



(19) **United States**
(12) **Patent Application Publication**
George et al.

(10) **Pub. No.: US 2014/0067279 A1**
(43) **Pub. Date: Mar. 6, 2014**

(54) **SIGNAL AVERAGING**

(52) **U.S. Cl.**

(76) Inventors: **Brian P. George**, Medina, OH (US);
Remi Dubois, Paris (FR); **Charulatha Ramanathan**, Solon, OH (US); **Harold Wodlinger**, Thornhill (CA)

CPC **A61B 5/7235** (2013.01)
USPC **702/19**

(57) **ABSTRACT**

(21) Appl. No.: **14/115,235**

A method (500) can comprise performing principal component analysis (PCA) on data corresponding to a subset of a plurality of signals and a selected template to generate a virtual lead and an optimized template (530). The method can also comprise calculating a cross correlation on the virtual lead and the optimized template to determine a strength of linear dependence between the virtual lead and the optimized template to determine regions of interest (ROIs) of the virtual lead (540). The method can further comprise detecting peak correlation coefficients in the virtual lead (550). The method can still further comprise comparing the amplitude of each of the ROIs of the virtual lead with the selected template to determine an error between the template and each ROI of the virtual lead (560). The method can yet further comprise averaging the ROIs to generate averaged data (570).

(22) PCT Filed: **May 4, 2012**

(86) PCT No.: **PCT/US2012/036543**

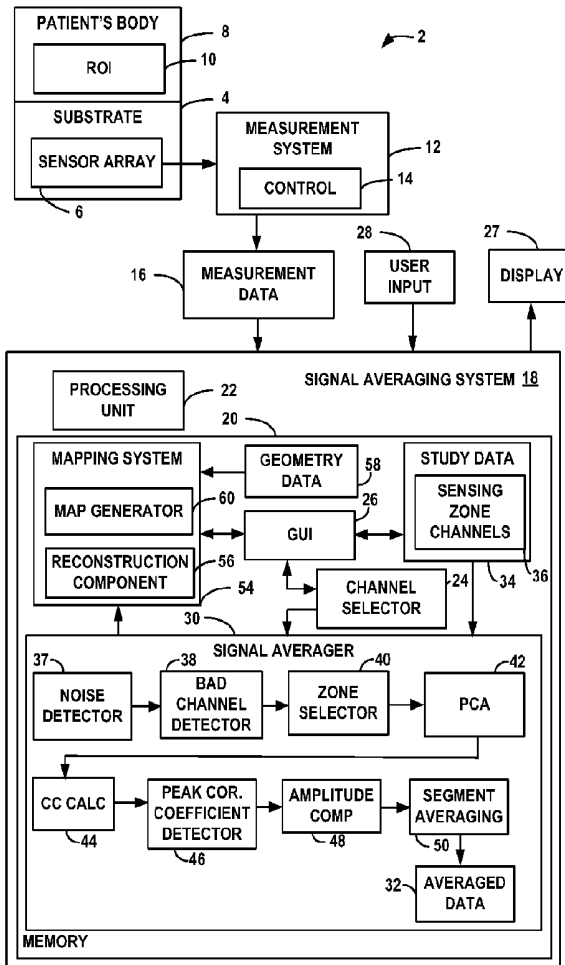
§ 371 (c)(1),
(2), (4) Date: **Nov. 1, 2013**

Related U.S. Application Data

(60) Provisional application No. 61/482,345, filed on May 4, 2011.

Publication Classification

(51) **Int. Cl.**
A61B 5/00 (2006.01)



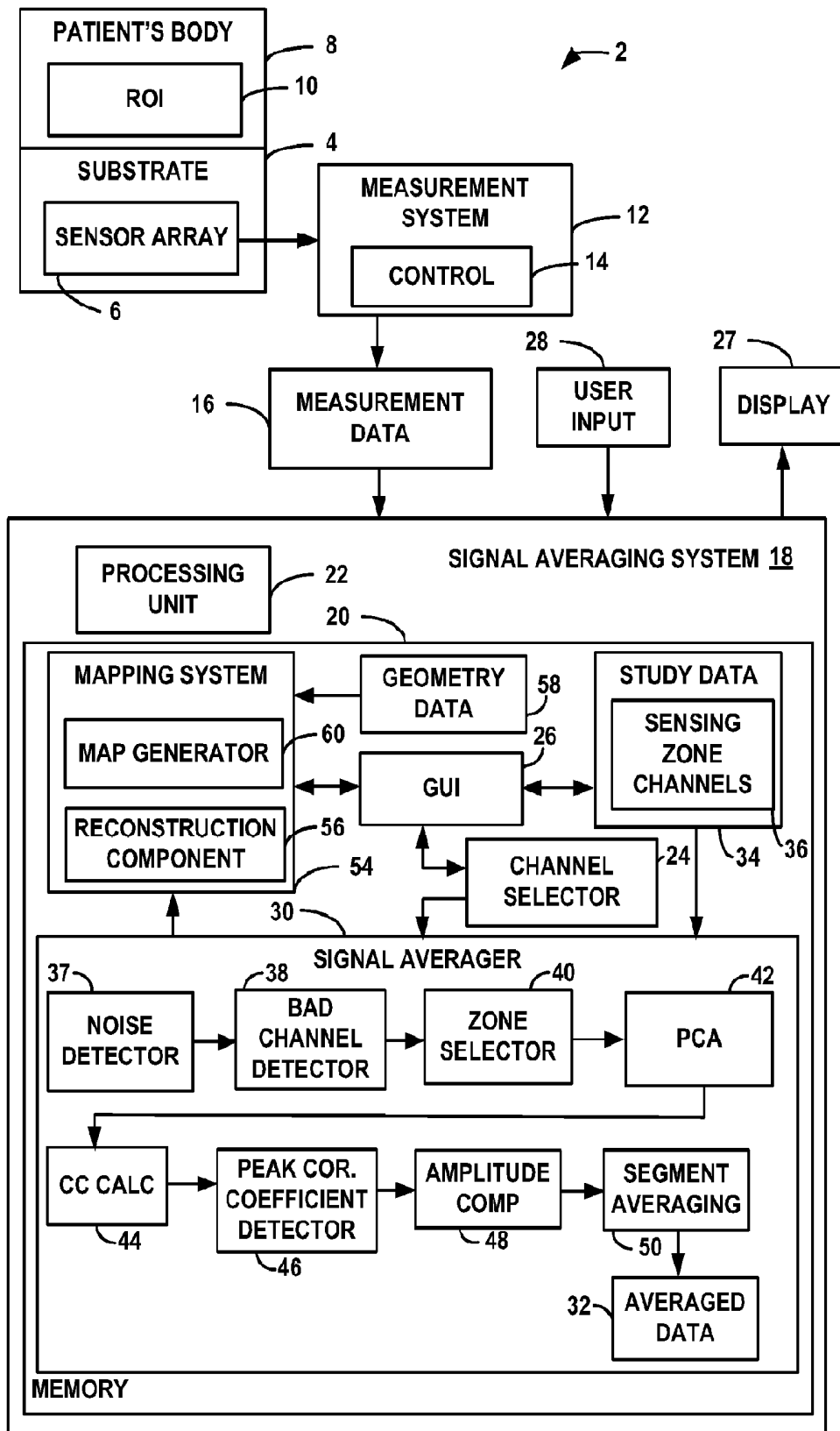


FIG. 1

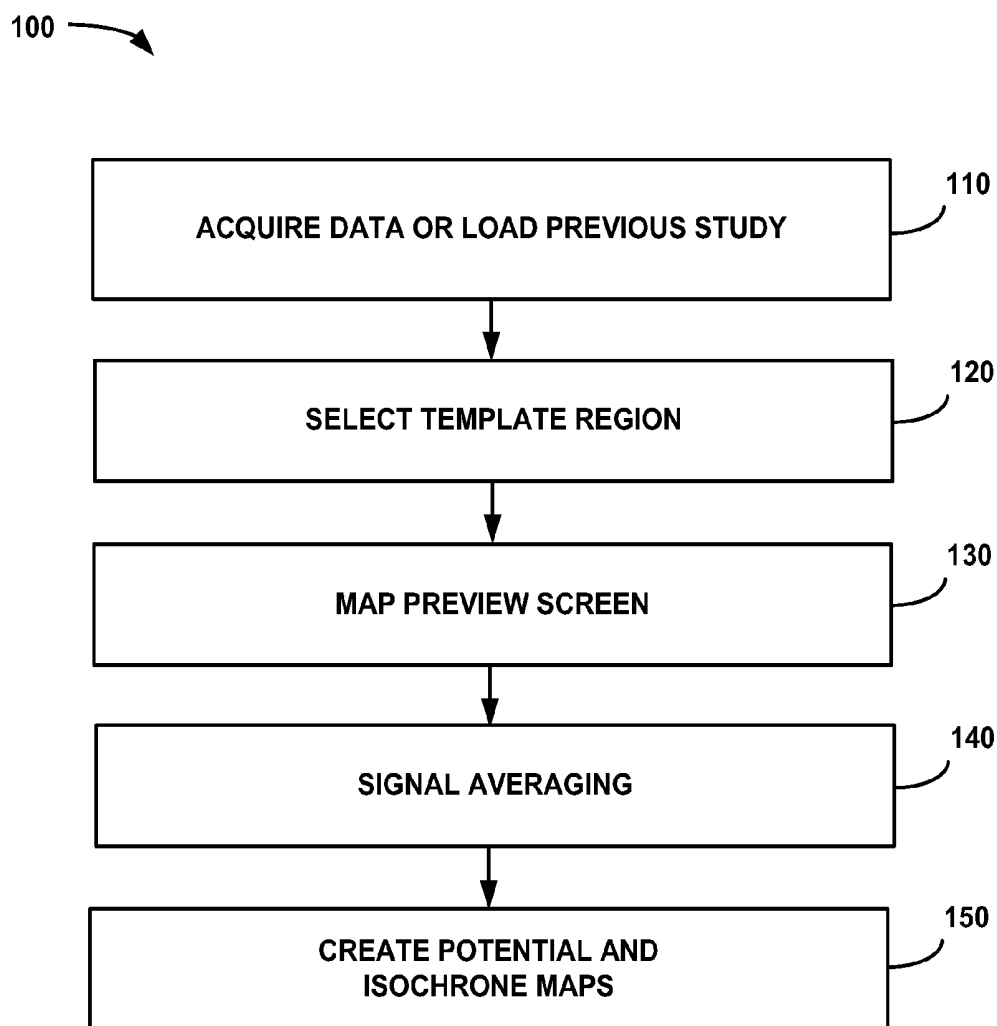


FIG. 2

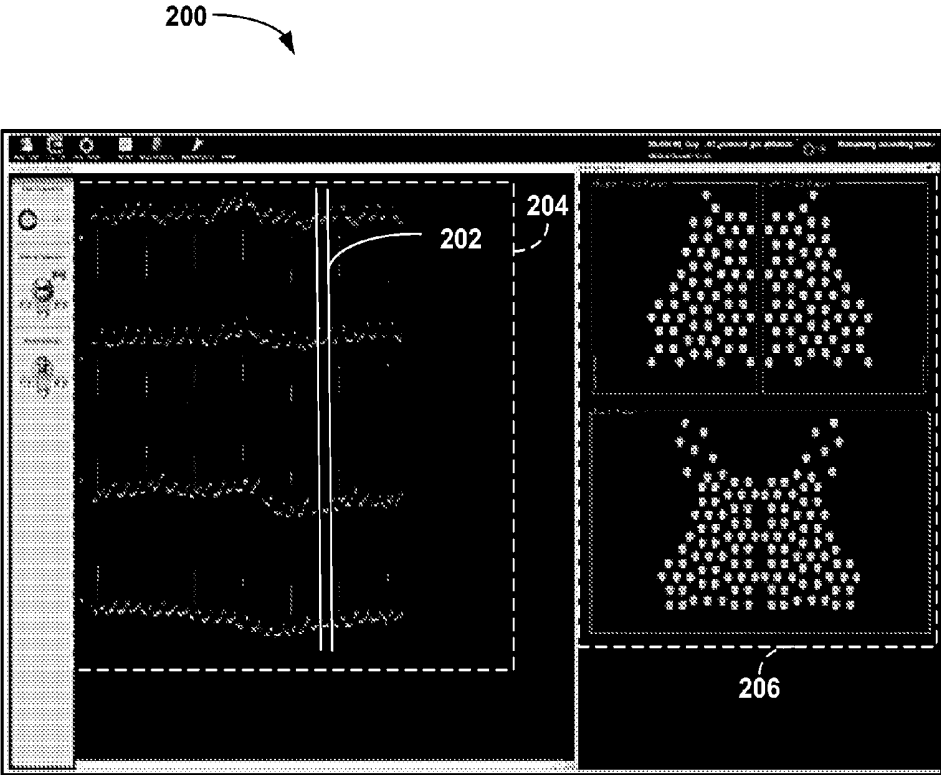


FIG. 3

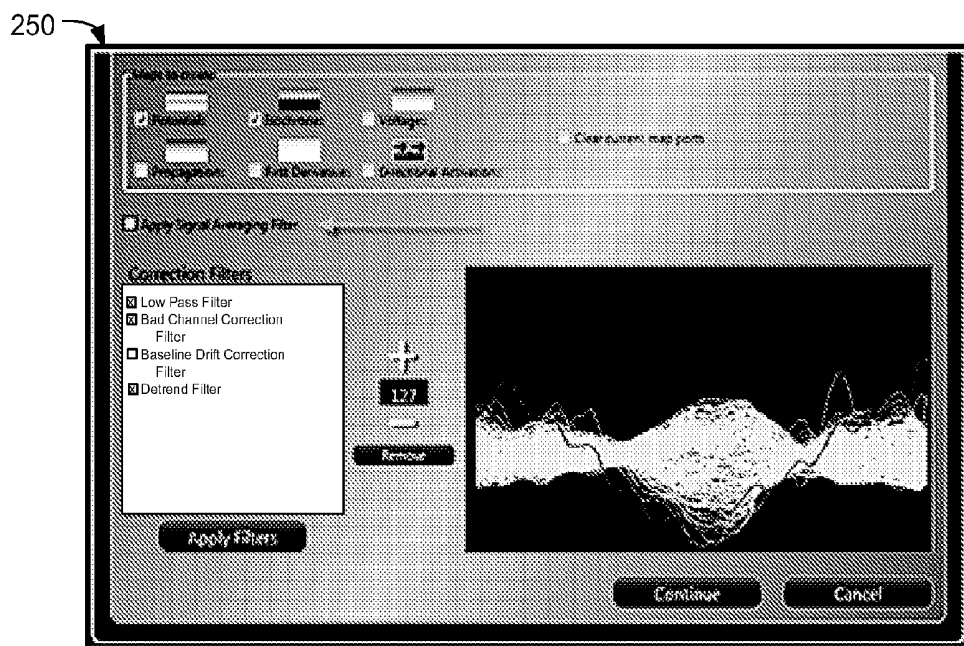


FIG. 4

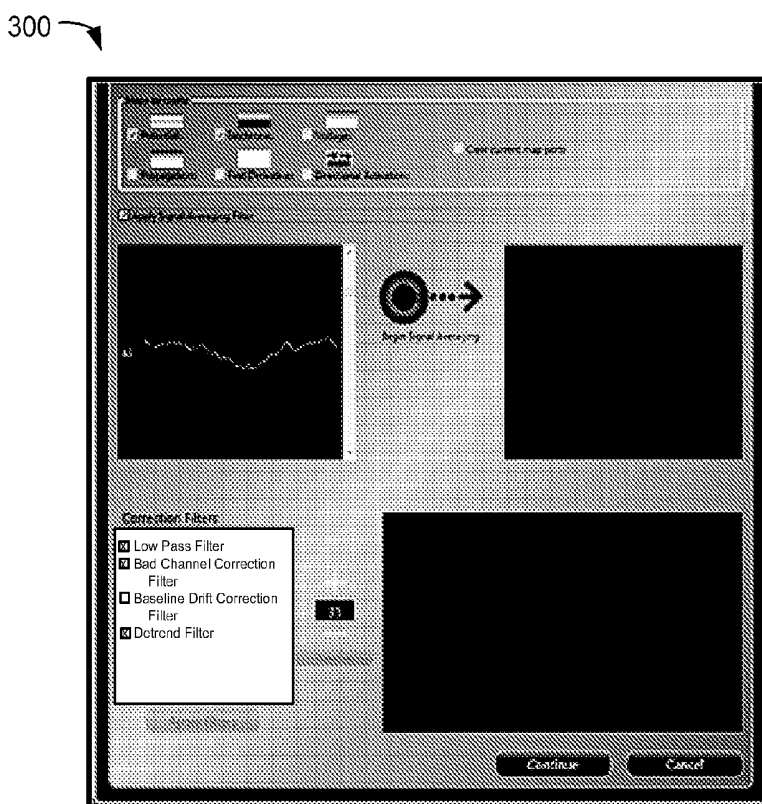


FIG. 5

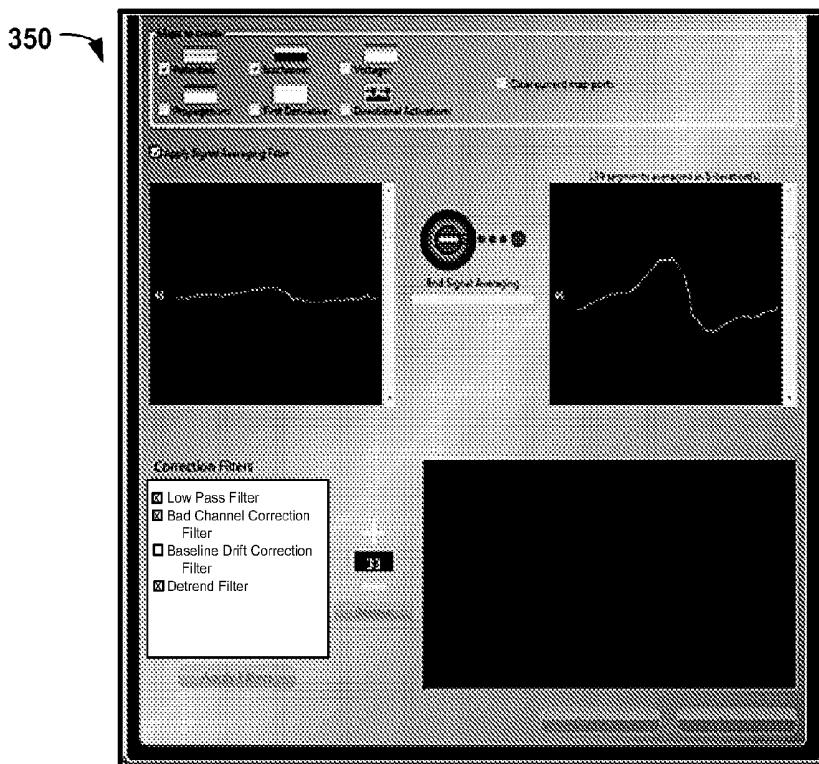


FIG. 6

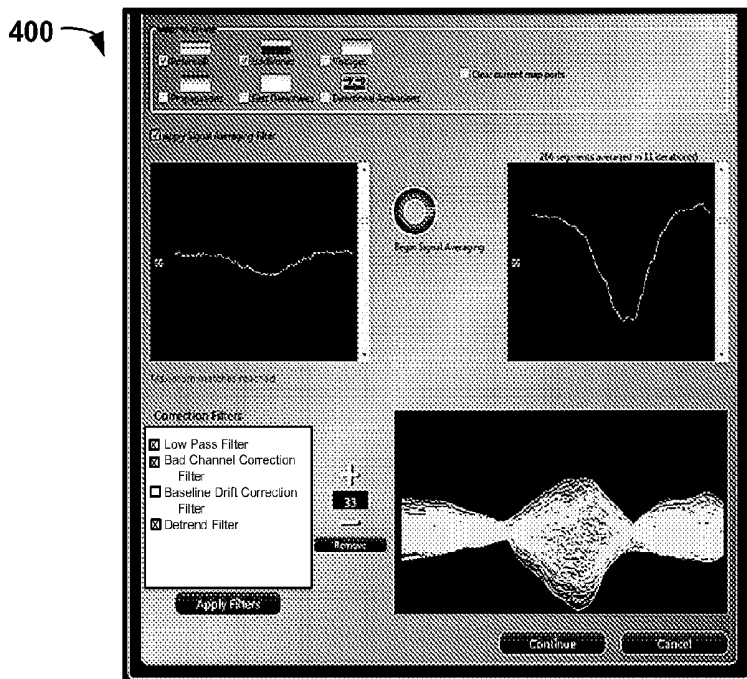


FIG. 7

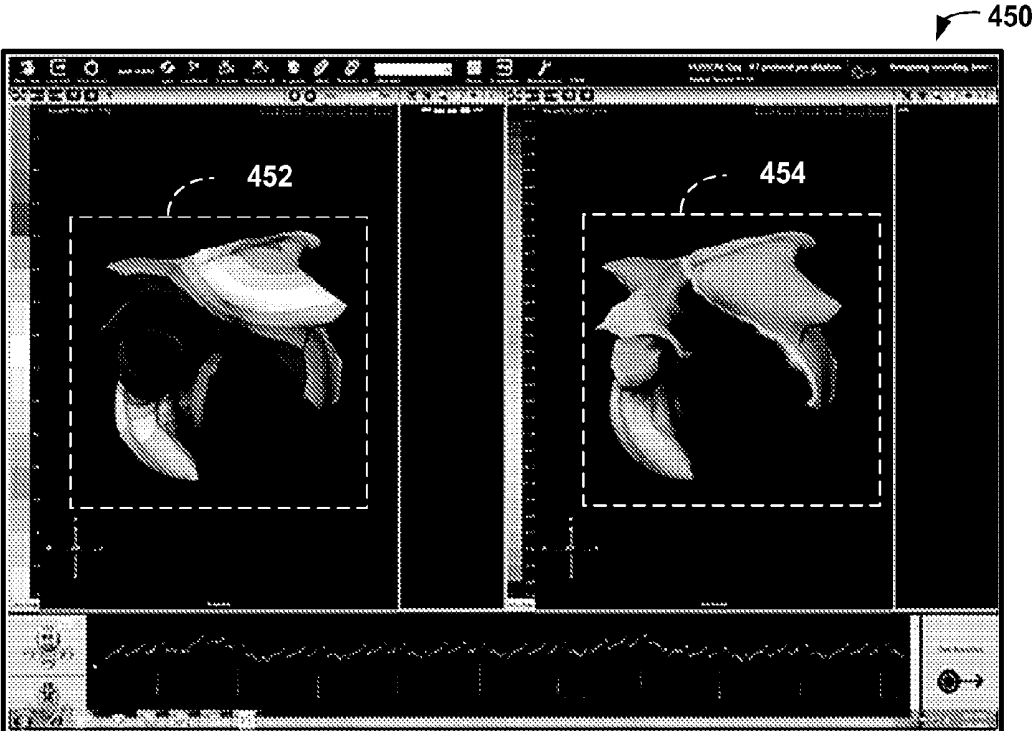


FIG. 8

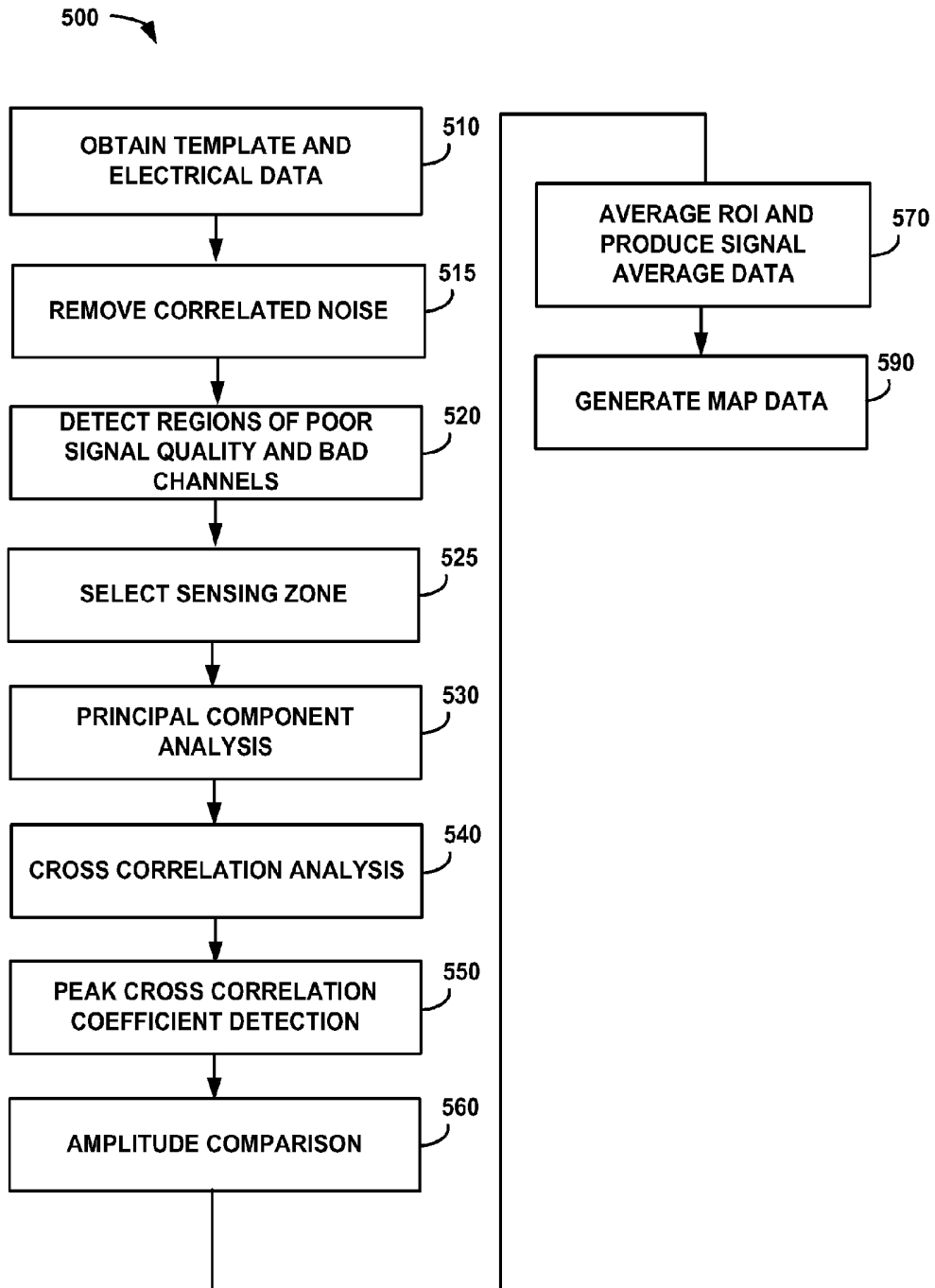


FIG. 9

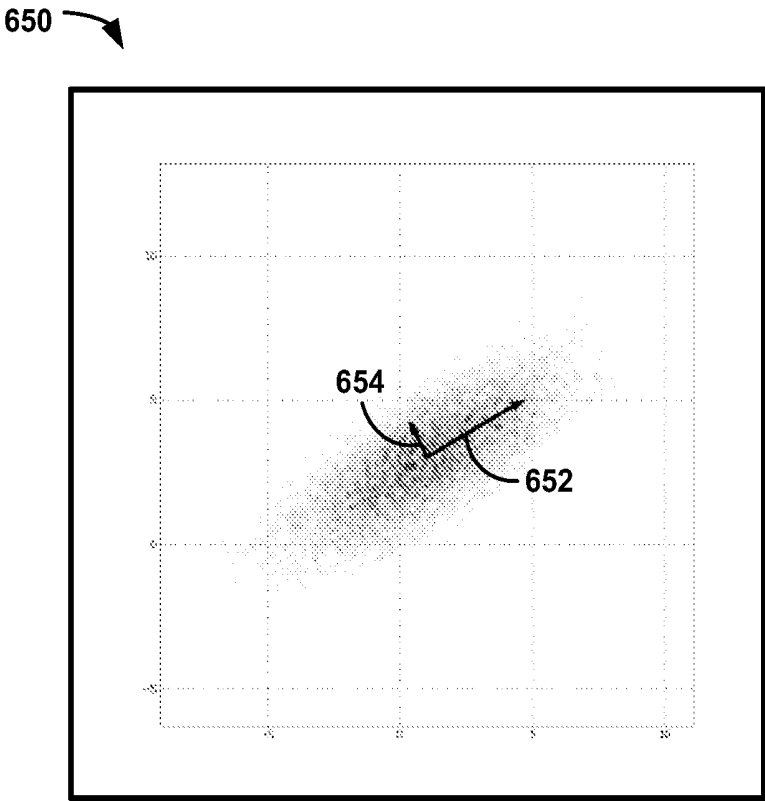


FIG. 10

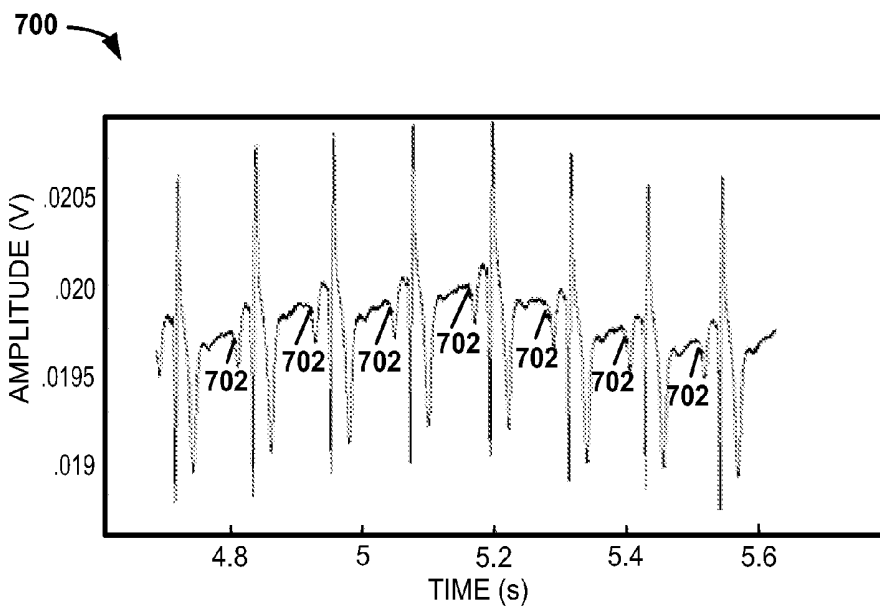


FIG. 11

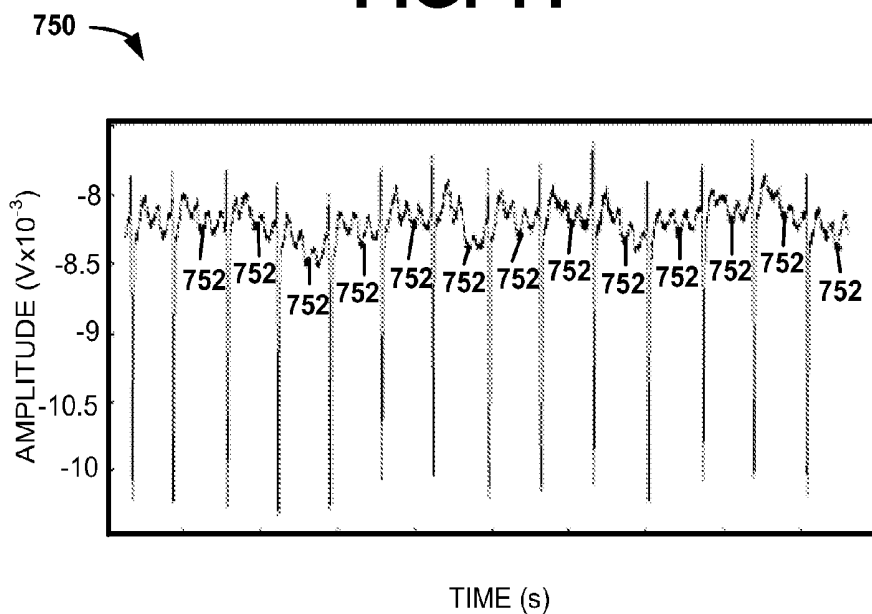


FIG. 12

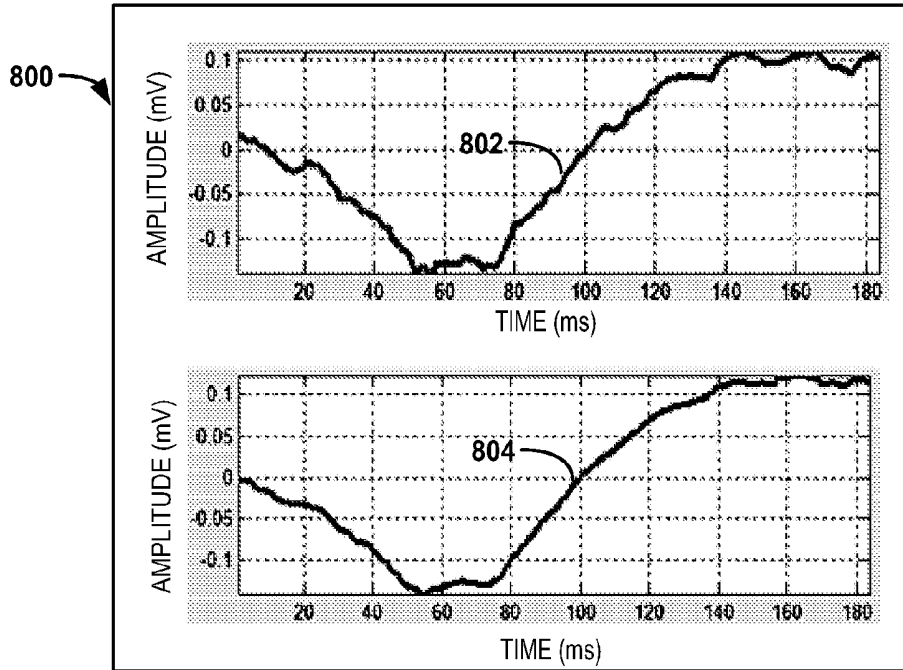


FIG. 13

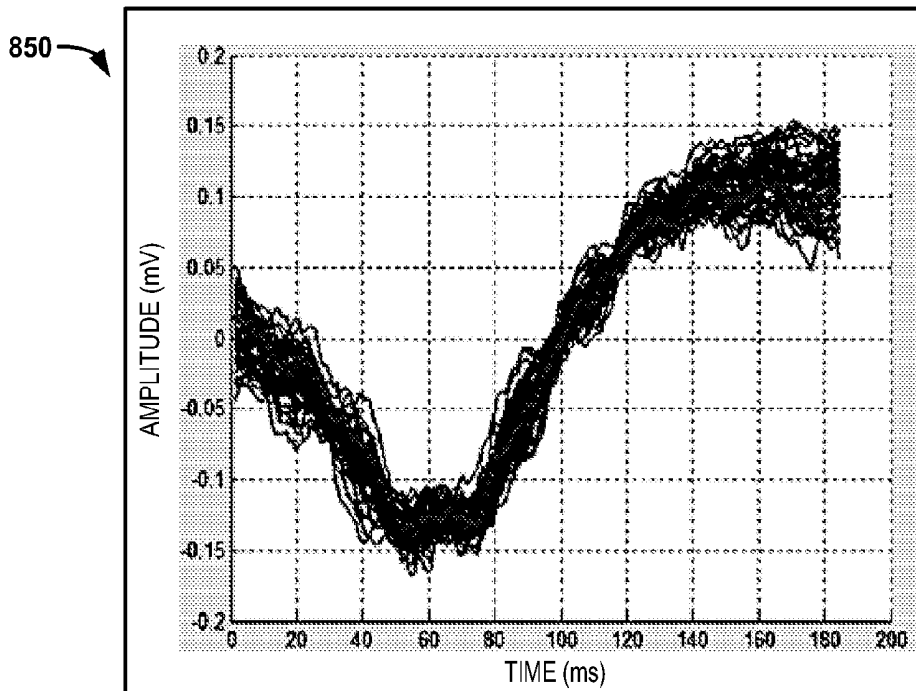


FIG. 14

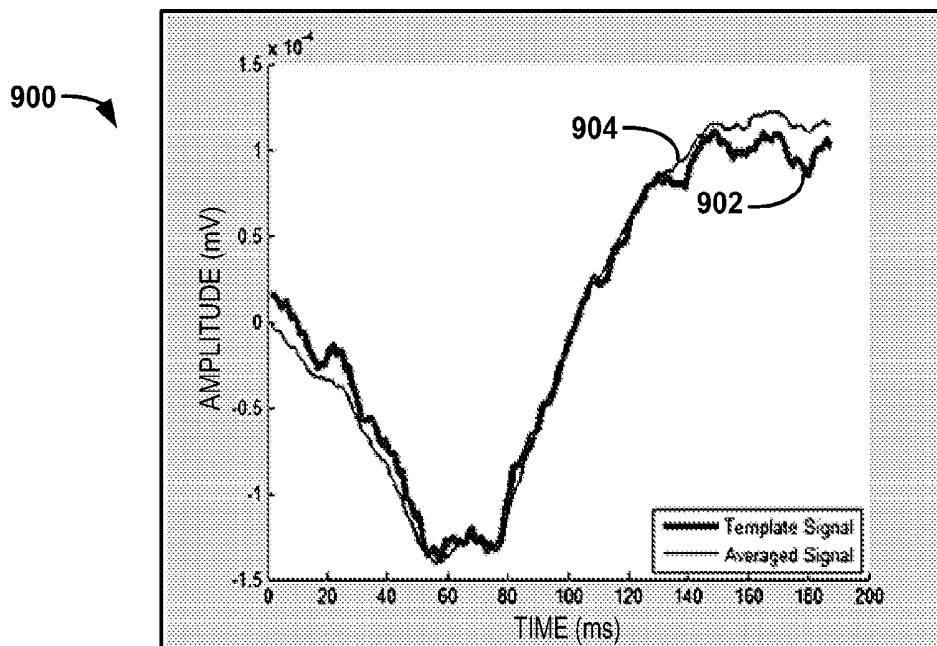


FIG. 15

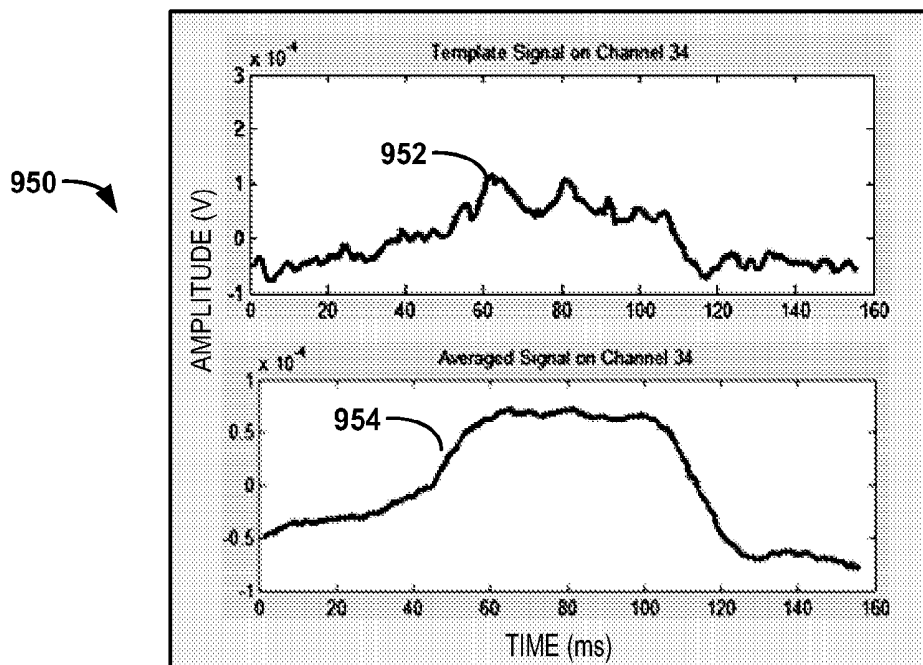


FIG. 16

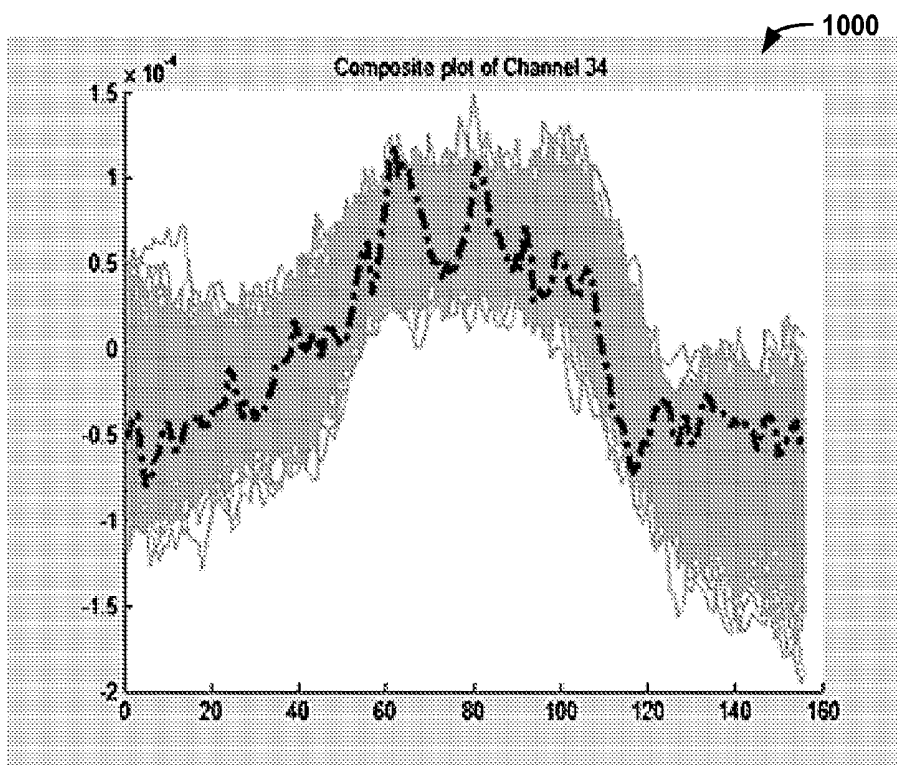


FIG. 17

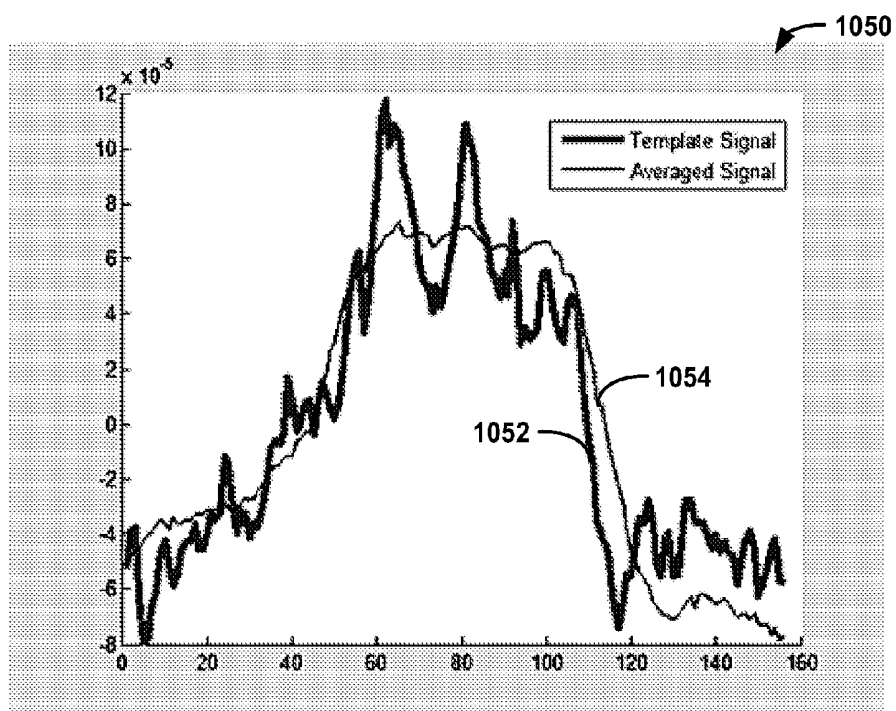
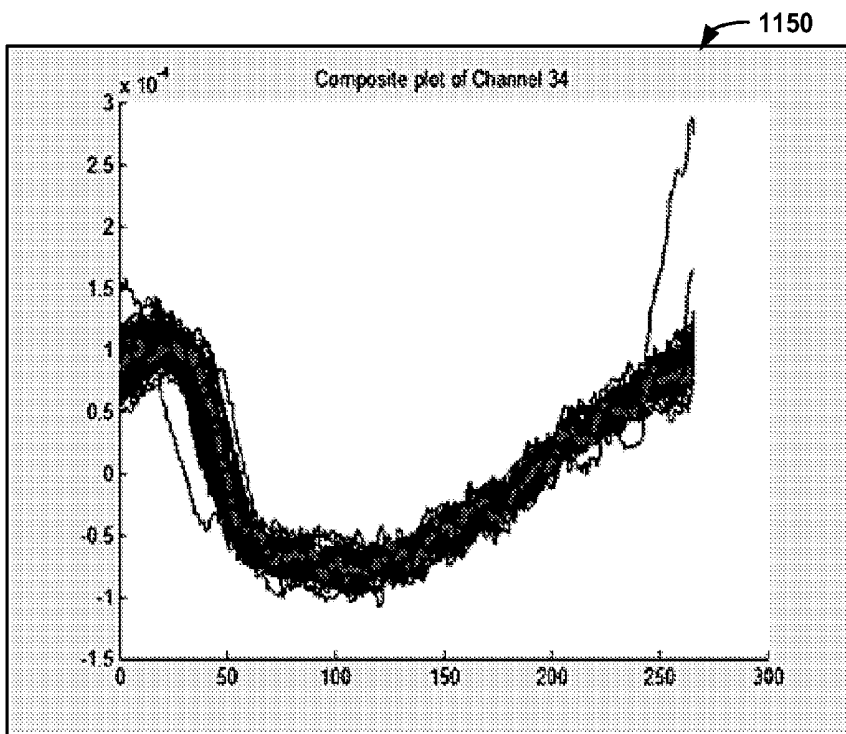
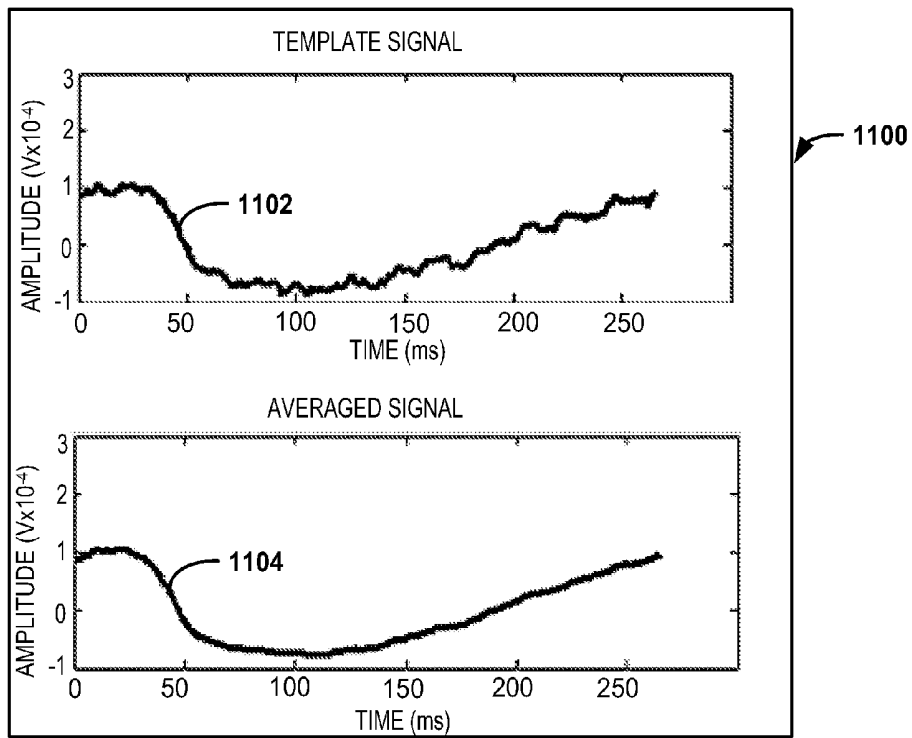


FIG. 18



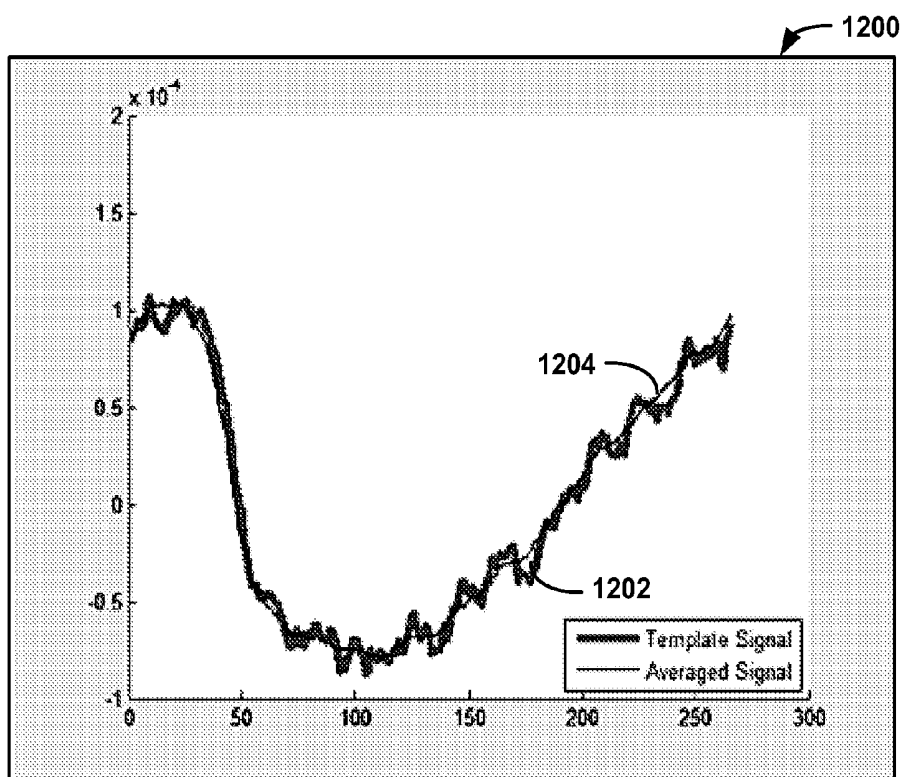


FIG. 21

1250

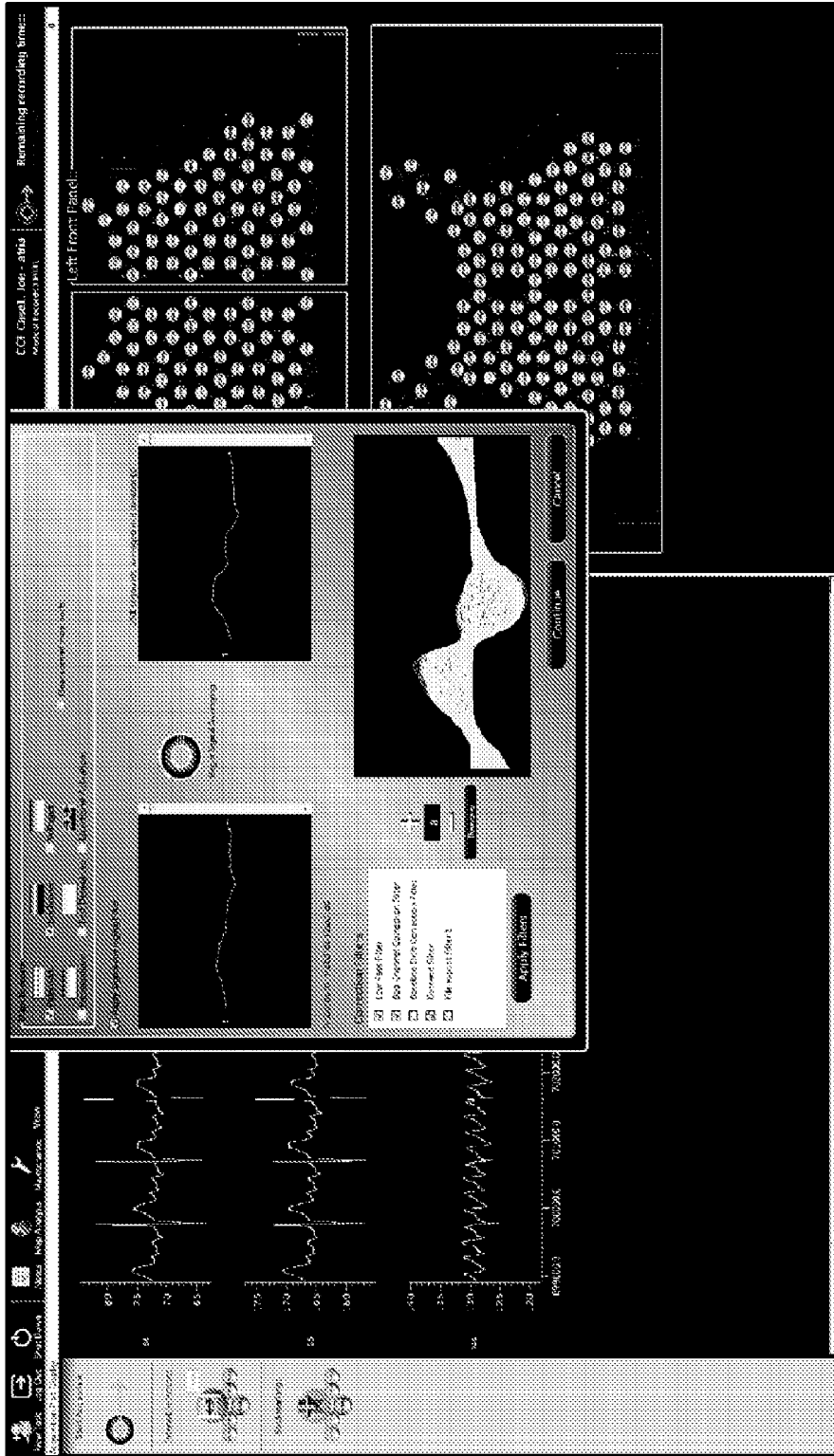


FIG. 22

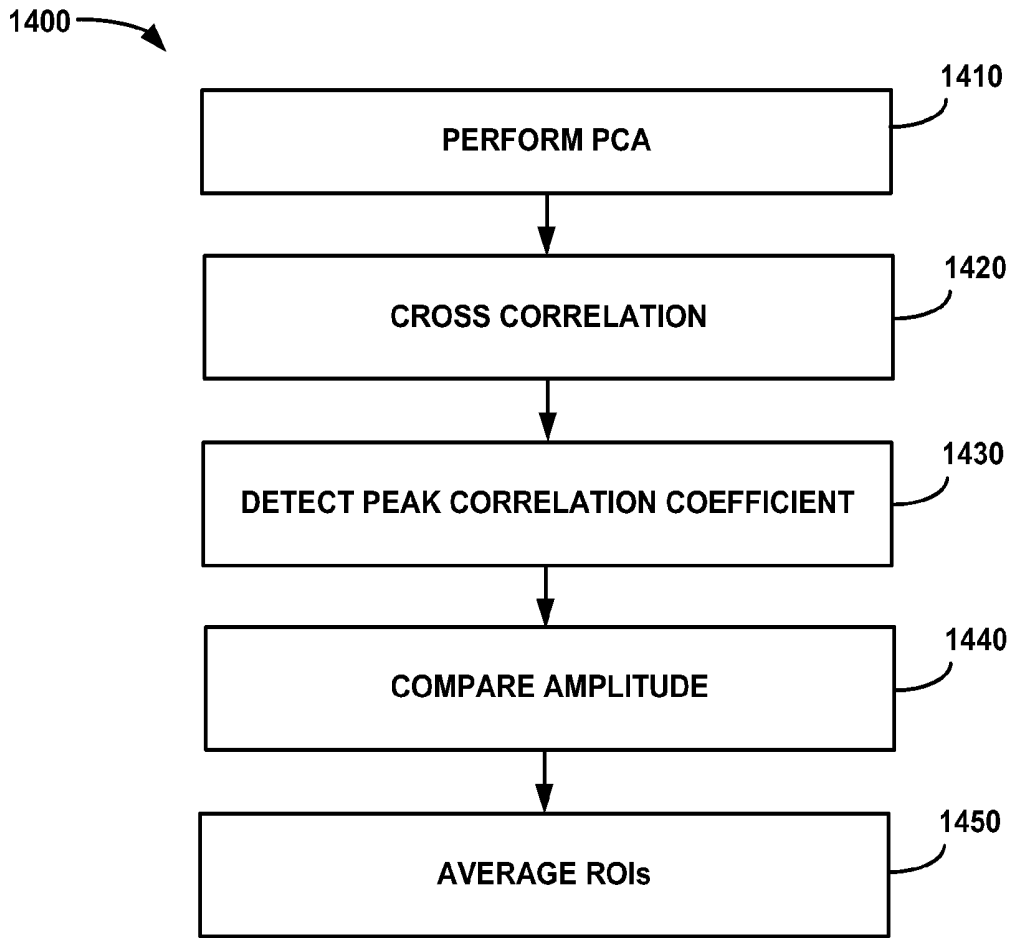


FIG. 23

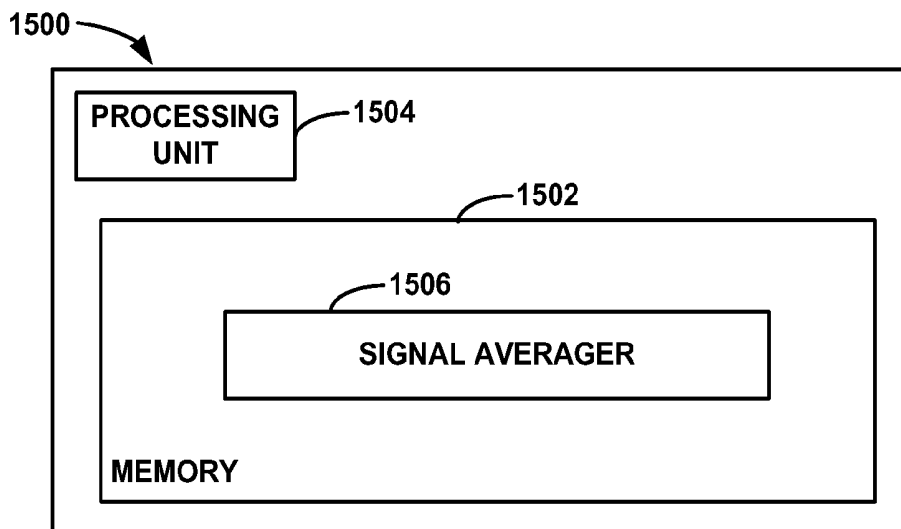


FIG. 24

SIGNAL AVERAGING

RELATED APPLICATIONS

[0001] This application claims the benefit of priority to U.S. Provisional Application No. 61/482,345, entitled "SIGNAL AVERAGING," and filed on May 4, 2011, which is incorporated herein by reference in its entirety.

TECHNICAL FIELD

[0002] This disclosure relates to systems and methods for averaging a plurality of signals, such as may be used for assessing a biological condition.

BACKGROUND

[0003] When an electrophysiological signal is sensed, the sensed signal can be contaminated with interfering noise from various sources. For the example of electrocardiogram (ECG) signals, sources of the noise can be a combination one or more of the following: electromagnetic radiation (e.g., about 50 Hz or 60 Hz depending on the country and harmonics) which include radio transmission, electrical wires, fluorescent lights; motion artifacts and baseline drift (e.g., ranging from about 0 Hz to about 20 Hz); electromyographic noise (e.g., ranging from about 20 Hz to about 200 Hz); and other electrophysiological equipment (e.g., generally ranging from about 0 Hz to about 2000 Hz). Given that the diagnostic frequency spectrum of ECGs can range from about 0.5 Hz to about 100 Hz, the presence of the noise can make a physician's analysis and diagnostic interpretation of the data difficult, especially when the sensed signals are low voltage signals (e.g., less than about 50 μ V).

[0004] A common and simple post-analysis method to remove contamination noise is to use a digital filter. For example, a band pass digital filter can eliminate both high and low frequency noise and only allow the desired frequencies to pass. However, the frequency response of a narrow frequency band filter may also remove physiologically relevant frequencies of the ECG signal. Another approach is to use a signal averaging technique which is commonly used in signal-averaged electrocardiography. The method may reduce small amounts of interfering noise, but cannot process large amount of noise or variations within the ECG signal.

SUMMARY

[0005] One example is related to a method comprising performing principal component analysis (PCA) on data corresponding to a subset of a plurality of signals and a selected template to generate a virtual lead and an optimized template. Each of the plurality of signals can correspond to an electrical biological signal detected by a sensor. The method can also comprise calculating a cross correlation on the virtual lead and the optimized template to determine a strength of linear dependence between the virtual lead and the optimized template to determine regions of interest (ROIs) of the virtual lead. The method can further comprise detecting peak correlation coefficients in the virtual lead. The method can yet further comprise comparing the amplitude of each of the ROIs of the virtual lead with the selected template to determine an error between the template and each ROI of the virtual lead. The method can still yet further comprise averaging the ROIs to generate averaged data.

[0006] Another example relates to a non-transitory machine readable medium for storing machine readable

instructions. The machine readable instructions can comprise a signal averager configured to receive measurement data that characterizes a plurality of detected biological signals. The signal averager can comprise a PCA function configured to perform PCA on the measurement data for a subset of the detected biological signals and a selected template to generate a virtual lead and an optimized template. The signal averager can also comprise a cross correlation (CC) calculator configured to determine a strength of linear dependence between the virtual lead and the optimized template to determine ROIs of the virtual lead. The signal averager can further comprise an amplitude comparator configured to compare the amplitude of each of the ROIs of the virtual lead with the selected template to determine an error between the template and each ROI of the virtual lead. The signal averager can still further comprise a segment averaging function configured to average each of the ROIs to calculate averaged data (e.g., for each of the biological signals).

[0007] Yet another example can relate to a system comprising a memory for storing machine readable instructions and a processing unit to access the memory and execute the machine readable instructions. The machine readable instructions can comprise a signal averager configured to detect regions of poor signal quality for each of a plurality of signals, wherein each of the plurality of signals corresponds to a biological signal. The signal averager can also be configured to determine which of the plurality of signals is associated with a bad channel based on the detected regions of poor signal quality. The signal averager can still further be configured to provide averaged data corresponding to an average of ROIs that are determined based on a strength of linear dependence between a virtual lead and an optimized template, wherein the virtual lead and the optimized template are based on the plurality of signals that are not associated with the bad channel and based on a selected template.

BRIEF DESCRIPTION OF THE DRAWINGS

[0008] FIG. 1 illustrates an example of a system for signal averaging.

[0009] FIG. 2 illustrates a flow chart of an example user work flow for implementing signal averaging.

[0010] FIG. 3 illustrates an example of a template selection screen.

[0011] FIG. 4 illustrates an example of a map preview screen with an ability to apply a signal averaging process.

[0012] FIG. 5 illustrates an example of a pre-signal averaging screen.

[0013] FIG. 6 illustrates an example of a signal averaging process running.

[0014] FIG. 7 illustrates an example of completed signal averaging results with a maximum number of segments averaged reached.

[0015] FIG. 8 illustrates an example of potential and isochrones maps created from signal averaged data.

[0016] FIG. 9 illustrates a flow chart of an example method for signal averaging.

[0017] FIG. 10 illustrates an example of Eigenvalues and eigenvectors.

[0018] FIG. 11 illustrates an example of P-wave accuracy test results.

[0019] FIG. 12 illustrates another example of P-wave accuracy test results.

[0020] FIG. 13 illustrates an example of a template versus averaged signal comparison.

[0021] FIG. 14 illustrates an example of a composite plot of all regions of interest detected to be averaged.

[0022] FIG. 15 illustrates an example of a template and averaged signal comparison.

[0023] FIG. 16 illustrates an example of template versus averaged signal comparison.

[0024] FIG. 17 illustrates an example of a composite plot of all regions of interest detected to be averaged.

[0025] FIG. 18 illustrates an example of a template and averaged signal comparison.

[0026] FIG. 19 illustrates an example of a template versus averaged signal comparison.

[0027] FIG. 20 illustrates an example of a composite plot of all regions of interest detected to be averaged.

[0028] FIG. 21 illustrates an example of a template and averaged signal comparison.

[0029] FIG. 22 illustrates an example of signal averaging results from a test case, Channel 1.

[0030] FIG. 23 illustrates another example flowchart of a method for averaging signals.

[0031] FIG. 24 illustrates another example of a system for averaging signals.

DETAILED DESCRIPTION

[0032] This disclosure relates to signal averaging for detected biological electrical signals. The signal averaging systems and methods provide an efficient approach for reducing the noise and preserve integrity of signal.

[0033] For example, ECG signals can be contaminated by interfering noise, whether from other lab equipment (computers) or the patient (electromyographic noise). The presence of the noise can make analysis and diagnostic interpretation of the data difficult, especially when the signals are low in voltage since the noise can overshadow the signal and prevent detection. Along with reducing the amount of interfering noise, the systems and methods disclosed herein can help accentuate and bring out small, but highly key signals that may be of diagnostic importance.

[0034] This disclosure provides signal averaging operative to reduce noise and enable low amplitude signal detection, such as body surface electrical activity. As an example, the signal averaging disclosed herein can encompass detection of local and global signal quality, data optimization by a principal component analysis, template matching by cross correlation, accurate matching by peak correlation detection and amplitude comparison, and ensemble averaging over all input channels, such as by using signal quality discrimination methods. The approach disclosed herein can also mitigate the number of false detections with a high accuracy of template detection, which can result in higher signal quality. As another example, by utilizing the signal averaging approach disclosed herein, signals as small as about 3 μV or less could be detected depending on the varying noise level. It will be appreciated that the signal averaging approach can be utilized to improve and advance the performance and accuracy of the detection method while preserving the noise reduction procedure.

[0035] For ease of explanation, examples of the signal averaging systems and methods are disclosed herein in the context of electrocardiogram (ECG) signals. It will be understood and appreciated that the systems and methods are equally applicable to other types of sensed electrical signals, including other types of electrophysiological signals (e.g., electromyography, electroencephalography, electrooculography, audiology and the like) as well as non-physiological electrical signals.

[0036] FIG. 1 illustrates an example of a system 2 that can be employed to process detected biological signals, such as ECG, EEG, EMG, EOG signals or the like. The system 2 can include a substrate 4 with a sensor array 6 mounted thereon. The substrate 4 could be implemented, for example, as a patient vest, a patient helmet or the like. The substrate 4 can be in physical contact with a patient's body 8. Alternatively, the sensors 6 can be connected to the patient's body 8 with out using a substrate.

[0037] Sensors in the sensor array 6 can be spaced apart in a distributed arrangement to detect the biological signals at different positions of the patient's body 8. Each of the sensors could be implemented, for example, as an electrode that can be utilized for recording patient electrical activity of a region of interest (ROI) 10, such as a heart or a brain of the patient. In some examples, the sensor array 6 can include non-invasive sensors that are attached to an external surface of the patient's body 8, such as the torso or head. Additionally or alternatively, the sensor array 6 could include invasive sensors that are positioned at the region of interest within the patient's body 8. In some examples, there can be about 200 or more sensors (e.g., about 252 sensors) in the sensor array 6. The number of sensors can vary according to application requirements.

[0038] The signals detected by the sensor array 6 can be referred to as detected signals. The detected signals can be provided to a measurement system 12. The measurement system 12 can include a control 14 which can be implemented as hardware and/or software for providing corresponding measurement data 16 that characterizes electrical signals detected by each of the sensors in the sensor array 6. The measurement data 16 can be stored in memory as analog or digital information. Appropriate timestamps can be utilized for indexing the temporal relationship between the respective measurement data 16 to facilitate the evaluation and analysis thereof. The measurement data 16 can be provided to a signal analysis system 18.

[0039] In the example of FIG. 1, the signal analysis system 18 can be implemented as a computer, such as a laptop computer, a desktop computer, a server, a tablet computer, a workstation or the like. The signal analysis system 18 can include a memory 20 for storing data and machine-readable instructions. While the measurement data 16 is demonstrated as being external to the analysis system 18, such data could be stored in the memory 20 of the analysis system. The memory 20 could be implemented, for example, as a non-transitory computer storage medium, such as volatile memory (e.g., random access memory), non-volatile memory (e.g., a hard disk drive, a solid-state drive, flash memory or the like) or a combination thereof.

[0040] The signal analysis system 18 can also include a processing unit 22 to access the memory 20 and execute the machine-readable instructions stored in the memory. The processing unit 22 could be implemented, for example, as one or more processor cores. In the present examples, although the components of the signal analysis system 18 are illustrated as being implemented on the same system, in other examples, the different components could be distributed across different systems and communicate, for example, over a network.

[0041] By way of example, the measurement data 16 can be provided to a channel selector 24 stored in the memory 20.

The channel selector **24** can, for example, be employed to select a template region (e.g., corresponding to P wave or identifiable portion) of detected signals characterized in the measurement data **16**. In some examples, the channel selector **24** can interface with a graphical user interface (GUI) **26** stored in the memory **20**, such that the template region can be selected in response to user input **28**. Additionally, the GUI **26** can provide data to a display **27** sufficient to provide a graphical representation (e.g., a chart) corresponding to each (or a selected subset) of the detected signals included in the measurement data **16**, such as to facilitate selecting the template region.

[0042] The selected template region can be provided to a signal averager **30** that is stored in the memory **20**. The signal averager **30** can be programmed to employ processing methods, such as those disclosed herein to provide averaged data **32** for each of the detected input signal signals based on the detected signals in the template region. The number of input signals (corresponding to input channels) can depend on the configuration of the sensor array **6**, and averaging is performed in relation to each such input channel (excluding bad channels), for example. The signal averager **30** can be programmed to perform data pre-processing to determine localized signal quality as well as global signal quality per channel can be implemented.

[0043] In one example, the GUI **26** can select study data **34** for a given study in response to user input **28**. The study data can characterize a particular type of biological study to perform on the patient. For instance, in some examples, the given study could be an atrial study, a ventricle study or the like. In other examples, the study data can identify one or more different anatomical regions of interest, which can be selected in response to user input or automatically according to other preselected analysis criteria. In any case, the study data can include information that identifies a subset of the sensors (or nodes) in the sensor array **6** for the selected study, which subset can collectively referred to as sensing zone channels **36**. In some examples, the subset of the sensors could be a proper subset of the sensors in the sensor array **6**, while in other examples, the subset can include all of the sensors in the sensor array **6**. The sensing zone channels **36** could be pre-defined for a given type of study as represented by the study data **34**. Alternatively or additionally, the sensing zone channels **36** could be determined based on an analysis of the patient and/or the sensor array **6** in response to a user input. The study data **34** can also be provided to the signal averager **30**.

[0044] The signal averager **30** can include a noise detector **37** that can detect and remove correlated noise (e.g., ambient noise from a power line). The noise detector **37** can be implemented in the measurement system as another example. In some examples, the noise detector **37** can be implemented as a low pass filter. The output of the noise detector **37** can be provided to a bad channel detector **38**.

[0045] The bad channel detector **38** can be implemented to detect a bad channel. The bad channel detector **38** can identify a channel as a "bad channel" upon determining, for example, if all of the data points in the channel are zero or if about 75% or more of the signal for such channel is to be deemed to have a poor signal quality. The bad channels identified by the bad channel detector **38** can be provided to a zone selector **40** of the signal averager **30**. The zone selector **40** can select a zone corresponding to the subset of sensing zone channels **36** included in the study data **34** and excludes the bad channel.

The selected zone and identified bad channels can be provided to a principal component analysis (PCA) function **42** of the signal averager **30**. As mentioned above, the selected zone can include a proper subset of the input channels or it can include up to all input channels. In some examples, bad channels may reside within the selected zone or they may be outside of the selected zone. In this latter case, the bad channel may be excluded from use by the PCA function **42** without affecting the PCA. If one or more bad channels reside within the selected zone, the bad channels can be omitted from analysis or, alternatively, interpolation of signals from a neighbouring set of channels can be utilized as a substitute channel.

[0046] The PCA function **42** can perform PCA on the measurement data **16** corresponding to the channels included in the selected zone, excluding any channels in the selected that had been identified as bad channels. The PCA function **42** can analyze the measurement data **16** characterizing the subset of the detected signals identified in the selected zone to provide a mechanism for identifying patterns in data of high dimensions and expressing that data in a manner that emphasizes the similarity and differences in the data, such as in a manner described herein. The PCA function **42** can calculate a covariance matrix for the measurement data **16** characterizing the subset of the detected signals identified in the selected zone. The PCA function **42** can also compute eigenvectors and eigenvalues of the covariance matrix by employing single variable decomposition, such as disclosed herein. The PCA function **42** can provide an orthogonal representation of the measurement data **16** characterizing the subset of the detected signals identified in the selected zone, in which the orthogonal dimensions can be sorted in a decreasing order of relevance such that a first component of the decomposition can be a dimension that carries the most information, such as described herein.

[0047] By employing such techniques, the PCA function **42** can calculate a virtual lead from the subset of channels. The virtual lead, corresponding to a single channel derived from the subset of input channels, can be utilized for further processing by the signal averager **30**. The virtual lead creation resolves the issue of multiple computationally intensive procedures and creates an efficient format that can be used as evaluation criteria for future processes. The PCA function **42** can also be utilized to derive an optimized template from the selected template (e.g., automatically or manually selected). The PCA-optimized template, for example, can correspond to a P wave detection function for use by the signal averager **30**. Thus, the PCA function **42** is utilized to detect the time location where the template matches the input signal. As disclosed herein, the actual averaging (via segment averaging function **50**) is performed on the original input measurement data **16** (e.g., excluding bad channels) to mitigate loss of important information in the input data.

[0048] As a further example, the optimized template and the virtual lead can be provided to a cross correlation (CC) calculator **44**. The CC calculator **44** can be employed to determine the strength of linear dependence between the optimized template and the virtual lead, which strength can be characterized in a CC signal. The CC calculator **44** can determine regions of interest (ROIs) that are set to maxima of the CC signal and a length of the optimized template, and provide the ROIs to a peak correlation coefficient detector **46** for each input channel.

[0049] The peak correlation coefficient detector **46** of the signal averager **30** can locate maximum correlation coefficients in the virtual lead by employing a smooth derivative from correlation coefficient data, in a manner described herein. The output of the peak correlation coefficient detector **46** and the ROIs can be provided to an amplitude comparator **48**. Additionally, the amplitude comparator **48** can compare the amplitude of each ROI with the optimized template to calculate in error between the optimized template and the virtual lead ROI to determine each extraction point, such as in a manner disclosed herein. Each extraction point thus can correspond to a time-referenced location derived from the optimized template and the virtual lead.

[0050] The signal averager **30** can also include a segment averaging function **50** that can calculate an average for each respective channel over each of the ROIs provided from the amplitude comparator **48** for the respective channel. The averaging function can employ the extraction point (e.g., corresponding to a time location) to perform the averaging for corresponding segments in each respective channel. The segment averaging function **50** can also account for the number of bad channels detected by the bad channel detector **38**, such as by excluding such bad channels from the averaging process. The method ensemble averages the detected regions and uses the signal quality information calculated previously to prevent averages with uninterpretable or poor signal quality regions. The output of the segment averaging function **50** can be provided as the averaged data **32** that characterizes an average signal for each of the ROIs, which can in some examples, corresponded to about 256 averaged signals (e.g., virtual leads). This averaging function thus evaluates smaller regions within a channel signal for signal quality rather than excluding the full channel from calculation based on an overall trend or small segment judgement. After the acceptable regions have been averaged, the data is then available for subsequent analysis and processing (e.g., for map creation or generating other outputs). The averaged data **32** can be stored in the memory **20** to represent average signal waveforms for each of the input channels corresponding to the measurement data **16**.

[0051] The averaged data **32** can be provided to a mapping system **54** stored in the memory **20**. The mapping system **54** can employ a reconstruction component **56** to convert the average data to corresponding reconstructed electrical activity of the organ under study (e.g., the patient's heart). In some examples, the reconstruction component **56** can combine the averaged data **32** with geometry data **58** that characterizes a geometry of the organ under study **10** and execute an inverse algorithm to reconstruct the electrical activity of the organ under study **10** on an envelope, such as an epicardial, an endocardial envelope or other envelope. The envelope can correspond to an anatomical surface of the organ or otherwise.

[0052] The mapping system **54** can also include a map generator **60** configured to produce corresponding map data based on reconstructed electrical activity of the organ under study **10** computed by the reconstruction component **56**. The map data can be provided to the GUI **26** such that the GUI **26** can provide data sufficient cause the display **27** to output a map of the organ under study **10**, such as a potential and/or an isochrone map.

[0053] In view of the foregoing structural and functional features described above, example methods will be better appreciated with reference to FIGS. **2**, **9** and **25**. While, for

purposes of simplicity of explanation, the example methods of FIGS. **29** and **25** are shown and described as executing serially, the present examples are not limited by the illustrated order, as some actions could in other examples occur in different orders and/or concurrently from that shown and described herein. Moreover, it is not necessary that all described actions be performed to implement a method. The example methods of FIGS. **29** and **25** can be implemented as computer-readable instructions that can be stored in a non-transitory computer readable medium such as can be computer program product. The computer readable instructions corresponding to the methods of FIGS. **29** and **25** can also be executed by a processor (e.g., the processing unit **22** of FIG. **2**).

[0054] FIG. **2** illustrates an example method **100** of a user workflow for employing the signal averaging method. At **110**, data (e.g., measurement data) can be acquired at a signal analysis system, such as the signal analysis system **18** illustrated in FIG. **1**. The data can be acquired in real-time or near real-time, for example, from a plurality of sensors (e.g., the plurality of sensors **6** illustrated in FIG. **1**). Alternatively or additionally, the data can be acquired earlier and loaded from a separate file (e.g., stored in memory).

[0055] At **120**, the user can employ a user interface (e.g., GUI **26** illustrated in FIG. **1**) to select a template region using the available selection callipers. FIG. **3** illustrates an example of a template selection screen **200** wherein calipers **202** are selected from ECG signals **204** that are provided from a sensor array **206**. The user then (via the GUI) chooses to map the template region. Referring back to FIG. **2**, at **130**, the user can be presented with a preview of the data to be signal averaged and the ability to begin the signal averaging process. FIG. **4** illustrates an example of a map preview screen **250** with ability to apply a signal averaging process and select correction filters that can be applied to the acquired data. FIG. **5** illustrates an example of a pre-signal averaging screen **300**. Referring back to FIG. **2**, before the template is matched, at **140** a signal averaging process is initiated such as in response to a user input (e.g., CONTINUE GUI element in FIG. **5**).

[0056] In response to initiating the signal averaging at **140**, a display can show the current signal averaging results as well as the mean number of segments averaged and the iteration number. FIG. **6** illustrates an example of a signal averaging process screen **350** running. The signal averaging process can terminate (e.g., end) automatically when a user defined number of segments averaged are reached or if the process reaches the beginning of the data set. The user can also stop the process manually (e.g., in response to providing an input via a GUI, such as the GUI **26** illustrated in FIG. **1**).

[0057] FIG. **7** illustrates an example of a completed signal averaging results screen **400** with a predefined maximum number of segments averaged reached. Referring back to FIG. **2**, upon completing the signal averaging, at **150**, the user can use perform inverse solution techniques on the averaged data (e.g., the averaged data **32** illustrated in FIG. **1**) to generate potential and isochrone maps. In some examples, the potential and isochrone maps can be generated, for example by the mapping system **54** illustrated in FIG. **1**. FIG. **8** illustrates an example screen **450** of a potential map **452** and an isochrone map **454** that can be created from signal averaged data.

[0058] FIG. 9 illustrates an example process flow chart representing a signal averaging method 500. The method 500 could be implemented, for example, by the signal averager 30 illustrated in FIG. 1.

[0059] At 510, a template region and ECG data can be obtained, such as described with respect to FIG. 2. By way of example, the signal averaging method 500 (e.g., algorithm) can receive the following inputs: the ECG data signal, the previous number of segments averaged, the previous averaged signal, the threshold of the correlation coefficients, the number of segments to average until the process returns a value to stop averaging, the template signal, a list of bad channels, the sensing zone channels, and the rate at which the data was sampled. As an alternative or in addition to the sensing zone channels, a minimum number of channels can also be provided as an input such that the minimum number of channels can be required in order to implement the signal averaging method 500. In situations when a sensing zone is utilized, the location of the electrodes can be considered sufficient such that the minimum number of channels can be ignored or a different minimum number can be used depending on the channels in the sensing zone.

[0060] At 515, correlated noise can be removed from the input signals (e.g., by the measurement system 52 illustrated in FIG. 1). This can be performed before or after the electrical data is acquired by the method 500. The noise which the signal averaging method can efficiently remove is uncorrelated, or random. To mitigate correlated noise from entering the signal averaging process, a line filter and a low pass filter can be implemented (e.g., part of the measurement system 12 of FIG. 1) before the data was processed by the signal averager. A line filter can remove the 60 Hz (or 50 Hz for European outlets) and further harmonics of 60 Hz ambient noise from the signals. A 100 Hz Butterworth low pass filter will remove frequencies above 100 Hz, given that the frequency spectrum of ECG signals is between 0.05 Hz and 100 Hz. The 100 Hz low pass filter is a standard for United States ECG machines. Such filters can be implemented in hardware, software or a combination thereof.

[0061] As an example, for white noise, the noise level can be represented as the standard deviation, or σ (sigma). The probability of detecting a signal with an amplitude range of σ_{DS} (DS=detected signal) is based on the input signal noise level (σ_{noise}) and the number of waveforms averaged (Nb) and can be calculated with Equation 1.

$$p(X) = 1 - \frac{\sqrt{N_b}}{\sigma_{noise}} \frac{1}{\sqrt{2\pi}} \int_{-X}^X \exp\left(-\frac{1}{2}\left(\frac{\sqrt{N_b}}{\sigma_{noise}}t\right)^2\right) dt. \quad \text{Equation 1}$$

[0062] Equation 1 represents the probability of extracting a signal of certain amplitude from a signal with a certain noise level after a specified number of waveform averages. Since the signal averaging method employed by the signal averager would be applied to detect signals as low of voltage as 3 μ V for PV reconnection analysis, 3 μ V was the baseline signal amplitude used for analysis.

[0063] At 520, regions of poor signal quality and bad channels can be detected and stored in a memory (e.g., of the signal analysis system illustrated in FIG. 1). For example, bad channels can be detected by a bad channel detector (e.g., the bad channel detector 38 illustrated in FIG. 1). Input bad channels can be defined as channels which were missing from the CT

scan, were completely saturated, or were chosen by the user (e.g., manually selected via a GUI, such as the GUI 26 illustrated in FIG. 1) as bad channels. Additionally, such detection can employ, for example, discrimination methods, such as bad channel detection and amplitude comparison, to search all channels of torso potential data (or other data) for a matching morphology of a chosen template signal within a limited threshold range. The highest quality matching regions thus can be averaged per channel and the resultant data is returned such that the detected regions of poor signal quality and/or bad channels can be ignored. The bad channel detector can utilize a predetermined temporal windowed segment of data for each iteration (e.g., about 30 seconds of data). For consecutive iterations, systems and methods can retrieve 30 seconds of data before the previous iteration.

[0064] As further example, to detect the regions of poor signal quality and/or bad channels, the bad channel detector can employ a bad channel detection algorithm. In one example the bad channel detector can identify a channel as a “bad channel” in response to determining, for example, if either all the data points in the channel are zero or 75% of the signal is deemed as of poor signal quality. For instance, the input data can be divided into segments of a plurality of data points (e.g., 2000 data points, or less if the data set contained less than 2000 data points). The bad channel detector can evaluate each windowed segment based on the variation of the baseline, amplitude changes between windows, large amplitude changes, and all zero data (no information).

[0065] For each windowed segment, the bad channel detection at 520 can calculate a baseline with a low pass filter FIR digital filter (e.g., a 0.1 Hz LPF) employing the window method. The baseline can be subtracted from the signal in order to make a comparison the signals with and without the baseline. The bad channel detection can compare each windowed segment to the previous segment for variations between the amplitude and baseline drift. The segment can be evaluated for the variation of the signal from the baseline and if the signal contained all zeros. If any of these criteria were met, the segment can be marked (e.g., bad channels) as not acceptable to average, and/or of poor quality. Segments that were not identified as bad channels can be averaged. If the channel has a predetermined amount (e.g., about 75%) or more of the total segments unacceptable, then the channel can be declared a “bad channel” and would be removed from the averaging process, resulting in zero averages for the iteration. The information about the segments’ quality can be stored in memory.

[0066] At 525, a sensing zone can be selected (e.g., the zone selector 40 illustrated in FIG. 1). To select the sensing zone, the zone selector can receive study data that identifies a subset of the detected channels which can be referred to as sensing zone channels. In some examples, the sensing zone can be predefined based on a study identified in the study data (e.g., an atrial study or a ventricle study). In other examples, the sensing zone channels can vary based on the patient and/or a geometry of a sensor array (e.g., the sensor array 6 illustrated in FIG. 1). The zone selector can select a sensing zone corresponding to the sensing zone channels based on the study data. Data characterizing the sensing zone channels in the sensing zone can be provided to a PCA function (e.g., the PCA function 42 illustrated in FIG. 1).

[0067] At 530, the PCA can be performed (e.g., by the PCA function 42 of FIG. 1) such as to optimize performance and increase accuracy. The PCA can be implemented on the sens-

ing zone channels and bad channels in the zone can be excluded. The PCA can provide a mechanism of identifying patterns in data of high dimensions and express that data in a manner to emphasize the data's similarities and differences. The PCA function could be useful, for example, when measures on a number of observed variables were obtained and it was advantageous to develop a smaller number of artificial variables that would account for most of the variance in the observed variables. The principal components can be used as predictor or criterion variables in subsequent analyses. A principal component could be defined as a linear combination of optimally-weighted observed variables.

[0068] The PCA at **530** can include calculating a covariance matrix, performing single value decomposition, forming a feature vector, and then formulating the new data set. As an example, the analysis first calculates a covariance matrix. The covariance is the measure of the strength of correlation between two or more signals with respect to each other. The principal components of the signal can be computed by determining the eigenvectors and eigenvalues of the covariance matrix by means of a single value decomposition. The first eigenvector shows the line of best fit while other eigenvectors show less important trends.

[0069] FIG. 10 illustrates a graph **650** demonstrates where the first and second eigenvectors **652** and **654** are plotted on a scatter plot of an example data set. The first eigenvector **652** can be varying from its direction based on the scattering of the data when the data sets contain a large number of outliers. Referring back to FIG. 9, the PCA function can calculate a virtual lead by multiplying the right singular vector by the ECG data.

[0070] The PCA function can produce an orthogonal representation of the original data in which the orthogonal dimensions can be sorted in a decreasing order of relevance. Each dimension can be obtained by a linear combination of the original data. The so-called "first component" of the decomposition can be the dimension (e.g., the linear combination of the original data) that carries the most information. As noted FIG. 10 illustrates an example of a graph **650** where the PCA function could be employed. The graph **650** of the PCA function can include an example of a "first component" **652** that is illustrated as a vector.

[0071] Referring back to FIG. 9, applied to ECG data, the first component can be determined as the linear combination that maximizes the amplitude of the signal. By way of example, let A be the matrix with the body surface ECGs. The matrix A can be an $N_s \times N_L$ matrix where N_L is the number of available channels, and N_s the number of samples in the record. Let T be the template manually delineated on the body surface ECGs: T was a sub-matrix of A of size $N_T \times N_L$ where N_T is the number of samples of the template. The PCA can be estimated by employing Equations 3-4 which employs a svd decomposition (singular value decomposition) of the matrix T that can be expressed as:

$$T=USV^T \quad \text{Equation 2.}$$

[0072] Then V_1 , the first column of V, is composed of the weight of the linear combination for the first component. The projection T_M of the template T on the virtual lead is thus given by Equation 3:

$$T_{PCA1} = \sum_{i=1 \dots N_L} V_1(i)T_i. \quad \text{Equation 3}$$

[0073] wherein:

[0074] T_i is the i-th column of T (e.g., the ECG of the Template on channel #i). T_{PCA1} is of size $N_T \times 1$.

[0075] The virtual lead for the entire record can be obtained by Equation 4:

$$A_{PCA1} = \sum_{i=1 \dots N_L} V_1(i)A_i. \quad \text{Equation 4}$$

[0076] wherein:

[0077] A_i is the i-th column of A (e.g., the ECG on channel #i). The size of A_{PCA1} is $N_s \times 1$.

The results can provide an optimized template and a virtual lead ECG signal, each corresponding to a single channel. As noted, the graph **650** illustrated in FIG. 10 illustrates an example of Eigenvalues and eigenvectors **652** and **654**.

[0078] Referring back to FIG. 9, at **540** cross correlation analysis of the acquired input signals can be performed (e.g., by the CC calculator **44** illustrated in FIG. 1). Cross correlation can be employed as a statistical method to determine the strength of linear dependence between two signals, such as in this example between the optimized template signal and the ECG virtual lead, which as explained herein can both be calculated from the PCA. The CC calculator can localize the template T (Equations 2 and 3) in the signal A by computing the CC function between the template on the virtual lead T_{PCA1} and the ECG signal on the virtual lead A_{PCA1} to provide a CC signal. The regions of interest (ROI) are set at the maxima of the CC signal and extend the length of the template. For example, the correlation coefficients can range from -1 to 1, with -1 representing the anti-correlation or a negative linear correlation, 0 representing no correlation, and 1 representing perfect positive correlation. Positive correlation values can be evaluated by the CC calculator. The correlation coefficient threshold can be set as a parameter that can be adjusted by the user via the GUI or automated methods can be employed. As one example, the correlation coefficient threshold can be initially set to 0.93.

[0079] At **550**, peak cross correlation coefficients can be detected (e.g., by the peak correlation coefficient detector **46** illustrated in FIG. 1). For example, once the correlation coefficients were calculated for the length of the virtual lead, the peak correlation coefficient detector can determine locations of maximum correlation coefficients. To accomplish this task, for instance, a smooth derivative can be computed for the correlation coefficient data, with the x-coordinates representing the location in time that the event occurred and with the y-coordinates representing the correlation coefficients. The location in time where the derivative crosses zero (e.g., when polarity of the derivative changes) represents a peak. A check can be performed for a crossing where the slope changes from positive to negative to preclude local maxima. The peak values can be stored in memory as a potential starting array point, and/or "extraction points" for signal averaging. Once this process is completed for the length of the virtual lead, the correlation coefficient values at these potential locations can

be compared to a user defined (programmable) correlation threshold. As an example, the threshold can be set at 0.90.

[0080] At **560**, an amplitude comparison can be implemented (e.g., by the amplitude comparator **48** illustrated in FIG. 1). The amplitude comparison can compare the amplitude of each determined ROI relative to the PCA optimized template signal. The amplitude comparison can calculate an error between the template and the virtual lead ROI for each extraction point. A unique Gaussian (or other) curve fitting technique can be employed to fit the distribution of the error values. If a single curve was detected, the error limit can be determined by adding 2.5 times the standard deviation to the peak value. If more than one curve is detected, the amplitude comparator can calculate the intersection point between the Gaussian curves. If this intersection point is determined to be of a size great enough to demonstrate a difference in morphology between signals, the amplitude comparator can calculate the error limit from this point between the curves. However, if the curves are within a small range of each other, the amplitude comparator can treat the curves as one curve and the method for a determining the error limit from a single curve can be applied. The ROIs can be compared to the calculated error limit and removed if outside the error range.

[0081] At **570**, the ROI can be averaged (e.g., by the segment averaging function **50** illustrated in FIG. 1) to produce averaged data (e.g., the averaged data **32** illustrated in FIG. 1). By way of example, since the bad channel detection can remove certain channels and provide a method for discriminating against poor signal quality regions within the signal, each channel can result in a different number of averages per iteration. Given this, a variable can be passed as one of the output parameters that tracks the cumulative sum of the averages on each channel. The sum of the segments averaged per channel can be used for consecutive iterations of signal averaging.

[0082] As an output from the bad channel detection (at **520**), a decision variable that represents information as to the acceptability of the sub-regions within the iteration can be provided. Each extraction point can correspond to a time referenced location that can be compared to the respective decision variable that represented the location (e.g., a time-referenced location) within the full signal to determine if the region is acceptable. Once the extraction points had been deemed adequate for averaging, the segment averaging function at **570** can ensemble average a region, starting with the extraction point and extending the length of the template. The averaging process can be carried out for all ROIs specific to that channel. For instance, each channel may have different ROIs that are to be averaged by the averaging function **570**. The segment averaging thus can be implemented for each channel individually. During this process, the DC offset can also be removed, thereby making the noise zero-mean. Due to the differing number of averages per channel, the mean value of the number of segments averaged per channel corresponds to the overall output for the number of segments averaged to the user.

[0083] In the foregoing example, it was assumed that the P-waves and T-waves of the signal to be averaged would be significantly different from one another. However, if there is

a case where the P-waves and T-waves become similar in amplitude and duration, the amplitude comparison method was designed to limit the number of false detections. In such a situation, the amplitude comparator can generate a distribution based on the difference between each ROI and the template signal. The distribution can reveal that there could be two or more Gaussian curves fitted. Each curve would represent a region of specific error related a different waveform. If the regions, or curves, are within a predetermined value of (e.g., about 2.5) standard deviations, then the error difference can be considered too small and all of the ROIs are selected for averaging. However, if the curves are greater than the predetermined standard deviations, the ROIs that have an error less than the intersecting point between the curves are selected for averaging. The amplitude comparator can include error comparison that can prevent the number of false detections by comparing the amplitude of the ROIs to be averaged.

[0084] This amplitude comparison at **560** thus allows for an automated method that can create distributions and determine an upper limit to differentiate signal morphologies. Additionally, the amplitude comparison can be programmed as to be used only if the previous averaging criteria (e.g., for a preceding cycle) were met.

[0085] At **590**, map data can be generated based on the averaged data provided at **570** (e.g., by the mapping system **54** of FIG. 1). For example, an inverse method can be performed on the averaged data generate electrophysiological data by combining body surface electrical measurements with patient geometry information through an inverse method programmed to reconstruct the electrical activity for a predetermined surface region of the patient's region of interest (e.g., heart or brain). For example, the map can represent electrical activity for each of a plurality of points on a cardiac envelope (e.g., in the form of potential and isochrone maps) concurrently as a function of time, such as an epicardial surface, endocardial surface or other envelope. Examples of inverse algorithms that can be utilized in the system **10** are disclosed in U.S. Pat. Nos. 7,983,743 and 6,772,004, which are incorporated herein by reference. The output maps can be displayed to the user via the GUI (e.g., the GUI **26** illustrated in FIG. 1).

[0086] Employment of the methods and systems here can provide relatively accurate results. By way of example, to measure the accuracy of detection, ten signals of 75,000 data points over 256 channels were used from the data cases. For each signal, a P-wave template can be chosen and the template was signal averaged. The output plots showed the locations where the template was detected on a specified channel. For instance, in the referenced test scenario, since the maximum number of segments was defined at 250 averaged, to detect a 3 μ V signal greater than 75% of the time, the noise level can be below 20 μ V. If the noise level is below 15 μ V, the 3 μ V signal can be detected 89% of the time and if the noise level is below 10 μ V the signal can be detected 98% of the time with 250 averages. An example of the results, demonstrating statistical analysis of probability to detect an event, are shown in Table 1.

TABLE 1

		Noise Level (sigma) (V)										
		1.00E-03	5.00E-04	1.00E-04	5.00E-05	3.00E-05	2.00E-05	1.50E-05	1.00E-05	3.00E-06	1.00E-06	1.00E-07
Number	5	0.00268	0.00535	0.02676	0.05348	0.08902	0.13319	0.17694	0.26269	0.73645	0.99920	1.00000
of	10	0.00378	0.00757	0.03783	0.07558	0.12563	0.18748	0.24817	0.36475	0.88616	1.00000	1.00000
Segments	25	0.00598	0.01197	0.05979	0.11924	0.19741	0.29234	0.38293	0.54675	0.98758	1.00000	1.00000
Averaged	50	0.00846	0.01692	0.08447	0.16800	0.27633	0.40412	0.52050	0.71116	0.99959	1.00000	1.00000
	75	0.01036	0.02073	0.10336	0.20499	0.33500	0.48400	0.61353	0.80607	0.99999	1.00000	1.00000
	100	0.01197	0.02393	0.11924	0.23583	0.38293	0.54675	0.68269	0.86639	1.00000	1.00000	1.00000
	125	0.01338	0.02676	0.13319	0.26269	0.42385	0.59827	0.73645	0.90647	1.00000	1.00000	1.00000
	150	0.01466	0.02931	0.14576	0.28670	0.45971	0.64168	0.77933	0.93381	1.00000	1.00000	1.00000
	200	0.01692	0.03384	0.16800	0.32863	0.52050	0.71116	0.84270	0.96611	1.00000	1.00000	1.00000
	225	0.01795	0.03589	0.17802	0.34729	0.54675	0.73942	0.86639	0.97555	1.00000	1.00000	1.00000
	250	0.01892	0.03783	0.18748	0.36475	0.57081	0.76432	0.88616	0.98230	1.00000	1.00000	1.00000
	275	0.01985	0.03968	0.19645	0.38116	0.59299	0.78641	0.90275	0.98714	1.00000	1.00000	1.00000
	300	0.02073	0.04144	0.20499	0.39667	0.61353	0.80607	0.91674	0.99063	1.00000	1.00000	1.00000
	400	0.02393	0.04784	0.23583	0.45150	0.68269	0.86639	0.95450	0.99730	1.00000	1.00000	1.00000
	600	0.02931	0.05858	0.28670	0.53757	0.77933	0.93381	0.98570	0.99976	1.00000	1.00000	1.00000
	1000	0.03783	0.07558	0.36475	0.65722	0.88616	0.98230	0.99843	1.00000	1.00000	1.00000	1.00000

[0087] FIGS. 11 and 12 illustrate the P-wave accuracy results 700 and 750. It can be seen for these two examples 700 and 750 that the P-wave template was detected. FIG. 11 illustrates an example 700 of a P-wave accuracy test results, wherein dots 702 mark where a template was detected. FIG. 12 illustrates an example of another P-wave accuracy test results 750, wherein dots 752 mark where a template was detected. Some results demonstrated that T-waves were detected as P-waves when the T-wave was similar in amplitude and duration as the P-wave which was against the assumptions. The averaging method employed herein can demonstrate about 99.873% accuracy or greater.

[0088] FIG. 13 illustrates an example graph 800 demonstrating a first case example template 802 relative an averaged signal 804. FIG. 14 illustrates an example 850 of composite plot (for the first case) of all regions of interest detected to be averaged with DC offset removed. FIG. 15 illustrates an example 900 of the first case template 902 and an averaged signal 904 comparison. FIG. 16 illustrates an example 950 of a second case template 952 versus an averaged signal 954 comparison. FIG. 17 illustrates an example 1000 of a composite plot of all regions of interest detected to be averaged for the second case. FIG. 18 illustrates an example 1050 of the second case template 1052 and an averaged signal comparison 1054. FIG. 19 illustrates an example 1100 of a third case template 1102 versus averaged signal 1104 comparison. FIG. 20 illustrates an example 1150 of a composite plot of all regions of interest detected to be averaged for the third case. FIG. 21 illustrates an example 1200 of template signal 1202 and an averaged signal 1204 comparison for the third case.

[0089] FIG. 22 illustrates an example screen 1250 depicting a GUI that can be utilized to show signal averaging results for a given channel from a sample test case. The signal averaging systems and methods disclosed herein mitigate reduce the effects of uncorrelated noise within the frequency spectrum of an ECG signal and detect low voltage signals. These systems and methods can allow for further analysis using an analysis system such as an ECGI system or other system configured to analyze detected biological signals.

[0090] In view of the foregoing, in addition to improving signal quality, the methods described herein have the unique advantage of accentuating and bringing out small, but highly key signals that are of diagnostic importance. Some examples of clinical applications that can capitalize on this approach

are the following: potential-based electrocardiography calculations and detection of pulmonary vein reconnection.

[0091] Additionally, the signal averaging systems and methods disclosed herein can be combined with other analysis and signal processing techniques such as the following: automated detection of poor signal quality regions and channels, a principal component analysis, and a Gaussian curve fitting amplitude detection. The algorithm can employ the calculated signal quality information to prevent averaging of poor signal quality regions. The various features of the algorithm allow for template detection within signals with complex morphological features and cycle lengths as well as prevent false detections, which makes the method unique. The algorithm's results demonstrated that it has the capability to remove uncorrelated noise from a template signal as well as detect low voltage signals (as low as 3 μ V). Overall, the advanced signal averaging can produce high quality signals to aid in innovative diagnostic techniques.

[0092] By way of example, since the demonstration that pulmonary vein (PV) ectopic activity is a main trigger of paroxysmal atrial fibrillation (AF), radiofrequency ablation (RF) of this arrhythmia has become an increasingly popular procedure in many electrophysiology laboratories. Traditionally, RF-based PVI uses a 'point-by-point' ablation technique, which makes it difficult to create continuous ablation lines and allows conduction gaps to develop which may facilitate recurrence of the arrhythmia. Either by the reduction in swelling or incomplete ablation procedures, the possibility of electrical channels reforming post-ablation impede the success of the procedure. The goal is to be able to use noninvasive electrocardiographic mapping (ECM) to identify pulmonary vein reconnection as a tool for predicting recurrence of atrial fibrillation (AF) after pulmonary vein isolation.

[0093] It can be demonstrated that the p-wave duration and area under the curve (AUC) decrease in patients post PVI whereas patients with reconnected PVs exhibit increased p-wave durations and AUC. Methods to investigate the electrograms near the PVs and carina of ipsilateral veins pre and post procedure would need to detect signals of amplitude near 2-4 μ V. Given that the tissue has been ablated and is scarred, detection of these low voltage signals would be difficult when the acquisition noise levels are high (e.g., noise levels 2-5 times the amplitude of the signal). The proposed signal averaging system and method can be used for post-acquisition

signal processing, to improve signal quality and allow for the detection of these low voltage signals.

[0094] As disclosed herein, the method can include a template detection process that is not dependent on pre-specified complex intervals and complex amplitudes assuming that the cycle lengths would remain constant during the detection process. The approach herein can employ an efficient comparison method to ensure that the detected regions are within the detection specification. The method can also utilize a signal averaging technique which can discriminate regions of poor signal quality and can efficiently average signals over multiple channels. The system and method provides a time-shifted cross correlation detection with the signal averaging process.

[0095] The proposed systems and methods thus can accurately detect a template signal within a large data set that can have multiple channels and improve the signal strength of the template (e.g., improves the signal-to-noise ratio gain by the square root of the number of measurements) by averaging the detected regions of the signal for each input channel.

[0096] FIG. 23 illustrates another flowchart of an example method 1400 that can be implemented for averaging signals (e.g., biological electrical signals). The method 1400 can be implemented, for example by the system 2 illustrated in FIG. 1. At 1410, PCA can be performed (e.g., by the PCA function 42 illustrated in FIG. 1) on data corresponding to a subset of a plurality of signals and a selected template to generate a virtual lead and an optimized template, wherein each of the plurality of signals corresponds to an electrical biological signal detected by a sensor. At 1420 a cross correlation on the virtual lead and the optimized template can be calculated to determine a strength of linear dependence between the virtual lead and the optimized template to determine ROIs of the virtual lead. At 1430, peak correlation coefficients in the virtual lead can be detected (e.g., by the peak correlation coefficient detector 46 illustrated in FIG. 1). At 1440, the amplitude of each of the ROIs of the virtual lead can be compared (e.g., by the amplitude comparator 48 illustrated in FIG. 1) with the selected template to determine an error between the template and each ROI of the virtual lead. At 1450, the ROIs can be averaged (e.g., by the segment averaging function 50 illustrated in FIG. 1) to generate averaged data.

[0097] FIG. 24 illustrates another example of a system 1500 for averaging a signal. The system can comprise a memory 1502 for storing machine readable instructions and a processing unit 1504 (e.g., a processor core) to access the memory and execute the machine readable instructions. The machine readable instructions can comprise a signal averager 1506 configured to detect regions of poor signal quality for each of a plurality of signals, wherein each of the plurality of signals corresponds to a biological signal (e.g., acquired concurrently from a surface of patient's body). The signal averager 1506 can also be configured to determine which of the plurality of signals is associated with a bad channel based on the detected regions of poor signal quality. The signal averager can further be configured to provide averaged data corresponding to an average of regions of interest (ROIs) that are determined based on a strength of linear dependence between a virtual lead and an optimized template, wherein the virtual lead and the optimized template are based on the plurality of signals that are not associated with the bad channel and based on a selected template.

[0098] What have been described above are examples. It is, of course, not possible to describe every conceivable combination of components or methodologies, but one of ordinary skill in the art will recognize that many further combinations and permutations are possible. Accordingly, the disclosure is intended to embrace all such alterations, modifications, and variations that fall within the scope of this application, including the appended claims.

[0099] As used herein, the term "includes" means includes but not limited to, the term "including" means including but not limited to. The term "based on" means based at least in part on. Additionally, where the disclosure or claims recite "a," "an," "a first," or "another" element, or the equivalent thereof, it should be interpreted to include one or more than one such element, neither requiring nor excluding two or more such elements.

What is claimed is:

1. A method comprising:
 - performing principal component analysis (PCA) on data corresponding to a subset of a plurality of signals and a selected template to generate a virtual lead and an optimized template, respectively, wherein each of the plurality of signals corresponds to an electrical biological signal detected by a sensor;
 - calculating a cross correlation on the virtual lead and the optimized template to determine a strength of linear dependence between the virtual lead and the optimized template to determine regions of interest (ROIs) of the virtual lead;
 - detecting peak correlation coefficients in the virtual lead;
 - comparing the amplitude of each of the ROIs of the virtual lead with the selected template to determine an error between the template and each ROI of the virtual lead; and
 - averaging the ROIs to generate averaged data for the plurality of signals.
2. The method of claim 1, further comprising:
 - detecting regions of poor signal quality for each of the plurality of signals; and
 - determining which of the plurality of signals is associated with a bad channel based on the detected regions of poor signal quality, each bad channels being excluded from the PCA.
3. The method of claim 1, further comprising mapping the averaged data to a surface of an organ to generate mapped averaged data.
4. The method of claim 3, further comprising generating one of potential and isochrone maps based on the mapped averaged data.
5. The method of claim 1, wherein the plurality of signals comprises at least 200 signals acquired concurrently from a body surface of a patient, the averaged data including signal averaged data computed for a subset of the at least 200 signals.
6. The method of claim 5, wherein each of the plurality of signals represents an electrocardiograph (ECG) signal.
7. The method of claim 5, wherein the template defines a P wave.
8. The method of claim 1, wherein the plurality of signals are acquired non-invasively from a patient.
9. The method of claim 1, wherein the plurality of signals are acquired invasively from a patient.
10. The method of claim 1, wherein PCA is performed on data corresponding to a sensing zone that comprises a proper

subset of the plurality of signals, the averaging being performed on the plurality of signals.

11. The method of claim 1, further comprising detecting and removing correlated noise from the subset of the plurality of signals.

12. A non-transitory machine readable medium for storing machine readable instructions, the machine readable instructions comprising:

a signal averager programmed to receive measurement data that characterizes a plurality of concurrently detected biological signals, the signal averager comprising:

a principal component analysis (PCA) function configured to perform PCA on the measurement data for a subset of the biological signals and a selected template to generate a virtual lead and an optimized template;

a cross correlation (CC) calculator configured to determine a strength of linear dependence between the virtual lead and the optimized template to determine regions of interest (ROIs) of the virtual lead;

an amplitude comparator configured to compare the amplitude of each of the ROIs of the virtual lead with the selected template to determine an error between the template and each ROI of the virtual lead; and

a segment averaging function configured to average each of the ROIs to calculate averaged data for the biological signals.

13. The non-transitory machine readable medium of claim 12, wherein the machine readable instructions further comprise a mapping system comprising:

a reconstruction component configured to convert the averaged data to corresponding reconstructed electrical activity of an organ of a patient; and

a map generator configured to produce map data based on the reconstructed electrical activity of the organ of the patient.

14. The non-transitory machine readable medium of claim 12, wherein the signal averager further comprises a zone selector configured to select a sensing zone comprising a proper subset of the biological signals, wherein the PCA function is configured to perform PCA on the sensing zone.

15. The non-transitory machine readable medium of claim 12, wherein the signal averager further comprises a peak correlation coefficient detector configured to determine maximum correlation coefficients for the virtual lead.

16. The non-transitory machine readable medium of claim 12, wherein the machine readable instructions further comprise a bad channel detector configured to:

detect regions of poor signal quality for each of the plurality of biological signals; and

determine which of the plurality of biological signals is associated with a bad channel based on the detected regions of poor signal quality, each bad channel being identified for exclusion from the PCA function.

17. A system comprising:

a memory for storing machine readable instructions; and a processing unit to access the memory and execute the machine readable instructions, the machine readable instructions comprising:

a signal averager configured to:

detect regions of poor signal quality for each of a plurality of signals, wherein each of the plurality of signals corresponds to a biological signal;

determine which of the plurality of signals is associated with a bad channel based on the detected regions of poor signal quality; and

provide averaged data corresponding to an average of regions of interest (ROIs) that are determined based on a strength of linear dependence between a virtual lead and an optimized template, wherein the virtual lead and the optimized template are based on the plurality of signals that are not associated with the bad channel and based on a selected template.

18. The system of claim 17, further comprising a sensor array mounted on a substrate, the sensor array comprising a plurality of sensors, the sensor array being configured to provide the plurality of signals.

19. The system of claim 18, further comprising a graphical user interface configured to provide study data to the signal averager in response to user input, the study data identifying a sensing zone that comprises a proper subset of the plurality of sensors in the sensor array, wherein the signal averager is further programmed to provide the averaged data based on signals of the plurality of signals that are provided from the proper subset of the plurality of sensors in the sensing zone.

20. The system of claim 17, further comprising a graphical user interface configured to provide an interface for selecting the template in response to user input.

* * * * *

专利名称(译)	信号平均		
公开(公告)号	US20140067279A1	公开(公告)日	2014-03-06
申请号	US14/115235	申请日	2012-05-04
[标]申请(专利权)人(译)	GEORGE BRIAN P DUBOIS REMI RAMANATHAN CHARULATHA WODLINGER HAROLD		
申请(专利权)人(译)	GEORGE , BRIAN P. DUBOIS , REMI RAMANATHAN , CHARULATHA WODLINGER , HAROLD		
当前申请(专利权)人(译)	GEORGE , BRIAN P. DUBOIS , REMI RAMANATHAN , CHARULATHA WODLINGER , HAROLD		
[标]发明人	GEORGE BRIAN P DUBOIS REMI RAMANATHAN CHARULATHA WODLINGER HAROLD		
发明人	GEORGE, BRIAN P. DUBOIS, REMI RAMANATHAN, CHARULATHA WODLINGER, HAROLD		
IPC分类号	A61B5/00		
CPC分类号	A61B5/7235 A61B5/04028 A61B5/04085 A61B5/0422 A61B5/04525 A61B5/7203 A61B5/7221 A61B5/7278 G06K9/0051 G06K9/00543		
优先权	61/482345 2011-05-04 US		
其他公开文献	US9504427		
外部链接	Espacenet USPTO		

摘要(译)

方法 (500) 可以包括对与多个信号的子集相对应的数据和所选模板执行主成分分析 (PCA) 以生成虚拟导联和优化模板 (530) 。该方法还可以包括计算虚拟引线和优化模板上的互相关, 以确定虚拟引线和优化模板之间的线性依赖性的强度, 以确定虚拟引线 (540) 的感兴趣区域 (ROI) 。该方法还可以包括检测虚拟引线中的峰值相关系数 (550) 。该方法还可以进一步包括将虚拟引线的每个ROI的幅度与所选模板进行比较, 以确定模板与虚拟引线的每个ROI之间的误差 (560) 。该方法还可以包括平均ROI以生成平均数据 (570) 。

