



US009204827B2

(12) **United States Patent**  
**Hayter et al.**

(10) **Patent No.:** **US 9,204,827 B2**  
(45) **Date of Patent:** **Dec. 8, 2015**

(54) **METHOD AND APPARATUS FOR PROVIDING DATA PROCESSING AND CONTROL IN MEDICAL COMMUNICATION SYSTEM**

(75) Inventors: **Gary Hayter**, Oakland, CA (US); **Mark K. Sloan**, Redwood City, CA (US); **Martin J. Fennell**, Concord, CA (US)

(73) Assignee: **Abbott Diabetes Care Inc.**, Alameda, CA (US)

(\* ) Notice: Subject to any disclaimer, the term of this patent is extended or adjusted under 35 U.S.C. 154(b) by 0 days.

(21) Appl. No.: **12/102,839**

(22) Filed: **Apr. 14, 2008**

(65) **Prior Publication Data**

US 2008/0288204 A1 Nov. 20, 2008

**Related U.S. Application Data**

(60) Provisional application No. 60/911,869, filed on Apr. 14, 2007.

(51) **Int. Cl.**

*A61B 5/145* (2006.01)  
*A61B 5/1486* (2006.01)  
*A61B 5/00* (2006.01)  
*A61B 5/01* (2006.01)

(52) **U.S. Cl.**

CPC ..... *A61B 5/14532* (2013.01); *A61B 5/002* (2013.01); *A61B 5/1486* (2013.01); *A61B 5/14546* (2013.01); *A61B 5/6849* (2013.01); *A61B 5/01* (2013.01)

(58) **Field of Classification Search**

CPC ..... A61B 5/14532; A61B 5/01  
USPC ..... 702/131; 374/100  
See application file for complete search history.

(56) **References Cited**

U.S. PATENT DOCUMENTS

3,581,062 A	5/1971	Aston	
3,926,760 A	12/1975	Allen et al.	
3,949,388 A	4/1976	Fuller	
3,960,497 A	6/1976	Acord et al.	
4,033,330 A *	7/1977	Willis .....	A61B 5/14539 356/39
4,036,749 A	7/1977	Anderson	
4,055,175 A	10/1977	Clemens et al.	
4,129,128 A	12/1978	McFarlane	
4,245,634 A	1/1981	Albisser et al.	
4,327,725 A	5/1982	Cortese et al.	
4,344,438 A	8/1982	Schultz	
4,349,728 A	9/1982	Phillips et al.	

(Continued)

FOREIGN PATENT DOCUMENTS

CA	2143172	7/2005
CA	2396613	3/2008

(Continued)

OTHER PUBLICATIONS

International Search Report and Written Opinion of the International Searching Authority for PCT Application No. PCT/US2008/060277 filed Apr. 14, 2008 to Abbott Diabetes Care, Inc., mailed Sep. 22, 2008.

(Continued)

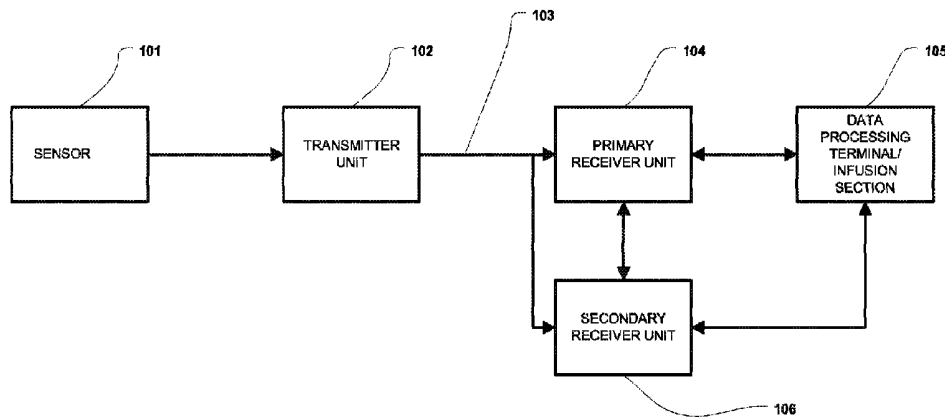
*Primary Examiner* — Hyun Park

(74) *Attorney, Agent, or Firm* — Jackson & Co., LLP

(57) **ABSTRACT**

Methods and apparatus for providing data processing and control for use in a medical communication system are provided.

**16 Claims, 10 Drawing Sheets**



(56)

## References Cited

## U.S. PATENT DOCUMENTS

4,373,527 A	2/1983	Fischell	5,431,921 A	7/1995	Thombre
4,392,849 A	7/1983	Petre et al.	5,438,983 A	8/1995	Falcone
4,425,920 A	1/1984	Bourland et al.	5,462,645 A	10/1995	Albery et al.
4,431,004 A *	2/1984	Bessman .....	5,472,317 A	12/1995	Field et al.
		A61B 5/14865	5,489,414 A	2/1996	Schreiber et al.
		204/403.14	5,497,772 A	3/1996	Schulman et al.
4,441,968 A	4/1984	Emmer et al.	5,505,828 A	4/1996	Wong et al.
4,464,170 A	8/1984	Clemens et al.	5,507,288 A	4/1996	Bocker et al.
4,478,976 A	10/1984	Goertz et al.	5,509,410 A	4/1996	Hill et al.
4,494,950 A	1/1985	Fischell	5,514,718 A	5/1996	Lewis et al.
4,509,531 A *	4/1985	Ward .....	5,531,878 A	7/1996	Vadgama et al.
		A61B 5/01	5,532,686 A	7/1996	Urbas et al.
		374/142	5,552,997 A	9/1996	Massart
4,527,240 A	7/1985	Kvitash	5,568,400 A	10/1996	Stark et al.
4,538,616 A	9/1985	Rogoff	5,568,806 A	10/1996	Cheney, II et al.
4,619,793 A	10/1986	Lee	5,569,186 A	10/1996	Lord et al.
4,671,288 A	6/1987	Gough	5,582,184 A	12/1996	Erickson et al.
4,703,756 A	11/1987	Gough et al.	5,586,553 A	12/1996	Halili et al.
4,731,726 A	3/1988	Allen, III	5,593,852 A	1/1997	Heller et al.
4,749,985 A	6/1988	Corsberg	5,601,435 A	2/1997	Quy
4,757,022 A	7/1988	Shults et al.	5,609,575 A	3/1997	Larson et al.
4,777,953 A	10/1988	Ash et al.	5,628,310 A	5/1997	Rao et al.
4,779,618 A	10/1988	Mund et al.	5,634,468 A	6/1997	Platt et al.
4,847,785 A	7/1989	Stephens	5,653,239 A	8/1997	Pompei et al.
4,854,322 A	8/1989	Ash et al.	5,660,163 A	8/1997	Schulman et al.
4,871,351 A	10/1989	Feingold	5,665,222 A	9/1997	Heller et al.
4,890,620 A	1/1990	Gough	5,707,502 A	1/1998	McCaffrey et al.
4,925,268 A	5/1990	Iyer et al.	5,711,001 A	1/1998	Bussan et al.
4,953,552 A	9/1990	DeMarzo	5,711,861 A	1/1998	Ward et al.
4,986,271 A	1/1991	Wilkins	5,724,030 A	3/1998	Urbas et al.
4,995,402 A	2/1991	Smith et al.	5,726,646 A	3/1998	Bane et al.
5,000,180 A	3/1991	Kuyppers et al.	5,733,259 A	3/1998	Valcke et al.
5,002,054 A	3/1991	Ash et al.	5,735,285 A	4/1998	Albert et al.
5,019,974 A	5/1991	Beckers	5,748,103 A	5/1998	Flach et al.
5,050,612 A	9/1991	Matsumura	5,749,907 A	5/1998	Mann
5,051,688 A	9/1991	Murase et al.	5,772,586 A	6/1998	Heinonen et al.
5,055,171 A	10/1991	Peck	5,791,344 A	8/1998	Schulman et al.
5,068,536 A	11/1991	Rosenthal	5,804,047 A	9/1998	Karube et al.
5,082,550 A	1/1992	Rishpon et al.	5,833,603 A	11/1998	Kovacs et al.
5,106,365 A	4/1992	Hernandez	5,842,189 A	11/1998	Keeler et al.
5,122,925 A	6/1992	Inpyun	5,891,049 A	4/1999	Cyrus et al.
5,135,004 A	8/1992	Adams et al.	5,899,855 A	5/1999	Brown
5,165,407 A	11/1992	Wilson et al.	5,914,026 A	6/1999	Blubaugh, Jr. et al.
5,202,261 A	4/1993	Musho et al.	5,919,141 A	7/1999	Money et al.
5,204,264 A	4/1993	Kaminer et al.	5,925,021 A	7/1999	Castellano et al.
5,210,778 A	5/1993	Massart	5,935,224 A	8/1999	Svanccarek et al.
5,228,449 A	7/1993	Christ et al.	5,942,979 A	8/1999	Luppino
5,231,988 A	8/1993	Wernicke et al.	5,951,485 A	9/1999	Cyrus et al.
5,246,867 A	9/1993	Lakowicz et al.	5,957,854 A	9/1999	Besson et al.
5,251,126 A	10/1993	Kahn et al.	5,961,451 A	10/1999	Reber et al.
5,262,035 A	11/1993	Gregg et al.	5,964,993 A	10/1999	Blubaugh, Jr. et al.
5,262,305 A	11/1993	Heller et al.	5,965,380 A	10/1999	Heller et al.
5,264,104 A	11/1993	Gregg et al.	5,971,922 A	10/1999	Arita et al.
5,264,105 A	11/1993	Gregg et al.	5,980,708 A	11/1999	Champagne et al.
5,279,294 A	1/1994	Anderson et al.	5,995,860 A	11/1999	Sun et al.
5,285,792 A	2/1994	Sjoquist et al.	6,001,067 A	12/1999	Shults et al.
5,293,877 A	3/1994	O'Hara et al.	6,024,699 A	2/2000	Surwit et al.
5,299,571 A	4/1994	Mastrototaro	6,028,413 A	2/2000	Brockmann
5,320,725 A	6/1994	Gregg et al.	6,049,727 A	4/2000	Crothall
5,322,063 A	6/1994	Allen et al.	6,052,565 A	4/2000	Ishikura et al.
5,330,634 A	7/1994	Wong et al.	6,066,243 A	5/2000	Anderson et al.
5,340,722 A	8/1994	Wolfbeis et al.	6,083,710 A	7/2000	Heller et al.
5,342,789 A	8/1994	Chick et al.	6,088,608 A	7/2000	Schulman et al.
5,356,786 A	10/1994	Heller et al.	6,091,976 A	7/2000	Pfeiffer et al.
5,360,404 A	11/1994	Novacek et al.	6,091,987 A	7/2000	Thompson
5,372,427 A	12/1994	Padovani et al.	6,093,172 A	7/2000	Funderburk et al.
5,379,238 A	1/1995	Stark	6,096,364 A	8/2000	Bok et al.
5,384,547 A	1/1995	Lynk et al.	6,103,033 A	8/2000	Say et al.
5,390,671 A	2/1995	Lord et al.	6,117,290 A	9/2000	Say et al.
5,391,250 A	2/1995	Cheney, II et al.	6,119,028 A	9/2000	Schulman et al.
5,408,999 A	4/1995	Singh et al.	6,120,676 A	9/2000	Heller et al.
5,410,326 A	4/1995	Goldstein	6,121,009 A	9/2000	Heller et al.
5,411,647 A	5/1995	Johnson et al.	6,121,611 A	9/2000	Lindsay et al.
5,425,868 A *	6/1995	Pedersen .....	6,122,351 A	9/2000	Schlueter, Jr. et al.
		A61B 5/14542	6,130,623 A	10/2000	MacLellan et al.
		204/408	6,134,461 A	10/2000	Say et al.
5,429,602 A	7/1995	Hauser	6,143,164 A	11/2000	Heller et al.
5,431,160 A	7/1995	Wilkins	6,144,871 A	11/2000	Saito et al.
			6,159,147 A	12/2000	Lichter et al.

(56)

## References Cited

## U.S. PATENT DOCUMENTS

6,162,611	A	12/2000	Heller et al.	6,607,509	B2	8/2003	Bobroff et al.
6,175,752	B1	1/2001	Say et al.	6,610,012	B2	8/2003	Mault
6,200,265	B1	3/2001	Walsh et al.	6,633,772	B2	10/2003	Ford et al.
6,212,416	B1	4/2001	Ward et al.	6,635,014	B2	10/2003	Starkweather et al.
6,219,574	B1	4/2001	Cormier et al.	6,635,167	B1	10/2003	Batman et al.
6,223,283	B1	4/2001	Chaiken et al.	6,641,533	B2	11/2003	Causey, III et al.
6,233,471	B1	5/2001	Berner et al.	6,648,821	B2	11/2003	Lebel et al.
6,248,067	B1	6/2001	Causey, III et al.	6,654,625	B1	11/2003	Say et al.
6,254,586	B1	7/2001	Mann et al.	6,656,114	B1	12/2003	Poulsen et al.
6,270,455	B1	8/2001	Brown	6,658,396	B1	12/2003	Tang et al.
6,275,717	B1	8/2001	Gross et al.	6,659,948	B2	12/2003	Lebel et al.
6,283,761	B1	9/2001	Joao	6,668,196	B1	12/2003	Villegas et al.
6,284,478	B1	9/2001	Heller et al.	6,675,030	B2	1/2004	Ciurczak et al.
6,291,200	B1	9/2001	LeJeune et al.	6,676,816	B2	1/2004	Mao et al.
6,293,925	B1	9/2001	Safabash et al.	6,687,546	B2	2/2004	Lebel et al.
6,294,997	B1	9/2001	Paratore et al.	6,689,056	B1	2/2004	Kilcoyne et al.
6,295,506	B1	9/2001	Heinonen et al.	6,694,191	B2	2/2004	Starkweather et al.
6,299,347	B1*	10/2001	Pompei	6,695,860	B1	2/2004	Ward et al.
			..... G01J 5/0022	6,698,269	B2	3/2004	Baber et al.
			374/133	6,702,857	B2	3/2004	Brauker et al.
6,306,104	B1	10/2001	Cunningham et al.	6,730,025	B1	5/2004	Platt
6,309,884	B1	10/2001	Cooper et al.	6,731,976	B2	5/2004	Penn et al.
6,314,317	B1	11/2001	Willis	6,733,446	B2	5/2004	Lebel et al.
6,329,161	B1	12/2001	Heller et al.	6,735,183	B2	5/2004	O'Toole et al.
6,348,640	B1	2/2002	Navot et al.	6,740,075	B2	5/2004	Lebel et al.
6,359,270	B1	3/2002	Bridson	6,740,518	B1	5/2004	Duong et al.
6,359,444	B1	3/2002	Grimes	6,741,877	B1	5/2004	Shults et al.
6,360,888	B1	3/2002	McIvor et al.	6,746,582	B2	6/2004	Heller et al.
6,366,794	B1	4/2002	Moussy et al.	6,758,810	B2	7/2004	Lebel et al.
6,377,828	B1	4/2002	Chaiken et al.	6,770,030	B1	8/2004	Schaupp et al.
6,379,301	B1	4/2002	Worthington et al.	6,789,195	B1	9/2004	Prihoda et al.
6,387,048	B1	5/2002	Schulman et al.	6,790,178	B1	9/2004	Mault et al.
6,400,974	B1	6/2002	Lesho	6,804,558	B2	10/2004	Haller et al.
6,405,066	B1	6/2002	Essenpreis et al.	6,809,653	B1	10/2004	Mann et al.
6,413,393	B1	7/2002	Van Antwerp et al.	6,810,290	B2	10/2004	Lebel et al.
6,416,471	B1	7/2002	Kumar et al.	6,811,533	B2	11/2004	Lebel et al.
6,418,346	B1	7/2002	Nelson et al.	6,811,534	B2	11/2004	Bowman, IV et al.
6,424,847	B1	7/2002	Mastrototaro et al.	6,813,519	B2	11/2004	Lebel et al.
6,427,088	B1	7/2002	Bowman, IV et al.	6,850,790	B2	2/2005	Berner et al.
6,440,068	B1	8/2002	Brown et al.	6,862,465	B2	3/2005	Shults et al.
6,471,689	B1	10/2002	Joseph et al.	6,865,407	B2	3/2005	Kimball et al.
6,478,736	B1	11/2002	Mault	6,873,268	B2	3/2005	Lebel et al.
6,484,046	B1	11/2002	Say et al.	6,878,112	B2	4/2005	Linberg et al.
6,493,069	B1	12/2002	Nagashimada et al.	6,881,551	B2	4/2005	Heller et al.
6,496,729	B2	12/2002	Thompson	6,882,940	B2	4/2005	Potts et al.
6,497,655	B1	12/2002	Linberg et al.	6,892,085	B2	5/2005	McIvor et al.
6,498,043	B1	12/2002	Schulman et al.	6,895,263	B2	5/2005	Shin et al.
6,514,718	B2	2/2003	Heller et al.	6,895,265	B2	5/2005	Silver
6,520,326	B2	2/2003	McIvor et al.	6,923,763	B1	8/2005	Kovatchev et al.
6,544,212	B2	4/2003	Galley et al.	6,923,764	B2	8/2005	Aceti et al.
6,546,268	B1	4/2003	Ishikawa et al.	6,931,327	B2	8/2005	Goode, Jr. et al.
6,549,796	B2	4/2003	Sohrab	6,932,894	B2	8/2005	Mao et al.
6,551,494	B1	4/2003	Heller et al.	6,936,006	B2	8/2005	Sabra
6,554,798	B1	4/2003	Mann et al.	6,940,403	B2	9/2005	Kail, IV
6,558,320	B1	5/2003	Causey, III et al.	6,941,163	B2	9/2005	Ford et al.
6,558,321	B1	5/2003	Burd et al.	6,942,518	B2	9/2005	Liamos et al.
6,558,351	B1	5/2003	Steil et al.	6,950,708	B2	9/2005	Bowman, IV et al.
6,560,471	B1	5/2003	Heller et al.	6,958,705	B2	10/2005	Lebel et al.
6,561,975	B1	5/2003	Pool et al.	6,968,294	B2	11/2005	Gutta et al.
6,561,978	B1	5/2003	Conn et al.	6,971,274	B2	12/2005	Olin
6,562,001	B2	5/2003	Lebel et al.	6,974,437	B2	12/2005	Lebel et al.
6,564,105	B2	5/2003	Starkweather et al.	6,983,176	B2	1/2006	Gardner et al.
6,565,509	B1	5/2003	Say et al.	6,990,366	B2	1/2006	Say et al.
6,571,128	B2	5/2003	Lebel et al.	6,997,907	B2	2/2006	Safabash et al.
6,572,545	B2	6/2003	Knobbe et al.	6,998,247	B2	2/2006	Monfre et al.
6,574,490	B2	6/2003	Abbink et al.	6,999,854	B2	2/2006	Roth
6,574,510	B2	6/2003	Von Arx et al.	7,003,336	B2	2/2006	Holker et al.
6,576,101	B1	6/2003	Heller et al.	7,003,340	B2	2/2006	Say et al.
6,577,899	B2	6/2003	Lebel et al.	7,003,341	B2	2/2006	Say et al.
6,579,231	B1	6/2003	Phipps	7,009,511	B2	3/2006	Mazar et al.
6,579,690	B1	6/2003	Bonnecaze et al.	7,015,817	B2	3/2006	Copley et al.
6,585,644	B2	7/2003	Lebel et al.	7,016,713	B2	3/2006	Gardner et al.
6,591,125	B1	7/2003	Buse et al.	7,020,508	B2	3/2006	Stivoric et al.
6,595,919	B2	7/2003	Berner et al.	7,022,072	B2	4/2006	Fox et al.
6,605,200	B1	8/2003	Mao et al.	7,022,219	B2	4/2006	Mansouri et al.
6,605,201	B1	8/2003	Mao et al.	7,024,236	B2	4/2006	Ford et al.
				7,024,245	B2	4/2006	Lebel et al.
				7,025,425	B2	4/2006	Kovatchev et al.
				7,027,848	B2	4/2006	Robinson et al.

(56)

## References Cited

## U.S. PATENT DOCUMENTS

7,027,931	B1	4/2006	Jones et al.	7,583,990	B2	9/2009	Goode, Jr. et al.
7,029,444	B2	4/2006	Shin et al.	7,591,801	B2	9/2009	Brauker et al.
7,041,068	B2	5/2006	Freeman et al.	7,599,726	B2	10/2009	Goode, Jr. et al.
7,041,468	B2	5/2006	Drucker et al.	7,602,310	B2	10/2009	Mann et al.
7,043,305	B2	5/2006	KenKnight et al.	7,604,178	B2	10/2009	Stewart
7,046,153	B2	5/2006	Oja et al.	7,613,491	B2	11/2009	Boock et al.
7,052,483	B2	5/2006	Wojcik	7,615,007	B2	11/2009	Shults et al.
7,056,302	B2	6/2006	Douglas	7,618,369	B2	11/2009	Hayter et al.
7,058,453	B2	6/2006	Nelson et al.	7,630,748	B2	12/2009	Budiman
7,060,031	B2	6/2006	Webb et al.	7,632,228	B2	12/2009	Brauker et al.
7,074,307	B2	7/2006	Simpson et al.	7,635,594	B2	12/2009	Holmes et al.
7,081,195	B2	7/2006	Simpson et al.	7,637,868	B2	12/2009	Saint et al.
7,082,334	B2	7/2006	Boute et al.	7,640,048	B2	12/2009	Dobbles et al.
7,092,891	B2	8/2006	Maus et al.	7,651,596	B2	1/2010	Petisce et al.
7,098,803	B2	8/2006	Mann et al.	7,651,845	B2	1/2010	Doyle, III et al.
7,108,778	B2	9/2006	Simpson et al.	7,653,425	B2	1/2010	Hayter et al.
7,110,803	B2	9/2006	Shults et al.	7,654,956	B2	2/2010	Brister et al.
7,113,821	B1	9/2006	Sun et al.	7,657,297	B2	2/2010	Simpson et al.
7,118,667	B2	10/2006	Lee	7,659,823	B1	2/2010	Killian et al.
7,123,950	B2	10/2006	Mannheimer	7,668,596	B2	2/2010	Von Arx et al.
7,125,382	B2	10/2006	Zhou et al.	7,699,775	B2	4/2010	Desai et al.
7,134,999	B2	11/2006	Brauker et al.	7,699,964	B2	4/2010	Feldman et al.
7,136,689	B2	11/2006	Shults et al.	7,711,402	B2	5/2010	Shults et al.
7,153,265	B2	12/2006	Vachon	7,713,574	B2	5/2010	Brister et al.
7,155,290	B2	12/2006	Von Arx et al.	7,715,893	B2	5/2010	Kamath et al.
7,167,818	B2	1/2007	Brown	7,736,310	B2	6/2010	Taub et al.
7,171,274	B2	1/2007	Starkweather et al.	7,741,734	B2	6/2010	Joannopoulos et al.
7,179,226	B2	2/2007	Crothall et al.	7,766,829	B2	8/2010	Sloan et al.
7,190,988	B2	3/2007	Say et al.	7,768,386	B2	8/2010	Hayter et al.
7,192,450	B2	3/2007	Brauker et al.	7,771,352	B2	8/2010	Shults et al.
7,198,606	B2	4/2007	Boecker et al.	7,774,145	B2	8/2010	Brauker et al.
7,203,549	B2	4/2007	Schommer et al.	7,778,680	B2	8/2010	Goode et al.
7,207,974	B2	4/2007	Safabash et al.	7,779,332	B2	8/2010	Karr et al.
7,225,535	B2	6/2007	Feldman et al.	7,782,192	B2	8/2010	Jeckelmann et al.
7,226,442	B2	6/2007	Sheppard et al.	7,783,333	B2	8/2010	Brister et al.
7,226,978	B2	6/2007	Tapsak et al.	7,791,467	B2	9/2010	Mazar et al.
7,228,182	B2	6/2007	Healy et al.	7,792,562	B2	9/2010	Shults et al.
7,237,712	B2	7/2007	DeRocco et al.	7,811,231	B2	10/2010	Jin et al.
7,258,673	B2	8/2007	Racchini et al.	7,813,809	B2	10/2010	Strother et al.
7,267,665	B2	9/2007	Steil et al.	7,826,981	B2	11/2010	Goode, Jr. et al.
7,276,029	B2	10/2007	Goode, Jr. et al.	7,831,310	B2	11/2010	Lebel et al.
7,278,983	B2	10/2007	Ireland et al.	7,860,574	B2	12/2010	Von Arx et al.
7,286,894	B1	10/2007	Grant et al.	7,882,611	B2	2/2011	Shah et al.
7,295,867	B2	11/2007	Berner et al.	7,889,069	B2	2/2011	Fifolt et al.
7,299,082	B2	11/2007	Feldman et al.	7,899,511	B2	3/2011	Shults et al.
7,310,544	B2	12/2007	Brister et al.	7,899,545	B2	3/2011	John
7,317,938	B2	1/2008	Lorenz et al.	7,905,833	B2	3/2011	Brister et al.
7,318,816	B2	1/2008	Bobroff et al.	7,912,674	B2	3/2011	Killoren Clark et al.
7,324,850	B2	1/2008	Persen et al.	7,914,450	B2	3/2011	Goode, Jr. et al.
7,335,294	B2	2/2008	Heller et al.	7,916,013	B2	3/2011	Stevenson
7,347,819	B2	3/2008	Lebel et al.	7,920,906	B2	4/2011	Goode et al.
7,354,420	B2	4/2008	Steil et al.	7,928,850	B2	4/2011	Hayter et al.
7,364,592	B2	4/2008	Carr-Brendel et al.	7,938,797	B2	5/2011	Estes
7,366,556	B2	4/2008	Brister et al.	7,941,200	B2	5/2011	Weinert et al.
7,379,765	B2	5/2008	Petisce et al.	7,946,985	B2	5/2011	Mastrototaro et al.
7,384,397	B2	6/2008	Zhang et al.	7,955,258	B2	6/2011	Goscha et al.
7,387,010	B2	6/2008	Sunshine et al.	7,970,448	B2	6/2011	Shults et al.
7,399,277	B2	7/2008	Saidara et al.	7,972,296	B2	7/2011	Braig et al.
7,402,153	B2	7/2008	Steil et al.	7,974,672	B2	7/2011	Shults et al.
7,404,796	B2	7/2008	Ginsberg	7,976,466	B2	7/2011	Ward et al.
7,419,573	B2	9/2008	Gundel	7,978,063	B2	7/2011	Baldus et al.
7,424,318	B2	9/2008	Brister et al.	7,999,674	B2	8/2011	Kamen
7,460,898	B2	12/2008	Brister et al.	8,010,174	B2	8/2011	Goode et al.
7,467,003	B2	12/2008	Brister et al.	8,010,256	B2	8/2011	Oowada
7,468,125	B2	12/2008	Kraft et al.	8,072,310	B1	12/2011	Everhart
7,471,972	B2	12/2008	Rhodes et al.	8,090,445	B2	1/2012	Ginggen
7,474,992	B2	1/2009	Ariyur	8,093,991	B2	1/2012	Stevenson et al.
7,492,254	B2	2/2009	Bandy et al.	8,094,009	B2	1/2012	Allen et al.
7,494,465	B2	2/2009	Brister et al.	8,098,159	B2	1/2012	Batra et al.
7,497,827	B2	3/2009	Brister et al.	8,098,160	B2	1/2012	Howarth et al.
7,519,408	B2	4/2009	Rasdal et al.	8,098,161	B2	1/2012	Lavedas
7,547,281	B2	6/2009	Hayes et al.	8,098,201	B2	1/2012	Choi et al.
7,565,197	B2	7/2009	Haubrich et al.	8,098,208	B2	1/2012	Ficker et al.
7,569,030	B2	8/2009	Lebel et al.	8,102,021	B2	1/2012	Degani
7,574,266	B2	8/2009	Dudding et al.	8,102,154	B2	1/2012	Bishop et al.
				8,102,263	B2	1/2012	Yeo et al.
				8,102,789	B2	1/2012	Rosar et al.
				8,103,241	B2	1/2012	Young et al.
				8,103,325	B2	1/2012	Swedlow et al.

(56)

## References Cited

## U.S. PATENT DOCUMENTS

8,111,042 B2	2/2012	Bennett	2004/0010207 A1	1/2004	Flaherty et al.
8,115,488 B2	2/2012	McDowell	2004/0011671 A1	1/2004	Shults et al.
8,116,681 B2	2/2012	Baarman	2004/0024553 A1	2/2004	Monfre et al.
8,116,683 B2	2/2012	Baarman	2004/0039298 A1	2/2004	Abreu
8,117,481 B2	2/2012	Anselmi et al.	2004/0040840 A1	3/2004	Mao et al.
8,120,493 B2	2/2012	Burr	2004/0041749 A1	3/2004	Dixon
8,124,452 B2	2/2012	Sheats	2004/0045879 A1	3/2004	Shults et al.
8,130,093 B2	3/2012	Mazar et al.	2004/0054263 A1	3/2004	Moerman et al.
8,131,351 B2	3/2012	Kalgren et al.	2004/0063435 A1	4/2004	Sakamoto et al.
8,131,365 B2	3/2012	Zhang et al.	2004/0064068 A1	4/2004	DeNuzzio et al.
8,131,565 B2	3/2012	Dicks et al.	2004/0099529 A1	5/2004	Mao et al.
8,132,037 B2	3/2012	Fehr et al.	2004/0106858 A1	6/2004	Say et al.
8,135,352 B2	3/2012	Langsweirdt et al.	2004/0117204 A1	6/2004	Mazar et al.
8,136,735 B2	3/2012	Arai et al.	2004/0122353 A1	6/2004	Shahmirian et al.
8,138,925 B2	3/2012	Downie et al.	2004/0133164 A1	7/2004	Funderburk et al.
8,140,160 B2	3/2012	Pless et al.	2004/0133390 A1	7/2004	Osorio et al.
8,140,168 B2	3/2012	Olson et al.	2004/0135684 A1	7/2004	Steinthal et al.
8,140,299 B2	3/2012	Siess	2004/0138588 A1	7/2004	Saikley et al.
8,150,321 B2	4/2012	Winter et al.	2004/0146909 A1	7/2004	Duong et al.
8,150,516 B2	4/2012	Levine et al.	2004/0147872 A1	7/2004	Thompson
8,179,266 B2	5/2012	Hermle	2004/0152622 A1	8/2004	Keith et al.
8,192,394 B2	6/2012	Estes et al.	2004/0167464 A1	8/2004	Ireland et al.
8,216,138 B1	7/2012	McGarraugh et al.	2004/0167801 A1*	8/2004	Say ..... A61B 5/14546
8,255,026 B1	8/2012	Al-Ali	2004/0171921 A1	9/2004	705/2
8,282,549 B2	10/2012	Brauker et al.	2004/0176672 A1	9/2004	Say et al.
8,374,668 B1	2/2013	Hayter et al.	2004/0186362 A1	9/2004	Silver et al.
8,461,985 B2	6/2013	Fennell et al.	2004/0186365 A1	9/2004	Brauker et al.
8,597,570 B2	12/2013	Terashima et al.	2004/0193020 A1	9/2004	Jin et al.
8,710,993 B2	4/2014	Hayter et al.	2004/0193025 A1	9/2004	Chiba et al.
8,845,536 B2	9/2014	Brauker et al.	2004/0193090 A1	9/2004	Steil et al.
2001/0037366 A1	11/2001	Webb et al.	2004/0197846 A1	10/2004	Lebel et al.
2002/0019022 A1*	2/2002	Dunn ..... A61B 5/14532	2004/0197846 A1	10/2004	Hockersmith et al.
		435/14	2004/0199056 A1	10/2004	Husemann et al.
2002/0042090 A1	4/2002	Heller et al.	2004/0199059 A1	10/2004	Brauker et al.
2002/0054320 A1	5/2002	Ogino	2004/0204687 A1	10/2004	Mogensen et al.
2002/0068860 A1	6/2002	Clark	2004/0204868 A1	10/2004	Maynard et al.
2002/0072784 A1	6/2002	Sheppard et al.	2004/0219664 A1	11/2004	Heller et al.
2002/0095076 A1	7/2002	Krausman et al.	2004/0225338 A1	11/2004	Lebel et al.
2002/0103499 A1	8/2002	Perez et al.	2004/0236200 A1	11/2004	Say et al.
2002/0106709 A1	8/2002	Potts et al.	2004/0249253 A1	12/2004	Racchini et al.
2002/0120186 A1	8/2002	Keimel	2004/0254433 A1	12/2004	Bandis et al.
2002/0128594 A1	9/2002	Das et al.	2004/0254434 A1	12/2004	Goodnow et al.
2002/0147135 A1	10/2002	Schnell	2004/0260478 A1	12/2004	Schwamm
2002/0161288 A1	10/2002	Shin et al.	2004/0267300 A1	12/2004	Mace
2002/0169635 A1	11/2002	Shillingburg	2005/0001024 A1	1/2005	Kusaka et al.
2003/0004403 A1	1/2003	Drinan et al.	2005/0004439 A1	1/2005	Shin et al.
2003/0023317 A1	1/2003	Brauker et al.	2005/0004494 A1	1/2005	Perez et al.
2003/0023461 A1	1/2003	Quintanilla et al.	2005/0010269 A1	1/2005	Lebel et al.
2003/0028089 A1	2/2003	Galley et al.	2005/0017864 A1	1/2005	Tsoukalis
2003/0032077 A1	2/2003	Itoh et al.	2005/0027177 A1	2/2005	Shin et al.
2003/0032867 A1	2/2003	Crothall et al.	2005/0027180 A1	2/2005	Goode et al.
2003/0032874 A1	2/2003	Rhodes et al.	2005/0027181 A1	2/2005	Goode et al.
2003/0042137 A1	3/2003	Mao et al.	2005/0027462 A1	2/2005	Goode et al.
2003/0060692 A1	3/2003	Ruchti et al.	2005/0027463 A1	2/2005	Goode et al.
2003/0060753 A1	3/2003	Starkweather et al.	2005/0031689 A1	2/2005	Shults et al.
2003/0065308 A1	4/2003	Lebel et al.	2005/0038332 A1	2/2005	Saidara et al.
2003/0100040 A1	5/2003	Bonnecaze et al.	2005/0043598 A1	2/2005	Goode, Jr. et al.
2003/0100821 A1	5/2003	Heller et al.	2005/0049179 A1	3/2005	Davidson et al.
2003/0114897 A1	6/2003	Von Arx et al.	2005/0070774 A1	3/2005	Addison et al.
2003/0125612 A1	7/2003	Fox et al.	2005/0070777 A1*	3/2005	Cho ..... A61B 5/01
2003/0130616 A1	7/2003	Steil et al.	2005/0090607 A1	4/2005	600/365
2003/0134347 A1	7/2003	Heller et al.	2005/0096511 A1	5/2005	Tapsak et al.
2003/0147515 A1	8/2003	Kai et al.	2005/0096512 A1	5/2005	Fox et al.
2003/0168338 A1	9/2003	Gao et al.	2005/0096516 A1	5/2005	Soykan et al.
2003/0176933 A1	9/2003	Lebel et al.	2005/0112169 A1	5/2005	Brauker et al.
2003/0187338 A1	10/2003	Say et al.	2005/0113648 A1	5/2005	Yang et al.
2003/0191377 A1	10/2003	Robinson et al.	2005/0113653 A1	5/2005	Fox et al.
2003/0199744 A1	10/2003	Buse et al.	2005/0113886 A1	5/2005	Fischell et al.
2003/0199790 A1	10/2003	Boecker et al.	2005/0114068 A1	5/2005	Chey et al.
2003/0208113 A1	11/2003	Mault et al.	2005/0115832 A1	6/2005	Simpson et al.
2003/0212317 A1	11/2003	Kovatchev et al.	2005/0116683 A1	6/2005	Cheng et al.
2003/0212379 A1	11/2003	Bylund et al.	2005/0121322 A1	6/2005	Say et al.
2003/0216630 A1	11/2003	Jersey-Willuhn et al.	2005/0131346 A1	6/2005	Douglas
2003/0217966 A1	11/2003	Tapsak et al.	2005/0137530 A1	6/2005	Campbell et al.
2004/0010186 A1	1/2004	Kimball et al.	2005/0143635 A1	6/2005	Kamath et al.
			2005/0154271 A1	7/2005	Rasdal et al.
			2005/0176136 A1	8/2005	Burd et al.
			2005/0177398 A1	8/2005	Watanabe et al.

(56)

## References Cited

## U.S. PATENT DOCUMENTS

2005/0182306	A1	8/2005	Sloan	2006/0253296	A1	11/2006	Liisberg et al.
2005/0187442	A1	8/2005	Cho et al.	2006/0258929	A1	11/2006	Goode et al.
2005/0187720	A1	8/2005	Goode, Jr. et al.	2006/0272652	A1	12/2006	Stocker et al.
2005/0192494	A1	9/2005	Ginsberg	2006/0281985	A1	12/2006	Ward et al.
2005/0192557	A1	9/2005	Brauker et al.	2006/0287691	A1	12/2006	Drew
2005/0195930	A1	9/2005	Spital et al.	2006/0290496	A1	12/2006	Peeters
2005/0199494	A1	9/2005	Say et al.	2006/0293607	A1	12/2006	Alt et al.
2005/0203360	A1	9/2005	Brauker et al.	2007/0010950	A1	1/2007	Abensour et al.
2005/0204134	A1	9/2005	Von Arx et al.	2007/0016381	A1	1/2007	Kamath et al.
2005/0214892	A1	9/2005	Kovatchev et al.	2007/0017983	A1	1/2007	Frank et al.
2005/0239154	A1*	10/2005	Feldman .....	2007/0027381	A1	2/2007	Stafford
			A61B 5/14532	2007/0032706	A1	2/2007	Kamath et al.
			435/14	2007/0032717	A1	2/2007	Brister et al.
2005/0239156	A1	10/2005	Drucker et al.	2007/0033074	A1	2/2007	Nitzan et al.
2005/0241957	A1	11/2005	Mao et al.	2007/0038044	A1	2/2007	Dobbles et al.
2005/0245795	A1	11/2005	Goode, Jr. et al.	2007/0055799	A1	3/2007	Koehler et al.
2005/0245799	A1	11/2005	Brauker et al.	2007/0060803	A1	3/2007	Liljeryd et al.
2005/0245839	A1	11/2005	Stivoric et al.	2007/0060814	A1	3/2007	Stafford
2005/0245904	A1	11/2005	Estes et al.	2007/0060869	A1	3/2007	Tolle et al.
2005/0251033	A1	11/2005	Scarantino et al.	2007/0060979	A1	3/2007	Strother et al.
2005/0272985	A1	12/2005	Kotulla et al.	2007/0066873	A1	3/2007	Kamath et al.
2005/0277164	A1	12/2005	Drucker et al.	2007/0066956	A1	3/2007	Finkel
2005/0277912	A1	12/2005	John	2007/0071681	A1	3/2007	Gadkar et al.
2005/0287620	A1	12/2005	Heller et al.	2007/0073129	A1	3/2007	Shah et al.
2006/0001538	A1	1/2006	Kraft et al.	2007/0078320	A1	4/2007	Stafford
2006/0001551	A1	1/2006	Kraft et al.	2007/0078321	A1	4/2007	Mazza et al.
2006/0004270	A1	1/2006	Bedard et al.	2007/0078322	A1	4/2007	Stafford
2006/0010098	A1	1/2006	Goodnow et al.	2007/0078323	A1	4/2007	Reggiardo et al.
2006/0015020	A1	1/2006	Neale et al.	2007/0078818	A1	4/2007	Zivitz et al.
2006/0015024	A1	1/2006	Brister et al.	2007/0093786	A1	4/2007	Goldsmith et al.
2006/0016700	A1*	1/2006	Brister .....	2007/0094216	A1	4/2007	Mathias et al.
			A61B 5/1411	2007/0100222	A1	5/2007	Mastrototaro et al.
			205/777.5	2007/0106135	A1	5/2007	Sloan et al.
2006/0017923	A1	1/2006	Ruchti et al.	2007/0118405	A1	5/2007	Campbell et al.
2006/0019327	A1	1/2006	Brister et al.	2007/0124002	A1	5/2007	Estes et al.
2006/0020186	A1	1/2006	Brister et al.	2007/0149875	A1	6/2007	Ouyang et al.
2006/0020187	A1	1/2006	Brister et al.	2007/0156033	A1	7/2007	Causey, III et al.
2006/0020188	A1	1/2006	Kamath et al.	2007/0163880	A1	7/2007	Woo et al.
2006/0020189	A1	1/2006	Brister et al.	2007/0168224	A1	7/2007	Letzt et al.
2006/0020190	A1	1/2006	Kamath et al.	2007/0173706	A1	7/2007	Neinast et al.
2006/0020191	A1	1/2006	Brister et al.	2007/0173709	A1	7/2007	Petisce et al.
2006/0020192	A1	1/2006	Brister et al.	2007/0173710	A1	7/2007	Petisce et al.
2006/0020300	A1	1/2006	Nghiem et al.	2007/0173761	A1	7/2007	Kanderian et al.
2006/0025663	A1	2/2006	Talbot et al.	2007/0179349	A1	8/2007	Hoyme et al.
2006/0029177	A1	2/2006	Cranford, Jr. et al.	2007/0179352	A1	8/2007	Randlov et al.
2006/0031094	A1	2/2006	Cohen et al.	2007/0191701	A1	8/2007	Feldman et al.
2006/0036139	A1	2/2006	Brister et al.	2007/0191702	A1	8/2007	Yodfat et al.
2006/0036140	A1	2/2006	Brister et al.	2007/0203407	A1	8/2007	Hoss et al.
2006/0036141	A1	2/2006	Kamath et al.	2007/0203966	A1	8/2007	Brauker et al.
2006/0036142	A1	2/2006	Brister et al.	2007/0208244	A1	9/2007	Brauker et al.
2006/0036143	A1	2/2006	Brister et al.	2007/0208246	A1	9/2007	Brauker et al.
2006/0036144	A1	2/2006	Brister et al.	2007/0213657	A1	9/2007	Jennewine et al.
2006/0036145	A1	2/2006	Brister et al.	2007/0228071	A1	10/2007	Kamen et al.
2006/0058588	A1	3/2006	Zdeblick	2007/0232878	A1	10/2007	Kovatchev et al.
2006/0079740	A1	4/2006	Silver et al.	2007/0232880	A1	10/2007	Siddiqui et al.
2006/0091006	A1	5/2006	Wang et al.	2007/0235331	A1	10/2007	Simpson et al.
2006/0142651	A1	6/2006	Brister et al.	2007/0244383	A1	10/2007	Talbot et al.
2006/0154642	A1	7/2006	Scannell	2007/0249922	A1	10/2007	Peyser et al.
2006/0155180	A1	7/2006	Brister et al.	2007/0253021	A1	11/2007	Mehta et al.
2006/0156796	A1	7/2006	Burke et al.	2007/0255321	A1	11/2007	Gerber et al.
2006/0166629	A1	7/2006	Reggiardo	2007/0255348	A1	11/2007	Holtzclaw
2006/0173260	A1	8/2006	Gaoni et al.	2007/0255531	A1	11/2007	Drew
2006/0173406	A1	8/2006	Hayes et al.	2007/0258395	A1	11/2007	Jollota et al.
2006/0173444	A1	8/2006	Choy et al.	2007/0270672	A1	11/2007	Hayter
2006/0183984	A1	8/2006	Dobbles et al.	2007/0271285	A1	11/2007	Eichorn et al.
2006/0183985	A1	8/2006	Brister et al.	2007/0282299	A1	12/2007	Hellwig
2006/0189863	A1	8/2006	Peyser et al.	2007/0285238	A1	12/2007	Batra
2006/0193375	A1	8/2006	Lee et al.	2007/0299617	A1	12/2007	Willis
2006/0202805	A1	9/2006	Schulman et al.	2008/0004515	A1	1/2008	Jennewine et al.
2006/0211072	A1	9/2006	Ryan et al.	2008/0004601	A1	1/2008	Jennewine et al.
2006/0222566	A1	10/2006	Brauker et al.	2008/0009692	A1	1/2008	Stafford
2006/0224109	A1	10/2006	Steil et al.	2008/0017522	A1	1/2008	Heller et al.
2006/0224141	A1	10/2006	Rush et al.	2008/0018433	A1	1/2008	Pitt-Pladdy
2006/0229512	A1	10/2006	Petisce et al.	2008/0021436	A1	1/2008	Wolpert et al.
2006/0247508	A1	11/2006	Fennell	2008/0021666	A1	1/2008	Goode, Jr. et al.
2006/0247710	A1	11/2006	Goetz et al.	2008/0029391	A1	2/2008	Mao et al.
2006/0247985	A1	11/2006	Liamos et al.	2008/0030369	A1	2/2008	Mann et al.
				2008/0033254	A1	2/2008	Kamath et al.
				2008/0039702	A1	2/2008	Hayter et al.

(56)

## References Cited

## U.S. PATENT DOCUMENTS

2008/0045824	A1	2/2008	Tapsak et al.	2008/0287764	A1	11/2008	Rasdal et al.
2008/0058625	A1	3/2008	McGarraugh et al.	2008/0287765	A1	11/2008	Rasdal et al.
2008/0058773	A1	3/2008	John	2008/0287766	A1	11/2008	Rasdal et al.
2008/0060955	A1	3/2008	Goodnow	2008/0288180	A1	11/2008	Hayter
2008/0061961	A1	3/2008	John	2008/0294024	A1	11/2008	Cosentino et al.
2008/0064937	A1	3/2008	McGarraugh et al.	2008/0296155	A1	12/2008	Shults et al.
2008/0064943	A1	3/2008	Talbot et al.	2008/0300572	A1	12/2008	Rankers et al.
2008/0071156	A1	3/2008	Brister et al.	2008/0306368	A1	12/2008	Goode et al.
2008/0071157	A1	3/2008	McGarraugh et al.	2008/0306434	A1	12/2008	Dobbles et al.
2008/0071158	A1	3/2008	McGarraugh et al.	2008/0306435	A1	12/2008	Kamath et al.
2008/0071328	A1	3/2008	Haubrich et al.	2008/0306444	A1	12/2008	Brister et al.
2008/0081977	A1	4/2008	Hayter et al.	2008/0312518	A1	12/2008	Jina et al.
2008/0083617	A1	4/2008	Simpson et al.	2008/0312841	A1	12/2008	Hayter
2008/0086042	A1	4/2008	Brister et al.	2008/0312842	A1	12/2008	Hayter
2008/0086044	A1	4/2008	Brister et al.	2008/0312844	A1	12/2008	Hayter et al.
2008/0086273	A1	4/2008	Shults et al.	2008/0312845	A1	12/2008	Hayter et al.
2008/0092638	A1	4/2008	Brenneman et al.	2008/0314395	A1	12/2008	Kovatchev et al.
2008/0097289	A1	4/2008	Steil et al.	2008/0319085	A1	12/2008	Wright et al.
2008/0108942	A1	5/2008	Brister et al.	2008/0319279	A1	12/2008	Ramsay et al.
2008/0114228	A1	5/2008	McCluskey et al.	2009/0005665	A1	1/2009	Hayter et al.
2008/0119705	A1	5/2008	Patel et al.	2009/0005666	A1	1/2009	Shin et al.
2008/0139910	A1	6/2008	Mastrototaro et al.	2009/0005729	A1	1/2009	Hendrixson et al.
2008/0154513	A1	6/2008	Kovatchev et al.	2009/0006034	A1	1/2009	Hayter et al.
2008/0161666	A1	7/2008	Feldman et al.	2009/0006061	A1	1/2009	Thukral et al.
2008/0167543	A1	7/2008	Say et al.	2009/0006133	A1	1/2009	Weinert et al.
2008/0167572	A1	7/2008	Stivoric et al.	2009/0012376	A1	1/2009	Agus
2008/0172205	A1	7/2008	Breton et al.	2009/0012379	A1	1/2009	Goode et al.
2008/0177149	A1	7/2008	Weinert et al.	2009/0018424	A1	1/2009	Kamath et al.
2008/0177165	A1	7/2008	Blomquist et al.	2009/0018425	A1	1/2009	Ouyang et al.
2008/0182537	A1	7/2008	Manku et al.	2009/0030293	A1	1/2009	Cooper et al.
2008/0183061	A1	7/2008	Goode et al.	2009/0030294	A1	1/2009	Petisce et al.
2008/0183399	A1	7/2008	Goode et al.	2009/0033482	A1	2/2009	Hayter et al.
2008/0188731	A1	8/2008	Brister et al.	2009/0036747	A1	2/2009	Hayter et al.
2008/0188796	A1	8/2008	Steil et al.	2009/0036758	A1	2/2009	Brauker et al.
2008/0189051	A1	8/2008	Goode et al.	2009/0036760	A1	2/2009	Hayter
2008/0194934	A1	8/2008	Ray et al.	2009/0036763	A1	2/2009	Brauker et al.
2008/0194935	A1	8/2008	Brister et al.	2009/0040022	A1	2/2009	Finkenzeller
2008/0194936	A1	8/2008	Goode et al.	2009/0043181	A1	2/2009	Brauker et al.
2008/0194937	A1	8/2008	Goode et al.	2009/0043182	A1	2/2009	Brauker et al.
2008/0194938	A1	8/2008	Brister et al.	2009/0043525	A1	2/2009	Brauker et al.
2008/0195232	A1	8/2008	Carr-Brendel et al.	2009/0043541	A1	2/2009	Brauker et al.
2008/0195967	A1	8/2008	Goode et al.	2009/0043542	A1	2/2009	Brauker et al.
2008/0197024	A1	8/2008	Simpson et al.	2009/0045055	A1	2/2009	Rhodes et al.
2008/0200788	A1	8/2008	Brister et al.	2009/0048503	A1	2/2009	Dalal et al.
2008/0200789	A1	8/2008	Brister et al.	2009/0054745	A1	2/2009	Jennewine et al.
2008/0200791	A1	8/2008	Simpson et al.	2009/0054747	A1	2/2009	Fennell
2008/0201325	A1	8/2008	Doniger et al.	2009/0054748	A1	2/2009	Feldman et al.
2008/0208025	A1	8/2008	Shults et al.	2009/0055149	A1	2/2009	Hayter et al.
2008/0208026	A1	8/2008	Noujaim et al.	2009/0062633	A1	3/2009	Brauker et al.
2008/0208113	A1	8/2008	Damiano et al.	2009/0062635	A1	3/2009	Brauker et al.
2008/0214900	A1	9/2008	Fennell et al.	2009/0062767	A1	3/2009	VanAntwerp et al.
2008/0214915	A1	9/2008	Brister et al.	2009/0063402	A1	3/2009	Hayter
2008/0214918	A1	9/2008	Brister et al.	2009/0076356	A1	3/2009	Simpson et al.
2008/0228051	A1	9/2008	Shults et al.	2009/0076360	A1	3/2009	Brister et al.
2008/0228054	A1	9/2008	Shults et al.	2009/0076361	A1	3/2009	Kamath et al.
2008/0228055	A1	9/2008	Sher	2009/0082693	A1*	3/2009	Stafford .....
2008/0234663	A1	9/2008	Yodfat et al.				A61B 5/0008
2008/0234943	A1	9/2008	Ray et al.	2009/0085768	A1	4/2009	Patel et al.
2008/0235469	A1	9/2008	Drew	2009/0085873	A1	4/2009	Betts et al.
2008/0242961	A1	10/2008	Brister et al.	2009/0088614	A1	4/2009	Taub et al.
2008/0242963	A1	10/2008	Essenpreis et al.	2009/0093687	A1	4/2009	Telfort et al.
2008/0254544	A1	10/2008	Modzelewski et al.	2009/0099436	A1	4/2009	Brister et al.
2008/0255434	A1	10/2008	Hayter et al.	2009/0105554	A1	4/2009	Stahmann et al.
2008/0255437	A1	10/2008	Hayter	2009/0105560	A1	4/2009	Solomon
2008/0255438	A1	10/2008	Saidara et al.	2009/0105570	A1	4/2009	Sloan et al.
2008/0255808	A1	10/2008	Hayter	2009/0105571	A1	4/2009	Fennell et al.
2008/0256048	A1	10/2008	Hayter	2009/0105636	A1	4/2009	Hayter et al.
2008/0262469	A1	10/2008	Brister et al.	2009/0112478	A1	4/2009	Mueller, Jr. et al.
2008/0269714	A1	10/2008	Mastrototaro et al.	2009/0124877	A1	5/2009	Goode, Jr. et al.
2008/0269723	A1	10/2008	Mastrototaro et al.	2009/0124878	A1	5/2009	Goode et al.
2008/0275313	A1	11/2008	Brister et al.	2009/0124879	A1	5/2009	Brister et al.
2008/0287761	A1	11/2008	Hayter	2009/0124964	A1	5/2009	Leach et al.
2008/0287762	A1	11/2008	Hayter	2009/0131768	A1	5/2009	Simpson et al.
2008/0287763	A1	11/2008	Hayter	2009/0131769	A1	5/2009	Leach et al.
				2009/0131776	A1	5/2009	Simpson et al.
				2009/0131777	A1	5/2009	Simpson et al.
				2009/0137886	A1	5/2009	Shariati et al.
				2009/0137887	A1	5/2009	Shariati et al.
				2009/0143659	A1	6/2009	Li et al.

(56)

## References Cited

## U.S. PATENT DOCUMENTS

2009/0143660 A1 6/2009 Brister et al.  
 2009/0150186 A1 6/2009 Cohen et al.  
 2009/0156919 A1 6/2009 Brister et al.  
 2009/0156924 A1 6/2009 Shariati et al.  
 2009/0163790 A1 6/2009 Brister et al.  
 2009/0163791 A1 6/2009 Brister et al.  
 2009/0164190 A1 6/2009 Hayter  
 2009/0164239 A1 6/2009 Hayter et al.  
 2009/0164251 A1 6/2009 Hayter  
 2009/0177068 A1 7/2009 Stivoric et al.  
 2009/0178459 A1 7/2009 Li et al.  
 2009/0182217 A1 7/2009 Li et al.  
 2009/0189738 A1 7/2009 Hermle  
 2009/0192366 A1 7/2009 Mensinger et al.  
 2009/0192380 A1 7/2009 Shariati et al.  
 2009/0192722 A1 7/2009 Shariati et al.  
 2009/0192724 A1 7/2009 Brauker et al.  
 2009/0192745 A1 7/2009 Kamath et al.  
 2009/0192751 A1 7/2009 Kamath et al.  
 2009/0198118 A1 8/2009 Hayter et al.  
 2009/0203981 A1 8/2009 Brauker et al.  
 2009/0204341 A1 8/2009 Brauker et al.  
 2009/0216100 A1 8/2009 Ebner et al.  
 2009/0216103 A1 8/2009 Brister et al.  
 2009/0227855 A1 9/2009 Hill et al.  
 2009/0234200 A1 9/2009 Husheer  
 2009/0240120 A1 9/2009 Mensinger et al.  
 2009/0240128 A1 9/2009 Mensinger et al.  
 2009/0240193 A1 9/2009 Mensinger et al.  
 2009/0240440 A1 9/2009 Shurabura et al.  
 2009/0242399 A1 10/2009 Kamath et al.  
 2009/0242425 A1 10/2009 Kamath et al.  
 2009/0247855 A1 10/2009 Boock et al.  
 2009/0247856 A1 10/2009 Boock et al.  
 2009/0247857 A1 10/2009 Harper et al.  
 2009/0247931 A1 10/2009 Damgaard-Sorensen  
 2009/0253973 A1 10/2009 Bashan et al.  
 2009/0267765 A1 10/2009 Greene et al.  
 2009/0287073 A1 11/2009 Boock et al.  
 2009/0287074 A1 11/2009 Shults et al.  
 2009/0289796 A1 11/2009 Blumberg  
 2009/0292188 A1 11/2009 Hoss et al.  
 2009/0296742 A1 12/2009 Sicurello et al.  
 2009/0298182 A1 12/2009 Schulat et al.  
 2009/0299155 A1 12/2009 Yang et al.  
 2009/0299156 A1 12/2009 Simpson et al.  
 2009/0299162 A1 12/2009 Brauker et al.  
 2009/0299276 A1 12/2009 Brauker et al.  
 2010/0010324 A1 1/2010 Brauker et al.  
 2010/0010329 A1 1/2010 Taub et al.  
 2010/0010331 A1 1/2010 Brauker et al.  
 2010/0010332 A1 1/2010 Brauker et al.  
 2010/0016687 A1 1/2010 Brauker et al.  
 2010/0016698 A1 1/2010 Rasdal et al.  
 2010/0022855 A1 1/2010 Brauker et al.  
 2010/0030038 A1 2/2010 Brauker et al.  
 2010/0030053 A1 2/2010 Goode, Jr. et al.  
 2010/0030484 A1 2/2010 Brauker et al.  
 2010/0030485 A1 2/2010 Brauker et al.  
 2010/0036215 A1 2/2010 Goode, Jr. et al.  
 2010/0036216 A1 2/2010 Goode, Jr. et al.  
 2010/0036222 A1 2/2010 Goode, Jr. et al.  
 2010/0036223 A1 2/2010 Goode, Jr. et al.  
 2010/0036225 A1 2/2010 Goode, Jr. et al.  
 2010/0041971 A1 2/2010 Goode, Jr. et al.  
 2010/0045465 A1 2/2010 Brauker et al.  
 2010/0049024 A1 2/2010 Saint et al.  
 2010/0063373 A1 3/2010 Kamath et al.  
 2010/0076283 A1 3/2010 Simpson et al.  
 2010/0081908 A1 4/2010 Dobbles et al.  
 2010/0081910 A1 4/2010 Brister et al.  
 2010/0087724 A1 4/2010 Brauker et al.  
 2010/0096259 A1 4/2010 Zhang et al.  
 2010/0099970 A1 4/2010 Shults et al.  
 2010/0099971 A1 4/2010 Shults et al.

2010/0105999 A1 4/2010 Dixon et al.  
 2010/0119693 A1 5/2010 Tapsak et al.  
 2010/0121169 A1 5/2010 Petisce et al.  
 2010/0141656 A1 6/2010 Kriefewirth  
 2010/0152554 A1 6/2010 Steine et al.  
 2010/0160759 A1 6/2010 Celentano et al.  
 2010/0168538 A1 7/2010 Keenan et al.  
 2010/0168546 A1 7/2010 Kamath et al.  
 2010/0174266 A1 7/2010 Estes  
 2010/0185175 A1 7/2010 Kamen et al.  
 2010/0190435 A1 7/2010 Cook et al.  
 2010/0191082 A1 7/2010 Brister et al.  
 2010/0191472 A1 7/2010 Doniger et al.  
 2010/0204557 A1 8/2010 Kiaie et al.  
 2010/0213080 A1 8/2010 Celentano et al.  
 2010/0240975 A1 9/2010 Goode et al.  
 2010/0274111 A1 10/2010 Say et al.  
 2010/0312176 A1 12/2010 Lauer et al.  
 2010/0313105 A1 12/2010 Nekomaram et al.  
 2011/0004276 A1 1/2011 Blair et al.  
 2011/0024043 A1 2/2011 Boock et al.  
 2011/0024307 A1 2/2011 Simpson et al.  
 2011/0027127 A1 2/2011 Simpson et al.  
 2011/0027453 A1 2/2011 Boock et al.  
 2011/0027458 A1 2/2011 Boock et al.  
 2011/0028815 A1 2/2011 Simpson et al.  
 2011/0028816 A1 2/2011 Simpson et al.  
 2011/0031986 A1 2/2011 Bhat et al.  
 2011/0077490 A1 3/2011 Simpson et al.  
 2011/0112696 A1 5/2011 Yodfat et al.  
 2011/0148905 A1 6/2011 Simmons et al.  
 2011/0152637 A1 6/2011 Kateraas et al.  
 2011/0208027 A1 8/2011 Wagner et al.  
 2011/0257895 A1 10/2011 Brauker et al.  
 2011/0287528 A1 11/2011 Fern et al.  
 2011/0289497 A1 11/2011 Kiaie et al.  
 2011/0320130 A1 12/2011 Valdes et al.  
 2012/0078071 A1 3/2012 Bohm et al.  
 2012/0108934 A1 5/2012 Valdes et al.  
 2012/0165626 A1 6/2012 Irina et al.  
 2012/0165640 A1 6/2012 Galley et al.  
 2012/0173200 A1 7/2012 Breton et al.  
 2013/0035575 A1 2/2013 Mayou et al.  
 2013/0235166 A1 9/2013 Jones et al.

## FOREIGN PATENT DOCUMENTS

CA 2413148 8/2010  
 DE 4401400 7/1995  
 EP 0098592 1/1984  
 EP 0127958 12/1984  
 EP 0320109 6/1989  
 EP 0353328 2/1990  
 EP 0390390 10/1990  
 EP 0396788 11/1990  
 EP 0286118 1/1995  
 EP 0724859 8/1996  
 EP 0678308 5/2000  
 EP 1048264 11/2000  
 EP 1292218 3/2003  
 EP 1077634 7/2003  
 EP 1568309 8/2005  
 EP 1666091 6/2006  
 EP 1703697 9/2006  
 EP 1704893 9/2006  
 EP 1897487 11/2009  
 EP 1897492 11/2009  
 EP 2113864 11/2009  
 EP 1897488 12/2009  
 EP 1681992 4/2010  
 EP 1448489 8/2010  
 EP 1971396 8/2010  
 EP 2201969 3/2011  
 EP 2153382 2/2012  
 EP 2284773 2/2012  
 GB 2409951 7/2005  
 WO WO-93/06237 4/1993  
 WO WO-96/25089 8/1996  
 WO WO-96/35370 11/1996

(56)

## References Cited

## FOREIGN PATENT DOCUMENTS

WO	WO-97/33513	9/1997
WO	WO-98/35053	8/1998
WO	WO-99/56613	11/1999
WO	WO-00/49940	8/2000
WO	WO-00/59370	10/2000
WO	WO-00/74753	12/2000
WO	WO-00/78992	12/2000
WO	WO-01/52935	7/2001
WO	WO-01/54753	8/2001
WO	WO-02/16905	2/2002
WO	WO-02/058537	8/2002
WO	WO-03/076893	9/2003
WO	WO-03/082091	10/2003
WO	WO-03/085372	10/2003
WO	WO-2004/047445	6/2004
WO	WO-2004/061420	7/2004
WO	WO-2005/010756	2/2005
WO	WO-2005/040404	5/2005
WO	WO-2005/041766	5/2005
WO	WO-2005/045744	5/2005
WO	WO-2005/089103	9/2005
WO	WO-2005/119238	12/2005
WO	WO-2006/024671	3/2006
WO	WO-2006/032653	3/2006
WO	WO-2006/051466	5/2006
WO	WO-2006/064397	6/2006
WO	WO-2006/079114	7/2006
WO	WO-2006/118947	11/2006
WO	WO-2006/124099	11/2006
WO	WO-2007/007459	1/2007
WO	WO-2007/016399	2/2007
WO	WO-2007/027788	3/2007
WO	WO-2007/041069	4/2007
WO	WO-2007/041070	4/2007
WO	WO-2007/041248	4/2007
WO	WO-2007/056638	5/2007
WO	WO-2007/097754	8/2007
WO	WO-2007/101223	9/2007
WO	WO-2007/120363	10/2007
WO	WO-2007/126444	11/2007
WO	WO-2007/053832	12/2007
WO	WO-2007/143225	12/2007
WO	WO-2008/021913	2/2008
WO	WO-2008/042760	4/2008
WO	WO-2008/086541	7/2008
WO	WO-2008/128210	10/2008
WO	WO-2008/130896	10/2008
WO	WO-2008/130897	10/2008
WO	WO-2008/130898	10/2008
WO	WO-2008/143943	11/2008
WO	WO-2008/151452	12/2008
WO	WO-2009/018058	2/2009
WO	WO-2009/049252	4/2009
WO	WO-2009/086216	7/2009
WO	WO-2009/096992	8/2009
WO	WO-2009/097594	8/2009
WO	WO-2010/077329	7/2010
WO	WO-2011/022418	2/2011

## OTHER PUBLICATIONS

Armour, J. C., et al., "Application of Chronic Intravascular Blood Glucose Sensor in Dogs", *Diabetes*, vol. 39, 1990, pp. 1519-1526.

Bennion, N., et al., "Alternate Site Glucose Testing: A Crossover Design", *Diabetes Technology & Therapeutics*, vol. 4, No. 1, 2002, pp. 25-33.

Blank, T. B., et al., "Clinical Results From a Non-Invasive Blood Glucose Monitor", *Optical Diagnostics and Sensing of Biological Fluids and Glucose and Cholesterol Monitoring II, Proceedings of SPIE*, vol. 4624, 2002, pp. 1-10.

Brooks, S. L., et al., "Development of an On-Line Glucose Sensor for Fermentation Monitoring", *Biosensors*, vol. 3, 1987/88, pp. 45-56.

Cass, A. E., et al., "Ferrocene-Mediated Enzyme Electrode for Amperometric Determination of Glucose", *Analytical Chemistry*, vol. 56 No. 4, 1984, 667-671.

Csoregi, E., et al., "Design and Optimization of a Selective Subcutaneously Implantable Glucose Electrode Based on 'Wired' Glucose Oxidase", *Analytical Chemistry*, vol. 67, No. 7, 1995, pp. 1240-1244.

Feldman, B., et al., "A Continuous Glucose Sensor Based on Wired Enzyme™ Technology—Results from a 3-Day Trial in Patients with Type 1 Diabetes", *Diabetes Technology & Therapeutics*, vol. 5, No. 5, pp. 769-779.

Feldman, B., et al., "Correlation of Glucose Concentrations in Interstitial Fluid and Venous Blood During Periods of Rapid Glucose Change", *Abbott Diabetes Care, Inc. Freestyle Navigator Continuous Glucose Monitor Pamphlet*, 2004.

Isermann, R., "Supervision, Fault-Detection and Fault-Diagnosis Methods—An Introduction", *Control Engineering Practice*, vol. 5, No. 5, 1997, pp. 639-652.

Isermann, R., et al., "Trends in the Application of Model-Based Fault Detection and Diagnosis of Technical Processes", *Control Engineering Practice*, vol. 5, No. 5, 1997, pp. 709-719.

Johnson, P. C., "Peripheral Circulation", *John Wiley & Sons*, 1978, pp. 198.

Jungheim, K., et al., "How Rapid Does Glucose Concentration Change in Daily Life of Patients with Type 1 Diabetes?", 2002, pp. 250.

Jungheim, K., et al., "Risky Delay of Hypoglycemia Detection by Glucose Monitoring at the Arm", *Diabetes Care*, vol. 24, No. 7, 2001, pp. 1303-1304.

Kaplan, S. M., "Wiley Electrical and Electronics Engineering Dictionary", *IEEE Press*, 2004, pp. 141, 142, 548, 549.

Lortz, J., et al., "What is Bluetooth? We Explain the Newest Short-Range Connectivity Technology", *Smart Computing Learning Series, Wireless Computing*, vol. 8, Issue 5, 2002, pp. 72-74.

Malin, S. F., et al., "Noninvasive Prediction of Glucose by Near-Infrared Diffuse Reflectance Spectroscopy", *Clinical Chemistry*, vol. 45, No. 9, 1999, pp. 1651-1658.

McGarraugh, G., et al., "Glucose Measurements Using Blood Extracted from the Forearm and the Finger", *TheraSense, Inc.*, 2001, 16 Pages.

McGarraugh, G., et al., "Physiological Influences on Off-Finger Glucose Testing", *Diabetes Technology & Therapeutics*, vol. 3, No. 3, 2001, pp. 367-376.

McKean, B. D., et al., "A Telemetry-Instrumentation System for Chronically Implanted Glucose and Oxygen Sensors", *IEEE Transactions on Biomedical Engineering*, vol. 35, No. 7, 1988, pp. 526-532.

Pickup, J., et al., "Implantable Glucose Sensors: Choosing the Appropriate Sensing Strategy", *Biosensors*, vol. 3, 1987/88, pp. 335-346.

Pickup, J., et al., "In Vivo Molecular Sensing in Diabetes Mellitus: An Implantable Glucose Sensor with Direct Electron Transfer", *Diabetologia*, vol. 32, 1989, pp. 213-217.

Pishko, M. V., et al., "Amperometric Glucose Microelectrodes Prepared Through Immobilization of Glucose Oxidase in Redox Hydrogels", *Analytical Chemistry*, vol. 63, No. 20, 1991, pp. 2268-2272.

Quinn, C. P., et al., "Kinetics of Glucose Delivery to Subcutaneous Tissue in Rats Measured with 0.3-mm Amperometric Microsensors", *The American Physiological Society*, 1995, E155-E161.

Roe, J. N., et al., "Bloodless Glucose Measurements", *Critical Review in Therapeutic Drug Carrier Systems*, vol. 15, Issue 3, 1998, pp. 199-241.

Sakakida, M., et al., "Development of Ferrocene-Mediated Needle-Type Glucose Sensor as a Measure of True Subcutaneous Tissue Glucose Concentrations", *Artificial Organs Today*, vol. 2, No. 2, 1992, pp. 145-158.

Sakakida, M., et al., "Ferrocene-Mediated Needle-Type Glucose Sensor Covered with Newly Designed Biocompatible Membrane", *Sensors and Actuators B*, vol. 13-14, 1993, pp. 319-322.

Salehi, C., et al., "A Telemetry-Instrumentation System for Long-Term Implantable Glucose and Oxygen Sensors", *Analytical Letters*, vol. 29, No. 13, 1996, pp. 2289-2308.

Schmidtke, D. W., et al., "Measurement and Modeling of the Transient Difference Between Blood and Subcutaneous Glucose Concentrations in the Rat After Injection of Insulin", *Proceedings of the National Academy of Sciences*, vol. 95, 1998, pp. 294-299.

(56)

## References Cited

## OTHER PUBLICATIONS

- Shaw, G. W., et al., "In Vitro Testing of a Simply Constructed, Highly Stable Glucose Sensor Suitable for Implantation in Diabetic Patients", *Biosensors & Bioelectronics*, vol. 6, 1991, pp. 401-406.
- Shichiri, M., et al., "Glycaemic Control in Pancreatectomized Dogs with a Wearable Artificial Endocrine Pancreas", *Diabetologia*, vol. 24, 1983, pp. 179-184.
- Shichiri, M., et al., "In Vivo Characteristics of Needle-Type Glucose Sensor—Measurements of Subcutaneous Glucose Concentrations in Human Volunteers", *Hormone and Metabolic Research Supplement Series*, vol. 20, 1988, pp. 17-20.
- Shichiri, M., et al., "Membrane Design for Extending the Long-Life of an Implantable Glucose Sensor", *Diabetes Nutrition and Metabolism*, vol. 2, 1989, pp. 309-313.
- Shichiri, M., et al., "Needle-type Glucose Sensor for Wearable Artificial Endocrine Pancreas", *Implantable Sensors for Closed-Loop Prosthetic Systems*, Chapter 15, 1985, pp. 197-210.
- Shichiri, M., et al., "Telemetry Glucose Monitoring Device With Needle-Type Glucose Sensor: A Useful Tool for Blood Glucose Monitoring in Diabetic Individuals", *Diabetes Care*, vol. 9, No. 3, 1986, pp. 298-301.
- Shichiri, M., et al., "Wearable Artificial Endocrine Pancreas With Needle-Type Glucose Sensor", *The Lancet*, 1982, pp. 1129-1131.
- Shults, M. C., et al., "A Telemetry-Instrumentation System for Monitoring Multiple Subcutaneously Implanted Glucose Sensors", *IEEE Transactions on Biomedical Engineering*, vol. 41, No. 10, 1994, pp. 937-942.
- Sternberg, R., et al., "Study and Development of Multilayer Needle-Type Enzyme-Based Glucose Microsensors", *Biosensors*, vol. 4, 1988, pp. 27-40.
- Thompson, M., et al., "In Vivo Probes: Problems and Perspectives", *Clinical Biochemistry*, vol. 19, 1986, pp. 255-261.
- Turner, A., et al., "Diabetes Mellitus: Biosensors for Research and Management", *Biosensors*, vol. 1, 1985, pp. 85-115.
- Updike, S. J., et al., "Principles of Long-Term Fully Implanted Sensors with Emphasis on Radiotelemetric Monitoring of Blood Glucose from Inside a Subcutaneous Foreign Body Capsule (FBC)", *Biosensors in the Body: Continuous in vivo Monitoring*, Chapter 4, 1997, pp. 117-137.
- Velho, G., et al., "Strategies for Calibrating a Subcutaneous Glucose Sensor", *Biomedica Biochimica Acta*, vol. 48, 1989, pp. 957-964.
- Wilson, G. S., et al., "Progress Toward the Development of an Implantable Sensor for Glucose", *Clinical Chemistry*, vol. 38, No. 9, 1992, pp. 1613-1617.
- PCT Application No. PCT/US2008/006247, International Preliminary Report on Patentability and Written Opinion of the International Searching Authority mailed Nov. 26, 2009.
- PCT Application No. PCT/US2008/006247, International Search Report and Written Opinion of the International Searching Authority mailed Sep. 5, 2008.
- PCT Application No. PCT/US2008/060277, International Preliminary Report on Patentability and Written Opinion of the International Searching Authority mailed Oct. 29, 2009.
- PCT Application No. PCT/US2008/060279, International Preliminary Report on Patentability and Written Opinion of the International Searching Authority mailed Oct. 29, 2009.
- PCT Application No. PCT/US2008/060279, International Search Report and Written Opinion of the International Searching Authority mailed Jul. 14, 2008.
- PCT Application No. PCT/US2008/060281, International Preliminary Report on Patentability and Written Opinion of the International Searching Authority mailed Oct. 29, 2009.
- PCT Application No. PCT/US2008/060281, International Search Report and Written Opinion of the International Searching Authority mailed Sep. 23, 2008.
- PCT Application No. PCT/US2008/060282, International Preliminary Report on Patentability and Written Opinion of the International Searching Authority mailed Oct. 29, 2009.
- PCT Application No. PCT/US2008/060282, International Search Report and Written Opinion of the International Searching Authority mailed Jun. 18, 2009.
- PCT Application No. PCT/US2008/060284, International Preliminary Report on Patentability and Written Opinion of the International Searching Authority mailed Oct. 29, 2009.
- PCT Application No. PCT/US2008/060284, International Search Report and Written Opinion of the International Searching Authority mailed Sep. 23, 2008.
- PCT Application No. PCT/US2008/070923, International Search Report and Written Opinion of the International Searching Authority mailed Oct. 1, 2008.
- U.S. Appl. No. 11/831,866, Office Action mailed Jun. 25, 2009.
- U.S. Appl. No. 11/831,866, Office Action mailed Dec. 9, 2009.
- El-Khatib, F. H., et al., "Adaptive Closed-Loop Control Provides Blood-Glucose Regulation Using Subcutaneous Insulin and Glucagon Infusion in Diabetic Swine", *Journal of Diabetes Science and Technology*, vol. 1, No. 2, 2007, pp. 181-192.
- Garg, S., et al., "Improvement in Glycemic Excursions with a Transcutaneous, Real-Time Continuous Glucose Sensor", *Diabetes Care*, vol. 29, No. 1, 2006, pp. 44-50.
- PCT Application No. PCT/US2008/070923, International Preliminary Report on Patentability and Written Opinion of the International Searching Authority, mailed Feb. 11, 2010.
- U.S. Appl. No. 11/831,866, Notice of Allowance mailed May 26, 2010.
- U.S. Appl. No. 11/831,881, Office Action mailed Jun. 21, 2011.
- U.S. Appl. No. 11/831,895, Office Action mailed May 25, 2011.
- U.S. Appl. No. 12/102,844, Office Action mailed Aug. 17, 2011.
- U.S. Appl. No. 12/102,847, Office Action mailed Aug. 18, 2011.
- U.S. Appl. No. 12/102,855, Office Action mailed Aug. 24, 2011.
- U.S. Appl. No. 12/102,856, Office Action mailed Aug. 17, 2011.
- U.S. Appl. No. 12/152,623, Office Action mailed May 26, 2011.
- U.S. Appl. No. 12/152,636, Office Action mailed Dec. 27, 2011.
- U.S. Appl. No. 12/152,648, Office Action mailed Aug. 12, 2011.
- U.S. Appl. No. 12/152,649, Office Action mailed Aug. 5, 2011.
- U.S. Appl. No. 12/152,650, Office Action mailed Aug. 11, 2011.
- U.S. Appl. No. 12/152,652, Office Action mailed Jun. 23, 2011.
- U.S. Appl. No. 12/152,657, Office Action mailed Aug. 11, 2011.
- U.S. Appl. No. 12/152,662, Office Action mailed Aug. 19, 2011.
- U.S. Appl. No. 12/152,670, Notice of Allowance mailed Jun. 20, 2011.
- U.S. Appl. No. 12/152,670, Office Action mailed Jan. 7, 2011.
- U.S. Appl. No. 12/152,673 Office Action mailed Aug. 26, 2011.
- European Patent Application No. 08745803.0, Extended European Search Report mailed Sep. 27, 2012.
- European Patent Application No. 08754499.5, Extended European Search Report mailed Sep. 20, 2012.
- U.S. Appl. No. 11/831,881, Office Action mailed Oct. 1, 2012.
- Morbiducci, U., et al., "Improved Usability of the Minimal Model of Insulin Sensitivity Based on an Automated Approach and Genetic Algorithms for Parameter Estimation", *Clinical Science*, vol. 112, 2007, pp. 257-263.
- Mougiakakou, et al., "A Real Time Simulation Model of Glucose-Insulin Metabolism for Type 1 Diabetes Patients", *Proceedings of the 2005 IEEE*, 2005, pp. 298-301.
- Parker, R., et al., "Robust H<sub>∞</sub> Glucose Control in Diabetes Using a Physiological Model", *AIChE Journal*, vol. 46, No. 12, 2000, pp. 2537-2549.
- European Patent Application No. 08745805.5, Extended European Search Report mailed May 23, 2012.
- European Patent Application No. 08745809.7, Extended European Search Report mailed Jul. 2, 2012.
- U.S. Appl. No. 11/831,881, Office Action mailed Nov. 17, 2011.
- U.S. Appl. No. 11/831,895, Advisory Action mailed Jan. 18, 2012.
- U.S. Appl. No. 11/831,895, Advisory Action mailed Jan. 25, 2012.
- U.S. Appl. No. 11/831,895, Office Action mailed Jul. 20, 2012.
- U.S. Appl. No. 11/831,895, Office Action mailed Oct. 14, 2011.
- U.S. Appl. No. 12/102,844, Notice of Allowance mailed Jan. 10, 2012.
- U.S. Appl. No. 12/102,847, Office Action mailed Jan. 10, 2012.
- U.S. Appl. No. 12/102,855, Office Action mailed Jan. 10, 2012.
- U.S. Appl. No. 12/102,856, Office Action mailed Jan. 10, 2012.

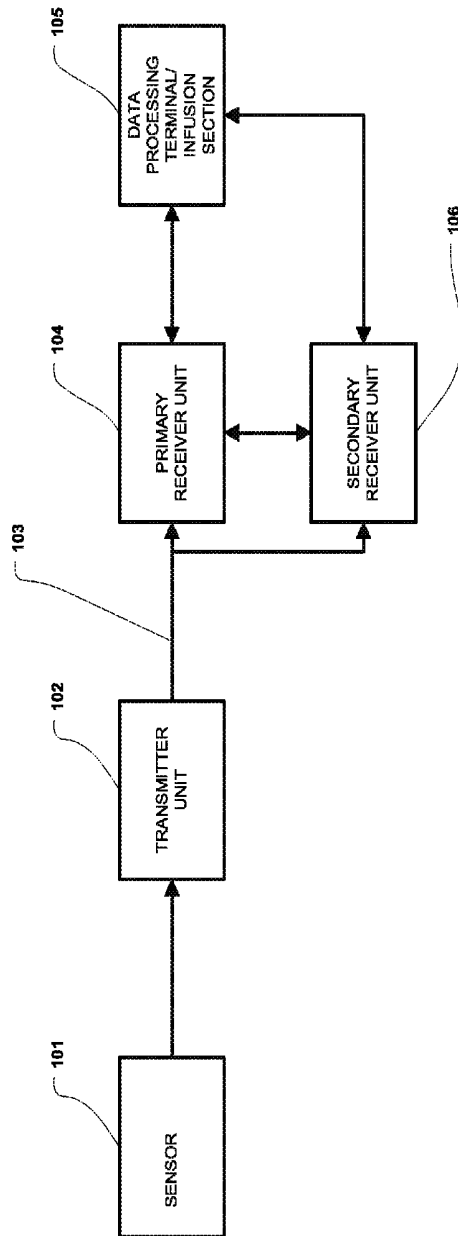
(56)

## References Cited

## OTHER PUBLICATIONS

- U.S. Appl. No. 12/152,623, Notice of Allowance Mailed Nov. 3, 2011.
- U.S. Appl. No. 12/152,636, Advisory Action mailed Jan. 19, 2012.
- U.S. Appl. No. 12/152,636, Advisory Action mailed Jan. 6, 2012.
- U.S. Appl. No. 12/152,636, Notice of Allowance mailed Jun. 19, 2012.
- U.S. Appl. No. 12/152,636, Office Action mailed Sep. 20, 2011.
- U.S. Appl. No. 12/152,648, Office Action mailed Aug. 29, 2012.
- U.S. Appl. No. 12/152,648, Office Action mailed Jan. 27, 2012.
- U.S. Appl. No. 12/152,649, Office Action mailed Jan. 27, 2012.
- U.S. Appl. No. 12/152,650, Office Action mailed Jan. 26, 2012.
- U.S. Appl. No. 12/152,650, Office Action mailed Jul. 25, 2012.
- U.S. Appl. No. 12/152,652, Advisory Action mailed Jan. 13, 2012.
- U.S. Appl. No. 12/152,652, Notice of Allowance mailed May 3, 2012.
- U.S. Appl. No. 12/152,652, Office Action mailed Nov. 1, 2011.
- U.S. Appl. No. 12/152,657, Office Action mailed Jan. 26, 2012.
- U.S. Appl. No. 12/152,662, Office Action mailed Jan. 11, 2012.
- U.S. Appl. No. 12/152,673, Office Action mailed Jan. 5, 2012.
- U.S. Appl. No. 12/152,673, Office Action mailed Jul. 11, 2012.
- U.S. Appl. No. 13/356,598, Office Action mailed Aug. 30, 2012.
- Bremer, T. M., et al., "Benchmark Data from the Literature for Evaluation of New Glucose Sensing Technologies", *Diabetes Technology & Therapeutics*, vol. 3, No. 3, 2001, pp. 409-418.
- Cheyne, E. H., et al., "Performance of a Continuous Glucose Monitoring System During Controlled Hypoglycaemia in Healthy Volunteers", *Diabetes Technology & Therapeutics*, vol. 4, No. 5, 2002, pp. 607-613.
- Kuure-Kinsey, M., et al., "A Dual-Rate Kalman Filter for Continuous Glucose Monitoring", *Proceedings of the 28th IEEE, EMBS Annual International Conference*, New York City, 2006, pp. 63-66.
- Lo, B., et al., "Key Technical Challenges and Current Implementations of Body Sensor Networks", *Body Sensor Networks*, 2005, pp. 1-5.
- Lodwig, V., et al., "Continuous Glucose Monitoring with Glucose Sensors: Calibration and Assessment Criteria", *Diabetes Technology & Therapeutics*, vol. 5, No. 4, 2003, pp. 573-587.
- Panteleon, A. E., et al., "The Role of the Independent Variable to Glucose Sensor Calibration", *Diabetes Technology & Therapeutics*, vol. 5, No. 3, 2003, pp. 401-410.
- Rodriguez, N., et al., "Flexible Communication and Control Protocol for Injectable Neuromuscular Interfaces", *IEEE Transactions on Biomedical Circuits and Systems*, vol. 1, No. 1, 2007, pp. 19-27.
- European Patent Application No. 08745807.1, Extended European Search Report mailed Oct. 8, 2012.
- European Patent Application No. 08871628.7, Extended European Search Report mailed Oct. 15, 2012.
- U.S. Appl. No. 11/831,881, Advisory Action mailed Aug. 23, 2013.
- U.S. Appl. No. 11/831,895, Advisory Action mailed Aug. 5, 2013.
- U.S. Appl. No. 11/831,895, Office Action mailed May 16, 2013.
- U.S. Appl. No. 11/831,895, Office Action mailed Oct. 1, 2013.
- U.S. Appl. No. 12/152,648, Notice of Allowance mailed Aug. 2, 2013.
- U.S. Appl. No. 12/152,648, Office Action mailed Mar. 13, 2013.
- U.S. Appl. No. 12/152,649, Notice of Allowance mailed Jul. 1, 2013.
- U.S. Appl. No. 12/152,649, Office Action mailed Nov. 5, 2012.
- U.S. Appl. No. 12/152,650, Notice of Allowance mailed Jan. 22, 2013.
- U.S. Appl. No. 12/152,673, Advisory Action mailed Apr. 9, 2013.
- U.S. Appl. No. 12/152,673, Office Action mailed Jan. 30, 2013.
- U.S. Appl. No. 13/356,598, Notice of Allowance mailed Jul. 11, 2013.
- U.S. Appl. No. 13/356,598, Office Action mailed May 2, 2013.
- U.S. Appl. No. 13/567,038, Notice of Allowance Nov. 22, 2013.
- U.S. Appl. No. 13/567,038, Office Action mailed Jun. 6, 2013.
- U.S. Appl. No. 13/567,038, Office Action mailed Oct. 10, 2013.
- U.S. Appl. No. 13/599,847, Notice of Allowance mailed Aug. 21, 2013.
- U.S. Appl. No. 13/599,847, Office Action mailed Jan. 29, 2013.
- Arnold, M. A., et al., "Selectivity Assessment of Noninvasive Glucose Measurements Based on Analysis of Multivariate Calibration Vectors", *Journal of Diabetes Science and Technology*, vol. 1, No. 4, 2007, pp. 454-462.
- Boyne, M. S., et al., "Timing of Changes in Interstitial and Venous Blood Glucose Measured With a Continuous Subcutaneous Glucose Sensor", *Diabetes*, vol. 52, Nov. 2003, pp. 2790-2794.
- Eren-Oruklu, M., et al., "Estimation of Future Glucose Concentrations with Subject-Specific Recursive Linear Models", *Diabetes Technology & Therapeutics* vol. 11(4), 2009, pp. 243-253.
- Li, Y., et al., "In Vivo Release From a Drug Delivery MEMS Device", *Journal of Controlled Release*, vol. 100, 2004, pp. 211-219.
- Canadian Patent Application No. 2,683,930, Examiner's Report mailed Jul. 22, 2014.
- Canadian Patent Application No. 2,683,953, Examiner's Report mailed Jan. 23, 2015.
- European Patent Application No. 08796500.0, Examination Report mailed Dec. 4, 2014.
- European Patent Application No. 08796500.0, Extended European Search Report mailed Jan. 14, 2014.
- U.S. Appl. No. 11/831,881, Notice of Allowance mailed Jun. 20, 2014.
- U.S. Appl. No. 11/831,881, Office Action mailed Mar. 13, 2014.
- U.S. Appl. No. 11/831,881, Office Action mailed May 23, 2013.
- U.S. Appl. No. 11/831,895, Advisory Action mailed Apr. 22, 2015.
- U.S. Appl. No. 11/831,895, Office Action mailed Feb. 13, 2015.
- U.S. Appl. No. 11/831,895, Office Action mailed Jul. 17, 2014.
- U.S. Appl. No. 12/102,847, Advisory Action mailed Aug. 27, 2014.
- U.S. Appl. No. 12/102,847, Office Action mailed Feb. 12, 2015.
- U.S. Appl. No. 12/102,847, Office Action mailed Apr. 24, 2014.
- U.S. Appl. No. 12/102,847, Office Action mailed Jun. 16, 2014.
- U.S. Appl. No. 12/102,855, Office Action mailed Jun. 11, 2014.
- U.S. Appl. No. 12/102,855, Office Action mailed Oct. 24, 2014.
- U.S. Appl. No. 12/102,856, Notice of Allowance mailed Feb. 25, 2015.
- U.S. Appl. No. 12/102,856, Office Action mailed May 7, 2014.
- U.S. Appl. No. 12/102,856, Office Action mailed Nov. 25, 2014.
- U.S. Appl. No. 12/152,657, Notice of Allowance mailed Jul. 10, 2015.
- U.S. Appl. No. 12/152,657, Office Action mailed Apr. 24, 2015.
- U.S. Appl. No. 12/152,657, Office Action mailed Sep. 18, 2014.
- U.S. Appl. No. 12/152,662, Advisory Action mailed Sep. 3, 2014.
- U.S. Appl. No. 12/152,662, Office Action mailed Jan. 23, 2015.
- U.S. Appl. No. 12/152,662, Office Action mailed Jun. 12, 2014.
- U.S. Appl. No. 14/106,000, Notice of Allowance mailed Apr. 24, 2015.
- U.S. Appl. No. 14/106,000, Office Action mailed Aug. 26, 2014.
- U.S. Appl. No. 14/106,000, Office Action mailed Jun. 17, 2014.
- U.S. Appl. No. 14/106,000, Office Action mailed Nov. 26, 2014.
- U.S. Appl. No. 14/472,341, Office Action mailed Apr. 10, 2015.
- U.S. Appl. No. 14/472,341, Office Action mailed Dec. 23, 2014.

\* cited by examiner



100

FIGURE 1

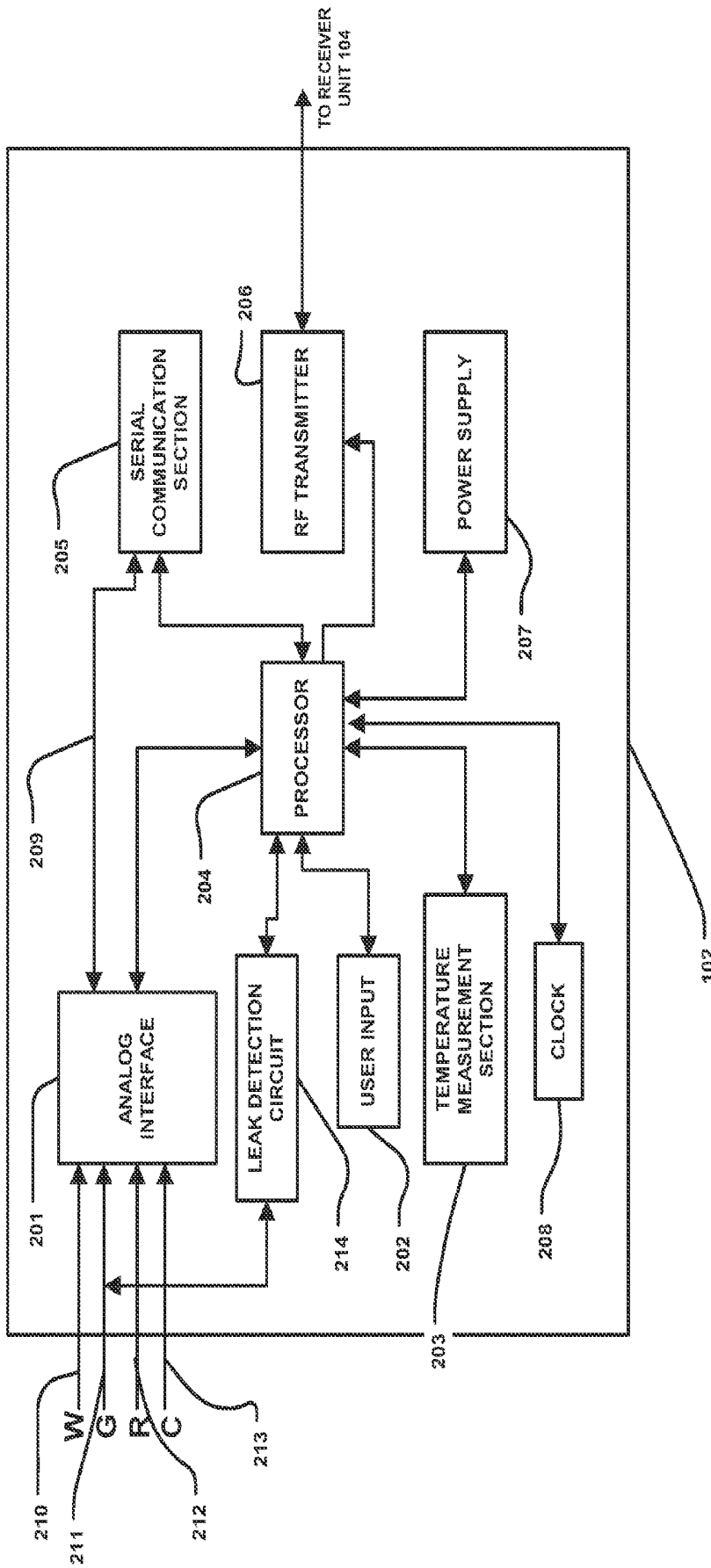


FIGURE 2

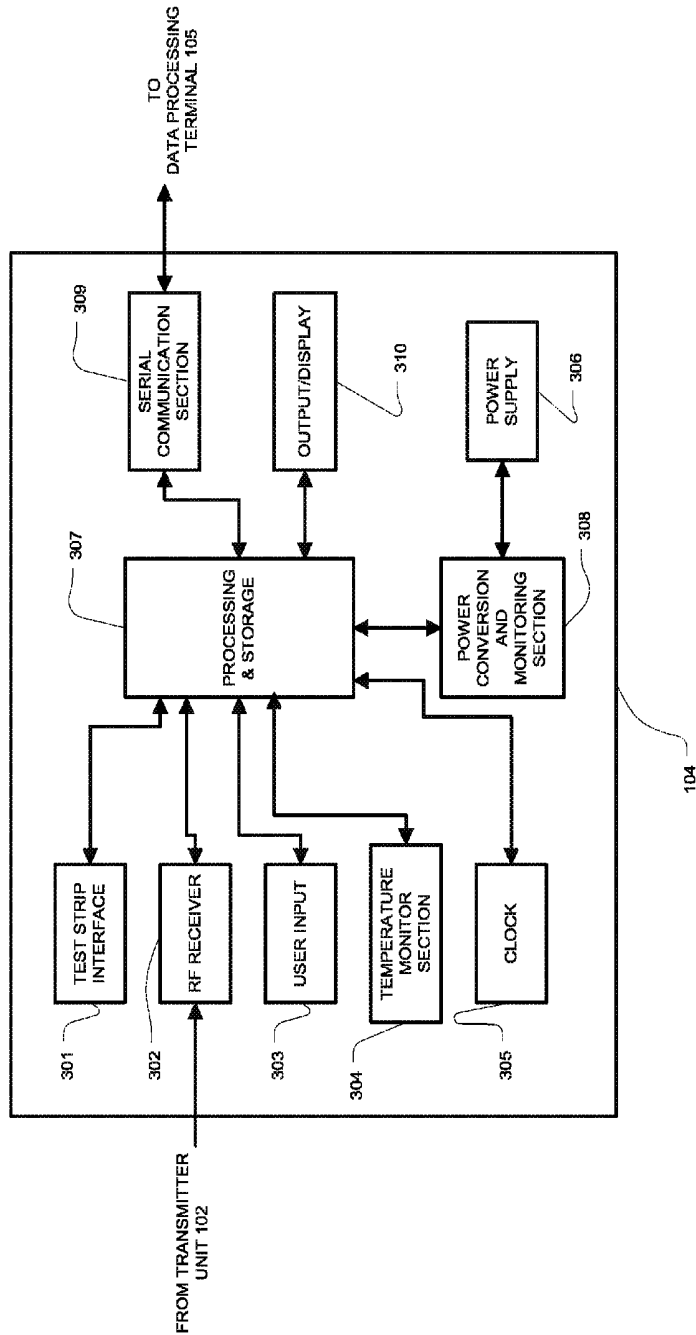


FIGURE 3

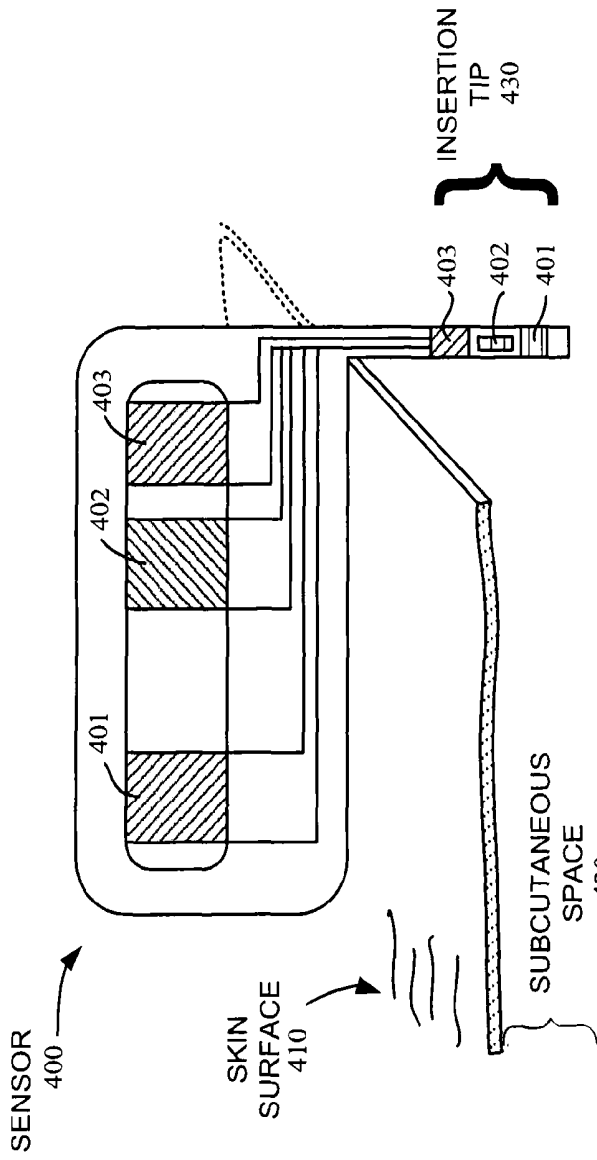


FIGURE 4A

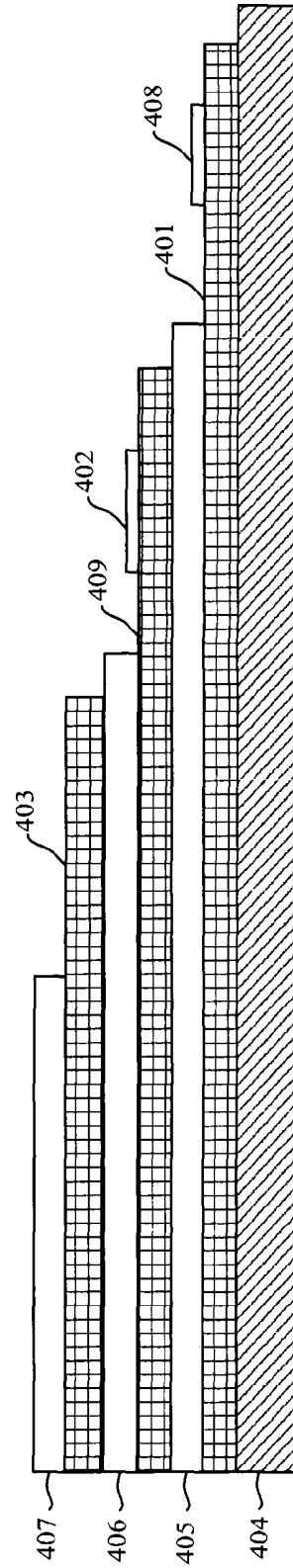


FIGURE 4B

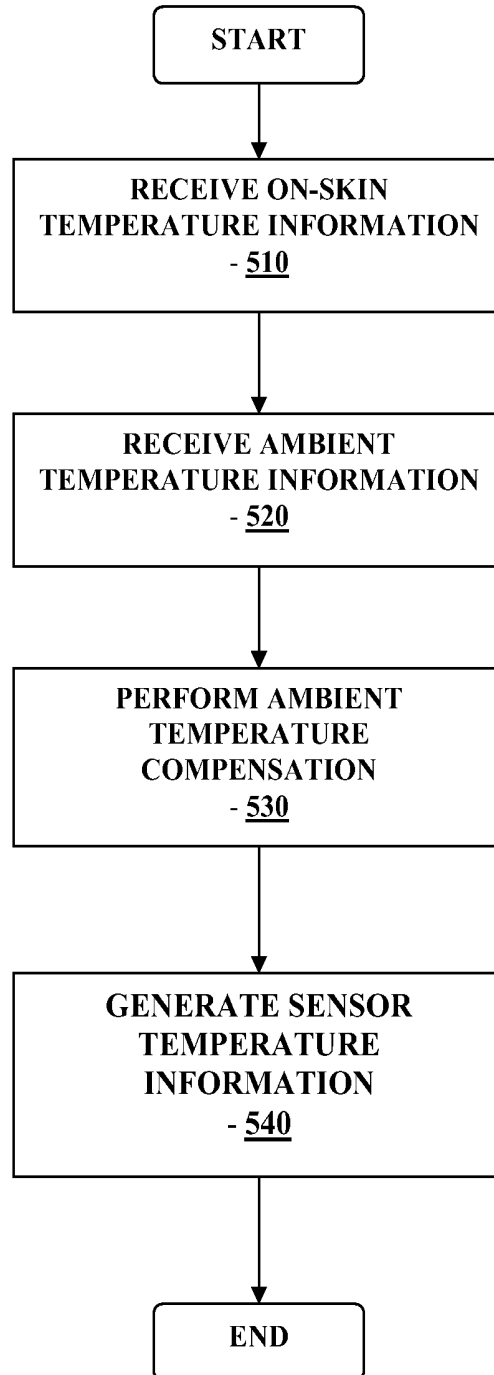


FIGURE 5

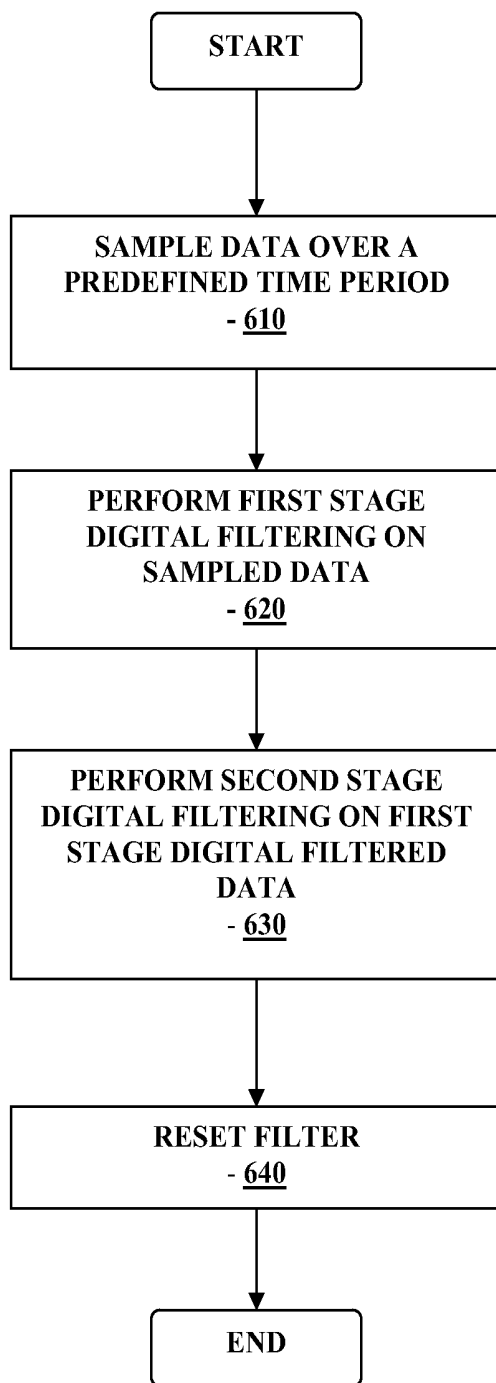


FIGURE 6

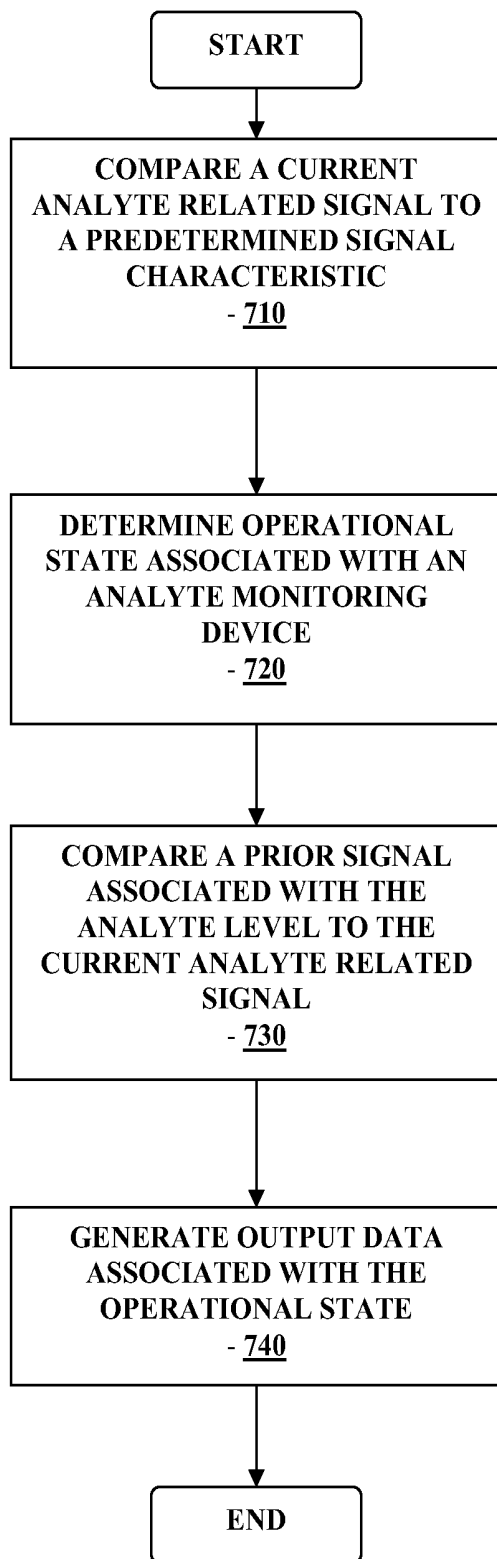


FIGURE 7

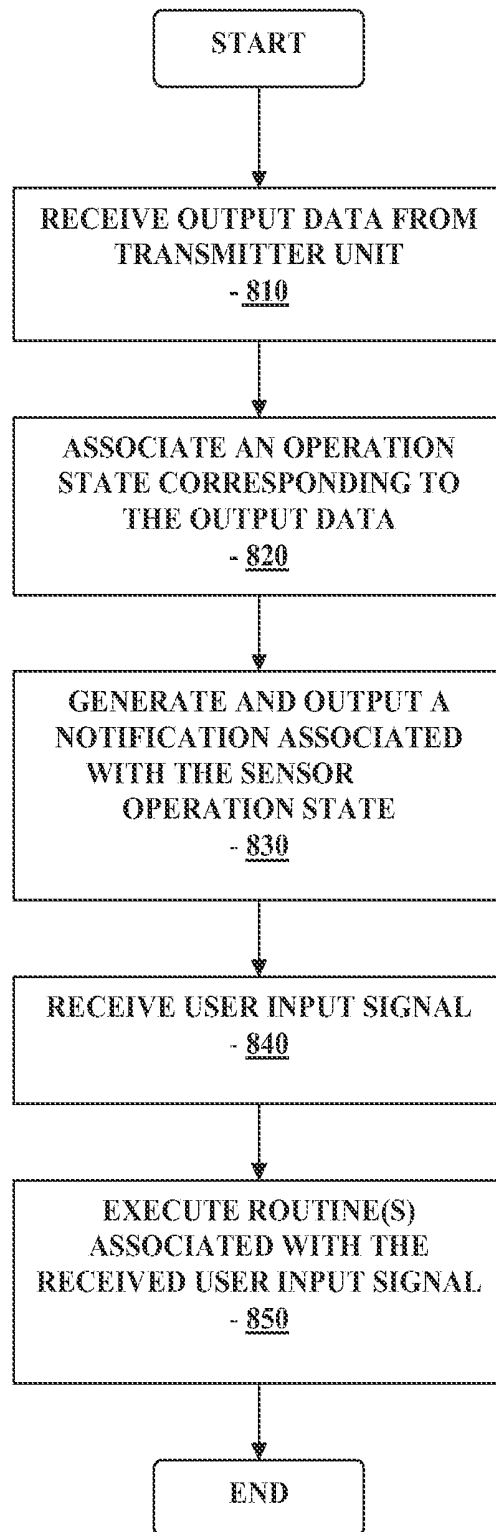


FIGURE 8

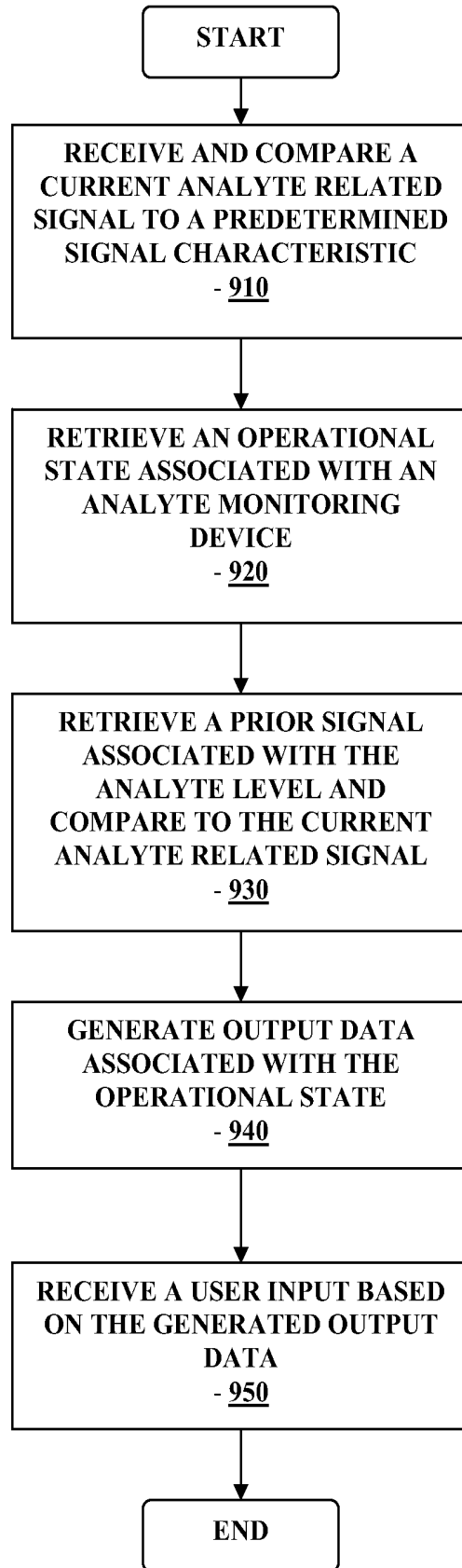


FIGURE 9

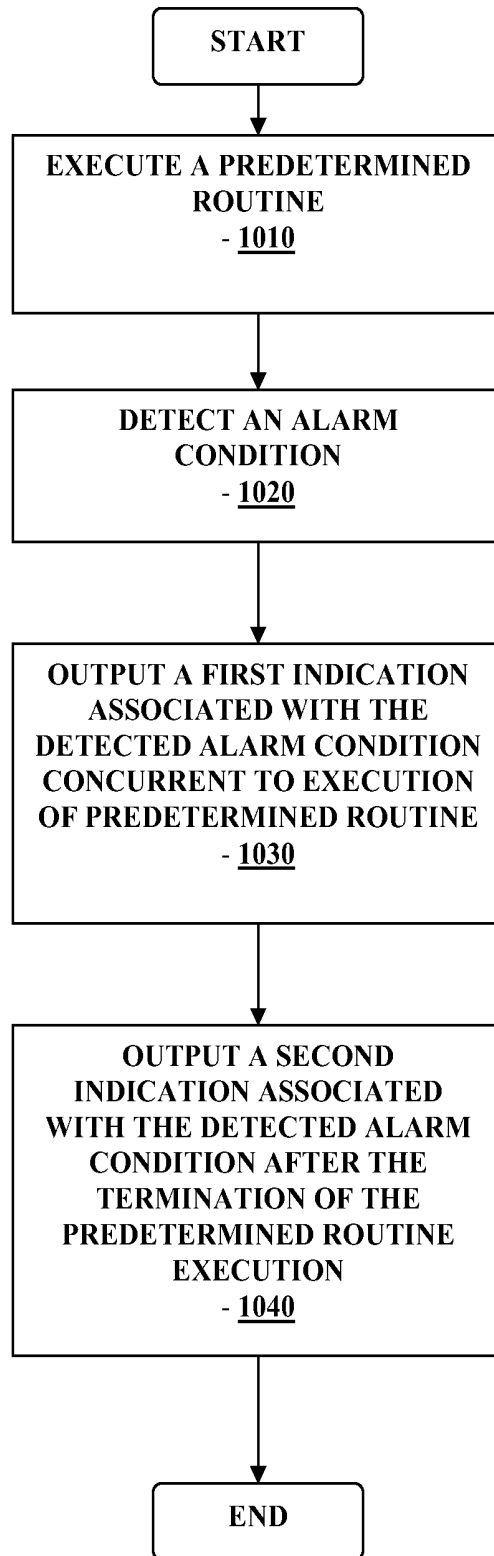


FIGURE 10

# METHOD AND APPARATUS FOR PROVIDING DATA PROCESSING AND CONTROL IN MEDICAL COMMUNICATION SYSTEM

## RELATED APPLICATIONS

The present application claims priority under §35 U.S.C. 119(e) to U.S. provisional application No. 60/911,869 filed Apr. 14, 2007, entitled "Method and Apparatus for Providing Data Processing and Control in Medical Communication System", and assigned to the Assignee of the present application, Abbott Diabetes Care Inc. of Alameda, Calif., the disclosure of which is incorporated herein by reference for all purposes.

## BACKGROUND

Analyte, e.g., glucose monitoring systems including continuous and discrete monitoring systems generally include a small, lightweight battery powered and microprocessor controlled system which is configured to detect signals proportional to the corresponding measured glucose levels using an electrometer, and RF signals to transmit the collected data. One aspect of certain analyte monitoring systems include a transcutaneous or subcutaneous analyte sensor configuration which is, for example, partially mounted on the skin of a subject whose analyte level is to be monitored. The sensor cell may use a two or three-electrode (work, reference and counter electrodes) configuration driven by a controlled potential (potentiostat) analog circuit connected through a contact system.

The analyte sensor may be configured so that a portion thereof is placed under the skin of the patient so as to detect the analyte levels of the patient, and another portion of segment of the analyte sensor that is in communication with the transmitter unit. The transmitter unit is configured to transmit the analyte levels detected by the sensor over a wireless communication link such as an RF (radio frequency) communication link to a receiver/monitor unit. The receiver/monitor unit performs data analysis, among others on the received analyte levels to generate information pertaining to the monitored analyte levels. To provide flexibility in analyte sensor manufacturing and/or design, among others, tolerance of a larger range of the analyte sensor sensitivities for processing by the transmitter unit is desirable.

In view of the foregoing, it would be desirable to have a method and system for providing data processing and control for use in medical telemetry systems such as, for example, analyte monitoring systems.

## SUMMARY OF THE INVENTION

In one embodiment, method and apparatus for detecting a first temperature related signal from a first source, detecting a second temperature related signal from a second source, the second source located at a predetermined distance from the first source, and estimating an analyte temperature related signal based on the first and second detected temperature signals, is disclosed.

These and other objects, features and advantages of the present invention will become more fully apparent from the following detailed description of the embodiments, the appended claims and the accompanying drawings.

## BRIEF DESCRIPTION OF THE DRAWINGS

FIG. 1 illustrates a block diagram of a data monitoring and management system for practicing one or more embodiments of the present invention;

FIG. 2 is a block diagram of the transmitter unit of the data monitoring and management system shown in FIG. 1 in accordance with one embodiment of the present invention;

FIG. 3 is a block diagram of the receiver/monitor unit of the data monitoring and management system shown in FIG. 1 in accordance with one embodiment of the present invention;

FIGS. 4A-4B illustrate a perspective view and a cross sectional view, respectively of an analyte sensor in accordance with one embodiment of the present invention;

FIG. 5 is a flowchart illustrating ambient temperature compensation routine for determining on-skin temperature information in accordance with one embodiment of the present invention;

FIG. 6 is a flowchart illustrating digital anti-aliasing filtering routine in accordance with one embodiment of the present invention;

FIG. 7 is a flowchart illustrating actual or potential sensor insertion or removal detection routine in accordance with one embodiment of the present invention;

FIG. 8 is a flowchart illustrating receiver unit processing corresponding to the actual or potential sensor insertion or removal detection routine of FIG. 7 in accordance with one embodiment of the present invention;

FIG. 9 is a flowchart illustrating data processing corresponding to the actual or potential sensor insertion or removal detection routine in accordance with another embodiment of the present invention;

FIG. 10 is a flowchart illustrating a concurrent passive notification routine in the data receiver/monitor unit of the data monitoring and management system of FIG. 1 in accordance with one embodiment of the present invention.

## DETAILED DESCRIPTION

As described in further detail below, in accordance with the various embodiments of the present invention, there is provided a method and apparatus for providing data processing and control for use in a medical telemetry system. In particular, within the scope of the present invention, there are provided method and system for providing data communication and control for use in a medical telemetry system such as, for example, a continuous glucose monitoring system.

FIG. 1 illustrates a data monitoring and management system such as, for example, analyte (e.g., glucose) monitoring system **100** in accordance with one embodiment of the present invention. The subject invention is further described primarily with respect to a glucose monitoring system for convenience and such description is in no way intended to limit the scope of the invention. It is to be understood that the analyte monitoring system may be configured to monitor a variety of analytes, e.g., lactate, and the like.

Analytes that may be monitored include, for example, acetyl choline, amylase, bilirubin, cholesterol, chorionic gonadotropin, creatine kinase (e.g., CK-MB), creatine, DNA, fructosamine, glucose, glutamine, growth hormones, hormones, ketones, lactate, peroxide, prostate-specific antigen, prothrombin, RNA, thyroid stimulating hormone, and troponin. The concentration of drugs, such as, for example, antibiotics (e.g., gentamicin, vancomycin, and the like), digitoxin, digoxin, drugs of abuse, theophylline, and warfarin, may also be monitored.

The analyte monitoring system **100** includes a sensor **101**, a transmitter unit **102** coupled to the sensor **101**, and a primary receiver unit **104** which is configured to communicate with the transmitter unit **102** via a communication link **103**. The primary receiver unit **104** may be further configured to transmit data to a data processing terminal **105** for evaluating

the data received by the primary receiver unit **104**. Moreover, the data processing terminal in one embodiment may be configured to receive data directly from the transmitter unit **102** via a communication link which may optionally be configured for bi-directional communication.

Also shown in FIG. **1** is a secondary receiver unit **106** which is operatively coupled to the communication link and configured to receive data transmitted from the transmitter unit **102**. Moreover, as shown in the Figure, the secondary receiver unit **106** is configured to communicate with the primary receiver unit **104** as well as the data processing terminal **105**. Indeed, the secondary receiver unit **106** may be configured for bi-directional wireless communication with each of the primary receiver unit **104** and the data processing terminal **105**. As discussed in further detail below, in one embodiment of the present invention, the secondary receiver unit **106** may be configured to include a limited number of functions and features as compared with the primary receiver unit **104**. As such, the secondary receiver unit **106** may be configured substantially in a smaller compact housing or embodied in a device such as a wrist watch, for example. Alternatively, the secondary receiver unit **106** may be configured with the same or substantially similar functionality as the primary receiver unit **104**, and may be configured to be used in conjunction with a docking cradle unit for placement by bedside, for night time monitoring, and/or bi-directional communication device.

Only one sensor **101**, transmitter unit **102**, communication link **103**, and data processing terminal **105** are shown in the embodiment of the analyte monitoring system **100** illustrated in FIG. **1**. However, it will be appreciated by one of ordinary skill in the art that the analyte monitoring system **100** may include one or more sensor **101**, transmitter unit **102**, communication link **103**, and data processing terminal **105**. Moreover, within the scope of the present invention, the analyte monitoring system **100** may be a continuous monitoring system, or semi-continuous, or a discrete monitoring system. In a multi-component environment, each device is configured to be uniquely identified by each of the other devices in the system so that communication conflict is readily resolved between the various components within the analyte monitoring system **100**.

In one embodiment of the present invention, the sensor **101** is physically positioned in or on the body of a user whose analyte level is being monitored. The sensor **101** may be configured to continuously sample the analyte level of the user and convert the sampled analyte level into a corresponding data signal for transmission by the transmitter unit **102**. In one embodiment, the transmitter unit **102** is coupled to the sensor **101** so that both devices are positioned on the user's body, with at least a portion of the analyte sensor **101** positioned transcutaneously under the skin layer of the user. The transmitter unit **102** performs data processing such as filtering and encoding on data signals, each of which corresponds to a sampled analyte level of the user, for transmission to the primary receiver unit **104** via the communication link **103**.

In one embodiment, the analyte monitoring system **100** is configured as a one-way RF communication path from the transmitter unit **102** to the primary receiver unit **104**. In such embodiment, the transmitter unit **102** transmits the sampled data signals received from the sensor **101** without acknowledgement from the primary receiver unit **104** that the transmitted sampled data signals have been received. For example, the transmitter unit **102** may be configured to transmit the encoded sampled data signals at a fixed rate (e.g., at one minute intervals) after the completion of the initial power on procedure. Likewise, the primary receiver unit **104** may be

configured to detect such transmitted encoded sampled data signals at predetermined time intervals. Alternatively, the analyte monitoring system **100** may be configured with a bi-directional RF (or otherwise) communication between the transmitter unit **102** and the primary receiver unit **104**.

Additionally, in one aspect, the primary receiver unit **104** may include two sections. The first section is an analog interface section that is configured to communicate with the transmitter unit **102** via the communication link **103**. In one embodiment, the analog interface section may include an RF receiver and an antenna for receiving and amplifying the data signals from the transmitter unit **102**, which are thereafter, demodulated with a local oscillator and filtered through a band-pass filter. The second section of the primary receiver unit **104** is a data processing section which is configured to process the data signals received from the transmitter unit **102** such as by performing data decoding, error detection and correction, data clock generation, and data bit recovery.

In operation, upon completing the power-on procedure, the primary receiver unit **104** is configured to detect the presence of the transmitter unit **102** within its range based on, for example, the strength of the detected data signals received from the transmitter unit **102** or a predetermined transmitter identification information. Upon successful synchronization with the corresponding transmitter unit **102**, the primary receiver unit **104** is configured to begin receiving from the transmitter unit **102** data signals corresponding to the user's detected analyte level. More specifically, the primary receiver unit **104** in one embodiment is configured to perform synchronized time hopping with the corresponding synchronized transmitter unit **102** via the communication link **103** to obtain the user's detected analyte level.

Referring again to FIG. **1**, the data processing terminal **105** may include a personal computer, a portable computer such as a laptop or a handheld device (e.g., personal digital assistants (PDAs)), and the like, each of which may be configured for data communication with the receiver via a wired or a wireless connection. Additionally, the data processing terminal **105** may further be connected to a data network (not shown) for storing, retrieving and updating data corresponding to the detected analyte level of the user.

Within the scope of the present invention, the data processing terminal **105** may include an infusion device such as an insulin infusion pump or the like, which may be configured to administer insulin to patients, and which may be configured to communicate with the receiver unit **104** for receiving, among others, the measured analyte level. Alternatively, the receiver unit **104** may be configured to integrate an infusion device therein so that the receiver unit **104** is configured to administer insulin therapy to patients, for example, for administering and modifying basal profiles, as well as for determining appropriate boluses for administration based on, among others, the detected analyte levels received from the transmitter unit **102**.

Additionally, the transmitter unit **102**, the primary receiver unit **104** and the data processing terminal **105** may each be configured for bi-directional wireless communication such that each of the transmitter unit **102**, the primary receiver unit **104** and the data processing terminal **105** may be configured to communicate (that is, transmit data to and receive data from) with each other via a wireless communication link. More specifically, the data processing terminal **105** may in one embodiment be configured to receive data directly from the transmitter unit **102** via the communication link, where the communication link, as described above, may be configured for bi-directional communication.

In this embodiment, the data processing terminal **105** which may include an insulin pump, may be configured to receive the analyte signals from the transmitter unit **102**, and thus, incorporate the functions of the receiver unit **104** including data processing for managing the patient's insulin therapy and analyte monitoring. In one embodiment, the communication link **103** may include one or more of an RF communication protocol, an infrared communication protocol, a Bluetooth® enabled communication protocol, an 802.11x wireless communication protocol, or an equivalent wireless communication protocol which would allow secure, wireless communication of several units (for example, per HIPAA requirements) while avoiding potential data collision and interference.

FIG. 2 is a block diagram of the transmitter unit of the data monitoring and detection system shown in FIG. 1 in accordance with one embodiment of the present invention. Referring to the Figure, the transmitter unit **102** in one embodiment includes an analog interface **201** configured to communicate with the sensor **101** (FIG. 1), a user input **202**, and a temperature detection section **203**, each of which is operatively coupled to a transmitter processor **204** such as a central processing unit (CPU).

Further shown in FIG. 2 are a transmitter serial communication section **205** and an RF transmitter **206**, each of which is also operatively coupled to the transmitter processor **204**. Moreover, a power supply **207** such as a battery is also provided in the transmitter unit **102** to provide the necessary power for the transmitter unit **102**. Additionally, as can be seen from the Figure, clock **208** is provided to, among others, supply real time information to the transmitter processor **204**.

As can be seen from FIG. 2, the sensor **101** (FIG. 1) is provided four contacts, three of which are electrodes—work electrode (W) **210**, guard contact (G) **211**, reference electrode (R) **212**, and counter electrode (C) **213**, each operatively coupled to the analog interface **201** of the transmitter unit **102**. In one embodiment, each of the work electrode (W) **210**, guard contact (G) **211**, reference electrode (R) **212**, and counter electrode (C) **213** may be made using a conductive material that is either printed or etched, for example, such as carbon which may be printed, or metal foil (e.g., gold) which may be etched, or alternatively provided on a substrate material using laser or photolithography.

In one embodiment, a unidirectional input path is established from the sensor **101** (FIG. 1) and/or manufacturing and testing equipment to the analog interface **201** of the transmitter unit **102**, while a unidirectional output is established from the output of the RF transmitter **206** of the transmitter unit **102** for transmission to the primary receiver unit **104**. In this manner, a data path is shown in FIG. 2 between the aforementioned unidirectional input and output via a dedicated link **209** from the analog interface **201** to serial communication section **205**, thereafter to the processor **204**, and then to the RF transmitter **206**. As such, in one embodiment, via the data path described above, the transmitter unit **102** is configured to transmit to the primary receiver unit **104** (FIG. 1), via the communication link **103** (FIG. 1), processed and encoded data signals received from the sensor **101** (FIG. 1). Additionally, the unidirectional communication data path between the analog interface **201** and the RF transmitter **206** discussed above allows for the configuration of the transmitter unit **102** for operation upon completion of the manufacturing process as well as for direct communication for diagnostic and testing purposes.

As discussed above, the transmitter processor **204** is configured to transmit control signals to the various sections of the transmitter unit **102** during the operation of the transmitter

unit **102**. In one embodiment, the transmitter processor **204** also includes a memory (not shown) for storing data such as the identification information for the transmitter unit **102**, as well as the data signals received from the sensor **101**. The stored information may be retrieved and processed for transmission to the primary receiver unit **104** under the control of the transmitter processor **204**. Furthermore, the power supply **207** may include a commercially available battery.

The transmitter unit **102** is also configured such that the power supply section **207** is capable of providing power to the transmitter for a minimum of about three months of continuous operation after having been stored for about eighteen months in a low-power (non-operating) mode. In one embodiment, this may be achieved by the transmitter processor **204** operating in low power modes in the non-operating state, for example, drawing no more than approximately 1  $\mu$ A of current. Indeed, in one embodiment, the final step during the manufacturing process of the transmitter unit **102** may place the transmitter unit **102** in the lower power, non-operating state (i.e., post-manufacture sleep mode). In this manner, the shelf life of the transmitter unit **102** may be significantly improved. Moreover, as shown in FIG. 2, while the power supply unit **207** is shown as coupled to the processor **204**, and as such, the processor **204** is configured to provide control of the power supply unit **207**, it should be noted that within the scope of the present invention, the power supply unit **207** is configured to provide the necessary power to each of the components of the transmitter unit **102** shown in FIG. 2.

Referring back to FIG. 2, the power supply section **207** of the transmitter unit **102** in one embodiment may include a rechargeable battery unit that may be recharged by a separate power supply recharging unit (for example, provided in the receiver unit **104**) so that the transmitter unit **102** may be powered for a longer period of usage time. Moreover, in one embodiment, the transmitter unit **102** may be configured without a battery in the power supply section **207**, in which case the transmitter unit **102** may be configured to receive power from an external power supply source (for example, a battery) as discussed in further detail below.

Referring yet again to FIG. 2, the temperature detection section **203** of the transmitter unit **102** is configured to monitor the temperature of the skin near the sensor insertion site. The temperature reading is used to adjust the analyte readings obtained from the analog interface **201**. The RF transmitter **206** of the transmitter unit **102** may be configured for operation in the frequency band of 315 MHz to 322 MHz, for example, in the United States. Further, in one embodiment, the RF transmitter **206** is configured to modulate the carrier frequency by performing Frequency Shift Keying and Manchester encoding. In one embodiment, the data transmission rate is 19,200 symbols per second, with a minimum transmission range for communication with the primary receiver unit **104**.

Referring yet again to FIG. 2, also shown is a leak detection circuit **214** coupled to the guard contact (G) **211** and the processor **204** in the transmitter unit **102** of the data monitoring and management system **100**. The leak detection circuit **214** in accordance with one embodiment of the present invention may be configured to detect leakage current in the sensor **101** to determine whether the measured sensor data are corrupt or whether the measured data from the sensor **101** is accurate.

FIG. 3 is a block diagram of the receiver/monitor unit of the data monitoring and management system shown in FIG. 1 in accordance with one embodiment of the present invention. Referring to FIG. 3, the primary receiver unit **104** includes a

blood glucose test strip interface **301**, an RF receiver **302**, an input **303**, a temperature detection section **304**, and a clock **305**, each of which is operatively coupled to a receiver processor **307**. As can be further seen from the Figure, the primary receiver unit **104** also includes a power supply **306** operatively coupled to a power conversion and monitoring section **308**. Further, the power conversion and monitoring section **308** is also coupled to the receiver processor **307**. Moreover, also shown are a receiver serial communication section **309**, and an output **310**, each operatively coupled to the receiver processor **307**.

In one embodiment, the test strip interface **301** includes a glucose level testing portion to receive a manual insertion of a glucose test strip, and thereby determine and display the glucose level of the test strip on the output **310** of the primary receiver unit **104**. This manual testing of glucose can be used to calibrate sensor **101**. The RF receiver **302** is configured to communicate, via the communication link **103** (FIG. 1) with the RF transmitter **206** of the transmitter unit **102**, to receive encoded data signals from the transmitter unit **102** for, among others, signal mixing, demodulation, and other data processing. The input **303** of the primary receiver unit **104** is configured to allow the user to enter information into the primary receiver unit **104** as needed. In one aspect, the input **303** may include one or more keys of a keypad, a touch-sensitive screen, or a voice-activated input command unit. The temperature detection section **304** is configured to provide temperature information of the primary receiver unit **104** to the receiver processor **307**, while the clock **305** provides, among others, real time information to the receiver processor **307**.

Each of the various components of the primary receiver unit **104** shown in FIG. 3 is powered by the power supply **306** which, in one embodiment, includes a battery. Furthermore, the power conversion and monitoring section **308** is configured to monitor the power usage by the various components in the primary receiver unit **104** for effective power management and to alert the user, for example, in the event of power usage which renders the primary receiver unit **104** in sub-optimal operating conditions. An example of such sub-optimal operating condition may include, for example, operating the vibration output mode (as discussed below) for a period of time thus substantially draining the power supply **306** while the processor **307** (thus, the primary receiver unit **104**) is turned on. Moreover, the power conversion and monitoring section **308** may additionally be configured to include a reverse polarity protection circuit such as a field effect transistor (FET) configured as a battery activated switch.

The serial communication section **309** in the primary receiver unit **104** is configured to provide a bi-directional communication path from the testing and/or manufacturing equipment for, among others, initialization, testing, and configuration of the primary receiver unit **104**. Serial communication section **104** can also be used to upload data to a computer, such as time-stamped blood glucose data. The communication link with an external device (not shown) can be made, for example, by cable, infrared (IR) or RF link. The output **310** of the primary receiver unit **104** is configured to provide, among others, a graphical user interface (GUI) such as a liquid crystal display (LCD) for displaying information. Additionally, the output **310** may also include an integrated speaker for outputting audible signals as well as to provide vibration output as commonly found in handheld electronic devices, such as mobile telephones presently available. In a further embodiment, the primary receiver unit **104** also includes an electro-luminescent lamp configured to provide backlighting to the output **310** for output visual display in dark ambient surroundings.

Referring back to FIG. 3, the primary receiver unit **104** in one embodiment may also include a storage section such as a programmable, non-volatile memory device as part of the processor **307**, or provided separately in the primary receiver unit **104**, operatively coupled to the processor **307**. The processor **307** is further configured to perform Manchester decoding as well as error detection and correction upon the encoded data signals received from the transmitter unit **102** via the communication link **103**.

In a further embodiment, the one or more of the transmitter unit **102**, the primary receiver unit **104**, secondary receiver unit **106**, or the data processing terminal/infusion section **105** may be configured to receive the blood glucose value wirelessly over a communication link from, for example, a glucose meter. In still a further embodiment, the user or patient manipulating or using the analyte monitoring system **100** (FIG. 1) may manually input the blood glucose value using, for example, a user interface (for example, a keyboard, keypad, and the like) incorporated in the one or more of the transmitter unit **102**, the primary receiver unit **104**, secondary receiver unit **106**, or the data processing terminal/infusion section **105**.

Additional detailed description of the continuous analyte monitoring system, its various components including the functional descriptions of the transmitter are provided in U.S. Pat. No. 6,175,752 issued Jan. 16, 2001 entitled "Analyte Monitoring Device and Methods of Use", and in U.S. patent application Ser. No. 10/745,878 filed Dec. 26, 2003, now U.S. Pat. No. 7,811,231, entitled "Continuous Glucose Monitoring System and Methods of Use", each assigned to the Assignee of the present application, the disclosures of each of which are incorporated herein by reference for all purposes.

FIGS. 4A-4B illustrate a perspective view and a cross sectional view, respectively of an analyte sensor in accordance with one embodiment of the present invention. Referring to FIG. 4A, a perspective view of a sensor **400**, the major portion of which is above the surface of the skin **410**, with an insertion tip **430** penetrating through the skin and into the subcutaneous space **420** in contact with the user's biofluid such as interstitial fluid. Contact portions of a working electrode **401**, a reference electrode **402**, and a counter electrode **403** can be seen on the portion of the sensor **400** situated above the skin surface **410**. Working electrode **401**, a reference electrode **402**, and a counter electrode **403** can be seen at the end of the insertion tip **430**.

Referring now to FIG. 4B, a cross sectional view of the sensor **400** in one embodiment is shown. In particular, it can be seen that the various electrodes of the sensor **400** as well as the substrate and the dielectric layers are provided in a stacked or layered configuration or construction. For example, as shown in FIG. 4B, in one aspect, the sensor **400** (such as the sensor **101** FIG. 1), includes a substrate layer **404**, and a first conducting layer **401** such as a carbon trace disposed on at least a portion of the substrate layer **404**, and which may comprise the working electrode. Also shown disposed on at least a portion of the first conducting layer **401** is a sensing layer **408**.

Referring back to FIG. 4B, a first insulation layer such as a first dielectric layer **405** is disposed or stacked on at least a portion of the first conducting layer **401**, and further, a second conducting layer **409** such as another carbon trace may be disposed or stacked on top of at least a portion of the first insulation layer (or dielectric layer) **405**. As shown in FIG. 4B, the second conducting layer **409** may comprise the reference electrode **402**, and in one aspect, may include a layer of silver/silver chloride (Ag/AgCl).

Referring still again to FIG. 4B, a second insulation layer 406 such as a dielectric layer in one embodiment may be disposed or stacked on at least a portion of the second conducting layer 409. Further, a third conducting layer 403 which may include carbon trace and that may comprise the counter electrode 403 may, in one embodiment, be disposed on at least a portion of the second insulation layer 406. Finally, a third insulation layer 407 is disposed or stacked on at least a portion of the third conducting layer 403. In this manner, the sensor 400 may be configured in a stacked or layered construction or configuration such that at least a portion of each of the conducting layers is separated by a respective insulation layer (for example, a dielectric layer).

Additionally, within the scope of the present invention, some or all of the electrodes 401, 402, 403 may be provided on the same side of the substrate layer 404 in a stacked construction as described above, or alternatively, may be provided in a co-planar manner such that each electrode is disposed on the same plane on the substrate layer 404, however, with a dielectric material or insulation material disposed between the conducting layers/electrodes. Furthermore, in still another aspect of the present invention, the one or more conducting layers, such as the electrodes 401, 402, 403, may be disposed on opposing sides of the substrate layer 404.

Referring back to the Figures, in one embodiment, the transmitter unit 102 (FIG. 1) is configured to detect the current signal from the sensor 101 (FIG. 1) and the skin temperature near the sensor 101, which are preprocessed by, for example, by the transmitter processor 204 (FIG. 2) and transmitted to the receiver unit (for example, the primary receiver unit 104 (FIG. 1)) periodically at a predetermined time interval, such as for example, but not limited to, once per minute, once every two minutes, once every five minutes, or once every ten minutes. Additionally, the transmitter unit 102 may be configured to perform sensor insertion detection and data quality analysis, information pertaining to which are also transmitted to the receiver unit 104 periodically at the predetermined time interval. In turn, the receiver unit 104 may be configured to perform, for example, skin temperature compensation as well as calibration of the sensor data received from the transmitter unit 102.

For example, in one aspect, the transmitter unit 102 may be configured to oversample the sensor signal at a nominal rate of four samples per second, which allows the analyte anti-aliasing filter in the transmitter unit 102 to attenuate noise (for example, due to effects resulting from motion or movement of the sensor after placement) at frequencies above 2 Hz. More specifically, in one embodiment, the transmitter processor 204 may be configured to include a digital filter to reduce aliasing noise when decimating the four Hz sampled sensor data to once per minute samples for transmission to the receiver unit 104. As discussed in further detail below, in one aspect, a two stage Kaiser FIR filter may be used to perform the digital filtering for anti-aliasing. While Kaiser FIR filter may be used for digital filtering of the sensor signals, within the scope of the present disclosure, other suitable filters may be used to filter the sensor signals.

In one aspect, the temperature measurement section 203 of the transmitter unit 102 may be configured to measure once per minute the on skin temperature near the analyte sensor at the end of the minute sampling cycle of the sensor signal. Within the scope of the present disclosure, different sample rates may be used which may include, for example, but not limited to, measuring the on skin temperature for each 30 second periods, each two minute periods, and the like. Additionally, as discussed above, the transmitter unit 102 may be configured to detect sensor insertion, sensor signal settling

after sensor insertion, and sensor removal, in addition to detecting for sensor—transmitter system failure modes and sensor signal data integrity. Again, this information is transmitted periodically by the transmitter unit 102 to the receiver unit 104 along with the sampled sensor signals at the predetermined time intervals.

In a further aspect, the one or more temperature measurements may be obtained or performed at other times during the sampling cycle. For example, the one or more temperature measurements may be performed or obtained during the middle of the sampling cycle when the analyte related data are averaged or otherwise filtered over the cycle. Additionally, in particular embodiments, the one or more temperature measurements or information may be sampled at a faster rate than once per minute and averaged or otherwise filtered to generate a one minute temperature sample. Faster sampling rate may provide additional accuracy in the corresponding temperature measurement.

Referring again to the Figures, as the analyte sensor measurements are affected by the temperature of the tissue around the transcutaneously positioned sensor 101, in one aspect, compensation of the temperature variations and affects on the sensor signals are provided for determining the corresponding glucose value. Moreover, the ambient temperature around the sensor 101 may affect the accuracy of the on skin temperature measurement and ultimately the glucose value determined from the sensor signals. Accordingly, in one aspect, a second temperature sensor is provided in the transmitter unit 102 away from the on skin temperature sensor (for example, physically away from the temperature measurement section 203 of the transmitter unit 102), so as to provide compensation or correction of the on skin temperature measurements due to the ambient temperature effects. In this manner, the accuracy of the estimated glucose value corresponding to the sensor signals may be attained.

In one aspect, the processor 204 of the transmitter unit 102 may be configured to include the second temperature sensor, which is located closer to the ambient thermal source within the transmitter unit 102. In other embodiments, the second temperature sensor may be located at a different location within the transmitter unit 102 housing where the ambient temperature within the housing of the transmitter unit 102 may be accurately determined.

In a further aspect, each of the first and second temperature sensors may be configured to monitor and measure or detect on-skin temperature as well as ambient temperature. Additionally, within the scope of the present disclosure, two or more temperature sensors may be provided to monitor the on-skin temperature and the ambient temperature.

Referring now to FIG. 5, in one aspect, an ambient temperature compensation routine for determining the on-skin temperature level for use in the glucose estimation determination based on the signals received from the sensor 101 is shown. Referring to FIG. 5, for each sampled signal from the sensor 101, a corresponding measured temperature information is received (510), for example, by the processor 204 from the temperature measurement section 203 (which may include, for example, a thermister provided in the transmitter unit 102). In addition, a second temperature measurement is obtained (520), for example, including a determination of the ambient temperature level using a second temperature sensor provided within the housing the transmitter unit 102.

In one aspect, based on a predetermined ratio of thermal resistances between the temperature measurement section 203 and the second temperature sensor (located, for example, within the processor 204 of the transmitter unit 102), and between the temperature measurement section 203 and the

skin layer on which the transmitter unit **102** is placed and coupled to the sensor **101**, ambient temperature compensation may be performed (**530**), to determine the corresponding ambient temperature compensated on skin temperature level (**540**). In one embodiment, the predetermined ratio of the thermal resistances may be approximately 0.2. However, within the scope of the present invention, this thermal resistance ratio may vary according to the design of the system, for example, based on the size of the transmitter unit **102** housing, the location of the second temperature sensor within the housing of the transmitter unit **102**, and the like.

With the ambient temperature compensated on-skin temperature information, the corresponding glucose value from the sampled analyte sensor signal may be determined.

Referring again to FIG. 2, the processor **204** of the transmitter unit **102** may include a digital anti-aliasing filter. Using analog anti-aliasing filters for a one minute measurement data sample rate would require a large capacitor in the transmitter unit **102** design, and which in turn impacts the size of the transmitter unit **102**. As such, in one aspect, the sensor signals may be oversampled (for example, at a rate of 4 times per second), and then the data is digitally decimated to derive a one-minute sample rate.

As discussed above, in one aspect, the digital anti-aliasing filter may be used to remove, for example, signal artifacts or otherwise undesirable aliasing effects on the sampled digital signals received from the analog interface **201** of the transmitter unit **102**. For example, in one aspect, the digital anti-aliasing filter may be used to accommodate decimation of the sensor data from approximately four Hz samples to one-minute samples. In one aspect, a two stage FIR filter may be used for the digital anti-aliasing filter, and which includes improved response time, pass band and stop band properties.

Referring to FIG. 6, a routine for digital anti-aliasing filtering is shown in accordance with one embodiment. As shown, in one embodiment, at each predetermined time period such as every minute, the analog signal from the analog interface **201** corresponding to the monitored analyte level received from the sensor **101** (FIG. 1) is sampled (**610**). For example, at every minute, in one embodiment, the signal from the analog interface **201** is over-sampled at approximately 4 Hz. Thereafter, the first stage digital filtering on the over-sampled data is performed (**620**), where, for example, a 1/6 down-sampling from 246 samples to 41 samples is performed, and the resulting 41 samples is further down-sampled at the second stage digital filtering (**630**) such that, for example, a 1/41 down-sampling is performed from 41 samples (from the first stage digital filtering), to a single sample. Thereafter, the filter is reset (**640**), and the routine returns to the beginning for the next minute signal received from the analog interface **201**.

While the use of FIR filter, and in particular the use of Kaiser FIR filter, is within the scope of the present invention, other suitable filters, such as FIR filters with different weighting schemes or IIR filters, may be used.

Referring yet again to the Figures, the transmitter unit **102** may be configured in one embodiment to periodically perform data quality checks including error condition verifications and potential error condition detections, and also to transmit the relevant information related to one or more data quality, error condition or potential error condition detection to the receiver unit **104** with the transmission of the monitored sensor data. For example, in one aspect, a state machine may be used in conjunction with the transmitter unit **102** and which may be configured to be updated four times per second, the results of which are transmitted to the receiver unit **104** every minute.

In particular, using the state machine, the transmitter unit **102** may be configured to detect one or more states that may indicate when a sensor is inserted, when a sensor is removed from the user, and further, may additionally be configured to perform related data quality checks so as to determine when a new sensor has been inserted or transcutaneously positioned under the skin layer of the user and has settled in the inserted state such that the data transmitted from the transmitter unit **102** does not compromise the integrity of signal processing performed by the receiver unit **104** due to, for example, signal transients resulting from the sensor insertion.

That is, when the transmitter unit **102** detects low or no signal from the sensor **101**, which is followed by detected signals from the sensor **101** that is above a given signal, the processor **204** may be configured to identify such transition in the monitored signal levels and associate with a potential sensor insertion state. Alternatively, the transmitter unit **102** may be configured to detect the signal level above the another predetermined threshold level, which is followed by the detection of the signal level from the sensor **101** that falls below the predetermined threshold level. In such a case, the processor **204** may be configured to associate or identify such transition or condition in the monitored signal levels as a potential sensor removal state.

Accordingly, when either of potential sensor insertion state or potential sensor removal state is detected by the transmitter unit **102**, this information is transmitted to the receiver unit **104**, and in turn, the receiver unit **104** may be configured to prompt the user for confirmation of either of the detected potential sensor related state. In another aspect, the sensor insertion state or potential sensor removal state may be detected or determined by the receiver unit **104** based on one or more signals received from the transmitter unit **102**. For example, similar to an alarm condition or a notification to the user, the receiver unit **104** may be configured to display a request or a prompt on the display or an output unit of the receiver unit **104** a text and/or other suitable notification message to inform the user to confirm the state of the sensor **101**.

For example, the receiver unit **104** may be configured to display the following message: "New Sensor Inserted?" or a similar notification in the case where the receiver unit **104** receives one or more signals from the transmitter unit **102** associated with the detection of the signal level below the predetermined threshold level for the predefined period of time, followed by the detection of the signal level from the sensor **101** above another predetermined threshold level for another predefined period of time. Additionally, the receiver unit **104** may be configured to display the following message: "Sensor Removed?" or a similar notification in the case where the receiver unit **104** received one or more signals from the transmitter unit **102** associated with the detection of the signal level from the sensor **101** that is above the another predetermined threshold level for the another predefined period of time, which is followed by the detection of the signal level from the sensor **101** that falls below the predetermined threshold level for the predefined period of time.

Based on the user confirmation received, the receiver unit **104** may be further configured to execute or perform additional related processing and routines in response to the user confirmation or acknowledgement. For example, when the user confirms, using the user interface input/output mechanism of the receiver unit **104**, for example, that a new sensor has been inserted, the receiver unit **104** may be configured to initiate new sensor insertion related routines including, such as, for example, sensor calibration routine including, for example, calibration timer, sensor expiration timer and the

like. Alternatively, when the user confirms or it is determined that the sensor **101** is not properly positioned or otherwise removed from the insertion site, the receiver unit **104** may be accordingly configured to perform related functions such as, for example, stop displaying of the glucose values/levels, or

deactivating the alarm monitoring conditions. On the other hand, in response to the potential sensor insertion notification generated by the receiver unit **104**, if the user confirms that no new sensor has been inserted, then the receiver unit **104** in one embodiment is configured to assume that the sensor **101** is in acceptable operational state, and continues to receive and process signals from the transmitter unit **102**.

In this manner, in cases, for example, when there is momentary movement or temporary dislodging of the sensor **101** from the initially positioned transcutaneous state, or when one or more of the contact points between sensor **101** and the transmitter unit **102** are temporarily disconnected, but otherwise, the sensor **101** is operational and within its useful life, the routine above provides an option to the user to maintain the usage of the sensor **101**, and no replacing the sensor **101** prior to the expiration of its useful life. In this manner, in one aspect, false positive indications of sensor **101** failure may be identified and addressed.

For example, FIG. 7 is a flowchart illustrating actual or potential sensor insertion or removal detection routine in accordance with one embodiment of the present invention. Referring to the Figure, the current analyte related signal is first compared to a predetermined signal characteristic (**710**). In one aspect, the predetermined signal characteristic may include one of a signal level transition from below a first predetermined level (for example, but not limited to, 18 ADC (analog to digital converter) counts) to above the first predetermined level, a signal level transition from above a second predetermined level (for example, but not limited to, 9 ADC counts) to below the second predetermined level, a transition from below a predetermined signal rate of change threshold to above the predetermined signal rate of change threshold, and a transition from above the predetermined signal rate of change threshold to below the predetermined signal rate of change threshold.

Referring back to the Figure, after comparing the current analyte related signal to the predetermined signal characteristic (**710**), a corresponding operational state associated with an analyte monitoring device is determined (**720**). Referring again to FIG. 7, after determining the corresponding operational state associated with the analyte monitoring device (**720**), the current analyte related signal may be compared to a prior signal associated with the analyte level (**730**) and an output data associated with the operational state is generated (**740**).

In this manner, in one aspect of the present invention, based on a transition state of the received analyte related signals, it may be possible to determine the state of the analyte sensor, and based on which, the user or the patient to confirm whether the analyte sensor is in the desired or proper position, has been temporarily dislocated, or otherwise, removed from the desired insertion site so as to require a new analyte sensor.

In this manner, in one aspect, when the monitored signal from the sensor **101** (FIG. 1) crosses a transition level (for example, from no or low signal level to a high signal level, or vice versa), the transmitter unit **102** may be configured to generate an appropriate output data associated with the sensor signal transition, for transmission to the receiver unit **104** (FIG. 1). Additionally, as discussed in further detail below, in another embodiment, the determination of whether the sensor **101** has crossed a transition level may be determined by the

receiver/monitor unit **104/106** based, at least in part on the one or more signals received from the transmitter unit **102**.

FIG. 8 is a flowchart illustrating receiver unit processing corresponding to the actual or potential sensor insertion or removal detection routine of FIG. 7 in accordance with one embodiment of the present invention. Referring now to FIG. 8, when the receiver unit **104** receives the generated output data from the transmitter unit **102** (**810**), a corresponding operation state is associated with the received output data (**820**), for example, related to the operational state of the sensor **101**. Moreover, a notification associated with the sensor operation state is generated and output to the user on the display unit or any other suitable output segment of the receiver unit **104** (**830**). When a user input signal is received in response to the notification associated with the sensor state operation state (**840**), the receiver unit **104** is configured to execute one or more routines associated with the received user input signal (**850**).

That is, as discussed above, in one aspect, if the user confirms that the sensor **101** has been removed, the receiver unit **104** may be configured to terminate or deactivate alarm monitoring and glucose displaying functions. On the other hand, if the user confirms that a new sensor **101** has been positioned or inserted into the user, then the receiver unit **104** may be configured to initiate or execute routines associated with the new sensor insertion, such as, for example, calibration procedures, establishing calibration timer, and establishing sensor expiration timer.

In a further embodiment, based on the detected or monitored signal transition, the receiver/monitor unit may be configured to determine the corresponding sensor state without relying upon the user input or confirmation signal associated with whether the sensor is dislocated or removed from the insertion site, or otherwise, operating properly.

FIG. 9 is a flowchart illustrating data processing corresponding to the actual or potential sensor insertion or removal detection routine in accordance with another embodiment of the present invention. Referring to FIG. 9, a current analyte related signal is received and compared to a predetermined signal characteristic (**910**). Thereafter, an operational state associated with an analyte monitoring device such as, for example, the sensor **101** (FIG. 1) is retrieved (**920**) from a storage unit or otherwise resident in, for example, a memory of the receiver/monitor unit. Additionally, a prior analyte related signal is also retrieved from the storage unit, and compared to the current analyte related signal received (**930**). An output data is generated which is associated with the operational state (**940**), and which at least in part is based on the one or more of the received current analyte related signal and the retrieved prior analyte related signal.

Referring again to FIG. 9, when the output data is generated, a corresponding user input command or signal is received in response to the generated output data (**950**), and which may include one or more of a confirmation, verification, or rejection of the operational state related to the analyte monitoring device.

FIG. 10 is a flowchart illustrating a concurrent passive notification routine in the data receiver/monitor unit of the data monitoring and management system of FIG. 1 in accordance with one embodiment of the present invention. Referring to FIG. 10, a predetermined routine is executed for a predetermined time period to completion (**1010**). During the execution of the predetermined routine, an alarm condition is detected (**1020**), and when the alarm or alert condition is detected, a first indication associated with the detected alarm or alert condition is output concurrent to the execution of the predetermined routine (**1030**).

That is, in one embodiment, when a predefined routine is being executed, and an alarm or alert condition is detected, a notification is provided to the user or patient associated with the detected alarm or alert condition, but which does not interrupt or otherwise disrupt the execution of the predefined routine. Referring back to FIG. 10, upon termination of the predetermined routine, another output or second indication associated with the detected alarm condition is output or displayed (1040).

More specifically, in one aspect, the user interface notification feature associated with the detected alarm condition is output to the user only upon the completion of an ongoing routine which was in the process of being executed when the alarm condition is detected. As discussed above, when such alarm condition is detected during the execution of a predetermined routine, a temporary alarm notification such as, for example, a backlight indicator, a text output on the user interface display or any other suitable output indication may be provided to alert the user or the patient of the detected alarm condition substantially in real time, but which does not disrupt an ongoing routine.

Within the scope of the present invention, the ongoing routine or the predetermined routine being executed may include one or more of performing a finger stick blood glucose test (for example, for purposes of periodically calibrating the sensor 101), or any other processes that interface with the user interface, for example, on the receiver/monitor unit 104/106 (FIG. 1) including, but not limited to the configuration of device settings, review of historical data such as glucose data, alarms, events, entries in the data log, visual displays of data including graphs, lists, and plots, data communication management including RF communication administration, data transfer to the data processing terminal 105 (FIG. 1), or viewing one or more alarm conditions with a different priority in a preprogrammed or determined alarm or notification hierarchy structure.

In this manner, in one aspect of the present invention, the detection of one or more alarm conditions may be presented or notified to the user or the patient, without interrupting or disrupting an ongoing routine or process in, for example, the receiver/monitor unit 104/106 of the data monitoring and management system 100 (FIG. 1).

A method in accordance with one embodiment includes detecting a first temperature related signal from a first source, detecting a second temperature related signal from a second source, the second source located at a predetermined distance from the first source, and estimating an analyte temperature related signal based on the first and second detected temperature signals.

The first source in one aspect may be located substantially in close proximity to a transcutaneously positioned analyte sensor, and more specifically, in one embodiment, the first source may be located approximately 0.75 inches from the analyte sensor.

In a further embodiment, the analyte temperature related signal may be estimated based on a predetermined value associated with the detected first and second temperature related signals, where the predetermined value may include a ratio of thermal resistances associated with the first and second sources.

The method in a further aspect may include determining a glucose value based on the estimated analyte temperature related signal and a monitored analyte level.

The second temperature related signal in yet another aspect may be related to an ambient temperature source.

An apparatus in a further embodiment may include a housing, an analyte sensor coupled to the housing and transcuta-

neously positionable under a skin layer of a user, a first temperature detection unit coupled to the housing configured to detect a temperature associated with the analyte sensor, and a second temperature detection unit provided in the housing and configured to detect an ambient temperature.

The one or more of the first temperature detection unit or the second temperature detection unit may include one or more of a thermistor, a semiconductor temperature sensor, or a resistance temperature detector (RTD).

The apparatus in a further aspect may also include a processor, where at least a portion of the second temperature detection unit may be provided within the processor. In one aspect, the processor may be provided within same housing as the one or more first or second temperature detection units.

In another embodiment, the processor may be configured to receive the temperature associated with the analyte sensor, the ambient temperature, and an analyte related signal from the analyte sensor, and also, the processor may be configured to estimate an analyte temperature related signal based on the temperature associated with the analyte sensor, and the ambient temperature.

Also, the processor may be configured to determine a glucose value based on the estimated analyte temperature related signal and an analyte related signal from the analyte sensor.

In still another aspect, the analyte temperature related signal may be estimated based on a predetermined value associated with the detected temperature associated with the analyte sensor, and the ambient temperature, where the predetermined value may include a ratio of thermal resistances associated with the temperature associated with the analyte sensor, and the ambient temperature.

Alternatively, the predetermined value in still another aspect may be variable based on an error feedback signal associated with the monitored analyte level by the analyte sensor, where the error feedback signal may be associated with a difference between a blood glucose reference value and the analyte sensor signal.

The apparatus may also include a transmitter unit configured to transmit one or more signals associated with the detected temperature associated with the analyte sensor, detected ambient temperature, an analyte related signal from the analyte sensor, analyte temperature related signal based on the temperature associated with the analyte sensor, and the ambient temperature, or a glucose value based on the estimated analyte temperature related signal and the analyte related signal from the analyte sensor.

The transmitter unit may include an RF transmitter.

A system in accordance with still another embodiment may include a data receiver configured to receive a first temperature related signal from a first source, a second temperature related signal from a second source, the second source located at a predetermined distance from the first source, and a processor operatively coupled to the data receiver, and configured to estimate an analyte temperature related signal based on the first and second detected temperature signals.

An apparatus in accordance with a further embodiment includes a digital filter unit including a first filter stage and a second filter stage, the digital filter unit configured to receive a sampled signal, where the first filter stage is configured to filter the sampled signal based on a first predetermined filter characteristic to generate a first filter stage output signal, and further, where the second filter stage is configured to filter the first filter stage output signal based on a second predetermined filter characteristic to generate an output signal associated with a monitored analyte level.

The sampled signal may include an over-sampled signal at a frequency of approximately 4 Hz.

The digital filter unit may include one of a Finite Impulse Response (FIR) filter, or an Infinite Impulse Response (IIR) filter.

The first and the second filter stages may include a respective first and second down sampling filter characteristics.

Also, the one or more of the first and second filter stages may include down sampling the sampled signal or the first filter stage output signal, respectively, where the received sampled signal may be associated with the monitored analyte level of a user.

In another aspect, the digital filter unit may be configured to receive the sampled signal at a predetermined time interval.

The predetermined time interval in one aspect may include one of approximately 30 seconds approximately one minute, approximately two minutes, approximately five minutes, or any other suitable time periods.

A method in accordance with yet another embodiment includes receiving a sampled signal associated with a monitored analyte level of a user, performing a first stage filtering based on the received sampled signal to generate a first stage filtered signal, performing a second stage filtering based on the generated first stage filtered signal, and generating a filtered sampled signal.

The sampled signal may include an over-sampled signal at a frequency of approximately 4 Hz, and also, where the first and the second stage filtering may include a respective first and second down sampling based on one or more filter characteristics.

The received sampled signal in one aspect may be periodically received at a predetermined time interval, where the predetermined time interval may include one of approximately 30 seconds, approximately one minute, approximately two minutes, or approximately five minutes.

A method in still another embodiment may include receiving a signal associated with an analyte level of a user, determining whether the received signal deviates from a predetermined signal characteristic, determining an operational state associated with an analyte monitoring device, comparing a prior signal associated with the analyte level of the user to the received signal, generating an output data associated with the operational state of the analyte monitoring device based on one or more of the received signal and the prior signal.

The predetermined signal characteristic in one embodiment may include a signal level transition from below a first predetermined level to above the first predetermined level, a signal level transition from above a second predetermined level to below the second predetermined threshold, a transition from below a predetermined signal rate of change threshold to above the predetermined signal rate of change threshold, or a transition from above the predetermined signal rate of change threshold to below the predetermined signal rate of change threshold.

In one aspect, the first predetermined level and the second predetermined level each may include one of approximately 9 ADC counts or approximately 18 ADC counts, or any other suitable signal levels or analog to digital converter (ADC) counts that respectively represent or correspond to a no sensor signal state, a sensor signal state, or the like.

The predetermined signal characteristic may include in one aspect, a transition from below a predetermined level to above and wherein the signal is maintained above the predetermined level for a predetermined period of time, where the predetermined period of time may include one of approximately 10 seconds, 30 seconds, or less than 30 seconds, or greater than 30 seconds, or any other suitable time periods.

In a further aspect, the operational state may include a no detected sensor state, or a sensor presence state.

The output data in one embodiment may include a user notification alert.

Further, the output data may include an indicator to start one or more processing timers associated with a respective one or more data processing routines, where the one or more processing timers may include a respective one of a calibration timer, or a sensor expiration timer.

The method may include receiving a user input data based on the output data, where the user input data may include a user confirmation of one of the change in operational state or no change in operational state.

The method may further include modifying the operational state, where the operational state may be modified based on one of the received user input data, or based on the generated output data.

The method may include presenting the output data, where presenting the output data may include one or more of visually presenting the output data, audibly presenting the output data, vibratorily presenting the output data, or one or more combinations thereof.

The analyte level may include glucose level of the user.

The operational state may include one of an analyte sensor removal state, an analyte sensor insertion state, an analyte sensor dislocation state, an analyte sensor insertion with an associated transient signal state, or an analyte sensor insertion with an associated stabilized signal state.

An apparatus in still yet another embodiment may include a data processing unit including a data processor configured to determine whether a received signal associated with an analyte level of a user deviates from a predetermined signal characteristic, determine an operational state associated with an analyte monitoring device, compare a prior signal associated with the analyte level of the user to the received signal, and generate an output data associated with the operational state of the analyte monitoring device based on one or more of the received signal or the prior signal.

The data processing unit may include a communication unit operatively coupled to the data processor and configured to communicate one or more of the received signal, the prior signal, and the output data associated the operational state of the analyte monitoring device.

The communication unit may include one of an RF transmitter, an RF receiver, an infrared data communication device, a Bluetooth® data communication device, or a Zigbee® data communication device.

The data processing unit may include a storage unit operatively coupled to the data processor to store one or more of the received signal associated with the analyte level, the predetermined signal characteristic, the operational state associated with the analyte monitoring device, the prior signal associated with the analyte level of the user, or the output data associated with the operational state of the analyte monitoring device.

A method in accordance with still yet a further embodiment may include receiving a signal associated with an analyte level of a user, determining whether the received signal deviates from a predetermined signal characteristic, determining an operational state associated with an analyte monitoring device, comparing a prior signal associated with the analyte level of the user to the received signal, presenting an output data associated with the operational state of the analyte monitoring device based at least in part on one or more of the received signal or the prior signal, and receiving a user input data based on the presented output data.

In still another aspect, the predetermined signal characteristic may include a signal level transition from below a first predetermined level to above the first predetermined level, a

signal level transition from above a second predetermined level to below the second predetermined level, a transition from below a predetermined signal rate of change threshold to above the predetermined signal rate of change threshold, and a transition from above the predetermined signal rate of change threshold to below the predetermined signal rate of change threshold, and further, where the first predetermined level and the second predetermined level each may include one of approximately 9 ADC counts or approximately 18 ADC counts, or other predetermined ADC counts or signal levels.

The predetermine signal characteristic in another aspect may include a transition from below a predetermined level to above and wherein the signal is maintained above the predetermined level for a predetermined period of time which may include, for example, but not limited to, approximately 10 seconds, 30 seconds, or less than 30 seconds, or greater than 30 seconds.

Further, the operational state may include a no detected sensor state, or a sensor presence state.

Moreover, the output data may include a user notification alert.

The output data may include an indicator to start one or more processing timers associated with a respective one or more data processing routines, where the one or more processing timers may include a respective one of a calibration timer, or a sensor expiration timer.

In another aspect, the user input data may include a user confirmation of one of the change in operational state or no change in operational state.

The method may include modifying the operational state based on, for example, one of the received user input data, or based on the generated output data.

Additionally, presenting the output data may include one or more of visually presenting the output data, audibly presenting the output data, vibratorily presenting the output data, or one or more combinations thereof.

Also, the operational state may include one of an analyte sensor removal state, an analyte sensor insertion state, an analyte sensor dislocation state, an analyte sensor insertion with an associated transient signal state, or an analyte sensor insertion with an associated stabilized signal state.

A data processing device in accordance with one embodiment may include a user interface unit, and a data processor operatively coupled to the user interface unit, the data processor configured to receive a signal associated with an analyte level of a user, determine whether the received signal deviates from a predetermined signal characteristic, determine an operational state associated with an analyte monitoring device, compare a prior signal associated with the analyte level of the user to the received signal, present in the user interface unit an output data associated with the operational state of the analyte monitoring device based at least in part on one or more of the received signal or the prior signal, and to receive a user input data from the user interface unit based on the presented output data.

The user interface unit in one aspect may include one or more of a user input unit, a visual display unit, an audible output unit, a vibratory output unit, or a touch sensitive user input unit.

In one embodiment, the device may include a communication unit operatively coupled to the data processor and configured to communicate one or more of the received signal, the prior signal, and the output data associated with the operational state of the analyte monitoring device, where the communication unit may include, for example, but not limited to one of an RF transmitter, an RF receiver, an infrared data

communication device, a Bluetooth® data communication device, a Zigbee® data communication device, or a wired connection.

The data processing device may include a storage unit operatively coupled to the data processor to store one or more of the received signal associated with the analyte level, the predetermined signal characteristic, the operational state associated with the analyte monitoring device, the prior signal associated with the analyte level of the user, or the output data associated with the operational state of the analyte monitoring device.

A method in accordance with still yet another embodiment may include executing a predetermined routine associated with an operation of an analyte monitoring device, detecting one or more predefined alarm conditions associated with the analyte monitoring device, outputting a first indication associated with the detected one or more predefined alarm conditions during the execution of the predetermined routine, outputting a second indication associated with the detected one or more predefined alarm conditions after the execution of the predetermined routine, where the predetermined routine is executed without interruption during the outputting of the first indication.

In one aspect, the predetermined routine may include one or more processes associated with performing a blood glucose assay, one or more configuration settings, analyte related data review or analysis, data communication routine, calibration routine, or reviewing a higher priority alarm condition notification compared to the predetermined routine, or any other process or routine that requires the user interface.

Moreover, in one aspect, the first indication may include one or more of a visual, audible, or vibratory indicators.

Further, the second indication may include one or more of a visual, audible, or vibratory indicators.

In one aspect, the first indication may include a temporary indicator, and further, and the second indication may include a predetermined alarm associated with detected predefined alarm condition.

In still another aspect, the first indication may be active during the execution of the predetermined routine, and may be inactive at the end of the predetermined routine.

Further, the second indication in a further aspect may be active at the end of the predetermined routine.

Moreover, each of the first indication and the second indication may include one or more of a visual text notification alert, a backlight indicator, a graphical notification, an audible notification, or a vibratory notification.

The predetermined routine may be executed to completion without interruption.

An apparatus in accordance with still another embodiment may include a user interface, and a data processing unit operatively coupled to the user interface, the data processing unit configured to execute a predetermined routine associated with an operation of an analyte monitoring device, detect one or more predefined alarm conditions associated with the analyte monitoring device, output on the user interface a first indication associated with the detected one or more predefined alarm conditions during the execution of the predetermined routine, and output on the user interface a second indication associated with the detected one or more predefined alarm conditions after the execution of the predetermined routine, wherein the predetermined routine is executed without interruption during the outputting of the first indication.

The predetermined routine may include one or more processes associated with performing a blood glucose assay, one or more configuration settings, analyte related data review or

analysis, data communication routine, calibration routine, or reviewing a higher priority alarm condition notification compared to the predetermined routine.

The first indication or the second indication or both, in one aspect may include one or more of a visual, audible, or vibratory indicators output on the user interface.

In addition, the first indication may include a temporary indicator, and further, wherein the second indication includes a predetermined alarm associated with a detected predefined alarm condition.

Also, the first indication may be output on the user interface during the execution of the predetermined routine, and is not output on the user interface at or prior to the end of the predetermined routine.

Additionally, the second indication may be active at the end of the predetermined routine.

In another aspect, each of the first indication and the second indication may include a respective one or more of a visual text notification alert, a backlight indicator, a graphical notification, an audible notification, or a vibratory notification, configured to output on the user interface.

Various other modifications and alterations in the structure and method of operation of this invention will be apparent to those skilled in the art without departing from the scope and spirit of the invention. Although the invention has been described in connection with specific preferred embodiments, it should be understood that the invention as claimed should not be unduly limited to such specific embodiments. It is intended that the following claims define the scope of the present invention and that structures and methods within the scope of these claims and their equivalents be covered thereby.

What is claimed is:

1. A method, comprising:

detecting a first temperature related signal from a first temperature sensor, the first temperature related signal corresponding to a temperature of skin within a predetermined distance of a transcutaneously positioned analyte sensor, wherein the analyte sensor includes a plurality of electrodes comprising at least one working electrode, the working electrode including an analyte-responsive enzyme and a mediator, and at least one of the analyte-responsive enzyme and the mediator is chemically bonded to a polymer disposed on the working electrode, and further wherein at least one of the analyte-responsive enzyme and the mediator is crosslinked with the polymer;

detecting a second temperature related signal from a second temperature sensor, the second temperature related signal corresponding to an ambient temperature in a housing of a data communication device, wherein the data communication device is operatively coupled to the analyte sensor and wherein the second temperature sensor is located at a predetermined distance from the first temperature sensor;

estimating an analyte temperature related signal based on the first and second detected temperature related signals; and

determining an analyte level in interstitial fluid based on the estimated analyte temperature related signal and a sensor signal from the transcutaneously positioned analyte sensor, wherein the first temperature related signal corresponding to the temperature of skin and the second temperature related signal corresponding to the ambient temperature in the housing are measured at a predetermined time of a sampling cycle of the analyte sensor;

wherein the analyte temperature related signal is estimated based on a predetermined value associated with the detected first and second temperature related signals; and

wherein the predetermined value includes a ratio of thermal resistances associated with the first and second temperature sensors.

2. The method of claim 1, wherein the predetermined time of the sampling cycle of the analyte sensor is the end of the sampling cycle of the analyte sensor.

3. The method of claim 1, further comprising determining an average temperature from a plurality of temperatures measured during the sampling cycle of the analyte sensor.

4. The method of claim 1, wherein the predetermined time of the sampling cycle of the analyte sensor is the middle of the sampling cycle of the analyte sensor.

5. The method of claim 1, further comprising detecting when the analyte sensor has been inserted into a user, and detecting when the analyte sensor has been removed from the user.

6. The method of claim 1, wherein the second temperature sensor is located within a transmitter unit housed in a sensor assembly.

7. An apparatus, comprising:

a housing;

an analyte sensor coupled to the housing and transcutaneously positionable under a skin layer of a user, wherein the analyte sensor includes a plurality of electrodes comprising at least one working electrode, the working electrode including an analyte-responsive enzyme and a mediator, and at least one of the analyte-responsive enzyme and the mediator is chemically bonded to a polymer disposed on the working electrode, and further wherein at least one of the analyte-responsive enzyme and the mediator is crosslinked with the polymer;

a first temperature detection unit coupled to the housing and configured to detect a temperature of skin within a predetermined distance of an insertion point of the analyte sensor;

a second temperature detection unit provided in the housing and configured to detect an ambient temperature within the housing; and

a processor configured to estimate an analyte temperature related signal based on the temperature of the skin and the ambient temperature within the housing, wherein the processor is further configured to receive an analyte related signal in interstitial fluid from the analyte sensor, and wherein the processor is further configured to determine an analyte value in interstitial fluid based on the estimated analyte temperature related signal and the analyte related signal in interstitial fluid;

wherein the analyte temperature related signal is estimated based on a predetermined value associated with the detected temperature of the skin and the ambient temperature within the housing; and

wherein the predetermined value includes a ratio of thermal resistances associated with the temperature of the skin and the ambient temperature within the housing.

8. The apparatus of claim 7, wherein one or more of the first temperature detection unit or the second temperature detection unit includes one or more of a thermistor, a semiconductor temperature sensor, or a resistance temperature detector (RTD).

9. The apparatus of claim 7, wherein the predetermined value is variable based on an error feedback signal associated with a monitored analyte level by the analyte sensor.

23

10. The apparatus of claim 9, wherein the error feedback signal is associated with a difference between a blood glucose reference value and an analyte related signal from the analyte sensor.

11. The apparatus of claim 7, further including a data communication device configured to communicate one or more signals associated with the detected temperature of the skin, the detected ambient temperature within the housing, the analyte related signal from the analyte sensor, the analyte temperature related signal based on the temperature of the skin and the ambient temperature within the housing, or a glucose value based on the estimated analyte temperature related signal and the analyte related signal from the analyte sensor.

12. The apparatus of claim 11, wherein the data communication device is an RF transmitter.

13. The apparatus of claim 7, wherein the first temperature detection unit detects the temperature of skin at a predetermined time of a sampling cycle of the analyte sensor.

14. The apparatus of claim 7, wherein the second temperature detection unit is provided in a transmitter unit within the housing.

15. A system, comprising:

a data receiver configured to receive a first temperature related signal from a first temperature sensor, the first temperature related signal corresponding to a temperature of skin within a predetermined distance of a transcutaneously positioned analyte sensor, a second temperature related signal from a second temperature sensor, the second temperature related signal corresponding to an ambient temperature in a housing of a data communication device, wherein the data communication device is operatively coupled to the analyte

24

sensor and wherein the second temperature sensor is located at a predetermined distance from the first temperature sensor; and

a processor operatively coupled to the data receiver, and configured to estimate an analyte temperature related signal based on the first and second detected temperature signals, wherein the processor is further configured to receive an analyte related signal in interstitial fluid from the analyte sensor, and wherein the processor is further configured to determine an analyte value in interstitial fluid based on the estimated analyte temperature related signal and the analyte related signal in interstitial fluid; wherein the analyte temperature related signal is estimated based on a predetermined value associated with the detected temperature of the skin and the ambient temperature in the housing; wherein the predetermined value includes a ratio of thermal resistances associated with the temperature of the skin and the ambient temperature in the housing; and wherein the analyte sensor includes a plurality of electrodes comprising at least one working electrode, the working electrode including an analyte-responsive enzyme and a mediator, and at least one of the analyte-responsive enzyme and the mediator is chemically bonded to a polymer disposed on the working electrode, and further wherein at least one of the analyte-responsive enzyme and the mediator is crosslinked with the polymer.

16. The system of claim 15, wherein the second temperature sensor is located within a transmitter unit housed in a sensor assembly.

\* \* \* \* \*

专利名称(译)	用于在医疗通信系统中提供数据处理和控制的方法和装置		
公开(公告)号	<a href="#">US9204827</a>	公开(公告)日	2015-12-08
申请号	US12/102839	申请日	2008-04-14
[标]申请(专利权)人(译)	雅培糖尿病护理公司		
申请(专利权)人(译)	雅培糖尿病, INC.		
当前申请(专利权)人(译)	雅培糖尿病INC.		
[标]发明人	HAYTER GARY SLOAN MARK K FENNELL MARTIN J		
发明人	HAYTER, GARY SLOAN, MARK K. FENNELL, MARTIN J.		
IPC分类号	A61B5/145 A61B5/00 A61B5/1486 A61B5/01		
CPC分类号	A61B5/14532 A61B5/002 A61B5/1486 A61B5/14546 A61B5/6849 A61B5/01 A61B5/1473 A61B5/4839 A61B5/7278 A61B5/7435		
审查员(译)	PARK, HYUN		
优先权	60/911869 2007-04-14 US		
其他公开文献	US20080288204A1		
外部链接	<a href="#">Espacenet</a> <a href="#">USPTO</a>		

摘要(译)

提供了用于提供用于医疗通信系统的数据处理和控制的的方法和装置。

