



US008907952B2

(12) **United States Patent**
Hautvast

(10) **Patent No.:** **US 8,907,952 B2**
(45) **Date of Patent:** **Dec. 9, 2014**

(54) **REPARAMETRIZED BULL’S EYE PLOTS**

FOREIGN PATENT DOCUMENTS

(75) Inventor: **Guillaume Leopold Theodorus Frederik Hautvast**, Eindhoven (NL)

DE 10331098 A1 2/2005
DE 102006026695 A1 12/2007

(73) Assignee: **Koninklijke Philips N.V.**, Eindhoven (NL)

(Continued)

(*) Notice: Subject to any disclaimer, the term of this patent is extended or adjusted under 35 U.S.C. 154(b) by 464 days.

Mark F. Smith et al: “Regional Cardiac Wall Motion From Gated Myocardial Perfusion Spect Studies”; IEEE Transactions on Nuclear Science, Vol. 46, No. 3, Jun. 1999, pp. 727-736.

(21) Appl. No.: **13/131,094**

(Continued)

(22) PCT Filed: **Nov. 27, 2009**

Primary Examiner — Chante Harrison

(86) PCT No.: **PCT/IB2009/055387**

(57) **ABSTRACT**

§ 371 (c)(1),
(2), (4) Date: **May 25, 2011**

The invention relates to a system for visualizing, in a first bull’s eye plot, results of a first quantitative analysis of an object represented in first image data, in particular for cardiac analysis. The first image data comprises a first plurality of data slices, and the system comprises a slice unit for associating a data slice of the first plurality of data slices with a concentric ring of the first bull’s eye plot, a radius unit for computing the length of a radius of the concentric ring of the first bull’s eye plot, and a value unit for computing at least one value for displaying in the concentric ring of the first bull’s eye plot, on the basis of the data slice associated with the concentric ring of the first bull’s eye plot, and wherein the length of the radius of the concentric ring of the first bull’s eye plot is defined on the basis of the position of the data slice, of the first plurality of data slices, associated with the concentric ring of the first bull’s eye plot, with respect to the object. The dependence of the first bull’s eye plot concentric ring radius on the position of the data slice associated with said concentric ring of the first bull’s eye plot, with respect to the object, defines an objective framework for the first bull’s eye plot, based on the geometry of the object. Thus, the results of the first quantitative analysis of the object visualized in the first bull’s eye plot can be more easily compared with results of a second quantitative analysis of the same object represented in second image data visualized in a second bull’s eye plot, when the length of the radiuses of the concentric rings of the second bull’s eye plot are also defined on the basis of the positions of the data slices associated with said concentric rings of a second first bull’s eye plot, with respect to the object. In an embodiment, the corresponding locations in each bull’s eye plot may be indicated by couples pointers. In addition, further pointers, each pointer coupled to the respective pointer in one of the bull’s eye plots, may be adapted for pointing at corresponding locations in the corresponding data slices of the first and second image data.

(87) PCT Pub. No.: **WO2010/064180**

PCT Pub. Date: **Jun. 10, 2010**

(65) **Prior Publication Data**

US 2011/0249005 A1 Oct. 13, 2011

(30) **Foreign Application Priority Data**

Dec. 3, 2008 (EP) 08170544

(51) **Int. Cl.**

G06T 11/20 (2006.01)
G06T 17/00 (2006.01)

(Continued)

(52) **U.S. Cl.**

CPC **A61B 5/055** (2013.01); **A61B 5/7425** (2013.01); **A61B 5/7435** (2013.01);

(Continued)

(58) **Field of Classification Search**

USPC 345/440, 424; 715/769; 600/425, 523, 600/476; 382/128, 131

See application file for complete search history.

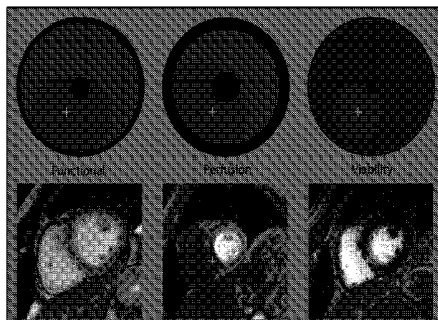
(56) **References Cited**

U.S. PATENT DOCUMENTS

2005/0008209 A1 1/2005 Matsumoto
2006/0182341 A1 8/2006 Rinck et al.

(Continued)

18 Claims, 8 Drawing Sheets



(51) **Int. Cl.**

G06K 9/00 (2006.01)
A61B 5/00 (2006.01)
A61B 5/055 (2006.01)

FOREIGN PATENT DOCUMENTS

JP 2004141245 5/2004
 JP 2009018005 1/2009
 WO 2006118100 A1 11/2006

(52) **U.S. Cl.**

CPC **A61B 5/2425** (2013.01); **G06T 11/206**
 (2013.01); **A61B 9/503** (2013.01)
 USPC **345/440**; 345/424; 345/441; 382/128;
 382/131

OTHER PUBLICATIONS

Stephan G. Nekolla et al: "Reproducibility of Polar Map Generation and Assessment of Defect Severity and Extent Assessment in Myocardial Perfusion Imaging Using Positron Emission Tomography"; European Journal of Nuclear Medicine, Vol. 25, No. 9, Sep. 1998, pp. 1313-1321.

Andre Alfons Dobbeleir: "Quantification and Data Optimisation of Heart and Brain Studies in Conventional Nuclear Medicine"; Thesis Submitted to University of Groningen, 2006, 117 Page Document.

Tadanori Fukami et al: "Quantitative Evaluation of Myocardial Function by a Volume-Normalized Map Generated From Relative Blood Flow"; Physics in Medicine and Biology, vol. 52, No. 14, Jul. 2007, pp. 4311-4330.

Manuel D. Cerqueira et al: "Standardized Myocardial Segmentation and Nomenclature for Tomographic Imaging of the Heart"; Circulation 2002, vol. 105, pp. 539-542.

(56)

References Cited

U.S. PATENT DOCUMENTS

2006/0241412 A1 10/2006 Rinck et al.
 2007/0014452 A1 1/2007 Suresh et al.
 2010/0160789 A1* 6/2010 Dilworth et al. 600/476
 2010/0215225 A1* 8/2010 Kadomura et al. 382/128
 2010/0245360 A1* 9/2010 Song et al. 382/131
 2011/0075902 A1* 3/2011 Song et al. 382/128
 2012/0089016 A1* 4/2012 Mizuno 600/425
 2012/0151399 A1* 6/2012 Soerensen et al. 715/769
 2013/0023780 A1* 1/2013 Cardinale et al. 600/523

* cited by examiner

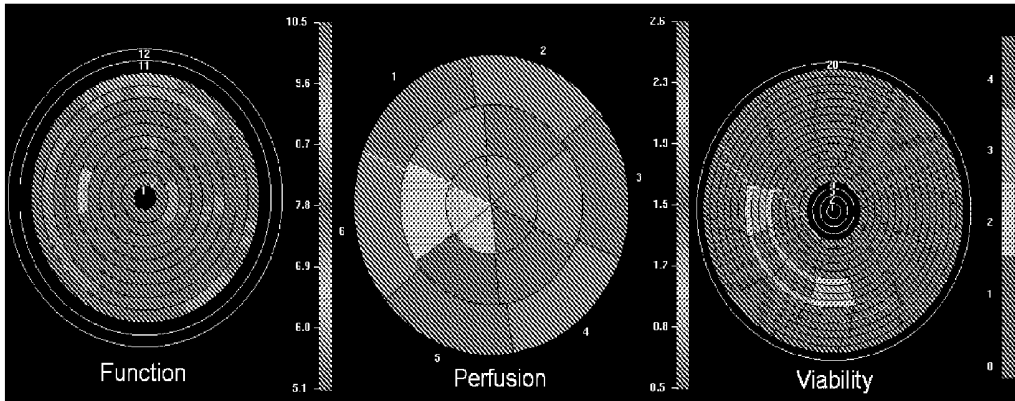


FIG. 1A
PRIOR ART

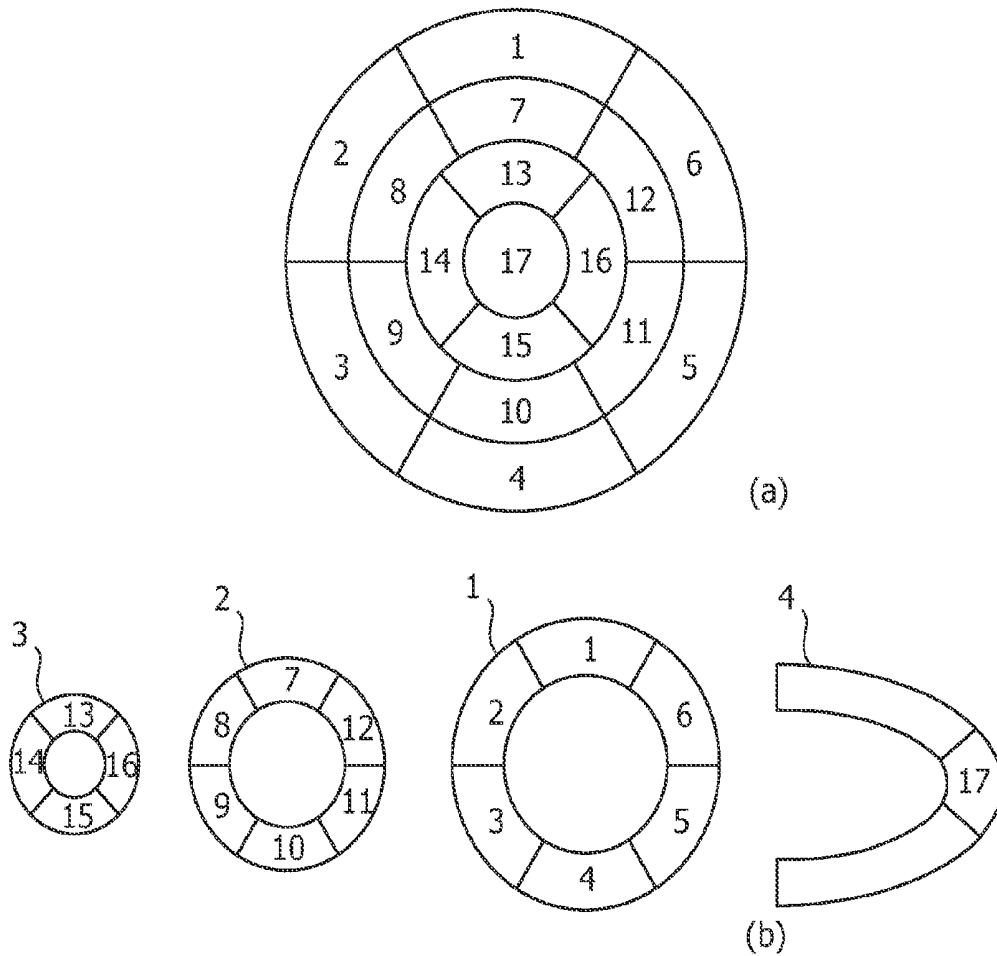


FIG. 1B
PRIOR ART

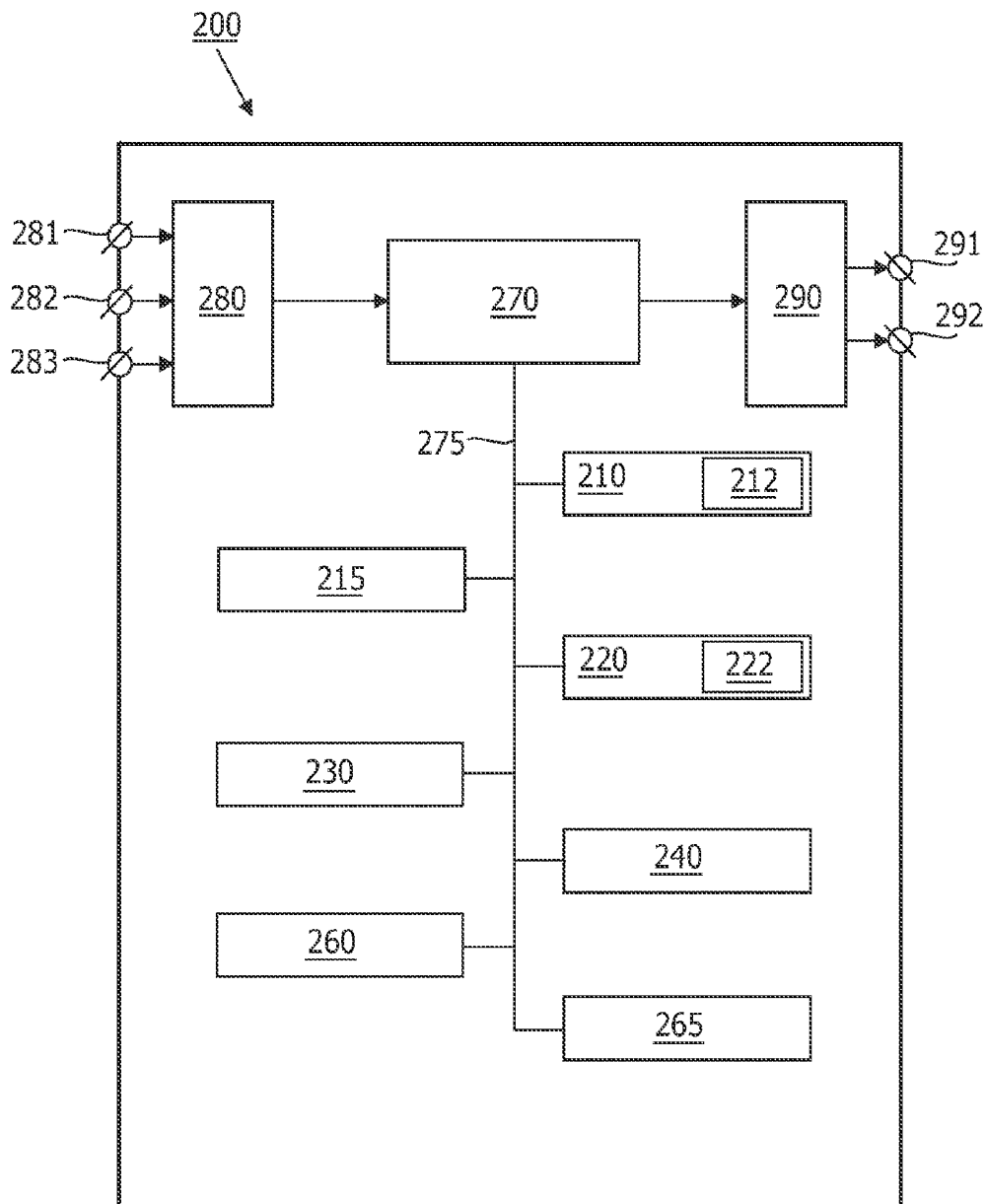


FIG. 2

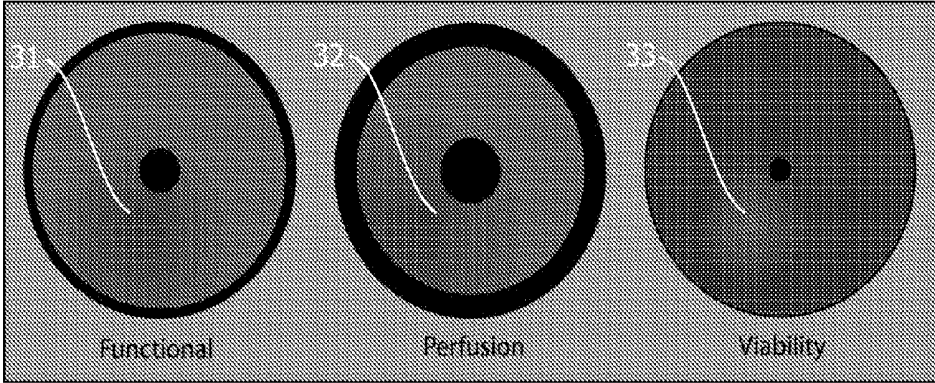


FIG. 3

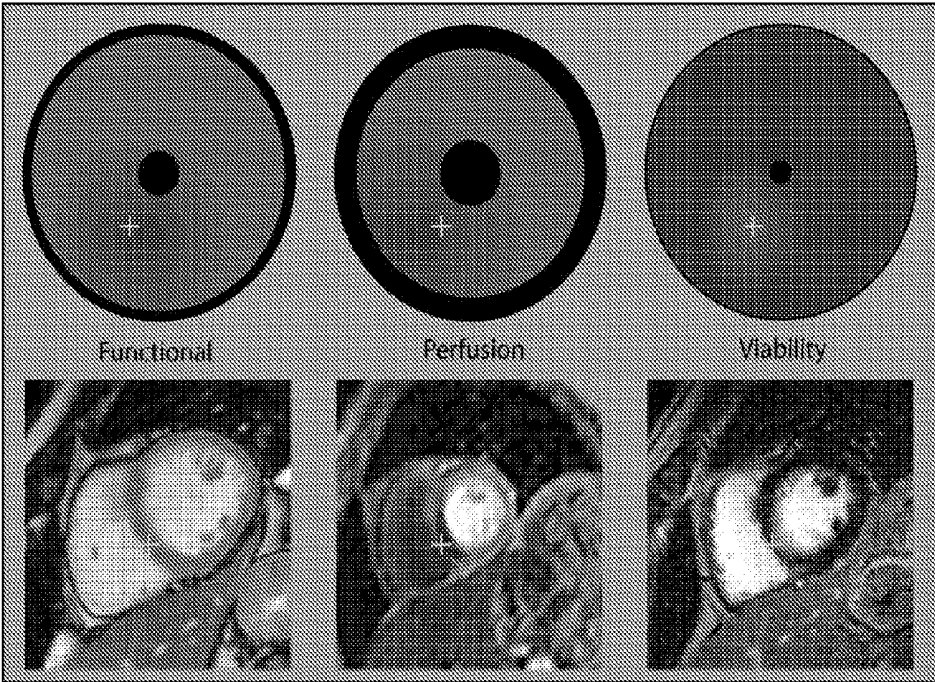


FIG. 4

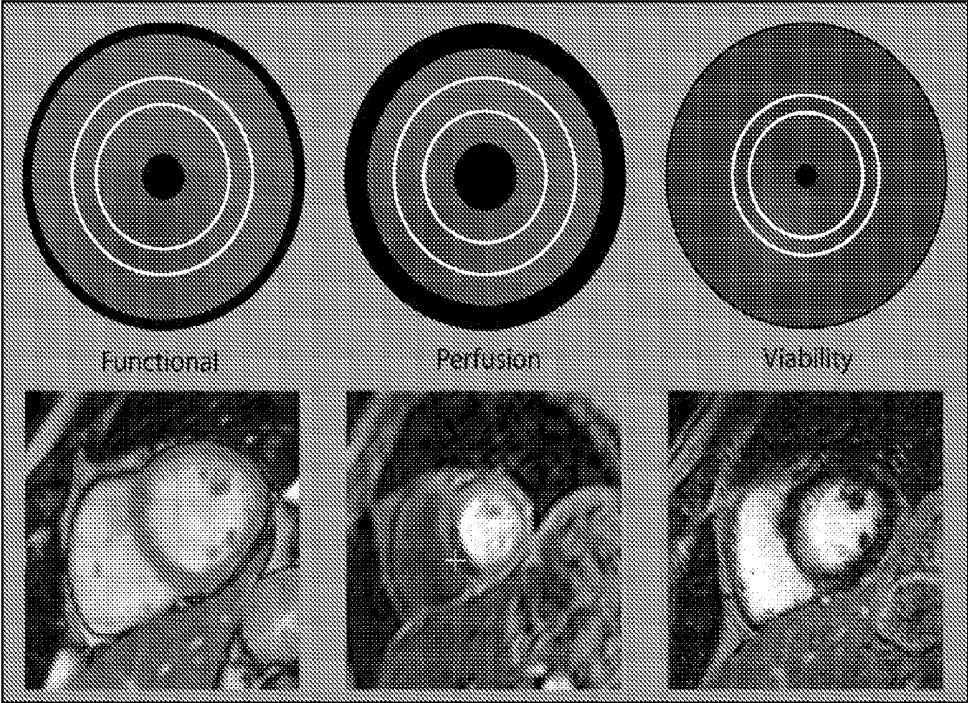


FIG. 5

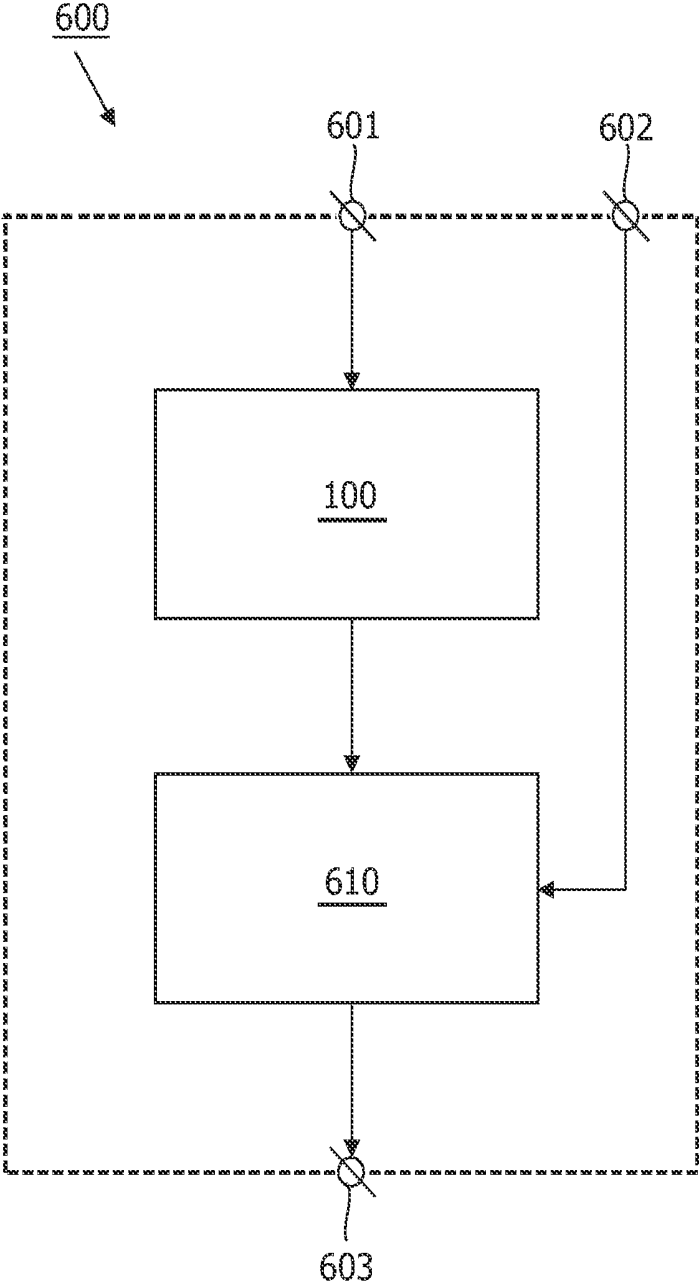


FIG. 6

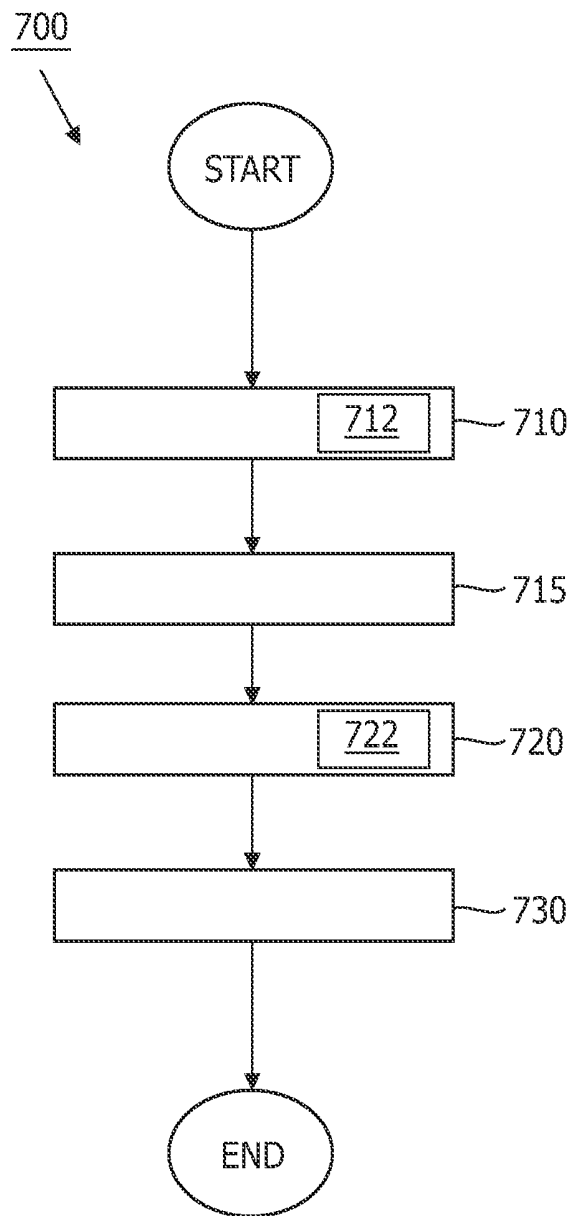


FIG. 7

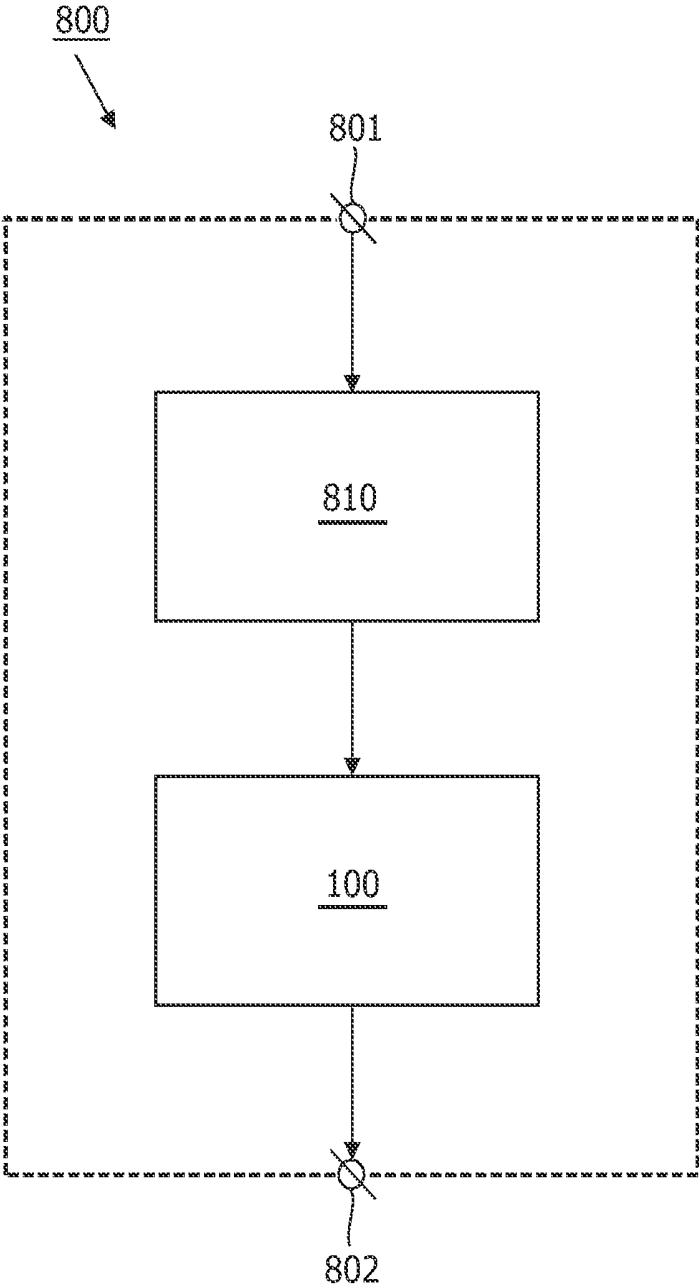


FIG. 8

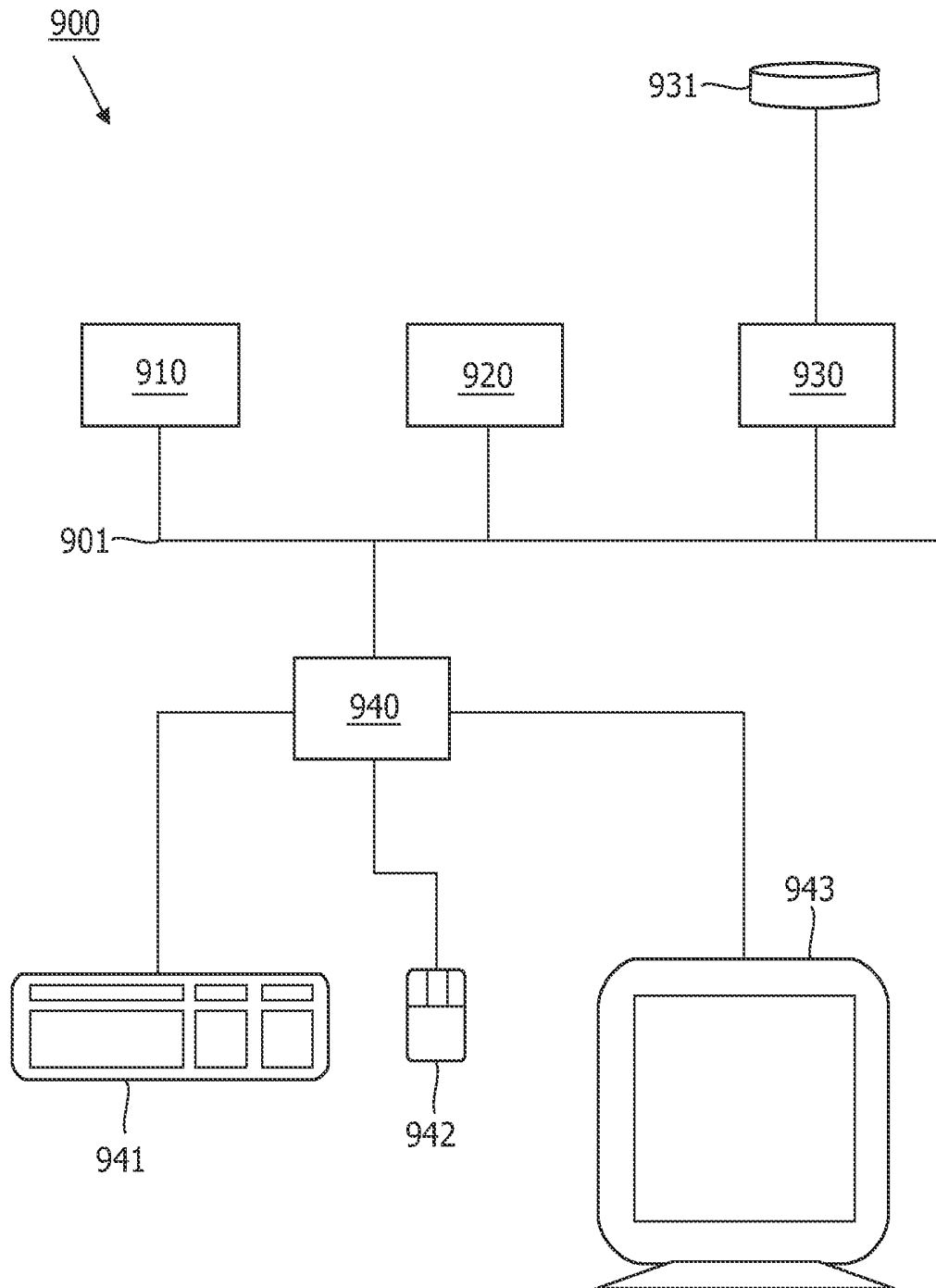


FIG. 9

REPARAMETRIZED BULL'S EYE PLOTS

FIELD OF THE INVENTION

The invention relates to the visualization of quantitative analysis results in a bull's eye plot, in particular to the visualization of quantitative cardiac analysis results.

BACKGROUND OF THE INVENTION

Cardiac imaging can be used to determine local myocardial function, perfusion and viability. Nowadays, such images can be obtained using various modalities such as magnetic resonance imaging (MRI), computed tomography (CT), ultrasound (US) and nuclear medicine (PET/SPECT). The images for function, perfusion and viability may be obtained using one modality (MRI) or using hybrid imaging, for instance PET/CT.

After acquisition, the images are analyzed independently, resulting in a number of measurements performed at different positions at the myocardium. The functional images are used to quantify wall motion abnormalities, the perfusion images are used to quantify perfusion deficits and the viability images are used to quantify scarring of the myocardium.

These measurements produce quantitative data that are usually displayed in so-called bull's eye plots, in which measurement values are color coded and projected on a plane perpendicular to the long axis.

Current cardiac analysis software packages generate bull's eye plots in which each ring in the bull's eye plot corresponds to a particular slice in the stack of acquired images. If a comprehensive cardiac exam is performed, bull's eye plots are made based on the (local) measurements derived from each scan. These bull's eye plots are then included in a comprehensive report. Functional measurements that can be displayed in a bull's eye plot are: end diastolic wall thickness, end systolic wall thickness, wall thickening (both absolute and relative), wall motion, time of maximum contraction, maximum wall thickness etc. Perfusion related measurements that can be displayed in a bull's eye plot include time of peak intensity, time of maximum upslope, upslope ratio rest/stress, etc. Viability related measurements that can be displayed in a bull's eye plot are: percentage of viable tissue, thickness of viable tissue, a transmural index, etc.

Unfortunately, current scanning procedures do not yet allow acquiring functional, perfusion and viability images of the same resolution. Consequently, the acquired image stacks differ with respect to the slice thickness, slice spacing and the number of slices. Therefore, the derived bull's eye plots consist of arbitrarily distributed different numbers of rings, such that it becomes difficult to compare the complementary information comprised in function, perfusion and viability bull's eye plots. This is illustrated in FIG. 1A showing bull's eye plots derived from a comprehensive cardiac MR exam comprising functional image data containing 10-15 contiguous slices of thickness 8 mm (a), from perfusion images of 3 slices of thickness 20 mm and gaps of 10 mm (b), and viability images of 15-20 slices of thickness 6 mm (c). The bull's eye plots in FIG. 1A are scaled such that they are of substantially the same size.

A standardized myocardial segmentation for tomographic imaging of the heart has been proposed by the American Heart Association (AHA). The AHA proposal is described in AHA Scientific Statement: *Standardized Myocardial Segmentation and Nomenclature for Tomographic Imaging of the Heart*, Circulation 2002; 105:539-542 (available online at <http://circ.ahajournals.org/cgi/content/short/105/4/539>).

FIG. 1B schematically shows left ventricular bull's eye plot sectors (a) and the corresponding myocardial slices and sectors (b) according to the AHA model. AHA recommends dividing the left ventricle into equal thirds perpendicular to the long axis of the heart to generate three slices of the left ventricle: the circular basal slice 1 comprising sectors 1 to 6, the mid-cavity slice 2 comprising sectors 7 to 12, and the apical short axis slice 3 comprising sectors 12 to 16. The last sector, the apex 17, is shown in a vertical long axis slice 4. The slice thickness should be selected on the basis of modality-specific resolution and clinical relevance and should be less than 1 cm. While the AHA segmentation allows comparing different cardiac study quantitative analyses, the proposed visualization often ignores large chunks of data which are not comprised in said three slices.

SUMMARY OF THE INVENTION

It would be advantageous to have a system which improves visualizing results of a quantitative analysis of a structure comprised in first image data in a first bull's eye plot, which first bull's eye plot can easily be compared to a second bull's eye plot visualizing results of a quantitative analysis of the same structure described in second image data.

The invention is defined by the independent claims. Advantageous embodiments are defined in the dependent claims.

Hence, in an aspect, the invention provides a system for visualizing, in a first bull's eye plot, results of a first quantitative analysis of an object represented in first image data, the first image data comprising a first plurality of data slices, the system comprising:

- a slice unit for associating a data slice of the first plurality of data slices with a concentric ring of the first bull's eye plot;
 - a radius unit for computing the length of a radius of the concentric ring of the first bull's eye plot; and
 - a value unit for computing at least one value for displaying in the concentric ring of the first bull's eye plot, on the basis of the data slice associated with the concentric ring of the first bull's eye plot;
- and wherein the length of the radius of the concentric ring of the first bull's eye plot is defined on the basis of the position of the data slice, of the first plurality of data slices, associated with the concentric ring of the first bull's eye plot, with respect to the object.

The radius may be, e.g., the external or the internal radius of the ring. The dependence of the first bull's eye plot concentric ring radius on the position of the data slice associated with said concentric ring of the first bull's eye plot, with respect to the object, defines an objective framework for the first bull's eye plot, based on the geometry of the object. Thus, the results of the first quantitative analysis of the object visualized in the first bull's eye plot can be more easily compared with results of a second quantitative analysis of the same object represented in second image data visualized in a second bull's eye plot when the length of the radiuses of the concentric rings of the second bull's eye plot are also defined on the basis of the positions of the data slices associated with said concentric rings of a second first bull's eye plot, with respect to the object. This is because the length of the radius of a concentric ring associated with a slice of the first plurality of data slices, said slice being at a certain position with respect to the object, will be similar to the length of the radius of a concentric ring associated with a slice of the second plurality of data slices, said slice being at a similar position with respect to the object.

In an embodiment of the system, the data slice associated with the concentric ring comprises a data sector, the slice unit further comprises a slice-sector unit for associating the data sector of the data slice with a ring sector of the concentric ring, the value unit comprises a sector-value unit for computing at least one value for displaying in the ring sector of the concentric ring, on the basis of the data sector associated with the ring sector of the concentric ring, and the position of the ring sector with respect to the concentric ring is defined on the basis of the position of the data sector associated with the ring sector, with respect to the object. By choosing smaller sectors, it is possible to increase the resolution of the first bull's eye plot. Because the position of each sector is based on the position of the corresponding data sector with respect to the object, the objective framework for the first bull's eye plot is based on a more detailed geometry of the object.

In an embodiment of the system, the first bull's eye plot comprises a concentric ring gap corresponding to an inter-slice gap. This may be necessary if the first image data is sparse and comprises, for example, gaps between data slices of the first plurality of data slices. The ring gaps correspond to the gaps between data slices.

In an embodiment, the system further comprises an approximation unit for computing at least one value for displaying in the concentric ring gap of the first bull's eye plot on the basis of data slices of the first plurality of data slices associated with concentric rings adjacent to the ring gap. For example, the system can be adapted to interpolate missing data slices of the first image data. The values in the ring gaps can be computed based on the interpolated data slices.

In an embodiment of the system, the at least one value for displaying in the concentric ring gap of the first bull's eye plot is computed on the basis of values for displaying in the concentric rings adjacent to the ring gap, which values are computed on the basis of data slices of the first plurality of data slices, associated with the concentric rings adjacent to the gap. Using, for example, radial (1-dimensional) or polar (2-dimensional) interpolation of the bull's eye plot values, the system may be adapted for computing values for displaying in the ring gap.

In an embodiment of the system, the length of the radius of the concentric ring of the first bull's eye plot is computed on the basis of a distance between the data slice of the first plurality of data slices, associated with the concentric ring, and a certain feature of the object. The distance may be defined as the distance between the upper surface of the slice and a point-feature of the object.

In an embodiment of the system, the width of the concentric ring of the first bull's eye plot is computed on the basis of the thickness of the data slice of the first plurality of data slices.

In an embodiment of the system, the first bull's eye plot is substantially smooth, i.e., there are substantially no ring edges corresponding to slice boundaries visible in the bull's eye plot. This may be achieved, for example, when the first plurality of data slices comprises a large number of thin data slices, or using interpolation.

In an embodiment, the system is further adapted for visualizing, in a second bull's eye plot, results of a second quantitative analysis of second image data, the second image data comprising a second plurality of data slices. In this embodiment:

the slice unit is adapted for associating a data slice of the second plurality of data slices with a concentric ring of the second bull's eye plot;

the radius unit is adapted for computing the length of a radius of the concentric ring of the second bull's eye plot; and

the value unit is adapted for computing at least one value for displaying in the concentric ring of the second bull's eye plot on the basis of the data slice associated with the concentric ring of the second bull's eye plot; and the length of the radius of the concentric ring of the second bull's eye plot is defined on the basis of the position of the data slice, of the second plurality of data slices, associated with the concentric ring of the second bull's eye plot, with respect to the object.

For example, the first and second bull's eye plot showing, respectively, functional and perfusion analysis results may be displayed next to each other for an easy visual inspection by a physician.

In an embodiment of the system, the lengths of the radiuses of the concentric ring of the first bull's eye plot and of the concentric ring of the second bull's eye plot are computed on the basis of distances from, respectively, the data slice of the first plurality of data slices and the data slice of the second plurality of data slices to a certain feature of the object.

In an embodiment, the system further comprises:

an indicator input unit for receiving a user input for indicating a first location in the first bull's eye plot, using a first indicator, and a second location in the second bull's eye plot, using a second indicator; and

an indicator unit for indicating the first location in the first bull's eye plot, using the first indicator, and the second location in the second bull's eye plot, using the second indicator, based on the user input;

wherein the first and second locations are substantially the same relative to the respective first and second bull's eye plots.

Thus, the indicated first and second locations correspond to substantially identical locations in the first and second image data. The first and second bull's eye plots are displayed on a display. The indicators help the user compare the results of the first and second quantitative analysis.

In an embodiment, the system further comprises a slice determination unit for determining a first ring comprising the first location, based on a first data slice associated with the first ring and for determining a second ring comprising the second location, based on a second data slice associated with the second ring. Thus, a comparison of the first and second ring is possible. Optionally, the corresponding first and second data slice may be also displayed next to the corresponding bull's eye plots.

In an embodiment of the system, the user input for indicating the first location in the first bull's eye plot comprises a certain location in a certain data slice of the first plurality of data slices. In this embodiment, the user may navigate through the first plurality of data slices. The system is adapted for displaying the slices selected by the user for viewing. The user may view the displayed slices, and select a certain location in a certain slice. This certain location is indicated by the indicator unit in the first bull's eye plot, in the ring associated with the certain slice, using the first indicator.

In a further aspect of the invention, the system is comprised in a reporting system for creating a report.

In a further aspect of the invention, the system is comprised in an image acquisition apparatus.

In a further aspect of the invention, the system is comprised in a workstation.

In a further aspect, the invention provides a method of visualizing, in a first bull's eye plot, results of a first quanti-

tative analysis of an object represented in first image data, the first image data comprising a first plurality of data slices, the method comprising:

- a slice step for associating a data slice of the first plurality of data slices with a concentric ring of the first bull's eye plot;
 - a radius step for computing the length of a radius of the concentric ring of the first bull's eye plot; and
 - a value step for computing at least one value for displaying in the concentric ring of the first bull's eye plot, on the basis of the data slice associated with the concentric ring of the first bull's eye plot;
- wherein the length of a radius of the concentric ring of the first bull's eye plot is defined on the basis of the position of the data slice, of the first plurality of data slices, associated with the concentric ring of the first bull's eye plot, with respect to the object.

In a further aspect of the invention, a computer program product to be loaded by a computer arrangement is provided, the computer program product comprising instructions for visualizing, in a first bull's eye plot, results of a first quantitative analysis of an object represented in first image data, the first image data comprising a first plurality of data slices, the computer arrangement comprising a processing unit and a memory, the computer program product, after being loaded, providing said processing unit with the capability to carry out the tasks of:

- associating a data slice of the first plurality of data slices with a concentric ring of the first bull's eye plot;
 - computing the length of a radius of the concentric ring of the first bull's eye plot; and
 - computing at least one value for displaying in the concentric ring of the first bull's eye plot, on the basis of the data slice associated with the concentric ring of the first bull's eye plot;
- and wherein the length of a radius of the concentric ring of the first bull's eye plot is defined on the basis of the position of the data slice, of the first plurality of data slices, associated with the concentric ring of the first bull's eye plot, with respect to the object.

It will be appreciated by those skilled in the art that two or more of the above-mentioned embodiments, implementations, and/or aspects of the invention may be combined in any way deemed useful.

Modifications and variations of the reporting system, of the image acquisition apparatus, of the workstation, of the method, and/or of the computer program product, which correspond to the described modifications and variations of the system, can be carried out by a person skilled in the art on the basis of the present description.

A person skilled in the art will appreciate that the method may be applied to multidimensional image data, e.g., to 3-dimensional or 4-dimensional images, acquired by various acquisition modalities such as, but not limited to, standard X-ray Imaging, Computed Tomography (CT), Magnetic Resonance Imaging (MRI), Ultrasound (US), Positron Emission Tomography (PET), Single Photon Emission Computed Tomography (SPECT), and Nuclear Medicine (NM).

BRIEF DESCRIPTION OF THE DRAWINGS

These and other aspects of the invention will become apparent from and will be elucidated with respect to the implementations and embodiments described hereinafter and with reference to the accompanying drawings, wherein:

FIG. 1A shows exemplary prior art bull's eye plots for a function, perfusion and viability scan;

FIG. 1B schematically shows left ventricular bull's eye plot sectors and the corresponding myocardial slices and sectors according to the AHA model;

FIG. 2 schematically shows a block diagram of an exemplary embodiment of the system;

FIG. 3 shows exemplary bull's eye plots based on a function, perfusion and viability scan according to the invention;

FIG. 4 shows exemplary bull's eye plots, each plot showing an indicated location, and exemplary images computed from data slices associated with rings comprising the indicated locations;

FIG. 5 shows exemplary bull's eye plots, each plot showing an indicated ring, and exemplary images computed from data slices associated with the indicated rings;

FIG. 6 schematically shows an exemplary embodiment of the reporting system;

FIG. 7 shows a flowchart of an exemplary implementation of the method;

FIG. 8 schematically shows an exemplary embodiment of the image acquisition apparatus; and

FIG. 9 schematically shows an exemplary embodiment of the workstation.

Identical reference numerals are used to denote similar parts throughout the Figures.

DETAILED DESCRIPTION OF EMBODIMENTS

FIG. 2 schematically shows a block diagram of an exemplary embodiment of the system **200** for visualizing, in a first bull's eye plot, results of a first quantitative analysis of an object represented in first image data, the first image data comprising a first plurality of data slices, the system **200** comprising:

- a slice unit **210** for associating a data slice of the first plurality of data slices with a concentric ring of the first bull's eye plot;
 - a radius unit **215** for computing the length of a radius of the concentric ring of the first bull's eye plot; and
 - a value unit **220** for computing at least one value for displaying in the concentric ring of the first bull's eye plot, on the basis of the data slice associated with the concentric ring of the first bull's eye plot;
- and wherein the length of a radius of the concentric ring of the first bull's eye plot is defined on the basis of the position of the data slice, of the first plurality of data slices, associated with the concentric ring of the first bull's eye plot, with respect to the object.

In the exemplary embodiment of the system **200**, the slice unit **210** further comprises a slice-sector unit **212** for associating the data sector of the data slice with a ring sector of the concentric ring; and

the value unit **220** comprises a sector-value unit **222** for computing at least one value for displaying in the ring sector of the concentric ring, on the basis of the data sector associated with the ring sector of the concentric ring;

and the position of the ring sector with respect to the concentric ring is defined on the basis of the position of the data sector associated with the ring sector, with respect to the object.

The exemplary embodiment of the system **200** further comprises the following units:

- an approximation unit **230** for computing at least one value for displaying in a concentric ring gap of the first bull's eye plot on the basis of data slices of the first plurality of data slices associated with concentric rings adjacent to the ring gap;

a slice determination unit **240** for determining a first ring comprising the first location, based on a first data slice associated with the first ring and for determining a second ring comprising the second location, based on a second data slice associated with the second ring;

a control unit **260** for controlling the workflow in the system **200**;

a user interface **265** for communicating with a user of the system **200**; and

a memory unit **270** for storing data.

In an embodiment of the system **200**, there are three input connectors **281**, **282** and **283** for the incoming data. The first input connector **281** is arranged to receive data coming in from a data storage means such as, but not limited to, a hard disk, a magnetic tape, a flash memory, or an optical disk. The second input connector **282** is arranged to receive data coming in from a user input device such as, but not limited to, a mouse or a touch screen. The third input connector **283** is arranged to receive data coming in from a user input device such as a keyboard. The input connectors **281**, **282** and **283** are connected to an input control unit **280**.

In an embodiment of the system **200**, there are two output connectors **291** and **292** for the outgoing data. The first output connector **291** is arranged to output the data to a data storage means such as a hard disk, a magnetic tape, a flash memory, or an optical disk. The second output connector **292** is arranged to output the data to a display device. The output connectors **291** and **292** receive the respective data via an output control unit **290**.

A person skilled in the art will understand that there are many ways to connect input devices to the input connectors **281**, **282** and **283** and the output devices to the output connectors **291** and **292** of the system **200**. These ways comprise, but are not limited to, a wired and a wireless connection, a digital network such as, but not limited to, a Local Area Network (LAN) and a Wide Area Network (WAN), the Internet, a digital telephone network, and an analog telephone network.

In an embodiment of the system **200**, the system **200** comprises a memory unit **270**. The system **200** is arranged to receive input data from external devices via any of the input connectors **281**, **282**, and **283** and to store the received input data in the memory unit **270**. Loading the input data into the memory unit **270** allows quick access to relevant data portions by the units of the system **200**. The input data may comprise, for example, the first image data. Optionally, the input data may further comprise a definition of data sectors, of the bull's eye plot ring sectors and of the correspondence between said bull's eye plot ring sectors and the structure sectors. The memory unit **270** may be implemented by devices such as, but not limited to, a Random Access Memory (RAM) chip, a Read Only Memory (ROM) chip, and/or a hard disk drive and a hard disk. The memory unit **270** may be further arranged to store the output data. The output data may comprise, for example, the computed first bull's eye plot data. The memory unit **270** may be also arranged to receive data from and/or deliver data to the units of the system **200** comprising the slice unit **210** further comprising the slice-sector unit **212**, the radius unit **215**, the value unit **220** further comprising the sector-value unit **222**, the approximation unit **230**, the slice determination unit **240**, the control unit **260**, and the user interface **265**, via a memory bus **275**. The memory unit **270** is further arranged to make the output data available to external devices via any of the output connectors **291** and **292**. Storing data from the units of the system **200** in the memory unit **270** may advantageously improve performance of the units of the

system **200** as well as the rate of transfer of the output data from the units of the system **200** to external devices.

Alternatively, the system **200** may comprise no memory unit **270** and no memory bus **275**. The input data used by the system **200** may be supplied by at least one external device, such as an external memory or a processor, connected to the units of the system **200**. Similarly, the output data produced by the system **200** may be supplied to at least one external device, such as an external memory or a processor, connected to the units of the system **200**. The units of the system **200** may be arranged to receive the data from each other via internal connections or via a data bus.

In an embodiment of the system **200**, the system **200** comprises a control unit **260** for controlling the workflow in the system **200**. The control unit may be arranged to receive control data from and provide control data to the units of the system **200**. For example, after associating a data slice with a concentric ring, the slice unit **210** may be arranged to provide control data "the data slice is associated with the concentric ring" to the control unit **260** and the control unit **260** may be arranged to provide control data "calculate the radius of the concentric ring" to the radius unit **215** and "calculate the values for displaying in the concentric ring" to the value unit **220**. Alternatively, a control function may be implemented in another unit of the system **200**.

In an embodiment of the system **200**, the system **200** comprises a user interface **265** for communicating with the user of the system **200**. The user interface may be arranged to display bull's eye plots. Further, the user interface **265** may be arranged to receive a user input for defining ring sectors and/or for indicating locations in the bull's eye plots. A person skilled in the art will understand that more functions may be advantageously implemented in the user interface **265** of the system **200**.

The embodiments of the invention are described with reference to cardiac bull's eye plots, where the object is the left ventricle of the human heart. Those skilled in the art will understand, however, that the described application should not be construed as limiting the scope of the claims and that other applications are also conceivable.

In an embodiment of the system **200**, the values computed by the value unit **220** are visualized using color coding. The center of the concentric rings of the bull's eye plot corresponds to the long axis of the left ventricle. The length of the external radius of each ring of the bull's eye plot is proportional to the distance from the apex of the left ventricle to the top planar surface of the data slice associated with the concentric ring by the slice unit **210**.

In an embodiment of the system **200**, the bull's eye plots are computed at high resolution and appear smooth in the sense that they do not show ring borders. This can be achieved in several ways. For example, the rings of the bull's eye plot may be thin and densely distributed on the plane of the bull's eye plot. This is possible if the image data set comprises a large number of substantially adjacent data slices. Each ring may be further divided into densely distributed small sectors. The widths of the rings and the sizes of the sectors are such that the human eye does not see borders between the sectors. For example, the sector size may be smaller than the size of a display pixel and thus the image granularity is determined by the display resolution. Alternatively or additionally, the approximation unit **230** may be employed for computing approximate values on the basis of the values computed in the rings or ring sectors of the bull's eye plot. Depending on the approximation method, the bull's eye plots may appear as low-resolution plots (e.g. when the number of rings and/or sectors is small, so that the rings or sectors scarcely cover the

bull's eye plot and a step-function interpolation is employed) or as high-resolution smooth plots (e.g. when the third-degree polynomial interpolation is employed).

FIG. 3 shows exemplary bull's eye plots according to the invention, obtained on the basis of a function (the left, first bull's eye plot), perfusion (the middle, second bull's eye plot) and viability (the right, third bull's eye plot) scan, using interpolation of missing bull's eye plot values. The plots appear to be smooth because the missing pixel values in the bull's eye plots are interpolated. Each location in the bull's eye plot relates to a particular location at the myocardium. Consequently, it becomes easier to relate findings from different scans. For example, from these bull's eye plots, it is immediately evident that the perfusion deficit 31 relates to a wall motion abnormality 32 and to a scar 33. It is worth pointing out that the range of different scans is also different. Thus, the blank areas in the bull's eye plots (visible as black areas of zero intensity and corresponding to the absence of image data) are different in each plot.

A person skilled in the art will understand that a number of various embodiments of the system 200 are possible. These embodiments may differ from each other, for example, with respect to the parameterization of the bull's eye plot. The radius of the bull's eye plot may be parameterized by the distance from the apex to the data slice or the distance from the valve plane to the data slice.

In an embodiment of the system 200, the length of the radius of each ring of the bull's eye plot is computed on the basis of the ratio of the distance from the apex to the data slice associated with the ring, to the distance between the apex and the valve plane.

Alternatively, the distance between other two landmarks of the heart and/or of the surrounding anatomy may be used to compute the ratio.

In an embodiment of the system 200, the radius unit is arranged for finding a position of at least one landmark in the image data. The skilled person will know various methods, e.g. segmentation methods, suitable for finding positions of such landmarks.

In an embodiment of the system 200, the length of the radius of each ring of the bull's eye plot is computed by the radius unit 215 on the basis of the thickness of data slices of the first plurality of data slices. For example, the length of the internal radius of the ring may be proportional to the sum of thicknesses of data slices of the plurality of data slices and, if the slices are not contiguous, of widths of inter-slice gaps, which data slices and inter-slice gaps are located between the data slice associated with the ring and a reference data slice. The length of the external radius of the ring may be equal to the sum of the thickness of the data slice associated with the ring and the internal ring radius. The reference data slice may be determined based on image data segmentation, for example, to comprise a reference landmark, e.g., the apex.

If two or more image data sets, each image data set comprising a plurality of data slices, are acquired in one exam such that the position of the patient with respect to the image acquisition apparatus is the same during each image data set acquisition, the radius of the ring of the bull's eye plot may be defined based on the position of the data slice associated with the ring in a laboratory system of reference. A laboratory system of reference is a system of reference defined with respect to the image acquisition apparatus. The z axis of the laboratory system is typically perpendicular to the data slices and substantially coincides with the long axis of the left ventricle of the myocardium. The radius of each ring of each bull's eye plot is computed based on the position of the data

slice with respect to the z axis of the laboratory system. In this embodiment it is not necessary to determine landmark positions.

Furthermore, different embodiments may involve interpolation of different orders, i.e. linear, quadric, cubic, etc. Alternatively, the ring gaps corresponding to gaps between the data slices may remain blank in the bull's eye plot. The width of the ring may be related to the thickness of the data slice in the image stack comprising the plurality of data slices and the width of the ring gap may represent the width of the gap in the image stack of data slices associated with said ring gap.

In an embodiment, the system 200 further comprises an indicator input unit, implemented within the user interface 265, for receiving a user input for indicating a first location in the first bull's eye plot, using a first indicator, and a second location in the second bull's eye plot, using a second indicator, and an indicator unit, implemented within the user interface 265, for indicating the first location in the first bull's eye plot, using the first indicator, and the second location in the second bull's eye plot, using the second indicator, wherein the first and second locations are substantially the same relative to the respective first and second bull's eye plots. Thus, the first and second locations correspond to substantially identical locations in the first and second image data. This is possible because of the reparameterization of the bull's eye plot.

FIG. 4 shows exemplary bull's eye plots, each plot showing an indicated location, and exemplary images computed from data slices associated with rings comprising the indicated locations. Each location is indicated by a cross. The location of the cross in one of the bull's eye plots is determined by a pointer controlled by a mouse controlled by a user. The two other locations are computed based on said one location in such a way that all three locations are identical relative to the respective bull's eye plots. FIG. 4 illustrates an exemplary interactive comprehensive view based on cardiac MR data according to the invention. The mouse pointer (the cross) is used to indicate a scar in the bull's eye plot derived from the viability image. Linked pointers indicate the same location in the other bull's eye plots. A person skilled in the art will understand that, in principle, the linked pointers can be used to indicate corresponding locations in a plurality of bull's eye plots visualizing results of a plurality of analyses of a plurality of image data sets of an organ, even if the bull's eye plots are not reparameterized. In this case, each linked pointer may point at a different location in each bull's eye plot.

In addition, the system 200 may be further adapted for displaying images computed from data slices associated with bull's eye plot rings, comprising a location indicated by the pointer, as shown in FIG. 4. Each image computed from a data slice may further include a pointer for indicating a location corresponding to the location in the ring associated with the shown slice. Those skilled in the art will appreciate that the one-to-one correspondence between a location in a bull's eye plot and a location in the data slice associated with a ring comprising said location allows the input to be based either on a pointer location in the bull's eye plot or on a pointer location in a data slice. The user may inspect the stack of data slices, select a slice and indicate a location in a data slice which is of interest to him. The system (200) may be adapted for computing the corresponding location in the bull's eye plot. Additionally or alternatively, the ring associated with the selected slice may be shown in the bull's eye plot.

FIG. 5 shows exemplary bull's eye plots, each plot showing an indicated ring, and exemplary images computed from data slices associated with the indicated rings. FIG. 5 illustrates an exemplary interactive comprehensive view based on cardiac MR data. The mouse pointer (the cross) is used to indicate a

perfusion deficit in the perfusion image. In each bull's eye plot, the circles indicate the rings associated with the data slices corresponding to the location of the perfusion deficit.

The above embodiment of the system **200** implements a new method of interactive simultaneous visualization of the results from a comprehensive cardiac exam. The disclosed user interaction allows "result-driven" browsing through the acquired images by using the location of the mouse pointer in the bull's eye plots to display the slice related to that measurement. This interaction can be used in a linked fashion, such that a number of bull's eye plots can be used to select a slice of interest from a number of acquisitions. Thus, it is possible to construct an interactive viewing application that displays the acquired images and bull's eye plots from function, perfusion and viability simultaneously. Pointing at a perfusion deficit in a bull's eye plot highlights quantitative results in the other bull's eye plots and selects the slices corresponding to the location pointed at in all three scans, as shown in FIGS. 4 and 5. Additionally, the viewing application may indicate the selected slices in the bull's eye plots by means of rings, as shown in FIG. 5.

The proposed user interaction provides a powerful mechanism to quickly select images from diseased locations in the heart based on quantitative cardiac analysis results. Furthermore, the simultaneous display of bull's eye plots and images from function, perfusion and viability allows cardiologist to diagnose in a very direct and simple approach. Furthermore, using the system **200** it is easy to select key images, often from a total of more than 2000 images, to be included in the final report.

In an embodiment, the system **200** is adapted for enabling the user, e.g. a cardiologist, to interactively delineate the myocardial contours in the examined image data. By displaying delineated contours and the acquired images, the cardiologist can quickly assess whether the delineation has been performed correctly, especially for a location with interesting measurement values.

Advantageously, the system **200** may be comprised in a reporting system **600**. Thus, the system **200** may be included in a medical report created by a report unit **610** together with annotations by a physician examining the bull's eye plot. In an embodiment, the reporting system **600** comprises a reporting system first input connector **601** for obtaining data needed by the system **200** and a reporting system second input connector **602** for obtaining other data such as user annotations, patient name and age, other test and examination results, comments by a physician preparing the report, and so on. The reporting unit **610** is arranged to receive the bull's eye plots from the system **200**. The report is outputted via a reporting system output connector **603**.

Those skilled in the art will further understand that other embodiments of the system **200** are also possible. It is possible, among other things, to redefine the units of the system and to redistribute their functions. Although the described embodiments apply to medical images, other applications of the system, not related to medical applications, are also possible.

The units of the system **200** may be implemented using a processor. Normally, their functions are performed under the control of a software program product. During execution, the software program product is normally loaded into a memory, like a RAM, and executed from there. The program may be loaded from a background memory, such as a ROM, hard disk, or magnetic and/or optical storage, or may be loaded via a network like the Internet. Optionally, an application-specific integrated circuit may provide the described functionality.

FIG. 7 shows a flowchart of an exemplary implementation of the method **700** of visualizing, in a first bull's eye plot, results of a first quantitative analysis of an object represented in first image data, the first image data comprising a first plurality of data slices. The method **700** begins with a slice step **710** for associating a data slice of the first plurality of data slices with a concentric ring of the first bull's eye plot. Optionally, the slice step may further involve a plurality of slice-sector steps **712** for associating the data sector of the data slice with a ring sector of the concentric ring. After the slice step **710**, the method **700** continues to a radius step **715** for computing the length of a radius of the concentric ring of the first bull's eye plot. After the radius step **715**, the method **700** continues to a value step **720** for computing at least one value for displaying in the concentric ring of the first bull's eye plot, on the basis of the data slice associated with the concentric ring of the first bull's eye plot. Optionally, the value step **220** may comprise a plurality of sector-value steps **722** for computing at least one value for displaying in the ring sector of the concentric ring, on the basis of the data sector associated with the ring sector of the concentric ring, and wherein the position of the ring sector with respect to the concentric ring is defined on the basis of the position of the data sector associated with the ring sector, with respect to the object. Optionally, after the value step **720**, the method **700** continues to an approximation step **730** for computing at least one value for displaying in a concentric ring gap of the first bull's eye plot on the basis of data slices of the first plurality of data slices associated with concentric rings adjacent to the ring gap. After the value step **720** or after the approximation step **730**, the method **700** terminates. In the method **700** according to the invention, the length of the radius of the concentric ring of the first bull's eye plot is defined on the basis of the position of the data slice, of the first plurality of data slices, associated with the concentric ring of the first bull's eye plot, with respect to the object.

A person skilled in the art may change the order of some steps or perform some steps concurrently using threading models, multi-processor systems or multiple processes without departing from the concept as intended by the present invention. For example, the radius step **215** and the value step **220** may be computed concurrently. Optionally, two or more steps of the method of the current invention may be combined into one step. Optionally, a step of the method of the current invention may be split into a plurality of steps.

FIG. 8 schematically shows an exemplary embodiment of the image acquisition apparatus **800** employing the system **200**, said image acquisition apparatus **800** comprising a CT image acquisition unit **810** connected via an internal connection with the system **200**, an input connector **801**, and an output connector **802**. This arrangement advantageously increases the capabilities of the image acquisition apparatus **800**, providing said image acquisition apparatus **800** with advantageous capabilities of the system **200**.

FIG. 9 schematically shows an exemplary embodiment of the workstation **900**. The workstation comprises a system bus **901**. A processor **910**, a memory **920**, a disk input/output (I/O) adapter **930**, and a user interface (UI) **940** are operatively connected to the system bus **901**. A disk storage device **931** is operatively coupled to the disk I/O adapter **930**. A keyboard **941**, a mouse **942**, and a display **943** are operatively coupled to the UI **940**. The system **200** of the invention, implemented as a computer program, is stored in the disk storage device **931**. The workstation **900** is arranged to load the program and input data into memory **920** and execute the program on the processor **910**. The user can input information to the workstation **900**, using the keyboard **941** and/or the

mouse 942. The workstation is arranged to output information to the display device 943 and/or to the disk 931. A person skilled in the art will understand that there are numerous other embodiments of the workstation 900 known in the art and that the present embodiment serves the purpose of illustrating the invention and must not be interpreted as limiting the invention to this particular embodiment.

It should be noted that the above-mentioned embodiments illustrate rather than limit the invention and that those skilled in the art will be able to design alternative embodiments without departing from the scope of the appended claims. In the claims, any reference signs placed between parentheses shall not be construed as limiting the claim. The word "comprising" does not exclude the presence of elements or steps not listed in a claim or in the description. The word "a" or "an" preceding an element does not exclude the presence of a plurality of such elements. The invention can be implemented by means of hardware comprising several distinct elements and by means of a programmed computer. In the system claims enumerating several units, several of these units can be embodied by one and the same item of hardware or software. The usage of the words first, second, third, etc., does not indicate any ordering. These words are to be interpreted as names.

The invention claimed is:

1. A system for concurrently displaying, in first and second bull's eye plots, results of a first and second quantitative analysis of an object represented in first and second image data, the first and second image data comprising a first and second plurality of data slices, respectively; the system comprising:

a slice unit that associates a data slice of the first plurality of data slices with a concentric ring of the first bull's eye plot;

a radius unit that computes the length of a radius of the concentric ring of the first bull's eye plot; and

a value unit that computes at least one value for displaying in the concentric ring of the first bull's eye plot, on the basis of the data slice associated with the concentric ring of the first bull's eye plot;

wherein the length of the radius of the concentric ring of the first bull's eye plot is defined on the basis of the position of the data slice of the first plurality of data slices associated with the concentric ring of the first bull's eye plot with respect to the object;

the system being further adapted to concurrently display, in the second bull's eye plot, the results of the second quantitative analysis of the object represented in the second image data, wherein:

the slice unit associates a data slice of the second plurality of data slices with a concentric ring of the second bull's eye plot;

the radius unit computes the length of a radius of the concentric ring of the second bull's eye plot; and

the value unit computes at least one value for displaying in the concentric ring of the second bull's eye plot on the basis of the data slice associated with the concentric ring of the second bull's eye plot;

wherein the length of the radius of the concentric ring of the second bull's eye plot is defined on the basis of the position of the data slice of the second plurality of data slices associated with the concentric ring of the second bull's eye plot with respect to the object; and

wherein the system further includes:

an indicator input unit that receives a user input for indicating a first location in the first bull's eye plot, and

an indicator unit that indicates the first location in the first bull's eye plot, and determines and indicates a second location in the second bull's eye plot corresponding to the first location in the first bull's eye plot.

2. A system as claimed in claim 1, wherein the data slice associated with the concentric ring comprises a data sector, wherein the slice unit further comprises a slice-sector unit that associates the data sector of the data slice with a ring sector of the concentric ring, wherein the value unit comprises a sector-value unit that computes at least one value for displaying in the ring sector of the concentric ring, on the basis of the data sector associated with the ring sector of the concentric ring, and wherein the position of the ring sector with respect to the concentric ring is defined on the basis of the position of the data sector associated with the ring sector, with respect to the object.

3. A system as claimed in claim 1, wherein the first bull's eye plot comprises a concentric ring gap corresponding to an inter-slice gap.

4. A system as claimed in claim 3, further comprising an approximation unit that computes at least one value for displaying in the concentric ring gap of the first bull's eye plot on the basis of data slices of the first plurality of data slices associated with concentric rings adjacent to the ring gap.

5. A system as claimed in claim 4, wherein the at least one value for displaying in the concentric ring gap of the first bull's eye plot is computed on the basis of values for displaying in the concentric rings adjacent to the ring gap, which values are computed on the basis of data slices of the first plurality of data slices, associated with the concentric rings adjacent to the gap.

6. A system as claimed in claim 1, wherein the length of the radius of the concentric ring of the first bull's eye plot is computed on the basis of a distance between the data slice of the first plurality of data slices, associated with the concentric ring, and a certain feature of the object.

7. A system as claimed in claim 6, wherein the width of the concentric ring of the first bull's eye plot is computed on the basis of the thickness of the data slice of the first plurality of data slices.

8. A system as claimed in claim 1, wherein the lengths of the radii of the concentric ring of the first bull's eye plot and of the concentric ring of the second bull's eye plot are computed on the basis of distances from, respectively, the data slice of the first plurality of data slices and the data slice of the second plurality of data slices to a certain feature of the object.

9. A system as claimed in claim 1, further comprising a slice determination unit that determines a first ring comprising the first location, based on a first data slice associated with the first ring and a second ring comprising the second location, based on a second data slice associated with the second ring.

10. A system as claimed in claim 9, wherein the user input for indicating the first location in the first bull's eye plot comprises indicating a certain location in a certain data slice of the first plurality of data slices.

11. An image acquisition apparatus comprising the system as claimed in claim 1.

12. A workstation comprising the system as claimed in claim 1.

13. A non-transitory computer readable medium that includes a computer program that, when executed by a processor, causes the processor to:

receive a first plurality of data slices and a second plurality of data slices corresponding to an object;

15

for each first data slice of the first plurality of data slices:
 determine a radius of a concentric ring of a first bull's eye plot that is based upon a distance of the first data slice from a feature of the object,
 determine a first set of values for display in the concentric ring of the first bull's eye plot; 5
 for each second data slice of the second plurality of data slices:
 determine a radius of a concentric ring of a second bull's eye plot that is based upon a distance of the second data slice from the feature of the object, 10
 determine a second set of values for display in the concentric ring of the second bull's eye plot;
 display the determined values in the concentric rings of the first bull's eye plot; 15
 concurrently display the determined values in the concentric rings of the second bull's eye plot;
 receive a user input that identifies a first point at a location in the first bull's eye plot;
 determine a second point in the second bull's eye plot corresponding to the location in the first bull's eye plot; 20
 and
 concurrently display an indication of the first point in the first bull's eye plot and the second point in the second bull's eye plot. 25
14. The medium of claim 13, wherein the computer program causes the processor to:
 determine a select data slice of the first plurality of data slices corresponding to the first point;
 display an image corresponding to the select data slice; 30
 determine a location of a point in the image corresponding to the first point; and
 display an indication of the point in the image.
15. The medium of claim 13, wherein the image is concurrently displayed with the first and second bull's eye plots. 35
16. The medium of claim 13, wherein the computer program causes the processor to:
 display an image corresponding to a select data slice of the first plurality of data slices;

16

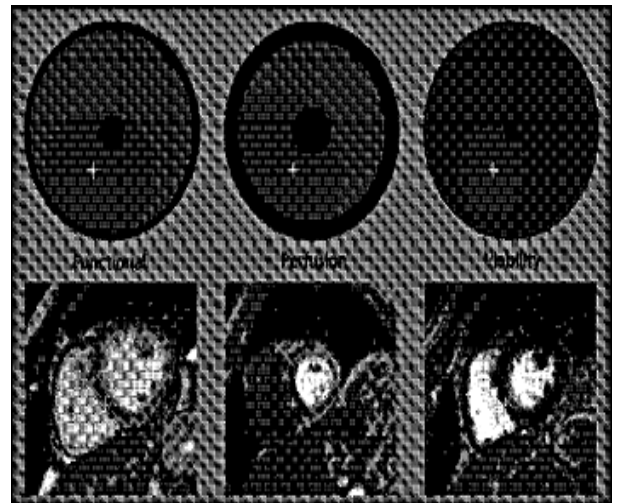
receive a user input that identifies a select point in the image;
 determine a first point in the first bull's eye plot and a second point in the second bull's eye plot, each corresponding to the select point in the image; and
 displaying an indication of the first point in the first bull's eye plot and the second point in the second bull's eye plot.
17. The medium of claim 16, wherein displaying an indication of the first point in the first bull's eye plot includes displaying an indication of the concentric ring containing the first point in the first bull's eye plot.
18. A method comprising:
 creating, on a processing system, a first bull's eye plot based on a first plurality of data slices corresponding to image data of an object that is stored in a computer-readable memory,
 creating, on the processing system, a second bull's eye plot based on a second plurality of data slices corresponding to second image data of the object,
 concurrently displaying the first and second bull's eye plots on a display device,
 wherein for each bull's eye plot, values determined corresponding to each data slice are displayed in a concentric ring, the radius of the concentric ring being determined by a distance of the data slice from a feature on the object;
 the method further including:
 receiving a user input that identifies a first point at a location in the first bull's eye plot,
 determining a second point in the second bull's eye plot corresponding to the location in the first bull's eye plot, and
 concurrently displaying an indication of the first point in the first bull's eye plot and the second point in the second bull's eye plot.

* * * * *

专利名称(译)	重新参数化的牛眼图		
公开(公告)号	US8907952	公开(公告)日	2014-12-09
申请号	US13/131094	申请日	2009-11-27
[标]申请(专利权)人(译)	皇家飞利浦电子股份有限公司		
申请(专利权)人(译)	皇家飞利浦电子N.V.		
当前申请(专利权)人(译)	皇家飞利浦电子N.V.		
[标]发明人	HAUTVAST GUILLAUME LEOPOLD THEODORUS FREDERIK		
发明人	HAUTVAST, GUILLAUME, LEOPOLD, THEODORUS, FREDERIK		
IPC分类号	G06K9/00 G06T17/00 A61B5/00 A61B5/055 G06T11/20		
CPC分类号	A61B5/024 A61B5/7475 A61B5/7425 G06T11/206 A61B6/507 A61B6/503 A61B5/055 A61B5/7435		
优先权	2008170544 2008-12-03 EP		
其他公开文献	US20110249005A1		
外部链接	Espacenet USPTO		

摘要(译)

本发明涉及一种用于在第一牛眼图中可视化第一图像数据中表示的对象的第一定量分析的结果的系统，特别是用于心脏分析。第一图像数据包括第一多个数据切片，并且系统包括切片单元，用于将第一多个数据切片的数据切片与第一牛眼图的同心环相关联，半径单元用于计算第一多个数据切片的长度。第一个牛眼图的同心环的半径，以及用于计算在第一个牛眼图的同心环中显示的至少一个值的值单位，基于与同心环相关联的数据切片。第一个牛眼图，其中第一个牛眼图的同心环半径的长度是根据第一个多个数据切片的数据切片的位置定义的，该数据切片与第一个多个数据切片的同心环相关联。第一个牛眼图，有尊重对象。第一个牛眼图同心环半径与第一个牛眼图的所述同心环相关的数据切片位置相对于物体的依赖性定义了第一个牛眼图的客观框架，基于对象的几何形状。因此，在第一次牛眼图中可视化的对象的第一次定量分析的结果可以更容易地与在第二次牛眼图中可视化的第二图像数据中表示的相同对象的第二次定量分析的结果进行比较。第二牛眼图的同心环的半径的长度也基于与第二牛眼图的所述同心环相关联的数据切片相对于对象的位置来定义。在一个实施例中，每个牛眼图中的对应位置可以由情侣指针指示。另外，进一步指针，每个指针耦合在一个牛眼图中的相应指针可以适于指向第一和第二图像数据的相应数据切片中的相应位置。



在一个实施例中，每个牛眼图中的对应位置可以由情侣指针指示。另外，进一步指针，每个指针耦合在一个牛眼图中的相应指针可以适于指向第一和第二图像数据的相应数据切片中的相应位置。