



(19) **United States**

(12) **Patent Application Publication** (10) **Pub. No.: US 2005/0203388 A1**

Carr (43) **Pub. Date: Sep. 15, 2005**

(54) **METHOD AND APPARATUS FOR DETECTING AND TREATING VULNERABLE PLAQUES**

(57) **ABSTRACT**

(76) **Inventor: Kenneth L. Carr, Woolwich, ME (US)**

Correspondence Address:
CESARI AND MCKENNA, LLP
88 BLACK FALCON AVENUE
BOSTON, MA 02210 (US)

(21) **Appl. No.: 11/093,370**

(22) **Filed: Mar. 30, 2005**

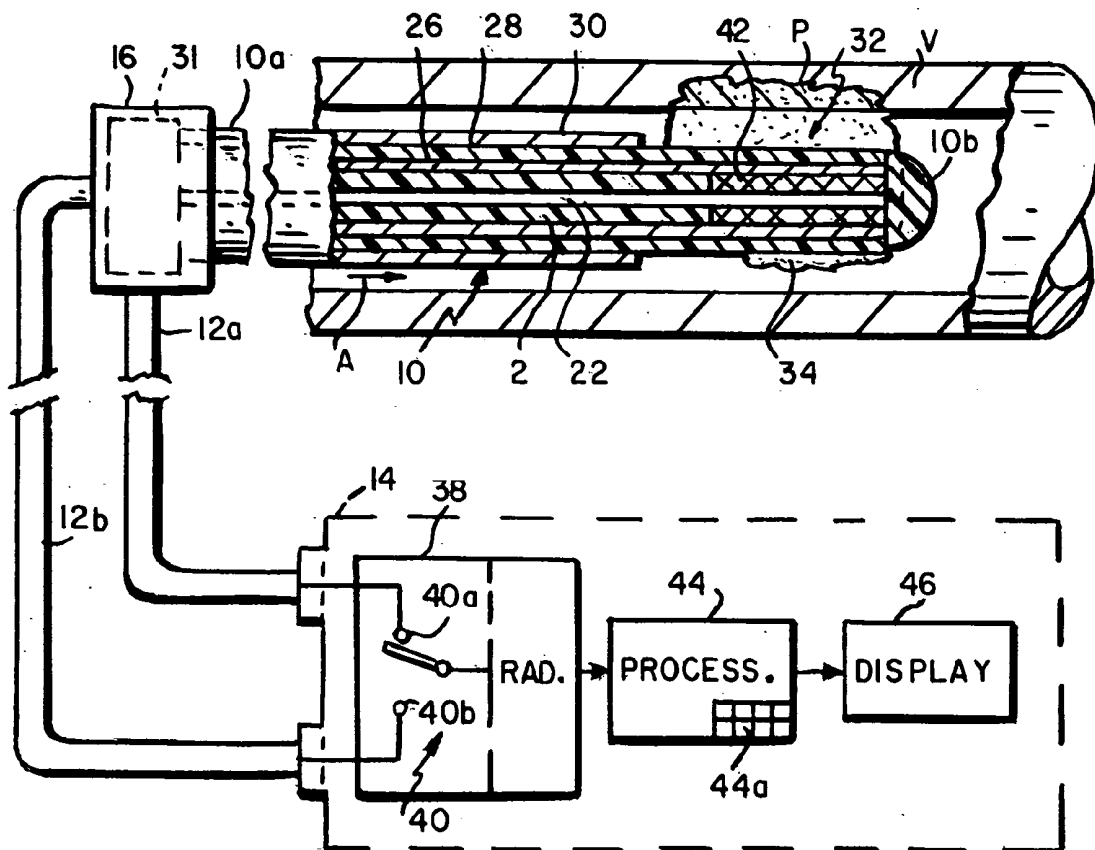
Related U.S. Application Data

(62) **Division of application No. 10/452,154, filed on Jun. 2, 2003.**

Publication Classification

(51) **Int. Cl.⁷ A61B 18/18; A61B 5/05**
(52) **U.S. Cl. 600/430**

Apparatus for detecting vulnerable plaques embedded in the wall of a patient's blood vessel includes an intravascular catheter containing a microwave antenna, an extracorporeal radiometer having a signal input, a reference input and an output, a cable for electrically connecting the antenna to the signal input, and a device for applying an indication of the patient's normal tissue temperature to the reference input so that when the catheter is moved along the vessel, the locations of the vulnerable plaques are reflected in a signal from the output as thermal anomalies due to the higher emissivity of the vulnerable plaques as compared to the normal tissue. A second embodiment of the apparatus has two coaxial antennas in the catheter serving two radiometers. One measures the temperature at locations in the vessel wall, the other measures the temperature at the surface. By subtracting the two signals, the locations of vulnerable plaque may be visualized. The apparatus employs a special diplexer for separating the signals from the two antennas and a method of detecting and possibly destroying the plaques is also disclosed.



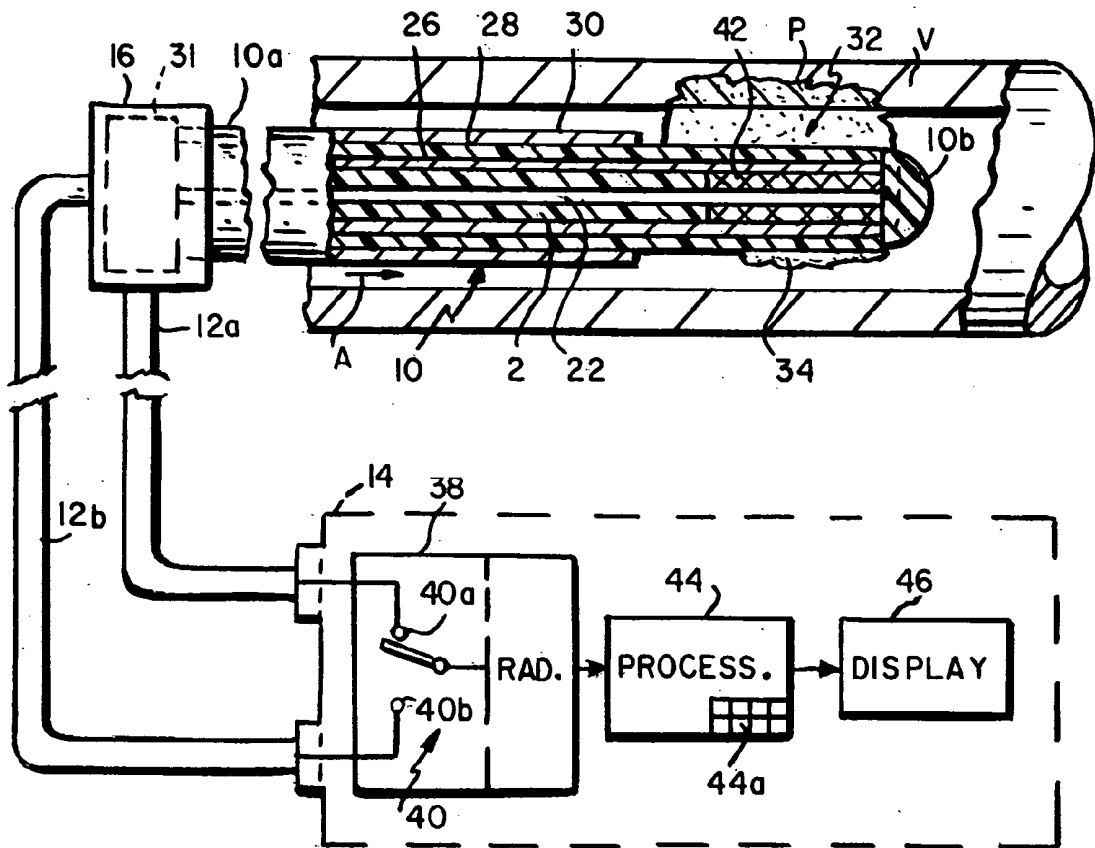


FIG. 1

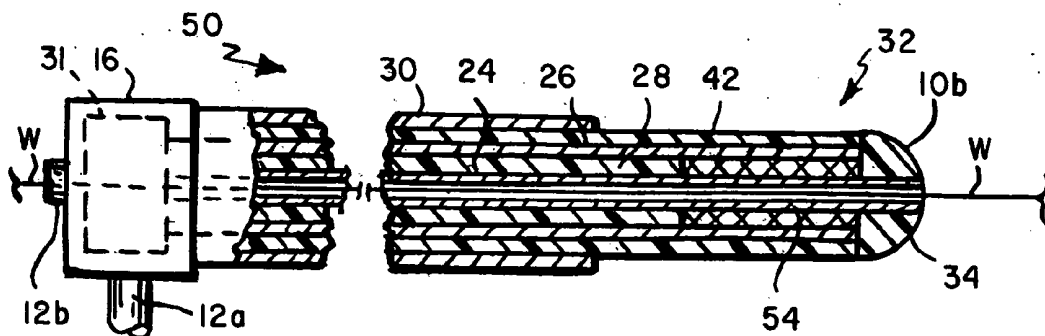


FIG. 2

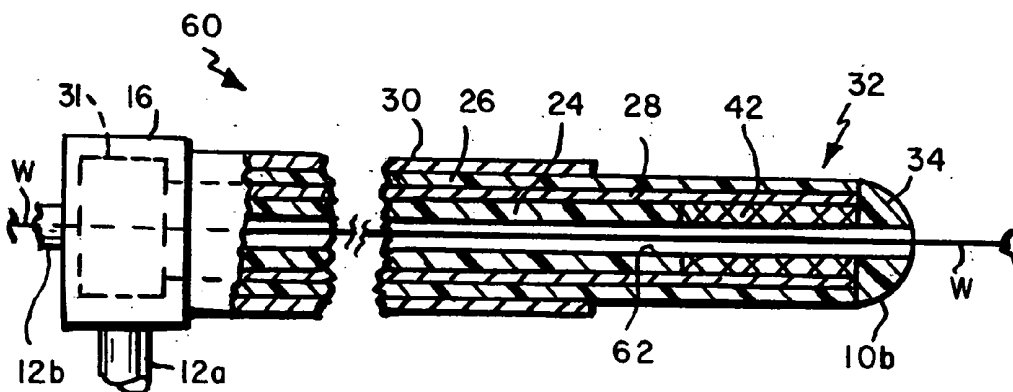


FIG. 3

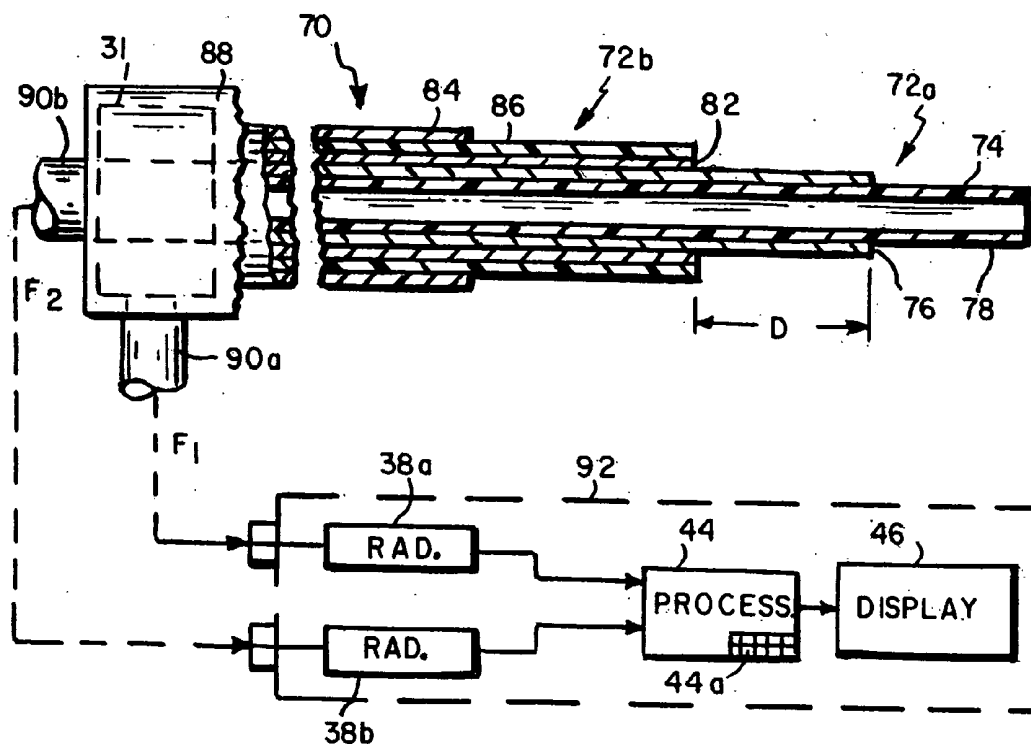


FIG. 4

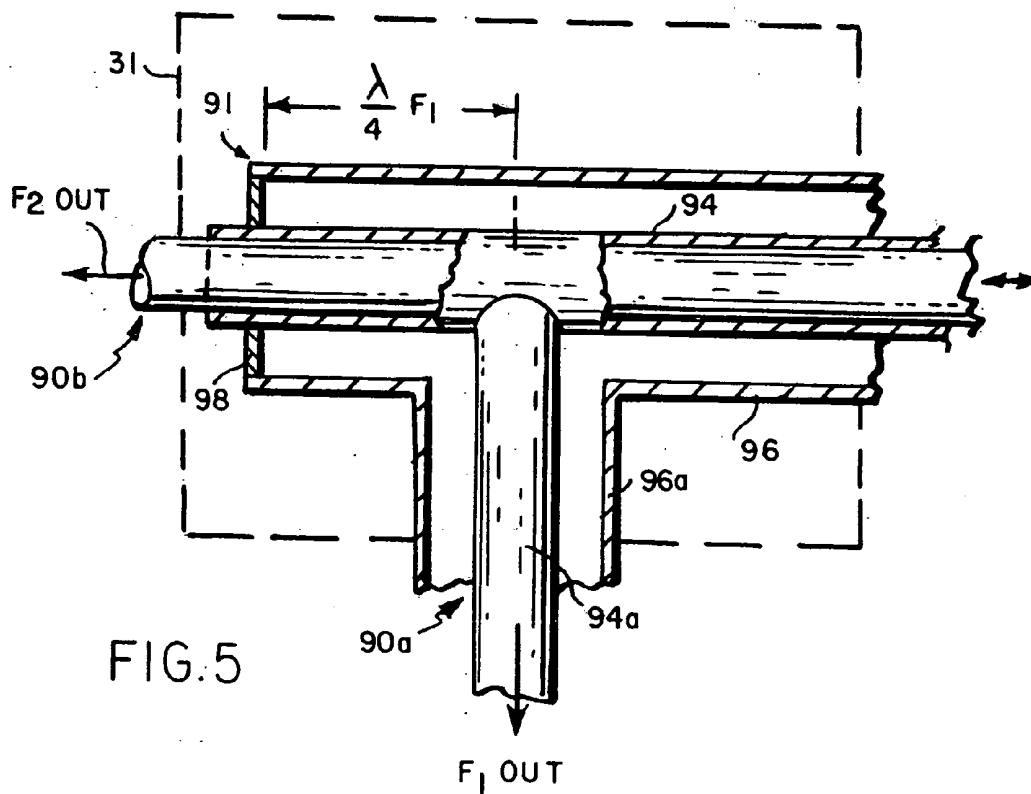


FIG. 5

METHOD AND APPARATUS FOR DETECTING AND TREATING VULNERABLE PLAQUES

CROSS-REFERENCE TO RELATED APPLICATION

[0001] This application is a division of Ser. No. 10/452,154, filed Jun. 2, 2003, now U.S. Pat. No. _____.

BACKGROUND OF THE INVENTION

[0002] This invention relates to a minimally invasive technique for detecting vulnerable plaques. It relates especially to method and apparatus for detecting vulnerable plaques utilizing microwave radiometry.

[0003] 1. Field of the Invention

[0004] It is widely known that many heart attacks originate from blockages created by atherosclerosis which is the aggressive accumulation of plaques in the coronary arteries. The accumulation of lipids in the artery and resulting tissue reaction cause a narrowing of the affected artery which can result in angina, coronary occlusion and even cardiac death.

[0005] Relatively recent studies have shown that coronary disease can also be caused by so-called vulnerable plaques which, unlike occlusive plaque, are engrained or imbedded in the arterial wall and do not grow into the blood vessel. Rather, they tend to erode creating a raw tissue surface that forms caps or scabs. Thus, they are more dangerous than occluding plaque which usually give a warning to a patient in the form of pain or shortness of breath. See, e.g., The Coming of Age of Vulnerable Plaque, Diller, W., Windover's Review of Emerging Medical Ventures, November 2000.

[0006] 2. Description of the Prior Art

[0007] Since vulnerable plaques are contained within the vessel wall, they do not result in a closing or narrowing of that vessel. As a result, such plaques are not easily detectable using conventional x-ray, ultrasound and MRI imaging techniques.

[0008] Moreover, since vulnerable plaques are part of the vessel wall, they may have essentially the same temperature as the surrounding normal tissue and the blood flowing through the vessel. Therefore, they are not amenable to detection by known intravascular catheters which rely on infrared (IR) imaging, thermistors, thermocouples and the like in order to detect temperature differences in the vessel wall.

[0009] Such intravascular catheters are disadvantaged also because they usually incorporate an inflatable balloon to isolate the working end of the catheter from fluids in the vessel; see for example U.S. Pat. No. 6,475,159. As seen there, the IR detector is located within the balloon which constitutes an insulating (not transparent at IR frequencies) layer between the detector and the vessel wall causing significant attenuation of the signal from the detector. Also, the undesirable stoppage of blood flow by the balloon increases the risk to the patient. Still further, the balloon has to be repeatedly inflated and deflated in order to image different locations along the blood vessel increasing the operating time during which the patient is at risk.

SUMMARY OF THE INVENTION

[0010] Accordingly, it is an object of the present invention to provide a method of detecting vulnerable plaques before the plaques rupture and cause thrombosis.

[0011] Another object of the invention is to provide such a vulnerable plaque detection method which does not require the stoppage of blood flow in the affected vessel.

[0012] An additional object of the invention is to provide a method of detecting vulnerable plaques using microwave radiometry.

[0013] Another object of the invention is to provide intracorporeal microwave apparatus for detecting vulnerable plaques having one or more of the above advantages.

[0014] A further object of the invention is to provide such apparatus capable of treating the plaques after detection.

[0015] Other objects will, in part, be obvious and will, in part, appear hereinafter.

[0016] The invention accordingly comprises the several steps and the relation of one or more of such steps with respect to each of the others, and the apparatus embodying the features of construction, combination of elements and arrangement of parts which are adapted to effect such steps, all as exemplified in the following detailed description, and the scope of the invention will be indicated in the claims.

[0017] Briefly, the present method utilizes microwave radiometry to detect the presence of vulnerable plaques engrained in the wall of a blood vessel. In accordance with the method, an intravascular catheter containing at least one microwave antenna is moved along the suspect vessel. The antenna, in combination with an external microwave detection and display unit, is able to detect and display thermal anomalies due to the difference in the thermal emissivity (brightness) of vulnerable plaques as compared to normal tissue even though the two may have a common temperature. In other words, it has been found that the microwave characteristics of vulnerable plaques imbedded in a vessel wall are different from those of normal tissue comprising the vessel wall and this difference is detected as a thermal anomaly and displayed or plotted as the catheter is moved along the vessel.

[0018] As we shall see, in some applications the detected plaques may then be treated by microwave ablation using the very same catheter.

[0019] In its simplest form, the microwave antenna may be a more or less conventional microwave antenna located at the distal or working end of the catheter. The inner and outer conductors of the antenna are connected by a coaxial cable to an external detection and display unit which detects the microwave emissions from the blood vessel picked up by the antenna and produces corresponding output signals for a display which responds to those signals by displaying the thermal emissions from the blood vessel in real time as the catheter is moved along the vessel.

[0020] In accordance with the invention, the radiometer is preferably a Dicke switch-type radiometer and the temperature of the blood flowing through the vessel, which corresponds to the body's core temperature, is used as the radiometer reference. The operating frequency of the radiometer is selected to detect microwave emissions from a depth in the blood vessel wall where vulnerable plaques are likely to be imbedded, e.g. a frequency in the range of 1 to 4 GHz, preferably 1 GHz. Thus as the catheter is moved along the vessel, it is maintained at a constant background or core temperature corresponding to the temperature of the

blood and of normal tissue. The locations of vulnerable plaques are detected as thermal anomalies (hot spots) due to the higher emissivity of the plaques as compared to normal tissue. Using the output of the radiometer to control a display, the plaque sites along the vessel can be plotted.

[0021] It is important to note that the present method and apparatus allow the detection of vulnerable plaques at subsurface locations in the vessel wall without contacting the vessel wall and without any interruption of blood flow through the vessel.

[0022] As will be described in more detail later, the catheter may include a lengthwise passage for receiving a guide wire to help guide the catheter into and along the blood vessel being examined. As we shall see, in some applications the guide wire itself may actually constitute the inner conductor of the antenna within the catheter. Also, in order to help center the antenna within the blood vessel, the catheter may incorporate an expandable perforated standoff device which spaces the antenna from the vessel wall without materially interfering with the blood flow through the vessel.

[0023] In a preferred embodiment of the invention, the detection unit includes two radiometers operating at different frequencies. One radiometer, operating at a higher frequency in the range of 3 to 6 GHz, preferably 4 GHz, detects thermal emissions from the inner surface of the blood vessel. This temperature, corresponding to the body core temperature, is used as a reference. The second radiometer operates at a lower frequency of 1 to 4 GHz, preferably 1 GHz, to detect thermal emissions from subsurface locations in the vessel wall which may contain embedded vulnerable plaques. Thus by subtracting the outputs of the two radiometers, the sites of vulnerable plaques can be detected and displayed continuously and in real time as the catheter is moved along the blood vessel.

BRIEF DESCRIPTION OF THE DRAWINGS

[0024] For a fuller understanding of the nature and objects of the invention, reference should be made to the following detailed description taken in connection with the accompanying drawings, in which:

[0025] FIG. 1 is a diagrammatic view of apparatus for detecting vulnerable plaques in accordance with the invention and employing a first intravascular catheter embodiment;

[0026] FIG. 2 is a fragmentary sectional view of a second catheter embodiment for use with the FIG. 1 apparatus;

[0027] FIG. 3 is a similar view showing a third catheter embodiment;

[0028] FIG. 4 is a view similar to FIG. 1 of another apparatus embodiment, and FIG. 5 is a sectional view of the diplexer component of the apparatus.

DETAILED DESCRIPTION OF ILLUSTRATIVE EMBODIMENTS

[0029] Referring to FIG. 1 of the drawings, the present apparatus comprises a catheter shown generally at 10 for insertion into a blood vessel V which may have locations where vulnerable plaques P are embedded or engrained in the vessel wall. Such plaques P typically include a relatively

large portion of the vessel wall, e.g. a third to a half of its circumference. Catheter 10 is connected by coaxial cables 12a and 12b to a detection and display unit 14. The catheter has a proximal end 10a to which cables 12a and 12b are connected by way of a fitting or connector 16 and a distal end or tip 10b. The catheter may have a length of 100 cm or more and is quite narrow and flexible so that it can be threaded along a conventional introducer, e.g. 8.5 French, allowing the distal end 10b of the catheter to be placed at a selected position in a patient's blood vessel V. Typically, vessel V is accessed by a vein in the patient's neck or groin.

[0030] The catheter may include an expandable perforated stand-off device such as shown U.S. Pat. No. 6,496,738, which is hereby incorporated herein by reference, so as to center the catheter 10 in vessel V without impeding the blood flow through that vessel.

[0031] As shown in FIG. 1, catheter 10 comprises a central conductor 22 surrounded by a cylindrical layer 24 of a suitable low loss dielectric material. Surrounding the layer 24 is a tubular middle conductor 26 surrounded by a dielectric layer 28. Finally, a tubular outer conductor 30 encircles layer 28. At fitting 16, the proximal ends of conductors 22, 26 and 30 are connected by way of a passive diplexer 31 (FIG. 5) to the coaxial cables 12a and 12b. Preferably, the catheter has a protective outer coating, e.g. of PTFE, (not shown).

[0032] At the distal end segment of catheter 10, the middle conductor 26 extends beyond the outer conductor 30 to form a microwave antenna 32 which, in this case, is a monopole as in the above U.S. Pat. No. 6,496,738. In some applications, a helical antenna or capacitive tip may be used; see U.S. Pat. Nos. 4,583,556 and 4,557,272, the contents of which are hereby incorporated herein by reference.

[0033] The distal end 10b of the catheter is actually formed by a rounded low loss dielectric button 34 which is butted and secured to the distal end of the dielectric layers 24 and 28. Typically, the middle conductor 26 extends beyond the outer conductor 30 a distance in the order of 1 cm so that antenna 32 has a relatively long antenna pattern. Also, if desired, the diameters of the coaxial conductors in catheter 10 may be stepped down along the catheter to improve antenna performance. Antenna 32 detects the thermal radiation emitted from blood vessel V and applies a corresponding electrical signal via cable 12a to a radiometer 38 in unit 14. The radiometer 38 may be a conventional Dicke switch-type radiometer as described in the above U.S. Pat. No. 4,557,272. The temperature-indicating signal from antenna 32 is applied via cable 12a to the signal input 40a of the Dicke switch 40 in radiometer 38. The other input to the switch 40 is a reference value which corresponds to the patient's core temperature, e.g. 37° C.

[0034] That temperature may be measured using a resistive termination or load or heat sensor 42 connected between inner conductor 22 and middle conductor 26 near the catheter tip. The sensor output or value is applied via those conductors to diplexer 31 in connector 16 which separates that signal from the antenna signal. That reference signal is thereupon conducted by cable 12b to the reference input 40b of switch 40. In other words, two ports of the radiometer are brought out to receive both the antenna and reference signals from catheter 10. The advantage of this arrangement is that the unknown temperature is now compared with the actual

blood (core) temperature. This improves radiometer sensitivity (performance) by keeping all circuitry that precedes the Dicke switch at the same temperature.

[0035] The radiometer operates at a center frequency in the order of 1 to 4 GHz so that the apparatus can detect thermal emissions from locations relatively deep in the wall of vessel V.

[0036] The output of the radiometer 38 is processed by a processor 44 in unit 14 which controls a display 46.

[0037] To use the FIG. 1 apparatus, the catheter 10 is threaded into the patient's vessel V in the usual way. After insertion, the catheter assumes essentially the same temperature as the vessel V and the blood flowing through the vessel. This temperature as sensed by sensor 42 is used as the reference for Dicke switch 40 which toggles between its signal and reference inputs 40a and 40b in the usual way. When the catheter is moved along the vessel V, say, in the direction of the arrow A, the antenna 32 will pick up thermal emissions from the normal tissue in the vessel wall and unit 14 will provide a core or background temperature indication which will be displayed by display 46. However, when the antenna 34 is moved opposite a region containing vulnerable plaques P, the apparatus will detect a thermal anomaly due to the increased emittance (brightness) of the plaques embedded in the vessel wall. Thus as the catheter 10 is moved along the vessel, the unit 14 can display continuously in real time the locations of plaques P as well as other useful information such as the body's core temperature, diagnostic data and the like as instructed via the processor's keyboard 44a.

[0038] Referring now to FIG. 2, in some procedures, it may be desirable that the catheter be guided along the blood vessel V by means of a guide wire. FIG. 2 illustrates an intravascular catheter shown generally at 50 capable of being moved along a guide wire W previously introduced into the blood vessel in a conventional manner. Catheter 50 is similar to catheter 10 in FIG. 1 except that its central conductor 54 is an elongated flexible conductive tube. The other parts of catheter 50 are more or less the same as those of catheter 10 and therefore carry the same identifying numerals.

[0039] In catheter 50, conductor 54 extends through the fitting 16 as well as all the way through the button 34 to the tip 10b of the catheter. This allows the guide wire W to be threaded through the tubular conductor 54 so that the catheter 50 can be moved along the guide wire after the guide wire has been introduced into the blood vessel being examined.

[0040] When the catheter 50 is in use, the guide wire W does not interfere with the antenna pattern of antenna 32 because it is shielded by conductor 54. In other words, the field around the antenna does not extend within the metal conductor 54.

[0041] In some applications, the guide wire W itself may be used as the central conductor of the antenna 32 in the catheter. FIG. 3 shows such a catheter at 60 which may be used to detect vulnerable plaques as described above. As shown there, the catheter 60 is similar to catheter 50 except that it is devoid of the tubular central conductor 54. Instead, it is formed with an axial passage 62 in dielectric layer 24 and button 34 which passage extends snugly but slidably all

the way from the tip of the catheter to the proximal end thereof and through the fitting 16 so that the guide wire W can be threaded through passage 62 as shown. In this case, the guide wire itself is connected electrically via cable 12b to the detection and display unit 14. In use, the guide wire may be introduced into the blood vessel to be examined and then remain stationary while the remainder of the catheter is slid along the guide wire in order to examine different lengthwise segments of the blood vessel wall. Alternatively, the entire catheter 60 including the guide wire W may be moved as a unit along the blood vessel in order to advance the antenna 32 along that vessel.

[0042] Refer now to FIG. 4 which shows a preferred embodiment of the invention that can detect even very small thermal anomalies in the vessel wall due to embedded or engrained plaques. The FIG. 4 apparatus comprises a catheter shown generally at 70 having coaxial inner and outer antennas indicated at 72a and 72b. The inner antenna 72a comprises an inner conductor 74 and an outer conductor 76 separated by an insulating layer 78. The inner conductor 74 extends beyond the outer conductor 76 forming the antenna 72a.

[0043] The outer antenna 72b comprises a tubular inner conductor 82 and an outer conductor 84 separated by an insulating layer 86, the inner conductor 72 being insulated from conductor 76 and extending beyond the outer conductor 74 to form the outer antenna 72b. The proximate end of catheter 70 is terminated by a fitting or connector 88 containing a diplexer 31 (FIG. 5) which connects the conductors of the antennas 72a, 72b to coaxial cables 90a and 90b leading to a detection and display unit 92.

[0044] In some applications, the outer conductor 76 of antenna 72a and the inner conductor 82 of antenna 72b may be fixed relatively. More preferably those conductors are separate as shown so that the inner antenna 72a is slidable within the outer antenna 72b and fitting 88 so that the distance D between the two antennas can be varied from zero to several centimeters allowing the outer and inner antennas to be optimized at two specific frequencies F_1 and F_2 . The inner conductor 74 of antenna 72a may be hollow or tubular so that it can receive a guide wire as described in connection with FIG. 2. Alternatively, that conductor may be sufficiently small to serve as the guide wire itself as described in connection with FIG. 3.

[0045] In order to electrically separate the outputs of the two antennas 72a and 72b, the fitting or connector 88, like connector 16, incorporates a passive diplexer 31. As seen from FIG. 5, the diplexer includes a quarter-wave ($\lambda/4$) stub 91 to bring out the signal F_2 from the inner antenna 72a. This stub also provides a matched 90° bend to separate and bring out the signal F_1 from the outer antenna 72b.

[0046] Whereas it is known in the art to use a quarter-wave stub to support the center conductor of an antenna, the present diplexer has a tubular inner conductor 94 which receives the coaxial cable 74-78 comprising the inner antenna 72a providing signal F_2 . That conductor 94 may be an extension of the antenna conductor 82. Surrounding and insulated from conductor 94 is a coaxial outer conductor 96 which may be an extension of antenna conductor 84. The two diplexer conductors 94 and 96 are shorted by an end plate 98 at the end of stub 91. Conductor 94 has a branch 94a which is brought out through a branch 96a of conductor 96

to deliver the signal F_1 from antenna **72b**. Preferably, the coaxial cable **74-78** is slidable to some extent along conductor **94** to vary the antenna distance D as described above.

[0047] The illustrated diplexer **31** provides several distinct advantages. It separates the concentric cables from antennas **72a** and **72b** in **FIG. 4** into two separate cables; allows those cables to be mechanically and independently positioned, and it allows the innermost conductor to double as a guide wire for the catheter as shown in **FIGS. 2 and 3**.

[0048] In the **FIG. 4** apparatus, the smaller diameter antenna **72a**, optimized at a frequency F_2 , e.g. 3-6 GHz, may measure the blood and normal tissue temperature, whereas the larger diameter antenna **72b** optimized at frequency F_2 , e.g. 1-4 GHz, measures the temperature of the deeper tissue where vulnerable plaques are likely to occur. This larger diameter provides a less lossy cable making that antenna more efficient. The larger diameter antenna also places it closer to the wall of vessel V (**FIG. 1**), further increasing the depth of detection.

[0049] While the catheter **70** in **FIG. 4** could be connected by cables **90a** and **90b** to the switch **40** of a single radiometer as shown in **FIG. 1**, the illustrated detection and display unit **92** contains two radiometers **38a** and **38b** connects to cables **90a** and **90b**, respectively. The former which operates at the frequency F_1 detects thermal anomalies picked up by antenna **72b** due to plaques located relatively deep in the wall of vessel V (**FIG. 1**) as before; the latter operating at frequency F_2 detects thermal emissions picked up by antenna **72a** at the inner surface of the vessel which reflect the body core temperature. The processor **44** thereupon subtracts the signals and causes display **46** to display the locations of thermal anomalies which are likely due to plaques P .

[0050] After the vessel V has been examined and the locations of the plaques P determined as described above, the plaques P may be treated by microwave ablation using the very same catheter. This may be done by connecting the catheter via a diplexer to a microwave transmitter in order to heat the plaques as described in the above U.S. Pat. No. 6,496,738.

[0051] It will thus be seen that the objects set forth above, among those made apparent from the preceding description, are efficiently attained and, since certain changes may be made in carrying out the above method and in the constructions set forth without departing from the scope of the invention, it is intended that all matter contained in the above description or shown in the accompanying drawings shall be interpreted as illustrative and not in the limiting sense.

[0052] Is also to be understood that the following claims are intended to cover all of the generic and specific features of the invention described herein.

What is claimed is:

1. Apparatus for detecting vulnerable plaques embedded or ingrained in the wall of the patient's blood vessel, said apparatus comprising

an intravascular catheter having proximal and distal ends and containing an inner coaxial cable forming a first antenna and an outer coaxial cable forming a second antenna, said first antenna extending lengthwise

beyond the second antenna a selected distance, and said first and second antennas being dimensioned to pick up different first and second signal frequencies, respectively, and

a diplexer at the proximal end of the catheter, said diplexer having a tubular inner conductor and a coaxial outer conductor, said inner conductor receiving the inner coaxial cable and the inner and outer conductors being connected electrically to the outer coaxial cable, said outer conductor having a branch oriented 90° relative to the inner conductor and spaced from corresponding shorted ends of the inner and outer conductors to form a quarter wave stub at the second signal frequency.

2. The apparatus defined in claim 1 wherein the inner coaxial cable is slidable lengthwise relative to the outer antenna and diplexer so as to adjust said selected distance.

3. The apparatus defined in claim 1 wherein the inner coaxial cable has an open-ended tubular inner conductor which extends the length of the catheter and through the diplexer.

4. The apparatus defined in claim 3 and further including a guide wire slidably received in the inner conductor and diplexer for guiding the catheter along said blood vessel.

5. The apparatus defined in claim 1 wherein the inner coaxial cable includes an axial wire that is slidable relative to the outer coaxial cable and diplexer, said wire constituting both the first conductor of said inner antenna and a guide wire for the catheter.

6. The apparatus defined in claim 1 and further including

a first radiometer connected to the inner coaxial cable and tuned to detect signals picked up by the first antenna and produce a first output signal;

a second radiometer connected to the inner and outer conductors of the diplexer and tuned to detect signals picked up from the second antenna and produce a second output signal, and

means for subtracting the first and second output signals to produce a difference signal reflecting thermal anomalies due to the higher emissivity of the vulnerable plaques as compared to normal tissue.

7. The apparatus defined in claim 1 and further including a radiometer having a reference input connected to the inner coaxial cable and a signal input connected to the inner and outer conductors of the diplexer so that when the catheter is moved along said vessel, said radiometer produces an output signal which reflects the locations of said vulnerable plaques due to the higher emissivity of said plaques as compared to normal tissue.

8. Apparatus for detecting vulnerable plaques, said apparatus comprising

an intravascular catheter containing first and second antennas;

a radiometer including a Dicke switch having a reference input and a signal input;

a first cable connecting the first antenna to the reference input, and

a second cable connecting the second antenna to the signal input.

9. The apparatus defined in claim 8 wherein said first and second antennas are coaxial and slidable relatively to vary the spacing of the antennas.

10. Apparatus for detecting vulnerable plaques, said apparatus comprising

an intravascular catheter having proximal and distal ends;

a diplexer at the proximal end of the catheter said diplexer including

a radially outer tubular conductor having a tubular side branch, and

a radially inner tubular conductor spaced from the outer conductor and having a side branch extending through the side branch of the outer conductor to the outside to form a first port, said inner and outer conductors having proximal ends which are short circuited to form a quarter wave stub between said proximal ends and the side branch of the inner conductor;

a first antenna at the distal end of the catheter, said first antenna including radially inner and outer electrically isolated tubular conductors connected electrically to the respective inner and outer conductors of the diplexer, and

a second antenna at the distal end of the catheter beyond the first antenna, said second antenna including a coaxial cable which extends through the inner conductor of the diplexer to the outside to form a second port.

11. The apparatus defined in claim 10 wherein the coaxial cable is slidable within the inner conductors of the first antenna and diplexer to adjust the distance between the first and second antennas.

12. The apparatus defined in claim 10 wherein the inner conductor of the coaxial cable is an open-ended tube adapted to slidably receive a guide wire.

13. The apparatus defined in claim 10 and further including

a first radiometer connected to the first port, and

a second radiometer connected to the second port, said first and second radiometers having different operating frequencies.

14. The apparatus defined in claim 10 and further including a radiometer having a signal input connected to the first port, a reference input connected to the second part, and an output for connection to a display.

15. The apparatus defined in claim 8 or 10, wherein said catheter also includes

a radially expandable perforate stand-off device, and

means operable extracorporeally for expanding said device.

16. The apparatus defined in any one of claims 8 or 13, and further including

a microwave transmitter for transmitting a heating signal capable of ablating tissue, and

means including an additional diplexer for coupling the heating signal to the antenna but not to the radiometer(s) so that the apparatus can heat said vulnerable plaques after the detection thereof

17. Microwave apparatus for detecting vulnerable plaques in a patient's blood vessel, said apparatus comprising,

an intravascular catheter having proximal and distal ends and containing an inner coaxial cable forming a first antenna and an outer cable coaxial to the inner cable and forming a second antenna, said first antenna extending axially beyond the second antenna a selected distance;

an extracorporeal control unit including a microwave transmitter, a microwave receiver and a processor controlling the transmitter and receiver, and

a diplexer connected between said first and second antennas and the control unit for coupling signals from the transmitter to one of the antennas but not to the receiver and for coupling signals from the other of the antennas to the receiver but not to the transmitter.

18. The apparatus defined in claim 17 wherein said diplexer is mounted to a proximal end of the catheter and includes

radially spaced-apart inner and outer tubular conductors surrounding a segment of said inner coaxial cable and connected electrically to said outer coaxial cable;

a tubular side branch extending from said outer conductor;

a branch conductor extending from said inner conductor through said side branch, and

a short circuit between said inner and outer conductors at a distance from said branch conductor to form a quarter wavelength stub at the frequency of the signal carried by the second antenna.

19. The apparatus defined in claim 17 wherein the inner coaxial cable is slidable relative to the outer coaxial cable and inner conductor so as to allow adjustment of said selected distance.

20. Microwave apparatus for detecting vulnerable plaques in a patient's blood vessel, said apparatus comprising

an intravascular catheter having proximal and distal ends and containing an inner coaxial cable forming a first antenna and an outer coaxial cable forming a second antenna, said first antenna extending axially beyond the second antenna a selected distance, and

a diplexer at the proximal end of the catheter, said diplexer having radially spaced-apart inner and outer conductors, said inner conductor snugly receiving the inner coaxial cable and the inner and outer conductors being connected electrically to the outer coaxial cable, said outer conductor having a tubular side branch oriented substantially 90° relative to the inner conductor and said inner conductor having a connection extending through said branch and being spaced from corresponding shorted ends of the inner and outer conductors to form a quarter wave stub at the frequency of the signal carried by the second antenna.

21. The apparatus defined in claim 20 wherein the inner coaxial cable is slidable lengthwise relative to the outer coaxial cable and inner conductor so as to allow adjustment of said selected distance.

22. The apparatus defined in claim 20 wherein the inner coaxial cable has an open-ended tubular inner conductor which extends the length of the catheter.

23. Microwave apparatus for detecting vulnerable plaques in a patient's blood vessel, said apparatus comprising

an intravascular catheter having proximal and distal ends;

a diplexer at the proximal end of the catheter, said diplexer including

a radially outer tubular conductor having a tubular side branch, and

a radially inner tubular conductor spaced from the outer conductor and having a connection extending through the side branch of the outer conductor to the outside to form a first port, said inner and outer conductors having proximal ends which are short circuited to form a quarter wave stub between said proximal ends and the side connection of the inner conductor;

a first antenna near the distal end of the catheter, said first antenna including radially inner and outer electrically

insulated tubular conductors connected electrically to the respective inner and outer conductors of the diplexer, and

a second antenna near the distal end of the catheter spaced axially beyond the first antenna, said second antenna including a coaxial cable having an inner conductor and which extends through the inner conductor of the diplexer to the outside to form a second port.

24. The apparatus defined in claim 23 wherein the coaxial cable is slidable within the inner conductors of the first antenna and diplexer to adjust the axial distance between the first and second antennas.

25. The apparatus defined in claim 23 wherein the inner conductor of the coaxial cable of the second antenna is an open-ended tube adapted to slidably receive a guide wire.

* * * * *

专利名称(译)	用于检测和治疗易损斑块的方法和设备		
公开(公告)号	US20050203388A1	公开(公告)日	2005-09-15
申请号	US11/093370	申请日	2005-03-30
[标]申请(专利权)人(译)	CARR KENNETH大号		
申请(专利权)人(译)	CARR KENNETH L.		
[标]发明人	CARR KENNETH L		
发明人	CARR, KENNETH L.		
IPC分类号	A61B5/00 A61B5/07 A61B18/18 A61B5/05		
CPC分类号	A61B5/01 A61B5/02007 A61B5/0507 A61B2018/1861 A61B18/18 A61B18/1815 A61B5/07		
其他公开文献	US7933660		
外部链接	Espacenet USPTO		

摘要(译)

用于检测嵌入患者血管壁中的易损斑块的装置包括含有微波天线的血管内导管，具有信号输入的体外辐射计，参考输入和输出，用于将天线电连接到信号输入的电缆，以及用于将患者的正常组织温度的指示应用于参考输入的装置，使得当导管沿着血管移动时，易损斑块的位置在来自输出的信号中反映为由于较高发射率导致的热异常与正常组织相比，易损斑块该装置的第二实施例在导管中具有两个同轴天线，用于两个辐射计。一个测量容器壁中的温度，另一个测量表面的温度。通过减去这两个信号，可以看到易损斑块的位置。该装置采用特殊的双工器来分离来自两个天线的信号，还公开了一种检测并可能破坏这些斑块的方法。

