



(19) **United States**

(12) **Patent Application Publication**

(10) **Pub. No.: US 2002/0040196 A1**

Kensey et al.

(43) **Pub. Date:**

Apr. 4, 2002

(54) **DUAL RISER/SINGLE CAPILLARY VISCOMETER**

Publication Classification

(76) Inventors: **Kenneth Kensey**, Chester Springs, PA (US); **William N. Hogenauer**, Gilbertsville, PA (US); **Sangho Kim**, Philadelphia, PA (US); **Young Cho**, Cherry Hill, NJ (US)

(51) **Int. Cl.⁷** **A61B 5/00**
(52) **U.S. Cl.** **600/573**

(57) **ABSTRACT**

A blood viscosity measuring system and methods for measuring blood viscosity monitors the change in height of one of two, oppositely-moving, columns of blood from the circulating blood of a patient and, given the dimensions of a capillary tube through which the blood flows and by detecting a single blood position of the other oppositely-moving column, determines the blood viscosity over a range of shears, especially low shears. The system includes a tube set (disposable or non-disposable) that includes a pair of riser tubes, a capillary tube of predetermined dimensions that is coupled between the riser tubes (or that forms a portion of one riser tube) and a valve mechanism for controlling the circulating flow of blood from the patient into the riser tubes. A sensor monitors the movement of one of the columns of blood in one of the riser tubes and a single point detector detects a single blood position of the other column of blood and an associated microprocessor analyzes this movement and single point, along with the predetermined dimensions of the capillary tube, to determine the viscosity of the patient's circulating blood.

Correspondence Address:
**CAESAR, RIVISE, BERNSTEIN,
COHEN & POKOTILOV, LTD.**
12TH FLOOR, SEVEN PENN CENTER
1635 MARKET STREET
PHILADELPHIA, PA 19103-2212 (US)

(21) Appl. No.: **09/973,639**

(22) Filed: **Oct. 9, 2001**

Related U.S. Application Data

(63) Continuation of application No. 09/573,267, filed on May 18, 2000, which is a continuation-in-part of application No. 09/439,795, filed on Nov. 12, 1999, now Pat. No. 6,322,524, which is a continuation-in-part of application No. 08/919,906, filed on Aug. 28, 1997, now Pat. No. 6,019,735.

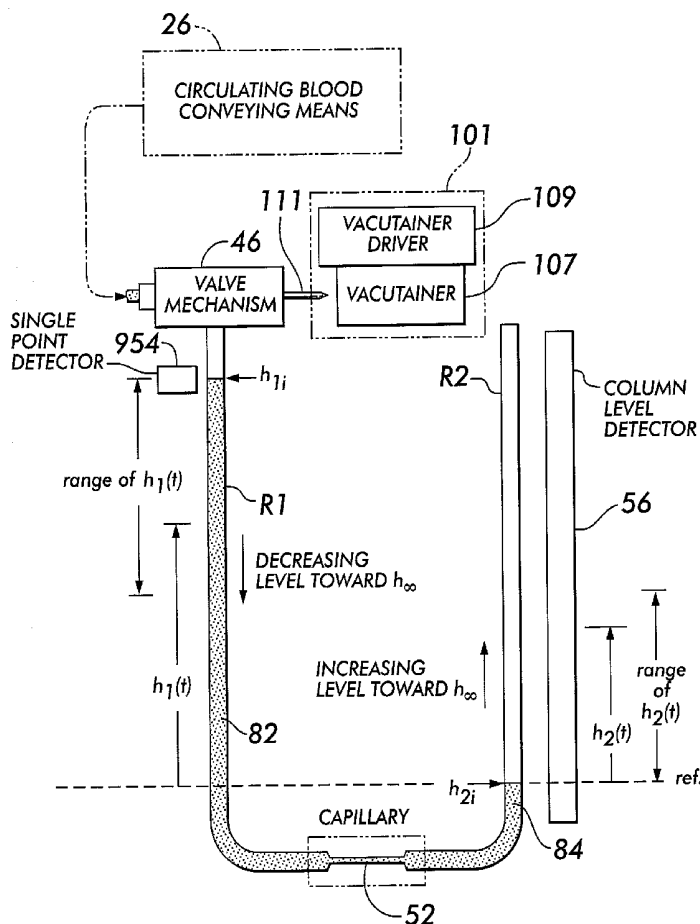


FIG. 1

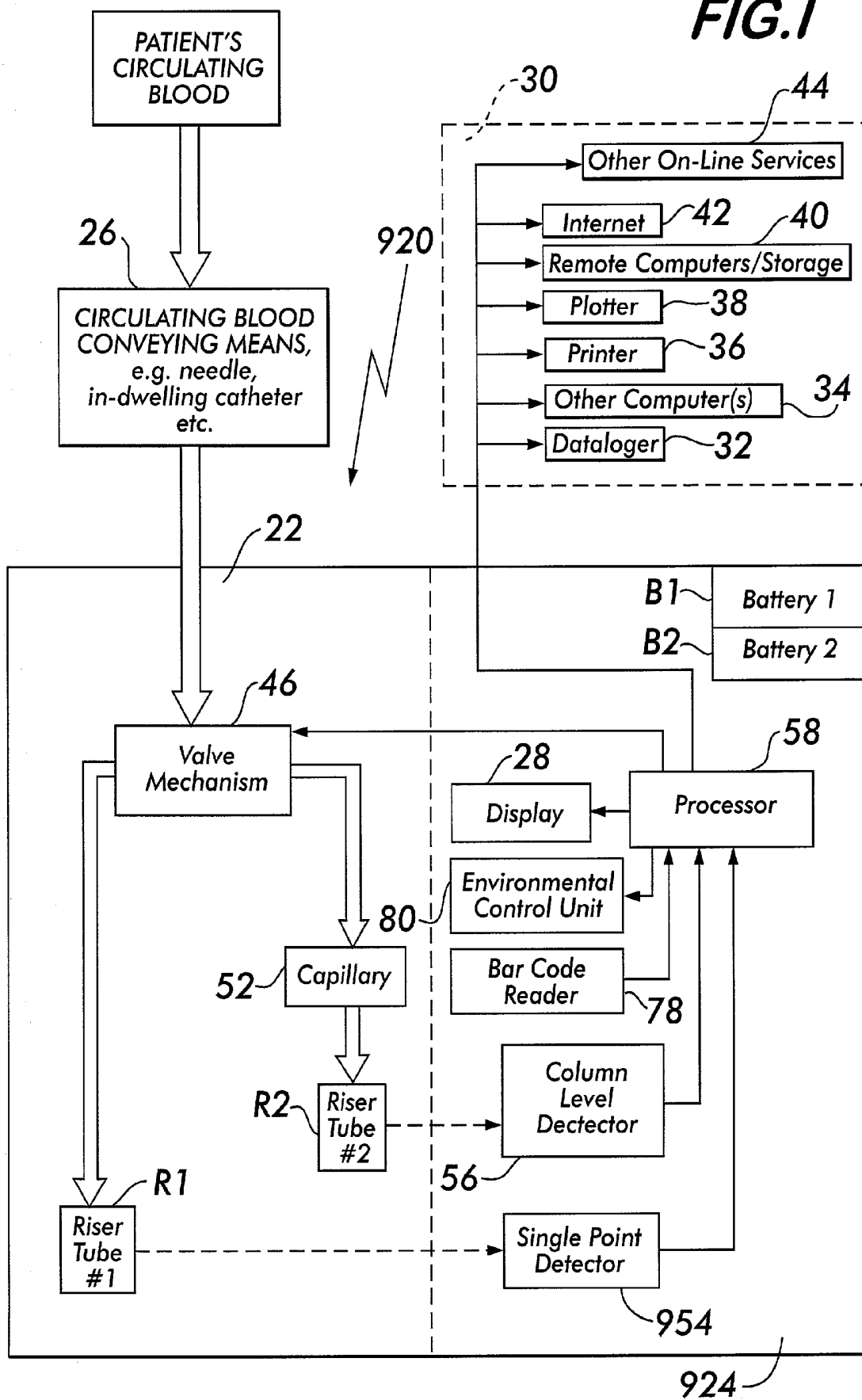


FIG. 2

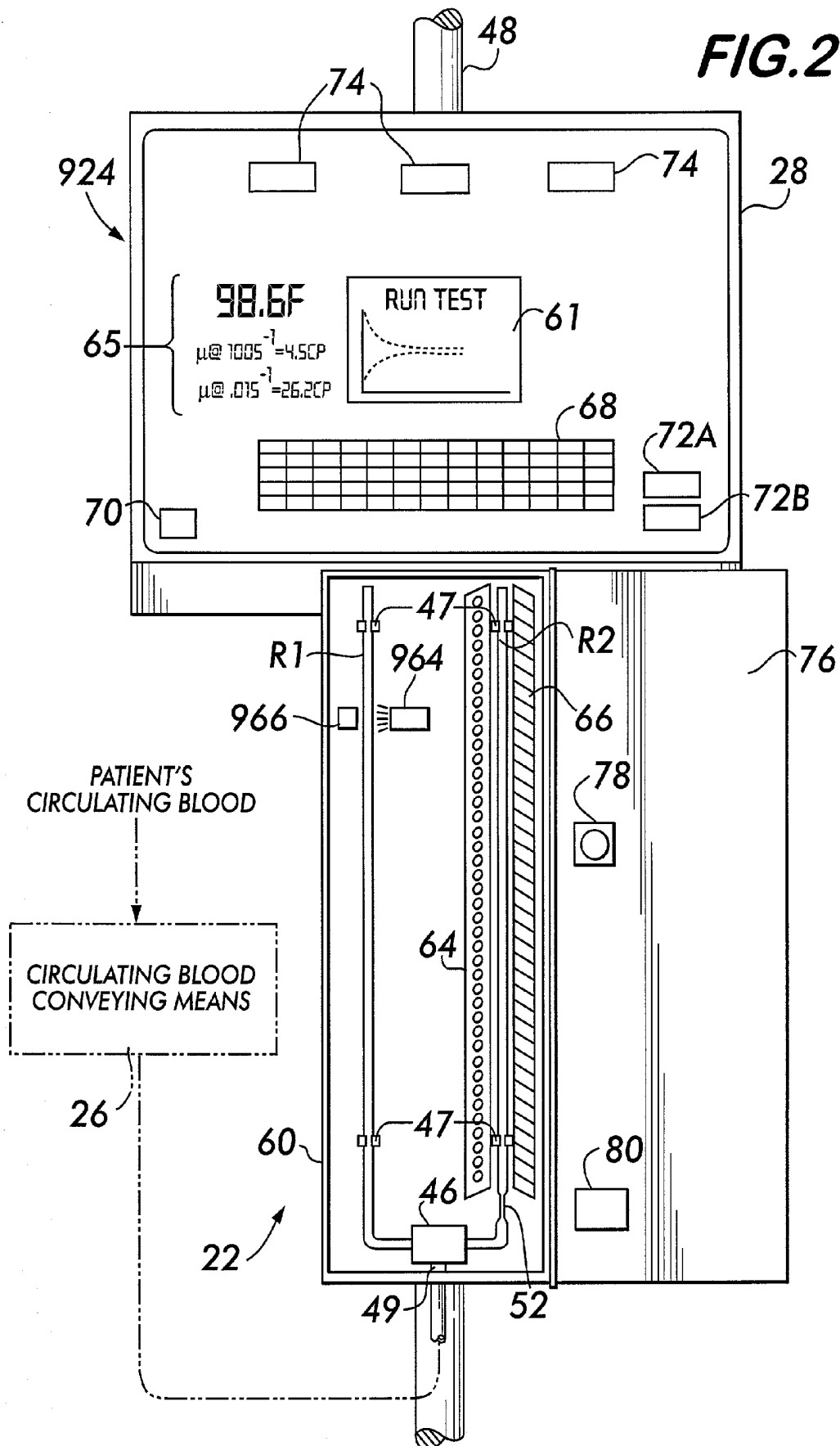


FIG. 3

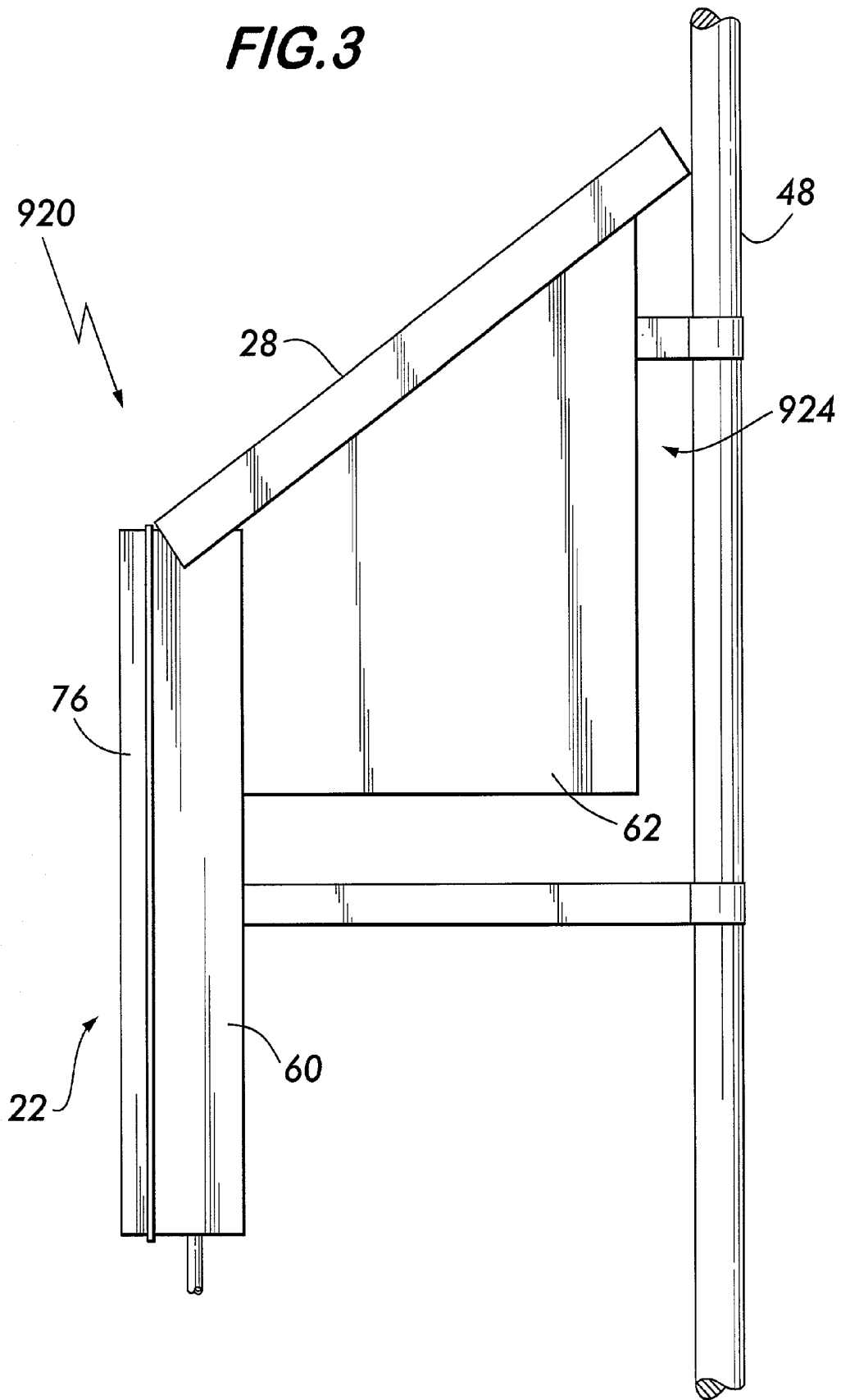


FIG. 4

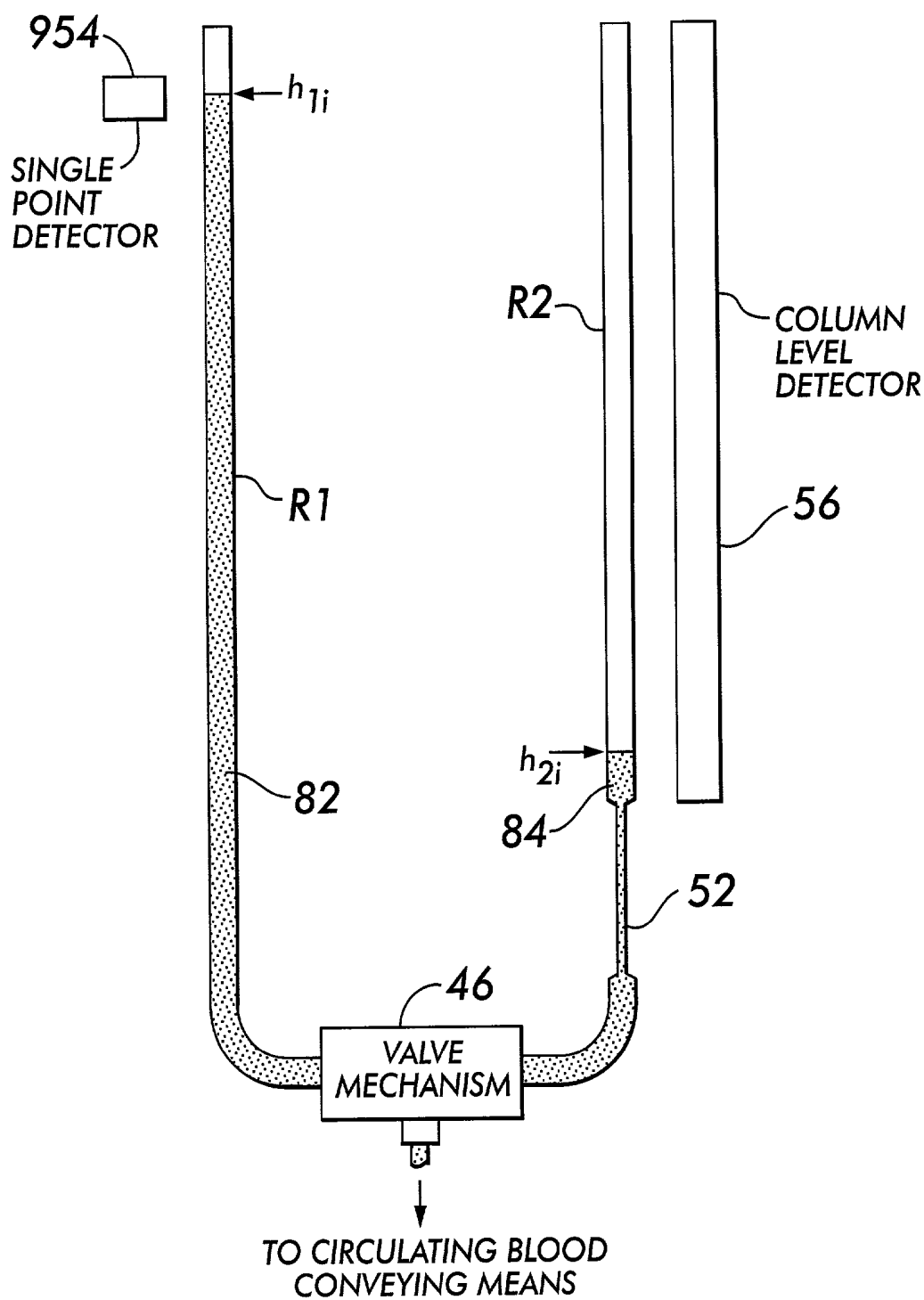


FIG. 5

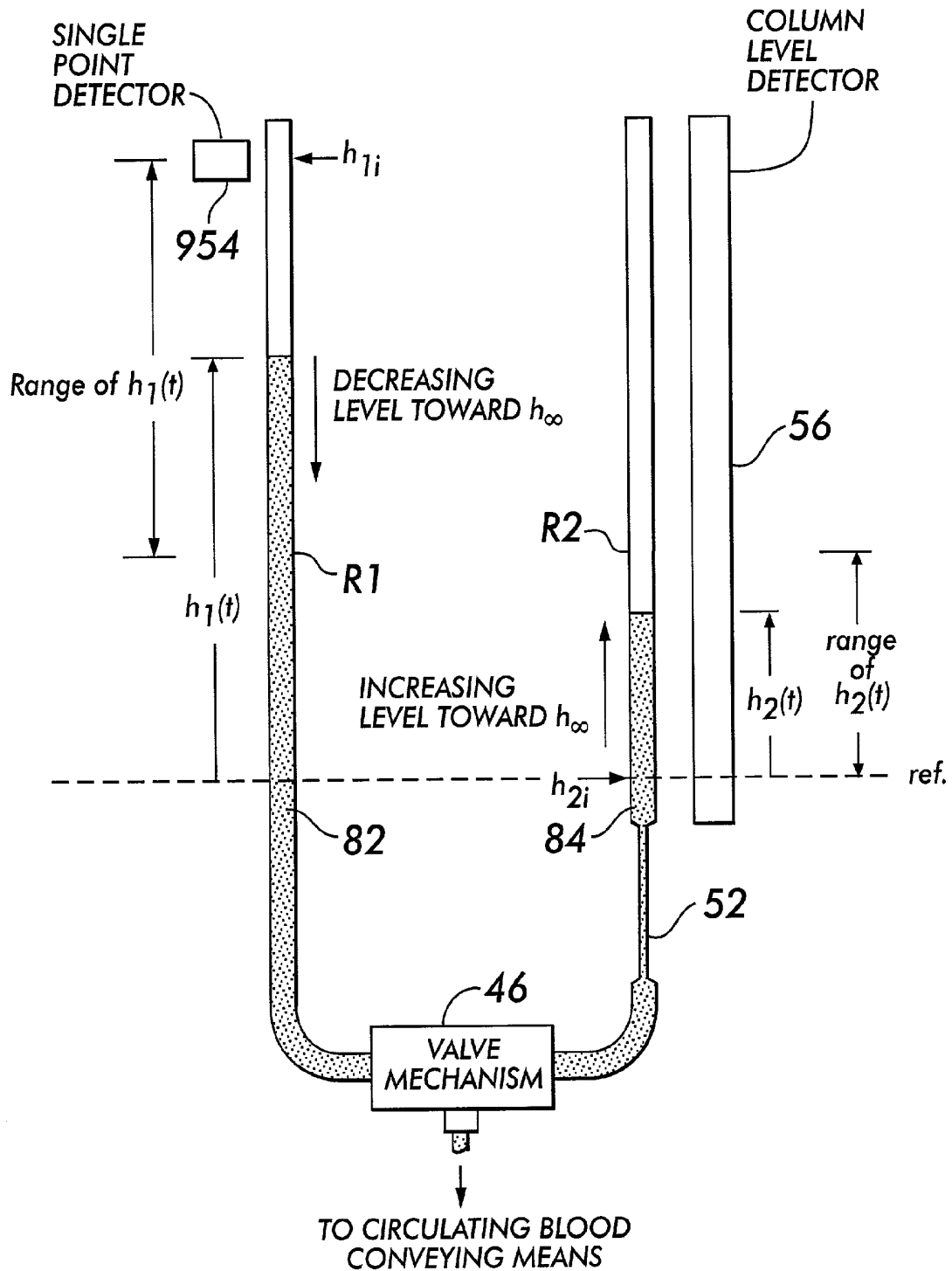


FIG. 6

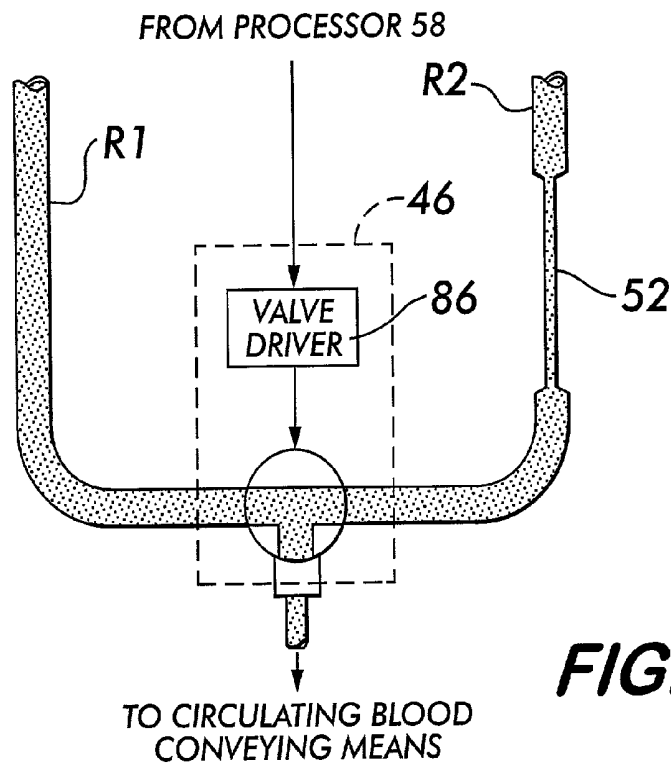
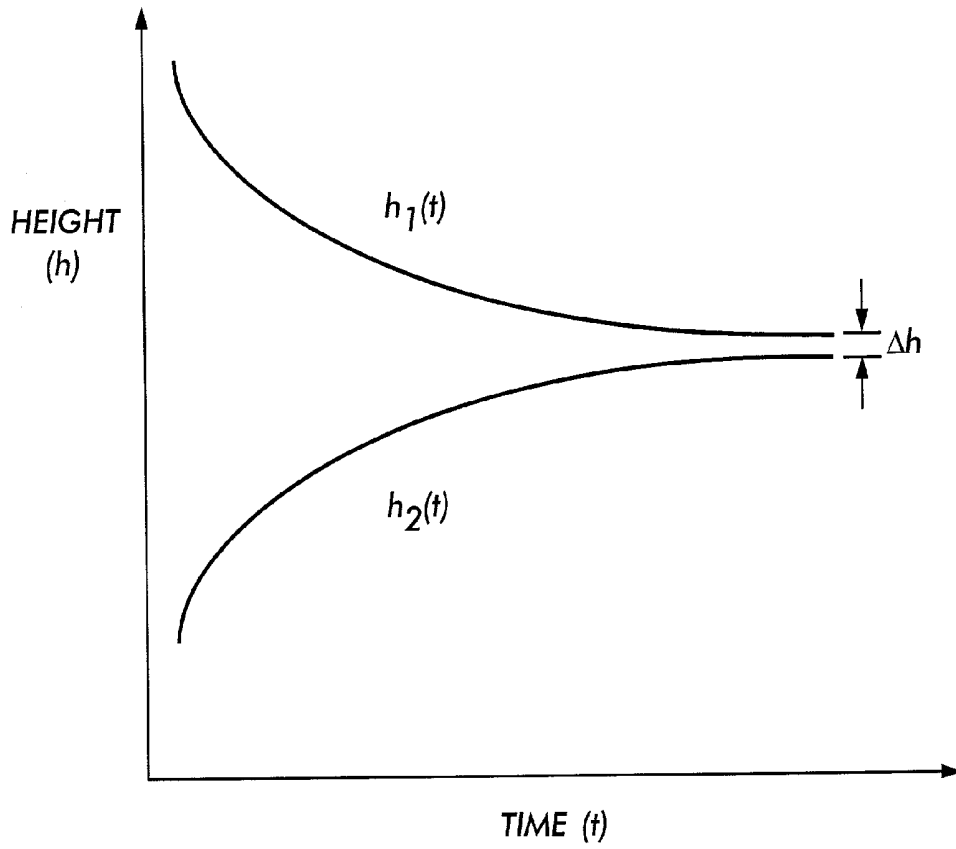


FIG. 7A

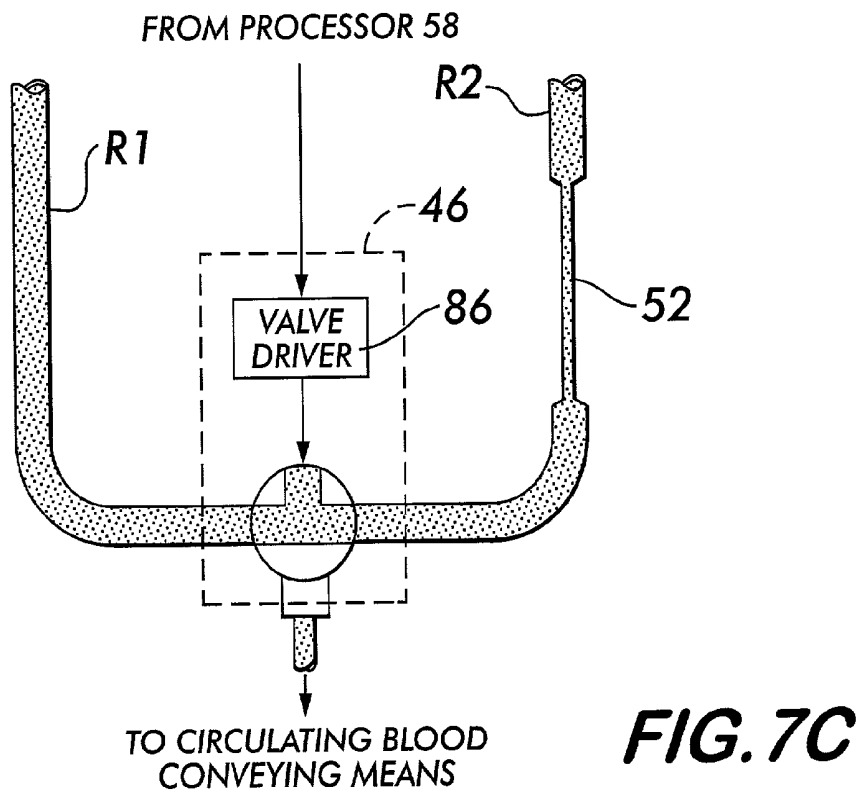
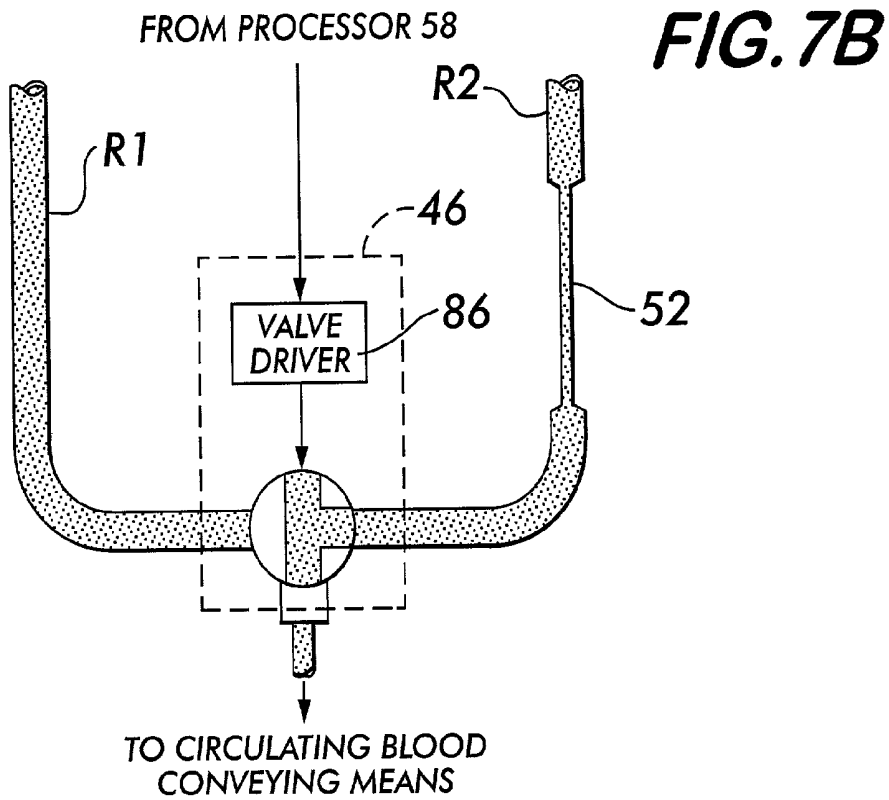
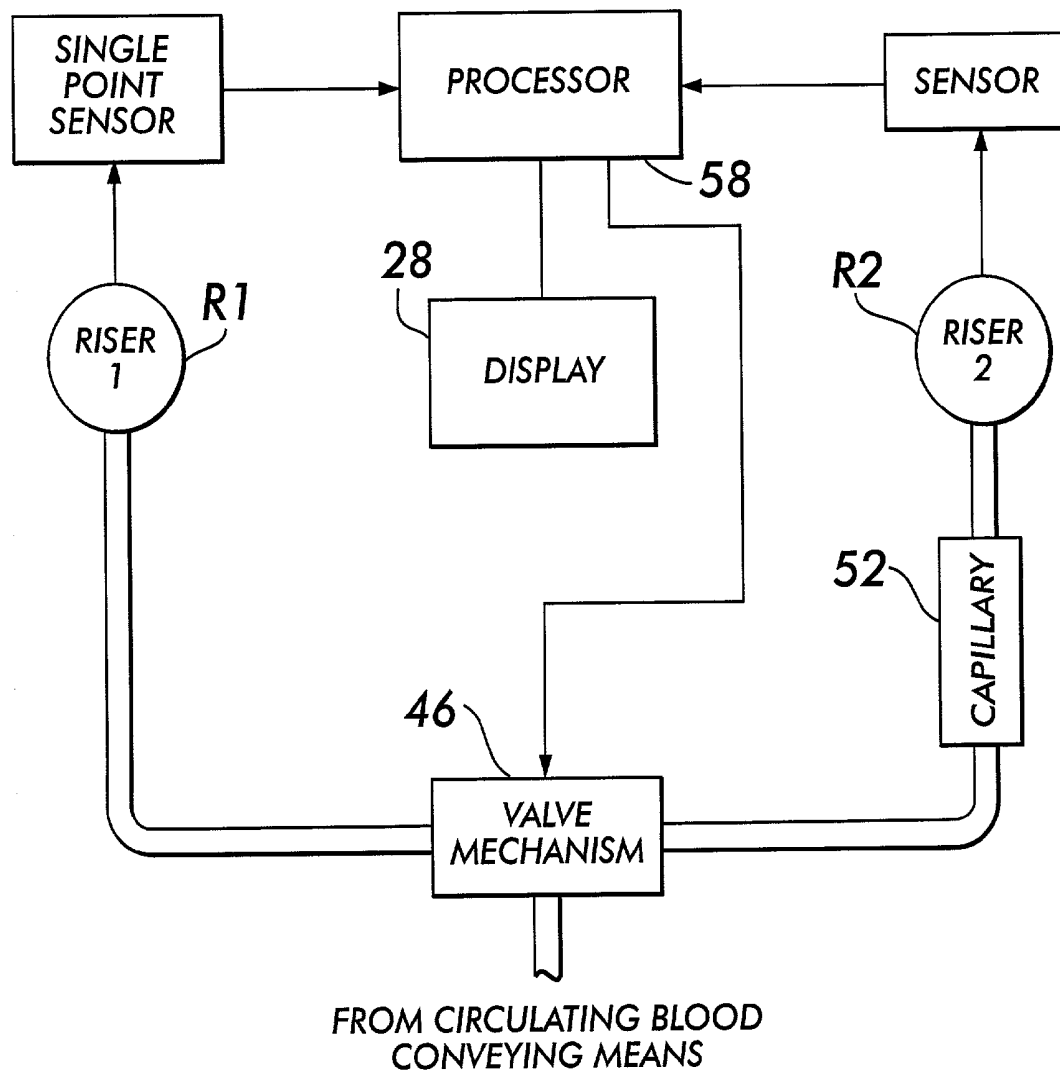


FIG. 8



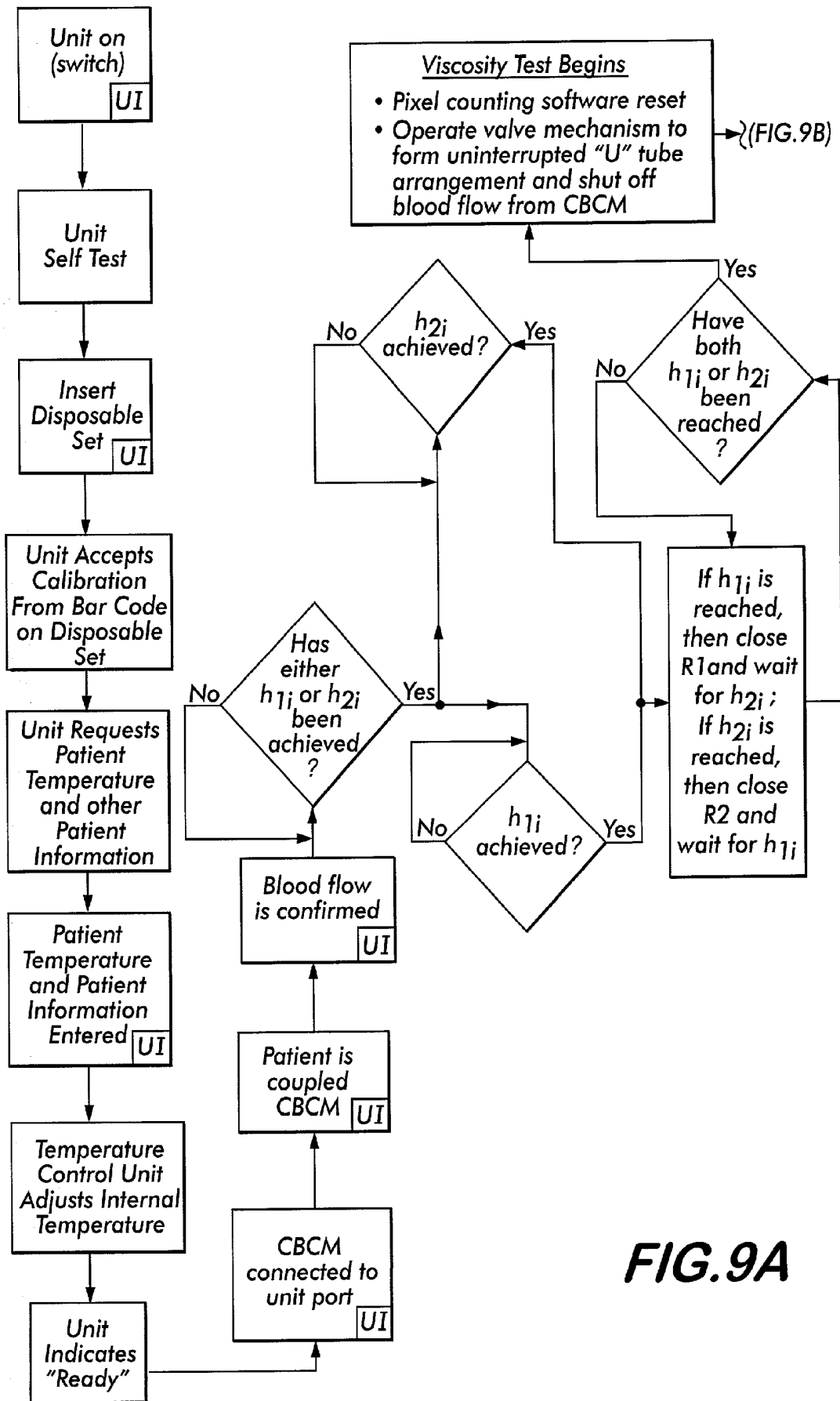


FIG.9A

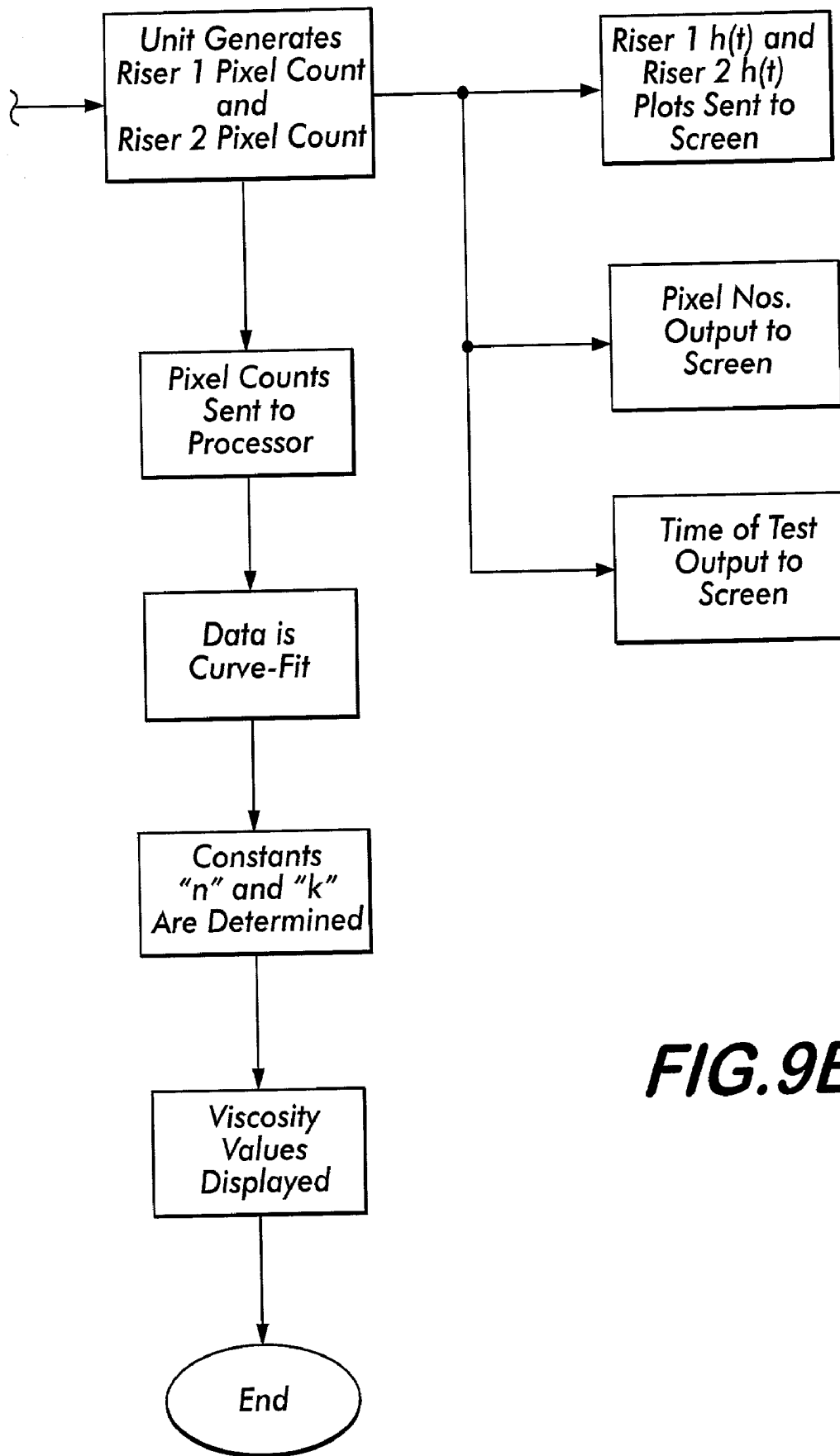


FIG. 9B

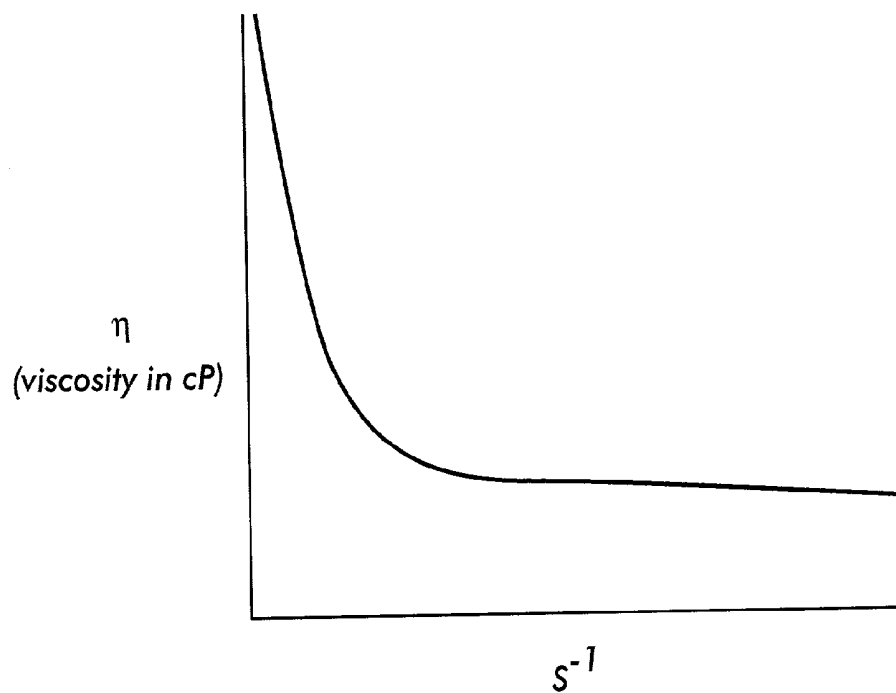


FIG.10A

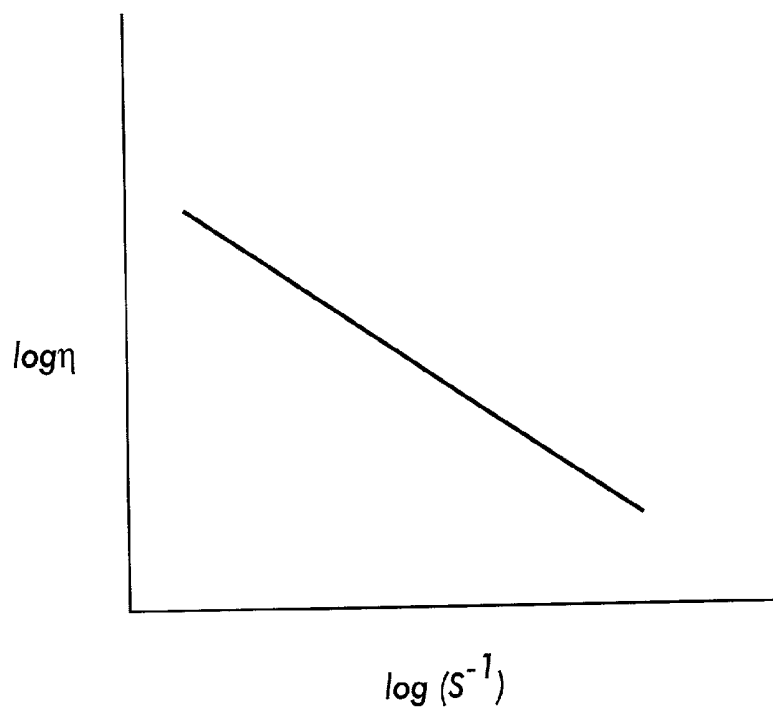


FIG.10B

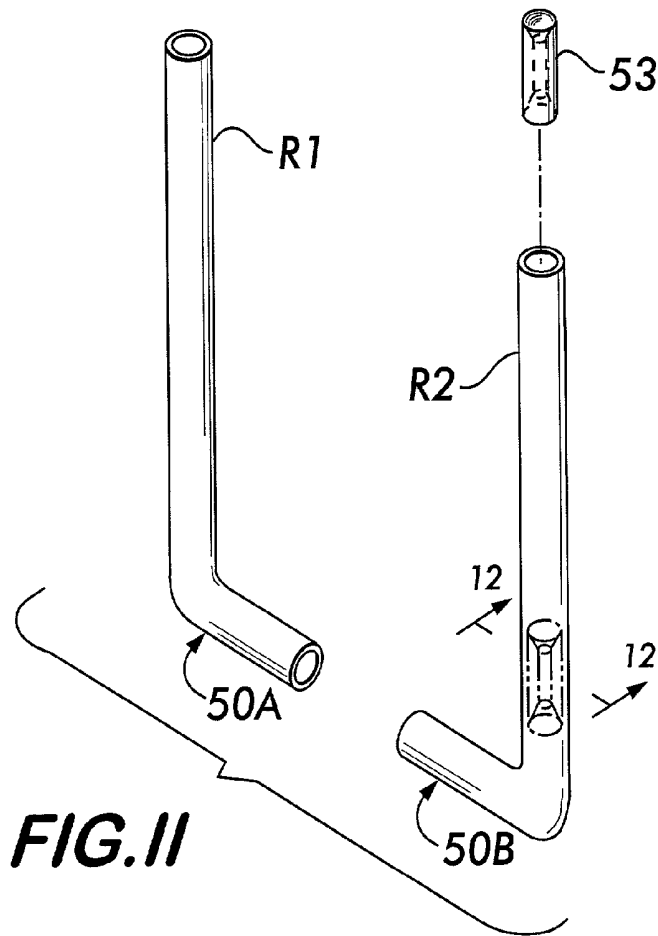


FIG. 11

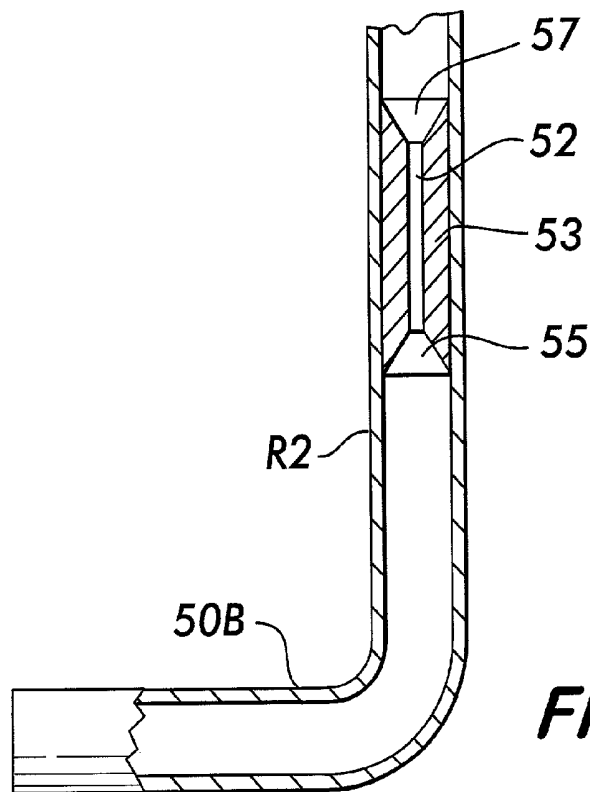


FIG. 12

FIG. 13

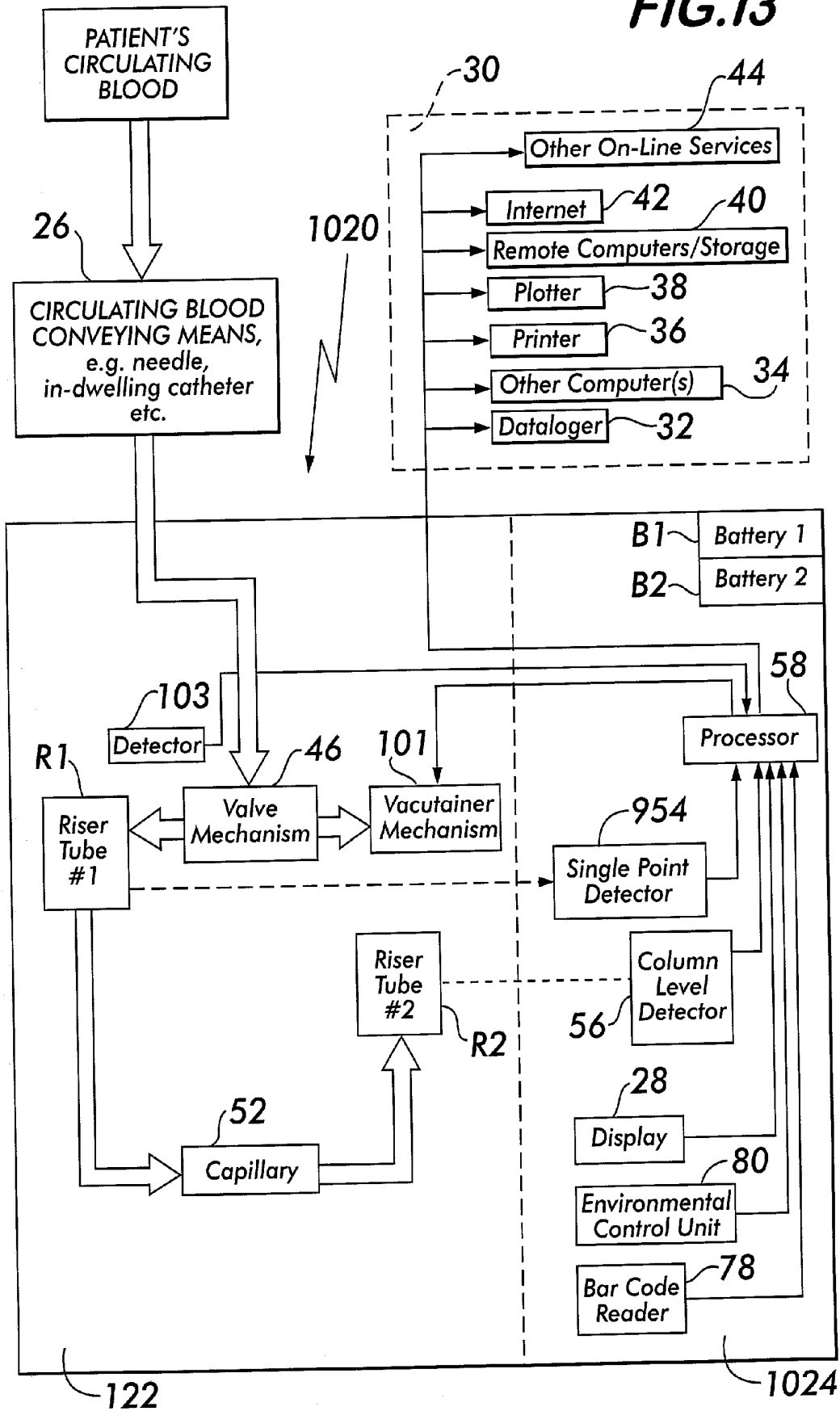


FIG. 14

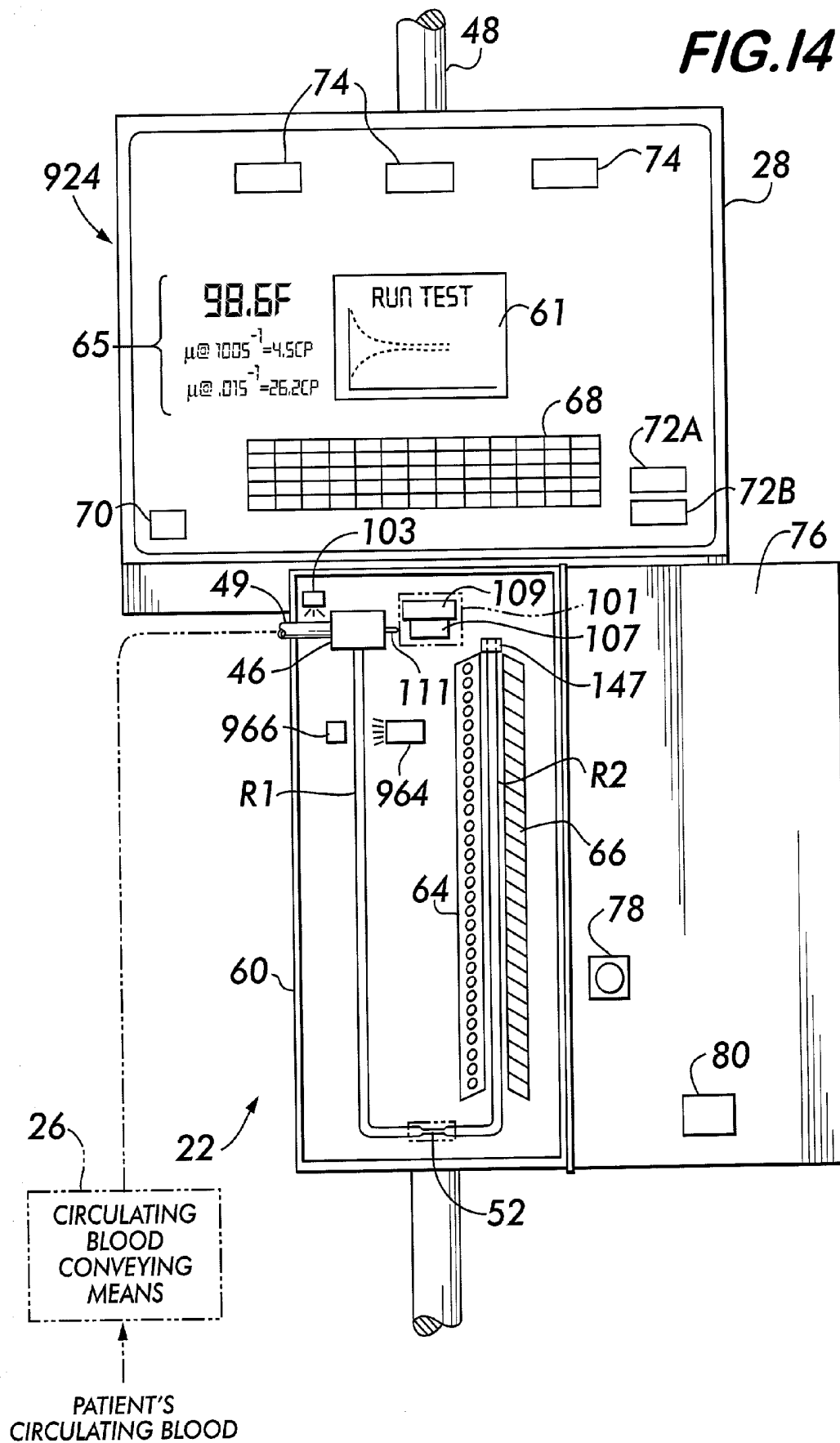
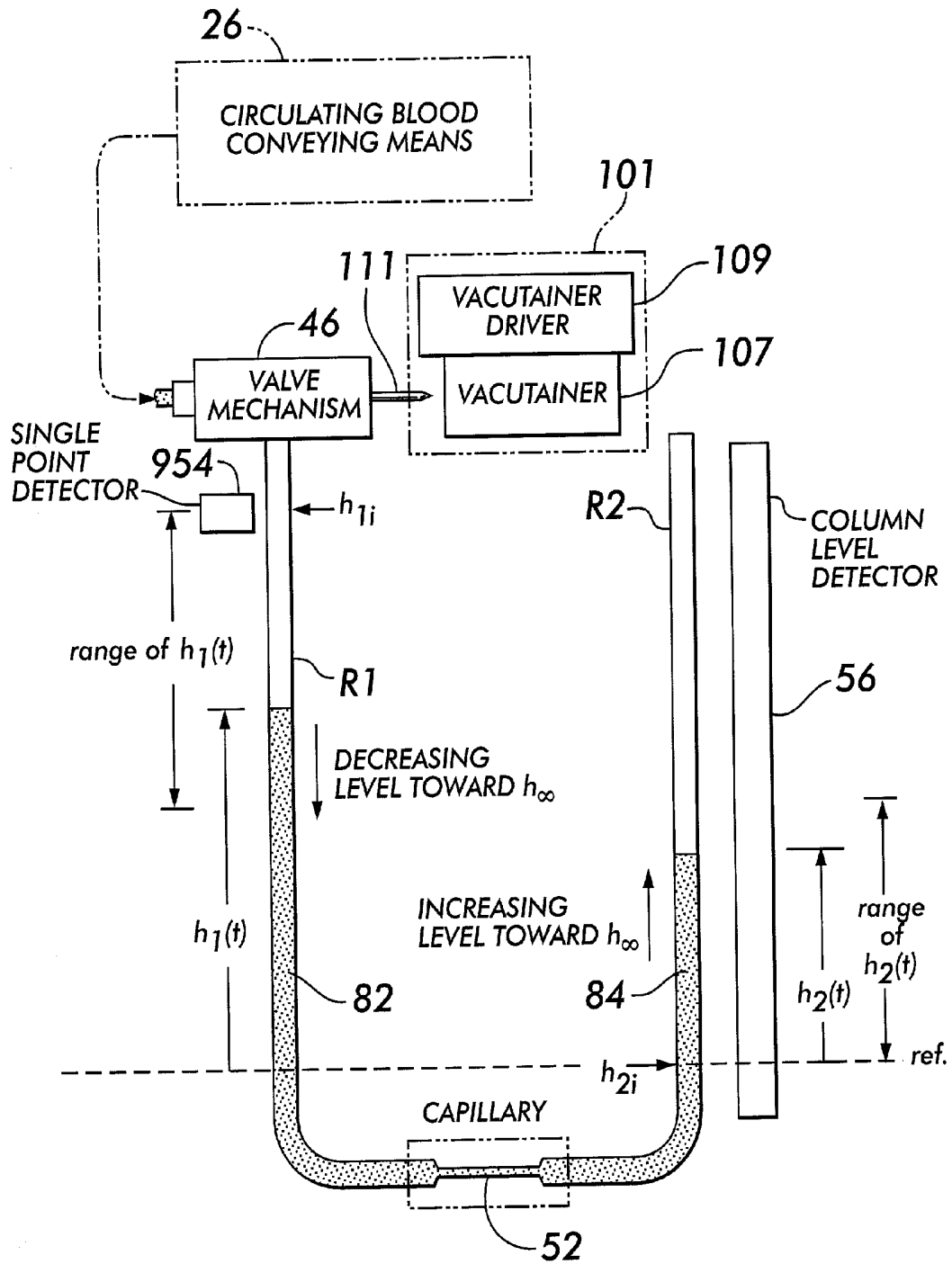


FIG. 16



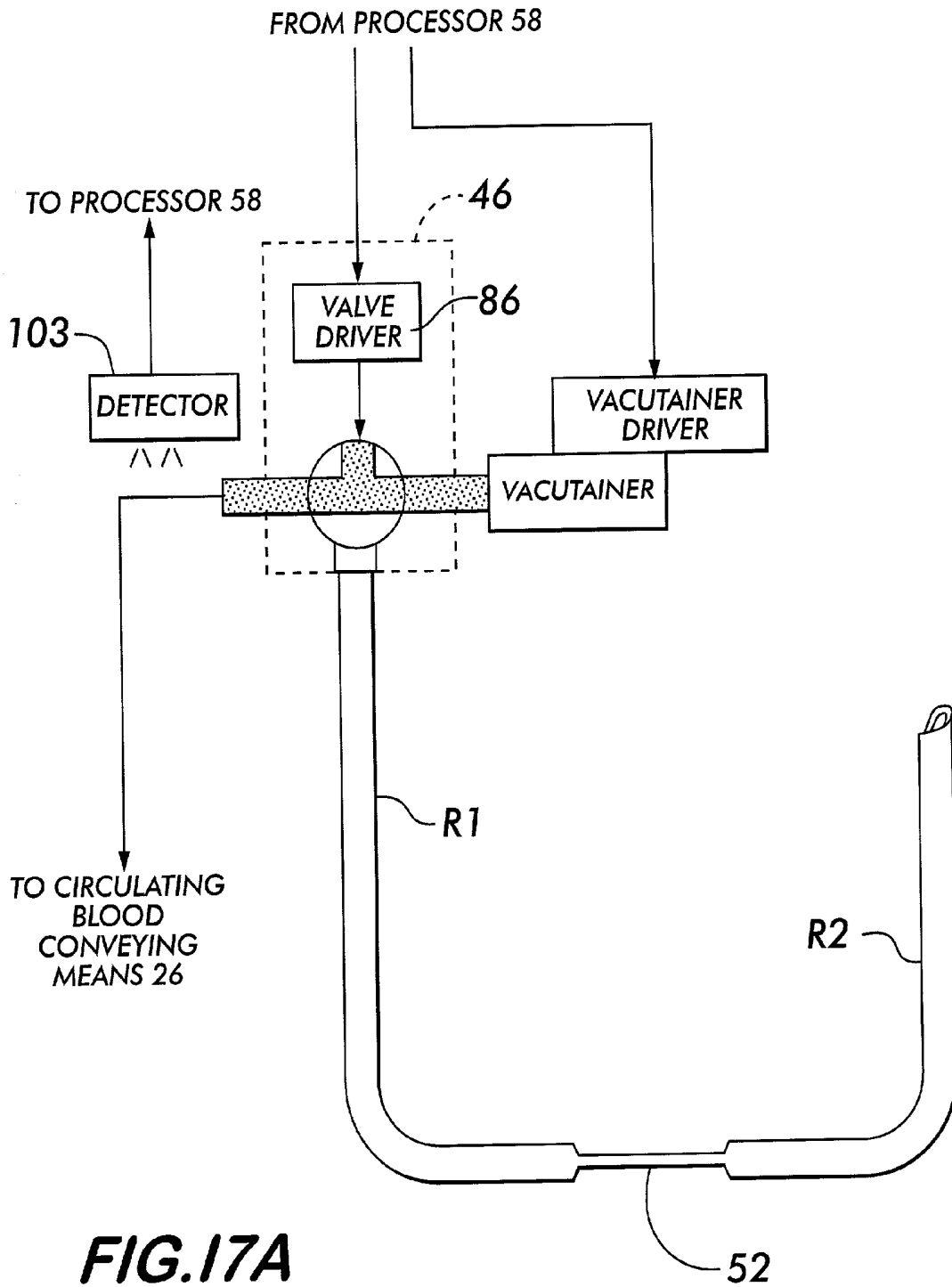


FIG. 17A

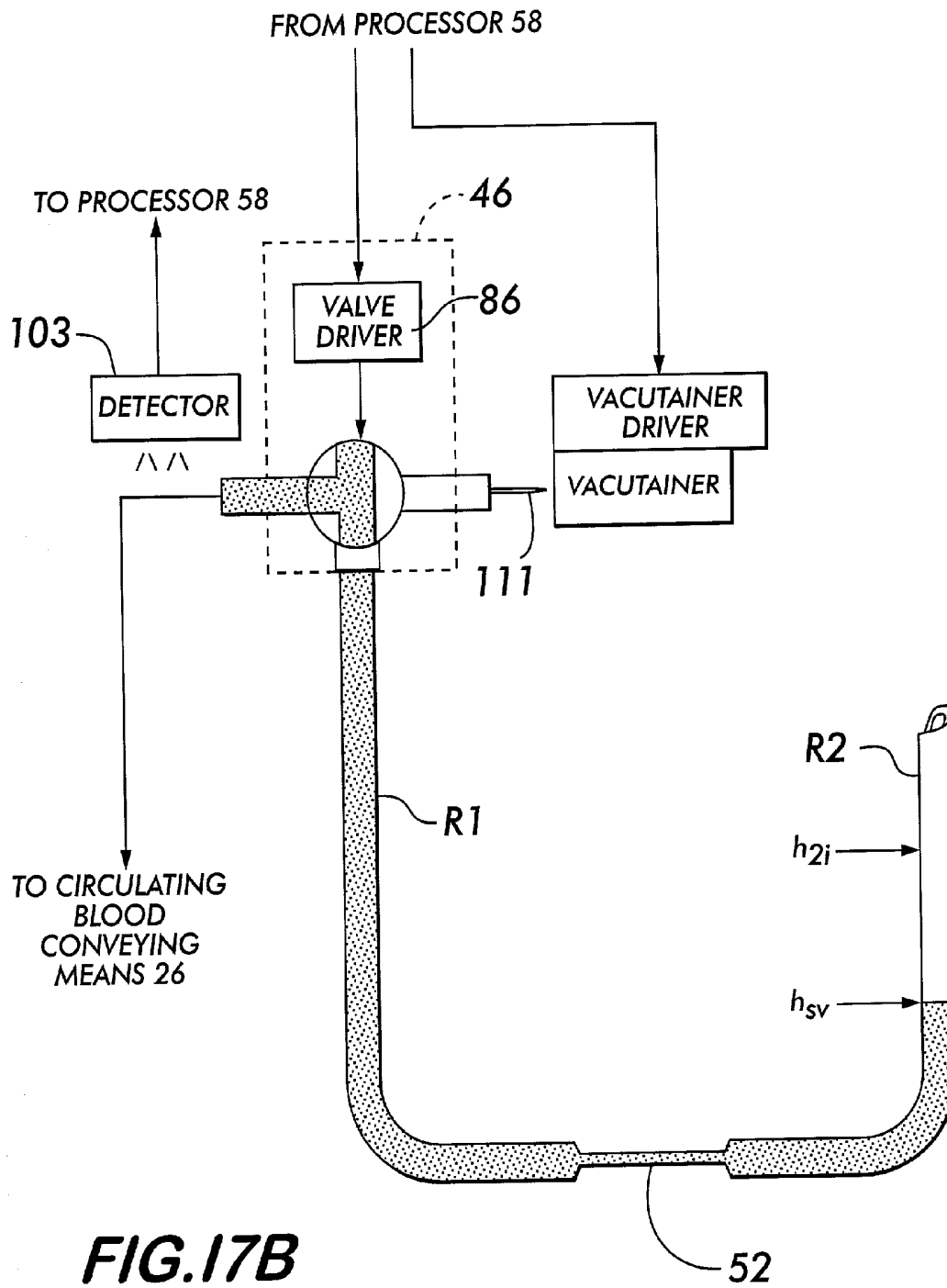


FIG. 17B

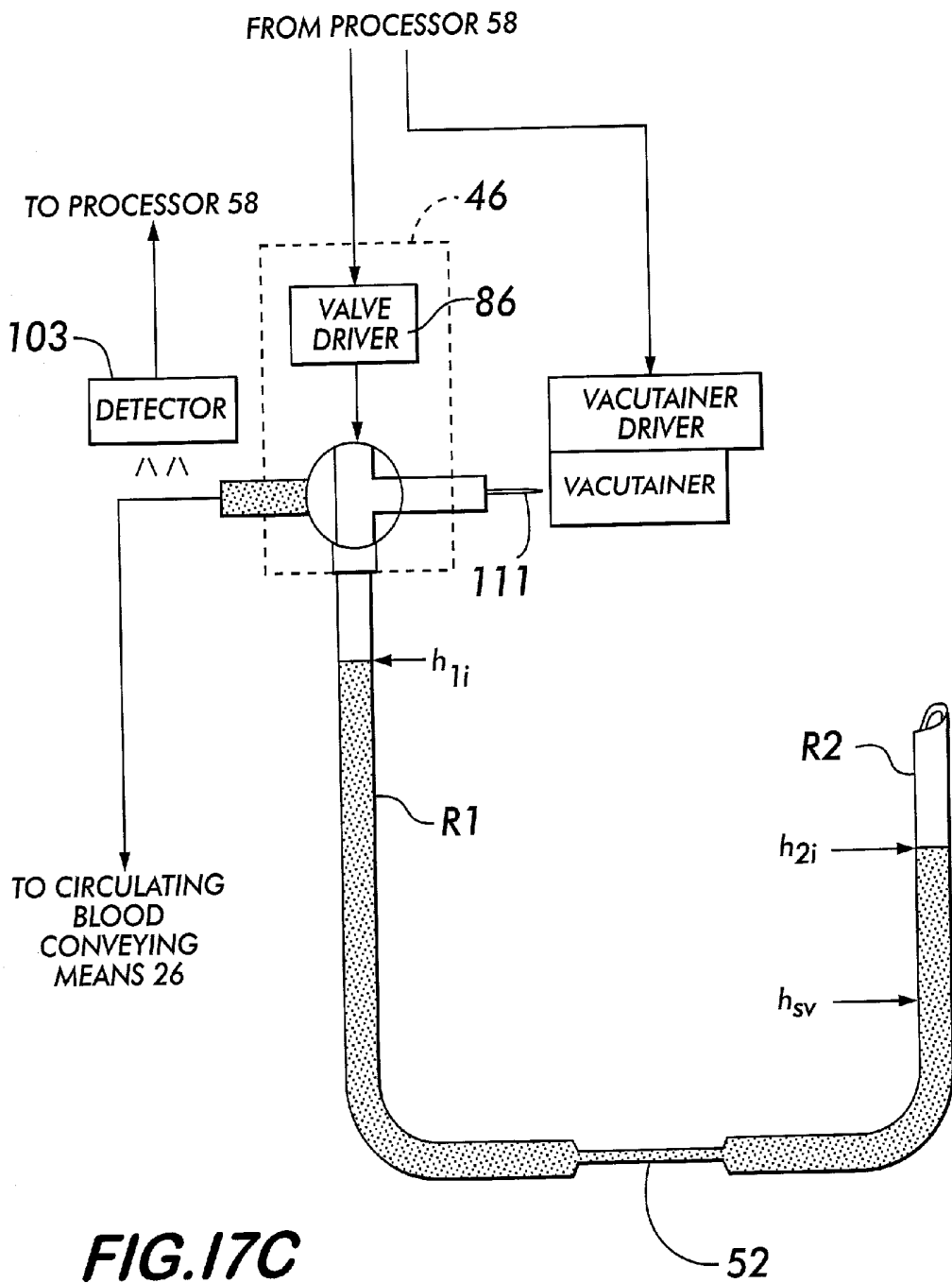


FIG. 18

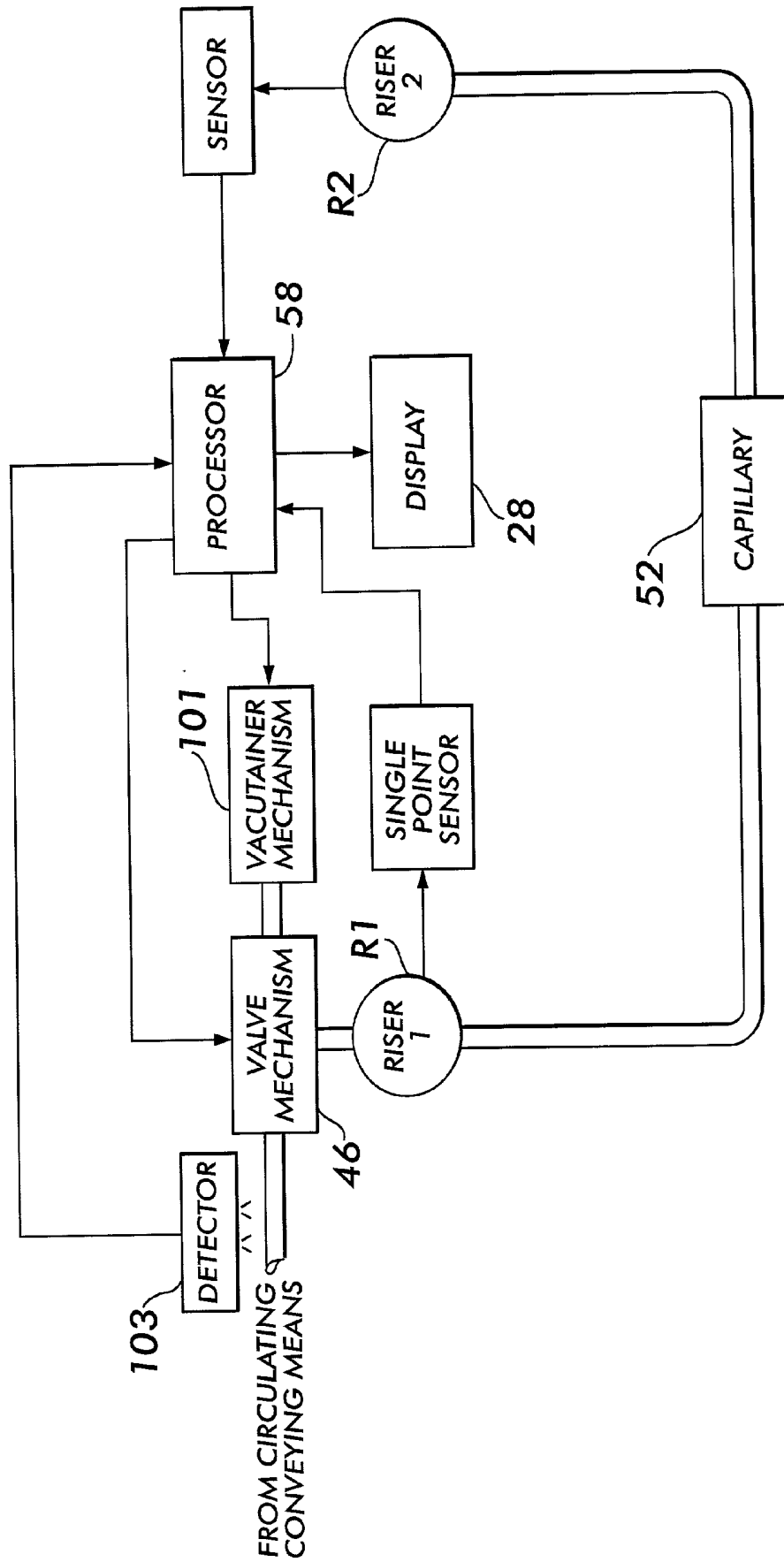
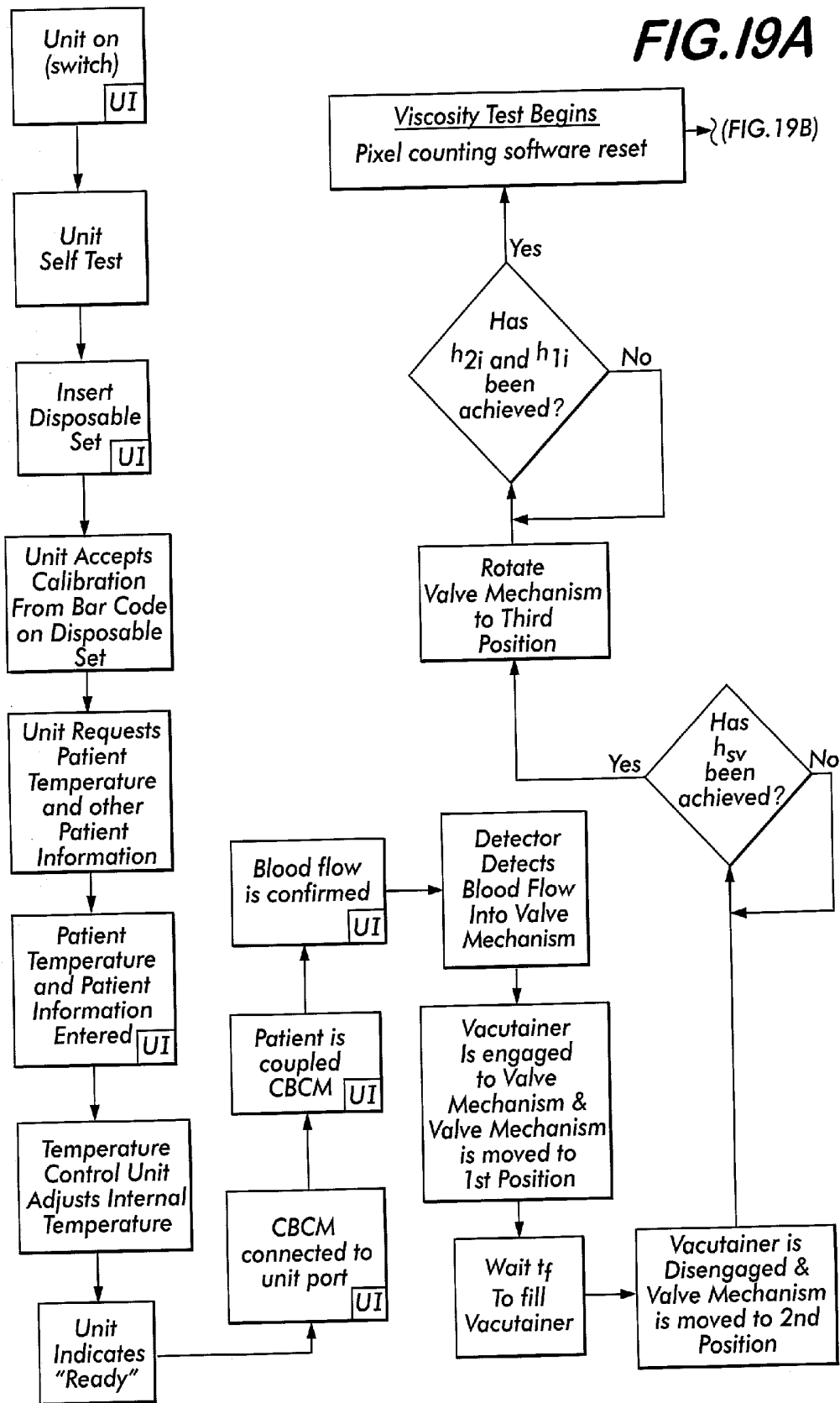


FIG. 19A



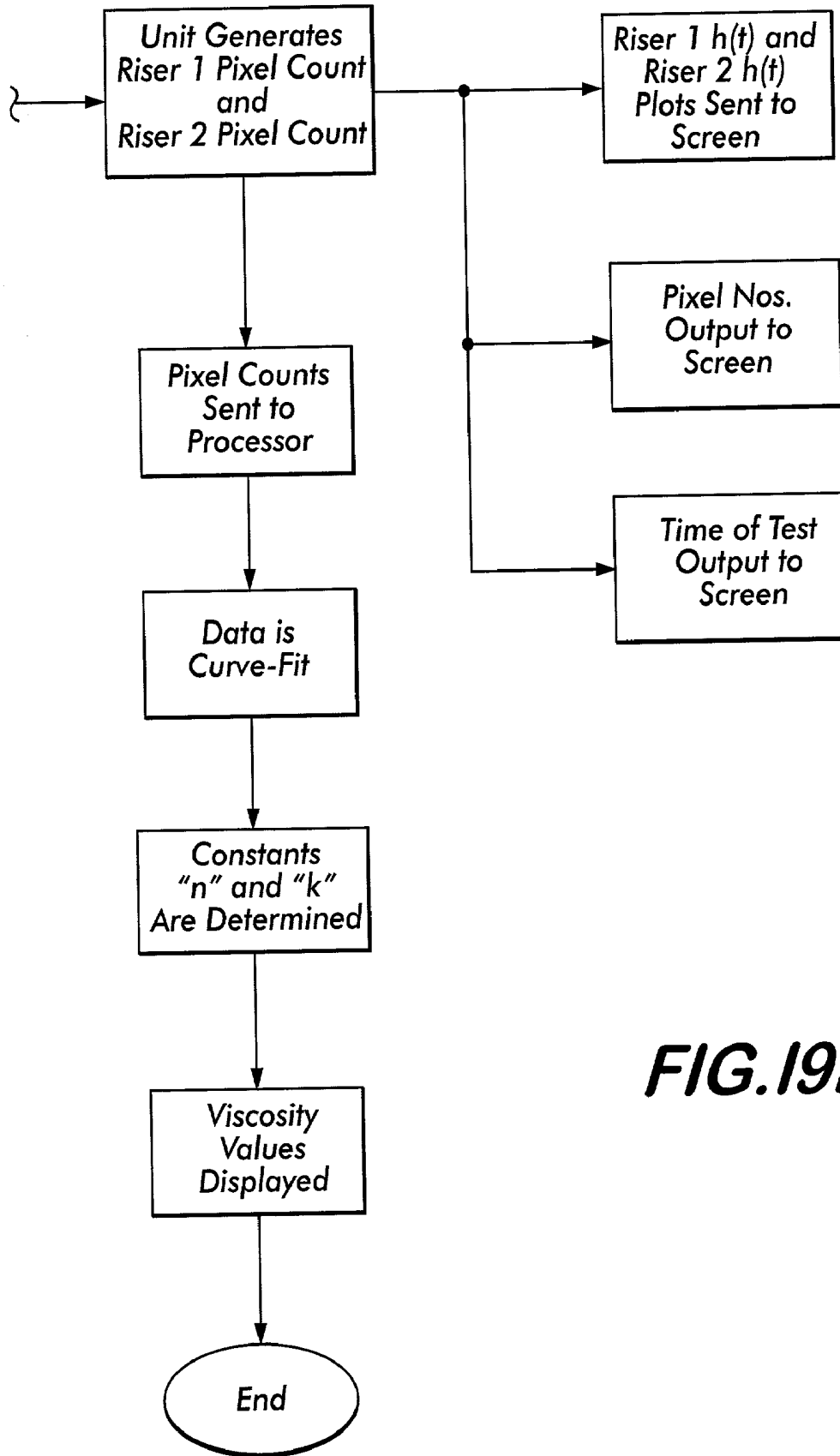
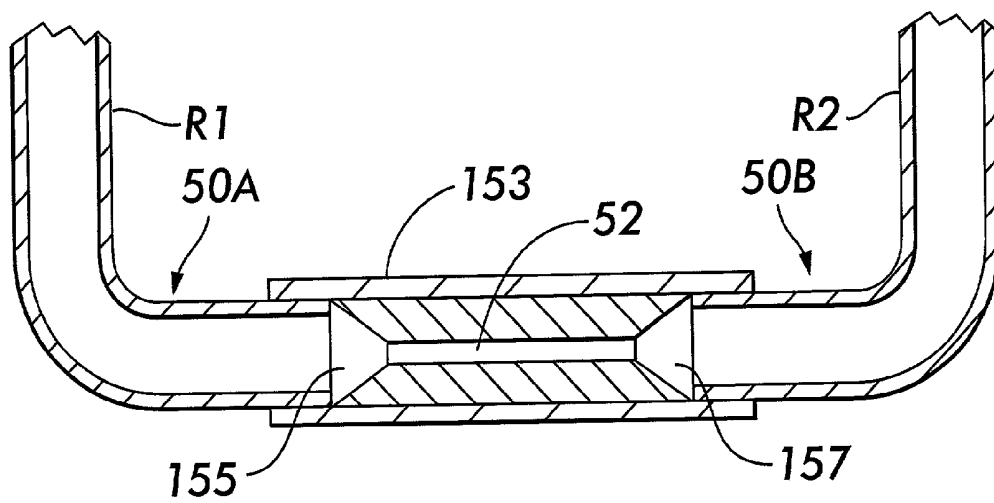
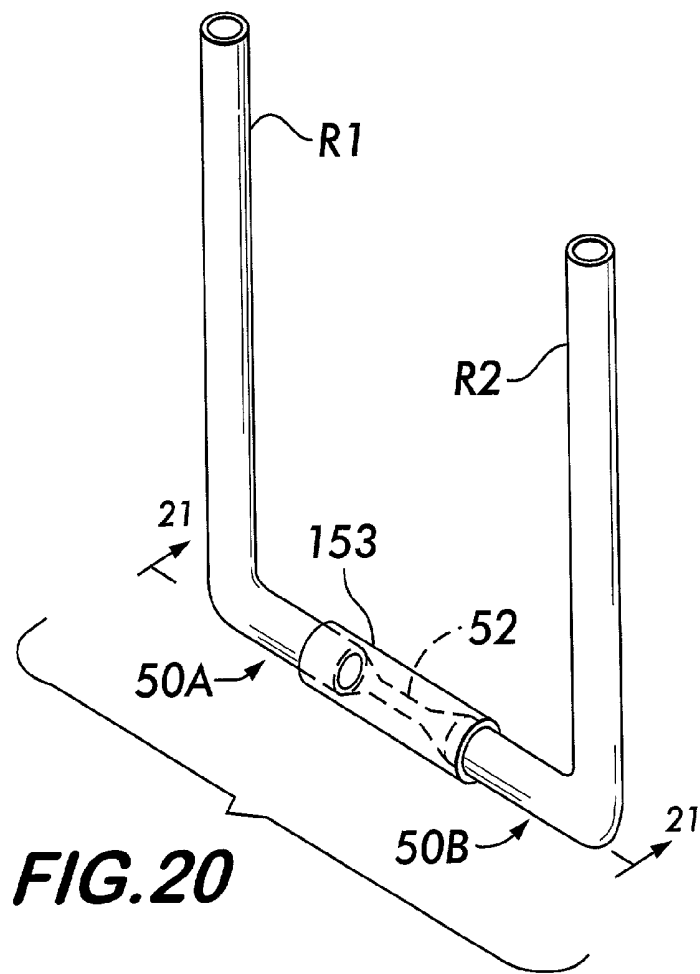


FIG. 19B



DUAL RISER/SINGLE CAPILLARY VISCOMETER

RELATED APPLICATIONS

[0001] This application is a Continuation-in-Part of Co-Pending application Ser. No. 09/439,795, filed Nov. 12, 1999, entitled DUAL RISER/SINGLE CAPILLARY VISCOMETER, which in turn is a Continuation-in-Part of application Ser. No. 08/919,906, filed Aug. 28, 1997 (now U.S. Pat. No. 6,019,735, issued on Feb. 1, 2000), entitled VISCOSITY MEASURING APPARATUS AND METHOD OF USE, all of which are assigned to the same Assignee as the present invention and all of whose entire disclosures are incorporated by reference herein.

BACKGROUND OF THE INVENTION

[0002] This invention relates generally to an apparatus and method for measuring the viscosity of liquids, and more particularly, an apparatus and methods for measuring the viscosity of the blood of a living being in-vivo and over a wide range of shears.

[0003] The importance of determining the viscosity of blood is well-known. *Fibrogen, Viscosity and White Blood Cell Count Are Major Risk Factors for Ischemic Heart Disease*, by Yarnell et al., *Circulation*, Vol. 83, No. 3, March 1991; *Postprandial Changes in Plasma and Serum Viscosity and Plasma Lipids and Lipoproteins After an Acute Test Meal*, by Tangney, et al., *American Journal for Clinical Nutrition*, 65:36-40, 1997; *Studies of Plasma Viscosity in Primary Hyperlipoproteinaemia*, by Leonhardt et al., *Atherosclerosis* 28,29-40, 1977; *Effects of Lipoproteins on Plasma Viscosity*, by Sepowitz, et al., *Atherosclerosis* 38, 89-95, 1981; *Hyperviscosity Syndrome in a Hypercholesterolemic Patient with Primary Biliary Cirrhosis*, Rosenson, et al., *Gastroenterology*, Vol. 98, No. 5, 1990; *Blood Viscosity and Risk of Cardiovascular Events:the Edinburgh Artery Study*, by Lowe et al., *British Journal of Hematology*, 96, 168-171, 1997; *Blood Rheology Associated with Cardiovascular Risk Factors and Chronic Cardiovascular Diseases: Results of an Epidemiologic Cross-Sectional Study*, by Koenig, et al., *Angiology, The Journal of Vascular Diseases*, November 1988; *Importance of Blood Viscoelasticity in Arteriosclerosis*, by Hell, et al., *Angiology, The Journal of Vascular Diseases*, June, 1989; *Thermal Method for Continuous Blood-Velocity Measurements in Large Blood Vessels, and Cardiac-Output Determination*, by Delanois, *Medical and Biological Engineering*, Vol. 11, No. 2, March 1973; *Fluid Mechanics in Atherosclerosis*, by Nerem, et al., *Handbook of Bioengineering*, Chapter 21, 1985.

[0004] Much effort has been made to develop apparatus and methods for determining the viscosity of blood. *Theory and Design of Disposable Clinical Blood Viscometer*, by Litt et al., *Biorheology*, 25, 697-712, 1988; *Automated Measurement of Plasma Viscosity by Capillary Viscometer*, by Cooke, et al., *Journal of Clinical Pathology* 41, 1213-1216, 1988; *A Novel Computerized Viscometer/Rheometer* by Jimenez and Kostic, *Rev. Scientific Instruments* 65, Vol 1, January 1994; *A New Instrument for the Measurement of Plasma-Viscosity*, by John Harkness, *The Lancet*, pp. 280-281, Aug. 10, 1963; *Blood Viscosity and Raynaud's Disease*, by Pringle, et al., *The Lancet*, pp. 1086-1089, May 22, 1965; *Measurement of Blood Viscosity Using a Conical Viscometer*, by Walker et al., *Medical and Biological Engineering*, pp. 551-557, September 1976.

[0005] One reference, namely, *The Goldman Algorithm Revisited: Prospective Evaluation of a Computer-Derived Algorithm Versus Unaided Physician Judgment in Suspected Acute Myocardial Infarction*, by Qamar, et al., *Am Heart J* 138(4):705-709, 1999, discusses the use of the Goldman algorithm for providing an indicator to acute myocardial infarction. The Goldman algorithm basically utilizes facts from a patient's history, physical examination and admission (emergency room) electrocardiogram to provide an AMI indicator.

[0006] In addition, there are a number of patents relating to blood viscosity measuring apparatus and methods. See for example, U.S. Pat. No.: 3,342,063 (Smythe et al.); U.S. Pat. No. 3,720,097 (Kron); U.S. Pat. No. 3,999,538 (Philpot, Jr.); U.S. Pat. No. 4,083,363 (Philpot); U.S. Pat. No. 4,149,405 (Ringrose); U.S. Pat. No. 4,165,632 (Weber, et. al.); U.S. Pat. No. 4,517,830 (Gunn, deceased, et. al.); U.S. Pat. No. 4,519,239 (Kiesewetter, et. al.); U.S. Pat. No. 4,554,821 (Kiesewetter, et. al.); U.S. Pat. No. 4,858,127 (Kron, et. al.); U.S. Pat. No. 4,884,577 (Merrill); U.S. Pat. No. 4,947,678 (Hori et al.); U.S. Pat. No. 5,181,415 (Esvan et al.); U.S. Pat. No. 5,257,529 (Taniguchi et al.); U.S. Pat. No. 5,271,398 (Schlain et al.); and U.S. Pat. No. 5,447,440 (Davis, et. al.).

[0007] The Smythe '063 patent discloses an apparatus for measuring the viscosity of a blood sample based on the pressure detected in a conduit containing the blood sample. The Kron '097 patent discloses a method and apparatus for determining the blood viscosity using a flowmeter, a pressure source and a pressure transducer. The Philpot '538 patent discloses a method of determining blood viscosity by withdrawing blood from the vein at a constant pressure for a predetermined time period and from the volume of blood withdrawn. The Philpot '363 patent discloses an apparatus for determining blood viscosity using a hollow needle, a means for withdrawing and collecting blood from the vein via the hollow needle, a negative pressure measuring device and a timing device. The Ringrose '405 patent discloses a method for measuring the viscosity of blood by placing a sample of it on a support and directing a beam of light through the sample and then detecting the reflected light while vibrating the support at a given frequency and amplitude. The Weber '632 patent discloses a method and apparatus for determining the fluidity of blood by drawing the blood through a capillary tube measuring cell into a reservoir and then returning the blood back through the tube at a constant flow velocity and with the pressure difference between the ends of the capillary tube being directly related to the blood viscosity. The Gunn '830 patent discloses an apparatus for determining blood viscosity that utilizes a transparent hollow tube, a needle at one end, a plunger at the other end for creating a vacuum to extract a predetermined amount and an apertured weight member that is movable within the tube and is movable by gravity at a rate that is a function of the viscosity of the blood. The Kiesewetter '239 patent discloses an apparatus for determining the flow shear stress of suspensions, principally blood, using a measuring chamber comprised of a passage configuration that simulates the natural microcirculation of capillary passages in a being. The Kiesewetter '821 patent discloses another apparatus for determining the viscosity of fluids, particularly blood, that includes the use of two parallel branches of a flow loop in combination with a flow rate measuring device for measuring the flow in one of the branches for determining the blood viscosity. The Kron '127 patent discloses an apparatus and

method for determining blood viscosity of a blood sample over a wide range of shear rates. The Merrill '577 patent discloses an apparatus and method for determining the blood viscosity of a blood sample using a hollow column in fluid communication with a chamber containing a porous bed and means for measuring the blood flow rate within the column. The Hori '678 patent discloses a method for measurement of the viscosity change in blood by disposing a temperature sensor in the blood flow and stimulating the blood so as to cause a viscosity change. The Esvan '415 patent discloses an apparatus that detects the change in viscosity of a blood sample based on the relative slip of a drive element and a driven element, which holds the blood sample, that are rotated. The Taniguchi '529 patent discloses a method and apparatus for determining the viscosity of liquids, e.g., a blood sample, utilizing a pair of vertically-aligned tubes coupled together via fine tubes while using a pressure sensor to measure the change of an internal tube pressure with the passage of time and the change of flow rate of the blood. The Bedingham '328 patent discloses an intravascular blood parameter sensing system that uses a catheter and probe having a plurality of sensors (e.g., an O₂ sensor, CO₂ sensor, etc.) for measuring particular blood parameters in vivo. The Schlain '398 patent discloses an intra-vessel method and apparatus for detecting undesirable wall effect on blood parameter sensors and for moving such sensors to reduce or eliminate the wall effect. The Davis '440 patent discloses an apparatus for conducting a variety of assays that are responsive to a change in the viscosity of a sample fluid, e.g., blood.

[0008] Viscosity measuring methods and devices for fluids in general are well-known. See for example, U.S. Pat. No.: 1,810,992 (Dallwitz-Wegner); U.S. Pat. No. 2,343,061 (Irany); U.S. Pat. No. 2,696,734 (Brunstrum et al.); U.S. Pat. No. 2,700,891 (Shafer); U.S. Pat. No. 2,934,944 (Eolkin); U.S. Pat. No. 3,071,961 (Heigl et al.); U.S. Pat. No. 3,116,630 (Piros); U.S. Pat. No. 3,137,161 (Lewis et al.); U.S. Pat. No. 3,138,950 (Welty et al.); U.S. Pat. No. 3,277,694 (Cannon et al.); U.S. Pat. No. 3,286,511 (Harkness); U.S. Pat. No. 3,435,665 (Tzentis); U.S. Pat. No. 3,520,179 (Reed); U.S. Pat. No. 3,604,247 (Gramain et al.); U.S. Pat. No. 3,666,999 (Moreland, Jr. et al.); U.S. Pat. No. 3,680,362 (Geerdes et al.); U.S. Pat. No. 3,699,804 (Gassmann et al.); U.S. Pat. No. 3,713,328 (Aritomi); U.S. Pat. No. 3,782,173 (Van Vessem et al.); U.S. Pat. No. 3,864,962 (Stark et al.); U.S. Pat. No. 3,908,441 (Virloget); U.S. Pat. No. 3,952,577 (Hayes et al.); U.S. Pat. No. 3,990,295 (Renovanz et al.); U.S. Pat. No. 4,149,405 (Ringrose); U.S. Pat. No. 4,302,965 (Johnson et al.); U.S. Pat. No. 4,426,878 (Price et al.); U.S. Pat. No. 4,432,761 (Dawe); U.S. Pat. No. 4,616,503 (Plungis et al.); U.S. Pat. No. 4,637,250 (Irvine, Jr. et al.); U.S. Pat. No. 4,680,957 (Dodd); U.S. Pat. No. 4,680,958 (Ruelle et al.); U.S. Pat. No. 4,750,351 (Ball); U.S. Pat. No. 4,856,322 (Langrick et al.); U.S. Pat. No. 4,899,575 (Chu et al.); U.S. Pat. No. 5,142,899 (Park et al.); U.S. Pat. No. 5,222,497 (Ono); U.S. Pat. No. 5,224,375 (You et al.); U.S. Pat. No. 5,257,529 (Taniguchi et al.); U.S. Pat. No. 5,327,778 (Park); and U.S. Pat. No. 5,365,776 (Lehmann et al.).

[0009] The following U.S. patents disclose viscosity or flow measuring devices, or liquid level detecting devices using optical monitoring: U.S. Pat. No. 3,908,441 (Virloget); U.S. Pat. No. 5,099,698 (Kath, et. al.); U.S. Pat. No. 5,333,497 (Br nd Dag A. et al.). The Virloget '441 patent discloses a device for use in viscometer that detects the level

of a liquid in a transparent tube using photodetection. The Kath '698 patent discloses an apparatus for optically scanning a rotameter flow gauge and determining the position of a float therein. The Br nd Dag A. '497 patent discloses a method and apparatus for continuous measurement of liquid flow velocity of two risers by a charge coupled device (CCD) sensor.

[0010] U.S. Pat. No. 5,421,328 (Bedingham) discloses an intravascular blood parameter sensing system.

[0011] A statutory invention registration, H93 (Matta et al.) discloses an apparatus and method for measuring elongational viscosity of a test fluid using a movie or video camera to monitor a drop of the fluid under test.

[0012] The following publications discuss red blood cell deformability and/or devices used for determining such: *Measurement of Human Red Blood Cell Deformability Using a Single Micropore on a Thin Si₃N₄ Film*, by Ogura et al, IEEE Transactions on Biomedical Engineering, Vol. 38, No. 8, August 1991; *the Pall BPF4 High Efficiency Leukocyte Removal Blood Processing Filter System*, Pall Biomedical Products Corporation, 1993.

[0013] A device called the "Hevimet 40" has recently been advertised at www.hevimet.freeseerve.co.uk. The Hevimet 40 device is stated to be a whole blood and plasma viscometer that tracks the meniscus of a blood sample that falls due to gravity through a capillary. While the Hevimet 40 device may be generally suitable for some whole blood or blood plasma viscosity determinations, it appears to exhibit several significant drawbacks. For example, among other things, the Hevimet 40 device appears to require the use of anticoagulants. Moreover, this device relies on the assumption that the circulatory characteristics of the blood sample are for a period of 3 hours the same as that for the patient's circulating blood. That assumption may not be completely valid.

[0014] Notwithstanding the existence of the foregoing technology, a need remains for an apparatus and method for obtaining the viscosity of the blood of a living being in-vivo and over a range of shears and for the provision of such data in a short time span.

OBJECTS OF THE INVENTION

[0015] Accordingly, it is the general object of the instant invention to provide an apparatus and methods for meeting that need.

[0016] It is a further object of this invention to provide viscosity measuring an apparatus and methods for determining the viscosity of circulating blood over a range of shear rates, especially at low shear rates.

[0017] It is still yet a further object of this invention to provide an apparatus and methods for determining viscosity of the circulating blood of a living being (e.g., in-vivo blood viscosity measurement) without the need to directly measure pressure, flow and volume.

[0018] It is yet another object of this invention to provide an indication of the viscosity of the circulating blood of a living being in a short span of time.

[0019] It is yet another object of this invention to provide an apparatus and methods for measuring the viscosity of the circulating blood of a living being and with minimal invasiveness.

[0020] It is still yet another object of the present invention to provide an apparatus and methods for measuring the viscosity of the circulating blood of a living being that does not require the use of anti-coagulants, or other chemicals or biologically active materials.

[0021] It is still yet even another object of the present invention to provide an apparatus and method for measuring the viscosity of blood of a living being that does not require the blood to be exposed to atmosphere or oxygen.

[0022] It is still yet another object of the present invention to provide an apparatus and method for determining the viscosity of the circulating blood contemporaneous with the diversion of the blood into a conveying means (e.g., needle) when that means is coupled to, e.g., inserted into, the patient.

[0023] It is still yet another object of the present invention to provide an apparatus and methods for measuring the circulating blood viscosity of a living being that comprises disposable portions for maintaining a sterile environment, ease of use and repeat testing.

[0024] It is still yet another object of the present invention to provide a blood viscosity measuring apparatus and methods for determining the thixotropic point of the blood.

[0025] It is even yet another object of the present invention to provide an apparatus and methods for determining the yield stress of the circulating blood.

[0026] It is moreover another object of the present invention to provide an apparatus and methods for detecting circulating blood viscosity to evaluate the efficacy of pharmaceuticals, etc., to alter blood viscosity of the circulating blood of a living being.

[0027] It is even yet another object of this invention to provide an apparatus and methods for detecting the viscosity of the circulating blood of a patient while negating the effects of venous pressure.

SUMMARY OF THE INVENTION

[0028] In accordance with one aspect of this invention an apparatus is provided for effecting the viscosity measurement (e.g., in real-time) of circulating blood in a living being. The apparatus comprises: a lumen arranged to be coupled to the vascular system of the being; a pair of tubes having respective first ends coupled to the lumen for receipt of circulating blood from the being, and wherein one of the pair of tubes comprises a capillary tube having some known parameters; a valve for controlling the flow of circulating blood from the being's vascular system to the pair of tubes; and an analyzer, coupled to the valve, for controlling the valve to permit the flow of blood into the pair of tubes whereupon the blood in each of the pair of tubes assumes a respective initial position with respect thereto. The analyzer is also arranged for operating the valve to isolate the pair of tubes from the being's vascular system and for coupling the pair of tubes together so that the position of the blood in the pair of tubes changes. The analyzer is also arranged for monitoring the blood position change in one of the tubes and detecting a single blood position in the other one of the pair of tubes and calculating the viscosity based thereon.

[0029] In accordance with another aspect of this invention a method is provided for determining the viscosity (e.g., in real-time) of circulating blood of a living being. The method

comprises the steps of: (a) providing access to the circulating blood of the living being to establish an input flow of circulating blood; (b) dividing the input flow of circulating blood into a first flow path and a second flow path into which respective portions of the input flow pass and wherein one of the first or second flow paths includes a passageway portion having some known parameters; (c) isolating the first and second flow paths from the input flow and coupling the first and second flow paths together so that the position of the blood in each of the flow paths changes; (d) monitoring the blood position change in one of the first and second flow paths over time; (e) detecting a single blood position in the other one of said first and second flow paths; and (f) calculating the viscosity of the circulating blood based on the blood position change, the single blood position and on selected known parameters of the passageway portion.

[0030] In accordance with still another aspect of this invention an apparatus is provided for effecting the viscosity measurement (e.g., in real-time) of circulating blood in a living being. The apparatus comprises: a lumen arranged to be coupled to the vascular system of the being; a pair of tubes having respective first ends and second ends wherein the first ends are coupled together via a capillary tube having some known parameters; a valve for controlling the flow of circulating blood from the being's vascular system to the pair of tubes wherein the valve is coupled to a second end of one of the pair of tubes and is coupled to the lumen; and an analyzer, coupled to the valve, for controlling the valve to permit the flow of blood into the pair of tubes whereupon the blood in each of the pair of tubes assumes a respective initial position with respect thereto. The analyzer also is arranged for operating the valve to isolate the pair of tubes from the being's vascular system so that the position of the blood in the pair of tubes changes. The analyzer also is arranged for monitoring the blood position change in one of the tubes and detecting a single blood position in the other one of the pair of tubes and calculating the viscosity of the blood based thereon.

[0031] In accordance with yet another aspect of this invention a method is provided for determining the viscosity (e.g., in real-time) of circulating blood of a living being. The method comprises the steps of: (a) providing access to the circulating blood of the living being to form an input flow of circulating blood; (b) directing the input flow into one end of a pair of tubes coupled together via a passageway having some known parameters whereby the input flow passes through a first one of the pair of tubes, through the passageway and into a first portion of a second one of the pair of tubes in order to form respective columns in the first and second tubes; (c) isolating the respective columns from the input flow so that the position of the blood in each of the columns changes; (d) monitoring the blood position change in one of the columns of blood over time; (e) detecting a single blood position in the other one of the pair of tubes; and (f) calculating the viscosity of the circulating blood based on the blood position change, the single blood position and on selected known parameters of the passageway.

DESCRIPTION OF THE DRAWINGS

[0032] Other objects and many of the intended advantages of this invention will be readily appreciated when the same becomes better understood by reference to the following

detailed description when considered in connection with the accompanying drawings wherein:

[0033] **FIG. 1** is a block diagram of the dual riser/single capillary (DRSC) viscometer;

[0034] **FIG. 2** is a front view of one embodiment of the DRSC viscometer depicting the respective housings for the blood receiving means, with its door opened, and the analyzer/output portion;

[0035] **FIG. 3** is a side view of the embodiment of **FIG. 2**;

[0036] **FIG. 4** is a functional diagram of the DRSC viscometer just prior to making a viscosity test run;

[0037] **FIG. 5** is a functional diagram of the DRSC viscometer during the viscosity test run;

[0038] **FIG. 6** depicts a graphical representation of the respective columns of fluid in the riser tubes of the DRSC viscometer during the viscosity test run;

[0039] **FIGS. 7A-7C** depict the operation of the valve mechanism of the DRSC viscometer just prior to, and during, the viscosity test run;

[0040] **FIG. 8** is a block diagram for the DRSC viscometer which detects movement of the column of fluid in either of the riser tubes using various types of sensors;

[0041] **FIGS. 9A-9B** comprise a flow chart of the operation of the DRSC viscometer;

[0042] **FIG. 10A** depicts a graphical representation of the viscosity of a living patient's circulating blood plotted for a range of shear rates;

[0043] **FIG. 10B** depicts a graphical representation of the logarithm of the viscosity of a living patient's circulating blood plotted against the logarithm of shear rates;

[0044] **FIG. 11** depicts an implementation of the capillary and riser tube portion of the blood receiving means;

[0045] **FIG. 12** is a partial cross-sectional view taken along line 12-12 of **FIG. 11**.

[0046] **FIG. 13** is a block diagram of a second more preferred dual riser/single capillary (DRSC) viscometer;

[0047] **FIG. 14** is a front view of the second embodiment of the DRSC viscometer depicting the respective housings for the blood receiving means, with its door opened, and the analyzer/output portion;

[0048] **FIG. 15** is a functional diagram of the second embodiment of the DRSC viscometer just prior to making a viscosity test run;

[0049] **FIG. 16** is a functional diagram of the second embodiment of the DRSC viscometer during the viscosity test run;

[0050] **FIGS. 17A-17C** depict the operation of the valve mechanism of the second embodiment of the DRSC viscometer just prior to, and during, the viscosity test run;

[0051] **FIG. 18** is a block diagram for the second embodiment of the DRSC viscometer which detects movement of the column of fluid in each of the riser tubes using various types of sensors;

[0052] **FIGS. 19A-19B** comprise a flow chart of the operation of the second embodiment of the DRSC viscometer;

[0053] **FIG. 20** depicts an implementation of the capillary and riser tube portion of the blood receiving means for the second embodiment of the DRSC viscometer; and

[0054] **FIG. 21** is a partial cross-sectional view taken along line 21-21 of **FIG. 20**.

DETAILED DESCRIPTION OF THE PREFERRED EMBODIMENTS

[0055] As stated previously, the present application is a Continuation-in-Part of Co-Pending application Ser. No. 09/439,795, filed Nov. 12, 1999, entitled DUAL RISER/SINGLE CAPILLARY VISCOMETER, which in turn is a Continuation-in-Part of A. Ser. No. 08/919,906 filed Aug. 28, 1997 (now U.S. Pat. No. 6,019,735), entitled VISCOSITY MEASURING APPARATUS AND METHOD OF USE, assigned to the same Assignee as the present invention and all of whose entire disclosures are incorporated by reference herein. For measuring the viscosity of circulating blood, including whole blood, of a living being, the apparatus and method as disclosed in U.S. Pat. No. 6,019,735 are generally preferable. To negate venous pressure effects at low shear rates, cuffing the living being, or other suitable means, may be used with that apparatus and method.

[0056] An alternative apparatus and method of the present invention to negate pressure at low shear rates for measuring the viscosity of circulating blood, including whole blood, of a living being is shown generally at **920** in **FIG. 1**. The dual riser/single capillary (DRSC) viscometer **920** basically comprises a blood receiving means **22** and an analyzer/output portion **924**. The analyzer/output portion **924** is similar to the analyzer output portion **24** of A. Ser. No. 09/439,795, except that one of the column level detectors, e.g., column level detector **54** for riser tube **R1**, is replaced with a single point detector **954**, as will be discussed in detail later. Suffice it to say for now, that the apparatus **920** is similar in structure and operation to the apparatus **20** except for the substitution of one of the column level detectors with a single point detector **954**.

[0057] The patient is coupled to the DRSC viscometer **920** through a circulating blood conveying means **26**, e.g., a needle, an IV needle, an in-dwelling catheter, etc., or any equivalent structure that can convey circulating blood from a patient to the DRSC viscometer **20**. As will be discussed in detail later, the analyzer/output portion **924** provides a display **28** for presenting the viscosity information, as well as other information to the operator. The analyzer/output portion **924** may also provide this information to other suitable output means **30**, such as a datalogger **32**, other computer(s) **34**, a printer **36**, a plotter **38**, remote computers/storage **40**, to the Internet **42** or to other on-line services **44**.

[0058] The blood receiving means **22** basically comprises a valve mechanism **46** coupled to a first riser tube **R1** on one side and coupled to a second riser tube **R2** via a capillary tube **52** on the other side. The capillary tube **52** is of small uniform inside diameter, e.g., 60 mm-length, 0.8 mm inside diameter. When the circulating blood conveying means **26** (hereinafter the "CBCM **26**") is coupled to the blood receiving means **22**, the valve mechanism **46** controls the flow of blood into the receiving means **22**, as will be discussed in

detail later. Each of the riser tubes R1 and R2 are preferably the same dimensions (e.g., 12 inch long, 2 mm inside diameter).

[0059] It should be understood that the blood receiving means 22 may be disposable or non-disposable. As will be discussed in detail later, where the blood receiving means 22 are disposable, the components (valve mechanism 46, riser tubes R1 and R2 and capillary tube 52) are releasably secured in a blood receiving means housing that can be quickly and easily inserted, used during the viscosity test run and then quickly and easily removed for disposal; another disposable blood receiving means 22 is then inserted in preparation for the next viscosity test run. On the other hand, where the blood receiving means 22 is non-disposable, the components (valve mechanism 46, riser tubes R1 and R2 and capillary tube 52) can be thoroughly washed and cleaned in place in preparation for the next viscosity test run.

[0060] It should be understood that the capillary tube 52 does not necessarily have to be an elongated tube but may comprise a variety of configurations such as a coiled capillary tube.

[0061] As mentioned earlier, the analyzer/output portion 924 differs from the analyzer/output portion 24 of A. Ser. No. 09/439,795 in that the analyzer/output portion 924 comprises only a single column level detector 56 and a single point detector 954. This modification to the analyzer/output portion 24 of A. Ser. No. 09/439,795 is based on the symmetry of the column of blood height (i.e., $h_1(t)$ and $h_2(t)$) vs. time data (see FIG. 6). As long as one of the two columns of blood 82/84 is monitored, the height vs. time data for the other column of blood can be generated by using a single height point from that column. In the invention of the present application, it is only necessary to monitor the change in position of one of the columns of blood in either riser tube R1 or riser tube R2 and to detect only one point from the other column of blood. The preferred method/means is to monitor the rising column of blood 84 which occurs in riser tube R2 and to detect the initial viscosity test run level (i.e., h_{1i} , as will be discussed in detail later) of the column of blood 82 in riser tube R1. Thus, it is within the broadest scope of this invention to cover a monitor that monitors either one of the moving columns of blood but not both (as is disclosed in A. Ser. No. 09/439,795) and a single point detector for detecting one point from the other moving column of blood.

[0062] In particular, the analyzer/output portion 924 basically comprises the single column level detector 56, the single point detector 954, a processor 58, the display 28, a bar code reader 78, an environmental control unit 80, and a first battery B1 and a second back-up battery B2. The column level detector 56 (comprising an LED (light emitting diode) array 64 and a CCD (charge coupled device) 66, as will be discussed in detail later) monitors the rising level of blood in the second riser tube R2; furthermore, the single point detector 954, may comprise (but is not limited to) an LED 964 and a photodetector 966, which detect a specific level of the column of blood, e.g., h_{1i} , as will also be discussed in detail later.

[0063] The processor 58 (e.g., a "386" microprocessor or greater, or any equivalent) is arranged to analyze the data from the detector 56 and calculate the blood viscosity therefrom, as will also be discussed in detail later. Further-

more, the processor 58 also controls the display 28 for providing the viscosity information and the other information to the operator as well as to the other output means 30. The processor 58 also controls the valve mechanism 46 based on the data from the detector 56, as will be discussed later. Battery B1 provides all of the requisite power to the analyzer/output portion 924, with battery B2 serving as a back-up power supply. The bar code reader 78 and the environmental control unit 80 will be described later.

[0064] As shown more clearly in FIGS. 2-3, the DRSC viscometer 920 comprises the blood receiving means 22 and the analyzer/output portion 924 contained in respective housings 60 and 62, each of which can be releasably secured to a common frame, e.g., a conventional intravenous (IV) pole 48. In this configuration, the analyzer/output portion 924 can be positioned in an inclined orientation (see FIG. 3) to facilitate user operation and viewing of the display 28. However, it should be understood that the respective housing constructions are exemplary, and others can be incorporated without limiting the scope of this invention.

[0065] The display 28 may comprise any suitable conventional devices, e.g., an ELD (electroluminescent display) or LCD (liquid crystal display) that permits the visualization of both text and graphics. The resolution of this display 28 is preferably 800x600 VGA or above. Furthermore, while the preferred embodiment utilizes a touch screen display which incorporates, among other things:

[0066] graphical display 61

[0067] instruction, and/or data, display 65 (which also includes the command line display shown as "RUN TEST"; e.g., "TESTING", "TEST IN PROGRESS," etc.)

[0068] alphanumeric keypad 68

[0069] emergency stop button 70

[0070] battery status indicators, 72A and 72B

[0071] function buttons 74,

[0072] it should be understood that any equivalent display device is within the broadest scope of the invention. Thus, any number of user interfaces and buttons may be available through the display 28. Therefore the invention 920 is not limited to the embodiment that is shown in FIG. 2. Moreover, the display 28 can be operated to minimize or maximize, or overlay any particular graphic or text screen, as is available in any conventional object-oriented operating system, such as Microsoft® WINDOWS.

[0073] The lower housing 60 comprises the blood receiving means 22 and the column level detector 56. In the preferred embodiment, the column level detector 56 comprises an LED (light emitting diode) array 64 and a CCD (charge coupled device) 66 located on opposite sides of the riser tube R2. When the column level detector 56 is operating, each LED array 64 illuminates the riser tube R2, and depending on whether there is fluid in the column, various pixels in the CCD 66 will either detect the light from the LED array 64 (no fluid in the column, thereby permitting the light to pass through the riser tube) or not (fluid is present and is blocking the passage of light from the LED array 64). The pixel data of each CCD 66 is passed to the analyzer/output 924 through conventional wire harnesses (not shown)

for use by the processor 58. Furthermore, power for the LED arrays 64 and the CCDs 66 is provided via these wire harnesses from the batteries B1/B2, if the batteries are contained in the analyzer/output housing 62.

[0074] With respect to the single point detector 954, during operation of the apparatus 920, with the valve mechanism 46 open, blood flows up the riser tube R1 while the photodetector 966 continues to detect the light from the LED 964. Once the top of the column of blood 82 interrupts the light from the LED 964, the photodetector 966 informs the processor 58, which operates the valve mechanism 46, to halt any further blood flow into riser tube R1. This level of the column of blood defined as h_{1i} , forms the initial starting point of the column of blood in riser tube R1 for the viscosity test run, i.e., the column of blood in riser tube R1 falls away from this level h_{1i} when the viscosity test begins. Since the position of the photodetector 966 is at the predetermined location, h_{1i} , above the reference level (FIG. 2), the photodetector 966 acts to verify that the initial position, h_{1i} has been reached by the column of blood in riser tube R1.

[0075] Alternatively, as mentioned earlier, the column level detector 56 can be used to detect the falling column of blood in the first riser tube R1 and the single point detector 954 can be used to detect the initial viscosity test run position, h_{2j} , of the rising column of blood in riser tube R2. Thus, it is within the broadest scope of the invention to cover the use of one column level detector for monitoring the change in position of the blood column in one riser tube and the use of a single point detector for detecting a single point of the blood column in the other riser tube.

[0076] It should be understood that any one point of the blood column can be detected by the single point detector 954. The preferred point is the initial column level for the viscosity test run, namely h_{1i} or h_{2j} . However, any other point in the column can be detected in order to generate the corresponding height vs. time data/curve.

[0077] Where the blood receiving means 22 is disposable, it is releasably secured in the housing 60 such that once a test run is completed and/or a new patient is to be tested, all of the lumens (e.g., the tube 50, the capillary 52, the riser tubes R1 and R2 and the valve mechanism 46) can be easily/quickly removed, disposed of and a new set inserted. For example, brackets 47 (FIG. 2) may be used to releasably secure the upper portions of the riser tubes R1 and R2 and the lower portions of the riser tubes R1 and R2; the valve mechanism 46 comprises a port 49 that fits snugly into an opening (not shown) in the bottom wall of the housing 60. The column level detector 56 is preferably not removable from the housing 60. A door 76 (which can be vertically or horizontally hinged to the housing 60) is provided to establish a darkened environment during the test run. The door 76 also supports the bar code reader 78, mentioned earlier. This bar code reader 78 automatically reads a bar code (not shown) that is provided on one of the riser tubes (e.g., R2). The bar code contains all of the predetermined data regarding the characteristics of the capillary tube 52 (e.g., its length and diameter) and the characteristics of the riser tubes R1 and R2. This information is passed to the processor 58 which is then used to determine the viscosity, as will be discussed in detail later. The bar code reader 78 passes this information to the processor 58 via the wire harnesses discussed earlier. It should be understood that the location (on the door 76) of

the bar code reader 78 is exemplary only and that other locations within the unit are encompassed by the scope of the invention.

[0078] It should be understood that the brackets 47 do not interfere in any way with the column level monitoring, nor the single point detection, since the movement of blood in the riser tubes R1/R2 that is being monitored/detected during the viscosity test run is in between the upper and lower bracket 47 pairs.

[0079] The door 76 also supports an environmental control unit 80 (e.g., a heater, fan and/or thermostat) such that when it is closed in preparation for the test, the capillary tube 52 is then heated (or cooled) and maintained throughout the test run at the same temperature and environment as the patient. Prior to the run, the patient's temperature is taken and the operator enters this temperature (via the touch screen display 28). The environmental control unit 80 then operates to achieve and maintain this temperature. It should be noted that it is within the broadest scope of this invention to include an environmental control unit 80 that achieves and maintains the entire blood receiving means 22 at the patient's temperature during the run. Power to the bar code reader 78 and temperature control unit 80 is provided by the analyzer/output 924 through the wire harnesses (not shown) discussed previously.

[0080] One exemplary implementation of the blood receiving means 22 is shown in FIGS. 11-12. In particular, the riser tubes R1 and R2 (e.g., injection-molded pieces) have integral elbows 50A and 50B that are inserted into respective ports (not shown) of the valve mechanism 46 (e.g., a single, 3-way stop cock valve). Prior to inserting the elbow portion 50B of riser R2 into its corresponding valve mechanism port, a capillary insert 53 having internal capillary 52, is positioned inside the riser tube R2. As shown most clearly in FIG. 12, the capillary insert 53 comprises a tapered entry port 55 and a tapered exit port 57 to minimize any turbulence as the circulating blood passes from the valve mechanism through the elbow 50B and up into riser tube R2.

[0081] The batteries B1/B2 may comprise a 12VDC, 4 amp-hour batteries, or any equivalent power supply (e.g., batteries used in conventional lap-top computers such as lithium ion batteries). The display 28 provides the status indicators 72A/72B for each battery in the DRSC viscometer 20. In particular, when the DRSC viscometer 20 is operating off of battery B1, the two battery indicators 72A/72B appear on the display 28. However, once battery B1 is depleted, the battery B1 indicator 72A disappears and the battery B2 indicator 72B blinks to warn the operator that the DRSC viscometer 20 is now operating off of the back-up battery B2 and re-charge of battery B1 is necessary.

[0082] The concept of viscosity determination using the DRSC viscometer 920 is to monitor the change in height of one of two, oppositely-moving, columns of blood from the circulating blood of a patient and given the dimensions of a capillary through which one of the columns of blood must flow. The DRSC viscometer 920 accomplishes this by operating the valve mechanism 46 to first establish an optimum separation distance between the two columns of blood 82 and 84 in the respective riser tubes R1 and R2 (FIG. 4). Once established, the DRSC viscometer 20, via its valve mechanism 46, couples these two columns of blood

82/84 together and permits them to reach equilibrium while monitoring the movement of the two columns blood **82/84** (**FIG. 5**).

[0083] In particular, as shown in **FIG. 4**, continuous blood flow from the patient is permitted to flow from the CBCM **26**, through the valve mechanism **46**, and into both riser tubes **R1** and **R2**. During this flow, the column level detector **56** monitors the height of the rising column of blood. When the optimum separation distance is achieved, i.e., when the column of blood in riser tube **R1** reaches h_{1i} , and the column of blood in riser tube **R2** reaches h_{2i} , the valve mechanism **46** stops the flow of blood from the CBCM **26** and simultaneously couples the columns of blood together (**FIG. 5**). As a result, the column of blood in riser tube **R1** falls and the column of blood in riser tube **R2** climbs toward a final equilibrium value, h_{∞} (which, as will be discussed later, is actually an offset known as “ Δh ”). It is the detection of one (preferably the rising column in riser tube **R2**) of these oppositely moving columns of blood (**FIG. 5**), which is important for blood viscosity determination, as will be discussed later. The graphical representation of $h_1(t)$ and $h_2(t)$ is shown in **FIG. 6**.

[0084] It should be understood that the optimum separation distance, i.e., $h_{1i}-h_{2i}$, as well as the dimensions of the capillary tube **52**, avoids any oscillations of the columns of blood at the end of the viscosity test run. In other words, these two factors provide for the flat appearance of each of the plots $h_1(t)$ and $h_2(t)$ at the end of the viscosity test run, as shown in **FIG. 6**.

[0085] **FIGS. 7A-7C** depict a typical sequence of how the valve mechanism **46** establishes the pre-test run columns of blood (**FIG. 4**) and the test run columns of blood (**FIG. 5**). The valve mechanism **46** comprises a single, 3-way stop cock valve. The valve may comprise a solenoid (e.g., 500 mA solenoid, or stepper motor, etc., indicated by valve driver **86**) that is pulsed by the processor **58** to operate the valve in the appropriate direction. In particular, the processor **58** commands rotation of the valve by issuing a positive or negative pulse to the solenoid. For example, to receive patient circulating blood flow into the DRSC viscometer **920** initially, the valve driver **86** configures the valve to allow circulating blood to enter both riser tubes **R1** and **R2** through respective tubing **13** and **14** (**FIG. 7A**). The column level detector **56** is monitoring the rising column of blood **84** during this time. Should the column of blood pre-test level h_{1i} be reached first, the processor **58** issues a positive pulse to the valve driver **86** to close off flow to riser tube **R1** (**FIG. 7B**); alternatively, should the column of blood pre-test level h_{2i} be reached first, the processor **58** issues a negative pulse to close off flow to riser tube **R2** while continuing to allow circulating blood flow into riser tube **R1** (not shown). Finally, to couple the two riser tubes **R1** and **R2** together while isolating them from the circulating blood flow of the patient, the processor **58** commands the valve driver **86** to the position shown in **FIG. 7C**.

[0086] As shown in **FIG. 8**, it is within the broadest scope of the invention to include any means and/or method for monitoring the movement of either one of the columns of blood **82/84** in the riser tubes **R1/R2** and for detecting the single point in the other one of the columns and, as such, are not limited to the LED array **64/CCD 66** arrangement for the column level detector **56**, nor to the LED **964**/photodetector

966 arrangement for the single point detector **954**. In fact, the following type of physical detections (indicated by “**SENSOR**” in **FIG. 8**) are covered by the present invention:

[0087] $d(\text{Weight})/dt$: the change in weight of either column of fluid with respect to time using a weight detecting means for either column of fluid as the sensor; e.g., $w_1(t)-w_2(t)$;

[0088] $d(\text{Pressure})/dt$: the change in pressure of either column of fluid with respect to time using a pressure transducer located at the top of either column of fluid; e.g., $p_1(t)-p_2(t)$;

[0089] time of flight: the length of time it takes an acoustic signal to be emitted from a sensor (e.g., ultrasonic) located above either column of fluid and to be reflected and return to the sensor; e.g., $\text{time of flight}_1(t)-\text{time of flight}_2(t)$;

[0090] $d(\text{Volume})/dt$: the change in volume of either column of fluid with respect to time; e.g., $V_1(t)-V_2(t)$;

[0091] $d(\text{Position})/dt$: the change in position of either column level using a digital video camera; e.g., $\text{Pos}_1(t)-\text{Pos}_2(t)$;

[0092] $d(\text{Mass})/dt$: the change in mass with respect to time for either column of fluid;

[0093] e.g., $m_1(t)-m_2(t)$.

[0094] **FIGS. 9A-9B** comprise a flowchart of the detailed operation of the DRSC viscometer **920** to determine the viscosity of a patient's circulating blood flow. The overall time of the test run is approximately 3 minutes with the CCD **66**. When the pixel values of the CCD **66** are no longer changing, the DRSC **20** determines that Δh has been reached and the test run is terminated.

[0095] As discussed earlier, the concept of viscosity determination using the DRSC viscometer **920** is to monitor the change in height of one of two, oppositely-moving, columns of blood from the circulating blood of a patient, along with detecting a single point from the other one of the two columns, and given the dimensions of a capillary through which one of the columns of blood must flow.

[0096] As stated in A. Ser. No. 09/439,795, there are a plurality of mathematical models that can be used as curve fitting models for the data obtained from the viscometers **920** and **1020**, such as a power law model, a Casson model, a Carreau model, a Herschel-Bulkley model, a Powell-Eyring model, a Cross model, Carreau-Yasuda model. It is within the broadest scope of this invention to include all of these models. The following discussion utilizes a power law model and is used by way of example only and not by way of limitation. Thus, one skilled in the art could substitute any of the above curve fitting models for the exemplary power law model discussed below

[0097] In particular, for non-Newtonian fluids, as is blood, the viscosity varies with shear rate, however, Hagen-Poiseuille flow within the capillary still holds for steady or quasi-steady laminar flow. For a fluid that is well-correlated with a non-Newtonian power law viscosity model, the capillary pressure drop and flow rate are related as follows:

$$\Delta P_c = \frac{4kL_c|\dot{\gamma}|^n}{\phi_c} = \frac{4kL_c}{\phi_c} \left(\frac{3n+1}{n} \right) \frac{8Q}{\pi\phi_c^3} \quad (1)$$

[0098] where the shear rate, $\dot{\gamma}$ is related to the capillary flow rate by:

$$\dot{\gamma} = \left(\frac{3n+1}{n} \right) \frac{8Q}{\pi\phi_c^3} \quad (2)$$

[0099] where the power law viscosity is defined as:

$$\mu = k|\dot{\gamma}|^{n-1} \quad (3)$$

[0100] and where

[0101] ΔP_c =capillary tube pressure drop (Pa)

[0102] L_c =length of capillary tube (m)

[0103] Q =volumetric flow rate (m^3/s)

[0104] k =consistency index (a constant used in capillary viscometry)—that is determined;

[0105] n =power law index (another constant used in capillary viscometry)—that is determined;

[0106] ϕ_c =capillary tube diameter (m)

[0107] μ =fluid viscosity (centipoise, CP)

[0108] $\dot{\gamma}$ =shear rate (s^{-1})

[0109] Since blood, a non-Newtonian fluid, is well-characterized with a power law viscosity model, Equation (1) can be re-written as:

$$\rho g(h_1 - h_2) = \frac{4kL_c}{\phi_c} \left\{ 2 \left(\frac{3n+1}{n} \right) \cdot \left(\frac{\phi_r^2}{\phi_c^2} \right) \left(\frac{dh}{dt} \right) \right\}^n + \Delta h \rho g \quad (4)$$

[0110] where

[0111] ρ =blood fluid density;

[0112] g =gravitational constant;

[0113] h_1 =instantaneous height of the column of blood in riser R1

[0114] h_2 =instantaneous height of the column of blood in riser R2

[0115] ϕ_c =inside diameter of the capillary tube

[0116] ϕ_r =inside diameter of riser tube and where $\phi_c \ll \phi_r$

[0117] Δh =an offset due to yield stress of the blood and is a property of blood.

[0118] It should be noted that the length of the capillary tube L_c is assumed large such that any friction forces in the riser tubes R1 and R2 and connecting fluid components can be ignored. In addition, the diameter of the riser tubes R1 and R2 are equal.

[0119] By integrating both sides of Equation (4) with respect to time, the need to determine dh/dt is eliminated, which yields:

$$h_1 - h_2 - \Delta h = - \left\{ \left(\frac{n-1}{n} \right) \alpha t + (\Delta h - h_0) \frac{n-1}{n} \right\}^{\frac{n}{n-1}} \quad (5)$$

[0120] where

[0121] $h_0 = h_1(t) - h_2(t)$ at $t=0$; i.e., $h_0 = h_{11} - h_{2i}$; and

$$\alpha = - \frac{1}{2} \left(\frac{4kL_c}{\rho g \phi_c} \right)^n \left(\frac{n}{3n+1} \right) \left(\frac{\phi_c^3}{\phi_r^2} \right) \quad (6)$$

[0122] In order to determine the viscosity, it is necessary to determine the values for k and n using curve fitting based on the test run data. In particular, the following procedure is used:

[0123] 1) Conduct a test run and obtain all $h_1(t)$ and $h_2(t)$ data;

[0124] 2) Fit curves through the data to obtain symbolic expressions for $h_1(t)$ and $h_2(t)$;

[0125] 3) Determine all $h_1(t) - h_2(t)$ data, as well as Δh ;

[0126] 3) Assume values for the power law parameters k and n ;

[0127] 4) Calculate the following error values for all data points:

$$\text{Error} = \left| (h_1 - h_2 - \Delta h) - \left\{ \left(\frac{n-1}{n} \right) \alpha t + (\Delta h - h_0) \frac{n-1}{n} \right\}^{\frac{n}{n-1}} \right| \quad (7)$$

[0128] 6) Sum the error values for all data points;

[0129] 7) Iterate to determine the values of k and n that minimize the error sum; and

[0130] 8) Use the determined k and n values in Equations (2) and (3) to calculate viscosity. **FIG. 10A** depicts a graphical representation of the viscosity of the patient's circulating blood versus a range of shear rates and **FIG. 10B** depicts a logarithmic depiction of viscosity versus shear rate. It should be understood that the curves depicted in those graphs are identical mathematically and that the DRSC viscometer **920** disclosed above ensures greater accuracy than existing technology.

[0131] A combined handle/filter assembly (not shown) could be used at the top of the riser tubes R1 and R2. This assembly permits the introduction of an inert gas at atmospheric pressure into the riser tubes R1 and R2 above the respective column of fluids. In addition, this assembly acts as a handle for the insertion and removal of the blood receiving means **22** when a disposable blood receiving means **22** is utilized.

[0132] It should also be understood that the locations of many of the components in the blood receiving means 22 are shown by way of example only and not by way of limitation. For example, the capillary 52 can be positioned horizontally or vertically; the valve mechanism 46 does not necessarily have to be located at the elbow portions 50A/50B of the riser tubes R1 and R2. It is within the broadest scope of the invention to include various locations of the components within the blood receiving means 22 without deviating from the invention. In fact, the next embodiment discussed below utilizes such various locations.

[0133] In FIGS. 13-21, there is shown a more preferred embodiment 1020 of the DRSC viscometer described heretofore. This second embodiment 1020 for all intents and purposes is the same as the first embodiment 920 except for the location of the valve mechanism 46, the use of a vacutainer mechanism 101, the position of the capillary tube 52 and the requisite volume of blood that is used in the blood receiving means. As a result, the equations (i.e., Equations 1-7) governing the operation of this second embodiment 1020 and the plots concerning the column levels' time response and viscosity (i.e., FIGS. 6, 10A and 10B) are similar and will not be repeated here. Thus, the common details of the construction and operation of embodiment 1020 will not be reiterated. Furthermore, as stated previously with respect to the embodiment 920, the capillary tube 52 used in the embodiment 1020 does not necessarily have to be an elongated tube but may comprise a variety of configurations such as a coiled capillary tube.

[0134] As can be seen in FIG. 13, the embodiment 1020 comprises a blood receiving means 122 and the analyzer/output portion 1024. As with the blood receiving means 22 described earlier, the blood receiving means 122 can be disposable or re-usable. As an example of a disposable blood receiving means 122, a friction-type fitting 147 (see FIG. 14) releasably secures the top end of riser tube R2 into the housing 60 while the valve mechanism 46 is friction-fitted at the top of the riser tube R1 into the housing 60. Thus, to remove the disposable blood receiving means 122, the operator need only disengage the fitting 147 and the valve mechanism 46 friction fit.

[0135] The blood receiving means 122 comprises the valve mechanism 46 that is now located at the top of riser tube R1 and the capillary tube 52 has been located between the two riser tubes R1 and R2. In addition, a vacutainer mechanism 101 has been added to the blood receiving means 122. The vacutainer mechanism 101 permits the retrieval of a sample of the first blood to reach the blood receiving means 122 for subsequent blood analysis (e.g., hematocrit studies). However, it should be understood that the vacutainer mechanism 101 does not form any part of the viscosity determination and does not impede, in any way, the operation of the DRSC viscometer 1020 in determining blood viscosity according to that described with respect to the embodiment 920. In fact, the vacutainer mechanism 101, as will be described below, disengages from the valve mechanism 46 before the viscosity test run begins.

[0136] The vacutainer mechanism 101 comprises vacutainer 107 that is positionable by a vacutainer driver 109. Operation of the vacutainer mechanism 101 is depicted in FIGS. 15, 16, 17A-17B and flowcharts FIGS. 19A-19B. In particular, as shown most clearly in FIG. 17A, when the

detector 103 (e.g., a photodetector, photo-eye, etc.) detects the first or initial portion of the input blood from the patient (via the CBCM 26), the detector 103 alerts the microprocessor 58 which activates the vacutainer driver 109 to drive the vacutainer 107 towards the puncturing means 111 (e.g., needle, FIG. 15) on the valve mechanism 46 which punctures a piercable surface of the vacutainer 107. Simultaneously, the processor 58 commands the valve driver 86 to place the valve in the first position (as shown in FIG. 17A). As a result, the first or initial portion of the input blood flow is captured in the vacutainer 107. After a fixed time, t_f , has elapsed, the processor 58 commands the vacutainer driver 109 to disengage the vacutainer 107 from the puncturing means 111.

[0137] With this initial portion of the input blood flow captured in the vacutainer 107, the operator can remove the vacutainer 107 from the driver 109 and then presented to a separate analyzing mechanism either on-site or remotely-located.

[0138] Simultaneous with the processor 58 commanding the vacutainer driver 109 to disengage the vacutainer 107 from the puncturing means 111, the processor 58 also commands the valve driver 86 to move the valve into the second position (FIG. 17B). As a result, the input blood flow enters into the top of the riser tube R2, down the riser tube R2, through the capillary 52 and up into riser tube R1. The column level detector 56 monitors the rising blood column in riser tube R2. When column level detector 56 detects a predetermined level, h_{sv} , it informs the processor 58. The h_{sv} is an exact value that corresponds to an exact volume of blood such that when the column of blood in riser tube R2 reaches h_{2i} , (FIGS. 17B and 17C), the column of blood in riser tube R1 will be at h_{1j} . Therefore, when column level detector 56 detects that h_{sv} has been reached, the processor 58 activates the valve driver 86 to rotate the valve into the third position (FIG. 17C), thereby isolating the two columns of blood from the input blood flow while simultaneously beginning the viscosity test run. This viscosity test run is similar to that described earlier with respect to embodiment 920 and, as such, will not be repeated here.

[0139] Alternatively, as mentioned earlier, the column level detector 56 can be used to detect the falling column of blood in the first riser tube R1 and the single point detector 954 can be used to detect the predetermined level, h_{sv} of the rising column of blood in riser tube R2. Thus, it is within the broadest scope of the invention to cover the use of one column level detector for monitoring the change in position of the blood column in one riser tube and the use of a single point detector for detecting a single point of the blood column in the other riser tube.

[0140] It should be understood that any one point of the blood column can be detected by the single point detector 954. The preferred point is the initial column level for the viscosity test run, namely h_{1i} or h_{sv} . However, any other point in the column can be detected in order to generate the corresponding height vs. time data/curve.

[0141] One exemplary implementation of the blood receiving means 122 is shown in FIGS. 20-21. In particular, the riser tubes R1 and R2 (e.g., injection-molded pieces) have integral elbows 50A and 50B that are inserted into respective ends of a capillary element 153. In particular, each end of the capillary element 153 forms a form fitting

sleeve that slides over each end of the elbows **50A** and **50B**. As shown most clearly in **FIG. 21**, the capillary element **153** comprises a tapered entry port **155** and a tapered exit port **157** to minimize any turbulence as the circulating blood passes from the end of the elbow **50A** into the capillary element **153** and then into the elbow **50B** and up into riser tube **R2**.

[**0142**] It should be pointed out that the “blood receiving” means of all embodiments disclosed herein are merely exemplary of various combinations of components, such as riser tubes, etc., which can take various other forms than those specifically disclosed herein.

[**0143**] As shown in **FIG. 18**, it is within the broadest scope of the invention to include any means and/or method for monitoring the movement of either one of the columns of blood **82/84** in the riser tubes **R1/R2** and for detecting the single point in the other one of the columns and, as such, are not limited to the LED array **64/CCD 66** arrangement for the column level detector **56**, nor to the LED **964/photodetector 966** arrangement for the single point detector **954**. In fact, the following type of physical detections (indicated by “SENSOR” in **FIG. 8**) are covered by the present invention:

[**0144**] $d(\text{Weight})/dt$: the change in weight of either column of fluid with respect to time using a weight detecting means for each column of fluid as the sensor; e.g., $w_1(t)-w_2(t)$;

[**0145**] $d(\text{Pressure})/dt$: the change in pressure of either column of fluid with respect to time using a pressure transducer located at the top of each column of fluid; e.g., $p_1(t)-p_2(t)$;

[**0146**] time of flight: the length of time it takes an acoustic signal to be emitted from a sensor (e.g., ultrasonic) located above either column of fluid and to be reflected and return to the sensor; e.g., time of flight₁(t)–time of flight₂(t);

[**0147**] $d(\text{Volume})/dt$: the change in volume of either column of fluid with respect to time; e.g., $V_1(t)-V_2(t)$;

[**0148**] $d(\text{Position})/dt$: the change in position of either column level using a digital video camera; e.g., $\text{Pos}_1(t)-\text{Pos}_2(t)$;

[**0149**] $d(\text{Mass})/dt$: the change in mass with respect to time for either column of fluid; e.g., $m_1(t)-m_2(t)$.

[**0150**] The **CCD 66** may be any conventional device. One particularly suitable one is available from ScanVision Inc. of San Jose, Calif. That **CCD** is of 300 dpi-83 μ pixel resolution. The ScanVision Inc. **CCD** utilizes conventional **CCD** acquisition software. The **LED arrays 64** can be implemented with a variety of light sources, including fiber optic lines.

[**0151**] Furthermore, the door **76** of the housing **60** can be configured to be hinged along the bottom of the housing **60** so as to swing down in order to gain access to the blood receiving means **22** or **122**.

[**0152**] It should be understood that it is within the broadest scope of the invention **920** and **1020** to include auxiliary pressure (e.g., a pressure source such as a pump) as the motive force for moving the columns of blood **82/84** during the test run, as opposed to venting each of the riser tubes **R1** and **R2** to the ambient atmosphere.

[**0153**] It should be further understood that although the display **28** provides an efficient means for conveying the viscosity data to the user, the broadest scope of the **DRSC viscometers 920** and **1020** does not require the display **28**. Rather, as long as the viscosity data is available to any output means **30**, the objectives of the present invention are met. Furthermore, it should be understood that the analyzer/output portion **924** in embodiments **920** and **1020** can be accomplished by a any laptop personal computer and is not limited in any way by that which is depicted in **FIGS. 2-3**.

[**0154**] The blood receiving means **22** and **122** of the respective embodiments **920** and **1020** are typically located to be at a position that is lower than the patient’s heart. By doing this, gravity assists the venous pressure in conveying the circulating blood to the blood receiving means **22/122**, but this also prevents any backflow of blood into the patient during the preliminary hook up and viscosity test run.

[**0155**] It should be understood that where a re-usable blood receiving means **22** is used in embodiment **920**, or where a re-usable blood receiving means **122** is used in embodiment **1020**, the step “insert disposable set” in **FIG. 9B** and **FIG. 19B**, respectively, is omitted.

[**0156**] It should also be noted that, as mentioned earlier, the preferred method/means is to monitor the rising column of blood **84** with the column level detector **56** as opposed to monitoring the falling column of blood **82** because a large amount of noise is encountered when the falling column **82** is monitored. The rising column **84** presents a more clean monitoring signal and is thus the preferred column to be monitored. However, it is within the broadest scope of this invention to include means for filtering or compensating this noise when the falling column is monitored by the column level detector **56**.

[**0157**] Without further elaboration, the foregoing will so fully illustrate our invention and others may, by applying current or future knowledge, readily adapt the same for use under various conditions of service.

We claim:

1. An apparatus for effecting the viscosity measurement of circulating blood in a living being, said apparatus comprising:

a lumen arranged to be coupled to the vascular system of the being;

a pair of tubes having respective first ends coupled to said lumen for receipt of circulating blood from the being, one of said pair of tubes comprising a capillary tube having some known parameters;

a valve for controlling the flow of circulating blood from the being’s vascular system to said pair of tubes; and

an analyzer, coupled to said valve, for controlling said valve to permit the flow of blood into said pair of tubes whereupon the blood in each of said pair of tubes assumes a respective initial position with respect thereto, said analyzer also being arranged for operating said valve to isolate said pair of tubes from the being’s vascular system and for coupling said pair of tubes together so that the position of the blood in said pair of tubes changes, said analyzer also being arranged for monitoring the blood position change in one of said

tubes and detecting a single blood position in the other one of said pair of tubes and calculating the viscosity of the blood based thereon.

2. The apparatus of claim 1 wherein said apparatus is adapted for effecting the viscosity measurement of circulating blood of a living being in real-time.

3. The apparatus of claim 2 wherein each of said tubes has a second end and whereupon said apparatus additionally comprises means for venting said second ends of said pair of tubes to the ambient atmosphere.

4. The apparatus of claim 2 wherein said analyzer detects the change in weight of one of said pair of tubes over time to effect said monitoring of the blood position change.

5. The apparatus of claim 2 wherein said respective initial positions comprise a first pre-test position of a first column of blood with respect to one of said pair of tubes and a second pre-test position of a second column of blood with respect to the other of said pair of tubes, said first pre-test position and said second pre-test position being different from each other.

6. The apparatus of claim 5 wherein said pair of tubes are oriented upright and wherein said first pre-test position comprises a first initial height of said first column of blood and said second pre-test position comprises a second initial height of said second column of blood.

7. The apparatus of claim 6 wherein said analyzer detects the change in column height of one of said first and second columns of blood.

8. The apparatus of claim 7 wherein said analyzer detects said change in column height by detecting the time of flight of emitted signals toward the top of one of said columns.

9. The apparatus of claim 8 wherein said emitted signals are acoustic signals.

10. The apparatus of claim 6 wherein said analyzer includes a digital video camera for detecting the change in column height of one of said first and second columns of blood.

11. The apparatus of claim 6 wherein said analyzer detects the change in pressure of one of said first and second columns of blood over time to effect said monitoring of the blood position change.

12. The apparatus of claim 2 wherein said analyzer detects the change of volume in blood of one of said pair of tubes to effect said monitoring of the blood position change.

13. The apparatus of claim 2 further comprising environmental control means, said environmental control means maintaining the blood in said capillary tube at substantially the same temperature of the living being during the time said analyzer couples said pair of tubes together.

14. The apparatus of claim 13 wherein said environmental control means maintains the blood in said pair of tubes at substantially the same temperature of the living being during the time said analyzer couples said pair of tubes together.

15. The apparatus of claim 5 wherein said respective initial positions of the blood in said pair of tubes is established by the operation of said analyzer.

16. The apparatus of claim 6 wherein said first initial height and said second initial height are established by the operation of said analyzer.

17. The apparatus of claim 5 wherein said position of the blood in said pair of tubes changes comprises the movement of a respective level of said first and second columns of blood moving in opposite directions and wherein said analyzer determines the difference value between said respective levels.

18. The apparatus of claim 6 wherein said position of the blood in said pair of tubes changes comprises a falling column of blood away from said first initial height and a rising column of blood away from said second initial height, said analyzer monitoring the blood position change of said rising column of blood and detecting said single blood position from said falling column of blood.

19. The apparatus of claim 18 wherein said single blood position is said first initial height.

20. The apparatus of claim 19 wherein said analyzer determines the difference values of said heights of said columns of blood over time, known as $h_1(t)-h_2(t)$ wherein $h_1(t)$ is said height of said falling column of blood and $h_2(t)$ is said height of said rising column of blood.

21. The apparatus of claim 20 wherein said analyzer determines an offset of said heights of said columns of blood, known as Δh , after monitoring the blood position change in said rising column of blood for a period of time and from said single blood position from said falling column of blood.

22. The apparatus of claim 21 wherein said analyzer calculates the viscosity using $h_1(t)-h_2(t)$ and Δh to determine the consistency index, k , and the power law index, n , as given by:

$$h_1(t) - h_2(t) - \Delta h = - \left(\left(\frac{n-1}{n} \right) \alpha t + (\Delta h - h_0) \frac{n-1}{n} \right)^{\frac{n}{n-1}}$$

where

$$\alpha = - \frac{1}{2} \left(\frac{4kL_c}{\rho g \phi_c} \right)^n \left(\frac{n}{3n+1} \right) \left(\frac{\phi_c^3}{\phi_r^2} \right)$$

and where

$h_0 = h_1(0) - h_2(0)$;

L_c = length of capillary tube;

Φ_c = inside diameter of said capillary tube

Φ_r = diameter of said columns of blood and where $\Phi_c \ll \Phi_r$

ρ = blood fluid density;

g = gravitational constant;

23. The apparatus of claim 22 wherein said analyzer calculates the viscosity, μ , using said determined values of n and k in the equation:

$$\mu = k |\dot{\gamma}|^{n-1}$$

where

$$\dot{\gamma} = \left(\frac{3n+1}{n} \right) \frac{8Q}{\pi \phi_c^3}$$

and where

Q = volumetric flow rate in said capillary tube

ϕ_c = capillary tube diameter; and

$\dot{\gamma}$ = shear rate.

24. The apparatus of claim 2 wherein said analyzer operates said valve to isolate said pair of tubes from the

living being's vascular system while simultaneously coupling said pair of tubes together.

25. The apparatus of claim 2 wherein said analyzer comprises a single monitor for one of said pair of tubes, said monitor monitoring the blood position change in said one of said pair of tubes.

26. The apparatus of claim 25 wherein said monitor comprises a light array and a charge coupled device (CCD).

27. The apparatus of claim 26 wherein said light array comprises a plurality of light emitting diodes arranged in linear fashion to illuminate said one of said pair of tubes along the length of said tube.

28. The apparatus of claim 2 wherein said analyzer comprises a detector for detecting said single blood position.

29. The apparatus of claim 28 wherein said detector comprises a light emitting diode and a photodetector.

30. The apparatus of claim 2 wherein said pair of tubes is disposable.

31. The apparatus of claim 2 wherein said valve mechanism is disposable.

32. A method for determining the viscosity of circulating blood of a living being, said method comprising the steps of:

- (a) providing access to the circulating blood of the living being to form an input flow of circulating blood;
- (b) dividing said input flow of circulating blood into a first flow path and a second flow path into which respective portions of said input flow pass, one of said first or second flow paths including a passageway portion having some known parameters;
- (c) isolating said first and second flow paths from said input flow and coupling said first and second flow paths together so that the position of the blood in each of said flow paths changes;
- (d) monitoring the blood position change in one of said first and second flow paths over time;
- (e) detecting a single blood position in the other one of said first and second flow paths; and
- (f) calculating the viscosity of said circulating blood based on said blood position change, said single blood position and on selected known parameters of said passageway portion.

33. The method of claim 32 wherein said step of calculating the viscosity of said circulating blood is conducted in real-time.

34. The method of claim 33 wherein said first and second flow paths comprise respective columns of blood in upright positions and said step of monitoring the blood position change over time comprises monitoring the change in column height of one of said first and second columns of blood over time.

35. The method of claim 34 wherein said step of detecting a single blood position in the other one of said first and second flow paths comprises detecting a single column height.

36. The method of claim 34 wherein said first and second columns are vented to ambient atmosphere.

37. The method of claim 33 wherein said first and second flow paths comprise respective columns in upright positions and said step of monitoring the blood position change over time comprises monitoring the change in weight of one of said first and second columns of circulating blood over time.

38. The method of claim 33 wherein said first and second flow paths comprise respective columns in upright positions and said step of monitoring the blood position change over time comprises monitoring the time of flight of emitted signals towards the top of one of said columns.

39. The method of claim 38 wherein said emitted signals are acoustic signals.

40. The method of claim 34 wherein said column height is monitored by a digital video camera.

41. The method of claim 33 wherein said first and second flow paths comprise respective columns in upright positions and said step of monitoring the blood position change over time comprises monitoring the change in pressure of one of said first and second columns of blood over time.

42. The method of claim 33 wherein said first and second flow paths comprise respective columns in upright positions and said step of monitoring the blood position change over time comprises monitoring the change in mass of one of said first and second columns of circulating blood over time.

43. The method of claim 33 wherein said first and second flow paths comprise respective columns in upright positions and said step of monitoring the blood position change over time comprises monitoring the change in volume of one of said first and second columns of blood over time.

44. The method of claim 33 further comprising the step of maintaining the temperature of said passageway portion at substantially the same temperature of the living being during said step of monitoring the blood position change in one of said first and said flow paths.

45. The method of claim 44 wherein said step of maintaining the temperature further comprises maintaining the temperature of said first and second flow paths at substantially the same temperature of the living being during said step of monitoring the blood position change in one of said first and said flow paths.

46. The method of claim 34 wherein said step of dividing said input flow of circulating blood into a first flow path and a second flow path comprises establishing a first pre-test level for said first column of blood and a second pre-test level for said second column of blood, said first and second pre-test levels being different from each other.

47. The method of claim 46 wherein said step of calculating the viscosity comprises determining difference values of said heights of said first and second columns of fluid over time, known as $h_1(t) - h_2(t)$ wherein h_1 is said height of said first column and h_2 is said height of said second column.

48. The method of claim 47 wherein said step of calculating the viscosity further comprises detecting an offset of said heights of said first and second columns, known as Δh .

49. The method of claim 48 wherein said step of calculating the viscosity further comprises using $h_1(t) - h_2(t)$ and Δh to determine the consistency index, k , and the power law index, n , as given by:

$$h_1(t) - h_2(t) - \Delta h = - \left\{ \left(\frac{n-1}{n} \right) \alpha t + (\Delta h - h_0) \frac{n-1}{n} \right\}^{\frac{n}{n-1}}$$

where

$$\alpha = - \frac{1}{2} \left(\frac{4kL_c}{\rho g \phi_c} \right)^n \left(\frac{n}{3n+1} \right) \left(\frac{\phi_c^3}{\phi_c^2} \right)$$

and where

$$h_0 = h(10) - h_2(0);$$

L_c = length of said passageway portion;

Φ_c = inside diameter of said passageway portion;

Φ_r = diameter of said first or second column of fluid and where $d_c \ll d_r$

ρ = blood fluid density;

g = gravitational constant;

50. The method of claim 49 wherein said step of calculating the viscosity, μ , further comprises using the determined values of n and k in the equation:

$$\mu = k|\dot{\gamma}|^{n-1}$$

where

$$\dot{\gamma} = \left(\frac{3n+1}{n} \right) \frac{8Q}{\pi \phi_c^3}$$

and where

Q = volumetric flow rate in said passageway portion

ϕ_c = passageway portion diameter; and

$\dot{\gamma}$ = shear rate.

51. An apparatus for effecting the viscosity measurement of circulating blood in a living being, said apparatus comprising:

a lumen arranged to be coupled to the vascular system of the being;

a pair of tubes having respective first ends and second ends, said first ends being coupled together via a capillary tube having some known parameters;

a valve for controlling the flow of circulating blood from the being's vascular system to said pair of tubes, said valve being coupled to a second end of one of said pair of tubes and being coupled to said lumen; and

an analyzer, coupled to said valve, for controlling said valve to permit the flow of blood into said pair of tubes whereupon the blood in each of said pair of tubes assumes a respective initial position with respect thereto, said analyzer also being arranged for operating said valve to isolate said pair of tubes from the being's vascular system so that the position of the blood in said pair of tubes changes, said analyzer also being arranged for monitoring the blood position change in one of said tubes and detecting a single blood position in the other one of said pair of tubes and calculating the viscosity of the blood based thereon.

52. The apparatus of claim 51 wherein said apparatus is adapted for effecting the viscosity measurement of circulating blood of a living being in real-time.

53. The apparatus of claim 52 further comprises means for venting said second end of said other one of said pair of tubes to atmosphere.

54. The apparatus of claim 52 wherein said analyzer detects the change in weight of one of said pair of tubes over time to effect said monitoring of the blood position change.

55. The apparatus of claim 52 wherein said respective initial positions comprise a first pre-test position of a first column of blood with respect to one of said pair of tubes and a second pre-test position of a second column of blood with respect to the other of said pair of tubes, said first pre-test position and said second pre-test position being different from each other.

56. The apparatus of claim 55 wherein said pair of tubes are oriented upright and wherein said first pre-test position comprises a first initial height of said first column of blood and said second pre-test position comprises a second initial height of said second column of blood.

57. The apparatus of claim 56 wherein said analyzer detects the change in column height of one of said first and second columns of blood.

58. The apparatus of claim 57 wherein said analyzer detects said change in column height by detecting the time of flight of emitted signals toward the top of one of said columns.

59. The apparatus of claim 58 wherein said emitted signals are acoustic signals.

60. The apparatus of claim 56 wherein said analyzer includes a digital video camera for detecting the change in column height of one of said first and second columns of blood.

61. The apparatus of claim 56 wherein said analyzer detects the change in pressure of one of said first and second columns of blood over time to effect said monitoring of the blood position change.

62. The apparatus of claim 52 wherein said analyzer detects the change of volume in blood of one of said pair of tubes to effect said monitoring of the blood position change.

63. The apparatus of claim 52 further comprising environmental control means, said environmental control means maintaining the blood in said capillary tube at substantially the same temperature of the living being during the time said analyzer couples said pair of tubes together.

64. The apparatus of claim 63 wherein said environmental control means maintains the blood in said pair of tubes at substantially the same temperature of the living being during the time said analyzer couples said pair of tubes together.

65. The apparatus of claim 55 wherein said respective initial positions of the blood in said pair of tubes is established by the operation of said analyzer.

66. The apparatus of claim 56 wherein said first initial height and said second initial height are established by the operation of said analyzer.

67. The apparatus of claim 55 wherein said position of the blood in said pair of tubes changes comprises the movement of a respective level of said first and second columns of blood moving in opposite directions and wherein said analyzer determines the difference value between said respective levels.

68. The apparatus of claim 56 wherein said position of the blood in said pair of tubes changes comprises a falling column of blood away from said first initial height and a rising column of blood away from said second initial height, said analyzer monitoring the blood position change of said rising column of blood and detecting said single blood position from said falling column of blood.

69. The apparatus of claim 68 wherein said single blood position is said first initial height.

70. The apparatus of claim 56 wherein said analyzer determines the difference values of said heights of said

columns of blood over time, known as $h_1(t)-h_2(t)$ wherein $h_1(t)$ is said height of said first column of blood and $h_2(t)$ is said height of said second column of blood.

71. The apparatus of claim 58 wherein said analyzer detects an offset of said heights of said columns of blood, known as Δh , after monitoring the blood position change for a period of time.

72. The apparatus of claim 71 wherein said analyzer calculates the viscosity using $h_1(t)-h_2(t)$ and Δh to determine the consistency index, k , and the power law index, n , as given by:

$$h_1(t) - h_2(t) - \Delta h = -\left(\left(\frac{n-1}{n}\right)\alpha t + (\Delta h - h_0)^{\frac{n-1}{n}}\right)^{\frac{n}{n-1}}$$

where

$$\alpha = -\frac{1}{2}\left(\frac{4kL_c}{\rho g \phi_c}\right)^n \left(\frac{n}{3n+1}\right) \left(\frac{\phi_c^2}{\phi_r^2}\right)$$

and where

$h_0 = h_1(0) - h_2(0)$;

L_c = length of capillary tube;

Φ_c = inside diameter of said capillary tube

Φ_r = diameter of said columns of blood and where $d_c \ll d_r$,

ρ = blood fluid density;

g = gravitational constant;

73. The apparatus of claim 72 wherein said analyzer calculates the viscosity, μ , using said determined values of n and k in the equation:

$$\mu = k|\dot{\gamma}|^{n-1}$$

where

$$\dot{\gamma} = \left(\frac{3n+1}{n}\right) \frac{8Q}{\pi \phi_c^3}$$

and where

Q = volumetric flow rate in said capillary tube

ϕ_c = capillary tube diameter; and

$\dot{\gamma}$ = shear rate.

74. The apparatus of claim 52 wherein said analyzer comprises a monitor for one of said pair of tubes, said monitor monitoring the blood position change in said one of said pair of tubes.

75. The apparatus of claim 74 wherein said monitor comprises a light array and a charge coupled device (CCD).

76. The apparatus of claim 75 wherein said light array comprises a plurality of light emitting diodes arranged in linear fashion to illuminate said tube along the length of said tube.

77. The apparatus of claim 52 wherein said analyzer comprises a detector for detecting said single blood position.

78. The apparatus of claim 77 wherein said detector comprises a light emitting diode and a photodetector.

79. The apparatus of claim 52 wherein said pair of tubes is disposable.

80. The apparatus of claim 52 wherein said valve mechanism is disposable.

81. The apparatus of claim 51 wherein said analyzer further comprises a container, said container collecting an initial portion of the flow of circulating blood from the being's vascular system.

82. The apparatus of claim 81 wherein said analyzer further comprises a detector adjacent an input port of said valve for detecting said initial portion of the flow of circulating blood from the being's vascular system.

83. The apparatus of claim 82 wherein said valve isolates said container from the being's vascular system while coupling said pair of tubes to the being's vascular system.

84. The apparatus of claim 74 wherein one of said respective monitors detects a predetermined level in one of said pair of tubes in order for said analyzer to isolate said pair of tubes from the being's vascular system.

85. A method for determining the viscosity of circulating blood of a living being, said method comprising the steps of:

(a) providing access to the circulating blood of the living being to form an input flow of circulating blood;

(b) directing said input flow into one end of a pair of tubes coupled together via a passageway having some known parameters, said input flow passing through a first one of said pair of tubes, through said passageway and into a first portion of a second one of said pair of tubes in order to form respective columns in said first and second tubes;

(c) isolating said respective columns from said input flow so that the position of the blood in each of said columns changes;

(d) monitoring the blood position change of one of said columns of blood over time;

(e) detecting a single blood position in the other one of said pair of tubes; and

(f) calculating the viscosity of the circulating blood based on said blood position change, said single blood position and on selected known parameters of said passageway.

86. The method of claim 85 wherein said step of calculating the viscosity of the circulating blood is conducted in real-time.

87. The method of claim 86 wherein said respective columns of blood are in upright positions and said step of monitoring the blood position change over time comprises monitoring the change in column height of one of said columns of blood over time.

88. The method of claim 87 wherein said step of detecting a single blood position in the other one of said pair of tubes comprises detecting a single column height.

89. The method of claim 87 wherein one end of said pair of tubes is vented to ambient atmosphere.

90. The method of claim 86 wherein said respective columns are in upright positions and said step of monitoring the blood position change over time comprises monitoring the change in weight of one of said columns of circulating blood over time.

91. The method of claim 86 wherein said respective columns are in upright positions and said step of monitoring

the blood position change over time comprises monitoring the time of flight of emitted signals towards the top of one of said columns.

92. The method of claim 91 wherein said emitted signals are acoustic signals.

93. The method of claim 87 wherein said column height is monitored by a digital video camera.

94. The method of claim 86 wherein said columns are in upright positions and said step of monitoring the blood position change over time comprises monitoring the change in pressure of one of said columns of blood over time.

95. The method of claim 86 wherein said columns are in upright positions and said step of monitoring the blood position change over time comprises monitoring the change in mass of one of said columns of circulating blood over time.

96. The method of claim 86 wherein said columns are in upright positions and said step of monitoring the blood position change over time comprises monitoring the change in volume of one of said columns of blood over time.

97. The method of claim 86 further comprising the step of maintaining the temperature of said passageway at substantially the same temperature of the living being during said step of monitoring the blood position change in said respective columns.

98. The method of claim 97 wherein said step of maintaining the temperature further comprises maintaining the temperature of said respective columns at substantially the same temperature of the living being during said step of monitoring the blood position change in one of said columns.

99. The method of claim 87 wherein said step of directing said input flow of circulating blood into one end of a pair of tubes comprises establishing a first pre-test level for said first column of blood and a second pre-test level for said second column of blood, said first and second pre-test levels being different from each other.

100. The method of claim 99 wherein said step of calculating the viscosity comprises determining difference values of said heights of said first and second columns of fluid over time, known as $h_1(t)-h_2(t)$ wherein h_1 is said height of said first column and h_2 is said height of said second column.

101. The method of claim **100** wherein said step of calculating the viscosity further comprises detecting an offset of said heights of said first and second columns, known as Δh .

102. The method of claim **101** wherein said step of calculating the viscosity further comprises using $h_1(t)-h_2(t)$ and Δh to determine the consistency index, k , and the power law index, n , as given by:

$$h_1(t) - h_2(t) - \Delta h = - \left\{ \left(\frac{n-1}{n} \right) \alpha t + (\Delta h - h_0) \frac{n-1}{n} \right\}^{\frac{n}{n-1}}$$

where

$$\alpha = - \frac{1}{2} \left(\frac{4kL_c}{\rho g \phi_c} \right)^n \left(\frac{n}{3n+1} \right) \left(\frac{\phi_c^3}{\phi_r^2} \right)$$

and where

$h_0 = h_1(0) - h_2(0)$;

L_c = length of passageway;

Φ_c = inside diameter of said passageway

Φ_r = diameter of said first or second column of fluid and where $d_c \ll d_r$

ρ = blood fluid density;

g = gravitational constant;

103. The method of claim **102** wherein said step of calculating the viscosity, μ , further comprises using the determined values of n and k in the equation:

$$\mu = k|\dot{\gamma}|^{n-1}$$

where

$$\dot{\gamma} = \left(\frac{3n+1}{n} \right) \frac{8Q}{\pi \phi_c^3}$$

and where

Q = volumetric flow rate in said passageway

ϕ_c = passageway diameter; and

$\dot{\gamma}$ = shear rate.

104. The method of claim 85 wherein said step of providing access to the circulating blood of the living being comprises collecting a finite amount of the initial portion of said input flow of circulating blood into a container.

* * * * *

专利名称(译)	双提升管/单毛细管粘度计		
公开(公告)号	US20020040196A1	公开(公告)日	2002-04-04
申请号	US09/973639	申请日	2001-10-09
[标]申请(专利权)人(译)	KENSEY KENNETH HOGENAUER WILLIAMñ KIM桑戈 曹英		
申请(专利权)人(译)	KENSEY KENNETH 可以威廉N. KIM桑戈 曹英		
当前申请(专利权)人(译)	KENSEY KENNETH 可以威廉N. KIM桑戈 曹英		
[标]发明人	KENSEY KENNETH HOGENAUER WILLIAM N KIM SANGHO CHO YOUNG		
发明人	KENSEY, KENNETH HOGENAUER, WILLIAM N. KIM, SANGHO CHO, YOUNG		
IPC分类号	G01N33/483 A61B5/145 A61B5/15 A61B10/00 G01N11/00 G01N11/04 G01N11/06 G01N33/15 G01N33/487 G01N33/49 A61B5/00		
CPC分类号	A61B5/02035 A61B5/1405 A61B5/6866 G01N11/04 A61B5/155 A61B5/15003 A61B5/150221 A61B5/ /150992 A61B5/154 G01N11/06 A61B5/150786 A61B5/150854 A61B5/157		
其他公开文献	US6745615		
外部链接	Espacenet USPTO		

摘要(译)

血液粘度测量系统和用于测量血液粘度的方法监测来自患者的循环血液的两个相反移动的血液柱中的一个的高度变化，并且给定血液流过的毛细管的尺寸和通过检测另一个相反移动的柱的单个血液位置，确定剪切范围内的血液粘度，尤其是低剪切。该系统包括管组（一次性或非一次性），其包括一对提升管，预定尺寸的毛细管，其连接在提升管之间（或形成一个提升管的一部分）和用于控制血液从患者循环流入提升管。传感器监测一个提升管中的一列血液的运动，并且单点检测器检测另一列血液的单个血液位置，并且相关的微处理器分析该运动和单点以及预定的尺寸。毛细管，确定患者循环血液的粘度。

