



US008986206B2

(12) **United States Patent**
Kim et al.

(10) **Patent No.:** **US 8,986,206 B2**
(45) **Date of Patent:** **Mar. 24, 2015**

(54) **HEALTH CARE APPARATUS AND METHOD**

USPC **600/301**; 600/544; 600/545; 600/546;
705/2; 705/3

(75) Inventors: **Youn-ho Kim**, Hwaseong-si (KR);
Kun-soo Shin, Seongnam-si (KR);
Wan-taek Han, Hwaseong-si (KR);
Hyung-sok Yeo, Yongin-si (KR);
Hyun-tai Hwang, Yongin-si (KR);
Jong-pal Kim, Seoul (KR)

(58) **Field of Classification Search**
USPC 600/300, 301; 128/903-905, 920
See application file for complete search history.

(73) Assignee: **Samsung Electronics Co., Ltd.**,
Suwon-si (KR)

(56) **References Cited**

U.S. PATENT DOCUMENTS

3,943,918 A 3/1976 Lewis
4,110,918 A * 9/1978 James et al. 434/262
(Continued)

(*) Notice: Subject to any disclaimer, the term of this
patent is extended or adjusted under 35
U.S.C. 154(b) by 1661 days.

FOREIGN PATENT DOCUMENTS

(21) Appl. No.: **11/397,716**

JP 5-076501 A 3/1993
JP 6-181891 A 7/1994

(22) Filed: **Apr. 5, 2006**

(Continued)

(65) **Prior Publication Data**

US 2007/0016098 A1 Jan. 18, 2007

Primary Examiner — William Thomson

Assistant Examiner — Shirley Jian

(30) **Foreign Application Priority Data**

Jul. 16, 2005 (KR) 10-2005-0064547

(74) *Attorney, Agent, or Firm* — Sughrue Mion, PLLC

(51) **Int. Cl.**

A61B 5/00 (2006.01)
A61B 5/06 (2006.01)
G06Q 10/00 (2012.01)
G06Q 50/00 (2012.01)

(Continued)

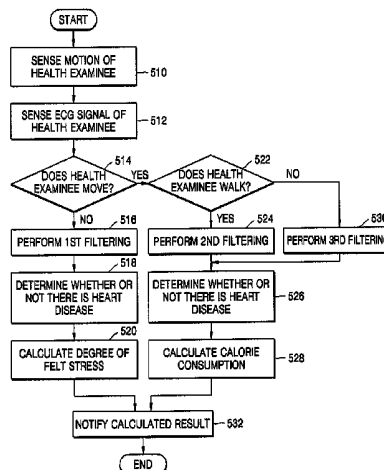
(57) **ABSTRACT**

A health care apparatus and method are provided. The apparatus includes: a motion sensing unit; a bio-electric potential sensing unit sensing an electric potential signal of the health examinee corresponding to the sensed result; and an analysis unit analyzing the sensed result. By recognizing a current motion of the examinee and sensing an electric potential signal corresponding to the recognized current motion from the examinee, a more reliable health index of the examinee can be calculated. Even when information on the current motion of the health examinee is not given, the current motion can be recognized by the apparatus and method. Furthermore, since the health examinee is notified of the calculated health index in real time, the health examinee can be informed immediately if the physical condition is in an emergency state. As a result, the examinee can respond quickly to the emergency situation.

(52) **U.S. Cl.**

CPC **A61B 5/0404** (2013.01); **A61B 5/02055**
(2013.01); **A61B 5/1118** (2013.01); **A61B**
5/1123 (2013.01); **A61B 5/4866** (2013.01);
A61B 5/4884 (2013.01); **G06F 19/3431**
(2013.01); **A61B 5/0002** (2013.01); **A61B 5/01**
(2013.01); **A61B 5/021** (2013.01); **A61B**
5/02416 (2013.01); **A61B 5/0456** (2013.01);
A61B 5/145 (2013.01); **A61B 2560/0462**
(2013.01); **A61B 2560/0468** (2013.01); **A61B**
2562/0219 (2013.01)

25 Claims, 7 Drawing Sheets



(51)	Int. Cl.							
	<i>A61B 5/0404</i>	(2006.01)	6,441,747	B1 *	8/2002	Khair et al.	340/870.16
	<i>A61B 5/0205</i>	(2006.01)	6,551,252	B2 *	4/2003	Sackner et al.	600/536
	<i>A61B 5/11</i>	(2006.01)	6,571,193	B1 *	5/2003	Unuma et al.	702/141
	<i>G06F 19/00</i>	(2011.01)	6,595,929	B2 *	7/2003	Stivoric et al.	600/549
	<i>A61B 5/01</i>	(2006.01)	6,821,229	B2 *	11/2004	Sato et al.	482/8
	<i>A61B 5/021</i>	(2006.01)	7,130,681	B2 *	10/2006	Gebhardt et al.	607/6
	<i>A61B 5/024</i>	(2006.01)	7,299,159	B2 *	11/2007	Nanikashvili	702/188
	<i>A61B 5/0456</i>	(2006.01)	7,604,603	B2 *	10/2009	Sackner et al.	600/500
	<i>A61B 5/145</i>	(2006.01)	2001/0047127	A1 *	11/2001	New et al.	600/300
			2002/0180605	A1	12/2002	Ozguz et al.		
			2003/0083559	A1	5/2003	Thompson		
			2003/0171661	A1 *	9/2003	Tong	600/300
			2003/0208335	A1 *	11/2003	Unuma et al.	702/141
			2005/0240087	A1 *	10/2005	Keenan et al.	600/301
			2006/0036183	A1 *	2/2006	Sackner et al.	600/481
			2006/0195020	A1 *	8/2006	Martin et al.	600/301
			2007/0293781	A1 *	12/2007	Sims et al.	600/534
			2010/0063365	A1 *	3/2010	Pisani et al.	600/301
			2011/0066062	A1 *	3/2011	Banet et al.	600/534

(56) **References Cited**

U.S. PATENT DOCUMENTS

5,394,882	A *	3/1995	Mawhinney	600/534
5,511,553	A	4/1996	Segalowitz		
5,792,195	A *	8/1998	Carlson et al.	607/17
5,862,803	A	1/1999	Besson et al.		
5,964,701	A *	10/1999	Asada et al.	600/300
6,026,321	A	2/2000	Miyata et al.		
6,026,324	A *	2/2000	Carlson	607/27
6,047,203	A *	4/2000	Sackner et al.	600/388
6,366,811	B1 *	4/2002	Carlson	607/27

FOREIGN PATENT DOCUMENTS

JP	2001-269332	A	10/2001
KR	10-2005-0031538	A	4/2005

* cited by examiner

FIG. 1

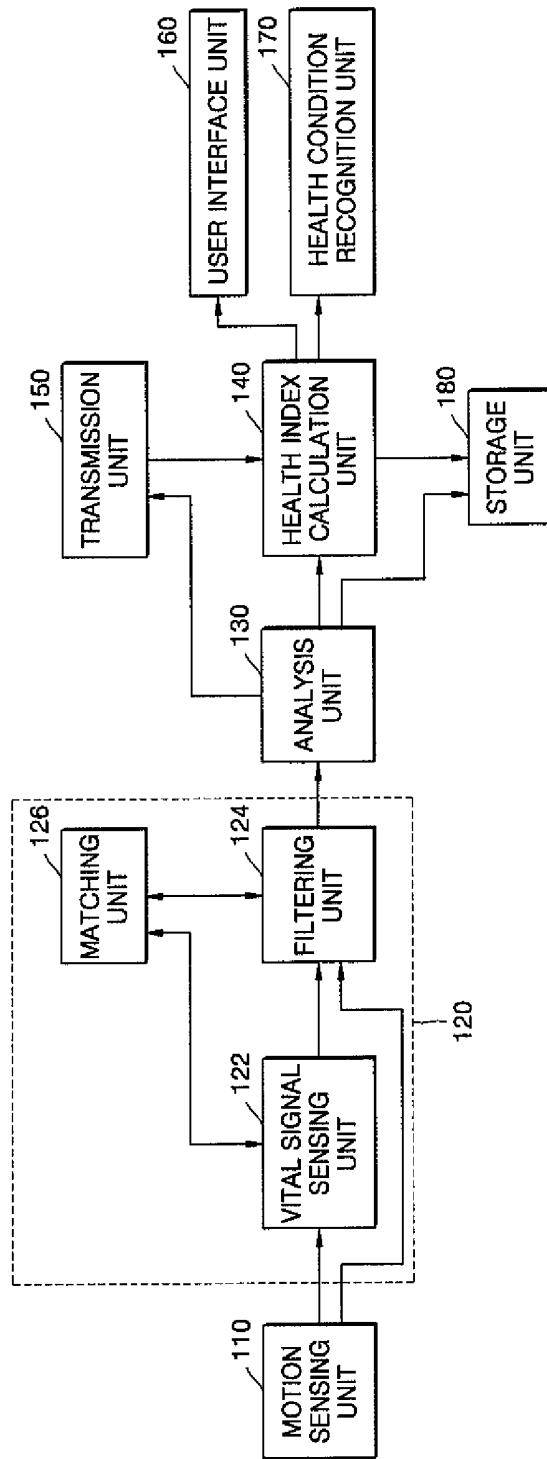


FIG. 2A

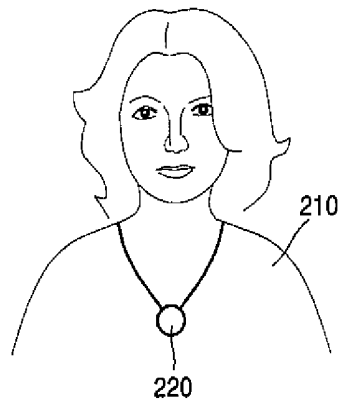
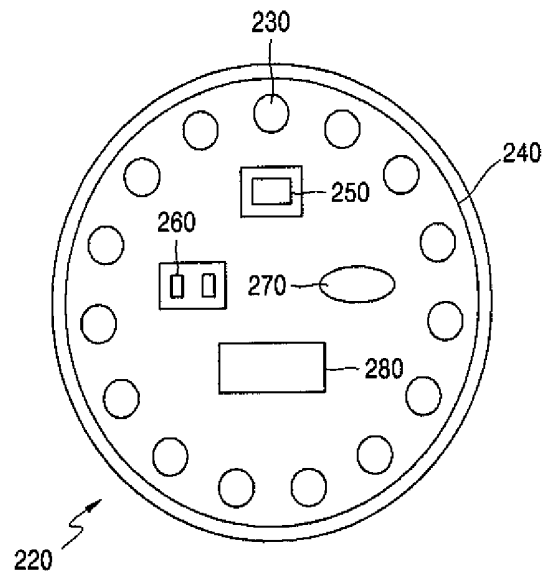


FIG. 2B



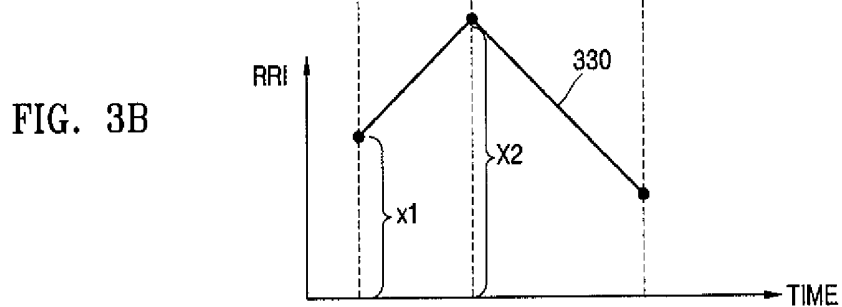
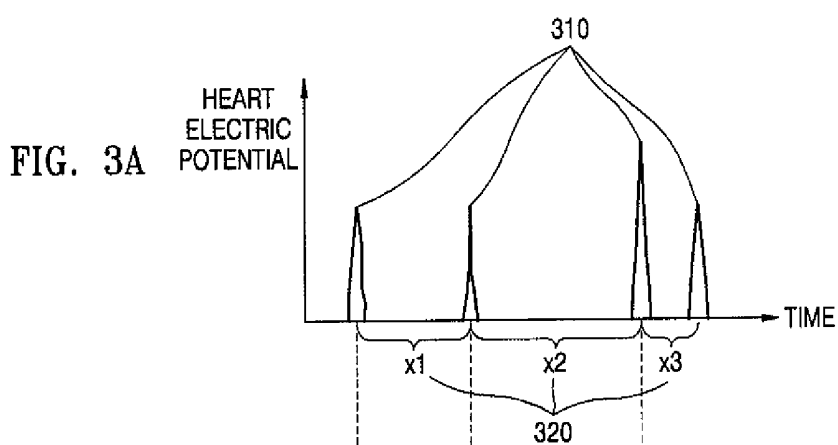


FIG. 3C

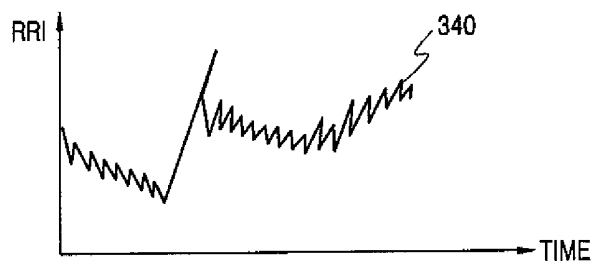


FIG. 3D

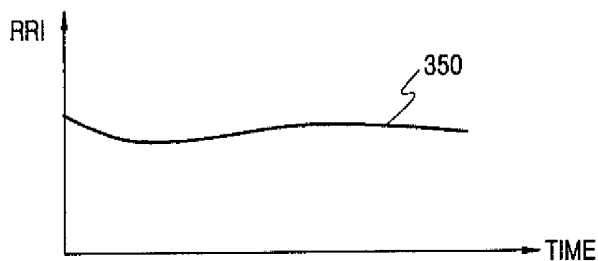


FIG. 3E

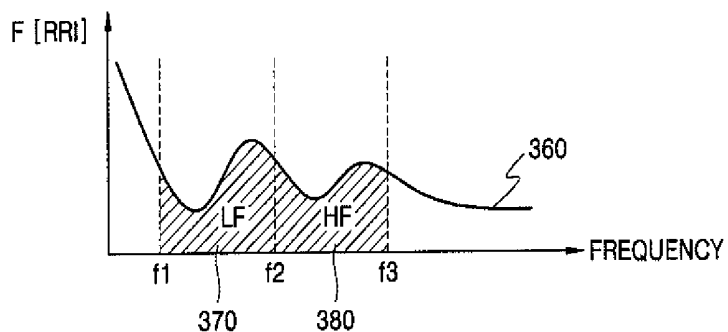


FIG. 4

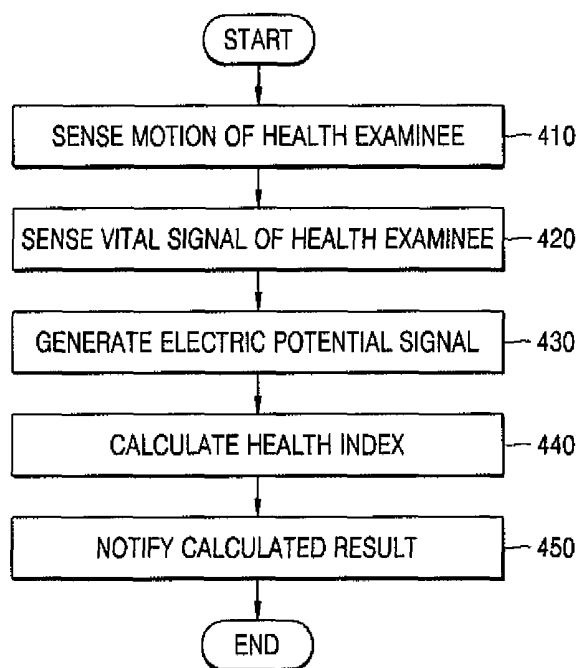


FIG. 5

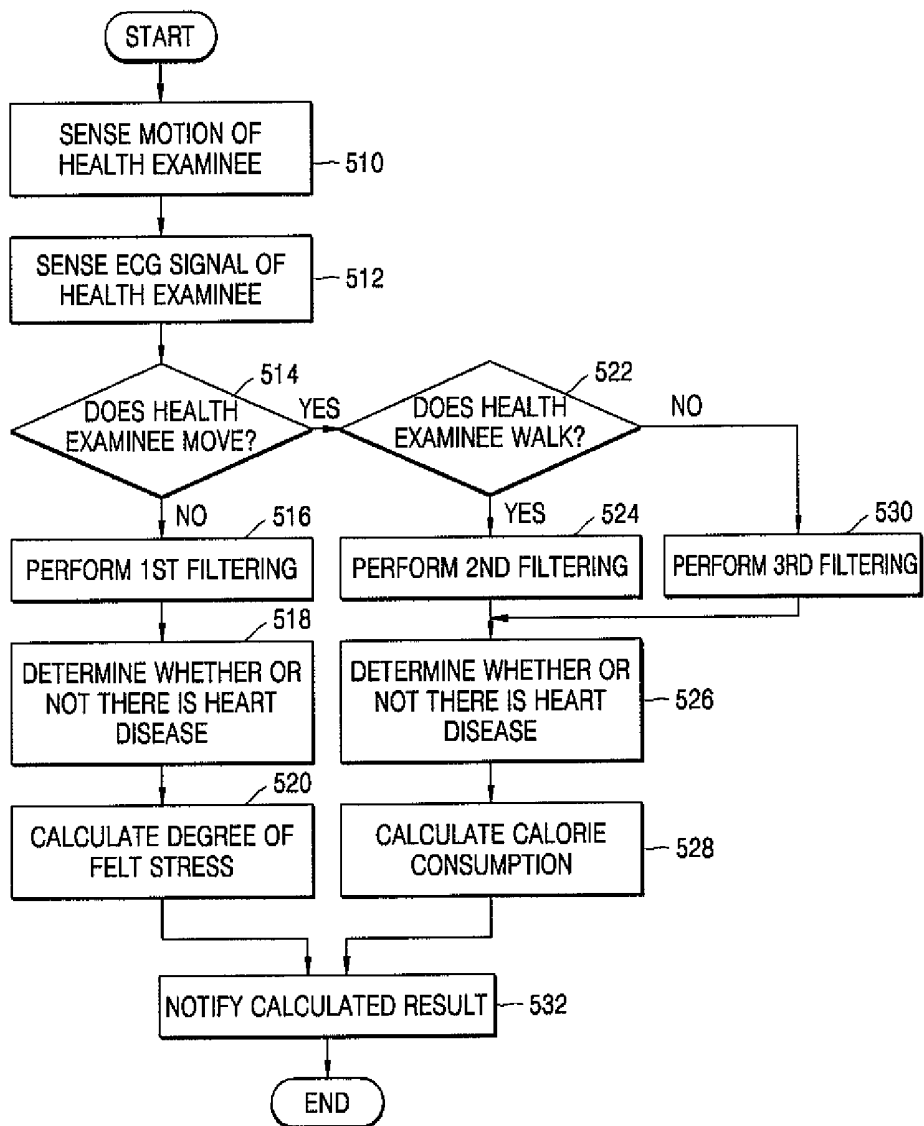
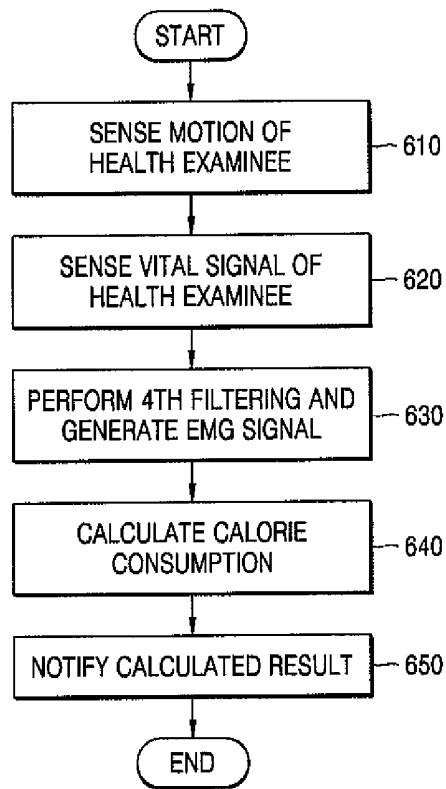


FIG. 6



HEALTH CARE APPARATUS AND METHODCROSS-REFERENCE TO RELATED PATENT
APPLICATIONS

This application claims the benefit of Korean Patent Application No. 10-2005-0064547, filed on Jul. 16, 2005, in the Korean Intellectual Property Office, the disclosure of which is incorporated herein in its entirety by reference.

BACKGROUND OF THE INVENTION

1. Field of the Invention

Apparatuses and methods consistent with the present invention relate to health care, and more particularly, to sensing motions of a health examinee with respect to time, sensing an electric potential signal corresponding to the sensed result from the examinee, and identifying the physical condition of the examinee by analyzing the sensed result.

2. Description of the Related Art

Vital signals that can be sensed from a person such as a health examinee include an electrocardiogram (ECG) signal and an electromyogram (EMG) signal. From the sensed ECG signal, whether or not the heart pulsation of the examinee is being normally generated and the degree of a stress currently felt by the examinee can be determined. Also, from the sensed EMG signal, the amount of calorie consumption by the motion of the examinee can be learned.

Thus, by using the vital signals sensed from the examinee, the physical condition of the examinee can be identified. That is, by using the sensed vital signals, the health index of the examinee can be calculated. At this time, the state of heart pulsation, internal cardiac work performed, the balance state of the autonomic nervous system, and the amount of calorie consumption are all examples of health indexes.

Meanwhile, in order to accurately identify the physical condition by using the sensed vital signals, the current motion, i.e., the current motive state, of the examinee should be considered. For example, in an exemplary embodiment, the degree of stress is calculated by using an ECG signal sensed from the examinee when the examinee takes a physical and mental rest. Also, in an exemplary embodiment, the amount of calorie consumption is calculated when the examinee is doing exercise.

The conventional health care apparatuses have a problem that the figures of health indexes cannot be calculated accurately if information on the current motion of the examinee is not given. Also, the conventional apparatuses cannot notify the examinee of the calculated figures of the health indexes in real time.

SUMMARY OF THE INVENTION

The present invention provides a health care apparatus for sensing motions of a health examinee with respect to time, sensing an electric potential signal corresponding to the sensed result from the examinee, and identifying the physical condition of the examinee by analyzing the sensed result.

The present invention also provides a method of sensing motions of a health examinee with respect to time, sensing an electric potential signal corresponding to the sensed result from the examinee, and identifying the physical condition of the examinee by analyzing the sensed result.

The present invention also provides a computer readable recording medium having embodied thereon a computer program for executing a method of sensing motions of a health examinee with respect to time, sensing an electric potential

signal corresponding to the sensed result from the examinee, and identifying the physical condition of the examinee by analyzing the sensed result.

According to an aspect of the present invention, there is provided a health care apparatus including: a motion sensing unit sensing the motion of a health examinee with respect to time; a bio-electric potential sensing unit sensing an electric potential signal of the health examinee corresponding to the sensed result; and an analysis unit analyzing the sensed result.

The apparatus may further include a health index calculation unit calculating a desired health index by using the analyzed result, wherein the health index is an index indicating a physical condition of the health examinee.

The motion sensing unit may include a plurality of sensing devices attached to the body of the health examinee.

The plurality of sensing devices may be prepared in an integrated unit or may be prepared at separate places connected through a network.

The bio-electric potential sensing unit may include: a vital signal sensing unit sensing the vital signal of the health examinee in response to the sensed result; and a filtering unit filtering the sensed vital signal in response to the sensed result and outputting the filtered result as the electric potential signal.

The bio-electric potential sensing unit may further include: a matching unit including the sensed result and information on the filtering matching the sensed result, wherein the vital signal sensing unit senses the vital signal indicated in the information matching the sensed result.

The bio-electric potential sensing unit may further include: a matching unit including the sensed result and information on the filtering matching the sensed result, wherein the filtering unit filters the sensed vital signal according to information on the filtering, matching the sensed result.

The electric potential signal may be a vital signal having a frequency band corresponding to the sensed result among vital signals sensible from the health examinee.

The apparatus may further include a user interface unit providing a user interface displaying at least one of the analyzed result and the calculated figure of the health index.

The apparatus may further include a health recognition unit making the health examinee recognize the health condition of the health examinee, by performing a function corresponding to the calculated figure of the health index.

The health condition recognition unit may make the health examinee recognize the health condition of the health examinee, by using at least one of a visual path, a tactile path and an audible path.

The health index may include the state of heart pulsation, internal cardiac work performed, the balance state of the autonomic nervous system, or the amount of calorie consumption

The vital signal may be an ECG signal or an EMG signal.

The apparatus may further include a storage unit storing the analyzed result and the calculated figure of the health index.

According to another aspect of the present invention, there is provided a health care method including: sensing the motion of a health examinee with respect to time; sensing an electric potential signal of the health examinee corresponding to the sensed result; and analyzing the sensed result.

The method may further include calculating a desired health index by using the analyzed result, wherein the health index is an index indicating a physical condition of the health examinee.

The sensing of the electric potential signal may include: sensing the vital signal of the health examinee in response to

the sensed result; and filtering the sensed vital signal according to the sensed result, wherein the filtered result is the electric potential signal.

The method may further include notifying at least one of the analyzed result and the calculated figure of the health index.

The method may further include making the health examinee recognize the calculated figure of the health index, by using at least one of a visual path, a tactile path and an audible path.

The method may further include storing the analyzed result and the calculated figure of the health index.

The health index may include the state of heart pulsation, internal cardiac work performed, the balance state of the autonomic nervous system, or the amount of calorie consumption.

The sensing of the motion may be performed by a plurality of sensing devices attached as an integrated unit to the body of the health examinee.

The sensing of the motion may be performed by a plurality of sensing devices that are attached to the body of the health examinee, and prepared at separated places connected through a network.

According to still another aspect of the present invention, there is provided a computer readable recording medium having embodied thereon a computer program for executing a health care method, wherein the method includes: sensing the motion of a health examinee with respect to time; sensing an electric potential signal of the health examinee corresponding to the sensed result; and analyzing the sensed result.

BRIEF DESCRIPTION OF THE DRAWINGS

The above and other aspects the present invention will become more apparent by describing in detail exemplary embodiments thereof with reference to the attached drawings in which:

FIG. 1 is a block diagram of an exemplary embodiment of a health care apparatus according to the present invention;

FIGS. 2A and 2B are reference diagrams explaining the health care apparatus according to exemplary embodiments of the present invention shown in FIG. 1;

FIGS. 3A, 3B, 3C, 3D and 3E are reference diagrams explaining a process for calculating a stress figure of a health examinee by a health care apparatus according to an exemplary embodiment of the present invention;

FIG. 4 is a flowchart explaining an exemplary embodiment of a health care method according to the present invention;

FIG. 5 is a flowchart explaining a principle of managing the state of heart pulsation of a health examinee according to an exemplary embodiment of a health care method of the present invention; and

FIG. 6 is a flowchart explaining a principle of calculating the amount of calories consumed by a health examinee according to an exemplary embodiment of a health care method of the present invention.

DETAILED DESCRIPTION OF THE INVENTION

The present invention will now be described more fully with reference to the accompanying drawings, in which exemplary embodiments of the invention are shown. However, terms described hereinafter are those defined with consideration of functions in the present invention and can be changed according to a user, the intention of an operator or a convention. Accordingly, definitions should be interpreted based on the contents in the present specification as a whole.

FIG. 1 is a block diagram of an exemplary embodiment of a health care apparatus according to the present invention, and the apparatus may include a motion sensing unit 110, a bio-electric potential sensing unit 120, an analysis unit 130, a health index calculation unit 140, a transmission unit 150, a user interface unit 160, a health condition recognition unit 170, and a storage unit 180. In this exemplary embodiment, the bio-electric potential sensing unit 120 includes a vital signal sensing unit 122, a filtering unit 124, and a matching unit 126.

The motion sensing unit 110 senses the pattern of motions of a health examinee. That is, the motion sensing unit 110 senses the motion of the examinee with respect to time. This motion sensing unit 110 can be constructed with a plurality of sensing devices.

In this case, the plurality of sensing devices can be disposed in an integrated unit. If the plurality of sensing devices are disposed together in a single limited place, it can be said that the plurality of sensing devices are disposed in an integrated unit. For example, if the plurality of sensing devices are disposed together in a patch-shaped place, it can be said that the plurality of sensing devices are disposed in an integrated unit.

Meanwhile, a plurality of sensing devices can be disposed on separate places but connected to each other through a network. That is, each of the plurality of sensing devices can be disposed on different places of the body of the examinee.

In this case, the plurality of sensing devices can be connected to an identical network.

These sensing devices can have at least one of an acceleration sensor function and an angular velocity sensor function. Here, the function of an acceleration sensor is to sense the acceleration of the examinee in an X-axis, Y-axis and Z-axis. Also, the function of an angular velocity sensor is to sense the angular velocity of the examinee. This angular velocity sensor is also referred to as a gyro sensor.

Motions with respect to time sensed by the motion sensing unit 110 include rest, walking, and running. However, rest, walking and running are just examples that can be sensed by the motion sensing unit 110 and other various motions can be sensed by the motion sensing unit 110.

If motions of the examinee are divided into rest, walking and running and sensed by the motion sensing unit 110, the distinguishing criterion of rest, walking, and running for the sensing results should be prepared in advance.

According to the health care apparatus of the present invention, a variety of health indexes can be calculated. Here, the health indexes are arbitrary indexes indicating the physical condition of the examinee. The state of heart pulsation, internal cardiac work performed, the balance state of the autonomic nervous system, and the amount of calorie consumption can be examples of health indexes.

Here, by using the state of heart pulsation, whether or not there is a disorder or an abnormality in the pulsation of the heart of the examinee can be determined, and by using the internal cardiac work performed, the work of the heart of the examinee when the examinee is doing exercise can be determined. By using the balance state of the autonomic nervous system, the degree of stress felt by the examinee can be determined. Also, by using the amount of calorie consumption, the amount of calories consumed when the examinee is doing exercise can be determined.

Meanwhile, the health indexes, such as the state of heart pulsation, internal cardiac work performed, and the balance state of the autonomic nervous system, can be calculated by using an ECG signal sensed from the examinee and the health

index such as the amount of calorie consumption can be calculated by using the EMG signal sensed from the examinee.

Here, the ECG signal is a signal indicating the electrical potential generated by a pumping of the heart with respect to time. The EMG signal is a signal indicating the electric potential of muscles with respect to time. These ECG and EMG signals are examples of vital signals that can be sensed from the examinee.

Meanwhile, in order to calculate a health index by using the sensed vital signals, the current motion pattern of the examinee should be considered.

For example, a figure indicating the degree of stress felt by the examinee is calculated in an exemplary embodiment by using an ECG signal sensed from the examinee when the examinee is taking a rest. Accordingly, a figure calculated by using an ECG signal sensed when the examinee is doing exercise can be said to be a less reliable number.

Likewise, when the EMG signal is sensed in order to calculate the amount of calories consumed by the examinee, the motion pattern of the exercise performed by the examinee should be considered. For example, in order to calculate the amount of calories consumed when the examinee rides a bicycle or a skate, in an exemplary embodiment, the amount of calorie consumption is calculated by using an EMG signal sensed in the muscles of the lower part of the body of the examinee. Accordingly, the amount of calorie consumption calculated by using an EMG signal sensed in the muscles of the upper part of the body cannot accurately indicate the amount of calories consumed by the examinee who is exercising the lower part of the body. That is, in order to accurately calculate the amount of calories consumed by the examinee exercising the lower part of the body, an EMG signal sensed in the muscles of the lower part of the body of the examinee should be used.

According to the present invention, a technological structure that senses by itself a current motion pattern of the examinee in a situation where any information on the motion pattern of the examinee is not given, and senses an electric potential signal appropriate to the sensed motion pattern, is implemented by using the bio-electric potential sensing unit 120. Here, the electric signal is a vital signal having a frequency band corresponding to the result sensed by the motion sensing unit 110 among vital signals that can be sensed from the examinee.

The bio-electric potential sensing unit 120 may include the vital signal sensing unit 122 and the filtering unit 124. The bio-electric potential sensing unit 120 senses from the examinee an electric potential signal corresponding to the motion pattern sensed by the motion sensing unit 110.

The vital signal sensing unit 122 senses the vital signal of the examinee in response to the result sensed by the motion sensing unit 110.

At this time, the vital signal sensed in the vital signal sensing unit 122 may be any vital signals that can be sensed in the sensed part of the body. That is, if only the vital signal sensing unit 122 senses any motion pattern irrespective of the contents of the motion pattern sensed in the motion sensing unit 110, all vital signals that can be sensed in the sensed part of the body can be sensed.

Also, the vital signal that is sensed in the vital signal sensing unit 122 may be part of vital signals that can be sensed in the sensed part of the body. That is, the vital signal sensing unit 122 can sense one or more preset vital signals matching the content of the motion pattern sensed in the motion sensing unit 110.

For example, if the examinee taking a rest is sensed by the motion sensing unit 110, in an exemplary embodiment, an ECG signal is sensed from the examinee by the vital signal sensing unit 122. Also, if the examinee exercising the lower part of the body is sensed by the motion sensing unit 110, in an exemplary embodiment, an EMG signal is sensed from the muscles of the lower part of the body of the examinee by the vital signal sensing unit 122.

Also, in response to the result sensed by the motion sensing unit 110, the filtering unit 124 filters the vital signal sensed in the vital signal sensing unit 122 and outputs the filtered result as an electric potential signal.

At this time, if all vital signals that can be sensed in the sensed part of the body are sensed, the filtering unit 124 filters the sensed vital signals in order to generate an electric potential signal having a preset vital signal matching the content of the motion pattern sensed in the motion sensing unit 110. An ECG signal and EMG signal can be examples of the preset vital signals.

For this, the bio-electric potential sensing unit 120 may further include the matching unit 126. At this time, in the matching unit 126, the result sensed in the motion sensing unit 110 is matched with a preset vital signal and information on the preset vital signal is output. Accordingly, the vital signal sensing unit 122 reads information on the preset vital signal matching the result sensed in the motion sensing unit 110, from the matching unit 126 and senses the vital signal indicated by the read information.

Also, the filtering unit 124 can again filter the filtered vital signal in order to generate an electric potential signal having a preset frequency matching the content of the motion pattern sensed in the motion sensing unit 110.

Meanwhile, if part of vital signals that can be sensed in the sensed part of the body are sensed by the vital signal sensing unit 122, the filtering unit 124 can filter the filtered vital signals in order to generate an electric potential signal having a preset frequency matching the content of the motion pattern sensed in the motion sensing unit 110.

For this, the bio-electric potential sensing unit 120 may further include the matching unit 126. At this time, in the matching unit 126 the result sensed in the motion sensing unit 110 is matched with a preset frequency and information on a preset frequency is output. Accordingly, the filtering unit 124 reads information on a frequency matching the result sensed in the motion sensing unit 110, from the matching unit 126 and performs filtering according to the frequency indicated in the read information.

For example, if an ECG signal is sensed in the vital signal sensing unit 122 and the examinee taking a rest is sensed by the motion sensing unit 110, the filtering unit 124 can generate and output an electric potential signal having a frequency from 0.1 Hz to 150 Hz, by passing only an ECG signal having a frequency in the range of 0.1 Hz to 150 Hz and blocking an ECG signal having a frequency in other ranges.

The signal output from the filtering unit 124, that is, the filtered vital signal, is an electric potential signal sensed in the bio-electric potential sensing unit 120.

The analysis unit 130 analyzes the sensed electric potential signal and by using the analyzed result, the health index calculation unit 140 calculates a health index desired to be calculated.

At this time, the analysis unit 130 and the health index calculation unit 140 can be integrated or be connected through a network. That is, the analysis unit 130 and the health index calculation unit 140 can be disposed separately without being disposed in an integrated place.

For example, the analysis unit **130** may be attached to a part of the body of the examinee and the health index calculation unit **140** may be disposed in a computer used by the attending physician. In this case, if the analysis unit **130** and the health index calculation unit **140** are connected through a network, the result analyzed in the analysis unit **130** is transmitted to the health index calculation unit **140**.

For this, the transmission unit **150** can be disposed in the health care apparatus according to the present invention. That is, the transmission unit **150** transmits the result analyzed by the analysis unit **130** to the health index calculation unit **140** connected to the analysis unit **130** through a network.

Meanwhile, the user interface unit **160** displays at least one of the result analyzed in the analysis unit **130** and the figure of the health index calculated in the health index calculation unit **140**.

The health condition recognition unit **170** notifies the examinee of the figure of the health index calculated in the health index calculation unit **140**.

More specifically, the health condition recognition unit **170** compares a preset threshold figure with the figure calculated in the health index calculation unit **140**, and with the comparison result, the health condition recognition unit **170** can notify the examinee of the figure.

The threshold figure is a number indicating that a disorder or an abnormality occurs in the physical condition of the examinee, if the calculated figure exceeds the number, or does not reach the number, or corresponds to the number. For example, if the health index calculation unit **140** calculates a health index of a degree of an internal cardiac work performed, and if the calculated degree exceeds a threshold, it is necessary for the examinee doing exercise to immediately stop the exercise. In this case, the health condition recognition unit **170** compares the calculated degree of the internal cardiac work performed with the threshold, and if the comparison result indicates that the calculated degree exceeds the threshold, the health condition recognition unit **170** notifies the examinee that the exercise should be stopped immediately.

At this time, by using at least one of visual means, tactile means, and audible means, the health condition recognition unit **170** can convey the figure. For this, the health condition recognition unit **170** may include a vibration motor, a speaker, or a display panel, or the like.

For example, when the health condition recognition unit **170** finishing a comparison of the calculated degree of the internal cardiac work performed with the threshold, desires to notify the examinee doing exercise that the exercise should be stopped, the health condition recognition unit **170** may vibrate a vibration motor, or sound through a speaker, or display on a display in order to notify the examinee that the exercise should be stopped.

Meanwhile, the storage unit **180** stores at least one of the result analyzed in the analysis unit **130** and the figure of the health index calculated in the health index calculation unit **140**.

FIGS. **2A** and **2B** are reference diagrams explaining the health care apparatus according to the present invention shown in FIG. **1**.

As shown, the motion sensing unit **110** through the storage unit **180**, i.e., the motion sensing unit **110**, the bio-electric potential sensing unit **120**, the analysis unit **130**, the health index calculation unit **140**, the transmission unit **150**, the user interface unit **160**, the health condition recognition unit **170**, and the storage unit **180**, included in the health care apparatus according to the present invention can be disposed in an integrated unit. In particular, in an exemplary embodiment,

the motion sensing unit **110** through the storage unit **180** are disposed in an integrated unit.

FIG. **2A** shows an example of implementing the health care apparatus according to the present invention. As shown in FIG. **2A**, the motion sensing unit **110** through the storage unit **180** included in the health care apparatus according to the present invention can all be disposed at a same place, i.e., on a device **220**. Here, the device **220** may be a circle-shaped device as shown.

Also, the health care apparatus according to the present invention may be disposed in a pendant of a necklace, or unlike the figure, the health care apparatus can be disposed in a medium, for example, a patch, detachably attached to the body of the examinee.

FIG. **2B** is a diagram showing details of the health care apparatus **220** shown in FIG. **2A**. If the vital signal sensing unit **122** is formed with a plurality of sensing devices, reference number **230** indicates each of the sensing devices.

Meanwhile, reference number **240** indicates the transmission unit **150**, reference number **250** indicates the motion sensing unit **110**, reference number **260** indicates a photoplethysmography (PPG) sensor, and reference number **270** indicates a temperature sensor.

That is, the vital signal sensing unit **122** may sense the PPG, or a core temperature. Here, the core temperature is the temperature of a place at a predetermined distance from the skin of a part being examined. The predetermined distance is determined in advance and can be varied.

When the vital signal sensing unit **122** senses the PPG, the health index calculation unit **140** can measure the blood oxygen saturation of the examinee **210**. Furthermore, when the vital signal sensing unit **122** senses both the PPG and the ECG signal, the health index calculation unit **140** can calculate the blood pressure of the examinee **210**.

Also, reference number **280** indicates a control unit and the control unit controls operations of all the units from the vital signal sensing unit **230** through the temperature sensor **270**.

FIGS. **3A**, **3B**, **3C**, **3D** and **3E** are reference diagrams explaining a process for calculating a stress figure of the health examinee **210** by a health care apparatus according to the present invention.

More specifically, FIG. **3A** is a timing diagram showing the electric potential of an R-peak value **310** sensed from the examinee **210** with respect to time. In FIG. **3A**, **x1**, **x2**, and **x3** indicate R-R intervals (RRI). Here, the RRI is an interval between R-peak values on the time axis.

FIG. **3B** is a timing diagram **330** showing RRI values, such as **x1**, **x2**, and **x3** shown in FIG. **3A**, with respect to time. Furthermore, FIGS. **3C** and **3D** are timing diagrams **340** and **350**, respectively, that can be expressed in FIG. **3B** and are expressed in a large scale.

The waveform of the timing diagram **340** shown in FIG. **3C** is more random than that of the timing diagram **350** shown in FIG. **3D**, and the examinee **210** sensed as the timing diagram **340** shown in FIG. **3C** is healthier than the examinee **210** sensed as the timing diagram **350** shown in FIG. **3D**.

Meanwhile, if the RRI signals in FIGS. **3C** and **3D** are Fourier transformed, a timing diagram **360** as shown in FIG. **3E** can be generated. Here, all of **f1**, **f2** and **f3** are preset frequencies and can be varied. For example, **f1**, **f2**, and **f3** may be 0.04 Hz, 0.1 Hz, and 0.5 Hz, respectively.

Meanwhile, LF shown in FIG. 3E can be expressed as the following equation 1:

$$LF = \int_{f_1}^{f_2} F[RRR(t)]df \quad (1)$$

Likewise, HF shown in FIG. 3E can be expressed as the following equation 2:

$$HF = \int_{f_2}^{f_3} F[RRR(t)]df \quad (2)$$

Here, LF is mainly affected by the autonomic nervous system and HF is mainly affected by the para autonomic nervous system. Accordingly, the figure of HF/LF indicates whether or not the mental and body condition of the examinee 210 is in a stable state.

For example, HF/LF=2/3 indicates that the mental and body condition of the examinee 210 is in a stable state. When the health index calculation unit 140 calculates the degree of stress currently felt by the examinee 210, the health index calculation unit 140 calculates an HF/LF figure and 2/3 becomes a threshold figure.

In this case, the health condition recognition unit 170 compares the HF/LF figure calculated by the health index calculation unit 140 with 2/3, and if the result of the comparison indicates that the calculated number exceeds 2/3, the health condition recognition unit 170 can notify the examinee 210 that the examinee 210 is in a tension state, i.e., has an elevated stress level. Meanwhile, if the comparison result indicates that the calculated figure is 2/3 or less than 2/3, the examinee 210 is in a relaxed state and therefore, the health condition recognition unit 170 may not notify the examinee 210.

FIG. 4 is a flowchart explaining an exemplary embodiment of a health care method according to the present invention. The embodiment is formed with sensing the motion pattern of the examinee 210 and sensing an electric potential signal corresponding to the sensed motion pattern in operations 410, 420 and 430, and calculating a health index by using the sensed electric potential signal and notifying the examinee 210 of the calculated result in operations 440 and 450.

The motion sensing unit 110 senses the motion of the examinee 210 with respect to time in operation 410. The vital signal sensing unit 122 senses a vital signal corresponding to the sensed result from the examinee 210 in operation 420.

Then, the filtering unit 124 filters the vital signal sensed in the vital signal sensing unit 122 according to the sensed result and generates an electric potential signal in operation 430. That is, the electric potential signal is a filtered vital signal.

Accordingly, after the operation 410, the bio-electric potential sensing unit 120 senses an electric signal corresponding to the sensed result from the examinee 210 in the operations 420 and 430.

Then, the analysis unit 130 analyzes the sensed electric potential signal and the health index calculation unit 140 calculates a health index by using the analyzed result in operation 440, and the health condition recognition unit 170 notifies the examinee 210 of the calculated health index in operation 450.

FIG. 5 is a flowchart explaining a principle of managing the state of heart pulsation of a health examinee according to a health care method of the present invention. The flowchart is formed with sensing the motion pattern of the examinee 210

and sensing an electric potential signal corresponding to the sensed motion pattern in operations 510, 512, 514 and 516, 522, 524 and 530, and calculating a health index by using the sensed electric potential signal and notifying the examinee 210 of the calculated result in operations 518, 520, 526, 528, and 532.

The motion sensing unit 110 senses the motion of the examinee 210 with respect to time in operation 510. The vital signal sensing unit 122 senses an ECG signal from the examinee 210 in operation 512, and the filtering unit 124 filters the sensed ECG signal according to the result sensed in the motion sensing unit 110.

More specifically, if it is determined in the motion sensing unit 110 that the examinee 210 is taking a rest in operation 514, the filtering unit 124 performs first filtering in operation 516. For convenience of explanation, it is assumed that the first filtering is to pass only frequencies from 0.1 Hz through 150 Hz. In this case, all P, Q, R, S, and T waves of the ECG signal pass the filtering unit 124. Here, the first-filtered vital signal becomes an electric potential signal.

After the operation 516, the analysis unit 130 analyzes the first-filtered vital signal and by using the analyzed result, the health index calculation unit 140 determines whether or not there is a disorder or an abnormality in the pulsation of the heart of the examinee 210 in operation 518. Furthermore, by using the analyzed result, the health index calculation unit 140 calculates the degree of stress felt by the examinee 210 in operation 520.

Meanwhile, if it is determined in the motion sensing unit 110 that the examinee 210 is walking in operation 522, the filtering unit 124 performs second filtering in operation 524. For convenience of explanation, it is assumed that the first filtering is to pass only frequencies from 1 Hz through 60 Hz. In this case, all P, Q, R, S, and T waves of the ECG signal pass the filtering unit 124. Here, the second-filtered vital signal becomes an electric potential signal.

After the operation 524, the analysis unit 130 analyzes the second-filtered vital signal and by using the analyzed result, it is determined whether or not there is a disorder or an abnormality in the pulsation of the heart of the examinee 210 in operation 526. Furthermore, by using the analyzed result, the health index calculation unit 140 calculates the amount of calories consumed by the examinee 210 in operation 528.

Meanwhile, if it is determined in the motion sensing unit 110 that the examinee 210 is running in operation 530, the filtering unit 124 performs third filtering in operation 530. For convenience of explanation, it is assumed that the third filtering is to pass only frequencies from 5 Hz through 30 Hz. In this case, Q, R, and S waves of the ECG signal pass the filtering unit 124. Here, the third-filtered vital signal becomes an electric potential signal.

After the operation 530, the analysis unit 130 analyzes the third-filtered vital signal and by using the analyzed result, the health index calculation unit 140 determines whether or not there is a disorder or an abnormality in the pulsation of the heart of the examinee 210 and in addition, calculates the heart rate of the examinee 210. Furthermore, by using the analyzed result, the health index calculation unit 140 calculates the amount of calories consumed by the examinee 210.

The health condition recognition unit 170 notifies the examinee 210 of the figure calculated in the health index calculation unit 140 in operation 532.

FIG. 6 is a flowchart explaining a principle of calculating the amount of calories consumed by a health examinee according to a health care method of the present invention. The flowchart is formed with sensing the motion pattern of the examinee 210 and sensing an electric potential signal

corresponding the sensed motion pattern in operations **610**, **620** and **630**, and calculating a health index by using the sensed electric potential signal and notifying the examinee **210** of the calculated result in operations **640** and **650**.

The motion sensing unit **110** senses the motion of the examinee **210** with respect to time in operation **610** and the vital signal sensing unit **122** senses all vital signals that can be sensed in the sensed part of the body in operation **620**.

Then, the filtering unit **124** filters the vital signal sensed in the vital signal sensing unit **122** according to the sensed result and generates an EMG signal in operation **630**. In this case, the EMG signal is an electric potential signal.

Accordingly, after the operation **610** the bio-electric potential sensing unit **120** senses an electric potential signal corresponding to the sensed result from the examinee **210** in operations **620** and **630**.

Then, the analysis unit **130** analyzes the sensed EMG signal and by using the analyzed result, the health index calculation unit **140** calculates the amount of calorie consumption in operation **640** in operation **640**. The health index recognition unit **170** notifies the examinee **210** of the calculated figure of the amount of the calorie consumption in operation **650**.

The present invention can also be embodied as computer readable codes on a computer readable recording medium. The computer readable recording medium is any data storage device that can store data which can be thereafter read by a computer system. Examples of the computer readable recording medium include read-only memory (ROM), random-access memory (RAM), CD-ROMs, magnetic tapes, floppy disks, optical data storage devices, and carrier waves (such as data transmission through the Internet). The computer readable recording medium can also be distributed over network coupled computer systems so that the computer readable code is stored and executed in a distributed fashion. Also, functional programs, codes, and code segments for accomplishing the present invention can be easily construed by programmers skilled in the art to which the present invention pertains.

While the present invention has been particularly shown and described with reference to exemplary embodiments thereof, it will be understood by those of ordinary skill in the art that various changes in form and details may be made therein without departing from the spirit and scope of the present invention as defined by the following claims. The exemplary embodiments should be considered in descriptive sense only and not for purposes of limitation. Therefore, the scope of the invention is defined not by the detailed description of the invention but by the appended claims, and all differences within the scope will be construed as being included in the present invention.

According to the health care apparatus and method of the present invention as described above, by recognizing a current motion of the examinee and sensing an electric potential signal corresponding to the recognized current motion from the examinee, a health index having more reliable figures than those of health index calculated without considering the current motion of the examinee can be calculated.

Meanwhile, according to the health care apparatus and method of the present invention even when information on the current motion of the health examinee is not given, the current motion can be recognized by the apparatus and method such that the health index can be calculated. Furthermore, since the figures of the calculated health index are notified to the health examinee in real time, if the physical condition enters an emergency state, the health examinee can be informed immediately that the physical condition is in an emergency state.

As a result, according to the health care apparatus and method of the present invention, the health examinee can recognize the physical condition in real time and when the physical condition is in an emergency state, the examinee can respond quickly to the emergency situation.

What is claimed is:

1. A health care apparatus comprising:

a motion sensing unit which senses a motion of a person with respect to time;

a bio-electric potential sensing unit which senses an electric potential signal of the person corresponding to the sensed motion; and

an analysis unit, implemented on a processor, which analyzes the sensed electric potential signal to generate an analyzed result,

wherein the electric potential signal is a vital signal having a frequency band corresponding to the sensed motion among a plurality of vital signals detected from the person,

wherein the bio-electric potential sensing unit comprises: a vital signal sensing unit, implemented on the processor, comprising a plurality of sensing devices, which senses the plurality of vital signals of the person;

a matching unit, implemented on the processor, which selects the vital signal among the plurality of vital signals based on a result of the sensed motion; selects a frequency band based on the result of the sensed motion; and outputs information on the vital signal and the frequency band; and

a filtering unit, implemented on the processor, which filters the sensed plurality of vital signals and generates the electric potential signal having the vital signal indicated in the output information among the plurality of vital signals; and further filters the electric potential signal having the vital signal, such that the electric potential has the frequency band that matches the sensed motion indicated in the output information,

wherein the matching unit selects a sensing device matching a relative body location corresponding to the sensed motion among the plurality of sensing devices, and the selected sensing device senses one or more preset vital signals.

2. The apparatus of claim **1**, further comprising a health index calculation unit which calculates a desired health index by using the analyzed result, wherein the health index is an index indicating a physical condition of the person.

3. The apparatus of claim **2**, further comprising a user interface unit which displays at least one of the analyzed result and the calculated figure of the health index.

4. The apparatus of claim **2**, further comprising a health condition recognition unit which notifies the person of the physical condition of the person.

5. The apparatus of claim **4**, wherein the health condition recognition unit notifies the person of the physical condition of the person, by using at least one of visual means, tactile means and audible means.

6. The apparatus of claim **2**, wherein the health index comprises state of heart pulsation, internal cardiac work performed, balance state of an autonomic nervous system, or amount of calorie consumption.

7. The apparatus of claim **2**, further comprising a storage unit which stores the analyzed result and the calculated health index.

8. The apparatus of claim **1**, wherein the motion sensing unit comprises a plurality of sensing devices attached to a body of the person.

9. The apparatus of claim 8, wherein the plurality of sensing devices are disposed in an integrated unit or are disposed at separate places connected through a network.

10. The apparatus of claim 1, wherein the vital signal is an electrocardiogram signal or an electromyogram signal.

11. The health care apparatus of claim 1, wherein the sensed motion of the person comprises a movement of a lower part of the person's body and the vital signal is sensed from the lower part of the body corresponding to said movement.

12. The health care apparatus of claim 1, wherein the sensed motion of the person comprises any one of walking and running and the vital signal is sensed at a body limb corresponding to the one of walking and running.

13. A health care method executed by a processor, the method comprising:

- sensing a motion of a person with respect to time;
- sensing an electric potential signal of the person corresponding to the sensed motion; and
- analyzing the sensed electric potential signal to generate an analyzed result,

wherein the electric potential signal is a vital signal having a frequency band corresponding to the sensed motion among a plurality of vital signals detected from the person,

wherein the sensing the electric potential signal comprises: sensing the plurality of vital signals of the person using one or more sensing device among a plurality of sensing devices;

selecting the vital signal among the plurality of vital signals based on a result of the sensed motion;

selecting the frequency band based on the result of the sensed motion; outputting information on the vital signal and the frequency band; and

filtering the sensed plurality of vital signals and generating the electric potential signal having the vital signal indicated in the output information among the plurality of vital signals; and further filtering the electric potential signal having the vital signal, such that the electric potential has the frequency band that matches the sensed motion indicated in the output information,

wherein, the sensing the electric potential signal further includes selecting a sensing device matching a relative body location corresponding to the sensed motion among the plurality of sensing devices, and sensing one or more preset vital signals.

14. The method of claim 13, further comprising calculating a desired health index by using the analyzed result, wherein the health index is an index indicating a physical condition of the person.

15. The method of claim 14, further comprising outputting at least one of the analyzed result and the calculated figure of the health index.

16. The method of claim 14, further comprising notifying the person of the calculated health index, by using at least one of visual means, tactile means and audible means.

17. The method of claim 14, further comprising storing the analyzed result and the calculated health index.

18. The method of claim 14, wherein the health index comprises state of heart pulsation, internal cardiac work per-

formed, balance state of the autonomic nervous system, or amount of calorie consumption.

19. The method of claim 13, wherein the vital signal is an electrocardiogram signal or an electromyogram signal.

20. The method of claim 13, wherein the sensing the motion is performed by a plurality of sensing devices attached as an integrated unit to a body of the person.

21. The method of claim 13, wherein the sensing the motion is performed by a plurality of sensing devices that are attached to a body of the person, and prepared at separated places connected through a network.

22. The method of claim 13, wherein the sensed motion of the person comprises a movement of a lower part of the person's body and the vital signal is sensed from the lower part of the body corresponding to said movement.

23. The health care apparatus of claim 1, wherein the filtering unit performs a first filtering based on a first condition met by the sensed motion and performs a second filtering based on a second condition met by the sense motion.

24. A non-transitory computer readable recording medium having embodied thereon a computer program for executing a health care method on a processor, wherein the method comprises:

- sensing a motion of a person with respect to time;
- sensing an electric potential signal of the person corresponding to the sensed motion; and
- analyzing the sensed electric potential signal,

wherein the electric potential signal is a vital signal having a frequency band corresponding to the sensed motion among a plurality of vital signals detected from the person,

wherein the sensing the electric potential signal comprises: sensing the plurality of vital signals of the person using one or more sensing device among a plurality of sensing devices;

selecting the vital signal among the plurality of vital signals based on a result of the sensed motion;

selecting the frequency band based on the result of the sensed motion; and

outputting information on the vital signal and the frequency band; and

filtering the sensed plurality of vital signals and generating the electric potential signal having the vital signal indicated in the output information among the plurality of vital signals; and further filtering the electric potential signal having the vital signal, such that the electric potential has the frequency band that matches the sensed motion indicated in the output information,

wherein, the sensing the electric potential signal further includes selecting a sensing device matching a relative body location corresponding to the sensed motion among the plurality of sensing devices, and sensing one or more preset vital signals.

25. The non-transitory computer readable recording medium of claim 24, wherein the sensed motion of the person comprises a movement of a lower part of the person's body and the vital signal is sensed from the lower part of the body corresponding to said movement.

专利名称(译)	保健装置和方法		
公开(公告)号	US8986206	公开(公告)日	2015-03-24
申请号	US11/397716	申请日	2006-04-05
[标]申请(专利权)人(译)	三星电子株式会社		
申请(专利权)人(译)	SAMSUNG ELECTRONICS CO. , LTD.		
当前申请(专利权)人(译)	SAMSUNG ELECTRONICS CO. , LTD.		
[标]发明人	KIM YOUN HO SHIN KUN SOO HAN WAN TAEK YEO HYUNG SOK HWANG HYUN TAI KIM JONG PAL		
发明人	KIM, YOUN-HO SHIN, KUN-SOO HAN, WAN-TAEK YEO, HYUNG-SOK HWANG, HYUN-TAI KIM, JONG-PAL		
IPC分类号	A61B5/00 A61B5/06 G06Q10/00 G06Q50/00 A61B5/01 A61B5/0205 A61B5/021 A61B5/024 A61B5/0404 A61B5/0456 A61B5/11 A61B5/145 G06F19/00		
CPC分类号	A61B5/0404 A61B5/02055 A61B5/1118 A61B5/1123 A61B5/4866 A61B5/4884 G06F19/3431 A61B5/0002 A61B5/01 A61B5/021 A61B5/02416 A61B5/0456 A61B5/145 A61B2560/0462 A61B2560/0468 A61B2562/0219 A61B5/4035 G16H50/30		
代理机构(译)	萨格鲁MION , PLLC		
审查员(译)	THOMSON , WILLIAM		
优先权	1020050064547 2005-07-16 KR		
其他公开文献	US20070016098A1		
外部链接	Espacenet USPTO		

摘要(译)

提供了一种保健设备和方法。该装置包括：运动传感单元；生物电势检测单元，检测与检测结果对应的健康受检者的电位信号；和分析单元分析感测结果。通过识别受检者的当前运动并且感测对应于来自被检者的所识别的当前运动的电势信号，可以计算被检者的更可靠的健康指数。即使没有给出关于健康受检者的当前运动的信息，也可以通过该装置和方法识别当前运动。此外，由于健康检查者被实时通知所计算的健康指标，所以如果身体状况处于紧急状态，则可以立即通知健康检查者。因此，考生可以快速响应紧急情况。

