



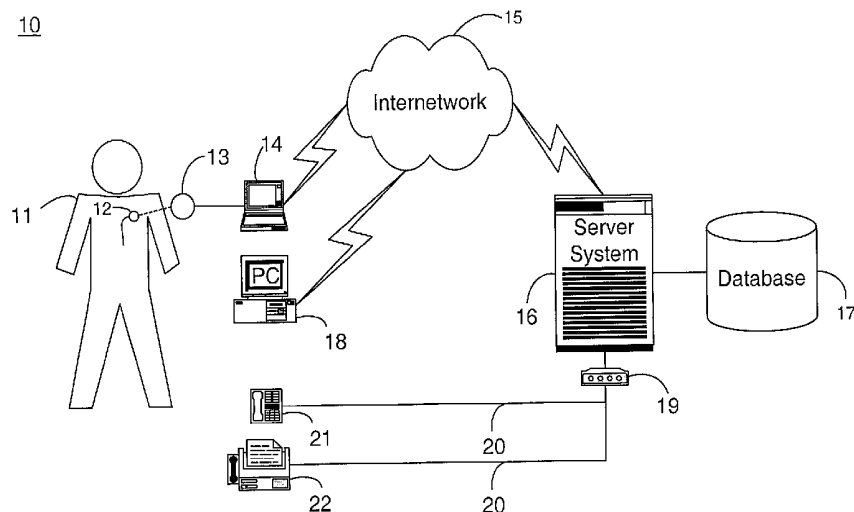
US 20020099301A1

(19) **United States**(12) **Patent Application Publication**  
**Bardy**(10) **Pub. No.: US 2002/0099301 A1**(43) **Pub. Date: Jul. 25, 2002**(54) **SYSTEM AND METHOD FOR PROVIDING  
PATIENT STATUS DIAGNOSIS FOR USE IN  
AUTOMATED PATIENT CARE**division of application No. 09/324,894, filed on Jun.  
3, 1999, now Pat. No. 6,312,378.**Publication Classification**(76) Inventor: **Gust H. Bardy, Seattle, WA (US)**(51) **Int. Cl.<sup>7</sup> ..... A61B 5/04**(52) **U.S. Cl. .... 600/509**

Correspondence Address:

**PATRICK J S INOUE P S**  
**810 3RD AVENUE**  
**SUITE 258**  
**SEATTLE, WA 98104 (US)**(21) Appl. No.: **10/101,007**(22) Filed: **Mar. 18, 2002****Related U.S. Application Data**(60) Continuation of application No. 09/789,456, filed on  
Feb. 20, 2001, now Pat. No. 6,358,203, which is a(57) **ABSTRACT**

A system and method for providing patient status diagnosis for use in automated patient care is described. Physiological measures relating to individual patient information recorded on a substantially continuous basis for an individual patient are stored as a patient care record into a database. One or more of the physiological measures in the patient care record are retrieved from the database. The retrieved physiological measures are analyzed relative to one or more other physiological measures to determine a patient status indicator. Feedback based on the analysis of the one or more physiological measures is sent to the individual patient.



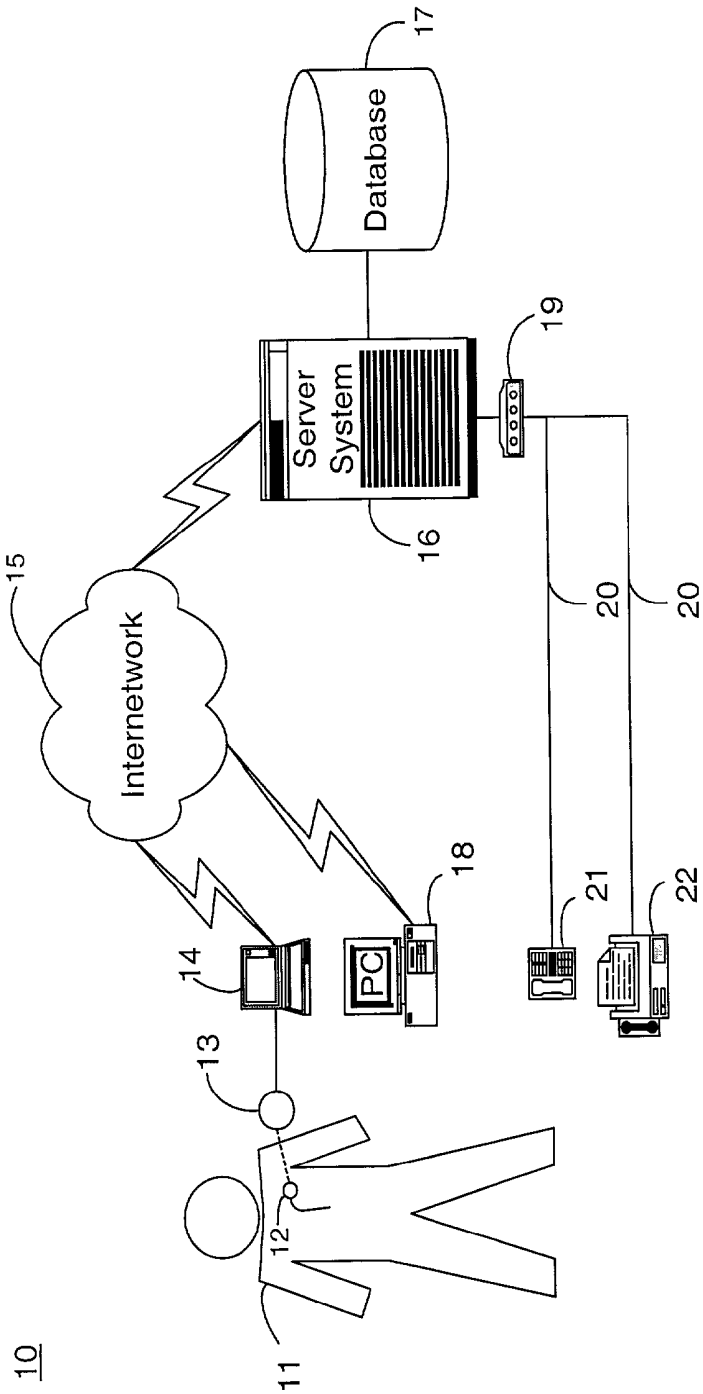


Figure 1.

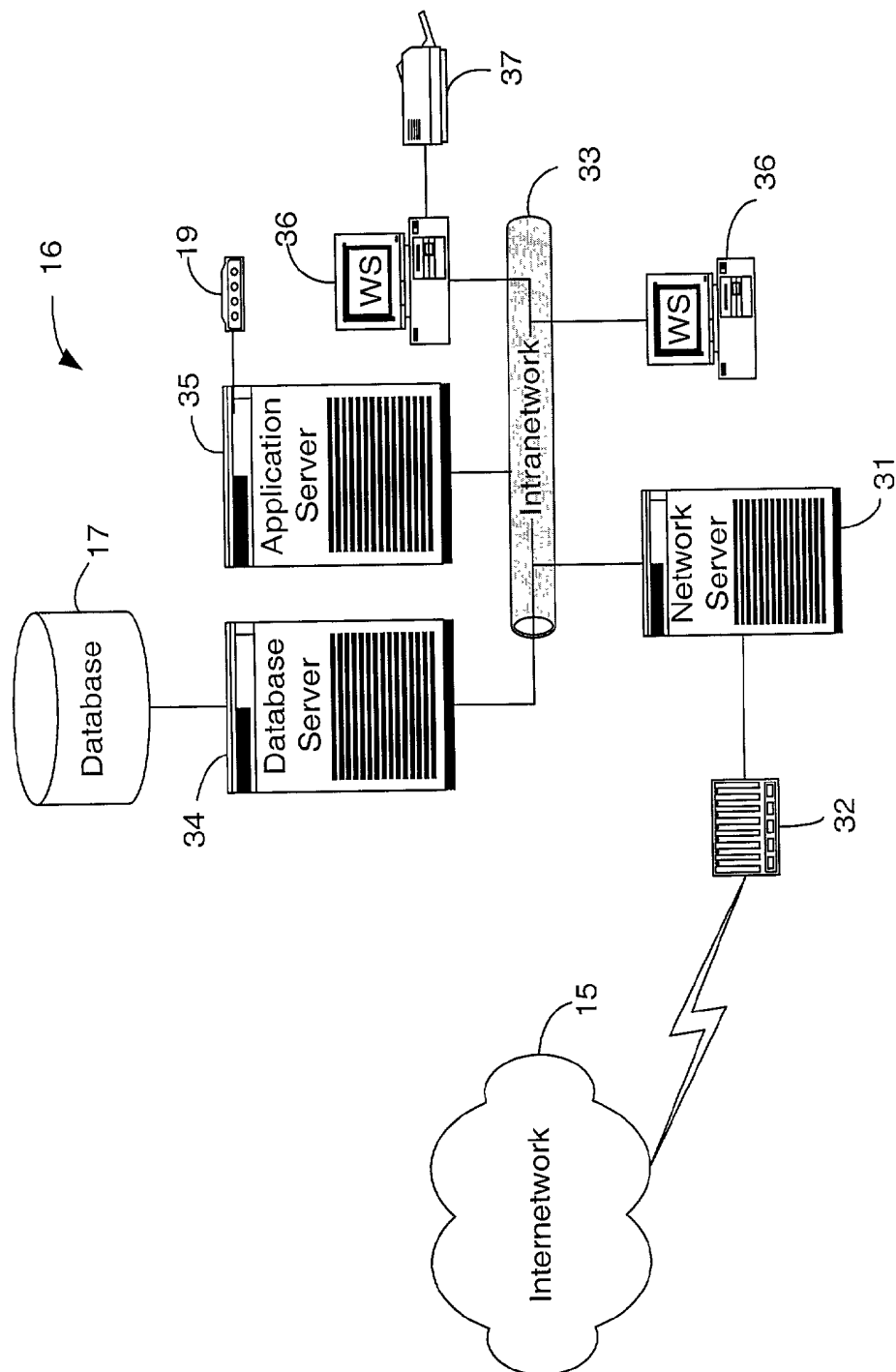


Figure 2.

Figure 3.

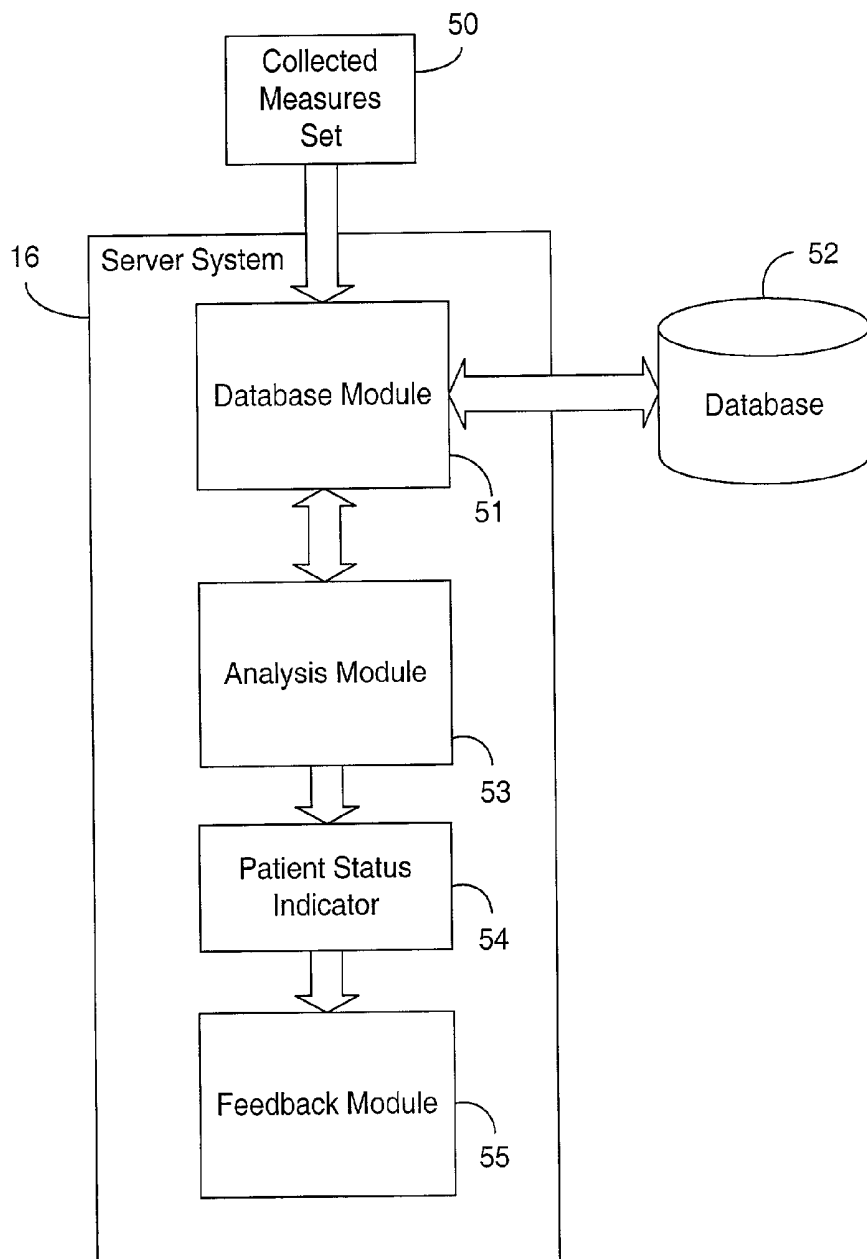


Figure 4.

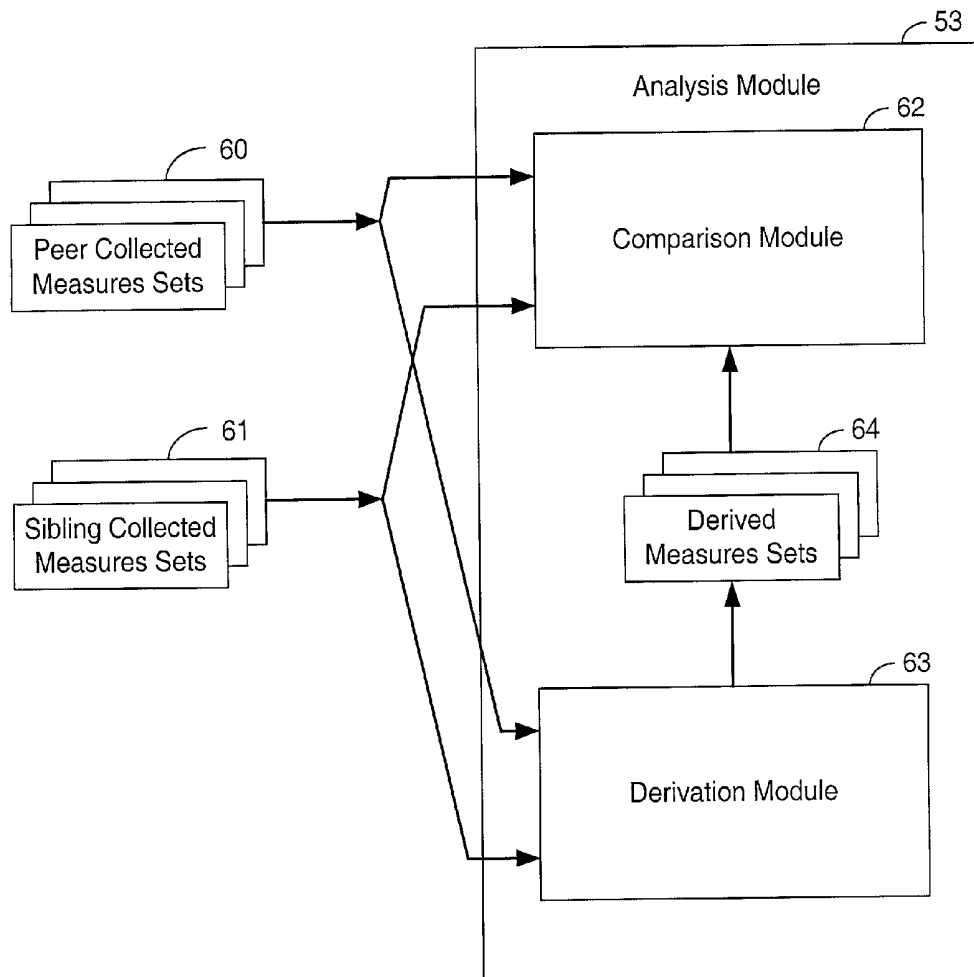
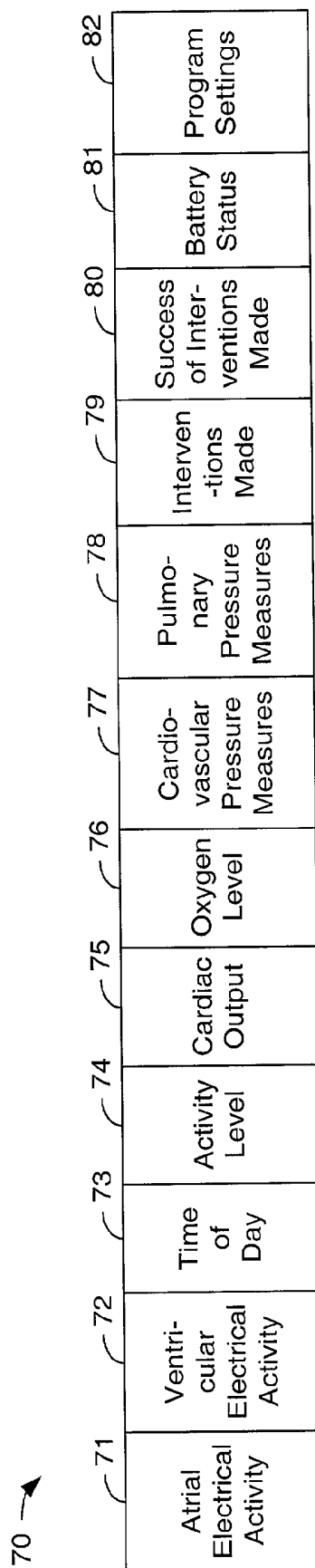


Figure 5.



Patient 1

Set 0				Set n-2	Set n-1	Set n
$X_0$	•	•	•	$X_{n-2}$	$X_{n-1}$	$X_n$
$Y_0$	•	•	•	$Y_{n-2}$	$Y_{n-1}$	$Y_n$
$Z_0$	•	•	•	$Z_{n-2}$	$Z_{n-1}$	$Z_n$

*time* →

Patient 2

Set 0				Set n-2	Set n-1	Set n
$X_{0'}$	•	•	•	$X_{n-2'}$	$X_{n-1'}$	$X_{n'}$
$Y_{0'}$	•	•	•	$Y_{n-2'}$	$Y_{n-1'}$	$Y_{n'}$
$Z_{0'}$	•	•	•	$Z_{n-2'}$	$Z_{n-1'}$	$Z_{n'}$

*time* →

Patient 3

Set 0				Set n-2	Set n-1	Set n
$X_{0''}$	•	•	•	$X_{n-2''}$	$X_{n-1''}$	$X_{n''}$
$Y_{0''}$	•	•	•	$Y_{n-2''}$	$Y_{n-1''}$	$Y_{n''}$
$Z_{0''}$	•	•	•	$Z_{n-2''}$	$Z_{n-1''}$	$Z_{n''}$

*time* →

Figure 6.

Figure 7.

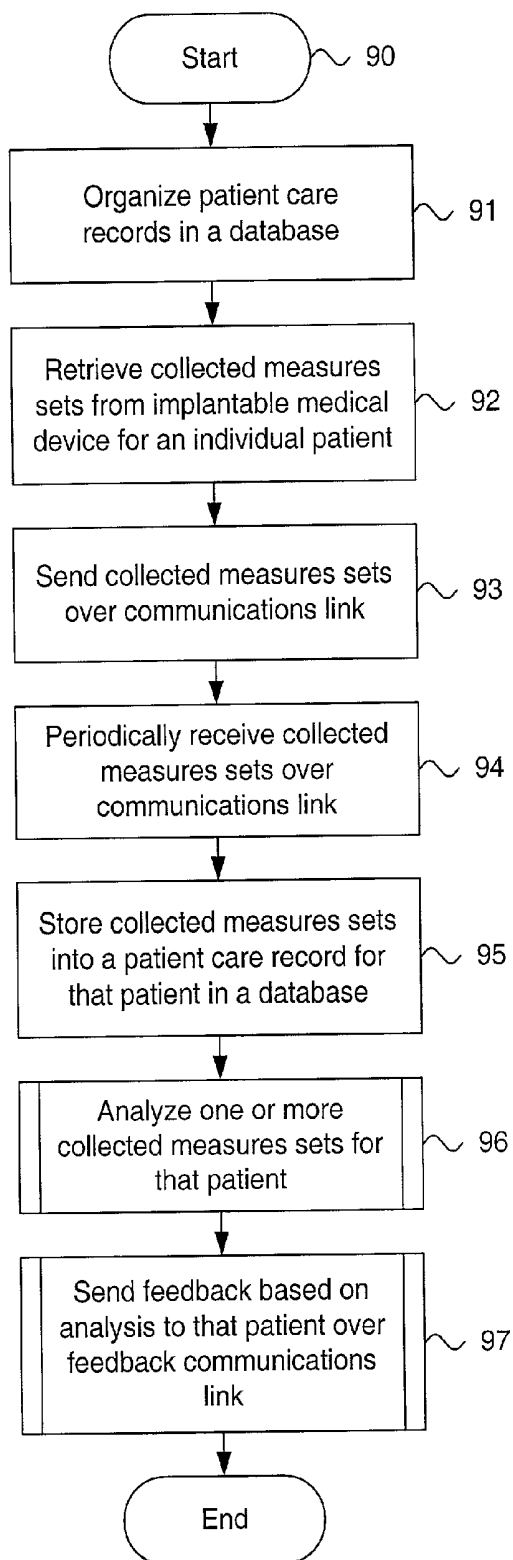




Figure 8.

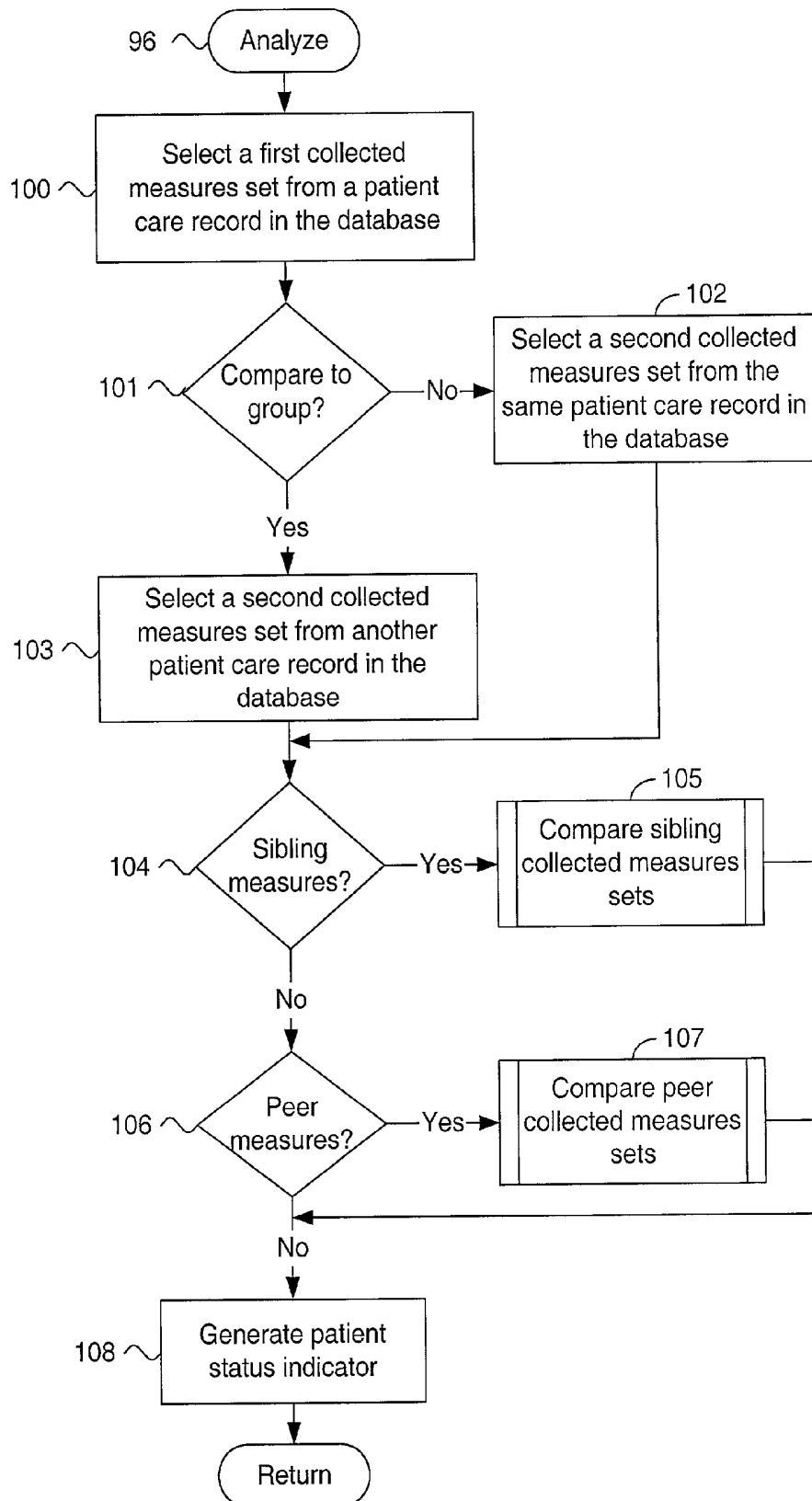


Figure 9.

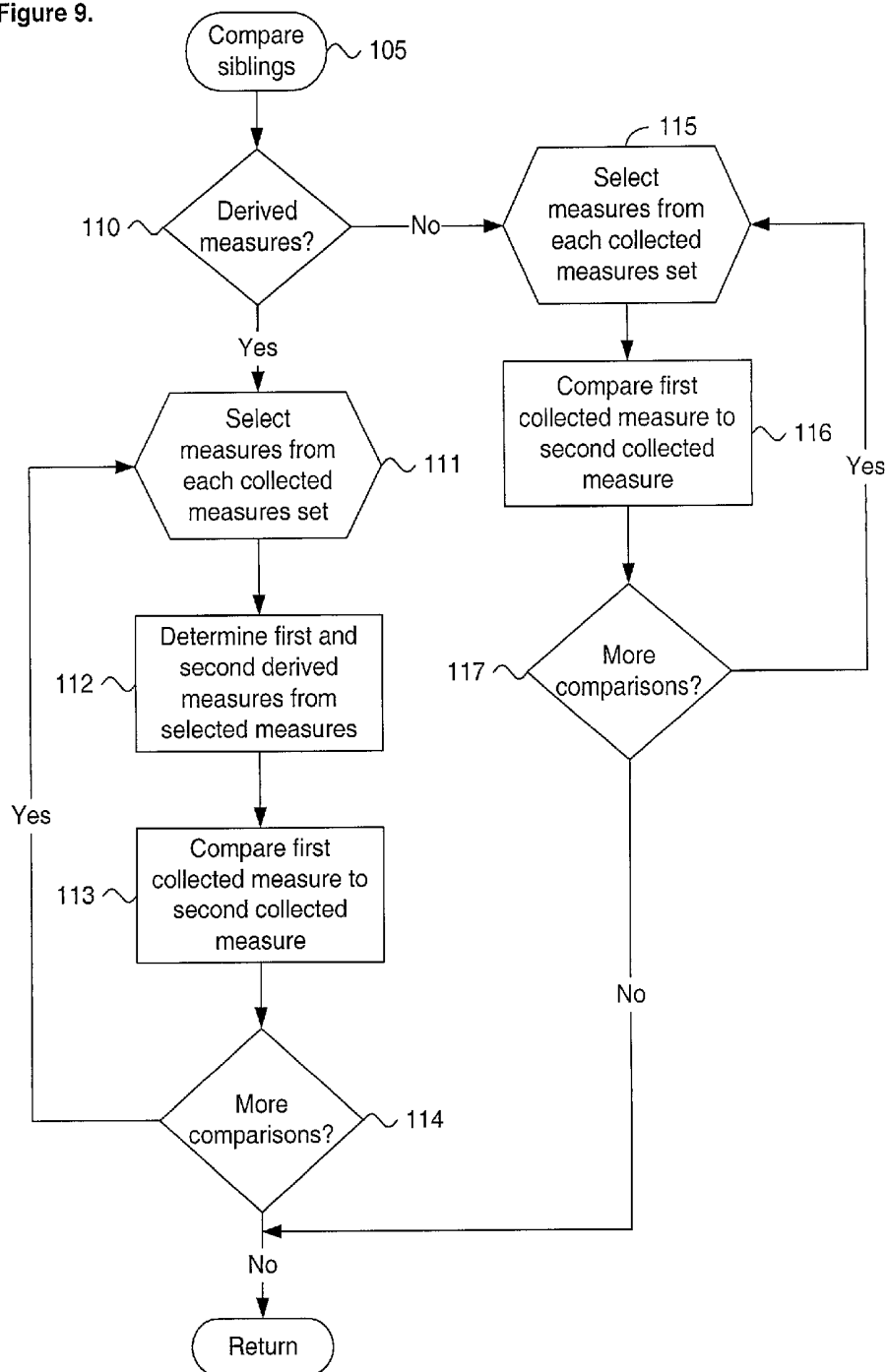


Figure 10A.

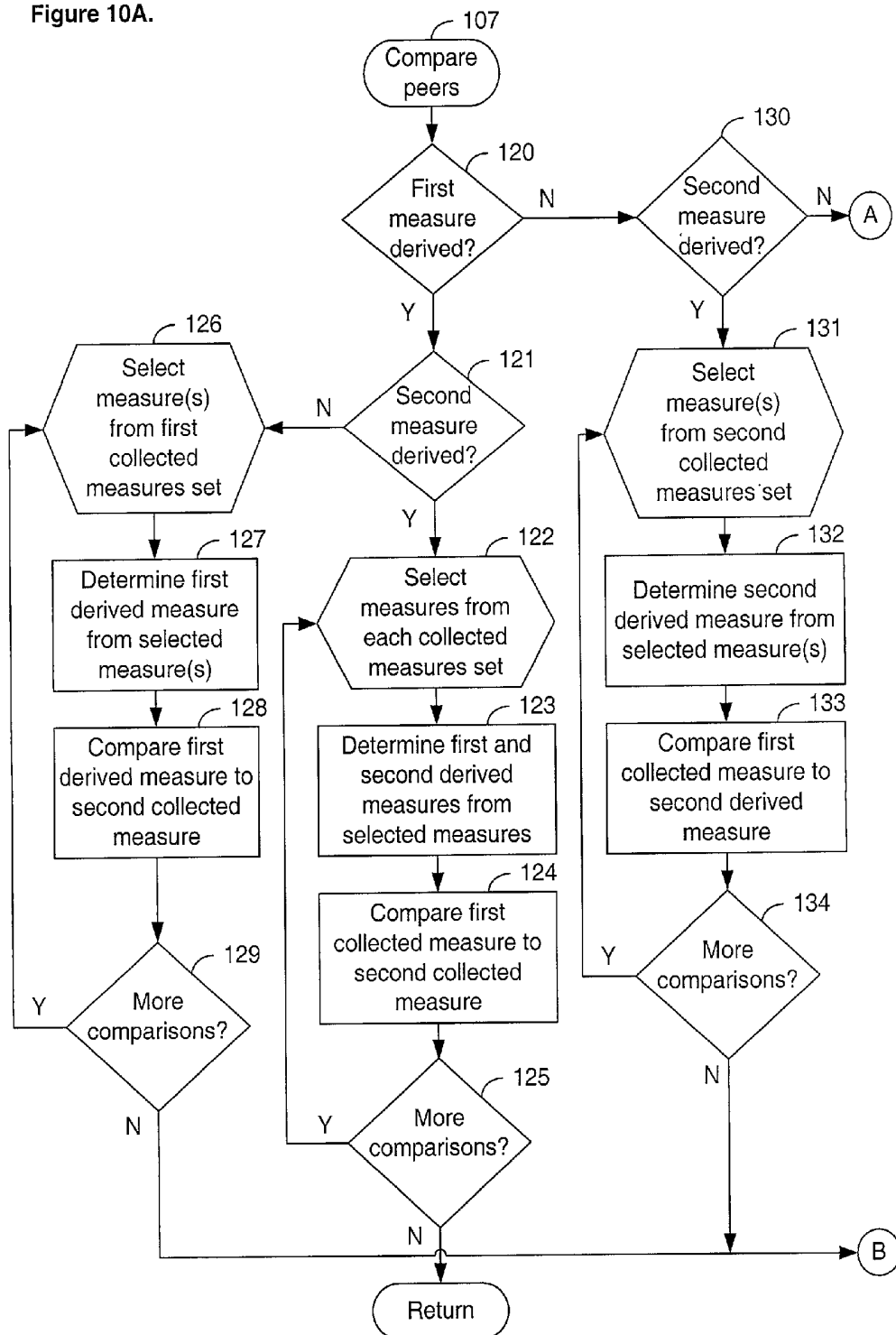


Figure 10B.

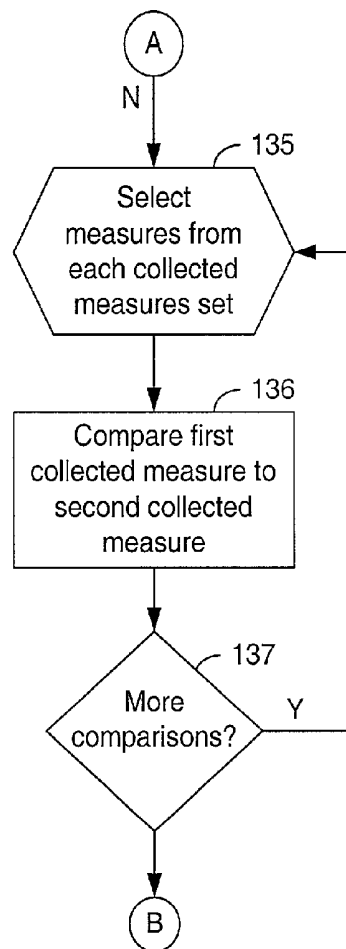
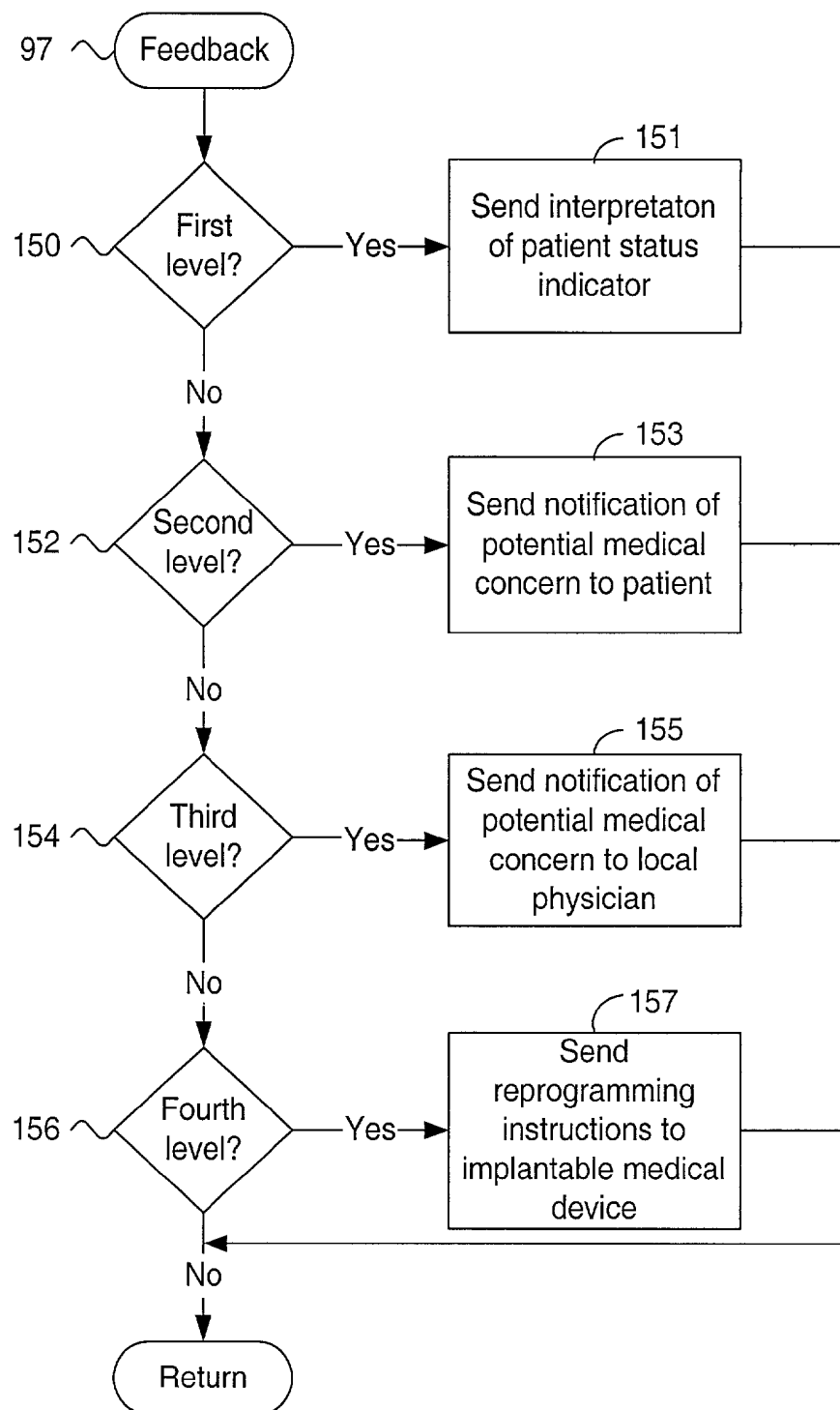


Figure 11.



## SYSTEM AND METHOD FOR PROVIDING PATIENT STATUS DIAGNOSIS FOR USE IN AUTOMATED PATIENT CARE

### CROSS REFERENCE TO RELATED APPLICATIONS

[0001] This patent application is a continuation of U.S. patent application Ser. No. 09/789,456, filed Feb. 20, 2001, pending, which is a divisional of U.S. Pat. No. 6,312,378, issued Nov. 6, 2001, the priority dates of which are claimed and the disclosures of which are incorporated by reference.

### FIELD OF THE INVENTION

[0002] The present invention relates in general to automated data collection and analysis, and, in particular, to a system and method for providing patient status diagnosis for use in automated patient care.

### BACKGROUND OF THE INVENTION

[0003] Implantable pulse generators (IPGs) are medical devices commonly used to treat irregular heartbeats, known as arrhythmias. There are two basic types. Cardiac pacemakers are used to manage bradycardia, an abnormally slow or irregular heartbeat. Left untreated, bradycardia can cause symptoms such as fatigue, dizziness, and fainting. Implantable cardioverter defibrillators (ICDs) are used to treat tachycardia, heart rhythms that are abnormally fast and life threatening. Tachycardia can result in sudden cardiac death (SCD).

[0004] Pacemakers and ICDs are increasingly being equipped with an on-board, volatile memory in which telemetered signals can be stored for later retrieval and analysis. Typically, the telemetered signals provide patient device information regarding atrial electrical activity, ventricular electrical activity, time of day, activity level, cardiac output, oxygen level, cardiovascular pressure measures, pulmonary measures, and any interventions made on a per heartbeat or binned average basis. In addition, a growing class of cardiac medical devices, including implantable heart failure monitors, implantable event monitors, cardiovascular monitors, and therapy devices, are being used to provide similar stored device information. These devices are able to store approximately thirty minutes of per heartbeat data. Telemetered signals are also stored in a broader class of monitors and therapeutic devices for other areas of medicine, including metabolism, endocrinology, hematology, neurology, muscular, gastrointestinal, geniturology, ocular, auditory, and the like.

[0005] Presently, stored device information is retrieved using a proprietary interrogator or programmer, often during a clinic visit or following a device event. The volume of data retrieved from a single device interrogation "snapshot" can be large and proper interpretation and analysis can require significant physician time and detailed subspecialty knowledge, particularly by cardiologists and cardiac electrophysiologists. The sequential logging and analysis of regularly scheduled interrogations can create an opportunity for recognizing subtle and incremental changes in patient condition otherwise undetectable by inspection of a single "snapshot." However, present approaches to data interpretation and understanding and practical limitations on time and physician availability make such analysis impracticable.

[0006] A prior art system for collecting and analyzing pacemaker and ICD telemetered signals in a clinical or office setting is the Model 9790 Programmer, manufactured by Medtronic, Inc., Minneapolis, Minn. This programmer can be used to retrieve data, such as patient electrocardiogram and any measured physiological conditions, collected by the IPG for recordation, display and printing. The retrieved data is displayed in chronological order and analyzed by a physician. Comparable prior art systems are available from other IPG manufacturers, such as the Model 2901 Programmer Recorder Monitor, manufactured by Guidant Corporation, Indianapolis, Ind., which includes a removable floppy diskette mechanism for patient data storage. These prior art systems lack remote communications facilities and must be operated with the patient present. These systems present a limited analysis of the collected data based on a single device interrogation and lack the capability to recognize trends in the data spanning multiple episodes over time or relative to a disease specific peer group.

[0007] A prior art system for locating and communicating with a remote medical device implanted in an ambulatory patient is disclosed in U.S. Pat. No. 5,752,976 ('976). The implanted device includes a telemetry transceiver for communicating data and operating instructions between the implanted device and an external patient communications device. The communications device includes a communication link to a remote medical support network, a global positioning satellite receiver, and a patient activated link for permitting patient initiated communication with the medical support network.

[0008] Related prior art systems for remotely communicating with and receiving telemetered signals from a medical device are disclosed in U.S. Pat. Nos. 5,113,869 ('869) and 5,336,245 ('245). In the '869 patent, an implanted AECG monitor can be automatically interrogated at preset times of day to telemeter out accumulated data to a telephonic communicator or a full disclosure recorder. The communicator can be automatically triggered to establish a telephonic communication link and transmit the accumulated data to an office or clinic through a modem. In the '245 patent, telemetered data is downloaded to a larger capacity, external data recorder and is forwarded to a clinic using an auto-dialer and fax modem operating in a personal computer-based programmer/interrogator. However, the '976 telemetry transceiver, '869 communicator, and '245 programmer/interrogator are limited to facilitating communication and transfer of downloaded patient data and do not include an ability to automatically track, recognize, and analyze trends in the data itself.

[0009] Thus, there is a need for a system and method for providing continuous retrieval, transferal, and automated analysis of retrieved implantable medical device information, such as telemetered signals, retrieved in general from a broad class of implantable medical devices and, in particular, from IPGs and cardiovascular monitors. Preferably, the automated analysis would include recognizing a trend and determining whether medical intervention is necessary.

[0010] There is a further need for a system and method that would allow consideration of sets of collected measures, both actual and derived, from multiple device interrogations. These collected measures sets could then be compared and analyzed against short and long term periods of observation.

[0011] There is a further need for a system and method that would enable the measures sets for an individual patient to be self-referenced and cross-referenced to similar or dissimilar patients and to the general patient population. Preferably, the historical collected measures sets of an individual patient could be compared and analyzed against those of other patients in general or of a disease specific peer group in particular.

#### SUMMARY OF THE INVENTION

[0012] The present invention provides a system and method for automated collection and analysis of patient information retrieved from an implantable medical device for remote patient care. The patient device information relates to individual measures recorded by and retrieved from implantable medical devices, such as IPGs and monitors. The patient device information is received on a regular, e.g., daily, basis as sets of collected measures which are stored along with other patient records in a database. The information can be analyzed in an automated fashion and feedback provided to the patient at any time and in any location.

[0013] An embodiment of the present invention is a system, method, and computer-readable storage medium holding code for automated collection and analysis of patient information retrieved from a medical device adapted to be implanted in a patient for remote patient care. A set of collected measures is periodically received from the medical device adapted to be implanted over a communications link which is interfaced to a network server. The collected measures set includes individual measures which each relate to patient information recorded by the medical device adapted to be implanted for an individual patient. The collected measures set is stored into a patient care record for the individual patient within a database server organized to store one or more patient care records. Each patient care record includes a plurality of the collected measures sets. One or more of the collected measures sets in the patient care record for the individual patient is analyzed relative to one or more other collected measures sets stored in the database server to determine a patient status indicator. The patient status indicators are then triaged and prioritized for an appropriate level of alert and interaction.

[0014] A further embodiment of the present invention is a system and method for automated remote patient care using patient information retrieved from a medical device adapted to be implanted in a patient. One or more patient care records are organized in a database with each patient care record including a plurality of the collected measures sets. Each collected measures set include individual measures which each relate to patient information recorded by a medical device adapted to be implanted for an individual patient. A set of the collected measures periodically sent from the implantable medical device over a communications link is received. The collected measures set is stored into the patient care record in the database for the individual patient. One or more of the collected measures sets in the patient care record for the individual patient are analyzed relative to one or more other collected measures sets stored in the patient care record of the individual patient. Feedback based on the analysis of the one or more collected measures sets is sent to the individual patient over a feedback communications link.

[0015] A further embodiment of the present invention is a system and method for automated remote patient care using patient information retrieved from a medical device adapted to be implanted in a patient. A plurality of patient care records is organized in a database with each patient care record including a plurality of the collected measures sets. Each collected measures set includes individual measures which each relate to patient information recorded by a medical device adapted to be implanted for an individual patient. A set of the collected measures periodically sent from the implantable medical device over a communications link is received. The collected measures set is stored into the patient care record in the database for the individual patient. One or more of the collected measures sets in the patient care record for the individual patient is analyzed relative to one or more other collected measures sets stored in other patient care records in the database. Feedback based on the analysis of the one or more collected measures sets is sent to the individual patient over a feedback communications link.

[0016] A further embodiment of the present invention is a system and method for automated remote cardiac patient care using cardiovascular patient information retrieved from a cardiac monitoring device adapted to be implanted in a patient. A set of collected cardiovascular measures recorded by and stored in the cardiac monitoring device adapted to be implanted is retrieved on a substantially regular basis and the collected cardiovascular measures set are periodically communicated over a communications link to a centralized server. The collected cardiovascular measures set is stored into a patient care record for the individual patient in a database coupled to the centralized server. A plurality of patient care records is organized in the database with each patient care record including a plurality of the collected cardiovascular measures sets. Each collected cardiovascular measures set includes individual cardiovascular measures which each relate to patient information recorded by the cardiac monitoring device for an individual patient. One or more of the collected cardiovascular measures sets in the patient care record for the individual patient is analyzed relative to one or more other collected cardiovascular measures sets stored in the patient care records in the database. Feedback based on the analysis of the one or more collected cardiovascular measures sets is sent to the individual patient over a feedback communications link.

[0017] The present invention facilitates the gathering, storage, and analysis of critical patient information obtained on a routine basis and analyzed in an automated manner. Thus, the burden on physicians and trained personnel to evaluate the volumes of information is significantly minimized while the benefits to patients are greatly enhanced.

[0018] Still other embodiments of the present invention will become readily apparent to those skilled in the art from the following detailed description, wherein is described embodiments of the invention by way of illustrating the best mode contemplated for carrying out the invention. As will be realized, the invention is capable of other and different embodiments and its several details are capable of modifications in various obvious respects, all without departing from the spirit and the scope of the present invention. Accordingly, the drawings and detailed description are to be regarded as illustrative in nature and not as restrictive.

## BRIEF DESCRIPTION OF THE DRAWINGS

[0019] **FIG. 1** is a block diagram showing a system for automated collection and analysis of patient information retrieved from an implantable medical device for remote patient care in accordance with the present invention;

[0020] **FIG. 2** is a block diagram showing the hardware components of the server system of the system of **FIG. 1**;

[0021] **FIG. 3** is a block diagram showing the software modules of the server system of the system of **FIG. 1**;

[0022] **FIG. 4** is a block diagram showing the analysis module of the server system of **FIG. 3**;

[0023] **FIG. 5** is a database schema showing, by way of example, the organization of a cardiac patient care record stored in the database of the system of **FIG. 1**;

[0024] **FIG. 6** is a record view showing, by way of example, a set of partial cardiac patient care records stored in the database of the system of **FIG. 1**;

[0025] **FIG. 7** is a flow diagram showing a method for automated collection and analysis of patient information retrieved from an implantable medical device for remote patient care in accordance with the present invention;

[0026] **FIG. 8** is a flow diagram showing a routine for analyzing collected measures sets for use in the method of **FIG. 7**;

[0027] **FIG. 9** is a flow diagram showing a routine for comparing sibling collected measures sets for use in the routine of **FIG. 8**;

[0028] **FIGS. 10A and 10B** are flow diagrams showing a routine for comparing peer collected measures sets for use in the routine of **FIG. 8**; and

[0029] **FIG. 11** is a flow diagram showing a routine for providing feedback for use in the method of **FIG. 7**.

## DETAILED DESCRIPTION

[0030] **FIG. 1** is a block diagram showing a system 10 for automated collection and analysis of patient information retrieved from an implantable medical device for remote patient care in accordance with the present invention. A patient 11 is a recipient of an implantable medical device 12, such as, by way of example, an IPG or a heart failure or event monitor, with a set of leads extending into his or her heart. The implantable medical device 12 includes circuitry for recording into a short-term, volatile memory telemetered signals, which are stored as a set of collected measures for later retrieval.

[0031] For an exemplary cardiac implantable medical device, the telemetered signals non-exclusively present patient information relating to: atrial electrical activity, ventricular electrical activity, time of day, activity level, cardiac output, oxygen level, cardiovascular pressure measures, the number and types of interventions made, and the relative success of any interventions made on a per heartbeat or binned average basis, plus the status of the batteries and programmed settings. Examples of pacemakers suitable for use in the present invention include the Discovery line of pacemakers, manufactured by Guidant Corporation, Indianapolis, Ind. Examples of ICDs suitable for use in the

present invention include the Ventak line of ICDs, also manufactured by Guidant Corporation, Indianapolis, Ind.

[0032] In the described embodiment, the patient 11 has a cardiac implantable medical device. However, a wide range of related implantable medical devices are used in other areas of medicine and a growing number of these devices are also capable of measuring and recording patient information for later retrieval. These implantable medical devices include monitoring and therapeutic devices for use in metabolism, endocrinology, hematology, neurology, musculoskeletal, gastro-intestinal, genital-urology, ocular, auditory, and similar medical subspecialties. One skilled in the art would readily recognize the applicability of the present invention to these related implantable medical devices.

[0033] On a regular basis, the telemetered signals stored in the implantable medical device 12 are retrieved. By way of example, a programmer 14 can be used to retrieve the telemetered signals. However, any form of programmer, interrogator, recorder, monitor, or telemetered signals transceiver suitable for communicating with an implantable medical device 12 could be used, as is known in the art. In addition, a personal computer or digital data processor could be interfaced to the implantable medical device 12, either directly or via a telemetered signals transceiver configured to communicate with the implantable medical device 12.

[0034] Using the programmer 14, a magnetized reed switch (not shown) within the implantable medical device 12 closes in response to the placement of a wand 13 over the location of the implantable medical device 12. The programmer 14 communicates with the implantable medical device 12 via RF signals exchanged through the wand 14. Programming or interrogating instructions are sent to the implantable medical device 12 and the stored telemetered signals are downloaded into the programmer 14. Once downloaded, the telemetered signals are sent via an internetwork 15, such as the Internet, to a server system 16 which periodically receives and stores the telemetered signals in a database 17, as further described below with reference to **FIG. 2**.

[0035] An example of a programmer 14 suitable for use in the present invention is the Model 2901 Programmer Recorder Monitor, manufactured by Guidant Corporation, Indianapolis, Ind., which includes the capability to store retrieved telemetered signals on a proprietary removable floppy diskette. The telemetered signals could later be electronically transferred using a personal computer or similar processing device to the internetwork 15, as is known in the art.

[0036] Other alternate telemetered signals transfer means could also be employed. For instance, the stored telemetered signals could be retrieved from the implantable medical device 12 and electronically transferred to the internetwork 15 using the combination of a remote external programmer and analyzer and a remote telephonic communicator, such as described in U.S. Pat. No. 5,113,869, the disclosure of which is incorporated herein by reference. Similarly, the stored telemetered signals could be retrieved and remotely downloaded to the server system 16 using a world-wide patient location and data telemetry system, such as described in U.S. Pat. No. 5,752,976, the disclosure of which is incorporated herein by reference.

[0037] The received telemetered signals are analyzed by the server system 16, which generates a patient status



indicator. The feedback is then provided back to the patient 11 through a variety of means. By way of example, the feedback can be sent as an electronic mail message generated automatically by the server system 16 for transmission over the internetwork 15. The electronic mail message is received by personal computer 18 (PC) situated for local access by the patient 11. Alternatively, the feedback can be sent through a telephone interface device 19 as an automated voice mail message to a telephone 21 or as an automated facsimile message to a facsimile machine 22, both also situated for local access by the patient 11. In addition to a personal computer 18, telephone 21, and facsimile machine 22, feedback could be sent to other related devices, including a network computer, wireless computer, personal data assistant, television, or digital data processor. Preferably, the feedback is provided in a tiered fashion, as further described below with reference to FIG. 3.

[0038] FIG. 2 is a block diagram showing the hardware components of the server system 16 of the system 10 of FIG. 1. The server system 16 consists of three individual servers: network server 31, database server 34, and application server 35. These servers are interconnected via an intranetwork 33. In the described embodiment, the functionality of the server system 16 is distributed among these three servers for efficiency and processing speed, although the functionality could also be performed by a single server or cluster of servers. The network server 31 is the primary interface of the server system 16 onto the internetwork 15. The network server 31 periodically receives the collected telemetered signals sent by remote implantable medical devices over the internetwork 15. The network server 31 is interfaced to the internetwork 15 through a router 32. To ensure reliable data exchange, the network server 31 implements a TCP/IP protocol stack, although other forms of network protocol stacks are suitable.

[0039] The database server 34 organizes the patient care records in the database 17 and provides storage of and access to information held in those records. A high volume of data in the form of collected measures sets from individual patients is received. The database server 34 frees the network server 31 from having to categorize and store the individual collected measures sets in the appropriate patient care record.

[0040] The application server 35 operates management applications and performs data analysis of the patient care records, as further described below with reference to FIG. 3. The application server 35 communicates feedback to the individual patients either through electronic mail sent back over the internetwork 15 via the network server 31 or as automated voice mail or facsimile messages through the telephone interface device 19.

[0041] The server system 16 also includes a plurality of individual workstations 36 (WS) interconnected to the intranetwork 33, some of which can include peripheral devices, such as a printer 37. The workstations 36 are for use by the data management and programming staff, nursing staff, office staff, and other consultants and authorized personnel.

[0042] The database 17 consists of a high-capacity storage medium configured to store individual patient care records and related health care information. Preferably, the database 17 is configured as a set of high-speed, high capacity hard

drives, such as organized into a Redundant Array of Inexpensive Disks (RAID) volume. However, any form of volatile storage, non-volatile storage, removable storage, fixed storage, random access storage, sequential access storage, permanent storage, erasable storage, and the like would be equally suitable. The organization of the database 17 is further described below with reference to FIG. 3.

[0043] The individual servers and workstations are general purpose, programmed digital computing devices consisting of a central processing unit (CPU), random access memory (RAM), non-volatile secondary storage, such as a hard drive or CD ROM drive, network interfaces, and peripheral devices, including user interfacing means, such as a keyboard and display. Program code, including software programs, and data are loaded into the RAM for execution and processing by the CPU and results are generated for display, output, transmittal, or storage. In the described embodiment, the individual servers are Intel Pentium-based server systems, such as available from Dell Computers, Austin, Tex., or Compaq Computers, Houston, Tex. Each system is preferably equipped with 128 MB RAM, 100 GB hard drive capacity, data backup facilities, and related hardware for interconnection to the intranetwork 33 and internetwork 15. In addition, the workstations 36 are also Intel Pentium-based personal computer or workstation systems, also available from Dell Computers, Austin, Tex., or Compaq Computers, Houston, Tex. Each workstation is preferably equipped with 64 MB RAM, 10 GB hard drive capacity, and related hardware for interconnection to the intranetwork 33. Other types of server and workstation systems, including personal computers, minicomputers, mainframe computers, supercomputers, parallel computers, workstations, digital data processors and the like would be equally suitable, as is known in the art.

[0044] The telemetered signals are communicated over an internetwork 15, such as the Internet. However, any type of electronic communications link could be used, including an intranetwork link, serial link, data telephone link, satellite link, radio-frequency link, infrared link, fiber optic link, coaxial cable link, television link, and the like, as is known in the art. Also, the network server 31 is interfaced to the internetwork 15 using a T-1 network router 32, such as manufactured by Cisco Systems, Inc., San Jose, Calif. However, any type of interfacing device suitable for interconnecting a server to a network could be used, including a data modem, cable modem, network interface, serial connection, data port, hub, frame relay, digital PBX, and the like, as is known in the art.

[0045] FIG. 3 is a block diagram showing the software modules of the server system 16 of the system 10 of FIG. 1. Each module is a computer program written as source code in a conventional programming language, such as the C or Java programming languages, and is presented for execution by the CPU as object or byte code, as is known in the arts. The various implementations of the source code and object and byte codes can be held on a computer-readable storage medium or embodied on a transmission medium in a carrier wave. There are three basic software modules, which functionally define the primary operations performed by the server system 16: database module 51, analysis module 53, and feedback module 55. In the described embodiment, these modules are executed in a distributed computing environment, although a single server or a cluster

of servers could also perform the functionality of the modules. The module functions are further described below in more detail beginning with reference to **FIG. 7**.

[0046] For each patient being provided remote patient care, the server system **16** periodically receives a collected measures set **50** which is forwarded to the database module **51** for processing. The database module **51** organizes the individual patient care records stored in the database **52** and provides the facilities for efficiently storing and accessing the collected measures sets **50** and patient data maintained in those records. An exemplary database schema for use in storing collected measures sets **50** in a patient care record is described below, by way of example, with reference to **FIG. 5**. The database server **34** (shown in **FIG. 2**) performs the functionality of the database module **51**. Any type of database organization could be utilized, including a flat file system, hierarchical database, relational database, or distributed database, such as provided by database vendors, such as Oracle Corporation, Redwood Shores, Calif.

[0047] The analysis module **53** analyzes the collected measures sets **50** stored in the patient care records in the database **52**. The analysis module **53** makes an automated determination of patient wellness in the form of a patient status indicator **54**. Collected measures sets **50** are periodically received from implantable medical devices and maintained by the database module **51** in the database **52**. Through the use of this collected information, the analysis module **53** can continuously follow the medical well being of a patient and can recognize any trends in the collected information that might warrant medical intervention. The analysis module **53** compares individual measures and derived measures obtained from both the care records for the individual patient and the care records for a disease specific group of patients or the patient population in general. The analytic operations performed by the analysis module **53** are further described below with reference to **FIG. 4**. The application server **35** (shown in **FIG. 2**) performs the functionality of the analysis module **53**.

[0048] The feedback module **55** provides automated feedback to the individual patient based, in part, on the patient status indicator **54**. As described above, the feedback could be by electronic mail or by automated voice mail or facsimile. Preferably, the feedback is provided in a tiered manner. In the described embodiment, four levels of automated feedback are provided. At a first level, an interpretation of the patient status indicator **54** is provided. At a second level, a notification of potential medical concern based on the patient status indicator **54** is provided. This feedback level could also be coupled with human contact by specially trained technicians or medical personnel. At a third level, the notification of potential medical concern is forwarded to medical practitioners located in the patient's geographic area. Finally, at a fourth level, a set of reprogramming instructions based on the patient status indicator **54** could be transmitted directly to the implantable medical device to modify the programming instructions contained therein. As is customary in the medical arts, the basic tiered feedback scheme would be modified in the event of bona fide medical emergency. The application server **35** (shown in **FIG. 2**) performs the functionality of the feedback module **55**.

[0049] **FIG. 4** is a block diagram showing the analysis module **53** of the server system **16** of **FIG. 3**. The analysis

module **53** contains two functional submodules: comparison module **62** and derivation module **63**. The purpose of the comparison module **62** is to compare two or more individual measures, either collected or derived. The purpose of the derivation module **63** is to determine a derived measure based on one or more collected measures which is then used by the comparison module **62**. For instance, a new and improved indicator of impending heart failure could be derived based on the exemplary cardiac collected measures set described with reference to **FIG. 5**. The analysis module **53** can operate either in a batch mode of operation wherein patient status indicators are generated for a set of individual patients or in a dynamic mode wherein a patient status indicator is generated on the fly for an individual patient.

[0050] The comparison module **62** receives as inputs from the database **17** two input sets functionally defined as peer collected measures sets **60** and sibling collected measures sets **61**, although in practice, the collected measures sets are stored on a per sampling basis. Peer collected measures sets **60** contain individual collected measures sets that all relate to the same type of patient information, for instance, atrial electrical activity, but which have been periodically collected over time. Sibling collected measures sets **61** contain individual collected measures sets that relate to different types of patient information, but which may have been collected at the same time or different times. In practice, the collected measures sets are not separately stored as "peer" and "sibling" measures. Rather, each individual patient care record stores multiple sets of sibling collected measures. The distinction between peer collected measures sets **60** and sibling collected measures sets **61** is further described below with reference to **FIG. 6**.

[0051] The derivation module **63** determines derived measures sets **64** on an as-needed basis in response to requests from the comparison module **62**. The derived measures **64** are determined by performing linear and non-linear mathematical operations on selected peer measures **60** and sibling measures **61**, as is known in the art.

[0052] **FIG. 5** is a database schema showing, by way of example, the organization of a cardiac patient care record stored **70** in the database **17** of the system **10** of **FIG. 1**. Only the information pertaining to collected measures sets are shown. Each patient care record would also contain normal identifying and treatment profile information, as well as medical history and other pertinent data (not shown). Each patient care record stores a multitude of collected measures sets for an individual patient. Each individual set represents a recorded snapshot of telemetered signals data which was recorded, for instance, per heartbeat or binned average basis by the implantable medical device **12**. For example, for a cardiac patient, the following information would be recorded as a collected measures set: atrial electrical activity **71**, ventricular electrical activity **72**, time of day **73**, activity level **74**, cardiac output **75**, oxygen level **76**, cardiovascular pressure measures **77**, pulmonary measures **78**, interventions made by the implantable medical device **78**, and the relative success of any interventions made **80**. In addition, the implantable medical device **12** would also communicate device specific information, including battery status **81** and program settings **82**. Other types of collected measures are possible. In addition, a well-documented set of derived measures can be determined based on the collected measures, as is known in the art.

[0053] FIG. 6 is a record view showing, by way of example, a set of partial cardiac patient care records stored in the database 17 of the system 10 of FIG. 1. Three patient care records are shown for Patient 1, Patient 2, and Patient 3. For each patient, three sets of measures are shown, X, Y, and Z. The measures are organized into sets with Set 0 representing sibling measures made at a reference time  $t=0$ . Similarly, Set  $n-2$ , Set  $n-1$  and Set  $n$  each represent sibling measures made at later reference times  $t=n-2$ ,  $t=n-1$  and  $t=n$ , respectively.

[0054] For a given patient, for instance, Patient 1, all measures representing the same type of patient information, such as measure X, are peer measures. These are measures, which are monitored over time in a disease-matched peer group. All measures representing different types of patient information, such as measures X, Y, and Z, are sibling measures. These are measures which are also measured over time, but which might have medically significant meaning when compared to each other within a single set. Each of the measures, X, Y, and Z, could be either collected or derived measures.

[0055] The analysis module 53 (shown in FIG. 4) performs two basic forms of comparison. First, individual measures for a given patient can be compared to other individual measures for that same patient. These comparisons might be peer-to-peer measures projected over time, for instance,  $X_n, X_{n-1}, X_{n-2}, \dots, X_0$ , or sibling-to-sibling measures for a single snapshot, for instance,  $X_n, Y_n$ , and  $Z_n$ , or projected over time, for instance,  $X_n, Y_n, Z_n, X_{n-1}, Y_{n-1}, Z_{n-1}, X_{n-2}, Y_{n-2}, Z_{n-2}, \dots, X_0, Y_0, Z_0$ . Second, individual measures for a given patient can be compared to other individual measures for a group of other patients sharing the same disease-specific characteristics or to the patient population in general. Again, these comparisons might be peer-to-peer measures projected over time, for instance,  $X_n, X_n, X_n, X_{n-1}, X_{n-1}, X_{n-1}, X_{n-2}, X_{n-2}, X_{n-2}, \dots, X_0, X_0, X_0$ , or comparing the individual patient's measures to an average from the group. Similarly, these comparisons might be sibling-to-sibling measures for single snapshots, for instance,  $X_n, X_n, X_n, Y_n, Y_n, Y_n$ , and  $Z_n, Z_n, Z_n$ , or projected over time, for instance,  $X_n, X_n, X_n, Y_n, Y_n, Y_n, Z_n, Z_n, Z_n, X_{n-1}, X_{n-1}, X_{n-1}, Y_{n-1}, Y_{n-1}, Y_{n-1}, Z_{n-1}, Z_{n-1}, Z_{n-1}, X_{n-2}, X_{n-2}, X_{n-2}, Y_{n-2}, Y_{n-2}, Y_{n-2}, Z_{n-2}, Z_{n-2}, Z_{n-2}, \dots, X_0, X_0, X_0, Y_0, Y_0, Y_0$ , and  $Z_0, Z_0, Z_0$ . Other forms of comparisons are feasible.

[0056] FIG. 7 is a flow diagram showing a method 90 for automated collection and analysis of patient information retrieved from an implantable medical device 12 for remote patient care in accordance with the present invention. The method 90 is implemented as a conventional computer program for execution by the server system 16 (shown in FIG. 1). As a preparatory step, the patient care records are organized in the database 17 with a unique patient care record assigned to each individual patient (block 91). Next, the collected measures sets for an individual patient are retrieved from the implantable medical device 12 (block 92) using a programmer, interrogator, telemetered signals transceiver, and the like. The retrieved collected measures sets are sent, on a substantially regular basis, over the internetwork 15 or similar communications link (block 93) and periodically received by the server system 16 (block 94). The collected measures sets are stored into the patient care record in the database 17 for that individual patient (block

95). One or more of the collected measures sets for that patient are analyzed (block 96), as further described below with reference to FIG. 8. Finally, feedback based on the analysis is sent to that patient over the internetwork 15 as an email message, via telephone line as an automated voice mail or facsimile message, or by similar feedback communications link (block 97), as further described below with reference to FIG. 11.

[0057] FIG. 8 is a flow diagram showing the routine for analyzing collected measures sets 96 for use in the method of FIG. 7. The purpose of this routine is to make a determination of general patient wellness based on comparisons and heuristic trends analyses of the measures, both collected and derived, in the patient care records in the database 17. A first collected measures set is selected from a patient care record in the database 17 (block 100). If the measures comparison is to be made to other measures originating from the patient care record for the same individual patient (block 101), a second collected measures set is selected from that patient care record (block 102). Otherwise, a group measures comparison is being made (block 101) and a second collected measures set is selected from another patient care record in the database 17 (block 103). Note the second collected measures set could also contain averaged measures for a group of disease specific patients or for the patient population in general.

[0058] Next, if a sibling measures comparison is to be made (block 104), a routine for comparing sibling collected measures sets is performed (block 105), as further described below with reference to FIG. 9. Similarly, if a peer measures comparison is to be made (block 106), a routine for comparing sibling collected measures sets is performed (block 107), as further described below with reference to FIGS. 10A and 10B.

[0059] Finally, a patient status indicator is generated (block 108). By way of example, cardiac output could ordinarily be approximately 5.0 liters per minute with a standard deviation of  $\pm 1.0$ . An actionable medical phenomenon could occur when the cardiac output of a patient is  $\pm 3.0$ -4.0 standard deviations out of the norm. A comparison of the cardiac output measures 75 (shown in FIG. 5) for an individual patient against previous cardiac output measures 75 would establish the presence of any type of downward health trend as to the particular patient. A comparison of the cardiac output measures 75 of the particular patient to the cardiac output measures 75 of a group of patients would establish whether the patient is trending out of the norm. From this type of analysis, the analysis module 53 generates a patient status indicator 54 and other metrics of patient wellness, as is known in the art.

[0060] FIG. 9 is a flow diagram showing the routine for comparing sibling collected measures sets 105 for use in the routine of FIG. 8. Sibling measures originate from the patient care records for an individual patient. The purpose of this routine is either to compare sibling derived measures to sibling derived measures (blocks 111-113) or sibling collected measures to sibling collected measures (blocks 115-117). Thus, if derived measures are being compared (block 110), measures are selected from each collected measures set (block 111). First and second derived measures are derived from the selected measures (block 112) using the derivation module 63 (shown in FIG. 4). The first and second derived

measures are then compared (block 113) using the comparison module 62 (also shown in FIG. 4). The steps of selecting, determining, and comparing (blocks 111-113) are repeated until no further comparisons are required (block 114), whereupon the routine returns.

[0061] If collected measures are being compared (block 110), measures are selected from each collected measures set (block 115). The first and second collected measures are then compared (block 116) using the comparison module 62 (also shown in FIG. 4). The steps of selecting and comparing (blocks 115-116) are repeated until no further comparisons are required (block 117), whereupon the routine returns.

[0062] FIGS. 10A and 10B are a flow diagram showing the routine for comparing peer collected measures sets 107 for use in the routine of FIG. 8. Peer measures originate from patient care records for different patients, including groups of disease specific patients or the patient population in general. The purpose of this routine is to compare peer derived measures to peer derived measures (blocks 122-125), peer derived measures to peer collected measures (blocks 126-129), peer collected measures to peer derived measures (block 131-134), or peer collected measures to peer collected measures (blocks 135-137). Thus, if the first measure being compared is a derived measure (block 120) and the second measure being compared is also a derived measure (block 121), measures are selected from each collected measures set (block 122). First and second derived measures are derived from the selected measures (block 123) using the derivation module 63 (shown in FIG. 4). The first and second derived measures are then compared (block 124) using the comparison module 62 (also shown in FIG. 4). The steps of selecting, determining, and comparing (blocks 122-124) are repeated until no further comparisons are required (block 115), whereupon the routine returns.

[0063] If the first measure being compared is a derived measure (block 120) but the second measure being compared is a collected measure (block 121), a first measure is selected from the first collected measures set (block 126). A first derived measure is derived from the first selected measure (block 127) using the derivation module 63 (shown in FIG. 4). The first derived and second collected measures are then compared (block 128) using the comparison module 62 (also shown in FIG. 4). The steps of selecting, determining, and comparing (blocks 126-128) are repeated until no further comparisons are required (block 129), whereupon the routine returns.

[0064] If the first measure being compared is a collected measure (block 120) but the second measure being compared is a derived measure (block 130), a second measure is selected from the second collected measures set (block 131). A second derived measure is derived from the second selected measure (block 132) using the derivation module 63 (shown in FIG. 4). The first collected and second derived measures are then compared (block 133) using the comparison module 62 (also shown in FIG. 4). The steps of selecting, determining, and comparing (blocks 131-133) are repeated until no further comparisons are required (block 134), whereupon the routine returns.

[0065] If the first measure being compared is a collected measure (block 120) and the second measure being compared is also a collected measure (block 130), measures are selected from each collected measures set (block 135). The

first and second collected measures are then compared (block 136) using the comparison module 62 (also shown in FIG. 4). The steps of selecting and comparing (blocks 135-136) are repeated until no further comparisons are required (block 137), whereupon the routine returns.

[0066] FIG. 11 is a flow diagram showing the routine for providing feedback 97 for use in the method of FIG. 7. The purpose of this routine is to provide tiered feedback based on the patient status indicator. Four levels of feedback are provided with increasing levels of patient involvement and medical care intervention. At a first level (block 150), an interpretation of the patient status indicator 54, preferably phrased in lay terminology, and related health care information is sent to the individual patient (block 151) using the feedback module 55 (shown in FIG. 3). At a second level (block 152), a notification of potential medical concern, based on the analysis and heuristic trends analysis, is sent to the individual patient (block 153) using the feedback module 55. At a third level (block 154), the notification of potential medical concern is forwarded to the physician responsible for the individual patient or similar health care professionals (block 155) using the feedback module 55. Finally, at a fourth level (block 156), reprogramming instructions are sent to the implantable medical device 12 (block 157) using the feedback module 55.

[0067] Therefore, through the use of the collected measures sets, the present invention makes possible immediate access to expert medical care at any time and in any place. For example, after establishing and registering for each patient an appropriate baseline set of measures, the database server could contain a virtually up-to-date patient history, which is available to medical providers for the remote diagnosis and prevention of serious illness regardless of the relative location of the patient or time of day.

[0068] Moreover, the gathering and storage of multiple sets of critical patient information obtained on a routine basis makes possible treatment methodologies based on an algorithmic analysis of the collected data sets. Each successive introduction of a new collected measures set into the database server would help to continually improve the accuracy and effectiveness of the algorithms used. In addition, the present invention potentially enables the detection, prevention, and cure of previously unknown forms of disorders based on a trends analysis and by a cross-referencing approach to create continuously improving peer-group reference databases.

[0069] Finally, the present invention makes possible the provision of tiered patient feedback based on the automated analysis of the collected measures sets. This type of feedback system is suitable for use in, for example, a subscription based health care service. At a basic level, informational feedback can be provided by way of a simple interpretation of the collected data. The feedback could be built up to provide a graduated response to the patient, for example, to notify the patient that he or she is trending into a potential trouble zone. Human interaction could be introduced, both by remotely situated and local medical practitioners. Finally, the feedback could include direct interventive measures, such as remotely reprogramming a patient's IPG.

[0070] While the invention has been particularly shown and described as referenced to the embodiments thereof, those skilled in the art will understand that the foregoing and

other changes in form and detail may be made therein without departing from the spirit and scope of the invention.

What is claimed is:

1. A system for providing patient status diagnosis for use in automated patient care, comprising:

a database storing physiological measures relating to individual patient information recorded on a substantially continuous basis for an individual patient as a patient care record;

an analysis module retrieving one or more of the physiological measures in the patient care record from the database and analyzing the retrieved physiological measures relative to one or more other physiological measures to determine a patient status indicator; and

a feedback module sending feedback based on the analysis of the one or more physiological measures to the individual patient.

2. A system according to claim 1, further comprising:

a database module logically grouping a plurality of the physiological measures, each relating to a same type of individual patient information, into a plurality of peer measures sets; and

a comparison module comparing, during analysis, one or more physiological measures selected from one such peer measures set to one or more physiological measures selected from another such peer measures set.

3. A system according to claim 1, further comprising:

a database module logically grouping a plurality of the physiological measures, each relating to a different type of individual patient information, into a plurality of sibling measures sets; and

a comparison module comparing, during analysis, one or more physiological measures selected from one such sibling measures set to one or more physiological measures selected from another such sibling measures set.

4. A system according to claim 1, further comprising:

a database module logically grouping a plurality of the physiological measures, each relating to a same type of individual patient information, into a plurality of peer measures sets and logically grouping a plurality of the physiological measures, each relating to a different type of individual patient information, into a plurality of sibling measures sets; and

a comparison module comparing, during analysis, one or more physiological measures selected from one such peer measures set to one or more physiological measures selected from one such sibling measures set.

5. A system according to claim 1, further comprising:

a database module selecting a plurality of collected physiological measures, each relating to individual patient information collected by a medical device adapted to be implanted in the individual patient; and

a comparison module comparing, during analysis, one or more such collected physiological measures to one or more other such collected physiological measures.

6. A system according to claim 1, further comprising:

a derivation module deriving a plurality of derived physiological measures from the physiological measures; and

a comparison module comparing, during analysis, one or more such derived physiological measures to one or more other such derived physiological measures.

7. A system according to claim 1, further comprising:

a database module selecting a plurality of the physiological measures, each relating to collected individual patient information;

a derivation module deriving a plurality of derived physiological measures from the physiological measures; and

a comparison module comparing, during analysis, one or more such collected physiological measures to one or more other such derived physiological measures.

8. A system according to claim 1, further comprising:

a database module retrieving the plurality of physiological measures from one of a patient care record for an individual patient, a peer group, and an overall patient population.

9. A system according to claim 1, further comprising:

the feedback module providing tiered feedback from the patient status indicator, comprising:

at a first level of feedback, communicating an interpretation of the patient status indicator;

at a second level of feedback, communicating a notification of potential medical concern based on the patient status indicator;

at a third level of feedback, communicating a notification of potential medical concern based on the patient status indicator to medical personnel; and

at a fourth level of feedback, communicating a set of reprogramming instructions based on the patient status indicator to a medical device adapted to be implanted in the individual patient.

10. A method for providing patient status diagnosis for use in automated patient care, comprising:

storing physiological measures relating to individual patient information recorded on a substantially continuous basis for an individual patient as a patient care record into a database;

retrieving one or more of the physiological measures in the patient care record from the database;

analyzing the retrieved physiological measures relative to one or more other physiological measures to determine a patient status indicator; and

sending feedback based on the analysis of the one or more physiological measures to the individual patient.

11. A method according to claim 10, further comprising:

logically grouping a plurality of the physiological measures, each relating to a same type of individual patient information, into a plurality of peer measures sets; and

comparing, during analysis, one or more physiological measures selected from one such peer measures set to

one or more physiological measures selected from another such peer measures set.

**12.** A method according to claim 10, further comprising:

logically grouping a plurality of the physiological measures, each relating to a different type of individual patient information, into a plurality of sibling measures sets; and

comparing, during analysis, one or more physiological measures selected from one such sibling measures set to one or more physiological measures selected from another such sibling measures set.

**13.** A method according to claim 10, further comprising:

logically grouping a plurality of the physiological measures, each relating to a same type of individual patient information, into a plurality of peer measures sets;

logically grouping a plurality of the physiological measures, each relating to a different type of individual patient information, into a plurality of sibling measures sets; and

comparing, during analysis, one or more physiological measures selected from one such peer measures set to one or more physiological measures selected from one such sibling measures set.

**14.** A method according to claim 10, further comprising:

selecting a plurality of collected physiological measures, each relating to individual patient information collected by a medical device adapted to be implanted in the individual patient; and

comparing, during analysis, one or more such collected physiological measures to one or more other such collected physiological measures.

**15.** A method according to claim 10, further comprising:

deriving a plurality of derived physiological measures from the physiological measures; and

comparing, during analysis, one or more such derived physiological measures to one or more other such derived physiological measures.

**16.** A method according to claim 10, further comprising:

selecting a plurality of the physiological measures, each relating to collected individual patient information;

deriving a plurality of derived physiological measures from the physiological measures; and

comparing, during analysis, one or more such collected physiological measures to one or more other such derived physiological measures.

**17.** A method according to claim 10, further comprising:

retrieving the plurality of physiological measures from one of a patient care record for an individual patient, a peer group, and an overall patient population.

**18.** A method according to claim 10, further comprising:

providing tiered feedback from the patient status indicator, comprising:

at a first level of feedback, communicating an interpretation of the patient status indicator;

at a second level of feedback, communicating a notification of potential medical concern based on the patient status indicator;

at a third level of feedback, communicating a notification of potential medical concern based on the patient status indicator to medical personnel; and

at a fourth level of feedback, communicating a set of reprogramming instructions based on the patient status indicator to a medical device adapted to be implanted in the individual patient.

**19.** A computer-readable storage medium for a device holding code for performing the method according to claim 1.

**20.** A system for providing remote cardiac patient status diagnosis for use in automated patient care, comprising:

a database maintaining patient care records comprising cardiovascular measurements each relating to patient information recorded by a cardiac monitoring device for an individual patient on a substantially regular basis;

an analysis module analyzing one or more cardiovascular measurements in the patient care record for the individual patient relative to one or more other cardiovascular measurements stored in patient care records in the database; and

a feedback module sending patient status diagnosis feedback based on the analysis of the one or more collected cardiovascular measurements to the individual patient.

**21.** A method for providing remote cardiac patient status diagnosis for use in automated patient care, comprising:

maintaining in a database patient care records comprising cardiovascular measurements each relating to patient information recorded by a cardiac monitoring device for an individual patient on a substantially regular basis;

analyzing one or more cardiovascular measurements in the patient care record for the individual patient relative to one or more other cardiovascular measurements stored in patient care records in the database; and

sending patient status diagnosis feedback based on the analysis of the one or more collected cardiovascular measurements to the individual patient.

**22.** A computer-readable storage medium for a device holding code for performing the method according to claim 1.

专利名称(译)	用于提供患者状态诊断以用于自动化患者护理的系统和方法		
公开(公告)号	<a href="#">US20020099301A1</a>	公开(公告)日	2002-07-25
申请号	US10/101007	申请日	2002-03-18
[标]申请(专利权)人(译)	BARDY GUST ^ h		
申请(专利权)人(译)	BARDY GUST H.		
当前申请(专利权)人(译)	BARDY GUST H.		
[标]发明人	BARDY GUST H		
发明人	BARDY, GUST H.		
IPC分类号	A61B5/00 G06F19/00 A61B5/04		
CPC分类号	A61B5/0031 G06F19/322 G06F19/3406 G06F19/3418 G06F19/3431 Y10S128/903 Y10S128/923 G16H10/60 G16H40/63 G16H40/67 G16H50/30		
其他公开文献	US6705991		
外部链接	<a href="#">Espacenet</a> <a href="#">USPTO</a>		

#### 摘要(译)

描述了一种用于提供患者状态诊断以用于自动化患者护理的系统和方法。与基本上连续记录的针对个体患者的个体患者信息相关的生理测量被作为患者护理记录存储到数据库中。从数据库中检索患者护理记录中的一个或多个生理测量值。相对于一个或多个其他生理测量分析所检索的生理测量值以确定患者状态指示符。基于对一种或多种生理测量的分析的反馈被发送给个体患者。

