



(19) **United States**

(12) **Patent Application Publication**
Glukhovsky

(10) **Pub. No.: US 2004/0193029 A1**

(43) **Pub. Date: Sep. 30, 2004**

(54) **MEASURING A GRADIENT IN-VIVO**

Publication Classification

(76) **Inventor: Arkady Glukhovsky, Santa Clarita, CA (US)**

(51) **Int. Cl.⁷ A61B 5/05**

(52) **U.S. Cl. 600/361; 128/903; 600/364**

Correspondence Address:

**EITAN, PEARL, LATZER & COHEN ZEDEK
LLP
10 ROCKEFELLER PLAZA, SUITE 1001
NEW YORK, NY 10020 (US)**

(57) **ABSTRACT**

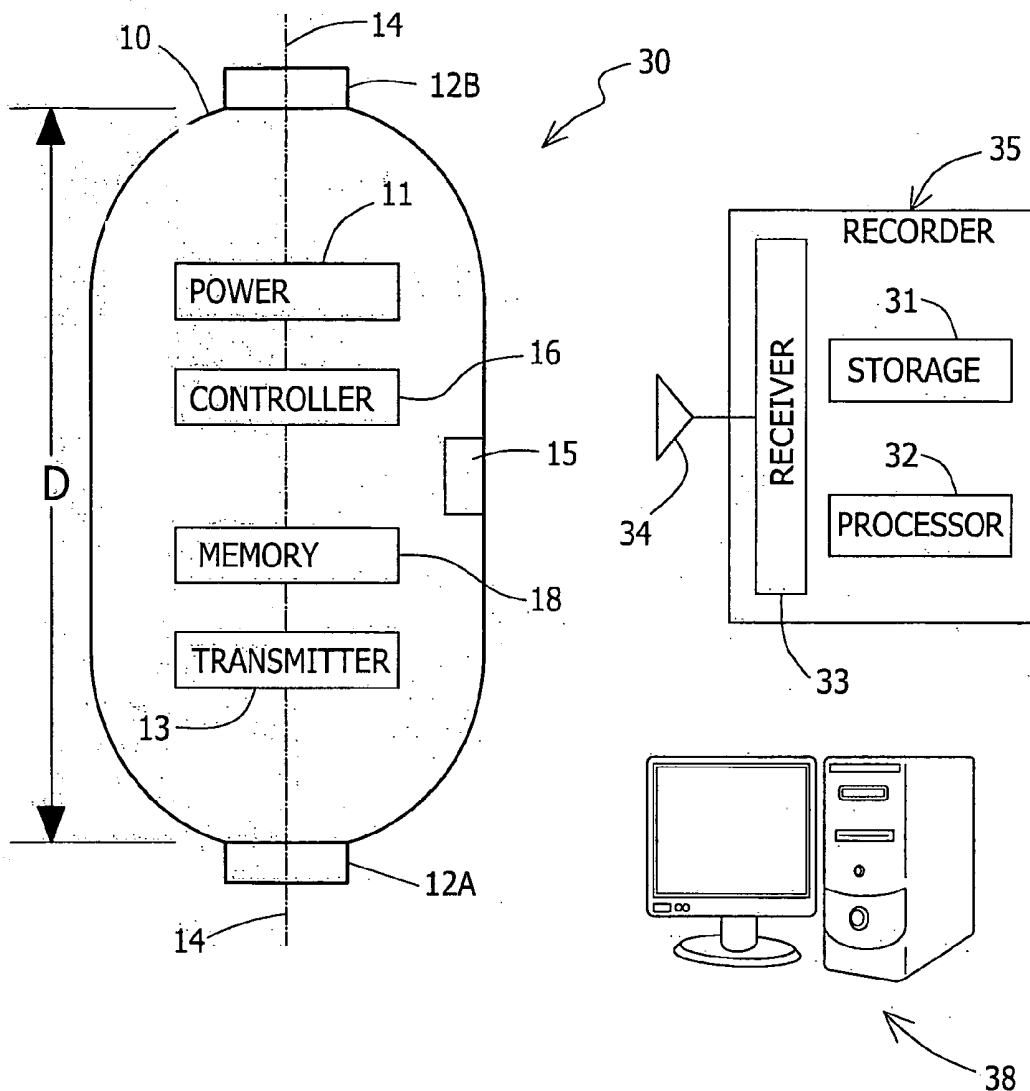
(21) **Appl. No.: 10/808,573**

(22) **Filed: Mar. 25, 2004**

Related U.S. Application Data

(60) **Provisional application No. 60/457,594, filed on Mar. 27, 2003.**

A device, system and method for in-vivo sensing (e.g., pH sensing, pressure sensing, or other sensing) may include more than one sensor receiving in-vivo data. The sensed data may be analyzed to, for example, determine a gradient or fluid flow. A device including multiple sensors may be held or immobilized in-vivo, and may detect a fluid flow or gradient moving past the sensors.



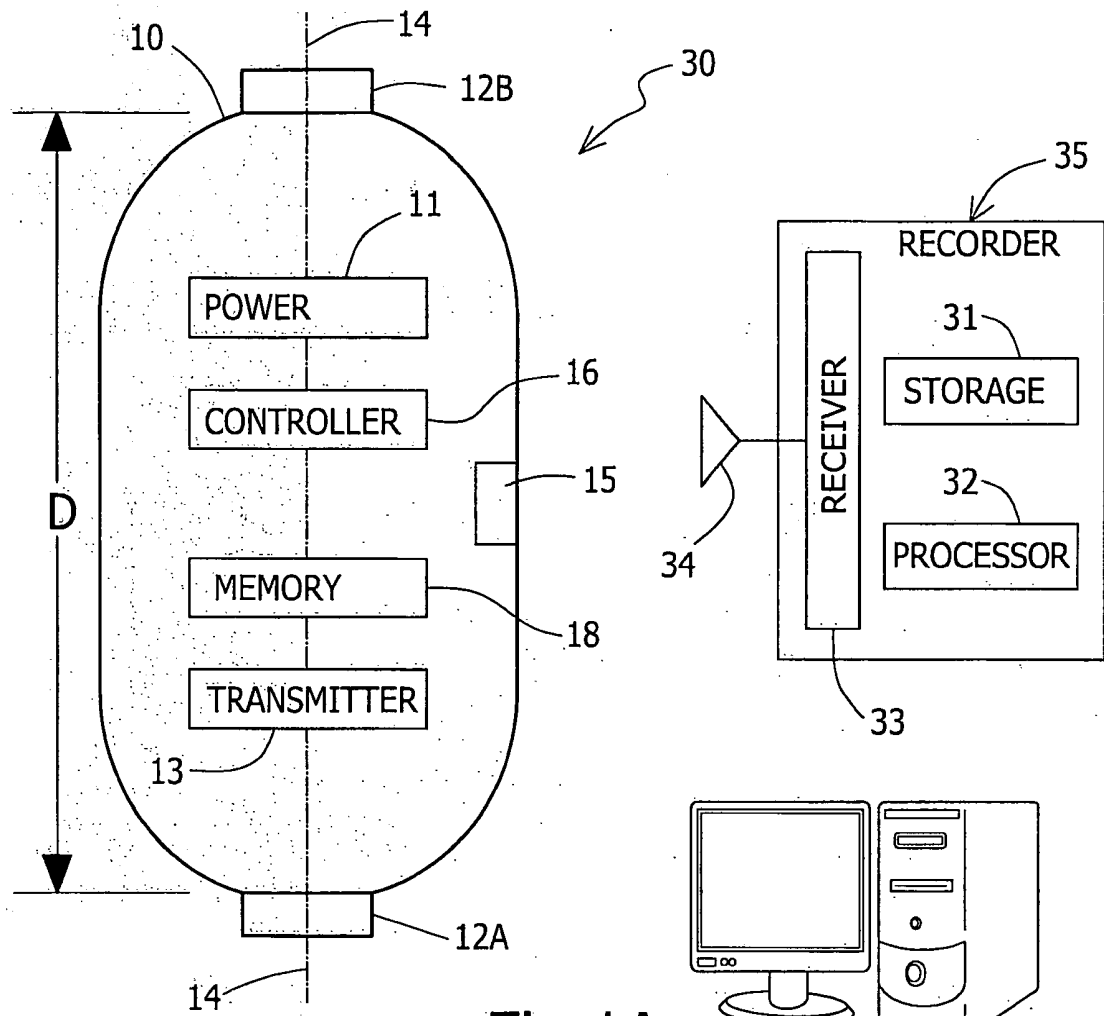


Fig.1A

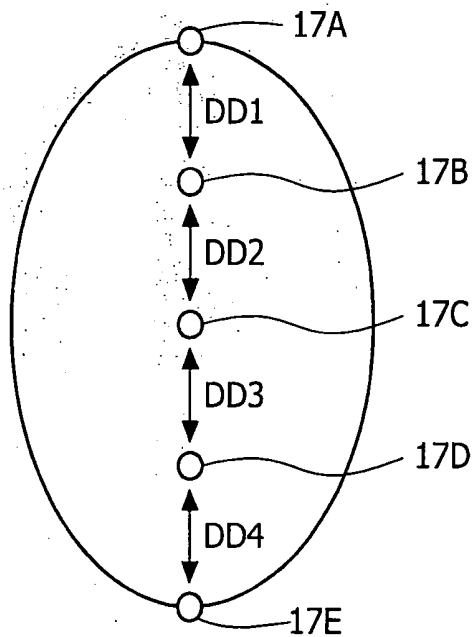


Fig.1B

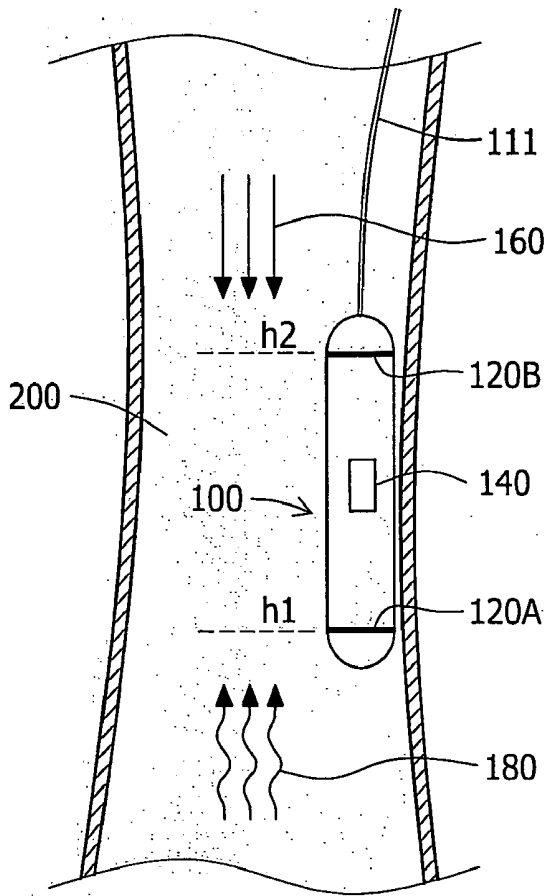


Fig. 2A

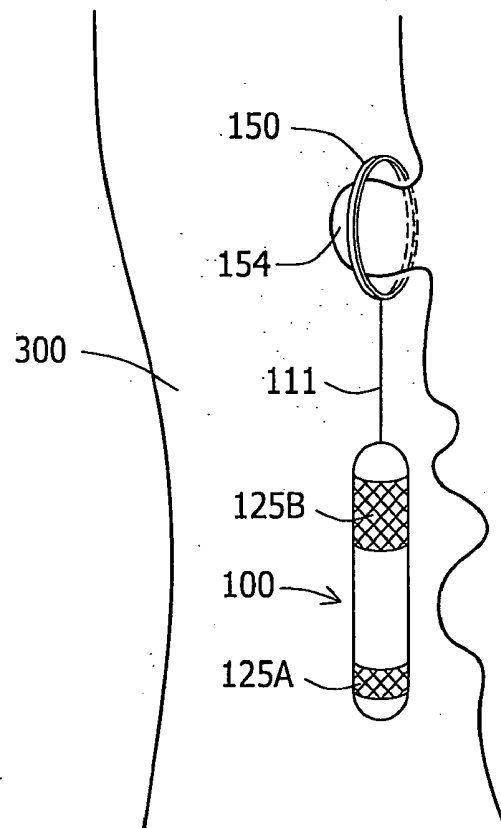


Fig. 2B

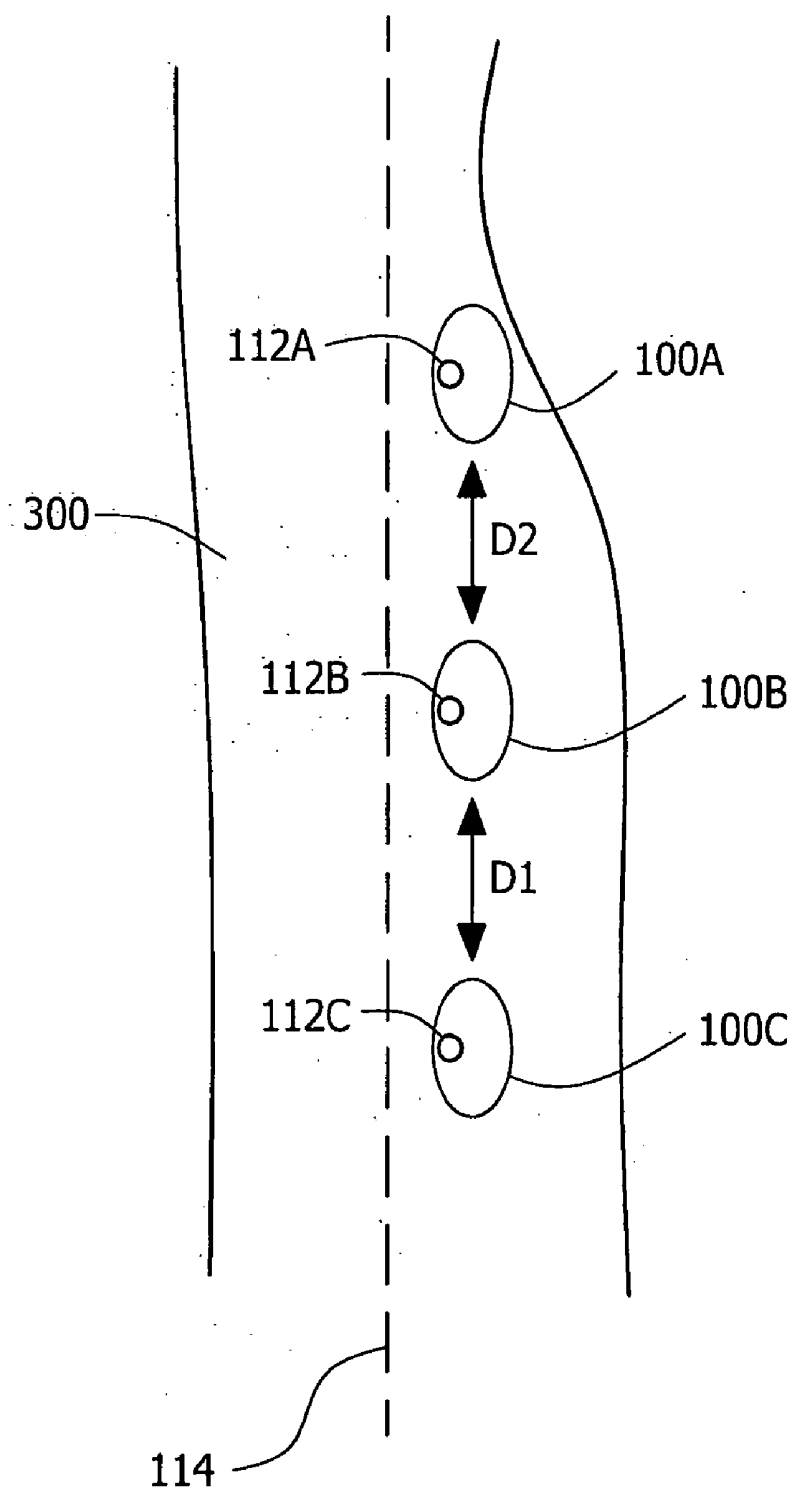


Fig. 2C

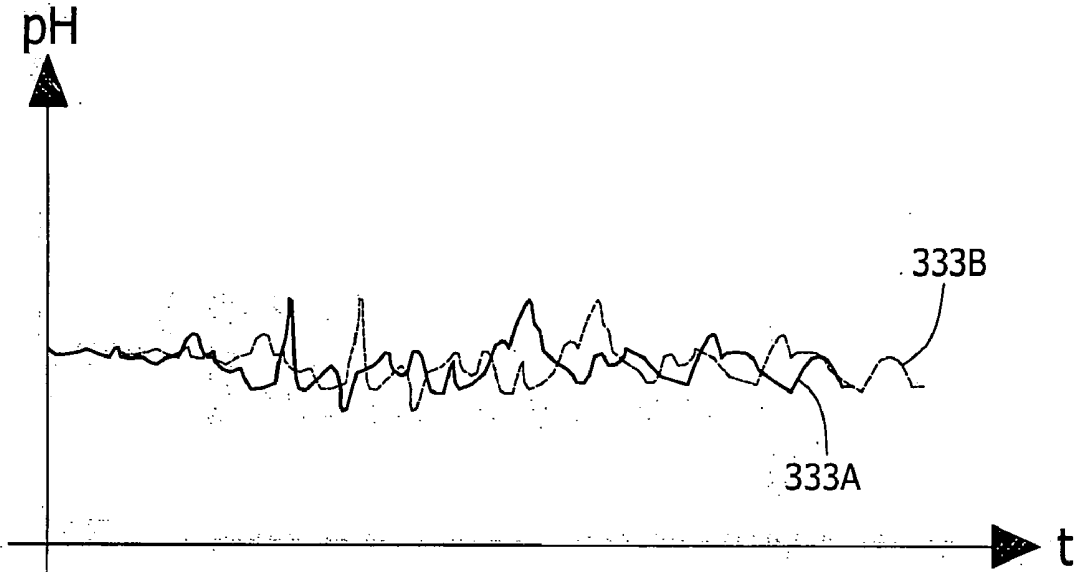


Fig. 3A

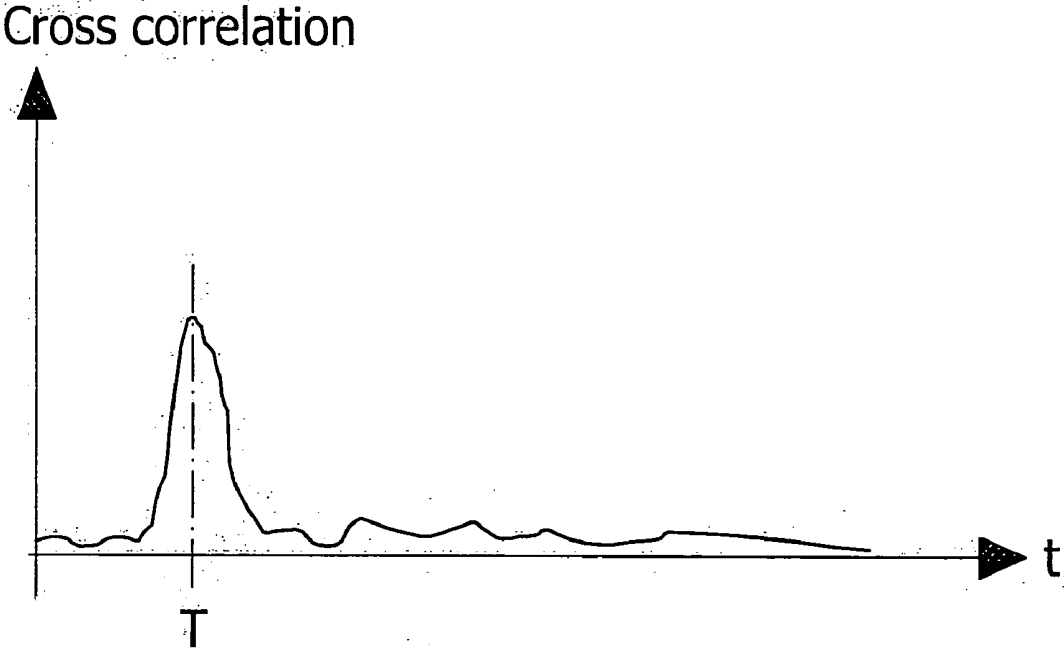


Fig. 3B

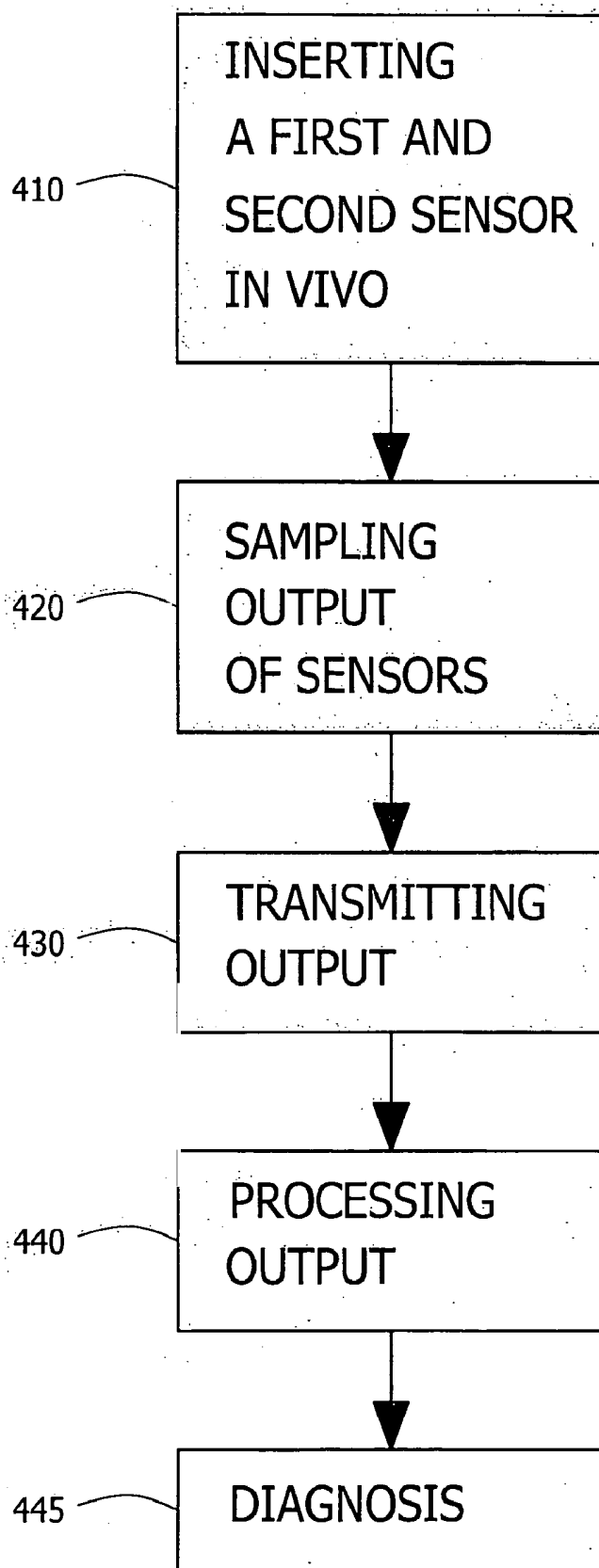


Fig. 4A

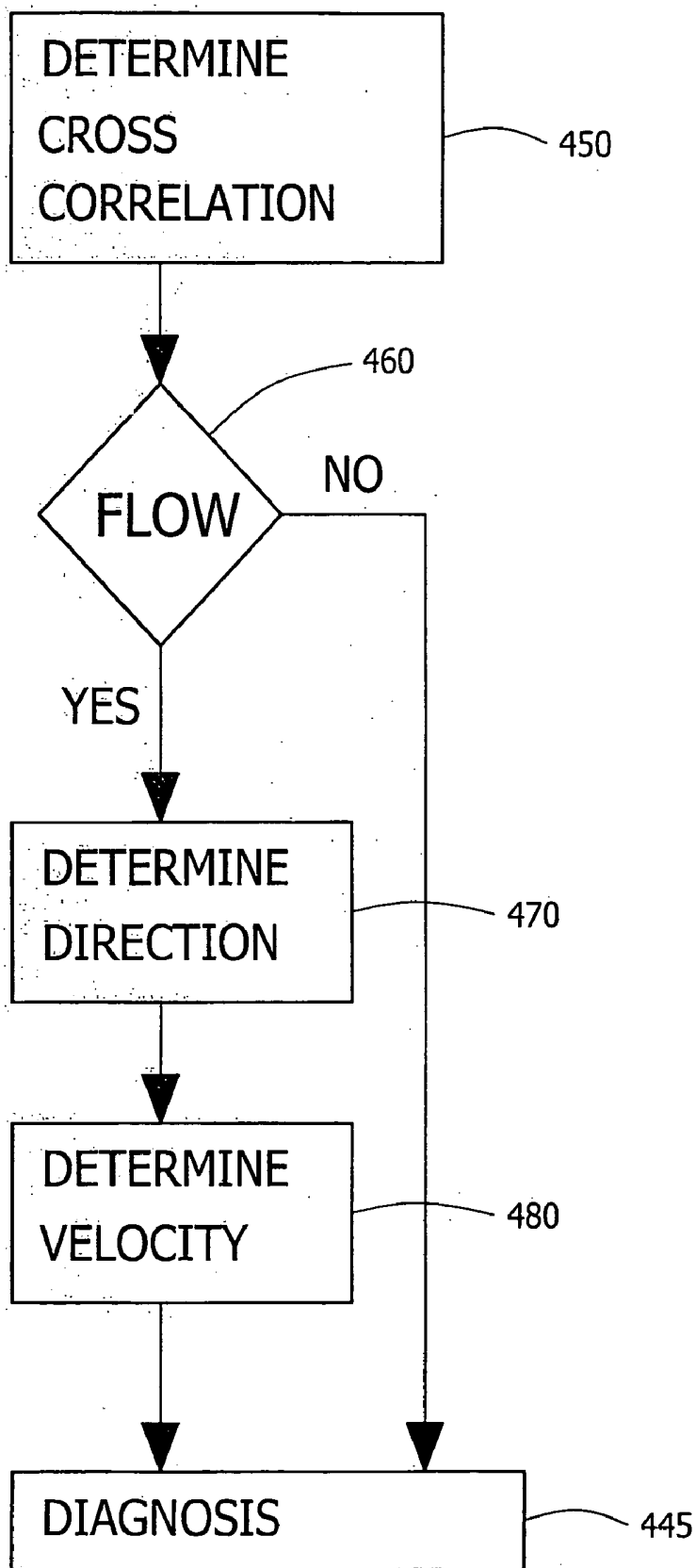


Fig. 4B

MEASURING A GRADIENT IN-VIVO

CROSS-REFERENCE TO RELATED APPLICATIONS

[0001] This application claims the benefit from prior U.S. provisional application serial No. 60/457,594, filed on Mar. 27, 2003 entitled "MEASURING A GRADIENT IN VIVO", which is incorporated in its entirety by reference herein.

FIELD OF THE INVENTION

[0002] The present invention relates to measurement of a static or dynamic gradient in a body lumen, for example, to measurement of a pH gradient in the esophagus.

BACKGROUND OF THE INVENTION

[0003] Gastroesophageal reflux occurs when stomach acid intermittently surges into the esophagus. It is common for most people to experience this acid reflux occasionally as heartburn. Gastroesophageal reflux disease (GERD) is a clinical condition in which the reflux of stomach acid into the esophagus is frequent enough and severe enough to impact a patient's normal functioning or to cause damage to the esophagus. GERD is sometimes also referred to as "reflux" or "reflux esophagitis".

[0004] In known methods for gastroesophageal reflux monitoring a pH sensing device is held in the lower esophagus and the pH levels therein are monitored for a period of time (usually 24-48 hours). The device may be attached to the esophageal wall or it may be suspended in the esophagus from an extension (e.g. catheter or cord). The known methods for in-vivo pH monitoring, specifically for gastroesophageal reflux monitoring, typically measure pH prevailing in a body lumen, such as the esophagus, however they usually do not measure other parameters of a pH reflux, such as pH gradient.

SUMMARY OF THE INVENTION

[0005] According to an embodiment of the present invention, there is provided a device, system and method for measuring in-vivo gradients. In one embodiment of the invention, the device may include two sensors (more than two sensors may be used) separated by a distance D from each other. In an exemplary embodiment, the device may be an in-vivo device and the sensors may be pH sensors that may, for example, measure pH in, for example, the esophagus. In one embodiment of the invention, the output for the two sensors may be processed to obtain a measure of gradient. In another embodiment of the invention, the device may include a transmitter that may transmit output to an external recorder.

BRIEF DESCRIPTION OF THE DRAWINGS

[0006] The present invention will be understood and appreciated more fully from the following detailed description taken in conjunction with the drawings in which:

[0007] FIG. 1A is a schematic illustration of a device according to an embodiment of the invention;

[0008] FIG. 1B is a schematic illustration of a device according to an embodiment of the invention;

[0009] FIGS. 2A, 2B and 2C are schematic illustrations of devices, constructed and operative in accordance with embodiments of the present invention;

[0010] FIG. 3A is a graphical illustration of exemplary output of pH sensors according to embodiments of the present invention; FIG. 3B is a graphical illustration of an exemplary correlation of the output of pH sensors according to embodiments of the present invention; and

[0011] FIGS. 4A and 4B are a flow charts describing a method for measuring a gradient in-vivo according to an embodiment of the present invention.

[0012] It will be appreciated that for simplicity and clarity of illustration, elements shown in the figures have not necessarily been drawn to scale. For example, the dimensions of some of the elements may be exaggerated relative to other elements for clarity. Further, where considered appropriate, reference numerals may be repeated among the figures to indicate corresponding or analogous elements.

DETAILED DESCRIPTION OF THE INVENTION

[0013] In the following detailed description, numerous specific details are set forth in order to provide a thorough understanding of the invention. However, it will be understood by those skilled in the art that the present invention may be practiced without these specific details. In other instances, well-known methods, procedures, and components have not been described in detail so as not to obscure the present invention.

[0014] Reference is now made to FIG. 1A, which schematically illustrates a system according to an embodiment of the invention. The system 30 includes an in-vivo device 10 and a recorder 35. The device 10 may include two or more comparable sensors, for example, two pH sensors 12A and 12B that may be separated by a distance D and a controller or processor 16 that may be connected to pH sensors 12A and 12B. In other embodiments of the invention, a processor may not be included in the device 10. The sensors may sense in modes other than pH, such as, for example, pressure, electrical conductivity or resistance, light, blood, oximetry, etc. The device 10 may include additional sensors, and in addition may include imaging capability. The device 10 may include, for example, a transmitter 13 for transmitting data to an external receiving unit 35. The transmitter 13 or another component may sample data output from sensors within the device 10, and then transmit the data, possibly to an external device. The transmitter 13 may be for example an ultra low power RF transmitter. In one embodiment of the invention, the transmitter 13 may be for example provided in chip scale packaging. Other suitable transmitters may be used. Transmitter 13 may include processing or control capability, for example, processor 16 or its functionality may be included in transmitter 13, and transmitter 13 may act as a controller. The transmitted data may be, for example, output from a sensor, for example one or more pH sensors or output of processor 16, which may, for example, analyze, compare or otherwise integrate several sensor (e.g., pH) measurements. Typically, a processor or controller analyzing sensor data is external to device 10, but in other embodiments need not be. Data may be transmitted from transmitter 13 by for example, radio frequency, ultrasonic link, or via wired link—e.g. wire, optical fiber, etc. In alternate embodi-

ments data may be transmitted, for example, directly from the pH sensing sensors **12** or the data may be recorded onto a memory, for example, a memory on processor **16**, or a separate memory unit (not shown), to be retreated at a later time, for example, after the device **10** is recovered from a patient's body, or after the device **10** has completed recording measurements. According to some embodiments, the device **10** may include a power supply unit **11** for providing power to the elements of the device **10**. Power supply unit **11** may include for example one or more suitable batteries. Some examples of suitable batteries may include a silver oxide battery, a lithium battery; in an alternative embodiment power may be delivered into the device **10** from an external source by a wireless method. According to some embodiments the processor **16** may be a separate unit, possibly positioned outside a patient's body. Data from sensors **12A** and/or **B** may be transmitted to an external receiver/recorder **35**, for example, worn by the patient for recording and storage. According to one embodiment the receiver/recorder **35** may include a storage unit **31**, an optional controller or processing unit **32**, a receiver **33** and one or more antennas **34**. Antenna **34** may be worn on the body, for example, on or near the neck or throat so that signals, for example, from the esophagus, may be picked up easily. The antenna **34** may be worn, or positioned in other locations or may be imbedded in the recorder **35**. Recorder **35** may also include for example, an amplifier, light indicator, or display, such as an LCD or other suitable display to present output of the in-vivo device **10** or analyzed data to a user. The output may be for example, visual audio or both. Other methods of presentation may be used or data recorded in recorder **35** may be downloaded to a processing unit **38** such as for example a computer, or other processing units for processing and/or displaying output.

[0015] Device **10** may be for example, a capsule or other unit where all the components are substantially contained within a container or shell, and where the device does not require any wires or cables to, for example, receive power or transmit information. In one embodiment of the invention, the capsule may be a swallowable capsule or other device that naturally traverses the GI tract while measuring, in-vivo gradients. The device may be autonomous. Device **10** need not be a capsule, and may include other configurations.

[0016] FIG. 1A shows two sensors, **12A** and **12B**. Sensors **12A** and **12B** may be any suitable type of sensor such as a pH sensor. PH sensors may include, for example, electrodes, ion selective field effect transistors (ISFET), pH sensitive color indicators, and so on, as is known in the art; other suitable pH sensors may be used. For example, pH sensitive electrodes may include an external ring **120** (FIG. 2A) or cylindrical electrode **125A** and **125B** (FIG. 2B) made of antimony and a zinc-silver chloride electrode. A saline solution such as for example, a 0.9% physiologic saline solution may be introduced into the electrode. A potential difference, which develops between the two electrodes is pH dependent, and may be applied to an amplifier and further processed by known hardware/software methods. Typically, the device includes two or more sensors that sense in the same modality or sense the same type of data (e.g., two or more sensors each sensing pH, each sensing pressure, etc.) Thus, according to one embodiment, sensors **12A** and **12B** each sense the same type of data.

[0017] The pH sensors **12A** and **12B** output is typically conveyed to processor **16**. Output from processor **16** may then be conveyed to a memory unit **18** or to transmitter **13** for being transmitted to an external receiving unit (not shown). Data may be conveyed through wired connections in device **10** or wirelessly, for example by RF or any other suitable wireless connection. The connections between elements within the device **10** are not shown so as not to obscure the figure. In an alternate embodiment processing may be performed externally to the device **10**, such as in processing unit **32** or **38**.

[0018] Sensors **12A** and **12B** may be placed in any appropriate location on device **10**. FIG. 1A shows them at both ends; however, they may be placed anywhere on device **10** as long as there is a distance D , possibly along an axis, e.g., longitudinal axis **14** of device **10**, between the sensors **12A** and **12B**. According to one embodiment two pairs of electrodes are located along the longitudinal axis of the device. According to another embodiment more than two pairs of electrodes may be located along the device other than on the longitudinal axis. Other numbers of sensors may be used, and need not be paired. Sensors **12A** and **12B** or other sensors may be placed on a device that is not elongated (e.g., round, square).

[0019] Reference is now made to FIG. 1B showing schematically a device according to another embodiment of the present invention. The device **20** may include an array of sensors, for example, **17A-17E**, with distances $DD1-DD4$, between **17A-17B**, **17B-17C**, **17C-17D**, **17D-17E**, respectively. Sensors **17A-17E** may be a single type of sensor, or alternatively more than one type of sensor. Although, in FIG. 1B sensors **17A-17E**, are shown to be evenly distributed along device **20**, in alternate embodiments other forms of distribution may be used.

[0020] Data transmitted to an external receiving unit may be recorded and/or presented to an operator in any suitable way, such as graphically, for example, on a screen of a workstation. Other ways of presenting transmitted data are possible, such a number, an audio signal, a flashing light etc.

[0021] Reference is now made to FIG. 2A, which illustrates a device, constructed and operative in accordance with an embodiment of the present invention. The device **100** may be, for example, capsule or rod shaped, but other suitable shapes or configurations may be used. Device **100** may include sensors **120A** and **120B**, such as pH sensors, a processor **140**, a transmitter (not shown) and a power source (not shown). Alternatively, data may be transmitted through a wired connection (e.g., cord **111**) and/or power may be supplied to the electrical elements of the device **100** through a wired connection (e.g., cord **111**). According to some embodiments the device **100** may include an additional sensor **15**, such as pressure, temperature, image sensors, blood sensor, or oximetry sensor. For example, device **100** may include an image sensor in an embodiment which may be similar to embodiments described in U.S. Pat. No. 5,604,531 to Iddan et al., and/or WO 01/65995, entitled "A Device And System For In Vivo Imaging", published on 13 Sep., 2001, both of which are assigned to the common assignee of the present invention and which are hereby incorporated by reference.

[0022] Unlike prior art devices, which typically may have a single pH sensor; embodiments of the present invention

may have multiple pH sensors, each separately measuring the pH, optionally at separate locations within a body lumen. According to one embodiment devices **10**, **20**, or **100** may measure the pH gradient of a fluid flowing past the device. While the functionality in a specific setting is described with respect to device **100**, such functionality may also be performed by system **30**, device **20**, or other embodiments described herein. The fluid may include food **160**, which has been swallowed, or reflux **180** that surges into esophagus **200** from the stomach. According to other embodiments measurement of for example blood flow (e.g., velocity) may be based on detecting pressure gradients during the cardiac cycle. Additionally, the flow of urine may be monitored. According to these embodiments a device, such as a capsule(s) may include pressure or other suitable transducers.

[0023] Processor **140** may process the sensed data from sensors **120A** and **120B**, for example, to determine the gradient and speed of fluid flow, and possibly other parameters such as direction. If the fluid is reflux, as may be determined, for example, by the direction of flow, processor **140** may also determine a rough estimate of the distance covered by the reflux. For example, if a sensor **120A**, which is positioned closer to the stomach, sensed a pH indicative of a reflux but a sensor **120B**, which is positioned further from the stomach, did not, then processor **140** may determine that the reflux reached a distance between the two sensors (i.e. that the reflux was higher than location h₁ of sensor **120A** but lower than location h₂ of sensor **120B**).

[0024] Moreover, other parameters may be sampled and included in the processing to present a more complete picture of the reflux event. For example, processor **140** may record times of ingestion, e.g. identified by a fluid flow in a direction towards the stomach as determined by the gradient measurements obtained with sensors **120A** and **120B**. Additional information may be integrated as well, for example, images taken by an image sensor in device **100** or, pressure and/or temperature measurements taken by appropriate sensors in device **100**. According to alternate embodiments, different data may be transmitted to an external receiving/processing unit for integration to be performed externally.

[0025] Device **100** may be positioned in a body lumen such that at least two pH sensors **120A** and **120B** may measure a pH gradient within the body lumen. Devices **10**, **20** or **100** may be positioned within the GI tract, for example for measuring pH gradients within the esophagus, stomach, small intestine, large intestine or other parts of the GI tract. Alternately, devices **10**, **20**, or **100** may be positioned within other body lumens such as blood vessels, the urinary tract, the reproductive tract and others. According to one embodiment the devices **10**, **20**, or **100** may be positioned in a body lumen and held in place by an external device such as an endoscope, catheter, needle, stent, etc., for example, as known in the art. In one embodiment of the invention, device **10**, **20**, or **100** may be an integral part of an external device, for example, an endoscope, catheter, needle, stent, etc. According to another embodiment the devices **10**, **20**, or **100** may be transiently attached to a body lumen wall by an attachment mechanism, for example, by use of vacuum, clips, suturing, elastic band, etc., for example, as is known in the art.

[0026] An embodiment of the present invention may be configured for being immobilized or held in-vivo. For

example, a device may include a shell or container configured for being immobilized, including recesses which may be tied or otherwise connected to in-vivo tissue, including clamps, pins, etc. A device may be attached to a cord or band from which it is hung from a relatively stationary position in-vivo, for example within the esophagus, or which may be tied to connected to an in-vivo site. Reference is now made to **FIG. 2B** in which device **100** (or devices **10** or **20**) is attached to the wall of a body lumen **300** (such as a section of the GI tract) with an elastic band **150** or other suitable extension or cord which, in turn, is placed around a protuberance **154** in the wall of the body lumen **300**. Device **100** then hangs down into the body lumen **300** and measures the pH over a pre-defined period of time, such as, for example, 24 hours. Other suitable time periods may be used. Other known methods for positioning and immobilizing a device to a body lumen wall may be used in accordance with embodiments of the invention and other body lumens besides the esophagus may be sensed. Examples of devices which may be immobilized or which are configured to be immobilized in-vivo, and some systems and methods for immobilizing a device in-vivo are described in WO 02/26103 published on Apr. 4, 2002, and published application US-2002-0042562-A1, which are assigned to the common assignee of the present invention and which are hereby incorporated by reference. Other systems and method of immobilizing an in-vivo device may be used.

[0027] Reference is now made to **FIG. 2C** in which a plurality of devices **100A**, **100B**, and **100C** are shown (similarly, devices **10** and **20** may be used in multiple device systems as well). According to an embodiment of the invention each of the devices may include a sensor, such as sensors **112A**, **112B** and **112C**. The devices **100A**, **100B**, and **100C** are distanced from each other by distances **D1** and **D2** and are attached to a body lumen **300** wall along an axis **114** of the body lumen. The devices may be connected to each other or they may each separately transmit data (for example as described herein) to an external receiving unit. Data received from the distanced devices may be used to calculate parameters of a gradient prevalent in the body lumen **300**. For example, at least two of the sensors **112A**, **112B** or **112C** may be pH, temperature or pressure sensors and thus they may monitor a pH, temperature or pressure gradient occurring along axis **114** of body lumen **300**. According to other embodiments other numbers and types of sensors may be used.

[0028] Reference is now made to **FIGS. 3A and 3B**, which illustrate exemplary output from multiple sensors, for example, from sensors **12A** and **12B**, respectively (or other sensor described herein, such as sensors **17A-D**, **120**, **125**, **112A-C**, etc.), and their cross correlation, respectively, over time. **FIG. 3A** shows an exemplary output of sensors **12A** and **12B**, where the output from sensor **12A** is shown with a solid line **333A** and that from sensor **12B** is shown with a dashed line **333B**. In the example of **FIG. 3A**, the outputs are shifted from each other by a time period **T**. **FIG. 3B** shows the cross-correlation between the output of the two sensors **12A** and **12B**. According to one embodiment a device according to an embodiment of the invention may be positioned within a flow of a fluid passing through, for example, the esophagus. The multiple sensors may detect for example a fluid flow or gradient moving past the sensors. Sensors may measure in a mode such as for example pH in two or more different locations. In an exemplary embodi-

ment the output of the two sensors **12A** and **12B** may correspond, for example with the outputs shown in **FIG. 3A** that may be shifted by a time T . A positive dynamic gradient may be expressed when, for example, the solid line is shifted forward in time by an amount T . Such determination may be made, for example, by matching portions of the signal stream received. Thus, the fluid has moved from one sensor to the next (i.e. the distance D) in the time T . In other words, the velocity (V) of the fluid may be expressed by the following relationship:

$$V=D/T$$

[0029] and its direction may be positive, from sensor **12A** to sensor **12B**. This positive dynamic gradient may indicate reflux. A negative dynamic gradient may indicate ingestion of food, or retraction of the reflux back to the stomach. A dynamic gradient may be defined as a gradient that may change quickly with time. A static gradient may be defined as a gradient that may be relatively constant with time, for example the natural gradient in pH between the relatively neutral pH in the esophagus and the relatively acid condition in the stomach, may be considered a static gradient.

[0030] In accordance with an embodiment of the present invention, processor **16** may used to determine the presence and possibly direction of fluid flow with, for example, a comparator. PH sensor outputs, or other sensor outputs may change with the introduction of fluid flow or movement, due to, for example, the acidity level of the fluid. In one embodiment, a fluid may be determined to be present if the output of at least one sensor **12** is greater than a threshold. For example, if the pH determined at a sensor changes, it may be determined that fluid has moved past the sensor. If the output of the cross-correlation operation is not above a threshold, then processor **16** may determine that the fluid passed only one sensor and did not reach the second or other sensors.

[0031] Presumably, the higher the speed of the reflux at a given location, the higher it may reach in the esophagus and the more severe the reflux may be.

[0032] Reference is now made to **FIG. 4A** showing an exemplary flow chart describing a method for measuring a gradient in-vivo according to an embodiment of the present invention. In block **410** a first and second sensor may be inserted in-vivo at a distance D between them. In other embodiments of the present invention, more than two sensors may be used and more than one gradient may be determined. In one exemplary embodiment, the first and second sensor may be pH sensors inserted into the esophagus or swallowed. In other embodiments, the sensors may be other sensors or may be inserted in other body lumens such as blood vessels, urinary tract, reproductive tract, etc. The sensors typically sense in the same modality or sense the same type of data, and in one embodiment are included in the same physical device or package (e.g., a capsule). However, the two sensors may sense in different modalities and/or may be located in different devices or packages. Subsequently, in block **420** the sensors may sample in-vivo conditions. In block **430**, the sampled output of the sensors may be transmitted to an external receiver/recorder. The data may be transmitted and/or downloaded or otherwise communicated to the processor, which may accept or receive the

data from the sensors. In block **440**, the output may be processed. In block **445** diagnosis based on the output may be performed. The diagnosis may involve, for example, comparing data from different sensors, performing a cross correlation, etc. A diagnosis may include, for example, a determination of a fluid-flow, which may include in addition a direction, speed, gradient, or other information on the fluid flow. In an alternate embodiment, the output may be processed or partially processed in-vivo prior to transmission. In the case that the processor or controller is in the same device as the sensors, the data may be simply communicated using, e.g., a wire or an intermediate device. Transmission may be for example by wire or by wireless transmission. Other operations and series of operations may be used.

[0033] **FIG. 4B** shows an exemplary flow chart describing a processing output and diagnosis procedure according to one embodiment. In block **450**, the output of the sensors may be compared so as to determine the cross correlation between the output of the sensors. Other suitable comparisons of data may be performed. Based on analysis of the comparison between the output of the sensors and the cross correlation, as for example is described herein, flow may be detected (**460**). In a case where flow is detected, the direction of the flow (**470**) and velocity of the flow (**480**) may be determined. Based on the determinations made and possibly other suitable parameters, in-vivo conditions such as for example, GERD, may be determined. Other operations and series of operations may be used.

[0034] While certain features of the invention have been illustrated and described herein, many modifications, substitutions, changes, and equivalents will now occur to those of ordinary skill in the art. It is, therefore, to be understood that the appended claims are intended to cover all such modifications and changes as fall within the true spirit of the invention.

1. A system for measuring a gradient in-vivo, the system comprising:

at least two sensors collecting data in the same modality; a processor; and an external receiving unit.

2. The system according to claim 1, wherein the at least two sensors are separated by a distance.

3. The system according to claim 1, wherein the at least two sensors are configured for being immobilized in-vivo.

4. The system according to claim 1, wherein the at least two sensors are immobilized in an esophagus.

5. The system according to claim 1, wherein the at least two sensors are an integral part of a swallowable capsule.

6. The system according to claim 1, wherein the at least two sensors are attached to or are an integral part of an endoscope.

7. The system according to claim 1, wherein the at least two sensors are pH sensors.

8. The system according to claim 7, wherein the pH sensors are selected from a group comprising: pH sensitive electrodes, pH sensitive color indicators, and ISFET.

9. The system according to claim 1, wherein the at least two sensors are selected from a group comprising: pressure sensor, temperature sensor, image sensor, blood sensor, and oximetry sensor.

10. The system according to claim 1 comprising a transmitter.

11. A method for measuring an in-vivo gradient, the method comprising:

inserting a first and second sensor in-vivo, the sensors separated by a distance D, the

first and second sensor sensing the same type of data; and

sampling output of the first sensor and the second sensor.

12. The method of claim 11 comprising processing the output.

13. The method according to claim 11, wherein the first and second sensors are pH sensors.

14. The method according to claim 11 comprising determining a velocity of flow based on the output.

15. The method according to claim 11 comprising inserting the first and second sensor into the esophagus.

16. The method according to claim 11 comprising diagnosing the presence or absence of GERD based on the output.

17. A system for measuring an in-vivo gradient comprising:

a sampling means for sampling output from a first and second in-vivo sensor, the

sensors separated by a distance D;

a transmitting means for transmitting the output;

a processing means for processing the output; and

a presentation means for presenting the output.

18. A system for determining an in-vivo gradient, the system comprising:

a controller to:

accept a set of data from a plurality of in-vivo sensors;

compare the data received from each of the sensors; and

determine a fluid flow based on the data.

19. The system of claim 18, wherein the data is pH data.

20. The system of claim 18, wherein the data is from two in-vivo sensors separated by a distance.

21. The system of claim 18, wherein the controller is to determine a cross correlation between the data of the plurality of sensors.

22. The system of claim 18, wherein the controller is to determine a direction of fluid flow.

23. A method for determining an in-vivo gradient, the method comprising:

accepting a set of data from a plurality of in-vivo sensors;

comparing the data received from each of the sensors; and

determining a gradient based on the data.

24. The method of claim 23, wherein the data is pH data.

25. The method of claim 23, wherein the data is from two in-vivo sensors separated by a distance.

26. The method of claim 23, wherein the comparing is to determine a cross correlation between the data of the plurality of sensors.

27. The method of claim 23, wherein the comparing is to determine a direction of fluid flow.

28. A system comprising:

an in-vivo device comprising a plurality of sensors;

a controller to determine a gradient based on sampling of the sensors; and

an external receiver to receive data from the in-vivo device.

29. The system of claim 28, wherein in-vivo device comprises a transmitter.

30. The system of claim 28, wherein the sensors are pH sensors.

31. The system of claim 28, wherein the in-vivo device is configured for being immobilized in-vivo.

32. The system of claim 28, wherein the controller is within the in-vivo device.

33. An in-vivo device for measuring an in-vivo gradient, the device comprising:

at least two sensors for sensing the same type of data,

wherein the in-vivo device is capable of being immobilized in-vivo.

34. The device according to claim 33, wherein the first sensors are pH sensors.

35. The device according to claim 33, wherein the device is configured for being immobilized in an esophagus.

36. The device according to claim 33 comprising a controller, said controller to accept output from the sensors and to process said output.

* * * * *

| | | | |
|----------------|---|---------|------------|
| 专利名称(译) | 在体内测量梯度 | | |
| 公开(公告)号 | US20040193029A1 | 公开(公告)日 | 2004-09-30 |
| 申请号 | US10/808573 | 申请日 | 2004-03-25 |
| [标]申请(专利权)人(译) | GLUKHOVSKY阿尔卡季 | | |
| 申请(专利权)人(译) | GLUKHOVSKY阿尔卡季 | | |
| 当前申请(专利权)人(译) | GLUKHOVSKY阿尔卡季 | | |
| [标]发明人 | GLUKHOVSKY ARKADY | | |
| 发明人 | GLUKHOVSKY, ARKADY | | |
| IPC分类号 | A61B5/00 G01N A61B5/05 | | |
| CPC分类号 | A61B5/076 A61B5/1473 A61B5/14542 A61B5/14539 | | |
| 优先权 | 60/457594 2003-03-27 US | | |
| 其他公开文献 | US7245954 | | |
| 外部链接 | Espacenet USPTO | | |

摘要(译)

用于体内感测（例如，pH感测，压力感测或其他感测）的装置，系统和方法可包括接收体内数据的多于一个传感器。可以分析所感测的数据以例如确定梯度或流体流量。包括多个传感器的装置可以在体内保持或固定，并且可以检测移动经过传感器的流体流动或梯度。

