

FIG.1

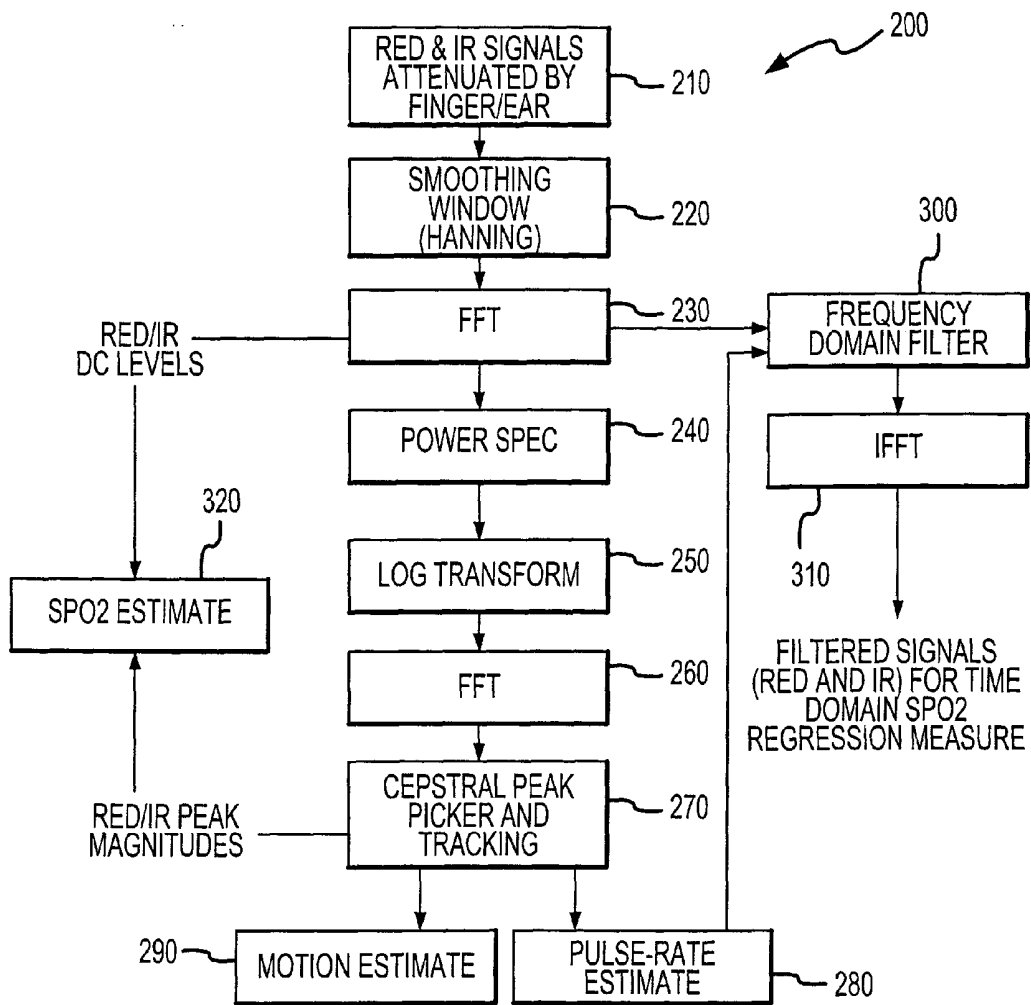


FIG.2

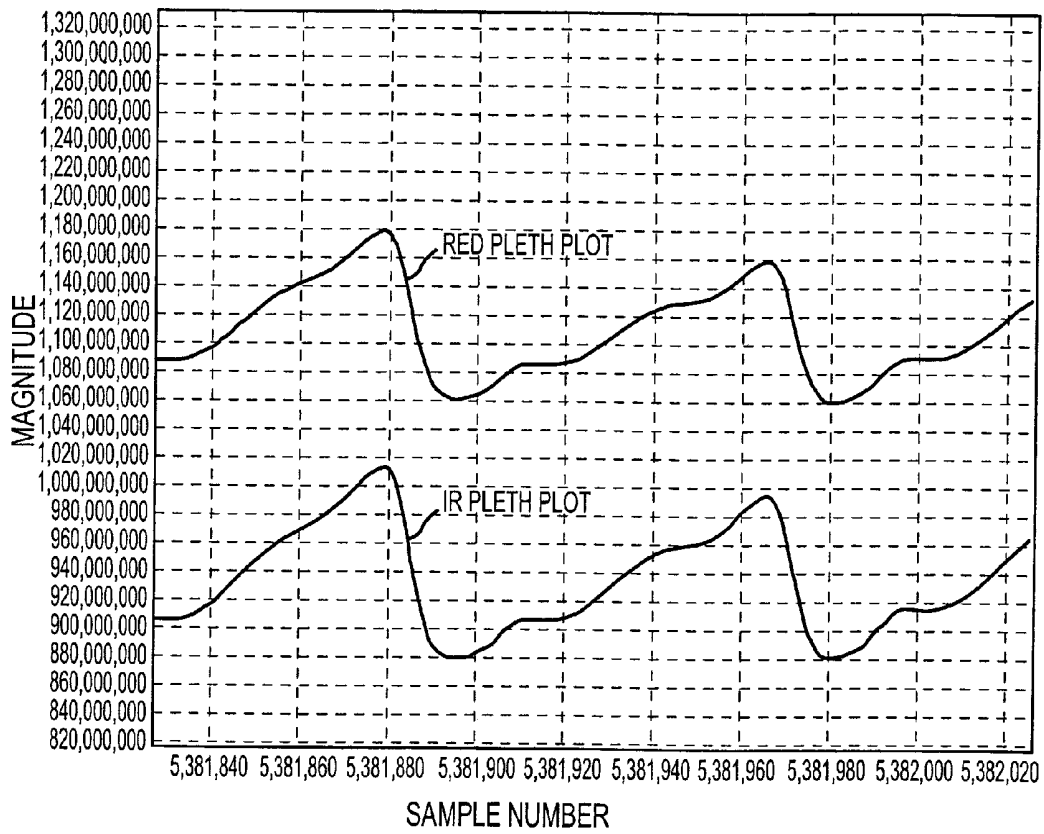


FIG.3A

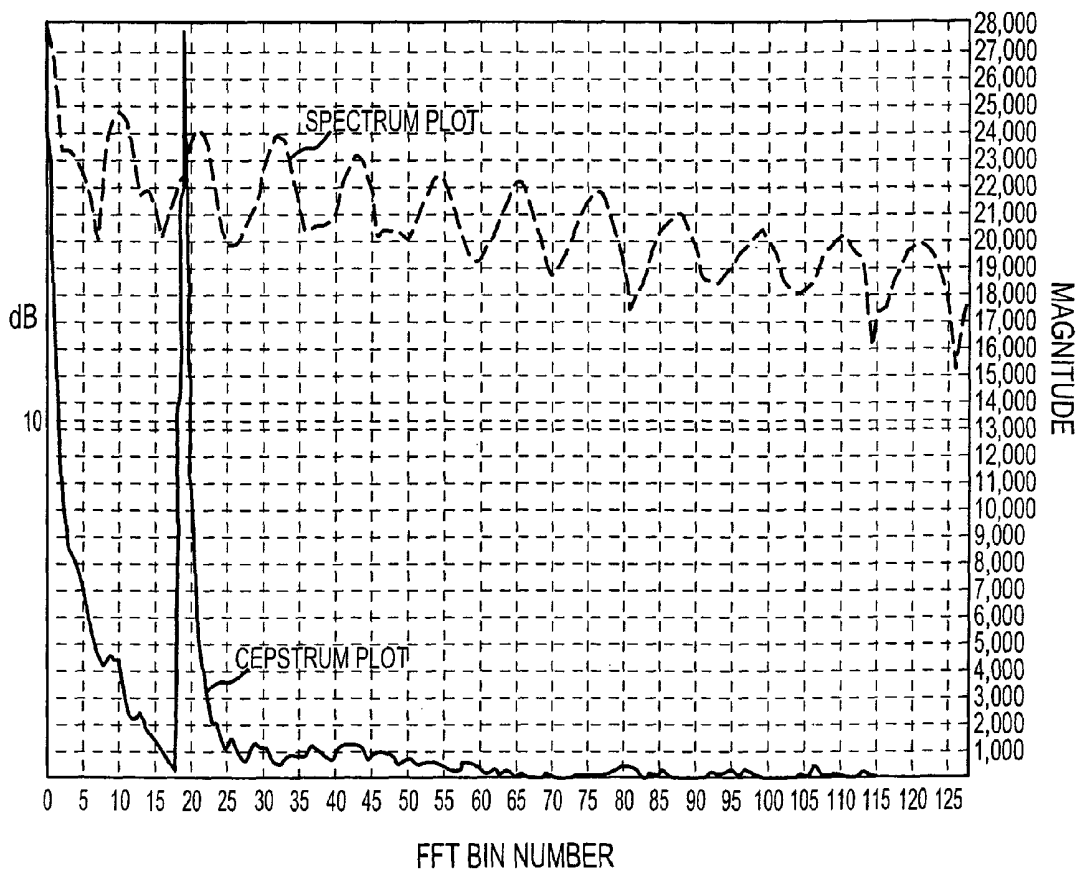


FIG.3B

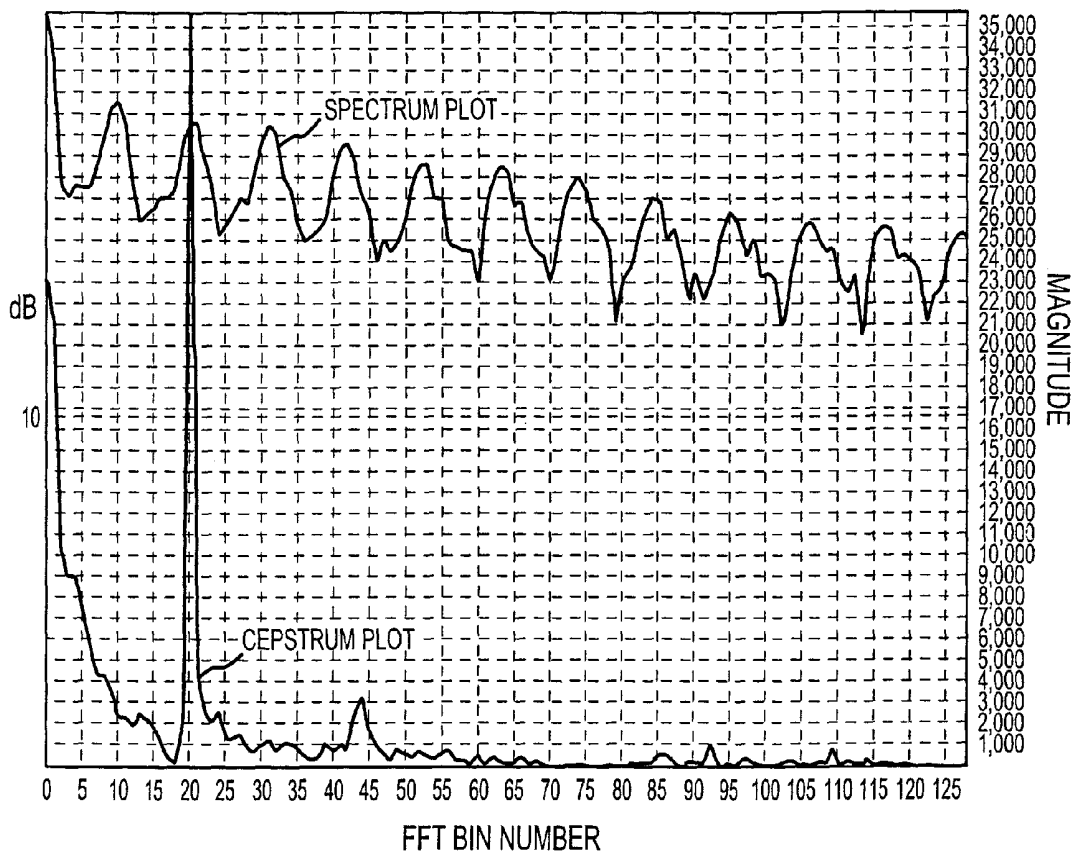


FIG.3C

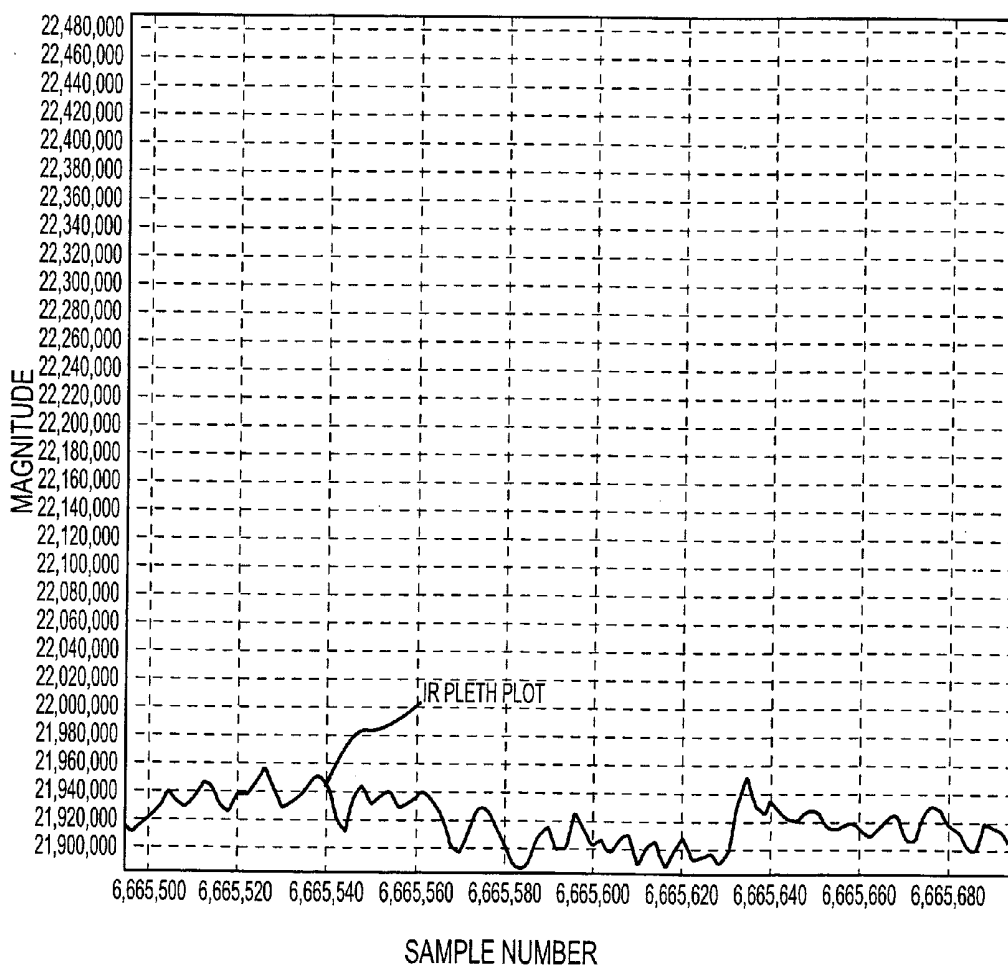


FIG.3D

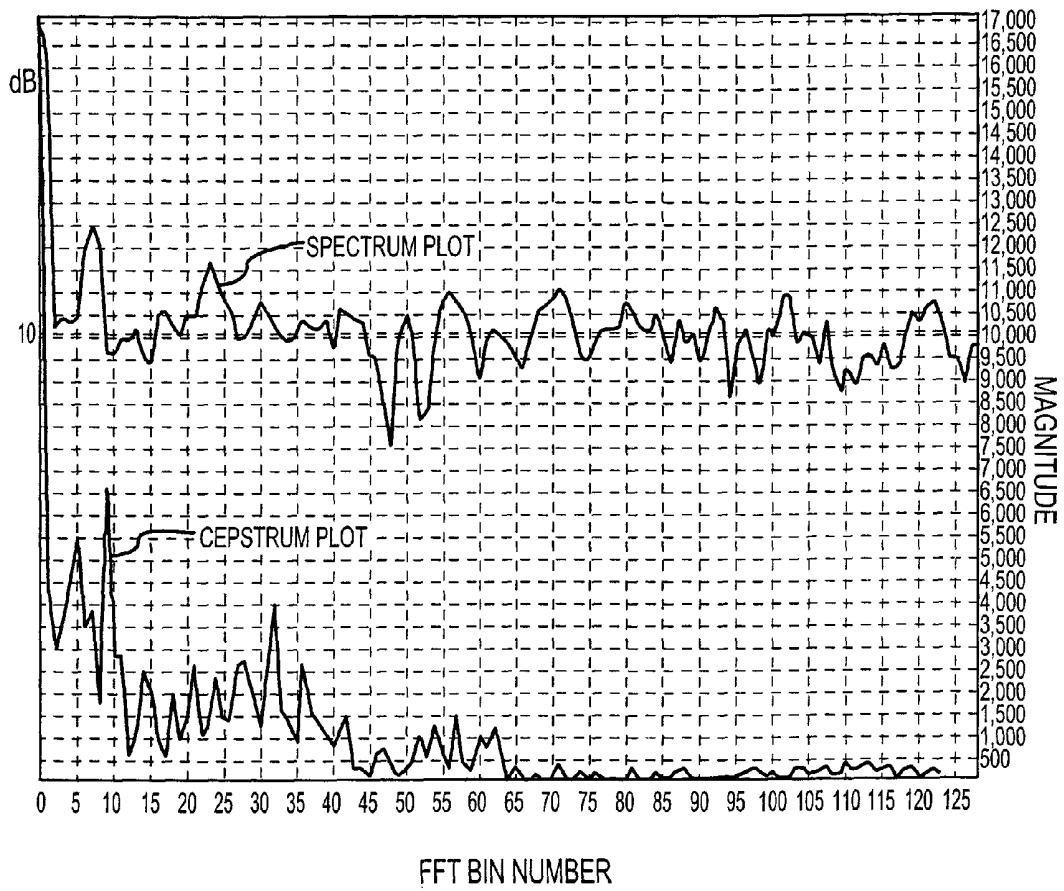


FIG.3E

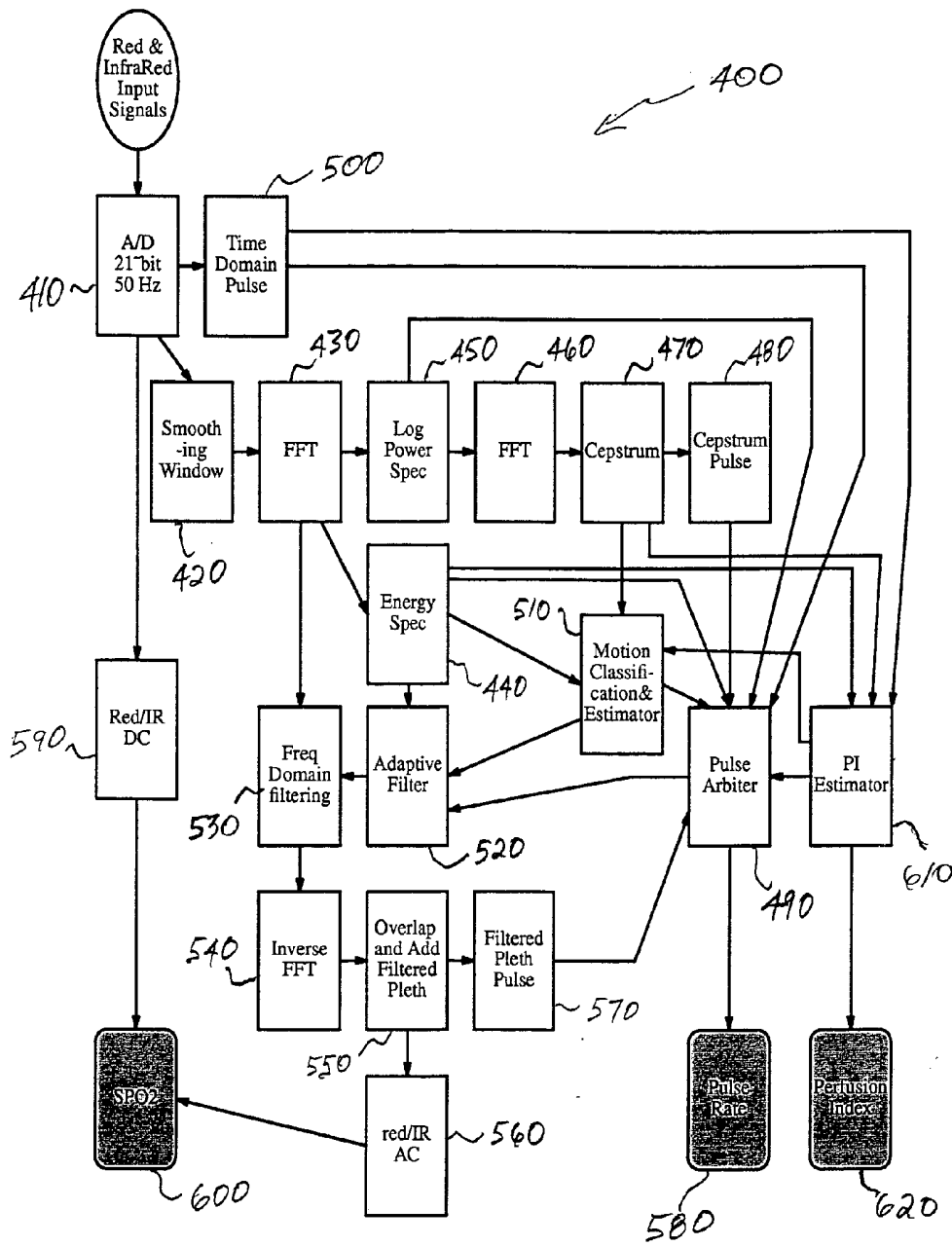
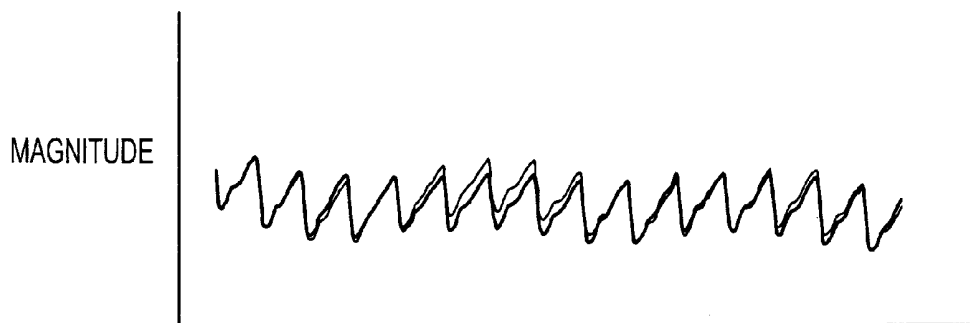
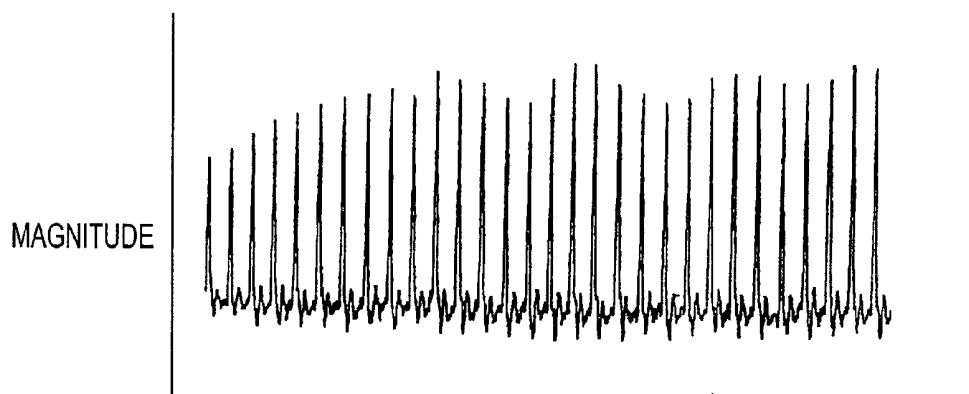


Fig. 4



SAMPLE NUMBER

FIG.5A



MAGNITUDE

SAMPLE NUMBER

FIG.5B

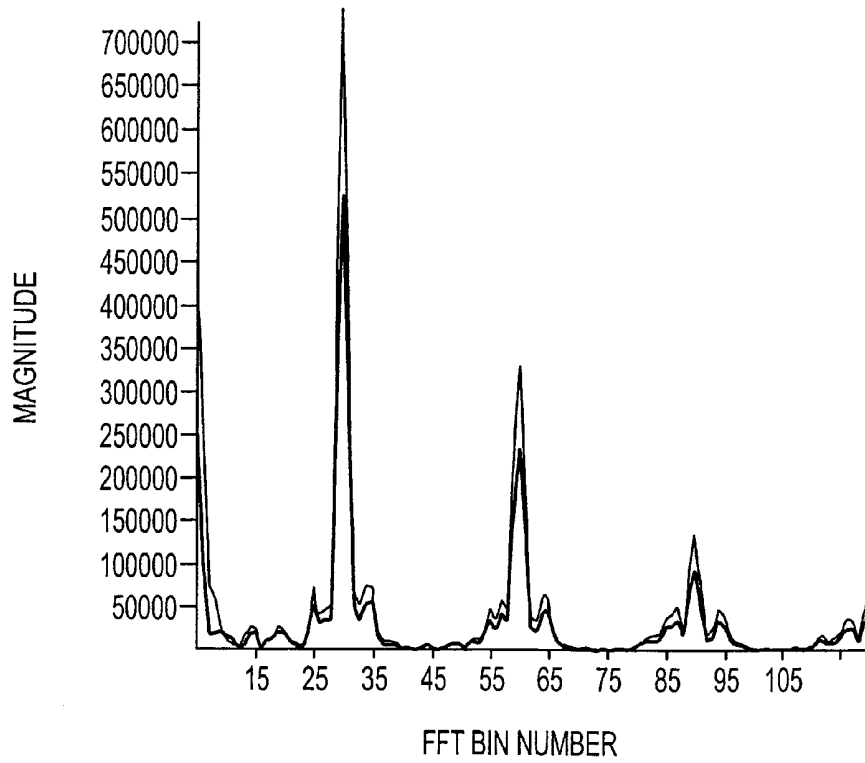


FIG.5C

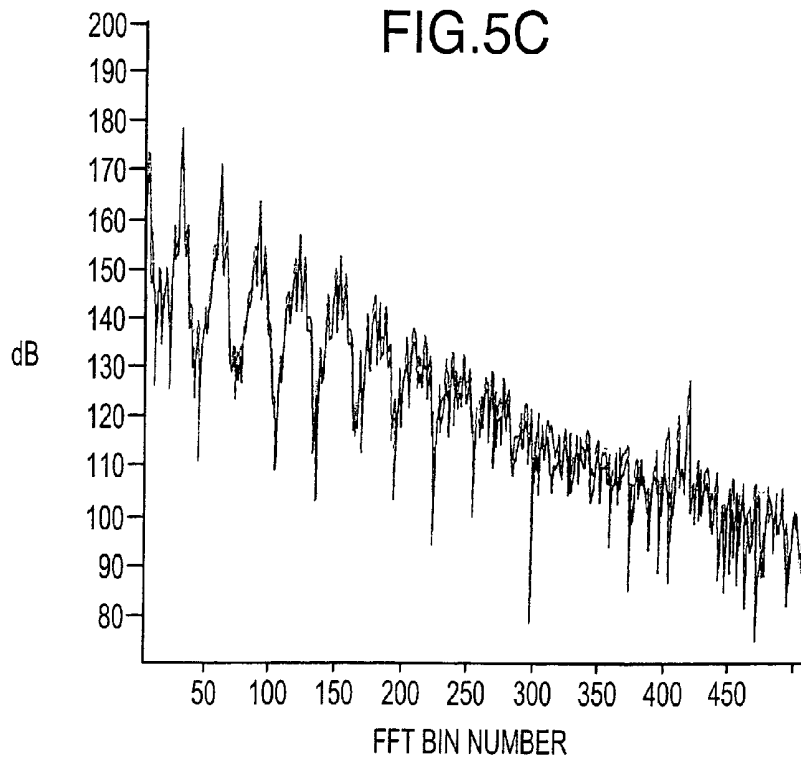


FIG.5D

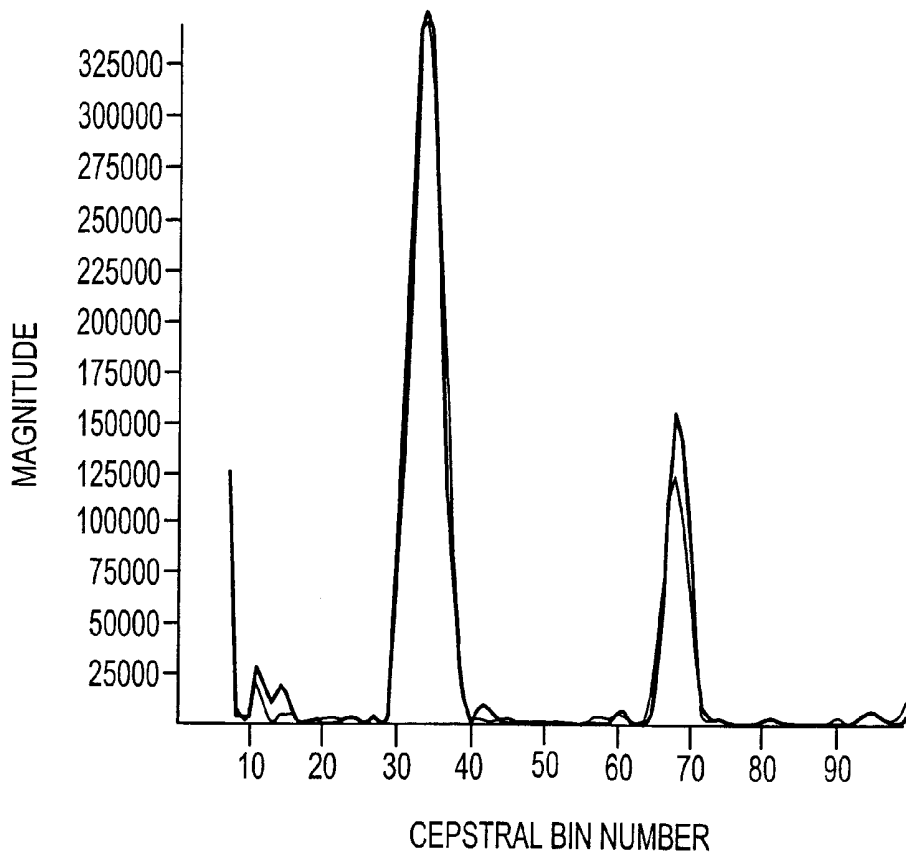


FIG.5E

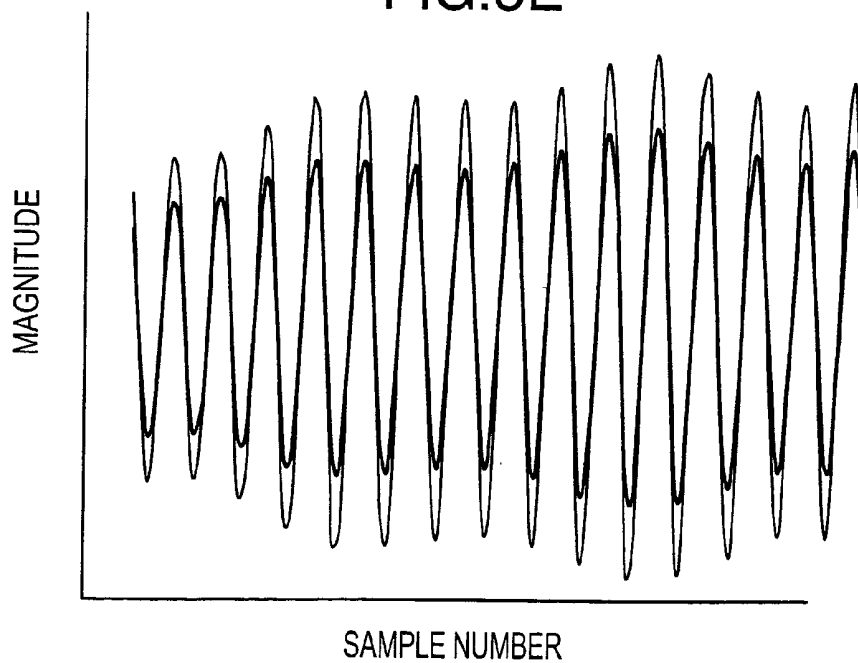
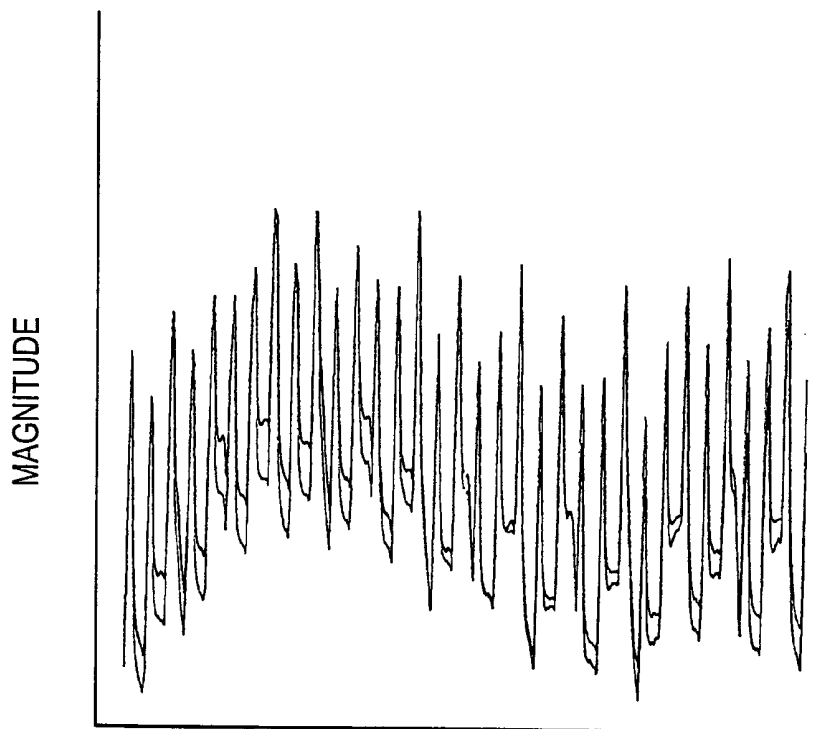
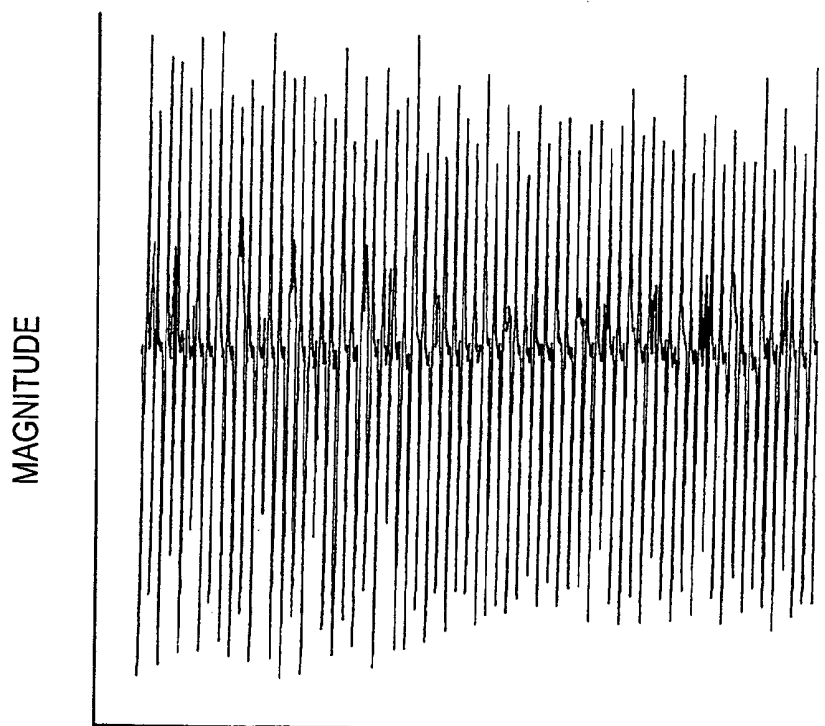


FIG.5F



SAMPLE NUMBER

FIG.6A



SAMPLE NUMBER

FIG.6B

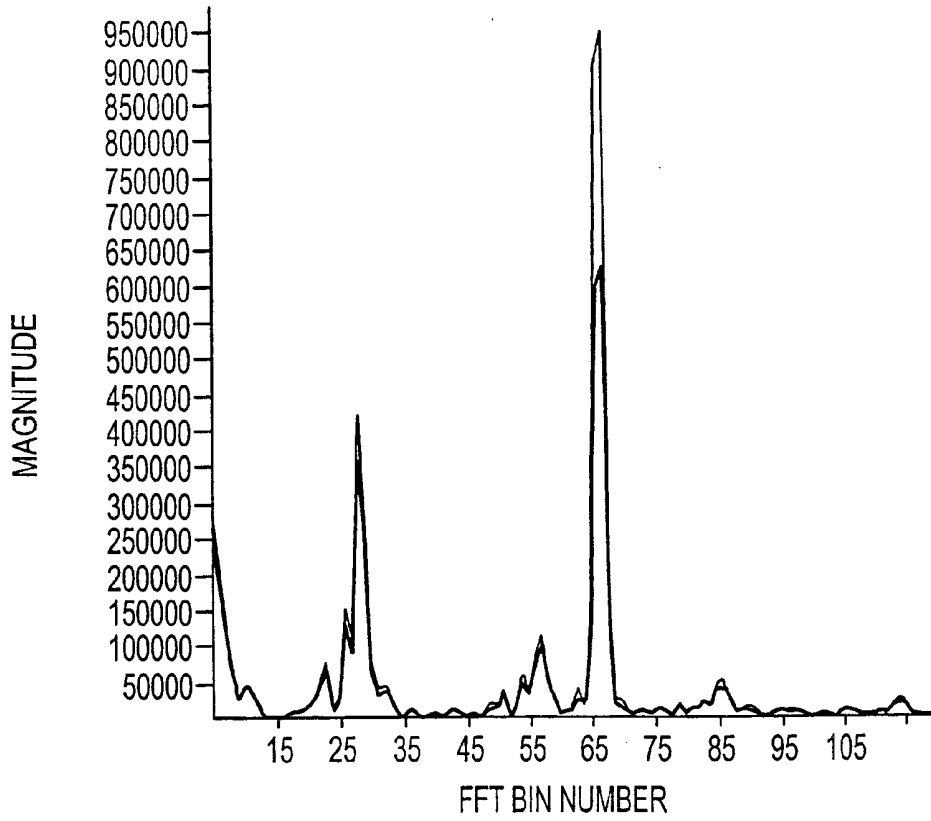


FIG.6C

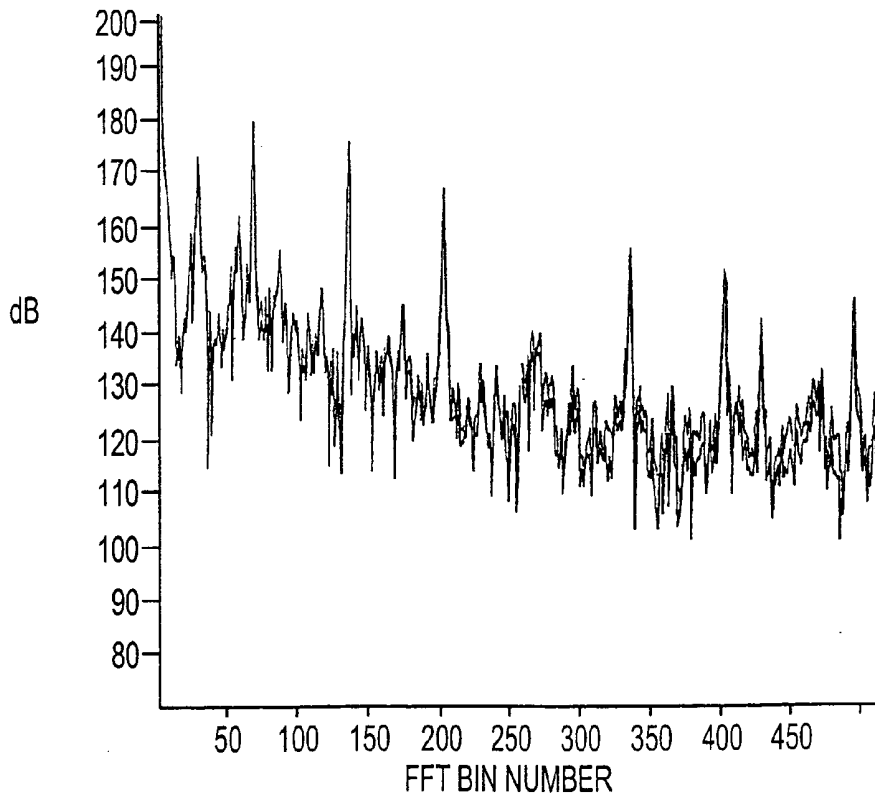


FIG.6D

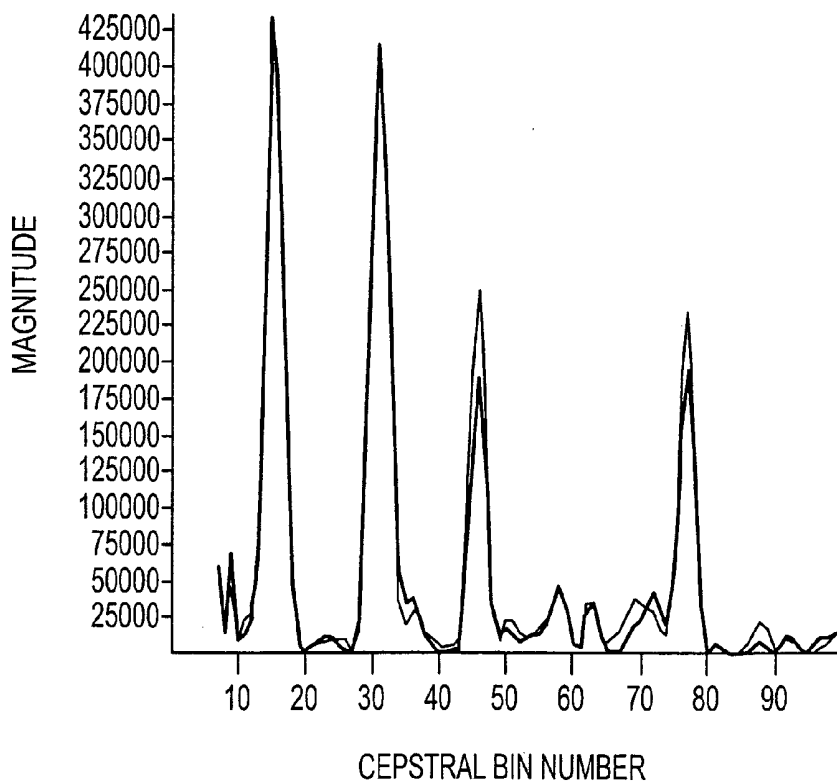


FIG.6E

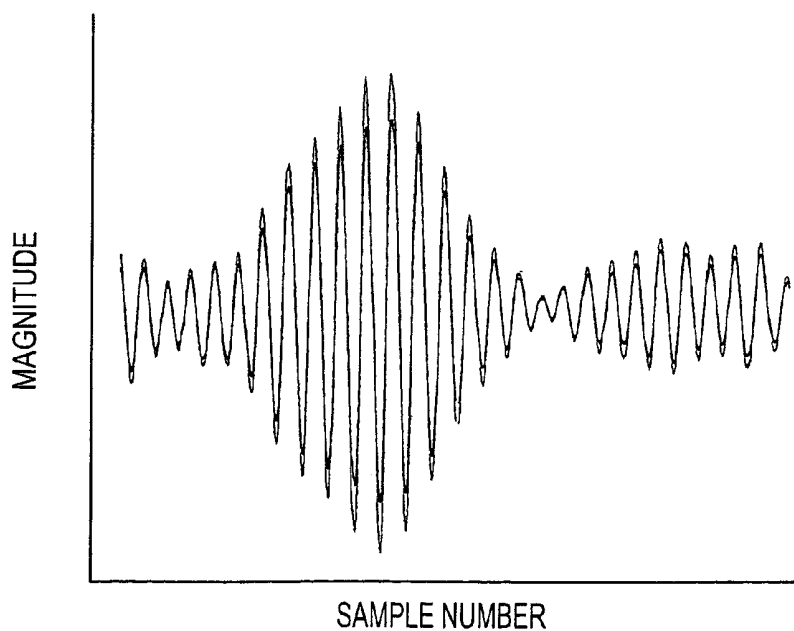


FIG.6F

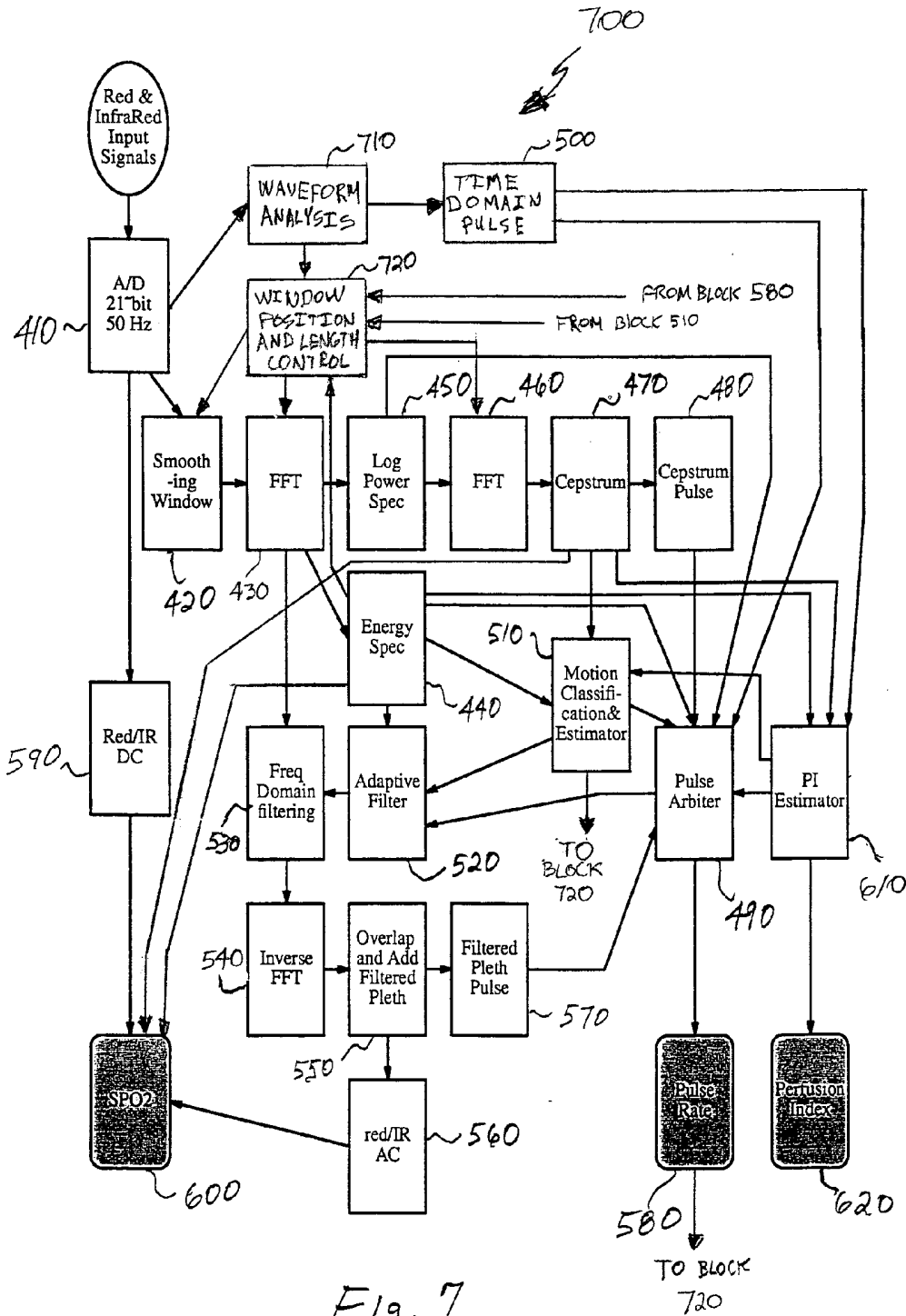


Fig. 7

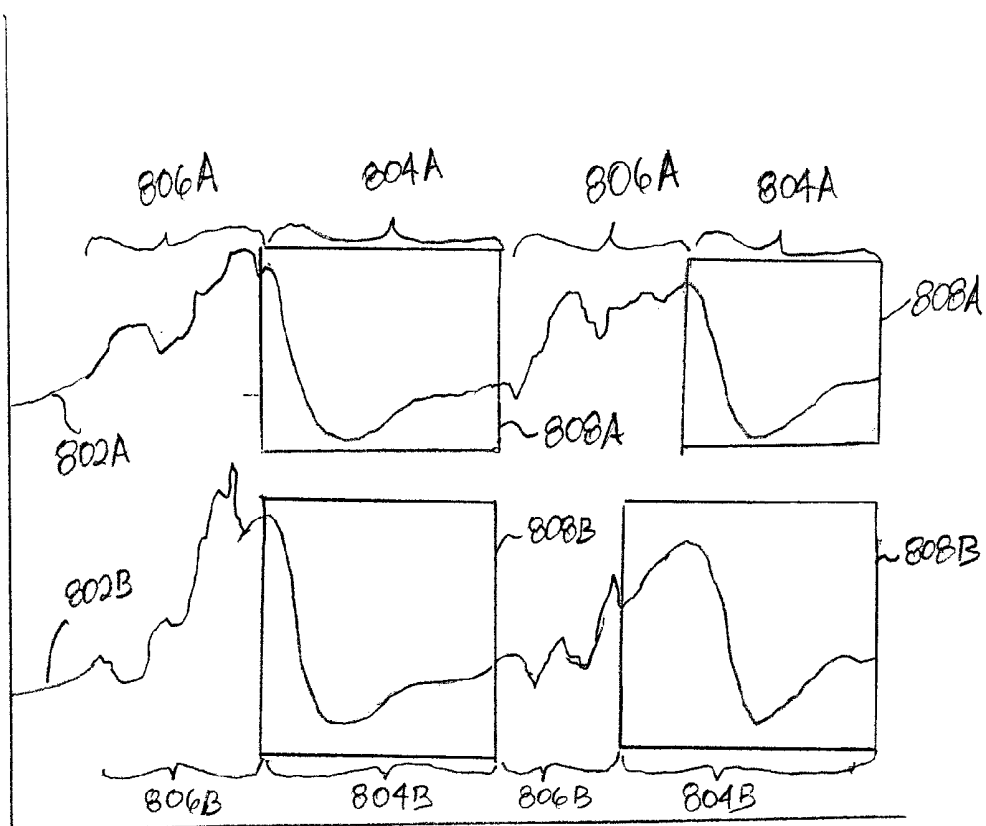


FIG. 8

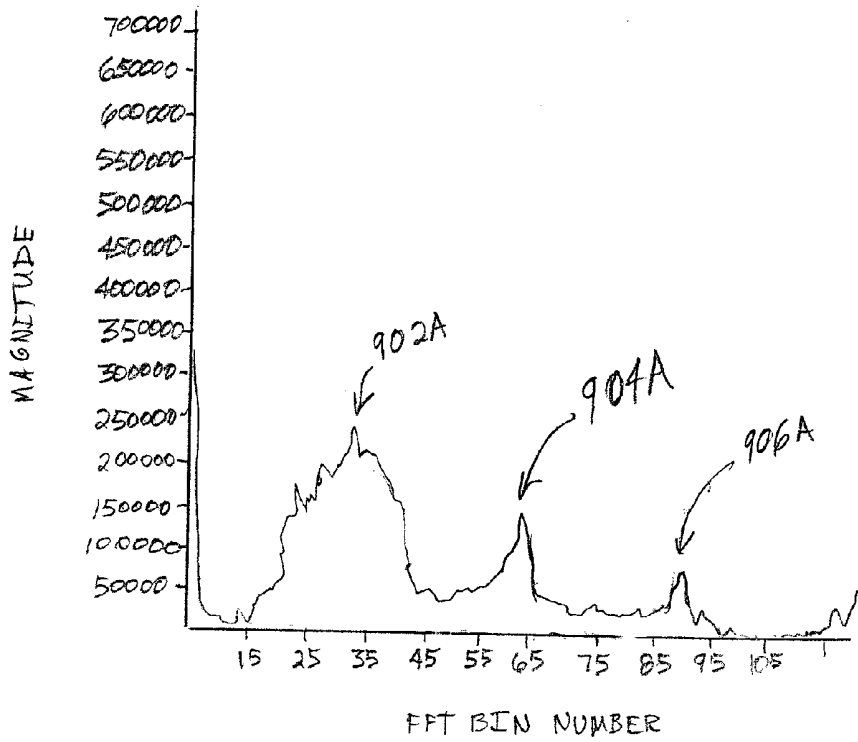


FIG. 9A

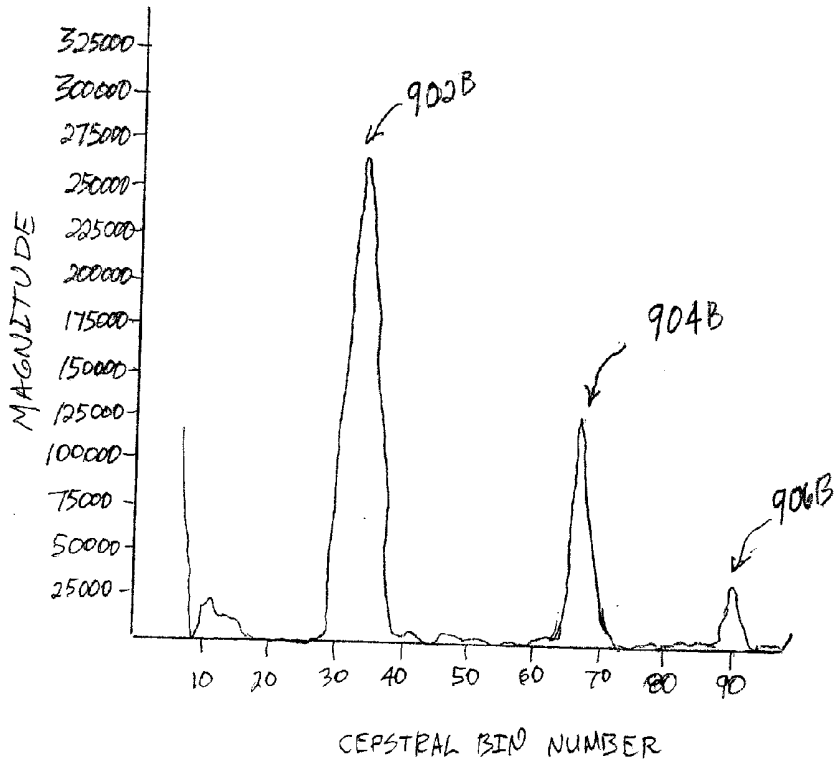


FIG. 9B

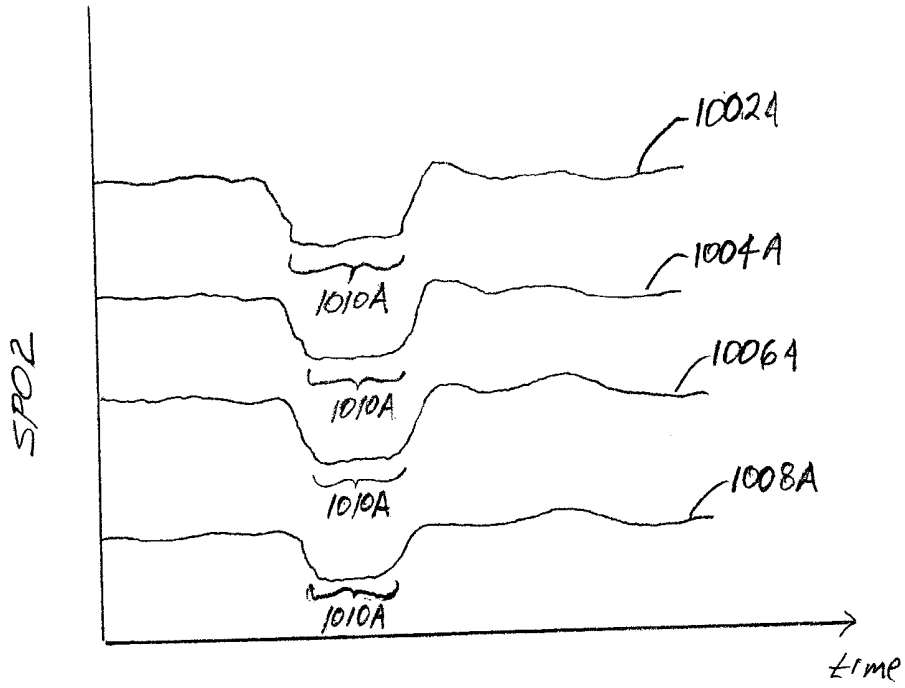


FIG. 10A

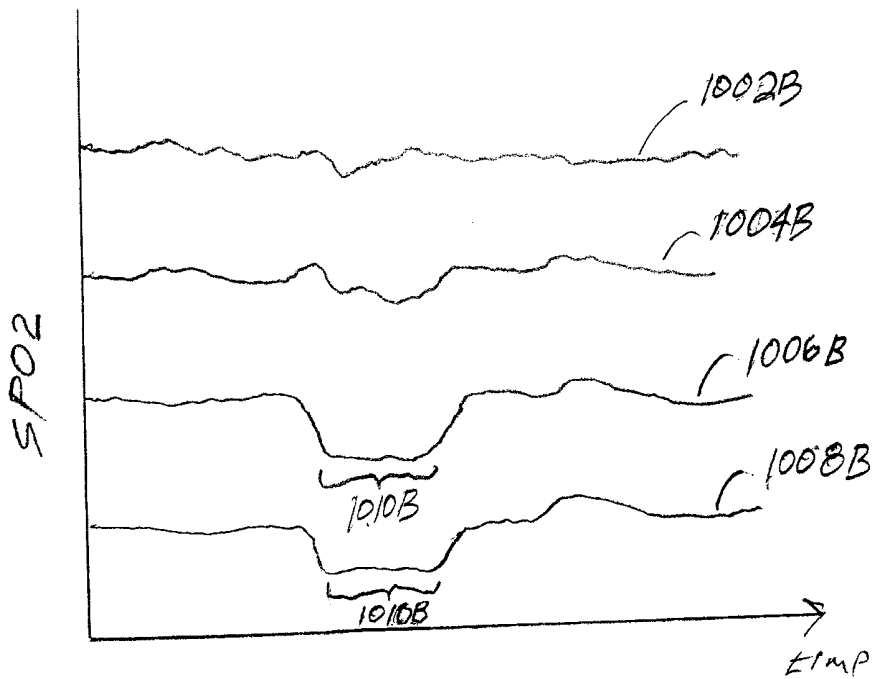


FIG. 10B

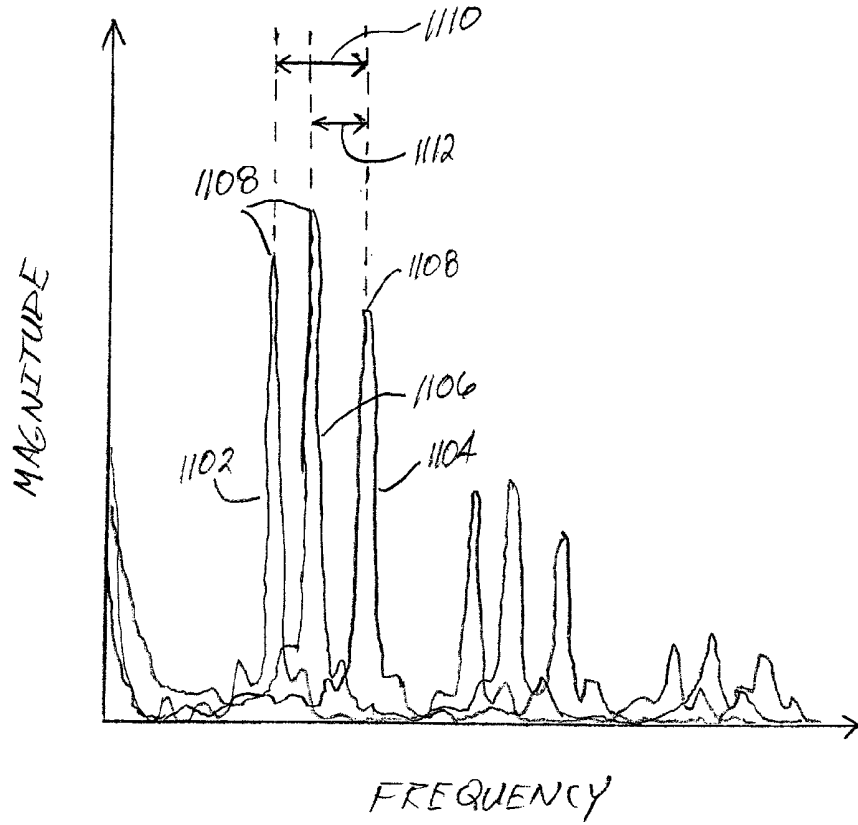


FIG. 11A

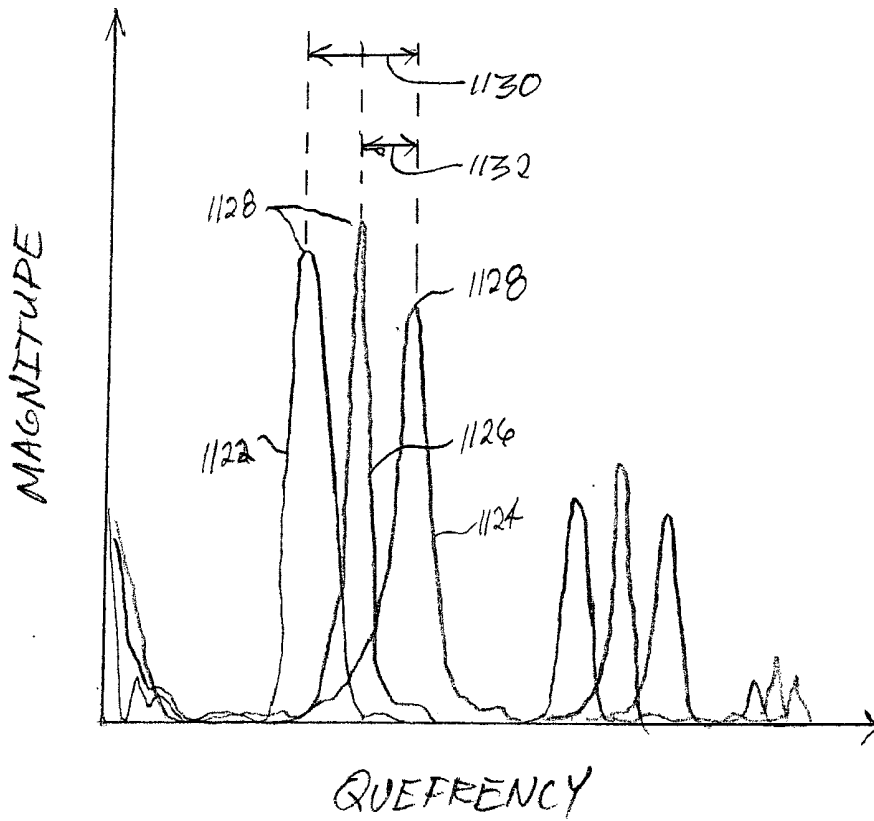


FIG. 11B

CEPSTRAL DOMAIN PULSE OXIMETRY

RELATED APPLICATION INFORMATION

[0001] This application is a continuation-in-part of and claims priority from U.S. application Ser. No. 10/371,658 entitled "CEPSTRAL DOMAIN PULSE OXIMETRY" filed on Feb. 21, 2003, which claims priority from U.S. Provisional Application Serial No. 60/359,018 entitled "CEPSTRAL DOMAIN PULSE OXIMETRY" filed on Feb. 22, 2002, the entire disclosures of which are incorporated herein.

FIELD OF THE INVENTION

[0002] The present invention relates generally to pulse oximetry, and more particularly to pulse rate and blood analyte level estimation using cepstral domain processing of plethysmographic signals.

BACKGROUND OF THE INVENTION

[0003] Current pulse oximeters obtain two signals derived from the attenuation of red and infrared light signals as they are passed through a patient tissue site, typically a finger. A number of processing methods have been developed in the industry in both time and frequency domains to obtain both pulse rate information and the oxygen content (SPO2) level of the arterial blood from the attenuated red and infrared light signals. The attenuated red and infrared signals show a pulsing waveform that is related to the heart rate of the patient. These time domain signals, usually after some bandpass filtering, are used for display of the pulse cycle and are known as plethysmographic signals. Prior techniques for pulse-rate estimation have mostly operated in the time domain and have used peak picking and analysis to derive a pulse rate. Time domain measures can respond quickly to pulse rate changes, but the presence of moderate motion and/or low amplitude pulses pose problems for accurate peak picking. Processing in the frequency or spectral domain has also been used and this requires a longer sample of the waveform to generate a pulse estimate. Also, identification of the predominant spectral peak produced by the pulse can be problematic in the presence of motion artifacts.

SUMMARY OF THE INVENTION

[0004] Accordingly, the present invention provides for processing of plethysmographic signals via the cepstral domain to enhance the determination of patient physiological condition related information such as patient pulse rate and SPO2 level information from plethysmographic signals, especially when motion artifacts are present in the plethysmographic signals. In accordance with the present invention, plethysmographic signals (e.g., attenuated red and infrared signals) are sampled and transformed into the cepstral domain, via, for example, a logarithmic like transform sandwiched between two forward Fourier transforms. Peaks in the cepstral domain are related primarily to the pulse rate. Identification of the pulse generated cepstral domain peak allows for pulse estimation in the presence of moderate motion artifacts. The cepstral information also allows for adaptive filtering of the input plethysmographic signals to remove noise and artifacts. The relative magnitudes of the cepstral peaks for both red and infrared signals in conjunction with an estimate of the DC levels of the red and infrared signals also allows for measurement of blood analyte (e.g., SPO2) levels of the blood.

[0005] Cepstral processing of the plethysmographic signals also facilitates the identification and classification of motion artifacts present in the plethysmographic signals, the selection of patient physiological condition related information (e.g., SPO2 levels) determined from multiple signal domains, and calculation of an enhanced patient perfusion index value in the presence of motion induced noise. Further, cepstral processing of plethysmographic signals may be accomplished using adaptive data selection window lengths, adaptive signal domain transformation operation sizes, and selective positioning of data selection windows.

[0006] According to one aspect of the present invention, a method of processing at least first and second time domain plethysmographic signals (e.g., red and infrared plethysmographic signals) obtained from a patient includes the steps of performing a Fourier transformation on the first time domain plethysmographic signal to transform the first plethysmographic signal into a first frequency domain plethysmographic signal and performing a Fourier transformation on the second time domain plethysmographic signal to transform the second plethysmographic signal into a second frequency domain plethysmographic signal. In this regard, the Fourier transformations may be fast Fourier transforms. A first power spectrum is computed from the first frequency domain plethysmographic signal and a second power spectrum is computed from the second frequency domain plethysmographic signal. A Fourier transformation is performed on the first power spectrum to transform the first power spectrum into a first cepstrum and a Fourier transformation is performed on the second power spectrum to transform the second power spectrum into a second cepstrum. In this regard, the Fourier transformations may be fast Fourier transforms. The first and second cepstrums are then examined to obtain information therefrom relating to a physiological condition of the patient.

[0007] The physiological condition of the patient may, for example, be the patient's pulse rate. In this regard, the first and second cepstrums may be examined to identify peaks in the first and second cepstrums associated with the pulse rate of the patient, and the pulse rate of the patient may be estimated based on the locations of the identified peaks in the first and second cepstrums.

[0008] The physiological condition of the patient may also, for example, be the patient's SPO2 level. In this regard, DC levels of the first and second power spectrums may be determined, AC levels of the first and second time domain plethysmographic signals may be determined from the identified peaks in the first and second cepstrums, and a value correlated with a blood analyte level (e.g., SPO2 level) of the patient may be computed from the DC values of the first and second power spectrums and the AC levels of the first and second time domain plethysmographic signals.

[0009] According to another aspect of the present invention, a method of determining a pulse rate of a patient from at least one time domain plethysmographic signal obtained from the patient includes the step of obtaining a time domain based estimate of the pulse rate of the patient from the time domain plethysmographic signal. The time domain plethysmographic signal is transformed to a spectral domain plethysmographic signal and a spectral domain based estimate of the pulse rate of the patient is obtained from the spectral domain plethysmographic signal. The spectral

domain plethysmographic signal is transformed to a cepstral domain plethysmographic signal and a cepstral domain based estimate of the pulse rate of the patient is obtained from the cepstral domain plethysmographic signal. A best estimate of the pulse rate of the patient is then determined based on at least the time, spectral, and cepstral domain based estimates of the pulse rate of the patient.

[0010] According to one more aspect of the present invention, a pulse oximeter includes first and second optical signal sources operable to emit optical signals characterized by first and second wavelengths (e.g., red and infrared), respectively. The pulse oximeter also includes a drive system, a detector, a digital sampler (e.g., an analog-to-digital converter), and a digital processor. The drive system is operable to cause operation of the first and second optical signal sources such that each optical signal source emits first and second optical signals, respectively, in accordance with a multiplexing method. The detector is operable to receive the first and second optical signals after the first and second optical signals are attenuated by a patient tissue site of a patient. The detector is also operable to provide an analog detector output signal representative of the attenuated first and second optical signals. The digital sampler is operable to sample the analog detector output signal at a desired sampling rate and output a digital signal having a series of sample values representative of the attenuated first and second optical signals. The digital processor is enabled to demultiplex the series of sample values into first and second time domain plethysmographic signals, transform the first and second time domain plethysmographic signals into first and second spectral domain signals, transform the first and second spectral domain plethysmographic signals into first and second cepstral domain plethysmographic signals, and examine the first and second cepstral domain plethysmographic signals to obtain information therefrom relating to a physiological condition of the patient, such as the patient's pulse rate or SPO2 level.

[0011] According to a further aspect of the present invention, a pulse arbitration method for use in determining a fundamental pulse frequency (or pulse rate) of a patient from multiple signal domains (e.g., time, energy, log, and cepstral) associated with at least one time domain plethysmographic signal obtained from the patient includes the step of transforming the time domain plethysmographic signal to a spectral domain plethysmographic signal. The spectral domain plethysmographic signal is transformed to a cepstral domain plethysmographic signal. The transformations to the spectral and cepstral domains may, for example, be accomplished via Fourier transformation operations. The spectral and cepstral domain plethysmographic signals are examined to identify corresponding spectral and cepstral domain plethysmographic signal peaks. The identified corresponding spectral and cepstral domain plethysmographic signal peaks are then used to select the fundamental pulse frequency from among a plurality of possible candidates for the fundamental pulse frequency of the patient. Possible candidates for the fundamental pulse frequency of the patient may, for example, be obtained from the time, spectral, and/or cepstral domain plethysmographic signals as well as from a filtered time domain plethysmographic signal and/or a log scaled spectral domain plethysmographic signal.

[0012] Cepstral domain processing of plethysmographic signals offers several advantages for pulse-rate identifica-

tion. For example, the log-like transform acts to suppress weaker noise components making peak identification easier, and the cepstral peak is primarily generated via the harmonic components of the pulse so that noise energy surrounding this "fundamental" pulse frequency does not adversely effect pulse frequency identification.

[0013] According to yet another aspect of the present invention, a method of processing at least first and second time domain plethysmographic signals obtained from a patient (e.g., red and infrared plethysmographic signals) includes the steps of selecting at least one desired portion of the first time domain plethysmographic signal and selecting at least one desired portion of the second time domain plethysmographic signal. Selection of the desired portions of the first and second time domain plethysmographic signals may be accomplished in a number of manners. In one embodiment, the desired portions are selected by positioning a first data selection window over the desired portion of the first time domain plethysmographic signal, adjusting a length of the first data selection window to correspond with a length of the desired portion of the first time domain plethysmographic signal, positioning a second data selection window over the desired portion of the second time domain plethysmographic signal, and adjusting a length of the second data selection window to correspond with a length of the desired portion of the second time domain plethysmographic signal. The appropriately positioned and length adjusted data selection windows pass the desired portions of the first and second time domain plethysmographic signals on for further processing and block the undesired portions outside the windows from further processing. The desired portions of the first and second time domain plethysmographic signals may be identified by analyzing the first and second time domain plethysmographic signals without selecting any particular portions thereof to identify at least one region of each of the first and second time domain plethysmographic signal wherein motion artifacts present in the first and second plethysmographic are below an acceptable level.

[0014] Once selected, the selected desired portions of the first and second time domain plethysmographic signals are transformed into first and second frequency domain plethysmographic signal portions corresponding to the selected desired portions of the first and second time domain plethysmographic signals. The first and second frequency domain plethysmographic signal portions are subsequently transformed into first and second cepstral domain plethysmographic signal portions corresponding to the selected desired portions of the first and second time domain plethysmographic signals. In this regard, Fourier transformations may be employed to transform the selected desired portions of the first and second time domain plethysmographic signals into the first and second frequency domain plethysmographic signal portions and to transform the first and second frequency domain plethysmographic signal portions into the first and second cepstral domain plethysmographic signal portions. The Fourier transformations may be accomplished by performing Fast Fourier Transform (FFT) operations. In this regard, the size of the FFT operations may be adjusted as desired in accordance with a predetermined parameter such as, for example, the patient's pulse rate. Once the transformations are accomplished, one or both of the first and second cepstral domain plethysmographic signal portions are examined to obtain information therefrom relating

to a physiological condition of the patient (e.g., the patient's pulse rate, the patient's SPO2 level).

[0015] According to one more aspect of the present invention, a method of assessing the presence of motion artifacts in a time domain plethysmographic signal obtained from a patient (e.g., a red or an infrared plethysmographic signal) includes the step of obtaining at least first and second instances of the time domain plethysmographic signal corresponding to at least first and second times. In this regard, the first and second times may preferably be separated by at least 1 second, and more preferably by at least 3 seconds, although they may be closer than 1 second apart. The first and second instances of the time domain plethysmographic signal are transformed to first and second instances of a spectral domain plethysmographic signal, which are in turn, transformed to first and second instances of a cepstral domain plethysmographic signal. In this regard, Fourier transformations may be employed to transform the first and second instances of the time domain plethysmographic signal to first and second instances of a spectral domain plethysmographic signal and to transform the first and second instances of the spectral domain plethysmographic signal to first and second instances of a cepstral domain plethysmographic signal. The Fourier transformations may comprise FFT operations, with the FFT size being adjusted in accordance with a pulse rate of the patient.

[0016] Once the transformations are completed, corresponding peaks are identified in the first and second instances of the cepstral domain plethysmographic signal. In this regard, the identified peaks may be associated with the fundamental pulse frequency of the patient and/or harmonics thereof. A difference between frequencies associated with the identified corresponding peaks in the first and second instances of the cepstral domain plethysmographic signal is measured. The measured difference between frequencies associated with the identified corresponding peaks in the first and second instances of the spectral domain plethysmographic signal may be compared to one or more frequency difference threshold values, and motion present in the portion of the time domain plethysmographic signal between the first and second times may be classified based on an outcome of the comparison with the threshold value(s).

[0017] In addition to assessing the presence of motion artifacts in the plethysmographic signal based on the first and second instances of the cepstral domain plethysmographic signal, an assessment may also be made based on the first and second instances of the spectral domain plethysmographic signal. In this regard, the method may include the steps of identifying corresponding peaks in the first and second instances of the spectral domain plethysmographic signal and measuring a difference between frequencies associated with the identified corresponding peaks in the first and second instances of the spectral domain plethysmographic signal. Thereafter, the measured difference between frequencies associated with the identified corresponding peaks in the first and second instances of the spectral domain plethysmographic signal may be compared to one or more frequency difference threshold values, and motion present in the portion of the time domain plethysmographic signal between the first and second times may be classified based on an outcome of comparison with the threshold value(s).

[0018] According to a further aspect of the present invention, a method of processing at least first and second time

domain plethysmographic signals obtained from a patient (e.g., red and infrared plethysmographic signals) includes the steps of transforming the first and second time domain plethysmographic signals into first and second frequency domain plethysmographic signals and transforming the first and second frequency domain plethysmographic signals into first and second cepstral domain plethysmographic signals. In this regard, Fourier transformations may be employed to transform the first and second time domain plethysmographic signals to the first and second frequency domain plethysmographic signals as well as transform the first and second frequency domain plethysmographic signals to the first and second cepstral domain plethysmographic signals. The Fourier transformations may comprise FFT operations, with the FFT size being adjusted in accordance with a pulse rate of the patient. In one embodiment, prior to transforming the first and second time domain plethysmographic signals to first and second frequency domain plethysmographic signals, one or more desired portions (e.g. portions having no or low motion artifacts) may be selected from the first and second time domain plethysmographic signals for transformation into the first and second frequency domain signals, with the non-selected portions (e.g. portions having severe motion artifacts) being ignored in subsequent processing steps.

[0019] A series of time domain estimates of an SPO2 level of the patient are obtained for a period of time using the first and second time domain plethysmographic signals, a series of spectral domain estimates of the SPO2 level of the patient are obtained for the same period of time using the first and second spectral domain plethysmographic signals, and a series of cepstral domain estimates of the SPO2 level of the patient are obtained for the same period of time using the first and second cepstral domain plethysmographic signals. Each of the series of time domain estimates of the SPO2 level of the patient, spectral domain estimates of the SPO2 level of the patient, and cepstral domain estimates of the SPO2 level of the patient obtained are compared with a series of DC tracking estimates of the SPO2 level of the patient obtained over the same period of time. Based on the comparisons with the series of DC tracking estimates of the SPO2 level of the patient, one or more of the time domain, spectral domain, cepstral domain, and DC tracking estimates of the SPO2 level of the patient may be selected for reporting as the SPO2 level of the patient.

[0020] Additionally, when comparisons indicate one or more of the series of time domain, the series of spectral domain, and the series of cepstral domain estimates of the SPO2 level of the patient agree with the series of DC tracking estimates of the SPO2 level of the patient, a calibrated series of DC tracking estimates of the SPO2 level of the patient may be generated. In this regard, the calibrated series of DC tracking estimates of the SPO2 level of the patient may be generated by adjusting SPO2 values from the series of non-calibrated DC tracking estimates of the SPO2 level of the patient used in the comparisons in accordance with information derived from one or more of the series of time domain, the series of spectral domain, and the series of cepstral domain estimates of the SPO2 level of the patient. In one embodiment, the calibrated series of DC tracking estimates of the SPO2 level of the patient is only generated when all three of the series of time domain, the series of spectral domain, and the series of cepstral domain estimates of the SPO2 level of the patient agree with the non-

calibrated series of DC tracking estimates of the SPO2 level of the patient, since one may be particularly confident that the time domain, spectral domain, and cepstral domain SPO2 estimates are correct when the form of all three series agrees with the series of non-calibrated DC tracking estimates. During time periods when none of the series of time domain, the series of spectral domain, and the series of cepstral domain estimates of the SPO2 level of the patient agree with the non-calibrated series of DC tracking estimates of the SPO2 level of the patient, a value from the calibrated series of DC tracking estimates of the SPO2 level of the patient may be reported as the patient's SPO2 level.

[0021] According to another aspect of the present invention, a method of processing first and second time domain plethysmographic signals obtained from a patient (e.g., red and infrared plethysmographic signals) includes the step of transforming the first and second time domain plethysmographic signals into first and second frequency domain plethysmographic signals. First and second energy spectrums are computed from the first and second frequency domain plethysmographic signals. In this regard, the first and second energy spectrums may be computed by, for example, squaring and summing respective real and imaginary frequency components of the first frequency domain plethysmographic signal and second frequency domain plethysmographic signal. The first and second frequency domain plethysmographic signals are transformed into first and second cepstral domain plethysmographic signals. The transformations of the plethysmographic signals from the time domain to the frequency domain and from the frequency domain to the cepstral domain may be accomplished using Fourier transformations. The Fourier transformations may be implemented as FFT operations, with the FFT size being adjusted in accordance with a pulse rate of the patient. The first and second cepstral domain plethysmographic signals are used to identify spectral peaks in the first and second energy spectrums that are associated with a pulse rate of the patient. Normalized amplitudes of the identified spectral peaks are computed, and the normalized amplitudes of the identified spectral peaks are utilized to obtain a perfusion index value for the patient.

[0022] These and other aspects and advantages of the present invention will be apparent upon review of the following Detailed Description when taken in conjunction with the accompanying figures.

DESCRIPTION OF THE DRAWINGS

[0023] For a more complete understanding of the present invention and further advantages thereof, reference is now made to the following Detailed Description, taken in conjunction with the drawings, in which:

[0024] FIG. 1 is a block diagram of one embodiment of a pulse oximeter in which a cepstral domain plethysmographic signal processing method in accordance with the present invention may be implemented;

[0025] FIG. 2 is a block diagram showing one embodiment of a method for processing plethysmographic signals via the cepstral domain in accordance with the present invention;

[0026] FIG. 3A is a plot showing typical red and infrared time domain plethysmographic input signals to be processed in accordance with the steps of FIG. 2;

[0027] FIG. 3B is a plot showing the Spectrum and Cepstrum for the red plethysmographic input signal of FIG. 3A after processing in accordance with the steps of FIG. 2;

[0028] FIG. 3C is a plot showing the Spectrum and Cepstrum for the infrared plethysmographic input signal of FIG. 3A after processing in accordance with the steps of FIG. 2;

[0029] FIG. 3D is a plot showing a typical infrared time domain plethysmographic input signal wherein the pulse oximeter probe is not transmitting properly through a patient tissue site (e.g., where the probe is removed from the patient's finger);

[0030] FIG. 3E is a plot showing the Spectrum and Cepstrum for the infrared plethysmographic signal of FIG. 3D after processing in accordance with the steps of FIG. 2;

[0031] FIG. 4 is a block diagram showing another embodiment of a method for processing plethysmographic signals via the cepstral domain in accordance with the present invention;

[0032] FIG. 5A is a plot showing typical red and infrared time domain plethysmographic input signals to be processed in accordance with the steps of FIG. 4;

[0033] FIG. 5B is a plot showing differentiated waveforms obtained from the typical red and infrared time domain plethysmographic input signals shown in FIG. 5A;

[0034] FIG. 5C is a plot showing red and infrared energy spectra corresponding to the typical red and infrared time domain plethysmographic input signals shown in FIG. 5A;

[0035] FIG. 5D is a plot showing red and infrared log spectra corresponding to the typical red and infrared time domain plethysmographic input signals shown in FIG. 5A;

[0036] FIG. 5E is a plot showing red and infrared cepstrums corresponding to the typical red and infrared time domain plethysmographic input signals shown in FIG. 5A;

[0037] FIG. 5F is a plot showing frequency domain filtered red and infrared plethysmographic waveforms corresponding to the typical red and infrared time domain plethysmographic input signals shown in FIG. 5A;

[0038] FIG. 6A is a plot showing typical red and infrared time domain plethysmographic input signals to be processed in accordance with the steps of FIG. 4 that include motion induced noise components at a main motion frequency of about 200 bpm;

[0039] FIG. 6B is a plot showing differentiated waveforms obtained from the typical red and infrared time domain plethysmographic input signals shown in FIG. 6A;

[0040] FIG. 6C is a plot showing red and infrared energy spectra corresponding to the typical red and infrared time domain plethysmographic input signals shown in FIG. 6A;

[0041] FIG. 6D is a plot showing red and infrared log spectra corresponding to the typical red and infrared time domain plethysmographic input signals shown in FIG. 6A;

[0042] FIG. 6E is a plot showing red and infrared cepstrums corresponding to the typical red and infrared time domain plethysmographic input signals shown in FIG. 6A;

[0043] FIG. 6F is a plot showing frequency domain filtered red and infrared plethysmographic waveforms corresponding to the typical red and infrared time domain plethysmographic input signals shown in FIG. 6A;

[0044] FIG. 7 is a block diagram showing another embodiment of a method for processing plethysmographic signals via the cepstral domain in accordance with the present invention;

[0045] FIG. 8 is a plot showing typical red and infrared time domain plethysmographic input signals to be processed in accordance with the steps of FIG. 7;

[0046] FIGS. 9A-9B are plots of an energy spectrum and a cepstrum corresponding to an exemplary plethysmographic signal;

[0047] FIGS. 10A-10B are plots of exemplary time domain, spectral domain, cepstral domain, and DC tracking based SPO2 estimates over a period of time;

[0048] FIGS. 11A-11B are plots of showing successive frames of exemplary spectrums and cepstrums corresponding to a plethysmographic signal in which various levels of motion are present over the time periods covered by the successive frames.

DETAILED DESCRIPTION

[0049] Referring now to FIG. 1, there is shown a block diagram of one embodiment of a pulse oximeter 10 in which a cepstral domain plethysmographic signal processing method in accordance with the present invention may be implemented. The pulse oximeter 10 is configured for use in determining the pulse rate of a patient as well as one or more blood analyte levels in the patient, such as an SPO2 level. It should be appreciated that a cepstral domain plethysmographic signal processing method in accordance with the present invention may be implemented in pulse oximeters that are configured differently from the pulse oximeter depicted in FIG. 1 as well as in other environments wherein plethysmographic signals are processed in order to obtain desired information relating to patient physiological conditions from the plethysmographic signals.

[0050] The pulse oximeter 10 includes a pair of optical signal sources 20a, 20b for emitting a corresponding pair of light signals 30a, 30b centered at different predetermined center wavelengths λ_1 , λ_2 through a suitable tissue site of a patient and on to a detector 40 (e.g., a photo-sensitive diode). The optical signal sources 20a, 20b and detector 40 may be included in a positioning device 50, or probe, to facilitate alignment of the light signals 30a, 30b with the detector 40. For example, the positioning device 50 may be of clip-type or flexible strip configuration adapted for selective attachment to a suitable patient tissue site (e.g., a finger, an ear lobe, a foot, or the nose of the patient). The center wavelengths λ_1 , λ_2 required depend upon the blood analyte level to be determined. For example, in order to determine an SPO2 level, λ_1 may be in the Red wavelength range and λ_2 may be in the infrared wavelength range. It should be appreciated that the pulse oximeter 10 may be readily implemented with more optical signal sources (e.g., four) depending upon the number of different blood analyte levels to be measured.

[0051] The optical signal sources 20a, 20b are activated by a corresponding plurality of drive signals 60a, 60b to

emit the light signals 30a, 30b. The drive signals 60a, 60b are supplied to the optical signal sources 20a, 20b by a corresponding plurality of drive signal sources 70a, 70b. The drive signal sources 70a, 70b may be connected with a digital processor 80, which is driven with a clock signal 90 from a master clock 100. The digital processor 80 may be programmed to define modulation waveforms, or drive patterns, for each of the optical signal sources 20a, 20b. More particularly, the digital processor 80 may provide separate digital trigger signals 110a, 110b to the drive signal sources 70a-d, which in turn generate the drive signals 60a, 60b. In this regard, the digital trigger signals 110a, 110b may be configured to provide for multiplexing of the drive signals 60a, 60b, and in turn the light signals 30a, 30b, in accordance with a multiplexing scheme (e.g., time division, frequency division, or code division multiplexing).

[0052] The drive signal sources 70a, 70b, processor 80 and clock 100 may all be housed in a monitor unit 120. While the illustrated embodiment shows the optical signal sources 20a, 20b physically interconnected with the positioning device 50 (e.g., mounted within the positioning device 50 or mounted within a connector end of a cable that is selectively connectable with the positioning device 50), it should be appreciated that the optical signal sources 20a, 20b may also be disposed within the monitor unit 120. In the latter case, the light signals 30a, 30b emitted from the optical signal sources 20a, 20b may be directed from the monitor unit 120 via one or more optical fibers to the positioning device 50 for transmission through the tissue site. Furthermore, the drive signal sources 70a, 70b may comprise a single drive signal generator unit that supplies each of the drive signals 60a, 60b to the optical signal sources 20a, 20b.

[0053] Transmitted light signals 130a, 130b (i.e., the portions of light signals 30a, 30b exiting the tissue) are detected by the detector 40. The detector 40 detects the intensities of the transmitted signals 130a, 130b and outputs a current signal 140 wherein the current level is indicative of the intensities of the transmitted signals 130a, 130b. As may be appreciated, the current signal 140 output by the detector 40 comprises a multiplexed signal in the sense that it is a composite signal including information about the intensity of each of the transmitted signals 130a, 130b. Depending upon the nature of the drive signals 60a, 60b, the current signal 140 may, for example, be time division multiplexed, wavelength division multiplexed, or code division multiplexed.

[0054] The current signal 140 is directed to an amplifier 150, which may be housed in the monitor unit 120 as is shown. As an alternative, the amplifier 150 may instead be included in a probe/cable unit that is selectively connectable with the monitor unit 120. The amplifier 150 converts the current signal 140 to a voltage signal 160 wherein a voltage level is indicative of the intensities of the transmitted signals 130a, 130b. The amplifier 150 may also be configured to filter the current signal 140 from the detector 40 to reduce noise and aliasing. By way of example, the amplifier 150 may include a bandpass filter to attenuate signal components outside of a predetermined frequency range encompassing modulation frequencies of the drive signals 60a, 60b.

[0055] Since the current signal 140 output by the detector 40 is a multiplexed signal, the voltage signal 160 is also a multiplexed signal, and thus, the voltage signal 160 must be

demultiplexed in order to obtain signal portions corresponding with the intensities of the transmitted light signals **130a**, **130b**. In this regard, the digital processor **80** may be provided with demodulation software for demultiplexing the voltage signal **160**. In order for the digital processor **80** to demodulate the voltage signal **160**, it must first be converted from analog to digital. Conversion of the analog voltage signal **160** is accomplished with an analog-to-digital (A/D) converter **170**, which may also be included in the monitor unit **120**. The A/D converter **170** receives the analog voltage signal **160** from the amplifier **150**, samples the voltage signal **160**, and converts the samples into a series of digital words **180** (e.g., eight, sixteen or thirty-two bit words), wherein each digital word is representative of the level of the voltage signal **160** (and hence the intensities of the transmitted light signals **130a**, **130b**) at a particular sample instance. In this regard, the A/D converter **170** should provide for sampling of the voltage signal **160** at a rate sufficient to provide for accurate tracking of the shape of the various signal portions comprising the analog voltage signal **160** being converted. For example, the A/D converter **170** may provide for a sampling frequency at least twice the frequency of the highest frequency drive signal **60a**, **60b**, and typically at an even greater sampling rate in order to more accurately represent the analog voltage signal.

[0056] The series of digital words **180** is provided by the A/D converter **170** to the processor **80** to be demultiplexed. More particularly, the processor **80** may periodically send an interrupt signal **190** (e.g., once per every eight, sixteen or thirty-two clock cycles) to the A/D converter **170** that causes the A/D converter **170** to transmit one digital word **180** to the processor **80**. The demodulation software may then demultiplex the series of digital words **180** in accordance with an appropriate method (e.g., time, wavelength, or code) to obtain digital signal portions indicative of the intensities of each of the transmitted light signals **130a**, **130b**. In this regard, the demultiplexed digital signal portions comprise time domain plethysmographic signals corresponding to the center wavelengths λ_1 , λ_2 (e.g., red and infrared) of the optical signal sources **20a**, **20b**. The red and infrared time domain plethysmographic signals may then be processed by the processor **80** to obtain desired patient physiological condition related information therefrom such as the patient's pulse rate and SPO2 level.

[0057] Referring now to **FIG. 2** there is shown a block diagram illustrating one embodiment of a method **(200)** for processing the red and infrared time domain plethysmographic signals via the cepstral domain to obtain desired information relating to patient physiological conditions such as patient pulse rate and blood analyte level (e.g., SPO2) information. The cepstral domain plethysmographic signal processing method **(200)** begins with obtaining **(210)** two digitized time domain plethysmographic signals such as red and infrared plethysmographic signals. In this regard, typical red and infrared time domain plethysmographic signals that have been sampled at 50 Hz are shown in **FIG. 3A**. The cepstral domain processing method **(200)** is particularly suited for implementation in software executable by the digital processor **80** of a pulse oximeter **10** such as described above in connection with **FIG. 1**. In other embodiments, the cepstral domain processing method **(200)** may be configured for processing non-digitized plethysmographic signals and may be implemented in appropriate hardware components. Furthermore, the cepstral domain processing method **(200)**

may be configured for simultaneously processing more than two plethysmographic signals.

[0058] A suitable smoothing window function (e.g., Hanning, Hamming, Kaiser) is applied **(220)** to the digitized time domain plethysmographic signals to smooth the signals. Smoothing the digitized time domain plethysmographic signals achieves improved frequency estimation. After the signals are smoothed, a first Fourier transformation operation is performed **(230)** on the signals to transform the red and infrared plethysmographic signals from the time domain to the frequency domain. Since there are two primary signals (the red and infrared inputs), it is convenient to perform the first Fourier transformation of the signals in parallel using a complex Fast Fourier Transform (FFT) procedure. If desired, the results of the FFT calculations may be appropriately scaled (e.g., by dividing by the number of points used in the FFT calculations) to help prevent floating point overflow errors in subsequent computations. After the first stage FFT is performed, respective power spectrums are computed **(240)** from the frequency domain red and infrared plethysmographic signals. In this regard, the power spectrums may be computed **(240)** by squaring and summing the appropriate real and imaginary frequency components of the red and infrared frequency domain plethysmographic signals. Power spectrums of the typical red and infrared plethysmographic signals after the first stage FFT are shown in **FIGS. 3B and 3C**, respectively.

[0059] After the power spectrums are computed, a log-like or companding function is applied **(250)** to the red and infrared power spectrums. Application of the log-like or companding function suppresses smaller noise components and emphasizes the prominent harmonics so that periodicity in the spectrum is more easily extracted. A second Fourier transformation operation is then performed **(260)** on the log transformed power spectrums to transform the signals to the cepstral domain. In this regard, it is convenient to perform the second-stage Fourier transformation of the log scaled power spectrums in parallel using a complex Fast Fourier Transform (FFT) procedure. If desired, the results of the second-stage FFT calculations may be appropriately scaled in a manner similar to scaling done on the results of the first-stage FFT calculations. The cepstrums of the typical red and infrared plethysmographic signals obtained after the second stage FFT are also shown in **FIGS. 3B and 3C**, respectively.

[0060] Once the red and infrared cepstrums are obtained, the separate red and infrared cepstrums are then examined **(270)** for peaks associated with the pulse rate of the patient. In this regard, the most prominent (i.e., largest amplitude) peak in each cepstrum may be identified. The location of the most prominent peak in each cepstrum provides an indication of the fundamental frequency of the plethysmographic waveform from which the cepstrum is obtained. Since the fundamental frequency of a plethysmographic waveform is proportional to the patient's pulse rate, the pulse rate of the patient may be estimated **(280)** from one or both of the cepstrums. For example, the most prominent peak in the red cepstrum of **FIG. 3B** occurs at around the 20th bin of the FFT spectrum corresponding to a cepstral based pulse rate estimate of approximately 65 beats-per minute. It should be noted that this estimate differs slightly from a conventional time domain based estimate obtained from the time domain red plethysmographic waveform shown in **FIG. 3A** of **61**

beats-per-minute. Pulse-rate estimates may be obtained from both the red and infrared cepstrums and the separate estimates may be correlated with one another in order to obtain a single estimate of the patient's pulse rate. Further, while it is possible to estimate the patient's pulse rate based only on information from one or both of the cepstrums, a time domain based estimate of the patient's pulse rate may also be used for initial identification purposes and to support subsequent tracking of the cepstral peak (Quefreny) associated with the pulse rate.

[0061] In some cases, there may not be a prominent peak in one or both of the cepstrums. For example, FIG. 3D shows an infrared time domain plethysmographic signal typical of the situation where there is no physiological signal condition (e.g., where the plethysmographic probe has been removed from the patient's finger), and FIG. 3E shows the infrared power spectrum and cepstrum obtained for the infrared time domain plethysmographic signal of FIG. 3D. While the power spectrum of FIG. 3E differs somewhat from a power spectrum that is typical of a patient physiological signal condition such as the power spectrums shown in FIGS. 3B and 3C, the lack of a patient physiological signal condition is particularly apparent from examination of the cepstrum since there is no prominent peak present in the cepstrum of FIG. 3E as compared with the quite prominent cepstral peaks in FIGS. 3B and 3C.

[0062] In addition to examining the cepstrums for peaks associated with patient pulse rate, in step (270) the red and infrared cepstrums may be examined for peaks associated with motion artifacts. Typically, peaks in the red and infrared cepstrums that are associated motion artifacts will be less prominent than the peaks associated with the patient pulse rate. The location(s) of less prominent peaks in each cepstrum provide an indication regarding motion artifacts present in the plethysmographic waveform from which the cepstrum is obtained, and based on this information the frequencies of motion artifacts present in the red and infrared plethysmographic signals may be estimated (290).

[0063] Once an estimate of the pulse rate is obtained, the pulse rate information may be used to construct a filter to remove noise and motion artifacts from the input red and infrared signals. This may be done via an adaptive bandpass filter applied in the time domain to the red and infrared signals where the cut off frequencies are determined by the pulse frequency which is identified in the cepstral domain. Alternatively, as is shown in the embodiment of FIG. 2, the frequency domain red and infrared plethysmographic signals may be filtered (300) in the frequency domain after the first stage FFT with a frequency domain filter constructed using the pulse frequency information obtained from the cepstral domain. An inverse fast Fourier transform (IFFT) operation may be performed (310) on the filtered frequency domain signals to obtain filtered time domain red and infrared plethysmographic signals for use in subsequent measures such as a regression based SPO2 estimation which uses the time domain version of the red and infrared inputs signals. Noise removal from the red and infrared signals improves subsequent measures such as regression based SPO2 estimation.

[0064] Additionally, the information in both the spectral and cepstral domains may be used to derive an SPO2 measure. The overall DC levels of the red and infrared

plethysmographic signals can be determined from the first stage spectrums and the relative magnitudes of the cepstral peaks corresponding to the pulse rate frequency may be used to obtain a measure of the AC levels of the red and infrared plethysmographic signals. In this regard, the following computation may be utilized:

$$R' = AC(\text{cepstral-red})/DC(\text{spectral-red})/AC(\text{cepstral-IR})/DC(\text{spectral-IR})$$

[0065] or, expressed in an alternative manner:

$$R' = AC(\text{cepstral-red})/DC(\text{spectral-red}) * DC(\text{spectral-IR})/AC(\text{cepstral-IR})$$

[0066] where AC(cepstral-red) is the AC level of the red plethysmographic signal obtained from the red cepstrum, DC(spectral-red) is the DC level of the red plethysmographic signal obtained from the red spectrum, AC(cepstral-IR) is the AC level of the infrared plethysmographic signal obtained from the infrared cepstrum, and DC(spectral-IR) is the DC level of the infrared plethysmographic signal obtained from the infrared spectrum. The derived measure R' may then be used to estimate (320) the patient's SPO2 level in a manner similar to known regression techniques where AC and DC estimates are obtained from the time domain red and infrared signals. An example of such a known regression technique is described in U.S. Pat. No. 5,934,277 entitled "SYSTEM FOR PULSE OXIMETRY SPO2 DETERMINATION", the entire disclosure of which is incorporated herein.

[0067] Referring now to FIG. 4 there is shown a block diagram illustrating another embodiment of a method (400) for processing the red and infrared time domain plethysmographic signals via the cepstral domain to obtain desired information relating to patient physiological conditions such as patient pulse rate and blood analyte level (e.g., SPO2) information. The cepstral domain plethysmographic signal processing method (400) shown in FIG. 4 proceeds in a manner similar to the method (200) shown in FIG. 2. In this regard, two continuous time domain plethysmographic signals such as red and infrared plethysmographic signals are digitized (410) by sampling the signals at a suitable frequency. Typical red and infrared time domain plethysmographic signals that have been sampled at 50 Hz are shown in FIGS. 5A and 6A, with the signals of FIG. 6A including motion artifacts. As with the method (200) of FIG. 2, the cepstral domain processing method (400) is particularly suited for implementation in software executable by the digital processor 80 of a pulse oximeter 10 such as described above in connection with FIG. 1, and in other embodiments, the cepstral domain processing method (400) may be configured for processing non-digitized plethysmographic signals and may be implemented in appropriate hardware components. Furthermore, the cepstral domain processing method (400) may be configured for simultaneously processing more than two plethysmographic signals.

[0068] The digitized time domain red and infrared plethysmographic signals are smoothed (420) via a suitable smoothing window (e.g. Hanning, Hamming, or Kaiser) and are then processed in parallel via a complex FFT (430). The output from the first stage FFT is then decoded and the separate red and infrared energy spectra and log power spectra are computed and stored (440, 450). Plots of red and infrared energy spectra and log spectra obtained for the red and infrared signals of FIG. 5A and 6A are shown in FIGS.

5C and 5D, respectively, and in **FIGS. 6C and 6D**, respectively. A second stage FFT (**460**) is then applied to the log power spectra to obtain red and infrared cepstra (**470**) therefrom. If desired, the results of the first and second stage FFT calculations may be scaled to help prevent floating point errors in subsequent computations. Plots of the red and infrared cepstra obtained for the red and infrared signals of **FIG. 5A and 6A** are shown in **FIG. 5E and 6E**. Peaks in the cepstra (which has the dimension of Quefrency) are examined (**480**) and transformed to provide an estimate of pulse frequency.

[**0069**] The cepstral based pulse rate estimate is provided to a pulse arbitration module (**490**). The pulse arbitration module (**490**) also receives estimates of the patient's pulse rate based on examination of peaks in the energy spectra and log power spectra. Additionally, a time-domain pulse rate estimate is extracted (**500**) from the digitized time domain red and infrared plethysmographic signals via a conventional technique such as differentiation, thresholding and picking the most commonly found interval. Plots of the differentiated waveforms obtained from the time domain red and infrared plethysmographic signals of **FIGS. 5A and 6A** are shown in **FIGS. 5B and 6B**. The time domain based pulse rate estimate is also provided as an input to the pulse arbitration module (**490**).

[**0070**] Information relating to the peaks of the energy spectra and the cepstra are input to a motion classification and motion strength estimation module (**510**). The motion classification and motion strength estimation module (**510**) uses both the amplitude, relative position and spacing of the respective peaks in the red and infrared energy spectra and cepstra to make motion classification and strength judgments. A simple measure classification and motion estimation can be derived by the number and spacing of cepstral peaks. In this regard, a relatively clean plethysmographic signal will typically produce one major cepstral peak. As the number and size of the cepstral peaks increases, sizable motion components can be inferred. Information from the motion classification and motion strength estimation module (**510**) is input to both an adaptive filter module (**520**) and the pulse arbiter module (**490**).

[**0071**] The adaptive filter module (**520**) uses estimates of the pulse frequency and the frequency distribution of the motion noise components (if present) to control filtering in the frequency domain in order to improve the signal to noise ratio of the pulse fundamental frequency components and/or its harmonics. In this regard, the red and infrared frequency domain plethysmographic signals obtained after the first stage FFT (**430**) signals are filtered (**530**) to produce filtered frequency domain red and infrared plethysmographic signals. Plots of the filtered frequency domain red and infrared plethysmographic signals corresponding to the time domain red and infrared plethysmographic signals of **FIGS. 5A and 6A** are shown in **FIGS. 5F and 6F**. A number of different types of filters may be implemented including both finite impulse response (FIR) and infinite impulse response (IIR) filters. One disadvantage of spectral methods is that they are not suited for tracking rapid changes in the input signal. However in the present method (**400**) the spectral information is used to control an adaptive filter. By using time domain pulse measurement techniques on the output signal from this filter, the ability to track reasonably fast changes is achieved.

[**0072**] An inverse FFT operation (**540**) is performed to obtain filtered time domain red and infrared plethysmographic signals, and an overlap and add operation (**550**) is performed to reconstruct the plethysmographic signals minus the DC components and with reduced motion components. Following the overlap and add operation (**550**), the energy content for both the red and infrared filtered signals is then obtained (**560**) via, for example, a root-mean-square (rms) measure. This provides an estimate of the AC red and infrared levels. Although not shown in **FIG. 4**, it is also possible to obtain an estimate of the red and infrared AC levels via the cepstral domain. The main peak location of the red and infrared cepstra can be translated to a frequency value and the value of the energy for that frequency and its harmonics can be obtained (i.e., integrated) by referring to the stored energy spectrum for the red and infrared signals. It is also feasible to use the relative amplitudes of the red and infrared cepstral peaks to derive an AC estimate. Following the overlap and add operation (**550**), another conventional time domain based pulse estimation is also performed (**570**) on the filtered red and infrared signals and this estimate is also sent to the pulse arbiter module (**490**).

[**0073**] The pulse arbiter (**490**) uses the various time domain, filtered time domain, energy spectra, log power spectra and cepstral based pulse estimates and the motion strength and classification to provide an overall best estimate (**580**) of the patient's pulse rate. In this regard, for a range of motions the location of the major cepstral peak suffices as a good estimate of pulse frequency. However for large motion amplitudes and motion that produces waveforms similar to those of red and infrared plethysmographic signals it is necessary to examine a number of parameters to resolve competing estimates. More particularly, the pulse arbitration module (**490**) examines the correlation between the time domain (both filtered and unfiltered), spectral domain (both energy and log power) and cepstral domain based pulse estimates and uses the motion estimation derived from the cepstrum in the motion classification and motion strength estimation module (**510**) to weight the respective pulse rate estimates. If significant motion is present then cepstral information can be used to resolve between competing spectral pulse candidates. In this regard, the typical pulse waveform which is 'sawtoothed shaped' would result in a main fundamental spectral peak with usually at least two visible harmonic peaks. The resulting cepstra would be one main peak associated with the fundamental frequency. Therefore spectral candidates with no corresponding cepstral peak can be eliminated. Further, in cases where there is competing noise around the fundamental frequency peak, a cepstral peak can be confirmed by examining the energy or log spectra for a fundamental frequency peak and related harmonics. In addition to the previously described pulse arbitration process (**490**), it would also be feasible to employ a neural-net for the pulse arbitration process (**490**).

[**0074**] Another strategy that may be employed in the pulse arbiter module (**490**) is to relate the cepstral peak to a region or channel in the energy spectrum and to obtain an AC value and then derive a SPO2 estimate. This SPO2 estimate can be referred to another SPO2 estimate derived from the mean energy over the allowable pulse range (e.g., 30-350 bpm). A valid cepstral candidate will generate a similar track of SPO2 over time as the estimate derived from mean energy.

This information can also be used to resolve amongst competing cepstral candidates for the one related to the pulse frequency.

[0075] In addition to obtaining an overall best estimate (580) of the patient's pulse rate, the plethysmographic signal processing method (400) of FIG. 4 also derives an estimate of the patient's SPO2 level. The energy content of the time domain red and infrared plethysmographic signals is obtained (590) via, for example a root mean square (rms) transform. This provides an estimate of the red and infrared DC levels. The red and infrared DC levels (590) and AC levels (560) are provided to an SPO2 module (600). As discussed in more detail above in connection with step (310) of the method (200) of FIG. 2, the SPO2 module (600) uses the red and infrared DC and AC levels to derive a measure that can be correlated with the patient's SPO2 level in a manner similar to conventional regression based techniques.

[0076] The cepstral domain plethysmographic signal processing method (400) of FIG. 4 also provides for obtaining an enhanced perfusion index (PI) measure when motion artifacts are present in the red and infrared time domain plethysmographic signals as compared to known time domain based perfusion index measures. The perfusion index is a measure of relative perfusion in the patient tissue site and is indicative of pulse strength. A time-domain based perfusion index measure may be obtained by, for example, calculating normalized plethysmographic signal amplitudes for the red and infrared time domain plethysmographic signals by summing the normalized delta amplitudes covering the rising portion of one cycle of the pulse waveform. This value can be termed Snda. In this regard, the perfusion index may be calculated from the red and infrared Snda values in accordance with the following expression:

$$PI = (Snda(\text{red}) * 0.0563 + Snda(\text{infrared}) * 0.3103) * \text{Scaling Factor}$$

[0077] Further detail regarding such a known time domain based method for obtaining a perfusion index measure is described in U.S. Pat. No. 5,766,127 entitled "METHOD AND APPARATUS FOR IMPROVED PHOTOPLETHYSMOGRAPHIC PERFUSION-INDEX MONITORING", the entire disclosure of which is incorporated herein.

[0078] However it is also possible to obtain a measure of the red and infrared plethysmographic signal amplitudes from their respective energy spectrums when the frequency components present in the energy spectrums due to the pulse signal can be identified via processing of the red and infrared cepstrums. In the regard, the plethysmographic signal processing method (400) may incorporate a perfusion index estimator step (610) wherein the red and infrared cepstrums obtained in step (470) are used to identify the frequency components present in the red and infrared energy spectrums obtained in step (440) that are associated with the pulse rate of the patient (i.e. the fundamental pulse frequency and its harmonics). The perfusion index estimator module (610) computes normalized amplitudes for the identified red and infrared spectral peaks. A perfusion index value (620) may then be computed from the normalized amplitudes of the identified red and infrared spectral peaks in accordance with, for example, the following expression:

$$PI = (ESamp(\text{red}) * 0.0563 + ESamp(\text{infrared}) + 0.3103) * ESscaling$$

[0079] where ESamp(red) and ESamp(infrared) are the normalized amplitudes derived from the identified spectral

peaks in the red and infrared energy spectrums and ESscaling is a scaling factor adjusted to give the spectral PI measure an equivalent value to the time domain PI measure. Because the spectral PI measure uses normalized amplitudes of the identified peaks in the red and infrared spectrums associated with the fundamental pulse frequency, the spectral PI measure is less susceptible to corruption by motion artifacts present in the time domain plethysmographic signals since peaks associated with motion artifacts will be ignored when identifying the fundamental pulse frequency peaks using the cepstrums.

[0080] Where desired, the spectral based PI measure may be correlated with the time domain based PI measure to provide a single PI measure. Further the spectral based PI measure provides information that can be used in tracking and identification of the fundamental pulse frequency by the pulse arbitration module (490). In this respect a spectral PI measure may be calculated for each spectral candidate and these estimates can be used in a scoring and arbitration scheme to track and resolve the correct (pulse produced) fundamental pulse frequency candidate.

[0081] Referring now to FIG. 7, there is shown a block diagram illustrating another embodiment of a method (700) for processing the red and infrared time domain plethysmographic signals via the cepstral domain to obtain desired information relating to patient physiological conditions such as patient pulse rate and blood analyte level (e.g., SPO2) information. The cepstral domain plethysmographic signal processing method (700) shown in FIG. 7 proceeds in a manner similar to the method (400) shown in FIG. 4 and, to the extent that various steps are identical or substantially identical, the same reference numerals are utilized in FIG. 7 as in FIG. 4. In addition to the various steps and modules included in the cepstral domain plethysmographic signal processing method (400) of FIG. 4, the cepstral domain plethysmographic signal processing method (700) of FIG. 7 includes a waveform analysis module (710) and a window position and length control module (720).

[0082] The waveform analysis module (710) is interposed between the step of digitizing (410) the analog red and infrared plethysmographic signals and extracting (500) a time-domain based estimate of the patient's pulse rate. In the waveform analysis module (710), the digitized red and infrared plethysmographic time domain waveforms are analyzed to extract desired information from the waveforms. Extracted information may include time domain features from a differentiated waveform such as spike width and height and variability of these features to identify a region of motion free or motion reduced pulse signal.

[0083] The information extracted in the waveform analysis module (710) is provided to the window position and length control module (720). The energy spectra (440) of the FFT transformed red and infrared plethysmographic signals, information from the motion classification and estimation module (510), and the patient's pulse rate (580) is also provided to the window position and length control module (720). The window position and length control module (720) adjusts the position and length of the smoothing window (also referred to in the context of the method of FIG. 7 as a data selection window) applied in the smoothing step (420) and/or the length of the FFT size utilized in the first and second stage FFT steps (430, 460). Under the direction of

the window position and length control module (720), the length of the smoothing window and/or the FFT size may be shortened or lengthened as necessary in order to optimize extraction of plethysmographic signal components relating to patient physiological conditions (e.g., pulse rate, SPO2 level) from noise components that may also be present in the plethysmographic signals. In this regard, for patients having typically higher pulse rates (e.g., babies and neonates) smaller window lengths and shorter FFT sizes have been found to be appropriate while for patients with typically slower pulse rates (e.g., adults) longer window lengths and larger FFT sizes have been found to provide more optimal results.

[0084] In addition to controlling window length and FFT size, the window position and length control module (720) also controls the position of the smoothing window. In this regard, when motion artifacts are present in the red and infrared plethysmographic signals, signal regions having little or no motion artifacts present may be identified (e.g., by the motion classification and estimation module (510)) and a window (with its length adjusted as appropriate to select the low-noise regions) can then be selectively positioned over such regions for subsequent spectral and cepstral processing. In this regard, a two-pass system may be implemented wherein the plethysmographic signals are initially processed without using a window to identify signal portions that are free from motion or include only limited motion, and then are re-processed using a window that is appropriately positioned and adjusted to select only the identified no or low noise regions.

[0085] By way of example, FIG. 8 shows plots of exemplary red and infrared plethysmographic signals 802A, 802B that include no or low motion regions 804A, 804B and high or severe motion regions 806A, 806B. Under the direction and control of the window position and length control module (720) several data selection windows 808A, 808B, are positioned and have their length appropriately adjusted to select only the no or low noise regions 804A, 804B of the red and infrared plethysmographic signals for further processing.

[0086] In addition to obtaining a measure correlated with the patient's SPO2 level from the red and infrared DC and AC levels, the SPO2 module (600) of the cepstral domain plethysmographic signal processing method (700) of FIG. 7 also derives an SPO2 measure from the red and infrared energy spectrums (440) and the red and infrared cepstrums (470). In this regard, the SPO2 module (600) may compare the energy present around the fundamental component of the red energy spectrum to the energy present around the fundamental component of the infrared energy spectrum to derive a ratio that is correlated with the patient's SPO2 level. Similarly, information present in the red and infrared cepstrums may be used by the SPO2 module (600) to derive a ratio that is correlated with the patient's SPO2 level.

[0087] Referring now to FIGS. 9A-9B, in the cepstral domain signal processing methods (200, 400, 700) of FIGS. 2, 4 and 7, the time, spectral and cepstral domains are analyzed and evaluated, and features identified in one domain may be confirmed and correlated in the other domains. For example, as illustrated in FIGS. 9A-9B, the fundamental spectral component 902A of one of the plethysmographic signals may be obscured by motion artifacts and

other noise. This can make it difficult to obtain the SpO2 level of the patient from the energy spectrum by comparing spectra for the red and infrared signals. However, prominent cepstral peaks 902B, 904B, 906B can be used to search for related spectral components 902A, 904A, 906A since a cepstral component can more easily be identified even though the region around the fundamental spectral component 902A may be corrupted by noise or motion components. Once identified in the cepstral domain, the SPO2 content may be extracted by the SPO2 module (600) directly from the energy spectrum by processing the second or third harmonic regions 904A, 906A, which may be distant enough from the lower frequency noise, since the SPO2 energy related content of the harmonic spectral components 904A, 906A is typically similar to that of the fundamental spectral component 902A. In this regard, such technique may be described as cepstral identification of fundamental spectral components and related harmonics followed by SPO2 evaluation at multiple harmonic sites.

[0088] Referring now to FIGS. 10A-10B, the SPO2 module (600) may confirm the accuracy of the time domain, spectral domain and cepstral domain based SPO2 level estimates through a technique referred to herein as "sheparding" the estimates. The sheparding technique recognizes that while a direct current (DC) tracking based SPO2 value typically does not accurately represent the correct magnitude of the patient's SPO2 level, the shape of the DC tracking based SPO2 plot is typically correct over time. Thus, the time domain, spectral domain and cepstral domain based SPO2 levels determined in the SPO2 module (600) may be plotted over time and the shape of the plots compared with a plot of a DC tracking based SPO2 value also determined in the SPO2 module (600). Through such comparison, the accuracy of the various SPO2 estimates may be confirmed and, if one or more of the estimates does not appear to be accurate, such SPO2 value can be rejected and only the accurate values reported and/or further utilized by the SPO2 module (600).

[0089] By way of example, FIG. 10A shows plots of exemplary time domain 1002A, spectral domain 1004A, cepstral domain 1006A, and DC tracking 1008A based SPO2 levels wherein the shape of each of the plots is similar. In this regard, each plot 1002A-1008A includes a corresponding shallow dip or desaturation region 1010A wherein the SPO2 level of the patient drops for a period of time and then recovers. Since, the desaturation region 1010A appears in each plot 1002A-1008A at substantially the same time, ends at substantially the same time, and has substantially the same shape, all three of the filtered time domain, spectral domain and cepstral domain based SPO2 estimates 1002A-1006A appear to be accurate and provide confirmation of the accuracy of the other estimates.

[0090] By way of further example, FIG. 10B shows plots of exemplary time domain 1002B, spectral domain 1004B, cepstral domain 1006B, and DC tracking 1008B based SPO2 levels wherein the shape of each of the plots is not similar due, for example, to the presence of motion artifacts in the original red and infrared plethysmographic signals. In this regard, the DC tracking based SPO2 plot 1008B includes a desaturation region 1010B which also appears distinctly in the cepstral domain based SPO2 plot 1006B but does not distinctly appear in the time domain and spectral domain based plots 1002B, 1004B. Thus, the accuracy of the

time domain and spectral domain based SPO2 levels during the period of time covered by the desaturation region **1010B** is questionable and the cepstral domain based SPO2 estimate appears to be accurate.

[**0091**] As may be appreciated, during certain time periods, none of the time domain, spectral domain and cepstral domain based SPO2 estimates may accurately follow the shape of the DC tracking based SPO2 estimate, in which case all three may be rejected by the SPO2 module (**600**). During such instances, the SPO2 module (**600**) may, for example, report an earlier SPO2 value previously confirmed to be accurate, or it may report an appropriately scaled DC tracking based SPO2 estimate.

[**0092**] During periods when all three of the filtered time domain, spectral domain and cepstral domain based SPO2 tracks agree in form with the DC track and with each other (such as illustrated in **FIG. 10A**), it can be assumed that the AC information included in the filtered time domain, spectral domain and cepstral domain SPO2 tracks is good or is at least being accurately extracted in motion conditions. At such times, the SPO2 values from the three tracks can be used to calibrate the DC SPO2 track and thereby generate a second DC SPO2 track that agrees both in form and in value with the previous SPO2 values. The second (calibrated) DC SPO2 track (and parameters describing the track) may be used to predict SPO2 values during periods of severe motion when none of the filtered time domain, spectral domain, or cepstral domain SPO2 tracks agrees in form with the non-calibrated DC SPO2 track. In order to generate the second (calibrated) DC SPO2 track during appropriate periods and to properly utilize the second (calibrated) DC SPO2 track during periods of severe motion, it may be necessary to maintain a history of the various SPO2 values and motion estimates.

[**0093**] Referring now to **FIGS. 11A-B**, the motion classification and strength estimation module (**510**) may analyze the red and infrared spectrums and cepstrums in a number of manners in order to identify the presence of motion artifacts in the red and infrared plethysmographic signals. One manner is to compare successive frames or snapshots of the spectrums and cepstrums over time to determine if there is jitter present in the peaks of the spectrums and cepstrums.

[**0094**] By way of example, **FIG. 11A** shows three successive frames of exemplary infrared spectrums **1102**, **1104**, **1106**. As can be seen in **FIG. 11A**, over time the fundamental spectral peak **1108** (and its related harmonic components) drifts from a lower frequency to a higher frequency and back to a lower frequency again. By measuring the amount of frequency drift of the spectral peak **1108** and comparing the measured drift to one or more threshold values, it is possible to classify the strength of any motion present in the plethysmographic signals. For example, the absolute value of the frequency drift **1110** measured between the spectral peak **1108** of the first instance of the spectrum **1102** and the spectral peak **1108** of the second instance of the spectrum **1104** may exceed a higher threshold value thereby indicating the presence of severe motion during the time between the first and second instances of the spectrum **1102**, **1104**, whereas the absolute value of the frequency drift **1112** measured between the spectral peak **1108** of the second instance of the spectrum **1104** and the spectral peak **1108** of the third instance of the spectrum **1106** may exceed a lower

threshold value but not the higher threshold value thereby indicating the presence of clinical motion during the time between the second and third instances of the spectrums **1104**, **1106**. As may be appreciated, where the measured frequency drift is below the lower threshold value, the plethysmographic signal may be classified as having no or only insignificant motion during the time period between successive spectral frames.

[**0095**] Likewise, **FIG. 11B** shows three successive frames of exemplary infrared cepstrums **1122**, **1124**, **1126**. As can be seen in **FIG. 11B**, over time the primary cepstral peak **1128** corresponding with the fundamental spectral peak (and the smaller cepstral peaks corresponding to the harmonic spectral components) drifts from a lower Quefreny to a higher Quefreny and back to a lower Quefreny again. By measuring the amount of Quefreny drift and comparing the measured drift to one or more threshold values, it is possible to classify the strength of any motion present in the plethysmographic signals. For example, the absolute value of the Quefreny drift **1130** measured between the cepstral peak **1128** of the first instance of the cepstrum **1122** and the cepstral peak **1128** of the second instance of the cepstrum **1124** may exceed a higher threshold value thereby indicating the presence of severe motion during the time between the first and second instances of the cepstrum **1122**, **1124**, whereas the absolute value of the Quefreny drift **1132** measured between the cepstral peak **1128** of the second instance of the cepstrum **1124** and the cepstral peak **1128** of the third instance of the cepstrum **1126** may exceed a lower threshold value but not the higher threshold value thereby indicating the presence of clinical motion during the time between the first and second instances of the cepstrums **1122**, **1128**. As may be appreciated, where the measured Quefreny drift is below the lower threshold value, the plethysmographic signal may be classified as having no or only insignificant motion during the time period between successive cepstral frames.

[**0096**] While various embodiments of the present invention have been described in detail, further modifications and adaptations of the invention may occur to those skilled in the art. However, it is to be expressly understood that such modifications and adaptations are within the spirit and scope of the present invention.

What is claimed is:

1. A method of processing at least first and second time domain plethysmographic signals obtained from a patient, said method comprising the steps of:

selecting at least one desired portion of the first time domain plethysmographic signal;

selecting at least one desired portion of the second time domain plethysmographic signal;

transforming the selected desired portions of the first and second time domain plethysmographic signals into first and second frequency domain plethysmographic signal portions corresponding to the selected desired portions of the first and second time domain plethysmographic signals;

transforming the first and second frequency domain plethysmographic signal portions into first and second cepstral domain plethysmographic signal portions cor-

- responding to the selected desired portions of the first and second time domain plethysmographic signals; and examining at least one of the first and second cepstral domain plethysmographic signal portions to obtain information therefrom relating to a physiological condition of the patient.
2. The method of claim 1 wherein the physiological condition of the patient comprises a pulse rate of the patient.
3. The method of claim 1 wherein said step of selecting at least one desired portion of the first time domain plethysmographic signal comprises:
- positioning a first data selection window over the desired portion of the first time domain plethysmographic signal; and
 - adjusting a length of the first data selection window to correspond with a length of the desired portion of the first time domain plethysmographic signal;
- and wherein said step of selecting at least one desired portion of the second time domain plethysmographic signal comprises:
- positioning a second data selection window over the desired portion of the second time domain plethysmographic signal; and
 - adjusting a length of the second data selection window to correspond with a length of the desired portion of the second time domain plethysmographic signal.
4. The method of claim 3 further comprising:
- analyzing the first and second time domain plethysmographic signals without selecting portions thereof to identify at least one region of each of the first and second time domain plethysmographic signals wherein motion artifacts present in the first and second plethysmographic signals are below an acceptable level.
5. The method of claim 1 wherein said step of transforming the selected desired portions of the first and second time domain plethysmographic signals to first and second spectral domain plethysmographic signal portions comprises performing Fast Fourier Transform operations on the selected desired portions of the first and second time domain plethysmographic signals, and wherein said step of transforming the first and second spectral domain plethysmographic signal portions to first and second cepstral domain plethysmographic signal portions comprises performing Fast Fourier Transform operations on the first and second spectral domain plethysmographic signal portions.
6. The method of claim 5 further comprising:
- adjusting a size of the Fast Fourier Transform operations in accordance with a predetermined parameter.
7. The method of claim 6 wherein the predetermined parameter comprises the patient's pulse rate.
8. The method of claim 1 further comprising:
- transmitting a red wavelength optical signal through a tissue site of the patient to obtain the first time domain plethysmographic signal; and
 - transmitting an infrared wavelength optical signal through the tissue site of the patient to obtain the second time domain plethysmographic signal.
9. The method of claim 8 wherein the physiological condition of the patient comprises an SPO2 level of the patient.
10. A method of assessing the presence of motion artifacts in a time domain plethysmographic signal obtained from a patient, said method comprising the steps of:
- obtaining at least first and second instances of the time domain plethysmographic signal corresponding to at least first and second times;
 - transforming the first and second instances of the time domain plethysmographic signal to first and second instances of a spectral domain plethysmographic signal;
 - transforming the first and second instances of the spectral domain plethysmographic signal to first and second instances of a cepstral domain plethysmographic signal;
 - identifying corresponding peaks in the first and second instances of the cepstral domain plethysmographic signal; and
 - measuring a difference between Quefrequencies associated with the identified corresponding peaks in the first and second instances of the cepstral domain plethysmographic signal.
11. The method of claim 10 wherein the first and second times are separated by at least 1 second.
12. The method of claim 10 further comprising:
- comparing the measured difference between Quefrequencies associated with the identified corresponding peaks in the first and second instances of the spectral domain plethysmographic signal to at least one Quefreny difference threshold value;
 - classifying motion present in the portion of the time domain plethysmographic signal between the first and second times based an outcome of said comparing step.
13. The method of claim 10 further comprising:
- identifying corresponding peaks in the first and second instances of the spectral domain plethysmographic signal; and
 - measuring a difference between frequencies associated with the identified corresponding peaks in the first and second instances of the spectral domain plethysmographic signal.
14. The method of claim 14 further comprising:
- comparing the measured difference between frequencies associated with the identified corresponding peaks in the first and second instances of the spectral domain plethysmographic signal to at least one frequency difference threshold value; and
 - classifying motion present in the portion of the time domain plethysmographic signal between the first and second times based an outcome of said comparing step.
15. The method of claim 10 wherein said step of transforming the first and second instances of the time domain plethysmographic signal to first and second instances of a spectral domain plethysmographic signal comprises performing Fourier transformations on the first and second instances of the time domain plethysmographic signal, and wherein said step of transforming the first and second

instances of the spectral domain plethysmographic signal to first and second instances of a cepstral domain plethysmographic signal comprises performing Fourier transformations on the first and second instances of the spectral domain plethysmographic signal.

16. The method of claim 15 wherein the Fourier transformations comprise Fast Fourier Transform operations.

17. The method of claim 16 further comprising:

adjusting a size of the Fast Fourier Transform operations in accordance with a pulse rate of the patient.

18. A method of processing at least first and second time domain plethysmographic signals obtained from a patient, said method comprising the steps of:

transforming the first and second time domain plethysmographic signals into first and second frequency domain plethysmographic signals;

transforming the first and second frequency domain plethysmographic signals into first and second cepstral domain plethysmographic signals;

obtaining a series of time domain estimates of an SPO2 level of the patient over a period of time using the first and second time domain plethysmographic signals;

obtaining a series of spectral domain estimates of the SPO2 level of the patient over the period of time using the first and second spectral domain plethysmographic signals;

obtaining a series of cepstral domain estimates of the SPO2 level of the patient over the period of time using the first and second cepstral domain plethysmographic signals;

comparing each of the series of time domain estimates of the SPO2 level of the patient, the series of spectral domain estimates of the SPO2 level of the patient, and the series of cepstral domain estimates of the SPO2 level of the patient obtained over the period of time with a series of DC tracking estimates of the SPO2 level of the patient obtained over the same period of time.

19. The method of claim 18 wherein said step of transforming the first and second time domain plethysmographic signals to first and second frequency domain plethysmographic signals comprises performing Fourier transformations on the first and second time domain plethysmographic signals, and wherein said step of transforming the first and second frequency domain plethysmographic signals to first and second cepstral domain plethysmographic signals comprises performing Fourier transformations on the first and second frequency domain plethysmographic signals.

20. The method of claim 19 wherein the Fourier transformations comprise Fast Fourier Transform operations.

21. The method of claim 20 further comprising:

adjusting a size of the Fast Fourier Transform operations in accordance with a pulse rate of the patient.

22. The method of claim 18 further comprising:

transmitting a red wavelength optical signal through a tissue site of the patient to obtain the first time domain plethysmographic signal; and

transmitting an infrared wavelength optical signal through the tissue site of the patient to obtain the second time domain plethysmographic signal.

23. The method of claim 18 further comprising:

selecting at least one desired portion of the first time domain plethysmographic signal; and

selecting at least one desired portion of the second time domain plethysmographic signal;

and wherein, in said step of transforming the first and second time domain plethysmographic signals into first and second frequency domain plethysmographic signals, only the selected desired portions of the first and second time plethysmographic signals are transformed into the first and second frequency domain signals.

24. The method of claim 23 further comprising:

analyzing the first and second time domain plethysmographic signals without selecting portions thereof to identify at least one desired portion of each of the first and second time domain plethysmographic signals wherein motion artifacts present in the first and second plethysmographic signals are below an acceptable level.

25. The method of claim 18 further comprising:

selecting at least one of the time domain, spectral domain, cepstral domain, and DC tracking estimates of the SPO2 level of the patient for reporting as the SPO2 level of the patient based on an outcome of said comparing step.

26. The method of claim 18 further comprising:

generating, when an outcome of said comparing step indicates that at least one of the series of time domain, the series of spectral domain, and the series of cepstral domain estimates of the SPO2 level of the patient agree with the series of DC tracking estimates of the SPO2 level of the patient, a calibrated series of DC tracking estimates of the SPO2 level of the patient by adjusting SPO2 values from the series of DC tracking estimates of the SPO2 level of the patient used in said comparing step in accordance with information derived from at least one of the series of time domain, the series of spectral domain, and the series of cepstral domain estimates of the SPO2 level of the patient.

27. The method of claim 26 wherein said generating step is undertaken only when an outcome of said comparing step indicates that all three of the series of time domain, the series of spectral domain, and the series of cepstral domain estimates of the SPO2 level of the patient agree with the series of DC tracking estimates of the SPO2 level of the patient.

28. The method of claim 26 further comprising:

reporting an SPO2 value from the calibrated series of DC tracking estimates of the SPO2 level when an outcome of said comparing step indicates that none of the series of time domain, the series of spectral domain, and the series of cepstral domain estimates of the SPO2 level of the patient agree with the series of DC tracking estimates of the SPO2 level of the patient used in said comparing step.

29. A method of processing first and second time domain plethysmographic signals obtained from a patient, said method comprising the steps of:

transforming the first and second time domain plethysmographic signals into first and second frequency domain plethysmographic signals;

computing first and second energy spectrums from the first and second frequency domain plethysmographic signals;

transforming the first and second frequency domain plethysmographic signals into first and second cepstral domain plethysmographic signals;

using the first and second cepstral domain plethysmographic signals to identify spectral peaks in the first and second energy spectrums that are associated with a pulse rate of the patient;

computing normalized amplitudes of the identified spectral peaks;

utilizing the normalized amplitudes of the identified spectral peaks to obtain a perfusion index value for the patient.

30. The method of claim 29 wherein said step of transforming the first and second time domain plethysmographic signals to first and second frequency domain plethysmographic signals comprises performing Fourier transformations on the first and second time domain plethysmographic signals, and wherein said step of transforming the first and second frequency domain plethysmographic signals to first and second cepstral domain plethysmographic signals comprises performing Fourier transformations on the first and second frequency domain plethysmographic signals.

31. The method of claim 30 wherein the Fourier transformations comprise Fast Fourier Transform operations.

32. The method of claim 31 further comprising:

adjusting a size of the Fast Fourier Transform operations in accordance with a pulse rate of the patient.

33. The method of claim 29 wherein said step of computing first and second energy spectrums comprises squaring and summing respective real and imaginary frequency components of the first frequency domain plethysmographic signal and second frequency domain plethysmographic signal.

34. The method of claim 29 wherein said step of utilizing comprises:

calculating the perfusion index value in accordance with the following expression:

$$PI = \frac{ESamp(1) * 1stValue + ESamp(2) + 2ndValue}{EScaling}$$

wherein ESamp(1) is the normalized amplitude of the identified spectral peak in the first energy spectrum, ESamp(2) is the normalized amplitude of the identified spectral peak in the second energy spectrum, 1stValue is a first predetermined value, 2ndValue is a second predetermined value, and EScaling is a scaling factor.

35. The method of claim 34 wherein 1stValue equals 0.0563 and 2ndValue equals 0.3103.

36. The method of claim 29 further comprising:

transmitting a red wavelength optical signal through a tissue site of the patient to obtain the first time domain plethysmographic signal; and

transmitting an infrared wavelength optical signal through the tissue site of the patient to obtain the second time domain plethysmographic signal.

* * * * *

专利名称(译)	倒谱域脉搏血氧饱和度		
公开(公告)号	US20040039273A1	公开(公告)日	2004-02-26
申请号	US10/645046	申请日	2003-08-21
[标]申请(专利权)人(译)	TERRY ALVIN MARK		
申请(专利权)人(译)	TERRY ALVIN MARK		
当前申请(专利权)人(译)	DATEX-OHMEDA INC.		
[标]发明人	TERRY ALVIN MARK		
发明人	TERRY, ALVIN MARK		
IPC分类号	A61B A61B5/00 A61B5/024		
CPC分类号	A61B5/02416 A61B5/14551 A61B5/6826 A61B5/7239 A61B5/7207 A61B5/7257 A61B5/6838		
优先权	60/359018 2002-02-22 US		
外部链接	Espacenet USPTO		

摘要(译)

提供了通过倒谱域处理体积描记信号。在一个实施例中，倒谱域体积描记信号处理方法 (200) 包括以下步骤：获得 (210) 时域体积描记信号，平滑 (220) 时域体积描记信号，执行 (230) 时间的第一阶段傅里叶变换域体积描记信号到频域体积描记信号，计算 (240) 来自频域体积描记信号的功率谱，缩放 (250) 功率谱并对对数缩放的谱执行 (260) 第二阶段傅里叶变换以转换功率光谱进入倒谱，并检查 (270) 倒谱以从中获得与患者的生理状况有关的信息，例如患者的脉搏率或SPO2水平。

