



US007167741B2

(12) **United States Patent**
Torchia et al.

(10) **Patent No.:** **US 7,167,741 B2**
(45) **Date of Patent:** **Jan. 23, 2007**

(54) **HYPERTHERMIA TREATMENT AND PROBE THEREFOR**

(75) Inventors: **Mark G. Torchia**, Winnipeg (CA); **Richard Tyc**, Winnipeg (CA); **John S. Pacak**, Winnipeg (CA)

(73) Assignee: **Monteris Medical, Inc.**, Winnipeg (CA)

(*) Notice: Subject to any disclaimer, the term of this patent is extended or adjusted under 35 U.S.C. 154(b) by 305 days.

- 4,671,254 A 6/1987 Fair
- 4,914,608 A 4/1990 LeBihan et al.
- 5,284,144 A 2/1994 Delannoy et al.
- 5,291,890 A 3/1994 Cline et al.
- 5,320,617 A 6/1994 Leach
- 5,327,884 A 7/1994 Hardy et al.
- 5,366,456 A 11/1994 Rink et al.
- 5,368,031 A 11/1994 Cline et al.
- 5,370,649 A 12/1994 Gardetto et al.
- 5,454,807 A 10/1995 Lennox
- 5,492,122 A 2/1996 Button et al.

(Continued)

FOREIGN PATENT DOCUMENTS

EP 0 614 651 A1 9/1994

(Continued)

OTHER PUBLICATIONS

Kahn et al—Journal of Computer Assisted Tomography 18(4):519-532—Jul./Aug. 1994 (14 pages).

(Continued)

Primary Examiner—Brian L. Casler
Assistant Examiner—William Jung
(74) *Attorney, Agent, or Firm*—Barbara A. Wrigley; Dena VanDeVoort Ehrich; Oppenheimer Wolff & Donnelly LLP

(21) Appl. No.: **10/014,846**

(22) Filed: **Dec. 14, 2001**

(65) **Prior Publication Data**

US 2002/0193682 A1 Dec. 19, 2002

Related U.S. Application Data

(63) Continuation-in-part of application No. PCT/CA01/00905, filed on Jun. 15, 2001.

(51) **Int. Cl.**
A61B 5/00 (2006.01)

(52) **U.S. Cl.** **600/427**; 600/407; 600/411; 600/425; 600/437; 600/439; 601/1; 601/2; 601/3; 607/89; 607/92; 607/104; 607/105; 607/116

(58) **Field of Classification Search** 601/1-5; 600/437, 439, 407, 411, 425, 427
See application file for complete search history.

(56) **References Cited**

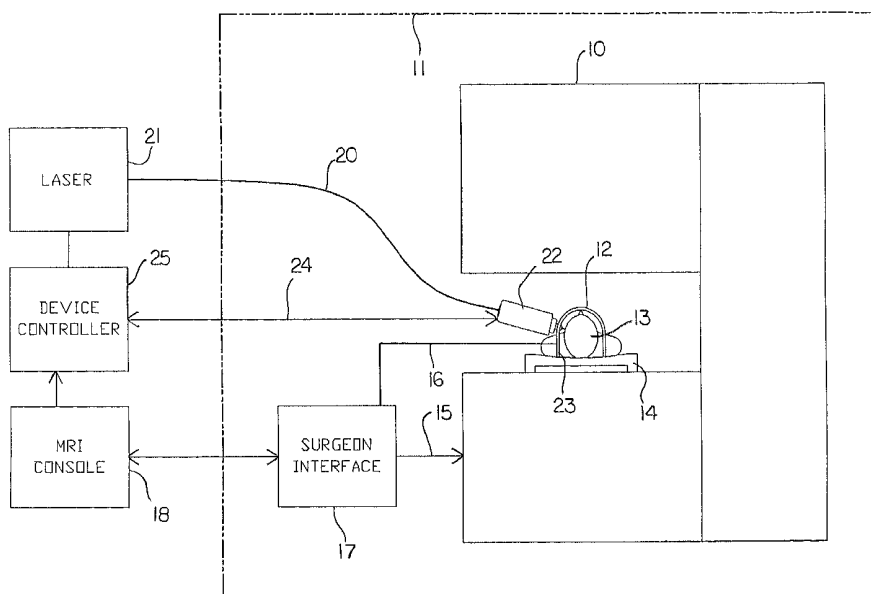
U.S. PATENT DOCUMENTS

4,111,209 A * 9/1978 Wolvek et al. 607/105

(57) **ABSTRACT**

This surgical device uses a laser beam to coagulate tissue. The elongate device carries the beam through an optical fiber that has a chamfered end for deflecting the beam out of a distal end of the device at an angle. Tissue coagulation is monitored using a magnetic resonance imaging system that provides periodic tissue temperature data. A small fluid supply duct provides cooling fluid that expands to a gas near the distal end of the device, thereby cooling the tip.

34 Claims, 10 Drawing Sheets



US 7,167,741 B2

Page 2

U.S. PATENT DOCUMENTS

5,537,499 A 7/1996 Brekke
5,620,479 A * 4/1997 Diederich 601/3
5,733,277 A 3/1998 Pallarito
5,762,066 A * 6/1998 Law et al. 600/439
5,785,704 A 7/1998 Bille
5,823,941 A 10/1998 Shaunnessey
6,086,532 A * 7/2000 Panescu et al. 600/437
6,123,719 A * 9/2000 Masychev 600/407
6,128,522 A 10/2000 Acker et al.
6,246,896 B1 6/2001 Dumoulin et al.
6,280,384 B1 8/2001 Loeffler
6,293,282 B1 9/2001 Lemelson

6,425,867 B1 * 7/2002 Vaezy et al. 600/439
6,551,274 B2 * 4/2003 Heiner 604/113

FOREIGN PATENT DOCUMENTS

WO WO/98/52465 11/1998

OTHER PUBLICATIONS

Journal of Magnetic Resonance Imaging JMRI 1998; 8:160-164 (5 pages).
Vogl et al in Radiology 1998: 209 381-385 (5 pages).

* cited by examiner

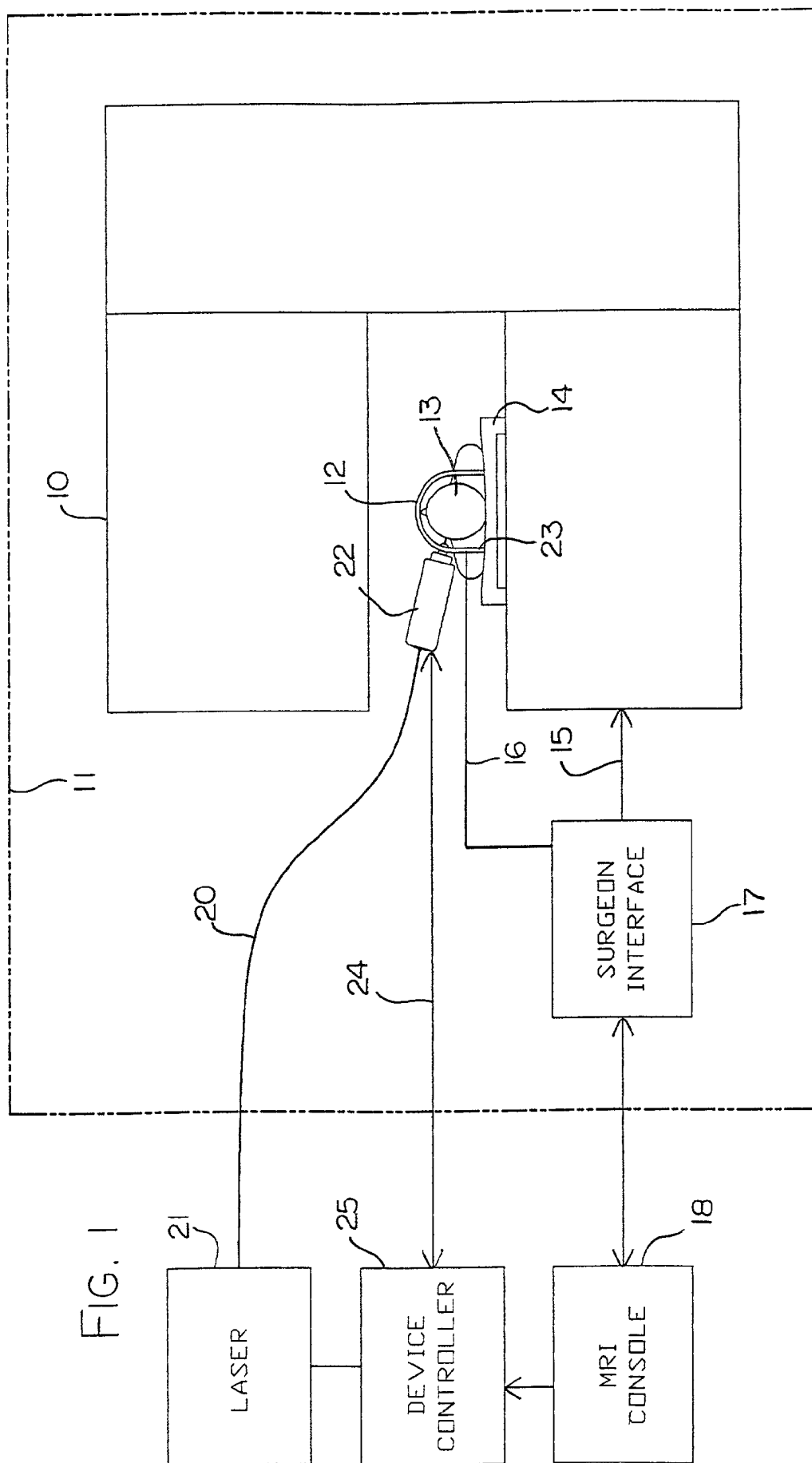
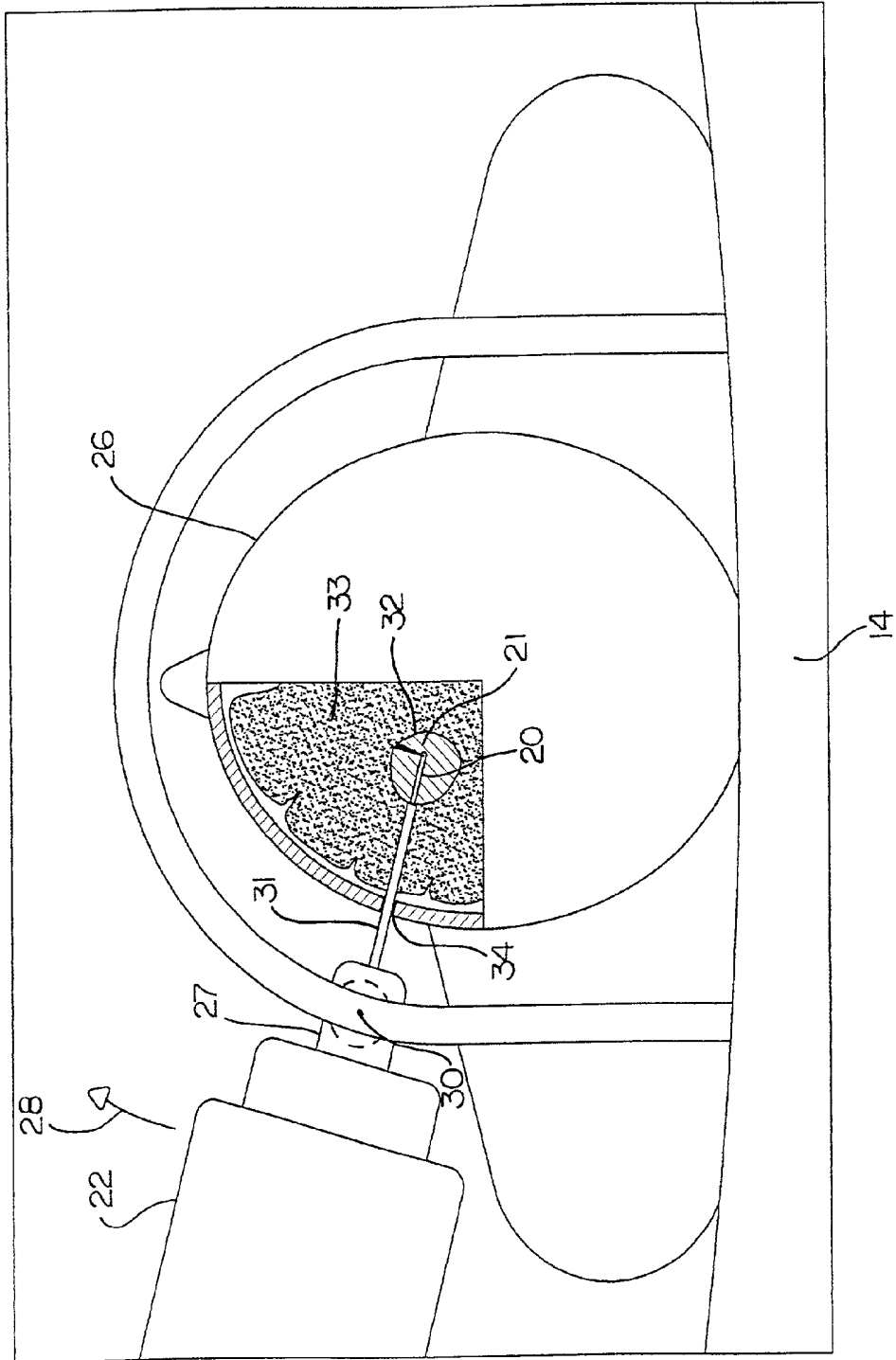


FIG. 2



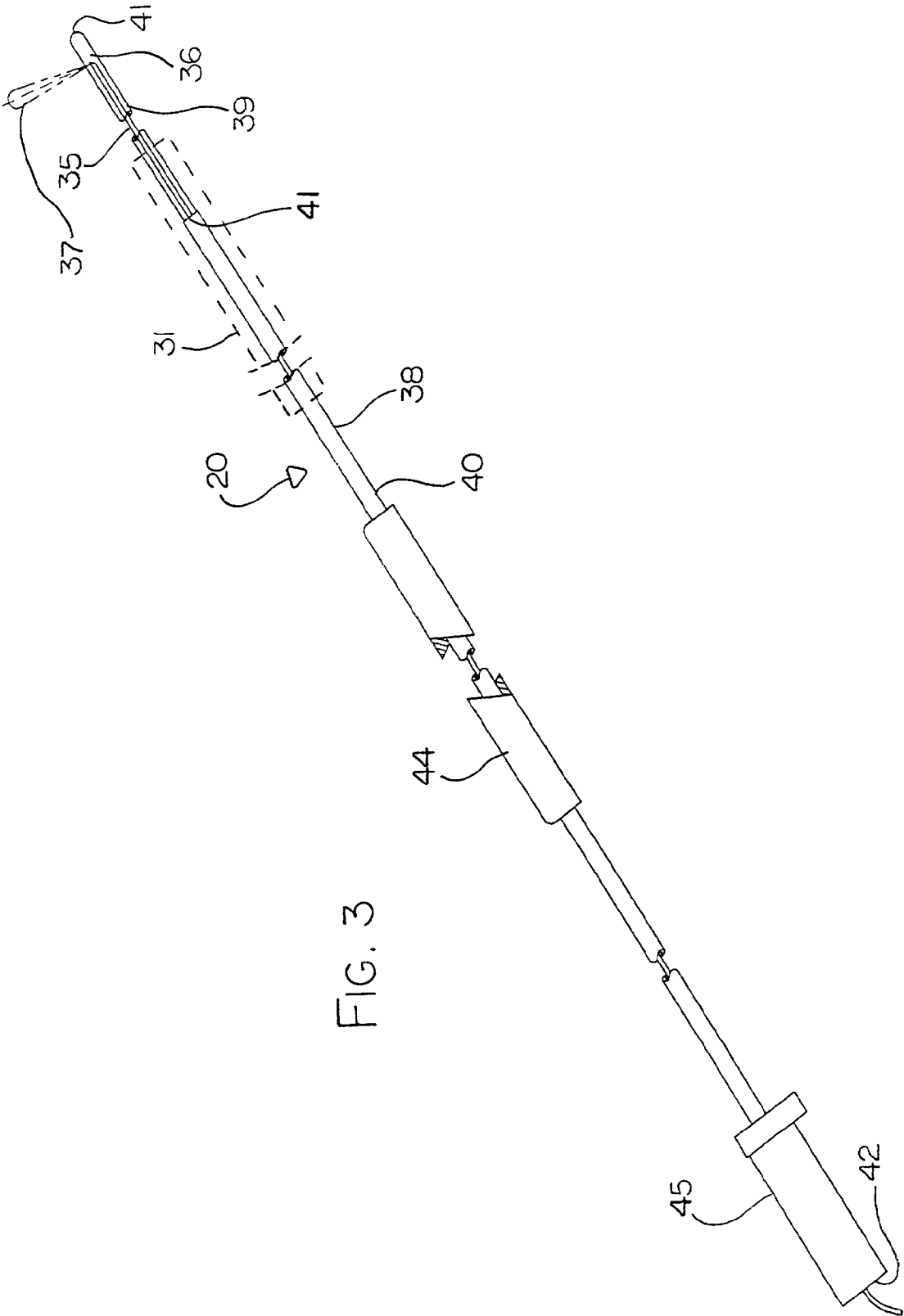


FIG. 3

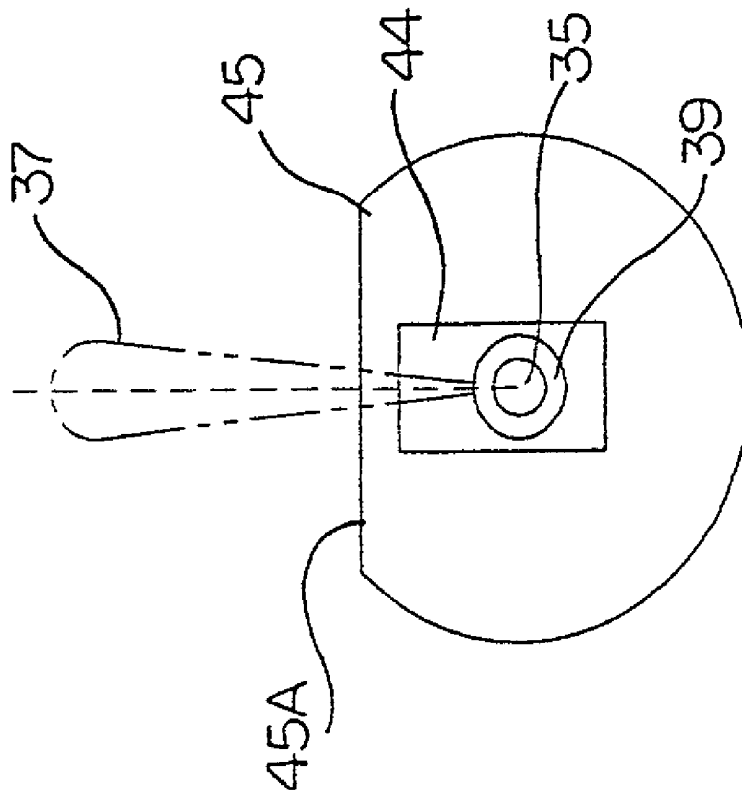


FIG. 4

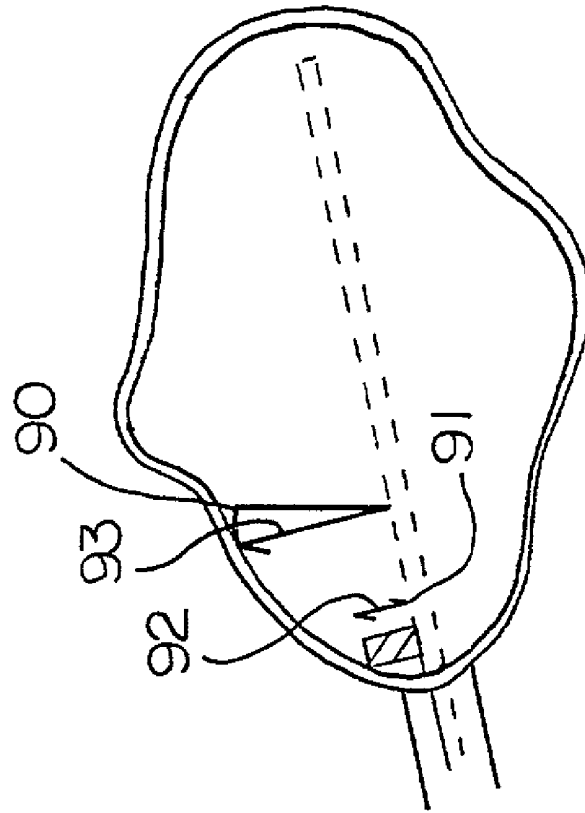


FIG. 8

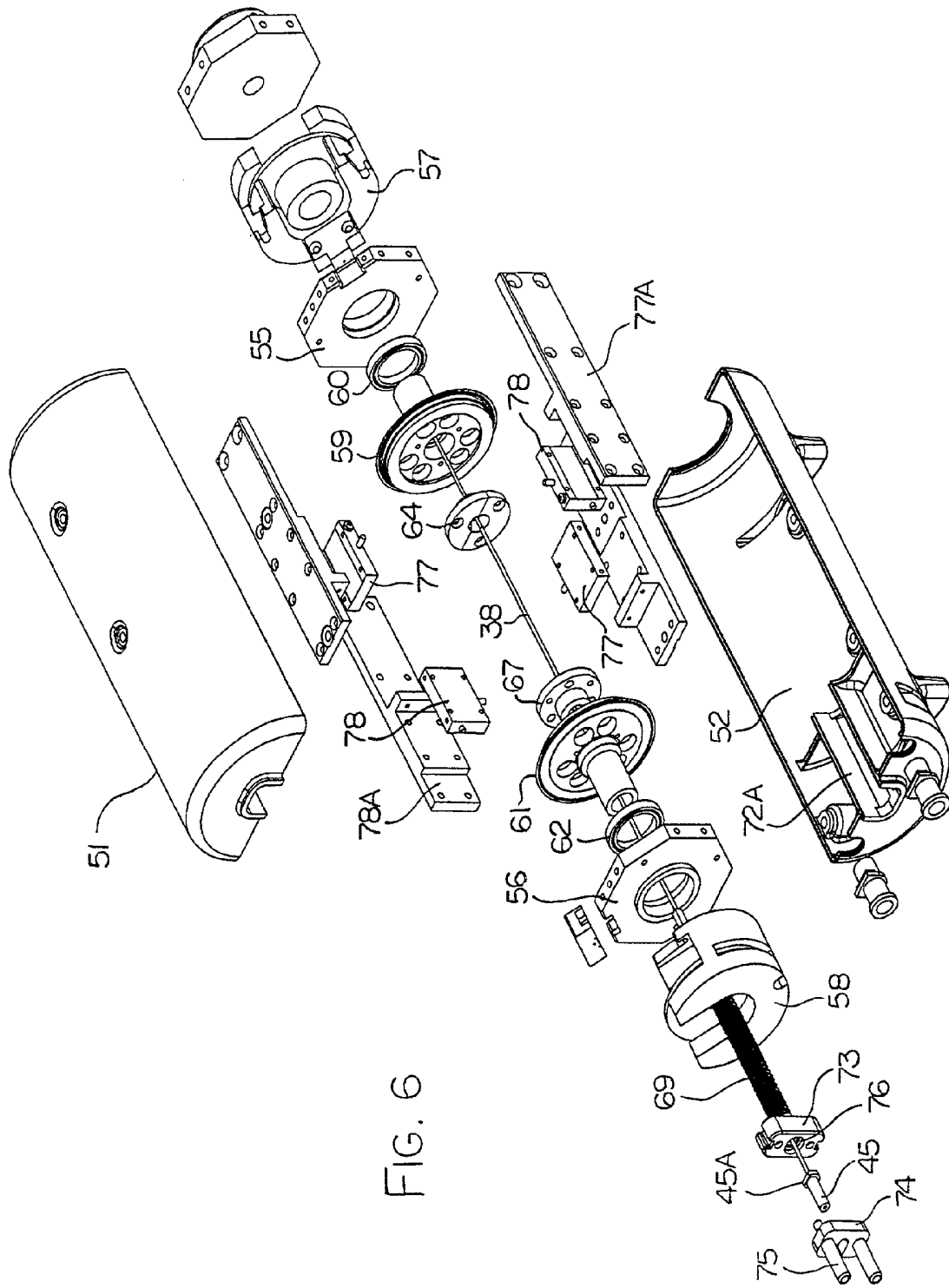
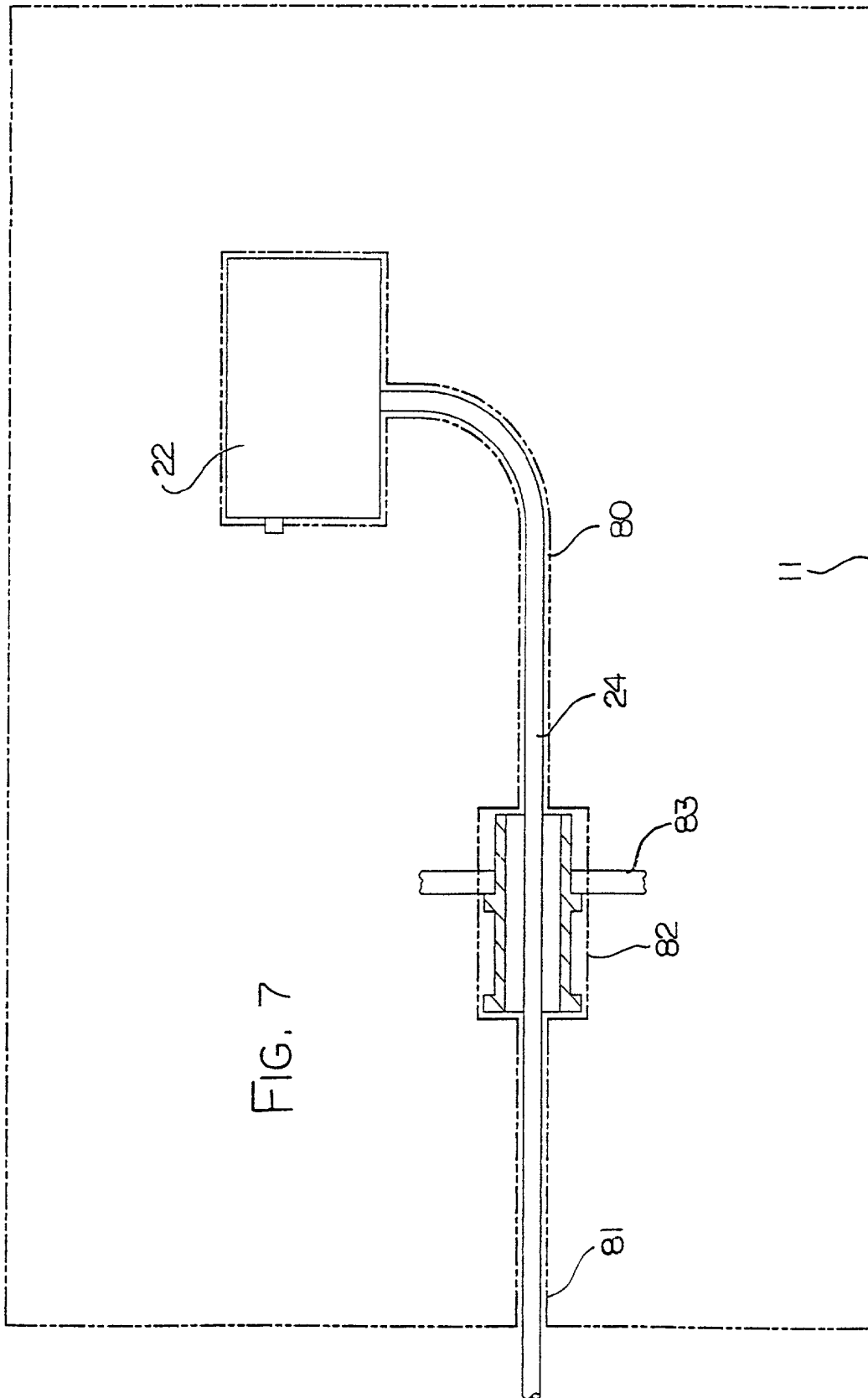
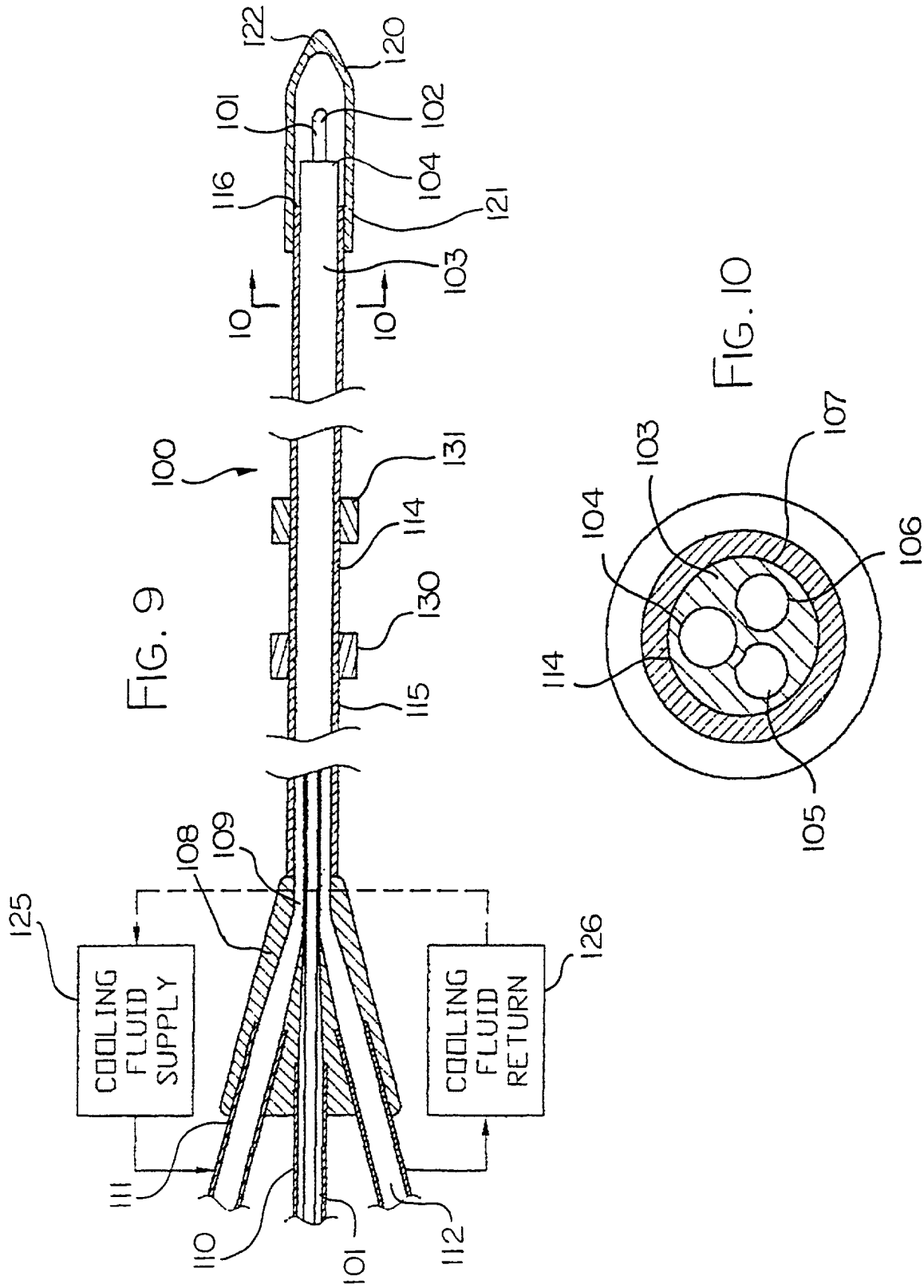
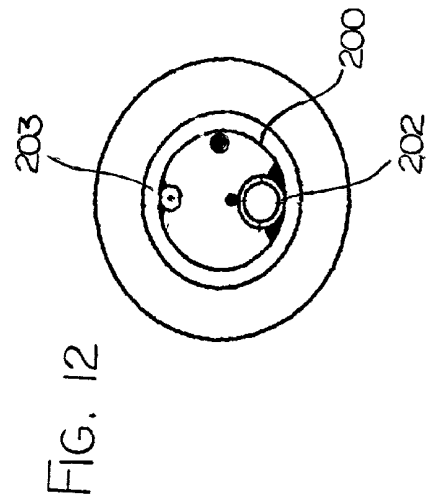
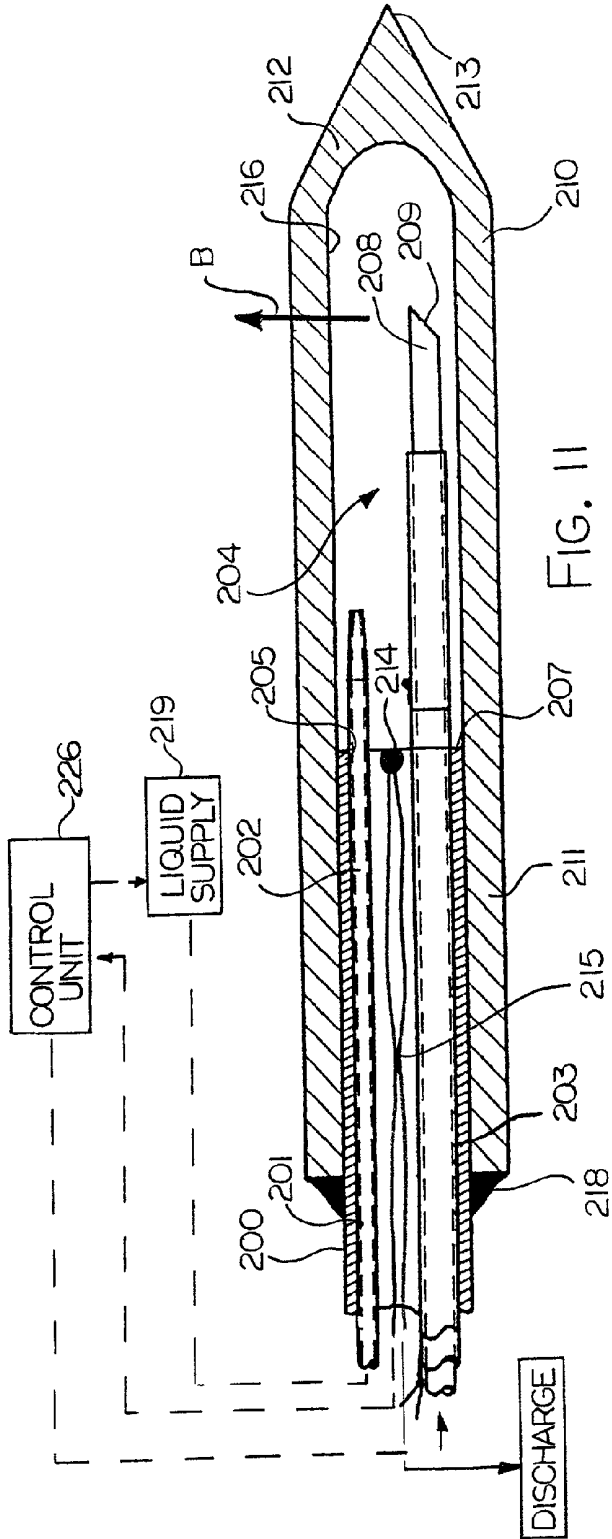


FIG. 6







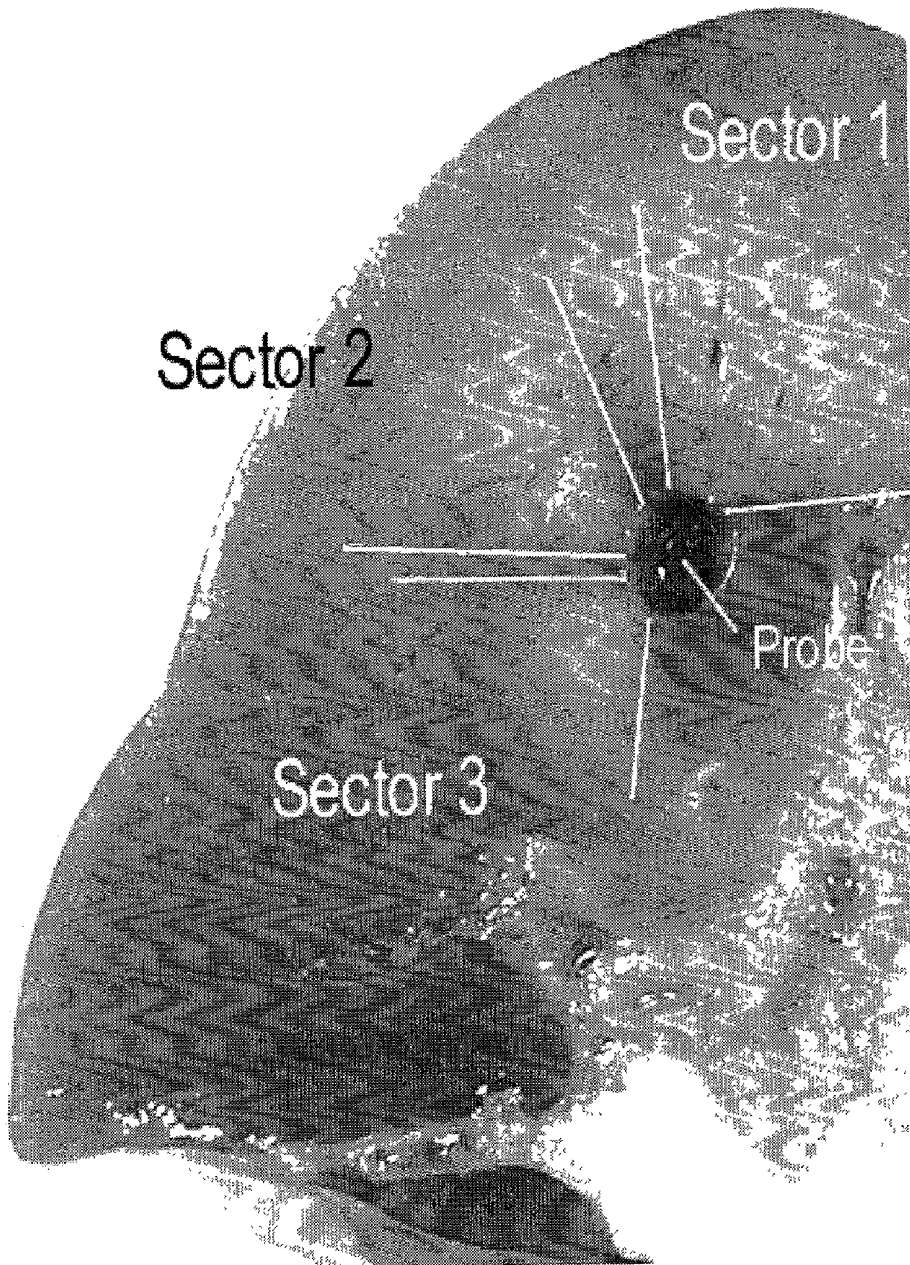


FIG. 13

HYPERTHERMIA TREATMENT AND PROBE THEREFOR

This application in a continuation-in-part application from PCT Application CA01/00905 filed Jun. 15th 2001.

This invention relates to a method and apparatus for hyperthermia treatment in a patient.

BACKGROUND OF THE INVENTION

The treatment of tumours by hyperthermia is known. Thus tumours and other lesions to be treated can in one known process be heated above a predetermined temperature of the order of 55° C. so as to coagulate the portion of tissue heated. The temperature range is preferably of the order of 55 to 65° C. and does not reach temperatures which can cause carbonization or ablation of the tissue.

One technique for effecting the heating is to insert into the lesion concerned an optical fiber which has at its inserted end an element which redirects laser light from an exterior source in a direction generally at right angles to the length of the fiber. The energy from the laser thus extends into the tissue surrounding the end or tip and effects heating. The energy is directed in a beam confined to a relatively shallow angle so that, as the fiber is rotated, the beam also rotates around the axis of the fiber to effect heating of different parts of the lesion at positions around the fiber. The fiber can thus be moved longitudinally and rotated to effect heating of the lesion over the full volume of the lesion with the intention of heating the lesion to the required temperature without significantly affecting tissue surrounding the lesion.

At this time the fiber is controlled and manipulated by a surgeon with little or no guidance apart from the knowledge of the surgeon of the anatomy of the patient and the location of the lesion. It is difficult therefore for the surgeon to effect a controlled heating which heats all of the lesion while minimizing damage to surrounding tissue.

It is of course well known that the location of tumours and other lesions to be excised can be determined by imaging using a magnetic resonance imaging system. The imaging system thus generates for the surgeon a location of the lesion to be excised but there is no system available which allows the surgeon to use the imaging system to control the heating effect. In most cases it is necessary to remove the patient from the imaging system before the treatment commences and that movement together with the partial excision or coagulation of some of the tissue can significantly change the location of the lesion to be excised thus eliminating any possibility for controlled accuracy.

It is also known that magnetic resonance imaging systems can be used by modification of the imaging sequences to determine the temperature of tissue within the image and to determine changes in that temperature over time.

U.S. Pat. No. 4,914,608 (LeBiahan) assigned to U.S. Department of Health and Human Services issued Apr. 3, 1990 discloses a method for determining temperature in tissue.

U.S. Pat. No. 5,284,144 (Delannoy) also assigned to U.S. Department of Health and Human Services and issued Feb. 8, 1994 discloses an apparatus for hyperthermia treatment of cancer in which an external non-invasive heating system is mounted within the coil of a magnetic resonance imaging system. The disclosure is speculative and relates to initial experimentation concerning the viability of MRI measurement of temperature in conjunction with an external heating system. The disclosure of the patent has not led to a commercially viable hyperthermic treatment system.

U.S. Pat. Nos. 5,368,031 and 5,291,890 assigned to General Electric relate to an MRI controlled heating system in which a point source of heat generates a predetermined heat distribution which is then monitored to ensure that the actual heat distribution follows the predicted heat distribution to obtain an overall heating of the area to be heated. Again this patented arrangement has not led to a commercially viable hyperthermia surgical system.

An earlier U.S. Pat. No. 4,671,254 (Fair) assigned to Memorial Hospital for Cancer and Allied Diseases and issued Jun. 9, 1987 discloses a method for a non surgical treatment of tumours in which the tumour is subjected to shock waves. This does not use a monitoring system to monitor and control the effect.

U.S. Pat. No. 5,823,941 (Shaunnessey) not assigned issued Oct. 20th, 1998 discloses a specially modified endoscope which designed to support an optical fiber which emits light energy and is moved longitudinally and rotates angularly about its axis to direct the energy. The device is used for excising tumors and the energy is arranged to be sufficient to effect vaporization of the tissue to be excised with the gas thus formed being removed by suction through the endoscope. An image of the tumor is obtained by MRI and this is used to program a path of movement of the fiber to be taken during the operation. There is no feedback during the procedure to control the movement and the operation is wholly dependent upon the initial analysis. This arrangement has not achieved commercial or medical success.

U.S. Pat. No. 5,454,807 (Lennox) assigned to Boston Scientific Corporation issued Oct. 3, 1995 discloses a device for use in irradiating a tumor with light energy from an optical fiber in which in conjunction with a cooling fluid which is supplied through a conduit with the fiber to apply surface cooling and prevent surface damage while allowing increased levels of energy to be applied to deeper tissues. This arrangement however provides no feedback control of the heating effect.

U.S. Pat. No. 5,785,704 (Bille) assigned to MRC Systems GmbH issued Jul. 28, 1996 discloses a particular arrangement of laser beam and lens for use in irradiation of brain tumors but does not disclose methods of feedback control of the energy. This arrangement uses high speed pulsed laser energy for a photo-disruption effect.

Kahn et al in *Journal of Computer Assisted Tomography* 18(4):519-532 July/August 1994 and in *Journal of Magnetic Resonance Imaging JMRI* 1998; 8: 160-164 Vogl et al in *Radiology* 1998; 209: 381-385 all disclose a method of application of heat energy from a laser through a fiber to a tumor where the temperature at the periphery of the tumor is monitored during the application of the energy by MRI. However none of these papers describes an arrangement in which the energy is controlled by feedback from the monitoring arrangement. The paper of Vogl also discloses a cooling system supplied commercially by Somatex of Berlin Germany for cooling the tissues at the probe end. The system is formed by an inner tube fiber through which the fiber passes mounted within an outer tube arrangement in which cooling fluid is passed between the two tubes and inside the inner tube in a continuous stream.

SUMMARY OF THE INVENTION

It is one object of the present invention, therefore, to provide an improved method and apparatus for effecting treatment of a patient by hyperthermia.

According to a first aspect of the invention there is provided a method for effecting treatment in a patient comprising:

identifying a volume in the patient the whole of which volume is to be heated to a required temperature, the volume being defined by a peripheral surface of the volume;

providing a heat source and applying heat to the volume within the patient by;

providing the heat source on an invasive probe having a longitudinal axis and an end;

inserting the end of the probe into the volume;

arranging the probe to cause directing of heat from the end in a direction at an angle to the longitudinal axis such that a heating effect of the probe lies in a disk surrounding the axis;

arranging the direction of the heat so as to define a heating zone which forms a limited angular orientation of heating within the disk such that, as the probe is rotated, the probe causes heating of different angular segments of the volume within the disk;

with the probe at a fixed axial position, rotating the probe about the axis so that the heating zone lies in a selected segment;

wherein the application of heat by the probe to the selected segment causes heat to be transferred from the segment into parts of the volume outside the segment surrounding the end of the probe;

and applying cooling to the end of the probe so as to extract heat from the parts surrounding the probe by conduction of heat therefrom.

Preferably the amount of cooling to the probe is arranged relative to the heating such that the parts of the volume surrounding the end of the probe are cooled sufficiently to cause a net heating effect by which substantially only the segment of the heating zone is heated to the required temperature and the parts outside the segment are not heated to the required temperature. This is preferably arranged so that the cooling maintains the parts outside the segment below a temperature sufficient to cause coagulation of the tissues therein. Thus when the probe is rotated to take up a new angle within a new segment, the tissue in the new segment is not in a condition by pre-heating which would interfere with the transmission and diffusion of the heat to that segment.

The arrangement of the present invention, that is the method defined above or the method or probe defined hereinafter, can be used on a rigid probe which is intended to be inserted in a straight line into a specific location in the body of the patient, or can be used on a flexible probe which can be guided in movement through a part of the body such as a vein or artery to a required location.

While the most likely and currently most suitable energy source is that of laser light, the arrangements described and defined herein can also be used with other energy sources of the type which can be directed to one side of the channel through which they are supplied such as electron beams or ultrasound generators.

In one preferred arrangement, the above method can be used with MRI real time control of the surgery by which a non-invasive detection system, such as MRI, is operated to generate a series of output signals over a period of time representative of temperature in the patient as the temperature of the patient changes during that time. The output signals are used to monitor at least one temperature of the volume as the temperature changes over the period of time. The application of heat to the probe is then controlled in response to the changes in temperature wherein the tem-

perature at the peripheral surface of the volume is monitored and a measure of the temperature at a location on the peripheral surface of the volume is used as the determining factor as to when to halt heating by the probe to the location. However the cooling effect can be used without the MRI monitoring to provide an enhanced system in which the whole of the volume required can be heated to the required temperature.

In the method in which temperature is monitored, the determination as to when to halt heating by the probe to the location is made based upon the temperature at the peripheral surface of the volume, with the exception that temperatures within the volume may be monitored to ensure that no serious or dangerous over-temperature occurs within the volume due to unexpected or unusual conditions. Thus any such over-temperature may be detected and used to halt further treatment or to trigger an alarm to the doctor for analysis of the conditions to be undertaken.

When used as a rigid probe for treatment within a body part such as the brain or liver, the probe itself may be sufficiently rigid and strong to accommodate the forces involved or there may be provided a cannula through which the probe is inserted, the cannula having an end which is moved to a position immediately adjacent but outside the volume and the probe having a rigid end portion projecting from the end of the cannula into the volume.

In the preferred arrangement, the heat source comprises a laser, an optical fiber for communicating light from the laser and a light directing element at an end of the fiber for directing the light from the laser to the predetermined direction relative to the fiber forming the limited angular orientation within the disk.

In accordance with a particularly preferred arrangement which provides the necessary level of cooling in a readily controllable process, the end of the probe is cooled by:

providing on the probe a supply duct for a cooling fluid extending from a supply to the end of the probe;

providing an expansion zone of reduced pressure at the end of the probe so as to cause the cooling fluid to expand as a gas thus generating a cooling effect;

and providing on the probe a return duct for return of the expanded gas from the end of the probe.

In this arrangement, the return duct is preferably of larger cross-sectional area than the supply duct and the supply duct includes a restricting orifice at its end where the return duct is larger in cross-sectional area by a factor of the order of 200 times larger than the orifice of the supply duct.

Preferably where the probe comprises a tube the supply duct is arranged inside the tube and the return duct is defined by an inside surface of the tube.

In this arrangement, the supply duct is attached as tube to an inside surface of the tube and the fiber itself is attached also to the inside.

In this arrangement, the orifice is provided by a restricting valve or neck in the supply duct immediately upstream of the expansion chamber at the end of the probe.

Where the fiber has a chamfered end of the fiber it may include a reflecting coating thereon for directing the light energy to the side. The arrangement of the chamfered end can have the advantage or feature that the chamfered end is located in the gas rather than being wetted by cooling fluid which can, when there is no coating, interfere with the reflective properties of the coating and thus with the proper control and direction of the light.

In this arrangement, the chamfered end can be arranged directly at 45 degrees to provide a light direction lying wholly in a radial plane at right angles to the axis of the fiber.

The chamfered end may carry a coating arranged to reflect light at two different wavelengths.

In order to accurately control the cooling effect to maintain the net heating required, there is preferably provided a temperature sensor at the end of the probe, which may be located inside the tube with the connection therefor passing through the probe to the control system outside the probe.

Preferably the temperature at the end of the probe is controlled by varying the pressure in the fluid as supplied through the supply duct. This system can allow the temperature to be maintained between about zero and minus 20 degrees Celsius which provides the required level of cooling to the probe for the net heating effect.

According to a second aspect of the invention there is provided a method for effecting treatment in a patient comprising:

identifying a volume in the patient to be heated to a required temperature;

providing a heat source for applying heat to the volume within the patient,

providing a probe mounting the heat source allowing invasive insertion of an end of the probe into the patient,

providing a position control system for moving the end of the probe to a required position within the patient;

inserting the end of the probe into the volume;

providing on the probe a supply duct for a cooling fluid extending from a supply to the end of the probe;

providing an expansion zone of reduced pressure at the end of the probe so as to cause the cooling fluid to expand as a gas thus generating a cooling effect;

and providing on the probe a return duct for return of the expanded gas from the end of the probe.

According to a third aspect of the invention there is provided a probe for use in effecting treatment in a patient comprising:

a heat source for applying heat to a volume within the patient,

a probe body mounting the heat source thereon for allowing invasive insertion of an end of the probe into the patient,

a supply duct on the probe body for a cooling fluid extending from a supply to the end of the probe;

the probe body being arranged to provide an expansion zone of reduced pressure at the end of the probe body so as to cause the cooling fluid to expand as a gas thus generating a cooling effect;

and a return duct on the probe body for return of the expanded gas from the end of the probe.

BRIEF DESCRIPTION OF THE DRAWINGS

One embodiment of the invention will now be described in conjunction with the accompanying drawings in which:

FIG. 1 is a schematic illustration of an apparatus for effecting MRI guided laser treatment according to the present invention.

FIG. 2 is a schematic illustration of the apparatus of FIG. 1 on an enlarged scale and showing the emission of laser energy into the brain of a patient.

FIG. 3 is a side elevational view of the laser probe of the apparatus of FIG. 1.

FIG. 4 is an end elevational view of the laser probe of the apparatus of FIG. 1.

FIG. 5 is a cross sectional view of the laser probe and drive motor therefor of the apparatus of FIG. 1.

FIG. 6 is an exploded view of the drive motor of the apparatus of FIG. 1.

FIG. 7 is a schematic illustration of the shielding of the apparatus of FIG. 1.

FIG. 8 is a schematic illustration of the effect of the apparatus on a tumour or other lesion to be coagulated.

FIG. 9 is a longitudinal cross sectional view through an alternative form of probe which provides a flow of cooling fluid to the end of the probe for cooling the surrounding tissue.

FIG. 10 is a cross sectional view along the lines 10—10 of FIG. 9.

FIG. 11 is a longitudinal cross sectional view through a further alternative form of probe which provides a flow of cooling fluid to the end of the probe for cooling the surrounding tissue.

FIG. 12 is a cross sectional view along the lines 12—12 of FIG. 11.

FIG. 13 is a photograph of a cross section of a tissue sample which has been heated in three separate segments showing the absence of heating outside the segments.

DETAILED DESCRIPTION

In FIG. 1 is shown schematically an apparatus for carrying out MRI controlled laser treatment. The apparatus comprises a magnetic resonance imaging system including a magnet 10 provided within a shielded room 11. The magnet 10 can be of any suitable construction and many different magnet arrangements are available from different manufacturers. The magnet includes field coils for generating variations in the magnetic field which are not shown since these are well known to one skilled in the art together with a radio frequency antenna coil which receives signals from the sample in this case indicated as a human patient 13.

The patient 13 rests upon a patient support table 14 on which the patient is supported and constrained against movement for the operative procedure. The fields of the magnet are controlled on an input control line 15 and the output from the antenna coil is provided on an output line 16 both of which communicate through a surgeon interface 17 to the conventional MRI control console 18. The MRI console and the magnet are shown only schematically since these are well known to one skilled in the art and available from a number of different manufacturers.

The apparatus further includes a laser treatment system including an optical fiber 20 which transmits heat energy in the form of light from a laser 21 mounted outside the room 11. The fiber extends into the room to a tip 21 (FIG. 2) at which the energy escapes into the relevant part of the patient as discussed hereinafter. The position of the fiber 20 within the patient and the orientation of the fiber is controlled by a drive motor 22 supported in fixed adjustable position on a stereotaxic frame 23. The motor communicates through a control line 24 to a device controller 25. In general the device controller receives information from the MRI console and from position detectors of the motor 22 so as to operate movement of the motor 22 and to operate a power output from the laser 21 so as to control the position and amount of heat energy applied to the part within the body of the patient.

In FIG. 2 is shown on a larger scale the patient table 14 to which is attached the stereotaxic frame 23 so that the frame is fixed relative to the table and extends over the head 26 of the patient. The frame is shown schematically and suitable details will be well known to one skilled in the art, but carries the motor 22 in a position on the frame by a bracket 27 of the motor. The position of the motor on the frame remains fixed during the procedure but can be adjusted in the arcuate direction 28 around the arch of the

frame **23**. The frame **23** can also be adjusted forwardly and rearwardly on the table **14**. The bracket **27** also allows rotation of the motor about a point **30** within the frame so that the direction of the fiber projecting forwardly from the motor can be changed relative to the frame.

The apparatus further includes a rigid cannula **31** which surrounds the fiber **20** and which is arranged to allow sliding movement of the fiber longitudinally in the cannula and rotational movement within the cannula while generally holding the fiber in a direction axial of the cannula. The cannula is formed of a suitable rigid MRI compatible material such as ceramic so that it is stiff and resistant to bending and has sufficient strength to allow the surgeon to insert the cannula into the required location within the body part of the patient.

In the arrangement as shown, the apparatus is arranged for operating upon a tumour **32** within the brain **33** of the patient. The surgeon therefore creates an opening **34** in the skull of the patient and directs the cannula **31**, in the absence of the fiber **20**, through the opening **34** to the front edge of the tumour **32**.

The position of the tumour is determined in an initial set of MRI experiments using conventional surgical and analytical techniques to define the boundaries, that is a closed surface within the volume of the brain which constitutes the extremities of the tumour. The surgical analysis by which the surgeon determines exactly which portions of the material of the patient should be removed is not a part of this invention except to say that conventional surgical techniques are available to one skilled in the art to enable an analysis to be carried out to define the closed surface.

The angle of insertion of the cannula is arranged so that, of course, it avoids as far as possible areas of the patient which should not be penetrated such as major blood vessels and also so that the cannula is directed so that, when it reaches the outside surface, it points toward a center of the tumour.

The optical fiber structure generally indicated at **20** in FIG. **3** includes an actual glass fiber element **35** which has an inlet end (not shown) at the laser and a remote end **36**. At the remote end is provided a reflector or prism which directs the laser energy in a beam **37** to one side of the end **36**. Thus the beam **37** is directed substantially at right angles to the length of the fiber and over a small angle around the axis of the fiber. The beam **37** forms a cone having a cone angle of the order of 12 to 15 degrees. Such fibers are commercially available including the reflector or prism for directing the light at right angles to the length of the fiber.

The fiber element itself as indicated at **35** is however encased in an enclosure to allow the fiber to be manipulated in the motor **22**. Around the fiber is formed a sleeve **38** including a first end portion **39** and a second longer portion **40**. The end portion **39** encloses the end **36** which is spaced from a tip **41** of the end portion. The end portion extends over the length of the order of 7 to 11 cm. The longer second portion **38** is of the order of 48 to 77 cm in length and extends from a forward end **41** through to a rear end **42**. The front portion **39** is formed of a rigid material such as glass. The longer rear portion **40** is formed of a stiff material which is less brittle than glass and yet maintains bending and torsional stiffness of the fiber so that forces can be applied to the sleeve portion **40** to move the tip **36** of the fiber to a required position within the tumour. The second portion **40** is formed of a material such as fiber reinforced plastics.

The two portions are bonded together to form an integral structure of common or constant diameter selected as a sliding fit through the cannula. The rigid front portion has a

length so that it can extend from the end of the cannula at the forward or closest edge of the tumour through to the rear edge of the tumour. An average tumour might have a diameter of the order of 0.5 to 5.0 cm so that the above length of the forward portion is sufficient to extend through the full diameter of the tumour while leaving a portion of the order of 1.25 cm within the end of the cannula. In this way the substantially rigid forward portion maintains the forward portion of the fiber lying substantially directly along the axis of the cannula without any bending or twisting of the forward portion within the cannula. The longer second portion is not formed from glass since this would provide a complete structure which is too brittle to allow the surgeon to insert the structure into the cannula without the danger of cracking or fracturing the structure under any bending loads. A less brittle material is therefore selected which can accommodate some bending loads caused by manual insertion of the structure into the cannula and yet can communicate the forces from longitudinal and rotational movement as described herein after.

The sleeve portion **40** has attached to it a first polygonal or non-circular section **44** and a second end stop section **45**. Both of the drive sections **44** and **45** are connected to the second portion so as to communicate driving action to the second portion. Thus the polygonal section **44** is arranged to co-operate with a drive member which acts to rotate the second portion and therefore the fiber along its full length about an axis longitudinal of the fiber. The second end stop section **45** is arranged to co-operate with a longitudinally movable drive element which moves the second portion and therefore the fiber longitudinally. In this way the tip **36** can be moved from an initial position in which it projects just beyond the outer end of the cannula outwardly into the body of the tumour until the tip reaches the far end of the tumour. In addition the tip can be rotated around the axis of the fiber so that the heat energy can be applied at selected angles around the axis. By selectively controlling the longitudinal movement and rotation of the tip, therefore, the heat energy can be applied throughout a cylindrical volume extending from the end of the cannula along the axis of the cannula away from the end of the cannula. In addition by controlling the amount of heat energy applied at any longitudinal position and angular orientation, the heat energy can be caused to extend to required depths away from the axis of the cannula so as to effect heating of the body part of the patient over a selected volume with the intention of matching the volume of the tumour out to the predetermined closed surface area defining the boundary of the tumour.

As shown in FIG. **4**, the non-circular cross section of the drive portion **44** is rectangular with a height greater than the width. However of course other non-circular shapes can be used provided that the cross section is constant along the length of the drive portion and provided that the drive portion can co-operate with a surrounding drive member to receive rotational driving force therefrom. The end stop member **45** is generally cylindrical with a top segment **45A** removed to assist the operator in insertion of the fiber into the drive motor.

Turning now to FIGS. **5** and **6**, the drive motor **22** is shown in more detail for effecting a driving action on the fiber through the drive members **44** and **45** into the sleeve **38** for driving longitudinal and rotational movement of the tip **36**.

The drive motor comprises a housing **50** formed by an upper half **51** and a lower half **52** both of semi-cylindrical shape with the two portions engaged together to surround the drive elements with the fiber extending axially along a

center of the housing. At the front **53** of the housing is provided a boss defining a bore **54** within which the sleeve **38** forms a sliding fit. This acts to guide the movement of the sleeve at the forward end of the housing.

Within the housing is provided a first annular mount **55** and a second annular mount **56** spaced rearwardly from the first. Between the first annular mount and the front boss is provided a first encoder **57** and behind the second annular mount **56** is provided a second encoder **58**.

The first annular mount **55** mounts a first rotatable drive disk **59** on bearings **60**. The second annular mount carries a second drive disk **61** on bearings **62**. Each of the drive disks is of the same shape including a generally flat disk portion with a cylindrical portion **63** on the rear of the disk and lying on a common axis with the disk portion. The bearings are mounted between a cylindrical inner face of the annular portion **55, 56** and an outside surface of the cylindrical portions **63**. Each of the disks is therefore mounted for rotation about the axis of the fiber along the axis of the housing.

The disk **59** includes a central plug portion **64** which closes the center hole of the disk portion and projects into the cylindrical portion **63**. The plug portion has a chamfered or frusto-conical lead in section **65** converging to a drive surface **66** surrounding the drive member **44** and having a common cross sectional shape therewith. Thus the tip portion **41** of the sleeve **38** can slide along the axis of the housing and engage into the conical lead in section **65** so as to pass through the drive surface or bore **66** until the drive member **44** engages into the surface **66**. In the position, rotation of the disk **59** drives rotation of the sleeve **38** and therefore of the fiber. As the drive portion **44** has a constant cross section, it can slide through the drive surface **66** forwardly and rearwardly.

The disk **61** includes a plug member **67** which engages into the central opening in the disk member **61**. The plug **67** has an inner surface **68** which defines a female screw thread for co-operating with a lead screw **69**. The lead screw **69** has an inner bore **70** surrounding the sleeve **38** so that the sleeve **38** is free to rotate and move relative to the bore **70**. The lead screw **69** also passes through the cylindrical portion **63** of the disk **61**. However rotation of the disk **61** acts to drive the lead screw longitudinally of the axis of the housing and therefore of the axis of the sleeve **38**. A rear end **71** of the lead screw is attached to a clamping member **72**. The clamping member **72** includes a first fixed portion **73** attached to the rear end **71** of the lead screw and a second loose portion **74** which can be clamped into engaging the fixed portion so as to clamp the end stop members **45** in position within the clamping member. The loose portion **74** is clamped in place by screws **75**. The top segment **45A** of the end stop **45** engages into a receptacle **76** in the fixed portion **73** so as to orient the sleeve **38** relative to the lead screw.

The disks **59** and **61** are driven in a ratchetting action by drive motors **77** and **78** respectively. In the preferred embodiment the drive motors are provided by piezo-electric drive elements in which a piezo-electric crystal is caused to oscillate thus actuating a reciprocating action which is used to drive by a ratchet process angular rotation of the respective disk.

The reciprocating action of the piezo-electric crystal **77** and **78** is provided by two such motors **77** co-operating with the disk **59** and two motors **78** co-operating with the disk **61**. Each motor is carried on a mounting bracket **77A, 78A** which is suitably attached to the housing.

The end clamp **72** is generally rectangular in cross section and slides within a correspondingly rectangular cross section duct **72A** within the housing. Thus the lead screw **69** is held against rotation and is driven axially by the rotation of the disk **61** while the fiber is free to rotate relative to the lead screw.

In other alternative arrangements (not shown), the ratchetting action can be effected by a longitudinally moveable cable driven from the device controller **25** outside the room **11**. In a further alternative arrangement, the motor may comprise a hydraulic or pneumatic motor which again effects a ratchetting action by reciprocating movement of a pneumatically or hydraulically driven prime mover.

Thus selected rotation of a respective one of the disks can be effected by supplying suitable motive power to the respective motor.

The respective encoder **57, 58** detects the instantaneous position of the disk and particularly the sleeve portion **63** of the disk which projects into the interior of the encoder. The sleeve portion therefore carries a suitable elements which allows the encoder to detect accurately the angular orientation of the respective disk. In this way the position of the disks can be controlled by the device controller **25** accurately moving the disk **59** to control the angular orientation of the fiber and accurately moving the disk **61** to control the longitudinal position of the fiber. The longitudinal position is of course obtained by moving the lead screw longitudinally which carries the end stop **45** longitudinally. The movements are independent so that the fiber can be rotated while held longitudinally stationary.

As the motor driving movement of the fiber is used while the magnet and the MRI system is in operation, it is essential that the motor and the associated control elements that are located within the room **11** are compatible with the MRI system. For this purpose, the power supply or control cable **24** and the motor must both be free from ferromagnetic components which would be responsive to the magnetic field. In addition it is necessary that the motor **22** and the cable **24** are both properly shielded against interference with the small radio frequency signals which must be detected for the MRI analysis to be effective.

As shown in FIG. 7, therefore, the room **11** is surrounded by a conductor which prevents penetration of radio frequency interference into the area within the room at the magnet. In addition the cable **24** and the motor **22** are surrounded by a conductor **80** which extends through an opening **81** in the conductor at the wall **11** through a cable port **82** within the wall **83** of the enclosure so that the whole of the motor and the cable are encased within the conductor **80** which is connected to the conductor within the wall. Thus the conductor **80** acts as a "worm hole" in the shielding thus retaining the motor **22** and the cable **24** effectively external to the shielding at the periphery of the room. The use of a Piezo-electric crystal to drive disks is particularly suitable and provides particular compatibility with the MRI system but other drive systems can also be used as set forth previously.

In the method of operation, the patient is located on the patient table and so to be restrained so that the head of the patient is held fixed within the magnet to prevent motion artefacts. The MRI system is then operated in conventional manner to generate an image of the portion, generally a tumour, to be excised. The surgeon alone or in conjunction with suitable software available to one skilled in the art then analyses the images developed to locate the closed area surrounding the volume of the tumour and defining the external perimeter of the tumour as indicated at FIG. 8 at **90**.

The surgeon also determines the best route for directing the cannula to the tumour to avoid damaging intervening tissue and to provide a best course to the centre of the tumour which may be irregular in shape.

Having determined the course and direction of the cannula, the opening **34** is formed and the cannula inserted as previously described.

With the cannula in place, the motor is mounted on the frame and the frame adjusted to locate the motor so that the fiber can be inserted directly along the length of the cannula. With the motor properly aligned along the axis of the cannula, the fiber is inserted through the bore of the motor and into the cannula so as to extend through the cannula until the tip emerges just out of the outer end of the cannula. The distance of the motor from the cannula can be adjusted so that the tip just reaches the end of the cannula when the lead screw is fully retracted and the end stop is located in place in the clamp **72**.

With the motor and fiber thus assembled, the MRI system is arranged to carry out experiments which generate temperature measurements in the boundary zone **90**. The temperature is detected over the full surface area of the boundary rather than simply at a number of discrete locations. While the experiments to detect the temperature are continued, the fiber is moved longitudinally to commence operation at a first position just inside the volume of the tumour. At a selected angular orientation of the beam, pulses of radiation are emitted by the laser and transmitted into the tumour through the beam **37**. The pulses are continued while the temperature in the boundary layer **90** is detected. As the pulses supply heat energy into the volume of the tumour, the tumour is heated locally basically in the segment shaped zone defined by the beam but also heat is conducted out of the volume of the beam into the remainder of the tumour at a rate dependant upon the characteristics of the tumour itself. Heating at a localised area defined by the beam is therefore continued until the heat at the boundary layer **90** is raised to the predetermined coagulation temperature of the order of 55 to 65° C. Once the boundary layer reaches this temperature, heating at that segment shaped zone within the disk is discontinued and the fiber is moved either longitudinally to another disk or angularly to another segment or both to move to the next segment shaped zone of the tumour to be heated. It is not necessary to predict the required number of pulses in advance since the detection of temperature at the boundary is done in real time and sufficiently quickly to prevent overshoot. However, predictions can be made in some circumstances in order to carry out the application of the heat energy as quickly as possible by applying high power initially and reducing the power after a period of time.

It is of course desirable to effect heating as quickly as possible so as to minimize the operation duration. For this purpose the number of pulses per second, or power of the heat source, may also be varied based upon the above predication depending upon the characteristics of the tumour as detected in the initial analysis. Thus the system may vary the energy pulse rate or power-time history of the heat source to modify the penetration depth of the heat induced lesion so that it can control the heating zone of an irregularly shaped lesion.

However the energy application rate cannot be so high that the temperature rises too quickly so that over shooting of the desired temperature at the boundary occurs with the possibility of damage to tissue outside the boundary. The rate of energy application is therefore selected depending upon the size and consistency of the tumour to effect heating at a controlled rate in order to achieve the required tem-

perature at the boundary without the possibility of over shoot. The rate of heat application can also be varied in dependence upon the distance of the boundary from the axis of the fiber. Thus the axis of the fiber is indicated at **91** in FIG. **8** and a first distance **92** of the beam to the boundary is relatively short at the entry point of the fiber into the tumour and increases to a second larger distance **93** toward the center of the tumour. In addition to pulses per second, it is also possible to adjust the power-time history of the laser energy to maximize penetration into the lesion. That is to use high power first for a short period of time and then ramp the power down throughout the duration of the treatment at that particular location.

In some cases it is desirable to maintain the fiber stationary at a first selected longitudinal position and at a first selected angular orientation until the temperature at the boundary reaches the required temperature. In this case the fiber is then rotated through an angle approximately equal to the beam angle to commence heating at a second angular orientation with the fiber being rotated to a next angular orientation only when heating at that second orientation is complete. In this way heating is effected at each position and then the fiber rotated to a next orientation position until all angular orientations are completed.

After a first disk shaped portion of the tumour is thus heated, the fiber is moved longitudinally through a distance dependant upon the diameter of the tumour at that location and dependant upon the beam angle so as to ensure the next disk shaped volume of tumour heated contains all of the tumour structure without intervening localised portions of the tumour which are not heated to the required temperature. Thus the fiber is moved longitudinally in steps which may vary in distance depending upon the diameter and structure of the tumour as determined by the initial analysis. However the total heating of the tumour is preferably determined by the temperature at the boundary without the necessity for analysis of the temperatures of the tumour inside the boundary or any calculations of temperature gradients within the tumour.

When the complete boundary of the tumour has been heated to the predetermined coagulation temperature, the treatment is complete and the apparatus is disassembled for removal of the fiber and the cannula from the patient.

The system allows direct and accurate control of the heating by controlling the temperature at the surface area defined by the boundary of the tumour so that the whole of the volume of the tumour is properly heated to the required temperature without the danger of heating areas external to the tumour beyond the coagulation temperature.

In order to maximize the amount of heat energy which can be applied through the fiber and thereby to effect treatment of larger tumors, it is highly desirable to effect cooling of the tissue immediately surrounding the end of the fiber so as to avoid overheating that portion of the tissue. Overheating beyond the coagulation temperature is unacceptable since it will cause carbonization which will inhibit further transmission of the heat energy. Thus without the cooling it is generally necessary to limit the amount of heat energy which is applied. As energy dissipates within the tissue, such a limitation in the rate of application of energy limits the size of the tumor to be treated since dissipation of energy prevents the outside portions of the tumor from being heated to the required coagulation temperature.

In FIGS. **9** and **10** is therefore shown a modified laser probe which can be used in replacement for the probe previously described, bearing in mind that it is of increased

diameter and thus minor modifications to the dimensions of the structure are necessary to accommodate the modified probe.

The modified probe **100** comprises a fiber **101** which extends from a tip portion **102** including the light dispersion arrangement previously described to a suitable light source at an opposed end of the fiber as previously described. The probe further comprises a support tube **103** in the form of a multi-lumen extruded plastics catheter for the fiber which extends along the fiber from an end **104** of the tube just short of the tip **102** through to a position beyond the fiber drive system previously described. The tube **103** thus includes a cylindrical duct **104** extending through the tube and there are also provided two further ducts **105** and **106** parallel to the first duct and arranged within a cylindrical outer surface **107** of the tube.

The supporting tube **103** has at its end opposite the outer end **104** a coupling **108** which is molded onto the end **109** and connects individual supply tubes **110**, **111** and **112** each connected to a respective one of the ducts **104**, **105** and **106**.

Multi-lumen catheters of this type is commercially available and can be extruded from suitable material to provide the required dimensions and physical characteristics. Thus the duct **104** is dimensioned to closely receive the outside diameter of the fiber so that the fiber can be fed through the duct tube **110** into the duct **104** and can slide through the support tube until the tip **102** is exposed at the end **104**.

While tubing may be available which provides the required dimensions and rigidity, in many cases, the tubing is however flexible so that it bends side to side and also will torsionally twist. The support tube is therefore mounted within an optional stiffening tube or sleeve **114** which extends from an end **115** remote from the tip **102** to a second end **106** adjacent to the tip **102**. The end **116** is however spaced rearwardly from the end **104** of the tubing **103** which in turn is spaced from the tip **102**. The distance from the end **106** to the tip **102** is arranged to be less than a length of the order of 1 inch. The stiffening tube **114** is formed of a suitable stiff material which is non-ferro-magnetic so that it is MRI compatible. The support tube **103** is bonded within the stiffening tube **114** so that it cannot rotate within the stiffening tube and cannot move side to side within the stiffening tube. The stiffening tube is preferably manufactured from titanium, ceramic or other material which can accommodate the magnetic fields of MRI. Titanium generates an artifact within the MRI image. For this reason the end **116** is spaced as far as possible from the tip **102** so that the artifact is removed from the tip to allow proper imaging of the tissues.

At the end **116** of the stiffening tube **114** is provided a capsule **120** in the form of a sleeve **121** and domed or pointed end **122**. The sleeve surrounds the end **116** of the stiffening tube and is bonded thereto so as to provide a sealed enclosure around the exposed part of the tube **103**. The capsule **120** is formed of quartz crystal so as to be transparent to allow the escape of the disbursed light energy from the tip **102**. The distance of the end of the stiffening tube from the tip is arranged such that the required length of the capsule does not exceed what can be reasonably manufactured in the transparent material required.

The tube **111** is connected to a supply **125** of a cooling fluid and the tube **112** is connected to a return collection **126** for the cooling fluid. Thus the cooling fluid is pumped through the duct **105** and escapes from the end **104** of the tube **103** into the capsule and then is returned through the duct **106**. The cooling fluid can simply be liquid nitrogen which is allowed to expand to nitrogen gas at cryogenic

temperatures which is then pumped under the pressure in the gas through the duct **105** and returns through the duct **106** where it can be simply released to atmosphere at the return **126**.

In an alternative arrangement the supply **125** and the return **126** form parts of a refrigeration cycle where a suitable coolant is compressed and condensed at the supply end and is evaporated at the cooling zone at the capsule **120** so as to transfer heat from the tissue surrounding the capsule **120** to the cooling section at the supply end.

The arrangement set forth above allows the effective supply of the cooling fluid in gaseous or liquid form through the ducts **105** and **106** and also effectively supports the fiber **101** so that it is held against side to side or rotational movement relative to the stiffening tube **114**. The location of the tip **102** of the fiber is therefore closely controlled relative to the stiffening tube and the stiffening tube is driven by couplings **130** and **131** shown schematically in FIG. 9 but of the type described above driven by reciprocating motor arrangements as set forth hereinbefore.

In FIGS. **11** and **12** is shown the tip section of an alternative probe in which cooling of the tip section is effected using expansion of a gas into an expansion zone. The tip only is shown as the remainder of the probe and its movement are substantially as previously described.

Thus the probe comprises a rigid extruded tube **200** of a suitable material for example titanium which is compatible with MRI (non-ferromagnetic) and suitable for invasive medical treatment. A further smaller cooling fluid supply tube **202** is also separately formed by extrusion and is attached by adhesive to the inside surface of the outer tube. An optical fiber **204** is also attached by adhesive to the inside surface the outer tube so that the fiber is preferably diametrically opposed to the tube **202**.

The tube **202** is swaged at its end as indicated at **205**, which projects beyond the end of the tube **201**, to form a neck section of reduced diameter at the immediate end of the tube **202**. Thus in manufacture the extruded tube **201** is cut to length so as to define a tip end **207** at which the outer tube terminates in a radial plane. At the tip end beyond the radial plane, the outer of the inner tube **202** is swaged by a suitable tool so as to form the neck section **205** having an internal diameter of the order of 0.003 to 0.005 inch.

The fiber **204** is attached to the tube **201** so that a tip portion **208** of the fiber **204** projects beyond the end **207** to a chamfered end face **209** of the fiber which is cut at 45° to define a reflective end plane of the fiber.

The end **207** is covered and encased by a molded quartz end cap **210** which includes a sleeve portion **211** closely surrounding the last part of the tube **200** and extending beyond the end **207** to an end face **212** which closes the capsule. The end face **212** is tapered to define a nose **213** which allows the insertion of the probe to a required location as previously described. The end of the tube **201** may be reduced in diameter so that the capsule has an outer diameter matching that of the main portion of the tube. However in the arrangement shown the capsule is formed on the outer surface so that its outer diameter is larger than that of the tube and its inner diameter is equal to the outer diameter of the tube.

A thermocouple **214** is attached to the inside surface of the outer tube **200** at the end **207** and includes connecting wires **215** which extend from the thermocouple to the control unit schematically indicated at **226**. Thus the thermocouple provides a sensor to generate an indication of the temperature at the end **207** within the quartz capsule. The quartz capsule is welded to or bonded to the outer surface of the tube as

indicated at **215** so as to form a closed expansion chamber within the quartz capsule beyond the end **207**. The inner surface **216** of the quartz capsule is of the same diameter as the outer surface of the tube **200** so that the expansion chamber beyond the end of the tube **200** has the same exterior dimension as the tube **200**.

The quartz capsule is transparent so as to allow the reflected beam of the laser light from the end face **209** of the fiber to escape through the transparent capsule in the limited angular direction substantially at right angles to the longitudinal axis of the fiber and within the axial plane defined by that longitudinal axis.

The tube **202** is connected at its end opposite to the tip to a fluid supply **219** which forms a pressurized supply of a suitable cooling fluid such as carbon dioxide or nitrous oxide. The fluid supply **219** is controlled by the control unit **216** to generate a predetermined pressure within the fluid supply to the tube **202** which can be varied so as to vary the flow rate of the fluid through the neck **205**. The fluid is supplied at normal or room temperature without cooling. The fluid is normally a gas at this pressure and temperature but fluids which are liquid can also be used provided that they form a gas at the pressures within the expansion chamber and thus go through an adiabatic gas expansion through the restricted orifice into the expansion chamber to provide the cooling effect.

Thus the restricted orifice has a cross-sectional area very much less than that of the expansion chamber and the return duct provided by the inside of the tube **201**. The items that reduce the effective cross sectional area of the return tube **201** are the optical fibre, the supply tube, two thermocouple wires, the shrink tube that fixes the thermocouple wires to the optical fibre and the adhesives used to bond the items into place (at the inlet of the discharge duct). Without the area of the adhesives included in the calculation, the exhaust duct area is about 300 times larger than a delivery orifice diameter of 0.004" (the target size). When considering the area occupied by the adhesives, the exhaust duct inlet area would be approximately 200 to 250 times larger than the 0.004" diameter orifice. Considering the manufacturing tolerance range of the supply tube orifice diameter alone, the exhaust duct area could be anywhere between 190 to 540 times larger than the orifice area (without considering the area occupied by adhesives). It is our estimation that a 200/1 gas expansion will be required to achieve appropriate cooling.

This allows the gas as it passes into the expansion chamber beyond the end **205** to expand as a gas thus cooling the quartz capsule and the interior thereof at the expansion chamber to a temperature in the range minus 20° C. to zero ° C. This range has been found to be suitable to provide the required level of cooling to the surface of the quartz capsule so as to extract heat from the surrounding tissue at a required rate. Variations in the temperature in the above range can be achieved by varying the pressure from the supply **219** so that in one example the pressure would be of the order of 700 to 850 psi at a flow rate of the order of 5 liters per min.

The tube **202** has an outside diameter of the order of 0.014 inch OD, the tube **203** has a diameter of the order of 0.079 inch. Thus a discharge duct for the gas from the expansion chamber is defined by the inside surface of the tube **200** having a flow area which is defined by the area of the tube **200** minus the area taken up by the tube **202** and the fiber **207**. This allows discharge of the gas from the expansion chamber defined within the quartz capsule at a pressure of the order of 50 psi so that the gas can be simply discharged to atmosphere if inert or can be discharged to an extraction

system or can be collected for cooling and returned to the fluid supply **219** if economically desirable. Tip cooling is necessary for optimum tissue penetration of the laser or heating energy, reduction of tissue charring and definition of the shape of the coagulated zone. The gas expansion used in the present invention provides an arrangement which is suitable for higher power densities required in this device to accommodate the energy supplied by the laser heating system.

The tip **208** of the fiber **204** is accurately located within the expansion zone since it is maintained in fixed position within the quartz capsule by its attachment to the inside surface of the outer tube. The fiber is located forwardly of the end **207** sufficiently that the MRI artifact generated by the end **207** is sufficiently removed from the plane of the fiber end to avoid difficulties in monitoring the temperature within the plane of the fiber end. The outlet orifice of the tube **202** is also located forwardly of the end **207** so as to be located with the cooling effect generated thereby at the plane of the fiber end.

The end face **209** is located within the expansion chamber **216** so that it is surrounded by the gas with no liquid within the expansion chamber. Thus in practice there is no condensate on the end face **209** nor any other liquid materials within the expansion chamber which would otherwise interfere with the reflective characteristics of the end face **209**.

The end face **209** is coated with a reflective coating such as a dual dielectric film. This provides a reflection at two required wave lengths of the laser light which are used as a visible guide beam and as the heat energy source such as He—Ne and Nd:YAG respectively. An alternative coating is gold which can alone provide the reflections at the two wavelengths.

The arrangement of the present invention provides excellent MRI compatibility both for anatomic imaging as well as MR thermal profiling.

In operation, the temperature within the expansion zone is monitored by the sensor **214** so as to maintain that temperature at a predetermined temperature level in relation to the amount of heat energy supplied through the fiber **204**. Thus the pressure within the fluid supply is varied to maintain the temperature at that predetermined set level during the hyperthermic process.

As described previously, the probe is moved to an axial location within the volume to be treated and the probe is rotated in steps so as to turn the heating zone generated by the beam B into each of a plurality of segments within the disk or radial plane surrounding the end face **209**. Within each segment of the radial plane, heat energy is supplied by the beam B which is transmitted through the quartz capsule into the tissue at that segment. The heat energy is dissipated from that segment both by reflection of the light energy into adjacent tissue and by conduction of heat from the heated tissue to surrounding tissue.

The surface of the capsule is cooled to a temperature so that it acts to extract heat from the surrounding tissue at a rate approximately equal to the dissipation or transfer of heat from the segment into the surrounding tissue. Thus the net result of the heating effect is that the segment alone is heated and surrounding tissue not in the segment required to be heated is maintained without any effective heating thereon, that is no heating to a temperature which causes coagulation or which could otherwise interfere with the transmission of heat when it comes time to heat that tissue in another of the segments. In this way when a first segment is heated to the required hyperthermic temperature throughout its extent from the probe to the peripheral surface of the volume, the

remaining tissues in the areas surrounding the probe are effectively unheated so that no charring or coagulation has occurred which would otherwise prevent dissipation of heat and in extreme cases completely prevent penetration of the beam B.

Thus when each segment in turn has been heated, the probe can be rotated to the next segment or to another segment within the same radial plane and further heating can be effected of that segment only.

In practice in one example, the laser energy can be of the order of 12 to 15 watts penetrating into a segment having an angle of the order of 60 to 80 degrees to a depth of the order of 1.5 cms. In order to achieve this penetration without causing heating to the remaining portions of the tissue not in the segment, cooling of the outside of the capsule to a temperature of the order of minus 5 degrees C. is required.

In FIG. 13 is shown an actual example of a cross-section of tissue which has been heated in three separate segments marked as sectors 1, 2 and 3. The central dark area is where the probe was located before it was removed to allow the cross-sectional slice to be taken. The darker area which forms approximately 100 degrees opposite sector 2 indicates that no heating has been applied to that area. The lighter color in the sectors 1, 2 and 3 indicates coagulation of the tissue. Similarly it will be noted that the tissue is of the darker color (not heated) in the smaller areas between sectors 2 and 3 and between sectors 1 and 2. Thus the cooling effect of the present invention achieves the effect required of limiting or prevention heating to the areas outside the selected segments.

The tube 200 is in the example shown above of a rigid structure for insertion in a straight line as previously described into a specific location. The use of a rigid material such as titanium for the outer tube avoids the necessity for the cannula previously described and allows the alignment of the probe in its mounting and drive arrangement as previously described to the required location in the patient without previously setting up a cannula. However other arrangements can be provided in which the tube 200 is formed of a fully or partial flexible material allowing the tube 200 to bend so as to allow insertion along suitable passageways such as veins or arteries within the patient by using guiding systems well known to one skilled in the art.

Since various modifications can be made in my invention as herein above described, and many apparently widely different embodiments of same made within the spirit and scope of the claims without departing from such spirit and scope, it is intended that all matter contained in the accompanying specification shall be interpreted as illustrative only and not in a limiting sense.

The invention claimed is:

1. A method for effecting treatment in a patient comprising:

identifying a volume in the patient the whole of which volume is to be heated to a required temperature, the volume being defined by a peripheral surface of the volume;

heating the volume within the patient by:

inserting a probe having a longitudinal axis and a distal end into the patient such that the distal end is in the volume;

sending laser energy through the probe;

deflecting the laser energy from the distal end of the probe at an angle from the longitudinal angle greater than zero, such that a heating effect of the probe lies in a disk-shaped area surrounding the axis;

directing the heat to define a heating zone that forms a limited angular orientation of heating within the disk-shaped area such that as the probe is rotated, the

probe causes heating of different angular segments of the volume within the disk-shaped area;

with the probe at a fixed axial position, rotating the probe about the axis so that the heating zone lies in a selected segment;

wherein applying heat to the selected segment causes heat to be transferred from the segment into parts of the volume outside the segment surrounding the end of the probe; and

cooling the end of the probe so as to extract heat from the parts surrounding the probe by conduction of heat therefrom

wherein cooling the distal end of the probe so as to extract heat from the parts surrounding the probe by conduction of heat therefrom comprises:

directing fluid to the distal end of the probe through a supply duct in the probe;

vaporizing the fluid in an expansion zone of reduced pressure in the distal end of the probe;

retrieving the gas from the probe through a return duct in the probe that is between 200 and 250 times larger in cross-sectional area than the supply duct.

2. The method of claim 1 wherein cooling the end of the probe so as to extract heat from the parts surrounding the probe by conduction of heat therefrom comprises cooling the end of the probe sufficiently to prevent the end of the probe from heating tissue outside of the selected segment to the required temperature.

3. The method of claim 2 wherein cooling the end of the probe sufficiently to prevent the end of the probe from heating tissue outside of the selected segment to the required temperature comprises cooling the end of the probe sufficiently to prevent the end of the probe from coagulating tissue outside of the segment.

4. The method of claim 1 further comprising moving the end of the probe axially within the volume thereby moving the disk-shaped area axially within the volume from a first position to a second position.

5. The method of claim 1 further comprising operating a non-invasive detection system to monitor a series of temperatures of the peripheral surface of the volume for use as a factor in determining when to stop heating a segment.

6. The method of claim 1 wherein sending laser energy through the probe comprises sending laser energy through an optical fiber contained within the probe and wherein deflecting the laser energy from the distal end of the probe at an angle from the longitudinal angle greater than zero comprises deflecting the laser energy off of a light directing element proximate the distal end of the fiber.

7. The method of claim 1 further comprising controlling a flow rate of the fluid directed to the distal end such that the distal end of the probe is cooled to a temperature between zero and minus 20 degrees Celsius.

8. The method of claim 1 wherein sending laser energy through the probe comprises sending laser energy through the probe at a power level that decreases from an initial high level to a lower value for each segment heated.

9. The method of claim 1 wherein retrieving the gas from the probe through a return duct in the probe comprises retrieving the gas from the probe through a return duct having outward extents defined by inside surfaces of an outer wall of the probe.

10. The method of claim 9 wherein directing fluid to the distal end of the probe through a supply duct in the probe comprises directing fluid to the distal end of the probe through a supply duct defined by a tube attached to the inside surface of the outer wall of the probe.

11. The method of claim 10 further comprising receiving data from a temperature sensor mounted on the inside surface of the outer wall of the probe proximate the distal end.

12. The method of claim 9 wherein sending laser energy through the probe comprises sending laser energy through a medium attached to the inside surface of the outer wall of the probe.

13. The method of claim 1 wherein vaporizing the fluid in an expansion zone of reduced pressure in the distal end of the probe comprises passing the fluid through a restricting orifice at an end of the supply duct leading into the expansion zone.

14. The method according to claim 13 wherein passing the fluid through a restricting orifice at an end of the supply duct leading into the expansion zone comprises passing the fluid through a restricting orifice formed by a reduced necking of a tube defining the supply duct.

15. The method according to claim 14 wherein passing the fluid through a restricting orifice formed by a reduced necking of a tube defining the supply duct comprises passing the fluid through a restricting orifice disposed distally of an end of an outer tube that defines the return duct.

16. The method according to claim 1 wherein sending laser energy through the probe comprises sending laser energy through an optical fiber contained within the probe and wherein deflecting the laser energy from the distal end of the probe at an angle from the longitudinal angle greater than zero comprises deflecting the laser energy off of a chamfered end of the optical fiber located in the expansion zone.

17. The method according to claim 16 wherein deflecting the laser energy off of a chamfered end of the optical fiber located in the expansion zone comprises deflecting the laser energy off of a chamfered end of the optical fiber that is chamfered at approximately 45 degrees to the longitudinal axis of the probe.

18. The method according to claim 16 wherein deflecting the laser energy off of a chamfered end of the optical fiber located in the expansion zone comprises deflecting the laser energy off of a chamfered end of the optical fiber having a coating that reflects light at two different wavelengths.

19. The method of claim 1 further comprising receiving data from a temperature sensor located at the distal end of the probe.

20. The method of claim 1 further comprising controlling a temperature at the distal end of the probe by varying the pressure of the fluid directed to the distal end of the probe.

21. A method for effecting treatment in a patient comprising:

- identifying a volume in the patient to be heated to a required temperature;
- inserting a distal end of a probe into the volume using a position control system;
- heating the volume by directing energy out the distal end of the probe into the volume; and
- cooling the distal end of the probe by
 - directing cooling fluid to an expansion zone in the distal end of the probe through a supply duct defined by the probe;
 - allowing the cooling fluid to undergo a phase change to gas in the expansion zone; and
 - retrieving the gas through a return duct defined by the probe wherein heating the volume by directing energy out the distal end of the probe into the volume comprises directing laser energy through an optical fiber

contained within the probe and deflecting the laser energy off of a chamfered end of the optical fiber located in the expansion zone.

22. The method of claim 21 wherein cooling the distal end of the probe comprises cooling the distal end of the probe to between zero and minus 20 degrees Celsius.

23. The method of claim 21 wherein retrieving the gas through a return duct defined by the probe comprises retrieving the gas from the probe through a return duct having outward extents defined by inside surfaces of an outer wall of the probe.

24. The method of claim 23 wherein directing cooling fluid to an expansion zone in the distal end of the probe through a supply duct defined by the probe comprises directing fluid to the expansion zone in the distal end of the probe through a supply duct defined by a tube attached to the inside surface of the outer wall of the probe.

25. The method of claim 23 wherein heating the volume by directing energy out the distal end of the probe into the volume comprises sending energy through an energy supply conduit attached to the inside surface of the outer wall of the probe.

26. The method of claim 21 wherein allowing the cooling fluid to undergo a phase change to gas in the expansion zone comprises passing the cooling fluid through a restricting orifice at a distal end of the supply duct.

27. The method of claim 26 wherein passing the cooling fluid through a restricting orifice at a distal end of the supply duct comprises passing the cooling fluid through a restricting orifice at a distal end of the supply duct formed by a reduced necking of a tube defining the supply duct.

28. The method of claim 27 wherein directing cooling fluid to an expansion zone in the distal end of the probe through a supply duct defined by the probe comprises directing fluid to the distal end of the probe through a supply duct defined by a tube attached to an inside surface of an outer wall of the probe.

29. The method of claim 21 wherein deflecting the laser energy off of a chamfered end of the optical fiber located in the expansion zone comprises deflecting the laser energy off of an end of the optical fiber chamfered on the order of 45 degrees.

30. The method of claim 21 wherein deflecting the laser energy off of a chamfered end of the optical fiber located in the expansion zone comprises deflecting the laser energy off of a chamfered end of the optical fiber having a coating that reflects light at two different wavelengths.

31. The method of claim 21 further comprising receiving data from a temperature sensor located at the distal end of the probe.

32. The method of claim 21 further comprising receiving data from a temperature sensor mounted on the inside surface of the outer wall of the probe proximate the distal end.

33. The method of claim 21 further comprising controlling a temperature at the distal end of the probe by varying the pressure of the fluid directed to the expansion zone in the distal end of the probe.

34. The method of claim 21 wherein heating the volume by directing laser energy through the probe and out the distal end of the probe into the volume comprises directing laser energy through an optical fiber extending through an outer tube of the probe and into a transparent capsule distal of the outer tube and enclosing a distal end of the outer tube.

专利名称(译)	热疗治疗及其探针		
公开(公告)号	US7167741	公开(公告)日	2007-01-23
申请号	US10/014846	申请日	2001-12-14
[标]申请(专利权)人(译)	托尔基亚Mark G制作 TYC RICHARD PACAK JOHN小号		
申请(专利权)人(译)	托尔基亚MARK G. TYC RICHARD PACAK JOHN S.		
当前申请(专利权)人(译)	MONTERIS MEDICAL , INC.		
[标]发明人	TORCHIA MARK G TYC RICHARD PACAK JOHN S		
发明人	TORCHIA, MARK G. TYC, RICHARD PACAK, JOHN S.		
IPC分类号	A61B5/00 G01R33/28 A61B5/055 A61B18/00 A61B18/20 A61B18/22 A61B18/24 A61B19/00 A61N5/06		
CPC分类号	A61B5/055 A61B18/24 A61B19/52 A61B18/20 A61B2018/00023 A61B2019/5236 A61B2018/00636 A61B2018/1861 A61B2018/2005 A61B2018/2277 A61B2018/00196 A61B90/36 A61B2090/374		
其他公开文献	US20020193682A1		
外部链接	Espacenet USPTO		

摘要(译)

该手术装置使用激光束来凝固组织。细长装置将光束传送通过光纤，该光纤具有倒角端，用于以一定角度将光束偏转出装置的远端。使用提供周期性组织温度数据的磁共振成像系统监测组织凝固。小的流体供应管道提供冷却流体，该冷却流体在装置的远端附近膨胀成气体，从而冷却尖端。

