



(19) **United States**

(12) **Patent Application Publication**
Swetlik et al.

(10) **Pub. No.: US 2003/0146847 A1**

(43) **Pub. Date: Aug. 7, 2003**

(54) **SYSTEM AND METHOD FOR USING
MULTIPLE MEDICAL MONITORS**

Publication Classification

(51) **Int. Cl.⁷** **G08C 15/00**; G08C 15/04;
G08B 23/00; G08B 21/00

(52) **U.S. Cl.** **340/870.15**; 340/573.1; 128/903

(75) Inventors: **Donald Edward Swetlik**, Temecula, CA (US); **Robert Edward Whitten**, Tujunga, CA (US); **Richard Brian Paul**, Diamond Bar, CA (US); **Gary Bruce Edstrom**, Glendale, CA (US); **Gary Michael Zednik**, Agua Dulce, CA (US); **Celso Ochoa Decastro JR.**, Northridge, CA (US); **Roy Seizo Carr**, Chatsworth, CA (US)

(57) **ABSTRACT**

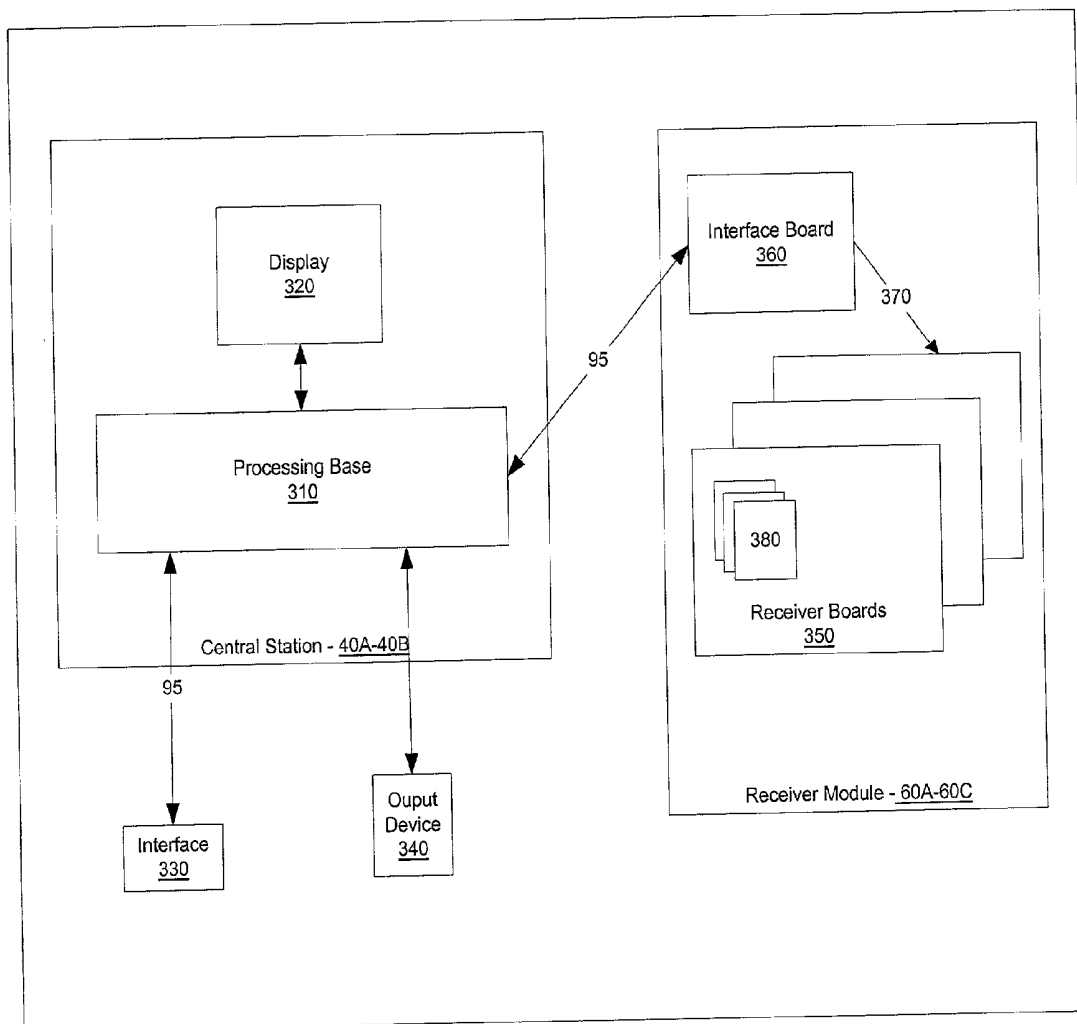
The present invention relates to a system and method for simultaneously using and configuring one or more disposable transmitters. The system includes at least one single or multiple use disposable transmitter, a central station, and a receiver module. The transmitter is connected to a patient to gather and measure biomedical information. The transmitter transmits the biomedical information through the receiver module to the central station for processing, storage and display. Prior to use, each transmitter must be configured to work with the central station and the receiver module. This allows the users to configure the disposable transmitters relatively quickly and easily without needing advanced technical information. The inventive configuration also enables the operator to map a location on a monitor in the central station to a specific disposable transmitter and ultimately to a specific patient or location in the coverage area that is covered by the system.

Correspondence Address:
MORGAN LEWIS & BOCKIUS LLP
1111 PENNSYLVANIA AVENUE NW
WASHINGTON, DC 20004 (US)

(73) Assignee: **Viasys Healthcare, Inc.**

(21) Appl. No.: **10/066,549**

(22) Filed: **Feb. 5, 2002**



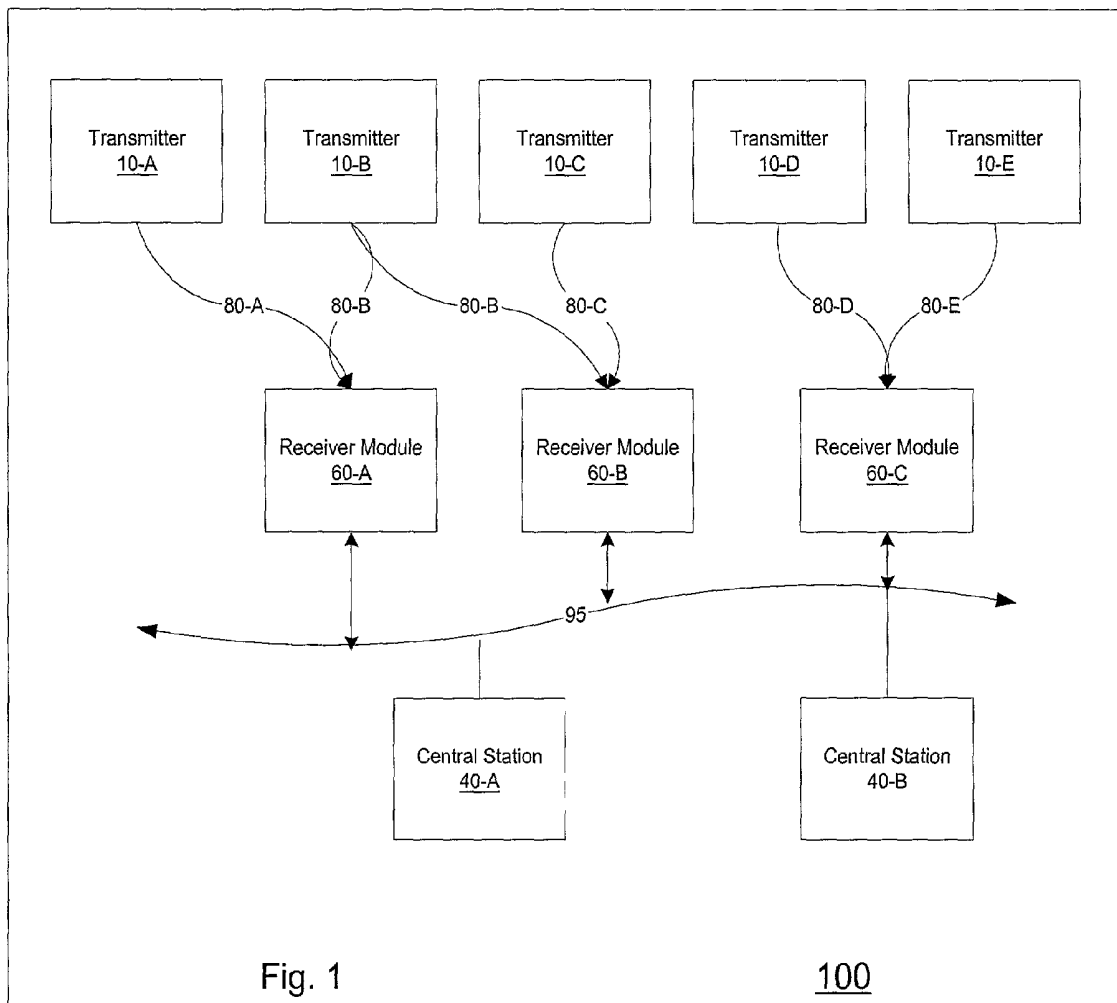
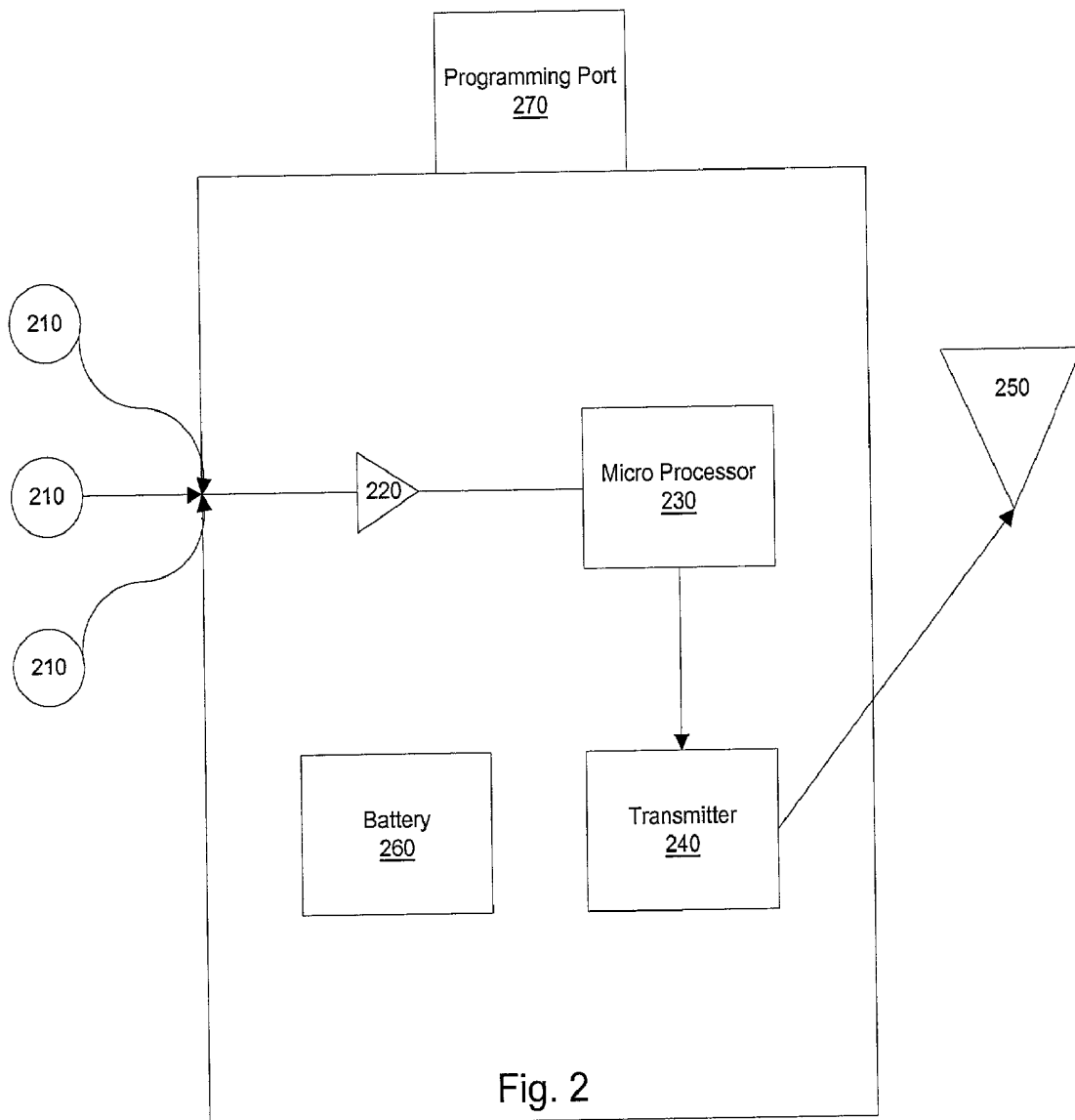


Fig. 1

100



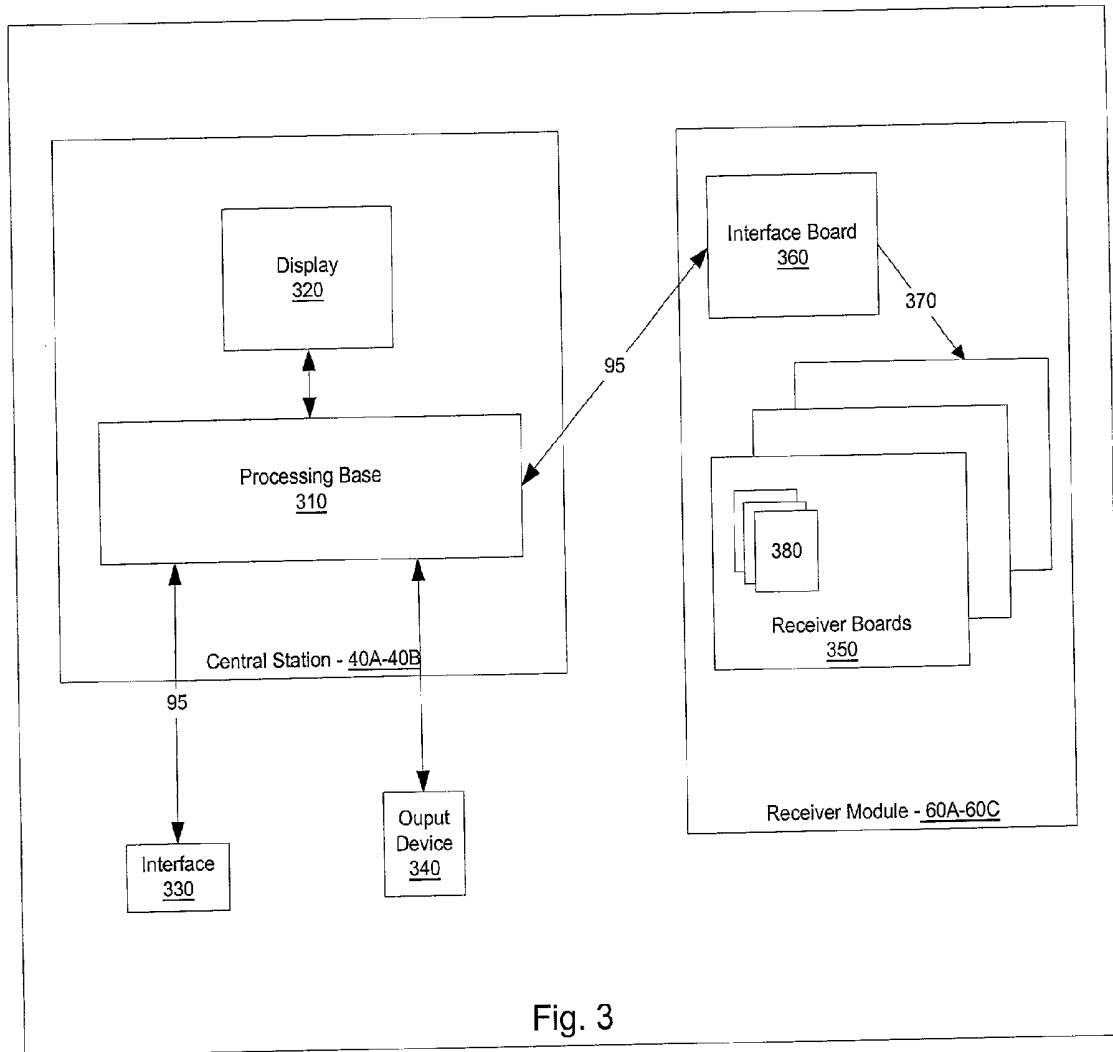


Fig. 3

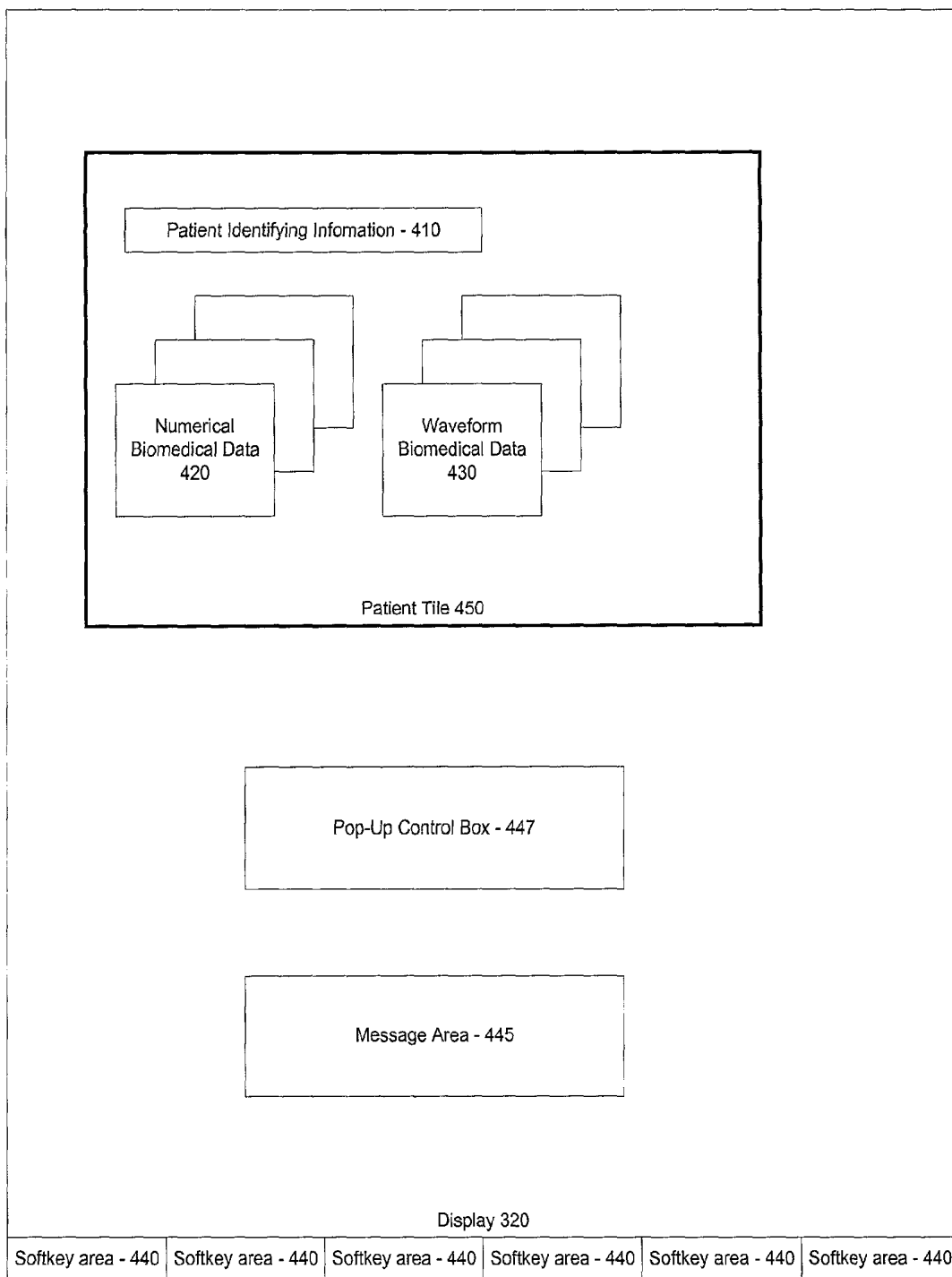
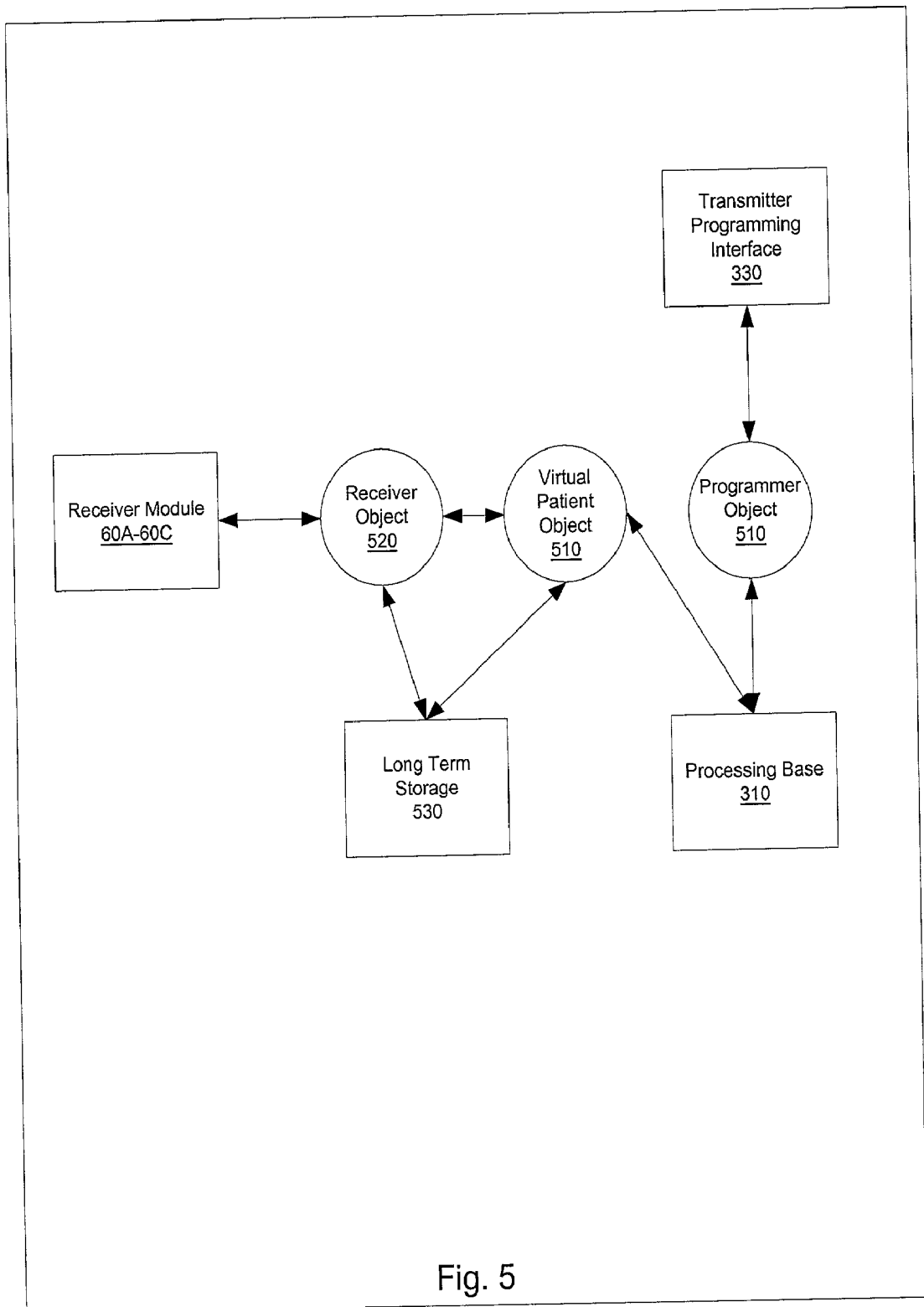


Fig. 4



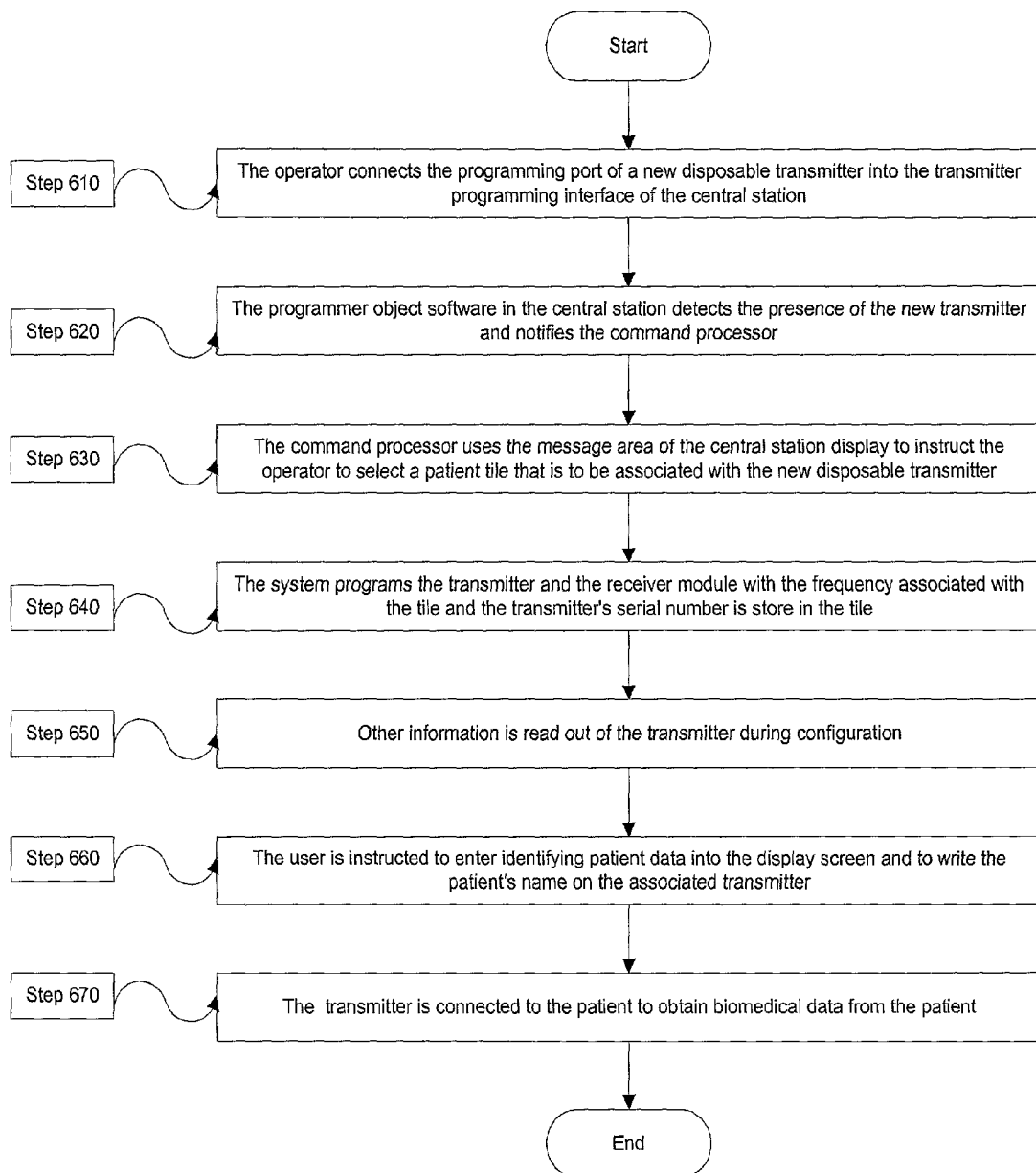


Fig. 6

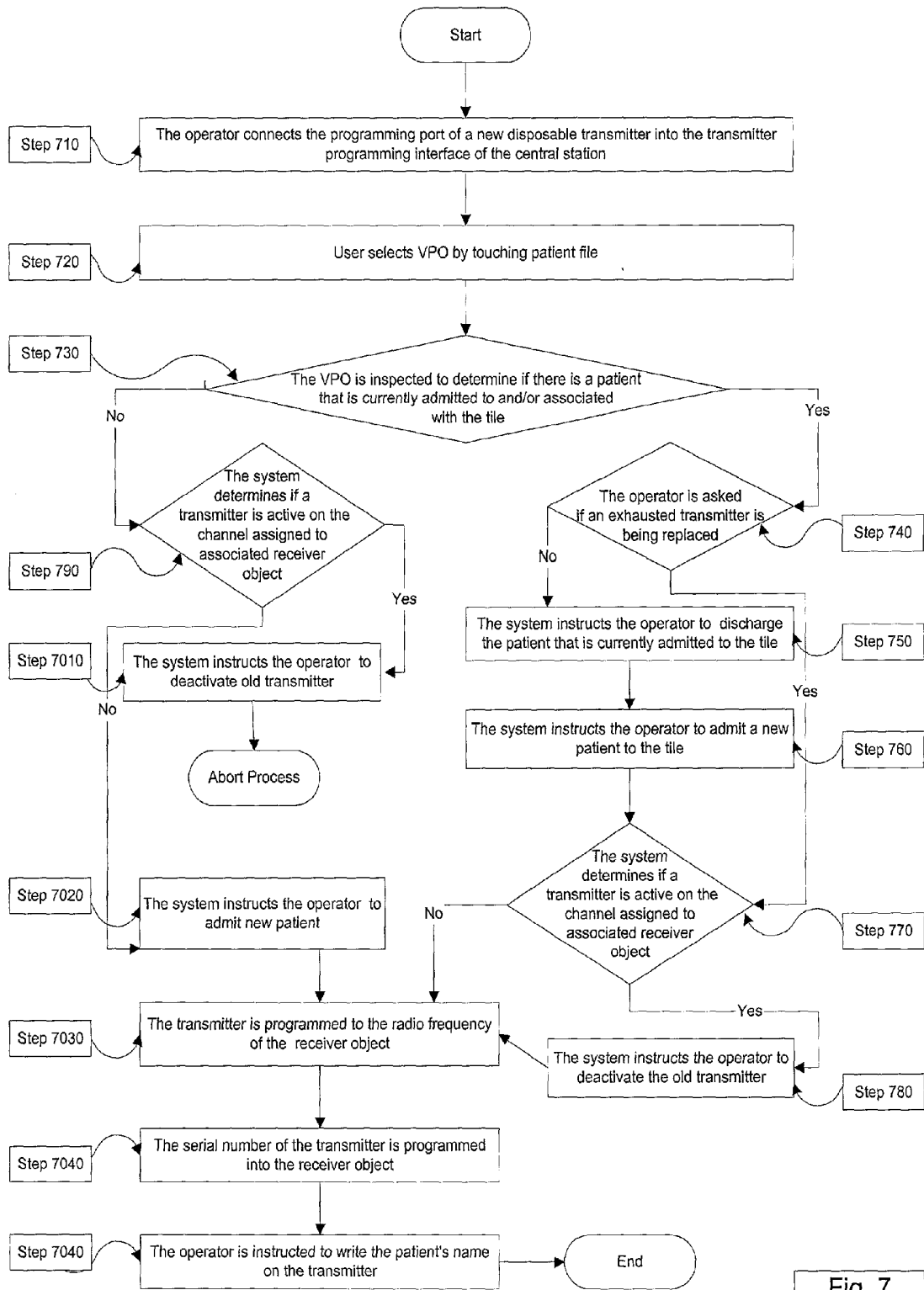


Fig. 7

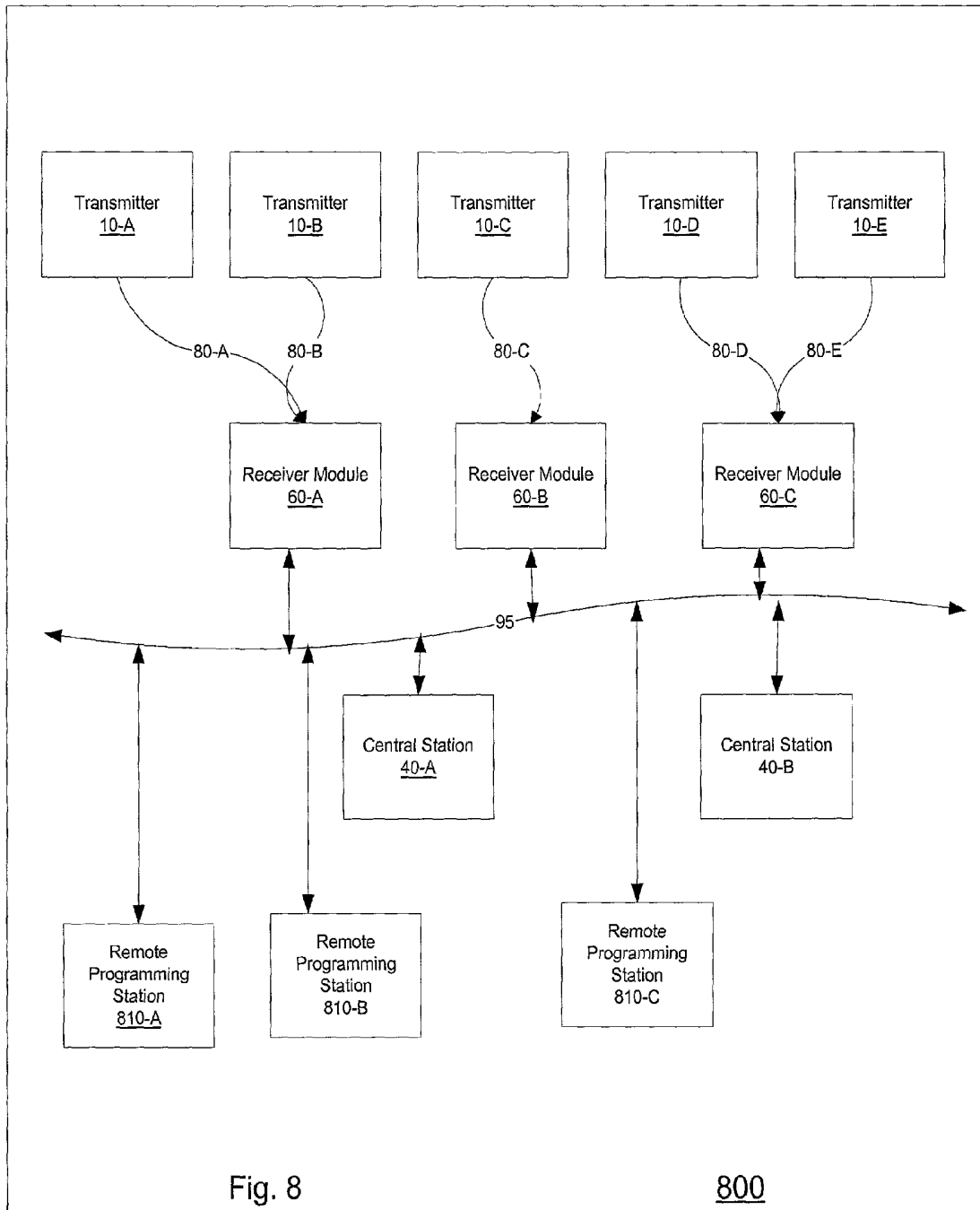


Fig. 8

800

SYSTEM AND METHOD FOR USING MULTIPLE MEDICAL MONITORS

FIELD OF THE INVENTION

[0001] This invention relates to medical monitoring systems, and more particularly to telemetry systems with disposable and/or reusable transmitters.

BACKGROUND OF THE INVENTION

[0002] In order to effectively monitor very ill patients, they often are connected to monitoring systems, such as telemetry systems. These systems generally include a number of monitors, such as ECG devices and reusable transmitters, for obtaining and measuring biomedical information from connected patients. Note that while different types of monitors are used in telemetry systems, typical systems using transmitters use reusable transmitters. Most reusable transmitters require replaceable and standardized batteries and electrodes to properly obtain and measure information from connected patients. Upon obtaining information from a connected patient, each reusable transmitter transmits the information to a central station, which receives information from multiple monitors and processes, displays and stores the received information. In current telemetry systems, there is a considerable safety issue in associating information in the central station with the appropriate transmitter and ultimately the appropriate patient.

[0003] Reusable transmitters are relatively expensive items that must be tracked and managed over long periods of time. Currently, not all batteries or electrodes work with all reusable transmitters. Therefore, batteries and electrodes used in these transmitters also must be managed, tracked and replenished. Moreover, transmitters are usually subjected to very extreme conditions and failure is not uncommon. Hence, considerable time is spent troubleshooting problems in telemetry systems. Additionally, clinical environments are busy and fast paced. Therefore, relatively expensive reusable transmitters are easily lost, removed from the premises, and/or discarded.

[0004] In order to obtain required information from patients, transmitters are usually worn for extended periods of time. This often causes the transmitters to become soiled by various bodily fluids. Thus, the transmitters must be cleaned between patients' uses and at other times when they are soiled. However, due to the complex mechanical construction of reusable transmitters, cleaning is generally labor intensive and unpleasant and may not be thoroughly performed.

[0005] Reusable transmitters are generally bulky which make them uncomfortable for patients to wear for extended periods of time, especially while sleeping. However, due to the expense associated with most reusable transmitters, there is a minimum size requirement to prevent loss. For example, most manufacturers require that the sizes of their reusable transmitters be such that they can not be flushed down a toilet.

[0006] To solve the above mentioned problems, a current telemetry system uses a single disposable transmitter, as set forth in U.S. Pat. No. 5,718,234. However, the disposable transmitter, described therein, can only transmit information to a device, such as a central station, which accepts one

transmission at a time. Thus, there can be no other active transmitters in the area where the disposable transmitter is being used. Most telemetry applications require using multiple transmitters on many different patients at the same time. Thus, to be logistically practical, preferably multiple disposable telemetry transmitters are used simultaneously and/or with reusable transmitters and information transmitted from each disposable transmitter must be properly associated with the transmitter and the connected patient.

[0007] Therefore, in telemetry systems where there are multiple transmitters, an efficient system must be created for configuring different types of transmitters and for associating the correct data with each transmitter.

SUMMARY OF THE INVENTION

[0008] The present invention relates to a system and method for simultaneously using and configuring one or more disposable and/or non-disposable transmitters. In one embodiment, the system includes at least one single use disposable transmitter, a central station, and a receiver module. The transmitter is connected to a patient to gather and measure biomedical information. The transmitter transmits the biomedical information through the receiver module to the central station for processing, storing and displaying. Prior to use, each transmitter must be configured to work with the central station and the receiver module. This allows the users to configure the disposable transmitters relatively quickly and easily without needing advanced technical experience or information. The system configuration also enables the operator to map a location on a monitor in the central station to a specific disposable transmitter and ultimately to a specific patient or location in the coverage area that is covered by the system.

[0009] Specifically, in a preferred embodiment of the invention, the system includes several channels, preferably wireless channels, for transmitting data between the transmitter and the receiver module. Each wireless channel is configured for use by one transmitter and receiver module and mapped to the central station. Each disposable transmitter includes one or more processing units for processing biomedical data gathered from a patient. In a preferred embodiment, after processing the biomedical data, the transmitter sends the data to the receiver module via a wireless channel. The receiver module includes components that format the data for further transmission to the central station.

[0010] The central station includes a display and a processing base for processing and storing incoming data. The processing base operates the display, and includes a transmitter programming interface for programming and configuring transmitters and an output component for displaying information and for generating print outs of biomedical data. The display screen is divided into multiple patient tiles and/or regions for displaying information, controls, and instructions. Each patient tile is on a predetermined portion of the screen, e.g. a rectangular portion; and each tile includes several regions for displaying patient information.

[0011] According to the invention in a wireless environment, during configuration of a disposable transmitter, each tile associated with the disposable transmitter is associated with a specific radio frequency. The radio frequency represents the channel into which the receiver associated with the tile is tuned. Once a tile is associated with a transmitter, the

location of the tile is generally static on the display. This enables the operator of the system to associate a tile with a transmitter and ultimately a patient and/or location in the coverage area.

[0012] The software for operating the central station includes multiple Virtual Patient Objects (VPO). Each patient's tile is mapped to one VPO and each VPO also is mapped to one receiver object. Each receiver object maintains control of one receiver and the receiver object retains information necessary to configure the receiver to a fixed wireless channel. During operation, biomedical information flows from the transmitter through the receiver and the receiver object into memory in the central monitor station. Thereafter, the information is transmitted to the VPO for display in an associated patient tile. The VPO associated with each tile maintains knowledge of whether or not a patient is admitted to the tile.

[0013] Prior to using the system, the operator must configure each disposable transmitter to work with the central station. During configuration, the operator connects a programming port of a new transmitter into the transmitter programming interface of the central station. The programmer object software in the central station detects the presence of the new transmitter and notifies a command processor. The command processor instructs the operator to select a patient tile that is to be associated with the new transmitter. If a patient is already associated with the tile, the system instructs the operator to use a new tile, deactivate the transmitter associated with the tile and/or discharge the patient that is currently associated with the tile. If there is no patient associated with the tile, the system determines if an active transmitter is assigned to the wireless channel that is used by the tile. If an active transmitter is detected, the system instructs the operator to deactivate the active transmitter. Thereafter, the system programs the transmitter with the frequency associated with the tile and the transmitter's serial number is stored in the tile. The transmitter's serial number is also included in transmitted data packets from the transmitter. The associated tile uses the serial number to identify and only display data from the appropriate transmitter. In one embodiment, the user is then instructed to enter identifying patient data into the display screen and to write the patient's name on the associated transmitter.

[0014] According to the invention, each transmitter is marked with disposal instructions in order to deactivate and dispose of the transmitter after use. Alternatively, each transmitter may deactivate and disable itself after being disconnected from the patient for a predetermined amount of time.

[0015] In another embodiment of the invention, the system may include one or more remote programming stations that may be included in several locations in a coverage area or in remote locations. The remote programming station may duplicate the central station's display, showing the same data and allowing the same interactions as the central station's display or it may be programmed in other ways to display and receive other information.

[0016] Additional features and advantages of the invention will be set forth in the description that follows, and in part will be apparent from the description, or may be learned by practice of the invention. Certain objectives and advantages of the invention will be realized and attained by the

system particularly pointed out in the written description and claims hereof as well as the appended drawings.

[0017] To achieve these and other advantages and in accordance with the purpose of the invention, as embodied and broadly described, the present invention provides a computer driven system for processing biomedical data from at least one patient, including: one or more disposable transmitters that are each connected to one patient to obtain biomedical data from the patient. Each disposable transmitter includes a connection for obtaining biomedical data from a patient, one or more processing components for processing biomedical data from the patient, and one or more transmitters for transmitting the biomedical data; one or more receiving components for receiving biomedical data from the disposable transmitters; and a central station for processing, storing and displaying the biomedical data. The central station includes a configuration component for configuring each disposable transmitter prior to use and for associating biomedical data from each disposable transmitter with a specific region on a display in the central station.

BRIEF DESCRIPTION OF THE DRAWINGS

[0018] The accompanying drawings, which are included to provide a further understanding of the invention and are incorporated in and constitute a part of this specification, illustrate embodiments of the invention that together with the description serve to explain the principles of the invention.

[0019] In the drawings:

[0020] **FIG. 1** illustrates a medical system used in the invention;

[0021] **FIG. 2** illustrates a preferred embodiment of a disposable transmitter that is used in **FIG. 1**;

[0022] **FIG. 3** illustrates a preferred embodiment of a central station and a receiver module used in **FIG. 1**;

[0023] **FIG. 4** illustrates a preferred embodiment of the central station's display format;

[0024] **FIG. 5** illustrates a preferred embodiment of the software that is used to operate the central station;

[0025] **FIG. 6** illustrates a flow diagram which describes how to connect the first patient to the inventive system;

[0026] **FIG. 7** illustrates a flow diagram which describes how to connect additional transmitters to the inventive system; and

[0027] **FIG. 8** illustrates a medical telemetry system with a plurality of remote central stations.

DETAILED DESCRIPTION

[0028] Reference will now be made in detail to the preferred embodiments of the present invention, examples of which are illustrated in the accompanying drawings. In one embodiment, the present invention extends the functionality of the inventive system and method for configuring and using multiple disposable transmitters in a telemetry system.

[0029] **FIG. 1** illustrates a medical system **100** that comprises multiple transmitters (**10A-10E**), central stations (**40A-40B**), and receiver modules (**60A-60C**). As would be obvious to one skilled in the art, other monitors for gathering

biomedical information, such as ECG devices, may be used in place of or with transmitters (10A-10E). Each transmitter (10A-10E) is connected to a patient to obtain and measure biomedical information from the patient. The obtained information is later transmitted to one or more central stations (40A-40B) for processing, storage, and display. In a preferred embodiment, the display on one central station may be replicated on other central stations for redundancy.

[0030] According to the inventive system, transmitters (10A-10E) may be single use disposable transmitters and/or reusable transmitters and may operate in a hard wired or wireless environment. In a preferred embodiment of the system, transmitters (10A-10E) are wireless, disposable transmitters. Each disposable transmitter may be included in a kit with the appropriate wiring, batteries, electrodes, patient preparation supplies, such as alcohol and wipes, and instructions for setting up and using the disposable transmitters for easier management and maintenance.

[0031] In prior systems, reusable transmitters are configured by trained technical professionals. According to the inventive system, disposable transmitters may be configured in an automated and intuitive manner by clinical professionals who have little technical training. Thus, in the present invention, prior to using each disposable transmitter (10A-10E), the transmitter must be configured to work with one or more central stations (40A-40B) and one receiver module (60A-60C). In a preferred embodiment of the invention, central stations (40A-40B) may include one or more programming stations for configuring disposable transmitters (10A-10E). Alternatively, the programming stations may be separate from central stations (40A-40B). The programming stations allow the users of disposable transmitters (10A-10E) to configure them relatively quickly and easily without needing advanced technical information, such as available radio channels. In a preferred embodiment, each transmitter (10A-10E) is configured in its package at a central station (40A-40B) and taken to the patient's location for use on the patient. This procedure ensures easier management and maintenance of disposable transmitters (10A-10E).

[0032] After configuration, each transmitter (10A-10E) is connected to a patient to gather biomedical information from the patient. Information obtained by each transmitter (10A-10E) is delivered over a radio channel to one of several receiver modules (60A-60C). In a preferred embodiment of the invention, radio channels (80A-80E) are wireless channels. The information is then relayed over a wired system backbone (95) from the receiver modules (60A-60C) to the appropriate central station (40A-40B). In one embodiment, each receiver module (60A-60C) may be located in the same computer as a central station (40A-40B).

[0033] In order for the system to function properly, prior system configuration must be performed such that each disposable transmitter (10A-10E) is correctly programmed to transmit information via a dedicated wireless channel (80A-80E). According to the invention, each wireless channel (80A-80E) is configured to and used by one transmitter (10A-10E). The receiver module (60A-60C) that receives information from a transmitter also must be configured to the same wireless channel (80A-80E) as the transmitter, and the receiver module must be mapped to the appropriate central station (40A-40B), such that each patient's data is sent not only to the correct central station, but also to the correct area on the central station's monitor.

[0034] FIG. 2 illustrates a preferred embodiment of disposable transmitter (10A-10E) that is used in FIG. 1. In each disposable transmitter (10A-10E), biomedical data is gathered from the patient through a connection 210 that is in contact with the patient and the data is processed by a processing circuitry 220. The data is digitized and further processed by a microprocessor 230. Thereafter, the data is transmitted to a receiver module (60A-60C) via a frequency synthesized transmitter 240 and an antenna 250. In one embodiment, disposable transmitter (10A-10C) operates on a power supply, such as battery 260, and may be programmed or configured via a programming port 270. As may be obvious to one skilled in the art, other powering devices, such as electricity may be used in place of a battery.

[0035] In a preferred embodiment, the present invention includes an ECG monitor, such as that described in U.S. patent application Ser. No. 09/776,324, which is hereby incorporated by reference in its entirety.

[0036] According to the present invention, each transmitter (10A-10E) is marked with disposal instructions describing how to deactivate, recycle and/or dispose of the transmitter after use. Alternatively, each transmitter (10A-10E) may deactivate and disable itself after being disconnected from the patient for a predetermined period of time. After deactivation, electronics in the disposable transmitters (10A-10E) may be recycled. In a preferred embodiment, a stamped envelop that is pre-addressed with the address of a recycling facility is included with each new set of transmitters (10A-10E) for returning the transmitters for recycling after use. Upon receiving used transmitter (10A-10E), the sender is automatically credited and the circuit board is removed from used transmitter (10A-10E), cleaned and inserted into a new disposable transmitter. Recycled transmitters (10A-10E) are then shipped again and include a pre-addressed stamped envelope for recycling.

[0037] FIG. 3 illustrates a preferred embodiment of central station (40A-40B) and receiver module (60A-60C). In a preferred embodiment, each central station (40A-40B) includes a processing base 310 and a display 320 having a touch screen. Processing base 310 processes and stores incoming data and operates display 320. In one embodiment, display 320 is in close proximity to transmitter (10A-10E) during system configuration. Processing base 310 also communicates with a transmitter programming interface 330 for programming and configuring transmitters (10A-10E), and an output device 340, such as a strip chart recorder, for generating print outs of biomedical data. According to the present invention, an operator may use a remote transmitter programming interface 330 to remotely program transmitter (10A-10E) and assign an associated patient to a location on the display. Processing base 310 also connects central station (40A-40B) to receiver modules (60A-60C) via wired system backbone 95.

[0038] Each receiver module (60A-60C) includes several wireless receiver boards 350 which are connected to an interface board 360 via an internal back-plane 370 which connects interface board 360 and receiver boards 350. After receiving data from transmitters, interface board 360 formats the data for further transmission to a central station (40A-40B). Each receiver board 350 includes one or more frequency synthesized receivers 380 which may be used to tune in data from a specific transmitter (10A-10E). When a

transmitter is configured, an associated receiver board **350** also must be configured to tune the receiver module (**60A-60C**) to the correct frequency on the wireless channel that is associated with the transmitter. Thereafter, interface board **360** and processing base **310** must be configured to transmit data to the correct location on the display **320** and to the patient associated with that location.

[0039] **FIG. 4** illustrates a preferred embodiment of the central station display **320** format. Display screen **320** in central station (**40A-40B**) is divided into multiple patient tiles **450**. Each patient tile **450** displays data transmitted from one patient and each tile may comprise several regions **410-430** that display patient information, such as identifying information, numerical biomedical data, and waveform biomedical data. According to the invention, each tile **450** is associated with a disposable transmitter (**10A-10E**) and also is associated with a specific radio frequency. The radio frequency represents a channel into which the receiver associated with the tile is tuned. Each time the system is started, each patient's tile **450** appears in the location it was during its previous operating period. During normal operations, the location and size of tile **450** is largely static and pre-determined. This enables the operator of the system to map a location on the display with a specific transmitter and ultimately a specific patient. In situations where a transmitter is associated with a specific location, the location may also be mapped to a specific tile through the associated transmitter. In other embodiments of the invention, it is possible for an operator of the display to resize and/or move tile **450** on display screen **320**. As is obvious to one skilled in the art, the location and size of tile **450** are determined by the user of the system.

[0040] Display screen **320** also includes controls and instructions regions, such as a soft-key area **440** and a message area **445**. Soft-key area **440** displays control keys that are used by the operator to control various features of central station (**40A-40B**). Message area **447** instructs and alerts users of the telemetry system to various system conditions. Display screen **320** may additionally employ one or more pop-up control boxes **447** to inform the operator of various conditions and instructions and to gather information from the operator.

[0041] **FIG. 5** illustrates a preferred embodiment of the software that is used to operate central station (**40A-40B**). The software includes multiple Virtual Patient Objects (VPO) **510**, whereby each patient's tile **450** is mapped to one VPO **510**. Each VPO **510** also is mapped to one receiver object **520**. In one embodiment of the invention, each VPO may be mapped directly and permanently to one tile **450** and to one receiver object **520**. Each receiver object **520** maintains control of one receiver module (**60A-60C**) and receiver object **520** retains all information necessary to configure receiver module (**60A-60C**) to a fixed wireless channel (**80A-80E**). During normal operations, biomedical information from disposable transmitter (**10A-10E**) flows through receiver module (**60A-60C**) and receiver object **520** into memory in central station (**40A-40B**). Thereafter, the information is transmitted to VPO **510** for display in an associated patient tile **450**.

[0042] According to the invention, each patient connected to a transmitter (**10A-10E**) is typically admitted to an active patient tile **450** in order to correctly associate the patient's

identifying information with the biomedical information on the tile. A patient is admitted to tile **450** when the operator enters identifying patient information in tile **450**. In some cases, however, a patient connected to a transmitter (**10A-10E**) may not be admitted to a patient tile **450**. Nevertheless, VPO **510** associated with each tile **450** maintains knowledge of whether or not a patient is admitted to the tile. If a patient is admitted to the tile, VPO **510** retains the patient's identifying information.

[0043] **FIG. 6** illustrates a flow diagram that describes how to connect the first patient to the system according to the present invention. In Step **610**, the operator connects programming port **270** of a new disposable transmitter **10A** into transmitter programming interface **330** of a central station (**40A-40B**). At Step **620**, the programmer object software in central station (**40A-40B**) detects the presence of new transmitter **10A** and notifies command processor base **310**. At Step **630**, command processor base **310** uses the message area of central station's display **320** to instruct the operator to select patient tile **410A** that is to be associated with new disposable transmitter **10A**. In a preferred embodiment of the present invention, the operator selects patient tile **410A** by touching a tile on display screen **320**. Other methods, such as a mouse and/or a keyboard, may be used by the operator to select patient tile **410A**. At Step **640**, the system programs transmitter **10A** and receiver module **60A** with the frequency associated with tile **410A** and the transmitter's serial number is stored in tile **410A**. The transmitter's serial number is also included in transmitted data packets from transmitter **10A**. Associated tile **410A** uses the serial number to identify and only display data from transmitter **10A**. At Step **650**, other information, such as the software version of transmitter **10A**, is also read out of transmitter **10A** during configuration. At Step **660**, the user is instructed to enter identifying patient data into display screen **320** and to write the patient's name on transmitter **10A**. At Step **670**, transmitter **10A** is connected to the patient to obtain biomedical data from the patient.

[0044] **FIG. 7** illustrates a flow diagram that describes how to connect or disconnect one or more transmitters to the inventive system. At Step **710**, the operator connects programming port **270** of new disposable transmitter **10B** into transmitter programming interface **330** of central station **40**. The programmer object software in central station (**40A-40B**) detects the presence of new transmitter **10B** and notifies command processor base **310**. Command processor base **310** reads transmitter **10B** serial number and uses the message area of central station display **320** to instruct the operator to select patient tile **410B** that is to be associated with new disposable transmitter **10B**. In Step **720**, the operator selects VPO **510**, to be associated with transmitter **10B** and patient tile **410B**, by touching patient tile **410B**.

[0045] In Step **730**, once a selection has been made, VPO **510** is inspected to determine if there is a patient that is currently admitted to and/or associated with tile **410B**. In Step **740**, if there is already a patient admitted to tile **410B**, the operator is asked if an exhausted transmitter is being replaced. In Step **750**, if an exhausted transmitter is not being replaced, the system instructs the operator to first discharge the patient that is currently admitted to tile **410B**. In Step **760**, the operator is instructed to admit a new patient to tile **410B**. In Step **770**, if an exhausted transmitter is being replaced, the system determines if a transmitter is active on

the channel assigned to associated receiver object **520**. In Step **780**, if there is an active transmitter on the channel, the system assumes that the operator is replacing the transmitter associated with tile **410B** for a valid reason. The system then instructs the operator to remove the old transmitter before activating new transmitter **10B**.

[0046] In Step **790**, if there is no patient admitted to and/or associated with tile **410B**, the system determines if a transmitter is active on the channel assigned to associated receiver object **520**. In Step **7010**, if there is an active transmitter on the channel, the system instructs the operator to remove the old transmitter before activating new transmitter **10B**. In Step **7020**, if there is no active transmitter on the channel, the system instructs the operator to admit the patient.

[0047] In Step **7030**, transmitter **10B** is programmed to the radio frequency of receiver object **520**. In Step **7040**, the serial number of transmitter **10B** is read from its microprocessor **230** and programmed into the receiver object **520**. At Step **7050**, the operator is instructed to identify the patient on transmitter **10B**, for example, to manually label (using for example, permanent marker and surgical tape) or electronically write (using the programming station) a patient's name and/or identification number on transmitter **10B**.

[0048] FIG. 8 illustrates an embodiment of a telemetry system with one or more remote programming stations (**810A-810C**). Remote programming stations **810** may be included in several locations in the coverage area. For example, a coverage area may be a hospital with many floors. Central station (**40A-40B**) may be located on one floor and remote programming stations (**810A-810C**) may be located on other floors. In another example, the coverage area also may include locations that are different from the location where central station (**40A-40B**) is located. Therefore, remote programming stations (**810A-810C**) may be located in locations that are different from the location where central station (**40A-40B**) is located. Remote programming station (**810A-810C**) may be a mirror of central station's display **320**, showing the same data and allowing the same interactions. Alternatively, the display associated with remote programming station (**810A-810C**) may show only data entered on that station. As would be obvious, remote stations could be programmed in various ways to display various information as required to meet a particular use of the system.

[0049] The foregoing description has been directed to specific embodiments of this invention. It will be apparent, however, that other variations and modifications may be made to the described embodiments, with the attainment of some or all of their advantages. Therefore, it is the object of the appended claims to cover all such variations and modifications as come within the true spirit and scope of the invention.

What is claimed:

1. A medical telemetry system comprising:

- a patient monitor;
- a first communications element in communication with the patient monitor;
- a central station in communication with the first communications element;

a second communications element in communication with the first communications element and the central station; and

a programming station in communication with the central station, the programming station having a user interface including a predetermined portion of a display assigned to a communications channel.

2. The medical telemetry system of claim 1, wherein the programming station further comprises instructions for receiving patient information, storing the patient information to electronic media, and taking further acts with respect to the patient information.

3. The medical telemetry system of claim 2, wherein the patient information includes patient identification information.

4. The medical telemetry system of claim 2, wherein the patient information includes medical data.

5. The medical telemetry system of claim 2, wherein the patient information includes use history of the patient monitor.

6. The medical telemetry system of claim 2, wherein the instructions for taking further acts include instructions for assigning the patient monitor to the communications channel.

7. The medical telemetry system of claim 2, wherein the instructions for taking further acts include instructions for prompting a user to label the patient monitor with a patient identifier.

8. The medical telemetry system of claim 7, wherein the label is manually placed on the patient monitor.

9. The medical telemetry system of claim 2, wherein the programming station further comprises instructions to prompt a user to enter patient information.

10. The medical telemetry system of claim 2, wherein the instructions for taking further acts include instructions for confirming the patient monitor is assigned to a specific patient.

11. The medical telemetry system of claim 2, wherein the instructions for taking further acts include instructions for disabling the patient monitor.

12. The medical telemetry system of claim 2, wherein the user interface is a touch screen.

13. A computer driven system for processing biomedical data from at least one patient, comprising:

one or more monitoring devices that are each connected to one patient to obtain biomedical data from the patient;

a central station for processing, storing and displaying the biomedical data on a display, wherein the display includes several regions and each region is associated with one monitoring device;

a transmitter for transmitting the biomedical information from the one or more monitoring devices to the central station; and

a configuration device for configuring each monitoring device to a channel and for configuring the channel to a region on the display, such that each region on the display is mapped to a specific monitoring device.

14. A computer driven system for processing biomedical data from at least one patient, comprising:

- one or more disposable transmitters that are each connected to one patient to obtain biomedical data from the patient;
- one or more receiver modules for transmitting biomedical data from the disposable transmitters to a central station, the central station processes, stores and displays the biomedical data; and
- a configuration device for configuring each disposable transmitter to work with one receiver module and the central station prior to connecting the disposable transmitter to the patient.
- 15.** The system of claim 14, further comprising at least one wireless channel that is configured for use by one disposable transmitter and mapped to one receiver module and the central station, wherein the disposable transmitter sends information to the receiver module via the wireless channel.
- 16.** The system of claim 14, wherein each disposable transmitter comprises:
- a connection for obtaining biomedical data from a patient;
 - one or more processing components for processing biomedical data from the patient; and
 - one or more transmitters for transmitting the biomedical data to the receiver module.
- 17.** The system of claim 16, wherein the disposable transmitter operates on a power source.
- 18.** The system of claim 16, wherein the disposable transmitter is configured via a programming port.
- 19.** The system of claim 14, wherein the disposable transmitter includes disposal instructions for deactivating and disposing of the disposable transmitter after use.
- 20.** The system of claim 14, wherein the disposable transmitter deactivates itself after being disconnected from the patient for a predetermined period of time.
- 21.** The system of claim 14, where electronics from the disposable transmitter is recycled after use.
- 22.** The system of claim 14, wherein the disposable transmitter is included in a prepackaged kit for easier management and maintenance.
- 23.** The system of claim 14, wherein the central station comprises:
- a software component for operating the central station;
 - a processing base for processing and storing incoming data; and
 - a display that is operated by the processing base, the display is used for displaying biomedical and instructional data.
- 24.** The system of claim 23, wherein the processing base communicates with a transmitter programming interface for programming and configuring disposable transmitters, and output generating means for generating outputs of biomedical data.
- 25.** The system of claim 23, wherein the processing base connects the central station to one or more receiver modules via a wired system backbone.
- 26.** The system of claim 23, wherein the display comprises:
- a plurality of patient tiles, wherein each patient tile is associated with a disposable transmitter and each patient tile displays data transmitted from an associated disposable transmitter for the connected patient, thereby enabling the system to associate a patient tile with a specific disposable transmitter;
 - one or more instruction regions; and
 - one or more input/output regions for presenting and gathering information from an operator.
- 27.** The system of claim 26, wherein each patient tile is associated with a specific radio frequency on a channel that a receiver associated with the tile is tuned into.
- 28.** The system of claim 26, wherein each patient tile appears in its previous location each time the system is started up and during normal operations, such that an operator may map a location on the display with a specific transmitter and patient.
- 29.** The system of claim 23, wherein the software component comprises:
- a plurality of virtual patient objects that maintain patient tiles on the display, wherein each virtual patient object is mapped to one patient tile in the display;
 - a plurality of receiver objects, wherein each receiver object maintains control of a receiver and retains all information that is necessary to configure the receiver to a fixed channel; and
 - means for mapping each receiver object with one virtual patient object.
- 30.** The system of claim 14, wherein the receiver module comprises:
- a plurality of wireless receiver boards which are connected to an interface board, wherein, each receiver board comprises one or more frequency synthesized receivers for tuning in data from a specific disposable transmitter; and
 - the interface board for formatting data for transmission to the central station.
- 31.** A computer driven system for processing biomedical data from at least one patient, comprising:
- one or more disposable transmitters that are each connected to one patient to obtain biomedical data from the patient, wherein each disposable transmitter comprises:
 - a connection for obtaining biomedical data from a patient, one or more processing component for processing biomedical data from the patient, and one or more transmitters for transmitting the biomedical data;
 - one or more receiving components for receiving biomedical data from the disposable transmitters; and
 - a central station for processing, storing and displaying the biomedical data, the central station comprises a configuration component for configuring each disposable transmitter prior to use and for associating biomedical data from each disposable transmitter with a specific region on a display in the central station.
- 32.** The computer driven system of claim 31, wherein the central station comprises at least one remote station.
- 33.** The computer driven system of claim 31, wherein the central station is duplicated for redundancy.
- 34.** A method for processing biomedical data from at least one patient, comprising:
- configuring at least one disposable transmitter;

connecting a patient to a configured disposable transmitter;

obtaining biomedical data from the patient through the configured disposable transmitter;

processing biomedical data from the patient in at least one processing component in the configured biomedical transmitter;

transmitting the biomedical data from the configured disposable transmitter to a receiving component;

obtaining the biomedical data from the receiving component and processing, storing and displaying the biomedical data on a central station; and

associating the biomedical data from the disposable transmitter with a specific region on a display in the central station.

35. A software component for processing biomedical data obtained from a patient in order to display the biomedical data on a computer screen, comprising

a plurality of virtual patient objects that maintain patient tiles on the computer screen, wherein each virtual patient object is mapped to one patient tile on the computer screen; and

a plurality of receiver objects, wherein each receiver object maintains control of a receiver, on a fixed channel, that obtains information from a disposable transmitter connected to the patient, the disposable transmitter obtains biomedical information from the connected patient, and each receiver object retains all information that is necessary to configure the receiver to the fixed channel; and

means for mapping each receiver object with one virtual patient object; and

means in the virtual patient object for mapping information from the receiver object with the patient tile.

36. A method for configuring a disposable transmitter in a patient monitoring system, comprising:

connecting a programming port of the disposable transmitter into a programming device;

detecting, in the programming device, the presence of the disposable transmitter;

instructing an operator to select a patient tile that is to be associated with the disposable transmitter; and

programming the disposable transmitter and related components to a frequency associated with the patient tile.

37. A method for recycling electronics in a disposable transmitter that is used in a telemetry system, comprising:

shipping at least one disposable transmitter with a pre-addressed stamped envelop;

using the disposable transmitter;

returning the disposable transmitter after use;

crediting a sender for the returned disposable transmitter; and

removing components from the disposable transmitter and inserting them into a new disposable transmitter.

* * * * *

专利名称(译)	用于使用多个医疗监视器的系统和方法		
公开(公告)号	US20030146847A1	公开(公告)日	2003-08-07
申请号	US10/066549	申请日	2002-02-05
申请(专利权)人(译)	VIASYS HEALTHCARE , INC.		
当前申请(专利权)人(译)	INVIVO CORPORATION		
[标]发明人	SWETLIK DONALD EDWARD WHITTEN ROBERT EDWARD PAUL RICHARD BRIAN EDSTROM GARY BRUCE ZEDNIK GARY MICHAEL DECASTRO CELSO OCHOA JR CARR ROY SEIZO		
发明人	SWETLIK, DONALD EDWARD WHITTEN, ROBERT EDWARD PAUL, RICHARD BRIAN EDSTROM, GARY BRUCE ZEDNIK, GARY MICHAEL DECASTRO, CELSO OCHOA JR. CARR, ROY SEIZO		
IPC分类号	A61B5/00 H04M11/00 G08C15/00 G08C15/04 G08B23/00 G08B21/00		
CPC分类号	A61B5/0002 A61B2560/0271 Y10S128/903 H04M11/002 A61B2560/0276		
其他公开文献	US7091879		
外部链接	Espacenet USPTO		

摘要(译)

本发明涉及一种用于同时使用和配置一个或多个一次性发射器的系统和方法。该系统包括至少一个单个或多个使用的一次性发射器，中心站和接收器模块。发射器连接到患者以收集和测量生物医学信息。发送器通过接收器模块将生物医学信息发送到中心站以进行处理，存储和显示。在使用之前，每个发射器必须配置为与中心站和接收器模块一起工作。这允许用户相对快速且容易地配置一次性发射器而无需高级技术信息。本发明的配置还使操作者能够将中心站中的监视器上的位置映射到特定的一次性发射器，并最终映射到系统覆盖的覆盖区域中的特定患者或位置。

