



US006886978B2

(12) **United States Patent**  
**Tokita et al.**

(10) **Patent No.:** **US 6,886,978 B2**  
(45) **Date of Patent:** **May 3, 2005**

(54) **ELECTRONIC CLINICAL THERMOMETER**

(75) Inventors: **Muneo Tokita, Kyoto (JP); Satoshi Nakajima, Kyoto (JP); Shigeru Makita, Kyoto (JP)**

(73) Assignee: **OMRON Corporation, Kyoto (JP)**

(\*) Notice: Subject to any disclaimer, the term of this patent is extended or adjusted under 35 U.S.C. 154(b) by 0 days.

5,755,670	A	*	5/1998	McKown et al.	600/505
6,149,297	A	*	11/2000	Beerwerth et al.	
6,219,573	B1	*	4/2001	Pompei	
6,220,750	B1	*	4/2001	Palti	
6,245,094	B1	*	6/2001	Pompei	607/104
6,250,802	B1	*	6/2001	Dotan	
6,356,774	B1	*	3/2002	Bernstein et al.	600/323
6,533,731	B2	*	3/2003	Pottgen et al.	600/549
6,575,922	B1	*	6/2003	Fearnside et al.	601/2
6,719,780	B1	*	4/2004	Salmon et al.	607/108
6,827,487	B2	*	12/2004	Baumbach	374/164
2003/0040783	A1	*	2/2003	Salmon	607/111

(21) Appl. No.: **10/166,586**

(22) Filed: **Jun. 5, 2002**

(65) **Prior Publication Data**

US 2002/0191675 A1 Dec. 19, 2002

(30) **Foreign Application Priority Data**

Jun. 18, 2001 (JP) ..... 2001-184134

(51) **Int. Cl.**<sup>7</sup> ..... **G01K 7/42; A61B 5/001**

(52) **U.S. Cl.** ..... **374/169; 374/134; 374/30; 600/549**

(58) **Field of Search** ..... **374/169, 163, 374/164, 170, 100, 134, 29, 30; 600/474, 549**

(56) **References Cited**

**U.S. PATENT DOCUMENTS**

3,404,678	A	*	10/1968	Von Ardenne	600/483
3,491,596	A	*	1/1970	Dean	374/178
3,933,045	A	*	1/1976	Fox et al.	
4,158,965	A	*	6/1979	Prosky	
4,183,248	A	*	1/1980	West	
5,015,102	A	*	5/1991	Yamaguchi	374/107
5,017,018	A	*	5/1991	Iuchi et al.	
5,066,141	A	*	11/1991	Ikeda et al.	374/169
5,127,742	A	*	7/1992	Fraden	
5,216,625	A	*	6/1993	Rall	702/134
RE34,507	E	*	1/1994	Egawa et al.	
5,293,877	A	*	3/1994	O'Hara et al.	
5,352,039	A	*	10/1994	Barral et al.	

**FOREIGN PATENT DOCUMENTS**

DE	3527942	A	*	2/1987	..... G01K/7/00
JP	56060326		*	5/1981	
JP	61000728	A	*	1/1986	
JP	61241631	A	*	10/1986	
JP	01189526	A	*	7/1989	
JP	03126471	A	*	5/1991	..... A61N/1/40
JP	03196206	A	*	8/1991	..... G05D/23/19
JP	3273121	A	*	12/1991	..... G01J/5/10
JP	04352971	A	*	12/1992	..... A61N/5/02
JP	2003010230	A	*	1/2003	..... A61F/7/08

\* cited by examiner

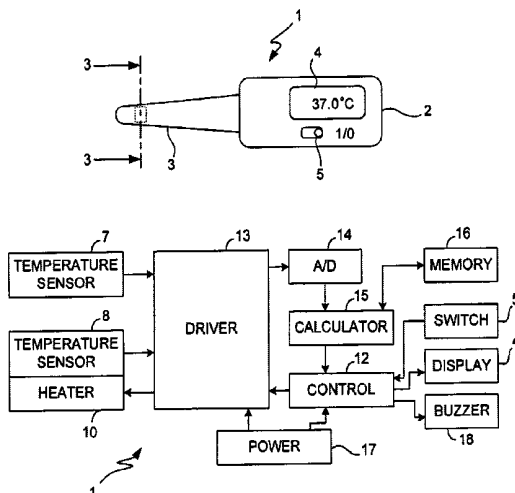
*Primary Examiner*—Gail Verbitsky

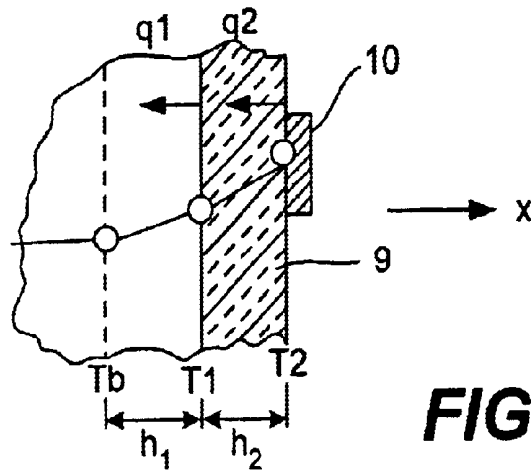
(74) *Attorney, Agent, or Firm*—Beyer Weaver & Thomas LLP

(57) **ABSTRACT**

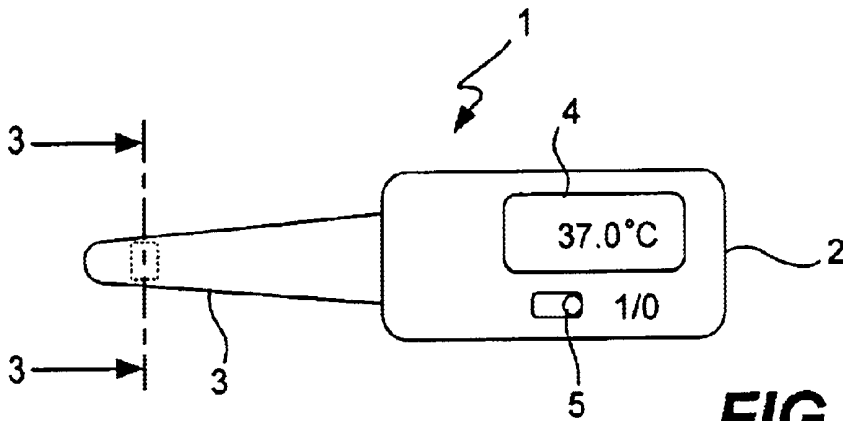
An electronic clinical thermometer has a probe including a variable-temperature heater and one or more temperature sensors and may also include a heat flux sensor. Physical variables such as temperature, time rate of change in temperature and/or heat flow rate are directly measured at positions on the surface of a patient while being heated by the heater through a thermally insulating member. Such measured values are used to solve a heat transfer equation rewritten as lower-order equations. Measurements may be controlled to be taken at a desired timing such as at specified intervals. The probe for contacting the patient's body may be planar or in an elongated bar-shape.

**21 Claims, 11 Drawing Sheets**

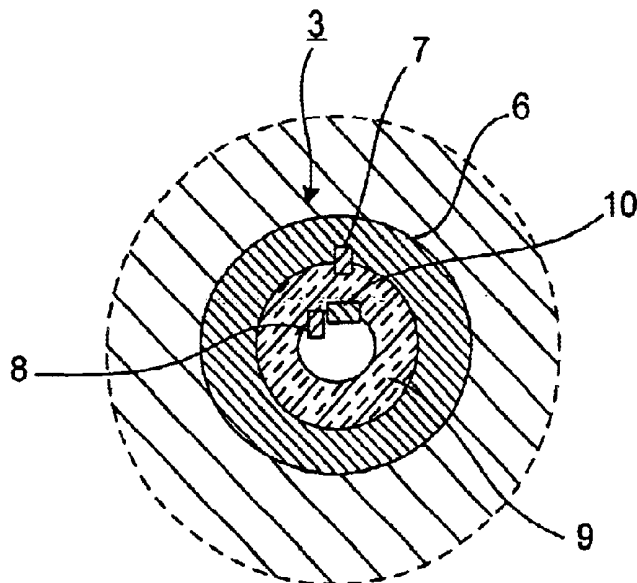




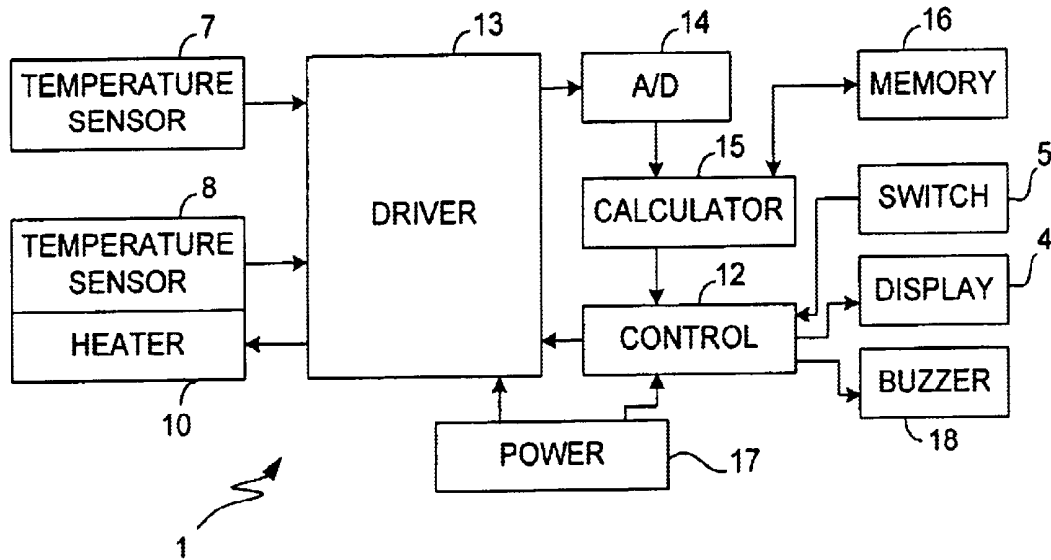
**FIG. 1**



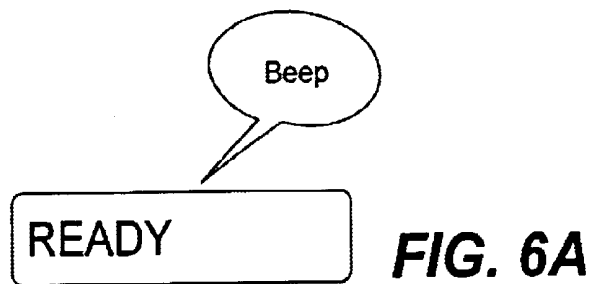
**FIG. 2**



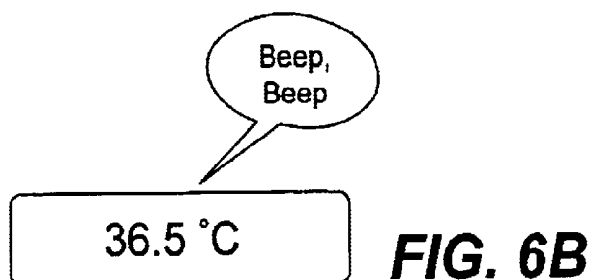
**FIG. 3**



**FIG. 4**



**FIG. 6A**



**FIG. 6B**

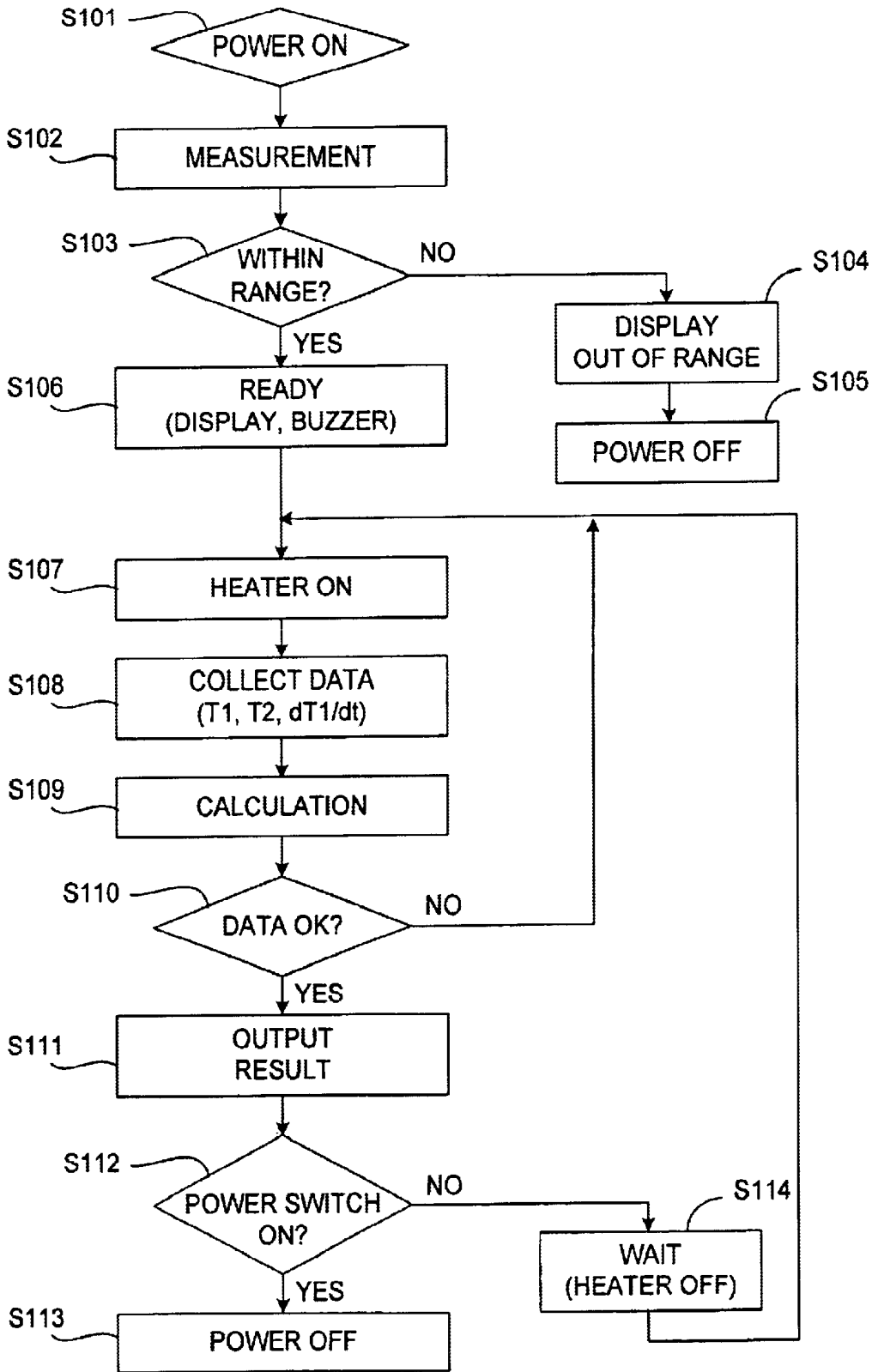
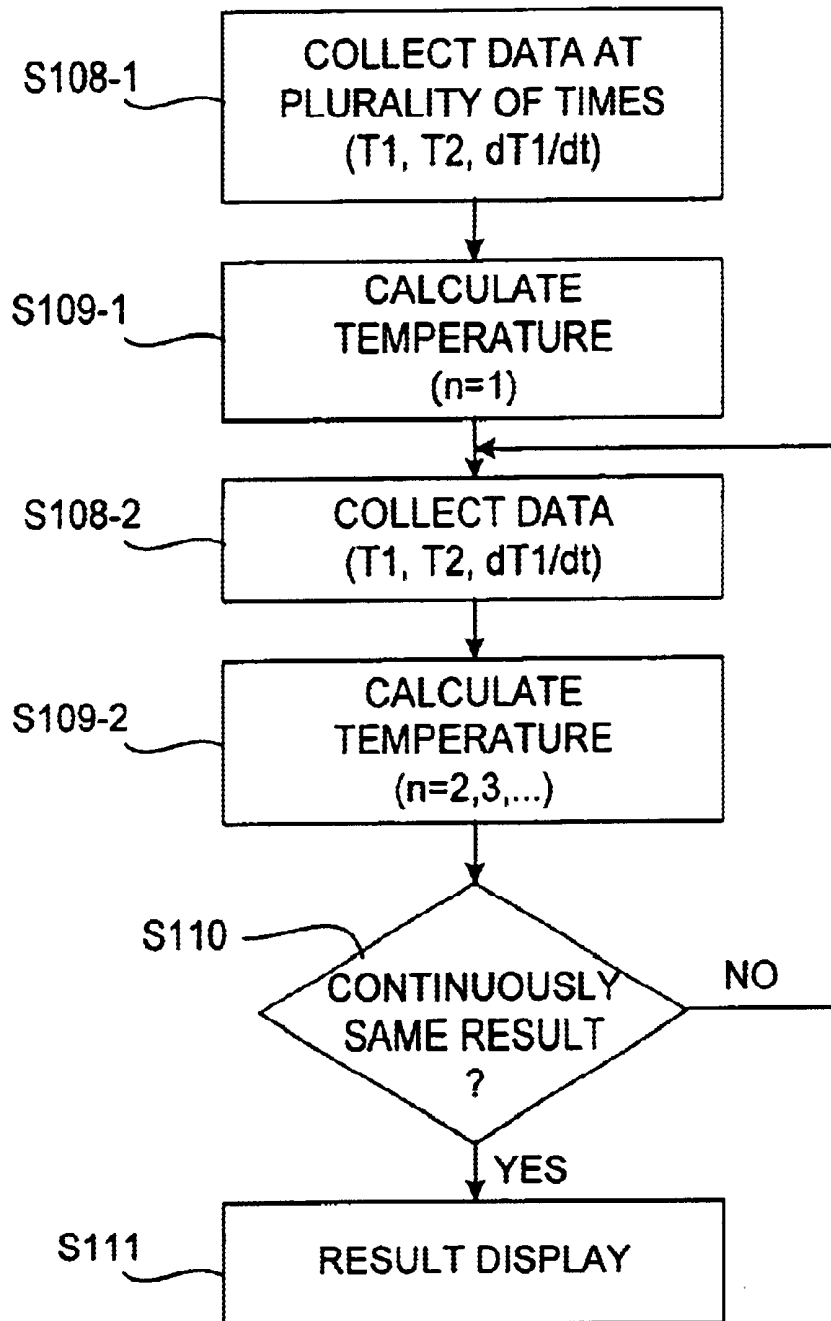


FIG. 5



**FIG. 7**

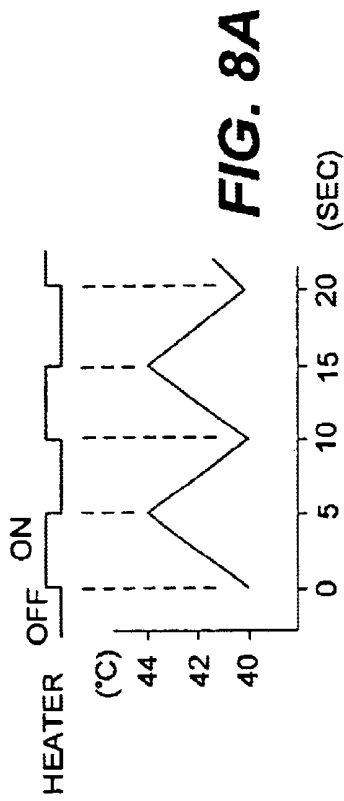


FIG. 8A

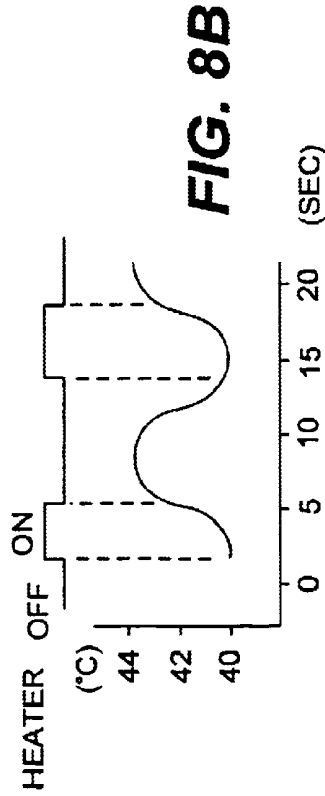


FIG. 8B

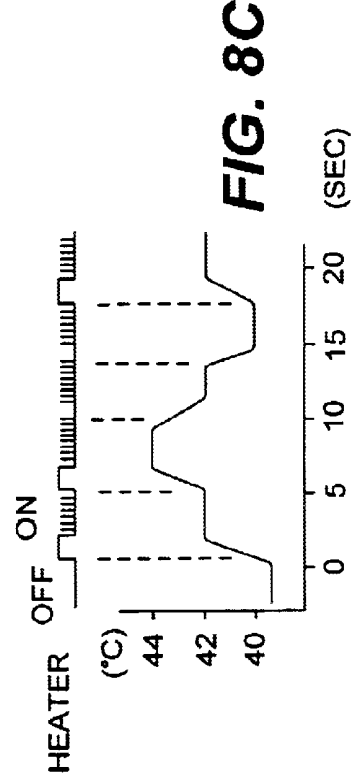


FIG. 8C



FIG. 9A

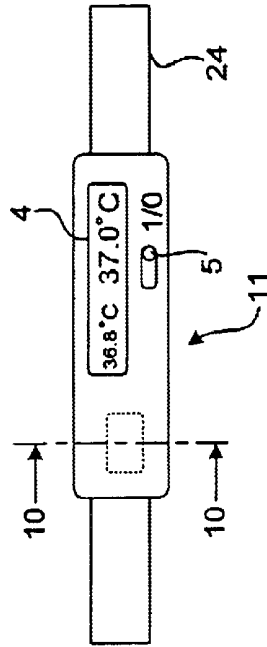


FIG. 9B

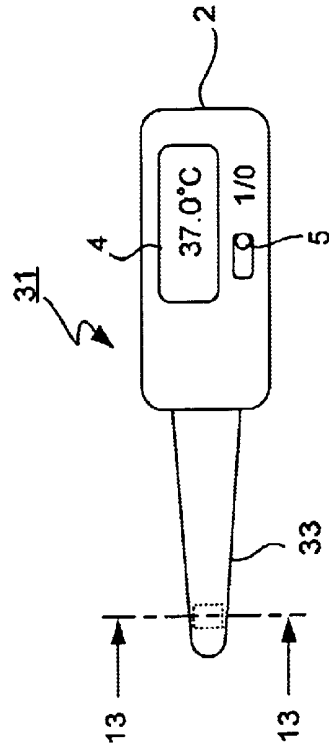


FIG. 12

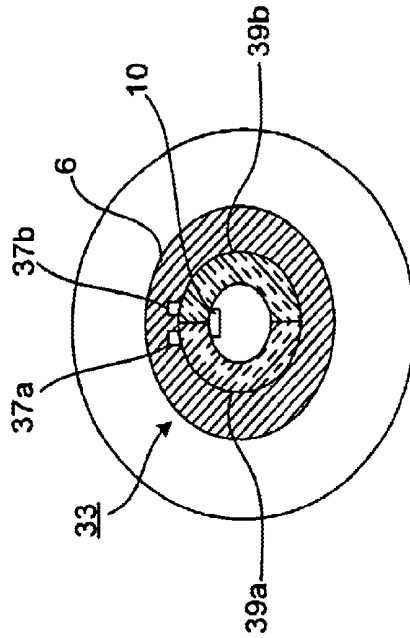


FIG. 13

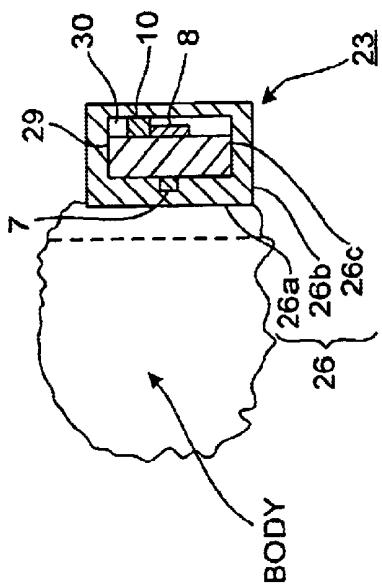


FIG. 10

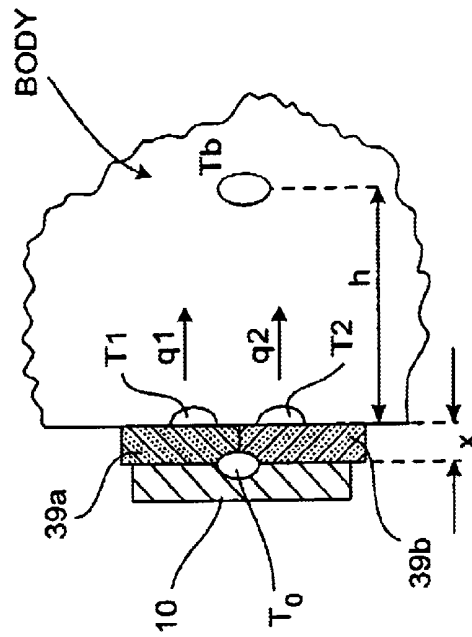


FIG. 11

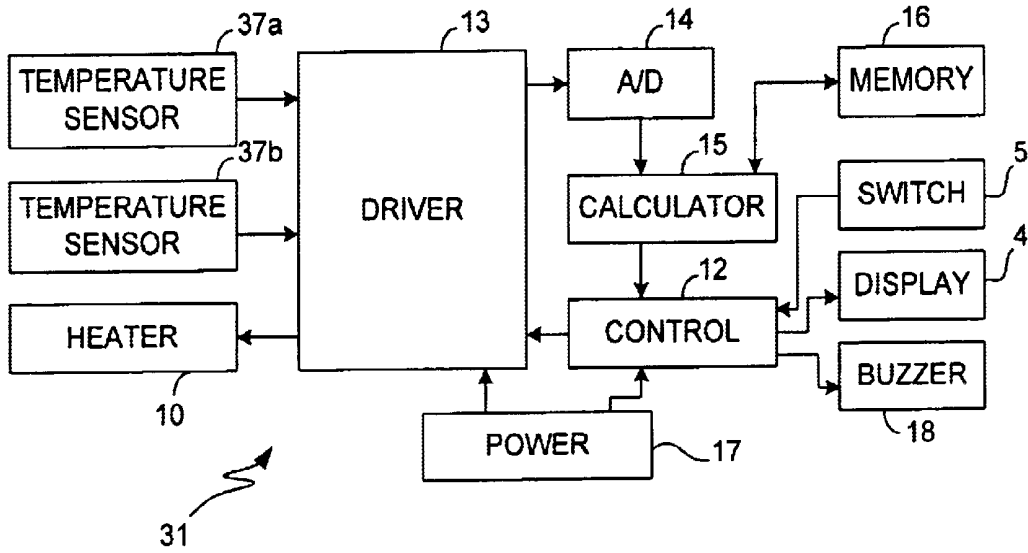


FIG. 14

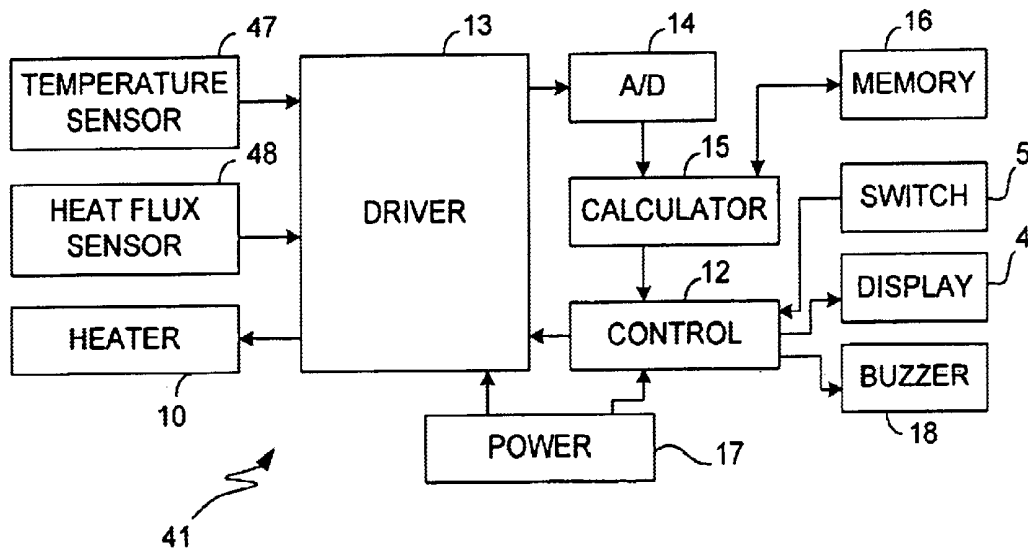


FIG. 20

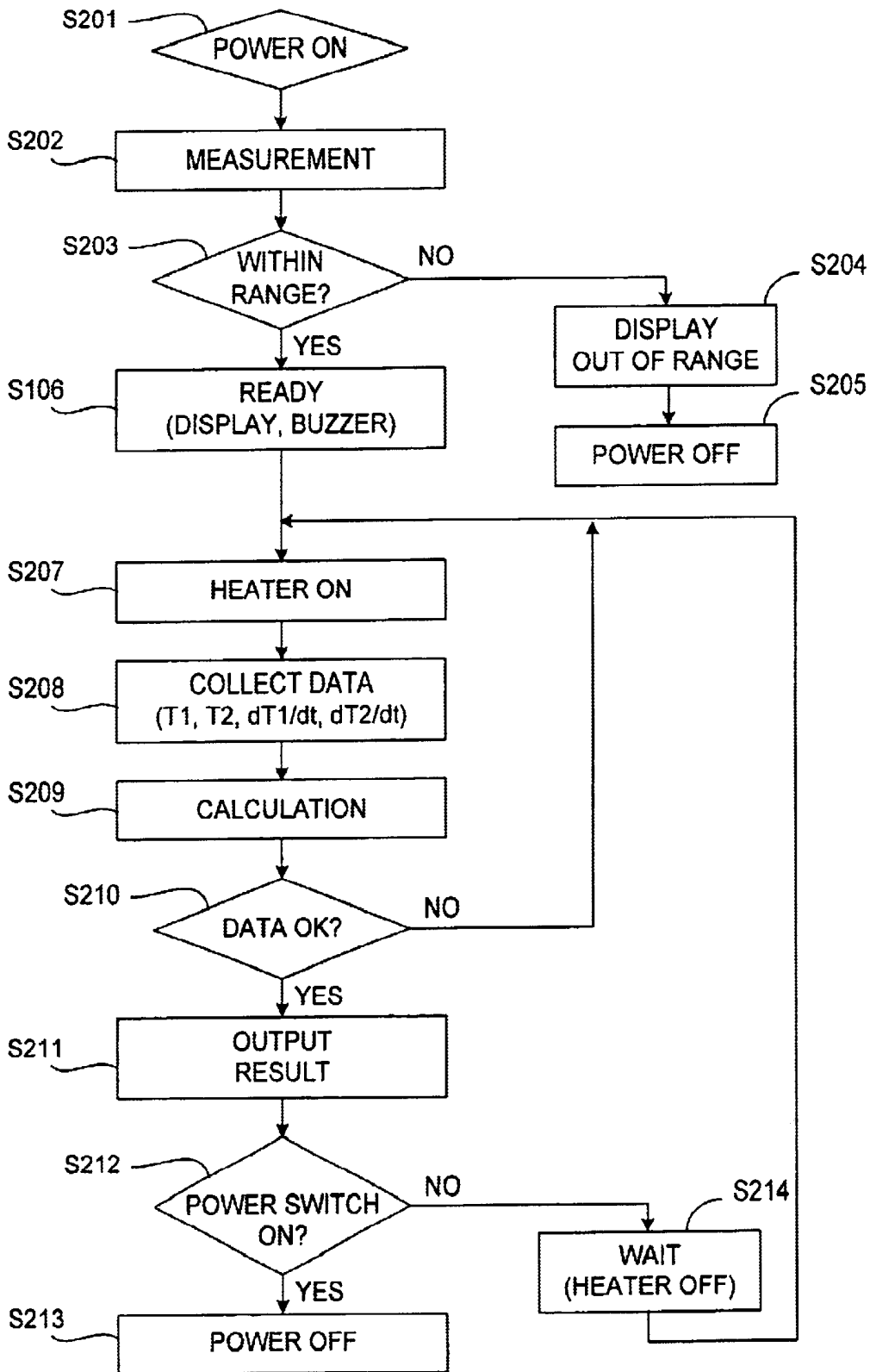


FIG. 15

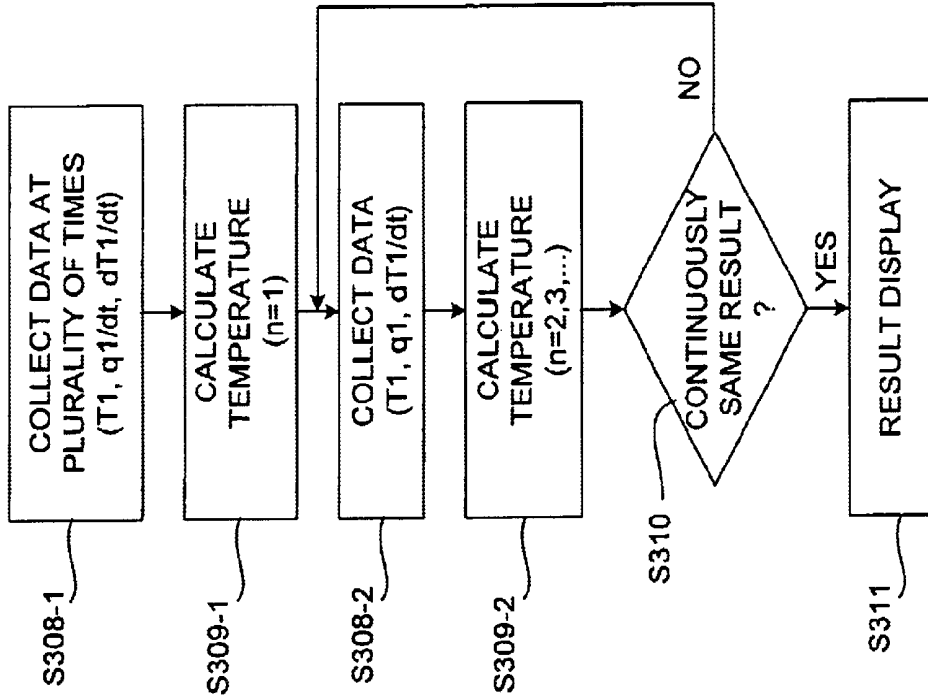


FIG. 22

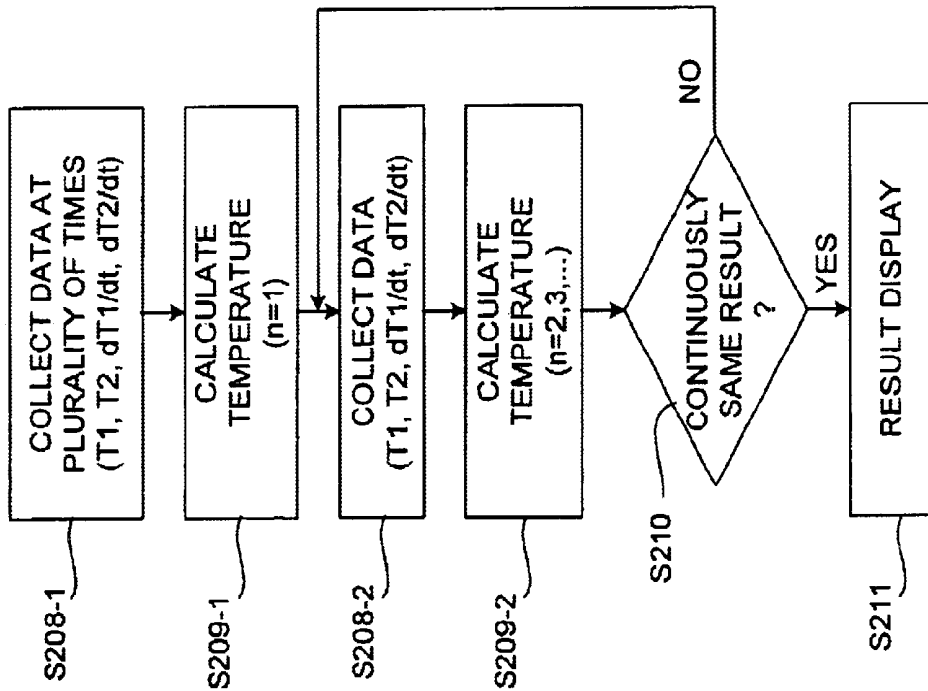
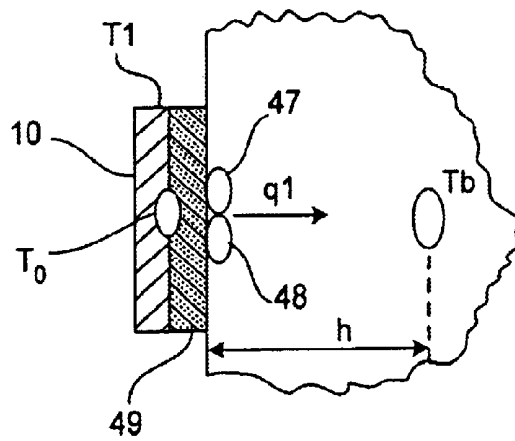
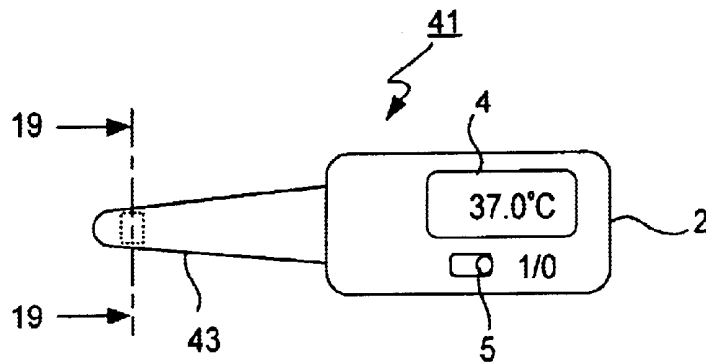


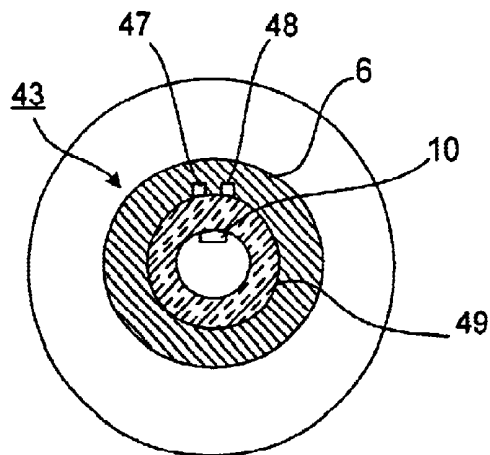
FIG. 16



**FIG. 17**



**FIG. 18**



**FIG. 19**

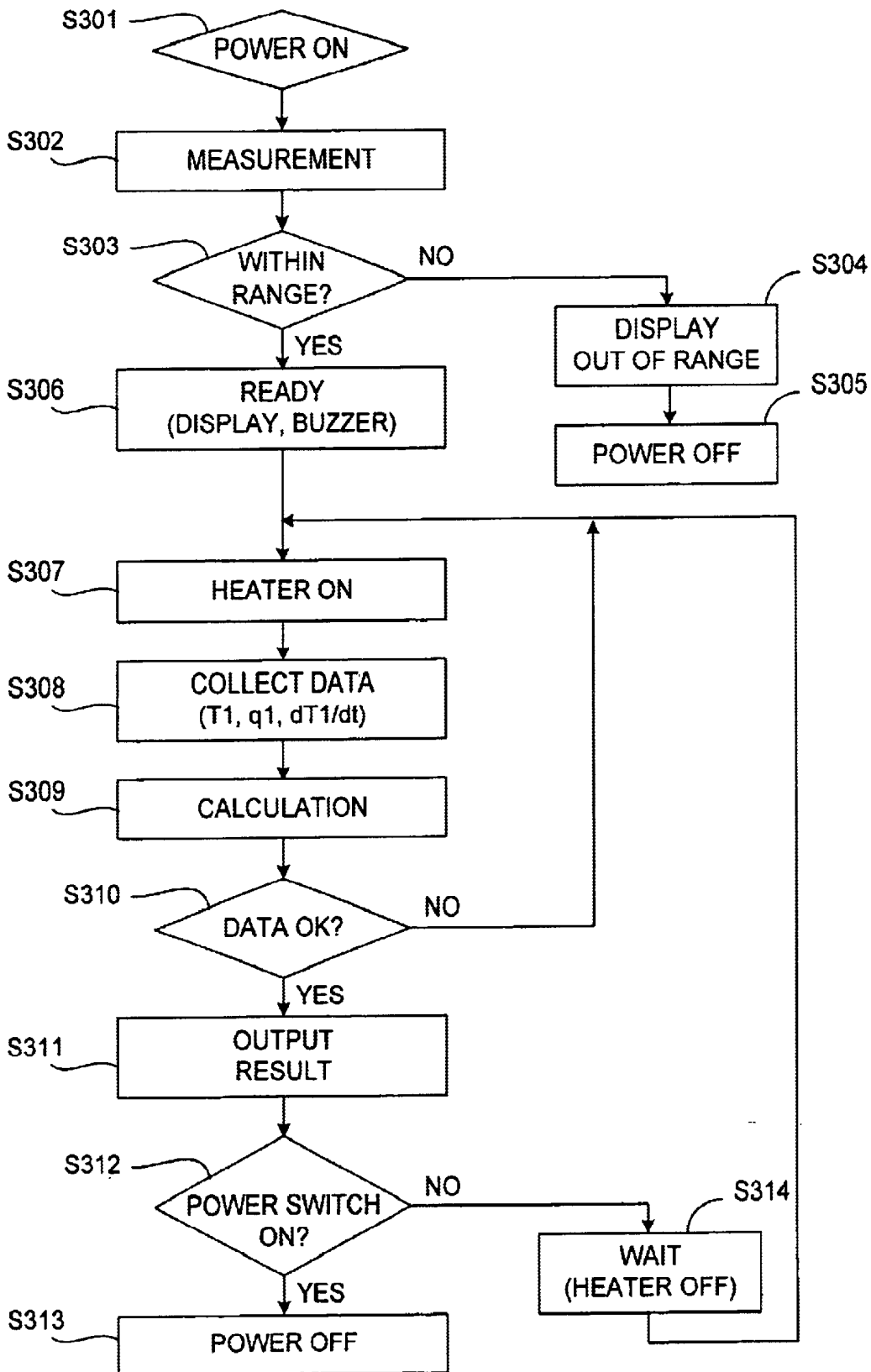


FIG. 21

**ELECTRONIC CLINICAL THERMOMETER****BACKGROUND OF THE INVENTION**

This invention relates to an electronic thermometer for estimating the temperature at an inner position of a live body based on temperature data taken on the body surface. More particularly, the invention relates to such an electronic thermometer using a heat transfer equation for making such an estimate.

When a conventional clinical thermometer such as a mercury thermometer is used to measure the temperature of a body by having it held under an arm or the tongue, the thermometer must be kept in that position until a thermal equilibrium is reached between the internal body position of interest and the surface temperature.

Japanese Patent Publication Tokko Hei 7-119656 B2 disclosed a method of using an equation for estimating the change in temperature while reaching an equilibrium and regarding such an equilibrium temperature as the body temperature.

It is desirable, however, to measure the internal body temperature of a patient directly. International Patent Publication WO-9850766 disclosed an electronic thermometer based on a method published in "Engineering of Heat Conduction" (at page 90) by Masahiro Shoji (published by Tokyo University). According to this method, temperatures are measured at two different positions and the temperature at a third position outside the region of the two positions is estimated. What is desired, however, is an electronic thermometer for measuring not a surface temperature but an inner temperature.

If the measurement cannot be taken until a thermal equilibrium is reached between the surface and inner temperatures, it takes as long as 10 minutes until the measurement can be taken. This wait time can be reduced by a method of estimating the inner temperature from the manner in which temperature changes to reach the equilibrium, but it still takes about 90 seconds. This method cannot fully take into account individual variations among patients or environmental changes.

As for the method according to International Patent Publication WO-9850766, since it is based on temperature changes due to conduction of heat from a live body, the thermometer must be removed from the live body for repeated measurements.

**SUMMARY OF THE INVENTION**

It is therefore an object of this invention to provide an electronic clinical thermometer capable of accurately and quickly estimate the internal body temperature of a live body at a desired timing.

In view of the above and other objects of this invention, the temperature on an external surface of a target body is measured directly on real time according to this invention and the body temperature at a normally inaccessible internal position of the body is estimated on the basis of values thus obtained. For this purpose, a heat transfer equation is solved in reverse. Such an equation is solved as a lower-order equation such as a first-order differential equation including measurable physical quantities such as the body surface temperature and the heat flux as variables. The desired internal temperature is then estimated by directly measuring these physical quantities. If as many different measured quantities are obtained as there are variables, the internal

temperature can be obtained accurately and quickly by solving simultaneous first-order equations.

An electronic clinical thermometer embodying this invention may be characterized broadly as comprising temperature measuring means (or a "temperature measuring device") for measuring temperature, heating means (or a "heater") for heating at a variable temperature, and estimating means (or an "estimating circuit") for estimating the temperature inside a live body from the variable temperature of heating and the temperatures measured by the temperature measuring means. When a heat transfer equation is solved in reverse to estimate the temperature inside a live body, as explained above, it is necessary to obtain at least as many measured values as the number of variables in the lower-order equations which express the transfer equation. If the thermometer is continuously kept in contact with the target body, the thermometer approaches a thermal equilibrium with the body and the variations in the measured values become small. According to this invention, the temperature of a heater is affirmatively varied for varying the flow of heat between the thermometer and the target body such that not only can highly accurate measurements be made but they can be made at a desired timing. The heater may be controlled such that an estimate of internal body temperature can be made as a signal is outputted at a desired timing while the temperature is continuously varied. If measurements are to be taken at specified time intervals, the heater may be controlled such that temperature will be varied according to the timing of the measurements.

In one aspect of the invention, the temperature measuring means comprises a first temperature sensor and a second temperature sensor. A thermally insulating member is disposed between these first and second temperature sensors. The first temperature sensor measures temperature of a position proximal to the heating means, and the second temperature sensor measures temperature at a position on the live body opposite to the heating means across the insulating material. Thus, temperatures at two different positions (although proximal to each other) may be selected as directly measurable physical variables for solving the heat transfer equation. The insulating member inserted between the two temperature sensors makes it possible to obtain stable temperature curves and hence more accurate results of measurement.

In another aspect of the invention, not only does the temperature measuring means comprise a first temperature sensor and a second temperature sensor, but the thermometer also comprises a first insulating member between the heating means and the first temperature sensor and a second insulating member having different heat-conducting properties between the heating means and the second temperature sensor. The first temperature sensor measures temperature on the live body at a position opposite to the heating means across the first insulating member, and the second temperature sensor measures temperature on the live body at another position opposite to the heating means across the second insulating member. Thus, temperatures at two positions separated from the heating means through different insulating members may be selected as directly measurable physical variables to solve the heat transfer equation in reverse. In the above, the two insulating members characterized as having different heat-conducting properties may be different not only in thermal conductivity but also in thickness or in specific heat.

In still another aspect of the invention, the thermometer further includes a heat flux sensor and a thermally insulating member disposed between the heating means and both the

temperature measuring means and the heat flux sensor. The estimating means estimates temperature inside the live body from the variable temperature of heating and temperatures measured by the temperature measuring means and the heat flux sensor. The temperature measuring means and the heat flux sensor are disposed opposite to the heating means across the insulating means and measure respectively temperature and heat flux at positions proximal to each other. In this case, temperature and flux of heat flow at mutually proximal positions on the body across from the heating means are selected as directly measurable physical variables for solving the heat transfer equation in reverse.

In a further aspect of this invention, the thermistor also includes a memory and a controller for controlling the temperature-estimating operations of the thermometer. The thermometer may thus be controlled so as to carry out the temperature-estimating operations at specified time intervals and to store estimated temperature values in the memory.

The probe for contacting the live body may be shaped differently. An elongated bar-shape is preferable for inserting in the armpit or under the tongue if the patient is capable of maintaining a body position suitable for the temperature measurement. A planar probe is preferable if otherwise, for example, if the patient is an infant. It is preferable to employ a material with a high thermal conductivity where the probe contacts the live body.

Thermometers according to this invention are convenient for taking measurements continuously, for example, for a patient in an intensive care unit or for monitoring a patient after surgery because temperature measurements can be taken at a desired timing and the measured value can be stored.

BRIEF DESCRIPTION OF THE DRAWINGS

FIG. 1 is a sectional view of a portion of a patient's body for explaining the principle of measurement by a thermometer according to a first embodiment of the invention.

FIG. 2 is an external plan view of an electronic thermometer according to the first embodiment of the invention.

FIG. 3 is a sectional view of the thermometer of FIG. 2 taken along line 3—3.

FIG. 4 is a block diagram for showing the circuit structure of the thermometer of FIG. 2.

FIG. 5 is a flowchart of the process of taking a measurement by a thermometer according to the first embodiment of this invention.

FIGS. 6A and 6B are examples of displays on the display device.

FIG. 7 is a portion of the flowchart of FIG. 5 shown more in detail.

FIGS. 8A, 8B and 8C are examples of ways in which the heater in the thermometer of FIG. 2 may be controlled.

FIG. 9A is a side view and FIG. 9B is a plan view of a variation of the thermometer according to the first embodiment of the invention.

FIG. 10 is a sectional view taken along line 10—10 of the thermometer of FIGS. 9A and 9B for showing its internal structure.

FIG. 11 is a sectional view of a portion of a patient's body for explaining the principle of measurement by a thermometer according to a second embodiment of this invention.

FIG. 12 is an external plan view of an electronic thermometer according to the second embodiment of the invention.

FIG. 13 is a sectional view of the thermometer of FIG. 12 taken along line 13—13.

FIG. 14 is a block diagram for showing the circuit structure of the thermometer of FIG. 12.

FIG. 15 is a flowchart of the process of taking a measurement by a thermometer according to the second embodiment of this invention.

FIG. 16 is a portion of the flowchart of FIG. 15 shown more in detail.

FIG. 17 is a sectional view of a portion of a patient's body for explaining the principle of measurement by a thermometer according to a third embodiment of this invention.

FIG. 18 is an external plan view of an electronic thermometer according to the third embodiment of the invention.

FIG. 19 is a sectional view of the thermometer of FIG. 18 taken along line 19—19.

FIG. 20 is a block diagram for showing the circuit structure of the thermometer of FIG. 18.

FIG. 21 is a flowchart of the process of taking a measurement by a thermometer according to the third embodiment of this invention.

FIG. 22 is a portion of the flowchart of FIG. 21 shown more in detail.

DETAILED DESCRIPTION OF THE INVENTION

The invention is described next by way of examples. FIG. 1 shows  $T_b$  as the temperature at an internal position of a patient to be estimated.  $T_1$  and  $q_1$  respectively indicate the temperature and the flux of heat flow at an externally exposed body surface position, separated from the target position by a distance of  $h_1$ . The heat conductivity of the body is expressed as  $\lambda_1$ .  $T_2$  and  $q_2$  respectively indicate the temperature and the flux of heat flow at a corresponding position separated by a thermally insulating member 9 with density  $\rho$ , specific heat  $c$ , thickness  $h$  and heat conductivity  $\lambda_2$ . Then, the conservation law of physics gives:

$$-q_1 + q_2 = \rho c h_2 (dT_1/dt) = \lambda_1 (dT_1/dx) - \lambda_2 (dT_2/dx),$$

or

$$(dT_1/dx) = \omega_1 (T_b - T_1) - \omega_2 (T_1 - T_2)$$

where  $\omega_1 = \lambda_1 / (\rho c h_1 h_2)$ ,  $\omega_2 = \lambda_2 / (\rho c h_2^2)$  and  $x$  generally represents the direction of the line connecting the internal target body position and the surface position where the surface body temperature and the heat flux are measured. Thus, if  $T_1$ ,  $dT_1/dt$  and  $T_2$  are measured,  $T_b$  can be calculated from these measured values. If a heater with variable temperature is used to vary the value of  $T_2$ , it is possible to vary  $T_1$ ,  $dT_1/dt$  and  $T_2$  at a desired timing. In other words, if it is desired to calculate  $T_b$  from the temperature change occurring due to the heat conducted from the body interior, the temperature sensor and the body temperature reach a thermal equilibrium and temperature change ceases to exist soon. Thus, different measured values cannot be obtained and accurate calculation of  $T_b$  becomes difficult. If  $T_2$  is affirmatively changed, as explained above, different measured values of  $T_1$ ,  $dT_1/dt$  and  $T_2$  can be obtained at any desired timing and hence accurate calculation for  $T_b$  becomes possible.

FIG. 2 shows an electronic thermometer 1 according to a first embodiment of the invention comprising a main body 2 which is approximately in the shape of a rectangular paral-

leloped and a probe **3** which protrudes longitudinally in the shape of a bar from the main body **2** such that the user may hold the main body **2** to insert the probe under an arm or under the tongue. The main body **2** contains a display device **4** such as an LCD for displaying data such as a measured value and a power switch **5**. The probe **3** is approximately circular in cross-section, as shown in FIG. **3**, and its outer surface is covered with a thin material **6** such as SUS having a high thermal conductivity. A temperature sensor **7** is disposed on the inner surface of this cover material **6**. A variable-temperature heater **10** and a temperature sensor **8** are disposed proximally to each other on a thermally insulating member **9** on the inner surface of the cover material **6**. Lead wires (not shown) connected to the temperature sensors **7** and **8** and the heater **10** may be passed through the hollow interior of the insulating member **9**. Examples of a practically usable temperature sensor include IC temperature sensors using temperature characteristics such as platinum resistors, thermistors, thermo-couples and transistors.

As shown in FIG. **4**, the electronic thermometer **1** comprises a controller **12**, a driver **13**, an A/D converter **14**, a calculator **15**, a memory **16**, a power source **17** and a buzzer **18**, in addition to the aforementioned temperature sensors **7** and **8**, the variable-temperature heater **10**, the power source switch **5** and the display device **4**. The controller **12** comprises a CPU and serves to control the thermometer as a whole. The driver **13** is for driving the temperature sensors **7** and **8** and the heater **10** on the basis of signals received from the controller **12**. Signals outputted from the driver **13** are converted into digital signals by the A/D converter **14** and inputted to the calculator **15**. The calculator **15** performs various calculations and outputs the results of the calculations to the controller **12**. The calculator **15** also operates to store specified data in the memory **16** and to retrieve data from the memory **16** to carry out specified calculations. The power source **17** may comprise a battery and serves to supply electric power to the controller **12** and the driver **13**. The power switch **5** is for switching on and off the supply of power from the power source **17**. The buzzer **18** is for generating a specified sound in response to a command from the controller **12** to alert the user of a certain situation.

FIG. **5** is referenced next to explain the process for measuring an internal body temperature. When the switch **5** is turned on (Step **S101**), a preliminary temperature measurement is taken by means of the temperature sensor **7** or **8** (Step **S102**) to determine whether or not this preliminarily obtained temperature is within a specified range (Step **S103**). If the measured temperature is not within the specified range (NO in Step **S103**), a display is made to this effect on the display device **4** (Step **S104**) and the power is switched off (Step **S105**). If the preliminarily measured temperature is within the specified range (YES in Step **S103**), a display is made to this effect on the display device **4** (Step **S106**) such as shown in FIG. **6A** and the buzzer **18** may also be beeped to inform that the thermometer is ready to be used.

Next, the heater **10** is operated through the driver **13** (Step **S107**) and values of  $T_1$ ,  $T_2$  and  $dT_1/dt$  are collected (Step **S108**). These data are now used by the calculator to estimate the temperature at an internal target position (Step **S109**).

Next, it is examined whether or not data that are sufficient for a measurement have been collected (Step **S110**). If sufficient data have not been collected (NO in Step **S110**), the program returns to Step **S107** and the heater **10** is driven. If sufficient data have been collected (YES in Step **S110**), the result of measurement is displayed on the display device **4**,

say, as shown in FIG. **6B** and the buzzer **18** may be caused to beep twice to indicate that the result of measurement has been displayed (Step **S111**). Thereafter, it is checked whether power is switched on or off (Step **S112**). If the switch **5** is in the ON condition (YES in Step **S112**), power is switched off (Step **S113**) and the process is concluded. If the power switch **5** is in the OFF condition (NO in Step **S112**), the heater **10** is switched off and is restarted (Step **S107**) after a wait period of a specified length (Step **S114**).

The portion of the program explained above from Step **S106** to Step **S111** is shown more in detail in FIG. **7**. After the display device **4** is caused to display that it is ready to take measurements, the heater **10** is activated and values of  $T_1$ ,  $T_2$  and  $dT_1/dt$  are measured a plural number of times (Step **S109-1**). Next, it is checked if data that are sufficient for a measurement have been collected. This judgment may be taken by examining whether or not a plurality of successively calculated temperature values are nearly the same (say, to the second positions below the decimal point). Since this is the first ( $n=1$ ) calculation and there is no other result to compare to, it is concluded in Step **S110** that sufficient data have not been collected and the program returns to Step **S107** (not shown in FIG. **7**) to start the heater **10** and to repeat the collection of data (Step **S108-2**) and to calculate the next temperature value (Step **S109-2**). If the condition in Step **S110** is finally satisfied (that is, if a plurality of temperature values calculated consecutively are sufficiently close to one another), it is set as the measured value and outputted to the display device **4** (Step **S111**).

The determination whether data sufficient for measurement have been collected may be made by examining whether or not a plurality of consecutively calculated temperature values are, say, within  $0.01^\circ\text{C}$ . of one another.

FIGS. **8A**, **8B** and **8C** show methods of driving the heater **10** in the process described above. First, the heater **10** may be switched on and off at equal time intervals, as shown in FIG. **8A**, such as 5 seconds. The temperature of the sensor **8** varies in a sawtooth manner as shown also in FIG. **8A**. The ON-time of the heater **10** may be made shorter and the OFF-time longer. If the heater **10** is repeatedly switched on and off in this manner, the temperature of the temperature sensor **8** varies sinusoidally, as shown in FIG. **8B**. FIG. **8C** shows still another method whereby the heater **10** is kept in an ON condition for a specified length of time, switched on and off intermittently thereafter, again kept in an ON condition for another specified length of time, and again switched on and off intermittently for still another specified length of time. While the heater **10** is thus switched on and off intermittently, it is controlled such that the temperature of the sensor **8** is at a constant level. In this manner, the temperature may change as shown in FIG. **8C**. It goes without saying that any other method of controlling the heater **10** is acceptable for the purpose of this invention because the purpose is to obtain different set of measured values of  $T_1$ ,  $dT_1/dt$  and  $T_2$ . Measurements may be repeated by intermittently repeating one period or a portion of one period of any of the waveforms shown in FIGS. **8A**, **8B** and **8C**.

Thus, according to this invention, the temperature of the heater **10** is affirmatively varied such that the temperature sensor is prevented from coming into a thermal equilibrium with the body temperature. Thus, an accurate measurement can be performed even when the temperature sensor is used continuously or when measurements are taken without sufficient time in between.

FIGS. **9A** and **9B** show another electronic thermometer **11** which may be considered a variation of the first embodiment

described above, being in the shape of a flat rectangular parallelepiped and having a probe **23** of approximately of a rectangular columnar shape protruding from one of the main surfaces of the thermometer **11** near one end part. On the opposite end part of the thermometer **11** are a display device **4** comprising an LCD and a power switch **5**. Belts **24** are affixed at both ends in the longitudinal direction such that the probe **23** can be attached to a specified part of a patient's body such as the forehead by means of these belts **24** such that measurements can be taken continuously over an extended period of time. This embodiment is useful when a patient in the intensive care unit must be monitored or where a sudden change in body temperature is particularly important because the patient's body temperature can be outputted on real time.

FIG. **10** shows the internal structure of the probe **23** of the thermometer **11** shown in FIGS. **9A** and **9B**. Symbols **26a**, **26b** and **26c** respectively indicate its top part, bottom part and side surface. The probe **23** is covered with a thin cover layer **26**, say, of SUS. A temperature sensor **7** is disposed underneath the top part **26a**. A nearly square-shaped insulating member **29** is disposed below the top part **26a** of the cover layer **26**, sandwiching the temperature sensor **7** with the top part **26a** of the cover layer **26**. A variable-temperature heater **10** is disposed on and contacting the lower surface of the insulating member **29**. There is an empty space **30** between the insulating member **29** and the bottom part **26c** of the cover layer **26**.

The thermometer **11** thus structured is particularly advantageous for use for an infant who may find it difficult to hold the probe steadily under an arm or under the tongue since the body temperature can be easily measured by contacting the probe **23** on a flat skin surface such as on the forehead. Since the thermometer is provided with belts, the thermometer can be kept in contact with the patient over an extended period of time

FIG. **11** is referenced next to explain the principle of measurement by means of a thermometer according to a second embodiment of this invention characterized as having two insulating members **39a** and **39b** having different thermal conductivities  $\lambda_1$  and  $\lambda_2$  contacting the patient's body. Let  $T_0$  indicate the temperature of a variable-temperature heater **10** and  $T_1$  and  $T_2$  respectively indicate the temperature at a portion of the patient's body contacting the insulating members **39a** and **39b**. The flux of heat flow at each of these surface positions will be indicated by  $q_1$  and  $q_2$ . If the temperature is  $T_b$  inside the patient's body at a depth of  $h$  from the body surface, a one-dimensional heat transfer equation may be written as follows by keeping up to the second-order terms:

$$T_b = T_1 + (h/\lambda_b)q_1 + (h^2/2\alpha_b)(dT_1/dt),$$

$$T_b = T_2 + (h/\lambda_b)q_2 + (h^2/2\alpha_b)(dT_2/dt),$$

where  $\alpha_b$  and  $\lambda_b$  indicate the thermal diffusivity and the conductivity of the patient's body. Since  $q_1 = -\lambda_1(dT_1/dt) = -\lambda_1(T_1 - T_0)/X$  and  $q_2 = -\lambda_2(dT_2/dt) = -\lambda_2(T_2 - T_0)/X$  where  $X$  is the thickness of the insulating members **39a** and **39b**, the following obtains:

$$T_b = T_1 + A(T_0 - T_1) + B(dT_1/dt),$$

$$T_b = T_2 + C(T_0 - T_2) + D(dT_2/dt),$$

where  $A$ ,  $B$ ,  $C$  and  $D$  are constants. If  $T_0$  is eliminated from these two equations, an equation is obtained relating  $T_b$ ,  $T_1$ ,  $T_2$ ,  $dT_1/dt$  and  $dT_2/dt$ . Thus, the inner body temperature  $T_b$  of a patient can be obtained by measuring  $T_1$ ,  $T_2$ ,  $dT_1/dt$  and  $dT_2/dt$ .

In summary, the inner body temperature can be calculated by measuring temperature and time-rate of change of temperature at two positions on the body surface which is being heated by a temperature-varying heater through different thermally insulating members. It goes without saying in this connection that these two insulating members do not have to have different thermal conductivities. They may be of the same material but different in thickness.

FIG. **12** shows an external view of a thermometer **31** according to the second embodiment of the invention. Since its external appearance is the same as that of the thermometer according to the first embodiment, the same symbols used in FIG. **2** are used for corresponding components and they are not repetitiously explained with reference to FIG. **12**.

FIG. **13** shows its internal structure. Its probe **33** is structured similarly to the probe **3** shown in FIG. **3** except that there are two (first and second) insulating members **39a** and **39b** each of semi-cylindrical shape on the inner surface of the cover **6**. The two insulating members **39a** and **39b** have different thermal conductivity values. A (first or second) temperature sensor **37a** or **37b** is disposed between the outer surface of each of the insulator members **39a** or **39b** and the inner surface of the cover **6**. A variable-temperature heater **10** is disposed on the inner surface of the insulating layers **39a** and **39b**, spanning over both and positioned opposite the first and second temperature sensors **37a** and **37b**. A thermometer thus structured with two temperature sensors and two different kinds of insulating members can be produced much less expensively than one using a heat flux sensor for measuring a flux of heat flow.

FIG. **14** shows the internal circuit structure of the thermometer **31**, which is similar to that shown by the block diagram of FIG. **4** except that the first and second temperature sensors **37a** and **37b** take the places of the temperature sensors **7** and **8** of FIG. **4**.

FIG. **15** is referenced next to explain the process for measuring an internal body temperature. The steps shown in FIGS. **15** and **16** are substantially the same as those shown in the flowcharts of FIGS. **5** and **6** and hence will not be repetitiously explained. In Step **S210** of FIG. **16**, the determination may be whether or not a specified number of consecutively calculated values are within a specified maximum value such as  $0.01^\circ\text{C}$ . The heater **10** according to this embodiment of the invention may also be driven as shown in FIGS. **8A**, **8B** and **8C**.

Thus, it is possible with a thermometer **31** according to the second embodiment of the invention, too, to prevent the thermometer from coming to a thermal equilibrium with the body because the variable-temperature heater **10** can be controlled so as to affirmatively vary its temperature. Thus accurate measurements are possible even when, for example, the thermometer is inserted into the ear of a patient for an extended period of time or when it is taken out of the ear and inserted again without waiting for an extended period of time.

It also goes without saying that the structure described above of the probe **33** with temperature sensors **37a** and **37b**, two insulating members **39a** and **39b** and a variable-temperature heater **10** may be applied to the kind of thermometer explained above with reference to FIGS. **9A** and **9B**.

FIG. **17** is referenced next to explain the principle of measurement by means of a thermometer according to a third embodiment of this invention characterized as determining the temperature  $T_b$  at an internal body position at a depth of  $h$  from a body surface by measuring the temperature

$T_1$  and flux of heat flow  $q_1$  at the patient's body surface opposite a variable-temperature heater **10** at temperature  $T_0$  through a thermally insulating member with thermal conductivity  $\lambda$ .

From the definition of heat flux,  $q_1 = -\lambda(dT/dt) = -\lambda(T_1 - T_b)/h$ , it follows that  $T_b = T_1 + (h/\lambda)q_1$ . Thus, the value of  $T_b$  can be determined by measuring two or more pairs of values of  $q_1$  and  $T_1$ .

Alternatively, one may start from the basic equation of heat transfer:

$$\partial T_1 / \partial t = \alpha (\partial^2 T_1 / \partial x^2)$$

where  $\alpha$  is the thermal diffusivity. If the second-order term is included in its solution, this gives:

$$T_b = T_1 + (h/\lambda)q_1 + (h^2/2\alpha)(dT_1/dt)$$

since  $q_1 = -\lambda(dT_1/dx)$ . This means that if three or more sets of values for  $T_1$ ,  $q_1$  and  $dT_1/dt$  are measured, the value of  $T_b$  can be estimated.

If the equation is of zeroth-order, the temperature at an internal body position can be estimated by a minimum of one measurement because there is no need to take in account any change with time. By making measurement for a plurality of times, accurate results can be obtained even by using a zeroth-order equation. If a higher-order equation is used, even more accurate estimates become possible. Examples of a heat flux sensor include layered structures and thermopiles.

FIG. **18** shows an external view of a thermometer **41** according to the third embodiment of the invention. Since its external appearance is the same as that of the thermometer according to the first embodiment, the same symbols used in FIG. **2** are used for corresponding components and they are not repetitiously explained with reference to FIG. **18**.

FIG. **19** shows its internal structure. Its probe **43** is structured similarly to the probe **3** shown in FIG. **3** except that there are a temperature sensor **47** and a heat flux sensor **48** inserted between the inner surface of the cover **6** and the outer surface of a tubularly shaped insulating member **49**. The insulating member **49** has a hollow interior and a variable-temperature heater **10** is disposed on the inner surface of the insulating member **49** and at a position opposite to both the temperature sensor **47** and the heat flux sensor **48**.

FIG. **20** shows the internal circuit structure of the thermometer **41**, which is similar to that shown by the block diagram of FIG. **4** except that the temperature sensor **47** and the heat flux sensor **48** take the places of the temperature sensors **7** and **8** of FIG. **4** and driven by signals from the controller **12**.

FIGS. **21** and **22** are referenced next to explain the process for measuring an internal body temperature. The steps shown in FIGS. **21** and **22** are substantially the same as those shown in the flowcharts of FIGS. **5** and **6** and hence will not be repetitiously explained. In Step **S310** of FIG. **22**, the determination may be whether or not a specified number of consecutively calculated values are within a specified maximum value such as  $0.01^\circ\text{C}$ . The heater **10** according to this embodiment of the invention may also be driven as shown in FIGS. **8A**, **8B** and **8C**.

Thus, it is possible with a thermometer **41** according to the third embodiment of the invention, too, to prevent the thermometer from coming to a thermal equilibrium with the body because the variable-temperature heater **10** can be controlled so as to affirmatively vary its temperature. Thus, accurate measurements are possible even when, for

example, the thermometer is inserted into the ear of a patient for an extended period of time or when it is taken out of the ear and inserted again without waiting for an extended period of time.

It also goes without saying that the structure described above of the probe **43** with the temperature sensor **47**, the heat flux sensor **48**, the insulating member **49** and a variable-temperature heater **10** may be applied to the kind of thermometer explained above with reference to FIGS. **9A** and **9B**.

In summary, the present invention provides electronic thermometers capable of accurately measure the internal body temperature quickly and at a desired timing.

What is claimed is:

1. An electronic clinical thermometer comprising:

a temperature measuring device for measuring temperature;

a heater for heating the live body at a variable temperature of a live body; and

an estimating circuit for estimating temperature inside said live body from said variable temperature of heating and temperatures measured at different times by said temperature measuring device.

2. The thermometer of claim **1** wherein said temperature measuring device comprises a first temperature sensor and a second temperature sensor, a thermally insulating member is disposed between said first temperature sensor and said second temperature sensor, said first temperature sensor measures temperature at a position proximal to said heater, and said second temperature sensor measures temperature at a position on said live body opposite said heater across said insulating material.

3. The thermometer of claim **1** wherein said temperature measuring device comprises a first temperature sensor and a second temperature sensor, said thermometer further comprises a first insulating member between said heater and said first temperature sensor and a second insulating member between said heater and said second temperature sensor, said first insulating member and said second insulating member having different heat-conducting properties, said first temperature sensor measures temperature on said live body at a position opposite said heater across said first insulating member, and said second temperature sensor measures temperature on said live body at another position opposite said heater across said second insulating member.

4. The thermometer of claim **1** further comprising a heat flux sensor and a thermally insulating member disposed between said heater and both said temperature measuring device and said heat flux sensor, wherein said estimating circuit estimates temperature inside said live body from said variable temperature of heating and measured values obtained by said temperature measuring device and said heat flux sensor, said temperature measuring device and said heat flux sensor being disposed opposite said heater across said insulating means and measuring respectively temperature and heat flux at positions proximal to each other.

5. The thermometer of claim **1** having a probe for contacting said live body, said probe being planar in shape.

6. The thermometer of claim **2** having a probe for contacting said live body, said probe being planar in shape.

7. The thermometer of claim **3** having a probe for contacting said live body, said probe being planar in shape.

8. The thermometer of claim **4** having a probe for contacting said live body, said probe being planar in shape.

9. The thermometer of claim **1** having a probe for contacting said live body, said probe being elongated in a bar-shape.

## 11

10. The thermometer of claim 2 having a probe for contacting said live body, said probe being elongated in a bar-shape.

11. The thermometer of claim 3 having a probe for contacting said live body, said probe being elongated in a bar-shape.

12. The thermometer of claim 4 having a probe for contacting said live body, said probe being elongated in a bar-shape.

13. The thermometer of claim 1 further comprising:

a controller for controlling operations of said thermometer in estimating temperature inside said live body; and  
a memory for storing temperature estimated by said estimating circuit;

wherein said estimating circuit estimates temperature inside said live body at specified time intervals and stores estimated temperature values in said memory.

14. The thermometer of claim 2 further comprising:

a controller for controlling operations of said thermometer in estimating temperature inside said live body; and  
a memory for storing temperature estimated by said estimating circuit;

wherein said estimating circuit estimates temperature inside said live body at specified time intervals and stores estimated temperature values in said memory.

15. The thermometer of claim 3 further comprising:

a controller for controlling operations of said thermometer in estimating temperature inside said live body; and  
a memory for storing temperature estimated by said estimating circuit;

wherein said estimating circuit estimates temperature inside said live body at specified time intervals and stores estimated temperature values in said memory.

16. The thermometer of claim 4 further comprising:

a controller for controlling operations of said thermometer in estimating temperature inside said live body; and  
a memory for storing temperature estimated by said estimating circuit;

wherein said estimating circuit estimates temperature inside said live body at specified time intervals and stores estimated temperature values in said memory.

17. An electronic clinical thermometer comprising:

a temperature measure device for measuring temperature; a heater for heating the live body at a variable temperature of a live body; and

## 12

an estimating circuit for estimating temperature inside a said live body from said variable temperature of heating, measured temperature obtained by said temperature measuring device while said live body is being heated by said heater and time-rates of change in said measured temperature.

18. The thermometer of claim 17 wherein said temperature measuring device comprises a first temperature sensor and a second temperature sensor, a thermally insulating member is disposed between said first temperature sensor and said second temperature sensor, said first temperature sensor measures temperature at a position proximal to said heater, and said second temperature sensor measures temperature at a position on said live body opposite said heater across said insulating material.

19. The thermometer of claim 17 wherein said temperature measuring device comprises a first temperature sensor and a second temperature sensor, said thermometer further comprises a first insulating member between said heater and said first temperature sensor and a second insulating member between said heater and said second temperature sensor, said first insulating member and said second insulating member having different heat-conducting properties, said first temperature sensor measures temperature on said live body at a position opposite said heater across said first insulating member, and said second temperature sensor measures temperature on said live body at another position opposite said heater across said second insulating member.

20. An electronic clinical thermometer comprising:

a temperature measuring device for measuring temperature;

a heater for heating the live body at a variable temperature of a live body;

a heat flux sensor and a thermally insulating member disposed between said heater and both said temperature measuring device and said heat flux sensor; and

an estimating circuit for estimating temperature inside a said live body from said variable temperature of heating and measured values obtained by said temperature measuring device and said heat flux sensor while said live body is being heated by said heater.

21. The electronic clinical thermometer of claim 20 wherein said temperature measuring device and said heat flux sensor are disposed opposite said heater across said insulating means and serve to measure respectively temperature and heat flux at positions proximal to each other.

\* \* \* \* \*

专利名称(译)	电子体温计		
公开(公告)号	<a href="#">US6886978</a>	公开(公告)日	2005-05-03
申请号	US10/166586	申请日	2002-06-05
[标]申请(专利权)人(译)	欧姆龙株式会社		
申请(专利权)人(译)	欧姆龙公司		
当前申请(专利权)人(译)	欧姆龙保健CO., LTD.		
[标]发明人	TOKITA MUNEO NAKAJIMA SATOSHI MAKITA SHIGERU		
发明人	TOKITA, MUNEO NAKAJIMA, SATOSHI MAKITA, SHIGERU		
IPC分类号	G01K7/42 G01K1/16 G01K13/00 A61B5/001		
CPC分类号	G01K1/16 G01K13/002 G01K7/42		
优先权	2001184134 2001-06-18 JP		
其他公开文献	US20020191675A1		
外部链接	<a href="#">Espacenet</a> <a href="#">USPTO</a>		

摘要(译)

电子体温计具有包括可变温度加热器和一个或多个温度传感器的探头，并且还可以包括热通量传感器。诸如温度，时间温度变化率和/或热流率的物理变量在患者表面上的位置处直接测量，同时由加热器通过绝热构件加热。这种测量值用于求解重写为低阶方程的热传递方程。可以控制测量以在所需的定时，例如以指定的间隔进行。用于接触患者身体的探针可以是平面的或细长的条形。

