



US010390762B2

(12) **United States Patent**
Romesburg

(10) **Patent No.:** **US 10,390,762 B2**
(45) **Date of Patent:** **Aug. 27, 2019**

(54) **PHYSIOLOGICAL METRIC ESTIMATION
RISE AND FALL LIMITING**

(58) **Field of Classification Search**
CPC ... A61B 5/7235; A61B 5/7203; A61B 5/6801;
A61B 5/742; A61B 5/14551;
(Continued)

(71) Applicant: **Valencell Inc.**, Raleigh, NC (US)

(72) Inventor: **Eric Douglas Romesburg**, Chapel Hill, NC (US)

(56) **References Cited**

(73) Assignee: **VALENCELL, INC.**, Raleigh, NC (US)

U.S. PATENT DOCUMENTS

3,636,617 A 1/1972 Schmidt et al.
3,704,706 A 12/1972 Herczfeld et al.

(*) Notice: Subject to any disclaimer, the term of this patent is extended or adjusted under 35 U.S.C. 154(b) by 197 days.

(Continued)

FOREIGN PATENT DOCUMENTS

(21) Appl. No.: **14/370,658**

CN 1545979 A 11/2004
CN 101317188 A 12/2008

(22) PCT Filed: **Dec. 24, 2012**

(Continued)

(86) PCT No.: **PCT/US2012/071593**

OTHER PUBLICATIONS

§ 371 (c)(1),
(2) Date: **Jul. 3, 2014**

Han et al. 2012 Comput. Biol. Med. 42:387-393; Pub.Date ePub. Dec. 27, 2011.*

(87) PCT Pub. No.: **WO2013/109389**

(Continued)

PCT Pub. Date: **Jul. 25, 2013**

Primary Examiner — Baisakhi Roy

(65) **Prior Publication Data**

Assistant Examiner — Patrick M Mehl

US 2015/0011898 A1 Jan. 8, 2015

(74) *Attorney, Agent, or Firm* — Coats & Bennett, PLLC

Related U.S. Application Data

(57) **ABSTRACT**

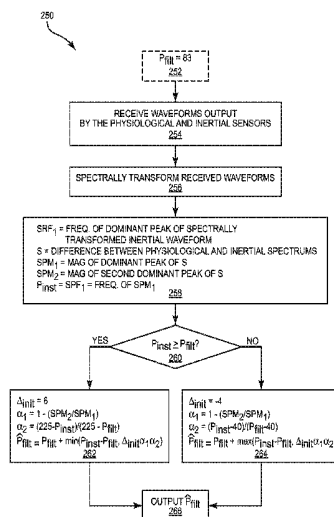
(60) Provisional application No. 61/586,874, filed on Jan. 16, 2012.

Methods and apparatus disclosed herein use a filtering technique to improve the accuracy of the results achieved when processing data provided by a physiological sensor. The disclosed filtering technique corrects many of the accuracy problems associated with physiological sensors, particularly PPG sensors. Broadly, the filtering technique adjusts a current filtered estimate of a physiological metric as a function of a rate limit based on a comparison between an instantaneous estimate of the physiological metric and the current filtered estimate.

(51) **Int. Cl.**
A61B 5/00 (2006.01)
A61B 5/024 (2006.01)
A61B 5/1455 (2006.01)

(52) **U.S. Cl.**
CPC **A61B 5/7235** (2013.01); **A61B 5/02416** (2013.01); **A61B 5/14551** (2013.01);
(Continued)

34 Claims, 6 Drawing Sheets



(56)

References Cited

FOREIGN PATENT DOCUMENTS

JP	H10258039	A	9/1998
JP	2004283228	A	10/2004
JP	2004358271	A	12/2004
JP	2005040261	A	2/2005
JP	2005270544	A	10/2005
WO	0021435	A1	4/2000
WO	0044274		8/2000
WO	2005010568	A2	2/2005
WO	2005036212	A2	4/2005
WO	2006009830	A2	1/2006
WO	2007013054	A1	2/2007
WO	2007122375	A2	11/2007
WO	2011105914	A1	9/2011
WO	2013038296	A1	3/2013
WO	2013109390	A1	7/2013
WO	2014109982	A2	7/2014

OTHER PUBLICATIONS

Poh et al. 2010 Optics Express 18:10762-10774 (Year: 2010).*

Bumgardner, W., "Top 8 Walking Speedometers and Odometers", retrieved on Jun. 18, 2014, retrieved from internet: <http://walking.about.com/od/measure/tp/speedometer.htm>.

Garmin, "Running Watches Heart Rate Monitor", Swim Watch, Heart Rate Monitors Reviews, Oct. 12, 2010, retrieved from internet: http://web.archive.org/web/*/http://heartratemonitors-reviews.com/category/swim-watch/.

Asada, H., et al., "Mobile Monitoring with Wearable Photoplethysmographic Biosensors," IEEE Engineering in Medicine and Biology Magazine, May/June 2003 Issue, May 1, 2003, pp. 28-40.

Wang, L. et al. "Multichannel Reflective PPG Earpiece Sensor with Passive Motion Cancellation," IEEE Transactions on Biomedical Circuits and Systems, vol. 1, No. 4, Dec. 1, 2007, pp. 235-241.

Wise, K., "Integrated sensors, MEMS, and microsystems: Reflections on a fantastic voyage," Sensors and Actuators A, vol. 136, Feb. 5, 2007, pp. 39-50.

Gigoi, B.P., et al., "Integration Technology for MEMS Automotive Sensors," 28th Annual Conference of the IEEE, Jan. 1, 2002, pp. 2712-2717.

Ko, W., "Trends and frontiers of MEMS," Sensors and Actuators A, vol. 136, Feb. 1, 2007, pp. 62-67.

Barbour, N., "Inertial Sensor Technology Trends," IEEE Sensors Journal, vol. 1, No. 4, Dec. 1, 2001, pp. 332-339.

Vigario, R., "Independent Component Approach to the Analysis of EEG and MEG Recordings," IEEE Transactions on Biomedical Engineering, vol. 47, No. 5, May 1, 2000, pp. 589-593.

Mayer-Kress, G., "Localized Measures for Nonstationary Time-Series of Physiological Data," Integr. Physiol. Behav. Sci., vol. 29, No. 3, Jul. 1, 1994, pp. 205-210.

Shaw, G.A., et al., "Warfighter Physiological and Environmental Monitoring: A Study for the U.S. Army Research Institute in Environmental Medicine and the Soldier Systems Center," Lincoln Laboratory, Massachusetts Institute of Technology, Lexington, MA., Nov. 1, 2004, pp. 1-128.

Laguna, P., et al., "Power Spectral Density of Unevenly Sampled Data by Least-Square Analysis: Performance and Application to Heart Rate Signals," IEEE Transactions on Biomedical Engineering, vol. 45, No. 6, Jun. 1, 1998, pp. 698-715.

Richardson, J.E., "Physiological Responses of Firefighters Wearing Level 3 Chemical Protective Suits While Working in Controlled Hot Environments," J. Occup. Environ. Med., vol. 43, No. 12, Dec. 1, 2001, pp. 1064-1072.

Scanlon, M., "Acoustic Sensors in the Helmet Detect Voice and Physiology," Proceedings of SPIE, vol. 5071, Jan. 1, 2003, pp. 41-51.

Arnold, M., et al., "Adaptive AR Modeling of Nonstationary Time Series by Means of Kalman Filtering," IEEE Transactions on Biomedical Engineering, vol. 45, No. 5, May 1, 1998, pp. 553-562.

Yan, Y., et al., "Reduction of motion artifact in pulse oximetry by smoothed pseudo Wigner-Ville distribution," Journal of NeuroEngineering and Rehabilitation, vol. 2, No. 3, Mar. 1, 2005, pp. 1-9.

Lee, C.M., et al., "Reduction of Motion Artifacts from Photoplethysmographic Recordings Using a Wavelet Denoising Approach," IEEE EMBS Asian-Pacific Conference on Biomedical Engineering, Jan. 1, 2003, pp. 194-195.

Foo, J.Y.A., "Comparison of wavelet transformation and adaptive filtering in restoring artefact-induced time-related measurement," Biomedical Signal Processing and Control vol. 1, No. 1 (2006), Mar. 24, 2006, pp. 93-98.

Wood, L., et al., "Active Motion Artifact Reduction for Wearable Sensors Using Laguerre Expansion and Signal Separation," Proceedings of the 2005 IEEE Engineering in Medicine and Biology 27th Annual Conference, Shanghai, China, Sep. 1, 2005, pp. 3571-3574.

Cacioppo, J., "Inferring Psychological Significance From Physiological Signals," American Psychologist, vol. 45, No. 1, American Psychological Association, Jan. 1, 1990, pp. 16-28.

Rhee, S., et al., "Artifact-Resistant Power-Efficient Design of Fingerring Plethysmographic Sensors," IEEE Transactions on Biomedical Engineering, vol. 48, No. 7, Jul. 1, 2001, pp. 795-805.

Wagner, J., et al., "From Physiological Signals to Emotions: Implementing and Comparing Selected Methods for Feature Extraction and Classification," IEEE Int. Conf. Multimedia and Expo, Jan. 1, 2005, pp. 1-4.

Parkka, J., et al., "Activity Classification Using Realistic Data From Wearable Sensors," IEEE Transactions on Information Technology in Biomedicine, vol. 10, No. 1, Jan. 1, 2006, pp. 119-128.

Georgoulas, G., et al., "Predicting the Risk of Metabolic Acidosis for Newborns Based on Fetal Heart Rate Signal Classification Using Support Vector Machines," IEEE Transactions on Biomedical Engineering, vol. 53, No. 5, May 1, 2006, pp. 875-884.

Liao, W., et al., "A Real-Time Human Stress Monitoring System Using Dynamic Bayesian Network," Proceedings of the 2005 IEEE Computer Society Conference on Computer Vision and Pattern Recognition, Jan. 1, 2005, pp. 1-8.

Moy, M., et al., "Accuracy of uniaxial accelerometer in chronic obstructive pulmonary disease," Journal of Rehabilitation Research and Development, vol. 45, No. 4, Nov. 4, 2008, pp. 611-618.

Moy, M., et al., "Ambulatory Monitoring of Cumulative Free-Living Activity," IEEE Engineering in Medicine and Biology Magazine May/June 2003, May 1, 2003, pp. 89-95.

Ricke, Ad. et al. "Automatic Segmentation of Heart Sound Signals Using Hidden Markov Models," IEEE Computers in Cardiology 2005; vol. 32, Jan. 1, 2005, pp. 953-956.

Acharya, R., et al., "Classification of cardiac abnormalities using heart rate signals," Medical and Biological Engineering and Computing 2004, vol. 42, No. 3, Jan. 1, 2004, pp. 288-293.

Allen, F., et al., "Classification of a known sequence of motions and postures from accelerometry data using adapted Gaussian mixture models," Institute of Physics Publishing Physiological Measurement, vol. 27, No. 10, Jul. 25, 2006, pp. 935-951.

Lee, J., et al., "Design of filter to reject motion artifact of pulse oximetry," Computer Standards & Interfaces, vol. 26 (2004), Jul. 4, 2003, pp. 241-249.

Rezek, I.A., et al., "Stochastic Complexity Measures for Physiological Signal Analysis," IEEE Transactions on Biomedical Engineering, vol. 45, No. 9, Sep. 1, 1998, pp. 1186-1191.

Gibbs, P., et al., "Active motion artifact cancellation for wearable health monitoring sensors using collocated MEMS accelerometers," Smart Struct. Mater., International Society for Optics and Photonics, Jan. 1, 2005, pp. 1-9.

Merletti, R., et al., "Advances in processing of surface myoelectric signals: Part 1," Medical and Biological Engineering and Computing, vol. 33, No. 3, May 1, 1995, pp. 362-372.

Asada, H., et al., "Active Noise Cancellation Using MEMS Accelerometers for Motion-Tolerant Wearable Bio-Sensors," Proceedings of the 26th Annual International Conference of the IEEE EMBS, San Francisco, CA, USA, Sep. 1, 2004, pp. 2157-2160.

(56) **References Cited**

OTHER PUBLICATIONS

- Newman, A., et al., "Sleep Disturbance, Psychosocial Correlates, and Cardiovascular Disease in 5201 Older Adults: The Cardiovascular Health Study," *Journal of American Geriatric Society*, vol. 45, No. 1, Jan. 1, 1997, pp. 1-7.
- Chan, K.W., et al., "Adaptive Reduction of Motion Artifact from Photoplethysmographic Recordings using a Variable Step-Size LMS Filter," *IEEE, Sensors*, Jun. 1, 2002, pp. 1342-1346.
- Dew, M.A., et al., "Healthy Older Adults' Sleep Predicts All-Cause Mortality at 4 to 19 Years of Follow-Up," *Psychosomatic Medicine*, vol. 65, Jan. 1, 2003, pp. 63-73.
- Gibbs, P., et al., "Reducing Motion Artifact in Wearable Bio-Sensors Using MEMS Accelerometers for Active Noise Cancellation," *IEEE American Control Conference*, Jun. 1, 2005, pp. 1581-1586.
- Yang, B-H, et al., "Development of the ring sensor for healthcare automation," *Robotics and Autonomous Systems*, vol. 30, Jan. 1, 2000, pp. 273-281.
- Healey, J., et al., "Detecting Stress During Real-World Driving Tasks Using Physiological Sensors," *IEEE Transactions on Intelligent Transportation Systems*, vol. 6, No. 2, Jun. 1, 2005, pp. 156-166.
- Hayes, M.J., et al., "A New Method for Pulse Oximetry Possessing Inherent Insensitivity to Artifact," *IEEE Transactions on Biomedical Engineering*, vol. 48, No. 4, Apr. 1, 2001, pp. 452-461.
- Wilson, G., et al., "An Analysis of Mental Workload in Pilots During Flight Using Multiple Psychophysiological Measures," *The International Journal of Aviation Psychology*, vol. 12, No. 1, May 1, 2001, pp. 3-18.
- Baddeley, A.D., "Selective Attention and Performance in Dangerous Environments," *HPEE*, vol. 5, No. 1, Oct. 1, 2000, pp. 86-91.
- Wilson, G.F., et al., "Performance Enhancement with Real-time Physiologically Controlled Adaptive Aiding," *Proceedings of the IEA 2000 / HFES 2000 Congress*, vol. 44, Jul. 30, 2000, pp. 61-64.
- Skinner, M.J., et al., "Workload Issues in Military Tactical Airlift," *The International Journal of Aviation Psychology*, vol. 12, No. 1, May 1, 2001, pp. 79-93.
- Helander, M., "Applicability of Drivers' Electrodermal Response to the Design of the Traffic Environment," *Journal of Applied Psychology*, vol. 63, No. 4, Jan. 18, 1978, pp. 481-488.
- Perala, C.H., "Galvanic Skin Response as a Measure of Soldier Stress," *Army Research Laboratory, ARL-TR-4114*, May 1, 2007, pp. 1-35.
- Zhai, J., et al., "Stress Detection in Computer Users Based on Digital Signal Processing of Noninvasive Physiological Variables," *Conf Proc IEEE Eng Med Biol Soc.*, New York, NY, Aug. 31, 2006; pp. 1355-1358.
- Zhai, J., et al., "Stress Recognition Using Non-invasive Technology," *FLAIRS Conference*, Melbourne Beach, Florida, May 11, 2006, AAAI Press, pp. 395-401.
- Endler, J., "Signals, Signal Conditions, and the Direction of Evolution," *The American Naturalist*, vol. 139, Supplement, Mar. 1, 1992, pp. S125-S153.
- Sadeh, A., "The role of actigraphy in sleep medicine," *Sleep Medicine Reviews*, vol. 6, No. 2, Jan. 1, 2002, pp. 113-124.
- Mendelson, Y. et al., "Skin Reflectance Pulse Oximetry: In Vivo Measurements from the Forearm and Calf," *Journal of Clinical Monitoring*, vol. 7, No. 1, Jan. 1, 1991; pp. 7-12.
- Konig, V. et al., "Reflectance Pulse Oximetry—Principles and Obstetric Application in the Zurich System," *Journal of Clinical Monitoring and Computing*, vol. 14, No. 6, Aug. 1, 1998; pp. 403-412.
- Tremper, K. et al., "Pulse Oximetry," *Medical Intelligence Article, Anesthesiology*, vol. 70, No. 1, Jan. 1, 1989; pp. 98-108.
- Haahr, R. et al. "A Wearable 'Electronic Patch' for Wireless Continuous Monitoring of Chronically Diseased Patients," *Proceedings of the 5th International Workshop on Wearable and Implantable Body Sensor Networks*, Jun. 1-3, 2008; pp. 66-70.
- Asada, H. et al., "The Ring Sensor: A New Ambulatory Wearable Sensor for Twenty-Four Hour Patient Monitoring," *Proceedings of the 20th Annual Conference of the IEEE Engineering in Medicine and Biology Society*, vol. 20, No. 4, Jan. 1, 1998; pp. 1906-1909.
- Comtois, G. et al., "A Comparative Evaluation of Adaptive Noise Cancellation Algorithms for Minimizing Motion Artifacts in a Forehead-Mounted Wearable Pulse Oximeter," *Proceedings of the 29th Annual International Conference of the IEEE EMBS*, Lyon, France, Aug. 23, 2007, pp. 1-4.
- Gupta, G. Sen et al., "Design of a Low-cost Physiological Parameter Measurement and Monitoring Device," *IMTC 2007—Instrumentation and Measurement Technology Conference*, Warsaw, Poland, May 1, 2007, pp. 1-6.
- Lee, R.G. et al. "A Mobile Care System With Alert Mechanism" *IEEE Transactions on Information Technology in Biomedicine*, vol. 11, Issue 5, Sep. 1, 2007.
- Buchanan, T., et al., "Neuromusculoskeletal Modeling: Estimation of Muscle Forces and Joint Moments and Movements From Measurements of Neural Command," *J Appl Biomech*, vol. 20, No. 4, Nov. 1, 2004, pp. 1-34.
- Stolwijk, J., "Mathematical Models of Thermal Regulation," *Annals of the New York Academy of Sciences*, vol. 335, No. 1, Jan. 1, 1980, pp. 98-106.
- Wiggs, L., et al., "Sleep patterns and sleep disorders in children with autistic spectrum disorders: insights using parent report and actigraphy," *Developmental Medicine and Child Neurology* 2004, vol. 46, No. 6, Jan. 1, 2004, pp. 372-380.
- Hastings, P.C., "Symptom burden of sleep-disordered breathing in mild-to-moderate congestive heart failure patients," *European Respiratory Journal*, vol. 27, No. 4, Jan. 1, 2006, pp. 748-755.
- Carskadon, M., et al., "Chapter 2—Normal Human Sleep: an Overview," *Monitoring and staging human sleep, from Principles and practice of sleep medicine*, 5th edition, St. Louis: Elsevier Saunders, Jan. 1, 2011, pp. 1-21.
- Critchley, H., "Electrodermal Responses: What Happens in the Brain," *The Neuroscientist*, vol. 8, No. 2, Jan. 1, 2002, pp. 132-142.
- Lang, P., et al., "Looking at pictures: Affective, facial, visceral, and behavioral reactions," *Psychophysiology*, vol. 30, No. 3, Apr. 22, 1992, pp. 261-273.
- Soleymani, M., et al., "Affective Ranking of Movie Scenes Using Physiological Signals and Content Analysis," *Proc. 2nd ACM Work. Multimed. Semant.*, Jan. 1, 2008, pp. 1-8.
- Appelhans, B., et al., "Heart Rate Variability as an Index of Regulated Emotional Responding," *Review of General Psychology*, vol. 10, No. 3, Sep. 15, 2005, pp. 229-240.
- Postma, D.S., et al., "The natural history of chronic obstructive pulmonary disease," *European Respiratory Monograph*, vol. 38, Jan. 1, 2006, pp. 71-83.
- Bidargaddi, N., et al., "Ambulatory monitor derived clinical measures for continuous assessment of cardiac rehabilitation patients in a community care model," *Pervasive Computing Technologies for Healthcare, 2008 Second International Conference on Pervasive Computing Technologies for Healthcare*, Jan. 30, 2008, pp. 1-5.
- Hertzman, A., "The Blood Supply of Various Areas as Estimated by the Photoelectric Plethysmograph," *Am J. Physiol*, vol. 124, Issue 2, Jul. 18, 1938, pp. 328-340.
- Hayes, M., et al., "Artifact reduction in photoplethysmography," *Applied Optics*, vol. 37, No. 31, Nov. 1, 1998, pp. 7437-7446.
- Page, E., et al., "Physiological approach to monitor patients in congestive heart failure: application of a new implantable device-based system to monitor daily life activity and ventilation," *Eurospace*, vol. 9, May 3, 2007, pp. 687-693.
- Moy, M., et al., "Free-living physical activity in COPD: Assessment with accelerometer and activity checklist," *Journal of Rehabilitation Research & Development*, vol. 46, No. 2, Nov. 2, 2009, pp. 277-286.
- Bennett, T., et al., "Development of Implantable Devices for Continuous Ambulatory Monitoring of Central Hemodynamic Values in Heart Failure Patients," *Pacing Clin Electrophysiol*, Jun. 2005; vol. 28, No. 6, Jun. 1, 2005, pp. 673-684.
- Allen, J., "Photoplethysmography and its application in clinical physiological measurement," *Physiological Measurement*, vol. 28, Feb. 20, 2007, pp. 1-39.
- Webster, J.G. (ed.), "Design of Pulse Oximeters," *Institute of Physics Publishing*, Philadelphia, PA, Jan. 1, 1997, pp. 1-134.

(56)

References Cited

OTHER PUBLICATIONS

- Webster, J.G. (ed.), "Design of Pulse Oximeters," Institute of Physics Publishing, Philadelphia, PA, Jan. 1, 1997, pp. 135-267.
- Shevchenko, Y, et al., "90th Anniversary of the Development by Nikolai S. Korotkoff of the Auscultatory Method of Measuring Blood Pressure," *Circulation*, vol. 94, No. 2, Jul. 15, 1996, pp. 116-118.
- Han, H., et al., "Development of a wearable monitoring device with motion artifact reduced algorithm," International Conference on Control, Automation and Systems 2007, Oct. 17, 2007, Seoul, Korea, pp. 1581-1584.
- Petition for Inter Partes Review of U.S. Pat. No. 8,157,730; *Apple, Inc.* (Petitioner) v. *Valencell, Inc.* (Patent Owner), IPR 2017-01701, filed Jun. 30, 2017, pp. 1-89.
- Petition for Inter Partes Review of U.S. Pat. No. 8,652,040; *Apple, Inc.* (Petitioner) v. *Valencell, Inc.* (Patent Owner), IPR 2017-01702, filed Jun. 30, 2017, pp. 1-70.
- Petition for Inter Partes Review of U.S. Pat. No. 8,652,040; *Apple, Inc.* (Petitioner) v. *Valencell, Inc.* (Patent Owner), IPR 2017-01703, filed Jun. 30, 2017, pp. 1-79.
- Petition for Inter Partes Review of U.S. Pat. No. 8,888,701; *Apple, Inc.* (Petitioner) v. *Valencell, Inc.* (Patent Owner), IPR 2017-01704, filed Jun. 30, 2017, pp. 1-84.
- Declaration of Dr. Majid Sarrafzadeh, Exhibit 1003, Petition for Inter Partes Review of U.S. Pat. No. 8,888,701; *Apple, Inc.* (Petitioner) v. *Valencell, Inc.* (Patent Owner), IPR 2017-01704, filed Jun. 30, 2017, pp. 1-109.
- Declaration of Brian W. Anthony, Ph.D. In Support of Petition for Inter Partes Review of U.S. Pat. No. 8,157,730, Exhibit 1003, Petition for Inter Partes Review of U.S. Pat. No. 8,157,730; *Apple, Inc.* (Petitioner) v. *Valencell, Inc.* (Patent Owner), IPR 2017-01701, filed Jun. 30, 2017, pp. 1-138.
- Declaration of Dr. Majid Sarrafzadeh, Exhibit 1003, Petition for Inter Partes Review of U.S. Pat. No. 8,652,040; *Apple, Inc.* (Petitioner) v. *Valencell, Inc.* (Patent Owner), IPR 2017-01703, filed Jun. 30, 2017, pp. 1-87.
- Declaration of Dr. Majid Sarrafzadeh, Exhibit 1003, Petition for Inter Partes Review of U.S. Pat. No. 8,652,040; *Apple, Inc.* (Petitioner) v. *Valencell, Inc.* (Patent Owner), IPR 2017-01702, filed Jun. 30, 2017, pp. 1-92.
- Declaration of Brian W. Anthony, Ph.D. In Support of Petition for Inter Partes Review of U.S. Pat. No. 9,044,180, Exhibit 1003, Petition for Inter Partes Review of U.S. Pat. No. 9,044,180; *Apple, Inc.* (Petitioner) v. *Valencell, Inc.* (Patent Owner), IPR 2017-01947, filed Aug. 15, 2017, pp. 1-153.
- Mendelson, J., et al., "Measurement Site and Photodetector Size Considerations in Optimizing Power Consumption of a Wearable Reflectance Pulse Oximeter", Proceedings of the 25th Annual International Conference of the IEEE EMBS, Engineering in Medicine and Biology Society, Cancun, Mexico, Sep. 17, 2003, pp. 1-4.
- Palder, et al., "Vascular Access for Hemodialysis, Patency rates and Results of Revision", *Annals of Surgery*, vol., 202, No. 2, Aug. 1, 1985, pp. 1-5.
- Spigulis, J., et al., "Wearable wireless photoplethysmography sensors," *Biophotonics: Photonic Solutions for Better Health Care*, Proceedings of SPIE, vol. 6991, May 1, 2008, pp. 1-7.
- Sandberg, M., et al., "Non-invasive monitoring of muscle blood perfusion by photoplethysmography: evaluation of a new application," *Acta Physiol Scand.*, vol. 183, No. 4, Dec. 7, 2004, pp. 335-343.
- Sum, K.W., et al. "Vital Sign Monitoring for Elderly at Home: Development of a Compound Sensor for Pulse Rate and Motion," *Studies in Health Technology and Informatics, Personalised Health Management Systems*, IOS Press, Jan. 1, 2005, pp. 43-50.
- Mendelson, Y., et al., "A Wearable Reflectance Pulse Oximeter for Remote Physiological Monitoring," Proceedings of the 28th IEEE EMBS Annual International Conference New York City, USA, Aug. 30, 2006, pp. 912-915.
- Jung, W., "Chapter H: OP Amp History," *Op Amp Applications Handbook*, published by Newnes/Elsevier, Jan. 1, 2005, ISBN-0-7506-7844-5, pp. H.1-H.72.
- Texas Instruments, "General Purpose Operational Amplifiers", SLOSS094B, Nov. 1, 1970, pp. 1-19.
- Schmitt, O., "A simple differential amplifier," *Review of Scientific Instruments* vol. 8, No. 126, Apr. 1, 1937, American Institute of Physics, pp. 1-3, available at: <http://dx.doi.org/10.1063/1.1752256>.
- Gray, p, et al., "Recent Advances in Monolithic Operational Amplifier Design," *IEEE Transactions on Circuits and Systems*, vol. CAS-21, No. 3, May 1, 1974, pp. 317-327.
- Horowitz, P., et al., "The Art of Electronics," Second Edition, Cambridge University Press, Jan. 1, 1989, pp. 98-102.
- Petition for Inter Partes Review of U.S. Pat. No. 9,044,180; *Apple, Inc.* (Petitioner) v. *Valencell, Inc.* (Patent Owner), IPR 2017-01947, filed Aug. 15, 2017, pp. 1-86.

* cited by examiner

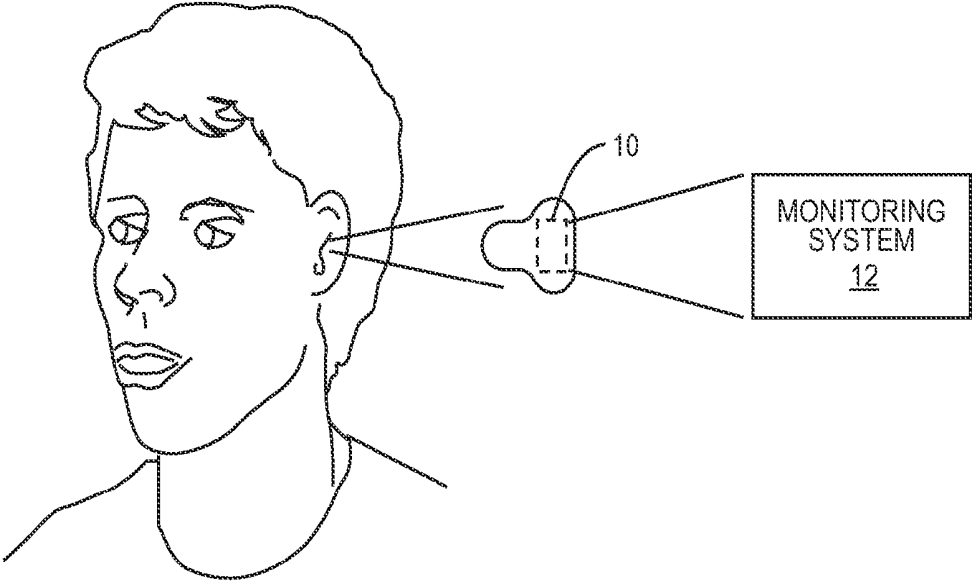


FIG. 1

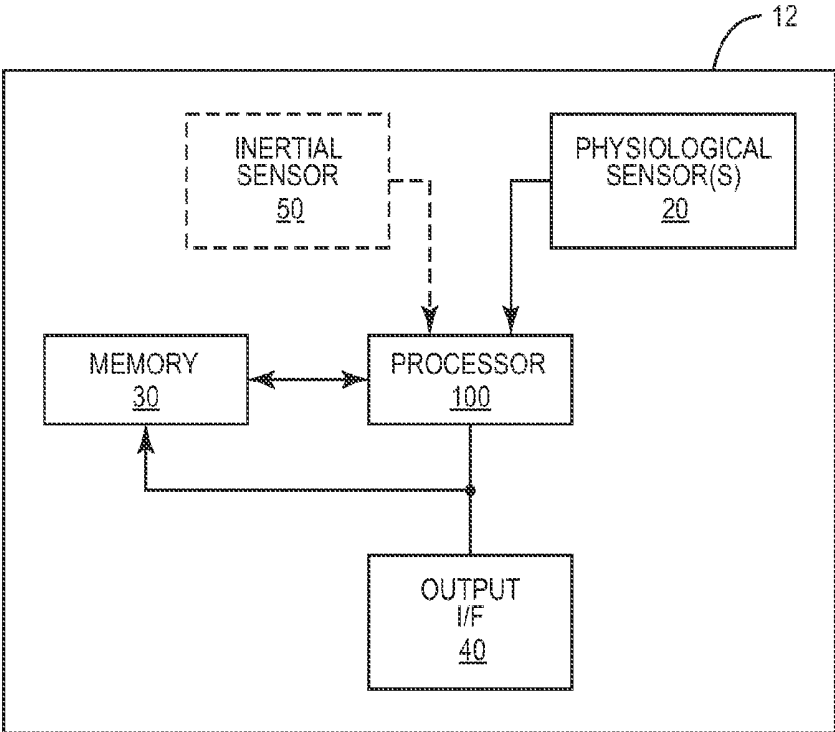


FIG. 2

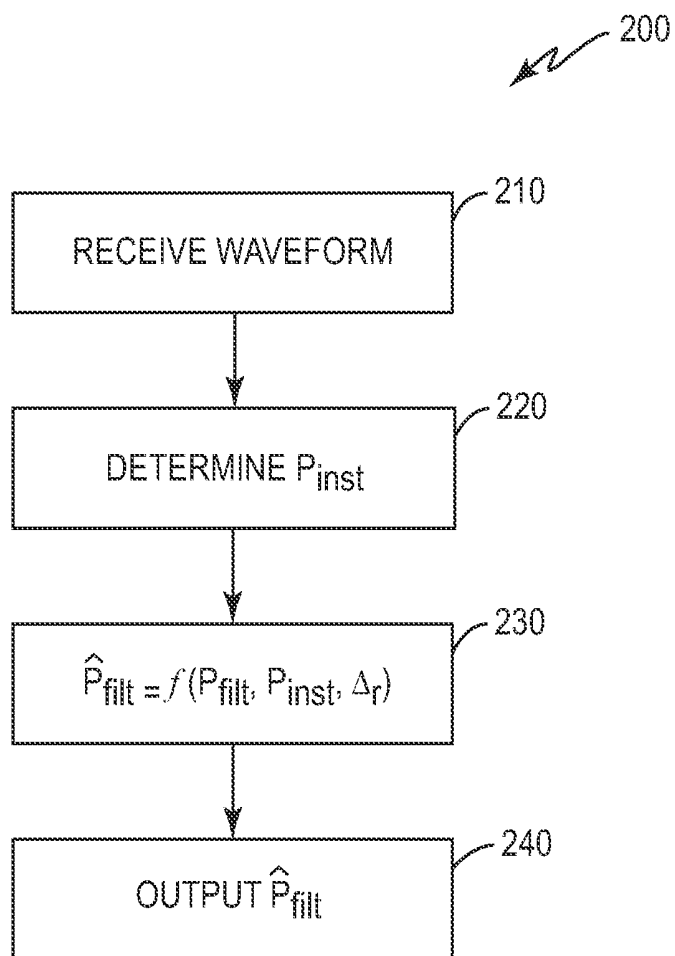


FIG. 3

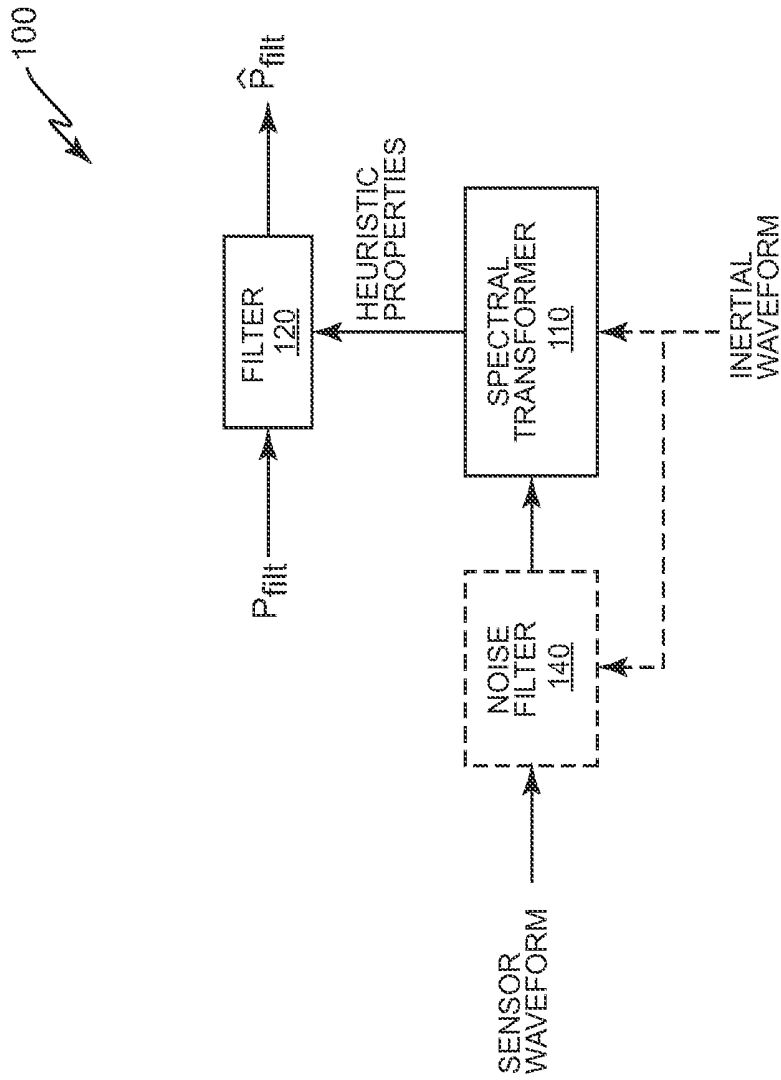


FIG. 4

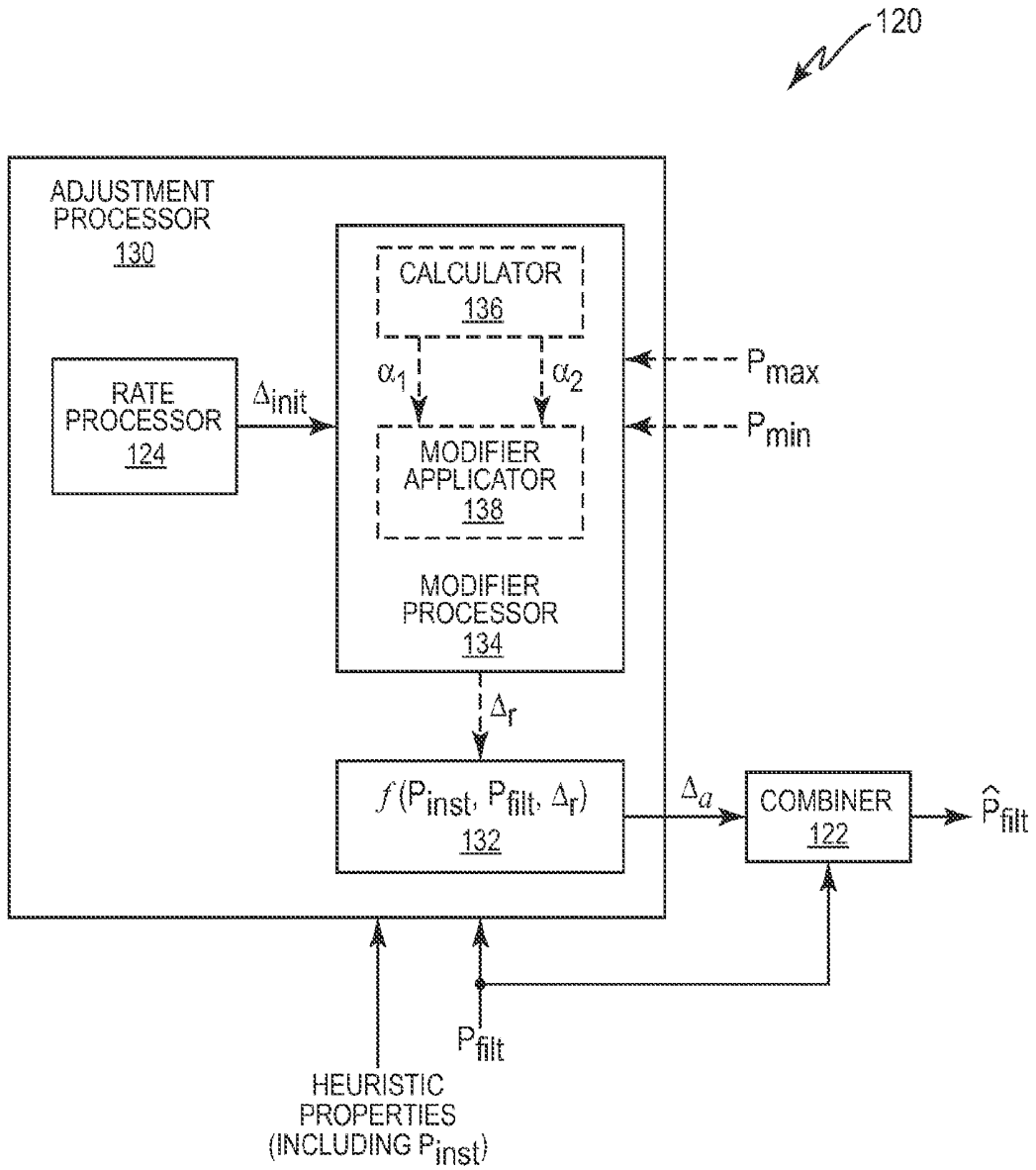


FIG. 5

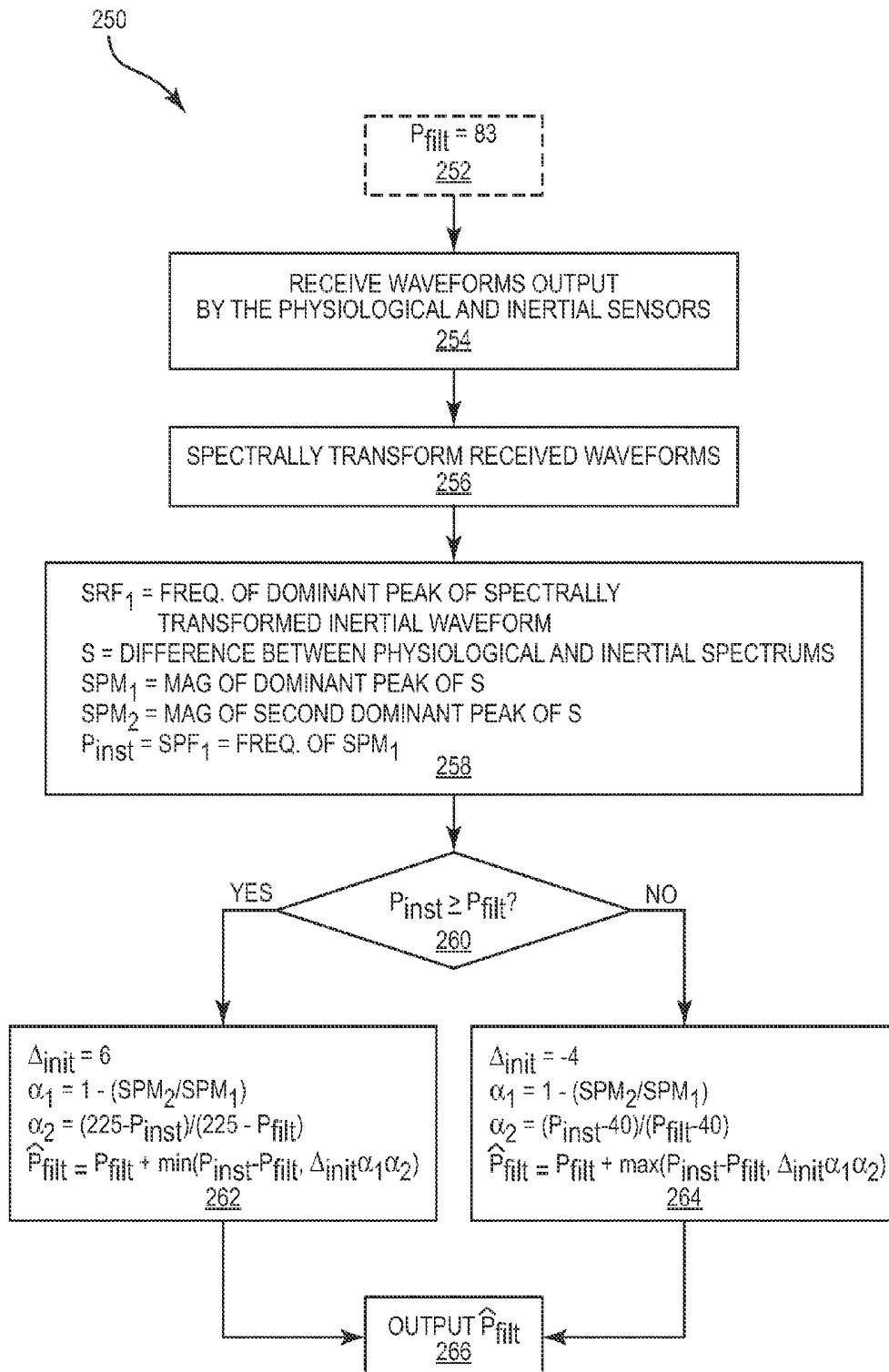


FIG. 6

PHYSIOLOGICAL METRIC ESTIMATION RISE AND FALL LIMITING

The embodiments disclosed herein generally relate to photoplethysmograph (PPG) sensors for monitoring heart rate and other physiological metrics, and more particularly relate to noise reduction techniques for PPG sensors.

BACKGROUND

Personal health monitors provide users with the ability to monitor their overall health and fitness by enabling the user to monitor heart rate or other physiological information during exercise, athletic training, rest, daily life activities, physical therapy, etc. Such devices are becoming increasingly popular as they become smaller and more portable.

A heart rate monitor represents one example of a personal health monitor. A common type of heart rate monitor uses a chest strap monitor that includes surface electrodes to detect muscle action potentials from the heart. Because such surface electrodes provide a relatively noise free signal, the information produced by monitors that use surface electrodes is highly accurate. However, most users find chest strap monitors uncomfortable and inconvenient.

Another type of heart rate monitor uses PPG sensors disposed in an ear bud. The ear provides an ideal location for a monitor because it is a relatively immobile platform that does not obstruct a person's movement or vision. PPG sensors proximate the ear have, e.g., access to the inner ear canal and tympanic membrane (for measuring core body temperature), muscle tissue (for monitoring muscle tension), the pinna and earlobe (for monitoring blood gas levels), the region behind the ear (for measuring skin temperature and galvanic skin response), and the internal carotid artery (for measuring cardiopulmonary functioning). The ear is also at or near the point of the body's exposure to environmental breathable toxins of interest (volatile organic compounds, pollution, etc.), noise pollution experienced by the ear, lighting conditions for the eye, etc. Further, as the ear canal is naturally designed for transmitting acoustical energy, the ear provides a good location for monitoring internal sounds, such as the heartbeat, breathing rate, mouth motion, etc.

PPG sensors measure the relative blood flow using an infrared or other light source that projects light that is ultimately transmitted through or reflected off tissue, and is subsequently detected by a photodetector and quantified. For example, higher blood flow rates result in more light being scattered by the blood, which ultimately increases the intensity of the light that reaches the photodetector. By processing the signal output by the photodetector, a monitor using PPG sensors may measure the blood volume pulse (the phasic change in blood volume with each heartbeat), the heart rate, heart rate variability, and other physiological information. PPG sensors are generally small and may be packaged such that they do not encounter the comfort and/or convenience issues associated with other conventional health monitors. However, PPG sensors are also more sensitive to motion artifact noise than are many other types of sensors, and thus are more prone to accuracy problems.

SUMMARY

The filtering techniques disclosed herein improve the accuracy of a heart rate and/or other physiological metrics provided by a monitor, e.g., one using photoplethysmograph (PPG) sensors. In general, the disclosed filtering technique

improves the accuracy by adjusting an estimate of a heart rate as a function of a rate limit associated with the heart rate.

One exemplary method processes data provided by a physiological sensor, e.g., a PPG sensor, to reduce the noise and therefore improve the accuracy of a physiological metric, e.g., a heart rate. The method comprises determining, based on a physiological waveform received from a physiological sensor, an instantaneous estimate of a physiological metric, and comparing the instantaneous estimate to a current filtered estimate of the physiological metric. The method further includes computing a revised filtered estimate of the physiological metric as a function of the current filtered estimate and a rate limit based on the comparison between the instantaneous estimate and the current filtered estimate, and outputting the revised filtered estimate.

One exemplary physiological processor processes data provided by a physiological sensor, e.g., a PPG sensor, to reduce the noise and therefore improve the accuracy of a physiological metric, e.g., a heart rate. The processor comprises a spectral transformer and a filter. The spectral transformer is configured to determine, based on a received waveform, an instantaneous estimate of the physiological metric. The filter is configured to compare the instantaneous estimate to a current filtered estimate of the physiological metric, and output a revised filtered estimate of the physiological metric computed as a function of the current filtered estimate and a rate limit based on the comparison between the instantaneous estimate and the current filtered estimate.

BRIEF DESCRIPTION OF THE DRAWINGS

FIG. 1 shows an exemplary heart rate monitor disposed in an ear bud.

FIG. 2 shows a block diagram of an exemplary physiological monitoring system disposed in a housing.

FIG. 3 shows an exemplary process for determining physiological information from data provided by a physiological sensor.

FIG. 4 shows an exemplary block diagram for the processor of FIG. 2, as configured to implement the process of FIG. 3.

FIG. 5 shows an exemplary block diagram for the filter of FIG. 4.

FIG. 6 shows another exemplary process for determining physiological information from data provided by a physiological sensor.

DETAILED DESCRIPTION

Many of the embodiments disclosed herein are derived from new findings on how vital signs, PPG signals, and acceleration changes within the human body during activity. By understanding the relationship between these changes, a method has been invented to track heart rate and other vital signs in the midst of motion artifact noise and other types of noise that may otherwise lead to erroneous estimations of heart rate and other vital signs.

The filtering technique disclosed herein improves the accuracy of the results achieved when processing data, e.g., heart rate data, provided by a physiological sensor. FIG. 1 shows an exemplary monitoring system **12** disposed in an ear bud **10**. The ear bud **10** may comprise a wireless or wired ear bud that communicatively couples to a remote device, e.g., a music player, a smart phone, a personal data assistant, etc. The monitoring system **12** monitors the heart rate and/or other physiological metrics, and outputs such physiological

information to the user and/or to other processing functions. While the monitoring system 12 disclosed herein is presented as being part of an ear bud 10, it will be appreciated that monitoring system 12 may be disposed into any device that secures to the body of a user, e.g., a device that secures to an ear, finger, toe, limb (arm, leg, ankle, etc.), wrist, nose, etc. In some embodiments, the device may comprise a patch, e.g., a bandage, designed to attach the system 12 to any desired location on the user's body.

FIG. 2 shows a block diagram of an exemplary monitoring system 12 according to one exemplary embodiment. System 12 comprises a processor 100 coupled to one or more physiological sensors 20, a memory 30, and an output interface 40. As discussed further herein, system 12 may also include an optional inertial sensor 50 configured to sense energy, e.g., motion, external to the system 12. Physiological sensor(s) 20 produce a physiological waveform responsive to the physiological state of the user. Processor 100 processes the physiological waveform using the filtering technique disclosed herein, along with information stored in memory 30, to determine a heart rate and/or one or more physiological metrics with improved accuracy. Output interface 40 outputs the determined physiological metric(s). It will be appreciated that output interface may comprise a transceiver for transmitting the data output by the processor 100 to a remote device. Alternatively or additionally, the output interface may provide the output data to a user interface, e.g., a display, a database, another processor, and/or a processing function.

In exemplary embodiments, the physiological sensors 20 comprise photoplethysmograph (PPG) sensors that generate an electrical physiological waveform responsive to detected light intensity. PPG sensors comprise light intensity sensors that generally rely on optical coupling of light into the blood vessels. As used herein, the term "optical coupling" refers to the interaction or communication between excitation light entering a region and the region itself. For example, one form of optical coupling may be the interaction between excitation light generated from within a light-guiding ear bud 10 and the blood vessels of the ear. Light guiding ear buds are described in co-pending U.S. Patent Application Publication No. 2010/0217102, which is incorporated herein by reference. In one embodiment, the interaction between the excitation light and the blood vessels may involve excitation light entering the ear region and scattering from a blood vessel in the ear such that the intensity of the scattered light is proportional to blood flow within the blood vessel. Another form of optical coupling may result from the interaction between the excitation light generated by an optical emitter within the ear bud and the light-guiding region of the ear bud.

Processor 100 determines one or more physiological metrics from the physiological waveform and filters the determined metric(s) to produce a revised physiological metric having an improved accuracy. The determined physiological metric may also refer to a physiological assessment computed from one or more physiological metrics. For simplicity, the following describes the processor 100 in terms of determining a heart rate. However, the processor 100 may alternatively or additionally determine other physiological metrics, e.g., a respiration rate, a heart rate variability (HRV), a pulse pressure, a systolic blood pressure, a diastolic blood pressure, a step rate, an oxygen uptake (VO_2), an R-R interval (which represents the interval between successive R-peaks in an ECG waveform), a maximal oxygen uptake (VO_2 max), calories burned, trauma, cardiac output and/or blood analyte levels including per-

centage of hemoglobin binding sites occupied by oxygen (SPO_2), percentage of methemoglobins, a percentage of carbonyl hemoglobin, and/or a glucose level. Alternatively or additionally, processor 100 may determine and filter one or more physiological assessments, e.g., a ventilatory threshold, lactate threshold, cardiopulmonary status, neurological status, aerobic capacity (VO_2 max), and/or overall health or fitness. Though heart rate is used as an example of a specific physiological metric that may be accurately extracted using the embodiments disclosed herein, it should be understood that other physiological metrics may also be derived using these embodiments. Periodically changing vital signs, such as, but not limited to, heart rate, respiration rate, R-R interval, circadian changes, blood-gas level changes, and the like may be particularly suited for signal extraction under the described embodiments.

FIG. 3 shows an exemplary method 200 that may be implemented by processor 100 to compute a revised heart rate. After processor 100 receives the physiological waveform from the sensor(s) 20 (block 210), the processor 100 determines an instantaneous estimate P_{inst} of the heart rate. After comparing P_{inst} to a current filtered estimate P_{filr} , which may be retrieved from memory 30, processor 100 computes a revised filtered estimate \hat{P}_{filr} of the heart rate as a function of P_{filr} and a rate limit Δ_r , based on the comparison (block 230), where Δ_r may also be retrieved from memory 30. Processor 100 subsequently outputs the revised filtered estimate \hat{P}_{filr} to output 40 (block 240). It will be appreciated that processor 100 may also store the revised filtered estimate \hat{P}_{filr} in memory 30, e.g., so that it may be used in subsequent calculations and/or as a current filtered estimate P_{filr} . As used herein, the rate limit represents a limit to the rate of change for the heart rate. For example, the rate limit may represent the rate of change in beats per minute (BPM) that the heart rate may experience in a 1 second frame period. Such a rate limit may be determined based on empirical evidence, and is generally predetermined. It will be appreciated that the rate limit may be expressed as the rate of change experienced for any length frame period, where for example, the rate limit in BPM/s is multiplied by the length of the frame period (in seconds).

FIG. 4 shows a block diagram of an exemplary processor 100 configured to process the physiological waveform provided by the sensor(s) 20. Processor 100 comprises a spectral transformer 110 and a filter 120. Spectral transformer 110 spectrally transforms the physiological waveform received from the sensor(s) 20 to determine one or more heuristic properties of the physiological waveform and provides the heuristic properties to the filter 120. For example, the spectral transformer 110 may evaluate the spectrally transformed waveform to identify the spectral peak having the largest amplitude. The spectral transformer 110 then defines the frequency of the peak with the largest amplitude as the instantaneous estimate P_{inst} of the heart rate. Filter 120 filters the instantaneous estimate P_{inst} of the heart rate to compute the revised filter estimate P_{filr} as a function of P_{filr} and Δ_r , based on a comparison between P_{filr} and P_{inst} .

To illustrate, consider the following example. If the instantaneous heart rate is greater than or equal to the current filtered heart rate, filter 120 may compute the revised filter estimate as a function of a rising/increasing heart rate limit Δ_{r+} and the current filtered heart rate, e.g., according to:

$$\hat{P}_{filr} = P_{filr} + \min(\Delta_{r+}, P_{inst} - P_{filr}),$$

where, the rising heart rate limit Δ_{r+} is, e.g., 6 BPM in a 1 second frame period. If, however, the instantaneous heart rate is less than the current filtered heart rate, filter 120 may

compute the revised filter estimate as a function of a falling heart rate limit Δ_{r-} and the current filtered heart rate, e.g., according to:

$$\hat{P}_{filt} = P_{filt} + \max(\Delta_{r-}, P_{inst} - P_{filt}), \quad (2)$$

where, the falling heart rate limit Δ_{r-} is, e.g., -4.

FIG. 5 shows a block diagram of an exemplary filter 120. In one embodiment, filter 120 comprises an adjustment processor 130 and a combiner 122. Combiner 122 combines an adjustment parameter Δ_a output by adjustment processor 130 with P_{filt} to compute the revised filtered estimate \hat{P}_{filt} of the heart rate. Adjustment processor 130 comprises a function processor 132 configured to compute Δ_a as a function of the rate limit Δ_r and the current filtered estimate P_{filt} responsive to the comparison between the instantaneous estimate P_{inst} and the current filtered estimate P_{filt} . Using the previous example, when $P_{inst} \geq P_{filt}$, function processor 132 may compute the adjustment parameter Δ_a according to:

$$\Delta_a = \min(\Delta_{r+}, P_{inst} - P_{filt}) \quad (3)$$

If, however $P_{inst} < P_{filt}$, function processor 132 may compute the adjustment parameter Δ_a according to:

$$\Delta_a = \max(\Delta_{r-}, P_{inst} - P_{filt}). \quad (4)$$

In some embodiments, adjustment processor 130 selects either the rising or falling rate limit used by function processor 132 based on the comparison between the instantaneous estimate and the current filtered estimate. Alternatively, filter 120 may include a rate processor 124 that selects an initial rate limit Δ_{mit} , which may comprise the rising or falling rate limit, based on the comparison between the instantaneous estimate and the current filtered estimate. In still another embodiment, the function processor 132 may comprise different processing paths associated with different comparison results, where adjustment processor 130 selects one of the processing paths based on the comparison between the instantaneous estimate and the current filtered estimate, where each processing path is associated with a different one of Equations (1)/(3) and (2)/(4), and where each processing path includes the corresponding rate limit.

It will also be appreciated that the different values disclosed herein for the rising and falling rate limits are exemplary and non-limiting. In some embodiments, the magnitude of the rising rate limit may equal the magnitude of the falling rate limit. Alternatively or additionally, while the rising and falling rate limits may respectively comprise positive and negative values, such is not required. For example, when the falling rate limit is set to a positive value, Equation (4) may be modified according to:

$$\Delta_a = -\min(\Delta_{r-}, P_{filt} - P_{inst}) \quad (5)$$

Similar modifications to Equation (3) may be made when the rising rate limit is set to a negative value.

Adjustment processor 130 may further include a modifier processor 134 configured to compute one or more modifiers based on one or more of the heuristic properties, and further configured to determine the rate limit as a function of the modifier(s) and an initial rate limit Δ_{mit} , e.g., as provided by rate processor 124. Accordingly, modifier processor 134 includes a calculator 136 and a modifier applicator 138. Calculator 136 computes one or more modifiers based on the one or more heuristic properties of the physiological waveform provided by the spectral transform. In some embodiments, the modifier(s) represent a reliability of the initial rate limit Δ_{mit} . Modifier applicator 138 subsequently applies the computed modifier(s) to the initial rate limit Δ_{mit} , e.g., by summing and/or multiplying the initial rate limit Δ_{mit} by the

computed modifier(s), to determine the rate limit Δ_r , used by function processor 132. It will be appreciated that the modifier(s) may be applied to any initial rate limit Δ_{mit} , including the rising rate limit, the falling rate limit, or both, and that when function processor 132 uses different processing paths based on the comparison between P_{inst} and P_{filt} , the modifiers are applied to the rate limits of one or more of the processing paths as needed/desired.

In one exemplary embodiment, calculator 136 computes a spectral modifier α , based on heuristic properties of the physiological waveform comprising spectral characteristics of the instantaneous estimate of the heart rate. The spectral modifier quantifies the reliability (or confidence) that the spectral transformer 110 associated the instantaneous estimate with the correct spectral peak. Broadly, when there is a large difference in magnitude between the spectral peak having the largest magnitude and the spectral peak having the next largest magnitude, there is a high degree of confidence that the largest spectral peak corresponds to the instantaneous heart rate of interest. More particularly, the spectral transformer 110 may provide the spectral characteristics for some number of the spectral peaks of the spectrally transformed waveform, e.g., the magnitude(s) of two or more spectral peaks. For example, the spectral transformer may provide the magnitude of the largest spectral peak SPM_1 and the magnitude of the second largest spectral peak SPM_2 to the calculator 136. Based on the provided spectral magnitudes, calculator 136 calculates the spectral modifier. For example, calculator 136 may compute the spectral modifier according to:

$$\alpha_1 = 1 - \frac{SPM_2}{SPM_1}. \quad (6)$$

Subsequently, modifier applicator 138 applies the spectral modifier according to:

$$\Delta_r = \alpha_1 \Delta_{mit} \quad (7)$$

It will be appreciated that applicator 138 may apply the spectral modifier to the initial rate limit Δ_{mit} using linear means, e.g., multiplication, addition, subtraction, and/or division, or using non-linear means, e.g., norm, RMS, min, or max functions. It should be noted that if the magnitude of the largest peak (SPM_1) and the magnitude of the 2nd largest peak (SPM_2) are identical, then $\alpha_1 = 0$, such that the rate limit Δ_r is zero. With the rate limit at zero, the reported physiological metric \hat{P}_{filt} (which in this specific case is the reported heart rate) may not change.

In another exemplary embodiment, calculator 136 computes a boundary modifier α_2 as a function of boundary values bounding the heart rate based on the comparison between the instantaneous estimate and the current filtered estimate. The boundary modifier also quantifies the reliability (or confidence) that the spectral transformer 110 associated the instantaneous estimate of the heart rate with the correct spectral peak based on the difference between the current filtered estimate and the instantaneous estimate. When there is a large difference between the instantaneous and current filtered estimates, there is a low degree of confidence that the instantaneous estimate is correct. More particularly, when the instantaneous estimate is greater than or equal to the current filtered estimate, the calculator 136 may compute the boundary modifier according to:

$$\alpha_2 = \frac{P_{max} - P_{inst}}{P_{max} - P_{filt}}, \quad (8)$$

where P_{max} represents an upper boundary for the heart rate. For example, P_{max} may be set equal to 225 BPM. When the instantaneous estimate is less than the current filtered estimate, the calculator **136** may compute the boundary modifier according to:

$$\alpha_2 = \frac{P_{inst} - P_{min}}{P_{filt} - P_{min}}, \quad (9)$$

where P_{min} represents a lower boundary for the heart rate. For example, P_{min} may be set equal to 40 BPM. Subsequently, modifier applicator **138** applies the boundary modifier according to:

$$\Delta_r = \alpha_2 \Delta_{mit} \quad (10)$$

It will be appreciated that applicator **138** may apply the boundary modifier to the initial rate limit Δ_{mit} using linear means, e.g., multiplication, addition, subtraction, and/or division, or using non-linear means, e.g., norm, RMS, min, or max functions. It will also be appreciated that the upper and lower heart rate boundaries are based on empirical evidence, which indicates that most people, whether at rest or exercising, have a heart rate between 40 and 225 BPM.

In still another embodiment, calculator **136** may compute the spectral and boundary modifiers, as previously described. Subsequently, applicator **138** applies the spectral and boundary modifiers according to:

$$\Delta_r = \alpha_1 \alpha_2 \Delta_{mit} \quad (11)$$

It will be appreciated that applicator **138** may apply the spectral and boundary modifiers to the initial rate limit Δ_{mit} using linear means, e.g., multiplication, addition, subtraction, and/or division, or using non-linear means, e.g., norm, RMS, min, or max functions. It will further be appreciated that other modifier(s) determined based on one or more heuristic properties of the physiological waveform may be additionally or alternatively applied to the initial rate limit Δ_{mit} to determine Δ_r .

Embodiments disclosed heretofore filter an estimate of the heart rate derived from a spectral transformation of the physiological waveform output by the sensor(s) **20**. While such filtering improves the accuracy of the output heart rate, it will be appreciated that the accuracy may further be improved through the use of noise reduction techniques applied to the physiological waveform and/or to the instantaneous estimate before applying the filtering technique. For example, processor **100** may include an optional noise filter **140** (FIG. 4) configured to filter the physiological waveform output by the sensor(s) **20** to generate a noise-reduced waveform, e.g., a waveform free of breathing noise. In this example, spectral transformer **110** determines the instantaneous estimate and/or other spectral information used during the filtering process based on the noise-reduced waveform. In so doing, the processor **100** reduces the noise present in the instantaneous estimate and/or the revised filtered estimate. Alternatively or additionally, system **12** may include an optional inertial sensor **50** (FIG. 2), e.g., a motion sensor, configured to receive an inertial waveform representative of external energy, e.g., external motion. The motion sensor **50** may comprise one or more of any number of types of sensors, including but not limited to an accelerometer, an

optical emitter/detector pair, an optical detector, a CCD camera, a piezoelectric sensor, a thermal sensor, or any type of sensor capable of capturing motion information. Exemplary optical emitters comprise one or more light emitting diodes, laser diodes, organic light-emitting diodes, miniature light emitters, electromagnetic emitters, etc. It will be appreciated that the sensors disclosed herein are not limited to optical wavelengths of the electromagnetic spectrum. In some embodiments, emitters and/or detectors configured for shorter or longer wavelengths may be used to accommodate shorter or longer wavelengths in the electromagnetic spectrum. The optical detector may comprise a photodetector, an electromagnetic detector, a photodiode, etc. In the filtering embodiment, spectral transformer **110** determines the instantaneous estimate and/or other spectral information used during the filtering process based on the inertial spectrum determined for the inertial waveform and the physiological spectrum determined for the physiological waveform. In so doing, the processor **100** reduces noise attributable to external energy/motion, e.g., energy due to a poor fit of the ear bud, shadows, etc., to reduce the noise present in the instantaneous estimate and/or the revised filtered estimate. For example, the spectral transformer may subtract the physiological and inertial spectrums to determine a reduced noise spectrum, and then may identify the frequency associated with the spectral peak having the largest magnitude as the instantaneous estimate of the heart rate. In still another embodiment, noise filter **140** may receive the inertial waveform and filter the physiological waveform based on the inertial waveform to generate the noise reduced waveform, where the spectral transformer **110** determines the instantaneous estimate and/or other spectral information based on the noise-reduced waveform.

FIG. 6 shows one exemplary method **250** for the embodiment where the spectral and boundary modifiers are used to compute the rate limit used to determine \hat{P}_{filt} , and where the inertial waveform provided by an inertial sensor **50** is used to reduce noise as described herein. In this exemplary embodiment, P_{filt} optionally comprises a current filtered heart rate initially set equal to 83 BPM (block **252**). Spectral transformer **110** spectrally transforms the physiological and inertial waveforms respectively received from the physiological and inertial sensors (blocks **254**, **256**). The spectral transformer **110** subsequently identifies the frequency of the dominant peak of the spectrally transformed inertial waveform (SRF_1), computes the difference between the physiological and inertial spectrums (S), identifies the magnitudes of the dominant and second dominant peaks of S (SPM_1 and SPM_2 , respectively), sets P_{inst} equal to the frequency of the dominant peak (SPF_1) (block **258**), and provides at least P_{inst} to the filter **120**. After comparing to P_{filt} to P_{inst} (block **260**), filter **120** performs a filtering operation based on the comparison. For example, filter **120** performs the operations of block **262** when $P_{inst} \geq P_{filt}$ and performs the operations of block **264** when $P_{inst} < P_{filt}$. Subsequently, the processor outputs \hat{P}_{filt} (block **266**).

The embodiments disclosed herein improve the accuracy of heart rates determined based on physiological waveforms provided by physiological sensors, particularly noise sensitive sensors, e.g., PPG sensors. In particular, the embodiments disclosed herein reduce the impact of noise sources not previously addressed by past systems, e.g., motion noise due to a user's jaw movement and/or breathing, shadow/sunlight flicker due to a user's movement into and out of shaded areas, light noise due to ambient light being detected by the photodetector, etc.

While the present invention is described in terms of PPG sensors, it will be appreciated that sensors 20 may comprise any sensor able to generate a physiological waveform, e.g., an electroencephalogram (EEG) waveform, and electrocardiogram (ECG) waveform, a radio frequency (RF) waveform, an electro-optical physiological waveform, a thermoelectric waveform, and electro-photoacoustic waveform including a photoacoustic waveform, an electro-mechanical physiological waveform, and/or an electro-nuclear physiological waveform.

The present invention may, of course, be carried out in other ways than those specifically set forth herein without departing from essential characteristics of the invention. The present embodiments are to be considered in all respects as illustrative and not restrictive, and all changes coming within the meaning and equivalency range of the appended claims are intended to be embraced therein.

What is claimed is:

1. A physiological processor configured to process a time domain photoplethysmography waveform provided by a photoplethysmography sensor, the processor comprising:

a spectral transformer configured to:

- convert the photoplethysmography waveform from the time domain to a frequency domain to generate a spectrum; and
- determine, responsive to the spectrum, an instantaneous estimate of a heart rate; and

a filter configured to:

- compare the instantaneous estimate to a current filtered estimate of the heart rate; and
- output, to an output interface, a revised filtered estimate of the heart rate computed based on the current filtered estimate and a rate limit and responsive to the comparison between the instantaneous estimate and the current filtered estimate, said revised filtered estimate comprising a sum of the current filtered estimate and an extremum value, said extremum value comprising the extremum of the rate limit and a difference between the instantaneous estimate and the current filtered estimate.

2. The physiological processor of claim 1 wherein the physiological processor is further configured to process information provided by the photoplethysmography sensor to determine at least one additional dynamically changing vital sign different from the heart rate.

3. A method of processing data provided by a physiological sensor, the method comprising:

receiving a time domain physiological waveform from the physiological sensor;

converting the received physiological waveform from the time domain to a frequency domain to generate a physiological spectrum;

determining, using the physiological spectrum, an instantaneous estimate of a physiological metric;

comparing the instantaneous estimate to a current filtered estimate of the physiological metric;

computing a revised filtered estimate of the physiological metric based on the current filtered estimate and a rate limit and responsive to the comparison between the instantaneous estimate and the current filtered estimate, said revised filtered estimate comprising a sum of the current filtered estimate and an extremum value, said extremum value comprising the extremum of the rate limit and a difference between the instantaneous estimate and the current filtered estimate; and

outputting the revised filtered estimate to an output interface;

wherein the rate limit comprises one of a first rate limit for an increasing physiological metric and a second rate limit for a decreasing physiological metric, where a magnitude of the second rate limit relative to the current filtered estimate is different from a magnitude of the first rate limit relative to the current filtered estimate; and

wherein the revised filtered estimate comprises:

the sum of the current filtered estimate and the extremum value wherein the extremum value comprises the minimum of the first rate limit and the difference between the instantaneous estimate and the current filtered estimate when the instantaneous estimate is greater than the current filtered estimate; and

the sum of the current filtered estimate and the extremum value wherein the extremum value comprises the maximum of the second rate limit and the difference between the instantaneous estimate and the current filtered estimate when the instantaneous estimate is less than the current filtered estimate.

4. The method of claim 3 wherein outputting the revised filter estimate comprises outputting the revised filter estimate to at least one of a user interface, a transceiver, a database, a processor, and a processing function.

5. The method of claim 3 wherein the physiological metric comprises a heart rate.

6. The method of claim 3 wherein receiving the physiological waveform comprises receiving the physiological waveform from a photoplethysmography (PPG) sensor.

7. A physiological processor configured to process a time domain physiological waveform provided by a physiological sensor, the processor comprising:

a spectral transformer configured to:

- convert the physiological waveform from the time domain to a frequency domain to generate a physiological spectrum; and
- determine, using the physiological spectrum, an instantaneous estimate of a physiological metric; and

a filter configured to:

- compare the instantaneous estimate to a current filtered estimate of the physiological metric; and
- output, to an output interface, a revised filtered estimate of the physiological metric based on the current filtered estimate and a rate limit and responsive to the comparison between the instantaneous estimate and the current filtered estimate, said revised filtered estimate comprising a sum of the current filtered estimate and an extremum value, said extremum value comprising the extremum of the rate limit and a difference between the instantaneous estimate and the current filtered estimate;

wherein the rate limit comprises one of a first rate limit for an increasing physiological metric and a second rate limit for a decreasing physiological metric, where a magnitude of the second rate limit relative to the current filtered estimate is different from a magnitude of the first rate limit relative to the current filtered estimate; and

wherein the revised filtered estimate comprises:

the sum of the current filtered estimate and the extremum value wherein the extremum value comprises the minimum of the first rate limit and the difference between the instantaneous estimate and the current filtered estimate when the instantaneous estimate is greater than the current filtered estimate; and

the sum of the current filtered estimate and the extremum value wherein the extremum value comprises

the maximum of the second rate limit and the difference between the instantaneous estimate and the current filtered estimate when the instantaneous estimate is less than the current filtered estimate.

8. The physiological processor of claim 7 wherein the filter comprises:

an adjustment processor configured to compute an adjustment parameter as a function of the current filtered estimate, the instantaneous estimate, and the rate limit, said function derived responsive to the comparison between the instantaneous estimate and the current filtered estimate; and

a combiner configured to combine the current filtered estimate with the adjustment parameter to compute the revised filter estimate of the physiological metric.

9. The physiological processor of claim 7 further comprising an output element configured to receive the revised filter estimate from the filter, said output element comprising at least one of a user interface, transceiver, a database, a processor, and a processing function.

10. The physiological processor of claim 7 wherein the physiological metric comprises a heart rate.

11. The physiological processor of claim 7 wherein the physiological sensor comprises a photoplethysmography (PPG) sensor.

12. A method of processing data provided by a physiological sensor, the method comprising:

receiving a time domain physiological waveform from the physiological sensor;

converting the received physiological waveform from the time domain to a frequency domain to generate a physiological spectrum;

determining, using the physiological spectrum, an instantaneous estimate of a physiological metric;

comparing the instantaneous estimate to a current filtered estimate of the physiological metric;

determining a rate limit relative to the current filtered estimate responsive to one or more properties of the physiological waveform;

computing a revised filtered estimate of the physiological metric based on the current filtered estimate and the rate limit and responsive to the comparison between the instantaneous estimate and the current filtered estimate, said revised filtered estimate comprising a sum of the current filtered estimate and an extremum value, said extremum value comprising the extremum of the rate limit and a difference between the instantaneous estimate and the current filtered estimate; and

outputting the revised filtered estimate to an output interface.

13. The method of claim 12 further comprising computing an adjustment parameter as a function of the current filtered estimate, the instantaneous estimate, and the rate limit, said function derived responsive to the comparison between the instantaneous estimate and the current filtered estimate, wherein computing the revised filter estimate comprises combining the current filtered estimate with the adjustment parameter.

14. The method of claim 12 wherein determining the rate limit relative to the current filtered estimate as a function of one or more properties of the physiological waveform comprises determining the rate limit relative to the current filtered estimate as a function of—a sum of two or more of the properties of the physiological waveform.

15. The method of claim 12 wherein determining the rate limit relative to the current filtered estimate as a function of one or more properties of the physiological waveform

comprises determining the rate limit relative to the current filtered estimate as a function of—a product of two or more of the properties of the physiological waveform.

16. The method of claim 12 further comprising computing one or more modifiers as a function of the one or more properties of the physiological waveform, wherein determining the rate limit relative to the current filtered estimate as a function of one or more properties of the physiological waveform comprises determining the rate limit relative to the current filtered estimate as a function of the one or more modifiers and an initial rate limit.

17. The method of claim 16 wherein computing the one or more modifiers comprises computing a first modifier as a function of a boundary value associated with the physiological metric and the one or more properties of the physiological waveform, and wherein determining the rate limit relative to the current filtered estimate as a function of the one or more modifiers and the initial rate limit comprises applying the first modifier to the initial rate limit.

18. The method of claim 16 wherein at least one of the one or more properties of the physiological waveform comprise spectral characteristics of the physiological spectrum, wherein computing the one or more modifiers comprises computing a first modifier as a function of the spectral characteristics of the physiological spectrum, wherein determining the rate limit relative to the current filtered estimate as a function of the one or more modifiers and the initial rate limit comprises applying the first modifier to the initial rate limit.

19. The method of claim 18 wherein computing the one or more modifiers further comprises computing a second modifier as a function of a boundary value associated with the physiological metric and the one or more properties of the physiological waveform, and wherein determining the rate limit relative to the current filtered estimate as a function of the one or more modifiers and the initial rate limit comprises applying the first and second modifiers to the initial rate limit.

20. The method of claim 18 wherein determining the instantaneous estimate comprises identifying one or more spectral peaks in the physiological spectrum, and determining the instantaneous estimate using one or more characteristics of a first spectral peak, said first spectral peak having a larger amplitude than the remaining spectral peaks, and wherein computing the first modifier comprises computing the first modifier as a function of a ratio between a second spectral peak and the first spectral peak, said second spectral peak having a smaller amplitude than the first spectral peak and a larger amplitude than the remaining spectral peaks.

21. The method of claim 12 wherein the rate limit comprises at least one of a first rate limit for an increasing physiological metric and a second rate limit for a decreasing physiological metric, where a magnitude of the first rate limit relative to the current filtered estimate is different from a magnitude of the second rate limit relative to the current filtered estimate, the method further comprising selecting at least one of the first and second rate limits responsive to the comparison between the instantaneous estimate and the current filtered estimate.

22. A method of processing data provided by a physiological sensor, the method comprising:

receiving a time domain physiological waveform from the physiological sensor;

converting the received physiological waveform from the time domain to a frequency domain to generate a physiological spectrum;

determining, using the physiological spectrum, an instantaneous estimate of a physiological metric by processing the physiological spectrum responsive to a second waveform from a second sensor to reduce noise in the instantaneous estimate;

comparing the instantaneous estimate to a current filtered estimate of the physiological metric;

computing a revised filtered estimate of the physiological metric based on the current filtered estimate and a rate limit and responsive to the comparison between the instantaneous estimate and the current filtered estimate, said revised filtered estimate comprising a sum of the current filtered estimate and an extremum value, said extremum value comprising the extremum of the rate limit and a difference between the instantaneous estimate and the current filtered estimate; and
outputting the revised filtered estimate to an output interface.

23. The method of claim **22** wherein the second sensor comprises an inertial sensor and the second waveform comprises a time domain inertial waveform, the method further comprising converting the inertial waveform from the time domain to the frequency domain to generate an inertial spectrum, and wherein determining the instantaneous estimate comprises processing the physiological spectrum as a function of the inertial spectrum to reduce the noise in the instantaneous estimate.

24. A physiological processor configured to process a time domain physiological waveform provided by a physiological sensor, the processor comprising:

a spectral transformer configured to:

convert the physiological waveform from the time domain to a frequency domain to generate a physiological spectrum; and

determine, using the physiological spectrum, an instantaneous estimate of a physiological metric; and

a filter configured to:

compare the instantaneous estimate to a current filtered estimate of the physiological metric; and

output, to an output interface, a revised filtered estimate of the physiological metric based on the current filtered estimate and a rate limit and responsive to the comparison between the instantaneous estimate and the current filtered estimate, said revised filtered estimate comprising a sum of the current filtered estimate and an extremum value, said extremum value comprising the extremum of the rate limit and a difference between the instantaneous estimate and the current filtered estimate;

wherein the filter comprises an adjustment processor configured to determine the rate limit relative to the current filtered estimate responsive to one or more properties of the physiological waveform.

25. The physiological processor of claim **24** wherein the adjustment processor is configured to determine the rate limit relative to the current filtered estimate as a function of a sum of two or more of the properties of the physiological waveform.

26. The physiological processor of claim **24** wherein the adjustment processor is configured to determine the rate limit relative to the current filtered estimate as a function of a product of two or more of the properties of the physiological waveform.

27. The physiological processor of claim **24** wherein the adjustment processor comprises a modifier processor configured to calculate one or more modifiers as a function of the one or more properties of the physiological waveform,

and wherein the adjustment processor determines the rate limit relative to the current filtered estimate by determining the rate limit relative to the current filtered estimate as a function of the one or more modifiers and an initial rate limit.

28. The physiological processor of claim **27** wherein the modifier processor comprises:

a calculator configured to compute a first modifier as a function of a boundary value associated with the physiological metric and the one or more properties of the physiological waveform; and

a modifier applicator configured to apply the first modifier to the initial rate limit to determine the rate limit relative to the current filtered estimate.

29. The physiological processor of claim **27** wherein at least one of the one or more properties of the physiological waveform comprise spectral characteristics of the physiological spectrum, and wherein the modifier processor comprises:

a calculator configured to compute a first modifier as a function of the spectral characteristics of the physiological spectrum; and

a modifier applicator configured to apply the first modifier to the initial rate limit to determine the rate limit relative to the current filtered estimate.

30. The physiological processor of claim **29** wherein the calculator is further configured to compute a second modifier as a function of a boundary value associated with the physiological metric and the one or more properties of the physiological waveform, and wherein the modifier applicator is configured to apply the first and second modifiers to the initial rate limit to determine the rate limit relative to the current filtered estimate.

31. The physiological processor of claim **29** wherein the spectral transformer is further configured to identify one or more spectral peaks of the physiological spectrum, and to determine the instantaneous estimate using one or more characteristics of a first spectral peak of the one or more spectral peaks, said first spectral peak having a larger amplitude than the remaining spectral peaks of the one or more spectral peaks, and wherein the calculator is configured to compute the first modifier as a function of a ratio between a second spectral peak of the one or more spectral peaks and the first spectral peak, said second spectral peak having a smaller amplitude than the first spectral peak and a larger amplitude than the remaining spectral peaks.

32. The physiological processor of claim **24** wherein the rate limit comprises at least one of a first rate limit for an increasing physiological metric and a second rate limit for a decreasing physiological metric, where a magnitude of the first rate limit relative to the current filtered estimate is different from a magnitude of the second rate limit relative to the current filtered estimate, and wherein the filter comprises a rate processor configured to select at least one of the first rate limit and the second rate limit responsive to the comparison between the instantaneous estimate and the current filtered estimate.

33. A physiological processor configured to process a time domain physiological waveform provided by a physiological sensor, the processor comprising:

a spectral transformer configured to:

convert the physiological waveform from the time domain to a frequency domain to determine a physiological spectrum; and

determine, based on the physiological spectrum, an instantaneous estimate of a physiological metric;

a filter configured to:

compare the instantaneous estimate to a current filtered estimate of the physiological metric; and
 output, to an output interface, a revised filtered estimate of the physiological metric based on the current filtered estimate and a rate limit and responsive to the comparison between the instantaneous estimate and the current filtered estimate, said revised filtered estimate comprising a sum of the current filtered estimate and an extremum value, said extremum value comprising the extremum of the rate limit and a difference between the instantaneous estimate and the current filtered estimate; and
 a second sensor configured to receive a time domain second waveform;
 wherein the spectral transformer is further configured to convert the second waveform from the time domain to the frequency domain to determine a second spectrum, and to determine the instantaneous estimate responsive to the second spectrum to reduce the noise in the instantaneous estimate.

34. The physiological processor of claim 33 wherein the second sensor comprises an inertial sensor and wherein the time domain second waveform comprises a time domain inertial waveform and the second spectrum comprises an inertial spectrum, the processor further comprising a noise filter configured to filter the physiological spectrum responsive to the inertial spectrum to generate a noise-reduced waveform, wherein the spectral transformer is configured to determine the instantaneous estimate using the noise-reduced waveform to reduce the noise in the instantaneous estimate.

* * * * *

专利名称(译)	生理度量估计上升和下降限制		
公开(公告)号	US10390762	公开(公告)日	2019-08-27
申请号	US14/370658	申请日	2012-12-24
[标]申请(专利权)人(译)	瓦倫賽爾公司		
申请(专利权)人(译)	VALENCELL INC.		
当前申请(专利权)人(译)	VALENCELL INC.		
[标]发明人	ROMESBURG ERIC DOUGLAS		
发明人	ROMESBURG, ERIC DOUGLAS		
IPC分类号	A61B5/00 A61B5/024 A61B5/1455		
优先权	61/586874 2012-01-16 US		
其他公开文献	US20150011898A1		
外部链接	Espacenet		

摘要(译)

本文公开的方法和装置使用过滤技术来提高在处理由生理传感器提供的的数据时所获得的结果的准确性。所公开的滤波技术校正了与生理传感器，特别是PPG传感器相关的许多精度问题。概括地说，滤波技术基于生理度量的瞬时估计与当前滤波估计之间的比较，调整生理度量的当前滤波估计作为速率限制的函数。

