



US 20130066226A1

(19) **United States**

(12) **Patent Application Publication**
Balao Welzien et al.

(10) **Pub. No.: US 2013/0066226 A1**
(43) **Pub. Date: Mar. 14, 2013**

(54) **SYSTEM AND METHOD FOR DETECTING SLEEP ONSET IN A SUBJECT BASED ON RESPONSIVENESS TO BREATHING CUES**

Publication Classification

(75) Inventors: **Leonardo Alberto Balao Welzien**, Lake Forest, CA (US); **Manuel Laura Lapoint**, Pittsburgh, PA (US); **Sara Marie Sibenaller**, Pittsburgh, PA (US)

(51) **Int. Cl.**
A61B 5/00 (2006.01)
A61B 5/087 (2006.01)
A61B 5/03 (2006.01)
A61B 5/08 (2006.01)
A61M 16/00 (2006.01)
(52) **U.S. Cl.**
CPC *A61B 5/4809* (2013.01); *A61B 5/08* (2013.01); *A61M 16/0057* (2013.01); *A61B 5/03* (2013.01); *A61B 5/087* (2013.01)
USPC **600/538**; 600/529

(73) Assignee: **KONINKLIJKE PHILIPS ELECTRONICS, N.V.**, ENDHOVEN (NL)

(21) Appl. No.: **13/697,113**

(22) PCT Filed: **Apr. 25, 2011**

(86) PCT No.: **PCT/IB2011/051790**

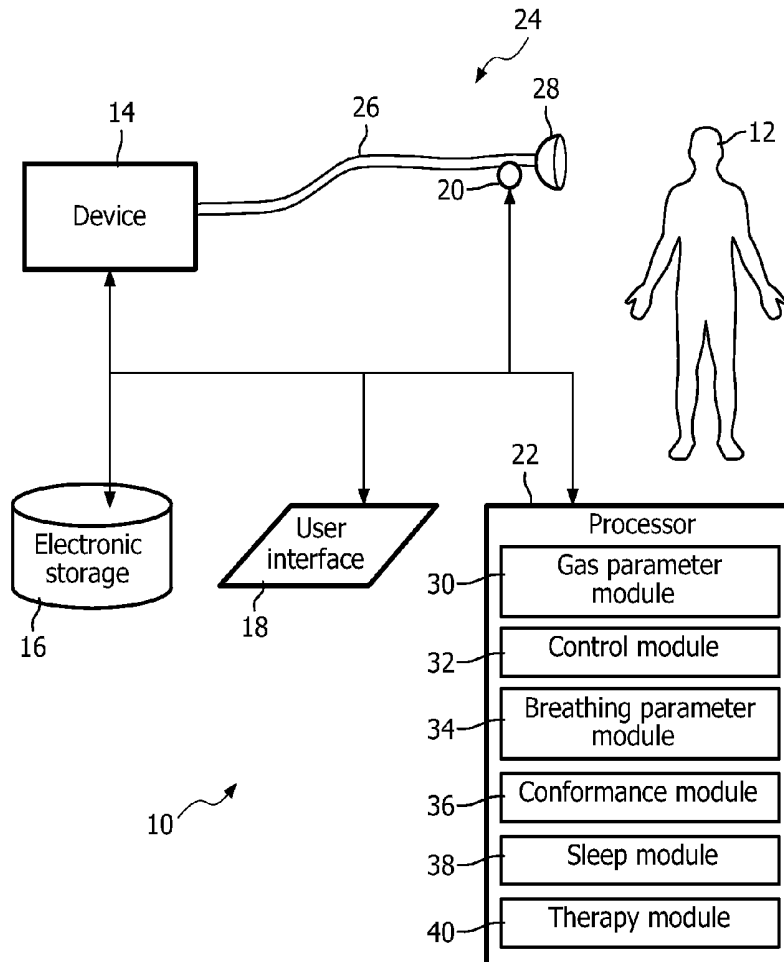
§ 371 (c)(1),
(2), (4) Date: **Nov. 9, 2012**

Related U.S. Application Data

(60) Provisional application No. 61/334,597, filed on May 14, 2010.

(57) **ABSTRACT**

A wake-to-sleep transition for a subject is detected based on responsiveness to breathing cues provided to the subject. A pressurized flow of breathable gas to the airway of subject having one or more gas parameters that are adjusted to provide breathing cues to the subject. Based on a detected conformance of the respiration of the subject to the breathing cues, a determination is made as to whether the subject is awake or asleep.



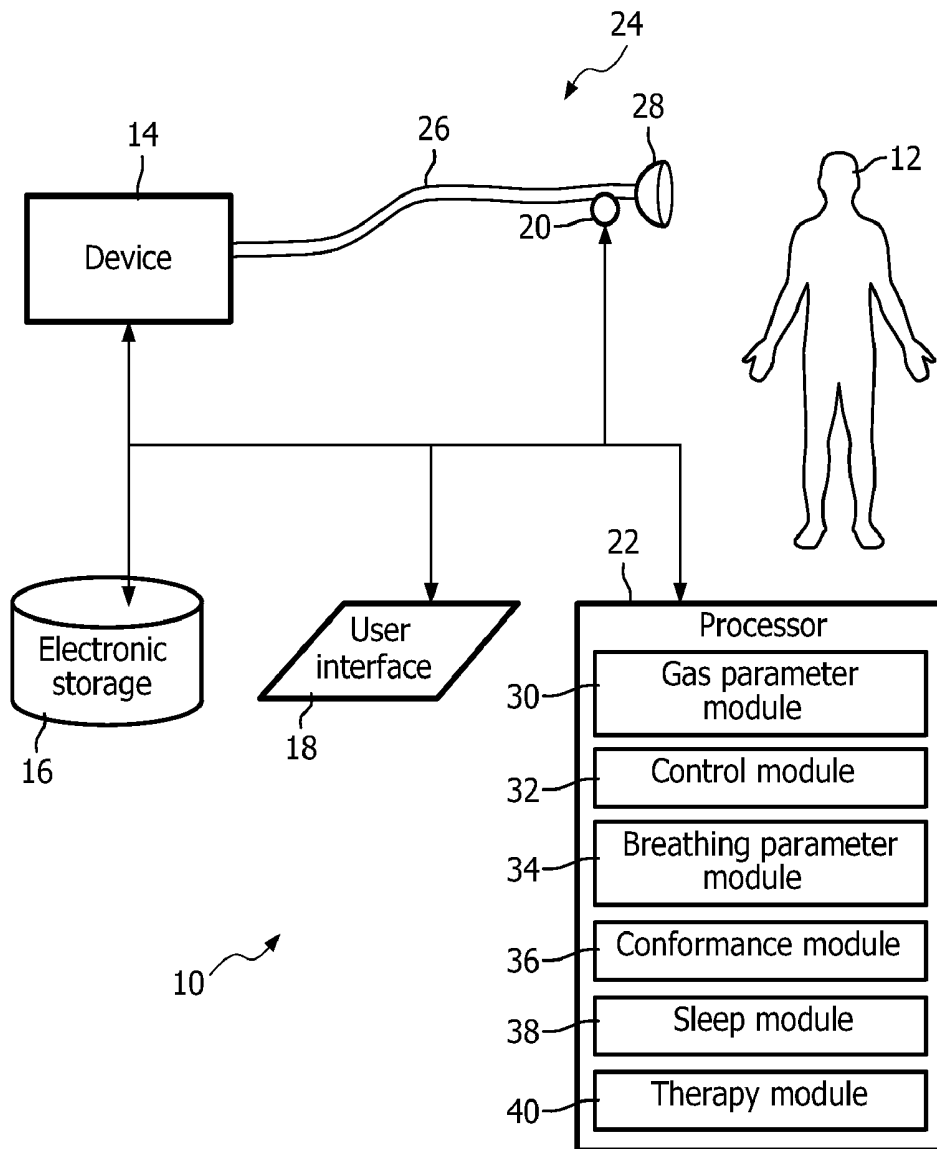


FIG. 1

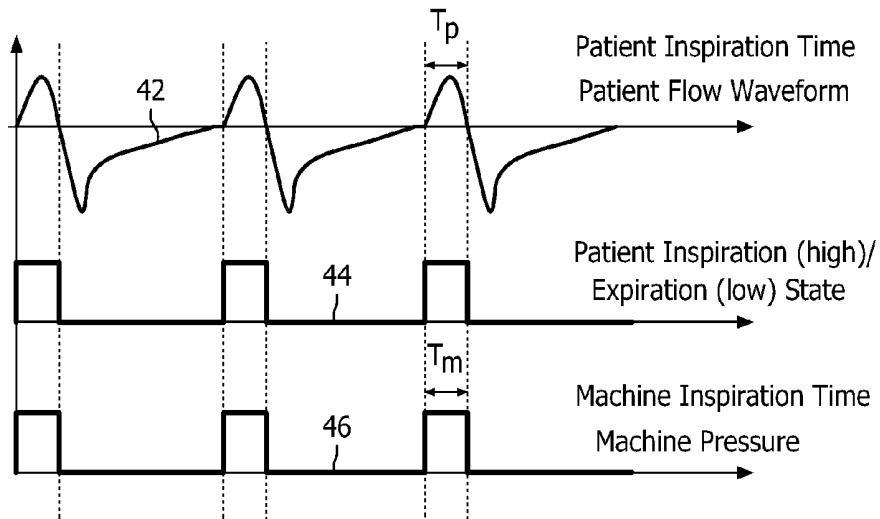


FIG. 2

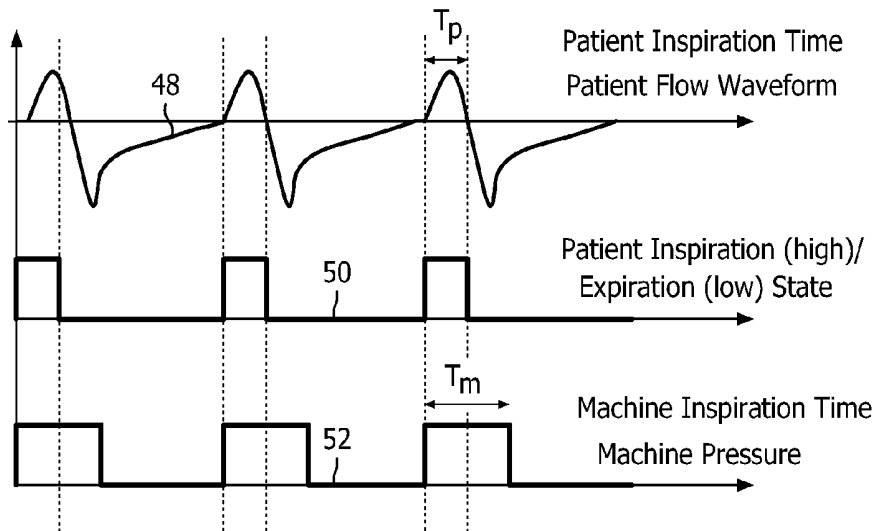


FIG. 3

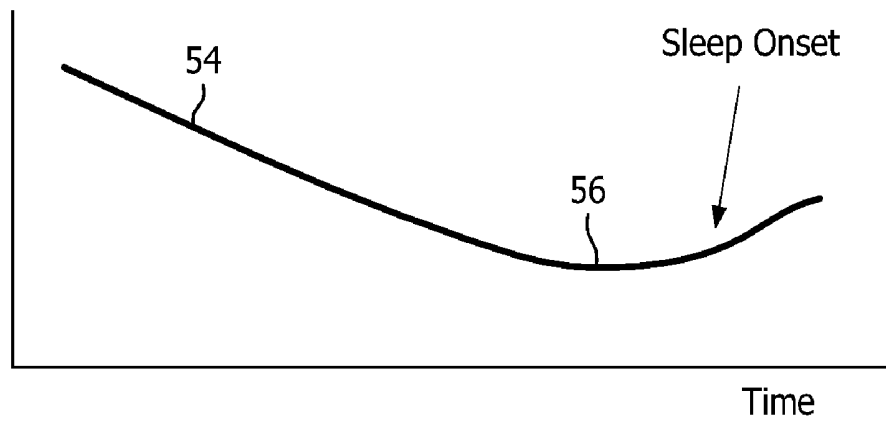


FIG. 4

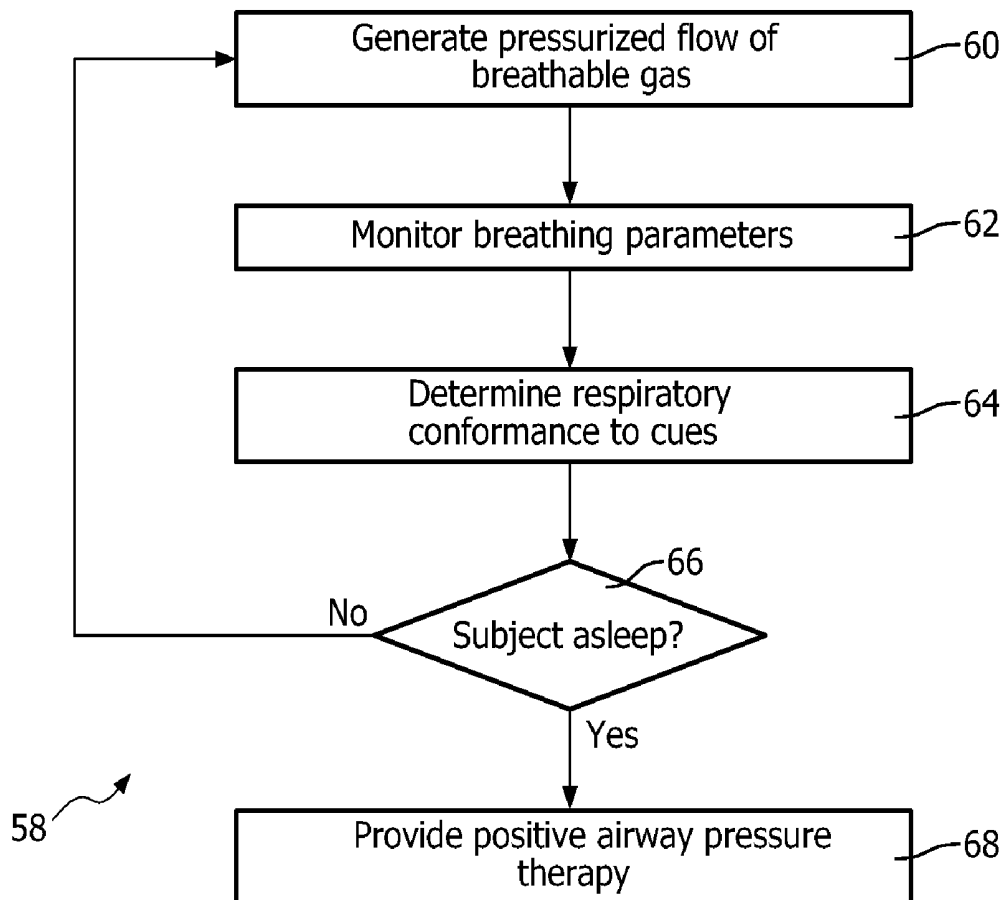


FIG. 5

SYSTEM AND METHOD FOR DETECTING SLEEP ONSET IN A SUBJECT BASED ON RESPONSIVENESS TO BREATHING CUES

[0001] The invention relates to detection of sleep onset in a subject based on responsiveness to breathing cues provided to the subject.

DESCRIPTION OF THE RELATED ART

[0002] Devices configured to deliver positive airway pressure therapy to a subject are known. Typically, such devices are used to support the airway of the subject during sleep to reduce or eliminate obstructive respiratory events (e.g., apneas) during sleep. One of the drawbacks associated with known systems is that they tend to be uncomfortable before the subject falls asleep. While conventional systems provide mechanisms for reducing this discomfort, such as slowly ramping the pressure applied to the airway of the subject, they may consistently inhibit sleep in the subject if they do not delay therapy until after the onset of sleep.

[0003] One aspect of the invention relates to a system configured to detect an awake-to-sleep transition in a subject. In one embodiment, the system comprises a device, one or more sensors, and a processor. The device is configured to generate a pressurized flow of breathable gas for delivery to the airway of a subject. The one or more sensors are configured to generate output signals conveying information related to one or more gas parameters at or near the airway of the subject. The processor is configured to execute computer program modules, the computer program modules comprising a control module, a conformance module, and a sleep module. The control module is configured to control the device such that the device adjusts one or more parameters of the gas in the pressurized flow of breathable gas in order to provide breathing cues to the subject. The conformance module is configured to determine conformance of respiration of the subject to the breathing cues provided by the pressurized flow of breathable gas, such determination being based on the output signals generated by the one or more sensors and the cues provided by the pressurized flow of breathable gas. The sleep module is configured to determine whether the subject is awake or asleep, such determination being based on the determination of conformance made by the conformance module.

[0004] Another aspect of the invention relates to a method of detecting an awake-to-sleep transition in a subject. In one embodiment, the method comprises generating a pressurized flow of breathable gas for delivery to the airway of a subject such that one or more parameters of the gas in the pressurized flow of breathable gas are adjusted in order to provide breathing cues to the subject; monitoring one or more breathing parameters of the respiration of the subject; determining conformance of respiration of the subject to the breathing cues provided by the pressurized flow of breathable gas, such determination being based on the monitored one or more breathing parameters and the cues provided by the pressurized flow of breathable gas; and determining whether the subject is awake or asleep, such determination being based on the determination of conformance.

[0005] Yet another aspect of the invention relates to a system configured to detect an awake-to-sleep transition in a subject. In one embodiment, the system comprises means for generating a pressurized flow of breathable gas for delivery to the airway of a subject such that one or more parameters of the gas in the pressurized flow of breathable gas are adjusted in

order to provide breathing cues to the subject; means for monitoring one or more breathing parameters of the respiration of the subject; means for determining conformance of respiration of the subject to the breathing cues provided by the pressurized flow of breathable gas, such determination being based on the monitored one or more breathing parameters and the cues provided by the pressurized flow of breathable gas; and means for determining whether the subject is awake or asleep, such determination being based on the determination of conformance.

[0006] These and other objects, features, and characteristics of the present invention, as well as the methods of operation and functions of the related elements of structure and the combination of parts and economies of manufacture, will become more apparent upon consideration of the following description and the appended claims with reference to the accompanying drawings, all of which form a part of this specification, wherein like reference numerals designate corresponding parts in the various figures. In one embodiment of the invention, the structural components illustrated herein are drawn to scale. It is to be expressly understood, however, that the drawings are for the purpose of illustration and description only and are not a limitation of the invention. In addition, it should be appreciated that structural features shown or described in any one embodiment herein can be used in other embodiments as well. It is to be expressly understood, however, that the drawings are for the purpose of illustration and description only and are not intended as a definition of the limits of the invention. As used in the specification and in the claims, the singular form of "a", "an", and "the" include plural referents unless the context clearly dictates otherwise.

[0007] FIG. 1 illustrates a system configured to detect a wake-to-sleep transition for a subject, according to one or more embodiments of the invention.

[0008] FIG. 2 illustrates a plot of flow at or near the airway of a subject, a plot of inspiration/expiration state for the subject, and a plot of pressure of a pressurized flow of breathable gas delivered to the airway of the subject to provide breathing cues to the subject.

[0009] FIG. 3 illustrates a plot of flow at or near the airway of a subject, a plot of inspiration/expiration state for the subject, and a plot of pressure of a pressurized flow of breathable gas delivered to the airway of the subject to provide breathing cues to the subject.

[0010] FIG. 4 illustrates a plot of breath rate as a subject receives therapy from a system configured to detect a wake-to-sleep transition for a subject, according to one or more embodiments of the invention.

[0011] FIG. 5 illustrates a method of detecting an awake-to-asleep transition in a subject, according to one or more embodiments of the invention.

[0012] FIG. 1 illustrates a system 10 configured to detect a wake-to-sleep transition for a subject 12. The system 10 provides pressurized flow of breathable gas to the airway of subject 12, and adjusts one or more gas parameters of the gas in the pressurized flow of breathable gas to provide breathing cues to subject 12 that encourage subject 12 to consciously adjust respiration such that the one or more breathing parameters are altered. Based on a detected conformance of the respiration of subject 12 to the breathing cues, a determination is made as to whether subject 12 is awake or asleep. In one embodiment, system 10 may include a device 14, electronic storage 16, a user interface 18, one or more sensors 20, a processor 22, and/or other components.

[0013] In one embodiment, device **14** includes a positive pressure support device. A positive pressure support device is well-known and is disclosed, for example, in U.S. Pat. No. 6,105,575, hereby incorporated by reference in its entirety. In this embodiment, device **14** is configured to deliver a pressurized flow of breathable gas to the airway of subject **12**.

[0014] Device **14** may be configured to generate the pressurized flow of breathable gas according to one or more modes. A non-limiting example of one such mode is Continuous Positive Airway Pressure (CPAP). CPAP has been used for many years and has proven to be helpful in promoting regular breathing. Another mode for generating the pressurized flow of breathable gas is Inspiratory Positive Air Pressure (IPAP). One example of the IPAP mode is bi-level positive air pressure (BiPAP). In BiPAP, two levels of positive air pressure (HI and LO) are supplied to a subject. Other modes of generating the pressurized flow of breathable gas are contemplated.

[0015] Generally, the timing of the HI and LO levels of pressure are controlled such that the HI level of positive air pressure is delivered to subject **12** during inhalation and the LO level of pressure is delivered to subject **12** during exhalation. In conventional positive pressure support devices, the timing of the HI and LO levels of pressure is coordinated to coincide with the breathing of subject **12** based on detection of gas parameters that indicate whether a user is currently inhaling or exhaling.

[0016] The pressurized flow of breathable gas is delivered to the airway of subject **12** via a subject interface **24**. Subject interface **24** is configured to communicate the pressurized flow of breathable gas generated by device **14** to the airway of subject **12**. As such, subject interface **24** includes a conduit **26** and an interface appliance **28**. Conduit conveys the pressurized flow of breathable gas to interface appliance **28**, and interface appliance **28** delivers the pressurized flow of breathable gas to the airway of subject **12**. Some examples of interface appliance **28** may include, for example, an endotracheal tube, a nasal cannula, a tracheotomy tube, a nasal mask, a nasal/oral mask, a full face mask, a total face mask, or other interface appliances that communicate a flow of gas with an airway of a subject. The present invention is not limited to these examples, and contemplates delivery of the pressurized flow of breathable gas to subject **12** using any subject interface.

[0017] In one embodiment, electronic storage **16** comprises electronic storage media that electronically stores information. The electronically storage media of electronic storage **16** may include one or both of system storage that is provided integrally (i.e., substantially non-removable) with system **10** and/or removable storage that is removably connectable to system **10** via, for example, a port (e.g., a USB port, a firewire port, etc.) or a drive (e.g., a disk drive, etc.). Electronic storage **16** may include one or more of optically readable storage media (e.g., optical disks, etc.), magnetically readable storage media (e.g., magnetic tape, magnetic hard drive, floppy drive, etc.), electrical charge-based storage media (e.g., EEPROM, RAM, etc.), solid-state storage media (e.g., flash drive, etc.), and/or other electronically readable storage media. Electronic storage **16** may store software algorithms, information determined by processor **22**, information received via user interface **18**, and/or other information that enables system **10** to function properly. Electronic storage **16** may be (in whole or in part) a separate component within system **10**, or electronic storage **16** may be provided (in whole or in part) inte-

grally with one or more other components of system **10** (e.g., device **14**, user interface **18**, processor **22**, etc.).

[0018] User interface **18** is configured to provide an interface between system **10** and subject **12** through which subject **12** may provide information to and receive information from system **10**. This enables data, results, and/or instructions and any other communicable items, collectively referred to as "information," to be communicated between the subject **12** and one or more of device **14**, electronic storage **16**, and/or processor **22**. Examples of interface devices suitable for inclusion in user interface **18** include a keypad, buttons, switches, a keyboard, knobs, levers, a display screen, a touch screen, speakers, a microphone, an indicator light, an audible alarm, a printer, and/or other interface devices. In one embodiment, user interface **18** includes a plurality of separate interfaces. In one embodiment, user interface **18** includes at least one interface that is provided integrally with device **14**.

[0019] It is to be understood that other communication techniques, either hard-wired or wireless, are also contemplated by the present invention as user interface **18**. For example, the present invention contemplates that user interface **18** may be integrated with a removable storage interface provided by electronic storage **16**. In this example, information may be loaded into system **10** from removable storage (e.g., a smart card, a flash drive, a removable disk, etc.) that enables the user(s) to customize the implementation of system **10**. Other exemplary input devices and techniques adapted for use with system **10** as user interface **18** include, but are not limited to, an RS-232 port, RF link, an IR link, modem (telephone, cable or other). In short, any technique for communicating information with system **10** is contemplated by the present invention as user interface **18**.

[0020] One or more sensors **20** are configured to generate one or more output signals conveying information related to one or more gas parameters of the gas breathed by subject **12**. The one or more parameters may include, for example, one or more of a flow rate, a volume, a pressure, a composition (e.g., concentration(s) of one or more constituents), humidity, temperature, acceleration, velocity, acoustics, changes in a parameter indicative of respiration, and/or other gas parameters. In an embodiment in which a pressurized flow of breathable gas is delivered to subject **12** from device **14**, sensors **20** include sensors in communication with gas within subject interface **24**.

[0021] Processor **22** is configured to provide information processing capabilities in system **10**. As such, processor **22** may include one or more of a digital processor, an analog processor, a digital circuit designed to process information, an analog circuit designed to process information, a state machine, and/or other mechanisms for electronically processing information. Although processor **22** is shown in FIG. 1 as a single entity, this is for illustrative purposes only. In some implementations, processor **22** may include a plurality of processing units. These processing units may be physically located within the same device, or processor **22** may represent processing functionality of a plurality of devices operating in coordination.

[0022] As is shown in FIG. 1, processor **22** may be configured to execute one or more computer program modules. The one or more computer program modules may include one or more of a gas parameter module **30**, a control module **32**, a breathing parameter module **34**, a conformance module **36**, a sleep module **38**, a therapy module **40**, and/or other modules. Processor **22** may be configured to execute modules **30**, **32**,

34, 36, 38, and/or 40 by software; hardware; firmware; some combination of software, hardware, and/or firmware; and/or other mechanisms for configuring processing capabilities on processor **22**.

[0023] It should be appreciated that although modules **30, 32, 34, 36, 38, and/or 40** are illustrated in FIG. 1 as being co-located within a single processing unit, in implementations in which processor **22** includes multiple processing units, one or more of modules **30, 32, 34, 36, 38, and/or 40** may be located remotely from the other modules. The description of the functionality provided by the different modules **30, 32, 34, 36, 38, and/or 40** described below is for illustrative purposes, and is not intended to be limiting, as any of modules **30, 32, 34, 36, 38, and/or 40** may provide more or less functionality than is described. For example, one or more of modules **30, 32, 34, 36, 38, and/or 40** may be eliminated, and some or all of its functionality may be provided by other ones of modules **30, 32, 34, 36, 38, and/or 40**. As another example, processor **22** may be configured to execute one or more additional modules that may perform some or all of the functionality attributed below to one of modules **30, 32, 34, 36, 38, and/or 40**.

[0024] The gas parameter module **30** is configured to determine information related to one or more gas parameters of the pressurized flow of breathable gas that is generated by device **14** and delivered to the airway of subject **12** via subject interface **24**. The one or more gas parameters are determined based on the output signals of sensors **20**. The one or more gas parameters may include one or more of a pressure, a flow rate, a peak flow, a composition, a humidity, a temperature, an acceleration, a velocity, a thermal energy dissipated (e.g., in a mass flowmeter, etc.), and/or other gas parameters.

[0025] Control module **36** is configured to control device **14**. Controlling device **14** includes adjusting the breathing cues provided to subject **12** by device **14**. As was mentioned above, in one embodiment, the breathing cues administered to subject **12** by device **14** include changes to one or more parameters of the pressurized flow of breathable gas delivered from device **14** to subject **12**. For example, the one or more parameters may include a pressure, a flow rate, and/or a volume of the pressurized flow of breathable gas. Control module **36** adjusts the breathing cues provided to subject **12** by device **14** in order to prompt subject **12** to bring the one or more breathing parameters into conformance with the target.

[0026] For example, in an embodiment in which device **14** generates the pressurized flow of breathable gas according to a BiPAP mode, control module **36** may control device **14** to adjust the pressure, flow rate, and/or volume of gas delivered to the airway of subject **12** while the pressurized flow of breathable gas is being generated at the HI pressure (e.g., during inhalation). Adjusting the pressure, flow rate, and/or volume of gas delivered to the airway of subject **12** while the pressurized flow of breathable gas is being generated at the HI pressure will tend to generate breathing cues that prompt subject **12** to begin inspiration, alter the volume of gas inhaled, to alter the inspiration period, to alter the inspiration flow rate, to alter the tidal volume, and/or to otherwise consciously alter one or more other breathing parameters.

[0027] As another example, in an embodiment in which device **14** generates the pressurized flow of breathable gas according to a BiPAP mode, control module **36** may control device **14** to adjust the pressure flow rate, and/or volume of gas delivered to the airway of subject **12** while the pressurized flow of breathable gas is being generated at the LO pressure

(e.g., during exhalation). Adjusting the pressure, flow rate, and/or volume of gas delivered to the airway of subject **12** while the pressurized flow of breathable gas is being generated at the LO pressure may result in breathing cues that tend to prompt subject **12** to begin exhalation, to adjust the exhalation period, the exhalation flow rate, the peak flow of respiration, the tidal volume, and/or to otherwise consciously alter one or more other breathing parameters.

[0028] As yet another example, in an embodiment in which device **14** generates the pressurized flow of breathable gas according to a BiPAP mode, control module **36** may control device **14** to adjust a period of the HI and/or LO pressure cycles, a pressure curve shape during a transition between HI and LO pressure cycles, a flow rate curve shape during a transition between HI and LO pressure cycles, and/or adjust other gas parameters of the pressurized flow of breathable gas. As will be appreciated, such adjustments to the gas parameters of the pressurized flow of breathable gas will tend to provide breathing cues to subject **12** to consciously alter one or more breathing parameters. For example, such breathing cues may prompt subject **12** to alter one or more of a breathing rate, a breath period, a respiration flow curve shape, a respiration pressure curve shape, a timing of an inspiration-to-expiration transition, a timing of an expiration-to-inspiration transition, and/or other breathing parameters.

[0029] The breathing parameter module **34** is configured to determine one or more breathing parameters of the respiration of subject **12**. The breathing parameter module **32** may determine the one or more breathing parameters based on the one or more gas parameters determined by gas parameter module **30** and/or from the output signals generated by sensors **20**. The one or more breathing parameters include the one or more breathing parameters that subject **12** is prompted to consciously alter by the breathing cues provided in the pressurized flow of breathable gas. For example, the one or more breathing parameters may include one or more of an inhalation flow rate, an inhalation period, an exhalation flow rate, an exhalation period, a tidal volume, a breathing rate, a breath period, a peak flow, a flow curve shape, a pressure curve shape, expiration-to-inspiration transitions, inspiration-to-expiration transitions, and/or other breathing parameters.

[0030] The conformance module **36** is configured to determine conformance of respiration of subject **12** with the breathing cues provided by the pressurized flow of breathable gas. The determination of conformance made by conformance module **36** is based on the output signals generated by sensors **20** and the cues provided by the pressurized flow of breathable gas. In one embodiment, conformance module **36** compares one or more of the breathing parameters determined by breathing parameter module **34** (which are determined based on the output signals of sensors **20**) to the cues.

[0031] Determining conformance of respiration of subject **12** with the breathing cues includes determining a metric that quantifies the conformance, or synchronicity, of the respiration of subject **12** with the breathing cues. For example, a breath rate of subject **12**, or a difference between breath rate of subject **12** and the breath rate prompted by the breathing cues may indicate conformance of the respiration of subject **12**.

[0032] The metric may quantify the conformance on a per-breath basis. By way of non-limiting example, conformance of the respiration of subject **12** may be quantified by a difference between an amount of time breathing cues provided by the pressurized flow of breathable gas prompt subject **12** to

inhale, and an actual amount of time subject 12 inhales. Hereafter, this difference is referred to “inspiration extension time”. Similarly, another non-limiting example of a metric that quantifies conformance of the respiration of subject 12 is a difference between an amount of time breathing cues provided by the pressurized flow of breathable gas prompt subject 12 to exhale, and an actual amount of time subject 12 exhales. This difference is referred to as “expiration extension time.”

[0033] If the metric quantifies conformance of the respiration of subject 12 to the breathing cues on a per-breath basis, determining conformance of subject 12 may include determining a per-breath average of the metric for a plurality of breaths. This may reduce noise caused for individual breaths by breathing irregularity, momentary inattentiveness, and/or other phenomena. The number of breaths used to determine the average may be a user-configurable setting or may be a set value. In one embodiment, conformance module 36 is configured to determine the number of breaths used to determine the average through observation of subject 12 over time. For example, at a first number of breaths, the average may be found to be too noisy (e.g., giving rise to false detections of sleepfulness), while at a second number of breaths the average may be found to not be sensitive enough (e.g., giving rise to belated detections of sleepfulness). The conformance module 36 may be configured to observe such results, and to identify a third number of breaths between the first number and the second number as an appropriate number of breaths to implement in determining the average of the metric for subject 12.

[0034] FIG. 2 illustrates a plot 42 of flow at or near the airway of a subject, a plot 44 of the inspiration/expiration state for the subject, and a plot 46 of pressure of a pressurized flow of breathable gas delivered to the airway of the subject to provide breathing cues to the subject. Specifically, in FIG. 2, the subject is awake and is exhibiting respiration that conforms to the breathing cues. As such, the transitions in breathing between exhale and inhale, and between inhale and exhale for the subject coincide with changes in the pressure of the pressurized flow of breathable gas. For example, the inspiration extension time and/or the expiration extension time for plots 44 and 46 would be zero, or de minimis.

[0035] FIG. 3 illustrates a plot 48 of flow at or near the airway of a subject, a plot 50 of inspiration/expiration state for the subject, and a plot 52 of pressure of a pressurized flow of breathable gas delivered to the airway of the subject to provide breathing cues. In plots 48, 50, and 52, the subject is asleep, and is therefore not following the breathing cues provided by the pressurized flow of breathable gas. For example, the inspirations of the subject are not extending to the full period of the breathing cues. As such, the inspiration extension time for these breaths will be substantially longer than the inspiration extension time for the breaths depicted in FIG. 2.

[0036] Returning to FIG. 1, sleep module 38 is configured to determine whether subject 12 is awake or asleep. The determination is based on the determination of conformance by conformance module 36. For example, in one embodiment, sleep module 38 compares the metric quantifying conformance that was determined by conformance module 36 with a threshold level of conformance. If the metric quantifying conformance does not breach the threshold level, then sleep module 38 determines that subject 12 is still awake and breathing in conformance with the cues provided by the pres-

surized flow of breathable gas. If the metric quantifying conformance breaches the threshold level, then sleep module 38 determines that subject 12 is asleep, thereby causing the breathing of subject 12 to no longer conform to the cues provided by the pressurized flow of breathable gas. The threshold may be a static value or level. The static value or level may be determined based on user-selection, and/or permanent (or semi-permanent) setting. The threshold may be a dynamic value or level. For example, sleep module 38 may determine the appropriate threshold of subject 12 individually over time. The sleep module 38 may accomplish this by tuning the value or level used as the threshold to minimize both false detections of sleep and delayed detections of sleep.

[0037] In one embodiment, control module 32 is configured such that the breathing cues provided to subject 12 by the pressurized flow of breathable gas remain constant during a therapy session. In one embodiment, control module 32 is configured such that the breathing cues provided to subject 12 by pressurized flow of breathable gas change slowly throughout the session. For example, the breathing cues may change during the session to slowly change breathing rate, inspiration time, expiration time, and/or other breathing parameters. These gradual changes in the breathing cues may facilitate detection of sleep, as a lack of synchronization between the respiration of subject 12 and the breathing cues may be easier to detect if the breathing cues are dynamic.

[0038] By way of non-limiting example, the inspiration time of the breathing cues may slowly expand during the therapy session. This will tend to relax subject 12, but will also highlight the point in time when subject 12 is no longer following the breathing cues due to the onset of sleep. This is because once subject 12 goes to sleep the inspiration time of the breathing of subject 12 will return to its natural state.

[0039] As another non-limiting example, FIG. 4 illustrates a plot 54 of breath rate as a subject receives therapy from a system similar to or the same as system 10 (shown in FIG. 1 and described above). The plot 54 illustrates how the breathing cues provided to the subject can slowly reduce the breath rate of the subject over time, and how once the subject goes to sleep, a local minima 56 is formed in breath rate because the breath rate begins to climb back to its natural value.

[0040] Referring back to FIG. 1, it will be appreciated that sleep module 38 may be configured to base the determination of whether subject 12 is awake or asleep on more than a single metric of conformance determined by conformance module 36. Further, in one embodiment, sleep module 38 further supplements the determination of whether subject 12 is awake or asleep on other analysis of breathing parameters determined by breathing parameter module 34 that can be indicative of sleepfulness. By way of non-limiting example, such breathing parameters may include one or more of breath to breath variability of a breathing parameter (e.g., volume, duration, inspiration percentage, expiration percentage, minute ventilation, breath rate, etc.), intrabreath variability in one or more breathing parameters, drops in one or more breathing parameters, dynamic frequency interbreath variability, and/or other analysis of breathing parameters.

[0041] The therapy module 40 is configured to control 1414 to administer a pressure support therapy to subject 12 while subject 12 sleeps. The administration of the pressure support therapy is triggered by a determination by sleep module 38 that subject 12 is asleep. Responsive to a determination by sleep module 38 that subject 12 is asleep, therapy module 40 is configured to begin the pressure support therapy. Com-

mening the pressure support therapy may include ramping up pressure at or near the airway of subject 12 to support the airway of subject 12 during sleep to reduce obstructive respiratory events. The pressure support therapy may include, for example, one or more of BiPAP®, continuous positive airway pressure therapy, and/or other forms of positive airway pressure therapy.

[0042] FIG. 5 illustrates a method 58 of detecting an awake-to-asleep transition in a subject. The operations of method 58 presented below are intended to be illustrative. In some embodiments, method 58 may be accomplished with one or more additional operations not described, and/or without one or more of the operations discussed. Additionally, the order in which the operations of method 58 are illustrated in FIG. 5 and described below is not intended to be limiting.

[0043] In some embodiments, method 58 may be implemented in one or more processing devices (e.g., a digital processor, an analog processor, a digital circuit designed to process information, an analog circuit designed to process information, a state machine, and/or other mechanisms for electronically processing information). The one or more processing devices may include one or more devices executing some or all of the operations of method 58 in response to instructions stored electronically on an electronic storage medium. The one or more processing devices may include one or more devices configured through hardware, firmware, and/or software to be specifically designed for execution of one or more of the operations of method 58.

[0044] At an operation 60, a pressurized flow of breathable gas is generated for delivery to the airway of a subject. The pressurized flow of breathable gas is generated such that one or more parameters of the gas in the pressurized flow of breathable gas are adjusted in order to provide breathing cues to the subject. The breathing cues prompt the subject to alter one or more breathing parameters. In one embodiment, operation 60 is performed by a device similar to or the same as device 14 (shown in FIG. 1 and described above) under control of a control module similar to or the same as control module 32 (shown in FIG. 1 and described above).

[0045] At an operation 62, one or more breathing parameters of the respiration of the subject are monitored. Monitoring the one or more breathing parameters may include determining the one or more breathing parameters. The one or more breathing parameters may be determined based on output signals generated by sensors conveying information related to gas parameters at or near the airway of the subject. In one embodiment, operation 62 may be performed by a breathing parameter module similar to or the same as breathing parameter module 34 (shown in FIG. 1 and described above).

[0046] At an operation 64, conformance of respiration of the subject to the breathing cues provided at operation 60 is determined. Determining the conformance of the respiration of the subject to the breathing cues may include determining a metric that quantifies respiratory conformance. In one embodiment, the metric quantifies conformance on a per-breath basis. In this embodiment, determining respiratory conformance may include determining an average of the metric over a plurality of breaths (e.g., consecutive breaths, breaths that are proximate in time, etc.). The conformance of the respiration of the subject to the breathing cues may be determined based on the monitored one or more breathing parameters and/or breathing cues. In one embodiment, opera-

tion 64 is performed by a conformance module similar to or the same as conformance module 36 (shown in FIG. 1 and described above).

[0047] At an operation 66, a determination is made as to whether the subject is asleep or awake. This determination may include comparing the conformance of the respiration of the subject with the breathing cues (determined at operation 64) with a threshold level of conformance. If the conformance of the respiration of the subject does not breach a threshold level, it is determined that the subject is still awake. If the conformance of the respiration of the subject breaches the threshold level, it is determined that the subject is asleep. The determination as to whether the subject is asleep or awake may further be supplemented by other analysis of the breathing parameters determined at operation 64. In one embodiment, operation 66 is performed by a sleep module similar to or the same as sleep module 38 (shown in FIG. 1 and described above).

[0048] If the determination is made at operation 66 that the subject is awake, method 58 continues to iterate through operations 60, 62, 64, and back to operation 66. If the determination is made at operation 66 that the subject is asleep, method 58 proceeds to an operation 68. At operation 68, a respiratory therapy is provided to the subject by the pressurized flow of breathable gas. For example, the respiratory therapy may include a positive airway pressure therapy. In one embodiment, operation 68 is performed by a therapy module similar to or the same as therapy module 40 (shown in FIG. 1 and described above).

[0049] Although the invention has been described in detail for the purpose of illustration based on what is currently considered to be the most practical and preferred embodiments, it is to be understood that such detail is solely for that purpose and that the invention is not limited to the disclosed embodiments, but, on the contrary, is intended to cover modifications and equivalent arrangements that are within the spirit and scope of the appended claims. For example, it is to be understood that the present invention contemplates that, to the extent possible, one or more features of any embodiment can be combined with one or more features of any other embodiment.

1. A system configured to detect an awake-to-sleep transition in a subject, the system comprising:

- a pressure generator (14) configured to generate a pressurized flow of breathable gas for delivery to the airway of a subject (12);
- a sensor (20) configured to generate output signals conveying information related to a gas parameter at or near the airway of the subject;
- a processor (22) configured to execute computer program modules, the computer program modules comprising:
 - a control module (32) configured to control the pressure generator such that the pressure generator adjusts a parameter of the gas in the pressurized flow of breathable gas in order to provide breathing cues to the subject;
 - a conformance module (36) configured to determine conformance of respiration of the subject to the breathing cues provided by the pressurized flow of breathable gas, such determination being based on the output signals generated by the sensor and the cues provided by the pressurized flow of breathable gas; and

- a sleep module (38) configured determine whether the subject is awake or asleep, such determination being based on the determination of conformance made by the conformance module.
2. The system of claim 1, wherein the sleep module is configured to determine that the subject is awake prior to the determination of conformance made by the conformance module breaching a threshold level of conformance, and to determine that the subject is asleep in response to the determination of conformance breaching the threshold level of conformance.
3. The system of claim 1, wherein the conformance module is configured such that the determination of conformance comprises determining a metric that quantifies conformance on an individual breath basis.
4. The system of claim 3, wherein the conformance module is further configured such that the determination of conformance comprises averaging the metric over a plurality of breaths.
5. The system of claim 1, wherein the gas parameter of the gas in the pressurized flow of breathable gas that is adjusted to provide breathing cues to the subject is pressure or flow rate.
6. A method of detecting an awake-to-sleep transition in a subject, the method comprising:
generating (60) a pressurized flow of breathable gas for delivery to the airway of a subject such that a parameter of the gas in the pressurized flow of breathable gas is adjusted in order to provide breathing cues to the subject;
monitoring (62) a breathing parameter of the respiration of the subject;
determining (64) conformance of respiration of the subject to the breathing cues provided by the pressurized flow of breathable gas, such determination being based on the monitored breathing parameter and the cues provided by the pressurized flow of breathable gas; and
determining (66) whether the subject is awake or asleep, such determination being based on the determination of conformance.
7. The method of claim 6, wherein determining whether the subject is awake or asleep comprises determining that the subject is awake prior to the determination of conformance breaching a threshold level of conformance, and determining that the subject is asleep in response to the determination of conformance breaching the threshold level of conformance.
8. The method of claim 6, wherein the determination of conformance comprises determining a metric that quantifies conformance on an individual breath basis.
9. The method of claim 8, wherein the determination of conformance further comprises averaging the metric over a plurality of breaths.
10. The method of claim 6, wherein the gas parameter of the gas in the pressurized flow of breathable gas that are adjusted to provide breathing cues to the subject is pressure or flow rate.
11. A system configured to detect an awake-to-sleep transition in a subject, the system comprising:
means for generating (14, 32) a pressurized flow of breathable gas for delivery to the airway of a subject such that a parameter of the gas in the pressurized flow of breathable gas is adjusted in order to provide breathing cues to the subject;
means for monitoring (20, 30, 34) a breathing parameter of the respiration of the subject;
means for determining (36) conformance of respiration of the subject to the breathing cues provided by the pressurized flow of breathable gas, such determination being based on the monitored breathing parameter and the cues provided by the pressurized flow of breathable gas; and
means for determining (38) whether the subject is awake or asleep, such determination being based on the determination of conformance.
12. The system of claim 11, wherein the means for determining whether the subject is awake or asleep is configured to determine that the subject is awake prior to the determination of conformance breaching a threshold level of conformance, and to determine that the subject is asleep in response to the determination of conformance breaching the threshold level of conformance.
13. The system of claim 11, wherein the means for determining conformance is configured to determine a metric that quantifies conformance on an individual breath basis.
14. The system of claim 13, wherein the means for determining conformance is further configured to average the metric over a plurality of breaths.
15. The system of claim 11, wherein the gas parameter of the gas in the pressurized flow of breathable gas that is adjusted to provide breathing cues to the subject is pressure or flow rate.

* * * * *

专利名称(译)	用于基于对呼吸提示的响应来检测对象中的睡眠发作的系统和方法		
公开(公告)号	US20130066226A1	公开(公告)日	2013-03-14
申请号	US13/697113	申请日	2011-04-25
[标]申请(专利权)人(译)	BALOA WELZIEN LEONARDO ALBERTO LAURA LAPOINT MANUEL sibenaller萨拉玛丽		
申请(专利权)人(译)	BALOA WELZIEN , LEONARDO ALBERTO LAURA LAPOINT , MANUEL SIBENALLER , SARA MARIE		
当前申请(专利权)人(译)	皇家飞利浦电子nV		
[标]发明人	BALOA WELZIEN LEONARDO ALBERTO LAURA LAPOINT MANUEL SIBENALLER SARA MARIE		
发明人	BALOA WELZIEN, LEONARDO ALBERTO LAURA LAPOINT, MANUEL SIBENALLER, SARA MARIE		
IPC分类号	A61B5/00 A61B5/087 A61B5/03 A61B5/08 A61M16/00		
CPC分类号	A61B5/0816 A61M16/161 A61B5/0826 A61B5/087 A61B5/091 A61B5/4809 A61M16/00 A61M2016/0021 A61M2016/0027 A61M2016/003 A61M2016/0036 A61M2205/3331 A61M2205/3368 A61M2230/40 A61M2230/42 A61M2230/50 A61B5/03 A61B5/08 A61M16/0057 A61B5/082 A61B5/4806 A61B5/4812 A61M16/024		
优先权	61/334597 2010-05-14 US		
其他公开文献	US9724038		
外部链接	Espacenet USPTO		

摘要(译)

基于对提供给受试者的呼吸提示的响应性来检测对象的唤醒 - 睡眠转变。加压的可呼吸气体流到受试者的气道，其具有一个或多个气体参数，所述气体参数被调节以向受试者提供呼吸提示。基于检测到的受试者呼吸与呼吸提示的一致性，确定受试者是醒着还是睡着了。

