

FIG. 1

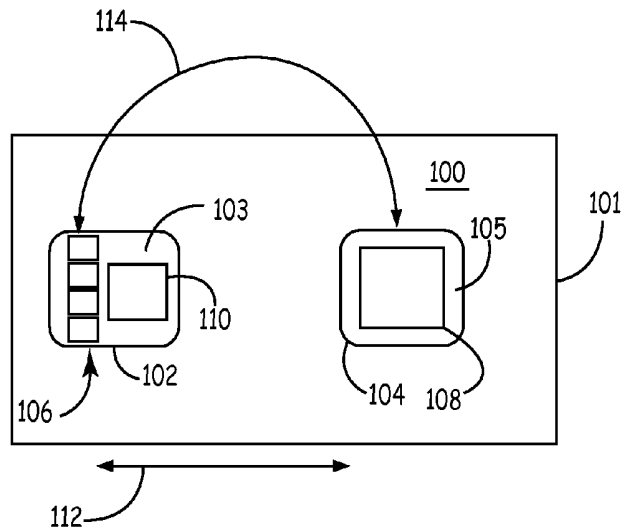


FIG. 2

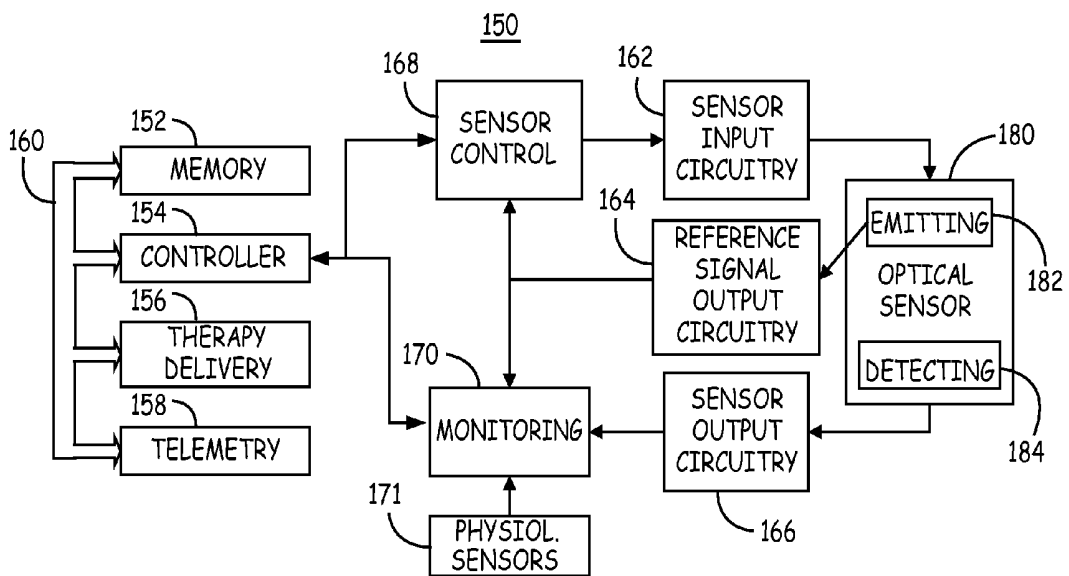


FIG. 3

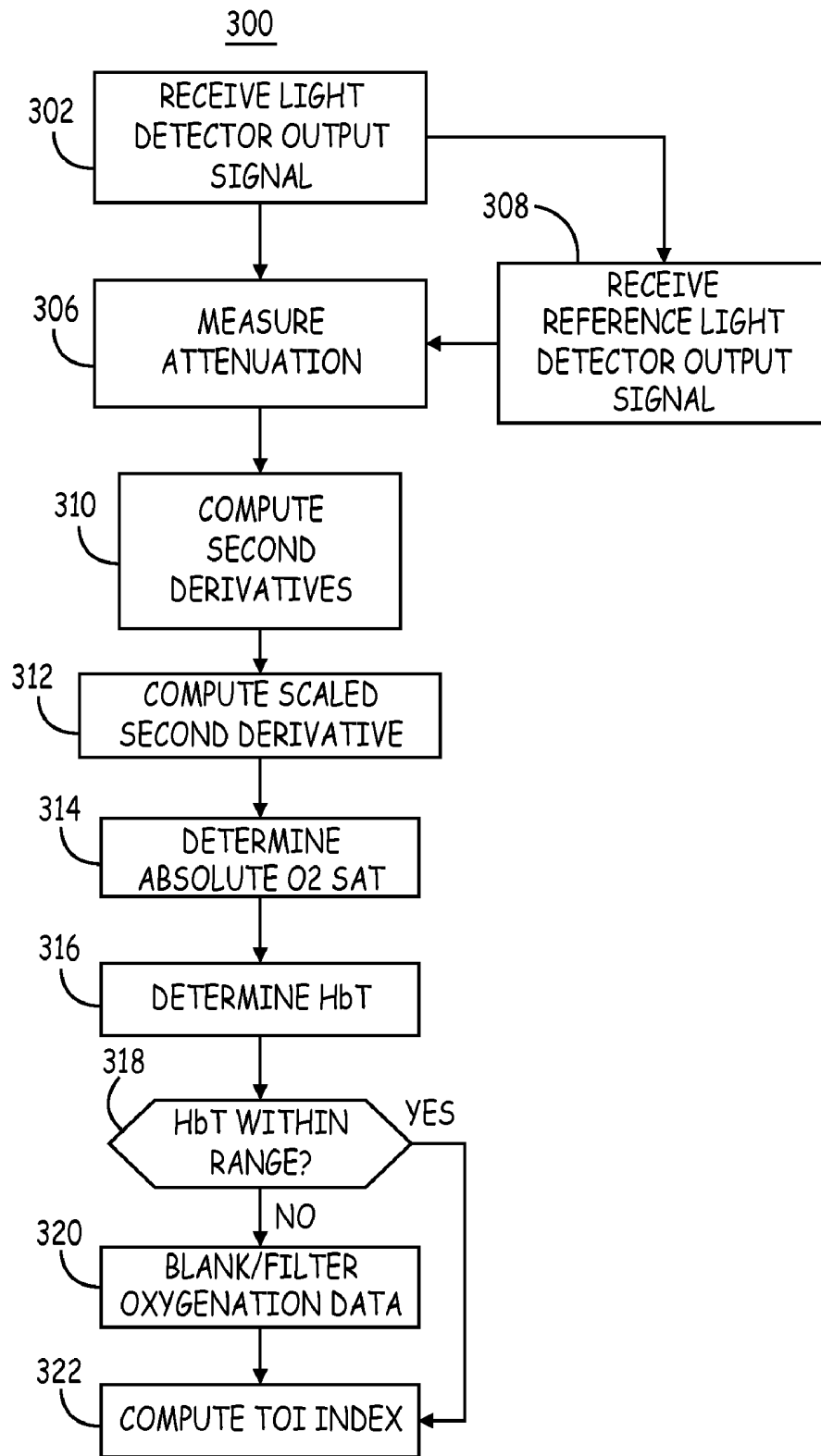


FIG. 4

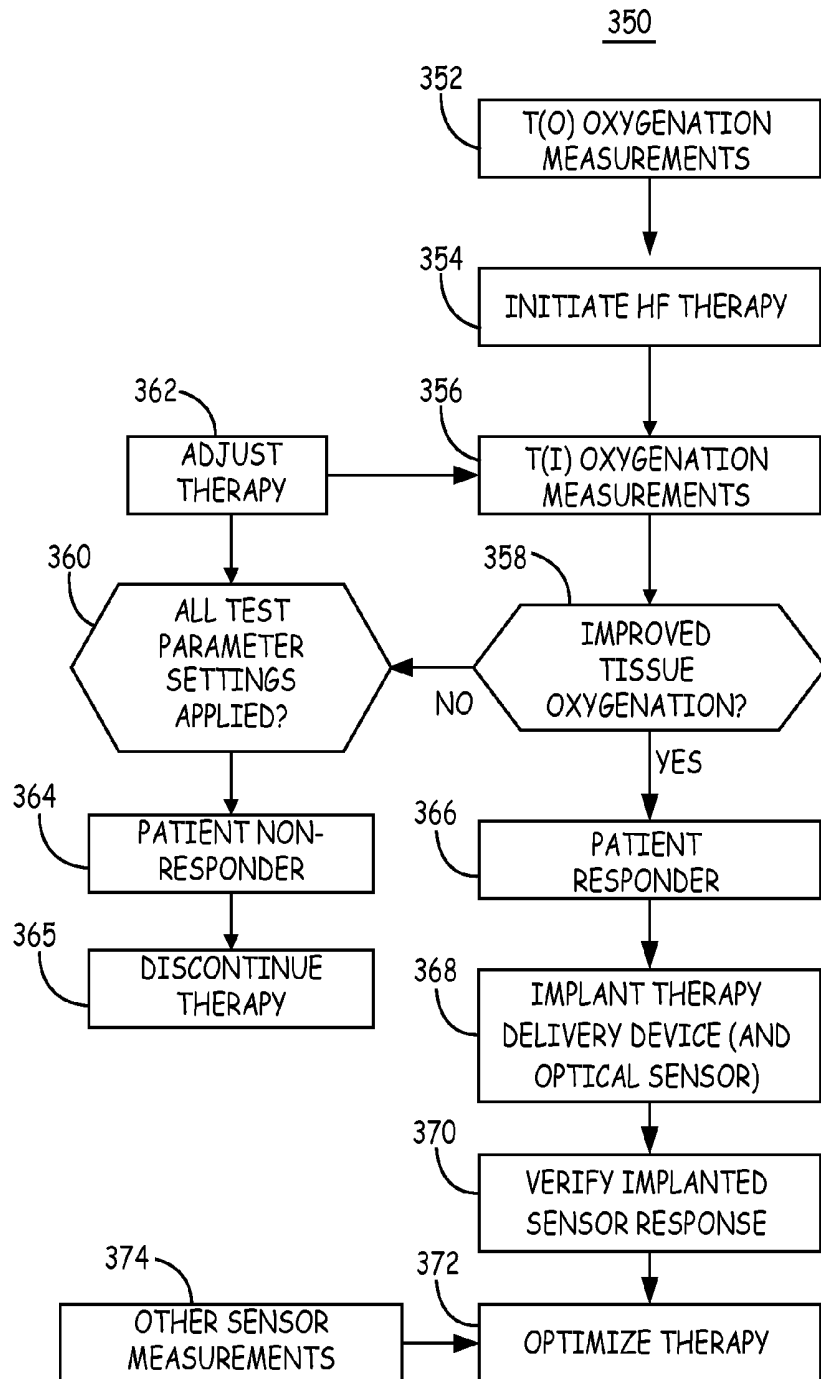


FIG. 5

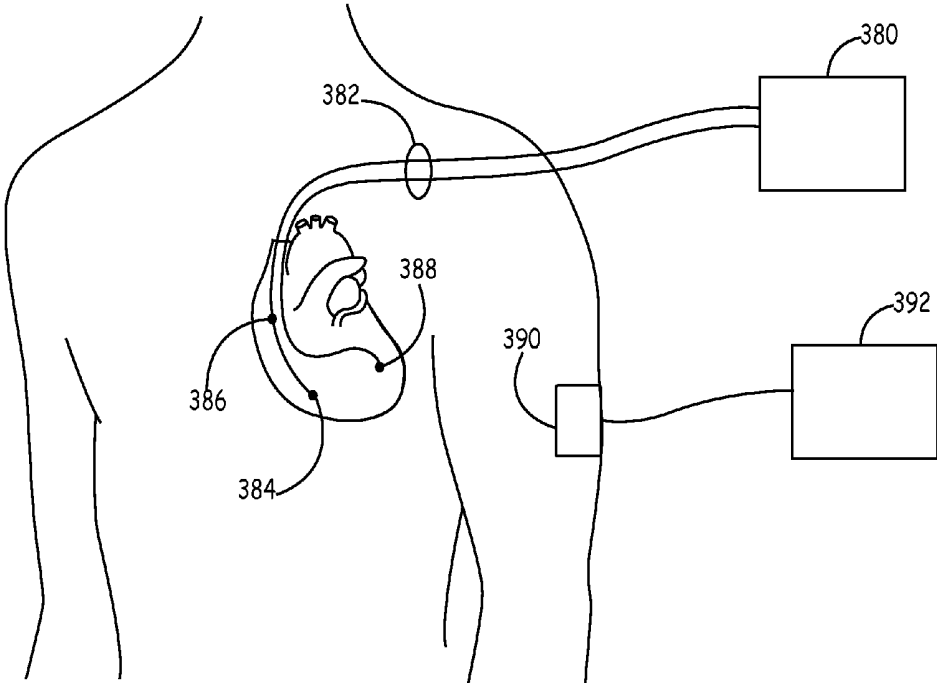


FIG. 6

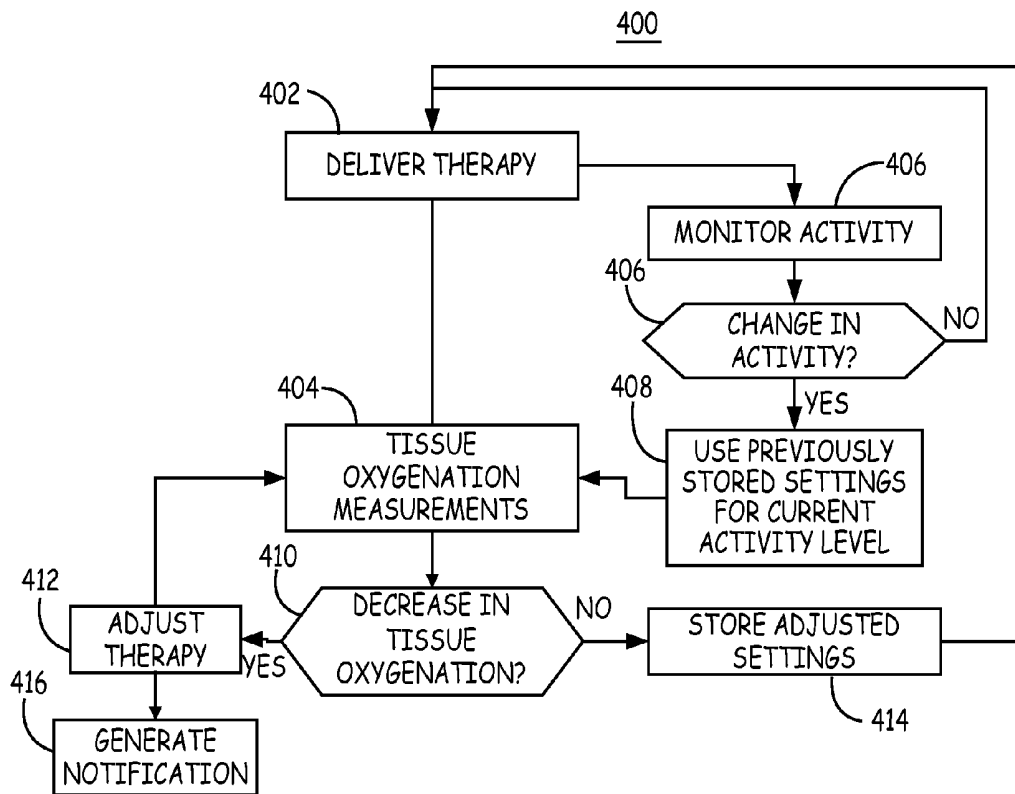


FIG. 7

TISSUE OXYGENATION MONITORING IN HEART FAILURE

RELATED APPLICATION

[0001] The present disclosure claims priority and other benefits from U.S. Provisional Patent Application Ser. No. 61/185,812, filed Jun. 10, 2009, entitled "TISSUE OXYGENATION MONITORING IN HEART FAILURE", incorporated herein by reference in its entirety.

REFERENCE TO RELATED APPLICATIONS

[0002] Cross-reference is hereby made to the commonly-assigned related U.S. Applications: Attorney Docket Numbers P0034665.03, P0034665.06 and P0034665.07, all entitled "DEVICE AND METHOD FOR MONITORING ABSOLUTE OXYGEN SATURATION AND TOTAL HEMOGLOBIN CONCENTRATION", to Kuhn et al.; Attorney Docket Numbers P0035554.01 and P0035554.03, both entitled "TISSUE OXYGENATION MONITORING IN HEART FAILURE" to Cinbis et al.; Attorney Docket Number P0035742.01, entitled "ACTIVE NOISE CANCELLATION IN AN OPTICAL SENSOR SIGNAL", to Kuhn et al.; Attorney Docket Numbers P0034899.01 and P0034899.02, both entitled "SHOCK REDUCTION USING ABSOLUTE CALIBRATED TISSUE OXYGEN SATURATION AND TOTAL HEMOGLOBIN VOLUME FRACTION", to Kuhn et al.; and Attorney Docket Numbers P0035038.01 and P0035038.02, both entitled "ABSOLUTE CALIBRATED TISSUE OXYGEN SATURATION AND TOTAL HEMOGLOBIN VOLUME FRACTION", to Kuhn et al., all of which are incorporated herein by reference in their entireties.

TECHNICAL FIELD

[0003] The disclosure relates generally to medical devices and, in particular, to a medical device system and associated method for monitoring tissue oxygen availability in heart failure patients.

BACKGROUND

[0004] Implantable medical devices are available for monitoring and treating patients with heart failure. Such devices include physiological sensors for sensing signals correlated to physiological events or conditions. For example, implantable hemodynamic monitors may monitor blood pressure and heart rate. Pacemakers or implantable cardioverter/defibrillators (ICDs) are available that monitor a cardiac EGM/ECG signal and may provide heart failure therapies such as cardiac resynchronization therapy (CRT). CRT involves pacing one or more heart chambers to improve the synchronization of the heart chamber contractions and thereby improve the heart's ability to eject blood. However, not all patients respond to CRT. Currently, a challenge remains in prospectively identifying heart failure patients that will respond positively to CRT.

[0005] Progression of heart failure leads to poor oxygenation of skeletal muscle tissue. A lack of cardiac reserve, i.e., the heart's inability to function above a basal level in response to an increased metabolic demand, such as during exercise, can lead to tissue hypoxia during exercise. Poor tissue oxygenation and lack of cardiac reserve lead to exercise intolerance in heart failure patients. Many approaches to monitoring a heart failure patient involve monitoring blood pressure, heart wall motion, ejection fraction, heart rate and other

hemodynamic measures. However, a need remains for sensing devices and methods for diagnostic, prognostic and therapy management purposes in heart failure patients.

BRIEF DESCRIPTION OF THE DRAWINGS

[0006] FIG. 1 is a schematic view of a medical device system for monitoring tissue oxygenation in a heart failure patient.

[0007] FIG. 2 is a top, schematic view of an optical sensor according to one embodiment.

[0008] FIG. 3 is a functional block diagram of a medical device system including an optical sensor for monitoring tissue oxygenation.

[0009] FIG. 4 is a flow chart of a method for operating an optical sensor during tissue oxygenation monitoring.

[0010] FIG. 5 is a flow chart of a method for evaluating a heart failure patient's response to a therapy using an optical sensor.

[0011] FIG. 6 is a schematic view of an alternative medical device system for use in evaluating a patient's response to a HF therapy.

[0012] FIG. 7 is a flow chart of a method for managing a HF therapy using tissue oxygenation monitoring.

DETAILED DESCRIPTION

[0013] In the following description, references are made to illustrative embodiments. It is understood that other embodiments may be utilized without departing from the scope of the disclosure. In some instances, for purposes of clarity, the same reference numbers may be used in the drawings to identify similar elements. As used herein, the term "module" refers to an application specific integrated circuit (ASIC), an electronic circuit, a processor (shared, dedicated, or group) and memory that execute one or more software or firmware programs, a combinational logic circuit, or other suitable components that provide the described functionality.

[0014] In various embodiments described herein, an optical sensor is used to monitor tissue oxygenation in a measurement tissue volume. The measurement volume is the volume of tissue (including blood) in the optical path of the sensor. The term "tissue oxygenation" as used herein refers to the availability of oxygen to a localized tissue volume and thus refers generally to the availability of oxygenated hemoglobin. The term "total hemoglobin volume fraction" (HbT) refers to the concentration of red blood cells in a measurement volume carrying hemoglobin and thus relates to the total hemoglobin concentration as a fraction of a measurement volume. Stated differently, the total hemoglobin volume fraction, which can be expressed as a percentage, is the volume percentage of red blood cells carrying oxygenated and deoxygenated hemoglobin in the measurement volume. Thus a measurement of HbT will include contributions from red blood cells present in any arteries, capillaries, and veins which may be present in the measurement volume. Generally speaking, when the availability of oxygen to a body tissue is being monitored, the optical sensor is positioned such that the measurement volume extends through a relatively uniform tissue volume such that optical sensor signals used to compute measurements of tissue oxygenation correlate to the absolute tissue oxygen saturation (O₂Sat) and HbT in the microcirculation of the measurement volume.

[0015] Absolute tissue oxygen saturation is the portion (or percentage) of the total hemoglobin that is in an oxygenated

state. More specifically, O₂Sat relates to the available hemoglobin binding sites holding an oxygen molecule. Thus, “tissue oxygenation monitoring” as used herein refers to monitoring both O₂Sat (or an index thereof) and HbT (or an index thereof). Tissue oxygenation monitoring may involve determining absolute measurements of O₂Sat and HbT, determining trends of these measurements, determining indices of oxygenation measurements or trends of indices. When either O₂Sat or HbT or measurements correlated thereto, are reduced, a blood-perfused tissue can become hypoxic.

[0016] The term “hypoxia” as used herein refers to a reduced availability of oxygen to the tissue. “Stagnant hypoxia” occurs when inadequate blood flow fails to transport sufficient oxygen to the tissue, such as in heart failure. As such, stagnant hypoxia generally occurs when tissue perfusion is low, e.g., due to low cardiac output.

[0017] The status of a heart failure patient may be monitored by assessing the oxygen available to tissue through monitoring absolute tissue O₂Sat and HbT. Generally speaking, as heart failure worsens, tissue oxygenation can worsen. As heart failure improves, for example in response to a heart failure therapy, tissue oxygenation will improve. In particular, a heart failure patient’s cardiac reserve is often diminished, reducing the ability of the heart to respond to an increased metabolic demand by increasing cardiac output. As a result, the tissue oxygen availability does not increase to meet an increased metabolic demand due to exercise. As such, tissue oxygenation during exercise may be lower in a heart failure patient as compared to a patient having normal cardiac function performing the same level of exercise.

[0018] As will be described herein, tissue oxygenation monitoring applications may include chronic or acute monitoring of tissue oxygenation using an implantable or external medical device including an optical sensor. As used herein, “chronic” monitoring generally refers to monitoring a tissue for more than one day using continuous or periodic measurements while “acute” monitoring generally refers to monitoring a tissue for one day or less, for example, testing performed during a clinical visit or measurements performed during a surgical procedure.

[0019] FIG. 1 is a schematic view of a medical device system 2 for monitoring tissue oxygenation in a heart failure patient. Medical device system 2 includes an implantable medical device (IMD) 10 provided for delivering a heart failure therapy, which may be a cardiac stimulation therapy, a nerve stimulation therapy, or a drug or biological agent.

[0020] System 2 may alternatively or additionally include a cardiac assist device which aids or replaces the blood pumping function of the heart. Examples of cardiac assist devices include intra-aortic balloon pumps, left ventricular assist devices (LVAD), total artificial heart (TAH) or other blood pumps. As will be described herein, an optical sensor may be used with any of these therapy delivery devices to monitor tissue oxygenation to measure the effectiveness of the therapy and possibly to optimize their settings.

[0021] Alternatively, medical device system 2 may be provided for monitoring a patient without including therapy delivery capabilities. As such, IMD 10 may be embodied as any of a number of implantable medical devices, including pacemakers, implantable cardioverter defibrillators (ICDs), nerve stimulators, fluid delivery pumps, hemodynamic monitors, ECG monitors, or the like.

[0022] In one embodiment, IMD 10 includes an optical sensor 12 incorporated in hermetically-sealed housing 14 of

IMD 10. Housing 14 encloses an IMD battery and other device circuitry and components needed for performing device functions. Housing 14 includes at least one opening or window through which light is emitted from a light emitting portion of the optical sensor 12 and at least one additional window through which light is detected by a light detecting portion of optical sensor 12.

[0023] It is recognized that sensor 12, and any of the other sensor embodiments described herein, may include multiple light emitting and/or light detecting portions to allow different combinations of emitting and detection portions to be selected for performing oxygenation measurements, which may include using emitting and detecting portions at different distances apart. The distance between the emitting and detecting portions determines, in part, the optical pathway of the sensor and thus the measurement volume and depth. Therefore, selection of different emitting and detecting portions and different emitting-to-detecting spacings allows oxygenation measurements to be performed in different measurement volumes in tissue adjacent to the sensor 12.

[0024] In some embodiments, an optical sensor 20 may be carried by a lead 22 extending from IMD 10. Lead 22 is coupled to circuitry within housing 14 via a connector block 15 including appropriate electrical connections and feedthroughs to allow circuitry within housing 14 to be coupled to sensor 20. A lead-based sensor 20 may be used to deploy sensor 20 at a tissue site remote from the implant site of IMD 10. Lead 22 may be tunneled extravascularly, e.g., subcutaneously or sub-muscularly, to a desired monitoring site.

[0025] In alternative embodiments, a lead 22 carrying a sensor 20, e.g. at a distal end of the lead 22, may be advanced within the vascular system and remain within a blood vessel 25 for measuring O₂Sat and HbT in tissue adjacent to the blood vessel. Alternatively, lead 24 may be advanced intravascularly to a desired tissue site, then advanced through the vessel wall, for example by puncturing the vessel wall, for placement at an adjacent tissue site.

[0026] System 2 may additionally or alternatively include an optical sensor 30 embodied as an implantable wireless optical sensor housed in a hermetically sealed housing. Sensor 30 includes a power supply and circuitry for performing tissue oxygenation measurements and further includes a telemetry module (not explicitly shown) enabling sensor 30 for wireless communication with IMD 10 or an external medical device 32. External medical device 32 may be a bedside monitor, a patient home monitor or a device programmer used to program IMD 10 or sensor 30.

[0027] A wireless sensor 30 may be implanted at a desired monitoring site remote from IMD 10 without the surgical constraints imposed by tethering sensor 30 to IMD 10 using a conductive lead. Wireless sensor 30 is shown implanted in an upper limb of patient 4, however a wireless sensor 30 may be positioned along any peripheral or core body site for monitoring a desired tissue volume. A wireless sensor 30 may be implanted for monitoring purposes only, without therapy delivery capabilities, and may be used alone or in conjunction with another IMD 10 for monitoring tissue oxygenation in patient 4.

[0028] System 2 may include an external, wireless optical sensor 40 for ambulatory, chronic or acute monitoring of tissue oxygenation. Sensor 40 emits light through the skin of the patient to obtain light attenuation measurements associated with the absorption of light by a tissue volume. External

wireless optical sensor **40** is shown positioned along a lower limb of patient **4** but may be positioned along any peripheral or core body location for monitoring tissue oxygenation in a desired tissue volume. External sensor **40** may be held in a stable position using an adhesive patch or tape or using a securable band or cuff. External wireless optical sensor **40** includes a power supply and circuitry for performing tissue oxygenation measurements and telemetry circuitry enabling wireless communication between sensor **40** and IMD **10** and/or an external medical device **32**.

[0029] IMD system **2** may include an external sensor **34** in wired communication with a monitor **36** for performing tissue oxygenation measurements transcutaneously. External sensor **34** and monitor **36** may be used in a patient's home, in a clinic, or in a surgical theater for monitoring tissue oxygenation for periodic patient monitoring or during implantation of IMD **10** or sensor **30**.

[0030] The sensors described herein relate generally to a "reflection" mode of operation, wherein the light emitting and light detecting portions of the sensor are in a substantially side-by-side arrangement and detected light is scattered by the tissue back to the detection portion. It is contemplated that an optical sensor may be configured to operate in a "transmission" mode, wherein the light emitting and light detecting portions of the sensor are arranged in facing opposition to each other. Detected light is light that is transmitted through the tissue. Furthermore, it is contemplated that in transmission mode configurations, one of the light emitting portion and the light detecting portion can be positioned externally against the skin "looking in" and the other can be positioned subcutaneously or submuscularly, "looking out" in facing opposition with the external portion.

[0031] As will be further described below, a medical device system **2** including an optical sensor for monitoring tissue oxygenation will include a processor for computing tissue oxygenation measurements. In one embodiment, absolute O₂Sat and HbT measurements are computed from a light detector output signal. In other embodiments, non-calibrated tissue oxygenation measurements may be computed. A processor and other signal conditioning circuitry for computing oxygenation measurements from raw signals may be included in or distributed across any of the components shown in system **2**, including external device **32**, IMD **10**, wireless sensors **30** and **40**, lead-based sensor **20**, or monitor **36**.

[0032] External device **32** is shown in communication with a networked patient monitoring database **38**. Tissue oxygenation data may be transmitted to a monitoring database **38** to allow a clinician to monitor patient **4** remotely using a centralized Internet website or networked computer system. An example of a remote patient management system in which tissue oxygenation monitoring may be incorporated for managing heart failure patients is generally described in U.S. Pat. No. 6,599,250 (Webb, et al.), hereby incorporated herein by reference in its entirety.

[0033] In various embodiments, IMD **10** is provided for delivering a heart failure therapy. IMD **10** is shown coupled to cardiac leads **17** which may be transvenous leads used to deploy electrodes **16** and **18** in one or more chambers of the patient's heart **8**. For example, leads **17** may include a right ventricular lead and a coronary sinus lead. A right ventricular lead is advanced transvenously into the right ventricle to position electrodes **16** for right ventricular sensing and stimulation. Electrodes **19** positioned in the right atrium may be

carried by a right ventricular lead as shown or by a separate lead. A coronary sinus lead is advanced further through the right ventricle into the coronary sinus and a cardiac vein to position electrodes **18** for sensing and stimulation in the left ventricle. Additional leads and/or electrodes may be included for sensing and stimulating in the atrial chambers or for delivering high-voltage cardioversion/defibrillation shock pulses.

[0034] Leads **17** and electrodes **16** and **18** may be used to deliver cardiac resynchronization therapy (CRT) for treating heart failure. An example of a device and method for delivering CRT is generally described in U.S. Pat. No. 6,839,592 (Grandjean), hereby incorporated herein by reference in its entirety. Other stimulation therapies that may be delivered in a heart failure patient include anti-tachycardia pacing therapies, minimum ventricular pacing, and rate-responsive pacing.

[0035] IMD **10** may alternatively be coupled to a lead provided for delivering stimulation to a nerve, e.g. the vagus nerve, for treating heart failure. System **2** may additionally or alternatively include leads or catheters extending from IMD **10** for delivering a fluid, e.g. a cardiac drug or biological agent, administered to treat heart failure.

[0036] IMD **10** may be in wireless communication with external monitor **36** to enable cooperative operation for obtaining tissue oxygenation measurements before and during delivery of a heart failure therapy. Alternatively, external device **32** may be in wireless communication with IMD **10** and in wired or wireless communication with monitor **36** to allow IMD **10**, external monitor **36**, and external device **32** to operate cooperatively to obtain tissue oxygenation measurements before and during delivery of a heart failure therapy. It is recognized, that the functionality of external device **32** and monitor **36** may be combined in a single unit.

[0037] FIG. **2** is a top, schematic view of an optical sensor according to one embodiment. It is recognized that numerous optical sensor configurations may be used for monitoring tissue oxygenation, and the methods and devices described herein are not limited to a particular optical sensor configuration. In general, any optical sensor that acquires measurements of the attenuation of light scattered by or transmitted through a tissue volume for computing a measurement correlated to tissue oxygenation may be used. In some embodiments, tissue oxygenation measurements may include a non-calibrated index of oxygen saturation determined using a two-wavelength optical sensor, typically emitting and detecting red and infrared light, as generally disclosed in U.S. Patent Application No. 2007/0255148 (Bhunia), hereby incorporated herein by reference in its entirety. In other embodiments, tissue oxygenation measurements may include non-calibrated indices of oxygen saturation and blood volume determined using a two-wavelength (typically red and infrared) optical sensor or a three-wavelength (typically red, isosbestic and infrared) optical sensor as generally described in U.S. Patent Publication No. 2008/0208269 (Cinbis, et al), hereby incorporated herein by reference in its entirety.

[0038] In the illustrative embodiments described herein, calibrated measures of O₂Sat and HbT are measured using a four wavelength optical sensor. Examples of optical sensors emitting and detecting at least four wavelengths are generally described in U.S. Pat. Appl. Ser. No. 61/185,818, (Kuhn, et al. Attorney Docket No. P0034665.00), hereby incorporated herein by reference in its entirety. Second derivatives of attenuation spectra can be used to obtain a calibrated, vol-

ume-independent measurement $O_2\text{Sat}$ and a calibrated measurement of HbT. Determination of absolute calibrated measures of $O_2\text{Sat}$ and HbT allows tissue oxygenation at a particular time point to be evaluated as well as long term changes in tissue oxygenation (e.g. over hours, days or weeks) to be monitored. The use of non-calibrated indices of tissue oxygen saturation and blood volume available from 2- or 3-wavelength optical sensor devices allows short term trends in tissue oxygenation (for example over seconds or minutes) to be monitored. Both short-term monitoring of tissue oxygenation index trends and absolute value and long-term monitoring of absolute calibrated measurements of tissue oxygenation can be useful in monitoring a heart failure patient and managing a heart failure therapy.

[0039] While the illustrative embodiments described herein rely on 4-wavelengths (or more) of light attenuation measurements to obtain calibrated measurements of tissue oxygenation, it is recognized that uncalibrated indices of tissue oxygenation measurements obtained from 2- or 3-wavelength optical sensor devices may be substituted, particularly when short-term trends are being evaluated for assessing tissue oxygenation in a heart failure patient. For example, a short-term trend in tissue oxygenation measured from immediately before initiating a heart failure therapy and subsequent to delivery of the heart failure therapy, e.g. within the first minute, may be evaluated using 2-, 3- or 4- or more wavelength optical sensor devices.

[0040] Sensor **100** may generally correspond to sensor **12**, **20**, **30**, **34** or **40** in FIG. 1. Sensor **100** includes a light emitting portion **102** and a light detecting portion **104**. Light emitting portion **102** includes one or more light sources **106** positioned to emit light through a lens **103** sealed in an opening in hermetically-sealed housing **101**. Light source(s) **106** may be embodied as single white light source or multiple light sources emitting light at separate spaced-apart wavelengths. Suitable light sources include, without limitation, optoelectronic devices such as light emitting diodes (LEDs), lasers such as vertical cavity surface emitting lasers (VCSELs), luminescent or phosphorescent and incandescent light sources. In one embodiment, light sources **106** are embodied as light emitting diodes (LEDs) emitting light in the visible, e.g. red, and/or infrared light spectrum.

[0041] For example, light sources **106** may include four LEDs in emitting portion **102** for emitting light at separate wavelengths of 680 nm, 720 nm, 760 nm, and 800 nm. Alternatively, four LEDs provided as light sources **106** may emit light at 660 nm, 720 nm, 760 nm, and 810 nm. In another embodiment, four LEDs are included emitting light at 720 nm, 760 nm, 810 nm, and 850 nm. In yet another embodiment, four LEDs are included that emit light at 720 nm, 760 nm, 810 nm, and 890 nm. Any combination of light sources emitting light at any of the wavelengths mentioned herein may be used. Furthermore, it is recognized that the specified wavelengths are approximate and each light source may emit a narrow band of light wavelengths which is approximately centered on, or at least includes, the specified wavelength. The light sources may be controlled to emit light sequentially or simultaneously.

[0042] In the embodiment shown, the light emitting portion **102** further includes a reference light detector **110**, which may be embodied, for example, as a photodiode. The light entering an adjacent tissue volume from emitting portion **102** may change over time during chronic use of sensor **100** due, for example, to drift in the photonic output of light source(s)

106 and/or changes in the optical properties of the materials encountered by light emitted by light sources **106** before entering an adjacent tissue volume, e.g. lens **103**. Reference light detector **110** provides an output signal for measuring or detecting changes in the intensity of the light emitted by emitting portion **102**.

[0043] The reference light detector **110** output signal can be used in computing or adjusting $O_2\text{Sat}$ and HbT measurements. Additionally or alternatively, an output signal from reference light detector **110** can be used as a feedback signal for controlling the drive signals applied to light sources **106** to cause light emission.

[0044] In other embodiments, a light detector **110** is not included in the emitting portion **102**. The emitted light intensity is assumed to be stable throughout the usable life of the sensor so as not to introduce significant error in light attenuation measurements used for computing tissue $O_2\text{Sat}$ and HbT.

[0045] The light detecting portion **104** includes a light detector **108** positioned to receive light through a lens **105** mounted in an opening in housing **101**. The light detector **108** may be embodied as a photodiode. Other components suitable for use as a light detector include a photoresistor, phototransistor, photovoltaic cell, photomultiplier tube, bolometer, charge-coupled device (CCD) or an LED reverse-biased to function as a photodiode. Light detector **108** receives light scattered by an adjacent tissue volume. The distance **112** between the light sources **106** and the light detector **108** will influence the optical path **114** (shown schematically) of sensor **100**. Greater spacing (longer distance **112**) between the emitting and detecting portions will result in a longer optical pathway **114**, extending deeper in the adjacent tissue volume, than relatively shorter spacing between light sources **106** and light detector **108**. As such, different spacing between emitting and detecting portions **102** and **104** will result in tissue oxygenation measurements relating to different depths of an adjacent body tissue.

[0046] FIG. 3 is a functional block diagram of a medical device system **150** including an optical sensor **180** for monitoring tissue oxygenation. The functionality described in conjunction with FIG. 3 may be implemented in or distributed across any of the medical device system components shown in FIG. 1. For example, the functional blocks shown in FIG. 1 may be implemented in IMD **10**, an implantable lead-based sensor **20**, an implantable wireless sensor **30**, an external wireless sensor **40**, an external wired sensor **40**, an external device **32**, an external monitor **36**, or any combination thereof (all shown in FIG. 1).

[0047] Device system **150** includes an optical sensor **180**, which may be incorporated along a hermetically sealed housing of a device or carried by a lead. Medical device system **150** further includes sensor input circuitry **162**, sensor output circuitry **166**, and optionally includes reference signal output circuitry **164** when a reference light detector is included in the optical sensor **180** for measuring the intensity of emitted light.

[0048] Optical sensor **180** generally includes a light source for emitting light through a blood perfused tissue of the patient and a light detector for generating a signal representative of an intensity of light emitted and scattered by the blood perfused tissue to the light detector. The light passed through the tissue (including blood) may be selected to include four or more wavelengths for use in computing a volume-independent measure of $O_2\text{Sat}$, from which an abso-

lute, calibrated tissue O₂Sat may be derived. Typically, the intensity of scattered light falling in the red part of the visible light spectrum and the infrared (IR) portion of the light spectrum is measured.

[0049] Absorption of light in the red to infrared spectrum by blood-perfused tissue will vary depending on the presence of chromophores (for example hemoglobin and/or myoglobin) in oxygenated and deoxygenated states present in the measurement volume. The light scattered by blood-perfused tissue and received by the light detector can therefore be used to measure attenuation of light emitted by the sensor due to light absorption which will be correlated to the oxygen available (O₂Sat and HbT) to the tissue. (The measured light attenuation may not be a precise measurement of the actual light absorption by the tissue volume since light reflections and scattering not detected by the sensor may cause attenuation of the remitted light intensity not attributed to actual light absorption by the tissue.) Processing of the optical sensor output signal thus allows tissue oxygen availability to be measured. Tissue oxygenation is used, in turn, for monitoring a patient's heart failure condition or a response to a heart failure therapy.

[0050] Sensor input circuitry 162 is coupled to a light emitting portion 182 of optical sensor 180. Light emitting portion 182 includes one or more light sources for emitting light that includes at least four different wavelengths for computing calibrated tissue oxygenation measurements. In alternative embodiments, sensor 180 may be two-wavelength or three-wavelength sensor used for computing non-calibrated measures of tissue oxygenation. Light sources may emit light at discrete, spaced-apart wavelengths or a single white light source may be used. The measurement of light attenuation for at least four different wavelengths allows a calibrated absolute O₂Sat measurement to be obtained as will be described herein.

[0051] Sensor input circuitry 162 provides input signals to the optical sensor 180. In particular, sensor input circuitry 162 provides the drive signals applied to the light source(s) included in light emitting portion 182 to cause controlled light emission, e.g. controlled intensity, time duration and frequency.

[0052] Sensor input circuitry 162 is controlled by sensor control module 168 which coordinates the beginning time, duration, and frequency of drive signals produced by sensor input circuitry 162. Control signals may include a period of no light emission for ambient light measurement. Drive signals may be applied to individual light sources simultaneously to cause "mixed" light emission from all light sources.

[0053] In one embodiment, the drive signals are applied sequentially to cause sequential (i.e., non-simultaneous) light emission by individual light sources emitting light at spaced apart wavelengths. In this way, a light detecting portion 184 of sensor 180 will receive scattered light at an individual wavelength at any given time during the operation of sensor 180. It is recognized that referring to an "individual" or "one" wavelength can include a narrow bandwidth of wavelengths approximately centered on, or at least including, the specified individual wavelength emitted by a light source.

[0054] The sequential emission of light wavelengths allows multiple light signals to be sequentially measured for each wavelength. A single O₂Sat or HbT measurement will require some minimum interval of time corresponding to the cumulative time durations of each of the separately emitted wave-

lengths. The time-based sequencing of emitted light may include an interval of no light emission to allow for ambient light measurements and correction of the measured light signals for the presence of ambient light during light emission by the sensor.

[0055] In alternative embodiments, the sensor input circuitry 162 is controlled by sensor control module 168 to deliver drive signals simultaneously to each of the light sources at separate, unique frequencies. For example, light sources may be controlled to emit light simultaneously with each individual wavelength having a signature frequency fluctuation. The detecting portion 184 will receive scattered light at all of the wavelengths corresponding to the individual wavelengths simultaneously with each wavelength modulated to a signature frequency. A light detector signal is then demodulated to obtain the individual wavelength signals.

[0056] This frequency multiplexing method of controlling the light emitting portion 182 allows simultaneous light emission and detection such that changes in light attenuation by the tissue due to oxygen and hemoglobin changes in the measurement volume can be measured simultaneously for all of the wavelengths rather than at discrete time intervals. This allows for a more instantaneous measurement of O₂Sat and HbT as compared to the sequentially-acquired signals for separate wavelengths in the time-multiplexed method of controlling light emission.

[0057] The different wavelengths may be modulated at frequencies that are much greater than the frequency of ambient light changes. Demodulation of the detected light signal will reduce or eliminate effects of ambient light artifact since low frequency components of the detected light signal corresponding to ambient light changes will be substantially removed from the demodulated light detector output signal.

[0058] Sensor output circuitry 166 receives the light detector signal from light detecting portion 184 and demodulates, digitizes, filters or performs other appropriate signal conditioning to provide a digital output signal to monitoring module 170. Sensor output circuitry 166 may include an analog-to-digital converter and memory for digitizing an analog output signal from detecting portion 184, providing the digitized signal to monitoring module 170, storing measurement results for future retrieval as well as storing calibration coefficients.

[0059] In one embodiment, monitoring module 170 includes processing circuitry that uses the optical signal to compute a volume-independent measurement of O₂Sat and a measurement of HbT (which is both oxygen and volume dependent) using the intensities of the multiple wavelengths measured by detecting portion 184.

[0060] As used herein, a "volume-independent" measure of oxygen saturation refers to a measurement that is substantially independent of the size of the optical sensor path that encompasses a measurement volume within a substantially uniform tissue. In other words, in a uniform, homogenous tissue, a longer optical pathway that encompasses a larger measurement volume and a relatively shorter optical pathway that encompasses a smaller measurement volume within the same uniform tissue will produce substantially equal O₂Sat measurements. A volume-dependent measure of oxygen saturation would be dependent on oxygen and the measurement volume and would thus produce two different measurements for two different measurement volumes in the same uniform, homogenous tissue. The second derivative method for computing O₂Sat as described herein eliminates scatter-

ing effects of a changing measurement volume and provides a volume-independent measurement of O₂Sat.

[0061] A homogenous tissue is a tissue that includes structures that are relatively small compared to the measurement volume. For example, if measurement volume is related to emitting-to-detecting spacing, a homogenous tissue might be a tissue wherein tissue structures or features have a dimension of approximately 1/10 of the emitting-to-detecting spacing or less. A uniform tissue is a tissue that has uniform oxygenation through the depth of the measurement volume in contrast to an oxygenation gradient. If a tissue is non-uniform or non-homogeneous, different oxygen saturation measurements will be obtained depending on the optical path of the sensor.

[0062] In some embodiments, a calibrated, absolute O₂Sat and calibrated HbT are derived from the light detector output signal and provided to a device controller **154** (which may include a processor, state machine or other control circuitry) for monitoring tissue oxygenation and controlling device-delivered therapy. In particular, the O₂Sat and HbT measurements may be used to detect a change in a patient's heart failure condition.

[0063] System **150** includes a therapy delivery module **156**. The monitored O₂Sat and HbT may be used in determining when a therapy is needed and in controlling therapy delivery. Therapy delivery module **156** may include electrical pulse generation capabilities for delivering cardiac pacing pulses, cardioversion/defibrillation shocks, or nerve stimulation therapies. Therapy delivery module **156** may additionally or alternatively include a fluid delivery pump for delivering a pharmaceutical or biological fluid to the patient, such as cardiac drugs or other therapeutic fluids. In one embodiment, therapy delivery module **156** is coupled to cardiac electrodes for delivering cardiac resynchronization therapy (CRT) for delivering pacing pulses to two or more heart chambers.

[0064] Device **150** may include other sensors **171** for sensing physiological signals such as ECG or cardiac EGM signals, blood pressure, patient activity, patient posture, heart sounds, temperature, or the like. Such sensor signals may be used in combination with the monitored O₂Sat and HbT (or tissue oxygenation indices) for detecting a patient condition. Other physiological sensors may also be used in triggering the acquisition of tissue oxygenation measurements, adjusting thresholds for detecting insufficient oxygen availability, and establishing different baseline measurements for different patient conditions (e.g., different activity levels, different patient postures, etc.).

[0065] In one embodiment, an activity sensor is included to provide a signal corresponding to activity of the patient as an indicator of metabolic demand. An activity sensor signal can be used to compute a sensor-indicated rate (SIR) for use in rate-responsive pacing. An activity sensor signal may be used in combination with tissue oxygenation measurements to determine if a heart failure therapy, such as CRT, needs to be adjusted for improving tissue oxygen availability during periods of exercise.

[0066] Data acquired by processor **154** relating to tissue oxygenation measurements may be stored in memory **152** and/or transferred to a medical device programmer, home monitor, computer, or other external or bedside medical device via wireless telemetry module **158** for display and/or review by a clinician. Data relating to tissue oxygenation may also be transmitted to another implantable or external medical device for use in controlling a device delivered therapy. Pro-

cessor **154** transmits data to and from memory **152**, therapy delivery module **156**, and telemetry module **158** via data/address bus **160**.

[0067] As described above, some embodiments include a reference light detector in the light emitting portion **182** of sensor **180**. Reference signal output circuitry **164** may then be included for receiving a light detection signal from the reference light detector and providing a reference output signal to sensor control **168** and/or to monitoring module **170**. In one embodiment, the reference signal output circuitry provides an emitted light intensity feedback signal to sensor control **168** in a feedback control loop to maintain emitted light at each wavelength at desired relative intensities. Drive signals applied to a light source in light emitting portion **182** can be automatically adjusted to maintain the emitted light within a desired intensity range for each wavelength measured by the detecting portion **184**. In this way, the emitted light spectra is reliably maintained over time promoting the accuracy of O₂Sat and HbT measurements computed using stored calibration constants or assuming stable light emission intensity. Accordingly sensor control **168** may include comparators, analog-to-digital convertors, and other logic circuitry for determining if a reference emitted light intensity signal is within a target range. If not within the desired range, the drive signal is adjusted by sensor control **168**, e.g., in an iterative manner, until the target range is reached.

[0068] In an alternative embodiment, the reference emitted light intensity signal provided by circuitry **164** is received by monitoring module **170**. Monitoring module **170** may use the emitted light intensity and a detected light intensity to compute light attenuation at each desired wavelength. The attenuation at each wavelength is used to compute second derivative attenuation spectra as will be described in greater detail below which enables derivation of a volume-independent measure of O₂Sat.

[0069] Alternatively, monitoring module **170** uses changes in the emitted light intensity to adjust a computed O₂Sat. O₂Sat may be computed assuming a stable emitted light intensity. The actual emitted light intensity may be measured and used to adjust a computed O₂Sat. For example, an initially measured emitted signal intensity and a currently measured emitted signal intensity can be used to adjust or correct an absolute O₂Sat and HbT computed using only the light detector signal from detecting portion **184** and calibration constants.

[0070] FIG. 4 is a flow chart of a method **300** for operating an optical sensor during tissue oxygenation monitoring. Flow chart **300** and other flow charts presented herein are intended to illustrate the functional operation of the device, and should not be construed as reflective of a specific form of software or hardware necessary to practice the methods described. It is believed that the particular form of software, hardware and/or firmware will be determined primarily by the particular system architecture employed in the device and by the particular detection and therapy delivery methodologies employed by the device. Providing software to accomplish the described functionality in the context of any modern medical device, given the disclosure herein, is within the abilities of one of skill in the art.

[0071] Methods described in conjunction with flow charts presented herein may be implemented in a computer-readable medium that includes instructions for causing a programmable processor to carry out the methods described. A "computer-readable medium" includes but is not limited to any

volatile or non-volatile media, such as a RAM, ROM, CD-ROM, NVRAM, EEPROM, flash memory, and the like. The instructions may be implemented as one or more software modules, which may be executed by themselves or in combination with other software.

[0072] At block 302, the optical sensor is controlled to emit light and the light detector output signal is received from the light detecting portion of the sensor. The light detector output signal may be filtered and corrected for ambient light and baseline offset. If a reference light detector is included in the light emitting portion, the reference light detector may provide an output signal for measuring the light intensity emitted by the sensor at block 308.

[0073] At block 306, the attenuation spectrum is measured. In one embodiment, the attenuation of four wavelengths in the red to infrared spectrum is measured. The attenuation of the four different wavelengths may be measured using sequential detection of the different wavelengths by the light detector when a time multiplexed light emission control algorithm is used. Alternatively, measurement of the four different wavelengths may involve demodulation of simultaneously detected light at the four different wavelengths when frequency multiplexed light emission is used. In other embodiments, remitted light from a white light source (or simultaneously emitting separate light sources) may be filtered to obtain the four different wavelength attenuation signals. Remitted light is the light that is scattered by the adjacent tissue volume and received by the light detecting portion (or reference light detector) of the optical sensor. The attenuation of remitted light for a given wavelength (λ) can be measured as the negative logarithm of the ratio of the emitted light intensity (i_{in}) to the remitted light intensity (i_{out}):

$$A(\lambda) = -\log(i_{in}/i_{out}), \quad (1)$$

[0074] wherein i_{in} can be measured using the output signal of a reference light detector in the light emitting portion of the sensor, and i_{out} is measured using the output signal of the light detecting portion for a given wavelength. The term "attenuation" measurement as used herein generally refers to a measure of the attenuation of light due to absorption and scattering by tissue along the optical path of the sensor. The measured attenuation may therefore not be an exact measurement of the actual light absorption by the tissue volume since light reflections and scattering may cause attenuation of the remitted light intensity not attributed to actual light absorption by the tissue.

[0075] In some embodiments, the emitted intensity for each wavelength i_{in} is assumed constant and is optionally measured prior to implantation, e.g., at the time of manufacture, and assumed to be sufficiently stable throughout the usable life of the sensor and not cause significant measurement error. In this case, a reference light detector may be eliminated from the light emitting portion of the sensor and thereby reduce overall size and complexity of the sensor. One method for measuring the emitted intensity prior to implantation uses the light detecting portion to measure the remitted light when the sensor is positioned within a calibrated reflective housing. The construction of the emitting portion is designed to minimize or prevent drift in the emitted light intensity over time. Design considerations include minimizing the distance between the tissue and the photonic surfaces of the light source(s).

[0076] The attenuation for four wavelengths is determined to allow the second derivative with respect to wavelength of

the attenuation spectra at two intermediate wavelengths to be computed. This determination of second derivatives at two intermediate wavelengths allows for computation of a scaled second derivative. By properly selecting the intermediate wavelengths, a scaled second derivative is an oxygen-dependent and volume-independent ratio and therefore provides a measure of $O_2\text{Sat}$. At block 310, the attenuation measurement for two wavelengths intermediate the four detected wavelengths is converted to a second derivative (D''), expressed generally as:

$$D''(\lambda_i) = A(\lambda_{i+1}) - 2A(\lambda_i) + A(\lambda_{i-1}) \quad (2)$$

[0077] wherein $A(\lambda_i)$ is the light attenuation, measured according to Equation 1 above, at the wavelength for which the second derivative is being computed, $A(\lambda_{i+1})$ is the attenuation at the next higher wavelength and $A(\lambda_{i-1})$ is the attenuation at the next lower wavelength of the four wavelengths. Equation 2 assumes equal spacings between the four wavelengths. When unequal spacings are used, a different equation for the second derivative with respect to wavelength is required to account for the different wavelength spacings by retaining the differences between wavelengths in denominators of the first and second derivative equations.

[0078] The second derivative of a selected intermediate wavelength is scaled by another computed second derivative at block 312. In one embodiment, the attenuation is measured for wavelengths at 680 nm, 720 nm, 760 nm, and 800 nm. The second derivatives of the attenuation spectra are computed at 720 nm and 760 nm and the second derivative at 720 nm is scaled by the second derivative at 760 nm. The scaled second derivative (SD'') of the 720 nm attenuation can be expressed as

$$SD'' = D''(720)/D''(760) \quad (3)$$

[0079] This $SD''(720)$ is dependent on oxygen saturation of the hemoglobin present in the measurement volume but independent of the size of the measurement volume, defined by the optical path of the sensor (assuming a uniform, homogeneous tissue). Thus, $SD''(720)$ is independent of the total hemoglobin present in the measurement volume and independent of the optical path length. The reduced dependence on total hemoglobin and optical path length is expected to reduce the effects of motion artifact on a measurement of $O_2\text{Sat}$ based on $SD''(720)$. Thus, measuring attenuation for at least four wavelengths allows the second derivatives of two intermediate wavelengths to be computed, allowing computation of a measurement volume-independent, scaled second derivative.

[0080] The optical sensor may be calibrated at the time of device manufacture using control samples, for example in an in vitro blood circuit, having known oxygen saturation and total hemoglobin concentration. The calibration process generate a look-up table relating second derivatives computed from the light detector output signal and the known $O_2\text{Sat}$ and HbT. The look-up table is stored in the device memory. The look-up table can then be used to derive absolute calibrated $O_2\text{Sat}$ and HbT values from an optical sensor measurement.

[0081] Alternatively, calibration methods may include curve-fitting methods to solve for coefficients defining best-fit curves to the calibration data. In one embodiment, the absolute tissue oxygen saturation is defined by:

$$O_2 \text{ sat} = A e^{B(SD''(\lambda)^D)} + C \quad (4)$$

[0082] wherein SD'' is a scaled second derivative of the attenuation spectra at a selected intermediate wavelength (λ_i)

emitted and detected by the optical sensor. As described above, a scaled second derivative of the attenuation spectra at a selected wavelength is determined by the monitoring module using the light detector signal. The scaled second derivative is the ratio of the second derivative with respect to wavelength of the attenuation spectra at a selected wavelength λ_i to the second derivative of the attenuation spectra at another selected wavelength used for scaling. By properly selecting the wavelength λ_i and the other wavelength used for scaling, the scaled second derivative is an oxygen-dependent and volume-independent ratio. The coefficients A, B and C are determined through best-fit analysis of measurements of the scaled second derivative for calibration samples having known oxygen saturation.

[0083] The total tissue hemoglobin volume fraction can be defined by the equation:

$$HbT = [M(100 - O_2Sat)^N + LJ * (D''(\lambda_i)/SF)] \quad (5)$$

[0084] wherein M, N, and L are coefficients determined during calibration and $D''(\lambda_i)$ is the second derivative of the attenuation spectra with respect to wavelength at the selected intermediate wavelength λ_i . $D''(\lambda)$ is measured for samples containing known total hemoglobin volume fraction and known oxygen saturation. The calibration coefficients M, N and L may then be computed for a best-fit of the measured second derivative values and known O_2Sat and HbT. Alternatively, the measured second derivative values and known O_2Sat and HbT may be used to generate a look-up table for converting the measured second derivative values to HbT.

[0085] SF is a spacing factor which may be used to adjust for an emitting-to-detecting portion spacing that may be different during tissue measurements than that used during calibration. Since the HbT measurement is dependent on both O_2Sat and the measurement volume, and measurement volume is dependent on the optical path of the sensor, defined at least in part by the spacing between the emitting and detecting portions, the HbT measurement needs to be corrected for changes in emitting-to-detecting portion spacing. For example, the sensor may be calibrated using a nominal emitting-to-detecting portion spacing, however when multiple emitting and/or detecting portions are selectable in a sensor or combination of sensors, the spacing may be different during monitoring than that used during calibration. As such, a spacing factor corresponding to selectable emitting-to-detecting portion spacings may be stored and used to correct the HbT measurement when a different spacing is used during monitoring than during calibration.

[0086] Once the scaled second derivative is obtained, the stored calibration data is used at block 314 to derive the absolute O_2Sat . The second derivative for attenuation at 720 nm wavelength (and 760 nm) is dependent on oxygen saturation and total hemoglobin. Thus, at block 316, HbT may be determined knowing the $D''(720)$ (or $D''(760)$) with respect to wavelength, the derived absolute O_2Sat , and the stored calibration data.

[0087] Tissue oxygenation, or the availability of oxygen to tissue, as defined herein, is a function of both tissue O_2Sat and HbT. Depending on the particular tissue oxygenation monitoring application, the derived O_2Sat and HbT may each be used separately in a monitoring algorithm or combined to determine a tissue oxygenation index used to monitor a patient's status and/or control a therapy. At block 322, a tissue oxygenation index may be computed as a function of O_2Sat and HbT. For example, a tissue oxygenation index (TOI) may

be a weighted combination of the O_2Sat and HbT measurements. In one embodiment, a tissue oxygenation index is computed as:

$$TOI = W_1 O_2Sat + W_2 HbT \quad (6)$$

[0088] wherein W_1 and W_2 are weighting factors selected for a particular application, may be tailored to an individual patient. It is contemplated that non-linear combinations of O_2Sat and HbT may also be used. Furthermore, a heart failure index or score may combine multiple physiological variables with the tissue oxygenation measurements to assess patient condition and/or evaluate response to a therapy.

[0089] A tissue oxygenation index computed using absolute measurements of O_2Sat and HbT can be available on a continuous or periodic basis. The TOI and/or the individual calibrated values of O_2Sat and HbT may be used for tracking a patient's tissue oxygenation and changes in patient status based on changes in oxygenation.

[0090] The absolute values of O_2Sat , HbT and the TOI computed using the calibrated absolute values of O_2Sat and HbT are computed and stored. Additionally, differences between each of these oxygenation measures and a baseline or other earlier corresponding measure may be computed and stored as calibrated trended variables. As such, in addition to storing the absolute values, trended values of each of the oxygenation measurements may be stored as changes in the absolute values over time, referred to as dO_2Sat , $dHbT$ or $dTOI$, which each represent the difference between a current measurement and a previous measurement of the same calibrated measurement.

[0091] Alternatively or additionally, non-calibrated values and trends of the oxygenation measurements may be determined and stored. Since sensor calibration can be time consuming and computing a calibrated measurement adds to the computational burden of the device, it may be desirable to compute non-calibrated values and trends of oxygenation measurements without conversion of those measurements to an absolute value. For example, a scaled second derivative of a properly selected wavelength, $SD''(\lambda)$, is a volume-independent measure of O_2Sat and may be determined as an index of O_2Sat without conversion to a calibrated measurement. Likewise, $D''(\lambda)$, which is volume and oxygen dependent, can provide an index of HbT without conversion to a calibrated measurement. Each of these uncalibrated tissue oxygenation measurements may be used individually as baseline indices of tissue oxygenation or combined in a computation of a TOI, such as a weighted linear combination of the uncalibrated measurements similar to Equation (6) above. The uncalibrated measure of $SD''(\lambda)$ used as an O_2Sat index is a volume-independent measurement which can provide meaningful measurements at a single time point, or over long- or short-term trends.

[0092] The uncalibrated measurements of $SD''(\lambda)$, $D''(\lambda)$, and a TOI computed using $SD''(\lambda)$ and $D''(\lambda)$ may be determined and stored for use as baseline measurements and measured at future time points for monitoring patient status and for use in detecting physiological events and controlling device-delivered therapies. Trends in each of the uncalibrated measurements over time, referred to as $dSD''(\lambda)$, $dD''(\lambda)$, and $dTOI$, may also be determined and stored as the difference between a current uncalibrated measurement and a previous corresponding measurement. In summary, various algorithms for monitoring tissue oxygenation may utilize calibrated measurements (O_2Sat and HbT), trends in the calibrated

measurements ($dO_2\text{Sat}$ and $dHbT$), uncalibrated measurements ($SD''(\lambda)$ and $D''(\lambda)$), trends in the uncalibrated measurements ($dSD''(\lambda)$ and $dD''(\lambda)$) or any combination of the foregoing measurements and trends. Furthermore, indices or trends of indices of tissue oxygenation determined using 2- or 3-wavelength sensors may be used.

[0093] The oxygen saturation measurement derived from a scaled second derivative is a volume-independent measurement and is therefore expected to have reduced susceptibility to motion artifact, which could alter the optical path of the sensor and thus alter the measurement volume. However, some embodiments may utilize the measured HbT, which is dependent on the measurement volume, to filter or blank tissue oxygenation monitoring during periods in which HbT is out of a normal range, which may be due to motion or activity of the patient.

[0094] Accordingly, in one embodiment, the measured HbT is compared to an acceptable range, e.g. between approximately 1% and approximately 25%, at block 318. If HbT is out of the acceptable range, tissue motion may be causing erroneous HbT measurements. At block 320, the tissue oxygenation measurement is blanked or otherwise deemed invalid based on the out-of-range HbT measurement. For example, patient activity may result in oscillatory movements that produce a signal that is intermittently in and out of the acceptable range. Intervals in which the HbT measurement is out-of-range may be blanked for determining a tissue oxygenation index. During intervals in which the HbT measurement is in range, the tissue oxygenation index is computed at block 322. When HbT is out of range, the absolute tissue oxygen saturation measurement may also be ignored or still be determined and stored.

[0095] Alternatively, $O_2\text{Sat}$ and HbT measurements may be filtered based on the fluctuation of HbT. If HbT variability is low, than a low rate of averaging (low pass filtering) $O_2\text{Sat}$ and HbT measurements may be used. If HbT variability increases, an increasing filtering or averaging frequency may be used based on the increased HbT variability.

[0096] FIG. 5 is a flow chart of a method 350 for evaluating a heart failure patient's response to a therapy using an optical sensor. At block 352, baseline tissue oxygenation measurements ($T(0)$ measurements) are obtained in a heart failure patient. In one embodiment, the baseline measurements are obtained using an external optical sensor coupled to an external monitor, e.g. sensor 34 and monitor 36 as shown in FIG. 1.

[0097] At block 354, a HF therapy is initiated. In one embodiment, the heart failure therapy is CRT. CRT therapy may be initiated at block 354 during a surgical implant procedure using an IMD (e.g. IMD 10 shown in FIG. 1) capable of delivering CRT, including electrical pacing pulse generation circuitry and cardiac electrodes coupled to the pulse generation circuitry. The IMD senses cardiac signals and is programmed to deliver pacing pulses to one or more heart chambers in timed relation to sensed or paced events in another heart chamber. The IMD delivering the HF therapy may be in wireless communication with an external monitor as generally shown in FIG. 1 to cooperatively acquire tissue oxygenation measurements before and subsequent to initiating HF therapy.

[0098] Alternatively, the HF therapy delivered by an IMD may be a cardiac assist therapy, e.g., provided by a co- or counter-pulsation or continuous blood pumping device such as an IABP or LVAD. In other embodiments, the HF therapy

delivered by an IMD may be a drug therapy or other biological agent delivered using a catheter and implantable pump.

[0099] Alternatively, a HF therapy may be initiated using an external therapy delivery device. The external therapy delivery device may be an external electrical stimulation device, external cardiac assist device or blood pump, or external fluid delivery pump for administering a drug or biological agent. An external therapy delivery device may be coupled as needed to cardiac stimulation electrodes or catheters advanced into the heart or vascular system during a catheterization procedure.

[0100] FIG. 6 is a schematic view of an alternative medical device system for use in evaluating a patient's response to a HF therapy using method 350. Since a fully implantable device for delivering CRT or another HF therapy can be costly and is invasive to implant, an external therapy delivery device 380 may be provided for evaluating the patient's response to a therapy. In this way, if the patient is identified as a non-responder to the therapy, the additional surgical procedure and costs associated with implanting an IMD can be avoided.

[0101] In one embodiment, external therapy delivery device 380 is coupled to transvenous leads 382 carrying multiple electrodes 384, 386 and 388 positioned for sensing and stimulating in the right ventricle, right atrium, and/or left ventricle, respectively. The external device 380 includes circuitry for sensing cardiac signals using the electrodes 384, 386 and 388, generating pacing pulses delivered via electrodes 384, 386 and/or 388, and controlling the delivery of the pacing pulses to one or more heart chambers in timed relation to sensed or paced events in another heart chamber.

[0102] In other embodiments, the external device may be provided for performing a cardiac assist (blood pumping) therapy or delivering a drug. As such, the external device may alternatively be coupled to catheters as needed for delivering the therapy.

[0103] An external optical sensor 390 is positioned to measure tissue oxygenation along an extremity of the patient. Optical sensor 390 is coupled to an external tissue oxygenation monitor 392. Monitor 392 includes control circuitry for controlling light emission by sensor 390 and signal processing circuitry for receiving a sensor output signal and computing a tissue oxygenation measurement. In various embodiments, the external therapy delivery device 380 and the external monitoring device 392 may be provided as a single external unit or may be in wired or wireless communication with each other to cooperatively perform tissue oxygenation measurements prior to initiating a HF therapy, subsequent to initiating a heart failure therapy, and subsequent to adjusting a parameter controlling the heart failure therapy delivery.

[0104] Referring again to FIG. 5, tissue oxygenation measurements are obtained subsequent to initiating the heart failure therapy ($T(i)$ measurements) at block 356. A controlled time delay between initiation of the HF therapy and the tissue oxygenation measurements performed at block 356 may be applied to allow a cardiac response to the therapy to occur. Alternatively, tissue oxygenation measurements may be sampled continuously from the time therapy is initiated to a time subsequent to therapy initiation to obtain a time-based plot of tissue oxygenation measurements from therapy onset to some later time point.

[0105] Tissue oxygenation measurements may include an absolute $O_2\text{Sat}$ and/or HbT, uncalibrated measures thereof, an index computed as a function of $O_2\text{Sat}$ and HbT or other non-calibrated indices or trends of tissue oxygenation

obtained using an optical sensor measuring the attenuation of two or more light wavelengths. At block 358, the baseline oxygenation measurements are compared to the measurement(s) obtained subsequent to initiating therapy. If tissue oxygenation is improved or exhibiting an increasing trend, e.g. based on an increase in the tissue oxygenation measurement(s) after initiating therapy as compared to the baseline measurements, the patient is identified at block 366 as a responder to the HF therapy. Conversely, tests may also be performed for measuring tissue oxygenation with the therapy on and then turning off or removing the therapy to determine if tissue oxygenation decreases.

[0106] If an external therapy delivery device has been used to test the patient's response to therapy, a surgical procedure may be performed to implant an IMD for delivering the HF therapy at block 368. Implantation of the therapy delivery device may include implanting an optical sensor if an external sensor was used to detect the patient response to the HF therapy. The implanted sensor response to tissue oxygenation with the HF therapy on and off may be verified at block 370. Alternatively, an oxygenation measurement using the implanted sensor may be compared to a real time oxygenation measurement acquired using an externally placed sensor to verify the implanted sensor is obtaining a reliable signal for tissue oxygenation monitoring.

[0107] The therapy delivery is continued at block 372 and may be further optimized to provide a maximal tissue oxygenation response, using either an external optical sensor or an implanted optical sensor. Optimization of tissue oxygenation may be performed by testing different control parameters, automatically or manually, until a maximum (or targeted) tissue oxygenation is achieved. Additional physiological sensor measurements may be provided as input during therapy optimization as indicated by block 374. Other sensor measurements may include heart rate, posture, activity level, or other physiological sensor signals listed previously herein. Each of these signals may influence an optimal therapy control parameter as well as a targeted tissue oxygenation. For example, one goal of the therapy delivery may be increase stroke volume and lower a resting heart rate. Therapy control parameters may therefore be adjusted until a reduced heart rate maintains tissue oxygenation within an acceptable range.

[0108] If the tissue oxygenation measurements are not improved at block 358, adjustment of the therapy may be required to obtain a positive response. A determination is made at block 360 if other test parameter settings are available for testing the heart failure therapy response of the patient. As used herein, control parameters relating to a HF therapy can include electrode location relative to the heart, electrode selection, electrical stimulation pulse amplitude (or energy), and timing parameters controlling the timed delivery of pacing pulses in one or more heart chambers relative to sensed and/or paced events in other heart chambers. Thus control parameters can be adjusted by repositioning an electrode relative to the heart tissue, selecting a different electrode (within the same or a different heart chamber) for sensing cardiac signals and/or for delivering stimulation pulses to the heart or to a nerve, e.g. the vagus nerve, adjusting a pacing pulse amplitude, or and adjusting a timing parameter.

[0109] The control parameters will depend on the type of therapy being delivered. When a cardiac assist therapy is being delivered, the duty cycle of the pumping function of an

IAPB, LVAD or other cardiac assist device may be adjusted. When a drug therapy is being delivered, the dosage may be adjusted.

[0110] If additional test parameter settings are available, the HF therapy is adjusted at block 362 by adjusting a therapy delivery control parameter one at a time or in combination with other control parameters. Tissue oxygenation measurements are repeated at block 356 to determine if tissue oxygenation has improved in response to the adjusted therapy.

[0111] If test settings available for adjusting the HF therapy have been exhausted, and no improvement in the tissue oxygenation has been measured, the patient is identified as a non-responder to the HF therapy at block 364. The therapy may be discontinued at block 365. An implanted IMD or any associated leads, electrodes or catheters may be explanted or a decision not to implant an IMD for delivering the therapy can be made. In this way, a clinician can make an informed decision as to whether to pursue a particular HF therapy in a patient.

[0112] FIG. 7 is a flow chart of a method for managing a HF therapy using tissue oxygenation monitoring. At block 402 a HF therapy is delivered using an initial set of control parameters (or may be initially turned off). At block 404, tissue oxygenation measurements are performed. Tissue oxygenation measurements may be sampled continuously or performed on a scheduled periodic basis.

[0113] Tissue oxygenation measurements taken at block 404 may be performed using an implantable or wearable sensor on a continuously sampled or scheduled periodic basis. Alternatively, periodic tissue oxygenation measurements may be performed at block 404 using an external sensor associated with a home-monitor device or a clinic-based device programmer or monitor.

[0114] If the tissue oxygenation has decreased, as determined at block 410, the therapy may be adjusted at block 412. A decrease in tissue oxygenation may be detected at block 410 by comparing a current tissue oxygenation measurement to a threshold value or a previously-defined acceptable normal physiological range. Alternatively, a decrease in tissue oxygenation may be based on a difference with a previous oxygenation measurement, which may be a previously stored measurement, such as an initial baseline measurement, a previous periodic measurement, or a running average. If the current tissue oxygenation measurement is determined to be decreased to a level that tissue oxygenation may be impaired, the therapy is adjusted at block 412.

[0115] Therapy adjustments may include turning a therapy on if it was previously off, selecting a different stimulation electrode, different stimulation pulse amplitude, or different pacing timing parameters. Other adjustments may include a drug dosing, blood pump settings, pacing or stimulation duty cycles, or the like. Adjustments to the therapy may continue until an optimal tissue oxygenation is achieved. An optimal tissue oxygenation may be defined as a maximum tissue oxygenation measurement but may alternatively be defined as an oxygenation measurement that falls within an acceptable range or is greater than a predefined threshold. In some cases, selecting optimal HF parameters may take into account other factors such as minimizing cardiac pacing. As such, a "maximum" tissue oxygenation as used herein may be defined as a targeted optimal value or range or a maximum that occurs within limits of the heart failure therapy control parameters, within a predefined acceptable tissue oxygenation range, or within limits of other hemodynamic, metabolic, or physi-

ological measurements. For example, a maximum tissue oxygenation may be the maximum tissue oxygenation that can be achieved when the heart rate is maintained within a pre-defined resting heart rate range.

[0116] It is further contemplated that under some circumstances, tissue oxygenation may be reduced as a side effect of a delivered therapy. As such, therapy adjustment performed at block **412** may include turning a therapy off.

[0117] Any adjustments to the HF therapy control parameters in response to detecting a decreased (or subthreshold) oxygenation measurement may be stored at block **414**. The adjusted parameter settings are then used to continue HF therapy delivery at block **402**.

[0118] In some embodiments, a significant drop in tissue oxygenation may cause a notification to be generated at block **416** to notify the patient and/or clinician that low tissue oxygenation has been detected. A threshold applied to an absolute tissue oxygenation measurement or trended measurement that causes a notification to be generated may be defined uniquely from criteria defined for detecting a tissue oxygenation decrease that warrants a therapy adjustment. Since low tissue oxygenation may be predictive of heart failure events, the notification may allow preventative clinical intervention to be taken. A significantly low or out of range tissue oxygenation measurement may also indicate a device-related issue that may need to be addressed by reprogramming, repositioning or replacement of the device.

[0119] While method **400** relates primarily to adjusting a heart failure therapy in response to decreasing or low tissue oxygenation, it is contemplated that therapy adjustments may also be made in response to an increasing or high tissue oxygenation measurement. For example, if tissue oxygenation is high and the patient is at rest, the therapy may be reduced or turned off in response to the high tissue oxygenation. Furthermore, a therapy may be adjusted to a minimum level that maintains a stable tissue oxygenation. As such adjustments may be made, for example, a duty cycle of CRT therapy may be adjusted when tissue oxygenation is high or stable within a normal range to determine the minimum amount of CRT pacing required to maintain the tissue oxygenation at a stable level.

[0120] In a medical device system that does not include therapy delivery, it is recognized that an implanted or wearable optical sensor may be used for taking tissue oxygenation measurements at block **404** and detecting a significant decrease in tissue oxygenation at block **410**. Tissue oxygenation data may be stored in device memory for later review by a clinician. A notification may be generated at block **416** in response to detecting significantly low or decreased tissue oxygen saturation. A tissue oxygen notification allows manual adjustments of a HF therapy to be performed. For example, a clinician may be titrating a HF medication. Notification of a low tissue oxygenation allows a clinician to adjust the HF medication appropriately.

[0121] Additionally or alternatively, tissue oxygenation measurements may be performed at block **404** on a triggered basis in response to detecting a change in another monitored physiological signal, e.g. a change in heart rate, blood pressure, patient activity, patient posture or the like. In method **400**, patient activity is monitored at block **406**. Activity may be monitored for providing a sensor indicated pacing rate and/or for providing a trigger for monitoring tissue oxygenation. A change in activity may trigger tissue oxygenation monitoring at block **404**. Alternatively, a change in activity

that results in a change in a sensor indicated pacing rate (and thus a heart rate change) may trigger tissue oxygenation monitoring at block **404**.

[0122] In some embodiments, different HF therapy control parameters may be stored for different activity levels (or different heart rates). As such, if a change in activity is detected, previously stored therapy delivery parameter settings may be used to deliver the HF therapy at block **408**.

[0123] Tissue oxygenation measurements are obtained at block **404**. If a decrease in tissue oxygenation is detected at block **410**, the therapy may be adjusted at block **412** until improved oxygenation is achieved. Any adjustments to the HF therapy control parameters may be stored for the current patient activity level (or heart rate) at block **414**. Stored parameter setting may be used the next time the patient activity (or heart rate) returns to the current level or range.

[0124] It is recognized that during increased activity, the tissue oxygenation measurements may exhibit a decreasing trend as oxygen is consumed by the tissue. As such, comparisons of the tissue oxygenation measurements performed at block **410** for detecting a decreasing tissue oxygenation may be dependent on the activity level (or heart rate) detected and the time duration of a reduced tissue oxygen saturation. For example, a decreasing tissue oxygenation measurement may be tolerated to some minimum threshold and/or for some minimum period of time period after which therapy adjustments are made. The thresholds or other criteria applied at block **410** for detecting a decrease in tissue oxygenation that results in a therapy adjustment may be defined differently for different levels of activity, e.g. rest, activities of daily living, and more strenuous exercise.

[0125] Alternatively, during activity, it may be desirable to provide a therapy adjustment to improve tissue oxygenation measurement earlier than at rest in order to meet increased metabolic demand and avoid tissue hypoxia. As such, a higher threshold may be applied to tissue oxygenation measurements during exercise than at rest in order to respond earlier by adjusting the HF therapy in an attempt to increase tissue oxygenation to meet metabolic demand. In other words, a smaller decline in tissue oxygenation may be allowed during exercise than at rest since resting tissue may be less likely to become hypoxic when tissue oxygenation is reduced.

[0126] In method **400**, tissue oxygenation monitoring performed at blocks **404** and **410** and subsequent therapy adjustments may be performed by a wholly implantable system using an optical sensor incorporated in the IMD delivering the HF therapy, an optical sensor coupled to the IMD delivering the HF therapy via a lead, or an implanted optical sensor in wireless communication with the IMD. The optical sensor may be positioned to measure tissue oxygenation at any core body or peripheral location. In some embodiments, the optical sensor is located along an extremity to allow for low peripheral tissue oxygenation to be detected and responded to.

[0127] In alternative embodiments, the optical sensor used to perform the tissue oxygenation measurements is an external sensor. An external sensor may be a wireless sensor worn by the patient and in communication with the IMD delivering the HF therapy to allow ambulatory tissue oxygenation monitoring and HF therapy optimization. Alternatively, the external sensor is a wireless sensor in communication with an external monitor in the patient's home or a clinic. A clinician can evaluate tissue oxygenation measurements and adjust the patient's HF therapy using an external programmer. Such

monitoring and adjustments may occur remotely using a remote patient management system that includes a networked database receiving tissue oxygenation data for review by the clinician or an expert patient management center.

[0128] An external sensor may alternatively be embodied as a wired sensor that is coupled to an external monitor in the patient's home or in a clinic. The patient may be instructed to position the sensor for transcutaneous tissue oxygenation measurements on a regular basis, e.g. daily, to allow therapy adjustments to be performed regularly, through an automated medical device system or with manual intervention.

[0129] While embodiments described herein relate primarily to managing a device-delivered heart failure therapy, it is further recognized that tissue oxygenation monitoring may be performed in a heart failure patient without including a device-delivered heart failure therapy delivery. For example, IMD 10 in FIG. 1 or an implanted or wireless sensor may be provided for heart failure monitoring. Tissue oxygenation measurements may be stored in memory and/or transmitted to an external monitoring device or remote patient management database for prognostic or diagnostic purposes. For example, tissue oxygenation measurements may be monitored to assess a patient's response to a heart failure medication. A clinician can evaluate the status of the patient's heart failure based on tissue oxygenation measurements to determine if the patient is improving or worsening and adjust a medical regimen accordingly.

[0130] For example, tissue oxygenation measurements may be used when titrating a drug therapy for heart failure. One goal in the medical management of a heart failure patient is to lower ventricular filling pressure to prevent pulmonary edema. However, if the filling pressure is lowered too much, cardiac output will drop and the patient will become symptomatic. A challenge faced by clinicians managing heart failure patients is to identify the optimal dosages of medications given to simultaneously manage the patient's heart function and fluid status (edema). By monitoring tissue oxygenation using a medical device system as described herein during the period that the dosing of the medications (e.g. diuretics) is titrated, early feedback is provided to the clinician if tissue oxygenation begins to decrease. A decrease in tissue oxygenation may indicate a decrease in cardiac output, allowing the clinician to respond quickly by adjusting the medication before patient symptoms appear or become severe.

[0131] Thus, a medical device and methods for use have been presented in the foregoing description with reference to specific embodiments. It is appreciated that various modifications to the referenced embodiments may be made without departing from the scope of the disclosure as set forth in the following claims.

1. A medical device for monitoring delivery of a therapy, comprising:

a sensor sensing an optical sensor signal corresponding to light attenuation by a volume of body tissue of a patient; a therapy delivery module to deliver the therapy; and

a processor configured to compute a first tissue oxygenation measurement from the optical sensor signal prior to initiating delivery of the therapy, compute a second tissue oxygenation measurement from the optical sensor signal subsequent to initiating delivery of the therapy, compare the first and the second tissue oxygenation measurements, and determine whether the delivered

therapy was successful in response to the first tissue oxygenation measurement and the second tissue oxygenation measurement.

2. The device of claim 1, wherein processor determines whether the delivered therapy was successful in response to the second tissue oxygenation measurement being greater than the first tissue oxygenation measurement.

3. The device of claim 1, wherein the processor is further configured to adjust a parameter controlling delivery of the therapy in response to the second tissue oxygenation measurement being not greater than the first tissue oxygenation measurement, compute a tissue oxygenation measurement from the sensor signal for the adjusted parameter, and continue to adjust the parameter and compute the tissue oxygenation measurement until a parameter setting resulting in a tissue oxygenation measurement that is greater than the first tissue oxygenation measurement is identified and determine whether the delivered therapy was successful in response to the identified parameter setting.

4. The device of claim 1, wherein the processor is further configured to adjust a parameter controlling delivery of the therapy to a plurality of settings, compute a tissue oxygenation measurement for each of the plurality of settings, determine a setting for the parameter corresponding to a maximum tissue oxygenation, and deliver the therapy using the determined parameter setting.

5. The device of claim 4, further comprising an activity sensor to sense an activity sensor signal corresponding to activity of the patient, wherein the processor is further configured to sense detect a change in activity level of the patient from the activity sensor signal, compute a tissue oxygenation measurement in response to detecting the change in activity level, detect a decrease in tissue oxygenation in response to the tissue oxygenation measurement computed in response to detecting the change in activity level, and adjust a parameter controlling delivery of the therapy in response to detecting the decreased tissue oxygenation.

6. The device of claim 1, wherein computing the first tissue oxygenation measurement and the second tissue oxygenation measurement comprises computing a second derivative of light attenuation with respect to wavelength and computing a tissue oxygen saturation using the second derivative.

7. The device of claim 6, wherein computing the first tissue oxygenation measurement and the second tissue oxygenation measurement further comprises computing a total hemoglobin volume fraction using the tissue oxygen saturation.

8. The device of claim 8, wherein computing the first tissue oxygenation measurement and the second tissue oxygenation measurement further comprises computing a tissue oxygenation index as a function of the tissue oxygen saturation and the total hemoglobin volume fraction.

9. A method for monitoring delivery of a therapy in a medical device, comprising;

sensing an optical sensor signal corresponding to light attenuation by a volume of body tissue of a patient;

initiating delivery of the therapy;

computing a first tissue oxygenation measurement from the optical sensor signal prior to initiating delivery of the therapy;

computing a second tissue oxygenation measurement from the optical sensor signal subsequent to initiating delivery of the therapy;

comparing the first and the second tissue oxygenation measurements; and

determining whether the therapy was successful in response to the first tissue oxygenation measurement and the second tissue oxygenation measurement.

10. The method of claim **9**, wherein determining whether the therapy was successful comprises determining whether the delivered therapy was successful in response to the second tissue oxygenation measurement being greater than the first tissue oxygenation measurement.

11. The method of claim **9**, further comprising:
adjusting a parameter controlling delivery of the therapy in response to the second tissue oxygenation measurement not being greater than the first tissue oxygenation measurement;

computing a tissue oxygenation measurement from the optical sensor signal for the adjusted parameter; and
continuing to adjust the parameter and compute the tissue oxygenation measurement until a parameter setting resulting in a tissue oxygenation measurement that is greater than the first tissue oxygenation measurement is identified and determining that the therapy was successful in response to the identified parameter setting.

12. The method of claim **9**, further comprising:
adjusting a parameter controlling delivery of the therapy to a plurality of settings;

computing a tissue oxygenation measurement for each of the plurality of settings;
determining a setting for the parameter corresponding to a maximum tissue oxygenation; and
delivering the therapy using the determined parameter setting.

13. The method of claim **12**, further comprising:
sensing an activity sensor signal;
detecting a change in activity level of the patient from the activity sensor signal;

computing a tissue oxygenation measurement in response to detecting the change in activity level;
detecting a decrease in tissue oxygenation in response to the tissue oxygenation measurement computed in response to detecting the change in activity level; and
adjusting a parameter controlling delivery of the therapy in response to detecting the decreased tissue oxygenation.

14. The method of claim **12**, wherein computing the tissue oxygenation measurement comprises computing a second derivative of light attenuation with respect to wavelength and computing a tissue oxygen saturation in response to the second derivative.

15. The method of claim **14**, wherein computing the tissue oxygenation measurement comprises computing a total hemoglobin volume fraction in response to the tissue oxygen saturation.

16. The method of claim **15**, wherein computing the tissue oxygenation measurement comprises computing a tissue oxygenation index as a function of the tissue oxygen saturation and the total hemoglobin volume fraction.

17. A computer readable medium having computer executable instructions for performing a method comprising:

sensing an activity sensor signal;
detecting a change in activity level of the patient from the activity sensor signal;
computing a tissue oxygenation measurement in response to detecting the change in activity level;

detecting a decrease in tissue oxygenation in response to the tissue oxygenation measurement computed in response to detecting the change in activity level; and
adjusting a parameter controlling delivery of the therapy in response to detecting the decreased tissue oxygenation.

18. The computer readable medium of claim **17**, wherein determining whether the therapy was successful comprises determining whether the delivered therapy was successful in response to the second tissue oxygenation measurement being greater than the first tissue oxygenation measurement.

19. The computer readable medium of claim **18**, wherein the method further comprises:

adjusting a parameter controlling delivery of the therapy in response to the second tissue oxygenation measurement not being greater than the first tissue oxygenation measurement;

computing a tissue oxygenation measurement from the optical sensor signal for the adjusted parameter; and
continuing to adjust the parameter and compute the tissue oxygenation measurement until a parameter setting resulting in a tissue oxygenation measurement that is greater than the first tissue oxygenation measurement is identified and determining that the therapy was successful in response to the identified parameter setting.

20. The computer readable medium of claim **17**, wherein the method further comprises:

adjusting a parameter controlling delivery of the therapy to a plurality of settings;
computing a tissue oxygenation measurement for each of the plurality of settings;
determining a setting for the parameter corresponding to a maximum tissue oxygenation; and
delivering the therapy using the determined parameter setting.

21. The computer readable medium of claim **20**, wherein the method further comprises:

sensing an activity sensor signal;
detecting a change in activity level of the patient from the activity sensor signal;
computing a tissue oxygenation measurement in response to detecting the change in activity level;
detecting a decrease in tissue oxygenation in response to the tissue oxygenation measurement computed in response to detecting the change in activity level; and
adjusting a parameter controlling delivery of the therapy in response to detecting the decreased tissue oxygenation.

22. The computer readable medium of claim **20**, wherein computing the tissue oxygenation measurement comprises computing a second derivative of light attenuation with respect to wavelength and computing a tissue oxygen saturation in response to the second derivative.

23. The computer readable medium of claim **22**, wherein computing the tissue oxygenation measurement comprises computing a total hemoglobin volume fraction in response to the tissue oxygen saturation.

24. The computer readable medium of claim **23**, wherein computing the tissue oxygenation measurement comprises computing a tissue oxygenation index as a function of the tissue oxygen saturation and the total hemoglobin volume fraction.

* * * * *

专利名称(译)	心力衰竭中的组织氧合监测		
公开(公告)号	US20100317942A1	公开(公告)日	2010-12-16
申请号	US12/797816	申请日	2010-06-10
[标]申请(专利权)人(译)	CINBIS CAN CARNEY JAMES K 库恩JONATHAN大号 安德森大卫		
申请(专利权)人(译)	CINBIS , CAN 卡尼JAMES K. 库恩 , JONATHAN L. ANDERSON , DAVID A.		
当前申请(专利权)人(译)	美敦力公司 , INC.		
[标]发明人	CINBIS CAN CARNEY JAMES K KUHN JONATHAN L ANDERSON DAVID A		
发明人	CINBIS, CAN CARNEY, JAMES K. KUHN, JONATHAN L. ANDERSON, DAVID A.		
IPC分类号	A61B5/00		
CPC分类号	A61N1/36557		
优先权	61/185812 2009-06-10 US		
其他公开文献	US8571620		
外部链接	Espacenet USPTO		

摘要(译)

医疗设备系统和相关方法用于监测心力衰竭患者。一种用于监测治疗的递送的医疗设备包括传感器，其感测对应于患者的身体组织的体积的光衰减的光学传感器信号，用于递送治疗的治疗递送模块，以及配置成计算第一组织氧合的处理器。在开始递送治疗之前从光学传感器信号测量，在开始递送治疗之后从光学传感器信号计算第二组织氧合测量，比较第一和第二组织氧合测量，并确定递送的治疗是否是成功响应第一次组织氧合测量和第二次组织氧合测量。

