



US007615010B1

(12) **United States Patent**
Najafi et al.

(10) **Patent No.:** **US 7,615,010 B1**
(45) **Date of Patent:** **Nov. 10, 2009**

(54) **SYSTEM FOR MONITORING THE
PHYSIOLOGIC PARAMETERS OF PATIENTS
WITH CONGESTIVE HEART FAILURE**

(75) Inventors: **Nader Najafi**, Ann Arbor, MI (US);
Collin Anderson Rich, Ypsilanti, MI
(US)

(73) Assignee: **Integrated Sensing Systems, Inc.**,
Ypsilanti, MI (US)

(*) Notice: Subject to any disclaimer, the term of this
patent is extended or adjusted under 35
U.S.C. 154(b) by 36 days.

(21) Appl. No.: **10/677,694**

(22) Filed: **Oct. 2, 2003**

Related U.S. Application Data

(60) Provisional application No. 60/415,537, filed on Oct.
3, 2002, provisional application No. 60/415,538, filed
on Oct. 3, 2002, provisional application No. 60/416,
406, filed on Oct. 7, 2002, provisional application No.
60/416,407, filed on Oct. 7, 2002, provisional applica-
tion No. 60/416,408, filed on Oct. 7, 2002, provisional
application No. 60/416,409, filed on Oct. 7, 2002.

(51) **Int. Cl.**
A61B 5/00 (2006.01)
A61B 5/02 (2006.01)
A61N 1/00 (2006.01)

(52) **U.S. Cl.** **600/481**; 600/300; 600/339;
600/485; 600/504; 600/549; 607/5; 607/6;
607/9

(58) **Field of Classification Search** 607/6;
600/300, 339, 481, 485, 504, 549
See application file for complete search history.

(56) **References Cited**

U.S. PATENT DOCUMENTS

4,026,276 A * 5/1977 Chubbuck 600/407
4,080,966 A * 3/1978 McNally et al. 604/505

4,114,606 A * 9/1978 Seylar 600/409
4,566,456 A * 1/1986 Koning et al. 607/23
4,886,064 A * 12/1989 Strandberg 607/18
4,925,443 A * 5/1990 Heilman et al. 600/16
4,987,897 A * 1/1991 Funke 607/32
5,067,491 A * 11/1991 Taylor et al. 600/561
5,207,103 A * 5/1993 Wise et al. 73/724

(Continued)

OTHER PUBLICATIONS

Clamp, Merriam-Webster Online Dictionary. <http://www.m-w.com/cgi-bin/dictionary>.*

(Continued)

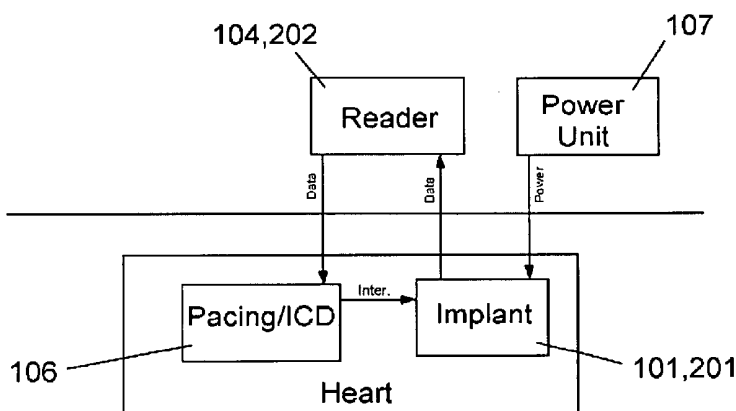
Primary Examiner—Patricia C Mallar

(74) *Attorney, Agent, or Firm*—Hartman & Hartman P.C.;
Gary M. Hartman; Domenica N. S. Hartman

(57) **ABSTRACT**

A telemetric sensing system for monitoring physiological parameters for diagnosis and treatment of congestive heart failure in a patient. This system includes one or more implantable sensing devices implanted in a cavity of the patient's cardiovascular system, and a non-implantable reader unit. The implantable sensing device has an inductor and at least one sensor with an option of having electronic components, as well as a mechanism for anchoring the device inside the patient's body. The external readout device has at least one inductor coil with a telemetric device that provides for at least one of electromagnetic telecommunication and wireless powering of the sensing device. This wireless system provides a means for effective monitoring, management and tailoring of treatments for patients suffering from congestive heart failure as well as many other diseases.

57 Claims, 4 Drawing Sheets



U.S. PATENT DOCUMENTS

5,300,107 A 4/1994 Stokes et al.
 5,558,640 A * 9/1996 Pfeiler et al. 604/67
 5,704,352 A * 1/1998 Tremblay et al. 600/300
 5,725,552 A 3/1998 Kotula et al.
 5,853,422 A * 12/1998 Huebsch et al. 606/213
 6,015,386 A * 1/2000 Kensey et al. 600/486
 6,120,457 A * 9/2000 Coombes et al. 600/486
 6,174,322 B1 1/2001 Schneldt
 6,231,516 B1 * 5/2001 Keilman et al. 600/485
 6,277,078 B1 8/2001 Porat et al.
 6,287,253 B1 * 9/2001 Ortega et al. 600/300
 6,295,466 B1 * 9/2001 Ishikawa et al. 600/509
 6,309,350 B1 * 10/2001 Van Tassel et al. 600/300
 6,328,699 B1 12/2001 Eigler et al.

6,400,990 B1 * 6/2002 Silvian 607/60
 6,409,674 B1 * 6/2002 Brockway et al. 600/486
 6,631,296 B1 * 10/2003 Parramon et al. 607/61
 6,636,769 B2 * 10/2003 Govari et al. 607/60
 6,746,404 B2 6/2004 Schwartz
 6,783,499 B2 8/2004 Schwartz
 6,855,115 B2 * 2/2005 Fonseca et al. 600/488
 7,149,587 B2 12/2006 Wardle et al.

OTHER PUBLICATIONS

Clamp 2 (2000). In The Penguin English Dictionary. Retrieved Sep. 3, 2007 from <http://www.credoreference.com/entry/1128474>.*

Clamp 1. (2001). In Chambers 21st Century Dictionary. Retrieved Sep. 3, 2007 from <http://www.credoreference.com/entry/1194849>.*

* cited by examiner

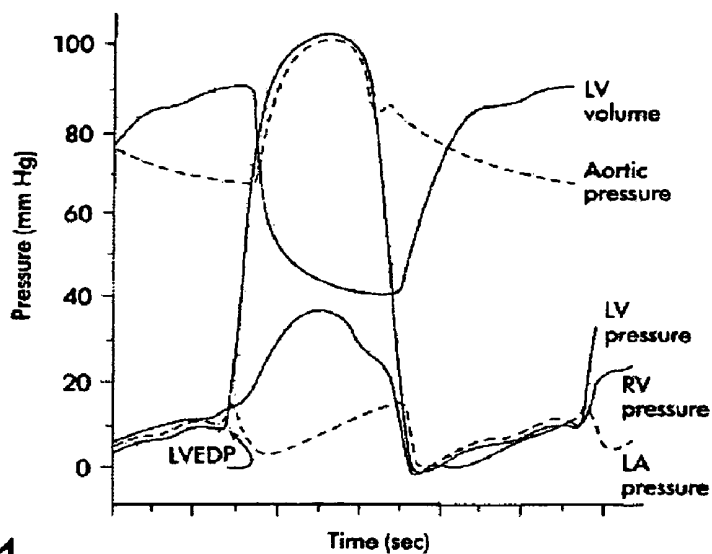


FIG. 1

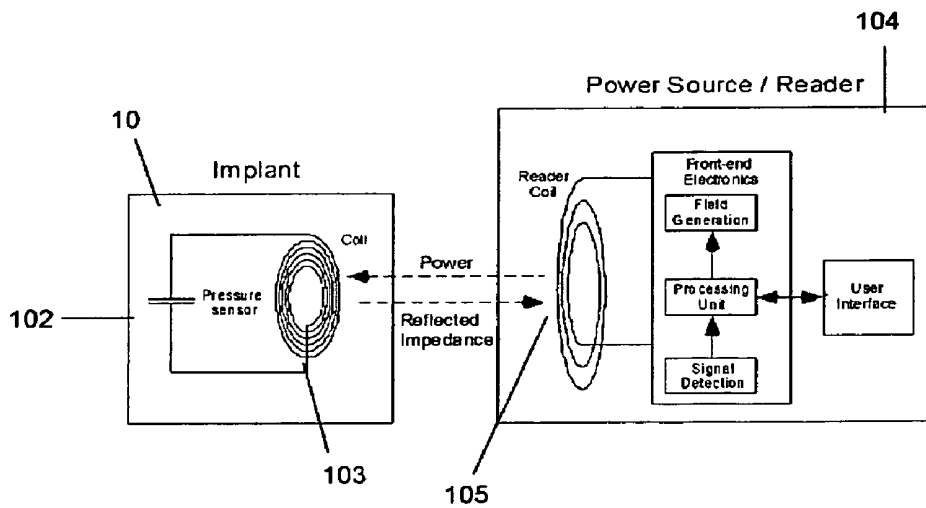


FIG. 2

FIG. 3

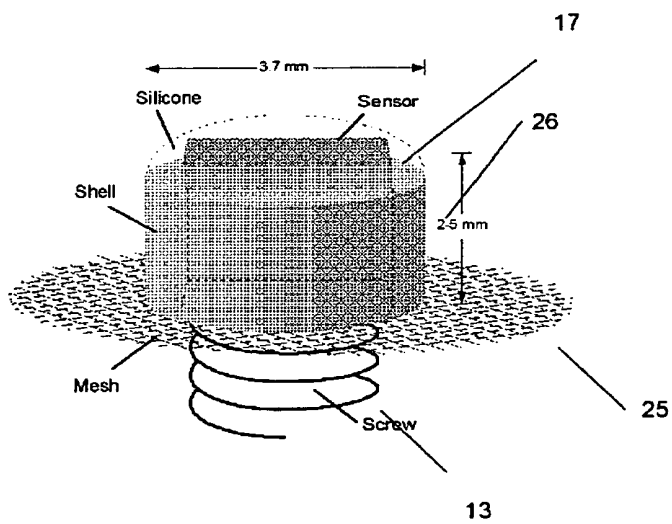
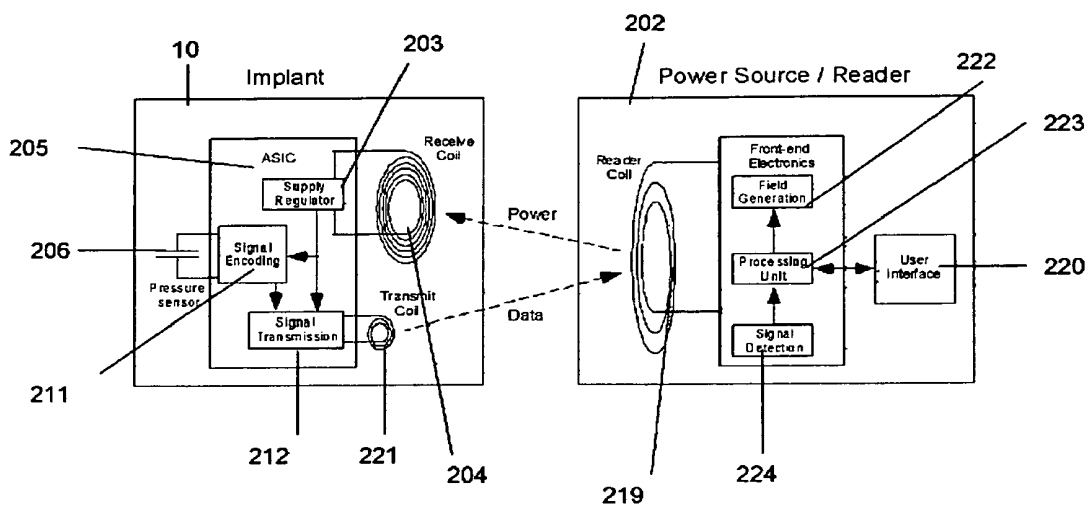


FIG. 4

FIG. 5

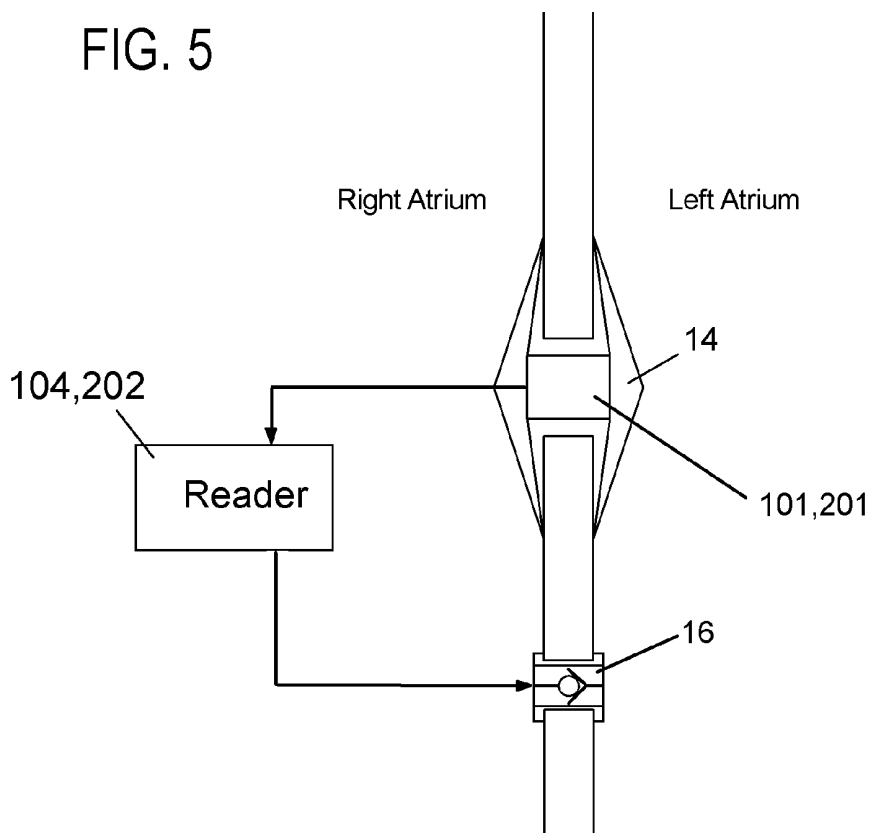


FIG. 6

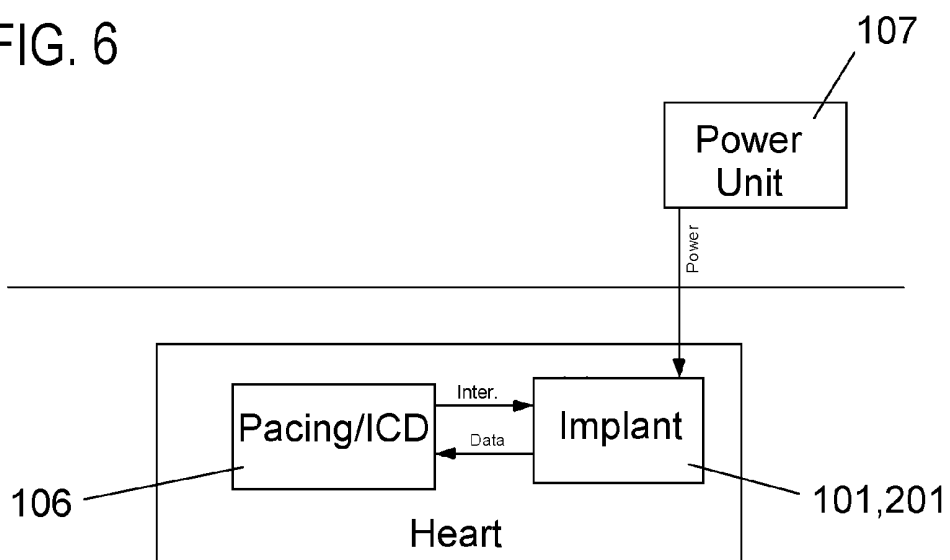


FIG. 7

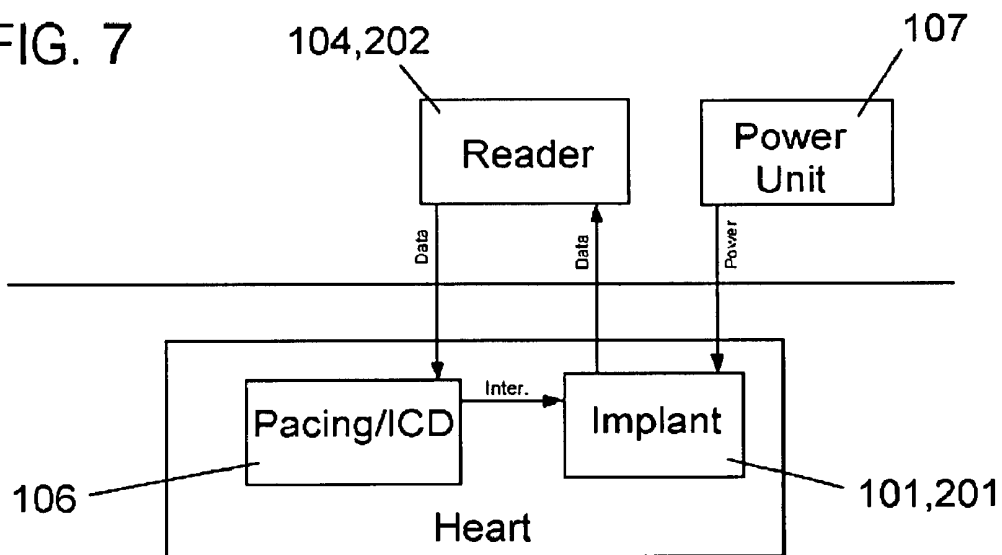
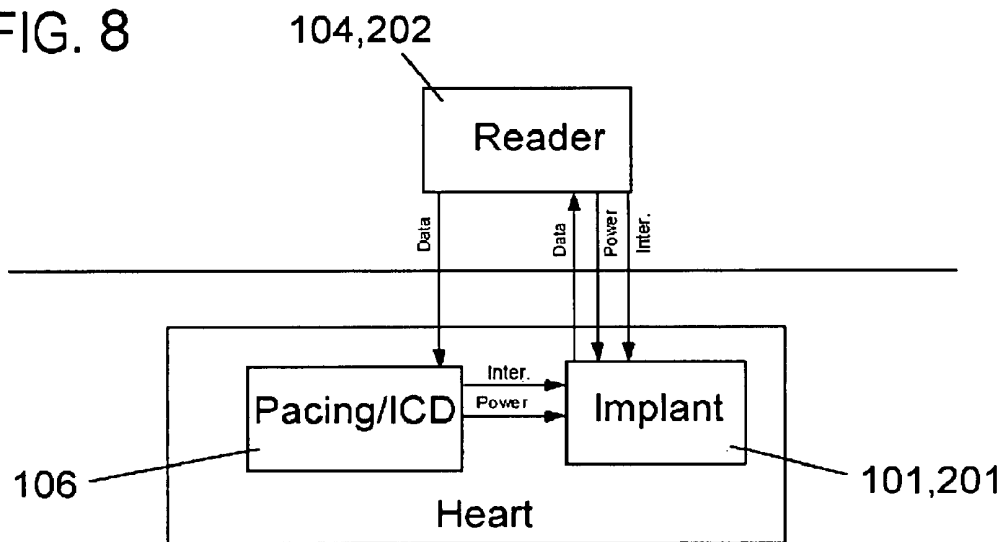


FIG. 8



SYSTEM FOR MONITORING THE PHYSIOLOGIC PARAMETERS OF PATIENTS WITH CONGESTIVE HEART FAILURE

REFERENCE TO PREVIOUS APPLICATIONS

This application claims the benefit of U.S. Provisional Applications No. 60/415,537 filed on Oct. 3, 2002, 60/415,538 filed on Oct. 3, 2002, 60/416,406 filed on Oct. 7, 2002, 60/416,407 filed on Oct. 7, 2002, 60/416,408 filed on Oct. 7, 2002, and 60/416,409 filed on Oct. 7, 2002.

FIELD OF THE INVENTION

The present invention relates generally to field of implantable medical devices for monitoring physiological parameters. More particularly, the invention relates to a system utilizing a telemetric implantable physiologic sensor for monitoring patients with Congestive Heart Failure and tailoring their medical management.

BACKGROUND OF THE INVENTION

Congestive heart failure (CHF) is a condition in which a damaged or overworked heart cannot pump adequately to meet the metabolic demands of the body and/or can do so only with an elevated ventricular diastolic pressure. CHF is a major health problem worldwide, affecting millions of patients and accounts for numerous hospitalizations. Overall, the cost of treating CHF is very high (billions of dollars annually) and involves numerous physician visits. From 1979 to 1999, CHF deaths increased 145% and hospital discharges increased 155%. Survival is poor with 20% dying within one year and only 50% of patients surviving more than 5 years. The many patients suffering from this progressive, fatal disease tend to have an extremely poor quality of life and become increasingly unable to perform routine daily tasks.

Left ventricular (LV) filling pressure is a key factor in the progression of CHF. LV filling pressure represents the diastolic pressure at which the left atrium (LA) and left ventricle (LV) equilibrate, at which time the LV fills with blood from the LA. As the heart ages, cardiac tissue becomes less compliant, causing the LV filling pressure to increase. This means that higher pressures are required from the LA in order to fill the LV. The heart must compensate for this in order to maintain adequate cardiac output (CO); however, increasing the LA pressure strains the heart and over time irreversible alteration will occur.

Left Ventricular End Diastolic Pressure (LVEDP) and Mean Left Atrium Pressure (MLAP) (see FIG. 1) are the primary factors physicians use to evaluate CHF patients. MLAP and LVEDP correspond directly with LV filling pressure and are easy for physicians to identify from LV pressure data. The physician's ultimate goal is to increase cardiac output (CO) while reducing LVEDP. Treatment methods include medications, lifestyle changes, pacemakers, and/or surgery.

The only current method for evaluating intracardiac pressures, including MLAP and LVEDP, is invasive, namely, a cardiac catheterization procedure. Catheterization, however, provides only a snapshot of pressure data, carries morbidity, and is expensive. Following diagnosis of congestive heart failure, physicians would prefer to noninvasively monitor heart condition on a continuing basis in order to optimize treatment. Currently, no technology exists that has this capability.

Furthermore, in certain cases, CHF is complicated by mitral stenosis. This is a very complex situation and requires significantly more precise and continuous pressure data. Atrial fibrillation can develop as a result of this condition, and catheterization to evaluate such cases is considerably more complex since pressure gradients across the mitral valve must also be measured. Doppler echocardiography can be used to evaluate this condition; however, echocardiography again requires a specialized laboratory with specialized equipment and doesn't provide continuous measurements.

The treatment of cardiovascular diseases such as Chronic Heart Failure (CHF) can be greatly improved through continuous and/or intermittent monitoring of various pressures and/or flows in the heart and associated vasculature. Porat (U.S. Pat. No. 6,277,078), Eigler (U.S. Pat. No. 6,328,699), and Carney (U.S. Pat. No. 5,368,040) each teaches different modes of monitoring heart performance using wireless implantable sensors. In every case, however, what is described is a general scheme of monitoring the heart. The existence of a method to construct a sensor with sufficient size, long-term fidelity, stability, telemetry range, and biocompatibility is noticeably absent in each case, being instead simply assumed. Eigler, et al., come closest to describing a specific device structure although they disregard the baseline and sensitivity drift issues that must be addressed in a long-term implant. Applications for wireless sensors located in a stent (e.g., U.S. Pat. No. 6,053,873 by Govari) have also been taught, although little acknowledgement is made of the difficulty in fabricating a pressure sensor with telemetry means sufficiently small to incorporate into a stent.

SUMMARY OF THE INVENTION

The invention comprises a telemetric sensing system for monitoring physiologic parameters used to evaluate heart condition in CHF patients. The system includes an implantable sensor unit and a companion reader unit. The sensor unit, which is preferably batteryless and wireless, is implanted in any of several locations in the heart (e.g. LA, LV, pulmonary artery (PA)). The sensor unit may be delivered percutaneously (for example, by catheter) or surgically. Once in place, the sensor unit will be wirelessly interrogated with the reader unit.

Upon placement in the respective locations in the heart, the sensor unit is capable of measuring and transmitting, in real time, any of various physiologic parameters including Left Ventricular End Diastolic Pressure (LVEDP), Left Atrium Pressure, and Mean Left Atrium Pressure (MLAP). When desired, the sensor unit implant is also able to monitor other parameters, including but not limited to blood flow and blood chemistry. Monitoring one or more of these parameters gives the physician several advantages:

- Enables earlier diagnosis of a failing heart;
- Facilitates earlier intervention in the course of a disease;
- Enables better tailoring of medications or other treatments and therapies to maximize cardiac output while reducing LVEDP
- Facilitates the identification of other complications from treatments or disease progression (e.g. weakening of other heart chambers);
- Gives faster feedback on the impact of medications and/or pacing changes on heart function;
- Facilitates defibrillator or pacemaker optimization;
- Lowers overall treatment costs;
- Decreases frequency and/or severity of hospitalization for CHF-related conditions through improved outpatient and home care monitoring.

Can be incorporated into an early warning system for serious conditions;
Enables closed-loop medical delivery systems.

BRIEF DESCRIPTION OF THE DRAWINGS

FIG. 1 is a graph of the expected waveforms for various pressure points within the heart.

FIG. 2 is a block diagram of a magnetic telemetry based physiologic monitoring system based on a resonant scheme according to a preferred embodiment of the present invention.

FIG. 3 is a block diagram of a magnetic telemetry based physiologic monitoring system based on a passive scheme according to an alternate embodiment of the present invention.

FIG. 4 is a perspective view of a sensor implant incorporating a screw anchoring mechanism according to a preferred embodiment of the present invention.

FIG. 5 is a side view of a sensor implanted in the atrial septum according to a preferred embodiment of the present invention.

FIGS. 6, 7, and 8 are block diagrams of different embodiments of closed-loop pacing/ICD tuning systems incorporating the magnetic telemetry-based physiologic monitoring system of the present invention.

DETAILED DESCRIPTION OF PREFERRED AND ALTERNATE EMBODIMENTS OF THE INVENTION

The following description of preferred embodiments and methods provides examples of the present invention. The embodiments discussed herein are merely exemplary in nature, and are not intended to limit the scope of the invention in any manner. Rather, the description of these preferred embodiments and methods serves to enable a person of ordinary skill in the relevant art to make, use and perform the present invention.

In order to provide for the effective monitoring, management, and tailoring of treatments for congestive heart failure, the present invention provides a wireless sensing system. The system comprises an implantable monitor in the form of a sensor which is securely anchored in a cavity of the heart; and an external reader that may transmit power to and receive transmitted data from the sensor. Data transmitted from the sensor may include pressure, temperature, calibration data, identification data, fluid flow rate, chemical concentration, and/or other physiologic parameters.

In the preferred embodiment, the sensor transmits data corresponding to Left Ventricular End Diastolic Pressure (LVEDP) or Mean Left Atrium Pressure (MLAP). To accomplish this, the sensor is located such that it reads pressure in the left ventricle (LV) or Left Atrium (LA). Alternatively, pressures correlated to LVEDP or MLAP may be transmitted if the sensor is located such that it reads pressures from the wedge position in the pulmonary artery. Furthermore, additional useful pressure data for monitoring CHF or other cardiovascular diseases may be obtained (by suitable location of the sensor) from pressures in the LA, aorta, right ventricle (RV), right atrium (RA), or pulmonary artery (PA). Note that the sensor may be located directly in the cavity whose pressure is being monitored, or it may be located in an intermediary structure, such as the atrial or ventricular septum, as long as communication with the parameter of interest is maintained.

In addition to LVDEP and MLAP, data useful to the physician and measurable with the described invention (in con-

junction with appropriate mathematical algorithms) include, but are not limited to: dp/dt (pressure change over time) of the LV pressure, dp/dt of the LA pressure, dp/dt of the RV pressure, RVEDP, and mean RA pressure. Each of these may be measured and/or derived from pressures measured in the appropriate heart cavities.

For cases of CHF with mitral valve stenosis, a second sensor would be placed such that mitral valve gradient can be assessed (for example, one sensor in the LA and one in the LV). This allows assessment of the severity of mitral disease using the pressure gradient. Ultimately, this would provide critical information to help the physician decide whether to proceed with early valve surgery and/or balloon angioplasty/valvuloplasty.

The wireless telemetry link between the sensor and the reader is preferably implemented using either a resonant or passive, magnetically coupled scheme. A resonant device **101** (shown in FIG. 2) is the simplest approach, and consists only of a packaged inductor coil **103** and capacitive pressure sensor **102**. Together, the sensor **102** and coil **103** form a circuit that has a specific resonant frequency. At that resonant frequency, the circuit presents a measurable change in magnetically coupled impedance load to an external coil **105** associated with an external reader **104**. Because the resonant frequency is a function of the inductance of the coil **103** and the sensor capacitance of the sensor **102**, as pressure changes the resonant frequency changes as well. The external reader **104** is able to determine pressure by monitoring the frequency at which the coil antenna **105** impedance changes.

The preferred communication scheme for the present invention, shown in FIG. 3 as being between a passive implant device **201** and an external reader **202**, is based on magnetic telemetry. Devices that have on-board circuitry but still receive their operating power from an external source (i.e., are batteryless) are referred to herein as passive. Without the external reader **202** present, the implant device **201** lays passive and without any internal means to power itself. When a pressure reading is desired, the reader **202** is brought into a suitable range to the implant device **201**. In this case the external reader **202** uses an alternating magnetic field to induce a voltage in the implant device **201**. When sufficient voltage has been induced in the implant device **201**, a rectification circuit **203** converts the alternating voltage on the receiver coil **204** into a direct voltage that can be used by the electronics **205** as a power supply for signal conversion and communication. At this point the implant device **201** can be considered alert and, in the preferred embodiment, also ready for commands from the reader **202**. The maximum achievable distance is mostly limited by the magnetic field strength necessary to turn the implant device **201** on. This telemetry scheme has been proven and used extensively in the identification and tracking industry (e.g., implantable RF ID technology from Texas Instruments or Digital Angel) with a great deal of acceptance and success.

Once the direct voltage in the implant device **201** has been established for the circuit operation, a number of techniques may be used to convert the output of the device **201** into a form suitable for transmission back to the reader **202**. In the preferred embodiment, a capacitive pressure sensor **206** and sigma delta conversion or capacitance to frequency conversion of the sensor output may be easily used. Capacitive sensors are preferred due to the small power requirements for electronics when reading capacitance values. Many pressure sensors are based on piezoresistive effects and, while suitable for some applications, do suffer in this application due to the

higher power levels needed for readout. Sigma delta converters are preferred due to the tolerance of noisy supply voltages and manufacturing variations.

As those skilled in magnetic telemetry are aware, a number of modulation schemes are available for transmitting data via magnetic coupling. The preferred schemes include but are not limited to amplitude modulation, frequency modulation, frequency shift keying, phase shift keying, and also spread spectrum techniques. The preferred modulation scheme may be determined by the specifications of an individual application, and is not intended to be limited under this invention.

In addition to the many available modulation techniques, there are many technologies developed that allow the implant device **201** to communicate back to the reader **202** the signal containing pressure information. It is understood that the reader **202** may transmit either a continuous level of RF power to supply the needed energy for the device **201**, or it may pulse the power allowing temporary storage in a battery or capacitor device (not shown) within the device **201**. Similarly, the implant device **201** of FIG. **3** may signal back to the reader **202** at any interval in time, delayed or instantaneous, during reader RF (Radio Frequency) transmission or alternately in the absence of reader transmission. The implant device **201** may include a single coil antenna **204** for both reception and transmission, or it may include two antennas **204** and **221**, one each for transmission and reception, respectively. There are many techniques for construction of the reader coil **219** and processing electronics known to those skilled in the art. The reader **202** may interface to a display, computer, or other data logging devices **220**.

The electronic circuit may consist of the coil antenna **204**, rectification circuitry **203**, signal conditioning circuitry **211**, and signal transmission circuitry **212**.

A large number of possible geometries and structures are available for the coil **204** and are known to those skilled in the art. The coil conductor may be wound around a ferrite core to enhance magnetic properties, deposited on a flat rigid or flexible substrate, and formed into a long/skinny or short/wide cylindrical solenoid. The conductor is preferably made at least in part with a metal of high conductivity such as copper, silver, or gold. The coil **204** may alternately be fabricated on implantable sensor substrates. Methods of fabrication of coils on the sensor substrate include but are not limited to one or more or any combination of the following techniques: sputtering, electroplating, lift-off, screen printing, and/or other suitable methods known to those skilled in the art.

The rectification circuitry **203** outputs a constant voltage level for the other electronics from an alternating voltage input. Efficient realizations of such circuitry are standard electronic techniques and may include full bridge diode rectifiers in the preferred embodiment. This rectification circuitry may include a capacitor for transient energy storage to reduce the noise ripple on the output supply voltage. This circuitry may be implemented on the same integrated circuit die with other electronics.

The signal conditioning circuit **211** processes an output signal from the sensor **206** and prepares it for transmission to an external receiving and/or analyzing device. For example, many pressure sensors output a capacitance signal that may be digitized for radio frequency (RF) transmission. Accordingly, the signal conditioning circuit **211** places the output signal of the sensor into an appropriate form. Many different signal conditioning circuits are known to those skilled in the art. Capacitance to frequency conversion, sigma delta or other

analog to digital conversion techniques are all possible conditioning circuits that may be used in a preferred embodiment.

The signal transmission circuitry **212** transmits the encoded signal from the signal conditioning circuitry **211** for reception by the external reader **202**. Magnetic telemetry is again used for this communication, as the transmission circuitry **212** generates an alternating electromagnetic field that propagates to the reader **202**. Either the same coil **204** is used for signal reception and for transmission, or alternately the second coil **221** is dedicated for transmission only.

A third option, particularly useful for (but not limited to) situations in which long-term data acquisition without continuous use of the readout unit is desirable, is to implement the sensor using an active scheme. This approach incorporates an additional capacitor, battery, rechargeable battery, or other power-storage element that allows the implant to function without requiring the immediate presence of the readout unit as a power supply. Data may be stored in the sensor and downloaded intermittently using the readout unit as required.

The implantable sensor may be physically realized with a combination of any of several technologies, including those using microfabrication technology such as Microelectromechanical Systems (MEMS). For example, capacitive and piezoresistive pressure sensors have been fabricated with MEMS technology. A hermetic sensor package may be formed from anodically bonded layers of glass and silicon (doped or undoped). Anchoring provisions may be incorporated directly into such a hermetic package, or they may alternately be added with an additional assembly step (e.g. as shown in FIG. **4**). An example of this would be insertion of the package into a molded plastic or metal shell that incorporates anchoring provisions. Possible anchoring methods include those conventionally used for cardiac pacing leads, such as screws or tines, as well as septal occluder schemes. Many such packaging schemes are known to those familiar with the art, and the present description should not be construed as limiting.

In addition to the basic implant-and-reader system, a number of other embodiments of the technology can be realized to achieve additional functionality. The system may be implemented as a remote monitoring configuration, including but not limited to home monitoring, which may include but not limited to telephone based, wireless communication based, or web-based (or other communication means) delivery of information received from the implant by the reader to a physician or caregiver.

The system may be implemented as a closed-loop pacing/ICD (Implantable Cardioverter Defibrillator) tuning system as represented in FIGS. **6**, **7** and **8**. FIG. **6**, in which sensor data is fed to a patient pacemaker of a pacing/ICD unit **106** for tailoring of pacing/ICD function. As shown in FIG. **6**, the implanted sensor device **101/201** may be directly interrogated by the pacing/ICD unit **106** (i.e. without requiring the intermediate external reader **104/202**). As also shown in FIG. **6**, the implanted sensor device **101/201** may also be interrogated by the pacing/ICD unit **106**, but with an additional, external power unit **107** solely for transmitting power to the sensor device **101/201**. Alternatively, as shown in FIG. **7** the sensor data may first be transmitted to an external reader **104/202** and then re-transmitted to the pacing/ICD unit **106**. Finally, as shown in FIG. **8** the system may be configured such that both an external reader **104/202** and the pacing/ICD unit **106** may interrogate and/or power the sensor device **101/201**.

A closed-loop drug delivery system may also be envisioned. Data from the implanted sensor is fed directly to a drug delivery device (which may or may not be implanted,

and may or may not be an integral part of the implanted sensor). This approach would allow continuous adjustment of medications for CHF-related conditions with minimal physician intervention.

As represented in FIG. 5, data obtained from the implanted sensor **101/102** may be used as feedback for a LA to RA unidirectional valve **16** (FIG. 5), which can be used to prevent pulmonary edema. LA decompression is accomplished by allowing blood to flow directly from the LA to the RA, thus reducing the pressure in the LA and the pulmonary bed.

The implantable sensor can be any suitable miniature sensor adapted to detect and/or monitor various physiological parameters. For example, the sensor can comprise a pressure sensor, a temperature sensor, a flow sensor, a velocity sensor, or a sensor adapted to measure specific chemistries such as gas content (e.g., O₂ and CO₂) and glucose levels. Various specific examples of these types of miniature sensors are known to those skilled in the art, and any one or more of these suitable sensors can be utilized in the sensor module of the present invention. While the specific type of sensor(s) chosen will depend on the application of the implantable system, the sensor(s) should be of a sufficiently small size in order to facilitate placement within a catheter for delivery and implantation.

To limit the risk of thrombogenesis, the preferred embodiment has limited protrusion of volume into the blood stream (particularly in the left side of the heart), as both shape and size are factors in thrombogenesis. Another shell may be overmolded or preformed to house the glass/silicon module, and the outer shell contains the necessary apparatus for anchoring the implant. In a preferred embodiment, the outer shell may be formed with existing plastic injection technologies suitable for medical implantation. A coating, preferably of silicone, parylene and/or polymers provides a non-thrombogenic exterior for the biologic environment.

The implant may be located in various places depending on the blood pressure measurement of interest. For chronic heart failure the end-diastolic pressure or mean left atrium pressure may be of most importance, and therefore the left chambers of the heart or immediately attaching vessels may be preferred locations. Because the number of implants is not practically limited by the technology, multiple locations for blood pressure and/or other physiologic parameter measurements are easily established, including all chambers of the heart, major arteries and appendages. The atrial septum is the preferred embodiment, FIG. 5, since, embedding the module in the atrial septum does not significantly impede blood flow and thus minimize the thrombogenic effect of flow turbulence caused by this volume.

The implant may be modified with anchoring methods found on devices already used for implantation. Devices such as septal occluders, pacemaker leads, left atrial appendage occluders, etc., may be used as carriers for the current invention. Devices have been made and approved by the FDA to occlude atrial septum defects (a septal occluder) and other vascular holes. An umbrella structure **14**, FIG. 5, may be folded inside a catheter for delivery and then expanded for implantation. In a preferred embodiment, the present invention may be anchored to the septum with similar techniques, as shown in FIG. 5. An important aspect of this preferred embodiment is that the majority of the implantable sensing device is located in the right side of the heart, with minimum protrusion in the left side of the heart. This embodiment will greatly reduce the thrombogenicity.

Pacemaker leads have a well-established history for implantation methods, and similar techniques are possible for the current invention. A screw **13** (FIG. 4) or barb may be used

to attach the implant to a heart or vessel wall. In the first package option shown in FIG. 4, a screw **13** may be molded into the device shell **26**, and screwed into the ventricle wall so that that the screw buries below the wall surface. In addition, the package may have mesh **25** attached to the device to promote tissue growth and anchoring.

A second package option can be attached with a metal tine or barb placed with a catheter. These devices work well in trabeculated areas of the heart, and therefore are used often for implanting pacing leads in the right ventricle. Clips or expanding probes may also be used, both of which would penetrate the heart or vessel wall slightly.

Note that in addition to sensing physiologic parameters, the described system could be augmented with various actuation functions. In such case, the implant device would be augmented with any of various actuators, including but not limited to: thermal generators; voltage or current sources, probes, or electrodes; drug delivery pumps, valves, or meters; micro-tools for localized surgical procedures; radiation-emitting sources; defibrillators; muscle stimulators; pacing stimulators.

The foregoing disclosure includes the best mode devised by the inventors for practicing the invention. It is apparent, however, that several variations in the apparatuses and methods of the present invention may be conceivable by one skilled in the art. Inasmuch as the foregoing disclosure is intended to enable one skilled in the pertinent art to practice the instant invention, it should not be construed to be limited thereby, but should be construed to include such aforementioned variations.

We claim:

1. A system for monitoring one or more physiological parameters for diagnosis of congestive heart failure within a patient, said system comprising:

- at least one sensing device adapted to be implanted in a septum of the patient's heart and monitor said one or more physiological parameters within a heart cavity, said sensing device comprising an anchoring mechanism, at least one inductor coil and at least one sensor, with optional electronic components, said anchoring mechanism comprising first and second portions that are separated by the sensor and are both foldable and expandable, the first portion being adapted to pass through an opening of the septum and expand on a distal side thereof within the heart cavity, the second portion being adapted to expand on an oppositely-disposed proximal side of the septum, the first and second portions being configured to clamp the septum therebetween, said sensor being disposed relative to the anchoring mechanism so that when said sensing device is implanted in the septum from the proximal side thereof and said sensor is within the opening in the septum, the first portion of the anchoring mechanism and a majority of said sensing device are located on the proximal side of the septum, said sensing device has minimum protrusion in the heart cavity on the distal side of the septum to minimize the risk of thrombogenicity, and said sensor is configured to monitor the one or more physiological parameters within the heart cavity;
- a pacing/ICD unit for interrogating said at least one sensing device;
- an external unit for powering said at least one sensing device; and
- a non-implantable readout device that is not adapted to be implanted in the patient, said readout device comprising at least one inductor coil having telemetric means for at least one of electromagnetic telecommu-

nication and electromagnetic wireless powering of said sensor through said at least one inductor coil of said sensing device.

2. The system of claim 1 wherein said system is adapted for use in at least one of the following applications: early diagnosis of a heart failing due to congestive heart failure related conditions, early intervention in treatment of congestive heart failure related conditions, tailoring of medications, disease management, identification of complications from congestive heart failure related conditions, identification of complications from cardiovascular disease related conditions, treatment of complications from congestive heart failure related conditions, treatment of complications from cardiovascular disease related conditions, feedback regarding the impact of medication on the heart, pacing adjustments, reduction in frequency and severity of hospitalizations due to cardiovascular diseases, reduction in frequency and severity of hospitalizations due to congestive heart failure, tuning of defibrillator or pacemaker parameters to improve congestive heart failure related conditions, identification of mitral valve stenosis, treatment of mitral valve stenosis.

3. The system of claim 1 wherein said at least one sensor of the implantable sensing device comprises at least one capacitive sensor.

4. The system of claim 1 wherein said readout device is adapted for use in at least one of the following: remote monitoring of congestive heart failure patients, monitoring of congestive heart failure patients with telephone-based (or similar method) data and information delivery, monitoring of congestive heart failure patients with wireless telephone-based (or similar method) data and information delivery, monitoring of congestive heart failure patients with web-based (or similar method) data and information delivery, closed-loop drug delivery to treat congestive heart failure, closed-loop pacemaker parameter tuning to treat congestive heart failure or congestive heart failure related conditions, warning systems for critical worsening of congestive heart failure or congestive heart failure related conditions, portable or ambulatory monitoring or diagnosis, battery-operation capability, data storage, reporting global positioning coordinates for emergency applications, communication with other medical devices chosen from the group consisting of pacemakers, defibrillator, implantable cardioverter defibrillator, implantable drug delivery systems, non-implantable drug delivery systems, and wireless medical management systems.

5. The system of claim 1 wherein the implantable sensing device includes a battery.

6. The system of claim 5 wherein the battery is rechargeable using wireless means.

7. The system of claim 1 wherein said non-implantable readout device includes a barometric pressure sensor.

8. The system of claim 7 wherein said barometric pressure sensor is adapted to compensate for variations in atmospheric pressure.

9. The system of claim 1 wherein the one or more physiological parameters include pressure.

10. The system of claim 1 wherein said implantable sensing device is configured for implantation using a minimally invasive outpatient technique.

11. The system of claim 9 wherein the at least one sensing device is adapted to be implanted so as to measure at least one of the following pressures: left ventricular end diastolic pressure, left atrium, left atrium appendage, mean left atrium pressure, left side of the heart, right side of the heart, right atrium, mean right atrium pressure, right ventricular end diastolic pressure, differential pressure between left and right atrium.

12. The system of claim 11 wherein said system calculates the change of pressure over time (dp/dt).

13. The system of claim 1 wherein said implantable sensing device is augmented with at least one actuator chosen from the group consisting of: thermal generators, voltage sources, current sources, probes, electrodes, drug delivery pumps, valves, meters, microtools for localized surgical procedures, radiation emitting sources, defibrillators, muscle stimulators, pacing stimulators.

14. A system for monitoring one or more physiological parameters for treatment of congestive heart failure within a patient, said system comprising:

at least one sensing device adapted to be implanted in a cavity of the patient's cardiovascular system, said sensing device comprising at least one inductor coil and at least one sensor, with optional electronic components; a non-implantable reader adapted to present data useful for diagnosing congestive heart failure, said reader comprising at least one inductor coil allowing electromagnetic telecommunication and electromagnetic wireless powering of said sensor through said at least one inductor coil of said sensing device;

an external unit operable to transmit power to said at least one sensing device; and

wherein said system is part of a closed-loop pacing/ICD (implantable cardioverter defibrillator) tuning mechanism comprising a pacing/ICD unit, said at least one sensing device is interrogated by the pacing/ICD unit, data from said at least one sensing device is sent to the pacing/ICD unit for tailoring of pacing/ICD function, and optionally said at least one sensing device transmits data to said reader, after which said reader retransmits data to the pacing/ICD unit.

15. The system of claim 1 wherein at least a portion of said implantable sensing device is coated with one or more layers of at least one coating material.

16. The system of claim 15 wherein the at least one coating material is chosen from the group consisting of: silicone, hydrogels, parylene, polymer, nitrides, oxides, nitric-oxide generating materials, carbides, suicides, titanium.

17. The system of claim 1 wherein a resonant scheme is used to couple the sensing device to the readout device.

18. The system of claim 1 wherein said implantable sensing device is configured for implantation using a catheter delivery method.

19. The system of claim 1 wherein a passive scheme is used to couple the sensing device to the readout device.

20. The system of claim 1 wherein said first and second portions of said anchoring mechanism comprise two opposing umbrella-shaped structures.

21. The system of claim 1 wherein an active scheme is used to couple the sensing device to the readout device.

22. The system of claim 1 wherein said anchoring mechanism is made from one or more or any combination thereof of the following materials: nitinol, teflon, stainless steel, polymer, titanium, biocompatible metals.

23. The system of claim 1 wherein the one or more physiologic parameters monitored by the system includes one or more of the following parameters: pressure, temperature, flow, blood composition, blood gas content, chemical composition, acceleration, vibration.

24. The system of claim 1, wherein said at least one sensing device transmits data to said readout device, and said readout device retransmits said data to said pacing/ICD unit.

25. The system of claim 1 wherein the at least one sensing device is adapted to be implanted at a location chosen from the group consisting of: atrial septum, ventricular septum,

aorta, left ventricle, left atrium, left atrium appendage, right ventricle, right atrium, pulmonary artery, wedge position in pulmonary artery.

26. The system of claim 14 wherein said implantable sensing device is augmented with at least one actuator chosen from the group consisting of: thermal generators, voltage sources, current sources, probes, electrodes, drug delivery pumps, valves, meters, microtools for localized surgical procedures, radiation emitting sources, defibrillators, muscle stimulators, pacing stimulators.

27. The system of claim 14 wherein said at least one sensor of the implantable sensing device comprises at least one capacitive sensor.

28. The system of claim 14 wherein said system is adapted for use in at least one of the following applications: early diagnosis of a heart failing due to congestive heart failure related conditions, early intervention in treatment of congestive heart failure related conditions, tailoring of medications, disease management, identification of complications from congestive heart failure related conditions, identification of complications from cardiovascular disease related conditions, treatment of complications from congestive heart failure related conditions, treatment of complications from cardiovascular disease related conditions, feedback regarding the impact of medication on the heart, pacing adjustments, reduction in frequency and severity of hospitalizations due to cardiovascular diseases, reduction in frequency and severity of hospitalizations due to congestive heart failure, tuning of defibrillator or pacemaker parameters to improve congestive heart failure related conditions, identification of mitral valve stenosis, treatment of mitral valve stenosis.

29. The system of claim 14 wherein a resonant scheme is used to couple the sensing device to the reader.

30. The system of claim 14 wherein said reader is adapted for use in at least one of the following: remote monitoring of congestive heart failure patients, monitoring of congestive heart failure patients with telephone-based (or similar method) data and information delivery, monitoring of congestive heart failure patients with wireless telephone-based (or similar method) data and information delivery, monitoring of congestive heart failure patients with web-based (or similar method) data and information delivery, closed-loop drug delivery to treat congestive heart failure, closed-loop pacemaker parameter tuning to treat congestive heart failure or congestive heart failure related conditions, warning systems for critical worsening of congestive heart failure or congestive heart failure related conditions, portable or ambulatory monitoring or diagnosis, battery-operation capability, data storage, reporting global positioning coordinates for emergency applications, communication with other medical devices chosen from the group consisting of pacemakers, defibrillator, implantable cardioverter defibrillator, implantable drug delivery systems, non-implantable drug delivery systems, and wireless medical management systems.

31. The system of claim 14 wherein the one or more physiological parameters include pressure.

32. The system of claim 31 wherein the at least one sensing device is adapted to be implanted so as to measure at least one of the following pressures: left ventricular end diastolic pressure, left atrium, left atrium appendage, mean left atrium pressure, left side of the heart, right side of the heart, right atrium, mean right atrium pressure, right ventricular end diastolic pressure, differential pressure between left and right atrium.

33. The system of claim 32 wherein said system calculates the change of pressure over time (dp/dt).

34. The system of claim 14 wherein a passive scheme is used to couple the sensing device to the reader.

35. The system of claim 14 wherein said non-implantable reader includes a barometric pressure sensor.

36. The system of claim 35 wherein said barometric pressure sensor is adapted to compensate for variations in atmospheric pressure.

37. The system of claim 14 wherein the implantable sensing device includes a battery.

38. The system of claim 37 wherein the battery is rechargeable using wireless means.

39. The system of claim 14 wherein said implantable sensing device is configured for implantation using a minimally invasive outpatient technique.

40. The system of claim 14 wherein said implantable sensing device is configured for implantation using a catheter delivery method.

41. The system of claim 14 wherein an active scheme is used to couple the sensing device to the reader.

42. The system of claim 14 wherein the one or more physiologic parameters monitored by the system includes one or more of the following parameters: pressure, temperature, flow, blood composition, blood gas content, chemical composition, acceleration, vibration.

43. The system of claim 14 wherein the at least one sensing device is adapted to be implanted at a location chosen from the group consisting of: atrial septum, ventricular septum, aorta, left ventricle, left atrium, left atrium appendage, right ventricle, right atrium, pulmonary artery, wedge position in pulmonary artery.

44. The system of claim 14 wherein said at least one sensing device is directly interrogated by the pacing/ICD unit.

45. The system of claim 14 wherein said at least one sensing device transmits data to said reader, after which said reader retransmits data to the pacing/ICD unit.

46. The system of claim 45 wherein said reader and said pacing/ICD unit perform at least one function of interrogation or powering of said at least one sensing device.

47. The system of claim 14 wherein at least a portion of said implantable sensing device is coated with one or more layers of at least one coating material.

48. The system of claim 47 wherein the at least one coating material is chosen from the group consisting of: silicone, parylene, hydrogels, polymer, nitrides, oxides, nitric-oxide generating materials, carbides, silicides, titanium.

49. The system of claim 14, wherein said implantable sensing device comprises an anchoring mechanism chosen from the group consisting of: anchoring mechanisms for septal occluder devices, anchoring mechanisms for left atrial appendage occluders, anchoring mechanisms for cardiac pacing leads, screws, tines, stents.

50. The system of claim 49 wherein said anchoring mechanism comprises a portion adapted for passing through a septum wall of the heart and means adapted for opening on at least one side of the septal wall and clamping said implantable device to the septal wall.

51. The system of claim 49 wherein said anchoring mechanism comprises a portion adapted for passing through the atrial septum of the heart.

52. The system of claim 51 wherein the anchoring mechanism comprises two umbrella-shaped anchors adapted to be disposed on opposite sides of the atrial septum.

53. The system of claim 51 wherein said implantable sensing device comprises a larger portion adapted to be located in the right side of the heart and a smaller portion adapted to be

13

located in the left side of the heart and includes at minimum said at least one sensor in order to minimize the risk of thrombogenicity.

54. The system of claim 49 wherein said anchoring mechanism is a helical screw.

55. The system of claim 49 wherein said anchoring mechanism is a tine adapted to catch on a trabeculated area of the heart.

56. The system of claim 49 wherein said anchoring mechanism is made from one or more or any combination thereof of the following materials: nitinol, teflon, stainless steel, polymer, titanium, biocompatible metals.

57. A system for monitoring one or more physiological parameters for at least one of diagnosis and treatment of congestive heart failure within a patient, said system comprising:

14

at least one sensing device adapted to be implanted in a cavity of the patient's cardiovascular system, said sensing device comprising at least one inductor coil and at least one sensor, with optional electronic components; a non-implantable readout device that is not adapted to be implanted in the patient, said readout device comprising at least one inductor coil having telemetric means for at least one of electromagnetic telecommunication and electromagnetic wireless powering of said sensing device through said at least one inductor coil of said sensing device;

wherein the system is incorporated into a closed-loop system with a left atrium to right atrium unidirectional valve for preventing the development of pulmonary edema.

* * * * *

专利名称(译)	用于监测充血性心力衰竭患者的生理参数的系统		
公开(公告)号	US7615010	公开(公告)日	2009-11-10
申请号	US10/677694	申请日	2003-10-02
申请(专利权)人(译)	集成传感系统, INC.		
当前申请(专利权)人(译)	集成传感系统, INC.		
[标]发明人	NAJAFI NADER RICH COLLIN ANDERSON		
发明人	NAJAFI, NADER RICH, COLLIN ANDERSON		
IPC分类号	A61B5/00 A61B5/02 A61N1/00		
CPC分类号	A61B5/0031 A61B5/0215 A61N1/37223 A61B2560/0219 A61B5/01 A61B5/04 A61B5/14532 A61B5/14542		
优先权	60/415537 2002-10-03 US 60/415538 2002-10-03 US 60/416406 2002-10-07 US 60/416407 2002-10-07 US 60/416408 2002-10-07 US 60/416409 2002-10-07 US		
外部链接	Espacenet	USPTO	

摘要(译)

一种遥测传感系统，用于监测生理参数，用于诊断和治疗患者的充血性心力衰竭。该系统包括植入患者心血管系统的腔中的一个或多个可植入感测装置，以及不可植入的读取器单元。可植入感测装置具有电感器和至少一个可选择具有电子部件的传感器，以及用于将装置锚固在患者体内的机构。外部读出装置具有至少一个具有遥测装置的电感线圈，该遥测装置提供感测装置的电磁通信和无线供电中的至少一种。该无线系统为患有充血性心力衰竭以及许多其他疾病的患者提供了有效监测，管理和定制治疗的手段。

