



(19) **United States**

(12) **Patent Application Publication**  
Urbas et al.

(10) **Pub. No.: US 2005/0169345 A1**

(43) **Pub. Date: Aug. 4, 2005**

(54) **IMPLANTABLE INDUCTIVELY PROGRAMMED TEMPERATURE SENSING TRANSPONDER**

**Publication Classification**

(51) **Int. Cl.<sup>7</sup> ..... G01K 1/00**

(52) **U.S. Cl. .... 374/100; 340/584; 340/572.1**

(76) **Inventors: Donald J. Urbas, Evergreen, CO (US);  
David Ellwood, Lakewood, CO (US);  
Eric B. Weddington, Evergreen, CO (US)**

(57) **ABSTRACT**

Correspondence Address:  
**STROOCK & STROOCK & LAVAN LLP  
180 MAIDEN LANE  
NEW YORK, NY 10038 (US)**

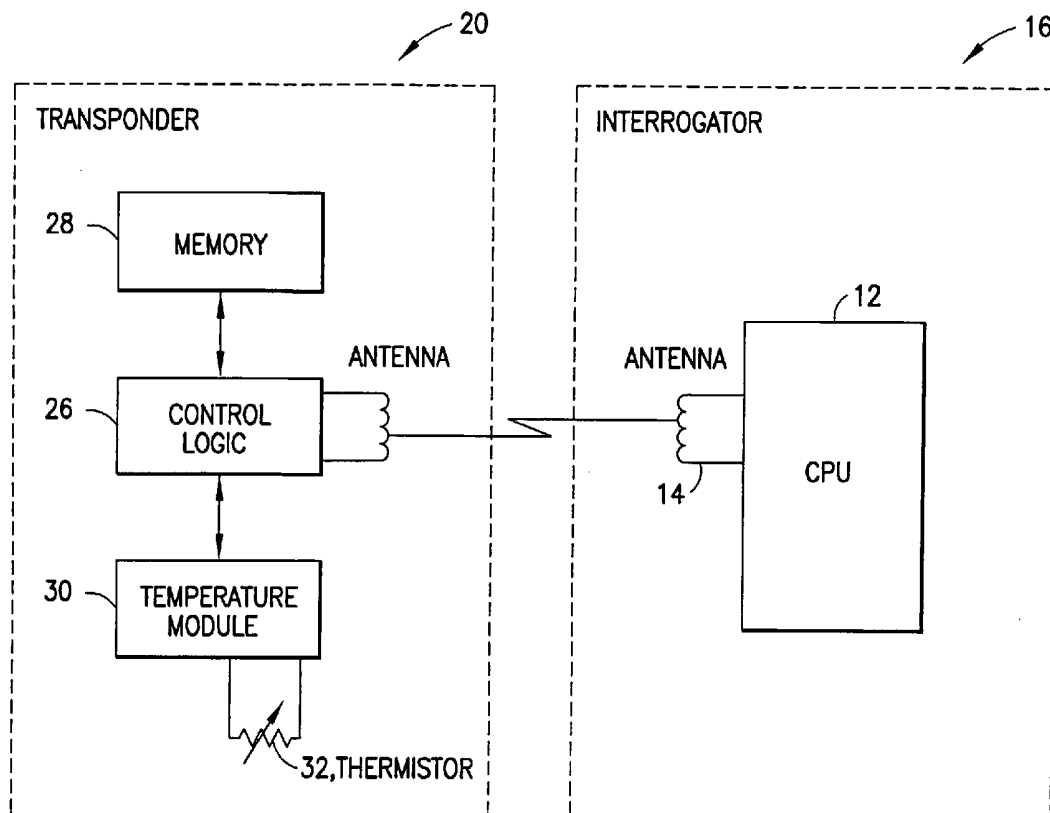
A method for determining temperature from a transponder utilizing a thermistor and a running counter comprises providing a running count which varies as a function of temperature; latching the count at predetermined time intervals; determining the difference between the values of successive latched counts; aggregating the differences; determining the total elapsed time between a first latched count and a last latched count; dividing the aggregate by the total time to obtain a frequency; and converting the frequency to a temperature based upon the temperature frequency characteristics of the thermistor.

(21) **Appl. No.: 11/083,770**

(22) **Filed: Mar. 18, 2005**

**Related U.S. Application Data**

(62) **Division of application No. 09/502,696, filed on Feb. 11, 2000, now Pat. No. 6,900,721.**



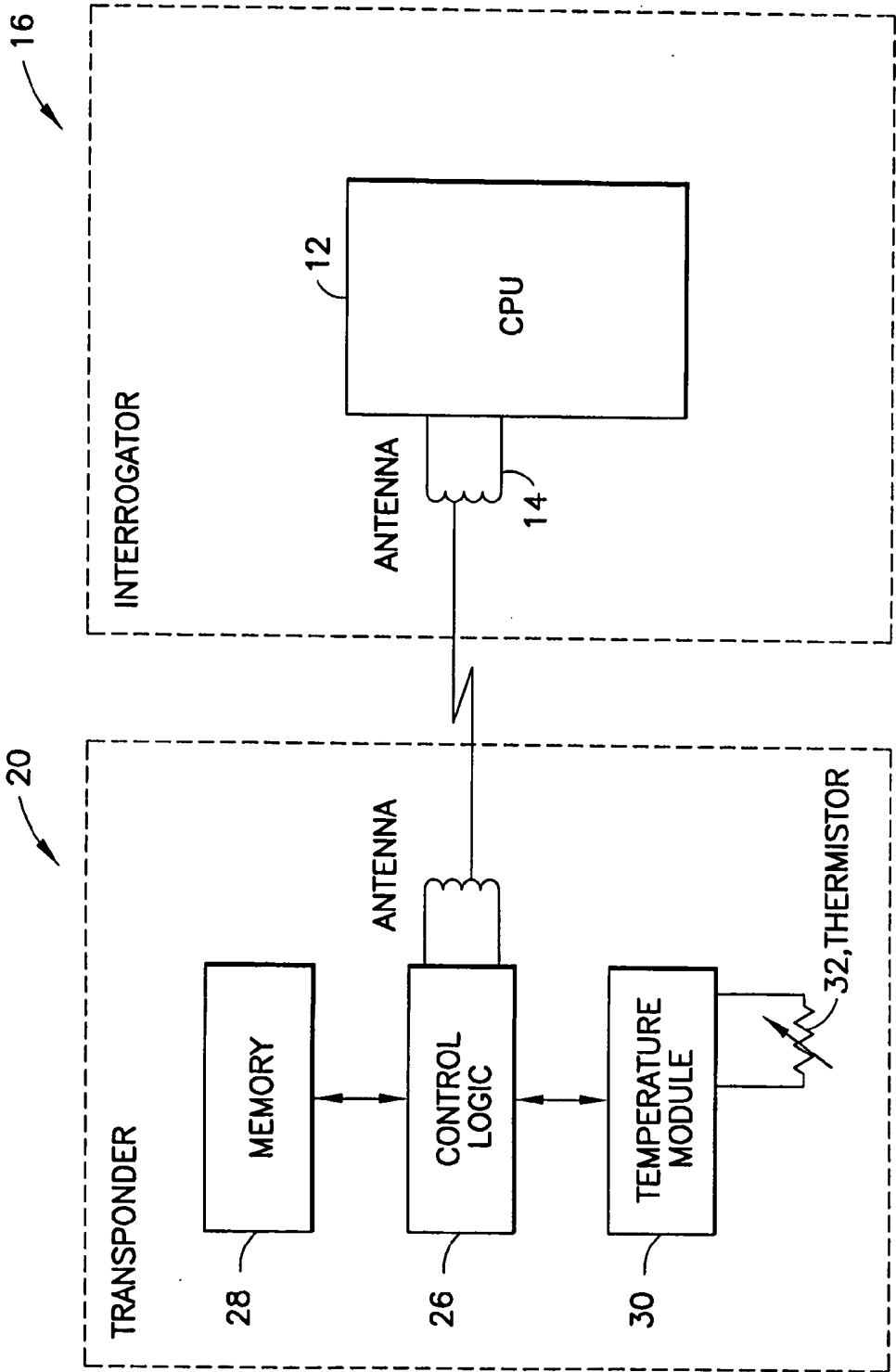


FIG.1

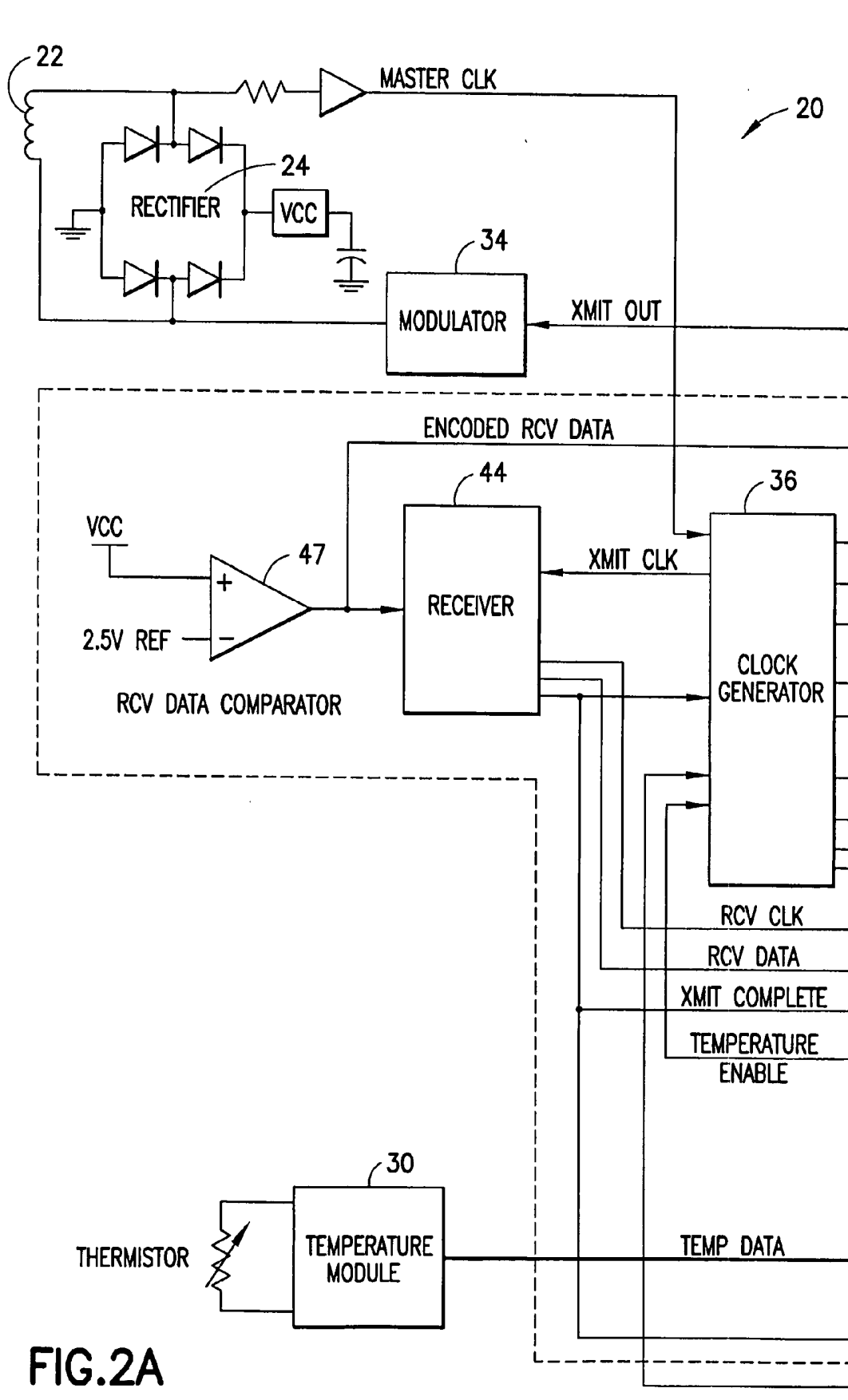
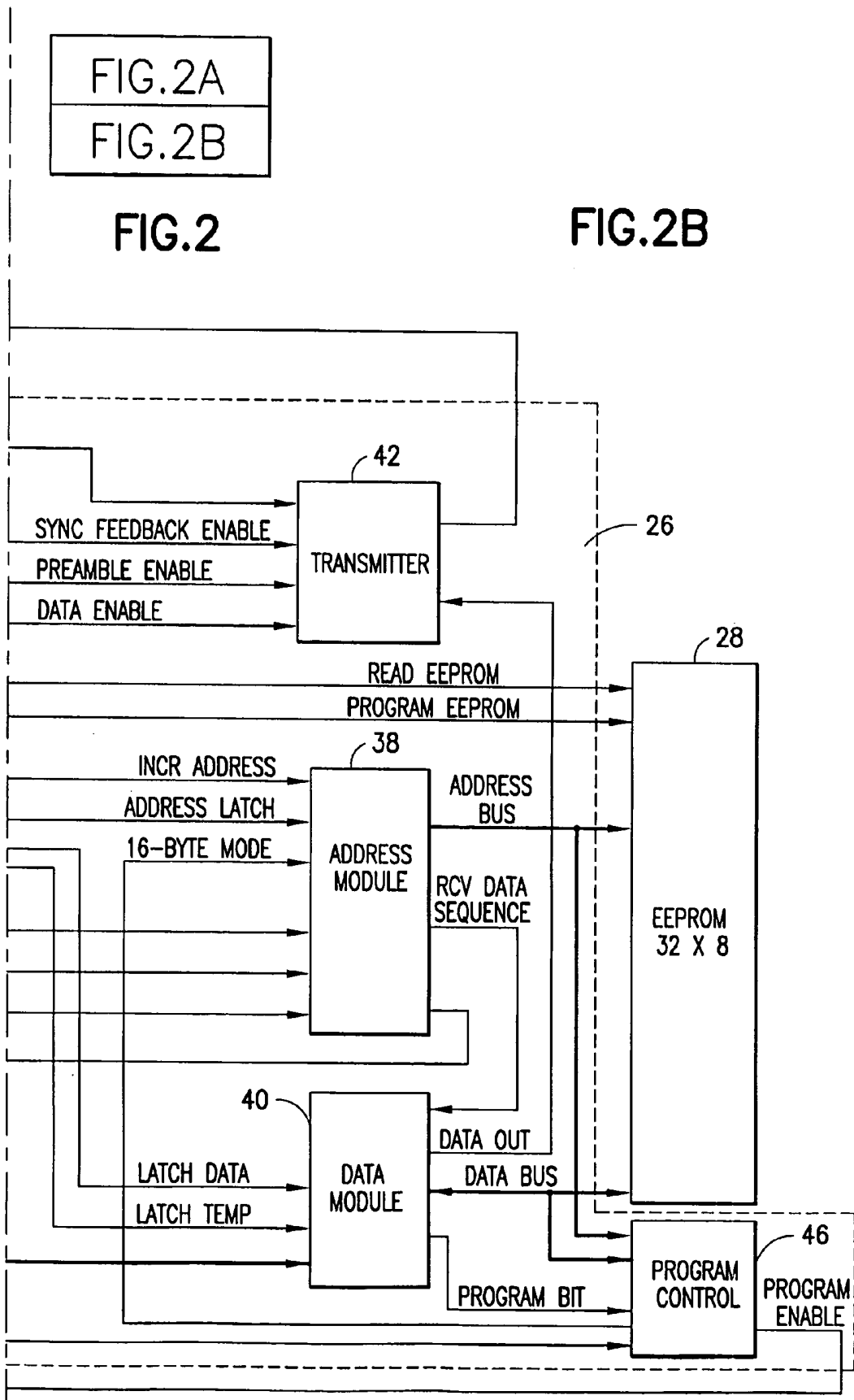


FIG.2A



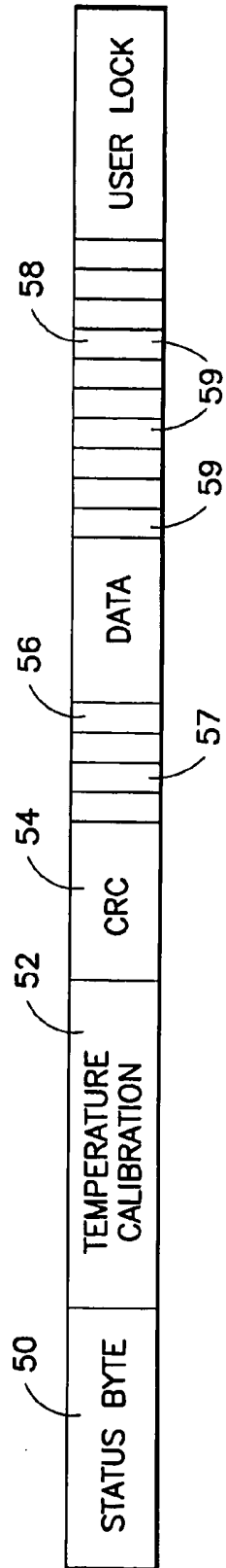


FIG. 3

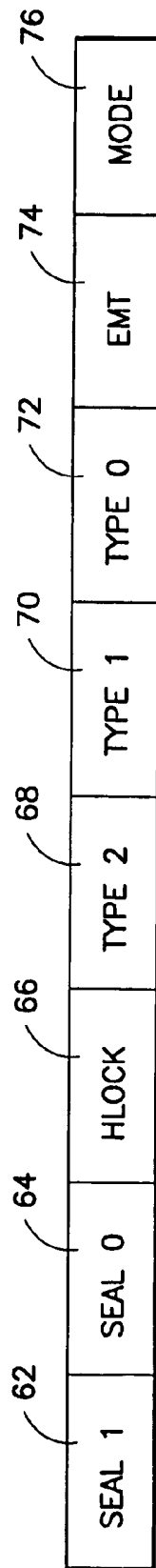


FIG. 4

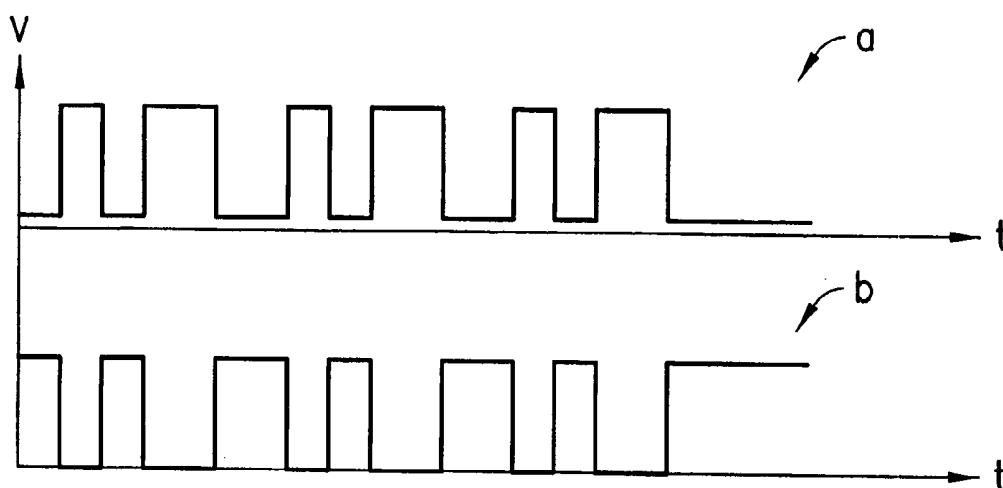


FIG.5

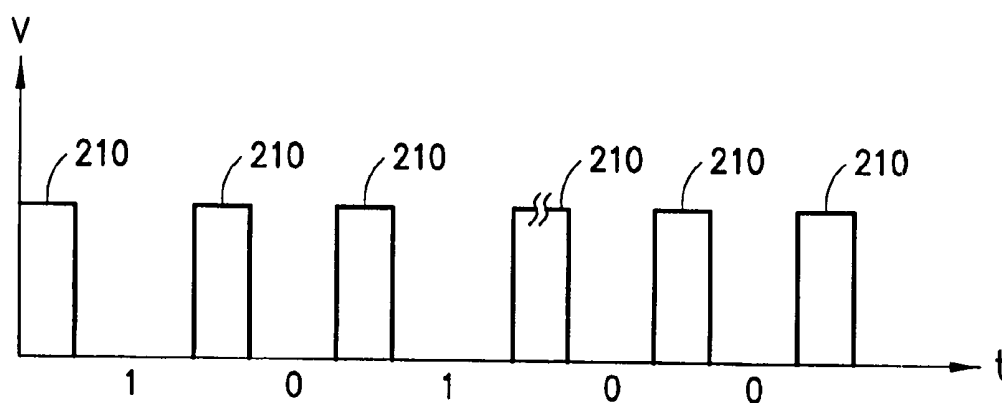


FIG.6

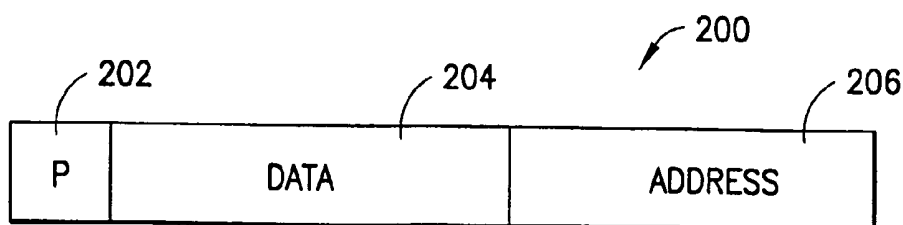


FIG.7

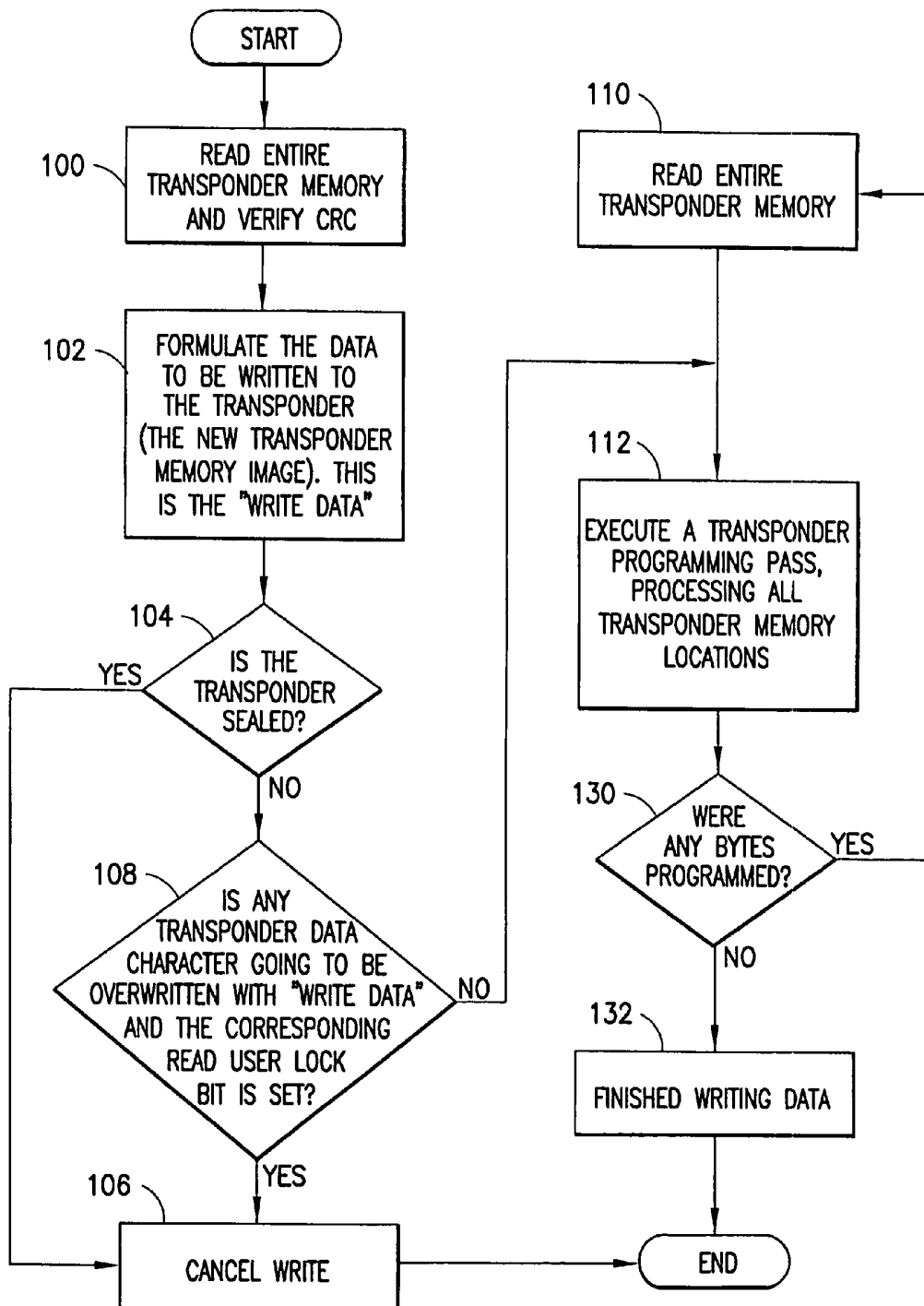
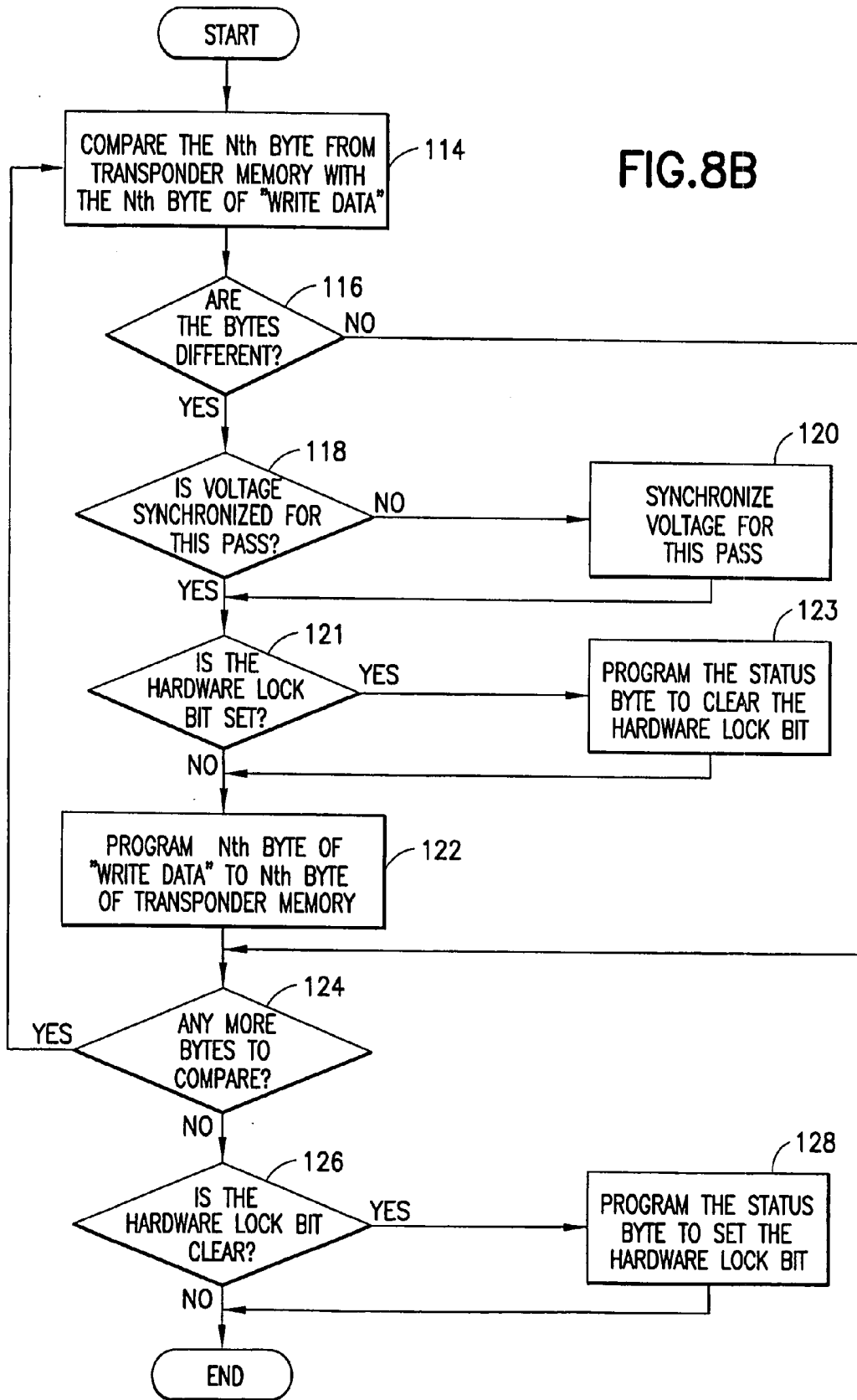


FIG.8A

FIG. 8B



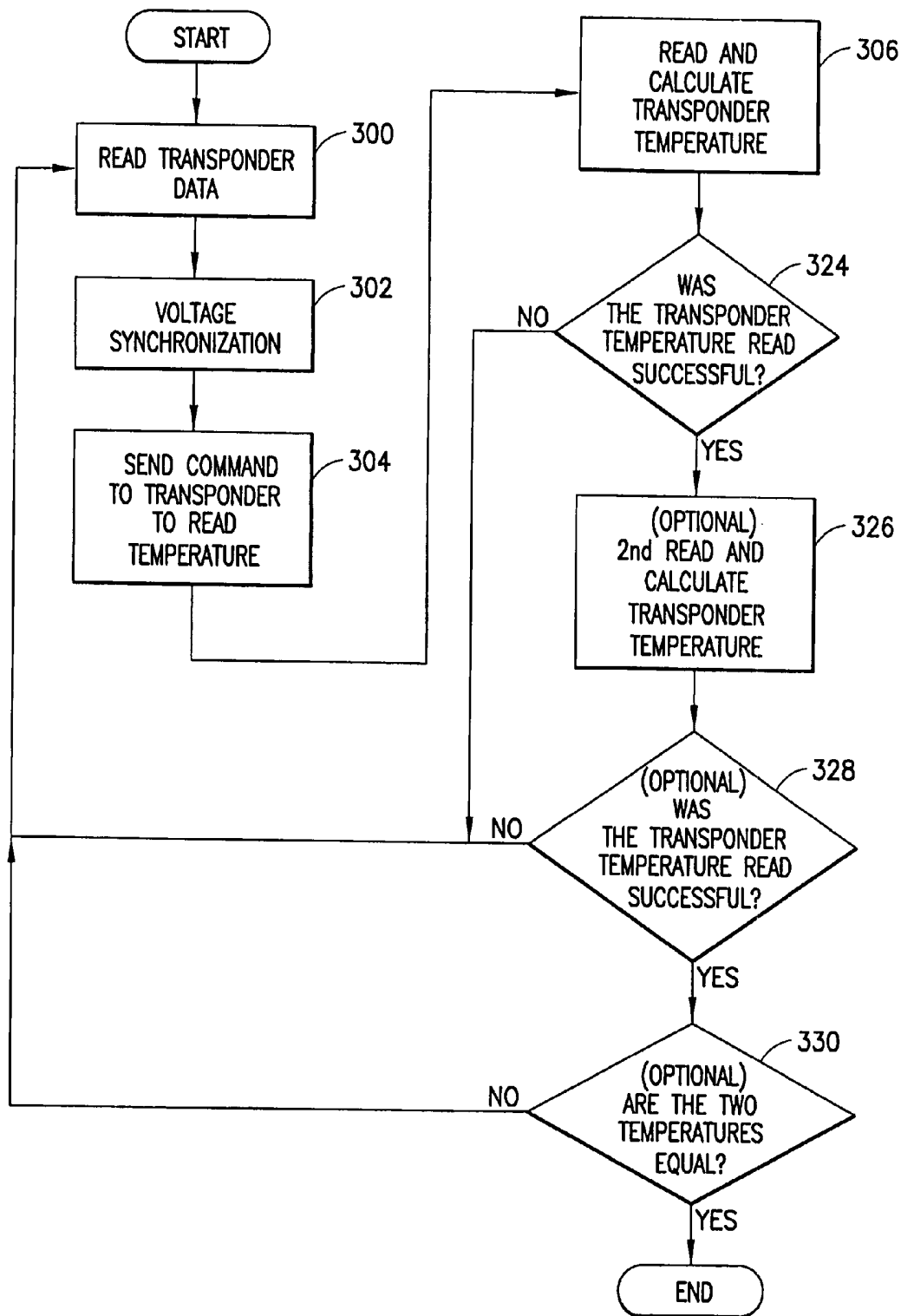


FIG.9A

FIG.9B

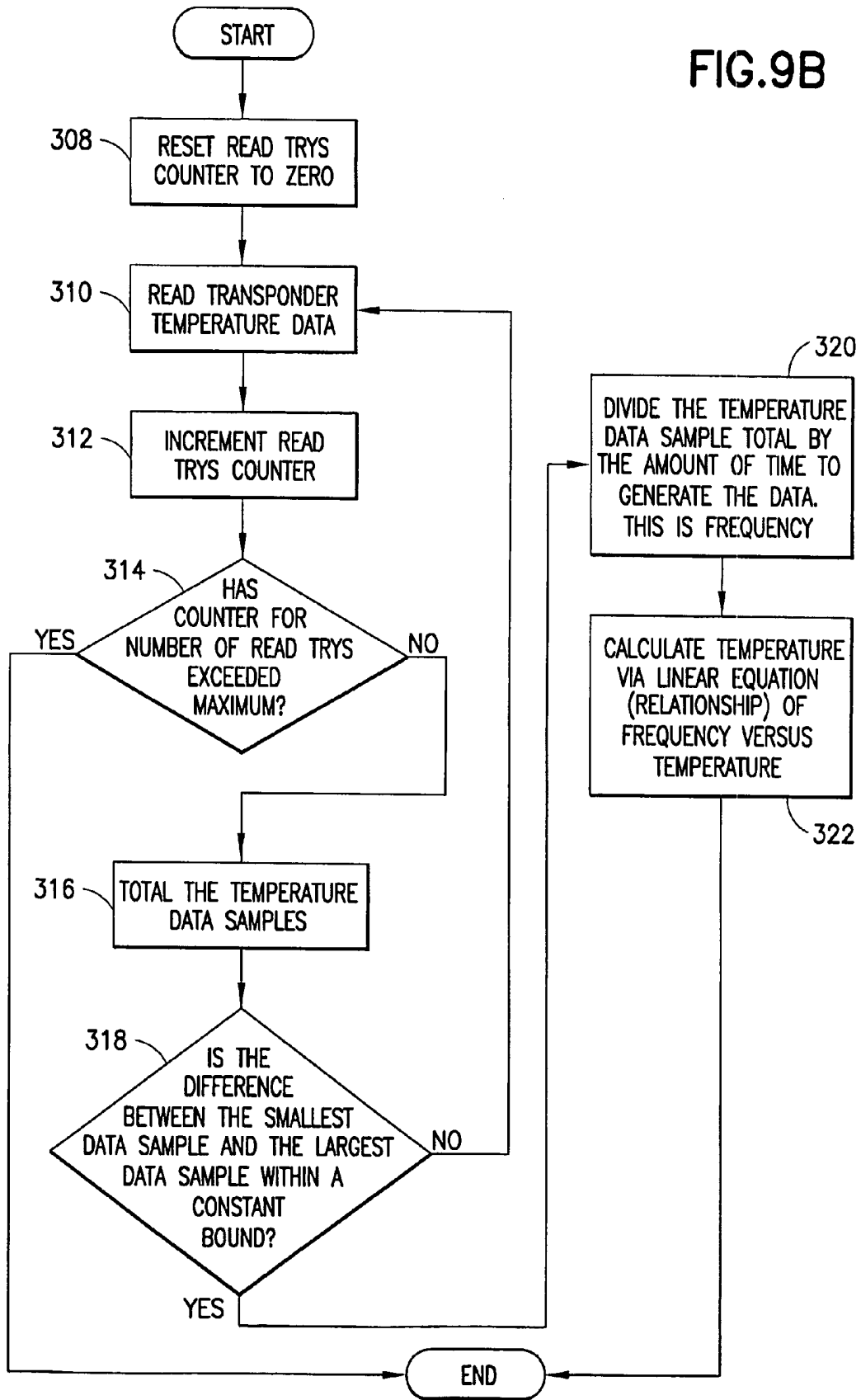
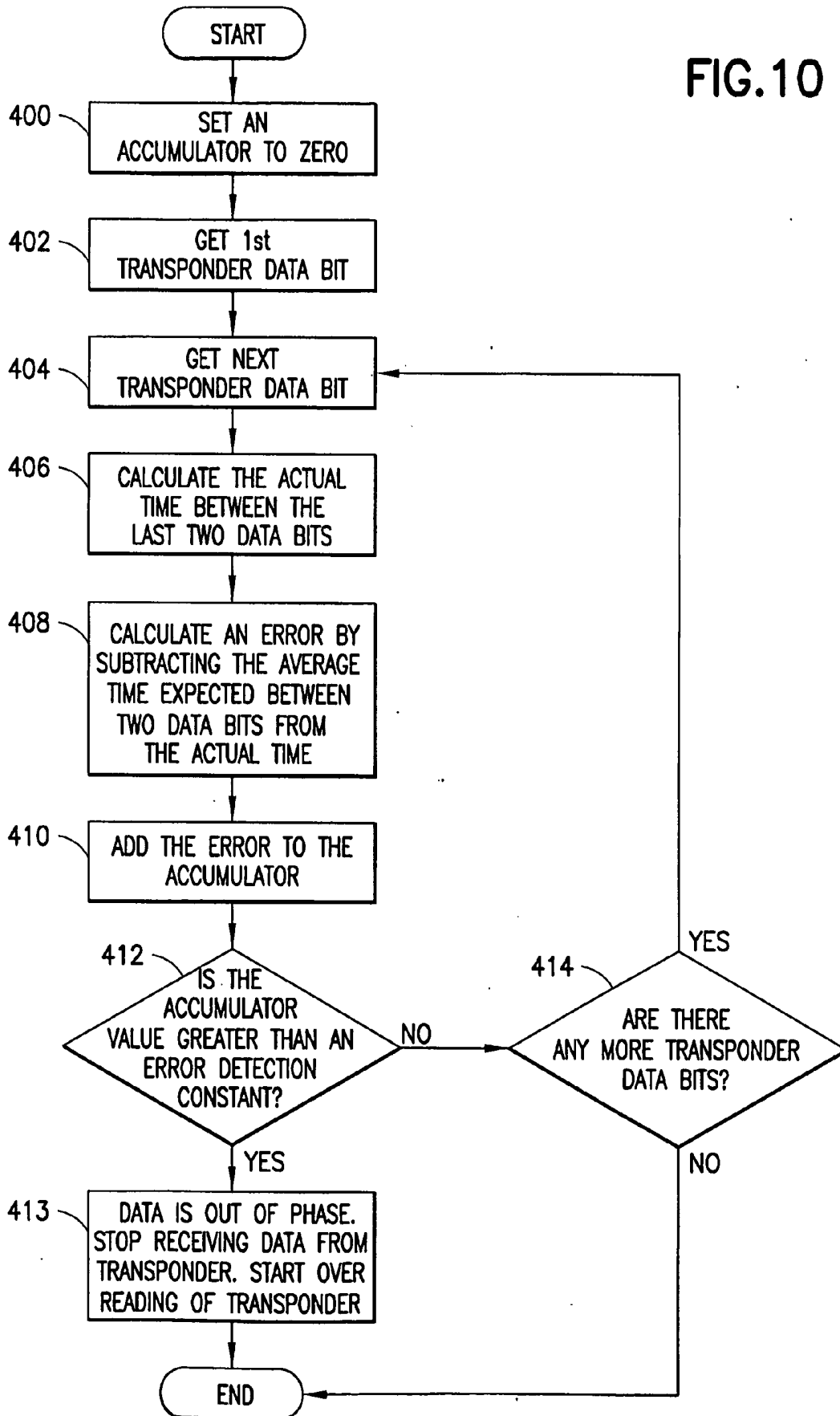


FIG. 10





**IMPLANTABLE INDUCTIVELY PROGRAMMED  
TEMPERATURE SENSING TRANSPONDER****RELATED U.S. PATENT APPLICATIONS**

[0001] The present application is a divisional application of U.S. patent application Ser. No. 09/502,696, filed on Feb. 11, 2000, which is incorporated herein by reference in its entirety.

**BACKGROUND OF THE INVENTION**

[0002] The present invention is directed to an implantable inductively programmable temperature sensing transponder, and, more particularly, to a transponder having operations which may be modified through software control

[0003] Implantable programmable temperature transponders are passive devices that are implanted under the skin of laboratory animals, by way of example, for positive animal identification. As is known in the art, conventional transponders, such as those sold by Bio Medic Data Systems, Inc. include a coil antenna coupled to an integrated circuit (IC) chip. The chip includes a memory and a thermistor. Circuitry is provided for receiving an interrogation signal, deriving power from the interrogation signal, deriving timing clocks from the interrogation signal, and controlling the memory and the thermistor to output data stored in the memory or temperature information sensed by the thermistor to the interrogator. It is also known in the art to program input data to the on-board memory of the transponder.

[0004] This prior art transponder has been satisfactory. However, it suffers from the disadvantage that the integrated circuitry required too much power for operation in the READ MODE. This resulted in the reduced read distance between the transponder and interrogator. The memory, which included an EEPROM was too small and the temperature data was required to be transmitted over the top of sixteen of the memory bits making them unusable. Although the prior art taught locking the data in the memory to preserve the integrity of the memory, the lock was permanent and could not be selectively changed by the transponder user as needed. Furthermore, in the prior art, synchronization between the transponder and interrogator has been performed utilizing a preamble of the transponder's data signal. Because the entire data signal was required to be transmitted as well as the preamble during any synchronization process, time was wasted, slowing down the overall programming and/or read cycle. Furthermore, a single temperature reading taken by the transponder was sent to the interrogator and used as the temperature. Many factors can affect the reading and recording of temperature in a transponder so that there would be fluctuations between successive temperature readings. In effect, a floating temperature value would occur reducing the precision of the temperature read. Lastly, during programming, utilizing conventional signal encoding techniques, the timing of the signal transmitted between the transponder and interrogator was critical. However, because timing was so critical, noise or other environmental factors could readily disrupt the signal, damaging the results.

[0005] Accordingly, an implantable programmable temperature transponder which overcomes the shortcomings of the prior art is desired.

**SUMMARY OF THE INVENTION**

[0006] An implantable programmable temperature transponder includes a receiver for receiving a programming signal. A memory has a plurality of addresses therein. The data being separated into two portions, a data storage portion and a lock portion, the data portion being capable of storing a plurality of subsets of bits, each subset of bits corresponding to a character. The lock portion stores a plurality of locks, each lock corresponding to a respective subset of bits corresponding to each character. An address module addresses each address within the memory. A data module receives data to be programmed and stores data in the memory at the address selected by the address module; the lock section allowing storing of data in the memory at the selected address if the corresponding lock is clear and preventing storing of data in the memory if the corresponding lock is set.

[0007] In a preferred embodiment, the implantable programmable temperature transponder includes a comparator for comparing a programming signal with a reference voltage and outputting a comparison signal in response thereto. A transmitter receives the comparison signal and outputs a first indicator signal if the received voltage is less than the reference voltage and outputs a second signal if the input voltage is greater than the reference voltage; the first signal being the inverse of the second signal for indicating to the interrogator the sufficiency of the input programming signal. The programming signal may be pulse space modulated.

[0008] In a preferred embodiment, the implantable programmable temperature transponder includes a clock generator for enabling current to be supplied to the memory during programming, turning off the current to the memory after each successive address has been addressed.

[0009] A temperature module including a thermistor is coupled to the data module. The temperature module includes a free-running counter which is continuously counting the output of the thermistor. A clock generator counts predetermined periods, the current count of the temperature module counter being latched and output to the interrogator at the end of each period. The interrogator receives a number of these counts, and determines the difference between successive counts to obtain a plurality of actual count numbers having occurred in each elapsed time period. These actual counts are then aggregated. The aggregate value of the differences is divided by the total time for obtaining the number of samples to obtain an average count per time or frequency. Knowing the thermistor's inherent relationship between frequency and temperature, the temperature corresponding to that frequency is known and is output by the interrogator as the temperature.

[0010] Accordingly, it is an object of the invention to provide an improved implantable temperature transponder.

[0011] Another object of the invention is to provide a transponder which minimizes power used during programming and reading of the transponder.

[0012] A further object of the invention is to provide a transponder which speeds up the voltage synchronization process with an interrogator.

[0013] Yet another object of the invention is to provide a transponder with expanded memory and the ability to trans-

mit temperature data separately from the data stored in memory so that all the memory addresses can be used.

[0014] Another object of the invention is to provide a more precise temperature reading.

[0015] Still another object of the invention is to provide a memory which provides varying levels of memory protection including the ability for the transponder user to selectively lock the data stored in the memory.

[0016] Still other objects and advantages of the invention will in part be obvious and will in part be apparent from the specifications and drawings.

[0017] The invention, accordingly, comprises the features of constructions, combinations of elements, combinations of steps, and arrangement of parts which will be exemplified in the construction as hereinafter set forth and the scope of the invention will be indicated in the claims.

#### BRIEF DESCRIPTION OF THE DRAWINGS

[0018] For a fuller understanding of the invention, reference is had to the following description in connection with the accompanying drawings, in which:

[0019] FIG. 1 is a block diagram of an interrogator/transponder system;

[0020] FIG. 2 is a more detailed block diagram showing the transponder control logic constructed in accordance with the invention;

[0021] FIG. 3 is a schematic diagram showing a format for the memory constructed in accordance with the invention;

[0022] FIG. 4 is a schematic diagram showing a format for the status byte of the memory format constructed in accordance with the invention;

[0023] FIG. 5 is a timing diagram of a voltage synchronization indication signal sent by the transponder to the interrogator in accordance with the invention;

[0024] FIG. 6 is a timing diagram of a programming signal output in accordance with the invention;

[0025] FIG. 7 is a schematic diagram of a format for the content of the programming signal;

[0026] FIGS. 8(A), 8(B) are flow charts showing the method for programming the transponder in accordance with the invention;

[0027] FIGS. 9(A), 9(B) are flow charts showing the method for measuring the temperature in accordance with the invention;

[0028] FIG. 10 is a flow chart showing the method for determining the integrity of the data read from the transponder; and

[0029] FIG. 11 is a circuit diagram of a clamp circuit constructed in accordance with the invention.

#### DETAILED DESCRIPTION OF THE PREFERRED EMBODIMENTS

[0030] Reference is first made to FIG. 1 in which an interrogator, generally indicated as 10 and a transponder generally indicated as 20 are shown. Interrogator 10 and

transponder 20 communicate with each other through inductive coupling as known in the art from U.S. Pat. No. 4,730,188. As will be discussed below, interrogator 10 provides a signal to transponder 20 which provides power to transponder 20, a clock signal and an operational command such as enter the PROGRAM MODE or TEMPERATURE MODE. Transponder 20 sends a return signal containing information therein to interrogator 10 as is known in the art.

[0031] Interrogator 10 includes a CPU 12 for generating command/power/clock signals (collectively interrogator signals) in response to the user inputs. These signals are input to an antenna 14 for broadcast to transponder 20.

[0032] An antenna 22 within transponder 20 receives the interrogator signal from interrogator 10 and inputs a 364 kHz signal to a rectifier 24 (FIG. 2) which receives the AC signal from the antenna 22 and rectifies the signal. The rectified signal is then passed to a control logic circuit 26 which, in response to the rectified interrogator signal will either read out data from the memory 28, program data into a memory 28, or read out temperature data from a temperature module 30. Temperature module 30 includes a thermistor 32 which changes resistance levels in response to changes in temperature which can be converted into a frequency as is known in the art, the frequency changing as a function of temperature. The temperature data and data from memory 28 are output under the control of control logic 26 through a modulator 34 for modulating the signal as known in the art to be transmitted by antenna 22 back to interrogator 10 where the data is operated upon by CPU 12 of interrogator 10.

[0033] Reference is now made to FIG. 2 in which a block diagram showing the circuitry of transponder 20, and in particular control logic 26, in greater detail is provided. The rectifier 24 includes a diode arrangement for rectifying the input signal and a clamp 23 for regulating the voltage level V<sub>ss</sub> to the transponder components of the. Clamp 23 simulates the behavior of a Zener diode. Clamp 23 includes four metal oxide semiconductor field effect transistors (MOSFETs) Q1-Q4, resistors R1-R3, and voltage connections V<sub>pos</sub> and V<sub>ss</sub>. In effect, the electronic circuit is a MOSFET Zener circuit providing IC protection to the remainder of the transponder circuitry by clamping the voltage. The MOSFET Zener clamp 23 connects V<sub>pos</sub> to the incoming positive voltage power supply and connects V<sub>ss</sub> to ground.

[0034] In clamp 23, transistors Q1 and Q4 are N-channel MOSFETs, while transistors Q2 and Q3 are P-channel MOSFETs. Transistor Q4 must be much larger in size than transistors Q1-Q3 because it must be able to pass a large amount of current from V<sub>pos</sub> to V<sub>ss</sub>. In a preferred embodiment, transistor Q4 is at least twenty times larger than the other MOSFETs.

[0035] As shown in FIG. 11, resistor R1 is connected at one end to V<sub>pos</sub> and at the other end it is connected to the gate of transistor Q1 and to resistor R2. Resistor R2 is connected at one end to the gate of transistor Q1 and resistor R1 and at its other end is connected to V<sub>ss</sub>. Resistor R3 is connected at one end to the gate of transistor Q4 and the drain of transistor Q3 and the other end is connected to V<sub>ss</sub>. The gate of transistor Q1 is connected to resistors R1, R2 while the source of transistor Q1 is connected to V<sub>ss</sub> and the drain is connected to the gates of transistors Q2, Q3 and the drain of transistor Q2. The gate of transistor Q2 is connected

to the gate of transistor Q3, the drain of transistor Q1 and its own drain. The source of transistor Q2 is connected to Vpos and the drain of transistor Q2 is connected to the drain of transistor Q1 and the gates of transistors Q2, Q3. The drain of transistor Q3 is connected to resistor R3 and the gate of transistor Q4. The drain of transistor Q4 is connected to Vpos.

[0036] During operation, resistors R1, R2 act as a voltage divider and control clamp threshold voltage. When the voltage on the gate of transistor Q1 rises, transistor Q1 will turn on, allowing current to pass through its drain and source. Transistors Q2, Q3 act as a current mirror so that whatever current is on the drain of transistor Q2 is the same amount of current on the drain of transistor Q3. With a current on the source of transistor Q3 and resistor R3, a voltage will be present on the gate of transistor Q4. The value of transistor. The value of transistor R3 determines the gain of the device. In other words, with a large value for resistor R3, the voltage on the gate of transistor Q4 rises faster than the voltages at Vpos. The value of transistor R3 then controls the speed at which the clamp acts.

[0037] As the voltage rises on the gate of transistor Q4, it will turn on, allowing current to pass through the drain and source. When transistor Q4 dumps current from Vpos to Vss, this keeps the voltage of Vpos at a constant level thereby clamping the supply voltage to the remainder of the integrated circuit, protecting the integrated circuit from a damaging over voltage condition. In a preferred embodiment transistor Q1 will start to turn on at approximately four volts and transistor Q4 will turn on and dump enough current to limit Vpos to approximately five volts.

[0038] Clamp 23 limits the supply voltage for the rest of the integrated circuit. Usually, integrated circuit devices do not need voltage limitation as integrated circuit devices are used with a controlled power source. In other words, the range of voltage that must be supplied to the chip and any regulation or limitation of power is done off chip. On the other hand, because the transponder is powered by an interrogator which provides an unknown voltage level to the interrogator, the protection from an over voltage condition is supplied on chip by the clamp.

[0039] The rectified signal serves as a master clock input to a clock generator 36. Clock generator 36 divides down the master clock signal and provides timing signals and enabling signals to a data module 40, address module 38, and memory 28.

[0040] Control logic 26 includes address module 38 for receiving signals from the clock generator and addressing an identified address within memory 28 in response to the clock generator signals. A data module 40 receives latch signals from clock generator 36, data from memory 28, temperature data from temperature module 30 and outputs data in response to these signals to a transmitter 42. Transmitter 42 transmits an output signal containing the data through modulator 34 which modulates the output signal output by transmitter 42.

[0041] A receiver 44 receives the data signal output by interrogator 10 after processing by a comparator 47 and outputs the received data to address module 38. A program control 46 receives data from memory 28 and a program bit from data module 40, an address from address module 38

and in response thereto outputs a program enable signal to clock generator 36 which in turn enables the programming of data in memory 28.

[0042] As described below, comparator 47 also acts as a voltage synchronization circuit and receives the interrogator signal and compares the interrogator signal to a reference voltage; 2.5 volts by way of example. The comparator outputs a signal in response to the received interrogator signal and outputs the signal to the transmitter 42 which, in turn, outputs the signal through modulator 34 to antenna 22 to be transmitted to interrogator 10.

[0043] As shown in FIG. 3, in a preferred embodiment, memory 28 is an EEPROM. Memory 28 is structured so as to have a status byte region 50, a temperature calibration region 52, a CRC region 54, a data region 56, and a user lock region 58. Temperature calibration region 52 includes a temperature adjustment value which is the offset between the calculated or sensed temperature sensed by temperature module 30 and the actual temperature of whatever is being monitored. The data stored in temperature calibration portion 52 is output to interrogator 10 along with temperature data from temperature module 30 and interrogator 10 through CPU 12 calculates the actual temperature as is known in the art.

[0044] CRC region 54 is an integrity check for the data stored in memory 28 as is known in the art, utilizing standard polynomial equations to compare and verify the data in memory.

[0045] Data region 56 stores user programmable information input from interrogator 10 while in PROGRAM MODE as discussed below and read from the memory during READ MODE. The data is stored as bits 57 which in combination represent characters. In a preferred embodiment, the least significant character is stored with the least significant bit of the character starting at the least significant bit in the least significant byte of data region 56 and goes upwards to the most significant bit of the character and the most significant bit in the most significant byte of data region 56. A number of bits 57 corresponds to a character. In a preferred embodiment, utilizing the compression techniques, each character can be represented by less than one byte. In a preferred embodiment, the data portion stores enough data to represent 32 characters formed as a plurality of discrete subsets of bits 57 in data region 56.

[0046] User lock region 58 is divided into bits 59. Each bit corresponds to a character stored in data region 56. Each bit represents the lock state of the respective character in the data. For example, if a zero is stored in the least significant bit of the user lock region which corresponds to the bits corresponding to the least significant bits for the least significant character stored in data region 56 then the lock is "clear". The user lock bit is "set" by storing a one in the desired bit of user lock region 58. For example, if the character data is stored as bytes, the least significant bit of the least significant byte of user lock region 58 corresponds to the least significant character in data region 56 and the most significant bit of the most significant byte corresponds to the most significant character. It should be noted that any other mapping arrangement of lock bits to character bits may be used.

[0047] As shown in FIG. 4, status byte 50 includes information for controlling the operation on memory 28.

Status byte **50** includes a mode bit **76** which causes the transponder to operate on all of its internal memory or just a portion thereof. This bit directly provides an output to the program control **46** and, in effect, is "hard wired" to automatically control the transponder circuitry. Specifically, as discussed in detail below, if mode bit **76** is clear, i.e., contains a zero therein, then the transponder will transmit or read from all of memory **28**. If mode bit **76** is a one, then transponder **20** may only read from or program into a portion of memory **28** such as the first half of memory **28**.

[**0048**] Bits **68** through **74** collectively indicate to the interrogator and transponder the type of transponder that transponder **20** is. For example, if there is an extended memory within transponder **20**, then a one may be stored in bit **74** to indicate that transponder **20** is an extended memory transponder (EMT). Bits **68**, **70**, and **72** may further identify the transponder type such as a laboratory transponder or industrial use transponder to determine a transponder data format most suitable for its intended purpose. Bits **68** through **74** are not hard wired, and therefore are not automatically input to program control **46**. Bits **68-74** may also be addressed and reprogrammed by address module **38** and data module **40** to conform transponder **20** to the user's needs.

[**0049**] An HLOCK bit **66** causes program control **46** to disable clock generator **36** in the PROGRAM MODE if the HLOCK bit is set (i.e., has a value of one). If the HLOCK is clear, i.e., has a value of zero, then programming can occur. By disabling the clock generator **36**, no data can be written to the address module **38** and data module **40** into memory **28**. This bit **66** is hard wired to program control **46** and controls programming of all of the characters in temperature calibration region **52**, CRC region **54**, data region **56**, and user lock region **58** not selective characters in data region **56** like user lock **58**. The HLOCK bit can be addressed and reprogrammed utilizing address module **38** and data module **40** as discussed below, and is used to prevent accidental or inadvertent overwriting of the data in memory **28**.

[**0050**] SEAL lock bits **62**, **64** hold two bits in combination which can act to seal transponder **20** from any future re-write, making the transponder a permanently read-only transponder. Bits **62**, **64** are also hard wired to program control **46** and cause clock generator **36** to be disabled in the PROGRAM MODE. However, unlike the HLOCK bit **66**, SEAL bits **62**, **64** are not reprogrammable once they are set. To seal the transponder, SEAL **0** should be set during a first write command and on a second write process SEAL **1** should then be set.

[**0051**] It should be noted that the format described above from least significant bit to most significant bit and the relative placement of the different memory regions is by way of example. The individual bits can be arranged in any order as long as one group of bits stores data, one group of bits is mapped to the data bits to act as a lock, and one group of bits acts to prevent programming of the data region as a whole.

[**0052**] The clamp **23** is entirely built, utilizing a CMOS Process, into the integrated circuit devices. Normally, integrated circuit devices such as clamp **23** are built using a bipolar process. A mixed process of bipolar/CMOS is not feasible in making the integrated circuit yet a Zener Diode

is still needed in the integrated circuit so that the MOSFET Zener Diode formed from the CMOS process is used instead.

#### [**0053**] Mode

[**0054**] When a continuous voltage signal is received from interrogator **10**, clock generator **36** utilizes the interrogator signal as a master clock and outputs a READ EEPROM signal to memory **28** and an INCR ADDR signal to address module **38** which causes address module **38** to sequentially latch the addresses of the memory **28** along the address bus. This causes the addressed data to be output along a DATA BUS to data module **40** where it is then output as a DATA OUT signal to transmitter **42**. Transmitter **42** then outputs the data to modulator **32** which outputs a modulated signal to interrogator **10** through antenna **22**. Clock generator **36** continuously provides a clock to address module **38** to increment the address being latched by address module **38** while in the READ MODE.

[**0055**] During the READ MODE, clock generator **36** provides a READ EEPROM signal to memory **28**. As READ EEPROM signal is input to memory **28**, memory **28** is utilizing current. However, during operation of a preferred embodiment, the READ EEPROM signal is output to memory **28** only while address module **38** latches the address in memory **28** and data is output to data module **40**. Once the data is output along the DATA BUS, the READ EEPROM signal is disabled until clock generator **36** outputs a successive INCR ADDR signal to increase the address to be addressed by the address module **38**. The READ EEPROM signal is then enabled and current is supplied to memory **28** to allow reading of data in memory **28** and this process is repeated until the READ MODE is terminated when power is removed from transponder **20**. By cutting off the current supply to memory **28**, the overall current consumed during the READ MODE is lowered. Because the memory is in EEPROM, i.e., a static memory, the data is stored even in the absence of current being supplied to memory **28**.

[**0056**] Clock generator **36** outputs a PREAMBLE ENABLE signal to transmitter **42** causing transmitter **42** to output a preamble as is known in the art. After a predetermined time period sufficient to output the preamble, clock generator disables the preamble and outputs a DATA ENABLE signal to transmitter **42** causing transmitter **42** to output the DATA OUT signal containing the data from data module **40** so that during the READ MODE, the output of transponder **20** is a preamble followed by the data read from memory **28** which has been modulated by modulator **34**. Once a complete cycle of the DATA OUT signal has been output by transmitter **42**, clock generator **36** disables the DATA ENABLE and outputs the PREAMBLE ENABLE signal.

#### [**0057**] Program Mode

[**0058**] Reference is now also made to FIGS. 6-8 in which the operation of the PROGRAM MODE is illustrated. In order to begin programming, transponder **20** is first read in the READ MODE and the data is verified using data in CRC region **54** of memory **28** in a step **100**. Transponder **20** then transmits the data stored in memory **28** as discussed above. Interrogator **10** will then power down antenna **14**, in effect turning off transponder **20**. Interrogator **10** will then formu-

late the data to be written into memory 28, i.e. programmed into status byte 50, temperature calibration region 52, CRC region 54, data region 56 or user lock region 58 in a step 102. Interrogator 10 formulates a data string corresponding to each bit of memory 28, even if that bit is not to be reprogrammed. Interrogator 10 utilizing CPU 12 will then analyze the data stored in memory 28. The interrogator will analyze status byte 50 to determine whether or not bits 62, 64 of status byte 50 are set in a step 104. If status bytes 62, 64 are set, then programming is canceled by the interrogator in a step 106.

[0059] In a step 108 it is determined whether any bits 57 in data region 56 to be overwritten (reprogrammed) has a corresponding bit 59 in user lock region 58 which is set. If so, then this indicates that the character is not to be changed unless the user lock bit 59 is cleared so writing is canceled in step 106. A separate programming signal must then be sent to clear the user lock.

[0060] If the user lock bit 59 corresponding to a character to be reprogrammed is not set then a transponder programming pass for processing all memory locations in memory 28 is performed in a step 112.

[0061] Reference is now made to FIG. 8(B). The Nth byte (or subset of bits) of data (corresponding to a character) stored in data region 56 is compared with the Nth byte of the write data in a step 114. If the bytes are the same as determined in a step 116, there is no need to reprogram memory 28 at that data region address and it is determined whether any more bytes are required to be compared in a step 124.

[0062] If the bytes are different as determined in step 116 then in a step 118 it is determined whether the voltage has been synchronized and if not, voltage synchronization is performed in a step 120. The interrogator and the transponder must first confirm that there is sufficient voltage level for the interrogator signal as received at the transponder for the transponder to properly operate. In an exemplary embodiment, this voltage level is determined to be 2.5 volts. In other words, the signal from the interrogator must produce at least 2.5 volts at the transponder in order to effectively transmit data to the transponder and the 2.5 volt threshold may be used to determine the difference between a zero signal value and a one signal value.

[0063] In order to transmit data to the transponder 20, interrogator 10 must determine what output power level will produce the reference voltage at the transponder. This relationship will change as the distance between the interrogator 10 and transponder 20 changes. Transponder 20 assists interrogator 10 in determining this power level by sending feedback in the form of transmitted data that the interrogator 10 can read. The feedback tells interrogator 10 whether the voltage at transponder 20 is presently above or below the threshold voltage.

[0064] In step 120 interrogator 10 sends a signal which powers up transponder 20. The interrogator signal is received at antenna 22 and input to comparator 47 where the interrogator signal is compared with a reference voltage REF. By way of example, if the interrogator signal is greater than the reference voltage, comparator 47 outputs a high signal. Conversely, if the received signal is less than the reference voltage, comparator 47 will output a low signal.

Comparator 47 outputs an ENCODED RCV DATA signal which is input to transmitter 42. In a preferred embodiment, transmitter 42 will output a first signal a as shown in FIG. 5 if the transponder voltage is below the reference voltage and a second signal b shown in FIG. 5 if the transponder voltage is above 2.5 volts.

[0065] If the pattern received by interrogator 10 indicates that the input voltage is above the desired threshold, i.e., signal b, interrogator 10 reduces the power output and the process is repeated until a pattern indicating below the threshold is received by the interrogator. Once signal a, which is the inverse of signal b, is output, indicating to interrogator 10 that the voltage received is below the threshold voltage after an adjustment, the power output by interrogator 10 would be increased. This process is repeated until the adjustment required from the interrogator is too fine, i.e., beyond the capabilities of the interrogator to further adjust above or below the threshold voltage. In an alternative embodiment, once an adjustment has become too fine, transponder 20 outputs a signal to interrogator 10 to discontinue adjustment.

[0066] By changing the output power level and monitoring the feedback signal, interrogator 10 can deduce the output power level that produces the threshold voltage (2.5 volts) at transponder 20. Once this threshold level is determined, interrogator 10 is able to transmit data to transponder 20 because it knows how to produce an output power that will result in a voltage greater than 2.5 volts at the transponder and conversely it knows the output power that will produce less than 2.5 volts at transponder 20. Transponder 20 translates a voltage of less than a threshold voltage as a zero logic state and a voltage greater than the threshold voltage as a one logic state. Transponder 20 powers up in the feedback mode so that interrogator 10 can quickly determine the threshold voltage transition level. If, however, interrogator 10 is not interested in programming the transponder, it can simply set a constant output power level and wait until transponder 20 switches to the READ MODE and read data from transponder 20.

[0067] Once the voltage has been synchronized in step 120 it is determined whether HLOCK bit 66 has been set in step 121. If so, then HLOCK bit 66 must be cleared to permit programming in a step 123. In step 123 a program signal is sent by interrogator 10 to clear HLOCK bit 66.

[0068] The program signal has a data format as shown in FIG. 7 in which program signal 200 has a program region 202, a data region 204, and an address region 206. The program region 202 is a single bit, in a preferred embodiment, indicating that the signal is, in fact, a program signal. The data region 204 includes the data to be programmed into memory 28 and represents a single character. In a preferred embodiment each character is one byte in length and data region 204 is made up of 8 bits, and with compression techniques each character can be represented by less than eight bits, while the data region can remain 8 bits long to program two bits for example if compressed to six bits, of a successive character. Address region 206 contains the data for indicating the address at which the data of the data region 204 is to be written and in a preferred embodiment is five bits.

[0069] As shown in FIG. 6, the actual signal transmitted by interrogator 10 which embodies the data of data signal

**200** is pulse space modulated. **FIG. 6** is a timing diagram of an exemplary signal. In prior art inductively coupled transponders, the communication between the interrogator and the transponder was heavily dependent upon the timing of the transmit and receive signals between the two. The signal in the present invention is timing independent. The signal is made up of a series of fixed or standard pulses **210**, the width or spacing between these pulses is modulated by a delay to correspond to the desired data. For example, a zero may correspond to a standard spacing between two pulses **210** while a data **1** is represented by a delayed or elongated spacing between adjacent pulses **210**. As a result, timing is no longer a factor. The end of a data transmission cycle may be indicated by remaining in a logic level for a predetermined period of time corresponding to more than the standard pulse or the value of a logic zero or logic one. This is how programming starts in a step **122**.

[**0070**] Receiver **44** receives the data as well as a transmit clock from clock generator **36**. If receiver **44** detects the leading edge transition of a pulse **210**, it then begins comparing the space between the pulses with a count dependent upon the XMIT CLK signal from clock generator **36**, for example, eight cycles of the transmit clock. If the received pulse width is less than the transmit clock, then, by way of example, the receiver will determine that the derived data is a zero and transmit that zero to the address module **38** as the RCV DATA signal along with a RCV CLK signal for clocking the data into the address module **38**. On the other hand, if the length of the width of the space is longer than the counted cycles of the transmit clock, it determines that the received data is a one and will transmit a one to address module **38** along with a RCV CLK signal for clocking the data into address module **38**. If the detected pulse has a width greater than a predetermined number of cycles, then receiver **44** determines that the data transmission has been completed and a XMIT COMPLETE signal is input to address module **38**. As the data is shifted into address module **38**, it is then shifted as RCV DATA SEQUENCE signal to data module **40** so that the first 8 bits, by way of example, corresponding to data portion **204** of the data signal are latched in data module **40**. Additionally, the program bit of program region **202** is output to program control **46** to indicate programming is to occur.

[**0071**] If interrogator **10** does not have a CPU **12** with the software capability for determining that the data has been locked by a comparison of the read data stream, programming will still be prevented by an interrogator because of program control **46**. When all of the data has been received by receiver **44**, the program bit has been received by program control **46**, program control **46** looks at the status byte **50** of memory **28** and determines whether or not the seal bits **62**, **64** of status byte **50** have been set. If seal bits **62**, **64** have been activated, program control **46** will not output a PROGRAM ENABLE signal to clock generator **36**. Clock generator **36** will not clock the address module **38** or data module **40**. Therefore, the programming cannot be forced by the interrogator.

[**0072**] If either one of seal bits **62**, **64** are clear in this embodiment, program control **46** then looks to HLOCK bit **66** which is also hard wired into program control **46**. If HLOCK bit **66** has been set then again the program control **46** will not output the PROGRAM ENABLE signal to begin programming as determined in a step **121**.

[**0073**] Because HLOCK bit **66** is reprogrammable, in step **123** program control **46** determines whether or not the address indicated by address module **38** along the address bus corresponds to the status byte **50** of memory **28**. If the address indicated by address module **38** is the status byte, program control **46** outputs a PROGRAM ENABLE signal to clock generator **36**. If the address is not the status byte, then it will not enable clock generator **36** preventing programming of any of the temperature calibration region **52**, CRC region **54**, remaining bits of the data region **56** or user lock region **58**.

[**0074**] In step **123**, interrogator **10** outputs program signal **200** containing the address of status byte **50** in address region **206** and a zero for bit **66** in data region **204**. Because the address of the programmed byte is the status byte, program control **46** outputs a PROGRAM ENABLE signal to clock generator **36**. Clock generator **36** clocks the address module along the ADDR LATCH input to clock the status byte address causing it to send a signal of the specific address of memory **28** and also outputs a LATCH DATA signal to data module **40** which causes data module **40** to shift data **204** of data signal **200** into memory **28** at the address indicated by address module **38**. This, in effect, will unlock the HLOCK bit **66** by placing a zero in HLOCK bit **66**.

[**0075**] Once HLOCK bit **66** has been cleared in step **123**, or if it was determined that HLOCK bit **66** was clear in step **121**, in a step **122** the Nth byte of write data is programmed into the transponder in a manner identical to programming the HLOCK. Program control **46**, after confirming that the HLOCK bit **66** is clear, outputs a PROGRAM ENABLE signal which causes clock generator **36** to clock address module **38** to address the desired memory address as indicated by the data stored in address region **206** of data signal **200**. The data of data region **204** latched into data module **40** is input to memory **28** at the indicated address. It is then determined in a step **124** whether there are any more bytes to compare in a step **114**.

[**0076**] If there are no more bytes to compare, then for safe keeping, although optional, the HLOCK bit **66** is programmed to be set by first determining if the bit is clear in a step **126**. If the bit is clear it is programmed to be set in step **128**. Again, programming is the same as that in step **123** only the value of the data being changed in bit **66** is different. In a step **130** it is determined whether any bytes are programmed.

[**0077**] If bytes from memory **28** have been programmed, then the transponder is again read in step **110** and the data read from the transponder is compared with the data that was to be programmed by the interrogator **10** under the control of CPU **12**. If any bytes are different, then transponder **20** would be reprogrammed to correct those differences in a step **112**. If there are no differences between the bytes of data stored as compared to the bytes of data intended to be programmed, then programming is finished in a step **132**, which would be arrived at by determining that in a second go around, no bytes were again programmed in step **130**.

[**0078**] If, in step **108** it is determined that one or more user lock bits **59** corresponding to a character is set, a separate programming signal must be sent to clear the user lock. User lock region **58** is programmed to clear the desired bits. This programming is done in a manner similar to that for pro-

programming the HLOCK bit including resetting user lock bit 59 after programming the corresponding character bits 57 if desired.

[0079] During programming, clock generator 36 outputs a PROGRAM EEPROM signal to memory 28. This signal enables current to memory 28 to allow it to be operated on. Clock generator 36 counts from the time PROGRAM ENABLE enables the clock generator 36 and for a predetermined period sufficient to shift data from data module 40 into the EEPROM of memory 28. Once the predetermined count has been reached, PROGRAM EEPROM is disabled so that no current is provided to the memory, further conserving power.

[0080] Program control 46 also reads mode bit 76 of status byte 50. If mode bit 76 is set for example, only half or 16 characters of data region 56 can be accessed either for programming or reading. Mode bit 76 causes program control 46 to output a MODE signal to address module 38 which disables address module 38 from addressing or latching data in the second half of memory 28. As a result, the transponder will act as if it has a memory half the size. This is beneficial where a study utilizing smaller transponders can be mimicked so that a single transponder can mimic the style of an old study or a new study utilizing the programmable implantable transponder of the invention.

[0081] Lastly, if the data in data region 56 is to be permanently maintained, then seal bits 62, 64 may be set by programming ones into them. This is accomplished by first programming SEAL 0, then programming SEAL 1 in a way as described above with programming the HLOCK bit. In this way a programmable lock bit is provided. It should be noted that two bits are used as the permanent seal by way of example, but the seal bit could be one bit, two bits, three bits or more.

[0082] Temperature Mode

[0083] During the TEMPERATURE MODE, the transponder is first read in a step 300 as shown in FIGS. 9(A), 9(B). In a step 302, voltage synchronization is performed to make sure that an appropriate voltage level temperature command will be sent and received. The voltage synchronization is that described above utilizing comparator 47. A temperature command is sent by interrogator 10 in a step 304 as a pulse space modulated signal as shown in FIG. 6. The signal may be of any length, but in the preferred embodiment, it is five bits and it is received by antenna 22 of transponder 20 and input to receiver 44.

[0084] A temperature module 30 is coupled to a thermistor 32. Thermistor 32 changes resistance as a function of temperature and outputs a frequency signal which changes with resistance. Temperature module 30 continuously counts the output of thermistor 32 and outputs the current count as a TEMP DATA signal to data module 40.

[0085] In step 306 receiver 44 receives the temperature command and outputs XMIT COMPLETE signal to address module 38 upon completion of the temperature command. The XMIT COMPLETE signal is also output to clock generator 36 and program control 46. Clock generator 36 outputs a LATCH TEMP signal to data module 40 on a periodic basis. At each occurrence of the LATCH TEMP signal, data module 40 outputs the current count of the TEMP DATA signal as a DATA OUT signal to transmitter

42. Transmitter 42 then outputs the latched count as the XMIT OUT signal to modulator 34 which modulates the signal and outputs the temperature count from antenna 22 to interrogator 10.

[0086] Because the frequency monitored by temperature module 30 varies with temperature, the count rate will vary with temperature. Clock generator 36, by outputting a consistent periodic LATCH TEMP signal at a predetermined interval, is utilized to standardize the sampling. This is done to reflect the changes in count as a function in temperature and not of time. In effect, each temperature sampling is the difference between successive latched counts.

[0087] Reference is made to FIG. 9B in which the steps 306 for reading transponder temperature data are provided in greater detail. CPU 12 of interrogator 10 has as part of its software a read tries counter. In step 308, the read tries counter is set to zero. In step 310, the temperature data is read as described above i.e. reading a plurality of latched samples. Interrogator 10 outputs a read command signal which results in interrogator 10 receiving a predetermined number of latched counts from temperature module 30. The read tries counter is incremented in a step 312. It is determined whether or not the counter for number of read tries exceeds a predetermined maximum in a step 314. If the number of tries has been exceeded, then this is an indicator that the temperature readings are inaccurate, and the temperature reading has been unsuccessful (step 324) because it is requiring too many tries to obtain an accurate reading and the process is begun again in a step 300 in which transponder data is read.

[0088] If the counter for the number of read tries has not exceeded the maximum, then the read has been successful and the temperature data samples are totaled in step 316. In step 318, as an integrity check, it is determined whether the difference between the count for the smallest data sample and the count for the largest data sample is within a predetermined range. If it falls outside of the range, then the variation is too great and the process is begun again at a step 310.

[0089] If the value is within the range, the total data sample temperature from step 316 is then divided by the amount of time required to generate all of the data in a step 320. This is the frequency output by the thermistor. Knowing the relationship between frequency and temperature for the given thermistor, the temperature is calculated in a step 322. In a step 324, it is determined whether the transponder read was successful. If not, the process is begun again at step 300. If the read was successful, then for verification a second read is taken in a step 326 by repeating steps 308-322. In a step 328 it is determined whether the second read was successful. If not, the process is restarted at step 300. If successful then the two counts are compared in a step 330. If they are equal, this temperature is displayed by interrogator 10. If they are not equal then the process is restarted at step 300.

[0090] Integrity Check

[0091] In one embodiment of the invention, the interrogator performs an integrity check of the data being read from transponder 20. Because transponder 20 utilizes the interrogator signal from interrogator 10 as a master clock, interrogator 10 knows the length of time between bits of data transmitted to interrogator 10 by transponder 20. CPU 12 of

interrogator **10** includes an accumulator. In a step **400**, the accumulator is set to zero. In a step **402**, the first transponder bit is received. In a step **404**, the next transponder data bit is received. In a step **406** utilizing an on-board clock, interrogator **10** calculates the actual time elapsed between the last successive two data bits. In a step **408**, the calculated time in a step **406** is subtracted from the average time expected between two bits. This number is an error number. In a step **410**, the error number is added to the accumulator. In a step **412**, it is determined whether the accumulator value is greater than an error detection constant. If the value is greater than an error detection constant, than this means the data is out of phase, and in a step **413** interrogator **10** stops receiving data from the transponder **20** and starts the read process over. If in step **412** the detection constant is still within acceptable tolerances, it is determined in a step **414** whether there are any more incoming transponder data bits. If there are more incoming bits, then the process is repeated at a step **404**. If there are no more bits, then the received data is valid and the process is ended.

[0092] By utilizing the method, it is no longer required to wait until the very end of the read cycle to determine whether or not a bad read has occurred. Time is saved by arriving at an accurate read more quickly providing a benefit to the user.

[0093] It will thus be seen that the objects set forth above, among those made apparent from the preceding description, are efficiently attained and, since certain changes may be made in carrying out the above method in the construction(s) set forth without departing from the spirit and scope of the invention, it is intended that all matter contained in the above description and shown in the accompanying drawings shall be interpreted as illustrative and not in a limiting sense.

[0094] It is also to be understood that the following claims are intended to cover all of the generic and specific features of the invention herein described and all statements of the scope of the invention which, as a matter of language, might be said to fall therebetween.

What is claimed is:

1. A method for determining temperature from a transponder utilizing a thermistor and a running counter comprising the steps of:

providing a running count which varies as a function of temperature;

latching the count at predetermined time intervals;

determining the difference between the values of successive latched counts;

aggregating the differences;

determining the total elapsed time between a first latched count and a last latched count;

dividing the aggregate by the total time to obtain a frequency; and

converting the frequency to a temperature based upon the temperature frequency characteristics of the thermistor.

2. The method of claim 1, comprising the step of determining the difference between the smallest difference obtained and the largest difference obtained and determining whether or not the second difference falls within a range;

beginning the process over if the difference does not fall within the range.

3. The method of claim 2, further comprising repeating the steps to obtain a second temperature value;

comparing a first temperature value to the second temperature value; and

outputting the temperature as a temperature value if the first temperature value is equal to the second temperature value.

\* \* \* \* \*

专利名称(译)	可植入的电感式编程温度传感应答器		
公开(公告)号	<a href="#">US20050169345A1</a>	公开(公告)日	2005-08-04
申请号	US11/083770	申请日	2005-03-18
[标]申请(专利权)人(译)	URBAS DONALD J ELLWOOD DAVID WEDDINGTON ERIC B		
申请(专利权)人(译)	URBAS唐纳德· ELLWOOD DAVID WEDDINGTON ERIC B.		
当前申请(专利权)人(译)	BIO MEDIC数据系统 , INC.		
[标]发明人	URBAS DONALD J ELLWOOD DAVID WEDDINGTON ERIC B		
发明人	URBAS, DONALD J. ELLWOOD, DAVID WEDDINGTON, ERIC B.		
IPC分类号	A01K11/00 A61B5/00 G01K1/02 G06K17/00 G06K19/07 G08C17/00 H04B1/59 H04B5/02 G01K1/00		
CPC分类号	A01K11/006 A61B5/0008 A61B5/0031 G06K19/0723 G01K13/002 G06K19/0717 G01K1/024		
其他公开文献	US7052178		
外部链接	<a href="#">Espacenet</a> <a href="#">USPTO</a>		

摘要(译)

利用热敏电阻和运行计数器从应答器确定温度的方法包括提供随温度变化的运行计数;以预定的时间间隔锁定计数;确定连续锁存计数值之间的差异;汇总差异;确定第一次锁存计数和最后一次锁存计数之间的总经过时间;将总和除以获得频率的总时间;根据热敏电阻的温度频率特性将频率转换为温度。

