



US009390229B1

(12) **United States Patent**
Kahn et al.

(10) **Patent No.:** **US 9,390,229 B1**
(45) **Date of Patent:** **Jul. 12, 2016**

(54) **METHOD AND APPARATUS FOR A HEALTH PHONE**

4,700,369 A 10/1987 Siegal et al.
4,776,323 A 10/1988 Spector
5,313,060 A 5/1994 Gast et al.
5,386,210 A 1/1995 Lee
5,430,480 A 7/1995 Allen et al.
5,446,725 A 8/1995 Ishiwatari
5,446,775 A 8/1995 Wright et al.

(75) Inventors: **Philippe Richard Kahn**, Santa Cruz, CA (US); **Arthur Kinsolving**, Santa Cruz, CA (US)

(Continued)

(73) Assignee: **DP TECHNOLOGIES, INC.**, Scotts Valley, CA (US)

FOREIGN PATENT DOCUMENTS

(*) Notice: Subject to any disclaimer, the term of this patent is extended or adjusted under 35 U.S.C. 154(b) by 80 days.

EP 1 104 143 5/2001
EP 0 833 537 7/2002

(Continued)

(21) Appl. No.: **11/740,884**

OTHER PUBLICATIONS

(22) Filed: **Apr. 26, 2007**

Related U.S. Application Data

“Access and Terminals (AT); Multimedia Message Service (MMS) for PSTN/ISDN; Multimedia Message Communication Between a Fixed Network Multimedia Message Terminal Equipment and a Multimedia Message Service Centre,” ETSI AT-F Rapporteur Meeting, Feb. 4-6, 2003, Gothenburg, DES/AT-030023 V0.0.1 (Mar. 2003).

(Continued)

(60) Provisional application No. 60/795,398, filed on Apr. 26, 2006.

(51) **Int. Cl.**

A61B 5/00 (2006.01)
G06F 19/00 (2011.01)
A63B 22/02 (2006.01)
A63B 22/04 (2006.01)

Primary Examiner — Gary Jackson

Assistant Examiner — Shirley Jian

(52) **U.S. Cl.**

CPC **G06F 19/34** (2013.01); **G06F 19/3456** (2013.01); **A63B 22/02** (2013.01); **A63B 22/04** (2013.01)

(74) *Attorney, Agent, or Firm* — HIPLegal LLP; Judith Szepesi

(58) **Field of Classification Search**

CPC A63B 22/02; A63B 22/04; A63B 23/0458; A63B 2022/0069; G06F 19/34; G06F 19/3456; G06F 19/3475–19/3481
USPC 600/300; 4/300
See application file for complete search history.

(57) **ABSTRACT**

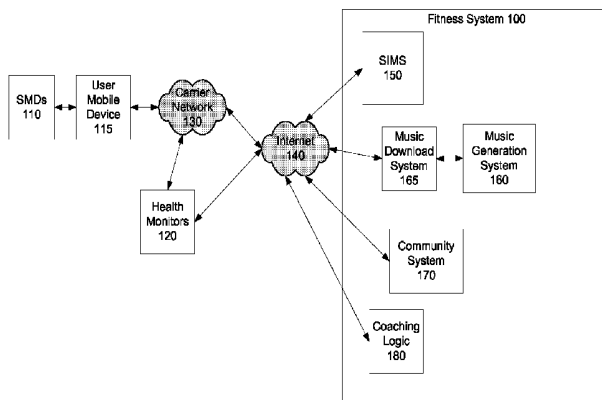
A method and apparatus providing a health phone utilizing a pedometer or accelerometer incorporated into a cellular telephone. The system is designed to receive activity data from the pedometer or accelerometer, and communicate the activity data to a remote server, the cellular telephone further designed to receive suggestions from the server, the suggestions generated based on the activity data received from the cellular telephone.

(56) **References Cited**

U.S. PATENT DOCUMENTS

4,285,041 A 8/1981 Smith
4,571,680 A 2/1986 Wu
4,578,769 A 3/1986 Frederick

20 Claims, 15 Drawing Sheets



(56)

References Cited

U.S. PATENT DOCUMENTS

5,454,114	A	9/1995	Yach et al.	7,072,789	B2	7/2006	Vock et al.
5,485,402	A	1/1996	Smith et al.	7,092,846	B2	8/2006	Vock et al.
5,506,987	A	4/1996	Abramson et al.	7,096,619	B2	8/2006	Jackson et al.
5,515,419	A	5/1996	Sheffer	7,148,797	B2	12/2006	Albert
5,583,776	A	12/1996	Levi et al.	7,148,879	B2	12/2006	Amento et al.
5,593,431	A	1/1997	Sheldon	7,149,964	B1	12/2006	Cottrille et al.
5,654,619	A	8/1997	Iwashita	7,155,507	B2	12/2006	Hirano et al.
5,703,786	A	* 12/1997	Conkright 700/244	7,158,912	B2	1/2007	Vock et al.
5,737,439	A	4/1998	Lapsley et al.	7,169,084	B2	1/2007	Tsuji
5,771,001	A	6/1998	Cobb	7,171,222	B2	1/2007	Fostick
5,778,882	A	7/1998	Raymond et al.	7,171,331	B2	1/2007	Vock et al.
5,911,065	A	6/1999	Williams et al.	7,173,604	B2	2/2007	Marvit et al.
5,955,667	A	9/1999	Fyfe	7,176,886	B2	2/2007	Marvit et al.
5,955,871	A	* 9/1999	Nguyen 323/282	7,176,887	B2	2/2007	Marvit et al.
5,960,085	A	9/1999	de la Huerga	7,176,888	B2	2/2007	Marvit et al.
5,976,083	A	11/1999	Richardson et al.	7,177,684	B1	2/2007	Kroll et al.
6,013,007	A	* 1/2000	Root et al. 482/8	7,180,500	B2	2/2007	Marvit et al.
6,061,456	A	5/2000	Andrea et al.	7,180,501	B2	2/2007	Marvit et al.
6,122,595	A	9/2000	Varley et al.	7,180,502	B2	2/2007	Marvit et al.
6,135,951	A	10/2000	Richardson et al.	7,200,517	B2	4/2007	Darley et al.
6,145,389	A	11/2000	Ebeling et al.	7,212,230	B2	5/2007	Stavely
6,246,321	B1	6/2001	Rechsteiner et al.	7,212,943	B2	5/2007	Aoshima et al.
6,282,496	B1	8/2001	Chowdhary	7,220,220	B2	5/2007	Stubbs et al.
6,336,891	B1	* 1/2002	Fedrigon et al. 482/8	7,245,725	B1	7/2007	Beard
6,353,449	B1	3/2002	Gregg et al.	7,254,516	B2*	8/2007	Case et al. 702/182
6,369,794	B1	4/2002	Sakurai et al.	7,280,096	B2	10/2007	Marvit et al.
6,396,883	B2	5/2002	Yang et al.	7,280,849	B1	10/2007	Bailey
6,408,330	B1	6/2002	de la Huerga	7,297,088	B2	11/2007	Tsuji
6,428,490	B1	8/2002	Kramer et al.	7,301,526	B2	11/2007	Marvit et al.
6,470,147	B1	10/2002	Imada	7,301,527	B2	11/2007	Marvit et al.
6,478,736	B1	* 11/2002	Mault 600/300	7,301,528	B2	11/2007	Marvit et al.
6,493,652	B1	12/2002	Ohlenbusch et al.	7,301,529	B2	11/2007	Marvit et al.
6,496,695	B1	12/2002	Kouji et al.	7,305,323	B2	12/2007	Skvortsov et al.
6,513,381	B2	2/2003	Fyfe et al.	7,328,611	B2	2/2008	Klees et al.
6,522,266	B1	2/2003	Soehren et al.	7,334,472	B2	2/2008	Seo et al.
6,529,144	B1	3/2003	Nilsen et al.	7,353,112	B2	4/2008	Choi et al.
6,532,419	B1	3/2003	Begin et al.	7,365,735	B2	4/2008	Reinhardt et al.
6,539,336	B1	3/2003	Vock et al.	7,365,736	B2	4/2008	Marvit et al.
6,595,929	B2*	7/2003	Stivoric et al. 600/549	7,365,737	B2	4/2008	Marvit et al.
6,601,016	B1*	7/2003	Brown et al. 702/182	7,379,999	B1	5/2008	Zhou et al.
6,607,493	B2	8/2003	Song	7,387,611	B2	6/2008	Inoue et al.
6,611,789	B1	8/2003	Darley	7,397,357	B2	7/2008	Krumm et al.
6,628,898	B2	9/2003	Endo	7,451,056	B2	11/2008	Flentov et al.
6,634,992	B1*	10/2003	Ogawa 482/8	7,457,719	B1	11/2008	Kahn et al.
6,665,802	B1	12/2003	Ober	7,457,872	B2	11/2008	Aton et al.
6,672,991	B2	1/2004	O'Malley	7,463,997	B2	12/2008	Pasolini et al.
6,685,480	B2	2/2004	Nishimoto et al.	7,467,060	B2	12/2008	Kulach et al.
6,700,499	B2	3/2004	Kubo et al.	7,502,643	B2*	3/2009	Farrington et al. 600/509
6,731,958	B1	5/2004	Shirai	7,512,515	B2	3/2009	Vock et al.
6,766,176	B1	7/2004	Gupta et al.	7,526,402	B2	4/2009	Tenenhaus et al.
6,771,250	B1	8/2004	Oh	7,608,050	B2	10/2009	Sugg
6,786,877	B2	9/2004	Foxlin	7,640,804	B2	1/2010	Daumer et al.
6,788,980	B1	9/2004	Johnson	7,647,196	B2	1/2010	Kahn et al.
6,790,178	B1*	9/2004	Mault et al. 600/300	7,653,508	B1	1/2010	Kahn et al.
6,813,582	B2	11/2004	Levi et al.	7,664,657	B1	2/2010	Letzt et al.
6,823,036	B1	11/2004	Chen	7,689,107	B2	3/2010	Enomoto
6,826,477	B2	11/2004	Ladetto et al.	7,705,884	B2	4/2010	Pinto et al.
6,836,744	B1	12/2004	Asphahani et al.	7,736,272	B2*	6/2010	Martens 482/8
6,881,191	B2	4/2005	Oakley et al.	7,752,011	B2	7/2010	Niva et al.
6,885,971	B2	4/2005	Vock et al.	7,753,861	B1	7/2010	Kahn et al.
6,895,425	B1	5/2005	Kadyk et al.	7,765,553	B2	7/2010	Douceur et al.
6,898,550	B1	5/2005	Blackadar et al.	7,774,156	B2	8/2010	Niva et al.
6,928,382	B2	8/2005	Hong et al.	7,788,059	B1	8/2010	Kahn et al.
6,941,239	B2	9/2005	Unuma et al.	7,840,346	B2*	11/2010	Huhtala et al. 701/439
6,959,259	B2	10/2005	Vock et al.	7,857,772	B2	12/2010	Bouvier et al.
6,975,959	B2	12/2005	Dietrich et al.	7,881,902	B1	2/2011	Kahn et al.
6,997,852	B2*	2/2006	Watterson et al. 482/1	7,892,080	B1	2/2011	Dahl
7,002,553	B2	2/2006	Shkolnikov	7,987,070	B2	7/2011	Kahn et al.
7,010,332	B1	3/2006	Irvin et al.	8,187,182	B2	5/2012	Kahn et al.
7,020,487	B2	3/2006	Kimata	8,275,635	B2*	9/2012	Stivoric et al. 705/3
7,027,087	B2	4/2006	Nozaki et al.	8,398,546	B2*	3/2013	Pacione et al. 600/300
7,028,547	B2	4/2006	Shiratori et al.	8,562,489	B2*	10/2013	Burton et al. 482/9
7,042,509	B2	5/2006	Onuki	8,790,279	B2*	7/2014	Brunner 600/595
7,054,784	B2	5/2006	Flentov et al.	2001/0047488	A1	11/2001	Verplaetse et al.
7,057,551	B1	6/2006	Vogt	2002/0006284	A1	1/2002	Kim
				2002/0022551	A1*	2/2002	Watterson et al. 482/8
				2002/0023654	A1	2/2002	Webb
				2002/0027164	A1*	3/2002	Mault et al. 235/462.46
				2002/0042830	A1	4/2002	Bose et al.

(56)

References Cited

U.S. PATENT DOCUMENTS

2002/0044634	A1	4/2002	Rooke et al.	2005/0131736	A1	6/2005	Nelson et al.
2002/0054214	A1	5/2002	Yoshikawa	2005/0141522	A1	6/2005	Kadar et al.
2002/0089425	A1	7/2002	Kubo et al.	2005/0143106	A1	6/2005	Chan et al.
2002/0109600	A1*	8/2002	Mault et al. 340/573.1	2005/0146431	A1	7/2005	Hastings et al.
2002/0118121	A1	8/2002	Lehrman et al.	2005/0157181	A1	7/2005	Kawahara et al.
2002/0122543	A1	9/2002	Rowen	2005/0165719	A1	7/2005	Greenspan et al.
2002/0138017	A1	9/2002	Bui et al.	2005/0168587	A1	8/2005	Sato et al.
2002/0142887	A1	10/2002	O'Malley	2005/0182824	A1	8/2005	Cotte
2002/0150302	A1	10/2002	McCarthy et al.	2005/0183086	A1	8/2005	Abe et al.
2002/0151810	A1	10/2002	Wong et al.	2005/0202934	A1	9/2005	Olrik et al.
2002/0173295	A1	11/2002	Nykanen et al.	2005/0203430	A1	9/2005	Williams et al.
2002/0190947	A1	12/2002	Feinstein	2005/0210300	A1*	9/2005	Song et al. 713/300
2003/0018430	A1	1/2003	Ladetto et al.	2005/0212751	A1	9/2005	Marvit et al.
2003/0033411	A1	2/2003	Kavoori et al.	2005/0212752	A1	9/2005	Marvit et al.
2003/0048218	A1	3/2003	Milnes et al.	2005/0212753	A1	9/2005	Marvit et al.
2003/0083596	A1	5/2003	Kramer et al.	2005/0212760	A1	9/2005	Marvit et al.
2003/0093187	A1	5/2003	Walker et al.	2005/0216403	A1	9/2005	Tam et al.
2003/0101260	A1	5/2003	Dacier et al.	2005/0222801	A1	10/2005	Wulff et al.
2003/0109258	A1	6/2003	Mantjarvi et al.	2005/0232388	A1	10/2005	Tsuji
2003/0139692	A1	7/2003	Barrey et al.	2005/0232404	A1	10/2005	Gaskill
2003/0139908	A1	7/2003	Wegerich et al.	2005/0234676	A1	10/2005	Shibayama
2003/0149526	A1	8/2003	Zhou et al.	2005/0235058	A1	10/2005	Rackus et al.
2003/0151672	A1	8/2003	Robins et al.	2005/0238132	A1	10/2005	Tsuji
2003/0187683	A1*	10/2003	Kirchhoff et al. 705/1	2005/0240375	A1	10/2005	Sugai
2003/0208110	A1*	11/2003	Mault et al. 600/300	2005/0243178	A1	11/2005	McConica
2003/0208113	A1*	11/2003	Mault et al. 600/316	2005/0245988	A1	11/2005	Miesel
2003/0227487	A1	12/2003	Hugh	2005/0248718	A1	11/2005	Howell et al.
2003/0236625	A1	12/2003	Brown et al.	2005/0256414	A1	11/2005	Kettunen et al.
2004/0017300	A1	1/2004	Kotzin et al.	2005/0258938	A1	11/2005	Moulson
2004/0024846	A1	2/2004	Randall et al.	2005/0262237	A1	11/2005	Fulton et al.
2004/0043760	A1	3/2004	Rosenfeld et al.	2005/0281289	A1	12/2005	Huang et al.
2004/0044493	A1	3/2004	Coulthard	2006/0009243	A1	1/2006	Dahan et al.
2004/0047498	A1	3/2004	Mulet-Parada et al.	2006/0017692	A1	1/2006	Wehrenberg et al.
2004/0078219	A1	4/2004	Kaylor et al.	2006/0020177	A1	1/2006	Seo et al.
2004/0078220	A1	4/2004	Jackson	2006/0029284	A1	2/2006	Stewart
2004/0081441	A1	4/2004	Sato et al.	2006/0040793	A1*	2/2006	Martens 482/8
2004/0106958	A1	6/2004	Mathis et al.	2006/0063980	A1	3/2006	Hwang et al.
2004/0122294	A1	6/2004	Hatlestad et al.	2006/0064276	A1	3/2006	Ren et al.
2004/0122295	A1	6/2004	Hatlestad et al.	2006/0080551	A1	4/2006	Mantjarvi et al.
2004/0122296	A1	6/2004	Hatlestad et al.	2006/0090088	A1	4/2006	Choi et al.
2004/0122297	A1	6/2004	Stahmann et al.	2006/0090161	A1	4/2006	Bodas et al.
2004/0122333	A1	6/2004	Nissila	2006/0098097	A1	5/2006	Wach et al.
2004/0122484	A1	6/2004	Hatlestad et al.	2006/0100546	A1	5/2006	Silk
2004/0122485	A1	6/2004	Stahmann et al.	2006/0109113	A1	5/2006	Reyes et al.
2004/0122486	A1	6/2004	Stahmann et al.	2006/0136173	A1*	6/2006	Case et al. 702/182
2004/0122487	A1	6/2004	Hatlestad et al.	2006/0140422	A1	6/2006	Zurek et al.
2004/0125073	A1	7/2004	Potter et al.	2006/0149516	A1	7/2006	Bond et al.
2004/0130628	A1	7/2004	Stavely	2006/0154642	A1	7/2006	Scannell, Jr.
2004/0135898	A1	7/2004	Zador	2006/0161377	A1	7/2006	Rakkola et al.
2004/0146048	A1	7/2004	Cotte	2006/0161459	A9	7/2006	Rosenfeld et al.
2004/0148340	A1	7/2004	Cotte	2006/0167387	A1	7/2006	Buchholz et al.
2004/0148341	A1	7/2004	Cotte	2006/0167647	A1	7/2006	Krumm et al.
2004/0148342	A1	7/2004	Cotte	2006/0167943	A1	7/2006	Rosenberg
2004/0148351	A1	7/2004	Cotte	2006/0172706	A1	8/2006	Griffin et al.
2004/0176067	A1	9/2004	Lakhani et al.	2006/0174685	A1	8/2006	Skvortsov et al.
2004/0185821	A1	9/2004	Yuasa	2006/0201964	A1	9/2006	DiPerna et al.
2004/0219910	A1*	11/2004	Beckers 455/422.1	2006/0204214	A1	9/2006	Shah et al.
2004/0225467	A1	11/2004	Vock et al.	2006/0206258	A1	9/2006	Brooks
2004/0236500	A1	11/2004	Choi et al.	2006/0223547	A1	10/2006	Chin et al.
2004/0242202	A1	12/2004	Torvinen	2006/0249683	A1	11/2006	Goldberg et al.
2004/0247030	A1	12/2004	Wiethoff	2006/0256082	A1	11/2006	Cho et al.
2004/0259494	A1	12/2004	Mazar	2006/0257042	A1	11/2006	Ofek et al.
2005/0015768	A1	1/2005	Moore	2006/0259268	A1	11/2006	Vock et al.
2005/0027567	A1	2/2005	Taha	2006/0284979	A1	12/2006	Clarkson
2005/0033200	A1	2/2005	Soehren et al.	2006/0288781	A1	12/2006	Daumer et al.
2005/0038691	A1	2/2005	Babu	2006/0289819	A1	12/2006	Parsons et al.
2005/0048945	A1	3/2005	Porter	2007/0004451	A1	1/2007	Anderson
2005/0048955	A1	3/2005	Ring	2007/0005988	A1	1/2007	Zhang et al.
2005/0078197	A1	4/2005	Gonzales	2007/0017136	A1	1/2007	Mosher et al.
2005/0079873	A1	4/2005	Caspi et al.	2007/0024441	A1	2/2007	Kahn et al.
2005/0101841	A9	5/2005	Kaylor et al.	2007/0037605	A1	2/2007	Logan et al.
2005/0102167	A1	5/2005	Kapoor	2007/0038364	A1	2/2007	Lee et al.
2005/0107944	A1	5/2005	Hovestadt et al.	2007/0040892	A1	2/2007	Aoki et al.
2005/0113649	A1*	5/2005	Bergantino 600/300	2007/0050157	A1	3/2007	Kahn et al.
2005/0113650	A1	5/2005	Pacione et al.	2007/0061105	A1	3/2007	Darley et al.
				2007/0063850	A1	3/2007	Devaul et al.
				2007/0067094	A1	3/2007	Park et al.
				2007/0073482	A1	3/2007	Churchill et al.
				2007/0075127	A1	4/2007	Rosenberg

(56)

References Cited

U.S. PATENT DOCUMENTS

2007/0075965 A1 4/2007 Huppi et al.
 2007/0082789 A1 4/2007 Nissila et al.
 2007/0104479 A1 5/2007 Machida
 2007/0106991 A1 5/2007 Yoo
 2007/0125852 A1 6/2007 Rosenberg
 2007/0130582 A1 6/2007 Chang et al.
 2007/0142715 A1 6/2007 Banet et al.
 2007/0143068 A1 6/2007 Pasolini et al.
 2007/0145680 A1 6/2007 Rosenberg
 2007/0150136 A1 6/2007 Doll et al.
 2007/0156364 A1 7/2007 Rothkopf
 2007/0161410 A1 7/2007 Huang et al.
 2007/0165790 A1 7/2007 Taori
 2007/0169126 A1 7/2007 Todoroki et al.
 2007/0176898 A1 8/2007 Suh
 2007/0192483 A1 8/2007 Rezvani et al.
 2007/0208531 A1 9/2007 Darley et al.
 2007/0208544 A1 9/2007 Kulach et al.
 2007/0213126 A1 9/2007 Deutsch et al.
 2007/0233788 A1 10/2007 Bender
 2007/0239399 A1 10/2007 Shyenblat et al.
 2007/0250261 A1 10/2007 Soehren
 2007/0259685 A1 11/2007 Engblom et al.
 2007/0259716 A1 11/2007 Mattice et al.
 2007/0259717 A1 11/2007 Mattice et al.
 2007/0260418 A1 11/2007 Ladetto et al.
 2007/0260482 A1 11/2007 Nurmela et al.
 2007/0263995 A1 11/2007 Park et al.
 2007/0281762 A1 12/2007 Barros et al.
 2007/0296696 A1 12/2007 Nurmi
 2008/0005738 A1 1/2008 Imai et al.
 2008/0030586 A1 2/2008 Helbing et al.
 2008/0046888 A1 2/2008 Appaji
 2008/0052716 A1 2/2008 Theurer
 2008/0072014 A1 3/2008 Krishnan et al.
 2008/0082994 A1 4/2008 Ito et al.
 2008/0102785 A1 5/2008 Childress et al.
 2008/0109158 A1* 5/2008 Huhtala et al. 701/208
 2008/0113689 A1 5/2008 Bailey
 2008/0114538 A1* 5/2008 Lindroos 701/208
 2008/0140338 A1 6/2008 No et al.
 2008/0153671 A1 6/2008 Ogg et al.
 2008/0165022 A1 7/2008 Herz et al.
 2008/0168361 A1 7/2008 Forstall et al.
 2008/0171918 A1 7/2008 Teller et al.
 2008/0214358 A1 9/2008 Ogg et al.
 2008/0231713 A1 9/2008 Florea et al.
 2008/0231714 A1 9/2008 Estevez et al.
 2008/0232604 A1 9/2008 Dufresne et al.
 2008/0243432 A1 10/2008 Kato et al.
 2008/0303681 A1 12/2008 Herz et al.
 2008/0311929 A1 12/2008 Carro et al.
 2009/0017880 A1 1/2009 Moore et al.
 2009/0031319 A1 1/2009 Fecioru
 2009/0043531 A1 2/2009 Kahn et al.
 2009/0047645 A1 2/2009 Dibenedetto et al.
 2009/0067826 A1 3/2009 Shinohara et al.
 2009/0088204 A1 4/2009 Culbert et al.
 2009/0099668 A1 4/2009 Lehman et al.
 2009/0124348 A1 5/2009 Yoseloff et al.
 2009/0124938 A1* 5/2009 Brunner 600/595
 2009/0128448 A1 5/2009 Riechel
 2009/0174782 A1 7/2009 Kahn et al.
 2009/0213002 A1 8/2009 Rani et al.
 2009/0215502 A1 8/2009 Griffin, Jr.
 2009/0234614 A1 9/2009 Kahn et al.
 2009/0274317 A1 11/2009 Kahn et al.
 2009/0296951 A1 12/2009 De Haan
 2009/0319221 A1 12/2009 Kahn et al.
 2009/0325705 A1 12/2009 Filer et al.
 2010/0056872 A1 3/2010 Kahn et al.
 2010/0057398 A1 3/2010 Darley et al.
 2010/0199189 A1 8/2010 Ben-Aroya et al.
 2010/0245131 A1 9/2010 Graumann

2010/0277489 A1 11/2010 Geisner et al.
 2010/0283742 A1 11/2010 Lam
 2011/0003665 A1* 1/2011 Burton et al. 482/9

FOREIGN PATENT DOCUMENTS

GB 2431813 A 5/2007
 JP 7020547 A 1/1995
 JP 2001-057695 2/2001
 JP 2003-143683 5/2003
 JP 2005-309691 11/2005
 JP 2006-118909 5/2006
 JP 2006-239398 9/2006
 JP 2007-104670 4/2007
 JP 2007-215784 8/2007
 JP 2007-226855 9/2007
 WO WO 99/22338 5/1999
 WO WO 00/63874 10/2000
 WO WO 02/088926 11/2002

OTHER PUBLICATIONS

Anderson, Ian, et al, "Shakra: Tracking and Sharing Daily Activity Levels with Unaugmented Mobile Phones," Mobile Netw Appl, Aug. 3, 2007, pp. 185-199.
 Ang, Wei Tech, et al, "Zero Phase Filtering for Active Compensation of Period Physiological Motion," Proc 1st IEEE / RAS-EMBS International Conference on Biomedical Robotics and Biomechanics, Feb. 20-22, 2006, pp. 182-187.
 Aylward, Ryan, et al, "Senseable: A Wireless, Compact, Multi-User Sensor System for Interactive Dance," International Conference on New Interfaces for Musical Expression (NIME06), Jun. 4-8, 2006, pp. 134-139.
 Baca, Arnold, et al, "Rapid Feedback Systems for Elite Sports Training," IEEE Pervasive Computing, Oct.-Dec. 2006, pp. 70-76.
 Bakhru, Kesh, "A Seamless Tracking Solution for Indoor and Outdoor Position Location," IEEE 16th International Symposium on Personal, Indoor, and Mobile Radio Communications, 2005, pp. 2029-2033.
 Bliley, Kara E, et al, "A Miniaturized Low Power Personal Motion Analysis Logger Utilizing MEMS Accelerometers and Low Power Microcontroller," IEEE EMBS Special Topic Conference on Microtechnologies in Medicine and Biology, May 12-15, 2005, pp. 92-93.
 Bourzac, Katherine "Wearable Health Reports," Technology Review, Feb. 28, 2006, <http://www.techreview.com/printer_friendly_article.aspx?id+16431>, Mar. 22, 2007, 3 pages.
 Cheng, et al, "Periodic Human Motion Description for Sports Video Databases," Proceedings of the Pattern Recognition, 2004, 8 pages.
 Dao, Ricardo, "Inclination Sensing with Thermal Accelerometers", MEMSIC, May 2002, 3 pages.
 "Decrease Processor Power Consumption using a CoolRunner CPLD," XILINX XAPP347 (v1.0), May 16, 2001, 9 pages.
 Fang, Lei, et al, "Design of a Wireless Assisted Pedestrian Dead Reckoning System—The NavMote Experience," IEEE Transactions on Instrumentation and Measurement, vol. 54, No. 6, Dec. 2005, pp. 2342-2358.
 Healey, Jennifer, et al, "Wearable Wellness Monitoring Using ECG and Accelerometer Data," IEEE Int. Symposium on Wearable Computers (ISWC'05), 2005, 2 pages.
 Hemmes, Jeffrey, et al, "Lessons Learned Building TeamTrak: An Urban/Outdoor Mobile Testbed," 2007 IEEE Int. Conf. on Wireless Algorithms, Aug. 1-3, 2007, pp. 219-224.
 Jones, L, et al, "Wireless Physiological Sensor System for Ambulatory Use," <http://ieeexplore.ieee.org/xpl/freeabs_all.jsp?tp=&ar number=1612917&isnumber=33861>, Apr. 3-5, 2006, 1 page.
 Jovanov, Emil, et al, "A Wireless Body Area Network of Intelligent Motion Sensors for Computer Assisted Physical Rehabilitation," Journal of NeuroEngineering and Rehabilitation, Mar. 2005, 10 pages.
 Kalpaxis, Alex, "Wireless Temporal-Spatial Human Mobility Analysis Using Real-Time Three Dimensional Acceleration Data," IEEE Intl. Multi-Conf. on Computing in Global IT (ICCGI'07), 2007, 7 pages.

(56)

References Cited

OTHER PUBLICATIONS

Lee, Hyunseok, et al, A Dual Processor Solution for the MAC Layer of a Software Defined Radio Terminal, Advanced Computer Architecture Laboratory, University of Michigan, 25 pages.

Lee, Seon-Woo, et al., "Recognition of Walking Behaviors for Pedestrian Navigation," ATR Media Integration & Communications Research Laboratories, Kyoto, Japan, pp. 1152-1155.

Margaria, Rodolfo, "Biomechanics and Energetics of Muscular Exercise", Chapter 3, Oxford: Clarendon Press 1976, pp. 105-125.

Milenkovic, Milena, et al, "An Accelerometer-Based Physical Rehabilitation System," IEEE SouthEastern Symposium on System Theory, 2002, pp. 57-60.

Mizell, David, "Using Gravity to Estimate Accelerometer Orientation", Seventh IEEE International Symposium on Wearable Computers, 2003, 2 pages.

Ornoneit, D, et al, Learning and Tracking of Cyclic Human Motion: Proceedings of NIPS 2000, Neural Information Processing Systems, 2000, Denver, CO, pp. 894-900.

Otto, Chris, et al, "System Architecture of a Wireless Body Area Sensor Network for Ubiquitous Health Monitoring," Journal of Mobile Multimedia, vol. 1, No. 4, 2006, pp. 307-326.

Park, Chulsung, et al, "Eco: An Ultra-Compact Low-Power Wireless Sensor Node for Real-Time Motion Monitoring," IEEE Int. Symp. on Information Processing in Sensor Networks, 2005, pp. 398-403.

Ricoh, "Advanced digital technology changes creativity," <http://www.ricoh.com/r_dc/gx/gx200/features2.html>, Accessed May 12, 2011, 4 pages.

"Sensor Fusion," <www.u-dynamics.com>, accessed Aug. 29, 2008, 2 pages.

Shen, Chien-Lung, et al, "Wearable Band Using a Fabric-Based Sensor for Exercise ECG Monitoring," IEEE Int. Symp. on Wearable Computers, 2006, 2 pages.

Tapia, Emmanuel Munguia, et al, "Real-Time Recognition of Physical Activities and Their Intensities Using Wireless Accelerometers and a Heart Rate Monitor," IEEE Cont. on Wearable Computers, Oct. 2007, 4 pages.

Tech, Ang Wei, "Real-time Image Stabilizer," <http://www.mae.ntu.edu.sg/ABOUTMAE/DIVISIONS/RRC_Biorobotics/Pages/rtimage.aspx>, Mar. 23, 2009, 3 pages.

Wang, Shu, et al, "Location Based Services for Mobiles: Technologies and Standards, LG Electronics MobileComm," IEEE ICC 2008, Beijing, pp. 1-66 (part 1 of 3).

Wang, Shu, et al, "Location Based Services for Mobiles: Technologies and Standards, LG Electronics MobileComm," IEEE ICC 2008, Beijing, pp. 67-92 (part 2 of 3).

Wang, Shu, et al, "Location Based Services for Mobiles: Technologies and Standards, LG Electronics MobileComm," IEEE ICC 2008, Beijing, pp. 93-123 (part 3 of 3).

Weckesser, P, et al, "Multiple Sensorprocessing for High-Precision Navigation and Environmental Modeling with a Mobile Robot," IEEE, 1995, pp. 453-458.

Weinberg, Harvey, "MEMS Motion Sensors Boost Handset Reliability" Jun. 2006, <<http://www.mwrf.com/Articles/Print.cfm?ArticleID=12740>>, Feb. 21, 2007, 3 pages.

Weinberg, Harvey, "Minimizing Power Consumption of iMEMS® Accelerometers," Analog Devices, <http://www.analog.com/static/imported-files/application_notes/5935151853362884599AN601.pdf>, 2002, 5 pages.

Wixted, Andrew J, et al, "Measurement of Energy Expenditure in Elite Athletes Using MEMS-Based Triaxial Accelerometers," IEEE Sensors Journal, vol. 7, No. 4, Apr. 2007, pp. 481-488.

Wu, Winston H, et al, "Context-Aware Sensing of Physiological Signals," IEEE Int. Conf. on Engineering for Medicine and Biology, Aug. 23-26, 2007, pp. 5271-5275.

Yoo, Chang-Sun, et al, "Low Cost GPS/INS Sensor Fusion System for UAV Navigation," IEEE, 2003, 9 pages.

Zypad WL 1100 Wearable Computer, http://www.eurotech.fi/products/manuals/Zypad%20WL%201100_sf.pdf, Jan. 16, 2008, 2 pgs.

* cited by examiner

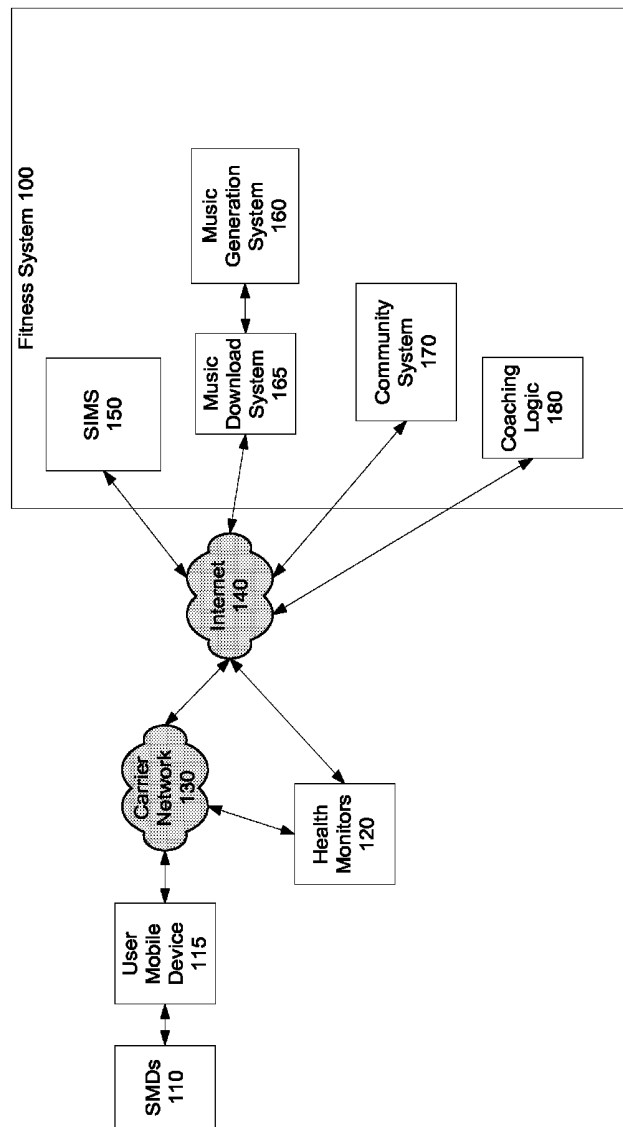


Fig. 1

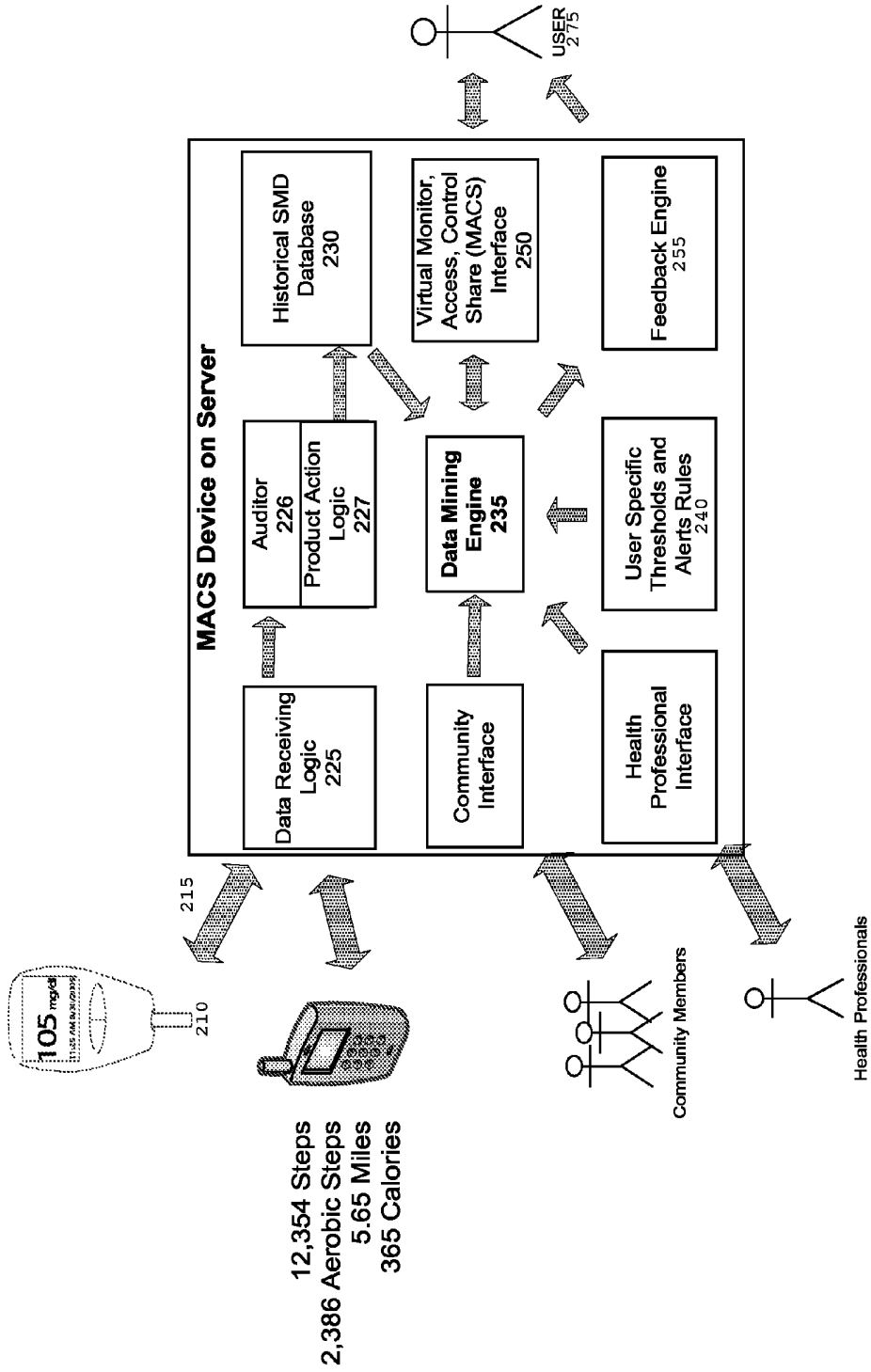


Fig. 2

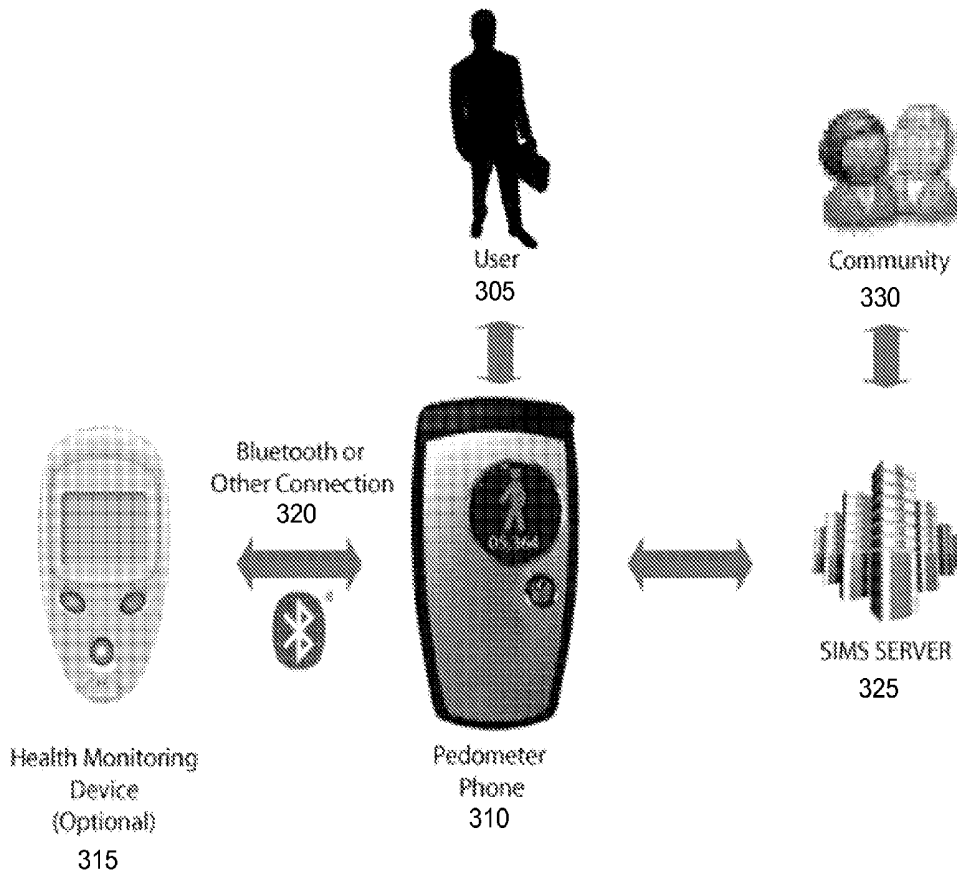


Fig. 3A

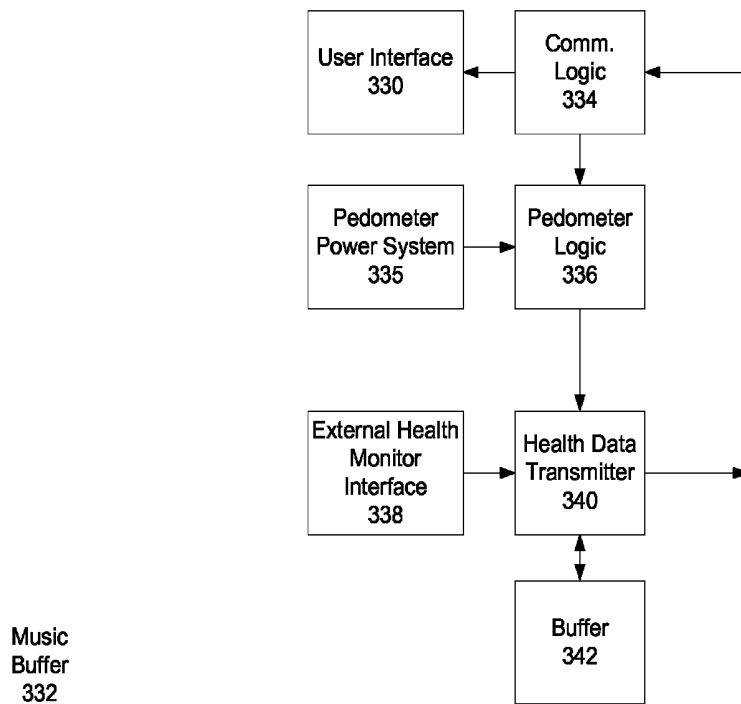


Fig. 3B

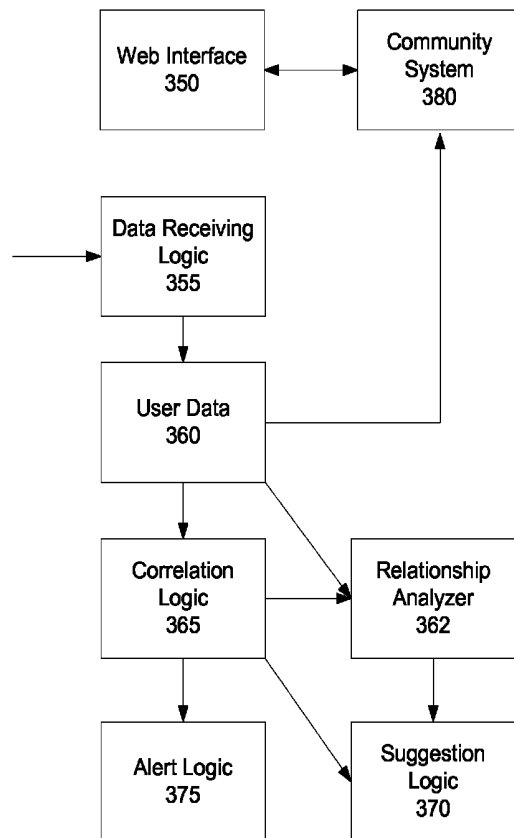


Fig. 3C

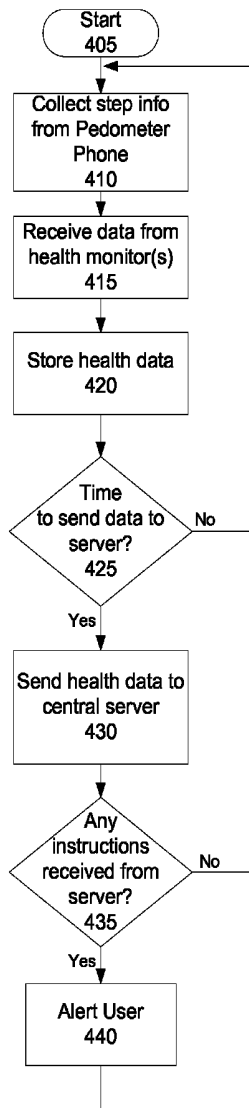


Fig. 4

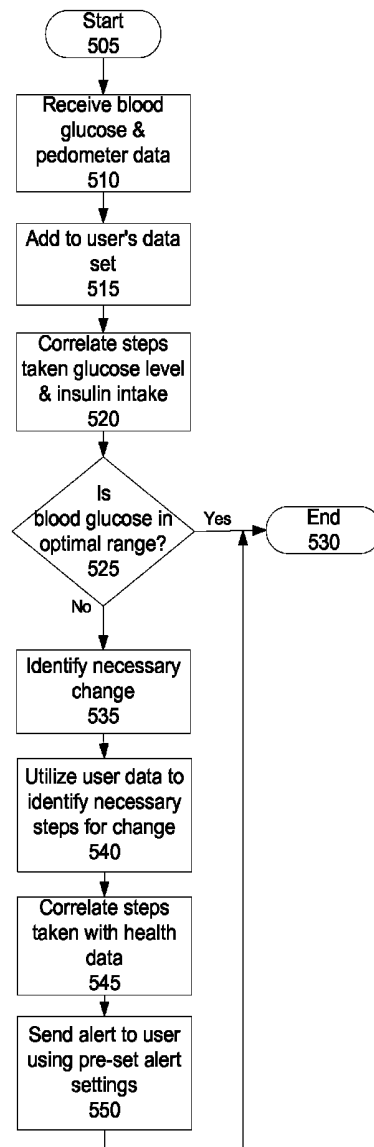


Fig. 5

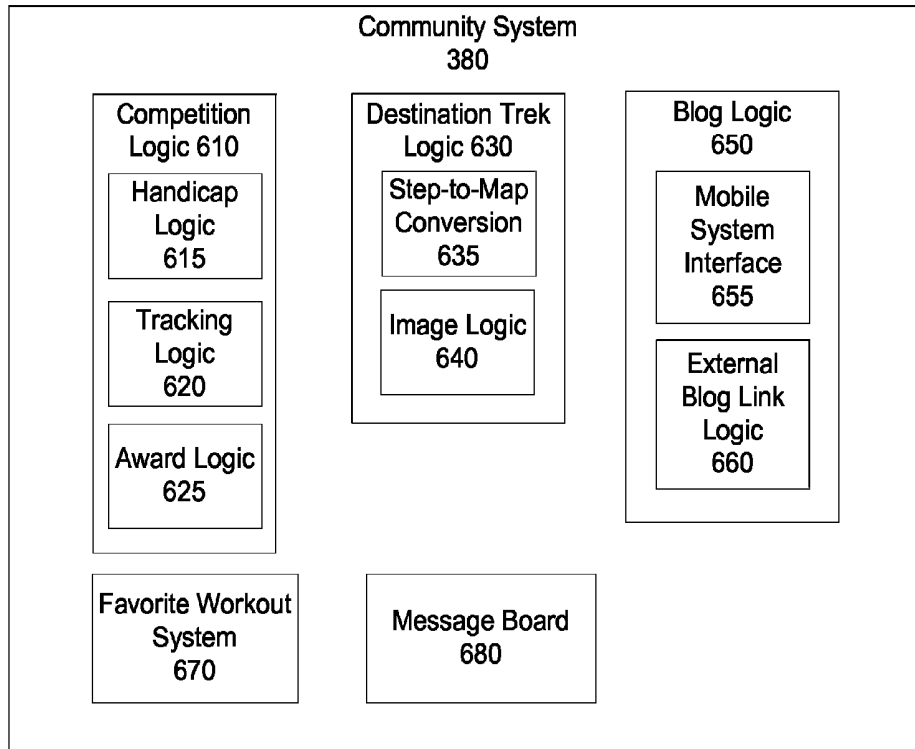


Fig. 6

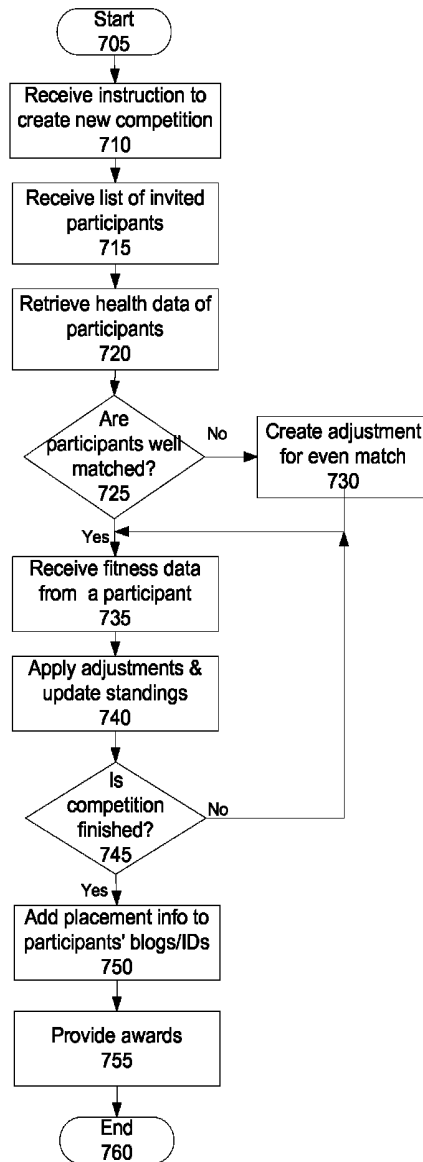


Fig. 7

Congratulations Philippe Kahn... Insert User Feedback Here

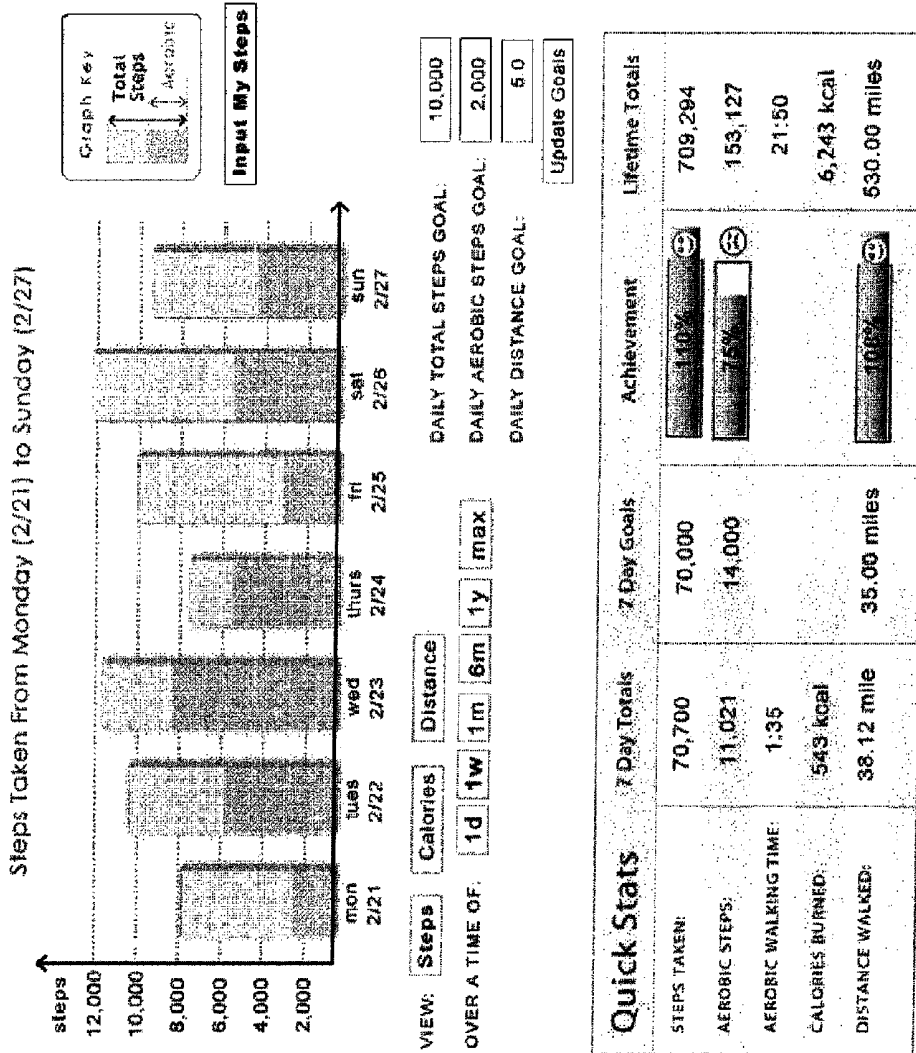


Fig. 8A

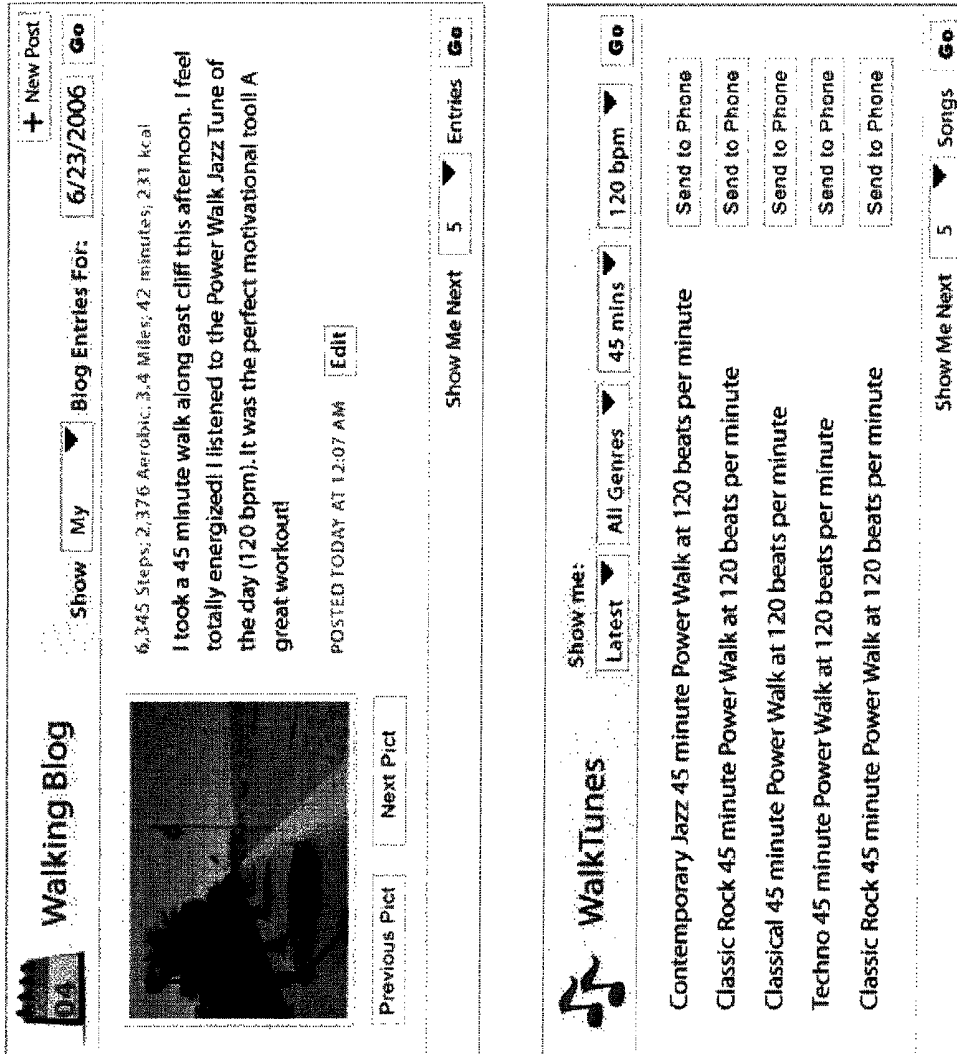


Fig. 8B






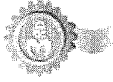
My Community

Invite Someone Family Walkoff New Competition Go

Show me: Go

Sophie is currently leading! Only 5 more days of competition, cram in those steps!


Request a Re-Start

 Sophie Lee Kahn 68,964 Actual Steps 32.34 Miles Handicap: 	104,324 Adjusted Steps 23,834 Aerobic Steps 120 Aerobic Minutes
 Sonia Lee Kahn 79,964 Actual Steps 32.34 Miles Handicap: 	98,654 Adjusted Steps 26,784 Aerobic Steps 120 Aerobic Minutes
 Philippe Kahn 103,964 Actual Steps 32.34 Miles Handicap: 	95,342 Adjusted Steps 28,784 Aerobic Steps 120 Aerobic Minutes

My Favorite Walks

Add a Lap to a Previous Walk New Walk Show Me: My Top Rated Go

#1 Old Windsor Lane
68,964 Steps 32.34 Miles Walked: 45 Times
Record Time: 54 minutes on 5/23/06
Average Time: 1 hour and 21 minutes

 Previous Pic Next Pic

Show Me Next 5 Walks Go

Fig. 8C

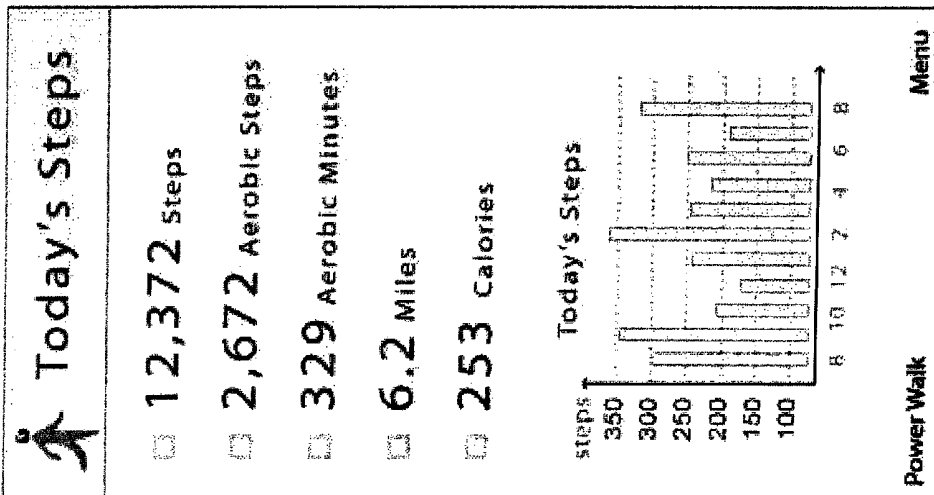
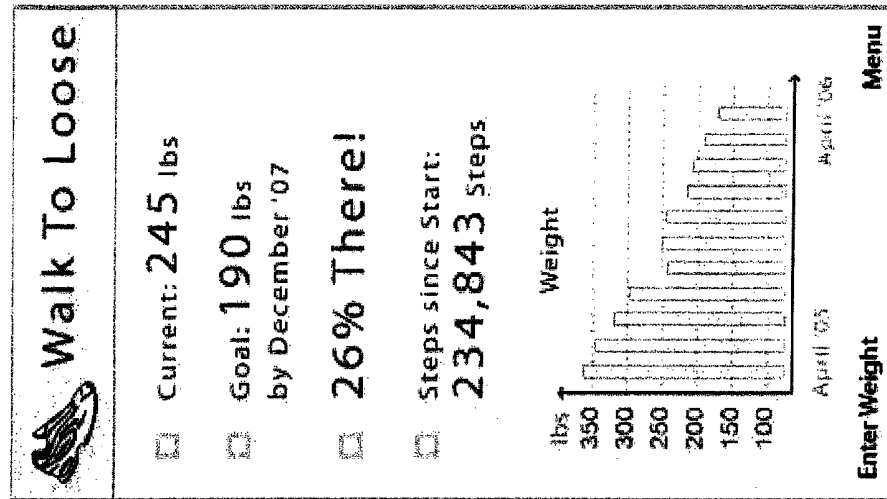




Fig. 8D

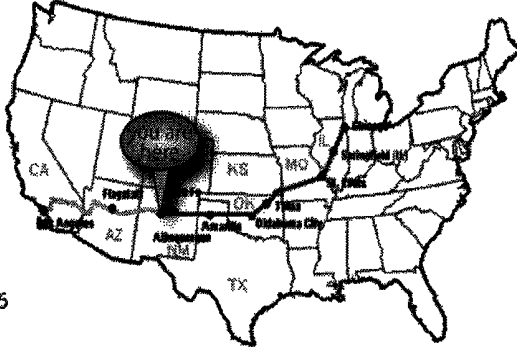
 **Walk America** Show my progress on:


 You made it to Albuquerque, New Mexico! You are 26 % of the way to Chicago! At this rate, you will arrive on June 24th.

Arrival Goal:

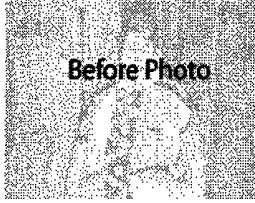
Steps Taken: 120,000
Distance Traveled: 1,032 miles
Days Traveling: 2 weeks

Steps Remaining: 653,234
Distance Remaining: 3,093 miles
Estimated Arrival: June 24th 2006



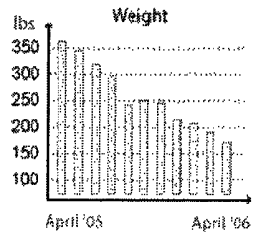
 **Walk to Loose Weight**

Congratulations, Great Progress! You are 55% to your goal and have 2 Months and 8 Days left. Loose 2 lbs a week to reach your goal.




Before Photo

Weight



April '05 April '06



After Photo

Before: 354 lbs
April 22nd, 2005

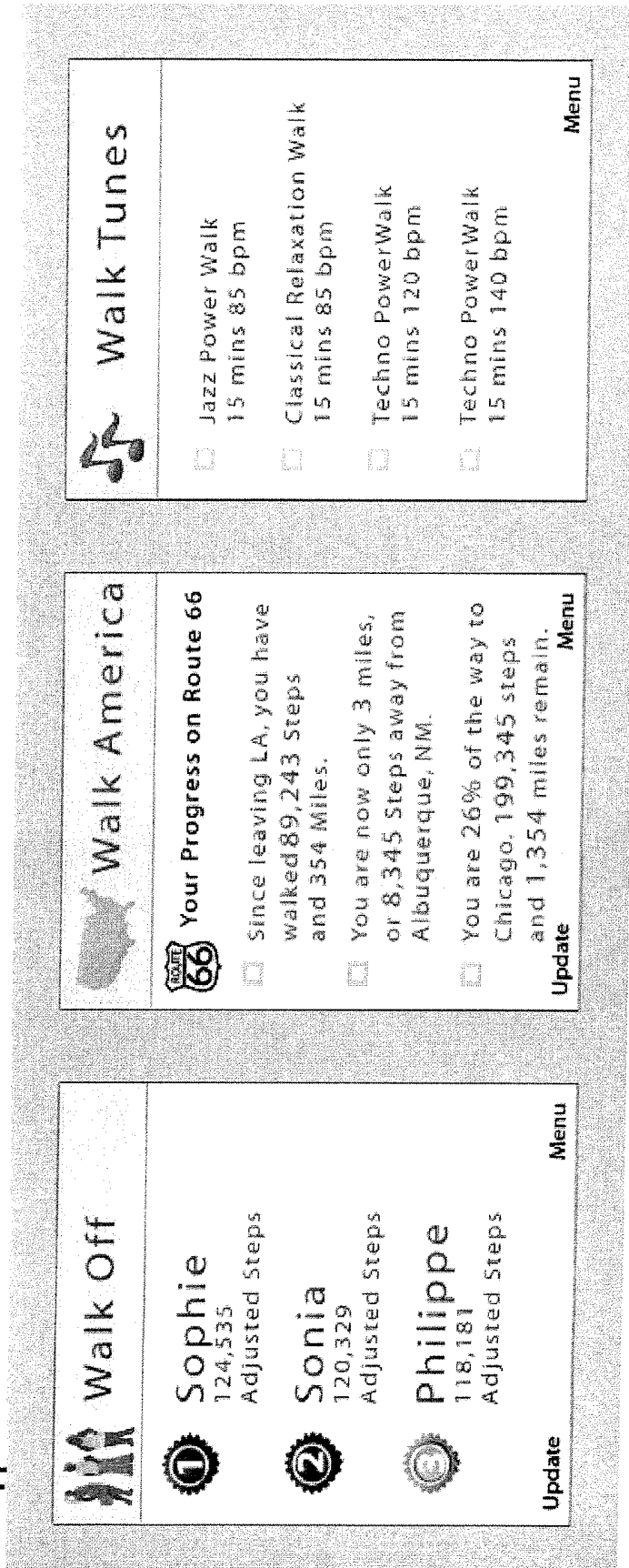
GOAL: lbs
BY:

After: 185 lbs
April 15th, 2006
787,323 Steps Later

ENTER YOUR WEIGHT: lbs

Fig. 8E

Fig. 8F



METHOD AND APPARATUS FOR A HEALTH PHONE

RELATED CASES

The present application claims the benefit of U.S. Provisional Application Ser. No. 60/795,398, filed Apr. 26, 2006.

FIELD OF THE INVENTION

The present invention relates to health data, and more particularly to a health phone to monitor user activity.

BACKGROUND

NTT DoCoMo, Inc. is marketing the F672i (Raku Raku Phone III) in Japan, the first mobile phone that also is a pedometer. The pedometer phone records your steps, and it also can e-mail them once a day to the address of the user's choice, or others can message the pedometer phone with a specific subject line to find out your pedometer data. Given the high rates of chronic conditions such as obesity, hypertension, diabetes and other conditions as well as broad cell phone adoption by teens in the US and Canada, adding a pedometer to cell phones will be a big public health benefit to encourage activity.

However, the NTT DoCoMo system provides very limited accountability, and no real-time data. Furthermore, there is no central data collection mechanism.

SUMMARY OF THE INVENTION

A method and apparatus providing a health phone utilizing a pedometer or accelerometer incorporated into a cellular telephone. The system is designed to receive activity data from the pedometer or accelerometer, and communicate the activity data to a remote server, the cellular telephone further designed to receive suggestions from the server, the suggestions generated based on the activity data received from the cellular telephone.

BRIEF DESCRIPTION OF THE DRAWINGS

The present invention is illustrated by way of example, and not by way of limitation, in the figures of the accompanying drawings and in which like reference numerals refer to similar elements and in which:

FIG. 1 is a block diagram of one embodiment of the network which may be used with the present invention.

FIG. 2 is a block diagram of one embodiment of the MACS system.

FIGS. 3A and 3B are exemplary sketches of the user system which may incorporate a health monitor and a mobile communications system.

FIG. 3C is a block diagram of one embodiment of the server.

FIG. 4 is a flowchart of one embodiment of utilizing the health phone system including coaching.

FIG. 5 is a flowchart of one embodiment of correlation evaluation and feedback.

FIG. 6 is a block diagram of one embodiment of the community system.

FIG. 7 is a flowchart of one embodiment of setting up competitions based on the health parameter data, to encourage a health regimen.

FIGS. 8A-F are exemplary screen shots.

DETAILED DESCRIPTION

The method and apparatus described uses a cellular telephone as a health phone. The health phone monitors user

motion, activity and inactivity, and provides an unobtrusive and simple way of tracking key health information, such as activity level, heart rate, etc. In one embodiment, the system includes a feedback mechanism which provides the ability to remind a user after a period of inactivity to move. In one embodiment, the feedback mechanism may also suggest that a user do certain stretches or particular motions, in accordance with the user's health status. The health status includes health condition data and current activity data, as maintained on a server. In one embodiment, the activity monitoring is performed by a pedometer or accelerometer integrated into the user's mobile phone, creating a health phone.

In one embodiment, the system is a health phone with an integrated accelerometer. In one embodiment, the health phone may further include a receiver to communicate with a heart rate monitor, glucose monitor, and/or other health monitors. The heart rate monitor may be a chest strap type monitor, for example. The receiver may, in one embodiment, be a Bluetooth receiver, a wireless network receiver, a wired connection, or another type of receiving mechanism that enables the health phone to receive data from external sensors, monitors, and/or devices (SMDs). The health data, which may include the activity data and corresponding heart rate, is then sent to a central health data repository, which may reside on a remote server. The remote server may maintain cumulative data, and further provide analysis based on the data. In one embodiment, the remote server may also provide feedback to the user.

In one embodiment, the system includes an activity coach that reacts to the data from the health phone and reminds the user to maintain a certain level of activity throughout the day. In one embodiment, the activity coach also provides reminders based on the health data received through health monitors, whether coupled to the health phone or not. The user may have the option, in one embodiment, to select the message type, messaging mechanism, and messaging frequency.

One utility for the health phone—or more generally the health monitor/wireless communicator—is providing diabetes management. The data collected from the health monitor and cellular device is sent to a server. The server, in one embodiment, cross tabulates activity (measured by the activity/health monitor) versus blood glucose and insulin taken (or alternative health indicators) to have a more complete picture of what is going on with the diabetic user. It is useful for diabetics to see steps/activity level cross graphed with blood glucose levels. In one embodiment, the system can then make concrete recommendations. For example, a recommendation may be to walk another 2,000 aerobic steps to lower glucose levels to a better level. Walking a certain amount at a certain pace has a predictable effect on a person's blood glucose levels. There is some variation across different users, but the effects generally remain the same for a particular user from day to day. In one embodiment, the activity/glucose adjustment levels may be calibrated for the individual user, based on the data received from the system. As the user becomes more fit, these effects may change, but the change is gradual. In one embodiment the system utilizes the continuous data to update these correlations for the user. Similarly, a correlation may be found between blood pressure (for example from stress) and walking, resting heart rate and walking, etc.

In one embodiment, the activity monitor is a pedometer. The pedometer is a great way to measure the activity level of an everyday person. In one embodiment, in addition to being able to monitor steps via a pedometer, the accelerometer integrated into the health phone is also capable of detecting and monitoring other activities, such as bicycling, roller skating, etc. Cellular telephones are becoming more popular, and are one of the few devices that are carried constantly on the

user's person, and thus are capable of providing health data such as steps (pedometer), heart rate (heart rate monitor), etc. Furthermore, by providing a community around the health data, the user receives support as well as a level of accountability unavailable with systems that do not include actual health monitor data.

In one embodiment, the system, in addition to collecting data, enables the creation of communities. Furthermore, the system is designed to encourage participation in the communities. While the user need not participate in order to receive the benefits of correlated health data and feedback, members in such communities generally encourage each other to do better. In one embodiment, the communities enable the user to compare their progress. In one embodiment, users can create peer competitions. The peer competition may be biased (i.e. handicapped like in golf), so that people of unequal health status can compete fairly. In one embodiment, each person gets an individualized "health score" based on the health data known about the person, and this health score is used to bias the competition. This enables an older fit person to fairly compete with a younger less fit person, a disabled person to compete with an able person, etc. In one embodiment, the system may create a handicapping based on the user health data in the server.

In one embodiment, in order to encourage walking, the system may enable setting up a virtual walk. A virtual walk enables users to track their walking goal, as the miles accumulate. For example, a goal may be to walk across America, or between any other start and destination. In one embodiment, the system may use third party mapping software to identify the length and steepness of the terrain, and prompt accordingly. In one embodiment, the system may further provide image-based feedback (for example showing representative images from a city or town virtually crossed by the user.

FIG. 1 is a block diagram of one embodiment of the network which may be used with the present invention. The user's mobile device 115 may be a cellular phone, a wearable computer, or any other device which is generally carried by the user and provides at least a periodic ability to establish a connection to the Internet 140. In one embodiment, the user's mobile device 115 connects to the Internet 140 via carrier network 130. At least one sensor, monitor, and/or device (SMD) 110, 120 is coupled to mobile device 115, or is part of the mobile device 115. Additional SMDs 110, 120 which may include various health monitors such as heart rate monitor, blood pressure monitor, blood glucose level monitor, pedometer, etc. send their data to the server 100 via user mobile device 115, or directly through carrier network 130 or Internet 140.

The health monitor and user device data is passed to server 100. Server 100, in one embodiment includes a fitness system 100. Fitness system 100 includes, in one embodiment SIMS 150, community system 170, and coaching logic 180. In one embodiment, each of the elements of the fitness system 100 may be on a separate server, or multiple servers. Alternatively, the elements may share a server or servers.

FIG. 2 is a block diagram illustrating one embodiment of a Virtual Management, Access, Control, Share (MACS) device on the SIMS server and its relationship to the actual SMD. The actual SMD 210 has an intermittent connection 215 to a server 220. The connection 215 may be through the Internet, through a carrier network, or through other means. The server 220 may be located in the same location as the real SMD 210.

The data receiving logic 225 receives the data from the actual SMD 210 or the user via an intermittent connection 215. The data is stored in historical database 230. The histori-

cal data is used by data mining engine 235, to present virtual MACS device 250 via a reliable always-on connection 260 to various recipients 275. In a healthcare setting for example, the recipients may include the user, healthcare providers, and family.

In one embodiment, data mining engine 235 may further interface with user alerts and rules 240 to generate notifications through intelligent notification engine 255. Intelligent notification engine 255 can send automatic notifications to designated recipients 275, when certain threshold or alert conditions are met. The threshold or alert conditions may include historical data, trend analysis, variance from charted trends, simple threshold, or any combination of the use of historical and current data from the actual SMD 210, or combination of SMDs. In one embodiment, the data mining engine 235 constantly monitors the database 230, to ensure that the alert rules and user thresholds 240 have not been triggered. Intelligent notification engine 255 can, in one embodiment, trigger a notification in an appropriate format to any designated recipient.

In one embodiment, in addition to the database 230, data from other relevant actual SMDs may be received as well via logic 245. For example, in health setting, in addition to the glucose meter, exercise data, medical reports, and/or other relevant conditions may be monitored. The threshold and alert rules 240 may utilize a combination of data from more than one real SMD to trigger a notification or command 270.

FIGS. 3A and 3B are exemplary sketches of the user system which may incorporate a health monitor and a mobile communications system.

FIG. 3A is a diagram of the client system elements. Health phone 310 includes mobile telephone functionality, a pedometer or other activity monitor, and the ability to send health data to a server. In one embodiment, additional health monitoring devices 315 may be coupled via Bluetooth or other connection 320 to health phone 310. Health phone 310 is carried by a user 305.

In one embodiment, the user's activity is tracked by an accelerometer in the health phone 310. In one embodiment, the accelerometer comprises a three-dimensional accelerometer. In one embodiment, the accelerometer comprises a two-dimensional accelerometer. In one embodiment, the accelerometer comprises two two-dimensional accelerometers arranged to enable detection of motion along all three axes. Alternative configurations for obtaining accelerometer data may be used.

The health phone 310 sends the activity data to SIMS server(s) 325. If additional health monitors 315 are coupled to health phone 310, the data from the health monitors 315 is also sent to the SIMS server(s) 325. In one embodiment, health phone 310 sends its data via cellular network or via the Internet if it is a WAP enabled phone. In one embodiment, SIMS server 325 shares parts of the data, or analyzed data, with community 330. Community 330 is designed to provide encouragement to the user 310, to maintain a fitness regimen. In one embodiment, user 305 accesses community 330 on the World Wide Web, via a browser, or via health phone 310. In one embodiment, the community 330 may also provide encouragement via email, instant messaging, or another format.

FIG. 3B is a block diagram of one embodiment of the client system. The client system includes an activity monitor 336. In one embodiment, the activity monitor 336 is a pedometer. In one embodiment, the activity monitor 336 is an accelerometer. The accelerometer may be a one, two, or three-dimensional accelerometer. In one embodiment, if the accelerometer is one or two-dimensional there may be two or more

accelerometers that are part of the activity monitor **336**. In one embodiment, the activity logic **336**, which includes activity monitor **336** and temporary data storage for the activity monitor, is separately powered by activity monitor power system **335**. The activity monitor power system **335** enables the activity monitor **336** to operate even when the client system (mobile telephone) is turned off.

The activity data from activity monitor logic **336** is transmitted to the server system via health data transmitter **340**. In one embodiment, an external health monitor interface **338** is also included in the system. The external health monitor interface **338** is designed to receive health data from external health SMDs, such as glucose meters, heart rate monitors, etc. In one embodiment, external health monitor interface **338** is a Bluetooth interface, which is configured to receive health data from external health monitors. In another embodiment, external health monitor interface **338** may be a wired interface designed to receive a physically connected device. The data received via external health monitor interface is buffered, in one embodiment, and then passed on to health data transmitter **340**.

In one embodiment, the health data is stored on the client system until health data transmitter **340** receives an acknowledgement that the data has been successfully received at the server (not shown). In one embodiment, a cyclic redundancy check (CRC) is included with the data, to ensure that the correct uncorrupted data was received by the server.

In one embodiment, the server may send feedback data to the health phone. The feedback data is received via communication logic **334**. Communication logic **334**, in one embodiment, passes feedback designed for the user to user interface **330**. Feedback data, in one embodiment, may be text, audio data, or other types of data. In one embodiment, communication logic **334** may send some of the feedback data directly to activity monitor logic **336**. For example, if the server determines that the accelerometer settings must be altered in some way, this data may be received from the server.

FIG. **3C** is a block diagram of one embodiment of the server. The server receives data from the health phone via data receiving logic **355**. Data receiving logic, in one embodiment, receives data from the health phone. In one embodiment, the data may include activity data as well as other available data. In one embodiment, the health data is pedometer data, which includes time & date information in addition to the step information.

The data received is then stored as user data **360**. In one embodiment, user data is stored in a central database/repository. In one embodiment, this central database/repository includes security, so that user data is not directly accessible or modifiable.

Correlation logic **365** utilizes the data in user data store **360** to determine whether there needs to be an alert or suggestion made to the user. Alerts indicate that the user should do something right away. For example, if the health data includes glucose level data, and the trending analysis determines that the user's glucose levels will be causing a problem shortly, an alert may be sent, via alert logic **375**. The alert may indicate an action to take, or an action to stop, in order to prevent a problem. In one embodiment, alerts may be in response to data, data trends, correlations between data sets, or pre-set alert levels. For example, a user may prefer to alert a third party if certain health indications happen.

Relationship analyzer **362** determines relationships between activity data (i.e. steps taken, speed of the steps, etc.) and other health data (i.e. blood glucose level, stress level, resting heart rate). The relationship analyzer **362** uses the correlation data and user data. In one embodiment, the rela-

tionships may be multi-level, with various factors obtained from various health monitors creating a complex relationship. In one embodiment, this relationship is user-specific. In one embodiment, the relationship analyzer **362** creates and stores an adjustment relationship.

Suggestion logic **370** is designed to utilize the correlation data from correlation logic **365** and propose actions to the user. For example, the suggestion logic **370** may suggest actions to the user based on the currently received data, historical/trend data analysis, and the user's other available data. In one embodiment, the suggestion may be a multi-step process. For example, the suggestion for a blood glucose level at a certain level may be to take 2000 aerobic steps now, and eat some high fiber, low glycemic index carbohydrates in one hour. In one embodiment, one of the suggestions is to walk, when the health phone includes a pedometer. In one embodiment, the suggestion logic **370** may send out an initial multi-step suggestion, and follow-up as the user follows or fails to follow the suggestion. In one embodiment, the initial suggestion may be a single step, with follow-up suggestions sent depending on whether the user followed the initial suggestion or not.

Web interface **350** enables the user, and other authorized viewers, to view user data **360**, and adjust settings. In one embodiment, the web interface may be used to present the data to the user. FIG. **8A** illustrates an exemplary screen shot showing the user's health data over time. FIG. **8D** illustrates an exemplary display including the pedometer data collected, as well as goals and weight data. This type of data may be very motivational to users.

In one embodiment, the system also includes a community system **380**. The community system **380** is designed to provide a community aspect to exercise and health monitoring. The community system **380** is described in more detail below, with respect to FIG. **6**.

FIG. **4** is a flowchart of one embodiment of the client-side process. This process is active whenever the user carries the health phone (block **410**). The health phone may receive data from other external health monitors as well. These external health monitors may include any monitors that can communicate with health phone, that are used to assess the user's current health status. For example, the health monitors may include a blood glucose monitor, a heart rate monitor, a blood pressure monitor, a blood oxygen level monitor, or any other type of health monitor. These health monitors communicate their data to the health phone, in one embodiment. (block **415**) In another embodiment, the health monitors may communicate their data directly to the server, without going through the health phone. In that case, block **415** may be skipped.

The health data is stored temporarily by the health phone (block **420**). In one embodiment, the health phone simply stores data received from external health monitors, and whenever it sends its own pedometer data, it packages the external health monitor data along with it. In one embodiment, the health phone stores the pedometer/internal health data as well.

The process then determines whether it is time to send data to server (block **425**). In one embodiment, the pedometer collects data continuously. In one embodiment, health monitors also may collect data continuously. The system, however, in one embodiment, only sends data periodically. In one embodiment, data is sent at preset intervals. In one embodiment, this interval may be one minute. In another embodiment, data may be sent only when at least a preset number of steps have been taken or a preset amount of health data has been collected, or a preset amount of time has elapsed, whichever occurs first. In another embodiment, the sending interval

may be set based on another factor. If it is not yet time to send the data, the process returns to block 410 to continue collecting pedometer data. If it is time to send the data, the process continues to block 430.

In another embodiment, the data is stored in a buffer and immediately sent when received. In one embodiment, the pedometer data is stored separately by the pedometer aspect of the health phone, and only transmitted to the mobile-aspect of the health phone periodically. In one embodiment, in such a case the pedometer data is immediately forwarded when it is received by the mobile-aspect of the health phone.

The data is sent to the central server (block 430). In one embodiment, the data may be sent as an email, SMS, MMS, via WAP, or in another format. In one embodiment, the system awaits an acknowledgement that the data was correctly received by the server. In one embodiment, the data is erased from the health phone once the acknowledgement is received.

At block 435, the process determines whether any instructions or alerts have been received from the server. The server may return data to the user's health phone. The instructions/alerts may be received in response to the data sent, cumulative data from the user whether received through the health phone or other sources, or other occurrences. If no alerts are received, the process returns to block 410 to continue collecting data.

If an alert is received, the process informs the user (block 440). In one embodiment, the system uses the standard SMS/email alerting system which is part of the health phone. Thus, the system itself need not do anything to alert the user. In one embodiment, the data received may be an adjustment to the health device, or something else that need not trigger a user alert. In that case, in one embodiment, the system does not inform the user. In another embodiment, the user is informed of the update, but the information is passed without an alert.

The process then returns to block 410, to continue collecting data. Note that while this is described as a flowchart, these processes generally occur simultaneously. That is data is constantly collected, and whenever it is time, the data is sent. The system continuously monitors for data received from the server. The other flowcharts utilized in this application also need not be executed in a linear form.

FIG. 5 is a flowchart of one embodiment of correlation evaluation and feedback. Note that the example provided here correlates pedometer data (steps taken) with blood glucose data (blood sugar levels). However, this is merely an example, and the creation of correlation between two or more measurements would be understood by one of skill in the art. For example, heart rate over time may be correlated with blood oxygen levels or blood glucose levels. Blood pressure may be correlated to amount walked, etc. One of skill in the art would understand that there are other correlations which may be used.

At block 510, blood glucose and pedometer data is received. In one embodiment, the pedometer data is sent periodically by the health phone. In one embodiment, the blood glucose data is also received through the health phone. In another embodiment, the blood glucose data is received through a different path. In one embodiment, blood glucose data includes data from a blood glucose monitor as well as an insulin pump, or from a user indicating how much insulin was used.

The new data is added to the user's data set. As discussed in prior application U.S. Ser. No. 11/192,549, entitled "MONITOR, CONTROL, AND SHARE (MACS) SYSTEM," incorporated herein by reference, the system maintains a central data store. This central store enables the system to not only identify long-term trends, but also determine user history, and user-

specific correlations. In one embodiment, additional data regarding any medicines or materials used to affect insulin levels may be included in the user's dataset. In one embodiment, the user's food data may also be included in this data set.

At block 520, the number of steps taken (i.e. pedometer data) is correlated with glucose levels. In one embodiment, other factors such as insulin taken, medicines taken, etc. are also included in the correlation. In one embodiment, the system continuously performs this correlation, as data is received. In one embodiment, the time of day is also taken into consideration for blood glucose levels. Generally, blood glucose levels are highest shortly after a meal. In one embodiment, meal data may be received from the user. In another embodiment, the system may determine when meals were consumed based on time-of-day data. In another embodiment, if the health phone has GPS (global positioning system) enabled, or if the pedometer data provides location information, the system may utilize this data to determine when the user eats.

At block 525, the process determines whether the glucose levels are in the optimal range. If the glucose levels are in the optimal range, the process terminates, at block 530. Otherwise, the process continues to block 535.

At block 535, the process identifies the necessary change in the glucose levels, to move them to optimal level. This may be to increase or decrease the blood glucose levels by a certain amount or percentage.

At block 540, the process uses user data to identify necessary steps for change. The user data collected indicates the correlation between changes in level of movement, level of insulin, food consumption, and other medicines and changes in blood glucose levels.

At block 545, the process determines the number of steps that should be taken, which would correlate with the necessary change. In one embodiment, the process takes into account a walking speed as well, in this evaluation. In one embodiment, for example, the system may know that walking 1000 aerobic steps reduces the user's blood glucose level by 2%. Therefore, the system may determine that the user should walk 2000 steps to reduce the blood glucose levels appropriately. Of course, while the pedometer-based recommendation is shown here, other recommendations—including eating something, taking medicines, performing other activities, may be recommended.

At block 550, the suggestion alert is sent to the user, indicating steps the user should take to appropriately alter the blood glucose levels. In one embodiment, the alert is sent using the mechanism selected by the user. In one embodiment, the suggestion alert is sent to the health phone. In one embodiment, the alert-type may be different depending on the level of deviation from the acceptable glucose levels. For example, if the level of deviation indicates that there may be a medical event, the alert may be sent to third parties as well. In one embodiment the notification process described in co-pending application Ser. No. 11/192,549 may be used. The process then ends at block 530.

FIG. 6 is a block diagram of one embodiment of the community system. The community system 380 is useful to encourage users to follow their exercise programs. There are multiple features.

Competition logic 610 administers competitions between users. Users can sign up for public competitions (i.e. visible to all users) or private competitions (i.e. visible only to those users who are invited to participate). Competitions administered by competition logic 610 may, in one embodiment, be handicapped. This enables unequal competitors to compete

with each other. For example, if one of the competitors is a 10 year old, it would not be fair to compare step-for-step with a 24-year-old. Therefore, handicap logic 615 is used to generate a “fair” comparison. In one embodiment, handicap logic 615 takes into account the calculated fitness level of the user, based on the health data in the system about each user.

Competition logic 610, in one embodiment, calculates a “conversion to standard step” mechanism. Thus, for example, for a child, 1000 steps may be equivalent to 1200 “standard steps.” Similarly, the level of exertion for “aerobic steps” may be different for an older person than for a younger person. FIG. 8F illustrates an exemplary display of a current competition. It shows the relative place of each participant in the Walk Off. FIG. 8C illustrates an exemplary display showing more information about the Walk Off, including current placement, how to catch up, etc.

Tracking logic 620 tracks how each user is doing in each competition. Award logic 625 shows the user’s placements. This is shown in FIG. 8C. In one embodiment, the user’s awards (i.e. final placements in various competitions) may be displayed publicly, if the user wishes. In one embodiment, current standings in on-going competitions may also be generated and displayed, in accordance with the user’s preference. In one embodiment, award logic 625 may display standings in public competitions in the blogging system 650, next to entries on the message board 680, and in other places. In one embodiment, lower placements may be replaced by a “participant” icon. This again provides positive feedback to the user, and incentives to excel. In one embodiment, competitions may focus on “steps taken” for pedometer-type devices, length and frequency of workouts, vigorousness of workout, or other metrics.

Destination trek logic 630 enables the system to provide competitions for taking a particular trek. For example, users may decide to walk across America, climb the Rockies, walk to their home town, or select an alternative “destination” or series of destinations. In one embodiment, the starting and ending points for the trek may be arbitrarily defined by the user. Step-to-map conversion logic 635 takes the source and destination, and step size data from the user. This is used to calculate how far the user travels, using the pedometer data. FIG. 8E is an exemplary display of the trek Walk America, and the user’s progress on that trek.

In one embodiment, the health phone data is used to chart progress. In one embodiment, self-reporting may be used, and the user may enter, for example, miles from a treadmill. Image logic 640 enables the destination trek logic 630 to insert images from actual location which is being virtually walked. Thus, for example, the user may set as a target walking from the Golden Gate Bridge to Coit Tower. The system may provide images along that walk for further motivation. In one embodiment, the system may also provide feedback/motivation based on the virtual locations. For example, in the Golden Gate Bridge to Coit Tower trek, the feedback may encourage the user to continue walking with messages such as “You are already at Fort Mason, that’s more than half-way there!” etc.

Blog logic 650 enables the user to keep a personal web log. An exemplary web blog display is shown in FIG. 8B. In one embodiment, an existing blogging engine may be used. In one embodiment, the user may be permitted to post from a mobile device, using mobile system interface 655. In one embodiment, the blog logic 650 may automatically post blog posts for various fitness sessions. For example, the blog logic 650 may automatically generate an entry for each workout session. In one embodiment, the entry may describe the user’s workout. Again, this provides positive feedback to the user,

and may encourage the formation of communities. In one embodiment, external blog link logic 660 enables the user to transmit blog entries in blog logic 650 to another blogging platform.

Favorite workout system 670 enables users to describe their favorite workouts, including fitness routines, walking paths, and other types of workouts. An exemplary favorite workout is shown in FIG. 8C. Again, this is designed to encourage community, and to encourage other users to try someone else’s favorite workout. In one embodiment, the system may display these favorite workouts to users looking for new routines. In one embodiment, the system may further provide location-based filtering. For example, for a user known to be residing in Northern California, only local walks would be shown. In one embodiment, the user may further add “places I visit” or similar indications to see favorite walks elsewhere. In one embodiment, the system may receive location information from the user’s mobile device, and use this information to tailor the “local walks” in the favorite workout system 670. This may enable a visitor to an area to find a nice workout.

Message board 680 enables users to communicate in other ways. Communities are designed to encourage people to meet.

In one embodiment, message board communities may be formed by the system. For example, there may be a message board for each identified type of medical status. For example, a board may focus on people having a particular type of condition, such as Type 2 Diabetes. In one embodiment, as the system acquires data about the user’s condition and health status, it recommends message boards 680 which may be useful to the user. In one embodiment, as communities are formed on the message boards, competition logic 610 recommends friendly competitions between the members of the message boards.

FIG. 7 is a flowchart of one embodiment of setting up competitions based on the health parameter data, to encourage a health regimen. At block 710, the system receives an instruction to create a new competition. In one embodiment, a new competition is created by a user. In one embodiment, the user may name the competition arbitrarily. At block 715, a list of participants is received. In one embodiment, the list of participants may be entered by the user. In another embodiment, the user may simply designate that the competition is open to the public. If the participant list is open to the public, in one embodiment, as each user signs up, the below steps are performed. If the list of participants is provided, the below steps may be performed immediately, or when an invited participant indicates an intention to join the competition.

At block 720, the health data of the participants—i.e. those who have indicated an intention to participate—is retrieved. In one embodiment, this is done as each participant joins. In another embodiment, this is done for all participants at the same time, when the competition actually starts. In another embodiment, this is done for all participants at the same time, when all invited participants have indicated their intention to participate, or not participate, in the competition.

At block 725, the process determines whether the participants are well matched. If so, the process continues to block 735. Otherwise, at block 730, an adjustment is created. This is referred to as handicapping. At its most basic, the adjustment may be for age and height. More complexly, the adjustment may include age, fitness level, past participation and success rate in competitions, health conditions, and any other relevant information. The adjustment is designed to ensure that each participant has an equal opportunity to win the competition. In another embodiment, this step may be skipped. In one

embodiment, the user organizing the competition may select whether handicapping should be included.

Once the competition starts, the process described in blocks 735 through 755 is performed. Fitness data is received—continuously or on a periodic basis—from each of the participants, at block 735. In one embodiment, pedometer data is received as described above. At block 740, any handicap adjustments are applied to the fitness data, and the standings in the competition are updated. In one embodiment, the standings are always visible to the participants.

At block 745, the process determines whether the competition is finished. If the competition is not yet finished, the process returns to block 735, to continue receiving data from the participants.

If the competition is finished, the process continues to block 750. At block 750, placement information is added to the user's data. In one embodiment, the user's top 3 placements may be displayed along with his or her name/ID on message boards, blogs, and other interactions. This is designed to provide additional incentive for participation. In one embodiment, the placement information is displayed during the competition as well, to encourage people to use the network and the system. In one embodiment, any user can click update and get the latest data from all participants and see the latest results.

In one embodiment, at block 755, awards are provided. In one embodiment, the user organizing the competition may designate awards—whether connected to the system or not. In one embodiment, for system-created competitions (i.e. all people with Type 2 diabetes, or members of a particular message board) the system may provide awards which may range from free service, additional feature availability, to cash awards or other prizes. The process then ends at block 760.

In the foregoing specification, the invention has been described with reference to specific exemplary embodiments thereof. It will, however, be evident that various modifications and changes may be made thereto without departing from the broader spirit and scope of the invention as set forth in the appended claims. The specification and drawings are, accordingly, to be regarded in an illustrative rather than a restrictive sense.

What is claimed is:

1. A mobile device comprising:

an activity monitor integrated into the mobile device to generate activity data;

a receiver to receive health data from one or more external health monitors;

a processor to execute computer-readable instructions to control a data transmitter to communicate the health data and the activity data to a remote server;

the processor implementing a communication logic to receive an initial suggestion from the remote server;

the data transmitter to transmit to the remote server subsequent health data and subsequent activity data to enable the remote server to determine whether the user followed the initial suggestion; and

the communication logic to receive a follow-up suggestion, the follow-up suggestion generated by the remote server based on a correlation between changes in health data received over time from the data transmitter and activity data received over time from the data transmitter; and

a blog logic to automatically generate a blog post based on the activity data, and the blog logic to further post the blog post for user.

2. The mobile device of claim 1, further comprising:

an external health monitor interface to receive the health data from the one or more external health monitors for transmission to the remote server by the data transmitter.

3. The mobile device of claim 2, wherein the one or more external health monitors are selected from among the following: a heart rate monitor, a blood pressure monitor, a blood glucose level monitor, an insulin pump, a pedometer, and a blood oxygen monitor.

4. The mobile device of claim 1, further comprising:

a user interface to notify the user of the initial suggestions generated by the remote server and of the follow-up suggestion generated by the remote server.

5. The mobile device of claim 1, further comprising:

the communication logic to further receive feedback for an exercise session of the user based on data associated with the exercise session and a virtual destination selected by the user, the feedback for the exercise session comprises one or more of a message encouraging the user, a message providing motivation based on the virtual destination selected by the user, and an image of a second location along a path to the virtual destination selected by the user.

6. The mobile device of claim 1, further comprising:

an activity monitor power system to separately power the activity monitor, to enable the activity monitor to continue monitoring user activity when the mobile device is turned off; and

a temporary storage to store activity data when the mobile device is turned off.

7. A computer-implemented health server comprising:

an interface to receive health data from one or more health monitors, the health data comprising one or more of: insulin data, food data, and glucose data, and activity data from a remote mobile device;

a processor implementing a correlation logic designed to determine a correlation between the health data and the activity data from the remote mobile device;

a coaching logic to send coaching data to a user, the coaching data providing an initial suggestion to the user for an exercise session based on the correlation between the health data and the activity data;

the coaching logic to determine whether the user is following the initial suggestion based on subsequent health data and/or subsequent activity data received by the interface, and to send a follow-up suggestion to the user based on a correlation between changes in health data received over time by the interface and activity data received over time by the interface; and

a blog logic to automatically generate a blog post for the exercise session of the user, the blog post describing the exercise session, and the blog logic to further to post the blog post for the exercise session to a social media site.

8. The health server of claim 7, further comprising:

a relationship analyzer to identify a relationship between the activity data and a change in a health condition.

9. The health server of claim 7, further comprising:

a community system to provide a community to encourage healthy user behavior, the community comprising a plurality of users associated with a plurality of computing devices, wherein the plurality of computing devices are accessible to the health server;

a communication interface to provide information associated with the user to the community system using a communication network; and

a memory to store the information associated with the user.

10. The health server of claim 9, further comprising:

a competition logic to enable users to set up competitions between users for a number of steps taken, as measured by a pedometer.

13

11. The health server of claim 9, further comprising:
a handicapping logic to provide a relative-ability based adjustment to the steps taken measurements, for competitions, enabling unequal users to participate in competitions. 5
12. The health server of claim 9, further comprising:
a favorite workout system enabling users to upload their favorite walks, and enabling other users to follow the favorite walks. 10
13. The health server of claim 12, wherein the favorite workout system filters the favorite walks provided to the other users based on a location of the other users. 10
14. A computer-implemented health server comprising:
an interface to receive data from one or more health monitors and one or more activity monitors, wherein health monitor data received from the one or more health monitors comprises one or more of: insulin data, food data, and glucose data; 15
an integration system using a processor designed to combine the health monitor data with activity monitor data received from the one or more activity monitors, to cross-tabulate the activity monitor data and the health monitor data, to determine a correlation between the cross-tabulated data, to provide a complete health picture to a user; 20
a suggestion logic to send an initial suggestion based on cross-tabulated activity monitor data and health monitor data to the user for how to improve the current health picture, to determine whether the user is following the initial suggestion based on subsequent health monitor data and/or activity monitor data received by the interface and to send a follow-up suggestion to the user, the follow-up suggestion based on a correlation between changes in the health monitor data received over time by the interface and activity monitor data received over time by the interface; and 30
a favorite workout system enabling users to upload their favorite walks to enable other users to follow the favorite walks, wherein the favorite workout system filters the favorite walks provided to the other users based on a location of the other users. 40
15. The health server of claim 14, further comprising:
a relationship analyzer to identify a relationship between the activity data and a change in a health condition based on the health data. 45
16. The health server of claim 14, further comprising:
a community system to provide a community to encourage healthy user behavior, the community comprising a plurality of users associated with a plurality of computing devices, wherein the plurality of computing devices are accessible to the health server; 50
a communication interface to provide information associated with the user to the community system using a communication network; and 55
a memory to store the information associated with the user.
17. The health server of claim 14, further comprising:
a competition logic to enable users to set up competitions between users for a number of steps taken, as measured by a pedometer.

14

18. The health server of claim 17, further comprising:
a handicapping logic to provide a relative-ability based adjustment to the steps taken measurements, for competitions, enabling unequal users to participate in competitions. 5
19. A computer executable method implemented by a health server comprising a processor, the computer-executable method comprising:
receiving health data from one or more health monitors and activity data from an activity monitor integrated into a mobile device via a network, the health data comprising insulin data, food data, and glucose data;
sending coaching data to a user through the network, the coaching data providing an initial suggestion to the user;
determining, by the processor, whether the user is following the initial suggestion based on subsequent health data and subsequent activity data and to send a follow-up suggestion to the user, wherein the follow-up suggestion is based on a correlation between changes in health data received over time and activity data received over time; and
providing feedback for an exercise session of the user based on data associated with the exercise session and a virtual destination selected by the user; and
providing a social media system to post about a user's workout session, the user's system including a blog logic to automatically generate blog posts for the exercise sessions of the user, each blog post describing the exercise session, and the blog logic to further to post the blog post to the social media system.
20. A computer-executable method implemented by a mobile device comprising a processor and memory, the computer-executable method comprising:
receiving data from one or more health monitors and one or more activity monitors integrated into the mobile device, the health monitor data comprising one or more of: insulin data, food data, and glucose data;
separately powering the integrated activity monitor, to enable the activity monitor to continue monitoring user activity when the mobile device is turned off;
combining, by the processor, the health monitor data with the activity monitor data;
cross-tabulating, by the processor, the activity monitor data and the health monitor data;
determining, by the processor, a correlation between the cross-tabulated activity monitor data and health monitor data to provide a complete health picture to a user;
sending, by the processor, an initial suggestion based on the cross-tabulated data to the user for how to improve the current health picture, when the initial suggestion is walking, including a recommended walk based on a favorite walk uploaded by another user, filtered based on the user's location;
determining, by the processor, whether the user is following the initial suggestion based on subsequent health data and/or subsequent activity data and sending a follow-up suggestion to the user, the follow-up suggestion based on a correlation between changes in health monitor data received over time and activity monitor data received over time.

专利名称(译)	用于健康电话的方法和设备		
公开(公告)号	US9390229	公开(公告)日	2016-07-12
申请号	US11/740884	申请日	2007-04-26
[标]申请(专利权)人(译)	KAHN PHILIPPE RICHARD KINSOLVING ARTHUR		
申请(专利权)人(译)	卡恩PHILIPPE RICHARD KINSOLVING , ARTHUR		
当前申请(专利权)人(译)	DP TECHNOLOGIES , INC.		
[标]发明人	KAHN PHILIPPE RICHARD KINSOLVING ARTHUR		
发明人	KAHN, PHILIPPE RICHARD KINSOLVING, ARTHUR		
IPC分类号	A61B5/00 G06F19/00 A63B22/02 A63B22/04		
CPC分类号	G06F19/34 G06F19/3456 A63B22/02 A63B22/04 A63B69/0028 A63B71/0686 A63B2024/0078 A63B2024/0093 A63B2071/063 A63B2220/40 A63B2225/20 A63B2225/50 A63B2230/00 A63B2230/06 A63B2230/30		
审查员(译)	JACKSON , GARY		
优先权	60/795398 2006-04-26 US		
外部链接	Espacenet USPTO		

摘要(译)

一种利用结合到蜂窝电话中的计步器或加速计提供健康电话的方法和设备。该系统被设计成从计步器或加速度计接收活动数据，并将活动数据传送到远程服务器，该蜂窝电话还被设计为接收来自服务器的建议，该建议基于从蜂窝电话接收的活动数据而产生。

