



US006592847B1

(12) **United States Patent**  
**Weissleder et al.**

(10) **Patent No.: US 6,592,847 B1**  
(45) **Date of Patent: \*Jul. 15, 2003**

(54) **INTRAMOLECULARLY-QUENCHED NEAR INFRARED FLOURESCENT PROBES**

(75) Inventors: **Ralph Weissleder**, Charlestown, MA (US); **Ching-Hsuan Tung**, Natick, MA (US); **Umar Mahmood**, Boston, MA (US); **Lee Josephson**, Arlington, MA (US); **Alexei Bogdanov**, Arlington, MA (US)

(73) Assignee: **The General Hospital Corporation**, Boston, MA (US)

(\* ) Notice: Subject to any disclaimer, the term of this patent is extended or adjusted under 35 U.S.C. 154(b) by 0 days.

This patent is subject to a terminal disclaimer.

(21) Appl. No.: **09/604,145**

(22) Filed: **Jun. 27, 2000**

**Related U.S. Application Data**

(63) Continuation-in-part of application No. 09/079,447, filed on May 14, 1998, now Pat. No. 6,083,486.

(51) **Int. Cl.**<sup>7</sup> ..... **A61B 10/00**; A61B 5/00; A61B 8/00

(52) **U.S. Cl.** ..... **424/9.6**; 424/1.11; 424/9.1; 424/1.65

(58) **Field of Search** ..... 424/1.11, 1.37, 424/1.65, 9.1, 9.3, 9.4, 9.5, 9.6, 9.7, 9.8, 1.49; 530/300, 331, 328, 329

(56) **References Cited**

**U.S. PATENT DOCUMENTS**

4,945,239 A	7/1990	Wist et al.	
4,947,850 A	8/1990	Vanderkooi et al.	
5,186,173 A	2/1993	Zuckerman	
5,403,928 A	4/1995	Arrhenius	540/128
5,593,658 A	1/1997	Bogdanov et al.	
5,641,878 A	6/1997	Dandliker et al.	540/128
5,650,135 A	7/1997	Contag et al.	424/9.1
5,661,035 A	8/1997	Tsien et al.	436/63
5,677,199 A	10/1997	Arrhenius	436/536
5,846,703 A	12/1998	Devlin et al.	
5,876,946 A	3/1999	Burbaum et al.	435/7.1
6,083,485 A	7/2000	Licha et al.	
6,083,486 A	7/2000	Weissleder et al.	424/9.6
6,258,340 B1	7/2001	Licha et al.	
6,268,222 B1 *	7/2001	Chandler et al.	436/523

**FOREIGN PATENT DOCUMENTS**

WO 98/47538 10/1998

**OTHER PUBLICATIONS**

Folli, S. et al., "Immunophotodiagnosis of colon carcinomas . . .," Proc. Natl. Adac. Sci. USA, 89:7973-7977, 1992.

Pottier, R.H., et al., "Non-invasive technique for obtaining . . .," Photochemistry and Photobiology, 44(5):679-687,, 1986.

Wagnieres, G. et al., "Photodetection of early cancer in . . .," SPIE: Future Trends in Biomedical Applications of Lasers, 1525:219-236, 1991.

Mew, D. et al., "Photoimmunotherapy: Treatment of animal . . .," Journal of Immunology, 130:1473-1477, 1982.

Ballou et al., "Tumor Labeling In Vivo Using Cyanine-Conjugated Monoclonal Antibodies," *Cancer Immunol. Immunother* 41:257-263 (1995).

Bogdanov et al., "Long-Circulating Blood Pool Imaging Agents," *Advanced Drug Delivery Reviews* 16:335-348 (1995).

Denmeade et al., "Specific and Efficient Peptide Substrates for Assaying the Proteolytic Activity of Prostate-Specific Antigen," *Cancer Research* 57:4924-4930 (1997).

Folli et al., "Antibody-Indocyanin Conjugates for Immunophotodetection of Human Squamous Cell Carcinoma in Nude Mice," *Cancer Research* 54:2643-2649 (1994).

Gulnik et al., "Design of Sensitive Fluorogenic Substrates for Human Cathepsin D," *FEBS Letters* 413:379-384 (1997).

Neri et al., "Targeting by Affinity-Matured Recombinant Antibody Fragments of an Angiogenesis Associated Fibronectin Isoform," *Nature Biotechnology* 15:1271-1275 (1997).

Tromberg et al., "Non-Invasive Measurements of Breast Tissue Optical Properties Using Frequency-Domain Photon Migration," *Phil. Trans. R. Soc. London B* 352:661-668 (1997).

Wyatt, "Cerebral Oxygenation and Haemodynamics in the Fetus and Newborn Infant," *Phil. Trans. R. Soc. London B* 352:697-700 (1997).

\* cited by examiner

*Primary Examiner*—Dameron L. Jones

(74) *Attorney, Agent, or Firm*—Fish & Richardson P.C.

(57) **ABSTRACT**

An intramolecularly-quenched, near infrared fluorescence probe that emits substantial fluorescence only after interaction with a target tissue (i.e., activation) is disclosed. The probe includes a polymeric backbone and a plurality of near infrared fluorochromes covalently linked to the backbone at fluorescence-quenching interaction-permissive positions separable by enzymatic cleavage at fluorescence activation sites. The probe optionally includes protective chains or fluorochrome spacers, or both. Also disclosed are methods of using the intramolecularly-quenched, near infrared fluorescence probes for in vivo optical imaging.

**208 Claims, 8 Drawing Sheets**

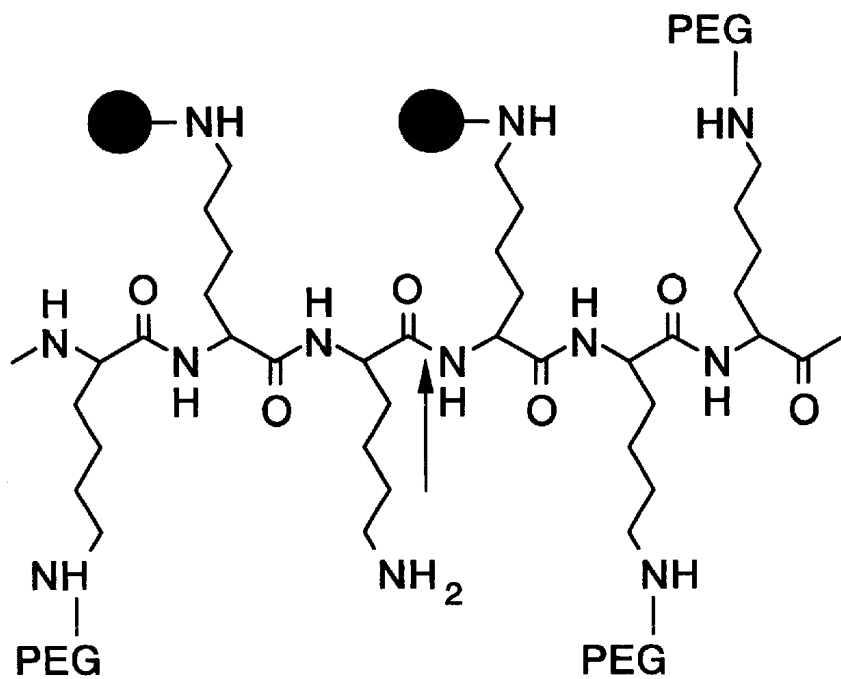


FIG.1A

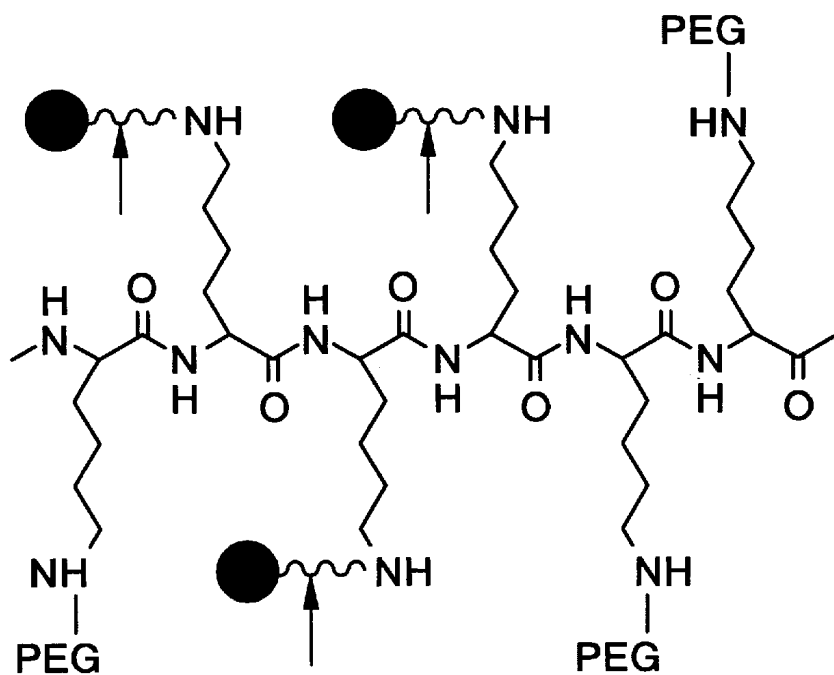
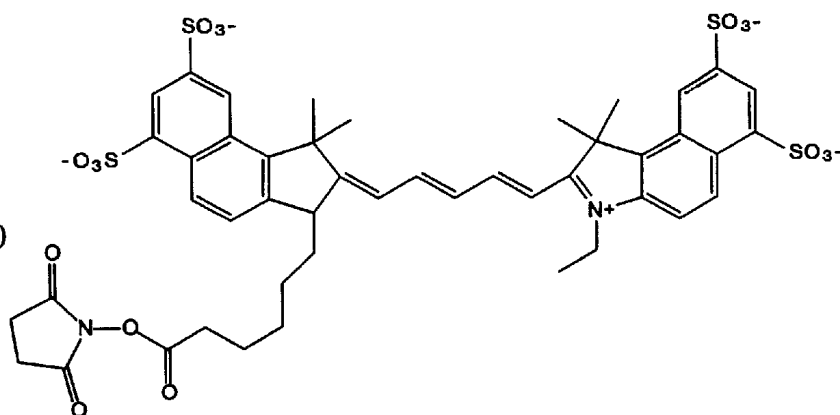
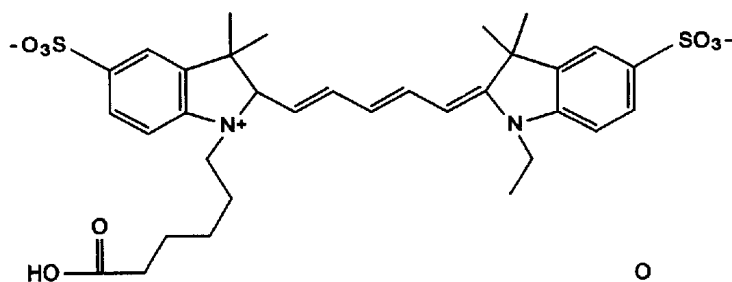


FIG.1B

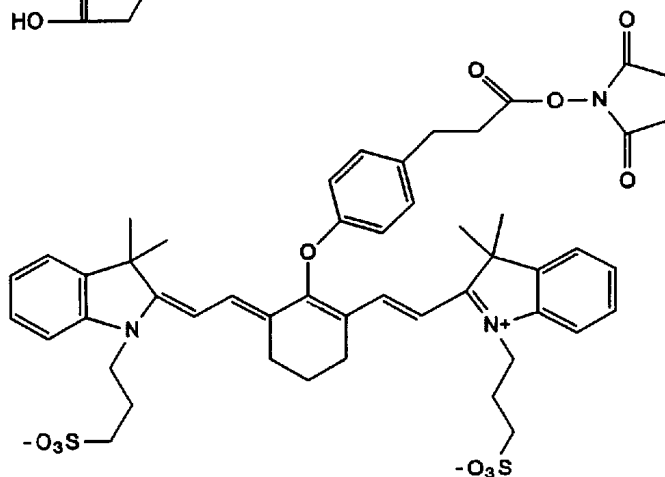
1. Cy5.5  
 Ex=675  
 Em=694  
 $\epsilon=250,000$   
 Q=28%



2. Cy5  
 Ex=649  
 Em=670  
 $\epsilon=250,000$   
 Q=28%



3. IRD41  
 Ex=787  
 Em=807  
 $\epsilon=200,000$   
 Q=16.5%



4. IRD700  
 Ex=685  
 Em=705  
 $\epsilon=170,000$   
 Q=50%

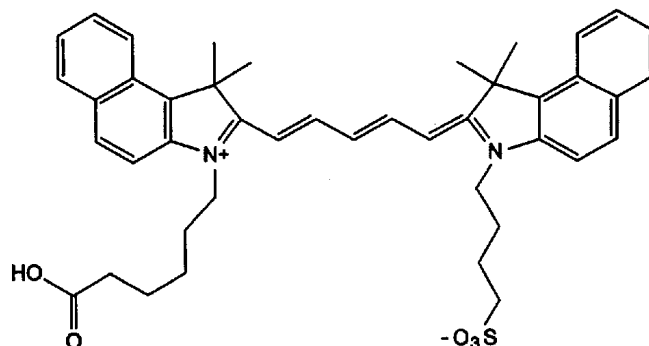
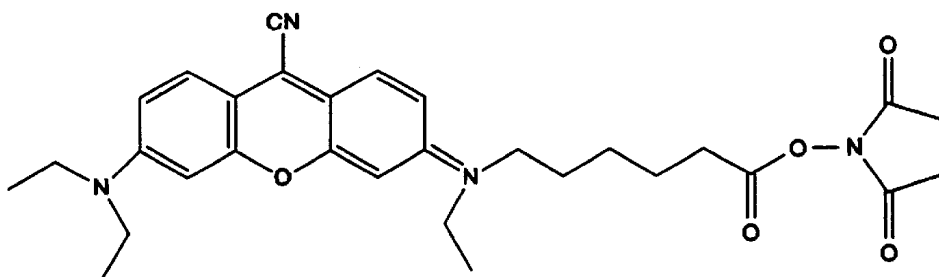


FIG. 2A

5. NIR-1  
 Ex=663  
 Em=685  
 ε=75,000



6. LaJolla Blue  
 Ex=680  
 Em=700  
 ε=170,000  
 Q=70%

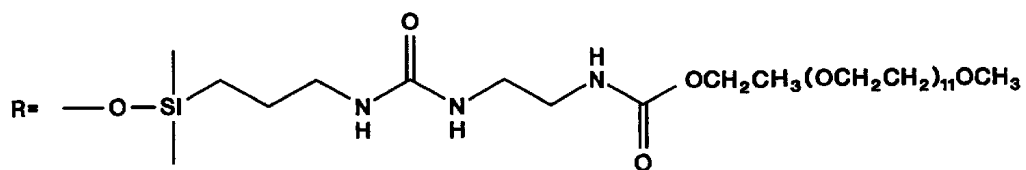
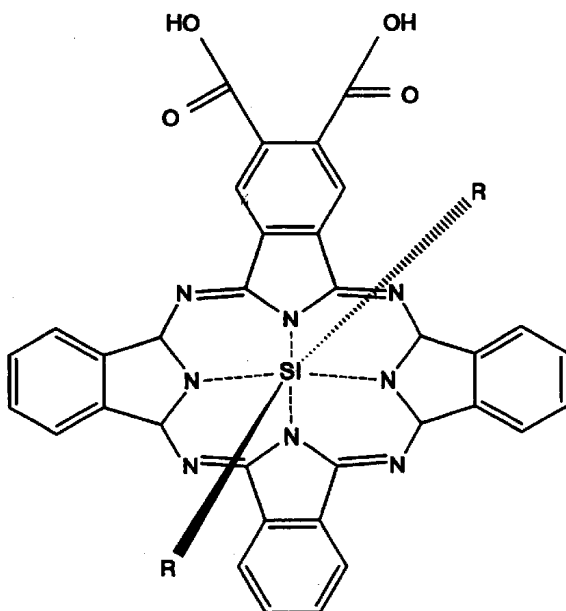


FIG. 2B

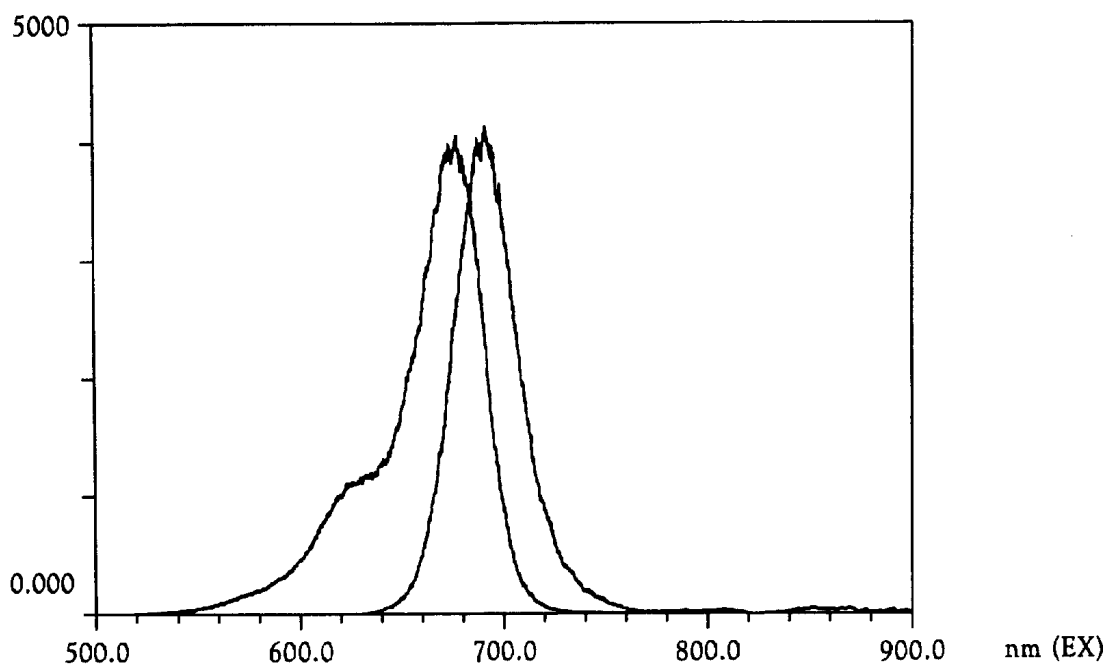


FIG.3A

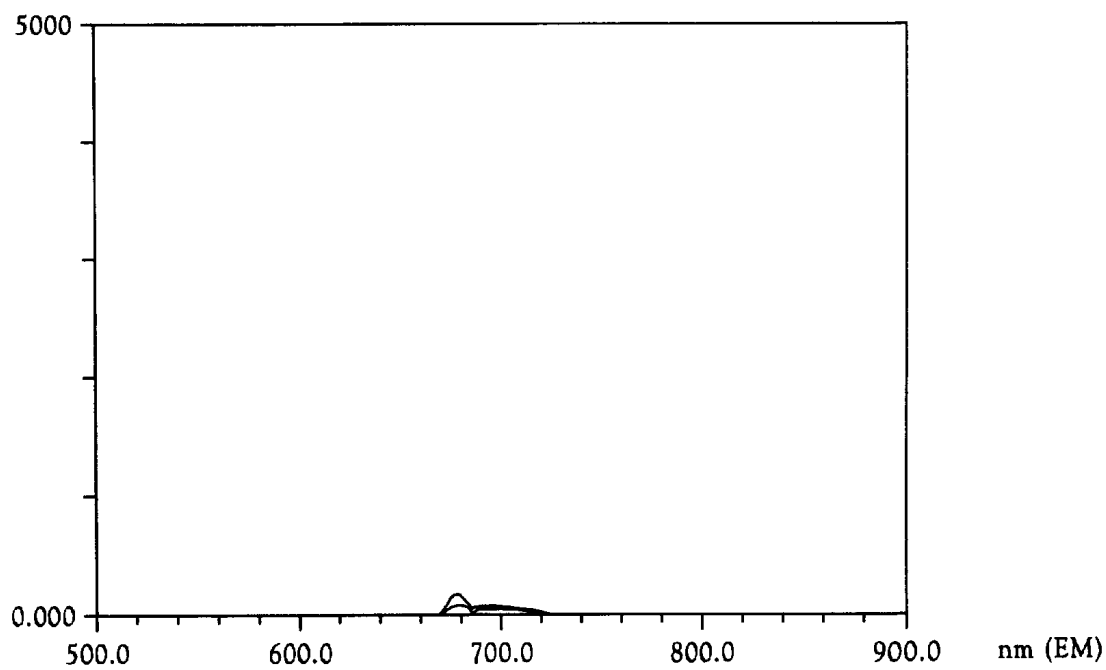


FIG.3B

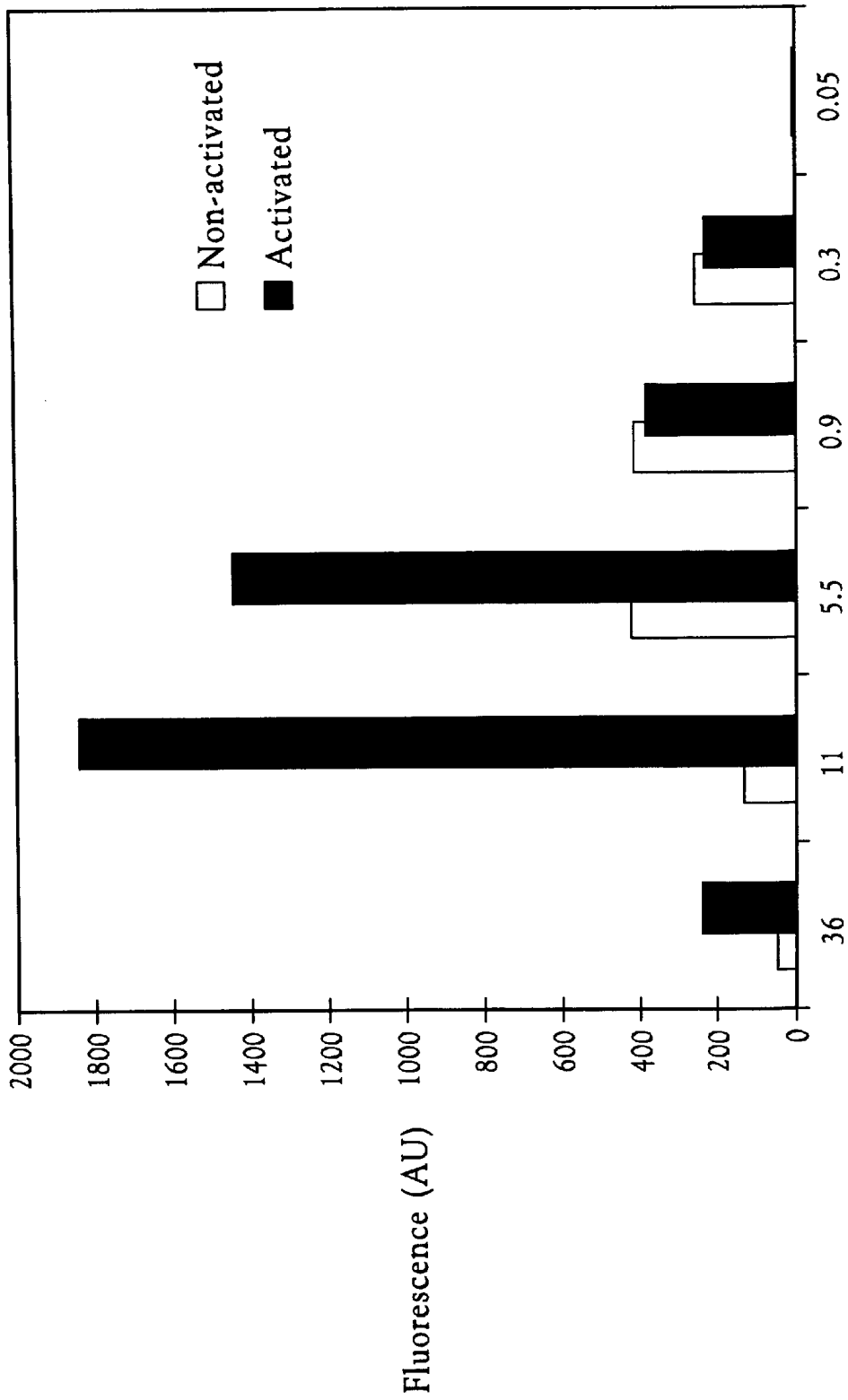


FIG. 4

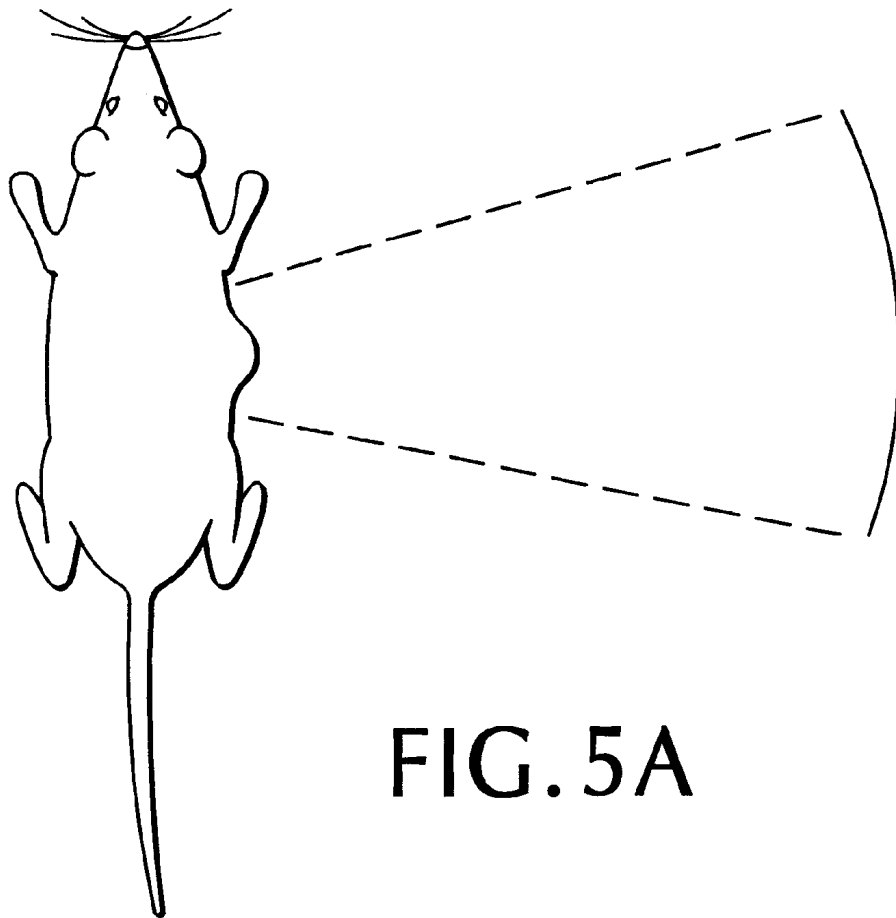


FIG. 5A

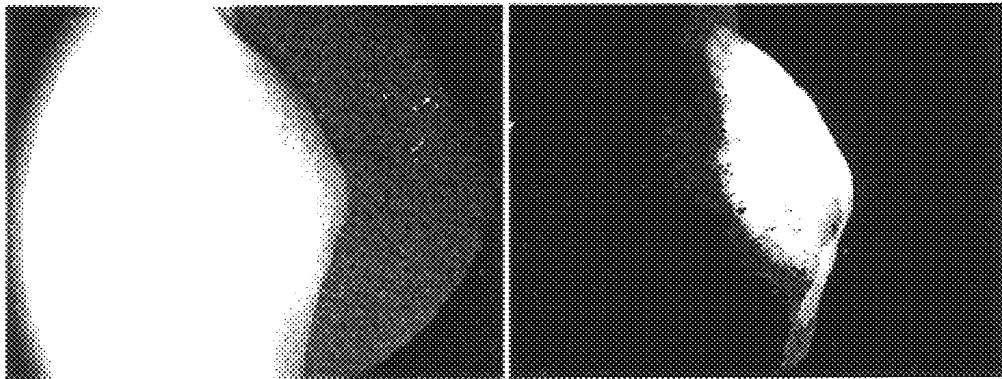


FIG. 5B

FIG. 5C

Endoscope figure:

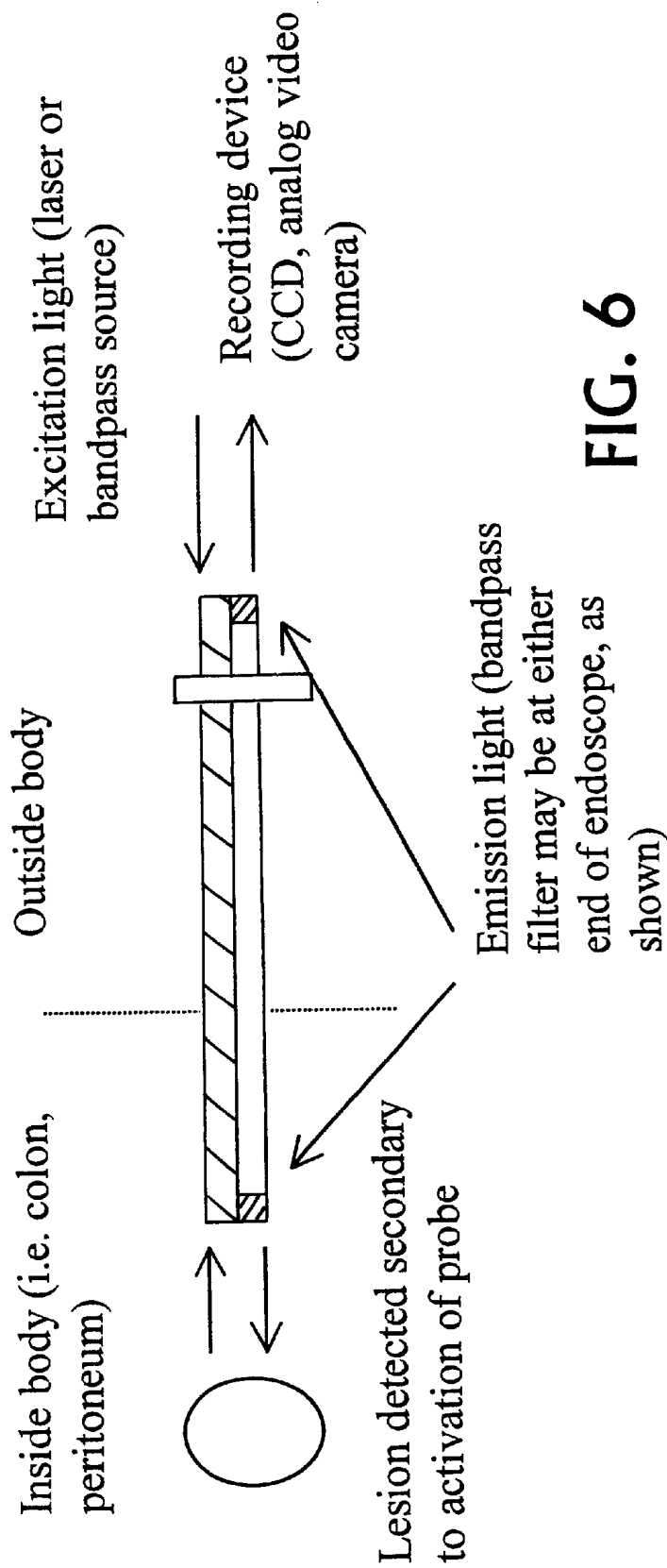


FIG. 6

1

## INTRAMOLECULARLY-QUENCHED NEAR INFRARED FLOURESCENT PROBES

This application is a continuation-in-part of application Ser. No. 09/079,447, filed May 14, 1998 U.S. Pat. No. 6,083,486.

### FIELD OF THE INVENTION

The invention relates to biochemistry, cell biology, and in vivo optical imaging.

### BACKGROUND OF THE INVENTION

Optically based biomedical imaging techniques have advanced over the past decade due to factors including developments in laser technology, sophisticated reconstruction algorithms and imaging software originally developed for non-optical, tomographic imaging modes such as CT and MRI. Visible wavelengths are used for optical imaging of surface structures by means of endoscopy and microscopy.

Near infrared wavelengths (approx. 700–1000 nm) have been used in optical imaging of internal tissues, because near infrared radiation exhibits tissue penetration of up to 6–8 centimeters. See, e.g., Wyatt, 1997, "Cerebral oxygenation and haemodynamics in the fetus and newborn infant," *Phil. Trans. R. Soc. London B* 352:701–706; Tromberg et al., 1997, "Non-invasive measurements of breast tissue optical properties using frequency-domain photo migration," *Phil. Trans. R. Soc. London B* 352:661–667.

Advantages of near infrared imaging over other currently used clinical imaging techniques include the following: potential for simultaneous use of multiple, distinguishable probes (important in molecular imaging); high temporal resolution (important in functional imaging); high spatial resolution (important in in vivo microscopy); and safety (no ionizing radiation).

In near infrared fluorescence imaging, filtered light or a laser with a defined bandwidth is used as a source of excitation light. The excitation light travels through body tissues. When it encounters a near infrared fluorescent molecule ("contrast agent"), the excitation light is absorbed. The fluorescent molecule then emits light (fluorescence) spectrally distinguishable (slightly longer wavelength) from the excitation light. Despite good penetration of biological tissues by near infrared light, conventional near infrared fluorescence probes are subject to many of the same limitations encountered with other contrast agents, including low target/background ratios.

### SUMMARY OF THE INVENTION

We have developed intramolecularly-quenched, near infrared fluorescence probes that emit substantial fluorescence only after interaction with a target tissue, i.e., "activation." This increases the target/background ratio by several orders of magnitude and enables non-invasive, near infrared imaging of internal target tissues in vivo, based on enzymatic activity present in the target tissue.

Accordingly, the invention features an intramolecularly-quenched fluorescence probe comprising a polymeric backbone and a plurality of near infrared fluorochromes covalently linked to the backbone at fluorescence-quenching interaction-permissive positions separable by enzymatic cleavage at fluorescence activation sites.

The backbone can be any biocompatible polymer. For example, it can be a polypeptide, a polysaccharide, a nucleic acid, or a synthetic polymer. Polypeptides useful as a

2

backbone include, for example, polylysine, albumins, and antibodies. Poly(L-lysine) is a preferred polypeptide backbone. The backbone also can be a synthetic polymer such as polyglycolic acid, polylactic acid, poly(glycolic-colactic) acid, polydioxanone, polyvalerolactone, poly- $\epsilon$ -caprolactone, poly(3-hydroxybutyrate), poly(3-hydroxyvalerate) polytartronic acid, and poly( $\beta$ -malonic acid).

The probe can include one or more protective chains covalently linked to the backbone. Suitable protective chains include polyethylene glycol, methoxypolyethylene glycol, methoxypolypropylene glycol, copolymers of polyethylene glycol and methoxypolypropylene glycol, dextran, and polylactic-polyglycolic acid. In some embodiments of the invention, the backbone is polylysine and the protective chains are methoxypolyethylene glycol.

Fluorescence activation sites can be located in the backbone, e.g., when the fluorochromes linked directly to  $\epsilon$ -amino groups of polylysine. Alternatively, each fluorochrome can be linked to the backbone by a spacer containing a fluorescence activation site. The spacers can be oligopeptides. Oligopeptide sequences useful as spacers include: Arg-Arg; Arg-Arg-Gly; Gly-Pro-Ile-Cys-Phe-Phe-Arg-Leu-Gly (SEQ ID NO:1); and His-Ser-Ser-Lys-Leu-Gln-Gly (SEQ ID NO:2).

Near infrared fluorochromes useful in this invention include Cy5.5, Cy5, Cy7, IRD41, IRD700, NIR-1, LaJolla Blue, indocyanine green (ICG) and analogs thereof, indotricarbocyanine (ITC), and chelated lanthanide compounds that display near infrared fluorescence. The fluorochromes can be covalently linked to the backbone, or spacers, using any suitable reactive group on the fluorochrome and a compatible functional group on the backbone or spacer. A probe according to this invention also can include a targeting moiety such as an antibody, antigen-binding antibody fragment, a receptor-binding polypeptide, or a receptor-binding polysaccharide.

The invention also features an in vivo optical imaging method. The method includes: (a) administering to a living animal or human an intramolecularly-quenched fluorescence probe that accumulates preferentially in a target tissue, and comprises a fluorochrome attachment moiety and a plurality of near infrared fluorochromes covalently linked to the fluorochrome attachment moiety at fluorescence-quenching interaction-permissive positions separable by enzymatic cleavage at fluorescence activation sites; (b) allowing time for (1) the probe to accumulate preferentially in the target tissue, and (2) enzymes in the target tissue to activate the probe by enzymatic cleavage at fluorescence activation sites, if the target tissue is present; (c) illuminating the target tissue with near infrared light of a wavelength absorbable by the fluorochromes; and (d) detecting fluorescence emitted by the fluorochromes. Preferably, the fluorochrome attachment moiety is a polymeric backbone. Alternatively, it can be a monomeric, dimeric, or oligomeric molecule.

The invention also features an in vivo optical imaging method comprising: (a) administering to a living animal or human an intramolecularly-quenched fluorescence probe comprising a fluorochrome attachment moiety and a plurality of near infrared fluorochromes covalently linked to the fluorochrome attachment moiety at fluorescence-quenching interaction-permissive positions separable by enzymatic cleavage at fluorescence activation sites, which enzymatic cleavage occurs preferentially in a target tissue; (b) allowing time for enzymes in the target tissue to activate the probe by enzymatic cleavage at fluorescence activation sites, if the

target tissue is present; (c) illuminating the target tissue with near infrared light of a wavelength absorbable by the fluorochromes; and (d) detecting fluorescence emitted by the fluorochromes. Preferably, the fluorochrome attachment moiety is a polymeric backbone. Alternatively, it can be a monomeric, dimeric, or oligomeric molecule.

The above methods can be used, e.g., for in vivo imaging of a tumor in a human patient, or in vivo detection or evaluation of arthritis in a joint of a human patient. The invention also features an in vivo method for selectively imaging two different cell or tissue types simultaneously. The method includes administering to an animal or human patient two different intramolecularly-quenched fluorescence probes, each of which accumulates preferentially in a target tissue. Each of the two probes includes a fluorochrome attachment moiety and a plurality of near infrared fluorochromes covalently linked to the fluorochrome attachment moiety at fluorescence-quenching interaction-permissive positions separable by enzymatic cleavage at fluorescence activation sites. Each of the two probes comprises a fluorochrome whose fluorescence wavelength is distinguishable from that of the other fluorochrome, and each of the two probes contains a different activation site.

As used herein, "backbone" means a biocompatible polymer to which near infrared fluorochromes are covalently linked in fluorescence-quenching interaction-permissive positions.

As used herein, "fluorescence activation site" means a covalent bond within a probe, which bond is: (1) cleavable by an enzyme present in a target tissue, and (2) located so that its cleavage liberates a fluorochrome from being held in a fluorescence-quenching interaction-permissive position.

As used herein, "fluorescence-quenching interaction-permissive positions" means the positions of two or more atoms (in a single polymer) to which fluorochromes can be covalently linked (directly or indirectly through a spacer) so that the fluorochromes are maintained in a position relative to each other that permits them to interact photochemically and quench each other's fluorescence.

As used herein, "fluorochrome attachment moiety" means a molecule to which two or more fluorochromes are covalently linked (directly or through a spacer) and maintained in fluorescence-quenching interaction-permissive positions relative to one another.

As used herein, "protective chain" means a biocompatible polymeric moiety covalently linked to the backbone of a probe to inhibit undesired biodegradation, clearance, or immunogenicity of the backbone.

As used herein, "targeting moiety" means a moiety bound covalently or noncovalently to a self-quenched probe, which moiety enhances the concentration of the probe in a target tissue relative to surrounding tissue.

Unless otherwise defined, all technical and scientific terms used herein have the same meaning as commonly understood by one of ordinary skill in the art to which this invention belongs. In case of conflict, the present application, including definitions will control. All publications, patent applications, patents, and other references mentioned herein are incorporated by reference.

Although methods and materials similar or equivalent to those described herein can be used in the practice of the present invention, preferred methods and materials are described below. The materials, methods, and examples are illustrative only and not intended to be limiting. Other features and advantages of the invention will be apparent from the detailed description and from the claims.

#### BRIEF DESCRIPTION OF THE DRAWINGS

FIGS. 1A and 1B are schematic diagrams indicating the chemical components, and their structural arrangement, in probes representing two embodiments of the invention.

FIGS. 2A and 2B are the chemical structures of six near infrared fluorochromes. FIG. 2A includes the structures of Cy5.5, Cy5, IRD41, and IRD700. FIG. 2B includes the structures of NIR-1 and LaJolla Blue.

FIGS. 3A and 3B are spectrophotometer scans of the near infrared fluorochrome, Cy5.5, before (FIG. 3A) and after (FIG. 3B) covalent linkage to PL-MPEG.

FIG. 4 is a bar graph summarizing data on intramolecular quenching and probe activation. The data were obtained using Cy-PL-MPEG probes with different levels of fluorochrome loading.

FIG. 5A is a schematic diagram illustrating the location of the murine flank tumor shown in FIGS. 5B and 5C.

FIG. 5B is a visible light photograph of the skin covering a human flank tumor in a 9L-bearing nude mouse.

FIG. 5C is a near infrared fluorescence image of the tumor in FIG. 5B.

FIG. 6 is a schematic diagram illustrating the use of an endoscope in the invention.

#### DETAILED DESCRIPTION

##### Probe Design and Synthesis

Probe architecture, i.e., the particular arrangement of probe components, can vary as long as the probe retains a polymeric backbone and a plurality of near infrared fluorochromes covalently linked to the backbone at fluorescence-quenching interaction-permissive positions separable by enzymatic cleavage at fluorescence activation sites. For example, the activation sites (points of enzymatic cleavage) can be in the backbone itself, as shown in FIG. 1A, or in side chains, as shown in FIG. 1B. Although each fluorochrome in FIGS. 1A and 1B is in a separate side chain, a pair of fluorochromes in fluorescence-quenching interaction-permissive positions can be in a single side chain. In such an embodiment, a fluorescence activation site is placed in the side chain between the pair of fluorochromes.

In some embodiments, the probe comprises a polypeptide backbone containing only a small number of amino acids, e.g., 5 to 20 amino acids, with fluorochromes attached to amino acids on opposite sides of a protease cleavage (activation) site. Guidance concerning various probe components, including backbone, protective side chains, fluorochromes, fluorochrome attachment moieties, spacers, activation sites and targeting moieties is provided in the paragraphs below.

Probe backbone design will depend on considerations such as biocompatibility (e.g., toxicity and immunogenicity), serum half-life, useful functional groups (for conjugating fluorochromes, spacers, and protective groups), and cost. Useful types of backbone include polypeptides (polyamino acids), polyethyleneamines, polysaccharides, aminated polysaccharides, aminated oligosaccharides, polyamidoamines, polyacrylic acids and polyalcohols. In some embodiments the backbone consists of a polypeptide formed from L-amino acids, D-amino acids, or a combination thereof. Such a polypeptide can be, e.g., a polypeptide identical or similar to a naturally occurring protein such as albumin, a homopolymer such as polylysine, or a copolymer such as a D-tyr-D-lys copolymer. When lysine residues are present in the backbone, the  $\epsilon$ -amino groups on the side chains of the lysine residues can serve as convenient reactive groups for covalent linkage of

fluorochromes and spacers (FIGS. 1A and 1B). When the backbone is a polypeptide, preferably the molecular weight of the probe is from 2 kD to 1000 kD. More preferably, its molecular weight is from 4 kd to 500 kd.

A backbone may be chosen or designed so as to have a suitably long in vivo persistence (half-life) inherently. Therefore, protective chains are not necessary in some embodiments of the invention. Alternatively, a rapidly-biodegradable backbone such as polylysine can be used in combination with covalently-linked protective chains. Examples of useful protective chains include polyethylene glycol (PEG), methoxypolyethylene glycol (MPEG), methoxypolypropylene glycol, polyethylene glycol-diacid, polyethylene glycol monoamine, MPEG monoamine, MPEG hydrazide, and MPEG imidazole. The protective chain can also be a block-copolymer of PEG and a different polymer such as a polypeptide, polysaccharide, polyamidoamine, polyethyleneamine or polynucleotide. Synthetic, biocompatible polymers are discussed generally in Holland et al., 1992, "Biodegradable Polymers," *Advances in Pharmaceutical Sciences* 6:101-164.

A useful backbone-protective chain combination is methoxypoly(ethylene)glycol-succinyl-N- $\epsilon$ -poly-L-lysine (PL-MPEG). The synthesis of this material, and other polylysine backbones with protective chains, is described in Bogdanov et al., U.S. Pat. No. 5,593,658 and Bogdanov et al., 1995, *Advanced Drug Delivery Reviews* 16:335-348.

Various near infrared fluorochromes are commercially available and can be used to construct probes according to this invention. Exemplary fluorochromes include the following: Cy5.5, Cy5 and Cy7 (Amersham, Arlington Hts., Ill.; IRD41 and IRD700 (LI-COR, Lincoln, Neb.); NIR-1, (Dejindo, Kumamoto, Japan); LaJolla Blue (Diatron, Miami, Fla.); indocyanine green (ICG) and its analogs (Licha et al., 1996, *SPIE* 2927:192-198; Ito et al., U.S. Pat. No. 5,968,479); indotricarbocyanine (ITC; WO 98/47538); and chelated lanthanide compounds. Fluorescent lanthanide metals include europium and terbium. Fluorescence properties of lanthanides are described in Lackowicz, 1999, *Principles of Fluorescence Spectroscopy*, 2<sup>nd</sup> Ed., Kluwar Academic, New York.

Fluorescent probes with excitation and emission wavelengths in the near infrared spectrum are used, i.e., 650-1300 nm. Use of this portion of the electromagnetic spectrum maximizes tissue penetration and minimizes absorption by physiologically abundant absorbers such as hemoglobin (<650 nm) and water (>1200 nm). Ideal near infrared fluorochromes for in vivo use exhibit: (1) narrow spectral characteristics, (2) high sensitivity (quantum yield), (3) biocompatibility, and (4) decoupled absorption and excitation spectra. Table 1 summarizes information on the properties of six commercially-available near infrared fluorochromes, whose structures are shown in FIGS. 2A and 2B.

TABLE 1

Exemplary Near Infrared Fluorochromes					
Fluoro-chrome	$\lambda$ (nm) excit-ation	$\lambda$ (nm) emis-sion	Mol. Wt.	Extinct. Coef.	Quantum yield %
Cy5.5	675	694	1128.41	250,000	28.0
Cy5	649	670	791.99	250,000	28.0
IRD41	787	807	925.10	200,000	16.5
IRD700	685	705	704.92	170,000	50.0
NIR-1	663	685	567.08	75,000	NA

TABLE 1-continued

Exemplary Near Infrared Fluorochromes					
Fluoro-chrome	$\lambda$ (nm) excit-ation	$\lambda$ (nm) emis-sion	Mol. Wt.	Extinct. Coef.	Quantum yield %
LaJolla Blue	680	700	5000.00	170,000	70.0
Cy7	743	767	818.02	200,000	28.0
ICG	780	812	774.98	115,000	1.2
ITC*					

\*See WO 98/47538

Intramolecular fluorescence quenching by non-activated probes can occur by any of various quenching mechanisms. Several mechanisms are known, including resonance energy transfer between two fluorochromes. In this mechanism, the emission spectrum of a first fluorochrome should be very similar to the excitation of a second fluorochrome, which is in close proximity to the first fluorochrome. Efficiency of energy transfer is inversely proportional to  $r^6$ , where  $r$  is the distance between the quenched chromophore and excited chromophore. Self-quenching can also result from fluorochrome aggregation or excimer formation. This effect is strictly concentration dependent. Quenching also can result from a non-polar-to-polar environmental change.

To achieve intramolecular quenching, several strategies can be applied. They include: (1) linking a second fluorochrome, as an energy acceptor, at a suitable distance from the first fluorochrome; (2) linking fluorochromes to the backbone at high density, to induce self-quenching; and (3) linking polar fluorochromes in a vicinity of non polar structural elements of the backbone and/or protective chains. Fluorescence is partially or fully recovered upon cleavage of the fluorochrome from neighboring fluorochromes and/or from a particular region, e.g., a non-polar region, of the probe.

The fluorochrome can be covalently linked to a fluorochrome attachment moiety, backbone, or spacer using any suitable reactive group on the fluorochrome and a compatible functional group on the fluorochrome attachment moiety, backbone, or spacer. For example, a carboxyl group (or activated ester) on a fluorochrome can be used to form an amide linkage with a primary amine such as the  $\epsilon$ -amino group of the lysyl side chain on polylysine.

In some embodiments of the invention, the fluorochromes are linked directly to the backbone or linked to the backbone through nonbiodegradable spacers. In such embodiments, the fluorescence activation sites are in the backbone. Some probes of this type accumulate in tumor interstitium and inside tumor cells, e.g., by fluid phase endocytosis. By virtue of this preferential accumulation, such probes can be used to image tumor tissues, even if the enzyme(s) activating the probe are not tumor specific.

In some embodiments of the invention, fluorochromes are linked to the backbone through spacers containing fluorescence activation sites. Oligopeptide spacers can be designed to contain amino acid sequences recognized by specific proteases associated with target tissues.

In some embodiments of the invention, two paired fluorochromes in fluorescence-quenching positions are in a single polypeptide side chain containing an activation site between the two fluorochromes. Such a side chain can be synthesized as an activatable fluorescence module that can be used as a probe per se, or covalently attached to a backbone (carrier) or targeting molecule, e.g., an albumin, antibody, receptor binding molecule, synthetic polymer or

polysaccharide. A useful conjugation strategy is to place a cysteine residue at the N-terminus or C-terminus of the module and then employ SPDP for covalent linkage between the side chain of the terminal cysteine residue and a free amino group of the carrier or targeting molecule.

Prostate Specific Antigen (PSA), is a 33 kD chymotrypsin-like serine protease is secreted exclusively by prostatic epithelial cells. Normally, this enzyme is primarily involved in post-ejaculation degradation of the major human seminal protein. Normally, serum concentrations of PSA are proportional to the volume of prostatic epithelium. The release of PSA from prostate tumor cells, however, is about 30-fold higher than that from normal prostate epithelium cells. Damages basal membrane and deranged tissue architecture allow PSA to be secreted directly into the extracellular space and into the blood. Although high levels of PSA can be detected in serum, the serum PSA exists as a complex with  $\alpha$ 1-antichymotrypsin protein, and is proteolytically inactive. Free, uncomplexed, activated PSA occurs in the extracellular fluid from malignant prostate tissues, and PSA activity can be used as a marker for prostate tumor tissue. prostate tumor tissue is highly enriched in PSA. Thus, spacers containing the amino acid sequence recognized by PSA can be used to produce a near infrared probe that undergoes fluorescence activation specifically in prostate tumor tissue. An example of a PSA-sensitive spacer is His-Ser-Ser-Lys-Leu-Gln-Gly (SEQ ID NO:2). Other PSA-sensitive spacers can be designed using information known in the art regarding the substrate specificity of PSA. See, e.g., 1997, Denmeade et al., *Cancer Res.* 57:4924-4930.

Cathepsin D is an abundant lysosomal aspartic protease distributed in various mammalian tissues. In most breast cancer tumors, cathepsin D is found at levels from 2-fold to 50-fold greater than levels found in fibroblasts or normal mammary gland cells. Thus, cathepsin D can be a useful marker for breast cancer. Spacers containing the amino acid sequence recognized by cathepsin D can be used to produce a near infrared probe that undergoes fluorescence activation specifically in breast cancer tissue. An example of a cathepsin D-sensitive spacer is the oligopeptide: Gly-Pro-Ile-Cys-Phe-Phe-Arg-Leu-Gly (SEQ ID NO:1). Other cathepsin D-sensitive spacers can be designed using information known in the art regarding the substrate specificity of cathepsin D. See, e.g., Gulnik et al., 1997, *FEBS Let.* 413:379-384.

Various other enzymes can be exploited to provide probe activation (cleavage) in particular target tissues in particular diseases. Table 2 provides information on 5 exemplary enzymes (including substrate sequence recognized and cleavage point) and associated diseases.

TABLE 2

Enzyme-Disease Associations			
Enzyme	Disease	Substrate	Reference
Cathepsin B/H	Cancer	K•K	
Cathepsin D	Breast ca > others	PIC(Et)F•F (SEQ ID NO:3)	Gulnik, 1997, <i>FEBS Lett.</i> 413:379.
PSA	Prostate ca	HSSKLG• (SEQ ID NO:4)	Denmeade, 1997, <i>Cancer Res.</i> 57:4924.
MMP's	Metastases, inflammation	P(L/Q)G•(I/L)AG (SEQ ID NO:5)	Verheijen, 1997, <i>Biochem. J.</i> 323:603.
CMV protease	Viral	GVVQA•SRLA (SEQ ID NO:6)	Sardana, 1994, <i>J. Biol. Chem.</i> 269: 14337

\*Bullet (•) indicates cleavage point.

When the fluorochromes are linked directly to the backbone, probe activation is by cleavage of the backbone.

High fluorochrome loading of the backbone can interfere with backbone cleavage by activating enzymes such as trypsin. Therefore, a balance between fluorescence quenching and accessibility of the backbone by probe-activating enzymes. For any given backbone-fluorochrome combination (when activation sites are in the backbone) probes representing a range of fluorochrome loading densities can be produced and tested in vitro to determine the optimal fluorochrome loading percentage.

When the fluorochromes are linked to the backbone through activation site-containing spacers, accessibility of the backbone by probe-activating enzymes is unnecessary. Therefore, high loading of the backbone with spacers and fluorochromes does not significantly interfere with probe activation. In such a system, every lysine residue of polylysine can carry a spacer and fluorochrome, and every fluorochrome can be released by activating enzymes.

Preferential accumulation of a probe in a target tissue can be achieved or enhanced by binding a tissue-specific targeting moiety (targeting ligand) to the probe. The binding can be covalent or non-covalent. Examples of targeting moieties include a monoclonal antibody (or antigen-binding antibody fragment) directed against a target-specific marker, a receptor-binding polypeptide directed to a target-specific receptor, and a receptor-binding polysaccharide directed against a target-specific receptor. Antibodies or antibody fragments can be produced and conjugated to probes of this invention using conventional antibody technology (see, e.g., Folli et al., 1994, "Antibody-Indocyanin Conjugates for Immunophotodetection of Human Squamous Cell Carcinoma in Nude Mice," *Cancer Res.* 54:2643-2649; Neri et al., 1997, "Targeting By Affinity-Matured Recombinant Antibody Fragments of an Angiogenesis Associated Fibronectin Isoform," *Nature Biotechnology* 15:1271-1275). Similarly, receptor-binding polypeptides and receptor-binding polysaccharides can be produced and conjugated to probes of this invention using known techniques.

#### In Vitro Probe Testing

After a probe is designed and synthesized, it can be tested routinely in vitro to verify a requisite level of intramolecular fluorescence quenching before activation. Preferably, this is done by obtaining a fluorescence value for the intramolecularly quenched, fluorochrome-containing probe in a dilute, physiological buffer. This value is then compared to the fluorescence value obtained from an equimolar concentration of free fluorochrome in the same buffer, under the same fluorescence-measuring conditions. Preferably, this comparison will be done at a series of dilutions, to verify that the measurements are taking place on a linear portion of the fluorescence vs. fluorochrome concentration curve.

The molar amount of an intramolecularly-quenched fluorochrome on a probe can be determined by one of ordinary skill in the art using any suitable technique. For example, the molar amount can be determined readily by near infrared absorption measurements. Alternatively, it can be determined readily by measuring the loss of reactive linking groups on the backbone (or spacers), e.g., decrease in ninhydrin reactivity due to loss of amino groups.

After suitable intramolecular fluorescence quenching is verified, "de-quenching," i.e., fluorescence, upon exposure to an activating enzyme also can be verified in vitro. In preferred procedure, fluorescence of an intramolecularly-quenched probe is measured before and after treatment with an activating enzyme. If the probe has activation sites in the backbone (as opposed to in spacers), de-quenching should be tested at various levels of fluorochrome loading, where

“loading” refers to the percentage of possible fluorochrome linkage sites on the backbone actually occupied by fluorochromes.

In addition, cells grown in culture can be used routinely to test intramolecularly-quenched near infrared fluorescence probes. Probe molecules free in cell culture medium should be non-detectable by fluorescence microscopy. Cellular uptake should result in probe activation and a fluorescence signal from probe-containing cells. Microscopy of cultured cells thus can be used to verify that activation takes place upon cellular uptake of a probe being tested. Microscopy of cells in culture is also a convenient means for determining whether activation occurs in one or more subcellular compartments.

#### In Vivo Near Infrared Imaging

Although the invention involves novel near infrared fluorescence probes, general principles of fluorescence, optical image acquisition, and image processing can be applied in the practice of the invention. For a review of optical imaging techniques, see, e.g., Alfano et al., 1997, “Advances in Optical Imaging of Biomedical Media,” *Ann. NY Acad. Sci.* 820:248–270.

An imaging system useful in the practice of this invention typically includes three basic components: (1) a near infrared light source, (2) a means for separating or distinguishing fluorescence emissions from light used for fluorochrome excitation, and (3) a detection system.

The light source provides monochromatic (or substantially monochromatic) near infrared light. The light source can be a suitably filtered white light, i.e., bandpass light from a broadband source. For example, light from a 150-watt halogen lamp can be passed through a suitable bandpass filter commercially available from Omega Optical (Brattleboro, Vt.). In some embodiments, the light source is a laser. See, e.g., Boas et al., 1994, *Proc. Natl. Acad. Sci. USA* 91:4887–4891; Ntziachristos et al., 2000, *Proc. Natl. Acad. Sci. USA* 97:2767–2772; Alexander, 1991, *J. Clin. Laser Med. Surg.* 9:416–418. Information on near infrared lasers for imaging can be found at <http://www.imds.com>.

A high pass filter (700 nm) can be used to separate fluorescence emissions from excitation light. A suitable high pass filter is commercially available from Omega Optical.

In general, the light detection system can be viewed as including a light gathering/image forming component and a light detection/image recording component. Although the light detection system may be a single integrated device that incorporates both components, the light gathering/image forming component and light detection/image recording component will be discussed separately.

A particularly useful light gathering/image forming component is an endoscope. Endoscopic devices and techniques which have been used for in vivo optical imaging of numerous tissues and organs, including peritoneum (Gahlen et al., 1999, *J. Photochem. Photobiol. B* 52:131–135), ovarian cancer (Major et al., 1997, *Gynecol. Oncol.* 66:122–132), colon (Mycek et al., 1998, *Gastrointest. Endosc.* 48:390–394; Stepp et al., 1998, *Endoscopy* 30:379–386) bile ducts (Izuishi et al., 1999, *Hepatogastroenterology* 46:804–807), stomach (Abe et al., 2000, *Endoscopy* 32:281–286), bladder (Kriegmair et al., 1999, *Urol. Int.* 63:27–31; Riedl et al., 1999, *J. Endourol.* 13:755–759), and brain (Ward, 1998, *J. Laser Appl.* 10:224–228) can be employed in the practice of the present invention.

Other types of light gathering components useful in the invention are catheter-based devices, including fiber optics devices. Such devices are particularly suitable for intravas-

cular imaging. See, e.g., Tearney et al., 1997, *Science* 276:2037–2039; *Proc. Natl. Acad. Sci. USA* 94:4256–4261.

Still other imaging technologies, including phased array technology (Boas et al., 1994, *Proc. Natl. Acad. Sci. USA* 91:4887–4891; Chance, 1998, *Ann. NY Acad. Sci.* 838:29–45), diffuse optical tomography (Cheng et al., 1998, *Optics Express* 3:118–123; Siegel et al., 1999, *Optics Express* 4:287–298), intravital microscopy (Dellian et al., 2000, *Br. J. Cancer* 82:1513–1518; Monsky et al., 1999, *Cancer Res.* 59:4129–4135; Fukumura et al., 1998, *Cell* 94:715–725), and confocal imaging (Korlach et al., 1999, *Proc. Natl. Acad. Sci. USA* 96:8461–8466; Rajadhyaksha et al., 1995, *J. Invest. Dermatol.* 104:946–952; Gonzalez et al., 1999, *J. Med.* 30:337–356) can be employed in the practice of the present invention.

Any suitable light detection/image recording component, e.g., charge coupled device (CCD) systems or photographic film, can be used in the invention. The choice of light detection/image recording will depend on factors including type of light gathering/image forming component being used. Selecting suitable components, assembling them into a near infrared imaging system, and operating the system is within ordinary skill in the art.

In some embodiments of the invention, two (or more) probes containing: (1) fluorochromes that emit fluorescence at different near infrared wavelengths, and (2) activation sites recognized by different enzymes, e.g., cathepsin D and MMP2, are used simultaneously. This allows simultaneous evaluation of two (or more) biological phenomena.

#### EXAMPLES

In order that the invention may be more fully understood, the following examples are provided. It should be understood that these examples are for illustrative purposes only and are not to be construed as limiting the invention in any way.

##### Synthesis of Near Infrared Fluorescence Probes

We synthesized three different intramolecularly-quenched near infrared fluorescence probes by conjugating a commercially-available fluorochrome known as Cy5.5 (absorption=675 nm, emission=694 nm; Amersham, Arlington Heights, Ill.) to PL-MPEG (average molecular weight approx. 450 kD). The three probes differed in attachment of the fluorochrome to the polylysine backbone. In a probe designated “Cy-PL-MPEG,” the Cy5.5 was linked directly to the  $\epsilon$ -amino group of the polylysine side chains at various densities, which ranged from 0.1% to 70% derivatization of the  $\epsilon$ -amino groups. In a probe designated, “Cy-RRG-PL-MPEG,” the Cy5.5, fluorochrome was linked to the polylysine by a spacer consisting of Arg-Arg-Gly. In a probe designated “Cy-GPICFFRLG-PL-MPEG,” the Cy 5.5 fluorochrome was linked to the polylysine by a spacer consisting of Gly-Pro-Ile-Cys-Phe-Phe-Arg-Leu-Gly (SEQ ID NO:1). Trypsin and trypsin-like proteases are capable of cleaving the polylysine backbone of Cy-PL-MPEG, when it is only partially derivatized.

Probes Cy-RRG-PL-MPEG and Cy-GPICFFRLG-PL-MPEG were designed to allow fluorochrome cleavage of the spacer, but not necessarily the backbone. For example the peptide spacer RRG, sensitive to trypsin cleavage, was used to derivatize the PL-MPEG, and then Cy5.5 was linked to the N-terminus of the RRG spacers. The cathepsin D sensitive peptide spacer, GPICFFRLG (SEQ ID NO:1), was similarly used to derivatize the PL-MPEG.

Cy5.5, commercially available as a monofunctional NHS-ester (Amersham, Arlington Heights, Ill.), was used according to the vendor’s instructions, to label free  $\epsilon$ -amino groups

of the polylysine backbone in PL-MPEG. Cy5.5 was added to a pre-mixed MPEG-PL solution (0.2 mg PL-MPEG in 1 ml 80 mM sodium bicarbonate solution) to a final concentration of 17  $\mu$ M. After three hours, the reaction mixture was applied to a Sephadex™ G-25 (Pharmacia) column (12 cm) for separation of the reaction product (Cy-PL-MPEG) from the unreacted fluorochrome and other low-molecular weight components of the reaction mixture. Average fluorochrome loading was about 20%, i.e., 11 out of 55 free amino groups on the PL-MPEG labeled with Cy5.5 (based on TNBS assay and absorption measurement).

FIG. 3A shows the excitation and emission spectra of Cy5.5 free in solution. FIG. 3B shows the excitation and emission spectra of Cy5.5 fluorochromes of Cy-PL-MPEG. The excitation and emission wavelengths of Cy5.5 are 675 nm and 694 nm, respectively. There was a marked difference in the level of fluorescence of the free Cy5.5 and the Cy-PL-MPEG. The fluorescence level of the Cy-MPEG-PL was approximately 30-fold lower than that of the unbound Cy5.5.

In subsequent studies, we determined the effect of fluorochrome loading (i.e., percentage of  $\epsilon$ -amino groups on the polylysine backbone occupied by fluorochrome) on the optical properties of the probe. FIG. 4 shows the relative fluorescent signal of Cy(n)-MPEG-PL (white bars) as a function of percentage of  $\epsilon$ -amino groups on the polylysine backbone occupied by fluorochrome. At 20% loading (11 of 55 groups) and higher, intramolecular quenching was observed, and the fluorescence signal was lowered in comparison to probes with lower fluorochrome loading. After trypsin cleavage of the backbone, fluorescence signal was recovered, as shown by the black bars in FIG. 4. Maximum fluorescence recovery was obtained at 20% loading (15-fold fluorescence signal increase upon activation). Recovery was reduced when at loading greater than 20%. This may have been due to steric hinderance and the need for free lysine groups for efficient cleavage of the backbone.

#### Probe Activation in Cell Culture

The next step in testing the functional imaging probe was to perform cell culture experiments. We expected that non-internalized Cy-PL-MPEG would be non-detectable by fluorescence microscopy, and that cellular uptake would lead to activation of the probe, with a resulting fluorescence signal. Data obtained using amelanotic B16 melanoma cells confirmed our prediction and showed that: (1) the non-activated probe is non-fluorescent, (2) the probe is taken up by this cell line, and (3) cellular uptake results in activation of the probe and fluorescence signal detection.

In this experiment we compared a bright field image outlining B16 cells to: (1) the same field under near infrared fluorescence conditions when Cy-MPEG-PL was added to the cells, near time-zero; and (2) after allowing time for intracellular uptake of the probe (data not shown). The cells were not detectable by near infrared fluorescence near time-zero, but the cells were clearly visible (due to intracellular fluorescence) after cellular uptake of the probe, i.e., at about two hours. This experiment demonstrated that our imaging probe detectably changed its optical properties in a target cell-dependent manner.

#### In Vivo Imaging

In vivo mouse imaging was carried out using a system composed of three main parts: light source, platform/holder, and image recording device. A fiber optic light bundle with

a 150 W halogen bulb (Fiberlite high intensity illuminator series 180, Dolan-Jennen Industries) provided broad spectrum white light. A sharp cut off band pass optical filter (Omega Filter Corp., Brattleboro, Vt.) was mounted at the end of the fiber optic bundle to create a uniform excitation source in the 610–650 nm range. The light was placed approximately 15 cm above the imaging platform to provide homogenous illumination of the entire mouse. The platform itself was a matte black surface that decreased the number of excitation photons reflected (and possibly detected) by the recording device.

Fluorescent (emission) photons were selected using a low pass filter with a sharp cut off at 700 nm (Omega Filter Corp.). Cy5.5 dye has an excitation peak at approximately 670 nm, with a broad shoulder extending below 610 nm. Peak emission is at 694 nm. Sharp cut-off filters with more than 5 OD attenuation combined with widely spaced frequencies for the filter set markedly decreased “cross talk” of incident excitation photons recorded as fluorescent emission signal. The narrow angle between light source and recording device ensured that only fluorescent emission photons or scattered photons that interacted with the mouse tissue reached the low pass filter

For image recording, the low-pass filter was mounted on a low power microscope (Leica StereoZoom 6 photo, Leica microscope systems, Heerbrugg, Switzerland). A low light CCD (SenSys 1400, 12 bit cooled CCD, Photometrics, Tuscon, Ariz.) recorded the fluorescent emission images. Images were transferred to a PowerMac 7600/120 PC (Apple Computer, Cupertino, Calif.) and processed using IPLab Spectrum 3.1 software (Signal Analytics Corp., Vienna, Va.). Post processing included standard routines to exclude bad CCD pixels, and superimposition routines to overlay emission images with localization images of the entire mouse obtained using a second white light source. Typical acquisition time was 30 seconds for the near infrared emission images, and 1 second for the white light (non-selective images).

We tested the near intramolecularly-quenched infrared fluorescence probe (Cy<sub>11</sub>-PL-MPEG; 20% fluorochrome loading) in tumor-bearing mice. Nude mice bearing tumor line 9L or LX1 received 2 nmol of Cy<sub>11</sub>-PL-MPEG intravenously. The mice were imaged by near infrared light immediately, and up to 36 hours after intravenous administration of the probe. An increase in fluorescence signal within tumor was observed as a function of time, as the probe was internalized into tumor cells and became activated by endosomal hydrolases.

FIG. 5A is a schematic diagram of the imaged mouse, illustrating the location of tumor shown in FIGS. 5B and 5C. FIG. 5B is visible light photograph of the skin covering a tumor on the side of a nude mouse into which the Cy<sub>11</sub>-PL-MPEG probe was injected. FIG. 5C is a corresponding near infrared fluorescence image. The tumor is visible as an area of intense fluorescence, in contrast to the surrounding tissue.

## SEQUENCE LISTING

<160> NUMBER OF SEQ ID NOS: 6

<210> SEQ ID NO 1  
 <211> LENGTH: 9  
 <212> TYPE: PRT  
 <213> ORGANISM: Artificial Sequence  
 <220> FEATURE:  
 <223> OTHER INFORMATION: spacer peptide

<400> SEQUENCE: 1

Gly Pro Ile Cys Phe Phe Arg Leu Gly  
 1 5

<210> SEQ ID NO 2  
 <211> LENGTH: 7  
 <212> TYPE: PRT  
 <213> ORGANISM: Artificial Sequence  
 <220> FEATURE:  
 <223> OTHER INFORMATION: spacer peptide

<400> SEQUENCE: 2

His Ser Ser Lys Leu Gln Gly  
 1 5

<210> SEQ ID NO 3  
 <211> LENGTH: 5  
 <212> TYPE: PRT  
 <213> ORGANISM: Artificial Sequence  
 <220> FEATURE:  
 <223> OTHER INFORMATION: substrate sequence  
 <221> NAME/KEY: VARIANT  
 <222> LOCATION: 3  
 <223> OTHER INFORMATION: Xaa = Cys (Et) which is ethylcysteine

<400> SEQUENCE: 3

Pro Ile Xaa Phe Phe  
 1 5

<210> SEQ ID NO 4  
 <211> LENGTH: 6  
 <212> TYPE: PRT  
 <213> ORGANISM: Artificial Sequence  
 <220> FEATURE:  
 <223> OTHER INFORMATION: substrate sequence

<400> SEQUENCE: 4

His Ser Ser Lys Leu Gln  
 1 5

<210> SEQ ID NO 5  
 <211> LENGTH: 6  
 <212> TYPE: PRT  
 <213> ORGANISM: Artificial Sequence  
 <220> FEATURE:  
 <223> OTHER INFORMATION: substrate sequence  
 <221> NAME/KEY: VARIANT  
 <222> LOCATION: 2  
 <223> OTHER INFORMATION: Xaa = Leu or Gln  
 <221> NAME/KEY: VARIANT  
 <222> LOCATION: 4  
 <223> OTHER INFORMATION: Xaa = Ile or Leu

<400> SEQUENCE: 5

Pro Xaa Gly Xaa Ala Gly  
 1 5

-continued

<210> SEQ ID NO 6  
 <211> LENGTH: 10  
 <212> TYPE: PRT  
 <213> ORGANISM: Artificial Sequence  
 <220> FEATURE:  
 <223> OTHER INFORMATION: substrate sequence

<400> SEQUENCE: 6

Gly Val Val Gln Ala Ser Cys Arg Leu Ala  
 1 5 10

We claim:

1. An activatable imaging probe comprising a fluorochrome attachment moiety and a plurality of near-infrared fluorochromes linked to the fluorochrome attachment moiety at fluorescence-quenching interaction-permissive positions, wherein the probe is activatable by cleavage at fluorescence activation sites.

2. The probe of claim 1, wherein the molecular weight of the probe is about 2 kDa to about 1,000 kDa.

3. The probe of claim 1, wherein cleavage is achieved by an enzyme.

4. The probe of claim 1, wherein at least one of the fluorochromes is linked to the fluorochrome attachment moiety by a spacer containing a fluorescence activation site.

5. The probe of claim 4, wherein the spacer is selected from the group consisting of a polysaccharide, a nucleic acid, and a synthetic cleavable moiety.

6. The probe of claim 4, wherein the spacer is a polypeptide.

7. The probe of claim 1, wherein the fluorescence activation sites are selected from the group consisting of the following amino acid sequences: RR, RRG, GPICFFRLG (SEQ ID NO:1), and HSSKLQG (SEQ ID NO:2).

8. The probe of claim 1, wherein the fluorescence activation sites are selected from the group consisting of the following amino acid sequences: PIC(Et)FF (SEQ ID NO:3), HSSKLQ (SEQ ID NO:4), P(L/Q)G(I/L)AG (SEQ ID NO:5), and GVVQASCRLA (SEQ ED NO:6).

9. The probe of claim 1, wherein the fluorescence activation site is KK.

10. The probe of claim 1, wherein cleavage is achieved by an enzyme that can cleave a KK activation site.

11. The probe of claim 1, wherein cleavage is achieved by an endosomal hydrolase.

12. The probe of claim 1, wherein cleavage is achieved by cleaving with a Cathepsin.

13. The probe of claim 1, wherein cleavage is achieved by cleaving with Cathepsin B.

14. The probe of claim 1, wherein the cleavage is achieved by cleaving with Cathepsin D or Prostate Specific Antigen (PSA).

15. The probe of claim 1, wherein the cleavage is achieved by cleaving with an enzyme selected from the group consisting of Cathepsin H, a Matrix Metalloproteinase (MMP), and Cytomegalovirus (CMV) protease.

16. The probe of claim 1, wherein the probe is activated by enzymatic cleavage by an enzyme from a tumor cell.

17. The probe of claim 1, wherein the fluorochrome attachment moiety is biocompatible.

18. The probe of claim 1, wherein the fluorochrome attachment moiety comprises a polymeric backbone.

19. The probe of claim 1, wherein the fluorochrome attachment moiety comprises a monomeric molecule.

20. The probe of claim 1, wherein the fluorochrome attachment moiety comprises a dimeric or oligomeric molecule.

21. The probe of claim 18, wherein the polymeric backbone comprises polylysine.

22. The probe of claim 18, wherein the polymeric backbone comprises poly-L-lysine.

23. The probe of claim 18, wherein the polymeric backbone has a molecular weight of about 35 kDa to about 50 kDa.

24. The probe of claim 18, wherein the polymeric backbone is selected from the group consisting of polypeptides, nucleic acids, polyethyleneamines, polysaccharides, polyamidoamines, polyacrylic acids, polyalcohols, and synthetic polymers.

25. The probe of claim 24, wherein the polypeptide backbone is comprised of D or L amino acids or a combination thereof.

26. The probe of claim 24, wherein the polypeptide backbone is comprised of a D-tyr-D-lys copolymer.

27. The probe of claim 24, wherein the polypeptide backbone is selected from the group consisting of albumin, antibodies, and antibody fragments.

28. The probe of claim 24, wherein the synthetic polymer is selected from the group consisting of polyglycolic acid, polylactic acid, poly(glycolic-colactic) acid, polydioxanone, polyvalerolactone, poly- $\epsilon$ -caprolactone, poly(3-hydroxybutyrate), poly(3-hydroxyvalerate) polytartronic acid, and poly( $\beta$ -malonic acid).

29. The probe of claim 1, further comprising a protective chain linked to the fluorochrome attachment moiety.

30. The probe of claim 29, wherein the protective chain is covalently linked to the fluorochrome attachment moiety.

31. The probe of claim 29, wherein the protective chain is selected from the group consisting of polyethylene glycol (PEG), methoxypolyethylene glycol (MPEG), polyethylene glycol-diacid, PEG monoamine, MPEG monoamine, MPEG hydrazide, MPEG imidazole, methoxypolypropylene glycol, copolymers of polyethylene glycol and methoxypolypropylene glycol, dextran, and polylactic-polyglycolic acid.

32. The probe of claim 29, wherein the protective chain is selected from the group consisting of a synthetic biocompatible polymer and a block-copolymer.

33. The probe of claim 29, wherein the protective chain has a molecular weight of about 5 kDa.

34. The probe of claim 29, wherein the protective chain is methoxypoly(ethylene) glycol-succinyl.

35. The probe of claim 29, wherein the protective chain is bound to the fluorochrome attachment moiety at a loading density of about 25% to about 35% of possible linkage sites on the fluorochrome attachment moiety.

36. The probe of claim 1, wherein at least one of the fluorochromes has excitation and emission wavelengths between 650 nm and 1300 nm.

37. The probe of claim 1, wherein the fluorochrome is selected from the group consisting of Cy5.5, Cy5, IRD41, IRD700, NIR-1, and LaJolla Blue.

38. The probe of claim 37, wherein the fluorochrome is Cy5.5.

39. The probe of claim 1, wherein the fluorochrome is selected from the group consisting of Cy7, indocyanine green (ICG), analogs of ICG, indotricarbocyanine (ITC), and chelated lanthanide compounds.

40. The probe of claim 1, wherein the fluorochromes are linked to the fluorochrome attachment moiety at a loading density of about 0.1% to about 70% of possible linkage sites on the fluorochrome attachment moiety.

41. The probe of claim 1, wherein for any given fluorochrome attachment moiety and fluorochrome combination, probes representing a range of fluorochrome loading densities are synthesized and tested to determine the optimal fluorochrome loading density.

42. The probe of claim 1, wherein fluorescence quenching is achieved by linking fluorochromes to the fluorochrome attachment moiety at a density such that self-quenching is induced.

43. The probe of claim 1, wherein fluorescence quenching is achieved by linking polar fluorochromes in the vicinity of the non-polar structural elements.

44. The probe of claim 1, wherein the fluorochromes are linked to the  $\epsilon$ -amino groups of polylysine.

45. The probe of claim 1, further comprising a targeting moiety.

46. The probe of claim 45, wherein the targeting moiety is covalently bound to the probe.

47. The probe of claim 45, wherein the targeting moiety is non-covalently bound to the probe.

48. The probe of claim 45, wherein the targeting moiety is selected from the group consisting of an antibody, an antibody fragment, a receptor-binding polypeptide, and a receptor-binding polysaccharide.

49. An activatable imaging probe comprising a fluorochrome attachment moiety and a plurality of fluorochromes linked to the fluorochrome attachment moiety at fluorescence-quenching interaction-permissible positions, wherein at least one of the fluorochromes is a near infrared fluorochrome and at least one of the other fluorochromes is an energy acceptor, and wherein the probe is activatable by cleavage at fluorescence activation sites.

50. The probe of claim 49, wherein the energy acceptor is a quencher fluorochrome.

51. The probe of claim 50, wherein the quencher fluorochrome is selected from the group consisting of DABCYL, QSY-7, and QSY-33.

52. An activatable imaging probe comprising a fluorochrome attachment moiety and a plurality of near-infrared fluorochromes linked to the fluorochrome attachment moiety at fluorescence-quenching interaction-permissible positions, wherein the probe is activatable by cleavage at fluorescence activation sites located in the fluorochrome attachment moiety.

53. The probe of claim 52, wherein the molecular weight of the probe is about 2 kDa to about 1000 kDa.

54. The probe of claim 52, wherein cleavage is achieved by an enzyme.

55. The probe of claim 52, wherein the fluorescence activation site is KK.

56. The probe of claim 52, wherein cleavage is achieved by an enzyme that can cleave a KK activation site.

57. The probe of claim 52, wherein cleavage is achieved by an endosomal hydrolase.

58. The probe of claim 52, wherein cleavage is achieved by cleaving with a Cathepsin.

59. The probe of claim 52, wherein cleavage is achieved by cleaving with Cathepsin B.

60. The probe of claim 52, wherein the probe is activated by enzymatic cleavage by an enzyme from a tumor cell.

61. The probe of claim 52, wherein the fluorochrome attachment moiety is biocompatible.

62. The probe of claim 52, wherein the fluorochrome attachment moiety comprises a polymeric backbone.

63. The probe of claim 52, wherein the fluorochrome attachment moiety comprises a monomeric molecule.

64. The probe of claim 52, wherein the fluorochrome attachment moiety comprises a dimeric or oligomeric molecule.

65. The probe of claim 62, wherein the polymeric backbone comprises polylysine.

66. The probe of claim 62, wherein the polymeric backbone comprises poly-L-lysine.

67. The probe of claim 62, wherein the polymeric backbone has a molecular weight of about 35 kDa to about 50 kDa.

68. The probe of claim 62, wherein the polymeric backbone is selected from the group consisting of polypeptides, nucleic acids, polyethylenamines, polysaccharides, polyamidoamines, polyacrylic acids, polyalcohols, and synthetic polymers.

69. The probe of claim 68, wherein the polypeptide backbone is comprised of D or L amino acids or a combination thereof.

70. The probe of claim 68, wherein the polypeptide backbone is comprised of a D-tyr-D-lys copolymer.

71. The probe of claim 68, wherein the polypeptide backbone is selected from the group consisting of albumin, antibodies, and antibody fragments.

72. The probe of claim 68, wherein the synthetic polymer is selected from the group consisting of polyglycolic acid, polylactic acid, poly(glycolic-colactic) acid, polydioxanone, polyvalerolactone, poly- $\epsilon$ -caprolactone, poly(3-hydroxybutyrate), poly(3-hydroxyvalerate) polytartronic acid, and poly( $\beta$ -malonic acid).

73. The probe of claim 52, further comprising a protective chain linked to the fluorochrome attachment moiety.

74. The probe of claim 73, wherein the protective chain is covalently linked to the fluorochrome attachment moiety.

75. The probe of claim 73, wherein the protective chain is selected from the group consisting of polyethylene glycol (PEG), methoxypolyethylene glycol (MEG), polyethylene glycol-diacid, PEG monoamine, MPEG monoamine, MPEG hydrazide, MPEG imidazole) methoxypolypropylene glycol, copolymers of polyethylene glycol and methoxypolypropylene glycol, dextran, and polylactic-polyglycolic acid.

76. The probe of claim 73, wherein the protective chain is selected from the group consisting of a synthetic biocompatible polymer and a block-polymer.

77. The probe of claim 73, wherein the protective chain has a molecular weight of about 5 kDa.

78. The probe of claim 73, wherein the protective chain is methoxypoly(ethylene) glycol-succinyl.

79. The probe of claim 73, wherein the protective chain is bound to the fluorochrome attachment moiety at a loading density of about 25% to about 35% of possible linkage sites on the fluorochrome attachment moiety.

80. The probe of claim 52, wherein at least one of the fluorochromes has excitation and emission wavelengths between 650 nm and 1300 nm.

81. The probe of claim 52, wherein the fluorochrome is selected from the group consisting of Cy5.5, Cy5, IRD41, IRD700, NIR-1, and LaJolla Blue.

82. The probe of claim 81, wherein the fluorochrome is Cy5.5.

83. The probe of claim 52, wherein the fluorochrome is selected from the group consisting of Cy7, indocyanine green (ICG), analogs of ICG, indotricarbocyanine (ITC), and chelated lanthanide compounds.

84. The probe of claim 52, wherein the fluorochromes are linked to the fluorochrome attachment moiety at a loading density of about 0.1% to about 70% of possible linkage sites on the fluorochrome attachment moiety.

85. The probe of claim 52, wherein for any given fluorochrome attachment moiety and fluorochrome combination, probes representing a range of fluorochrome loading densities are synthesized and tested to determine the optimal fluorochrome loading density.

86. The probe of claim 52, wherein fluorescence quenching is achieved by linking fluorochromes to the fluorochrome attachment moiety at a density such that self-quenching is induced.

87. The probe of claim 52, wherein fluorescence-quenching is achieved by linking polar fluorochromes in the vicinity of the non-polar structural elements.

88. The probe of claim 52, wherein the fluorochromes are linked to the  $\epsilon$ -amino groups of polylysine.

89. The probe of claim 52, further comprising a targeting moiety.

90. The probe of claim 89, wherein the targeting moiety is covalently bound to the probe.

91. The probe of claim 89, wherein the targeting moiety is non-covalently bound to the probe.

92. The probe of claim 89, wherein the targeting moiety is selected from the group consisting of an antibody, an antibody fragment, a receptor-binding polypeptide, and a receptor-binding polysaccharide.

93. An activatable imaging probe comprising a fluorochrome attachment moiety of methoxypoly(ethylene)glycol-succinyl-N- $\epsilon$ -poly-L-lysine and a plurality of fluorochromes linked to the  $\epsilon$ -amino groups of the poly-L-lysine side chains at fluorescence-quenching interaction-permissible positions, wherein the probe is activatable by enzymatic cleavage at KK activation sites located in the fluorochrome attachment moiety.

94. The probe of claim 93, wherein the fluorochrome is Cy5.5.

95. The probe of claim 93, wherein methoxypoly(ethylene)glycol-succinyl-N- $\epsilon$ -poly-L-lysine is synthesized from poly-L-lysine with a molecular weight of about 35 kDa to about 50 kDa.

96. The probe of claim 93, wherein the methoxypoly(ethylene)glycol-succinyl-N- $\epsilon$ -poly-L-lysine contains a methoxypoly(ethylene)glycol density of about 25% to about 45%.

97. The probe of claim 93, wherein Cy5.5 is linked to the methoxypoly(ethylene) glycol-succinyl-N- $\epsilon$ -poly-L-lysine at a loading density of about 5% to about 20%.

98. An activatable imaging probe comprising a fluorochrome attachment moiety and a plurality of fluorochromes linked to the fluorochrome attachment moiety at fluorescence-quenching interaction-permissible positions, wherein at least one of the fluorochromes is a near infrared fluorochrome and at least one of the other fluorochromes is an energy acceptor, and wherein the probe is activatable by cleavage at fluorescence activation sites located in the fluorochrome attachment moiety.

99. The probe of claim 98, wherein the energy acceptor is a quencher fluorochrome.

100. The probe of claim 99, wherein the quencher fluorochrome is selected from the group consisting of DABCYL, QSY-7, and QSY-33.

101. An activatable imaging probe comprising a fluorochrome attachment moiety and a plurality of fluorochromes linked to the fluorochrome attachment moiety at fluorescence-quenching interaction-permissible positions, wherein the probe is activatable by enzymatic cleavage by a Cathepsin at activation sites located in the fluorochrome attachment moiety.

102. An activatable imaging probe comprising a fluorochrome attachment moiety and a plurality of near-infrared fluorochromes linked to the fluorochrome attachment moiety at fluorescence-quenching interaction-permissible positions through spacers, wherein the probe is activatable by cleavage at fluorescence activation sites located in the spacers.

103. The probe of claim 102, wherein the molecular weight of the probe is about 2 kDa to about 1000 kDa.

104. The probe of claim 102, wherein cleavage is achieved by an enzyme.

105. The probe of claim 102, wherein the spacers are selected from the group consisting of a polysaccharide, a nucleic acid, and a synthetic cleavable moiety.

106. The probe of claim 102, wherein the spacers are polypeptides.

107. The probe of claim 102, wherein the fluorescence activation sites are selected from the group consisting of the following amino acid sequences: RR, RRG, GPICFFRLG (SEQ ID NO:1), and HSSKLQG (SEQ ID NO:2).

108. The probe of claim 102, wherein the fluorescence activation sites are selected from the group consisting of the following amino acid sequences: PIC(Et)FF (SEQ ID NO:3), HSSKLQ (SEQ ID NO:4), P(L/Q)G(I/L)AG (SEQ ID NO:5), and GVVQASCRLA (SEQ ID NO:6).

109. The probe of claim 102, wherein the fluorescence activation site is KK.

110. The probe of claim 102, wherein cleavage is achieved by an endosomal hydrolase.

111. The probe of claim 102, wherein cleavage is achieved by cleaving with a Cathepsin.

112. The probe of claim 102, wherein cleavage is achieved by cleaving with Cathepsin B.

113. The probe of claim 102, wherein the cleavage is achieved by cleaving with Cathepsin D or Prostate Specific Antigen (PSA).

114. The probe of claim 102, wherein the cleavage is achieved by cleaving with an enzyme selected from the group consisting of Cathepsin H, a Matrix Metalloproteinase (MMP), and Cytomegalovirus (CMV) protease.

115. The probe of claim 102, wherein the probe is activated by enzymatic cleavage by an enzyme from a tumor cell.

116. The probe of claim 102, wherein the fluorochrome attachment moiety is biocompatible.

117. The probe of claim 102, wherein the fluorochrome attachment moiety comprises a polymeric backbone.

118. The probe of claim 102, wherein the fluorochrome attachment moiety comprises a monomeric molecule.

119. The probe of claim 102, wherein the fluorochrome attachment moiety comprises a dimeric or oligomeric molecule.

120. The probe of claim 117, wherein the fluorochrome attachment moiety comprises polylysine.

121. The probe of claim 117, wherein the polymeric backbone comprises poly-L-lysine.

122. The probe of claim 117, wherein the polymeric backbone has a molecular weight of about 35 kDa to about 50 kDa.

123. The probe of claim 117, wherein the polymeric backbone is selected from the group consisting of

polypeptides, nucleic acids, polyethyleneamines, polysaccharides, polyamidoamines, polyacrylic acids, polyalcohols, and synthetic polymers.

124. The probe of claim 123, wherein the polypeptide backbone is comprised of D or L amino acids or a combination thereof.

125. The probe of claim 123, wherein the polypeptide backbone is comprised of a D-tyr-D-lys copolymer.

126. The probe of claim 123, wherein the polypeptide backbone is selected from the group consisting of albumin, antibodies, and antibody fragments.

127. The probe of claim 123, wherein the synthetic polymer is selected from the group consisting of polyglycolic acid, polylactic acid, poly(glycolic-colactic) acid, polydioxanone, polyvalerolactone, poly- $\epsilon$ -caprolactone, poly(3-hydroxybutyrate), poly(3-hydroxyvalerate) polytartaric acid, and poly( $\beta$ -malonic acid).

128. The probe of claim 102, further comprising a protective chain linked to the fluorochrome attachment moiety.

129. The probe of claim 128, wherein the protective chain is covalently linked to the fluorochrome attachment moiety.

130. The probe of claim 128, wherein the protective chain is selected from the group consisting of polyethylene glycol (PEG), methoxypolyethylene glycol (MPEG), polyethylene glycol-diacid, PEG monoamine, MPEG monoamine, MPEG hydrazide, MPEG imidazole, methoxypolypropylene glycol, copolymers of polyethylene glycol and methoxypolypropylene glycol, dextran, and polylactic-polyglycolic acid.

131. The probe of claim 128, wherein the protective chain is selected from the group consisting of a synthetic biocompatible polymer and a block-copolymer.

132. The probe of claim 128, wherein the protective chain has a molecular weight of about 5 kDa.

133. The probe of claim 128, wherein the protective chain is methoxypoly(ethylene) glycol-succinyl.

134. The probe of claim 128, wherein the protective chain is bound to the fluorochrome attachment moiety a loading density of about 25% to about 35% of possible linkage sites on the fluorochrome attachment moiety.

135. The probe of claim 128, wherein at least one of the fluorochromes has excitation and emission wavelengths between 650 nm and 1300 nm.

136. The probe of claim 102, wherein the fluorochrome is selected from the group consisting of Cy5.5, Cy5, IRD41, IRD700, NIR-1, and LaJolla Blue.

137. The probe of claim 102, wherein the fluorochrome is Cy5.5.

138. The probe of claim 136, wherein the fluorochrome is selected from the group consisting of Cy7, indocyanine green (ICG), analogs of ICG, indotricarbocyanine (ITC), and chelated lanthanide compounds.

139. The probe of claim 102, wherein the fluorochromes are linked to the fluorochrome attachment moiety at a loading density of about 0.1% to about 70% of possible linkage sites on the fluorochrome attachment moiety.

140. The probe of claim 102, wherein for any given fluorochrome attachment moiety and fluorochrome combination, probes representing a range of fluorochrome loading densities are synthesized and tested to determine the optimal fluorochrome loading density.

141. The probe of claim 102, wherein fluorescence quenching is achieved by linking fluorochromes to the fluorochrome attachment moiety through the spacers at a density such that self-quenching is induced.

142. The probe of claim 102, wherein fluorescence-quenching is achieved by linking polar fluorochromes in the vicinity of the non-polar structural elements.

143. The probe of claim 102, further comprising a targeting moiety.

144. The probe of claim 143, wherein the targeting moiety is covalently bound to the probe.

145. The probe of claim 143, wherein the targeting moiety is non-covalently bound to the probe.

146. The probe of claim 143, wherein the targeting moiety is selected from the group consisting of an antibody, an antibody fragment, a receptor-binding polypeptide, and a receptor-binding polysaccharide.

147. An activatable imaging probe comprising a fluorochrome attachment moiety and a plurality of fluorochromes linked to the fluorochrome attachment moiety through spacers at fluorescence-quenching interaction-permissible positions, wherein at least one of the fluorochromes is a near infrared fluorochrome and at least one of the other fluorochromes is an energy acceptor, and wherein the probe is activatable by cleavage at fluorescence activation sites located in the spacer.

148. The probe of claim 147, wherein the energy acceptor is a quencher fluorochrome.

149. The probe of claim 148, wherein the quencher fluorochrome is selected from the group consisting of DABCYL, QSY-7, and QSY-33.

150. An in vivo optical imaging method comprising:

- (a) administering to a subject the probe of claim 1;
- (b) allowing time for the probe to become activated in a tissue in the subject;
- (c) illuminating the subject with near infrared light of a wavelength absorbable by the fluorochromes; and
- (d) detecting fluorescence emitted by the fluorochromes.

151. The method of claim 150, wherein the probe is activated by an endosomal hydrolase.

152. The method of claim 150, wherein the probe is activated by Cathepsin B.

153. The method of claim 150, wherein the probe is activated by Cathepsin D or Prostate Specific Antigen (PSA).

154. The method of claim 150, wherein the probe is activated by an enzyme selected from the group consisting of Cathepsin H, a Matrix Metalloproteinase (MMP), and Cytomegalovirus (CMV) protease.

155. The method of claim 150, wherein the probe consists of at least one fluorochrome that has excitation and emission wavelengths between 650 nm and 1300 nm.

156. The method of claim 150, wherein steps (a) through (d) are repeated over time.

157. The method of claim 150, wherein the fluorescence emitted from step (d) is used to construct an image.

158. The method of claim 150, wherein step (d) is performed using a suitable light detection or image recording component consisting of a charge coupled device (CCD) system or photographic film.

159. The method of claim 150, wherein steps (c) and (d) are performed using an endoscopic device, a catheter-based device, a diffuse optical tomographic imaging system, phased array technology, confocal imaging, or intravital microscopy.

160. The method of claim 150, wherein the presence, absence or level of probe activation is indicative of a disease state.

161. The method of claim 160, wherein the disease state is cancer.

162. The method of claim 160, wherein the disease state is arthritis or inflammation.

163. The method of claim 150, wherein the subject is a living animal.

164. The method of claim 150, wherein the subject is a human.

165. The method of claim 150, wherein the probe is administered via IV injection.

166. The method of claim 150, wherein in step (a), more than one distinguishable imaging probe is administered to the subject and wherein in step (d) more than one target is detected simultaneously in tissues in the subject.

167. An in vivo optical imaging method comprising:

(a) administering to a subject the probe of claim 52;

(b) allowing time for the probe to become activated in a tissue in the subject;

(c) illuminating the subject with near infrared light of a wavelength absorbable by the fluorochromes; and

(d) detecting fluorescence emitted by the fluorochromes.

168. The method of claim 167, wherein the probe is activated by cleavage of fluorescence activation sites located in the fluorescence attachment moiety.

169. The method of claim 167, wherein the probe is activated by an endosomal hydrolase.

170. The method of claim 167, wherein the probe is activated by Cathepsin B.

171. The method of claim 167, wherein the probe consists of at least one fluorochrome that has excitation and emission wavelengths between 650 nm and 1300 nm.

172. The method of claim 167, wherein steps (a) through (d) are repeated over time.

173. The method of claim 167, wherein the fluorescence emitted from step (d) is used to construct an image.

174. The method of claim 167, wherein step (d) is performed using a suitable light detection or image recording component consisting of a charge coupled device (CCD) system or photographic film.

175. The method of claim 167, wherein steps (c) and (d) are performed using an endoscopic device, a catheter-based device, a diffuse optical tomographic imaging system, phased array technology, confocal imaging, or intravital microscopy.

176. The method of claim 167, wherein the presence, absence or level of probe activation is indicative of a disease state.

177. The method of claim 176, wherein the disease state is cancer.

178. The method of claim 176, wherein the disease state is arthritis or inflammation.

179. The method of claim 167, wherein the subject is a living animal.

180. The method of claim 167, wherein the subject is a human.

181. The method of claim 167, wherein the probe is administered via IV injection.

182. The method of claim 167, wherein in step (a), more than one distinguishable imaging probe is administered to the subject and wherein in step (d) more than one target is detected simultaneously in tissues in the subject.

183. An in vivo optical imaging method comprising:

(a) administering to a subject the probe of claim 93;

(b) allowing time for the probe to become activated in a tissue in the subject;

(c) illuminating the subject with near infrared light of a wavelength absorbable by the fluorochromes; and

(d) detecting fluorescence emitted by the fluorochromes.

184. The method of claim 183, wherein steps (a) through (d) are repeated over time.

185. The method of claim 183, wherein the fluorescence emitted from step (d) is used to construct an image.

186. The method of claim 183, wherein step (d) is performed using a suitable light detection or image record-

ing component consisting of a charge coupled device (CCD) system or photographic film.

187. The method of claim 183, wherein steps (c) and (d) are performed using an endoscopic device, a catheter-based device, a diffuse optical tomographic imaging system, phased array technology, confocal imaging, or intravital microscopy.

188. The method of claim 183, wherein the presence, absence or level of probe activation is indicative of a disease state.

189. The method of claim 188, wherein the disease state is cancer.

190. The method of claim 188, wherein the disease state is arthritis or inflammation.

191. The method of claim 183, wherein the subject is a living animal.

192. The method of claim 183, wherein the subject is a human.

193. The method of claim 183, wherein the probe is administered via IV injection.

194. An in vivo optical imaging method comprising:

(a) administering to a subject the probe of claim 102;

(b) allowing time for the probe to become activated in a tissue in the subject;

(c) illuminating the subject with near infrared light of a wavelength absorbable by the fluorochromes; and

(d) detecting fluorescence emitted by the fluorochromes.

195. The method of claim 194, wherein the probe is activated by Cathepsin D or Prostate Specific Antigen (PSA).

196. The method of claim 194, wherein the probe is activated by an enzyme selected from the group consisting of Cathepsin B, Cathepsin H, a Matrix Metalloproteinase (MMP), and Cytomegalovirus (CMV) protease.

197. The method of claim 194, wherein the probe consists of at least one fluorochrome that has excitation and emission wavelengths between 650 nm and 1300 nm.

198. The method of claim 194, wherein steps (a) through (d) are repeated over time.

199. The method of claim 194, wherein the fluorescence emitted from step (d) is used to construct an image.

200. The method of claim 194, wherein step (d) is performed using a suitable light detection or image recording component consisting of a charge coupled device (CCD) system or photographic film.

201. The method of claim 194, wherein steps (c) and (d) are performed using an endoscopic device, a catheter-based device, a diffuse optical tomographic imaging system, phased array technology, confocal imaging, or intravital microscopy.

202. The method of claims 194, wherein the presence, absence or level of probe activation is indicative of a disease state.

203. The method of claim 202, wherein the disease state is cancer.

204. The method of claim 202, wherein the disease state is arthritis or inflammation.

205. The method of claim 202, wherein the subject is a living animal.

206. The method of claim 199, wherein the subject is a human.

207. The method of claim 199, wherein the probe is administered via IV injection.

208. The method of claim 199, wherein in step (a), more than one distinguishable imaging probe is administered to the subject and wherein in step (d) more than one target is detected simultaneously in tissues in the subject.

专利名称(译)	分子内猝灭的近红外荧光探针		
公开(公告)号	<a href="#">US6592847</a>	公开(公告)日	2003-07-15
申请号	US09/604145	申请日	2000-06-27
[标]申请(专利权)人(译)	通用医疗公司		
申请(专利权)人(译)	总医院CORPORATION		
当前申请(专利权)人(译)	总医院总公司		
[标]发明人	WEISSLEDER RALPH TUNG CHING HSUAN MAHMOOD UMAR JOSEPHSON LEE BOGDANOV ALEXEI		
发明人	WEISSLEDER, RALPH TUNG, CHING-HSUAN MAHMOOD, UMAR JOSEPHSON, LEE BOGDANOV, ALEXEI		
IPC分类号	A61K49/00 A61B5/00 A61K47/48 C07K7/06 A61B10/00 A61B8/00		
CPC分类号	A61B5/0071 A61B5/0084 A61B5/0086 A61K47/48215 A61K49/0032 A61K49/0054 A61K49/0056 A61K49/0058 C12Q1/6841 C12Q1/6883 C12Q2565/30 C12Q2565/1015 C12Q2525/301 A61B5/0068 A61K47/60		
代理机构(译)	FISH & RICHARDSON P.C.		
外部链接	<a href="#">Espacenet</a> <a href="#">USPTO</a>		

摘要(译)

本发明公开了一种分子内猝灭的近红外荧光探针，其仅在与靶组织相互作用（即活化）后才发出显著的荧光。该探针包括聚合物主链和多个近红外荧光染料，其在荧光猝灭相互作用位置与荧光猝灭相互作用位置共价连接，所述荧光猝灭相互作用位置可通过荧光激活位点的酶促裂解分离。探针任选地包括保护链或荧光染料间隔物，或两者。还公开了使用分子内猝灭的近红外荧光探针进行体内光学成像的方法。

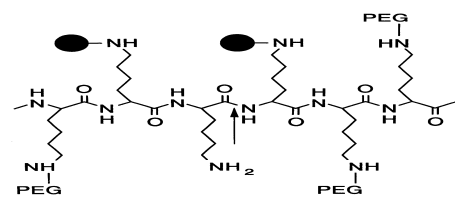


FIG. 1A

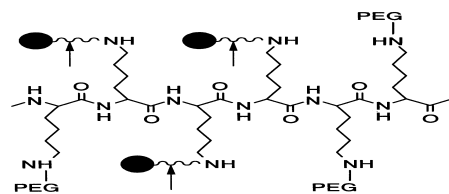


FIG. 1B