



(19) **United States**

(12) **Patent Application Publication** (10) **Pub. No.: US 2002/0067269 A1**

**Cadell et al.**

(43) **Pub. Date:**

**Jun. 6, 2002**

(54) **SPREAD SPECTRUM TELEMETRY OF PHYSIOLOGICAL SIGNALS**

(52) **U.S. Cl.** ..... **340/573.1; 340/575; 340/576; 340/10.1; 340/539; 340/573.4**

(76) **Inventors:** **Theodore C. Cadell, Conestroke (CA); Dennis Metzger, Kitchener (CA)**

(57) **ABSTRACT**

Correspondence Address:  
**PATENT ADMINSTRATOR  
KATTEN MUCHIN ZAVIS  
SUITE 1600  
525 WEST MONROE STREET  
CHICAGO, IL 60661 (US)**

The invention disclosed is an apparatus, or system, and methodology for power efficient, flexible, data efficient wireless transmission, receipt and interpretation of signals from a patient, such signals reflecting one or more measured physiological and patient specific parameters such as an 10 electrocardiogram, electroencephalogram, electromyogram and/or patient ID. The system includes a mobile transmitter for attachment to a patient, which is a battery powered sensor/transmitter device for transmission of enhanced data transmission rate signals in multiple frequencies within a given frequency band; a receiver for receiving the signals; and a display analysis and/or recording device for interpretation of the 15 received signals. The system operates using a spread spectrum transmission technique which reduces interference with the detection of the transmitted signals. The mobile transmitter and the receiver include corresponding optical components for establishing a duplex optical link allowing for changes to operating characteristics while transmission is occurring.

(21) **Appl. No.:** **09/864,213**

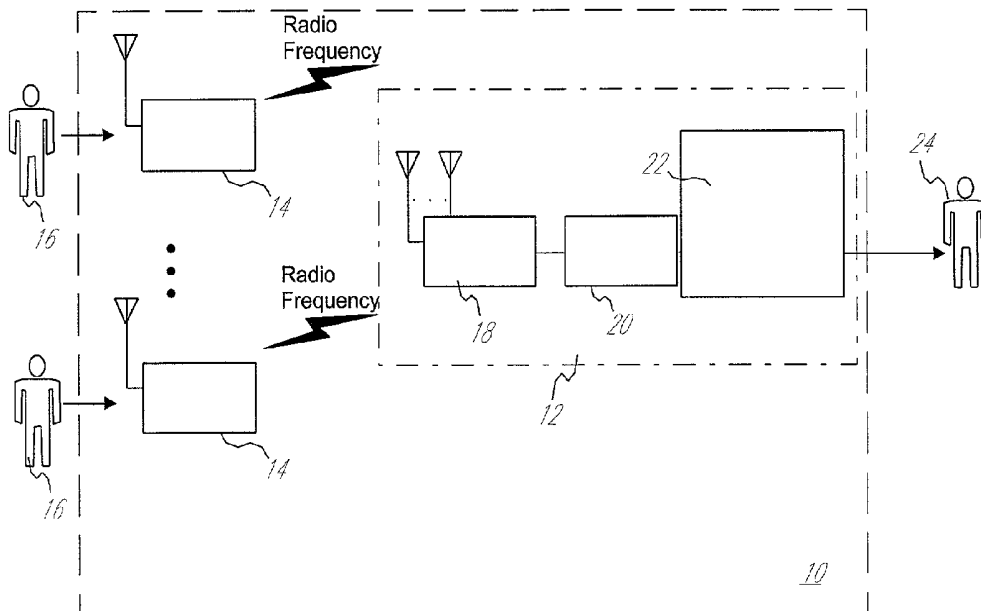
(22) **Filed:** **May 25, 2001**

**Related U.S. Application Data**

(63) Continuation-in-part of application No. 08/953,283, filed on Oct. 17, 1997, now abandoned, which is a continuation-in-part of application No. 08/587,436, filed on Jan. 17, 1996, now abandoned.

**Publication Classification**

(51) **Int. Cl.<sup>7</sup>** ..... **H04K 1/00**



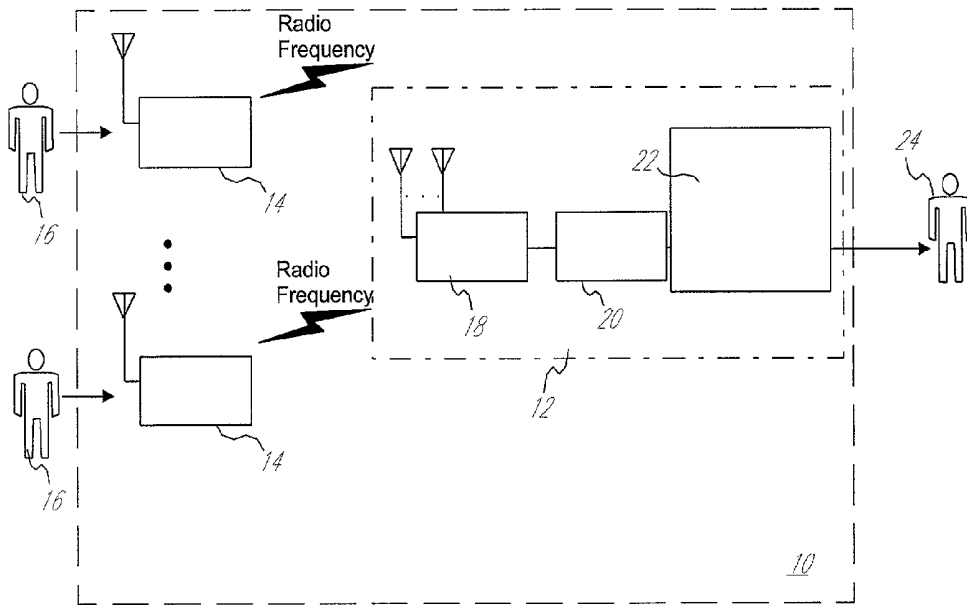


Fig. 1

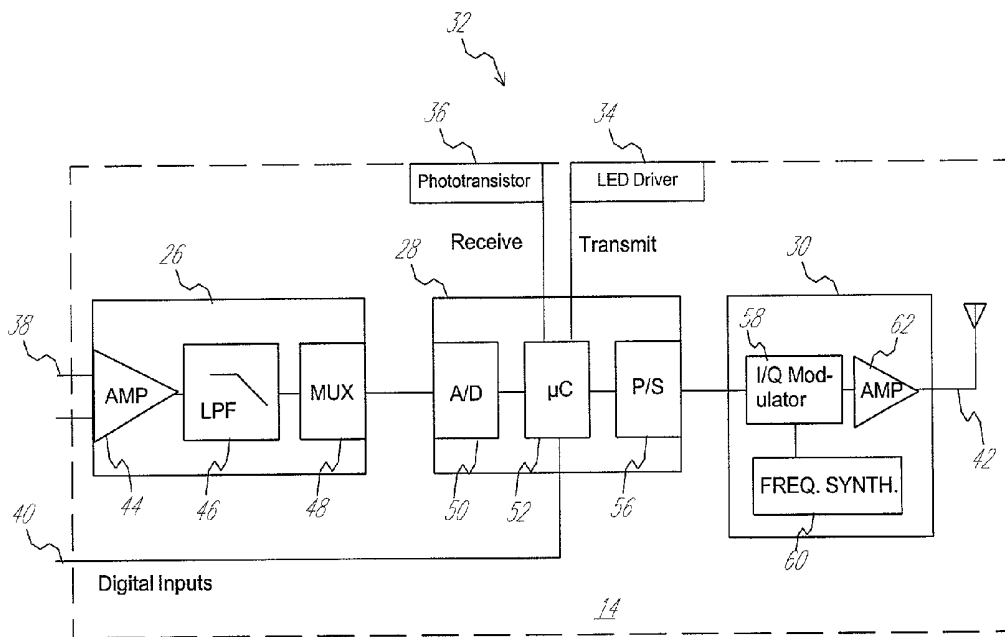


Fig. 2

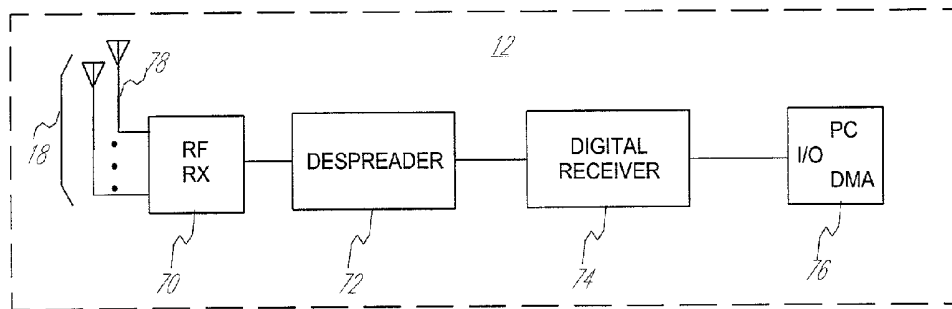


Fig. 3

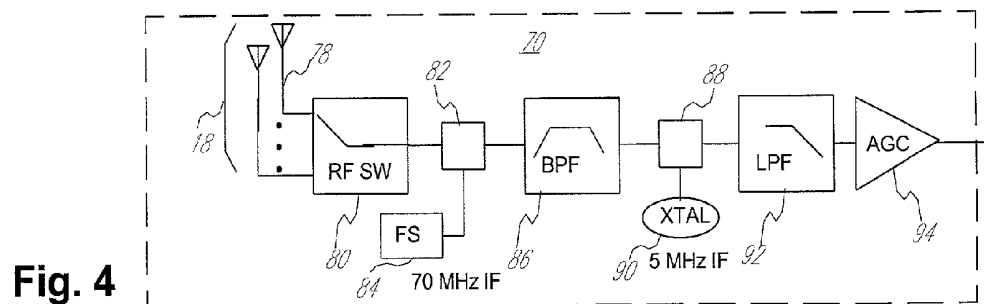


Fig. 4

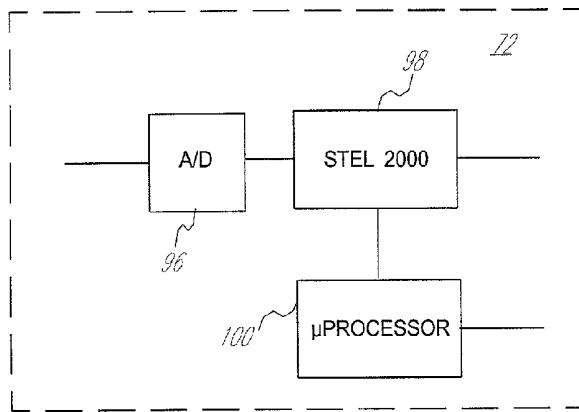


Fig. 5

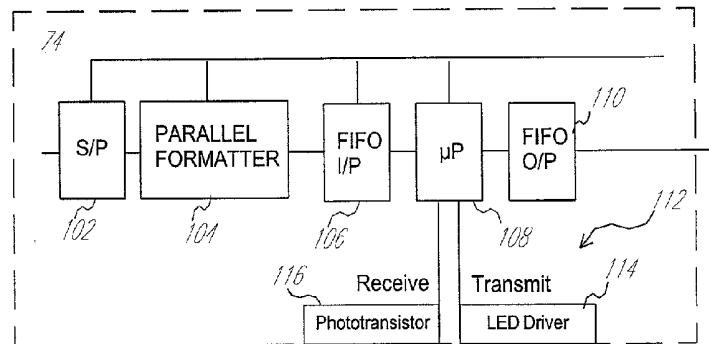


Fig. 6

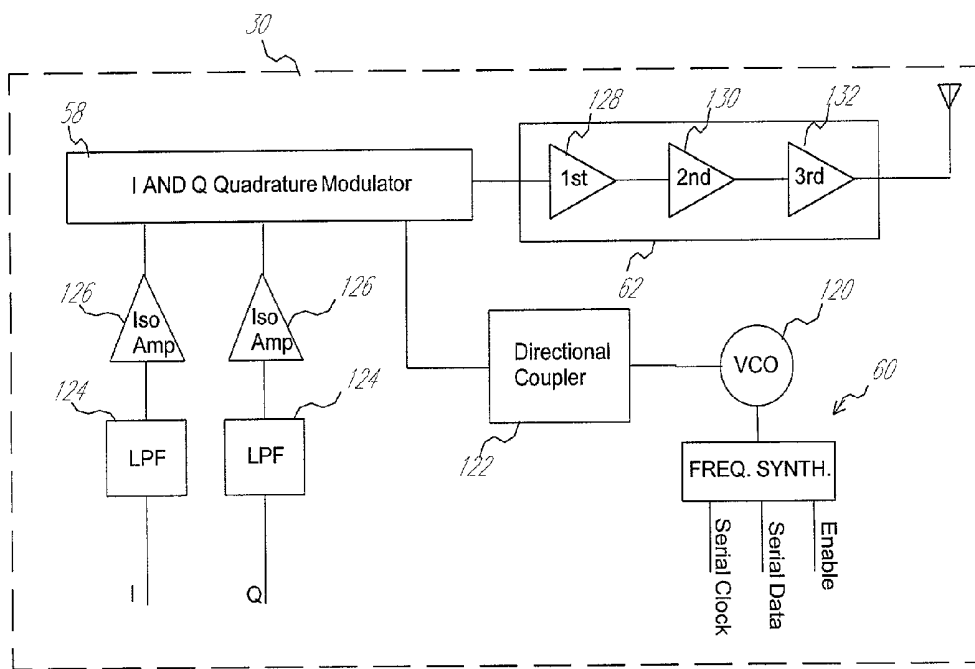


Fig. 7

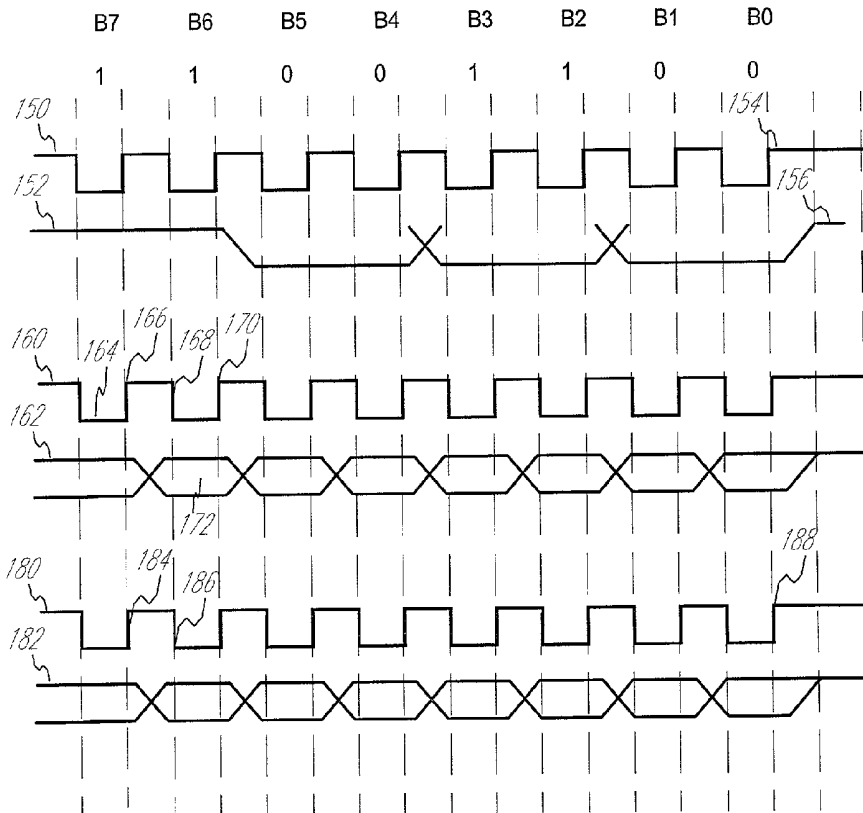


Fig. 8a

Fig. 8b

Fig. 8c

## SPREAD SPECTRUM TELEMETRY OF PHYSIOLOGICAL SIGNALS

### FIELD OF THE INVENTION

[0001] The present invention relates to the field of telemetry used in applications where it is advantageous to monitor signals, more specifically, in monitoring the physiological signals of a patient, using in particular spread spectrum transmissions.

### DESCRIPTION OF THE PRIOR ART

[0002] Telemetry systems are well known in the field of physiological monitoring. For a number of years systems that transmit a plurality of patient signals such as electro cardiograms (ECG), or electroencephalogram (EEG) signals, without wires have been known. The advantages of such systems is obvious insofar as patients are allowed freedom of movement, being unhampered by connecting wires between monitors and sensing devices which are attached to a patient. Such systems allow for ambulation of a patient so that the signals are transmitted from a unit worn by the patient to a central monitoring unit such as a nurses' station.

[0003] In certain medical facilities, usually in intensive care units, transmitters located at a patient's bedside are used to transmit signals from patients, who are being monitored for ECG signals, blood pressure, respiration rates, pulse rates, etc. The transmission of these signals is to a nurses' station where incoming signals are monitored. A number of patients may be monitored in this way and software driven alarms may be used to alert the care professional's attention when one or more of the monitored signals is of concern.

[0004] In another setting of physiological signal monitoring, telemetry devices have not been used. This setting is in respect of stress tests. These tests monitor the electrical activity of the heart of a patient who is wearing sensor leads which are still routinely attached by cables to a monitor. Introduction of a telemetry-based system would have obvious advantages however current devices are incapable of solving this problem.

[0005] Early telemetry systems incorporated FM/FM analog modulation, however these systems were often susceptible to a large amount of DC drift which increases the likelihood of a false alarm. Such systems also suffer from fairly inefficient use of available bandwidth which limits the number of channels that can be transmitted and the frequency responses of the transmitted channels. An approach to solving these problems has been the conversion of analogue signals to digital signals, see for examples U.S. Pat. No. 5,205,294 issued to Flach et al. and U.S. Pat. No. 4,958,645 issued to Cadell et al. Where telemetry devices are used, the systems operate by a variety of digital modulation schemes which modulate the RF carrier. Unfortunately these systems are limited to a limited number of signals due to channel and bandwidth restrictions. In addition, these systems are subject to interference and noise from competing signals, and are thus less than ideal in performance.

[0006] In an attempt to overcome some of these limitations Burrows (U.S. Pat. No. 5,381,798) described a device which uses spread spectrum technology to transmit physi-

ological data from a patient to a monitoring station. However, the system taught by Burrows suffers from a number of drawbacks. For example, it uses frequency shift keying modulation which limits the data transmission rate in a given bandwidth. Consequently, in the event of adaptation of the system for monitoring a larger number of patient parameters, the Burrows system as disclosed is inadequate. Furthermore, with the Burrows system changes to characteristics of the data scrambler and frequency spreader would only be possible when the transmitter is off line. Finally, because of the over sampling and DSP design taught by Burrows, the device described would be impractical for use as a battery powered device. Too much power would be required thereby resulting in frequent recharging of the device, and in any event, the physical size limitations of the components coupled with the power consumption required to achieve the system taught by Burrows would dictate a battery size that would be impractical. In the light of these limitations a more power efficient, flexible, data efficient device is required.

### SUMMARY OF THE INVENTION

[0007] The present invention overcomes the aforementioned deficiencies in the field by providing a method and a system which provides more power efficient, flexible, data efficient wireless transmissions.

[0008] In accordance with an aspect of the present invention there is provided a mobile transmitter for monitoring a patient via physiological data comprising: a sensor interface for coupling to sensors disposed on the patient for collecting physiological data therefrom; a digital controller having an input for analogue data from the sensor interface, an output for serial digital data derived from analogue data and an optical receiver and transmitter for establishing a bi-direction optical link for receiving mobile transmitter configuration data during operation of the mobile transmitter; and a radio frequency transmitter for radio transmission of the serial digital data in dependence upon stored mobile transmitter configuration data.

[0009] In accordance with another aspect of the present invention there is provided base station for monitoring a patient via physiological data comprising: an antenna array for receiving the wireless transmission from the mobile transmitter; a receiver including an input coupled to the antenna array, an interface having an output for digital data derived from the radio transmission and an input of mobile transmitter configuration data, and an optical receiver and transmitter for establishing a bi-direction optical link for transmitting mobile transmitter configuration data to an adjacent mobile transmitter; and a monitor coupled to the interface for display of the physiological data and for effecting transfer of mobile transmitter configuration data via the bi-directional optical link during operation of the mobile transmitter.

[0010] In accordance with a further aspect of the present invention there is provided a system for monitoring a patient via physiological data comprising: a mobile transmitter including a sensor interface for coupling to sensors disposed on the patient for collecting physiological data therefrom, a digital controller having an input for analogue data from the sensor interface, an output for serial digital data derived from analogue data and an optical receiver and transmitter for establishing a bi-direction optical link for receiving

mobile transmitter configuration data, and a radio frequency transmitter for radio transmission of the serial digital data in dependence upon stored mobile transmitter configuration data; and a base station including an antenna array for receiving the wireless transmission from the mobile transmitter, a receiver including an input coupled to the antenna array, an interface having an output for digital data derived from the radio transmission and an input of mobile transmitter configuration data, and an optical receiver and transmitter for establishing a bi-direction optical link for transmitting mobile transmitter configuration data to an adjacent mobile transmitter, and a monitor coupled to the interface for display of the physiological data and for effecting transfer of mobile transmitter configuration data via the bi-directional optical link during operation of the mobile transmitter.

[0011] The present invention provides a more data efficient telemetry system by providing a method to achieve a greater data transmission rate in a smaller bandwidth, within the system which receives physiological signals from a patient and then translates the signals into a format which is suitable for transmission using a spread spectrum signal. The data contained in the spread spectrum signal is then decoded and reformatted. The reformatted physiological signal is subsequently displayed, recorded, printed, analyzed or otherwise processed.

[0012] The present invention also provides a method of providing multiple frequencies of transmission within the 902 to 928 MHz band of frequencies for the simultaneous transmission of an increased number of signals.

[0013] The present invention is a battery operated system which requires infrequent operational charging that receives physiological signals from a patient and then translates the signals into a format which is suitable for transmission using a spread spectrum signal. The data contained in the spread spectrum signal is then decoded and reformatted. The reformatted physiological signal is subsequently displayed, recorded, printed, analyzed or otherwise processed. The use of battery power provides the patient with increased movement flexibility. To meet the demand of 24 hours between battery changes and to limit the size of the equipment, i.e., the transmitter, a comprehensive design change was undertaken to reduce the current and limit the size.

[0014] The present invention also provides a system that receives physiological signals from a patient and then translates the signals into a format which is suitable for transmission using a spread spectrum signal and allows for changes during operation of the characteristics of scrambling, digital sequence code, frequency and data rate. The data contained in the spread spectrum signal is then decoded and reformatted. The reformatted physiological signal is subsequently displayed, recorded, printed, analyzed or otherwise processed.

[0015] In a preferred embodiment of the invention there is provided a system for the transmission of physiological signals from a patient to a data receiving device which includes an acquisition system for the detection of desired physiological data from a patient and for processing an analog signal which corresponds to the data. The system also includes an analog to digital conversion device which is operatively associated with the data acquisition system. This device is for converting the analog signals which correspond to the physiological data into a serial digital data stream. The

serial digital data stream is combined by a transmission device with a digital code sequence to form a combined transmission signal which is transmitted by the transmission device via spread spectrum transmission over a wide frequency bandwidth. The combined signal is received by a receiving device and a data signal demodulation device separates the serial digital data stream from the digital code sequence. The serial digital data stream from the demodulating device is then processed by a data reformatting processor and the output of a physiological data display, recording and/or analysis device for the receipt of the output from said reformatting processor.

[0016] In a preferred embodiment of the invention, the system is a patient monitor telemetry device for the acquisition of data of a design which utilizes spread spectrum radio frequency (RF) technology to increase data integrity and range. In particular, the system makes use any one of the well known bands used in spread spectrum transmissions, namely the 902-928 MHz band, the 2.4-2.5 GHz, or the 5.725-5.785 GHz industrial, scientific, and medical (ISM) band which allows for unlicensed operation in most countries. In a preferred embodiment the system incorporates a transmitter using a frequency synthesizer thereby providing multiple frequencies of transmission within the 902-928 MHz band.

[0017] In yet a further preferred embodiment, the system of the invention is incorporated into a modular design to facilitate adaptation to a number of applications and changing requirements. The system has a high data throughput.

[0018] In a further embodiment differential quadrature phase shift keying (DQPSK) modulation is utilized to reduce the serial data stream bit rate thereby increasing the data transmission rate for an equivalent bandwidth.

[0019] In yet a further embodiment, the remote part of the system is energy efficient thereby allowing for extensive battery life (in a preferred embodiment up to 24 hours) and as such requiring infrequent operational recharging.

[0020] In practice the system of this invention can allow for multiple patient transmitters (in the three ISM bands depending upon the particular bandwidth can be up to 100 or more) operating simultaneously in the same location. The sensor/monitor and transmitter of the system is small and light-weight and is easily adapted to functional requirements. The system of this invention is also platform independent having a high speed direct memory access (DMA) computer interface to central monitoring stations.

#### BRIEF DESCRIPTION OF THE DRAWINGS

[0021] FIG. 1 illustrates in a block diagram, of a patient monitoring system in accordance with an embodiment of the present invention;

[0022] FIG. 2 illustrates in a block diagram, detail of the mobile transmitter of FIG. 1;

[0023] FIG. 3 illustrates in a block diagram, detail of the receiver of FIG. 1;

[0024] FIG. 4 illustrates in a block diagram, detail of the RF receiver of FIG. 3;

[0025] FIG. 5 illustrates in a block diagram, detail of the despreader of FIG. 3;

[0026] FIG. 6 illustrates in a block diagram, details of the digital receiver and optical transmitter/receiver of FIG. 3;

[0027] FIG. 7 illustrates in a block diagram, further details of the mobile transmitter of FIGS. 1 and 2; and

[0028] FIG. 8a, 8b, and 8c graphically illustrate optical signals exchanged between the digital receiver of FIG. 3 and the mobile transmitter of FIG. 2.

#### DETAILED DESCRIPTION OF THE PREFERRED EMBODIMENTS

[0029] Referring to FIG. 1, there is illustrated, in a block diagram a patient monitoring system in accordance with an embodiment of the present invention. The patient monitoring system 10 includes a base station 12 and a plurality of mobile transmitters 14 coupled to sensors disposed on patients 16. The base station 10 includes an antenna network 18, a receiver 20, and a monitor or computer 22. The monitor 22 allows an attendant 24 to view data for patients 16.

[0030] FIG. 1 provides a general overview of a preferred embodiment of the invention. It can be particularized to specific settings and uses for monitoring physiological signals such as electrocardiogram (ECG), electroencephalogram (EEG) or electromyogram (EMG). While the description detailed below is concerned with an embodiment used to monitor EEG, it is to be understood that the present invention can be applied to any setting where remote monitoring of physiological systems is desired or required.

[0031] In operation, patients 16 are connected by sensors to the mobile transmitter 14. A physiological signal of interest from the patient is transmitted by spread spectrum techniques to the antenna network 18 that provides the signal to the receiver 20. The receiver 20 provides output that can be directed to the monitor 22, and the data analysis or image creation is conducted with or without input by the attendant 24. The remaining figures detail an example of an embodiment of an EEG system that is one particularization of the general system of FIG. 1.

[0032] Referring to FIG. 2, there is illustrated in a block diagram detail of the mobile transmitter of FIG. 1. The mobile transmitter 14 includes three functional modules, namely a sensor interface/analog controller 26, digital processor/controller 28, and an RF transmitter 30. The sensor interface 26 includes connector electrodes 38 and a channel analog amplifier/filter module having an amplifier (AMP) 44, a low pass filter (LPF) 46 and a multiplexer (MUX) 48. The digital processor/controller 28 includes an analog to digital converter (A/D) 50, a microcontroller ( $\mu$ C) 52 and a formatter parallel to serial (P/S) 56. A full duplex optical link 32 is provided from/to the microprocessor 52 via an LED driver 34 and a phototransistor 36. The RF transmitter 30 includes an in-phase/quadrature (I/Q) modulator 58, a frequency synthesizer 60 and a power amplifier 62.

[0033] In operation, an analogue signal received from the connector electrodes 38 is first amplified by the AMP 44 and then submitted to the LPF 46. The signal is then treated by the MUX 48, and the resulting analog signal received from the sensor interface module 26 is processed by the A/D 50, as described further below. The A/D 50, for example may be a 12 bit, 500 sample/second/channel analog to digital converter, although, it is understood that any A/D capable of providing a digital signal for operation in this transmitter

device is acceptable. The  $\mu$ C 52 of the digital controller 28 illustrated in FIG. 2 handles mixed signal inputs from a number of sources including analog signals from the sensor interface 26. These other signals include a digital signal "patient call" button used by the patient for event timing, digital signals for input "lead off", and two digital signals for low power alarms from the battery and a digital pacer detect line referenced to a timer for accurate timing are all collectively indicated as digital inputs 40. Connectors for digital input from other sensor devices such as a pulse oximeter, non invasive blood pressure monitors, patient location, RS232 devices, and others can be included. The analogue channel bandwidth can be 0.1 to 120 Hz at the 3 dB bandwidth points. In the present embodiment the analogue channel bandwidth is 0.1 to 120 Hz.

[0034] Features of the transmitter device 14 include its ability to provide as many as 32 channels in this embodiment with groupings of 8, 16, 24, or 32 or individual 1 through 8 channels, i.e., any combination of between 1 and 32 (with the possibility of as many as 64) channels can be sampled, put in packet format, and transmitted. The A/D input bandwidth is a minimum of 8 kHz. The input noise of a preferred embodiment of this device is 4  $\mu$ V pk/pk (0.1 to 120 Hz) equivalent input noise. The input differential amplifier 44 and low pass filter 46 of sensor interface/analog controller 26 have a fixed gain of 2,000 with a maximum input analog level of 2 mV. Because the gain is fixed, the output of this section has a maximum level of 4  $\mu$ V pk to pk. The maximum level of noise allowed in this amplifier and filter section is 4  $\mu$ V pk to pk and the maximum differential offset at the input is  $\pm$ 300 mV. Because the gain is fixed, no internal calibration is necessary: External calibration can be supplied by replacing the input lead block with a calibrator. The analog amplifier 44 low pass filter 46 and multiplexer 48 are addressed by the digital controller 28 to select one of 32 channels for input to the A/D 50.

[0035] The digital processor/controller 28 first converts the analog signal in the A/D 50 to a 12 bit digital word. This, along with the digital information from digital inputs 40 (lead disconnects, battery, patient call, etc.), are formatted into a packet with three packet sync bytes, two word sync bytes, packet length, checksum and transmitter number, and are sent through the parallel to serial formatter 56 to the RF transmitter 30. The controller 28 has non-volatile memory for storage of parameter changeable information downloaded through the optical link 32 with the receiver phototransistor 36. Examples of this include packet sync byte value, word sync byte value, frequency of transmission, identification number, number of analog channels, and modification of the RF serial to I/Q modulator transmitter (TX) functions.

[0036] The full duplex optical link provided to the  $\mu$ C 52 by means of a transmission line under control of the LED driver 34, and a receiving line connected to the phototransistor 36 allows the mobile transmitter of an embodiment of the present invention to be reconfigured during operation. That is the characteristics of the scrambling, digital code sequence, frequency and data rate, in addition the frequency of transmission can be changed "on the fly". This unique feature allows the user 24 to make changes while the transmitter is operational, hence significantly enhances the flexibility of the system. The full duplex optical link has the additional advantages of not requiring physical connection

between the mobile transmitter and the receiver, providing protection against electrostatic discharge (ESD) and enhancing the ease of use of the system. The operator **24**, responsive to operation of the transmitter **14** as displayed on the monitor **22** may place the mobile transmitter **14** adjacent to the receiver **20** so as to align the corresponding optical receivers and transmitters and using a configuration menu on the monitor effect a reconfiguration of the transmitter **14** while the transmitter is operating. The operator **24** is then able to see the affect of the reconfiguration on the monitor **22**.

[0037] The RF transmitter **30** receives the packetted serial bits then adds a chipping sequence and provides this combined signal to the I/Q modulator **58** within the RF transmitter **30**. The data is then transmitted by broad band quadrature phase shift key (DQPSK) synthesized frequency direct sequence spread spectrum signal via antenna **42**. This method provides greater transmission rate in the same bandwidth. This method reduces the serial data stream bit rate by half and consequently provides double the data rate within the same RF bandwidth. The DQPSK can, instead of doubling the data rate increase the digital code chipping sequence by double within the same band width thereby providing greater immunity to interference and noise. The output power level of the amplifier **62** of the RF transmitter **30** is 13 dBm.

[0038] The use of a frequency synthesizer **60** in the RF transmitter **30** provides multiple frequencies of transmission within, for example, the 902 to 928 MHz band of frequencies. Consequently, as in a preferred embodiment five distinct frequencies are provided.

[0039] Referring to FIG. 3 there is illustrated in a block diagram, details of the receiver of FIG. 1. The receiver (central monitor interface) **12** includes four functional modules, an RF receiver **70**, a despreader **72**, a digital receiver/processor **74**, and a computer interface direct memory access input/output (DMA I/O) **76**. A more detailed view of the receiver is shown in FIG. 4. The radio frequency receiver (RFRX) **70** includes a plurality of antennas **78**, a radio frequency switch (RFSW) **80** coupled to the antennas **78**, a mixer **82**, a frequency synthesizer (FS) **84** for a 70 MHz intermediate frequency (IF), a band pass filter (BPF) **86**, a mixer **88** and a crystal (XTAL) **90** for a 5 MHz IF low pass filter (LPF) **92** and an automatic gain control (AGC) **94**.

[0040] In operation, the RF receiver **70** down converts the transmitted RF signal to a 5 MHz second IF and provides this signal to the despreader **72** for demodulation. The antenna system **18** includes two or more antennas **78** to be mounted (under normal conditions) further than 5 feet from the personal computer (PC) **22**. The receiver box **20** is to be located within 5 feet of the PC **22**. Antenna switches **80** are provided for antenna spacial diversity. An RSSI (received signal strength indicator) signal along with the Bit Error Rate (BER) are provided to allow for switching of the antennaes. In a preferred embodiment the AGC **94** O/P will provide a constant level of control over a broad input range. For example, during normal operation, a patient will be mobile (the effect of multipath is prevalent whether mobile or not). The output signal from the RF transmitter **14** will be transmitted in a straight line to the receiver (**18/20**) and in multiple reflected paths to the receiver. The signals at specific points will tend to cancel each other providing

“null” locations where the signal appears to be gone, or disappear. These locations are dependent on many factors, for example, room layout, moving objects and personnel, location and arrangement of adjacent buildings, and metal objects. The frequency width of these nulls are broad in nature and can be several MHz wide. This would degrade the performance of the received signal and reduce the available time to receive the RF. To overcome these problems, spacial diversity of antennas **78** for two or more per receiver with receiver intelligence to switch on poor receive signals is necessary. In a preferred embodiment RSSI is used to switch in attenuators for the input RF signal but uses the packet checksum on the received signal to switch antennas **78**. Furthermore, spacial antennas also allow a wider range of travel for a particular patient **16**.

[0041] The FS **84** used in the RF receiver adjusts the frequencies of the receiver. Before fitting a patient with a transmitter, the transmitter is configured by a PC to provide patient number and to set the frequency of transmission via the full duplex optical link **32**. The control signals for the RF receiver FS **84** are also controlled from the PC and can be changed by the operator **24**. This provides flexibility along with the ability to change the RF transmitter frequency in situations where it is preferable to avoid consistent interferers within spread spectrum band limitations or provide multiple patients. The PC also provides control over the receiver similar to the transmitter in that the packet and word sync are changeable along with the receiver data structure. The incoming received signal from either antenna **78**(controlled by the RF switch **80**) is mixed with the RF signal from a frequency synthesizer **84**. The 70MHz IF (intermodulation frequency) is band pass limited to the band pass filter **86** and then goes through a second fixed mixer **88** to provide a second IF of 5 MHz. This signal is low pass filtered by LPF **92** and goes through an AGC circuit **94**, which is controlled by the despreader **72** using the RSSI. The 5 MHz IF signal goes to a despreader **72** (FIG. 3) that digitally demodulates the incoming IF and provides a serial data line and a reconstructed clock.

[0042] Referring to FIG. 5, there is illustrated in a block diagram, the despreader of FIG. 3 in further detail. The despreader **72** includes an analogue-to-digital converter (A/D) **96**, a STEL 2000 98 and a microprocessor **100**. The parameters of the elements of a despreader are controllable by the receiver. This allows the chipping sequence, the digital peak detection, and digital filter to be changed, i.e., the frequency of received signal (which is passed on to the RF receiver) and other parameters can be modified to improve the signal quality. From the despreader **72**, the serial packet (with spreading signal removed) goes to the digital receiver **74**.

[0043] Referring to FIG. 6, there is illustrated in a block diagram, the digital receiver of FIG. 3. The digital receiver **74** includes a serial to parallel convertor (S/P) **102**, a parallel formatter **104**, an input FIFO **106**, a microprocessor ( $\mu$ P) **108** and an output FIFO **108**. In the digital receiver **74** (the elements of which are shown in greater detail in FIG. 6) the three packet bytes (value controlled by PC) are used to synchronize the input serial data stream. The data is converted to 8-bit byte format using loaded parameters controlled by the PC and stored in the FIFO (first in first out) memory **106**. The microprocessor **108** synchronizes the input parallel data from the two word sync bytes defined by

the PC, strips this off the parallel data, ensures that the checksum is correct and transfers this to the DMA I/O 76 of the PC 22. Connected to the microprocessor in the receiver is the receiver side 112 of the duplex optical link described above. The transmitter provided by LED Driver 114, the receiver provided by the phototransistor 116.

[0044] The PC can also download changes to the packet structure (i.e., one channel, eight channels, thirty-two channels etc.). This data is then displayed in a user appropriate format on the PC.

[0045] The computer (central monitoring station) interface 76 is an industry standard digital I/O with DMA (such as the Keithley Metrabyte PDMA-32). The DMA I/O is installed in a personal computer 22 that provides for platform independent high speed data transfer with a minimum of software overhead.

[0046] Referring to FIG. 7, there is illustrated, in a block diagram, further detail of the mobile transmitter of FIGS. 1 and 2. Specifically further detail of the RF transmitter 30 is shown. The RF transmitter 30 includes the I/Q modulator 58, the frequency synthesizer 60 and the output power amplifier 62. The frequency synthesizer 60 includes a voltage controlled oscillator 120 and a directional coupler 122 and has inputs for serial clock, serial data and enable. The I/Q modulator includes separate low pass filters 124 and isolation amplifiers 126 for the I and Q inputs to the I/Q quadrature modulator. The output power amplifier 62 includes three stages with first 128, second 130 and third 132 stage amplifiers.

[0047] While still considering the mobile transmitter 14, to meet the demand of 24 hours between battery changes and to limit the size of the transmitter, a comprehensive design change was undertaken to reduce the current and limit the size. FIG. 7 illustrates the design changes which allowed these objectives to be met. The analog differential front end (one per channel) is designed to use discrete operating amps to ensure minimum current. No currently designed differential amp could provide such low currents. Lower switching speeds, slower A/D's and low current microcontroller are used to reduce current consumption. The design of the RF amplifier illustrated in FIG. 7 provides +13 dBm linear output while using a passive quadrature modulator. In addition, the use of the optical link, rather than adding an RF receiver to effect parameter data transfers saves both complexity and power usage in the mobile transmitter 14.

[0048] Referring to FIGS. 8a, 8b, and 8c there are graphically illustrated optical channel signal formats between the digital receiver 74 and the mobile transmitter 14. FIG. 8a, illustrates the output signals for the mobile transmitter 14 and digital receiver 74 after the digital receiver has been initiated by the computer 22 a signal 150 represents the output optical signal of the mobile transmitter 14 and a signal 152 represents the output optical signal of the digital receiver 74. The mobile transmitter 14 sends a pulse out the optical transmit 34 once every 2 ms period. The pulse duration is between 50  $\mu$ s and 100  $\mu$ s, as shown by the signal 150. The digital receiver 74, receives these pulses and outputs a code, which is stable from the end of one transmit pulse to the beginning of the next pulse, as shown by the signal 152. The mobile transmitter 14 receives this signal and shifts the signal until it matches a predefined preamble code. The code for the preamble is 11001100. After trans-

mission the eighth bit of the preamble code, the digital receiver 74 prepares to send the first bit of the first data byte. The mobile transmitter 14 acknowledges a received preamble by holding its signal high for 1 ms, as shown at 154. If the time that the mobile transmitter's optical signal stays high is longer than 100  $\mu$ s (assuming the preamble is correct) then the digital receiver outputs the first data bit of the command, as indicated at 156.

[0049] FIG. 8b graphically illustrates the output signals for the mobile transmitter 14 and the digital receiver 14 during transmission of data from the digital receiver 74 to the mobile transmitter 14. A signal 160 represents the optical signal output by the mobile transmitter 14, and a signal 162 represents the optical signal output by the digital receiver. The signal 160 will go low for 50-100  $\mu$ s, as indicated at 164 and the data signal 162 from the digital receiver 74 must be stable at that time. When the signal 160 goes high at 166, the bit being sent by the digital receiver can change, but must be stable by the time the signal 160 goes low at 168. On the rising edge of the signal 160, at 170, the data bit 172 is read at the mobile transmitter 14. On the eighth clock pulse the digital transmitter goes high for 1 ms. At the same time the digital receiver 74 signal 16 goes low for about 500  $\mu$ s. The digital receiver 74 then sets up the output for the first bit of the second byte and remains stable while the mobile transmitter signal goes low after the 1 ms, then goes high. The signals 160 and 162 are representative of the second byte also. On the last bit of the last byte, the output of the digital receiver 74 goes high and remains so for 500  $\mu$ s it then goes low for 1 ms. This sets up the mobile transmitter to start sending data.

[0050] FIG. 8c graphically illustrates the optical signals output by the digital receiver 74 and the mobile transmitter 14 as signals 180 and 182, respectively. The roles are now reversed from the previous two FIGS. 8a and 8b. The digital receiver optical output goes low for 1 ms. The data signal 180 sent by the mobile transmitter 14 must be stable when the digital receiver optical signal goes high as shown at 184. During the high period, the data signal 182 may change, but must be stable before the digital receiver optical output signal goes low again as at 186. At the end of the eighth data bit, the digital receiver optical output signal goes high for 1 ms, as at 188. The mobile transmitter output optical signal goes low for 500  $\mu$ s, failure to do so indicates an error and causes the digital receiver 74 to begin transmitting the preamble again.

[0051] While the invention has been particularly shown and described with reference to certain embodiments, it will be understood by those skilled in the art that various other changes in form and detail may be made without departing from the spirit and scope of the invention.

What is claimed is:

1. A system for monitoring a patient via physiological data comprising:

a mobile transmitter including a sensor interface for coupling to sensors disposed on the patient for collecting physiological data therefrom, a digital controller having an input for analogue data from the sensor interface, an output for serial digital data derived from analogue data and an optical receiver and transmitter for establishing a bi-direction optical link for receiving mobile transmitter configuration data, and a radio fre-

quency transmitter for radio transmission of the serial digital data in dependence upon stored mobile transmitter configuration data; and

a base station including an antenna array for receiving the wireless transmission from the mobile transmitter, a receiver including an input coupled to the antenna array, an interface having an output for digital data derived from the radio transmission and an input of mobile transmitter configuration data, and an optical receiver and transmitter for establishing a bi-direction optical link for transmitting mobile transmitter configuration data to an adjacent mobile transmitter, and a monitor coupled to the interface for display of the physiological data and for effecting transfer of mobile transmitter configuration data via the bi-directional optical link during operation of the mobile transmitter.

2. A system as claimed in claim 1 wherein the mobile transmitter configuration data includes a packet sync byte value.

3. A system as claimed in claim 1 wherein the mobile transmitter configuration data includes a word sync byte value

4. A system as claimed in claim 1 wherein the mobile transmitter configuration data includes a frequency of transmission.

5. A system as claimed in claim 1 wherein the mobile transmitter configuration data includes an identification number.

6. A system as claimed in claim 1 wherein the mobile transmitter configuration data includes a number of analogue channels.

7. A system as claimed in claim 1 wherein the mobile transmitter configuration data includes radio transmitter characteristics

8. A system as claimed in claim 7 wherein radio transmitter characteristics include scrambling parameters.

9. A system as claimed in claim 7 wherein radio transmitter characteristics include digital code sequence.

10. A system as claimed in claim 7 wherein radio transmitter characteristics include transmitter frequency.

11. A system as claimed in claim 7 wherein radio transmitter characteristics include data rate.

12. A system as claimed in claim 7 wherein the radio transmitter uses differential Quadrature phase shift keying modulation.

13. A system as claimed in claim 12 wherein the radio transmitter transmits a direct sequence modulated spread spectrum signal.

14. A system as claimed in claim 13 wherein the signal is transmitted in a radio frequency range of about 902 to 928 MHz.

15. A system as claimed in claim 13 wherein the signal is transmitted in a radio frequency range of about 2.4 to about 2.5 Ghz.

16. A system as claimed in claim 13 wherein the signal transmitted in a radio frequency range of about 5.725 to about 5.785 Ghz.

17. A mobile transmitter for monitoring a patient via physiological data comprising:

a sensor interface for coupling to sensors disposed on the patient for collecting physiological data therefrom;

a digital controller having an input for analogue data from the sensor interface, an output for serial digital data derived from analogue data and an optical receiver and transmitter for establishing a bi-direction optical link for receiving mobile transmitter configuration data during operation of the mobile transmitter; and

a radio frequency transmitter for radio transmission of the serial digital data in dependence upon stored mobile transmitter configuration data.

18. A base station for monitoring a patient via physiological data comprising:

an antenna array for receiving the wireless transmission from the mobile transmitter;

a receiver including an input coupled to the antenna array, an interface having an output for digital data derived from the radio transmission and an input of mobile transmitter configuration data, and an optical receiver and transmitter for establishing a bi-direction optical link for transmitting mobile transmitter configuration data to an adjacent mobile transmitter; and

a monitor coupled to the interface for display of the physiological data and for effecting transfer of mobile transmitter configuration data via the bi-directional optical link during operation of the mobile transmitter.

\* \* \* \* \*

|                |  |         |            |
|----------------|--|---------|------------|
| 专利名称(译)        | 生理信号的扩频遥测  |         |            |
| 公开(公告)号        | <a href="#">US20020067269A1</a>  | 公开(公告)日 | 2002-06-06 |
| 申请号            | US09/864213  | 申请日     | 2001-05-25 |
| [标]申请(专利权)人(译) | CADELL THEODORE C.<br>METZGER DENNIS   |         |            |
| 申请(专利权)人(译)    | CADELL THEODORE C.<br>METZGER DENNIS   |         |            |
| 当前申请(专利权)人(译)  | CADELL THEODORE C.<br>METZGER DENNIS   |         |            |
| [标]发明人         | CADELL THEODORE C.<br>METZGER DENNIS   |         |            |
| 发明人            | CADELL, THEODORE C.<br>METZGER, DENNIS   |         |            |
| IPC分类号         | A61B5/00 A61B5/04 A61B5/0476 A61B5/0488 A61B5/0496 G08C13/00 G08C17/02 G08C23/04 H04B7/26 H04B10/12 H04K1/00 |         |            |
| CPC分类号         | A61B5/0006 A61B5/0017 H04B10/25759 A61B5/0488 A61B5/0496 A61B5/0476  |         |            |
| 外部链接           | <a href="#">Espacenet</a> <a href="#">USPTO</a>  |         |            |

摘要(译)

本发明公开了一种用于功率有效，灵活，数据有效的无线传输，接收和解释来自患者的信号的装置，系统和方法，这些信号反映一个或多个测量的生理和患者特定参数，例如10心电图，脑电图，电子图和/或患者ID。该系统包括用于连接到患者的移动发射器，该移动发射器是电池供电的传感器/发射器设备，用于在给定频带内的多个频率中传输增强的数据传输速率信号；用于接收信号的接收器；以及用于解释接收信号的显示分析和/或记录设备。该系统使用扩频传输技术进行操作，该技术减少了对传输信号的检测的干扰。移动发射器和接收器包括相应的光学部件，用于建立双工光学链路，允许在发生传输时改变操作特性。

