



US009987488B1

(12) **United States Patent**
Gelfand et al.

(10) **Patent No.:** **US 9,987,488 B1**
(45) **Date of Patent:** **Jun. 5, 2018**

(54) **DETECTING AND TREATING DISORDERED BREATHING**

USPC 607/2, 42; 600/529
See application file for complete search history.

(75) Inventors: **Mark Gelfand**, New York, NY (US);
Howard Levin, Teaneck, NJ (US);
Andrew Halpert, Coral Springs, FL
(US); **Antonis Panteleon**, Edina, MN
(US)

(56) **References Cited**

U.S. PATENT DOCUMENTS

4,129,125 A 12/1978 Lester et al.
4,702,253 A 10/1987 Nappholz et al.
4,827,935 A 5/1989 Geddes et al.
4,830,008 A 5/1989 Meer

(Continued)

(73) Assignee: **Respircardia, Inc.**, Minnetonka, MN
(US)

(*) Notice: Subject to any disclaimer, the term of this patent is extended or adjusted under 35 U.S.C. 154(b) by 1307 days.

FOREIGN PATENT DOCUMENTS

DE 10103288 8/2002
WO 2008092246 A1 8/2008

(21) Appl. No.: **12/163,500**

(22) Filed: **Jun. 27, 2008**

OTHER PUBLICATIONS

Redline, Susan et al., Beyond the Fat Boy, Journal of Applied Physiology 2005, vol. 99: pp. 1243-1244.

(Continued)

Related U.S. Application Data

(60) Provisional application No. 60/937,426, filed on Jun. 27, 2007.

(51) **Int. Cl.**

A61N 1/36 (2006.01)
A61B 5/08 (2006.01)
A61N 1/365 (2006.01)
A61B 5/0205 (2006.01)
A61B 5/113 (2006.01)
A61B 5/00 (2006.01)

Primary Examiner — Christopher D Koharski

Assistant Examiner — Pamela M Bays

(74) *Attorney, Agent, or Firm* — Frank P. Piskolich

(52) **U.S. Cl.**

CPC *A61N 1/3601* (2013.01); *A61B 5/0816* (2013.01); *A61B 5/0826* (2013.01); *A61N 1/3611* (2013.01); *A61B 5/0205* (2013.01); *A61B 5/113* (2013.01); *A61B 5/4818* (2013.01); *A61N 1/3605* (2013.01); *A61N 1/36514* (2013.01)

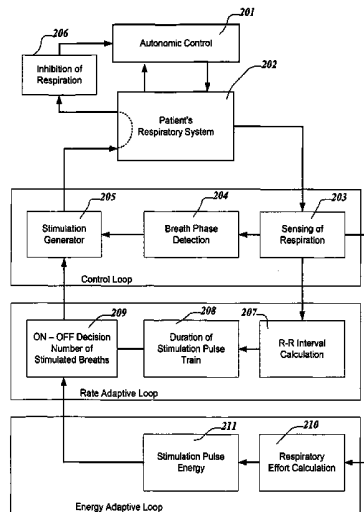
(57) **ABSTRACT**

Detection and treatment of disordered breathing, with treatment being primarily delivered using electrical stimulation of the diaphragm, either directly or by stimulating appropriate nerves. In some embodiments, the stimulus is applied to still at least one lung upon detection of an apnea-hypopnea of some length or upon the detection of hyperpnea. The stimulation may be initiated during the apnea-hypopnea period or upon detection of a breath of a predetermined intensity near the end of apnea-hypopnea. The stimulation may be initiated in phase with respiration or irrespective of the phase of respiration.

(58) **Field of Classification Search**

CPC *A61N 1/3601*; *A61N 1/36514*; *A61N 1/3605*; *A61N 1/3611*; *A61B 5/0205*; *A61B 5/113*; *A61B 5/4818*; *A61B 5/0816*; *A61B 5/0826*

17 Claims, 17 Drawing Sheets



(56)

References Cited

U.S. PATENT DOCUMENTS

5,002,067 A 3/1991 Berthelsen et al.
 5,056,519 A 10/1991 Vince
 5,146,918 A 9/1992 Kallok et al.
 5,170,802 A 12/1992 Mehra
 5,199,428 A 4/1993 Obel et al.
 5,265,604 A 11/1993 Vince
 5,330,507 A 7/1994 Schwartz
 5,423,865 A 6/1995 Bowald et al.
 5,483,969 A 1/1996 Testerman et al.
 5,485,851 A 1/1996 Erickson
 5,524,632 A 6/1996 Stein et al.
 5,578,061 A 11/1996 Stroetmann et al.
 5,922,014 A 7/1999 Warman et al.
 5,938,694 A 8/1999 Jaraczewski et al.
 6,006,134 A 12/1999 Hill et al.
 6,132,384 A 10/2000 Christopherson et al.
 6,212,435 B1 4/2001 Lattner et al.
 6,266,564 B1 7/2001 Hill et al.
 6,314,324 B1 11/2001 Lattner et al.
 6,360,740 B1 3/2002 Ward et al.
 6,415,183 B1 7/2002 Scheiner et al.
 6,449,507 B1 9/2002 Hill et al.
 6,463,327 B1 10/2002 Lurie et al.
 6,532,388 B1 3/2003 Hill et al.
 6,537,228 B1 3/2003 Lambert
 6,542,774 B2 4/2003 Hill et al.
 6,587,726 B2 7/2003 Lurie et al.
 6,589,188 B1 7/2003 Street et al.
 6,641,542 B2 11/2003 Cho et al.
 6,684,101 B2 1/2004 Daum
 6,718,208 B2 4/2004 Hill et al.
 RE38,705 E 2/2005 Hill et al.
 6,881,192 B1 4/2005 Park
 6,890,306 B2 5/2005 Poezevera
 6,928,324 B2 8/2005 Park et al.
 6,934,583 B2 8/2005 Weinberg et al.
 6,937,903 B2 8/2005 Schuler et al.
 6,964,641 B2 11/2005 Cho et al.
 7,025,730 B2 4/2006 Cho et al.
 7,070,568 B1* 7/2006 Koh 600/508
 7,077,132 B2 7/2006 Berthon-Jones
 7,082,331 B1 7/2006 Park et al.
 7,094,207 B1 8/2006 Koh
 7,155,278 B2 12/2006 King et al.
 7,179,229 B1 2/2007 Koh
 7,184,829 B2 2/2007 Hill et al.
 7,200,442 B1 4/2007 Koh et al.
 7,212,862 B2 5/2007 Park et al.
 7,223,244 B1 5/2007 Koh
 7,225,019 B2 5/2007 Jahns et al.
 7,225,021 B1 5/2007 Park et al.
 7,245,971 B2 7/2007 Park et al.
 7,269,457 B2 9/2007 Shafer et al.
 7,269,459 B1 9/2007 Koh
 7,277,757 B2 10/2007 Casavant et al.
 7,340,302 B1 3/2008 Falkenberg et al.
 7,357,775 B1 4/2008 Koh
 7,361,146 B1 4/2008 Bharmi et al.
 7,363,086 B1 4/2008 Koh et al.
 7,371,220 B1 5/2008 Koh et al.
 7,454,250 B1* 11/2008 Bjorling et al. 607/42
 7,813,805 B1 10/2010 Farazi et al.
 2001/0003799 A1 6/2001 Boveja
 2002/0049479 A1 4/2002 Pitts
 2002/0128563 A1 9/2002 Carlson et al.
 2003/0078623 A1 4/2003 Weinberg et al.
 2003/0088244 A1 5/2003 Swanson et al.
 2003/0135248 A1* 7/2003 Stypulkowski 607/73
 2003/0195571 A1 10/2003 Burnes et al.
 2005/0043765 A1 2/2005 Williams et al.
 2005/0085734 A1 4/2005 Tehrani
 2005/0085865 A1 4/2005 Tehrani
 2005/0085866 A1 4/2005 Tehrani
 2005/0085867 A1 4/2005 Tehrani et al.
 2005/0085868 A1 4/2005 Tehrani et al.

2005/0085869 A1 4/2005 Tehrani et al.
 2005/0165457 A1 7/2005 Benser et al.
 2005/0197588 A1 9/2005 Freeberg
 2005/0240240 A1 10/2005 Park et al.
 2005/0288729 A1 12/2005 Libbus et al.
 2006/0030894 A1 2/2006 Tehrani
 2006/0036294 A1 2/2006 Tehrani
 2006/0084060 A1 4/2006 Nagahama et al.
 2006/0122662 A1 6/2006 Tehrani et al.
 2006/0142815 A1 6/2006 Tehrani et al.
 2006/0149334 A1* 7/2006 Tehrani et al. 607/42
 2006/0155341 A1 7/2006 Tehrani et al.
 2006/0167523 A1 7/2006 Tehrani et al.
 2006/0190052 A1* 8/2006 Yun et al. 607/42
 2006/0229677 A1 10/2006 Moffitt et al.
 2006/0247729 A1 11/2006 Tehrani et al.
 2007/0021795 A1 1/2007 Tehrani
 2007/0118183 A1 5/2007 Gelfand et al.
 2007/0156199 A1 7/2007 Koh et al.
 2007/0260285 A1 11/2007 Libbus et al.
 2008/0154330 A1 6/2008 Tehrani et al.
 2008/0161878 A1 7/2008 Tehrani et al.
 2008/0167695 A1 7/2008 Tehrani et al.
 2008/0177347 A1 7/2008 Tehrani et al.
 2008/0183239 A1 7/2008 Tehrani et al.
 2008/0183240 A1 7/2008 Tehrani et al.
 2008/0183254 A1 7/2008 Bly et al.
 2008/0183259 A1 7/2008 Bly et al.
 2008/0183264 A1 7/2008 Bly et al.
 2008/0188903 A1 8/2008 Tehrani et al.
 2008/0188904 A1 8/2008 Tehrani et al.
 2008/0234694 A1 9/2008 Stegfeldt et al.
 2009/0088827 A1 4/2009 Tockman et al.
 2010/0249630 A1 9/2010 Droitcour et al.
 2011/0060380 A1 3/2011 Gelfand et al.

OTHER PUBLICATIONS

Esler, Murray et al., Is Obstructive Sleep Apnea the Cause of Sympathetic Nervous Activation in Human Obesity?, *Journal of Applied Physiology* 2006, vol. 100, pp. 11-12.
 Caples, Sean M. et al., Influence of Cardiac Function and Failure on Sleep-Disordered Breathing, *Journal of Applied Physiology* 2006, vol. 100, pp. 11-12.
 Punjabi, Naresh M. et al., Disorders of Glucose Metabolism in Sleep Apnea, *Journal of Applied Physiology* 2005, vol. 99, pp. 1998-2007.
 Leuenberger, Urs A. et al., Hypoxia Augments Apnea-Induced Peripheral Vasoconstriction in Humans, *Journal of Applied Physiology* 2001, vol. 90, pp. 1516-1522.
 Oliven, Arie et al., Upper Airway Response to Electrical Stimulation of the Genioglossus in Obstructive Sleep Apnea, *Journal of Applied Physiology* 2003, vol. 95, pp. 2023-2029.
 Parati, Gianfranco et al., Sleep Apnea: Epidemiology, Pathphysiology, and Relation to Cardiovascular Risk, *Am Journal Physiological Society* 2007, vol. 293, pp. R1671-R1683.
 Gottfried, Stewart B. et al., Effects of Phrenic Stimulation on Upper Airway Resistance in Anethetized Dogs, *Am Physiological Society* 1983, 0161-7567/83, pp. 419-426.
 Planas, Roque F. et al., Diaphragmatic Pressures: Transvenous vs. Direct Phrenic Nerve Stimulation, *Am Physiological Society* 1985, 0161-7567/85, pp. 269-273.
 Series, F. et al., Site of Phrenic Nerve Stimulation-Induced Upper Airway Collapse: Influence of Expiratory Time, *Journal of Applied Physiology* 2002, vol. 92, pp. 665-671.
 Kingma, John G. Jr. et al., Neuromodulation Therapy Does Not Influence Blood Flow Distribution or Left-Ventricular Dynamics During Acute Muocardial Ischemia, *Autonomic Neuroscience: Basic and Clinical* 91 (2001) pp. 47-54.
 Linderoth, Bengt, Md, Phd et al, Mechanisms of Spinal Cord Stimulation in Painful Syndromes: Role of Animal Models, *American Academy of Pain Medicine*, vol. 7, No. S14-S26, 2006/.
 Tanaka, Satoshi et al., Mechanims of Sustained Cutaneous Vasodilation Induced by Spinal Cord Stimulation, *Autonomic Neuroscience: Basic and Clinical* 114 (2004) pp. 55-60.

(56)

References Cited

OTHER PUBLICATIONS

- Lorenzi-Filho, Geraldo et al., Cheyne-Stokes Respiration in Patients with Congestive Heart Failure: Causes and Consequences, *Clinics* 2005; 60(4):333-44.
- Brack, Thomas, Cheyne-Stokes Respiration in Patients with Congestive Heart Failure, *Swiss Med Wkly* 2003; 133:605-610, www.smw.ch.
- Yuminco, Dai et al., Central Sleep Apnea and Cheyne-Stokes Respiration, *Proceedings of the American Thoracic Society*, 2008, vol. 5, pp. 226-236.
- Garrido-Garcia, H. et al., Treatment of Chronic Ventilatory Failure Using a Diaphragmatic Pacemaker, *Spinal Cord* (1998) 36, 310-314.
- Diedrichs, Holger et al., Symptomatic Relief Precedes Improvement of Myocardial Blood Flow in Patients Under Spinal Cord Stimulation, *BioMed Central*, 2005, pp. 1-7.
- Kaneko, S. et al., A New Approach to Respiratory Assist for Phrenic Nerve Paralysis, *Trans Am Soc. Artif Intern Organs*, 1985, vol. XXXI, pp. 301-304.
- Macintyre, Neil R., MD, Setting the Frequency-Tidal vol. Pattern, www.rcjournal.com/contents/03.02/03.02.0266.asp.
- Kohnlein, T. et al., Central Sleep Apnea Syndrome in Patients with Chronic Heart Disease: A Critical Review of the Current Literature, *Thorax* 2002; 57:547-554.
- Javaheri, Shahrokh, MD, Central Sleep Apnea in Congestive Heart Failure: Prevalence, Mechanisms, Impact, and Therapeutic Options, *Seminars in Respiratory and Critical Care Medicine*, 2005, vol. 26, No. 1.
- Dobelle, William H., Use of Breathing Pacemakers to Suppress Intractable Hiccups of up to Thirteen Years Duration, *ASAIO Journal* 1999, pp. 524-525.
- Series, Frederic, Assessment of Upper Airway Dynamics in Awake Patients with Sleep Apnea Using Phrenic Nerve Stimulation, *Am J Respir Crit Care Med*, 2000, vol. 162., pp. 795-800.
- Bilgutay, A.M. et al., Augmented Ventilation by Synchronous Phrenic Nerve Stimulation, *Trans. Amer. Soc. Artif. Int. Organs*, 1970, vol. XVI, pp. 213-217.
- Yasuma, Fumihiko et al., Eight-Year Follow-Up Study of a Patient with Central Alveolar Hypoventilation Treated with Diaphragm Pacing, *Respiration*, 1998; 65:313-316.
- Handa, Y. et al., Basic Studies on Electrophrenic Respiration Part 2—Assisted Ventilation by the Synchronous Electrophrenic Respirator, *Medical and Biological Engineering*, Jul. 1976.
- Kimura, M. et al., A Heart-Rate-Responsive Diaphragm Pacemaker, *Med. & Biol. Eng. & Comput.* 1987, 25, 458-462.
- Kimura, M. et al. Heart Rate and Body Temperature Sensitive Diaphragm Pacing, *Med. & Biol. Eng. & Comput.* 1992, 30, 155-161.
- Kimura, M. et al., Addition to an RF-Coupled Phrenic Nerve Stimulator Implant to Provide Outward Transmission of Body Temperature, *Med. & Biol. Eng. & Comput.* 1986, 24, 659-661.
- Taira, Takaomi, MD, Ph. D et al., Phrenic Nerve Stimulation for Diaphragm Pacing with a Spinal cord Stimulator, Elsevier Science, *Surg Neurol*, 2003; 59:128-32.
- Chatfield, Paul O. et al., Role of Pulmonary Proprioceptive Reflexes in Suppression of Spontaneous Breathing During Electrophrenic Respiration, Dept. of Physiology, Harvard Medical School, and Dept. of Physiology, Harvard School of Public Health, vol. 163.
- Sarnoff, Stanley J. et al., Electrophrenic Respiration. III. Mechanism of the Inhibition of Spontaneous Respiration, Dept. of Physiology, Harvard School of Public Health, 1948, vol. 155, pp. 203-207.
- Sarnoff, Stanley J. et al., Electrophrenic Respiration IV. The Effectiveness of Contralateral Ventilation during Activity of One Phrenic Nerve, Dept. Of Physiology, Harvard School of Public Health, 1949, pp. 929-937.
- Stemmer, Edward A. MD et al., Diaphragmatic Pacing in the Treatment of Hypoventilation Syndrome, *Journal of Thoracic and Cardiovascular Surgery*, vol. 54, No. 5, 1967, pp. 649-657.
- Furman, Seymour, MD et al, Transvenous Stimulation of the Phrenic Nerves, *Journal of Thoracic and Cardiovascular Surgery*, vol. 62, No. 5, 1971, pp. 743-751.
- Aiyar, Harish et al., *Diaphragm Pacing for Chronic Respiratory Insufficient*, CRC Press, LLC, 2001, Chapter 9.
- Oliven, Arie et al., Upper Airway Response to Electrical Stimulation of the Genioglossus in Obstructive Sleep Apnea, *Journal of Applied Physiology*, 95:2023-2029, 2003.
- Javaheri, Shahrokh, MD, Acetazolamide Improves Central Sleep Apnea in Heart Failure Pulmonary Service, Department of Veterans Affairs Medical Center, and Department of Medicine, University of Cincinnati College of Medicine, Cincinnati, Ohio Am J Respir Crit Care Med vol. 173, pp. 234-237, 2006, Jul. 5, 2005.
- Vaseghi, et al., Beyond Coronary Sinus Angiography: The Value of Coronary Arteriography and Identification of the Pericardiophrenic Vein During Left Ventricular Lead Placement, *PACE*, 2005, vol. 28.
- Leung, Richard S. T. et al., Influence of Cheyne-Stokes Respiration on Cardiovascular Oscillations in Heart Failure, *Am J Respir Crit Care Med*, 2003, vol. 167. pp. 1534-1539.
- Escher, Doris J.W., Clinical control of Respiration by Transvenous Phrenic Pacing, *Trans. Amer. Soc. Artif. Int. Organs.*, vol. XIV, 1968.
- Levy, T. et al., A Comparison Between Passive and Active Fixation Leads in the Coronary Sinus for Batrial Pacing, *The European Society of Cardiology* 2000.
- Javaheri, Shahrokh M.D., CPAP Should Not Be Used for Central Sleep Apnea in Congestive Heart Failure Patients, *Journal of Clinical Sleep Medicine*, vol. 2, No. 4, 2006.
- Hall, Michael J. et al., Cycle Length of Periodic Breathing in Patients with and without Heart Failure, *Am. J. Respir. Crit. Care Med* vol. 154, pp. 376-381, 1996.
- Hasdemir, Can MD et al., *Jpn Heart J*, vol. 44 No. 3, 2003.
- Schauerte, Patrick et al., Catheter Stimulation of Cardiac Parasympathetic Nerves in Humans: A Novel Approach to the Cardiac Autonomic Nervous System, *American Heart Association* 2006.
- Shaul, Donal B., et al., Thoracoscopic Placement of Phrenic Nerve Electrodes for Diaphragmatic Pacing in Children, *Journal of Pediatric Surgery*, vol. 37, No. 7 pp. 974-978, 2002.
- Plisiene, Jurgita et al., Selective Transvascular Stimulation of Cardiac Autonomic Nerves: A Novel Technique, *Biomedicine* vol. 2 No. 1, Jul. 2002.
- Arzt, Michael et al., Treatment of Sleep Apnea in Heart Failure, *Am J Respir Crit Care Med* vol. 173, pp. 1300-1308, 2006.
- Thoma, H. et al., *The Vienna Phrenic Pacemaker, Longterm Data of Failures*, 1993.
- Ishii, Kiyoshi, Effects of Bilateral transvenous diaphragm pacing on hemodynamic function in patients after cardiac operations, 1990.

* cited by examiner

Figure 1

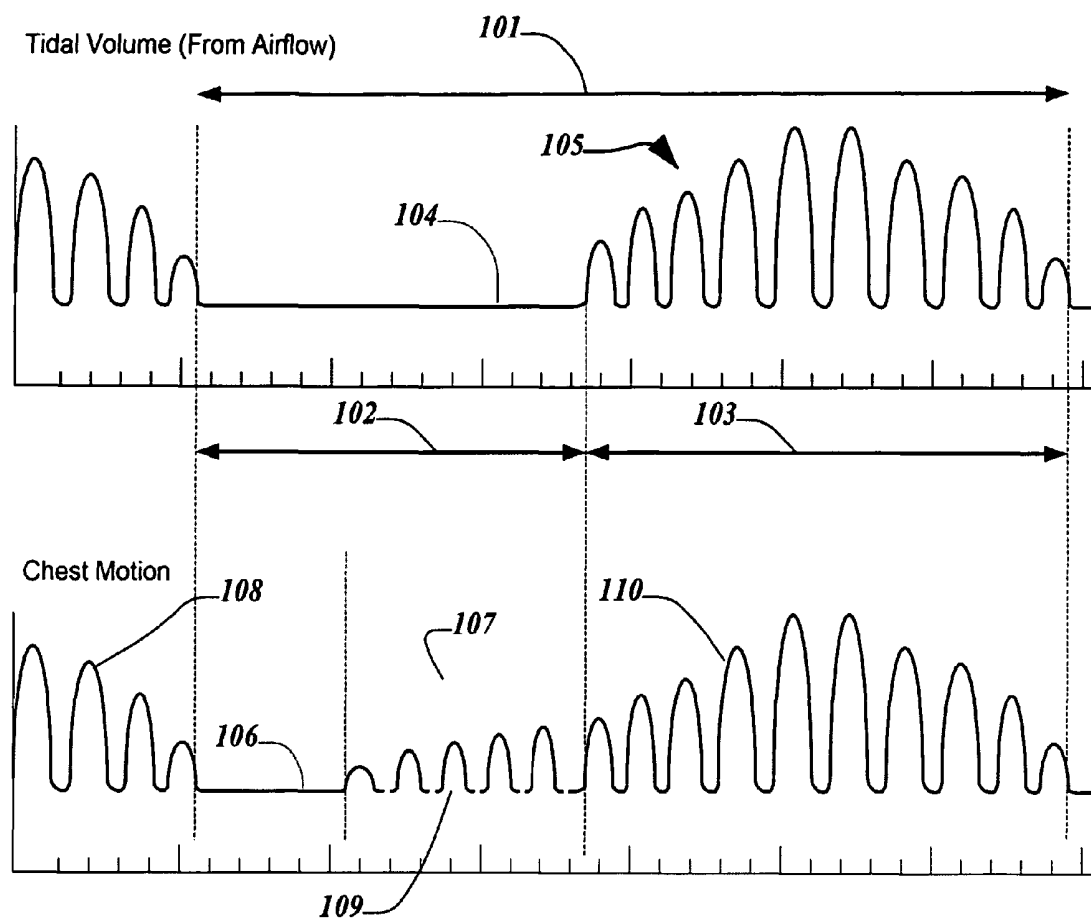


Figure 2

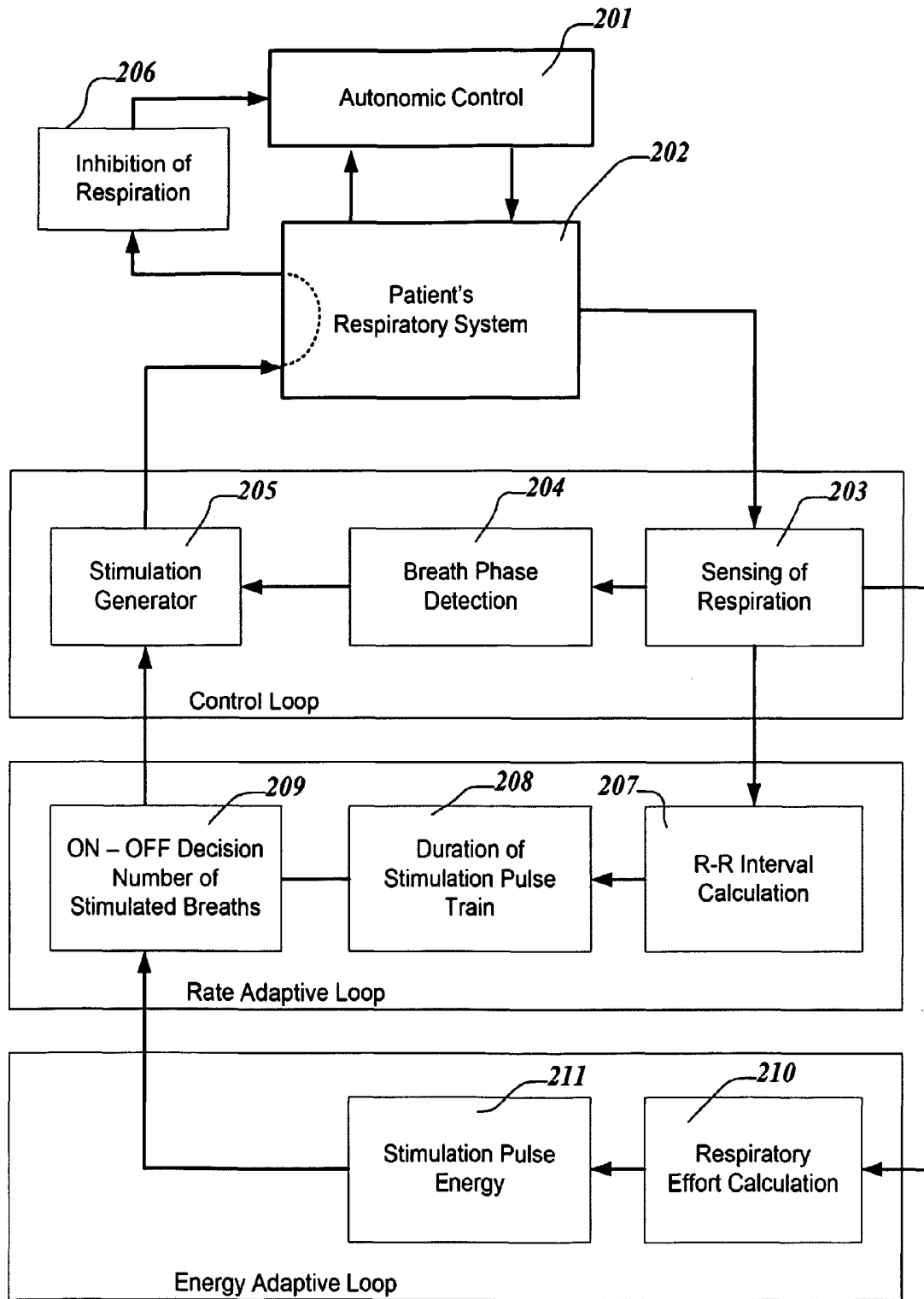


Figure 3

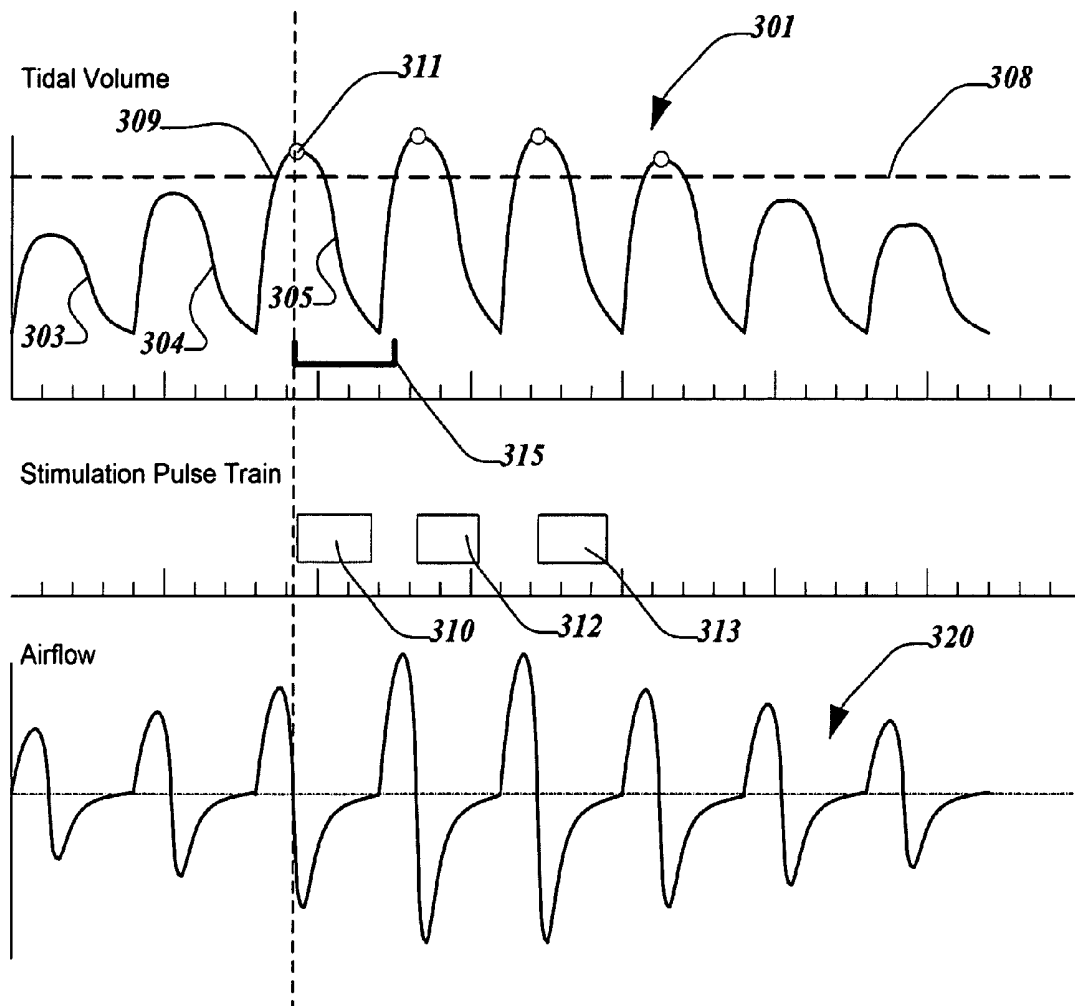


Figure 4

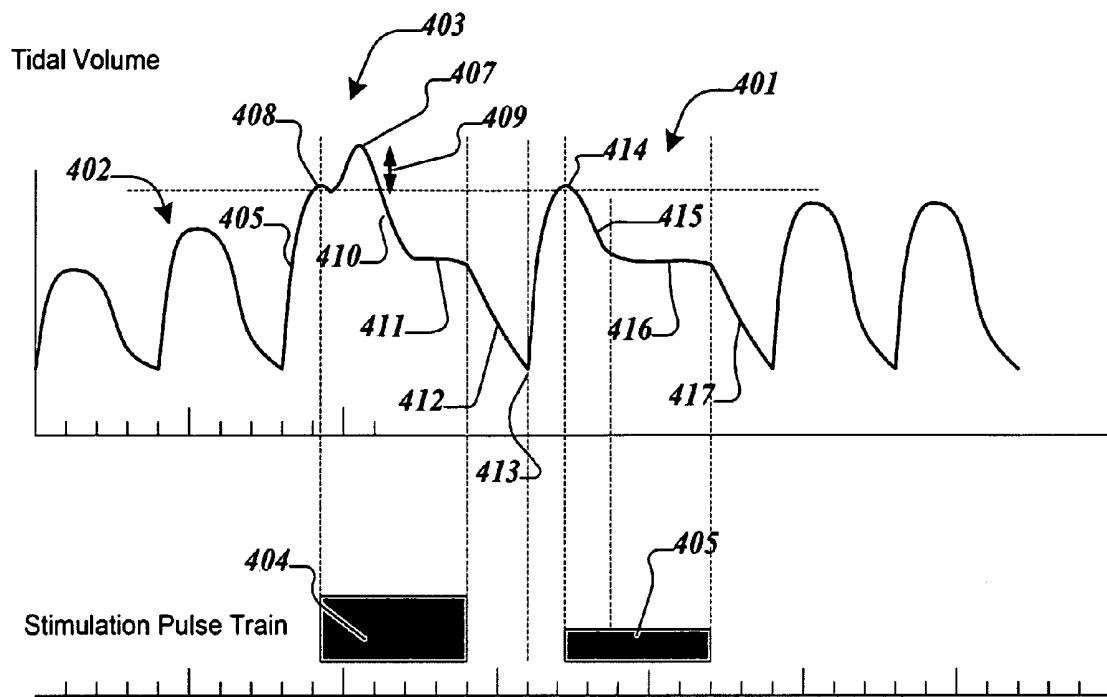


Figure 5

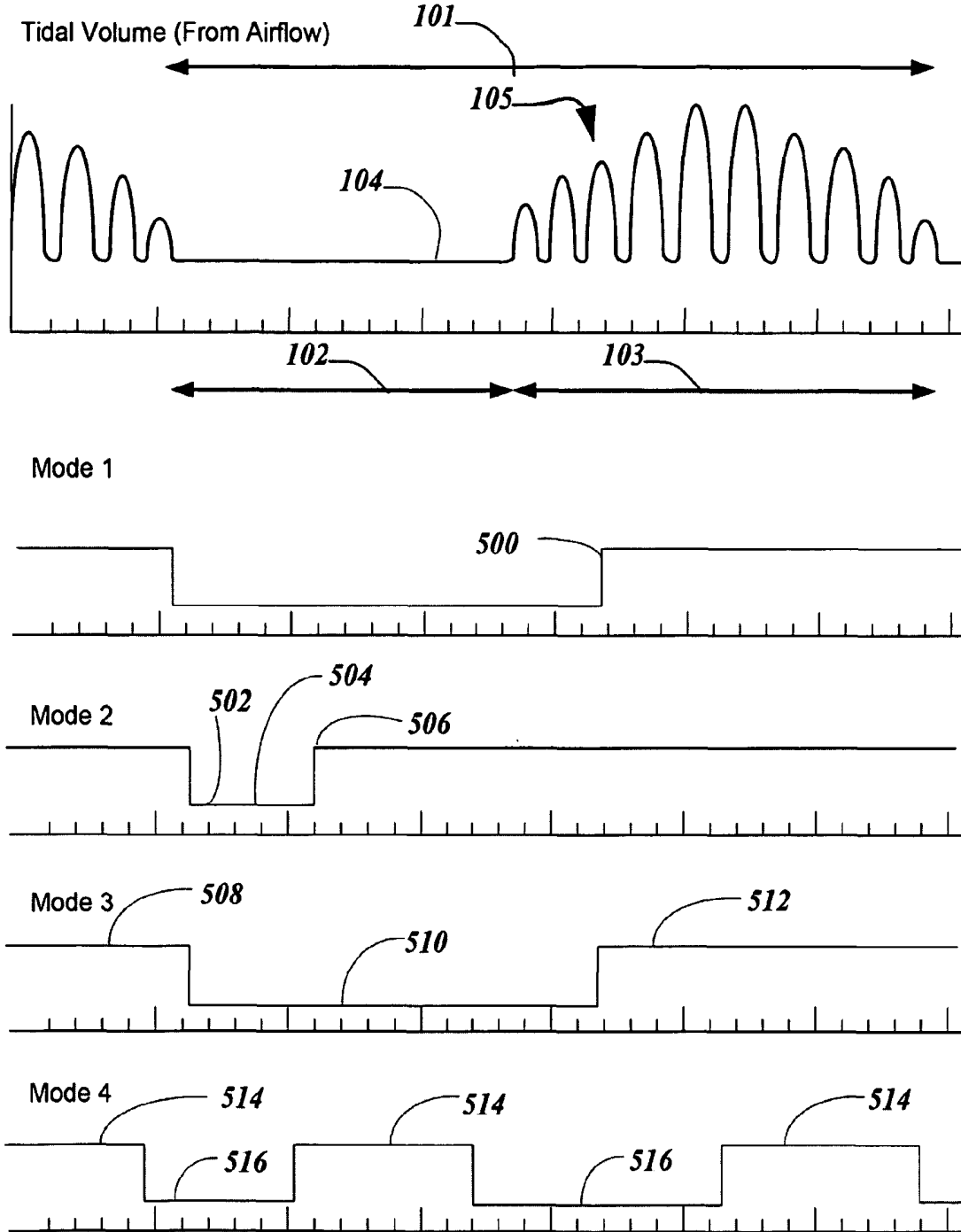


Figure 6

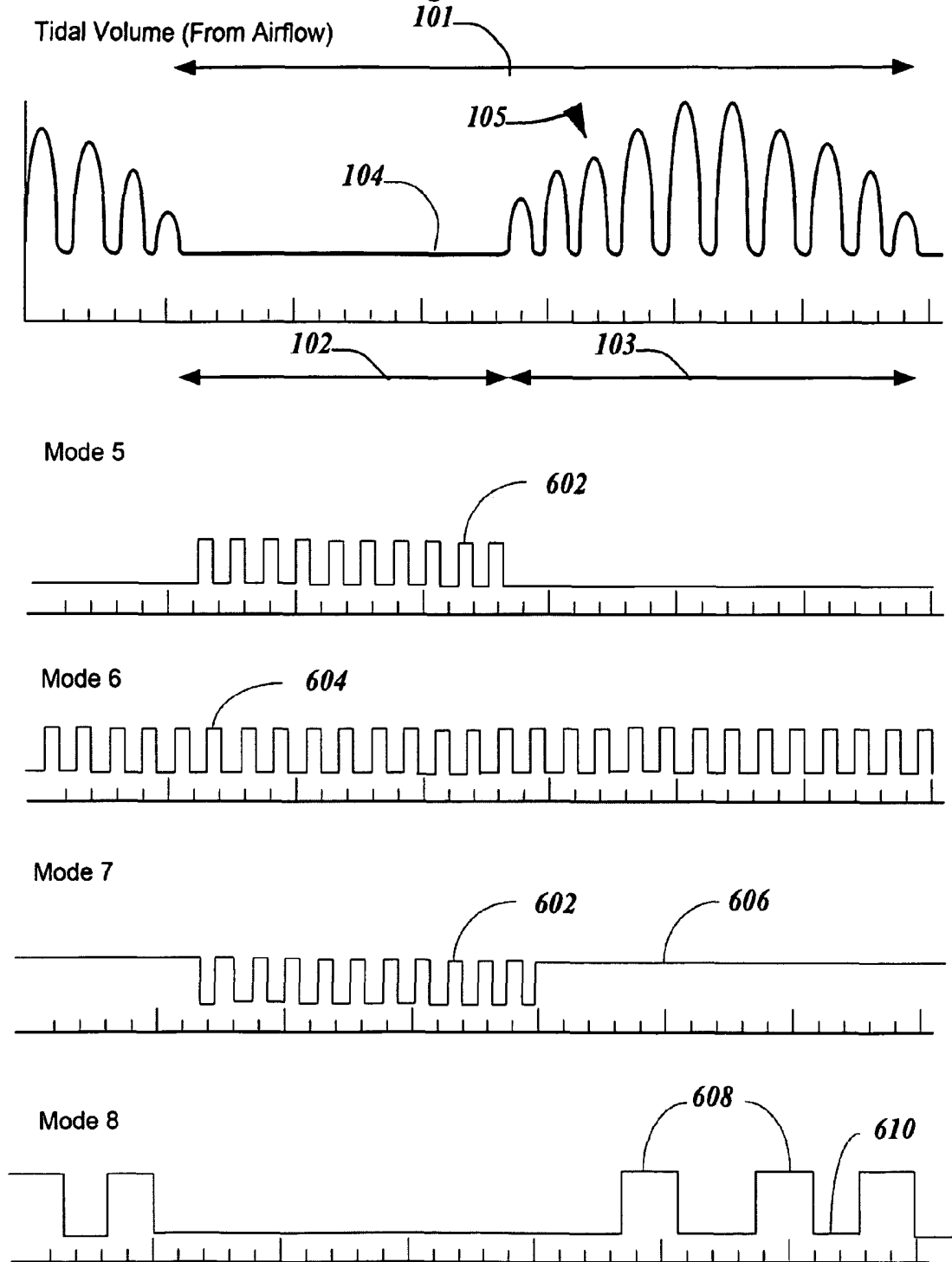


Figure 7

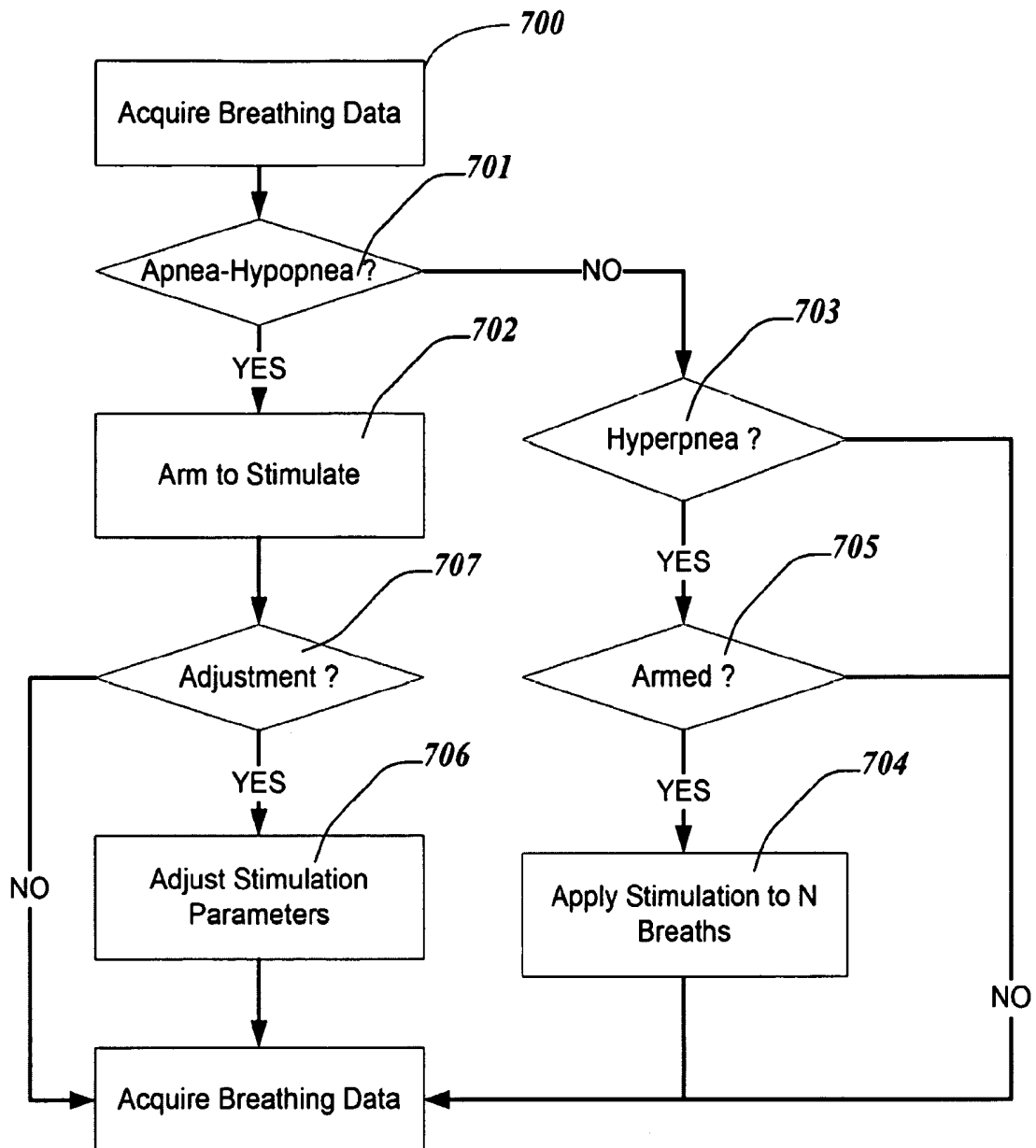


Figure 8

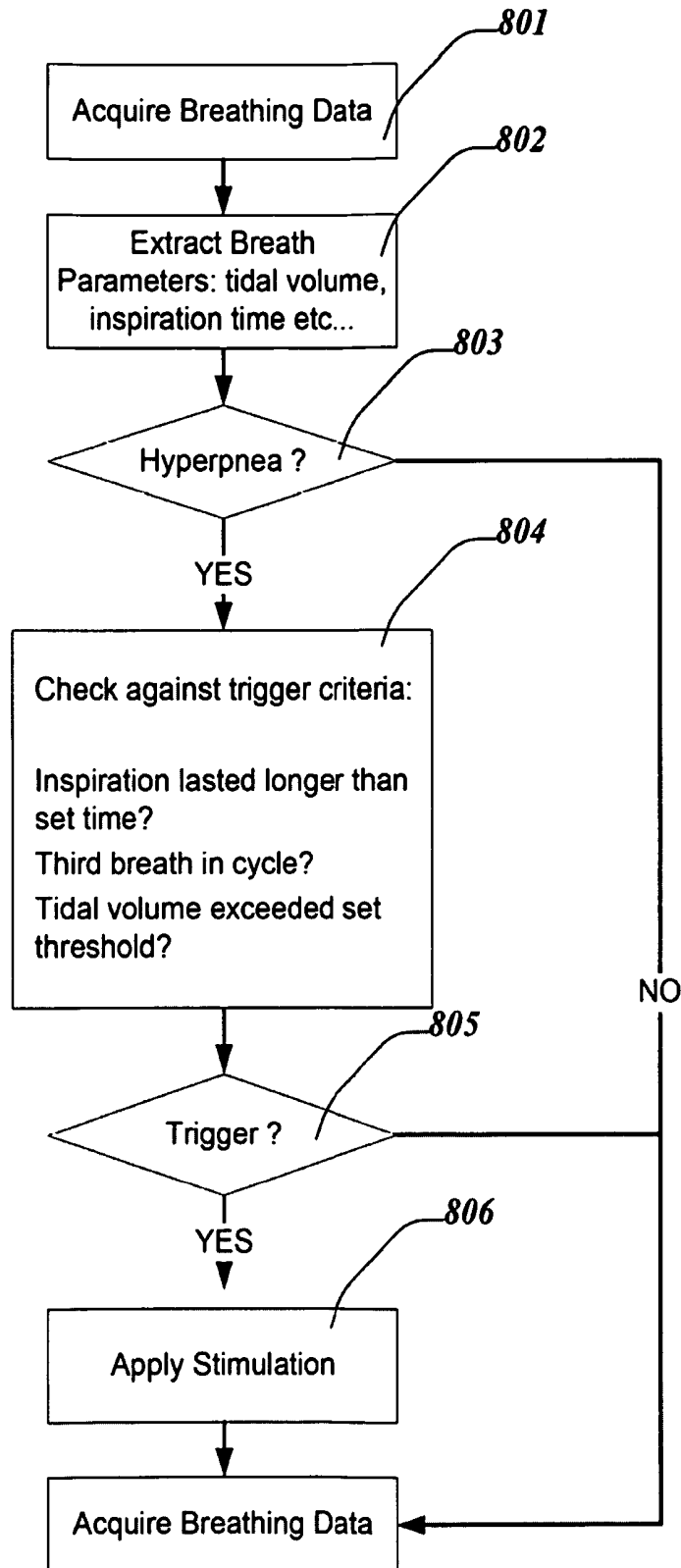


Figure 9

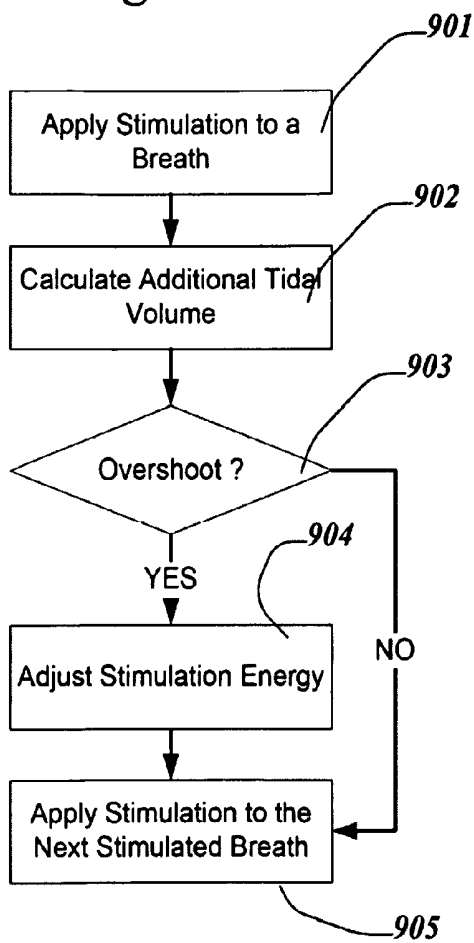


Figure 10

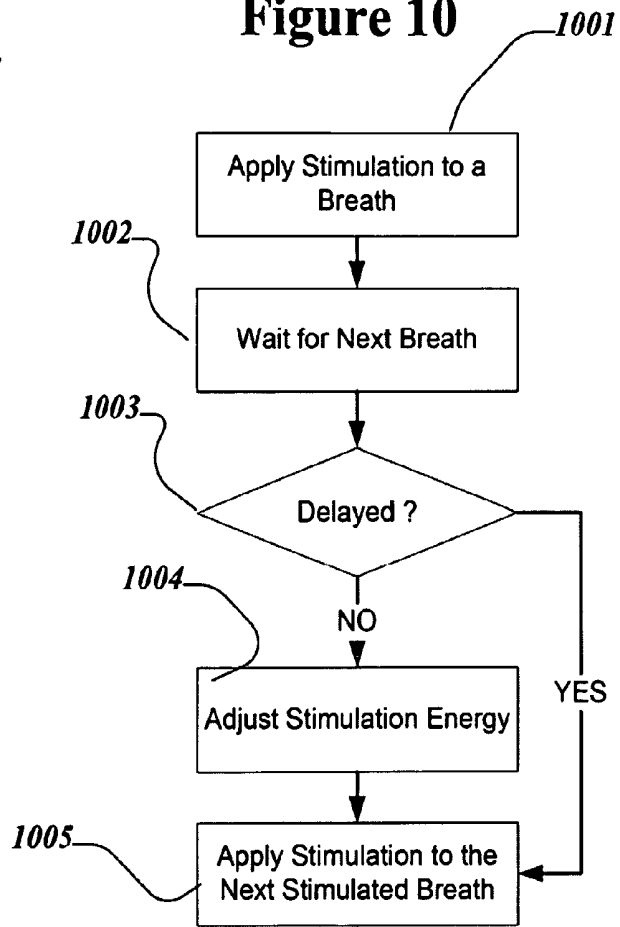


Figure 11

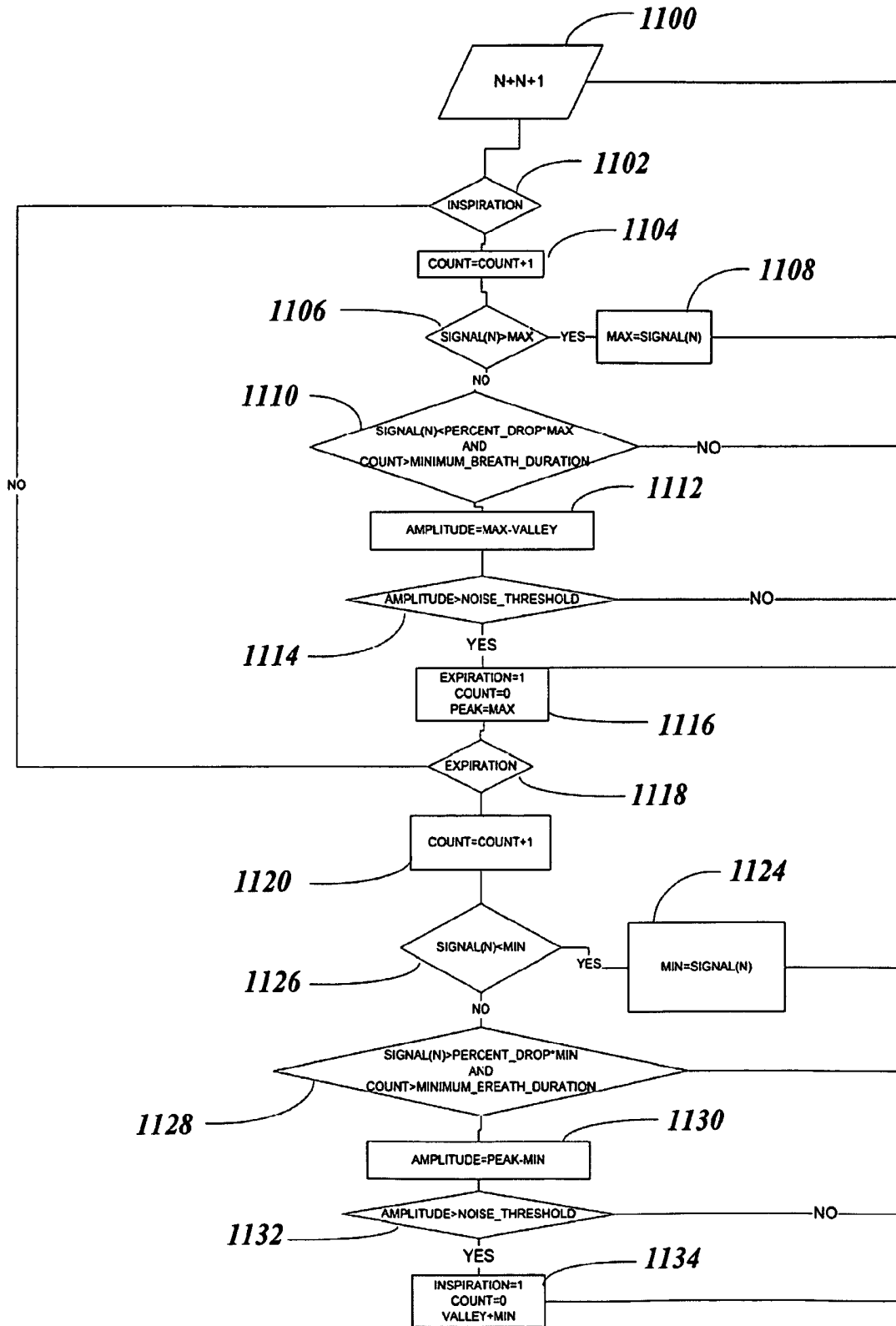


Figure 12

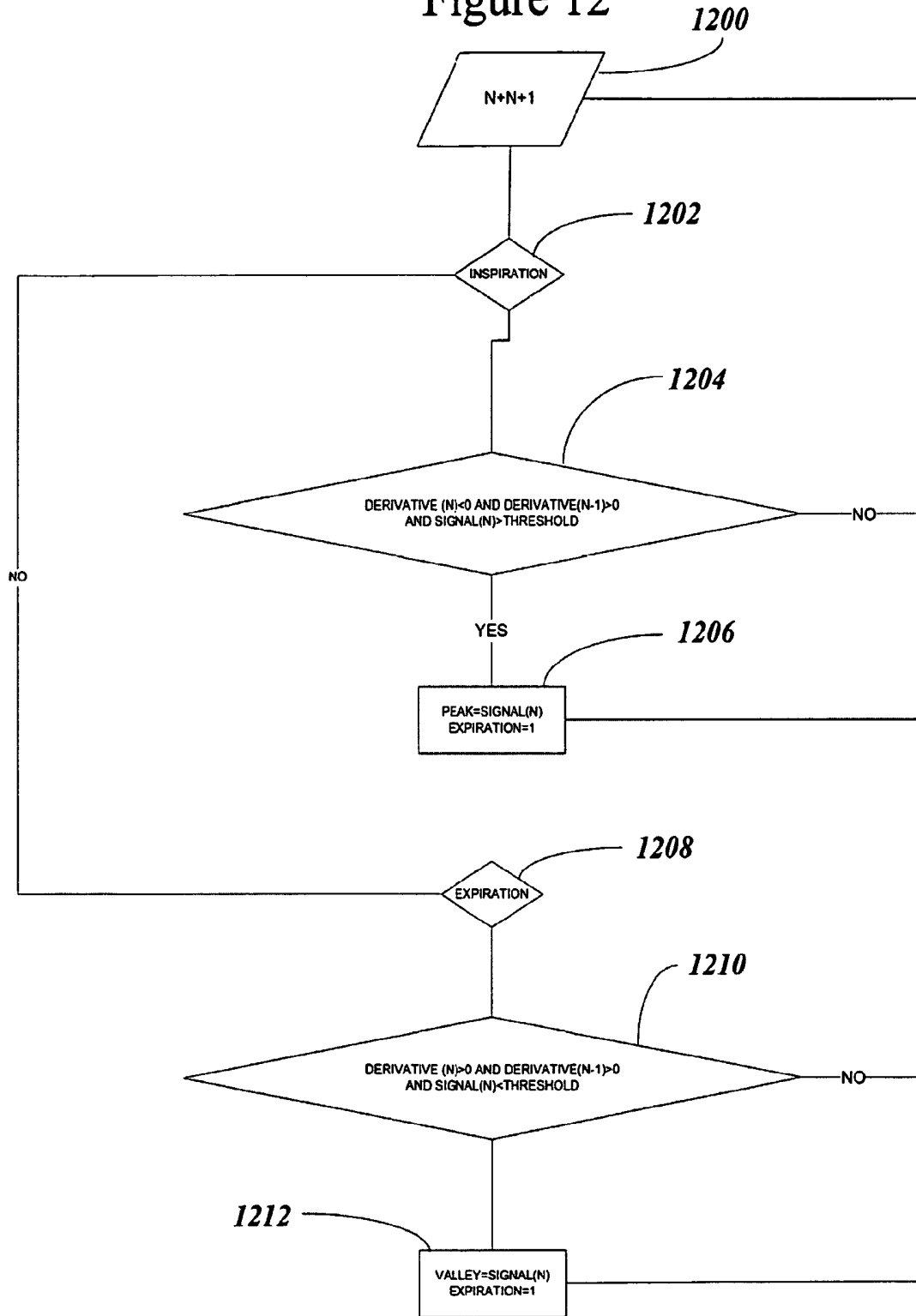


Figure 13

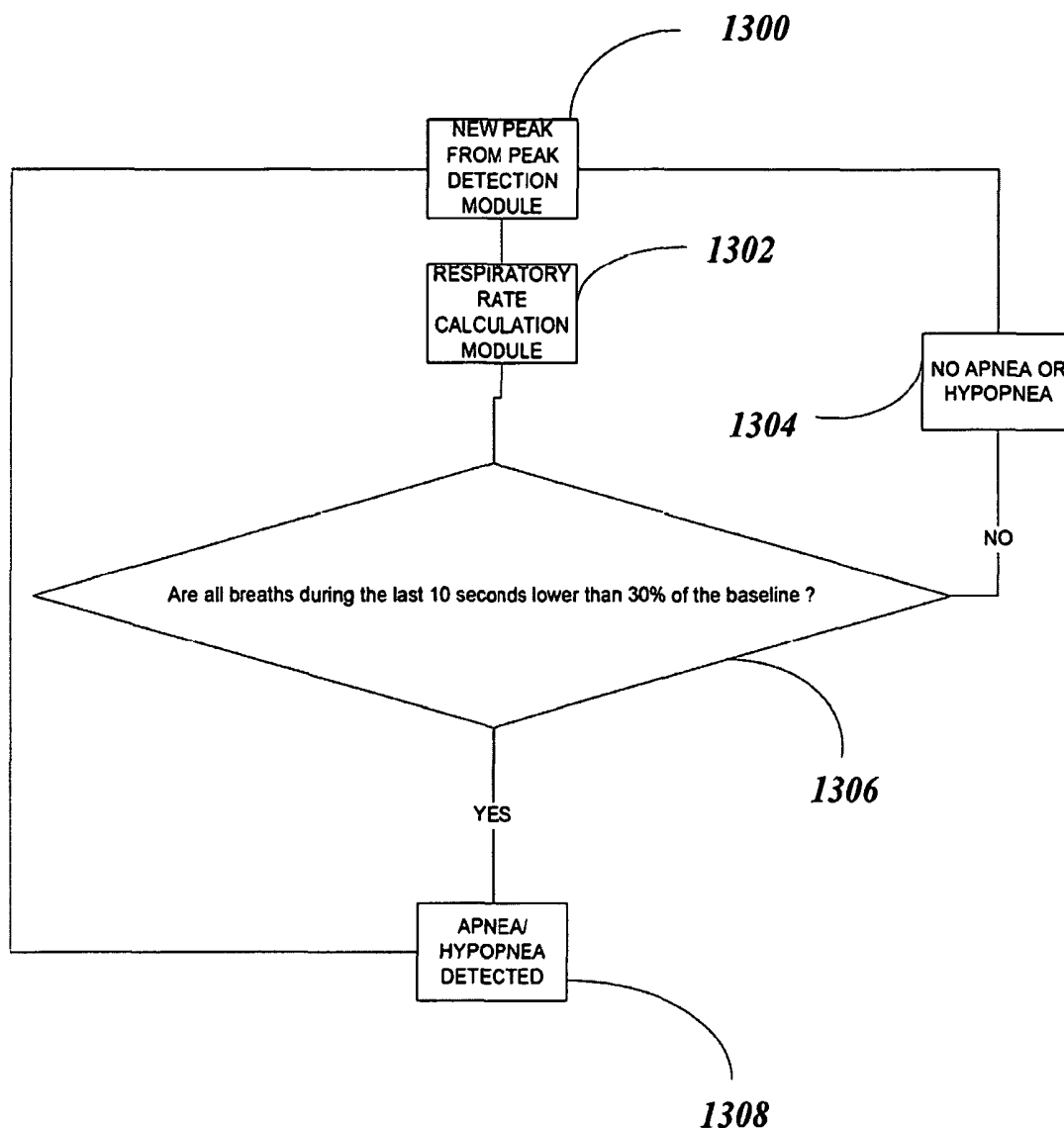


Figure 14

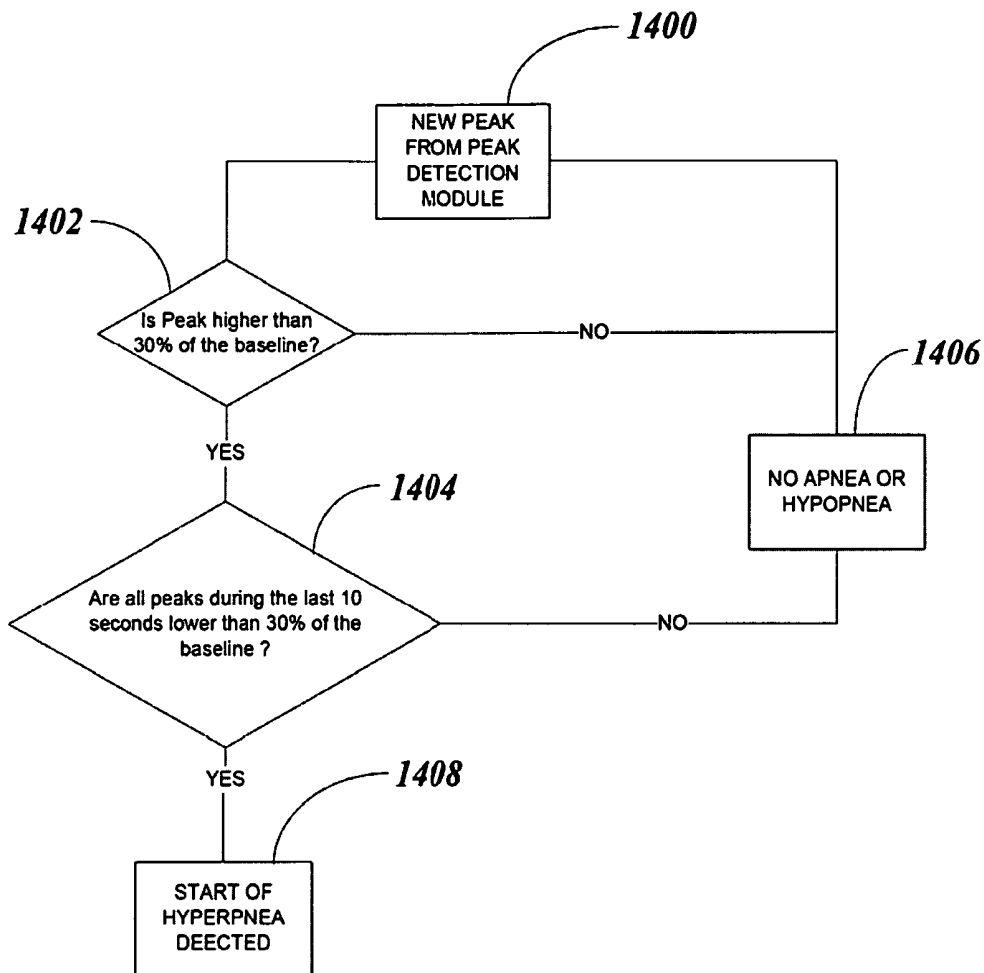


Figure 15

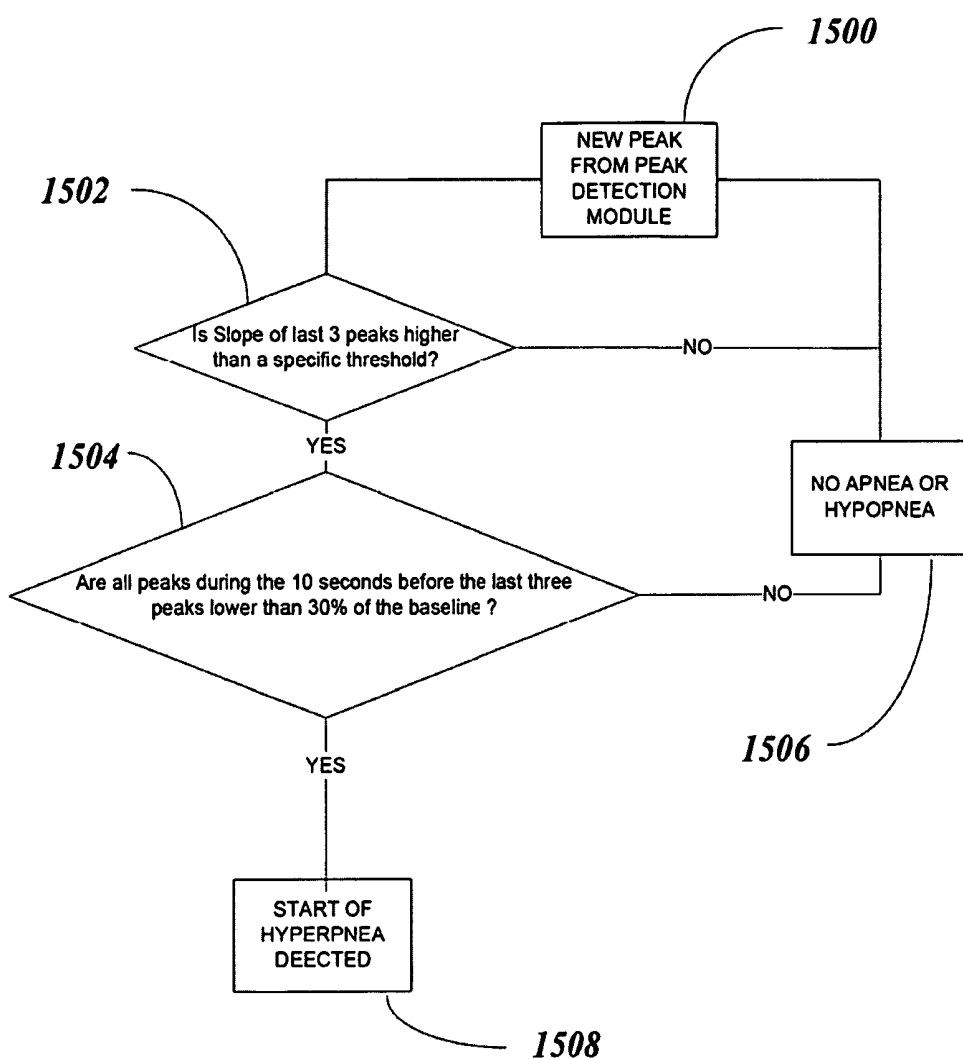


Figure 16

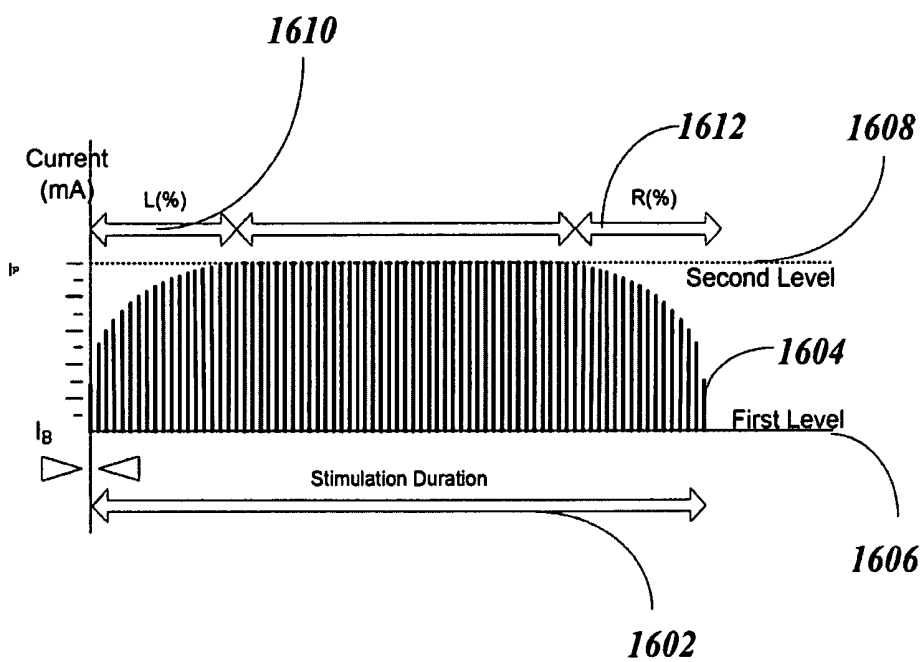


Figure 17

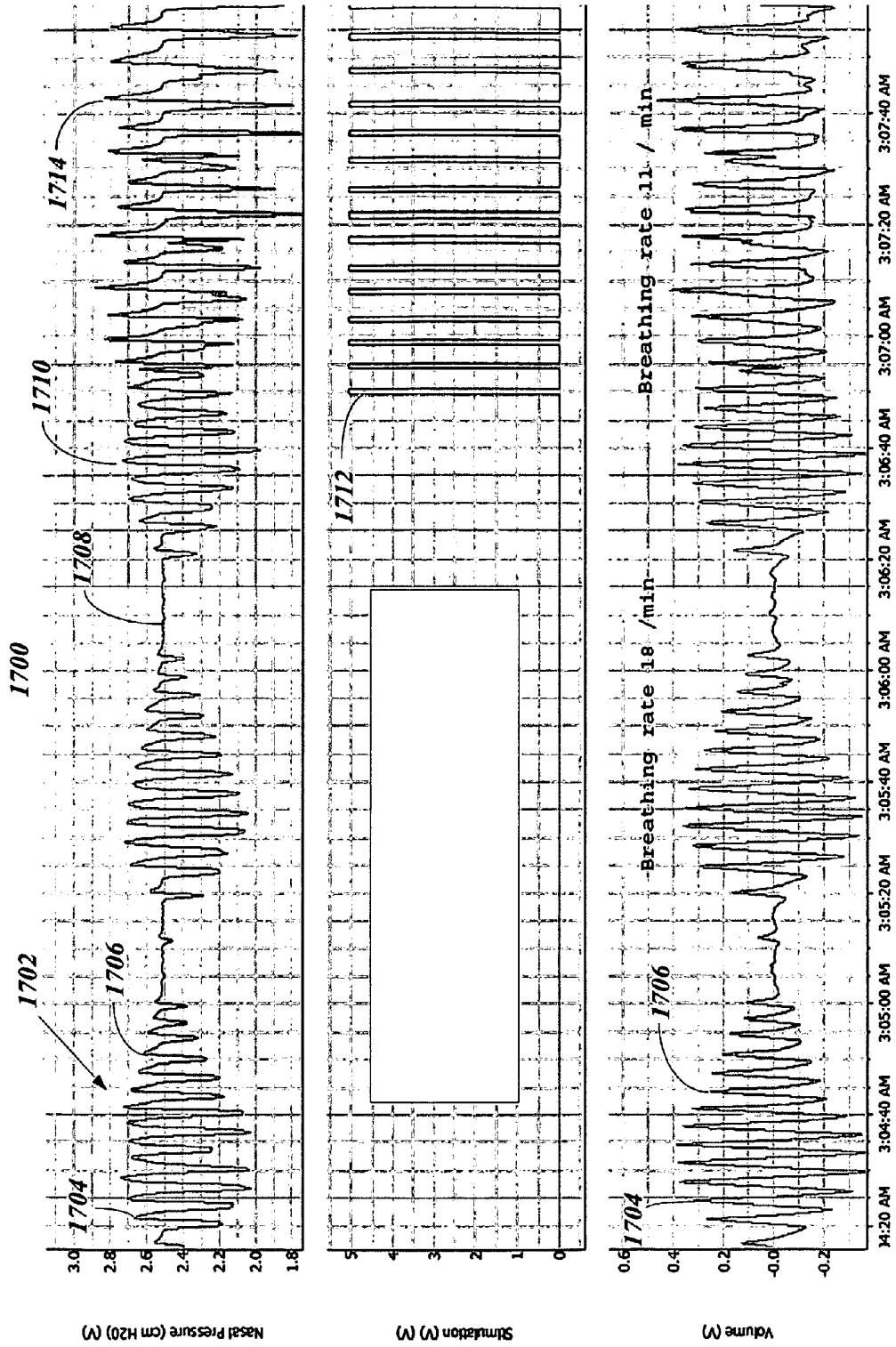
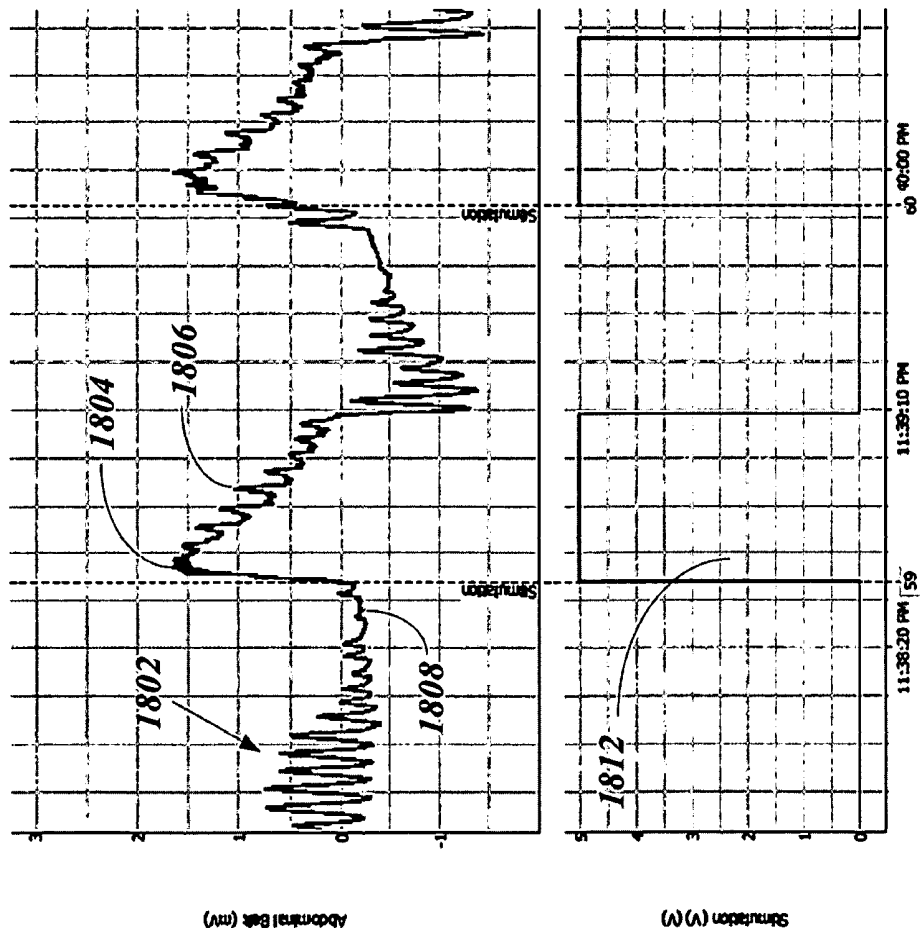


Figure 18



DETECTING AND TREATING DISORDERED BREATHING

CROSS REFERENCE TO RELATED CASES

The present application claims priority to U.S. Provisional application entitled "ALGORITHMS FOR PHRENIC NERVE STIMULATION" filed Jun. 27, 2007, Ser. No. 60/937,426. Applicant claims the benefit of the filing date of the provisional application and hereby incorporates the provisional application herein in relevant part.

FIELD OF THE INVENTION

The present invention relates to detecting and treating defects in human respiration, particularly the types of disordered breathing that may accompany heart disease.

BACKGROUND

Human respiration is an extraordinarily complicated process. Although rhythmic breathing, inhalation and exhalation, is familiar to all of us, the underlying processes that give rise to the observed respiration cycle are complex. In general respiration permits gas exchange between gases in the blood and gases in the environment. In a healthy individual, oxygen is provided to the blood and carbon dioxide, which is a product of metabolic processes in the body, is driven off into the atmosphere. Respiration is subject to both voluntary and involuntary control and several disease processes can have a profound impact on respiration.

A person's respiration is controlled by the autonomic nervous system that integrates inputs from many physiologic sensors such as mechanoreceptors and chemoreceptors. The central nervous system commands the diaphragm and other muscles in the chest as well as in the neck to phasically contract and relax thus producing a breath of certain shape and tidal volume. It also acts as a respiratory pacemaker by setting the breathing rate. In a normal sleeping person the next breath is typically initiated substantially immediately after the previous breath is completely exhaled. The term tidal volume refers to the volume of air inspired or expired during a respiratory cycle. Together tidal volume and breathing rate determine minute volume of ventilation that determines the rate at which oxygen is delivered and CO₂ is removed from the respiratory system.

The term disordered breathing is used herein to describe a variety of observable respiration patterns that deviate from normal respiration. For example, Cheyne-Stokes respiration ("CSR") is clinically observed and declared when a patient has bouts of "rapid" and/or "deep" breathing followed by reductions in breathing or apnea-hypopnea. This abnormal pattern of breathing can be seen in patients with strokes, traumatic brain injuries, brain tumors, and congestive heart failure and is usually a result of poor control of blood gas chemistry by the central nervous system.

"Pure" Cheyne-Stokes respiration is also called central sleep apnea by the medical community and is sometimes present with congestive heart failure. However, CSR breathing may be mixed with other respiration disorders that may or may not be related to congestive heart failure or other cardiac disorders.

SUMMARY

Embodiments in accordance with the present invention are directed to detecting and treating disordered breathing.

In some embodiments, a device may operate by sensing natural respiration and phasically synchronizing the delivery of a stimulus with the breath after inspiration. The stimulation of these embodiments is provided to at least one half of a patient's phrenic nerves which innervate one side of the diaphragm associated with one lung. The stimulus is of a sufficient character to cause that lung to "be still," with some amount of air retained in the lung, and lung volume generally will not change during the stimulation, within some broadly defined limits. It is the belief of the inventors that it may be sufficient to stimulate and still only one lung under the theory that compensatory physiologic feedback mechanisms preserved on the unstimulated lung of the central and autonomic nervous system will interact in a virtuous and favorable way with the stimulation regime to provide the therapy. It is believed that arresting at least one lung will prolong breaths and thus temporarily slow respiration and modify or modulate the tidal volume of breathing. This reduction of tidal volume may prevent blood carbon dioxide from being driven to low levels associated with apnea.

In other embodiments in accordance with the present invention, the stimulus is applied to still at least one lung upon detection of an apnea-hypopnea of some length or upon the detection of hyperpnea. In these embodiments, the stimulation may be initiated during the apnea-hypopnea period or upon detection of a breath of a predetermined intensity near the end of apnea-hypopnea. The stimulation may be initiated in phase with respiration or irrespective of the phase of respiration. If initiated irrespective of the phase of respiration, the stimulation may be gradually increased in intensity so as to expand and still at least one lung slowly so as not to disturb or arouse a sleeping patient. For purposes of this discussion, hyperpnea is defined as abnormally rapid or deep breathing. In some but not all cases, hyperpnea may involve rapid breathing that is compensating for the reduced respiratory effectiveness of a previous period of apnea-hypopnea or reduced breathing.

Embodiments in accordance with the present invention may cooperate with naturally occurring physiologic feedback mechanisms to provide a therapy for disordered breathing. In one embodiment, a fully implanted device coupled to a transvenous lead system may be provided to monitor breathing and extract inspiration points, expiration points and other data associated with a physiologic breathing pattern. A programmable, computer may be provided with control software for managing both the respiration measuring system as well as extracting useful data concerning breathing. The programmable computer may be described as a combination of circuitry and software, circuitry and firmware, or a computer with software or firmware, and all of these descriptions contemplate the same essential elements. The control software within the device may select the timing for the delivery of hemi diaphragmatic stimulation and accept input information from a variety of sources that can be used in nested control loops to tailor the therapy to a particular patient and to provide a different therapy as the patient's needs change.

In one embodiment in accordance with the invention, a system for treating disordered breathing includes a stimulation lead having a stimulation electrode, a respiration sensor, an energy source, a pulse generator, and circuitry. In this embodiment, the circuitry is operative to monitor signals from the respiration sensor and detect apnea-hypopnea. The circuitry will deliver a stimulation signal to the stimulation electrode after the detection of apnea-hypopnea. In this embodiment, the stimulation signal has a duration of at least ten seconds.

In another embodiment in accordance with the invention, a system for treating disordered breathing includes a stimulation lead having a stimulation electrode, a respiration sensor, an energy source, a pulse generator, and circuitry. In this embodiment, the circuitry is operative to monitor signals from the respiration sensor and detect apnea-hypopnea. The circuitry will deliver a stimulation pulse to the stimulation electrode after the detection of a hyperpnea following apnea-hypopnea. In this embodiment, the stimulation signal has a duration of at least ten seconds.

In yet another embodiment in accordance with the invention, a system for treating disordered breathing includes a stimulation lead having a stimulation electrode, a respiration sensor, an energy source, a pulse generator, and circuitry. In this embodiment, the circuitry is operative to monitor signals from the respiration sensor and detect apnea-hypopnea by accumulating data from the respiration sensor to determine a value representative of average tidal volume and then detecting hyperpnea when, for example, the measured value is below 30% of the average value for ten seconds. The circuitry will deliver a stimulation pulse to the stimulation electrode after the detection of apnea-hypopnea. In this embodiment, the stimulation signal has a duration of at least ten seconds.

In yet another embodiment in accordance with the invention, a system for treating disordered breathing includes a stimulation lead having a stimulation electrode, a respiration sensor, an energy source, a pulse generator, and circuitry. In this embodiment, the circuitry is operative to monitor signals from the respiration sensor and detect apnea-hypopnea by accumulating data from the respiration sensor to determine a value representative of average tidal volume and then detecting hyperpnea when the measured value is below 30% of the average value for ten seconds. The circuitry will then detect hyperpnea when the value representative of tidal volume exceeds 30% of the average value after the detection of apnea-hypopnea. The circuitry will deliver a stimulation pulse to the stimulation electrode after the detection of hyperpnea following apnea-hypopnea. In this embodiment, the stimulation signal has a duration of at least ten seconds.

In another embodiment in accordance with the invention, a system for treating disordered breathing includes a stimulation lead having a stimulation electrode, a respiration sensor, an energy source, a pulse generator, and circuitry. In this embodiment the stimulation lead is configured to be implanted in a blood vessel proximate a phrenic nerve in a patient. In this embodiment, the circuitry is operative to monitor signals from the respiration sensor and detect apnea-hypopnea. The circuitry will deliver a stimulation pulse to the stimulation electrode after the detection of apnea-hypopnea. In this embodiment, the stimulation signal has a duration of at least ten seconds.

A system for treating disordered breathing in accordance with embodiments of the invention includes a stimulation lead having a stimulation electrode, a respiration sensor, an energy source, a pulse generator, and circuitry. The circuitry of this embodiment is operative to determine the onset of a hyperpnea based on the respiration sensor signals and deliver a stimulation signal to the stimulation electrode during hyperpnea, the signal having a duration of at least one second to extend the duration of the breath.

Another system for treating disordered breathing in accordance with embodiments of the invention includes a stimulation lead having a stimulation electrode, a respiration sensor, an energy source, a pulse generator, and circuitry. The system receives signals from the respiration sensor and calculates a baseline breath duration. The circuitry of this

embodiment is operative to determine the onset of a hyperpnea based on the respiration sensor signals and deliver a stimulation signal to the stimulation electrode during hyperpnea, the signal having a duration of at least 25% of the baseline breath duration.

Another system for treating disordered breathing in accordance with embodiments of the invention includes a stimulation lead having a stimulation electrode, a respiration sensor, an energy source, a pulse generator, and circuitry. The circuitry of this embodiment is operative to determine the onset of a hyperpnea and the peak of inspiration based on the respiration sensor signals and deliver a stimulation signal to the stimulation electrode during hyperpnea proximate the peak of inspiration, the signal having a duration of at least one second to extend the duration of the breath.

A system for treating disordered breathing in accordance with embodiments of the invention includes a stimulation lead having a stimulation electrode, a respiration sensor, an energy source, a pulse generator, and circuitry. The circuitry of this embodiment is operative to determine the onset of a hyperpnea based on the respiration sensor signals and to determine the duration of a hyperpnea cycle and deliver a stimulation signal to the stimulation electrode during hyperpnea, the signal having a duration greater than 25% of the duration of the hyperpnea cycle.

Another system for treating disordered breathing in accordance with embodiments of the invention includes a stimulation lead having a stimulation electrode, a respiration sensor, an energy source, a pulse generator, and circuitry. The circuitry of this embodiment is operative to determine the onset of a hyperpnea based on the respiration sensor signals and to determine the duration of a hyperpnea cycle. The circuitry is also operative to deliver a stimulation signal to the stimulation electrode during hyperpnea, the signal being initiated after the midpoint of the hyperpnea cycle and having a duration of at least one second to extend the duration of the breath. In some variations of this embodiment the signal is initiated proximate the peak of inspiration of a breath that occurs after the midpoint of hyperpnea.

Another system for treating disordered breathing in accordance with embodiments of the invention includes a stimulation lead having a stimulation electrode, a respiration sensor, an energy source, a pulse generator, and circuitry. The circuitry of this embodiment is operative to determine the onset of a hyperpnea based on the respiration sensor signals and to determine the duration of a hyperpnea cycle. The circuitry is also operative to deliver a stimulation signal to the stimulation electrode during hyperpnea, the signal being initiated after the midpoint of the hyperpnea cycle and having a duration of at least one second to extend the duration of the breath. The circuitry of this embodiment is also operative to deliver a stimulation signal at the peak of inspiration for several breaths beginning after the midpoint of hyperpnea.

Another system for treating disordered breathing in accordance with embodiments of the invention includes a stimulation lead having a stimulation electrode, a respiration sensor, an energy source, a pulse generator, and circuitry. The circuitry of this embodiment is operative to determine the onset of a hyperpnea based on the respiration sensor signals. The circuitry is also operative to deliver at least three segmented stimulation signals to the stimulation electrode during the hyperpnea.

Another system for treating disordered breathing in accordance with embodiments of the invention includes a stimulation lead having a stimulation electrode, a respiration sensor, an energy source, a pulse generator, and circuitry.

The circuitry of this embodiment is operative to determine the onset of a hyperpnea based on the respiration sensor signals and to determine the average duration of a hyperpnea cycle and the average duration of an apnea-hypopnea cycle. The circuitry is also operative to deliver a stimulation signal to the stimulation electrode during hyperpnea based on the average duration of a hyperpnea cycle and establish a blanking period based on the average duration of an apnea-hypopnea cycle.

A system for treating disordered breathing in accordance with embodiments of the invention includes a stimulation lead having a stimulation electrode, a respiration sensor, an energy source, a pulse generator, and circuitry. The circuitry of this embodiment is operative to determine the onset of a hyperpnea based on the respiration sensor signals and deliver a stimulation signal to the stimulation electrode during hyperpnea, where the signal has a duration of at least one second and is in the form of a gradually rising and descending pulse train envelope.

In another embodiment in accordance with the invention, a method of monitoring or treating disordered breathing includes calculating an average duration of a patient's hyperpnea over some period of time and stimulating a diaphragm of the patient upon detection of hyperpnea. In this embodiment the stimulation lasts at least 30% as long as the calculated average duration of hyperpnea.

Another embodiment in accordance with the invention involves a method of monitoring or treating disordered breathing. The method includes gathering data related to a patient's breathing and generating a value representative of the tidal volume of the breaths of the patient. The tidal volumes of sequential breaths are compared and hyperpnea is detected when there are three sequential breaths where the tidal volume of each breath is at least 20% greater than the tidal volume of the previous breath. The method of this embodiment includes calculating an average duration of a patient's hyperpnea over some period of time and stimulating a diaphragm of the patient upon detection of hyperpnea. In this embodiment the stimulation lasts at least 30% as long as the calculated average duration of hyperpnea.

In another embodiment in accordance with the invention, a method of monitoring or treating disordered breathing includes calculating an average duration of a patient's hyperpnea over some period of time and stimulating a diaphragm of the patient upon detection of hyperpnea. In this embodiment the stimulation lasts at least 30% as long as the calculated average duration of hyperpnea. The stimulation signal of this embodiment is in the form of a gradually rising and descending pulse train envelope. Some examples of possible pulse train shapes include linear, parabolic, and elliptical.

In yet another embodiment in accordance with the invention, a method of monitoring or treating disordered breathing includes calculating an average duration of a patient's episodes of hyperpnea over some period of time and an average midpoint of the hyperpnea episode and stimulating a diaphragm of the patient during hyperpnea after the midpoint of the hyperpnea.

In yet another embodiment in accordance with the invention, a method of monitoring or treating disordered breathing includes calculating an average duration of a patient's episodes of hyperpnea over some period of time and an average midpoint of the hyperpnea episode and stimulating a diaphragm of the patient during hyperpnea after the midpoint of the hyperpnea. This embodiment includes determining the peak of inspiration and stimulating proximate the peak of inspiration.

In yet another embodiment in accordance with the invention, a method of monitoring or treating disordered breathing includes calculating an average duration of a patient's episodes of hyperpnea over some period of time and an average midpoint of the hyperpnea episode and stimulating a diaphragm of the patient during hyperpnea after the midpoint of the hyperpnea. In this embodiment additional future breaths extending beyond the normal duration of hyperpnea are stimulated.

BRIEF DESCRIPTION OF THE DRAWINGS

FIG. 1 is a stylized representation of tidal volume and chest motion over time of a patient.

FIG. 2 is a representation of a system as it interacts with a patient's respiratory system.

FIG. 3 is a stylized representation of tidal volume, airflow, and an illustrative stimulation therapy.

FIG. 4 is a stylized representation of a stimulation protocol.

FIG. 5 is a stylized representation of tidal volume during a CSR cycle with mixed apnea and several treatment protocols.

FIG. 6 is a stylized representation of tidal volume during a CSR cycle with mixed apnea and several treatment protocols.

FIG. 7 is a flowchart of a detection and treatment protocol.

FIG. 8 is a flowchart of a detection and treatment protocol.

FIG. 9 is a flowchart of a stimulation adjustment protocol.

FIG. 10 is a flowchart of a stimulation adjustment protocol.

FIG. 11 is a flowchart of a breath detection protocol.

FIG. 12 is a flowchart of a breath detection protocol.

FIG. 13 is a flowchart of an apnea-hypopnea detection protocol.

FIG. 14 is a flowchart of a hyperpnea detection protocol.

FIG. 15 is a flowchart of a hyperpnea detection protocol.

FIG. 16 is a representation of a stimulation signal.

FIG. 17 shows experimental results of treatment of disordered breathing.

FIG. 18 shows experimental results of treatment of disordered breathing.

DETAILED DESCRIPTION

Turning now to the Figures, FIG. 1 is a stylized representation of tidal volume and chest motion over time of a patient suffering from mixed apnea within Cheyne-Stokes Respiration. The CSR cycle 101 consists of an apnea-hypopnea period 102 and a hyperpnea period 103. During apnea-hypopnea 102 there is substantially no airflow 104 inspired or expired. During hyperpnea 103 airflow gradually increases, crests and then decreases from breath to breath. This pattern is often described as a crescendo-decrescendo pattern. In the beginning of apnea-hypopnea 106 there is no respiratory drive from the autonomic nervous system of the patient and consequently no substantial diaphragm or chest motion. This is an example of true or pure central sleep apnea. It may be caused by the suppression of drive to breathe caused by the concentration of CO₂ in the blood ("PaCO₂") crossing below an apnic threshold. This abnormally low PaCO₂ is likely a result of the preceding hyperpnea 108 that is in turn a manifestation of a ventilatory overshoot.

Respiratory or ventilatory overshoot describes an excessive response of the physiologic respiratory control system to a sensed change of blood gas composition. In some

disordered breathing patients, poor blood flow to the brain causes the central nervous system to perceive CO₂ levels in the blood that are no longer representative of the overall blood CO₂ level. In the case of high sensed CO₂ levels, the central nervous system triggers an increase in respiration in response to the high sensed CO₂ levels, but by the time the chemoreceptors sense the reduced CO₂ level and begin slowing respiration, the CO₂ levels have already become too low. The CO₂ levels may drop below an apnic threshold and as a result respiration may stop or become reduced for a time. CO₂ levels increase during this period of reduced respiration and the cycle of overcorrection of blood gas composition continues or becomes worse. Respiratory overshoot is manifested as excessive minute ventilation or hyperpnea that leads to apnea-hypopnea within the CSR cycle.

Later in the cycle, the patient's respiratory drive is restored **109** by the increasing blood PaCO₂. Chest motion **109** indicates the presence of respiratory drive, but the patient is breathing against the closed airway. No airflow is present. This is obstructive apnea within the same CSR cycle. Later in the cycle the patient's airway opens **110** and chest motion is accompanied by airflow. The natural control system of the respiration in the patient overreacts to the prolonged apnea-hypopnea. Breathing gradually becomes deeper. This is a new cycle of hyperpnea. Excessive escalation of breathing control is the manifestation of another respiratory overshoot.

FIG. 2 is a representation of a system in accordance with embodiments of the invention as it interacts with a patient's respiratory system. A patient's respiration is monitored **203** by a respiratory sensor that can be, for example, an impedance sensor, a pressure sensor or an accelerometer. A respiratory waveform can be acquired and stored in the system memory. Embedded software analyzes the waveform **204** and detects parameters of a breath such as the breath phase (inspiration or expiration) and tidal volume. At the appropriate time in the breath cycle, such as for example the end of inspiration, a pulse train or signal of stimulation is applied by the stimulation generator **205** to a phrenic nerve. In this embodiment, the pulse train is of sufficient energy to keep one hemidiaphragm muscle contracted (somewhat flattened) thus trapping some amount of air in at least one lung of the patient's respiratory system **202**. This pattern of stimulation results in the inhibition of respiration **206** that may temporarily prevent the natural respiratory pacemaker **201** of the patient from initiating a new breath. It is believed that this may be at least partially accomplished via a vagal feedback into the autonomic control **201** system of the patient from the stretch receptors (mechanoreceptors) of the lung. As a result, the breathing rate of the patient is momentarily reduced. This reduction results in the suppression of respiratory overshoot that would otherwise be caused by the unstable autonomic control. Prevention or reduction of the overshoot may prevent PaCO₂ from dropping below the apnic threshold. This may prevent the cessation or clinically undesirable reduction of breathing during the apnea-hypopnea phase of the CSR cycle.

The described basic operation of the detection and therapy delivery processes of this embodiment can be supplemented by additional control loops to make any stimulation device or other therapy delivery device more practical. For example, software can analyze **207** the respiratory waveform acquired and stored in the device memory for breathing parameters such as respiratory rate, tidal volume, cyclic changes of tidal volume (crescendo-decrescendo), and periodicity of respiration. Based on these parameters the software can determine the settings for the stimulation generator

205. For example, the duration of the stimulation train **208** can be determined based on the respiratory rate or on the success of the previous cycles of therapy. The stimulation duration can be automatically set to some number between, for example, 0.5 and 60 seconds, thus determining how long the respiratory drive will be suppressed. Based on the available data from the analysis of stored waveforms, the software can also turn therapy on and off **209** or decide to extend one breath or a number of breaths. In one illustrative embodiment stimulation is applied for the duration of a hyperpnea cycle.

In a further embodiment the software can calculate the respiratory effort breath-to-breath **210** based, for example, on the detected chest motion **203**. Software can adjust stimulation energy **211** by changing, for example, settings for pulse current, signal duration or pulse frequency depending of the detected breath pattern. As used herein, the terms "stimulation signal," "stimulation," "stimulation pulse train," and equivalents refer to a single pulse or a train of pulses that operatively act as a single stimulation event.

In one embodiment in accordance with the invention, one hemidiaphragm of the patient is stimulated and remains in a relatively contracted state while the other can be naturally relaxed. This results in the trapping of a certain amount of air in the stimulated lung, which may even remain substantially inflated during stimulation. The level of stimulation may be chosen to keep the lung sufficiently inflated so that the stretch receptors in the lung act to activate the afferent vagal feedback to the patient's natural respiration control center in the autonomic nervous system. This feedback may suppress the patient's natural drive to breathe during the stimulation, and for a short time after the stimulation is ended, until both lungs are fully deflated. When the term "stimulated lung" is mentioned, it refers to the lung associated with a stimulated hemidiaphragm or the lung associated with a stimulated phrenic nerve. The term "stimulated lung" is used to simplify the description, and the stimulation of the corresponding hemidiaphragm or phrenic nerve is implied. "Unstimulated lung" can refer to an instance where no stimulation is applied or to a lung that is contralateral to a stimulated lung. It is understood that unless otherwise specified, both the right and left hemidiaphragms and/or phrenic nerves may be stimulated separately and independently, in combination, or in alternating patterns.

Whether or not the stimulation energy is sufficient to activate this vagal afferent feedback, the stimulated breath is extended. The breathing rate and minute ventilation are momentarily reduced. This results in the reduction of respiratory overshoot and consequentially may prevent blood PaCO₂ (Arterial blood carbon dioxide concentration) from dropping below an apnic threshold. As a result, the apnic phase of the CSR cycle may be prevented or substantially reduced in duration and/or severity.

Software can identify the cyclic breathing or CSR that is a periodic alternation of apnea-hypopnea and hyperpnea phases that together form a CSR cycle. Within the cycle software can identify apnea-hypopnea that is a cessation of breathing for several breaths or several sequential breaths of very weak breathing. Software can identify the onset of hyperpnea that is a sequence of breaths with sequentially increasing tidal volume following apnea-hypopnea. Software can extend one or several breaths in the beginning or middle of hyperpnea phase of the cycle.

Software can analyze the stimulated breaths for the effects of stimulation. These effects can include the additional inhaled volume, duration and presence of a plateau and the increased stimulated breath duration. Software can compare

the results of stimulation to the desired settings, to the unstimulated breaths of the same patient and the previous stimulated breaths of the same patient that are stored in the device memory.

The general purpose of the feedback control is to achieve the desired extension of the breath at the minimum expanding of stimulation energy and with a minimum additional inspired tidal volume that can result from stimulation and additional diaphragmic contraction. Closed loop control algorithms such as PID controllers can be used to meter the adjustments based on the real time information and the process history.

FIG. 3 is a stylized representation of tidal volume, airflow, and an illustrative stimulation therapy in accordance with embodiments of the invention. Tidal volume waveform 301 and airflow waveform 320 are shown during hyperpnea. Breaths 303, 304 and 305 sequentially increase in amplitude by increments of tidal volume that exceed 20% of the preceding breath. They therefore meet the criteria for stimulation set by an illustrative software algorithm for the detection of hyperpnea. In addition a tidal volume threshold criterion may set as illustrated by the by the line 308. In some embodiments, the stimulation pulse train 310 is activated only if the breath tidal volume 309 exceeds the threshold 308.

In this embodiment, stimulation is applied at the peak inspiration time point 311 when the breath phases change from inspiration to expiration. In this example three stimulation pulse trains 310, 312 and 313 are applied to three sequential breaths. In similar embodiments, stimulation may be applied at any point during inspiration. In those embodiments where the stimulation is applied at different points of inspiration, it may be helpful to fashion the stimulation pulse train so that the stimulation is applied somewhat gradually to move the diaphragm to a contracted position more gently to avoid arousing a sleeping patient.

In some embodiments, an additional stimulation criterion may be set by a blanking period 315. Blanking period can be set, for example, equal to the duration of time that is between 25% and 90% of the duration of an average spontaneous (unstimulated) breath for the treated patient or to some fixed value such as, for example, one second. The blanking period is applied to avoid double triggering. During the blanking period 315, stimulation is not allowed even if all other criteria are met. The blanking period can be implemented as a software time counter that starts counting after a stimulation pulse train is applied. In embodiments where the stimulation is not coordinated with the peak of inspiration, the blanking period may be shorter, particularly if the stimulation is configured to hold the lung "still" for a relatively long time.

FIG. 4 is a stylized representation of a stimulation protocol in accordance with embodiments of the invention. In this embodiment, an adjustment is made based on the results of the stimulation of the previous breath, but it is understood that such an adjustment can be performed based on the acquired respiratory data collected over several stimulated breaths or within the same breath.

FIG. 4 shows a representation of a respiratory waveform during a hyperpnea cycle. Breath 402 is not stimulated. Breath 403 is the first stimulated breath of the cycle. Stimulation pulse train 404 is applied shortly after the natural inspiration phase 405 of the breath 403 has reached the natural peak inspiration point 408. In this case the stimulation energy of the pulse train 404 may be excessive. Natural inspiration 405 is followed by the additional inspiration 407 caused by the stimulation and that results in the

added tidal volume 409. Simultaneously with the stimulated lung inspiring the additional volume 409, the contralateral unstimulated lung starts expiring air 410. This is the first of two expirations that have been seen during the unilateral (single lung) stimulation performed according to embodiments of the invention. In this example, first lung expiration 410 stops when approximately 50% of air inhaled by the patient during the inspiration phase 405 is exhaled and the patient's lungs enter into a plateau or still period 411. This still period 411 can be shortened or prolonged by decreasing or increasing the duration of the stimulation pulse train 404. When stimulation 404 stops, the second (stimulated) lung enters the second expiration phase of the stimulated breath cycle 412 that ends at the point when both lungs are substantially deflated 413. It is believed that the stimulated lung's stretch receptor feedback inhibits the next breath, which can be started by the autonomic control system after expiration is completed.

Breath 401 is stimulated by the pulse train 405. The stimulation energy of the pulse train 405 is reduced compared to the pulse train 404 based on the analysis of the breath 403. Reduction can be achieved by reducing the electric current of pulse train, the duration of pulse train or the frequency of stimulation. The reduction of energy has the effect on the shape of the breath 401 compared to the breath 403. Stimulation 405 starts at the peak of natural inspiration 414 and there is no significant additional inspiration or added tidal volume caused by the stimulation. Expiration of the unstimulated lung 415 is followed by a plateau 416 that is followed by the expiration of the stimulated lung 417. It is understood that the optimization of the stimulation energy can be performed in small increments from one stimulated breath to another and involve feedback mechanisms such as a digital PI or PID regulators and other tools commonly used by engineers to design feedback loops and controls.

In some embodiments, the stimulation energy is allowed or designed to add tidal volume to an intrinsic breath. This is of course true where the breath is a diminished or apnea-hypopnea breath, but it also may be the case that some therapies are designed or allowed to add tidal volume to intrinsic breaths during normal respiration or hyperpnea (particularly near the start or end of the hyperpnea phase). In these cases calibration of the stimulation signal may be based on factors other than a desire to minimize additional inspiration caused by stimulation.

FIG. 5 is a stylized representation of tidal volume during a CSR cycle with mixed apnea and several treatment protocols in accordance with embodiments of the invention. The CSR cycle is the same as is shown and described with respect to FIG. 1. The various treatment protocols, or modes, are shown in a simplified fashion below the representation of the CSR cycle. The effects of the stimulation profile on the tidal volume are not shown in this Figure, but will be discussed here and elsewhere. Mode 1 is a stimulation that begins 500 upon the detection of hyperpnea and continues through the majority of the hyperpnea cycle. It is believed that holding at least one lung still during the hyperpnea cycle reduces respiration during that cycle and thus reduces the likelihood of ventilatory overshoot and a subsequent reduced breathing period that could result from such an overshoot.

Mode 2 is a stimulate and hold mode similar to mode 1. In mode 2, apnea-hypopnea is detected at 502. After a delay of an adjustable set amount 504, a stimulation pulse train is initiated 506 and held through the majority of the hyperpnea cycle. As with any of the modes, the stimulation may be

shaped to gradually capture and contract the diaphragm so as to be less likely to arouse the patient or cause discomfort.

Mode 3 stimulates and holds at least one hemidiaphragm based on a historical average duration of hyperpnea and apnea-hypopnea cycles. If a patient has not immediately responded to therapy, mode 3 would stimulate and hold based on historical durations of apnea-hypopnea 510 and hyperpnea 512. The stimulation 512 and blanking period 510 would be based on these average durations and not on any real-time detection of breathing parameters. This mode might be useful if a patient's movement during sleep makes it difficult to measure respiration parameters accurately, for example.

Mode 4 stimulates and holds at least one hemidiaphragm for random periods 514 at random intervals 516. This mode may be effective because holding at least one lung still during apnea-hypopnea has little effect, while desirable effects flow from holding one lung still during periods of hypopnea. This mode may be effective for some patients and is very simple to implement and manage. This mode may be automatically triggered upon detection of sleep by the use of an accelerometer and/or position sensor or any other means known in the art. Sleep detection may be used to trigger or terminate or otherwise manage any of these modes.

FIG. 6 is a stylized representation of tidal volume during a CSR cycle with mixed apnea and several treatment protocols in accordance with embodiments of the invention. The CSR cycle is the same as is shown and described with respect to FIG. 1. The various treatment protocols, or modes, are shown in a simplified fashion below the representation of the CSR cycle. The effects of the stimulation profile on the tidal volume are not shown in this Figure, but will be discussed here and elsewhere. Mode 5 comprises a series of short stimulation signals 602 during apnea-hypopnea. This mode could be employed by detecting actual apnea-hypopnea episodes and stimulating for the majority of the duration of the reduced autonomic breathing. The short pulses of mode 5 are designed to stimulate respiration during the apnea-hypopnea phase where less than normal respiratory drive is present. Each signal is intended to create or augment a breath.

When employing mode 5, it may be important not to contribute to the hyperventilation or excessive ventilation. Mode 5 will therefore often be configured to stimulate breathing at below mean ventilation levels. One possible way of accomplishing this would be to stimulate one lung at a time. The stimulation could also be set to send the stimulation signals at 50% of normal breathing rate, 50% of the apnea hyperpnea periodic breathing cycle, or some arbitrary low number such as 6-10 breaths per minute or it could be set to stimulate for 50% of the apnea-hypopnea duration, for example. The stimulation of mode 5 during apnea-hypopnea may reduce oxygen desaturation which may reduce respiratory overshoot by keeping the blood gases at a more consistent level.

Patients with mixed apnea may also differ in the degree of airway obstruction (obstructive component of apnea). In general, the airway diameter may fluctuate with the CSR cycle. The airway may be more open during hyperpnea and gradually more closed during a decrescendo of hyperpnea and apnea-hypopnea. In many cases, significant airway closure is observed towards the end of apnea-hypopnea. This can contribute to arousals at the beginning of hyperpnea, when the patient starts breathing against the closed or significantly obstructed airway. In this regard it may be

advisable in some cases to engage the stimulation of mode 5 in the early stages of apnea-hypopnea when airway closure may be less likely.

Mode 6 comprises a series of short stimulation bursts 604 throughout the CSR cycle. It has been observed that in some patients stimulating throughout CSR without regard to synchronizing the stimulations to breathing or any phase of breathing may "train" the poorly functioning autonomic control to engage in more regular control of breathing. The stimulation signal in mode 6 may be on the order of one to two seconds.

It has been observed that the crescendo-decrescendo pattern of a typical hyperpnea cycle may represent a relatively strong respiratory drive early in the hyperpnea cycle that gradually decreases during the decrescendo phase of the hyperpnea. It is believed that initiating a mode 6 stimulation pattern after the midpoint of the hyperpnea cycle may be effective in maintaining a regular breathing pattern for the duration of the stimulation and may actually result in regular autonomic breathing once the stimulation is terminated.

Mode 7 comprises a series of short stimulation bursts 602 during apnea-hypopnea with an extended stimulation and hold during hyperpnea 606. It has been observed that the drive to hyperventilate in CSR patients may vary throughout the night. For example, it may be most severe early in the sleep cycle and may wane some as the patient falls more deeply into sleep or as therapies mitigate the drive. It may be advisable in some cases to implement mode 7 early in a sleep period and then move to mode 1 or another mode as the therapy mitigates the disordered breathing.

The reverse may also be true, as the ultimate goal is to stabilize breathing. A patient therapy may be started on mode 1 with the hope that attenuating respiration during hyperpnea will reduce respiratory overshoot and result in autonomic breathing replacing apnea-hypopnea. If mode 1 is not effective in breaking the CSR cycle after some time, the device could switch to mode 7 or some other mode to provide some ventilation during apnea-hypopnea cycles and reduce blood oxygen desaturation incidents.

Mode 8 comprises a number of longer segmented signals 608 during hyperpnea. The signals are separated by intervals 610 so that the signals hold at least one hemidiaphragm still during hyperpnea for several discontinuous periods.

All of the modes just described, and others that will occur to those of skill in the art upon reading this disclosure, may be combined into a single therapy delivery device. These modes may be selected based on a patient's response to therapy and other factors considered by practitioners that treat disordered breathing.

FIG. 7 is a flowchart of a detection and treatment protocol in accordance with embodiments of the invention. Respiratory data of a patient is gathered 700 from sensors capable of detecting signals representative of respiration frequency and amplitude. The data is then analyzed 701 to determine if the patient is experiencing an episode that can be characterized as apnea-hypopnea. Clinically, apnea is defined as 10 seconds or more of very little (less than 10% of normal for the patient) breathing or no breathing at all. For practical purposes apnea-hypopnea can be detected as 4-9 seconds without breathing or with very shallow breathing. Very shallow breathing can be defined as, for example, less than 5-20% of highest tidal volume previously detected during the previous CSR cycle or over selected several minutes of spontaneous ventilation or as less than 10% of patient's normal, non-periodic breathing. The thresholds for apnea-hypopnea detection can be automatically periodically adjusted based on the respiratory information stored in the

device memory or adjusted by a practitioner based on characteristics of the individual patient.

If apnea-hypopnea is detected, it can be used to enable therapy during a following hyperpnea cycle. The stimulation device may be "armed" **702** upon detection of apnea-hypopnea and would be set to intervene and moderate respiratory overshoot upon the onset of hyperpnea. Intervention can occur within the same CSR cycle or during one of the following cycles.

In one embodiment the protocol will detect apnea-hypopnea, wait for the first breath that meets the hyperpnea criteria **703**, and start stimulation as soon as the first breath occurs following apnea-hypopnea. In this embodiment, the hyperpnea criteria may be a simple amplitude threshold that is normally crossed as the patient moves from apnea-hypopnea to hyperpnea.

Another embodiment assumes a relatively long stimulation duration of 30-60 seconds. In this embodiment hyperpnea is suppressed, as in others, and stimulation may or may not be synchronized to inspiration-expiration.

In another embodiment, the device detects hyperpnea **703** by analyzing the respiratory waveform over several breaths. Hyperpnea can be detected **703**, for example, by three sequential breaths where the tidal volume of the next breath exceeds the tidal volume of the previous breath by 20% or more. If such sequentially escalating breaths are detected, a device may apply stimulation to the following breath or several breaths **704** if armed **705**. It can be expected that the device will intervene and extend at least one breath after, for example, the first 4-10 breaths of hyperpnea are detected and analyzed. Other methods of detecting or declaring hyperpnea may be used without departing from the spirit of this disclosure. Some patients may have hyperpneas that do not follow the crescendo-decrescendo pattern that is frequently found in CSR, and hyperpnea detection criteria can be set on a case-by-case basis.

The protocol may decide **707** to adjust the parameters of stimulation **706** based on the data collected **700** from the intervention (the physiologic response to stimulation) during one or more previous CSR cycles. These parameters can include: stimulation duration, stimulation energy and the number of extended breaths.

FIG. **8** is a flowchart of a detection and treatment protocol in accordance with embodiments of the invention. This protocol can be executed alone or in combination with other protocols. For example, this protocol could be executed within the block **704** in FIG. **7**. It could represent the decisions made within one breath after the hyperpnea is identified in block **703** of FIG. **7**. In the event that this protocol is nested within the protocol of FIG. **7**, the redundant steps (i.e., hyperpnea detection) would not be performed.

In the embodiment of FIG. **8** as a stand-alone protocol, respiratory waveform data is acquired **801** from a respiration sensor in real time, for example every 10 milliseconds. The detected beginning of the inspiration phase of the breath starts the breath analysis **802**. As the data points are acquired, a value representative of inspired tidal volume gradually increases. If hyperpnea is not detected **803**, further respiratory waveform data is gathered **801**. If hyperpnea is detected, parameters such as tidal volume at the end of inspiration, inspiration duration and the rate of inspiration (volume divided by time) are calculated and analyzed **804**.

The protocol may decide **805** to trigger or not trigger the application of a stimulation pulse train or even to abort the pulse train before the normal duration time based on this

constantly updated data stream and analysis. The breath analysis **804** may include, without limitations, the following tests:

If the inspiration duration is less than a preset time of, for example, 0.5 sec. or is less than 75% of the inspiration time of an average breath for this patient, or some predetermined fraction of the inspiration time of the previous breath, stimulation may not be triggered. Conversely if the inspiration duration is significantly longer than expected, stimulation also may not be triggered.

FIG. **9** is a flowchart of a stimulation adjustment protocol in accordance with embodiments of the invention. The protocol of FIG. **9** may be used to accomplish the signal adjustment described in relation to FIG. **4**. After the stimulated breath **901** is substantially completed, the additional tidal volume as compared to an unstimulated breath is calculated **902**. If an overstimulation is detected **903**, such as for example an additional 10% of tidal volume is inhaled by the patient after the natural peak of inspiration is reached, the energy of stimulation is adjusted **904** before the stimulation of the next stimulated breath **905**. The adjustment may constitute a 10% reduction of the stimulation current or signal duration.

FIG. **10** is a flowchart of a stimulation adjustment protocol in accordance with embodiments of the invention. It is possible that, the adjustment of energy illustrated by FIG. **9** can result in the loss of respiratory inhibition or, in the case of nerve stimulation, the loss of nerve capture. This loss of inhibition can be detected by the absence of the stimulated breath plateau (See FIG. **4** and related discussion) in response to the application of stimulation **1001** or by the increase of respiratory rate indicated by the absence of the expected delay **1002** before the next breath **1003**. If the breath is not delayed or the plateau is not detected, the stimulation energy can be increased **1004** to be applied to the next stimulated breath **1005**.

The general purpose of the feedback control is to achieve the desired contraction of the diaphragm with the minimum expanding of stimulation energy and with a minimum additional inspired tidal volume that can result from stimulation and additional diaphragmic contraction. Closed loop control systems such as PID controllers can be used to meter the adjustments based on the real time information and the process history.

An alternative method of determining if stimulation capturing the diaphragm is to apply a short stimulation signal during apnea-hypopnea. A short stimulation envelope, for example 2 seconds long, can be applied when no significant natural breathing occurs. The response to this stimulation can be measured as tidal volume or lung volume change. Such a capture test could be performed periodically and the energy of stimulation can be adjusted if indicated. Such test signals during apnea-hypopnea allow detection of stimulation capture with less interference from natural breathing.

FIG. **11** is a flowchart of a breath detection protocol in accordance with embodiments of the invention. A signal (N) is captured **1100** from a respiration sensor configured to sense respiratory effort of a patient. The sensor could be an impedance sensor, an accelerometer, an external respiration belt, or any other sensor known in the art. When the protocol is in the inspiration mode **1102**, it counts the signal based on a sample frequency **1104**. The protocol begins with a "MAX" value set at the system minimum and a "MIN" value set to the system maximum. The protocol originally assumes the patient is in inspiration and compares the measured signal to the recorded MAX. If the signal is greater than MAX **1106**, MAX is reset to the signal value **1108**. This

continues until the signal is less than MAX, at which time a noise detection protocol **1110** checks that the signal has not dropped an unreasonable amount, which might indicate a signal interruption or noise, and that the count since the beginning of inspiration is greater than a preset or calculated minimum breath duration. If the detected peak of inspiration indicated by the decreasing signal is determined to be real, an amplitude representative of tidal volume is calculated **1112** by subtracting the new MAX from the most recently determined VALLEY (discussed below). If this amplitude passes a noise threshold **1114** the expiration loop is initiated **1116** and a PEAK value is assigned the value of MAX, or the most recent signal.

The expiration loop **1118** begins with a counter **1120** that accumulates signal data during the expiration cycle. If the signal is less than MIN **1126**, MIN is reset to the signal value **1124**. This continues until the signal is greater than MIN, at which time a noise detection protocol **1128** checks that the signal is not unreasonably greater than MIN and that the count since the beginning of expiration is greater than a preset or calculated minimum breath duration. If the detected valley of expiration indicated by the now-increasing signal is determined to be real, an amplitude representative of tidal volume is calculated **1130** by subtracting the new MIN from the most recently determined PEAK. If this amplitude passes a noise threshold **1132**, the inspiration loop is initiated **1134** and a VALLEY value is assigned to the value of MIN, or the most recent signal.

From this protocol, or others using the same basic framework or that will occur to those of skill in the art upon reading this disclosure, values for breath frequency or periodicity, amplitude or tidal volume, inspiration duration, expiration duration, cyclic changes of tidal volume, onset a peak of inspiration, onset and peak of expiration and others may be determined. Averages over time or over relevant periods of time may also be calculated. For example, a baseline breath duration may be calculated by measuring breath periodicity over a period of time and calculating an average value. Such baseline development may happen while a patient is awake or at other times when disordered breathing is less likely. Even during periods of CSR, average breath duration can be taken over several cycles of breathing and should remain reasonably constant and provide a good baseline.

FIG. **12** is a flowchart of a breath detection protocol in accordance with embodiments of the invention. This protocol is another alternative method of determining cycles of inspiration and expiration and associated breathing data. A signal (N) is captured **1200** from a respiration sensor configured to sense respiratory effort of a patient. If the signal is processed through the inspiration loop **1202**, the slope of the signal and the previous signal is determined and compared to zero **1204** to look for an inflection point. If the slope of the signals was positive and is now negative, and a noise threshold test is passed, it can be determined that a peak of inspiration has occurred. The peak value is recorded **1206** and the expiration module **1208** commences. The expiration module **1210** compares the slope of the data points, generally negative throughout expiration depending on the respiration sensor used, until the slope becomes positive. Once the slope of the signals changes from negative to positive, and a noise threshold test is passed, it can be determined that a valley of expiration has occurred and the valley can be recorded **1212** and the inspiration module can begin. This protocol can determine respiration qualities such as breath frequency or periodicity, amplitude or tidal volume, inspi-

ration duration, expiration duration, cyclic changes of tidal volume, onset a peak of inspiration, onset and peak of expiration, for example.

FIG. **13** is a flowchart of an apnea-hypopnea detection protocol in accordance with embodiments of the invention. The protocol begins when a respiration peak is detected **1300** in accordance with a protocol such as those shown in FIGS. **11** and **12**, or others. The respiration rate is then calculated **1302** based on accumulated data either in the peak detection module or this module. A baseline breath amplitude is determined **1306** for the patient. Such a baseline may be set based on breathing data collected during the day, in the case of a sleep apnea patient, or at any other time that regular breathing may be tracked. Alternatively, a baseline breath amplitude may be determined by a practitioner and preset into the protocol. However determined, the protocol checks to see whether all breaths in the last ten seconds lower than 30% of the baseline **1306**. If so, apnea-hypopnea is detected. Other criteria could be used to detect and declare an episode of apnea-hypopnea, and all are contemplated within the scope of this disclosure.

FIG. **14** is a flowchart of a hyperpnea detection protocol in accordance with embodiments of the invention. The protocol begins when a respiration peak is detected **1400** in accordance with a protocol such as those shown in FIGS. **11** and **12** or others. The protocol of FIG. **14** determines if the peak is higher than 30% of a baseline breath amplitude **1402** determined as described with respect to FIG. **13**. If there is no such peak, the module waits for the next peak from the peak detection module **1400**. Once the module detects a breath peak higher than 30% of the baseline **1402** it checks for a preceding apnea by determining if all peaks during the last 10 seconds were lower than 30% of baseline **1404**. If both conditions **1402** and **1404** are met, the start of a hyperpnea cycle is detected **1408**. The criteria for steps **1402** and **1404** may be modified as desired without departing from the spirit of this disclosure.

FIG. **15** is a flowchart of a hyperpnea detection protocol in accordance with embodiments of the invention. The protocol begins when a respiration peak is detected **1500** in accordance with a protocol such as those shown in FIGS. **11** and **12** or others. The protocol of FIG. **15** determines the slope of the last three detected peaks and compares the slope to a predetermined or historically determined threshold **1502**. If the slope of the three peaks exceeds the threshold, the protocol determines whether all peaks recorded during the ten seconds prior to these three peaks had an amplitude lower than 30% of a baseline breath amplitude **1504**. If both conditions **1502** and **1504** are met, the start of a hyperpnea cycle **1508** is detected. The criteria for steps **1402** and **1404** may be modified as desired without departing from the spirit of this disclosure.

FIG. **16** is a representation of a stimulation signal in accordance with embodiments of the invention. The stimulation signal lasts a stimulation duration or signal duration **1602**. The stimulation signal is made up of a series of pulses **1604** represented by vertical lines in FIG. **16**. In this example, when the stimulation is initiated, the current begins at a base or first level **1606**. In some embodiments, the base current level **1606** is 1-2 milliamps (mA). The stimulation current amplitude then transitions **1610** over a percentage of the total duration to a plateau or second level **1608**. In some embodiments, the plateau current level **1608** may be between 2-4 mA and the time to go from the base current level **1606** to the plateau is about 30% **1610** of the total signal duration **1602**. The current amplitude may transition **1610** from the base current level to the plateau current level

in a linear, exponential, or elliptical fashion or any other transition shape that may be useful. The gradual nature of this transition **1610** may help reduce patient discomfort and reduce or eliminate arousals during sleep. The current amplitude may also transition downward **1612** near the end of the stimulation signal in a similar fashion as the initial transition **1610**. This may release the stimulation more gradually and may provide similar benefits for a patient.

The stimulation pulses **1604** in this example may be delivered at a frequency of 20 Hz and last for a period of 150 μ sec. The stimulation duration or signal duration **1602** includes the entire time from that pulses are delivered including transition pulses **1610**, **1612**.

FIG. **17** shows experimental results of treatment of disordered breathing carried out in accordance with embodiments of the invention. The patient is experiencing CSR as shown by periods of hyperpnea **1702** and apnea-hypopnea **1708**. The hyperpnea exhibits what is commonly referred to as a crescendo **1704**—decrescendo **1706** pattern. The patient's breathing rate during the disordered breathing episodes is approximately 18 breaths per minute. Stimulation signals **1712** are initiated during hyperpnea after the midpoint **1710** of the hyperpnea cycle. The stimulation signals extend the breath duration and slow the breathing rate from 18 breaths per minute to 11 breaths per minute. The stimulation signals are applied to additional future breaths **1714** occurring after the normal duration of the hyperpnea cycle. As can be observed, the CSR cycle is broken and the deleterious effects of CSR including, but not limited to, pulse rate variations, blood gas variations, oxygen desaturation are reduced or eliminated. It is believed that long term health benefits will also accrue, particularly for heart failure patients.

The extension of breath duration may not result in a lowered breathing rate as measured by breaths per minute. In cases where, for example, a patient is in hyperpnea for 40 seconds and apnea-hypopnea for 20 seconds, a measured breathing rate of 20 breaths per minute might result from a rate of one breath per two seconds (two-second breaths) during the 40-second hyperpnea with little or no breathing activity during the apnea-hypopnea. Extending the breath duration and eliminating or reducing the apnea-hypopnea may, for example, result in a breathing rate of one breath per three seconds (three-second breaths) over an entire minute, which would still result in a measured breathing rate of 20 breaths per minute.

FIG. **18** shows experimental results of treatment of disordered breathing carried out in accordance with embodiments of the invention. The patient is experiencing CSR as shown by periods of hyperpnea **1802** and apnea-hypopnea **1808**. A stimulation signal **1812** is delivered to one hemidiaphragm at the start of a hyperpnea cycle and the stimulated lung is held open starting at time **1804**. The stimulation signal duration is greater than 50% of a normal hyperpnea duration and the stimulated lung is stilled for that entire time. Muted respiration signals **1806** can be seen throughout the stimulation, likely from the contralateral lung still responding to autonomic signals. The stimulation is repeated **1812** at the start of the next hyperpnea until the CSR cycle is broken.

While exemplary embodiments of this invention have been illustrated and described, it should be understood that various changes, adaptations, and modifications may be made therein without departing from the spirit of the invention and the scope of the appended claims.

What is claimed is:

1. A system for treating disordered breathing comprising:
 - a. a stimulation lead having a stimulation electrode;
 - b. a respiration sensor;
 - c. an energy source, a pulse generator, and circuitry, the circuitry operative to:
 - i. determine the onset of a hyperpnea episode based on a signal from the respiration sensor; and
 - ii. deliver a stimulation signal to the stimulation electrode during the hyperpnea episode, the stimulation signal having a duration of at least one second and operative to extend a duration of time of a breath of a subject, the duration of time of a breath being defined as the time from an onset of inhalation to the onset of inhalation of a successive breath wherein the stimulation is initiated proximate a peak of inhalation, wherein the stimulation signal acts to reduce the minute ventilation during the hyperpnea episode.
2. The system of claim 1, wherein the circuitry receives respiration signals from the respiration sensor to calculate a baseline breath duration.
3. The system of claim 2, wherein the stimulation signal duration is at least 25% of the baseline breath duration.
4. The system of claim 1, wherein the circuitry is operative to determine the peak of inspiration.
5. The system of claim 1, wherein the stimulation signal is configured to retain a lung in a patient to a fully inflated position.
6. The system of claim 1, wherein the respiration sensor is selected from a group consisting of an impedance sensor, a pressure sensor, and an accelerometer.
7. The system of claim 1, wherein the circuitry is operative to store data relating to respiratory rate, tidal volume, cyclic changes of tidal volume, and periodicity of respiration.
8. The system of claim 1, wherein the circuitry is operative to determine the duration of a hyperpnea episode and deliver a stimulation signal proximate the peak of inhalation for several breaths extending beyond the normal duration of a hyperpnea episode.
9. The system of claim 1, wherein circuitry is operative to determine the duration of a hyperpnea episode and the stimulation signal is initiated after the midpoint of the hyperpnea episode and is configured to initiate the stimulation signal proximate the peak of inhalation of each breath after the midpoint of the hyperpnea episode.
10. The system of claim 9, wherein the circuitry is operative to deliver a stimulation signal proximate the peak of inspiration for several breaths beginning after the midpoint of the hyperpnea episode.
11. The system of claim 9, wherein the stimulation signal has a duration of at least 2 seconds.
12. The system of claim 1, wherein the stimulation signal has a duration of at least 2 seconds.
13. The system of claim 1, wherein the circuitry is operative to provide at least three segmented stimulation signals during the hyperpnea episode.
14. The system of claim 1, wherein the circuitry is operative to:
 - a. determine the average duration of a hyperpnea episode;
 - b. determine the average duration of an apnea-hypopnea episode;
 - c. deliver a stimulation signal during a hyperpnea episode based on the average duration of a hyperpnea episode; and
 - d. establish a blanking period based on the average duration of an apnea-hypopnea episode.

15. The system of claim 1, wherein the stimulation signal is in the form of a gradually rising and descending pulse train envelope.

16. The system of claim 15, wherein the rising and descending portion of the pulse train envelope are of a shape selected from the group comprising linear, parabolic, and elliptical.

17. The system of claim 1, wherein the circuitry is configured to determine a blanking period that prevents the stimulation signal from being sent for a selected amount of time.

* * * * *

专利名称(译)	检测和治疗呼吸紊乱		
公开(公告)号	US9987488	公开(公告)日	2018-06-05
申请号	US12/163500	申请日	2008-06-27
[标]申请(专利权)人(译)	MARK盖尔芬德 LEVIN HOWARD HALPERT ANDREW PANTELEON安东尼		
申请(专利权)人(译)	盖尔芬德, MARK LEVIN, 霍华德 HALPERT, ANDREW PANTELEON, 安东尼		
当前申请(专利权)人(译)	RESPICARDIA INC.		
[标]发明人	GELFAND MARK LEVIN HOWARD HALPERT ANDREW PANTELEON ANTONIS		
发明人	GELFAND, MARK LEVIN, HOWARD HALPERT, ANDREW PANTELEON, ANTONIS		
IPC分类号	A61N1/36 A61B5/08 A61B5/0205 A61N1/365 A61B5/113 A61B5/00		
CPC分类号	A61N1/3601 A61B5/0816 A61N1/3611 A61B5/0826 A61N1/36514 A61B5/0205 A61B5/113 A61N1/3605 A61B5/4818		
优先权	60/937426 2007-06-27 US		
外部链接	Espacenet USPTO		

摘要(译)

检测和治疗呼吸紊乱，主要通过电刺激膈肌来治疗，直接或通过刺激适当的神经进行治疗。在一些实施方式中，在检测到某种长度的呼吸暂停 - 呼吸不足或者检测到呼吸过度时，刺激被应用于至少一个肺。刺激可以在呼吸暂停 - 低通气时段期间或者在呼吸暂停低通气结束附近检测到预定强度的呼吸时开始。刺激可以在呼吸阶段开始或不管呼吸阶段如何。

