



US009700726B2

(12) **United States Patent**
Stahmann et al.

(10) **Patent No.:** **US 9,700,726 B2**
(45) **Date of Patent:** **Jul. 11, 2017**

(54) **ADAPTIVE SAMPLING OF HEART SOUNDS**

(75) Inventors: **Jeffrey E. Stahmann**, Ramsey, MN (US); **Krzysztof Z. Siejko**, Maple Grove, MN (US); **Carlos Haro**, Stevenson Ranch, CA (US); **Abhilash Patangay**, Inver Grove Heights, MN (US); **Gerrard M. Carlson**, Houston, TX (US); **Andres Belalcazar**, St. Paul, MN (US)

(73) Assignee: **Cardiac Pacemakers, Inc.**, St. Paul, MN (US)

(*) Notice: Subject to any disclaimer, the term of this patent is extended or adjusted under 35 U.S.C. 154(b) by 896 days.

(21) Appl. No.: **13/325,654**

(22) Filed: **Dec. 14, 2011**

(65) **Prior Publication Data**

US 2012/0089040 A1 Apr. 12, 2012

Related U.S. Application Data

(62) Division of application No. 11/564,637, filed on Nov. 29, 2006, now Pat. No. 8,096,954.

(51) **Int. Cl.**
A61B 5/02 (2006.01)
A61N 1/365 (2006.01)
(Continued)

(52) **U.S. Cl.**
CPC **A61N 1/36514** (2013.01); **A61B 5/0031** (2013.01); **A61B 5/1116** (2013.01);
(Continued)

(58) **Field of Classification Search**

CPC A61B 5/0031; A61B 5/021; A61B 5/024; A61B 5/053; A61B 5/08; A61B 5/0816;
(Continued)

(56) **References Cited**

U.S. PATENT DOCUMENTS

4,094,308 A 6/1978 Cormier
4,220,160 A 9/1980 Kimball et al.
(Continued)

FOREIGN PATENT DOCUMENTS

EP 0762908 B1 3/1997
EP 1179317 A2 2/2002
(Continued)

OTHER PUBLICATIONS

"U.S. Appl. No. 11/564,637, Examiner Interview Summary mailed Feb. 18, 2010", 5 pgs.

(Continued)

Primary Examiner — Christopher D Koharski

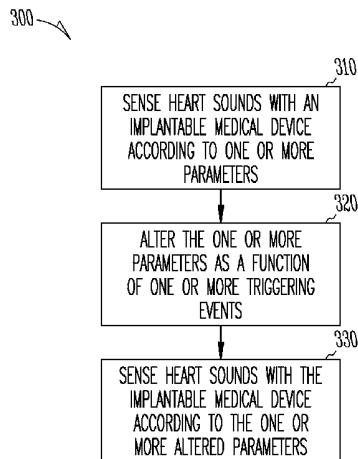
Assistant Examiner — Pamela M Bays

(74) *Attorney, Agent, or Firm* — Schwegman Lundberg & Woessner, P.A.

(57) **ABSTRACT**

A system and method to sense heart sounds with one or more implantable medical devices according to one or more signal processing parameters. The method alters one or more of the parameters as a function of one or more physiologic triggering events. The method then senses heart sounds with the one or more implantable medical devices according to at least the one or more altered signal processing parameters.

17 Claims, 8 Drawing Sheets



(51)	Int. Cl.		6,044,298 A	3/2000	Salo et al.
	<i>A61B 5/00</i>	(2006.01)	6,044,299 A	3/2000	Nilsson
	<i>A61B 5/11</i>	(2006.01)	6,045,513 A	4/2000	Stone et al.
	<i>A61B 7/04</i>	(2006.01)	6,053,872 A	4/2000	Mohler
	<i>A61B 5/021</i>	(2006.01)	6,058,329 A	5/2000	Salo et al.
	<i>A61B 5/024</i>	(2006.01)	6,064,910 A	5/2000	Andersson et al.
	<i>A61B 5/053</i>	(2006.01)	6,076,015 A	6/2000	Hartley et al.
	<i>A61B 5/08</i>	(2006.01)	6,077,227 A	6/2000	Miesel
(52)	U.S. Cl.		6,144,880 A	11/2000	Ding et al.
	CPC	<i>A61B 7/04</i> (2013.01); <i>A61B 5/021</i> (2013.01); <i>A61B 5/024</i> (2013.01); <i>A61B 5/053</i> (2013.01); <i>A61B 5/08</i> (2013.01); <i>A61B 5/0816</i> (2013.01); <i>A61B 5/4806</i> (2013.01); <i>A61B</i> <i>5/686</i> (2013.01); <i>A61B 5/7275</i> (2013.01); <i>A61N 1/36578</i> (2013.01)	6,152,884 A	11/2000	Bjorgaas
			6,161,042 A	12/2000	Hartley et al.
			6,193,668 B1	2/2001	Chassaing et al.
			6,208,900 B1	3/2001	Ecker et al.
			6,243,606 B1	6/2001	Mann et al.
			6,264,611 B1	7/2001	Ishikawa et al.
			6,269,396 B1	7/2001	Shah et al.
			6,272,377 B1	8/2001	Sweeney et al.
			6,298,269 B1	10/2001	Sweeney
			6,312,378 B1	11/2001	Bardy
(58)	Field of Classification Search		6,327,622 B1	12/2001	Jindal et al.
	CPC	<i>A61B 5/1116</i> ; <i>A61B 5/4806</i> ; <i>A61B 5/686</i> ; <i>A61B 5/7275</i> ; <i>A61B 7/04</i> ; <i>A61N</i> <i>1/36514</i> ; <i>A61N 1/36578</i>	6,351,673 B1	2/2002	Ding et al.
	USPC	607/4, 18; 600/439, 485, 500, 513, 514, 600/528	6,360,127 B1	3/2002	Ding et al.
	See application file for complete search history.		6,366,811 B1	4/2002	Carlson
			6,368,283 B1	4/2002	Xu et al.
			6,409,675 B1	6/2002	Turcott
			6,411,840 B1	6/2002	Bardy
			6,415,033 B1	7/2002	Halleck et al.
			6,440,082 B1	8/2002	Joo et al.
			6,459,929 B1	10/2002	Hopper et al.
(56)	References Cited		6,463,326 B1	10/2002	Hartley et al.
	U.S. PATENT DOCUMENTS		6,477,406 B1	11/2002	Turcott
			6,478,746 B2	11/2002	Chassaing et al.
			6,480,733 B1	11/2002	Turcott
			6,491,639 B1	12/2002	Turcott
			6,520,924 B2	2/2003	Lee
			6,527,729 B1	3/2003	Turcott
			6,542,775 B2	4/2003	Ding et al.
			6,575,916 B2	6/2003	Halleck et al.
			6,626,842 B2	9/2003	Oka
			6,629,937 B2	10/2003	Watrous
			6,643,548 B1	11/2003	Mai et al.
			6,643,584 B1	11/2003	Ikeuchi et al.
			6,650,940 B1	11/2003	Zhu et al.
			6,665,564 B2	12/2003	Lincoln et al.
			6,666,826 B2	12/2003	Salo et al.
			6,684,103 B2	1/2004	Ding et al.
			6,733,464 B2	5/2004	Olbrich et al.
			6,741,886 B2	5/2004	Yonce
			6,792,308 B2	9/2004	Corbucci
			6,795,732 B2	9/2004	Stadler et al.
			6,810,287 B2	10/2004	Zhu et al.
			6,824,519 B2	11/2004	Narimatsu et al.
			6,830,548 B2	12/2004	Bonnet et al.
			6,845,263 B2	1/2005	Kawaguchi
			6,868,346 B2	3/2005	Larson et al.
			6,942,622 B1	9/2005	Turcott
			6,949,075 B2	9/2005	Hatlesad et al.
			6,999,816 B2	2/2006	Van
			7,052,466 B2	5/2006	Scheiner et al.
			7,096,060 B2	8/2006	Arand et al.
			7,110,817 B2	9/2006	Yu et al.
			7,115,096 B2	10/2006	Siejko et al.
			7,123,962 B2	10/2006	Siejko et al.
			7,139,609 B1	11/2006	Min et al.
			7,158,830 B2	1/2007	Yu et al.
			7,174,203 B2	2/2007	Arand et al.
			7,209,786 B2	4/2007	Brockway et al.
			7,226,422 B2	6/2007	Hatlesad et al.
			7,269,458 B2	9/2007	Kadhiresan et al.
			7,387,610 B2	6/2008	Stahmann et al.
			7,400,928 B2	7/2008	Hatlesad
			7,424,321 B2	9/2008	Wariar et al.
			7,431,699 B2	10/2008	Siejko et al.
			7,480,528 B2	1/2009	Brockway et al.
			7,582,061 B2	9/2009	Li et al.
			7,585,279 B2	9/2009	Carlson et al.
			7,713,213 B2	5/2010	Siejko et al.
			7,736,319 B2	6/2010	Patangay et al.
			7,780,606 B2	8/2010	Carlson et al.

(56)

References Cited

U.S. PATENT DOCUMENTS

7,853,327	B2	12/2010	Patangay et al.	
8,096,954	B2	1/2012	Stahmann et al.	
8,332,034	B2	12/2012	Patangay et al.	
9,049,981	B2	6/2015	Patangay et al.	
9,364,193	B2	6/2016	Patangay et al.	
2002/0001390	A1	1/2002	Kawaguchi	
2002/0035337	A1	3/2002	Oka	
2002/0072684	A1	6/2002	Stearns	
2002/0082645	A1	6/2002	Sweeney	
2002/0107450	A1	8/2002	Ogura	
2002/0128563	A1	9/2002	Carlson et al.	
2002/0147401	A1	10/2002	Oka	
2002/0151812	A1 *	10/2002	Scheiner	A61B 5/042 600/528
2002/0151938	A1	10/2002	Corbucci	
2003/0055352	A1	3/2003	Hayek et al.	
2003/0055461	A1	3/2003	Girouard et al.	
2003/0069608	A1	4/2003	Sweeney	
2003/0072458	A1	4/2003	Halleck et al.	
2003/0093002	A1	5/2003	Kuo	
2003/0093003	A1	5/2003	Watrous et al.	
2003/0105497	A1	6/2003	Zhu et al.	
2003/0120159	A1	6/2003	Mohler	
2003/0144702	A1	7/2003	Yu et al.	
2003/0144703	A1	7/2003	Yu et al.	
2003/0158492	A1	8/2003	Sheldon et al.	
2003/0158584	A1	8/2003	Cates et al.	
2003/0176896	A1	9/2003	Lincoln et al.	
2003/0208240	A1	11/2003	Pastore et al.	
2003/0216620	A1	11/2003	Jain et al.	
2003/0229289	A1	12/2003	Mohler	
2003/0233132	A1	12/2003	Pastore et al.	
2004/0024423	A1	2/2004	Lincoln et al.	
2004/0039295	A1	2/2004	Olbrich et al.	
2004/0039419	A1	2/2004	Stickney et al.	
2004/0039420	A1	2/2004	Jayne et al.	
2004/0064056	A1	4/2004	Ogura	
2004/0078059	A1	4/2004	Ding et al.	
2004/0078060	A1	4/2004	Ding et al.	
2004/0102712	A1	5/2004	Belalcazar et al.	
2004/0106960	A1	6/2004	Siejko et al.	
2004/0106961	A1	6/2004	Siejko et al.	
2004/0122484	A1	6/2004	Hatlestad et al.	
2004/0127792	A1 *	7/2004	Siejko	A61B 5/02028 600/439
2004/0138572	A1	7/2004	Thiagarajan	
2004/0167417	A1 *	8/2004	Schulhauser et al.	600/513
2004/0215264	A1	10/2004	Van Bentem	
2004/0225332	A1	11/2004	Gebhardt et al.	
2004/0236239	A1	11/2004	Murray et al.	
2004/0254481	A1	12/2004	Brodnick	
2004/0267147	A1	12/2004	Sullivan	
2004/0267148	A1 *	12/2004	Arand et al.	600/528
2005/0004485	A1	1/2005	Crosby et al.	
2005/0027323	A1	2/2005	Mulligan et al.	
2005/0033190	A1	2/2005	Bauer	
2005/0065448	A1	3/2005	Stahmann et al.	
2005/0065556	A1	3/2005	Reghabi et al.	
2005/0102001	A1	5/2005	Maile et al.	
2005/0107838	A1	5/2005	Lovett et al.	
2005/0115561	A1	6/2005	Stahmann et al.	
2005/0137626	A1	6/2005	Pastore et al.	
2005/0148896	A1	7/2005	Siejko et al.	
2005/0149136	A1	7/2005	Siejko et al.	
2006/0020294	A1	1/2006	Brockway et al.	
2006/0020295	A1	1/2006	Brockway et al.	
2006/0030892	A1	2/2006	Kadhiresan et al.	
2006/0047213	A1	3/2006	Gavriely et al.	
2006/0161070	A1	7/2006	Siejko et al.	
2006/0247550	A1	11/2006	Thiagarajan et al.	
2006/0270939	A1	11/2006	Wariar et al.	
2006/0282000	A1	12/2006	Zhang et al.	
2007/0078491	A1	4/2007	Siejko et al.	
2007/0191725	A1	8/2007	Nelson	
2007/0239218	A1	10/2007	Carlson et al.	

2008/0077029	A1	3/2008	Mohler et al.
2008/0103406	A1	5/2008	Kameli
2008/0119749	A1	5/2008	Haro et al.
2008/0119750	A1	5/2008	Patangay et al.
2008/0125820	A1	5/2008	Stahmann et al.
2008/0177191	A1	7/2008	Patangay et al.
2008/0262368	A1	10/2008	Patangay et al.
2009/0018461	A1	1/2009	Siejko et al.
2009/0132000	A1	5/2009	Brockway et al.
2009/0287106	A1	11/2009	Zhang et al.
2010/0249863	A1	9/2010	Carlson et al.
2011/0077543	A1	3/2011	Patangay et al.
2013/0096451	A1	4/2013	Patangay et al.
2015/0257729	A1	9/2015	Patangay et al.

FOREIGN PATENT DOCUMENTS

EP	1247485	A1	10/2002
WO	WO-0156651	A1	8/2001
WO	WO-2004012815	A1	2/2004
WO	WO-2004035137	A1	4/2004
WO	WO-2004035137	A1	4/2004
WO	WO-2004050178	A1	6/2004
WO	WO-2006028575	A2	3/2006
WO	WO-2006028575	A3	3/2006
WO	WO-2006127594	A2	11/2006
WO	WO-2006127594	A3	11/2006
WO	WO-2008063288	A2	5/2008
WO	WO-2008130532	A1	10/2008

OTHER PUBLICATIONS

- "U.S. Appl. No. 11/564,637, Examiner Interview Summary mailed Aug. 11, 2009", 4 pgs.
- "U.S. Appl. No. 11/564,637, Final Office Action mailed Dec. 10, 2009", 9 pgs.
- "U.S. Appl. No. 11/564,637, Non-Final Office Action mailed Mar. 29, 2011", 9 pgs.
- "U.S. Appl. No. 11/564,637, Non-Final Office Action mailed May 13, 2009", 7 pgs.
- "U.S. Appl. No. 11/564,637, Notice of Allowance mailed Sep. 22, 2011", 10 pgs.
- "U.S. Appl. No. 11/564,637, Response filed Feb. 23, 2010 to Final Office Action mailed Dec. 10, 2009", 9 pgs.
- "U.S. Appl. No. 11/564,637, Response filed Apr. 16, 2009 to Restriction Requirement mailed Mar. 16, 2009", 6 pgs.
- "U.S. Appl. No. 11/564,637, Response filed Jun. 28, 2011 to Non-Final Office Action mailed Mar. 29, 2011", 11 pgs.
- "U.S. Appl. No. 11/564,637, Response filed Aug. 13, 2009 to Non-Final Office Action mailed May 13, 2009", 7 pgs.
- "U.S. Appl. No. 11/564,637, Restriction Requirement mailed Mar. 16, 2009", 6 pgs.
- "U.S. Appl. No. 11/736,055, Non-Final Office Action mailed Mar. 12, 2010", 7 pgs.
- "U.S. Appl. No. 11/736,055, Notice of Allowance mailed Aug. 13, 2010", 8 pgs.
- "U.S. Appl. No. 11/736,055, Response filed Jul. 2, 2010 to Non Final Office Action mailed Mar. 12, 2010", 17 pgs.
- "International Application Serial No. PCT/US2008/004832, International Search Report mailed Sep. 3, 2008", 6 pgs.
- "International Application Serial No. PCT/US2008/004832, Written Opinion mailed Sep. 3, 2008", 7 pgs.
- Dreuw, P., et al., "Tracking Using Dynamic Programming for Appearance-Based Sign Language Recognition", Proceedings of the 7th International Conference on Automatic Face and Gesture Recognition, (2006), 293-298.
- "U.S. Appl. No. 10/334,694, Advisory Action mailed Dec. 18, 2007", 3 pgs.
- "U.S. Appl. No. 10/334,694, Advisory Action mailed Dec. 23, 2008", 3 pgs.
- "U.S. Appl. No. 10/334,694, Final Office Action mailed Oct. 1, 2007", 13 pgs.
- "U.S. Appl. No. 10/334,694, Final Office Action mailed Oct. 7, 2008", 14 pgs.

(56)

References Cited

OTHER PUBLICATIONS

- "U.S. Appl. No. 10/334,694, Final Office Action mailed Nov. 27, 2009", 13 pgs.
- "U.S. Appl. No. 10/334,694, Non-Final Office Action mailed Mar. 18, 2009", 14 pgs.
- "U.S. Appl. No. 10/334,694, Non-Final Office Action mailed Mar. 19, 2008", 15 pgs.
- "U.S. Appl. No. 10/334,694, Non-Final Office Action mailed Apr. 20, 2007", 12 pgs.
- "U.S. Appl. No. 10/334,694, Non-Final Office Action mailed Apr. 30, 2010", 13 pgs.
- "U.S. Appl. No. 10/334,694, Non-Final Office Action mailed Nov. 27, 2006", 9 pgs.
- "U.S. Appl. No. 10/334,694, Notice of Allowance mailed Oct. 5, 2010", 6 pgs.
- "U.S. Appl. No. 10/334,694, Response filed Feb. 27, 2007 to Non-Final Office Action mailed Nov. 27, 2006", 20 pgs.
- "U.S. Appl. No. 10/334,694, Response filed Mar. 1, 2010 to Final Office Action mailed Nov. 27, 2009", 21 pgs.
- "U.S. Appl. No. 10/334,694, Response filed Jun. 19, 2008 to Non-Final Office Action mailed Mar. 19, 2008", 20 pgs.
- "U.S. Appl. No. 10/334,694, Response filed Jul. 17, 2009 to Non-Final Office Action mailed Mar. 18, 2009", 18 pgs.
- "U.S. Appl. No. 10/334,694, Response filed Jul. 20, 2007 to Non-Final Office Action mailed Apr. 20, 2007", 18 pgs.
- "U.S. Appl. No. 10/334,694, Response filed Jul. 27, 2010 to Non-Final Office Action mailed Apr. 30, 2010", 19 pgs.
- "U.S. Appl. No. 10/334,694, Response filed Dec. 3, 2007 to Final Office Action mailed Oct. 1, 2007", 21 pgs.
- "U.S. Appl. No. 10/334,694, Response filed Dec. 8, 2008 to Final Office Action mailed Oct. 7, 2008", 18 pgs.
- "U.S. Appl. No. 10/746,853, Final Office Action mailed May 22, 2007", 11 pgs.
- "U.S. Appl. No. 10/746,853, Non-Final Office Action mailed Sep. 26, 2007", 8 pgs.
- "U.S. Appl. No. 10/746,853, Non-Final Office Action mailed Dec. 19, 2006", 10 pgs.
- "U.S. Appl. No. 10/746,853, Notice of Allowance mailed May 30, 2008", 4 pgs.
- "U.S. Appl. No. 10/746,853, Response filed Jan. 17, 2008 to Non-Final Office Action mailed Sep. 26, 2007", 18 pgs.
- "U.S. Appl. No. 10/746,853, Response filed Mar. 15, 2007 to Non-Final Office Action mailed Dec. 19, 2006", 16 pgs.
- "U.S. Appl. No. 10/746,853, Response filed Jul. 23, 2007 to Final Office Action mailed May 22, 2007", 16 pgs.
- "U.S. Appl. No. 10/746,874, Notice of Allowance mailed May 19, 2006", 9 pgs.
- "U.S. Appl. No. 10/746,874, Response filed Apr. 17, 2006 to Restriction Requirement mailed Mar. 31, 2006", 14 pgs.
- "U.S. Appl. No. 10/746,874, Restriction Requirement mailed Mar. 31, 2006", 6 pgs.
- "U.S. Appl. No. 10/865,498, Non-Final Office Action mailed Sep. 11, 2006", 11 pgs.
- "U.S. Appl. No. 10/865,498, Notice of Allowance mailed Dec. 6, 2006", 12 pgs.
- "U.S. Appl. No. 10/865,498, Response filed Oct. 24, 2006 to Non-Final Office Action mailed Sep. 11, 2006", 19 pgs.
- "U.S. Appl. No. 11/148,107, Notice of Allowance mailed Aug. 30, 2010", 8 pgs.
- "U.S. Appl. No. 11/277,773, Examiner Interview Summary mailed Oct. 2, 2008", 2 pgs.
- "U.S. Appl. No. 11/277,773, Notice of Allowance mailed Mar. 24, 2010", 6 pgs.
- "U.S. Appl. No. 11/426,835, Final Office Action mailed Nov. 12, 2010", 13 pgs.
- "U.S. Appl. No. 11/426,835, Non-Final Office Action mailed Apr. 1, 2010", 13 pgs.
- "U.S. Appl. No. 11/426,835, Response filed Aug. 2, 2010 to Non-Final Office Action mailed Apr. 1, 2010", 16 pgs.
- "U.S. Appl. No. 11/426,835, Response filed Nov. 6, 2009 to Restriction Requirement mailed Oct. 6, 2009", 12 pgs.
- "U.S. Appl. No. 11/465,878, Notice of Allowance mailed Oct. 8, 2009", 8 pgs.
- "U.S. Appl. No. 11/561,428, Final Office Action mailed Feb. 10, 2011", 19 pgs.
- "U.S. Appl. No. 11/561,428, Non-Final Office Action mailed Apr. 20, 2010", 13 pgs.
- "U.S. Appl. No. 11/561,428, Response filed Oct. 20, 2010 to Non-Final Office Action mailed Apr. 20, 2010", 15 pgs.
- "U.S. Appl. No. 11/777,739, Examiner Interview Summary mailed Apr. 29, 2010", 3 pgs.
- "U.S. Appl. No. 11/777,739, Final Office Action mailed Jun. 4, 2010", 16 pgs.
- "U.S. Appl. No. 11/777,739, Non-Final Office Action mailed Jan. 29, 2010", 18 pgs.
- "U.S. Appl. No. 11/777,739, Non-Final Office Action mailed Nov. 18, 2011", 6 pgs.
- "U.S. Appl. No. 11/777,739, Response filed Apr. 29, 2010 to Non-Final Office Action mailed Jan. 29, 2010", 18 pgs.
- "U.S. Appl. No. 11/777,739, Response filed Aug. 4, 2010 to Final Office Action mailed Jun. 4, 2010", 16 pgs.
- "U.S. Appl. No. 11/777,739, Response filed Oct. 19, 2009 to Restriction Requirement mailed Sep. 23, 2009", 9 pgs.
- "U.S. Appl. No. 11/777,739, Restriction Requirement mailed Sep. 23, 2009", 7 pgs.
- "U.S. Appl. No. 12/283,760, Non-Final Office Action mailed Oct. 5, 2011", 9 pgs.
- "U.S. Appl. No. 12/813,073, Non-Final Office Action mailed Sep. 3, 2010", 7 pgs.
- "U.S. Appl. No. 12/963,902, Final Office Action mailed May 29, 2012", 7 pgs.
- "U.S. Appl. No. 12/964,902, Examiner Interview Summary mailed Apr. 23, 2012", 3 pgs.
- "U.S. Appl. No. 12/964,902, Non-Final Office Action Mailed Dec. 21, 2011", 8 pgs.
- "U.S. Appl. No. 12/964,902, Notice of Allowance mailed Aug. 1, 2012", 8 pgs.
- "U.S. Appl. No. 12/964,902, Response filed Apr. 23, 2012 to Non-Final Office Action mailed Dec. 21, 2011", 16 pgs.
- "U.S. Appl. No. 12/964,902, Response filed Jul. 12, 2012 to Final Office Action mailed May 29, 2012", 13 pgs.
- "Australian Application Serial No. 2008241508, First Examiner Report mailed Nov. 23, 2010", 3 Pgs.
- "Australian Application Serial No. 2008241508, Response filed Sep. 16, 2011 to Office Action mailed Nov. 23, 2010", 29 pgs.
- "European Application Serial No. 05806944.4, Office Action mailed Apr. 14, 2008", 8 pgs.
- "European Application Serial No. 05806944.4, Response filed Oct. 17, 2008 to Office Action mailed Apr. 14, 2008", 22 pgs.
- "European Application Serial No. 07753005.3, Communication mailed Nov. 5, 2008", 2 pgs.
- "European Application Serial No. 07753005.3, Response filed Dec. 2, 2008 to Communication mailed Nov. 5, 2008", 9 pgs.
- "European Application Serial No. 08742888.4, Office Action mailed Feb. 12, 2010", 2 pgs.
- "European Application Serial No. 08742888.4, Response filed Aug. 10, 2010 to Office Action mailed Feb. 12, 2010", 25 pgs.
- "International Application Serial No. PCT/US2005/025235, International Search Report and Written Opinion mailed Apr. 4, 2006", 20 pgs.
- "International Application Serial No. PCT/US2005/025235, Invitation to Pay Additional Fees and Partial Search Report mailed Jan. 27, 2006", 9 pgs.
- "International Application Serial No. PCT/US2007/021503, International Search Report mailed Jun. 5, 2008", 4 pgs.
- "International Application Serial No. PCT/US2007/021503, Written Opinion mailed Jun. 5, 2008", 7 pgs.
- "Japanese Application Serial No. 2009-502827, Amended Claims filed Mar. 4, 2010", (w/ English Translation), 15 pgs.
- Aaron, S. D, et al., "How accurate is spirometry at predicting restrictive pulmonary impairment?", Chest, 115(3), XP002362629 ISSN: 0012-3692, (Mar. 1999), 869-873.

(56)

References Cited

OTHER PUBLICATIONS

Bulgrin, J. R., et al., "Comparison of Short-Time Fourier, Wavelet and Time-Domain Analyses of Intracardiac Sounds", *Biomedical Sciences Instrumentation*, 29, (1993), 4 pgs.

Kinderman, Michael, et al., "Optimizing the AV Delay in DDD Pacemaker Patients with High Degree AV Block: Mitral Valve Doppler Versus Impedance Cardiography", *PACE*, vol. 20, (Oct. 1997), 2453-2462.

Leatham, A., "Splitting of the First and Second Heart Sounds", *Lancet*, 267 (6839), (Sep. 25, 1954), 607-614.

Leonelli, Fabio M, et al., "Systolic and Diastolic Effects of Variable Atrioventricular Delay and Patients with Complete Hear Block and Normal Ventricular Function", *Amer. J-Cardiology*, vol. 80, (Aug. 1, 1997), 294-298.

Makhoul, John, "Linear Prediction: A Tutorial Review", *Proceedings of the IEEE*, 63, (Apr. 1975), 561-580.

Marcus, G. M., et al., "Association Between Phonocardiographic Third and Fourth Heart Sounds and Objective Measures of Left Ventricular Function", *JAMA*, 293(18), (May 11, 2005), 2238-44.

Obaidat, M. S, et al., "Performance of the Short-Time Fourier Transform and Wavelet Transform to Phonocardiogram Signal Analysis", *Proceedings of the 1992 ACM/SIGAPP Symposium on Applied Computing ACM, Applied Computing: Technological Challenges of the 1990s*, (1992), 856-862.

Ritter, P., et al., "New Method for Determining the Optimal Atrio-Ventricular Delay in Patients Place in DDD Mode for Complete Atrio-Ventricular Block", *NASPE Abstracts*, (Abstract No. 237), (1995), 3 pgs.

Tavel, Morton E, "The Appearance of Gallop Rhythm after Exercise Stress Testing", *Clin. Cardiol.*, vol. 19, (1996), 887-891.

"U.S. Appl. No. 13/708,196, Examiner Interview Summary mailed Aug. 9, 2013", 3 pgs.

"U.S. Appl. No. 13/708,196, Final Office Action mailed Oct. 23, 2013", 10 pgs.

"U.S. Appl. No. 13/708,196, Non Final Office Action mailed May 8, 2013", 9 pgs.

"U.S. Appl. No. 13/708,196, Response filed Aug. 6, 2013 to Non Final Office Action mailed May 8, 2013", 13 pgs.

"U.S. Appl. No. 13/708,196, Response filed Dec. 23, 2013 to Final Office Action mailed Oct. 23, 2013", 14 pgs.

"U.S. Appl. No. 13/708,196, Advisory Action mailed Jan. 14, 2014", 2 pgs.

"U.S. Appl. No. 13/708,196, Advisory Action mailed Oct. 15, 2014", 2 pgs.

"U.S. Appl. No. 13/708,196, Final Office Action mailed Jul. 30, 2014", 10 pgs.

"U.S. Appl. No. 13/708,196, Non Final Office Action mailed Feb. 14, 2014", 9 pgs.

"U.S. Appl. No. 13/708,196, Notice of Allowance mailed Feb. 4, 2015", 10 pgs.

"U.S. Appl. No. 13/708,196, Response filed May 14, 2014 to Non Final Office Action mailed Feb. 14, 2014", 14 pgs.

"U.S. Appl. No. 13/708,196, Response filed Sep. 30, 2014 to Final Office Action mailed Jul. 30, 2014", 15 pgs.

"U.S. Appl. No. 14/729,187, Non Final Office Action mailed Jul. 31, 2015", 7 pgs.

"U.S. Appl. No. 14/729,187, Notice of Allowance mailed Feb. 18, 2016", 5 pgs.

"U.S. Appl. No. 14/729,187, Preliminary Amendment filed Jun. 15, 2015", 8 pgs.

"U.S. Appl. No. 14/729,187, Response filed Oct. 29, 2015 to Non Final Office Action mailed Jul. 31, 2015", 9 pgs.

* cited by examiner

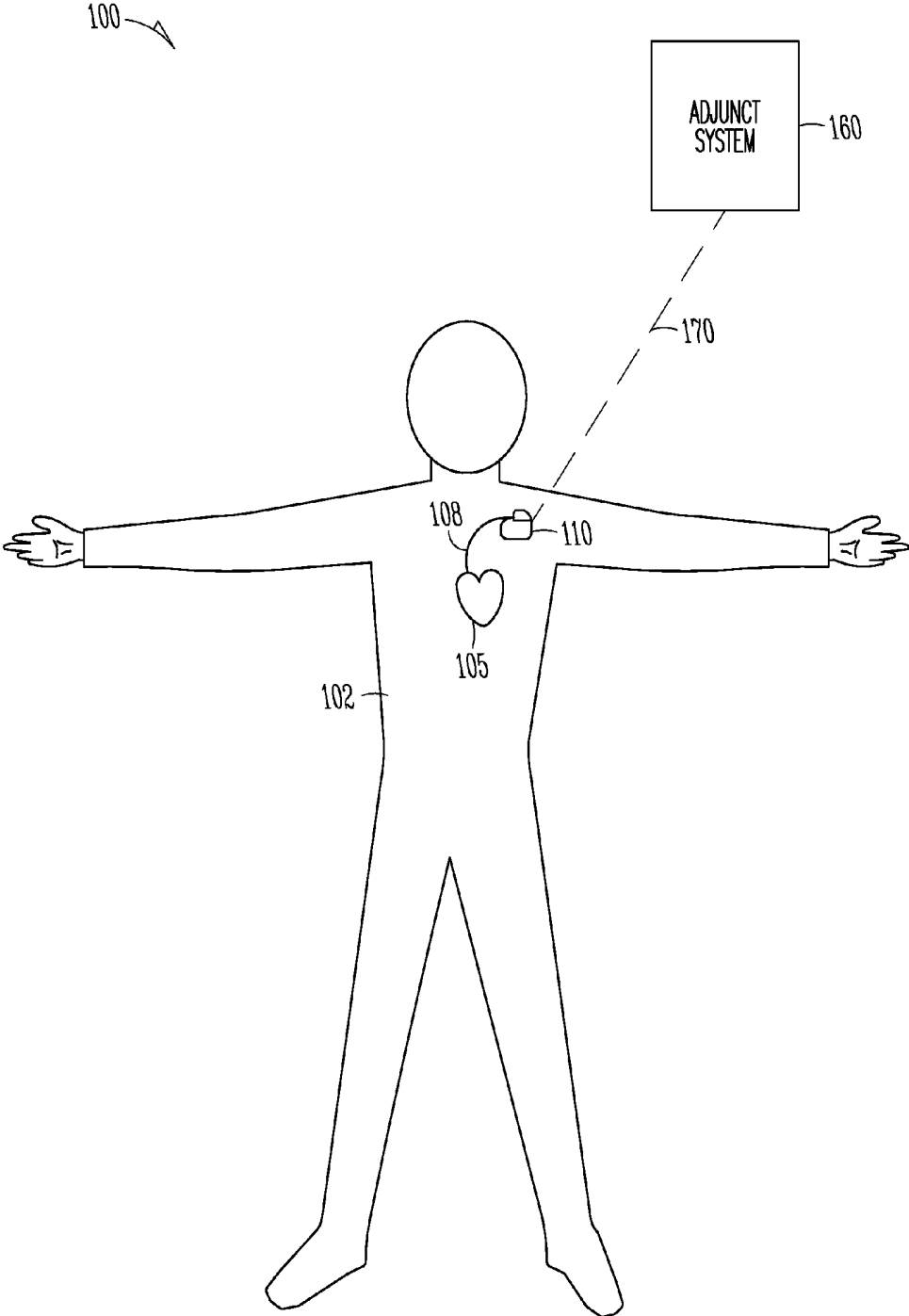


Fig. 1

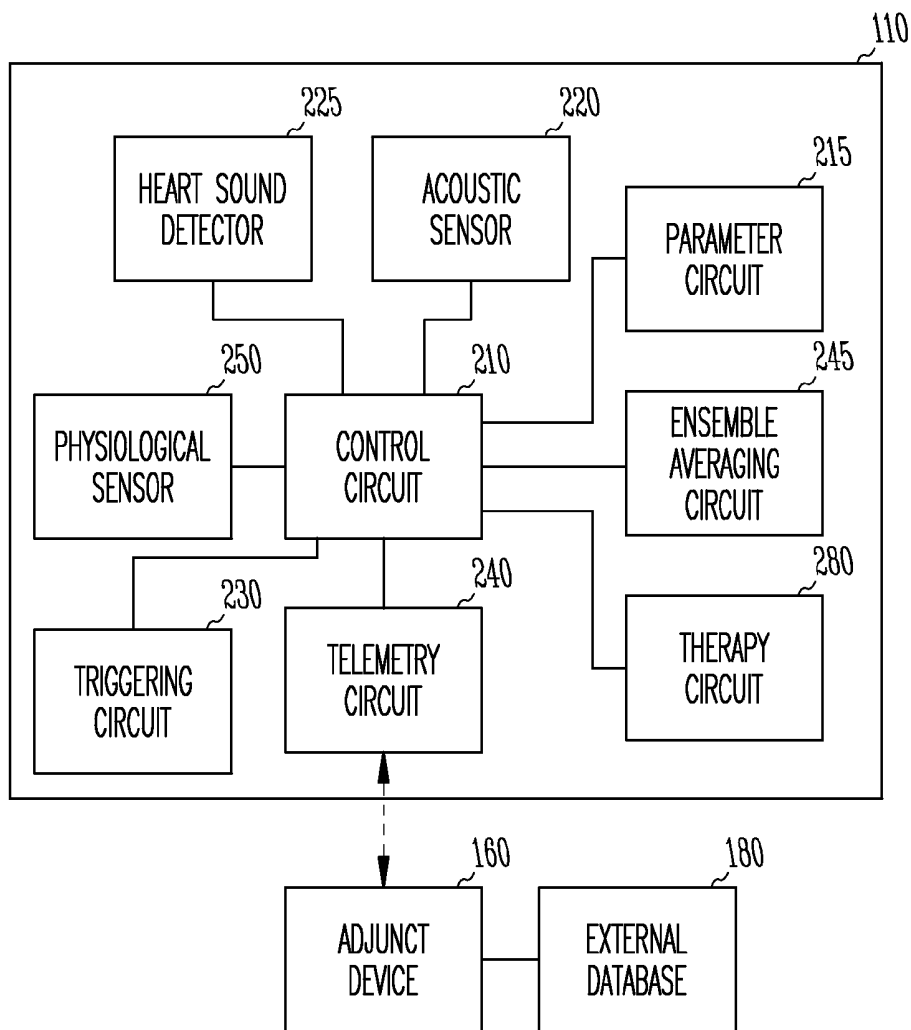


Fig. 2

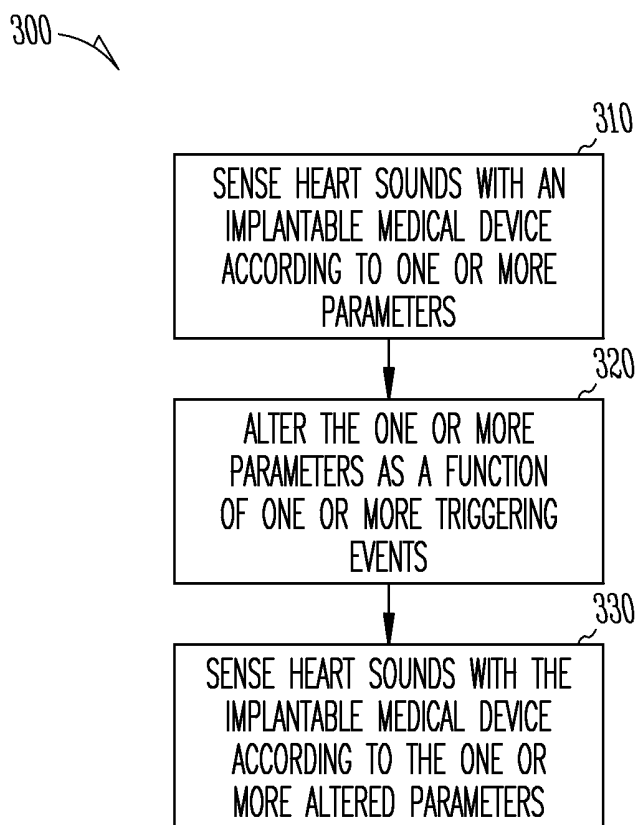


Fig. 3

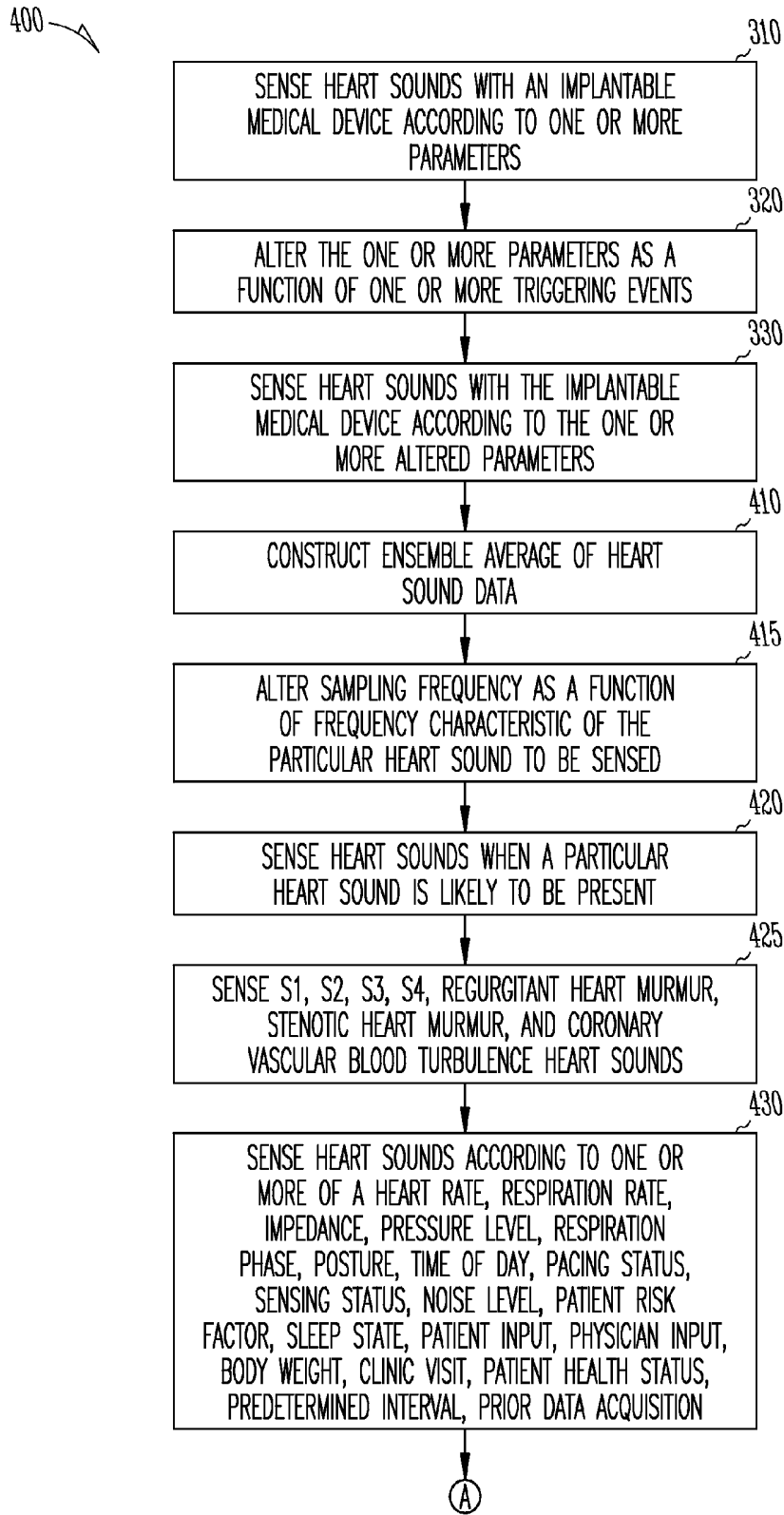


Fig. 4A

400 ↗

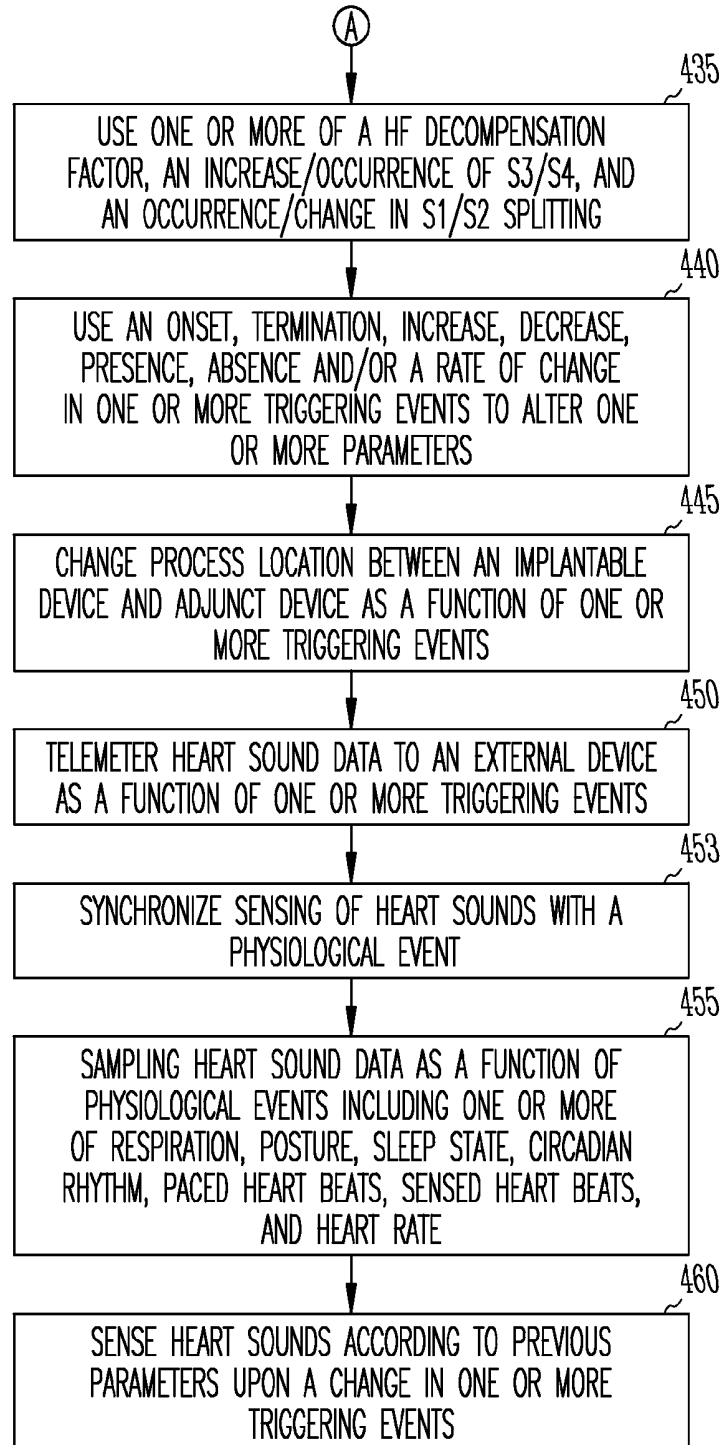


Fig. 4B

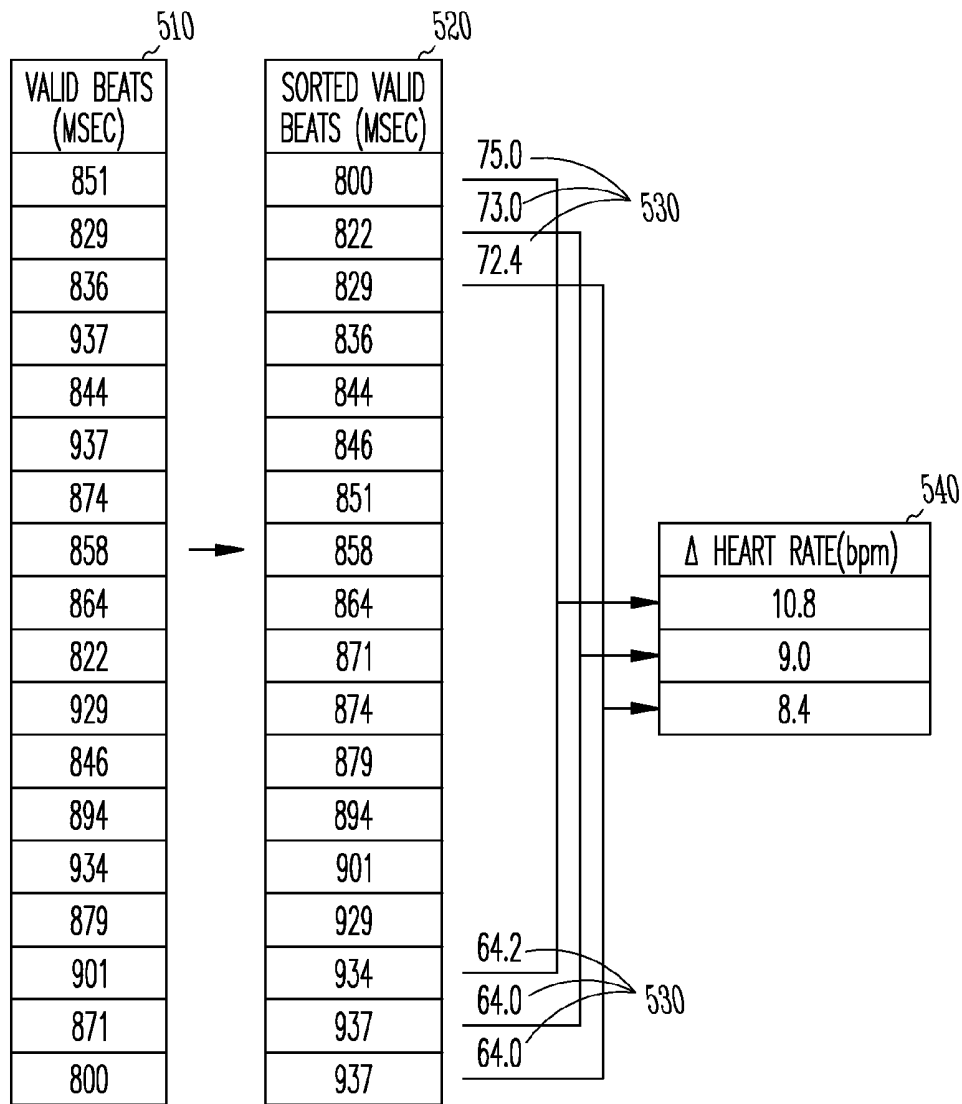


Fig. 5

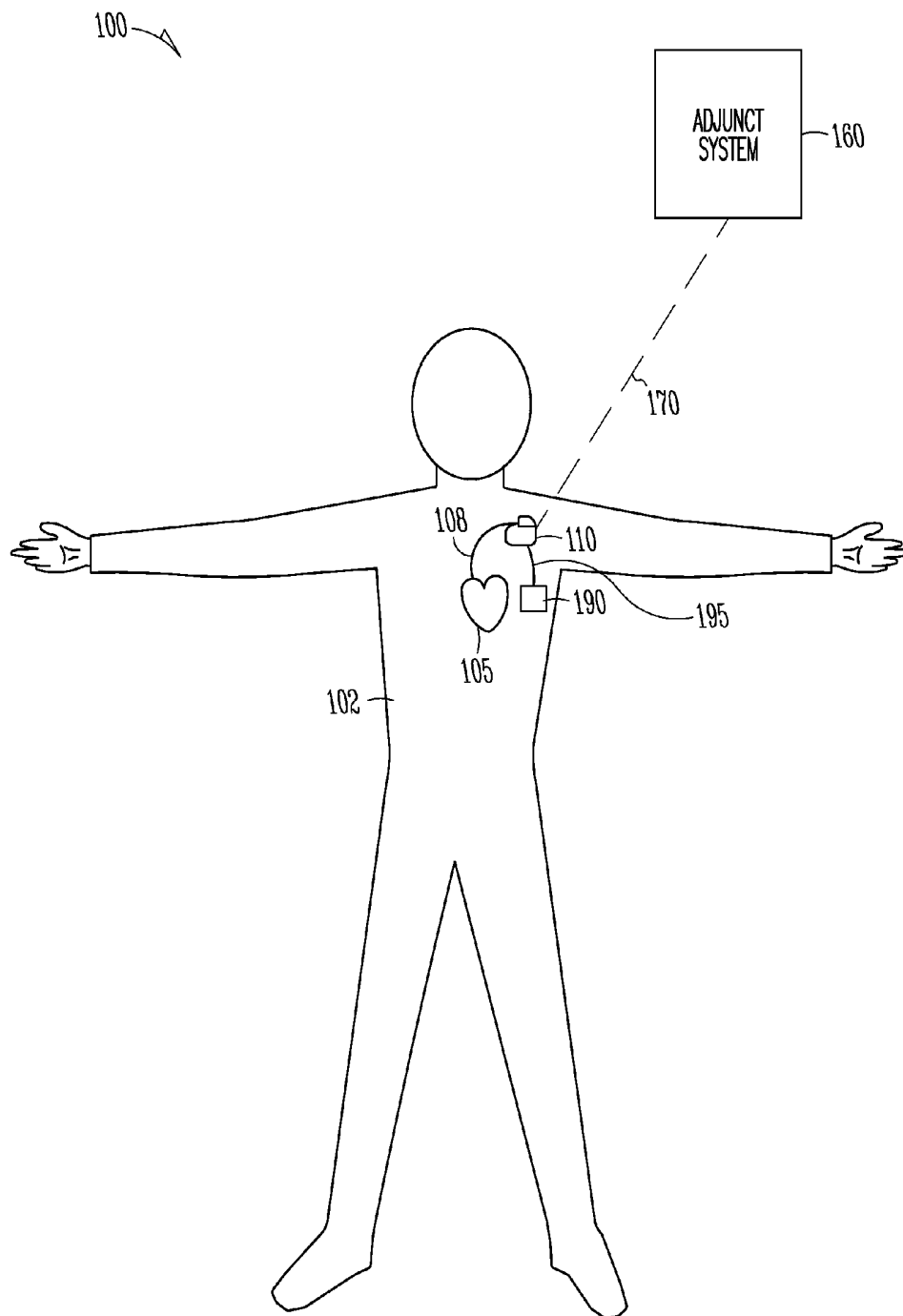


Fig. 6

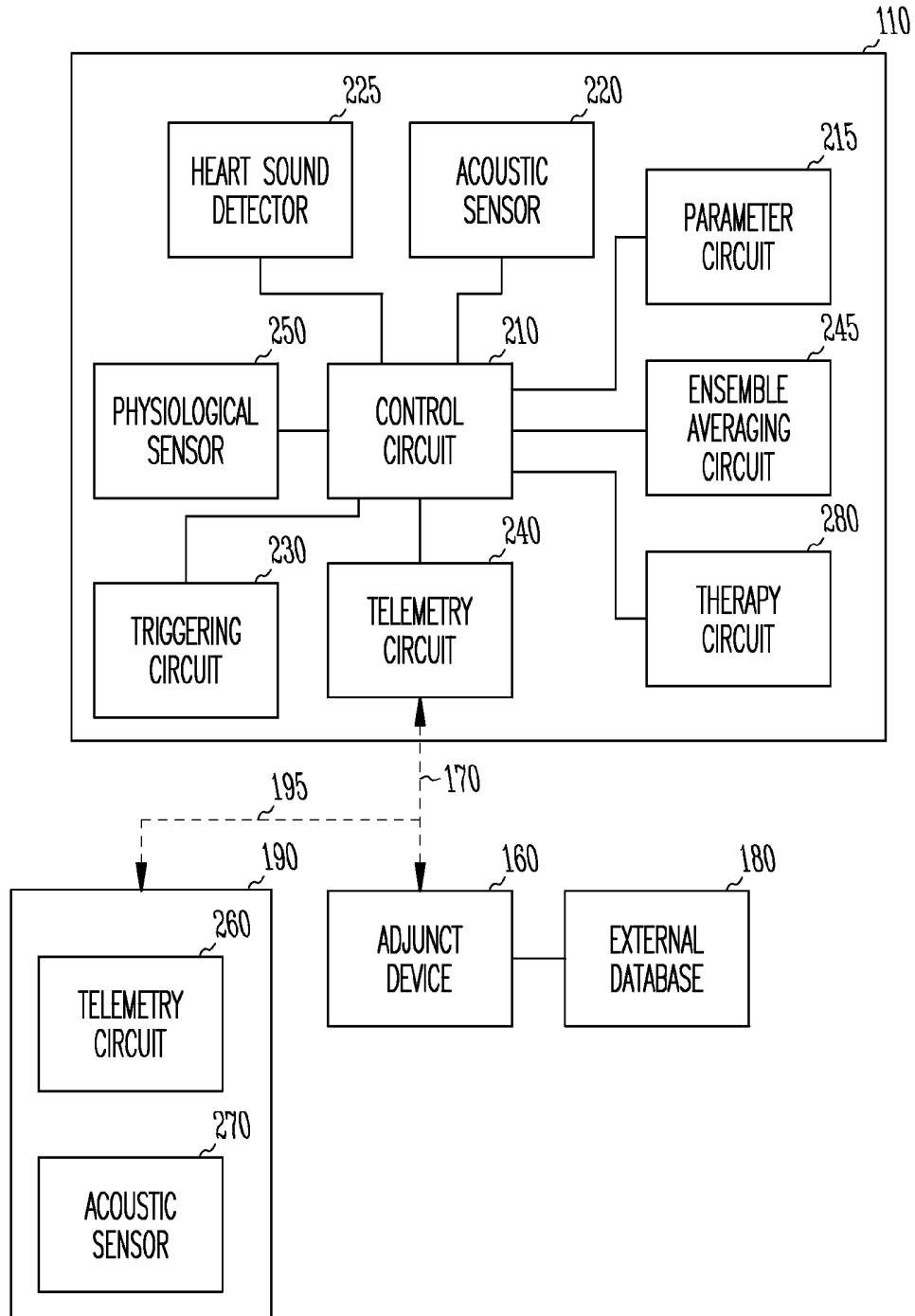


Fig. 7

ADAPTIVE SAMPLING OF HEART SOUNDS**CROSS-REFERENCE TO RELATED APPLICATIONS**

This patent application is a divisional of U.S. patent application Ser. No. 11/564,637, now issued as U.S. Pat. No. 8,096,954, filed Nov. 29, 2006, which is incorporated herein by reference in its entirety.

TECHNICAL FIELD

Various examples relate to the field of implantable medical devices, and in an example, but not by way of limitation, to the adaptive sampling of heart sounds by implantable medical devices.

BACKGROUND

The heart is at the center of the circulatory system. It includes four chambers—two atria and two ventricles. The right atrium receives deoxygenated blood from the body, pumps it into the right ventricle, and the right ventricle pumps the blood to the lungs to be re-oxygenated. The re-oxygenated blood returns to the left atrium, it is pumped into the left ventricle, and then the blood is pumped by the left ventricle throughout the body to meet the hemodynamic needs of the body.

Heart sounds are associated with mechanical vibrations from activity of a patient's heart and the flow of blood through the heart. Heart sounds recur with each cardiac cycle and are separated and classified according to the activity associated with the vibration. The first heart sound (S1) is the vibrational sound made during closure of the mitral and tricuspid valves. The second heart sound (S2) is made by the closure of the aortic and pulmonary valves. The third heart sound (S3) and fourth heart sound (S4) are often related to abnormal filling pressures of the left ventricle during diastole. Heart sounds are useful indications of proper or improper functioning of a patient's heart.

Implantable medical devices (IMDs) are devices designed to be implanted into a patient. Some examples of these devices include cardiac function management (CFM) devices such as implantable pacemakers, implantable cardioverter defibrillators (ICDs), cardiac resynchronization devices, and devices that include a combination of such capabilities. The devices are typically used to treat patients using electrical therapy or to aid a physician or caregiver in patient diagnosis through internal monitoring of a patient's condition, or both. The devices may include or be connected to electrodes in communication with circuitry to monitor electrical heart activity within a patient, and often include one or more other sensors to internally monitor other patient parameters. Other examples of implantable medical devices include implantable diagnostic devices, implantable insulin pumps, devices implanted to administer drugs to a patient, or implantable devices with neural stimulation capability.

OVERVIEW

An implantable medical device can be used to adaptively sample heart sounds. The heart sounds can be compared to independently specifiable thresholds, such as to trigger an alert or responsive therapy, or to display one or more trends. The heart sound information can also be combined with one or more other parameters or patient reported symptoms to generate a status indicator or to trigger an alarm or respon-

sive therapy or to display one or more trends. The alert can notify a patient or a caregiver, such as via remote monitoring. The status indicators, alarms, therapy, display, or trend may be used, for example, to manage congestive heart failure (CHF).

In Example 1, a system includes an implantable medical device. The implantable medical device includes a control circuit; a parameter circuit, coupled to the control circuit, the parameter circuit including one or more parameters; a sensor, coupled to the control circuit, the sensor configured to sense energy and produce a signal indicative of heart sounds; a heart sound detector, coupled to the control circuit, the heart sound detector adapted to detect heart sounds within the signal; and a triggering circuit, coupled to the control circuit, the triggering circuit configured to transmit a signal to the control circuit upon the occurrence of a triggering event. The sensor senses energy or the heart sound detector detects heart sounds as a function of the one or more parameters. The triggering circuit signal causes a change in one or more of the parameters.

In Example 2, the sensor of Example 1 is optionally an acoustic sensor that senses acoustic energy and produces an acoustic signal.

In Example 3, the parameters of Examples 1-2 optionally include one or more of a sampling frequency, a data acquisition separation interval (also referred to as a data acquisition frequency), a data acquisition interval, one or more characteristics of an ensemble average, a bit resolution, a noise blanking interval, and a retry interval.

In Example 4, the triggering events of Examples 1-3 are optionally a function of one or more of a heart rate, a cardiac cycle phase, a respiration rate, a respiration phase, a posture, a time of day, a noise level, an activity level, a patient risk factor, a sleep state, a patient input, a care giver input, a body weight, a change in health status, a predetermined interval, a result of a prior data acquisition, a pacing status, a sensing status, a pressure level, an impedance, a heart rate variability, a heart sound amplitude, a heart sound interval, a heart sound duration, and a clinic visit.

In Example 5, the patient risk factor of Examples 1-4 optionally includes one or more of a heart failure decompensation risk factor, an increase in an occurrence or intensity of one or more of an S3 heart sound and an S4 heart sound, and an occurrence or change in a splitting of an S1 heart sound or an occurrence or change in a splitting of an S2 heart sound.

In Example 6, the triggering circuit of Examples 1-5 optionally transmits the signal as a function of one or more of an onset, a termination, an increase, a decrease, a presence, an absence, a probability of occurrence, a probability of frequency, and a rate of change of the one or more triggering events.

In Example 7, the systems of Examples 1-6 optionally include a telemetry circuit coupled to the control circuit, and an external device wirelessly coupled to the telemetry circuit. The telemetry circuit optionally transmits heart sound data to the external device as a function of the change in one or more of the parameters.

In Example 8, the systems of Examples 1-7 optionally include an external data base coupled to the external device, the external data base for receiving and storing the heart sound data.

In Example 9, the systems of Examples 1-8 optionally include a telemetry circuit coupled to the control circuit and a second implantable medical. The telemetry circuit optionally communicatively couples the first and second implantable medical devices.

In Example 10, the systems of Examples 1-9 optionally include a therapy circuit, wherein the therapy circuit is configured to provide therapy to a patient.

In Example 11, the therapy circuit of Examples 1-10 is configured to provide one or more of pacing, defibrillation, cardioversion, cardiac resynchronization, and neural stimulation therapy.

In Example 12, a process includes sensing heart sounds with a first implantable medical device according to one or more parameters; altering one or more of the parameters as a function of one or more triggering events; and sensing heart sounds with the implantable medical device according to at least the one or more altered parameters.

In Example 13, the parameters of Example 12 optionally include altering one or more of a sampling frequency, a data acquisition separation interval, a data acquisition interval, one or more characteristics of an ensemble average, a bit resolution, a noise blanking interval, and a retry interval. The data acquisition separation, data acquisition, and retry intervals may be adapted according to other triggering parameters such as a detected change in posture.

In Example 14, the characteristics of the ensemble average of Examples 12-13 optionally include one or more of using only sensed heart beats, using only paced heart beats, selecting non-consecutive heart beats, the number of heart beats, and a threshold amplitude for heart beats.

In Example 15, the retry interval of Examples 12-14 is optionally a function of a result of a previous data acquisition.

In Example 16, the alteration of the sampling frequency of Examples 12-15 is optionally a function of a frequency characteristic of a particular heart sound to be sensed.

In Example 17, the data sampling interval of Examples 12-16 is optionally a function of a time period during a cardiac cycle when a particular heart sound is likely to be present.

In Example 18, the triggering events of Examples 12-17 are optionally a function of one or more of a heart rate, a cardiac cycle phase, a respiration rate, a respiration phase, a posture, a time of day, a noise level, an activity level, a patient risk factor, a sleep state, a patient input, a care giver input, a body weight, a patient health status, a predetermined interval, a result of a prior data acquisition, a pacing status, a sensing status, a pressure level, an impedance, and a clinic visit.

In Example 19, the patient risk factor of Examples 12-18 optionally include one or more of a heart failure decompensation risk factor, an increase in an occurrence or intensity of one or more of an S3 heart sound and an S4 heart sound, and an occurrence or change in a splitting of an S1 heart sound or an S2 heart sound.

In Example 20, the alteration of the one or more parameters as a function of the one or more triggering events of Examples 12-19 optionally includes using one or more of an onset, a termination, an increase, a decrease, a presence, an absence, and a rate of change of the one or more trigger events.

In Example 21, the processes of Examples 12-20 optionally include returning to the sensing of heart sounds according to a previous set of parameters upon a change in one or more of the triggering events.

In Example 22, the processes of Examples 12-21 optionally include one or more of terminating, initiating, increasing, and decreasing heart sound sampling or processing in response to the one or more triggering events.

In Example 23, the processes of Examples 12-22 optionally include comprising changing a processing location

between the first implantable device and one or more of a second implantable device and an external device as a function of one or more of the triggering events.

In Example 24, the processes of Examples 12-23 optionally include telemetering heart sound data to one or more of another implantable device, an external device, and an external database as a function of one or more of the triggering events.

In Example 25, the processes of Examples 12-24 optionally include synchronizing the sensing of the heart sounds with a physiological event as a function of one or more of the triggering events.

In Example 26, the physiological event of Examples 12-25 optionally includes one or more of respiration, posture, sleep state, circadian rhythm, paced heart beats, sensed heart beats, and heart rate.

This overview is intended to provide an overview of the subject matter of the present patent application. It is not intended to provide an exclusive or exhaustive explanation of the disclosure. The detailed description is included to provide further information about the subject matter of the present patent application.

BRIEF DESCRIPTION OF THE DRAWINGS

In the drawings, which are not necessarily drawn to scale, like numerals describe similar components throughout the several views. The drawings illustrate generally, by way of example, but not by way of limitation, various examples discussed in the present document.

FIG. 1 illustrates an example of an implanted medical device coupled to an adjunct external device.

FIG. 2 illustrates a block diagram of an implantable medical device.

FIG. 3 illustrates a flowchart of an example process to adaptively sample heart sounds.

FIGS. 4A and 4B illustrate a flowchart of another example process to adaptively sample heart sounds.

FIG. 5 illustrates an example ensemble averaging technique.

FIG. 6 illustrates an example of a first implantable medical device and a second implantable medical device coupled to an adjunct external device.

FIG. 7 illustrates a block diagram of a first implantable medical device and a second implantable medical device.

DETAILED DESCRIPTION

The following detailed description refers to the accompanying drawings which form a part hereof, and in which is shown by way of illustration specific examples in which the disclosure may be practiced. These examples, which are sometimes referred to as examples, are discussed in sufficient detail to enable those skilled in the art to practice the teachings of the disclosure, and such examples may be combined, or other examples may be utilized, and structural, logical and electrical changes may be made without departing from the scope of the present disclosure. The following detailed description provides examples, and the scope of the present disclosure is defined by the appended claims and their equivalents.

It should be noted that references to “an”, “one”, or “various” examples in this disclosure are not necessarily to the same example, and such references contemplate more than one example.

This document describes adaptive sampling of heart sounds. In this disclosure, the term heart sound is meant to

include any sound or vibration generated by the heart, and/or blood flowing through the heart, including, but not limited to one or more of an S1 heart sound, an S2 heart sound, an S3 heart sound, an S4 heart sound, a regurgitant heart murmur, a stenotic heart murmur sound, and a coronary vascular blood turbulence sound. The term cardiogenic sounds is sometimes used to generically refer to heart sounds.

FIG. 1 is a diagram illustrating an example of a medical device system 100 which can be used in connection with transmitting data from an implantable device 110 to an adjunct system 160. In an example, the adjunct system 160 is an external (non-implanted) system. FIG. 1 further illustrates a body 102 with a heart 105. In this example, the system 100 includes the implantable medical device 110, a lead system 108, the adjunct system 160, and a wireless telemetry link 170. Data and/or other instructions may be transferred between the device 110 and the adjunct device 160 via the telemetry link 170. FIGS. 6 and 7 illustrate that the implantable medical device 110 may be coupled to a second implantable medical device 190 via an intra-body communication link 195. The device 190 may include a telemetry circuit 260 and an acoustic sensor 270. The acoustic sensor 270 may be used in addition to, or instead of, the acoustic sensor 220. Data that is transferred between the device 110 and the adjunct device 160 may include data input to and/or data output from a patient or care giver via the telemetry circuit 260 of the second implantable device 190. Examples of care givers include physicians, nurses, and relatives, friends or other assistants of the patient.

FIG. 2 illustrates an example of an implantable medical device 110. In this example, the device 110 includes a control circuit 210, which can include or can be coupled to a parameter circuit 215. The parameter circuit 215 may include one or more parameters. Some of these parameters may be used to determine how the device 110 obtains heart sounds. An acoustic sensor 220 is coupled to the control circuit 210. The acoustic sensor 220 may include any sensor suitable for this purpose including an accelerometer, a microphone, or some other type of acoustic-to-electrical, acoustic-to-optical or other acoustic transducer. The acoustic sensor 220 senses acoustic vibration energy and generates a responsive signal as a function of the acoustic vibration energy. The responsive signal produced by the acoustic sensor may be indicative of a heart sound. A heart sound detector 225 is coupled to or included in the control circuit 210. The heart sound detector 225 detects heart sounds in the responsive signal generated by the acoustic sensor 220. In an example, the acoustic sensor 220 senses acoustic energy and/or the heart sound detector 225 detects heart sounds as a function of the one or more parameters stored in the parameter circuit 215. A triggering circuit 230 is coupled to or included in the control circuit 210. A triggering signal generated by the triggering circuit 230 may cause a change in one or more of these heart sound acquisition or processing parameters, thereby changing how the implanted device 110 obtains information indicative of heart sounds produced by the heart. The parameters may also be altered directly by the control circuit 210, or by another component of the device 110 in conjunction with the control circuit 210. The device 110 may further be configured to include a therapy circuit 280 coupled to the control circuit 210. The therapy circuit 280 may be configured to provide one or more of pacing, defibrillation, cardioversion, cardiac resynchronization, and neural stimulation therapy.

In this example, a physiological sensor 250 is coupled to the control circuit 210, such as via a wired or wireless connection. Examples of the physiological sensor 250 may

include a heart rate sensing circuit, a respiration rate sensing circuit, a respiration phase sensing circuit, a posture sensing circuit, a sleep detector circuit, a blood pressure sensing circuit, and/or a cardiac impedance sensing circuit. One or more of the physiological sensors 250 may be part of the implantable medical device 110. For example, if the implantable medical device includes a cardiac pacemaker, then the pacemaker may also include a heart rate sensing circuit.

FIG. 2 illustrates that the implantable medical device 110 may further include a telemetry circuit 240, such as coupled to the control circuit 210. The telemetry circuit 240 wirelessly communicatively couples the implantable medical device 110 to the adjunct or external device 160. In an example, the telemetry circuit 240 may transmit heart sound data to the external device 160, for example, as a function of the change in one or more of the parameters in the parameter circuit 215. FIG. 2 further illustrates an example in which a remote or local external database 180 may be coupled to the external device 160. The external database 180 may be used for storing data including heart sound data received from the implantable medical device 110.

FIG. 2 further illustrates an example in which the implantable medical device 110 may include an ensemble averaging circuit 245 or other central tendency or lowpass filtering circuit. While it is referred to as an ensemble averaging circuit, such a circuit is not limited to the calculation of a simple statistical average, but also is meant to encompass one or more other statistical or other measures such as, for example, a weighted mean, a median, or a mode. The ensemble averaging circuit 245 may calculate an ensemble average for an acoustic signal, a heart sound signal, or any other signal sensed by the device 110.

The one or more parameters stored within the parameter circuit 215 may include one or more parameters that control the manner in which heart sounds are obtained by the device 110. Examples of such parameters may include a sampling frequency, a data acquisition separation interval, a data acquisition interval, one or more characteristics of an ensemble average, a bit resolution, a noise blanking interval, and a retry interval. In certain examples, the sampling frequency parameter controls the frequency (i.e., samples per second) at which data points are sampled in an analog signal waveform including heart sound information in order to generate a sampled or digital signal of the waveform. The data acquisition separation interval generally relates to the time period separating different data acquisition periods (e.g., sampling a buffer of heart sound data every 15 minutes), or how often a buffer of multiple heart beats is updated with newly acquired data. The data acquisition interval is generally the actual time period during which a buffer of heart sounds is acquired. For example, the device 110 may sample a set of consecutive heart sounds for 30 seconds. The data acquisition interval may also be referred to as the acquisition buffer length. The bit resolution generally refers to the number of bits representing each sample point. In an example, the bit resolution is 8 bits. In another example, the bit resolution is 16 bits. The noise blanking interval generally refers to a time period during which heart sound data acquisition does not occur (e.g., because it is automatically inhibited). For example, heart sound data acquisition may be automatically inhibited during time periods of increased patient activity, which could result in higher noise interfering with the heart sound data acquisition. The noise blanking interval may also refer to a particular segment of the cardiac cycle during which the device inhibits or ignores acquired heart sound data (e.g., the first 50 ms of the cardiac cycle), such as to ignore periods of time

during which useful heart sound information is not likely to be present. The retry interval generally relates to the amount of time that the device will wait before it attempts to acquire more heart sound data after an unsuccessful attempt at acquiring heart sound data (e.g., because of a noisy signal). The control circuit **210** and/or the triggering circuit **230** uses one or more of these parameters to control operation of one or more of the acoustic sensor **220**, the heart sound detector **225**, the telemetry circuit **240**, and the ensemble averaging circuit **245**, such as in the acquisition or processing of heart sound data.

One or more of these heart sound parameters that determine the manner of the acquisition or processing of heart sounds, such as by the implantable device **110**, may be altered by one or more triggering events, yielding adaptive heart sound acquisition or processing. In various examples, such triggering events may be determined as a function of one or more of a heart rate, a cardiac phase, a respiration rate, a respiration phase, a posture, a time of day, a noise level, an activity level, a patient risk factor, a sleep state, a patient input, a physician input, a body weight, a change in health status, a predetermined interval, a result of a prior data acquisition, a pacing status, a sensing status, a pressure level, an impedance, or a clinic visit.

The device **110** can be configured to adaptively change any aspect of the manner in which it acquires heart sound information (e.g., the sampling frequency, the sampling interval, etc.) as a function of any one or more of the triggering events. This can be based on either a change in the triggering event parameter (e.g., an increase in the heart rate), the presence of a particular triggering event (e.g., the body is in the prone or supine positions, triggering heart sound data acquisition), the triggering event being below or above a threshold (e.g., the level of noise in the system or environment is below a certain level), and/or a triggering event parameter that is within a certain range (e.g., acquire heart sound information between 12:00 p.m. and 4 p.m.). Therefore, the triggering event may include one or more of an onset, a termination, an increase, a decrease, a presence, an absence, and a rate of change of the one or more triggering event parameters.

In another example, the automatic triggering event may include an identified patient risk factor, such as one or more of a heart failure decompensation risk factor, an increase in an occurrence or intensity of one or more of an **S3** heart sound or an **S4** heart sound, an occurrence or change in a time-splitting of an **S1** heart sound or an **S2** heart sound, and a population risk stratifier. The heart failure decompensation risk factor can include one or more of, for example, an increased respiration rate, a decreased thoracic impedance, and an increased resting heart rate. Similarly, an onset or an increase in the intensity of an **S3** or an **S4** heart sound are risk factors, and the manner in which heart sound information is obtained by a device may be altered as a function of the onset or increase in the intensity of the **S3** and/or **S4** heart sounds. Similarly, an occurrence or change in a splitting of an **S1** heart sound or an occurrence or a change in a splitting of an **S2** heart sound are risk factors, and heart sound data acquisition may be adapted accordingly. Also, if there is a change in the patient's general health or metabolic need status (indicated by, for example, an increase in the patient's resting heart rate), then the current data acquisition interval may not be at a sufficient rate, and the data acquisition interval may be shortened, so that more buffers are collected during a particular time period. Similarly, the data sampling interval may be lengthened, so that more heart beats are

collected in a buffer. Alternatively, if the patient's general health status is improving, the sampling frequency may be decreased.

FIG. **3** illustrates an example of a process **300** for the adaptive sampling of heart sounds by an implantable device. At **310**, the process senses heart sounds with an implantable medical device according to one or more parameters. At **320**, the one or more parameters are altered as a function of one or more triggering events. Lastly, at **330**, heart sounds are sensed with the implantable medical device according to at least the one or more altered parameters.

FIGS. **4A** and **4B** illustrate another example of a process **400** for the adaptive sampling of heart sounds by an implantable device. As indicated in FIGS. **4A** and **4B**, the process **400** may include at **310** sensing heart sounds with an implantable medical device according to one or more parameters. At **320**, the one or more parameters are altered as a function of one or more triggering events. At **330**, heart sounds are sensed with the implantable medical device according to at least the one or more altered parameters.

At **410**, heart beats that are sensed during a particular data sampling interval are ensemble averaged before further analysis is performed on the data. This conditions the signal by removing noise and compressing the data. An ensemble average for a buffer of heart sound signals may be generated or represented by a summation of the accelerometer (or other acoustic sensing device) outputs relative to a reference point such as a V-event marker. Using an ensemble average in the adaptive sampling of heart sounds also permits the system and method to select certain cardiac cycles in a buffer for retention, processing, and storage, and permits discarding of other cardiac cycles in a buffer.

An example of a method of selecting particular cardiac cycles, or heart beats, for an ensemble average is illustrated in FIG. **5**. FIG. **5** illustrates a buffer of heart beat data **510**. The heart beat data **510** includes the duration of each heart beat in milliseconds. In the example of FIG. **5**, the heart beat data **510** includes the duration of 18 separate heart beats. The heart beats in the buffer are then sorted in ascending order of heart beat duration as illustrated in **520**. The heart beat durations are converted to heart rates **530** by taking the reciprocal of the duration, and a difference **540** is calculated between the heart rate of a first heart beat in a set of 16 consecutive ordered heart beats and the heart rate of a 16th beat in the set of 16 consecutive heart beats. This calculation is performed for all the sets of 16 consecutive heart beats in the buffer, and the set of ordered heart beats with the smallest change in rate between the first heart beat in the set of 16 consecutive beats and the 16th heart beat in a set of 16 consecutive beats is selected as the beats to retain, process, and store. By initially sorting the beats in ascending duration order, and determining the ordered beats with the smallest change in heart rate, the process is able to select the "best" non-consecutive beats for the calculation of the ensemble average. While the example of FIG. **5** illustrates the selection of 16 consecutive heart beats from a buffer of 18 consecutive hearts beats, other buffer sizes may be used and other numbers of consecutive heart beats may be selected.

Additionally or alternatively, the number of beats that may be selected to construct an ensemble average may be altered according to the amount of noise detected in the system and the time allowed for acquisition of the heart sounds. For example, if the noise increases, it may be necessary to increase the number of beats that are included in each ensemble average. As another example, if the use of the heart sound data by the device **110** requires accelerated processing, the device may be configured to reduce the

number of heart beats sampled for an ensemble average, thereby reducing the time required to generate the ensemble average.

In a particular example of calculating an ensemble average, only sensed heart beats are used. In another example, only paced heart beats are used. In another example, a certain specified number of cardiac beats must be present in the data buffer to calculate the ensemble average. If that minimum number of beats is present in the buffer, the first beats in the buffer may be selected for the calculation of the ensemble average, and the rest of the beats in the buffer may be discarded. In another example, there is a threshold condition imposed upon the heart sound amplitude in order for a heart beat to be considered for the ensemble average. Any or all of these ensemble averaging factors may be altered by one or more of the triggering events discussed above.

At 415, the sampling frequency is altered as a function of a frequency characteristic of a particular heart sound to be sensed. For example, if the desire is to sense the S3 heart sound with the implantable device, then the sampling frequency may be set to 10-30 Hz. This may either be done manually by a health care provider, or done by the device 110 in response to an occurrence or an increase in the S3 heart sound. In another embodiment, the sampling frequency for S3 may be around 50 Hz for Nyquist purposes. By comparison, if it is desired to sample the S1 heart sound, a sampling frequency of 20-50 Hz may be more appropriate (or up to 100 Hz for Nyquist purposes). Moreover, depending on the condition of the patient, the device 110 may adaptively alter between the sampling frequencies of approximately 10-30 Hz and 20-50 Hz, or other frequencies that are associated with other heart sounds.

At 420, heart sounds are sensed during a specific time when a particular heart sound is likely to be present. For example, if it is desired to sense the S3 heart sound, then the sampling may be attempted at approximately 500-600 ms into the cardiac cycle. The sampling may be adjusted based on the heart rate. At 425, the heart sounds that are sensed include one or more of an S1 heart sound, an S2 heart sound, an S3 heart sound, an S4 heart sound, a regurgitant heart murmur, a stenotic heart murmur sound, and a coronary vascular blood turbulence sound.

At 430, the device uses one or more triggering events that are a function of one or more of a heart rate, a cardiac cycle phase, a respiration rate, a respiration phase, a posture, a time of day, a noise level, an activity level, a patient risk factor, a sleep state, a patient input, a physician input, a body weight, a patient health status, a predetermined interval, a result of a prior data acquisition, a pacing status, a sensing status, a pressure level, an impedance, and a clinic visit.

At 435, the device 110 uses as patient risk factors one or more of a heart failure decompensation factor, an increase in an occurrence or intensity of one or more of an S3 heart sound and an S4 heart sound, and an occurrence or change in a splitting of an S1 heart sound or an occurrence or change in an S2 heart sound.

At 440, the device, in altering of the one or more parameters as a function of the one or more triggering events includes using one or more of an onset, a termination, an increase, a decrease, a presence, an absence, and a rate of change of the one or more trigger events.

At 445, the process changes a processing location between the implantable device and an external device as a function of one or more of the triggering events. Similarly, at 450, the process telemeters heart sound data to one or more of an external device and an external database as a

function of one or more of the triggering events. At 453, the process synchronizes the sensing of the heart sounds with a physiological event as a function of one or more of the triggering events. At 455, the physiological event includes one or more of respiration, posture, sleep state, circadian rhythm, paced heart beats, sensed heart beats, and heart rate. At 460, the device returns to sensing heart sounds according to a previous set of parameters upon a change in one or more of the triggering events.

In the foregoing detailed description, various features are grouped together in one or more examples or examples for the purpose of streamlining the disclosure. This method of disclosure is not to be interpreted as reflecting an intention that the claimed examples of the invention require more features than are expressly recited in each claim. Rather, as the following claims reflect, inventive subject matter lies in less than all features of a single disclosed example. Thus the following claims are hereby incorporated into the detailed description of examples of the invention, with each claim standing on its own as a separate example. It is understood that the above description is intended to be illustrative, and not restrictive. It is intended to cover all alternatives, modifications and equivalents as may be included within the scope of the invention as defined in the appended claims. Many other examples will be apparent to those of skill in the art upon reviewing the above description. The scope of the invention should, therefore, be determined with reference to the appended claims, along with the full scope of equivalents to which such claims are entitled. In the appended claims, the terms "including" and "in which" are used as the plain-English equivalents of the respective terms "comprising" and "wherein," respectively. Moreover, the terms "first," "second," and "third," etc., are used merely as labels, and are not intended to impose numerical requirements on their objects.

As used in this disclosure, the term "circuit" is broadly meant to refer to hardware, software, and a combination of hardware and software. That is, a particular function may be implemented in specialized circuits, in software executing on general processor circuits, and/or a combination of specialized circuits, generalized circuits, and software.

The abstract is provided to comply with 37 C.F.R. 1.72(b) to allow a reader to quickly ascertain the nature and gist of the technical disclosure. The Abstract is submitted with the understanding that it will not be used to interpret or limit the scope or meaning of the claims.

The invention claimed is:

1. A process to control operation of a medical device system, the process comprising:
 - sensing heart sounds of a subject with a first implantable medical device of the medical device system according to one or more heart sound signal processing parameters, wherein the one or more heart sound signal processing parameters include one or more characteristics of an ensemble average, a bit resolution, a noise blanking interval, and a retry interval;
 - detecting one or more physiologic triggering events of the subject during the heart sound sensing;
 - identifying a type of heart sound to sense, from a plurality of heart sound types identifiable by the in implantable medical device, as a function of the one or more detected physiologic triggering events;
 - adaptively altering, by the medical device system, one or more of the heart sound signal processing parameters of the medical device system in response to the identifying the type of heart sound to sense; and

sensing heart sounds with the implantable medical device according to at least the one or more altered heart sound signal processing parameters.

2. The process of claim 1, wherein altering one or more of the heart sound signal processing parameters includes altering the one or more characteristics of an ensemble average, wherein the characteristics of an ensemble average include one or more of using only sensed heart beats, using only paced heart beats, selecting non-consecutive heart beats; the number of heart beats, and a threshold amplitude for heart beats.

3. The process of claim 1, wherein altering one or more of the heart sound signal processing parameters includes altering the retry interval, wherein the retry interval is a function of a result of a previous data acquisition.

4. The process of claim 1, further including altering a sampling frequency used in sampling the heart sound, wherein the sampling frequency is a function of a frequency characteristic of an S3 or S4 heart sound.

5. The process of claim 1, wherein altering one or more of the heart sound signal processing parameters includes altering the data sampling interval, wherein the data sampling interval is a function of a time period during a cardiac cycle when a particular heart sound is likely to be present.

6. The process of claim 1, wherein the one or more physiologic triggering events include a function of one or more of a heart rate, a cardiac cycle phase, a respiration rate, a respiration phase, a posture, a time of day, a noise level, an activity level, a patient risk factor, a sleep state, a body weight, a change in patient health status, a predetermined interval, a result of a prior data acquisition, a pacing status, a sensing status, a pressure level, an impedance, a heart rate variability, a heart sound amplitude, a heart sound interval, and a heart sound duration.

7. The process of claim 6, wherein the patient risk factor includes one or more of a heart failure decompensation risk factor, an increase in an occurrence or intensity of one or more of an S3 heart sound and an S4 heart sound, and an occurrence or change in a splitting of an S1 heart sound, and an occurrence or change in a splitting of an S2 heart sound.

8. The process of claim 1, wherein the altering of the one or more parameters as a function of the one or more physiologic triggering events includes using one or more of an onset, a termination, an increase, a decrease, a presence, an absence, and a rate of change of the one or more physiologic trigger events.

9. The process of claim 1, further comprising returning to the sensing of heart sounds according to a previous set of parameters upon a change in one or more of the physiologic triggering events.

10. The process of claim 1, comprising one or more of terminating, initiating, increasing, and decreasing sampling

of a heart sound signal or processing of the heart sound signal in response to the one or more physiologic triggering events.

11. The process of claim 1, comprising changing a processing location between the first implantable device and one or more of a second implantable device and an external device as a function of one or more of the physiologic triggering events.

12. The process of claim 1, comprising telemetering heart sound data to one or more of another implantable device, an external device, and an external database as a function of one or more of the physiologic triggering events.

13. The process of claim 1, comprising synchronizing the sensing of the heart sounds with another physiological event as a function of one or more of the physiologic triggering events.

14. The process of claim 13, wherein the physiological event includes an event related to one or more of respiration, posture, sleep state, circadian rhythm, paced heart beats, sensed heart beats, and heart rate.

15. A process of controlling an implantable medical device, the process comprising:

sensing heart sounds with the implantable medical device according to one or more heart sound signal processing parameters;

identifying a type of heart sound to sense, from a plurality of heart sound types identifiable by the implantable medical device, as a function of one or more physiologic triggering events that include a patient risk factor detected during the heart sound sensing; and

adaptively selecting, by self-configuring of the implantable medical device, a first value of a heart sound signal sampling frequency when the identified type of heart sound is a first heart sound type, and selecting a second different value of the heart sound signal sampling frequency when the identified type of heart sound is a second different heart sound type.

16. The process of claim 15, wherein selecting a heart sound signal sampling frequency according to the identified heart sound includes selecting a first signal sampling frequency when the identified heart sound is an S3 heart sound and selecting a second different signal sampling frequency when the identified heart sound is an S1 heart sound.

17. The process of claim 15, wherein selecting a heart sound signal sampling frequency according to the identified heart sound includes selecting a first signal sampling frequency for the identified heart sound at a first determined heart rate and selecting a second different sampling frequency for the identified heart sound at a second determined heart rate.

* * * * *

专利名称(译)	心音的自适应采样		
公开(公告)号	US9700726	公开(公告)日	2017-07-11
申请号	US13/325654	申请日	2011-12-14
[标]申请(专利权)人(译)	STAHMANN JEFFREYé SIEJKO KRZYSZTOFž HARO CARLOS PATANGAY ABHILASH 卡尔森GERRARD中号 贝拉尔卡萨ANDRES		
申请(专利权)人(译)	STAHMANN JEFFREY E. SIEJKO KRZYSZTOF Z. HARO CARLOS PATANGAY ABHILASH 卡尔森GERRARD M. 贝拉尔卡萨ANDRES		
当前申请(专利权)人(译)	心脏起搏器 , INC.		
[标]发明人	STAHMANN JEFFREY E SIEJKO KRZYSZTOF Z HARO CARLOS PATANGAY ABHILASH CARLSON GERRARD M BELALCAZAR ANDRES		
发明人	STAHMANN, JEFFREY E. SIEJKO, KRZYSZTOF Z. HARO, CARLOS PATANGAY, ABHILASH CARLSON, GERRARD M. BELALCAZAR, ANDRES		
IPC分类号	A61B5/02 A61B7/04 A61N1/365 A61B5/00 A61B5/11 A61B5/021 A61B5/024 A61B5/053 A61B5/08		
CPC分类号	A61N1/36514 A61B5/0031 A61B5/1116 A61B7/04 A61B5/021 A61B5/024 A61B5/053 A61B5/08 A61B5/0816 A61B5/4806 A61B5/686 A61B5/7275 A61N1/36578 A61B7/00		
代理机构(译)	SCHWEGMAN和Lundberg & 沃斯纳 , P.A.		
其他公开文献	US20120089040A1		
外部链接	Espacenet USPTO		

摘要(译)

一种根据一个或多个信号处理参数用一个或多个可植入医疗设备感测心音的系统和方法。该方法根据一个或多个生理触发事件改变一个或多个参数。该方法然后根据至少一个或多个改变的信号处理参数利用一个或多个可植入医疗设备感测心音。

300

