



US008702606B2

(12) **United States Patent**  
**Wang et al.**

(10) **Patent No.:** **US 8,702,606 B2**  
(45) **Date of Patent:** **Apr. 22, 2014**

- (54) **PATIENT MONITORING HELP VIDEO SYSTEM AND METHOD**
- (75) Inventors: **Hui Wang**, San Ramon, CA (US); **Min Meng**, San Jose, CA (US)
- (73) Assignee: **Covidien LP**, Mansfield, MA (US)
- (\* ) Notice: Subject to any disclaimer, the term of this patent is extended or adjusted under 35 U.S.C. 154(b) by 940 days.

4,807,631 A	2/1989	Hersh et al.
4,911,167 A	3/1990	Corenman et al.
4,913,150 A	4/1990	Cheung et al.
4,936,679 A	6/1990	Mersch
4,938,218 A	7/1990	Goodman et al.
4,971,062 A	11/1990	Hasebe et al.
4,972,331 A	11/1990	Chance
4,974,591 A	12/1990	Awazu et al.
5,028,787 A	7/1991	Rosenthal et al.
5,065,749 A	11/1991	Hasebe et al.

(Continued)

FOREIGN PATENT DOCUMENTS

- (21) Appl. No.: **12/122,358**
- (22) Filed: **May 16, 2008**

CA	2653934 A1	12/2007
EP	0615723	9/1994

(Continued)

- (65) **Prior Publication Data**  
US 2008/0214906 A1 Sep. 4, 2008

OTHER PUBLICATIONS

**Related U.S. Application Data**

- (63) Continuation-in-part of application No. 11/386,038, filed on Mar. 21, 2006, and a continuation-in-part of application No. 11/445,495, filed on May 31, 2006.
- (60) Provisional application No. 61/016,733, filed on Dec. 26, 2007.

Barnum, P.T., et al.; "Novel Pulse Oximetry Technology Capable of Reliable Bradycardia Monitoring in the Neonate," *Respiratory Care*, vol. 42, No. 1, p. 1072 (Nov. 1997).

(Continued)

- (51) **Int. Cl.**  
**A61B 5/00** (2006.01)  
**G06F 19/00** (2011.01)

*Primary Examiner* — Bill Thomson  
*Assistant Examiner* — Bobby Soriano

(74) *Attorney, Agent, or Firm* — Fletcher Yoder PC

- (52) **U.S. Cl.**  
CPC ..... **G06F 19/3406** (2013.01)  
USPC ..... **600/301; 600/323; 600/324; 715/714**

- (58) **Field of Classification Search**  
USPC ..... 600/300-301, 323, 324; 715/714  
See application file for complete search history.

- (56) **References Cited**

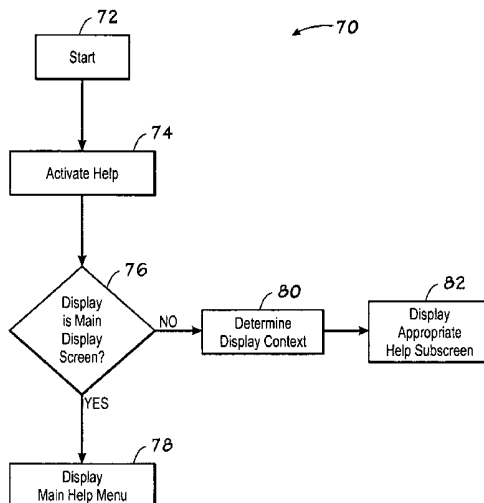
U.S. PATENT DOCUMENTS

3,638,640 A	2/1972	Shaw
4,714,341 A	12/1987	Hamaguri et al.
4,805,623 A	2/1989	Jöbsis

- (57) **ABSTRACT**

Embodiments of the present invention relate to a patient monitoring help screen system and method. Specifically, embodiments of the present invention include a patient monitoring device with an integral help screen system including display of video. The help screen system may provide context-sensitive help, such that the help screen accessed by a help key may relate to a specific display context.

**29 Claims, 4 Drawing Sheets**



(56)

## References Cited

## U.S. PATENT DOCUMENTS

5,084,327	A	1/1992	Stengel	6,546,267	B1	4/2003	Sugiura et al.
5,119,815	A	6/1992	Chance	6,549,795	B1	4/2003	Chance
5,122,974	A	6/1992	Chance	6,580,086	B1	6/2003	Schulz et al.
5,167,230	A	12/1992	Chance	6,591,122	B2	7/2003	Schmitt
5,190,038	A	3/1993	Polson et al.	6,594,513	B1	7/2003	Jobsis et al.
5,246,003	A	9/1993	DeLonzor	6,599,241	B1 *	7/2003	Murphy ..... 600/300
5,247,931	A	9/1993	Norwood	6,606,509	B2	8/2003	Schmitt
5,263,244	A	11/1993	Centa et al.	6,606,511	B1	8/2003	Ali et al.
5,275,159	A	1/1994	Griebel	6,615,064	B1	9/2003	Aldrich
5,279,295	A	1/1994	Martens et al.	6,618,042	B1	9/2003	Powell
5,297,548	A	3/1994	Pologe	6,622,095	B2	9/2003	Kobayashi et al.
5,355,880	A	10/1994	Thomas et al.	6,654,621	B2	11/2003	Palatnik et al.
5,372,136	A	12/1994	Steuer et al.	6,654,624	B2	11/2003	Diab et al.
5,377,319	A *	12/1994	Kitahara et al. .... 715/707	6,658,276	B2	12/2003	Kianl et al.
5,385,143	A	1/1995	Aoyagi	6,658,277	B2	12/2003	Wasserman
5,390,670	A	2/1995	Centa et al.	6,662,030	B2	12/2003	Khalil et al.
5,413,099	A	5/1995	Schmidt et al.	6,668,183	B2	12/2003	Hicks et al.
5,454,722	A *	10/1995	Holland et al. .... 434/271	6,671,526	B1	12/2003	Aoyagi et al.
5,469,845	A	11/1995	DeLonzor et al.	6,671,528	B2	12/2003	Steuer et al.
5,482,036	A	1/1996	Diab et al.	6,678,543	B2	1/2004	Diab et al.
5,483,646	A	1/1996	Uchikoga	6,684,090	B2	1/2004	Ali et al.
5,553,614	A	9/1996	Chance	6,690,958	B1	2/2004	Walker et al.
5,558,638	A	9/1996	Evers et al.	6,697,658	B2	2/2004	Al-Ali
5,564,417	A	10/1996	Chance	6,708,048	B1	3/2004	Chance
5,575,285	A	11/1996	Takanashi et al.	6,711,424	B1	3/2004	Fine et al.
5,611,337	A	3/1997	Bukta	6,711,425	B1	3/2004	Reuss
5,630,413	A	5/1997	Thomas et al.	6,714,245	B1	3/2004	Ono
5,645,059	A	7/1997	Fein et al.	6,731,274	B2	5/2004	Powell
5,645,060	A	7/1997	Yorkey	6,785,568	B2	8/2004	Chance
5,673,691	A *	10/1997	Abrams et al. .... 600/300	6,785,670	B1	8/2004	Chiang et al.
5,680,857	A	10/1997	Pelikan et al.	6,793,654	B2	9/2004	Lemberg
5,692,503	A	12/1997	Keunstner	6,801,797	B2	10/2004	Mannheimer et al.
5,730,124	A	3/1998	Yamauchi	6,801,798	B2	10/2004	Geddes et al.
5,758,644	A	6/1998	Diab et al.	6,801,799	B2	10/2004	Mendelson
5,779,631	A	7/1998	Chance	6,829,496	B2	12/2004	Nagai et al.
5,782,757	A	7/1998	Diab et al.	6,829,501	B2	12/2004	Nielsen et al.
5,786,592	A	7/1998	Hök	6,850,053	B2	2/2005	Daalmans et al.
5,830,136	A	11/1998	DeLonzor et al.	6,863,652	B2	3/2005	Huang et al.
5,830,139	A	11/1998	Abreu	6,873,865	B2	3/2005	Steuer et al.
5,831,598	A	11/1998	Kauffert et al.	6,889,153	B2	5/2005	Dietiker
5,842,981	A	12/1998	Larsen et al.	6,898,451	B2	5/2005	Wuori
5,871,442	A	2/1999	Madarasz et al.	6,904,263	B2	6/2005	Grudnitski et al.
5,873,821	A	2/1999	Chance et al.	6,939,307	B1	9/2005	Dunlop
5,920,263	A	7/1999	Huttenhoff et al.	6,947,780	B2	9/2005	Scharf
5,995,855	A	11/1999	Kiani et al.	6,949,081	B1	9/2005	Chance
5,995,856	A	11/1999	Mannheimer et al.	6,961,598	B2	11/2005	Diab
5,995,859	A	11/1999	Takahashi	6,978,169	B1	12/2005	Guerra
6,011,986	A	1/2000	Diab et al.	6,983,178	B2	1/2006	Fine et al.
6,064,898	A	5/2000	Aldrich	6,993,371	B2	1/2006	Kiani et al.
6,081,742	A	6/2000	Amano et al.	6,996,427	B2	2/2006	Ali et al.
6,088,607	A	7/2000	Diab et al.	7,024,235	B2	4/2006	Melker et al.
6,120,460	A	9/2000	Abreu	7,027,849	B2	4/2006	Al-Ali
6,134,460	A	10/2000	Chance	7,030,749	B2	4/2006	Al-Ali
6,150,951	A	11/2000	Olejniczak	7,035,697	B1	4/2006	Brown
6,154,667	A	11/2000	Miura et al.	7,047,056	B2	5/2006	Hannula et al.
6,163,715	A	12/2000	Larsen et al.	7,048,544	B2	5/2006	Olsen
6,181,958	B1	1/2001	Steuer et al.	7,127,278	B2	10/2006	Melker et al.
6,181,959	B1	1/2001	Schöllermann et al.	7,162,306	B2	1/2007	Caby et al.
6,230,035	B1	5/2001	Aoyagi et al.	7,209,775	B2	4/2007	Bae et al.
6,266,546	B1	7/2001	Steuer et al.	7,212,128	B2	5/2007	Schenker
6,285,895	B1	9/2001	Ristolainen et al.	7,236,811	B2	6/2007	Schmitt
6,312,393	B1	11/2001	Abreu	7,263,395	B2	8/2007	Chan et al.
6,353,750	B1	3/2002	Kimura et al.	7,272,426	B2	9/2007	Schmid
6,397,091	B2	5/2002	Diab et al.	7,277,752	B2	10/2007	Matos
6,415,236	B2	7/2002	Kobayashi et al.	7,373,193	B2	5/2008	Al-Ali et al.
6,419,671	B1	7/2002	Lemberg	7,401,111	B1 *	7/2008	Batman et al. .... 709/200
6,438,399	B1	8/2002	Kurth	7,647,237	B2 *	1/2010	Malave et al. .... 705/3
6,461,305	B1	10/2002	Schnall	7,979,284	B2 *	7/2011	Brown ..... 705/2
6,466,809	B1	10/2002	Riley	8,001,470	B1 *	8/2011	Chen et al. .... 715/714
6,487,439	B1	11/2002	Skladnev et al.	2001/0005773	A1	6/2001	Larsen et al.
6,493,568	B1	12/2002	Bell et al.	2001/0020122	A1	9/2001	Steuer et al.
6,501,974	B2	12/2002	Huiku	2001/0039376	A1	11/2001	Steuer et al.
6,501,975	B2	12/2002	Diab et al.	2001/0044700	A1	11/2001	Kobayashi et al.
6,526,301	B2	2/2003	Larsen et al.	2002/0026106	A1	2/2002	Khalil et al.
6,544,193	B2	4/2003	Abreu	2002/0035318	A1	3/2002	Mannheimer et al.
				2002/0038079	A1	3/2002	Steuer et al.
				2002/0042558	A1	4/2002	Mendelson
				2002/0049389	A1	4/2002	Abreu
				2002/0062071	A1	5/2002	Diab et al.

(56)

## References Cited

## U.S. PATENT DOCUMENTS

2002/0111748	A1	8/2002	Kobayashi et al.	
2002/0133068	A1	9/2002	Huiku	
2002/0156354	A1	10/2002	Larson	
2002/0161287	A1	10/2002	Schmitt	
2002/0161290	A1	10/2002	Chance	
2002/0165439	A1	11/2002	Schmitt	
2002/0198443	A1	12/2002	Ting	
2003/0023140	A1	1/2003	Chance	
2003/0027121	A1*	2/2003	Grudnitski et al.	434/308
2003/0055324	A1	3/2003	Wasserman	
2003/0059009	A1*	3/2003	Meyerson et al.	379/93.17
2003/0060693	A1	3/2003	Monfre et al.	
2003/0061071	A1	3/2003	Babula et al.	
2003/0073064	A1*	4/2003	Riggs	434/350
2003/0120164	A1*	6/2003	Nielsen et al.	600/513
2003/0139687	A1	7/2003	Abreu	
2003/0144584	A1	7/2003	Mendelson	
2003/0144877	A1*	7/2003	Goldmann et al.	705/2
2003/0158467	A1*	8/2003	Liebert	600/300
2003/0220548	A1	11/2003	Schmitt	
2003/0220576	A1	11/2003	Diab	
2004/0006480	A1*	1/2004	Ehlen et al.	704/276
2004/0010188	A1	1/2004	Wasserman	
2004/0018477	A1*	1/2004	Olsen	434/307 R
2004/0034284	A1*	2/2004	Aversano et al.	600/300
2004/0036715	A1*	2/2004	Warren	345/713
2004/0054270	A1	3/2004	Pewzner et al.	
2004/0087846	A1	5/2004	Wasserman	
2004/0107065	A1	6/2004	Al-Ali	
2004/0127779	A1	7/2004	Steuer et al.	
2004/0171920	A1	9/2004	Mannheimer et al.	
2004/0176670	A1	9/2004	Takamura et al.	
2004/0176671	A1	9/2004	Fine et al.	
2004/0204635	A1*	10/2004	Scharf et al.	600/323
2004/0230106	A1	11/2004	Schmitt et al.	
2005/0080323	A1	4/2005	Kato	
2005/0101850	A1	5/2005	Parker	
2005/0113651	A1	5/2005	Wood et al.	
2005/0113656	A1	5/2005	Chance	
2005/0137481	A1	6/2005	Sheard et al.	
2005/0148885	A1	7/2005	Tweed et al.	
2005/0168722	A1	8/2005	Forstner et al.	
2005/0177034	A1	8/2005	Beaumont	
2005/0192488	A1	9/2005	Bryenton et al.	
2005/0203357	A1	9/2005	Debreczeny et al.	
2005/0228248	A1	10/2005	Dietiker	
2005/0267346	A1	12/2005	Faber et al.	
2005/0283059	A1	12/2005	Iyer et al.	
2006/0009688	A1	1/2006	Lamego et al.	
2006/0015021	A1	1/2006	Cheng	
2006/0020181	A1	1/2006	Schmitt	
2006/0030763	A1	2/2006	Mannheimer et al.	
2006/0052680	A1	3/2006	Diab	
2006/0058683	A1	3/2006	Chance	
2006/0064024	A1	3/2006	Schnall	
2006/0195028	A1	8/2006	Hannula et al.	
2006/0224058	A1	10/2006	Mannheimer	
2006/0247501	A1	11/2006	Ali	
2006/0258921	A1	11/2006	Addison et al.	
2006/0287586	A1*	12/2006	Murphy	600/300
2007/0129610	A1*	6/2007	Squilla	600/300
2007/0162505	A1	7/2007	Cecchi et al.	
2007/0225575	A1	9/2007	Kilborn et al.	
2007/0225580	A1	9/2007	Wang et al.	
2008/0000477	A1	1/2008	Huster et al.	
2008/0032267	A1*	2/2008	Suzansky	434/1
2008/0214906	A1	9/2008	Wang et al.	

## FOREIGN PATENT DOCUMENTS

EP	0630203	12/1994
EP	0654734 A1	5/1995
EP	1051945 A	11/2000

EP	2336925 A2	6/2011
EP	2336926 A2	6/2011
JP	63275325	11/1988
JP	2237544	9/1990
JP	8256996	10/1996
JP	2005034472	2/2005
JP	2009539187 A	11/2009
WO	WO9639927	12/1996
WO	WO0021438	4/2000
WO	WO0140776	6/2001
WO	WO0176461	10/2001
WO	WO0176471	10/2001
WO	WO03039326	5/2003
WO	2007109732 A1	9/2007
WO	2007109737 A1	9/2007
WO	2007143132 A2	12/2007

## OTHER PUBLICATIONS

Pickett, John, et al.; "Pulse Oximetry and PPG Measurements in Plastic Surgery," *Proceedings—19<sup>th</sup> International Conference—IEEE/EMBS*, Chicago, Illinois, Oct. 30-Nov. 2, 1997, pp. 2330-2332.

East, Christine E., et al.; "Fetal Oxygen Saturation and Uterine Contractions During Labor," *American Journal of Perinatology*, vol. 15, No. 6, pp. 345-349 (Jun. 1998).

Seelbach-Göbel, Birgit, et al.; "The prediction of fetal acidosis by means of intrapartum fetal pulse oximetry," *Am J. Obstet. Gynecol.*, vol. 180, No. 1, Part 1, pp. 73-81 (1999).

Nilsson, Lena, et al.; "Monitoring of Respiratory Rate in Postoperative Care Using a New Photoplethysmographic Technique," *Journal of Clinical Monitoring and Computing*, vol. 16, pp. 309-315 (2000).

Belal, Suliman Yousef, et al.; "A fuzzy system for detecting distorted plethysmogram pulses in neonates and paediatric patients," *Physiol. Meas.*, vol. 22, pp. 397-412 (2001).

Earthrowl-Gould, T., et al.; "Chest and abdominal surface motion measurement for continuous monitoring of respiratory function," *Proc. Instn Mech Engrs*, V215, Part H; pp. 515-520 (2001).

Maletras, Francois-Xavier, et al.; "Construction and calibration of a new design of Fiber Optic Respiratory Plethysmograph (FORP)," *Optomechanical Design and Engineering, Proceedings of SPIE*, vol. 4444, pp. 285-293 (2001).

Lutter, Norbert O., et al.; "False Alarm Rates of Three Third-Generation Pulse Oximeters in PACU, ICU and IABP Patients," *Anesth Analg*, vol. 94, pp. S69-S75 (2002).

Yoon, Gilwon, et al.; Multiple diagnosis based on Photo-plethysmography: hematocrit, SpO<sub>2</sub>, pulse and respiration, *Optics in Health Care and Biomedical optics: Diagnostics and Treatment, Proceedings of the SPIE*, vol. 4916; pp. 185-188 (2002).

Johansson, A.; "Neural network for photoplethysmographic respiratory rate monitoring," *Medical & Biological Engineering & Computing*, vol. 41, pp. 242-248 (2003).

Johnston, W.S., et al.; "Extracting Breathing Rate Information from a Wearable Reflectance Pulse Oximeter Sensor," *Proceedings of the 26<sup>th</sup> Annual International conference of the IEEE EMBS*, San Francisco, California; Sep. 1-5, 2004; pp. 5388-5391.

Spigulis, Janis, et al.; "Optical multi-channel sensing of skin blood pulsations," *Optical Sensing, Proceedings of SPIE*, vol. 5459, pp. 46-53 (2004).

Bar J., et al.; "Das grobe Windows 3.1 Buch"; 1992, Data Becker, pp. 89-132.

Nellcor OxiMax N-600 Pulse Oximeter Home Use Guide; Mar. 17, 2006; pp. 1-98.

Extended Search Report for European Application No. 11002722.4 dated Dec. 14, 2011; pp. 1-7.

International Search Report for PCT/US2007/064530 mailed Aug. 16, 2007, pp. 1-5.

International Search Report for PCT/US2007/064538 mailed Aug. 2, 2007, pp. 1-5.

Berry, R.E., et al.; "Contextual Help Facility for Interactive Systems"; www.ip.com; Mar. 1, 1985; pp. 1-2.

\* cited by examiner

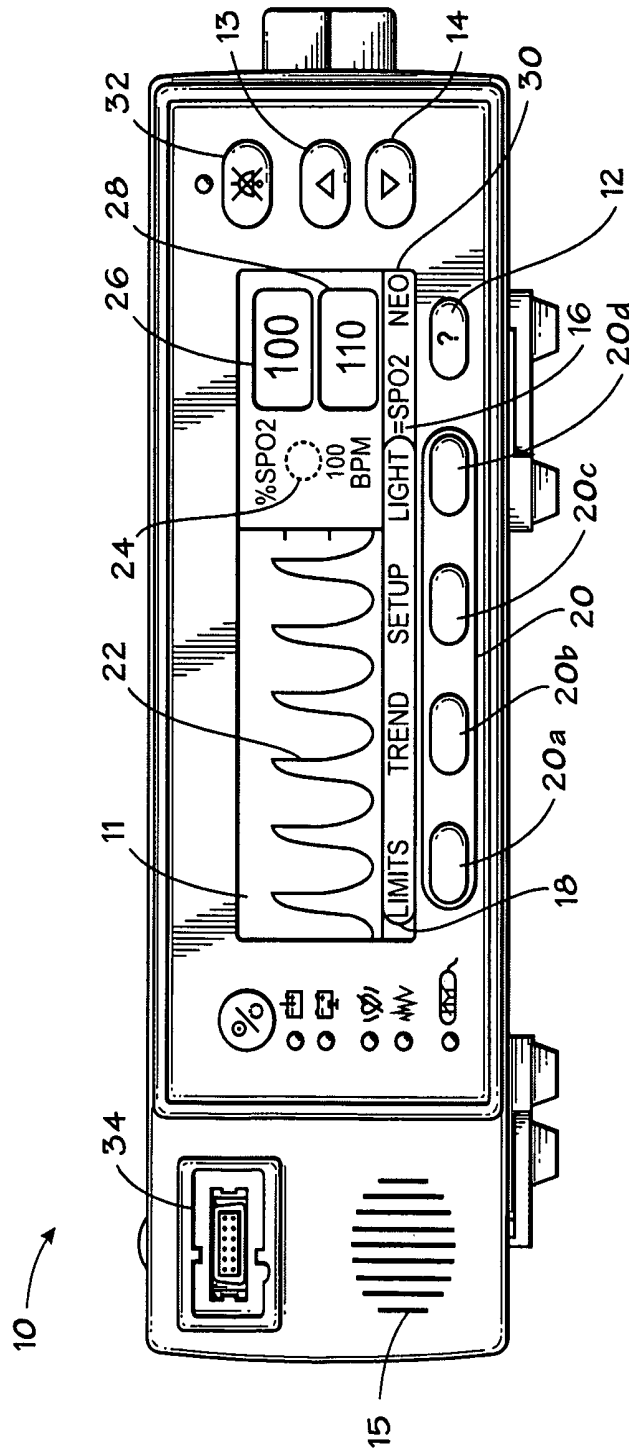


FIG. 1

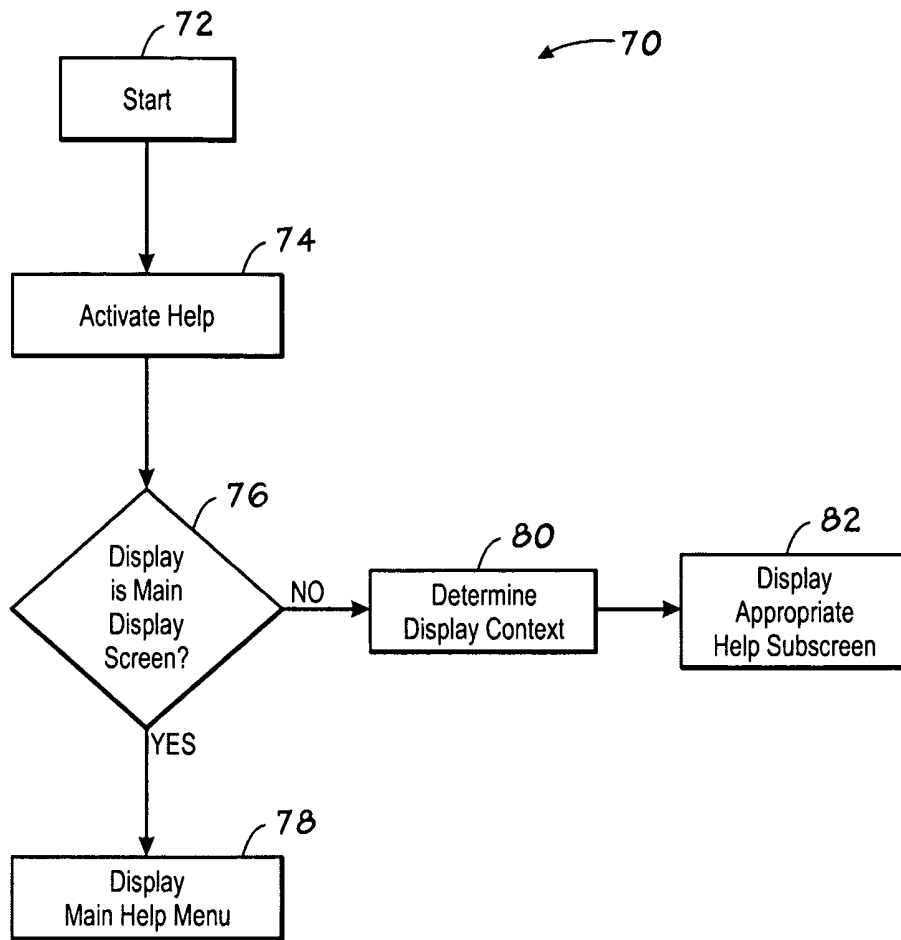


FIG. 2

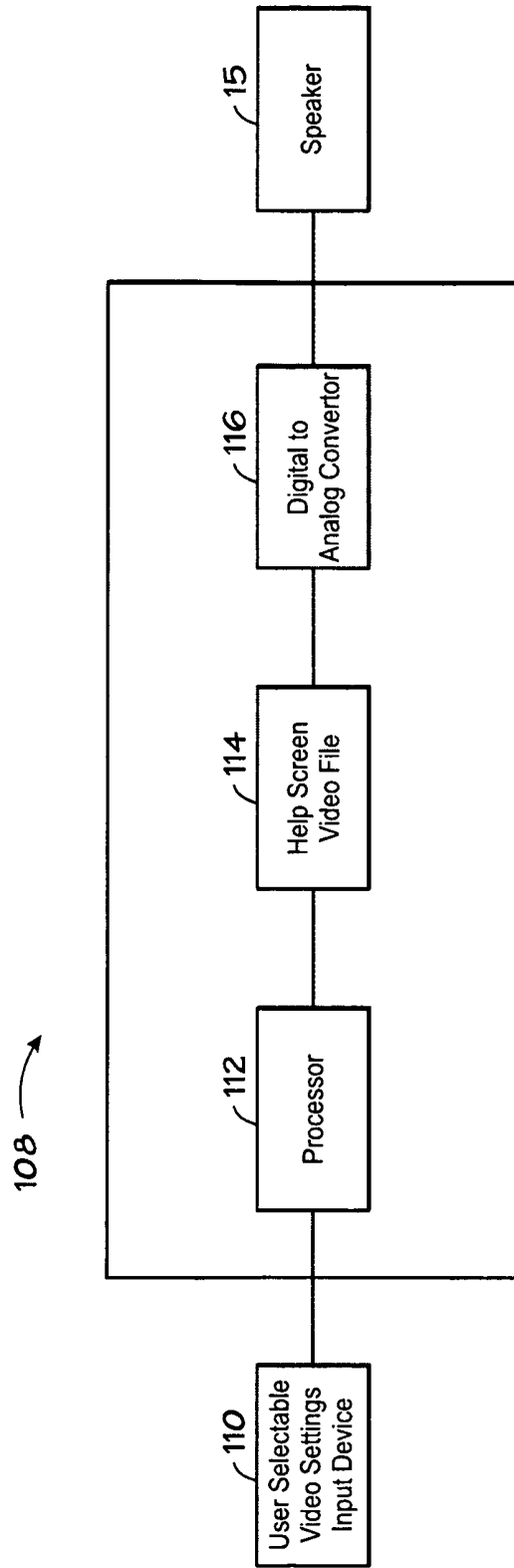


FIG. 3

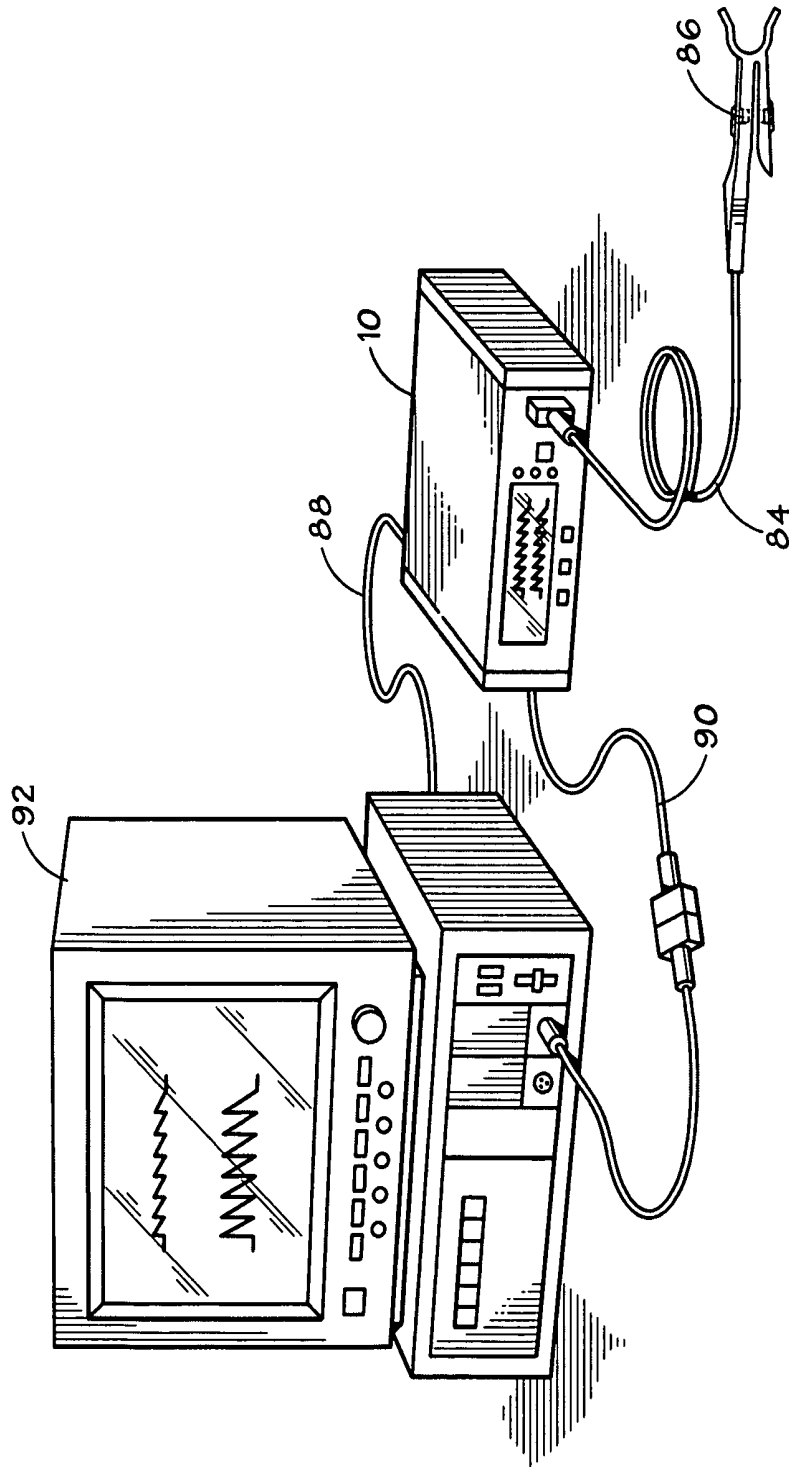


FIG. 4

## PATIENT MONITORING HELP VIDEO SYSTEM AND METHOD

### CROSS-REFERENCE TO RELATED APPLICATIONS

This application is a continuation-in-part of both U.S. application Ser. No. 11/386,038, filed Mar. 21, 2006, and U.S. application Ser. No. 11/445,495, filed May 31, 2006, both of which are incorporated by reference herein in their entirety for all purposes. This application also claims priority to Provisional Application No. 61/016,733, filed Dec. 26, 2007, which is incorporated by reference herein in its entirety for all purposes.

### BACKGROUND

The present invention relates generally to help screen systems for patient physiological data monitoring instruments. In particular, the present invention relates to a context-sensitive messaging using photographic stills and/or video.

This section is intended to introduce the reader to various aspects of art that may be related to various aspects of the present invention, which are described and/or claimed below. This discussion is believed to be helpful in providing the reader with background information to facilitate a better understanding of the various aspects of the present invention. Accordingly, it should be understood that these statements are to be read in this light, and not as admissions of prior art.

In the field of medicine, doctors often desire to monitor certain physiological characteristics of their patients. Accordingly, a wide variety of devices have been developed for monitoring many such characteristics of a patient. Such devices provide doctors and other healthcare personnel with the information they need to provide the best possible healthcare for their patients. As a result, such monitoring devices have become an indispensable part of modern medicine.

One technique for monitoring certain physiological characteristics of a patient is commonly referred to as pulse oximetry, and the devices built based upon pulse oximetry techniques are commonly referred to as pulse oximeters. Pulse oximetry may be used to measure various blood flow characteristics, such as the blood-oxygen saturation of hemoglobin in arterial blood, the volume of individual blood pulsations supplying the tissue, and/or the rate of blood pulsations corresponding to each heartbeat of a patient.

Pulse oximetry typically utilizes a patient monitoring device that, among other functions, displays information related to patient vital signs and provides an audible and/or visual alarm when changes in the vital signs so warrant. This improves patient care by facilitating continuous supervision of a patient without continuous attendance by a human observer (e.g., a nurse or physician). However, as pulse oximetry has become more sophisticated, the number and variety of functions that a pulse oximetry monitor may perform has increased. Thus, operating a pulse oximetry monitor has become more complex for the user. Further, while pulse oximetry monitors typically have detailed user manuals that may address the increasing complexity, these manuals may not always be stored together with the monitoring instruments.

### SUMMARY

Certain aspects commensurate in scope with the originally claimed invention are set forth below. It should be understood that these aspects are presented merely to provide the reader

with a brief summary of certain forms the invention might take and that these aspects are not intended to limit the scope of the invention. Indeed, the invention may encompass a variety of aspects that may not be set forth below.

Embodiments of the present disclosure to a patient monitoring help video system and method. Specifically, embodiments include a patient monitoring device (e.g., pulse oximeter) with an integral help screen system including display of video. The help screen system may provide context-sensitive help, such that the help screen and/or video accessed by a help key may relate to a specific display context.

There may be provided a monitoring system that includes: a patient monitor configured to display physiological information related to a patient; and a user input device in communication with the monitor, wherein the user input device is configured to cause the monitor to display a help screen comprising video.

There may also be provided a monitoring system that includes: a patient monitor having a display configured to provide a plurality of output displays of computerized processes, wherein the plurality of output displays are configured to be associated with a respective plurality of contexts; and a user input device in communication with the monitor, wherein the user input device is configured to effect activation of a plurality of help screens on the display, wherein the plurality of help screens are associated with the respective plurality of contexts, and wherein at least one of the help screens comprises video.

In addition, there may be provided a monitoring system that includes: a patient monitor configured to display physiological information related to a patient; and a user input device in communication with the monitor, wherein the user input device is configured to cause the monitor to display a video, the video comprising a report of patient data, a report of performance of the patient monitor, a warning, an alarm, a help message, or a user manual, or any combination thereof.

Further, there may be provided a monitoring system that includes: a patient monitor having a display configured to provide a plurality of output displays of computerized processes, wherein the plurality of output displays are configured to be associated with a respective plurality of contexts; and a user input device in communication with the monitor, wherein the user input device is configured to effect activation of a plurality of video help messages, wherein the plurality of video help messages are context sensitive.

Still further, there may be provided a method of monitoring a patient, including: monitoring a patient with a patient monitoring device; activating a help system associated with the patient monitoring device; and displaying a screen of the help system, wherein the screen comprises a video.

### BRIEF DESCRIPTION OF THE DRAWINGS

Advantages of the invention may become apparent upon reading the following detailed description and upon reference to the drawings in which:

FIG. 1 is a perspective view of a physiological monitor in accordance with an exemplary embodiment;

FIG. 2 is a flow chart of a method for providing a context-sensitive image messaging help screen in accordance with an exemplary embodiment;

FIG. 3 is a block diagram of a video help module for providing video versions of help screens in accordance with an exemplary embodiment; and

FIG. 4 is a view of a multiparameter monitor and exemplary patient physiological monitor in accordance with an exemplary embodiment.

#### DETAILED DESCRIPTION OF SPECIFIC EMBODIMENTS

One or more specific embodiments of the present invention will be described below. In an effort to provide a concise description of these embodiments, not all features of an actual implementation are described in the specification. It should be appreciated that in the development of any such actual implementation, as in any engineering or design project, numerous implementation-specific decisions must be made to achieve the developers' specific goals, such as compliance with system-related and business-related constraints, which may vary from one implementation to another. Moreover, it should be appreciated that such a development effort might be complex and time consuming, but would nevertheless be a routine undertaking of design, fabrication, and manufacture for those of ordinary skill having the benefit of this disclosure.

The present disclosure relates to a patient monitor with a help screen system. A patient monitor, such as a pulse oximeter, is provided that displays physiological information and includes a user-input device that allows a user to access a help screen system. The help screen system may be integral to the patient monitor and, in the presently disclosed embodiments, it may incorporate video and/or photo stills. In operation, the healthcare provider may access this video help system to seek answers for questions about the operation of the device without losing time searching for a hard-copy user manual, for example. The video presentation of information to the user may duplicate, augment, and/or improve information provided in a hard-copy or primarily textual user manual. In the context of this disclosure, "video" may include not only actual captured images, e.g., from a video camera, but may also include, animation, graphical images, and so forth. For example, if the help message relates to training a caregiver to apply a particular type of sensor properly, the video may include actual captured images of a person applying a sensor and/or an animation illustrating how to apply the sensor.

Moreover, a user may find a user manual to be lengthy and problematic, especially when attempting to peruse and read a hardcopy of the user manual. Further, it is not uncommon that the hardcopy user manual may be lost or that it may not be stored with the medical device. In contrast, with an embedded video user manual and/or help screen, a user can readily access the video and receive educational information, such as safety warnings, how to use the device, or how to solve a problem, and so forth.

Indeed, with the present techniques and current affordable technology, the user interface of medical device (e.g., a pulse oximeter monitor) can be more than just a text screen. Novel video applications include video display of a user manual or equipment information, video help functions, video patient (physiological) report, video alarm, and so on. Thus, in addition or in lieu of text or audio help, a user can playback a video clip to receive help information. In certain embodiments, these video clips or photographic stills may be accessed either hierarchically (e.g., from the main help menu) or contextually at given functional screens.

Lastly, it should be noted that while the present discussion may focus on providing help information (via video or photographic stills), the present techniques also apply to providing information that may or may not be considered typical help information, such as information regarding system or patient warnings or alarms, patient monitoring data or

reports, and so on. For example, variations of the present techniques include incorporation of a video report (which may have audio). For instance, a nurse or doctor may press a button on the patient monitoring device (e.g., pulse oximeter) to view a video/audio report regarding the last two hours (or any configurable time duration) of the monitoring of the patient. In another embodiment, when an alarm condition occurs, a relevant pre-stored video/audio is played to explain what happened to the patient or monitoring device, and what treatment/measurements might be recommended.

Thus, a monitoring system (e.g., pulse oximeter) may include a patient monitor configured to display physiological information related to a patient. The monitoring system may include a user input device in communication with the monitor. The user input device may cause the monitor to display a video, which may be a report of patient data, a report of performance of the patient monitor, a warning, an alarm, a help message, or a user manual, or any combination thereof, and so on. The video displayed may be context sensitive to the current status of the patient monitor or to a current point in a menu tree of a control scheme of the patient monitor, for example.

FIG. 1 is a perspective view of a patient monitor 10 in accordance with an exemplary embodiment. The monitor 10 includes a display window 11, which may be a cathode ray tube or liquid crystal display, for example. The display window 11 is coupled with the monitor 10 and may display physiological data and other information. For example, the monitor 10 may be a pulse oximeter, such as those available from Nellcor Puritan Bennett LLC. The monitor 10 includes a user-input device for activating a help screen display that may include any type of user-input mechanism, such as a fixed function key, a soft key, a remote activation device, a touch screen, or a voice recognition device. An exemplary user-input device is depicted here as a help key 12 that effects the display of a help video in the display window 11, discussed in more detail below. Of course, it should be noted that the video information may be provided instead on another display separate from the display 11, and that the separate display may be integrated with the monitor 10 or operably coupled to it. The help key 12 may include a question mark icon or a text indicator such as HELP. In certain embodiments, activation of the help key 12 may involve pressing or pressing the key 12 and releasing the key 12.

Activation of the help key 12 may switch the display window 11 view from a patient information display to a help video. Such a switch may involve complete replacement of the previous display, or may involve only partial replacement of the display such that sections of the previous display remain visible. In certain embodiments (not shown) the monitor 10 may include an additional display window that is a dedicated help display window. In such an embodiment, the help video or screen stills may be displayed without interfering with the display from the first output display window. Also, as indicated below with regard to FIG. 4, the help video or stills may be displayed on a multi-parameter monitor 92.

In general, the monitor 10 includes functions such as processing physiological data and/or other data received from a patient sensor (discussed below) via a cable connection port 34 that is configured to communicatively couple with the sensor. The monitor 10 may be processor-based and software-controlled. The software may be stored in memory, such as RAM, ROM, flash, or on ASIC. Additionally, the monitor 10 may be re-programmed. The processed data may be displayed in the display window 11. For example, a display may include a plethysmographic ("pleth") waveform display 22, an oxygen saturation display 26, and/or a pulse rate display 28 that

are displayed in a main display screen or a pleth display screen. The oxygen saturation displays may be a functional arterial hemoglobin oxygen saturation measurement in units of percentage SPO<sub>2</sub>. The pulse rate display **28** may indicate a patient's pulse rate in beats per minute. In other embodiments, the display window **11** may show an initial display immediately after the monitor **10** is turned on that includes the general monitor information, such as the serial number of the instrument and the software version. In other embodiments, the display window **11** may show topic-specific screens, such as a setup display, a help video or still, a "blip" display that includes pulse amplitude blips, a real-time trend display, and an alarm limit and monitoring mode display.

In addition to displaying physiological information, the monitor **10** may also display information related to alarms and monitor settings. The monitor also may include at least speaker **15** for audible alarm signals. For example, in some embodiments, the monitor **10** employs SatSeconds™ by Nellcor™ to detect alarms and manage nuisance alarms. SatSeconds™ may include activation of an alarm based on limits that may include the integral of time and depth of a desaturation event and may also include an indicator **24** that may serve to inform the operator that an SpO<sub>2</sub> reading has been detected outside of the limit settings. The display may also include an alarm status indicator (not shown), such as a bell that flashes when an alarm condition is present. When the alarm is silenced using the alarm silence button **32**, an alarm silence indicator, such as a slash and a timer, may be shown to indicate that the alarm is temporarily silenced. When the alarm is silenced through an "all mute" menu selection, which is permanent until power is cycled or deselected using menu, an alarm status indicator with a slash may be shown to indicate that alarm has been silenced. Further, the display may include mode setting information such as neonatal mode alarm limits or adult mode alarm limits indicators **30** and special settings such as a fast response mode setting indicator **16**.

In addition to a help key **12**, or other help user-input device, the monitor **10** may include a number of keys that are related to the operating functions. The keys may include fixed function keys, such as the arrow up key **13** or the arrow down key **14** that may be used to scroll through items in the display window **11**. Fixed function keys may be configured to have dual functions. For example, in certain embodiments (not shown), the help key **12** may be configured to bring up a help screen when depressed for less than a predetermined amount of time, and may be used to adjust the contrast in combination with the arrow up key **13** and arrow down key **14** when pressed for longer than the predetermined amount of time. In such an embodiment where the help key **12** includes a programmed contrast adjust function, the help key **12** may include two different icons, such as a question mark icon and a light bulb icon. The monitor **10** may also include programmable function keys ("soft keys") **20**, and associated soft key icons in the soft key menu **18**. The four soft keys **20a**, **20b**, **20c**, and **20d** are pressed to select a corresponding one of the soft key icons. The soft key icon menu **18** indicates which software menu items can be selected through the soft keys **20**. Pressing a soft key **20** associated with, such as below, above, or next to an icon, selects the option.

FIG. 2 is a block diagram of a method **70** for providing a monitor **10** with context-sensitive messaging help in accordance with an exemplary embodiment of the present invention. Context-sensitive messaging help allows an operator to quickly access help screens relating to topics that are specific to a particular monitor display. Thus, when a user is on a display screen relating to a particular topic, such as alarm management, activating help (e.g., pressing the help key **12**)

will bring up the alarm management help screen. The method begins at block **72** and proceeds to block **74**, in which a user activates a help key **12**. The help function may also be activated by voice activation, touch screen, and so on.

Upon activation of the help key **12**, a processor may determine whether a monitor display screen is associated with a main display screen context in block **76**. An association of the monitor display with a main display context causes the processor to effect the display of a help screen main menu in block **78**. If the display is associated with a particular help context, as determined in block **80**, a help screen submenu is displayed in block **82** that is associated with the particular help context.

For example, if the monitor is in a trend display, a processor may determine that the trend display is associated with a trend display help context. Upon pressing the help key **12**, or otherwise activating help, the monitor display will switch to a trend help subscreen that contains trend help information. Thus, the operator may quickly access individual help topics from certain monitor displays without the necessity of navigating through the help screen main menu. In another example, a particular help subscreen may be available via the help key **12** after startup of the system, such that help information on the subscreen is related to startup of the system including calibration, threshold values, initiation of patient monitoring, and so forth. In yet another example, upon receipt of an alarm or warning from the system, a particular help subscreen having help items (including video) related to the alarm or warning, may be available by pressing the help key **12**, or otherwise activating help. Another example includes when the performance of the system is abnormal, or when the real-time patient data is skewed to a particular region, a subscreen having help information related to these items may be available instantly via the help system. In situations where the monitor display is not associated with a particular help subscreen, the processor may effect the display of the default help screen, the help main menu screen.

In certain embodiments, the monitor **10** may be configured to provide video help messages. Video help messages may be advantageous in for training purposes. In FIG. 3, a video help module **108** is depicted that is responsive to an audible settings-input device **110**. It is envisioned that the monitor settings menus may provide a soft key or other user-input device in order to activate video help. The video settings-input device **110** is in communication with a processor **112**. The processor **112**, which may include a video and/or a graphics controller, is able to retrieve from a memory an appropriate stored video help file **114** to be viewed on the display **11**. Video help files **114** may include jpeg files, mpeg files, or any other appropriate storage format. A video card **116** generates a signal from the video help file **114** and sends the signal to the display. It is envisioned that the video help files **114** may contain additional help information that may supplement the text or graphic help information separately. In certain embodiments, the video help message may be activated separately from the display of a help screen **52**. In such an embodiment, the video help message may be independent of a particular help screen context. In certain embodiments, the help information may be text, audio, video, stills, or any combination of these formats. Moreover, video files may be stored in a memory on the monitor or streamed/downloaded from a server or over the Internet. In one embodiment, the monitor may include a Hypertext Transfer Protocol (HTTP) server to facilitate communication and/or downloading of video from a server or over the Internet. For example, due to possible memory limitations, the monitor may store certain

relatively short help videos, while longer and/or supplemental videos may be accessed via a server or over the Internet.

The exemplary pulse oximetry monitor **10** described herein may be used with a sensor **86**, as illustrated in FIG. **4**. It should be appreciated that the cable **84** of the sensor **86** may be coupled to the monitor **10** or it may be coupled to a transmission device (not shown) to facilitate wireless transmission between the sensor **86** and the monitor **10**. The sensor **86** may be any suitable sensor **86**, such as those available from Nellcor Puritan Bennett LLC. Furthermore, to upgrade conventional pulse oximetry provided by the monitor **10** to provide additional functions, the monitor **10** may be coupled to a multi-parameter patient monitor **92** via a cable **90** connected to a sensor input port or via a cable **88** connected to a digital communication port. It should be understood that the help video screens described herein may be upgraded through, for example, software upgrades or plug-ins that may enhance or alter the help screen displays.

While the invention may be susceptible to various modifications and alternative forms, specific embodiments have been shown by way of example in the drawings and will be described in detail herein. However, it should be understood that the invention is not intended to be limited to the particular forms disclosed. Rather, the invention is to cover all modifications, equivalents and alternatives falling within the spirit and scope of the invention as defined by the following appended claims.

What is claimed is:

1. A monitoring system comprising:  
a patient monitor configured to display physiological information related to vascular parameters of a patient, wherein the patient monitor comprises a processor; and a user input device in communication with the monitor, wherein the processor is configured to cause the monitor to display a help screen comprising video, wherein the video displayed is context-sensitive to a current status of the patient monitor as determined by the processor based on the current status of the patient monitor and a user input received by the user input device.
2. The system of claim **1**, wherein the patient monitor is configured to display a plethysmographic waveform, a heart rate, an SpO<sub>2</sub> value, or an alarm indicator, or any combination thereof.
3. The system of claim **1**, comprising a first display window configured to display the physiological information and a second display window configured to display the help screen.
4. The system of claim **1**, wherein the patient monitor comprises a pulse oximeter.
5. A monitoring system comprising:  
a patient monitor comprising a display configured to provide a plurality of output displays of computerized processes, wherein the plurality of output displays are configured to be associated with a respective plurality of contexts related to pulse oximetry readings from a patient, wherein the patient monitor comprises a processor; and  
a user input device in communication with the patient monitor, wherein the processor is configured to effect activation of a plurality of help screens on the display, wherein the plurality of help screens are associated with the respective plurality of contexts, wherein at least one of the plurality of help screens comprises video, and wherein the processor is configured to determine a current state of the patient monitor and to effect activation of an appropriate help screen based on the current state of the patient monitor and a user input received by the user input device.

6. The system of claim **5**, wherein the patient monitor comprises a pulse oximeter.

7. A monitoring system comprising:  
a patient monitor configured to display physiological information related to vascular parameters of a patient, wherein the patient monitor comprises a processor; and a user input device in communication with the monitor, wherein the processor is configured to cause the monitor to display a video, the video comprising a report of patient data, a report of performance of the patient monitor, a warning, an alarm, or a help message, or any combination thereof, and wherein the video displayed is determined by the processor based on the current status of the patient monitor and a user input received by the user input device.

8. The system of claim **7**, wherein the patient monitor comprises a pulse oximeter.

9. A monitoring system comprising:  
a patient monitor comprising a display configured to provide a plurality of output displays of computerized processes, wherein the plurality of output displays are configured to be associated with a respective plurality of contexts related to a current operational status of the patient monitor relating to pulse oximetry readings of a patient, wherein the patient monitor comprises a processor; and  
a user input device in communication with the patient monitor, wherein the processor is configured to determine a current operational status of the patient monitor and to effect activation of at least one video help message based on the current operational status of the patient monitor and a user input received by the user input device.

10. A patient monitor comprising:  
a sensor configured to sense physiological information related to pulse oximetry readings of a patient;  
a processor configured to provide video help files for display, wherein the video displayed is context-sensitive to a current status of the patient monitor as determined by the processor based at least in part on the current status of the patient monitor; and  
a display configured to display the physiological information and the video help files.

11. The system of claim **10**, comprising a memory configured to store the video help files.

12. The system of claim **10**, wherein the processor is configured to facilitate streaming of the video help files from a server.

13. The system of claim **10**, wherein the patient monitor comprises a pulse oximeter.

14. A method of monitoring a patient, comprising:  
monitoring vascular parameters of a patient with a patient monitoring device;  
accessing a help system associated with the patient monitoring device; and  
causing the display of a screen of the help system, wherein the screen comprises a video, wherein the video displayed is context-sensitive to a current status of the patient monitoring device as determined by a processor of the patient monitoring device.

15. The method of claim **14**, wherein displaying the screen comprises displaying the screen comprising the video on a display of the patient monitoring device.

16. The method of claim **14**, wherein accessing the help system comprises retrieving a help screen in response to the pushing of a key or button associated with the patient monitoring device.

17. The method of claim 14, wherein accessing the help system comprises retrieving a screen of the help system from a memory of the patient monitoring device.

18. The method of claim 14, wherein accessing the help system comprises retrieving a screen of the help system from a server.

19. The method of claim 14, wherein the patient monitoring device comprises a pulse oximeter.

20. The system of claim 1, wherein the video displayed comprises information related to alarm management, if the current status of the patient monitor relates to an alarm.

21. The system of claim 20, wherein the information related to alarm management comprises an explanation related to the alarm, a recommendation for treatment, a recommendation for a response to the alarm, or a combination thereof.

22. The system of claim 1, wherein the video displayed comprises information related to system startup, if the current status of the patient monitor relates to a startup of the system.

23. The system of claim 22, wherein the information related to system startup comprises information related to calibration, threshold values, initiation of patient monitoring, or a combination thereof.

24. The system of claim 1, wherein the video displayed comprises information related to training a caregiver on how to properly apply a medical sensor.

25. The system of claim 1, comprising a memory configured to store the video.

26. The system of claim 5, wherein the current context relates to an alarm and the appropriate help screen provides information related to alarm management.

27. The system of claim 26, wherein the help screen provides an explanation related to the alarm, a recommendation for treatment, a recommendation for a response to the alarm, or any combination thereof.

28. The system of claim 5, wherein the current context relates to startup of the system and the appropriate help screen provides information related to system startup.

29. The system of claim 28, wherein the information related to system startup comprises information related to calibration, threshold values, initiation of patient monitoring, or a combination thereof.

\* \* \* \* \*

专利名称(译)	患者监测帮助视频系统和方法		
公开(公告)号	<a href="#">US8702606</a>	公开(公告)日	2014-04-22
申请号	US12/122358	申请日	2008-05-16
[标]申请(专利权)人(译)	内尔科尔普里坦贝内特公司		
申请(专利权)人(译)	NELLCOR PURITAN BENNETT LLC		
当前申请(专利权)人(译)	COVIDIEN LP		
[标]发明人	WANG HUI MENG MIN		
发明人	WANG, HUI MENG, MIN		
IPC分类号	A61B5/00 G06F19/00		
CPC分类号	G06F9/4446 G06F19/3406 G16H40/63 G06F9/453		
优先权	61/016733 2007-12-26 US		
其他公开文献	US20080214906A1		
外部链接	<a href="#">Espacenet</a> <a href="#">USPTO</a>		

摘要(译)

本发明的实施例涉及患者监视帮助屏幕系统和方法。具体地，本发明的实施例包括患者监测设备，其具有包括视频显示的整体帮助屏幕系统。帮助屏幕系统可以提供上下文敏感的帮助，使得由帮助键访问的帮助屏幕可以涉及特定的显示上下文。

