



US007819804B2

(12) **United States Patent**
Hatlestad et al.

(10) **Patent No.:** **US 7,819,804 B2**
(45) **Date of Patent:** ***Oct. 26, 2010**

(54) **DETECTION OF CONGESTION FROM MONITORING PATIENT RESPONSE TO A RECUMBENT POSITION**

5,040,536 A 8/1991 Riff

(75) Inventors: **John D. Hatlestad**, Maplewood, MN (US); **Qingsheng Zhu**, Wexford, PA (US); **Jeffrey E. Stahmann**, Ramsey, MN (US)

(Continued)

FOREIGN PATENT DOCUMENTS

EP 0985374 A2 3/2000

(73) Assignee: **Cardiac Pacemakers, Inc.**, St. Paul, MN (US)

(*) Notice: Subject to any disclaimer, the term of this patent is extended or adjusted under 35 U.S.C. 154(b) by 135 days.

(Continued)

OTHER PUBLICATIONS

This patent is subject to a terminal disclaimer.

"U.S. Appl. No. 10/267,982, Notice of Allowance mailed Jun. 2, 2006", 7 pgs.

(Continued)

(21) Appl. No.: **12/204,152**

(22) Filed: **Sep. 4, 2008**

Primary Examiner—Robert L Nasser

(74) *Attorney, Agent, or Firm*—Schwegman, Lundberg & Woessner, P.A.

(65) **Prior Publication Data**

US 2009/0005697 A1 Jan. 1, 2009

(57) **ABSTRACT**

Related U.S. Application Data

(60) Continuation of application No. 11/926,425, filed on Oct. 29, 2007, now Pat. No. 7,422,560, which is a division of application No. 11/619,821, filed on Jan. 4, 2007, now Pat. No. 7,384,395, which is a division of application No. 10/267,982, filed on Oct. 9, 2002, now Pat. No. 7,226,422.

Systems and methods obtain information that allows detection of whether a patient suffers from congestion by monitoring a response of the patient to a recumbent position of the patient's body. The patient may be monitored to determine a respiration pattern for a non-recumbent position such as standing and a respiration pattern for a recumbent position such as lying down. The two patterns may be compared, either by a processing device or a physician, to determine a difference in the two respiration patterns. Furthermore, the congestion may be inferred from detecting an amount of time that the patient spends in a recumbent position or from detecting the recumbent angle that the patient obtains, either of which is presumed to indicate whether a recumbent position presents discomfort to the patient due to the presence of congestion.

(51) **Int. Cl.**
A61B 5/00 (2006.01)

(52) **U.S. Cl.** **600/300; 600/534; 600/481**

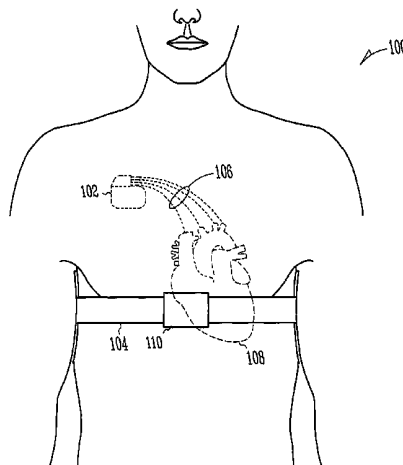
(58) **Field of Classification Search** None
See application file for complete search history.

(56) **References Cited**

U.S. PATENT DOCUMENTS

4,308,872 A 1/1982 Watson et al.

24 Claims, 7 Drawing Sheets



U.S. PATENT DOCUMENTS

5,233,984 A 8/1993 Thompson
 5,342,404 A 8/1994 Alt et al.
 5,593,431 A 1/1997 Sheldon
 6,002,963 A 12/1999 Mouchawar et al.
 6,015,388 A 1/2000 Sackner et al.
 6,047,203 A 4/2000 Sackner et al.
 6,049,730 A 4/2000 Kristbjarnarson
 6,336,903 B1 1/2002 Bardy
 6,595,927 B2 7/2003 Pitts-Crick et al.
 6,616,607 B2 9/2003 Hashimoto et al.
 6,719,701 B2 4/2004 Lade
 6,738,666 B1 5/2004 Park et al.
 6,752,765 B1 6/2004 Jensen et al.
 6,811,537 B2 11/2004 Bardy
 6,829,507 B1 12/2004 Lidman et al.
 6,912,420 B2 6/2005 Scheiner et al.
 6,937,900 B1 8/2005 Pianca et al.
 6,949,075 B2 9/2005 Hatlestad et al.
 7,226,422 B2 6/2007 Hatlestad et al.
 7,384,395 B2 6/2008 Hatlestad et al.
 7,422,560 B2 9/2008 Hatlestad et al.
 2002/0147475 A1 10/2002 Scheiner et al.
 2002/0170193 A1 11/2002 Townsend et al.
 2003/0055461 A1 3/2003 Girouard et al.
 2003/0144595 A1 7/2003 Lade
 2004/0073128 A1 4/2004 Hatlestad et al.
 2004/0102712 A1 5/2004 Belalcazar et al.
 2004/0106962 A1 6/2004 Mai et al.
 2004/0116819 A1 6/2004 Alt
 2004/0172080 A1 9/2004 Stadler et al.
 2005/0004609 A1 1/2005 Stahmann et al.
 2005/0038327 A1 2/2005 Tanaka et al.
 2005/0145246 A1 7/2005 Hartley et al.
 2005/0283197 A1 12/2005 Daum et al.
 2006/0020295 A1 1/2006 Brockway et al.
 2006/0025699 A1 2/2006 Maile et al.
 2006/0241513 A1 10/2006 Hatlestad et al.
 2007/0106130 A1 5/2007 Hatlestad et al.
 2007/0118054 A1 5/2007 Pinhas et al.
 2007/0129643 A1 6/2007 Kwok et al.
 2008/0045852 A1 2/2008 Hatlestad et al.

FOREIGN PATENT DOCUMENTS

EP 0985429 A2 3/2000
 EP 1151719 A2 11/2001
 EP 1238630 A2 9/2002
 EP 1115350 B1 8/2003
 EP 1011803 B1 9/2004
 EP 0985374 B1 12/2004
 EP 0985429 B1 12/2004
 JP 03109277 U 11/1991
 JP 05048904 A2 2/1993
 JP 05048904 6/1993
 JP 06-327653 A 11/1994
 JP 2003-088512 3/2003
 JP 2003-088512 A 3/2003
 JP 2006327653 A2 12/2006
 JP 06-327653 11/2009
 WO WO-98/00197 A1 1/1998
 WO WO-98/33554 A1 8/1998
 WO WO-00/18317 A2 4/2000
 WO WO-01/19426 A2 3/2001
 WO WO-0119426 A2 3/2001
 WO WO-0178577 A2 10/2001
 WO WO-2004/047638 A1 6/2004
 WO WO-2004/060166 A2 7/2004
 WO WO-2004/095306 A1 11/2004

WO WO-2005/046472 A1 5/2005

OTHER PUBLICATIONS

"U.S. Appl. No. 10/267,982, Notice of Allowance mailed Oct. 3, 2006", 7 pgs.
 "U.S. Appl. No. 10/267,982, Notice of Allowance mailed Dec. 29, 2005", 6 pgs.
 "U.S. Appl. No. 10/267,982, Amendment and Response filed Oct. 3, 2005 to Non-Final Office Action mailed May 2, 2005", 15 pgs.
 "U.S. Appl. No. 10/267,982, Non-Final Office Action mailed May 2, 2005", 7 pgs.
 "U.S. Appl. No. 10/267,982, Supplemental Amendment filed Jan. 18, 2006", 12 pgs.
 "U.S. Appl. No. 10/267,982, Supplemental Amendment filed Aug. 29, 2006", 13 pgs.
 "U.S. Appl. No. 11/619,821, Notice of Allowance Mailed Aug. 24, 2007", 6 pgs.
 "U.S. Appl. No. 11/619,821, Response and Preliminary Amendment filed Jul. 16, 2007 to Restriction Requirement mailed Jun. 14, 2007", 8 pgs.
 "U.S. Appl. No. 11/619,821, Restriction Requirement mailed Jun. 14, 2007", 5 pgs.
 "U.S. Appl. No. 11/926,425, Notice of Allowance mailed Apr. 1, 2008", 6 pgs.
 Cooke, W. H., et al., "Human responses to upright tilt: a window on central autonomic integration", *J Physiol.*, 517(Pt 2), (Jun. 1, 1999), 617-628.
 Kubo, S. H., "Circulatory autoregulation in chronic congestive heart failure: responses to head-up tilt in 41 patients", *Am J Cardiol.*, 52(5), (Sep. 1, 1983), 512-518.
 Levine, T. B., et al., "The Neurohumoral and Hemodynamic Response to Orthostatic Tilt in Patients with Congestive Heart Failure", *Circulation*, 67(5), (May, 1983), 1070-1075.
 Lucas, C., "Congestive Heart Failure, Freedom from Congestion Predicts Good Survival Despite Previous Class IV Symptoms of Heart Failure", *American Heart Journal*, 140(6), (Dec. 2000), 840-847.
 Miyamoto, S., "Effects of Posture on Cardiac Autonomic Nervous Activity in Patients with Congestive Heart Failure", *Journal of the American College of Cardiology*, 37(7), (Jun. 1, 2001), 1788-1793.
 Sanderson, John E, et al., "Impact of changes in respiratory frequency and posture on power spectral analysis of heart rate and systolic blood pressure variability in normal subjects and patients with heart failure", *Clinical Science*, vol. 91, (1996), 35-43.
 Stadler, R., et al., "Automated detection of decreases in intrathoracic impedance to predict CHF hospitalization", *Abstract 263*, 26(4 pt II), Abstract 16, (Apr., 2003), p. 932.
 Wang, L., et al., "Impedance based prediction of CHF admission precedes symptoms in heart failure patients", *Heart rhythm : the official journal of the Heart Rhythm Society*, 1(Suppl 1), Abstract 679, (2004), p. S213.
 Wang, L., et al., "Prediction of CHF hospitalization by ambulatory intrathoracic impedance measurement in CHF patients is feasible using pacemaker or ICD lead systems", *Pacing and Clinical Electrophysiology*, 26(4 pt. II), Abstract 123, (Apr., 2003), p. 959.
 Wang, Li, et al., "Multiple Sources of the Impedance Cardiogram Based on 3-D Finite Difference Human Thorax Models", *IEEE Transactions on Biomedical Engineering*, 42(2), (Feb. 1995), 141-148.
 Yu, C., et al., "Changes in device based thoracic impedance in decompensating congestive heart failure", *Circulation*, 104(17 Supplement), (Abstract 1994), (2001), p. II-419.
 Yu, C. M., et al., "Correlation of device-based intra-thoracic impedance and patient fluid status during intravenous diuretic therapy in acute CHF", *European Heart Journal*, 23(Abstract Supplement), (2002), (Abstract P955), p. 158.
 Yu, C., et al., "Device-based intra-thoracic impedance correlates with fluid status and provides automated prediction of CHF hospitalization", *Journal of Cardiac Failure*, 10(4 Suppl), Abstract 354, (2004), p. S113.

Yu, C., et al., "Early warning of CHF hospitalization by intra-thoracic impedance measurement in CHF patients with pacemakers", *Pacing and Clinical Electrophysiology: PACE*, 24(4 pt 11), Abstract 19, (2002), p. 527.

Yu, C. M., et al., "Impedance measurements from implanted devices provide automated prediction of CHF hospitalization", *European Heart Journal*, 25(Supp), (Aug.-Sep. 2004), 1 pg.

"European Application Serial No. 03786528.4, Communication mailed Aug. 17, 2009", 4 pgs.

"European Application Serial No. 03786528.4, Response filed Jan. 29, 2010 to Communication dated Aug. 17, 2009", 19 pgs.

"International Application Serial No. PCT/US2003/032553, International Search Report mailed Jun. 17, 2004", 4 pgs.

"Japanese Application Serial No. 2005-510603, Office Action mailed Dec. 2, 2009", (w/ English Translation), 6 pgs.

"Japanese Application Serial No. 2005-510603, Notice of Allowance mailed Apr. 20, 2010", 3 pgs.

Handa, T., "Orthopnea and Respiratory Distress", *Clinician*, 22(10), (Oct. 10, 1996), 2243-2246.

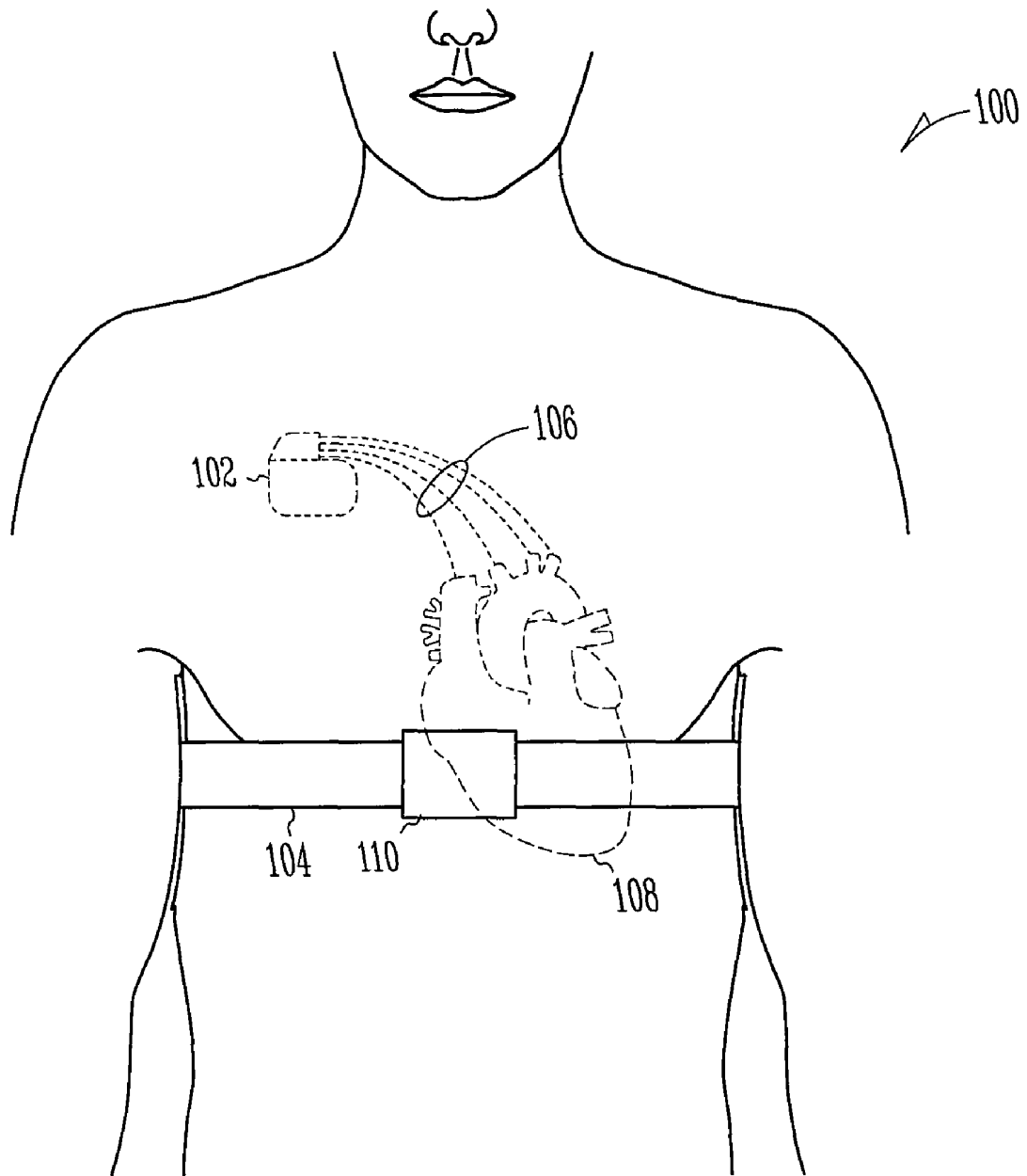


Fig. 1

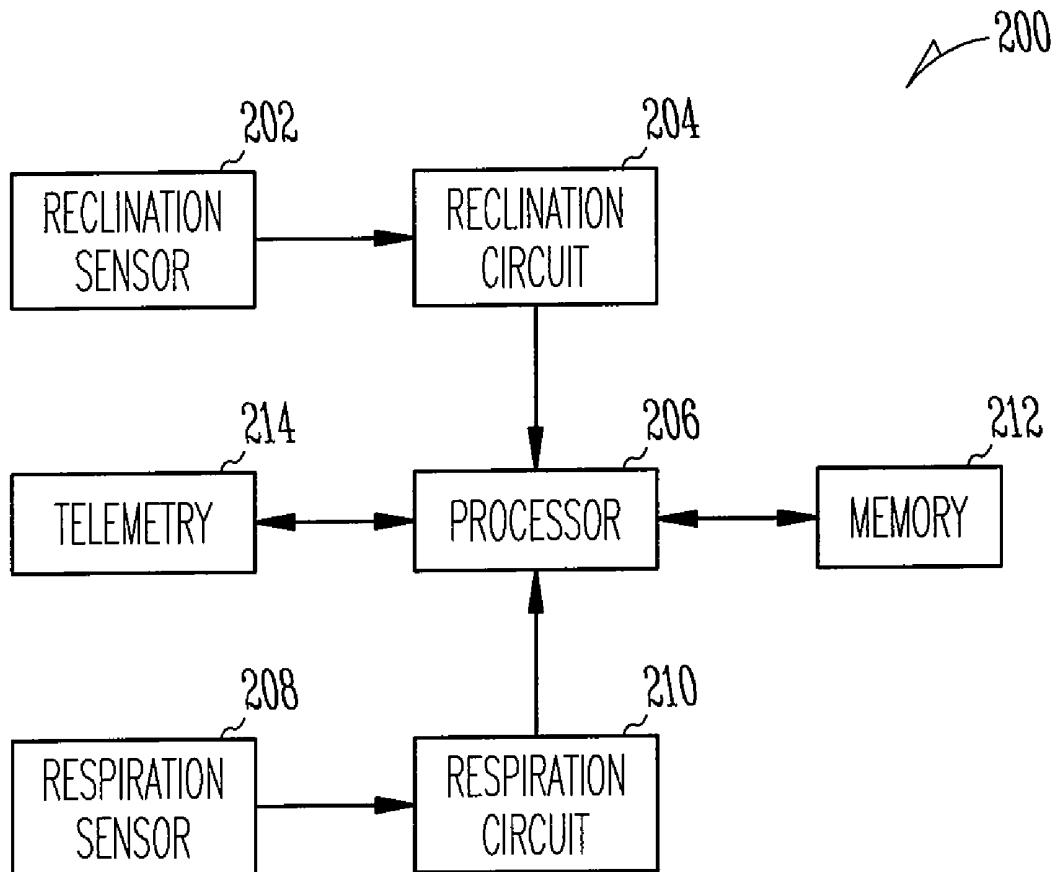


Fig. 2

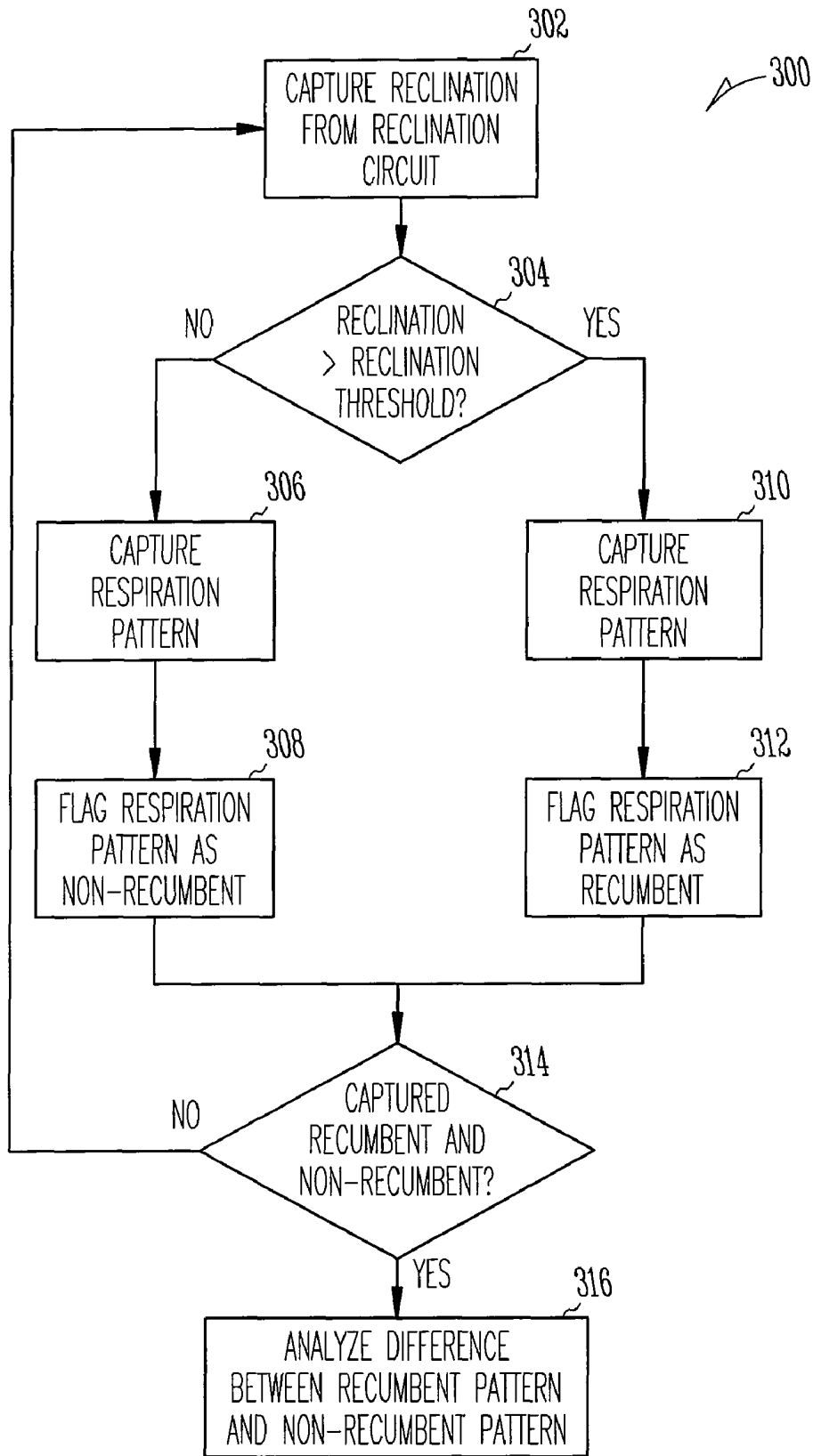


Fig. 3

400

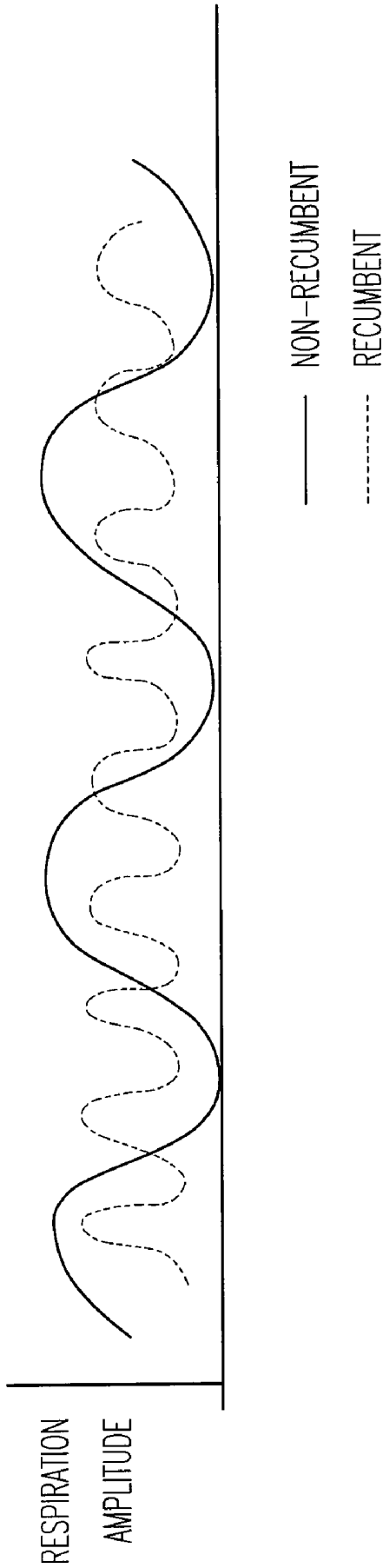


Fig. 4

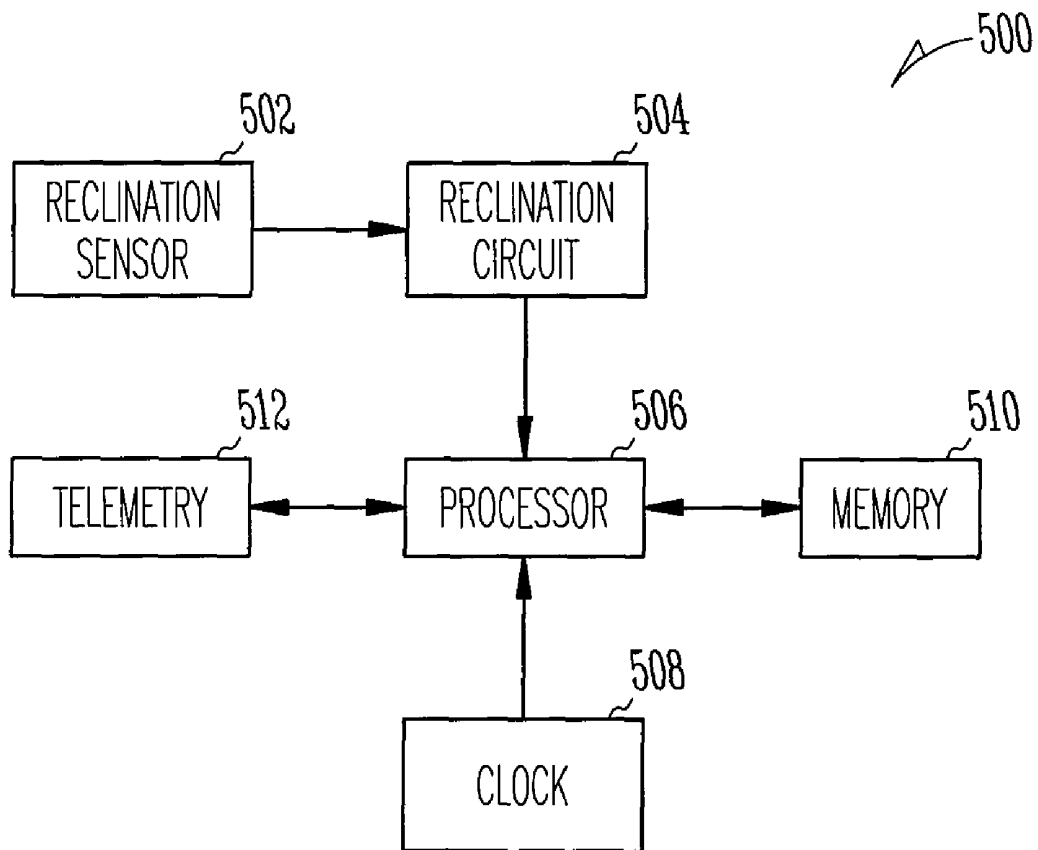


Fig. 5

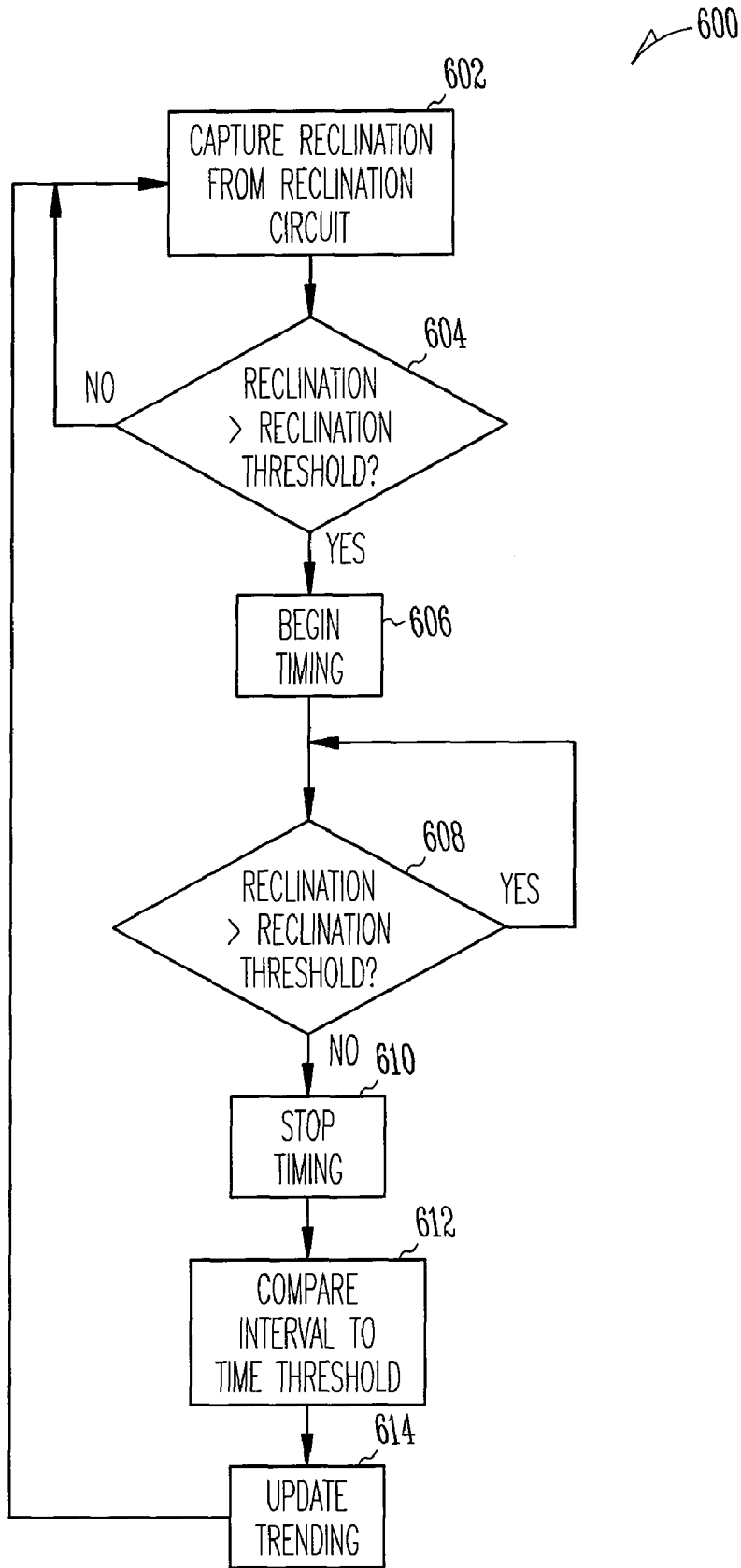


Fig. 6

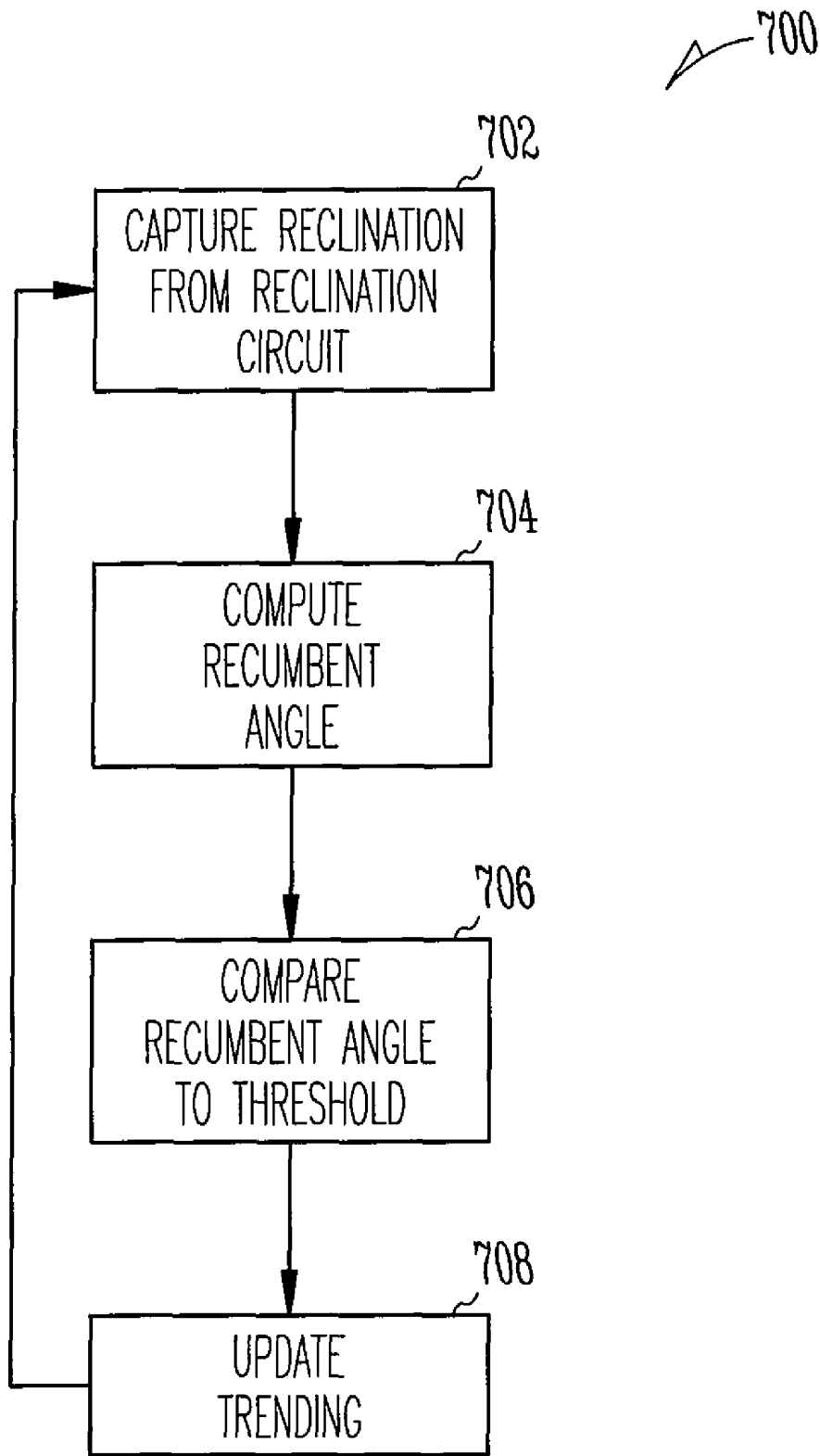


Fig. 7

DETECTION OF CONGESTION FROM MONITORING PATIENT RESPONSE TO A RECUMBENT POSITION

CLAIM OF PRIORITY

This application is a continuation of U.S. patent application Ser. No. 11/926,425, filed on Oct. 29, 2007, which is a divisional of U.S. patent application Ser. No. 11/619,821, filed on Jan. 4, 2007, now U.S. Pat. No. 7,384,395, which in turn, is a divisional of U.S. patent application Ser. No. 10/267,982, filed on Oct. 9, 2002, now U.S. Pat. No. 7,226,422, the specifications of which are incorporated herein by reference.

TECHNICAL FIELD

The present invention is related to the detection of congestion of a patient. More particularly, the present invention is related to the detection of congestion through monitoring a patient's response to a recumbent position of the patient's body.

BACKGROUND

A patient suffers from congestion when filling pressure of the heart, which results from the return of blood from the body to the heart, is relatively high due to the heart's inability to effectively pump blood back out to the body. Thus, congestion is indicative of heart failure and is one factor that should be closely monitored for a heart failure patient. Congestion may be manifested in several ways in the heart failure patient's body.

One condition highly correlated with congestion is respiratory distress upon lying down. Congestion often results in the lungs becoming partially filled with fluid once the patient lies down, and the lungs maintain the partially filled state until the patient becomes upright. This filling causes the patient to have difficulty breathing while in the recumbent position, and the respiratory distress that may result from the lungs remaining filled with fluid is a good indicator of congestion.

Attempts have been made to assess congestion from observation of a patient's posture relative to his average trans-thoracic impedance, which decreases as the lungs fill with fluid. However, the average trans-thoracic impedance masks any change that might occur in the patient's respiratory patterns. Thus, average trans-thoracic impedance measurements fail to indicate the patient's level of respiratory distress that results from the recumbent position.

SUMMARY

Embodiments of the present invention address the issues discussed above and others by providing systems and methods that obtain information that allows detection of congestion by assessing the patient's respiratory distress. The respiratory distress may be assessed based on a comparison of respiration pattern before and after the patient becomes recumbent. Alternatively, the respiratory distress may be assessed by inferring distress from the amount of time the patient is able to remain in a recumbent position or the recumbent angle the patient is able to obtain.

The information related to congestion may be obtained by first detecting whether

the patient is in a recumbent position. When the patient is not in the recumbent position, the respiration of the patient is monitored to detect a first respiration pattern. When the

patient is in the recumbent position, the respiration of the patient is monitored to detect a second respiration pattern. Differences in the two breathing patterns may indicate respiratory distress due to the recumbent position, which is a sign of congestion.

The information related to congestion may be obtained by continuously monitoring the patient over a period of time to determine an amount of time during the period that the patient is in a recumbent position. The amount of time that the patient is in a recumbent position may indicate patient discomfort due to respiratory distress arising from the recumbent position, which is a sign of congestion.

The information related to congestion may be obtained by continuously monitoring the patient over a period of time to determine a recumbent angle that the patient is able to obtain during the period. The recumbent angle may indicate patient discomfort at greater angles approaching horizontal due to respiratory distress arising from the recumbent position, which is a sign of congestion.

DESCRIPTION OF THE DRAWINGS

FIG. 1 illustrates one or more devices coupled to a patient to obtain information allowing the detection of congestion by monitoring the patient's response to a recumbent position.

FIG. 2 shows a diagram of major components of one embodiment of a system for obtaining information allowing the detection of congestion by comparing an upright respiration pattern of the patient to a recumbent respiration pattern.

FIG. 3 shows an example of operational flow for the system of FIG. 2 for obtaining information related to congestion and for detecting congestion from the information.

FIG. 4 depicts first and second respiration patterns whose difference indicates congestion.

FIG. 5 shows a diagram of major components of one embodiment of a system for obtaining information allowing the detection of congestion by determining the amount of time a patient remains in a recumbent position relative to a threshold indicative of congestion and/or by determining the recumbent angle that the patient obtains relative to a threshold indicative of a normal recumbent angle.

FIG. 6 shows an example of operational flow for the system of FIG. 5 to determine the amount of time that the patient remains in the recumbent position.

FIG. 7 shows an example of operational flow for the system of FIG. 5 to determine a recumbent angle that the patient obtains.

DETAILED DESCRIPTION

Embodiments of the present invention attempt to obtain information related to a congestive condition and/or to diagnose a congestive condition of a patient from the information by monitoring the patient's response to a recumbent position of the patient's body. For patients suffering from congestion, respiratory distress will likely occur at some point after the patient's body achieves a recumbent state. The respiratory distress may be measured by comparison of respiratory patterns detected during the recumbent state and during a non-recumbent state. Alternatively, the respiratory distress may be detected by measuring the amount of time the patient remains recumbent and by presuming the patient is experiencing respiratory distress if the amount of time is shorter than a predetermined threshold related to a congestive condition. As another alternative, the respiratory distress may be detected by measuring an angle from vertical of the patient's position and by presuming the patient is experiencing respiratory dis-

stress for greater angles of reclination if the recumbent angle is less than a normal recumbent angle.

FIG. 1 shows a patient's body **100** having one or more devices coupled to the body **100** to detect and/or infer respiratory distress occurring once the body **100** becomes recumbent. For example, an implantable medical device (IMD) **102** such as a pacemaker or device dedicated to congestion detection may be implanted in the body **100** and may be configured to monitor the patient's behavior in relation to a recumbent state, such as by detecting a change in respiratory patterns, finding the amount of time the patient remains in the recumbent state, or finding the recumbent angle the patient is able to obtain. Alternatively, an external device such as a respiratory effort band **104** may be coupled to the torso of the body **100** to monitor the patient's respiration in relation to the recumbent state by measuring the chest movement caused by the respiratory patterns.

In situations where an IMD **102** is utilized, the IMD **102** may make respiratory measurements as part of its routine for providing therapy to the patient, such as a pacemaker measuring respiratory rate to control pulse rate of the patient's heart **108**. These respiratory measurements can also be utilized, either by the IMD **102** or another device to detect respiratory patterns of the patient. One manner of detecting the respiratory patterns is through monitoring trans-thoracic impedance variation through one or more leads **106** during each individual inhale and exhale cycle. The IMD **102** or other device coupled to the body **100** is provided with a reclination sensor, such as a tilt switch, to allow a distinction between the body **100** being in a recumbent or non-recumbent state. Furthermore, the reclination sensor may be an accelerometer to allow the recumbent angle of the patient to be measured.

In situations where an external device **104** is utilized, the external device **104** can similarly make respiratory measurements and sense the recumbent state of the body **100**. For example, a respiratory effort band measures the expansion and contraction of the torso of the body **100** resulting from respiratory cycles to produce signals that represent the respiratory patterns of the patient. The external device **104** or other device also detects the reclination using a tilt switch or accelerometer to distinguish between the recumbent and non-recumbent states. The external device **104** includes a module **110** that contains electrical circuitry discussed below for obtaining information related to congestion and may also detect congestion from the obtained information.

Alternatively, the IMD **102** or external device **104** may measure the reclination of the patient and then employ a clock to track the amount of time that the body **100** is in a recumbent state. The amount of time may then be compared to a predetermined threshold to infer whether the patient has respiratory distress while in a recumbent state. The inference may be made because it may be presumed that the patient becomes non-recumbent once respiratory distress begins to occur to relieve the discomfort.

As another alternative, the IMD **102** or external device **104** may measure the recumbent angle obtained by the patient for a period of time, such as the maximum recumbent angle or an average recumbent angle that the patient achieves while sleeping. The recumbent angle may then be compared to a predetermined threshold, such as a typical recumbent angle for a healthy patient, to infer whether the patient suffers respiratory distress at recumbent angles greater than the recumbent angle actually measured for the patient. The inference may be made because it may be presumed that the

patient achieves the greatest recumbent angle possible while resting that does not result in discomfort due to respiratory distress.

FIG. 2 shows the major components of an illustrative system **200** that detects respiratory distress caused by a recumbent position of the body **100**. As discussed above, any or all of the components of system **200** may be internal or external to the body **100**. For example, any or all of the components may be contained within the IMD **102** and/or module **110** of external device **104**.

The system **200** includes a reclination sensor **202** the produces an electrical signal that is representative of the orientation of the reclination sensor **202** relative to gravity. One example of a reclination sensor **202** is a tilt switch. Another example is a DC accelerometer. In either case, a signal is produced by the reclination sensor **202** in response to the reclination sensor **202** having a particular orientation relative to gravity. Therefore, the reclination sensor **202** is coupled to the body **100** with a known orientation so that the reclination sensor **202** produces a detectable signal in response to the body **100** having a recumbent or non-recumbent state. The reclination sensor **202** may be multi-axis responsive so that regardless of the orientation of the body **100** while in a recumbent position (i.e., lying on back versus lying on side), a detectable signal is produced.

A reclination circuit **204** is electrically connected to the reclination sensor **202** to convert the reclination sensor signal into digital data that may be processed. For a tilt switch, the conversion may be simply recognizing the switch as open or closed, where one state indicates a recumbent patient and the other state indicates a non-recumbent patient. For an accelerometer, the reclination circuit **204** may amplify and/or filter the accelerometer signal prior to conversion to digital data to maintain a sufficient granularity for more precisely determining the degree of reclination of the body **100**. The reclination circuit **204** then provides the reclination data to a processing device **206** where the degree of reclination of the body **100** can be factored into the determination of congestion.

A respiration sensor **208** detects the respiration patterns of the body **100** and produces a signal representative of the respiration patterns. The respiration sensor **208** may be of various forms such as a trans-thoracic impedance sensor of an IMD **102**. Other forms are possible as well, including the respiratory effort band **104** whose impedance varies as the strap **104** expands and contracts in relation to the chest of the body **100** expanding and contracting.

The signal representative of respiration is provided to a respiration circuit **210** that produces digital data from the respiration signal that can be further processed and factored into the detection of congestion. The respiration circuit **210** may amplify and/or filter the respiration signal received from the respiration sensor **208**. The respiration circuit **210** then provides the respiration data that identifies the respiration pattern to the processing device **206**.

The processing device **206** may be a general-purpose programmable processor, hardwired digital logic, or other suitable processing device for applying logical operations to the reclination and respiration data. One example of the logical operations of the processing device **206** are described below with reference to FIG. 3. The processor **206** utilizes memory **212** for programming and/or storage of received and processed data while implementing the logical operations of FIG. 3.

In the embodiment shown in FIG. 2, the system **200** includes telemetry **214** that allows the processor **206** to communicate information to an external device (not shown) used by the physician monitoring the patient. For example, the

IMD 102 employs telemetry 214 to communicate bi-directionally and wirelessly with a device programmer. An external device 104 may also employ telemetry 214 to communicate either wirelessly or through a wired connection to a device such as a programmer. The programmer may also communicate back to the device 200, such as to update instructions stored in memory 212 that are employed by the processor 206 to bring about the logical operations of FIG. 3.

The illustrative logical operations 300 of FIG. 3 are performed by the processor 206 to detect whether the patient is suffering from congestion by finding whether the respiratory distress is experienced when lying down. The logical operations begin at data operation 302 where the processor 206 receives reclination data from the reclination circuit 204. At query operation 304, the processor 206 detects whether the reclination of the torso of body 100 is greater than a reclination threshold stored in memory 212. The reclination threshold may be chosen based on the desired amount of reclination necessary to be considered recumbent. This value may be patient specific as some patients may choose to sleep or recline to different degrees. For example, reclination of at least 65 degrees away from vertical may be considered a recumbent position for one patient while reclination of at least 85 degrees away from vertical is considered a recumbent position for another.

If the reclination is not greater than the reclination threshold as determined by query operation 304, then the processor 206 accepts data from the respiration circuit 210 at data operation 306 and flags the received data as non-recumbent data at flag operation 308. If the reclination is greater than the reclination threshold as determined at query operation 304, then the processor 206 accepts data from the respiration circuit 210 at data operation 310 and flags that data as recumbent data at flag operation 312.

Query operation 314 detects whether the processor 206 has received and flagged a sufficient quantity of both recumbent data and non-recumbent data. If not, then operational flow returns to data operation 302 where the processor 206 continues to receive reclination data. If query operation 314 finds that a sufficient quantity of both recumbent and non-recumbent data have been received and flagged, then operational flow proceeds to analysis operation 316.

At analysis operation 316, the processor 206 compares the two respiration patterns represented by the respiration data flagged as recumbent data and non-recumbent data. FIG. 4 shows two illustrative hypothetical respiration patterns. The non-recumbent respiration pattern shows that the patient is taking relatively slow and deep breaths as can be seen by the relatively low frequency and high amplitude of the pattern. However, the recumbent respiration pattern shows that the patient is taking relatively rapid and shallow breaths as indicated by the relatively high frequency and low amplitude of the pattern. The rapid and shallow breathing of the recumbent respiration pattern indicates a patient suffering from orthopnea, or paroxysmal nocturnal dyspnea ("PND") that eventually occurs upon lying down.

The presence of orthopnea or PND such as shown in FIG. 4 is known to be a sign of congestion. However, other recumbent respiration pattern changes resulting from lying down may also be indicative of congestion. Therefore, at analysis operation 316 the processor 206 may perform various comparisons in addition to or as an alternative to looking for both rapid and shallow breaths. For example, the processor 206 may search for only rapid recumbent respiration relative to upright respiration. Similarly, the processor 206 may search for only shallow, or low tidal volume, recumbent respiration relative to upright respiration. As another example, the pro-

cessor 206 may search for a difference in the combination of respiratory rate to tidal volume between the recumbent and non-recumbent respiration patterns. Such a combination may be a ratio of respiratory rate to tidal volume. Additionally, the processor 206 may search for a difference in inspiratory times and expiratory times, inspiratory time of a recumbent pattern versus inspiratory for a non-recumbent pattern, and/or expiratory time of a recumbent pattern versus expiratory time of a non-recumbent pattern.

The results of the analysis may then be telemetered to a programmer, either in real-time or at a subsequent time, for viewing by a physician. Alternatively, for an external device an indicator such as a light emitting diode or a display screen may be included to provide direct feedback to the patient or to a physician examining the patient.

Although not shown in the logical operations 300 of FIG. 3, a trending operation may also be provided for the logical operations 300 so that the result of the analysis between recumbent and non-recumbent breathing patterns may be trended over time to also allow the physician to track to the progression of the patient's congestion. Furthermore, the detection of differences in breathing patterns that are indicative of congestion may be based upon difference thresholds in rate, volume, or some combination thereof. The difference thresholds may also be based upon breathing pattern differences that are known to be normal for a population so that differences beyond this threshold are considered to be an indicator of congestion. Also, the breathing pattern information, including the patterns themselves and/or any detected differences may be communicated from the medical device for review by a physician who may make the determination of whether congestion is present.

FIG. 5 shows the major components of another illustrative embodiment of a system 500 that detects congestion by determining the amount of time a patient can remain in a recumbent position and by comparing the amount of time to a threshold related to a congestive condition. As was discussed for the system 200 of FIG. 2, any or all of the components of system 500 may be located internally or externally of the body 100. The system 500 includes a reclination sensor 502 and reclination circuit 504 as previously discussed for the system 200.

A processing device 506 such as the processing device 206 of system 200 is also included in the system 500 and receives the reclination data from the reclination circuit 504. The processor 506 utilizes the memory 510 to access programming for performing logical operations such as those discussed below with reference to FIG. 6. Additionally, the processor 506 may utilize the memory 510 to store data describing the results of the determination of the amount of time a recumbent position can be maintained and whether a congestive condition is presumed to be present. Thus, the memory 510 can be used to maintain trending information for detecting whether the patient is experiencing congestion and whether the condition is worsening over time.

Telemetry 512 may also be included as discussed above for system 200. Telemetry 512 may be used to provide an indication to a programmer as to whether the patient is presumed to be suffering from congestion. Alternatively, the telemetry may be used to provide the amount of time the patient remains in a recumbent state to the programmer for observation by a physician. Additionally, the telemetry 512 may be used to provide an update to programming for the processor 506 that is stored in memory 510.

A clock 508 is provided to allow the processor 506 to determine how long the patient remains in the recumbent position. The clock 508 may be a simple timer circuit such as

a clock used to drive the operations of the processor 506 or a more elaborate time keeping device such as a clock that maintains the actual time of day. The clock 508 provides timing data or pulses to the processor 506 that the processor 506 uses to determine time intervals.

Illustrative logical operations 600 that are implemented by the processor 506 are shown in FIG. 6. The logical operations 600 allow the processor 506 to determine the amount of time the patient remains in the recumbent state. This determination then allows an inference to be drawn as to whether the patient is suffering from congestion brought on by respiratory distress upon lying down. The logical operations 600 begin at data operation 602 where the processor 506 receives reclination data from the reclination circuit 504.

Query operation 604 then detects whether the reclination is greater than a reclination threshold specified in memory 510. As discussed above, the reclination threshold may be patient specific as one patient may choose to lie down or sleep while reclined at an angle greater than another patient. If the reclination is not greater than the reclination threshold as determined at query operation 604, then the processor 506 receives the next set of reclination data at data operation 602. If the reclination is greater than the reclination threshold, then the processor 506 begins keeping track of time at timing operation 606 so that the interval from the time the patient became recumbent until the time the patient is upright can be found.

Query operation 608 detects whether the reclination is greater than the reclination threshold. If it is, then the patient is still recumbent, and query operation 608 repeats. If the reclination is no longer greater than the reclination threshold, then the processor 506 stops keeping track of time at timing operation 610. From the timing by the processor 506, an interval of time is known for the period when the patient was in the recumbent state.

In this embodiment, the processor 506 then compares the interval of time to a time threshold that is related to a congestive condition at comparison operation 612. This threshold may be known from a study of patients suffering from congestion who experience respiratory distress after a particular amount of time in a recumbent position. Furthermore, this threshold may vary depending upon the degree of congestion that the patient is being tested for through application of the logical operations 600. Additionally, the threshold may be based upon a particular percentage of an average normal sleep time that corresponds to a particular degree of congestion, such as a patient who remains recumbent for 50% of an average normal sleep time for a population may be diagnosed as severely congested. Alternatively, the raw numbers or percentages could be trended and/or reported from the medical device to a physician who then may interpret the information to determine whether congestion is present.

For the embodiment shown in FIG. 6, the patient's congestion level may be trended as part of an overall wellness program. Thus, upon completion of comparison operation 612, trending information stored in memory 510 or in memory of another external device may be continuously updated based on the results of the comparison operation 612 at trend operation 614. Through these trending updates, the physician can see the progression of the patient's congestion as well as additional conditions of the patient that may be simultaneously monitored with congestion.

Illustrative logical operations 700 that may alternatively be implemented by the processor 506 are shown in FIG. 7 where the reclination sensor such as an accelerometer provides a signal that is representative of the recumbent angle rather than a signal that is merely indicative of a recumbent versus non-recumbent state. The logical operations 700 allow the proces-

sor 506 to obtain the recumbent angle that the patient is able to obtain for further processing and/or for transmission to a physician. The determined recumbent angle allows an inference to be drawn as to whether the patient is suffering from congestion brought on by respiratory distress upon reaching a degree of reclination.

The logical operations 700 begin at data operation 702 where the processor 506 receives reclination data from the reclination circuit 504 over a period of time. The reclination data is representative of the recumbent angles the patient obtains during the period. At process operation 704, the processor 506 computes a recumbent angle from the reclination data for the period, such as by finding the maximum recumbent angle specified by the reclination data or by averaging the recumbent angle values for the period. The period may be limited to times of day when the patient is expected or known to be resting so that there is little or no reclination data obtained while the patient is upright that would skew the average. Alternatively, a query operation may be employed by the processor 506 to throw out reclination data taken during the period that indicates an upright recumbent angle.

Comparison operation 706 then determines whether the recumbent angle is greater than a recumbent angle threshold specified in memory 510. This recumbent threshold, whose value may differ from the reclination threshold of FIG. 6, may also be patient specific as one patient may choose to lie down or sleep while reclined at a recumbent angle that is greater than another patient. If the recumbent angle is not greater than the recumbent angle threshold, then the processor 506 of this embodiment determines that the patient is suffering from congestion since it is presumed that the patient does not recline beyond the recumbent threshold due to congestion related discomfort. If the reclination is greater than the reclination threshold, then the processor 506 of this embodiment determines the patient is not suffering from congestion since it is presumed that the patient would not recline beyond the recumbent threshold due to discomfort if congestion was present.

In the embodiment of FIG. 7, the recumbent angle threshold may be known from a study of patients suffering from congestion who experience congestion once the recumbent angle is beyond a certain amount from vertical. Furthermore, this recumbent angle threshold may vary depending upon the degree of congestion that the patient is being tested for through application of the logical operations 700. Additionally, the recumbent angle threshold may be based upon a particular percentage of an average normal recumbent angle that corresponds to a particular degree of congestion, such as a patient who may only rest at a recumbent angle that is 50% of an average normal recumbent angle for a population may be diagnosed as severely congested.

For the embodiment shown in FIG. 7, the patient's congestion level may be trended as part of an overall wellness program. Thus, upon completion of comparison operation 706, trending information stored in memory 510 or in memory of another external device may be continuously updated based on the results of the computation operation 704 and/or comparison operation 706 at trend operation 708. Through these trending updates, the physician can see the progression of the patient's congestion as well as additional conditions of the patient that may be simultaneously monitored with congestion.

In another embodiment, the processor 506 may not determine whether congestion is present. Instead, the medical device may transmit the recumbent angle information to the physician who can then interpret the information to make the determination. As discussed above, the raw recumbent angle

data could be trended and/or reported from the medical device to a physician who then may interpret the information to determine whether congestion is present.

While the invention has been particularly shown and described with reference to preferred embodiments thereof, it will be understood by those skilled in the art that various other changes in the form and details may be made therein without departing from the spirit and scope of the invention.

What is claimed is:

1. A system, comprising:
 - a reclination sensor that produces a reclination signal indicative of a reclination of a patient;
 - reclination circuitry that produces reclination data from the reclination signal;
 - a respiration sensor that produces a respiration signal indicative of respiration patterns of the patient;
 - respiration circuitry that produces respiration pattern data from the respiration signal; and
 - a processing device that is configured to communicate with the reclination circuitry and the respiration circuitry to determine, from the reclination data and the respiration pattern data, recumbent respiration pattern data and non-recumbent respiration pattern data, to compare the recumbent and non-recumbent respiration pattern data, and to determine, using a result of the comparison, whether the patient is suffering from congestion.
2. The system of claim 1, wherein the processing device is configured to determine whether the patient is in a recumbent position by comparing the reclination data to data representative of a reclination threshold.
3. The system of claim 1, wherein the reclination sensor includes a tilt switch.
4. The system of claim 1, wherein the reclination sensor includes an accelerometer.
5. The system of claim 1, wherein the respiration sensor is configured to produce a respiration signal in response to a change in trans-thoracic impedance.
6. The system of claim 1, wherein the processing device is configured to compare the recumbent respiration pattern data and the non-recumbent respiration pattern data to detect whether a difference in respiration rate exists.
7. The system of claim 1, wherein the processing device is configured to compare the recumbent respiration pattern data and the non-recumbent respiration pattern data to detect whether a difference in tidal volume of respiration exists.
8. The system of claim 1, wherein the processing device is configured to compare the recumbent respiration pattern data and the non-recumbent respiration pattern data to detect whether a difference in a ratio of respiration rate to tidal volume of respiration exists.
9. The system of claim 1, comprising a communication device configured to communicate at least one of the reclination data or the respiration pattern data to a remote device.
10. The system of claim 1, wherein the system includes an implantable device.
11. The system of claim 1, wherein the system includes an external device.
12. A system, comprising:
 - a reclination sensor that produces a reclination signal indicative of a reclination of a patient;
 - reclination circuitry that produces reclination data from the reclination signal;
 - a respiration sensor that produces a respiration signal indicative of respiration patterns of the patient;
 - respiration circuitry that produces respiration pattern data from the respiration signal; and

- a processing device, including:
 - a monitoring module configured to monitor the respiration pattern data and the reclination data;
 - a reclination module configured to determine whether the patient is in a recumbent position by comparing the reclination data to data representative of a reclination threshold;
 - an association module configured to associate the respiration pattern data obtained at a specified time with the reclination data obtained at the specified time;
 - a comparison module configured to compare the respiration pattern data obtained with the patient in a recumbent position to the respiration pattern data obtained with the patient in a non-recumbent position to determine whether a difference is present between the respiration patterns associated with recumbent and non-recumbent positions; and
 - an analysis module configured to analyze the difference between the respiration patterns associated with recumbent and non-recumbent positions to determine whether the patient is suffering from congestion.
- 13. The system of claim 12, comprising a communication device configured to transmit at least one of the reclination data or the respiration pattern data.
- 14. The system of claim 12, wherein the system includes an implantable device.
- 15. The system of claim 12, wherein the system includes an external device.
- 16. The system of claim 15, wherein the external device includes a respiratory effort band.
- 17. The system of claim 12, wherein the reclination sensor includes a multi-axis responsive reclination sensor that produces a reclination signal indicative of reclinations of a patient at more than one orientation.
- 18. The system of claim 12, wherein the processing device is configured to determine whether the patient is in a recumbent position by comparing the reclination data to data representative of a reclination threshold.
- 19. The system of claim 12, wherein the processing device includes a trending module configured to trend analyses of the respiration patterns associated with recumbent and non-recumbent positions.
- 20. A system, comprising:
 - means for sensing reclination of a patient;
 - means for sensing respiration of the patient;
 - means for processing sensed reclination and sensed respiration to produce recumbent respiration pattern data and non-recumbent respiration pattern data; and
 - means for comparing the recumbent and non-recumbent respiration pattern data to determine, using a result of the comparison, whether the patient is suffering from congestion.
- 21. The system of claim 20, comprising means for communicating at least one of the recumbent respiration pattern data or the non-recumbent respiration pattern data to a remote device.
- 22. The system of claim 20, wherein the means for sensing reclination includes a tilt switch.
- 23. The system of claim 20, wherein the means for sensing reclination includes an accelerometer.
- 24. The system of claim 20, wherein the means for sensing respiration includes a respiration sensor configured to produce a respiration signal in response to a change in trans-thoracic impedance.

专利名称(译)	通过监测患者对卧位的反应来检测充血		
公开(公告)号	US7819804	公开(公告)日	2010-10-26
申请号	US12/204152	申请日	2008-09-04
[标]申请(专利权)人(译)	心脏起搏器股份公司		
申请(专利权)人(译)	心脏起搏器, INC.		
当前申请(专利权)人(译)	心脏起搏器, INC.		
[标]发明人	HATLESTAD JOHN D ZHU QINGSHENG STAHMANN JEFFREY E		
发明人	HATLESTAD, JOHN D. ZHU, QINGSHENG STAHMANN, JEFFREY E.		
IPC分类号	A61B5/00 A61B5/08 A61B5/103 A61B5/11 A61B5/113 A61N1/365		
CPC分类号	A61B5/0809 A61B5/0816 A61B5/1116 A61B5/1135 A61B5/6831 A61B5/6846 A61B5/1071 A61B5/4806 A61N1/36542 A61B5/686 G16H40/63 G16H50/20		
其他公开文献	US20090005697A1		
外部链接	Espacenet USPTO		

摘要(译)

系统和方法通过监测患者对患者身体的躺着位置的响应来获得允许检测患者是否患有充血的信息。可以监测患者以确定非躺卧位置(例如站立)的呼吸模式和诸如躺下的躺卧位置的呼吸模式。可以通过处理设备或医生比较这两种模式,以确定两种呼吸模式的差异。此外,可以通过检测患者在躺着位置花费的时间量或者通过检测患者获得的躺着角度来推断拥挤,其中任一个被假定为指示躺着的位置是否由于患者而给患者带来不适。拥挤的存在。

