



(19) **United States**

(12) **Patent Application Publication**
Saffarian

(10) **Pub. No.: US 2012/0179012 A1**

(43) **Pub. Date: Jul. 12, 2012**

(54) **DATA ANALYTICS SYSTEM**

(52) **U.S. Cl. 600/324; 600/300; 600/551; 600/483**

(76) **Inventor: Arsham Andy Saffarian, Mahwah, NJ (US)**

(21) **Appl. No.: 13/348,805**

(22) **Filed: Jan. 12, 2012**

Related U.S. Application Data

(60) **Provisional application No. 61/461,007, filed on Jan. 12, 2011.**

Publication Classification

(51) **Int. Cl.**
A61B 5/0205 (2006.01)
A61B 10/00 (2006.01)
A61B 5/00 (2006.01)

(57) **ABSTRACT**

The invention includes a system and processes to gather and analyze data to monitor, track, and provide care. The major subsystems of the invention include the Medical Digital Assistant (“MDA”), Server, Monitoring Devices, Dispensing Devices, Server, Dashboard, and Application Software. The invention includes the method for conducting data acquisition, monitoring, analysis, and reporting to diagnose and treat medical conditions such as diagnosing and treating specific medical conditions such as fertility and congestive heart failure.

3000

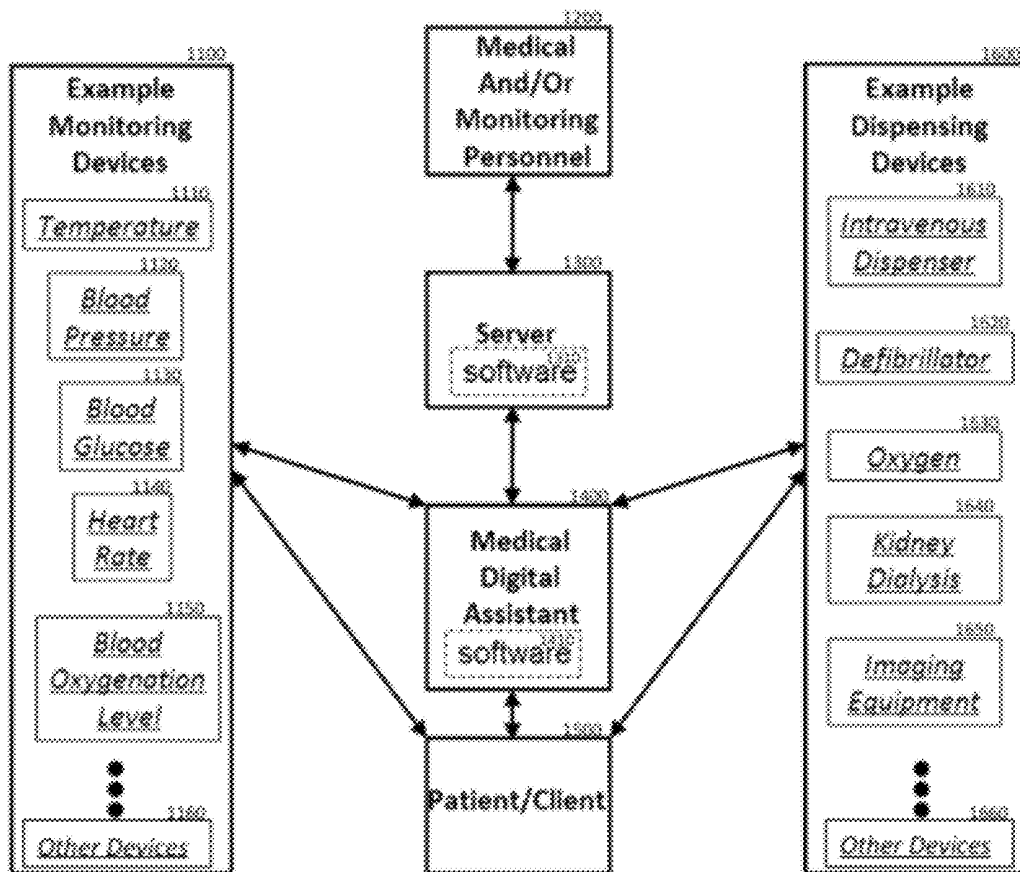


FIG. 1

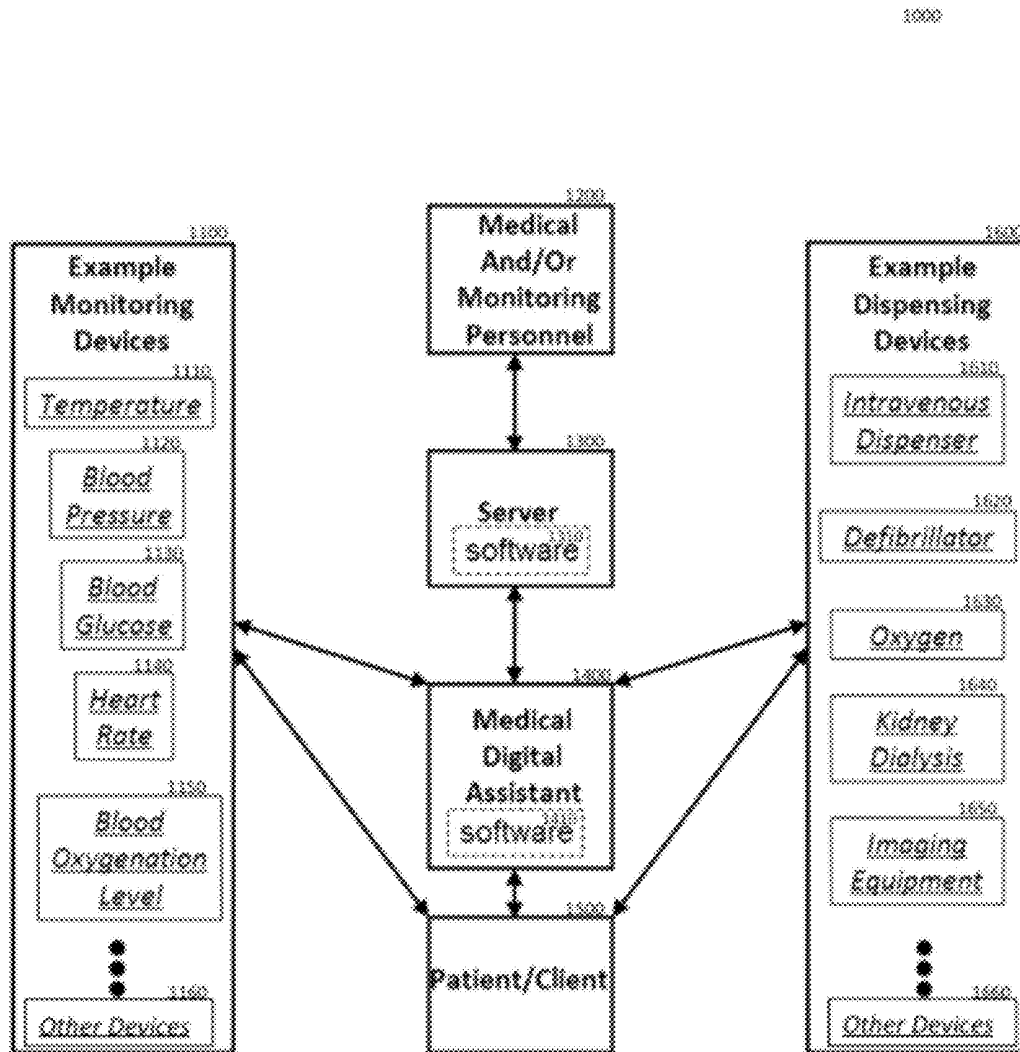


FIG. 2

2000

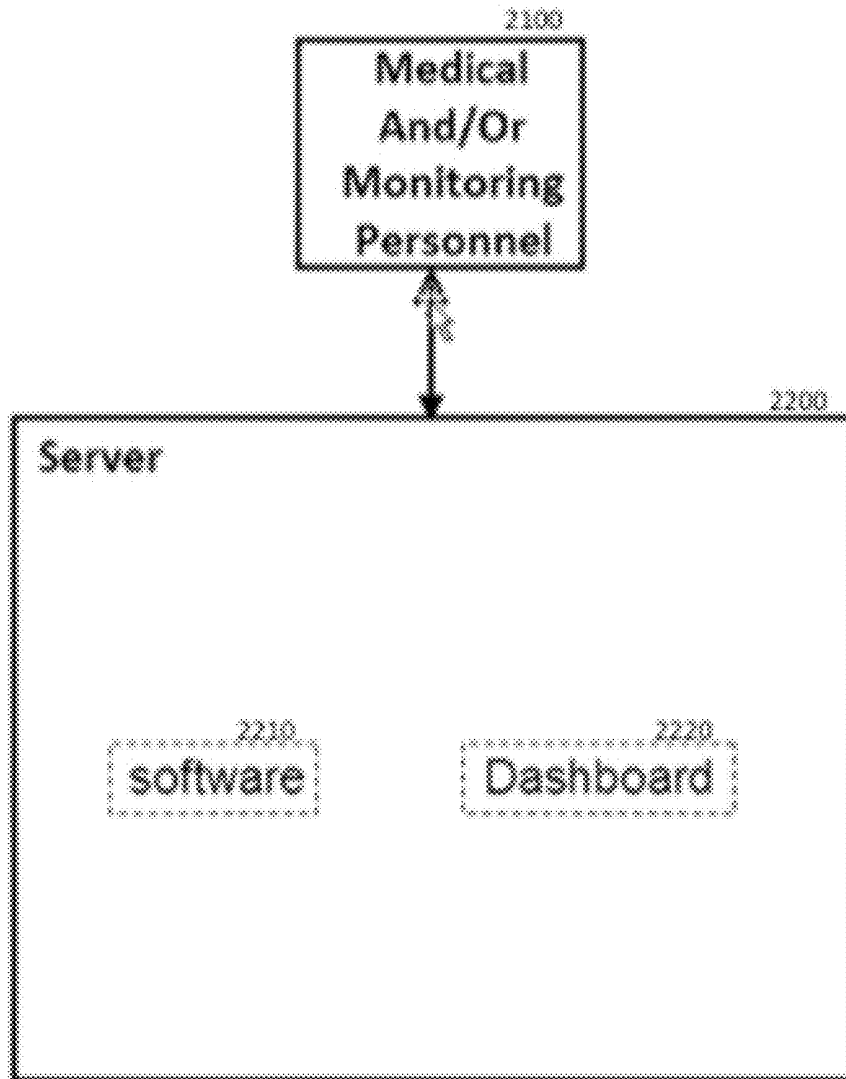


FIG. 3

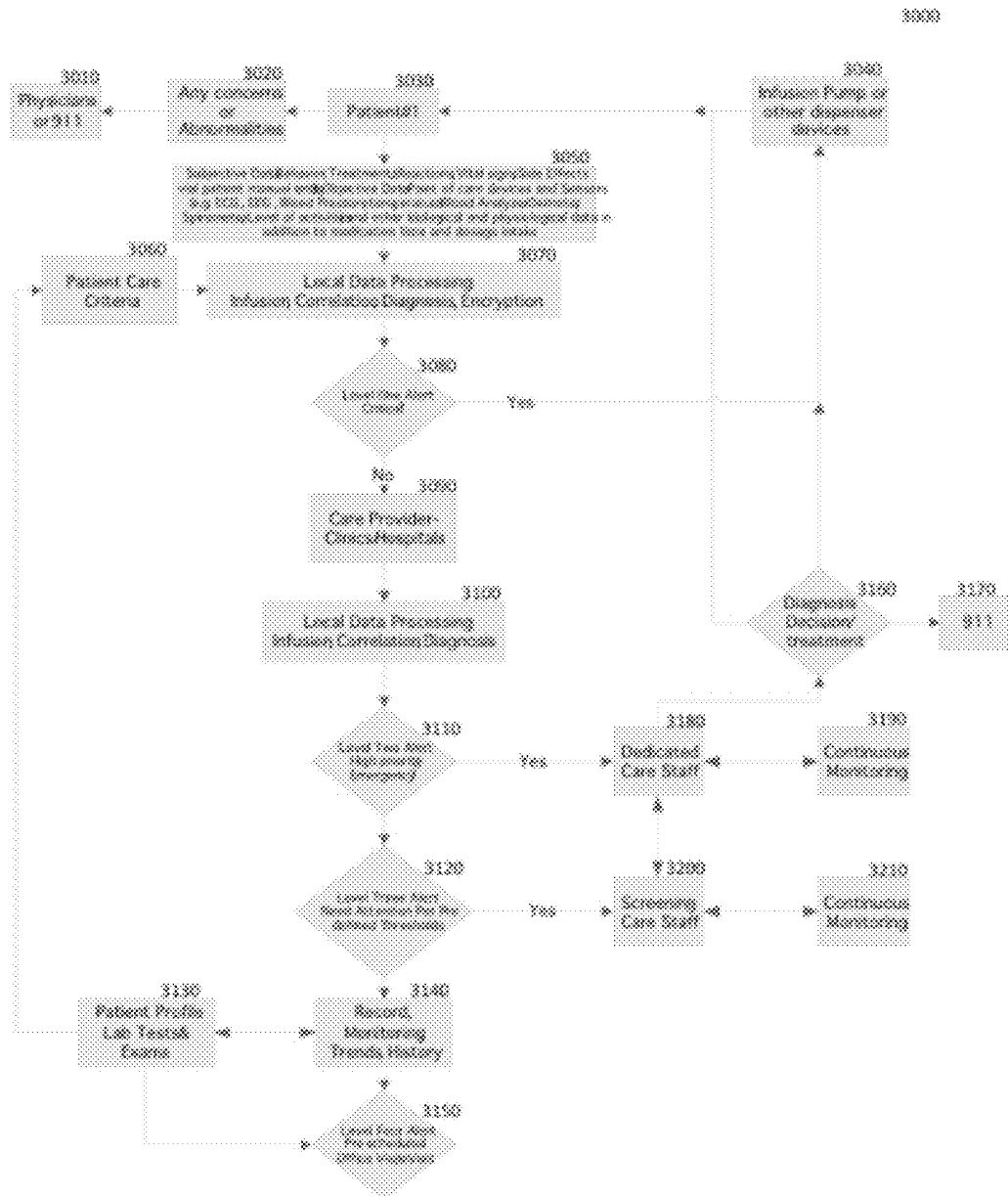
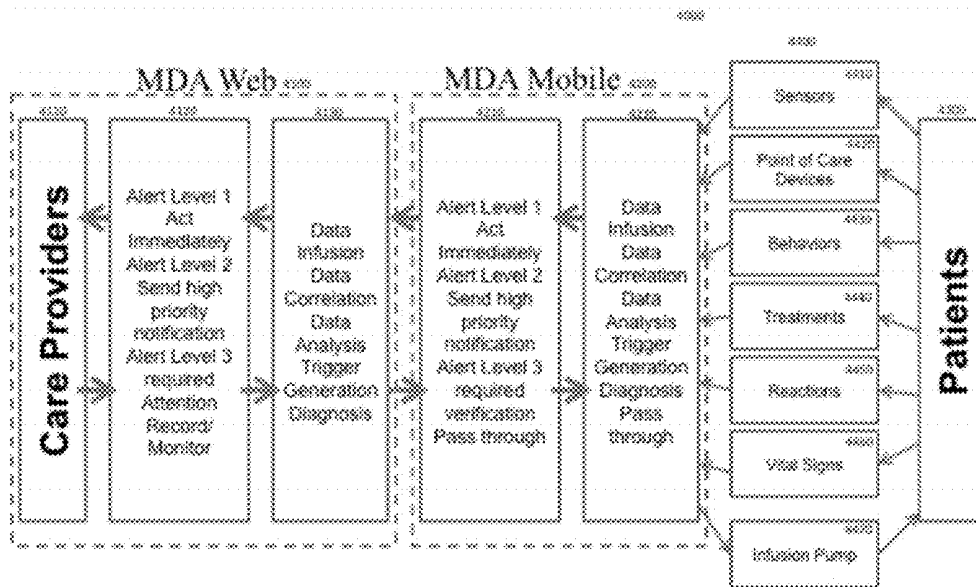


FIG. 4



DATA ANALYTICS SYSTEM

[0001] This application claims the benefit of U.S. Provisional Application No. 61/146,1007 filed Jan. 12, 2011.

FIELD OF THE INVENTION

[0002] This invention relates generally to the field of data gathering and analysis, and particularly methods, apparatuses, and systems for gathering and analyzing data to monitor, track, and provide care.

BACKGROUND OF THE INVENTION

[0003] Monitoring, tracking, and caring for patients—such as patients requiring monitoring under a court order, or patient with disabilities, chronic medical conditions, or pre and post surgery—requires continuous attention to resources which are often unavailable or unaffordable. Such problems may be exacerbated when patient are remotely located, or have chronic conditions that require long term continuous monitoring. The problem may also arise when conducting clinical trials where the care providers must monitor patient frequently, continuously and in real-time. The current solutions are limited because they only monitor one data at a time and do not have the capability of correlating the combination of the data.

Examples of problems addressed by this invention include:

[0004] Current methods of providing medical attention to chronically ill patients, or patient that have cognitive deficiencies due to age and/or other disabilities or during pre and post surgery requires the patient to remain in close proximity to medical staff, equipment, and hospital or medical facilities. This means that a patient must stay in a hospital or care home, resulting in excessive costs as well as the loss of independence.

[0005] Many epilepsy patient are unable to live untethered lives; preventing them from activities such as driving, bicycling, hiking, walking alone, living alone, holding jobs, and generally experiencing a normal independent life.

[0006] Medical staffs often have too many patients to keep track of changing conditions that may result in a patient requiring urgent attention or a change in care or medication.

[0007] The process of manually documenting/recording patient data often results in entry errors, loss of data, security violations, or a loss of the correlation between the patient data and the correct patient. These types of errors result in inefficiencies, or worse, incorrect procedures or prescriptions.

[0008] Universal worldwide immediate accessibility of current patient data continues to be a problem. The current trend of a patient being assigned to a pool of medical staff, versus being assigned a single caregiver, complicates the ability of having access to readily available current medical records. This is further complicated by the fact that the pool of medical personnel may reside in disparate distant geographic locations.

[0009] Remote rural patients have to travel long distances to access medical care for routine visits/tests, or to be monitored for extended periods of time. This problem also persists in urban areas where crowded cities with extensive traffic and sparse parking make it equally difficult to obtain medical care.

[0010] Individuals under court order, requiring monitoring for illegal substances or under house arrest, are currently able

to easily disable or circumvent the monitoring equipment, preventing authorities from enforcing the intended court intentions.

[0011] Not knowing the location or physical/medical status of a child or loved one can cause stress and anxiety. Individuals in need of police or emergency medical assistance will often not receive prompt help, or may never receive needed help.

[0012] Patient/client data that is being remotely recorded (away from the security of a physical facility) can be lost or stolen, resulting in release of confidential patient/client information.

[0013] Not having information on the patient's status, both qualitative and quantitative (simultaneously captured/recorded, sometimes for an extended continuous period), prevents an informed decision from being made that would otherwise result in an early diagnosis or proactive action. For example, having simultaneous access to a patient's blood oxygen, weight, heart rate, activity level, etc., could be used for early prevention/detection of a heart attack.

[0014] Detecting the basal temperature of both humans and other animals continues to be problematic. Being able to continuously monitor and record temperature (while awake or asleep) can be used to detect ovulation, as well as provide an indicator for certain disorders such as thyroid.

[0015] Home/remote care of patients often requires knowledge of how to setup/program/configure/operate complex medical equipment, often beyond the capabilities of the patient. For example, administering the dosage of infusion pumps used to dispense insulin, providing chemotherapies, nitro derivatives, anti-thrombotics, etc.

[0016] Managing patients in home or remote settings is currently impractical in cases where the medical condition may not require any intervention for extended periods, but can change quickly requiring an immediate response or a medical emergency requiring the immediate attention/intervention of medical personnel. This requires the ability to monitor one or more events, make decisions based on those events that may include monitoring a different set of events and/or taking some other action such as dispensing medication or activating an alert.

[0017] The reaction of a patient to medications is never completely known, and this is especially true of patients taking multiple medications where the interaction of multiple medications is frequently not tested or not known.

[0018] Patients are often asked to complete lengthy questionnaires that include irrelevant data. This is an inefficient and annoying practice that results in an overwhelming amount of irrelevant data that is either ignored by medical personnel or results in crucial data being buried and missed amongst all the irrelevant data.

[0019] Properly diagnosing and managing remote patients often requires being able to see the patient or the patient's medical equipment to monitor vital signs and other physiological and biological data.

[0020] The price per bit of transferring data via wireless data networks is expensive. This limits the amount of data that can affordably be transferred for many applications.

[0021] Physicians are not always aware of the patient's activities and symptoms outside the clinic. For example, when a patient complains about chest pain, the patient may not remember or been aware of other indicators which may help diagnose the problem such as activities, blood pressure, body temperature, etc.

[0022] Another problem for drug clinical trials is the preference to monitor patients more closely outside the clinics in their normal life while taking the drug and/or following certain treatments, both of which are outside the control and access of medical personnel.

[0023] This invention provides a solution to all these problems with a system and process capable of capturing and monitoring a patient's biological and physiological data, the capability to interactively communicate remotely, and enable actions to provide patient care.

BRIEF SUMMARY OF THE INVENTION

[0024] From a medical perspective, a patient's discomfort comes from the seemingly impersonal world of medical care, rather than the disease itself, including therapy side effects, lack of timely communication, professionals' misjudgments, improper treatments, medical errors, and endless paperwork. This invention is a interactive wireless patient monitoring platform that provides an integrated and secure solution for managing outpatient care and diagnostic information. It has no physical boundaries, allowing Healthcare professionals to stay connected with their patients anywhere, anytime. This unique holistic approach to next-generation health management is a flexible and scalable platform, delivering innovations that healthcare professionals can use to collect patient therapy information, perform research and analyze data—all in real-time.

[0025] This invention has been driven by two major trends:

[0026] Technology trends: Network technologies such as 3G, WiMAX and LTE have emerged as candidate radio technologies to support the Mobile Internet with ubiquitous connectivity. In addition, all IP architectures are becoming critical elements in the economical delivery of ubiquitous mobile broadband services. As these technologies migrate toward the 4G vision, mobile broadband services will be delivered with increased performance capabilities and improved economics. Mobile broadband technology delivers throughput speeds of 2 MB to 10 MB/second, and as the Mobile Internet proliferates, a completely new generation of service and end-user applications will emerge. To achieve profitability and differentiation in this complex world of the emerging Mobile Internet, operators, enterprises, software developers and applications and content providers all face a new Mobile Internet ecosystem.

[0027] Healthcare high cost: The United States last year spent an estimated \$2.5 trillion—18 percent of its GDP on health care. Much of that spending was for costly hospital care, often delivered long after the onset of chronic problems that could have been better managed early on. This invention improves Patients' quality of care while increasing operational efficiencies within Healthcare organizations.

[0028] This invention provides a solution to all these problems with a system and process capable of capturing and monitoring patients and individuals biological and physiological data and the capability to interactively communicate remotely. Such data includes, but is not limited to an individual's vitals, blood sugar, blood count, medication concentration, presence of drugs/alcohol, heart/brain electrical activity, velocity, acceleration, physical location, being able to see the patient's appearance or the patient's medical equipment, such as video.

[0029] The invention may use available encryption techniques to record patient/client data, processes to aggregate and compress data to minimize data transmission charges,

and may purge patient/client data from the recording device after successfully transmitting, wired or wirelessly, the patient/client data to a secure Server.

[0030] The invention may take action based on the recorded data, or received requests, transmitted wired or wirelessly. Actions taken by the system may include, but not limited to: altering the dispensing of medication, altering medical equipment such as pacemakers, defibrillators, or other equipment; sending alerts (wired or wirelessly) to specific individuals, a secure Server, Police, emergency medical personnel; enabling or disabling (wired or wirelessly) devices such as automobiles, audio/visual alarms, et cetera.

[0031] The invention may include an intelligent questionnaire process that is able to change questions asked based on responses of previous questions.

[0032] The invention may include a data fusion function where patient responses are included and aggregated along with other data and processed via a decision matrix, tree, or process to help provide potential diagnosis. Data may include patient subjective data such as vital signs, diary, behaviors, adverse reactions, symptoms plus medication dates/time stamps, reminders; or patient 1500 objective data via blood analyzer, spirometer, pulse oximeter, glucometer, temperature sensor, BP, EKG, ECG, EEG, ingestible capsule, ambulatory infusion pump, activity level monitor.

[0033] The invention may include a secure Server which provides immediate worldwide access (wired or wirelessly) to patient/client data, enables commands/alarms to be transmitted to the patient's/client's monitoring equipment, and makes an intelligent graphical user interface ("GUI") available for command/control/display/monitoring.

[0034] The intelligent GUI may have the capability to process the data of one or more patients/clients and provide tables/graphs/charts/alarms that help the prioritization of reviewing patient/client status, as well as provide a simple dashboard for each patient to help medical personnel quickly grasp the overall status of patients.

BRIEF DESCRIPTION OF THE DRAWINGS

[0035] Features and advantages of the claimed subject matter will be apparent from the following detailed description of embodiments consistent therewith, which description should be considered with reference to the accompanying drawings, wherein:

[0036] FIG. 1: This is a block diagram showing the embodiments of the invention including the components, interfaces, and software blocks in accordance with the teachings of the present invention;

[0037] FIG. 2: This is a close up view of the block diagram illustrating the interface between the server and monitoring personnel, as well as the dashboard, in accordance with the teachings of the present invention;

[0038] FIG. 3: This is a process flow diagram illustrating how the invention is used to obtain, transmit, collect, analyze, and report data to enhance medical diagnosis and treatment in accordance with the teachings of the present invention;

[0039] FIG. 4: This is an alternative view illustrating the components of the invention and how they are integrated and interact with subjects and monitoring personnel in accordance with the teachings of the present invention.

DETAILED DESCRIPTION OF THE INVENTION

[0040] The following describes the details of the invention. Although the following description will proceed with refer-

ence being made to illustrative embodiments, many alternatives, modifications, and variations thereof will be apparent to those skilled in the art. Accordingly, it is intended that the claimed subject matter be viewed broadly. Examples are provided as reference and should not be construed as limiting. The term “such as” when used should be interpreted as “such as, but not limited to.”

[0041] FIGS. 1 and 2 depict the components of the system. FIG. 3 and depict the data, process and control flow between the subsystems. The major subsystems of the invention include the Medical Digital Assistant (“MDA”) 1400, Server 1300 and 2200, Monitoring Devices 1100, Dispensing Devices 1600, Dashboard 2220, and Application Software 1310 and 2210. For convenience, a medical example is illustrated and discussed. However, due to the multi-purpose use of this invention, “Individual” could be used to replace “Patient”, and “Police” or “Monitoring” could be used to replace “Medical”; making this invention useful for a multitude of specific monitoring, management, care, maintenance, and control applications of individuals.

[0042] The invention enables a low cost solution based on an off-the-shelf hand held computer so there is no need to develop an expensive custom made hardware and multiple device functionalities are enabled into one MDA 1400 handheld device. Furthermore, the invention provides for subjective and objective patient 1500 data collection with the system interfaced with point-of-care wired and/or wireless devices for capturing objective data collection such as level of activities, spirometer, thermometer, blood pressure, and EKG, or with a simple graphic interface for patients to enter subjective data such as level of pain, describe the pain, number of days out of work, level of wellness, etc. in one handheld device. The system also enables real-time interactive connection via high bandwidth data, video stream, messages, voice with exchange enabled between patients and healthcare professionals real-time over 3G and 4G technologies wireless data networks. The system further enables secure patient 1500 data handling with data encryption on the handheld device. All data gets uploaded and purged out from the handheld device to another secure centralized location via wired or wireless connectivity. Device privacy is assured by use of unique user identification, audit control with reports of data usage, and the consistent enforcement of HIPAA security and encryption policies.

[0043] The system includes an easy-to-view, easy-to-use interface for simple and logical application—even for patients with no computer skills. Maintenance and support of the system is efficient with remote management and support via secure, professional system maintenance and IT support for both healthcare professionals and patients. The system is portable and pocket-able providing for an easy to carry monitoring system that automatically synchronizes to a centralized database. The two-way communication built into the system enables nurses, physicians, researchers, patients, other healthcare and plan providers enjoy secure communications via video, message, voice, email and fax.

[0044] The invention integrates with existing electronic medical records (“EMR”) through standard and/or proprietary interfaces, keeping records in one place and reducing the amount of paper storage. Easy access to trending reports allows healthcare providers to better visualize patient 1500 activity and manage therapies. Two-way communication enables more efficient, timely communication between health

providers and patients. Physiological data portrays a truly accurate statistical update, which is sometimes different from what a patient 1500 indicates.

[0045] The invention enables monitoring of key indicators anywhere, anytime, reducing the need for office visits and/or hospitalization. There are many benefits to this invention such as: More life balance, regardless of the diagnosis or health condition; When a patient 1500 knows they are monitored, including consistent two-way communication with their health provider, it helps ease the stress of an illness, provide peace of mind, and promote quicker healing; Patient 1500 data collected by electronic systems has consistently demonstrated a reduction in data variance when compared to data collected on paper. This means studies can contain smaller cohorts, saving significant time and cost; Automatic wireless synch-up removes the need for plug-in cables, or even to have a computer at home; User-friendly interface makes it simple for all ages and all levels of technical ability to monitor their condition and better manage their care; Better titration of therapy will yield better health outcomes; A resource center with illustrated reports helps patients 1500 better understand the trends and progress of their condition, to keep them informed and empowered; Automated non-compliance alerts support early intervention and save time through management by exception; Unnecessary visits are eliminated, yet enabling healthcare professionals to stay in contact with patients 1500; Less paperwork means reduced costs and more time for patient 1500 care; Better compliance means healthier patients 1500 with fewer office visits and hospital stays; A real-time connection with participants improves the ability to monitor and intervene quickly if adverse events occur; Connection directly to point-of-care devices—for example with ambulatory actigraphy devices, oxygen, heart or blood pressure monitors, etc.,—to collect and record data more objectively; Electronic data collection is more accurate, less costly, and reports can be collected and analyzed seamlessly. Time is not lost waiting for paper to arrive or for data to be entered. With real-time recording and collection—plus a time-stamp to increase accuracy—recall bias is reduced; The system not only collects and securely stores patients’ data, but also supports dedicated application software to manage the study and conduct data analysis; The following describes the details of the invention.

[0046] FIG. 1 is a diagram of an exemplary embodiment for a system 1000 that gathers and analyzes data to monitor, track, and provide care. The major subsystems of the invention include the Medical Digital Assistant (“MDA”) 1400, Server 1300 and 2200, Monitoring Devices 1100, Dispensing Devices 1600, Dashboard 2220, and Application Software 1310 and 2210. First, the Monitoring Devices 1100 are used to acquire any number of various multiple data parameters. Next, the Dispensing Devices 1600 have the capability of performing an act on the patient 1500, and/or also require monitoring of specific parameter(s). Next, the Medical Digital Assistant 1400 is the patient’s 1500 main interface and is responsible for local control and coordination with the Monitoring 1100 or Dispensing 1600 Devices.

[0047] This invention, allows the use of any commercially available Monitoring Device which stores and transmits data based on any standard specification, such as PCI Express, USB, WiMax, LTE, WiFi, WWAN, WLAN, LAN, PAN and WPAN including but not limited 2.5G, 3G, 4G, WiFi, Bluetooth, USB, POTs, Ethernet and other proprietary WPAN RF interfaces. The Monitoring Devices 1100 acquires patient

1500 data. The Monitoring Devices **1100** may require action by the patient **1500**, the MDA **1400**, or may be autonomous. The Monitoring Devices **1100** may be directly attached to the patient **1500** and/or connect to the patient **1500** using wires, electrodes, wireless technologies, tubes, or some other technology. Any control or configuration of the Monitoring Devices **1100** is accomplished primarily by the MDA **1400** (wired or wirelessly) and may also include patient **1500** actions. The data from the Monitoring Devices **1100** is transmitted to the MDA **1400** (wired or wirelessly), where it is locally encrypted, processed, stored, and retransmitted to the Server **1300**.

[0048] In some configurations of the invention, the use of Dispensing Devices **1600** to perform some action on the patient **1500**, which may or may not also require monitoring one or more patient **1500** parameters. The Dispensing Devices **1600** may be directly attached to the patient **1500**, may connect to the patient **1500** using wires, electrodes, wireless technologies, tubes, or some other technology. Any control or configuration of the Dispensing Devices **1600** is accomplished primarily by the MDA **1400** (wired or wirelessly) and may also include patient **1500** actions. Any relevant data from the Dispensing Devices **1600** is transmitted to the MDA **1400** (wired or wirelessly), where it is locally encrypted, processed, stored, and retransmitted to the Server **1300**.

[0049] The MDA **1400** is a crucial central component of the entire system. The system supports one or more MDAs **1400**, enabling simultaneous support of one or more patients/clients **1500**. The MDA **1400** may be a commercially available portable computer such as a notebook PC, tablet, smart-phone, or personal digital assistant. In another embodiment the MDA **1400** may be a customized device. The MDA **1400** is supported by the Application Software **1310** and **2210**, which includes the logic to coordinate data retrieval, storage, communication, processing, analysis, and reporting. The primary functions of the MDA **1400** include control and configuration of both Monitoring Devices **1100** as well as Dispensing Devices **1600**. The MDA **1400** may also be used for processing, encrypting, and storing patient data as well as equipment status from the Monitoring Devices **1100** the Dispensing Devices **1600**, as well as patient **1500** responses to MDA **1400** interrogations of the patient **1500**. The MDA **1400** also is used in aggregating and compressing/decompressing data so as to minimize the data that must be transferred to/from the Server **1300**, thus minimizing communications charges. The MDA **1400** also performs searching, connecting, and securely relaying data to/from the Server **1300** (wired or wirelessly). The MDA **1400** also is used in deleting confidential patient data from the MDA **1400**, as well as other local equipment, after successfully relaying data to/from the Server **1300**. The MDA **1400** is also used for processing and making local decisions, such as asking the patient **1500** questions regarding either patient **1500** or equipment status.

[0050] The MDA **1400** is also equipped with software **1310** that enables the use of a data fusion process to make decisions based on data collected from local equipment(s), as well as patient **1500** responses to MDA **1400** initiated interrogations. MDA **1400** decisions may include, but not limited to; asking the patient **1500** different questions based on previous responses or collected equipment data, changing the setup/configuration/choice of Monitoring Devices **1100** or Dispensing Devices **1600**, sending alarms to Medical Personnel

1200 and **2100**, making recommendations to Medical Personnel **1200** and **2100** to alter the patient **1500** treatment.

[0051] The MDA **1400** also provides information to the patient **1500** and medical Personnel **1200** and **2100** regarding malfunctioning equipment.

[0052] The MDA **1400** provides a single user-friendly mobile human interface to monitor and/or control various complex equipment(s), one that can accommodate the disabilities of the specific patient **1500** such as hearing, vision, cognitive, etc. Finally, the MDA **1400** provides patient **1500** prompts to take medication, eat, sleep, wake, bathe or dress a wound, show up for an appointment, call to make an appointment, seek emergency assistance, reduce physical activity, increase physical activity, call relatives and or friends to report status, etc.

[0053] Next the Server **1300** provides multiple features and functions such as providing a secure link for data transfer to and from one or more MDAs **1400**. The Server **1300** also provides a long-term secure and redundant database for data collected from one or more MDAs **1400**. The Server **1300** is available to act as the data processing engine to compress and decompress data to minimize the required storage for patient/client data records and minimize data transfer charges to/from the MDAs **1400**, as well as to act on patient data and Medical Personnel **1200** and **2100** requests/commands. The Server **1300** is also a data repository that can be accessed worldwide, any time, from anywhere, to anyone having either internet, telephone, cell, or radio link. Finally, the Server **2200** also provides a Dashboard **2220**, as illustrated in FIG. 2, and further described below.

[0054] Next, the Medical or Monitoring Personnel **1200** and **2100** include anyone that needs to interact with the patient **1500** or patient's data. This may include nurses, pharmacists, technicians, family members/friends, and even the patient **1500**. Each of these entities would have secure access to only the data that is approved for the entity. For example, a doctor may have only access to patients **1500** assigned to himself, with everyone having differing levels of data access. A patient **1500** would have access to only his own limited data, while family/friends would have further reduced levels of data access—configurable by the patient **1500** or other authorized entity.

[0055] The Medical Personnel **1200** and **2100** may interact with the Server **2200** either directly (locally logged into the Server **2200**) or remotely via a wired or wirelessly connected client. The client may include a personal computing device such as a PC, Laptop, Netbook, MDA **1400**, Tablet computer or a telephone (cell or landline).

[0056] Next the Dashboard **2220** is an application that runs on the Server **2200**, and interacts with the Medical Personnel **1200** and **2100** and the database that is locally maintained on the Server **2200**. The Dashboard **2220** provides the client with a graphical GUI, possibly through a Client PC. FIG. 2 depicts the concept of the Dashboard **2220** that is presented to the Medical Personnel **1200** and **2100**. This Dashboard **2220** provides a multitude of features and functions such as providing critical status summary screen(s) for multiple patients **1500**, enabling Medical Personnel **1200** and **2100** to quickly and efficiently grasp the status of multiple patients **1500**. The Dashboard **2220** may also provide detailed screen(s) for selected patients **1500**; provide alarm(s) for patient **1500** status; and provide graphing functions of selected parameters for selected patients **1500**, enabling graphical comparisons over selectable time periods.

[0057] The Dashboard 2220 allows for Medical Personnel 1200 and 2100 to change the treatment for a selected patient 1500, by resetting/reconfiguring the patient's local equipment, changing medications or dosage, issuing lab requests, requesting appointments or telephone calls, requesting intervention and/or review of patient 1500 data from other specialist. The Dashboard 2220 also allows for Medical Personnel 1200 and 2100 to set various thresholds for various parameters of selected patients 1500. For example, if the O₂ level of patient 1500 X falls below Y, then activate an alarm and dispense an ambulance.

[0058] The Dashboard 2220 also provides patient's medical history, which is securely accessible anytime/anywhere by authorized personnel. The Dashboard 2220 also provides a patient 1500 database that can be used to automatically fill out forms/questionnaires, request insurance/Medicare/Medicaid pre-approval or submit claims. The Dashboard 2220 may alert Medical Personnel 1200 and 2100 of improper/risky prescribed treatments for patients 1500 due to allergies, multiple prescription interactions, or from past/present data collected from the patient 1500; for example, prescription X has or has not worked in the past for patient Y.

[0059] Next the Application Software 1310 and 2210 ties all of the components together and provides the processes for the coordination of data storage, data compression, patient/client record aggregation and compression, transmission, analysis, and reporting. The Application Software 1310 and 2210 is applied to the MDA 1400 and the Server 1300, and possibly the Monitoring 1100 and Dispensing Devices 1600. On the MDA 1400, the Application Software 1310 and 2210 coordinates the data acquisition from the Monitoring 1100 and or Dispensing 1600 Devices. The process includes: Requesting data from the Monitoring 1100 and or Dispensing 1600 Devices, either on demand, at synchronized times, or upon manual request; Acquiring data from the Monitoring 1100 and/or Dispensing 1600 Devices; Encrypting and Decrypting data from the Monitoring 1100 and or Dispensing 1600 Devices; Data aggregation, compression/decompression between the MDA 1400 and Server 1300; Performing some data analysis, which may be supported locally by the MDA 1400 processor instead of transmitting and analyzing data on the Server 1300; Sending request to delete the data on the Monitoring 1100 and or Dispensing 1600 Devices; Sending the data acquired from the Monitoring 1100 and or Dispensing 1600 Devices to the Server 1300; Performing self-tests to make sure the MDA 1400 and Monitoring 1100 and or Dispensing 1600 Devices are working properly; Sending requests to the Server 1300 to indicate the results of self-tests, such as requests for further maintenance.

[0060] The Application Software 2210 on the Server 2200 coordinates the data acquisition from one or more MDAs 1400 and also executes data analysis and reporting through the Dashboard 2220. The process further include: Instructing the MDAs 1400 to request data from the Monitoring 1100 and or Dispensing 1600 Devices; Requesting data from the MDA 1400; Encrypting and Decrypting data from the MDA 1400; and performing data analysis. For example, the Server 1300 can determine whether a patient's vitals are within an acceptable range. The Server 1300 will transmit the data analysis in a report, such as the Dashboard 2220, to relevant people including the patient 1500, medical Personnel 1200 and 2100, etc.; Submitting data reports via the Dashboard 2220 via the world-wide-web, closed network, using a portable storage device, or printed to paper. In an alternative situation the

Server 1300 may send emergency data reports to appropriate medical personnel 1200 and 2100. For example, the Server 1300 can be programmed to recognize emergency situations such as signs of an impending stroke and send a request for emergency medical personnel 1200 and 2100. Another example, is detecting when a person has fallen, for example by using accelerometer sensors which may transmit an immediate change in a persons height as an indication that the person has fallen, the Server 1300 may send a distress signal to local emergency personnel, or send a message to the person asking him to respond and indicate that the person has not lost consciousness. If there isn't an emergency situation, the Server 1300 will report the data to a Dashboard 2220, which can be accessed by the patient 1500, medical Personnel 1200 and 2100, or others.

[0061] Using advanced management technology the Application Software 1310 and 2210 can also be remotely managed and updated in a secure environment. This allows the Data Analytics System 1000 to be maintained and upgraded remotely and with reduced cost. For example, the Data Analytics System 1000 may be upgraded without the cost of changing the associated hardware such as the Monitoring 1100 and Dispensing 1600 Devices, MDA 1400, Server 1300, or Client PC.

[0062] The coordinated interaction of all these subsystems provides the useful, unique, and novel features/functions described above and comprise the invention described herein. A significant and diverse set of both Monitoring Devices 1100 and Dispensing 1600 Devices are currently commercially available for sale. The hardware functions provided by the MDA 1400 and the Server 1300 are also currently commercially available for sale. The coordination of all these subsystems is accomplished via the application running on the MDA 1400 interacting with the application running on the Server 1300. The client access to the Server 1300 can be provided by a custom client application, or can be provided by an existing commercially available client application such as an Internet browser.

[0063] The invention includes the method for conducting data acquisition, monitoring, analysis, and reporting to diagnose and treat medical conditions. For example, the invention may be used to diagnose and treat specific medical conditions such as fertility and congestive heart failure.

[0064] In one embodiment the invention is used to diagnose and treat infertility. Infertility, defined as the inability to become pregnant after one year of unprotected sex, affects about 6.1 million women in the US between the ages of 15 to 44 according to the CDC. For women trying to get pregnant, diagnosing ovulation is the first step to finding when they are most fertile. Currently, there are several indirect methods to predicting ovulation. These indirect methods involve measuring LH or estrogen levels in blood, urine, or saliva, charting basal body temperature ("BBT"), or analyzing cervical mucus. Of these methods, charting BBT is easy, cost effective and the least invasive.

[0065] Charting BBT, which can be self-administered at home, is a method to observe temperature patterns in the menstrual cycle. BBT exhibits a strong circadian rhythm, possibly due to an endogenous variation in the thermoregulatory set point. It can also vary depending on behavioral and external stimuli, including sleep, physical activity, ambient temperature, meals, and the menstrual cycle in women. When ovulation occurs, the corpus luteum releases progesterone, causing a 0.6 degree Fahrenheit increase in BBT. After sev-

eral months of charting their BBT, women can approximate when they ovulate and thus are most fertile. Prior research has shown that the average true positive rate of charting BBT to diagnose ovulation is 90%.

[0066] Currently, women only measure their temperature immediately on waking, before rising, moving or taking food or drink. However, the change in BBT due to progesterone is best noticed at the lowest circadian thermogenic point, which occurs at approximately the 5th hour after sleep onset. It has been shown that in normal nocturnal sleep, BBT rises at the 6th hour after sleep onset.

[0067] This invention may be used to enhance the fertility treatment by first using the invention with a temperature sensor to monitor BBT continuously throughout the day. Next the invention is used with a sleep monitoring device continuously throughout the day. The invention is used to survey the women's lifestyle habits, including hour/quality of sleep, diet, exercise, alcohol/substance use, and emotional/stress levels. Next medical Personnel **1200** and **2100** can use the data captured continuously and the correlation of these data to detect an accurate ovulation window.

[0068] In another embodiment, the invention may be used to treat congestive heart failure. Approximately 5.8 million people in the United States have heart failure. The most common causes of heart failure are coronary artery disease, high blood pressure, and diabetes. Typical co-morbidities that contribute to HF patient **1500's** de-compensation include: High cholesterol, High blood pressure, Diabetes, Cigarette smoking, Overweight and obesity, Poor diet, Physical inactivity, and Alcohol use.

[0069] The invention may be used to capture multiple data streams in order to detect early heart failure symptoms to prevent serious implications. For example, the invention may be used to capture and monitor all of the following data streams simultaneously and continuously: monitor BP three times a day via BP Monitor device; monitor activity level during the day via Pedometer; monitor oxygen level for about 3 minutes a day while patient **1500** walking via Oximeter; monitor weight once every morning via a weight scale; monitor EKG 24 hrs a day via a wireless sensor; and monitor time of medication and effectiveness, and any medication side effects. The invention is then used to conduct automated data analysis and correlation to detect any possible abnormalities.

[0070] Various features, aspects, and embodiments have been described herein. The features, aspects, and embodiments are susceptible to combination with one another as well as to variation and modification, as will be understood by those having skill in the art. The present disclosure should, therefore, be considered to encompass such combinations, variations, and modifications. The terms and expressions which have been employed herein are used as terms of description and not of limitation, and there is no intention, in the use of such terms and expressions, of excluding any equivalents of the features shown and described (or portions thereof), and it is recognized that various modifications are possible within the scope of the claims. Other modifications, variations, and alternatives are also possible. Accordingly, the claims are intended to cover all such equivalents.

The invention claimed is:

1. A system comprising: monitoring devices used to acquire data from a patient; dispensing devices having the capability of performing actions on a patient, or requiring monitoring of data; a medical digital assistant which is the patient's main interface and is responsible for control and

coordination with the monitoring and dispensing devices; a server which provides a secure link for data storage and transfer to and from the devices; a dashboard to provide a graphical user interface to monitor, manage, maintain, or control data or request actions; and application software to coordinate storage, compression, transmission, analysis, and reporting of data or actions.

2. A system according to claim 1, wherein the patient is a human child or adult.

3. A system according to claim 1, wherein the patient is a non-human animal.

4. A system according to claim 1, wherein the monitoring device stores and transmits data based on a commercial specification such as PCI Express, USB, WiMAX, LTE, WiFi, WWAN, WLAN, LAN, PAN, WPAN, 2.5G, 3G, 4G, Bluetooth, USB, POTs, Ethernet, or WPAN RF interfaces.

5. A system according to claim 1, wherein more than one medical digital assistant is supported to enable simultaneous support of one or more patients and clients.

6. A system according to claim 1, wherein the medical digital assistant is a commercially available portable computing device such as a notebook PC, tablet PC, smart-phone, or personal digital assistant.

7. A system according to claim 1, wherein the server includes significant data storage sufficient to provide long-term secure and redundant data storage for multiple devices, patients, and clients.

8. A system according to claim 1, wherein the server is accessible worldwide, anytime, from anywhere, and to any authorized user via Internet, telephone, cellular, or radio communication.

9. A system according to claim 1, wherein the dashboard provides a graphical user interface via a personal computing device such as a notebook PC, desktop PC, netbook PC, medical digital assistant, tablet PC, smart-phone, or personal digital assistant.

10. A system according to claim 9, wherein the dashboard includes summary and detailed data displays such as alarms for patient status and graphs of data parameters.

11. A method comprising: using a monitoring device to acquire data from a patient; transmitting data from the monitoring or dispensing devices to a medical digital assistant; coordinating data retrieval, storage, communication, processing, analysis, and reporting; and performing actions on the patient based on the data analysis results using dispensing devices controlled or configured by the medical digital assistant.

12. A method according to claim 11, wherein the patient is a human child or adult.

13. A method according to claim 11, wherein the patient is a non-human animal.

14. A method according to claim 11, wherein the actions by the medical digital assistant include asking the patient different questions based on previous responses.

15. A method according to claim 11, wherein the actions by the medical digital assistant include changing the setup, configuration, or selected monitoring or dispensing devices.

16. A method according to claim 11, wherein the actions include sending alarms to medical personnel.

17. A method according to claim 11, wherein the actions include requests to alter the patient's treatment such as resetting or reconfiguring the patient's dispensing devices, changing medications or dosage levels, issuing lab request, request-

ing appointments or telephone calls, requesting intervention and review from other personnel, or setting thresholds for various data parameters

18. A method according to claim **11**, wherein the data monitored includes the basal body temperature and sleep duration of a female patient to detect an accurate ovulation duration.

19. A method according to claim **11**, wherein the data monitored is critical for detecting chronic disease symptoms including such data as cholesterol levels, blood pressure, calories, physical activity, and alcohol levels.

20. A method according to claim **19**, wherein the chronic diseases include heart failure, diabetes, hypertension, and chronic obstructive pulmonary disorders.

21. A method according to claim **19**, wherein the data monitored to detect chronic disease symptoms include monitoring blood pressure with a blood pressure monitoring device at least three times per day, monitoring activity level continuously throughout the day with a pedometer, monitoring oxygen levels for at least three minutes a day with an oximeter, monitoring weight once every day with a scale, monitoring EKG continuously every day with a remote EKG sensor, and monitoring the time, effectiveness, and side effects of medication.

22. A method operating on a device having physical memory comprising requesting data from the monitoring and dispensing devices on demand, at synchronized times, or upon manual request; acquiring data from the monitoring and dispensing devices; sending the data acquired from the monitoring and dispensing devices to the server; performing data analysis; transmitting the data analysis in a report; requesting the monitoring and dispensing devices to perform actions on the patient based on results of the analysis.

23. A method according to claim **22**, wherein the patient is a human child or adult.

24. A method according to claim **22**, wherein the patient is a non-human animal.

25. A method according to claim **22**, wherein the device is the medical digital assistant, or server, or monitoring device, or dispensing device.

26. A method according to claim **22**, wherein the process can be remotely managed and updated remotely.

27. A method according to claim **22**, wherein the data is encrypted and decrypted when transferred from one component of the system to another.

28. A method according to claim **22**, wherein the data is subjected to data compression and decompression processes between one component of the system to another to reduce the file size transmitted.

29. A method according to claim **22**, wherein the analysis is performed locally by the medical digital assistant instead of transmitting and analyzing data on the server.

30. A method according to claim **22**, wherein the data on the monitoring and dispensing devices are deleted after being transferred and received by the server.

31. A method according to claim **22**, wherein the medical digital assistant, monitoring and dispensing devices perform self-tests to make sure the medical digital assistant and monitoring and dispensing devices are working properly and if not working properly sending requests to the server to indicate the results of self-tests, such as requests for maintenance.

32. A method according to claim **22**, wherein the report is a dashboard made available to patients, medical personnel, or other authorized persons and accessible via the internet, closed network, portable storage device, or printed to paper.

33. A method according to claim **22**, wherein the requests to the monitoring and dispensing devices to perform actions on the patient are input by the patient, medical personnel, or other authorized users.

34. A method according to claim **22**, wherein the requests to the monitoring and dispensing devices to perform actions on the patient are based on pre-programmed situations.

35. A method according to claim **22**, wherein the pre-programmed situation is detecting signs of an impending acute medical emergency and the automatic action is a request for emergency medical personnel.

36. A method according to claim **22**, wherein the pre-programmed situation is detecting when a patient has fallen and the automatic action is to send a distress signal to emergency personnel.

* * * * *

专利名称(译)	数据分析系统		
公开(公告)号	US20120179012A1	公开(公告)日	2012-07-12
申请号	US13/348805	申请日	2012-01-12
[标]申请(专利权)人(译)	SAFFARIAN ARSHAM ANDY		
申请(专利权)人(译)	SAFFARIAN ARSHAM ANDY		
当前申请(专利权)人(译)	SAFFARIAN ARSHAM ANDY		
[标]发明人	SAFFARIAN ARSHAM ANDY		
发明人	SAFFARIAN, ARSHAM ANDY		
IPC分类号	A61B5/0205 A61B10/00 A61B5/00		
CPC分类号	A61B5/0022 A61B5/02055 A61B10/0012 A61B2010/0019 G06F19/34 G06F19/3418 G06F19/345 A61B5/7232 A61B5/0004 G06F19/30 G16H50/20		
优先权	61/461007 2011-01-12 US		
其他公开文献	US8721543		
外部链接	Espacenet USPTO		

摘要(译)

本发明包括收集和分析数据以监视，跟踪和提供护理的系统 and 过程。本发明的主要子系统包括医疗数字助理 (“MDA”)，服务器，监视设备，分配设备，服务器，仪表板和应用软件。本发明包括用于进行数据获取，监测，分析和报告以诊断和治疗诸如诊断和治疗特定医学病症 (例如生育力和充血性心力衰竭) 的医学病症的方法。

