



US006714803B1

(12) **United States Patent**  
**Mortz**

(10) **Patent No.:** **US 6,714,803 B1**  
(45) **Date of Patent:** **\*Mar. 30, 2004**

(54) **PULSE OXIMETRY SPO2 DETERMINATION**

(75) Inventor: **Margaret S. Mortz**, Lafayette, CO (US)

(73) Assignee: **Datex-Ohmeda, Inc.**, Madison, WI (US)

(\* ) Notice: Subject to any disclaimer, the term of this patent is extended or adjusted under 35 U.S.C. 154(b) by 0 days.

This patent is subject to a terminal disclaimer.

4,824,242 A	4/1989	Frick et al.	
4,869,253 A	9/1989	Craig, Jr. et al.	
4,869,254 A	9/1989	Stone et al.	
4,883,353 A	* 11/1989	Hausman et al.	600/323
4,928,692 A	5/1990	Goodman et al.	
4,948,248 A	8/1990	Lehman	
5,028,787 A	7/1991	Rosenthal et al.	
5,048,524 A	9/1991	Bailey	
5,119,815 A	6/1992	Chance	
5,219,400 A	6/1993	Jacot et al.	
5,259,381 A	11/1993	Cheung et al.	
5,351,685 A	10/1994	Potratz	
5,379,238 A	1/1995	Stark	
5,503,148 A	4/1996	Pologe et al.	
5,934,277 A	8/1999	Mortz	
6,385,471 B1	* 5/2002	Mortz	600/323

\* cited by examiner

(21) Appl. No.: **09/963,219**

(22) Filed: **Sep. 25, 2001**

**Related U.S. Application Data**

(63) Continuation of application No. 09/370,962, filed on Aug. 10, 1999, now Pat. No. 6,385,471, which is a continuation of application No. 08/405,569, filed on Mar. 16, 1995, now Pat. No. 5,934,277, which is a continuation of application No. 07/753,761, filed on Sep. 3, 1991, now abandoned.

(51) **Int. Cl.**<sup>7</sup> ..... **A61B 5/00**

(52) **U.S. Cl.** ..... **600/323**

(58) **Field of Search** ..... 600/323, 330, 600/336

(56) **References Cited**

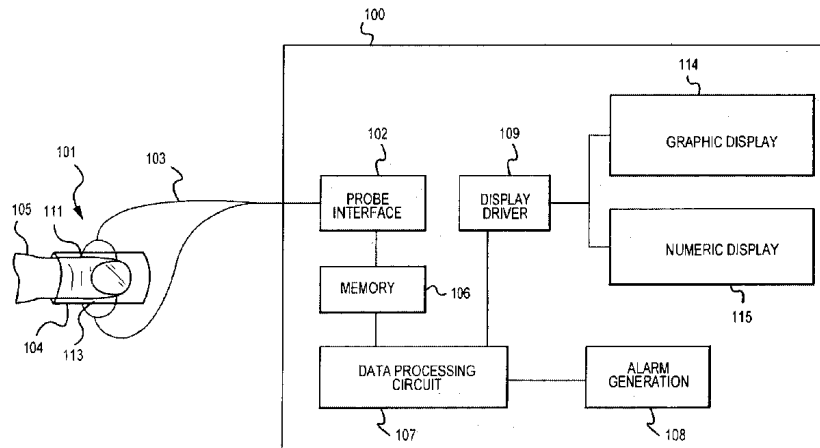
**U.S. PATENT DOCUMENTS**

4,167,331 A	9/1979	Nielsen
4,266,554 A	5/1981	Hamaguri
4,586,513 A	5/1986	Hamaguri et al.
4,623,248 A	11/1986	Sperinde
4,700,708 A	10/1987	New, Jr. et al.
4,714,080 A	12/1987	Edgar, Jr. et al.
4,714,341 A	12/1987	Hamaguri et al.
4,784,150 A	11/1988	Vorhies et al.
4,796,636 A	1/1989	Branstetter et al.
4,805,623 A	2/1989	Jobsis
4,807,631 A	2/1989	Hersh et al.
4,819,752 A	4/1989	Zelin
4,822,568 A	4/1989	Tomita

(57) **ABSTRACT**

The improved pulse oximeter preprocesses the sets of red and infrared signals received from the probe to remove ambient light, to remove noise, and to de-exponentiate the signals. The linearity of the processed red and infrared signals allows the use of statistical techniques such as linear regression and linear correlation to fit a best fit straight line to the set of pairs of processed red and infrared data points and to measure the goodness of the straight line fit to these data points. The result of this analysis is a linear regression slope and a goodness of fit correlation coefficient. The correlation coefficient is a measure of the linearity of the input data points and, if less than a predetermined threshold, it indicates that a distorted signal has been received from the probe. This permits the pulse oximeter to detect probe off conditions and/or motion in the patient. The computed linear regression slope is converted to a RRatio which is used in an empirical calibration formula to compute the average SpO2 value. The minimum size of the data set required for high confidence calculations using this apparatus is significantly smaller than the a pulse period and permits faster response to changing input data.

**20 Claims, 6 Drawing Sheets**



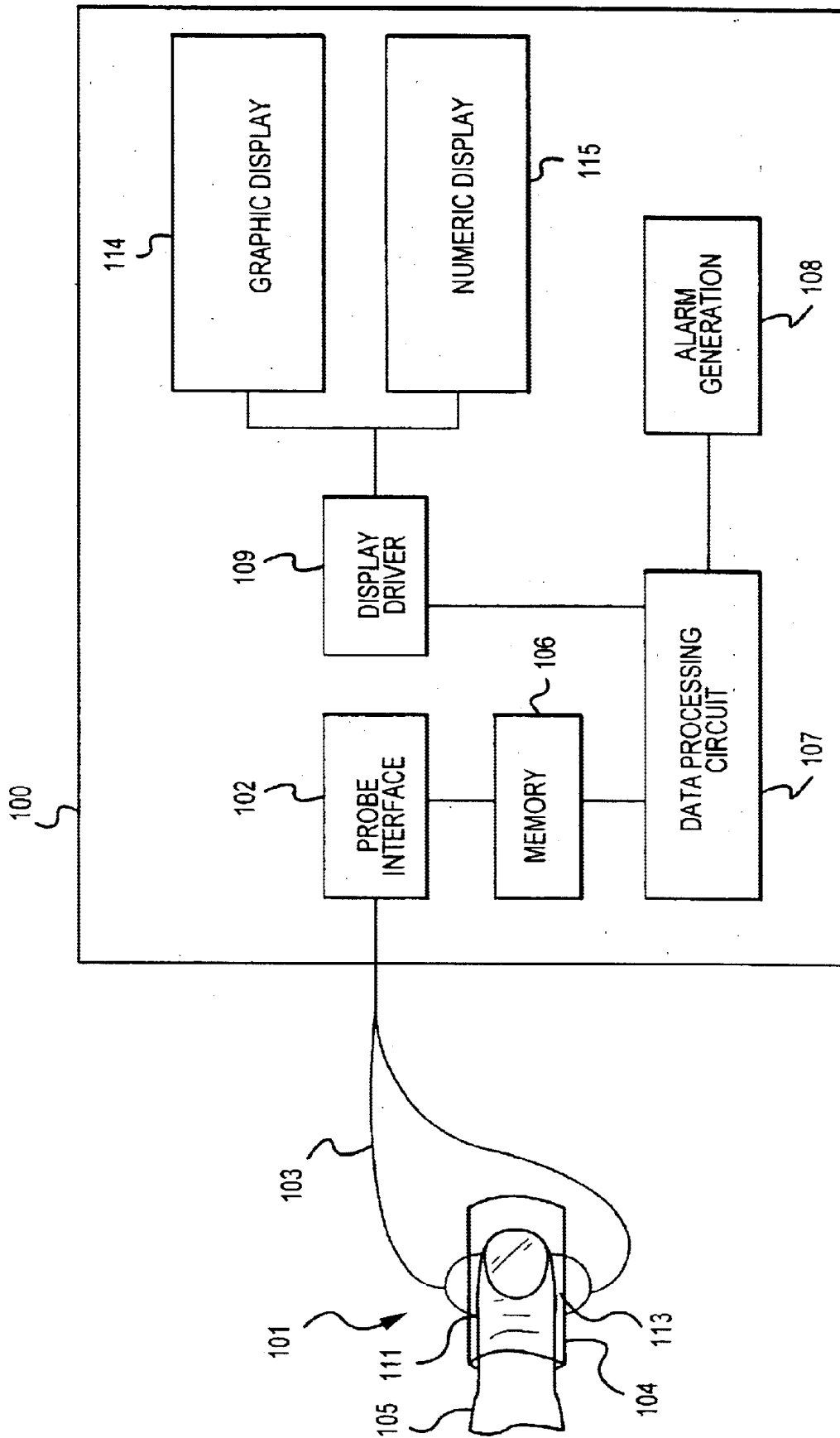


FIG.1

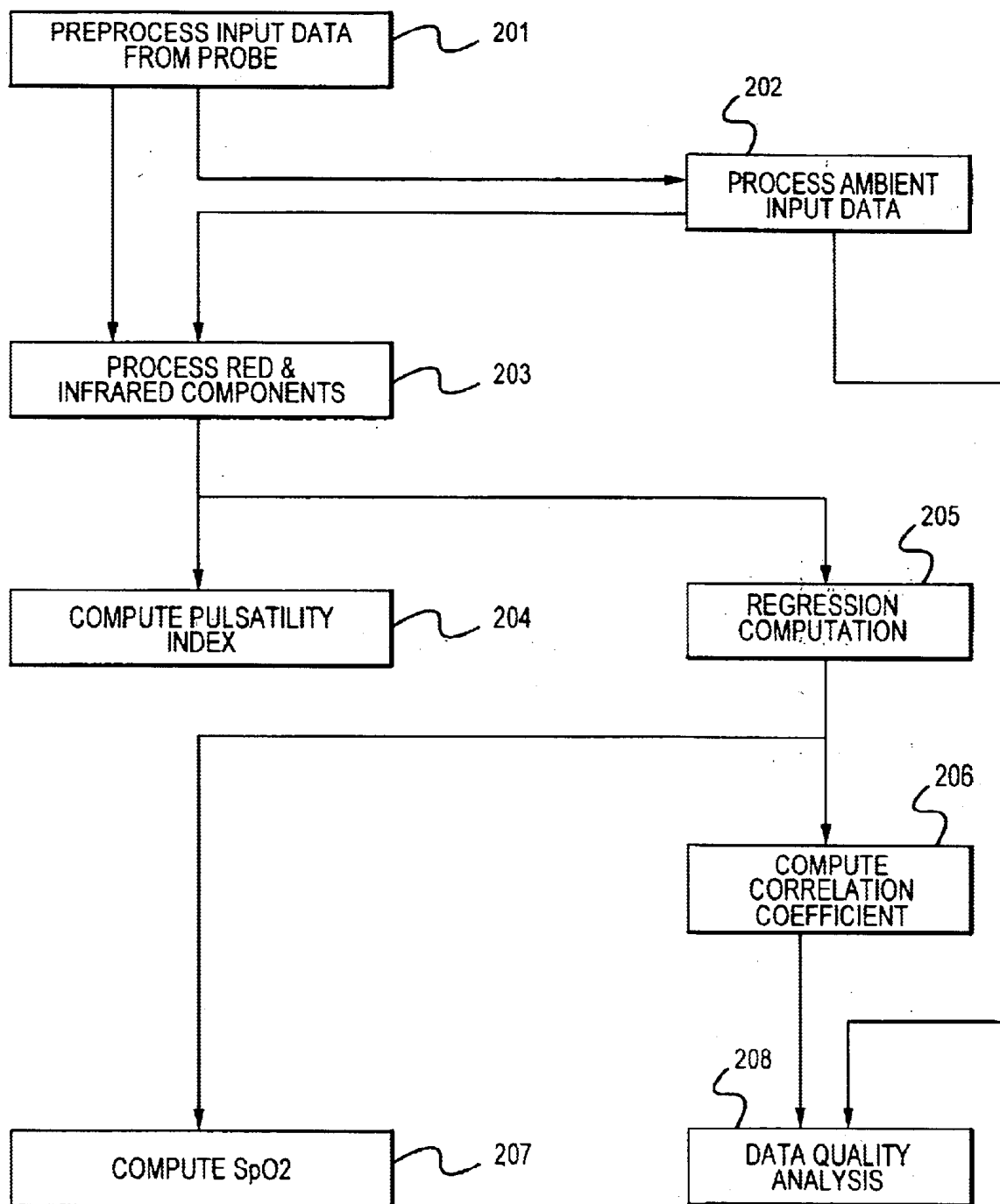


FIG.2

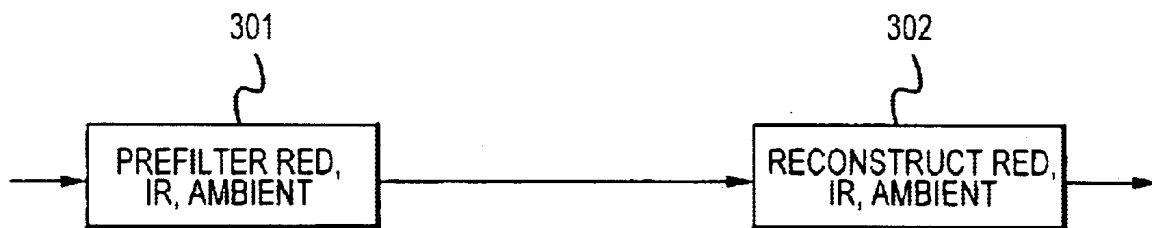


FIG.3

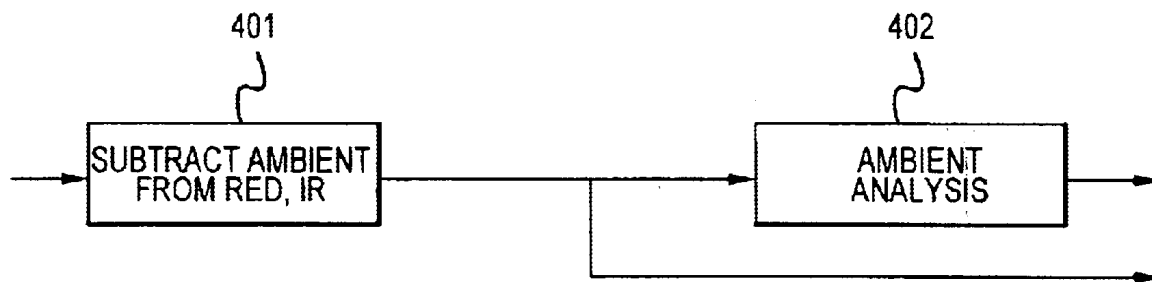


FIG.4

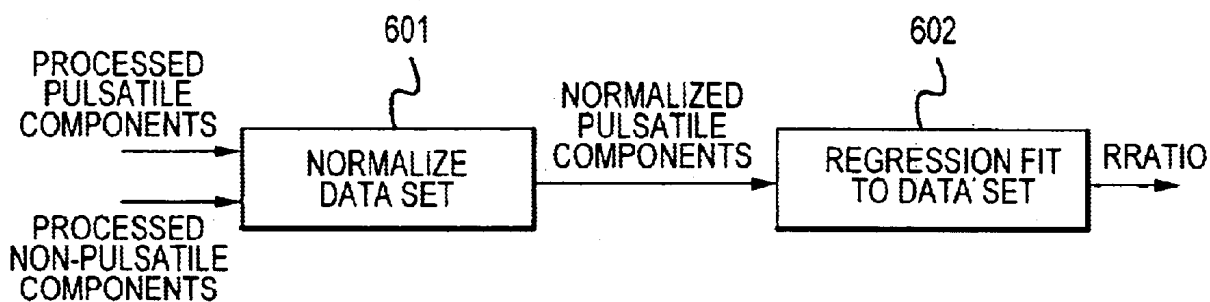


FIG.6

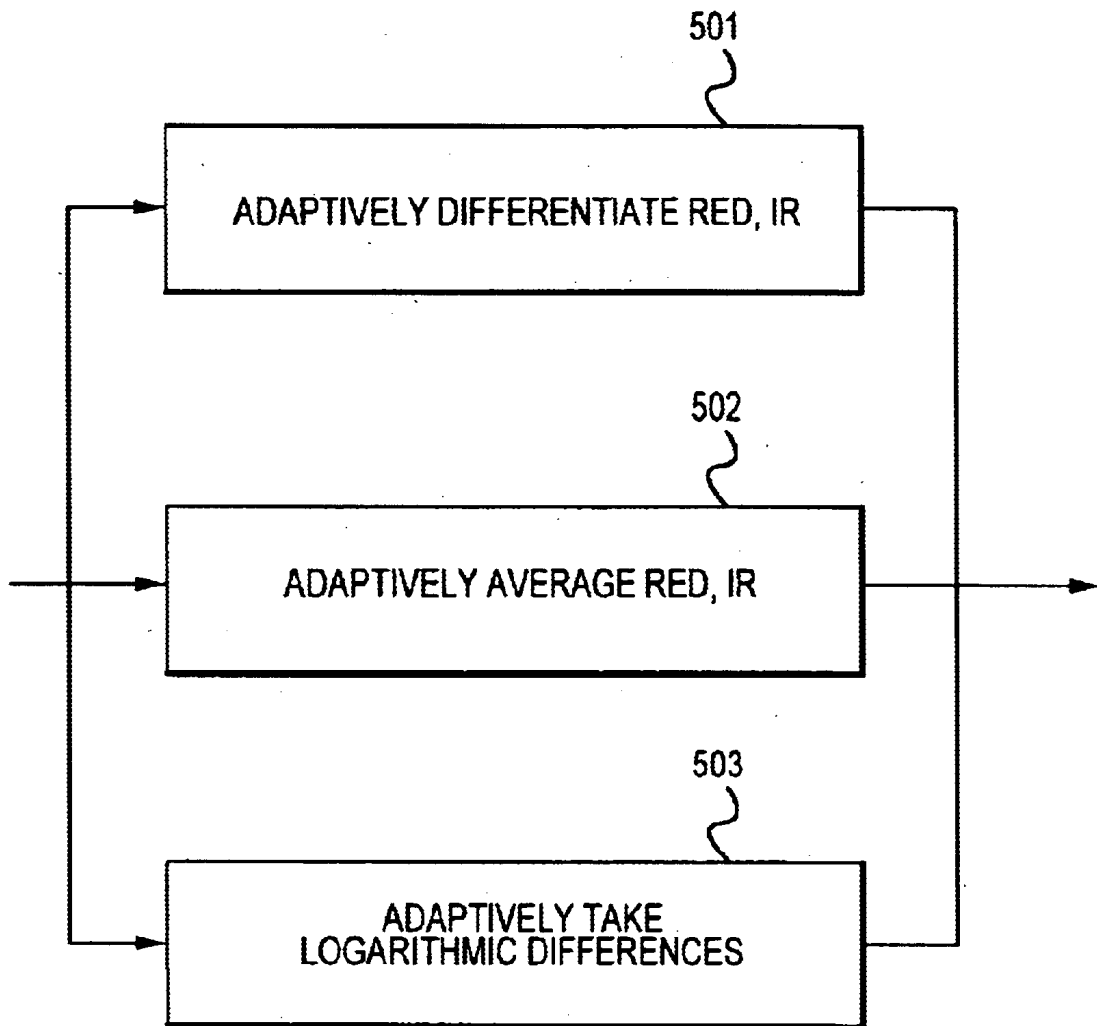


FIG.5

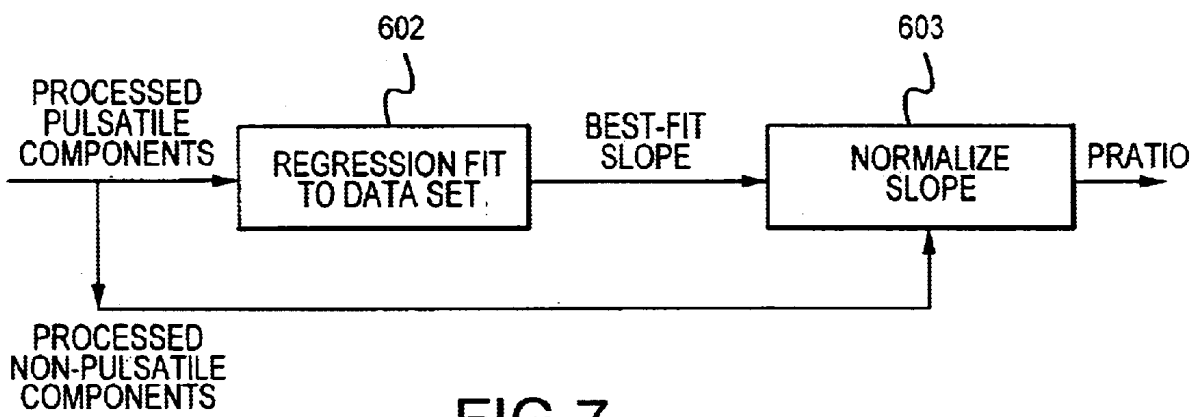


FIG. 7

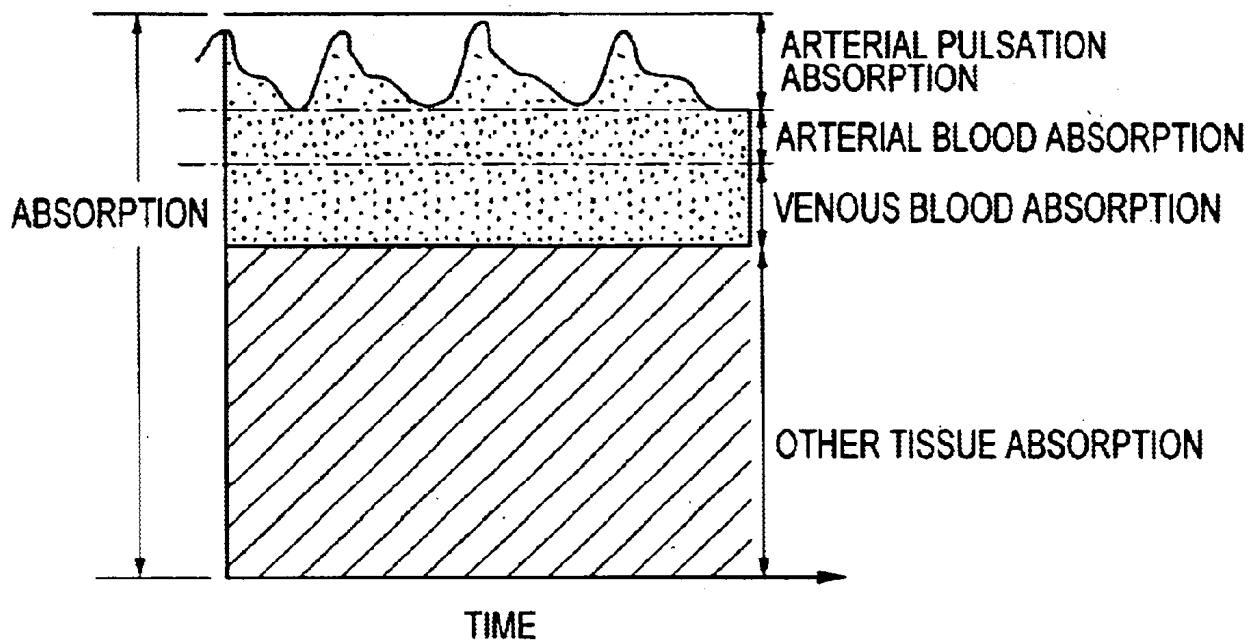


FIG.8

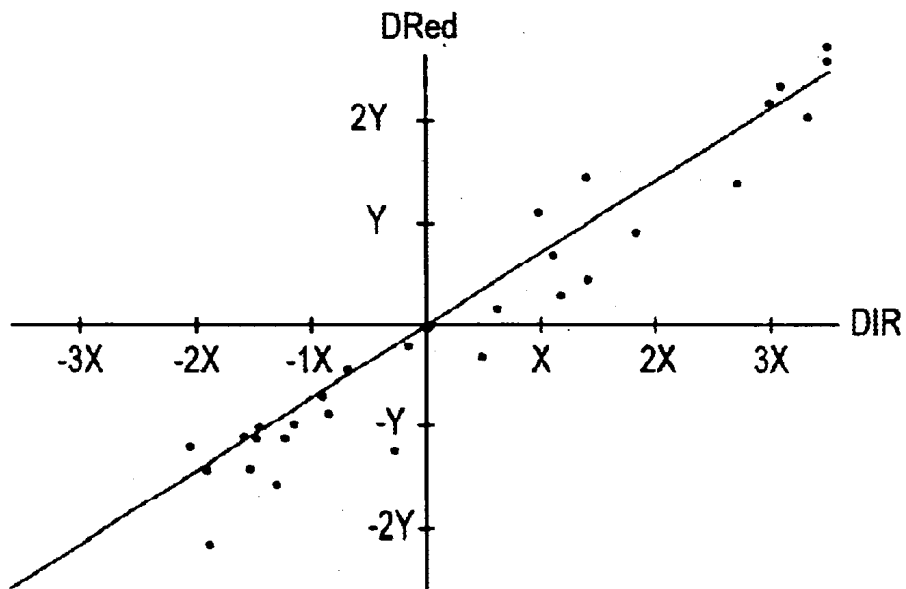


FIG.9

1

**PULSE OXIMETRY SPO<sub>2</sub> DETERMINATION****RELATED APPLICATION**

This patent application is a continuation of U.S. patent application Ser. No. 09/370,962, filed Aug. 10, 1999, now U.S. Pat. No. 6,385,471 which is a continuation of U.S. patent application Ser. No. 08/405,569, filed Mar. 16, 1995, which issued as U.S. Pat. No. 5,934,277, on Aug. 10, 1999, which is a continuation of U.S. patent application Ser. No. 07/753,761, filed Sep. 3, 1991, abandoned all of which are hereby incorporated by reference in their entirety.

**FIELD OF THE INVENTION**

This invention relates to pulse oximeters which noninvasively measure the oxygen saturation of hemoglobin in arterial blood and, in particular, to an improved system for performing these calculations and for discriminating valid signals from invalid data such as caused by probe-off conditions or motion artifacts.

**Problem**

It is a problem in the field of pulse oximeters to accurately measure the oxygen saturation of the hemoglobin in arterial blood without having a significant error content due to ambient noise. It is also a problem to determine when the probe used to perform the measurement is producing data with a noise component that is too large to provide an oxygen saturation reading of sufficient accuracy. The oxygen saturation (SpO<sub>2</sub>) of the hemoglobin in arterial blood is determined by the relative proportions of oxygenated hemoglobin and reduced hemoglobin in the arterial blood. A pulse oximeter calculates the SpO<sub>2</sub> by measuring the difference in the absorption spectra of these two forms of hemoglobin. Reduced hemoglobin absorbs more light in the red band than does oxyhemoglobin while oxyhemoglobin absorbs more light in the infrared band than does reduced hemoglobin. The pulse oximeter includes a probe that is placed in contact with the skin, in a vascularized tissue region, either on a flat surface in the case of reflectance probes or across some appendage in the transmission case. The probe contains two light emitting diodes (LEDs), each of which emits light at a specific wavelength, one in the red band and one in the infrared band. The amount of light received after interacting with the tissue adjacent to the LEDs is measured many times a second at both wavelengths.

The tissue contains arterial, capillary and venous blood as well as muscle, connective tissue and bone. Therefore the red and infrared signals received from the probe contain a non-pulsatile component which is influenced by the absorbency of tissue, venous blood, capillary blood, non-pulsatile arterial blood, the intensity of the light source and the sensitivity of the detector. The pulsatile component of the received signals is an indication of the expansion of the arteriolar bed with arterial blood. The amplitude of the pulsatile component is a very small percentage of the total signal amplitude and depends on the blood volume change per pulse and the SpO<sub>2</sub>. The received red and infrared signals have an exponential relationship to their respective incident intensities. Therefore, the argument of the received red and infrared signals have a linear relationship and these received signals can be filtered and mathematically processed using either derivatives or logarithms. The effects of different tissue thicknesses and skin pigmentation can be removed from the received signals by normalizing the processed signal by a term that is proportional to the non-pulsatile portion of the received signal intensity. Taking

2

the ratio of the mathematically processed and normalized red and infrared signals results in a number which is theoretically a function of only the concentration of oxyhemoglobin and reduced hemoglobin in the arterial blood, provided that the concentration of dyshemoglobins in the arterial blood is sufficiently small.

This data is significantly impacted by the presence of noise, which is manifested in many forms. Any phenomena, whether mechanical or electrical or optical, that causes an artifact in the pulsatile component of the received signals compromises instrument performance. An example is that any transient change in the distance between the light emitting diodes and the detector can result in an error signal at both wavelengths. These pulse sources can cause annoying false positive alarms which are of concern in a critical care setting because instruments with frequent alarms are often ignored or the alarms are disabled. Motion artifacts can be caused by patient movement and frequently mimic vascular beats with frequencies well within normal physiological ranges. A second source of noise is the introduction of ambient light into the probe. Any light incident on the detector and not originating from the light emitting diodes is considered noise. Many of these noise sources are not easily filtered out of the resultant signal and represent a significant error component in existing pulse oximeters.

**Solution**

The above-described problems are solved and a technical advance achieved in the field by the improved system for noninvasively calculating the oxygenation of hemoglobin in arterial blood using a pulse oximeter. This improved system takes advantage of the basic statistical property of pulse oximetry signals that the measured blood oxygen saturation appears as a constant over a small set of measurements. Properly processed sets of red and infrared signals have a linear relationship therebetween.

The processing has several steps. First, the received red and infrared signals are collected from the probe detector and pre-processed. This pre-processing includes removal of ambient light and prefiltering to remove noise. The pre-filtering can be a combination of linear filtering to remove unwanted additive noise and non-linear filtering to remove noise spikes. The filtered red and infrared signals consist of both a small magnitude pulsatile component which carries information about the oxygen saturation of the hemoglobin, and a plurality of large magnitude non-pulsatile components. The filtered signals are mathematically processed using either derivatives or logarithms. The results of the mathematical processing are a set of red values which are directly proportional to the red optical Extinction, and a set of infrared values which are directly proportional to the infrared optical Extinction. The red and infrared signals travel through the same pulsatile path when the data is good, which leads to a technique for both identifying good data and extracting the ratio of red optical absorption to the infrared optical absorption for that set of data measurements.

The oxygen saturation is essentially constant for a set of measurements taken over a short interval of time; e.g. less than a second. This implies that, when the data is good and the optical paths are the same for the red and infrared signals, the ratio of the mathematically processed red signal to the mathematically processed infrared signal is also a constant, except for residual noise. Consequently, for good data, a plot of the simplified infrared data points versus the simplified red data points yields points that are tightly scattered around a straight line. A "best-fit" straight line can

be computed for these data points using standard mathematical techniques such as linear regression. The slope of that best-fit-line is proportional to the RRatio, which is defined as the ratio of red optical absorption to the infrared optical absorption for that data set. The RRatio carries the desired information about oxygen saturation of hemoglobin in the arterial blood.

The processed signals also contain additional information. If the plotted points are widely scattered about the best-fit-line, the excessive scatter indicates that there is excessive noise or probe artifacts in the received signals. This can be an indication the probe has fallen off the patient and/or there is patient motion. The degree of scatter of the points can be measured using standard mathematical techniques, such as the linear correlation coefficient. The measure of the scatter of the plotted points provides a quality measure of the data sample. Other statistical techniques could also be used to check the linearity of the data; for example, higher-order moments or higher-order fits. Still another test of data quality can be the intercept of the best-fit-line. The intercept is very close to zero for good data. The computed error measures can be compared to a failure threshold, possibly over a series of measurements. If there is too much error, then an alarm can be generated for the user.

The minimum size of the measured data set required for high confidence SpO<sub>2</sub> calculations is small and therefore permits faster response of the pulse oximeter to changing values of the SpO<sub>2</sub>. It is not necessary to wait a pulse period to acquire enough samples, and high confidence values can be computed in less than a second.

#### BRIEF DESCRIPTION OF THE DRAWING

FIG. 1 illustrates in block diagram form the overall architecture of the improved system for SpO<sub>2</sub> calculation;

FIG. 2 illustrates in block diagram form the functional elements used by this system to perform the calculations;

FIGS. 3–7 illustrate additional details of the various processes used in the improved system for SpO<sub>2</sub> calculation;

FIG. 8 illustrates in graphical form the various components of the input signal from the probe; and

FIG. 9 illustrates in graphical form an illustrative set of data which is used in this system.

#### DETAILED DESCRIPTION

This pulse oximeter system takes advantage of the basic statistical property of pulse oximetry signals that the measured blood oxygen saturation appears as a constant over a small set of measurements. Properly processed sets of red and infrared signals should have a linear relationship therebetween. Preprocessing of the sets of red and infrared signals received from the probe removes ambient light components and linear and non-linear prefiltering also removes noise to provide more accurate measurement data.

The filtered signals are mathematically processed using either derivatives or logarithms. The results of the mathematical processing are a set of red values which are directly proportional to the red optical absorption, and a set of infrared values which are directly proportional to the infrared optical absorption. The presence of good data is indicated by a linear relationship between the mathematically processed red values and the mathematically processed infrared values.

There are several types of appropriate mathematical processing. For example, one method is based on a derivative technique which finds the numerical difference between two

successive red measurements. This difference results in a red term that is proportional to the product of the red optical absorption and the pulsatile path, provided that the sample rate is rapid enough for the time between measurements to be very small. Taking a similar difference between two successive infrared measurements provides an infrared term that is proportional to the product of the infrared optical absorption and the pulsatile path. For good data, the pulsatile path components are identical for both red and infrared signals, so that the ratio of the differentiated red and infrared terms cancels out the path length. The effects of different tissue thicknesses and skin pigmentation are removed by normalizing the processed signal by removing the terms that are proportional to the red and infrared non-pulsatile incident intensities.

An alternate method of mathematical processing is to use logarithms instead of derivatives. In this approach, the logarithms of the ratio of two successive red measurements are taken, which is equivalent to finding the difference between the logarithms of two successive red measurements. The same process is applied to the infrared signals. Then the ratio of the logarithmic differences of the red and infrared signals yields a term that is a function of the red and infrared absorptions and is independent of path length. This technique directly compensates for the variations in thickness of different tissues and skin pigmentation.

Regardless of whether the derivatives or logarithms are used for mathematical processing, the linearity of the mathematically processed red and infrared signals allows the use of statistical techniques such as linear regression and linear correlation to fit a straight line to the set of pairs of processed red and infrared data points and to measure the goodness of that fit. One result of this analysis is a linear regression slope and intercept and the other result is a goodness-of-fit correlation coefficient. The linear regression slope is a measure of the best fit straight line to the ratio of the red absorption coefficient and infrared absorption coefficient. This ratio is called a best-fit RRatio. This best-fit RRatio is then used in an empirical calibration formula to compute the best-fit SpO<sub>2</sub> value. The minimum size of the data set required for high confidence SpO<sub>2</sub> calculations is relatively small, and permits faster response of the pulse oximeter system to changing values of SpO<sub>2</sub>. It is not necessary to have a full pulse period, and responses under one second are feasible.

The goodness-of-fit correlation coefficient is a measure of linearity between the mathematically processed red and infrared signals. If the correlation coefficient is low, then the data is a poor fit. This can indicate that there is a probe-off condition or patient motion. By tracking a short history of computed correlation coefficients against pre-determined failure thresholds, error conditions can be detected and appropriate alarms generated for the user. A large magnitude of the computed intercept of the best-fit-line also indicates bad data.

#### System Architecture

FIG. 1 illustrates in block diagram form the overall architecture of a typical pulse oximeter system including the apparatus of the present invention. The pulse oximeter system **100** consists of a probe **101** connected to probe interface circuit **102** by means of a set of electrical conductors **103**. The probe **101** consists of an exterior housing **104** that applies the active elements of the probe to the tissue under test, such as a finger **105**, containing an arterial blood flow that is to be monitored. Included within housing **104** is a pair of light emitting diodes **111**, **112** and at least one corresponding light detector **113**. The light emitting diodes **111**, **112** each produce an output light beam of predeter-

mined wavelength which is directed at the tissue under test **105** enclosed by housing **104**. The light detector **113** monitors the level of light that is transmitted through or reflected from the vascularized tissue **105**. In order to distinguish between the light beam produced by the red **111** and infrared **112** light emitting diodes, these light emitting diodes **111**, **112** are synchronously sampled. Ambient light is measured in housing **104** by light detector **113** making measurements when the light emitting diodes **111**, **112** are off.

The signals received by probe interface circuit **102** from light detector **113** are analog signals and are typically processed by additional analog circuitry and then converted by an analog-to-digital converter circuit into sets of digital measurements which are stored in memory **106**. Data processing circuit **107** mathematically processes the digitized measurements stored in memory **106** to compute the oxygenation level of the hemoglobin in the arterial blood in tissue **105**. It is also possible that analog circuitry can be used to perform some of the mathematical operations described herein as performed by data processing circuit **107**, such as taking derivatives or logarithms.

The data processing circuit **107** also computes the pulse rate, and a pulsatility index. The results of the oxygen saturation computation and pulse rate are displayed numerically (**115**) via display driver **109** and the associated display **114**, **115** while the plethysmographic waveform is typically displayed graphically via display **114**. The pulsatility index can be done with numerical or graphical methods. In addition, data processing circuit **107** detects anomalies in the input data stored in memory **106** and "sets error codes which may be used to" activate an alarm generation circuit **108** to produce an audible and/or visual alarm to a user to indicate a data error condition. The operation of data processing circuit **107** is disclosed in additional detail below and, for the purpose of this disclosure, it is assumed that the other elements disclosed in FIG. 1 are the conventional components found in existing pulse oximeter systems.

#### Signal Components

FIG. 8 illustrates in graphical form (not to scale) the various components of the signal produced by the light detector **113** as a result of a light beam interacting with vascularized tissue **105**. The light detector output signal consists of a large magnitude non-pulsatile component and a small magnitude pulsatile component. The non-pulsatile component represents light remaining after absorption due to a combination of venous blood flow, tissue, bone, and constant arterial blood flow while the small pulsatile component is caused by the light absorption due to pulsatile arterial blood flow that is to be measured. Since the light emitting diodes **111**, **112** are sampled in rapid succession, the data signals produced by the light detector **113** and transmitted to the probe interface **102** consist of a series of data points which are digitized and stored in memory **106**. Since the red **111** and infrared **112** light emitting diodes are sampled in rapid succession, the digitized data points produced consist of a plurality of sets of measurements, with one set corresponding to samples of the red intensity, the other set corresponding to samples of the infrared intensity, and a third set corresponding to ambient light.

Ideally, the ratio of the normalized derivative (or logarithm) of the red intensity to the normalized derivative (or logarithm) of the infrared intensity is a constant. This constant is indicative of the partial oxygenation of the hemoglobin in the arterial blood flow. It is obvious that this ratio changes as SpO2 changes but, for a short interval with rapid enough sampling rate, the ratio remains constant.

As noted above, the actual data received by the probe interface circuit **102** can include a fairly significant noise

component which is caused by a number of sources including motion of the finger **105**, the introduction of ambient light into the housing **101**, and various sources of electrical noise. These noise components skew the values of either or both of the magnitudes measured in each set of data points destroying the correct relationship between the red and infrared signals. Existing pulse oximeter circuits make use of various filtering techniques to minimize the impact of the noise on the SpO2 value measured by the system. However, a severe limitation of existing filtering circuits is that very little indication is provided to the user of the severity of the noise introduced into the measurements. The accuracy of the readings produced by a typical pulse oximeter system can be severely compromised by the probe **101** being improperly affixed to the patient's finger **105** without the user being able to detect this condition. In addition, only a single pass filtering technique is typically used to remove only the most egregious instances of noise in the system. The apparatus of the present invention overcomes the limitations of existing pulse oximeter systems by processing the received data in a manner that detects excessive noise introduction in the system and provides improved noise rejection in determining the SpO2 measured by probe **101**.

#### Mathematical Background

In this system, the key parameter is called the RRatio. This parameter measures the ratio of the normalized derivative (or logarithm) of red intensity to the normalized derivative (or logarithm) of infrared intensity. For good data, this parameter corresponds to the ratio of the red arterial optical absorption to the infrared arterial optical absorption. The significance is the RRatio can be understood by examining the optical behavior of light as it passes through tissue. The light is scattered and absorbed by all the tissues, but the light passing through a pulsing artery or arterial bed will see a moving path length. The other tissues are unmoving and contribute to the steady non-pulsatile signal, but not to the time-varying pulsatile signals. The absorption of light by arterial blood is assumed to be only a function of the oxygenation state of the hemoglobin. Other basic assumptions are that the red and infrared light travels along essentially the same optical path, and that all the hardware circuits do not introduce any bias into the signal extraction.

The waveform of the optical signal is determined by changes in the pulse length,  $L_p$ , and the basic optical signal is described by an exponential relationship according to Beer's law. This means that the intensity of red,  $I_{Red}$ , and the intensity of the InfraRed,  $I_{IR}$ , light absorbed by the blood in a pulsing capillary bed can be described by the following equations:

$$I_{Red} = \text{Ambient} + I_{NPRED} * \text{Exp}[-E_{Red} * C * L_p] \quad (1)$$

$$I_{IR} = \text{Ambient} + I_{NPIR} * \text{Exp}[-E_{IR} * C * L_p] \quad (2)$$

where the Red or IR optical absorption is given by the product of the Red Extinction Coefficient,  $E_{Red}$ , or InfraRed Extinction Coefficient,  $E_{IR}$ , and the hemoglobin concentrations,  $C$ . The concentration,  $C$ , and pulsatile path length,  $L_p$ , are the same for the red and infrared light.  $I_{NPRED}$  is the non-pulsatile red intensity of the signal and is proportional to the product of the light emitting diodes intensity with attenuation factors from propagation through non-pulsatile media and sensitivity and gain factors from the detection electronics.  $I_{NPIR}$  is the corresponding non-pulsatile infrared intensity.

The pulsatile exponential function puts an amplitude modulation on the non-pulsatile intensity. The equation for the non-pulsatile intensity  $I_{NP}$ , has several terms.

$$I_{NP} = I_0 * A * \text{Exp}[-\Sigma(E_x * C_x * L_x)] \quad (3)$$

The term  $I_0$  is the incident intensity.  $A$  is a composite scale factor caused by scattering losses, losses in detection, and gain in detection circuits. There is a composite exponential absorption as the light propagates through non-pulsatile intervening tissue, which can be described by a summation of the absorptions by each intervening tissue zone.

The objective of the following mathematical manipulation is to obtain the ratio of the Extinction coefficients of the Red,  $E_{Red}$ , and the InfraRed,  $E_{IR}$ , signals. This ratio is used with a calibration equation to determine how well the blood is oxygenated. It is assumed that the ambient light is perfectly subtracted from the received signals.

It is necessary to compute the Extinction coefficients from the exponentials. This can be done with the use of either logarithms or derivatives. The preferred method disclosed herein uses derivatives. If the samples are closely spaced relative to the changes in pulsatile path length,  $L_p$ , then a series expansion of the exponential function can be used. This means that the exponential really looks like a constant plus a term that is linearly proportional to the path length. In other words, only the first two terms of the binomial expansion need to be retained. Assume that the difference between two closely spaced in time non-pulsatile intensities is zero. Taking samples at time  $t_2$  and time  $t_1$ , the derivative of the red intensity can be approximated as the difference between the two samples:

$$DRed = I_{NPRED} * (\text{Exp}[-E_{Red} * C * L_p(t_2)] - \text{Exp}[-E_{Red} * C * L_p(t_1)]) \approx I_{NPRED} * (1 - E_{Red} * C * L_p(t_2)) - [1 - E_{Red} * C * L_p(t_1)] = I_{NPRED} * (E_{Red} * C * [L_p(t_2) - L_p(t_1)]) \quad (4)$$

In equation 4  $L_p(t_2)$  is the pulsatile path length at time 2 and  $L_p(t_1)$  is the pulsatile path length at time 1.

The derivative of the infrared intensity can be approximated in a similar manner.

$$DIR = I_{NPIR} * (\text{Exp}[-E_{IR} * C * L_p(t_2)] - \text{Exp}[-E_{IR} * C * L_p(t_1)]) \approx I_{NPIR} * (1 - E_{IR} * C * L_p(t_2)) - [1 - E_{IR} * C * L_p(t_1)] = I_{NPIR} * (E_{IR} * C * [L_p(t_2) - L_p(t_1)]) \quad (5)$$

Note that both  $DRed$  and  $DIR$  are directly proportional to the Extinction coefficients as long as  $I_{NPRED}$  and  $I_{NPIR}$  are constant over that sampling interval. Note also that the term  $C * [L_p(t_2) - L_p(t_1)]$  is common to both  $DRed$  and  $DIR$ . This means that the ratio of  $DRed$  and  $DIR$  is independent of the concentration and path length changes.

$$DRed/DIR = (I_{NPRED}/I_{NPIR}) * (E_{Red}/E_{IR}) \quad (6)$$

NOW the factor which is due to the ratio of received non-pulsatile intensities can be removed in several ways. In one method, analog hardware is used to separate the received intensities, by finding the low-pass DC values of the Red and InfraRed.

$$(I_{NPRED}/I_{NPIR}) = (I_{NPREDDC}/I_{NPIRDC}) \quad (7)$$

In the preferred method, the sum of the two or more time samples is used

$$I_{NPRED} = I_{NPRED(t_2)} + I_{NPRED(t_1)} \quad (8)$$

$$I_{NPIR} = I_{NPIR(t_2)} + I_{NPIR(t_1)} \quad (9)$$

An instantaneous  $RRatio$  is found by multiplying the ratio of derivatives to the ratio of the incident intensities.

$$\text{instantaneous } RRatio = DRed/DIR * (I_{NPIR}/I_{NPRED}) = (E_{Red}/E_{IR}) \quad (10)$$

## Key Equations

The instantaneous  $RRatio$  is a number computed from only two measurement pairs of red and infrared values, which can be corrupted by noise. There is another way to computed an  $RRatio$  that forms a best-fit to a larger number of measurements pairs and reduces the sensitivity to noise. Note once again that the Extinction Coefficients and incident intensities are nearly constant provided that the sample rate is fast compared to any physiological changes. This means that valid data must obey the equation of a straight line. Consequently for a small set of closely spaced samples, it must be true that:

$$DRed * I_{NPIR} = SlopeA * (DIR * I_{NPRED}) + noise, \text{ and} \quad (11)$$

where

$$SlopeA = E_{Red}/E_{IR} \quad (12)$$

An alternate way to express the linear relationship may be more applicable in some cases.

$$DRed = SlopeB * DIR + noise, \text{ and} \quad (13)$$

where

$$SlopeB = (I_{NPRED}/I_{NPIR}) * (E_{Red}/E_{IR}) \quad (14)$$

Equations 11 and 12 state that each value of  $DIR$  should be scaled by multiplying by  $I_{NPIR}$  and that each value of  $DRed$  should be scaled by multiplying by  $I_{NPRED}$ . Then a linear regression of all the scaled points in the set yields a line whose slope is the best fit to the ratio of the Red Extinction to the Infrared Extinction which is the desired  $RRatio$ .

$$\text{best-fit } RRatio = SlopeA \quad (15)$$

If the incident intensities are constant over the data set, then it is not necessary to scale each value before doing the linear regression. That case corresponds to Equations 13 and 14, which indicate that the linear regression slope can be computed on  $DIR$  and  $DRed$  and then normalized by the ratio of the incident intensities.

$$\text{best-fit } RRatio = SlopeB / (I_{NPRED}/I_{NPIR}) \quad (16)$$

After finding the best-fit  $RRatio$ , the  $SpO_2$  is computed from an empirical calibration formula.

Equations 11 to 16 are the key equations. They state that there is a linear relationship between the  $DIR$  and  $DRed$  provided that the data is good. Consequently, the slope of the linear regression fit to a set of data samples yields a best-fit estimate for the ratio of the Extinction Coefficients,  $RRatio$ . The goodness of the fit can then be used as a test for checking the quality of the data. Any deviation from the linearity relationship indicates a reduced quality of the data.

For completeness, we show how the linear regression method can be used when the red and infrared signals are processed with logarithms instead of derivatives. In this case, define the difference between the logarithms of two subsequent red and infrared measurements.

$$D \text{ Log } Red = (\log[I_{NPRED}(t_2)] - \log[I_{NPRED}(t_1)]) + E_{Red} * C * (L_p(t_2) - L_p(t_1)) \quad (17)$$

and

$$D \text{ Log } IR = (\log[I_{NPIR}(t_2)] - \log[I_{NPIR}(t_1)]) + E_{IR} * C * (L_p(t_2) - L_p(t_1)) \quad (18)$$

If two samples are closely spaced in time, the difference between two non-pulsatile intensities goes to zero. Then:

$$D \text{ Log } Red / D \text{ Log } IR = E_{Red}/E_{IR} \quad (19)$$

Since the Extinctions are constant, this means that:

$$D \text{ Log } IR = \text{SlopeA} * D \text{ Log } Red + \text{noise} \quad (20)$$

where

$$\text{SlopeA} = E_{Red} / E_{IR} \quad (12)$$

Equation 20 and Equation 11 have the same linear form. The results from equation 20 and 11 differ only if there are significant variations in incident intensity or large amounts of additive noise, or the sample spacing is too large for the series expansion to be valid.

#### System Implementation

FIG. 2 illustrates in block diagram form the various components used within the data processing circuit 107 of the pulse oximetry system of the present invention in order to provide improved data filtering and data acquisition. The analog data signals received from probe 101 are filtered by analog hardware and digitized by an analog to digital converter in probe interface 102 prior to application to preprocess input data from probe circuit 201. The preprocessing circuit 201 includes prefilter circuit 301 (FIG. 3) which uses digital filtering techniques for noise removal, frequency selection and data rate control. Nonlinear digital filters can be used in the prefilter circuit 301 of preprocessing circuit 201 to reduce the influence of input data that are statistically beyond the range of the other data values acquired by probe 101. These nonlinear digital filters can be implemented for example by median filters, trimmed mean filters and morphological filters.

The input data from probe 101 is typically decomposed into its non-pulsatile and pulsatile sub-elements in probe interface 102 in order to provide accurate measurements of these components. The pulsatile component typically represents 0.5% of the total input signal and the decomposition of the input signal into pulsatile and non-pulsatile components permits accurate analog to digital conversion of each of these components. Therefore, once these two sets of components have been filtered by the prefilter circuit 301 of preprocessing circuit 201, they are applied to reconstruct red, IR, and ambient circuit 302 where the components are used to return the acquired input signal back to its original form. The reconstructed infrared and red data signals are in digital form and the signal reconstructed within reconstruction circuit 302 is used for pulse computations and display 115. The red and/or infrared signals are further processed for waveform display 114 on the pulse oximeter system.

For some hardware configurations, the reconstructed red and infrared signals are transmitted to process ambient input data circuit 202 which is comprised of the elements illustrated in FIG. 4. The ambient signal is removed from the red and infrared signals in subtract ambient circuit 401. In other hardware configurations, the ambient light is removed from the red and infrared signals prior to the analog-to-digital converter. In those configurations, the preprocessed input data can be directly sent to process red and infrared component circuit 203. The resultant signal is then transmitted to process red and infrared component circuit 203. The measured ambient components are also transmitted to ambient analysis circuit 402 where the characteristics of the ambient signal are used to help determine whether there is a probe off condition or excessive noise in the input signal. This ambient analysis is forwarded to data quality analysis circuit 208 which performs the error determination function for the pulse oximeter circuit to identify any aberrant conditions in the input signals which question the validity of the measurements taken as described below.

The red and infrared pulsatile components with ambient removed are applied to process red and infrared component circuit 203. The processing of the red and infrared components consists of several possible implementations illustrated in FIG. 5. One implementation adaptively differentiates 501 the red and infrared signals to perform a digital differentiation of these two signals to de-exponentiate the pulsatile component. Adaptive averaging circuit 502 performs a local average of the red and infrared signals to estimate the non-pulsatile component.

Alternatively, the differentiation can be replaced by logarithmic difference circuit 503 which performs a digital subtraction of the logarithms of two sequential red signals and the same for two sequential infrared signals. The logarithmic differences are used in place of the differential and local average values computed by circuits 501 and 502 respectively.

As a result of these computations, a plurality of sets of processed red and infrared data values are stored in memory of data processing circuit 107 wherein each set consists of the processed red and infrared data values computed at two successive sampling intervals. Successive sets of data values therefore represent successive processed samples of measurements taken in successive time intervals.

Whichever ones of these processes are selected, the output processed signals are applied to compute "pulsatility index" circuit 204 which computes a "pulsatility index" indicative of the perfusion of the hemoglobin using a weighted combination of the red and infrared processed values. The perfusion is a term used to indicate the volume of arterial blood flow for a given volume of tissue and by looking at the red and infrared signals separately, an estimation of the present blood volume change in the tissue can be determined. The "pulsatility index" is therefore only a figure that can be correlated to the true perfusion of the tissue.

These same processed signals output by process component circuit 203 are applied to regression computation circuit 205 which is the first step used in calculating the partial oxygenation SpO2 of the hemoglobin. The regression computation circuit 205 consists at least one of the plurality of subcircuits illustrated in FIGS. 6 and 7. These circuits illustrate various combinations of regression computation and normalization. Circuit 601 is typically used to normalize the differentials received from process component circuit 203. The normalization circuit 601 multiplies each red differential by the corresponding infrared non-pulsatile intensity and multiplies each infrared differential by the corresponding red non-pulsatile intensity. The normalized differentials are then applied to regression circuit 602 which performs a linear regression fit using the normalized infrared differential as the independent variable and the normalized red differential as the dependent variable. The slope of the best fit line (FIG. 9) is a constant value that represents the best fit RRatio for that data set. A robust regression process can be implemented by removing the outliers in the collection of data points to thereby improve the least squares fit, or by other standard methods for robust linear regression.

An alternative method of processing (shown in FIG. 7) performs a regression fit to the differential values that are input to the regression computation circuit 205 and the output of the regression circuit is then normalized by normalize Slope circuit 603. In either case, the output of regression computation circuit 205 is the RRatio for the data set as well as a set of computation products that are forwarded to compute correlation coefficient circuit 206. In addition, the linear regression can be either a first order polynomial fit or a higher-order polynomial fit. In general,

good input data should produce a fitted line having a finite slope, zero intercept and all higher order terms should be essentially zero.

The compute correlation circuit **206** uses the RRatio calculated by regression computation circuit **205** as well as a set of parameters used in the computation of the RRatio to determine the goodness of the linear fit of this straight line in the set of red and infrared differentials that were transmitted by process component circuit **203** to regression computation circuit **205**. A correlation coefficient is calculated which represents the goodness of the linear fit of the straight line to the set of obtained data values. The intercept of the best fit line can be also computed to evaluate data quality. The correlation coefficient and zero offset values are transmitted to data quality analysis circuit **208** which uses these values as well as the ambient analyses obtained from process ambient input data circuit **202** to verify the quality of the input data.

#### Probe-Off Detection

A probe-off condition can be detected by measuring the goodness of the linear fit. This means that the product of the slope and its inverse should equal one if the linear fit is a good one.

There is a standard statistical technique for measuring the goodness of a linear regression fit. The Fisher Linear Correlation essentially measures the goodness of the fit by using the constraint that the slope and its inverse must be a product very close to  $\pm 1$  if the fit is good. If the product of the slope and its inverse are significantly different than  $\pm 1$ , the data is bad. A higher order polynomial fit can be used instead of a linear and then the size of the higher order coefficients are used as a test.

Data quality analysis circuit **208** monitors the correlation coefficient as well as other indicators to identify excessive input signal noise. A neural network or knowledge-based system can be used to identify a subset of anomalies indicative of errors. These anomalies can include  $n$  successive samples that exceed a predetermined variance and/or excessive variance in the ambient signal. Furthermore, the SpO<sub>2</sub> varies slowly as a result of physiological changes and excessive correlation of changes in the determined SpO<sub>2</sub> with changes in the ambient is an indication of an error condition. This circuit may also receive input pulse signal data available from electrocardiograph machines which could be used to check the validity of the data and that the pulsatile rate of the data can be compared with the ECG values to identify motion artifacts in the input data. By the use of pattern matching, a feature vector can be computed to identify not only the presence of an error condition. It may also be used to classify the error.

The best fit RRatio output by regression computation circuit **205** is transmitted to compute SpO<sub>2</sub> circuit **207** where the partial oxygenation of the hemoglobin in the arterial blood is computed using an empirical formula to identify the correspondence between the input data and the actual oxygenation value as noted above. The results of this computation are then applied to display driver **109** for numeric output on display **115**. While a specific embodiment of this invention has been disclosed, it is expected that those skilled in the art can and will design alternate embodiments of this invention that fall within the scope of the appended claims.

What is claimed is:

1. A method for use with a probe which produces a signal indicative of the light absorption of arterial blood at a first light wavelength and at a second light wavelength, comprising:

processing said signal to obtain a plurality of data sets, each of said data sets including first and second data values which are indicative of the light absorption of the blood at the first light wavelength and at the second light wavelength, respectively;

employing said plurality of data sets to calculate a best-fit function;

utilizing said best-fit function and said plurality of data sets to obtain a correlation coefficient indicative of a degree of correlation between said plurality of data sets and the best-fit function; and

using said correlation coefficient to identify a probe-off condition.

2. The method of claim 1, further comprising:

generating an error indication indicative of the presence of invalid data values in said plurality of data sets when said correlation coefficient is outside of a predetermined range; and

displaying said error indication indicative of said probe-off condition to a user of said probe.

3. The method of claim 1, wherein said processing step comprises:

processing each of a plurality of successive first sets of successive samples of a first signal component of said signals indicative of the light absorption of the blood at the first wavelength, and each of a corresponding plurality of successive second sets of successive samples of a second signal component of the signals indicative of the light absorption of the blood at the second wavelength, wherein corresponding ones of said samples of the first and second signal components are obtained in a common one of a corresponding plurality of successive time intervals, and wherein said corresponding plurality of successive time intervals is cumulatively less than a corresponding patient pulse period.

4. The method of claim 3, wherein said corresponding plurality of successive time intervals is cumulatively less than about one second.

5. The method of claim 3, wherein said processing step further comprises:

obtaining an approximated derivative for each of said plurality of successive first sets of successive samples of the first signal component, and an approximated derivative for each of said plurality of successive second sets of successive samples of the second signal component.

6. The method of claim 5, wherein each of said plurality of successive first sets of successive samples of the first signal component comprises two samples obtained in corresponding successive time intervals, and wherein each of said plurality of successive second sets of successive samples of the second signal component comprises two samples obtained in corresponding successive time intervals, and wherein said obtaining step comprises:

differentiating between said two samples comprising each of said plurality of successive first sets, and between said two samples comprising each of said plurality of successive second sets.

7. The method of claim 3, wherein each of said plurality of successive first sets of successive samples of the first signal component comprises two samples obtained in corresponding successive time periods, and wherein each of said plurality of successive second sets of successive samples of second signal component comprises two samples obtained in corresponding successive time intervals, and wherein said processing step comprises:

13

computing a logarithmic difference between said two samples comprising each of said plurality of successive first steps, and between said two samples comprising each of said plurality of successive second sets.

8. The method of claim 1, wherein said step of using comprises identifying said probe off condition based on a magnitude of said condition co-efficient.

9. A method for determining oxygen saturation of hemoglobin in arterial blood using signals received from a probe, which signals are indicative of the light absorption of arterial blood, which has pulsatile and non-pulsatile components, at each of a respective one of two light wavelengths, said method comprising the steps of:

producing, in response to said signals received from said probe, a series of sets of data values, each of said sets including first and second data values, which are indicative of the light absorption of arterial blood at a respective one of said two light wavelengths, said producing step including:

processing each of a plurality of successive first sets of successive samples of a first signal component of said signals indicative of the light absorption of the blood at the first wavelength, and each of a corresponding plurality of successive second sets of successive samples of a second signal component of the signals indicative of the light absorption of the blood at the second wavelength, wherein corresponding ones of said samples of the first and second signal components are obtained in a common one of a corresponding plurality of successive time intervals, and wherein said corresponding plurality of successive time intervals is cumulatively less than a corresponding patient pulse period;

storing a plurality of said sets of first and second data values;

computing a ratio of an effective optical extinction coefficient of said pulsatile component of said arterial blood at a first one of said two light wavelengths to an effective optical extinction coefficient of said pulsatile component of said arterial blood at a second one of said two light wavelengths, said ratio being determined by regression analysis of n data points, each data point corresponding with one of said stored plurality of sets of data values, wherein n is a positive integer greater than 2; and

determining oxygen saturation of said hemoglobin using said ratio.

10. The method of claim 9, wherein said computing step comprises:

determining a linear regression fit for said n data points.

11. The method of claim 10, wherein said ratio is determined by a slope of said linear regression fit.

12. The method of claim 11, wherein each of said n data points comprises first and second data values from one of said stored plurality of sets of data values.

13. The method of claim 10, wherein each of said first data values is determined utilizing at least a different pair of successive samples of the signals corresponding with said first light wavelength, and wherein each of said second data values is determined utilizing at least a different pair of successive samples of the signals corresponding with said second light wavelength.

14

14. A method for measuring concentrations of hemoglobin analytes in arterial blood using a probe which produces a signal indicative of the light absorption of arterial blood at a first light wavelength and at a second light wavelength, comprising:

processing each of a plurality of successive first sets of successive samples of a first signal component of said signal indicative of the light absorption of the blood at the first wavelength, and each of a corresponding plurality of successive second sets of successive samples of a second signal component of the signal indicative of the light absorption of the blood at the second wavelength, wherein corresponding ones of said samples of the first and second signal components are obtained in a common one of a corresponding plurality of successive time intervals, and wherein said processing provides for the obtainment of an approximated derivative for each of said plurality of successive first sets and an approximated derivative for each of said plurality of successive second sets to combinatively define a plurality of data sets, each of said data sets including first and second data values which are indicative of the light absorption of the blood at the first light wavelength and at the second light wavelength, respectively; and

employing said plurality of data sets in a linear regression analysis to obtain a linear regression fit for use in determining the concentration of at least a first hemoglobin analyte in the arterial blood;

utilizing said linear regression fit and said plurality of data sets to obtain a correlation coefficient indicative of a degree of correlation between said plurality of data sets and the linear regression fit; and

using said correlation coefficient to identify a probe-off condition.

15. The method of claim 14, further comprising: generating an error indication when said correlation coefficient is outside of predetermined range.

16. The method of claim 14, wherein said correlation coefficient is a linear correlation coefficient.

17. The method of claim 14, wherein said step of using comprises identifying said probe off condition based on a magnitude of said condition co-efficient.

18. A method for use with a probe which produces a signal indicative of the light absorption of arterial blood at a first light wavelength and at a second light wavelength, comprising:

processing said signal to obtain signal data including first and second data value sets which are indicative of the light absorption of the blood at the first light wavelength and at the second light wavelength, respectively; employing said first and second data sets to calculate a value indicative of quality of said signal; and using said value to identify a probe-off condition.

19. The method of claim 18, wherein said step of employing comprises using both of said data sets to determine a degree of correlation between signal components represented by said first and second data sets.

20. The method of claim 18, wherein said step of using comprises identifying said probe off condition based on a magnitude of said value.

专利名称(译)	脉搏血氧饱和度测定SpO <sub>2</sub>		
公开(公告)号	<a href="#">US6714803</a>	公开(公告)日	2004-03-30
申请号	US09/963219	申请日	2001-09-25
申请(专利权)人(译)	DATEX-OHMEDA INC.		
当前申请(专利权)人(译)	DATEX-OHMEDA INC.		
[标]发明人	MORTZ MARGARET S		
发明人	MORTZ, MARGARET S.		
IPC分类号	A61B5/00 A61B5/024		
CPC分类号	A61B5/14551 A61B5/6843 A61B5/7239 A61B5/02416 A61B2560/0276		
代理机构(译)	噢，得了吧Fischmann LLP和沼泽		
外部链接	<a href="#">Espacenet</a> <a href="#">USPTO</a>		

摘要(译)

改进的脉搏血氧仪预处理从探头接收的红外和红外信号组，以去除环境光，去除噪声，并对信号进行去指数化。处理后的红色和红外信号的线性允许使用统计技术，如线性回归和线性相关，以拟合最佳拟合直线到处理的红色和红外数据点对，并测量直线的良好性适合这些数据点。该分析的结果是线性回归斜率和拟合优度相关系数。相关系数是输入数据点的线性度的度量，并且如果小于预定阈值，则表示已经从探测器接收到失真信号。这允许脉搏血氧计检测患者的探头关闭状况和/或运动。将计算的线性回归斜率转换为RRatio，其用于经验校准公式中以计算平均SpO<sub>2</sub>值。使用该装置进行高置信度计算所需的数据集的最小尺寸明显小于脉冲周期，并允许对改变输入数据的更快响应。

