



US006802815B2

(12) **United States Patent**
Hasegawa et al.

(10) **Patent No.:** **US 6,802,815 B2**
(45) **Date of Patent:** **Oct. 12, 2004**

(54) **NONINVASIVE CONTINUOUS BLOOD PRESSURE MEASURING APPARATUS AND A METHOD OF NONINVASIVELY MEASURING CONTINUOUS BLOOD PRESSURE**

5,241,964 A * 9/1993 McQuilkin 600/485
5,810,734 A * 9/1998 Caro et al. 600/485
5,904,654 A * 5/1999 Wohltmann et al. 600/481
6,231,516 B1 * 5/2001 Keilman et al. 600/485
6,371,921 B1 * 4/2002 Caro et al. 600/485
6,632,181 B2 * 10/2003 Flaherty et al. 600/485

(75) Inventors: **Kinya Hasegawa, Kanagawa-Ken (JP); Yushi Nishimura, Yokohama (JP); Hisashi Hagiwara, Yokohama (JP)**

* cited by examiner

(73) Assignee: **Matsushita Electric Industrial Co., Ltd. (JP)**

Primary Examiner—Robert L. Nasser

(74) *Attorney, Agent, or Firm*—Connolly Bove Lodge & Hutz LLP

(*) Notice: Subject to any disclaimer, the term of this patent is extended or adjusted under 35 U.S.C. 154(b) by 0 days.

(57) **ABSTRACT**

(21) Appl. No.: **10/721,083**

One of pairs of an exciter and a sensor is selected in accordance with the detection signal which is derived from an exciter waveform induced in an artery transmitted there-through. The pairs of exciters and sensors are arranged on a substrate in various formations. A/D converters are provided to respective detection signals. A frequency of the oscillation signal supplied to the exciter is controlled by various oscillation signal generation circuits. Bandpass filtering for extracting the exciter waveform, low-pass-filtering for extracting a natural blood pressure waveform, phase difference detection processes are provided by a microprocessor, wherein the bandpass filtering and low-pass-filtering processes may be replaced with a bandpass filter and a low pass filter, and their outputs are selected by a switching circuit and supplied to the microprocessor through one a/d converter. The frequency of the oscillation signal is controlled to an optimum frequency by detecting the detection signal and estimating the attenuation, dispersion, phase shift with respect to different frequency and by determining one of the different frequency in accordance with the estimation result. The waveform of the oscillation signal is controlled to an optimum waveform similarly.

(22) Filed: **Nov. 26, 2003**

(65) **Prior Publication Data**

US 2004/0077957 A1 Apr. 22, 2004

Related U.S. Application Data

(62) Division of application No. 10/721,066, filed on Nov. 26, 2003, which is a division of application No. 10/057,910, filed on Apr. 29, 2002, now Pat. No. 6,743,178.

(30) **Foreign Application Priority Data**

Apr. 20, 1998 (JP) 10-123892
May 13, 1998 (JP) 10-146668
May 13, 1998 (JP) 10-146669
Jun. 1, 1998 (JP) 10-165839

(51) **Int. Cl.**⁷ **A61B 5/00**

(52) **U.S. Cl.** **600/485; 600/500**

(58) **Field of Search** **600/485, 500-503**

(56) **References Cited**

U.S. PATENT DOCUMENTS

4,771,792 A * 9/1988 Seale 600/587

10 Claims, 17 Drawing Sheets

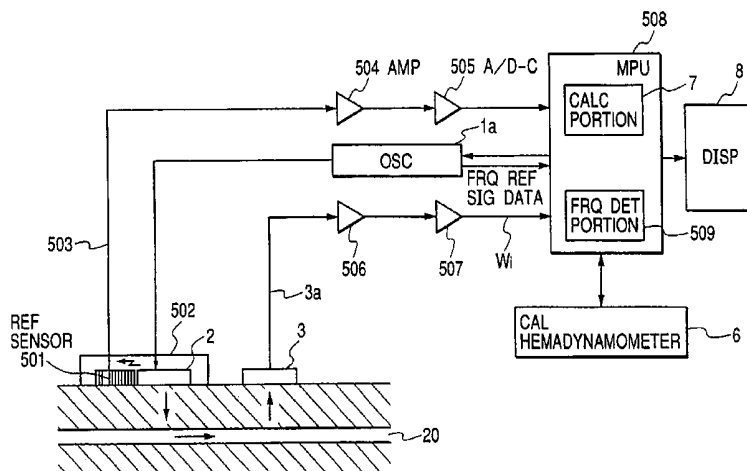


FIG. 1

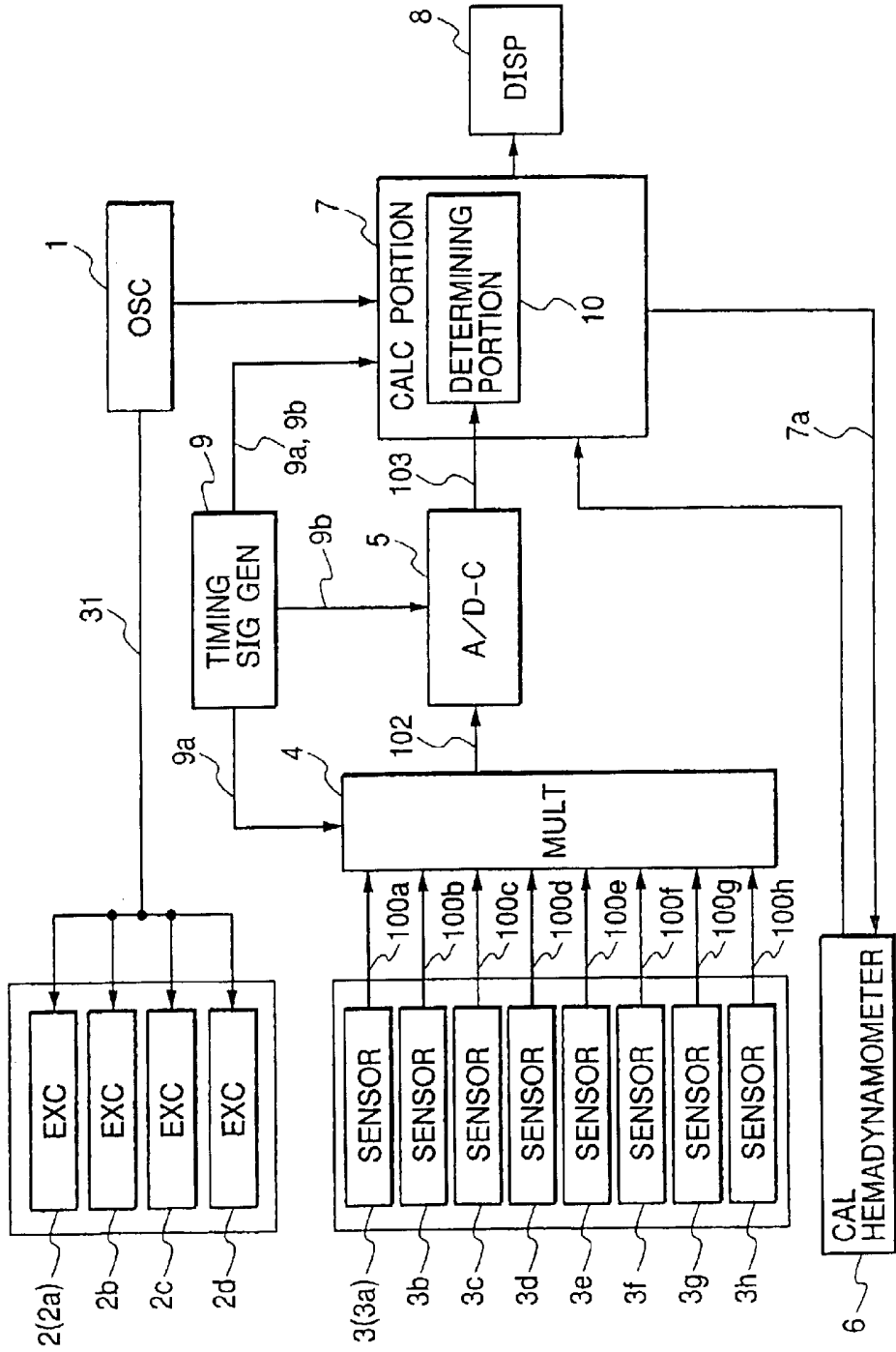


FIG. 2

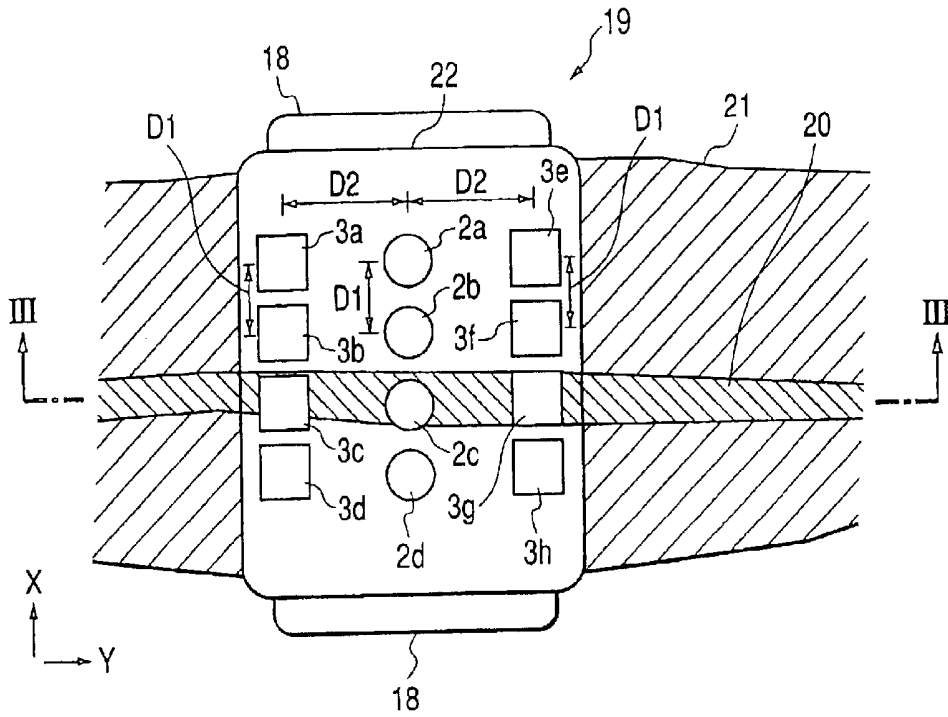


FIG. 3

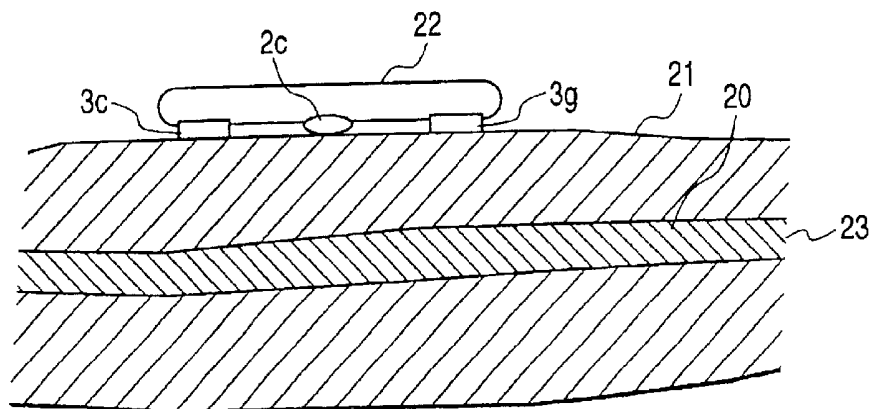


FIG. 4A

DET SIG 100c

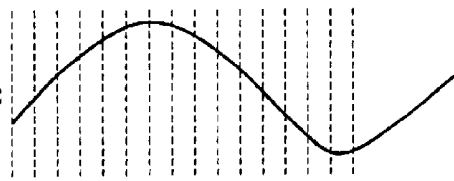


FIG. 4B

DET SIG 100d

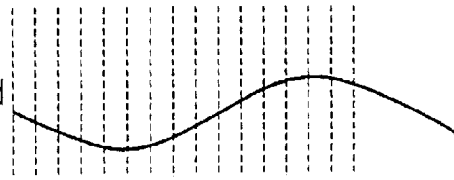


FIG. 4C

OUTPUT OF
MULT 4

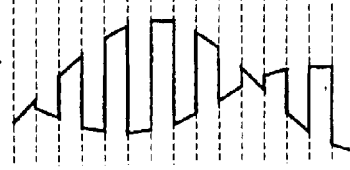


FIG. 4D

OUTPUT OF
A/D-C

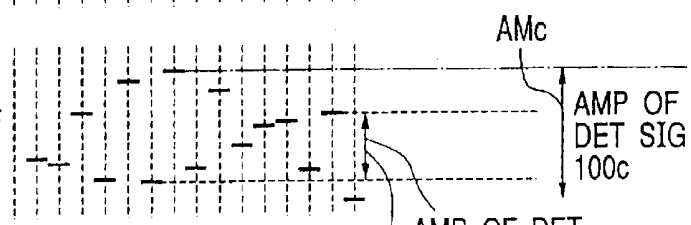


FIG. 4E

DETERMINED
DET SIG

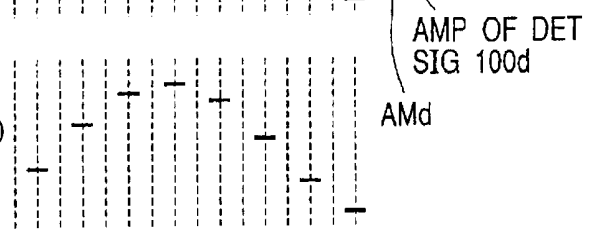


FIG. 5A

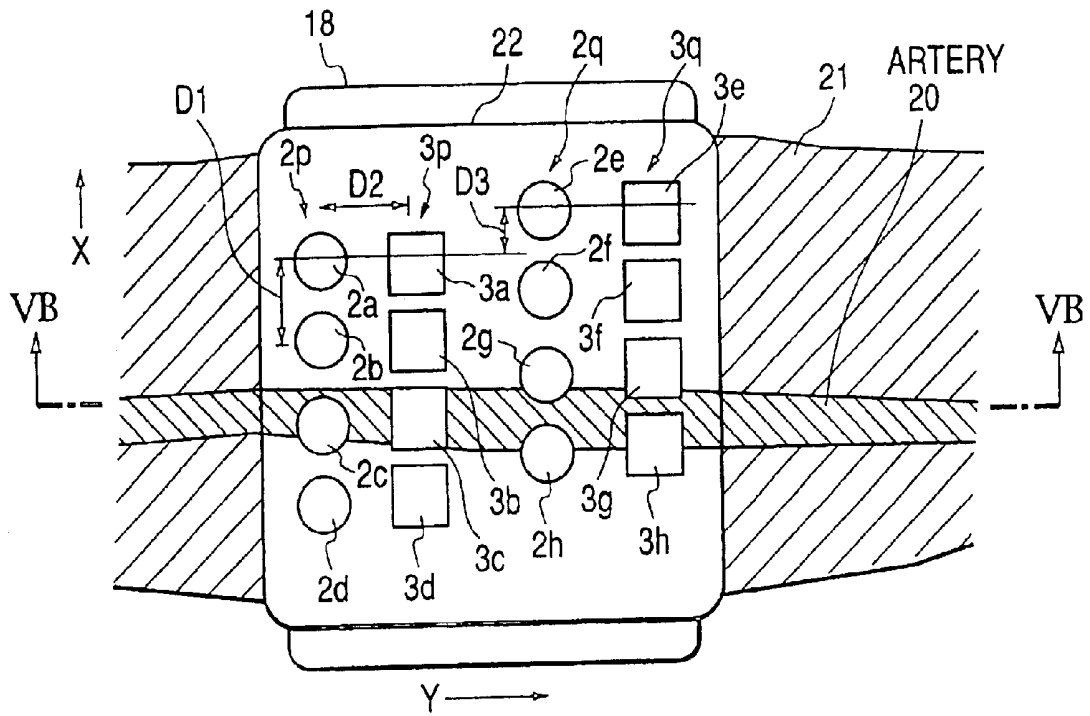


FIG. 5B

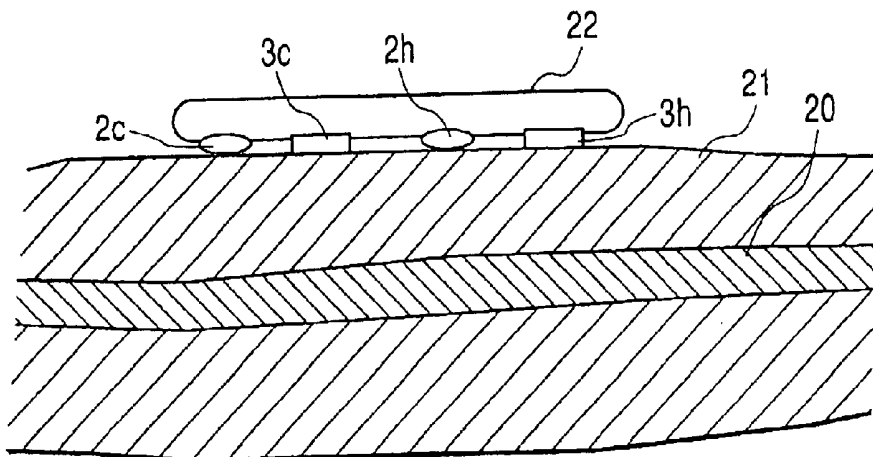


FIG. 6

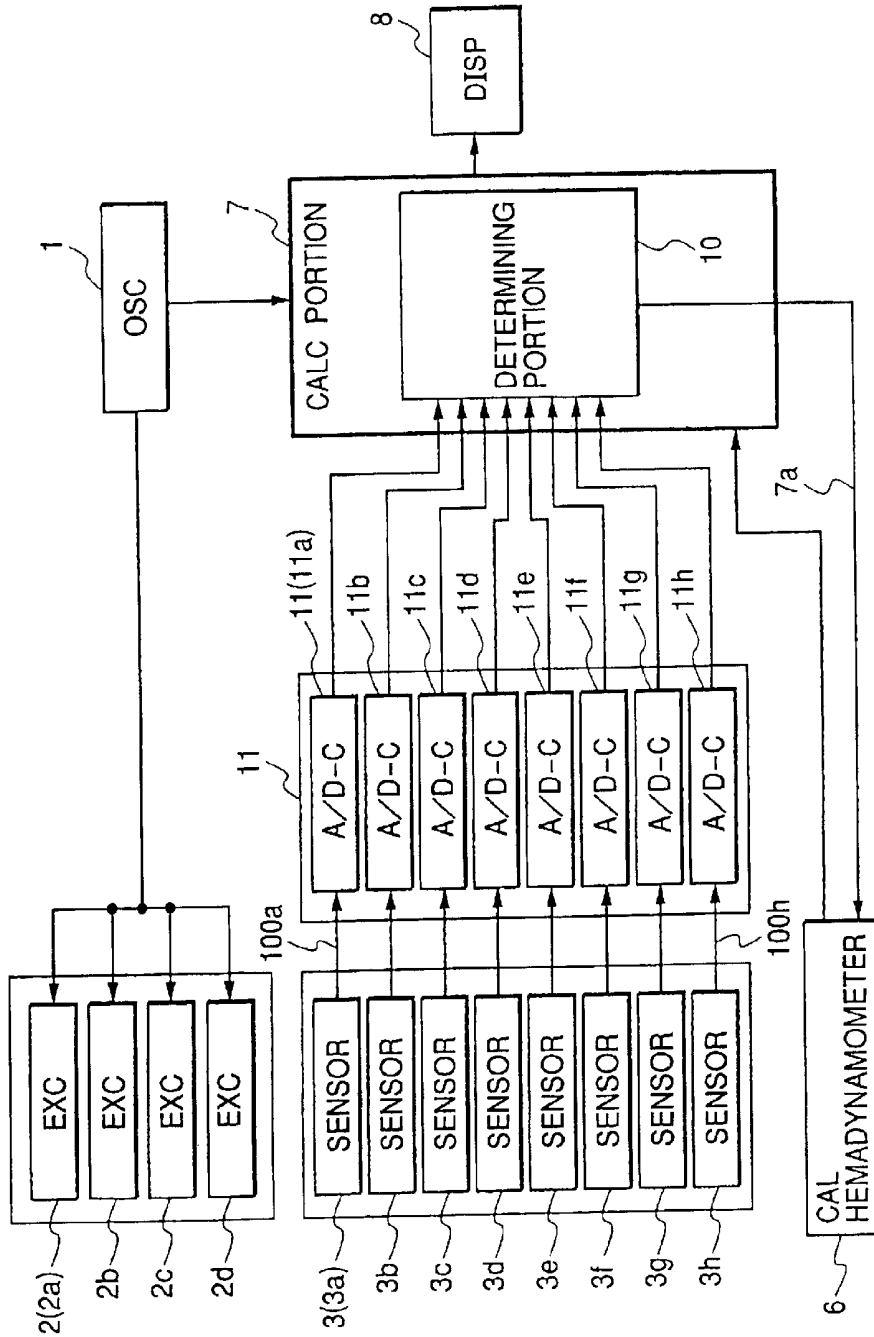


FIG. 7

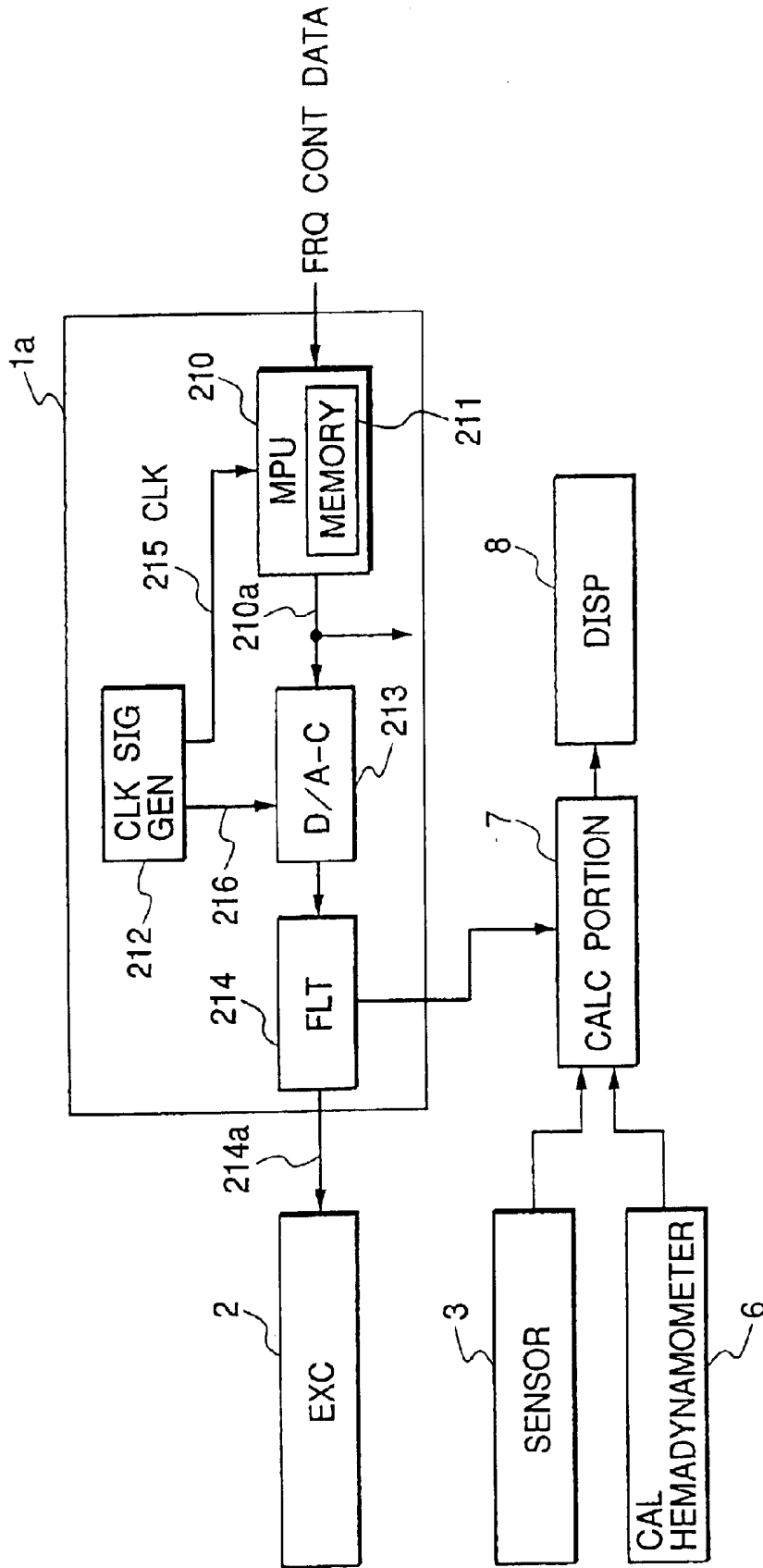


FIG. 8

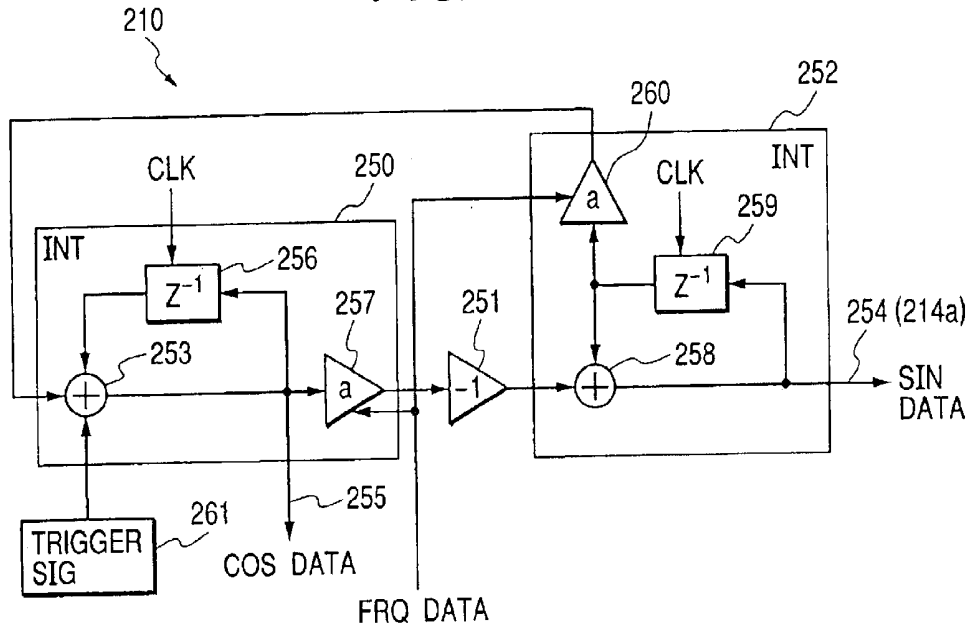


FIG. 9

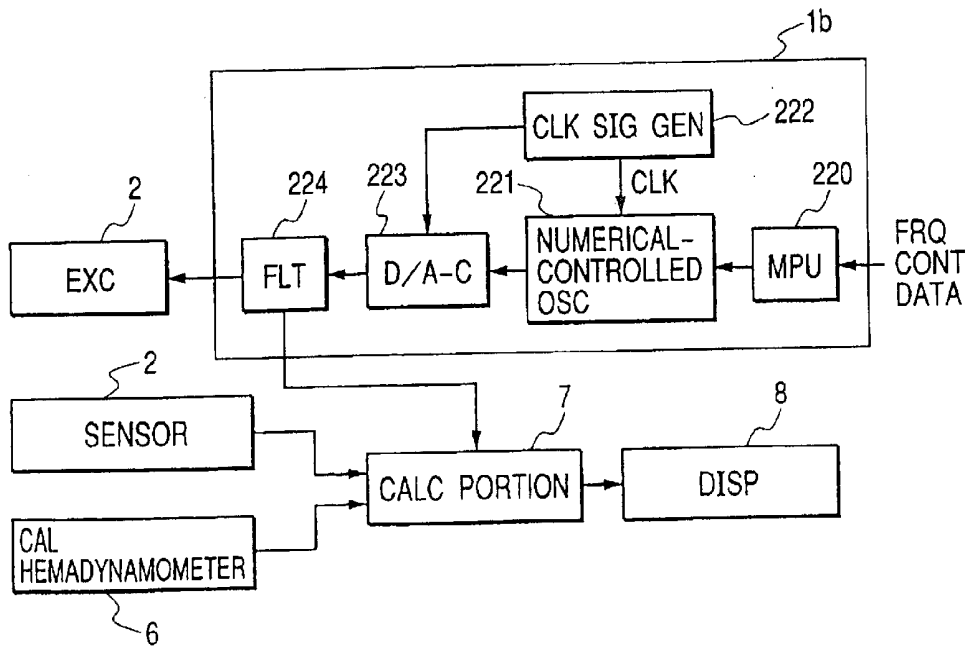


FIG. 10

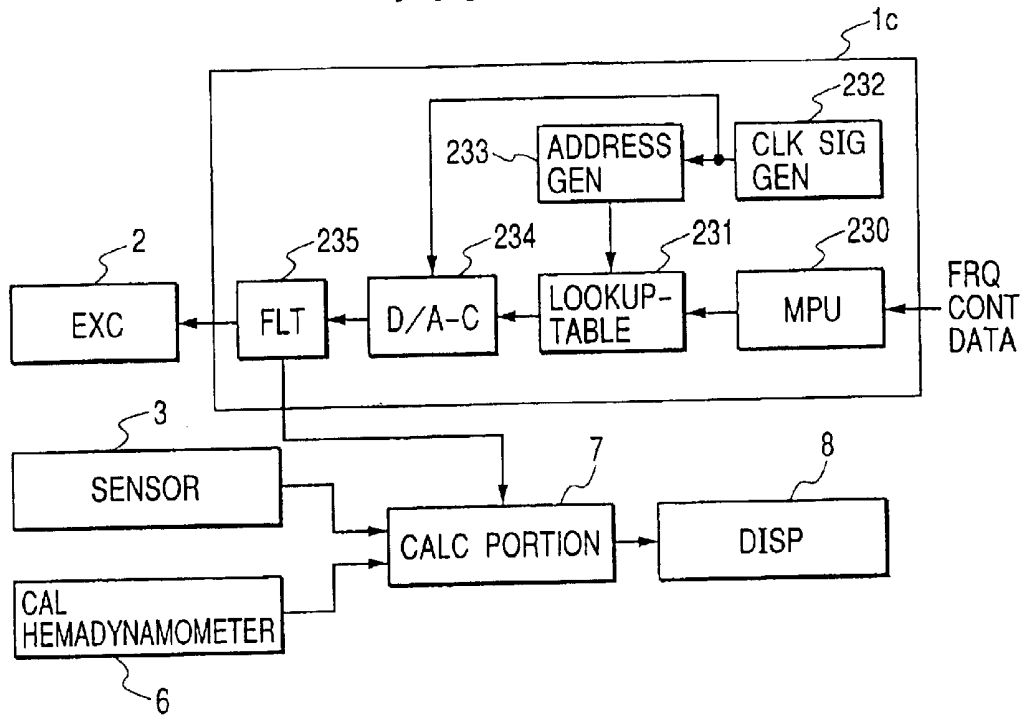


FIG. 11

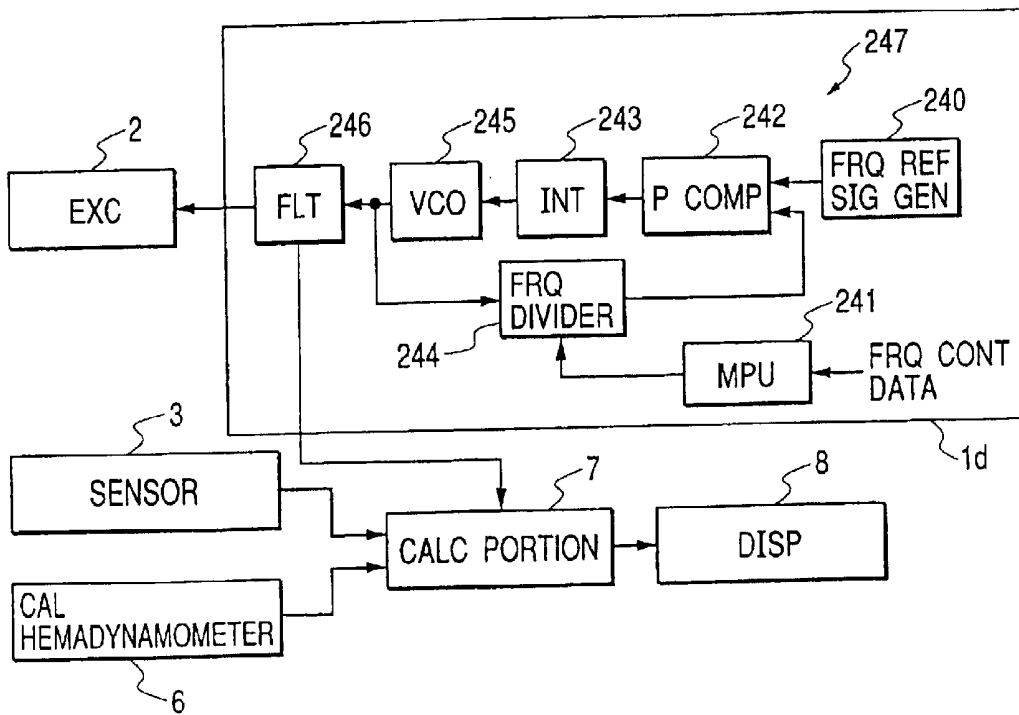


FIG. 12

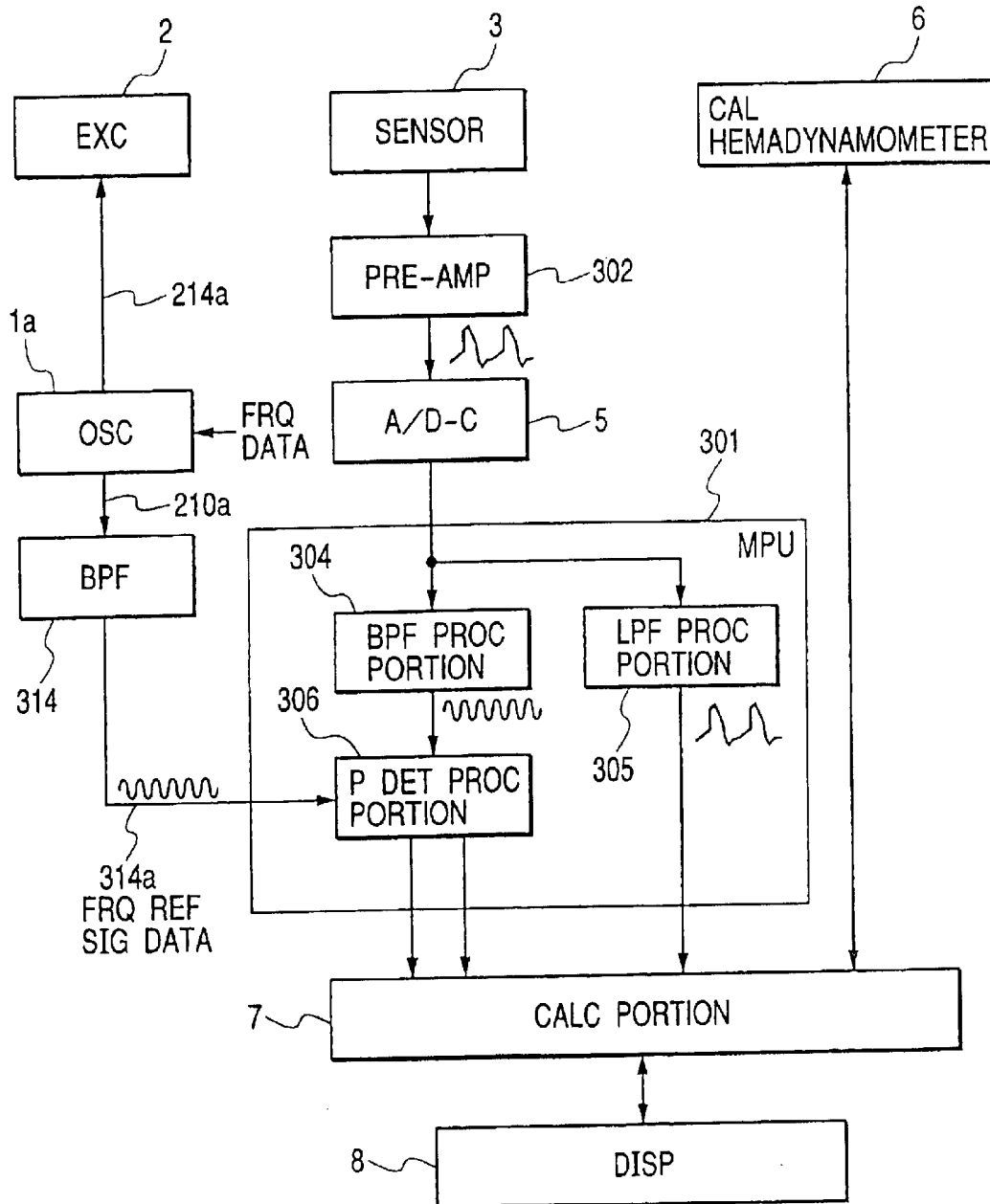


FIG. 13A

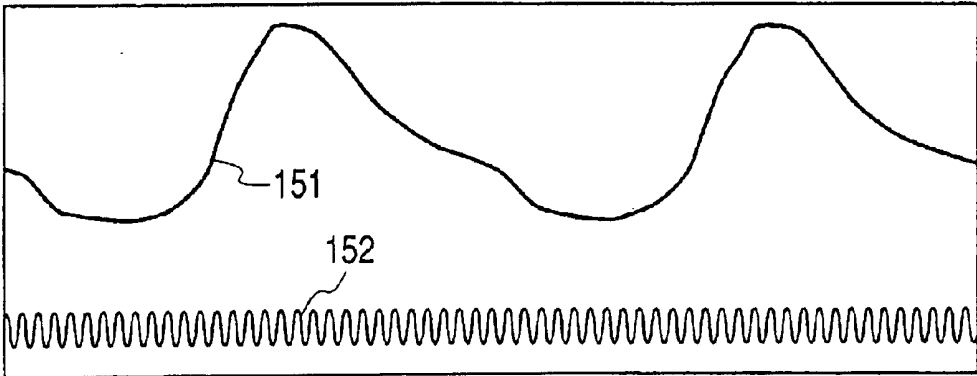


FIG. 13B

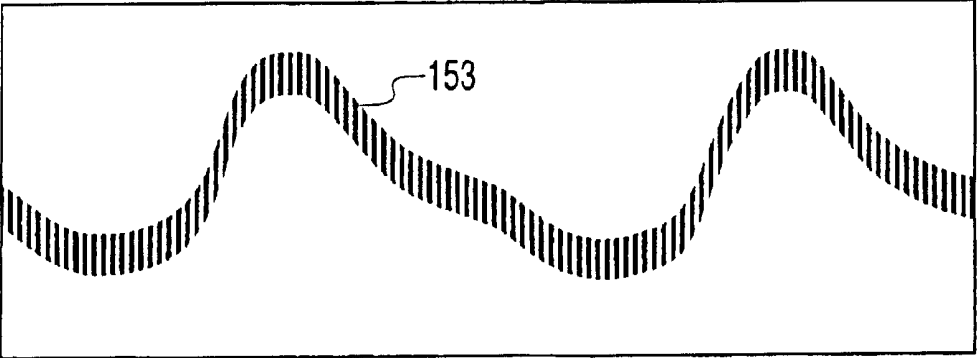


FIG. 14

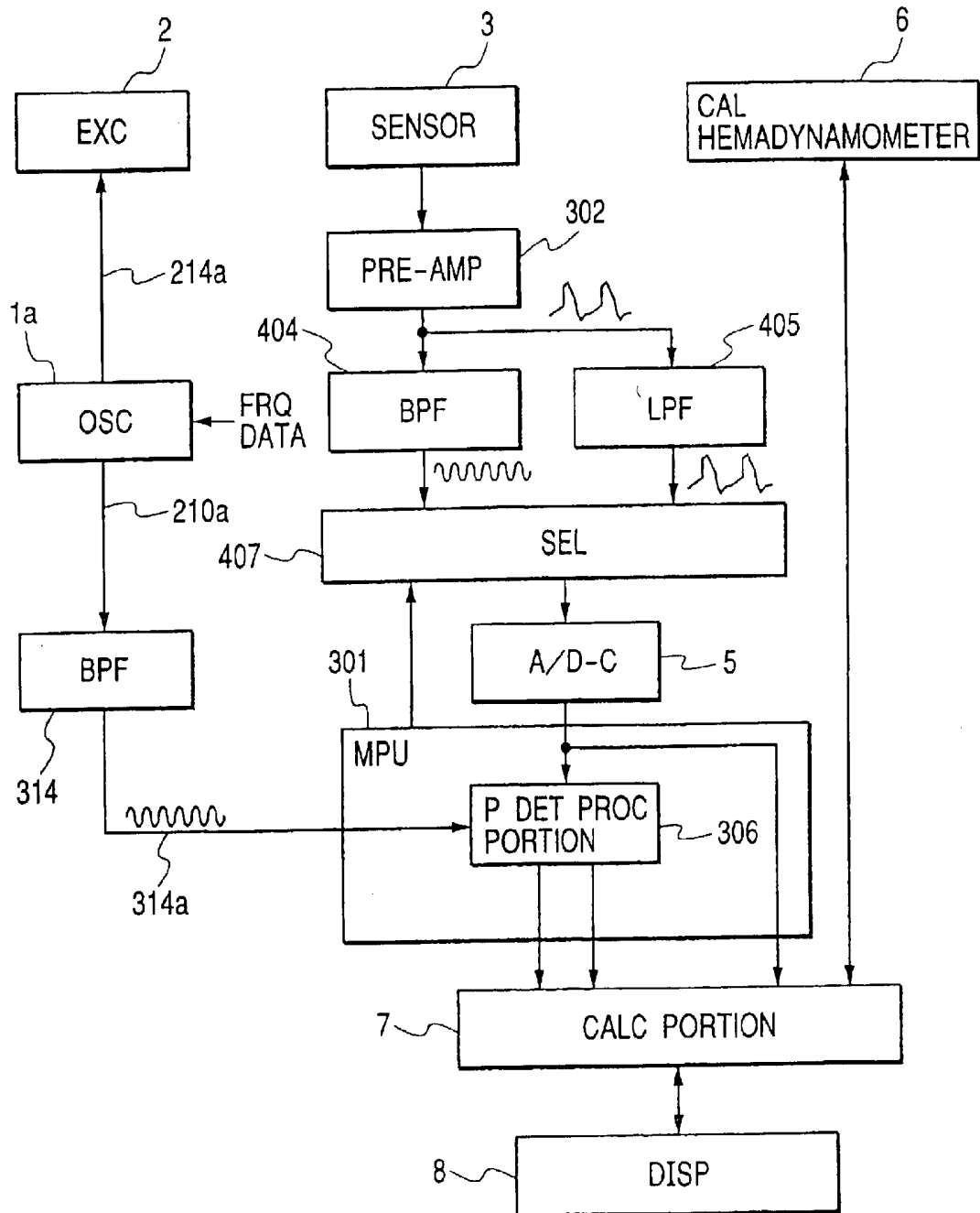


FIG. 15

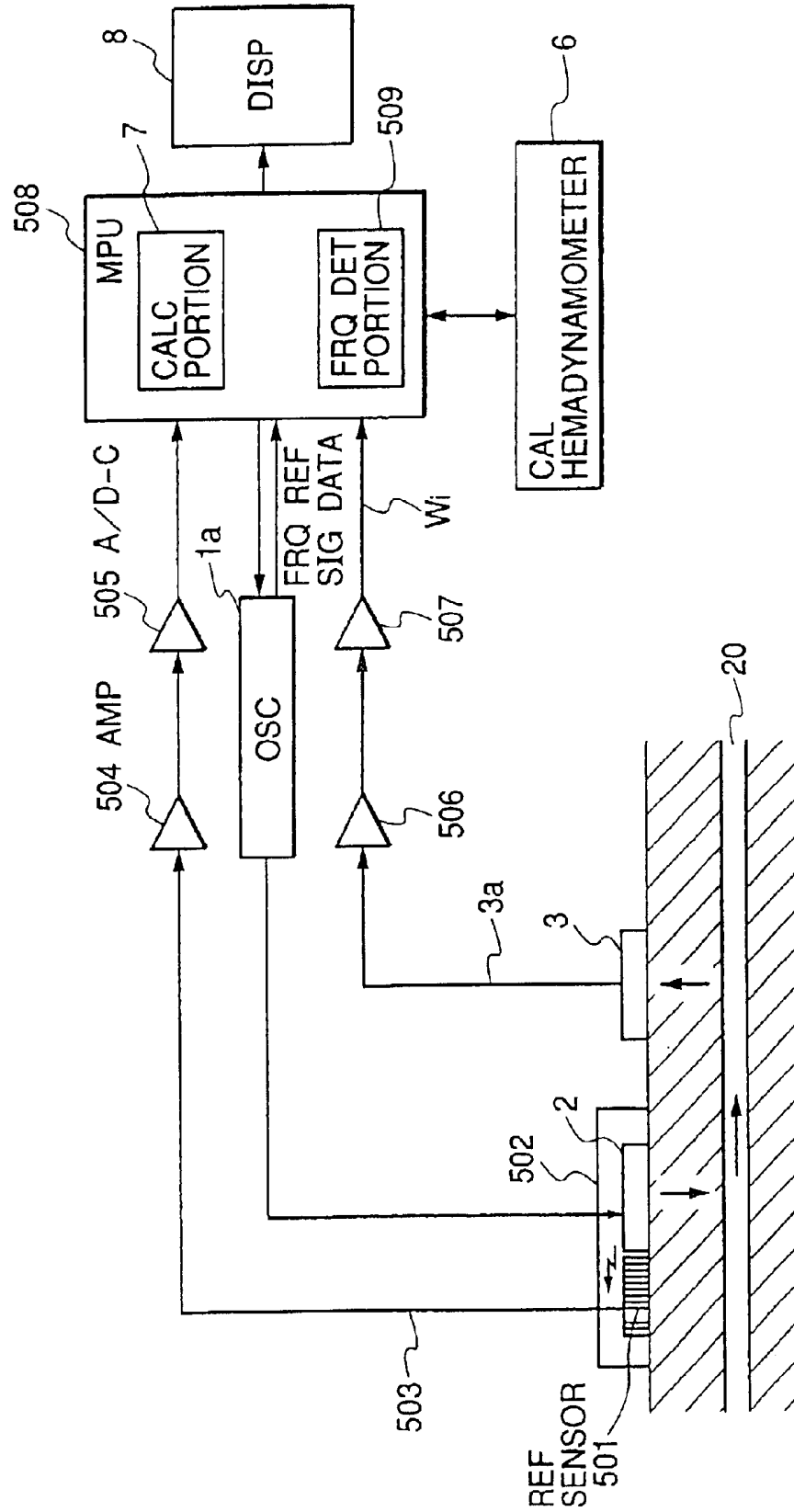


FIG. 16

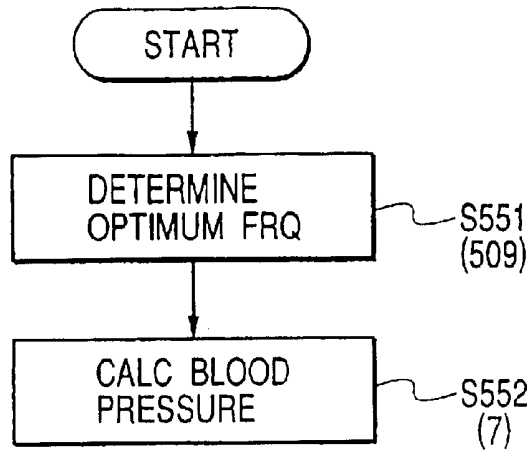


FIG. 18

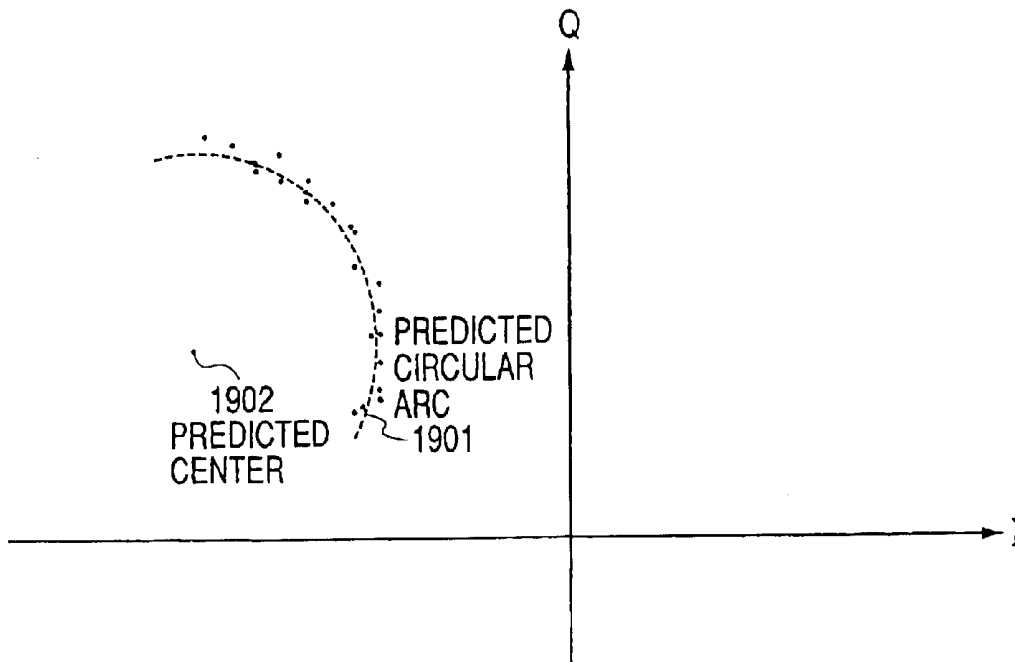


FIG. 17

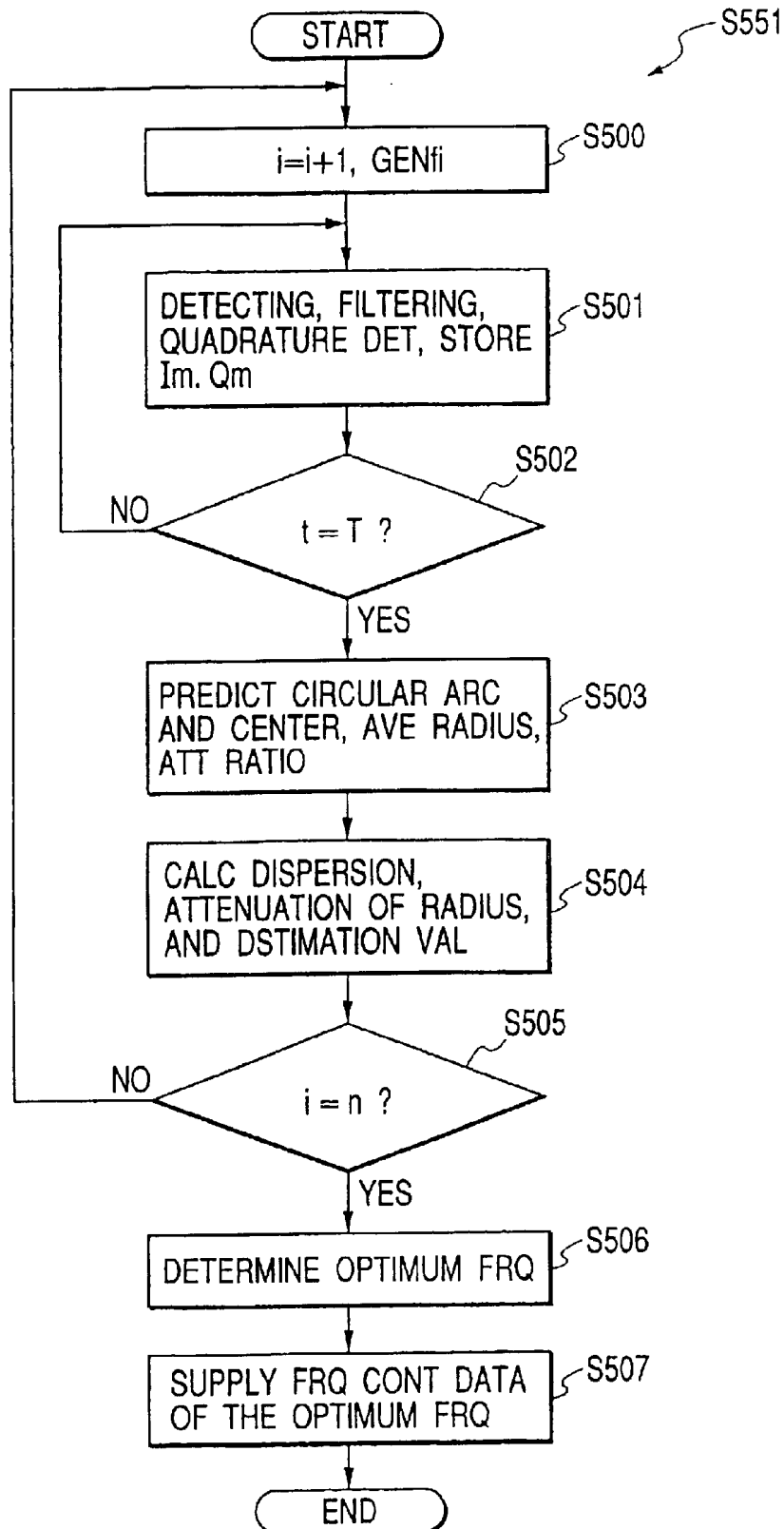


FIG. 20

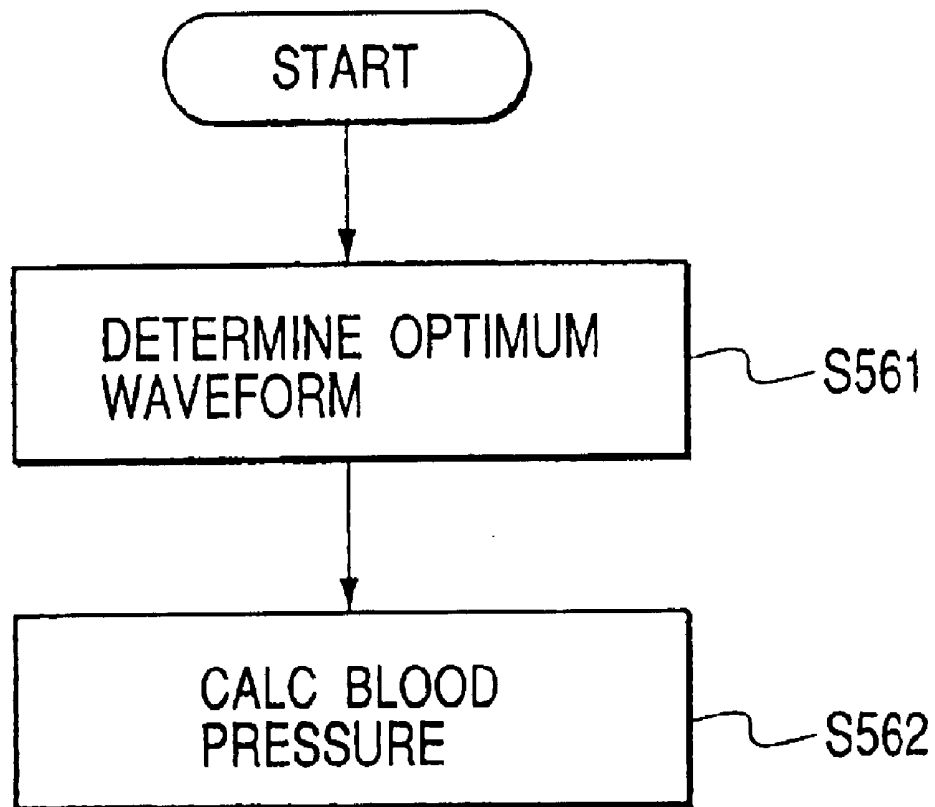
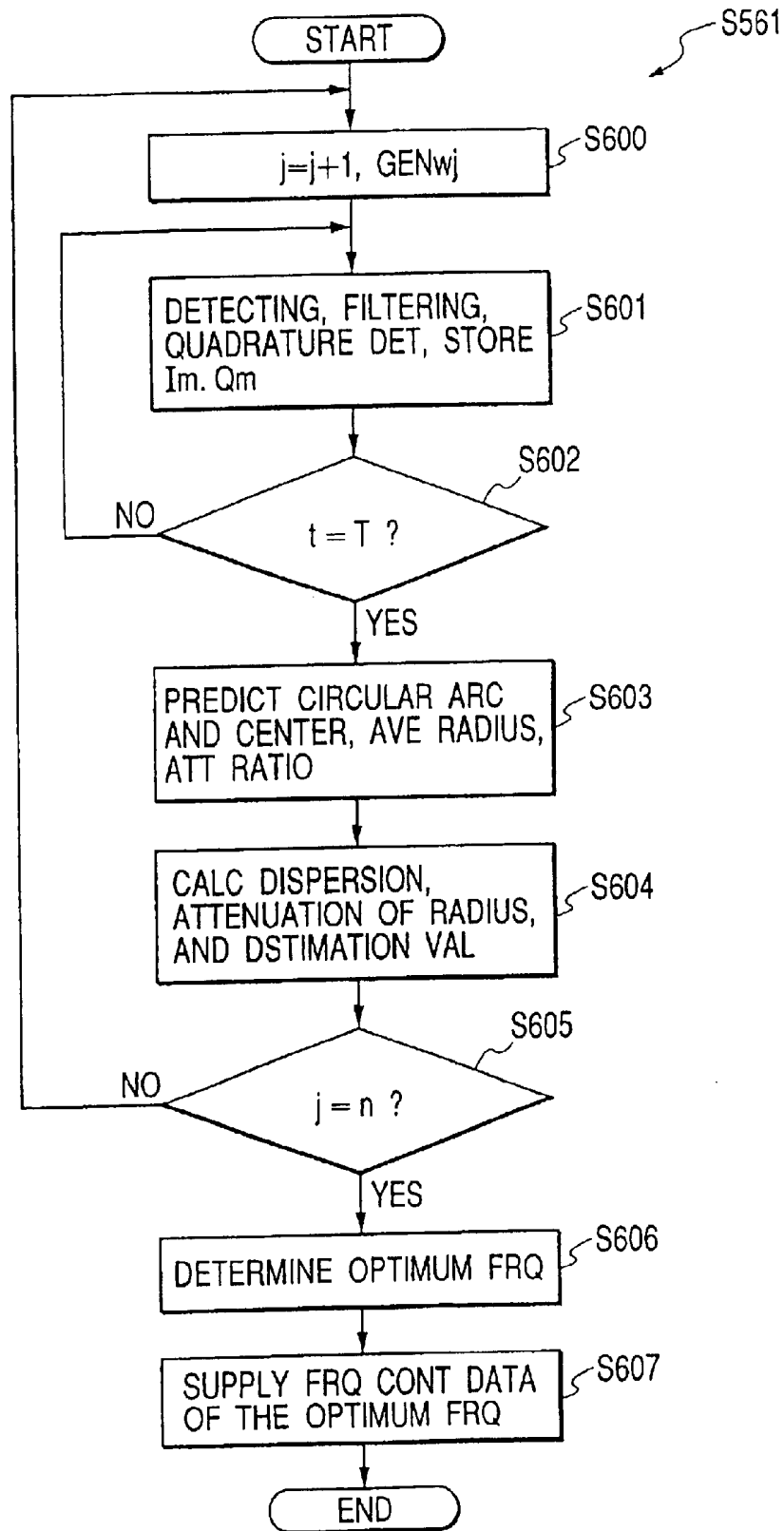


FIG. 21



**NONINVASIVE CONTINUOUS BLOOD
PRESSURE MEASURING APPARATUS AND
A METHOD OF NONINVASIVELY
MEASURING CONTINUOUS BLOOD
PRESSURE**

RELATED APPLICATIONS

This application is a divisional of another divisional application Ser. No. 10/721,066, filed Nov. 26, 2003, which is a divisional of U.S. patent application No. 10/057,910 filed Jan. 29, 2002, now U.S. Pat. No. 6,743,178.

BACKGROUND OF THE INVENTION

1. Field of the Invention

This invention relates to a noninvasive continuous blood pressure measuring apparatus for noninvasively, continuously measuring blood pressure and a method of noninvasively measuring continuous blood pressure.

2. Description of the Prior Art

A noninvasive continuous blood pressure measuring apparatus for noninvasively, continuously measuring blood pressure is known. An apparatus and a method for measuring an induced perturbation to determine a blood pressure is disclosed in U.S. Pat. No. 5,590,649. In this prior art apparatus, a monitor for continuously determining a patient's physiological parameter includes a means for obtaining a periodic calibration measurement of the patient's physiological parameter. An exciter, positioned over an artery of the patient induces an exciter waveform into the patient's arterial blood. A noninvasive sensor, positioned over the artery, senses a hemoparameter and provides a noninvasive sensor signal output representative of the hemoparameter. A processor receives the calibration measurement and noninvasive sensor signal output. The processor determines a SC offset based on the calibration measurement and processes the noninvasive sensor signal to continuously determine the patient's physiological parameter.

SUMMARY OF THE INVENTION

The aim of the present invention is to provide a superior noninvasive continuous blood pressure measuring apparatus and a superior method of noninvasively measuring continuous blood pressure.

According to this invention, there is provided a first noninvasive continuous blood pressure measuring apparatus including: an oscillator for generating an oscillation signal having a desired frequency and a desired amplitude; a substrate; a plurality of exciters arranged on the substrate in a direction responsive to the oscillation signal for inducing exciter waveforms in an artery and a blood in the artery of a living body; a plurality of sensors respectively arranged on the substrate in the direction a predetermined interval apart from the exciters for receiving induced exciter waveforms transmitted through the artery from the living body and outputting detection signals; a multiplexer for effecting recurrently switching and time-divisionally outputting outputs of the sensors; a determining and selecting portion responsive to the multiplexer for determining one of the outputs in accordance with a predetermined judging condition and for selecting and outputting one of the outputs; a calibration hemodynamometer for detecting absolute values of a maximum blood pressure and a minimum blood pressure of the living body; a calculating portion for receiving the absolute values from the hemodynamometer and successively calculating and outputting an instantaneous blood

pressure value from a phase relation between the oscillation signal and one of the outputs from the determining and selecting portion and the absolute values; and a display for displaying a continuous blood pressure variation from the instantaneous blood pressure successively outputted by the calculation portion.

In the first noninvasive continuous blood pressure measuring apparatus, the substrate correspondingly arranges the exciters and the sensors such that each pair of each of the exciters and each of the sensors is arranged in the direction and the exciter and the sensor of each pair are arranged in a second direction perpendicular to the direction, the apparatus further including an attaching unit for attaching the substrate to the living body.

In the first noninvasive continuous blood pressure measuring apparatus, the substrate may correspondingly arranges the exciter and the sensors such that each pair including two of the sensors and one of the exciter arranged between the two of the sensors with the predetermined distance is arranged in the direction, the apparatus may further include an attaching unit for attaching the substrate to the living body.

The first noninvasive continuous blood pressure measuring apparatus may further include: a plurality of a/d converters for respectively a/d-converting the detection signals and supplying converted signals to the determining and selecting portion as the outputs of the sensors.

According to this invention, there is a second noninvasive continuous blood pressure measuring apparatus is provided which includes: an oscillator for generating an oscillation signal having a desired frequency and a desired amplitude; an exciter arranged responsive to the oscillation signal for inducing an exciter waveform in an artery and blood in the artery of a living body; a sensor arranged a predetermined interval apart from the exciter for receiving the induced exciter waveform transmitted through the artery from the living body and outputting a detection signal; a calibration hemodynamometer for detecting absolute values of a maximum blood pressure and a minimum blood pressure of the living body; a calculating portion for receiving absolute values from the calibration hemodynamometer and successively calculating and outputting an instantaneous blood pressure value from a phase relation between the oscillation signal and the detection signal and the absolute values; and a display for displaying a continuous blood pressure variation from the instantaneous blood pressure successively outputted by the calculation portion.

In the second noninvasive continuous blood pressure measuring apparatus, the oscillator may include: a clock signal generation circuit for generating a clock signal; a processor responsive to frequency control data and the clock signal for successively generating frequency signal data indicative of amplitude in time base in accordance with the frequency control data; a d/a converter for converting the frequency signal data; and a filter for low-pass filtering an output of the d/a converter and outputting the oscillation signal of which frequency is controlled in accordance with the frequency data.

In the second noninvasive continuous blood pressure measuring apparatus, the oscillator may include: a clock signal generation circuit for generating a clock signal; a numerically-controlled oscillator responsive to frequency control data and the clock signal for successively generating frequency signal data indicative of amplitude in time base in accordance with the frequency control data; a d/a converter for converting the frequency signal data; and a filter for

low-pass filtering an output of the d/a converter and outputting the oscillation signal of which frequency is controlled in accordance with the frequency data.

In the second noninvasive continuous blood pressure measuring apparatus, the oscillator may include: a clock signal generation circuit for generating a clock signal; a processor responsive to frequency control data for generating at least one cycle of frequency signal data and storing one cycle of frequency signal data in a look-up table; an address signal generating circuit for generating an address signal in response to the clock signal to operate the look-up table to successively read and output one cycle of frequency data indicative of an amplitude of the oscillation signal; a d/a converter for converting one cycle of frequency data; and a filter for low-pass filtering an output of the a/d converter and outputting the oscillation signal of which frequency is controlled in accordance with the frequency data.

In the second noninvasive continuous blood pressure measuring apparatus, the oscillator may include: a PLL circuit responsive to frequency control data for successively generating a frequency signal; and a filter for low-pass filtering the frequency signal and outputting the filtered frequency signal as the oscillation signal of which frequency is controlled in accordance with the frequency data.

According to this invention, there is provided a third noninvasive continuous blood pressure measuring apparatus which includes: an oscillator for generating an oscillation signal having a desired frequency and a desired amplitude; an exciter responsive to the oscillation signal for inducing an exciter waveform in an artery and blood in the artery of a living body; a sensor arranged a predetermined interval apart from the exciter for receiving the induced exciter waveform transmitted through the artery from the living body and outputting a detection signal; an a/d converter for a/d-converting the detection signal; a calibration hemadynamometer for detecting absolute values of a maximum blood pressure and a minimum blood pressure of the living body; a microprocessor including a filter portion and a calculating portion, the filter portion band-pass-filtering the detection signal from the a/d converter, the calculating portion receiving the absolute values from the calibration hemadynamometer and successively calculating and outputting an instantaneous blood pressure value from a phase relation between the oscillation signal and the detection signal from the filter portion and the absolute values; and a display for displaying a continuous blood pressure variation from the instantaneous blood pressure successively outputted by the calculation portion.

According to this invention, there is provided a fourth noninvasive continuous blood pressure measuring apparatus which includes: an oscillator for generating an oscillation signal having a desired frequency and a desired amplitude; an exciter responsive to the oscillation signal for inducing an exciter waveform in an artery and blood in the artery of a living body; a sensor arranged a predetermined interval apart from the exciter for receiving the induced exciter waveform transmitted through the artery from the living body and outputting detection signal; a calibration hemadynamometer for detecting absolute values of a maximum blood pressure and a minimum blood pressure of the living body; a band-pass filter for band-pass-filtering the detection signal from the sensor; an a/d converter for a/d-converting the detection signal from the bandpass filter; a microprocessor including a calculating portion for receiving the absolute values from the calibration hemadynamometer and successively calculating and outputting an instantaneous blood pressure value from a phase relation between the oscillation signal and the

detection signal from the a/d converter and the absolute values; and a display for displaying a continuous blood pressure variation from the instantaneous blood pressure successively outputted by the calculation portion.

According to this invention, there is provided a fifth noninvasive continuous blood pressure measuring apparatus which includes: an oscillator for generating an oscillation signal of which frequency is controlled; an exciter responsive to the oscillation signal for inducing an exciter waveform in an artery and blood in the artery of a living body; a sensor arranged a predetermined interval apart from the exciter for receiving the induced exciter waveform transmitted through the artery from the living body and outputting a detection signal; a calibration hemadynamometer for detecting absolute values of a maximum blood pressure and a minimum blood pressure of the living body; a frequency determining portion responsive to the sensor for controlling the oscillator to successively control the frequency at different frequencies and determining one of the difference frequencies in accordance with the detection signal outputted at different frequencies, and then, controlling the oscillator to continuously generate the oscillation signal at one of the different frequencies; a calculating portion responsive to the frequency determining portion for receiving absolute values from the calibration hemadynamometer and successively calculating and outputting an instantaneous blood pressure value from a phase relation between the oscillation signal and the detection signal at one of the different frequencies and the absolute values; and a display for displaying a continuous blood pressure successively outputted by the calculation portion.

In the fifth noninvasive continuous blood pressure measuring apparatus, the frequency determining portion may detect attenuations in the detection signal at different frequencies and determine one of the difference frequencies in accordance with a minimum of the attenuations.

In the fifth noninvasive continuous blood pressure measuring apparatus, the frequency determining portion may detect dispersions in amplitudes of the detection signal at different frequencies and determine one of the different frequencies in accordance with a minimum of the dispersions.

In the fifth noninvasive continuous blood pressure measuring apparatus, the frequency determining portion may detect phase shifts in the detection signal at different frequencies and determine one of the difference frequencies in accordance with a maximum of the phase shifts.

In the fifth noninvasive continuous blood pressure measuring apparatus, the frequency determining portion may detect attenuations in the detection signal at different frequencies, detect dispersions in amplitudes of the detection signal at the different frequencies, and detect phase shifts in the detection signal at the different frequencies, obtain estimation values at the different frequencies through an estimating function for estimating the attenuations, the dispersions, and the phase shifts, and determine one of the difference frequencies in accordance with the estimation values at the different frequencies.

According to this invention, there is provided a sixth noninvasive continuous blood pressure measuring apparatus which includes: an oscillator for generating an oscillation signal of which waveform is controlled; an exciter responsive to the oscillation signal for inducing an exciter waveform in an artery and blood in the artery of a living body; a sensor arranged a predetermined interval apart from the exciter for receiving the induced exciter waveform trans-

mitted through the artery from the living body and outputting a detection signal; a calibration hemadynamometer for detecting absolute values of a maximum blood pressure and a minimum blood pressure of the living body; a waveform determining portion responsive to the sensor for controlling the oscillator to control the oscillation signal successively have different waveforms and determining one of the difference waveforms in accordance with the detection signal outputted at different waveforms and then, controlling the oscillator to continuously generate the oscillation signal at one of the different waveforms; a calculating portion responsive to the frequency determining portion for receiving absolute values from the calibration hemadynamometer and successively calculating and outputting an instantaneous blood pressure value from a phase relation between the oscillation signal and the detection signal at one of the different waveforms and the absolute values; and a displaying for displaying a continuous blood pressure variation from the instantaneous blood pressure successively outputted by the calculation portion.

In the sixth noninvasive continuous blood pressure measuring apparatus, the waveform determining portion may detect attenuations in the detection signal at the different waveforms and determine one of the difference waveforms in accordance with a minimum of the attenuations.

In the sixth noninvasive continuous blood pressure measuring apparatus, the waveform determining portion may detect dispersions in amplitudes of the detection signal at the different waveforms and determines one of the difference waveforms in accordance with a minimum of the dispersions.

In the sixth noninvasive continuous blood pressure measuring apparatus, the waveform determining portion may detect phase shifts in the detection signal at the different waveforms and determine one of the difference waveforms in accordance with a maximum of the phase shifts.

In the sixth noninvasive continuous blood pressure measuring apparatus, the waveform determining portion may detect attenuations in the detection signal at the different waveforms, detect dispersions in amplitudes of the detection signal at the different waveforms, and detect phase shifts in the detection signal at the different waveforms, obtain estimation values at the different waveforms through an estimating function for estimating the attenuations, the dispersions, and the phase shifts, and determine one of the difference waveforms in accordance with the estimation values at the different waveforms.

According to this invention, there is provided a first method of noninvasively measuring continuous blood pressure including the steps of: generating an oscillation signal of which frequency is controlled; providing an exciter responsive to the oscillation signal inducing an exciter waveform in an artery and blood in the artery of a living body; providing a sensor arranged a predetermined interval apart from the exciter for receiving the induced exciter waveform transmitted through the artery from the living body and outputting a detection signal; detecting absolute values of a maximum blood pressure and a minimum blood pressure of the living body; controlling the oscillation signal to successively control the frequency at different frequencies and determining one of the difference frequencies in accordance with the detection signal outputted at different frequencies; continuously generating the oscillation signal at one of the different frequencies; receiving absolute values and successively calculating and outputting an instantaneous blood pressure value from a phase relation between the

oscillation signal and the detection signal at one of the different frequencies and the absolute values; and displaying a continuous blood pressure variation from the instantaneous blood pressure successively outputted.

According to this invention, there is provided a second method of noninvasively measuring continuous blood pressure including the steps of: generating an oscillation signal of which waveform is controlled; providing an exciter responsive to the oscillation signal inducing an exciter waveform in an artery and blood in the artery of a living body; providing a sensor arranged a predetermined interval apart from the exciter for receiving the induced exciter waveform transmitted through the artery from the living body and outputting a detection signal; detecting A-absolute values of a maximum blood pressure and a minimum blood pressure of the living body; controlling the oscillation signal to successively control the frequency at different waveforms and determining one of the difference waveforms in accordance with the detection signal outputted at different waveforms; continuously generating the oscillation signal at one of the different waveforms; receiving absolute values and successively calculating and outputting an instantaneous blood pressure value from a phase relation between the oscillation signal and the detection signal at one of the different waveforms and the absolute values; and displaying a continuous blood pressure variation from the instantaneous blood pressure successively outputted.

BRIEF DESCRIPTION OF THE DRAWINGS

The object and features of the present invention will become more readily apparent from the following detailed description taken in conjunction with the accompanying drawings in which:

FIG. 1 is a block diagram of a noninvasive continuous blood pressure measuring apparatus of a first embodiment of this invention;

FIG. 2 is a plan view of a sensor unit of the first embodiment;

FIG. 3 is a cross-sectional side view of the sensor unit of the first embodiment taken on line III—III;

FIGS. 4A to 4E are graphical drawings of the first embodiment showing the determining operation;

FIG. 5A is a plan view of a sensor unit of a second embodiment;

FIG. 5B is a cross-sectional side view of the sensor unit of the second embodiment taken on the line VB in FIG. 5A;

FIG. 6 is a block diagram of a noninvasive continuous blood pressure measuring apparatus of a third embodiment of this invention;

FIG. 7 is a block diagram of a noninvasive continuous blood pressure measuring apparatus of a fourth embodiment of this invention;

FIG. 8 is a block diagram of the fourth embodiment, wherein the operation of the microprocessor is equivalently shown;

FIG. 9 is a block diagram of a noninvasive continuous blood pressure measuring apparatus of a fifth embodiment of this invention;

FIG. 10 is a block diagram of a noninvasive continuous blood pressure measuring apparatus of a sixth embodiment of this invention;

FIG. 11 is a block diagram of a noninvasive continuous blood pressure measuring apparatus of a seventh embodiment of this invention;

FIG. 12 is a block diagram of a noninvasive continuous blood pressure measuring apparatus of an eighth embodiment of this invention;

FIGS. 13A and 13B are graphical drawing of the eighth embodiment;

FIG. 14 is a block diagram of a noninvasive continuous blood pressure measuring apparatus of a ninth embodiment of this invention;

FIG. 15 is a block diagram of a noninvasive continuous blood pressure measuring apparatus of a tenth embodiment of this invention;

FIG. 16 depicts a flow chart of the tenth embodiment showing an operation of the microprocessor;

FIG. 17 depicts a flow chart of the tenth embodiment showing an operation of the frequency determining portion;

FIG. 18 is a graphical drawing of the tenth embodiment;

FIG. 19 is a block diagram of a noninvasive continuous blood pressure measuring apparatus of an eleventh embodiment of this invention;

FIG. 20 depicts a flow chart of the eleventh embodiment showing an operation of the microprocessor; and

FIG. 21 depicts a flow chart of the eleventh embodiment showing an operation of the waveform determining portion.

The same or corresponding elements or parts are designated with like references throughout the drawings.

DETAILED DESCRIPTION OF THE INVENTION

First Embodiment

FIG. 1 is a block diagram of a noninvasive continuous blood pressure measuring apparatus of a first embodiment of this invention. FIG. 2 is a plan view of a sensor unit of the first embodiment. FIG. 3 is a side cross-sectional view of the sensor unit of the first embodiment taken on line III—III.

The noninvasive continuous blood pressure measuring apparatus of the first embodiment includes an oscillator 1 for generating an oscillation signal 31 having a predetermined (desired) frequency and a predetermined amplitude, a plurality of exciters 2 (2a to 2d) arranged in a direction X with a distance D1, responsive to the oscillation signal 31, for inducing exciter waveforms in an artery 20 and blood 23 in the artery 20 of a living body (arm) 21, a plurality of sensors 3 (3a to 3h) arranged in the direction X with a distance D1 and apart from the column of the exciters 2 by a distance D2 respectively for receiving exciter waveforms from the living body 21 and outputting detection signals 100a to 100g, respectively, a timing signal generating circuit 9 for generating timing signals 9a and 9b, a multiplexer 4 for switching and recurrently outputting one of outputs of the sensors 3a to 3h in response to the timing signal 9a, a/d converter 5 for a/d-converting one of the outputs of the sensors 3 from the multiplexer 4, a determining portion 10 responsive to the multiplexer 4 through the a/d converter 5 for determining one of the outputs in accordance with an output of the multiplexer 4 and a predetermined judging condition such as amplitude, a calibration hemadynamometer 6 for detecting absolute-values of a maximum blood pressure and a minimum blood pressure of the living body, a calculating portion 7 for operating the calibration hemadynamometer 6 and successively calculating and outputting an instantaneous blood pressure value from a phase relation between the oscillation signal 31 and one of the outputs 100a to 100g indicated by the determination result from the determining portion 10 and the absolute values, and a display 8 for displaying a continuous blood pressure variation from the instantaneous blood pressure successively outputted by the

calculation portion 7. The calibration hemadynamometer 6 may measure the absolute values of a maximum blood pressure and a minimum blood pressure of the living body periodically without controlling by the calculation portion 7. The distance D2 is constant. On the other hand, the display D1 can be varied with every sensor 3 to surely detect the exciter waveforms.

The sensor unit 19 includes a substrate 22, the exciters 2a to 2d, and sensors 3a to 3h, and an attaching belt 18 as shown in FIG. 2. The exciters 2 and the sensors 3 includes flexible plates (not shown) and piezoelectric element (not shown) sandwiched between the flexible plates, so called bimorph. The exciter 2 generates vibrations with bending in the plates generated by the piezoelectric elements. Inversely, the sensor 3 generates the detection signal from the piezoelectric element therein in accordance with the vibrations from the living body 21.

The oscillator 1 generating the oscillation signal 31 having the desired frequency and the predetermined amplitude to induce exciter a favourable waveform in the blood 23 in the artery 20. The exciters 2a to 2d respectively induce exciter waveforms in the artery 20 and the blood 23 in the artery 20 of a living body (arm) 21 in response to the oscillation signal 31. The exciter waveforms (vibrations) induced in the blood 23 transmit through the blood in the artery 20 and reach the sensors 3a to 3h. The sensors 3a to 3h receive exciter waveforms from the living body 21, i.e., the induced exciter waveforms transmitting through the artery 20 and output detection signals 100a to 100g. The timing signal generating circuit 9 generates timing signals 9a and 9b. The multiplexer 4 recurrently selecting and outputting one of detection signals 100a to 100g of the sensors 3a to 3h in response to the timing signal 9a. The a/d converter 5 a/d-converts one of the detection signals 100a to 100g of the sensor 3a to 3h. The determining portion 10 determines one of the a/d-converted detection signals in accordance with a/d-converted detection signals and a predetermined judging condition such as amplitude of the detection signals.

The calibration hemadynamometer 6 detects absolute values of a maximum blood pressure and a minimum blood pressure of the living body 21 periodically or detects the absolute values in response to a command 7a from the calculation portion 7. The calculating portion 7 operates the calibration hemadynamometer 6 and successively calculates and outputs the instantaneous blood pressure value from a phase relation between the oscillation signal 31 and one of the outputs 100a to 100g indicated by the determining result from the determining portion 10 and the absolute values. The display 8 displays the continuous blood pressure variation from the instantaneous blood pressure successively outputted by the calculation portion 7.

The determining operation will be described more specifically.

FIGS. 4A to 4E are graphical drawings of the first embodiment showing the determining operation. For convenience of explanation, it is assumed that one of the detection signals is determined between two detection signals 100c and 100d which are near the artery 20.

The sensors 100c and 100d outputs the detection signals as shown in FIGS. 4A and 4B, wherein an amplitude of the detection signal 100c is higher than that of the detection signal 100d because the exciter 2c and the sensor 3c are just above the artery 20 as shown in FIG. 2.

The multiplexer 4 multiplexes the detection signals 100c and 100d in response to the timing signal 9a as shown in FIG. 4C.

The a/d converter **4** a/d-converts the outputs of the multiplexer **4** as shown in FIG. 4D. The determining portion **10** compares the amplitude AMc of the a/d converted detection signal from the sensor **3c** with the amplitude AMd of the a/d-converted detection signal **3d** with reference to the timing signal **9a** and determines the a/d-converted detection signal from the sensor **3c** because the amplitude AMc is higher than the amplitude AMd from the sensor **3d**. Then, the determining portion **10** selects and outputs a determined detection signal from the sensor **3c**. In this embodiment, determining one of the a/d converted detection signal has been described with assumption that the detection signal is induced from the exciter waveform through the artery **20**. However, it is also possible to determine one of the a/d-converted detection signal from the amplitude induced by the pulsation of the artery **20**, that is, natural blood pressure waves. In this case, a frequency of the natural blood pressure waves is lower than the frequency of the oscillation signal **31**, so that this signal is better in consideration of switching timing of the multiplexer **4** and the analog-to-digital converting rate.

In this case, a sampling frequency in the a/d converter **5** per one detection signal is equal to or more than 200 Hz. Accordingly, the resultant sampling frequency of the a/d converter **5** is equal to or more than 1600 Hz because there are eight sensor **3a** to **3h**.

The calculation portion **7** calculates and outputs the instantaneous blood pressure value from a phase relation between the oscillation signal **31** and one of the detection signals **100a** to **100g** indicated by the determining result from the determining portion **10** and the absolute values. That is, the method of calculating the blood pressure from the sound velocity through artery is known and described in U.S. Pat. No. 5,590,649, the disclosure of which is hereby incorporated by reference.

In FIG. 2, the substrate **22** correspondingly arranges the exciter units **2a** to **2d** and the sensors **3a** to **3h** such that each pair (for example, **2a**, **3a**, and **3e**) includes two of the sensors **3** and one of the exciters **2** arranged between two of the sensors with the distance D2 and is arranged in the direction X, so that it is easy to attach the substrate **22** with the attaching belt **18** because accurate positioning with respect to the artery **20** can be omitted by the selecting operation of the detection signals. In FIG. 2, the detection signal **100g** may be selected by determining portion **10** in accordance with the amplitudes of the detection signals **100c** and **100g**. Moreover, it is possible to select the sensor **3** positioned upstream of the artery **20** or positioned downstream with respect to the exciter **2** at will with a request receiving portion (not shown).

Second Embodiment

FIG. 5A is a plan view of a sensor unit of a second embodiment. FIG. 5B is a cross-sectional side view of the sensor unit of the second embodiment taken on the line VB in FIG. 5A.

The sensor unit of the second embodiment includes a substrate **22**, exciters **2a** to **2h**, sensors **3a** to **3h**, and an attaching belt **18**. A column **2q** of the exciters **2e** to **2h** and corresponding column **3q** of the sensors **3e** to **3h** are shifted in the direction X from the column **2p** of the exciters **2a** to **2d** and the column **3p** of the sensors **3a** to **3d** by a distance D3 which is a half of the distance (pitch) D1. The exciters **2a** to **2d** and the sensors **3a** to **3d** are arranged with the distance D1 in direction X which substantially corresponds to the size of the exciters **2a** to **2d** and the sensors **3a** to **3d** in the direction X. Therefore, the exciters **2a** to **2d** and the sensors **3a** to **3d** are arranged compactly and selecting one of the detection signals are precisely effected.

Third Embodiment

FIG. 6 is a block diagram of a noninvasive continuous blood pressure measuring apparatus of a third embodiment of this invention. The noninvasive continuous blood pressure measuring apparatus of the third embodiment is substantially the same as that of the first embodiment. The difference is that a/d converters **11a** to **11h** are respectively provided to the detection signals **10a** to **100h** instead of the multiplexer **4** and the a/d converter **5**. The a/d converters **11a** to **11h** a/d-converts the detection signals **100a** to **100h** independently. The determining portion **10** selects and outputs a determined detection signal from the sensor **3**.

The calculating portion **7** operates the calibration hemadynamometer **6** and successively calculates and outputs the instantaneous blood pressure value from a phase relation between the oscillation signal and one of the outputs **100a** to **100g** from the determining portion **10** and the absolute values. The display **8** displays the continuous blood pressure variation from the instantaneous blood pressure successively outputted by the calculation portion **7**.

In the third embodiment, a total sampling rate of the a/d converters **11a** to **11h** is increased, so that an accuracy in measuring the continuous blood pressure variation is improved.

Fourth Embodiment

FIG. 7 is a block diagram of a noninvasive continuous blood pressure measuring apparatus of a fourth embodiment of this invention. The noninvasive continuous blood pressure measuring apparatus of the fourth embodiment is substantially the same as that of the first embodiment. The difference is that a frequency of the oscillator **1a** is controlled.

The oscillator **1a** includes a clock signal generation circuit **212** for generating a clock signal; a microprocessor **210**, including a memory **211**, responsive to frequency control data and the clock signal for successively generating frequency signal data **210a** indicative of amplitude in time base in accordance with the frequency control data; a d/a converter **213** for converting the frequency signal data, and outputting a frequency signal; and a filter **214** for low-pass-filtering the frequency signal and outputting the filtered frequency signal as the oscillation signal of which frequency controlled in accordance with the frequency data.

FIG. 8 is a block diagram of the fourth embodiment, wherein the operation of the microprocessor **210** is equivalently shown.

The clock signal generation circuit **212** generates the clock signal **215** and a conversion timing signal for the a/d converter **213**. The microprocessor **210** starts an operation for calculating frequency signal data **210a** indicative of amplitude in response to every clock signal **215** from the clock signal generation circuit **212** using the memory **211** as a work memory by the known double integration method. The a/d converter **213** converts the frequency signal data to generate the oscillation signal. The filter **214** filters the oscillation signal from the a/d converter **213** to remove unnecessary frequency components to supply the oscillation signal **214a** with low spurious.

The calculation portion **7** may be provided by the same microprocessor **210**.

FIG. 8 shows a circuit which is equivalent to the operation of the microprocessor **210**.

The circuit for effecting the double integration method includes first integrator **250**, an inverter for inverting an output of the integrator **250**, and a second integrator **252** for integrating an output of the inverter **251** and outputting sine data **254** and feed back data which is supplied to the first integrator **250**.

The first integrator **250** includes an adder **253**, a multiplier **257**, a delay **256**. The adder **253** sums the feedback data from a multiplier **260** in the second integrator **252**, an output of the delay **256** and a trigger signal **261** which is generated once at start of the operation of the oscillator **1a**. The summing result is supplied to the delay **256** and to the multiplier **257** and outputted as a cosine data **255**. The multiplier **257** multiplies the cosine data **255** with frequency data "a". The delay **256** supplied with the clock signal **215** delays the summing result of the adder **253** by one clock period of the clock signal **215**.

The inverter **251** having a gain of -1 and inverts the multiplying result.

The second integrator **252** includes an adder **258**, a multiplier **260**, and a delay **259**. The adder **258** sums an output of the delay **259** and an output of the inverter **251**. The summing result of the adder **258** is supplied to the delay **259** and outputted as a sine data **254**. The delay **259** supplied with the clock signal **215** delays the summing result of the adder **258** by one clock period of the clock signal **215**. The output of the delay **259** is supplied to the multiplier **260** which multiplies the output of the delay **259** with the frequency data "a" and supplies the feedback data to the adder **253** as mentioned. The delay **256** and **259** are supplied with the clock signal **215** to delay the cos data **255** and the sin data **254** by one clock signal interval.

This circuit generates the oscillation signal **214a** of which frequency f is given by:

$$f=(axT)/(2x\pi)$$

where T is a frequency of the clock signal **215** generated by the clock signal generation circuit **212**.

As mentioned, the circuit generates the oscillation signal **214a** of which frequency f is controlled by the frequency control data "a". Moreover, as the oscillation signal, the sine data **254** and the cosine data **255** are generated and are also supplied to the calculation portion **7** at the same time.

Fifth Embodiment

FIG. **9** is a block diagram of a noninvasive continuous blood pressure measuring apparatus of a fifth embodiment of this invention. The noninvasive continuous blood pressure measuring apparatus of the fifth embodiment is substantially the same as that of the fourth embodiment. The difference is in the structure of the oscillator **1b**. The oscillator **1b** includes a clock signal generation circuit **222** for generating a clock signal; a microprocessor **220** for receiving frequency control data; a numerically-controlled oscillator **221** for successively generating frequency control data indicative of amplitude in time base in accordance with the frequency control data; a d/a converter **223** for converting the frequency signal data, and outputting a frequency signal; and a filter **224** for low-pass-filtering the frequency signal and outputting the filtered frequency signal as the oscillation signal of which frequency controlled in accordance with the frequency data "a".

The microprocessor **220** receives the frequency control data. The numerically-controlled oscillator **221** successively generates the frequency control data in accordance with the frequency control data. The d/a converter **223** converts the frequency signal data and outputs a frequency signal. The filter **224** low-pass-filters the frequency signal and outputting the filtered frequency signal as the oscillation signal of which frequency controlled in accordance with the frequency data "a".

Sixth Embodiment

FIG. **10** is a block diagram of a noninvasive continuous blood pressure measuring apparatus of a sixth embodiment

of this invention. The noninvasive continuous blood pressure measuring apparatus of the sixth embodiment is substantially the same as that of the fourth embodiment. The difference is in the structure of the oscillator **1c**. The oscillator **1c** includes a clock signal generation circuit **232** for generating a clock signal; a look-up table **231**; a microprocessor **230** for receiving frequency control data and generating a set of frequency signal data indicative of amplitude for one cycle of the oscillation signal in accordance with the frequency control data and storing the frequency signal data in a look-up table **231**; an address signal generation circuit **233** for successively generating an address signal in response to the clock signal to operate the look-up table **231** to successively output instantaneous frequency signal data; a d/a converter **234** for a/d-converting the frequency signal data and outputting a frequency signal; and a filter **235** for low-pass-filtering the frequency signal and outputting the filtered frequency signal as the oscillation signal of which frequency controlled in accordance with the frequency data "a".

The microprocessor **220** receives the frequency control data and generates the set of frequency signal data indicative of amplitude for one cycle of the oscillation signal in accordance with the frequency control data and stores the frequency signal data in the look-up table **231** before the start of measuring the blood pressure. The address signal generation circuit **233** successively generates the address signal in response to the clock signal to operate the look-up table **231** to successively output the instantaneous frequency signal data. The d/a converter **234** d/d-converts the frequency signal data and outputs the frequency signal. The filter **235** low-pass-filters the frequency signal and outputs the filtered frequency signal as the oscillation signal of which frequency controlled in accordance with the frequency data "a".

Seventh Embodiment

FIG. **11** is a block diagram of a noninvasive continuous blood pressure measuring apparatus of a seventh embodiment of this invention. The noninvasive continuous blood pressure measuring apparatus of the seventh embodiment is substantially the same as that of the fourth embodiment. The difference is in the structure of the oscillator. The oscillator **1d** of the seventh embodiment includes a microprocessor (MPU) **241** for receiving frequency control data, a PLL circuit **247**, and a filter **246**. The PLL circuit **247** includes a frequency reference signal generating circuit **240** for generating a frequency reference signal, a phase comparator **242** for detecting a phase difference between the frequency reference signal generating circuit **240** and a frequency-divided signal, an integrator **243** for integrating an output of the phase comparator **242**, a voltage-controlled oscillator **245** for generating an oscillation signal of which frequency controlled in accordance with the output of the integrator, i.e., the integrated phase difference, and a frequency divider **244** for frequency-dividing the oscillation signal from the voltage controlled-oscillator **245** by the frequency control data from the microprocessor **241**. The filter **246** removes unnecessary components in the oscillation signal from the voltage controlled oscillator **245** and supplies the filtered oscillation signal to the exciter **2** and the calculation portion **7**. The frequency of the oscillation signal and the vibration frequency of the exciter **2** are controlled in accordance with the frequency control data.

Eighth Embodiment

FIG. **12** is a block diagram of a noninvasive continuous blood pressure measuring apparatus of an eighth embodiment of this invention. The noninvasive continuous blood

pressure measuring apparatus of the eighth embodiment is substantially the same as that of the fourth embodiment. The difference is that a microprocessor **301** is further provided for filtering processes and a phase detection process.

The noninvasive continuous blood pressure measuring apparatus of the eighth embodiment includes the oscillator **1a** for generating the oscillation signal **214a** of which frequency controlled to a predetermined (desired) frequency and the corresponding oscillation signal data **210a**, a bandpass filter **314** for bandpass-filtering the oscillation signal data **210a** and outputting frequency reference signal data **314a**, the exciter **2** for inducing exciter waveforms in an artery **20** and blood **23** in the artery of a living body (arm) **21**, the sensor **3** apart from the exciter **2** by a distance **D2** for receiving exciter waveforms and a natural blood pressure waveform from the living body and outputting a detection signal, a pre-amplifier **302** for amplifying the detection signal including a plurality of patient's physiological parameters, an a/d converter **5** for a/d-converting an output of the pre-amplifier **302** to output detection data, the microprocessor **301** for effecting a bandpass filtering process for detecting the exciter waveform and a low pass filtering process for detecting a natural blood pressure waveform from the detection data and a phase detection process to output phase difference data, a calibration hemodynamometer **6** for detecting absolute values of a maximum blood pressure and a minimum blood pressure of the living body, a calculating portion **7** for successively calculating and outputting an instantaneous blood pressure value from a phase relation between the frequency reference signal data and the detected exciter waveform and the detected natural blood pressure waveform and the absolute values from the calibration hemodynamometer **6**, and a display **8** for displaying a continuous blood pressure variation from the instantaneous blood pressure successively outputted by the calculation portion **7**.

The bandpass filtering process portion **304** in the microprocessor **301** detects the exciter waveform from the detection data and the low pass filtering process portion **305** detects the natural blood pressure waveform from the detection data. The phase detection process portion **305** detects a phase difference between the frequency reference signal data **314a** and the detected exciter waveform from the bandpass processing portion **304** and outputs the phase difference data including a real number component of the phase shift and an imaginarily number component of the phase shift.

The calculating portion **7** successively calculates and outputs an instantaneous blood pressure value from the phase difference data, the detected natural blood pressure waveform, and the absolute values from the calibration hemodynamometer **6**. The display **8** displays a continuous blood pressure variation from the instantaneous blood pressure successively outputted by the calculation portion **7**.

FIGS. **13A** and **13B** are graphical drawing of the eighth embodiment. The sensor receives the vibrations from the living body including the exciter waveform and the natural blood pressure waveform superimposed with each other. The bandpass filtering processing portion **304** extracts the exciter waveform **152** and the low pass filter processing portion **305** extracts the natural blood pressure waveform **151**.

The band pass filter **314** may be omitted if the oscillation signal data **210a** includes unnecessary components. The microprocessor **301** may also effect the processing in the calculation portion **7**.

Ninth Embodiment

FIG. **14** is a block diagram of a noninvasive continuous blood pressure measuring apparatus of a ninth embodiment

of this invention. The noninvasive continuous blood pressure measuring apparatus of the ninth embodiment is substantially the same as that of the ninth embodiment. The difference is that the bandpass filtering process is effected by a bandpass filter **404** instead the bandpass filtering processing portion **304**, the low pass filtering processing is effected by a low pass filter **405** instead the low pass filtering processing portion **305**, a selector **407** is further provided to supplying either of an output of the bandpass filter **404** and an output of the low pass filter **405** to the a/d converter **5**.

The sensor **3** receives the induced exciter waveform and natural blood pressure waveform from the living body and outputting detection signal. The pre-amplifier **302** amplifies the detection signal including a plurality of patient's physiological parameters. The bandpass filter **404** extracts the exciter waveform. The low pass filter **405** extracts the natural blood pressure waveform. The selector switchably outputs either of the exciter waveform from the bandpass filter **404** or the natural blood waveform from the low pass filter **405** in response to a switching control signal from the microprocessor **301**. The a/d converter **5** a/d-converts the exciter waveform and the natural blood pressure waveform. The phase detection process portion **306** detects the phase difference between the frequency reference signal data **314a** and an output of the a/d converter **5** while the selector selects the exciter waveform and outputs the phase difference data. The calculating portion **7** successively calculates and outputs an instantaneous blood pressure value from the phase difference data from the phase detection processing portion **306**, the natural blood pressure waveform from the a/d converter **5** while the selector **407** selects the natural blood pressure waveform, and the absolute values from the calibration hemodynamometer **6**. The display **8** displays a continuous blood pressure variation from the instantaneous blood pressure successively outputted by the calculation portion **7**.

Tenth Embodiment

FIG. **15** is a block diagram of a noninvasive continuous blood pressure measuring apparatus of a tenth embodiment of this invention. The noninvasive continuous blood pressure measuring apparatus of the tenth embodiment is substantially the same as that of the fourth embodiment. The difference is that a reference sensor **501** is further provided with the exciter **2**, an amplifier **504** for amplifying the reference sensor detection signal from the reference sensor **501**, and a a/d converter **505** for a/d-converting the sensor detection signal from the amplifier **504**, and a frequency determining portion **509** are further provided. The reference sensor **501** detects the vibrations from the exciter **2**. A substrate **502** supports the exciter **2** and the reference sensor **501**.

FIG. **16** depicts a flow chart of the tenth embodiment showing an operation of the microprocessor **508**.

Before detecting the continuous blood pressure, the frequency determining portion **509** successively generates and supplies frequency control data indicative of a frequency f_i (f_1 to f_n) to the oscillator **1a** for T seconds and successively detects the detection signal from the sensor **3** and the reference sensor detection signal **503** for the interval of T seconds to determine the optimum frequency and supplies the frequency control data indicative of the optimum frequency in step **S551**. When the optimum frequency has been determined, the microprocessor **508** successively calculates the instantaneous blood pressure in step **S552** at the optimum frequency, so that the display **8** displays the continuous blood pressure variation from the successively supplied blood pressure from the calculation portion **7**.

FIG. 17 depicts a flow chart of the tenth embodiment showing an operation of the frequency determining portion 509, that is, the step S551.

At first, the frequency determining portion 509 generates the frequency control data indicative of a frequency f_1 for the interval of T seconds in step S500. During the interval of T seconds, the oscillator 1a generates the oscillation signal having a frequency f_1 , i.e., $A \sin(2\pi f_1 t)$. The exciter 2 generates vibration of the frequency f_1 , so that the exciter waveform is induced in the artery 20.

In the following step S501, the reference sensor 501 detects the vibrations of the exciter 2 and generates the reference sensor detection signal 503 which is supplied to the microprocessor 508 through the amplifier 504 and the a/d converter 505 at the oscillation frequency f_1 . The sensor 3 detects the exciter waveform transmitted through the artery 20 and generates the detection signal 3a which is supplied to the microprocessor 508 through the amplifier 506 and the a/d converter 507 at the oscillation frequency f_1 . Further, the frequency determining portion 509 extracts the frequency component f_1 from the detection signal from the sensor 3 and extracts the frequency component f_1 of the reference sensor detection signal by a filtering process.

Moreover, the frequency determining portion 509 effects a quadrature detection to obtain and store a real number component (I component) and an imaginarily number component (Q component) of the phase shift between the frequency reference signal data and the detection signal from the sensor 3. The processing in step S501 is repeated for T seconds.

FIG. 18 is a graphical drawing of the tenth embodiment.

When $t=T$ (sec) in step S502, the frequency determining portion 509, in step S503, predicts a circular arc 1901 of the I and Q components ((I1, Q1), (I2, Q2), . . . , (Im, Qm)) of the phase shift at the frequency f_1 in an I-Q plane as shown in FIG. 18 and predicts a center 1902 of the circular arc 1901 and obtains distances, i.e., radiuses, (r1, r2, . . . , rm) between the respective points (I1, Q1), (I2, Q2), . . . , (Im, Qm) and the predicted center 1902 of the circular arc 1901 (m is a natural number more than one) and calculates an average radius $Rf1Ave$ and attenuation ratio $Pf1$ with respect to the amplitude Aex of the reference sensor detection signal from the reference sensor 501 as follows:

$$Pf1 = 1 \cdot (Rf1Ave / Aex)$$

The frequency determining portion 509, in step S504 calculates a dispersion value $Rf1Var$ of the radiuses r1, r2, . . . , rm. Moreover, optimum frequency estimation value $Zf1$ is obtained:

$$Zf1 = \alpha \cdot (Pf1 / PStd) + \beta \cdot (Rf1Var / RStd)$$

Then, processing returns to step S500 to generate the oscillation signal having a frequency f_2 .

The processing from steps S500 to S505 is repeated until $i=n$ (n is a natural number).

Then, the optimum frequency estimation values of f_1 to f_n are obtained from the equation:

$$Zfi = \alpha \cdot (Pfi / PStd) + \beta \cdot (Rfivar / RStd)$$

Then, in step S506, the optimum frequency showing the lowest optimum frequency estimation value is selected. In the following step S507, the frequency determining portion 509 supplies the frequency control data of the optimum frequency.

In the equation for obtaining the optimum frequency estimation value, α and β are weighting coefficients which

are determined in accordance with degrees of importance of the estimation element of (Pfi/PStd) and (RfiVar/RStd).

In this embodiment, the reference sensor 501 is used. However, this sensor can be omitted because the amplitude of the vibrations of the exciter 2 is substantially constant over a necessary frequency range. Moreover, it is possible that the amplitudes of the reference sensor detection signal with respect to f_1 to f_n can be measured and stored in advance to be used in step S501.

Eleventh Embodiment

FIG. 19 is a block diagram of a noninvasive continuous blood pressure measuring apparatus of an eleventh embodiment of this invention. The noninvasive continuous blood pressure measuring apparatus of the eleventh embodiment is substantially the same as that of the tenth embodiment. The difference is that the waveform determining portion 1602 is provided instead of the frequency determining portion 509.

FIG. 20 depicts a flow chart of the eleventh embodiment showing an operation of the microprocessor 1603.

Before detecting the continuous blood pressure, the waveform determining portion 1602 successively generates and supplies waveform control data 1601 indicative of a waveform W_j ($j=1$ to n) to the oscillator 1e for T seconds and successively detects the detection signal from the sensor 3 and the reference sensor detection signal 503 for the interval of T seconds to determine the optimum frequency and supplies the frequency control data indicative of the optimum waveform in step S561. When the optimum waveform has been determined, the microprocessor 1603 successively calculates the instantaneous blood pressure in step S562, so that the display 8 displays the continuous blood pressure variation from the successively supplied blood pressure from the calculation portion 7.

FIG. 21 depicts a flow chart of the eleventh embodiment showing an operation of the waveform determining portion 1602, that is, the step S561.

At first, the waveform determining portion 1602 generates the waveform control data indicative of a waveform W_j for the interval of T seconds in step S600. During the interval of T seconds, the oscillator 1e generates the oscillation signal having a waveform W_1 , for example $A \sin(2\pi ft)$. The exciter 2 generates vibration of the waveform W_1 , so that the exciter waveform is induced in the artery 20.

In the following steps S601 to S605, the waveform estimation value is obtained as similar to the steps S501 to S505. The estimation value is given by:

$$Zwj = \alpha \cdot (Pwj / PStd) + \beta \cdot (RwjVar / RStd)$$

Then, processing returns to step S600 to generate the oscillation signal having a waveform w_j .

The processing from steps S600 to S605 is repeated until $j=n$ (n is a natural number).

Then, the waveform estimation values of W_1 to W_n are obtained from the equation:

Then, in step S606, the optimum waveform showing the lowest waveform estimation value is selected. In the following step S607, the waveform determining portion 1602 supplies the waveform control data of the optimum waveform.

In this embodiment, the reference sensor 501 is used. However, this sensor can be omitted because the amplitude of the vibrations of the exciter 2 is substantially constant over waveform W_1 to W_n . Moreover, it is possible that the amplitudes of the reference sensor detection signal with respect to waveforms W_1 to W_n can be measured and stored in advance to be used in step S601.

What is claimed is:

1. A noninvasive continuous blood pressure measuring apparatus comprising:

oscillating means for generating an oscillation signal of which frequency is controlled;

an exciter responsive to said oscillation signal for inducing an exciter waveform in an artery and blood in said artery of a living body;

a sensor arranged a predetermined interval apart from said exciter for receiving said induced exciter waveform transmitted through said artery from said living body and outputting detection signal;

calibration hemodynamometer means for detecting absolute values of a maximum blood pressure and a minimum blood pressure of said living body;

frequency determining means responsive to said sensor for controlling said oscillating means to successively control said frequency at different frequencies, determining one of said different frequencies in accordance with said detection signal outputted at different frequencies, and then, controlling said oscillating means to continuously generating said oscillation signal at said one of said different frequencies;

calculating means responsive to said frequency determining means for receiving absolute values from said calibration hemodynamometer means and successively calculating and outputting an instantaneous blood pressure value from a phase relation between said oscillation signal and said detection signal at said one of said different frequencies and said absolute values; and displaying means for displaying a continuous blood pressure variation from said instantaneous blood pressure successively outputted by said calculation means.

2. The noninvasive continuous blood pressure measuring apparatus as claimed in claim 1, wherein said frequency determining means detects attenuations in said detection signal at different frequencies and determines said one of said difference frequencies in accordance with a minimum of said attenuations.

3. The noninvasive continuous blood pressure measuring apparatus as claimed in claim 1, wherein said frequency determining means detects dispersions in amplitudes of said detection signal at different frequencies and determines said one of said different frequencies in accordance with a minimum of said dispersions.

4. The noninvasive continuous blood pressure measuring apparatus as claimed in claim 1, wherein said frequency determining means detects phase shifts in said detection signal at different frequencies and determines said one of said difference frequencies in accordance with a maximum of said phase shifts.

5. The noninvasive continuous blood pressure measuring apparatus as claimed in claim 1, wherein said frequency determining means detects attenuations in said detection signal at different frequencies, detects dispersions in amplitudes of said detection signal at said different frequencies, and detects phase shifts in said detection signal at said different frequencies, obtains estimation values at said different frequencies through an estimating function for estimating said attenuations, said dispersions, and said phase shifts, and determines said one of said difference frequencies in accordance with the estimation values at said different frequencies.

6. A method of noninvasively measuring continuous blood pressure comprising the steps of:

(a) generating an oscillation signal of which frequency is controlled;

(b) providing an exciter responsive to said oscillation signal inducing an exciter waveform in an artery and blood in said artery of a living body;

(c) providing a sensor arranged a predetermined interval apart from said exciter for receiving said induced exciter waveform transmitted through said artery from said living body and outputting a detection signal;

(d) detecting absolute values of a maximum blood pressure and a minimum blood pressure of said living body;

(e) controlling said oscillation signal to successively control said frequency at different frequencies;

(f) determining one of said different frequencies in accordance with said detection signal outputted at different frequencies;

(g) continuously generating said oscillation signal at said one of said different frequencies;

(h) receiving absolute values and successively calculating and outputting an instantaneous blood pressure value from a phase relation between said oscillation signal and said detection signal at said one of said different frequencies and said absolute values; and

(i) displaying a continuous blood pressure variation from said instantaneous blood pressure successively outputted.

7. The method as claimed in claim 6, further comprising the step of:

detecting attenuations in said detection signal at different frequencies, wherein in said step (f), said one of said difference frequencies is determined in accordance with a minimum of said attenuations.

8. The method as claimed in claim 6, further comprising the step of:

detecting dispersions in amplitudes of said detection signal at different frequencies, wherein in said step (f) said one of said difference frequencies is determined in accordance with a minimum of said dispersions.

9. The method as claimed in claim 6, further comprising the step of:

detecting phase shifts in said detection signal at different frequencies, wherein in said step (f) said one of said difference frequencies is determined in accordance with a maximum of said phase shifts.

10. The method as claimed in claim 6, further comprising the steps of:

detecting attenuations in said detection signal at different frequencies;

detecting dispersions in amplitudes of said detection signal at said different frequencies;

detecting phase shifts in said detection signal at said different frequencies;

obtaining estimation values at said different frequencies through an estimating function for estimating said attenuations, said dispersions, and said phase shifts; and

determining said one of said difference frequencies in accordance with the estimation values at said different frequencies.

UNITED STATES PATENT AND TRADEMARK OFFICE
CERTIFICATE OF CORRECTION

PATENT NO. : 6,802,815 B2
DATED : October 12, 2004
INVENTOR(S) : Kinya Hasegawa et al.

Page 1 of 1

It is certified that error appears in the above-identified patent and that said Letters Patent is hereby corrected as shown below:

Title page.

Item [62], **Related U.S. Application Data**, "filed on Apr. 29, 2002, now Pat. No. 6,743,178." should read -- filed on Jan. 29, 2002, now Pat. No. 6,743,176, which is a division of 09/290,394 filed on Apr. 13, 1999, now Pat. No. 6,358,212. --

Signed and Sealed this

Twenty-ninth Day of March, 2005

A handwritten signature in black ink, appearing to read "Jon W. Dudas". The signature is stylized with a large, sweeping initial "J" and "D".

JON W. DUDAS
Director of the United States Patent and Trademark Office

UNITED STATES PATENT AND TRADEMARK OFFICE
CERTIFICATE OF CORRECTION

PATENT NO. : 6,802,815 B2
DATED : October 12, 2004
INVENTOR(S) : Kinya Hasegawa et al.

Page 1 of 1

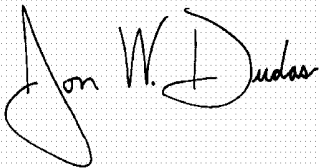
It is certified that error appears in the above-identified patent and that said Letters Patent is hereby corrected as shown below:

Title page.

Item [62], **Related U.S. Application Data**, "6,743,176" should read -- 6,743,178 --.

Signed and Sealed this

Nineteenth Day of July, 2005

A handwritten signature in black ink on a dotted background. The signature reads "Jon W. Dudas" in a cursive style.

JON W. DUDAS

Director of the United States Patent and Trademark Office

专利名称(译)	无创连续血压测量装置和无创测量连续血压的方法		
公开(公告)号	US6802815	公开(公告)日	2004-10-12
申请号	US10/721083	申请日	2003-11-26
申请(专利权)人(译)	松下电器产业有限公司.		
当前申请(专利权)人(译)	松下电器产业有限公司.		
[标]发明人	HASEGAWA KINYA NISHIMURA YUSHI HAGIWARA HISASHI		
发明人	HASEGAWA, KINYA NISHIMURA, YUSHI HAGIWARA, HISASHI		
IPC分类号	A61B5/021 A61B5/00 A61B5/02		
CPC分类号	A61B5/021 A61B5/02133 A61B2562/043 A61B2562/0247 A61B5/02116		
代理机构(译)	康诺利BOVE旅馆和胡茨律师事务所		
优先权	1998165839 1998-06-01 JP 1998146669 1998-05-13 JP 1998146668 1998-05-13 JP 1998123892 1998-04-20 JP		
其他公开文献	US20040077957A1		
外部链接	Espacenet USPTO		

摘要(译)

根据从在其中传输的动脉中感应的激励器波形导出的检测信号来选择激励器和传感器的对中的一对。激励器和传感器对以各种形式布置在基板上。A/D转换器被提供给各个检测信号。提供给激励器的振荡信号的频率由各种振荡信号生成电路控制。用于提取激励器波形的带通滤波，用于提取自然血压波形的低通滤波，相位差检测过程由微处理器提供，其中带通滤波和低通滤波过程可以用带通滤波器代替，低通滤波器，它们的输出由开关电路选择，并通过一个a/d转换器提供给微处理器。通过检测检测信号并估计相对于不同频率的衰减，色散，相移以及通过根据估计结果确定不同频率之一，振荡信号的频率被控制到最佳频率。类似地，振荡信号的波形被控制为最佳波形。

