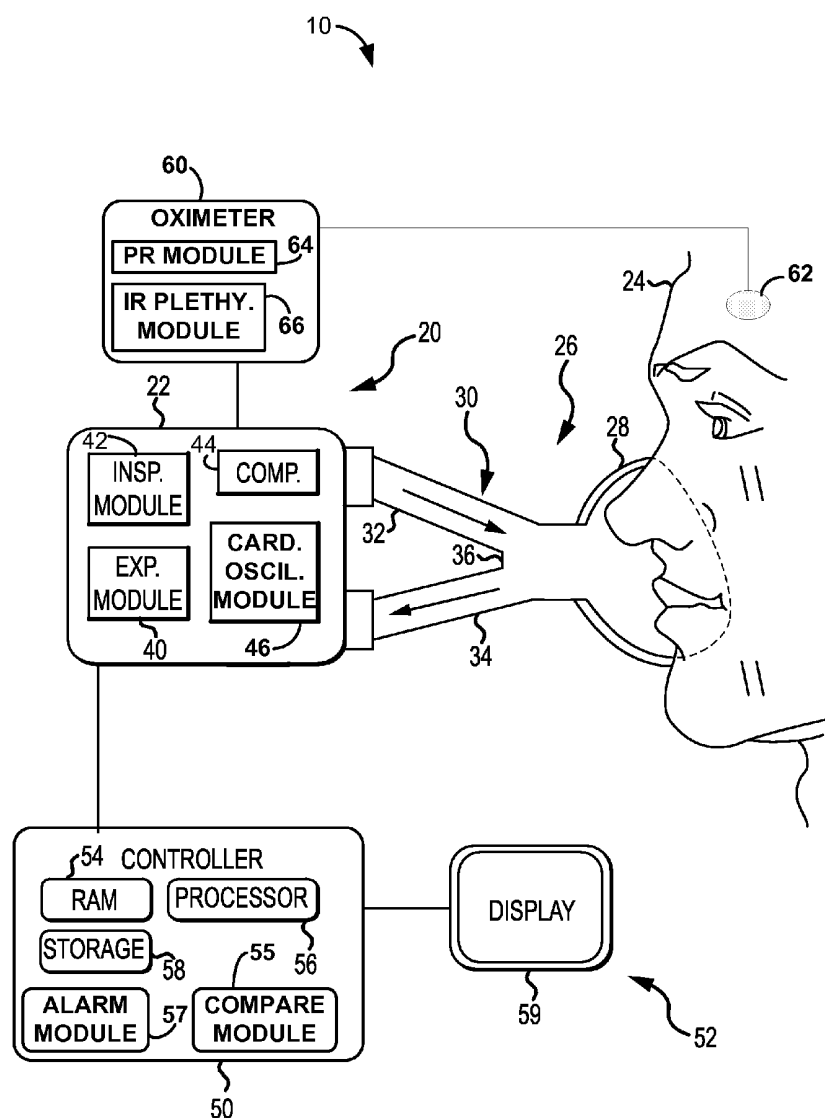




US 20120029317A1

(19) **United States**(12) **Patent Application Publication**
Doyle et al.(10) **Pub. No.: US 2012/0029317 A1**(43) **Pub. Date: Feb. 2, 2012**(54) **METHODS FOR VALIDATING PATIENT
IDENTITY**(22) Filed: **Jul. 28, 2010****Publication Classification**(75) Inventors: **Peter Doyle**, Vista, CA (US);
Joseph Doug Vandine, Manteca,
CA (US); **Warren Sanborn**,
Escondido, CA (US); **Dan Graboi**,
Encinitas, CA (US)(51) **Int. Cl.**
A61B 5/00 (2006.01)(52) **U.S. Cl.** **600/301; 600/323**(57) **ABSTRACT**(73) Assignee: **Nellcor Puritan Bennett LLC**,
Boulder, CO (US)

This disclosure describes systems and methods for monitoring a patient on a ventilator-oximeter system. The disclosure describes a novel approach determining if the oximeter and the ventilator are attached to the same patient and if not providing a warning.

(21) Appl. No.: **12/844,942**

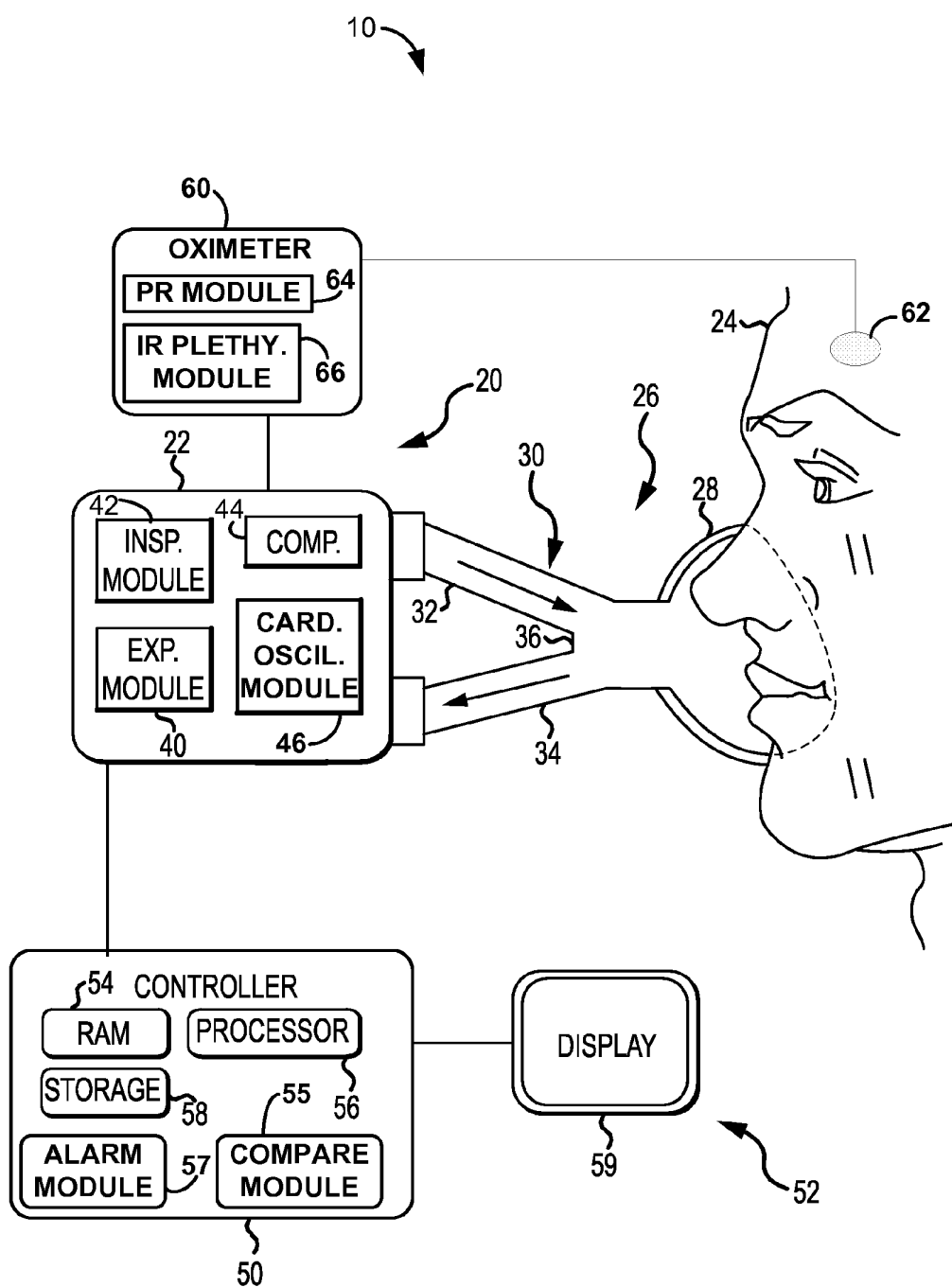


FIG.1

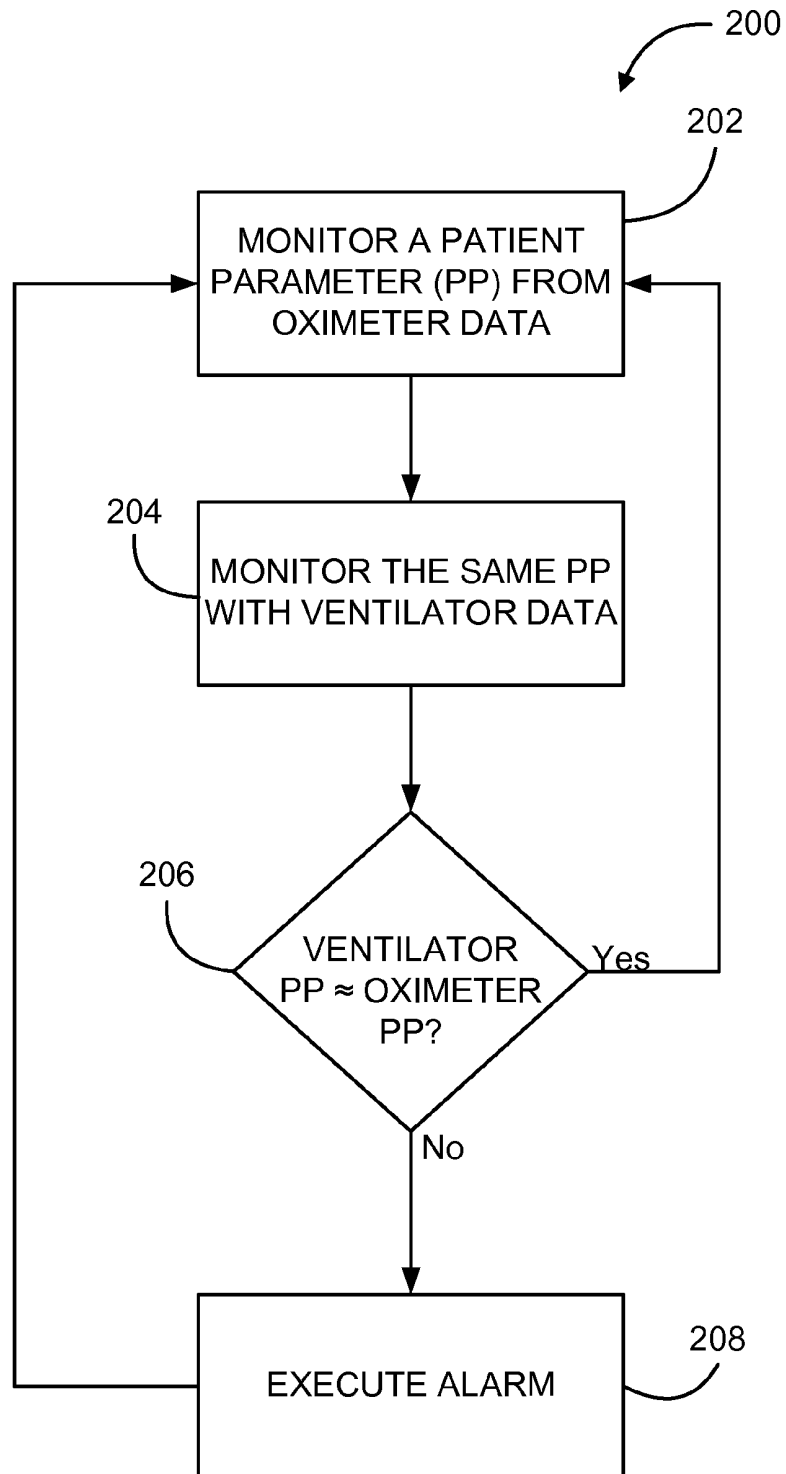


FIG. 2

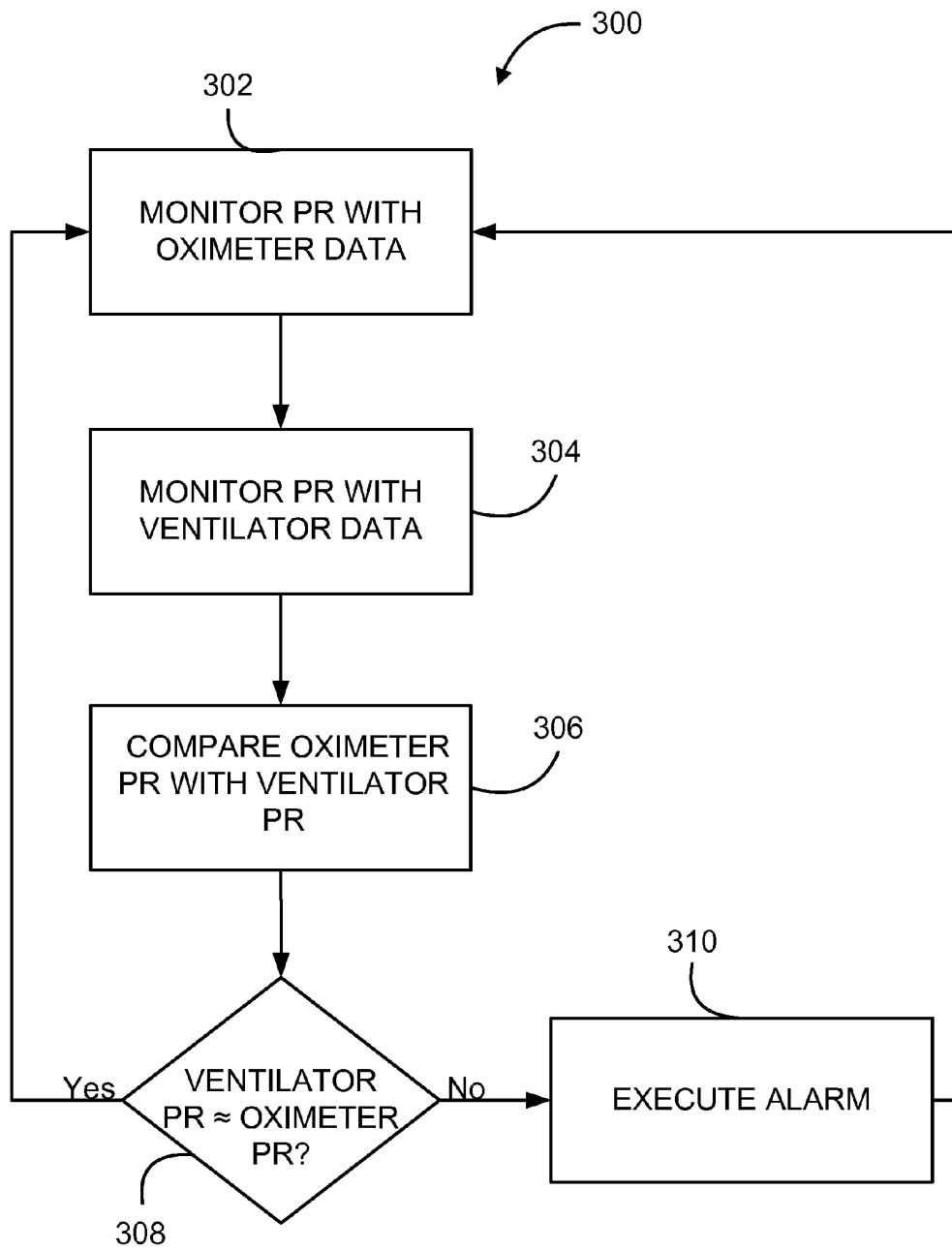


FIG. 3

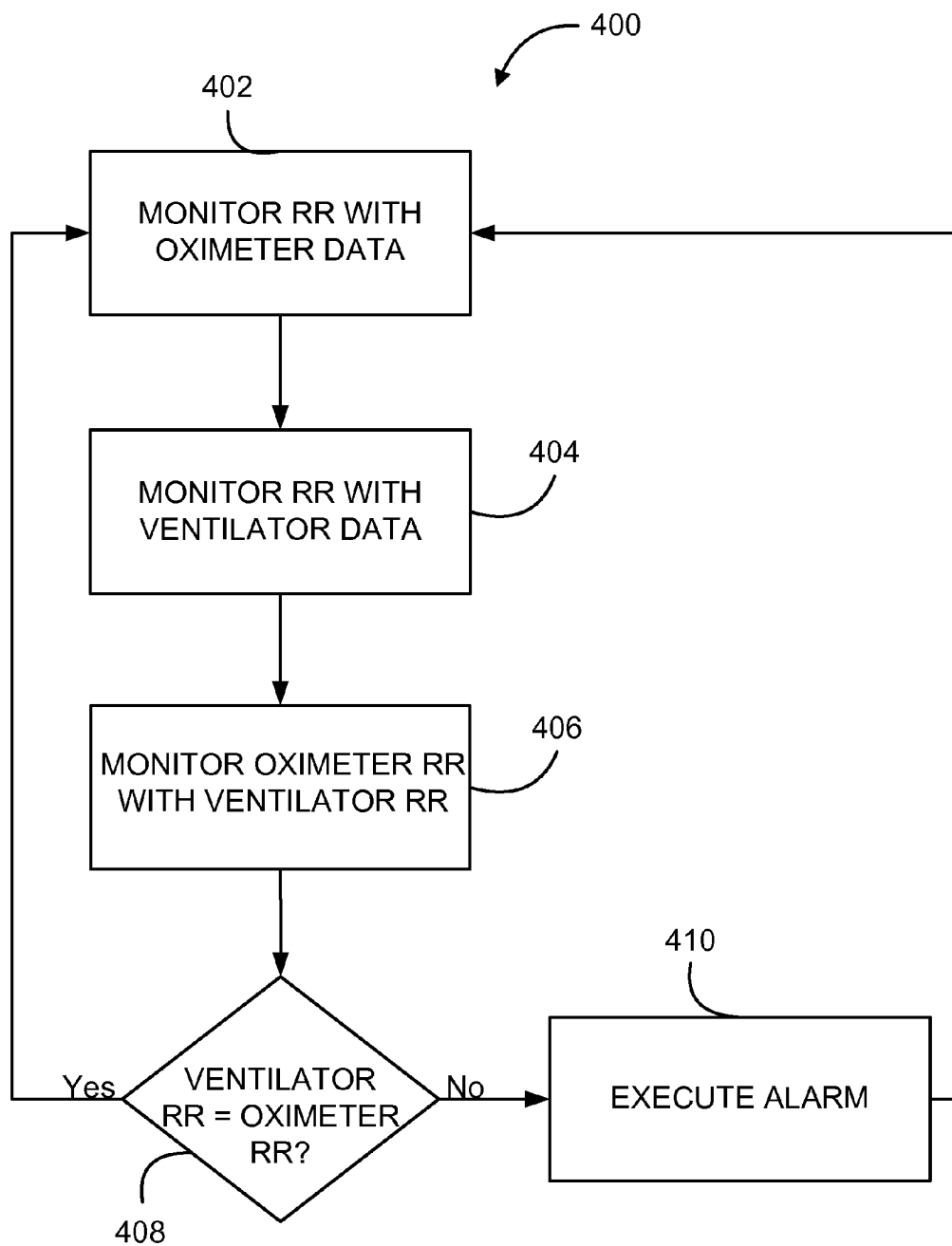


FIG. 4

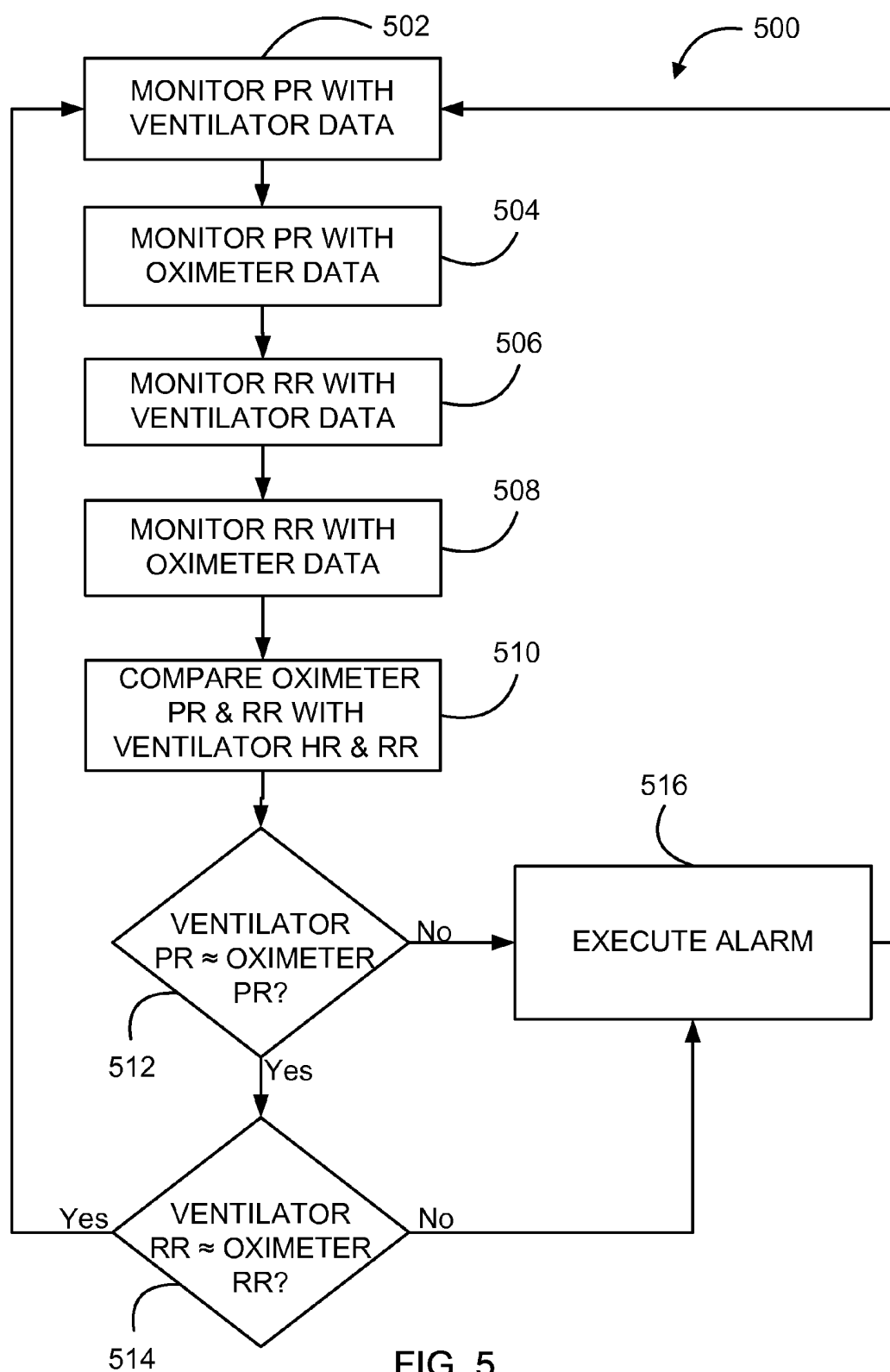


FIG. 5

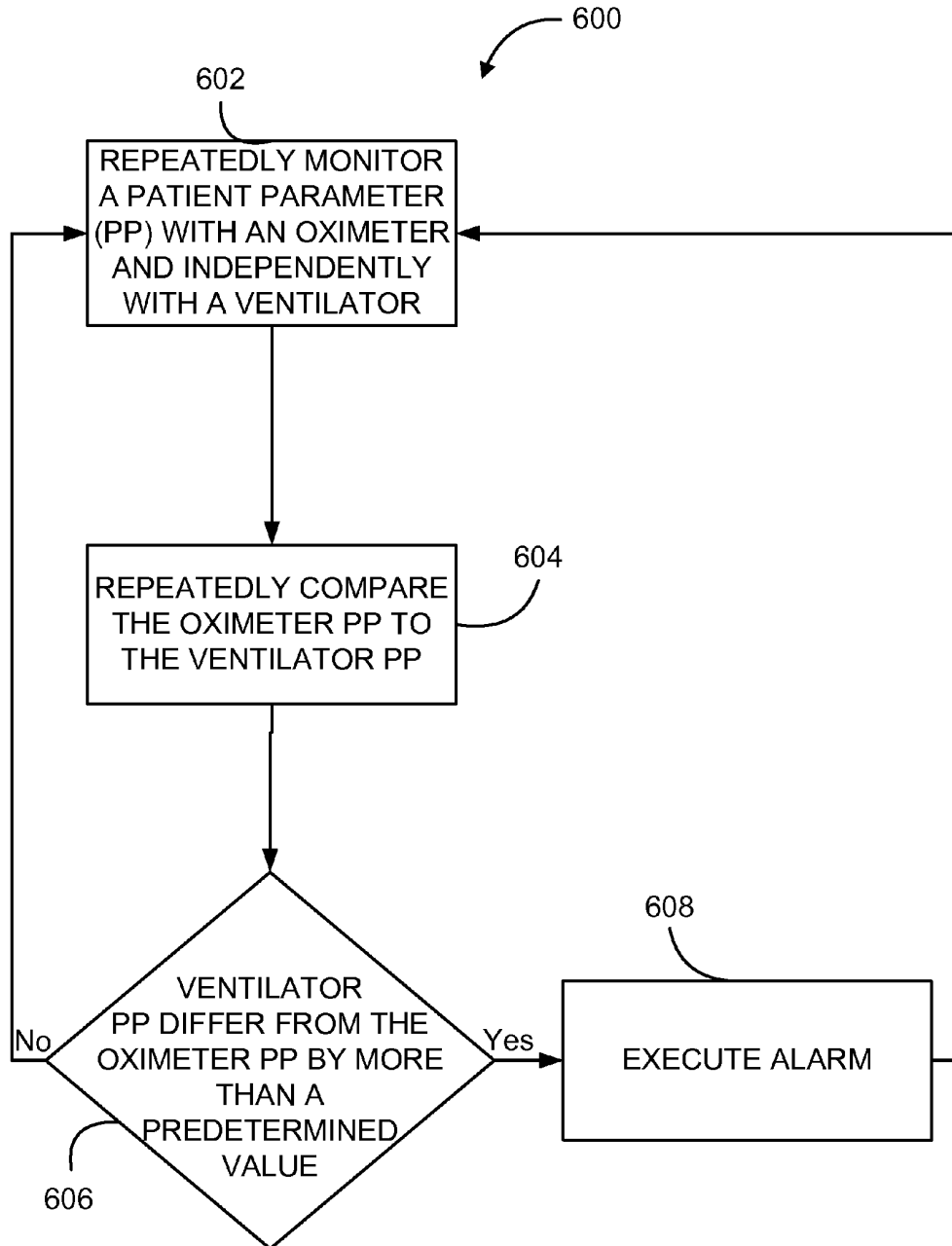


FIG. 6

METHODS FOR VALIDATING PATIENT IDENTITY

[0001] Medical ventilator systems have been long used to provide supplemental oxygen support to patients. These ventilators typically include a source of pressurized oxygen which is fluidly connected to the patient through a conduit. In some systems, the proper arterial oxygen saturation (SpO_2) is monitored via a pulse oximeter attached to the patient.

[0002] A pulse oximeter includes a light sensor that is placed at a site on a patient, usually a fingertip, toe, forehead or earlobe, or in the case of a neonate, across a foot. Light, which may be produced by a light source integrated into the pulse oximeter, containing both red and infrared wavelengths is directed onto the skin of the patient and the light that passes through the skin is detected by the sensor. The intensity of light in each wavelength is measured by the sensor over time. The graph of light intensity versus time is referred to as the photoplethysmogram (PPG) or, more commonly, simply as the "pleth." From the waveform of the PPG, it is possible to identify the pulse rate of the patient and when each individual pulse occurs. In addition, by comparing the intensities of two wavelengths when a pulse occurs, it is possible to determine blood oxygen saturation of hemoglobin in arterial blood. This relies on the observation that highly oxygenated blood will relatively absorb more red light and less infrared light than blood with a lower oxygen saturation.

[0003] Ventilators and oximeters are often used in combination on patients during ventilation. The oximeter and ventilator may be operatively coupled, but each system, regardless of coupling, is attached to a patient separately. Coupling allows the systems to communicate readings to each other. On occasion, the oximeter sensor is placed on a patient who is not the same as the ventilator patient even though the oximeter and ventilator are both supposed to be attached the same patient. Additionally, on occasion, the oximeter sensor is not attached to a patient at all. In these cases, the ventilation parameters may be changed based on inaccurate data hindering proper patient treatment.

SUMMARY

[0004] This disclosure describes systems and methods for monitoring a patient on a ventilator-oximeter system. The disclosure describes a novel approach determining if the oximeter and the ventilator are attached to the same patient and if not providing a warning.

[0005] In part, this disclosure describes a method for monitoring a patient being ventilated by a medical ventilator-oximeter system including:

[0006] a) monitoring at least one patient parameter using data gathered by an oximeter;

[0007] b) monitoring the same at least one patient parameter from data gathered by a ventilator independently of the oximeter;

[0008] c) comparing the at least one patient parameter monitored by the oximeter to the same at least one patient parameter monitored by the ventilator; and

[0009] d) executing an alarm to notify an operator of the medical ventilator-oximeter system that an oximeter sensor is not attached to the patient being ventilated by the ventilator when the at least one patient parameter monitored by the oximeter and the ventilator differ by more than a predetermined value.

[0010] Another aspect of this disclosure describes a method for monitoring a patient being ventilated by a medical ventilator-oximeter system including:

[0011] a) monitoring a pulse rate of a patient using data gathered by an oximeter;

[0012] b) monitoring the pulse rate of the patient using data gathered by a ventilator independently of the oximeter;

[0013] c) comparing the pulse rate monitored by the oximeter to the pulse rate monitored by the ventilator; and

[0014] d) executing an alarm to notify an operator of the medical ventilator-oximeter system that an oximeter sensor is not attached to the patient being ventilated by the ventilator when the pulse rate monitored by the oximeter and the pulse rate monitored by the ventilator differ by more than a predetermined value.

[0015] Yet another aspect of this disclosure describes a method for monitoring a patient being ventilated by a medical ventilator-oximeter system including:

[0016] a) monitoring a respiration rate of a patient using data gathered from an oximeter;

[0017] b) monitoring the respiration rate of the patient using data gathered by a ventilator independently of the oximeter;

[0018] c) comparing the respiration rate monitored by the oximeter to the respiration rate monitored by the ventilator; and

[0019] d) executing an alarm to notify an operator of the medical ventilator-oximeter system that an oximeter sensor is not attached to the patient being ventilated by the ventilator when the respiration rate monitored by the oximeter and the respiration rate monitored by the ventilator differ by more than a predetermined value.

[0020] The disclosure further describes a medical ventilator-oximeter system. The medical ventilator-oximeter system includes:

[0021] a) a ventilator, the ventilator including a processor, a pneumatic gas delivery system controlled by the processor, the pneumatic gas delivery system adapted to control a flow of gas from a gas supply to a patient via a ventilator breathing circuit, at least one sensor in communication with the processor, data from the at least one sensor is utilized to determine a respiration rate of the patient, and a cardiac oscillation detector in communication with the processor, data from the cardiac oscillation detector is utilized to determine a pulse rate of the patient;

[0022] b) an oximeter operatively coupled to the ventilator, the oximeter includes an oximeter sensor in communication with the processor, a pulse rate module in communication with the processor, and an infrared plethysmogram module in communication with the processor;

[0023] c) a comparing module, the comparing module compares at least one patient parameter monitored by using oximeter data to the same at least one patient parameter monitored by using ventilator data gathered independently of the oximeter data;

[0024] d) an alarm module, the alarm module executes an alarm when the at least one patient parameter monitored by using the oximeter data and the same at least one patient parameter monitored by using the ventilator data differ by more than a predetermined value; and

[0025] e) a display module controlled by the processor, the display module is adapted to display an executed alarm

[0026] Yet another aspect of this disclosure describes a computer-readable medium having computer-executable

instructions for performing a method for monitoring a patient being ventilated by a medical ventilator-oximeter system. The method includes:

[0027] a) repeatedly monitoring at least one patient parameter with an oximeter and with a ventilator independently of the oximeter;

[0028] b) repeatedly comparing the at least one patient parameter monitored by the oximeter to the at least one patient parameter monitored by the ventilator;

[0029] c) determining that the at least one patient parameter monitored by the oximeter differs from the at least one parameter monitored by the ventilator by more than a predetermined value; and

[0030] d) executing an alarm after the step of determining that the at least one patient parameter monitored by the oximeter differs from the at least one parameter monitored by the ventilator by more than a predetermined value.

[0031] A further aspect of this disclosure describes a medical ventilator-oximeter system including means for repeatedly monitoring at least one patient parameter with an oximeter and with a ventilator independently of the oximeter, means for repeatedly comparing the at least one patient parameter monitored by the oximeter to the at least one patient parameter monitored by the ventilator, means for determining that the at least one patient parameter monitored by the oximeter differs from the at least one parameter monitored by the ventilator by more than a predetermined value, and means for executing an alarm after the step of determining that the at least one patient parameter monitored by the oximeter differs from the at least one parameter monitored by the ventilator by more than a predetermined value.

[0032] These and various other features as well as advantages which characterize the systems and methods described herein will be apparent from a reading of the following detailed description and a review of the associated drawings. Additional features are set forth in the description which follows, and in part will be apparent from the description, or may be learned by practice of the technology. The benefits and features of the technology will be realized and attained by the structure particularly pointed out in the written description and claims hereof as well as the appended drawings.

[0033] It is to be understood that both the foregoing general description and the following detailed description are exemplary and explanatory and are intended to provide further explanation of the invention as claimed.

BRIEF DESCRIPTION OF THE DRAWINGS

[0034] The following drawing figures, which form a part of this application, are illustrative of embodiment systems and methods described below and are not meant to limit the scope of the invention in any manner, which scope shall be based on the claims appended hereto.

[0035] FIG. 1 illustrates an embodiment of a ventilator-oximeter system connected to a human patient.

[0036] FIG. 2 illustrates an embodiment of a method for monitoring a patient being ventilated by a medical ventilator-oximeter system.

[0037] FIG. 3 illustrates an embodiment of a method for monitoring a patient being ventilated by a medical ventilator-oximeter system.

[0038] FIG. 4 illustrates an embodiment of a method for monitoring a patient being ventilated by a medical ventilator-oximeter system.

[0039] FIG. 5 illustrates an embodiment of a method for monitoring a patient being ventilated by a medical ventilator-oximeter system.

[0040] FIG. 6 illustrates an embodiment of a computer-readable medium having computer-executable instructions for performing a method for monitoring a patient being ventilated by a medical ventilator-oximeter system.

DETAILED DESCRIPTION

[0041] Although the techniques introduced above and discussed in detail below may be implemented for a variety of medical devices, the present disclosure will discuss the implementation of these techniques in the context of a medical ventilator for use in providing ventilation support to a human patient. The reader will understand that the technology described in the context of a medical ventilator for human patients could be adapted for use with other systems such as ventilators for non-human patients and general gas transport systems.

[0042] Medical ventilators are used to provide a breathing gas to a patient who may otherwise be unable to breathe sufficiently. In modern medical facilities, pressurized air and oxygen sources are often available from wall outlets. However, ventilators may also provide pressure regulating valves (or regulators) connected to localized sources of pressurized air and pressurized oxygen. Internal to the ventilator are regulating valves that function to regulate flow so that respiratory gas having a desired concentration of oxygen is supplied to the patient at desired pressures and rates. Ventilators capable of operating independently of external sources of pressurized air are also available.

[0043] While operating a ventilator, it is desirable to control the percentage of oxygen in the gas supplied by the ventilator to the patient. Further, it is desirable to monitor the oxygen saturation level of blood (SpO₂ level) of a patient. Accordingly, systems typically have oximeters for non-invasively measuring the SpO₂ level of a patient.

[0044] The oximeter and ventilator can be operatively coupled, but each system, regardless of coupling, is attached to the patient separately. Coupling allows the systems to communicate readings to each other. On occasion, the oximeter sensor is placed on the wrong patient or not on the ventilator patient. Additionally, on occasion, the oximeter sensor is not attached to a patient at all. In these instances, ventilator readings, settings, and/or warnings can be based on inaccurate data and hinder proper patient treatment. Prior ventilation systems provided no safeguards for these mistakes. Therefore, it is desirable to provide an automated system that can detect when a ventilator and oximeter are not attached to the same patient. Accordingly, the medical ventilator-oximeter system disclosed herein can determine if the oximeter and ventilator are attached to the same patient and if not, provide for an appropriate warning.

[0045] The ventilator-oximeter system disclosed herein includes a ventilator operatively coupled to an oximeter. The ventilator-oximeter system disclosed herein utilizes at least one common patient parameter monitored from data gathered by the ventilator and from data gathered independently by the oximeter to determine if the ventilator and oximeter are attached to the same patient. Further, the ventilator-oximeter system may utilize the same plurality of patient parameters monitored from data gathered by the ventilator and from data gathered independently by the oximeter to determine if the ventilator and oximeter are attached to the same patient

[0046] In one embodiment, the ventilator-oximeter system compares independently determined pulse rates of a patient. In this embodiment the oximeter, via its specific sensor, monitors the pulse rate of a patient. Concurrently, the ventilator monitors cardiac oscillations to derive the pulse rate of the patient independently from the oximeter. The ventilator and/or oximeter compares the pulse rate calculated by the oximeter and the ventilator. If the difference between the two measurements exceeds a predetermined threshold, the ventilator and/or oximeter executes a warning notifying the operator that the oximeter is not attached to the same patient as the ventilator. If the pulse rate measurements are similar enough, the ventilator and/or oximeter does not execute an alarm because the ventilator and the oximeter are most likely attached to the same patient. Additionally, the phase of the independently measured pulse rates may be compared. Similarly, if the pulse rate phase measurements differ by more than a predetermined value or threshold, the ventilator and/or oximeter executes a warning notifying the operator that the oximeter is not attached to the same patient as the ventilator.

[0047] In another embodiment, the ventilator-oximeter system compares independently determined respiration rates of the patient. In this embodiment, the oximeter receives oximeter data, such as an IR plethysmogram baseline modulation, to monitor the respiration rate and/or actual positive pressure output of the patient. Concurrently, the ventilator independently monitors the respiration rate and/or actual positive pressure output of the patient from received ventilator-gathered data. The ventilator may monitor the respiration rate of the patient by monitoring data received from ventilator sensors, such as a flow sensor or pressure sensor, or the ventilator may know the respiration rate of the patient because the rate is set by ventilator parameters. The ventilator and/or oximeter compares the respiration rate monitored by the oximeter with the respiration rate monitored by the ventilator. If the rates are too different to have been taken from the same patient, the ventilator and/or oximeter executes a warning or an alarm notifying the operator that the oximeter is not attached to the same patient as the ventilator. If the respiration rate measurements are similar enough, the ventilator and/or oximeter does not execute an alarm because the ventilator and the oximeter are most likely attached to the same patient. Additionally, the phase duration of the independently measured respiration rates may be compared. If the respiration rate phase durations differ by more than a predetermined threshold or value, the ventilator and/or oximeter executes a warning notifying the operator that the oximeter is not attached to the same patient as the ventilator.

[0048] In a further embodiment, the ventilator-oximeter compares independently determined respiration rates and pulse rates of the patient. The combination of the two patient parameters provides for a more robust implementation of this safety check. In this embodiment, the oximeter data are utilized calculate pulse rate and the ventilation system data are utilized to determine the frequency of cardiac oscillations (if present) on the ventilation pressure waveform to calculate pulse rate. Next, the oximeter and/or ventilator compares the calculated pulse rates. Concurrently, in this embodiment, the ventilator monitors the frequency of pressure excursion in the ventilation pressure waveform and the oximeter monitors the frequency of changes in the magnitude of modulation (max-min) of the infrared (IR) plethysmogram and/or baseline light level (a.k.a. the "DC" component). The oximeter and/or the ventilator then compares these frequencies. If either com-

parison shows a frequency difference (particularly the same frequency difference, if a difference is detected in both) that is greater than a predetermined value, an alarm is issued by the ventilator and/or oximeter. If both comparisons show no frequency difference or a difference that is equal to or less than a predetermined value, an alarm is not issued by the ventilator and/or oximeter because the ventilator and the oximeter are most likely attached to the same patient. The predetermined value, is the value of difference necessary for determining that the patient parameters were not calculated from sensor measurements taken from the same patient

[0049] Those skilled in the art will recognize that the methods and systems of the present disclosure may be implemented in many manners and as such are not to be limited by the foregoing exemplary embodiments and examples. In other words, functional elements being performed by a single or multiple components, in various combinations of hardware and software or firmware, and individual functions, can be distributed among software applications at either the client or server level or both. In this regard, any number of the features of the different embodiments described herein may be combined into single or multiple embodiments, and alternate embodiments having fewer than or more than all of the features herein described are possible. Functionality may also be, in whole or in part, distributed among multiple components, in manners now known or to become known. Thus, myriad software/hardware/firmware combinations are possible in achieving the functions, features, interfaces and preferences described herein. Moreover, the scope of the present disclosure covers conventionally known manners for carrying out the described features and functions and interfaces, and those variations and modifications that may be made to the hardware or software or firmware components described herein as would be understood by those skilled in the art now and hereafter.

[0050] Unless otherwise indicated, all numbers expressing quantities, properties, reaction conditions, and so forth used in the specification and claims are to be understood as being modified in all instances by the term "about." Accordingly, unless indicated to the contrary, the numerical parameters set forth in the following specification and attached claims are approximations that may vary depending upon the desired properties sought to be obtained by the present disclosure.

[0051] FIG. 1 illustrates an embodiment of a ventilator-oximeter system 10 attached to a human patient 24. The ventilator-oximeter system 10 includes a ventilator system 20 operatively coupled to an oximeter system 60. The ventilator system 20 and the oximeter system 60 are each separately attached to a patient 24. To prevent the oximeter system 60 from being attached to the wrong patient or no patient at all, the ventilator-oximeter system 10 determines if the oximeter system 60 is attached to patient 24 being ventilated by ventilator system 20 and if not, provides an alarm.

[0052] Ventilator system 20 includes a pneumatic system 22 (also referred to as a pressure generating system 22) for circulating breathing gases to and from patient 24 via the ventilation tubing system 26, which couples the patient 24 to the pneumatic system 22 via physical patient interface 28 and ventilator circuit 30.

[0053] Ventilator circuit 30 could be a two-limb or one-limb circuit 30 for carrying gas to and from the patient 24. In a two-limb embodiment as shown, a wye fitting 36 may be provided as shown to couple the patient interface 28 to the inspiratory limb 32 and the expiratory limb 34 of the circuit

30. Examples of suitable patient interfaces 28 include a nasal mask, nasal/oral mask (which is shown in FIG. 1), nasal prong, full-face mask, tracheal tube, endotracheal tube, nasal pillow, etc.

[0054] Pneumatic system 22 may be configured in a variety of ways. In the present example, system 22 includes an expiratory module 40 coupled with an expiratory limb 34 and an inspiratory module 42 coupled with an inspiratory limb 32. Compressor 44 or another source or sources of pressurized gas (e.g., pressured air and/or oxygen) is controlled through the use of one or more pneumatic gas delivery systems.

[0055] As shown, in one embodiment, the pneumatic system 22 further includes a cardiac oscillation module 46. In an alternative embodiment, the cardiac oscillation module 46 is located within another component of ventilator system 20. The cardiac oscillation module 46 detects small pressure (flow) fluctuations in the breathing circuit that originate in the lungs-thorax of patient 24 as a result of the systolic-diastolic action of the heart. These fluctuations allow the cardiac oscillation module 46 of ventilator system 20 to determine the pulse rate of patient 24 being ventilated.

[0056] The pneumatic system 22 may include a variety of other components, including sources for pressurized air and/or oxygen, mixing modules, valves, sensors, tubing, filters, etc.

[0057] The oximeter system 60 of the ventilator-oximeter system 10 measures an oxygen saturation level of blood in a patient (SpO_2) attached to an oximeter sensor 62. The oximeter system 60 is operatively coupled to the oximeter sensor 62.

[0058] As shown, in one embodiment, the oximeter system 60 is a completely separate and independent component from ventilator system 20. In an alternative embodiment, oximeter system 60 is located inside of ventilator system 20 and/or the pneumatic system 22. As discussed above, the oximeter system 60 and the ventilator system 20 are operatively coupled. This coupling allows the ventilator system 20 and the oximeter system 60 to communicate with each other.

[0059] In one embodiment, the oximeter system 60 includes a pulse rate module 64 and/or an infrared (IR) plethysmogram module 66. The pulse rate module 64 derives the pulse rate of the patient attached to the oximeter sensor 62 by monitoring signal bounces in time caused by the expansion and contraction of the arterial blood vessels with each heartbeat. The infrared (IR) plethysmogram module 66 detects the frequency of changes in the magnitude of modulation (max-min) of the IR plethysmogram and/or baseline light level (a.k.a. the "DC" component) to determine the respiration rate or the actual positive pressure output of the patient attached to the oximeter sensor 62. In an alternative embodiment, the data gathered by the pulse rate module 64 and/or the infrared (IR) plethysmogram module 66 is sent to the ventilator and ventilator calculates the oximeter pulse rate and oximeter respiration rate of the patient from oximeter gathered data.

[0060] Controller 50 is operatively coupled with pneumatic system 22, oximeter system 60, signal measurement and acquisition systems, and an operator interface 52, which may be provided to enable an operator to interact with the ventilator system 20 (e.g., change ventilator settings, select operational modes, view monitored parameters, etc.). Controller 50 may include memory 54, one or more processors 56, storage 58, and/or other components of the type commonly found in

command and control computing devices. In one embodiment, controller 50 further includes a compare module 55 and/or an alarm module 57.

[0061] The processor 56 is the logic circuitry that responds to and processes instructions that drive a computer. Examples of processors include general-purpose microprocessors, application specific integrated circuits (ASICs) and field programmable gate arrays (FPGAs).

[0062] The memory 54 is non-transitory computer-readable storage media that stores software that is executed by the processor 56 and which controls the operation of the ventilator system 20. In an embodiment, the memory 54 includes one or more solid-state storage devices such as flash memory chips. In an alternative embodiment, the memory 54 may be mass storage connected to the processor 56 through a mass storage controller (not shown) and a communications bus (not shown). Although the description of non-transitory computer-readable media contained herein refers to a solid-state storage, it should be appreciated by those skilled in the art that non-transitory computer-readable storage media can be any available media that can be accessed by the processor 56. Non-transitory computer-readable storage media includes volatile and non-volatile, removable and non-removable media implemented in any method or technology for storage of information such as non-transitory computer-readable instructions, data structures, program modules or other data. Non-transitory computer-readable storage media includes, but is not limited to, RAM, ROM, EPROM, EEPROM, flash memory or other solid state memory technology, CD-ROM, DVD, or other optical storage, magnetic cassettes, magnetic tape, magnetic disk storage or other magnetic storage devices, or any other medium which can be used to store the desired information and which can be accessed by the processor 56.

[0063] The compare module 55 of controller 50 compares at least one patient parameter measured from data gathered by the oximeter system 60 with the same at least one patient parameter measured from data gathered by the ventilator system 20. In one embodiment, compare module 55 is activated upon user or operator command. In an alternative embodiment, the compare module 55 is activated based on a preset, a preconfigured, or a preselected ventilator setting. In another embodiment, compare module 55 is activated repeatedly based on a preset, a preconfigured, or a preselected ventilator setting. In one embodiment, compare module 55 compares the pulse rate calculated from data gathered by oximeter system 60 with the pulse rate determined independently from data gathered by ventilator system 20. In another embodiment, compare module 55 compares the respiration rate calculated from data gathered by oximeter system 60 with the respiration rate determined independently from data gathered by ventilator system 20. In an alternative embodiment, compare module 55 compares the pulse rate and respiration rate calculated from data gathered by oximeter system 60 with the pulse rate and respiration rate determined independently from data gathered by ventilator system 20.

[0064] The alarm module 57 of controller 50 determines if the compared patient parameters determined from data gathered by oximeter system 60 and data gathered from the ventilator system 20 differ by more than a predetermined value. In one embodiment, the predetermined value is selected by an operator or inputted by an operator. In another embodiment the predetermined value is about 5% to about 10%. This range is not limiting. The predetermined value may vary depending upon the patient and the ventilator application. In one

embodiment, the predetermined value is about 5%. Accordingly, alarm module 57 considers the patient parameters similar enough to be calculated from sensor readings from the same patient if the readings are about 95% or more equivalent. In one embodiment, the compared patient parameters are at least one of pulse rate and respiration rate.

[0065] If the alarm module 57 determines that any of the patient parameters measured independently from data gathered by ventilator system 20 and oximeter system 60 differ by more than a predetermined value, alarm module 57 executes an alarm. The alarm may be an audio and/or visual warning. The visual warning may include flashing lights, a designated icon, or a simple worded notice on the display screen. This list is not limiting. Any suitable visual warning for notifying a ventilator-oximeter system operator that oximeter sensor 62 is not attached to patient 24 being ventilated by ventilator system 20 may be utilized by the ventilator-oximeter system 10. If the alarm module 57 determines that the patient parameters determined independently from data gathered by ventilator system 20 and oximeter system 60 are equal to or less than the predetermined value, alarm module 57 does nothing because it is likely that oximeter sensor 62 is attached to patient 24 being ventilated by ventilator system 20.

[0066] The warning or alarm alerts the operator that the oximeter sensor 62 should be checked and if oximeter sensor 62 is not on patient 24, oximeter sensor 62 should be placed on patient 24. Accordingly, the alarm provides the operator of the ventilator system 20 with a check for verifying that the oximeter sensor 62 of oximeter system 60 is attached to ventilation patient 24 to prevent the ventilator-oximeter system 10 from displaying incorrect information based on improper oximeter information. Further, the alarm provides the operator of the ventilator system 20 with a check for verifying that the oximeter system 60 and the ventilator system 20 are performing properly and/or not processing corrupted data. This check helps to prevent the operator from improperly treating patient 24 based on the improper information.

[0067] The controller 50 further issues commands to pneumatic system 22 in order to control the breathing assistance provided to patient 24 by ventilator system 20. The specific commands may be based on data inputs received from patient 24, pneumatic system 22, sensors, operator interface 52, oximeter system 60, and/or other components of the ventilator system 20.

[0068] In the depicted example, operator interface 52 includes a display 59 that is touch-sensitive, enabling the display 59 to serve both as an input user interface and an output device. In an alternative embodiment, the display 59 is not touch sensitive or an input user interface. The display 59 can display any type of ventilation information, such as sensor readings, parameters, commands, alarms, warnings, and/or smart prompts (i.e., ventilator determined operator suggestions). In one embodiment, display 59 displays an alarm notifying a ventilator-oximeter system operator that the oximeter sensor 62 is not attached to patient 24 being ventilated by ventilator system 20.

[0069] In the embodiment shown in FIG. 1, oximeter system 60 does not include an oximeter controller. In an alternative embodiment, oximeter system 60 includes an oximeter controller. The oximeter controller is operatively coupled with pneumatic system 22, signal measurement and acquisition systems, controller 50, operator interface 52, and/or display 59. The oximeter controller may include memory, one or

more processors, storage, and/or other components of the type commonly found in command and control computing devices. In one embodiment, the oximeter controller further includes a compare module and an alarm module. In another embodiment, the oximeter controller includes a compare module and an alarm module and the ventilator controller 50 does not include these modules.

[0070] The memory of the oximeter controller is non-transitory computer-readable storage media that stores software that is executed by the processor and which controls the operation of the ventilator. In an embodiment, the memory includes one or more solid-state storage devices such as flash memory chips. In an alternative embodiment, the memory may be mass storage connected to the processor through a mass storage controller (not shown) and a communications bus (not shown). Although the description of non-transitory computer-readable media contained herein refers to a solid-state storage, it should be appreciated by those skilled in the art that non-transitory computer-readable storage media can be any available media that can be accessed by the processor. Non-transitory computer-readable storage media includes volatile and non-volatile, removable and non-removable media implemented in any method or technology for storage of information such as non-transitory computer-readable instructions, data structures, program modules or other data. Non-transitory computer-readable storage media includes, but is not limited to, RAM, ROM, EPROM, EEPROM, flash memory or other solid state memory technology, CD-ROM, DVD, or other optical storage, magnetic cassettes, magnetic tape, magnetic disk storage or other magnetic storage devices, or any other medium which can be used to store the desired information and which can be accessed by the processor.

[0071] The compare module of the oximeter controller performs all the same function as discussed above for compare module 55 of controller 50. The alarm module of the oximeter controller performs all the same function as discussed above for alarm module 57 of controller 50.

[0072] FIG. 2 illustrates an embodiment of a method for monitoring a patient being ventilated by a medical ventilator-oximeter system 200. As illustrated, method 200 performs a first monitoring operation 202. First monitoring operation 202 monitors a patient parameter (PP) for a patient attached to an oximeter sensor by utilizing oximeter data received from the oximeter sensor. In one embodiment, the patient parameter is at least one of respiration rate and pulse rate. In one embodiment, the pulse rate is monitored by using a photoplethysmogram from a light sensor. In another embodiment, the respiration rate is monitored by the oximeter using an embedded algorithm that processes frequency of changes in a magnitude of modulation (max-min) of an infrared plethysmogram and/or baseline light level (a.k.a. the "DC" component).

[0073] Further, method 200 performs a second monitoring operation 204. Second monitoring operation 204 determines the same patient parameter as monitored by the first monitoring operation 202 by utilizing ventilator data from a patient attached to a ventilator independently of the oximeter data. In one embodiment, the data gathered by the ventilator is suitable for determining at least one of the pulse rate and/or respiration rate of the patient. In another embodiment, the pulse rate is monitored by the ventilator by detecting small pressure (flow) fluctuations in the breathing circuit under the influence of a contracting heart of the patient. In another embodiment, the respiration rate is monitored by the ventilator by using measured flow rates and/or pressures in the

ventilator breathing circuit. In another embodiment, the respiration rate is monitored by using a preset, preselected, and/or preconfigured ventilator flow rate and/or a preset, preselected, and/or preconfigured ventilator respiration rate.

[0074] Next, method **200** performs a decision operation **206**. Decision operation **206** compares the patient parameter monitored by using the oximeter data to the same patient parameter monitored by using the ventilator data and determines if the patient parameter monitored by the oximeter and the same patient parameter monitored by the ventilator differ by more than a predetermined value or are not substantially equivalent. If decision operation **206** determines that the patient parameter monitored by the oximeter and the same patient parameter monitored by the ventilator differ by more than a predetermined value, decision operation **206** selects to perform alarm operation **208**. If decision operation **206** determines that patient parameter monitored by the oximeter and the same patient parameter monitored by the ventilator do not differ by more than a predetermined value or are substantially equivalent, decision operation **206** selects to perform the first monitoring operation **202**.

[0075] The predetermined value is the greatest value that the two separately measured parameters can be different from each other if they were determined from sensor data measuring the same patient. A difference above the predetermined value is an indicator that the two separately determined parameters were most likely not determined from sensor measurements taken from the same patient. In one embodiment, the predetermined value is selected by an operator or inputted by an operator. In another embodiment the predetermined value is about 5% to about 10%. This range is not limiting. The predetermined value may vary depending upon the patient and the ventilator application. In one embodiment, the predetermined value is about 5%.

[0076] In one embodiment, decision operation **206** is performed upon user or operator command. In an alternative embodiment, decision operation **206** is performed at a preset, preselected, and/or preconfigured time. In another embodiment, decision operation **206** is performed continuously and/or repeatedly based on a preset, a preconfigured, and/or a preselected time duration.

[0077] Method **200** also performs alarm operation **208**. Alarm operation **208** executes an alarm. The alarm may be an audio and/or visual warning. The visual warning may include flashing lights, a designated icon, or a simple worded notice on the display screen. This list is not limiting. Any suitable visual warning for notifying a ventilator-oximeter system operator that an oximeter sensor is potentially not attached to the same patient as the ventilator may be utilized by method **200**.

[0078] The alarm alerts the operator that the oximeter sensor should be checked and if the oximeter sensor is not attached to the ventilator patient, the oximeter sensor should be placed on the ventilator patient. Accordingly, this alarm feature provides the operator of a ventilator-oximeter system with a check for verifying that the oximeter sensor of an oximeter is attached to the ventilator patient to prevent the ventilator and/or oximeter from displaying incorrect information. Further, the alarm provides the operator of the ventilator with a check for verifying that the oximeter and the ventilator are performing properly and/or not processing corrupted data. This check helps to prevent the operator from improperly treating a patient based on the improper information.

[0079] In one embodiment, method **200** further performs a disarming operation. The disarming operation disarms an executed alarm. In one embodiment, the disarming operation is performed upon operator command. In another embodiment, the disarming operation is executed after a predetermined, preselected, and preconfigured amount of alarm time.

[0080] FIG. 3 illustrates an embodiment of a method for monitoring a patient being ventilated by a medical ventilator-oximeter system **300**. As illustrated, method **300** performs a first pulse rate (PR) monitoring operation **302**. First monitoring operation **302** monitors the pulse rate for a patient attached to an oximeter sensor by utilizing oximeter data gathered from the oximeter sensor. In one embodiment, the pulse rate is monitored using the photoplethysmogram from a light sensor.

[0081] Further, method **300** performs a second monitoring operation **304**. Second monitoring operation **304** monitors the pulse rate for a patient by utilizing ventilator data gathered by a ventilator independently of the oximeter. In one embodiment, the pulse rate is monitored by the ventilator by detecting small pressure (flow) fluctuations in the breathing circuit under the influence of a contracting heart of the patient.

[0082] Method **300** also performs a compare operation **306**. Compare operation **306** compares the pulse rate monitored by the oximeter to the pulse rate monitored by the ventilator. In an embodiment, compare operation **306** further compares the phase of the pulse rate monitored by the oximeter to the phase of the pulse rate monitored by the ventilator.

[0083] Next, method **300** performs a decision operation **308**. Decision operation **308** determines if the pulse rate monitored by the oximeter and the pulse rate monitored by the ventilator differ by more than a predetermined value or are not substantially equivalent. If decision operation **308** determines that the pulse rate monitored by the oximeter and the pulse rate monitored by the ventilator differ by more than a predetermined value or are not substantially equivalent, decision operation **308** selects to perform alarm operation **310**. If decision operation **308** determines that the pulse rate monitored by the oximeter and the pulse rate monitored by the ventilator do not differ by more than a predetermined value or are substantially equivalent, decision operation **308** selects to perform the first monitoring operation **302**.

[0084] In one embodiment, when decision operation **308** determines that the pulse rate monitored by the oximeter and the pulse rate monitored by the ventilator do not differ by more than a predetermined value or are substantially equivalent, decision operation **308** selects to perform a phase decision operation. The phase decision operation determines if the phase of the pulse rate monitored by the oximeter and the phase of the pulse rate monitored by the ventilator differ by more than a predetermined value or are not substantially equivalent. If decision operation **308** determines that the phase of the pulse rate monitored by the oximeter and the phase of the pulse rate monitored by the ventilator differ by more than a predetermined value or are not substantially equivalent, decision operation **308** selects to perform alarm operation **310**. If decision operation **308** determines that the phase of the pulse rate monitored by the oximeter and the phase of the pulse rate monitored by the ventilator do not differ by more than a predetermined value or are substantially equivalent, decision operation **308** selects to perform the first monitoring operation **302**.

[0085] The predetermined value is the greatest value that the two separately monitored pulse rates can be different from

each other if they were monitored using sensor data measuring the same patient. A pulse rate difference above the predetermined value is an indicator that the two separately monitored pulse rates were most likely not monitored using sensor readings taken from the same patient. In one embodiment, the predetermined value is selected by an operator or inputted by an operator. In another embodiment the predetermined value is about 5% to about 10%. This range is not limiting. The predetermined value may vary depending upon the patient and the ventilator application. In one embodiment, the predetermined value is about 5%.

[0086] In one embodiment, decision operation 308 and compare operation 306 are performed upon user or operator command. In an alternative embodiment, decision operation 308 and compare operation 306 are performed at a preset, preselected, and/or preconfigured time. In another embodiment, decision operation 308 and compare operation 306 are performed continuously and/or repeatedly.

[0087] Method 300 also performs an alarm operation 310. Alarm operation 310 executes an alarm. The alarm may be an audio and/or visual warning. The visual warning may include flashing lights, a designated icon, or a simple worded notice on the display screen. This list is not limiting. Any suitable visual warning for notifying a ventilator-oximeter system operator that an oximeter sensor is potentially not attached to the same patient as the ventilator may be utilized by method 300.

[0088] The alarm of method 300 notifies the operator that the oximeter sensor should be checked and if the oximeter sensor is not attached to the ventilator patient, the oximeter sensor should be placed on the ventilator patient. Accordingly, this alarm feature provides the operator of a ventilator-oximeter system with a check for verifying that the oximeter sensor of an oximeter is attached to the ventilator patient to prevent the ventilator and/or oximeter from displaying improper information. Further, the alarm provides the operator of the ventilator with a check for verifying that the oximeter and the ventilator are performing properly and/or not processing corrupted data. This check helps to prevent the operator from improperly treating a patient based on the improper information.

[0089] In one embodiment, method 300 further performs a disarming operation. The disarming operation disarms an executed alarm. In one embodiment, the disarming operation is performed upon operator command. In another embodiment, the disarming operation is executed after a predetermined, preselected, and/or preconfigured amount of alarm time.

[0090] FIG. 4 illustrates an embodiment of a method for monitoring a patient being ventilated by a medical ventilator-oximeter system 400. As illustrated, method 400 performs a first monitoring operation 402. First monitoring operation 402 monitors a respiration rate (RR) for a patient attached to an oximeter sensor by utilizing oximeter data received from the oximeter sensor. In one embodiment, the respiration rate is monitored by the oximeter using an embedded algorithm that processes frequency of changes in a magnitude of modulation (max-min) of an infrared plethysmogram and/or baseline light level (a.k.a. the "DC" component).

[0091] Further, method 400 performs a second monitoring operation 404. Second monitoring operation 404 monitors the respiration rate by utilizing ventilator data from a patient gathered by a ventilator independently of the oximeter. In one embodiment, the respiration rate is monitored by the ventila-

tor by using a measured flow rate and/or pressure in the ventilator circuit. In another embodiment, the respiration rate is monitored by using a preset, a preconfigured, and/or a preselected flow rate, pressure rate, and/or respiration rate.

[0092] Method 400 also performs a compare operation 406. Compare operation 406 compares the respiration rate monitored by the oximeter to the respiration rate monitored by the ventilator. In an embodiment, compare operation 406 further compares a phase duration of the respiration rate monitored by the oximeter to the phase duration of the respiration rate monitored by the ventilator.

[0093] Next, method 400 performs a decision operation 408. Decision operation 408 determines if the respiration rate monitored by the oximeter and the respiration rate monitored by the ventilator differ by more than a predetermined value or are not substantially equivalent. If decision operation 408 determines that the respiration rate monitored by the oximeter and the respiration rate monitored by the ventilator data differ by more than a predetermined value or are not substantially equivalent, decision operation 408 selects to perform alarm operation 410. If decision operation 408 determines that the respiration rate monitored by the oximeter and the respiration rate monitored by the ventilator do not differ by more than a predetermined value or are substantially equivalent, decision operation 408 selects to perform first monitoring operation 402.

[0094] In one embodiment, when decision operation 408 determines that the respiration rate monitored by the oximeter and the respiration rate monitored by the ventilator do not differ by more than a predetermined value or are substantially equivalent, decision operation 408 selects to perform a phase decision operation. The phase decision operation determines if the phase duration of the respiration rate monitored by the oximeter and the phase duration of the respiration rate monitored by the ventilator differ by more than a predetermined value or are not substantially equivalent. If decision operation 408 determines that the phase duration of the respiration rate monitored by the oximeter and the phase duration of the respiration rate monitored by the ventilator differ by more than a predetermined value or are not substantially equivalent, decision operation 408 selects to perform alarm operation 410. If decision operation 408 determines that the phase duration of the respiration rate monitored by the oximeter and the phase duration of the respiration rate monitored by the ventilator do not differ by more than a predetermined value or are substantially equivalent, decision operation 408 selects to perform the first monitoring operation 402.

[0095] The predetermined value is the greatest value that the two separately determined respiration rates can be different from each other if they were determined from sensor data measuring the same patient. A respiration rate difference above the predetermined value is an indicator that the two separately measured values were most likely not taken from the same patient. In one embodiment, the predetermined value is selected by an operator or inputted by an operator. In another embodiment the predetermined value is about 5% to about 10%. This range is not limiting. The predetermined value may vary depending upon the patient and the ventilator application. In one embodiment, the predetermined value is about 5%.

[0096] In one embodiment, decision operation 408 and compare operation 406 are performed upon user or operator command. In an alternative embodiment, decision operation 408 and compare operation 406 are performed at a preset,

preselected, or preconfigured time. In another embodiment, decision operation **408** and compare operation **406** are performed continuously and/or repeatedly.

[0097] Method **400** also performs an alarm operation **410**. Alarm operation **410** executes an alarm. The alarm may be an audio and/or visual warning. The visual warning may include flashing lights, a designated icon, or a simple worded notice on the display screen. This list is not limiting. Any suitable visual warning for notifying a ventilator-oximeter system operator that an oximeter sensor is potentially not attached to the same patient as the ventilator may be utilized by method **400**.

[0098] The alarm notifies the operator that the oximeter sensor should be checked and if the oximeter sensor is not attached to the ventilator patient, the oximeter sensor should be placed on the ventilator patient. Accordingly, this alarm feature provides the operator of a ventilator-oximeter system with a check for verifying that the oximeter sensor of an oximeter is attached to the ventilator patient to prevent the ventilator and/or oximeter from displaying improper information. Further, the alarm provides the operator of the ventilator with a check for verifying that the oximeter and the ventilator are performing properly and/or not processing corrupted data. This check helps to prevent the operator from improperly treating a patient based on the improper information.

[0099] In one embodiment, method **400** further performs a disarming operation. The disarming operation disarms an executed alarm. In one embodiment, the disarming operation is performed upon operator command. In another embodiment, the disarming operation is executed after a predetermined, preselected, and preconfigured amount of alarm time.

[0100] As illustrated in FIG. 5, in one embodiment, methods **300** and **400** are performed in combination **500**. Method **500** performs a first PR monitoring operation **502**, a first RR monitoring operation **506**, a second PR monitoring operation **504**, a second RR monitoring operation **508**, a compare operation **510**, a PR decision operation **512**, a RR decision operation **514**, and an alarm operation **516**. First monitoring operations **502** and **506** are identical to first monitoring operations **304** and **404** as described above. Second monitoring operations **504** and **508** are identical to second monitoring operations **302** and **402** as described above. Compare operation **510** is identical to the combination of compare operations **306** and **406** as described above. Alarm operation **516** is identical to the alarm operations **410** and **310** as described above.

[0101] PR decision operation **512** determines if the pulse rate monitored by the oximeter and the pulse rate monitored by ventilator differ by more than a predetermined value or are not substantially equivalent. RR decision operation **514** determines if the respiration rate monitored by the oximeter and the respiration rate monitored by ventilator differ by more than a predetermined value or are not substantially equivalent.

[0102] Decision operations **512** and **514** may be performed in any order. Decision operation **512** may be performed before decision operation **514** or decision operation **514** may be performed before decision operation **512**. If either decision operation **512** or **514** determine that the pulse rate and/or respiration rate monitored by the oximeter and the pulse rate and/or respiration rate monitored by the ventilator differ by

more than a predetermined value or are not substantially equivalent, decision operations **512** and **514** select to perform alarm operation **516**.

[0103] If the decision operation **512** is performed before decision operation **514** and decision operation **512** determines that the pulse rate monitored by the oximeter and the pulse rate monitored by the ventilator do not differ by more than a predetermined value or are substantially equivalent, decision operation **512** selects to perform decision operation **514**. If the decision operation **512** is performed after decision operation **514** and decision operation **512** determines that the pulse rate monitored by the oximeter and the pulse rate monitored by the ventilator do not differ by more than a predetermined value or are substantially equivalent, decision operation **512** selects to perform first PR monitoring operation **502**.

[0104] If the decision operation **514** is performed before decision operation **512** and decision operation **514** determines that the respiration rate monitored by the oximeter and the respiration rate monitored by the ventilator do not differ by more than a predetermined value or are substantially equivalent, decision operation **514** selects to perform decision operation **512**. If the decision operation **514** is performed after decision operation **512** and decision operation **514** determines that the respiration rate monitored by the oximeter and the respiration rate monitored by the ventilator do not differ by more than a predetermined value or are substantially equivalent, decision operation **514** selects to perform first PR monitoring operation **502**.

[0105] In an alternative embodiment, not illustrated, method **500** requires both decision operations **512** and **514** to determine that their parameters (i.e. pulse rate and respiration rate) differ by more than a predetermined value or are not substantially equivalent before performing alarm operation **516**.

[0106] In another embodiment, method **500** selects to further perform a disarming operation. The disarming operation is identical to disarming operations described above for methods **200**, **300**, and **400**.

[0107] As illustrated in FIG. 6, in one embodiment, a computer-readable medium having computer-executable instructions for performing a method **600** for monitoring a patient being ventilated by a medical ventilator-oximeter system is shown.

[0108] Method **600** performs a monitoring operation **602**. The monitoring operation **602** repeatedly monitors at least one patient parameter with an oximeter and with a ventilator independently of the oximeter.

[0109] Further, method **600** performs a compare operation **604**. Compare operation **604** repeatedly compares the at least one patient parameter monitored by the oximeter to the at least one patient parameter monitored by the ventilator.

[0110] Method **600** also performs a determination operation **606**. Determination operation **606** determines if the at least one patient parameter monitored by the oximeter differs from the at least one parameter monitored by the ventilator by more than a predetermined value. If the at least one patient parameter monitored by the oximeter differs from the at least one parameter monitored by the ventilator by more than a predetermined value, method **600** performs alarm execution operation **608**. If the at least one patient parameter monitored by the oximeter does not differ from the at least one parameter monitored by the ventilator by more than a predetermined value, method **600** performs monitoring operation **602** again,

[0111] Next method 600 performs an alarm execution operation 608. The alarm execution operation 608 executes an alarm after the step of determining that the at least one patient parameter monitored by the oximeter differs from the at least one parameter monitored by the ventilator by more than a predetermined value.

EXAMPLE 1

[0112] Numerous other changes may be made which will readily suggest themselves to those skilled in the art and which are encompassed in the spirit of the disclosure and as defined in the appended claims. While various embodiments have been described herein for purposes of this disclosure, various changes and modifications may be made which are well within the scope of the present invention. Numerous other changes may be made which will readily suggest themselves to those skilled in the art and which are encompassed in the spirit of the disclosure and as defined in the claims.

What is claimed is:

1. A method for monitoring a patient being ventilated by a medical ventilator-oximeter system, the method comprising:
 - monitoring at least one patient parameter using data gathered by an oximeter;
 - monitoring the same at least one patient parameter using data gathered by a ventilator independently of the oximeter;
 - comparing the at least one patient parameter monitored by the oximeter to the same at least one patient parameter monitored by the ventilator; and
 - executing an alarm to notify an operator of the medical ventilator-oximeter system that an oximeter sensor is not attached to the patient being ventilated by the ventilator when the at least one patient parameter monitored by the oximeter and the ventilator differ by more than a predetermined value.
2. The method of claim 1, wherein the at least one patient parameter monitored by the oximeter and the ventilator is at least one of respiration rate and pulse rate.
3. The method of claim 1, wherein the respiration rate and pulse rate include related phase information.
4. The method of claim 1, wherein the at least one patient parameter is a pulse rate and wherein the pulse rate is monitored by the ventilator by detecting small pressure (flow) fluctuations in the breathing circuit under the influence of a contracting heart of the patient.
5. The method of claim 1, wherein the at least one patient parameter is respiration rate and wherein the respiration rate is monitored by the oximeter using an embedded algorithm that processes frequency of changes in a magnitude of modulation (max-min) of an infrared plethysmogram.
6. The method of claim 1, wherein the alarm is at least one of audio and visual.
7. The method of claim 1, where in the comparing step is performed upon an operator command.
8. The method of claim 1, further comprising, disarming the alarm upon an operator command.
9. The method of claim 1, wherein the predetermined value is 5 percent.
10. A method for monitoring a patient being ventilated by a medical ventilator-oximeter system, the method comprising:
 - monitoring a pulse rate of a patient using data gathered by an oximeter;

monitoring the pulse rate of the patient using data gathered by a ventilator independently of the oximeter;

comparing the pulse rate monitored by the oximeter to the pulse rate monitored by the ventilator; and

executing an alarm to notify an operator of the medical ventilator-oximeter system that an oximeter sensor is not attached to the patient being ventilated by the ventilator when the pulse rate monitored by the oximeter and the pulse rate monitored by the ventilator differ by more than a predetermined value.

11. The method of claim 10, further comprising:

monitoring a respiration rate of the patient using data gathered by the oximeter;

monitoring the respiration rate of the patient using data gathered by the ventilator independently of the oximeter; and

comparing the respiration rate monitored by the oximeter to the respiration rate monitored by the ventilator;

wherein the step of executing the alarm further comprises executing the alarm to notify the operator of the medical ventilator-oximeter system that the oximeter sensor is not attached to the patient being ventilated by the ventilator when the pulse rate and the respiration rate monitored by the oximeter and the pulse rate and the respiration rate monitored by the ventilator differ by more than the predetermined value.

12. The method of claim 11, further comprising:

determining that the difference in the pulse rate is about equal to the difference in the respiration rate.

13. The method of claim 11, wherein the respiration rate is monitored by the oximeter using an embedded algorithm that processes frequency of changes in a magnitude of modulation (max-min) of a baseline of an infrared plethysmogram.

14. The method of claim 10, wherein the predetermined value is 5 percent,

15. The method of claim 10, wherein the comparing step and the monitoring steps are performed upon an operator command.

16. The method of claim 10, further comprising, disarming the alarm upon an operator command.

17. The method of claim 10, wherein the pulse rate is monitored by the ventilator by detecting small pressure (flow) fluctuations in the breathing circuit under the influence of a contracting heart of the patient.

18. A method for monitoring a patient being ventilated by a medical ventilator-oximeter system, the method comprising:

monitoring a respiration rate of a patient using data gathered from an oximeter;

monitoring the respiration rate of the patient using data gathered by a ventilator independently of the oximeter;

comparing the respiration rate monitored by the oximeter to the respiration rate monitored by the ventilator; and

executing an alarm to notify an operator of the medical ventilator-oximeter system that an oximeter sensor is not attached to the patient being ventilated by the ventilator when the respiration rate monitored by the oximeter and the respiration rate monitored by the ventilator differ by more than a predetermined value.

19. The method of claim 18, wherein the predetermined value is 5 percent.

20. A medical ventilator-oximeter system, comprising:
a ventilator, the ventilator comprising
a processor,
a pneumatic gas delivery system controlled by the processor, the pneumatic gas delivery system adapted to control a flow of gas from a gas supply to a patient via a ventilator breathing circuit,
at least one sensor in communication with the processor, data from the at least one sensor is utilized to determine a respiration rate of the patient, and
a cardiac oscillation detector in communication with the processor, data from the cardiac oscillation detector is utilized to determine a pulse rate of the patient;
an oximeter operatively coupled to the ventilator, comprising,
an oximeter sensor in communication with the processor, and
a pulse rate module in communication with the processor, and
an infrared plethysmogram module in communication with the processor;
a comparing module, the comparing module compares at least one patient parameter monitored by using oximeter data to the same at least one patient parameter monitored independently by using ventilator data;
an alarm module, the alarm module executes an alarm when the at least one patient parameter monitored by using the oximeter data and the same at least one patient parameter monitored by using the ventilator data differ by more than a predetermined value; and
a display module controlled by the processor, the display module is adapted to display an executed alarm.

21. The medical ventilator of claim **20**, wherein the compared at least one patient parameter monitored using the oximeter data and the ventilator data is at least one of respiration rate and pulse rate.

22. A computer-readable medium having computer-executable instructions for performing a method for monitoring a patient being ventilated by a medical ventilator-oximeter system, the method comprising:

repeatedly monitoring at least one patient parameter with an oximeter and with a ventilator independently of the oximeter;

repeatedly comparing the at least one patient parameter monitored by the oximeter to the at least one patient parameter monitored by the ventilator;

determining that the at least one patient parameter monitored by the oximeter differs from the at least one parameter monitored by the ventilator by more than a predetermined value; and

executing an alarm after the step of determining that the at least one patient parameter monitored by the oximeter differs from the at least one parameter monitored by the ventilator by more than a predetermined value.

23. A medical ventilator-oximeter system, comprising:

means for repeatedly monitoring at least one patient parameter with an oximeter and with a ventilator independently of the oximeter;

means for repeatedly comparing the at least one patient parameter monitored by the oximeter to the at least one patient parameter monitored by the ventilator;

means for determining that the at least one patient parameter monitored by the oximeter differs from the at least one parameter monitored by the ventilator by more than a predetermined value; and

means for executing an alarm after the step of determining that the at least one patient parameter monitored by the oximeter differs from the at least one parameter monitored by the ventilator by more than a predetermined value.

* * * * *

专利名称(译)	验证患者身份的方法		
公开(公告)号	US20120029317A1	公开(公告)日	2012-02-02
申请号	US12/844942	申请日	2010-07-28
[标]申请(专利权)人(译)	内尔科尔普里坦贝内特公司		
申请(专利权)人(译)	NELLCOR PURITAN BENNETT LLC		
当前申请(专利权)人(译)	NELLCOR PURITAN BENNETT LLC		
[标]发明人	DOYLE PETER VANDINE JOSEPH DOUG SANBORN WARREN GRABOI DAN		
发明人	DOYLE, PETER VANDINE, JOSEPH DOUG SANBORN, WARREN GRABOI, DAN		
IPC分类号	A61B5/00		
CPC分类号	A61B5/02416 A61B5/0816 A61B2505/03 A61B2560/0276 A61M16/0051 A61M2205/13 A61M2230/42 A61M2205/3306 A61M2205/502 A61M2205/581 A61M2205/583 A61M2230/06 A61M2230/205 A61M2205/18 A61M16/0063 A61M16/024		
其他公开文献	US8676285		
外部链接	Espacenet USPTO		

摘要(译)

本公开描述了用于在呼吸机 - 血氧计系统上监测患者的系统和方法。本公开描述了一种确定血氧计和呼吸机是否连接到同一患者并且如果没有提供警告的新方法。

