



US 20030225337A1

(19) **United States**

(12) **Patent Application Publication**
Scharf et al.

(10) **Pub. No.: US 2003/0225337 A1**

(43) **Pub. Date: Dec. 4, 2003**

(54) **SEPARATING MOTION FROM CARDIAC SIGNALS USING SECOND ORDER DERIVATIVE OF THE PHOTO-PLETHYSMOGRAM AND FAST FOURIER TRANSFORMS**

(75) Inventors: **John E. Scharf**, Oldsmar, FL (US);
Bhavin B. Shah, Pune (IN)

Correspondence Address:

JONES DAY

555 WEST FIFTH STREET, SUITE 4600
LOS ANGELES, CA 90013-1025 (US)

(73) Assignee: **Dolphin Medical, Inc.**

(21) Appl. No.: **10/356,697**

(22) Filed: **Jan. 30, 2003**

Related U.S. Application Data

(60) Provisional application No. 60/354,601, filed on Jan. 31, 2002.

Publication Classification

(51) **Int. Cl.⁷** **A61B 5/02**

(52) **U.S. Cl.** **600/508**

(57) **ABSTRACT**

The present invention is directed toward a pulse oximetry system for the determination of a physiological parameter capable of removing motion artifacts from physiological signals comprises a hardware subsystem and a software subsystem. The software subsystem is used in conjunction with the hardware subsystem to perform a method for removing a plurality of motion artifacts from the photo-plethysmographic data and for obtaining a measure of at least one physiological parameter from the data. The method comprises acquiring the raw photo-plethysmographic data, transforming the data into the frequency domain, analyzing the transformed data to locate a series of candidate cardiac spectral peaks (primary plus harmonics), reconstructing a photo-plethysmographic signal in the time domain with only the candidate cardiac spectral peaks (primary plus harmonics), computing the second order derivative of the reconstructed photo-plethysmographic signal, analyzing the candidate second order derivative photo-plethysmographic signal to determine the absence or presence of cardiac physiologic signal characteristics, and finally selecting the best physiologic candidate from the series of potential cardiac spectral peaks (primary plus harmonics) based upon a second derivative scoring system. This scoring system is preferentially based upon second derivative processing analysis, but can be equally applied using the first, third, fourth or other similar derivative processing analysis.

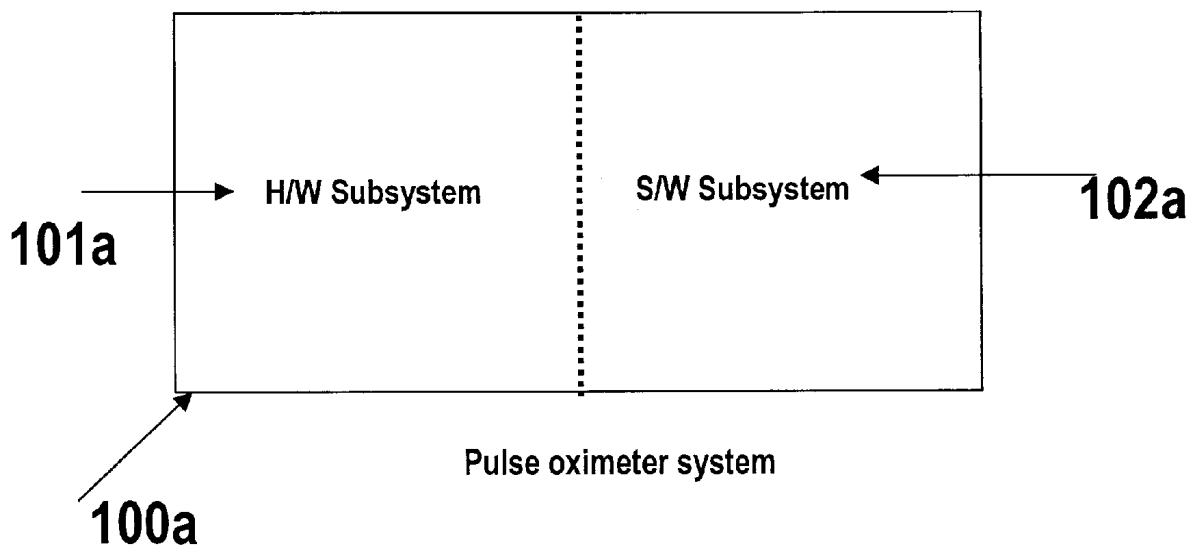
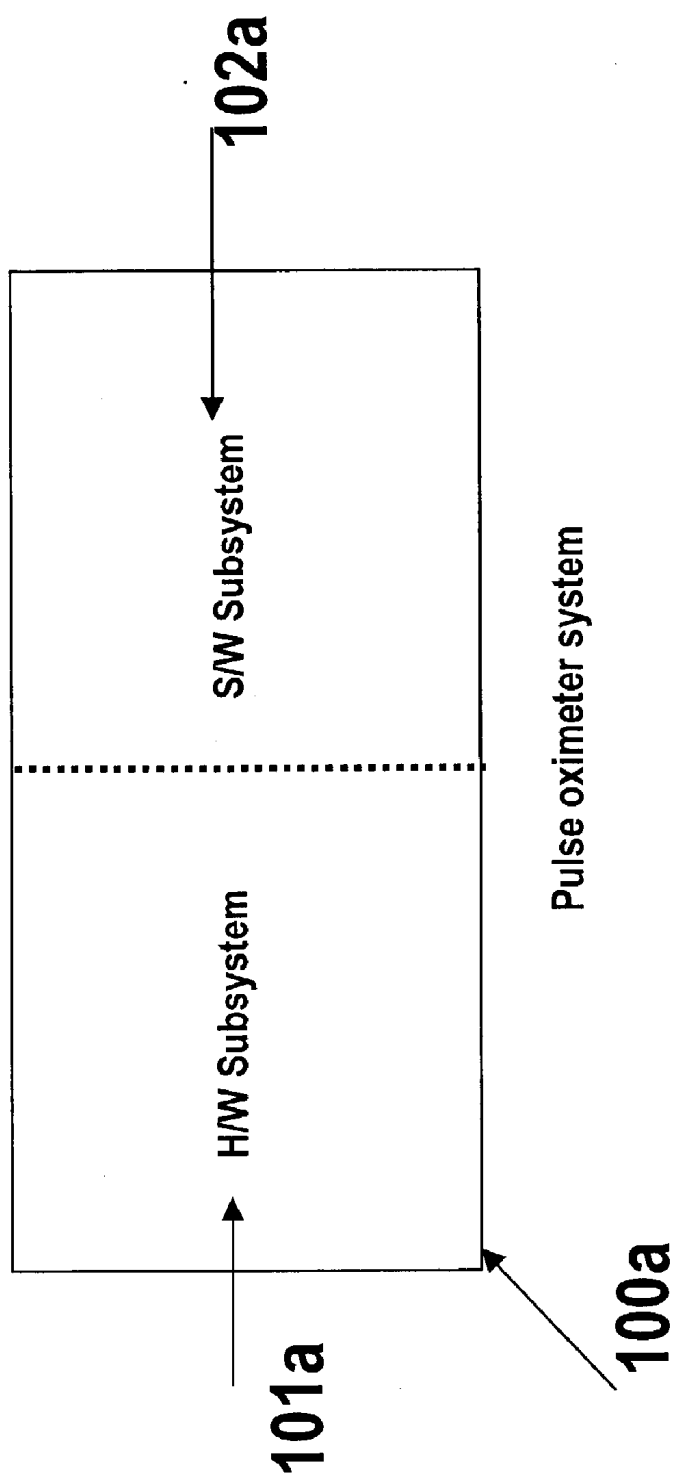


FIG. 1a



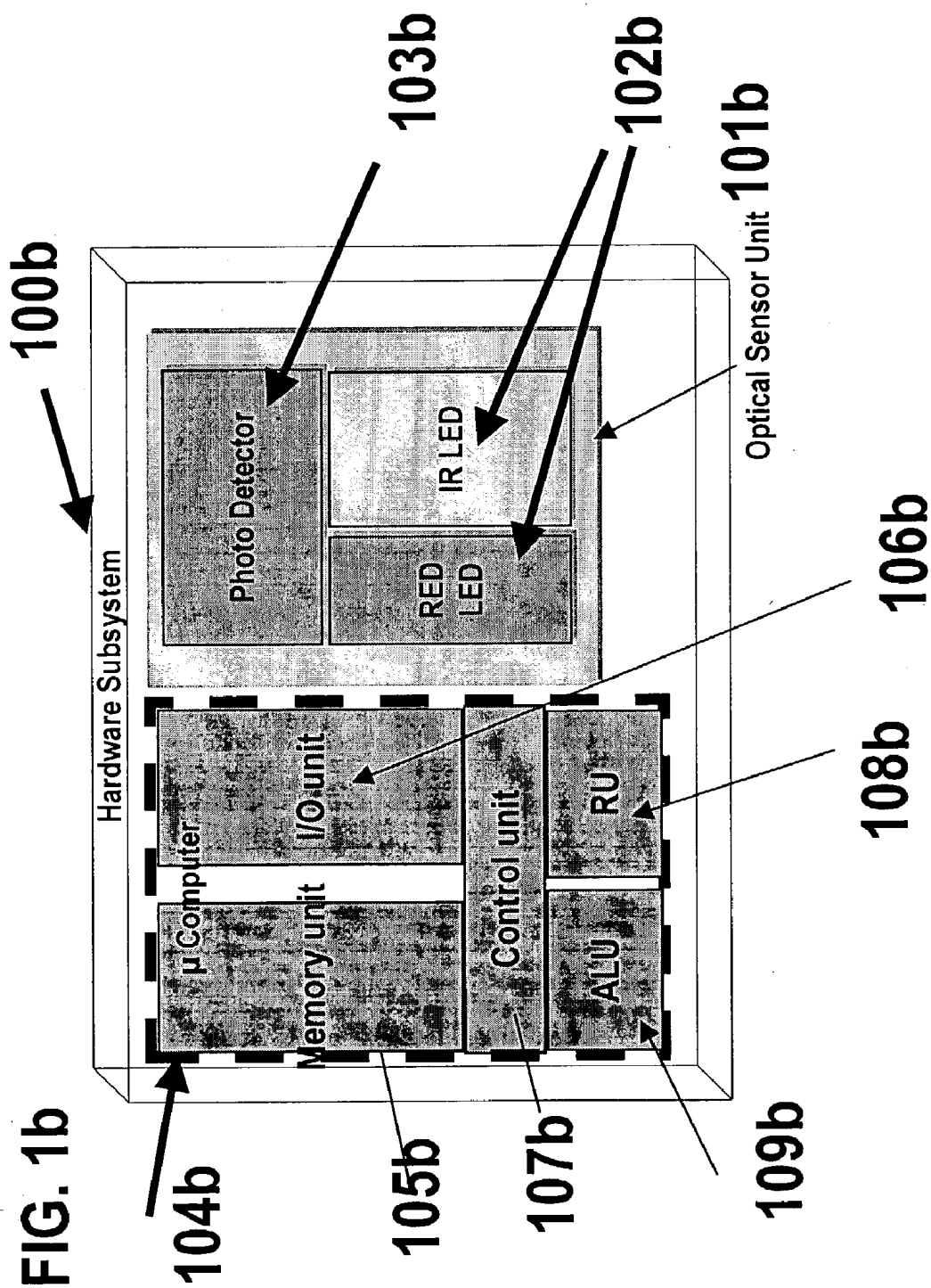


FIG. 1c

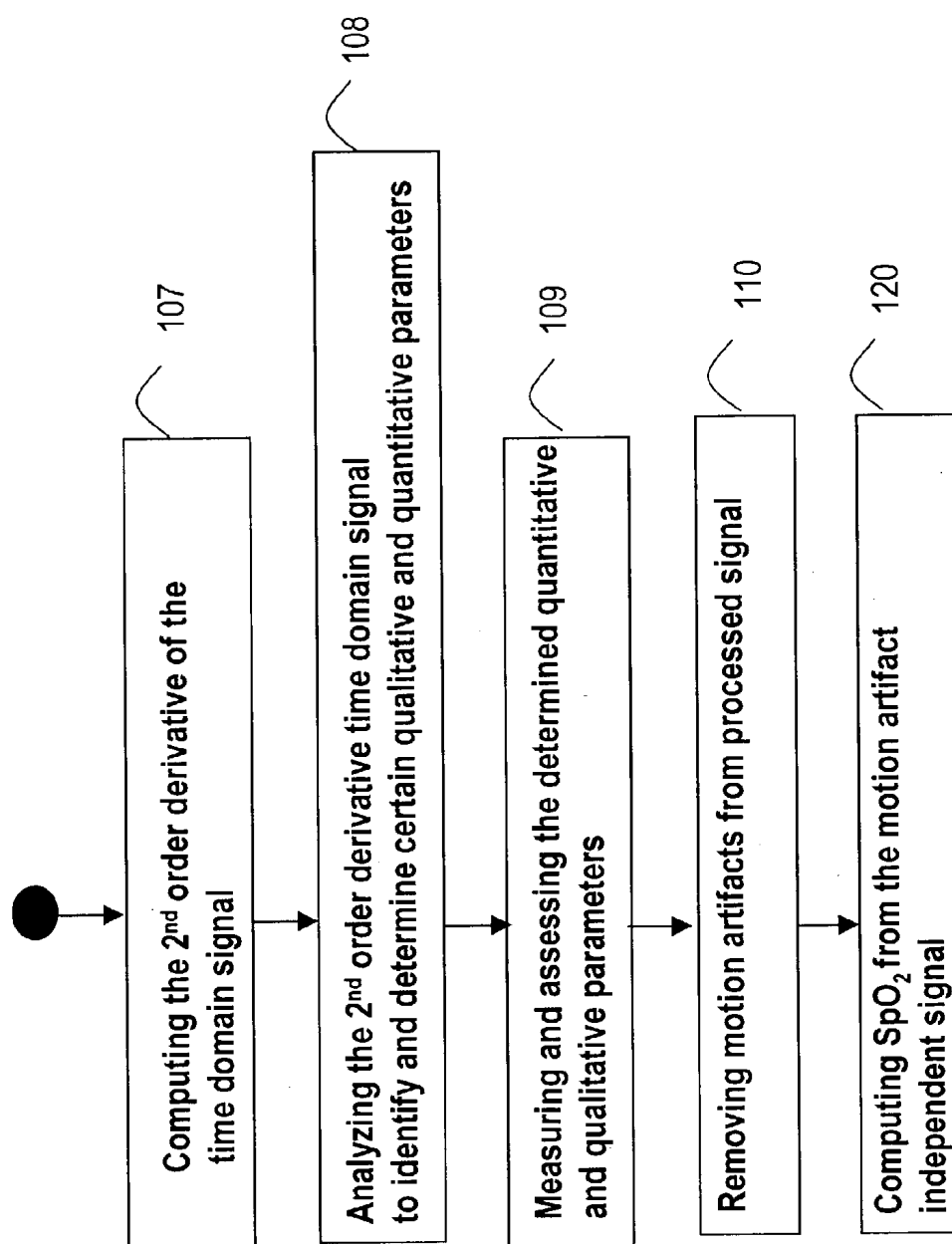


FIG. 2

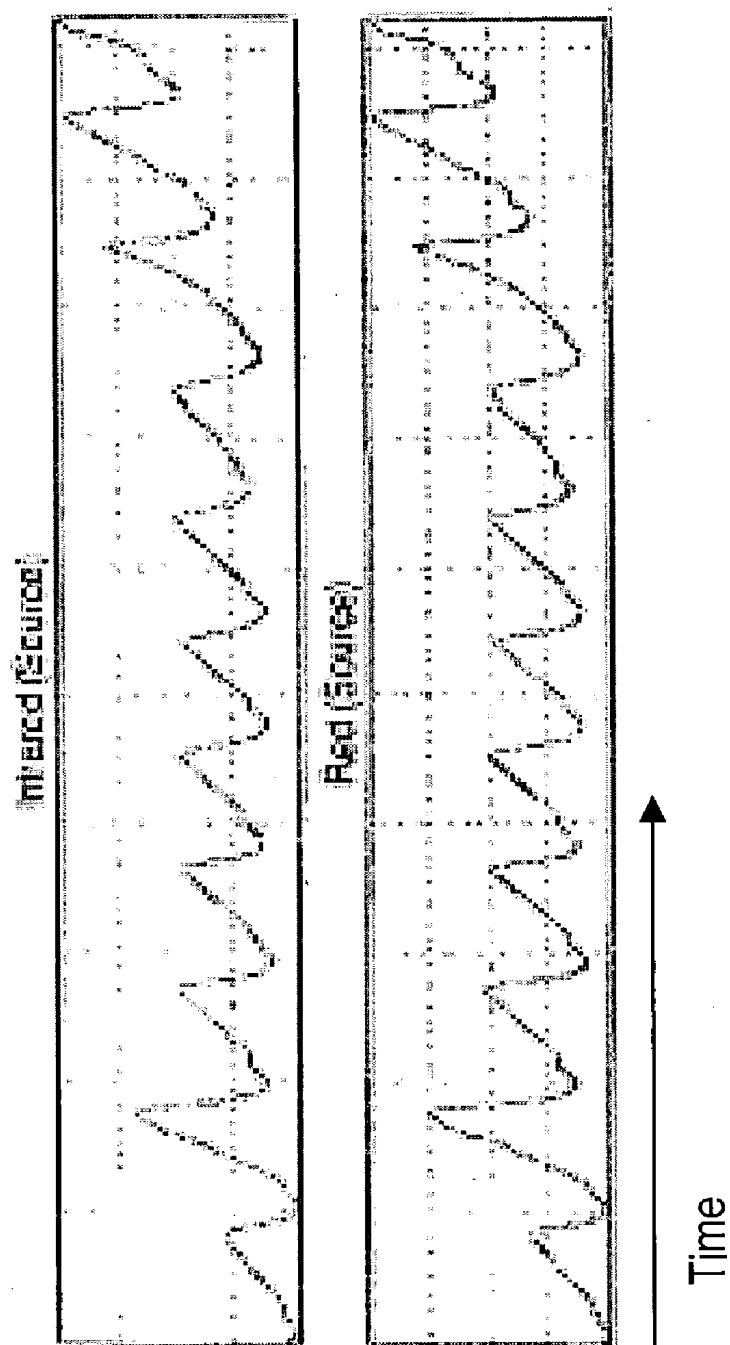


FIG. 3

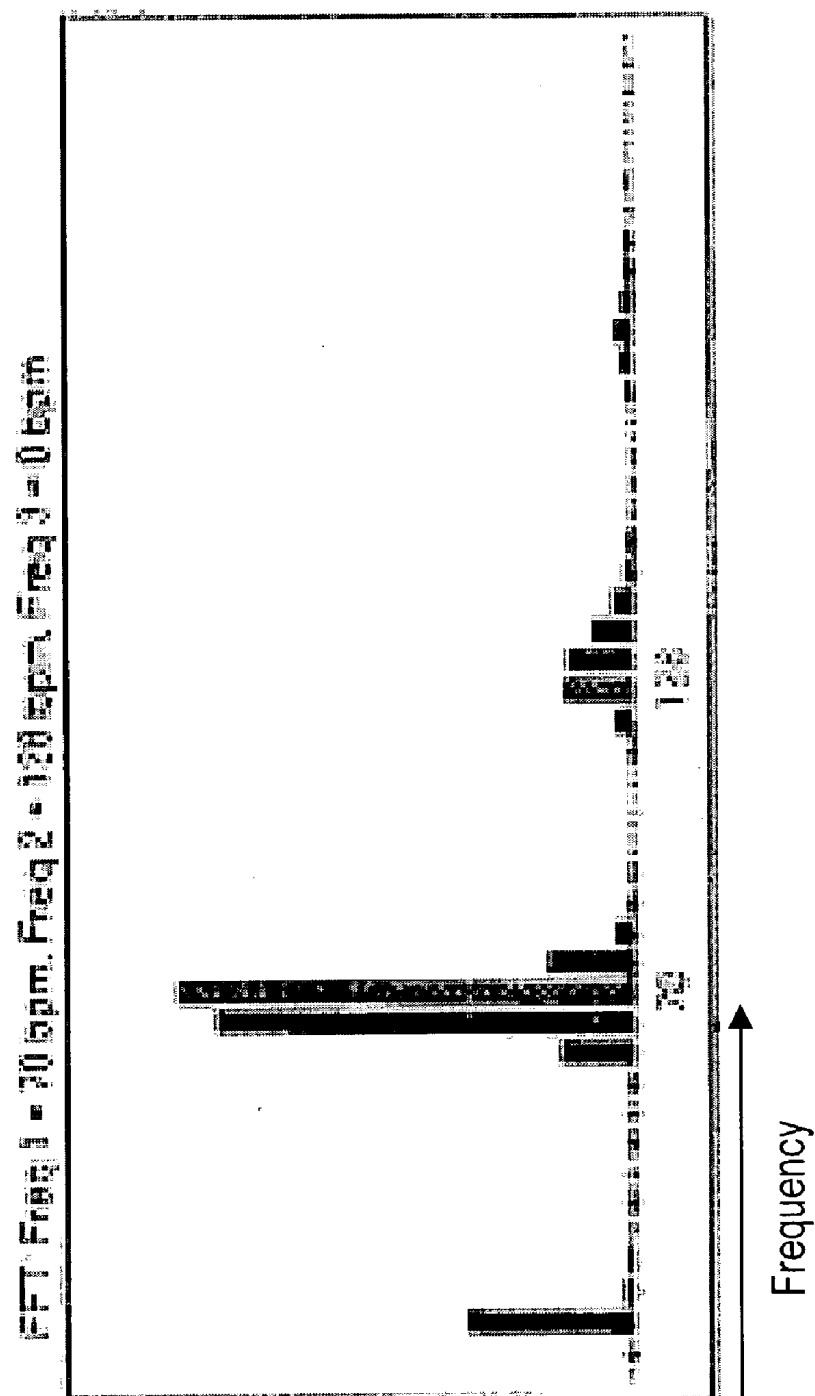


FIG. 4a

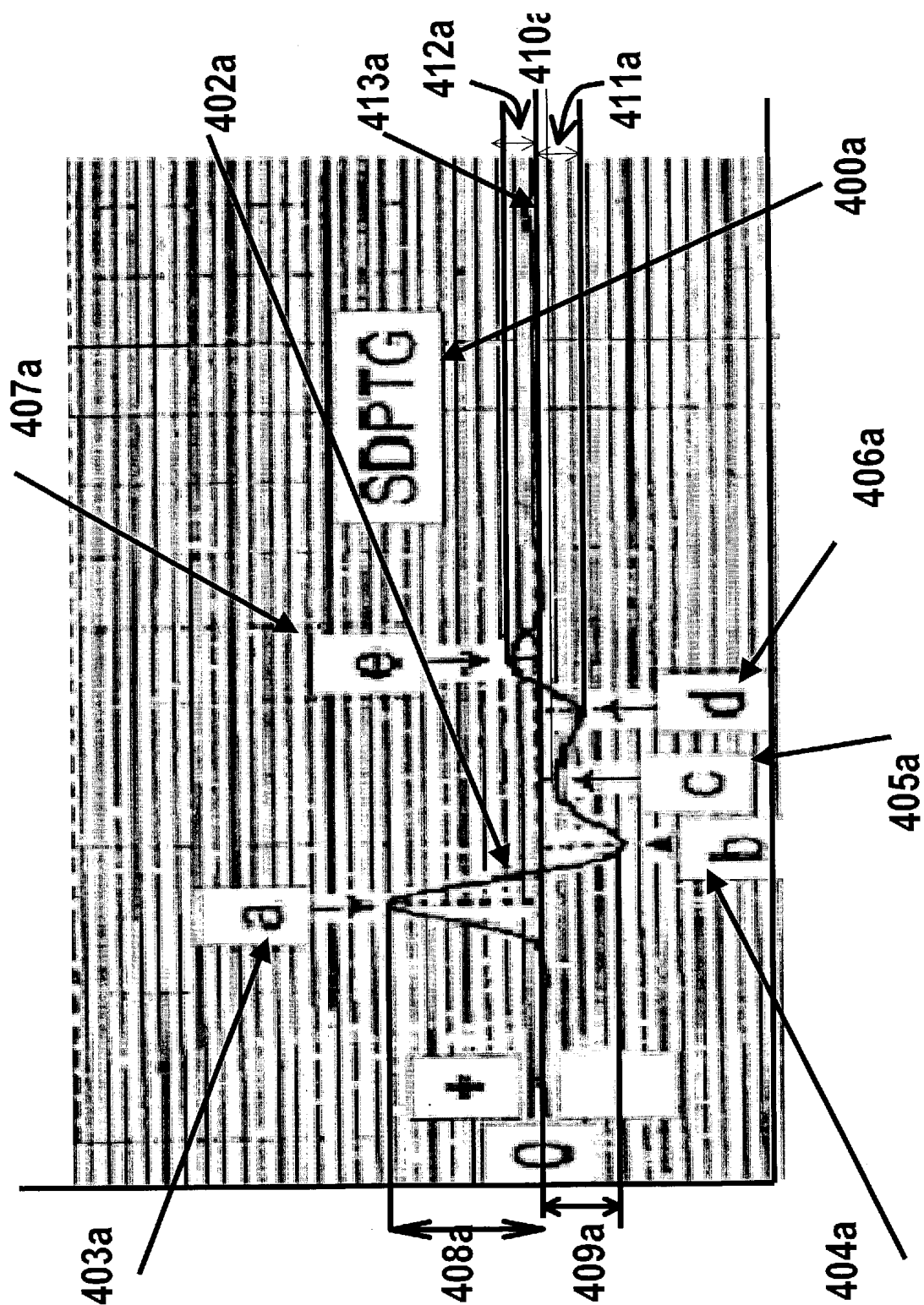


FIG. 4b

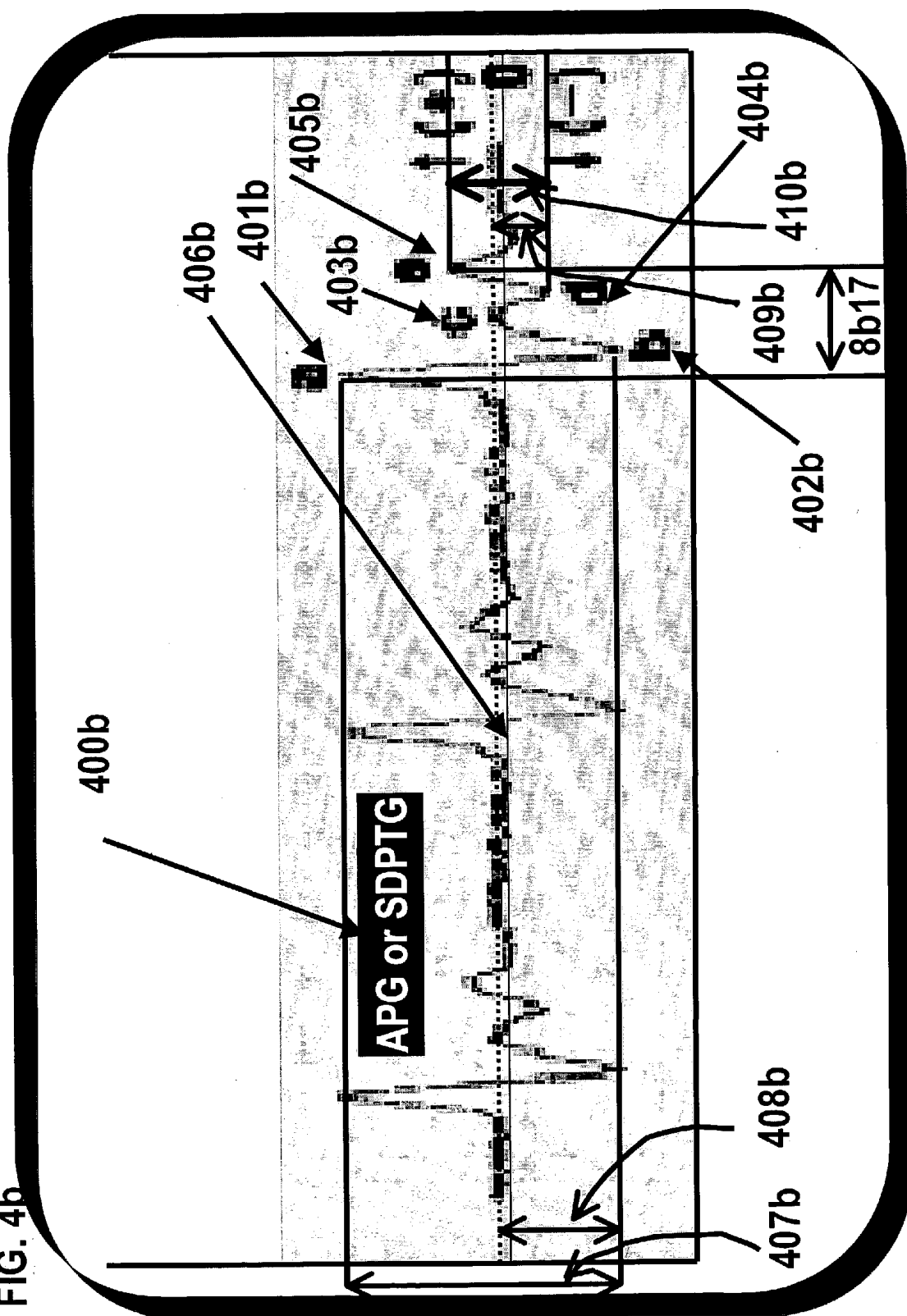


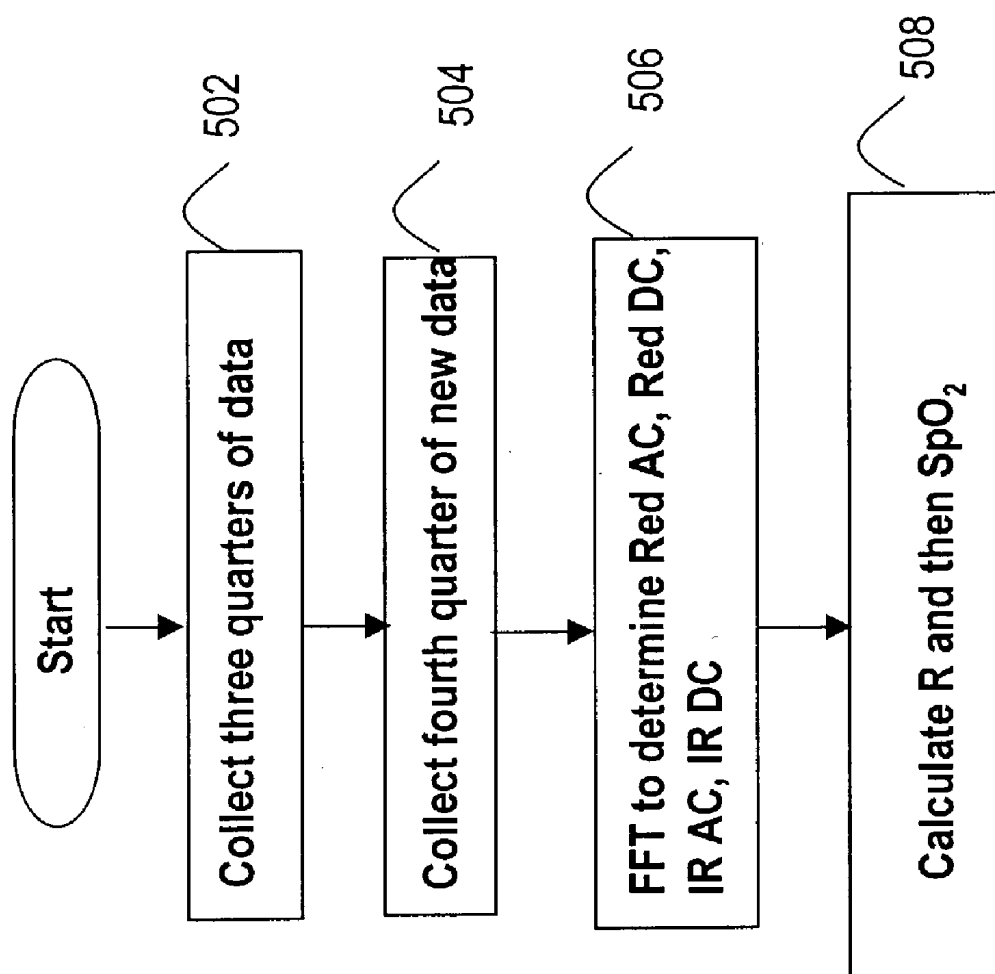
FIG. 5

FIG. 6a

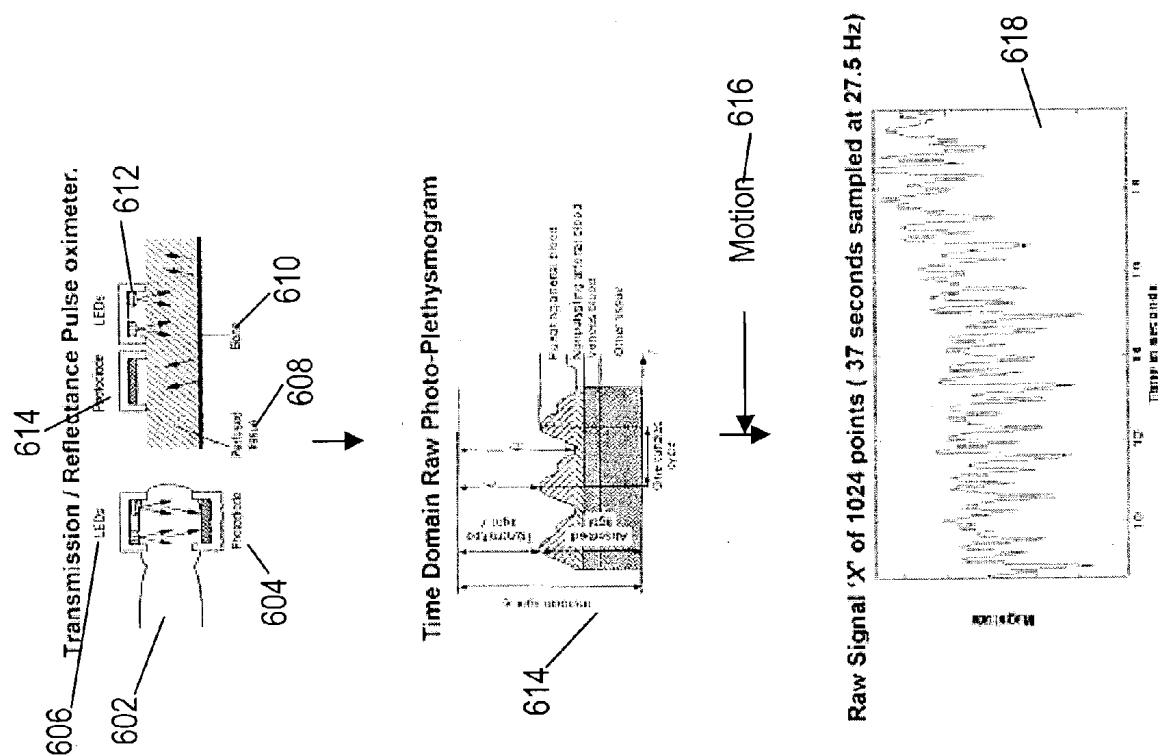


FIG. 6b

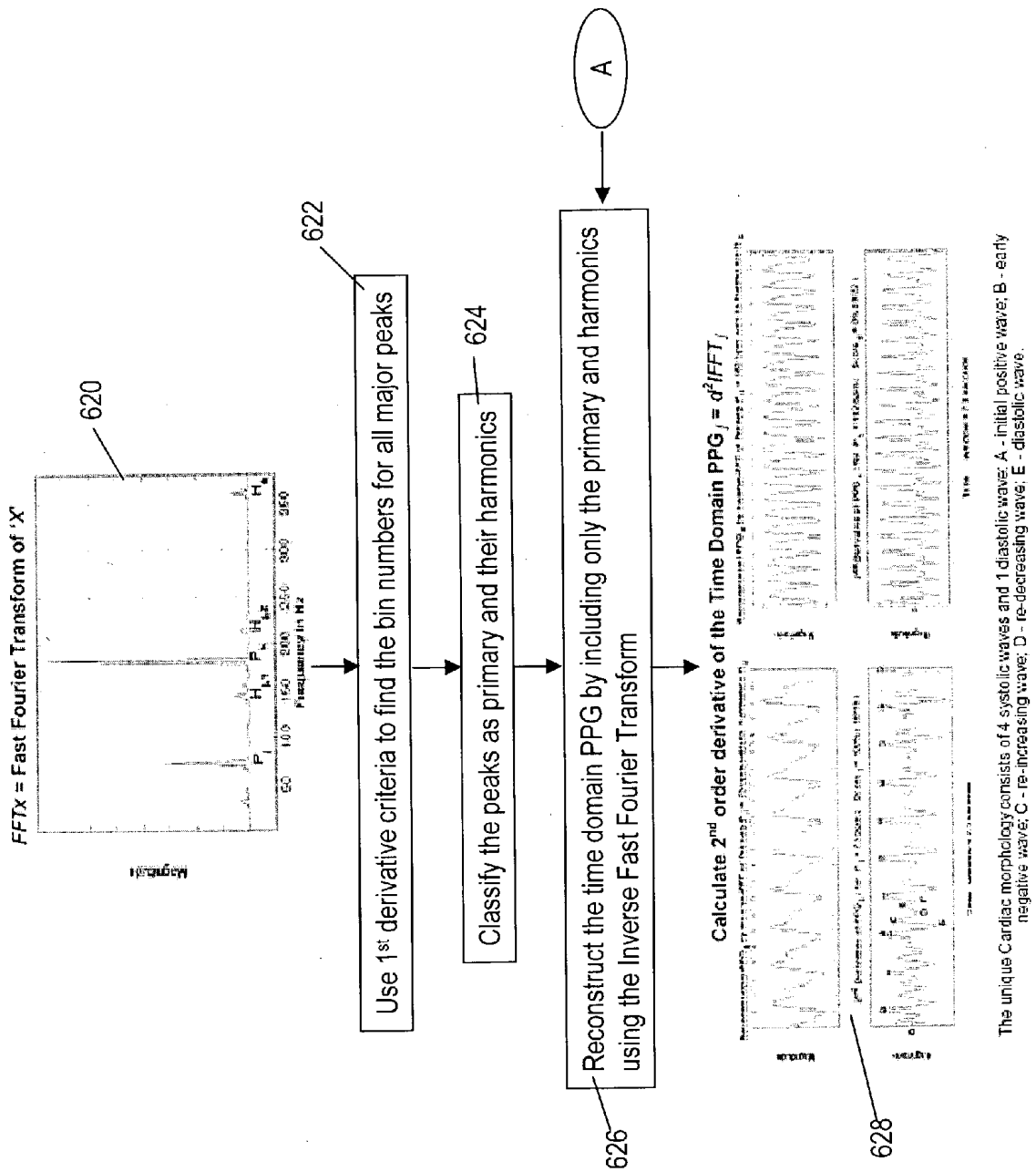


FIG. 6c

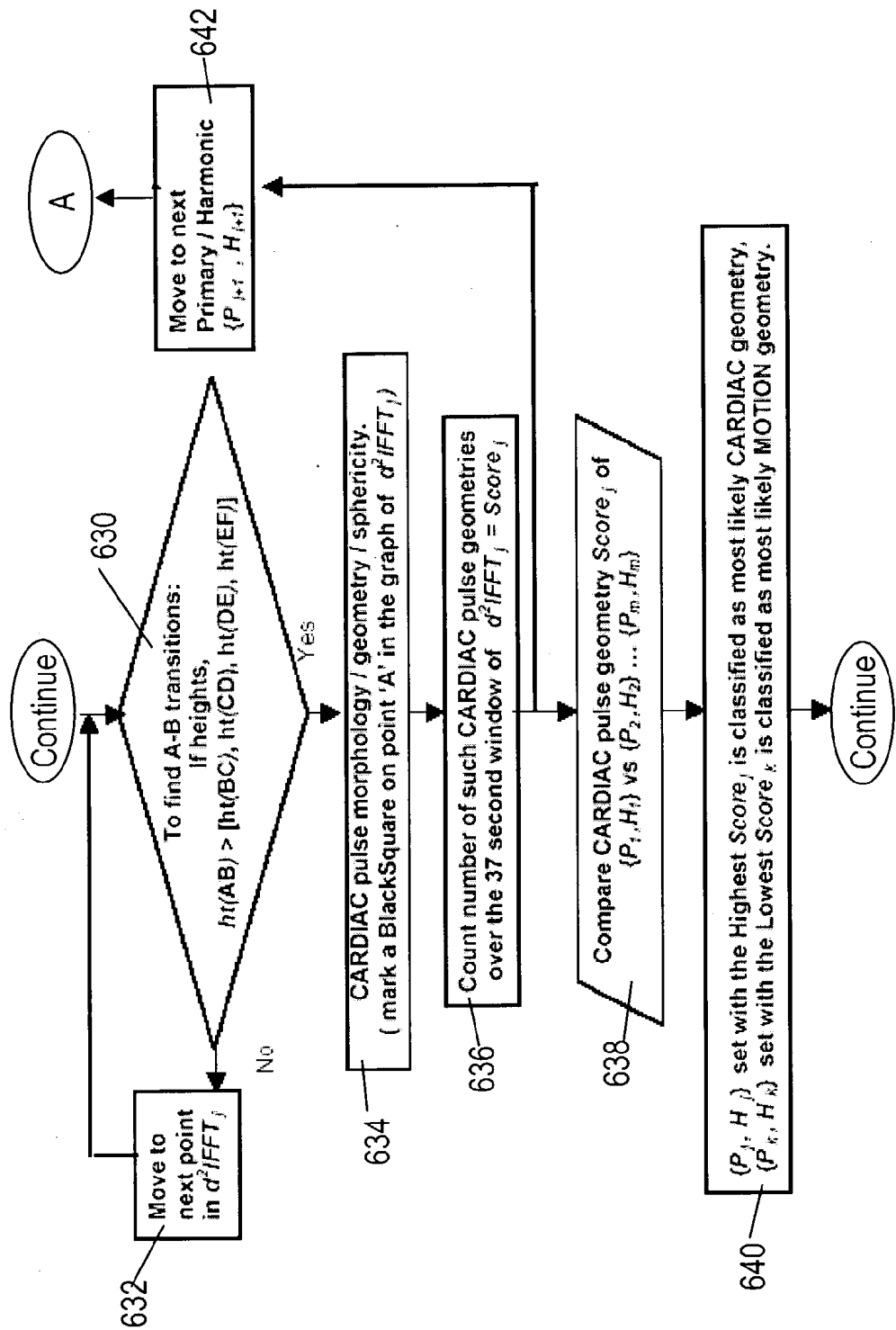
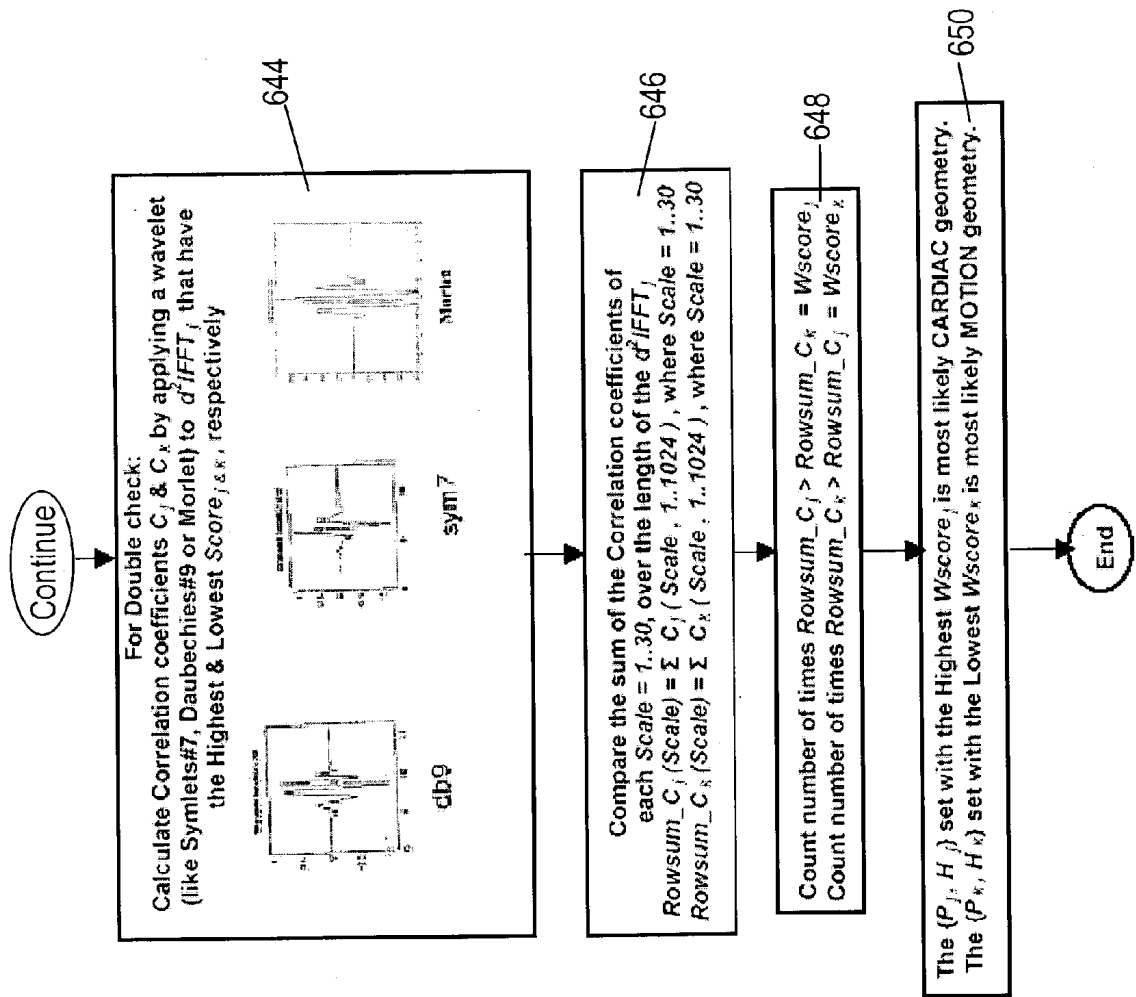


FIG. 6d



SEPARATING MOTION FROM CARDIAC SIGNALS USING SECOND ORDER DERIVATIVE OF THE PHOTO-PLETHYSMOGRAM AND FAST FOURIER TRANSFORMS

CROSS-REFERENCE TO RELATED APPLICATIONS

[0001] This application claims the benefit of U.S. Provisional Application No. 60/354,601, filed Jan. 31, 2002, entitled "Separating Motion from Cardiac Signals Using Second Order Derivative of the Photo-plethysmogram and Fast Fourier Transforms".

FIELD OF THE INVENTION

[0002] The present invention relates generally to correcting physiological signals, and more specifically to methods and systems for separation of artifacts, generated by undesirable motion, from physiological signals.

BACKGROUND OF THE INVENTION

[0003] Pulse oximeters are devices used to measure oxygen saturation level (SpO_2) in the blood. Conventional pulse oximeters perform photoplethysmography (PPG) to measure SpO_2 . Photoplethysmography (PPG) is the electro-optic technique of measuring the cardiovascular pulse wave found throughout the human body. This pulse wave is caused by the periodic pulsations of arterial blood volume and is measured by the changing optical absorption. The measurement system consists of a light source, a photo-detector, a signal recovery, a processor, and a display system. These PPG devices differentiate between light absorption due to blood volume and that of other fluid and tissue constituents by observation that arterial blood flow pulsates while tissue absorption remains static. The PPG device measurements are non-invasive and can be applied to blood bearing tissue to conduct heart and respiration rate monitoring, to perform blood pressure studies, and to determine blood hemoglobin oxygen saturation.

[0004] Existing PPG devices have substantial disadvantages, however. The PPG device measurements are sensitive to corruption from external dynamics, causing motion artifacts that degrade the signal-to-noise ratio. An artifact may include unwanted signals superimposed onto the PPG signal, which can be induced by any external dynamics. For example, variation in the optical coupling between the probe head and the patient, possibly induced by patient movement, may cause an artifact. Motion artifacts can render it substantially difficult for the oximeter to accurately determine the patient's PPG signal, therefore causing errors in the pulse rate and oxygen saturation outputs.

[0005] Another limitation is that PPG relies on AC photoplethysmogram (PPG) component, which is synchronous with cardiac pulsations but very small compared to the overall DC component, to determine SpO_2 . Because the AC component is small relative to the DC component, accurate measurement of the AC component is difficult. Inaccuracies in AC component measurements cause inaccuracies in SpO_2 measurements because oximeters compute SpO_2 using the relative magnitudes of the AC components of the different optical photo-plethysmograms. In addition, in poorly perfused patients, the circulation may not adequately modulate the light beams to the point where it is difficult to distinguish

the synchronous cardiac pulsations from system noise. Thus, the usefulness of most commercial pulse oximeters is limited to situations in which patient is well perfused and subject to minimal motion.

[0006] Many pulse oximeters utilize time-domain algorithms that determine the period and amplitude of the photo-plethysmograms. These techniques typically analyze time-domain parameters such as slope transition, minima, maxima, and rise and fall time. Additionally, such algorithms may employ decision rules in order to reject data, which falls outside of certain limits.

[0007] A difficulty with these time-domain algorithms is that the SpO_2 is conventionally averaged with several recent values in order to reduce the disruptive effect of corrupted data. Such averaging is only useful if the number of bad values is small relative to the number of good data values.

[0008] Several advanced technology pulse oximeters have been introduced that utilize digital signal processing in the frequency domain as a solution to some scenarios presented by the cases where artifacts are induced.

[0009] An existing technique utilizes saturation-based digital signal processing algorithms. The patent is directed toward a signal processor which acquires a first signal, including a first desired signal portion and a first undesired signal portion, and a second signal, including a second desired signal portion and a second undesired signal portion, wherein the first and second desired signal portions are correlated. The signals may be acquired by propagating energy through a medium and measuring an attenuated signal after transmission or reflection. Alternatively, the signals may be acquired by measuring energy generated by the medium. A processor generates a noise reference signal which is a combination of only the undesired signal portions and is correlated to both the first and second undesired signal portions. The noise reference signal is then used to remove the undesired portion of each of the first and second measured signals via an adaptive noise canceller, preferably of the joint process estimator type. The processor may be employed in conjunction with an adaptive noise canceller in physiological monitors wherein the known properties of energy attenuation through a medium are used to determine physiological characteristics of the medium.

[0010] An underlying assumption in the '642 patent is that all motion artifacts come from the movement of lower-saturation venous blood. Furthermore, this motion artifact results in correlated red and infrared signals. A limitation with this algorithm is that when red and infrared signals become corrupted by sources other than moving arterial and venous blood, such as sensor movement relative to skin, the artifact can result in uncorrelated red and infrared signals. Thus this method has the potential to pick and choose for display a false high saturation created by non-venous artifact.

[0011] An existing technique involving a frequency domain approach utilizes a cardiac-based digital filtering algorithm. This Kalman filtering algorithm minimizes chaotic random signal artifact, regardless of the red and infrared correlation. One drawback of this cardiac-based filtering is the assumption that, on average and over several seconds of time, signal noise coming from real patient motion and other sources does not occur at the heart rate. As a result, the filters

associated with this approach assume that noise is chaotic and random and in turn tend to find the underlying cardiac signal that is mixed with noise created by patient movement or other sources of artifact.

[0012] Another existing approach involves an oximeter having two light emitting diodes (LEDs), a red LED and an infrared LED, that alternatively illuminate an intravascular blood sample with two wavelengths of electromagnetic radiation. The electromagnetic radiation interacts with the blood and a residual optical signal is both reflected and transmitted by the blood. A photodiode in the light-to-frequency converter (LFC) collects oximetry data from the intravascular blood sample illuminated by the two LEDs. The LFC produces a periodic electrical signal in the form of a pulse train having a frequency, the logarithm of which is in linear relationship to the logarithm of the intensity of the optical signal received by the LFC. The data becomes an input to a high-speed digital counter, which converts the pulsatile signal into a form suitable to be entered into a central processing unit (CPU) of a computer system. Once inside the CPU, the time-domain data is converted into the frequency domain by, for example, performing the well-known Fast Fourier Transform (FFT) on the time-domain data. The frequency domain data is then processed to determine the saturation value.

[0013] In this approach, the magnitudes of the AC and DC components for both the red LED and the IR LED are determined using a frequency domain analysis. For both the red and infrared signals, the AC component is determined by the magnitude of the highest spectral peak found between 0.5 to 2.5 Hz. This highest peak represents the pulsatile, or AC component, of the oximetry waveform. Likewise, the magnitude of the DC component is the highest spectral peak generally found in the first bin at 0 Hz.

[0014] Another approach involves a system for processing signals containing information about the pulse rate and oxygen saturation of arterial blood flowing in tissue. To determine the pulse rate and oxygen saturation from the signals, the positive peaks, negative peaks, and period of the signal are determined. The disclosed invention accomplishes this by first searching for a sustained positive sloping region of the signal. Then the first derivative of the signal with respect to time is analyzed and points on the signal before and after the occurrence of a slope reversal are marked. If the slope at the first point is positive, the interval between the two points is searched for a maximum amplitude that is identified as a positive peak. After the occurrence of a negative sloping region of the signal, another pair of points are marked occurring before and after a subsequent slope reversal. The minimum amplitude of the signal between these points is then identified as a negative peak. These positive and negative peaks are then compared with waveform templates to determine whether the amplitude between the peaks falls within an allowable range and to determine whether the interval between the peaks likewise falls within an acceptable range. These ranges are adjustable in proportion to the amplitude and interval compared against them. In this manner, values for the positive peak, negative peak, and period of the signal can be determined.

[0015] Preferably, the output produced by the above-described derivative processor is the auto-normalized convolution derivative. This auto-normalization provides suffi-

cient processing to discriminate peaks from inflections in the PPG, provided that the signal is a well-behaved function. In practice, physiological signals such as the PPG are not well behaved and are often modulated with artifacts due to noise, interference, and patient motion.

[0016] Another approach involves an ECG-synchronized pulse oximeter. The patent discloses a pulse oximeter, including a sensor for the emission and detection of two beams of light of different wavelengths. The beams are passed through skin tissue and modulated by the flow of blood therein. The preferred embodiment includes an apparatus for the amplification and detection of an ECG, R-wave signal. This signal is used as a reference to guide the averaging of subsequent optical pulse waveforms. The weight given to the newest pulse waveform during the averaging process is determined by the amplitude of that pulse waveform and by the degree of similarity between it and the preceding pulse waveform. The composite, averaged pulse waveform is then used in computing the oxygen saturation of the blood.

[0017] In light of the above-described disadvantages, there is need for methods and systems that remove asynchronous motion signals from synchronous cardiac signals superimposed in the photo-plethysmogram. Additionally, there is a need for a system that processes photo-plethysmographic signals in both time and frequency domains. Furthermore, there is a need for a system to generate a unique 'cardiac' morphology, which helps in separating cardiac signals from motion signals.

SUMMARY OF THE INVENTION

[0018] The present invention is directed toward an oximetry system employing a novel signal processing method. In one embodiment, a pulse oximetry system for the determination of a physiological parameter capable of removing motion artifacts from physiological signals comprises a hardware subsystem and a software subsystem.

[0019] The hardware subsystem comprises an optical sensor unit for providing the pulse oximetry system with a plurality of photo-plethysmographic data, wherein the sensor may either be transmittance or reflectance type containing at least two light emitting diodes for emitting light of two different wavelengths. The hardware subsystem additionally comprises a photo-detector for detecting the light after being transmitted or reflected by a patient's tissue, wherein the detected light is representative of the patient's photo-plethysmographic data, a microcomputer comprising an input/output unit, a processor for processing the photo-plethysmographic data, wherein the processor includes a control unit, a register unit, and an arithmetic and logic unit, and a memory unit, wherein the memory unit is operably coupled to the processor.

[0020] The software subsystem is used in conjunction with the hardware subsystem to perform a method for removing a plurality of motion artifacts from the photo-plethysmographic data and for obtaining a measure of at least one physiological parameter from said data. The method comprises acquiring the raw photo-plethysmographic data, transforming the data into the frequency domain, analyzing the transformed data to locate a series of candidate cardiac spectral peaks (primary plus harmonics), reconstructing a photo-plethysmographic signal in the time domain with only

the candidate cardiac spectral peaks (primary plus harmonics), computing the second order derivative of the reconstructed photo-plethysmographic signal, analyzing the candidate second order derivative photo-plethysmographic signal to determine the absence or presence of cardiac physiologic signal characteristics, and finally selecting the best physiologic candidate from the series of potential cardiac spectral peaks (primary plus harmonics) based upon a second derivative scoring system. This scoring system is preferentially based upon second derivative processing analysis, but can be equally applied using the first, third, fourth or other similar derivative processing analysis.

[0021] In one embodiment, analyzing transformed data to locate candidate spectral peaks comprises the steps of assigning a largest power amplitude from said data as a primary candidate spectral peak and assigning a next largest power amplitude that is not a harmonic of said primary candidate spectral peak as a secondary candidate spectral peak. Further, the candidate spectral peaks detected during the analysis of transformed data is classified into Primary= P_j and their respective Harmonics= H_j , where $j=1, \dots, m$ and wherein a maximum of m Primary frequencies are identified as candidate spectral peaks.

[0022] In one embodiment, the photo-plethysmographic signal is reconstructed by transforming data from a frequency domain data into a time domain by including only a plurality of primary candidate spectral peaks and a plurality of corresponding harmonic spectral peaks.

[0023] In one embodiment, the second order derivative photo-plethysmographic signal is analyzed to determine a plurality of parameters by performing a morphological analysis of the second order derivative photo-plethysmographic signal to determine a unique cardiac morphology, wherein the cardiac morphology consists of four systolic and one diastolic waves, and wherein the analysis accounts for a plurality of wave transitions. The second order derivative photo-plethysmographic signal analysis further comprises the step of performing a morphological analysis of the second order derivative photo-plethysmographic signal to determine at least one height of the wave transitions.

[0024] Optionally, the criterion for detecting a predefined type of wave transition among a first wave, a second wave, a third wave, a fourth wave, and a fifth wave comprises identifying the largest transition between a first wave and a second wave and determining whether a set of first, second, third, fourth, and fifth waves adhere to a formula: height (first wave to second wave) > {height (second wave to third wave), height (third wave to fourth wave), height (fourth wave to fifth wave)}.

[0025] Optionally, the removal of motion artifacts from the photo-plethysmographic signal comprises classifying a first primary-harmonic set with a first highest score_j as a likely cardiac geometry and classifying a second primary-harmonic set with a highest score_k as a likely motion geometry based upon wavelet analysis. This scoring system is preferentially based upon calculating correlation coefficients by applying Symlets #7, Daubechies #9 or Morlet wavelets to the second derivative of the candidate cardiac spectral peaks (primary plus harmonics), but can be equally applied using any other wavelet correlation coefficient scoring system. The candidate cardiac spectral peaks (primary

plus harmonics) that have the highest wavelet correlation coefficient thus becomes the chosen physiologic cardiac spectral peaks.

[0026] These and other aspects of the invention shall be described in further detail with reference to drawings and in the Detailed Description.

BRIEF DESCRIPTION OF THE DRAWINGS

[0027] These and other features and advantages of the present invention will be appreciated, as they become better understood by reference to the following Detailed Description when considered in connection with the accompanying drawings, wherein:

[0028] FIG. 1a is a schematic of an exemplary pulse oximetry system;

[0029] FIG. 1b depicts one embodiment of a hardware subsystem of an exemplary pulse oximetry system;

[0030] FIG. 1c is an embodiment of a process employed by the present invention;

[0031] FIG. 2 illustrates sample segments of acquired IR and RED photo-plethysmographic data;

[0032] FIG. 3 illustrates a power spectrum of an IR photo-plethysmographic data segment;

[0033] FIG. 4a is a graphical illustration of a second order derivative of a photo-plethysmogram;

[0034] FIG. 4b is another graphical illustration of a second order derivative of a photo-plethysmogram;

[0035] FIG. 5 is process for calculating SpO₂; and

[0036] FIGS. 6a-6d depict another embodiment of a process employed by the present invention.

DETAILED DESCRIPTION

[0037] The present invention discloses methods and systems for removing asynchronous motion artifacts from synchronous cardiac signals by performing second order derivative processing of the measured photo-plethysmographic waveforms. The present invention will be described with reference to the aforementioned drawings. One of ordinary skill in the art would appreciate that the application described herein is an example of how the broader concept can be applied.

[0038] Referring to FIG. 1a, a system embodiment of the pulse oximeter 100a of the present invention is shown. The pulse oximeter system 100a comprises of a hardware subsystem 101a and an associated software subsystem 102a. The hardware subsystem 101a performs signal acquisition, followed by measurements and optional preconditioning. The software subsystem 102a is responsible for discarding motion artifacts from the acquired, measured and optionally preconditioned signal. Within the software subsystem 102a resides a method embodiment (not shown) of this invention, which includes a series of steps that exploit certain characteristics of photo-plethysmographic waveforms.

[0039] FIG. 1b shows a detailed view of the hardware subsystem. The hardware subsystem 100b incorporates an optical sensor unit 101b containing red and infrared light emitting diodes or RED and IR LEDs 102b, a photo-detector

103b, and a microcomputer **104b**. The sensor **101b** is positioned in contact with the finger of a patient and provides the aforesaid pulse oximeter system with red and infrared photo-plethysmographic waveforms. The sensor **101b** may either be transmittance or reflectance type. The microcomputer **104b** comprises of a memory unit **105b**, an I/O unit **106b**, a control unit **107b**, a register unit **108b** and an arithmetic and logic unit **109b**. It may be noted here that the memory unit **105b** accommodates the aforesaid software subsystem.

[0040] FIG. 1c is a flowchart depicting a process employed in the present invention for removing motion artifacts from photo-plethysmographic data and obtaining a measure of pulse rate and SpO₂ from that data. The algorithm includes the steps of acquiring segments of the raw photo-plethysmographic data **101**, both a RED data segment and an IR data segment from the aforesaid sensor, conditioning each segment of acquired raw photo-plethysmographic data for signal processing **102**, transforming the conditioned data into the frequency domain **103**, analyzing the frequency domain data to locate candidate spectral peaks **104**, optionally calculating selected parameters associated with the candidate spectral peaks **105**, transforming the frequency domain data into time domain followed by reconstructing the original photo-plethysmographic data or signal **106**, computing the 2nd order derivative of the time domain photo-plethysmographic signal **107**, analyzing the 2nd order derivative time domain photo-plethysmographic signal for the identification and determination of its certain qualitative and quantitative parameters **108**, measurement and assessment of the quantitative and qualitative parameters determined and/or identified previously **109**, removal of motion artifacts from processed photo-plethysmographic signal **110**, and eventually computing SpO₂ for the motion artifact independent photo-plethysmographic signal **120**. The operations **106**, **107**, **108**, and **109** are repeated for each (1 . . . m) Primary-Harmonic sets of the candidate spectral peaks located earlier. This method is applied to both RED and IR data signals to eliminate or reduce noise and/or artifacts from the data signals prior to outputting pulse rate and SpO₂.

[0041] Referring to FIGS. 1b and 1c, the method of this invention begins with an initial step of acquiring a segment of raw photo-plethysmographic data (e.g. approximately 37 seconds duration) measured from any one of the two LEDs **102b**. During this step light (RED or IR) from the LED **102b** is transmitted through a finger and is further detected with a photo-detector **103b** on the opposite side of the finger. This step of acquiring a raw photo-plethysmographic data segment is depicted by block **101** of FIG. 1c.

[0042] FIG. 2 illustrates sample segments of IR and RED photo-plethysmographic data acquired according to block **101**. The horizontal axis of FIG. 2 is measured in units of time, and illustrated here in seconds. The vertical axis of FIG. 2 is measured in arbitrary units, and illustrated here in analog-to-digital output units. For convenience, a 37 seconds segment of data will be used to illustrate the method. It should be readily apparent to one of ordinary skill in the art that the method of the invention is not limited to data segments of this size. The signal processing steps described herein may be performed on both RED and IR photo-plethysmographic data segments independently and simultaneously. Thus, while the steps of the method may be

illustrated with data from an IR radiation signal, the same steps are applicable to data from a RED light signal and vice versa.

[0043] A segment of data may be received from a sensor that converts transmitted or reflected light signals into electrical signals. A photo-detector, for example, a photodiode, may be used to receive a RED and IR photo-plethysmographic data from the sensor. The collected signals may then be pre-conditioned, for example by filtering or amplifying, and converted into digital data using an analog-to-digital converter for subsequent digital signal processing. The RED and IR photo-plethysmographic data or waveforms may be sampled at any convenient data rate. However, for simplicity of illustration, a sampling rate of 27.5 Hz will be performed on the 37 seconds segment of RED and IR photo-plethysmographic data. A 37 seconds segment of data corresponds to approximately 1024 data points with a sampling rate of 27.5 data points per second.

[0044] Once a segment of data from a single electrical signal due to IR radiation signal or RED light has been acquired and digitized, it may be conditioned for subsequent signal processing, as depicted by block **102** of FIG. 1c. Signal conditioning may include filtering to reduce spectral leakage resulting from subsequent frequency analysis. There are several window filters that may be suitable for such purposes. For example, and not by way of limitation, a Hanning window may be used to reduce spectral leakage. It will be readily apparent to one of ordinary skill in the art of digital signal processing that other window filters and methods of filtering data to reduce spectral leakage may be selected. As such methods of filtering and various filters are known to one of ordinary skill in the art of signal processing, they will not be further detailed herein. FIG. 3 illustrates the power spectrum of the IR photo-plethysmographic data segment of FIG. 2 after filtering and transforming. The vertical axis of FIG. 3 may be measured in any arbitrary units of power. The horizontal axis is measured in any units of frequency, specifically here in units of bpm (beats per minute).

[0045] The conditioned data is then transformed into the frequency domain for further analysis and signal processing. Signal processing as described herein is generally performed in the frequency domain. The segment of data is converted into the frequency domain by, for example, performing Fast Fourier Transform (FFT) on the data segment. FIG. 3 is a graph of the FFT of the IR data segment of FIG. 2. FIG. 3 illustrates a primary candidate spectral peak at a frequency of approximately 70 bpm and a secondary candidate spectral peak at a frequency of approximately 128 bpm. Other common techniques of converting time-domain data to the frequency domain may also be used, e.g., classical methods using the FFT such as the periodogram or correlogram, autoregressive methods, Prony's method, minimum variance methods, maximum likelihood methods. Additionally, time domain data may be converted to the frequency domain using transforms such as discrete cosine transform, wavelet transform, discrete Hartley transform, and Gabor transform. The preferred transform according to this method is the FFT with a window size of 1024 points. The 1024 data points are placed in a buffer, the FFT buffer. The FFT transforms the 1024 points of data from the time domain into the frequency domain.

[0046] The output of the FFT is 512 points of real and 512 points of imaginary data in the frequency domain. From these 512 points of real and 512 points of imaginary data the power spectrum is calculated and placed in a power spectrum buffer.

[0047] Both transient and periodic artifacts can induce peaks in the frequency domain. Analyzing the power spectrum to locate candidate spectral peaks is depicted in block 104 of FIG. 1c. Numerous approaches towards determination of peaks in the frequency domain are already known in the prior art. For example, one such approach utilizes first derivative processing for the determination of positive slope and positive/negative peak in a photo-plethysmogram. Another approach towards determination of candidate spectral peaks in a photo-plethysmogram would be to order the frequencies by peak amplitude from largest to smallest, F_1 to F_m , where F_1 through F_m are not Harmonics of each other, and analyze them one by one. However, the preferred approach selects up to three candidate spectral peaks for further analysis.

[0048] Candidate spectral peaks are located from the power spectrum computed in block 103. The power spectrum buffer is an array of 512 vector points (referred to herein as "bins") in the frequency domain. Each array element in the power spectrum buffer represents the power of the corresponding frequency in the original raw photo-plethysmographic waveform. Of the 512 bins, only bins 5 (29 bpm) through 43 (252 bpm) are of interest, since this range covers the physiological limits of the human heart rate. This set of $43-5+1=39$ bins forms the set of bins selected for subsequent analysis. All other bins are unused by the method of the invention because they cannot physiologically represent a valid spectral frequency of a pulse rate. Table 1, below, shows the first 45 points of the power spectrum buffer or array.

TABLE 1

Power Spectrum Buffer bin number	Frequency (Hz) $f = n * 100/1024$	Pulse Rate (bpm) Pulse Rate = $f * 60$
0	0.00000	0.0
1	0.09766	5.9
2	0.19531	11.7
3	0.29297	17.6
4	0.39063	23.4
5	0.48828	29.3
6	0.58594	35.2
7	0.68359	41.0
8	0.78125	46.9
9	0.87891	52.7
10	0.97656	58.6
11	1.07422	64.5
12	1.17188	70.3
13	1.26953	76.2
14	1.36719	82.0
15	1.46484	87.9
16	1.56250	93.8
17	1.66016	99.6
18	1.75781	105.5
19	1.85547	111.3
20	1.95313	117.2
21	2.05078	123.0
22	2.14844	128.9
23	2.24609	134.8
24	2.34375	140.6
25	2.44141	146.5
26	2.53906	152.3
27	2.63672	158.2

TABLE 1-continued

Power Spectrum Buffer bin number	Frequency (Hz) $f = n * 100/1024$	Pulse Rate (bpm) Pulse Rate = $f * 60$
28	2.73438	164.1
29	2.83203	169.9
30	2.92969	175.8
31	3.02734	181.6
32	3.12500	187.5
33	3.22266	193.4
34	3.32031	199.2
35	3.41797	205.1
36	3.51563	210.9
37	3.61328	216.8
38	3.71094	222.7
39	3.80859	228.5
40	3.90625	234.4
41	4.00391	240.2
42	4.10156	246.1
43	4.19922	252.0
44	4.29688	257.8

[0049] In table 1, column 1 is the bin number, n ; column 2 is the center frequency, f of the corresponding bin number, n , calculated here as the product of the bin number n and sampling rate (100 samples/sec) divided by the block size used by the FFT (i.e., 1024); and column 3 is the pulse rate corresponding to the center frequency, f , calculated by multiplying f (measured in units of beats per second) by 60 to convert to units of beats per minute (bpm). Although the sampling rate selected here is 100 samples/sec, it is not limited to this value. The center frequency values corresponding to a sampling rate of 27.5 Hz can be similarly calculated as the product of the bin number n and the sampling rate 27.5 Hz divided by the block size of the FFT used, i.e. 1024.

[0050] In order to select candidate spectral peaks (and corresponding frequencies), different amplitude analysis methods are applied to different frequency bands. The amplitude of adjacent and nearby frequency components of the candidate spectral peak amplitude may be compared in terms of their absolute or relative values. For example, the frequencies represented by candidate bins 5 through 10 ("5-10" search method) may be stepped through in a sequential fashion.

[0051] In one embodiment, a "5-10" search method is employed. According to this method, a candidate bin is assumed to be a candidate power spectrum peak if the previous three bins and subsequent four bins relative to a candidate bin are all lower in power than the candidate bin. For example, in order for bin 6 to be a candidate spectral peak, bins 3, 4, 5, 7, 8, 9 and 10 must all be lower in power than bin 6. The terms "spectral peak", "power peak", "power spectrum peak" or "peak" are used synonymously herein. Various amplitude, shape, and syntactic or other pattern analysis methods may be applied to identify a candidate peak. Also, multiple curve fit methods, as known to one of ordinary skill in the spectroscopic analysis, may also be applied.

[0052] In a second embodiment, a first derivative criteria to select candidate spectral peaks within a given power spectrum is used. Using an assumption that a candidate spectral peak is defined as the frequency bin at which the slope is zero, therefore employing the first derivative crite-

tion for the detection of extrema or critical points (i.e. points at which slope is zero), all such frequency bins are firstly detected. It is known to one of ordinary skill in the art that the criterion for verification of “maxima and minima” can be given by the following equations (A) and (B):

$$(d^2y/dx^2) \text{ or } (d^2f(x)/dx^2) > 0 \rightarrow \text{for minima if slope } (dy/dx) = 0 \text{ at the detected extrema or critical point; and} \quad (A)$$

$$(d^2y/dx^2) \text{ or } (d^2f(x)/dx^2) < 0 \rightarrow \text{for maxima if slope } (dy/dx) = 0 \text{ at the detected extrema or critical point.} \quad (B)$$

[0053] This eventually leads to the determination of all candidate spectral peaks. Once the power spectrum peak candidates or candidate spectral peaks are found, predetermined criteria are applied to select a plurality, preferably three, candidate spectral peaks.

[0054] Referring back again to the embodiment utilizing the “5-10” search method, a power peak associated with a largest power amplitude is selected to be the primary candidate spectral peak. Then, any power peaks that are determined to be harmonics of the primary candidate spectral peak are collected to form a first Primary-Harmonics set. In general, a Primary-Harmonic set is symbolically represented as $\{P_j, H_j\}$, where P_j is the Primary frequency corresponding to a primary candidate peak whereas H_j is its respective Harmonic. According to this method, a Harmonic is defined as any power peak the frequency of which is a multiple of the primary candidate peak and the amplitude of which is less than half the maximum allowed power of the previous Harmonic, or in the case of the first Harmonic, less than half the power of the primary peak. For example, assume a primary candidate peak is found at bin 10.

[0055] Possible harmonic bins of 10 are bins 19-21, 29-31 and 39-41. Continuing with the example, if the primary power peak amplitude (bin 10) is 100 arbitrary power spectrum units, then bins 19-21 must be less than 50 units to be deemed a harmonic, bins 29-31 must be less than 25 units and bins 39-41 must be less than about 12 units, where units are the measure of the amplitude of the power spectrum. Other weights may be applied to the analysis of the sequence for detection of Harmonics of the candidate spectral peak without departing from the scope of the invention.

[0056] After Harmonics of the primary candidate spectral peak possessing the largest power amplitude are collected into a first Primary—Harmonic set, the next largest remaining power peak found (if any) is selected to be the secondary candidate spectral peak. Again, the Harmonics corresponding to the secondary candidate spectral peak are collected to form a second Primary-Harmonics set.

[0057] Finally, if the previous pulse rate is non-zero, the power spectrum corresponding to the previous pulse rate is determined. If the bin corresponding to the previous pulse rate is not equal to the primary or secondary candidate power peak, then the bin corresponding to the previous pulse rate is selected to be the tertiary candidate spectral peak. Next, the Harmonics corresponding to the tertiary candidate spectral peak are collected into a third Primary—Harmonic set. Thus, three candidate spectral peaks (primary, secondary and tertiary) and corresponding frequencies of each candidate peak are identified. It may be noted that any number of candidate spectral peaks may exist and therefore less than or more than three candidate spectral peaks can be selected for further analysis. Assuming that a maximum of m Primary frequencies are identified as candidate spectral peaks, then

these peaks are classified into Primary P_j and their respective Harmonics H_j , where $j=1, \dots, m$.

[0058] Optionally, selected parameters associated with the candidate spectral peaks may be calculated and may include pulse window filtering, calculating such parameters as peak detection and pulse rejection criteria and determining descriptive parameters associated with each of the candidate spectral peaks. These parameters are used to determine a pulse confidence for each candidate spectral peak. The parameters calculated herein for each filtered candidate spectral peak include measures of central tendency and variability of pulse width, pulse rate and SpO_2 , as well as measures of the history and confidence of these parameters. It should be noted that other parameters including, but not limited to, other measures of central tendency, variability (i.e., skewness, kurtosis), history/trend and confidence could be calculated from the candidate spectral peaks.

[0059] Prior to calculating the aforementioned parameters, each candidate spectral peak is filtered with a narrow band filter, such as a bandpass, finite impulse response (FIR) filter. In one aspect of the present invention, one of several predefined FIR filters is applied to a given bin or candidate peak. The peak frequencies of the filters may be separated by a fixed difference in frequency (measured in Hz or bpm), such as 25 bpm, or may be variable and a function of either frequency or a characteristic of the spectrum, for example variability or noise, or both. For example, if a candidate peak was found at bin 12, a filter with center or peak frequency of 76.2 bpm might be chosen. A fixed difference in frequency may be in a range from about 15 bpm to about 40 bpm. A variable difference in frequency may be in a range from about 15 bpm to about 40 bpm.

[0060] Preferably, to improve discrimination, especially with closely spaced peaks, the bandpass filter coefficients may be stored or generated and adjusted as needed so that the center frequency is nearly identical to the candidate frequency. Additionally, other filtering methods such as (a) other types of bandpass filters, i.e., infinite impulse response (IIR) filters, and (b) frequency domain methods such as transforming the data into the frequency domain (for example, FFT), filtering or eliminating unwanted components in the frequency domain and transforming back into the time domain (for example, inverse FFT) for further signal processing, may be applied.

[0061] Having identified a set of m Primary frequencies as candidate spectral peaks (P_j) and their respective Harmonics (H_j) where $j=1, \dots, m$, the frequency domain data is converted into the time domain, i.e. previously identified Primaries P_j and their respective Harmonics H_j are transformed back into the time-domain.

[0062] One preferred approach employs the Inverse Fast Fourier Transform or IFFT. The output of IFFT is the time-domain analogue of the Primary P_j and their respective Harmonics H_j . Further, a set $(1 \dots m)$ time-domain PPG_j is reconstructed by including only the Primary P_j and their respective Harmonics H_j . It is obvious to a person of ordinary skill in the art of signal processing that numerous methods or techniques concerning signal reconstruction in the time as well as frequency-domain are already known. One exemplary embodiment employs the sinc approximation method. This is not a limitation, however, and other possible methods for reconstructing a signal in the time-

domain will also suffice. Because methods of transforming frequency-domain data to time-domain are known to one of ordinary skill in the art of signal processing, they will not be further detailed herein.

[0063] Once a set of $(1 \dots m)$ time-domain PPG_j signals is reconstructed as explained above the 2nd order derivative of each $(1 \dots m)$ time-domain PPG_j ($=d^2\text{IFFT}_j$) is computed. A preferred embodiment utilizes the numerical differentiation approach for finding the 2nd order derivative of each $(1 \dots m)$ time-domain PPG_j ($=d^2\text{IFFT}_j$). The numerical differentiation of digitized signals (or signal comprising discrete samples) is a well-known approach towards finding signal derivatives. It will be readily apparent to one of ordinary skill in the art of signal processing that other possible approaches towards finding signal derivatives may be selected. Because approaches of finding signal derivatives are already known to one of ordinary skill in the art of signal processing, they will not be further detailed herein.

[0064] The 2nd order derivative of PPG signals or a second order derivative photo-plethysmogram (SDPTG) is computed because, in the domain of the SDPTG, the cardiac signal exhibits a unique 'cardiac' morphology. The SDPTG or an acceleration photo-plethysmogram (APG), as it is sometimes called, is obtained by computing the 2nd order derivative of a given photo-plethysmogram or PPG signals. The SDPTG facilitates efficient qualitative and quantitative morphological analysis of physiological signals since it visually represents physiological changes and other artifacts, better than that of normal waves.

[0065] Referring to FIG. 4a, a graphical illustration of a SDPTG or APG 400a is plotted. A qualitative morphological analysis of the SDPTG 400a reveals that, in the domain of SDPTG 400a, a cardiac signal 402a exhibits a unique cardiac morphology. This unique cardiac morphology consists of a first set of 4 systolic waves and a second set of 1 diastolic wave. More specifically, the first set of 4 systolic waves is constituted by two positive waveforms namely, a-wave 403a and c-wave 405a, and two negative waveforms namely, b-wave 404a and d-wave 406a respectively. On the other hand the second set of 1 diastolic wave is constituted by a diastolic waveform namely, e-wave 407a. Further, the a-wave 403a is an actual representation for an initial diastolic wave, b-wave 404a an actual representation for an early negative wave, c-wave 405a for a re-increasing wave, d-wave 406a for a re-decreasing wave and e-wave 407a for a diastolic wave respectively.

[0066] Another significant qualitative parameter that is taken into consideration is wave transition. A set of possible wave transitions can be taken into consideration for subsequent calculation of a quantitative parameter namely, height of a wave transition.

[0067] During a quantitative morphological analysis of the SDPTG 400a, a set of heights 408a, 409a, 410a, 411a and 412a of the waves 403a, 404a, 405a, 406a, and 407a are measured from the baseline 413a. Heights above the baseline 413a are considered positive while the heights below the baseline 413a are considered negative. A ratio b/a is calculated as the ratio of the height of the b-wave 404a is to the height of the a-wave 403a. Similarly, another ratio d/a is calculated as the ratio of the height of the d-wave 406a is to the height of the a-wave 403a. These ratios, b/a and d/a, are expressed in terms of percentage. In order to support further

quantitative analysis of the SDPTG 400a, an aging index, is defined as per the following equation:

$$\text{Aging Index} = (b - c - d - e) / a.$$

[0068] Referring to FIG. 4b, the wave transitions that are taken into consideration are following: a first wave transition namely, (a-wave 401b)→(b-wave 402b), a second wave transition namely, (b-wave 402b)→(c-wave 403b), a third wave transition namely, (c-wave 403b)→(d-wave 404b), and a fourth wave transition namely, (d-wave 404b)→(e-wave 405b) respectively. The heights of these wave transitions are measured from baseline 406b. The height of transition (a-wave 401b)→(b-wave 402b) is 407b, of (b-wave 402b)→(c-wave 403b) is 408b, of (c-wave 403b)→(d-wave 404b) is 409b and that of (d-wave 404b)→(e-wave 405b) is 410b.

[0069] After the calculation of heights of transitions such as (a-wave 401b)→(b-wave 402b), (b-wave 402b)→(c-wave 403b), (c-wave 403b)→(d-wave 404b) and (d-wave 404b)→(e-wave 405b), they are compared amongst each other for the largest wave transition utilizing a predetermined criterion. In here, the criterion for finding the largest wave transition is as follows: Height [(a-wave 401b)→(b-wave 402b)] > {Height [(b-wave 402b)→(c-wave 403b)], Height [(c-wave 403b)→(d-wave 404b)], Height [(d-wave 404b)→(e-wave 405b)]}. In this case, the largest wave transition when estimated in terms of height of wave transition is 407b of the wave transition (a-wave 401b)→(b-wave 402b), as seen in FIG. 4b. It may be noted that the above-mentioned criterion for finding the largest wave transition is in no way a limitation and other suitable predetermined criterion may also be employed. This task of finding the largest wave transition is repeated for in each $(1 \dots m)$ array d 2 IFFT_j by utilizing the same predetermined criterion, as mentioned earlier.

[0070] It may be noted here that the unique cardiac morphology will be referred hereinafter as a-b-c-d-e segment. If an individual a-b-c-d-e segment meets the above-mentioned predetermined criteria, it is identified as a cardiac pulse morphology/geometry. The number of such cardiac pulse geometries counted over a 37 second window of d2IFFT_j are stored in an array Score_j. For example, Score₁ keeps record of the aggregate number of such cardiac pulse morphologies/geometries within an array d2IFFT₁, i.e. the first array of $(1 \dots m)$ d2IFFT_j. Similarly, Score₂ keeps record of the aggregate number of such Cardiac pulse morphologies/geometries within an array d2IFFT₂ and so on.

[0071] Referring back to FIG. 1c, after the completion of step 109, the operations associated with steps 106, 107, 108, and 109 are repeated for each $(1 \dots m)$ Primary-Harmonic sets of the candidate spectral peaks located in step 104 to yield respective Scores_j. After this each cardiac pulse geometry Score_j is analyzed for the highest number of such Cardiac pulse geometries. In step 110, the {P_j, H_j} set with the highest Score_j is classified as the most likely cardiac geometry. Whereas another {P_k, H_k} set with the highest Score_k is classified as the most likely motion geometry.

[0072] In step 120, the elements of the {P_j, H_j} set with the highest Score_j classified as the most likely cardiac geometry are used for SpO₂ computation via AC/DC ratios from similar data collected at different wavelengths of light. It may be noted in context of the present invention two different wavelengths namely, RED and IR, were selected initially. The SpO₂ algorithm is described and is outlined here in FIG. 5.

[0073] Referring to FIG. 5, data collection begins at 502. The total collection period is 37 seconds in this embodiment, which is divided into four quarters of approximately 9.25 seconds each. As shown at 502, three quarters (approximately 27.75 seconds) of data samples are collected to help initialize a sliding window function, described below. Next, the fourth quarter of the total sample (approximately 9.25 seconds worth of samples) is taken, at 504. The sample rate and time of collection are all variable. In this embodiment, between the samples taken at 502 and 504, a total of 37 seconds worth of samples are collected for processing. The samples can be taken at many rates, e.g., 15 Hz to 240 Hz, depending on the processing to take place below, as is known in the art. In the current embodiment the sampling rate is 27.5 Hz.

[0074] The SpO_2 algorithm then determines the magnitudes of the AC and DC components for both the RED LED 102b and the IR LED 102b of FIG. 1b (AC_{red} , DC_{red} , AC_{ir} , and DC_{ir}) using a frequency domain analysis 506. Specifically, the 37 seconds of time-domain data is converted into the frequency domain by performing a Fast Fourier Transform (FFT). The FFT can be performed in many ways. For example, an FFT of between 64 points (on data sampled at 15 Hz) and 1024 points (on data sampled at 240 Hz) will suffice. For both the RED and IR signals, the AC component is determined by the magnitude of the highest spectral peak found at from 0.5 to 2.5 Hz and represents the pulsatile, or AC component, of the oximetry waveform. Likewise, the magnitude of the DC component is the highest spectral peak found at from between 0.0 and 0.5 Hz.

[0075] An R-value may then be calculated from the RED and IR AC and DC spectral peaks, based on the formula:

$$R = (AC_{red}/DC_{red}) / (AC_{ir}/DC_{ir})$$

[0076] Finally, SpO_2 value may be obtained from the approximate formula:

$$SpO_2 = -25R + 110.$$

[0077] In another embodiment of the present invention, as shown in FIGS. 6a through 6d, a transmission or reflectance type pulse oximeter acquires raw photo-plethysmogram data. Exemplary pulse oximeters comprise LEDs 606, 612 emitting light, which enters through tissue 602, 608 and is received by a photodiode 604, 614 either through transmission or reflection off a structure, such as bone 610. The acquired raw PPG 614 may be modified by or combined with some external motion 616. The modified signal is then sampled to generate a raw signal 618. A preferred sampling rate is 37 seconds at 27.5 Hz to create 1024 data points.

[0078] A Fast Fourier transform is performed on the sampled data 620. Using first derivative criteria, bin numbers are identified for all major peaks 622. The identified peaks are then classified as primary and their harmonics 624. Including only a first set of primary and harmonic peaks, the time domain PPG is then reconstructed using the Inverse Fast Fourier transform 626. The second order derivative of the time domain PPG is then calculated 628, revealing a unique Cardiac morphology defined by four systolic waves and one diastolic wave, as previously discussed.

[0079] Wave transitions are identified and the height of wave transitions are determined in accordance with a quantitative morphological analysis of the second order derivative of the time domain PPG. A plurality of wave transitions

that are taken into consideration include a first wave transition, (a-wave)→(b-wave), a second wave transition, (b-wave)→(c-wave), a third wave transition, (c-wave)→(d-wave), a fourth wave transition, (d-wave)→(e-wave), and a fifth wave transition, (e-wave)→(f-wave), respectively. After the calculation of heights of transitions, they are compared amongst each other for the largest wave transition utilizing a predetermined criterion 630. The criterion for finding the largest wave transition is as follows: Height [(a-wave)→(b-wave)] > {Height [(b-wave)→(c-wave)], Height [(c-wave)→(d-wave)], Height [(d-wave)→(e-wave)], Height [(e-wave)→(f-wave)]}. The above-mentioned criterion for finding the largest wave transition is in no way a limitation and other suitable predetermined criterion may also be employed.

[0080] If the criterion is not satisfied, the calculation proceeds to the next point in the second order derivative inverse Fast Fourier Transform 632 and repeats. If the criterion is satisfied, a cardiac pulse morphology or geometry is identified 634 and the number of such cardiac pulse geometries are counted 636 over the sample period, such as 37 seconds, to generate a score.

[0081] This process, starting from the reconstruction of the time domain PPG 626 through to the generation of a score 636, is repeated for each primary/harmonic set, thereby yielding a score ($Score_j$) for each primary peak (P_j) and corresponding harmonic peaks (H_j). Once all of the scores ($Score_j$) are derived, they are compared 638 to each other, i.e. for each primary/harmonic set. The primary/harmonic set with the highest score is classified as the most likely cardiac geometry while the primary/harmonic set with the lowest score is classified as the most likely motion geometry 640.

[0082] To perform a double check, correlation coefficients (C_j and C_k) for the highest and lowest scores ($Score_j$ and $Score_k$) are calculated 644 by applying a wavelet, such as Symlets #7, Daubechies #9, or Morlet. The sum of the correlation coefficients of each scale over the length of the second order derivative of the inverse Fast Fourier transform is compared 646 to one another. Specifically,

$$\text{Rowsum_}C_j(\text{Scale}) = \sum C_j(\text{Scale}, 1 \dots 1024), \text{ where } \text{Scale} = 1 \dots 30$$

$$\text{Rowsum_}C_k(\text{Scale}) = \sum C_k(\text{Scale}, 1 \dots 1024), \text{ where } \text{Scale} = 1 \dots 30$$

[0083] In a subsequent step 648, a count is performed whereby the number of times $\text{Rowsum_}C_j > \text{Rowsum_}C_k$ is counted, yielding $Wscore_j$, and the number of times $\text{Rowsum_}C_k > \text{Rowsum_}C_j$ is "counted, yielding $Wscore_k$. In step 650, the primary/harmonic set (P_j, H_j) with the highest score ($Wscore_j$) is identified as the most likely cardiac geometry while the primary/harmonic set (P_k, H_k) with the highest score ($Wscore_k$) is identified as the most likely motion geometry.

[0084] The present invention utilizes the novel signal processing method in an oximeter to provide the enhanced detection of physiological signals. One of ordinary skill in the art would appreciate that this signal processing approach could be used in a device that functionally processes physiological signals but is not referred to as an oximeter. Further, as various modifications could be made in the above methods and systems without departing from the scope of the invention, it is intended that all matter contained in the

above description should be interpreted as illustrative and not in the limiting sense. For example, other signal acquisition, measurement, and preconditioning systems, or signal transformation, and reconstruction methods could be used while still staying within the scope of the present invention.

What is claimed is:

1. A method for use in a system comprising a sensor for acquiring photo-plethysmographic data of a patient and a signal processing system for removing a plurality of motion artifacts from said photo-plethysmographic data and for obtaining a measure of at least one physiological parameter from said data, the method comprising:

- (a) acquiring said photo-plethysmographic data;
- (b) transforming said data;
- (c) analyzing said transformed data to locate candidate spectral peaks;
- (d) reconstructing a photo-plethysmographic signal;
- (e) computing the second order derivative of said reconstructed photo-plethysmographic signal;
- (f) analyzing said second order derivative photo-plethysmographic signal to determine a plurality of parameters;
- (g) identifying signal representations of a plurality of motion artifacts; and
- (h) selecting a candidate spectral peak from a plurality of potential cardiac spectral peaks.

2. The method of claim 1 further comprising the step of conditioning the photo-plethysmographic data prior to transforming the data.

3. The method of claim 2, wherein conditioning said photo-plethysmographic data reduces spectral leakage from subsequent signal processing and frequency analysis.

4. The method of claim 3, wherein said conditioning includes filtering said photo-plethysmographic data.

5. The method of claim 4, wherein said filtering is performed with a Hanning window.

6. The method of claim 1 wherein transforming said data comprises the step of transforming the data from a time domain to a frequency domain.

7. The method of claim 6, wherein transforming said data into the frequency domain is performed with a Fast Fourier Transform.

8. The method of claim 7, wherein said transforming is performed with a Fast Fourier Transform of a window size of approximately 1024 data points.

9. The method of claim 8, wherein said window size of approximately 1024 data points is obtained by sampling a 37 second segment of said data with a rate of approximately 27.5 data points per second.

10. The method of claim 6, wherein transforming said data into the frequency domain is performed with a technique selected from the group comprising a periodogram, a correlogram, autoregressive methods, Prony's method, minimum variance methods, maximum likelihood methods, a discrete cosine transform, a wavelet transform, a discrete Hartley transform, and a Gabor transform.

11. The method of claim 1, wherein analyzing said transformed data to locate candidate spectral peaks comprises the steps of assigning a largest power amplitude from said data as a primary candidate spectral peak and assigning

a next largest power amplitude that is not a harmonic of said primary candidate spectral peak as a secondary candidate spectral peak.

12. The method of claim 11, wherein said analyzing transformed data to locate candidate spectral peaks is performed using the first derivative criteria, wherein said candidate spectral peak is a frequency bin having a slope value equal to approximately zero.

13. The method of claim 12, wherein said first derivative criteria comprises a first criterion for detecting extrema, having a plurality of slopes, and a second criterion for verifying maxima or minima, wherein said extrema are considered maxima or minima based upon whether a second derivative of the slopes of extrema is lesser than or greater than zero.

14. The method of claim 1, further comprising the step of classifying said candidate spectral peaks detected into primary peaks (P_j) and harmonics (H_j) to said primary peaks, where $j=1, \dots, m$ and wherein a maximum of m primary frequencies are identified as candidate spectral peaks.

15. The method of claim 1 wherein reconstructing a photo-plethysmographic signal comprises the step of transforming data from a frequency domain data into a time domain.

16. The method of claim 15, wherein transforming the frequency domain data into the time domain is performed using an inverse fast Fourier transform.

17. The method of claim 15 wherein the time domain photo-plethysmographic data is reconstructed by including only a plurality of primary candidate spectral peaks and a plurality of corresponding harmonic spectral peaks.

18. The method of claim 1 wherein the second order derivative photo-plethysmographic signal is analyzed to determine the absence or presence of cardiac physiologic signal characteristics.

19. The method of claim 18 wherein analyzing said second order derivative photo-plethysmographic signal comprises the step of performing a morphological analysis of the second order derivative photo-plethysmographic signal to determine a unique cardiac morphology, wherein said cardiac morphology consists of a plurality of systolic and a plurality of diastolic waves, and wherein said analysis accounts for a plurality of wave transitions.

20. The method of claim 19 wherein analyzing said second order derivative photo-plethysmographic signal further comprises the step of performing a morphological analysis of the second order derivative photo-plethysmographic signal to determine at least one height of said wave transitions.

21. The method of claim 1 wherein analyzing said second order derivative photo-plethysmographic signal comprises the steps of: determining a plurality of wave transitions, calculating a plurality of heights of said wave transitions, and applying a criterion for detecting a predefined type of wave transition.

22. The method of claim 21 wherein the criterion for detecting a predefined type of wave transition among a first wave, a second wave, a third wave, a fourth wave, and a fifth wave comprises identifying the largest transition between a first wave and a second wave and determining whether a set of first, second, third, fourth, and fifth waves adhere to a formula:

$$\begin{aligned} &\text{height (first wave to second wave)} > \{ \text{height (second} \\ &\quad \text{wave to third wave),} \\ &\quad \text{height (third wave to fourth wave), height (fourth wave} \\ &\quad \text{to fifth wave)} \}. \end{aligned}$$

23. The method of claim 21 wherein the criterion for detecting a predefined type of wave transition among a first wave, a second wave, a third wave, a fourth wave, a fifth wave, and a sixth wave comprises identifying the largest transition between a first wave and a second wave and determining whether a set of first, second, third, fourth, fifth, and sixth waves adhere to a formula:

height (first wave to second wave) > {height (second wave to third wave),

height (third wave to fourth wave), height (fourth wave to fifth wave), height (fifth wave to sixth wave)}.

24. The method of claim 1, wherein the removal of motion artifacts from the photo-plethysmographic signal comprises classifying a first primary-harmonic set with a first highest score_j as a likely cardiac geometry and classifying a second primary-harmonic set with a highest score_k as a likely motion geometry.

25. The method of claim 1, wherein the removal of motion artifacts from the photo-plethysmographic signal comprises classifying a first primary-harmonic set with a first highest score_j as a likely cardiac geometry and classifying a second primary-harmonic set with a highest score_k as a likely motion geometry based upon a wavelet analysis.

26. The method of claim 25, wherein the wavelet analysis is conducted by calculating correlation coefficients.

27. The method of claim 26, wherein the correlation coefficients are calculated by applying a wavelet correlation coefficient scoring system.

28. The method of claim 27, wherein the wavelet correlation coefficient scoring system comprises at least one of Symlets #7, Daubechies #9 or Morlet wavelets applied to a second derivative of candidate cardiac spectral peaks.

29. The method of claim 1 further comprising the step of removing a plurality of motion artifacts from the reconstructed photo-plethysmographic signal to create a motion artifact independent photo-plethysmographic signal.

30. The method of claim 1 further comprising the step of computing a physiological parameter from the motion artifact independent photo-plethysmographic signal.

31. The method of claim 1 wherein the candidate spectral peak is selected from a set of potential cardiac spectral peaks based upon a second order derivative scoring system.

32. The method of claim 1 wherein the candidate spectral peak is selected from a set of potential cardiac spectral peaks based upon a derivative scoring system.

33. A pulse oximetry system for the determination of a physiological parameter capable of removing motion artifacts from physiological signals comprising a hardware subsystem and a software subsystem,

wherein said hardware subsystem comprises an optical sensor unit for providing said pulse oximetry system with a patient's photo-plethysmographic data, wherein said sensor comprises a light emitting diode for emitting light, a photo-detector for detecting said light, wherein said detected light contains information on the photo-plethysmographic data, a processor for processing the photo-plethysmographic data, and a memory unit, wherein said memory unit is operably coupled to said processor, and

wherein the software subsystem performs a method comprising the steps of:

- (a) acquiring said photo-plethysmographic data from the sensor;
- (b) conditioning said photo-plethysmographic data for signal processing;
- (c) transforming the conditioned data into a frequency domain;
- (d) analyzing the frequency domain data to locate candidate spectral peaks;
- (e) transforming the frequency domain data into a time domain
- (f) reconstructing the photo-plethysmographic signal;
- (g) computing the second order derivative of the time domain photo-plethysmographic signal;
- (h) analyzing the second order derivative time domain photo-plethysmographic signal to identify parameters;
- (i) measuring said parameters;
- (j) removing a motion artifact from the photo-plethysmographic signal; and
- (k) computing a physiological parameter for the motion artifact independent photo-plethysmographic signal.

34. The system of claim 33 wherein the method further comprising the step of conditioning the photo-plethysmographic data prior to transforming the data.

35. The system of claim 34 wherein conditioning said photo-plethysmographic data reduces spectral leakage from subsequent signal processing and frequency analysis.

36. The system of claim 33 wherein the step of transforming said data comprises the step of transforming the data from a time domain to a frequency domain.

37. The system of claim 33 wherein analyzing said transformed data to locate candidate spectral peaks comprises the steps of assigning a largest power amplitude from said data as a primary candidate spectral peak and assigning a next largest power amplitude that is not a harmonic of said primary candidate spectral peak as a secondary candidate spectral peak.

38. The system of claim 33 wherein said analyzing transformed data to locate candidate spectral peaks is performed using the first derivative criteria, wherein said candidate spectral peak is a frequency bin having a slope value equal to approximately zero.

39. The system of claim 33 wherein said first derivative criteria comprises a first criterion for detecting extrema, having a plurality of slopes, and a second criterion for verifying maxima or minima, wherein said extrema are considered maxima or minima based upon whether a second derivative of the slopes of extrema is lesser than or greater than zero.

40. The system of claim 33 further comprising the step of classifying said candidate spectral peaks detected into primary peaks (P_j) and harmonics (H_j) to said primary peaks, where j=1, . . . , m and wherein a maximum of m primary frequencies are identified as candidate spectral peaks.

41. The system of claim 33 wherein reconstructing a photo-plethysmographic signal comprises the step of transforming data from a frequency domain data into a time domain.

42. The system of claim 41 wherein the time domain photo-plethysmographic data is reconstructed by including only a plurality of primary candidate spectral peaks and a plurality of corresponding harmonic spectral peaks.

43. The system of claim 33 wherein the second order derivative photo-plethysmographic signal is analyzed to determine the absence or presence of cardiac physiologic signal characteristics.

44. The system of claim 43 wherein analyzing said second order derivative photo-plethysmographic signal comprises the step of performing a morphological analysis of the second order derivative photo-plethysmographic signal to determine a unique cardiac morphology, wherein said cardiac morphology consists of a plurality of systolic and a plurality of diastolic waves, and wherein said analysis accounts for a plurality of wave transitions.

45. The system of claim 44 wherein analyzing said second order derivative photo-plethysmographic signal further comprises the step of performing a morphological analysis of the second order derivative photo-plethysmographic signal to determine at least one height of said wave transitions.

46. The system of claim 33 wherein analyzing said second order derivative photo-plethysmographic signal comprises the steps of: determining a plurality of wave transitions, calculating a plurality of heights of said wave transitions, and applying a criterion for detecting a predefined type of wave transition.

47. The system of claim 46 wherein the criterion for detecting a predefined type of wave transition among a first wave, a second wave, a third wave, a fourth wave, and a fifth wave comprises identifying the largest transition between a

first wave and a second wave and determining whether a set of first, second, third, fourth, and fifth waves adhere to a formula:

height (first wave to second wave) > {height (second wave to third wave),
height (third wave to fourth wave), height (fourth wave to fifth wave)}.

48. The system of claim 46 wherein the criterion for detecting a predefined type of wave transition among a first wave, a second wave, a third wave, a fourth wave, a fifth wave, and a sixth wave comprises identifying the largest transition between a first wave and a second wave and determining whether a set of first, second, third, fourth, fifth, and sixth waves adhere to a formula:

height (first wave to second wave) > {height (second wave to third wave),
height (third wave to fourth wave), height (fourth wave to fifth wave), height (fifth wave to sixth wave)}.

49. The system of claim 33 wherein the removal of motion artifacts from the photo-plethysmographic signal comprises classifying a first primary-harmonic set with a first highest score_j as a likely cardiac geometry and classifying a second primary-harmonic set with a highest score_k as a likely motion geometry.

50. The system of claim 33 wherein the removal of motion artifacts from the photo-plethysmographic signal comprises classifying a first primary-harmonic set with a first highest score_j as a likely cardiac geometry and classifying a second primary-harmonic set with a highest score_k as a likely motion geometry based upon a wavelet analysis.

* * * * *

专利名称(译)	使用光 - 体积描记图的二阶导数和快速傅里叶变换将运动与心脏信号分离		
公开(公告)号	US20030225337A1	公开(公告)日	2003-12-04
申请号	US10/356697	申请日	2003-01-30
[标]申请(专利权)人(译)	DOLPHIN MEDICAL		
申请(专利权)人(译)	DOLPHIN MEDICAL , INC.		
[标]发明人	SCHARF JOHN E SHAH BHAVIN B		
发明人	SCHARF, JOHN E. SHAH, BHAVIN B.		
IPC分类号	A61B5/00 A61B5/02		
CPC分类号	A61B5/14551 A61B5/7207 A61B5/726 A61B5/7253 A61B5/7257 A61B5/7239		
优先权	60/354601 2002-01-31 US		
其他公开文献	US7020507		
外部链接	Espacenet USPTO		

摘要(译)

本发明涉及一种用于确定能够从生理信号中去除运动伪影的生理参数的脉搏血氧测定系统，包括硬件子系统和软件子系统。软件子系统与硬件子系统结合使用，以执行从光电体积描记数据中去除多个运动伪影的方法，并从数据中获得至少一个生理参数的测量值。该方法包括获取原始光体积描记数据，将数据变换到频域，分析变换后的数据以定位一系列候选心脏谱峰（主要谐波），重建a时域中的光 - 体积描记信号仅具有候选心脏谱峰（主要谐波），计算重建的光 - 体积描记信号的二阶导数，分析候选二阶导数光 - 体积描记信号以确定是否存在或存在心脏生理信号特征，并最终基于二阶导数评分系统从一系列潜在心脏谱峰（主要谐波）中选择最佳生理候选者。该评分系统优选地基于二阶导数处理分析，但是可以使用第一，第三，第四或其他类似的导数处理同等地应用。分析。

