



US006549756B1

(12) **United States Patent**
Engstrom

(10) **Patent No.:** **US 6,549,756 B1**
(45) **Date of Patent:** **Apr. 15, 2003**

(54) **MOBILE DIGITAL COMMUNICATION/
COMPUTING DEVICE INCLUDING HEART
RATE MONITOR**

4,867,442 A	*	9/1989	Matthews	600/502 X
4,938,228 A	*	7/1990	Righter et al.	600/503
5,670,944 A	*	9/1997	Myllymaki	340/573.1
5,827,179 A	*	10/1998	Lichter et al.	600/481 X
6,100,806 A	*	8/2000	Gaukel	340/573.4

(75) Inventor: **Eric Engstrom**, Kirkland, WA (US)

* cited by examiner

(73) Assignee: **Xoucin, Inc.**, Kirkland, WA (US)

(*) Notice: Subject to any disclaimer, the term of this patent is extended or adjusted under 35 U.S.C. 154(b) by 0 days.

Primary Examiner—William Trost
Assistant Examiner—Philip J. Sobutka
(74) *Attorney, Agent, or Firm*—Schwabe, Williamson & Wyatt, P.C.

(21) Appl. No.: **09/690,679**

(57) **ABSTRACT**

(22) Filed: **Oct. 16, 2000**

(51) **Int. Cl.**⁷ **H04B 7/00**

A mobile client device, such as a wireless mobile or a palm sized personal digital assistant, is provided with a number of sensors and companion programming instructions/circuitry to generate a heart rate reading for a user holding the device. The sensors are used to sense blood flow rate of the user. The sensors are advantageously disposed in a distributed manner, in a number of locations of the mobile client device. The programming instructions/circuitry are used to infer a holding pattern of the device, and generate the heart rate reading, using a subset of the sensed data, based at least in part on the inferred holding pattern.

(52) **U.S. Cl.** **455/66; 455/566; 455/575; 455/90; 455/100; 455/128; 455/351; 600/509; 600/513; 600/519**

(58) **Field of Search** **455/66, 550, 556, 455/557, 575, 100, 90, 128, 344, 351; 600/502, 503, 481, 493, 519, 504, 513, 509**

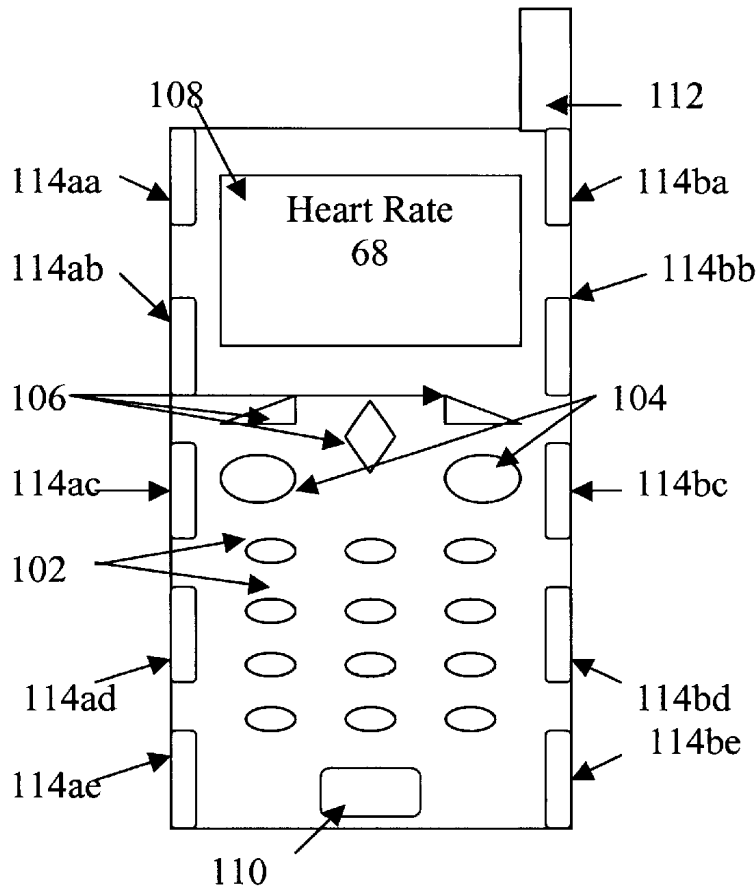
(56) **References Cited**

U.S. PATENT DOCUMENTS

4,320,767 A * 3/1982 Villa-Real 600/493

24 Claims, 7 Drawing Sheets

100



100

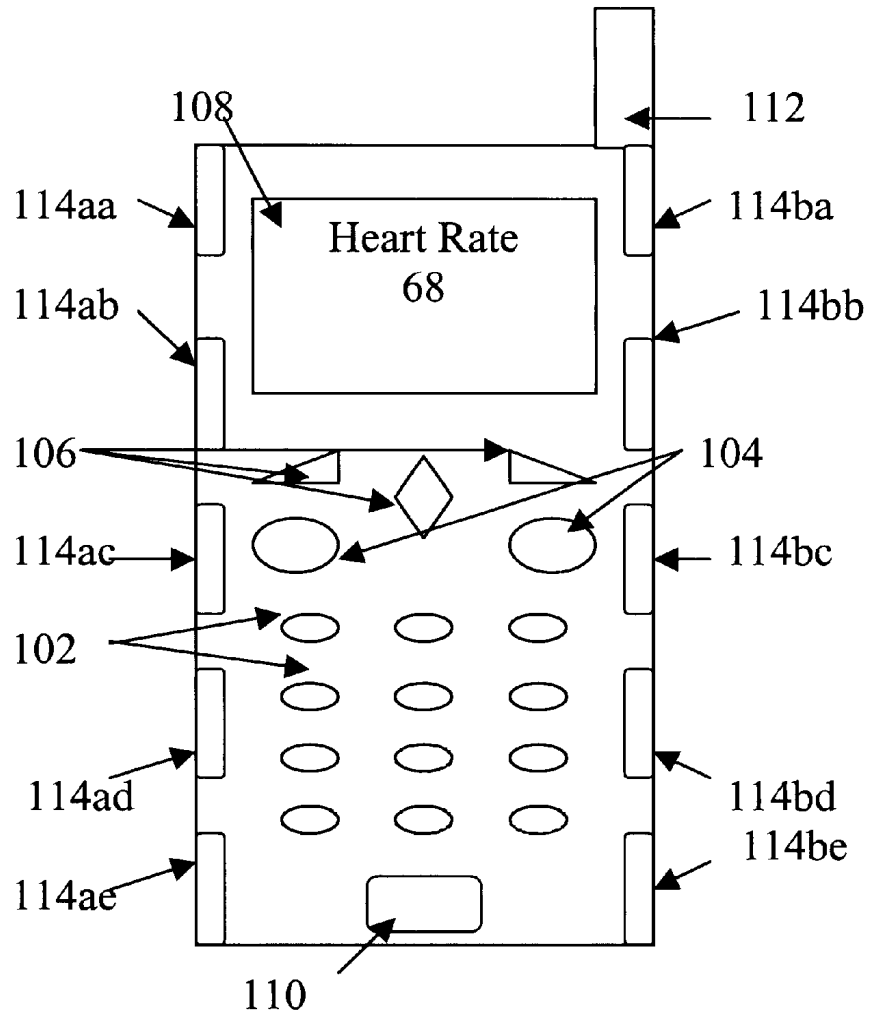


Figure 1

200

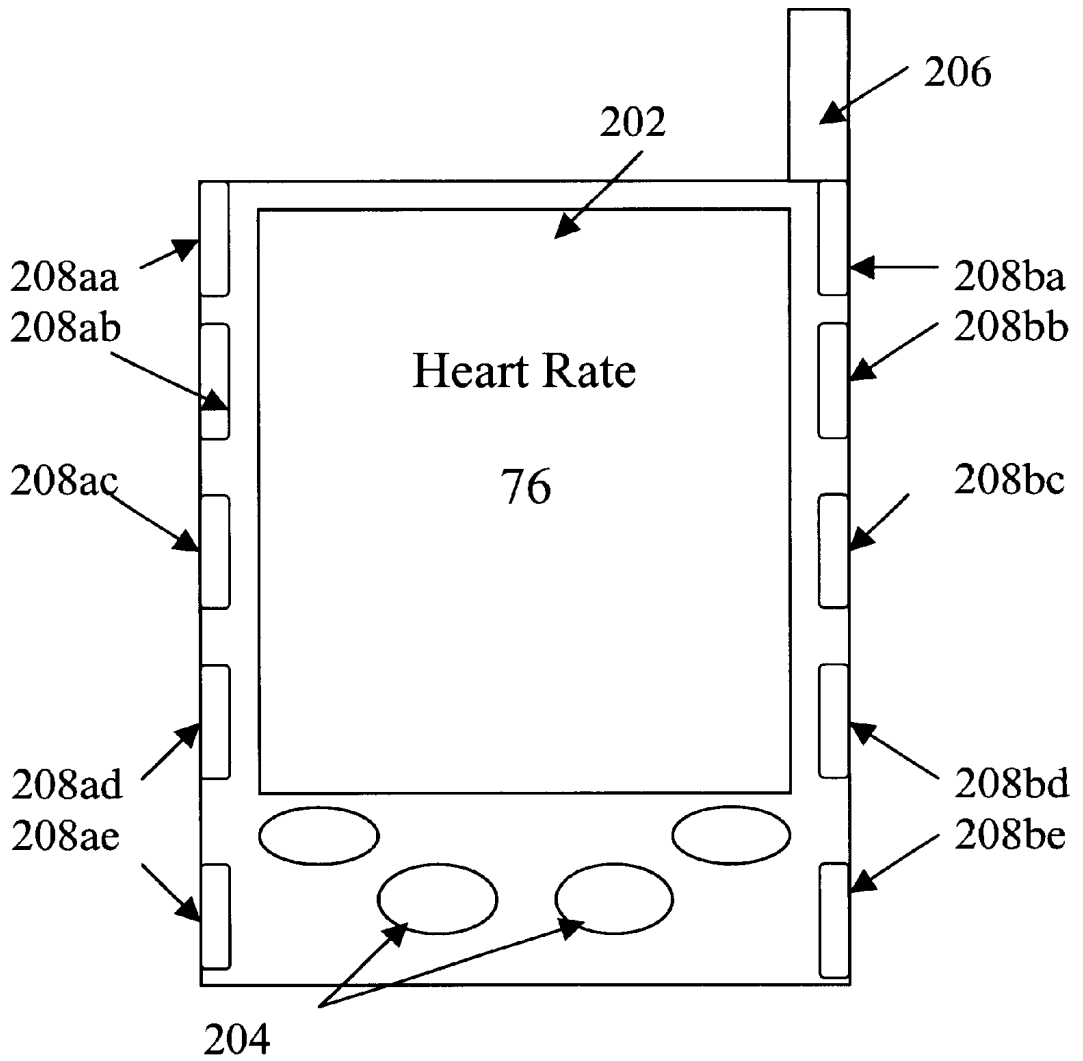


Figure 2

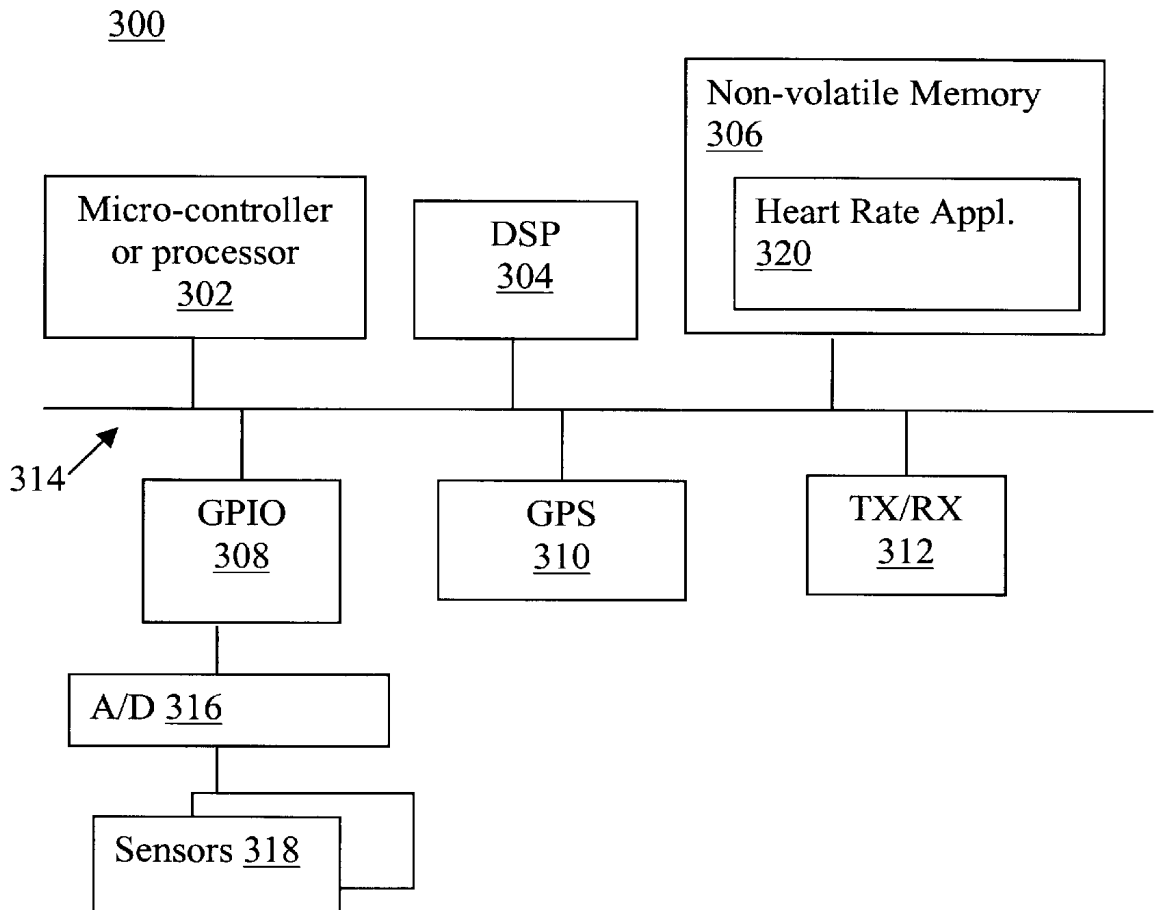


Figure 3

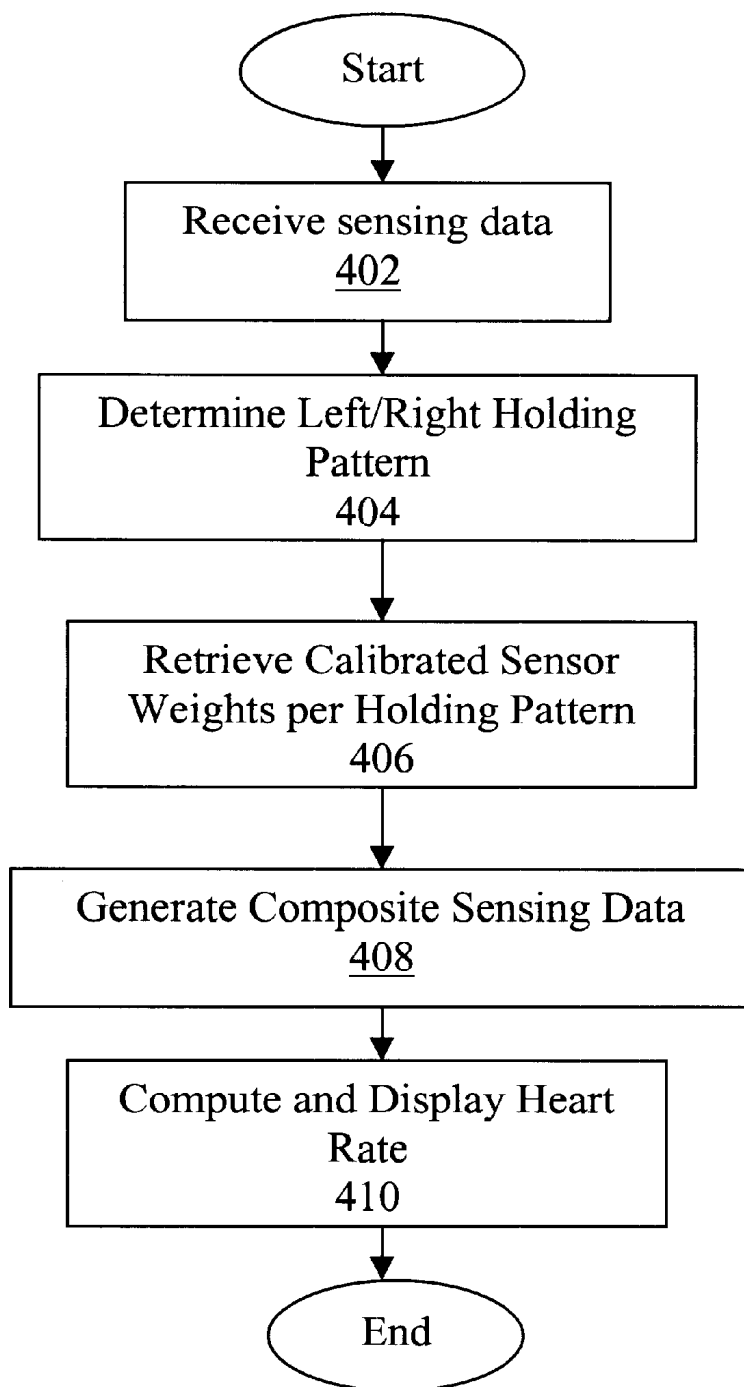


Figure 4

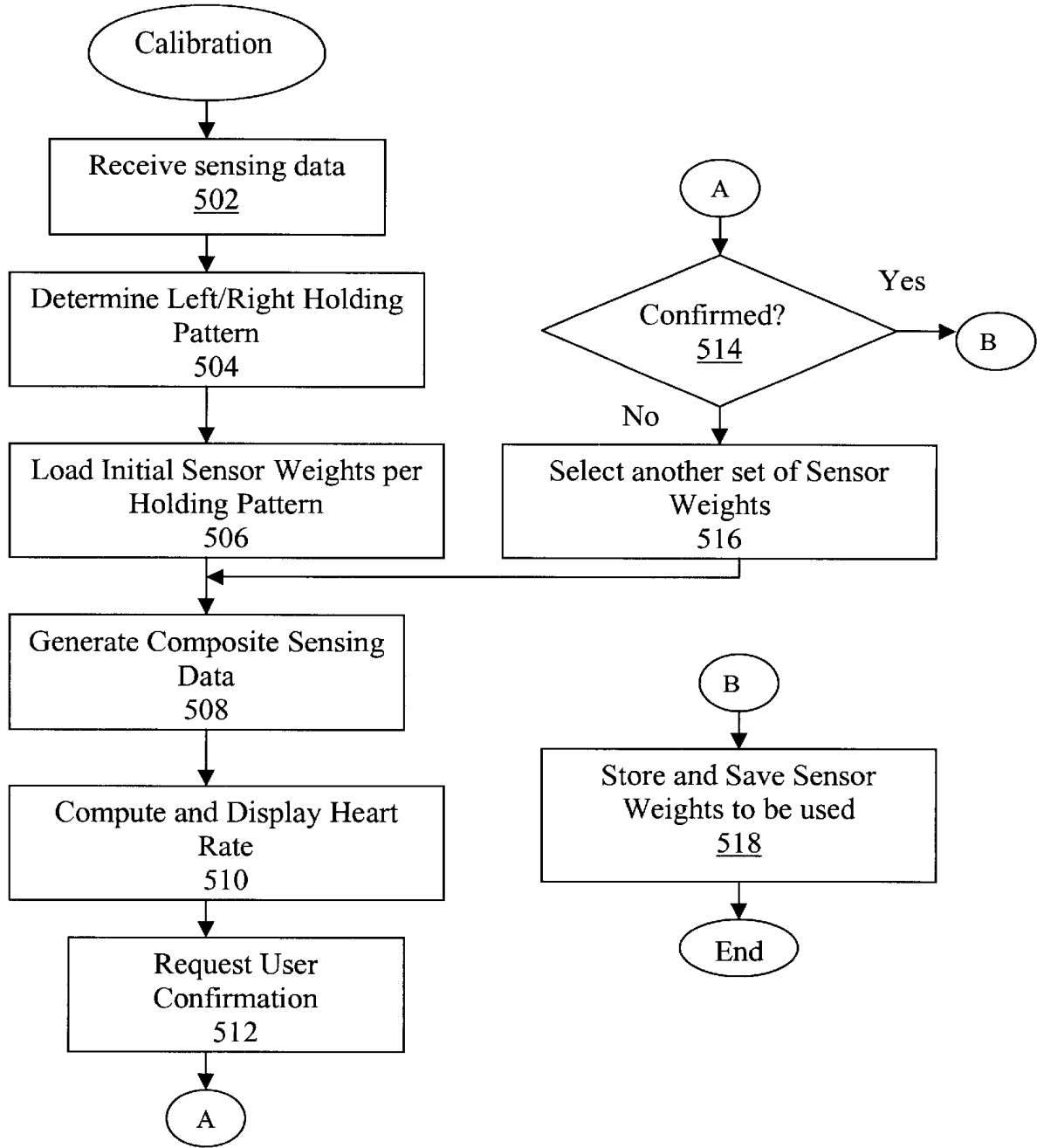


Figure 5

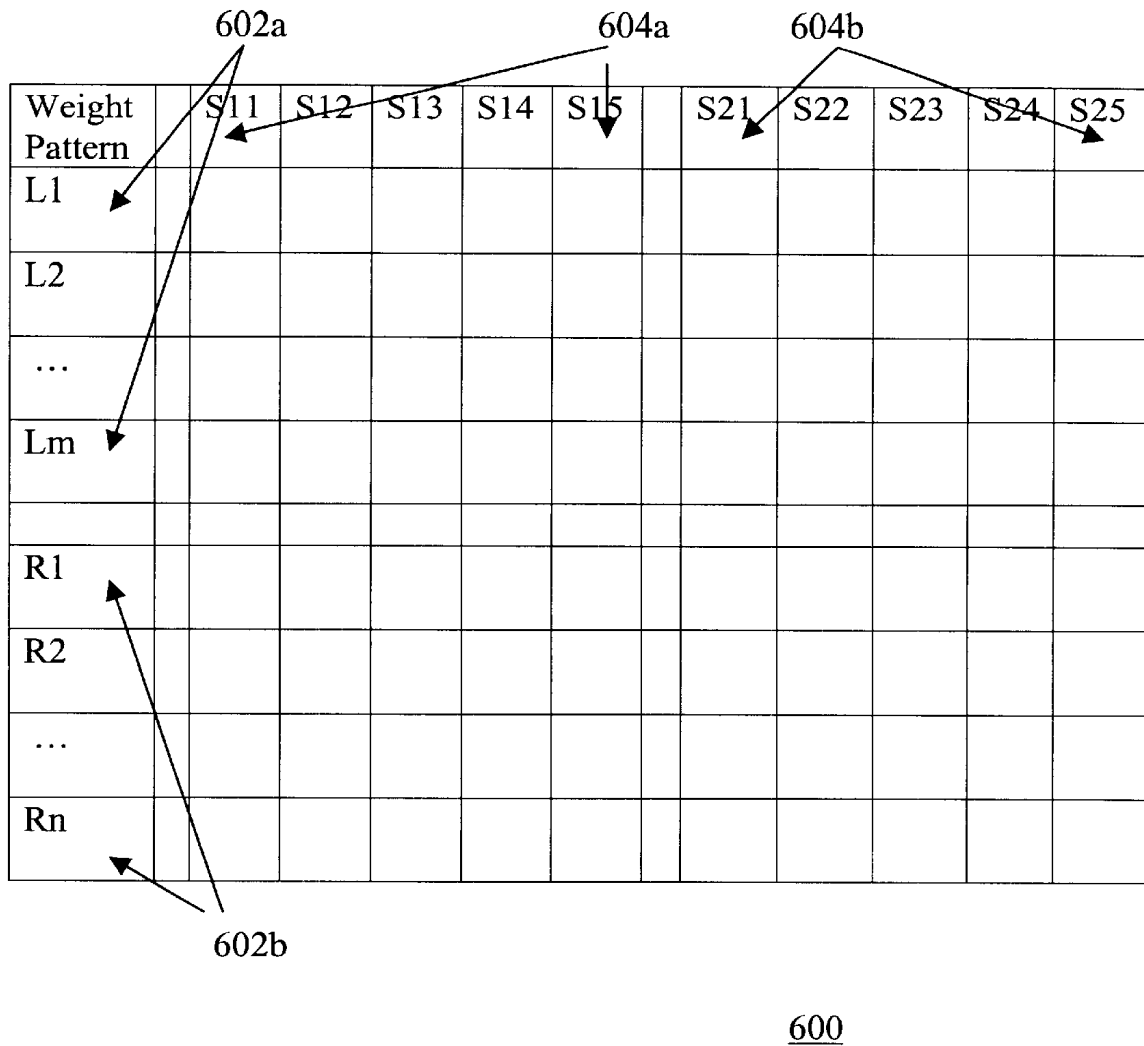


Figure 6

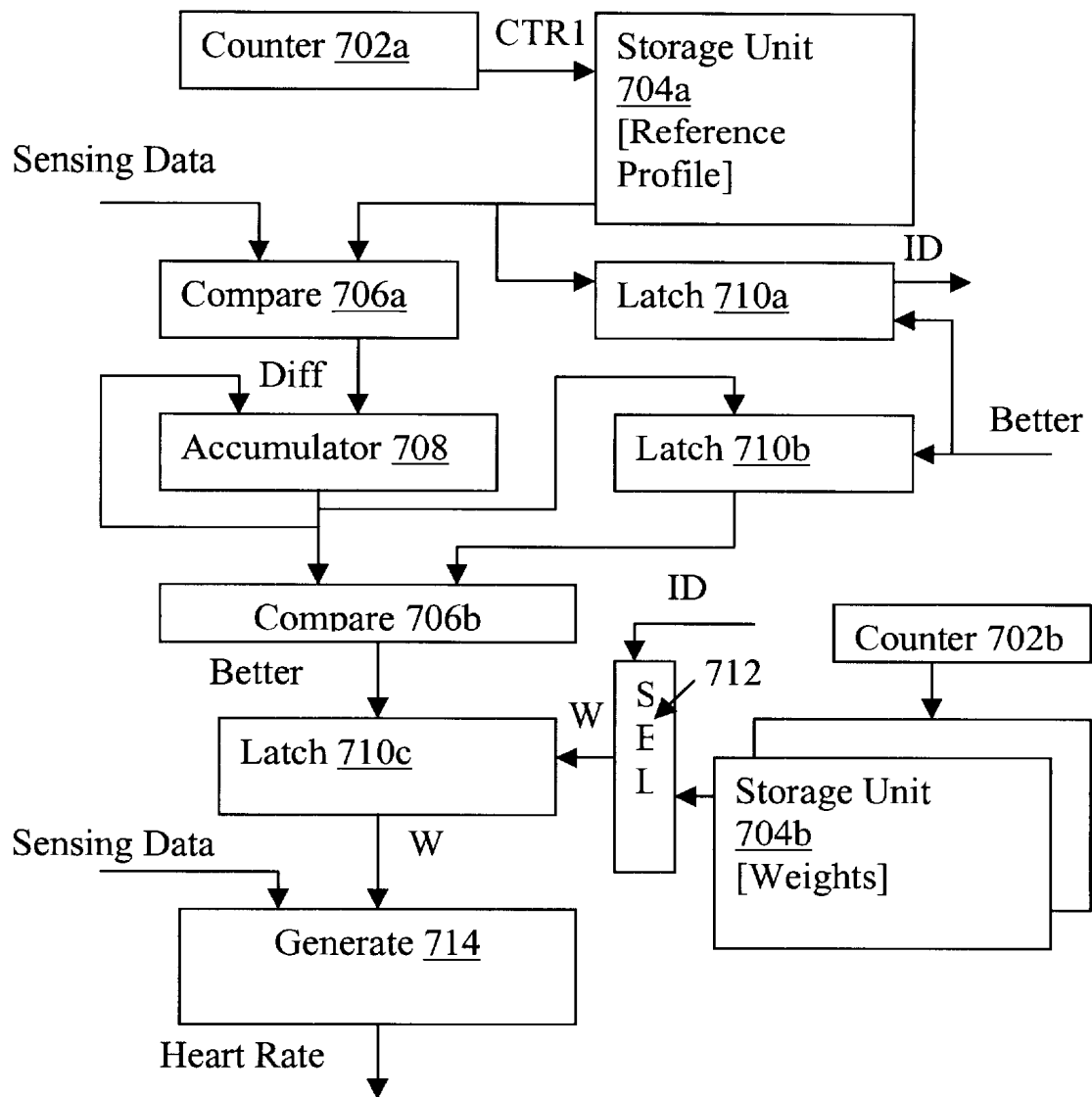


Figure 7

1

MOBILE DIGITAL COMMUNICATION/ COMPUTING DEVICE INCLUDING HEART RATE MONITOR

BACKGROUND OF THE INVENTION

1. Field of the Invention

The present invention relates to the fields of mobile communication and/or computing devices. More specifically, the present invention relates to the incorporation of bio-metric sensors/monitors in these devices.

2. Background Information

Advances in computer and telecommunication technology have led to wide spread adoption of mobile client devices, from the basic wireless telephones to function rich notebook sized computers that pack the power of a desktop computer. In between are web enabled wireless telephones, palmed sized personal digital assistants (PDA) and so forth. As a result, professionals are virtually always only a few clicks or buttons away from their home offices.

While these capabilities have increased the mobility of modern professionals, they also have contributed to longer work hours and increased stress for the professionals. However, as society in general becomes more health conscious, notwithstanding their busy work schedules, more and more professionals are allocating time to exercise or participate in physical activities. This trend has not gone unnoticed to the application developers, which as a result have become increasingly interested in incorporating bio-metric data in their applications.

Among the modern mobile client devices, unquestionably, wireless mobiles and palm sized PDAs have emerged as the two most popular mobile client devices for modern professionals. Thus, increasingly, artesian are interested in being able to collect bio-metric data using these devices.

SUMMARY OF THE INVENTION

A mobile client device, such as a wireless mobile phone or a palm sized personal digital assistant, is provided with a number of sensors and companion programming instructions/circuitry to generate a heart rate reading for a user holding the device. The sensors are used to sense blood flow rate of the user. The sensors are advantageously disposed in a distributed manner, in a number of locations of the mobile client device, to allow collection of multiple blood flow rate readings of the user. The programming instructions/circuitry are used to infer a holding pattern of the device, and generate the heart rate reading using a subset of the sensed data, based at least in part on the inferred holding pattern.

In one embodiment, the sensors are distributively disposed along two edges of the mobile client device, to facilitate collection of blood flow rate data for at least a left hand holding pattern and a right hand holding pattern. In one embodiment, the holding pattern is inferred by comparing the sensed data with one or more reference characteristic profiles. In one embodiment, a set of weights is also selected to normalize the employed sensed data.

BRIEF DESCRIPTION OF DRAWINGS

The present invention will be described by way of exemplary embodiments, but not limitations, illustrated in the accompanying drawings in which like references denote similar elements, and in which:

2

FIG. 1 illustrates a front view of a wireless mobile phone incorporated with heart rate sensors in accordance with one embodiment;

FIG. 2 illustrates a front view of a palm sized PDA incorporated with heart rate sensors in accordance with another embodiment;

FIG. 3 illustrates an architectural view of the wireless mobile phone and the PDA of FIG. 1-2, in accordance with one embodiment;

FIGS. 4-5 illustrate the operational flow of the relevant aspects of the heart rate application of FIG. 3, in accordance with one embodiment;

FIG. 6 illustrates an example data structure suitable for use to store the weight data associated with generating the heart rate for practicing the present invention, in accordance with one embodiment; and

FIG. 7 illustrates a block diagram view of a circuit suitable for use to practice the present invention, in accordance with one embodiment.

DETAILED DESCRIPTION OF THE INVENTION

In the following description, various aspects of the present invention will be described. However, it will be apparent to those skilled in the art that the present invention may be practiced with only some or all aspects of the present invention. For purposes of explanation, specific numbers, materials and configurations are set forth in order to provide a thorough understanding of the present invention. However, it will also be apparent to one skilled in the art that the present invention may be practiced without the specific details. In other instances, well known features are omitted or simplified in order not to obscure the present invention.

Parts of the description will be presented using terms such as end-user interfaces, buttons, and so forth, commonly employed by those skilled in the art to convey the substance of their work to others skilled in the art. Parts of the description will be presented in terms of operations performed by a computing device, using terms such as sensing, converting, comparing, storing, generating and so forth. As well understood by those skilled in the art, these quantities and operations take the form of electrical, magnetic, or optical signals capable of being stored, transferred, combined, and otherwise manipulated through mechanical and electrical components of a digital system. The term digital system includes general purpose as well as special purpose computing machines, systems, and the like, that are standalone, adjunct or embedded.

Various operations will be described in turn in a manner that is most helpful in understanding the present invention, however, the order of description should not be construed as to imply that these operations are necessarily order dependent. Furthermore, the phrase "in one embodiment" will be used repeatedly, however the phrase does not necessarily refer to the same embodiment, although it may.

Referring now to FIG. 1, wherein a front view of a wireless mobile phone, incorporated with the teachings of the present invention, in accordance with one embodiment, is shown. As illustrated, similar to a conventional wireless mobile phone, wireless mobile phone **100** includes key pad **102**, "talk" and "end talk" buttons **104**, cursor control buttons **106**, display screen **108** and antenna **112**. However, unlike prior art wireless mobile phones, wireless mobile phone **100** is equipped with a number of sensors **114aa-114ae** and **114ba-114be** to sense a number of blood

flow rate readings of a user holding wireless mobile phone **100**. Wireless mobile phone **100** is also provided with either companion programming instructions or circuitry (or combination thereof) to generate a heart rate reading for the user using the data sensed by sensors **114aa–114ae** and **114ba–114be**.

In accordance with the present invention, sensors **114aa–114ae** and **114ba–114be** are advantageously disposed in a distributed manner, at a number of locations of wireless mobile phone **100**. For the illustrated embodiments, sensors **114aa–114ae** and **114ba–114be** are distributively disposed along the two side edges of wireless mobile phone **100**. As a result, the blood flow rate of the user may be sensed at multiple points, more importantly, at different combinations of these points, depending on how mobile phone **100** is held by the user.

For example, if mobile phone **100** is held in a left hand position, the user's thumb and the lower left region of the user's palm are more likely to be in contact with sensors **114aa**, **114ad** and **114ae**, giving three reasonably accurate readings of the user's blood flow rate, while sensors **114ab** and **114ac** most likely will not make very good contact with the user's palm or fingers, yielding unreliable readings of the user's blood flow rate. At the same time, the user's remaining four fingers are more likely to be in contact with sensors **114ba–114bd**, yielding reliable readings, with sensor **114be** most likely not making very good contact with the user's palm or fingers, yielding unreliable readings. On the other hand, if mobile phone **100** is held in a right hand position, the user's thumb and the lower right region of the user's palm are more likely to be in contact with sensors **114ba**, **114bd** and **114be**, yielding more reliable readings, with sensors **114bb** and **114bc** most likely not making very good contact with the user's palm or fingers, yielding unreliable readings. At the same time, the user's remaining four fingers are more likely to be in contact with sensors **114aa–114ad**, yielding reliable readings, with sensor **114ae** most likely not making very good contact with the user's palm or fingers, yielding unreliable readings.

Thus, it can be seen, a user holding pattern (of the mobile phone **100**) can be inferred from the relative strength of the sensing signals generated by the distributively disposed sensors **114aa–114ae** and **114ba–114be**. The companion programming instructions/circuitry are designed to do just that, i.e. infer the holding pattern based on the relative strength of the sensing signals. In one embodiment, the companion programming instructions/circuitry make the inference using reference characteristic profiles, to be described more fully below. In turn, the companion programming instructions/circuitry generate the heart rate reading using a subset of the sensing data, based at least in part on the inferred holding pattern. In one embodiment, the employed sensed data are also "normalized" to reflect the different strength a user may employ in holding mobile phone **100**.

For the illustrated embodiment, mobile phone **100** also includes a dedicated service request button **110** to allow the roving user to request for services from different locations or have location information of the user be selectively providing to various recipients. Requesting for service by a roving user is the subject of co-pending U.S. Patent Application, <number to be assigned>, entitled "Method and Apparatus for Roving Request for Service", filed contemporaneously, and having at least partial common inventorship with the present application. Selective provision of location information of the user to various recipients is the subject matter of co-pending U.S. Patent Application, <number to be

assigned>, entitled "Method and Apparatus for People to Simply Communicate Their Location and Activity, also filed contemporaneously, and having at least partial common inventorship with the present application. Except for the recursive incorporation, both of these applications are hereby fully incorporated by reference.

FIG. 2 illustrates a front view of a palm sized PDA, incorporated with the teachings of the present invention, in accordance with one embodiment. As illustrated, similar to a conventional PDA, PDA **200** includes display screen **202**, function buttons **204**, and antenna **206**. However, unlike prior art PDA, but similar to wireless mobile phone **100**, PDA **200** is equipped with a number of sensors **208aa–208ae** and **208ba–208be** to sense the blood flow rate of a user holding PDA **200**. Also similar to wireless mobile phone **100**, PDA **200** is also provided with either programming instructions or circuitry (or combination thereof) to generate a heart rate reading for the user, using the data sensed by sensors **208aa–208ae** and **208ba–208be**.

As wireless mobile phone **100**, sensors **208aa–208ae** and **208ba–208be** are advantageously disposed in a distributed manner, at a number of locations of PDA **200**. For the illustrated embodiments, sensors **208aa–208ae** and **208ba–208be** are distributively disposed along the two side edges of PDA **200**. As a result, the blood flow rate of the user may also be sensed at multiple points, more importantly, at different combinations of these points, depending on how PDA **200** is held by the user. As described earlier, the companion programming instructions/circuitry are designed to infer the holding pattern based on the relative strength of the sensing signals. In turn, the companion programming instructions/circuitry generate the heart rate reading using a subset of the sensing data, based at least in part on the inferred holding pattern.

Similar to mobile phone **100**, PDA **200** may be equipped with a roving request for service application or a location information distribution application. If so, a service request or location information distribution "home" page may be retrieved from a messaging service, and rendered on display screen **202**. The service request/location information distribution "home" page may include a "drop down" menu of services available for request, request button, current location and status display. As a result, a user of PDA **200** may also request anyone of the services included in the "drop down" menu, such as calling a taxi, ordering a take out, buying some local wines, and the like, or request the user's current location information being provided to a number of selected recipients, such as the user's parent, friends, and so forth, as described in the co-pending incorporated by reference applications.

FIG. 3 illustrates an architecture view of a mobile client device **300**, which is intended to be representative of mobile phone **100** and PDA **200**, in accordance with one embodiment. As illustrated, mobile client device **300** includes elements found in conventional mobile client devices, such as micro-controller/processor **302**, digital signal processor (DSP) **304**, non-volatile memory **306**, general purpose input/output (GPIO) interface **308**, and transmit/receive (TX/RX) **312**. For the illustrated embodiment, mobile client device **300** also advantageously includes geographic positioning system **310**, which is equipped to provide a user of mobile client device **300** his/her current location. [However, the provision of GPS **310**, while desirable, is not essential to the practice of the present invention.] Further, mobile client device **300** is provided with sensors **318** (representative of earlier described sensors **114aa–114ae** and **114ba–114be** and sensors **208aa–208ae** and **208ba–208be**), A/D converter

316, and heart rate application 320 incorporated with the teachings of the present invention.

Selected ones of sensors 318 (depending a user's holding pattern) make contact with the user's palm or fingers, and generate electrical signals proportional to the blood flow rate detected by the sensors. Anyone of a number of such known sensors may be employed. A/D converter 316 converts the analog electrical signals into digital data. Similarly, anyone of a number of such known A/D converters may be employed. Heart rate application 320 in turn infers the holding pattern, and generate the heart rate accordingly, to be described more fully below. In alternate embodiments, in lieu of heart rate application 320, mobile client device 300 may be provided with dedicated circuitry for performing the holding pattern inference and heart rate generation operations (also to be described in more details below, referencing FIG. 7).

Except for the distributive employment of the sensors, and heart rate generation application 320 (or its circuitry equivalent), the functions and constitutions of the various enumerated elements of FIG. 3 are known in the art, accordingly will not be otherwise further described either.

FIG. 4 illustrates the operational flow of the relevant aspects of the heart rate application of the present invention, in a normal mode of operation, in accordance with one embodiment. As illustrated, at block 402, heart rate application 320 receives sensing data from the distributively disposed sensors. At block 404, heart rate application 320 examines the received sensing data and infers a holding pattern of the mobile client device. In one embodiment, heart rate application 320 infers at least whether the mobile client device is being held by the user in a left hand or a right hand position. As alluded earlier, in one embodiment, heart rate application 320 makes the determination by comparing the received sensing data against a number of reference characteristic profiles, depicting the sensing signal characteristics for typical users holding the mobile client device with their left or right hands. [Recall that different sensors are expected to have "lower strength" sensing signals for different holding patterns.] At block 406, for the illustrated embodiment, heart rate application 320 further loads a set of calibrated weight corresponding to the determined holding pattern to normalize the subset of sensing data to be used (to reflect the different pressures different users may applied to the sensors when holding the mobile client device). [Recall from earlier description that the unused sensing data are the data generated by sensors that are not expected to make good contact with the user for the particular holding pattern.] At block 408, heart rate application 320 generates a composite signal, averaging the normalized sensing data. In alternate embodiments, other factors may also be employed to "smooth" the sensing data. At block 410, heart rate application 320 generates the heart rate reading based on the composite averaged reading (i.e. converting the measured flow rate represented by the signal rate into heart rate).

FIG. 5 illustrates the operational flow of the relevant aspects of the heart rate application of the present invention, in a calibration mode of operation, in accordance with one embodiment. At blocks 502-510, heart rate application 320 essentially performs the same operations as earlier described for blocks 402-410, when operating in the normal mode, except in block 506, in lieu of loading a calibrated set of weight as in the case of block 406, heart rate application 320 loads an initial set of "trial" weights. At block 512, heart rate application 320 asks the user to confirm if the generated reading using the "trial" weights to normalize the sensing data appear to be sufficiently accurate. The present invention

contemplates that the user has a second independent method of learning about the user's heart rate, to allow the user to calibrate the present invention. At block 514, heart rate application 320 determines if the user confirms the computed heart rate using the "trial" weights is "sufficiently" accurate. If it is not, heart rate application 320 fetches another set of "trial" weights, and re-performs blocks 508-512. The process continues until eventually the user confirms that the generated heart rate is sufficiently accurate. At such time, heart rate application 320 saves the last set of "trial" weights as the "calibrated" weights for the particular holding pattern. The process may be repeated for different holding patterns. Further, in alternate embodiments, in lieu to loading different sets of "trial" weights, the initial set of "trial" weight may be systematically altered (i.e. increased or decreased) to locate the optimal normalization weights.

FIG. 6 illustrates a data structure suitable for use to store the weight data for practicing of the present invention. As illustrated, table 600 includes a number of weight sets for left hand holding patterns 602a and a number of weight sets for right hand holding patterns 602b. Each weight set 602a or 602b, includes a number of weights 604a for left side sensors 114aa-114ae or 208aa-208ae, and a number of weights 604b for right side sensors 114ba-114be or 208ba-208be. In one embodiment, once calibrated, the "optimal" weight set identifiers for the left and right hand holding patterns are saved in a working area or alternatively, in a configuration register.

FIG. 7 illustrates a block diagram view of an equivalent circuitry suitable for use to practice the present invention, in accordance with one embodiment. Circuitry 700 comprises counters 702a-702b, storage units 704a-704b, comparators 706a-706b, accumulator 708, latches 710a-710c, selector 712 and generator 714, coupled to each other as shown. Counter 702a is used to generate a pointer to storage units 704a to cause storage units 704a to output a reference sensing data characteristic profile. Comparator 706a compares the sensing data to the reference characteristic profile. Accumulator 708 accumulates the differences between the sensing data and reference data. Comparator 706b determines if the accumulated difference is smaller than the previously known smallest accumulated difference. If not, after a pre-determined number of clocks, counter 702a advances, causing another reference characteristic profile to be output for analysis. Eventually, after a predetermined number of trials or upon convergence towards a "best fit" reference characteristic profile, the "best" difference is latched into latch 710b, and the identifier of the characteristic profile is latched into latch 710a.

Thereafter, in like manner, counter 702b successively generates a series of pointers to cause different weight sets to be successively output for different holding patterns for analysis. Latched identifier of the most "fitting" reference characteristic profile causes selector 712 to select the appropriate trial weight sets corresponding to the inferred holding pattern to be examined. The selected trial weight set is then latched and used to normalize the sensing data, and upon normalization, compute the heart rate.

The computed heart rate may then be presented to the user for confirmation. The process may be repeated if necessary. Eventually, upon confirmation, the calibrated weight set may then be used during normal mode of operation.

Accordingly, a mobile client device having integrated capabilities for also generating a heart rate reading for a user holding the mobile client device has been described. While the present invention has been described in terms of the

above illustrated embodiments, those skilled in the art will recognize that the invention is not limited to the embodiments described. The present invention can be practiced with modification and alteration within the spirit and scope of the appended claims. Thus, the description is to be regarded as illustrative instead of restrictive on the present invention.

What is claimed is:

1. A wireless mobile phone comprising:

a palm-sized body;

a transceiver for transmitting and receiving signals, disposed inside said palm-sized body;

a plurality of sensors to sense and output blood flow rate data of a user holding the wireless mobile phone with one of the user's hands, with the sensors being distributively disposed at a plurality of locations of the palm-sized body to facilitate having at least a subset of said sensors to contact the holder user's holding hand including at least one of the holding hand's finger and palm; and

means disposed within said palm-sized body and coupled to the sensors to infer a manner the wireless mobile phone is being held by one of the user's hands, as characterized by the sensor contact configuration of the holding hand's finger/palm, and to generate a heart rate of the user using a subset of the blood flow rate data output by said sensors, based at least in part on the inferred hand holding manner characterized by the sensor contact configuration of the holding hand's finger/palm.

2. The wireless mobile phone of claim 1, wherein the sensors comprise a first and a second subset disposed along a first and a second edge of said palm-sized body of said wireless mobile phone to allow different subsets of said sensors to be primarily relied upon for sensing data for different potential hand holding manners of said wireless mobile phone.

3. The wireless mobile phone of claim 2, wherein said subsets comprise a first and a second subset to be primarily relied upon for sensing data for a left hand and a right hand holding manner.

4. The wireless mobile phone of claim 1, wherein said means comprises means to compare sensing data being received from said sensors against a plurality of reference characteristic profiles.

5. The wireless mobile phone of claim 1, wherein said means comprises means to select a set of weights to be applied to normalize sensing data received from said sensors.

6. The wireless mobile phone of claim 1, wherein said means comprises means to request a user to confirm a generated heart rate in a calibration mode of operation.

7. The wireless mobile phone of claim 1, wherein said means comprises a plurality of programming instructions designed to perform said inference of a hand holding manner of the wireless mobile phone and said generation of a heart rate of the user.

8. The wireless mobile phone of claim 1, wherein said means comprises circuitry for performing said inference of a hand holding manner of the wireless mobile phone and said generation of a heart rate of the user.

9. A personal digital assistant (PDA) comprising:

a palm-sized body;

memory disposed within said palm-sized body;

a processor disposed with said palm-sized body and coupled to the memory;

a plurality of sensors to sense and output blood flow rate data of a user holding the PDA with one of the user's hands, with the sensors being distributively disposed at a plurality of locations of the palm-sized body to facilitate having at least a subset of said sensors to contact the holder user's holding hand including at least one of the holding hand's finger and palm; and

means disposed within said palm-sized body and coupled to the sensors to infer a manner of the PDA is being held by one of the user's hand, as characterized by the sensor contact configuration of the holding hand's finger/palm, and to generate a heart rate of the user using a subset of the blood flow rate data output by said sensors, based at least in part on the inferred hand holding manner characterized by the holding hand's finger/palm configuration characterized by the sensor contact configuration of the holding hand's finger/palm.

10. The PDA of claim 9, wherein the sensors comprise a first and a second subset disposed along a first and a second edge of said palm-sized body of said PDA to allow different subsets of said sensors to be primarily relied upon for sensing data for different potential hand holding manners of said PDA.

11. The PDA of claim 10, wherein said subsets comprise a first and a second subset to be primarily relied upon for sensing data for a left hand and a right hand holding manner.

12. The PDA of claim 9, wherein said means comprises means to compare sensing data being received from said sensors against a plurality of-reference characteristic profiles.

13. The PDA of claim 9, wherein said means comprises means to select a set of weights to be applied to normalize sensing data received from said sensors.

14. The PDA of claim 9, wherein said means comprises means to request a user to confirm a generated heart rate in a calibration mode of operation.

15. The PDA of claim 9, wherein said means comprises a plurality of programming instructions designed to perform said inference of a hand holding manner of the PDA and said generation of a heart rate of the user.

16. The PDA of claim 9, wherein said means comprises circuitry for performing said inference of a hand holding manner of the PDA and said generation of a heart rate of the user.

17. A mobile client device comprising:

a palm-sized body;

a plurality of sensors to sense and output blood flow rate data of a user holding the mobile client device with one of the user's hands, with the sensors being distributively disposed at a plurality of locations of the palm-sized body to facilitate having at least a subset of said sensors to be in contact with the holder user's holding hand including at least one of the holding hand's finger and palm; and

means disposed within said palm-sized body and coupled to the sensors to infer a manner the mobile client device is being held by one of the user's hands, as characterized by the sensor contact configuration of the holding hand's finger/palm, and to generate a heart rate of the user using a subset of the blood flow rate data output by said sensors, based at least in part on the inferred hand holding manner characterized by the sensor contact configuration of the holding hand's finger/palm.

18. The mobile client device of claim 17, wherein the sensors comprise a first and a second subset disposed along a first and a second edge of said palm-sized body of said

mobile client device to allow different subsets of said sensors to be primarily relied upon for sensing data for different potential hand holding manners of said mobile client device.

19. The mobile client device of claim 17, wherein said means comprises means to compare sensing data being received from said sensors against a plurality of reference sensing data profiles.

20. The mobile client device of claim 17, wherein said means comprises means to select a set of weights to be applied to normalize sensing data received from said sensors.

21. A mobile client device comprising:

a palm-sized body;

a plurality of sensors to sense and output bio-metric data of a user holding the mobile client device with one of the user's hands, with the sensors being distributively disposed at a plurality of locations of the palm-sized body to facilitate having at least a subset of said sensors to be in contact with the holder user's holding hand including at least one of the holding hand's finger and palm; and

means disposed within said palm-sized body and coupled to the sensors to infer a manner the mobile client device

is being held by one of the user's hands, as characterized by the sensor contact configuration of the holding hand's finger/palm, and to generate measurement of at least one bio-metric of the user using a subset of the bio-metric data output by said sensors, based at least in part on the inferred hand holding manner characterized by the sensor contact configuration of the holding hand's finger/palm.

22. The mobile client device of claim 21, wherein the sensors comprise a first and a second subset disposed along a first and a second edge of said palm-sized body of said mobile client device to allow different subsets of said sensors to be primarily relied upon for sensing data for different potential hand holding manners of said mobile client device.

23. The mobile client device of claim 21, wherein said means comprises means to compare sensing data being received from said sensors against a plurality of reference sensing data profiles.

24. The mobile client device of claim 21, wherein said means comprises means to select a set of weights to be applied to normalize sensing data received from said sensors.

* * * * *

专利名称(译)	包括心率监视器的移动数字通信/计算设备		
公开(公告)号	US6549756	公开(公告)日	2003-04-15
申请号	US09/690679	申请日	2000-10-16
[标]申请(专利权)人(译)	XOUCIN		
申请(专利权)人(译)	XOUCIN INC.		
当前申请(专利权)人(译)	HALL 铝有限责任公司		
[标]发明人	ENGSTROM ERIC		
发明人	ENGSTROM, ERIC		
IPC分类号	A61B5/024 A61B5/026 A61B5/00 H04B1/38 H04B7/00		
CPC分类号	A61B5/02438 A61B5/6887 A61B5/0002 H04B1/3805 A61B2560/0462 A61B5/026 A61B5/6898		
审查员(译)	TROST , WILLIAM		
外部链接	Espacenet	USPTO	

摘要(译)

诸如无线移动或手掌大小的个人数字助理的移动客户端设备被提供有多个传感器和伴随编程指令/电路, 以为保持该设备的用户生成心率读数。传感器用于感测用户的血液流速。传感器有利地以分布方式设置在移动客户端设备的多个位置中。编程指令/电路用于至少部分地基于所推断的保持模式来推断设备的保持模式, 并且使用感测数据的子集来生成心率读数。

