



US 20140249442A1

(19) **United States**

(12) **Patent Application Publication**  
**BANET et al.**

(10) **Pub. No.: US 2014/0249442 A1**  
(43) **Pub. Date: Sep. 4, 2014**

(54) **BODY-WORN SYSTEM FOR CONTINUOUS, NONINVASIVE MEASUREMENT OF CARDIAC OUTPUT, STROKE VOLUME, CARDIAC POWER, AND BLOOD PRESSURE**

(52) **U.S. CL.**  
CPC ..... *A61B 5/029* (2013.01); *A61B 5/0295* (2013.01); *A61B 5/746* (2013.01)  
USPC ..... **600/526**

(76) Inventors: **Matt BANET**, Kihei, HI (US); **Isaac HENRY**, La Mesa, CA (US); **Donald BERNSTEIN**, Rancho Santa Fe, CA (US)

(57) **ABSTRACT**  
The invention provides a system for measuring stroke volume (SV), cardiac output (CO), and cardiac power (CP) from a patient that features: 1) an impedance sensor connected to at least two body-worn electrodes and including an impedance circuit that processes analog signals from the electrodes to measure an impedance signal (e.g. a TBEV waveform); 2) an ECG sensor connected to at least two chest-worn electrodes and including an ECG circuit that processes analog signals from the electrodes to measure an ECG signal; 3) an optical sensor connected to a body-worn optical probe and including an optical circuit that processes signals from the probe to measure at least one optical signal (e.g. a PPG waveform) from the patient; 4) a processing system, typically worn on the patient's wrist and connected through a wired interface to the optical sensor, and through either a wired or wireless interface to the TBEV and ECG sensors. The processing system analyzes the ECG, TBEV and optical signals to determine SV, and further analyzes SV and HR determined from an ECG sensor to determine CO.

(21) Appl. No.: **13/338,248**

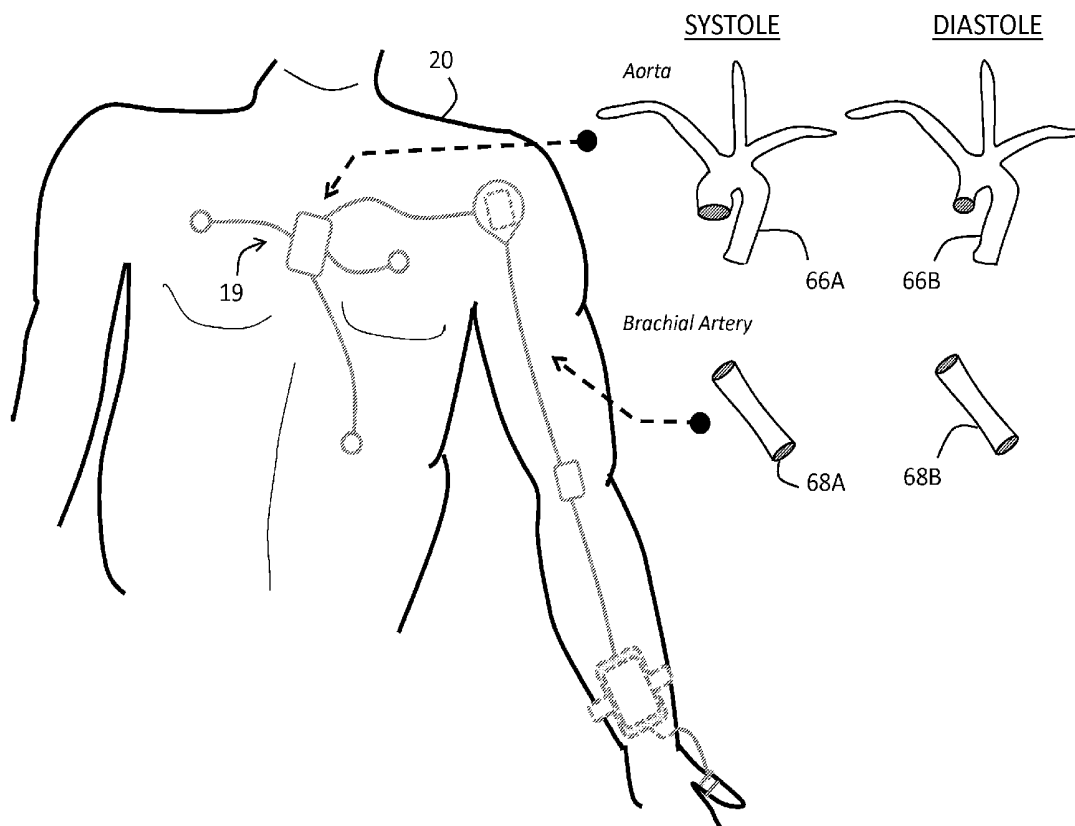
(22) Filed: **Dec. 28, 2011**

**Related U.S. Application Data**

(60) Provisional application No. 61/427,756, filed on Dec. 28, 2010.

**Publication Classification**

(51) **Int. Cl.**  
*A61B 5/029* (2006.01)  
*A61B 5/00* (2006.01)  
*A61B 5/0295* (2006.01)



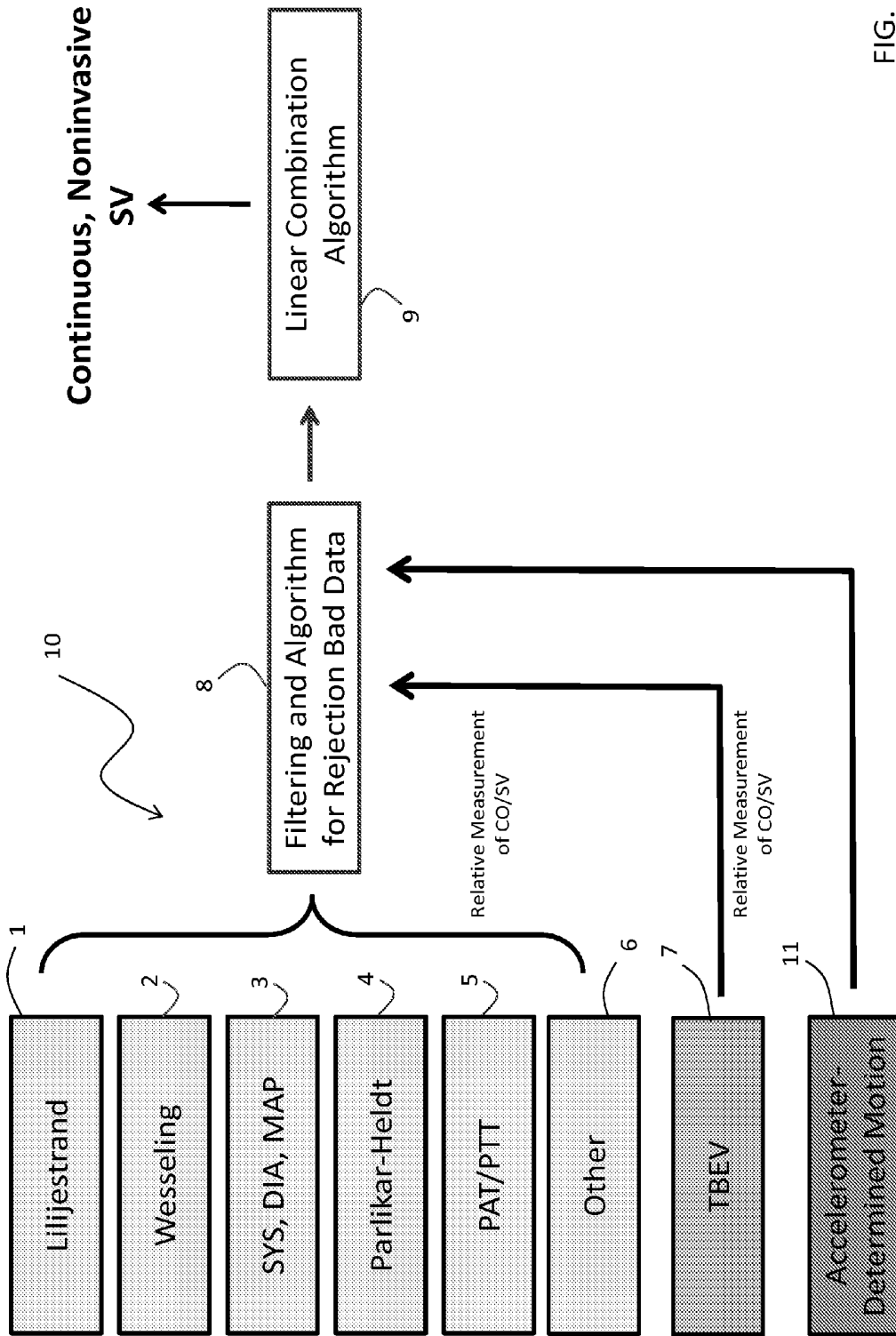


FIG. 1

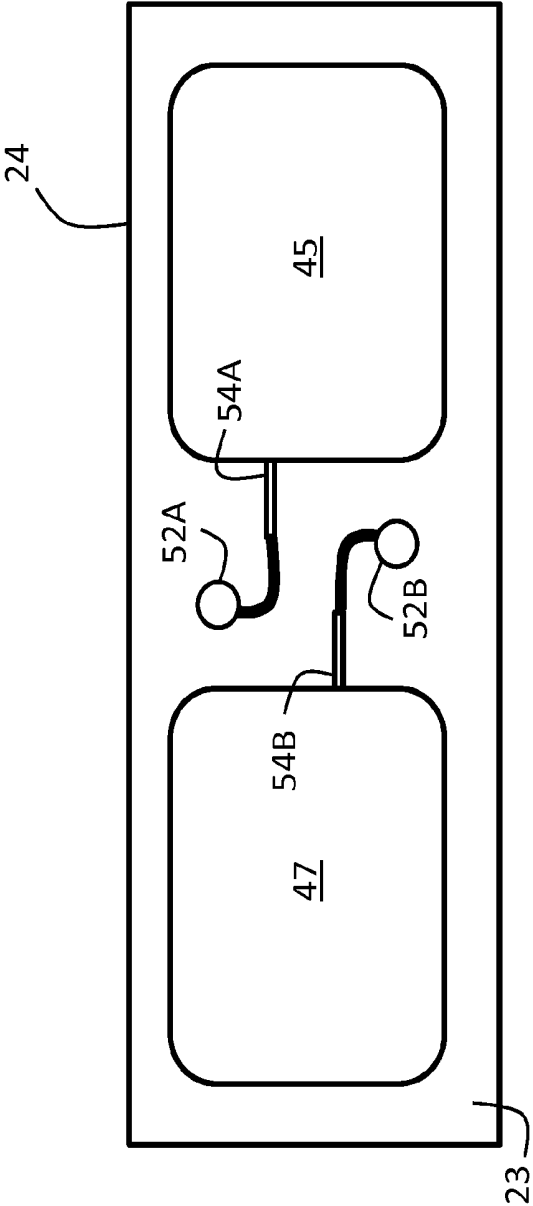


FIG. 2

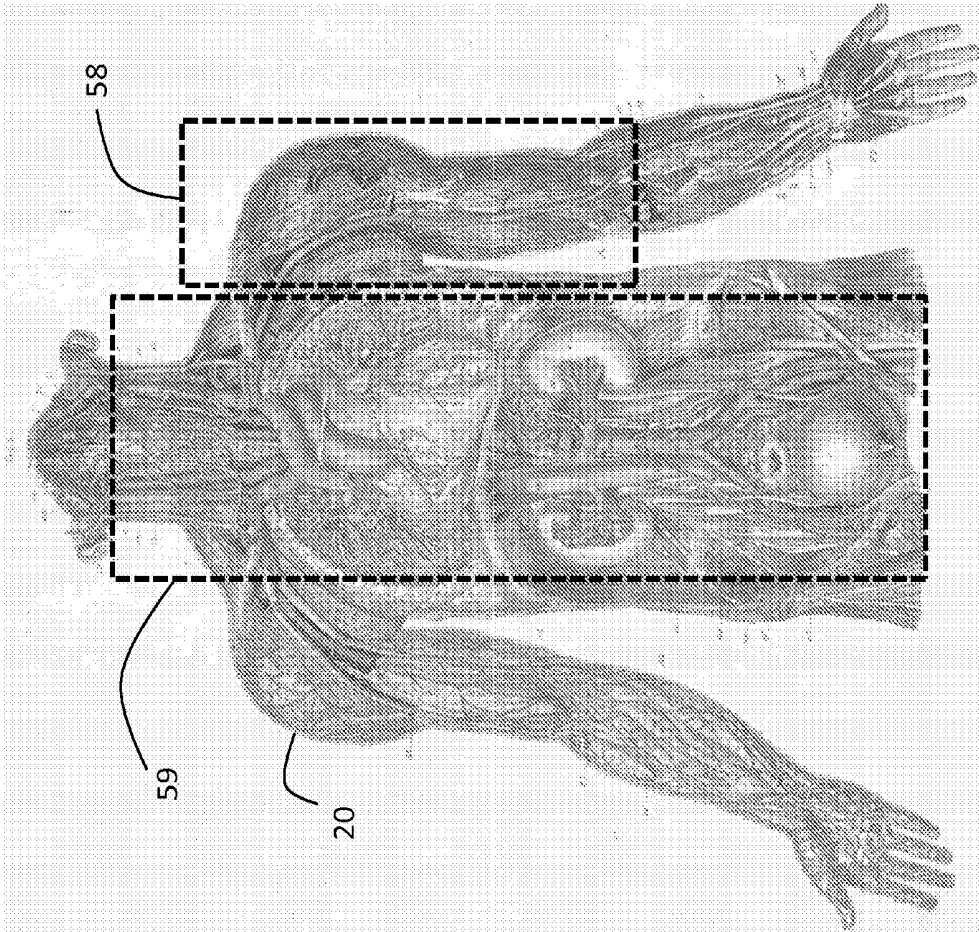


FIG. 3

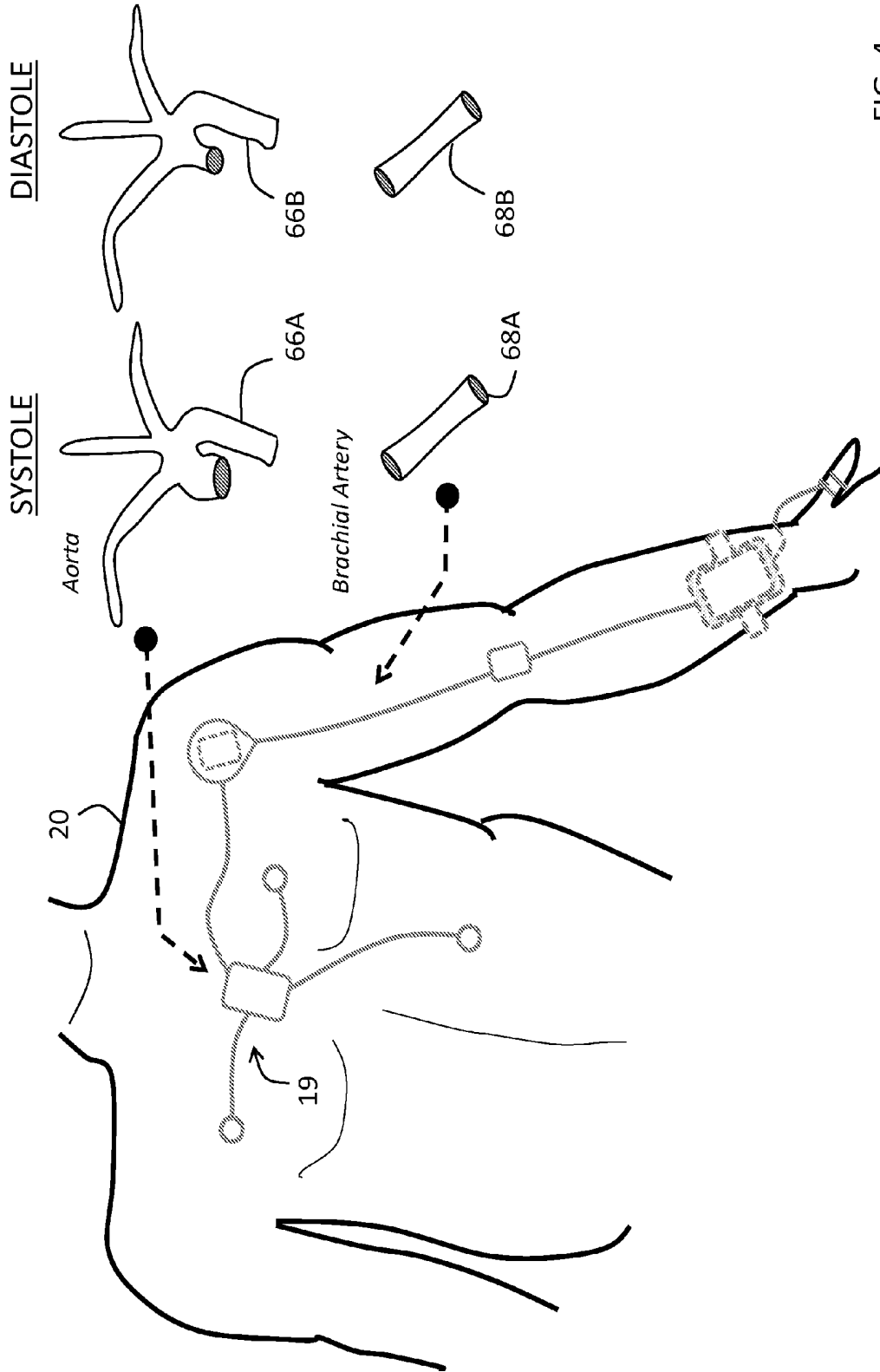


FIG. 4

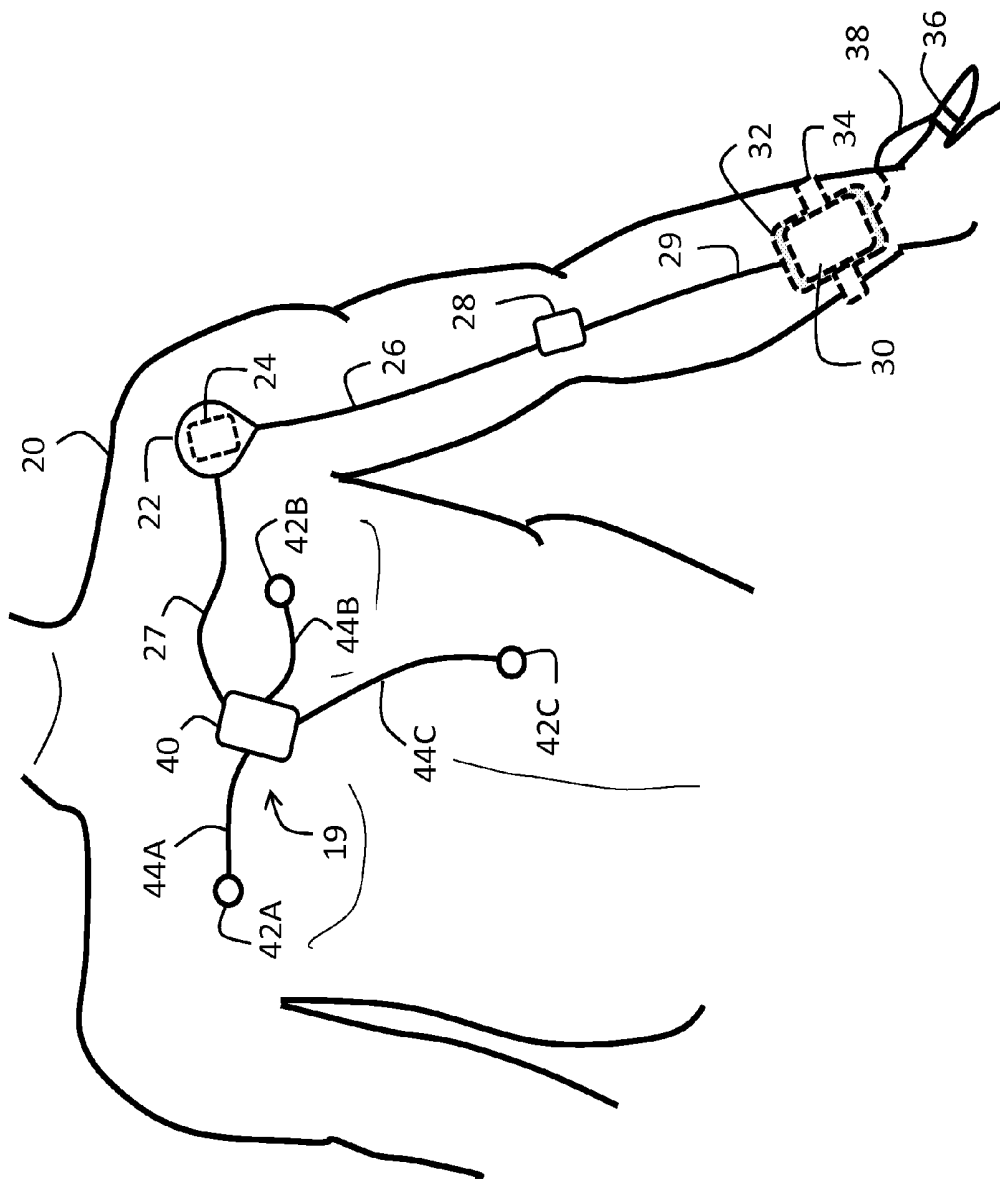


FIG. 5

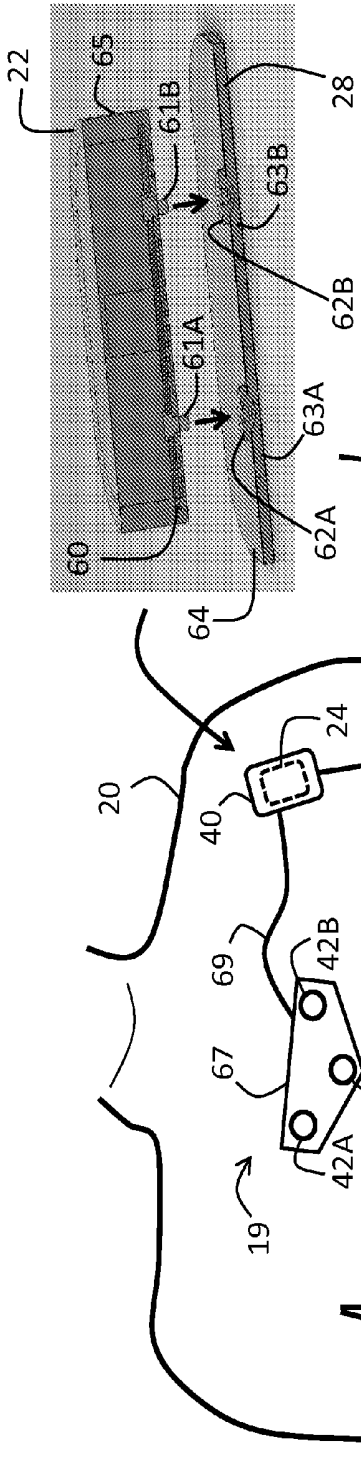


FIG. 6A

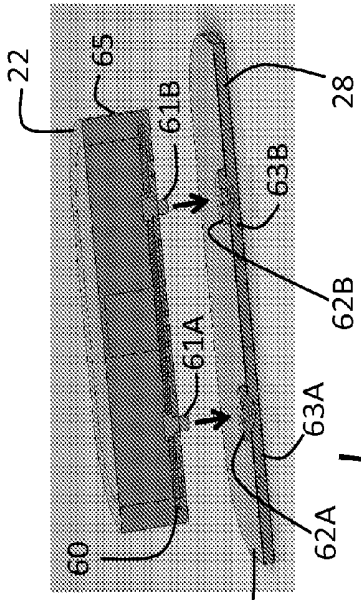


FIG. 6B

FIG. 6A

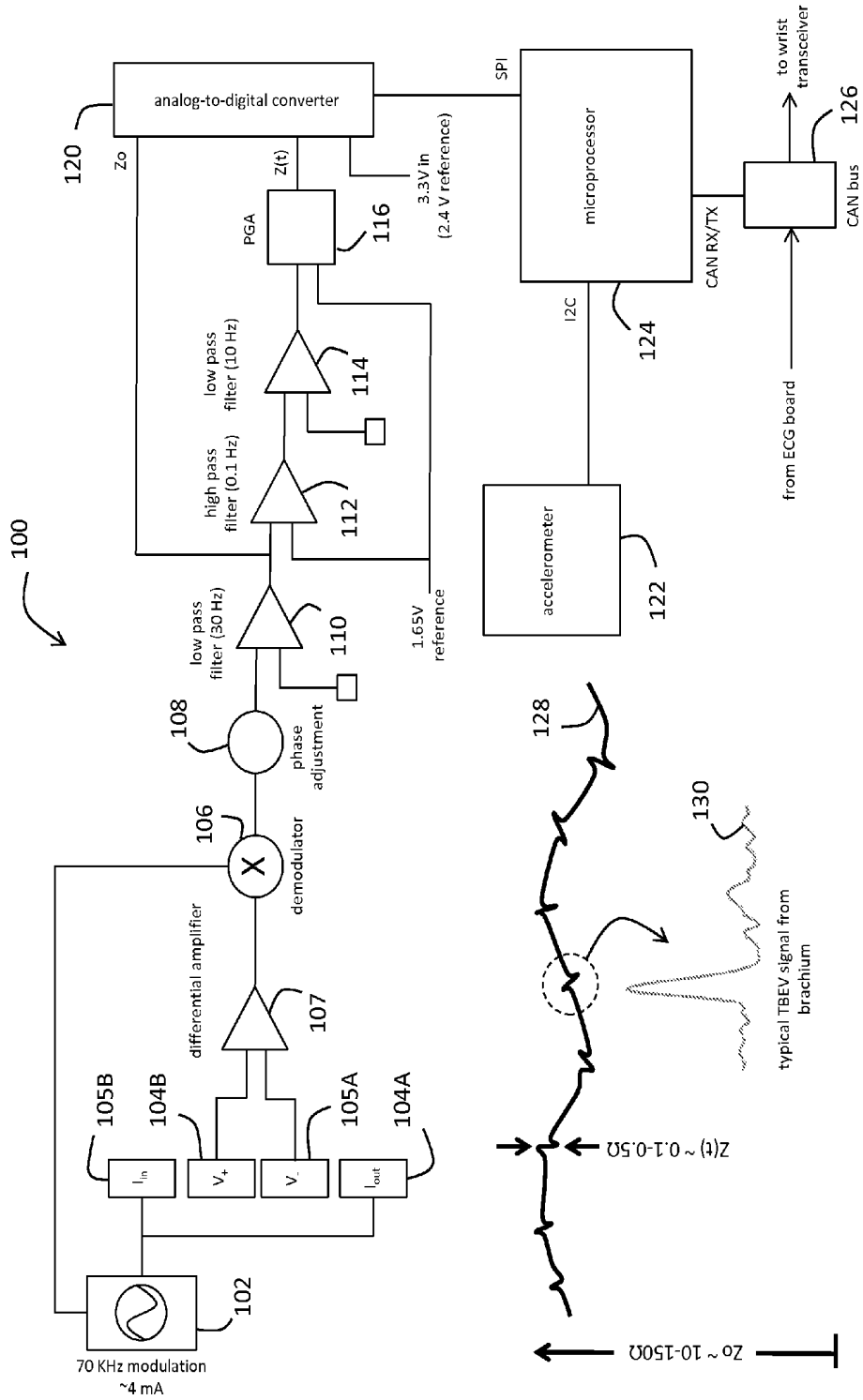
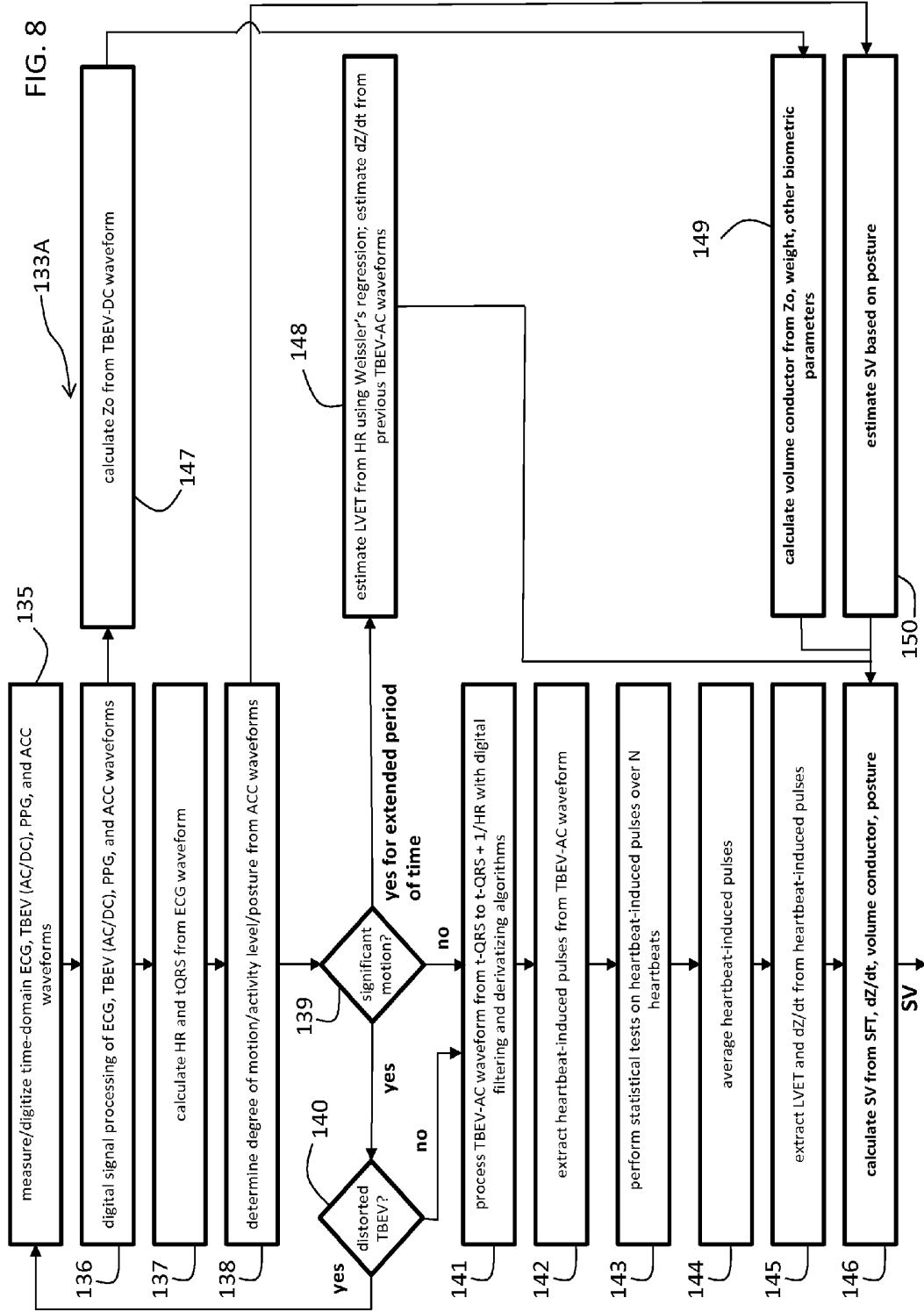
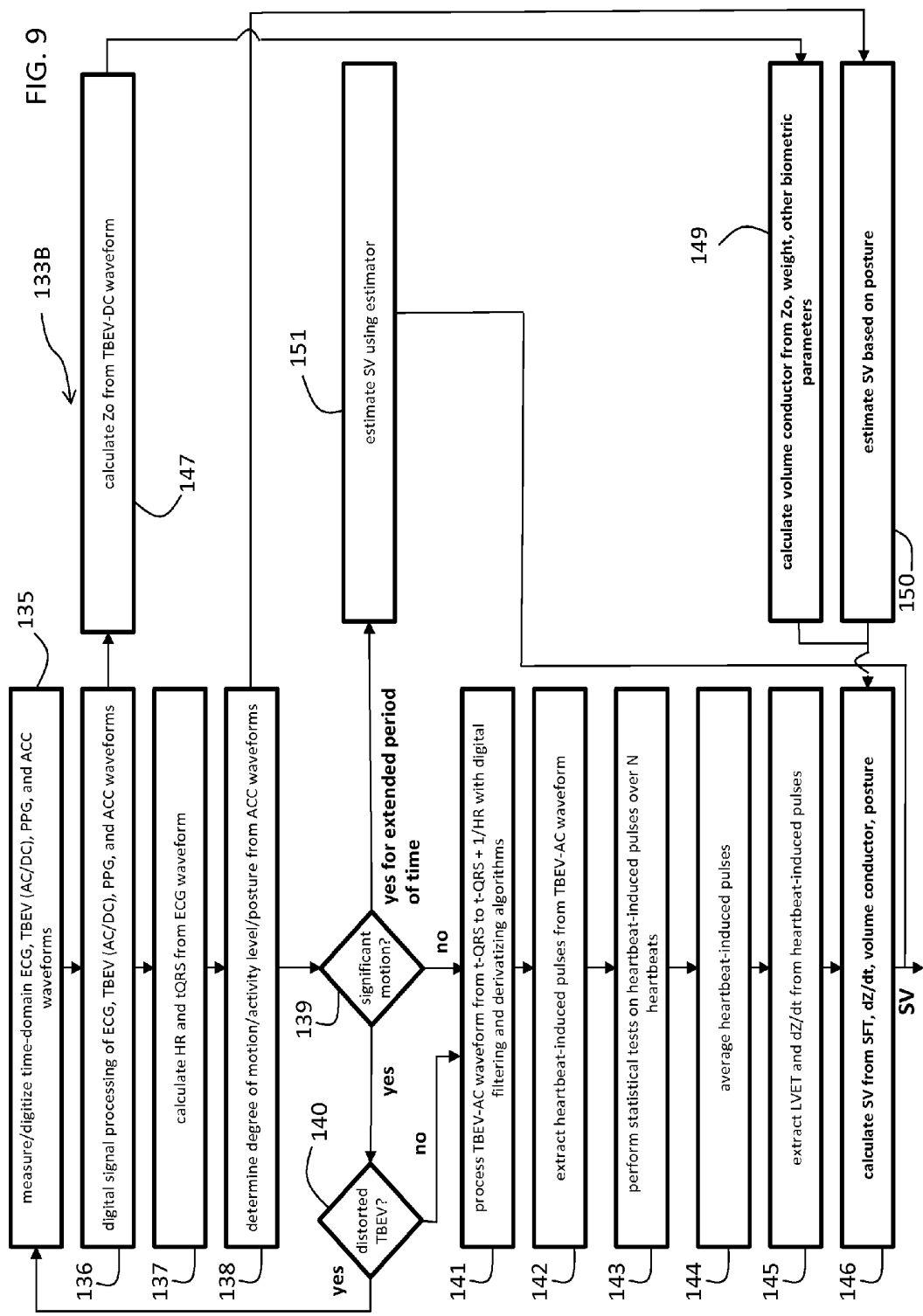


Fig. 7





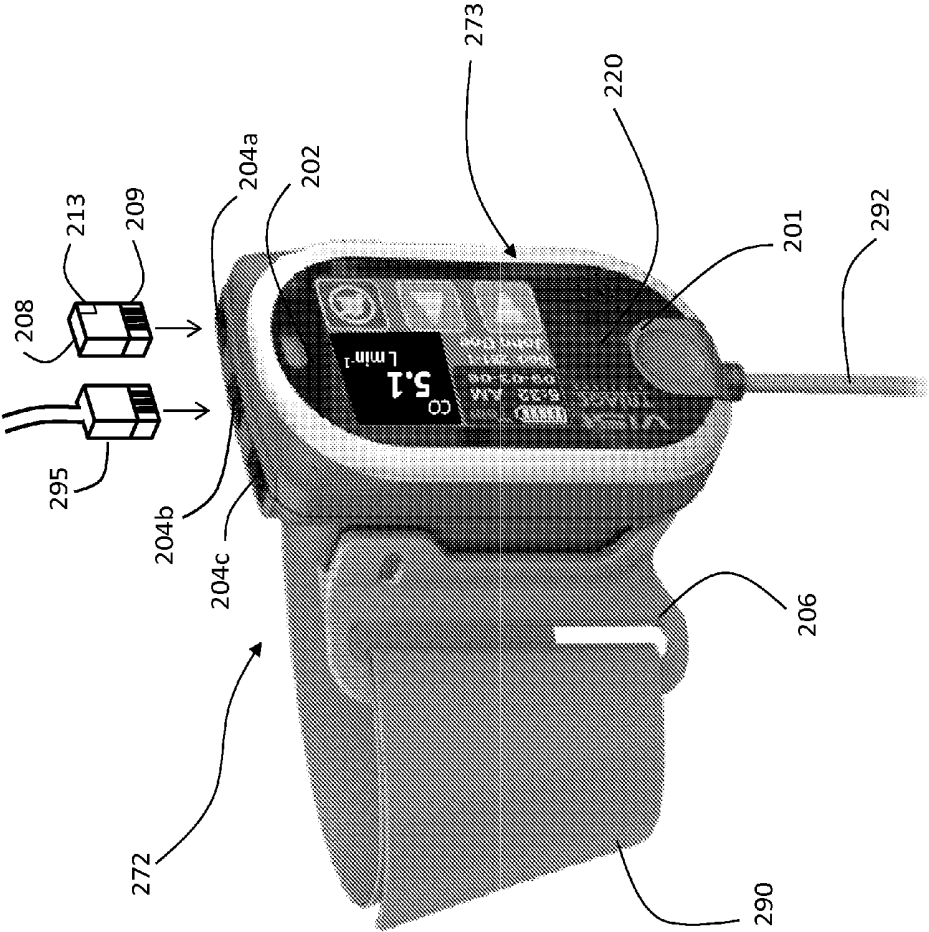


FIG. 10

FIG. 11A

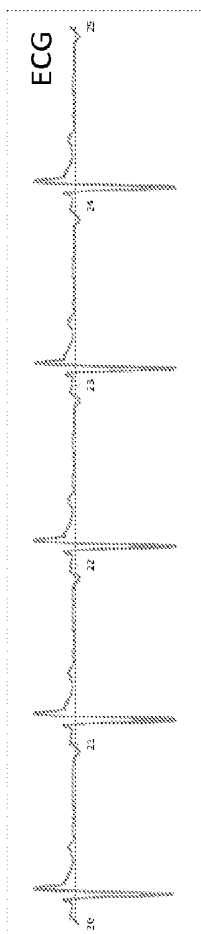


FIG. 11B

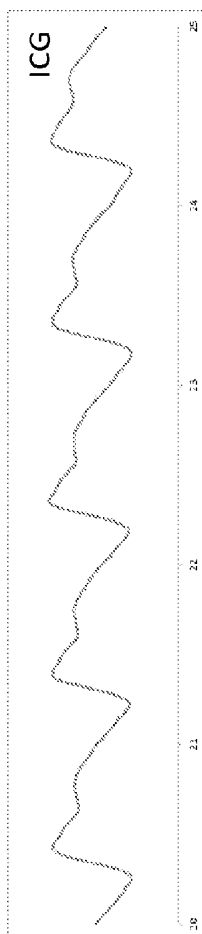


FIG. 11C

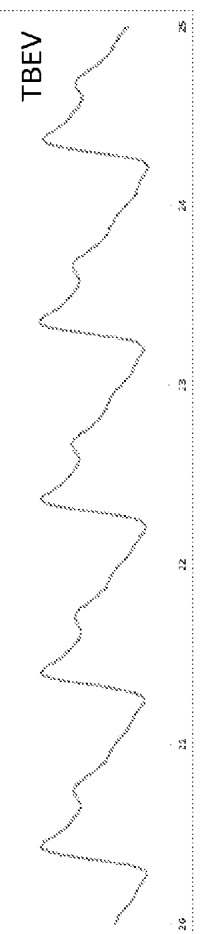


FIG. 11D

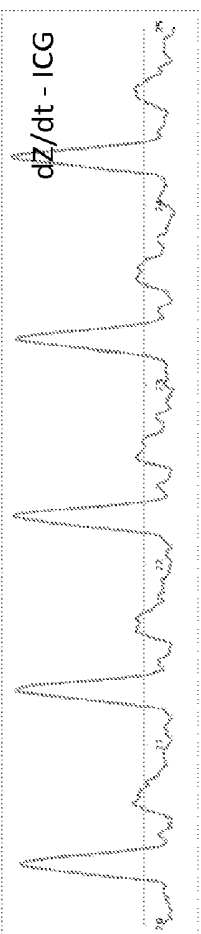


FIG. 11E

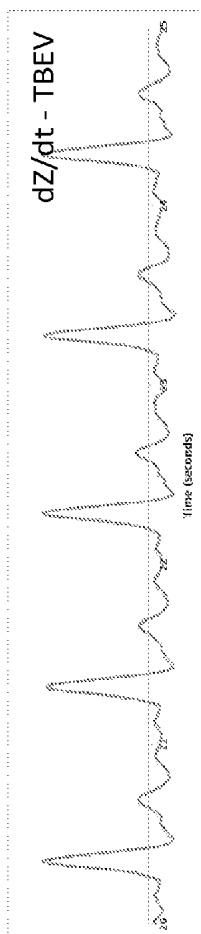


FIG. 12A

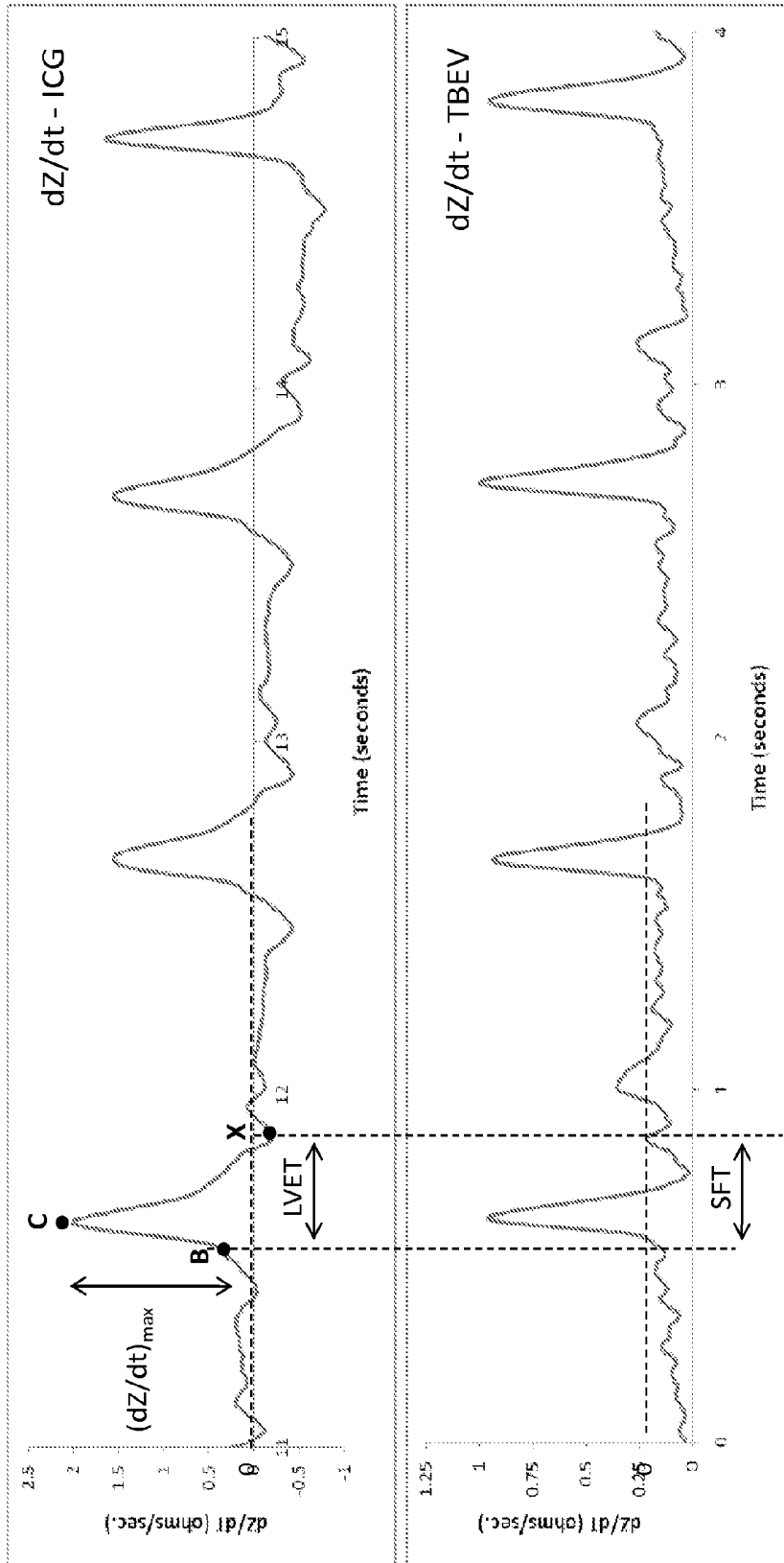
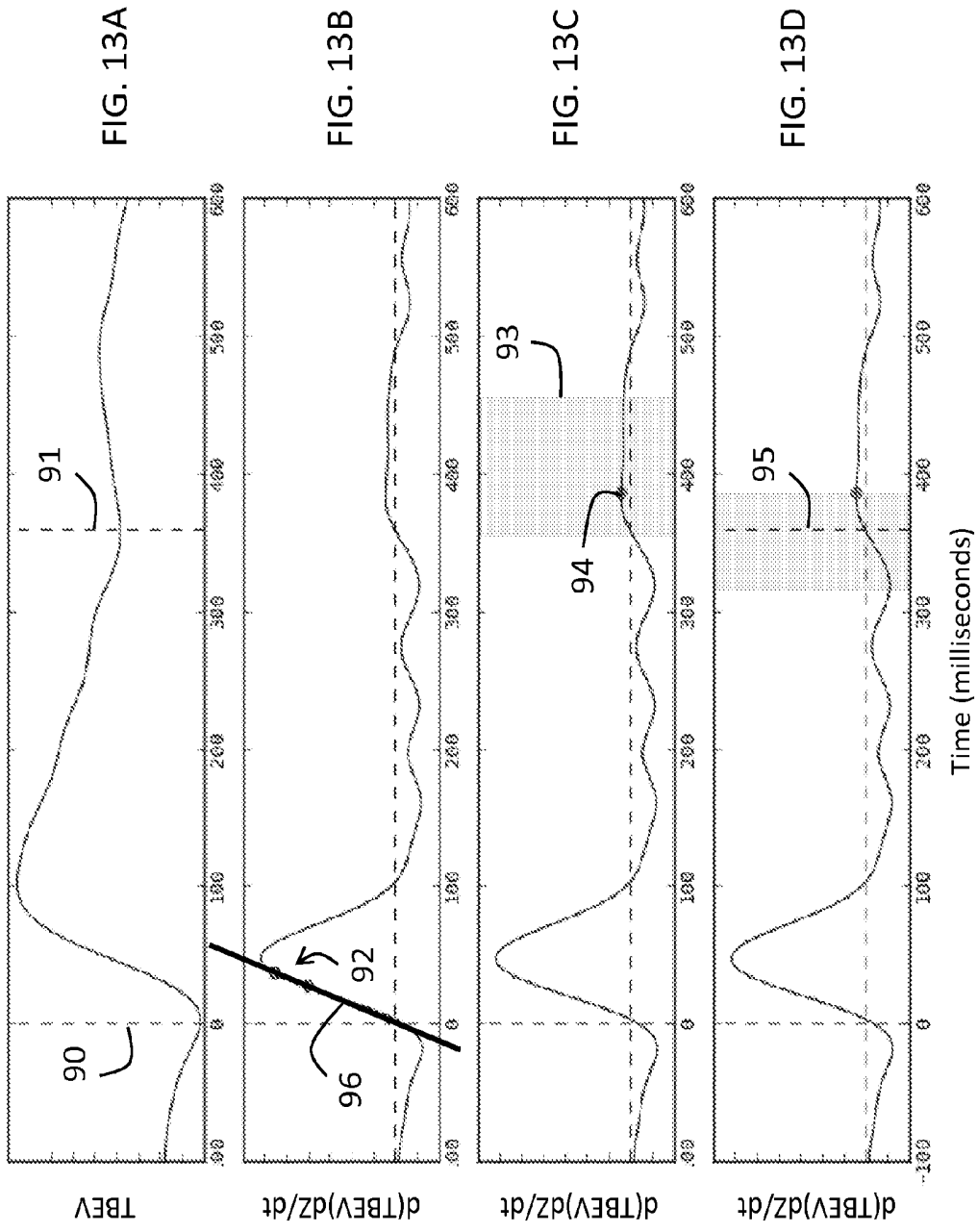


FIG. 12B



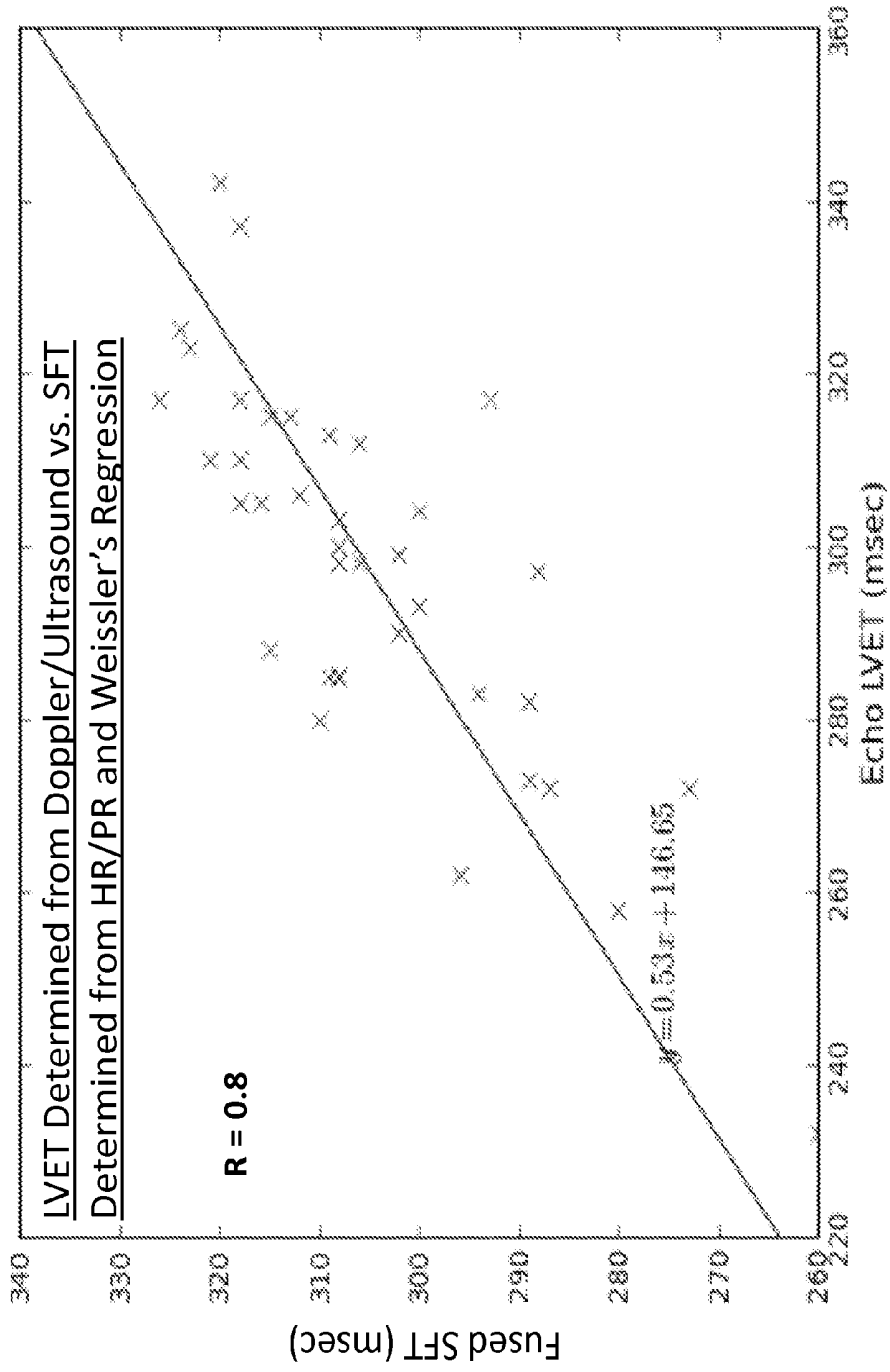


FIG. 14

FIG. 15A

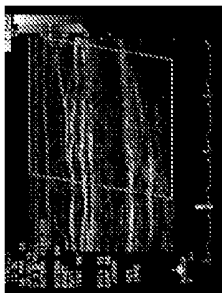


FIG. 15B

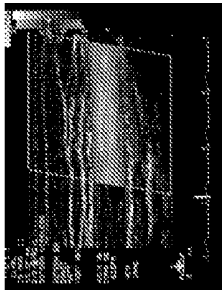


FIG. 15C

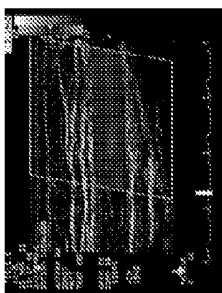


FIG. 15D

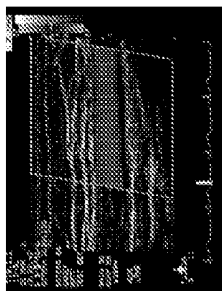


FIG. 15E

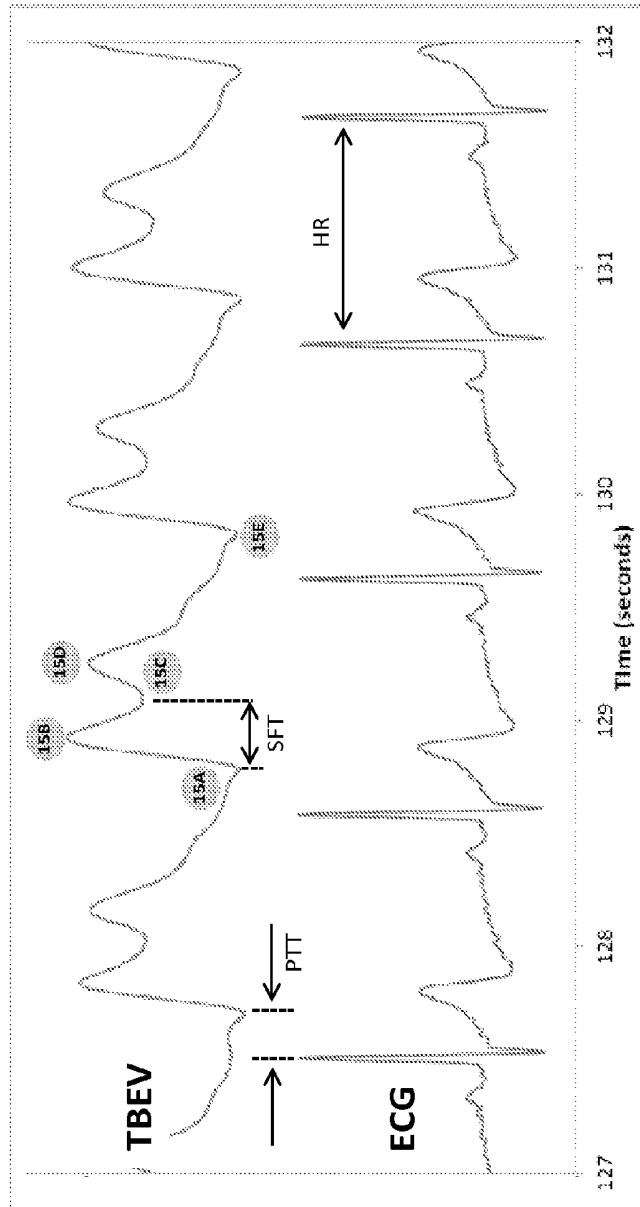
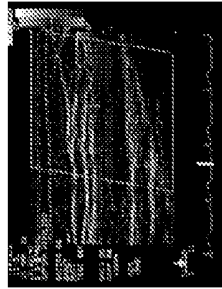


FIG. 15F

FIG. 16C

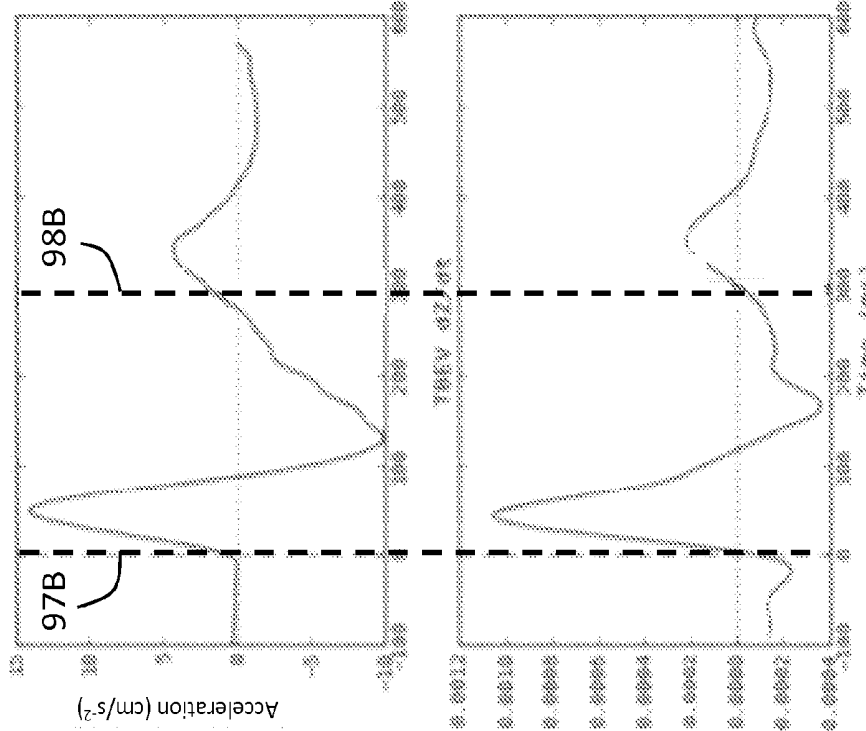


FIG. 16D

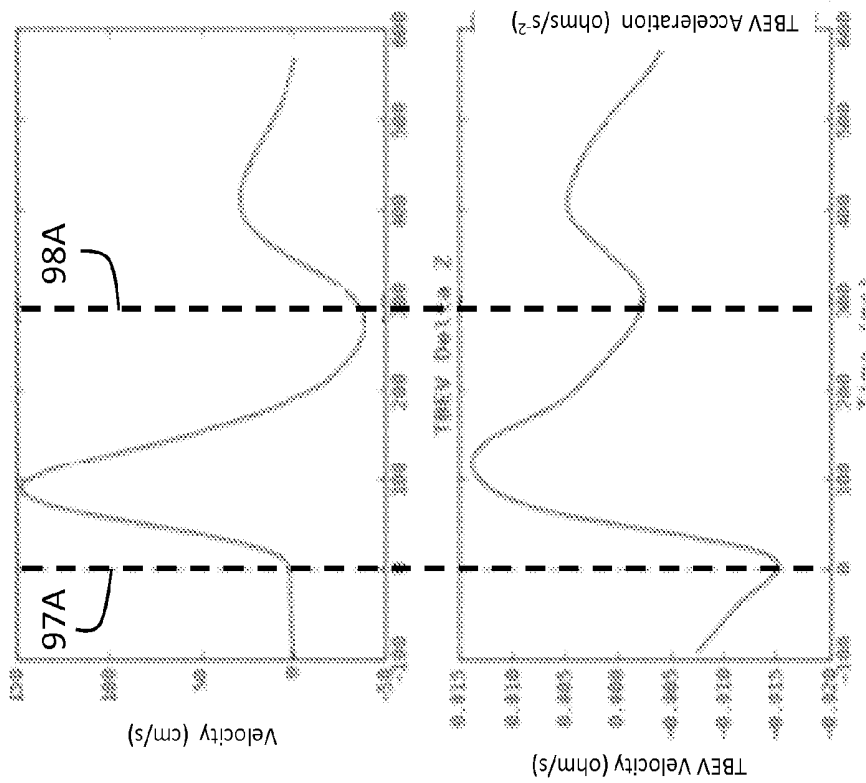


FIG. 16A

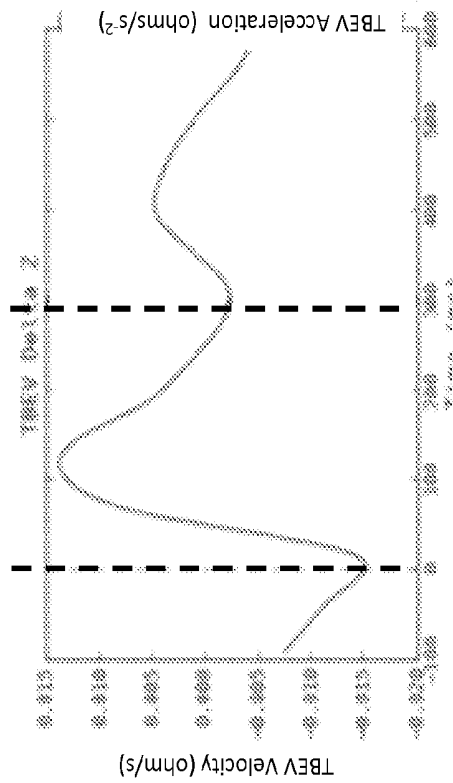
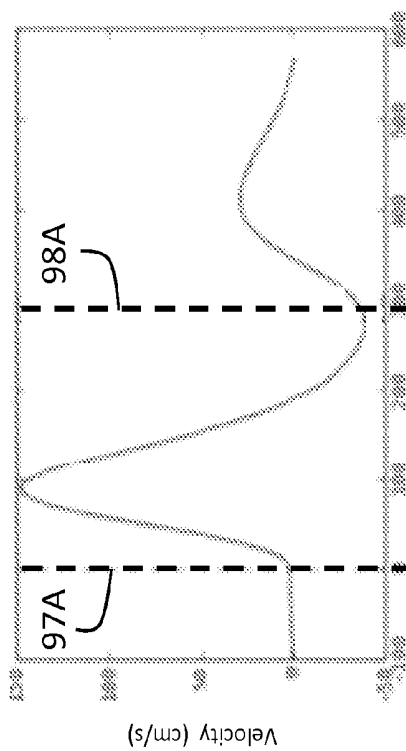


FIG. 16B

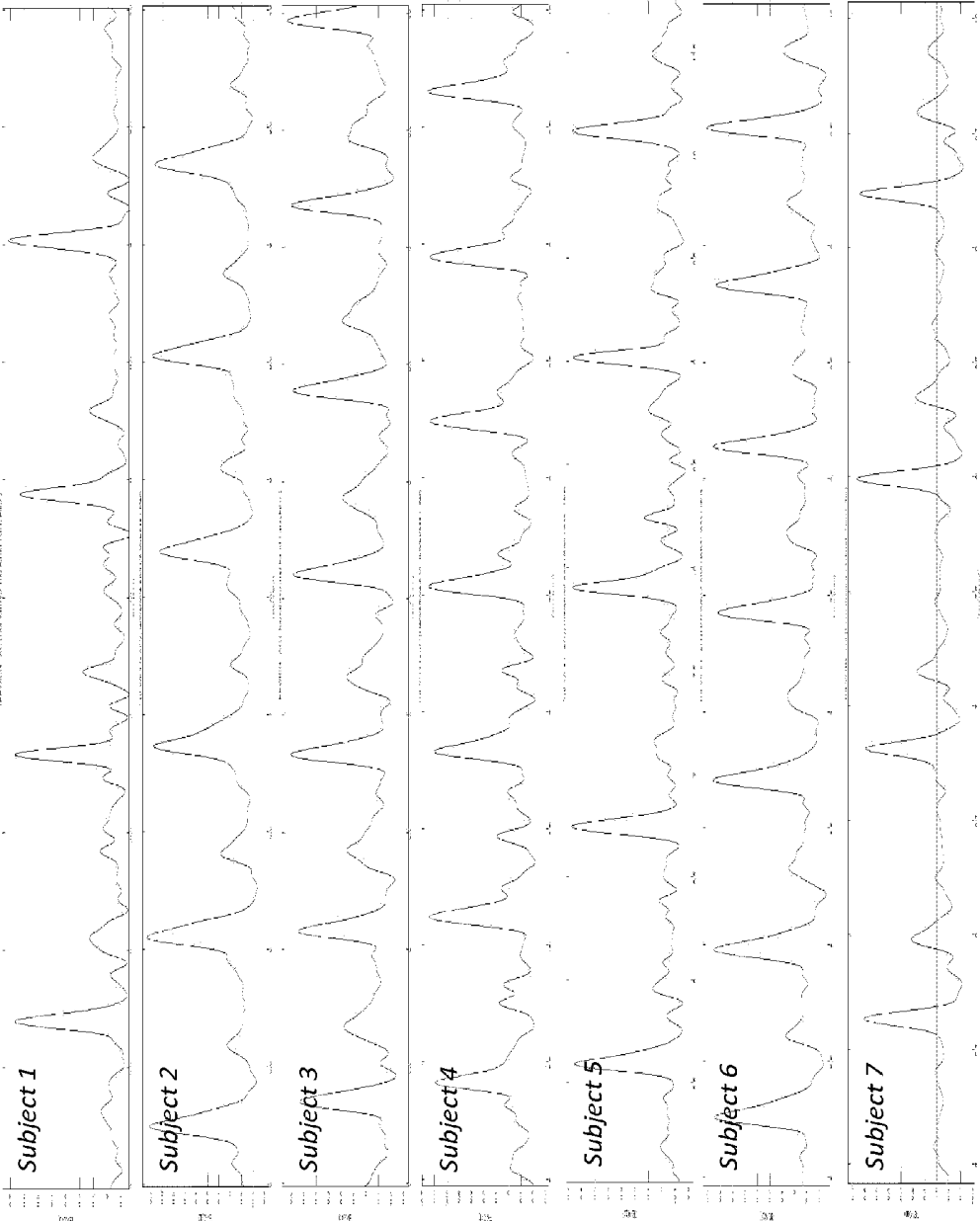


FIG. 17

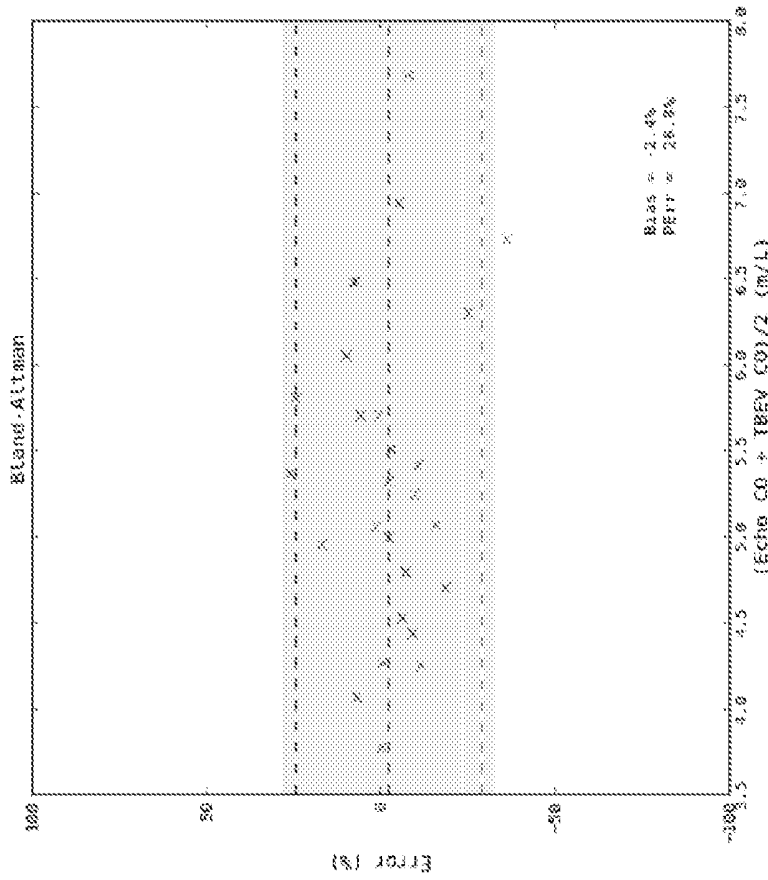


FIG. 18B

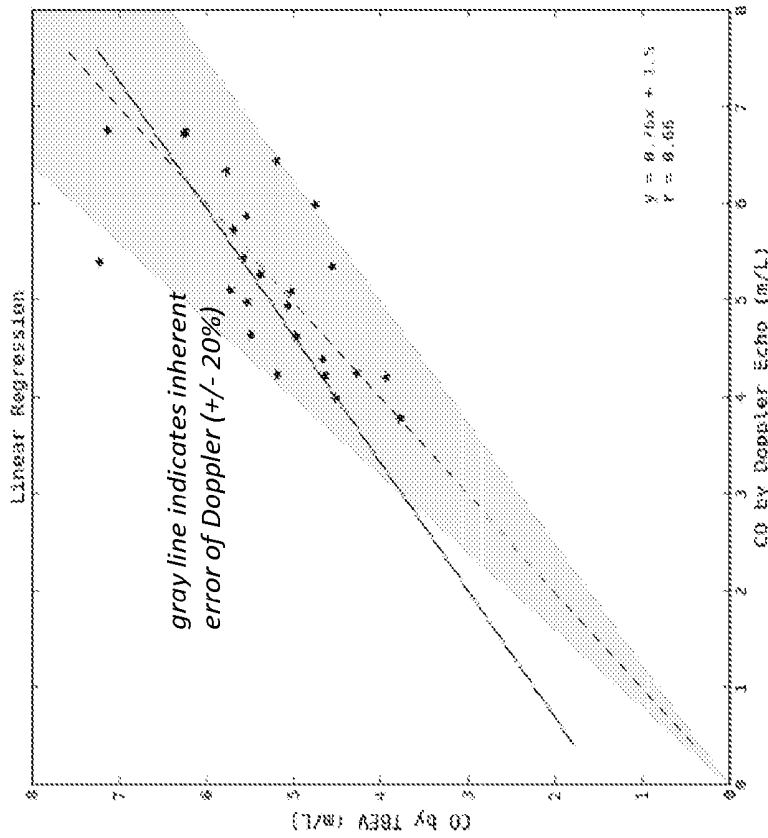


FIG. 18A

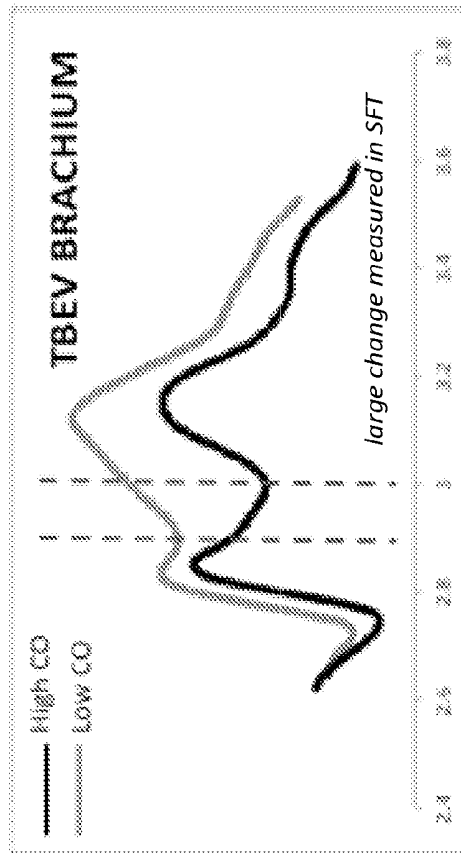


FIG. 19B

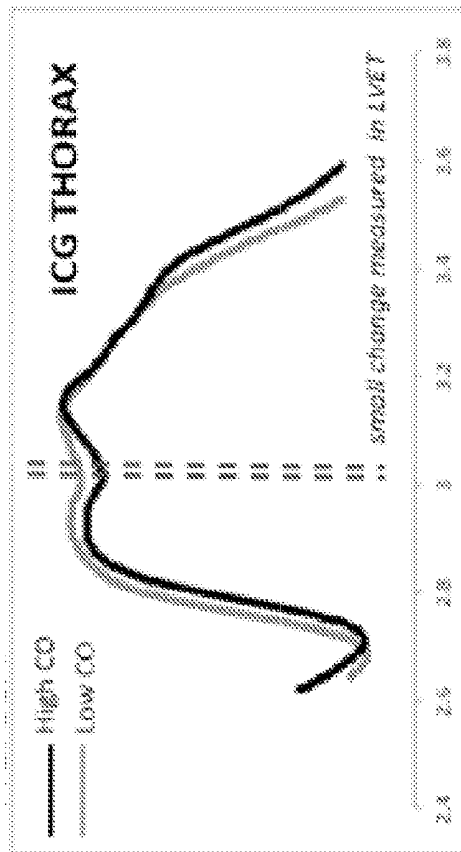


FIG. 19A

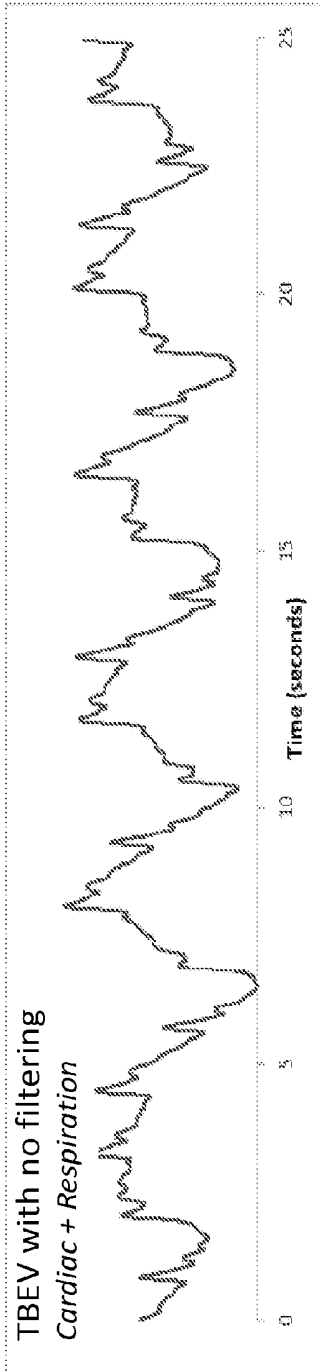


FIG. 20A

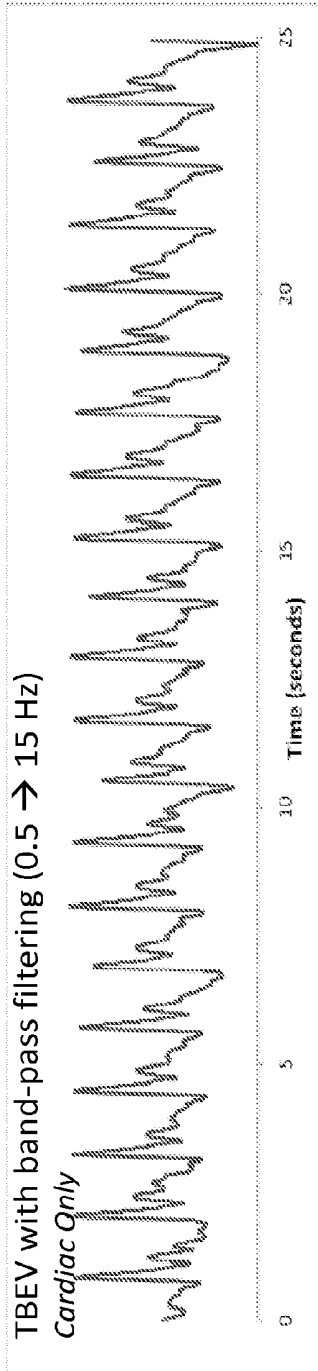


FIG. 20B

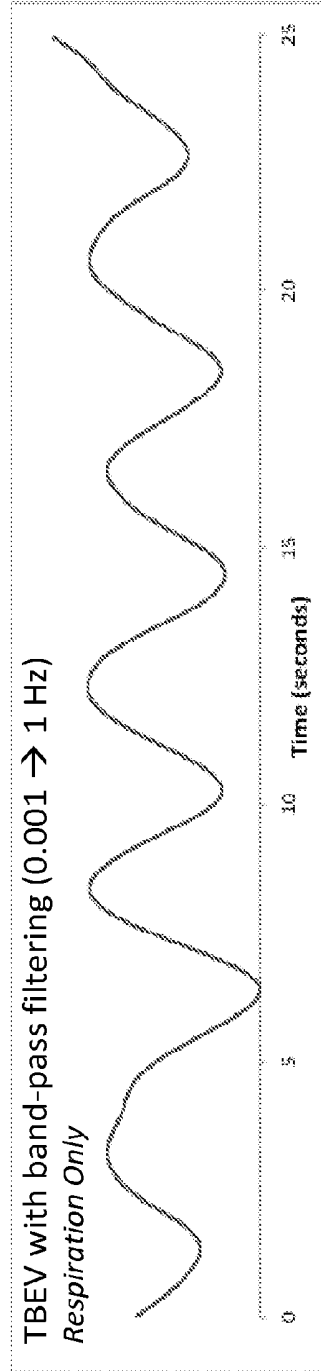
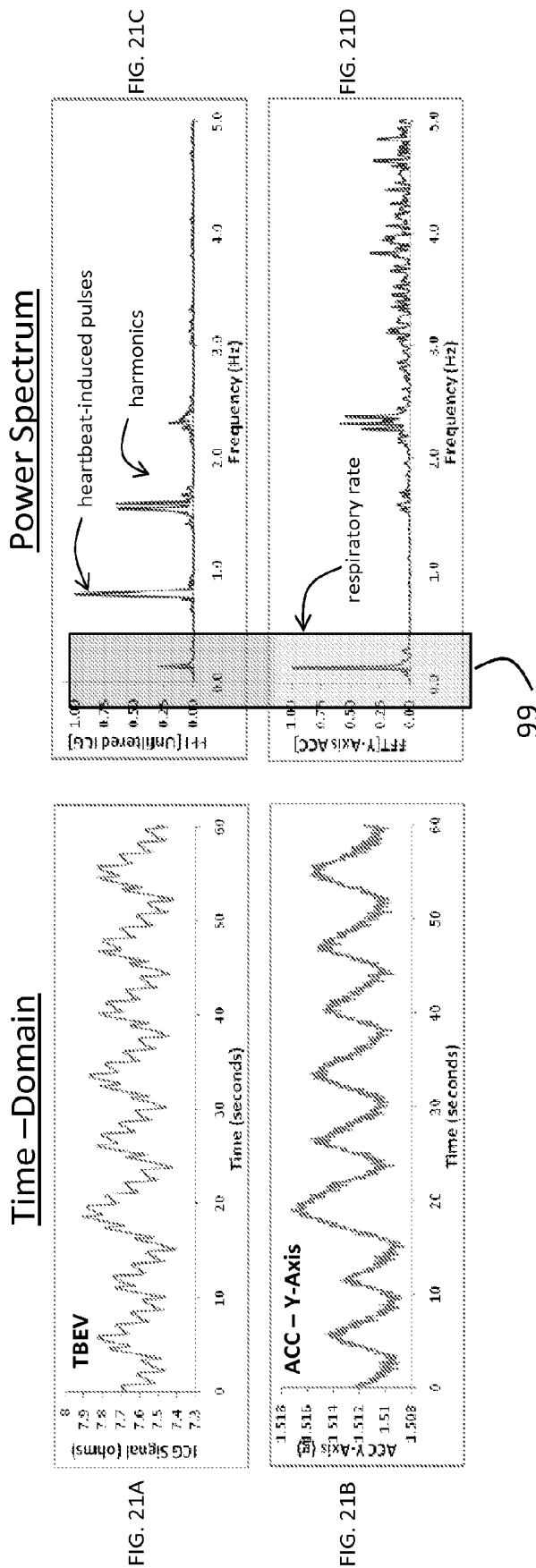


FIG. 20C



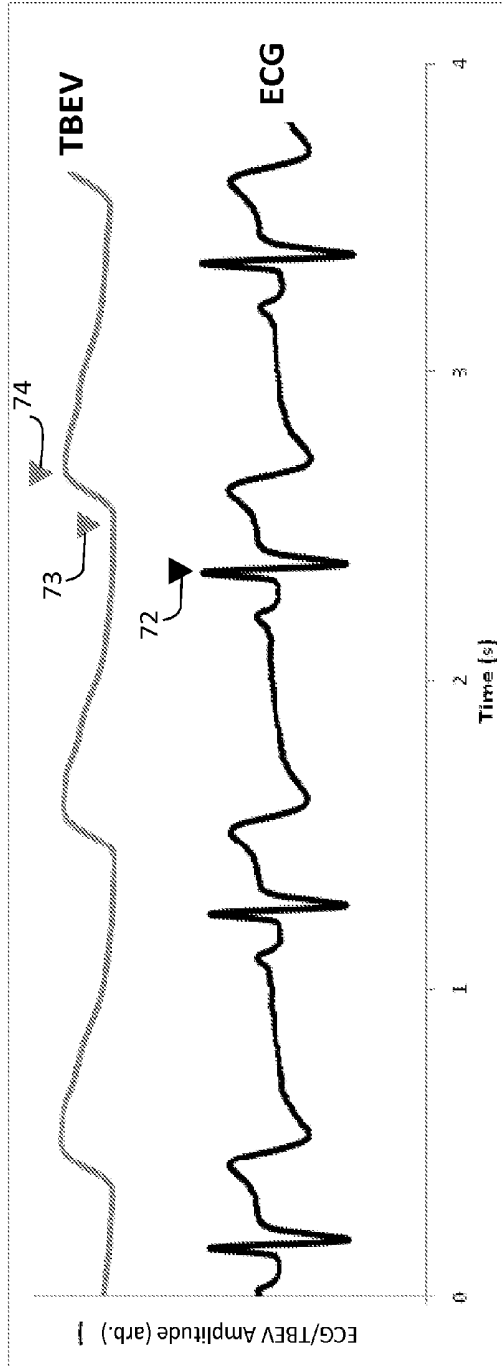


FIG. 22A

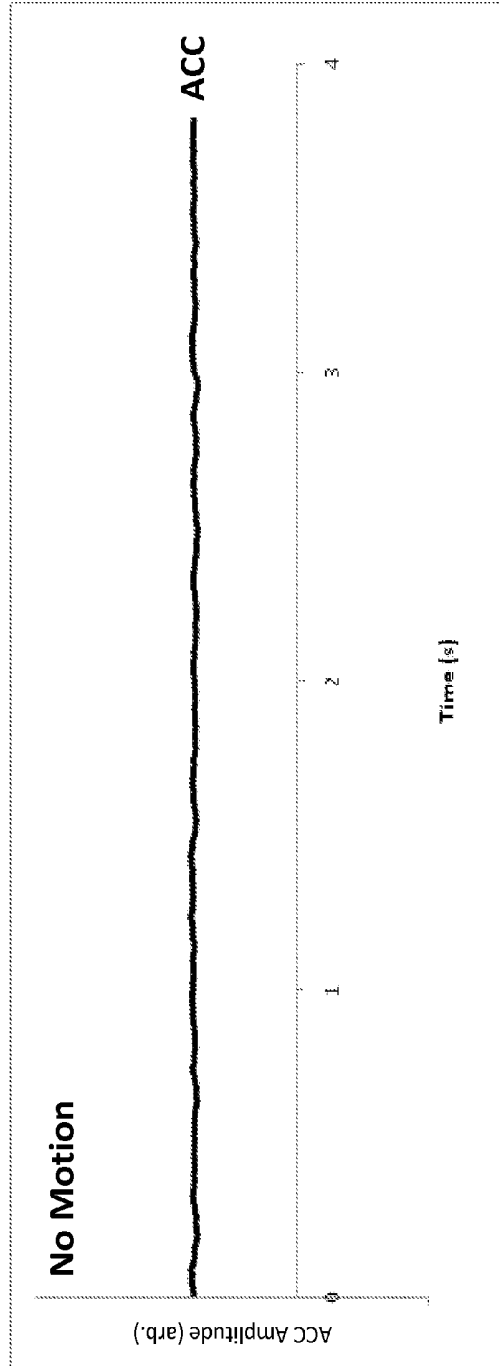


FIG. 22B

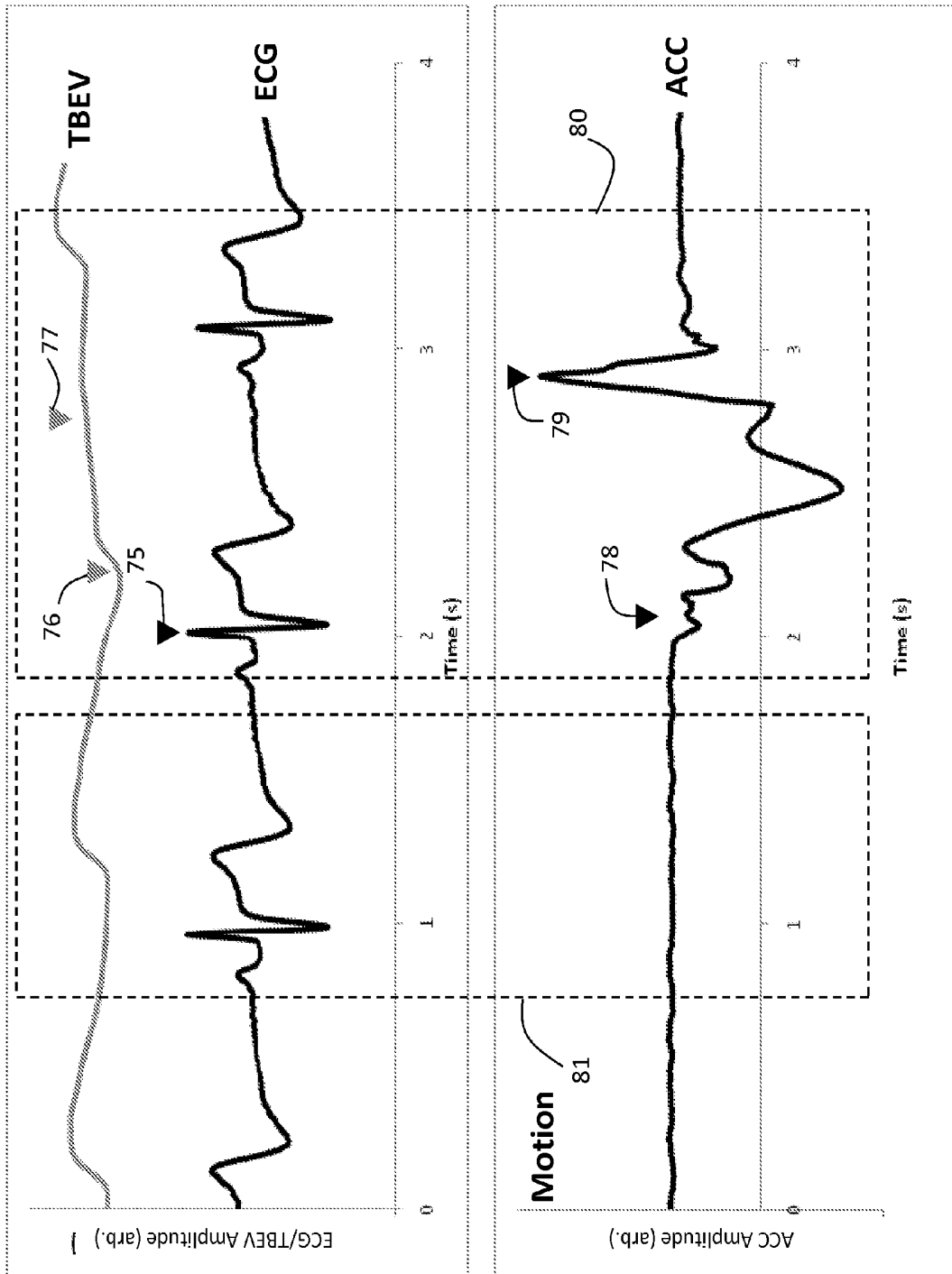


FIG. 23A

FIG. 23B

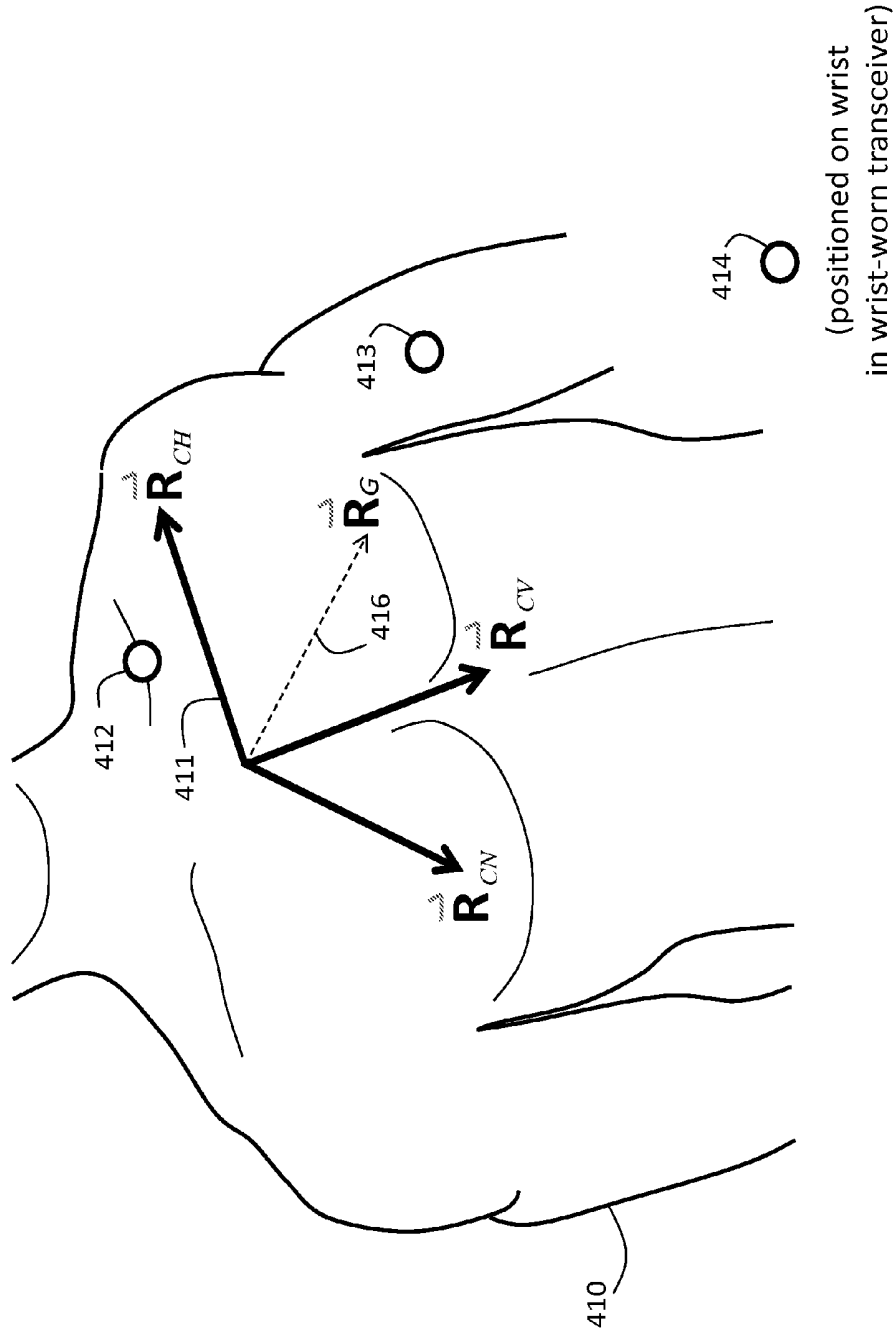


FIG. 24

FIG. 25A

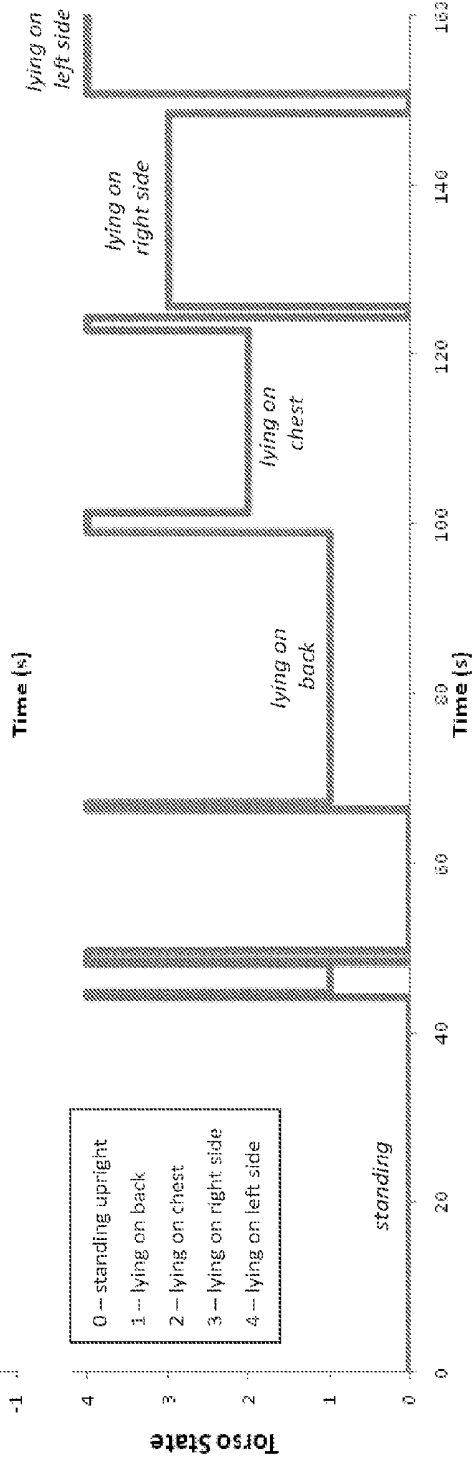
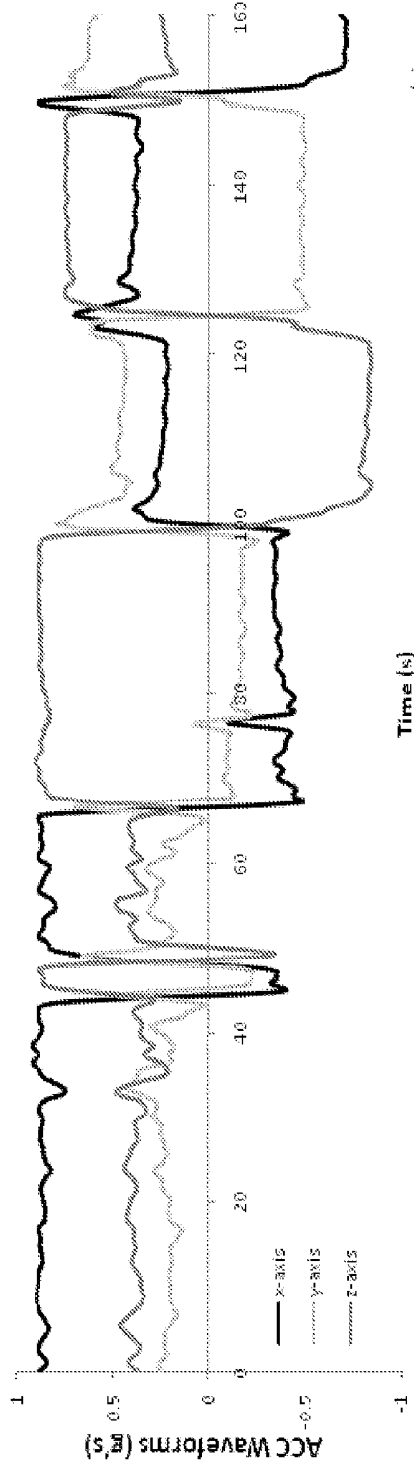
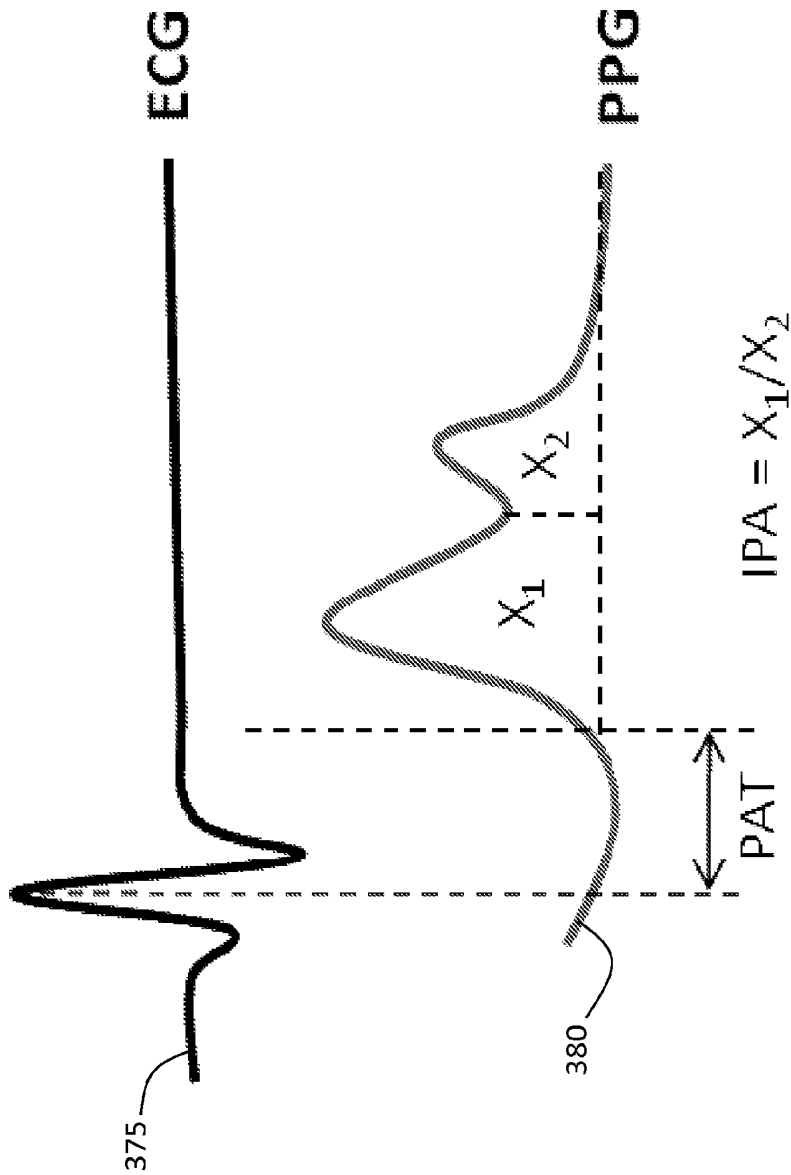


FIG. 25B



From Wang et al., *The non-invasive and continuous estimation of cardiac output using a photoplethysmogram and electrocardiogram during incremental exercise*; *Physiol. Meas.*; 31: 715-726 (2010)

FIG. 26

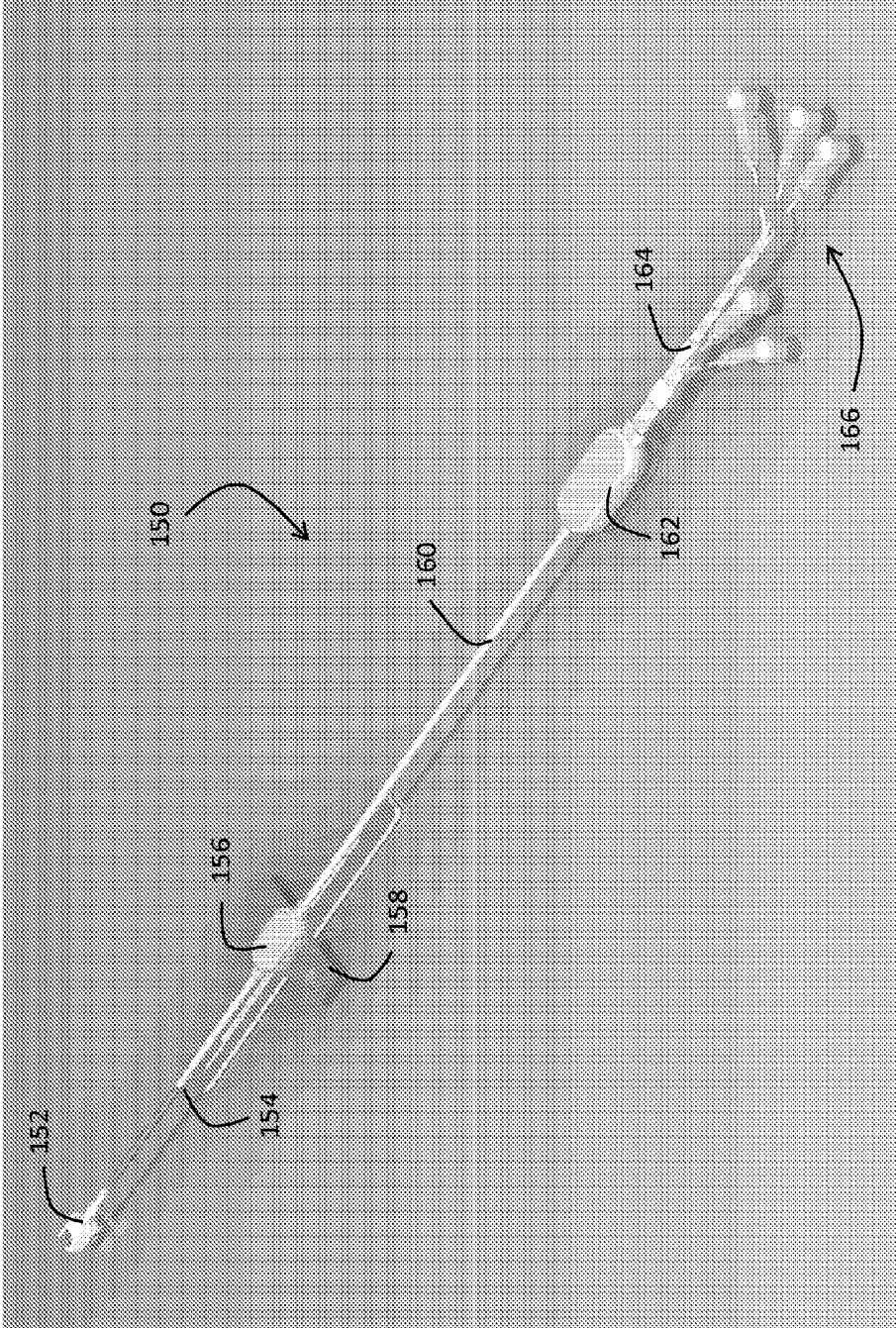


FIG. 27

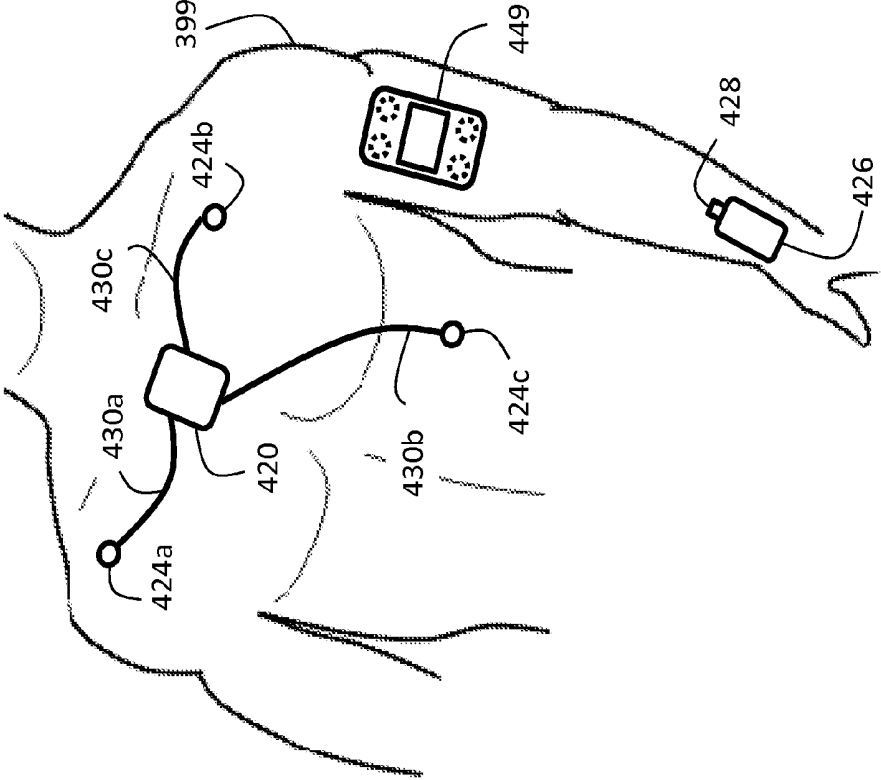


FIG. 28

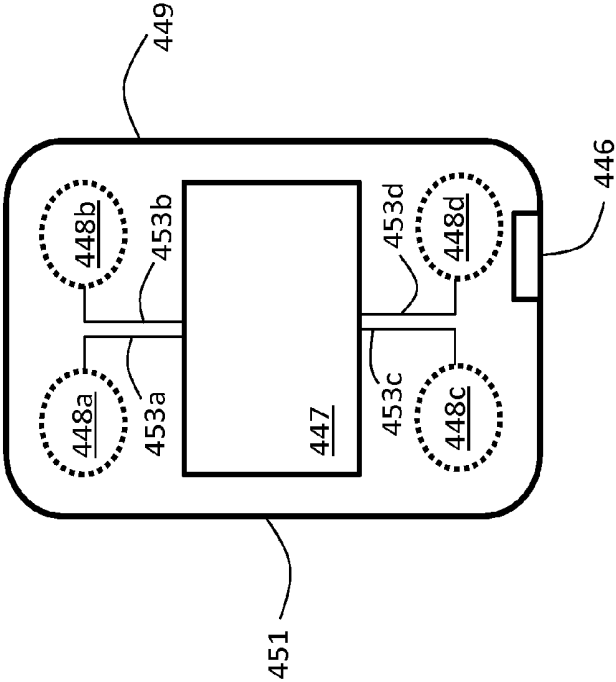


FIG. 29



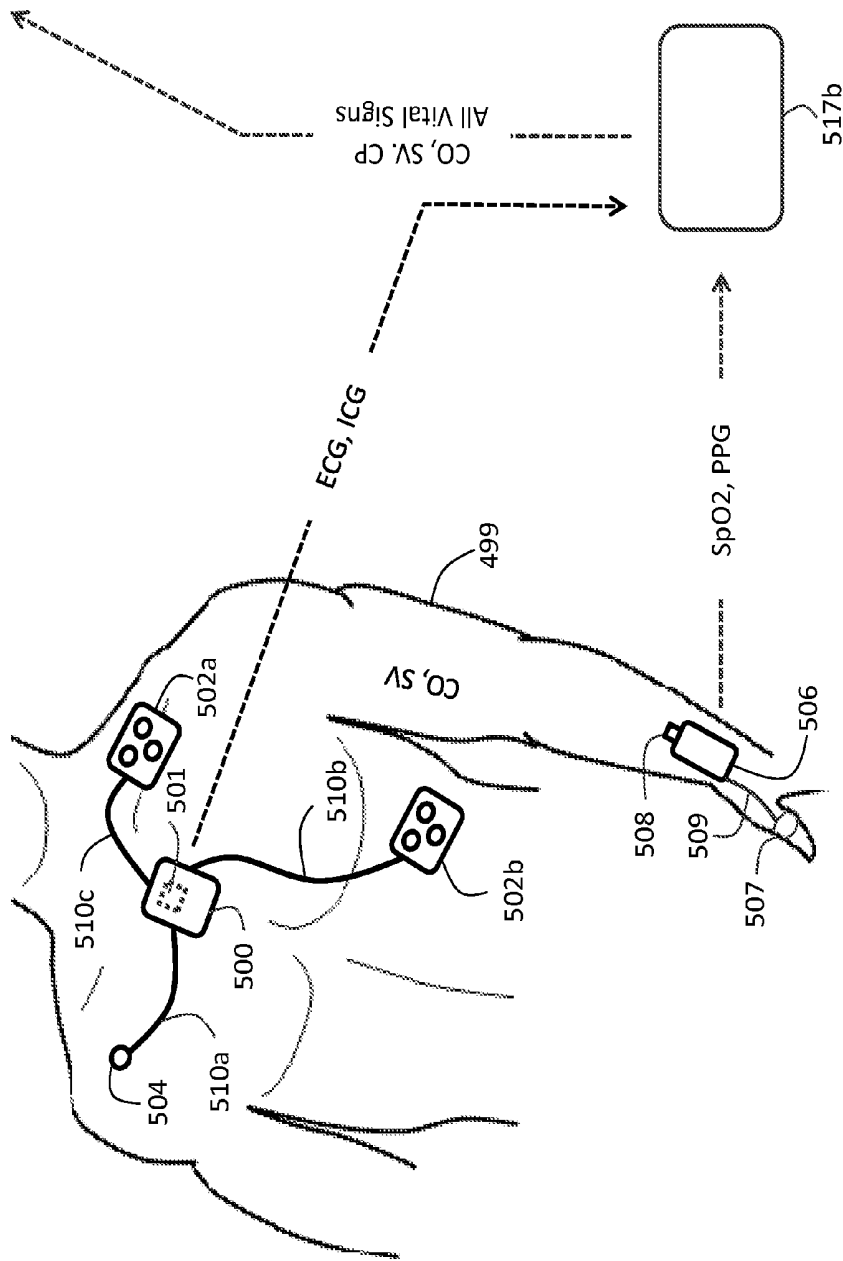


FIG. 31

**BODY-WORN SYSTEM FOR CONTINUOUS,  
NONINVASIVE MEASUREMENT OF  
CARDIAC OUTPUT, STROKE VOLUME,  
CARDIAC POWER, AND BLOOD PRESSURE**

CROSS REFERENCES TO RELATED  
APPLICATIONS

**[0001]** This application claims priority from a Provisional Application entitled 'BODY-WORN SYSTEM FOR CONTINUOUS, NONINVASIVE MEASUREMENT OF CARDIAC OUTPUT, STROKE VOLUME, AND BLOOD PRESSURE', U.S. Ser. No. 61/427,756, filed Dec. 28, 2010, which is hereby incorporated by reference in its entirety.

STATEMENT REGARDING FEDERALLY  
SPONSORED RESEARCH OR DEVELOPMENT

**[0002]** Work for some of the components described in this patent application was sponsored by the Department of Defense under contract W81XWH-11-2-0085.

BACKGROUND OF THE INVENTION

**[0003]** 1. Field of the Invention

**[0004]** The present invention relates to medical devices for monitoring cardiovascular properties, e.g. cardiac output (CO), stroke volume (SV), and continuous non-invasive blood pressure (cNIBP).

**[0005]** 2. Description of the Related Art

**[0006]** CO is typically measured in a hospital setting and, informally, indicates how efficiently a patient's heart pumps blood through their arterial tree. More specifically, CO, with units of liters/minute, describes the time-dependent volume of blood ejected from the left ventricle into the aorta; it indicates how well the patient's heart delivers blood-borne oxygen, nutrients, and other substances to the cells in the body. CO is the product of heart rate (HR) and SV, where SV is defined as the mathematical difference between left ventricular end diastolic volume (EDV) and end systolic volume (ESV), i.e.:

$$CO=SV \times HR \quad (1)$$

**[0007]** Combining CO and mean arterial blood pressure (MAP) into a single value, called 'cardiac power' (CP), provides a particularly valuable prognostic variable for monitoring patients suffering from cardiac conditions such as congestive heart failure (CHF), and is an independent predictor of mortality that can be measured non-invasively using cardiopulmonary exercise testing. Specifically, CP is defined as:

$$CP=CO \times MAP \quad (2)$$

**[0008]** Measuring CO and SV in a continuous, non-invasive manner with high clinical accuracy has often been considered a 'holy grail' of medical-device monitoring. Most existing techniques in this field require in-dwelling catheters, which in turn can harm the patient, are inherently inaccurate in the critically, and require a specially trained operator. For example, current 'gold standards' for this measurement are thermodilution cardiac output (TDCO) and the Fick Oxygen Principal (Fick). However both TDCO and Fick are highly invasive techniques that can cause infection and other complications, even in carefully controlled hospital environments. In TDCO, a pulmonary artery catheter (PAC), also known as a Swan-Ganz catheter, is typically inserted into the right portion of the patient's heart. Procedurally a bolus (typi-

cally 10 ml) of glucose or saline that is cooled to a known temperature is injected through the PAC. A temperature-measuring device within the PAC, located a known distance away (typically 6-10 cm) from where fluid is injected, measures the progressively increasing temperature of the diluted blood. CO is then estimated from a measured time-temperature curve, called the 'thermodilution curve'. The larger the area under this curve, the lower the cardiac output. Likewise, a smaller the area under the curve implies a shorter transit time for the cold bolus to dissipate, hence a higher CO.

**[0009]** Fick involves calculating oxygen consumed and disseminated throughout the patient's blood over a given time period. An algorithm associated with the technique incorporates consumption of oxygen as measured with a spirometer with the difference in oxygen content of centralized blood measured from a PAC and oxygen content of peripheral arterial blood measured from an in-dwelling cannula.

**[0010]** Both TD and Fick typically measure CO with accuracies between about 0.5-1.0 l/min, or about +/-20% in the critically ill.

**[0011]** Several non-invasive techniques for measuring SV/CO/CP have been developed with the hope of curing the deficiencies of Fick and TD. For example, Doppler-based ultrasonic echo (Doppler/ultrasound) measures blood velocity using the well-known Doppler shift, and has shown reasonable accuracy compared to more invasive methods. But both two and three-dimensional versions of this technique require a specially trained human operator, and are thus, with the exception of the esophageal Doppler technique, impractical for continuous measurements. CO/SV can also be measured with techniques that rely on electrodes placed on the patient's torso that inject and then collect a low-amperage, high-frequency modulated electrical current. These techniques, based on electrical bioimpedance and called 'impedance cardiography' (ICG), 'electrical cardiometry velocimetry' (ECV), and 'bioreactance' (BR), measure a time-dependent electrical waveform that is modulated by the flow of blood through the patient's thorax. Blood is a good electrical conductor, and when pumped by the heart can further modulate the current injected by these techniques in a manner sensitive to the patient's CO. During a measurement, ICG, ECV, and BR each extract properties called left ventricular ejection time (LVET) and pre-injection period (PEP) from time-dependent ICG and ECG waveforms. A processor then analyzes the waveform with an empirical mathematical equation, shown below in Eq. 2, to estimate SV. CO is then determined from the product of SV and HR, as described above in Eq. 1.

**[0012]** ICG, ECV, and BR all represent a continuous, non-invasive alternative for measuring CO/SV, and in theory can be conducted with an inexpensive system and no specially trained operator. But the medical community has not embraced such methods, despite the fact that clinical studies have shown them to be effective with some patient populations. In 1992, for example, an analysis by Fuller et al. analyzed data from 75 published studies describing the correlation between ICG and TD/Fick (Fuller et al., *The validity of cardiac output measurement by thoracic impedance: a meta-analysis*; Clinical Investigative Medicine; 15: 103-112 (1992)). The study concluded using a meta analysis wherein, in 28 of these studies, ICG displayed a correlation of between  $r=0.80-0.83$  against TDCO, dye dilution and Fick CO. Patients classified as critically ill, e.g. those suffering from acute myocardial infarction, sepsis, and excessive lung fluids,

yielded worse results. Further impeding commercial acceptance of these techniques is the tendency of ICG monitors to be relatively bulky and similar in both size and complexity to conventional vital signs monitors. This means two large and expensive pieces of monitoring equipment may need to be located bedside in order to monitor a patient's vital signs and CO/SV. For this and other reasons, impedance-based measurements of CO have not achieved widespread commercial success.

**[0013]** ICG-based methodologies for measuring CO/SV have evolved since Fuller's analysis. For example, it has recently been shown that the dimensionless peak rate of change of the trans-thoracic electrical impedance pulse variation, which is defined as the maximum value of the derivative of the ICG waveform  $(dZ/dt)_{max}$  divided by the base impedance ( $Z_o$ ), is an acceleration analog (with units of  $1/s^2$ ). When subjected to square root transformation this yields ohmic mean velocity  $[(dZ/dt)_{max}/Z_o]^{0.5}$ . These parameters are described in detail in U.S. Pat. Nos. 7,740,590 and 7,261,697, the contents of which are fully incorporated herein by reference. Reasonable facsimiles of SV can be obtained when this value is multiplied by LVET and a volume conductor ( $V_c$ ) allometrically related by body mass to the intrathoracic blood volume. As compared to CO measured with TDCO and transesophageal echocardiography, good to high correlation and limits of agreement within  $\pm 30\%$  are reported.

**[0014]** While most ICG measurements are conducted on the thorax, there is good evidence in the literature implying that left ventricular SV can be obtained from the upper extremity, and specifically the brachium. For example, Chemla et al. showed that peak aortic blood acceleration is highly correlated with peak brachial artery blood acceleration ( $r=0.79$ ) (see, e.g., Chemla et al., *Blood flow acceleration in the carotid and brachial arteries of healthy volunteers: respective contributions of cardiac performance and local resistance*; *Fundam Clin Pharmacol*; 10: 393-399 (1996)). This study also demonstrated that, while brachial blood velocity is affected by downstream vasoactivity, peak brachial blood acceleration is solely affected by the upstream  $\beta$ -adrenergic influences of cardiac impulse formation. This suggests that square root transformation of brachial  $(dZ/dt)_{max}/Z_o$  may yield accurate estimations of SV when multiplied by LVET and a  $V_c$  of appropriate magnitude. Stanley et al. showed that the maximum early systolic upslope of the trans-thoracic and brachial impedance changes ( $\Delta Z$ ) are identical, indicating that they are linearly correlated (see, e.g. Stanley et al., *Multi-channel electrical bioimpedance: a new noninvasive method to simultaneously measure cardiac and peripheral blood flow*; *J Clin Monit Comput*; 21: 345-51 (2007)). This implies that, despite being of different magnitudes, the peak rate of change of the trans-thoracic and trans-brachial impedance changes can both be used to calculate SV. Finally, Wang et al. demonstrated that impedance changes ( $\Delta Z(t)$ ) in the forearm are highly correlated with Doppler-derived SV, showing a correlation coefficient of  $r=0.86$  (see, e.g. Wang et al., *Evaluation of changes in cardiac output from the electrical impedance waveform in the forearm*; *Physiol Meas*; 28: 989-999 (2007)).

**[0015]** CO/SV can also be estimated from a time-dependent arterial blood pressure waveform measured, e.g., with a tonometer or in-dwelling arterial catheter. Algorithms can be used to extract pulse pressure (PP) and other contour-related features from these waveforms, which are then processed to estimate CO/SV. Unfortunately both the heart and its associ-

ated vessels can function independently and sometimes paradoxically, so changes in parameters like PP may both reflect and mask changes in CO/SV. In other words, measurements of CO using time-dependent arterial waveforms represent a combination of cardiac and vascular function.

**[0016]** Pulse arrival time (PAT), defined as the transit time for a pressure pulse launched by a heartbeat in a patient's arterial system, has been shown in a number of studies to correlate to both systolic (SYS) and diastolic (DIA) blood pressures. In these studies, PAT is typically measured with a conventional vital signs monitor that includes separate modules to determine both an electrocardiogram (ECG) and a value for pulse oximetry (SpO<sub>2</sub>). During a PAT measurement, multiple electrodes typically attach to a patient's chest to determine a time-dependent component of the ECG waveform characterized by a sharp spike called the 'QRS complex'. The QRS complex indicates an initial depolarization of ventricles within the heart and, informally, marks the beginning of the heartbeat and a pressure pulse that follows. SpO<sub>2</sub> is typically measured with a bandage or clothespin-shaped sensor that attaches to a patient's finger, and includes optical systems operating in both red and infrared spectral regions. A photodetector measures radiation emitted from the optical systems that transmits through the patient's finger. Other body sites, e.g., the ear, forehead, and nose, can also be used in place of the finger. During a measurement, a microprocessor analyses both red and infrared radiation measured by the photodetector to determine time-dependent waveforms corresponding to the different wavelengths, each called a photoplethysmogram waveform (PPG). From these a SpO<sub>2</sub> value is calculated. Time-dependent features of the PPG waveform indicate both pulse rate and a volumetric absorbance change in an underlying artery (e.g., in the finger) caused by the propagating pressure pulse.

**[0017]** Typical PAT measurements determine the time separating a maximum point on the QRS complex (indicating the peak of ventricular depolarization) and a portion of the PPG waveform (indicating the arrival of the pressure pulse). PAT depends primarily on arterial compliance, the propagation distance of the pressure pulse (which is closely approximated by the patient's arm length), and blood pressure. To account for patient-specific properties, such as arterial compliance, PAT-based measurements of blood pressure are typically 'calibrated' using a conventional blood pressure cuff. Typically during the calibration process the blood pressure cuff is applied to the patient, used to make one or more blood pressure measurements, and then removed. Going forward, the calibration measurements are used, along with a change in PAT, to determine the patient's blood pressure and blood pressure variability. PAT typically relates inversely to blood pressure, i.e., a decrease in PAT indicates an increase in blood pressure.

**[0018]** A number of issued U.S. Patents describe the relationship between PAT and blood pressure. For example, U.S. Pat. Nos. 5,316,008; 5,857,975; 5,865,755; and 5,649,543 each describe an apparatus that includes conventional sensors that measure ECG and PPG waveforms, which are then processed to determine PAT.

#### SUMMARY OF THE INVENTION

**[0019]** The invention provides a small-scale, body-worn monitor for measuring SV/CO/CP, along with cNIBP, HR, respiratory rate (RR), SpO<sub>2</sub>, and body temperature (TEMP), motion, and posture. Measurements of CO/SV are based on a

measurement technique called 'transbrachial electro-velocimetry' (TBEV), which is described in detail below. TBEV measurements yield two time-dependent waveforms:  $Z_0$ , which represents a base impedance in the brachial region, and is sensitive to slowly varying properties such as blood volume; and  $\Delta Z(t)$ , which features heartbeat-induced pulses that vary in contour as blood flows through the brachium during both systole and diastole. These waveforms are measured from the patient's brachium, a region that is somewhat immune to pulmonary ventilatory affects that can complicate conventional ICG measurements obtained from the thorax. Collectively, an algorithm running on a microprocessor within the body-worn monitor analyzes features analysis of both  $Z_0$  and  $\Delta Z(t)$  to determine values for each TBEV measurement. More specifically, to determine SV/CO/CP values, the monitor relies on a 'hybrid measurement' that collectively processes combinations of time-dependent PPG, ECG, and TBEV waveforms, along with physiological parameters (e.g. blood pressure values) extracted from these waveforms, measured by the body-worn monitor. From these waveforms parameters such as LVET and PEP can be estimated and used in a mathematical relationship to continuously and accurately estimate SV/CO/CP values, as described in detail below. Once determined, they are combined with conventional vital signs, and wirelessly transmitted by the body-worn monitor to a central station to effectively monitor the patient.

**[0020]** The TBEV waveform is measured with a small module that connects to a first set of adhesive electrodes worn in the patient's clavicle/brachial (CB) region. This region roughly extends from areas near the tip of the shoulder (proximal to the axilla) to the elbow (proximal to the antecubital fossa). ECG waveforms are measured with a small module that connects to second set of adhesive electrodes that are typically worn on the patient's thorax in a conventional Einthoven's triangle configuration. Both the TBEV and ECG modules also include a 3-axis accelerometer that measures acceleration waveforms (ACC) that are sensitive to motion. Both accelerometers measure, for example, breathing-induced chest wall excursions that can be processed to estimate RR, as well as larger scale motion that can be processed to determine motion-related properties such as activity level, posture, degree/magnitude of motion, and frequency of motion.

**[0021]** During a measurement, the TBEV and ECG modules transmit waveforms and numerical information through either a wired or wireless connection to a wrist-worn transceiver. The transceiver also connects to an optical sensor, worn on the patient's thumb, that measures PPG waveforms generated with optical systems featuring red (~600 nm) and infrared (~900 nm) light-emitting diodes (LEDs). These waveforms can be processed to determine values of SpO<sub>2</sub>. The wrist-worn transceiver also includes an internal accelerometer that measures ACC waveforms associated with hand motions. Both PPG waveforms, along with the ECG waveforms, can be processed to determine cNIBP values.

**[0022]** The TBEV component of the hybrid measurement is measured by injecting a high-frequency, low-amperage alternating current (AC) field along the course of the brachial artery in the CB region, followed by simultaneously sensing and signal processing voltage changes produced within the current field. The fundamental rationale for TBEV derives from the direct proportionality and high correlation observed between peak ascending aortic and peak brachial artery blood flow acceleration. This technique is in diametric opposition to

the generally accepted volumetric theory, an alternative approach that suggests it is the velocity-induced peak rate of change in the specific resistance of axially-directed flowing blood that causes a time-dependent change in the measured impedance. Computationally, TBEV-determined SV is obtained by taking the square root of the peak rate of change of electrical impedance pulse variation divided by the base impedance as measured in the CB region, i.e.  $[(dZ/dt)_{max}/Z_0]^{0.5}$ . This parameter is then multiplied by LVET and a constant  $V_c$  to yield SV.

**[0023]** The body-worn monitor simultaneously provides a technique for measuring cNIBP, based on either PAT, pulse transit time (PTT) or vascular transit time (VTT), as described in more detail in the above-referenced patent applications. These documents describe cNIBP measurements made using the 'Composite Method', described in detail below, which features a number of improvements over conventional PAT and PTT measurements.

**[0024]** Upon completion of a measurement, the body-worn monitor wirelessly transmits waveforms, vital signs, and SV/CO/CP values to a remote monitor, such as a personal computer (PC), workstation at a nursing station, tablet computer, personal digital assistant (PDA), or cellular telephone. Typically the wireless transmitter is within the wrist-worn transceiver, which also displays and further analyzes this information. Both the remote monitor and the wrist-worn transceiver can additionally include a barcode scanner, touch screen display, camera, voice and speaker system, and wireless systems that operate with both local-area networks (e.g. 802.11 or 'WiFi' networks) and wide-area networks (e.g. the Sprint network).

**[0025]** In one aspect, for example, the invention provides a system for measuring both SV and CO from a patient. The system features an impedance sensor, connected to at least two patient-worn electrodes, and featuring an impedance circuit that processes signals from the at least two electrodes to measure an impedance signal from the patient. An optical sensor within the system connects to an optical probe, and features an optical circuit that measures at least one optical signal from the patient. A body-worn processing system operably connects to both the impedance sensor and the optical sensor and receives and processes the impedance signal to determine a first value of SV and CO. It then receives the optical signal and processes it to determine a second value of these parameters. Finally, the processing system collectively processes both the first and second values of SV and CO to determine a third value of these parameters, which it then reports to a display device.

**[0026]** In another aspect, the invention provides a similar system that also features an ECG sensor, connected to at least two body-worn electrodes, and featuring an ECG circuit. The ECG circuit is configured to process signals from the electrodes to measure an ECG waveform and HR value. A processing system connects to the impedance, optical, and ECG sensors, and receives time-dependent waveforms from each of these systems. It then collectively processes the ECG and optical signals to determine a blood pressure value, and then processes the blood pressure value to estimate SV and CO.

**[0027]** In another aspect, the invention provides a similar system that features ECG, impedance, and optical sensors. Collectively these sensors generate signals that are processed to determine a collection of SV 'estimators'. The various estimators are then processed with a variety of algorithms to estimate stroke volume.

**[0028]** In another aspect the invention provides a method for determining SV that features the following steps: (a) measuring an impedance signal with an impedance sensor operably connected to the body-worn monitor; (b) measuring an optical signal with an optical sensor; (c) processing the impedance signal to determine a value of  $(dZ/dt)_{max}$ ; (d) processing the optical signal to determine a value of SFT; and (e) collectively processing  $Z_o$ ,  $(dZ/dt)_{max}$  and SFT to determine the SV.

**[0029]** In another aspect, the invention provides a method of determining cardiac power, which as described in detail below is the product of CO and MAP. Here, CO is determined by processing an ECG waveform to determine a heart rate value, and a combination of impedance and optical waveforms to determine SV. MAP is then calculated from a PAT value determined from PPG and ECG waveforms. Alternatively, MAP is calculated from a VTT value determined from TBEV and PPG waveforms. In both cases, the Composite Method processes either PAT or PTT to determine MAP.

**[0030]** In another aspect, the invention provides a body-worn system for measuring a SV value from a patient. The body-worn system features a TBEV module that includes an electrical circuit configured to inject a current proximal to the patient's brachium. The circuit's bottom portion includes a pair of electrical connectors that are configured to snap into a pair of mated connectors disposed on a first electrode, with a first connector configured to inject the current into a first portion of the electrode, and a second connector configured to measure signals from a second portion of the electrode that relate to a voltage. An analog circuit then processes the signals from the second connector to generate a voltage value. A processor interfaced to the analog circuit converts the voltage value, or a value calculated therefrom, into a time-dependent resistance value, and then converts the time-dependent resistance value into a SV value.

**[0031]** In yet another aspect, the invention provides a method for determining SV from a patient that includes the following steps: (a) measuring a motion waveform with a first motion sensor; (b) processing the motion waveform with a motion algorithm to determine a motion-related parameter; (c) comparing the motion-related parameter to a pre-determined threshold parameter to determine if the patient's motion exceeds an acceptable level; (d) measuring an impedance waveform from the patient with an impedance sensor if the patient's motion does not exceed an acceptable level; and (e) calculating a SV value from the impedance waveform if the patient's motion does not exceed an acceptable level.

**[0032]** The Composite Method for cNIBP is described in detail in the following patent application, the contents of which are fully incorporated herein by reference: BODY-WORN SYSTEM FOR MEASURING CONTINUOUS NON-INVASIVE BLOOD PRESSURE (cNIBP), U.S. Ser. No. 12/650,354, filed Nov. 15, 2009. It includes both pressure-dependent and pressure-free measurements, and is based on the discovery that PAT and the PPG waveform used to determine it are strongly modulated by an applied pressure. During a pressure-dependent measurement, also referred to herein as an 'indexing measurement', two events occur as the pressure gradually increases to the patient's systolic pressure: 1) PAT increases, typically in a non-linear manner, once the applied pressure exceeds diastolic pressure; and 2) the magnitude of the PPG's amplitude systematically decreases, typically in a linear manner, as the applied pressure approaches systolic pressure. The applied pressure gradually decreases

blood flow and consequent blood pressure in the patient's arm, and therefore induces the pressure-dependent increase in PAT. Each of the resulting pairs of PAT/blood pressure readings measured during the period of applied pressure can be used as a calibration point. Moreover, when the applied pressure equals SYS, the amplitude of the PPG waveform is completely eliminated, and PAT is no longer measurable. Collectively analyzing both PAT and the PPG waveform's amplitude over a suitable range, along with the pressure waveform using techniques borrowed from conventional oscillometry, yields the patient's SYS, DIA, and MAP, along with a patient-specific slope relating PAT and MAP. From these parameters the patient's cNIBP can be determined without using a conventional cuff.

**[0033]** A combination of several algorithmic features improves the efficacy of the Composite Method over conventional PAT measurements of cNIBP. For example, sophisticated, real-time digital filtering removes high-frequency noise from the PPG waveform, allowing its onset point to be accurately detected. When processed along with the ECG waveform, this ensures measurement of an accurate PAT and, ultimately, cNIBP value. The pressure-dependent indexing method, which is made during inflation of the arm-worn cuff, yields multiple data points relating PAT and blood pressure during a short (~60 second) measurement. Processing of these data points yields an accurate patient-specific slope relating PAT to cNIBP. Inclusion of multiple accelerometers yields a variety of signals that can determine features like arm height, motion, activity level, and posture that can be further processed to improve accuracy of the cNIBP calculation, and additionally allow it to be performed in the presence of motion artifacts. And a model based on femoral blood pressure, which is more representative of pressure in the patient's core, can reduce effects such as 'pulse pressure amplification' that can elevate blood pressure measured at a patient's extremities.

**[0034]** The Composite Method can also include an 'intermediate' pressure-dependent measurement wherein the cuff is partially inflated. This partially decreases the amplitude of the PPG waveform in a time-dependent manner. The amplitude's pressure-dependent decrease can then be 'fit' with a numerical function to estimate the pressure at which the amplitude completely disappears, indicating systolic pressure.

**[0035]** For the pressure-dependent measurement, a small pneumatic system attached to the cuff inflates the bladder to apply pressure to an underlying artery according to the pressure waveform. The cuff is typically located on the patient's upper arm, proximal to the brachial artery, and time-dependent pressure is measured by an internal pressure sensor, such as an in-line Wheatstone bridge or strain gauge, within the pneumatic system. The pressure waveform gradually ramps up in a mostly linear manner during inflation, and then slowly rapidly deflates through a 'bleeder valve' during deflation. During inflation, mechanical pulsations corresponding to the patient's heartbeats couple into the bladder as the applied pressure approaches DIA. The mechanical pulsations modulate the pressure waveform so that it includes a series of time-dependent oscillations. The oscillations are similar to those measured with an automated blood pressure cuff using oscillometry, only they are measured during inflation rather than deflation. They are processed as described below to

determine a 'processed pressure waveform', from which MAP is determined directly, and SYS and DIA are determined indirectly.

[0036] Pressure-dependent measurements performed on inflation have several advantages to similar measurements performed on deflation, which are convention. For example, inflation-based measurements are relatively fast and comfortable compared to those made on deflation. Most conventional cuff-based systems using deflation-based oscillometry take roughly four times longer than the Composite Method's pressure-dependent measurement. Inflation-based measurements are possible because of the Composite Method's relatively slow inflation speed (typically 5-10 mmHg/second) and high sensitivity of the pressure sensor used within the body-worn monitor. Moreover, measurements made during inflation can be immediately terminated once systolic blood pressure is calculated. In contrast, conventional cuff-based measurements made during deflation typically apply a pressure that far exceeds the patient's systolic blood pressure; pressure within the cuff then slowly bleeds down below DIA to complete the measurement.

[0037] Pressure-free measurements immediately follow the pressure-dependent measurements, and are typically made by determining PAT with the same optical and electrical sensors used in the pressure-dependent measurements. Specifically, the body-worn monitor processes PAT and other properties of the PPG waveform, along with the patient-specific slope and measurements of SYS, DIA, and MAP made during the pressure-dependent measurement, to determine cNIBP.

[0038] The invention in general, and particularly the hybrid measurement for SV/CO/CP, features many advantages over conventional techniques used to measure these properties. Compared to TDCO and Fick, for example, the body-worn monitor facilitates continuous, noninvasive measurement of these values that is highly accurate and has a low-risk of detrimental complications, such as infection and pulmonary artery vessel perforation. And unlike measurements based on TDCO, Fick, and Doppler, the hybrid measurement does not require a specially trained observer. TBEV measurements are performed at the brachium, which by itself has several advantages over conventional ICG measurements made from the thorax. For example, complications in the pulmonary system, i.e. intra-thoracic liquids and pulmonary edema, do not affect SV/CO/CP values measured from this region. Similarly, the baseline trans-brachial quasi-static impedance,  $Z_0$  is not affected by medical equipment sometimes present in the thorax, such as chest tubes, external pacemaker wires, and central venous lines. Typically thoracic ICG measurements require 8 separate electrodes, whereas the TBEV measurement described herein only requires 2 separate electrodes. Finally, without the influence of pulmonary ventilation and pulmonary artery pulsations, the signal-to-noise ratio of waveforms measured from the brachium is relatively high.

[0039] These and other advantages of the invention will be apparent for the following detailed description, and from the claims.

#### BRIEF DESCRIPTION OF THE DRAWINGS

[0040] FIG. 1 shows a schematic drawing of an algorithm that performs the hybrid measurement for determining SV/CO/CP values according to the invention;

[0041] FIG. 2 shows a schematic drawing of the custom electrode patch used to perform TBEV measurements described in FIG. 1;

[0042] FIG. 3 shows a schematic drawing of the human body's circulatory system indicating regions where both conventional ICG and TBEV measurements are made;

[0043] FIG. 4 shows a schematic diagram showing the body-worn monitor of the invention positioned relative to both the aorta and brachial arteries, and how these vessels change in diameter during systole and diastole;

[0044] FIG. 5 shows a schematic drawing of a body-worn monitor that performs the hybrid measurement shown in FIG. 1;

[0045] FIG. 6A shows a schematic drawing of an alternate embodiment of the body-worn monitor that performs the hybrid measurement shown in FIG. 1;

[0046] FIG. 6B shows a three-dimensional drawing of the TBEV module and custom electrode used in the alternate embodiment shown in FIG. 6A;

[0047] FIG. 7 shows a schematic diagram of analog and digital circuits used to make a TBEV measurement according to the invention;

[0048] FIG. 8 shows a flow chart of an algorithm for calculating SV where systolic flow time (SFT) is determined using Weissler's regression;

[0049] FIG. 9 shows a flow chart of an algorithm for calculating SV using the SV estimators shown in FIG. 1;

[0050] FIG. 10 shows a three-dimensional image of a wrist-worn transceiver, which is part of the body-worn monitor shown in FIGS. 5 and 6A;

[0051] FIGS. 11A-E show time-dependent plots of, respectively, ECG, ICG, TBEV,  $d(ICG)/dt$ , and  $d(TBEV)/dt$  waveforms measured with the body-worn monitor of FIG. 5;

[0052] FIGS. 12A-B show time-dependent plots of  $dZ/dt$  waveform measured from, respectively, the thorax and brachium;

[0053] FIGS. 13A-13D show time-dependent plots of, respectively, a TBEV waveform, a derivative of the TBEV waveform showing fiducial points near a pulse maximum used to determine the pulse's onset, a derivative of the TBEV waveform showing a shaded region indicating where Weissler's regression is used to estimate LVET, and a derivative of the TBEV waveform where SFT is determined;

[0054] FIG. 14 shows a correlation plot comparing SFT measured using a 'fused' approach that relies partially on HR, pulse rate (PR) and Weissler's regression, and LVET measured with Doppler/ultrasound;

[0055] FIGS. 15A-E show two-dimensional Doppler/ultrasound images of the brachial artery measured during systole (FIGS. 15A-C), and diastole (FIGS. 15D, E);

[0056] FIG. 15F shows a time-dependent plot of an ECG waveform and a TBEV waveform that corresponds to the two-dimensional images shown in FIGS. 15A-E;

[0057] FIGS. 16A, B show time-dependent plots of, respectively, a waveform extracted from Doppler/ultrasound images taken from the brachium, similar to those shown in FIGS. 15A-E, and a simultaneously measured TBEV waveform;

[0058] FIG. 16C, D show plots of, respectively, the time-dependent derivatives of the waveforms shown in FIGS. 16A, B;

[0059] FIG. 17 shows derivatized TBEV waveforms measured from 7 unique subjects;

[0060] FIG. 18A, B show, respectively, correlation and Bland-Altman plots comparing CO measured from of 23 subjects using Doppler/ultrasound and TBEV;

[0061] FIGS. 19A, B show time-dependent plots of, respectively, ICG and TBEV waveforms corresponding to high and low values of CO measured while a subject is wearing military anti-shock trousers (MAST);

[0062] FIGS. 20A-C show time-dependent plots of, respectively, an unfiltered TBEV waveform showing both cardiac and respiratory events, a TBEV waveform filtered with a 0.5 to 15 Hz band-pass filter showing only cardiac events, and a TBEV waveform filtered with a 0.001 to 1 Hz band-pass filter showing only respiration events;

[0063] FIGS. 21A, B show time-dependent plots of, respectively, TBEV and ACC waveforms modulated by respiration events;

[0064] FIGS. 21C, D show frequency-domain power spectra of the time-dependent plots shown, respectively, in FIGS. 21A, B;

[0065] FIG. 22A shows a time-dependent plot of TBEV and ECG waveforms measured during a period of no motion;

[0066] FIG. 22B shows a time-dependent plot of ACC waveforms, measured simultaneously with the TBEV and ECG waveforms of FIG. 22A, during the period of no motion;

[0067] FIG. 23A shows time-dependent plots of TBEV and ECG waveforms measured during a period of motion;

[0068] FIG. 23B shows a time-dependent plot showing ACC waveforms, measured simultaneously with the TBEV and ECG waveforms of FIG. 22A, during the period of motion;

[0069] FIG. 24 shows a schematic drawing of a patient and an overlying coordinate axis used with an algorithm and ACC waveforms to determine the patient's posture;

[0070] FIG. 25A shows a plot of time-dependent ACC waveforms measured from a patient's chest during different postures;

[0071] FIG. 25B shows a plot of time-dependent postures determined by processing the ACC waveforms of FIG. 25A with an algorithm and coordinate axis shown in FIG. 24;

[0072] FIG. 26 shows a schematic drawing of ECG and PPG waveforms, and how the PAT determined from these waveforms and the contours of the PPG waveforms can be collectively analyzed to determine an estimator for SV;

[0073] FIG. 27 shows a three-dimensional drawing of a harness used to make a TBEV measurement according to an alternate embodiment of the invention;

[0074] FIG. 28 shows a schematic drawing of an alternate embodiment of the invention wherein the TBEV circuit is contained within a module attached directly to the brachium and detached from the ECG circuit, which is worn on the chest;

[0075] FIG. 29 shows a schematic drawing of the TBEV module shown in FIG. 28;

[0076] FIG. 30 shows a schematic drawing of an alternate embodiment of the invention wherein the body-worn monitor wirelessly transmits information between a chest-worn module and the wrist-worn transceiver, and from there to a remote monitor; and,

[0077] FIG. 31 shows a schematic drawing of the body-worn monitor, similar to that shown in FIG. 30, that wirelessly transmits information between both a chest-worn module and the wrist-worn transceiver to the remote monitor.

## DETAILED DESCRIPTION OF THE INVENTION

[0078] Measurement Overview

[0079] Referring to FIG. 1, the invention described herein features a body-worn monitor that continuously and non-invasively determines SV from TBEV measurements 7 collected from a patient's CB region, along with a series of SV 'estimators' 1-6 made calculated from cNIBP measurements. The body-worn monitor is described, for example, in the following patent applications, the contents of which are incorporated herein by reference: BODY-WORN VITAL SIGN MONITOR, U.S. Ser. No. 12/560,077, filed Sep. 15, 2009; and BODY-WORN VITAL SIGN MONITOR, U.S. Ser. No. 12/762,726, filed Apr. 19, 2009. SV measurements made using TBEV 7 and the estimators 1-6 can be incorporated into a 'hybrid measurement' 10, operating on a micro-processor within the body-worn monitor, that determines SV and ultimately CO and CP.

[0080] TBEV is a variation of conventional bioimpedance techniques, such as ICG, and measures waveforms from the CB region to determine time-dependent parameters such as systolic flow time (SFT),  $(dZ/dt)_{max}$ , and  $Z_0$ . These parameters feed into Eq. 3, below, where they are coupled with a static parameter  $V_c$  to determine SV.

$$SV = V_c \sqrt{\frac{(dZ/dt)_{max}}{Z_0}} SFT \quad (3)$$

Here, SV is obtained by taking the square root of the peak rate of change of each TBEV pulse divided by the transbrachial base impedance,  $Z_0$ . This parameter is then multiplied by SFT and a constant-magnitude  $V_c$  to yield SV. The derivation of Eq. 3 is described in detail in U.S. Pat. No. 6,511,438 and in the following reference, the contents of which are fully incorporated herein by reference: Bernstein et al., *Stroke Volume Obtained By Electrical Interrogation of the Brachial Artery: Transbrachial Electrical Bioimpedance Velocimetry*. Unpublished manuscript, submitted 2012. Eq. 3 assumes that  $(dZ/dt)_{max}/Z_0$  represents a dimensionless acceleration of blood (with units of  $1/s^2$ ), which is the ohmic analog of peak aortic blood acceleration ( $cm/s^2$ ). Forceful systolic ejection of blood from the left ventricle of the heart aligns the erythrocytes in parallel during systolic flow to generate a pulsatile increase in conductivity. For this model,  $V_c$  is estimated entirely from weight, and is independent of any factors that depend on electrode separation.

[0081] Along with SV, the body-worn monitor simultaneously measures cNIBP values (SYS, DIA, MAP, and PP) using a cuffless technique called the 'Composite Method', which is described in detail above. According to the hybrid method, SV is determined explicitly from the TBEV waveforms, and can be estimated from the cNIBP values. From these parameters multiple estimators 1-7 are determined which the algorithm 10 collectively processes to determine SV. Additionally, the body-worn monitor features multiple accelerometers that generate time-dependent ACC waveforms, which are then further processed by a motion algorithm 11 to estimate the patient's level of motion. A function for filtering and rejecting bad data 8 processes information from both the estimators 1-7 and the motion algorithm 11 to determine a collection of valid data points, which are then linearly combined with another function 9 to determine final values of SV. The valid data points, for example, are relatively

uncorrupted by motion artifacts; they are determined when the motion algorithm 11 compares a parameter extracted from an ACC waveform to a pre-determined 'motion threshold' value. If the parameter exceeds the pre-determined threshold value, the function 8 rejects the corresponding SV values. On the other hand, if the parameter is lower than the pre-determined threshold value, the function 8 approves the corresponding SV value, and it is passed into the linear combination algorithm 9, where it will be processed to determine a final value for SV.

**[0082]** Different threshold values can be applied for SV calculated from TBEV 7, a measurement that is particularly sensitive to motion, and SV estimated from estimators related to blood pressure 1-6, which are less sensitive to motion. For example, the motion algorithm 11 may determine that a small amount of motion is present, and thus the linear combination algorithm 9 relies completely on SV values determined from the estimators related to blood pressure 1-6. Or it may determine that a large amount of motion is present, and in response the linear combination algorithm 9 will not report an SV value. If the motion algorithm 11 determines that no motion is present, the linear combination algorithm 9 typically reports a SV value determined entirely from TBEV 7.

**[0083]** In embodiments, the linear combination algorithm 9 combines different estimators using a simple average or weighted average to determine a single value of SV. More sophisticated approaches can also be used to process the estimators. For example, specific estimators can be selected based on a patient's physiological condition or biometric parameters, e.g. their age, gender, weight, or height.

**[0084]** Once SV is determined, it can be further processed as defined in Eqs. 1, 2 to determine both CO and CP.

**[0085]** Upon completion of a measurement, the body-worn monitor wirelessly transmits SV/CO/CP values, along with conventional vital signs, to a remote processing system. For example, these data may flow through a hospital-based wireless network to a central computer interfaced to an electronic medical records system. From there, medical professionals, such as doctors, nurses, and first responders, can evaluate a constellation of physiological values corresponding to the patient to make a diagnosis. Typically, patients wear the body-worn monitor as they transition from the ambulance, into the hospital, and ultimately to the home.

**[0086]** A TBEV measurement, described in detail below, injects a low-amperage, high-frequency current into the patient's CB region, and monitors a voltage which relates to the time-dependent resistance encountered by the current through Ohm's Law ( $V=I \times R$ ). It is based on the assumption that the brachial artery, which is the only major artery in the CB region, undergoes little volumetric expansion during systole, and thus changes in resistance are due exclusively to acceleration-induced alignment of erythrocytes within this artery. Stated another way, as blood flows through the artery with each heartbeat, the diameter of the brachial artery stays relatively constant, but acceleration of the blood causes the erythrocytes to align. This physiological process consequently increases conductivity, and decreases resistance, in the artery. The time-dependent resistance in the artery is manifested as a first waveform, called  $\Delta Z(t)$ , which features a series of pulses, each corresponding to a unique heartbeat. A second TBEV waveform,  $Z_0$ , is filtered to only reflect the baseline impedance of the artery, and is sensitive to relatively low-frequency processes, such as blood volume, interstitial fluids, and occasionally respiration rate.

**[0087]** Estimators for determining SV from blood pressure values include the Lilijstrand 1, Wesseling 2, MAP 3, and Herd 4 estimators. These depend linearly on blood pressure values, and are shown below in Table 1. In this table  $SYS_{area}$  refers to the area under the PPG waveform during systole,  $\Delta P_n$  is the beat-to-beat blood pressure change,  $T_n$  is the duration of the cardiac cycle, and  $\tau_n$  is a time constant that governs the intra-cycle dynamics of the Windkessel model.

**[0088]** These estimators are summarized in detail in the following reference, among other places, the contents of which are incorporated herein by reference: Chen, *Cardiac Output Estimation from Arterial Blood Pressure Waveforms using the MIMIC II Database*; Thesis for Masters Degree submitted to the Massachusetts Institute of Technology; (2009); and Parlikar et al., *Model-Based Estimation of Cardiac Output and Total Peripheral Resistance*; unpublished manuscript available at <http://lcp.mit.edu/pdf/Parlikar07.pdf>. Estimators based on blood pressure can be determined using the Composite Method, or alternatively with a conventional cuff-based method, such as oscillometry or auscultation.

TABLE 1

Estimators for CO	
CO ESTIMATOR	CO FORMULA (CO = k*equation below)
Lilijstrand	$[(PP/(SYS + DIA))] * HR$
Wesseling	$(163 + HR - 0.48 * MAP) * SYS_{area} * HR$
MAP	MAP
SYS	$SYS_{area} * HR$
ParlikarHeldt	$(\Delta P_n / T_n + MAP / \tau_n)$
Herd	$(MAP - DIA) * HR$
Windkessel	$PP * HR$

**[0089]** Other SV estimators that can be processed by the algorithm include those based on PAT 5, which is determined using PPG and ECG waveforms measured by the body-worn monitor, and is described in the following reference, the contents of which are incorporated by reference: Wang et al., *The non-invasive and continuous estimation of cardiac output using a photoplethysmogram and electrocardiogram during incremental exercise*; *Physiol. Meas.*; 31: 715-726 (2010). FIG. 26 and Eq. 4, below, indicate Wang's methodology for analyzing PAT, ECG 375, and PPG 380 waveforms to determine a relative value of CO.

$$CO = D \times [C - \ln(PAT)] \times (1 - IPA) \times (1 + IPA)^{-1} \quad (4)$$

**[0090]** In the equation D and C are constants defined in the Wang reference, and IPA is shown schematically in FIG. 26. This theory assumes that the PPG waveform 380 includes a well-defined dichrotic notch allowing the parameters  $X_1$ ,  $X_2$ , and ultimately IPA to be determined. Integration of an area under the PPG before the notch yields  $X_1$ , while integration of an area under the PPG after the notch yields  $X_2$ . IPA is defined as the ratio of  $X_1$  to  $X_2$ . Once determined, PAT and IPA are used in Eq. 4 to yield another estimator of SV/CO/CP.

**[0091]** The PPG waveform, taken by itself, can be analyzed and used as an 'other' estimator 6 for algorithm 10. This waveform represents a time-dependent volumetric expansion of the underlying artery from which it is measured, and is thus different than a traditional cNIBP waveform, such as that measured using an in-dwelling arterial catheter, which represents the time-dependent pressure in the artery. However, PPG and cNIBP waveforms share a similar morphology, particularly over relatively long time periods, and can be ana-

lyzed to estimate both blood flow dynamics and hence SV. The following reference, the contents of which are incorporated herein by reference, describes an analysis method for processing waveforms to extract these parameters: Lu et al., *Continuous cardiac output monitoring in humans by invasive and noninvasive peripheral blood pressure waveform analysis*; J Appl Physiol 101: 598-608 (2006).

**[0092]** In still other embodiments, an ‘other’ estimator **6** for the SV/CO/CP measurement can be based on a measurement technique performed by an external sensor that connects to the body-worn monitor. Such a connection can be made using either wired or wireless means. For example, a technique such as near-infrared spectroscopy (NIRS) can be used to estimate SV as described in the following references, the contents of which are incorporated herein by reference: Soller et al., *Noninvasively determined muscle oxygen saturation is an early indicator of central hypovolemia in humans*; J Appl Physiol 104: 475-481 (2008). A sensor incorporating a NIRS measurement can thus be integrated with the body-worn monitor and attached to the patient’s body during a measurement. Values for SV calculated with this sensor are sent to the monitor through the wired or wireless connection, and can be incorporated in the algorithm **10** to further improve the accuracy of the continuous, non-invasive determination of SV. In all cases, the collection of estimators **1-6** relate to CO through a calibration factor ( $k$  in Table 1) determined from an absolute measurement of SV, which in the algorithm **10** is provided by the TBEV measurement **7**. Typically TBEV determines SV to within about  $\pm 20\%$ . Perhaps more importantly, the estimators **1-6** and TBEV measurement **7** determine SV with completely different methodologies and from different locations on the body. Thus it is possible that combining the measurements into a single algorithm **10** may reduce error caused by well-known physiological effects that are typically isolated to these locations.

**[0093]** As shown in FIG. 2, TBEV measurements are typically made with a pair of custom electrodes **24**, each featuring two conductive regions **45**, **47**. The outer conductive region **45** (i.e. the region furthest removed from the CB region) of each electrode **24** injects a low-amperage ( $<5$  mA), high frequency (50-100 kHz) current into the patient’s CB region. The inner conductive region **47** then measures the time-dependent voltage across the artery. As described above, variations in this voltage are due to resistance changes caused by blood flowing through the brachial artery, and more specifically due to acceleration-induced alignment of erythrocytes occurring with each heartbeat. This physiology provides a basis for the mathematical model shown above in Eq. 3.

**[0094]** Each conductive region **45** and **47** typically consists of a conductive ‘liquid gel’ material that roughly matches the impedance properties of human skin. The liquid gel is deposited on top of a conductive substrate coated with a large-area Ag:AgCl film that, in turn, is deposited on top of a flexible substrate **23**. The liquid gel, for example, can be a sponge-like material saturated with a conductive gel or fluid. The neighboring conductive regions **45**, **47** are electrically isolated from each other, and individually connect through a pair of individual conductive traces **54A**, **B** to a pair of electrical leads **52A**, **B** adhered to the flexible substrate **23**. The electrical leads **52A**, **B**, for example, can be metal rivets or posts that easily snap into a corresponding female connector. An insulating adhesive layer (not shown in the figure) dispersed between the conductive regions **45** and **47** electrically isolates

these portions of the electrode **24**, and is coated with an adhesive that enables it to be securely attached to the patient during a measurement.

**[0095]** FIGS. 3 and 4 indicate some of the advantages of TBEV measurements, which are made in the CB region **58** of the patient **20**, as compared to conventional ICG measurements, which are made in the thorax **59**. As is clear from FIG. 3 (with the underlying image borrowed from Gray’s Anatomy), the thorax **59** features a vast and complicated collection of arteries and veins, as well as most of the patient’s vital organs, such as their lungs, heart, kidneys, liver, stomach, and gastro-intestinal track. Each of these systems, and most particularly the lungs and large arteries stemming from the left side of the heart, contain conductive fluids (e.g. blood and lung fluids) that will influence conventional ICG waveforms. For example, physiological processes such as excess lung fluids, pulmonary edema, and pulmonary injury can alter the time-dependent impedance characteristics of the patient’s thorax. Thus, the resulting waveforms measured therefrom are no longer reflective of the true hemodynamic state. In stark contrast is the brachium **58**, which is physically removed from pulmonary affects and features only one large artery—the brachial artery—which influences the TBEV measurement. Ultimately this simplifies the morphology of the TBEV waveform and lessens its patient-to-patient variability, thereby simplifying the calculation of SV.

**[0096]** Importantly, previous studies have indicated a strong correlation between peak blood acceleration in the aorta, where the SV is first manifested, and peak blood acceleration in the brachium, where TBEV measures a signal used to estimate SV by square root transformation. Insofar as velocities are concerned, peak aortic blood velocity is roughly 80-124 cm/s (mean  $\sim 100$  cm/s), while that in the brachial artery is roughly 30-70 cm/s (mean  $\sim 50$  cm/s). Experiments that measured these parameters are described in the following references, the contents of which are incorporated herein by reference: Gardin J M et al., *Evaluation of blood flow velocity in the ascending aorta and main pulmonary artery of normal subjects by Doppler echocardiography*. Am. Heart J. 1984; 107:310; Wilson S et al., *Normal intracardiac and great artery blood velocity measurements by pulsed Doppler echocardiography*. Br. Heart J. 1985; 53:451; Fronck A., *Non invasive diagnostics in vascular disease*. McGraw-Hill, N.Y. 1989, pp 117; Green D, et al., *Assessment of brachial artery blood flow across the cardiac cycle: retrograde flows during bicycle ergometry*. J. Appl. Physiol 2002; 93:361. These references indicate that, to a first approximation, the average blood velocity in the aorta is roughly twice that in the brachial artery.

**[0097]** FIG. 4 indicates how TBEV signals are further reduced in complexity as compared to ICG signals. Without being bound to any theory, this is likely because of the relatively complex time-dependent properties of vasculature in the thorax (e.g. the aorta **66A**, **66B**), as compared to those in the CB region (e.g. the brachium **68A**, **68B**). More specifically, the figure shows the location of the body-worn monitor **19** on a patient, along with schematic drawings of the patient’s aorta **66A**, **66B** and brachial artery **68A**, **68B**. During systole, the left ventricle contracts to force blood into the aorta **66A**, with the volume of ejection defined as the SV. This process creates two simultaneous processes in the aorta as the cardiac cycle moves from diastole to systole: 1) a volumetric increase as the aorta’s arterial walls, which are highly elastic and expand to an enlarged state **66A** during systole and then

recoil to a relaxed state **66B** during diastole; and 2) an acceleration-induced alignment of erythrocytes within the arterial lumen, causing these cells to move from a random orientation during diastole to an aligned parallel orientation during systole. Without being bound by any theory, it is likely that both the volumetric and acceleration-induced alignment processes take place in the aorta during the cardiac cycle. Both processes affect the conductivity of blood in the aorta in a patient-specific manner, thereby complicating the pulsatile component of the ICG signal, and making it difficult for a single mathematical equation to characterize a large set of patients. Historically parameters extracted from ICG signals are fed into the well-known Sramek-Bernstein equation, shown below in Eq. 5, is based on the volumetric expansion model:

$$SV = \delta \frac{L^3}{4.25} \frac{(dZ/dt)_{max}}{Z_0} LVET \quad (6)$$

In Eq. 5  $\delta$  represents compensation for body mass index,  $Z_0$  is the base impedance, and  $L$  is estimated from the distance separating the current-injecting and voltage-measuring electrodes on the thorax. This equation and several mathematical derivatives are described in detail in the following reference, the contents of which are incorporated herein by reference: Bernstein, *Impedance cardiography: Pulsatile blood flow and the biophysical and electrodynamic basis for the stroke volume equations*; J Electr Bioimp; 1: 2-17 (2010). Eq. 5 depends on LVET, which is estimated from each pulse in the ICG waveform, as is described in more detail below. Both the Sramek-Bernstein Equation and an earlier derivative of this, called the Kubicek Equation, feature a 'static component',  $Z_0$ , and a 'dynamic component',  $\Delta Z(t)$ , which relates to LVET and a  $(dZ/dt)_{max}/Z_0$  value, calculated from the derivative of the raw ICG signal,  $\Delta Z(t)$ . These equations assume that  $(dZ/dt)_{max}/Z_0$  represents a radial velocity (with units of  $\Omega/s$ ) of blood due to volume expansion of the aorta.

**[0098]** In contrast to the aorta, the brachial artery is a relatively muscular vessel that undergoes little expansion during systole **68A** and recoil during diastole **68B**; its arterial volume, as shown in FIG. 4, thus remains relatively constant during the cardiac cycle. Time-dependent changes in the arterial waveform are thus due nearly exclusively to periodic, sinusoidal, heartbeat-induced parallel alignment of the erythrocytes within the artery. Ultimately this means that, to develop an underlying mathematical model for the brachial artery, it is not necessary to estimate the relative contributions of volumetric expansion and erythrocyte alignment, which as described above may vary with each patient.

**[0099]** Sensor Configurations

**[0100]** Referring to FIGS. 5 and 6, in a preferred embodiment the body-worn monitor **19** is distributed on a patient **20** to measure SV/CO/CP. The monitor features a TBEV module **22**, worn near the CB region, which is attached to the patient **20** using a first two-part electrode **24** shown in FIG. 2. A second two-part electrode **28** attaches to the patient **20** near the elbow. As described above, the outer conductive area in the first two-part electrode injects a high-frequency, low-amperage current into the patient's CB region, while the outer conductive area in the second two-part electrode serves as a sink for this current. Simultaneously, the inner electrodes measure a voltage that describes resistance encountered by the propagating current according to Ohm's Law. Each elec-

trode in the first two-part electrode **24** features a rivet or post that snaps into a mated female component in the TBEV module, thereby connecting these components directly to analog circuitry therein. Similarly, electrodes in the second two-part electrode **28** connect to snaps embedded in a cable **26** that connects the first **24** and second **28** electrodes. The cable **26** includes conductors for transmitting digital data through the control area network (CAN) protocol. Use of this protocol is described in detailed in the following patent application, the contents of which have been previously incorporated herein by reference: BODY-WORN VITAL SIGN MONITOR, U.S. Ser. No. 12/560,077, filed Sep. 15, 2009. The cable **26** additionally includes conductors for transmitting analog signals to the TBEV module **22** to measure the above-described voltage. An analog-to-digital converter (not shown in the figure) within the module digitizes the TBEV waveforms to form  $\Delta Z(t)$  and  $Z_0$ , which are then analyzed with a microprocessor (also not shown in the figure) as described above to determine a value for SV.

**[0101]** An ECG module **40** worn on the patient's thorax connects to the TBEV module **22** through a similar cable **27** that only includes conductors for transmitting digital signals according to the CAN protocol. The ECG module **40** connects to a trio of disposable ECG electrodes **42A-C**, disposed on the patient's thorax in a conventional 'Einthoven's triangle' configuration, through a corresponding trio of ECG leads **44A-C**. During a measurement, the ECG module **40** measures analog signals from each electrode **42A-C** and lead **44A-C**, and performs a differential amplification of these signals according to known techniques in the art to generate an ECG waveform. An analog-to-digital converter (not shown in the figure) digitizes the ECG waveform, and a microprocessor (also not shown in the figure) analyzes the well-known QRS complex within this waveform with a beat-picking algorithm to determine a HR value. Digital representations of these data are sent within CAN-formatted packets through the cable **27** to a CAN transceiver (not shown in the figure) within the TBEV module **22**. There, the packets are combined with corresponding packets that include the TBEV waveform and SV values, which are calculated as described above. These packets pass through CAN conductors in the cable **26**, past the second two-part electrode **28**, and then through a third cable **29** to a wrist-worn transceiver **30** that connects to the patient's wrist using a plastic cradle **32** and Velcro strap **34**. These components are described in more detail in the following co-pending patent applications, the contents of which have been previously incorporated by reference: BODY-WORN VITAL SIGN MONITOR, U.S. Ser. No. 12/560,077, filed Sep. 15, 2009; and BODY-WORN VITAL SIGN MONITOR, U.S. Ser. No. 12/762,726, filed Apr. 19, 2009. The wrist-worn transceiver **30** additionally connects through a short cable **38** that carries only analog signals measured by a thumb-worn optical sensor **36**. Within the wrist-worn transceiver is a pulse oximetry circuit (not shown in the figure) that converts signals measured by the optical sensor **36** to generate PPG waveforms and corresponding values of SpO<sub>2</sub>. A microprocessor within the wrist-worn transceiver **30** processes PPG and ECG waveforms to generate a value of PAT, or alternatively TBEV and PPG waveforms to generate a value of VTT. These transit times are converted into cNIBP values using the Composite Method, as described above. The cNIBP values, in turn, are converted into SV estimators using the algorithm shown in FIG. 1. From there, corresponding values

of CO are determined using SV and ECG-determined values of HR, while values of CP are determined using MAP and CO.

[0102] Technically, TBEV-based measurements of SV only require an isolated TBEV waveform, and can be performed without an ECG waveform. However, this signal, which is relatively easy to measure and denotes the beginning of the cardiac cycle associated with each heartbeat, can be used to 'gate' the relatively weak TBEV signal to make it easier to extract the properties described above in Eq. 3. More specifically, the above-described software beat picker can detect the QRS complex within the ECG waveform, which is associated with the onset of an individual heartbeat. Relevant portions of the TBEV waveform typically follow the QRS complex by a few hundred milliseconds. Analysis of these portions of the TBEV waveforms yields properties such as SFT,  $(dZ/dt)_{max}$ , and  $Z_0$  that are used to calculate SV as described above. Gating the TBEV waveform in this manner can be particularly effective in analyzing these properties when noise is present in the TBEV waveform, e.g. during periods of motion.

[0103] HR, determined from the ECG waveform, is used to convert SV into CO and CO into CP, as described in Eqs. 1 and 2, above. Typically HR is determined from the time period separating neighboring QRS complexes in the ECG waveform; alternatively it can be estimated from neighboring pulses in either the PPG or TBEV waveform.

[0104] The ECG module 40 can additionally connect to 5 leads, and alternatively 12 leads. It is typically hard-wired into the TBEV module 22. The third cable 29 plugs into the wrist-worn transceiver 30 using a detachable connector 31 that allows it to be easily removed. In other embodiments the order of the ECG module 40 and TBEV module 22 can be reversed so that the TBEV module 22 is closer to the thorax, and the ECG module 40 is closer to the CB region. In still other embodiments, the TBEV module 22 can be disposed on the third cable 29 and attach directly to the second electrode 28, and the ECG module 40 can be disposed in the original location of the TBEV module 22, and be encapsulated by a housing that attaches to the first electrode 24 and feeds analog signals into the TBEV module 22. In general, multiple configurations of the various modules, cables, and electrodes shown in FIG. 6 are within the scope of the invention.

[0105] An alternate embodiment of the invention is shown in FIGS. 6A, B. Here, the ECG module 40 is worn on the patient's CB region, and the TBEV module 22 is worn near the elbow. Both the ECG 40 and TBEV 22 modules are attached to the patient with two-part electrodes 24, 28, with the TBEV electrode 24 shown in more detail in FIG. 6B. The two-part electrode 24 features a pair of female snaps 62A, B disposed on a flexible substrate 64 that connects to underlying conductive regions 63A, B. Each conductive region 63A, B features a solid gel material, chosen to match the electrical impedance characteristics of human skin, deposited on a thin Ag/AgCl film. The flexible substrate 64 features an underlying adhesive layer that during use securely attaches the electrode 24 to the patient's CB region. The female snaps 62A, B are chosen to geometrically match a pair of metal rivets 61A, B that attach to a bottom portion of a TBEV circuit board 60. During use the rivets 61A, B snap into the female snaps 62A, B, thus securing the TBEV module 22 to the patient. The rivet 61B furthest away from the CB region connects to the TBEV circuit and injects a current through the corresponding conducting region 63B, while the rivet 61A closest to the region measures a corresponding voltage. A plastic housing 65 cov-

ers the TBEV circuit board 60 and shields it from liquids and other materials present in the hospital. Note that in the figure the female snaps 62A, B are disposed on the electrode 28, and the metal rivets 61A, B are disposed on the circuit board 60. However in an alternate embodiment these components can be reversed, i.e. the female snaps 62A, B can be disposed on the bottom of the circuit board and the metal rivets 61A, B can be disposed on the top of the electrode 28.

[0106] The ECG module 40 is attached to a second electrode 24 with a geometry similar to that shown in FIG. 6B. Here, however, the electrode 24 is not electrically connected to an internal ECG circuit, but rather is used exclusively to hold the ECG module 40 in place. The electrode's conductive regions connect through electrical leads within the module 40 that are not connected to the ECG circuit, and then through a cable 68 to the TBEV module 22. There, the module 22 receives and collectively processes signals from the first 28 and second 24 electrode to measure a time-dependent voltage as described above. This voltage is then converted into a time-dependent resistance to form the TBEV waveform, which is then processed to determine SV and ultimately CO. The cable 68 also includes conductors for sending packets containing digitized ECG waveforms and HR according to the CAN protocol. These packets pass through CAN transceivers in the TBEV module 22, through the third cable 29, and ultimately to the wrist-worn transceiver 30 for further processing and display.

[0107] In FIG. 6A the individual ECG electrodes 42A-C are disposed on a single chest-worn patch 67 that attaches near the middle of the patient's thorax. The patch 67 connects to the ECG module 40 through a single cable 69 that includes individual conductors corresponding to each electrode 42A-C. These conductors port analog signals to the ECG module 40, where they are analyzed as described above to determine ECG waveforms and HR.

[0108] Within the body-worn monitor 19 are three three-axis accelerometers that measure ACC waveforms corresponding to x, y, and z-axes. The accelerometers, which are not shown in the figure, are disposed within the ECG module 40, the TBEV module 22, and the wrist-worn transceiver 30. During a measurement, ACC waveforms generated by the accelerometers are processed by microprocessors within each of the above-mentioned components to determine a motion-related parameter. Measurements of SV (or any vital sign, for that matter) are rejected if the parameter, or a secondary parameter derived therefrom, is lower than the pre-determined threshold value. Algorithms for such calculations are described, for example, in the following co-pending patent application, the contents of which are incorporated herein by reference: VITAL SIGN MONITORING SYSTEM FEATURING 3 ACCELEROMETERS, U.S. Ser. No. 12/469,094 (filed May 20, 2009).

[0109] Within the TBEV module is an analog circuit 100, shown in FIG. 7, that performs the TBEV measurement according to the invention. The figure shows just one embodiment of the circuit 100; similar electrical results can be achieved using a design and collection of electrical components that differ from those shown in the figure.

[0110] The circuit 100 features a first electrode 105B that injects a high-frequency, low-amperage current ( $I_m$ ) into the patient's brachium. This serves as the current source. Typically a current pump 102 provides the modulated current, with the modulation frequency typically being between 50-100 KHz, and the current magnitude being between 0.1

and 10 mA. Preferably the current pump **102** supplies current with a magnitude of 4 mA that is modulated at 70 kHz through the first electrode **105B**. A second electrode **104A** serves as the current drain ( $I_{out}$ ).

[0111] A pair of electrodes **104B**, **105A** measure the time-dependent voltage encountered by the propagating current. These electrodes are indicated in the figure as  $V+$  and  $V-$ . As described above, using Ohm's law ( $V=I \times R$ ), the measured voltage divided by the magnitude of the injected current yields a time-dependent resistance to ac (i.e. impedance) that relates to blood flow in the brachial artery. As shown by the waveform **128** in the figure, the time-dependent resistance features a slowly varying dc offset, characterized by  $Z_0$ , that indicates the baseline impedance encountered by the injected current; for TBEV this will depend, for example, on the amount of fat, bone, muscle, and blood volume in the brachium of a given patient.  $Z_0$ , which typically has a value between about 10 and 150 $\Omega$ , is also influenced by low-frequency, time-dependent processes such as respiration. Such processes affect the inherent capacitance near the brachial region that TBEV measures, and are manifested in the waveform by low-frequency undulations, such as those shown in the waveform **128**. A relatively small (typically 0.1-0.5 $\Omega$ ) ac component,  $\Delta Z(t)$ , lies on top of  $Z_0$  and is attributed to changes in resistance caused by the heartbeat-induced blood that propagates in the brachial artery, as described in detail above.  $\Delta Z(t)$  is processed with a high-pass filter to form a TBEV signal that features a collection of individual pulses **130** that are ultimately processed to ultimately determine stroke volume and cardiac output.

[0112] Voltage signals measured by the first electrode **104B** ( $V+$ ) and the second electrode **105A** ( $V-$ ) feed into a differential amplifier **107** to form a single, differential voltage signal which is modulated according to the modulation frequency (e.g. 70 kHz) of the current pump **102**. From there, the signal flows to a demodulator **106**, which also receives a carrier frequency from the current pump **102** to selectively extract signal components that only correspond to the TBEV measurement. The collective function of the differential amplifier **107** and demodulator **106** can be accomplished with many different circuits aimed at extracting weak signals, like the TBEV signal, from noise. For example, these components can be combined to form a lock-in amplifier that selectively amplifies signal components occurring at a well-defined carrier frequency. Or the signal and carrier frequencies can be deconvoluted in much the same way as that used in conventional AM radio using a circuit features one or more diodes. The phase of the demodulated signal may also be adjusted with a phase-adjusting component **108** during the amplification process. In one embodiment, the ADS **1298** family of chipsets marketed by Texas Instruments may be used for this application. This chipset features fully integrated analog front ends for both ECG and impedance pneumography. The latter measurement is performed with components for digital differential amplification, demodulation, and phase adjustment, such as those used for the TBEV measurement, that are integrated directly into the chipset.

[0113] Once the TBEV signal is extracted, it flows to a series of analog filters **110**, **112**, **114** within the circuit **100** that remove extraneous noise from the  $Z_0$  and  $\Delta Z(t)$  signals. The first low-pass filter **1010** (30 Hz) removes any high-frequency noise components (e.g. power line components at 60 Hz) that may corrupt the signal. Part of this signal that passes through this filter **110**, which represents  $Z_0$ , is ported

directly to a channel in an analog-to-digital converter **120**. The remaining part of the signal feeds into a high-pass filter **112** (0.1 Hz) that passes high-frequency signal components responsible for the shape of individual TBEV pulses **130**. This signal then passes through a final low-pass filter **114** (10 Hz) to further remove any high-frequency noise. Finally, the filtered signal passes through a programmable gain amplifier (PGA) **116**, which, using a 1.65V reference, amplifies the resultant signal with a computer-controlled gain. The amplified signal represents  $\Delta Z(t)$ , and is ported to a separate channel of the analog-to-digital converter **120**, where it is digitized alongside of  $Z_0$ . The analog-to-digital converter and PGA are integrated directly into the ADS **1298** chipset described above. The chipset can simultaneously digitize waveforms such as  $Z_0$  and  $\Delta Z(t)$  with 24-bit resolution and sampling rates (e.g. 500 Hz) that are suitable for physiological waveforms. Thus, in theory, this one chipset can perform the function of the differential amplifier **107**, demodulator **108**, PGA **116**, and analog-to-digital converter **120**. Reliance of just a single chipset to perform these multiple functions ultimately reduces both size and power consumption of the TBEV circuit **100**.

[0114] Digitized  $Z_0$  and  $\Delta Z(t)$  waveforms are received by a microprocessor **124** through a conventional digital interface, such as a SPI or I2C interface. Algorithms for converting the waveforms into actual measurements of SV and CO are performed by the microprocessor **124**. The microprocessor **124** also receives digital motion-related waveforms from an on-board accelerometer, and processes these to determine parameters such as the degree/magnitude of motion, frequency of motion, posture, and activity level.

[0115] FIGS. **8** and **9** show flow charts of algorithms **133A**, **B** that function using compiled computer code that operates, e.g., on the microprocessor **124** shown in FIG. **7**. The compiled computer code is loaded in memory associated with the microprocessor, and is run each time a TBEV measurement is converted into a numerical value for CO and SV. The microprocessor typically runs an embedded real-time operating system. The compiled computer code is typically written in a language such as C, C++, or assembly language. Each step **135-150** in the different algorithms **133A**, **B** is typically carried out by a function or calculation included in the compiled computer code.

[0116] Wrist-Worn Transceiver

[0117] The wrist-worn transceiver **272** used to perform the hybrid measurement method of SV according to the invention is shown in more detail in FIG. **10**. It features an embedded microprocessor (not shown in the figure) for making these calculations, and a touch panel interface **273** that displays CO/SV along with other properties described above. A flexible wrist strap **290** affixes the transceiver **272** to the patient's wrist like a conventional wristwatch. Connected to the transceiver **272** is an analog cable **292** that terminates with an optical sensor (not shown in the figure) that wraps around the base of the patient's thumb to measure PPG waveforms. During the measurement, the optical sensor generates a series of time-dependent PPG waveforms (measured with both red and infrared wavelengths) that a microprocessor in the transceiver processes along with a TBEV and ECG to measure cNIBP, SpO<sub>2</sub>, and provide waveforms to the hybrid measurement for SV/CO/CP.

[0118] As described above, the wrist-worn transceiver attaches to the patient's wrist using a flexible strap **290** which threads through two D-ring openings in a plastic housing **206**.

The transceiver 272 features a touch panel display 220 that renders a GUI 273 that is altered depending on the viewer (typically the patient or a medical professional). Specifically, the transceiver 272 includes a small-scale infrared barcode scanner 202 that, during use, can scan a barcode worn on a badge of a medical professional. The barcode indicates to the transceiver's software that, for example, a nurse or doctor is viewing the user interface. In response, the GUI 273 displays vital sign data and other medical diagnostic information appropriate for medical professionals. Using this GUI 273, the nurse, doctor, or medical professional, for example, can view the vital sign information, set alarm parameters, and enter information about the patient (e.g. their demographic information, medication, or medical condition). For example, for the SV/CO/CP measurement described above, the clinician can enter the patient's gender, height, weight, and age. These parameters may be used in the calculations described in Eq. 3, above, to estimate the  $V_c$  used in Eq. 3 to calculate SV. Once entered, the clinician can press a button on the GUI 273 indicating that these operations are complete and that the appropriate data for the SV measurement has been entered. At this point, the display 220 renders an interface that is more appropriate to the patient, such as one that simply displays the time of day and battery power.

[0119] The transceiver 272 features three CAN connectors 204a-c on the side of its upper portion, each which supports the CAN protocol and wiring schematics, and relays digitized data to the transceiver's internal CPU. Digital signals that pass through the CAN connectors include a header that indicates the specific signal (e.g. TBEV, ECG, ACC, or numerical values calculated from these waveforms) and the sensor from which the signal originated. In alternative embodiments some of these are sent from the chest-worn module through Bluetooth, which maintains the CAN structure of the packets. This allows the CPU to easily interpret signals that arrive through the CAN connectors 204a-c, such as those described above corresponding to TBEB and ECG waveforms, and means that these connectors are not associated with a specific cable. Any cable connecting to the transceiver can be plugged into any connector 204a-c.

[0120] As shown in FIG. 10, one embodiment of the invention features a first connector 204a that receives a Bluetooth 'dongle' 208 that features an embedded antenna 213 and a connector 209 which snaps into and mates with any one of the CAN connectors 204a-c. During operation the dongle 208 is automatically paired with the Bluetooth transceiver in the chest-worn sensor, and then receives a digital data stream over Bluetooth with the antenna 213. An internal CAN transceiver formats the data stream into CAN-compliant packets, and then passes these through the connector 209 into the wrist-worn transceiver, where it is processed as described above.

[0121] The second CAN connector 104b receives the cable 286 that connects to another sensor, e.g. a pneumatic cuff-based system used to measure blood pressure values used in the Composite Method. This connector 204b receives a time-dependent pressure waveform delivered by the pneumatic system 285 to the patient's arm, along with values for SYS, DIA, and MAP values determined during the Composite Method's indexing measurement. The cable 286 unplugs from the connector 204b once the indexing measurement is complete, and is plugged back in after approximately four hours for another indexing measurement.

[0122] The final CAN connector 204c can be used for an ancillary device, e.g. a glucometer, infusion pump, body-worn insulin pump, NIRS system, ventilator, or et-CO2 measurement system. As described above, digital information generated by these systems will include a header that indicates their origin so that the CPU can process them accordingly.

[0123] The transceiver 272 includes a speaker 201 that allows a medical professional to communicate with the patient using a voice over Internet protocol (VOIP). For example, using the speaker 201 the medical professional could query the patient from a central nursing station or mobile phone connected to a wireless, Internet-based network within the hospital. Or the medical professional could wear a separate transceiver similar to the shown in the figure, and use this as a communication device. In this application, the transceiver 272 worn by the patient functions much like a conventional cellular telephone or 'walkie-talkie': it can be used for voice communications with the medical professional and can additionally relay information describing the patient's vital signs and motion. The speaker can also enunciate pre-programmed messages to the patient, such as those used to calibrate the chest-worn accelerometers for a posture calculation, as described above.

[0124] Clinical Data from CO/SV Measurements

[0125] FIGS. 11A-E shows examples of ECG, ICG, and TBEV waveforms, along with time-dependent derivatives of the both ICG ( $d(ICG)/dt$ ) and TBEV ( $d(TBEV)/dt$ ) waveforms. These data were simultaneously measured from a human subject over a 5-second period with a body-worn monitor similar to that shown in FIG. 5. Each waveform features a heartbeat-induced 'pulse' indicating a unique physiologic process. For example, the ECG waveform shown in FIG. 11A is measured with conventional ECG electrodes and circuitry described above. It features a conventional QRS complex indicating rapid depolarization of the heart's right and left ventricles. Informally, the ECG waveform denotes the onset of the cardiac cycle. The ICG waveform (FIG. 11B) is measured from the thorax using a conventional ICG monitor and configuration of chest-worn electrodes as described above, and its derivatized form (FIG. 11D) yields parameters used above in Eq. 5 to calculate SV. Specifically, from the derivatized waveform a computer program calculates parameters such as  $(dZ/dt)_{max}$  and SFT, which as described above corresponds to the time period from opening of the aortic valve, heralding the onset of ejection, to closure of the aortic valve, signifying the end of ejection. The TBEV waveform (FIG. 11C) and its time-dependent derivative (FIG. 11E) are measured from the brachium using a configuration of arm-worn electrodes similar to that shown in FIG. 5. The derivatized TBEV waveform, like the derivatized ICG waveform, yields similar impedance parameters such as  $(dZ/dt)_{max}$  and SFT, and features a signal-to-noise ratio similar to that shown for the ICG waveform, despite the fact that its genesis is the much smaller brachial artery.

[0126] FIGS. 12A, 12B indicate how LVET and SFT are extracted, respectively, from both the derivatized ICG and TBEV waveforms. As shown in FIG. 12A, the derivatized ICG waveform features consecutive pulses, each characterized by three points: a 'B' point on the pulse's upswing indicating opening of the aortic valve; an X point on the pulse's nadir indicating closing of the aortic valve; and a 'C' point on its maximum value indicating the maximum slope of the  $\Delta Z(t)$  pulse's upswing, which is equivalent to  $(dZ/dt)_{max}$ .

LVET is typically calculated from the time differential between the B and X points. However, due to the subtle nature of these fiducial markers, even low levels of noise in the waveforms can make them difficult to determine. Ultimately such noise adds errors to the calculated LVET and resulting SV.

**[0127]** Determining SFT from the derivatized TBEV waveform shown in FIG. 12B is relatively easier. Here, there are no complicated B and X points. The initial upswing, or onset of the pulse, indicates the onset of flow, corresponding to opening of the aortic valve. And the second zero crossing point after  $dZ/dt_{max}$  occurring later in time, indicates when acceleration of the erythrocytes is temporarily ceased. The second zero crossing indicates the end of systolic forward flow, corresponding to closing of the valve. Computationally, using a computer algorithm, such a determination of SFT can be easily done by following the progression of the pulse and recording the appropriate zero-point crossings.

**[0128]** FIGS. 13A-D indicate a technique for determining both an onset **90** and dichrotic notch **91** in a pulse contained in a TBEV waveform. As described above, such fiducial markers can sometimes be obscured by baseline noise (caused, e.g., by motion or low signal levels), making them difficult to determine. In the derivatized waveform in FIG. 13B, a pair of data points **92** near the peak of the pulse can be selected and fit with a simple line **96**, with the point at which the line **96** intersects a zero value (shown in the figure by the dashed line **90**) indicating the pulse's onset. Once this point is determined, the zero-point crossing indicating the dichrotic notch can be first initially estimated using an approximation for SFT, which is the time separating the pulse's onset and dichrotic notch. This is done using an equation known as 'Weissler's Regression', shown below in Eq. 6, that estimates LVET from HR.

$$LVET = -0.0017 \times HR + 0.413 \quad (6)$$

Weissler's Regression allows LVET, equivalent to SFT, to be estimated from HR determined from either the ECG waveform, or alternatively from PR determined from the PPG waveform. LVET determined from Weissler's relationship is also shown as a vertical line in FIGS. 13A and 13B. FIG. 14 shows a correlation plot of a 'fused' SFT determined from HR and PR and compared to LVET from the Doppler/ultrasound for a 38-subject study. Here, Doppler/ultrasound represents a gold standard for determining LVET. As is clear from these data, strong correlation ( $r=0.8$ ) exists between these two methods, indicating that Eq. 6 is a reasonable way to determine SFT. This method can thus be used along with parameters extracted from TBEV signals measured at the brachium to estimate SV.

**[0129]** To further support this point, FIGS. 15A-E show Doppler/ultrasound images measured from the brachial artery, and FIG. 15F shows concurrently measured TBEV and ECG waveforms. These data indicate two important aspects of the TBEV measurement. First, the Doppler/ultrasound images confirm that, during a typical cardiac cycle, volumetric expansion in the brachial artery is minimal. The artery's diameter undergoes little to no measurable change during the cycle, meaning that heartbeat-induced changes in blood conductivity, as measured by TBEV, are mostly due to acceleration of blood and the consequent parallel alignment of erythrocytes. Second, the images also indicate that the dichrotic notch in the TBEV waveform does indeed correspond to a

point in time when the acceleration of blood is temporarily zero, and thus SFT can be accurately calculated from this fiducial marker.

**[0130]** More specifically, the figures show Doppler/ultrasound images indicating forward blood velocity is zero prior to systole (FIG. 15A), thereby reducing conductivity and the corresponding amplitude of the TBEV waveform. This point marks the onset of the TBEV pulse. Opening of the aortic valve induces systole (FIG. 15B) and increases acceleration of blood and thus conductivity in the brachium, causing the TBEV waveform to rapidly increase in amplitude. Closure of the aortic valve, as characterized by SFT, marks the end of the systole (FIG. 15C) a temporary lull in acceleration, and consequently the appearance of the dichrotic notch. During diastole (FIG. 15D) flow is once again increased due to reflected waves, as well as blood remaining in the aorta, which is injected into the brachium, and eventually decays away until the cycle is repeated with a new heartbeat (FIG. 15E). This relatively simple physiology contrasts the complex, underlying physiological processes that take place in the thorax as mentioned above, which are the basis for ICG-based determination of SV.

**[0131]** FIGS. 16A-D further illustrates how TBEV waveforms yield SFT in much the same way as Doppler/ultrasound yields LVET, which as described above represents a gold standard for this measurement. Here, FIG. 16A shows a time-dependent waveform extracted from a collection of two-dimensional Doppler/ultrasound images, such as those shown in FIGS. 15A-E. The waveform indicates time-dependent blood velocity, and its derivatized form is shown in FIG. 16C. Shown below these waveforms in FIGS. 16B and 16D are simultaneously measured TBEV waveforms (FIG. 16B) and its derivatized form (FIG. 16D). Dashed lines **97A, B, 98A, B** in the figures show, respectively, the pulse onset (determined, e.g., as shown in FIG. 13) and the dichrotic notch from the two sets of waveforms. As is clear from the figure, these points coincide exactly, indicating that LVET determined explicitly from Doppler/ultrasound waveforms is nearly identical to SFT determined from TBEV waveforms.

**[0132]** Another advantage of TBEV waveforms compared to those measured with conventional ICG is that they undergo little patient-to-patient variation, thus making their computer-based analysis relatively easy. FIG. 17 demonstrates this point by showing derivatized waveforms from 7 different subjects. Each waveform has roughly the same morphology, and in all cases the relevant fiducial markers (pulse onset, pulse maximum, zero-point crossing) are clear. This indicates that a simple computer algorithm can be used to extract  $(dZ/dt)_{max}$  and SFT, which is then used as described above to calculate SV.

**[0133]** The analysis described above was used in a formal clinical study to test accuracy of determining CO using TBEV and Eq. 3 above, compared to CO determined using Doppler/ultrasound. Correlation and Bland-Altman plots are shown, respectively, in FIGS. 18A and 18B. The shaded gray area in the plots indicates the inherent errors associated with conventional Doppler/ultrasound measurements, which are about  $\pm 20\%$ . In total 23 subjects (11M, 12W) with ages ranging from 21-80 were measured for this study, and correlations for all but two of these subjects fell within the error of the Doppler/ultrasound measurements.

**[0134]** FIGS. 19A-B indicate that TBEV waveforms measured from the brachium may be a better determinant of CO than ICG waveforms measured from the thorax. Here, both

waveforms were measured while a subject wore a 'MAST' suit, which is a pair of pressurized trousers used to force blood from the lower extremities toward the torso and the heart. A MAST suit thus simulates the reverse of hemorrhage, and thus causes CO/SV to increase. As shown in the figures by the dashed lines, LVET was determined from ICG, while SFT was determined using TBEV. Waveforms from these techniques were measured simultaneously from the thorax and brachium during period of high and low SV measurements. Increased SV is achieved when the MAST suit forces blood into the thorax. An increase in both LVET and SFT indicate an increase in SV. In the ICG waveforms (FIG. 19A) only a small increase in LVET was detected. In contrast, in the TBEV waveforms (FIG. 19B), a large increase in SFT was detected, indicating measurements made in this region of the body may be more sensitive to small changes in SV and CO.

**[0135]** Measuring Respiration Rate with TBEV

**[0136]** TBEV, like techniques such as impedance pneumography, injects small amounts of current into the patient's body, and measures resistance (i.e. impedance) encountered by the current to calculate a parameter of interest. During a TBEV measurement, heartbeat-induced blood flow results in the pulsatile component of  $\Delta Z(t)$ . Additionally, changes in capacitance due to breathing may also affect the impedance as measured by TBEV. FIGS. 20A-C illustrate this point. In FIG. 20A, for example, a TBEV waveform with no digital filtering shows both high-frequency cardiac components due to blood flow, as well as low-frequency undulations due to respiration rate. Both features can be extracted and analyzed using digital filtering. For example, as shown in FIG. 20B, processing the TBEV waveform shown in FIG. 20A with a first band-pass filter (0.5→15 Hz) removes the respiratory component, leaving only the cardiac component. Similarly, as shown in FIG. 20C, processing the TBEV waveform shown in FIG. 20A with a second band-pass filter (0.001→1 Hz) removes the cardiac component, leaving on the undulations due to respiration. In this latter case, the peaks in the waveform can be counted with a conventional breath-picking algorithm to determine respiration rate.

**[0137]** The algorithm for calculating respiration rate can be expanded to include processing of signal from the accelerometer within the TBEV module. For example, as shown in FIGS. 21A-D, these signals can be collectively processed to accurately determine respiration rate, even in the presence of motion. A similar technique is described in the following co-pending application, the contents of which are incorporated herein by reference: BODY-WORN MONITOR FOR MEASURING RESPIRATION RATE, U.S. Ser. No. 12/762, 874, filed Apr. 14, 2010. More specifically, FIGS. 21A and 21B show time-domain TBEV and ACC waveforms measured simultaneously from a patient with the system similar to that described above. In the TBEV waveform, the slowly varying pulses occurring approximately every 7 seconds correspond to individual breaths, while the sharp peaks in the waveform correspond to heartbeat-induced pulses. FIGS. 21C and 21D show, respectively, frequency-domain power spectra of both the TBEV and ACC waveforms. Clearly shown in the power spectra of the TBEV waveform is a dominant peak near 0.8 Hz corresponding to the heartbeat-induced pulses. A much weaker peak corresponding to the patient's breathing rate is also evident near 0.15 Hz. As shown in the gray shaded region 99, the power spectra corresponding to the ACC waveform features only one well-defined peak near 1.5 Hz that includes nearly the exact same frequency

components as the corresponding peak in the TBEV waveform. Further processing of these two spectra with a simple peak-finding algorithm yields the patient's actual RR, which corresponds to about 8 breaths/minute.

**[0138]** Measuring TBEV Waveforms in the Absence of Motion

**[0139]** FIGS. 22A, B and 23A, B indicate how different degrees of motion from a patient's arm can influence both ECG and TBEV waveforms, thereby affecting the accuracy of SV measurements. The ACC waveform is typically measured along the vertical axis of the accelerometer embedded in the TBEV module. The magnitude of the axes for ECG and TBEV waveforms are the same for all figures.

**[0140]** In FIG. 22B, for example, the ACC waveform is relatively flat and lacks any significant time-dependent features, indicating that the patient is not moving and is relatively still. Consequently the TBEV waveform in FIG. 22A, which is strongly affected by motion, features well-defined values for the pulse onset, indicated by marker 73, and  $(dZ/dt)_{max}$ , indicated by marker 74. Likewise the ECG waveform features a QRS complex, indicated by marker 72, which is undistorted. The fidelity of these features indicate that both HR and SV values can typically be accurately determined during periods of little or no motion, as indicated by the ACC waveform in FIG. 22B.

**[0141]** FIGS. 23A, B show the affects of a major amount of arm motion on both the ECG and TBEV waveforms. Here, the period of motion is indicated in both figures by the dashed box 80, which contrasts with the preceding period where motion is not present, as shown in the dashed box 81. The ACC waveform in FIG. 23B indicates that motion lasts for roughly one second, beginning and ending at times indicated, respectively, near markers 78 and 79. The motion is complex and peaks in intensity at marker 79. Even for major finger motion the ECG waveform and its QRS complex, indicated by marker 75, are relatively undistorted. But the TBEV measured during the period of motion is strongly distorted to the point that its peak value, indicated by marker 77, is relatively flat and basically immeasurable. This makes it difficult to accurately measure TBEV waveforms and the subsequent SV value calculated from this parameter. The peak onset, indicated by marker 76, is also distorted, but to a lesser degree than the corresponding peak value.

**[0142]** Data shown in FIGS. 22A, B and 22A, B indicate that motion can be detected and accounted for during TBEV measurements to minimize the occurrence of false alarms and, additionally, make accurate readings in the presence of motion. For example, during periods of motion SFT can be calculated using Weessler's Regression, and then used to Eq. 3 above to estimate SV. Or during such motion one of the various estimators shown in FIG. 1 could be used to estimate SV.

**[0143]** Processing ACC Waveforms to Determine Posture

**[0144]** A patient's posture may influence their values of SV/CO/CP, and thus knowing this parameter may improve the measurement described herein. To make this measurement, the body-worn monitor described above includes three 3-axis accelerometers as well as the ECG and TBEV circuits. In addition to determining SV/CO/CP, these sensors can generate time-dependent waveforms that when analyzed yield RR and the patient's motion-related properties, e.g. degree of motion, posture, and activity level.

**[0145]** FIGS. 25A-B show, for example, that the body-worn monitor can generate ACC waveforms that can be ana-

lyzed to accurately estimate the patient's posture. Specifically, FIG. 25A shows that the 3-axis accelerometer in the torso accurately measures ACC waveforms which correlate directly to the patient's position (e.g. standing, lying on back, lying on chest, lying on side) as indicated in FIG. 25B. This property, in turn, can be used along with the patient's SV/CO/CP value and a series of 'heuristic rules' to generate an alarm/alert value. For example, an alarm need not be sounded if the patient's SV/CO/CP value is low (e.g. below about 1.5 l/min. for CO), but analysis of the ACC waveforms indicates that the patient is standing or walking as shown in FIG. 25B. The assumption here is that a patient in this posture/activity level is not in need of medical assistance. In contrast, a combination of a low SV/CO/CP value and a patient that is either supine or, worse yet, recently fallen should trigger an alarm.

[0146] FIG. 24 indicates how the body-worn monitor can determine motion-related parameters (e.g. degree of motion, posture, and activity level) from a patient 410 using time-dependent ACC waveforms continuously generated from the three accelerometers 412, 413, 414 worn, respectively, on the patient's chest, bicep, and wrist. Additionally, the height of the patient's arm can affect the cNIBP measurement, as blood pressure can vary significantly due to hydrostatic forces induced by changes in arm height. Moreover, this phenomenon can be detected and exploited to calibrate the cNIBP measurement, as described in detail in the above-referenced patent applications, the contents of which have been previously incorporated by reference. As described in these documents, arm height can be determined using DC signals from the accelerometers 413, 414 disposed, respectively, on the patient's bicep and wrist. Posture, in contrast, can be exclusively determined by the accelerometer 412 worn on the patient's chest. An algorithm operating on the wrist-worn transceiver extracts DC values from waveforms measured from this accelerometer and processes them with an algorithm described below to determine posture.

[0147] Specifically, torso posture is determined for a patient 410 using angles determined between the measured gravitational vector and the axes of a torso coordinate space 411. The axes of this space 411 are defined in a three-dimensional Euclidean space where  $\vec{R}_{CV}$  is the vertical axis,  $\vec{R}_{CH}$  is the horizontal axis, and  $\vec{R}_{CN}$  is the normal axis. These axes must be identified relative to a 'chest accelerometer coordinate space' before the patient's posture can be determined.

[0148] The first step in determining a patient's posture is to identify alignment of  $\vec{R}_{CV}$  in the chest accelerometer coordinate space. This can be determined in either of two approaches. In the first approach,  $\vec{R}_{CV}$  is assumed based on a typical alignment of the body-worn monitor relative to the patient. During a manufacturing process, these parameters are then preprogrammed into firmware operating on the wrist-worn transceiver. In this procedure it is assumed that accelerometers within the body-worn monitor are applied to each patient with essentially the same configuration. In the second approach,  $\vec{R}_{CV}$  is identified on a patient-specific basis. Here, an algorithm operating on the wrist-worn transceiver prompts the patient (using, e.g., video instruction operating on the wrist-worn transceiver, or audio instructions transmitted through a speaker) to assume a known position with respect to gravity (e.g., standing upright with arms pointed straight down). The algorithm then calculates  $\vec{R}_{CV}$  from DC values corresponding to the x, y, and z-axes of the chest

accelerometer while the patient is in this position. This case, however, still requires knowledge of which arm (left or right) the monitor is worn on, as the chest accelerometer coordinate space can be rotated by 180 degrees depending on this orientation. A medical professional applying the monitor can enter this information using the GUI, described above. This potential for dual-arm attachment requires a set of two pre-determined vertical and normal vectors that are interchangeable depending on the monitor's location. Instead of manually entering this information, the arm on which the monitor is worn can be easily determined following attachment using measured values from the chest accelerometer values, with the assumption that  $\vec{R}_{CV}$  is not orthogonal to the gravity vector.

[0149] The second step in the procedure is to identify the alignment of  $\vec{R}_{CN}$  in the chest accelerometer coordinate space. The monitor determines this vector in the same way it determines  $\vec{R}_{CV}$  using one of two approaches. In the first approach the monitor assumes a typical alignment of the chest-worn accelerometer on the patient. In the second approach, the patient is prompted to the alignment procedure and asked to assume a known position with respect to gravity. The monitor then calculates  $\vec{R}_{CN}$  from the DC values of the time-dependent ACC waveform.

[0150] The third step in the procedure is to identify the alignment of  $\vec{R}_{CH}$  in the chest accelerometer coordinate space. This vector is typically determined from the vector cross product of  $\vec{R}_{CV}$  and  $\vec{R}_{CN}$ , or it can be assumed based on the typical alignment of the accelerometer on the patient, as described above.

[0151] A patient's posture is determined using the coordinate system described above and in FIG. 25, along with a gravitational vector  $\vec{R}_G$  that extends normal from the patient's chest. The angle between  $\vec{R}_{CV}$  and  $\vec{R}_G$  is given by Eq. 7:

$$\theta_{VG}[n] = \arccos\left(\frac{\vec{R}_G[n] \cdot \vec{R}_{CV}}{\|\vec{R}_G[n]\| \|\vec{R}_{CV}\|}\right) \quad (7)$$

where the dot product of the two vectors is defined as:

$$\vec{R}_G[n] \cdot \vec{R}_{CV} = (r_{Cx}[n] \times r_{CVx}) + (r_{Cy}[n] \times r_{CVy}) + (r_{Cz}[n] \times r_{CVz}) \quad (8)$$

[0152] The definitions of the norms of  $\vec{R}_G$  and  $\vec{R}_{CV}$  are given by Eqs. 9 and 10:

$$\|\vec{R}_G[n]\| = \sqrt{(r_{Cx}[n])^2 + (r_{Cy}[n])^2 + (r_{Cz}[n])^2} \quad (9)$$

$$\|\vec{R}_{CV}\| = \sqrt{(r_{CVx})^2 + (r_{CVy})^2 + (r_{CVz})^2} \quad (10)$$

[0153] As indicated in Eq. 12, the monitor compares the vertical angle  $\theta_{VG}$  to a threshold angle to determine whether the patient is vertical (i.e. standing upright) or lying down:

$$\text{if } \theta_{VG} \leq 45^\circ \text{ then Torso State} = 0, \text{ the patient is upright} \quad (11)$$

If the condition in Eq. 11 is met the patient is assumed to be upright, and their torso state, which is a numerical value equated to the patient's posture, is equal to 0. The patient is assumed to be lying down if  $\theta_{VG} > 45$  degrees. Their lying

position is then determined from angles separating the two remaining vectors, as defined below.

**[0154]** The angle  $\theta_{NG}$  between  $\vec{R}_{CN}$  and  $\vec{R}_G$  determines if the patient is lying in the supine position (chest up), prone position (chest down), or on their side. Based on either an assumed orientation or a patient-specific calibration procedure, as described above, the alignment of  $\vec{R}_{CN}$  is given by Eq. 11, where i, j, k represent the unit vectors of the x, y, and z axes of the chest accelerometer coordinate space respectively:

$$\vec{R}_{CN} = r_{CNx}\hat{i} + r_{CNy}\hat{j} + r_{CNz}\hat{k} \quad (12)$$

The angle between  $\vec{R}_{CN}$  and  $\vec{R}_G$  determined from DC values extracted from the chest ACC waveform is given by Eq. 13:

$$\theta_{NG}[n] = \arccos\left(\frac{\vec{R}_G[n] \cdot \vec{R}_{CN}}{\|\vec{R}_G[n]\| \|\vec{R}_{CN}\|}\right) \quad (13)$$

The body-worn monitor determines the normal angle  $\theta_{NG}$  and then compares it to a set of predetermined threshold angles to determine which position in which the patient is lying, as shown in Eq. 14:

$$\begin{aligned} &\text{if } \theta_{NG} \leq 35^\circ \text{ then Torso State}=1, \text{ the patient is supine} \\ &\text{if } \theta_{NG} \geq 135^\circ \text{ then Torso State}=2, \text{ the patient is prone} \end{aligned} \quad (14)$$

If the conditions in Eq. 14 are not met then the patient is assumed to be lying on their side. Whether they are lying on their right or left side is determined from the angle calculated between the horizontal torso vector and measured gravitational vectors, as described above.

**[0155]** The alignment of  $\vec{R}_{CH}$  is determined using either an assumed orientation, or from the vector cross-product of  $\vec{R}_{CV}$  and  $\vec{R}_{CN}$  as given by Eq. 15, where i, j, k represent the unit vectors of the x, y, and z axes of the accelerometer coordinate space respectively. Note that the orientation of the calculated vector is dependent on the order of the vectors in the operation. The order below defines the horizontal axis as positive towards the right side of the patient's body.

$$\vec{R}_{CH} = r_{CVx}\hat{i} + r_{CVy}\hat{j} + r_{CVz}\hat{k} = \vec{R}_{CV} \times \vec{R}_{CN} \quad (15)$$

The angle  $\theta_{HG}$  between  $\vec{R}_{CH}$  and  $\vec{R}_G$  is determined using Eq. 16:

$$\theta_{HG}[n] = \arccos\left(\frac{\vec{R}_G[n] \cdot \vec{R}_{CH}}{\|\vec{R}_G[n]\| \|\vec{R}_{CH}\|}\right) \quad (16)$$

The monitor compares this angle to a set of predetermined threshold angles to determine if the patient is lying on their right or left side, as given by Eq. 17:

$$\begin{aligned} &\text{if } \theta_{HG} \geq 90^\circ \text{ then Torso State}=3, \text{ the patient is on their} \\ &\quad \text{right side} \\ &\text{if } \theta_{HG} < 90^\circ \text{ then Torso State}=4, \text{ the patient is on their} \\ &\quad \text{left side} \end{aligned} \quad (17)$$

Table 1 describes each of the above-described postures, along with a corresponding numerical torso state used to render, e.g., a particular icon on a remote computer.

TABLE 2

postures and their corresponding torso states	
Posture	Torso State
standing upright	0
supine: lying on back	1
prone: lying on chest	2
lying on right side	3
lying on left side	4
undetermined posture	5

Data shown in FIGS. 25A, B were calculated using the above-mentioned approach. As the patient moves, the DC values of the ACC waveforms measured by the chest accelerometer vary accordingly, as shown in FIG. 25A. The body-worn monitor processes these values as described above to continually determine  $\vec{R}_G$  and the various quantized torso states for the patient, as shown in FIG. 25B. The torso states yield the patient's posture as defined in Table 2. For this study the patient rapidly alternated between standing, lying on their back, chest, right side, and left side within a time period of about 160 seconds. Different alarm/alert conditions (e.g. threshold values) for vital signs can be assigned to each of these postures, or the specific posture itself may result in an alarm/alert. Additionally, the time-dependent properties of the graph can be analyzed (e.g. by counting changes in torso states) to determine, for example, how often the patient moves in their hospital bed. This number can then be equated to various metrics, such as a 'bed sore index' indicating a patient that is so stationary in their bed that lesions may result.

#### Alternate Embodiments

**[0156]** Other embodiments are within the scope of the invention. For example, the TBEV harness and its associated electrode can take on a variety of configurations. One of these is shown in FIG. 27. Here, the TBEV harness 150 features a TBEV module 156 disposed directly on top of a single TBEV electrode 158. The electrode 158 features four conductive regions (not shown in the figure): 1) a current source; 2) a current sink; and 3), 4) a pair of electrodes for measuring a voltage in the CB region. As described above, conductive regions for sourcing and draining the current are on an outer portion of the electrode 158, while those for measuring voltage are on an inner portion of the electrode. Each conductive region connects to analog circuitry within the TBEV module 156 with a single connector (not shown in the figure). The TBEV module 156 also includes a CAN transceiver (not shown in the figure) that sends digitized waveforms and CO/SV values through a first cable 154 to a connector 152 which plugs into the back panel of the wrist worn transceiver, such as that shown in FIG. 10. A second cable 160 connects to an ECG module 162, which in turn connects through a short third cable 164 to a collection of ECG leads 166. During a measurement, the ECG module 163 sends digitized versions of ECG waveforms, HR, and other information through the second cable 160 and to the TBEV module 156. Data are sent according to the CAN protocol. From there, data are relayed with the module's internal CAN transceivers through the second cable 154 and to the connector 152, which then passes the data onto the wrist transceiver.

**[0157]** FIG. 28 shows an alternate embodiment of the invention where TBEV 449 and ECG 420 modules are physically separated and connected through a wireless interface.

Here, the ECG module **420** includes the ECG circuit, and attaches through cables **430a-c** to ECG electrodes **424a-c**. A second arm-worn module **449** includes four electrodes (two for injecting current; two for measuring voltage) dispersed on its upper and lower portions that connect to a central TBEV circuit to perform a measurement at the brachium as described above. Both the chest-worn module **420** and arm-worn module **449** include a unique Bluetooth transmitter that sends, respectively, ECG and TBEV waveforms to a paired Bluetooth transmitter **128** in the wrist-worn transceiver **426**.

**[0158]** FIG. **29** shows the arm-worn module **449** in more detail. As described above, it includes four electrodes **448a-d** that snap on to the back surface of a flexible substrate **451** that holds an TBEV circuit **447**, located in the module's center in place. The electrodes **448a-d** provide the current-injecting and voltage-measuring functions of the TBEV measurement as described above, and connect to the TBEV circuit **447** through a series of metal traces **453a-d** embedded within the flexible substrate. The electrodes **448a-d** also adhere to the patient's skin to hold the module **449** on the brachium. Once a TBEV waveform is measured, a Bluetooth transmitter **446** located at the bottom of the module sends it to the wrist-worn transceiver for processing, as described above.

**[0159]** FIGS. **30** and **31** show schematic drawings of an alternate embodiment of the invention, and indicate how data relating to SV/CP/CP can be wirelessly transmitted from the chest-worn sensor **500** and wrist-worn transceiver **506** to an external router (**517a** in FIG. **30**, **517b** in FIG. **31**), and from there to an external network (e.g. the Internet). Multiple strategies can be used for this data-transfer process, two of which are shown in the figures. In FIG. **30**, for example, ICG and ECG waveforms are measured from analog signals collected by electrode patches **502a**, **502b**, **404**, and then wirelessly transmitted using Bluetooth from the chest-worn sensor **500** to the wrist-worn transceiver **506**, where they are then analyzed as described above to determine SV/CO/CP, along with all other vital signs. These processed data are then sent from the transceiver **506** to the external router **517a** using Bluetooth, 802.11, or any other wireless protocol. Once the router **506** receives the data, it transmits it out using a wireless protocol (e.g. CDMA, GSM, iDEN) or wired protocol (e.g. Ethernet) to the external network. From there, for example, the data can be transferred to a hospital medical records systems, website, or sent through a web service to another application.

**[0160]** FIG. **31** shows an alternate approach where the external router **517b** performs a higher degree of the computing load. In this case, the chest-worn sensor **500** processes analog signals measured by the electrode patches **502a**, **502b**, **504** to determine ECG and ICG waveforms, and then wirelessly transmits these in a digital form to the router **517b**. At around the same time, the wrist-worn transceiver measures SpO<sub>2</sub> and PPG waveforms and wirelessly transmits these to the router **517b**. There, an embedded processor analyzes ECG waveforms to determine HR; ECG and PPG waveforms to determine PAT and cNIBP; and ECG, ICG, PPG waveforms and PAT to determine SV/CO/CP. These data are then transmitted as described above to the external network, and from there to another system.

**[0161]** In addition to those methods described above, the body-worn monitor can use a number of additional methods to calculate blood pressure and other properties from the optical and electrical waveforms. These are described in the following co-pending patent applications, the contents of

which are incorporated herein by reference: 1) CUFFLESS BLOOD-PRESSURE MONITOR AND ACCOMPANYING WIRELESS, INTERNET-BASED SYSTEM (U.S. Ser. No. 10/709,015; filed Apr. 7, 2004); 2) CUFFLESS SYSTEM FOR MEASURING BLOOD PRESSURE (U.S. Ser. No. 10/709,014; filed Apr. 7, 2004); 3) CUFFLESS BLOOD PRESSURE MONITOR AND ACCOMPANYING WEB SERVICES INTERFACE (U.S. Ser. No. 10/810,237; filed Mar. 26, 2004); 4) VITAL SIGN MONITOR FOR ATHLETIC APPLICATIONS (U.S. Ser. No.; filed Sep. 13, 2004); 5) CUFFLESS BLOOD PRESSURE MONITOR AND ACCOMPANYING WIRELESS MOBILE DEVICE (U.S. Ser. No. 10/967,511; filed Oct. 18, 2004); 6) BLOOD PRESSURE MONITORING DEVICE FEATURING A CALIBRATION-BASED ANALYSIS (U.S. Ser. No. 10/967,610; filed Oct. 18, 2004); 7) PERSONAL COMPUTER-BASED VITAL SIGN MONITOR (U.S. Ser. No. 10/906,342; filed Feb. 15, 2005); 8) PATCH SENSOR FOR MEASURING BLOOD PRESSURE WITHOUT A CUFF (U.S. Ser. No. 10/906,315; filed Feb. 14, 2005); 9) PATCH SENSOR FOR MEASURING VITAL SIGNS (U.S. Ser. No. 11/160,957; filed Jul. 18, 2005); 10) WIRELESS, INTERNET-BASED SYSTEM FOR MEASURING VITAL SIGNS FROM A PLURALITY OF PATIENTS IN A HOSPITAL OR MEDICAL CLINIC (U.S. Ser. No. 11/162,719; filed Sep. 9, 2005); 11) HAND-HELD MONITOR FOR MEASURING VITAL SIGNS (U.S. Ser. No. 11/162,742; filed Sep. 21, 2005); 12) CHEST STRAP FOR MEASURING VITAL SIGNS (U.S. Ser. No. 11/306,243; filed Dec. 20, 2005); 13) SYSTEM FOR MEASURING VITAL SIGNS USING AN OPTICAL MODULE FEATURING A GREEN LIGHT SOURCE (U.S. Ser. No. 11/307,375; filed Feb. 3, 2006); 14) BILATERAL DEVICE, SYSTEM AND METHOD FOR MONITORING VITAL SIGNS (U.S. Ser. No. 11/420,281; filed May 25, 2006); 15) SYSTEM FOR MEASURING VITAL SIGNS USING BILATERAL PULSE TRANSIT TIME (U.S. Ser. No. 11/420,652; filed May 26, 2006); 16) BLOOD PRESSURE MONITOR (U.S. Ser. No. 11/530,076; filed Sep. 8, 2006); 17) TWO-PART PATCH SENSOR FOR MONITORING VITAL SIGNS (U.S. Ser. No. 11/558,538; filed Nov. 10, 2006); and, 18) MONITOR FOR MEASURING VITAL SIGNS AND RENDERING VIDEO IMAGES (U.S. Ser. No. 11/682,177; filed Mar. 5, 2007).

**[0162]** Other embodiments are also within the scope of the invention. For example, other measurement techniques, such as conventional oscillometry measured during deflation, can be used to determine SYS for the above-described algorithms. Additionally, processing units and probes for measuring SpO<sub>2</sub> similar to those described above can be modified and worn on other portions of the patient's body. For example, optical sensors with finger-ring configurations can be worn on fingers other than the thumb. Or they can be modified to attach to other conventional sites for measuring SpO<sub>2</sub>, such as the ear, forehead, and bridge of the nose. In these embodiments the processing unit can be worn in places other than the wrist, such as around the neck (and supported, e.g., by a lanyard) or on the patient's waist (supported, e.g., by a clip that attaches to the patient's belt). In still other embodiments the probe and processing unit are integrated into a single unit.

**[0163]** In other embodiments, a set of body-worn monitors can continuously monitor a group of patients, wherein each patient in the group wears a body-worn monitor similar to those described herein. Additionally, each body-worn monitor can be augmented with a location sensor. The location

sensor includes a wireless component and a location-processing component that receives a signal from the wireless component and processes it to determine a physical location of the patient. A processing component (similar to that described above) determines from the time-dependent waveforms at least one vital sign, one motion parameter, and an alarm parameter calculated from the combination of this information. A wireless transceiver transmits the vital sign, motion parameter, location of the patient, and alarm parameter through a wireless system. A remote computer system featuring a display and an interface to the wireless system receives the information and displays it on a user interface for each patient in the group.

**[0164]** In embodiments, the interface rendered on the display at the central nursing station features a field that displays a map corresponding to an area with multiple sections. Each section corresponds to the location of the patient and includes, e.g., the patient's vital signs, motion parameter, and alarm parameter. For example, the field can display a map corresponding to an area of a hospital (e.g. a hospital bay or emergency room), with each section corresponding to a specific bed, chair, or general location in the area. Typically the display renders graphical icons corresponding to the motion and alarm parameters for each patient in the group. In other embodiments, the body-worn monitor includes a graphical display that renders these parameters directly on the patient.

**[0165]** Typically the location sensor and the wireless transceiver operate on a common wireless system, e.g. a wireless system based on 802.11 (i.e. 'WiFi'), 802.15.4 (i.e. 'Bluetooth'), or cellular (e.g. CDMA, GSM) protocols. In this case, a location is determined by processing the wireless signal with one or more algorithms known in the art. These include, for example, triangulating signals received from at least three different base stations, or simply estimating a location based on signal strength and proximity to a particular base station. In still other embodiments the location sensor includes a conventional global positioning system (GPS) that processes signals from orbiting satellites to determine patient's position.

**[0166]** The body-worn monitor can include a first voice interface, and the remote computer can include a second voice interface that integrates with the first voice interface. The location sensor, wireless transceiver, and first and second voice interfaces can all operate on a common wireless system, such as one of the above-described systems based on 802.11 or cellular protocols. The remote computer, for example, can be a monitor that is essentially identical to the monitor worn by the patient, and can be carried or worn by a medical professional. In this case the monitor associated with the medical professional features a GUI wherein the user can select to display information (e.g. vital signs, location, and alarms) corresponding to a particular patient. This monitor can also include a voice interface so the medical professional can communicate directly with the patient.

**[0167]** Still other embodiments are within the scope of the following claims.

What is claimed is:

1. A method for determining stroke volume from a patient, comprising:

- (a) measuring a motion waveform with a first motion sensor;
- (b) processing the motion waveform with a motion algorithm to determine a motion-related parameter;

- (c) comparing the motion-related parameter to a pre-determined threshold parameter to determine if the patient's motion exceeds an acceptable level;
- (d) measuring an impedance waveform from the patient with an impedance sensor if the patient's motion does not exceed an acceptable level; and
- (e) calculating a stroke volume value from the impedance waveform if the patient's motion does not exceed an acceptable level.

2. A method for determining stroke volume from a patient, comprising:

- (a) measuring a motion waveform with a first motion sensor;
- (b) processing the motion waveform with a motion algorithm to determine a motion-related parameter;
- (c) comparing the motion-related parameter to a pre-determined threshold parameter to determine if the patient's motion exceeds an acceptable level;
- (d) measuring an impedance waveform from the patient with an impedance sensor;
- (e) calculating a stroke volume value from the impedance waveform; and
- (f) reporting the stroke volume value if the patient's motion does not exceed an acceptable level.

3. A method for generating an alarm from a stroke volume value calculated from a patient, comprising:

- (a) measuring a motion waveform with a first motion sensor;
- (b) processing the motion waveform with a motion algorithm to determine a motion-related parameter;
- (c) comparing the motion-related parameter to a pre-determined threshold parameter to determine if the patient's motion exceeds an acceptable level;
- (d) measuring an impedance waveform from the patient with an impedance sensor;
- (e) calculating a stroke volume value from the impedance waveform; and
- (f) generating the alarm based on the stroke volume value if the patient's motion does not exceed an acceptable level.

4. A method for determining stroke volume from a patient, comprising:

- (a) measuring a motion waveform with a first motion sensor;
- (b) processing the motion waveform with a motion algorithm to determine a motion-related parameter;
- (c) processing the motion-related parameter to determine the patient's posture;
- (d) measuring an impedance waveform from the patient with an impedance sensor;
- (e) calculating a stroke volume value from the impedance waveform and the patient's posture.

5. A method for generating an alarm from a stroke volume value calculated from a patient, comprising:

- (a) measuring a motion waveform with a first motion sensor;
- (b) processing the motion waveform with a motion algorithm to determine a motion-related parameter;
- (c) processing the motion-related parameter with an algorithm to determine the patient's posture;
- (d) measuring an impedance waveform from the patient with an impedance sensor;
- (e) calculating a stroke volume value from the impedance waveform; and

- (f) generating the alarm based on the stroke volume value and the patient's posture.
6. The method of claim 1, wherein the first motion sensor is an accelerometer.
7. The method of claim 6, wherein the first motion sensor is a three-axis accelerometer.
8. The method of claim 1, where the first motion sensor and the impedance sensor are disposed on a common substrate.
9. The method of claim 8, wherein the common substrate is attached to the patient's CB region.
10. The method of claim 1, wherein the first motion sensor is disposed on a first sensor module, and the impedance sensor is disposed on a second sensor module.
11. The method of claim 10, wherein the first sensor module is configured to attach to the patient's chest, and the second sensor module is configured to attach to the patient's CB region.
12. The method of claim 10, wherein the first sensor module is configured to attach to the patient's wrist, and the second sensor module is configured to attach to the patient's CB region.
13. The method of claim 1, wherein the motion-related parameter is a magnitude of motion.
14. The method of claim 1, wherein the motion-related parameter is a frequency of motion.
15. The method of claim 1, wherein the motion-related parameter is a specific type of motion.
16. The method of claim 15, wherein the specific type of motion is one of walking, running, lying down, and being motionless.
17. The method of claim 1, wherein the motion-related parameter is a posture.
18. The method of claim 17, wherein the posture is one of standing up, sitting down, lying down, lying down on the right side, and lying down on the left side.
19. The method of claim 1, wherein the impedance sensor is not powered on until after the comparing step.
20. The method of claim 1, wherein the impedance sensor is only partially powered on until after the comparing step.
21. The method of claim 1, wherein the impedance sensor is powered on after the comparing step indicates that the patient's motion does not exceed an acceptable level.

\* \* \* \* \*

专利名称(译)	用于连续，无创测量心脏输出，中风体积，心脏功率和血压的体系系统		
公开(公告)号	<a href="#">US20140249442A1</a>	公开(公告)日	2014-09-04
申请号	US13/338248	申请日	2011-12-28
[标]申请(专利权)人(译)	BANET MATT HENRY ISAAC 伯恩斯坦DONALD		
申请(专利权)人(译)	BANET, MATT 亨利, ISAAC 伯恩斯坦, DONALD		
当前申请(专利权)人(译)	BANET, MATT 亨利, ISAAC 伯恩斯坦, DONALD		
[标]发明人	BANET MATT HENRY ISAAC BERNSTEIN DONALD		
发明人	BANET, MATT HENRY, ISAAC BERNSTEIN, DONALD		
IPC分类号	A61B5/029 A61B5/00 A61B5/0295		
CPC分类号	A61B5/029 A61B5/746 A61B5/0295 A61B5/0004 A61B5/01 A61B5/02055 A61B5/0225 A61B5/0402 A61B5/0816 A61B5/091 A61B5/14551 A61B5/6823 A61B5/6824 A61B5/72 A61B5/7221 A61B5/7225 A61B5/0008 A61B5/0022 A61B5/02028 A61B5/0205 A61B5/021 A61B5/02427 A61B5/0245 A61B5 /0535 A61B5/1116 A61B5/14542 A61B5/681 A61B5/6826 A61B5/6833 A61B5/7239 A61B5/725 A61B2562/04 G16H40/67 G06F19/00		
优先权	61/427756 2010-12-28 US		
其他公开文献	US9585577		
外部链接	<a href="#">Espacenet</a> <a href="#">USPTO</a>		

摘要(译)

本发明提供一种用于测量来自患者的每搏输出量 (SV)，心输出量 (CO) 和心脏功率 (CP) 的系统，其特征在于：1) 连接到至少两个体戴电极并包括阻抗电路的阻抗传感器处理来自电极的模拟信号以测量阻抗信号 (例如TBEV波形)；2) ECG传感器，其连接到至少两个胸部电极并且包括ECG电路，该ECG电路处理来自电极的模拟信号以测量和ECG信号；3) 光学传感器，连接到体佩式光学探针并包括光学电路，该光学电路处理来自探针的信号以测量来自患者的至少一个光学信号 (例如PPG波形)；4) 处理系统，通常佩戴在患者的手腕上并通过有线接口连接到光学传感器，并通过有线或无线接口连接到TBEV和ECG传感器。处理系统分析ECG，TBEV和光信号以确定SV，并进一步分析从ECG传感器确定的SV和HR以确定CO。

