



US 20080194975A1

(19) **United States**

(12) **Patent Application Publication**
MacQuarrie et al.

(10) **Pub. No.: US 2008/0194975 A1**
(43) **Pub. Date: Aug. 14, 2008**

(54) **MONITORING PHYSIOLOGICAL
CONDITION AND DETECTING
ABNORMALITIES**

(52) **U.S. Cl. 600/483; 600/300; 600/509; 600/513**

(75) Inventors: **David MacQuarrie**, Langley (CA);
Bozena Kaminska, Burnaby (CA)

(57) **ABSTRACT**

Correspondence Address:
FASKEN MARTINEAU DUMOULIN, LLP
2900 - 550 Burrard Street
VANCOUVER, BC V6C 0A3

A system for monitoring an individual's physiological condition and detecting abnormalities therein, comprising concurrently receiving at least a first signal and a second signal. The first and second signals are conditioned to minimize background extraneous noise after which, each signal is concurrently processed and analyzed to detect repeating cyclical patterns and further characterized to identify individual components of the repeating cycles. At least one individual component in one signal is selected as a reference marker for a selected component in the other signal. The two signals are then synchronized, outputs produced therefrom and stored in a database. The system is provided with a plurality of devices for acquiring, transmitting and conditioning at least two physiological signals, a software program cooperable with a microprocessor configured for receiving said transmitted signals and conditioned signals, and processing said signals to characterize and synchronize said signals and provide signal outputs derived therefrom, a database for storing said transmitted signals, conditioned signals, synchronized signals, and output signals derived therefrom. The output signals are useful for reporting and optionally for retransmission to the individual's body and providing physiologically stimulatory signals thereto.

(73) Assignee: **Heart Force Medical Inc.**,
Vancouver (CA)

(21) Appl. No.: **11/743,591**

(22) Filed: **May 2, 2007**

Related U.S. Application Data

(60) Provisional application No. 60/888,930, filed on Feb. 8, 2007.

Publication Classification

(51) **Int. Cl.**
A61B 5/0205 (2006.01)
A61B 5/00 (2006.01)

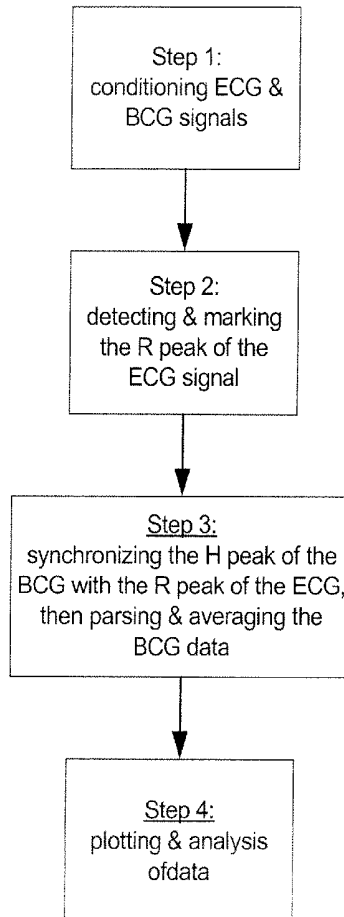


Fig. 1

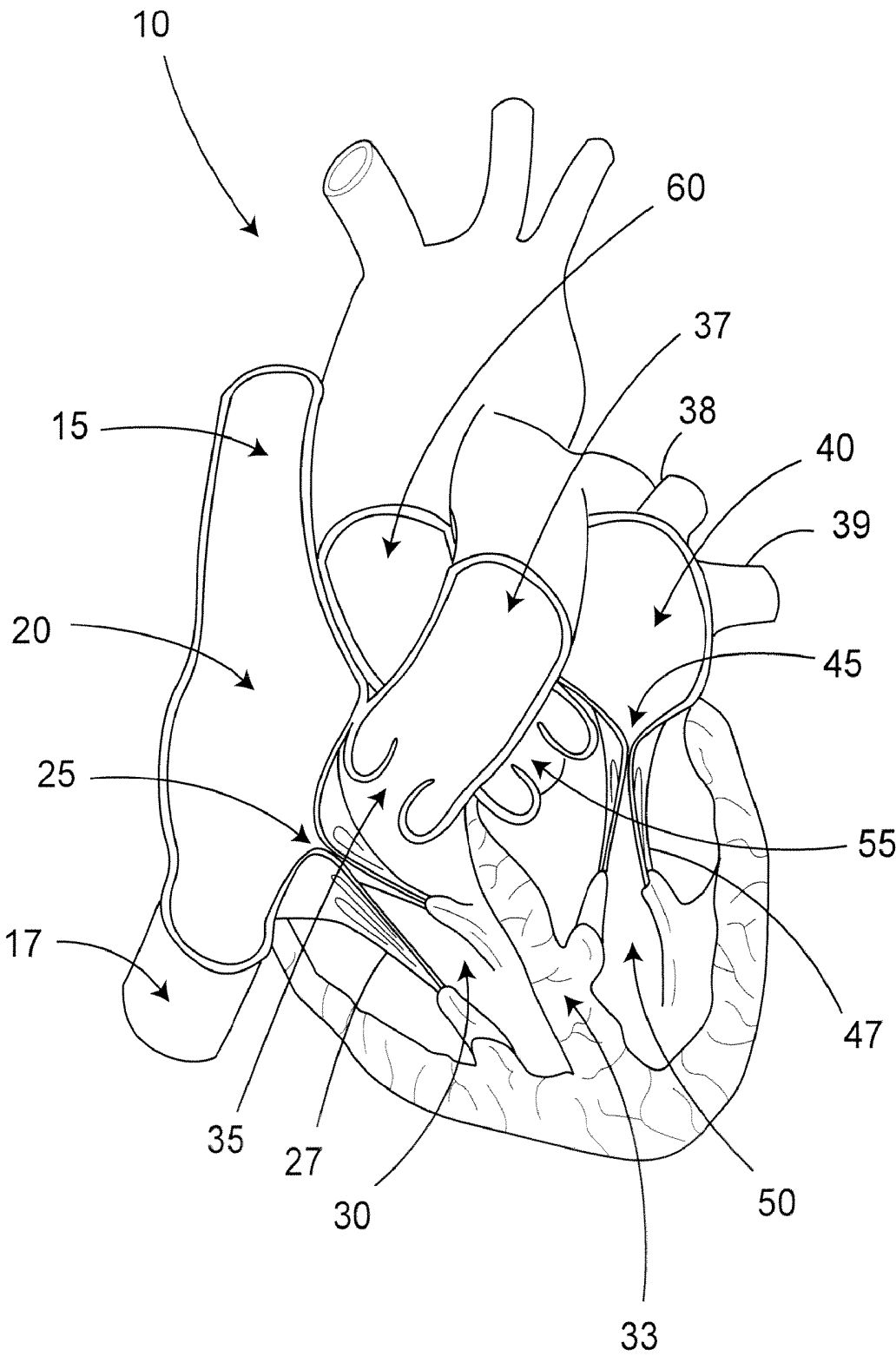


Fig. 2

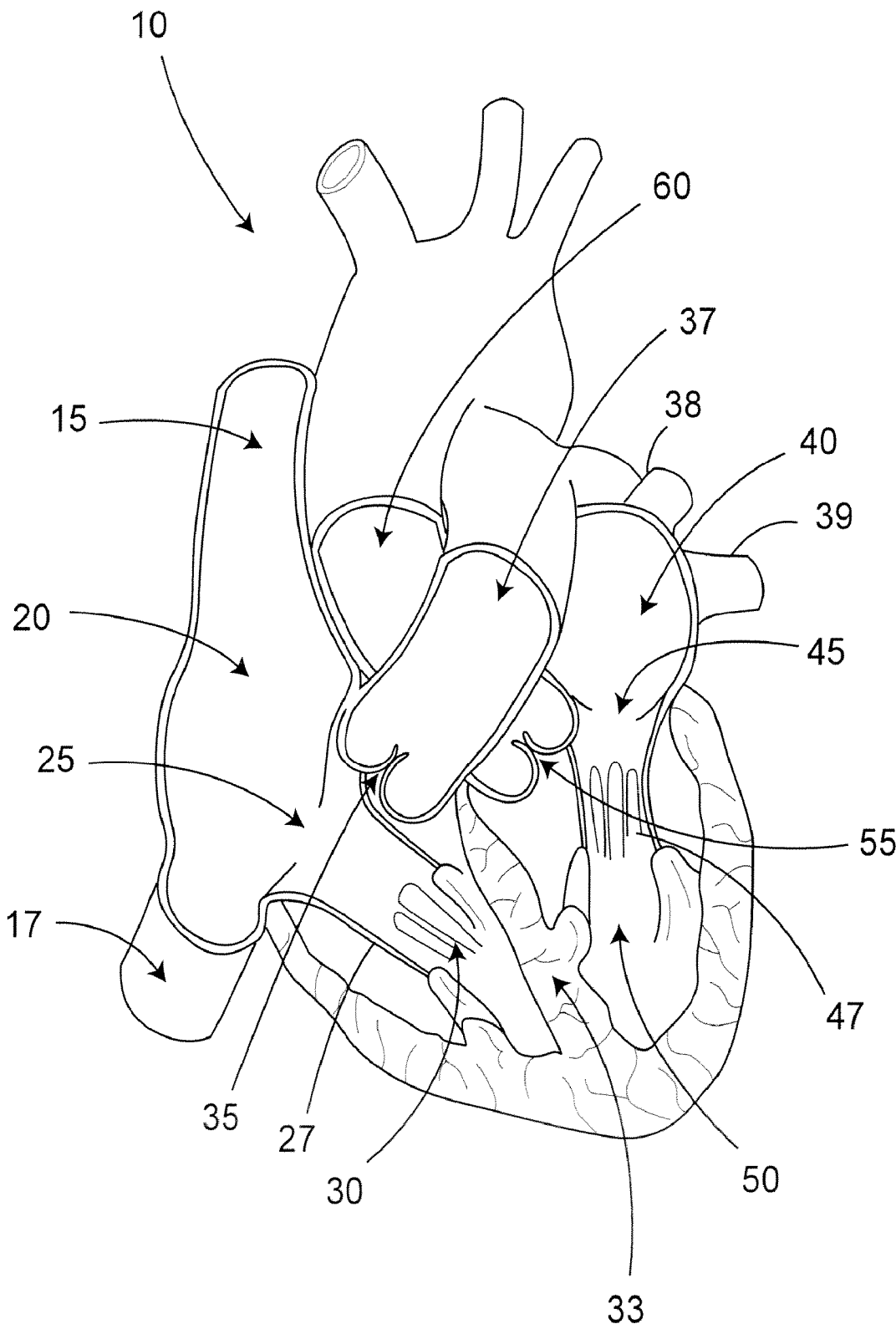


Fig. 3

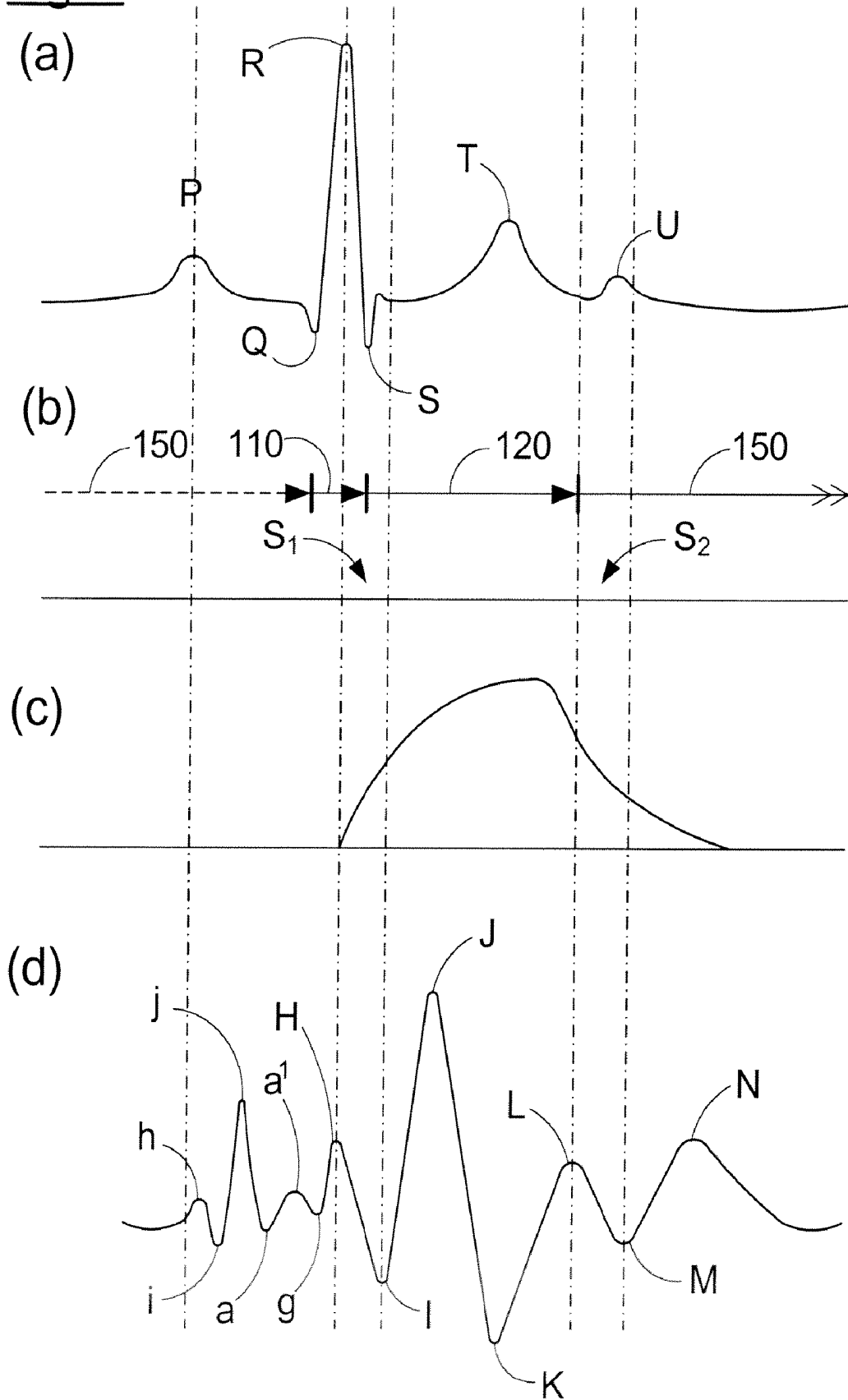


Fig. 4

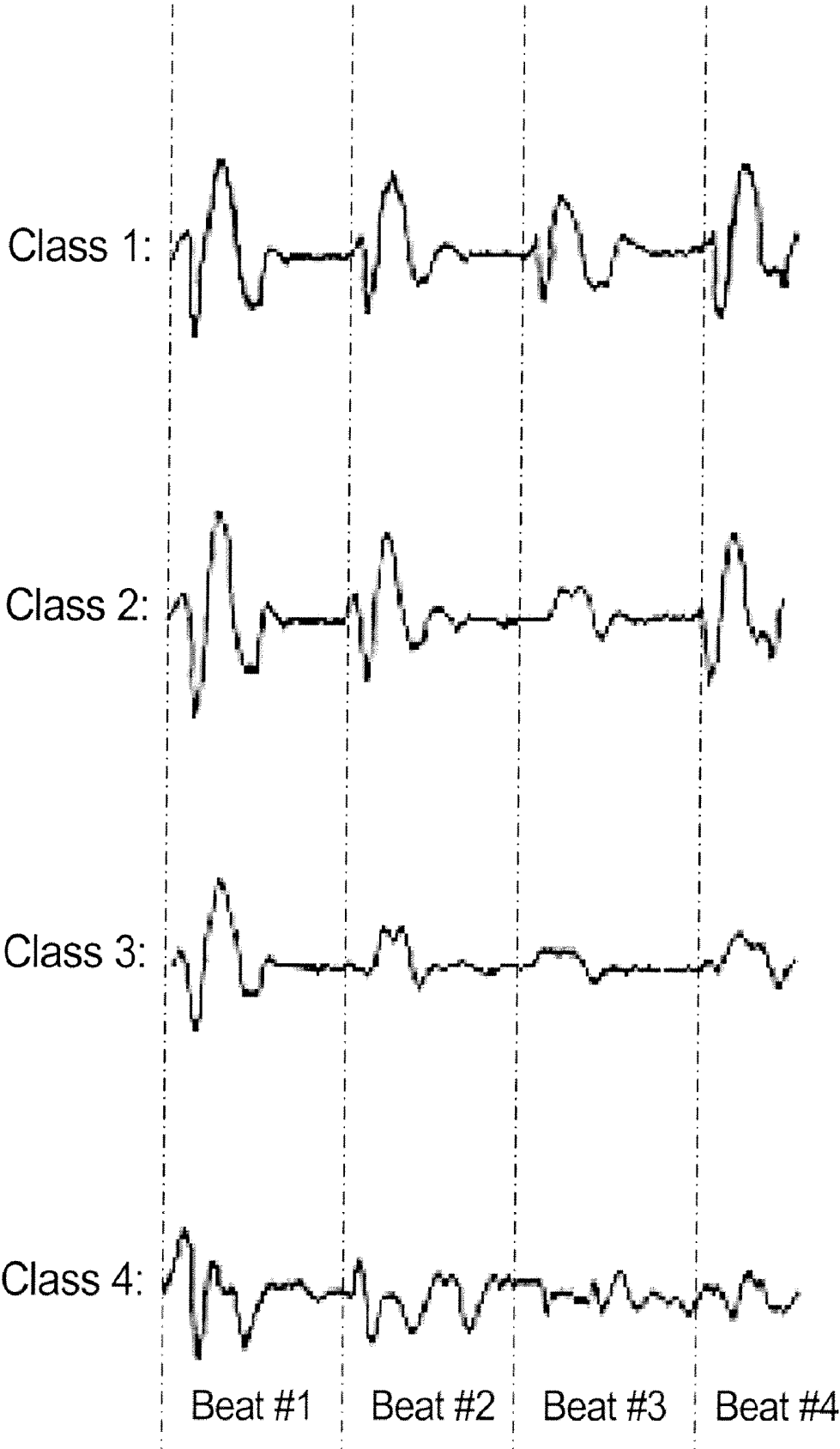


Fig. 5

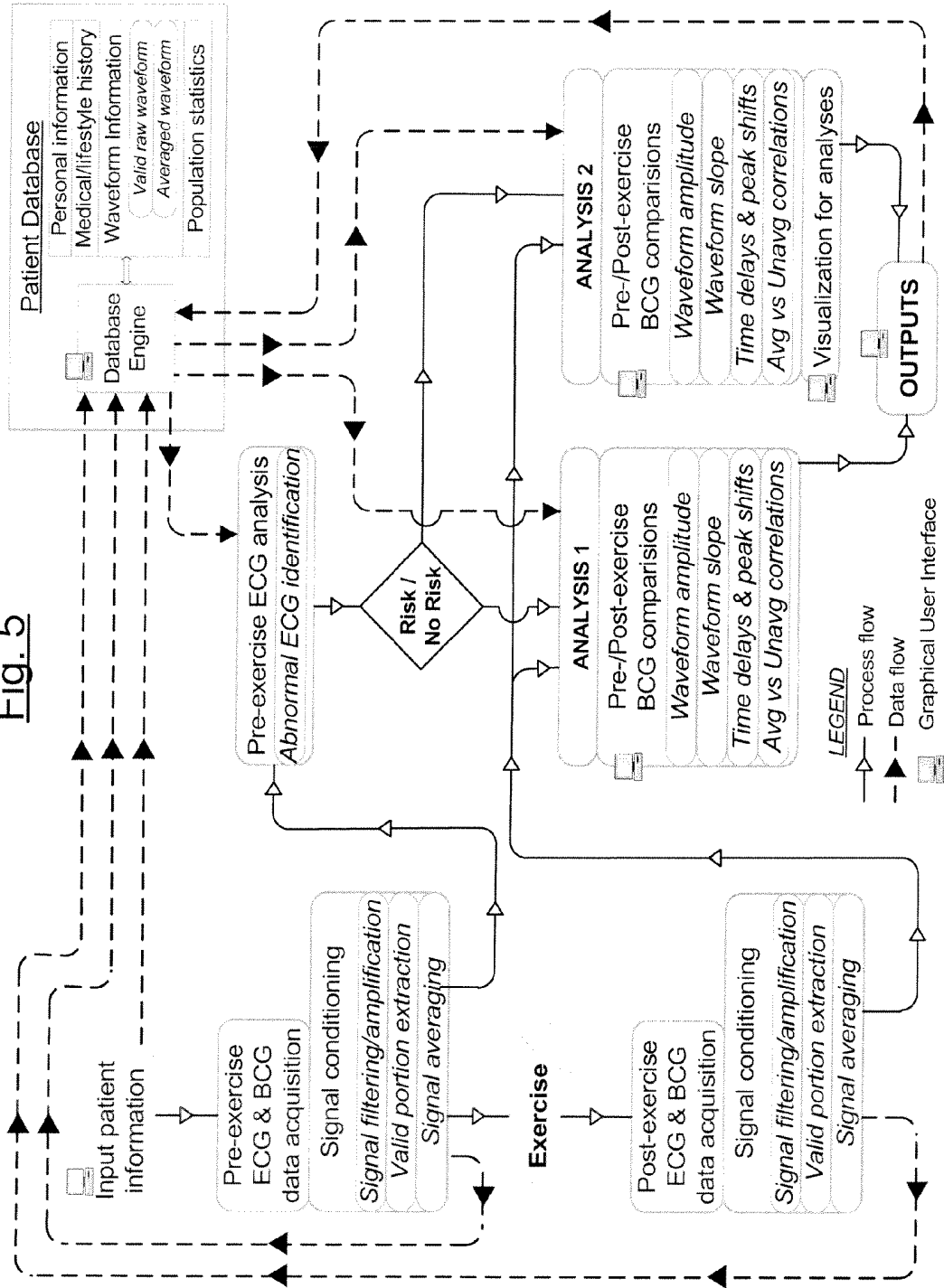


Fig. 6

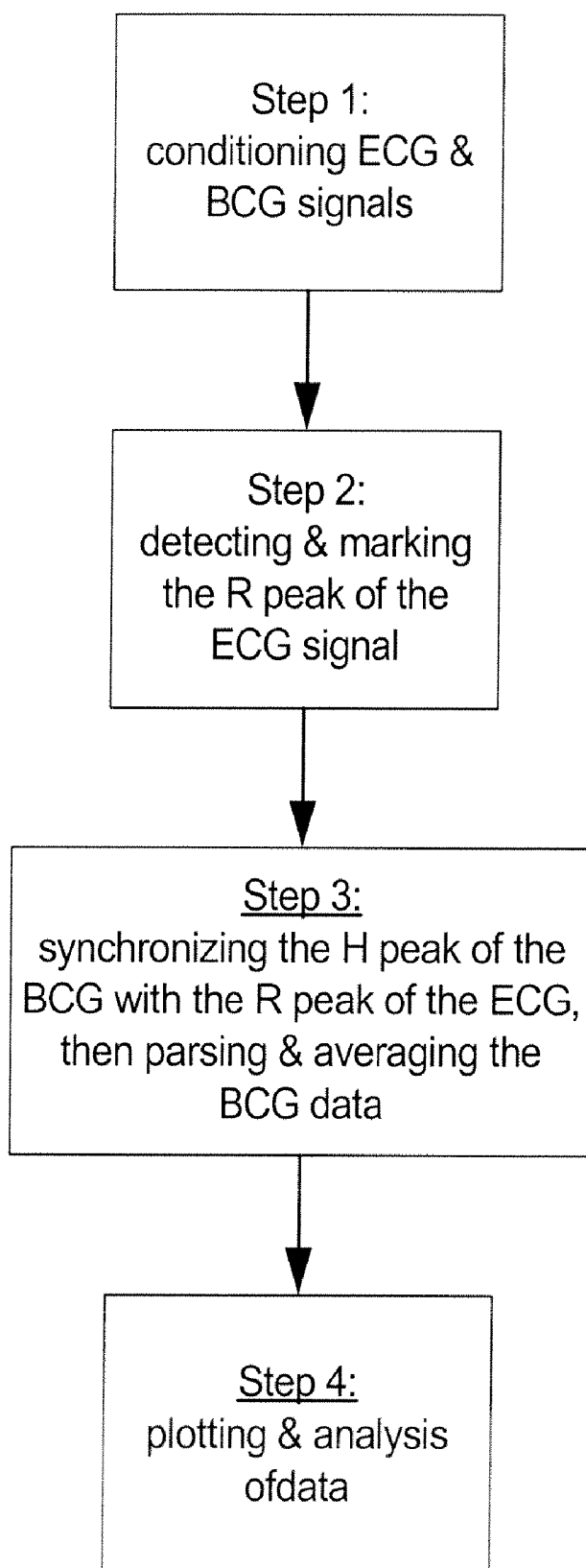


Fig. 7

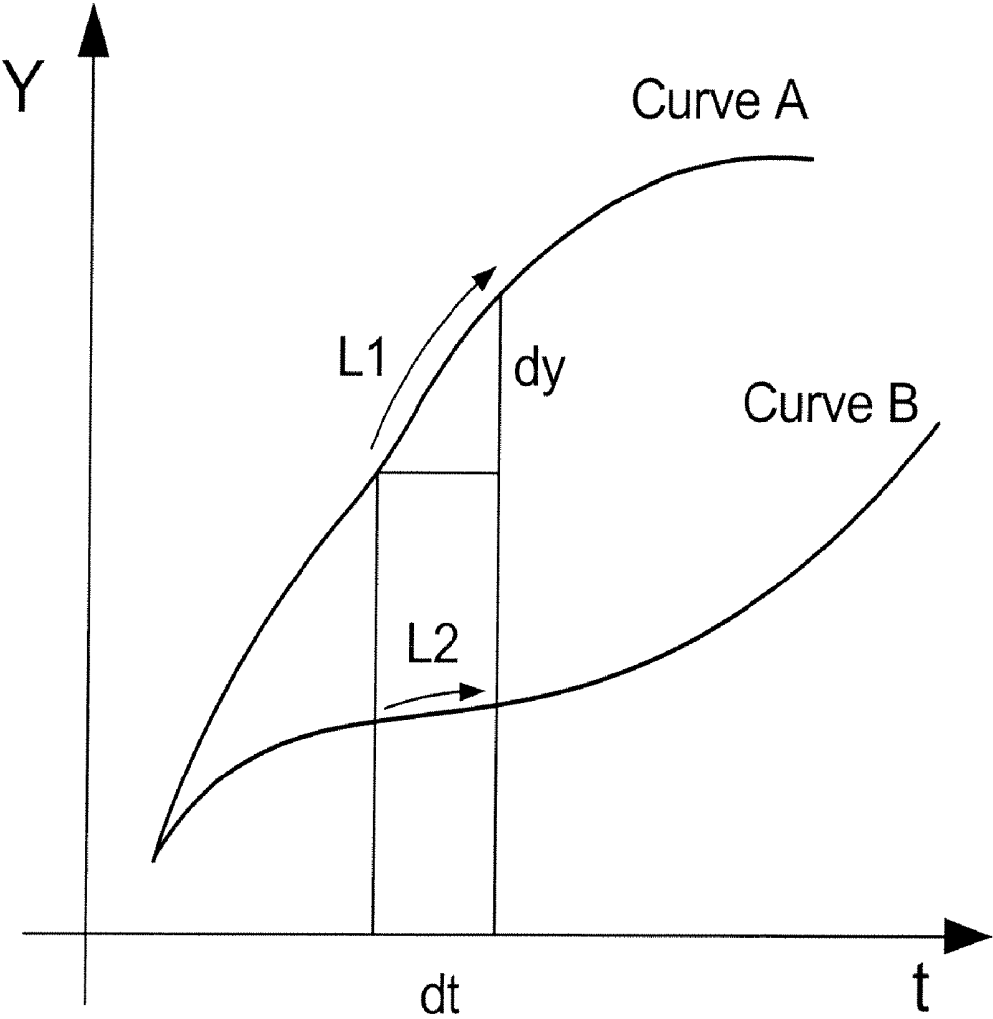


Fig. 8

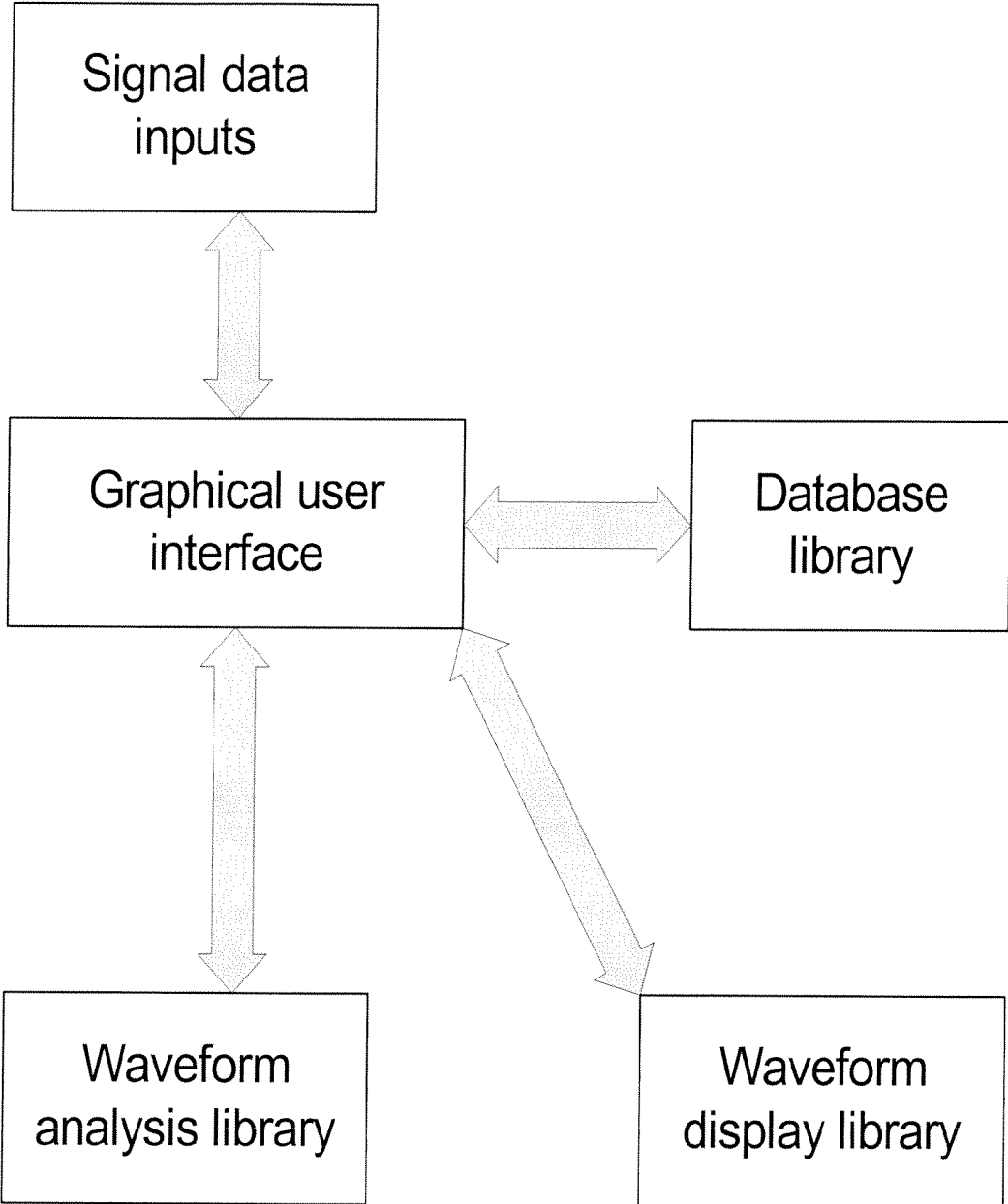


Fig. 9

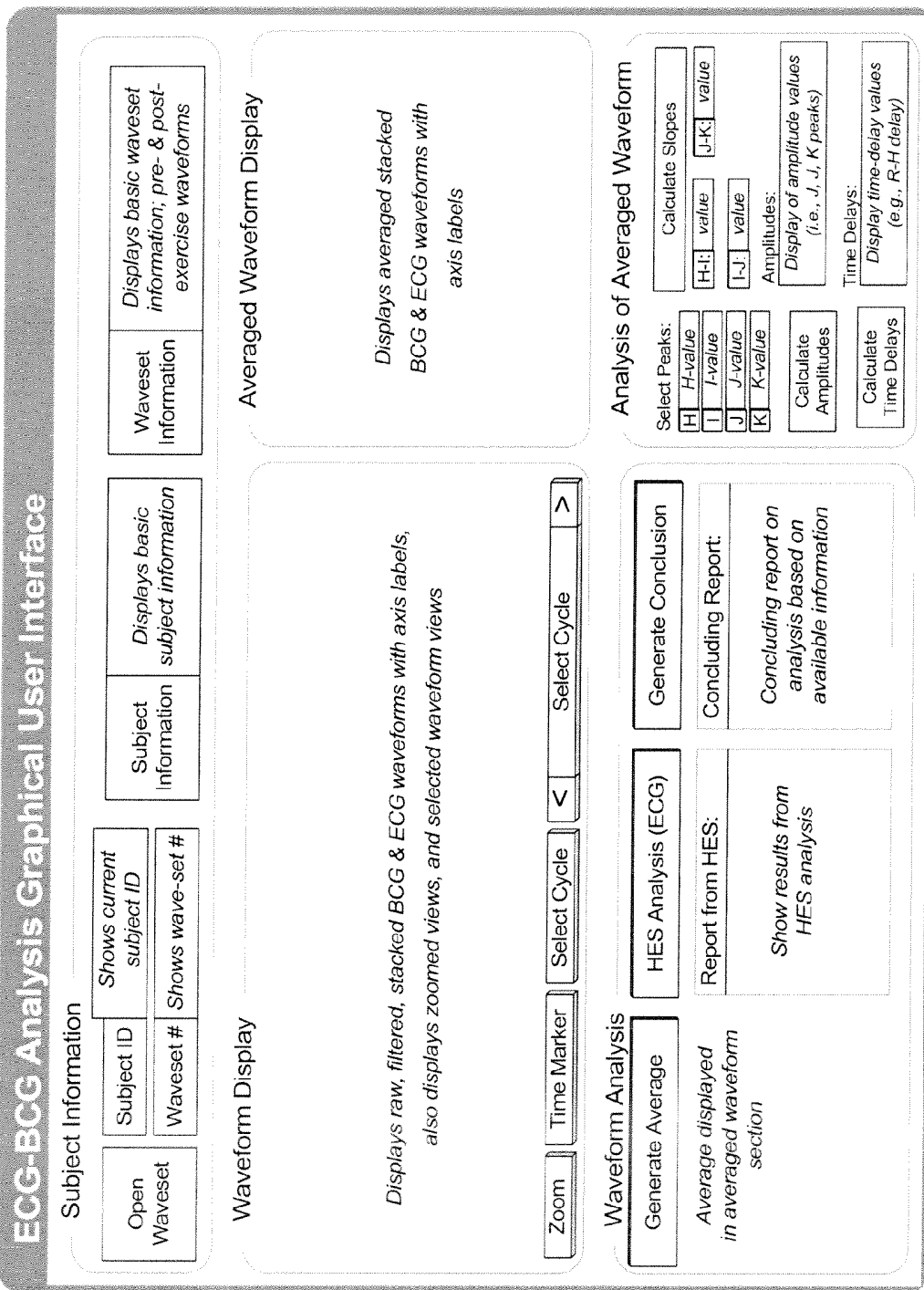


Fig. 10

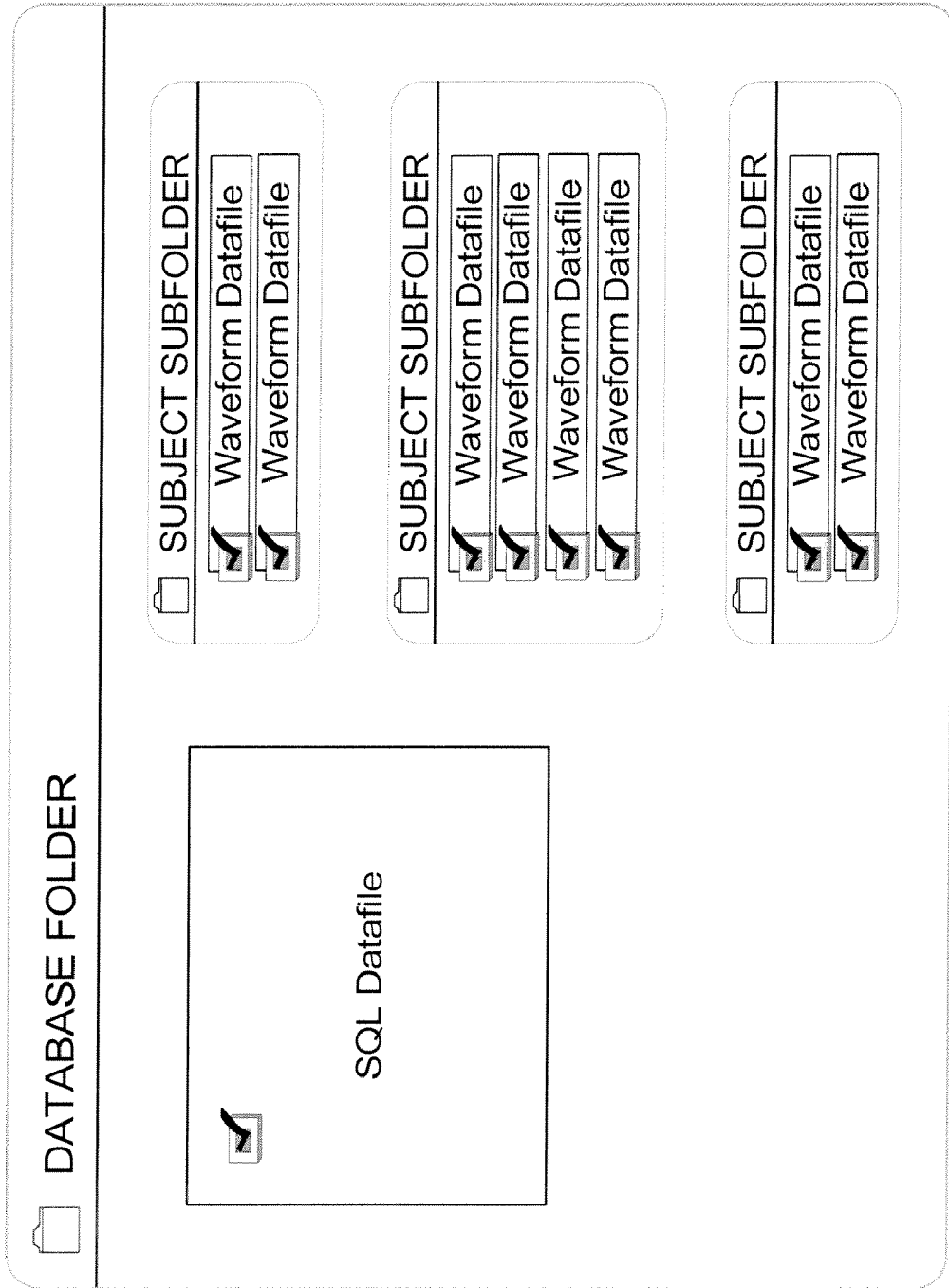


Fig. 11

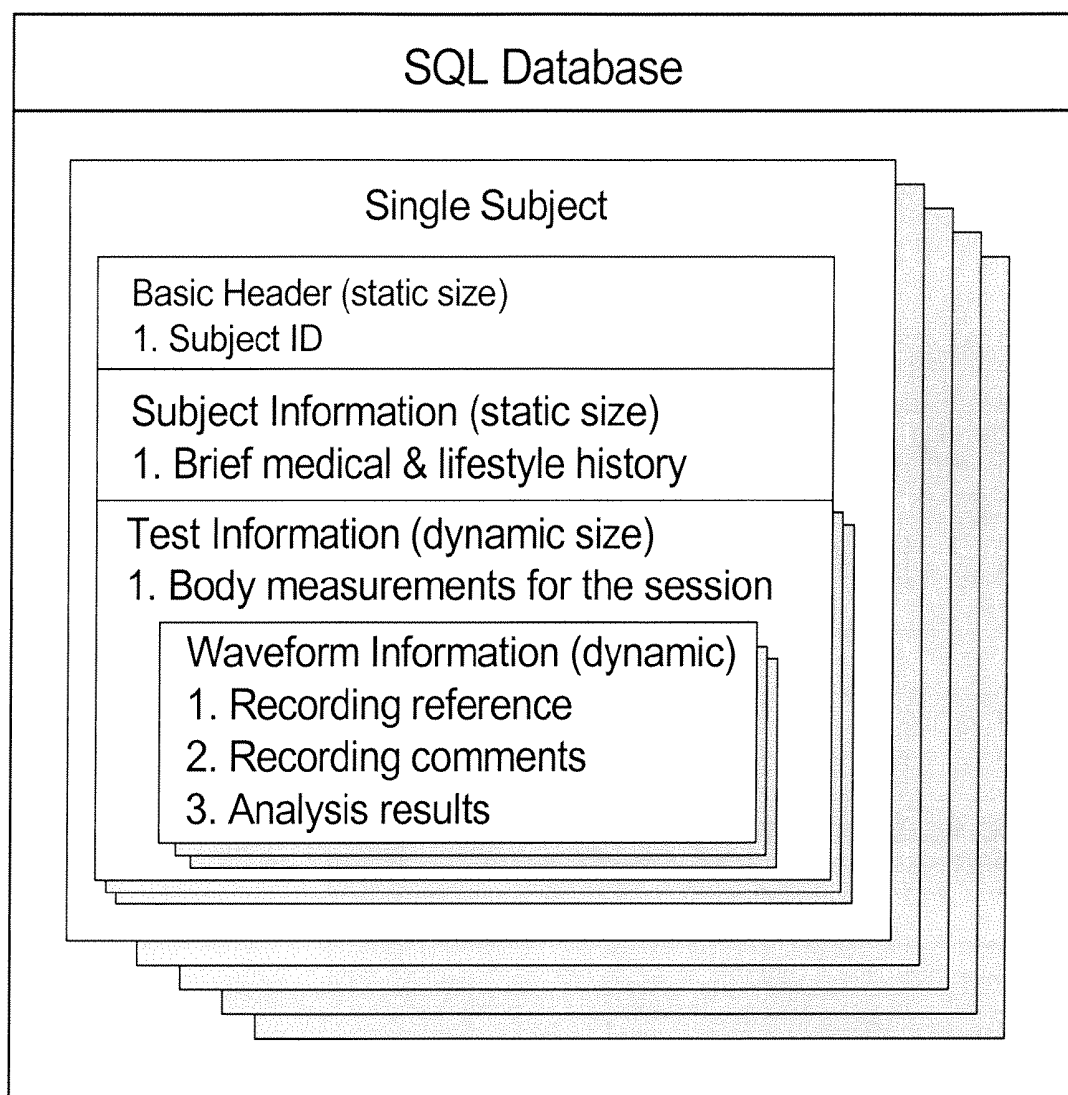


Fig. 12a

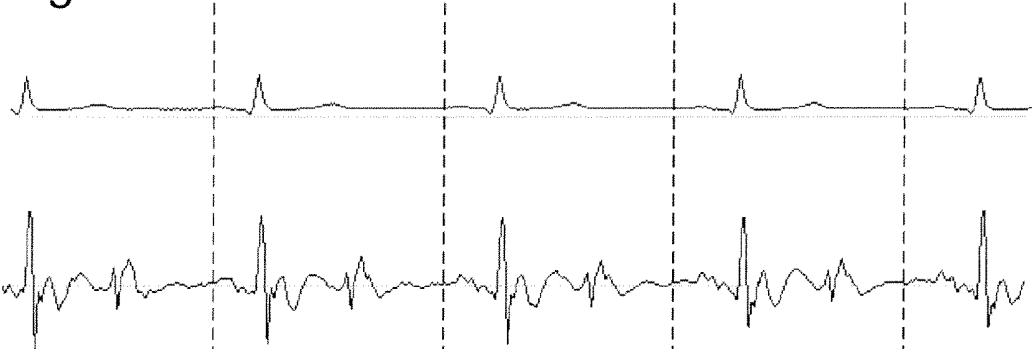
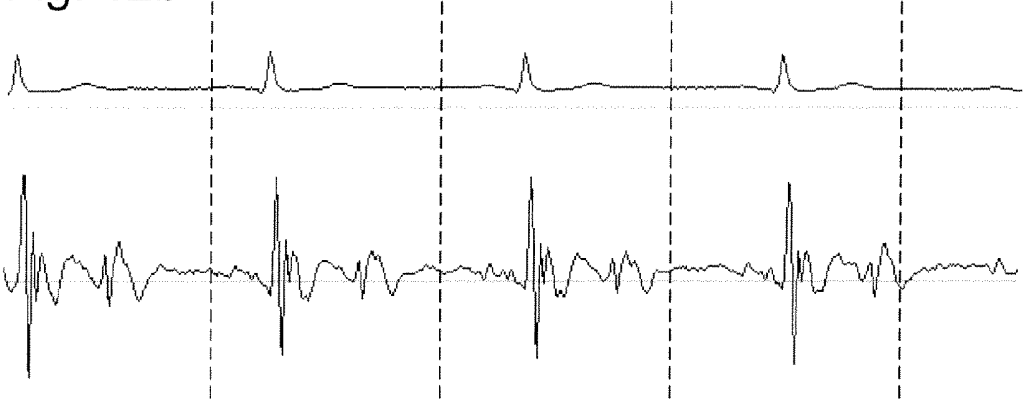


Fig. 12b



1st sec 2nd sec 3rd sec 4th sec

Fig. 13a

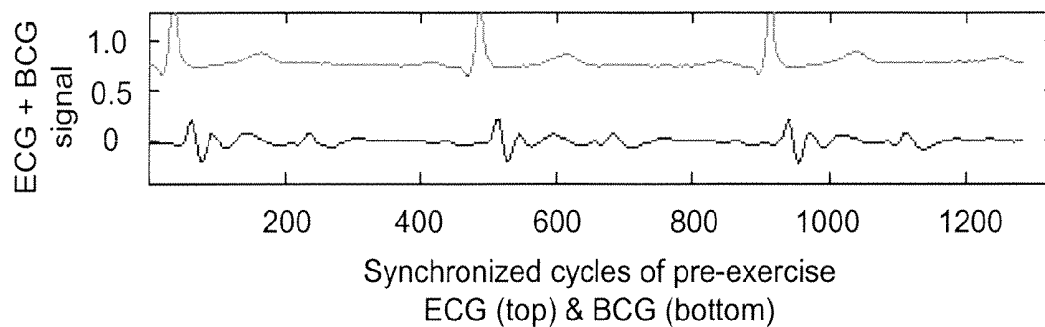


Fig. 13b

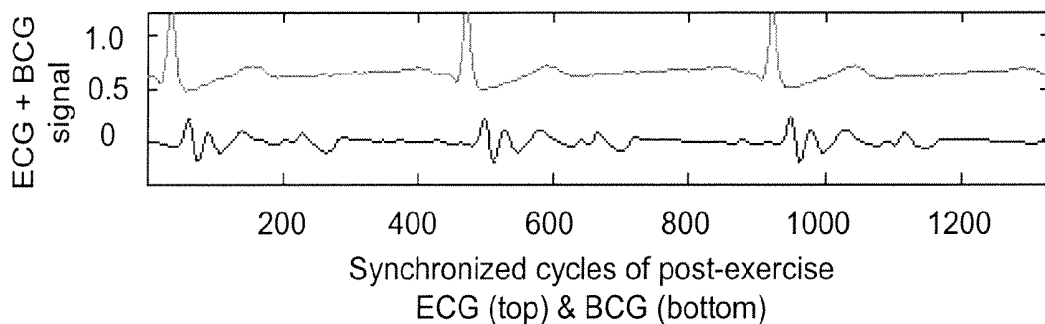


Fig. 13c

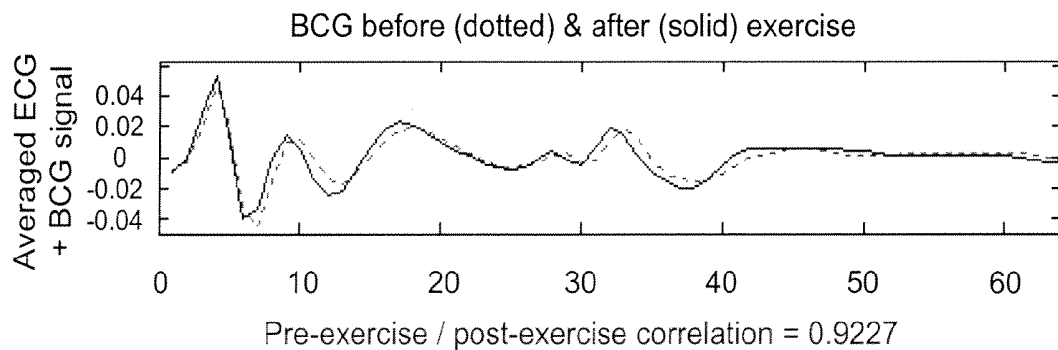


Fig. 14a

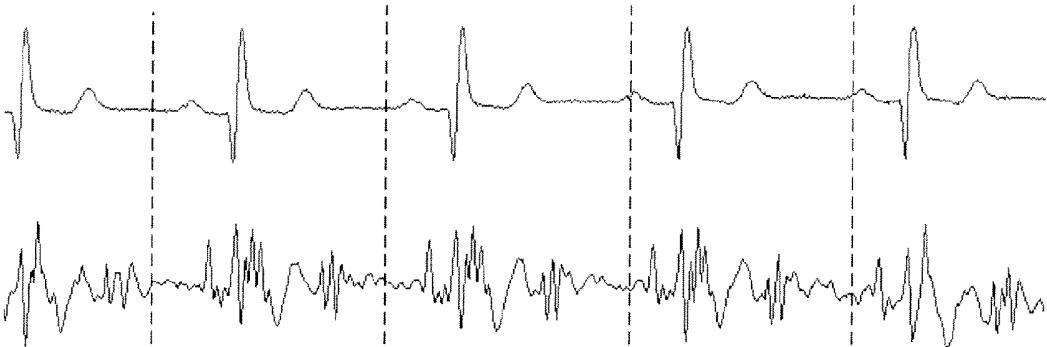


Fig. 14b

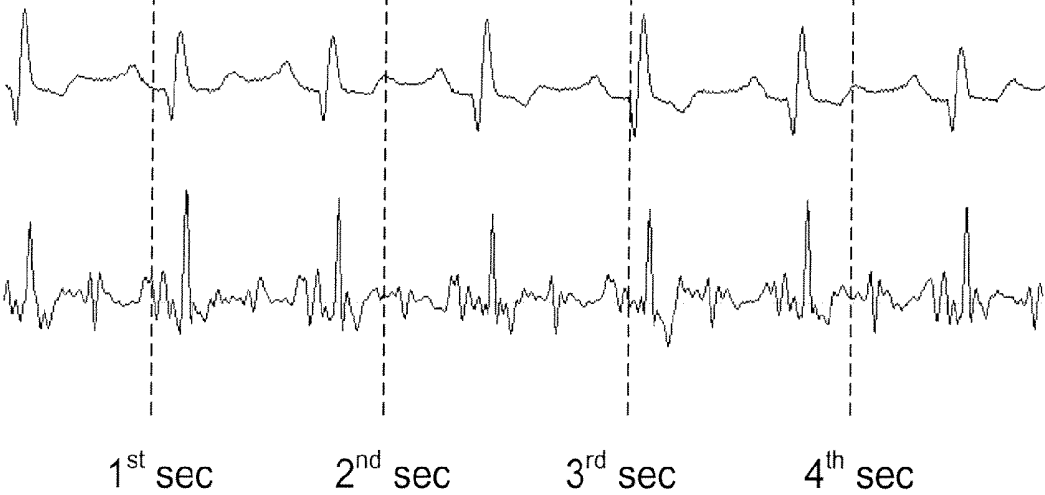


Fig. 15a

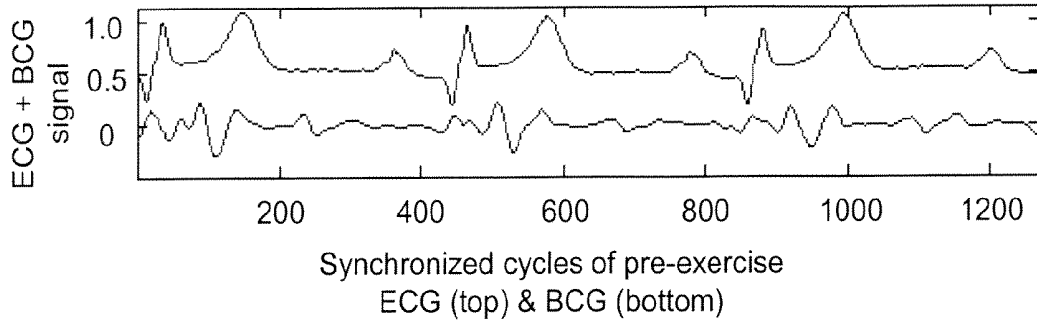


Fig. 15b

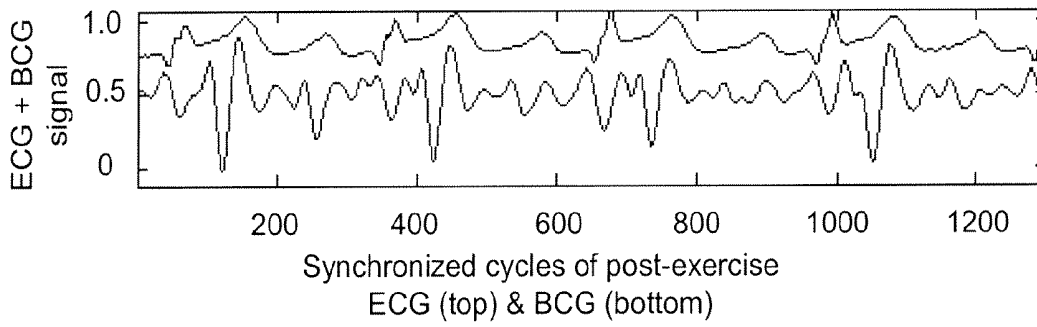


Fig. 15c

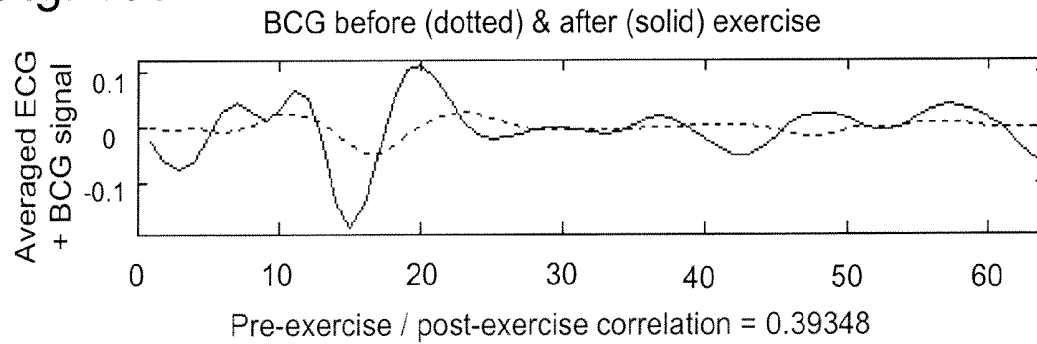


Fig. 16a

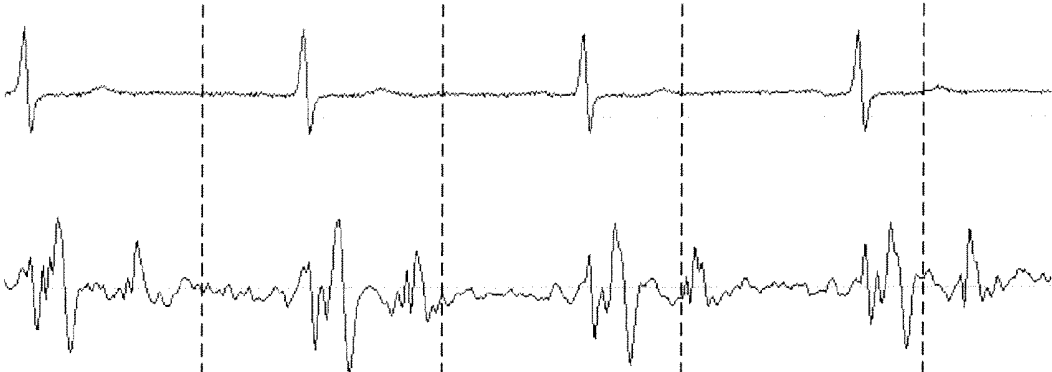


Fig. 16b

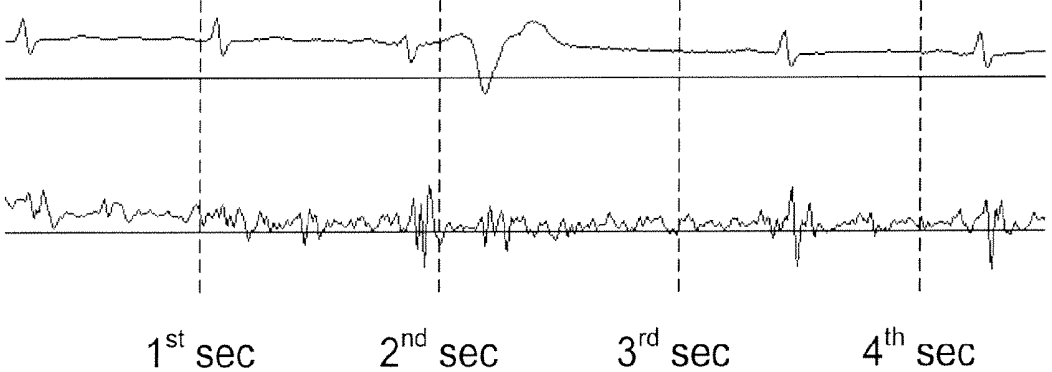


Fig. 17a

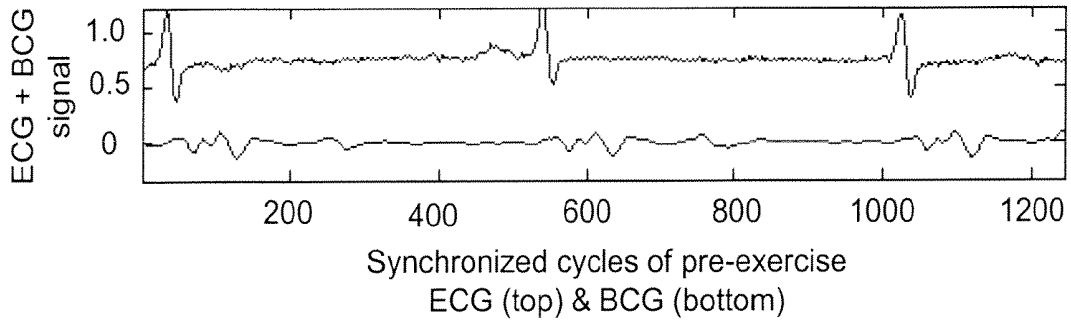


Fig. 17b

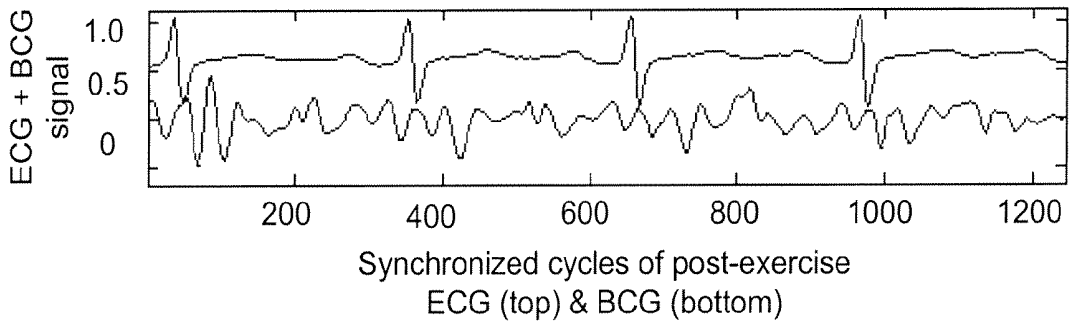


Fig. 17c

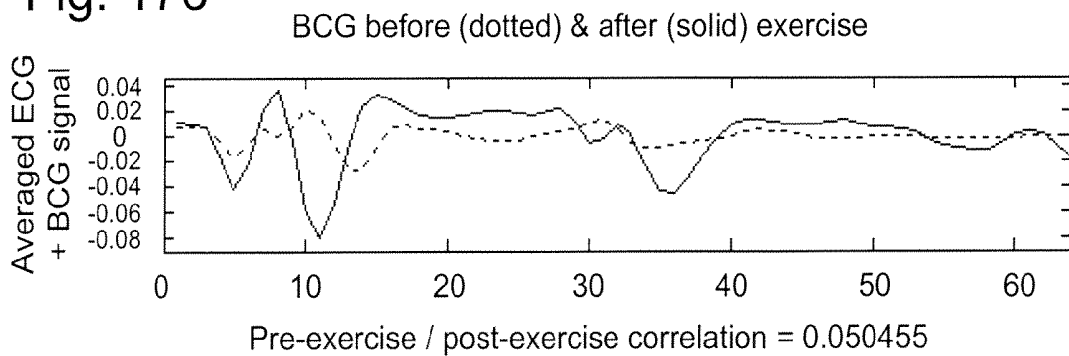
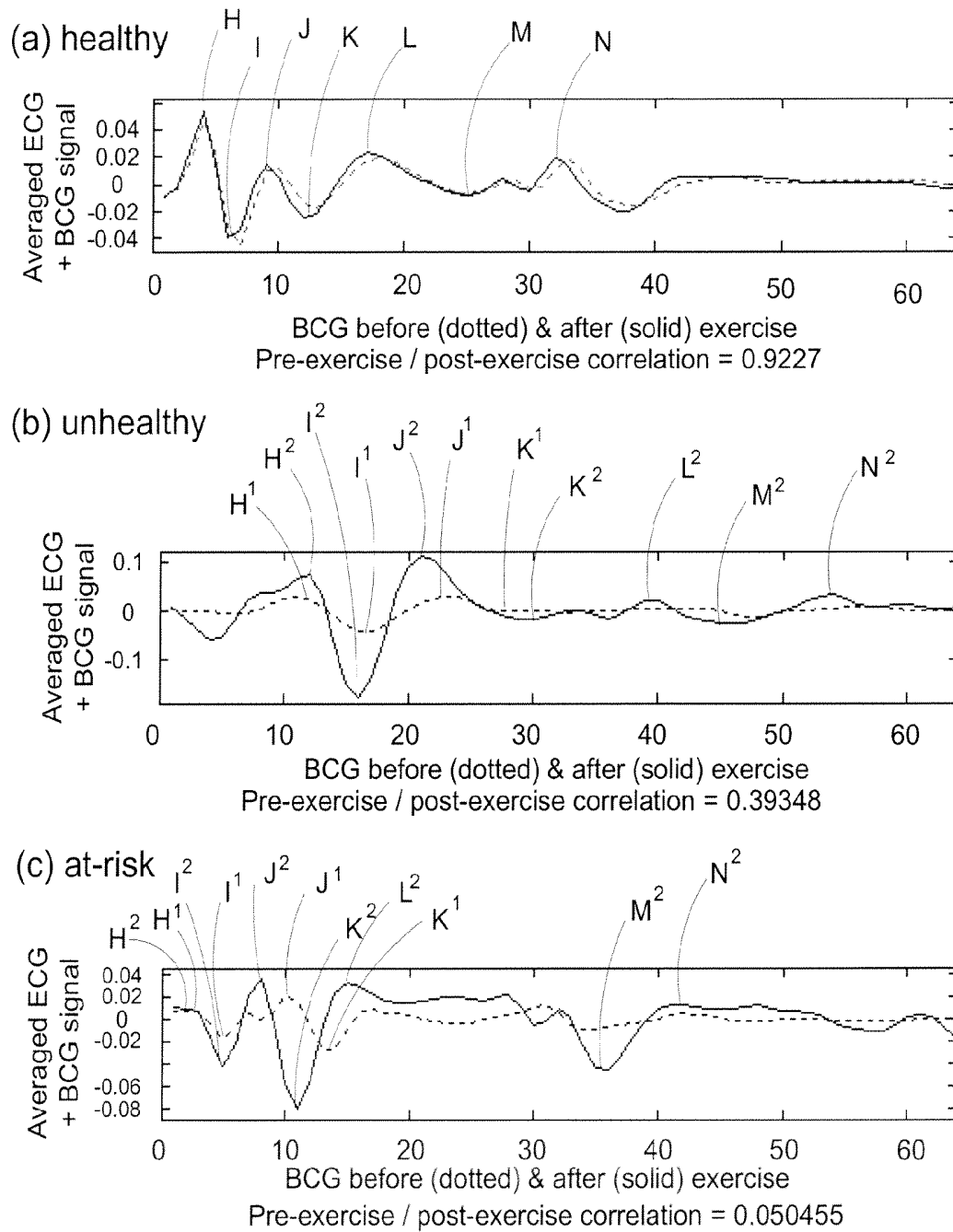


Fig. 18



MONITORING PHYSIOLOGICAL CONDITION AND DETECTING ABNORMALITIES

FIELD OF THE INVENTION

[0001] This invention relates to monitoring cardiovascular health. More particularly, this invention relates to systems and methods for early detection of cardiovascular abnormalities and malfunctions.

BACKGROUND OF THE INVENTION

[0002] Numerous types of malfunctions and abnormalities that commonly occur in the cardiovascular system, if not diagnosed and appropriately treated or remedied, will progressively decrease the body's ability to supply sufficient oxygen to satisfy the coronary oxygen demand when the individual encounters stress. The progressive decline in the cardiovascular system's ability to supply oxygen under stress conditions will ultimately culminate in a heart attack, i.e., myocardial infarction event that is caused by the interruption of blood flow through the heart resulting in oxygen starvation of the heart muscle tissue (i.e., myocardium). In serious cases, the consequences are mortality while in less serious cases, permanent damage will occur to the cells comprising the myocardium that will subsequently predispose the individual's susceptibility to additional myocardial infarction events.

[0003] In addition to potential malfunctions and abnormalities associated with the heart muscle and valve tissues (e.g., hypertrophy), the decreased supply of blood flow and oxygen supply to the heart are often secondary symptoms of debilitation and/or deterioration of the blood flow and supply system caused by physical and biochemical stresses. While some of these stresses are unavoidable, e.g., increasing age, heredity and gender, many of the causative factors of cardiovascular diseases and malfunction are manageable, modifiable and treatable if their debilitating effects on the cardiovascular system are detected early enough. Examples of such modifiable risk factors include high blood pressure, management of blood cholesterol levels, Diabetes mellitus, physical inactivity, obesity, stress, and smoking. Examples of cardiovascular diseases that are directly affected by these types of stresses include atherosclerosis, coronary artery disease, peripheral vascular disease and peripheral artery disease. In many patients, the first symptom of ischemic heart disease (IHD) is myocardial infarction or sudden death, with no preceding chest pain as a warning.

[0004] Screening tests are of particular importance for patients with risk factors for IHD. The most common initial screening test for IHD is to measure the electrical activity over a period of time which is reproduced as a repeating wave pattern, commonly referred to as an electrocardiograph (ECG), showing the rhythmic depolarization and repolarization of the heart muscles. Analysis of the various waves and normal vectors of depolarization and repolarization yields important diagnostic information. However, ECG measurements are not particularly sensitive nor are the data very useful for detecting cardiovascular abnormalities or malfunctions. Therefore, stressing the heart under controlled conditions and measuring changes in the ECG data is usually, but not always, the next step. The stresses may be applied by the performance of physical exercise or alternatively, by administration of pharmaceutical compounds such as dobutamine, which mimic the physiological effects of exercise. Other

screening tests for IED include the radionucleotide stress test which involves injecting a radioactive isotope (typically thallium or cardiolyte) into a patient's bloodstream, then visualizing the spreading of the radionucleotide throughout the vascular system and its absorption into the heart musculature. The patient then undergoes a period of physical exercise after which, the imaging is repeated to visualize changes in distribution of the radionucleotide throughout the vascular system and the heart. Stress echocardiography involves ultrasound visualization of the heart before, during and after physical exercise. The radionucleotide stress test and stress echocardiography are often used in combination with ECG measurements in order to gain a clearer understanding of the state of individual's cardiovascular health.

[0005] However, there are a number of serious limitations associated with the use of ECG and related stress tests for detecting abnormalities and malfunctions that are indicators of ischemic heart disease. ECG printouts provide a static record of a patient's cardiovascular function at the time the testing was done, and may not reflect severe underlying heart problems at a time when the patient is not having any symptoms. The most common example of this is in a patient with a history of intermittent chest pain due to severe underlying coronary artery disease. This patient may have an entirely normal ECG at a time when he is not experiencing any symptoms despite the presence of an underlying cardiac condition that normally would be reflected in the ECG. In such instances, the ECG as recorded during an exercise stress test may or may not reflect an underlying abnormality while the ECG taken at rest may be normal. Furthermore, many abnormal patterns on an ECG may be non-specific, meaning that they may be observed with a variety of different conditions. They may even be a normal variant and not reflect any abnormality at all. Routine exercise ECG is not recommended in patients who have no signs or symptoms of coronary artery disease. Exercise ECG is notoriously ineffective at predicting underlying coronary artery disease, and a positive exercise ECG test in an apparently healthy patient is not known to have any association with cardiovascular morbidity and mortality.

[0006] Ballistocardiography (BCG) is a non-invasive method of graphically recording minute movements on an individual's body surface as a consequence of the ballistic i.e., seismic forces associated with cardiac function, e.g., myocardial contractions and related subsequent ejections of blood, ventricular filling, acceleration, and deceleration of blood flow through the great vessels. These minute movements are amplified and translated by a pick-up device (e.g., an accelerometer) placed onto a patient's sternum, into signals with electrical potentials in the 1-20 Hz frequency range and recorded on moving chart paper. The rhythmic contractions of the heart and related flows of blood within and from the heart's chambers under resting and stressed conditions produce repeating BCG wave patterns that enable visual detection and assessment by qualified diagnosticians of normal and abnormal cardiovascular function. The BCG records the vigor of cardiac ejection and the speed of diastolic filling. It provides a practical means of studying the physiologic response of the heart in its adjustment to the stress of exercise. The application of the light BCG exercise test to subjects without clinical or ECG evidence of heart disease, or to hypertensive subjects, or to patients with coronary artery disease and to those suspected of having myocarditis, provides information or clinical importance which cannot be obtained from any other means of physical diagnosis or from

the BCG at rest (Mandelbaum et al., 1954. *Circulation* 9:388-399). The most common BCG wave pattern classification system is known as the Starr system (Starr et al., 1961, *Circulation* 23: 714-732) and identifies four categories of cardiovascular function depending on the abnormalities in the measured BCG signals. In class 1, all BCG complexes are normal in contour. In class 2, the majority of the complexes are normal, but one or two of the smaller complexes of each respiratory cycle are abnormal in contour. In class 3, the majority of the complexes are abnormal in contour, usually only a few of the largest complexes of each respiratory cycle remaining normal and in class 4, there is such complete distortion that the waves cannot be identified with confidence, and the onset of ejection could not be located without the assistance of a simultaneous ECG (Starr, 1964, *J. Am. Med. Assoc.* 187:511). In general, a normal healthy person should belong to Starr class 1, and person belonging to class 3 or 4 has a significant abnormality in one or more components of the cardiovascular system. However, the classification is not exact, as it is done visually and depends on the person making the classification (Starr, 1964, *J. Am. Med. Assoc.* 187:511).

[0007] Coronary angiography enables visualization and assessment of potential cardiovascular abnormalities and malfunctions that are not possible to detect with the aforementioned stress tests, including as occlusions, stenosis, restenosis, thrombosis, aneurismal enlargement of coronary artery lumens, heart chamber size, heart muscle contraction performance and heart valve function. During a coronary angiogram, a small catheter is inserted through the skin into an artery in either the groin or the arm. Guided with the assistance of a fluoroscope, the catheter is then advanced to the opening of the coronary arteries, the blood vessels supplying blood to the heart. Next, a small amount of radiographic contrast solution is injected into each coronary artery. The images that are produced are called the angiogram. Although angiographic images accurately reveal the extent and severity of all coronary arterial blockages and details of the heart musculature, the procedure is invasive and requires the use of local anaesthesia and intravenous sedation.

SUMMARY OF THE INVENTION

[0008] The exemplary embodiments of the present invention, at least in some forms, provide systems, methods, devices, apparatus and software programs for acquiring, processing, synchronizing, storing and reporting at least two physiologically generated signals useful for monitoring the physiological condition of a mammalian system and for detecting abnormalities therein.

[0009] According to one exemplary embodiment, there is provided a system configured for monitoring the cardiovascular condition of a mammalian body. The system is provided with at least: (a) a plurality of devices configured to concurrently detect, acquire and transmit at least two different types of physiological signals produced by the cardiovascular system, (b) an analog-digital converter for converting the signals into digital data that can be processed and stored, (c) at least one apparatus configured to receive therethrough and condition the at least two signals, (d) a microprocessor suitably configured with hardware, an operating system and software provided for concurrently processing, analyzing, characterizing, reporting and transmitting said physiological and said conditioned signals, (e) a software program configured to concurrently process said conditioned signals to at least firstly detect repeating cyclical patterns in the conditioned

signals, secondly to identify and characterize individual components comprising the repeating cycles, thirdly to identify a first reference component in at a first conditioned signal and a second reference signal in a second conditioned signal, fourthly to synchronize at least a first conditioned signal with a second conditioned signal by aligning the first and second reference points, and then subsequently aligning the repeating cyclical pattern of the first conditioned signal with the repeating cyclical pattern of the second conditioned signal in constant reference to the first and second reference points, and fifthly producing at least a synchronized paired signal derived therefrom, and a database provided for communicating and cooperating with the microprocessor for storing therein and providing therefrom the physiological signals, conditioned signals, synchronized signals and signal outputs derived therefrom.

[0010] According to one aspect, there is provided a plurality of devices configured for concurrently detecting, acquiring and transmitting at least two physiological signals from a cardiovascular system. Exemplary suitable signals include electrical signals, electronic signals, seismic signals, mechanical signals, acoustic signals, imaging signals and the like. Suitable devices are exemplified by electrocardiographs, ballistocardiographs, seismocardiographs, angiographs and the like. Additional physiological monitoring equipment and instruments exemplified by pulsoximeters and blood pressure measuring devices, may be optionally provided to cooperate with said devices. The signals may be transmitted by wires or by wireless means.

[0011] According to another aspect, there is provided a filtering apparatus configured to remove extraneous noise components from the digital signals converted from the physiological signals acquired from the mammalian cardiovascular system thereby providing at least two conditioned signals.

[0012] According to exemplary embodiment of the present invention, there is provided at least one software program configured to concurrently perform a plurality of the following functions on the at least two conditioned signals: (a) process, (b) analyze, (c) optimize, (d) transform, (e) identify repeating cyclical patterns, (f) identify and characterize individual components of the repeating cyclical patterns, (g) identify a reference component in each of the cyclical patterns comprising each of the conditioned signals, (h) synchronize at least two of the conditioned signals by aligning the reference component of a first conditioned signal with the reference component of the second conditioned signal, (i) generate output comprising at least one synchronized signal wave pattern, (j) report identifying and characterizing key components of the at least one synchronized signal wave pattern relating to a physiological condition, (k) store, and (l) re-transmit the synchronized signals. It is within the scope of this invention for the synchronized signals to be transmitted back to the mammalian system for providing a stimulatory signal thereto.

[0013] According to one aspect, the software program is suitably configured for processing, comparing and reporting a plurality of synchronized signals, and providing outputs therefrom.

[0014] According to another aspect, the software program may comprise a plurality of mathematical algorithms, or alternatively heuristic algorithms, or optionally, a combination of mathematical and heuristic algorithms.

[0015] According to another exemplary embodiment of the present invention, there is provided a database for storing

therein and providing therefrom a plurality of synchronized signals produced as disclosed herein.

[0016] According to one aspect, the database may be provided as an integral component of the microprocessor provided herein.

[0017] According to another aspect, the database may be contained in a facility provided for such purposes. The database is configured receive therein pluralities of synchronized signals produced as disclosed herein. The synchronized signals may be delivered to and transmitted from the database base electrically, electronically, acoustically, via beams of light, and the like using wired or alternatively wireless transmission methods.

BRIEF DESCRIPTION OF THE DRAWINGS

[0018] The present invention will be described in conjunction with reference to the following drawing, in which:

[0019] FIG. 1 is a cross-sectional perspective view of the heart showing the tricuspid and mitral valves in opened positions, and the pulmonary and aortic valves in closed positions;

[0020] FIG. 2 is a cross-sectional perspective view of the heart showing the tricuspid and mitral valves in closed positions, and the pulmonary and aortic valves in opened positions;

[0021] FIG. 3 is a schematic diagram showing the relationships between the rhythmic electrical functions and related physical motions of a physiologically normal heart cooperating with a physiologically normal cardiovascular system, with reference to: (a) electrocardiographic (ECG) events, (b) systolic and diastolic periods of time, (c) blood pressure during the systole and diastole periods, and (d) ballistocardiographic (BCG) events;

[0022] FIG. 4 is an exemplary chart showing the traditional Starr BCG signal classification system;

[0023] FIG. 5 is a schematic diagram showing an exemplary system of the present invention configured for concurrently detecting and transmitting ECG and BCG signals produced by a heart to a device configured to synchronize one of the signals and provide a visual output of the synchronized ECG and BCG signals;

[0024] FIG. 6 is a flow chart of one embodiment of the present invention showing an exemplary method for processing and synchronizing concurrently produced ECG and BCG signals;

[0025] FIG. 7 is a graph illustrating a prior art curve-length concept;

[0026] FIG. 8 is a systems flow chart showing the data flow into and out of the graphical user interface;

[0027] FIG. 9 is an exemplary illustration of a layout for an ECG-BCG analysis Graphical User Interface (GUI) according to one aspect of the present invention;

[0028] FIG. 10 is an exemplary illustration of a basic layout for a database according to one aspect of the present invention;

[0029] FIG. 11 is an exemplary illustration of a sample SQL data table according to one aspect of the present invention;

[0030] FIG. 12a shows a raw unconditioned and unsynchronized ECG-BCG signal set of a healthy individual with a well-functioning cardiovascular system, collected during a resting stage prior to exercising, while FIG. 12b shows a raw unconditioned and unsynchronized ECG-BCG signal set collected from the healthy individual during the post-exercise period.

[0031] FIG. 13a shows the resting stage ECG-BCG signal set from FIG. 12a after conditioning and synchronization according to one aspect of the present invention, FIG. 13b shows the post-exercise ECG-BCG signal set from FIG. 12b after conditioning and synchronization, and FIG. 13c shows the synchronized post-exercise BCG signal overlaid onto the synchronized pre-exercise resting-stage BCG signal;

[0032] FIG. 14a shows a raw unconditioned and unsynchronized ECG-BCG signal set of an unhealthy individual with a somewhat debilitated cardiovascular system, collected during a resting stage of prior to exercising, while FIG. 14b shows a raw unconditioned and unsynchronized ECG-BCG signal set collected from the unhealthy individual during the post-exercise period.

[0033] FIG. 15a shows the resting stage ECG-BCG signal set from FIG. 14a after conditioning and synchronization according to one aspect of the present invention, FIG. 15b shows the post-exercise ECG-BCG signal set from FIG. 14b after conditioning and synchronization, and FIG. 15c shows the synchronized post-exercise BCG signal overlaid onto the synchronized pre-exercise resting-stage BCG signal;

[0034] FIG. 16a shows a raw unconditioned and unsynchronized ECG-BCG signal set of an at-risk individual with a seriously debilitated cardiovascular system, collected during a resting stage prior to exercising, while FIG. 16b shows a raw unconditioned and unsynchronized ECG-BCG signal set collected from the at-risk individual during the post-exercise period;

[0035] FIG. 17a shows the resting stage ECG-BCG signal set from FIG. 16a after conditioning and synchronization according to one aspect of the present invention, FIG. 17b shows the post-exercise ECG-BCG signal set from FIG. 16b after conditioning and synchronization, and FIG. 17c shows the synchronized post-exercise BCG signal overlaid onto the synchronized pre-exercise resting-stage BCG signal; and

[0036] FIGS. 18a, 18b and 18c are comparisons of the overlaid synchronized pre- and post-exercise BCG signals for the healthy individual, unhealthy individual, and at-risk individual respectively.

DETAILED DESCRIPTION OF THE INVENTION

[0037] The present invention relates to the detection and monitoring of two disparate signals associated with rhythmic electrical cardiovascular functions and physical movements associated with the beating of an individual's heart, and the synchronization of a selected signal to the other signal whereby the synchronized signal enables and facilitates detection of potential abnormalities and malfunctions associated with the individual's cardiovascular system. Two exemplary suitable signals for monitoring cardiovascular function and for synchronization with each other are ECG and BCG signals. A brief description follows of cardiovascular functions as they relate to the generation of ECG and BCG signals, for reference to during disclosure herein of how either of these signals may be synchronized to the other for the detection of potential cardiovascular abnormalities and malfunctions according to the present invention.

[0038] As shown in FIGS. 1 and 2, the heart 10 comprises four chambers, the right atrium 20 interconnected with the right ventricle 30 by the tricuspid valve 35, and the left atrium 40 interconnected with the left ventricle 50 by the mitral valve 45. Blood is delivered into the right atrium 20 from the upper half of the body via the superior vena cava 15, and from the lower half of the body via the inferior vena cava 17. The

tricuspid valve **25** is opened by concurrent contraction of the right atrium myocardium (i.e., muscle tissue) and the right ventricular papillary muscles **27** thereby allowing blood flow from the right atrium **20** into the right ventricle **30**, and then closes when the papillary muscles **27** relax. When the myocardium of the right ventricle **30** contracts, blood is forced from the right ventricle **30** through the pulmonary valve **35** into the pulmonary artery **37** which delivers the blood into the lungs wherein it is oxygenated. The oxygenated blood is then returned into the left atrium via pulmonary veins **38** and **39**. The oxygenated blood flows from the left atrium into the left ventricle when the mitral valve **45** is opened by concurrent contraction of the left atrium myocardium and the left ventricular papillary muscles **47** thereby allowing blood flow from the left atrium **40** into the left ventricle **50**, and then closed when the papillary muscles **47** relax. The oxygenated blood is then forced out of the left ventricle **50** through the aortic valve **55** into the aorta which delivers the oxygenated blood to throughout the body via the peripheral vascular system.

[0039] Every rhythmic 'beat' of the heart involves three major stages: atrial systole, ventricular systole and complete cardiac diastole. Electrical systole is the electrical activity that stimulates the muscle tissue, i.e., the myocardium of the chambers of the heart to make them contract. Referring to FIG. 3(b), atrial systole **110** is the period of contraction of the heart muscles (i.e., myocarda) encompassing the right and left atria **20** and **40**. Both atria **20** and **40** contract concurrently with papillary muscle **27** and **47** contraction thereby forcing open the tricuspid valve **25** and the mitral valve **45** as shown in FIG. 1. Electrical systole, i.e. electrical depolarization of the atria **20** and **40** begins within the sinoatrial (SA) node located in the right atrium just below the opening to the superior vena cava. The conduction electrical depolarization continues to travel in a wave downwards, leftwards and posteriorly through both atria depolarising each atrial muscle cell in turn. It is this propagation of charge that can be seen as the P wave on an ECG as exemplified in FIG. 3(a). This is closely followed by mechanical systole i.e., mechanical contraction of the atria which is detected on a BCG (FIG. 3(d)) as an impact (i.e., "h" peak) and recoil (i.e., "i" valley) wave pattern. As the right and left atria **20** and **40** begin to contract, there is an initial high velocity flow of blood into the right and left ventricles **30** and **50** detectable as the "j" peak on the BCG (FIG. 3(d)). Continuing atrial contraction as the tricuspid valve **25** begins to close forces an additional lower velocity flow of blood into the right and left ventricles **30** and **50**. The additional flow of blood is called the "atrial kick" and is shown in FIG. 3(d) as the "a—a¹" wave pattern. After the atria are emptied, the tricuspid and mitral valves **25** and **45** close thereby giving rise to the footward "g" wave pattern on the BCG as shown in FIG. 3(d).

[0040] Referring to FIG. 3(b), ventricular systole **120** is the contraction of the muscles i.e., myocarda of the left and right ventricles **30** and **50**, and is caused the electrical depolarization of the ventricular myocarda giving rise to the QRS complex in a ECG plot as shown in FIG. 3(a). The downward Q wave is caused by the downward flow of depolarisation through the septum **33** along a specialized group of cells called "the bundle of His". The R wave is caused by depolarization of the ventricular muscle tissue, while S wave is produced by depolarization of the heart tissue between the atria **20** and **40** and ventricles **30** and **50**. As the depolarization travels down the septum and throughout the ventricular myo-

cardia, the atria **20** and **40** and sinoatrial node start to polarise. The closing of the tricuspid and mitral valves **25** and **45** mark the beginning of ventricular systole and cause the first part of the "lub-dub" sound made by the heart as it beats. Formally, this sound is known as the "First Heart Tone" and is produced during the period of time shown in FIG. 3(b) as S₁. As the electrical depolarization of the ventricular myocarda peaks, as exemplified by the "R" peak shown in FIG. 3(a), the AV septum **33** separating the right and left ventricles **30** and **50** contracts causing an impact, i.e., the "H" peak and a recoil i.e., the "I" valley detectable on a BCG as shown in FIG. 3(d). The ventricular contraction forces the blood from the right ventricle **30** into the pulmonary artery **37** through the pulmonary valve **35**, and from the left ventricle **50** into the aorta **60** through the aortic valve **55** under very high velocity thereby causing the "J" wave in the BCG as shown in FIG. 3(d). The deceleration of blood flow from the left ventricle **50** into the aorta **60** causes a footward decline in the BCG resulting in the "K" wave (FIG. 3(d)). As the left ventricle **50** empties, its pressure falls below the pressure in the aorta **60**, and the aortic valve **55** closes. Similarly, as the pressure in the right ventricle **30** falls below the pressure in the pulmonary artery **37**, the pulmonary valve **35** closes. The second part of the "lub-dub" sound, i.e., the "Second Heart Tone" is produced during the period of time shown in FIG. 3(b) as S₂ and is caused by the closure of the pulmonary and aortic valves **35** and **55** at the end of ventricular systole thereby giving rise to the headward "L" wave detectable on a BCG as shown in FIG. 3(d). Concurrently with the closing of the pulmonary and aortic valves **35** and **55**, the AV septum **33** relaxes and moves headward, and the ventricular myocarda is re-polarized giving rise to the "T" wave in the corresponding ECG as shown in FIG. 3(a).

[0041] Cardiac diastole is the period of time when the heart **10** relaxes after contraction in preparation for refilling with circulating blood. Atrial diastole is when the right and left atria **20** and **40** are relaxing, while ventricular diastole is when the right and left ventricles **30** and **50** are relaxing. Together, they are known as complete cardiac diastole **150** as shown in FIG. 3(b). During the period of atrial diastole, the right atrium **20** is re-filled by deoxygenated blood returning from the upper half of the body via the superior vena cava **15** and from the lower half of the body via the inferior vena cava **17**, while the left atrium is re-filled with oxygenated blood returning from the lungs via pulmonary veins **38** and **39**. Re-filling of the atria **20** and **40** causes a downward "M" wave in the BCG FIG. 3(d) early in diastole which coincides with repolarization of the bundle of His cells, which is shown as the "U" wave in FIG. 3(a). As the right and left atria **20** and **40** are filled to their maximum capacities, the reflux of blood against the tricuspid valve **25** and mitral valve **45** cause an upward "N" wave in the BCG as shown in FIG. 3(d).

[0042] In summary, an ECG, as exemplified in FIG. 3(a) provides information on the rhythmic formation, propagation and regeneration of electrical signals within the heart muscles wherein: (a) the P wave results from electrical depolarization of the right and left atria signalling the onset of atrial systole during which time the right and left atria contract, (b) the QRS wave pattern results from depolarization of the right and left ventricles signalling the onset of ventricular systole during which time the right and left ventricles contract, (c) the subsequent T wave is produced by electrical repolarization of the ventricular myocarda, and (d) the U wave is produced by electrical repolarization of the bundle of His cells. The T and

U waves are notoriously hard to locate and annotate due to their slow slopes and low amplitudes.

[0043] The BCG, as exemplified in FIG. 3(d), records the vigor of cardiac ejection of blood from the atria and ventricles, and the speed of filling of the atrial chambers during the diastolic period. More specifically, the BCG provides information on the mechanical functioning and related physical movements of the heart muscles, valves, and related flows of blood into, between and out of the atria and ventricles as a consequence of electrical depolarization and re-polarization of the heart tissues. As the heart pumps blood from the right and left atria via the right and left ventricles into the pulmonary artery and the aorta, and as the blood flow returns to the left and right atria, recoil pressures in the opposite directions are applied by the body. The pumping pressures result in headward BCG wave peaks, while the recoil pressures on bloodflow result in the downward BCG wave peaks. The “h-i” wave component of the BCG shows the physical impact and recoil from depolarization of the SA node and related atrial movements. The “j-a-a1” wave pattern records the impact and recoil of the heart in response to blood flow from the atria 20 and 40 into the right and left ventricles 30 and 50. The “g” wave pattern is a caused by the closing of the tricuspid and mitral valves 35 and 45. The “H-I” wave pattern is caused by the impact and recoil of the septum 33 and corresponds to the isometric phase of ventricular systole during which time the heart is physically twisting and moving upward within the chest cavity. The “J-K” wave pattern is caused by the initial highly forceful impact of blood from the right and left ventricles into the pulmonary and aortic arteries (the J peak) followed by deceleration of blood flow in the aorta (the J-K slope). The L wave is caused by the movement of the septum during isometric relaxation, while the M wave is caused by the flow of blood into the right atrium from the vena cava vessels and into the left atrium by the pulmonary veins. The heart is physically recoiling and moving downward in the chest cavity during isometric relaxation. The N wave is caused by impact of blood onto the ventricular myocardia at the end of early diastolic filling due to reflux.

[0044] Considerable energy is generated by the ventricular myocardia during ventricular systole, and the strength of ventricular contraction is fueled by the oxygen in the blood returning from the lungs into the left ventricle via the left atrium. About 80% of the oxygen in the blood flowing through the left ventricle is removed to supply the ventricular myocardial oxygen demand during ventricular systole. The cardiovascular systems of most individuals under “resting” conditions, can supply adequate amounts of oxygen during coronary perfusion to provide regular repeating ECG and BCG patterns as exemplified in Figs 3(a) and 3(d). When healthy individuals are placed under stressed conditions, e.g., exercise, it is known that as the heart rate increases to provide sufficient oxygen to the maintain efficient cardiovascular function while supplying additional oxygen to meet the demands from the peripheral musculature, the related ECG and BCG wave patterns reproduce the typical repeating wave patterns as illustrated in FIGS. 3(a) and 3(d) but the slopes and amplitudes of the wave patterns increase significantly. However, individuals experiencing some debilitation in their cardiovascular physiology and function when stressed, tend to produce BCG signals that show significant variations in their repeating BCG wave patterns when compared to their BCG produced under “resting” conditions. FIGS. 4(a)-4(d) show four types of exemplary BCG signals that are divided

into separate classes of cardiovascular abnormalities based on the Starr classification system (Starr, 1964, Journal of the American Medical Association 187: 511). In Class 1 (FIG. 4(a)), all BCG wave patterns are normal in contour. In Class 2 (FIG. 4(b)), the majority of the BCG wave patterns are normal but one or two of the smaller wave patterns in each respiratory cycle are abnormal. In Class 3 (FIG. 4(c)), the majority of the BCG wave patterns are abnormal in contour and usually, only a few of the largest wave patterns of each respiratory cycle remain normal. Lastly, in Class 4 (FIG. 4(d)), there is such complete distortion in the BCG wave patterns that none of the waves can be identified with confidence, and it is difficult to determine the onset of each rhythmic cycle. In general, a normal healthy person should belong to the Starr Class 1 (FIG. 4(a)), while a person producing BCG wave patterns that fall into the Starr Class 3 or 4 (FIG. 4(c) or 4(d)) has significant cardiovascular abnormalities and/or malfunctions.

[0045] We have surprisingly discovered that, regardless of the type of BCG wave pattern produced by an individual under stressed conditions in reference to the Starr classification system, it is possible to synchronize the individual’s rhythmic BCG pattern with their ECG signal under non-stressed, i.e., resting stage conditions, and then characterize the individual’s cardiac function by calculating a plurality of the following parameters:

[0046] (1) stroke volume: the amount of blood ejected from the left ventricle during systole. Stroke volume (SV)=end diastolic volume (EDV)-end systolic volume (ESV);

[0047] (2) cardiac output: the volume of blood pumped by the left ventricle per minute, calculated by multiplying the stroke volume by the number of heart beats per minute. Cardiac output (CO)=SV X heart rate (HR measured in beats per minute);

[0048] (3) ending diastolic volume: the volume of blood contained in the left ventricle at the end of the rest phase when the left ventricle is at its fullest;

[0049] (4) ending systolic volume: the volume of blood left in the left ventricle at the end of the systolic period when the ventricle contains its lowest volume;

[0050] (5) ventricular ejection fraction: the percentage of the ending diastolic volume that is ejected during each heart beat. Ejection fraction (EF)=SV/EDV;

[0051] (6) cardiac output index: the volume of blood pumped by the left ventricle per minute normalized to the body surface area (measured in meters²). Cardiac output index (CI)=CO+body surface area (BSA)=SV X HR/BSA;

[0052] (7) Pre-ejection period: The time from the Q-wave peak on the ECG to the opening of the aortic valve;

[0053] (8) Cardiac performance index (CPI)=(isovolumetric relaxation time+isovolumetric contraction time)/Ejection time (ET). The CPI can also be calculated as the (time period between the I-peak and the L-peak)/ET. The CPI can also be calculated as the (time period between aortic valve opened and aortic valve closed)/(time period between the I-peak and the L-peak).

[0054] The quantifications of the above parameters are dependent on synchronizing, as illustrated in FIGS. 3(a) and 3(d), the R wave peak on an ECG caused by the depolarization of the ventricular muscle tissue with the H peak on a corresponding BCG which signals the rapid increase in intra-

ventricular pressure caused by the impact of the septum as the direct consequence of the depolarization of the ventricular muscle pressure. Since the H-wave and I-wave on a BCG are caused by the impact and recoil of the septum concurrent with

J-K, K-L, L-M and M-N slopes are similarly elongated and irregular as shown in FIG. 4(c). Table 1 shows a summary of various types of cardiovascular abnormalities and their effects on ECG and BCG wave patterns.

TABLE 1

Cardiovascular abnormality	ECG Wave Patterns	BCG Wave Patterns
Ischemic Heart Diseases (IHD)	hyperacute T wave (tall T wave) ST segment Changes. T wave inversion. Q wave longer than 0.04 sec. S in V1 and V2 + R in V5 R in I + S in III > 25 mm	increased amplitude in K, J, L, M peaks broad K wave fused H-J wave patterns expiration. notched J waves changes in Q-I, Q-J, I-J slopes prolonged H-I-J wave pattern
Sinus Arrhythmia: tachycardia bradycardia	typical ECG wave patterns relating to heart rate, P wave or QRS wave patterns	often appears as Starr Class 3 or 4 wave patterns
Nonsinus Arrhythmia: ventricular & atrial flutter/fibrillation	ECG shows variable different P-QRS wave patterns	primarily produce Starr Class 3 or 4 wave patterns
Hypertension	variable ECG wave patterns. T inversions large S or R peaks. some ECG fluctuations similar to those for IHD	tall L wave. large H wave. H wave fused into the J wave

depolarization of the ventricular muscle tissue, (a) the time duration of the H-I wave, i.e., the isovolumetric contraction time, and (b) the distance between the H and I peaks over the duration of that wave, can be measured. These data enable calculation of the slope of the H-I wave and the time to maximum velocity of the blood flow resulting from the ventricular contraction which results in rapid blood flow into the aorta thereby causing the J-peak. The subsiding blood flow into the aorta from ventricle results in the K-Peak. Since most individuals at resting stage, reproduce all of the H-I-J-K-L-M-N peaks of a "normal"-looking BCG pattern, the synchronized H-peak, and the detected I-peak and J-peaks can be used to sequentially find and mark the remaining K-L-M-N peaks. Marking each of these peaks enables precise calculation of the H-I slope, the I-J slope, the J-K slope, the K-L slope, the L-M slope, and the M-N slope. These data enable calculations of the time to maximum velocity for each slope thereby enabling calculation of the volumes of blood flow and the positive and negative pressure values that are exerted on and by the various heart muscles and valves. Furthermore, it is also possible to back-calculate from the synchronized H-peak and precisely mark the preceding g-a¹-a-j-i-h wave patterns.

[0055] When individuals with healthy cardiovascular systems, i.e., those within the Starr Class 1 range, are stressed such that their heart rates increase significantly to supply adequate oxygen in the blood stream throughout the body, the slopes of their H-I and J-K wave patterns will increase in height, have steeper slopes and have shorter time period, while the L-M-N waves will repeat distinctly, regularly and their slopes often become steeper. However, individuals with cardiovascular abnormalities and malfunctions, when stressed, will produce H-I and J-K slopes that are decreased in height and become longer, i.e., flatter, while L-M-N peaks tend to flatten out as shown in FIGS. 4(b) and 4(c). In cases where the severity of the cardiovascular abnormalities and malfunctions are increased, the heights of the H, J, L, and N peaks are significantly reduced to the point where the H-I, I-J,

[0056] We have discovered that the H-I-J-K-L-M-N wave peak data collected and calculated from the synchronized BCG and ECD signals under resting conditions, can be used as reference points to detect and identify different types of potential cardiovascular abnormalities by the changes that occur in one or more of the H-I, I-J, J-K, K-L, L-M, and M-N slopes when the individual is placed under stressed conditions. It is important to note that regardless of whether an individual is under resting or stressed conditions, synchronization of the H-peak on the BCG with the R-peak on the ECG during resting conditions will enable during stressed conditions, the precise marking of where the H-peak should occur on the BCG from the R-peak on the ECG. It is then possible to mathematically determine where the subsequent I-J-K-L-M-N peaks should have occurred. By referencing the synchronized h-i-j-a¹-g-H-I-J-K-L-M-N and wave peaks and H-I, I-J, J-K, K-L, L-M, M-N slopes produced by the individual under resting conditions, it is possible to identify and characterize the changes in the physical movements of the heart muscles and valves, and in the rates and patterns of blood flow into, through and out of the heart under stressed conditions. For example, significant decreases in the H and J peaks accompanied by elongation of the H-I and J-K slopes under stress conditions indicate that there is (a) a reduction in the rate of increase in intraventricular pressure in response to depolarization of the ventricular muscle pressure, i.e., there is less ventricular contractive force being generated during ventricular systole, which results in (b) less ejective force exerted on blood flow during ventricular contraction thereby resulting in a smaller J peak. The reduction in the H and J peaks is primarily as a consequence of insufficient oxygen delivery to the heart muscles in the blood returning from the lungs to the left atrium to supply the energy required for contraction of the left ventricle. Prolonged insufficient supply of oxygenated blood to the left ventricle will result in the decreases in the H and J peaks becoming more pronounced while the H-I and J-K slopes become more elongated. Individuals with severely reduced cardiovascular function will have significantly

increased heart rates under stress, which can be detected by a significantly reduced time span between the S_1 and S_2 periods, i.e. the time period between the I peak signaling septum recoil during ventricular contraction and the L peak signally ventricular relaxation during which time the aortic valve is closed by backflow of blood ejected from the left ventricle. Malfunctioning in the aortic valve, e.g., incomplete closure or leakiness by the aortic valve results in a greater impact on the left ventricular wall during the early period of diastole and causes a larger spike, i.e. height in the N peak. Reduction in the height of the j peak and an elongation of the j-a slope under stressed conditions indicates that the right and left atria are contracting with less force compared to the resting stage, while disappearance of the a^1 peak indicates that the right atrium is not delivering the same pressurized volume of blood into the right ventricle for subsequent delivery into the pulmonary artery for transport to the lungs. A reduction or disappearance in the g wave indicates malfunction or abnormalities in closure of the tricuspid and/or mitral valves resulting in backflow leakage from the right and left ventricles into the right and left atria. When an individual with a malfunctioning and/or abnormal cardiosystem is relieved from the stressed conditions and returns to a resting stage, their ECG and BCG patterns return to the normal patterns previously recorded before the onset of the stress.

[0057] An exemplary embodiment of the present invention for monitoring the physiological condition of the cardiovascular system and detecting abnormalities is shown in FIG. 5 and generally comprises at least: (1) one device configured for detecting electrical depolarization and re-polarization of an individual's heart tissues and for transmitting such information as a ECG signal, (2) one device configured for detecting physical movements on and/or within the individual's heart and related movements on their body surfaces and for transmitting such information as a BCG signal, (3) a device configured for receiving the ECG and BCG signals and conditioning at least one of the signals, (4) an analog-digital converter for converting the signals into digital data that can be processed and stored, (5) a microprocessor for computing, analyzing, reporting, transmitting and storing the digital data, (6) a computer software program comprising at least one algorithm configured for analyzing the ECG and BCG signals to: (a) detect the P-QRS peaks in an ECG signal, (b) detect and mark the H-I-J peaks in a BCG, (c) synchronize the H peak of the BCG signal with the R peak of the ECG signal, and (d) provide synchronized ECG and BCG signal outputs, and (7) a graphical user interface (GUI) program written in C++ language.

[0058] The system of the present invention may be suitably provided with a pulseoximeter configured to concurrently detect at least the amount of oxygen in the individual's blood and changes in the blood volume in their skin and transmit these data one of the device configured for receiving the ECG and BCG data or alternatively, to the microprocessor. The pulseoximeter may be optionally configured to detect and transmit the individual's heart rate. The system of the present invention maybe optionally provided with a device configured to detect sounds made by the heart during its rhythmic systole-diastole periods and to transmit a phonocardiogram signal to the signal conditioning device. The system of the present invention may be optionally provided with a device configured to provide images of the heart during its rhythmic systole-diastole periods and to transmit an echocardiogram

signal to the signal conditioning device. The computer program may optionally comprise a plurality of cooperating algorithms.

[0059] The device configured for receiving the ECG and BCG signals and the analog-digital converter may comprise a suitably configured motherboard provided with suitable electronic devices known to those skilled in these arts. The motherboard may be additionally provided with a microprocessor configured for receiving and running the software program comprising one or more mathematical algorithms and/or heuristic algorithms to at least separately process, analyze and synchronize the R peaks and H peaks of the concurrently received ECG and BCG signals and to provide an output comprising at least synchronized ECG-BCG wave-pattern signals. The computer software program may be suitably provided with an additional or optionally, a plurality of algorithms configured to heuristically separately process, analyze and synchronize the concurrently received ECG and BCG signals, and then to heuristically identify and mark the h-i-j-a- a^1 -g and I-J-K-L-M-N peaks on the synchronized BCG signal. The computer software program may be suitably provided with at least one addition algorithm or optionally, a plurality of algorithms configured to process, compare, and analyze pluralities of synchronized ECG and BCG signals and to provide outputs relating to the similarities and differences among and between the pluralities of synchronized ECG and BCG signals.

[0060] FIG. 6 shows an exemplary 4-step flowchart according to one embodiment of the present invention, for processing and synchronizing concurrently produced ECG and BCG signals. The first step comprises conditioning of concurrently produced ECG and BCG signals to remove extraneous noise components thereby providing signal outputs that are transmitted with minimum relative loss or maximum relative gain. A suitable method for conditioning ECG and BCG signals is to pass each signal separately through fifth-order Butterworth filters wherein: (a) for the ECG signal, the high-pass cutoff frequency is set at about 40 Hz and the low-pass filter is set at about 1 Hz, and (b) for the BCG signal, high-pass cutoff frequency is set at about 25 Hz and the low-pass filter is set at about 1 Hz. The second step is to detect the R wave in the filtered ECG signal with an algorithm. A suitable algorithm may be developed by exploiting the curve-length concept **[text missing or illegible when filed]**

which, in reference to FIG. 7, illustrates how the lengths L_1 and L_2 are able to characterize the shape of the curves, given a certain time interval DT . This principle can be applied to detect the wave fronts that characterize the beginning and the end of an episode arc-length relative to the i -th sample with the chord length, obtaining: **[text missing or illegible when filed]** L is the total estimated length of the episode, T_x is the sampling interval, $y_i - y_{i-1}$ represents the i -th increment and n is a rough estimate of the duration of the episode (or waveform) to be detected: in this case n is an estimate of QRS duration. L can also be written:

$$L = T_x \cdot \sum_{i=0}^{n-1} \sqrt{1 + \frac{(y_i - y_{i-1})^2}{T_x^2}} = T_x \cdot \sum_{i=0}^{n-1} \sqrt{1 + \frac{Dy^2}{T_x^2}} \quad (2)$$

Finally, centering the computational window on the i -th sample and calling $w=n/2$, a recursive low computational cost form is obtained that may be incorporated in to computer

software programs using assembly languages for DSPs processors known to those skilled in these arts: **[text missing or illegible when filed]**

The third step is to identify the H peak from the conditioned BCG signal, then synchronize the H peak with the R peak from the ECG signal, after with the conditioned BCG signal is parsed to locate and mark the h-i-j-a-a¹-g and I-J-K-L-M-N peaks, and then, average the conditioned BCG signal.

[0061] Suitable heuristic algorithms for (a) synchronizing the H peak with the R peak then (b) parsing the conditioned BCG signal is parsed to locate and mark the h-i-j-a-a¹-g and I-J-K-L-M-N peaks, and then, (c) averaging the conditioned BCG signal, may be developed by using the ECG's R peaks as the synchronization points for the cycle-by-cycle length determination. Each cycle length is then divided into intervals according to the sample rate of the signals. The number of the intervals can be programmed and experimentally determined. An example is 2500 samples equivalent to 1.2 seconds of the acquired signal. The assigned intervals allow the signal processing. The segment points are then associated with the ECG pick values, when possible and as the additional synchronization option. The segmented signal is used for maxima and minima determination followed by the BCG's letter assignments. Each segment can be searched for a local minimum or maximum. The number of segments and their programmed assignments permit on a practical adjustments and experimental set-ups accordingly to the subject group and analysis requirements.

[0062] The assignments generally follow the steps listed below for the segmented ECG and BCG signals:

- [0063]** 1. first segment in BCG signal after R pick or the segment with the R pick is searched for a local maximum which determines H value of the BCG signal,
- [0064]** 2. next local minimum of BCG signal segments (following H) is found for the assignment of I value of BCG signal,
- [0065]** 3. from I value the next segments are searched for the local maximum and J assignment, the next local minimum can be K pick of BCG signal,
- [0066]** 4. synchronize and associate the segments and values to the ECG signal,
- [0067]** 5. next local maximum of the ECG signal which follows J maximum (BCG signal) is T pick, the identification of the T permits on the re-synchronization of the segments,
- [0068]** 6. the search of the segments following T pick determines the L (local maximum) and M (the local minimum),
- [0069]** 7. the next assignment after L and M is the result of the search of the next local maximum which becomes N pick of the BCG signal,
- [0070]** 8. the segmentation permits on the time interval determination and the back calculation of the time related to the specific events (pick values),
- [0071]** 9. the assignments are repeated for each next cycle of BCG signal as determined by R pick synchronization reference,

after which, the cycle-by-cycle assignments can be averaged or considered separately.

[0072] The fourth step is to producing synchronized and marked outputs of the ECG and BCG signals, and transmitting the outputs to at least one electronic processing device, one data storage device and one visual output device. Exemplary suitable visual output devices include display monitors,

printers and plotters. The data produced by the individual as described will serve as the resting-stage reference points for subsequent physiological stress testing outputs, as will be described in more detail below.

[0073] Another embodiment of the present invention comprises detecting, transmitting, conditioning, synchronization, and processing of a plurality of signals produced by an individual's cardiovascular system during resting stage conditions, and storing the digital data developed therefrom in a data storage device. Suitable signals are ECG signals and BCG signals. The signals may optionally or additionally, comprise phonocardiogram and/or echocardiogram signals. While remaining connected to the system of the present invention, the individual is then placed under stressed conditions for real-time ongoing detection, transmission, conditioning, synchronization and processing of the signals output by the individual's cardiovascular system to produce a synchronized ECG-BCG signal set showing the effects of stress on the signal outputs. The stressed signal outputs can then be compared using at least one algorithm, to the resting-stage signal outputs for detection, quantification and assessments of stress-effected variations in the signal wave patterns and h-i-j-a-a¹-g-H-I-J-K-L-M-N peaks.

[0074] After acquisition, processing and extraction of BCG-ECG signal pick values and time intervals the comparison of the time-pick values is conducted. The comparison includes the following:

[0075] 1. pick values and their respective normalized amplitude values; the lower or higher values are determined in comparison of the pre and post exercise assessment,

[0076] 2. the time intervals related to the pick values are compared and the differences are derived,

the differences are determined on cycle-by-cycle basis; the extreme values and the averaged values are recorded and reported.

The computer software program of the present invention may be additionally configured to average synchronized outputs for an individual's resting and stressed stages, and then to overlay the averaged synchronized outputs to enable visual observation and analyses of the cardiovascular signal outputs. Since the data for each signal recording session is storable in a data storage device, it is possible to collect resting stage signal data from an individual over an extended period of time, e.g., months or years or decades, and then precisely detect and assess physiological changes that may have occurred in the individual's resting stage cardiovascular system during these time periods.

[0077] The graphical user interface (GUI) of the present invention is configured to manage the acquisition, analysis, storage and reporting of large sets of ECG-BCG waveforms. A backend data management module may be optionally provided for efficient interfacing between the GUI and the synchronized ECG-BCG data stored in a suitable database. An additional module may be provided for computer-aided selection of the individual tailored data-analysis algorithms for analysis and synchronizing of certain types of BCG signals, and optionally, computer-selected combinations of data-analysis algorithms. It is within the scope of this invention that the GUI is suitably configured as shown in FIG. 8:

[0078] (a) to provide at least one module configured receive a plurality of signals from an individual's cardiovascular system, and then (i) process, (ii) analyze, (iii) optimize, (iv) transform, (v) synchronize, and (vi)

generate at least one output comprising at least one synchronized signal wave pattern,

[0079] (b) with a computer software program configured to provide a computer-aided process for selection of a suitable data-analysis algorithm for processing an incoming stream of plurality of signals from an individual's cardiovascular system, and optionally, for a selection of a combination of suitable data-analysis algorithms, and

[0080] (c) to provide a data flow management module for communicating and cooperating with a data storage device, and

[0081] (d) to provide an outputs management module for communicating synchronized ECG-BCG signal outputs to devices exemplified by monitors, screens, printers and plotters.

[0082] Referring to FIG. 8, the GUI is in windows GUI format through Microsoft Foundation Class (MFC). It provides the basic system layout, waveform display, as well as various buttons, inputs, and fields associated with data management and analysis function calls FIG. 9. The GUI provides the user access to retrieve and analyze the waveforms from the database. A model GUI drawing is attached in the appendix to provide more detail to the basic design of the GUI. The database management module is a library of general functions providing the User Interface Module access to the database. Basic functions may include, "read", "write to database", "add subfolder", "retrieve wavefile", and "save/resave wavefile". The waveform display module suitably comprises a library of general functions. It may additionally contain basic waveform display functions such as "draw and erase waveforms", "scrolling display and zooming", "select points on waveform", "select cycles on waveform", and "get values on wavepoints". The waveform analysis module suitably comprises a library collection of functions. These functions are linkable functions that the User Interface Module can call upon to provide outputs to the waveform analysis module. The basic function groups will include algorithms to "detect wave slopes", "amplitude", "interwavelet delays", "cycle detection", "averaging" and other analysis algorithms known to those skilled in these arts to be useful for analyzing ECG or BCG signals.

[0083] FIG. 10 shows an exemplary basic layout for a database structure useful to storing sets of ECG-BCG waveforms provided by the present invention. The database is contained inside a main folder, the database folder. This database folder contains a SQL (similar to Access) type data table. The SQL data table stores information for each subject and references to the waveforms associated (FIG. 11). The waveform data files for each subject are stored under subfolders located under the same main folder. There may be several waveform data files during a single session for the same subject, thus an exemplary naming convention has been established to maintain reliable referencing. The exemplary file naming convention is as follows: first, a 4-digit subject ID is placed, followed by an underscore, then the location of the BCG reading is indicated by appending either PMI (4/5-intercostal) or STR (sternal), followed by another underscore, then pre- or post-exercise reading is indicated by appending PRE (for pre-exercise) or POS (for post-exercise), followed by the number of the recording, followed by another underscore, then finally

the date is appended using the year-month-date convention (YYYYMMDD). The template for the filename would read the as follows:

XXXX_PMI/STR_PRE/POS#_YYYYMMDD

[0084] An exemplary method for the use of the system of the present invention for monitoring the physiological condition of an individual's cardiovascular systems and for early identification cardiovascular abnormalities and malfunctions is provided below. Referring again to FIG. 5, the first step is to collect and input into the GUI, the individual's: (a) medical history relating to their cardiovascular system, (b) lifestyle characteristics such smoking, drinking, nutrition, drug use habits and other lifestyle habits, (c) physical activity level; and (d) physical and genetic information including race, weight, height, circumference of their body around the hips, circumference of their body around the waist, age, and sex. The second step is to measure their blood pressure with a suitable blood pressure measuring device exemplified by CAS Vital Signs Monitors Models 740, 750C and 750E (CAS Medical Systems Inc., Branford, Conn., USA). It is suitable for the individual to remain interconnected with the blood pressure measuring device for the duration of the testing period. The third step is to attach an appropriate number of electrocardiograph (ECG) electrodes to appropriate sites on the individual's body and then connect the ECG electrodes to a suitable ECG system. The fourth step is for the individual to lie in a prone position after which, a suitable ballistocardiograph (BCG) accelerometer as exemplified by those supplied by Brüel & Kjær (Skodsborgvej 307, DK-2850, Nærum, Denmark) is attached to the base of the individual's sternum with hypoallergenic double-sided adhesive tape. It is also suitable to clip a pulseoximeter to the individual's finger. Exemplary suitable pulseoximeters include Nonin 8600 pulseoximeters (Nonin Medical Inc., Plymouth, MM, USA) and CAS Vital Signs Monitors Models 740, 750C and 750 E (CAS Medical Systems Inc.). The sixth step is to record the individual's resting-stage ECG, BCG, blood pressure, heart rate and blood oxygen concentration signal data for a selected period of time while they are lying in a prone position and breathing normally. An exemplary suitable resting-stage data collection period is about three minutes, but this data collection period may be adjusted as determined to be appropriate by the medical personnel conducting the testing of the individual. It is preferable that a plurality of BCG data collections is conducted during the resting-stage data collection period. A suitable number of BCG data collections during this period is three. The seventh step is for the individual to perform a selected physical exercise for a selected suitable period of time appropriate for the selected physical exercise. Exemplary suitable physical exercises include pedaling on a stationary bicycle, running or walking on a treadmill, manipulating a StairMaster® exercise device (StairMaster is a registered trademark of StairMaster Sports/Medical Products, Inc., Vancouver Wash., USA), jogging, swimming and the like. The eighth step is for the individual to lie down into a prone position immediately after the period of physical exercise has ended for recording of the individual's post-exercise ECG, BCG, blood pressure, heart rate and blood oxygen concentration signal data for a selected period of time. An exemplary suitable post-exercise data collection period is about three minutes, but this data collection period may be adjusted as determined to be appropriate by the medical personnel conducting the testing of the individual. It is

preferable that a plurality of BCG data collections is conducted during the resting-stage data collection period. A suitable number of BCG data collections during this period is three.

[0085] The subject information, resting-stage, and post-exercise data inputs are transmitted to the database engine where they are stored in separate files in the database, and are accessible for processing, synchronization, and analyses by the algorithms of the present invention disclosed herein for synchronization of the R peak of the ECG signal and the H peak of the BCG signal for each set of ECG and BCG signals concurrently collected from the individual during their resting-stage and post-exercise periods. The processed data is stored in separate files in the database, and are displayable on suitable monitors and screens, and printable by suitable printers and plotters. Comparisons of the individual's resting-stage and post-exercise synchronized ECG-BCG wave patterns generated by the algorithms of the present inventions will enable detection and assessments in stress-induced changes in the individual's BCG wave patterns and related h-i-j-a-a'-g-h-i-j-k-l-m-n peaks.

[0086] In accordance with one exemplary embodiment, the system may be used as a routine testing method in a clinical environment as exemplified by a Medical Doctor's office, a walk-in clinic, a clinical laboratory, a testing facility associated with a medical research institute, a testing facility associated with a hospital, and the like.

[0087] In accordance with another exemplary embodiment, the system may be optionally adapted for employment in exercise and training facilities for observing, recording and storing changes in an individual's cardiovascular system during periods of exercise and training for the purposes of monitoring improvements in cardiovascular fitness and for detection of onset of potential cardiovascular malfunctions.

[0088] In accordance with another exemplary embodiment, resting-stage cardiovascular data and related synchronized ECG-BCG wave patterns may be collected from a plurality of individuals, compiled and stored in a database file for use as a "population" sized reference point for comparing individuals' resting-stage synchronized ECG-BCG wave patterns. It is within the scope of the present invention to separate and group pluralities of resting-stage synchronized ECG-BCG wave patterns in accordance to, for example, the Starr classification system to provide "population" sized reference groups of healthy individuals with ideal synchronized ECG-BCG wave patterns (i.e., resting-stage Class 1), individuals with somewhat less than ideal synchronized ECG-BCG wave patterns (i.e., resting-stage Class 2), individuals whose synchronized ECG-BCG wave patterns show debilitation of cardiovascular function under resting conditions (i.e., resting-stage Class 3), and individuals whose synchronized ECG-BCG wave patterns show significant debilitation of cardiovascular function under resting conditions (i.e., resting-stage Class 4).

[0089] The system and methods of the present invention for monitoring cardiovascular physiological conditions and for detecting related abnormalities and malfunctions are described in more detail in the following examples.

EXAMPLE 1

[0090] An exemplary system of the present invention was configured as shown in Fig. comprising the following components:

[0091] 1. CSA 750C Multi-Parameter Monitor (CAS Medical Systems Inc.) for monitoring blood pressure, heart rate and blood oxygen levels.

[0092] 2. Burdick® EK10 12 lead, single channel electrocardiograph (Cardiac Science Corp., Bothell, Wash., USA) for detection and transmission of ECG signals.

[0093] 3. Brüel & Kjær® (Brüel & Kjær is a registered trademark of Brüel & Kjær Sound & Vibration; Measurement A/S, Nærum, Denmark) Type 4381 accelerometer coupled with a Brüel & Kjær® Type 2635 charge amplifier for detection and transmission of BCG signals.

[0094] 4. LabVIEW® (LabVIEW is a registered trademark of National Instruments Corp., Austin, Tex., USA) 8.2 data acquisition system installed on an IBM laptop computer, for concurrently receiving ECG and BCG signals from the ECG and BCG instruments

[0095] 5. A software program comprising the algorithms described herein for conditioning and synchronizing ECG and BCG, and configured to communicate with the LabVIEW® 8.2 data acquisition system.

[0096] 6. A database program configured to receive, store and display conditioned raw and synchronized ECG and BCG signal sets.

[0097] 7. A stationary exercise cycle.

[0098] The system was used to collect, condition, synchronize, process, analyze, store and report resting-stage and post-exercise cardiovascular data from 142 individuals. Each individual was assessed for a period of 30 minutes as follows: First, their medical history was filled in on a questionnaire comprising the following questions:

[0099] (1) medical history of their heart (including all known heart conditions),

[0100] (2) lifestyle habits (i.e. smoking drinking, drug use, stress levels, etc.),

[0101] (3) physical activity level,

[0102] (4) race,

[0103] (5) weight,

[0104] (6) height,

[0105] (7) hip circumference,

[0106] (8) waist circumference,

[0107] (9) body fat %, and

[0108] (10) age, and

[0109] (11) sex.

[0110] Next, the individual's blood pressure was recorded after which, ECG electrodes to both of their shoulders and just above both hips, after which the electrodes were attached to the Burdick® EK10 electrocardiograph. Then, the Brüel & Kjær® Type 4381 accelerometer and Type 2635 charge amplifier were attached with hypoallergenic double-sided adhesive tape to the base of the individual's sternum. Then, the pulseoximeter provided with the CSA 750C Multi-Parameter Monitor was clipped onto one of the individual's forefingers and connected to the Monitor. The individual then lay very still in a prone position on a padded board while breathing normally while three 1-minute-long BCG recordings were collected, with 1-minute rest periods between each 1-minute recording period. The pulseoximeter, ballistocardiography, ECG, and blood pressure equipment were disconnected from the individual who was then asked to pedal the stationary exercise cycle for a 1-minute period or alternatively, depending on the physical condition of the individual, walk around a set course for 1 minute. They were then asked to again to lie down very still in a prone position on the padded board while the equipment was reconnected to the individual

for collection of post-exercise blood pressure, heart rate, blood oxygen concentration, ECG signals plus three 1-minute BCG recordings, with 1-minute rests periods between each 1-minute recording period.

[0111] The resting-stage and post-exercise ECG and BCG signals were conditioned by (a) passing the ECG signals through a fifth-order Butterworth filter with the high-pass cutoff frequency set at about 40 HZ and the low-pass filter set at about 1 Hz, and (b) passing the BCG signals through a fifth-order Butterworth filter with the high-pass cutoff frequency set at about 25 Hz and the low-pass frequency set at about 1 Hz. The algorithms described herein were applied to each ECG-BCG signal sets to (a) identify the R peaks, (b) synchronize the H peaks with the R peaks, (b) parsing the conditioned BCG signals to locate and mark the h-i-j-a¹-g and I-J-K-L-M-N peaks, and then, (c) averaging the conditioned resting-stage and post-exercise BCG signals.

EXAMPLE 2

[0112] FIG. 12a shows the raw, unconditioned ECG and BCG signals produced by a healthy individual with a normally function cardiovascular system, during a pre-exercise non-stressed resting-stage period. Additional cardiophysiological data collected as described in Example 1, were stored in the system's database. FIG. 12b shows the raw, unconditioned ECG and BCG signals produced by the same individual after a period of physical exercise administered as outlined in Example 1. The R-peaks of the ECG signal during the pre-exercise resting stage (FIG. 12a) were used by the heuristic algorithms to mark and synchronize the BCG H-peaks with said concurrently collected ECG R-peaks. The heuristic algorithms subsequently marked and correlated the subsequent I-J-K-L-M-N peaks and produced the synchronized ECG-BCG cycle patterns shown in FIG. 13a. In a similar way, the R-peaks of the ECG signal during the post-exercise stage (FIG. 12b) were used by the heuristic algorithms to mark and synchronize algorithms subsequently marked and correlated the subsequent I-J-K-L-M-N peaks and produced the synchronized ECG-BCG cycle patterns shown in FIG. 13b. Finally, the software program compared and assessed synchronized BCG patterns to determined if significant changes occurred in the physical functioning of the various heart components as exemplified by the vigor of cardiac ejection of blood from the atria and ventricles, and the speed of filling of the atrial chambers during the diastolic period, and the related physical movements of the heart muscles, valves, and related flows of blood into, between and out of the atria and ventricles. FIG. 13c shows a comparison of the pre-exercise and post-exercise synchronized BCG signals produced by the exemplary system of the present during one cycle, i.e. heart beat. In this healthy individual, the pre- and post-exercise BCG patterns are identical showing that the electrical, physical and physiological components of the heart were not affected by the application of stress.

EXAMPLE 3

[0113] FIGS. 14a and 14b show the raw, unconditioned ECG and BCG signals produced by an individual before and after stress induced by physical exercise as described in Example 1. This individual had previously experience and recovered from a mild heart attack, and is in the process of modifying their lifestyle in order to strengthen their cardiovascular system. This individual's post-exercise heart rate

was about 65%-70% (5 beats in a 3-second interval) greater than the pre-exercise rate (3 beats in a 3-second interval) (FIGS. 14a and 14b). More significant, however, are the changes that are evident after the signal conditioning to remove the background noise and synchronization of the BCG signals with the ECG signals (FIGS. 15a and 15b), that show the increased heart rates is accompanied by increased physical intensities in the movements of the heart muscles and valves (FIG. 15b). However, comparison of the pre- and post-exercise synchronized BCG signals show that the H-I-J-K-L-K-M-N peaks in the pre-exercise BCG signal pattern, the peaks between the H-I-J-K-L-K-M-N are flattened out and that the demarcation between the peaks is significantly diminished (FIG. 15a). However, their post-exercise synchronized BCG signal (FIG. 15b) shows that a clearly distinguishable H-I-J-K pattern was temporarily reestablished, presumably for a brief period of time to supply an increased supply of oxygen to the heart muscles. However, the presence of this "normal-appearing" BCG pattern during the post-exercise period suggests that this individual has the potential to restore his cardiovascular system to approximate the functioning of the individual tested in Example 2. So, although in this example, the individual's raw unconditioned pre- and post-exercise ECG and BCG signals appeared to be normal although with an elevated heart rate, the system and the software of the present invention provided the means for detecting physiological abnormalities associated with physical malfunctioning with one or more of their heart valves, heart muscles and vascular system. Furthermore, it is within the scope of this invention to store such data produced by an individual during sampling periods over extended periods of time, so that improvements in the individual's cardiovascular system's function and capacity can be recorded and reported as part of treatment, therapy, exercise programs and the like.

EXAMPLE 4

[0114] FIGS. 16a and 16b show the raw, unconditioned ECG and BCG signals produced by an individual before and after stress induced by physical exercise as described in Example 1. This individual is considered at-risk based on the sporadic breakdown in their post-exercise ECG signal (FIG. 16b) in conjunction with the substantial decreases in the amplitudes of the BCG signals (FIG. 16b). However, conditioning the ECG and BCG signals and synchronizing the BCG signal with the ECG signal showed that, during the pre-exercise resting period, the magnitude of the BCG H-I-J-K-L-K-M-N peaks are even more diminished than was seen with the unhealthy individual in Example 3 with only the H-I wave clearly identifiable (FIGS. 17a and 17c). Although the intensity of the BCG peaks increased post-stress (FIG. 17b), the amplitudes of the peaks within the wave pattern were approximately the same suggesting that even under stress, the post-right-ventricular contraction movements of the heart produce as much signal amplitude as do the septum recoil (i.e., the H-I wave) and flow of blood into the pulmonary and aortic arteries (i.e., J-K wave). In a healthy individual as exemplified in Example 2 (FIG. 13 b), the amplitudes of the H-I and J-K waves are typically greater than subsequent L-M-N waves.

EXAMPLE 5

[0115] FIGS. 18a, 18b, and 18c compare the conditioned synchronized pre- and post exercise BCG signals from a

healthy individual (FIG. 15a is taken from FIG. 13c), an unhealthy individual (FIG. 15b is taken from FIG. 15c) and an at-risk individual (FIG. 15c is taken from FIG. 17c). As previously discussed, the healthy individual's pre- and post-exercise synchronized BCG wave patterns are identical (FIG. 18a). The unhealthy individual's pre-exercise BCG wave pattern (FIG. 18b) has substantially diminished H, J, and L peaks accompanied by flattened and elongated H-I and J-K waves (exemplified by H¹, I¹, J¹ and K¹) while after exercise, the amplitudes of the H, J, and L peaks increase considerably, the H-I and J-K waves are more clearly defined, and the L-M-N waves appear (exemplified by H², I², J², K², L², M², N²). The at-risk individual's pre-exercise BCG wave pattern exemplified by H¹, I¹, J¹ and K¹ peaks (FIG. 18c) is similar to the unhealthy individual's pre-exercise BCG wave (FIG. 18b). However, the at-risk individual's post-exercise BCG wave pattern exemplified by H², I², J², K², L², M², N² peaks (FIG. 18c) is different from the unhealthy individual's BCG wave pattern (FIG. 18b) indicating that different components of the at-risk individual's cardiovascular system are abnormal relative to the unhealthy individual's system, both systems in comparison to the healthy individual's system as exemplified by the post-exercise BCG wave pattern in FIG. 18a. Those skilled in these arts will understand that storing such data in a database for future reference to in comparison with later collected ECG and BCG data with the exemplary systems of the present invention, will enable: (1) assessments of the improvements or deterioration in an individual's cardiovascular system over a period of time, and also, (2) comparisons of the responses of an individual's cardiovascular systems pre- and post-stress to a broad population database.

[0116] While this invention has been described with respect to the exemplary embodiments, those skilled in these arts will understand how to modify and adapt the systems, methods, algorithms and heuristic methods disclosed herein for monitoring the physiological condition of cardiovascular systems and for detecting abnormalities and malfunctions therein by conditioning and synchronizing exemplary ECG and BCG signals for other applications. For example, the system of the present invention may be additionally provided with an implantable device configured for installation within an individual's body and for receiving therein electrical signals derived from the conditioned and synchronized ECG-BCG signal sets, and for transmitting the derived electrical signals to a target site within the individual's body for affecting a physiological response therein. Furthermore, it is possible for those skilled in these arts to adapt the systems, methods and algorithms disclosed herein for monitoring the physiological condition of other types of mammalian systems wherein a plurality of detectable signals are generated whereby the signals are acquired, processed, synchronized and retransmitted for storage and/or reporting and/or for providing returning stimulatory signals to the originating mammalian systems. Examples of such modifications include providing alternative types of paired signals for condition and synchronization as exemplified by signals quantifying levels of blood sugar paired with signals for example quantifying blood oxygen levels or alternatively, insulin levels, or alternatively, electrical impulses transmitted by the peripheral nervous system paired with electrical impulses transmitted by the central nervous systems, or further alternatively, with signals generated by systemic antibodies to various and individual types of cancers paired with signals generated by selected systemic biochemical markers such as proteins, and the like. There-

fore, it is to be understood that various alterations and modifications can be made to the systems, methods and algorithms disclosed herein for monitoring the physiological condition and detecting abnormalities therein, within the scope of this invention.

What is claimed is:

1. A system for monitoring an individual's physiological condition and detecting abnormalities therein, the system comprising:

- a first device comprising a device configured for at least receiving, displaying and transmitting a first plurality of signals comprising electrical signals;
- a set of electrodes wherein each electrode is capable of detecting electrical activity associated with a physiological condition of the individual and producing a corresponding electrical signal, said set of electrodes configured for attachment to the individual's body and for communicating with and cooperating with said first device;
- a second device configured for receiving and transmitting a second plurality of signals from the individual's body, said second plurality of signals selected from the group comprising seismic signals, acoustic signals, image signals, chemical signals, biochemical signals and electrical signals;
- a third device capable of receiving therein the first plurality and the second plurality of signals, said third device configured for conditioning the first plurality of signals and the second plurality of signals, and for transmitting said conditioned first plurality of signals and said conditioned second plurality of signals;
- a software program provided with at least one algorithm configured for processing and synchronizing said conditioned first plurality of signals and said conditioned second plurality of signals, and deriving an output from said synchronized signals;
- a microprocessor capable of receiving said conditioned first plurality of signals and said conditioned second plurality of signals from the third device, said microprocessor configured to cooperate with the software program to process and synchronize said conditioned first plurality of signals and said conditioned second plurality of signals, and to generate an output derived therefrom said synchronized signals indicative of the individual's physiological condition; and
- a database provided for storing therein signals transmitted from the first, second and third devices, and outputs generated by the microprocessor.

2. A system according to claim 1, wherein the first device comprises an electrocardiograph configured for at least receiving, displaying and transmitting a first plurality of signals comprising ECG signals, and the set of electrodes comprises a plurality of electrodes capable of detecting electrical activity associated with the heart beat of an individual and producing corresponding ECG signals, said set of electrodes configured for attachment to the individual's body and for communicating with and cooperating with said electrocardiograph.

3. A system according to claim 2, wherein the second device is selected from the group comprising ballistocardiographs and seismocardiographs, and is configured for at least receiving, displaying and transmitting a second plurality of signals comprising BCG signals produced in and on the individual's body as a result of cardiovascular system function,

said second device provided with at least one seismic sensor configured for communicating with the individual's body.

4. A system according to claim 3, wherein the seismic sensor is an accelerometer.

5. A system according to claim 4, wherein the accelerometer is coupled to a charge amplifier.

6. A system according to claim 2, additionally provided with at least one device configured for measuring at least one physiological parameter selected from the group comprising blood pressure, heart rate, and blood oxygen concentration.

7. A system according to claim 2, additionally provided with a graphical user interface configured to enable an operator to input data into the database, and to access signals and outputs stored therein the database.

8. A system according to claim 2, wherein the first plurality of signals is conditioned by passing said signals through a filter provided with a high-pass cutoff frequency of about 40 Hz and a low-pass filter of about 1 Hz.

9. A system according to claim 3, wherein the second plurality of signals is conditioned by passing said signals through a filter provided with a high-pass cutoff frequency of about 25 Hz and a low-pass filter of about 1 Hz.

10. A system according to claim 3, wherein the software program is provided with a at least one algorithm configured to firstly, detect and mark a first reference peak in a repeating cycle of wave patterns comprising the conditioned first plurality of ECG signals, then secondly, detect and mark a selected second reference peak in a repeating cycle of wave patterns comprising the conditioned second plurality of BCG signals, then thirdly, synchronize the first reference peak and the second reference peak thereby synchronizing the conditioned first plurality of ECG signals and the conditioned second plurality of BCG signals and producing a synchronized paired ECG-BCG signal set therefrom.

11. A system according to claim 10, wherein the first reference peak is a R peak in the first plurality of ECG signals, and the second reference peak is a H peak in the second plurality of BCG signals.

12. A system according to claim 3, wherein the software program is provided with a plurality of algorithms, wherein:

a first algorithm is configured to firstly, detect and mark a first reference peak in a repeating cycle of wave patterns comprising the conditioned first plurality of ECG signals, then secondly, detect and mark a selected second reference peak in a repeating cycle of wave patterns comprising the conditioned second plurality of BCG signals, then thirdly, synchronize the first reference peak and the second reference peak thereby synchronizing the conditioned first plurality of ECG signals and the conditioned second plurality of BCG signals and producing a synchronized paired ECG-BCG signal set therefrom; and

a second algorithm is configured for analyzing the synchronized paired ECG-BCG signal set, deriving, identifying, marking, and characterizing therefrom: (a) the individual wave components comprising the repeating cycles of the conditioned first plurality of ECG signals, and (b) the individual wave components comprising the repeating cycles of the conditioned second plurality of BCG signals, and producing an output therefrom.

13. A system according to claim 12, wherein the first reference peak is a R peak in the first plurality of ECG signals, and the second reference peak is a H peak in the second plurality of BCG signals.

14. A system according to claim 12, wherein the individual wave components comprising the repeating cycles of the conditioned first plurality of ECG signals comprise P-Q-R-S-T peaks, and the individual wave components comprising the repeating cycles of the conditioned second plurality of BCG signals comprise at least H-I-J-K-L peaks.

15. A system according to claim 3, wherein the software program is provided with a plurality of algorithms, wherein:

a first algorithm is configured to firstly, detect and mark a first reference peak in a repeating cycle of wave patterns comprising the conditioned first plurality of ECG signals, then secondly, detect and mark a selected second reference peak in a repeating cycle of wave patterns comprising the conditioned second plurality of BCG signals, then thirdly, synchronize the first reference peak and the second reference peak thereby synchronizing the conditioned first plurality of ECG signals and the conditioned second plurality of BCG signals and producing a synchronized paired ECG-BCG signal set therefrom;

a second algorithm is configured for analyzing the synchronized paired ECG-BCG signal set, deriving, identifying, marking, and characterizing therefrom: (a) the individual wave components comprising the repeating cycles of the conditioned first plurality of ECG signals, and (b) the individual wave components comprising the repeating cycles of the conditioned second plurality of BCG signals, and producing an output therefrom; and

a third algorithm is configured for comparing the individual wave components comprising the repeating cycles of the conditioned first plurality of ECG signals and the conditioned second plurality of BCG signals produced by the second algorithm, with the individual wave components comprising the repeating cycles of the conditioned first plurality of ECG signals and the conditioned second plurality of BCG signals of at least one selected synchronized paired ECG-BCG signal set stored in the database, and to produce an output therefrom, said output storable in the database.

16. A system according to claim 12, wherein the at least one selected synchronized paired ECG-BCG signal set stored in the database is the individual's resting-stage ECG-BCG signal set, and the synchronized paired ECG-BCG signal set produced by the second algorithm is the individual's post-exercise ECG-BCG signal set

17. A system according to claim 3, wherein the software program is provided with a plurality of algorithms, wherein:

a first algorithm is configured to firstly, detect and mark a first reference peak in a repeating cycle of wave patterns comprising the conditioned first plurality of ECG signals, then secondly, detect and mark a selected second reference peak in a repeating cycle of wave patterns comprising the conditioned second plurality of BCG signals, then thirdly, synchronize the first reference peak and the second reference peak thereby synchronizing the conditioned first plurality of ECG signals and the conditioned second plurality of BCG signals and producing a synchronized paired ECG-BCG signal set therefrom;

a second algorithm is configured for analyzing the synchronized paired ECG-BCG signal set, deriving, identifying, marking, and characterizing therefrom: (a) the individual wave components comprising the repeating cycles of the conditioned first plurality of ECG signals, and (b) the individual wave components comprising the

repeating cycles of the conditioned second plurality of BCG signals, and producing an output therefrom; and
 a third algorithm is configured for comparing the individual wave components comprising the repeating cycles of the conditioned first plurality of ECG signals and the conditioned second plurality of BCG signals produced by the second algorithm, with the individual wave components comprising the repeating cycles of the conditioned first plurality of ECG signals and the conditioned second plurality of BCG signals of a selected plurality of synchronized paired ECG-BCG signal sets stored in the database, and to produce an output therefrom, said output storable in the database.

18. A system according to claim **14**, wherein the synchronized paired ECG-BCG signal set produced by the second algorithm is the individual's resting-stage ECG-BCG signal set, and the selected plurality of synchronized paired ECG-BCG signal sets comprises stored in the database comprises a plurality of synchronized resting-stage paired ECG-BCG signal sets produced from the individual during a plurality of spaced apart testing periods.

19. A system according to claim **14**, wherein the synchronized paired ECG-BCG signal set produced by the second algorithm is the individual's resting-stage ECG-BCG signal set, and the selected plurality of synchronized paired ECG-BCG signal sets comprises stored in the database comprises synchronized resting-stage paired ECG-BCG signal sets produced from a plurality of individuals.

20. As system according to claim **3**, additionally provided with a fourth device configured to receive therein the outputs generated from said synchronized signals and to derive and produce therefrom electrical signals, said fourth device capable of controllably transmitting said electrical signals; and

a fifth device capable of receiving from the fourth device said electrical signals, said fifth device configured for controllably

21. A method, using the system of claim **1**, for monitoring an individual's physiological condition and detecting abnormalities therein, the method comprising;

attaching the set of electrodes to selected points on the individual's body and interconnecting said electrodes with the first device;

additionally attaching to a selected point on the individual's body at least one appropriate signal detection device configured for communication with the second device and interconnecting said signal detection device with the second device;

interconnecting the first and second devices with the third device, the microprocessor provided with the software program, and with the database;

recording, processing and storing at least one set of resting-stage data for a selected period of time while the individual is lying in a prone position;

disconnecting the first and second devices from the set of electrodes and signal detection device, and the subjecting the individual to a selected stress for a selected period of time;

reconnecting the first and second devices to the set of electrodes and signal detection device, and then recording, processing and storing at least one set of post-stress data for a selected period of time while the individual is lying in a prone position;

comparing the at least one set of post-stress data to the at least one set of resting-stage data.

22. A method according to claim **21**, wherein the first device comprises an electrocardiograph configured for at least receiving, displaying and transmitting a plurality of signals comprising ECG signals, and the set of electrodes comprises a plurality of electrodes capable of detecting electrical activity associated with the heart beat of an individual and producing corresponding ECG signals.

23. A method according to claim **22**, wherein the second device is selected from the group comprising ballistocardiographs and seismocardiographs, and is configured for at least receiving from an appropriate signal detection device, displaying and transmitting a plurality of signals comprising BCG signals produced in and on the individual's body as a result of cardiovascular system function, said second device provided with at least one seismic sensor configured for communicating with the individual's body.

24. A method according to claim **23**, wherein the signal detection device is an accelerometer.

25. A method according to claim **24**, wherein the accelerometer is coupled to a charge amplifier.

26. A method according to claim **23**, wherein the system is additionally provided with at least one device configured for measuring at least one physiological parameter selected from the group comprising blood pressure, heart rate, and blood oxygen concentration.

27. A method according to claim **23**, wherein a graphical user interface is provided to enable an operator to input data into the database, and to access signals and outputs stored therein the database.

28. A method according to claim **23** wherein the resting-stage

29. A method according to claim **23**, wherein the first plurality of ECG signals is conditioned by passing said signals through a filter provided with a high-pass cutoff frequency of about 40 Hz and a low-pass filter of about 1 Hz.

30. A method according to claim **23**, wherein the second plurality of BCG signals is conditioned by passing said signals through a filter provided with a high-pass cutoff frequency of about 25 Hz and a low-pass filter of about 1 Hz.

31. A method according to claim **23**, wherein: (a) the resting-stage data comprise a first plurality of conditioned ECG signals and a second plurality of conditioned BCG signals, and (b) the post-exercise data comprise a first plurality of conditioned ECG signals and a second plurality of conditioned BCG signals.

32. A method according to claim **31**, wherein the resting-stage data and the post-exercise data are separately processed, analyzed and characterized by a software program provided with at least one algorithm configured to:

firstly, detect and mark a first reference peak in a repeating cycle of wave patterns comprising the conditioned first plurality of ECG signals, then

secondly, detect and mark a selected second reference peak in a repeating cycle of wave patterns comprising the conditioned second plurality of BCG signals, then

thirdly, synchronize the first reference peak and the second reference peak thereby synchronizing the conditioned first plurality of ECG signals and the conditioned second plurality of BCG signals and producing a synchronized paired ECG-BCG signal set therefrom;

thereby producing a first synchronized paired ECG-BCG signal set therefrom the resting-stage data, and a second synchronized paired ECG-BCG signal set therefrom post-exercise data.

33. A method according to claim **32**, wherein the first reference peak is a R peak in the first plurality of ECG signals, and the second reference peak is a H peak in the second plurality of BCG signals.

34. A method according to claim **31**, wherein the resting-stage data and the post-exercise data are separately processed, analyzed and characterized by a software program provided with a plurality of algorithms, wherein:

the first algorithm is configured to firstly, detect and mark a first reference peak in a repeating cycle of wave patterns comprising the conditioned first plurality of ECG signals, then secondly, detect and mark a selected second reference peak in a repeating cycle of wave patterns comprising the conditioned second plurality of BCG signals, then thirdly, synchronize the first reference peak and the second reference peak thereby synchronizing the conditioned first plurality of ECG signals and the conditioned second plurality of BCG signals and producing a synchronized paired ECG-BCG signal set therefrom, thereby producing a first synchronized paired ECG-BCG signal set therefrom the resting-stage data, and a second synchronized paired ECG-BCG signal set therefrom post-exercise data; and

the second algorithm is configured for analyzing the synchronized paired ECG-BCG signal sets, deriving, identifying, marking, and characterizing therefrom: (a) the individual wave components comprising the repeating cycles of the conditioned first plurality of ECG signals, and (b) the individual wave components comprising the repeating cycles of the conditioned second plurality of BCG signals, thereby producing first output from the resting-stage synchronized paired ECG-BCG signal set, and a second output from the post-exercise synchronized paired ECG-BCG signal set.

35. A method according to claim **34**, wherein the first reference peak is a R peak in the first plurality of ECG signals, and the second reference peak is a H peak in the second plurality of BCG signals.

36. A method according to claim **34**, wherein the individual wave components comprise the repeating cycles of the conditioned first plurality of ECG signals comprise P-Q-R-S-T peaks, and the individual wave components comprise the repeating cycles of the conditioned second plurality of BCG signals comprise at least H-I-J-K-L peaks.

37. A method according to claim **31**, wherein the resting-stage data and the post-exercise data are separately processed, analyzed and characterized by a software program provided with a plurality of algorithms, wherein:

a first algorithm is configured to firstly, detect and mark a first reference peak in a repeating cycle of wave patterns comprising the conditioned first plurality of ECG signals, then secondly, detect and mark a selected second reference peak in a repeating cycle of wave patterns comprising the conditioned second plurality of BCG signals, then thirdly, synchronize the first reference peak and the second reference peak thereby synchronizing the conditioned first plurality of ECG signals and the conditioned second plurality of BCG signals and producing a synchronized paired ECG-BCG signal set therefrom, thereby producing a first synchronized paired ECG-

BCG signal set therefrom the resting-stage data, and a second synchronized paired ECG-BCG signal set therefrom post-exercise data;

a second algorithm is configured for analyzing the synchronized paired ECG-BCG signal sets, deriving, identifying, marking, and characterizing therefrom: (a) the individual wave components comprising the repeating cycles of the conditioned first plurality of ECG signals, and (b) the individual wave components comprising the repeating cycles of the conditioned second plurality of BCG signals, thereby producing first output from the resting-stage synchronized paired ECG-BCG signal set, and a second output from the post-exercise synchronized paired ECG-BCG signal set; and

a third algorithm is configured for comparing the individual wave components comprising the repeating cycles of the conditioned resting-stage synchronized paired ECG-BCG signal set, with the individual wave components comprising the repeating cycles of the conditioned post-exercise synchronized paired ECG-BCG signal, and to produce an output therefrom, said output storable in the database.

38. A method according to claim **37**, wherein the third algorithm is additionally configured for comparing the individual wave components comprising the repeating cycles of one of the conditioned resting-stage synchronized paired ECG-BCG signal set and the conditioned post-exercise synchronized paired ECG-BCG signal, with a plurality of synchronized paired ECG-BCG signals selected from the database, and to produce outputs therefrom,

39. A method according to claim **38**, wherein the plurality of synchronized paired ECG-BCG signals selected from the database comprise a plurality of resting-stage and post-exercise conditioned synchronized paired ECG-BCG signal sets collected from the individual during a plurality of spaced apart testing periods.

40. A method according to claim **38**, wherein the plurality of synchronized paired ECG-BCG signals selected from the database comprise a plurality of resting-stage and post-exercise conditioned synchronized paired ECG-BCG signal sets collected from a plurality of individuals.

41. A device configured for concurrently receiving, conditioning, and processing at least two pluralities of physiological signals from an individual, and additionally configured for synchronizing the at least two pluralities of physiological signals and transmitting a synchronized set of physiological signals, the device comprising:

a motherboard;

at least one electronic device configured to concurrently receive at least two pluralities of physiological signals;

a microprocessor configured to concurrently and separately perform on the incoming signals, a plurality of functions selected from the group comprising processing, analyzing, optimizing, and transforming said incoming signals;

a software program configured to cooperate with the microprocessor, the software program provided with a first algorithm configured for processing and synchronizing data from the at least two physiological signals and producing therefrom a synchronized paired signal set comprising repeating cycles, a second algorithm configured for detecting, marking, identifying and characterizing the individual wave components comprising the repeating cycles of one of the synchronized paired signal

set, and a third algorithm configured for comparing, analyzing and characterizing a plurality of synchronized paired signal sets;

a database configured for storing therein pluralities of physiological signal sets, and pluralities of synchronized paired signal sets; and

a graphical user interface configured to enable an operator to input data into the database, and to access signals and outputs stored therein the database.

42. A system according to claim 1, wherein the software program is provided with a at least one algorithm configured to firstly, detect and mark a selected reference peak in a cycle of the conditioned first plurality of signals, then secondly, detect and mark a selected reference peak in a cycle of the conditioned second plurality of signals, then thirdly, synchronize the first reference peak and the second reference peak thereby synchronizing the conditioned first plurality of signals and the conditioned second plurality of signals and producing a synchronized paired signal set therefrom, said paired signal set storable in the database.

43. A system according to claim 1, wherein the software program is provided with a plurality of algorithms, wherein:

a first algorithm is configured to firstly, detect and mark a selected reference peak in a cycle of the conditioned first plurality of signals, then secondly, detect and mark a selected reference peak in a cycle of the conditioned second plurality of signals, then thirdly, synchronize the first reference peak and the second reference peak thereby synchronizing the conditioned first plurality of signals and the conditioned second plurality of signals and producing a synchronized paired signal set therefrom; and

a second algorithm is configured for deriving, identifying, marking, and characterizing individual components of the synchronized signal wave pattern output, and producing an output therefrom, said output storable in the database.

44. A system according to claim 1, wherein the software program is provided with a plurality of algorithms, wherein:

a first algorithm is configured to firstly, detect and mark a selected reference peak in a cycle of the conditioned first plurality of signals, then secondly, detect and mark a selected reference peak in a cycle of the conditioned second plurality of signals, then thirdly, synchronize the first reference peak and the second reference peak thereby synchronizing the conditioned first plurality of signals and the conditioned second plurality of signals and producing a synchronized paired signal set therefrom;

a second algorithm is configured for deriving, identifying, marking, and characterizing individual components of the synchronized signal set, and producing an output therefrom, said output storable in the database; and

a third algorithm is configured for comparing the individual components of the synchronized signal set derived by the second algorithm, with the individual components of a synchronized signal set stored in the database, and produced an output therefrom, said output storable in the database.

45. A system according to claim 4, wherein the output from the second algorithm characterizes post-stress individual components of the synchronized signal set, and the individual components of the synchronized signal set stored in the database characterize a resting stage.

* * * * *

专利名称(译)	监测生理状况并检测异常		
公开(公告)号	US20080194975A1	公开(公告)日	2008-08-14
申请号	US11/743591	申请日	2007-05-02
申请(专利权)人(译)	HEART部队医务INC.		
当前申请(专利权)人(译)	HEART部队医务INC.		
[标]发明人	MACQUARRIE DAVID KAMINSKA BOZENA		
发明人	MACQUARRIE, DAVID KAMINSKA, BOZENA		
IPC分类号	A61B5/0205 A61B5/00		
CPC分类号	A61B5/02 A61B2562/0219 A61B5/1102 A61B5/0452		
优先权	60/888930 2007-02-08 US		
其他公开文献	US7846104		
外部链接	Espacenet USPTO		

摘要(译)

一种用于监测个体的生理状况并检测其中的异常的系统，包括同时接收至少第一信号和第二信号。调节第一和第二信号以最小化背景外来噪声，之后，同时处理和分析每个信号以检测重复的循环模式，并进一步表征以识别重复循环的各个分量。选择一个信号中的至少一个单独分量作为另一信号中所选分量的参考标记。然后将这两个信号同步，从中产生输出并存储在数据库中。该系统具有多个用于获取，发送和调节至少两个生理信号的装置，一个与微处理器配合的软件程序，用于接收所述发送信号和调节信号，并处理所述信号以表征和同步所述信号并提供从其导出的信号输出，用于存储所述发送信号的数据库，调节信号，同步信号和从其导出的输出信号。输出信号可用于报告和任选地重传到个体并向其提供生理刺激信号。

