



US006532381B2

(12) **United States Patent**  
**Bayer et al.**

(10) **Patent No.:** **US 6,532,381 B2**  
(45) **Date of Patent:** **Mar. 11, 2003**

(54) **PATIENT MONITOR FOR DETERMINING A PROBABILITY THAT A PATIENT HAS ACUTE CARDIAC ISCHEMIA**

(75) Inventors: **Brian J. Bayer**, Menomonee Falls, WI (US); **Areef Ahmed Bin Moin**, Waukesha, WI (US); **Patrick Van Ryzin**, Pewaukee, WI (US)

(73) Assignee: **GE Medical Systems Information Technologies, Inc.**, Waukesha, WI (US)

(\* ) Notice: Subject to any disclaimer, the term of this patent is extended or adjusted under 35 U.S.C. 154(b) by 5 days.

(21) Appl. No.: **09/681,112**

(22) Filed: **Jan. 11, 2001**

(65) **Prior Publication Data**

US 2002/0133087 A1 Sep. 19, 2002

(51) **Int. Cl.<sup>7</sup>** ..... **A61B 5/04**

(52) **U.S. Cl.** ..... **600/515**

(58) **Field of Search** ..... 600/509, 513, 600/515-518

(56) **References Cited**

**U.S. PATENT DOCUMENTS**

4,679,144 A	7/1987	Cox et al.	600/516
4,680,708 A	7/1987	Ambos et al.	600/509
4,930,075 A	* 5/1990	Kortas	364/413.06
4,957,115 A	9/1990	Selker	600/509
5,365,426 A	* 11/1994	Siegel et al.	600/509
5,377,687 A	* 1/1995	Evans et al.	600/513
5,437,285 A	* 8/1995	Verrier et al.	128/702
5,501,229 A	* 3/1996	Selker et al.	600/508
5,683,424 A	* 11/1997	Brown et al.	607/5
6,339,720 B1	* 1/2002	Anzellini et al.	600/517

**OTHER PUBLICATIONS**

“Dash 2000/3000 Portable Monitoring”, GE Marquette Medical Systems Company, Mar. 1999.

“Model M1791A, Acute Cardiac Ischemia Time-Insensitive Predictive Instrument (HP ACI-TIPI)”, Hewlett Packard Company, 1996.

Selker, H.P. et al., “Use of the Acute Cardiac Ischemia Time-Insensitive Predictive Instrument (ACI-TIPI) to Assist with Triage of Patients with Chest Pain or Other Symptoms Suggestive of Acute Cardiac Ischemia”, *Annals of Internal Medicine*, Dec. 1, 1998.

“HP Introduces First ECG Instrument for Predicting Heart Attack Probability”, Hewlett-Packard Company, Mar. 25, 1996.

Selker, H.P. et al., “A Tool for Judging Coronary Care Unit Admission Appropriateness, Valid for Both Real-Time and Retrospective Use”, *Medical Care*, vol. 29, No. 7, pp. 610-627, 1991.

\* cited by examiner

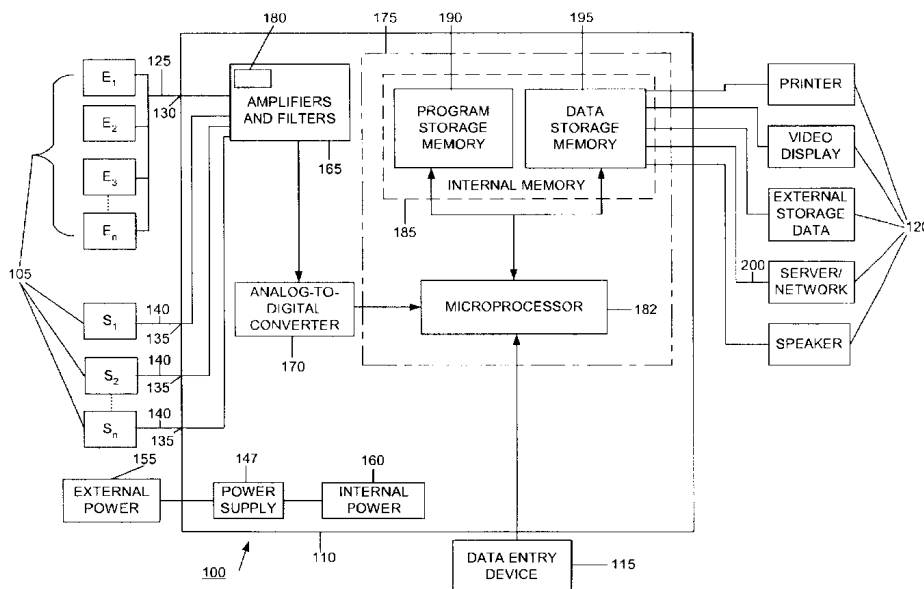
*Primary Examiner*—Carl Layno

(74) *Attorney, Agent, or Firm*—Michael Best & Friedrich LLP

(57) **ABSTRACT**

A patient monitor for determining a probability that a patient has acute cardiac ischemia including an input device connectable to a patient to acquire electrocardiogram (ECG) signals from the patient, an instrumentation amplifier connected to the input terminal to combine the signals and to generate at least one ECG lead, and an analysis module. The analysis module is operable to continuously read the ECG lead, to analyze a portion of the ECG lead for a period of time, and to calculate a probability that the patient has acute cardiac ischemia based at least in part on the analyzed portion of the ECG lead.

**55 Claims, 2 Drawing Sheets**



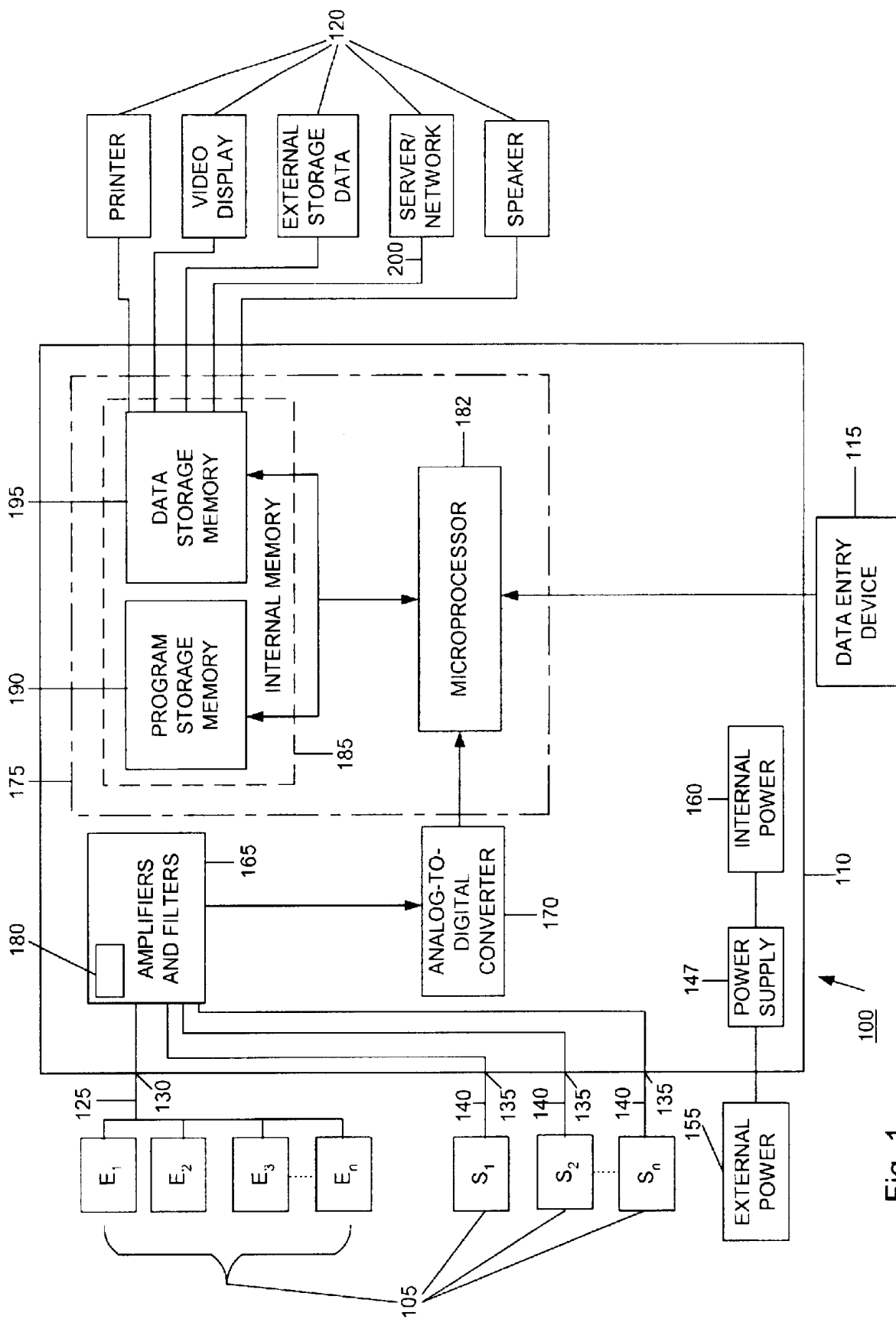


Fig. 1

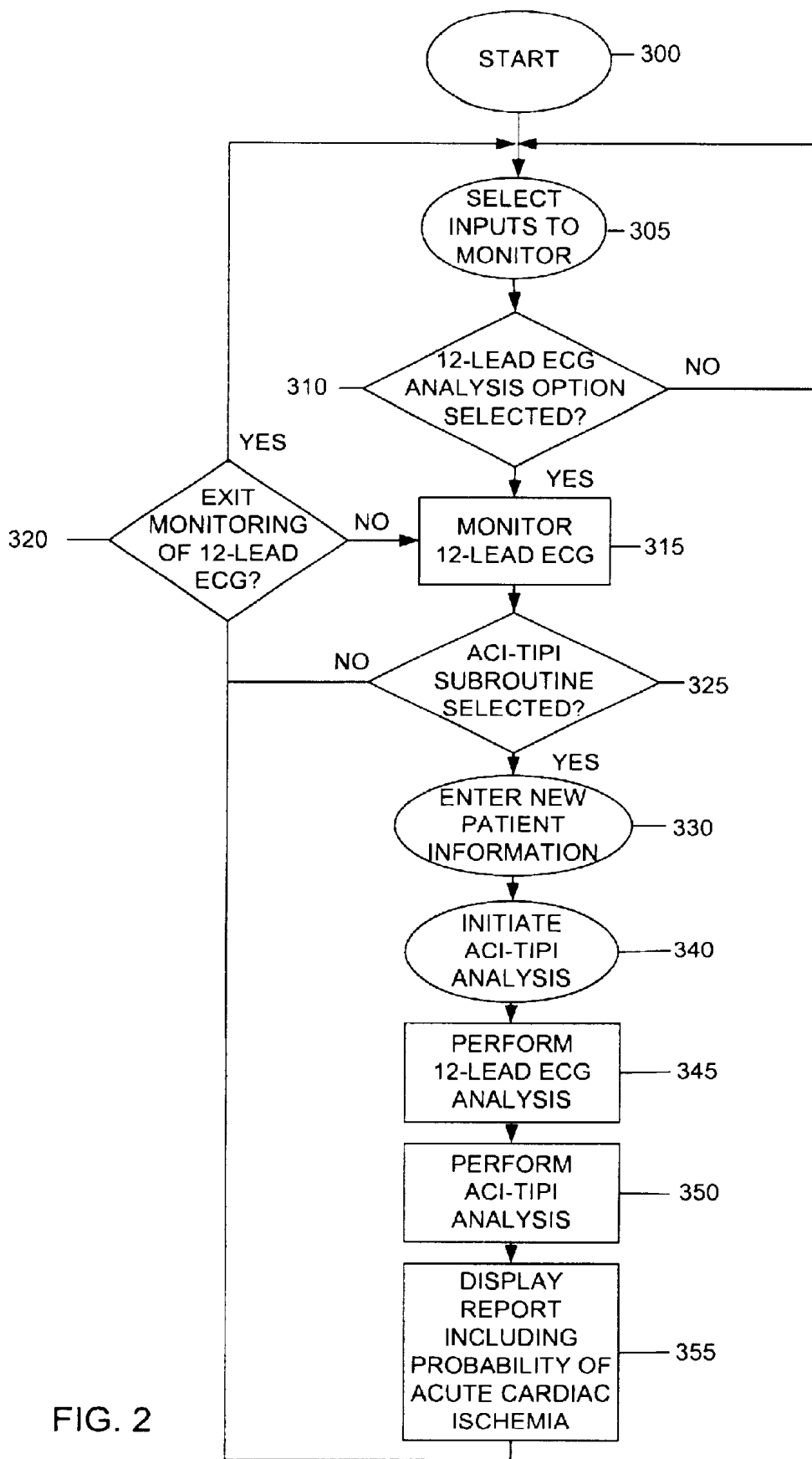


FIG. 2

## 1

**PATIENT MONITOR FOR DETERMINING A  
PROBABILITY THAT A PATIENT HAS  
ACUTE CARDIAC ISCHEMIA**

**BACKGROUND OF INVENTION**

The invention relates to a patient monitor and, particularly, a patient monitor for continuously monitoring one or more physiological signals of a patient and for determining a probability that a patient has acute cardiac ischemia based at least in part on one of the continuously monitored physiological signals.

Every day, patients arrive at an emergency room of a hospital complaining of chest pain. The chest pain may be a symptom indicating the patient is experiencing a myocardial infarction or, alternatively, the chest pain may be a symptom indicating the patient is experiencing a lesser medical condition (e.g., heartburn or indigestion). Statistics show that quickly identifying whether a patient is having a myocardial infarction may minimize the amount of damage to the heart. However, performing the necessary tests to correctly determine whether a patient is experiencing the myocardial infarction or heartburn are expensive.

One instrument used to predict whether a patient is likely experiencing a myocardial infarction is an electrocardiograph capable of calculating a probability that the patient has acute cardiac ischemia. If the patient has a high probability of acute cardiac ischemia, then the patient should be further tested to determine whether the patient is experiencing a heart attack. One instrument for determining a probability of a patient having acute cardiac ischemia is an Acute Cardiac Ischemia—Time-Insensitive Predictive Instrument (ACI-TIPI). ACI-TIPI is described in detail in Selker et al., H. P. *A Tool for Judging Coronary Care Unit Admission Appropriateness, Valid for both Real-Time and Retrospective Use: Medical Care*, Vol. 29, No. 7 July 1991), pp. 610–627 and Selker et al., H. P. *Erratum: Medical Care*, Vol. 30, No. 2 (February 1992), p. 188, both of which are incorporated herein by reference.

The ACI-TIPI calculates a score representing the probability of a patient having acute cardiac ischemia. Based on the probability of the patient having acute cardiac ischemia, an experienced doctor or technician can determine whether the patient should be admitted to the coronary care unit. Once admitted to the coronary care unit, the patient can undergo more complicated, expensive and time consuming tests to determine whether the patient is experiencing a heart attack.

Prior medical equipment having the capability of calculating a probability of a patient having acute cardiac ischemia consisted exclusively of electrocardiographs having ACI-TIPI. An example electrocardiograph capable of determining a probability that a patient has acute cardiac ischemia is the MAC™5000, which is manufactured and sold by GE Medical Systems Information Technologies, Inc. Electrocardiographs are not used for continuous, constant or ongoing patient monitoring, i.e., they typically only take a small time sample (e.g., ten to twelve seconds) of a patient's electrocardiograms (ECGs). A separate piece of medical equipment (i.e., a patient monitor) is attached to a patient for continuous, constant or ongoing monitoring of patient parameters. One such patient monitor is the DASH®2000 brand patient monitor, which is manufactured and sold by GE Medical Systems Information Technologies, Inc. Such patient monitoring devices however have not heretofore included the capability of determining the probability that a patient has acute cardiac ischemia.

## 2

**SUMMARY OF INVENTION**

When the patient enters the emergency room complaining of chest pains, multiple pieces of medical equipment (e.g., a patient monitor and an electrocardiograph) may be attached to the patient at any time. Attaching multiple pieces of equipment to the patient requires time for attachment, space for each piece of equipment, and coordination among the emergency room staff. In addition, the patient may be periodically moved throughout the emergency room or the hospital. Consequently, requiring an electrocardiograph to be temporarily attached to the patient requires use of extra time, space, personnel, and restricts transferability, which may affect the care provided to the patient. Therefore, it would be beneficial to have a patient monitor, and particularly a patient transport monitor, capable of determining a probability that a patient has acute cardiac ischemia.

Accordingly, the invention provides a patient monitor for determining a probability that a patient has acute cardiac ischemia. The patient monitor includes an input device connectable to a patient to continuously acquire electrocardiogram (ECG) signals from the patient, an instrumentation amplifier connected to the input terminal to combine the signals and to generate at least one ECG lead, and an analysis module. The analysis module is operable to continuously read the ECG lead, to analyze a portion of the ECG lead for a period of time, and to calculate a probability that the patient has acute cardiac ischemia based at least in part on the analyzed portion of the ECG lead.

The invention further provides a method of determining a probability that a patient has acute cardiac ischemia. The method includes the acts of providing a patient monitor having an input device connectable to a patient, acquiring electrocardiogram (ECG) signals from the patient, generating at least one ECG lead in response to acquiring the ECG signals, continuously monitoring the ECG lead, analyzing a portion of the ECG lead for a period of time, and calculating the probability that the patient has acute cardiac ischemia based at least in part on the analyzed portion of the ECG lead.

The invention further provides a software program for a patient monitor. The software program is capable of determining a probability that a patient has acute cardiac ischemia. The software program includes the acts of reading at least one electrocardiogram (ECG) lead acquired from the patient, continuously monitoring the ECG lead, analyzing a portion of the ECG lead for a period of time, and calculating the probability that the patient has acute cardiac ischemia based at least in part on the analyzed portion of the ECG lead.

Other features and advantages of the invention will become apparent to those skilled in the art upon review of the following detailed description, claims, and drawings.

**BRIEF DESCRIPTION OF DRAWINGS**

FIG. 1 is a schematic diagram of a patient monitor embodying the invention.

FIG. 2 is a flowchart implementing a method of determining a probability that a patient has acute cardiac ischemia.

**DETAILED DESCRIPTION**

Before one embodiment of the invention is explained in full detail, it is to be understood that the invention is not limited in its application to the details of construction and the arrangement of components set forth in the following

description or illustrated in the following drawings. The invention is capable of other embodiments and of being practiced or of being carried out in various ways. Also, it is to be understood that the phraseology and terminology used herein is for the purpose of description and should not be regarded as limiting. The use of including and comprising and variations thereof herein is meant to encompass the items listed thereafter and equivalents thereof as well as additional items.

A patient monitor **100** embodying the invention is schematically shown in FIG. 1. An example monitor embodying the invention is a GE Medical Systems Information Technologies, Inc. DASH@3000 Pro™ brand portable monitor. In general terms, the monitor **100** includes one or more input devices **105**, a central unit **110**, a data entry device **115** connected to central unit **110**, and one or more output devices **120** connected to central unit **110**.

The one or more input devices **105** include a plurality of electrodes  $E_1, E_2 \dots E_n$  that are connectable to a patient. The electrodes acquire electrical activity (i.e., ECG signals) generated by the patient. The number of electrodes  $E_1, E_2 \dots E_n$  may vary. But for the embodiment shown, the number of electrodes is equal to ten and are connected to the patient in a standard twelve-lead configuration.

The electrodes  $E_1, E_2 \dots E_n$  are connected to the central unit **110** by an interface cable **125**. The interface cable **125** provides direct communication between the electrodes  $E_1, E_2 \dots E_n$  and an input terminal **130**. The interface cable **125** allows for transmission of the acquired ECG signals from the patient to the central unit **110**. The interface cable **125** is preferably a passive cable but, alternatively, the cable **125** may contain active circuitry for amplifying and combining the ECG signals into ECG leads (discussed further below). In other embodiments, the electrodes  $E_1, E_2 \dots E_n$  may be in communication with the central unit **110** through a telemetry-based transmitter transmitting a radio frequency (RF) signal to one or more antennas connected to central unit **110** through a conventional RF receiver.

The one or more input devices **105** may further include one or more sensors  $S_1, S_2 \dots S_n$ . The sensors  $S_1, S_2 \dots S_n$  are connectable to the patient and acquire physiological signals from the patient. Example sensors may include invasive and noninvasive blood pressure sensors, carbon dioxide sensors, pulseoximetry sensors, temperature sensors, etc. Similar to electrodes  $E_1, E_2 \dots E_n$  and for the embodiment shown, the one or more sensors  $S_1, S_2 \dots S_n$  are connected to the central processing unit at input terminals **135** by interface cables **140**. In other embodiments, the one or more sensors may be in communication with the central processing unit via a telemetry transmitter as described above.

The data-entry device **115** allows an operator (e.g., a technician, nurse, doctor, etc.) to enter data into the central unit **110**. The data-entry device **115** may be incorporated within the central unit **110** (e.g., a trim knob) or, alternatively, may be a stand-alone device (e.g., a stand-alone keyboard). Example data-entry devices **115** include a trim knob, a keyboard, a keypad, a touch screen, a pointing device (e.g., a mouse, a trackball), etc.

The central unit **110** includes a power supply **147**. The power supply **147** powers the patient monitor **100** and receives input power either by an external power source **155** or an internal power source **160** (e.g., a battery).

The central unit **110** also includes amplifying-and-filtering circuitry **165**, analog-to-digital (A/D) conversion circuitry **170**, and an analysis module **175**. The amplifying-

and-filtering circuitry **165**, the A/D conversion circuitry **170**, and the analysis module **175** may be discrete circuitry, may be incorporated as an integrated circuit (e.g., an application specific integrated circuit), or may be a combination of both.

The amplifying-and-filtering circuitry **165** receives the physiological signals from the input terminals **130** and **135**, and amplifies and filters (i.e., conditions) the physiological signals. For example, the amplifying-and-filtering circuitry **165** includes an instrumentation amplifier **180**. The instrumentation amplifier **180** receives the ECG signals, amplifies the signals, and filters the signals to create a multi-lead ECG. The number of leads of the multi-lead ECG may vary without changing the scope of the invention.

The A/D conversion circuitry **170** is electrically connected to the instrumentation amplifier **180**. The A/D conversion circuitry **170** receives the amplified and filtered physiological signals and converts the signals into digital physiological signals (e.g., a digital multi-lead ECG.) The digital physiological signals are then provided to the analysis module **175** which is electrically connected to the A/D conversion circuitry **170**.

The analysis module **175** reads the digital physiological signals, analyzes the signals from the A/D conversion circuitry **170**, and displays the signals and the resulting analysis to an operator. The analysis module **175** includes a controller or microprocessor **182** and internal memory **185**, and implements a software program to control the monitor **100**. The internal memory **185** includes program storage memory **190** for storing the software program and data storage memory **195** for storing data. The implementation of the software program, including determining a probability that the patient has acute cardiac ischemia, is discussed in further below.

The output devices **120** may include a printer, a display, a storage device (e.g., a magnetic disc drive, a read/write CD-ROM, etc.), a server or other processing unit connected via a network **200**, and a speaker. Of course, other output devices may be added or attached (e.g., a defibrillator), and/or one or more output devices may be incorporated within the central unit **110**. Additionally, not all of the outputs **120** are required for operation of the monitor **100**.

In operation and at act **300** (FIG. 2), an operator activates the monitor **100**. The software initializes the microprocessor **182**. The operator then attaches the electrodes  $E_1, E_2 \dots E_n$  and/or sensors  $S_1, S_2 \dots S_n$  to the patient.

At act **305**, the monitor **100** automatically identifies which input devices **105** are connected to the patient. Alternatively, the operator may inform the monitor **100**, via the data-entry device **115**, which inputs **105** are connected to the patient. Once the monitor **100** is informed from which inputs **105** to acquire physiological signals from, the monitor **100** begins continuously monitoring the physiological signals from the patient. The monitoring data may be displayed on the display, printed by the printer, stored in the data storage memory for analysis or later recall, provided to the external storage device for storage, and/or provided to the server via the network **200**.

For example and in the embodiment shown, the operator attaches ten electrodes to the patient and selects twelve-lead ECG monitoring. Once twelve-lead ECG-monitoring is selected (act **310**), the monitor **100** continuously monitors the ECG leads generated by the patient (act **315**). This is accomplished by acquiring electrical activity generated by the patient in the form of ECG signals. The ECG signals are transmitted to the input terminal **130** via the interface cable **125**. The ECG signals enter the central unit **110** at terminal **130** and are provided to the instrumentation amplifier **180**.

The instrumentation amplifier **180** combines, amplifies and filters the ECG signals resulting in a standard twelve-lead ECG. For other electrode configurations, the number of leads of the multi-lead ECG may vary. The resulting multi-lead ECG is provided to the A/D conversion circuit **170**. The A/D conversion circuit **170** samples each lead of the multi-lead ECG to create a digital signal representing the multi-lead ECG, and provides the digital multi-lead ECG to the analysis module **175**. The analysis module **175** reads the digital multi-lead ECG signal for monitoring. The monitored twelve-lead ECG may be used to calculate a heart rate, detect an arrhythmia, measure ST-segment elevation and, as is discussed below, calculate a probability that the patient has acute cardiac ischemia. The monitor **100** continues to monitor the twelve-lead ECG until the operator exits the twelve-lead monitoring function (act **320**). Other monitoring applications are performed similarly. The other monitoring applications include blood pressure monitoring, pulse oximetry monitoring, temperature monitoring, etc.

If the patient complains of heart pain, the operator may request the monitor **100** to perform a calculation of a probability that the patient has acute cardiac ischemia (act **325**). For example, when a patient enters the emergency room complaining of heart pain, the emergency room staff may attach the patient monitor **100** to the patient for monitoring. In addition, a staff member (e.g., the resident emergency room doctor) may request a test to determine whether the patient has acute cardiac ischemia. In the past, an electrocardiograph and a technician would need to be requested and brought into the patient's direct area. The electrocardiograph would then need to be attached to the patient. Attaching the electrocardiograph to the patient takes valuable time. Moreover, the presence of another piece of equipment and the operator thereof connected to the patient, may inconvenience the emergency room staff. Thus, it is beneficial for the patient monitor **100** already connected to the patient for continuous, ongoing monitoring to be able to perform this function in addition to performing the monitoring function.

For the embodiment shown, the operator uses the data entry device **115** (e.g., the trim knob) to select an ACI-TIPI analysis. Once the ACI-TIPI analysis is selected (act **325**), the software initiates an ACI-TIPI analysis subroutine (act **330**). Although the patient monitor **100** described herein uses ACI-TIPI to determine a probability that the patient has acute cardiac ischemia, other instruments (i.e., formulas) may be used.

Specifically, the monitor **100** uses Formula 1 (below) to calculate or determine a probability that a patient has acute cardiac ischemia.

FORMULA 1 ACI-TIPI

$$\text{probability \%} = 100 \times \left[ 1 - \frac{1}{1 + \exp(b_o + \sum b_i \cdot x_i)} \right]$$

where:  $b_o$  is a constant term,  $b_i$  are coefficients, and  $x_i$  are variables. The coefficients include values representing a chest pain condition, patient demographics, and ECG analysis coefficients. The variables are empirically found and act as multipliers. Formula 1 and its constant term, coefficients and variables are further described in Selker et al., *A Tool for Judging Coronary Care Unit Admission Appropriateness, Valid for both Real-Time and Retrospective Use: Medical Care*, Vol. 28, No. 7 (July 1991), pp. 610-627 and Selker et al., *Erratum: Medical Care*, Vol. 30, No. 2 (February 1992), p. 188, both of which are incorporated herein by reference.

If the ACI-TIPI subroutine is selected, the patient monitor **100** proceeds to act **330**. At act **330**, the operator enters patient information. For example, the operator enters patient biographical data (e.g., patient sex and patient age) and a patient condition (e.g., chest or left arm pain is the primary complaint, chest or left arm pain is the secondary complaint, or chest or left arm pain is not present). As described above, the entered patient information is used by Formula 1 for determining a probability that a patient has acute cardiac ischemia. Other patient data may be entered when using different instruments.

Once the patient information is entered, the operator initiates the ACI-TIPI analysis (act **340**) via the data entry device **115**. At act **345**, the software temporarily stores a portion of the monitored ECG leads for a period of time (i.e., a time window). When the ECG leads are stored, the software analyzes the stored ECG leads to obtain ECG analysis coefficients for the ACI-TIPI formula. Example ECG analysis coefficients include whether ECG Q-waves are present, whether the ECG ST segment is depressed or elevated by an amount, whether the ECG T-waves are inverted by an amount, and whether both the ECG ST segment is depressed and the ECG T-wave is inverted. The ECG analysis coefficients are used by Formula 1 to determine a probability that the patient has acute cardiac ischemia. Other ECG analysis coefficients may be used when using different instruments (i.e., different formulas). Additionally, the temporarily stored portion of the monitored ECG leads may be stored prior to the operator initiating the ACI-TIPI analysis. For example, the software may repeatedly store a portion of the monitored ECG leads for a period of time. Once the operator initiates the ACI-TIPI analysis, the software analyzes the most recently stored data to obtain ECG analysis coefficients for the ACI-TIPI formula.

At act **350**, the software calculates a probability that the patient has acute cardiac ischemia using the ACI-TIPI formula as is disclosed in Selker et al., *A Tool for Judging Coronary Care Unit Admission Appropriateness, Valid for both Real-Time and Retrospective Use: Medical Care*, Vol. 28, No. 7 (July 1991), pp. 610-627 and Selker et al., *Erratum: Medical Care*, Vol. 30, No. 2 (February 1992), p. 188. Upon completing the calculation, the resulting probability is disclosed (e.g., displayed on the monitor) to the operator (act **355**). In addition, the software may provide a list of factors affecting or reasons for the resulting calculated probability. Example factors are shown in TABLE 1 EXAMPLE FACTORS. Based on the probability and disclosed factors (if provided), an experienced operator may determine whether the patient should be admitted to the cardiac care unit for further testing. In addition, the resulting probability and data used for calculating the probability may be stored or printed for future reference, or provided to the network **200** for additional analysis by a remote server or processor.

TABLE 1

EXAMPLE FACTORS	
1.	Chest or left arm pain present.
2.	Chest or left arm pain is chief complaint.
3.	Patient is male, less than 41 years of age.
4.	Patient is male, age 41-50.
5.	Patient is male, over 50 years of age.
6.	Patient is female, less than 41 years of age.
7.	Patient is female, age 41-50.
8.	Patient is female, over 50 years of age.

TABLE 1-continued

EXAMPLE FACTORS	
9.	Q waves are not present.
10.	No significant Q waves detected.
11.	ST segment is elevated 2 mm or more.
12.	ST segment is elevated 1-2 mm.
13.	ST segment is depressed 2 mm or more.
14.	ST segment is depressed 1-2 mm.
15.	ST segment is depressed 0.5-1 mm.
16.	No abnormal ST segment deviation detected.
17.	Hyperactive T-waves.
18.	T waves are inverted 5 mm or more.
19.	T waves are inverted 1-5 mm.
20.	Flattened T waves in all frontal or precordial leads.
21.	No T-wave abnormality detected.

As can be seen from the above, the invention provides a patient monitor for determining a probability that a patient has acute cardiac ischemia. The invention also provides a method of determining a probability that a patient has acute cardiac ischemia and a software tool for a patient monitor to calculate a probability that a patient has acute cardiac ischemia. Various features and advantages of the invention are set forth in the following claims.

What is claimed is:

1. A patient monitor comprising:
  - a first input device connectable to a patient to acquire electrocardiogram (ECG) signals from the patient;
  - an instrumentation amplifier connected to the input device to combine the signals and to generate at least one ECG lead based on the signals;
  - a second input device connectable to the patient to acquire a non-ECG physiological signal; and
  - an analysis module operable to continuously read the ECG lead, to analyze a portion of the ECG lead for a period of time, and to calculate a probability that the patient has acute cardiac ischemia based at least in part on the analyzed portion of the ECG lead.
2. A patient monitor as set forth in claim 1 and further comprising:
  - a data entry device operable to receive patient biographical data; and
  - wherein the analysis module calculates the probability that the patient has acute cardiac ischemia based at least in part on the patient biographical data.
3. A patient monitor as set forth in claim 2 wherein the patient biographical data is the sex of the patient.
4. A patient monitor as set forth in claim 2 wherein the patient biographical data is the age of the patient.
5. A patient monitor as set forth in claim 1 and further comprising a data entry device operable to receive information relating to a patient condition, and wherein the analysis module calculates a probability that the patient has acute cardiac ischemia based at least in part on the information relating to the patient condition.
6. A patient monitor as set forth in claim 5 wherein the patient condition is a reported pain located in the chest or left arm of the patient.
7. A patient monitor as set forth in claim 1 wherein the first input device is a plurality of electrodes.
8. A patient monitor as set forth in claim 1 and further comprising an output device that informs an operator of the probability that the patient has acute cardiac ischemia.
9. A patient monitor as set forth in claim 8 wherein the output device is a display.
10. A patient monitor as set forth in claim 8 wherein the output device is a printer.

11. A patient monitor as set forth in claim 1 wherein the analysis module includes a memory unit, a processor, and software stored in the memory unit that operates the processor.
12. A patient monitor as set forth in claim 11 wherein the software operates the processor to analyze a portion of the ECG lead for a period of time resulting in at least one ECG analysis coefficient, and to calculate a probability that the patient has acute cardiac ischemia based at least in part on the ECG analysis coefficient.
13. A patient monitor as set forth in claim 12 wherein the ECG analysis coefficient signifies whether an ECG Q-wave is present.
14. A patient monitor as set forth in claim 12 wherein the ECG analysis coefficient signifies whether an ECG ST segment is depressed or elevated.
15. A patient monitor as set forth in claim 12 wherein the ECG analysis coefficient signifies whether an ECG T-wave is inverted.
16. A patient monitor comprising:
  - an input device connectable to a patient to acquire electrocardiogram (ECG) signals from the patient;
  - an instrumentation amplifier connected to the input device to combine the signals and to generate at least one ECG lead based on the signals;
  - an analysis module operable to continuously read the ECG lead, to analyze a portion of the ECG lead for a period of time, and to calculate a probability that the patient has acute cardiac ischemia based at least in part on the analyzed portion of the ECG lead;
  - an output device that informs an operator of the probability that the patient has acute cardiac ischemia;
  - an output terminal connectable to a second processor via a network; and
  - wherein the output device is the second processor.
17. A patient monitor comprising:
  - an input device connectable to a patient to acquire electrocardiogram (ECG) signals from the patient;
  - an instrumentation amplifier connected to the input device to combine the signals and to generate at least one ECG lead based on the signals;
  - an analysis module operable to continuously read the ECG lead, to analyze a portion of the ECG lead for a period of time, and to calculate a probability that the patient has acute cardiac ischemia based at least in part on the analyzed portion of the ECG lead; and
  - wherein the patient monitor is powered by a direct current power source.
18. A patient monitor comprising:
  - an input device connectable to a patient to acquire electrocardiogram (ECG) signals from the patient;
  - an instrumentation amplifier connected to the input device to combine the signals and to generate at least one ECG lead based on the signals;
  - an analysis module operable to continuously read the ECG lead, to analyze a portion of the ECG lead for a period of time, and to calculate a probability that the patient has acute cardiac ischemia based at least in part on the analyzed portion of the ECG lead; and
  - wherein the patient monitor is powered by an alternating current power source.
19. A patient monitor comprising:
  - an input device connectable to a patient to acquire electrocardiogram (ECG) signals from the patient;

an instrumentation amplifier connected to the input device to combine the signals and to generate at least one ECG lead;  
 a second input device connectable to the patient to acquire a non-ECG physiological signal;  
 a data entry device operable to receive patient biographical data and information relating to a patient condition; and  
 an analysis module including a memory unit, a processor, and software that operates the processor to continuously read the ECG lead, to continuously read the non-ECG physiological signal, to analyze a portion of the ECG for a period of time, and to calculate a probability that the patient has acute cardiac ischemia based at least in part on the analyzed portion of the ECG lead, the patient biographical data and the information relating to the patient condition.

**20.** A patient monitor as set forth in claim **19** wherein the patient biographical data is the sex of the patient.

**21.** A patient monitor as set forth in claim **19** wherein the patient biographical data is the age of the patient.

**22.** A patient monitor as set forth in claim **19** wherein the patient condition is a reported pain located in the chest or left arm of the patient.

**23.** A patient monitor as set forth in claim **19** wherein the software operates the processor to analyze a portion of the ECG lead for a period of time resulting in at least one ECG analysis coefficient, and to calculate a probability that the patient has acute cardiac ischemia based at least in part on the ECG analysis coefficient.

**24.** A patient monitor as set forth in claim **23** wherein the ECG analysis coefficient signifies whether an ECG Q-wave is present.

**25.** A patient monitor as set forth in claim **23** wherein the ECG analysis coefficient signifies whether an ECG ST segment is depressed or elevated.

**26.** A patient monitor as set forth in claim **23** wherein the ECG analysis coefficient signifies whether an ECG T-wave is inverted.

**27.** A patient monitor as set forth in claim **19** and further comprising an output device that informs an operator of the probability that the patient has acute cardiac ischemia.

**28.** A patient monitor as set forth in claim **19** wherein the patient monitor is powered by a direct current power source.

**29.** A patient monitor as set forth in claim **19** wherein the patient monitor is powered by an alternating current power source.

**30.** A method of determining a probability that a patient has acute cardiac ischemia, the method comprising the acts of:

providing a patient monitor having an input device connectable to a patient;  
 acquiring electrocardiogram (ECG) signals from the patient;  
 generating at least one ECG lead in response to acquiring the ECG signals;  
 continuously monitoring the ECG lead;  
 analyzing a portion of the ECG lead for a period of time;  
 calculating the probability that the patient has acute cardiac ischemia based at least in part on the analyzed portion of the ECG lead; and  
 wherein the act of continuously monitoring the ECG lead includes continuously displaying the ECG lead.

**31.** A method of determining a probability that a patient has acute cardiac ischemia, the method comprising the acts of:

providing a patient monitor having an input device connectable to a patient;  
 acquiring electrocardiogram (ECG) signals from the patient;  
 generating at least one ECG lead in response to acquiring the ECG signals;  
 continuously monitoring the ECG lead;  
 analyzing a portion of the ECG lead for a period of time;  
 calculating the probability that the patient has acute cardiac ischemia based at least in part on the analyzed portion of the ECG lead; and  
 wherein the act of continuously monitoring the ECG lead includes continuously recording the ECG lead.

**32.** A method of determining a probability that a patient has acute cardiac ischemia, the method comprising the acts of:

providing a patient monitor having a first input device connectable to a patient;  
 acquiring electrocardiogram (ECG) signals from the patient;  
 generating at least one ECG lead in response to acquiring the ECG signals;  
 continuously monitoring the ECG lead;  
 analyzing a portion of the ECG lead for a period of time;  
 calculating the probability that the patient has acute cardiac ischemia based at least in part on the analyzed portion of the ECG lead;  
 wherein the patient monitor includes a second input device that connects to the patient and acquires a non-ECG physiological signal; and  
 wherein the method further comprises continuously monitoring the non-ECG physiological signal from the patient.

**33.** A method as set forth in claim **32** wherein the patient monitor includes a data entry device that receives patient biographical data, wherein the method further comprises the act of entering patient biographical data via the data entry device, and wherein the act of calculating includes calculating the probability of acute cardiac ischemia based at least in part on the patient biographical data.

**34.** A method as set forth in claim **33** wherein the patient biographical data is the sex of the patient.

**35.** A method as set forth in claim **34** wherein the patient biographical data is the age of the patient.

**36.** A method as set forth in claim **32** wherein the patient monitor includes a data entry device that receives a patient condition, wherein the method further comprises the act of entering the patient condition via the data entry device, and wherein the act of calculating includes calculating the probability of acute cardiac ischemia based at least in part on the patient condition.

**37.** A method as set forth in claim **36** wherein the patient condition is a reported pain located in the chest or left arm of the patient.

**38.** A method as set forth in claim **32** wherein the input device is a plurality of electrodes.

**39.** A method as set forth in claim **32** wherein the act of analyzing the ECG lead comprises analyzing a portion of the ECG lead for a period of time resulting in at least one ECG analysis coefficient, and wherein the act of calculating comprises calculating the probability of the patient having acute cardiac ischemia based at least in part on the ECG analysis coefficient.

**40.** A method as set forth in claim **39** wherein the ECG analysis coefficient signifies whether an ECG Q-wave is present.

11

41. A method as set forth in claim 39 wherein the ECG analysis coefficient signifies whether an ECG ST segment is depressed or elevated.

42. A method as set forth in claim 39 wherein the ECG analysis coefficient signifies whether an ECG T-wave is inverted.

43. A method as set forth in claim 32 and further comprising informing an operator of the probability of the patient having acute cardiac ischemia.

44. A software program stored in a computer readable medium for operation in a patient monitor to determine a probability that a patient has acute cardiac ischemia, the software program comprising program code for:

- reading at least one electrocardiogram (ECG) lead acquired from the patient;
- continuously monitoring the ECG lead;
- analyzing a portion of the ECG lead for a period of time;
- calculating the probability that the patient has acute cardiac ischemia based at least in part on the analyzed portion of the ECG lead; and

wherein the continuously monitoring act includes continuously display the ECG lead.

45. A software program stored in a computer readable medium for operation in a patient monitor to determine a probability that a patient has acute cardiac ischemia, the software program comprising program code for:

- reading at least one electrocardiogram (ECG) lead acquired from the patient;
- continuously monitoring the ECG lead;
- analyzing a portion of the ECG lead for a period of time;
- calculating the probability that the patient has acute cardiac ischemia based at least in part on the analyzed portion of the ECG lead; and

wherein the continuously monitoring act includes continuously recording the ECG lead.

46. A software program stored in a computer readable medium for operation in a patient monitor to determine a probability that a patient has acute cardiac ischemia, the software program comprising program code for:

- reading at least one electrocardiogram (ECG) lead acquired from the patient;
- continuously monitoring the ECG lead;
- analyzing a portion of the ECG lead for a period of time;
- calculating the probability that the patient has acute cardiac ischemia based at least in part on the analyzed portion of the ECG lead;

receiving patient biographical data; and wherein the act of calculating includes calculating the probability of acute cardiac ischemia based at least in part on the patient biographical data.

47. A software program as set forth in claim 46 wherein the patient biographical data is the sex of the patient.

12

48. A software program as set forth in claim 47 wherein the patient biographical data is the age of the patient.

49. A software program stored in a computer readable medium for operation in a patient monitor to determine a probability that a patient has acute cardiac ischemia, the software program comprising program code for:

- reading at least one electrocardiogram (ECG) lead acquired from the patient;
- continuously monitoring the ECG lead;
- analyzing a portion of the ECG lead for a period of time;
- calculating the probability that the patient has acute cardiac ischemia based at least in part on the analyzed portion of the ECG lead;
- receiving a patient condition; and

wherein the act of calculating includes calculating the probability of acute cardiac ischemia based at least in part on the patient condition.

50. A software program as set forth in claim 49 wherein the patient condition is a reported pain located in the chest or left arm of the patient.

51. A software program stored in a computer readable medium for operation in a patient monitor to determine a probability that a patient has acute cardiac ischemia, the software program comprising program code for:

- reading at least one electrocardiogram (ECG) lead acquired from the patient;
- continuously monitoring the ECG lead;
- analyzing a portion of the ECG lead for a period of time;
- calculating the probability that the patient has acute cardiac ischemia based at least in part on the analyzed portion of the ECG lead;

reading at least one non-ECG physiological signal; and continuously monitoring the non-ECG physiological signal.

52. A software program as set forth in claim 51 wherein the act of analyzing the ECG lead comprises analyzing a portion of the ECG lead for a period of time resulting in at least one ECG analysis coefficient, and wherein the act of calculating comprises calculating the probability of the patient having acute cardiac ischemia based at least in part on the ECG analysis coefficient.

53. A software program as set forth in claim 52 wherein the ECG analysis coefficient signifies whether an ECG Q-wave is present.

54. A software program as set forth in claim 52 wherein the ECG analysis coefficient signifies whether an ECG ST segment is depressed or elevated.

55. A software program as set forth in claim 52 wherein the ECG analysis coefficient signifies whether an ECG T-wave is inverted.

\* \* \* \* \*

专利名称(译)	用于确定患者患有急性心肌缺血的概率的患者监测器		
公开(公告)号	<a href="#">US6532381</a>	公开(公告)日	2003-03-11
申请号	US09/681112	申请日	2001-01-11
[标]申请(专利权)人(译)	BAYER BRIAN J BIN MOIN AREEF AHMED VAN RYZIN PATRICK		
申请(专利权)人(译)	BAYER BRIAN J. BIN MOIN AREEF AHMED VAN RYZIN PATRICK		
当前申请(专利权)人(译)	GE医疗系统信息技术股份有限公司.		
[标]发明人	BAYER BRIAN J MOIN AREEF AHMED BIN RYZIN PATRICK VAN		
发明人	BAYER, BRIAN J. MOIN, AREEF AHMED BIN RYZIN, PATRICK VAN		
IPC分类号	A61B5/0452 A61B5/00 A61B5/021 A61B5/04		
CPC分类号	A61B5/0452 A61B5/0002 A61B5/1455 A61B5/021		
其他公开文献	US20020133087A1		
外部链接	<a href="#">Espacenet</a> <a href="#">USPTO</a>		

摘要(译)

一种用于确定患者患有急性心肌缺血的概率的患者监测器，包括可连接到患者的输入装置以从患者获取心电图（ECG）信号，连接到输入端子的仪表放大器以组合信号并至少产生一个心电图导联和一个分析模块。分析模块可操作以连续读取ECG导联，分析ECG导联的一部分一段时间，并且至少部分地基于ECG的分析部分计算患者患有急性心脏缺血的概率。铅。

