

(19)



(11)

EP 2 701 595 B1

(12)

EUROPEAN PATENT SPECIFICATION

(45) Date of publication and mention of the grant of the patent:

01.06.2016 Bulletin 2016/22

(51) Int Cl.:

A61B 5/145 ^(2006.01) **A61B 5/00** ^(2006.01)
A61M 1/14 ^(2006.01) **A61M 1/16** ^(2006.01)
A61M 1/34 ^(2006.01)

(21) Application number: **12719170.8**

(86) International application number:

PCT/US2012/034333

(22) Date of filing: **19.04.2012**

(87) International publication number:

WO 2012/148789 (01.11.2012 Gazette 2012/44)

(54) **CHRONIC PH OR ELECTROLYTE MONITORING**

KONTINUIERLICHE PH- ODER ELEKTROLYTÜBERWACHUNG

SURVEILLANCE CHRONIQUE DE PH OU D'ÉLECTROLYTE

(84) Designated Contracting States:

AL AT BE BG CH CY CZ DE DK EE ES FI FR GB GR HR HU IE IS IT LI LT LU LV MC MK MT NL NO PL PT RO RS SE SI SK SM TR

(72) Inventors:

- **GERBER, Martin T.**
Maple Grove, MN 55369 (US)
- **LYU, Suping**
Maple Grove, Minnesota 55311 (US)
- **PUDIL, Bryant J.**
Plymouth, Minnesota 55447 (US)

(30) Priority: **29.04.2011 US 201161480539 P**

29.04.2011 US 201161480541 P

29.04.2011 US 201161480535 P

29.04.2011 US 201161480532 P

29.04.2011 US 201161480530 P

29.04.2011 US 201161480528 P

29.04.2011 US 201161480544 P

20.03.2012 US 201213424525

(74) Representative: **Hughes, Andrea Michelle et al**

Dehns
St Bride's House
10 Salisbury Square
London EC4Y 8JD (GB)

(43) Date of publication of application:

05.03.2014 Bulletin 2014/10

(56) References cited:

US-A1- 2006 025 748 US-A1- 2007 175 827

US-A1- 2010 168 546 US-A1- 2011 077 574

(73) Proprietor: **MEDTRONIC, INC.**

Minneapolis, Minnesota 55432 (US)

EP 2 701 595 B1

Note: Within nine months of the publication of the mention of the grant of the European patent in the European Patent Bulletin, any person may give notice to the European Patent Office of opposition to that patent, in accordance with the Implementing Regulations. Notice of opposition shall not be deemed to have been filed until the opposition fee has been paid. (Art. 99(1) European Patent Convention).

Description

RELATED APPLICATION

[0001] This application claims priority to U.S. Utility Application No. 13/424,525 filed March 20, 2012, which claims priority to U.S. Provisional Application No. 61/480,539, U.S. Provisional Application No. 61/480,544, U.S. Provisional Application No. 61/480,541, U.S. Provisional Application No. 61/480,535, U.S. Provisional Application No. 61/480,532, U.S. Provisional Application No. 61/480,530, and U.S. Provisional Application No. 61/480,528, wherein each priority Provisional Application was filed April 29, 2011.

FIELD

[0002] The present disclosure relates generally to devices, systems and uses for monitoring electrolytes or pH in patients for which blood cleaning or fluid removal is indicated, such as patients suffering from kidney disease or heart failure.

BACKGROUND

[0003] Patients who undergo hemodialysis or other procedures that remove solutes and fluid from the blood often die of cardiac complications. Many factors may contribute to such death, including stress placed on the heart due to the increased blood fluid volume in these patients. Increased fluid concentrations and inability to remove waste products from the blood, in some cases, can also contribute to electrolyte and pH imbalance that can affect cardiac contractility and efficiency. Further, rapid changes in fluid volume or pH or electrolyte concentration of the blood during hemodialysis or other fluid removal processes may place additional stress on the heart and may contribute to the high rate of morbidity for patients who undergo blood fluid removal procedures.

[0004] When a patient reaches a point where routine blood fluid removal procedures are prescribed, the patient undergoes periodic examinations that allow a healthcare provider to set various parameters of the blood fluid removal procedures, such as the profile of fluid removal, the composition of dialysate or replacement fluid employed, and the like. These examinations typically occur once a month in accordance with current standards of care.

[0005] Hemodialysis or similar procedures may occur three to four times a week. Thus, the patient may undergo 10 to 15 or more blood fluid removal sessions before the prescription or parameters are changed. It is possible, for example, that a prescription with regard to a dialysate electrolyte and pH buffer composition will not be appropriate for a patient several days or weeks after the prescription is set. Accordingly, it may be desirable to more frequently determine whether the electrolyte or pH con-

centration of a fluid used in blood fluid removal sessions is appropriate. In addition, it may be desirable to adjust the concentration or composition of the fluid during a blood fluid removal session in a manner that may improve patient health and reduce morbidity.

[0006] Devices for controlling blood fluid removal are known, e.g., from US2011/0077574, which shows a method and device for monitoring indicators concerning blood composition using an implanted sensor, and which transmit these findings to a control device. Another example of such a device is known from US2007/0175827.

SUMMARY

[0007] This disclosure, among other things, describes devices, systems and uses for monitoring pH or electrolytes in patients for which blood fluid removal sessions are indicated. The monitoring may occur prior to a blood fluid removal session, and data acquired from the monitoring may be used to assist in determining an appropriate initial concentration and composition of buffer (pH) or electrolytes for use during the session. Alternatively, or in addition, the monitoring may occur during a blood fluid removal session, and the concentration or composition of buffer or electrolytes may be adjusted based on monitored data acquired during the blood fluid removal session. By monitoring pH or electrolytes, a more appropriate initial dialysate or replacement fluid may be used, or the fluid may be adjusted during a session, to enhance patient safety.

[0008] In various embodiments described herein, a use includes identifying a patient for which a blood fluid removal session is indicated and monitoring an indicator of blood electrolyte concentration or blood pH of the patient. The use may further include determining whether the monitored indicator crosses a predetermined threshold, and alerting the patient or healthcare provider, or automatically scheduling a blood fluid removal session, if the indicator is determined to cross the threshold. In various embodiments, the use includes determining an appropriate electrolyte concentration or buffer concentration for a fluid to be used in a blood fluid removal session based on the monitored indicator.

[0009] In some embodiments, a use includes initiating a blood fluid removal procedure for a patient in need thereof. The procedure includes use of a fluid selected from a dialysate fluid or a replacement fluid. The fluid has an initial pH buffer composition or electrolyte composition. The use further includes monitoring an indicator of blood electrolyte concentration or blood pH of the patient during the blood fluid removal session, via an implantable or wearable sensor, and adjusting the pH buffer composition or the electrolyte composition of the fluid based on a value of the monitored indicator.

[0010] In embodiments, a system includes a blood fluid removal device, which has (i) an inlet for receiving blood from a patient, (ii) an outlet for returning blood from the patient, (iii) a medium for removing fluid and contami-

nants from the blood, the medium being positioned between the inlet and the first outlet, and (iv) a fluid source for carrying a fluid, where the fluid is selected from dialysate and replacement fluid. If the fluid is dialysate, the fluid source carries the fluid to the medium. If the fluid is replacement fluid, the fluid source carries the fluid to the blood after the blood exits the medium. The system further includes (i) a concentrate source for housing a concentrate solution comprising concentrated electrolyte or pH buffer, (ii) a concentrate flow control element for controlling the rate that the concentrate solution enters the fluid source; (iii) an implantable sensor for monitoring an indicator of blood pH or blood electrolyte concentration; and (iv) control electronics in operable communication with the sensor and the concentrate flow control element. The control electronics are configured, via the concentrate flow control element, to adjust the rate at which the concentrate solution enters the fluid source based on data obtained from the sensor.

[0011] One or more embodiments of the systems, devices and uses described herein may provide one or more advantages over prior systems, devices and uses for blood fluid removal in patients. Such advantages will be apparent to those skilled in the art upon reading the following detailed description.

BRIEF DESCRIPTION OF THE DRAWINGS

[0012] The accompanying drawings, which are incorporated into and form a part of the specification, illustrate several embodiments of the present disclosure and, together with the description, serve to explain the principles of the disclosure. The drawings are only for the purpose of illustrating embodiments of the disclosure and are not to be construed as limiting the disclosure.

FIGS. 1-3 are schematic block diagrams showing interaction of blood fluid removal devices with a patient showing flow of blood (dashed arrows) and fluid (solid arrows), which blood fluid removal devices may be used in various embodiments described herein.

FIG. 4 is a schematic diagram of an embodiment of a sensor device implanted in a patient.

FIG. 5 is a schematic block diagram showing some selected components of an embodiment of a sensor device.

FIG. 6 is a schematic diagram of an embodiment of an implanted sensor device configured to communicate with an external device, which is configured to communicate with a remote device.

FIGS. 7-8 are schematic block diagrams showing flow paths and some control mechanisms (closed loop: **FIG. 7**; open loop: **FIG. 8**) for controlling flow

of concentrate into fluid for use in a blood fluid removal process based on monitored pH or electrolytes.

FIGS. 9-13 are flow diagrams illustrating overviews of general uses in accordance with embodiments described herein.

[0013] The schematic drawings presented herein are not necessarily to scale. Like numbers used in the figures refer to like components, steps and the like. However, it will be understood that the use of a number to refer to a component in a given figure is not intended to limit the component in another figure labeled with the same number. In addition, the use of different numbers to refer to components is not intended to indicate that the different numbered components cannot be the same or similar.

DETAILED DESCRIPTION

[0014] In the following detailed description, reference is made to the accompanying drawings that form a part hereof, and in which are shown by way of illustration several embodiments of devices, systems and uses. It is to be understood that other embodiments are contemplated and may be made without departing from the scope of the present invention as defined by the claims. The following detailed description, therefore, is not to be taken in a limiting sense.

[0015] All scientific and technical terms used herein have meanings commonly used in the art unless otherwise specified. The definitions provided herein are to facilitate understanding of certain terms used frequently herein and are not meant to limit the scope of the present disclosure.

[0016] As used in this specification and the appended claims, the singular forms "a", "an", and "the" encompass embodiments having plural referents, unless the content clearly dictates otherwise.

[0017] As used in this specification and the appended claims, the term "or" is generally employed in its sense including "and/or" unless the content clearly dictates otherwise.

[0018] As used herein, "have", "having", "include", "including", "comprise", "comprising" or the like are used in their open ended sense, and generally mean "including, but not limited to."

[0019] As used herein, a "patient for which a blood fluid removal session is indicated" is a patient that has undergone, is undergoing, or is likely to undergo at least one blood fluid removal session. In general, such patients are fluid overloaded patients, such as patients suffering from heart failure, chronic kidney disease, or acute kidney failure. Often such patients are stage 3 to stage 5 chronic kidney disease patients, are unresponsive or under-responsive to diuretics, or the like.

[0020] As used herein, a "blood fluid removal process," or the like, refers to a process from which fluid is removed

from blood of a patient and the blood is returned to the patient. In most (if not all) cases, blood fluid removal processes result in removal of waste products from the blood, and cleaned blood is returned to the patient. Examples of such processes include ultrafiltration, hemofiltration, hemodialysis, hemodiafiltration, peritoneal dialysis and the like. Any patient for which blood fluid removal is indicated may benefit from the devices, systems and uses described herein.

[0021] This disclosure relates to, among other things, systems and uses for monitoring pH or electrolyte concentrations in patients for which a blood fluid removal process is indicated. Sensors are used to monitor pH and electrolytes in the patient. In embodiments, the sensors monitor pH, electrolytes, or indicators thereof, in the patient's blood. In embodiments, the sensors monitor pH or electrolytes, or indicators thereof, in tissue or fluid other than the blood. Other tissues or fluids tend to equilibrate with blood. Accordingly, changes in pH or electrolyte levels in tissue or fluid other than blood may be indicative of changes of pH or electrolytes in blood. Of course, there may be some delay in the relative time of changes in pH or electrolytes in tissue or fluid other than blood relative to changes in blood, which delay may be accounted for. In addition to absolute values of monitored indicators, trends showing downward or upward changes in pH or electrolytes in tissue or fluid other than blood may be correlated to changes in blood pH or blood electrolytes. In embodiments, sensors are placed to detect pH or electrolytes in, for example, a peritoneal cavity or a cerebrospinal fluid compartment of the patient.

[0022] In some embodiments, an initial buffer or electrolyte concentration or composition of a fluid for use in the blood fluid removal process may be selected based on data acquired from the sensors. Any suitable device or system for removing fluid, or fluid and contaminants, from blood may be used in accordance with the teachings presented herein. The devices, or components thereof, may be traditional large console-type, wearable, or implantable.

[0023] Block diagrams of some example devices and systems are shown in **FIGS. 1-3**. As shown in **FIG. 1**, blood may be removed from a patient **10** and fluid may be removed via a blood fluid removal device **100** and returned to the patient **10**. Removed fluid may be diverted. In some embodiments where the blood fluid removal device **100** or system, or components thereof, are implanted, the removed fluid may be diverted to the patient's bladder. Examples of blood fluid removal devices **100** that may operate as depicted in **FIG. 1** are ultrafiltration and hemofiltration devices. Examples of such devices and components thereof that may be employed in accordance with the teachings presented herein are well known in the art. With some of such devices, replacement fluid may be introduced into the patient's blood if fluid is removed from the blood by the device **100** at too great of a rate or amount. The replacement fluid may be added to the original blood before fluid removal or may be added

to the blood after initial fluid removal and prior to return to the patient's cardiovascular system. Preferably, the replacement fluid is added after initial fluid removal. The pH and electrolyte concentration of the replacement fluid may be set or adjusted, e.g. as described in more detail below, based on monitoring of pH or electrolytes of the patient.

[0024] As shown in the embodiment depicted in **FIG. 2**, the blood fluid removal device **100** may employ dialysate to assist in removal of contaminants from the patient's blood and in maintaining proper pH and electrolyte balance. The pH or electrolyte concentration of the dialysate may be set or adjusted, e.g. as described in more detail below, based on monitoring of pH or electrolytes. Used dialysate and fluid removed from the blood may be diverted. In some embodiments, particularly where the blood fluid removal device **100** or system or components thereof are wearable or implantable, the used dialysate and removed fluid, or a portion thereof, may be regenerated (indicated by dashed lined regeneration system **150**) to produce fresh dialysate for re-use in the blood fluid removal process. One system for regeneration of dialysate is the REDY system, such as described in Roberts, M, "The regenerative dialysis (REDY) sorbent system," *Nephrology* 4:275-278, 1998, which system may be employed or readily modified for use in embodiments described herein. As shown in **FIG. 2**, a concentrate may be added to the regenerated dialysate to adjust the pH and electrolytes of the regenerated dialysate to an amount suitable for re-use as fresh dialysate.

[0025] Regardless of whether the dialysate is regenerated, systems and devices that operate in a manner shown in the embodiment of **FIG. 2** include hemodialysis and hemodiafiltration systems. Examples of such devices and components thereof that may be employed in accordance with the teachings presented herein are well known in the art. It will be understood that peritoneal dialysis, where the dialysate is introduced into the peritoneal cavity may also be employed.

[0026] As shown in **FIG. 3**, in cases where the blood fluid removal device **100** of **FIG. 2** removes fluid from the blood at too high of a rate, replacement fluid may be introduced into the patient's blood, upstream or downstream of fluid removal, e.g. as described above with regard to **FIG. 1**.

[0027] Regardless of the device or blood fluid removal process employed, it is important to ensure that the blood pH and electrolyte concentrations are within suitable ranges. If blood electrolyte concentrations are not within suitable ranges, problems with cardiac contractility, efficiency and the like may occur. If the pH is not within a suitable range, acidosis may result, which can result in disruption of cell membranes and denaturation of proteins. In either case, if ranges of blood electrolytes and pH are not properly controlled, the patient's health may be at risk. For example, sudden and cardiac death (including death from congestive heart failure, myocardial infarction, and sudden death) are common in hemodial-

ysis patients. See Bleyer et al, "Sudden and cardiac death rated in hemodialysis patients," *Kidney International*, (1999), 55:1552-1559.

[0028] Accordingly, one goal of hemodialysis, ultrafiltration, and the like is to ensure that the patient's blood pH and electrolyte concentrations are within acceptable ranges. Typical ranges of pH and blood electrolyte concentration that are desired during or following a blood fluid removal session are provided in **Table 1** below. As indicated in **Table 1**, concentrations of various acids or bases (or salts or hydrates thereof) are often important in determining the pH of blood. Accordingly, some typical target concentrations of such acids or bases are presented in **Table 1**.

Table 1: Typical target ranges for pH and electrolytes (ref. Medical Surgical Nursing, 7th Ed., 2007)

	Target Range
pH	7.35 - 7.45
Phosphate	2.8 - 4.5 mg/dL
Bicarbonate	22 - 26 mEq/L
Cl ⁻	96 - 106 mEq/L
Mg ²⁺	1.5 - 2.5 mEq/L
Na ⁺	135 - 145 mEq/L
K ⁺	3.5 - 5.0 mEq/L
Ca ²⁺	4.5 - 5.5 mEq/L

[0029] However, it will be understood that the target for a particular patient may be different from the values presented in **Table 1** for one or more electrolyte or pH. It will also be understood that buffers are typically employed to maintain proper blood pH.

[0030] Some suitable buffers that may be used in fluid, such as replacement fluid or dialysate, include bicarbonate, acetate, lactate, citrate, amino acid and protein buffers. The concentration and composition of the buffers and components thereof may be adjusted based on monitored pH of the patient's blood. Similarly, the concentration of electrolytes such as sodium, potassium, calcium, and chloride in replacement fluid or dialysate may be set or altered based the monitored levels of electrolytes.

[0031] The uses, systems and devices described herein may be used, in some embodiments, to set the initial electrolyte concentration and pH (buffer components and concentration) based on monitoring that occurs before a blood fluid removal session starts. In some embodiments, the monitoring is chronic; e.g., monitoring is performed intermittently, periodically or continuously over the course of days, weeks, months or years. In an attempt to minimize interference with the patient's lifestyle, the monitoring system, or components thereof, may be implantable or wearable.

[0032] For example and with reference to **FIGS. 4-6**,

embodiments of monitoring devices or systems that have implantable or wearable components are shown. In the embodiment depicted in **FIG. 4**, sensor device **200** is fully implantable in the patient **10** and is capable of communicating with devices outside of the patient or other implanted devices via telemetry or other suitable form of communication. The sensor **200** includes a device body **201** containing electronic components within a hermetically sealed housing. A transducer **205** is operably coupled to the electronics of the device body **201** via a lead **207**. In this manner the device body **201** may be implanted at a location removed from the sensor or transducer **205**. In some embodiments, the sensor **200** is leadless, and the transducer is incorporated into the device body **201** or a portion thereof, such as a portion of the housing. **[0033]** The transducer **205**, whether in a leadless or lead-containing device **200**, may be placed within a blood vessel so that measurements of blood pH or blood electrolyte concentrations can be determined. The transducer **205**, or device body **201** (if leadless), may be placed in any suitable blood vessel to monitor pH or electrolytes, or indicators thereof. In some embodiments, the transducer **205**, or device body **201** (if leadless), is placed in a femoral artery or a pulmonary artery. An example of a leadless implantable monitor for placement in a blood vessel is Medtronic, Inc.'s active leadless pressure sensor (ALPS), which generally takes the form of a stent to anchor the device within vessel. It is understood that the ALPS sensor device may be modified for purpose of monitoring pH or electrolyte concentrations. The ALPS may be modified by replacing the pressure transducer with transducers for measuring pH or electrolyte concentration.

[0034] In embodiments, the transducer is placed in tissue or fluid other than blood of the patient. Measurements of ion concentration may be correlated to blood electrolyte concentration or blood pH.

[0035] Any suitable transducer **205** may be employed to detect pH or electrolytes, regardless of where the transducer **205** is placed. In embodiments, the transducer **205** is an ion selective electrode configured to detect H⁺ ions, K⁺ ions, Na⁺ ions, Ca²⁺ ions, Cl⁻ ions, phosphate ions, magnesium ions, acetate ions, amino acids ions, or the like. Such electrodes, and components of sensors employing such electrodes, are known in the art and may be employed, or modified to be employed, for use in the monitoring described herein. One example of a pH sensor is Medtronic, Inc.'s Bravo® pH sensor. One example of a potassium selective electrode is the Thermo Scientific Potassium Ionplus®. Other examples of ion-selective electrodes are contained in the CCX Stat Profile® produced by Nova Biomedical.

[0036] In some embodiments, one or more sensors are employed to detect one or more ions to gauge pH or electrolytes in the blood. In some embodiments, a sensor may have more than one transducer, even if leadless, that may monitor more than one ionic species. By measuring more than one ionic species, a more detailed un-

derstanding of the levels of various electrolytes or blood components may be had. For example, in some patients in some situations, one electrolyte may be at elevated levels while another may be at reduced levels. In some embodiments, more than one sensor for the same ion is employed for purposes of result confirmation and redundancy, which can improve reliability and accuracy. In some embodiments, sensors for the same ion may be configured to accurately detect different ranges of concentrations of the ion. In embodiments, more than one transducer is present in a single unit. This allows for convenient data collection and circuitry, as all the data may be collected in one place at the same time. Further, the multiple transducers may share the same fluid collection mechanism (e.g., a microdialyzer in the case of an implant), and if needed or desired, may share the same data processing and memory storage components.

[0037] Implantable sensors or sensors in which the transducer is chronically inserted in a tissue or blood of a patient may be calibrated prior to implant by placement of the transducer in blood (or other conditions mimicking the implant environment) with known pH or electrolyte concentrations. The sensors **200** may be recalibrated while implanted in the patients. For example, blood pH and electrolyte concentration can be measured external to the patient, e.g., via blood draws, and results of the external monitoring can be communicated to the implanted sensor **200** by receiving input, e.g., from healthcare providers. Thus, the sensor **200**, if sensor has necessary electronics (e.g., as discussed below in more detail), can recalibrate based on the input regarding the external measurements. Alternatively, or in addition, the sensor may have an internal reference built in, such as with the Medtronic, Inc. Bravo® pH sensor. Alternatively, in cases where the sensor outputs raw data to an external device, the external device may be calibrated to interpret the raw data from the sensor with regard to input regarding the external measurements.

[0038] For purposes of illustration, a block diagram of a generic implantable sensing device **200** (e.g., as depicted in **FIG. 4**) is shown in **FIG. 5**. The depicted sensor is implantable and has a hermetically sealed housing **299** for containing various electronic components **296**, **297**, **289**, **295**. Sensing circuitry **296**, such as analog-to-digital convertor, band-pass filter, or the like, is operably coupled to power supply **297** and control electronics **295**, which include a processor **294** and a memory **293** for storing sensed data and processor instructions. Sensing circuitry **296** is also operably coupled to transducer **205**, such as an ion selective electrode, via lead **207**, which enters housing **299** via a hermetic feedthrough (not shown). Control electronics **295** are also operably coupled to power supply **297**, which may be a battery or the like, and to telemetry circuitry **289** for wirelessly communicating with a device external to the patient or with another device implanted in the patient. In some embodiments, the telemetry circuitry **289** allows the sensor device **200** to transmit data regarding a monitored pH or

electrolyte directly to a blood fluid removal device or system that is equipped with suitable telemetry circuitry.

[0039] Referring now to **FIG. 6**, an embodiment of a sensor system **250**, in which the implanted sensor device **200** (leadless is shown, but may include lead as depicted in **FIG. 4**), communicates with an external device **210**. The external device **210** may be worn and may carry out some processing of data acquired by sensor **200** to reduce power consumption of implanted sensor **200**, for purpose of size, computing power, upgradeability, or the like. Any suitable external device **210**, such as a computer, personal data assistant, smart phone, patient programmer device, or the like, may be employed. In embodiments, the external device **210** communicates with remote device **300**. Of course, in some embodiments, the implanted sensor **200** may communicate directly with remote device **300**.

[0040] Remote devices **300** may be devices associated with blood fluid removal, and data transmitted by external device **210** may be used to set or adjust fluid pH and electrolyte concentrations before or during a blood fluid removal session. Remote device **300** may be a computer, personal data assistant or the like connected to the internet or a phone network, allowing sensed data or other information regarding sensed data to be transmitted to a healthcare provider. For example, the sensed data, or information regarding the sensed data, may be used to prepare an appropriate initial fluid (e.g., dialysate or replacement fluid) for use in the patient's next blood fluid removal session. If the monitored pH or electrolytes are out of a predetermined range, an appointment to see a healthcare provider or to schedule a blood fluid removal session may be performed automatically. In some embodiments, remote device **300** is a physician programmer device. Of course, remote device **300** may be any other suitable device.

[0041] In various embodiments, data acquired from blood pH or electrolyte sensors may be used to adjust the pH of electrolytes of fluid (e.g., dialysate or replacement fluid, see, e.g., **FIGS. 1-3**) during a blood fluid removal session, as long as the blood fluid replacement device or system is equipped to adjust the concentration of such components. Some examples of such devices that may be used, or modified for use herein, are described in U.S. Provisional patent Application No. 61/480,532, filed on April 29, 2011 (published as, inter alia, US 2012/0273420), entitled ELECTROLYTE AND pH MONITORING FOR FLUID REMOVAL PROCESSES.

[0042] The implantable or wearable sensors described herein, e.g. with regard to **FIGS. 4-6**, may be used as sensors that monitor an indicator of blood pH or blood electrolyte concentration before the blood enters a blood fluid removal device or media in accordance with the incorporated provisional application.

[0043] The pH or electrolyte sensors, e.g. as described above, may be employed to understand how to appropriately adjust the pH or electrolyte level. Data acquired

from the sensors may be transmitted to blood fluid removal devices or devices in communication with blood fluid removal devices (such as devices depicted in FIGS. 1-3 and described above) for adjusting the concentration of pH buffers or electrolytes in dialysate or replacement fluid. The pH and electrolyte concentration of the fluid (dialysate or replacement fluid) may be adjusted in any suitable manner.

[0044] For example and with reference to FIGS. 7-8, some representative components of an example of a closed-loop system (FIG. 7) and an open-loop system (FIG. 8) for adjusting pH and electrolyte concentrations of fluid are shown. With reference to FIG. 7, data from sensor 200 (e.g., as described above with regard to FIGS. 4-6) is presented to control electronics 495, which are configured to control flow control elements 415, 425, 435, such as valves. The electronically controllable flow control elements 415, 425, 435 are in fluid communication with supplies of concentrated electrolyte or buffer solutions 410, 420, 430 and with fluid line 440, which may be a catheter for carrying fresh dialysate or a catheter for carrying replacement fluid. The electronically controllable flow control elements 415, 425, 435, via control electronics 495, control the rate at which the concentrates 410, 420, 430 flow into the fluid line 440. The concentrates 410, 420, 430 are added to bulk fluid 400 to adjust the concentration of electrolytes or the pH of the bulk fluid (and thus the blood).

[0045] Referring now to FIG. 8, data from sensor 200 may be processed and appropriate information presented on a display 600, which may be a part of the blood fluid removal device, a separate computer, or the like. A healthcare provider may use the information presented on the display 600 to adjust the concentration of electrolytes or pH. This can be done, for example, by transmitting appropriate instructions to the control electronics via an input device 500. Any suitable input device 500 may be used. For example, input device 500 may be a keyboard, a computer, a tablet, a personal data assistant, a physician programmer, or the like. In some embodiments, the input device 500 is the display 600; e.g., where the display 600 is a touch screen device. Regardless of how the instructions are input, the control electronics 495 can control flow control elements 415, 425, 435 to control the amount of concentrate 410, 420, 430 introduced to bulk fluid 400, which may be dialysate or replacement fluid.

[0046] Any number of suitable concentrates may be used. For example, one concentrate may be sufficient with higher amounts being added when the electrolytes are determined to be low in the patient's blood, and smaller amounts being added when the electrolytes are determined to be high in the patient's blood. More than one concentrate may be used when it is desired to, for example, control pH and electrolyte concentration independently or to control concentration of different electrolytes independently. In embodiments, the number of concentrates is the same as the number of ion species (pH and

electrolytes) monitored.

[0047] Control elements 415, 425, 435, as depicted in, and described with regard to, FIGS. 7-8, may be any suitable control element, such as electronically controllable valves, electronically controllable pump mechanisms, or the like.

[0048] Control electronics 495, as depicted in, and described with regard to, FIGS. 7-8, may include, for example, a processor and memory. The memory, which may be RAM, ROM, or the like, may store instructions, and the processor may carry out the instructions.

[0049] Any suitable system may be configured as depicted in FIGS. 7-8 to provide control of adjustment of pH or electrolytes based on data acquired from one or more sensors. Examples of such systems that may be used, or modified for use herein, are described in U.S. Provisional Patent Application No. 61/480,532, filed on April 29, 2011 (US 2012/0273420), entitled ELECTROLYTE AND pH MONITORING FOR FLUID REMOVAL PROCESSES.

[0050] While FIGS. 7-8 show devices that can adjust blood electrolyte or pH by adjusting the pH or electrolyte concentration of replacement fluid or dialysate, it will be understood that pH and concentration can also be adjusted by, for example, adjusting the rate at which dialysate or blood is passed over a dialysis membrane. The rate of transfer between blood and dialysate of electrolytes, etc. across the membrane will be dependent on the flow rate of the blood and the dialysate. Accordingly, in systems where dialysate electrolyte concentration or pH cannot be readily adjusted, the rate of flow of blood or dialysate flow may be altered to achieve similar effects to adjusting the concentration of electrolytes in dialysate.

[0051] It will be understood that the blood fluid removal devices and systems, and components thereof, described herein are presented for purposes of illustration and not limitation. Components, devices and systems other than those described herein, or derivations of the components, devices and systems described herein, may be employed. Further, it will be understood that, while many of the blood fluid removal devices depicted in a variety of the figures, such as FIGS. 1-3 are shown as external to the patient, the teachings presented herein apply if the device or components thereof, were implanted in the patient.

[0052] The devices and systems described above, or components thereof, may be used to carry out the uses depicted in FIGS. 9-13 and described below, or portions thereof. Of course, any suitable device or system may be employed to carry out the uses, or portions thereof, described below. It will be understood that various steps of the uses presented with regard to any one of FIGS. 9-13 below may be interchanged, substituted, or added to steps presented with regard to any other of FIGS. 9-13.

[0053] FIGS. 9-11 present embodiments where monitoring is employed prior to a given blood fluid session, and FIGS. 12-13 present embodiments where monitoring is employed during a blood fluid removal session. How-

ever, aspects of the uses of **FIGS. 9-11** may be incorporated into the uses of **FIGS. 12-13**.

[0054] Referring now to **FIG. 9**, the depicted use includes identifying, selecting or diagnosing a patient for which a blood fluid removal session is indicated (**800**) and monitoring pH or electrolyte levels of the blood of the patient (**810**). The monitoring (**810**) may be chronic and may employ one or more implantable sensors. Based on the monitored pH or electrolyte concentration, the fluid (e.g., dialysate or replacement fluid) composition (e.g., electrolyte concentration, buffer composition and concentration) for use initial use in a blood fluid removal session may be set (**820**). As described above, the ability to chronically monitor pH or electrolyte concentrations of the patient's blood provides the ability to tailor the fluid composition prior to each blood fluid removal session, as opposed to current standard practice in which the fluid composition is adjusted on a monthly basis (or thereabout). As multiple blood fluid removal sessions (e.g., two to three a week) may occur with a month, setting the fluid composition on a monthly basis may result in the patient undergoing several blood fluid removal sessions with a fluid composition that may no longer be well suited for the patient.

[0055] Referring now to **FIG. 10**, use includes identifying, selecting or diagnosing a patient for which a blood fluid removal session is indicated (**800**) and monitoring pH or electrolyte levels of the blood of the patient (**810**). As with the use in **FIG. 9**, the monitoring (**810**) may be chronic and may employ one or more implantable sensors. The use depicted in **FIG. 10** includes determining whether the pH or electrolyte concentration is out of range (**830**) based on data acquired during the monitoring (**810**). For example, a determination (**830**) may be made as to whether pH or electrolyte levels crossed a threshold (e.g., a ceiling or floor). Suitable thresholds or ranges may be stored in, for example, a look-up table in memory of a sensor device, a blood fluid removal device, or other suitable device for purposes of determining whether the pH or electrolyte concentration is out of range (**830**) based on data acquired during the monitoring. If the pH or electrolytes are determined to be within range, monitoring (**810**) may continue. If the pH or electrolytes are determined to be out of range (e.g., cross a threshold), an alert (**840**) may be issued or a blood fluid removal session (**850**) may be scheduled.

[0056] The scheduled blood fluid removal session may take into account the monitored (**810**) pH or electrolytes, e.g. as described with regard to **FIG. 9**. The scheduling may occur automatically, e.g. the sensor or a device in communication with the sensor may transmit data and cause scheduling of session over internet, telephone, or other suitable network.

[0057] Any suitable alert (**840**) may be issued. The alert may be a tactile cue, such as vibration or audible alarm, generated by a sensor or a device in communication with sensor. The alert may provide the patient with notice that medical attention should be sought. The alert may also

provide information to a healthcare provider regarding the nature of the health issue (e.g., pH or electrolytes out of range) and treatment (e.g., blood fluid removal session) for which the alert (**840**) was issued. The sensor or a device in communication with the sensor may alert the healthcare provider by transmitting the alert or related information over the internet, a telephone network, or other suitable network to a device in communication with the healthcare provider.

[0058] Referring now to **FIG. 11**, the depicted use includes identifying, selecting or diagnosing a patient for which a blood fluid removal session is indicated (**800**) and monitoring pH or electrolyte levels of the blood of the patient (**810**). The monitoring (**810**) may be chronic and may employ one or more implantable sensors. Based on the monitored pH or electrolyte concentration, the rate of flow of dialysate or blood, based in part on the concentration of electrolytes and pH composition of the dialysate, is set (**901**). As described above, the rate of flow of dialysate or blood affects the rate of transfer of electrolytes, etc. across the dialysis membrane. Accordingly, depending on the composition of the dialysate used, the rate of flow of the dialysate or blood may be adjusted or set so that desirable blood pH and electrolyte levels may be achieved during the course of a treatment session.

[0059] Referring now to **FIG. 12**, the depicted use includes initiating a blood fluid removal session (**801**) and monitoring pH or electrolyte concentration of blood (**810**). As discussed above, the monitoring may occur via one or more implanted sensors. Based on the monitored pH or electrolytes, the pH or electrolyte composition or concentration of fluid (e.g., dialysate or replacement fluid) used in the blood fluid removal session may be adjusted (**860**). For example, based one or more of the current value of a monitored ionic species or the rate of change in the monitored ionic species, the fluid composition may be adjusted, e.g. as discussed above.

[0060] Referring now to **FIG. 13**, the depicted use show a use where blood electrolyte concentration or pH is adjusted by altering the flow rate of dialysate or blood. The use includes initiating a blood fluid removal session (**801**), such as a hemodialysis session, and monitoring an indicator of pH or electrolyte (**810**), which can be in the patient, upstream of the device, downstream of the device, within the device, or the like. Based on the monitored data (**810**), adjustments to the flow of dialysate or blood may be made (**900**) to adjust the electrolyte concentration or pH in the blood that gets returned to the patient.

[0061] The uses described herein, including the uses depicted in **FIGS. 9-12**, may be carried out by sensor devices, blood fluid removal devices, or other devices in communication with sensor devices or blood fluid removal devices. These uses may be algorithms or instructions programmed into memory of such devices, which may be carried out by processors or other control electronics of the devices. Preferably, the processor is in communi-

cation with appropriate control elements of the devices and is configured to control such elements in a manner such that the programmed instructions are carried out by the appropriate device. It will be understood that a computer readable medium programmed with instructions that cause a sensor device, blood fluid removal device, or other suitable device to carry out a use, or a portion thereof, as described herein are contemplated. The computer readable medium may be non-transitory, i.e. lasting for more than a fleeting instant or seconds. The medium may be memory, such as RAM or ROM, a cd or dvd, flash memory, or the like.

[0062] Various aspects of uses, systems, devices, computer-readable media, etc. are described herein. A summary of some of the aspects is provided below.

[0063] In a first aspect, a use comprises (i) identifying a patient for which a blood fluid removal session is indicated; and (ii) chronically monitoring an indicator of blood electrolyte concentration or blood pH of the patient via an implantable sensor device.

[0064] A second aspect is a use of the first aspect, further comprising (i) determining whether the monitored indicator crosses a predetermined threshold; and (ii) alerting the patient if the indicator is determined to cross the threshold.

[0065] A third aspect is a use of the second aspect, further comprising alerting a healthcare provider if the indicator is determined to cross the threshold.

[0066] A fourth aspect is a use of the first aspect, further comprising determining an appropriate electrolyte concentration or buffer concentration for a fluid to be used in a blood fluid removal session based on the monitored indicator.

[0067] A fifth aspect is a use of the fourth aspect, wherein the fluid to be used in the blood fluid removal session comprises dialysate fluid.

[0068] A sixth aspect is a use of the fifth aspect, wherein the fluid to be used in the blood fluid removal session comprises replacement fluid.

[0069] A seventh aspect is a use of any of aspects 1-6, further comprising transmitting data regarding the monitored indicator to a blood fluid removal device, or control electronics configured to control a blood fluid removal device, wherein the blood fluid removal device or control electronics determines the appropriate electrolyte concentration or buffer concentration.

[0070] An eighth aspect is a use of any of aspects, 1-7, wherein the monitoring comprises monitoring the indicator via an implantable sensor.

[0071] A ninth aspect is a use of aspect 8, further comprising monitoring the indicator via an external sensor, and calibrating the implantable sensor based on data acquired from the external sensor.

[0072] A tenth aspect is a use of aspect 9, wherein the monitoring via the external sensor occurs during a blood fluid removal session, and wherein the calibrating occurs during a blood fluid removal session.

[0073] An eleventh aspect is a use comprising: (i)

chronically monitoring, via an implantable sensor, an indicator of blood electrolyte concentration or blood pH of the patient during the blood fluid removal session; and (ii) initiating blood fluid removal procedure for a patient in need thereof, wherein the procedure comprises use of a dialysate fluid and a dialysate membrane, as at least a part of a blood fluid removal medium, across which electrolytes may be exchanged between blood and dialysate fluid, wherein the concentration of electrolyte in the dialysate fluid is based on a value of the monitored indicator.

[0074] A twelfth aspect is a use comprising: (i) chronically monitoring, via an implantable sensor, an indicator of blood electrolyte concentration or blood pH of the patient during the blood fluid removal session; and (ii) initiating blood fluid removal procedure for a patient in need thereof, wherein the procedure comprises use of a dialysate fluid and a dialysate membrane, as at least a part of a blood fluid removal medium, across which electrolytes may be exchanged between blood and dialysate fluid, wherein the rate of flow of the dialysate fluid or the blood is based on a value of the monitored indicator.

EXAMPLE

[0075] The following prophetic example is presented to provide guidance as to how to acquire and interpret data from an implantable sensor configured to monitor pH or electrolytes in blood of a patient for use in uses or devices as described in the DETAILED DESCRIPTION above. It will be understood that the prophetic example provided herein in only one suitable way for monitored data to be acquired and interpreted in accordance with the general principles disclosed herein.

[0076] For this prophetic example, an implantable transducer of a sensor that is configured to detect the presence of a specific ion species (e.g., K^+ , Na^+ or H^+) is calibrated by placement in blood of known concentrations of the ion species. A sensor response profile for the various concentrations of ion species is then recorded and entered into memory, which can be memory of the sensor device or a device in communication with the sensor. Once calibrated, the sensor, or transducer, may then be placed within a blood vessel of the patient (e.g., using a stent-like, or Medtronic, Inc. ALPS-like device) to monitor the ion species in the patient's blood.

[0077] The sensor may be recalibrated occasionally. For example, blood can be withdrawn from the patient and lab tests may be performed to determine the actual concentration of the ionic species in the blood. The actual value of the ionic species may then be communicated to the sensor, which can then re-calibrate, if necessary, based on the actual value and the initial calibration curve. In some cases, the sensor may include an internal reference standard, such as with Medtronic, Inc.'s Bravo® pH sensor, which maybe used to calibrate the sensor from time to time.

[0078] In any case, once the sensor is properly cali-

brated, its readings with regard to amount ionic species may be trusted. These readings can then be reliably used in accordance with the teachings provided herein.

[0079] Thus, systems, devices and uses for CHRONIC pH OR ELECTROLYTE MONITORING are described. Those skilled in the art will recognize that the preferred embodiments described herein may be altered or amended without departing from the true scope of the disclosure, as defined in the accompanying claims.

Claims

1. A method comprising:

chronically monitoring an indicator of blood electrolyte concentration or blood pH via an implanted sensor device; and
determining an appropriate electrolyte concentration or buffer concentration for a fluid to be used in a blood fluid removal session based on the monitored indicator; and further comprising transmitting data regarding the monitored indicator to a blood fluid removal device, or control electronics configured to control a blood fluid removal device, wherein the blood fluid removal device or control electronics is adapted to determine the appropriate electrolyte concentration or buffer concentration and to control flow of a concentrate from one or more concentrate sources of the blood fluid removal device into the fluid to achieve the appropriate concentration.

2. The method of claim 1, further comprising (i) determining whether the monitored indicator crosses a predetermined threshold; and (ii) providing an alert if the indicator is determined to cross the threshold.

3. The method of claim 2, further comprising alerting a healthcare provider if the indicator is determined to cross the threshold.

4. The method of any preceding claim, wherein the fluid to be used in the blood fluid removal session comprises dialysate fluid.

5. The method of any preceding claim, wherein the fluid to be used in the blood fluid removal session comprises replacement fluid.

6. The method of claim 1, further comprising monitoring the indicator via an external sensor, and calibrating the implantable sensor based on data acquired from the external sensor.

7. The method of any preceding claim, wherein the indicator of blood electrolyte concentration or blood

pH is monitored before initiating the blood fluid removal procedure, wherein the initial pH buffer composition or electrolyte composition of the fluid is based on a value of the indicator monitored before the blood fluid removal session is initiated.

8. The method of any preceding claim, wherein the sensor is selected from a transducer, an active leadless pressure sensor, an ion selective electrode or a pH sensor.

9. The method of claim 1, wherein the flow of the concentrate from the one or more concentrate sources is controlled by one or more pumps and one or more valves in fluid communication with the one or more concentrate sources.

10. The method of claim 1, wherein a patient for which a blood fluid removal session is indicated is identified prior to monitoring an indicator of blood electrolyte concentration or blood pH.

11. A system comprising:

a blood fluid removal device (100) comprising

(i) an inlet for receiving blood from a patient,
(ii) an outlet for returning blood from the patient,

(iii) a medium (100) for removing fluid and contaminants from the blood, the medium being positioned between the inlet and the first outlet, and

(iv) a fluid source for carrying a fluid, the fluid selected from dialysate and replacement fluid, wherein if the fluid is dialysate the fluid source carries the fluid to the medium, and wherein if the fluid is replacement fluid the fluid source carries the fluid to the blood after the blood exits the medium;

(v) a concentrate source for housing a concentrate solution (410, 420, 430) comprising concentrated electrolyte or pH buffer;

(vi) a concentrate flow control element (415, 425, 435) for controlling the rate that the concentrate solution enters the fluid source; and

control electronics (495) in operable communication with the concentrate flow control element and an implantable sensor (200) configured to perform the method of any preceding claim.

12. The system of claim 11, wherein the control electronics are housed within a housing (299) of the blood fluid removal device.

13. The system of claim 11 or claim 12, further compris-

ing a computer readable medium, wherein the computer readable medium comprises instructions that cause the control electronics to control the concentrate flow control element to adjust the rate at which the concentrate solution enters the fluid source based on data obtained from the sensor.

14. The system of any of claims 11 to 13, wherein the implantable sensor is selected from a transducer, an active leadless pressure sensor, an ion selective electrode or a pH sensor.

Patentansprüche

1. Verfahren, das Folgendes umfasst:

zeitliches Überwachen eines Indikators der Blutelektrolytkonzentration oder des Blut-pH-Wertes über eine implantierte Sensorvorrichtung; und

Bestimmen einer geeigneten Elektrolytkonzentration oder Pufferkonzentration für ein Fluid, das in einer Blutfluid-Beseitigungssitzung verwendet werden soll, anhand des überwachten Indikators; und das ferner umfasst:

Senden von Daten bezüglich des überwachten Indikators zu einer Blutfluid-Beseitigungsvorrichtung oder zu einer Steuerelektronik, die konfiguriert ist, eine Blutfluid-Beseitigungsvorrichtung zu steuern, wobei die Blutfluid-Beseitigungsvorrichtung oder die Steuerelektronik dafür ausgelegt ist, die geeignete Elektrolytkonzentration oder Pufferkonzentration zu bestimmen und die Durchflussmenge eines Konzentrats von einer oder mehreren Konzentratquellen der Blutfluid-Beseitigungsvorrichtung in das Fluid zu steuern, um die geeignete Konzentration zu erreichen.

2. Verfahren nach Anspruch 1, das ferner umfasst: (i) Bestimmen, ob der überwachte Indikator einen vorgegebenen Schwellenwert durchquert; und (ii) Vorsehen einer Warnung, falls bestimmt wird, dass der Indikator den Schwellenwert durchquert.
3. Verfahren nach Anspruch 2, das ferner das Warnen eines Gesundheitsdienstanbieters umfasst, falls bestimmt wird, dass der Indikator den Schwellenwert durchquert.
4. Verfahren nach einem vorhergehenden Anspruch, wobei das Fluid, das in der Blutfluid-Beseitigungssitzung verwendet werden soll, ein Dialysatfluid enthält.

5. Verfahren nach einem vorhergehenden Anspruch, wobei das Fluid, das in der Blutfluid-Beseitigungssitzung verwendet werden soll, ein Austauschfluid enthält.

6. Verfahren nach Anspruch 1, das ferner das Überwachen des Indikators über einen externen Sensor und das Kalibrieren des implantierbaren Sensors anhand von von dem externen Sensor erfassten Daten umfasst.

7. Verfahren nach einem vorhergehenden Anspruch, wobei der Indikator der Blutelektrolytkonzentration oder des Blut-pH-Wertes überwacht wird, bevor die Blutfluid-Beseitigungsprozedur begonnen wird, wobei die anfängliche pH-Puffersammensetzung oder die Elektrolytzusammensetzung des Fluids auf einem Wert des überwachten Indikators vor dem Beginn der Blutfluid-Beseitigungssitzung beruht.

8. Verfahren nach einem vorhergehenden Anspruch, wobei der Sensor aus einem Wandler, einem aktiven, leitungslosen Drucksensor, einer ionenselektiven Elektrode oder einem pH-Sensor gewählt ist.

9. Verfahren nach Anspruch 1, wobei die Durchflussmenge des Konzentrats von der einen oder den mehreren Konzentratquellen durch eine oder mehrere Pumpen und ein oder mehrere Ventile, die mit der einen oder den mehreren Konzentratquellen in Fluidkommunikation stehen, gesteuert wird.

10. Verfahren nach Anspruch 1, wobei ein Patient, für den eine Blutfluid-Beseitigungssitzung indiziert ist, identifiziert wird, bevor ein Indikator der Blutelektrolytkonzentration oder des Blut-pH-Wertes überwacht wird.

11. System, das Folgendes enthält:

eine Blutfluid-Beseitigungsvorrichtung (100), die enthält:

- (i) einen Einlass, um Blut von einem Patienten zu empfangen,
(ii) einen Auslass, um Blut von dem Patienten zurückzuleiten,
(iii) ein Medium (100), um Fluid und Verunreinigungen aus dem Blut zu beseitigen, wobei das Medium zwischen dem Einlass und dem ersten Auslass positioniert ist, und
(iv) eine Fluidquelle, um ein Fluid zu transportieren, wobei das Fluid aus einem Dialysat und einem Austauschfluid gewählt ist, wobei dann, wenn das Fluid ein Dialysat ist, die Fluidquelle das Fluid zu dem Medium transportiert, und wobei dann, wenn das Fluid ein Austauschfluid ist, die Fluidquelle

- das Fluid zu dem Blut transportiert, nachdem das Blut das Medium verlassen hat;
- (v) eine Konzentratquelle, um eine Konzentratlösung (410, 420, 430), die konzentrierten Elektrolyt oder einen pH-Puffer enthält, aufzunehmen;
- (vi) ein Konzentrat-Durchflussmengensteuerelement (415, 425, 435), um die Durchflussmenge, mit der die Konzentratlösung in die Fluidquelle eintritt, zu steuern; und
- eine Steuerelektronik (495) in betriebstechnischer Kommunikation mit dem Konzentrat-Durchflussmengensteuerelement und einen implantierbaren Sensor (200), der konfiguriert ist, das Verfahren nach einem vorhergehenden Anspruch auszuführen.
12. System nach Anspruch 11, wobei die Steuerelektronik in einem Gehäuse (299) der Blutfluid-Beseitigungsvorrichtung aufgenommen ist.
13. System nach Anspruch 11 oder Anspruch 12, das ferner ein computerlesbares Medium enthält, wobei das computerlesbare Medium Befehle enthält, die die Steuerelektronik dazu veranlassen, das Konzentrat-Durchflussmengensteuerelement zu steuern, um die Durchflussmenge, mit der die Konzentratlösung in die Fluidquelle eintritt, anhand von Daten, die von dem Sensor erhalten werden, einzustellen.
14. System nach einem der Ansprüche 11 bis 13, wobei der implantierbare Sensor aus einem Wandler, einem aktiven, leitungslosen Drucksensor, einer ionenselektiven Elektrode oder einem pH-Sensor gewählt ist.

Revendications

1. Procédé comportant :

de surveiller de manière chronologique un indicateur d'une concentration d'électrolyte sanguin ou d'un pH sanguin via un dispositif de capteur implanté ; et

de déterminer une concentration d'électrolyte appropriée ou une concentration tampon pour un fluide à utiliser dans une session de retrait de fluide sanguin basée sur l'indicateur surveillé ; et comportant en outre

de transmettre des données concernant l'indicateur surveillé à un dispositif de retrait de fluide sanguin, ou à une unité électronique de commande configurée pour commander un dispositif de retrait de fluide sanguin, dans lequel le dispositif de retrait de fluide sanguin ou l'unité électronique de commande est adapté pour dé-

terminer la concentration d'électrolyte appropriée ou la concentration tampon et pour commander l'écoulement d'un concentré depuis une ou plusieurs sources de concentré du dispositif de retrait de fluide sanguin dans le fluide pour atteindre la concentration appropriée.

2. Procédé selon la revendication 1, comportant en outre (i) de déterminer si l'indicateur surveillé franchit un seuil prédéterminé ; et (ii) de fournir une alerte si l'indicateur est déterminé comme franchissant le seuil.
3. Procédé selon la revendication 2, comportant en outre d'alerter un professionnel de santé si l'indicateur est déterminé comme franchissant le seuil.
4. Procédé selon l'une quelconque des revendications précédentes, dans lequel le fluide à utiliser dans la session de retrait de fluide sanguin comporte un fluide dialysat.
5. Procédé selon l'une quelconque des revendications précédentes, dans lequel le fluide à utiliser dans la session de retrait de fluide sanguin comporte un fluide de remplacement.
6. Procédé selon la revendication 1, comportant en outre de surveiller l'indicateur via un capteur externe, et de calibrer le capteur implantable sur la base de données acquises par le capteur externe.
7. Procédé selon l'une quelconque des revendications précédentes, dans lequel l'indicateur de concentration d'électrolyte sanguin ou de pH sanguin est surveillé avant de lancer la procédure de retrait de fluide sanguin, dans lequel la composition tampon de pH initial ou la composition d'électrolyte du fluide est basée sur une valeur de l'indicateur surveillé avant le lancement de la session de retrait de fluide sanguin.
8. Procédé selon l'une quelconque des revendications précédentes, dans lequel le capteur est choisi parmi un transducteur, un capteur de pression sans fil actif, une électrode sélective d'ions ou un capteur de pH.
9. Procédé selon la revendication 1, dans lequel l'écoulement du concentré depuis la source ou les sources de concentré est commandé par une ou plusieurs pompes et une ou plusieurs soupapes en communication de fluide avec la source ou les sources de concentré.
10. Procédé selon la revendication 1, dans lequel un patient pour lequel une session de retrait de fluide sanguin est indiquée est identifié avant de surveiller un indicateur de concentration d'électrolyte sanguin ou

de pH sanguin.

de pH.

11. Système comportant :

un dispositif de retrait de fluide sanguin (100) comportant 5

(i) une entrée pour recevoir du sang d'un patient,

(ii) une sortie pour renvoyer du sang du patient, 10

(iii) un support (100) pour retirer un fluide et des contaminants du sang, le support étant positionné entre l'entrée et la première sortie, et 15

(iv) une source de fluide pour acheminer un fluide, le fluide étant choisi parmi un dialysat et un fluide de remplacement, dans lequel si le fluide est un dialysat la source de fluide achemine le fluide sur le support, et dans lequel si le fluide est un fluide de remplacement la source de fluide achemine le fluide dans le sang une fois que le sang quitte le support ; 20

(v) une source de concentré pour héberger une solution de concentré (410, 420, 430) comportant un électrolyte concentré ou un tampon de pH ; 25

(vi) un élément de commande d'écoulement de concentré (415, 425, 435) pour commander le débit auquel la solution de concentré pénètre dans la source de fluide ; et 30

une unité électronique de commande (495) en communication opérationnelle avec l'élément de commande d'écoulement de concentré et un capteur implantable (200) configuré pour mettre en oeuvre le procédé selon l'une quelconque des revendications précédentes. 35

40

12. Système selon la revendication 11, dans lequel l'unité électronique de commande est hébergée dans un boîtier (299) du dispositif de retrait de fluide sanguin.

13. Système selon la revendication 11 ou la revendication 12, comportant en outre un support lisible par ordinateur, dans lequel le support lisible par ordinateur comporte des instructions qui amènent l'unité électronique de commande à commander l'élément de commande d'écoulement de concentré pour régler le débit auquel la solution de concentré pénètre dans la source de fluide sur la base de données obtenues à partir du capteur. 45
50

14. Système selon l'une quelconque des revendications 11 à 13, dans lequel le capteur implantable est choisi parmi un transducteur, un capteur de pression sans fil actif, une électrode sélective d'ions ou un capteur 55

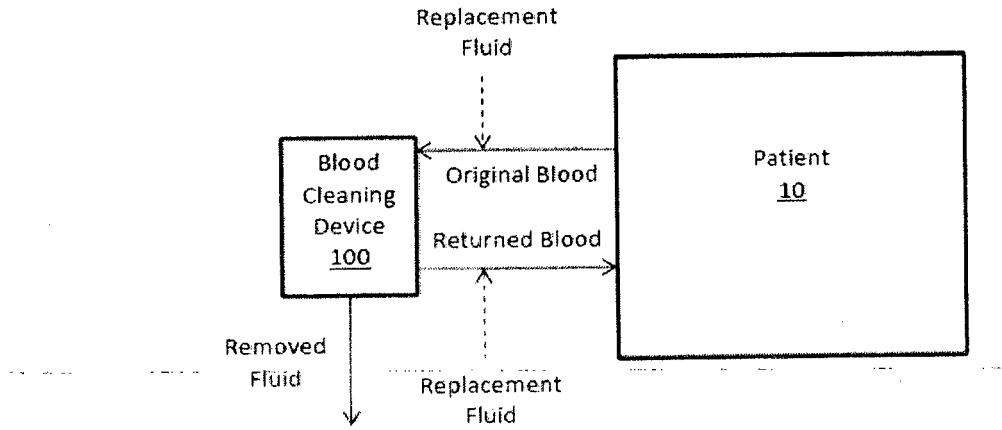


FIG. 1

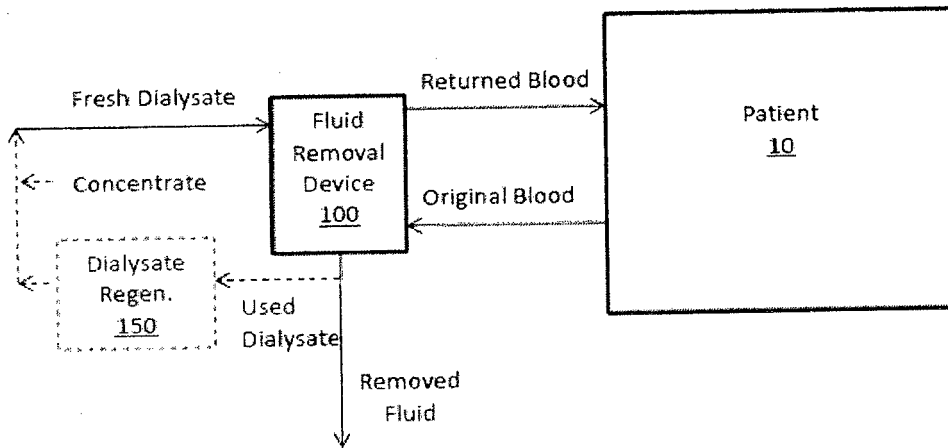


FIG. 2

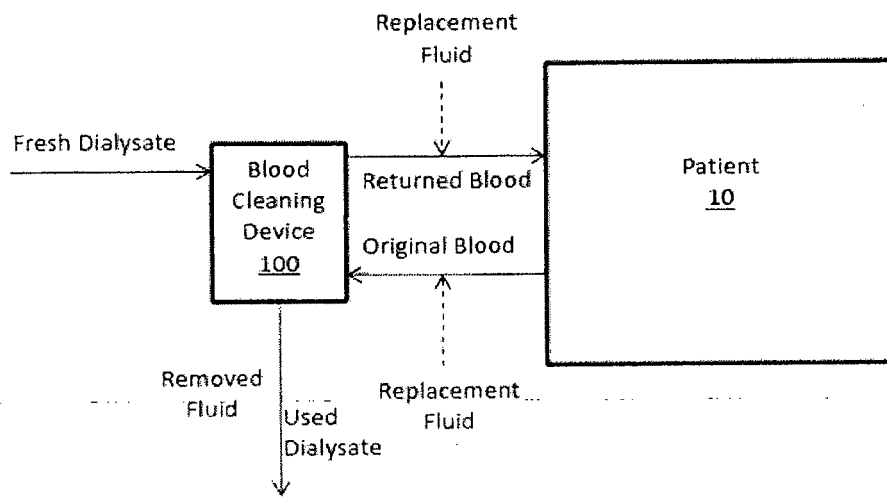


FIG. 3

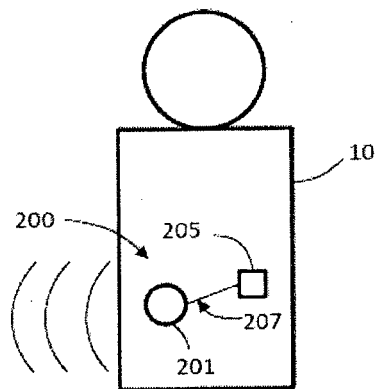


FIG. 4

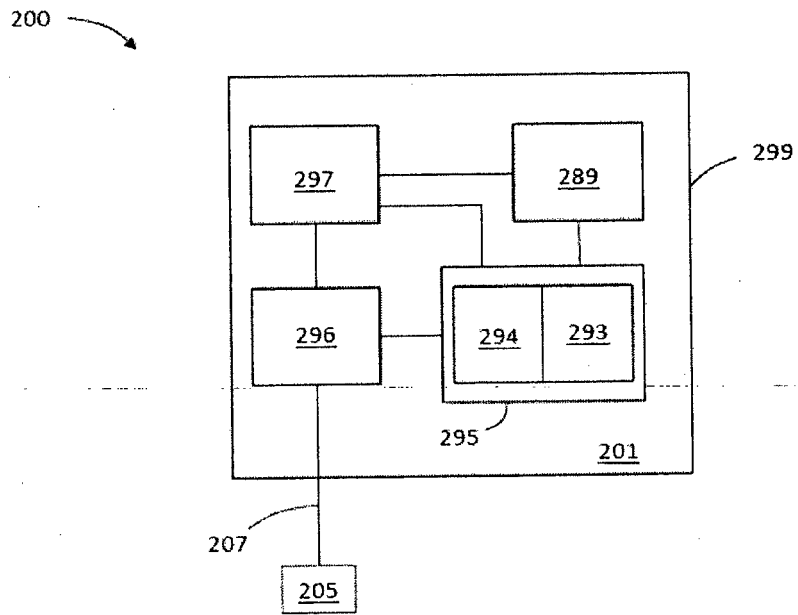


FIG. 5

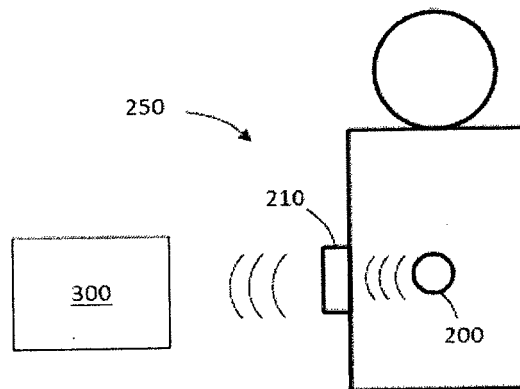


FIG. 6

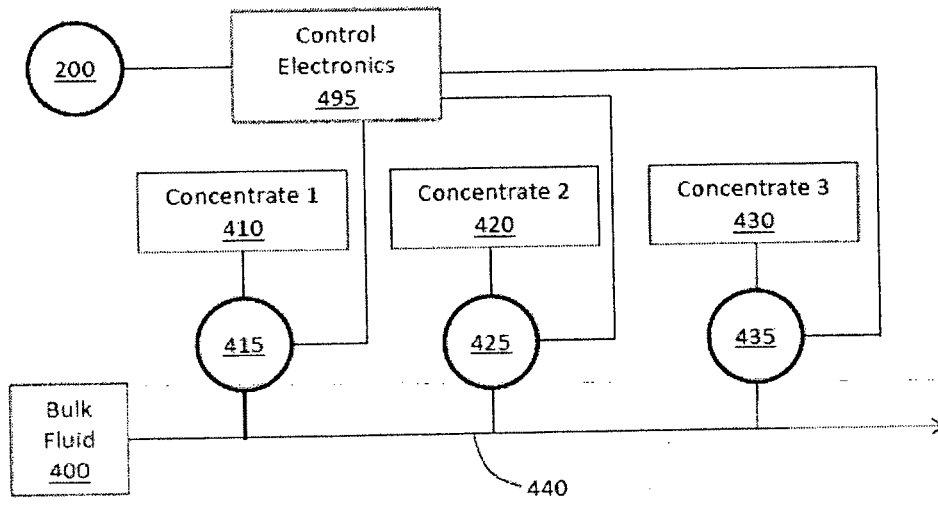


FIG. 7

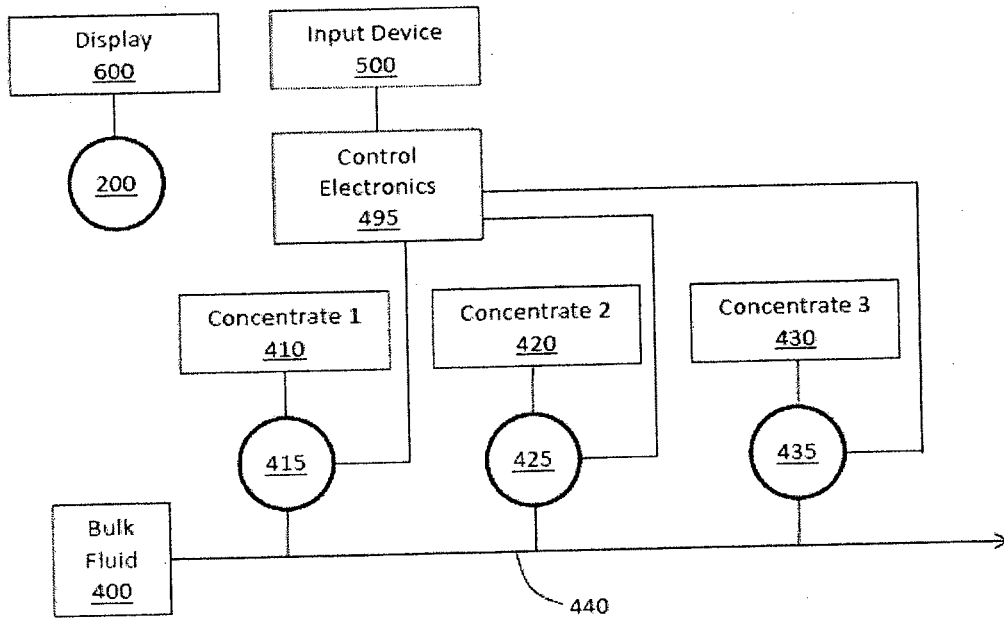


FIG. 8

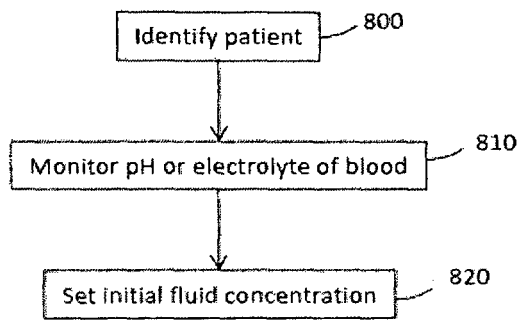


FIG. 9

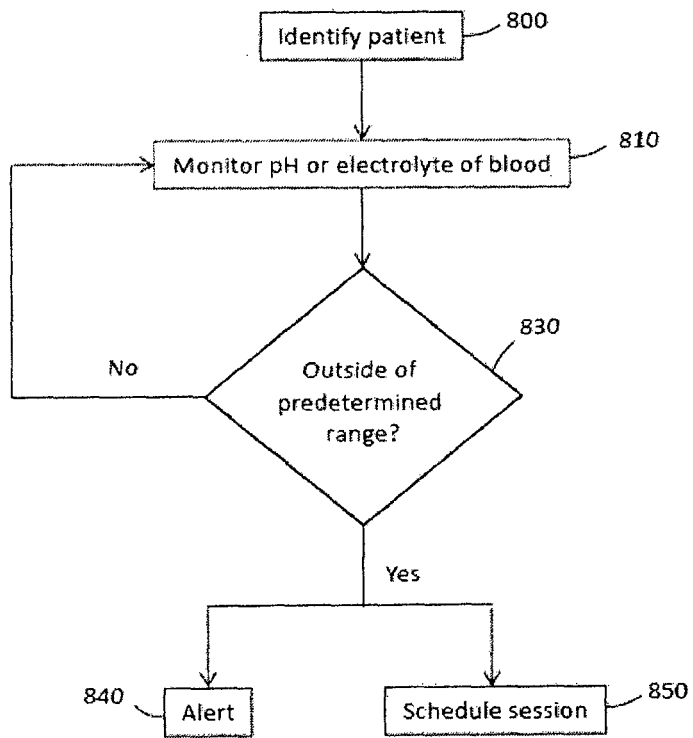


FIG. 10

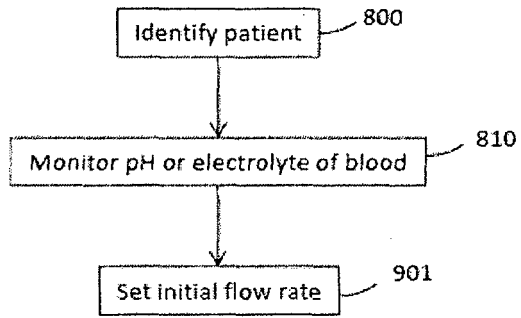


FIG. 11

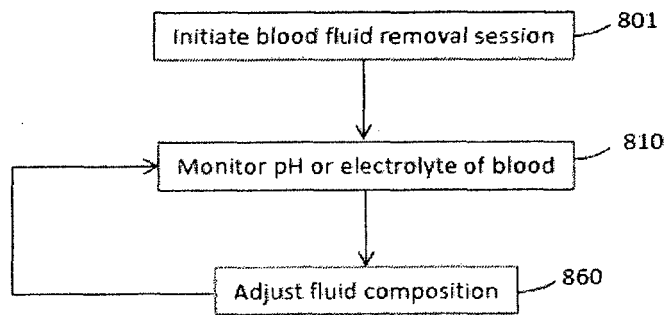


FIG. 12

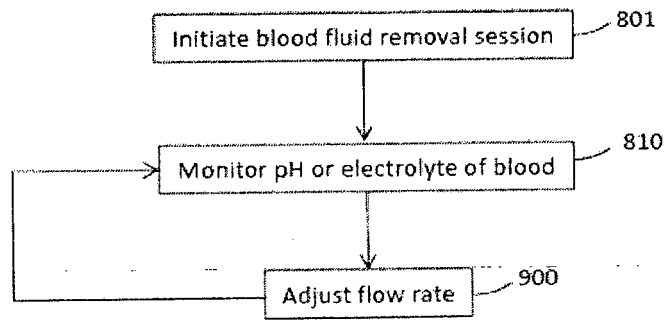


FIG. 13

REFERENCES CITED IN THE DESCRIPTION

This list of references cited by the applicant is for the reader's convenience only. It does not form part of the European patent document. Even though great care has been taken in compiling the references, errors or omissions cannot be excluded and the EPO disclaims all liability in this regard.

Patent documents cited in the description

- US 42452512 A [0001]
- US 61480539 A [0001]
- US 61480544 A [0001]
- US 61480541 A [0001]
- US 61480535 A [0001]
- US 61480532 A [0001] [0041] [0049]
- US 61480530 A [0001]
- US 61480528 A [0001]
- US 20110077574 A [0006]
- US 20070175827 A [0006]
- US 20120273420 A [0041] [0049]

Non-patent literature cited in the description

- **ROBERTS, M.** The regenerative dialysis (REDY) sorbent system. *Nephrology*, 1998, vol. 4, 275-278 [0024]
- **BLEYER et al.** Sudden and cardiac death rated in hemodialysis patients. *Kidney International*, 1999, vol. 55, 1552-1559 [0027]

专利名称(译)	慢性ph或电解质监测		
公开(公告)号	EP2701595B1	公开(公告)日	2016-06-01
申请号	EP2012719170	申请日	2012-04-19
[标]申请(专利权)人(译)	美敦力公司		
申请(专利权)人(译)	美敦力公司, INC.		
当前申请(专利权)人(译)	美敦力公司, INC.		
[标]发明人	GERBER MARTIN T LYU SUPING PUDIL BRYANT J		
发明人	GERBER, MARTIN T. LYU, SUPING PUDIL, BRYANT J.		
IPC分类号	A61B5/145 A61B5/00 A61M1/14 A61M1/16 A61M1/34		
CPC分类号	A61B5/0031 A61B5/026 A61B5/053 A61B5/0537 A61B5/145 A61B5/14503 A61B5/14539 A61B5/14546 A61B5/4836 A61B5/4848 A61B5/6866 A61B2560/0223 A61M1/16 A61M1/1601 A61M1/342 A61M1/3607 A61M1/3609 A61M2205/18 A61M2205/3334 A61M2205/52 A61M2205/60 A61M2205/70 A61M2230/00 B01D65/02 B01D2321/12 B01D2321/40 A61M1/34 A61M1/3403 A61M1/361 A61M1/3612 A61M2205/04 A61M2205/3306 A61M2205/3313 A61M2205/3331 A61M2205/3375 A61B5/0295 A61M1/00 A61M1/14 A61M1/1603 A61M1/1605 A61M1/1607 A61M1/1613 A61M2205/33 A61M2205/3523 A61M2205/50 A61M2230/208 B01D61/00 B01D61/32 A61B5/14535 A61M1/28 A61M2205/3303 A61M2230/005 A61M2230/20 A61M2230/207 A61M2230/65 G06F19/00		
优先权	61/480539 2011-04-29 US 61/480541 2011-04-29 US 61/480535 2011-04-29 US 61/480532 2011-04-29 US 61/480530 2011-04-29 US 61/480528 2011-04-29 US 61/480544 2011-04-29 US 13/424525 2012-03-20 US		
其他公开文献	EP2701595A1		
外部链接	Espacenet		

摘要(译)

用途包括监测血液pH或电解质水平, 并基于监测数据设定初始流体参数, 例如透析液参数或置换液参数, 用于血液流体去除期。血液去除系统可采用监测血液pH或电解质水平的传感器, 以在血液去除期间调节流体参数。

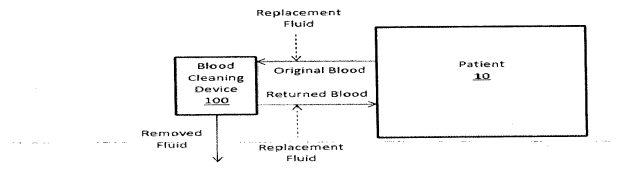


FIG. 1

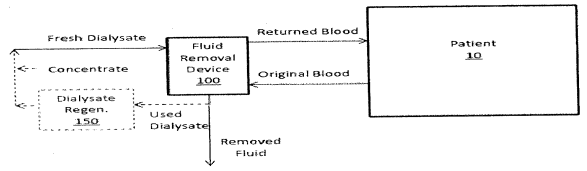


FIG. 2