

(19)



(11)

EP 2 604 168 B1

(12)

EUROPEAN PATENT SPECIFICATION

(45) Date of publication and mention of the grant of the patent:
09.10.2019 Bulletin 2019/41

(51) Int Cl.:
A61B 1/00 (2006.01) A61B 1/05 (2006.01)
A61B 5/00 (2006.01) A61B 1/04 (2006.01)
A61B 1/06 (2006.01) B82Y 30/00 (2011.01)
A61K 49/00 (2006.01)

(21) Application number: **11816631.3**

(22) Date of filing: **11.08.2011**

(86) International application number:
PCT/KR2011/005915

(87) International publication number:
WO 2012/021015 (16.02.2012 Gazette 2012/07)

(54) MEDICAL IMAGING DEVICE FOR SIMULTANEOUSLY DETECTING MULTIPLE TARGETS

MEDIZINISCHE BILDGEBUNGSVORRICHTUNG ZUR GLEICHZEITIGEN ERKENNUNG MEHRERER ZIELE

APPAREIL D'IMAGERIE MÉDICALE POUR LA DÉTECTION SIMULTANÉE DE PLUSIEURS CIBLES

(84) Designated Contracting States:
AL AT BE BG CH CY CZ DE DK EE ES FI FR GB GR HR HU IE IS IT LI LT LU LV MC MK MT NL NO PL PT RO RS SE SI SK SM TR

(30) Priority: **11.08.2010 KR 20100077565**

(43) Date of publication of application:
19.06.2013 Bulletin 2013/25

(73) Proprietor: **SNU R&DB Foundation**
Seoul 151-742 (KR)

(72) Inventors:

- **JEONG, Dae Hong**
Seoul 151-050 (KR)
- **KANG, Keon Wook**
Seoul 121-793 (KR)
- **LEE, Dong Soo**
Seoul 137-073 (KR)
- **LEE, Yoon Sik**
Anyang-si
Gyeonggi-do 431-060 (KR)

- **KIM, Gun Sung**
Anyang-si
Gyeonggi-do 431-747 (KR)
- **JUN, Bong Hyun**
Daegu 702-053 (KR)
- **PAENG, Jin Chul**
Seoul 137-040 (KR)
- **LEE, Ho Young**
Seoul 137-781 (KR)
- **LEE, Yun Sang**
Seoul 100-827 (KR)

(74) Representative: **Crease, Devanand John et al**
Keltie LLP
No.1 London Bridge
London SE1 9BA (GB)

(56) References cited:
WO-A1-2007/125300 JP-A- 2010 060 698
KR-A- 20050 034 199 KR-A- 20090 092 512
US-A1- 2005 130 163 US-A1- 2006 238 745
US-A1- 2007 002 435 US-A1- 2008 007 716
US-A1- 2008 051 645 US-B1- 7 359 040
US-B1- 7 525 653 US-B2- 7 436 501

EP 2 604 168 B1

Note: Within nine months of the publication of the mention of the grant of the European patent in the European Patent Bulletin, any person may give notice to the European Patent Office of opposition to that patent, in accordance with the Implementing Regulations. Notice of opposition shall not be deemed to have been filed until the opposition fee has been paid. (Art. 99(1) European Patent Convention).

Description

[Technical Field]

[0001] The present invention relates to a medical imaging device for obtaining image information on multiple targets by simultaneously detecting fluorescence and Raman signals thereof, and more particularly, to a medical imaging device including, for example, an endoscopic device, an optical fiber probe, or long distance optical system employing an optical fiber bundle probe for use in the in-vivo diagnosis of a disease of an animal including a human.

[Background Art]

[0002] In modern medical science, in-vivo disease diagnosis is conducted using a variety of imaging equipments such as MRI, PET, CT or endoscopy, each of which having different scope of applications and advantages and disadvantages according to features thereof.

[0003] A medical imaging equipment proposed herein is similar to currently-available endoscope in terms of the fact that the equipment is capable of acquiring two-dimensional image of a specific site inside a human body or a site exposed to outside, using a probe for insertion into the human body or a long distance optical system having a long-working distance, while also providing real time-based qualitative analysis of multiple markers using marker nanoparticles binding thereto and signals. However, the proposed imaging equipment according to the present invention provides wider and more efficient range of applications than endoscopes. The advantages are obtained from a technology that simultaneously introduces multi signal components such as fluorescence and Raman signals (to be specific, SERS signals) for marker nanoparticles, along with an optical system which is capable of measuring the same with efficiency.

[0004] Endoscope non-invasively examines in-vivo the interior of organs such as digestive system or respiratory system. Diagnosis method using the endoscope is photodynamic diagnosis. Taking cancer diagnosis for example, invasive biopsy extracts biological sample and culture cancer tissue. However, optical biopsy using endoscopy does not require extraction of biological sample, but examines a suspected site by irradiating light. This method thus saves pains on the patient's side, and also offers convenience and simple process on the side of a practitioner who can use images. Additionally, endoscope offers advantages such as accurate cancer diagnosis and early detection of cancer.

[0005] Conventional endoscopic examination involves observation on mucous membrane using white light, using natural color representation of minute color shifting of mucous membrane to provide detection of minimal disease change which is as small as several millimeters. Meanwhile, the endoscopic investigation utilizing white light has insufficient ability to recognize dysplasia gen-

erally occurring in Barrett esophagus or to detect or diagnose colorectal polyp from non-tumor. Accordingly, biopsy and histopathologic examination are separately required, to characterize positivity of a sample or malignancy. However, biopsy has drawbacks mentioned above, and other shortcomings that it is prone to sampling error, or increased cost and lengthening time of inspection due to need for histopathologic examination.

[0006] Indeed, the white light-based endoscopic examination is considered to be a relatively simple screen technology, and it is not considered to be as technological as implied by the term 'endoscopic imaging' which generally refers to those technologies that illuminate artificial lights in-vivo to living organism and construct an image based on extraction/processing/interpretation of optical information that can be acquired from the living organism.

[0007] To compensate for the above-mentioned drawbacks, fluorescent imaging technology was proposed as the endoscopic imaging technology that utilizes fluorescence, according to which presence or absence of a targeted material can be analyzed with increased accuracy and in real time by distinguishing differences of colors or the like released from normal and abnormal structures with a diagnostic equipment, using autofluorescence which is naturally emitted from biological structure in response to a predetermined frequency of laser light emitted thereto, or photosensitizer or biomarker selectively remaining on a cancerous structure. The fluorescent imaging technology thus enabled in-vivo analysis of presence of targeted material on living organism, with increased accuracy and in a real-time basis (US Pat. No. 7,285,089 et al.)

[0008] Fluorescence is used in a wide range of areas as a marker substance due to its high sensitivity that can detect even a single molecule. A considerable number of imaging technologies on marker materials have been proposed so far, including the in-vivo fluorescence imaging technology on marker material as proposed by Gambir et al. However, the fluorescence imaging technology has fundamental limitation particularly in terms of simultaneous detection on multiple biomarkers due to relatively wider bandwidth of the fluorescent spectra.

[0009] Accordingly, newer optical diagnostic technologies such as light scattering spectroscopy, or optical coherence tomography have been suggested so far, and attempts were continuously made to examine the states of the structures in details. The Raman spectrometry is gaining attention, as its way of detecting vibration spectra of molecules gives availability in a variety of optical fields and also it contains information about the structure of molecules. Since the Raman spectrometry basically enables characterization of biological constituents such as proteins or DNA based on the differences of molecular structures thereof. The Raman spectrometry is thus considered to be effective in the detection and diagnosis as to, for example, whether the polyp generated on mucous membrane is tumor or nontumor.

[0010] Raman scattering based on vibration of mole-

cules has optical characteristics which are distinguished from the energy of incident light. Accordingly, Raman scattering has narrow line width, and different scattering wavelengths depending on the types and vibrations of the scattered molecules. Further, the Raman marker materials that express Raman scattering do not show photobleaching characteristic like fluorescence. By utilizing the above-mentioned optical characteristics, it will be possible to encode a plurality of biomarkers distinctively within a narrow optical region, and it is thus possible to detect signals from multiple biomarkers by single diagnosis performance and to perform diagnosis on molecular structure-based sample using the Raman spectrometry.

[0011] Many studies are currently conducted on the imaging analysis equipment which utilizes Raman spectrometry. By way of example, JP Patent Publication No. 2002-136469 discloses an endoscopic apparatus employing a Raman spectrometer and an optical fiber, and JP Patent Publication No. 2009-511175 discloses an imaging apparatus which achieves microimages using a CARS signal. Further, US2008/007716 discloses a Raman scattering light observation apparatus and endoscope apparatus.

[0012] However, many improvements are necessary to achieve accurate diagnosis by the Raman spectrometry utilizing endoscopy, because the Raman signal emitted from the sample itself is very weak, and most Raman signals are interfered with autofluorescence of the sample, thus causing difficulty of discriminating Raman spectra of normal site from those of abnormal site. That is, due to basically weak signal strength, the Raman signals are not easily detected due to various noises or fluorescence.

[0013] US Pat. No. 2008-0007716 attempts to solve the problem of Raman signals being interfered with autofluorescence of a sample, by providing a method for removing fluorescent interference with a Shifted Excitation Raman Difference Spectroscopy (SERDS) system, but is not efficient enough to overcome the basic characteristic of the Raman signals, i.e., weakness of the signals. Further, most Raman spectrometry-based technologies suggested so far have not solved inconvenience of having to record spectra by scanning with individual optical fibers included in the optical fiber bundles and conduct imaging with respect to a specific band. Therefore, notwithstanding the advantageously narrow line width of Raman signals, practical utilization thereof for the simultaneous detection of multiple markers has limits.

[Disclosure]

[Technical Problem]

[0014] The invention has been proposed to overcome the problems occurring in the prior art, and an object of the present invention is to provide a method for simultaneously detecting fluorescence and Raman signals for

multiple targets of various diseases including cancer of an incision of an animal including human in a procedure such as surgery, and to a medical imaging device for simultaneously detecting multiple targets using the method.

[Technical Solution]

[0015] The present invention has been proposed to overcome the problems mentioned above, a method for simultaneously detecting fluorescence and Raman signals for multiple targets in one embodiment may include steps of: injecting marker particles and one or more marker particles including Raman marker particle and receptor into a body of an animal including human; illuminating a laser light into the body of the animal; and detecting, by separating an optical signal emitted after the illuminating into a fluorescent signal and a Raman signal.

[0016] The above steps inject, and thus binds marker nanoparticles, which are surface-treated to bind to targeting sites (target such as a disease or the like including specific cancer cells), separating multi-signals emitted from the bound marker nanoparticles and thereby determines location and type of the target.

[0017] The injecting may use various methods such as oral administration or injection by needle, but not limited thereto. Additional steps may be included, such as, directly spraying the marker particle onto a test structure inside the body of the animal using a spraying means connected to a probe of the medical imaging device, or injecting the marker particle through blood vessels.

[0018] Further, it may help to determine the relative location of the marker particle by determining form and location of a test structure using Rayleigh scattering and autofluorescence from cells and tissues, in addition to the fluorescence by the marker particle.

[0019] The detecting step may include steps of filtering, and thus removing laser light from the emitted optical signal, dividing a path of the filtered optical signal into a first and a second paths, and detecting a fluorescence signal from the optical signal of the first divided path and detecting a Raman signal from the optical signal of the second path, whereby the test structure can be imaged with the fluorescence signal (i.e., autofluorescence naturally emitted from the sample itself) and analyzed with the Raman signal.

[0020] The marker particle according to one embodiment of the present invention may additionally include a fluorescence dye, in which case the location of the test structure can be easily determined based on the fluorescence signal emitted from the fluorescence dye and analyzed with the Raman signal. That is, if the fluorescence signal is naturally emitted from the sample itself, two-dimensional imaging using general fluorescence may be conducted, while if the fluorescence signal is originated from the fluorescence dye included in the marker particle, this is used in the determination of the location of the test structure. Further, after the detecting step, the step of

analyzing the test structure using the Raman signal is subsequently performed.

[0021] The marker particle for use in the medical imaging device and detecting method according to the present invention may preferably use a surface-enhanced Raman marker particle incorporating therein so-called illuminating component, which may include the Raman reporter molecules adsorbed on metal nano particle including at least one of silver (Ag), gold (Au) or copper (Cu), and fluorescence materials including dyes or quantum dots co-added with core-shell structure nanoparticle including the same.

[0022] The probe particle may be so structured that the structure thereof may additionally include silica shell surrounding the fluorescence dye, the Raman reporter molecules and the metal nanoparticle or may be surface-treated to enhance other biocompatibility.

[0023] Further, the marker particle may include silica core particle to further increase quality of SERS signal, in which the silica core particle may additionally include magnetic nanoparticles to further expand the functionality of the marker particle.

[0024] That is, the present invention necessarily involves use of probe nanoparticles generating strong Raman signal (particularly, SERS signals), which are attached to the targeted site to investigate presence or absence of various targets and types of the targets based on the characteristic Raman signal thereof, and preferably and additionally generating fluorescence providing additional effects such as easy location tracing of targets due to simultaneous emission of fluorescence signal and the Raman signal.

[0025] The most basic form of the marker particle has to emit enhanced Raman signal, which may be provided in a core-shell form including a silica core incorporating therein a metal nanoparticle including at least one of gold (Au), silver (Ag) or copper (Cu), Raman marker material adhered onto the metal nano particle and a shell protecting the same (Korean Pat. No. 10-073308, Korean Pat. No. 10-2008-011195). Another example can also be found in COIN (Nano Letters., 2007, 7(2), 351-356) which discloses use of metal nano particle and bundle thereof as the core, and metal and hollow shell.

[0026] In any case, using silica shell may protect the Raman marker material within nanoparticles, increase biocompatibility of the nanoparticle, and facilitate introduction of receptors for the binding to respective targets. The receptor may use a marker material-specific receptor including any one selected from a group consisting of enzyme substrate, ligand, amino acid, peptide, protein, nucleic acid, lipid, co-factor, carbohydrate or antibody.

[0027] Among implementations of the multi signals, a technology to use both fluorescence and Raman signal is particularly advantageous for the imaging and multi detection. A F-SERs Dot (Korean Pat. No. 10-2008-011195) as one embodiment of the present invention relates to additionally including fluorescence dye to the shell in the process of forming the shell of the mark-

er particle. In addition to the above implementation, other examples are also possible. For example, the fluorescence dye may be included in the core as a dye-doped silica, and the fluorescence dye itself may be various fluorescence signal emitting material other than general organic dye, such as quantum dot. As explained above, the fluorescence signal emitted from the fluorescence dye may be advantageously used to determine the location of a test structure, while the Raman signal is used to perform analysis on the same. In this process, fluorescence signal may be naturally emitted from the test structure itself (i.e., autofluorescence), and this may be used to perform two-dimensional imaging of the test structure with the above-mentioned optical equipment. If the signal is originated from the fluorescence dye included in the marker particle, this may advantageously used for determining the location of the test structure.

[0028] To ensure that the simultaneous detection of multi signals is performed efficiently, the fluorescence dye is so selected as to be placed in the longer wavelength domain than the Raman signal to avoid overlapping with the Raman signal. The doubling of the target number of the simultaneous detection is enabled because different targets can be distinguished with the fluorescence signal before the discrimination by the Raman signal. If (n) fluorescence dyes are introduced with respect to (m) Raman signal marker particles, nano marker for simultaneously detecting (m x n) multiple targets is possible. However, too many fluorescence markers are less preferred, considering the wide bandwidth of fluorescence. Accordingly, if a plurality of fluorescence markers are necessary, two to four fluorescence markers may be sufficient.

[0029] The present invention has been made to overcome the problems mentioned above, and in one embodiment, provides a medical imaging device for simultaneously detecting multiple fluorescence and Raman signal targets which may include a light source which emits a laser light, an image guide which guides the laser light emitted from the light source and optical signals of an incident light emitted from a test structure or from marker particles which comprise a Raman marker material to emit Raman signals and receptors and which are bound to the test structure, a light collector which is connected to the image guide and which collects the optical signals, a scanner which is connected to the image guide and which scans the optical signals of the incident light, a light separator comprising a beam splitter connected to the scanner to separate a path of the incident light into a first path and a second path so that the lights are emitted separately, a fluorescence signal detector which detects fluorescence signals from the optical signals of the first path separated at the light separator, and a Raman signal detector which detects Raman scattering lights from the optical signals of the second path separated at the light separator to construct a Raman spectrum.

[0030] The light collector may be implemented in various forms for broader use of the optical equipment ac-

according to the present invention, and it is preferable to use optical fiber bundle or remote distance optical system. Since the optical fiber bundle has long length and small diameter, it is possible to directly contact this to the exposed site of the incision in the process of surgery, or when implemented in the form of slant tip, it is also possible to penetrate the same into skin for observation. Further, the optical fiber bundle may be connected to the endoscope to allow easier observation of a targeted site inside the living body. Further, while the end of the optical fiber bundle can be exposed as is, it is possible to acquire minute confocal images in the cell level, if microoptical system such as ball lens or GRIN lens, etc., is attached and used. The long-working distance lens may be used as the remote distance optical system, and this is particularly advantageous in observing the exposed target site in a contactless manner.

[0031] The light separator may additionally include an edge filter which is placed between the scanner, the fluorescence signal detector and the Raman signal detector, to remove, by filtering, the laser light from the optical signals incoming from the scanner.

[0032] It is necessary that the light separator additionally includes the edge filter to remove, by filtering, Rayleigh scattering light which corresponds to the wavelength of the laser light which is relatively stronger among the optical signals incoming from the scanner. It is also necessary to include a filter and a beam splitter to separate the optical signals into Raman signals and fluorescence signals and guide these to paths 1 and 2, to ensure that the fluorescence and Raman signals are collected efficiently. The Rayleigh removal filter may be implemented with various specifications and in various arrangements.

[0033] Further, the image guide and the light collector may additionally include a spray means to spray the marker particles onto the test structure, in which the spray means may additionally include a washing means to wash the test structure.

[Advantageous Effects]

[0034] According to the present invention, it is possible to easily perform simultaneous detection of multiple targets using multiple optical signals emitted from a test structure.

[0035] Further, according to the present invention, since the Raman marker particles with fluorescence components incorporated thereto are injected into a living body with a spray device or the like, more accurate diagnostic results based on multiple biomarker analysis can be obtained in a real-time basis.

[Brief description of drawings]

[0036]

Fig. 1 is a schematic view illustrating a structure and

operation of a medical imaging device for simultaneously detecting multiple fluorescence and Raman signal targets according to the present invention;

Fig. 2 schematically illustrates a structure of a light collector of a medical imaging device for simultaneously detecting multiple fluorescence and Raman signal targets according to the present invention;

Fig. 3 is a schematic view of a constitution and an operation of a light separator of a medical imaging device for simultaneously detecting multiple fluorescence and Raman signal targets according to the present invention;

Fig. 4 is a graph schematically represents the spectrum of an optical signal generated from the marker particles 300;

Fig. 5 is a view provided to briefly explain the process of separating and extracting the fluorescence and Raman signals only, according to the present invention;

Fig. 6 illustrates an endoscopic probe implementing therein a spray means 70 according to another embodiment of the present invention;

Fig. 7 illustrates the structure of F-SERS particles as an embodiment of the marker particles 300 according to the present invention;

Fig. 8 shows SERS spectrum acquired using the signal detecting method and optical fiber bundle according to the present invention;

Figs. 9 to 11 are fluorescence images taken by a medical imaging device for simultaneously detecting multiple fluorescence and Raman signal targets according to an embodiment of the present invention; Fig. 12 provides photograph and graph representing real-time, simultaneous measure of the fluorescence and spectrum shift;

Fig. 13 are graphs for comparing optical signal domains as collected in a medical imaging device for simultaneously detecting multiple fluorescence and Raman signal targets according to an embodiment of the present invention; and

Figs. 14 and 15 are graphs, showing when the natural Raman signals of the optical fibers are removed according to establishment of the optical path.

[Best Mode]

[0037] The present invention will be explained in greater detail below with reference to exemplary embodiments.

[0038] Fig. 1 is an overall, schematic view illustrating a structure and operation of a medical imaging device for simultaneously detecting multiple fluorescence and Raman signal targets according to the present invention.

[0039] Referring to Fig. 1, the medical imaging device according to the present invention includes a light source 10, an image guide 21 including a bundle of optical fibers, a light collector 20, a scanner 30, and a light separator 40, according to which accurate diagnosis is performed

as a path of the optical signal collected at the light collector 20 and passed through the optical fiber bundle 12 and the scanner 30 is divided into a path 1 and a path 2, a location of a target material (T) (e.g., area the marker particle is bound to targeting cell and tissue) is confirmed, and a type and a relative amount of marked particle by the various Raman signals separated to path 2.

[0040] For an optical system that provides two dimensional imaging and mobility, a technically well-developed and also well-known optical fiber bundle system 21 including scanner 30 is used, and marker nanoparticle (e.g., F-SERS dot, etc.), which uses both fluorescence signal having technical superiority in terms of real-time imaging and Raman scattering signal having superiority for multiple detection, is used, and fluorescence imaging and Raman spectra are acquired for the signal detection by separating the fluorescence signal and the Raman signal. Since the marker particle is bio-conjugated to recognize biological molecule to diagnose, the targeted marker particle emits fluorescence and Raman signals so that the optical signal delivered to the optical fiber bundle passes through the optical system and separated into fluorescence imaging and Raman spectrum for measure thereof. The measured fluorescence image indicates the targeted location among the cells and tissues in a living organism, and the Raman spectrum indicates the type of the targeted biological molecule. To be specific, since the Raman spectrum has bandwidth below approximately 10 cm^{-1} , it is possible to use numerous different signals from the visible ray area, from excitation energy and narrow spectrometry area below 2000 cm^{-1} , to fabricate various types of marker nanoparticles including Raman marker materials that emit Raman signals at different locations, and also possible to simultaneously detect multiple targeted biological molecules using such marker nanoparticles. The Raman scattering signals used herein utilize the surface enhanced Raman scattering (SERS) effect, and silver, gold and nano structures of various forms can be utilized to acquire enhanced Raman scattering signals.

[0041] The optical signals of marker nanoparticles are constructed with fluorescence signals which do not overlap with the SERS signals by the molecules adhered to silver and gold surfaces. Since SERS signals can select various adsorbate molecules, numerous different signals can be incorporated, and although the identical fluorescence signals can be selected, relatively distinguishing signals may be incorporated within an optically distinguishable range, in which case various types of signals can be implemented based on combinations of SERS signals and fluorescence signals, and various immunoassay strategies can be provided. By way of example, using the fluorescence signals emitted from the fluorescence dye, it is possible to advantageously determine the location of the test structure, and using the Raman signals, it is possible to analyze the same. That is, if the fluorescence signal is naturally emitted from the sample itself, two dimensional imaging using general fluores-

cence can be implemented, while if the fluorescence signal is originated from the fluorescence dye included in the marker particles, this can be used in the determination of a location of the test structure.

[0042] Fig. 2 schematically illustrates a structure of a light collector of a medical imaging device for simultaneously detecting multiple fluorescence and Raman signal targets according to the present invention. In one example, it is possible to use a lens system (reference numeral '20a') such as so-called 'long-working distance lens', which is used at a several centimeter working distance (e.g., intraoperative imaging equipment (FLARE: Fluorescence-assisted resection and exploration, Proc. SPIE, Vol. 6009, 60090C (2005)) at a terminal end of the optical fiber bundle optical system 21, according to which one is able to perform imaging and multi measure during a surgery; or use micro optics such as GRIN lens 20d and Ball lens 20c, or use the optical fiber bundle as a probe (i.e., without employing any lens at all) according to which one is able to perform imaging and multi measure by measuring near-distance sample which is at a micrometer working distance (US 7,336,990 B2, US 2009/0023999 A1)

[0043] The optical fiber bundle probe 20b, 20c, 20d may particularly be used in combination with endoscope. The guide of the endoscope may additionally include a spraying means which sprays the marker particles onto the test structure, to thus simultaneously detect the fluorescence and Raman signals in real-time basis in vivo and thus provide improved accuracy of the diagnosis. Meanwhile, additional functions of the medical imaging diagnosis may be incorporated by combining the functions of the conventional nuclear medical imaging equipment such as MRI or PET, in which case the nuclear medical imaging equipment may detect the disease region, while the optical fiber bundle probe may measure the corresponding region to construct multiple diagnostic image.

[0044] Fig. 3 is a schematic view provided to explain a path of an optical signal inside a medical imaging device. The medical imaging device according to one embodiment may include a light source 10, a light collector 20, an image guide 21, a scanner 30, a light separator 40, a fluorescence signal detector 50, and a Raman signal detector 60. Further, the medical imaging device may additionally include a spray means 70 to spray marker particles onto a test structure in a living organism for the diagnostic purpose.

[0045] First, the overall light path will be explained by referring to Fig. 3. The laser light 1 generated from the light source 10 is reflected from an edge filter 42, passes through a scanner 30, converged at a light emitting lens 22, transmitted to an optical fiber bundle 21, and emitted from a terminal end of the light collector 20 connected to the optical fiber bundle, that is, emitted preferably onto a test structure (T) present in a living organism. An emitted light 2 that corresponds to the wavelength of the laser light is filtered at the edge filter 42, and the filtered light

is separated at a beam splitter 41 so that 1/2(3) is delivered to the Raman signal detector 60, while 1/2(4) is delivered to the fluorescence signal detector 50. The incident light 2 may be autofluorescence which is naturally emitted from the test structure (T) or fluorescence that is generated from the marker particle 300 bound to the test structure (T) in the prior injection step.

[0046] Note that it is the optical signal emitted from the marker particle 300 that is actually used for the detection of abnormal site. That is, the autofluorescence is excluded, considering a possible error due to existence of non-specific background signal that may be included. However, the autofluorescence may be advantageously used for a conventional two dimensional imaging.

[0047] The marker particle 300 may include Raman marker material which emits Raman signal and a receptor, and may also preferably include a light emitting material including fluorescence dye or quantum dot, BRET, or dye-doped silica including a complex of fluorescence dye and silica. In a preferred embodiment of the present invention, SERS particles utilizing surface enhanced Raman scattering effect (SERS effect) are used. Accordingly, it is possible to detect both the fluorescence signal and the Raman signals simultaneously.

[0048] To be specific, the fluorescence signal detected at the fluorescence signal detector 50 may be mainly divided into two types. One is autofluorescence which is naturally emitted from the sample itself, and the other is fluorescence signal emitted from a fluorescence dye included in the marker particle 300 according to the present invention. According to the present invention, the marker particle 300 may or may not include fluorescence dye. In the former's case, both the autofluorescence and fluorescence signal from the fluorescence dye enter, while in the latter's case, only the autofluorescence is included in the incident light. Further, in the former's case, the two dimensional imaging is implemented by use of the autofluorescence at the fluorescence signal detector 50, while the location of the test structure (T) with the marker particle 30 attached thereto is determined using the fluorescence signal originated from the fluorescence dye. Further, since the latter's case uses the autofluorescence only, the fluorescence signal detector 50 is able to perform two dimensional imaging process only. In the former's case, that is, in the case where the fluorescence dye is included in the marker particle 300, the signal from the autofluorescence is excluded from consideration in the process of detecting abnormal structure. That is, the fluorescence signal, which has relatively greater signal strength and is easier to detect, is used to determine the location of the test structure (T), i.e., determine the location of the abnormal site, while the Raman signal with narrow line width is used for the qualitative analysis on the multiple targets.

[0049] Fig. 4 is a graph schematically represents the spectrum of an optical signal generated from the marker particles 300 attached to the test structure T. Referring to Fig. 4, the fluorescence signal is emitted from the flu-

orescence dye, and is not autofluorescence. That is, it is assumed that the marker particles 300 include fluorescence dye.

[0050] Referring to Fig. 4, the horizontal axis represents the shifting of the spectrum in the form of spectral domain (cm^{-1}), and the vertical axis represents magnitude of the signal.

[0051] Referring to Fig. 4, the optical signal of the incident light 2 largely includes, so-called Rayleigh scat-

tering signal region ('laser line, ν_0 ' in the drawing), which is the direct reflective light of the laser light as emitted, Raman signals, to be specific, 'SERS encoding region', and fluorescence signal region ('Fluorescence region' in the drawing), and each spectrum shifts to the respective corresponding spectra domain and detected. That is, with reference to the laser light (i.e., Rayleigh scattering), the Raman scattering shifts about 500 to 2000 cm^{-1} , and the fluorescence shifts about 2000 cm^{-1} or above (when marker particles include fluorescence dye).

[0052] The Raman band shifts from the laser wavelength (from Rayleigh scattering region) as much as the oscillation frequency of the molecule that causes Raman scattering, and such shifting spans from several tens to several thousands cm^{-1} . Among these, the region below 900 cm^{-1} is not used for the detection of the Raman band by the optical fibers. Accordingly, the actually used regions among 900 to 2000 cm^{-1} range may be approximately 520 to 560 nm, provided that the laser wavelength is 500 nm, for example. This particular region is used to encode the Raman signals, or to be more specific, to encode the SERS signals, and the fluorescence signals use relatively longer wavelength domain. The distinction among the wavelength domains may vary, depending on the wavelength of the laser light.

[0053] In one embodiment of the present invention, the marker particles 300 are designed by appropriately selecting the Raman signals as explained above, or the Raman signals along with Raman marker particles and fluorescence dye to emit the fluorescence signal. That is, using the marker particles 300, it is possible to obtain a spectrum that has a sufficient difference to avoid interference of transitions of the Raman signal region and the Fluorescence signal region with respect to the laser optical signal, and it is thus possible to achieve the basic objective of the present invention, i.e., to separate and detect the Raman signals and fluorescence signals.

[0054] That is, since the Raman scattering does not interfere with the laser light or fluorescence, the marker particles 300 and the medical imaging device according to the present invention are capable of separating and detecting the Raman signals and the fluorescence signals simultaneously.

[0055] To be specific, in one embodiment of the present invention, among the three types of signals, the Rayleigh signals are removed by a predetermined optical filter, and the rest signals, i.e., Raman signals and fluo-

rescence signals are separately detected so that the location of the targeted site is determined with the fluorescence signal and the targeted site is analyzed with the Raman signal. To be more specific, the fluorescence signal, which has stronger magnitude and is easier to detect, is used for the determination of the location of the test structure, while characteristics of the Raman spectrum are used for the multi in-vivo imaging in real-time basis, free of interference among the signals emitted from the multiple targets, considering the characteristics of the Raman spectrum are narrow line width, and variable shifting depending on the type of molecules used as the Raman marker material and the wavelength of the laser light. Furthermore, by implementing SERS particles as the marker particles 300, it is possible to provide the most efficient medical imaging device which compensates for the shortcoming of the Raman spectrum, i.e., weak signal strength.

[0056] In other words, since the fluorescence is used to determine the location of the test structure, while the Raman signals are used for the analysis purpose, it is not necessary to scan the wide surface area to find the Raman signals and thus is possible to find the location of the test structure in real-time basis. Further, since the Raman spectrum of the entire targeted region is recorded, simultaneous signal detection for the multiple targets is accomplished.

[0057] Further, the conventional medical imaging device constructs two dimensional image using autofluorescence which is naturally emitted from the interior of a living organism, and thus suffered shortcoming of less accurate diagnosis because of the non-specific background signals included in the autofluorescence. The present invention solves the above-mentioned problem of the conventional art, by exclusively using the fluorescence signal emitted from the marker particles 300 and the Raman signals for the purpose of detecting abnormal site.

[0058] It is particularly possible to provide confocal images for more accurate diagnosis, because all of the laser light, autofluorescence naturally emitted from the sample T, and Raman signals and fluorescence signals from the marker nanoparticles 300 are passed through the same optical path.

[Mode for Invention]

[0059] Hereinbelow, the respective constitutions of a medical imaging device for simultaneously detecting fluorescence and Raman signals for multiple targets according to the present invention will be explained.

[0060] The light source 10 emits a laser light. The light source 10 may use a gas laser, a solid state laser, or any of the known light emitting means without limitation. In one embodiment of the present invention, the light emitted from the light source 10 may preferably range between 400 ~ 800 nm, with resolution below 5 cm⁻¹, and be suitable for acquisition of Raman signals. The wave-

length domain may be suitably selected in consideration of the surface Plasmon resonance (SPR) with respect to precious metals such as Ag, Au included in the SERS particles used as the marker particles 300 suitable according to the present invention, and therefore, various solid state laser lights may be used at Ar ion laser lines of 488 and 514.5 nm, Kr-ion laser lines of 531, 568 and 647 nm, and/or at the above-mentioned domains.

[0061] The image guide 21 and the light collector 20 include the optical fiber bundle 21, and may include the light emitting lens 22, and various light collectors 20a-20d, to guide a laser light 1 (i.e., outgoing light) from the light source, and an optical signal 2 of an incident light emitted from the test structure, or from the marker particles 300 which are attached to the test structure and include therein Raman marker material to emit Raman signals and receptor, or additionally, fluorescence dye to emit fluorescence signals. Using the image guide 21 and the light collector 20, the laser emitted from the light source 10 can access the test structure T, and with the use of remote distance optical system, it is possible to access the targeted location with ease. If the optical fiber bundles are used as the optical collectors 20b, 20c, 20d, the heads at the terminal ends thereof may be directly manipulated or indirectly operated when connected to the endoscope according to a driving device of the endoscope. The image guide 21 and the optical fiber bundle light collectors 20b, 20c, 20d may need to have suitable size for the purpose of clinical use, which may range several mm in diameter.

[0062] The optical fiber bundles may include optical fiber bundles covered by protective layers. To acquire high resolution images, sufficient optical fibers and minimum spaces among the optical fiber cores are necessary. Generally, the optical fiber bundles include several thousands to several hundred and thousand optical fibers which are several μm in diameter, respectively. Both ends of the optical fiber bundles 21 may be equipped with reflection-proofed glass plates to prevent reflection at both ends.

[0063] The light emitting lens 22 of the image guide 21 plays a role of converging laser lights and emitting the same to the individual optical fibers inside the optical fiber bundles, and to form a focal point that is closest as possible to the diffraction limit, the emitting lens 22 is required to keep the aberration at the minimum and also to keep from deteriorating the quality of wave front.

[0064] The scanner 30 is used to acquire confocal images by aligning paths of the outgoing and incoming lights. Accordingly, any known system may be used as the scanner 30 without limit, provided that the same forms confocal image. For example, an optical system may be used, which includes a combination of one or more mirrors and aberration-free lens to form confocal images. The examples may be found at various literatures including US 7,447,539, US 7,336,990 or US 7,383,077.

[0065] The light separator 40 includes the beam splitter 41 which separates the path of the incident light into a

first path and a second path and emits the light accordingly, and may additionally include the edge filter 42.

[0066] Referring to Fig. 3, the beam splitter 41 operates to divide the path of the light, which includes the Raman signal component emitted from the marker particles 300, and fluorescence signal component (autofluorescence and fluorescence originated from fluorescence dye, respectively) emitted from the test structure T or the marker particles 300, into the first and second paths 3, 4. By the separation of the light path, as explained below, the fluorescence signals are detected from the fluorescence signal detector 50 using the optical signals separated into the first path 3, while the optical signals separated to the second path 4 are used to detect the Raman signals at the Raman signal detector 60 and construct the Raman spectrum. The beam splitter 41 may be implemented as 50/50 separating cube or 50/50 separating plate.

[0067] The edge filter 42 operates to remove the laser light from the incoming light signals 2 from the scanner 30 by filtering. Because the Rayleigh light, which is the direct reflection of the emitted laser light, does not give any meaning for the analysis purpose of the test structure, these optical signals are filtered and removed. Accordingly, the present invention may preferably employ the edge filter 42 to perform the filtering.

[0068] The edge filter 42 may preferably have approximately 5 nm of edge steepness (when measured at optical density 6.0 wavelength and 50% transmittance wavelength) to ensure that the Rayleigh scattering is removed effectively. If the edge filter 42 is included, the light, from which the Rayleigh scattering is removed, leaving the Raman signals and fluorescence signals, arrives at the beam splitter 41 and divided into the first and second paths 3, 4.

[0069] The fluorescence signal detector 50 operates to detect the fluorescence signals from the optical signals of the first path 4, from among the optical signals divided into each path at the beam splitter 41. The fluorescence signal detector 50 may separately include a rejection filter into the beam splitter to remove the Raman signals from the optical signal of the first path 4 and thus to detect the fluorescence signals, by removing optical components other than the fluorescence signals. Alternatively, a band-pass filter may be included to selectively detect one or more fluorescence signals. As explained above, depending on whether the fluorescence dye is included in the marker particles 300 or not, the autofluorescence may only be detected, or fluorescence originated from the fluorescence dye may additionally be detected.

[0070] The process of exclusively extracting fluorescence signals with the functions of the edge filter 42 and the rejection filter or the band-pass filter in the medical imaging device according to the present invention will be explained below.

[0071] Fig. 5 is a view provided to briefly explain the process of separating and extracting the fluorescence and Raman signals only. Referring to Fig. 5, it is assumed that the marker particles 300 include fluorescence dye.

[0072] Referring to Fig. 5, the optical signals emitted from the test structure include Rayleigh scattering signals (in blue) which are the direct reflection of the initial laser light from the same wavelength, Raman scattering signals (in green), and fluorescence signals (in yellow, red). As the optical signals pass the edge filter 42, only the Raman signals and the fluorescence signals remain, and therefore, the optical signals are divided into the two light paths. After that, as the optical signals advancing on the first path 4 are passed through the rejection filter or the band-pass filter, the Raman signal component is removed, thus leaving the fluorescence signals only which are detected at the fluorescence signal detector 50.

[0073] The fluorescence signal detector 50 may use, without limit, the known detector such as an avalanche photodiode or PMT which can successively accommodate the signals.

[0074] The Raman signal detector 60 plays a role of constructing the Raman spectrum by detecting the Raman scattering in the optical signals of the second path 3 which is split from the optical signals at the beam splitter 41. The Raman signal detector 60 may include a predetermined spectrometer and an optical diode array detector, or any other known signal detector, provided that the employed detector is capable of detecting Raman signals and constructing a spectrum based on the same and reading the signals. Accordingly, the optical signals of the second path 3 is formed into spectrum at the spectrometer, so that only the Raman signal region of the spectrum of the optical signal is read at a CCD or a photodiode array detector.

[0075] In another embodiment of the present invention, a spray means 70 may be additionally included, which sprays the marker particles 300 for the in-vivo diagnosis of the test structure using the medical imaging device.

[0076] Referring to Fig. 6, in one embodiment, the spray means 70 may include a particle storage tank 71a storing therein spray liquid A including the marker particles, a particle conveying pipe 71b which conveys the spray liquid A from the particle storage tank 71a to the test structure T, a washing liquid storage tank 72a storing therein washing liquid B to wash the test structure to thus remove foreign substances other than the marker nanoparticles, and a washing liquid conveying pipe 72b which conveys the washing liquid B to the test structure T.

[0077] Accordingly, as a practitioner operates a driving device 200, or uses a spray gun or the like, the liquid A for injection and the washing liquid B are sprayed from the storage tanks 71a, 72a onto the test structure through the conveying pipes 71b, 72b.

[0078] That is, with the use of the spray means 71, it is not necessary to inject the marker particles 300 into a body using needles or the like in advance, because it is possible to spray the marker particles 300 included in the injection liquid A onto the test structure in the process of conducting diagnosis with the endoscope. As a result, more accurate spraying and reduced time for diagnostic procedure are achieved.

[0079] Further, it is possible to design the spray means 71 to also spray the washing liquid B to provide clearer image of the test structure T by washing the same.

[0080] To be specific, the spray means 70 may be mounted to the heads (or probes) placed on the leading ends of the image guide 21 and the light collector 20. The endoscopic probe implementing therein the spray means 70 is illustrated in Fig. 6.

[0081] Referring to Fig. 6, the endoscopic probe may include the optical fiber bundles 20, the particle conveying pipe 71b, the washing liquid conveying pipe 72b and other endoscopic portions 11.

[0082] It is possible to use the probe of Fig. 6 to provide more accurate in-vivo diagnosis in real-time basis, with the marker particles and washing liquid conveyed through the particle conveying pipe 71b and the washing liquid conveying pipe 72b, in addition to the optical fiber bundle 20 for collecting the emitted light of the test structure T.

[0083] Next, the marker particles 300 according to the present invention will be explained. Basically, the marker particles according to the present invention include Raman marker material to emit Raman signals and receptors, and may additionally include fluorescence dye. The fluorescence dye generate fluorescence signals, and the Raman marker material generates Raman signals. Further, the receptors play a role of binding to the targeted test structure T.

[0084] According to the present invention, the marker particles 300 holding therein the receptors binding to specific suspected cancer cells are sprayed onto the structure where the cancer cells are present, and the medical imaging device according to the present invention determines location of the test structure based on the fluorescence signals generated from the fluorescence dye included in the marker particles 300 and also analyzes the presence or absence of the suspected cancer cells and properties thereof at the test structure based on the determination as to whether the Raman signals are detected or not. In an example where the fluorescence dye is not included, the Raman signals, or to be more specific, the SERS signals are used for the direct detection of the abnormal structure, while the autofluorescence is used for the imaging for observation of the structure.

[0085] That is, if the receptors of the marker particles 300 are attached to specific cancer cells, since the fluorescence signals included in the attached marker particles 300 (only autofluorescence naturally emitted from the cancer cells is detected when there is not fluorescence dye included), and fluorescence signals generated from a specific Raman marker material and Raman signal in the spectrum form are detected, it is possible to determine as to whether or not the cancer cells are present. Further, considering the very narrow line width of the Raman signal spectrum, when various receptors are bound to several marker particles 300 and injected in vivo, interference with other signals is not occurred. Therefore, it is possible to analyze Raman signals for a plurality of

marker particles 300 at once. That is, it is possible to detect and analyze the signals for multiple targets.

[0086] According to the present invention, accurate diagnosis can be achieved, because the fluorescence signals with relatively higher strength are used to easily determine the location of the marker particles 300 attached to a specific site inside a body, while the Raman signals are used to provide accurate spectrum analysis. The marker particles 300 may be implemented in any available form such as granule, wire, or the like, provided that the same include the fluorescence dye, the Raman marker material and the receptors, and the above-mentioned basic elements may be combined with conventional marker nanoparticles such as magnetic material, radioactive isotopes, quantum dots, or photonic crystals.

[0087] The receptors may also be implemented as available ones, provided that the same specifically attach to a specific test structure. An example of the receptors may include enzymatic substrate, ligand, amino acid, peptide, protein, nucleic acid, lipid, co-factor, carbohydrate or antibody, but not limited thereto. The test structure for attachment or reaction or binding to the receptors for detection thereof, i.e., the target material may include enzyme, protein, nucleic acid, oligosaccharide, peptide, amino acid, carbohydrate, lipid, cells, cancer cells, cancer stem cells, antigen, aptamer, or other biologically-derived molecules, and more preferably, proteins related to disease, but not limited thereto.

[0088] Despite the advantages of the marker particles 300 according to the present invention explained above, the considerably weak signal strength of Raman signals still plays as a daunting factor for the accurate diagnosis. Accordingly, an embodiment of the present invention preferably uses SERS particles with enhanced Raman signal strength, and more particularly, uses F-SERS particles as the marker particles 300 including therein the fluorescence dye according to the present invention.

[0089] The SERS effect as used herein refers to rapid increase of Raman scattering by 10^3 to 10^{14} folds when the molecules are adhered onto the surfaces of the metallic nanoparticles such as gold, silver or copper. The SERS spectrometry based on such effect is thus gaining increasing attention for possible development of high sensitivity technology that can directly measure/analyze only one single molecule (i.e., monomer) in cooperation with the nano technology which is fast developing.

[0090] The SERS particles that can provide the SERS effect may have the form in which the Raman marker material and the receptors are added with metallic nanoparticles including one or more of silver (Ag), gold (Au) or copper (Cu) to amplify the relatively weaker Raman signals. The metallic nanoparticles may allow more incident laser beam to reach the Raman marker material, and also plays a role of an antenna which amplifies the emitted spectrum. To be specific, the SERS particles may be designed so that the Raman marker material surround the surfaces of the metallic nanoparticles, or separate cores (e.g., silica or ZnO cores) may be surrounded by

metallic nanoparticles and Raman marker materials. Furthermore, the above may be formed into aggregated structure or to a wire-like structure.

[0091] For example, the SERS particles may be SOLID™ (Oxonica Materials Inc.) which has a structure in which silver nanoparticles as the cores are surrounded by Raman marker material and silica shells in sequence, or COINS (Composite Organic-Inorganic Nanoparticles) (NANO LETTERS, 2005, Vol.5, No.1, pp49-54) including aggregates of condensed gold and silver nanoparticles in the presence of Raman organic marker material as suggested by Xing Su et al., but not limited thereto. Additionally, the SERS particles may use the particles of Korean Pat. No. 892629, or Korean Patent Publication No. 2010-4458, or material made by binding thiol group and Raman marker material to terminus of DNA 3' and incorporating ligand to perceive specific biological substance to 5' terminus, or carbon nanotubes (KEREN et al., PNAS 2008; 105; 5844) or various other SERS particles or materials emitting strong Raman signals, but not limited thereto.

[0092] In one embodiment of the present invention, in addition to maximize the Raman signals using the SERS particles, it is also possible to use the F-SERS particles to which the fluorescence dye is included, to thus enable simultaneous detection of both fluorescence signals and Raman signals.

[0093] Fig. 7 illustrates the structure of F-SERS particles as one embodiment of the marker particles 300 according to the present invention.

[0094] Referring to Fig. 7, in one embodiment of the present invention, the F-SERS particles have a basic structure that includes core particles 1 at the core, marker shells which surround the core particles 1 and which include metallic nanoparticles 2, Raman marker material 3 and fluorescence dye 4, and one or more antibodies 6 attached to the marker shells as one type of receptor. In addition, silica shells 5 may additionally be included, surrounding the core particles 1, the metallic nanoparticles 2, the Rana marker material 3 and the fluorescence dye 4, in which case the antibodies 6 are attached to the outer surfaces of the silica shells 5 (see Fig. 7).

[0095] The core particles 1 may include at least one of silica, silica including therein dispersed dye or silica including therein small cores of magnetic material (or radioactive isotope), metallic nanoparticles or a bundle of the same. The magnetic material may use metal or metal oxide such as CO, Mn, Fe, Ni, Gd or MM'_2O_4 and M_xO_y (where, M and M' are Co, Fe, Ni, Mn, Zn, Gd, Cr, $0 < x \leq 3$, $0 < y \leq 5$) individually or in combination. The F-SERS particles according to the present invention preferably use silica as the core particles 1.

[0096] The metal of the metal nanoparticles may use at least one of silver (Ag), gold (Au) and copper (Cu) that generates so-called SERS effect.

[0097] Any material including molecules to generate Raman signals may be used as the Raman marker material 3, which may be selected from a group consisting

of 2-methyl benzenethiol, 4-methyl benzenethiol, 4-mercaptopyridine, 2-naphthalenethiol, 4-methoxy benzenethiol, 3-methoxy benzenethiol, 3,4-dimethylbenzenethiol, thiophenol and 3,5-methoxy dimethylbenzenethiol), or any other material that has unique SERS spectrum with high binding force with the metallic nanoparticles 2.

[0098] Organic or inorganic fluorescence dye may be used as the fluorescence dye 4, and in one example, the known organic marker material such as fluorescent rhodamine, radioactive isotope or light emitting semiconductor quantum dot such as Zn-S capped CdSe may be used. The silica shells 5 have high biocompatibility since these are harmless to human or animal body, and surface modification is easy. Therefore, the silica shells 5 can be used as the final shells.

[0099] The antibodies 6 have specific terminus to bind to specific molecule or cell. In one embodiment of the present invention, various antibodies 6 or other receptors may be implemented altogether, to thus induce a plurality of SERS particles, to which the receptors are applied, to emit multisignals.

[0100] In one preferred embodiment, in selecting respective constituents of F-SERS particles as the marker particles 300, those fluorescence materials and Raman marker materials may be appropriately selected so that the fluorescence signals generated from the fluorescence dye 4 are placed at longer wavelength domain than the SERS signals generated from the Raman marker material 3, to thus avoid interference of the two signals.

[0101] The method for fabricating the SERS particles and specific characteristics thereof can be found in Korean Patent Publication No. 2007-14964 filed by the inventors of the present invention. However, F-SERS particles are only one of examples, and other modified examples may also be implemented. For example, fluorescence particles may be incorporated into various configurations of the SERS particles explained above.

[0102] The medical imaging device for simultaneously detecting multiple fluorescence and Raman signal targets according to embodiments of the present invention has been explained above. Although the medical imaging device according to the present invention may be representatively implemented as a structure included in the endoscope to investigate test structure by being introduced into a living body, other embodiments are possible. Accordingly, the medical imaging device according to the present invention may be applied for various embodiments of imaging systems in addition to endoscope. For example, the medical imaging device according to the present invention may be implemented as a probe to accurately examine test structure of the incision in the process of surgery, or other forms of probes.

[0103] The present invention proposes a method for simultaneously detecting fluorescence and Raman signals for multiple targets using the medical imaging device and F-SERS particles explained above. The method for simultaneously detecting fluorescence and Raman sig-

nals of multiple targets according to one embodiment of the present invention may include steps of injection (S10), emitting light (S20), scanning (S30) and detecting (S40).

[0104] At injection step (S10), at least one marker particle 300 to which a plurality of various receptors are preferably attached, are injected into a body of an animal including human, in which the marker particles 300 may be injected by oral route, or by needle, or by a general injection method, or using the spray means 70 connected to the endoscopic probe as explained above.

[0105] The injection step (S20) involves emitting a laser beam into the body of the animal, in which the laser beam generated from the light source 10 is emitted to the test structure via the optical fiber bundle 21 and the optical collector 20.

[0106] At scanning step (S30), the marker particles 300 and the laser beam emitted from the test structure of the interior of the body of the animal are scanned. This step may preferably be performed by forming confocal images using the scanner 30.

[0107] That is, the light emitting step (S20) and the scanning step (S30) may be performed simultaneously. For example, using the optical fiber bundle, the laser may be emitted to the individual optical fibers within the bundle, while being scanned at the same time.

[0108] The detecting step (S40) involves separately detecting the emitted optical signals into fluorescence signals and the Raman signals, and may include, in particular, the steps of removing laser reflective light (S41), separating optical paths (S42) and separately detecting (S43).

[0109] The laser reflective light removing step (S41) includes removing, by filtering, optical component (i.e., Rayleigh light) corresponding to the laser beam from the scanned optical signals, using the edge filter 42.

[0110] The light path separating step (S42) includes separating the path of the filtered optical signals into a first path 3 and a second path 4.

[0111] The separately detecting step (S43) includes the steps of detecting fluorescence signals from the optical signals of the separated first path 3, and detecting Raman signals from the optical signals of the separated second path 4. The principles of operation are referred to the explanation provided above with reference to the medical imaging device according to the present invention.

[0112] With the method for simultaneously detecting fluorescence and Raman signals for multiple targets according to various embodiments of the present invention, real-time detection of multiple targets is possible. Particularly, because of a method for separately detecting fluorescence and Raman signals using separate marker particles, the embodiments of the present invention provides greatly improved advantages such as absence of non-specific background signals such as autofluorescence. Therefore, it is possible to utilize the characteristics explained above for the purpose of in vivo and in situ

diagnoses using endoscopy, or image guided surgery, or the like.

[0113] Fig. 8 is a SERS spectrum acquired using the signal detection method and optical fiber bundle according to the present invention.

[0114] Referring to the SERS spectrum of Fig. 8 measured with the optical fibers, the Raman signals naturally generated from the optical fibers are observed in the region below 900cm^{-1} . Accordingly, it is possible to use optical signals from the range between 900cm^{-1} and 2000cm^{-1} for SERS encoding.

[0115] Figs. 9 to 14 show results of experiments conducted with the medical imaging device for simultaneous detection of multiple targets, based on the method for simultaneously detecting fluorescence and Raman signals for multiple fluorescence and Raman signal targets and medical imaging device for simultaneously detecting multiple targets using the method, according to the embodiments of the present invention.

[0116] As a result of experimenting with the medical imaging device prepared according to the present invention to simultaneously detect the multiple fluorescence and Raman signal targets, the technology of acquiring spectrum while maintaining fluorescence imaging function, enabled successful separation of paths for incident light and measure light with the use of optical fiber optical system, without having to change the optical path of the laser scanning unit, and by incorporating a combination of fluorescence imaging technology and Raman spectrometry function, the fluorescence and spectrum were measured simultaneously.

[0117] Further, Figs. 9 to 11 are fluorescence images taken by a medical imaging device for simultaneously detecting multiple fluorescence and Raman signal targets according to an embodiment of the present invention, which confirm the fact that images with high resolution are acquired.

[0118] Further, Fig. 12 provides photograph and graph representing real-time, simultaneous measure of the fluorescence and spectrum shift which confirm the fact that the present invention can measure the fluorescence images and the spectrum at the same time and in real-time basis.

[0119] Fig. 13 are graphs for comparing optical signal domains as collected in a medical imaging device for simultaneously detecting multiple fluorescence and Raman signal targets according to an embodiment of the present invention. Since the optical signals have scattering light from the laser beam itself, Raman signals naturally emitted from the optical fibers, Raman signals generated from the marker particles, and fluorescence signals are overlapped with one another, it was confirmed that by establishing an optical path, it was possible to achieve the technology to separate/collect the natural signals from the optical fiber, the Raman signals of the marker particles and the fluorescence signals.

[0120] Figs. 14 and 15 are graphs, showing when the natural Raman signals of the optical fibers are removed

according to establishment of the optical path. These confirm the fact that by establishing an optical path, it was possible to achieve the technology to separate/collect the natural signals from the optical fiber, the Raman signals of the marker particles and the fluorescence signals.

[0121] The foregoing embodiments and advantages are merely exemplary and are not to be construed as limiting the present invention. The present teaching can be readily applied to other types of apparatuses. Also, the description of the exemplary embodiments of the present inventive concept is intended to be illustrative, and not to limit the scope of the claims, and many alternatives, modifications, and variations will be apparent to those skilled in the art.

[Industrial applicability]

[0122] The present invention is industrially applicable, since it relates to a medical imaging device including an endoscope employing therein optical fiber bundle probe for use in the in-vivo disease diagnosis of an animal including a human, an optical fiber probe, or a remote distance optical system.

Claims

1. A medical imaging device for simultaneously detecting fluorescence and Raman signal for multiple targets, the medical imaging device comprising:

light source (10) configured to emit a laser light; an image guide (21) including an optical fiber bundle configured to guide the laser light emitted from the light source to a test structure and optical signals of an incident light emitted from the test structure or from marker particles bound to the test structure, wherein each of the marker particles comprises a Raman marker material to emit Raman signals receptors, and metallic nanoparticles consisting of at least one of silver (Ag), gold (Au) and copper (Cu), and a fluorescence dye that emits fluorescence signals, or a quantum dot, and each of the marker particles emits fluorescence signals in a first wavelength range and Raman signals in a second wavelength range, and wherein the first and the second wavelength ranges are separated from one another without interference;

a light collector (20) connected to the image guide and configured to collect the optical signals including the fluorescence signals and the Raman signals;

a scanner (30) connected to the image guide and configured to scan the optical signals including the fluorescence signals and the Raman signals;

a light separator (40) comprising a beam splitter connected to the scanner to separate a path of the incident light into a first path including the fluorescence signals in the first wavelength range and a second path including the Raman signals in the second wavelength range;

a fluorescence signal detector (50) configured to detect fluorescence signals from the optical signals in the first path separated at the light separator for constructing a fluorescence image indicative of a location of the test structure based on the detected fluorescence signals; and

a Raman signal detector (60) configured to detect Raman signals from the optical signals of the second path separated at the light separator for constructing a Raman spectrum of the test structure based on the detected Raman signals.

2. The medical imaging device as set forth in claim 1, wherein the light separator further comprises an edge filter placed between the scanner, the fluorescence signal detector and the Raman signal detector, to remove, by filtering, the laser light from the optical signals incoming from the scanner.
3. The medical imaging device as set forth in claim 1 or claim 2, wherein the image guide and the light collector further comprise a spray means configured to spray the marker particles onto the test structure.
4. The medical imaging device as set forth in claim 3, wherein the spray means further comprises a washing means configured to wash the test structure.
5. The medical imaging device as set out in claims 1 to 4, wherein the marker particles further comprise silica shells surrounding the fluorescence dye, a Raman marker material and the metallic nanoparticles.
6. The medical imaging device as set forth in claim 5, wherein the marker particles further comprise core particles which are surrounded by the fluorescence dye, the Raman marker material, the metallic nanoparticles and the silica shells, and which are formed of at least one of silica and magnetic material.
7. The medical imaging device as set forth in claims 1 to 6, wherein the receptors are any one selected from a group consisting of enzymatic substrate, ligand, amino acid, peptide, protein, nucleic acid, lipid, cofactor, carbohydrate or antibody.

Patentansprüche

1. Medizinische Bildgebungs Vorrichtung zum gleichzeitigen Erfassen von Fluoreszenz- und Ramansignalen für mehrere Ziele, wobei die medizinische Bild-

gebungsvorrichtung Folgendes umfasst:

- eine Lichtquelle (10), die konfiguriert ist, um ein Laserlicht zu emittieren;
 eine Bildführung (21), beinhaltend ein optisches Faserbündel, das konfiguriert ist, um das von der Lichtquelle emittierte Laserlicht zu einer Teststruktur und optische Signale eines von der Teststruktur emittierten einfallenden Lichts oder von an die Teststruktur gebundenen Markerpartikeln zu führen, wobei jeder der Markerpartikel ein Ramanmarkermaterial zum Emittieren von Ramansignalrezeptoren und metallische Nanopartikel, die aus mindestens einem von Silber (Ag), Gold (Au) und Kupfer (Cu) bestehen, und einen Fluoreszenzfarbstoff, der Fluoreszenzsignale emittiert, oder einen Quantenpunkt umfasst, und wobei jeder der Markerpartikel Fluoreszenzsignale in einem ersten Wellenlängenbereich und Ramansignale in einem zweiten Wellenlängenbereich emittiert, und wobei der erste und der zweite Wellenlängenbereich störungsfrei voneinander getrennt sind;
 einen Lichtkollektor (20), der mit der Bildführung verbunden ist und konfiguriert ist, um die optischen Signale zu sammeln, die die Fluoreszenzsignale und die Ramansignale beinhalten;
 einen Scanner (30), der mit der Bildführung verbunden ist und konfiguriert ist, um die optischen Signale zu scannen, die die Fluoreszenzsignale und die Ramansignale beinhalten;
 einen Lichtseparator (40), umfassend einen mit dem Scanner verbundenen Strahlenteiler, um einen Weg des einfallenden Lichts in einen ersten Weg, der die Fluoreszenzsignale im ersten Wellenlängenbereich beinhaltet, und einen zweiten Weg, der die Ramansignale im zweiten Wellenlängenbereich beinhaltet, zu trennen;
 einen Fluoreszenzsignaldetektor (50), der konfiguriert ist, um Fluoreszenzsignale von den optischen Signalen in dem ersten Weg zu erfassen, der an dem Lichtseparator getrennt ist, um ein Fluoreszenzbild zu erstellen, das eine Stelle der Teststruktur basierend auf den erfassten Fluoreszenzsignalen anzeigt; und
 einen Ramansignaldetektor (60), der konfiguriert ist, um Ramansignale aus den optischen Signalen des zweiten Weges zu erfassen, der an dem Lichtseparator getrennt wurde, um ein Ramanspektrum der Teststruktur basierend auf den erfassten Ramansignalen zu erstellen.
2. Medizinische Bildgebungsvorrichtung nach Anspruch 1, wobei der Lichtseparator ferner einen Kantfilter umfasst, der sich zwischen dem Scanner, dem Fluoreszenzsignaldetektor und dem Ramansignaldetektor befindet, um durch Filtern das Laserlicht aus den vom Scanner kommenden optischen

Signalen zu entfernen.

3. Medizinische Bildgebungsvorrichtung nach Anspruch 1 oder 2, wobei die Bildführung und der Lichtkollektor ferner ein Sprühmittel umfassen, das konfiguriert ist, um die Markerpartikel auf die Teststruktur zu sprühen.
4. Medizinische Bildgebungsvorrichtung nach Anspruch 3, wobei das Sprühmittel ferner ein Waschmittel umfasst, das zum Waschen der Teststruktur konfiguriert ist.
5. Medizinische Bildgebungsvorrichtung nach einem der Ansprüche 1 bis 4, wobei die Markerpartikel ferner Siliziumdioxidschalen, die den Fluoreszenzfarbstoff umgeben, ein Ramanmarkermaterial und die metallischen Nanopartikel umfassen.
6. Medizinische Bildgebungsvorrichtung nach Anspruch 5, wobei die Markerpartikel ferner Kernpartikel, welche von dem Fluoreszenzfarbstoff umgeben sind, das Ramanmarkermaterial, die metallischen Nanopartikel und die Siliziumdioxidschalen umfassen, die mindestens aus einem aus Siliziumdioxid und magnetischem Material gebildet sind.
7. Medizinische Bildgebungsvorrichtung nach einem der Ansprüche 1 bis 6, wobei die Rezeptoren aus einer Gruppe ausgewählt sind, die aus einem enzymatischen Substrat, Liganden, Aminosäuren, Peptiden, Proteinen, Nukleinsäuren, Lipiden, Cofaktoren, Kohlenhydraten oder Antikörpern besteht.

Revendications

1. Dispositif d'imagerie médicale pour détecter simultanément un signal de fluorescence et un signal Raman pour des cibles multiples, le dispositif d'imagerie médicale comprenant :

une source de lumière (10) configurée pour émettre une lumière laser ;
 un guide d'image (21) comportant un faisceau de fibres optiques configuré pour guider la lumière laser émise par la source de lumière vers une structure d'essai et des signaux optiques d'une lumière incidente émise par la structure d'essai ou par des particules marqueuses liées à la structure d'essai, chacune des particules marqueuses comprenant un matériau de marqueur Raman pour émettre des récepteurs de signaux Raman, et des nanoparticules métalliques constituées d'au moins l'un parmi l'argent (Ag), l'or (Au) et le cuivre (Cu), et un colorant de fluorescence qui émet des signaux de fluorescence, ou un point quantique, et chacune des

- particules marqueuses émet des signaux de fluorescence dans une première plage de longueurs d'onde et des signaux Raman dans une seconde plage de longueurs d'onde, et les première et seconde plages de longueurs d'onde étant séparées l'une de l'autre sans interférence ;
- un collecteur de lumière (20) relié au guide d'image et configuré pour collecter les signaux optiques comportant les signaux de fluorescence et les signaux Raman ;
- un dispositif de balayage (30) relié au guide d'image et configuré pour balayer les signaux optiques comportant les signaux de fluorescence et les signaux Raman ;
- un séparateur de lumière (40) comprenant un diviseur de faisceau relié au dispositif de balayage pour séparer un trajet de la lumière incidente en un premier trajet comportant les signaux de fluorescence dans la première plage de longueurs d'onde et en un second trajet comportant les signaux Raman dans la seconde plage de longueurs d'onde ;
- un détecteur de signaux de fluorescence (50) configuré pour détecter des signaux de fluorescence à partir des signaux optiques dans le premier trajet séparé au niveau du séparateur de lumière pour construire une image de fluorescence indiquant un emplacement de la structure d'essai sur la base des signaux de fluorescence détectés ; et
- un détecteur de signaux Raman (60) configuré pour détecter des signaux Raman à partir des signaux optiques du second trajet séparé au niveau du séparateur de lumière pour construire un spectre Raman de la structure d'essai sur la base des signaux Raman détectés.
2. Dispositif d'imagerie médicale selon la revendication 1, dans lequel le séparateur de lumière comprend en outre un filtre de bord placé entre le dispositif de balayage, le détecteur de signaux de fluorescence et le détecteur de signaux Raman, pour éliminer, par filtrage, la lumière laser des signaux optiques entrant du dispositif de balayage.
3. Dispositif d'imagerie médicale selon la revendication 1 ou la revendication 2, dans lequel le guide d'image et le collecteur de lumière comprennent en outre un moyen de pulvérisation configuré pour pulvériser les particules marqueuses sur la structure d'essai.
4. Dispositif d'imagerie médicale selon la revendication 3, dans lequel le moyen de pulvérisation comprend en outre un moyen de lavage configuré pour laver la structure d'essai.
5. Dispositif d'imagerie médicale selon les revendica-

tions 1 à 4, dans lequel les particules marqueuses comprennent en outre des coques de silice entourant le colorant de fluorescence, un matériau de marqueur Raman et les nanoparticules métalliques.

6. Dispositif d'imagerie médicale selon la revendication 5, dans lequel les particules marqueuses comprennent en outre des particules de noyau qui sont entourées par le colorant de fluorescence, le matériau de marqueur Raman, les nanoparticules métalliques et les coques de silice, et qui sont formées d'au moins l'un parmi un matériau de silice et un matériau magnétique.
7. Dispositif d'imagerie médicale selon les revendications 1 à 6, dans lequel les récepteurs sont l'un quelconque sélectionné parmi un substrat enzymatique, un ligand, un acide aminé, un peptide, une protéine, un acide nucléique, un lipide, un cofacteur, un glucide ou un anticorps.

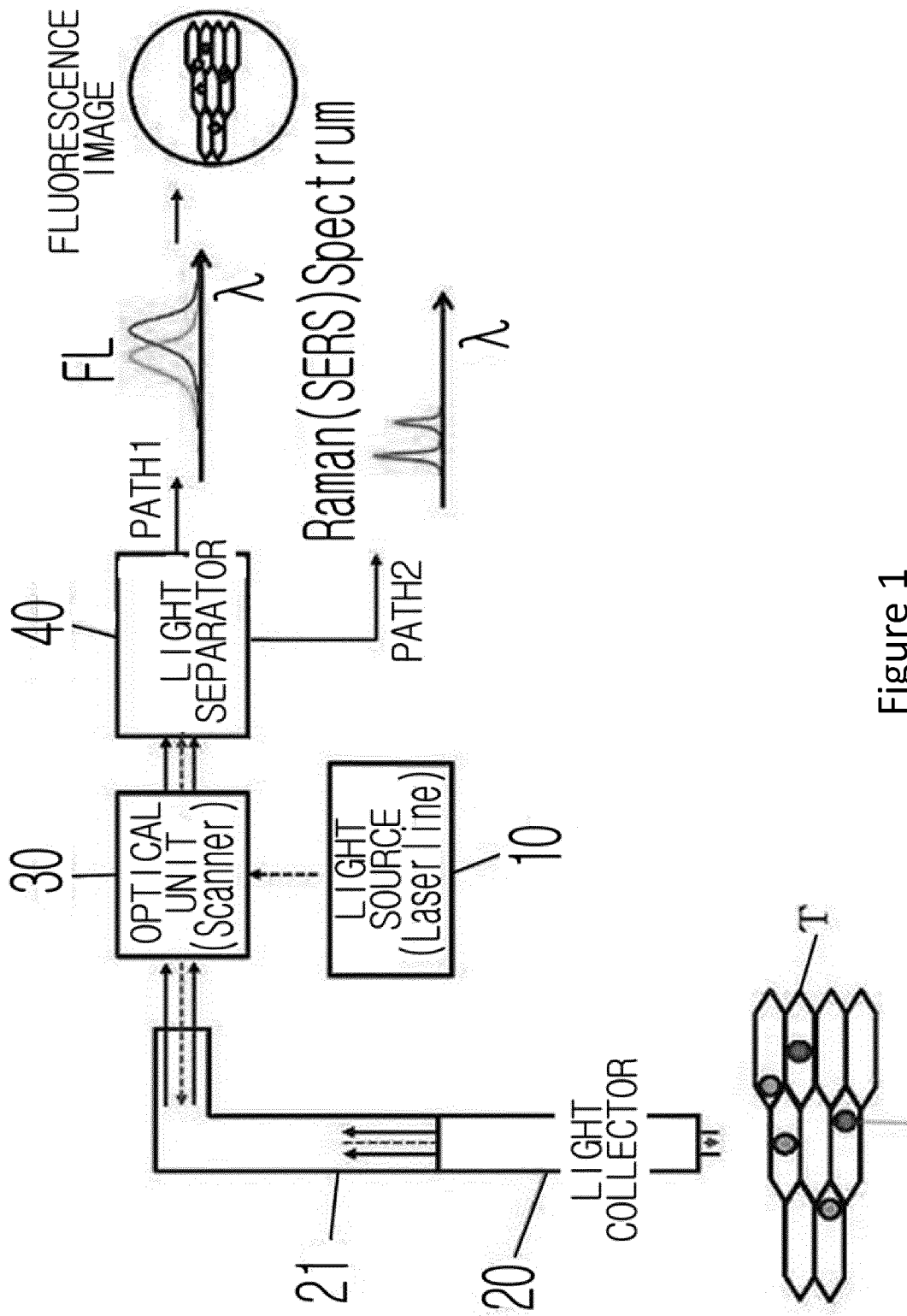


Figure 1

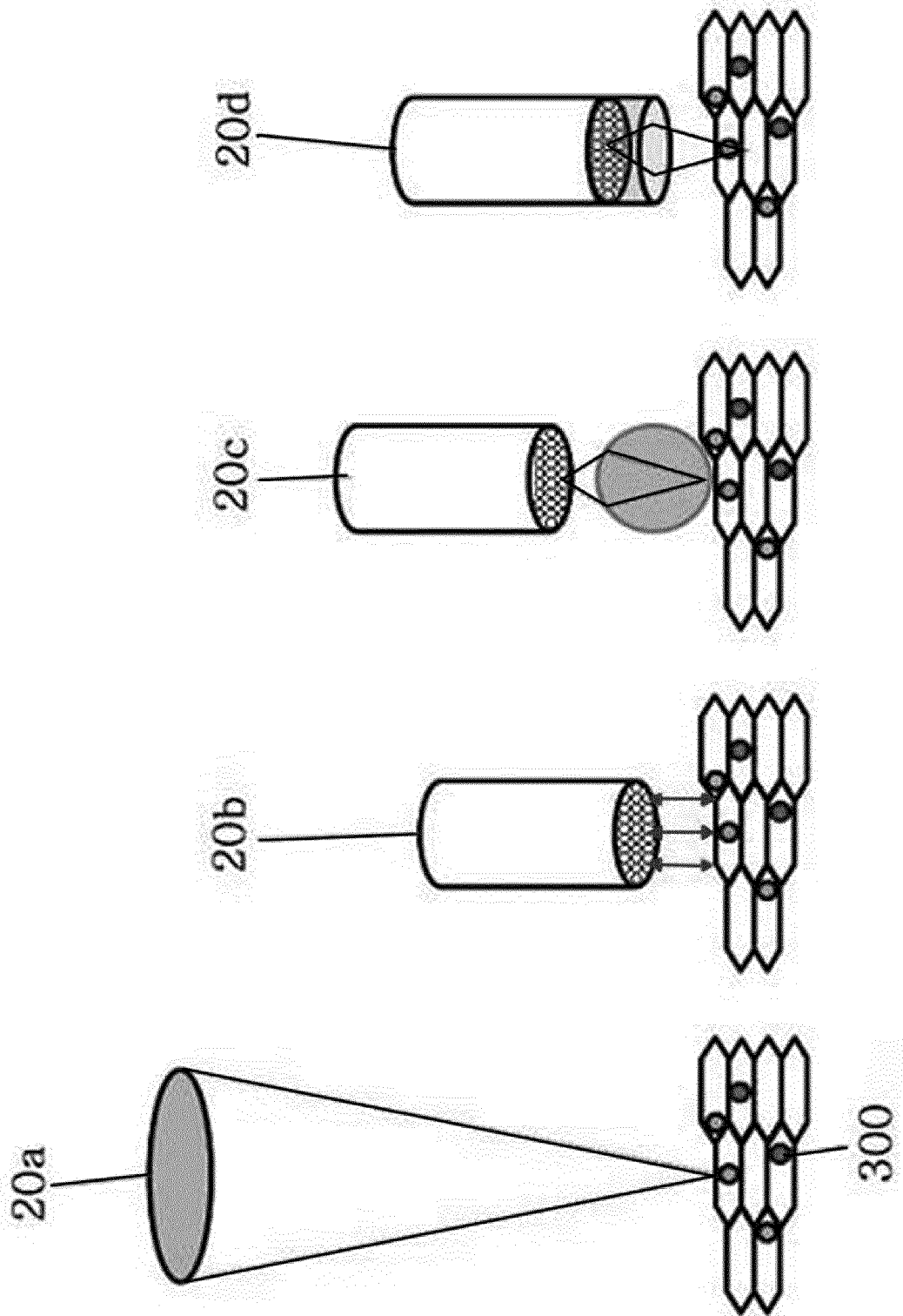


Figure 2

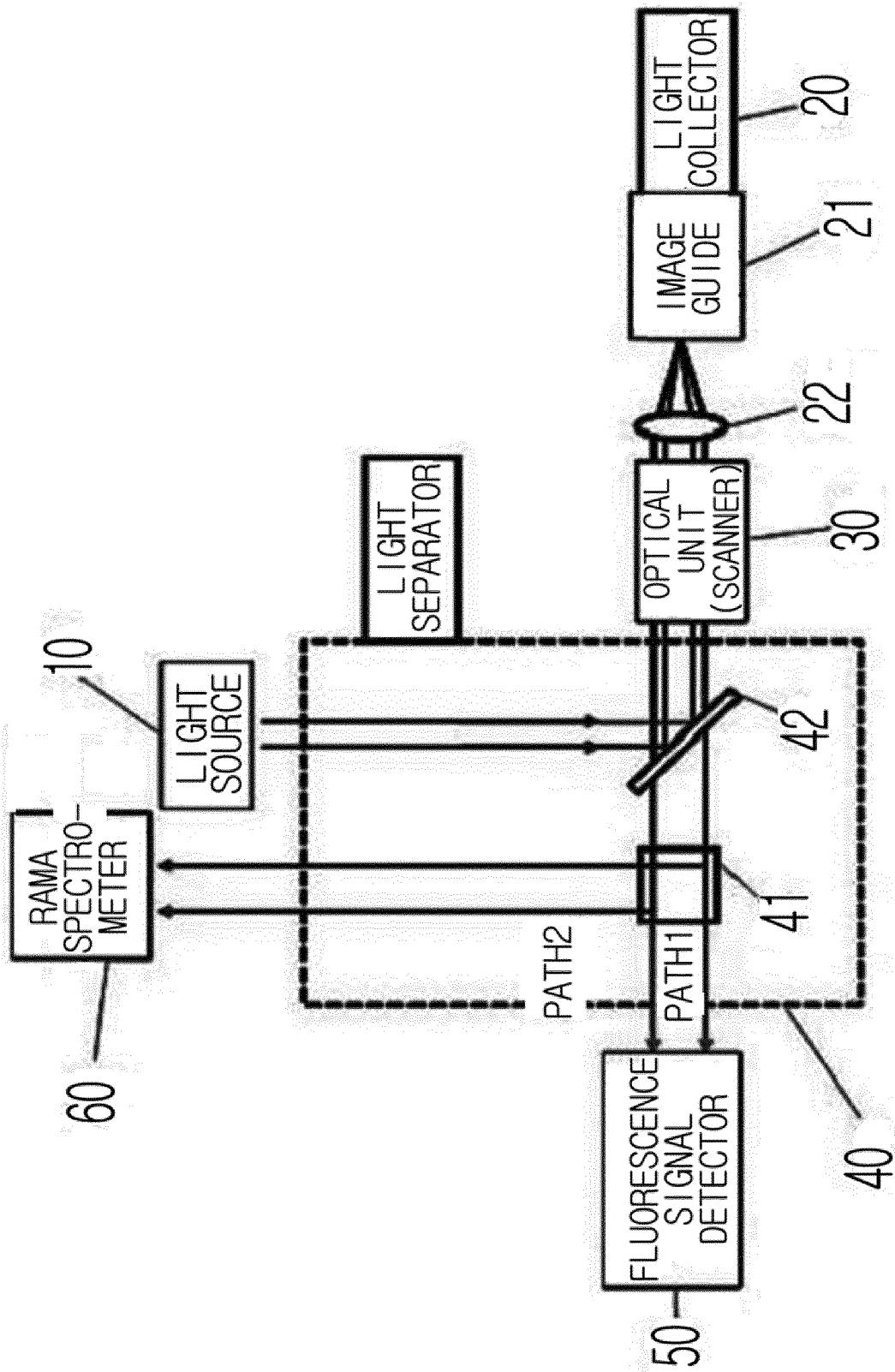


Figure 3

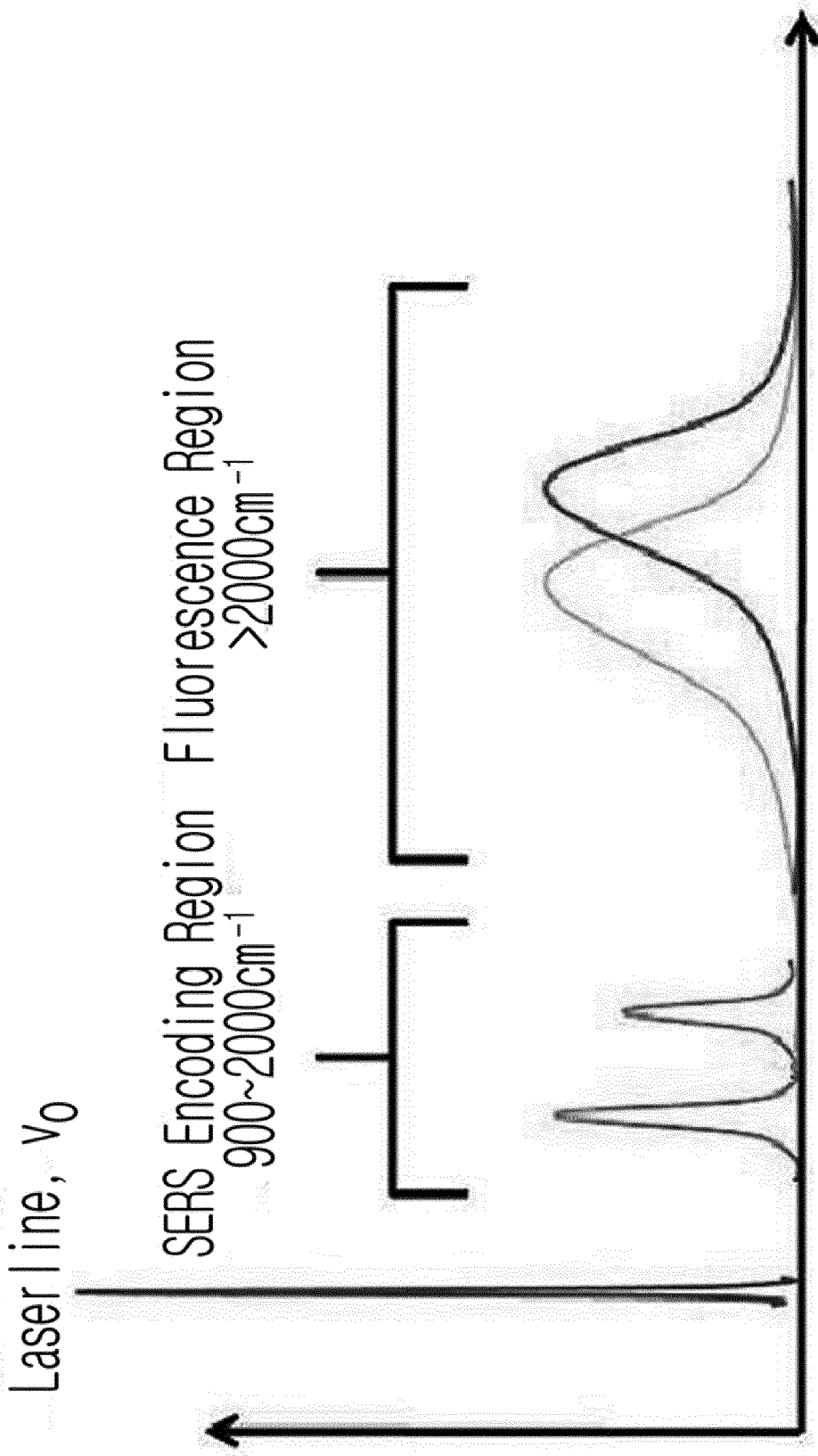


Figure 4

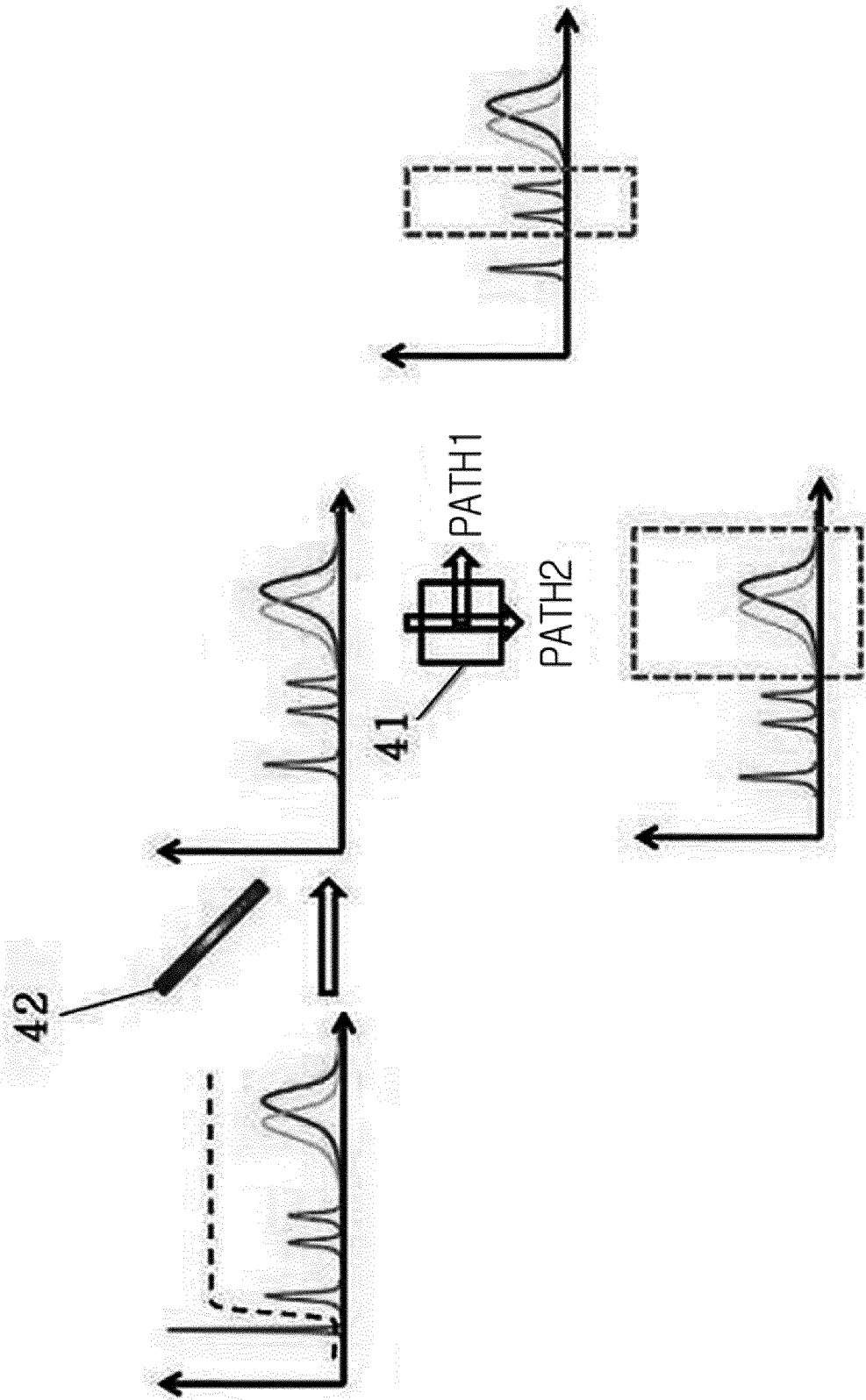


Figure 5

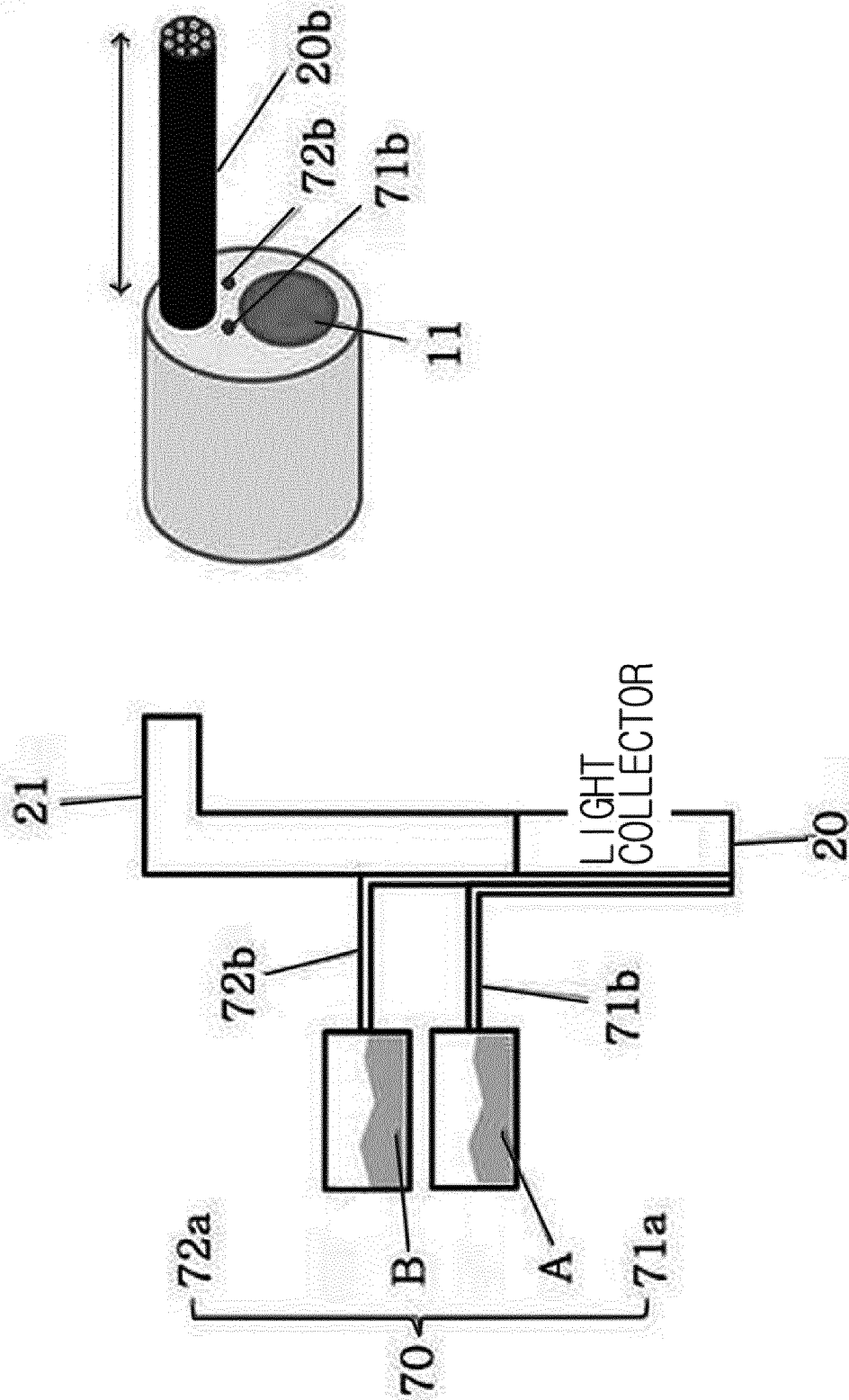


Figure 6

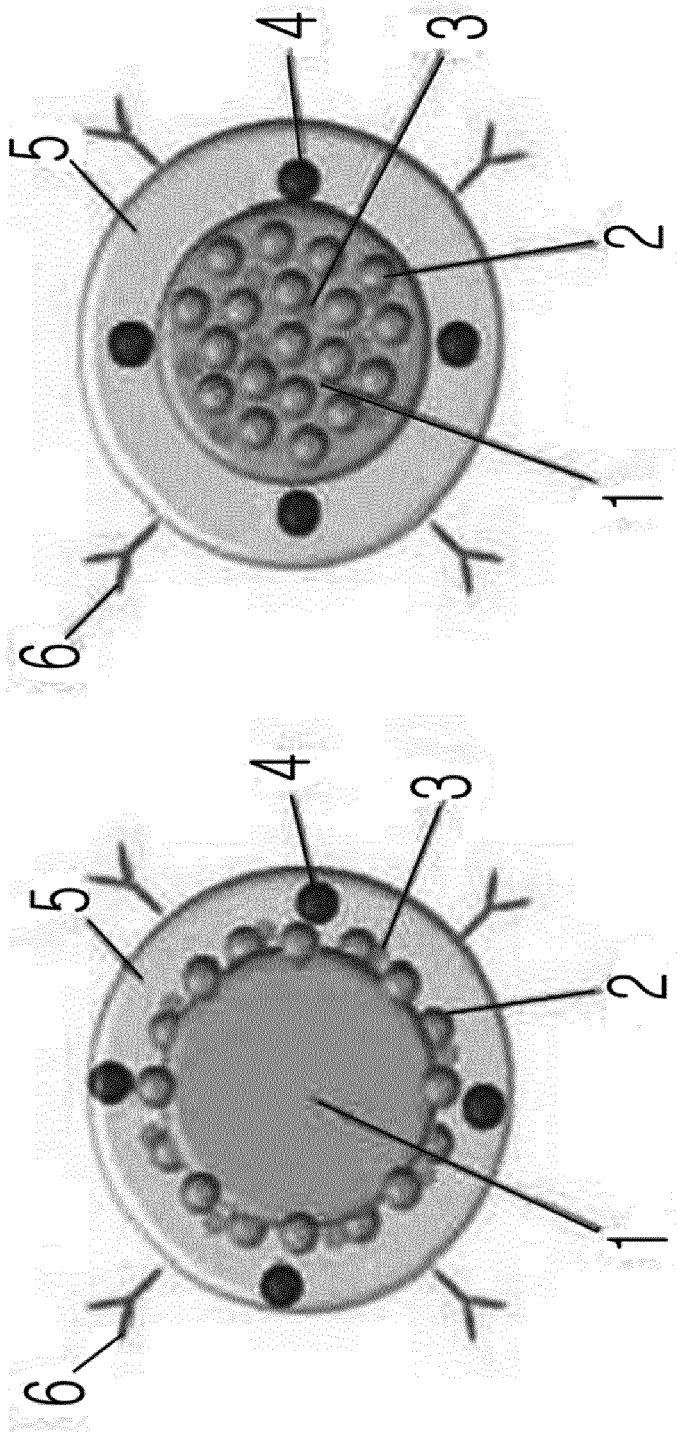


Figure 7

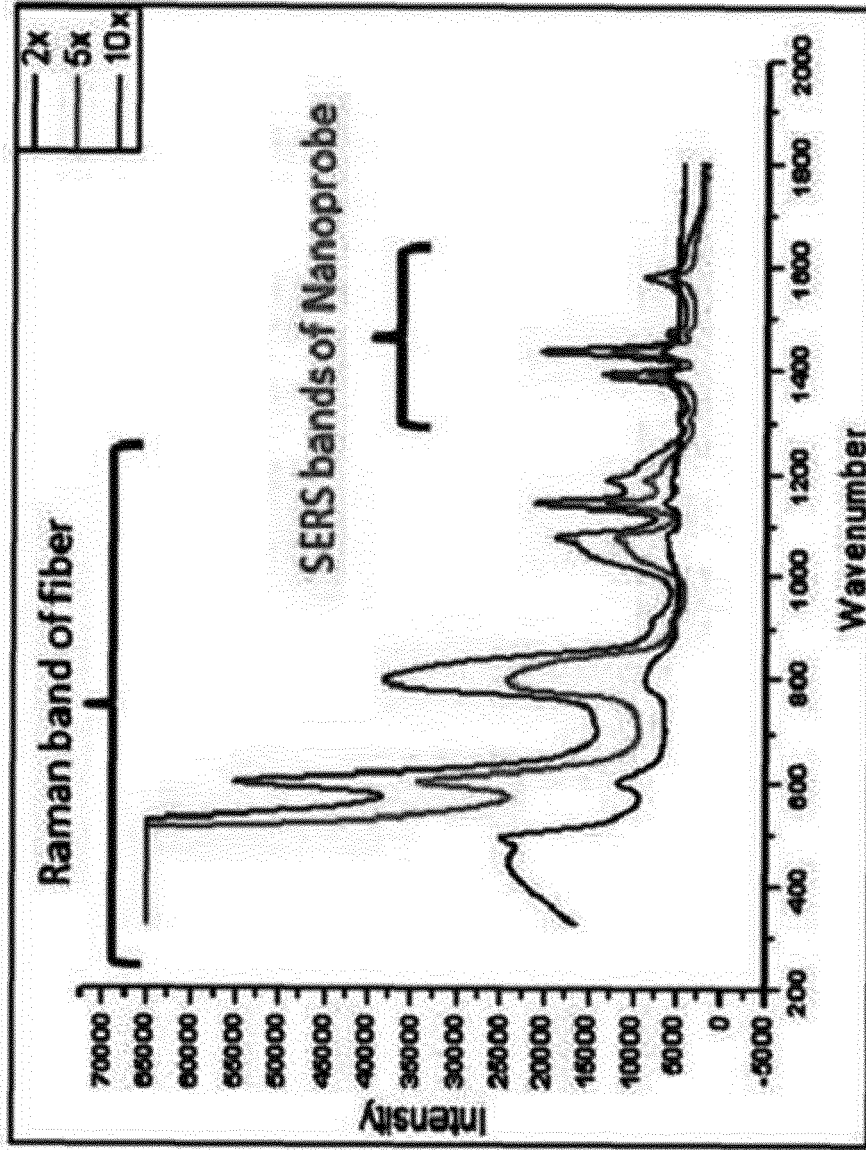


Figure 8

▷ **Natural sponge**

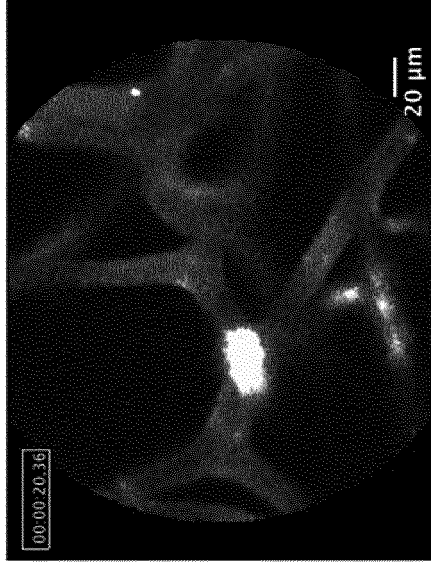
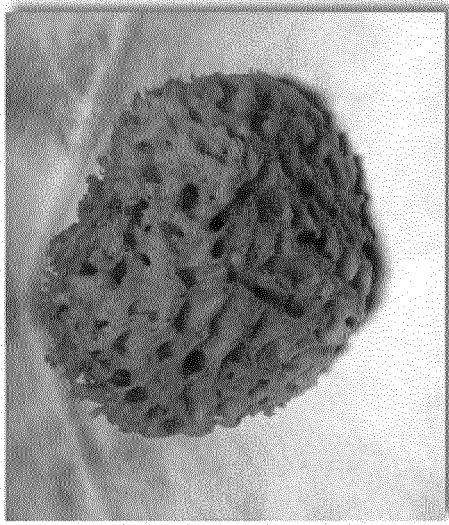


Figure 9

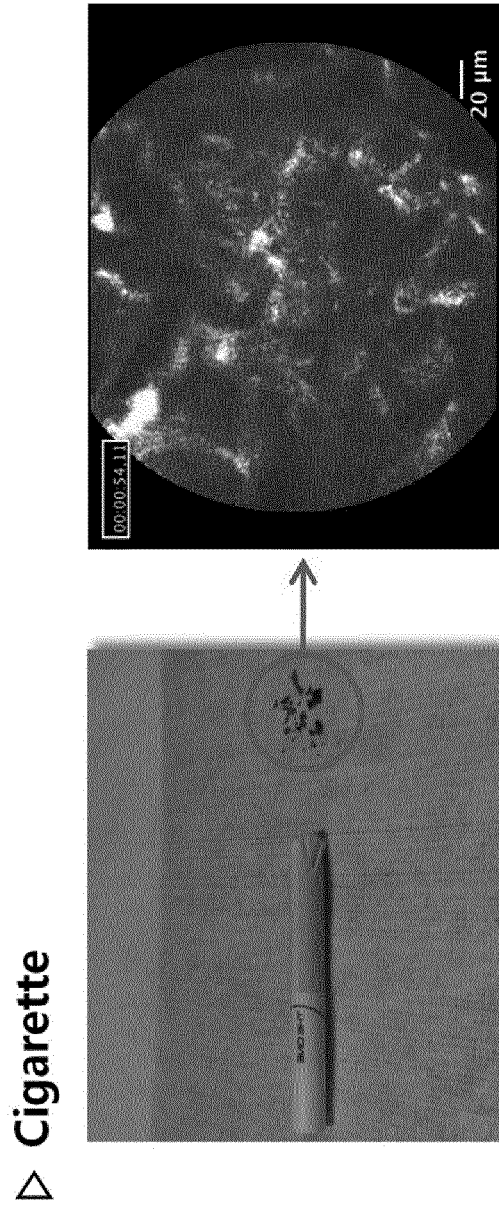


Figure 10

▷ F-Silica on the TEM grid (Rh 6G)

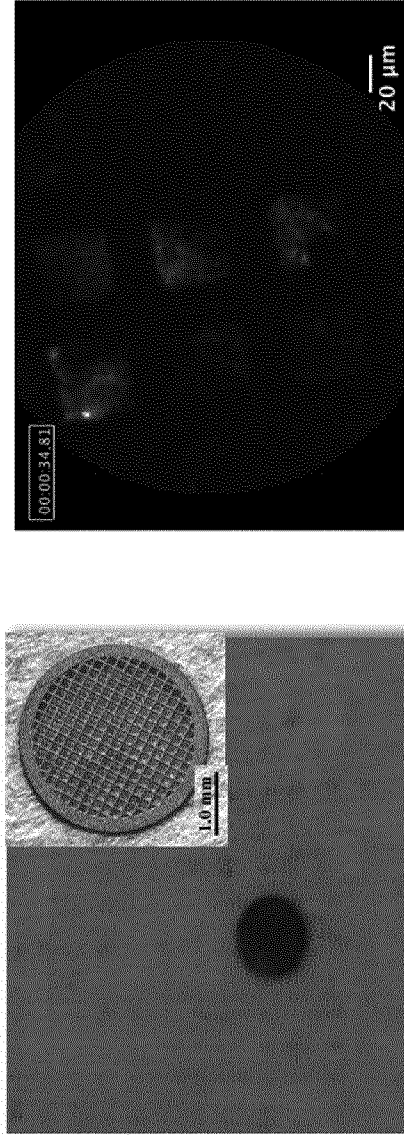


Figure 11

▷ Rhodamine 6G (EtOH) on the cotton swab

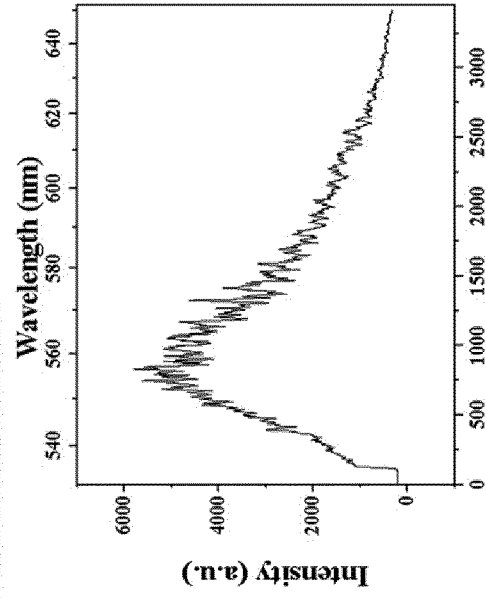
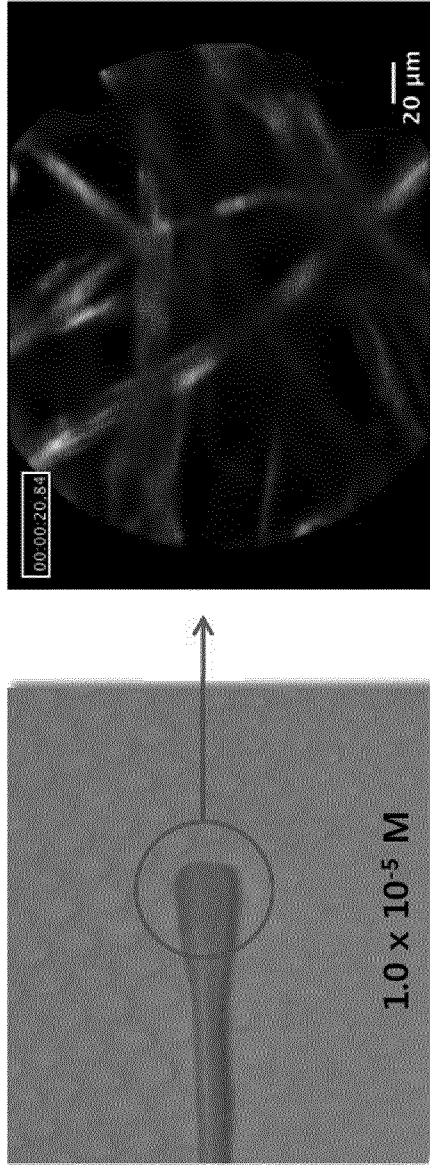


Figure 12

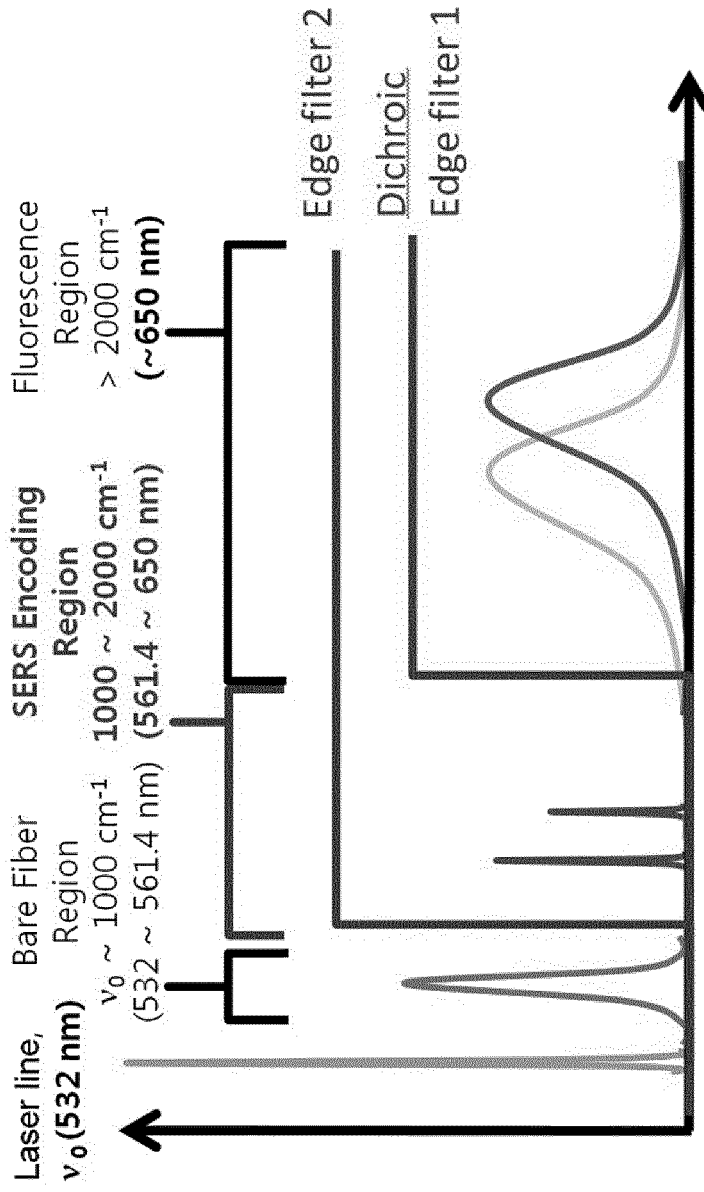


Figure 13

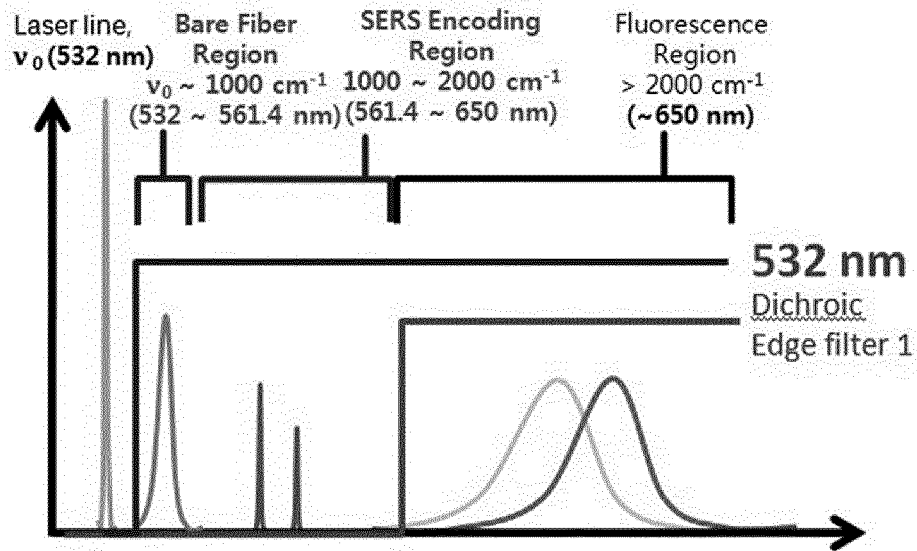
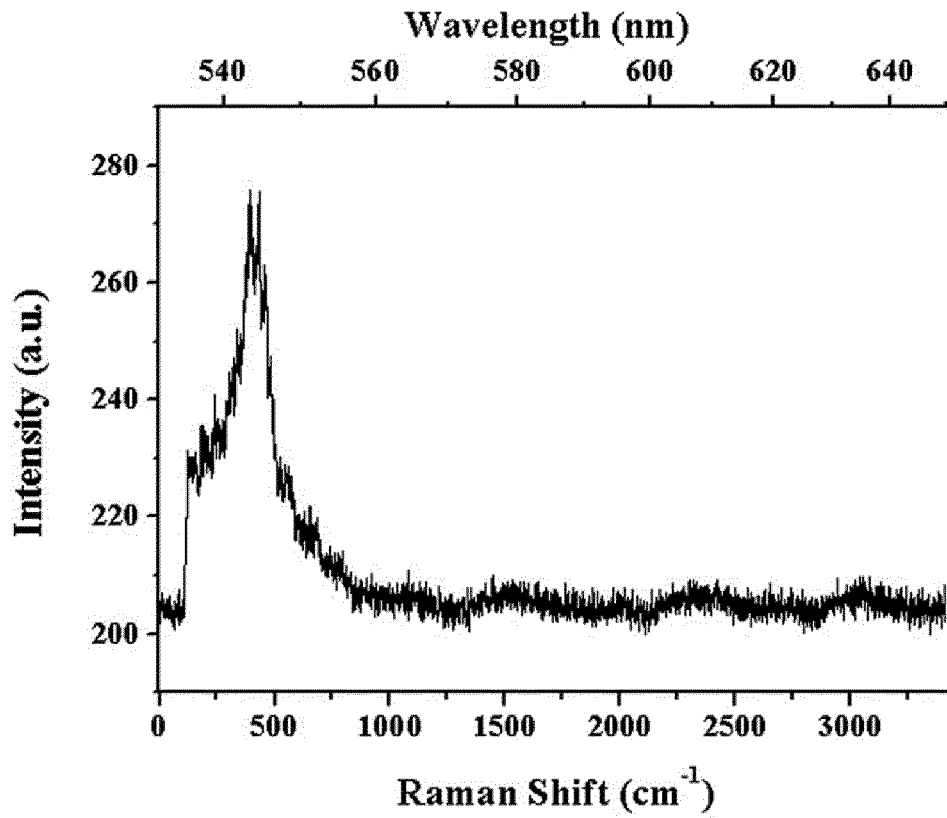


Figure 14

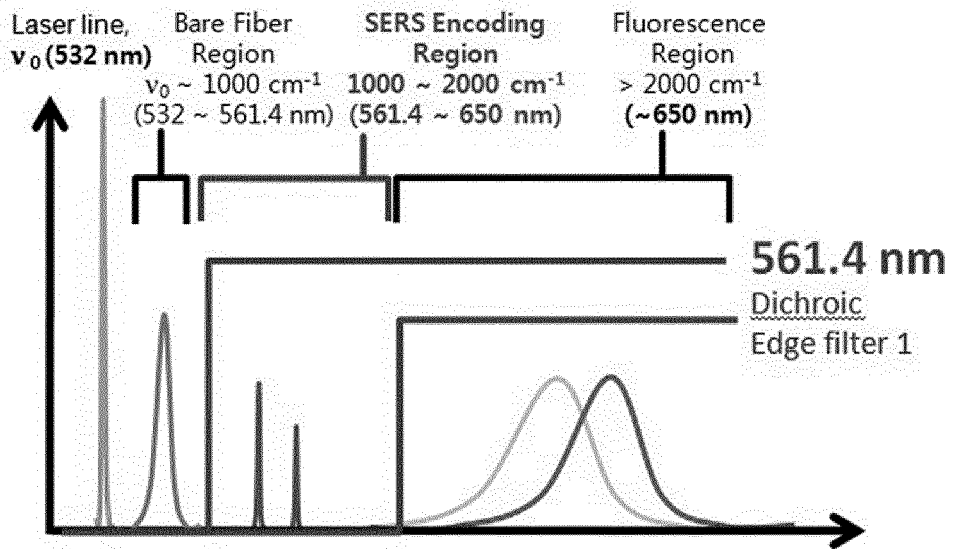
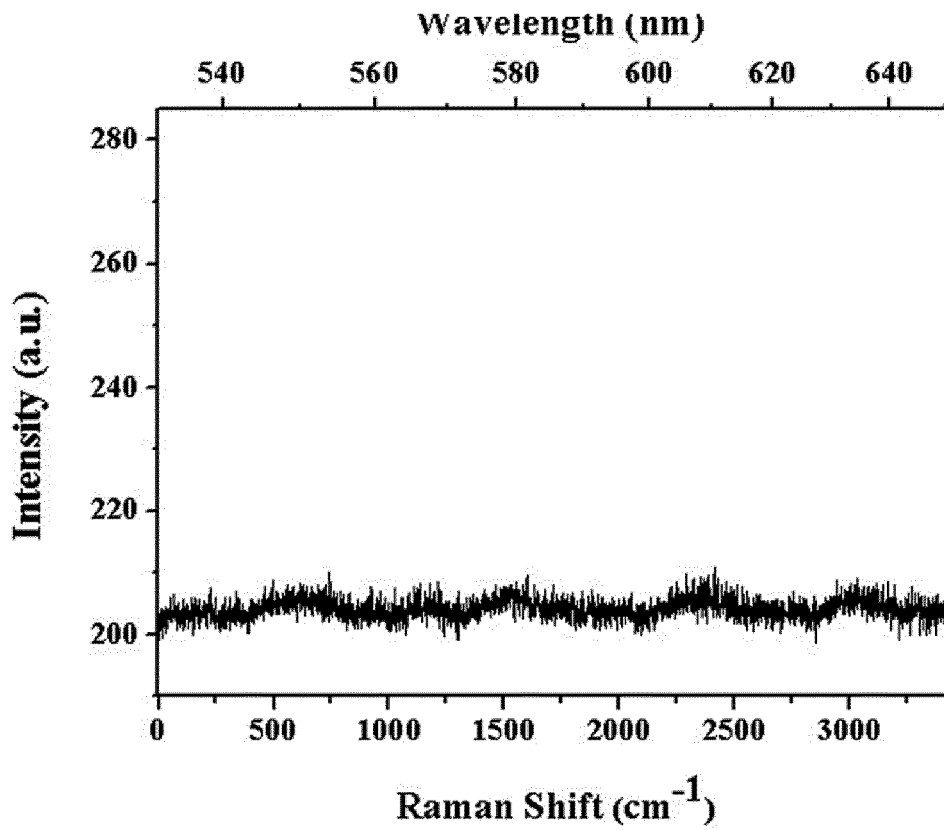


Figure 15

REFERENCES CITED IN THE DESCRIPTION

This list of references cited by the applicant is for the reader's convenience only. It does not form part of the European patent document. Even though great care has been taken in compiling the references, errors or omissions cannot be excluded and the EPO disclaims all liability in this regard.

Patent documents cited in the description

- US 7285089 B [0007]
- JP 2002136469 A [0011]
- JP 2009511175 A [0011]
- US 2008007716 A [0011]
- US 20080007716 A [0013]
- KR 10073308 [0025]
- KR 102008011195 [0025] [0027]
- US 7336990 B2 [0042]
- US 20090023999 A1 [0042]
- US 7447539 B [0064]
- US 7336990 B [0064]
- US 7383077 B [0064]
- KR 892629 [0091]
- KR 20104458 [0091]
- KR 200714964 [0101]

Non-patent literature cited in the description

- *Nano Letters.*, 2007, vol. 7 (2), 351-356 [0025]
- FLARE: Fluorescence-assisted resection and exploration. *Proc. SPIE*, 2005, vol. 6009, 60090C [0042]
- Composite Organic-Inorganic Nanoparticles. *NANO LETTERS*, 2005, vol. 5 (1), 49-54 [0091]
- **KEREN et al.** *PNAS*, 2008, vol. 105, 5844 [0091]

专利名称(译)	同时检测多个目标的医学成像设备		
公开(公告)号	EP2604168B1	公开(公告)日	2019-10-09
申请号	EP2011816631	申请日	2011-08-11
[标]申请(专利权)人(译)	首尔大学校产学协力团		
申请(专利权)人(译)	首尔大学R & DB基金会		
当前申请(专利权)人(译)	首尔大学R & DB基金会		
[标]发明人	JEONG DAE HONG KANG KEON WOOK LEE DONG SOO LEE YOON SIK KIM GUN SUNG JUN BONG HYUN PAENG JIN CHUL LEE HO YOUNG LEE YUN SANG		
发明人	JEONG, DAE HONG KANG, KEON WOOK LEE, DONG SOO LEE, YOON SIK KIM, GUN SUNG JUN, BONG HYUN PAENG, JIN CHUL LEE, HO YOUNG LEE, YUN SANG		
IPC分类号	A61B1/00 A61B1/05 A61B5/00 A61B1/04 A61B1/06 B82Y30/00 A61K49/00		
优先权	1020100077565 2010-08-11 KR		
其他公开文献	EP2604168A4 EP2604168A2		
外部链接	Espacenet		

摘要(译)

本发明涉及一种同时检测多个荧光和拉曼信号靶的荧光和拉曼信号的方法，并且涉及一种使用该方法同时检测多个靶的医学成像装置。根据本发明的一个实施例的同时检测多个荧光和拉曼信号靶标的荧光和拉曼信号的方法包括以下步骤：将至少一个包含拉曼标记和受体的标记颗粒注射到动物体内，所述动物可以是一个人；将激光束照射到动物的身体上；分别检测激光束照射后标记颗粒发射的光信号作为荧光信号和拉曼信号。根据本发明，即使不用不同的光纤单独扫描由标记颗粒发射的光信号，也可以同时检测多个目标。另外，根据本发明，由于可以通过使用喷雾剂等将引入荧光成分的表面增强型拉曼标记颗粒注入动物体内来进行检查，因此可以增强微弱的拉曼信号。从而实时获得更准确的诊断结果。

