

(19)



(11)

EP 2 296 535 B1

(12)

EUROPEAN PATENT SPECIFICATION

(45) Date of publication and mention of the grant of the patent:
19.09.2018 Bulletin 2018/38

(51) Int Cl.:
A61B 5/00 (2006.01) A61B 5/16 (2006.01)
A61B 5/053 (2006.01)

(21) Application number: **09757973.4**

(86) International application number:
PCT/IB2009/052335

(22) Date of filing: **03.06.2009**

(87) International publication number:
WO 2009/147625 (10.12.2009 Gazette 2009/50)

(54) METHOD AND SYSTEM OF OBTAINING A DESIRED STATE IN A SUBJECT

VERFAHREN UND SYSTEM ZUR ERREICHUNG DES GEWÜNSCHTEN STATUS EINES PATIENTEN

PROCÉDÉ ET SYSTÈME D'OBTENTION D'UN ÉTAT SOUHAITÉ CHEZ UN SUJET

(84) Designated Contracting States:
AT BE BG CH CY CZ DE DK EE ES FI FR GB GR HR HU IE IS IT LI LT LU LV MC MK MT NL NO PL PT RO SE SI SK TR

- **JOHNSON, Mark, T.**
NL-5656 AE Eindhoven (NL)
- **VAN DER WOLF, Richard, G., C.**
NL-5656 AE Eindhoven (NL)
- **VAN DER MEIJDEN, Frans, A., M.**
NL-5656 AE Eindhoven (NL)

(30) Priority: **06.06.2008 EP 08157718**

(43) Date of publication of application:
23.03.2011 Bulletin 2011/12

(74) Representative: **Coops, Peter**
Philips Intellectual Property & Standards
High Tech Campus 5
5656 AE Eindhoven (NL)

(73) Proprietor: **Koninklijke Philips N.V.**
5656 AE Eindhoven (NL)

(56) References cited:
WO-A2-2008/017979 US-A- 5 800 337
US-A1- 2004 117 212 US-A1- 2005 154 264
US-A1- 2005 288 601

- (72) Inventors:
- **VAN DOOREN, Marieke**
NL-5656 AE Eindhoven (NL)
 - **MENA BENITO, Maria, E.**
NL-5656 AE Eindhoven (NL)

Note: Within nine months of the publication of the mention of the grant of the European patent in the European Patent Bulletin, any person may give notice to the European Patent Office of opposition to that patent, in accordance with the Implementing Regulations. Notice of opposition shall not be deemed to have been filed until the opposition fee has been paid. (Art. 99(1) European Patent Convention).

EP 2 296 535 B1

Description

FIELD OF THE INVENTION

[0001] This invention relates to a method of, and system for, obtaining a desired state in a subject.

BACKGROUND OF THE INVENTION

[0002] The study of bio-feedback is already an established research discipline. Bio-feedback systems exist, which are comprised of one or more sensors, for example sensors for galvanic skin response, local skin temperature, heart rate and heart rate variability, respiration, electromyography, electroencephalography etc. The aim of these systems is to extract certain physiological parameters out of the raw sensor signals that can, in this case, be interpreted in terms of emotional experience of the subject. The ongoing emotional experience can then be fed back to the user, preferably in real time, such that the user gets information about their state and can try to learn to control their bodily reactions and consequently also their emotions. Recently, the use of bio-feedback in lifestyle applications has become popular, for example, the introduction of massage devices with sensors, such as Sanyo massage-chair technology (see for United States of America Patent Application Publication US 2005/0137503).

[0003] Similar ideas are shown in United States of America Patent US 6067468, which discloses apparatus for monitoring a person's psycho-physiological condition. In this Patent the running of a program, designed to train the user to control one or more aspects of his or her psycho-physiological state, is controlled by signals representative of a psycho-physiological parameter of the user, for example, galvanic skin resistance. This may be detected by a sensor unit with two contacts on adjacent fingers of a user. The sensor unit is separate from a receiver unit which is connected to a computer running the program. It is the object of all of the known systems to provide accurate feedback to the subject about their current performance. Indeed an many applications, accuracy of the feedback is of paramount importance.

SUMMARY OF THE INVENTION

[0004] It is therefore an object of the invention to improve upon the known art.

[0005] According to a first aspect of the present invention, there is provided a method of obtaining a desired state in a subject comprising measuring one or more physiological parameters of the subject, calculating, using the measured parameter(s), a value, determining if the calculated value is to be modified, modifying the calculated value, if the determination is that the value is to be modified, wherein the step of modifying the calculated value, if the determination is that the value is to be modified, comprises accessing a modification scheme and

modifying the calculated value according to the modification scheme, and generating an output to the subject, the output being in proportion to the modified value, the method further comprising determining the direction of movement of the calculated value, and the step of modifying the calculated value, if the determination is that the value is to be modified, being dependent on the direction of movement of the value, wherein a first modification scheme is used when the value is increasing, and a different, second modification scheme is used when the value is decreasing.

[0006] According to a second aspect of the present invention, there is provided a system for obtaining a desired state in a subject comprising one or more sensors arranged to measure one or more physiological parameters of the subject, a processor arranged to calculate, using the measured parameter(s), a value, to determine if the calculated value is to be modified, and to modify the calculated value, if the determination is that the value is to be modified, and the processor is further arranged, when modifying the calculated value, if the determination is that the value is to be modified, to access a modification scheme and to modify the calculated value according to the modification scheme, and one or more output devices arranged to generate an output to the subject, the output being in proportion to the modified value, wherein the processor is further arranged to determine the direction of movement of the calculated value, wherein the modifying of the calculated value, if the determination is that the value is to be modified, is dependent on the direction of movement of the value, wherein the processor access a first modification scheme when the value is increasing, and access a different, second modification scheme when the value is decreasing.

[0007] Owing to the invention, it is possible to provide altered bio-feedback for enhanced emotional experiences. The present method and system relate to the use of bio-feedback in, for example, lifestyle devices. People tend to rely heavily on feedback monitoring for cognitions about their ongoing emotional experiences. There is provided a method to achieve enhanced emotional and/or sexual arousal during usage of the system by implementation of the altered bio-feedback. A feature of the method is the bias/alteration of the sensor signals that are fed back to the user, such that the user starts to believe that their body gets emotionally aroused (or the opposite, i.e. relaxed). Consequently, because of the complex interplay and interaction between psychological and biological factors, what goes on in the mind (e.g. sexual desire) is stimulated.

[0008] Until now, the emphasis in bio-feedback systems has been put on providing an accurate feedback about physiological functioning (like for example the galvanic skin response (GSR), electromyography (EMG), heart rate variability (HRV)) to the user. The main aim of this "minding the body" approach, which is well known within, but not restricted to, the healthcare domain, lies in the real-time coaching of the user. Here, the temporal

and functional accuracy and resolution of the psychophysiological sensing method (and consequently the diagnosis) is of major importance. An exemplary application could be to train the user to control one or more aspects of his psycho-physiological state, as described in the prior art Patent referred to above. In that sense, the bio-feedback is used to cause self-behaviour modification in the user. For example this methodology can be used in order to train the user to modify negative behaviour patterns (which is related to the philosophy of mindfulness).

[0009] In known virtual reality systems, a realistic simulation of the physical sense of touch is provided via force feedback. The applications of force feedback range widely, from medical training systems for surgeons to teach how hard to press with a scalpel in delicate areas of the human body, to popular joysticks used in computer games, see for example, <http://encyclopedia.farlex.com/force+feedback>. The use of force feedback is known to provide a more realistic and more intense experience. In these applications, the aim is again to provide accurate feedback.

[0010] From an end user point of view, devices in the domain of lifestyle and wellness, such as massage devices with sensors, are not focussed on control over the user's body, as is the case in healthcare applications. Rather, there is an emphasis on enhancing the pleasure of the user by being out of control. The different user needs lead to an a priori different approach for applications. The development of bio-feedback systems with high resolution and high accuracy is therefore not the central issue in this case. The question remains: what could intensify the user's emotional experiences?

[0011] So the present system and method are different from the prior art applications. In the domain of lifestyle and wellness as provided by massage devices or devices such as the Aurea television (see <http://www.aurea.philips.com>), the needs of end users are very different from the users in the healthcare domain, i.e. end users are not primarily interested in the functional resolution of bio-feedback. This is also reflected by the general insight that lifestyle applications preferably do not look too technical. The end user needs in the broad field of lifestyle rather focus on entertainment, fun, and an easy user interface, which is analogous to the values present in the computer games with forced feedback.

[0012] This positively inspired approach translates the vision of 'solving problems and dysfunctions' into the vision of 'enhancing the pleasure of the user'.

[0013] While accuracy of diagnosis and feedback monitoring is a major concern in the domain of healthcare (user needs focus on health related reasons), in the domain of lifestyle and wellness (for example, massage), the impact of entertainment is far more important. This different emphasis in both fields (differential user needs) leads to completely different applications. It is proposed that the system of altered bio-feedback can be employed to have a big impact in entertainment applications in gen-

eral, and also more specific devices such as in massage devices.

[0014] In the prior art systems, the user receives accurate feedback of their current physiological state (and subsequently their current emotional state if desired), or accurate feedback to the activities being simulated by the system (i.e. the computer game etc.). However, the present invention is designed in order to influence the emotional state of a user in such a way that it may often be more effective to provide stimuli based upon the desired emotional state of the user, which is not necessarily their current emotional state. For example, if a subject wishes to become relaxed, it is not helpful to receive feedback telling them that they are stressed at this moment; a more fruitful approach is to provide feedback along the lines of "you're looking comfortable" and to hope that this suggestion will actually make the subject start to feel at least a little better. Such an approach of dropping a suggestive remark (even if it is clearly not the actual state of the user) can be applied in any emotional situation to induce the subject to realise the desired emotional state. Similarly, systems which simply reflect a user's current emotional state will not be ideal for inducing the desired state in a user.

[0015] For this reason, in this invention there is proposed a system, device and method whose primary goal is the explicit alteration of bio-feedback signal(s) in order to obtain a desired state in the subject, for example to enhance the emotional experience of the subject. For the proposed alterations, see below for more detail. The alteration has to be at least plausible. Clearly it is not believable if you were to say to somebody who is clearly depressed that you have never seen them look better. Similarly, the manipulation of the feedback must also be plausible. This will be considered when discussing algorithms for alteration of the feedback.

[0016] The method and the system according to the invention provide a more effective and adaptable solution. In addition to considering the absolute value when deciding on the modification to be applied, whether this value is increasing or decreasing can be used to determine the nature of the adjustment (i.e. the nature of the modification scheme, or the selection of one out of many predetermined modification schemes, or the online generation of modification scheme) that is applied. For example, if the value is falling then a first graph could be used to determine the modification, and if the value is rising, then a second graph could be used in the modification of the calculated value.

[0017] In one embodiment, the emphasis is put on the intensification of the emotional experience. The aim of intensifying the experience is analogous to the aim of force feedback in computer games. What's different is the explicit biasing of the sensor signals that are fed back to the user. After all, it is the appraisal and/or interpretation of the feedback through the user which makes the difference in emotional experiences (effectively operating as a self fulfilling prophecy). Hereby, suggestiveness

and/or evocativeness are very important.

[0018] Preferably, the step of modifying the calculated value, if the determination is that the value is to be modified, comprises accessing a modification scheme and modifying the calculated value according to the modification scheme. The scheme may be in the form of a graph or alternatively in the form of a look-up-table (which table is essentially containing the x, y co-ordinates of the graph, as implemented in a processor), defining how the calculated value is to be altered according to the modification applied by the system. This allows a high degree of flexibility in the modification of the value that drives the output to the user, but does so in a manner that is relatively simple to implement. The system can access the modification scheme and perform the modification according to the scheme.

[0019] Advantageously, the step of modifying the calculated value, if the determination is that the value is to be modified, comprises amplifying the calculated value. The modification of the value can be a simple amplification according to a multiplication factor. If a modification scheme is used, then this scheme can determine the multiplying factor that is used according to measured value. For example, if the desired state that the user is being pushed towards is an arousal state, then a sensor may be measuring the heart rate of the user, and feeding back an output to the user that is showing their current heart rate. However, the altered feedback delivered by the system will amplify the measured value, to influence the subject to believe that they are more aroused than they really are. Alternatively, the altered feedback can comprise attenuating the calculated value.

[0020] In one exemplary embodiment, the step of determining if the calculated value is to be modified comprises comparing the calculated value against a threshold. Additionally, the step of modifying the calculated value, if the determination is that the value is to be modified, can comprise amplifying the calculated value if the calculated value is beyond (either below or above) the threshold. For example, the alteration will amplify the calculated value if it is below a predetermined (fixed or variable = adaptive in time, and either or not personalised) threshold, or in another case the alteration will amplify the calculated value if it is above a predetermined (fixed or variable = adaptive in time, and either or not personalised) threshold. The level of the amplification may depend upon the measured value. For example, if the subject is being pushed towards a desired state that corresponds to a minimum heart rate of 85 beats per minute (BPM), then, if their measured heart rate is below a threshold of 75 BPM, then amplification of the value is performed, for example using a multiplication factor of 1.2.

[0021] Ideally, the process further comprises mapping the one or more measured physiological parameters of the subject to a scale and wherein the calculated value comprises a value on the scale. The state of the subject may be calculated in pure objective physical terms, such

as heart rate, but may also be considered in subjective terms, such as a relaxation scale. For example, a scale of 1 to 10 may be used, with 1 being most relaxed, and 10 being most aroused. One or more measured physiological parameters are then used to determine the current relaxation state of the subject. These discrete states can be represented to the subject in the output presented by the system. The inventive system provides for the alteration of the output, via modification of the measured values, to provide the altered bio-feedback to the subject. In a further embodiment the system comprises a massage device.

BRIEF DESCRIPTION OF THE DRAWINGS

[0022] Embodiments of the present invention will now be described, by way of example only, with reference to the accompanying drawings, in which:-

Fig. 1 is a schematic diagram of a system with a subject,

Fig. 2 is a graph showing alteration of bio-feedback using a single, fixed, threshold,

Fig. 3 is an alternative graph showing alteration of bio-feedback, also using a single, fixed, threshold,

Fig. 4 is a second alternative graph showing alteration of bio-feedback, using two, fixed, thresholds,

Fig. 5 is a flowchart of a method of obtaining a desired state in a subject, and

Fig. 6 is a schematic diagram of a second embodiment of the system.

DETAILED DESCRIPTION OF THE EMBODIMENTS.

[0023] Fig. 1 shows a system 10 for obtaining a desired state in a subject 12. The system 10 comprises sensors 14 which are arranged to measure one or more physiological parameters of the subject 12, a processor 16 arranged to perform, using the measured parameter(s), various calculations, and an output device 18 arranged to generate an output to the subject 12. The system 10 is effectively a feedback system, monitoring the parameters of the subject 12, such as skin temperature and heart rate, and providing feedback to the subject 12 via the output device 18.

[0024] The Figure shows the subject 12 being monitored by three separate sensors 14. A first sensor 14a is skin conductivity measuring device, a second sensor 14b is a camera that is monitoring the facial expression and head position of the subject 12, and a third sensor 14c is a wireless heart rate monitor held in place with a strap around the subject's chest. The sensors 14a and 14c can be considered to be direct sensors that are directly measuring physiological parameters of the subject 12, and the sensor 14b is an indirect sensor that is measuring physiological parameters such as the facial expression of the subject 12, and/or the rate of movement of the subject's head. Other indirect physiological sensors that can be

used may comprise the manner in which user interacts with a user interface, in dependence upon their current situation, for example the pressure at which the user grips a steering wheel while driving.

[0025] The output device 18 is a loudspeaker arranged to provide an output to the subject 18, under the control of the processor 16. A single output device 18 is shown in the Figure, but there is no reason why multiple output devices 18 can't be used, of the same or of a different category. For example, an output device 18 may be provided that constitutes a display device. The subject 12 is provided with a feedback via the audio device 18 and also, in concert, by the associated display device. The output devices 18, or a single output device 18, go to providing the totality of the feedback to the subject 12, under the control of the processor 16, which determines the extent and intensity of the feedback provided to the subject 12, by the device(s) 18.

[0026] The system 10 discloses methods to alter the bio-feedback signals that are measured via sensors 14 and are fed back to the user 12 of the system 10, either through atmosphere feedback or device feedback. An essential feature of the system 10 is to measure certain physiological attributes, such as galvanic skin response, local skin temperature, facial expression, heart rate and heart rate variability, respiration, electromyography and apply altered bio-feedback to the user. The processor 16 is controlling the feedback to the user 12, and is arranged to modify the feedback that is provided to the user.

[0027] The sensors 14 are provided in order to record one of more physiological signals, body position or facial expression or activity or movement of the user 12. Suitable sensors include measuring the subject's heart rate signal (from which a relaxation state can be derived from the heart rate variation), which can be determined in a variety of ways, for example, with a classical electrical Ag/Ag Cl electrodes measuring the ECG signal, by measuring the ballistocardiogram, for example with a static charge sensitive bed (SCSB), or a piezo foil, or an EMFi-film sensor build into a chair, by measuring the user's oxygen saturation (SPO2), by measuring the (photo)plethysmogram PPG, in the finger, ear, or somewhere else, by using non-galvanic capacitive electrodes, by using a wristwatch like device, by using seismosomnography (SSG), Ultra Wide Band radar, Optical Vibrocardiography, acoustical with a microphone (phonocardiogram), or by using intelligent textile or underwear with built in sensors.

[0028] Other physiological based measurement devices include those measuring skin conductivity/perspiration (this is well known as an emotional arousal measurement in the art, and most suitable for judging the users' excitement' level), (skin) temperature, either via a full contact measurement, using a thermocouple, or non-contact infrared sensing thermometer, or brain wave patterns, through EEG. Other sensors could include blood flow sensors (for example light based sensors), and blood gas level sensors (for example measuring oxygen

level).

[0029] Other physiological parameters that can be measured by the sensors 14 include muscle tension (preferable measured electrically by EMG), and breathing rate, which can be derived from the heart rate variability (as determined from the ECG signal), or could be measured directly on chest/belly by a stretchable band). Alternatively a microphone of a headset or phone could be used to detect acoustically the breathing rate of the subject 12. This signal could also be used to measure user excitement.

[0030] The sensors 14 can also be used to perform an audio-based analysis. For example, audio classification means can be used to detect moments of laughing, enthusiastic talking, screaming, crying, significant changes in social contexts and more generally obtain an indication of the emotional state by analysis of the frequency distribution of the audio signal. Similarly, video-based analysis can be used. For example, computer vision can be used to detect and classify social events such as parties, smiling faces etc. In addition, it is possible to use the relative positions of facial features (eyes and mouth relative to the nose) to define the emotional state of the user, for example in the form of a "pleasure vs. arousal level" scale. This has been demonstrated by e.g. the "Empathic painting" project at the University of Bath (<http://www.cs.bath.ac.uk/~vision/empaint>)

[0031] The processor 16 runs software to process the raw physiological signals in real time. Within a certain time window, the minimum and maximum parameter values of the physiological signals are calculated via peak detection. The normalisation procedure allows the processor 16 to evaluate the actual parameter value in relation to the extremes in a certain time interval, and therefore controls for the time variations in baseline parameter values (and thereby provides the system with a personalised, next to an adaptive in time, parameter interval).

[0032] The desired emotional state of the subject 12, which is defined by threshold(s) (see below), can therefore be considered as either time invariant, or time variable. The simplest embodiment is to take either one or two fixed threshold values. A more advanced embodiment could be to encapsulate time variations in baseline parameter range, and to handle one or two variable threshold values. Feedback alteration algorithms are run by the processor 16 to determine the modification of the feedback to the subject 12. The heart of the system 10 concerns the alteration of the bio-feedback presented to the user 12. The algorithms which may be used to alter the bio-feedback are described in more detail below.

[0033] A first embodiment of the altered bio-feedback system 10 uses a system with a single threshold. The goal of the system 10 is to enhance the subject's emotional experience while using a lifestyle device. In a most simple embodiment of the system 10, the desired ("optimal") state for the user's emotional experience is defined by a boundary (either a lower or upper threshold) for either one or each physiologically measured param-

eter or alternatively for a combination of two or more physiological parameters. The result of the alteration therefore needs to influence the user 12 to reach a position either above a lower threshold or below an upper threshold and to remain on the correct side of the boundary.

[0034] This optimal result is achieved through two fundamental manipulations. The alteration has many qualitatively different possibilities, for example, amplification, attenuation, phase shift (delay), inversion, superposition of a non-measured signal (such as jitter), and a combination of any of these. Quantitatively, the amount of alteration depends on, for example, the slope of the currently measured physiological signal (for example, if the steepness is high, the alteration diminishes, or the alteration depends on the sign of the slope: positive or negative steepness), or the distance of the currently measured parameter value from the threshold value(s).

[0035] A first example is shown in Fig. 2, which is an illustration to explain the principle of a single, fixed threshold 20, in relation to the processing by the processor 16, in determining whether and how much alteration to apply to the output to the user 12. The measured physiological parameter in this example is skin conductance (GSR) level $x(t)$ is given on the X-axis. The amplification factor of the alteration is given on the Y-axis. The desired emotional state 22 is defined by the single threshold 20, the fixed value (x_1) = lower threshold of measured sensor signal, being $5\mu\text{S}$. The threshold 20 separates the desired state 22 of the user 12 from an undesired state 24.

[0036] The graph of Fig. 2 illustrates the simple decision rules, if $x < x_1$, then amplify, else if $x_1 \leq x$ then no alteration. The graph 26 can be considered as a modification scheme that is used to modify the output provided to the user 12. The system 10 operates to measure the physiological parameter (skin conductance) of the subject 12. This is then used to calculate a value (here on a scale of 0 to $20\mu\text{S}$). The processor 16 then determines whether to modify this calculated value. In this example, this decision making process is based upon the threshold 20, as detailed above. If it is determined that the calculated value is to be modified, then that value is modified according to the scheme 26, which amplifies the calculated value to create a modified value. The system 10 then generates an output to the subject 12, the output being in proportion to the modified value.

[0037] The range of skin conductance (GSR) values lies within 1 to $20\mu\text{S}$ as typical values for a wide range of test subjects. It is possible for example to set a lower threshold $x_1 = 5\mu\text{S}$. When the currently measured value is lower than the fixed threshold 20, the feedback signal will be amplified. In this example, the amount of amplification depends on the distance between the actual and the desired parameter values. The greater the distance of the calculated value from the lower threshold 20, the steeper the alteration of the feedback, according to the scheme 26. The actual amplification factors are given in the Figure for the situation that the feedback is directly

set to the threshold value. Alternative curves could use a somewhat lower value of amplification, which would give the user the impression that they are closer to the desired state than in reality, but still not quite at the desired state. Below, various methods are presented for giving the altered bio-feedback.

[0038] A second example is shown in Fig. 3, which is an illustration of a more advanced algorithm, although still using a single threshold 20. When the currently measured skin conductance (GSR) signal $x(t)$ is outside of the desired emotional state, the aim of the altered bio-feedback is to get the person 12 in the right mood, i.e. in the right area 22 of measured parameter values. The algorithm, shown in Fig. 3, gives an example of how to achieve the aim of getting the person 12 above the lower threshold 20.

[0039] If the sensed parameter value is too low, feedback will not be altered. In this area, defined by the second threshold 28, amplification is just not plausible (for example, because the person 12 is on the verge of falling asleep, and therefore, at that moment, information about excitement is irrelevant and can even be irritating). This second threshold 28 can for example be set at 50% or less of the lower threshold 20. When the distance between the actually measured value and the threshold 20 is shorter, alteration of feedback starts. The amplification factors are shown in the Figure by the schemes 26. It is the case that depending on the direction of measured sensor value the scheme that is used in the modification of the value is different. The first scheme 26a is used when the value is increasing, and the second scheme 26b is used when the value is decreasing. In particular, scheme 26b will have the effect that if the user begins to approach the lower threshold 20, from within the desired area, 22, they will already get a strongly modified value starting at threshold 20b which will alert them that they are about to leave the desired region and enable them to take action to avoid this.

[0040] In this case it should be noted that there is modification of the value whilst the user is (still) in the desired area, 22. This can be realised, within the system, by appreciating that whilst the desired state of the user is represented by a certain value, 20, the threshold for modification may be set at a value either higher (20a, 20b) or lower than the value which defines the desired state.

[0041] When the currently measured skin conductance (GSR) signal $x(t)$ lies within the borders of the desired emotional state, the aim of the altered bio-feedback is to keep the person 12 in the right mood, i.e. in the right area 22 of measured parameter values. The algorithm, shown in Fig. 3 (in particular modification scheme 26b), gives an example of how to achieve keeping the person within this area which is defined by one lower threshold 20.

[0042] In a further embodiment the altered bio-feedback system 10 operates with a double threshold (lower and upper). In this further system 10, according to the embodiment, the optimal/desired state for the user's emotional experience may be defined by two boundaries

(lower + upper threshold) for either each physiologically measured parameter or alternatively for a combination of two or more physiological parameters. The result of the alteration therefore needs to influence the user to reach a position within these two boundaries and then to remain within these two boundaries.

[0043] A third example is illustrated in Fig. 4, to explain the principle of a double, fixed threshold. The measured skin conductance (GSR) signal $x(t)$ is given on the X-axis. The amplification factor of the alteration is given on the Y-axis. The desired emotional state is defined by two thresholds 20 and 32: the fixed value (x_1) = lower threshold of measured sensor signal; the fixed value (x_2) = upper threshold of measured signal. The desired state 22 into which the subject is to be led is defined by the lower threshold 20 and the upper threshold 32. If the measured physiological parameter value is below the threshold 20, then the user 12 is in the undesired state 24 (too relaxed), and if the parameter value is above the threshold 32, then the user 12 is in the undesired state 30 (too stressed).

[0044] The line 26 defines the modification scheme that is used to modify the value to create the value that is used when generating the output to the subject 12. This graph illustrates the simple decision rules that if $x < x_1$ then amplify; and if $x_1 \leq x \leq x_2$ then no alteration; and if $x > x_2$ then attenuate. Therefore if the measured value is below the first threshold 20, then it is amplified, and if the measured value is above the second threshold 32, then it is attenuated.

[0045] The range of skin conductance values lies within 2 to 20 μS as a typical value for a wide range of test subjects. There could be, for example, set a lower threshold $x_1 = 5 \mu\text{S}$, and an upper threshold $x_2 = 10 \mu\text{S}$. On the one hand, when the currently measured value is lower than the fixed lower threshold 20, the feedback signal will be amplified. On the other hand, when the currently measured value is higher than the fixed upper threshold 32, the feedback signal is attenuated. In this example, the amount of amplification depends on the distance between the actual and the desired parameter values, as defined by the line 26. The greater the distance of the measured value from the threshold 20, the steeper the alteration of the feedback. The actual amplification factors are given in the Figure for the situation that the feedback is directly set to the threshold (lower and upper) values. Alternative curves could be used (some less amplification, some less attenuation). Clearly, different curves could be used depending upon the direction in which the value approaches the threshold, as was illustrated for a single threshold in Fig. 3.

[0046] The thresholds discussed above have all been "fixed" thresholds. It is possible that the threshold, which determines whether the modification is applied to the calculated value, is determined dynamically, for example with reference to the measurement of some other parameter(s). This other parameter could be an external measurement such as the local temperature or could be a dif-

ferent physiological parameter of the subject 12. If more than one threshold is used in the system 10, for example with a second threshold being used to decide not to apply modification (on the grounds of plausibility), then this second threshold could be set as a function of the first threshold, for example being set at 50% of the first threshold.

[0047] The method of obtaining the desired state in the subject 12 is summarised in Fig. 5. The method comprises the steps of, firstly at step S1, measuring one or more physiological parameters of the subject 12, and secondly, at step S2, calculating, using the measured parameter(s), a value. In order to derive the value, the procedure, carried out by the processor 16, may also comprise mapping the one or more measured physiological parameters of the subject 12 to a scale and therefore the calculated value comprises a value on the scale. In its simplest form, the value is generated directly from the data that is read by sensors 14. For example, the user's heart rate may be measured by a sensor 14, and the value used will be the user's heart beats per minute. However more complicated processing of the sensor data is possible, to combine data from different sensor 14 and to map that data to scale, which can be considered to be more abstract in nature, such as a relaxation scale.

[0048] The next step in the process is step S3, which comprises determining if the calculated value is to be modified. The step of determining if the calculated value is to be modified can comprise comparing the calculated value against a threshold, as discussed above in detail with respect to Figs. 2 to 4. The processor 16 decides whether to modify the calculated value according to predetermined rules. These can be embodied in one or more algorithms that used by the processor 16 at this stage of the process. This is carried out in real time.

[0049] The fourth step in the process is the step S4 of modifying the calculated value, if the determination is that the value is to be modified. The processor 16 applies modification to the calculated value to alter the bio-feedback to the subject 12. The step of modifying the calculated value, if the determination is that the value is to be modified, can comprise accessing a modification scheme 26 and modifying the calculated value according to the modification scheme 26. In the preferred embodiment, the step of modifying the calculated value, if the determination is that the value is to be modified, comprises amplifying the calculated value. If the system is using a threshold to make the determination of whether to apply a modifier to the value, then the step of modifying the calculated value, if the determination is that the value is to be modified, comprises amplifying the calculated value if the calculated value is beyond the threshold.

[0050] More complicated levels of processing are possible. For example, the processor 14 may be further arranged to determine the direction of movement of the value on the scale, wherein the step of modifying the calculated value, if the determination is that the value is to be modified, is dependent on the direction of movement of the value.

[0051] The final step S5 in the process is the generating of an output to the subject 12, the output being in proportion to the modified value. This final step is applying feedback to the user 12, which may trigger any of the human senses, for example by sound, scent, touch, or sight. Parameters to manipulate are, for example, the intensity or the frequency of the provided feedback signal. Light feedback can be given via a change in colour or a change in brightness. Sound feedback can be given via a change in pitch or a change in amplitude, or if bilaterally presented sound is used: the directional characteristics (binaural inter-aural time and level differences) may vary according to the altered bio-feedback signal. Touch feedback can be given via change in tactile stimulation rhythm or change in pressure of stimulation, or duration of stimulation. Scent feedback can be given via change in fragrance or change in intensity of presented scent. Finally, the feedback may be provided via conscious presentation or via subliminal messages, or a combination of both.

[0052] There are many different embodiments and applications in which the system 10 can be embodied. For example, the altered bio-feedback signal can be sent wirelessly to external devices such as a lamp, so that the colour wheel of the lamp can be steered by the feedback controller (the processor 16). Possible outputs to the subject 12 include a movie/animation that is displayed on a television screen.

[0053] Another feedback modality is transcutaneous electrical nerve stimulation (TENS) which might be modulated by the feedback controller.

[0054] If a subject is lying on bed, the system 10 can be used as a fall-in-sleep aid, the cardio signals are measured, by one of the methods described, but preferably with a ballistocardiogram, so that the subject is free to move. The feedback can be given by modulating lights at a modest level, but also by a relaxing humming sound at modest sound level, which might be modulated by the feedback controller, or a (synthetic) music sound can be used.

[0055] During sports activities for example when a subject 12 is participating in gym activities, running, and rowing, the sportsman can get feedback, in particular runners often wear already a HR measurement device. In some activities a device is touched, for example, the steering wheel of a bike, where easily the ECG can be measured, many other gym apparatuses have similar such contacts. Likewise, for sportsmen (boxers, rugby players, etc.), it is important to get in the right mood before a competition. Boxers may set a higher performance if they feel more aroused and less fearful. Actors can set a more realistic scene (e.g. anger emotion) if they really feel the emotion they are about to express. In that sense, the altered bio-feedback can be used as a training tool. At the office working with a PC, the user can be made more relaxed.

[0056] In a preferred embodiment, shown in Fig. 6, the system further comprises a hand held massage device 34, which is provide with a handle hole 36 for the subject

12 to use. Optionally, such a massage device may further comprise the means for measuring the physiological parameters of the subject. Many hand held massage devices are available on the market, usually comprising a plastic casing and one or more vibration inducing motors. An example of a massage device comprising physiological sensors, in this case GSR sensors, is given in US patent 4173217.

[0057] The embodiment of Fig. 6 includes the sensors 14 built in to the device, which could measure skin temperature, or some other physiological parameter of the subject 12. The processor 16 receives the measurements from the sensors 14, and controls the output of the output devices 18, which are intended to contact the skin of the subject 12. The processor 16 is configured to provide altered bio-feedback to the subject 12, as shown schematically in the lower half of the Figure. In this case, the calculated value 38 is modified according to the scheme 26, to produce the modified value 40. In this example, the processor 16 has attenuated the value 12 to 10, and the feedback provided by the output devices 18 will be in proportion to this modified value 40.

Claims

1. A method of obtaining a desired state (22) in a subject (12) comprising:

- measuring one or more physiological parameters of the subject (12),
- calculating a value (38) using the measured parameter(s),
- determining if the calculated value (38) is to be modified,
- modifying the calculated value (38), if the determination is that the value (38) is to be modified, wherein the step of modifying the calculated value (38), if the determination is that the value (38) is to be modified, comprises accessing a modification scheme (26) and modifying the calculated value (38) according to the modification scheme (26), and
- generating an output to the subject (12), the output being in proportion to the modified value (40),

characterized in that the method further comprises determining the direction of movement of the calculated value (38), and **in that** the step of modifying the calculated value (38), if the determination is that the value (38) is to be modified, is dependent on the direction of movement of the value (38), wherein a first modification scheme (26a) is used when the value (38) is increasing, and a different, second modification scheme (26b) is used when the value (38) is decreasing.

2. A method according to claim 1, wherein the modification scheme (26) is in the form of a graph or look-up table.
3. A method according to claim 1 or 2, wherein the step of modifying the calculated value (38), if the determination is that the value (38) is to be modified, comprises amplifying or attenuating the calculated value (38).
4. A method according to any preceding claim, wherein the step of determining if the calculated value (38) is to be modified comprises comparing the calculated value (38) against a threshold (20).
5. A method according to claim 3 and 4, wherein the step of modifying the calculated value (38), if the determination is that the value (38) is to be modified, comprises amplifying the calculated value (38) if the calculated value (38) is beyond the threshold (20).
6. A method according to claim 4 or 5, wherein the step of determining if the calculated value (38) is to be modified comprises comparing the distance between the calculated value (38) and the threshold (20) to a second threshold (28), wherein the calculated value (38) is to be modified if said distance is smaller than the second threshold (28).
7. A method according to any preceding claim, and further comprising mapping the one or more measured physiological parameters of the subject (12) to a scale and wherein the calculated value (38) comprises a value on the scale.
8. A system for obtaining a desired state in a subject (12) comprising:
- one or more sensors (14) arranged to measure one or more physiological parameters of the subject (12),
 - a processor (16) arranged to calculate a value (38) using the measured parameter(s), to determine if the calculated value (38) is to be modified, and to modify the calculated value (38), if the determination is that the value (38) is to be modified, wherein the processor (16) is arranged, when modifying the calculated value (38), if the determination is that the value (38) is to be modified, to access a modification scheme (26) and to modify the calculated value (38) according to the modification scheme (26), and
 - one or more output devices (18) arranged to generate an output to the subject (12), the output being in proportion to the modified value (40),

characterized in that the processor (16) is further

arranged to determine the direction of movement of the calculated value (38), wherein the modifying of the calculated value (38), if the determination is that the value (38) is to be modified, is dependent on the direction of movement of the value (38), wherein the processor (16) access a first modification scheme (26a) when the value (38) is increasing, and access a different, second modification scheme (26b) when the value (38) is decreasing.

9. A system according to claim 8, wherein the modification scheme (26) is in the form of a graph or look-up table.
10. A system according to claim 8 or 9, wherein the processor (16) is arranged, when modifying the calculated value (38), if the determination is that the value (38) is to be modified, to amplify or attenuate the calculated value (38).
11. A system according to any one of claims 8 to 10, wherein the processor (16) is arranged, when determining if the calculated value (38) is to be modified, to compare the calculated value (38) against a threshold (20).
12. A system according to claim 10 and 11, wherein the processor (16) is arranged, when modifying the calculated value (38), if the determination is that the value (38) is to be modified, to amplify the calculated value (38) if the calculated value (38) is beyond the threshold (20).
13. A system according to claim 11 or 12, wherein the processor (16) is arranged, when determining if the calculated value (38) is to be modified, to compare the distance between the calculated value (38) and the threshold (20) to a second threshold (28), wherein the calculated value (38) is to be modified if said distance is smaller than the second threshold (28).
14. A system according to any one of claims 8 to 13, wherein the processor (16) is further arranged to map the one or more measured physiological parameters of the subject (12) to a scale and wherein the calculated value (38) comprises a value on the scale.

50 Patentansprüche

1. Verfahren zum Erreichen eines gewünschten Status (22) einer Person (12), wonach:
- ein oder mehrere physiologische Parameter der Person (12) gemessen werden,
 - ein Wert (38) unter Verwendung des bzw. der gemessenen Parameter berechnet wird,

- ermittelt wird, ob der berechnete Wert (38) zu modifizieren ist,
 - der berechnete Wert (38) modifiziert wird, wenn die Ermittlung darauf hinausläuft, dass der Wert (38) zu modifizieren ist, wobei, im Falle die Ermittlung darauf hinausläuft, dass der Wert (38) zu modifizieren ist, der Schritt des Modifizierens des berechneten Wertes (38) das Zugreifen auf ein Modifikationsschema (26) sowie das Modifizieren des berechneten Wertes (38) entsprechend dem Modifikationsschema (26) umfasst, und
 - eine Ausgabe an die Person (12) generiert wird, wobei die Ausgabe im Verhältnis zu dem modifizierten Wert (40) steht,
- dadurch gekennzeichnet, dass** das Verfahren weiterhin das Ermitteln der Bewegungsrichtung des berechneten Wertes (38) umfasst, und dass, wenn die Ermittlung darauf hinausläuft, dass der Wert (38) zu modifizieren ist, der Schritt des Modifizierens des berechneten Wertes (38) von der Bewegungsrichtung des Wertes (38) abhängig ist, wobei ein erstes Modifikationsschema (26a) verwendet wird, wenn der Wert (38) ansteigt, und ein anderes, zweites Modifikationsschema (26b) verwendet wird, wenn der Wert (38) abnimmt.
2. Verfahren nach Anspruch 1, wobei das Modifikationsschema (26) in Form einer grafischen Darstellung oder Lookup-Tabelle vorgesehen wird.
 3. Verfahren nach Anspruch 1 oder 2, wobei, wenn die Ermittlung darauf hinausläuft, dass der Wert (38) zu modifizieren ist, der Schritt des Modifizierens des berechneten Wertes (38) das Verstärken oder Abschwächen des berechneten Wertes (38) umfasst.
 4. Verfahren nach einem der vorangegangenen Ansprüche, wobei der Schritt des Ermittlens, ob der berechnete Wert (38) zu modifizieren ist, das Vergleichen des berechneten Wertes (38) mit einem Schwellwert (20) umfasst.
 5. Verfahren nach den Ansprüchen 3 und 4, wobei, wenn die Ermittlung darauf hinausläuft, dass der Wert (38) zu modifizieren ist, der Schritt des Modifizierens des berechneten Wertes (38) das Verstärken des berechneten Wertes (38) umfasst, wenn der berechnete Wert (38) über den Schwellwert (20) hinausgeht.
 6. Verfahren nach Anspruch 4 oder 5, wobei der Schritt des Ermittlens, ob der berechnete Wert (38) zu modifizieren ist, das Vergleichen des Abstands zwischen dem berechneten Wert (38) und dem Schwellwert (20) mit einem zweiten Schwellwert (28) umfasst, wobei der berechnete Wert (38) zu modifizieren

ren ist, wenn der Abstand kleiner als der zweite Schwellwert (28) ist.

7. Verfahren nach einem der vorangegangenen Ansprüche, das weiterhin das Zuordnen des einen oder mehrerer gemessener, physiologischer Parameter der Person (12) zu einer Skala umfasst, und wobei der berechnete Wert (38) einen Wert auf der Skala umfasst.
8. System zum Erreichen eines gewünschten Status einer Person (12), umfassend:
 - einen oder mehrere Sensoren (14), die so eingerichtet sind, dass sie einen oder mehrere physiologische Parameter der Person (12) messen,
 - einen Prozessor (16), der so eingerichtet ist, dass er einen Wert (38) unter Verwendung des bzw. der gemessenen Parameter berechnet, ermittelt, ob der berechnete Wert (38) zu modifizieren ist, und den berechneten Wert (38) modifiziert, wenn die Ermittlung darauf hinausläuft, dass der Wert (38) zu modifizieren ist, wobei der Prozessor (16) so eingerichtet ist, dass er, im Falle die Ermittlung darauf hinausläuft, dass der Wert (38) zu modifizieren ist, auf ein Modifikationsschema (26) zugreift und den berechneten Wert (38) entsprechend dem Modifikationsschema (26) modifiziert, sowie
 - eine oder mehrere Ausgabevorrichtungen (18), die so eingerichtet sind, dass sie eine Ausgabe an die Person (12) generieren, wobei die Ausgabe im Verhältnis zu dem modifizierten Wert (40) steht,

dadurch gekennzeichnet, dass der Prozessor (16) weiterhin so eingerichtet ist, dass er die Bewegungsrichtung des berechneten Wertes (38) ermittelt, wobei, wenn die Ermittlung darauf hinausläuft, dass der Wert (38) zu modifizieren ist, das Modifizieren des berechneten Wertes (38) von der Bewegungsrichtung des Wertes (38) abhängig ist, wobei der Prozessor (16) auf ein erstes Modifikationsschema (26a) zugreift, wenn der Wert (38) ansteigt, und auf ein anderes, zweites Modifikationsschema (26b) zugreift, wenn der Wert (38) abnimmt.
9. System nach Anspruch 8, wobei das Modifikationsschema (26) in Form einer grafischen Darstellung oder Lookup-Tabelle vorgesehen ist.
10. System nach Anspruch 8 oder 9, wobei, wenn die Ermittlung darauf hinausläuft, dass der Wert (38) zu modifizieren ist, der Prozessor (16) so eingerichtet ist, dass er bei Modifizieren des berechneten Wertes (38) den berechneten Wert (38) verstärkt oder abschwächt.

11. System nach einem der Ansprüche 8 bis 10, wobei, wenn ermittelt wird, ob der berechnete Wert (38) zu modifizieren ist, der Prozessor (16) so eingerichtet ist, dass er den berechneten Wert (38) mit einem Schwellwert (20) vergleicht.
12. System nach den Ansprüche 10 und 11, wobei, wenn die Ermittlung darauf hinausläuft, dass der Wert (38) zu modifizieren ist, der Prozessor (16) so eingerichtet ist, dass er bei Modifizieren des berechneten Wertes (38) den berechneten Wert (38) verstärkt, wenn der berechnete Wert (38) über den Schwellwert (20) hinausgeht.
13. System nach Anspruch 11 oder 12, wobei, wenn ermittelt wird, ob der berechnete Wert (38) zu modifizieren ist, der Prozessor (16) so eingerichtet ist, dass er den Abstand zwischen dem berechneten Wert (38) und dem Schwellwert (20) mit einem zweiten Schwellwert (28) vergleicht, wobei der berechnete Wert (38) zu modifizieren ist, wenn der Abstand kleiner als der zweite Schwellwert (28) ist.
14. System nach einem der Ansprüche 8 bis 13, wobei der Prozessor (16) weiterhin so eingerichtet ist, dass er den einen oder mehrere gemessene, physiologische Parameter der Person (12) einer Skala zuordnet, und wobei der berechnete Wert (38) einen Wert auf der Skala umfasst.

Revendications

1. Procédé d'obtention d'un état souhaité (22) d'un sujet (12) comprenant :

la mesure d'un ou plusieurs paramètres physiologiques du sujet (12),
 le calcul d'une valeur (38) en utilisant le(s) paramètre(s) mesuré(s) ;
 la détermination si la valeur calculée (38) doit être modifiée,
 la modification de la valeur calculée (38) si la détermination est que la valeur (38) doit être modifiée, dans lequel l'étape de modification de la valeur calculée (38), si la détermination est que la valeur (38) doit être modifiée, comprend l'accès à un schéma de modification (26) et la modification de la valeur calculée (38) selon le schéma de modification (26), et
 la génération d'une sortie au sujet (12), la sortie étant proportionnelle à la valeur modifiée (40),
caractérisé en ce que le procédé comprend en outre la détermination de la direction de mouvement de la valeur calculée (38), et **en ce que** l'étape de modification de la valeur calculée (38), si la détermination est que la valeur (38) doit être modifiée, dépend de la direction de

mouvement de la valeur (38), dans lequel un premier schéma de modification (26a) est utilisé quand la valeur (38) augmente, et un second schéma de modification différent (26b) est utilisé quand la valeur (38) diminue.

2. Procédé selon la revendication 1, dans lequel le schéma de modification (26) est sous la forme d'un graphique ou d'un tableau de recherche.
3. Procédé selon la revendication 1 ou 2, dans lequel l'étape de modification de la valeur calculée (38), si la détermination est que la valeur (38) doit être modifiée, comprend l'amplification ou l'atténuation de la valeur calculée (38).
4. Procédé selon l'une quelconque des revendications précédentes, dans lequel l'étape de détermination si la valeur calculée (38) doit être modifiée comprend la comparaison de la valeur calculée (38) à un seuil (20).
5. Procédé selon la revendication 3 ou 4, dans lequel l'étape de modification de la valeur calculée (38), si la détermination est que la valeur (38) doit être modifiée, comprend l'amplification de la valeur calculée (38) si la valeur calculée (38) est au-delà du seuil (20).
6. Procédé selon la revendication 4 ou 5, dans lequel l'étape de détermination si la valeur calculée (38) doit être modifiée comprend la comparaison de la distance entre la valeur calculée (38) et le seuil (20) à un second seuil (28), dans lequel la valeur calculée (38) doit être modifiée si ladite distance est inférieure au second seuil (28).
7. Procédé selon l'une quelconque des revendications précédentes, et comprenant en outre la cartographie du ou des paramètres physiologiques mesurés du sujet (12) à une échelle et dans lequel la valeur calculée (38) comprend une valeur sur l'échelle.
8. Système pour obtenir un état souhaité d'un sujet (12) comprenant :
- un ou plusieurs capteurs (14) conçus pour mesurer un ou plusieurs paramètres physiologiques du sujet (12),
 un processeur (16) conçu pour calculer une valeur (38) en utilisant le(s) paramètre(s) mesuré(s) afin de déterminer si la valeur calculée (38) doit être modifiée, et de modifier la valeur calculée (38), si la détermination est que la valeur (38) doit être modifiée, dans lequel le processeur (16) est conçu, lors de la modification de la valeur calculée (38), si la détermination est que la valeur (38) doit être modifiée, pour accé-

- der à un schéma de modification (26) et pour modifier la valeur calculée (38) selon le schéma de modification (26) et un ou plusieurs dispositifs de sortie (18) conçus pour générer une sortie au sujet (12) la sortie étant proportionnelle à la valeur modifiée (40), **caractérisé en ce que** le processeur (16) est en outre conçu pour déterminer la direction de mouvement de la valeur calculée (38), dans lequel la modification de la valeur calculée (38), si la détermination est que la valeur (38) doit être modifiée, dépend de la direction de mouvement de la valeur (38), dans lequel le processeur (16) accède à un premier schéma de modification (26a), quand la valeur (38) augmente, et accède à un second schéma de modification différent (26b) quand la valeur (38) diminue.
- 5
- 10
- 15
9. Système selon la revendication 8, dans lequel le schéma de modification (26) est sous la forme d'un graphique ou d'un tableau de recherche.
- 20
10. Système selon la revendication 8 ou 9, dans lequel le processeur (16) est conçu, lors de la modification de la valeur calculée (38), si la détermination est que la valeur (38) doit être modifiée, pour amplifier ou atténuer la valeur calculée (38).
- 25
11. Système selon l'une quelconque des revendications 8 à 10, dans lequel le processeur (16) est conçu, lors de la détermination si la valeur calculée (38) doit être modifiée, pour comparer la valeur calculée (38) à un seuil (20).
- 30
12. Système selon les revendications 10 et 11, dans lequel le processeur (16) est conçu, lors de la modification de la valeur calculée (38), si la détermination est que la valeur (38) doit être modifiée, pour amplifier la valeur calculée (38) si la valeur calculée (38) est au-delà du seuil (20).
- 35
- 40
13. Système selon la revendication 11 ou 12, dans lequel le processeur (16) est conçu, lors de la détermination si la valeur calculée (38) doit être modifiée, pour comparer la distance entre la valeur calculée (38) et le seuil (20) à un second seuil (28), dans lequel la valeur calculée (38) doit être modifiée si ladite distance est inférieure au second seuil (28).
- 45
14. Système selon l'une quelconque des revendications 8 à 13, dans lequel le processeur (16) est en outre conçu pour cartographier le ou les paramètres physiologiques du sujet (12) à une échelle et dans lequel la valeur calculée (38) comprend une valeur sur l'échelle.
- 50
- 55

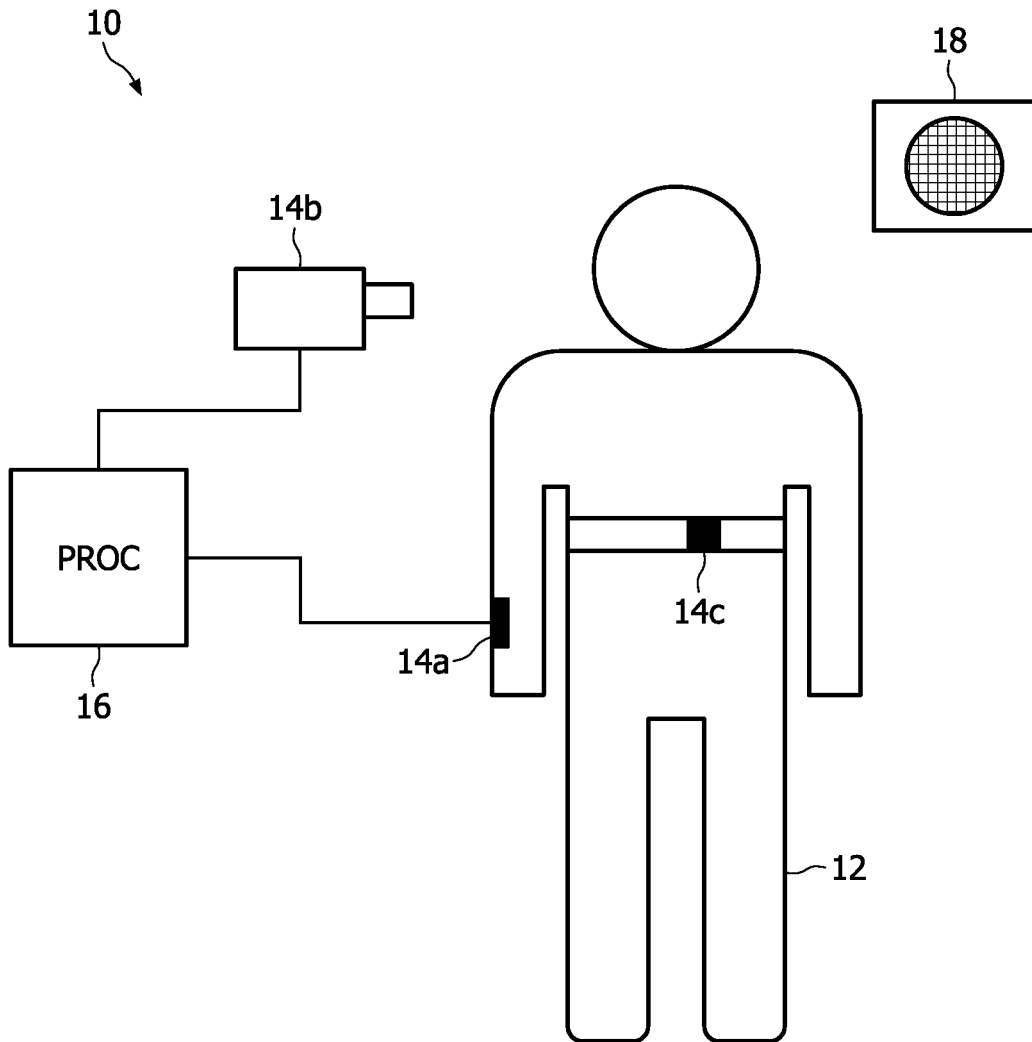


FIG. 1

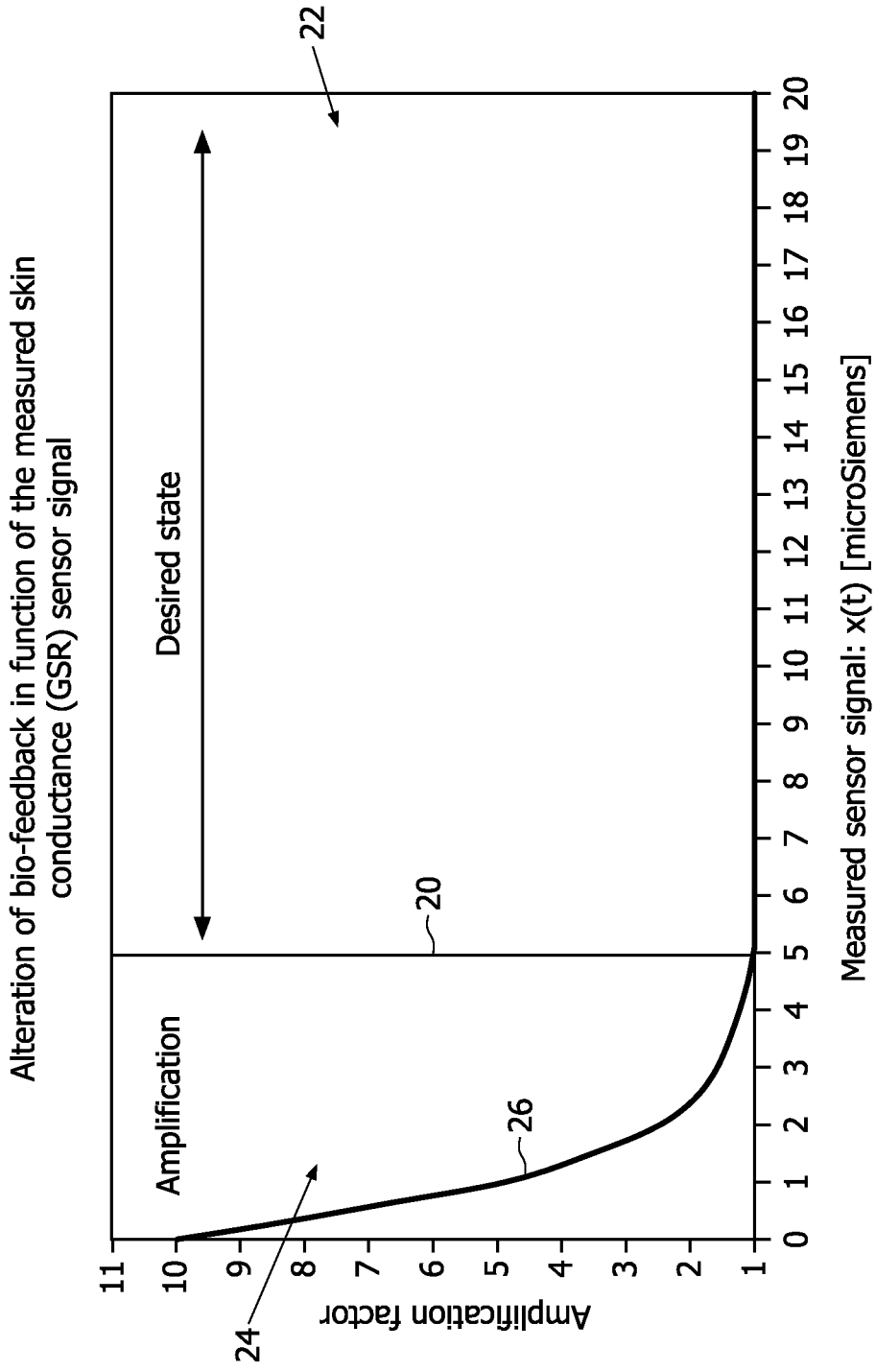


FIG. 2

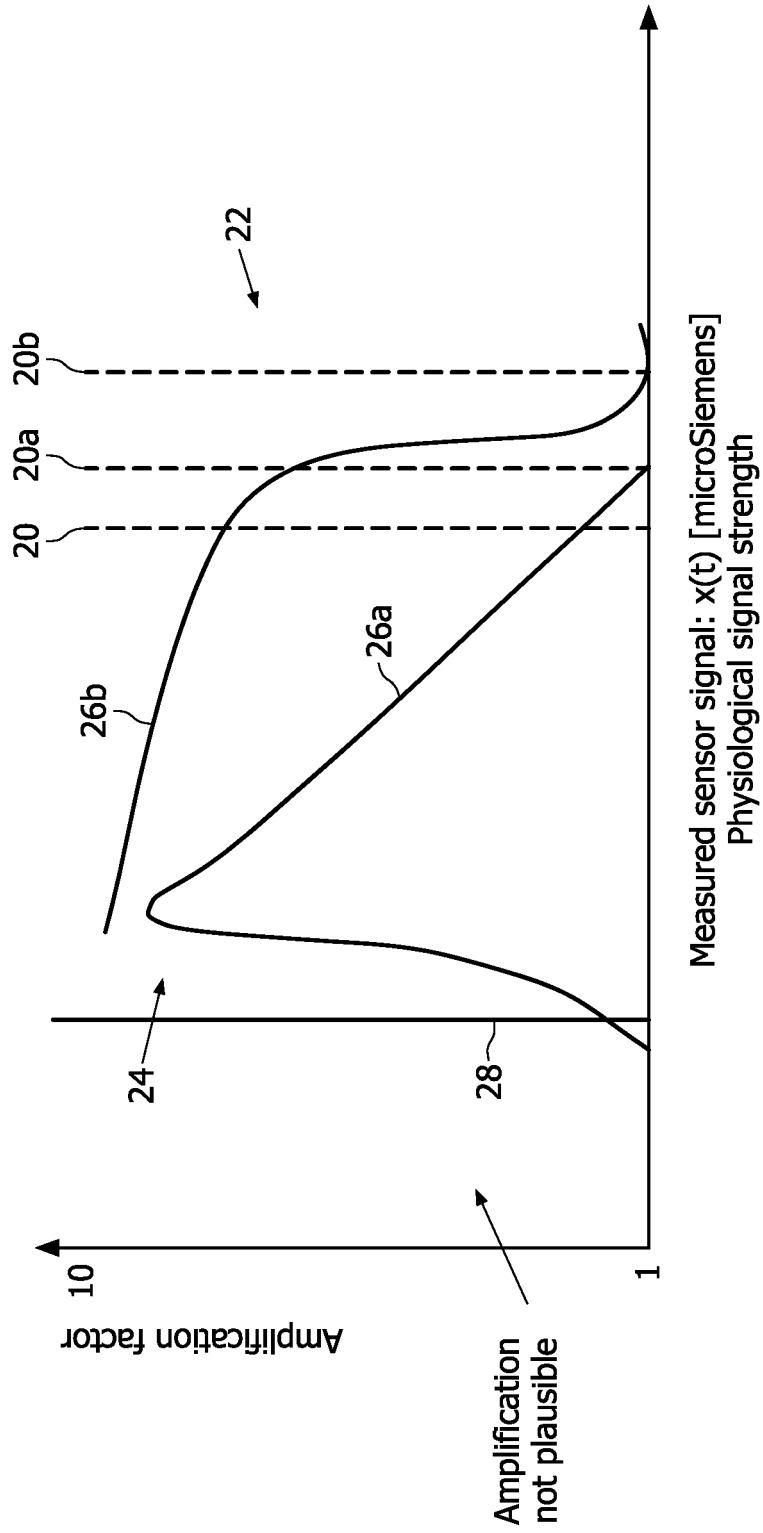


FIG. 3

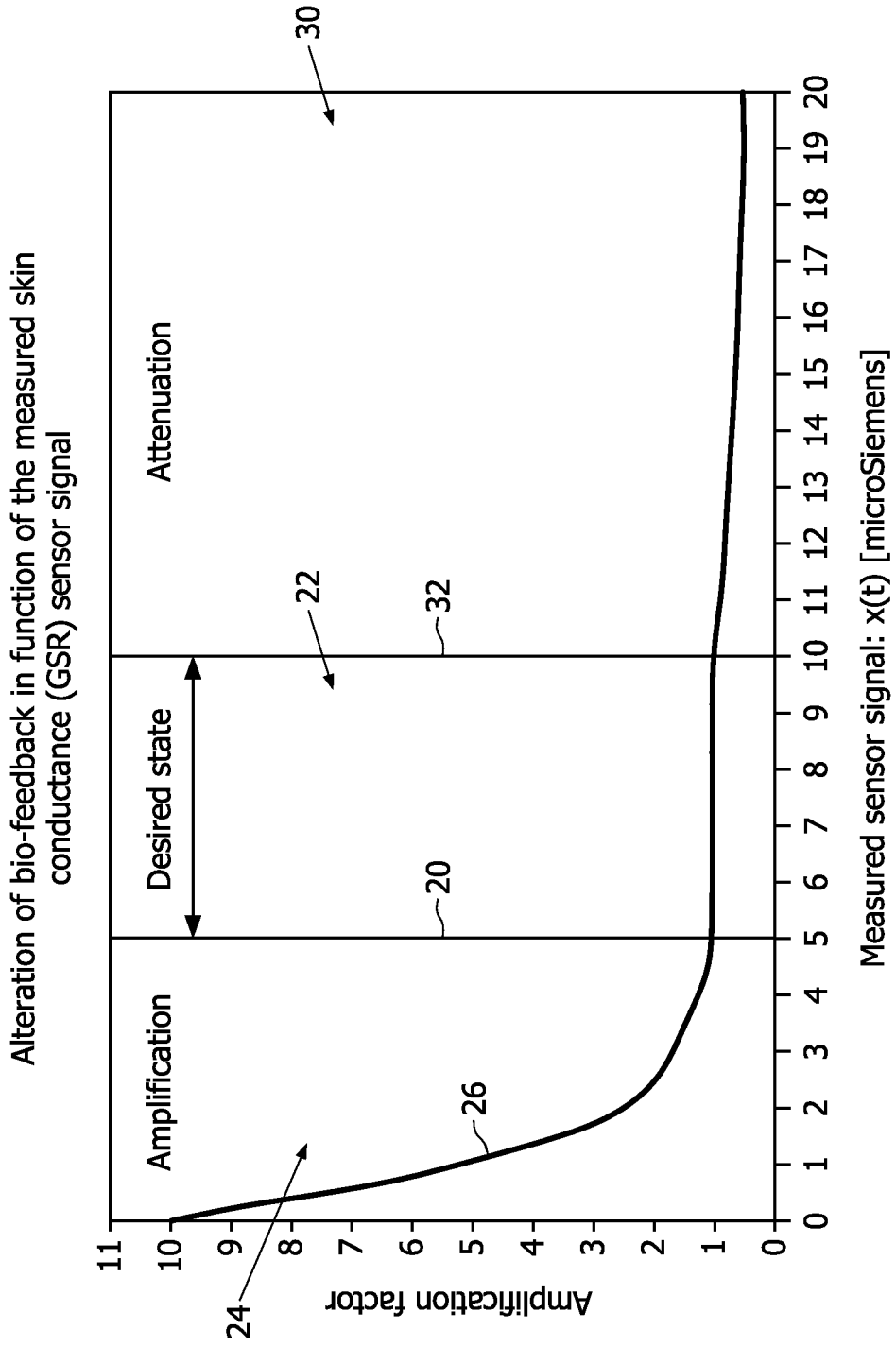


FIG. 4

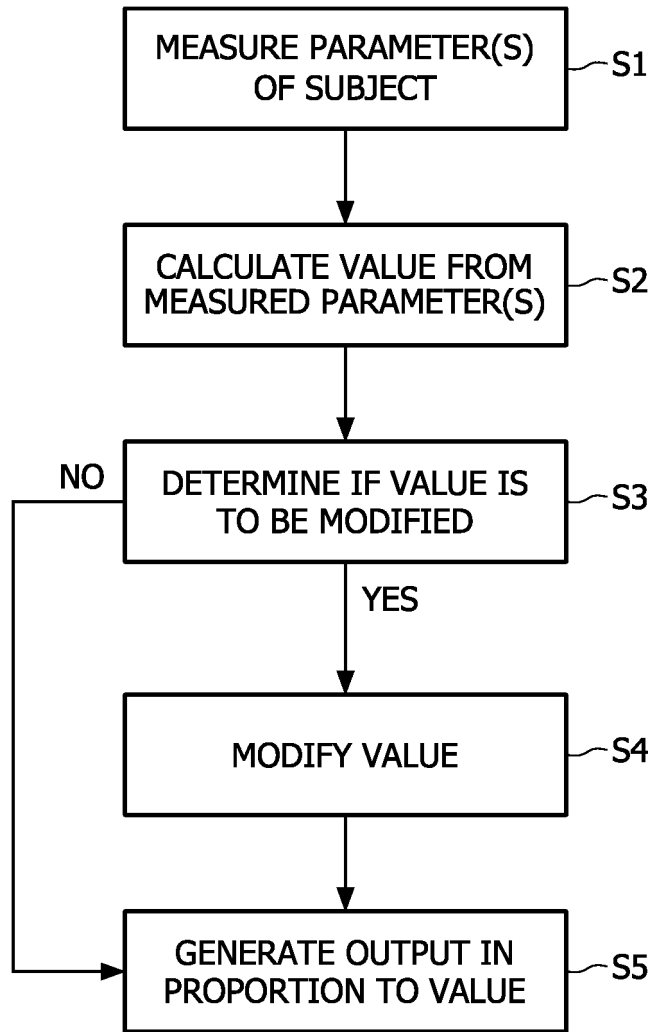


FIG. 5

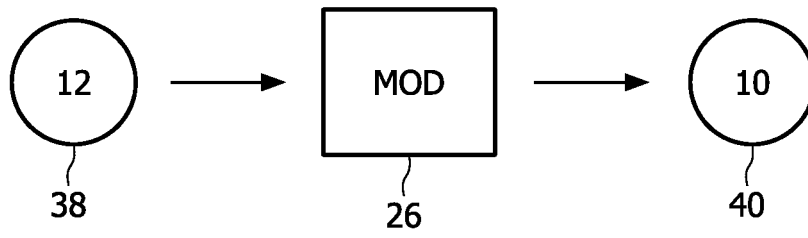
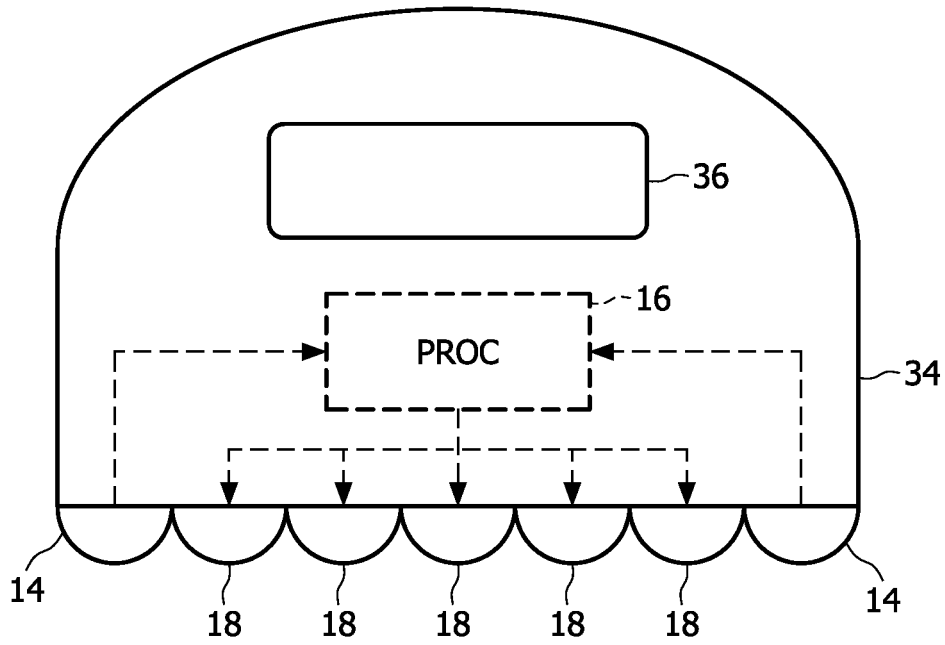


FIG. 6

REFERENCES CITED IN THE DESCRIPTION

This list of references cited by the applicant is for the reader's convenience only. It does not form part of the European patent document. Even though great care has been taken in compiling the references, errors or omissions cannot be excluded and the EPO disclaims all liability in this regard.

Patent documents cited in the description

- US 20050137503 A [0002]
- US 6067468 A [0003]
- US 4173217 A [0056]

专利名称(译)	获得受试者中所需状态的方法和系统		
公开(公告)号	EP2296535B1	公开(公告)日	2018-09-19
申请号	EP2009757973	申请日	2009-06-03
[标]申请(专利权)人(译)	皇家飞利浦电子股份有限公司		
申请(专利权)人(译)	皇家飞利浦电子N.V.		
当前申请(专利权)人(译)	皇家飞利浦N.V.		
[标]发明人	VAN DOOREN MARIEKE MENA BENITO MARIA E JOHNSON MARK T VAN DER WOLF RICHARD G C VAN DER MEIJDEN FRANS A M		
发明人	VAN DOOREN, MARIEKE MENA BENITO, MARIA, E. JOHNSON, MARK, T. VAN DER WOLF, RICHARD, G., C. VAN DER MEIJDEN, FRANS, A., M.		
IPC分类号	A61B5/00 A61B5/16 A61B5/053		
CPC分类号	A61B5/7264 A61B5/0533 A61B5/16 A61B5/486 G16H50/30		
代理机构(译)	合作社, PETER		
优先权	2008157718 2008-06-06 EP		
其他公开文献	EP2296535A1		
外部链接	Espacenet		

摘要(译)

在(22)受试者中获得期望状态的方法包括测量受试者(12)的一个或多个生理参数,使用测量的参数计算值(38),确定计算的值(38)。如果确定要修改该值,则修改计算值,并且生成对象的输出,输出与修改值成比例(40)。如果确定要修改该值,则修改计算值的步骤可以包括访问修改方案并根据修改方案修改计算值。修改计算值的一种方法包括放大计算值。

