



(11) **EP 2 275 025 B1**

(12) **EUROPEAN PATENT SPECIFICATION**

(45) Date of publication and mention of the grant of the patent:
25.09.2019 Bulletin 2019/39

(51) Int Cl.:
A61B 5/00 (2006.01) **A61B 5/107** (2006.01)
A61B 5/103 (2006.01)

(21) Application number: **10183479.4**

(22) Date of filing: **05.04.2005**

(54) **Apparatus and method for measuring fat**

Gerät und Methode zur Fettmessung

Dispositif et procédé de mesure de la graisse

(84) Designated Contracting States:
DE FR GB

(30) Priority: **11.10.2004 KR 20040081058**

(43) Date of publication of application:
19.01.2011 Bulletin 2011/03

(62) Document number(s) of the earlier application(s) in accordance with Art. 76 EPC:
05252131.7 / 1 645 223

(73) Proprietor: **Samsung Electronics Co., Ltd.**
Suwon-si, Gyeonggi-do, 443-742 (KR)

(72) Inventors:
• **Lee, Jong-young**
Yongin-si
Gyeonggi-do (KR)
• **Li, Bo**
Hangzhou City
310014, Zhejiang Province (CN)
• **Jeon, Kye-jin**
Suwon-si
Gyeonggi-do (KR)

• **Kim, Kyung-ho**
Yongin-si
Gyeonggi-do (KR)

(74) Representative: **Elkington and Fife LLP**
Prospect House
8 Pembroke Road
Sevenoaks, Kent TN13 1XR (GB)

(56) References cited:
EP-A1- 1 013 219 EP-A1- 1 366 707
EP-A2- 1 063 500 WO-A-2004/080276
US-A- 4 633 087 US-A- 4 850 365
US-A- 4 990 772 US-A- 5 941 825
US-B1- 6 285 904 US-B1- 6 587 702
US-B1- 6 618 615

• **CONWAY J M ET AL: "A NEW APPROACH FOR THE ESTIMATION OF BODY COMPOSITION: INFRARED INTERACTANCE", AMERICAN JOURNAL OF CLINICAL NUTRITION, BETHESDA, MD, US, vol. 40, no. 6, December 1984 (1984-12), pages 1123-1130, XP000878863, ISSN: 0002-9165**

EP 2 275 025 B1

Note: Within nine months of the publication of the mention of the grant of the European patent in the European Patent Bulletin, any person may give notice to the European Patent Office of opposition to that patent, in accordance with the Implementing Regulations. Notice of opposition shall not be deemed to have been filed until the opposition fee has been paid. (Art. 99(1) European Patent Convention).

Description

[0001] The present invention relates to an apparatus and method for measuring fat thickness, and more particularly, to an apparatus and method for measuring fat thickness in a target by radiating light at the target.

[0002] The human body is mainly comprised of four components: water, protein, fat, and minerals. A rate of these components in the body is different depending on sex, age, and race, but it is roughly 55:20:20:5. The rate of the four components can be obtained from the amount of water in the body since protein and water are major components of human muscle and are proportional to each other. For example, if healthy muscle is comprised of about 73% water, the other 27% is protein. Minerals form bones, a weight of which is closely related with the muscle weight. In detail, the amount of protein and the amount of minerals can be obtained using the amount of water in the body, and the amount of fat in the body is obtained by subtracting the sum of the amounts of water, protein, and minerals from the body weight. Conventionally, bioelectrical impedance analysis (BIA) is most widely used to measure body fat. Besides, hydrodensitometry is also used.

[0003] In the BIA, a body fat rate is measured based on the fact that the amount of hydrodensitometry water in the body is inversely proportional to the electrical resistance of the body. The BIA is advantageous in that measurement is simple, quick, and non-invasive. When a weak alternating current (AC) electrical signal is applied to the human body, electricity flows along water having high conductivity in the body. According to the amount of water, the size of a passage through which the electricity flows is determined. A value measured in this situation indicates the bio-impedance. In calculating the amount of a body component using the bio-impedance, an AC of about 1 mA in a frequency band of 50 kHz is applied to the human body. When the AC flows in the body, body resistance is measured and the amount of water in the body is obtained using the body resistance. The amount of protein and the amount of minerals are obtained using the amount of water. A body fat rate is obtained using the amounts of protein and minerals and the weight of the body.

[0004] FIG. 1 is a perspective view of a conventional apparatus for measuring a body fat rate using near infrared rays. The apparatus radiates near infrared rays at a human body and measures a body fat rate. To accurately measure the body fat rate, near infrared rays must be uniformly radiated at a target body part and a constant amount of near infrared rays must be radiated at every measurement. The apparatus shown in FIG. 1 radiates near infrared rays at a target body part using four light emitters 100, 110, 120, and 130. To increase uniformity of radiation of near infrared rays, it is necessary to increase the number of light emitters or the length of the apparatus.

[0005] FIG. 2 illustrates a perspective view of another conventional apparatus for measuring a body fat rate using near infrared rays, to explain a method of setting a measurement position of the apparatus. For repetitiveness of near infrared rays at every measurement, two marks 210 and 220 of the apparatus 200 must be always aligned when measurement is performed.

[0006] As described above, in the conventional apparatuses and methods for measured fat, it is necessary to increase the number of light emitters or the length of a measuring apparatus to satisfactorily uniformize the amount of near infrared rays radiated at a target body part. As a result, manufacturing cost increases and miniaturization cannot be accomplished. In addition, the conventional technology is inconvenient because a measurement position must be set at every measurement. Moreover, a fat rate in a whole human body can be measured, but the amount of fat in a part of the body cannot be measured.

[0007] EP 1366707 A1 discloses a method of measuring fat thickness comprising emitting light having a wavelength in the range 550 to 800nm at a target and measuring the transmission of the light by the body part. The fat thickness is determined with reference to a plurality of data represented by curves showing a relationship between the subcutaneous fat thickness measured by ultrasonic diagnostic apparatus and an electrical signal value representing the transmitted light.

[0008] The invention provides a method of measuring fat thickness in a target according to claim 1.

[0009] The present invention thus provides a method of measuring fat thickness in a target body part of a person, including radiating near infrared rays having a first wavelength at a fat sample and measuring an absorbance of the fat sample with respect to the near infrared rays having the first wavelength; radiating near infrared rays having a second wavelength at the fat sample and measuring an absorbance of the fat sample with respect to the near infrared rays having the second wavelength; measuring a thickness of the fat using an ultrasonic wave; generating an equation defining a relationship between the absorbances respectively obtained at the first and second wavelengths and the fat thickness; radiating near infrared rays having the first wavelength at the target body part, receiving light reflected from the target body part, and calculating a ratio of intensity of the light reflected from the body part to intensity of the near infrared rays radiated at the target body part to obtain absorbance of the target body part; radiating near infrared rays having the second wavelength at the target body part, receiving light reflected from the target body part, and calculating a ratio of intensity of the light reflected from the body part to intensity of the near infrared rays radiated at the target body part to obtain absorbance of the target body part; and calculating the fat thickness in the target body part using the two calculated absorbances and the generated equation.

[0010] The first and second wavelengths are 930 nm and 1040 nm, respectively. The near infrared rays may be emitted by a single light emitter.

[0011] The method of measuring fat thickness may be implemented as a computer program recorded in a computer readable recording medium.

[0012] The method may be performed using an apparatus for measuring fat thickness in a target body part of a person, the apparatus including a light emitter emitting near infrared rays, an inner reflector having a reflecting plane outside to reflect the near infrared rays emitted by the light emitter, an outer reflector surrounding the inner reflector and having a reflecting plane inside to reflect the near infrared rays emitted by the light emitter, a light receiver receiving light reflected from the target body part in response to the near infrared rays, and a calculator calculating the fat thickness in the target body part using the light received by the light receiver.

[0013] The apparatus may further include a conductive window transmitting the near infrared rays emitted by the light emitter to the target body part.

[0014] The reflecting planes may be formed using aluminum.

[0015] The light receiver may be a pin type silicon detector.

[0016] The present invention thus provides a method for measuring fat thickness in a target body part using near infrared rays emitted by a single light emitter.

[0017] The above and other features and advantages of the present invention will become more apparent by describing in detail preferred embodiments thereof with reference to the attached drawings in which:

FIG. 1 is a perspective view of a conventional apparatus for measuring a body fat rate using near infrared rays; FIG. 2 is a perspective view of another conventional apparatus for measuring a body fat rate using near infrared rays to explain a method of setting a measurement position of the apparatus; FIG. 3 illustrates a vertical cross-section of an apparatus for measuring fat thickness using near infrared rays according to an embodiment of the present invention; FIG. 4 illustrates a horizontal cross-section of the apparatus shown in FIG. 3; FIG. 5 is a graph illustrating the relationship between the wavelength of near infrared rays radiated at a target body part and absorptance; FIG. 6 is a flowchart of a method of measuring a fat thickness using near infrared rays according to an embodiment of the present invention; and FIG. 7 is a flowchart of a method of generating a regression equation defining the relationship between the absorptance and the fat thickness.

[0018] Hereinafter, preferred embodiments of the invention will be described in detail with reference to the attached drawings. Like reference numerals in the drawings denote like elements.

[0019] FIG. 3 illustrates a vertical cross-section of an apparatus for measuring the fat thickness using near infrared rays according to an embodiment of the present invention. The apparatus includes a light emitter 300, an outer reflector 310, an inner reflector 320, a light receiver 330, signal transmitters 340 and 350, a conductive window 360, a shield 370, and a calculator (not shown).

[0020] The light emitter 300 emits near infrared rays toward a target body part. The near infrared rays emitted by the light emitter 300 may have a wavelength of 930 or 1040 nm.

[0021] The outer reflector 310 has a reflecting plane inside so that the near infrared rays emitted by the light emitter 300 are reflected from the inside reflecting plane toward the target body part. The inside of the outer reflector 310 may be formed using plastic coated with aluminum.

[0022] The inner reflector 320 has a reflecting plane outside so that the near infrared rays emitted by the light emitter 300 are reflected from the outside reflecting plane toward the target body part. The outside of the inner reflector 320 may be formed using plastic coated with aluminum.

[0023] The near infrared rays emitted by the light emitter 300 are reflected by the inside of the outer reflector 310 and the outside of the inner reflector 320 and uniformly radiated at the target body part through a space between the outer reflector 310 and the inner reflector 320.

[0024] The light receiver 330 receives the near infrared rays that are not absorbed into the target body part but are reflected therefrom. The absorptance of the target body part can be obtained by calculating a ratio of the amount of near infrared rays received by the receiver 330 to the amount of near infrared rays emitted by the light emitter 300. The light receiver 330 may be implemented as a pin type silicon detector.

[0025] The signal transmitters 340 and 350 transmit a light signal generated by the receiver 330 to the calculator. The signal transmitters 340 and 350 may be implemented as a thin metal pole whose outside is coated with aluminum.

[0026] The conductive window 360 enables the near infrared rays emitted by the light emitter 300 to reach the target body part. The shield 370 interrupts external light to prevent light other than the near infrared rays emitted by the light emitter 300 from being radiated at the target body part.

[0027] The calculator receives the light signal transmitted from the light receiver 330 through the signal transmitter 340 and 350 and calculates a fat thickness in the target body part using the light signal. For example, the calculator may

calculate a ratio of the intensity of the light reflected from the target body part to the intensity of the near infrared rays radiated at the target body part and generate an equation defining the relationship between the calculated ratio and the fat thickness, thereby calculating the fat thickness in the target body part. The equation may be:

$$\text{Fat thickness} = K_0 + K_1 \times (\log I/I_1) \quad \dots(1)$$

$$I = E_s/E_r,$$

where E_r is the intensity of the near infrared rays that are emitted by the light emitter 300 and radiated at the target body part, E_s is the intensity of the light that is reflected from the target body part and received by the light receiver 330, and K_0 and K_1 are constants.

[0028] FIG. 4 illustrates a horizontal cross-section of the apparatus shown in FIG. 3. As shown in FIG. 4, the apparatus may have a cylindrical shape. Starting from the outside of the cylindrical shape, the shield 370, the outer reflector 310, the inner reflector 320, and light receiver 330 are sequentially disposed. A passage through which the near infrared rays pass is present between the outer reflector 310 and the inner reflector 320.

[0029] FIG. 5 is a graph illustrating the relationship between the wavelength of near infrared rays radiated at a target body part and the absorptance. Curves 500, 510, 520, and 530 correspond to fat thicknesses of 10, 7, 5, and 2 mm, respectively. According to the graph shown in FIG. 5, when the near infrared rays have frequencies of 930 and 1040 nm, absorptance of the target body part with respect to the near infrared rays increases as the fat thickness increases. Consequently, a fat thickness in the target body part can be obtained by radiating near infrared rays having a wavelength of 930 or 1040 nm at the target body part, receiving light reflected from the target body part, calculating the absorptance of the target body part, and calculating an equation like Equation (1) defining the relationship between the absorptance and the fat thickness.

[0030] FIG. 6 is a flowchart of a method of measuring fat thickness using near infrared rays according to an embodiment of the present invention. In operation 600, the light emitter 300 radiates near infrared rays at a target body part. As shown in FIG. 5, since the absorptance is proportional to the fat thickness when the near infrared rays have a wavelength of 930 or 1040 nm, it is preferable to radiate the near infrared rays having a wavelength of 930 or 1040 nm.

[0031] In operation 610, the light receiver 330 receives light reflected from the target body part at which the near infrared rays are radiated. In operation 620, the calculator calculates the intensity of the light received by the light receiver 330, and calculates absorptance, i.e., a ratio of the intensity of the light received by the light receiver 330 to the intensity of the near infrared rays radiated at the target body part. In operation 630, the calculator calculates a fat thickness in the target body part using the absorptance of the target body part.

[0032] FIG. 7 is a flowchart of a method of generating an equation defining the relationship between the absorptance and the fat thickness. In operations 700 and 710, "n" fat samples having different thicknesses are prepared and near infrared rays having a wavelength of 930 nm are radiated at a first fat sample among the "n" fat samples. In operation 720, the intensity of light reflected from the fat sample at which the near infrared rays are radiated is measured. In operation 730, absorptance of the fat sample with respect to the near infrared rays is calculated by calculating a ratio of the intensity of the light reflected from the fat sample to the intensity of the near infrared rays radiated at the fat sample.

[0033] In operation 740, the thickness of the fat sample is measured using an ultrasonic wave. In operation 750, it is determined whether the above operations are performed on all of the fat samples. Operations 710 through 740 are repeated until the absorptance and the thickness are measured with respect to all of the fat samples.

[0034] In operation 770, a regression equation defining the relationship between the absorptance and the fat thickness is generated using "n" pairs of absorptance and fat thickness measured from all of the fat samples.

[0035] To generate a more accurate equation for the relationship between the absorptance and the fat thickness, operations 700 through 760 may be repeated at two different wavelengths of the near infrared rays, and as a result, a regression equation like Equation (2) may be obtained.

$$\text{Fat thickness} = K_0 + K_1 \times (\log I/I_1) + K_2 \times (\log I/I_2) \quad \dots(2)$$

$$I_1 = E_{s1}/E_{r1},$$

$$I_2 = E_{s2}/E_{r2},$$

where E_{r1} is the intensity of the near infrared rays having a first wavelength that are radiated at the target body part by the light emitter 300, E_{s1} is the intensity of light reflected from the target body part at which the near infrared rays having the first wavelength are radiated, E_{r2} is the intensity of the near infrared rays having a second wavelength that are radiated at the target body part by the light emitter 300, E_{s2} is the intensity of light reflected from the target body part at

which the near infrared rays having the first wavelength are radiated, and K_0 , K_1 and K_2 are constants. The first and second wavelengths may be 930 and 1040nm, respectively.

[0036] When fat thickness is calculated using Equation (2), near infrared rays having the first wavelength are radiated at a target body part, and an absorptance of the target body part with respect to the near infrared rays is calculated. Thereafter, near infrared rays having the second wavelength are radiated at the target body part, and an absorptance of the target body part with respect to the near infrared rays is calculated. Next, the two absorptances are applied to Equation (2) to calculate the fat thickness in the target body part.

[0037] The invention can also be embodied as computer readable codes on a computer readable recording medium. The computer readable recording medium is any data storage device that can store data which can be thereafter read by a computer system. Examples of the computer readable recording medium include read-only memory (ROM), random-access memory (RAM), CD-ROMs, magnetic tapes, floppy disks, optical data storage devices, and carrier waves (such as data transmission through the Internet). The computer readable recording medium can also be distributed over network coupled computer systems so that the computer readable code is stored and executed in a distributed fashion. Also, functional programs, codes, and code segments for accomplishing the present invention can be easily construed by programmers skilled in the art to which the present invention pertains.

[0038] As described above, according to the present invention, near infrared rays can be uniformly radiated at a target body part using a single light emitter, and therefore, manufacturing cost and a size of a measuring apparatus can be reduced. In addition, since a fat thickness can be locally measured at a desired body part, health and obesity can be locally managed throughout the whole body.

[0039] Although a few embodiments of the present invention have been shown and described, it will be understood by those skilled in the art that changes may be made in these elements without departing from the scope of the invention, the scope of which is defined in the appended claims.

Claims

1. A method of measuring fat thickness in a target, the method comprising:

radiating near infrared rays having a first wavelength at a fat sample (710), measuring an absorptance of the fat sample with respect to the near infrared rays having the first wavelength (720, 730), measuring a thickness of the fat sample using an ultrasonic wave (740), and generating an equation defining a relationship between the absorptance obtained at the first wavelength and the fat thickness (770);

generating and radiating near infrared rays having the first wavelength at the target (600), receiving light reflected from the target in response to the near infrared rays (610), and calculating a ratio of intensity of the light reflected from the target to intensity of the near infrared rays radiated at the target to obtain absorptance of the target with respect to the near infrared rays having the first wavelength (620); and

calculating the fat thickness in the target using the calculated absorptance and the generated equation (630), wherein the method is **characterized in that** the step of radiating further comprises radiating near infrared rays having a second wavelength at the fat sample and measuring an absorptance of the fat sample with respect to the near infrared rays having the second wavelength, the equation defining a relationship between the absorptances respectively obtained at the first and second wavelengths and the fat thickness,

wherein the step of generating further comprises generating and radiating near infrared rays having the second wavelength at the target, and calculating a ratio of intensity of the light reflected from the target to intensity of the near infrared rays radiated at the target to obtain absorptance of the target with respect to the near infrared rays having the second wavelength; and

wherein the step of calculating comprises calculating the fat thickness in the target using the two calculated absorptances and the generated equation, and wherein the first and second wavelengths are 930 nm and 1040 nm, respectively.

2. The method of claim 1, wherein the near infrared rays are emitted by a single light emitter (300).

3. A computer program comprising computer program code means adapted to perform all the steps of claim 1 or 2 when said program is run on a computer.

4. The computer program of claim 3 embodied on a computer readable medium.

5. The method of claim 1 or 2, wherein the method is performed using an apparatus for measuring fat thickness in a target body part of a person, the apparatus comprising:

a light emitter (300) for emitting near infrared rays;
 an inner reflector (320) having a reflecting plane outside to reflect the near infrared rays emitted by the light emitter (300);
 an outer reflector (310) surrounding the inner reflector (320) and having a reflecting plane inside to reflect the near infrared rays emitted by the light emitter (300);
 a light receiver (330) for receiving light reflected from the target body part in response to the near infrared rays; and
 a calculator for calculating the fat thickness in the target body part using the light received by the light receiver (330).

6. The method of claim 5, further comprising a conductive window (360) for transmitting the near infrared rays emitted by the light emitter (300) to the target body part.

7. The method of claims 5 or 6, wherein the reflecting planes (310, 320) are formed using aluminum and/or wherein the light receiver (330) is a pin type silicon detector.

8. The method of any of claims 5 to 7, wherein the calculator comprises:

a ratio calculator for calculating the ratios of intensity of the light received by the light receiver to intensity of the near infrared rays radiated at the target body part, to obtain the absorptances; and
 a thickness calculator for calculating the fat thickness in the target body part using the two absorptances calculated with respect to the near infrared rays having the first and second wavelengths and the relationship between the absorptances and the fat thickness.

9. The method of any of claims 5 to 8, further comprising a shield (370) for interrupting external light to prevent light other than the near infrared rays emitted by the light emitter (300) from being radiated at the target body part.

Patentansprüche

1. Verfahren zum Messen der Fettdicke in einem Ziel, wobei das Verfahren Folgendes umfasst:

Abstrahlen von Nahinfrarotstrahlen mit einer ersten Wellenlänge auf eine Fettprobe (710), Messen eines Absorptionsgrades der Fettprobe in Bezug auf die Nahinfrarotstrahlen mit der ersten Wellenlänge (720, 730), Messen einer Dicke der Fettprobe unter Verwendung einer Ultraschallwelle (740) und Erzeugen einer Gleichung, die eine Beziehung zwischen dem bei der ersten Wellenlänge erhaltenen Absorptionsgrad und der Fettdicke (770) definiert,

Erzeugen und Abstrahlen von Nahinfrarotstrahlen mit der ersten Wellenlänge auf das Ziel (600), Empfangen von Licht, das von dem Ziel als Reaktion auf die Nahinfrarotstrahlen (610) reflektiert wird, und Berechnen eines Verhältnisses der Intensität des von dem Ziel reflektierten Lichts zur Intensität der auf das Ziel abgestrahlten Nahinfrarotstrahlen, um den Absorptionsgrad des Ziels in Bezug auf die Nahinfrarotstrahlen mit der ersten Wellenlänge (620) zu erhalten, und

Berechnen der Fettdicke im Ziel unter Verwendung des berechneten Absorptionsgrades und der erzeugten Gleichung (630),

wobei das Verfahren **dadurch gekennzeichnet ist, dass** der Schritt des Abstrahlens ferner das Abstrahlen von Nahinfrarotstrahlen mit einer zweiten Wellenlänge auf die Fettprobe und das Messen eines Absorptionsgrades der Fettprobe in Bezug auf die Nahinfrarotstrahlen mit der zweiten Wellenlänge umfasst, wobei die Gleichung eine Beziehung zwischen den jeweils bei der ersten und zweiten Wellenlänge erhaltenen Absorptionsgraden und der Fettdicke definiert,

wobei der Schritt des Erzeugens ferner das Erzeugen und Abstrahlen von Nahinfrarotstrahlen mit der zweiten Wellenlänge auf das Ziel und das Berechnen eines Verhältnisses der Intensität des vom Ziel reflektierten Lichts zur Intensität der auf das Ziel abgestrahlten Nahinfrarotstrahlen umfasst, um den Absorptionsgrad des Ziels in Bezug auf die Nahinfrarotstrahlen mit der zweiten Wellenlänge zu erhalten, und

wobei der Schritt des Berechnens das Berechnen der Fettdicke in dem Ziel unter Verwendung der beiden berechneten Absorptionsgrade und der erzeugten Gleichung umfasst,

und wobei die erste und die zweite Wellenlänge 930 nm bzw. 1040 nm betragen.

2. Verfahren nach Anspruch 1, wobei die Nahinfrarotstrahlen von einem einzelnen Lichtsender (300) emittiert werden.

EP 2 275 025 B1

3. Computerprogramm, umfassend Computerprogrammcodemittel, die geeignet sind, um alle Schritte nach Anspruch 1 oder 2 auszuführen, wenn das Programm auf einem Computer ausgeführt wird.

4. Computerprogramm nach Anspruch 3, das auf einem computerlesbaren Medium verkörpert ist.

5. Verfahren nach Anspruch 1 oder 2, wobei das Verfahren unter Verwendung einer Vorrichtung zum Messen der Fettdicke in einem Zielkörperteil einer Person durchgeführt wird, wobei die Vorrichtung Folgendes umfasst:

einen Lichtsender (300) zum Emittieren von Nahinfrarotstrahlen,
einen inneren Reflektor (320) mit einer reflektierenden Ebene außerhalb, um die von dem Lichtsender (300) emittierten Nahinfrarotstrahlen zu reflektieren,
einen äußeren Reflektor (310), der den inneren Reflektor (320) umgibt und eine reflektierende Ebene im Inneren aufweist, um die von dem Lichtsender (300) emittierten Nahinfrarotstrahlen zu reflektieren,
einen Lichtempfänger (330) zum Empfangen von Licht, das von dem Zielkörperteil als Reaktion auf die Nahinfrarotstrahlen reflektiert wird, und
einen Rechner zum Berechnen der Fettdicke in dem Zielkörperteil unter Verwendung des von dem Lichtempfänger (330) empfangenen Lichts.

6. Verfahren nach Anspruch 5, ferner umfassend ein leitfähiges Fenster (360) zum Übertragen der vom Lichtsender (300) emittierten Nahinfrarotstrahlen auf den Zielkörperteil.

7. Verfahren nach Anspruch 5 oder 6, wobei die reflektierenden Ebenen (310, 320) unter Verwendung von Aluminium ausgebildet sind und/oder wobei der Lichtempfänger (330) ein Siliziumdetektor vom Stifftyp ist.

8. Verfahren nach einem der Ansprüche 5 bis 7, wobei der Rechner Folgendes umfasst:

einen Verhältnisrechner zum Berechnen der Verhältnisse der Intensität des vom Lichtempfänger empfangenen Lichts zur Intensität der am Zielkörperteil abgestrahlten Nahinfrarotstrahlen, um die Absorptionsgrade zu erhalten, und
einen Dickenrechner zum Berechnen der Fettdicke im Zielkörperteil unter Verwendung der beiden Absorptionsgrade, die in Bezug auf die Nahinfrarotstrahlen mit der ersten und zweiten Wellenlänge und dem Verhältnis zwischen den Absorptionsgraden und der Fettdicke berechnet wurden.

9. Verfahren nach einem der Ansprüche 5 bis 8, ferner umfassend eine Abschirmung (370) zum Unterbrechen von Fremdlicht, um zu verhindern, dass außer den von dem Lichtsender (300) emittierten Nahinfrarotstrahlen anderes Licht auf den Zielkörperteil abgestrahlt wird.

Revendications

1. Procédé de mesure de l'épaisseur de graisse dans une cible, le procédé comprenant :

le rayonnement des rayons proches infrarouges possédant une première longueur d'onde vers un échantillon de graisse (710), la mesure du pouvoir d'absorption de l'échantillon de graisse par rapport aux rayons proches infrarouges possédant la première longueur d'onde (720, 730), la mesure de l'épaisseur de l'échantillon de graisse à l'aide d'une sonde à ultrason (740), et la génération d'une équation définissant une relation entre l'absorption obtenue à la première longueur d'onde et l'épaisseur de graisse (770) ;
la génération et le rayonnement des rayons proches infrarouges possédant la première longueur d'onde vers la cible (600), la réception de la lumière réfléchie par la cible en réponse aux rayons proches infrarouges (610), et le calcul d'un rapport de l'intensité de la lumière réfléchie par la cible sur l'intensité des rayons proches infrarouges rayonnés vers la cible pour obtenir le pouvoir d'absorption de la cible par rapport aux rayons proches infrarouges possédant la première longueur d'onde (620) ; et
le calcul de l'épaisseur de graisse dans la cible à l'aide du pouvoir d'absorption calculé et de l'équation générée (630),

ledit procédé étant **caractérisé en ce que** l'étape de rayonnement comprend en outre le rayonnement de rayons proches infrarouges possédant une seconde longueur d'onde vers l'échantillon de graisse et la mesure du pouvoir d'absorption de l'échantillon de graisse par rapport aux rayons proches infrarouges possédant la seconde longueur d'onde, l'équation définissant une relation entre les pouvoirs d'absorption obtenus respecti-

EP 2 275 025 B1

vement aux première et seconde longueurs d'onde et l'épaisseur de graisse, ladite étape de génération comprenant en outre la génération et le rayonnement des rayons proches infrarouges possédant la seconde longueur d'onde vers la cible, et le calcul d'un rapport de l'intensité de la lumière réfléchie par la cible sur l'intensité des rayons proches infrarouges rayonnés vers la cible pour obtenir le pouvoir d'absorption de la cible par rapport aux rayons proches infrarouges possédant la seconde longueur d'onde ; et ladite étape de calcul comprenant le calcul de l'épaisseur de graisse dans la cible à l'aide les deux pouvoirs d'absorption calculés et l'équation générée, et lesdites première et seconde longueurs d'onde étant respectivement égales à 930 nm et 1040 nm.

- 5
- 10
- 15
- 20
- 25
- 30
- 35
- 40
- 45
- 50
- 55
2. Procédé selon la revendication 1, lesdits rayons proches infrarouges étant émis par un seul émetteur de lumière (300).
 3. Programme informatique comprenant un moyen de code de programme informatique adapté pour effectuer toutes les étapes selon la revendication 1 ou 2 lorsque ledit programme est exécuté sur un ordinateur.
 4. Programme d'ordinateur selon la revendication 3, incorporé sur un support lisible par ordinateur.
 5. Procédé selon la revendication 1 ou 2, ledit procédé étant effectué à l'aide d'un appareil destiné à mesurer l'épaisseur de graisse dans une partie de corps cible d'une personne, l'appareil comprenant :
 - un émetteur de lumière (300) destiné à émettre des rayons proches infrarouges ;
 - un réflecteur interne (320) possédant un plan de réflexion à l'extérieur pour réfléchir les rayons proches infrarouges émis par l'émetteur de lumière (300) ;
 - un réflecteur externe (310) entourant le réflecteur interne (320) et possédant un plan réfléchissant à l'intérieur pour réfléchir les rayons proches infrarouges émis par l'émetteur de lumière (300) ;
 - un récepteur de lumière (330) destiné à recevoir la lumière réfléchie par la partie de corps cible en réponse aux rayons proches infrarouges ; et
 - un calculateur destiné à calculer l'épaisseur de graisse dans la partie de corps cible à l'aide de la lumière reçue par le récepteur de lumière (330).
 6. Procédé selon la revendication 5, comprenant en outre une fenêtre conductrice (360) destinée à transmettre les rayons proches infrarouges émis par l'émetteur de lumière (300) vers la partie de corps cible.
 7. Procédé selon la revendication 5 ou 6, lesdits plans réfléchissants (310, 320) étant constitués d'aluminium et/ou ledit récepteur de lumière (330) étant un détecteur de silicium de type PIN.
 8. Procédé selon l'une quelconque des revendications 5 à 7, ledit calculateur comprenant :
 - un calculateur de rapport destiné à calculer les rapports d'intensité de la lumière reçue par le récepteur de lumière sur l'intensité des rayons proches infrarouges émis par la partie de corps cible, afin d'obtenir les pouvoirs d'absorption ; et
 - un calculateur d'épaisseur destiné à calculer l'épaisseur de graisse dans la partie de corps cible à l'aide des deux pouvoirs d'absorption calculés par rapport aux rayons proches infrarouges possédant les première et seconde longueurs d'onde et la relation entre les pouvoirs d'absorption et l'épaisseur de graisse.
 9. Procédé selon l'une quelconque des revendications 5 à 8, comprenant en outre un écran (370) destiné à stopper la lumière extérieure afin d'empêcher toute lumière autre que les rayons infrarouges proches émis par l'émetteur de lumière (300) d'être rayonnée vers la partie de corps cible.

FIG. 1 (PRIOR ART)

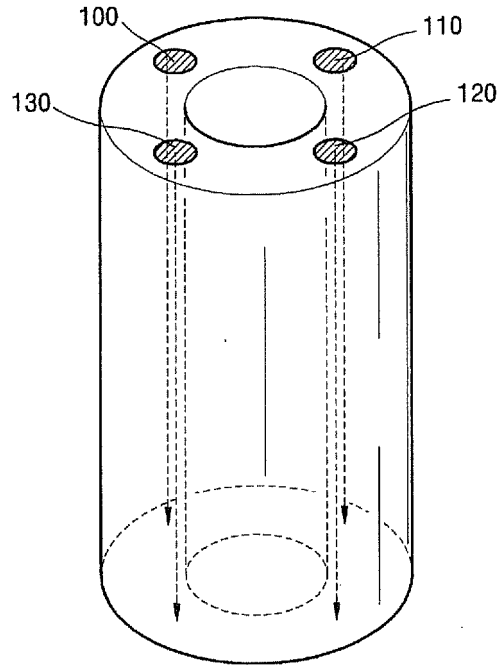


FIG. 2 (PRIOR ART)

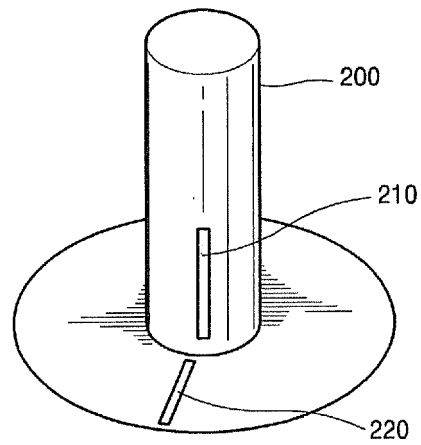


FIG. 3

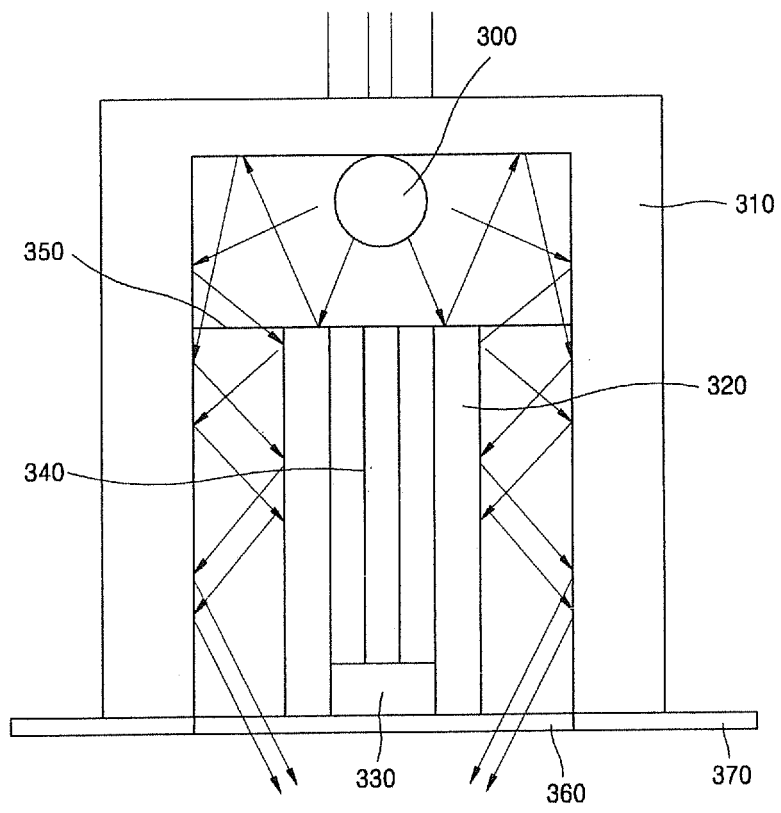


FIG. 4

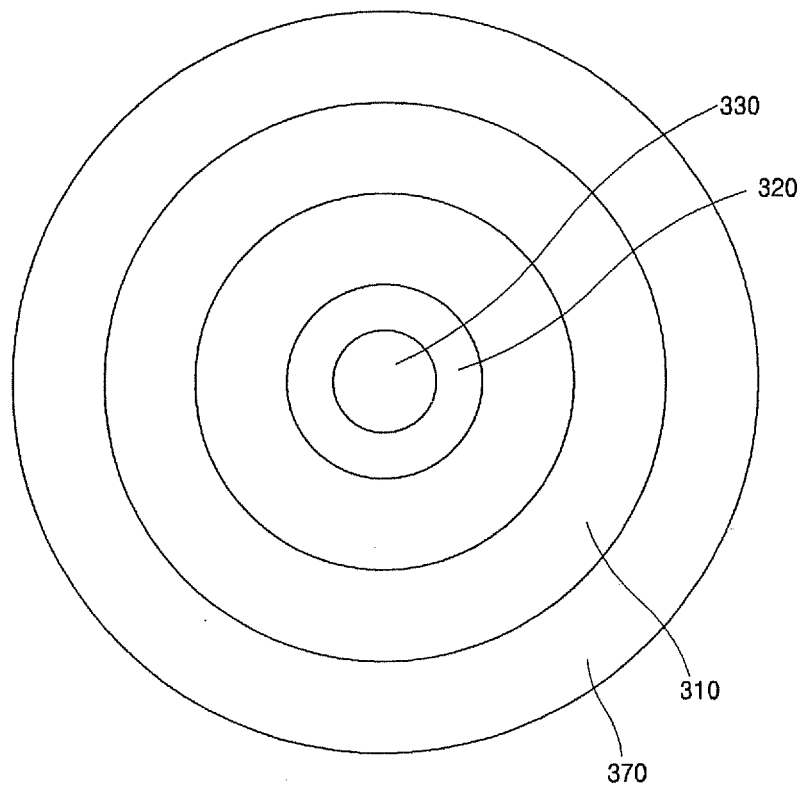


FIG. 5

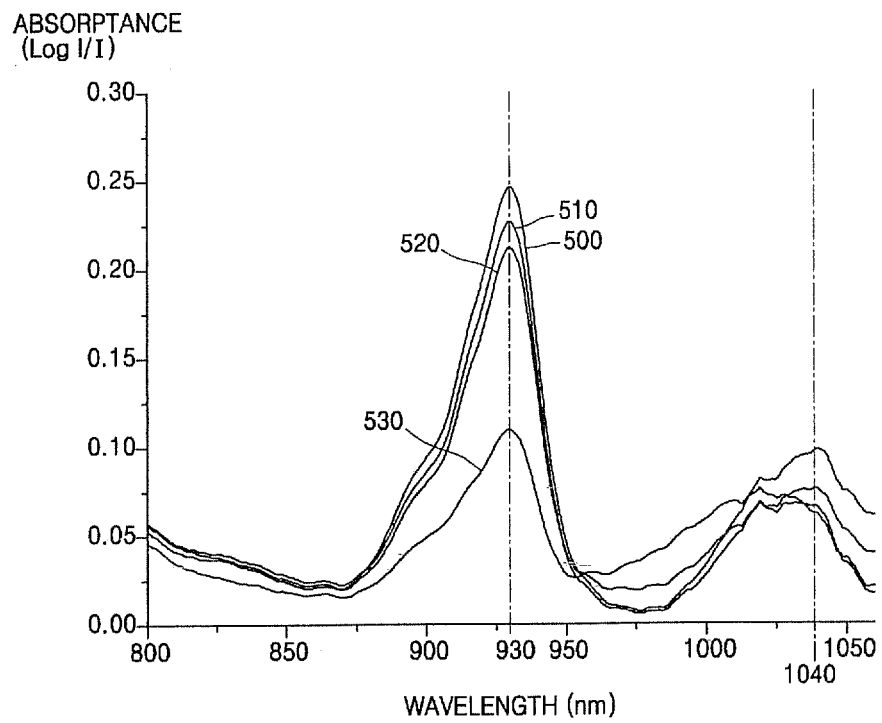


FIG. 6

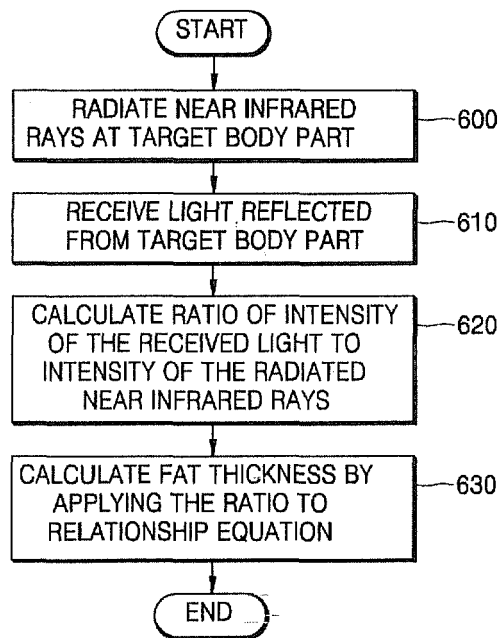
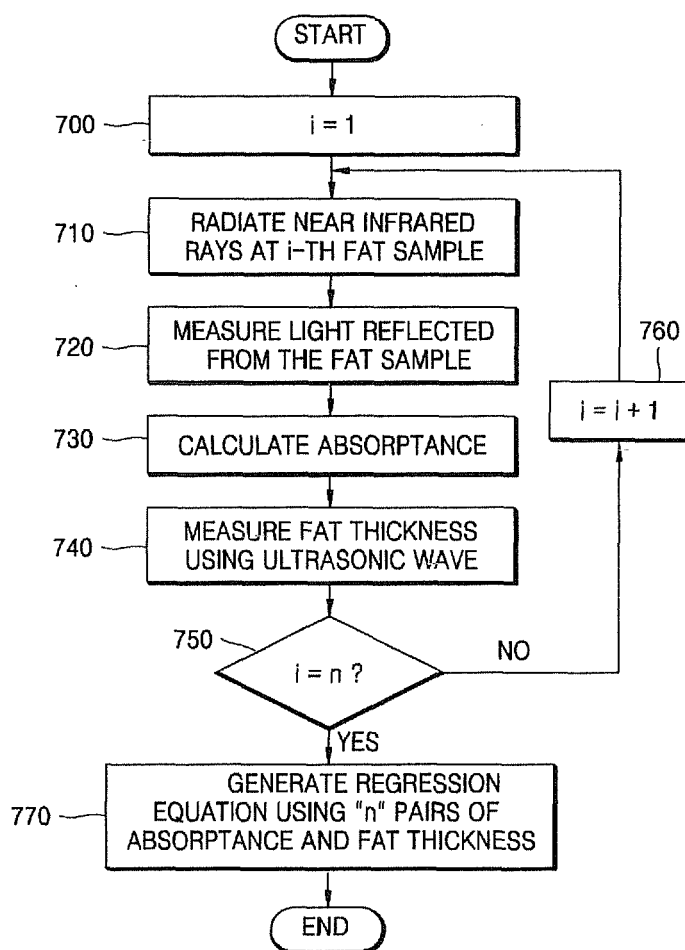


FIG. 7



REFERENCES CITED IN THE DESCRIPTION

This list of references cited by the applicant is for the reader's convenience only. It does not form part of the European patent document. Even though great care has been taken in compiling the references, errors or omissions cannot be excluded and the EPO disclaims all liability in this regard.

Patent documents cited in the description

- EP 1366707 A1 [0007]

专利名称(译)	测量脂肪的装置和方法		
公开(公告)号	EP2275025B1	公开(公告)日	2019-09-25
申请号	EP2010183479	申请日	2005-04-05
[标]申请(专利权)人(译)	三星电子株式会社		
申请(专利权)人(译)	SAMSUNG ELECTRONICS CO. , LTD.		
当前申请(专利权)人(译)	SAMSUNG ELECTRONICS CO. , LTD.		
[标]发明人	LEE JONG YOUN LI BO JEON KYE JIN KIM KYUNG HO		
发明人	LEE, JONG-YOUN LI, BO JEON, KYE-JIN KIM, KYUNG-HO		
IPC分类号	A61B5/00 A61B5/107 A61B5/103 G01B11/02 G01N21/35 G01N21/359		
优先权	1020040081058 2004-10-11 KR		
其他公开文献	EP2275025A2 EP2275025A3		
外部链接	Espacenet		

摘要(译)

提供了一种用于测量目标身体部位的脂肪厚度的方法和设备。该装置包括：发射近红外线的发光器；内部反射器，外部反射器的外部反射平面以反射由该发光器发射的近红外线；外部反射器，其围绕内部反射器，内部反射器的内部反射平面以反射近红外光线由光发射器发出的光，光接收器接收响应于近红外线而从目标身体部位反射的光，以及计算器使用光接收器接收的光来计算目标身体部位中的脂肪厚度。

