

(19)



(11)

EP 2 086 399 B1

(12)

EUROPEAN PATENT SPECIFICATION

(45) Date of publication and mention of the grant of the patent:

09.08.2017 Bulletin 2017/32

(51) Int Cl.:

<i>G06T 7/00</i> (2017.01)	<i>G06T 7/60</i> (2017.01)
<i>G06T 7/11</i> (2017.01)	<i>G06T 11/20</i> (2006.01)
<i>G06T 17/00</i> (2006.01)	<i>A61B 34/10</i> (2016.01)
<i>G06T 7/155</i> (2017.01)	<i>G06T 7/187</i> (2017.01)
<i>G06T 15/08</i> (2011.01)	

(21) Application number: **07873356.5**

(22) Date of filing: **13.11.2007**

(86) International application number:
PCT/IB2007/004576

(87) International publication number:
WO 2008/125910 (23.10.2008 Gazette 2008/43)

(54) **ADAPTIVE NAVIGATION TECHNIQUE FOR NAVIGATING A CATHETER THROUGH A BODY CHANNEL OR CAVITY**

ADAPTIVE NAVIGATIONSTECHNIK ZUR NAVIGATION EINES KATHETERS DURCH EINEN KÖRPERKANAL ODER EINE KÖRPERHÖHLE

TECHNIQUE DE GUIDAGE ADAPTATIVE DESTINÉE À GUIDER UN CATHÉTER DANS UNE CAVITÉ OU UN CANAL CORPOREL

(84) Designated Contracting States:
AT BE BG CH CY CZ DE DK EE ES FI FR GB GR HU IE IS IT LI LT LU LV MC MT NL PL PT RO SE SI SK TR

(74) Representative: **Soames, Candida Jane Maschio & Soames IP Limited**
30 Carlton Crescent
Southampton SO15 2EW (GB)

(30) Priority: **10.11.2006 US 865379 P**
28.11.2006 US 867428 P
01.02.2007 US 887663 P

(56) References cited:
US-A1- 2003 035 507 US-A1- 2003 099 390
US-A1- 2005 107 679 US-B2- 6 558 333

(43) Date of publication of application:
12.08.2009 Bulletin 2009/33

(73) Proprietor: **Covidien LP**
Mansfield, MA 02048 (US)

(72) Inventors:
• **AVERBUCH, DORIAN**
47261 Ramat HaSharon (IL)
• **WEINGARTEN, Oren**
45286 Hod HaSharon (IL)
• **JOSKOWICZ, Leo**
96306 Jerusalem (IL)
• **MARKOV, IGOR**
45288 Hod HaSharon (IL)
• **VOROBAYCHYK, Ivan**
49332 Petah Tikva (IL)
• **COHEN, Ran**
49726 Petach Tikva (IL)

- **KIRALY A P ET AL: "Three-dimensional human airway segmentation methods for clinical virtual bronchoscopy", ACADEMIC RADIOLOGY, RESTON, VA, US, vol. 9, no. 10, 1 September 2002 (2002-09-01), pages 1153-1168, XP002330892, ISSN: 1076-6332, DOI: 10.1016/S1076-6332(03)80517-2**
- **KIRALY ATILLA P ET AL: "Three-dimensional human airway segmentation methods for clinical virtual bronchoscopy.", ACADEMIC RADIOLOGY OCT 2002, vol. 9, no. 10, October 2002 (2002-10), pages 1153-1168, XP40201240, ISSN: 1076-6332**

Note: Within nine months of the publication of the mention of the grant of the European patent in the European Patent Bulletin, any person may give notice to the European Patent Office of opposition to that patent, in accordance with the Implementing Regulations. Notice of opposition shall not be deemed to have been filed until the opposition fee has been paid. (Art. 99(1) European Patent Convention).

EP 2 086 399 B1

- **KIM D Y ET AL: "Automatic navigation path generation based on two-phase adaptive region-growing algorithm for virtual angioscopy", MEDICAL ENGINEERING & PHYSICS, BUTTERWORTH-HEINEMANN, GB, vol. 28, no. 4, 1 May 2006 (2006-05-01), pages 339-347, XP025245184, ISSN: 1350-4533, DOI: 10.1016/J.MEDENGPY.2005.07.011 [retrieved on 2006-05-01]**

Description

RELATED APPLICATIONS

[0001] This application claims priority to U.S. Provisional Application Serial No. 60/865,379 filed November 10, 2006 entitled *Adaptive Navigation Method*; U.S. Provisional Application Serial No. 60/867,428 filed November 28, 2006 entitled *Adaptive Navigation Technique For Navigating A Catheter Through A Body Channel Or Cavity*; and U.S. Provisional Application Serial No. 60/887,663 filed February 1, 2007 entitled *Adaptive Navigation Technique For Navigating A Catheter Through A Body Channel Or Cavity*.

BACKGROUND OF THE INVENTION

[0002] Breakthrough technology has emerged which allows the navigation of a catheter tip through a tortuous channel, such as those found in the pulmonary system, to a predetermined target. This technology compares the real-time movement of a locatable guide (LG) against a three-dimensional digital map of the targeted area of the body (for purposes of explanation, the pulmonary airways of the lungs will be used hereinafter, though one skilled in the art will realize the present invention could be used in any body cavity or system: circulatory, digestive, pulmonary, to name a few).

[0003] Such technology is described in U.S. Patents 6,188,355; 6,226,543; 6,558,333; 6,574,498; 6,593,884; 6,615,155; 6,702,780; 6,711,429; 6,833,814; 6,974,788; and 6,996,430, all to Gilboa or Gilboa et al.; and U.S. Published Applications Pub. Nos. 2002/0193686; 2003/0074011; 2003/0216639; 2004/0249267 to either Gilboa or Gilboa et al.

[0004] US2005/0107679 discloses a bronchial sub-tree leading towards a target nodule, and an arterial sub-tree corresponding to the bronchial sub-tree also leading to the target nodule. A "jump-point" is defined corresponding to a location on the airway path near where the detectable airway tree ends, and its corresponding location on the arterial path. I.e. the "jump point" connects the bronchial sub-tree and the arterial sub-tree.

[0005] One aspect of this background technology pertains to the registration of the CT images that were used, collectively, as a three-dimensional digital map against the actual movement of the LG through the pulmonary system. The user interface shows three separate CT-based images reconstructed by software from x, y, and z directions, simultaneously with the LG location superimposed onto the intersection point of the reconstructed images. If the CT images do not accurately reflect the actual location of the airways, the LG will quickly appear to drift out of the airways as the LG is advanced, thereby diminishing the utility of the navigation system.

[0006] Presently, registration points at chosen known landmarks in the central area of lungs are used to register or align the CT based digital map with the patient's chest

cavity. These registration points are first chosen during a planning stage and marked on the internal lung surface. At the beginning of the procedure, the corresponding points are touched and recorded using the LG aided by a bronchoscope in the patient's airways. Doing so allows a computer to align the digital map with the data received from the LG such that an accurate representation of the LG's location is displayed on a monitor.

[0007] However, due to various factors, the accuracy of the registration diminishes as the distance between LG and the registration points increases. In other words, the navigation system is less accurate at the periphery of the lungs, where it is most needed. This is due to various factors, two of which are the focus of the present invention. The first factor involves the rigidity of the CT digital image utilized as a digital map by current system while the lung structure is flexible. Second, as the distance increases from the last registration point, errors compound. Compounded errors, coupled with the flexible airways, result in LG that appear to be outside of the airways on the CT images.

[0008] As a result of the accumulative inaccuracies, the performance of the existing system is limited. For example, once the bronchoscope is too big to advance, the existing system provides guidance to the user as to whether the LG is being advanced in the direction of the target ignoring the inaccuracies created by the flexibility and internal movement of the living airways. In addition, the guidance instructions to the target are given without regard to the geometries of the airways leading to the target. As a result, user gently advances the LG and watches whether the LG is moving in the direction of the target. If it is not, the LG is retracted and the user "feels" for another airway that may lead to the target rather than see it directly on the CT cross-sections. Hence, two problems arise. First, the LG no longer appears to be located within the airways. Second, the guidance provided does not guide the user along a logical path, it merely provides a general direction to the lesion.

[0009] The present invention addresses these two issues by using a unique algorithm to create a BT skeleton, which is a three-dimensional virtual map of the bronchial airways, and by continuously and adaptively matching the LG path to the BT skeleton. Due to the increased accuracy of the BT skeleton and the registration, three-dimensional guidance is extended past the limits of the bronchoscope.

BRIEF DESCRIPTION OF THE DRAWINGS

[0010]

Figure 1 is a graphic representation of an algorithm of the present invention;

Figure 2 is a table showing relative importance of sources of error uncertainty encountered in a method of the present invention;

Figure 3 is a chart showing steps of the pathway generation process of the present invention;

Figures 4-13 are screen captures of the user interface during the pathway generation process of the present invention; and

Figure 14 is a screen capture of the user interface of the present invention while a procedure is being performed on a patient.

DETAILED DESCRIPTION OF THE INVENTION

Method of Generating a Pathway to a Target in the Lungs

[0011] The present invention includes a unique method of generating a BT skeleton such that an accurate and logical pathway to the target may be formed. Generally, this method begins with an algorithm that automatically detects the trachea inside the CT volume, a three-dimensional image created from a plurality of CT scans, and uses this as a starting point for the generation of the BT. Next, a different segmentation step is applied to mark those voxels of the CT scan that represent air inside the bronchi. Next, the segmented and filtered data is skeletonized - center lines of the perceived airways are defined and used to build an anatomically valid virtual model of the airways.

[0012] More specifically, the method of generating a pathway to a target inside the lungs is outlined as follows:

1. BRONCHIAL TREE GENERATION

[0013] Bronchial tree generation is a fully automatic process that runs in the background and is thus transparent to the user while working with the application software.

2. AUTOMATIC SEED POINT DETECTION

[0014] Automatic seed point detection is an algorithm that detects the trachea by searching for a tubular object having the density of air in the upper region of the CT volume. The center of gravity of the found tubular object is defined as a seed point for further segmentation.

3. SEGMENTATION: LUNG'S AIR DIFFERENTIATION

[0015] Segmentation is a process based on a Region Growing Algorithm (see p. 73 of Handbook of Medical Imaging, Processing and Analysis, Isaac N. Bankman, Academic Press, 2000, .), which defines and displays the bronchial airways from the CT volume images of the human chest. The purpose of the Region Growing Algorithm is to construct homogeneous regions of points connected to the starting seed point and satisfying the following condition: Hounsfield values (HU) in all of these points are lower than a predefined maximum threshold

value.

[0016] The implemented process is fully automatic, iterative and consists of several steps:

3.1 Anatomical feature segmentation:

The purpose is to mark (or segment) the portion of voxels (voxel = Volume Pixel) of a substance inside a recognizable feature of the lumen network. This recognizable feature is used as a starting point. For example, in the case of the airways of the lungs being the lumen network, the trachea is preferred for selection as the anatomical feature. Hence the portion of voxels representing air inside the trachea, avoiding the bubbles caused by noise and artifacts inside the CT images is marked. Region growing with a high threshold value is then applied inside the volume for this purpose. If the blood vessels constitute the lumen network of interest, for example, the aorta could be used as the anatomical feature.

3.2 Adaptive threshold detection for region growing algorithm:

3.2.1 Starting from the boundary of the previously segmented area from step 3.1, multiple iterations of a region growing algorithm are performed. With each iteration the following steps occur:

3.2.1.1 A threshold value is defined and all voxels lower than the threshold value are deemed to be containing only air and are thus segmented. This process is iterative, but growth rate and geometry are not considered.

3.2.1.2 After the segmentation process is completed for that iteration, the whole number of segmented voxels inside the lungs stemming from the seed point are recorded.

3.2.2 Next the threshold value is increased and the next iteration is performed. After this iteration is completed, the number of segmented voxels between the current iteration and the previous one are compared.

3.2.3 Each iteration should result in a greater number of connected voxels because the threshold value increases with each iteration. Increasing the threshold value means that more voxels are considered as air.

3.2.4 If the difference in the number of segmented voxels between two consecutive iterations has increased significantly, this event is considered as leakage. Practically it means that somewhere the bronchi wall was "broken" by segmentation and in

addition to the air inside the lung, the outside lung air is now connected to the segmented volume. So a conclusion is drawn that the current threshold is too high and the threshold value from the previous iteration is used.

3.2.5 Finally segmentation is performed with the selected threshold. This time the segmentation result is added to the step 1 and stored. This will be used as a starting point for the next step.

3.3 Leakage control:

This is required in order to improve the results of the region-growing algorithm using the adaptive threshold local values by segmenting additional areas. The technique of section 3.2 is applied for every boundary point (point located on tissue) of previously segmented area.

3.4 Geometry control wave propagation:

This is described in the article, "Hybrid Segmentation and Exploration of the Human Lungs, IEEE Visualization 2003, Dirk Bartz, Dirk Mayer, Jan Fischer, Sebastian Ley, Anxo del Ro, Stef Thust, Claus Peter Heussel, Hans-Ulrich Kauczor, and Wolfgang Straßer. This article enables additional improvement over previous steps using higher threshold levels due a mechanism of geometrical parameter control of growing branches.

3.5 "Template matching":

This approach is based on the aforementioned article by Bartz *et al.* and evaluates the candidate area below templates with the values of uncertain density (between -950 HU and -775 HU). This is organized in two stages; the first stage establishes templates that are used in the second stage to evaluate the local voxel neighborhood. First, 2D template matching applies 2D region growing starting from the boundary voxels of the previous segmentations. The thresholds are varied - from the upper threshold of the uncertain density value interval (-775 HU) - until the number of selected voxels is below the critical limit, since it can be assumed that they did not leak out. Based on this selected voxel area, circular templates of varying sizes is generated. In the second stage, we apply a 2D region growing. The shape of each connected segmented area is compared with set of circular templates from the 1 st stage. The positive comparison result is then selected and added to the segmentation.

3.6 Bubble filter:

Finally a bubble filter is applied. A bubble filter is a combination of morphological dilation and erosion operations. It is used to eliminate small non-segmented regions (bubbles) from the final segmented area. These bubbles appear due to the noisy nature and artifacts of CT images.

10 4. SKELETONIZATION AND FEATURE CALCULATION

[0017] Skeletonization and feature calculation refers to the extraction of centerlines of previously segmented bronchi, the building of a valid anatomical hierarchy of bronchial airways, the calculation of bronchi diameters and geometric features, and the surface generation for each segmented bronchi. The following steps are involved:

4.1 Thinning algorithm:

The iterative object reduction technique described in the article, A Sequential 3D Thinning Algorithm and Its Medical Applications, K'alm'an Pal'agyi, Erich Sorantin, Emese Balogh, Attila Kuba, Csongor Halmai, Bal'azs Erd"ohelyi, and Klaus Hausegger, 17th Int. Conf. IPMI (2001) 409-415 and is used to convert the previously segmented airways into a geometric skeleton representation.

4.2 Branches and node points detection:

A map of all the skeleton voxels is generated, so for each voxel we have a list of neighbor voxels. Voxels with three or more neighbors are considered to be "node points". The voxels with two neighbors are considered as points on the branch. The entire voxel map is rearranged as a graph with nodes and branches.

4.3 Filtering of false branches:

This involves the following steps:

4.3.1 Identify and remove disconnected branches.

4.3.2 Resolve graph loops by removing the longest branch of two branches connected to a common node.

4.3.3 Remove relatively short leaves in the graph, considering them a result of a leakage.

4.3.4 Remove leaves that are relatively close to each other.

4.4 Convert graph to tree:

Find the root point on the graph as one nearest to the seed point found in 1. The graph is converted to a binary tree. Branches are approximated by polynomials.

4.5 Branch labeling: logical and hierarchical:

This is performed according to the technique described in the article, Automated Nomenclature Labeling of the Bronchial Tree in 3D-CT Lung Images, Hiroko Kitaoka from Osaka University, Yongsup Park, Juerg Tschirren, Joseph Reinhardt, Milan Sonka, Geoffrey McLennan, and Eric A. Hoffman from University of Iowa, Lecture Notes in Computer Science, T. Dohi and R. Kikinis, Eds. Amsterdam, The Netherlands: Springer-Verlag, Oct. 2002, vol. 2489, pp. 1-11, .

4.6 Automatic evaluation of tree quality

Tree quality is evaluated based on the recognition of the following main parts of the skeleton:

4.6.1 right lower lobe (RLL) and right middle lobe (RML),

4.6.2 right upper lobe (RUL)

4.6.3 left upper lobe (LUL)

4.6.4 left low lobe (LLL)

Branch numbers and branch length features are calculated separately for each area and compared to statistical model or template of acceptable anatomy to evaluate the tree quality.

4.7 Extraction of External surfaces of bronchial tubes:

Modification of a widely known method called "marching cubes" is used to extract airways surface from volumetric CT data.

5. PLANNING THE PATH TO THE PERIPHERAL TARGET

[0018] This process plans the pathway from the trachea entrance to the target area.

[0019] As the CT resolution limits the final quality of automatically generated bronchial tree described in 1., the user is enabled to perform the pathway fine tuning.

6. TARGET MARKING

[0020] The planning software is used for planning the bronchoscopic procedure of navigating to suspect lesion (target) inside the human lungs.

[0021] The target center and target dimensions are manually marked with the planning software.

7. PATHWAY SEMI-AUTOMATIC GENERATION

[0022] At this point there are both the automatically generated bronchial tree and the target. However the target may be located out of the tree. This happens for several reasons, including:

- The target may lay inside the tissue
- Some small bronchi may be missing from the automatically generated tree due to the CT resolution limitations.

[0023] Therefore, a gap is created and shall be completed manually. Using both the interactive display of the bronchial tree and CT cross-sections, the user manually selects the point on the bronchial tree that shall be connected to the target center. This is called the "exit point".

[0024] The pathway from the trachea to the "exit point" is automatically generated. In addition the original tree is extended by a linear branch that connects the "exit point" and the target center.

8. PATHWAY FINE TUNING

[0025] Using the CT cross-section user is optionally able to define split the automatically created linear branch into segments, defining the intermediate waypoints by intuitive graphic user interface.

9. ON-PATH GUIDANCE

[0026] On-Path guidance is designed to keep the locatable tool inside the planned path (displayed in green). In this approach the path is approximated by an automatically generated 3D poly-line. The poly-line segments are connected with the vertex. Each vertex is defined as an intermediate target in our system. During navigation when an intermediate target is reached, it disappears and the next intermediate target appears and becomes the current target. The mathematical vector connecting the actual location of the locatable tool with the incoming intermediate target is calculated. This mathematical vector is translated to the locatable tool operation through the following instructions set:

9.1 Push Forward\Backward

9.2 Set the specific rotation angle

9.3 Apply bending ON/OFF.

Additional methods are contemplated that may improve the accuracy of the BT generated by the aforementioned method. First, arterial blood vessels may be tracked and used to regenerate missing airway data from the CT. Because the arterial blood vessels from the heart to the lungs terminate at the alveoli, deductions can be made regarding the location of the bronchioles leading to the alveoli. Second, an anatomic atlas created from data derived from multiple lung models can be used to evaluate and complete the generated BT geometry. Though every lung is unique, each has common characteristics portrayed in an anatomic atlas. This information can be used to deduce and fill in missing BT geometry data.

[0027] Accuracy may also be improved by utilizing multiple sensors. For example, acquiring the location and orientation data from the electromagnetic system may be performed using multiple external and/or multiple internal sensors. These could be located on the extended working channel (EWC), the locatable guide (LG), the bronchoscope, or attached to the interior of the lung.

[0028] The location and orientation data acquired from the electromagnetic system, regardless of the number of sensors used, may be used to complete any missing branches from the BT due to limitation in CT resolution.

[0029] It is also contemplated that flexibility may be added to the generated BT structure by utilizing multiple sets of CT data, each representing different points in the patient's breathing cycle. For example, three CT scans could be taken, one at the peak inhalation point of a normal breathing cycle, one at the peak exhalation point of a normal breathing cycle, and one midway in between. External sensor positions may optionally be noted to record chest positions during these various "snapshots" taken with the CT. Noting the differences in positions of the bronchial features in each of the three locations provides information on the individual movement paths of the features during the breathing cycle. The movement paths can be estimated by connecting the three recorded points. Once the flexible BT is generated, external position sensors on the patient can be used to detect the patient's breathing cycle, and for determining the corresponding locations of the various bronchial features along their respective movement paths.

[0030] This simulated flexibility can be calculated and used individually for each patient or, if it is desired to minimize the cost and radiation exposure of multiple CT scans, can be used as a model for other patients. Several models can be recorded and kept on file for later matching to patients as a function of anatomic location, patient dimension, gender age, phase of breathing cycle, etc.

Adaptive Navigation Method

[0031] The present invention also provides unique method of continually and adaptively matching the automatically generated BT skeleton to the patient during the

procedure. Generally, this method records consecutive locations of the LG as it is advanced through the airways. Because it is known that the LG travels through airways, the BT skeleton is continually matched such that the LG appears in an airway. Hence, the accuracy of the navigation improves, rather than degrades, as the LG is advanced.

[0032] More specifically, this method is outlined as follows:

1. GENERAL CONSIDERATIONS

[0033] Adaptive Skeleton Navigation method is developed to detect the current location of a locatable guide ("LG") being introduced through a patient's bronchial airway on a map of the bronchial tree obtained using a CT Scan. This is achieved by constant and adaptive correlation between the two data sets: the bronchial airway tree map and the sensor data history. The correlation above is performed via two steps:

1) Adaptive Skeleton-based Registration.

2) Adaptive Skeleton-based Navigation.

[0034] Note that these steps, described in detail below, may be performed recursively.

2. THE ADAPTIVE SKELETON-BASED REGISTRATION ALGORITHM

[0035] This section includes the description of the proposed algorithm of adaptive skeleton-based registration. Registration, generally, is a method of computing transformations between two different coordinate systems. Here, the goal is to register the bronchial tree (BT) skeleton to the locatable guide (LG) path.

2.1 Requirements:

[0036]

2.1.1 The registration accuracy improves as the locatable guide gets closer to the lower levels of the lumen network (e.g. bronchial tree) and the peripheral target.

2.1.2 The registration is updated continuously and adaptively, depending on the location of the LG in the bronchial tree. The LG path is a history of LG locations as the LG is manipulated through the bronchial tree.

2.2 Technical issues:

2.2.1 Geometrically paired 3D/3D points (or other objects) from the BT skeleton and the LG path are the registration basis (see, e.g. pairs 1-1' and 2-2' in

Figure 1).

2.2.2 The registration is continuous and adaptive. "Continuous" means that the registration is continually (iteratively) re-computed as new LG path points are obtained. "Adaptive" means that different paired points, weights, and registration methods are used as the LG advances towards the target.

2.2.3 The registration consists of two main phases: global rigid registration followed by local deformable registration. Deformable registration is only performed in the lower levels of the bronchial tree and near the peripheral target. The idea is to start with rigid registration when the bronchus is wide and switch to constrained and localized deformable registration when the diameter of the probe is close to the diameter of the bronchus and the bronchus becomes flexible.

2.2.4 Global rigid registration is performed with the sophisticated Weighted Iterative Closest-Point (WICP) method with outlier removal. The pairing is performed by using the weighted function of position distance and orientation difference of the paired objects. The optimization function is the weighted sum of paired point distances. The parameters to determine are the weight function and the number of points to use.

2.2.5 Local non-rigid registration is performed with a constrained elastic registration method in which paired points are connected with springs and the optimization function is the springs' potential energy.

2.2.6 The LG path is not monotonic therefore it should be judiciously sampled and windowed so that the path data is of good quality.

2.2.7 The accuracy or the registration improves when user-defined landmark points are acquired with the LG.

3. REGISTRATION ALGORITHM

[0037]

3.1 Input: BT path from CT scan, initial registration guess, LG locations (stream)

3.2 Output: Rigid registration (6 parameters) + local deformation map

3.3 Algorithm Method - Figure 1 shows an outline of the actual bronchus 100, with a line showing the BT skeleton 110 and a second line 120 showing the path of the LG 115 through the bronchus 100. The path 120 of the LG 115 will be used to register the BT

skeleton 110 to the actual bronchus 100, such that the BT skeleton, seen by the physician, is an accurate representation of the actual bronchus location. The LG path 120 includes a plurality of actual LG locations 130. Corresponding projected points 140 are shown on the BT skeleton 110. The differences between the actual points 130 and the projected points 140 are represented with lines (e.g. d1, d2) between the skeleton 110 and the path 120. With continued reference to Figure 1, the registration algorithm is described:

3.3.1 Perform first registration with an initial registration guess. Apply transformation to the BT. Use the registration results, obtained from the initial registration phase.

3.3.2 While enroute to the target:

3.3.2.1 Obtain new stream of LG locations from sensor.

3.3.2.2 Perform cleaning, decluttered and classification (weighting) on the stream of LG locations.

3.3.2.3 Perform selection of the LG location stream according to the optimization decision and registration history.

3.3.2.4 Project the selected LG location segments/points on BT skeleton to obtain paired segments/points. The projection is performed by optimizing the following criteria.

3.3.2.4.1 Minimal Distance relative to the local bronchi diameter.

3.3.2.4.2 Minimal Orientation difference.

3.3.2.4.3 The matched branch points (p1, p2, etc.) on the path.

3.3.2.5 Global rigid registration: weight paired points and obtain new rigid registration with WICP. Apply new computed transformation to the LG.

3.3.2.6 Local deformable registration: when appropriate (only when the Extended Working Channel - EWC and bronchus diameters are close to each other), perform deformable registration on chosen window. Apply transformation to the BT local branches. The usefulness of this correction shall be determined empirically..

3.3.3 Validation that the registration doesn't get worse as a result of noise sensor data:

3.3.3.1 Perform LG history classification by breath-

ing averaging or specific phase. Define the maximal deviation from the initial registration.

3.3.3.2 Make sure that the LG history is mostly inside the bronchus.

4. THE ADAPTIVE SKELETON-BASED NAVIGATION

[0038]

4.1 The basic idea

The implementation of navigation shall be similar to the navigation with the map. Similar tasks have been implemented in GIS (Geographic Information System) systems, such as PDA (Personal Digital Assistant) systems for blind people. It has been proven by that data topology is important for higher navigation accuracy. However our problem is significantly different from above due to the bronchial tree flexibility and movement.

4.2 The needed input information

4.2.1 Current sensor position and orientation data

4.2.2 The history of sensor position and orientation data

4.2.3 The registration (matrix) history.

4.2.4 The sources of navigation uncertainty

[0039] Figure 2 is a table that presents the sources of error uncertainty in the order of importance, with the values having a higher contribution into the final error at the top of the table. The error prediction model based on this table shall be developed to predict the navigation uncertainty. The assumed prediction model is the sphere around the computed location whose radius includes the localization uncertainty. The radius of this sphere is a function of time and location.

In Use

[0040] Figures 3-13 show several stages of the aforementioned methods. First, the pathway generation process is described. Figure 3 is a chart showing the pathway generation steps 10 - 18. Figures 4-13 are representations of the user interface that guides a user through these steps during the planning stage prior to a procedure.

[0041] A user engaged in the first step 10, adding a target, is shown in Figure 4. The upper left quadrant is a CT cross-section reconstructed from the viewpoint of the patients feet looking toward his head. The lower left quadrant is a CT cross-section reconstructed from the front of the patient such that the plane is parallel to the table on which the patient is lying. The upper right quadrant is

a cross-section reconstructed from CT directed at the side of the patient. Cross-hairs mark the targeted spot that is the intersection of all the cross-sections reconstructed from CT. Each of the CT cross-sections shows a projection of a small camera that represents the virtual bronchoscope inside the CT volume. The lower right quadrant is a virtual bronchoscopy view of the targeted spot from within the BT as though seen from the camera. Notably, the display shown in the Figures is just an example. If the user feels the need for different views, the system allows for views from any angle to be displayed in the various quadrants. Hence, the system is completely configurable and customizable to the user's preferences.

[0042] In Figure 5, the user has selected the target and the message "Crosshairs positioning" appears in the user messages box in the upper right corner of the user interface. Selecting the very bottom button 20, marks the target, as seen in Figure 6. The user may enter a target name in the box 22, thus beginning the next step of Figure 3.

[0043] Figure 7 illustrates that the user has the option of displaying the BT skeleton in the upper right quadrant, rather than the side view.

[0044] In Figure 8, the selected target is being measured. In Figure 9, a name has been assigned to the target.

[0045] The pathway creation step 14 begins in Figure 10. The pathway button 24 is pressed and a name is given to the pathway.

[0046] Figure 11 shows the exit point marking step 16. The exit point is marked on the map, from which a straight line will be drawn to the target. Having identified a destination (exit point), the pathway can be determined.

[0047] Next the add waypoints step 18 is completed, as seen in Figures 12 and 13. Waypoints may be added to assist the user to follow the pathway by marking the turns enroute to the exit point.

[0048] Figure 14 shows the user interface during a procedure being conducted on a patient. In the upper right quadrant, the three-dimensional BT skeleton is shown with an LG indicator 30 visible. The aforementioned AN algorithm ensures that the BT skeleton remains registered with the patient.

[0049] Although the invention has been described in terms of particular embodiments and applications, one of ordinary skill in the art, in light of this teaching, can generate additional embodiments and modifications without departing from the scope of the claimed invention. Accordingly, it is to be understood that the drawings and descriptions herein are proffered by way of example to facilitate comprehension of the invention and should not be construed to limit the scope thereof.

55 **Claims**

1. A computer based method of virtually generating an intra-lumen pathway to a target inside a body, com-

prising:

imaging a patient to obtain a plurality of scans;
 creating a 3D image volume from the scans
 comprising a plurality of voxels;
 selecting (10) a target in the 3D image volume;
 detecting an anatomical feature related to a net-
 work of lumens within the 3D image volume;
 identifying a seed point, wherein the seed point
 is a center of gravity of the detected anatomical
 feature;
 segmenting voxels that represent space inside
 the lumens of the network, wherein segmenting
 starts at a voxel represented by the seed point;
 generating a computerized three-dimensional
 model of the lumen network using the segment-
 ed voxels;
 marking (16) an exit point on a pathway in the
 three-dimensional model of the lumen network;
 generating (14) a pathway from the anatomical
 feature to the exit point on the three-dimensional
 model of the lumen network;
 and
 connecting the exit point and the target with a
 straight line;
 wherein segmenting voxels that represent
 space inside the lumens of the network compris-
 es:

- a) defining a threshold value;
- b) marking all related voxels according to
 the threshold value beginning with the voxel
 represented by the seed point;
- c) recording a whole number of marked vox-
 els;
- d) increasing the threshold value;
- e) repeating steps b) and c), thereby begin-
 ning a next iteration;
- f) comparing the number of marked voxels
 to the number determined in a previous it-
 eration;
- g) setting a limit for the increase determined
 at f) over which the increase is attributed to
 leakage and the increased threshold value
 at d) is reset to that from the previous it-
 eration, thereby establishing a selected
 threshold;
- h) segmenting the marked voxels using the
 selected threshold;
- i) adding the segmented voxels to the voxel
 represented by the seed point, thereby
 growing a pathway and resetting the seed
 point to a center of a distal end of the path-
 way; and
- j) repeating steps b) through i) until the path-
 way is complete.

2. The method of claim 1 wherein detecting an anatom-

ical feature related to the network comprises detect-
 ing the trachea.

3. The method of claim 2 wherein detecting the trachea
 comprises searching for a tubular object in the lumen
 network having the density of air in the upper region
 of the network.
4. The method of claim 1 wherein detecting an anatom-
 ical feature related to the network comprises detect-
 ing the aorta.
5. The method of claim 1 wherein segmenting voxels
 that represent space inside the lumens of the net-
 work comprises marking voxels that represent a sub-
 stance contained within the lumens of the network.
6. The method of claim 5 wherein segmenting voxels
 that represent a substance inside the lumens of the
 network further comprises avoiding bubbles caused
 by imaging noise and artifacts.
7. The method of claim of any preceding claim, com-
 prising automatically generating the pathway from
 the anatomical feature to the exit point.

Patentansprüche

1. Rechnerbasiertes Verfahren zum virtuellen Generieren eines intraluminalen Pfads zu einem Ziel innerhalb eines Körpers, umfassend:
 - Abbilden eines Patienten um mehrere Scans zu erhalten;
 - Generieren eines 3D-Bildvolumens aus den Scans, das mehrere Voxel (Gitterpunkte) umfasst;
 - Auswählen (10) eines Ziels im 3D-Bildvolumen;
 - Erfassen eines anatomischen Merkmals bezüglich eines Netzwerks von Lumina innerhalb des 3D-Bildvolumens;
 - Identifizieren eines Keimpunkts, wobei der Keimpunkt ein Schwerpunkt des erfassten anatomischen Merkmals ist;
 - Segmentieren von Voxeln, die einen Raum innerhalb der Lumina des Netzwerks darstellen, wobei das Segmentieren bei einem Voxel beginnt, das durch den Keimpunkt dargestellt ist;
 - Generieren eines rechnergestützten dreidimensionalen Modells des Lumennetzwerks unter Verwendung der segmentierten Voxel;
 - Markieren (16) eines Austrittspunkts auf einem Pfad im dreidimensionalen Modell des Lumennetzwerks;
 - Generieren (14) eines Pfads vom anatomischen Merkmal zum Austrittspunkt auf dem dreidimensionalen Modell des Lumennetzwerks;

- und
Verbinden des Austrittspunkts und des Ziels mit einer geraden Linie;
wobei das Segmentieren von Voxeln, die den Raum innerhalb der Lumina des Netzwerks darstellen, umfasst:
- a) Definieren eines Schwellenwerts;
 - b) Markieren aller zusammengehörigen Voxel gemäß dem Schwellenwert, beginnend mit dem Voxel das durch den Keimpunkt dargestellt ist;
 - c) Aufzeichnen einer gesamten Zahl von markierten Voxeln;
 - d) Erhöhen des Schwellenwerts;
 - e) Wiederholen der Schritte b) und c), dadurch Beginnen einer nächsten Wiederholung;
 - f) Vergleichen der Zahl von markierten Voxeln mit der Zahl, die in einer vorherigen Wiederholung ermittelt ist;
 - g) Einstellen einer Grenze für die Erhöhung, die bei f) ermittelt ist, über der die Erhöhung einer Leckage zugeschrieben wird und der erhöhte Schwellenwert bei d) auf jenen der vorherigen Wiederholung zurückgesetzt wird, wodurch eine ausgewählte Schwelle eingerichtet wird;
 - h) Segmentieren der markierten Voxel unter Verwendung der ausgewählten Schwelle;
 - i) Hinzufügen der segmentierten Voxel zu dem Voxel, das durch den Keimpunkt dargestellt ist, wodurch ein Pfad wächst, und Zurücksetzen des Keimpunkts zu einem Mittelpunkt eines fernen Endes des Pfads; und
 - j) Wiederholen der Schritte b) bis i), bis der Pfad vollständig ist.
2. Verfahren nach Anspruch 1, wobei das Erfassen eines anatomischen Merkmals bezüglich des Netzwerks ein Erfassen der Trachea erfasst.
 3. Verfahren nach Anspruch 2, wobei das Erfassen der Trachea ein Suchen nach einem röhrenförmigen Objekt im Lumennetzwerk mit der Dichte von Luft im oberen Bereich des Netzwerks umfasst.
 4. Verfahren nach Anspruch 1, wobei das Erfassen eines anatomischen Merkmals bezüglich des Netzwerks ein Erfassen der Aorta umfasst.
 5. Verfahren nach Anspruch 1, wobei das Segmentieren der Voxel, die den Raum innerhalb der Lumina des Netzwerks darstellen, ein Markieren der Voxel, die eine Substanz darstellen, die innerhalb der Lumina des Netzwerks beinhaltet ist, umfasst.

6. Verfahren nach Anspruch 5, wobei das Segmentieren von Voxeln, die eine Substanz innerhalb der Lumina des Netzwerks darstellen, des Weiteren ein Vermeiden von Blasen umfasst, die durch ein Abbildungsrauschen und Artefakte verursacht sind.
7. Verfahren nach einem der vorstehenden Ansprüche, umfassend ein automatisches Generieren des Pfads vom anatomischen Merkmal zum Austrittspunkt.

Revendications

1. Procédé à base informatique pour générer virtuellement une voie intraluminale vers une cible à l'intérieur d'un corps, comprenant :

l'imagerie d'un patient pour obtenir une pluralité de balayages ;

la création d'un volume d'image 3D à partir des balayages comprenant une pluralité de voxels ; la sélection (10) d'une cible dans le volume d'image 3D ;

la détection d'une caractéristique anatomique en rapport avec un réseau de lumières dans le volume d'image 3D ;

l'identification d'un point de prélèvement, dans lequel le point de prélèvement est un centre de gravité de la caractéristique anatomique détectée ;

la segmentation de voxels qui représentent un espace au sein des lumières du réseau, dans lequel la segmentation part d'un voxel représenté par le point de prélèvement ;

la génération d'un modèle tridimensionnel informatisé du réseau de lumières en utilisant les voxels segmentés ;

le marquage (16) d'un point de sortie sur une voie du modèle tridimensionnel du réseau de lumières ;

la génération (14) d'une voie de la caractéristique anatomique au point de sortie sur le modèle tridimensionnel du réseau de lumières ; et

le raccordement du point de sortie et de la cible par une ligne droite ;

dans lequel la segmentation de voxels qui représentent un espace au sein des lumières du réseau comprend :

- a) la définition d'une valeur de seuil ;
- b) le marquage de tous les voxels apparentés selon la valeur de seuil en commençant par le voxel représenté par le point de prélèvement ;
- c) l'enregistrement d'un nombre entier de voxels marqués ;
- d) l'augmentation de la valeur de seuil ;
- e) la répétition des étapes b) et c), en com-

- mençant ainsi une itération suivante ;
 f) la comparaison du nombre de voxels marqués au nombre déterminé dans une itération précédente ;
 g) le réglage d'une limite pour l'augmentation déterminée en f) sur laquelle l'augmentation est attribuée à une fuite et la valeur de seuil augmentée en d) est remise à zéro vis-à-vis de l'itération précédente, en établissant ainsi un second seuil ;
 h) la segmentation des voxels marqués en utilisant le seuil sélectionné ;
 i) l'addition des voxels segmentés au voxel représenté par le point de prélèvement, en faisant croître ainsi une voie et en remettant à zéro le point de prélèvement à un centre d'une extrémité distale de la voie ; et
 j) la répétition des étapes b) à i) jusqu'à ce que la voie soit complète.
2. Procédé selon la revendication 1, dans lequel la détection d'une caractéristique anatomique se rapportant au réseau comprend la détection de la trachée.
3. Procédé selon la revendication 2, dans lequel la détection de la trachée comprend la recherche d'un objet tubulaire dans le réseau de lumières ayant la densité de l'air dans la région supérieure du réseau.
4. Procédé selon la revendication 1, dans lequel la détection d'une caractéristique anatomique en rapport avec le réseau comprend la détection de l'aorte.
5. Procédé selon la revendication 1, dans lequel la segmentation de voxels qui représentent un espace au sein des lumières du réseau comprend le marquage de voxels qui représentent une substance contenue dans les lumières du réseau.
6. Procédé selon la revendication 5, dans lequel la segmentation de voxels qui représentent une substance au sein des lumières du réseau comprend en outre l'empêchement de bulles provoquées par le bruit et les artefacts d'imagerie.
7. Procédé selon l'une quelconque des revendications précédentes, comprenant la génération automatique de la voie de la caractéristique anatomique au point de sortie.

55

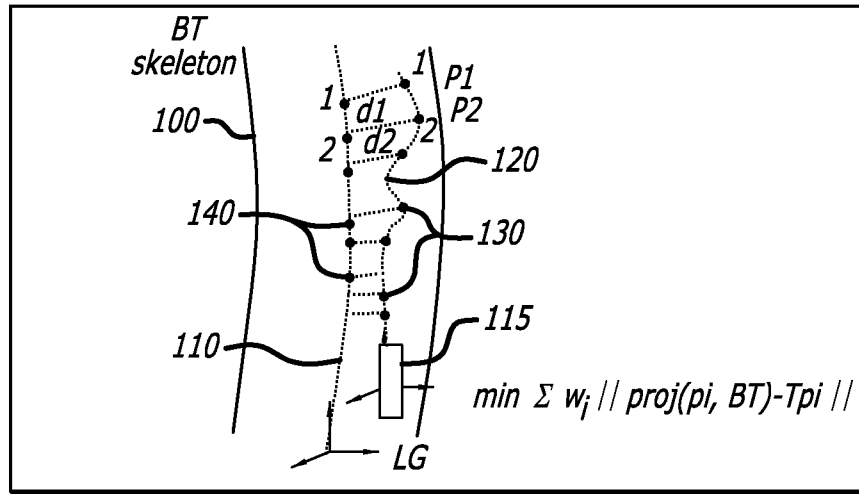


FIG. 1

<i>The error source</i>	<i>Time characteristics</i>	<i>Comment</i>
<i>Breathing</i>	<i>VARIABLE</i>	<i>measurable</i>
<i>Patient movement</i>	<i>CONSTANT</i>	<i>under control</i>
<i>Bronchial tree level</i>	<i>VARIABLE</i>	<i>the uncertainty grows for higher levels of the tree</i>
<i>The difference between the diameter of bronchoscope WC or EWC and the bronchial tube</i>	<i>VARIABLE</i>	<i>diminishes as the bronchus diameter gets smaller</i>
<i>The difference between the patient position during CT and procedure on setup</i>	<i>CONSTANT</i>	
<i>System localization error</i>	<i>CONSTANT</i>	
<i>CT segmentation error</i>	<i>CONSTANT</i>	

FIG. 2

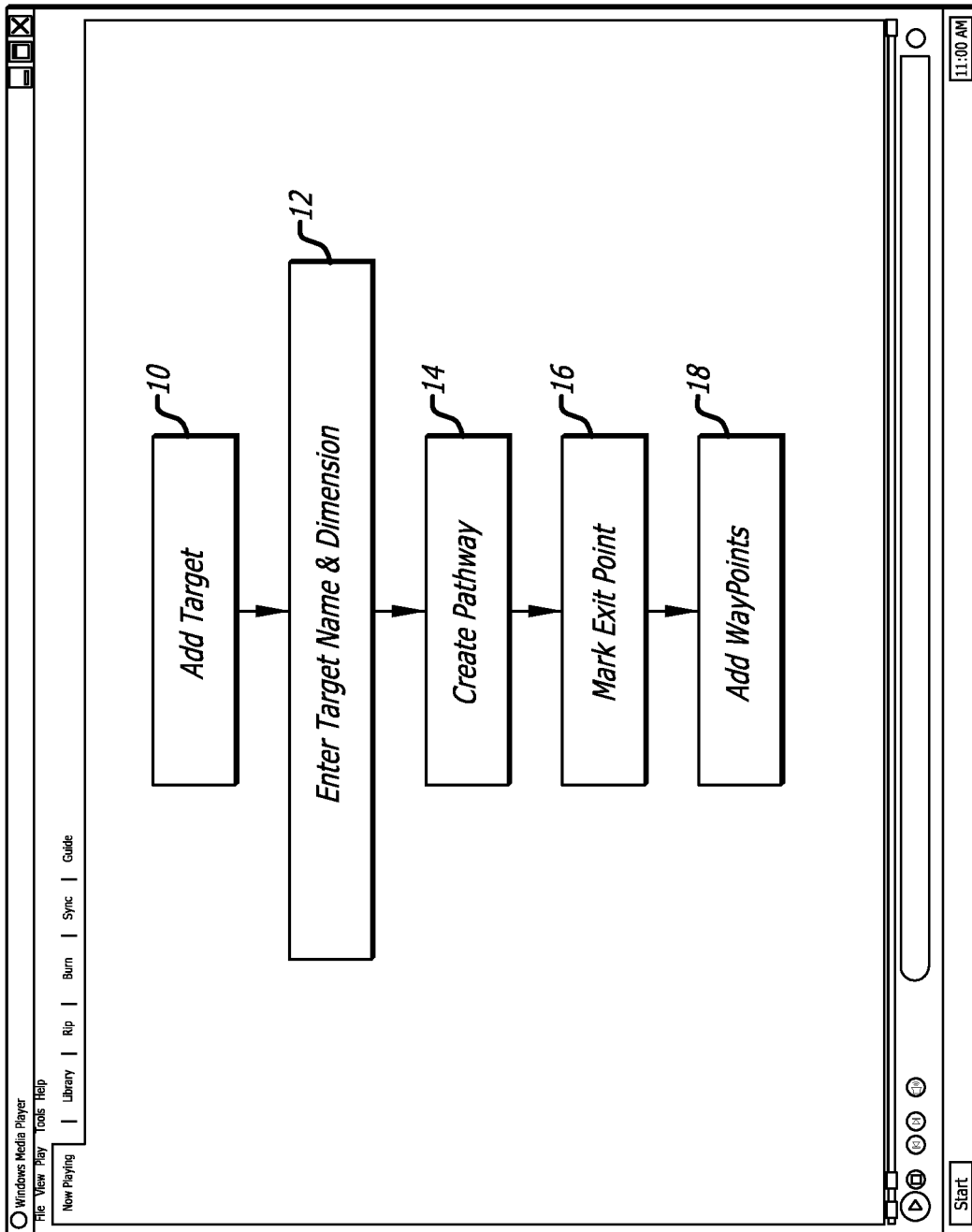


FIG. 3

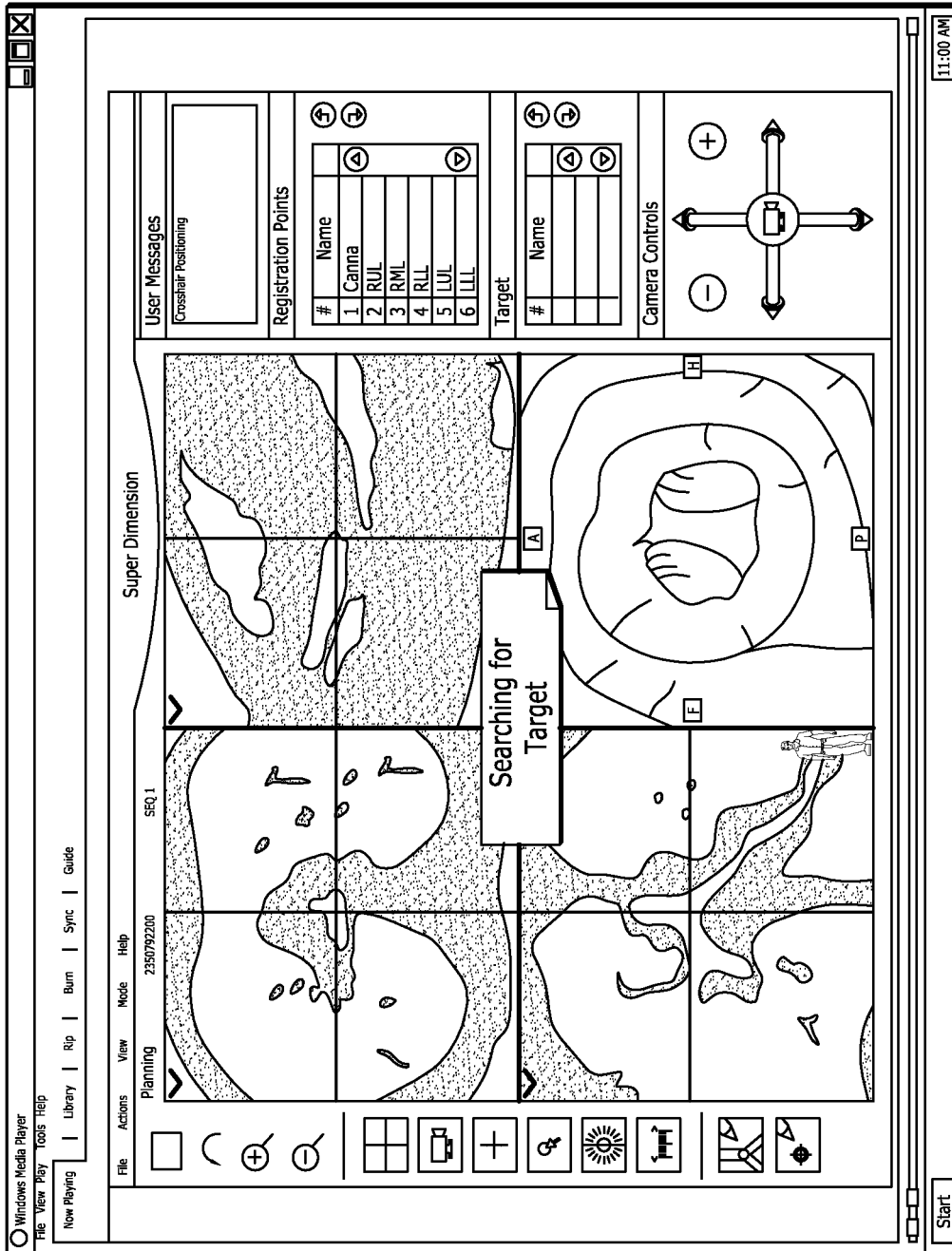


FIG. 4

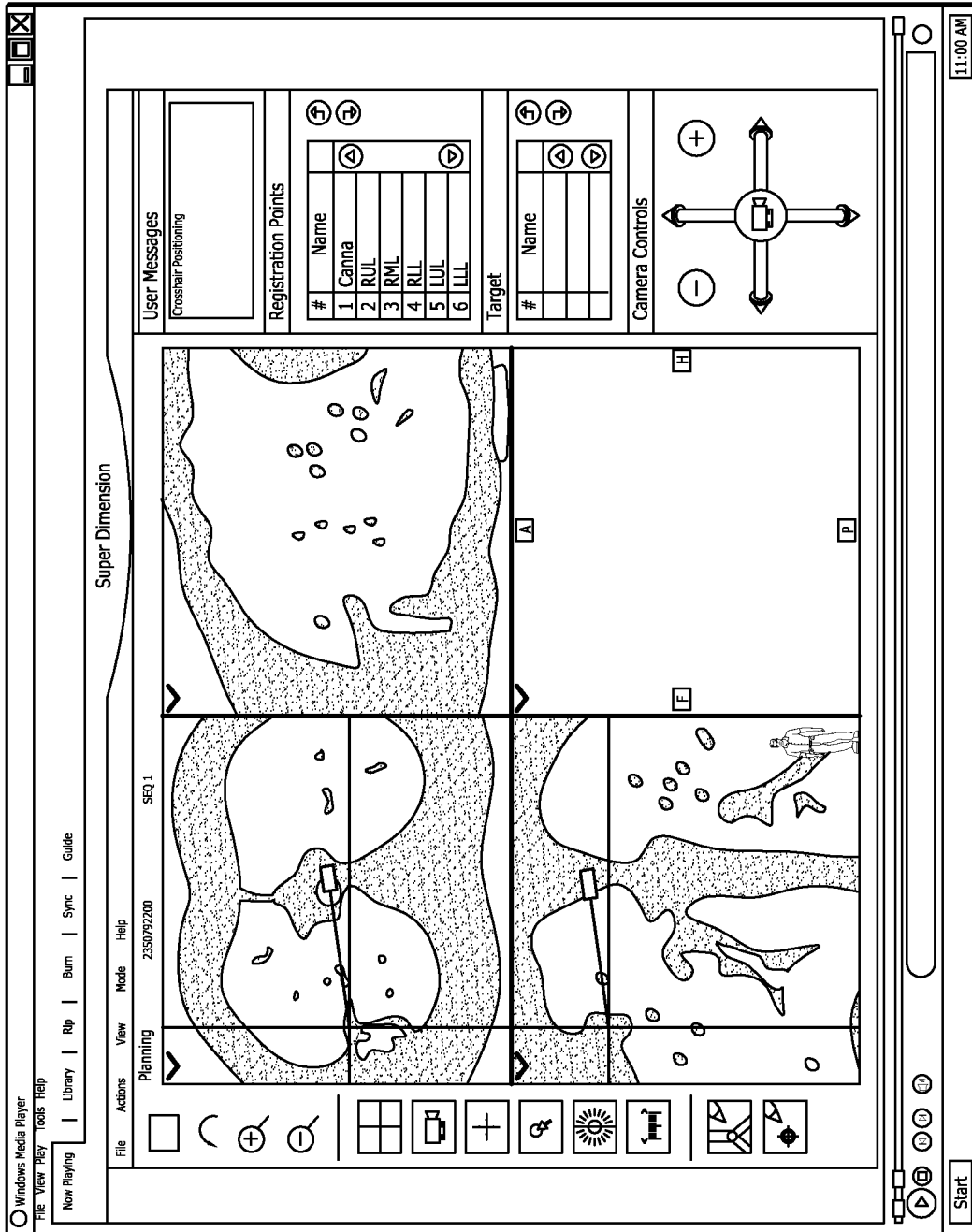


FIG. 5

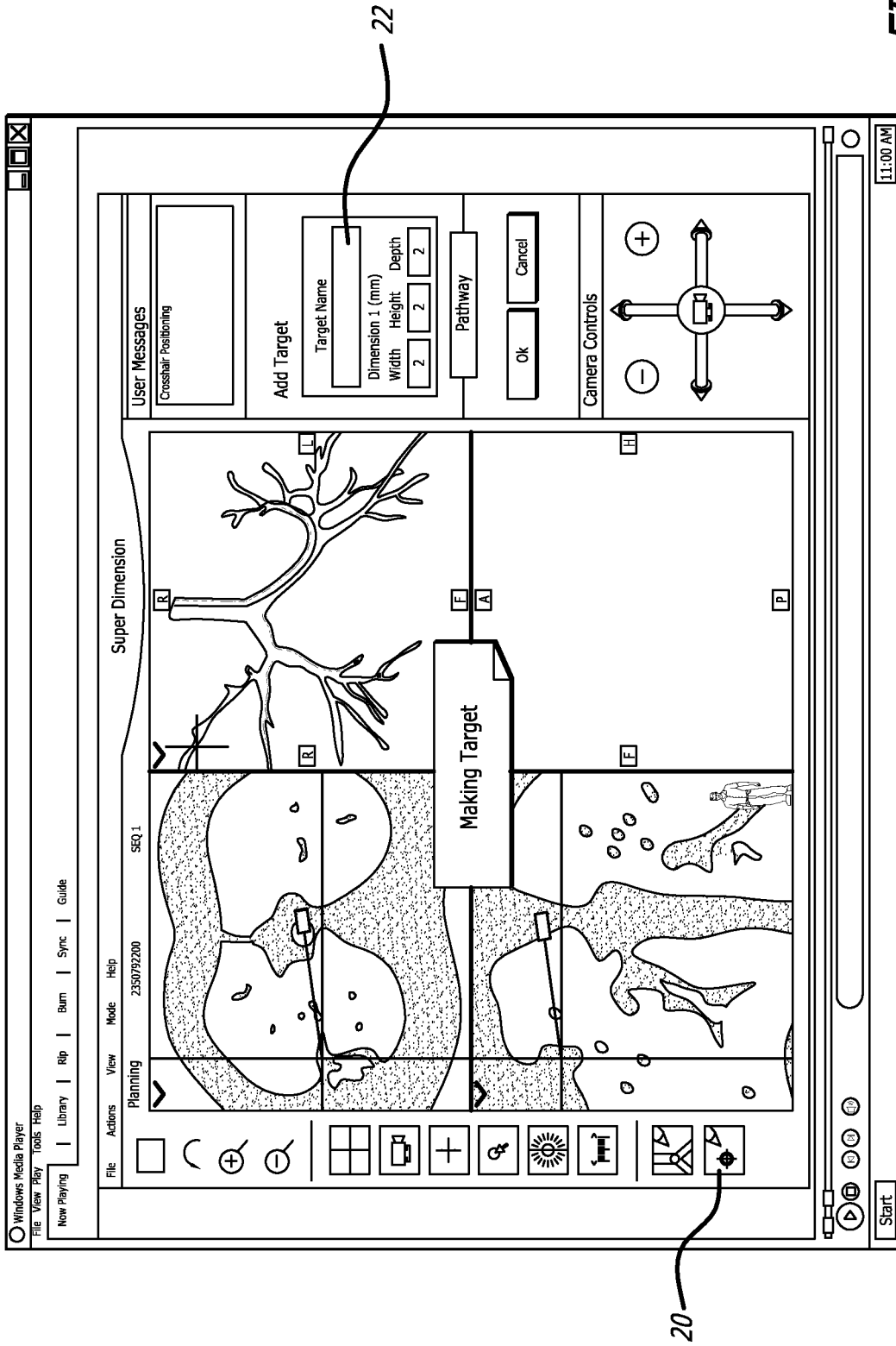


FIG. 6

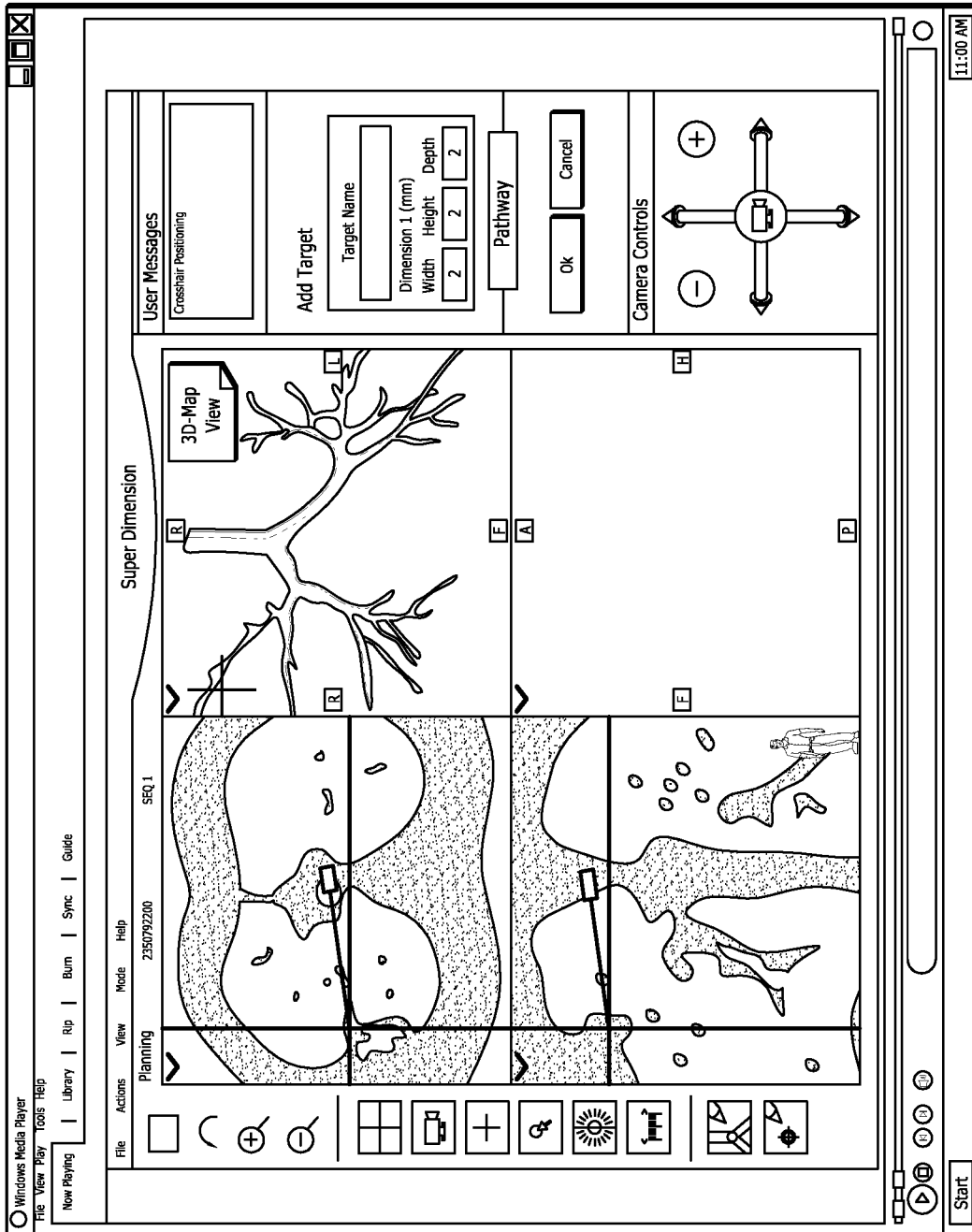


FIG. 7

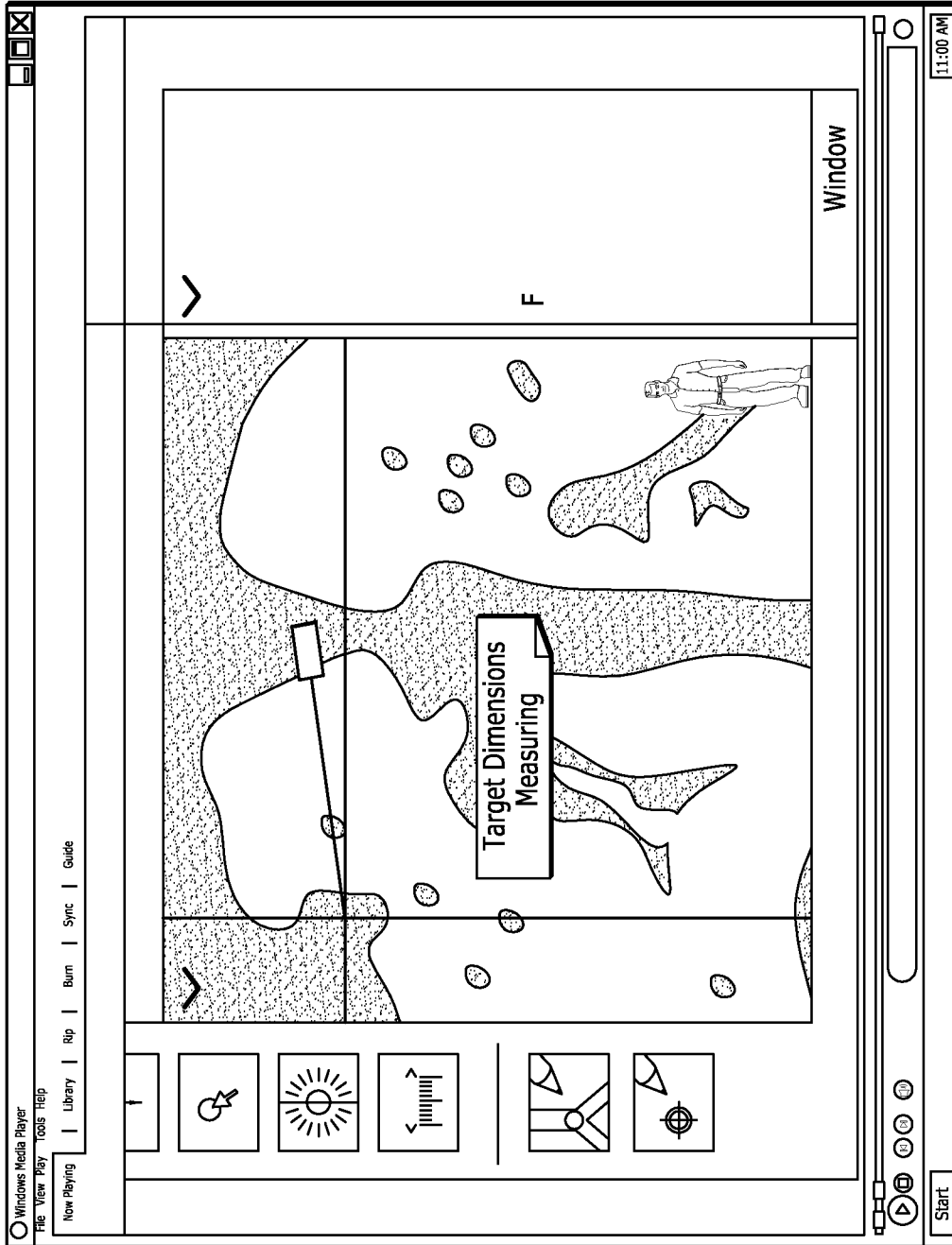


FIG. 8

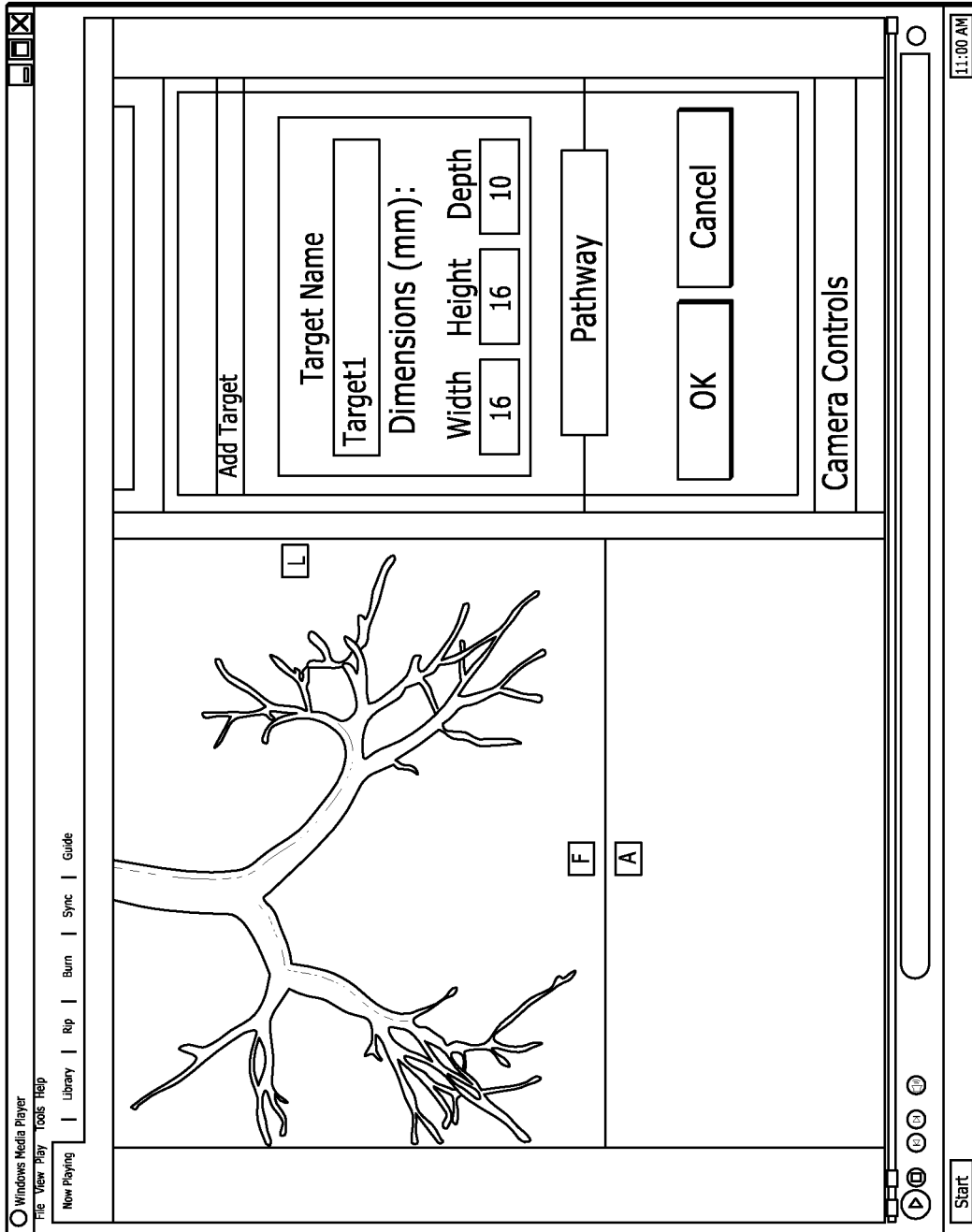


FIG. 9

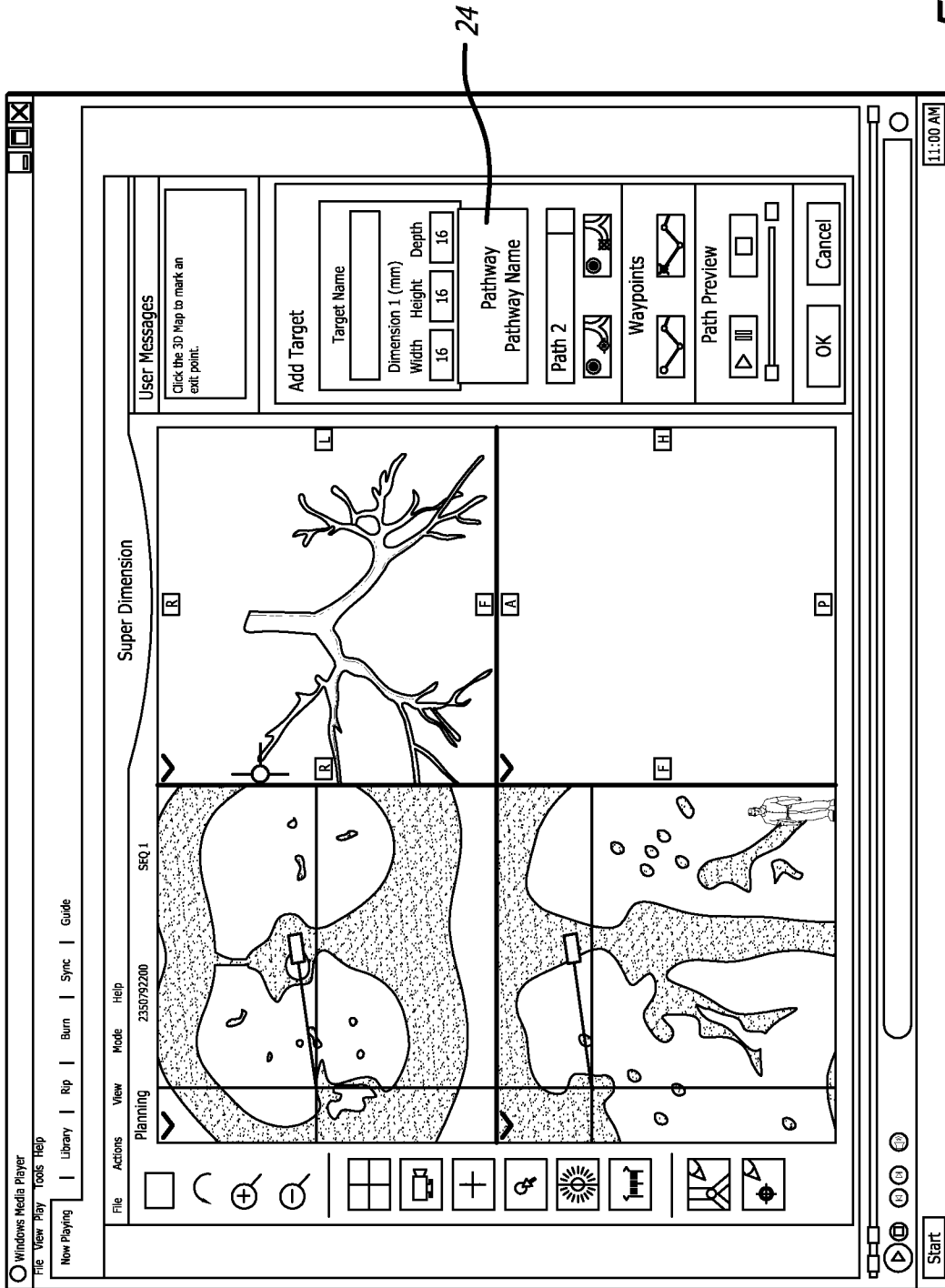


FIG. 10

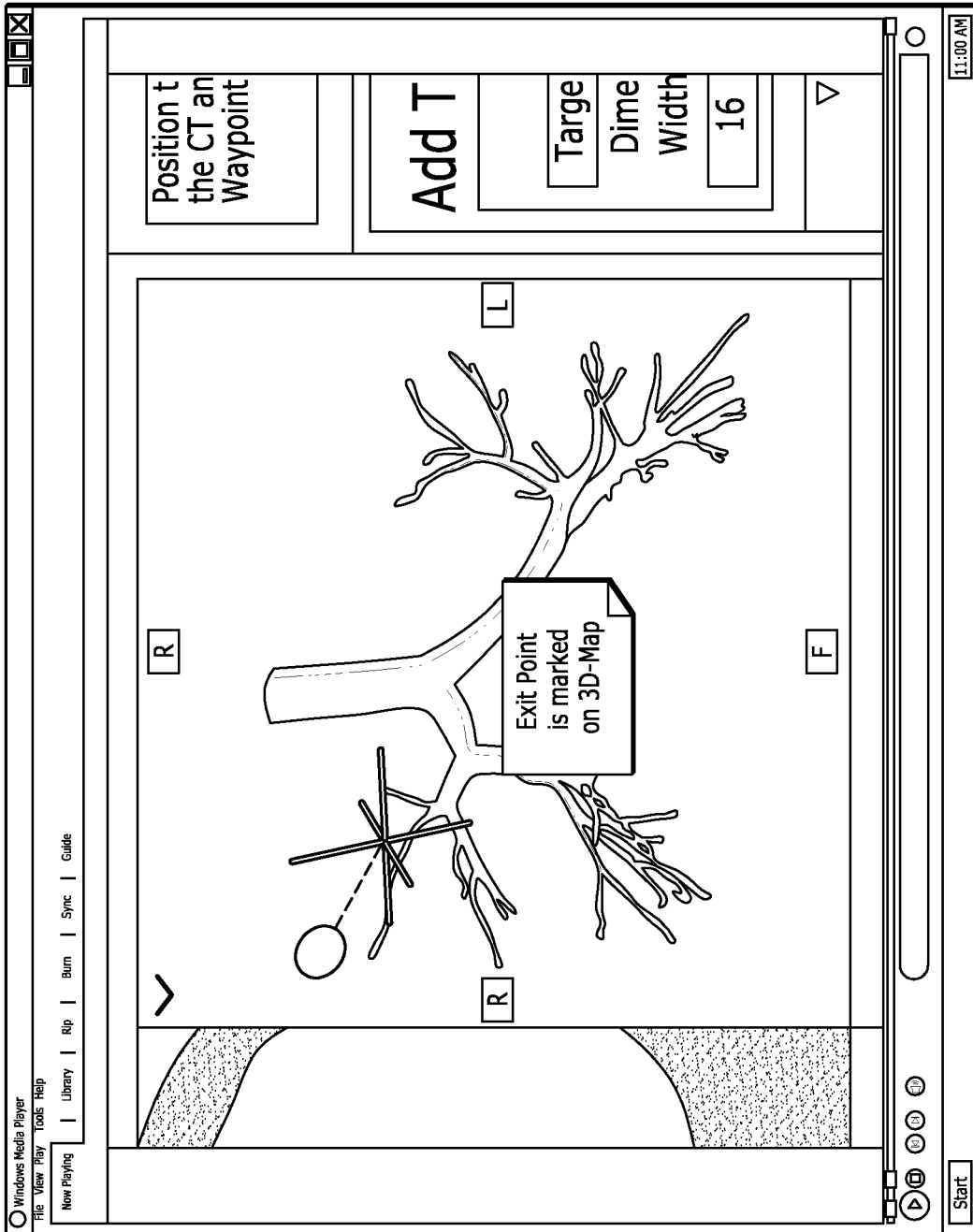


FIG. 11

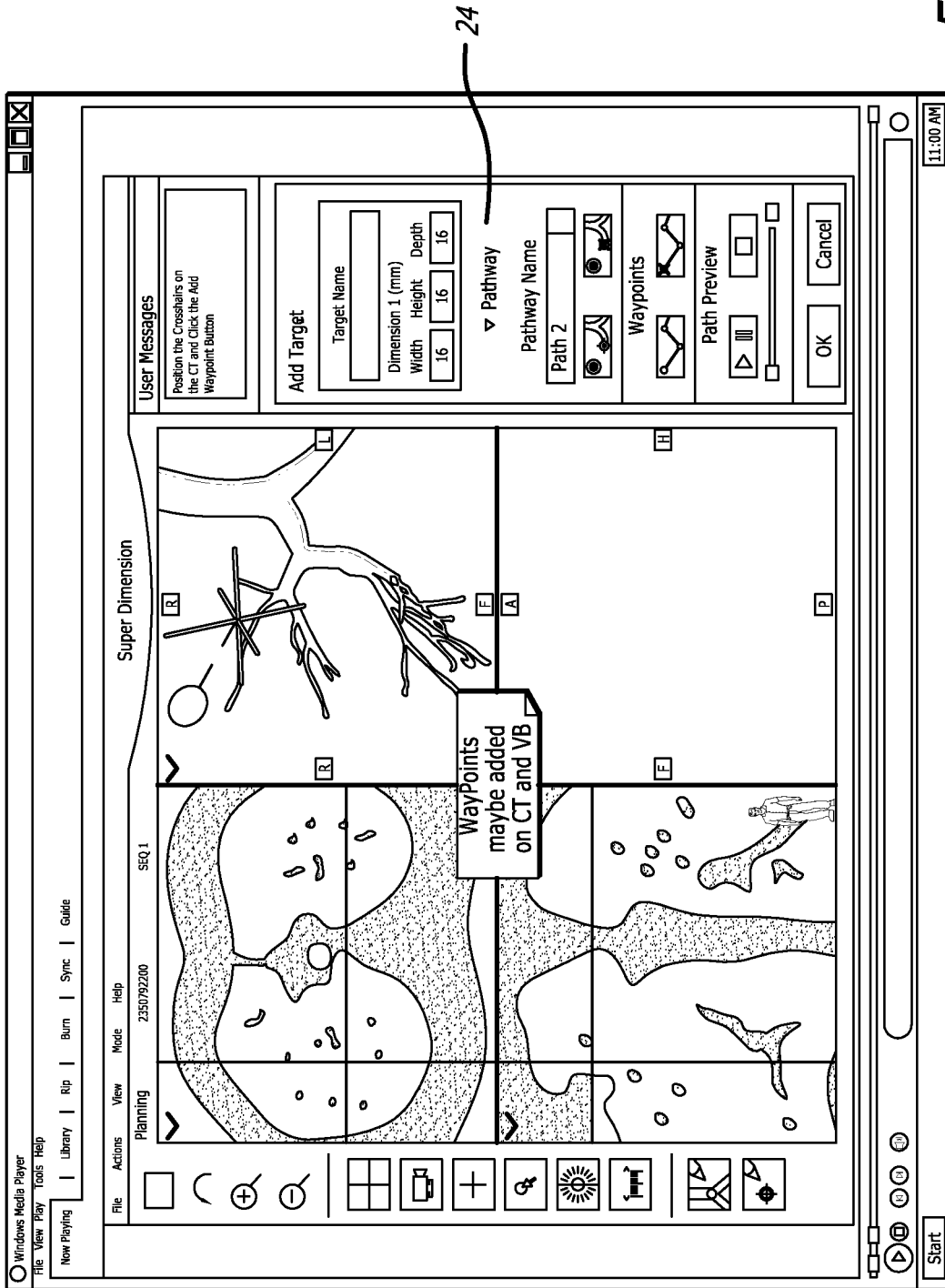


FIG. 12

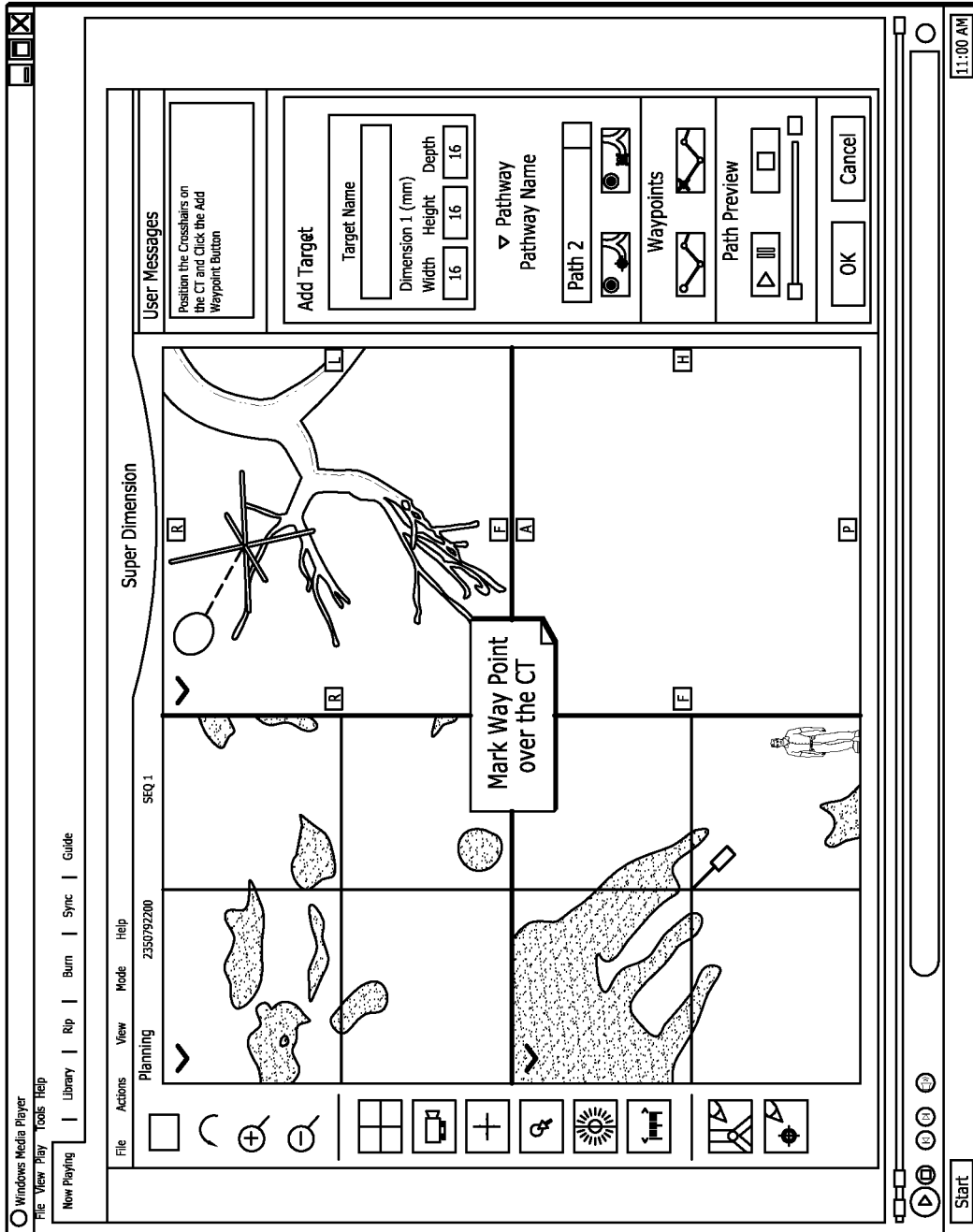


FIG. 13

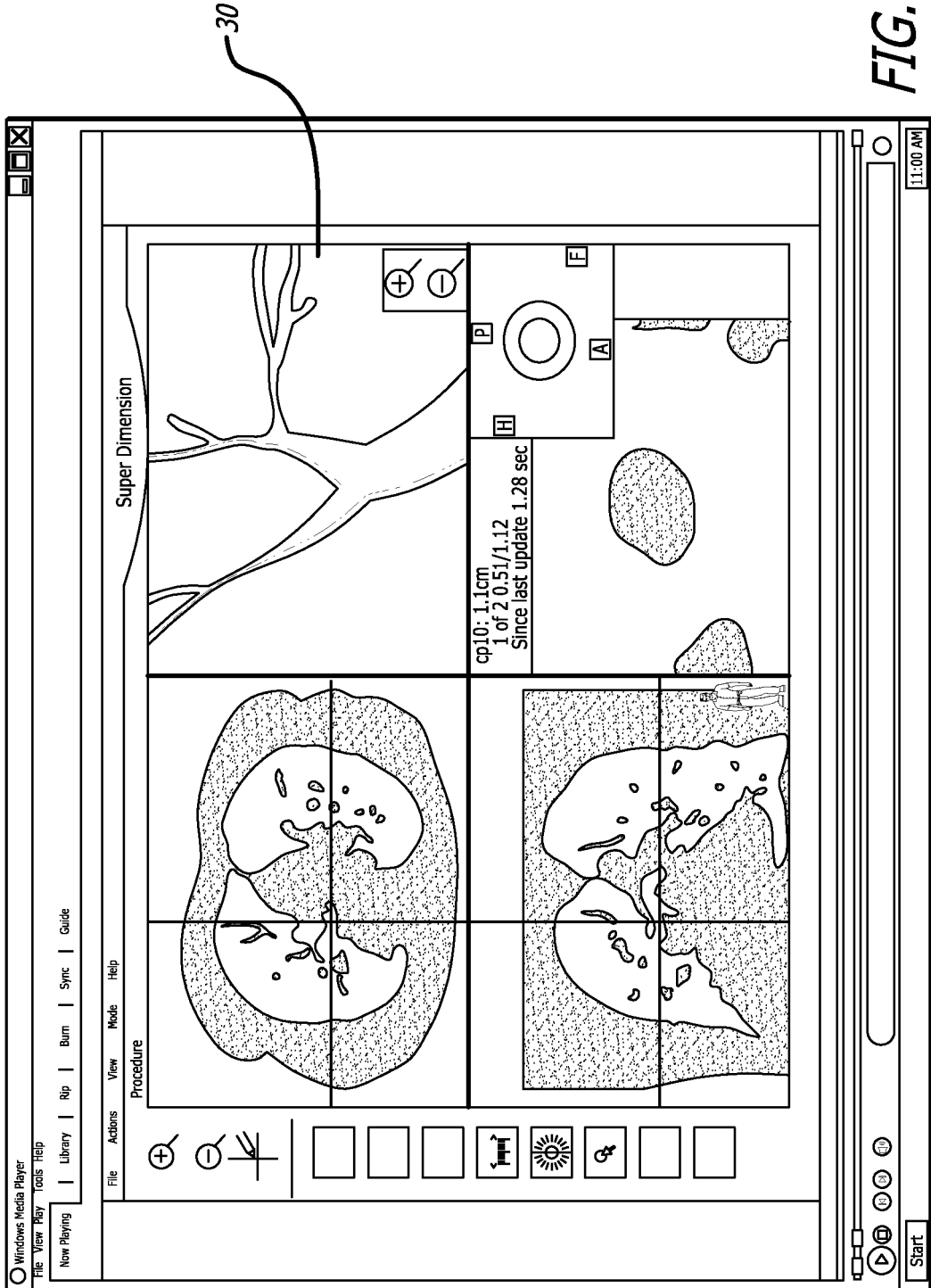


FIG. 14

REFERENCES CITED IN THE DESCRIPTION

This list of references cited by the applicant is for the reader's convenience only. It does not form part of the European patent document. Even though great care has been taken in compiling the references, errors or omissions cannot be excluded and the EPO disclaims all liability in this regard.

Patent documents cited in the description

- US 86537906 P [0001]
- US 86742806 P [0001]
- US 88766307 P [0001]
- US 6188355 B [0003]
- US 6226543 B [0003]
- US 6558333 B [0003]
- US 6574498 B [0003]
- US 6593884 B [0003]
- US 6615155 B [0003]
- US 6702780 B [0003]
- US 6711429 B [0003]
- US 6833814 B [0003]
- US 6974788 B [0003]
- US 6996430 B [0003]
- US 20020193686 A [0003]
- US 20030074011 A [0003]
- US 20030216639 A [0003]
- US 20040249267 A [0003]
- US 20050107679 A [0004]

Non-patent literature cited in the description

- **ISAAC N. BANKMAN.** Handbook of Medical Imaging, Processing and Analysis. Academic Press, 2000, 73 [0015]
- **DIRK BARTZ ; DIRK MAYER ; JAN FISCHER ; SEBASTIAN LEY ; ANXO DEL RO ; STEF THUST ; CLAUS PETER HEUSSEL ; HANS-ULRICH KAUCZOR ; WOLFGANG STRÄßER.** Hybrid Segmentation and Exploration of the Human Lungs. *IEEE Visualization*, 2003 [0016]
- **K'ALM'AN PAL'AGYI ; ERICH SORANTIN ; EMESE BALOGH ; ATTILA KUBA ; CSONGOR HALMAI ; BAL'AZS ERD'OHÉLYI ; KLAUS HAUSEGGER.** A Sequential 3D Thinning Algorithm and Its Medical Applications. *17th Int. Conf. IPMI*, 2001, 409-415 [0017]
- **YONGSUP PARK ; JUERG TSCHIRREN ; JOSEPH REINHARDT ; MILAN SONKA ; GOEFFREY MCLENNAN ; ERIC A. HOFFMAN.** Automated Nomenclature Labeling of the Bronchial Tree in 3D-CT Lung Images. Springer-Verlag, October 2002, vol. 2489, 1-11 [0017]

专利名称(译)	用于导管穿过身体通道或腔的自适应导航技术		
公开(公告)号	EP2086399A4	公开(公告)日	2014-06-25
申请号	EP2007873356	申请日	2007-11-13
[标]申请(专利权)人(译)	SUPERDIMENSION AVERBUCH DORIAN WEINGARTEN OREN JOSKOWICZ LEO 马尔科夫IGOR VOROBAYCHYK IVAN ULCHIN YIGAL COHEN RAN		
申请(专利权)人(译)	SUPERDIMENSION. , LTD. AVERBUCH , DORIAN WEINGARTEN , OREN JOSKOWICZ , LEO 马尔科夫 , IGOR VOROBAYCHYK , IVAN ULCHIN , YIGAL COHEN , RAN		
当前申请(专利权)人(译)	SUPERDIMENSION. , LTD. AVERBUCH , DORIAN WEINGARTEN , OREN JOSKOWICZ , LEO 马尔科夫 , IGOR VOROBAYCHYK , IVAN ULCHIN , YIGAL COHEN , RAN		
[标]发明人	AVERBUCH DORIAN WEINGARTEN OREN JOSKOWICZ LEO MARKOV IGOR VOROBAYCHYK IVAN ULCHIN YIGAL COHEN RAN		
发明人	AVERBUCH, DORIAN WEINGARTEN, OREN JOSKOWICZ, LEO MARKOV, IGOR VOROBAYCHYK, IVAN ULCHIN, YIGAL COHEN, RAN		
IPC分类号	A61B5/00 G06T7/00 A61B34/10 G06T7/11 G06T7/155 G06T7/187 G06T7/60 G06T11/20 G06T15/08 G06T17/00		
CPC分类号	A61B34/10 G06T7/0012 G06T7/11 G06T7/155 G06T7/187 G06T7/60 G06T2200/24 G06T2207/10081 G06T2207/20044 G06T2207/20156 G06T2207/30061 G06T2207/30101 A61B34/25 A61B2034/107 A61B2034/252 A61B2090/3762 G06T11/203 G06T15/08 G06T17/00		

代理机构(译)	KRAHBICHLER, ERIK
优先权	60/865379 2006-11-10 US 60/867428 2006-11-28 US 60/887663 2007-02-01 US
其他公开文献	EP2086399B1 EP2086399A2
外部链接	Espacenet

摘要(译)

一种导航系统，用于在用探头导航管腔网络的同时将管腔网络的计算机模型注册到患者的实际管腔网络，所述系统包括探头，并且其中，所述系统适于：收集与实际位置有关的数据 具有传感器的探针；处理连续的数据点以建立探测路径；在跟踪探头位置的同时，将探头路径迭代注册为管腔网络计算机模型上的路径形状；迭代地调整计算机模型的位置，以使所述探针路径位于路径形状内。