

(19)



(11)

**EP 3 010 405 B1**

(12)

**EUROPEAN PATENT SPECIFICATION**

(45) Date of publication and mention of the grant of the patent:  
**24.04.2019 Bulletin 2019/17**

(51) Int Cl.:  
**A61B 5/0408** <sup>(2006.01)</sup>      **A61B 5/0492** <sup>(2006.01)</sup>  
**A61B 5/0478** <sup>(2006.01)</sup>      **A61B 5/0428** <sup>(2006.01)</sup>  
**A61B 5/00** <sup>(2006.01)</sup>            **A61B 5/0416** <sup>(2006.01)</sup>  
**A61B 5/0424** <sup>(2006.01)</sup>

(21) Application number: **14813529.6**

(22) Date of filing: **16.01.2014**

(86) International application number:  
**PCT/KR2014/000446**

(87) International publication number:  
**WO 2014/204077 (24.12.2014 Gazette 2014/52)**

**(54) METHOD AND DEVICE TO MEASURE BIOSIGNAL**

VERFAHREN UND VORRICHTUNG ZUR MESSUNG VON BIOSIGNALEN  
PROCÉDÉ ET DISPOSITIF POUR MESURER UN BIOSIGNAL

(84) Designated Contracting States:  
**AL AT BE BG CH CY CZ DE DK EE ES FI FR GB  
GR HR HU IE IS IT LI LT LU LV MC MK MT NL NO  
PL PT RO RS SE SI SK SM TR**

(74) Representative: **Grünecker Patent- und  
Rechtsanwälte  
PartG mbB  
Leopoldstraße 4  
80802 München (DE)**

(30) Priority: **17.06.2013 KR 20130068864**

(43) Date of publication of application:  
**27.04.2016 Bulletin 2016/17**

(56) References cited:  
**EP-A2- 1 275 342      WO-A1-2012/075497  
KR-A- 20050 121 472      KR-A- 20110 004 660  
US-A1- 2010 042 012      US-A1- 2012 088 999  
US-A1- 2012 238 890**

(73) Proprietor: **Samsung Electronics Co., Ltd.  
Suwon-si, Gyeonggi-do 443-742 (KR)**

(72) Inventor: **KIM, Youn Ho  
Yongin-si  
Gyeonggi-do 446-712 (KR)**

**EP 3 010 405 B1**

Note: Within nine months of the publication of the mention of the grant of the European patent in the European Patent Bulletin, any person may give notice to the European Patent Office of opposition to that patent, in accordance with the Implementing Regulations. Notice of opposition shall not be deemed to have been filed until the opposition fee has been paid. (Art. 99(1) European Patent Convention).

## Description

### Technical Field

**[0001]** The following description relates to a method and device to measure a biosignal.

### Background Art

**[0002]** Ubiquitous health (U-health) may refer to a service that provides health care and medical treatment, such as diagnosis, treatment, and protection. For example, by connecting a patient to a doctor without restrictions on time and place using information technology (IT) network, such as, for example, the Internet, a mobile phone, and a bi-directional cable television (TV). U-health may also refer to a technique of monitoring a biosignal of a patient without restrictions on time and place to provide such service. For example, a general electrocardiogram (ECG) measurement device to measure an ECG uses conductive gel and is generally used in a hospital environment. An ECG may be measured without using conductive gel where a user wears clothes and is partaking in the activities of everyday life. For example, a technique of measuring a biosignal in a noncontact manner may be utilized. Documents US 2012/238890 and US 2010/042012 disclose modular biosignal acquisition systems, both comprising a processing unit and an electrode unit removably connected, wherein the connection supports both power and data transfer.

### Summary

**[0003]** This Summary is provided to introduce a selection of concepts in a simplified form that are further described below in the Detailed Description. This Summary is not intended to identify key features or essential features of the claimed subject matter, nor is it intended to be used as an aid in determining the scope of the claimed subject matter. The invention is defined in the appended claims 1-13.

**[0004]** In one general aspect, there is provided a biosignal measurement device including a first signal connector capable of removably attaching to an electrode unit that is configured to sense a biosignal, wherein the first signal connector is configured to receive the biosignal from the electrode unit; a power supplier configured to supply power to the electrode unit in response to the power supplier being connected to the electrode unit; and a signal processor configured to process the biosignal received by the first signal connector.

**[0005]** The signal processor may be further configured to maintain a signal processing frequency band of a filter when the power supplier is disconnected from the electrode unit; and to change the signal processing frequency band of the filter when the power supplier is connected to the electrode unit.

**[0006]** The signal processor may be further configured

to operate in a first frequency band when the power is not supplied from the power supplier; and to operate in a second frequency band when the power is not supplied from the power supplier.

**[0007]** The first frequency band may be wider than the second frequency band.

**[0008]** The biosignal measurement device may include a fixing unit configured to fix the biosignal measurement device to at least one of a body or clothes.

**[0009]** The electrode unit, may include at least one electrode configured to sense the biosignal; and a second signal connector capable of removably attaching to the first signal connector, wherein the second signal connector is configured to transfer the biosignal to the first signal connector.

**[0010]** The electrode unit may include at least one capacitive coupling active electrode configured to sense the biosignal; a second signal connector capable of removably attaching to the first signal connector, wherein the second signal connector is configured to transfer the biosignal to the first signal connector; and a second power connector configured to provide power supplied from the power supplier to the at least one capacitive coupling active electrode.

**[0011]** The biosignal measurement device may include a first power connector configured to supply power to the electrode unit from the power supplier.

**[0012]** The biosignal measurement device may include a communicator configured to transmit the processed biosignal to an external device.

**[0013]** In another general aspect, there is provided a biosignal measurement device including an electrode unit configured to sense a biosignal; a first signal connector capable of removably attaching to the electrode unit, wherein the first signal connector is configured to receive the biosignal from the electrode unit; a power connector configured to receive power from the electrode unit in response to the power connector being connected to the electrode unit; and a signal processor configured to process the biosignal received by the first signal connector.

**[0014]** The signal processor may be further configured to maintain a signal processing frequency band of a filter when the power connector is disconnected from the electrode unit, and to change the signal processing frequency band of the filter when the power connector is connected to the electrode unit.

**[0015]** The signal processor may be further configured to operate in a first frequency band when the power is not supplied from the power connector; and to operate in a second frequency band when the power is received by the power connector.

**[0016]** The signal processor may be configured to operate in a frequency band for a capacitive coupling active electrode when the power is received by the power connector.

**[0017]** The biosignal measurement device may include a fixing unit configured to fix the biosignal measurement

device to at least one of a body or clothes.

**[0018]** The electrode unit may include at least one electrode configured to sense the biosignal; and a second signal connector capable of removably attaching to the first signal connector, wherein the second signal connector is configured to transfer the biosignal to the first signal connector.

**[0019]** The electrode unit may include at least one capacitive coupling active electrode configured to sense the biosignal; a second signal connector capable of removably attaching to the first signal connector, wherein the second signal connector is configured to transfer the biosignal to the first signal connector; and a power supplier configured to supply power to the capacitive coupling active electrode and the power connector.

**[0020]** In another general aspect, there is provided a method to measure a biosignal, the method including determining a connection between an electrode unit and a power connector; supplying power to the electrode unit in response to the detected connection; sensing a biosignal at the electrode unit; and processing the sensed biosignal at a biosignal processor.

**[0021]** The processing may include maintaining a signal processing frequency band of a filter in response to the power not being supplied to the electrode unit; and changing the signal processing frequency band of the filter in response to the power being supplied to the electrode unit.

**[0022]** The processing may include processing the biosignal in a first frequency band in response to the connection not being detected; and processing the biosignal in a second frequency band in response to the connection being detected.

**[0023]** The processing may include operating a filter in a frequency band for a capacitive coupling active electrode in response to the connection being detected.

**[0024]** The sensing of the biosignal may include sensing the biosignal through at least one electrode, and the processing may include processing the biosignal in a first frequency band in response to the connection not being detected.

**[0025]** The supplying power may include supplying power to at least one capacitive coupling active electrode; the sensing of the biosignal may include sensing the biosignal through the capacitive coupling active electrode; and the processing may include processing the biosignal in a second frequency band in response to the connection being detected.

**[0026]** The processing may include processing the biosignal in a frequency band between 0.1 Hz to 150 Hz in response to the connection not being detected; and processing the biosignal in the frequency band between 5 Hz to 35 Hz in response to the connection being detected.

**[0027]** Other features and aspects will be apparent from the following detailed description, the drawings, and the claims. The invention is defined by appended claims 1-13.

## Brief Description of Drawings

### [0028]

5 FIG. 1 is a diagram illustrating an example of a biosignal measurement device.

FIG. 2 is a diagram illustrating an example of a biosignal measurement device.

10 FIG. 3 is a diagram illustrating another example of a biosignal measurement device.

FIG. 4 is a diagram illustrating an example of a method to measure a biosignal.

FIG. 5 is a diagram illustrating another example of a method to measure a biosignal.

15 FIGS. 6a through 6d are diagrams illustrating examples of a fixing unit of a biosignal measurement device.

**[0029]** Throughout the drawings and the detailed description, unless otherwise described or provided, the same drawing reference numerals will be understood to refer to the same elements, features, and structures. The drawings may not be to scale, and the relative size, proportions, and depiction of elements in the drawings may be exaggerated for clarity, illustration, and convenience.

## Detailed Description

**[0030]** The following detailed description is provided to assist the reader in gaining a comprehensive understanding of the methods, apparatuses, and/or systems described herein. However, various changes, modifications, and equivalents of the systems, apparatuses and/or methods described herein will be apparent to one of ordinary skill in the art. The progression of processing steps and/or operations described is an example; however, the sequence of and/or operations is not limited to that set forth herein and may be changed as is known in the art, with the exception of steps and/or operations necessarily occurring in a certain order. Also, descriptions of functions and constructions that are well known to one of ordinary skill in the art may be omitted for increased clarity and conciseness.

**[0031]** The features described herein may be embodied in different forms, and are not to be construed as being limited to the examples described herein. Rather, the examples described herein have been provided so that this disclosure will be thorough and complete, and will convey the full scope of the disclosure to one of ordinary skill in the art.

**[0032]** FIG. 1 illustrates an example of a biosignal measurement device. Referring to FIG. 1, the biosignal measurement device includes a biosignal processor 110, an electrode unit 120, and a fixing unit 130. Biosignal may include all signals that can be measured and monitored from biological beings, such as, for example, electrocardiogram (ECG) signal, electrooculogram (EOG) signal, electromyogram (EMG) signal, electroencepha-

logram (EEG) signal, Mechanomyogram (MMG) signal, Galvanic skin response (GSR) signal, and Magnetoencephalogram (MEG).

**[0033]** The electrode unit 120 may include an electrode capable of sensing a biosignal. For example, the electrode unit 120 may include an active electrode, such as, for example, a capacitive coupling active electrode 121 and a simple metal electrode 123. The electrode unit 120 is connected to the biosignal processor 110 through a signal connector 122 provided in a physically connectable structure. The electrode unit 120 including different types of electrodes, for example, the metal electrode 123 and the capacitive coupling active electrode 121, may be selectively connected to at least one signal processor 110 through the signal connector 122 provided in a similar form, based on a predetermined condition.

**[0034]** For example, when a biosignal of a human body is required to be measured, the biosignal may be measured by connecting the biosignal processor 110 with the metal electrode 123 in a state in which the body is restrained. As another example, when a biosignal is required to be measured without restraining a body, for example, when a user is in a sleeping state, the biosignal may be measured by connecting the biosignal processor 110 with the capacitive coupling active electrode 121 that does not require restraining the body.

**[0035]** The biosignal processor 110 may extract a waveform of the measured biosignal by processing the measured biosignal. The biosignal processor 110 may be connected to the electrode unit 120 through a signal connector 111. The biosignal processor 110 may differently process a biosignal based on whether power is supplied to the electrode unit 120, which will be further described with reference to FIG. 2 through FIG. 5.

**[0036]** The fixing unit 130 may fix the biosignal measurement device to a body or to the clothes worn by a person. Referring to FIG. 1, the fixing unit 130 is mounted to at least one of the electrode unit 120 and the biosignal processor 110 of the biosignal measurement device. Example of the fixing unit 130 fixing the biosignal measurement device to the body will be further described with reference to FIG. 6.

**[0037]** According to a non-exhaustive example, a user may measure a biosignal by selectively applying a direct contact using a simple electrode based on a change in environment or an indirect contact using a capacitive coupling active electrode. Accordingly, a user may measure biosignal more conveniently. For example, when the user is participating in active exercise or when the ECG morphology of the user needs to be accurately observed, a simple electrode having an adhesive property may be attached to the biosignal measurement device around the heart of a user. As another example, when a motion of the user is limited, such as when the user is sleeping, and when a binding force of a contact needs to be reduced for measuring biosignal, the capacitive coupling active electrode 121 may be attached to the user and may be used to measure a biosignal.

**[0038]** FIG. 2 illustrates an example of a biosignal measurement device 200. Referring to FIG. 2, the biosignal measurement device 200 includes a biosignal processor 210 and an electrode unit 220. The biosignal processor 210 may include a first signal connector 211 and a first power connector 214. The electrode unit 220 may include a second signal connector 222 and a second power connector 223.

**[0039]** The biosignal connector 210 includes the first signal connector 211, a power supplier 212, a signal processor 213, the first power connector 214, and a communication unit 215.

**[0040]** The first signal connector 211 has a structure that is capable of being physically connectable to the electrode unit 220, which is configured to sense a biosignal. The first signal connector 211 is connected to the electrode unit 220 through the second signal connector 222 to receive the biosignal. Similarly, the electrode unit 220 has a structure that is capable of being physically connectable to the first signal connector 211. The first signal connector 211 and the electrode unit 220 are physically connectable and may be connected to each other or may be separate from each other depending on the requirement. For example, a magnet may be used for the connectable structure. The first signal connector 211 may transfer at least one signal through each separate path and may also receive at least one signal through each separate path.

**[0041]** When the first power connector 214 is connected to the second power connector 223, the power supplier 212 may supply power to the electrode unit 220. The power supplier 212 may also supply power to operate the signal processor 213 and the communication unit 215.

**[0042]** The signal processor 213 may process a biosignal provided from the first signal connector 211. The signal processor 213 may include, for example, an analog front end (AFE) and a filter. The signal processor 213 may modify a scheme of processing a biosignal based on a type of an electrode included in the electrode unit 220 connected to the biosignal processor 210.

**[0043]** When the power is not supplied from the power supplier 212, the signal processor 213 may operate in a first frequency band. When the power is supplied from the power supplier 212, the signal processor 213 may operate in a second frequency band. For example, when the power supplier 212 is disconnected from the electrode unit 220, the signal processor 213 may maintain a signal processing frequency band of the filter. When the power supplier 212 is connected to the electrode unit 220, the signal processor 213 may change the signal processing frequency band of the filter. In this example, the second frequency band may have a width less than the first frequency band. For example, the second frequency band may include a frequency band for a capacitive coupling active electrode.

**[0044]** The signal processor 213 may include a right-leg-driven (RLD) circuit or other methods to reduce com-

mon-mode interference. To cancel common-mode noise, the signal processor 213 may receive two biosignals from the electrode unit 220 through the second signal connector 222 and may feed back a single signal including common-mode noise to a body through the electrode unit 220.

**[0045]** The first power connector 214 may be connected to the second power connector 223 to provide power to the electrode unit 220. For example, when the electrode unit 220 includes a capacitive coupling active electrode, the power may be provided to an operational amplifier used for the capacitive coupling active electrode.

**[0046]** The first power connector 214 may detect whether to provide the power to the electrode unit 220. For example, the first power connector 214 may include a switch function. When the switch is turned on, the first power connector 214 may detect that the power is to be provided to the electrode unit 220. When the switch is turned off, the first power connector 214 may detect that the power is not to be provided to the electrode unit 220. When the first power connector 214 is connected to the second power connector 223, the switch may be turned on.

**[0047]** The communication unit 215 may transmit a result of processing the biosignal at the signal processor 213 to an external device. The external device may refer to any device capable of performing a communication function in order to receive the result from the biosignal measurement device 200. As a non-exhaustive illustration only, an external device described herein may refer to devices such as, for example, a cellular phone, a smart phone, a wearable smart device (such as, for example, a ring, a watch, a pair of glasses, a bracelet, an ankle bracket, a belt, a necklace, an earring, a headband, a helmet, a device embedded in the cloths or the like), a personal computer (PC), a tablet personal computer (tablet), a phablet, a personal digital assistant (PDA), a digital camera, a portable game console, an MP3 player, a portable/personal multimedia player (PMP), a handheld e-book, an ultra mobile personal computer (UMPC), a portable lab-top PC, a global positioning system (GPS) navigation, and devices such as a high definition television (HDTV), an optical disc player, a DVD player, a Blue-ray player, a setup box, or any other device capable of wireless communication or network communication consistent with that disclosed herein. In a non-exhaustive example, the external device may be self-mountable on the body of the user, such as, for example, the glasses or the bracelet. In another non-exhaustive example, the external device may be mounted on the body of the user through an attaching device, such as, for example, attaching a smart phone or a tablet to the arm of a user using an armband, or hanging the external device around the neck of a user using a lanyard.

**[0048]** The electrode unit 220 may include an active electrode 221, the second signal connector 222, and the second power connector 223. For example, the electrode unit 220 including the active electrode 221 may be used to measure a biosignal through a direct contact without

restraining the body. For example, the active electrode 221 may be applied to a body of a user when the user is sleeping, undertaking an exercise, such as a power walking or jogging. The active electrode 221 may also be applied to a body of a user to detect drowsiness, and to monitor the daily stress level.

**[0049]** The active electrode 221 may sense a biosignal through capacitive coupling with a body. For example, the active electrode 221 may include, as a capacitive coupling active electrode, a shield configured to prevent external noise, an electrode face configured to establish a contact with the body to sense a biosignal, and an operational amplifier that is supplied with power and that operates to amplify the biosignal.

**[0050]** The second signal connector 222 has a structure that is capable of being physically connected to the first signal connector 211. The second signal connector 222 is connected to the first signal connector 211 to transfer the sensed biosignal to the biosignal processor 210. In this example, when the signal processor 213 includes an RLD circuit, the second signal processor 222 may feed back, to the body, a signal transferred from the first signal connector 221. The signal transferred from the first signal connector 221 may include common-mode noise.

**[0051]** The second power connector 223 may provide, to the capacitive coupling active electrode, the power supplied from the first power connector 214.

**[0052]** The electrode unit 220 may include a metal electrode and the second signal connector 222 without including the second power connector 223. In this example, the electrode unit 220 may transfer a biosignal to the biosignal processor 210 without being supplied with the power, which differs from a case in which the electrode unit 220 includes the active electrode 221. For example, the electrode unit 220 including the simple electrode may be used to measure a biosignal by restraining the body or through a direct contact. The simple electrode may include a wet electrode, and may be applied when a more exact test is required because the user, for example, suffers from the heart disease and does strenuous exercise.

**[0053]** FIG. 3 illustrates another example of a biosignal measurement device 300. Referring to FIG. 3, a power supplier 324 is mounted to an electrode unit 320 instead of being mounted to a biosignal processor 310, which differs from the example of FIG. 2.

**[0054]** The biosignal processor 310 includes a first signal connector 311, a signal processor 313, a first power connector 314, and a communication unit 315. The first signal connector 311, the signal processor 313, and the communication unit 315 may be similar to the first signal connector 211, the signal processor 213, and the communication unit 215, respectively, of FIG. 2. When the first power connector 314 is connected to the electrode unit 320, the first power connector 314 may be supplied with the power from the electrode unit 320. The first power connector 314 may transfer the power to operate the signal processor 313 and the communication unit 315.

**[0055]** The electrode unit 320 includes an active elec-

trode 321, a second signal connector 322, a second power connector 323, and the power supplier 324. The active electrode 321 and the second signal connector 322 may be similar to the active electrode 221 and the second signal connector 222, respectively, of FIG. 2. The second power connector 323 may provide the power supplied from the power supplier 324 to the first power connector 314 and to the active electrode 321. The power supplier 324 may supply power so as to operate the active electrode 321. When the first power connector 314 is connected to the second power connector 323, the power supplier 324 may transfer the power to the biosignal processor 310.

**[0056]** FIG. 4 illustrates an example of a method to measure a biosignal. The operations in FIG. 4 may be performed in the sequence and manner as shown, although the order of some operations may be changed or some of the operations omitted without departing from the spirit and scope of the illustrative examples described. Many of the operations shown in FIG. 4 may be performed in parallel or concurrently. The description of FIGS. 1-3 is also applicable to FIG. 4, and thus will not be repeated here.

**[0057]** In 410, a connection between an electrode unit and a power connector is detected. For example, a determination may be made whether a first power connector and a second power connector are connected. The connection may be detected when switches included in the first power connector and the second power connector are turned on. A signal processor may process a biosignal sensed by the electrode unit as follows.

**[0058]** When the power connection is not detected, in 421, the electrode unit senses a biosignal through at least one electrode. For example, the electrode unit may include a simple electrode.

**[0059]** When the connection is not detected, in 422, the biosignal is processed in a first frequency band. The first frequency band may include a band suitable for processing the biosignal using a direct contact type electrode, for example, a metal electrode. For example, a biosignal corresponding to the first frequency band may pass through a band pass filter (BPF).

**[0060]** When a frequency band of the signal processor is set by default to the first frequency band, a signal processing frequency band of a filter included in the signal processor may be maintained when power is not being supplied. When the frequency band set by default is a second frequency band, the signal processing frequency band of the filter may be changed to the first frequency band when power is not being supplied.

**[0061]** Conversely, when the power connection is detected, in 431, power is supplied to the electrode unit. The power supplier may supply the power to at least one capacitive coupling active electrode.

**[0062]** In 432, the biosignal is sensed through the electrode unit. The electrode unit may sense the biosignal using the capacitive coupling active electrode.

**[0063]** When the connection is detected, in 433, the

biosignal is processed in the second frequency band. The second frequency band may include a frequency band for a capacitive coupling active electrode. For example, a biosignal corresponding to the second frequency band may pass through a BPF.

**[0064]** When a frequency band of the signal processor is set by default to the first frequency band, the signal processing frequency band of the filter included in the signal processor may be changed to the second frequency band while the power is being supplied. When the frequency band of the signal processor is set by default to the second frequency band, the signal processing frequency band of the filter may be maintained while the power is being supplied.

**[0065]** FIG. 5 illustrates another example of a method to measure a biosignal. In this example, the biosignal may be an ECG signal. The operations in FIG. 5 may be performed in the sequence and manner as shown, although the order of some operations may be changed or some of the operations omitted without departing from the spirit and scope of the illustrative examples described. Many of the operations shown in FIG. 5 may be performed in parallel or concurrently. The description of FIGS. 1-4 is also applicable to FIG. 5, and thus will not be repeated here.

**[0066]** In 510, it is determined whether a power supplier is connected. For example, whether power is supplied from a biosignal processor to an electrode unit, or whether the power is supplied from the electrode unit to the biosignal processor may be detected through the connection to the power supplier.

**[0067]** When the connection with a power supply is not detected, a signal processing frequency band of a filter is set to be within a range of 0.1 Hz to 150 Hz in 520. For example, when a switch of the power supplier is turned off, the signal processing frequency band of the filter may be set to be a first frequency band, for example, within the range of 0.1 Hz to 150 Hz in order to observe the overall waveform of ECG using a simple electrode.

**[0068]** When the connection with a power supply is detected, the signal processing frequency band of the filter is set to be within a range of 5 Hz to 35 Hz. For example, when the switch of the power supplier is turned on, the signal processing frequency band of the filter may be set to a second frequency band, for example, within the range of 5 Hz to 35 Hz in order to observe R-peaks of ECG using a capacitive coupling active electrode. The capacitive coupling active electrode is robust against motion artifacts and measures a relatively simple waveform, for example, R-peaks of ECG compared to the simple electrode. Accordingly, the signal processor may process a biosignal using a relatively narrow band.

**[0069]** According to non-exhaustive examples, a direct contact scheme using a simple electrode and an indirect contact scheme using an indirect electrode may be selectively used in order to measure a biosignal. For example, when a user moves a lot in everyday life, the simple electrode may be used. In another example, to prevent

an electrode from obstructing a sleeping user, the capacitive coupling active electrode may be used.

**[0070]** FIGS. 6a through 6d illustrate examples of a fixing unit 630 of a biosignal measurement device 600. The fixing unit 630 may be similar to the fixing unit 130 of FIG. 1. FIG. 6a illustrates an example in which the biosignal measurement device 600 is attached to a material 691, for example, undergarment by the fixing unit 630 to contact to the skin of a user 690. The fixing unit 630 is mounted to an electrode unit or a biosignal processor of the biosignal measurement device 600 to fix the biosignal measurement device 600 to another object. For example, the other object may include the skin of the user 690 and clothes of the user 690, for example, outer garments and undergarments.

**[0071]** Referring to FIG. 6b, the biosignal measurement device 600 is fixed and directly contacts with the skin of user 690 by attaching the fixing unit 630 to an inside of the material 691, for example, undergarment. Referring to FIG. 6c, the biosignal measurement device 600 indirectly contacts with the skin of user 690 by attaching the fixing unit 630 to an outside of the material 691 and measures a biosignal using a capacitive coupling active electrode scheme. Referring to FIG. 6d, the biosignal measurement device 600 measures a biosignal using a capacitive coupling active electrode scheme after fixing the biosignal measurement device 600 to an inside of another material 692, for example, an outer garment using the fixing unit 630.

**[0072]** The processes, functions, and methods described above including a method for beamforming can be written as a computer program, a piece of code, an instruction, or some combination thereof, for independently or collectively instructing or configuring the processing device to operate as desired. Software and data may be embodied permanently or temporarily in any type of machine, component, physical or virtual equipment, computer storage medium or device that is capable of providing instructions or data to or being interpreted by the processing device. The software also may be distributed over network coupled computer systems so that the software is stored and executed in a distributed fashion. In particular, the software and data may be stored by one or more non-transitory computer readable recording mediums. The non-transitory computer readable recording medium may include any data storage device that can store data that can be thereafter read by a computer system or processing device. Examples of the non-transitory computer readable recording medium include read-only memory (ROM), random-access memory (RAM), Compact Disc Read-only Memory (CD-ROMs), magnetic tapes, USBs, floppy disks, hard disks, optical recording media (e.g., CD-ROMs, or DVDs), and PC interfaces (e.g., PCI, PCI-express, WiFi, etc.). In addition, functional programs, codes, and code segments for accomplishing the example disclosed herein can be construed by programmers skilled in the art based on the flow diagrams and block diagrams of the figures and their corresponding

descriptions as provided herein.

**[0073]** The apparatuses and units described herein may be implemented using hardware components. The hardware components may include, for example, controllers, sensors, processors, generators, drivers, and other equivalent electronic components. The hardware components may be implemented using one or more general-purpose or special purpose computers, such as, for example, a processor, a controller and an arithmetic logic unit, a digital signal processor, a microcomputer, a field programmable array, a programmable logic unit, a microprocessor or any other device capable of responding to and executing instructions in a defined manner. The hardware components may run an operating system (OS) and one or more software applications that run on the OS. The hardware components also may access, store, manipulate, process, and create data in response to execution of the software. For purpose of simplicity, the description of a processing device is used as singular, however, one skilled in the art will appreciate that a processing device may include multiple processing elements and multiple types of processing elements. For example, a hardware component may include multiple processors or a processor and a controller. In addition, different processing configurations are possible, such a parallel processors.

**[0074]** The invention is defined by appended claims 1-13.

## Claims

1. A biosignal measurement device (200), comprising:

a biosignal processor (210) configured to process a biosignal; and  
an electrode unit (220) configured to sense the biosignal,  
the biosignal processor (210) comprising:

a first signal connector (211) capable of removably attaching to the electrode unit (220), wherein the first signal connector (211) is configured to receive the biosignal from the electrode unit (220);  
a power supplier (212) configured to supply power to the electrode unit (220) through a first power connector (214) in response to the power supplier (212) being connected to the electrode unit (220);  
a signal processor (213) configured to differently process the biosignal received by the first signal connector (211) based on whether power is supplied to the electrode unit (220); and

the electrode unit (220) comprising:  
at least one active electrode (221) configured to

- connect with the biosignal processor (210), wherein the biosignal is sensed through at least one metal electrode being a direct contact type electrode, when the biosignal processor (210) and the electrode unit (220) are not connected such that no power is supplied through the first power connector (214) to the electrode unit (220), and wherein the biosignal is sensed through the at least one active electrode (221) being a capacitive coupling active electrode, when the biosignal processor (210) and the electrode unit (220) are connected by the first power connector (214) and a respective second power connector (223) of the electrode unit (220) such that power supplied from the power supplier (212) is provided to the at least one capacitive coupling electrode (221); and a second signal connector (222) capable of removably attaching to the first signal connector (211) of the biosignal processor (210), wherein the second signal connector (222) is configured to transfer the biosignal to the biosignal processor (210).
2. The biosignal measurement device of claim 1, wherein the signal processor (213) is further configured:
    - to maintain a signal processing frequency band of a filter when the power supplier (212) is disconnected from the electrode unit (220); and
    - to change the signal processing frequency band of the filter when the power supplier (212) is connected to the electrode unit (220).
  3. The biosignal measurement device of claim 1, wherein the signal processor (213) is further configured:
    - to operate in a first frequency band when the power is not supplied from the power supplier (212); and
    - to operate in a second frequency band when the power is supplied from the power supplier (212), wherein the first frequency band is wider than the second frequency band.
  4. The biosignal measurement device of claim 1, further comprising a fixing unit (630) configured to fix the biosignal measurement device (200) to at least one of a body or clothes.
  5. The biosignal measurement device of claim 1, further comprising a communicator (215) configured to transmit the processed biosignal to an external device.

6. A biosignal measurement device (300), comprising:
  - an electrode unit (320) configured to sense a biosignal; and
  - a biosignal processor (310) configured to process the biosignal, the biosignal processor (310) comprising:
    - a first signal connector (311) capable of removably attaching to the electrode unit (320), wherein the first signal connector (311) is configured to receive the biosignal from the electrode unit (320);
    - a first power connector (314) configured to receive power from the electrode unit (320) in response to the first power connector (314) being connected to a second power connector (323) of the electrode unit (320); and
    - a signal processor (313) configured to differently process the biosignal received by the first signal connector (311) based on whether power is supplied to the electrode unit (320);
- the electrode unit (320) comprising:
  - at least one active electrode (321) configured to connect with the biosignal processor (310), wherein the biosignal is sensed through at least one metal electrode being a direct contact type electrode, when no power is supplied through the second power connector (323) of the electrode unit (320) and the first power connector (314) of the biosignal processor (310), and wherein the biosignal is sensed through the at least one active electrode (321) being a capacitive coupling active electrode, when the second power connector (323) of the electrode unit (320) and the first power connector (314) of the biosignal processor (310) are connected such that power supplied from a power supplier (324) is received from the electrode unit (320);
  - a second signal connector (323) capable of removably attaching to the first signal connector (311), wherein the second signal connector (323) of the biosignal processor (310) is configured to transfer the biosignal to the biosignal processor (310); and
  - the power supplier (324) configured to supply power to the at least one capacitive coupling active electrode (321) and the second power connector (323)
7. The biosignal measurement device of claim 6, wherein the signal processor (313) is further config-

ured:

to maintain a signal processing frequency band of a filter when the first power connector (314) is disconnected from the electrode unit (320), and  
to change the signal processing frequency band of the filter when the first power connector (314) is connected to the electrode unit (320).

8. The biosignal measurement device of claim 6, wherein the signal processor (313) is further configured

to operate in a first frequency band when the power is not supplied from the first power connector (314);  
to operate in a second frequency band when the power is received by the first power connector (314);  
wherein the second frequency band is a frequency band for operating a capacitive coupling active electrode.

9. The biosignal measurement device of claim 6, further comprising: a fixing unit (630) configured to fix the biosignal measurement device (300) to at least one of a body or clothes.

10. A method to measure a biosignal, the method comprising:

determining a connection between a second power connector (223) of an electrode unit (220) and a first power connector (214) of a biosignal processor (210);  
supplying power to the electrode unit (220) in response to the detected connection;  
sensing a biosignal at the electrode unit (220) including at least one active electrode (221); and  
processing the sensed biosignal at the biosignal processor (210) based on whether power is supplied to the electrode unit (220);

**the method characterized in**

sensing the biosignal at the electrode unit (220) through at least one metal electrode being a direct contact type electrode when no power is supplied through the first power connector (214) to the electrode unit (220); and  
sensing the biosignal at the electrode unit (220) through the at least one active electrode (221) being a capacitive coupling active electrode when the second power connector (223) and the first power connector (214) are connected such that power supplied from a power supplier (212) is provided to the at least one capacitive coupling electrode (221).

11. The method of claim 10, wherein the processing comprises: maintaining a signal processing frequency band of a filter in response to the power not being supplied to the electrode unit (220); and changing the signal processing frequency band of the filter in response to the power being supplied to the electrode unit (220), or  
processing the biosignal in a first frequency band in response to the connection not being detected; and  
processing the biosignal in a second frequency band in response to the connection being detected.

12. The method of claim 10, wherein the processing comprises operating a filter in a frequency band for the capacitive coupling active electrode (221) in response to the connection being detected, or  
wherein the processing comprises processing the biosignal in a frequency band between 0.1 Hz to 150 Hz in response to the connection not being detected; and  
processing the biosignal in the frequency band between 5 Hz to 35 Hz in response to the connection being detected.

13. The method of claim 10, wherein the sensing of the biosignal comprises sensing the biosignal through the at least one direct contact type electrode; and  
the processing comprises processing the biosignal in a first frequency band in response to the connection not being detected, or  
wherein the supplying power comprises supplying power to the at least one capacitive coupling active electrode (221);  
the sensing of the biosignal comprises sensing the biosignal through the capacitive coupling active electrode (221); and  
the processing comprises processing the biosignal in a second frequency band in response to the connection being detected.

**Patentansprüche**

1. Eine Vorrichtung zum Messen von Biosignalen (200), umfassend:

einen Biosignal-Prozessor (210), gestaltet, um ein Biosignal zu verarbeiten; und  
eine Elektroden-Einheit (220), gestaltet, um das Biosignal wahrzunehmen,  
der Biosignal-Prozessor (210) umfassend:

einen ersten Signalanschluss (211), geeignet, um mit der Elektroden-Einheit (220) wieder trennbar verbunden zu werden, wobei der erste Signalanschluss (211) gestaltet ist, um das Biosignal von der Elektroden-Einheit (220) zu empfangen;  
einen Stromversorger (212), gestaltet, um Strom an die Elektroden-Einheit (220) über

einen ersten Stromanschluss (214) zu liefern, als Reaktion auf die Verbindung vom Stromanschluss (212) mit der Elektroden-Einheit (220);  
 ein Signalprozessor (213), gestaltet, um das durch den ersten Signalanschluss (211) erhaltene Biosignal anders zu verarbeiten, darauf basierend, ob Strom zur Elektroden-Einheit (220) geliefert wird; und

die Elektroden-Einheit (220) umfassend: mindestens eine Aktivelektrode (221) gestaltet, um

mit dem Biosignal-Prozessor (210) verbunden zu werden,  
 wobei das Biosignal durch mindestens eine Metallelektrode wahrgenommen wird, die eine Art Direktkontakt-Elektrode ist, sofern der Biosignal-Prozessor (210) und die Elektroden-Einheit (220) nicht miteinander verbunden sind, so dass kein Strom durch den ersten Stromanschluss (214) zur Elektroden-Einheit (220) fließt, und  
 wobei das Biosignal durch die mindestens eine Aktivelektrode (221) wahrgenommen wird, die eine Art kapazitive Kopplungs-Aktivelektrode ist, sofern der Biosignal-Prozessor (210) und die Elektroden-Einheit (220) miteinander durch den ersten Stromanschluss (214) und einen entsprechenden zweiten Stromanschluss (223) der Elektroden-Einheit (220) verbunden sind, so dass Strom vom Stromversorger (212) zu der mindestens einen, kapazitiven Kopplungselektrode (221) zugeführt wird; und  
 einen zweiten Signalanschluss (222) geeignet, um mit dem ersten Signalanschluss (211) des Biosignal-Prozessors (210) wieder trennbar verbunden zu werden, wobei der zweite Signalanschluss (222) gestaltet ist, um das Biosignal dem Biosignal-Prozessor (210) zu übertragen.

2. Die Biosignalmessvorrichtung nach Anspruch 1, wobei der Signalprozessor (213) ferner gestaltet ist, um:

ein Frequenzband eines Filters zur Signalverarbeitung aufrecht zu erhalten, sofern der Stromversorger (212) nicht mit der Elektroden-Einheit (220) verbunden ist; und  
 das Frequenzband des Filters zur Signalverarbeitung zu wechseln, sofern der Stromversorger (212) mit der Elektroden-Einheit (220) verbunden ist.

3. Die Biosignalmessvorrichtung nach Anspruch 1, wo-

bei der Signalprozessor (213) ferner gestaltet ist, um:

in einem ersten Frequenzband zu arbeiten, sofern kein Strom vom Stromversorger (212) fließt; und  
 in einem zweiten Frequenzband zu arbeiten, sofern Strom vom Stromversorger (212) fließt, wobei das erste Frequenzband breiter als das zweite Frequenzband ist.

4. Die Biosignalmessvorrichtung nach Anspruch 1, ferner eine Befestigungseinheit (630) umfassend, gestaltet, um die Biosignalmessvorrichtung (200) an mindestens einem Körper oder an Kleidungsstücken zu befestigen.

5. Die Biosignalmessvorrichtung nach Anspruch 1, ferner einen Kommunikator (215) umfassend, gestaltet, um das verarbeitete Biosignal an eine externe Vorrichtung zu senden.

6. Eine Vorrichtung zum Messen von Biosignalen (300), umfassend:

eine Elektroden-Einheit (320), gestaltet, um ein Biosignal wahrzunehmen; und  
 einen Biosignal-Prozessor (310), gestaltet, um das Biosignal zu verarbeiten, der Biosignal-Prozessor (310) umfassend:

einen ersten Signalanschluss (311), geeignet, um mit der Elektroden-Einheit (320) wieder trennbar verbunden zu werden, wobei der erste Signalanschluss (311) gestaltet ist, um das Biosignal von der Elektroden-Einheit (320) zu empfangen;  
 einen ersten Stromanschluss (314), gestaltet, um Strom von der Elektroden-Einheit (320) zu empfangen, als Reaktion auf die Verbindung vom ersten Stromanschluss (314) mit einem zweiten Stromanschluss (323) der Elektroden-Einheit (320);  
 ein Signalprozessor (313), gestaltet, um das durch den ersten Signalanschluss (311) erhaltene Biosignal anders zu verarbeiten, darauf basierend, ob Strom zur Elektroden-Einheit (320) geliefert wird; und

die Elektroden-Einheit (320) umfassend: mindestens eine Aktivelektrode (321) gestaltet, um

mit dem Biosignal-Prozessor (310) verbunden zu werden,  
 wobei das Biosignal durch mindestens eine Metallelektrode wahrgenommen wird, die eine Art Direktkontakt-Elektrode ist, sofern

- kein Strom durch den zweiten Stromanschluss (323) der Elektroden-Einheit (320) und dem ersten Stromanschluss (314) des Biosignal-Prozessors (310) fließt, und  
wobei das Biosignal durch die mindestens eine Aktivelektrode (321) wahrgenommen wird, die eine Art kapazitive Kopplungs-Aktivelektrode ist, sofern der zweite Stromanschluss (323) der Elektroden-Einheit (320) und der erste Stromanschluss (314) des Biosignal-Prozessors (310) miteinander verbunden sind, so dass Strom, von einem Stromversorger (324) übertragen, von der Elektroden-Einheit (320) empfangen wird;  
einen zweiten Signalanschluss (323) geeignet, um mit dem ersten Signalanschluss (311) wieder trennbar verbunden zu werden, wobei der zweite Signalanschluss (323) des Biosignal-Prozessors (310) gestaltet ist, um das Biosignal dem Biosignal-Prozessor (310) zu übertragen; und  
der Stromversorger (324), gestaltet, um mindestens die kapazitiven Kopplungs-Aktivelektrode (321) und den zweiten Stromanschluss (323) mit Strom zu versorgen.
7. Die Biosignalmessvorrichtung nach Anspruch 6, wobei der Signalprozessor (313) ferner gestaltet ist, um:
- ein Frequenzband eines Filters zur Signalverarbeitung aufrecht zu erhalten, sofern der erste Stromanschluss (314) nicht mit der Elektroden-Einheit (320) verbunden ist; und  
das Frequenzband des Filters zur Signalverarbeitung zu wechseln, sofern der erste Stromanschluss (314) mit der Elektroden-Einheit (320) verbunden ist.
8. Die Biosignalmessvorrichtung nach Anspruch 6, wobei der Signalprozessor (313) ferner gestaltet ist, um:
- in einem ersten Frequenzband zu arbeiten, sofern kein Strom vom ersten Stromanschluss (314) fließt;  
in einem zweiten Frequenzband zu arbeiten, sofern Strom durch den ersten Stromanschluss (314) empfangen wird,  
wobei das zweite Frequenzband ein Frequenzband zum Betreiben einer kapazitiven Kopplungs-Aktivelektrode ist.
9. Die Biosignalmessvorrichtung nach Anspruch 6, ferner eine Befestigungseinheit (630) umfassend, gestaltet, um die Biosignalmessvorrichtung (300) an
- mindestens einem Körper oder an Kleidungsstücken zu befestigen.
10. Ein Verfahren zum Messen eines Biosignals, das Verfahren umfassend:
- Bestimmen einer Verbindung zwischen einem zweiten Stromanschluss (223) einer Elektroden-Einheit (220) und einem ersten Stromanschluss (214) eines Biosignal-Prozessors (210);  
Versorgen der Elektroden-Einheit (220) mit Strom, als Reaktion auf die bestimmte Verbindung;  
Wahrnehmen eines Biosignals an der Elektroden-Einheit (220) mindestens eine Aktivelektrode (221) einschließend; und  
Verarbeiten des wahrgenommenen Biosignals im Biosignal-Prozessor (210) darauf basierend, ob Strom zur Elektroden-Einheit (220) übertragen wird;  
**das Verfahren gekennzeichnet durch**  
Wahrnehmen des Biosignals an der Elektroden-Einheit (220) durch mindestens eine Metallelektrode, die eine Art Direktkontakt-Elektrode ist, sofern kein Strom durch den ersten Stromanschluss (214) zur Elektroden-Einheit (220) übertragen wird; und  
Wahrnehmen des Biosignals an der Elektroden-Einheit (220) durch die mindestens eine Aktivelektrode (221), die eine kapazitive Kopplungs-Aktivelektrode ist, sofern der zweite Stromanschluss (223) und der erste Stromanschluss (214) miteinander verbunden sind, so dass Strom von einem Stromversorger (212) an die mindestens eine kapazitive Kopplungs-Aktivelektrode (221) geliefert wird.
11. Das Verfahren nach Anspruch 10, wobei die Verarbeitung umfasst:
- Aufrechterhalten eines Frequenzbandes eines Filters zur Signalverarbeitung, als Reaktion auf die Nichtversorgung der Elektroden-Einheit (220) mit Strom; und Ändern des Frequenzbandes des Filters zur Signalverarbeitung, als Reaktion auf die Versorgung der Elektroden-Einheit (220) mit Strom, oder  
Verarbeiten des Biosignals in einem ersten Frequenzband, als Reaktion auf die nicht erkannte Verbindung; und  
Verarbeiten des Biosignals in einem zweiten Frequenzband, als Reaktion auf die erkannte Verbindung.
12. Das Verfahren nach Anspruch 10, wobei die Verarbeitung das Betreiben eines Filters in einem Frequenzband für kapazitive Kopplungs-Aktivelektro-

den (221) umfasst, als Reaktion auf die erkannte Verbindung, oder  
wobei das Verarbeiten umfasst, das Biosignal in einem Frequenzband zwischen 0.1 Hz bis 150 Hz zu verarbeiten, als Reaktion auf die nicht erkannte Verbindung; und das Biosignal in einem Frequenzband zwischen 5 Hz bis 35 Hz zu verarbeiten, als Reaktion auf die erkannte Verbindung.

13. Das Verfahren nach Anspruch 10, wobei das Wahrnehmen des Biosignals umfasst, das Biosignal durch mindestens eine Art Direktkontakt-Elektrode wahrzunehmen; und das Verarbeiten umfasst, das Biosignal in einem ersten Frequenzband zu verarbeiten, als Reaktion auf die nicht erkannte Verbindung, oder  
wobei die Stromversorgung umfasst, Strom zu mindestens einer kapazitiven Kopplungs-Aktivelektrode (221) zu übertragen; das Wahrnehmen des Biosignals umfasst, das Biosignal über die kapazitive Kopplungs-Aktivelektrode (221) wahrzunehmen; und das Verarbeiten umfasst, das Biosignal in einem zweiten Frequenzband zu verarbeiten, als Reaktion auf die erkannte Verbindung.

## Revendications

1. Dispositif de mesure de signal biologique (200), comprenant :

un dispositif de traitement de signal biologique (210) configuré pour traiter un signal biologique ; et  
une unité électrode (220) configurée pour capter le signal biologique,  
le dispositif de traitement de signal biologique (210) comprenant :

un premier connecteur de signal (211) capable de fixation de manière amovible à l'unité électrode (220), le premier connecteur de signal (211) étant configuré pour recevoir le signal biologique de l'unité électrode (220) ;

un dispositif d'alimentation d'énergie (212) configuré pour alimenter de l'énergie à l'unité électrode (220) à travers un premier connecteur d'énergie (214) en réponse au dispositif d'alimentation d'énergie (212) relié à l'unité électrode (220) ;

un dispositif de traitement de signal (213) configuré pour traiter différemment le signal biologique reçu par le premier connecteur de signal (211) sur la base du fait que l'énergie est alimentée à l'unité électrode (220) ; et

l'unité électrode (220) comprenant :

au moins une électrode active (221) configurée pour se connecter au dispositif de traitement de signal biologique (210), le signal biologique étant capté à travers au moins une électrode métallique étant une électrode type à contact direct, lorsque le dispositif de traitement de signal biologique (210) et l'unité électrode (220) ne sont pas connectés de sorte qu'aucune alimentation en énergie n'est alimentée travers le premier connecteur d'énergie (214) à l'unité électrode (220), et

le signal biologique étant capté à travers ladite électrode active (221) qui est une électrode active à couplage capacitif, lorsque le dispositif de traitement de signal biologique (210) et l'unité électrode (220) sont connectés par le premier connecteur d'énergie (214) et un second connecteur d'énergie respectif (223) de l'unité électrode (220) de sorte que l'énergie alimentée depuis le dispositif d'alimentation d'énergie (212) est fournie à ladite électrode à couplage capacitif (221) ; et

un second connecteur de signal (222) capable de fixation de manière amovible au premier connecteur de signal (211) du dispositif de traitement de signal biologique (210), le second connecteur de signal (222) étant configuré pour transférer le signal biologique au dispositif de traitement de signal biologique (210).

2. Dispositif de mesure de signal biologique selon la revendication 1, le dispositif de traitement de signal (213) étant en outre configuré :

pour maintenir une bande de fréquence de traitement de signal d'un filtre lorsque le dispositif d'alimentation d'énergie (212) est déconnecté de l'unité électrode (220) ; et  
pour changer la bande de fréquence de traitement de signal du filtre lorsque le dispositif d'alimentation d'énergie (212) est connecté à l'unité électrode (220).

3. Dispositif de mesure de signal biologique selon la revendication 1, le dispositif de traitement de signal (213) étant en outre configuré :

pour fonctionner dans une première bande de fréquence lorsque l'énergie n'est pas alimentée au dispositif d'alimentation d'énergie (212) ; et  
pour fonctionner dans une seconde bande de fréquence lorsque l'énergie est alimentée depuis le dispositif d'alimentation d'énergie (212),

la première bande de fréquence étant plus large que la seconde bande de fréquence.

4. Dispositif de mesure de signal biologique selon la revendication 1, comprenant en outre une unité de fixation (630) configurée pour fixer le dispositif de mesure de signal biologique (200) à au moins l'un d'un corps ou de vêtements. 5
5. Dispositif de mesure de signal biologique selon la revendication 1, comprenant en outre un dispositif de communication (215) configuré pour transmettre le signal biologique traité à un dispositif externe. 10
6. Dispositif de mesure de signal biologique (300), comprenant : 15
- une unité électrode (320) configurée pour détecter un signal biologique ; et
- un dispositif de traitement de signal biologique (310) configuré pour traiter le signal biologique, le dispositif de traitement de signal biologique (310) comprenant : 20
- un premier connecteur de signal (311) capable de fixation de manière amovible à l'unité électrode (320), le premier connecteur de signal (311) étant configuré pour recevoir le signal biologique de l'unité électrode (320) ; 25
- un premier connecteur d'énergie (314) configuré pour recevoir l'énergie depuis l'unité électrode (320) en réponse au premier connecteur d'énergie (314) qui est connecté à un second connecteur d'énergie (323) de l'unité électrode (320) ; et 30
- un dispositif de traitement de signal (313) configuré pour traiter différemment le signal biologique reçu par le premier connecteur de signal (311) sur la base du fait que l'énergie est alimentée à l'unité électrode (320) ; 35
- l'unité électrode (320) comprenant :
- au moins une électrode active (321) configurée pour se connecter au dispositif de traitement de signal biologique (310), le signal biologique étant capté à travers au moins une électrode métallique étant une électrode type à contact direct, lorsqu'aucune énergie n'est alimentée à travers le second connecteur d'énergie (323) de l'unité électrode (320) et le premier connecteur d'énergie (314) du dispositif de traitement de signal biologique (310), et 40
- le signal biologique étant détecté à travers ladite électrode active (321) qui est une 45
- 50
- 55

électrode active à couplage capacitif, lorsque le second connecteur d'énergie (323) de l'unité électrode (320) et le premier connecteur d'énergie (314) du dispositif de traitement de signal biologique (310) sont connectés de sorte que l'énergie alimentée depuis un dispositif d'alimentation d'énergie (324) est reçue de l'unité électrode (320) ; un second connecteur de signal (323) capable de fixation de manière amovible au premier connecteur de signal (311), le second connecteur de signal (323) du dispositif de traitement de signal biologique (310) étant configuré pour transférer le signal biologique au dispositif de traitement de signal biologique (310) ; et le dispositif d'alimentation d'énergie (324) étant configuré pour alimenter de l'énergie à ladite électrode active à couplage capacitif (321) et au second connecteur d'énergie (323)

7. Dispositif de mesure de signal biologique selon la revendication 6, le dispositif de traitement de signal (313) étant en outre configuré : 25
- pour maintenir une bande de fréquence de traitement de signal d'un filtre lorsque le premier connecteur d'énergie (314) est déconnecté de l'unité électrode (320), et 30
- pour changer la bande de fréquence de traitement de signal du filtre lorsque le premier connecteur d'énergie (314) est connecté à l'unité électrode (320). 35
8. Dispositif de mesure de signal biologique selon la revendication 6, le dispositif de traitement de signal (313) étant en outre configuré 40
- pour fonctionner dans une première bande de fréquence lorsque l'énergie n'est pas alimentée depuis le premier connecteur d'énergie (314) ;
- pour fonctionner dans une seconde bande de fréquence lorsque l'énergie est reçue par le premier connecteur d'énergie (314) ;
- la seconde bande de fréquence étant une bande de fréquence pour faire fonctionner une électrode active à couplage capacitif. 45
9. Dispositif de mesure de signal biologique selon la revendication 6, comprenant en outre : une unité de fixation (630) configurée pour fixer le dispositif de mesure de signal biologique (300) à au moins l'un d'un corps ou de vêtements. 50
10. Procédé de mesure d'un signal biologique, le procédé comprenant : 55

la détermination d'une connexion entre un se-

cond connecteur d'énergie (223) d'une unité électrode (220) et un premier connecteur d'énergie (214) d'un dispositif de traitement de signal biologique (210) ;

l'alimentation d'énergie à l'unité électrode (220) en réponse à la connexion détectée ;

la détection d'un signal biologique au niveau de l'unité électrode (220) comprenant au moins une électrode active (221) ; et

le traitement du signal biologique détecté au niveau du dispositif de traitement de signal biologique (210) sur la base du fait que l'énergie est alimentée à l'unité électrode (220) ;

**procédé caractérisé en ce que**

la détection du signal biologique au niveau de l'unité électrode (220) à travers au moins une électrode métallique qui est une électrode type à contact direct lorsqu'aucune énergie n'est alimentée à travers le premier connecteur d'énergie (214) à l'unité électrode (220) ; et

la détection du signal biologique au niveau de l'unité électrode (220) à travers ladite électrode active (221) qui est une électrode active à couplage capacitif lorsque le second connecteur d'énergie (223) et le premier connecteur d'énergie (214) sont connectés de sorte que l'énergie alimentée depuis un dispositif d'alimentation d'énergie (212) est fournie à ladite électrode à couplage capacitif (221).

tact direct ; et le traitement comprenant le traitement du signal biologique dans une première bande de fréquence en réponse à la connexion qui n'est pas détectée, ou

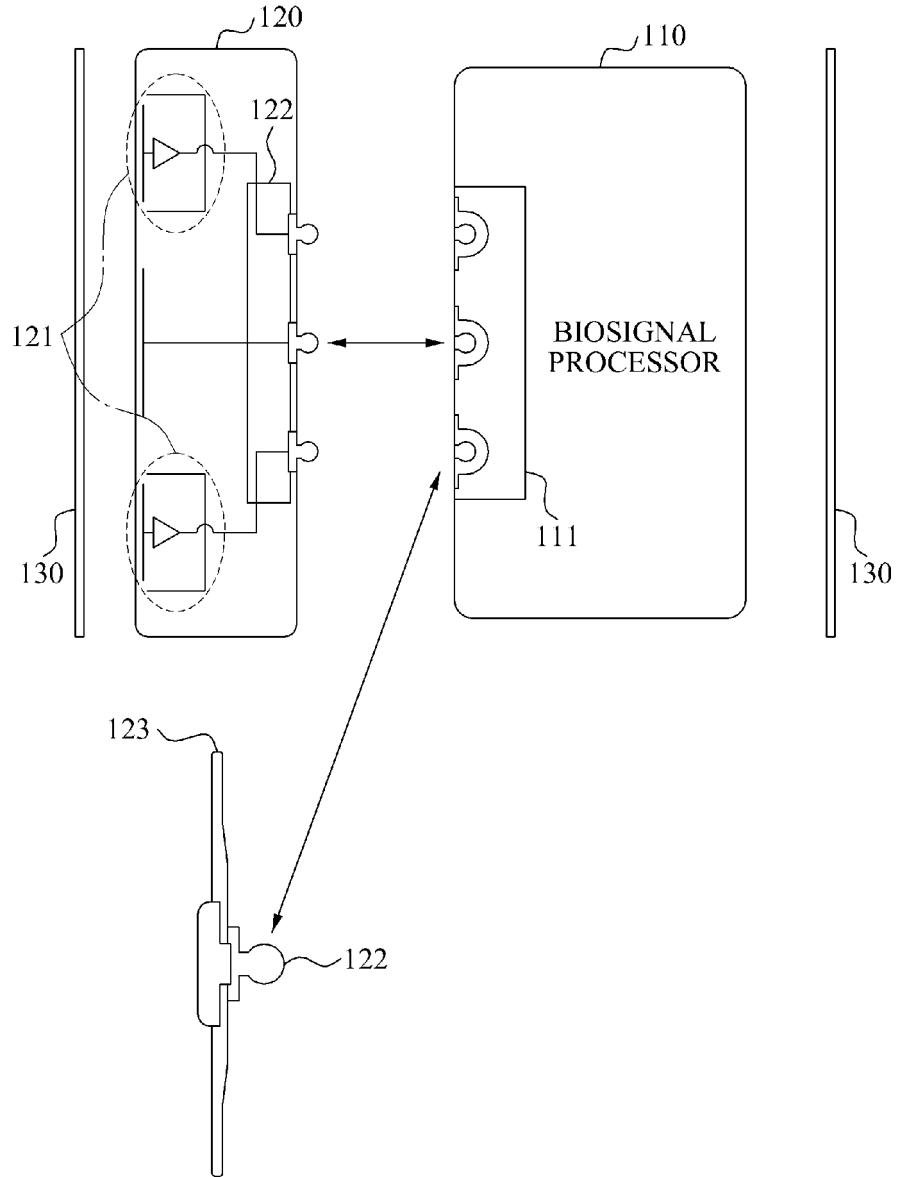
l'énergie d'alimentation comprenant l'alimentation d'énergie à ladite électrode active à couplage capacitif (221) ; la détection du signal biologique comprenant la détection du signal biologique à travers l'électrode active à couplage capacitif (221) ; et le traitement comprenant le traitement du signal biologique dans une seconde bande de fréquence en réponse à la connexion qui est détectée.

11. Procédé selon la revendication 10, le traitement comprenant : le maintien d'une bande de fréquence de traitement de signal d'un filtre en réponse à l'énergie qui n'est pas alimentée à l'unité électrode (220) ; et le changement de la bande de fréquence de traitement de signal du filtre en réponse à l'énergie qui est alimentée à l'unité électrode (220), ou le traitement du signal biologique dans une première bande de fréquence en réponse à la connexion qui n'est pas détectée ; et le traitement du signal biologique dans une seconde bande de fréquence en réponse à la connexion qui est détectée.

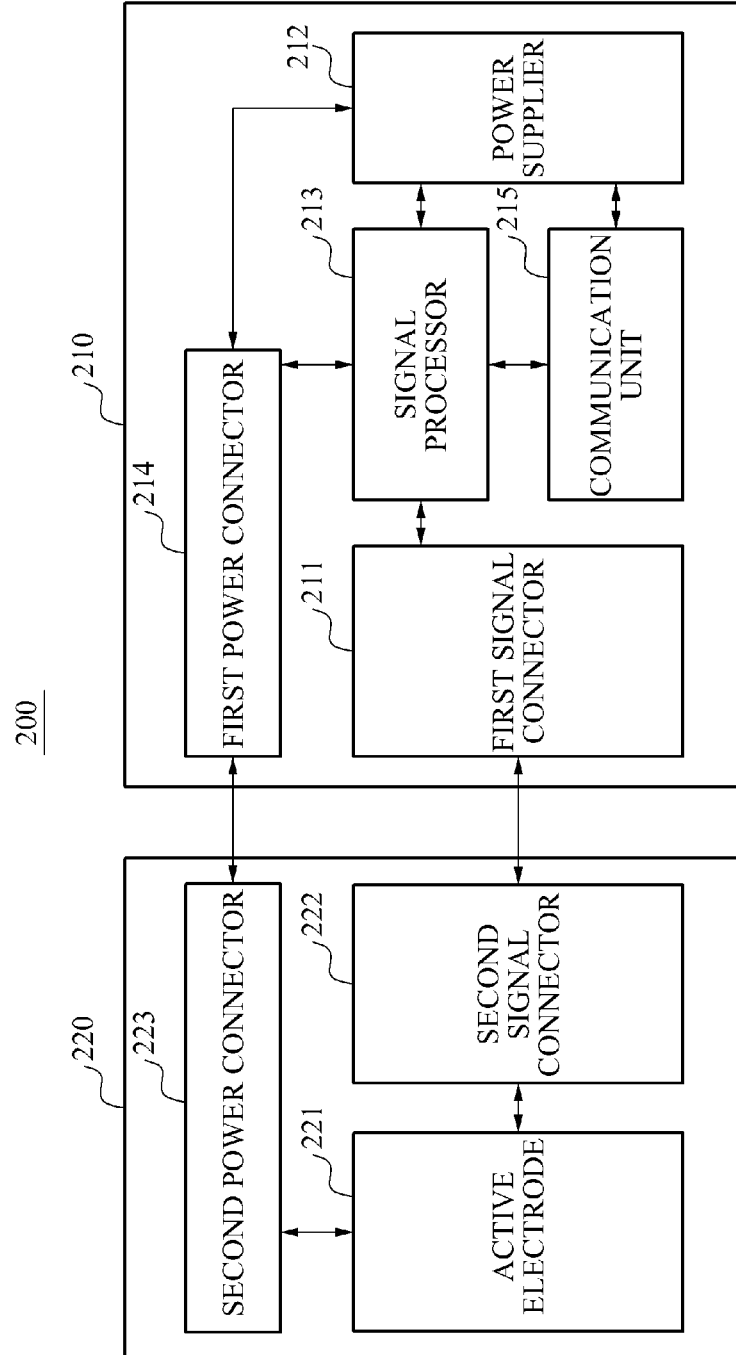
12. Procédé selon la revendication 10, le traitement comprenant le fonctionnement d'un filtre dans une bande de fréquence pour l'électrode active à couplage capacitif (221) en réponse à la connexion qui est détectée, ou le traitement comprenant le traitement du signal biologique dans une bande de fréquence entre 0,1 Hz à 150 Hz en réponse à la connexion qui n'est pas détectée ; et le traitement du signal biologique dans la bande de fréquence entre 5 Hz à 35 Hz en réponse à la connexion qui est détectée.

13. Procédé selon la revendication 10, la détection du signal biologique comprenant la détection du signal biologique à travers ladite électrode de type à con-

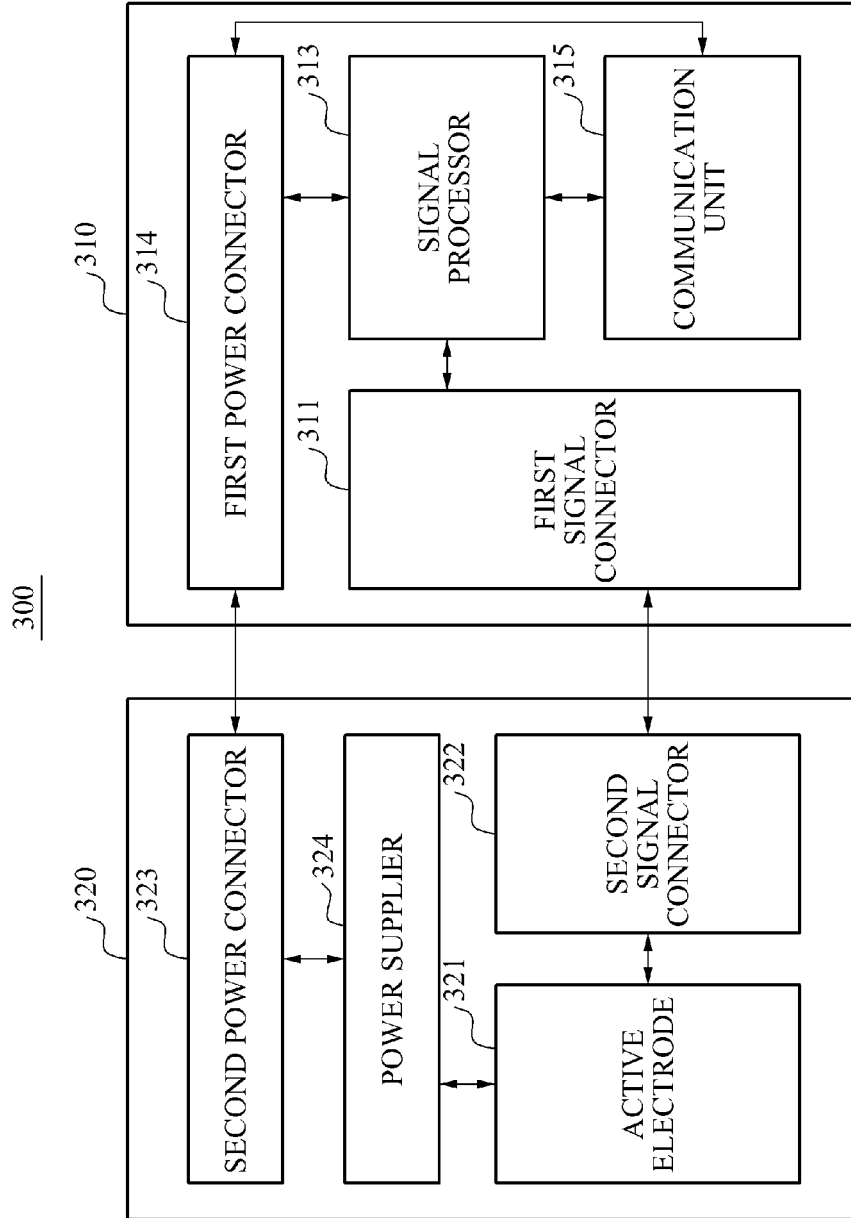
[Fig. 1]



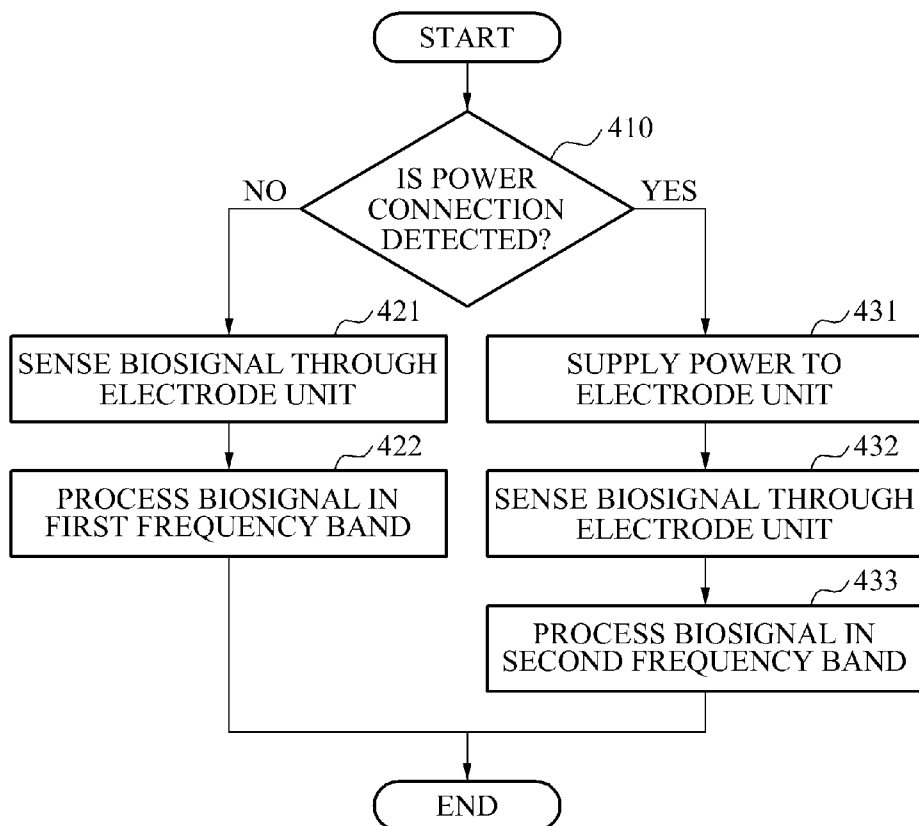
[Fig. 2]



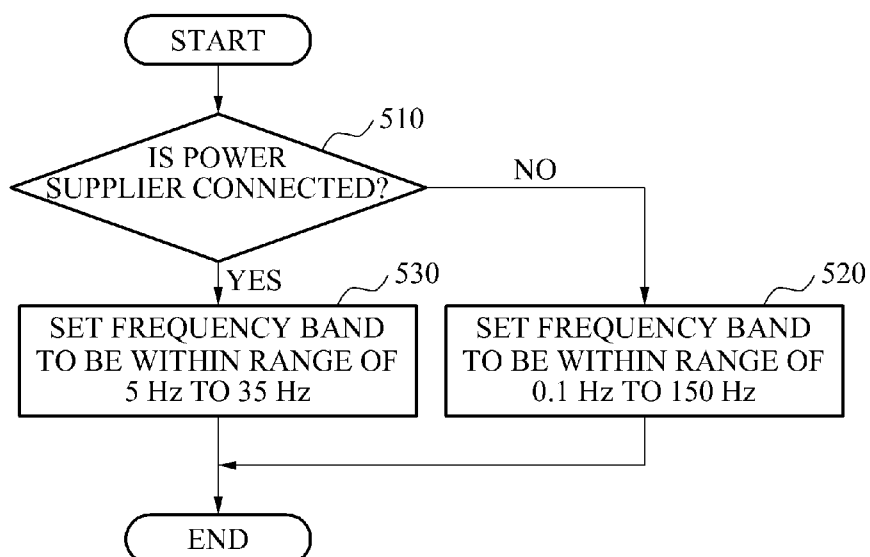
[Fig. 3]



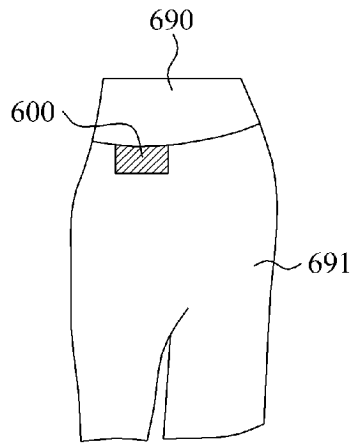
[Fig. 4]



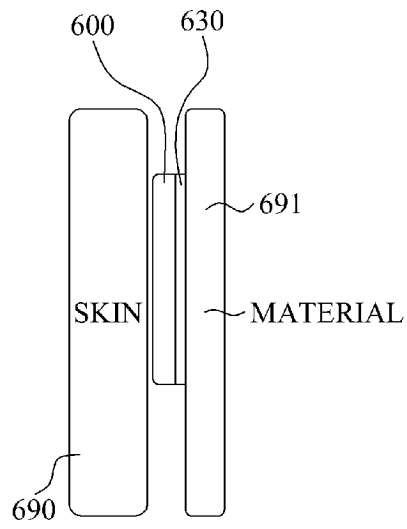
[Fig. 5]



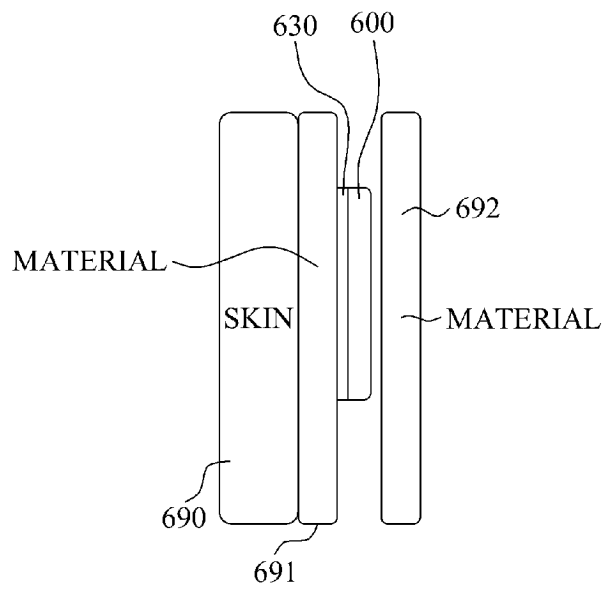
[Fig. 6a]



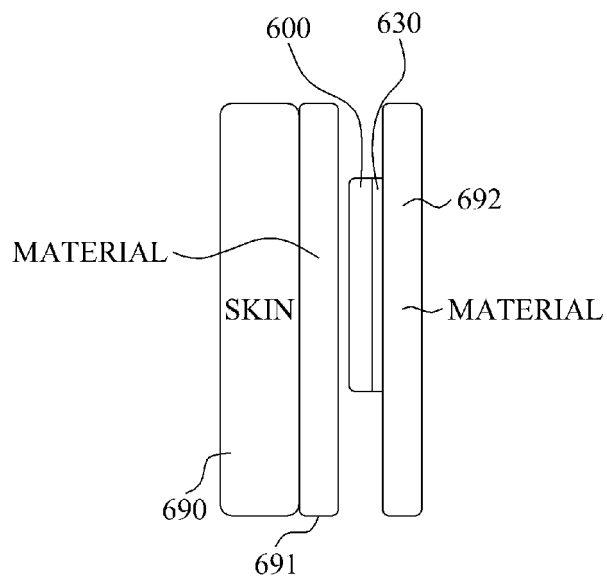
[Fig. 6b]



[Fig. 6c]



[Fig. 6d]



**REFERENCES CITED IN THE DESCRIPTION**

*This list of references cited by the applicant is for the reader's convenience only. It does not form part of the European patent document. Even though great care has been taken in compiling the references, errors or omissions cannot be excluded and the EPO disclaims all liability in this regard.*

**Patent documents cited in the description**

- US 2012238890 A [0002]
- US 2010042012 A [0002]

专利名称(译)	测量生物信号的方法和装置		
公开(公告)号	<a href="#">EP3010405B1</a>	公开(公告)日	2019-04-24
申请号	EP2014813529	申请日	2014-01-16
[标]申请(专利权)人(译)	三星电子株式会社		
申请(专利权)人(译)	SAMSUNG ELECTRONICS CO., LTD.		
当前申请(专利权)人(译)	SAMSUNG ELECTRONICS CO., LTD.		
[标]发明人	KIM YOUN HO		
发明人	KIM, YOUN HO		
IPC分类号	A61B5/0408 A61B5/0492 A61B5/0478 A61B5/0428 A61B5/00 A61B5/0416 A61B5/0424		
CPC分类号	A61B5/0424 A61B5/0006 A61B5/04085 A61B5/0416 A61B5/0428 A61B5/04284 A61B5/6804 A61B5/6833 A61B2560/0209 A61B2560/0412 A61B2560/045 A61B2562/0214 A61B2562/226 A61B2562/227		
优先权	1020130068864 2013-06-17 KR		
其他公开文献	EP3010405A4 EP3010405A1		
外部链接	<a href="#">Espacenet</a>		

摘要(译)

提供了一种生物信号测量方法和装置，其可以通过将简单电极或电容耦合有源电极连接到生物信号处理器来分析生物信号来测量生物信号。生物信号处理器可以基于连接电极的类型改变要过滤生物信号的频带。该生物信号测量装置包括第一信号连接器，该第一信号连接器能够可拆卸地连接到被配置为感测生物信号的电极单元，其中第一信号连接器被配置为从电极单元接收生物信号；电源，其被配置为响应于电源连接到电极单元而向电极单元供电；信号处理器，用于处理第一信号连接器接收的生物信号。

