

(19)



(11)

EP 1 880 665 B1

(12)

EUROPEAN PATENT SPECIFICATION

(45) Date of publication and mention of the grant of the patent:
07.05.2014 Bulletin 2014/19

(51) Int Cl.:
A61B 5/00 (2006.01)

(21) Application number: **07112765.8**

(22) Date of filing: **19.07.2007**

(54) **An apparatus, method and optical sensor module using a tilter for body fat measurement**

Vorrichtung, Verfahren und optisches Sensormodul mit Kippvorrichtung zur Körperfettmessung

Appareil, procédé et module de capteur optique utilisant un basculeur pour la mesure de gras d'un corps

(84) Designated Contracting States:
DE FR GB

(30) Priority: **21.07.2006 KR 20060068482**

(43) Date of publication of application:
23.01.2008 Bulletin 2008/04

(73) Proprietor: **Samsung Electronics Co., Ltd.**
Suwon-si, Gyeonggi-do, 443-742 (KR)

(72) Inventors:
• **Hwang, In Duk**
440-705, Gyeonggi-do (KR)

• **Kim, Sang Ryong**
448-749, Gyeonggi-do (KR)
• **Shin, Kun Soo**
463-748, Gyeonggi-do (KR)

(74) Representative: **Grootscholten, Johannes A.M.**
Arnold & Siedsma
Sweelinckplein 1
2517 GK Den Haag (NL)

(56) References cited:
EP-A- 1 520 514 EP-A1- 1 366 707
WO-A-00/33730 US-A1- 2003 220 549

EP 1 880 665 B1

Note: Within nine months of the publication of the mention of the grant of the European patent in the European Patent Bulletin, any person may give notice to the European Patent Office of opposition to that patent, in accordance with the Implementing Regulations. Notice of opposition shall not be deemed to have been filed until the opposition fee has been paid. (Art. 99(1) European Patent Convention).

Description

BACKGROUND

1. Field

[0001] An embodiment of the present invention relates to an apparatus, method and optical sensor module for body fat measurement. More particularly, an embodiment of the present invention relates to an apparatus and an optical sensor module having a tilter, and a method for using the apparatus and/or sensor for body fat measurement. The tilter may be made of a material having a similar refraction index to a biological tissue of a body fat measurement object, and enables light radiated from a light source to irradiate the biological tissue at a predetermined incident angle, allowing deeper penetration of the light into the tissue.

2. Description of the Related Art

[0002] Maintaining health and achieving beauty is a priority for many consumers. Accordingly, there is currently a trend to seek a healthy lifestyle. The amount of body fat is one criteria used to estimate an individual's health. With this in mind, there are various methods of measuring the amount of body fat, with the body fat ratio being a common criteria used to measure the amount of body fat and to estimate an individual's health or as a measure of beauty such as with dieting.

[0003] Methods for measuring body fat ratio include a body average density measurement employing underwater weighing, a skinfold test measuring the thickness of fat at a specific point of the body, applying a weak electrical current to the body and measuring the body's impedance, and using a table of values to measure the body fat ratio based on waist size, height, body type, etc. Problems associated with these methods include inaccuracy and the need for complicated equipment.

[0004] Recently, certain body fat measurement methods have used a light capable of readily and accurately measuring body fat. A body fat measurement device using light is based on a theory that when light is emitted from a light source to irradiate a measurement point of a body, backward scattering occurs in the body, and subsequently body fat is measured by measuring a scattered optical signal using an optical detector.

[0005] An important consideration is whether the optical signal penetrates and scatters deep within the biological tissue, i.e. up to a muscle layer at the measurement point. Generally, when the depth of the incident light increases, the distance between the light source and the optical detector also increases making it difficult to employ a portable body fat measurement apparatus. Thus, it is difficult to accurately measure body fat using such conventional portable body fat measurement apparatuses.

[0006] An optical sensor module according to the pre-

amble of claim 1 is known from EP 1 520 514 A1.

[0007] The inventors have found a need for a portable body fat measurement apparatus that can readily and accurately measure the body fat of a body.

5 **[0008]** According to a first aspect, the present invention provides an optical sensor module as defined in claim 1.

[0009] According to a second aspect, the present invention provides a body fat measurement apparatus as defined in claim 8.

10 **[0010]** According to a third aspect, the present invention provides a method for measuring a thickness of a subcutaneous fat layer as defined in claim 12.

[0011] Additional and/or other aspects and advantages of the present invention will be set forth in part in the description which follows and, in part, will be obvious from the description, or may be learned by practice of the invention.

BRIEF DESCRIPTION OF THE DRAWINGS

20

[0012] The above and/or other aspects and advantages of the present invention will become apparent and more readily appreciated from the following detailed description, taken in conjunction with the accompanying drawings of which:

25

FIG. 1 illustrates a body fat measurement apparatus having an optical sensor module, according to one or more embodiments of the present invention;

30

FIG. 2A illustrates an optical sensor module, such as that of FIG. 1, having a light source unit with a tilter, according to one or more embodiments of the present invention;

35

FIG. 2B illustrates a light sensor module having a light source unit without a tilter, according to one or more embodiments of the present invention;

40

FIG. 3 illustrates simulation results of a body fat information measurement when a tilter is used with the light source unit, according to one or more embodiments of the present invention, in contrast with results when the tilter is not used with the light source unit; and

45

FIG. 4 illustrates an optical sensor module, according to one or more other embodiments of the present invention.

DETAILED DESCRIPTION OF EMBODIMENTS

[0013] Reference will now be made in detail to embodiments of the present invention, examples of which are illustrated in the accompanying drawings, wherein like reference numerals refer to like elements throughout. Embodiments are described below in order to explain the present invention by referring to the figures.

55

[0014] An apparatus, method and optical sensor module of a body fat measurement apparatus in accordance with one or more embodiments of the present invention is illustrated in FIGS. 1-4. The apparatus may include an

optical sensor module 110, a signal processing unit 120, and an output unit 130, for example. The optical sensor module 110 may further include an optical power control unit 111, at least one light source unit 112, a tilter 211, and an optical detector 113, for example, noting that such modules may equally include differing numbers and types of components in other configurations. According to an embodiment, the corresponding method measures body fat using at least one light source and a tilter to control an irradiation angle of the at least one light source so that light is radiated into a biological tissue at a predetermined angle. The one or more embodiments of the present invention described herein provide a number of advantages including enhanced accuracy and the ability to acquire body fat information about a deep body fat layer.

[0015] In an embodiment, a portable body fat measurement device may be embodied within, or as any one of, a mobile terminal, a personal digital Assistant (PDA), a portable game device, an MP3 player, a personal multimedia player (PMP), a digital multimedia broadcasting terminal (DMB) terminal, a portable blood sugar measurement device or a grip power exercise device, for example. Conversely, the portable body fat measurement device/apparatus may not be installed in such devices, but may be designed in a stand-alone configuration, or implemented as a system.

[0016] Also, the biological tissue described herein is not be limited to a human body, i.e., the portable body fat measurement device, according to differing embodiments, may be used for all organisms having a subcutaneous fat layer between skin and muscle.

[0017] Referring to FIG. 1 again, the electrical signal process unit 120 may include a signal amplification unit 121, a body fat information calculation unit 122 and an output control unit 123, for example. Additionally, the output unit 130 may include a display unit 131 and a sound output unit 132.

[0018] Again, the light source unit 112 of the optical sensor module 110 may include at least one light source and a tilter, which may be provided together with the light source. The light source may be embodied as any one of a point light source, including a top view light emitting diode (LED) which has been popularly utilized, or a surface light source, for example. A configuration of the light source unit 112 will be described in greater detail by referring to FIG. 2.

[0019] FIG. 2A illustrates an optical sensor module, such as that of FIG. 1, having a light source unit with a tilter 211, and FIG. 2B illustrates an optical sensor module having a light source unit without such a tilter 211.

[0020] Referring to FIG. 2A, the tilter 211 may be combined with the light source 210 of the optical sensor module. Specifically, the tilter 211 is positioned at a surface where the light source 210 contacts a biological tissue. Thus, the tilter 211 is placed between the surface of the light source 210 and the biological tissue so that light incident upon the tissue from the light source falls at an

angle other than one perpendicular to the tissue.

[0021] As an example, as illustrated in FIG. 2A, when the light source 210 is a type of a pentahedron, the tilter 211 may be embodied as a type of a triangular prism. Also, when the tilter 211 is a triangular prism type, a bottom angle of the triangular prism may range from 2 degrees to 45 degrees, for example. In addition to the range of 2 degrees to 45 degrees, the bottom angle of the triangular prism may variously range depending on the differing embodiments in the art.

[0022] The tilter 211 may be made of a material having a similar or an identical refraction index to the biological tissue of the body fat measurement object. Specifically, the tilter 211 may be made of a water epoxy in a solid type or a polymer based compound, for example.

[0023] As described herein, the light which is radiated from the light source 210 and penetrates into the biological tissue using the tilter 211, may more deeply penetrate into the biological tissue compared with light radiated from an optical sensor module lacking a tilter, such as shown in FIG. 2B.

[0024] As described in FIG. 2B, when a tilter 211 is not combined with the light source unit 230 of the optical sensor module, the light source unit 230 radiates light perpendicularly into a biological tissue. As described above, when the tissue is perpendicularly irradiated by the light, an optical path 231, i.e. the light reflected, absorbed, and scattered within the biological tissue, has a measurement depth as illustrated in FIG. 2B. Here, the light source unit 230 is inadequate because the light it radiates does not penetrate deeply enough into the biological tissue to accurately measure the thickness of the body fat.

[0025] However, as illustrated in FIG. 2A, when the tilter 211 is combined with the light source 210, the light may more deeply penetrate into the biological tissue. Specifically, as illustrated in FIG. 2A, the light radiated from the light source 210 may penetrate into the biological tissue, and may have a predetermined incidence angle upon the tissue, due to the tilter 211. In this instance, as illustrated in FIG. 2A, the optical path 212 penetrates deeper into the biological tissue, allowing measurement of the body fat thickness down to a muscle of the biological tissue.

[0026] Namely, when the light radiated from the light source 210 is irradiated into the biological tissue while having a predetermined tilt of the light using the tilter 211, the light may penetrate comparatively deeper into the biological tissue than when the biological tissue is perpendicularly irradiated by the light.

[0027] In some instances, increasing the distance between the optical detectors 220 and 240, and their respective light source units 210 and 230 may also increase the measurement depth allowing for the measurement of thicker layers of body fat. In an embodiment, the distance between the optical detectors 220 and 240, and their respective light source units 210 and 230, as shown in FIGS. 2A and 2B, is identical. In a further embodiment,

regardless of whether the tilter 211 is provided as illustrated in FIG. 2 A , the distance between the light source units 210 and 230, and the optical detectors 220 and 240 may be 20 mm. According to one or more embodiments, the light may penetrate deeper into the biological tissue by providing the tilter 211 to the light source 210, without extending the distance between the light source 210 and the optical detector 220. Accordingly, body fat may be consistently and accurately measured by using the optical path 212 having the deeper measurement depth, even when the thickness of the body fat is increased, which will be illustrated in FIG. 3.

[0028] FIG. 3, portions I and II, illustrate simulation results of a body fat measurement made: a) when a tilter 211 is provided to the light source unit (portion II) according to one or more embodiments of the present invention; and b) when no tilter 211 is provided to the light source unit (portion I).

[0029] FIG. 3, portion I, illustrates the simulation results of the body fat measurement when a light, radiated from the light source, is irradiated into a biological tissue perpendicularly without providing the tilter 211 to the light source. Alternatively, FIG. 3, portion II, illustrates the simulation result of the body fat measurement when the light, radiated from the light source, is irradiated into the biological tissue, while having a tilt of 45 degrees, for example, by providing the tilter 211 to the light source, according to one or more embodiments of the present invention.

[0030] The illustrated graphs of the body fat measurement show the simulation results for biological tissue having identical characteristics, i.e. the thickness of the body fat is 20 mm and the thickness of the muscle is 30 mm. A fat substitute having a thickness of 20 mm was also used for the simulation.

[0031] Here, the vertical axis in each graph of FIG. 3, portions I and II indicates a measurement depth, while the horizontal axis in each graph indicates a distance between a light source and an optical detector. Each area of the graphs of FIG. 3, portions I and II, i.e. a first area 311 and 321, a second area 312 and 322, a third area 313 and 323, and a fourth area 314 and 324, is shown in a different shade, in order to readily distinguish an irradiated optical power according to the distance between the light source and the optical detector.

[0032] Specifically, the first area 311 of portion I of FIG. 3 and the first area 321 of portion II of FIG. 3 indicate optical path information when the distance between the light source and the optical detector is identical, and identical optical power is used. Area 311 indicates optical path information when no tilter 211 is used while area 321 indicates optical path information when a tilter 211 is used according to one or more embodiments of the present invention.

[0033] The second area 312 of portion I of FIG. 3 and the second area 322 of portion II of FIG. 3 indicate optical path information when the distance between the light source and the optical detector is an identical second distance, and identical optical power is used. Area 312

indicates optical path information when no tilter 211 is used while area 322 indicates optical path information when a tilter 211 is used according to one or more embodiments of the present invention. The third area 313 of portion I of FIG. 3 and the third area 323 of portion II of FIG. 3 indicate optical path information when a distance between the light source and the optical detector is an identical third distance, and identical optical power is used. Area 313 indicates optical path information when no tilter 211 is used while area 323 indicates optical path information when a tilter 211 is used according to one or more embodiments of the present invention. Finally, the fourth area 314 of portion I of FIG. 3 and the fourth area 324 of portion II of FIG. 3 indicate optical path information when a distance between the light source and the optical detector is an identical fourth distance, and identical optical power is used. Area 314 indicates optical path information when no tilter 211 is used while area 324 indicates optical path information when a tilter 211 is used according to one or more embodiments of the present invention.

[0034] The above simulation demonstrates, as shown in the each graph of portions I and II of FIG. 3, that a deeper optical path is measured for each area of portion II of FIG. 3, compared to the corresponding area of portion I of FIG. 3. Specifically, when the fourth areas are compared in each graph, it can be seen that a deeper optical path is measured for the fourth area 324 of portion II of FIG. 3 than for the fourth area 314 of portion I of FIG. 3.

[0035] Accordingly, body fat may be accurately measured by providing a tilter 211 made of a material having a refraction index similar, or identical to, the body fat, without significantly extending a distance between the light source and the optical detector.

[0036] Also, according to another one or more embodiments of the present invention, the light source unit 112 may include at least two light sources. Here, the tilter 211 may be provided to any one of the light sources, which are included in the light source unit 112, which will now be described in greater detail by referring to FIG. 4.

[0037] FIG. 4 illustrates an optical sensor module according to another one or more embodiments of the present invention.

[0038] Here, the optical sensor module may include a plurality of light sources. For convenience of description, an example in which the optical sensor module includes three light sources, i.e. a first light source 410, a second light source 420, and a third light source 430, is illustrated in FIG. 4, noting that alternative embodiments are equally available.

[0039] The first light source 410, the second light source 420 and the third light source 430 may be arranged with an optical detector 440, in parallel. In this non-limiting example, the tilter 411 may be provided to the first light source 410, however, depending upon embodiments, the tilter 411 may be provided with the first light source 410 and the second light source 420. Alternatively, the tilter 411 may be provided with the first light

source 410, the second light source 420, and the third light source 430.

[0040] In yet another exemplary embodiment, the tilter 411 may be provided only to the first light source 410, as illustrated in FIG. 4. Specifically, the tilter 411 may be provided only to the first light source, that is, the light source farthest from the optical detector 440. This configuration may enable the radiated light to penetrate deeper into the biological tissue because the scattering path (i.e. the path of the irradiated light from the first light source 410 to the optical detector 440) is the longest.

[0041] Accordingly, when the tilter 411 is properly provided to the light source, body fat may be more accurately measured with reduced costs.

[0042] Referring back to FIG. 1, the optical power control unit 111 controls a driving current supplied to at least one light source, which may be included in the light source unit 112. Specifically, as described with reference to FIG. 4, when the light source unit 112 includes a plurality of light sources, the optical power control unit 111 may control the driving current, so that optical powers output from each of the light sources becomes greater, in proportion to the respective distances between each of the light sources and the optical detector 113.

[0043] The optical detector 113 receives light that has been scattered by biological tissue, the tissue having been irradiated by the light, and transforms the received scattered light into an electrical signal. Specifically, the optical detector 113 receives the scattered light from the biological tissue, i.e., at a measurement point, and transforms the scattered light into the electrical signal. For the above-described operation, the optical detector 113 may include a predetermined optical-electrical transducing element for transforming the optical signal into the electrical signal.

[0044] The electrical signal calculation unit 120 calculates body fat information at the measurement point by receiving the electrical signal. For the above operation, the electrical signal calculation unit 120 may include a signal amplification unit 121, a body fat information calculation unit 122, and an output control unit 123.

[0045] The signal amplification unit 121 transmits the transformed electrical signal into the body fat information calculation unit 122 after receiving and amplifying the transformed electrical signal.

[0046] The body fat information calculation unit 122 calculates body fat information at the measurement point using the amplified electrical signal. Specifically, the body fat information calculation unit 122 may calculate thickness of the body fat using the optical power of the scattered light from the biological tissue. The calculation may be based on the principal that scattering of light is greater in body fat and absorption of light is greater in muscle. Also, the body fat information calculation unit 122 may calculate the weight of the body fat, and may calculate a body fat ratio using a reference lookup table. Accordingly, the body fat calculation unit 122 may calculate the thickness of the body fat, the body fat ratio, the weight of the

body fat, or other measures as would be appreciated by one skilled in the art.

[0047] In one embodiment, the output control unit 123 controls the body fat information to be displayed or played via the output unit 130. The output unit 130 may display or play the body fat information via the display unit 131 or via the sound output unit 132, respectively.

[0048] Accordingly, advantages of one or more embodiments of the present invention include acquiring body fat information about a deep body fat layer using a light source having a tilter. The tilter is formed of a material having a refraction index similar to the biological tissue being measured. The tilter may enable a light source to radiate light at a predetermined incident angle to penetrate deep into the biological tissue. The tilter may be generated along with the light sensor, e.g., they may be manufactured as a single unit, or they may operate independently as a system.

[0049] Further advantages of one or more embodiments of the present invention include an optical sensor module of a portable body fat measurement apparatus that may minimize a distance between a light source and an optical detector.

[0050] Although a few embodiments of the present invention have been shown and described, the present invention is not limited to the described embodiments. Instead, it would be appreciated by those skilled in the art that changes may be made to these embodiments without departing from the principles and spirit of the invention, the scope of which is defined by the claims and their equivalents.

Claims

1. An optical sensor module (110) for a body fat measurement apparatus, said apparatus being arranged to measure a thickness of a subcutaneous fat layer between skin and muscle in a biological tissue of an organism, the module comprising:

at least one light source (112; 210; 410, 420, 430); and

an optical detector (113; 220; 440) to detect a scattered optical signal and to transform the scattered optical signal into an electric signal, the scattered optical signal scattered from the light radiated into the biological tissue;

characterized in that the module further comprises:

a tilter (211; 411) to control an irradiation angle of the at least one light source (112; 210; 410, 420, 430) to radiate light from the at least one light source (112; 210; 410, 420, 430) into the biological tissue at a predetermined angle other than an angle perpendicular to the biological tissue;

- wherein the tilter (211; 411) is adapted to be placed between a surface of the at least one light source (112; 210; 410, 420, 430) and the biological tissue for tilting the at least one light source (112; 210; 410, 420, 430) away from said optical detector (113; 220; 440).
2. The module of claim 1, wherein the tilter (211; 411) is comprised of a material having a predetermined refraction index to radiate light from the at least one light source (112; 210; 410, 420, 430) into the biological tissue at the predetermined angle.
 3. The module of claim 1, wherein the tilter (211; 411) comprises a solid water epoxy or a polymer compound.
 4. The module of claim 1, wherein the tilter (211; 411) is a prism and the irradiation angle ranges from 2 degrees to 45 degrees.
 5. The module of claim 1, wherein:
 - the at least one light source (112; 210; 410, 420, 430) comprises at least two light sources (410, 420, 430), each being a different distance from the optical detector (440); and
 - the tilter is located at one (410) of the at least two light sources (410, 420, 430) located farthest from the optical detector (440).
 6. The module of claim 1, wherein the optical detector further comprises a transformer unit to transform the scattered optical signal into the electrical signal.
 7. The module of claim 1, further comprising an optical power control unit to control a driving current applied to the at least one light source (112; 210; 410, 420, 430).
 8. A body fat measurement apparatus comprising the optical sensor module (110) according to any one of claims 1-7 and an electric signal calculation unit (120) to process the electric signal and to calculate the thickness of the fat layer.
 9. The apparatus of claim 8, wherein the thickness of the fat layer is calculated based on a principle that scattering of light is greater in body fat and absorption of light is greater in muscle.
 10. The apparatus of claim 8 or 9, wherein the electric signal calculation unit (120) comprises:
 - a signal amplification unit (121) to amplify the electric signal transformed by the optical detector;
 - a body fat information calculation unit (122) to calculate body fat information comprising the thickness of the fat layer from the amplified electric signal; and
 - an output control unit (123) to control the body fat information to be output to a predetermined display unit (131) or sound output unit (132).
 11. The apparatus of claim 8, wherein the body fat measurement apparatus is any one of a mobile communication terminal, a personal digital assistant (PDA), a portable game apparatus, an MP3 player, a personal multimedia player (PMP), a digital multimedia broadcasting (DMB) terminal, a portable blood sugar measurement apparatus, and a grip exercise apparatus.
 12. A method for measuring a thickness of a subcutaneous fat layer between skin and muscle in a biological tissue of an organism, the method comprising:
 - providing a light source (112; 210; 410, 420, 430);
 - providing an optical detector (113; 220; 440) to detect a scattered optical signal and to transform the scattered optical signal into an electric signal, the scattered optical signal scattered from the light radiated into the biological tissue;
 - irradiating light into a biological tissue using said light source (112; 210; 410, 420, 430);
 - detecting scattered light from the irradiating of the light into the biological tissue using the optical detector (113; 220; 440); and
 - transforming the detected scattered light into an electrical signal using the optical detector (113; 220; 440);

characterized by:

 - providing a tilter (211; 411) to control an irradiation angle of the at least one light source (112; 210; 410, 420, 430) to radiate light from the at least one light source (112; 210; 410, 420, 430) into the biological tissue at a predetermined angle other than an angle perpendicular to the biological tissue;
 - arranging the tilter (211; 411) between a surface of the light source and the biological tissue for tilting the at least one light source (112; 210; 410, 420, 430) away from said optical detector (113; 220; 440).
 13. The method of claim 12, further comprising controlling a driving current applied to at least one light source (410, 420, 430) so that optical powers output from each of the one or more light source (410, 420, 430) becomes greater in proportion to respective distances between each of the one or more light sources

(410, 420, 430) and an optical detector (440).

14. The method of claim 12, further comprising calculating the thickness of the fat layer from the electrical signal.

15. The method of claim 14, wherein the calculating is based on a principle that scattering of light is greater in body fat and absorption of light is greater in muscle.

16. The method of claim 12, further comprising:

amplifying the electrical signal;
calculating the thickness of the fat layer from the amplified electrical signal; and
controlling body fat information comprising the thickness of the fat layer to be output to a pre-determined display unit (131) or sound output unit (132).

17. The method of claim 12, wherein the tilter (211; 411) is a prism and the irradiation angle ranges from 2 degrees to 45 degrees.

Patentansprüche

1. Optisches Sensormodul (110) für ein Körperfettmessgerät, wobei das Gerät zur Messung einer Dicke einer subkutanen Fettschicht zwischen Haut und Muskel in einem biologischen Gewebe eines Organismus eingerichtet ist, wobei das Modul umfasst:

zumindest eine Lichtquelle (112; 210; 410, 420, 430); und
einen optischen Detektor (113; 220; 440) zur Erfassung eines gestreuten optischen Signals und zur Umwandlung des gestreuten optischen Signals in ein elektrisches Signal, wobei das gestreute optische Signal aus dem ins biologische Gewebe gestrahlten Licht gestreut wird;
dadurch gekennzeichnet, dass das Modul weiterhin umfasst:

eine Kippeinrichtung (211; 411) zur Steuerung eines Einstrahlungswinkels der zumindest einen Lichtquelle (112; 210; 410, 420, 430), um Licht aus der zumindest einen Lichtquelle (112; 210; 410, 420, 430) in das biologische Gewebe mit einem vorgegebenen Winkel, ausgenommen einem zum biologischen Gewebe perpendikularen Winkel, zu strahlen;

wobei die Kippeinrichtung (211; 411) angepasst ist, um zwischen einer Fläche der zumindest einen Lichtquelle (112; 210; 410, 420, 430) und dem biologischen Gewebe

platziert zu werden zwecks Wegkippens der zumindest einen Lichtquelle (112; 210; 410, 420, 430) von dem optischen Detektor (113; 220; 440).

2. Modul nach Anspruch 1, wobei die Kippeinrichtung (211; 411) aus einem Material besteht, das einen vorgegebenen Brechungsindex aufweist, um Licht aus der zumindest einen Lichtquelle (112; 210; 410, 420, 430) in das biologische Gewebe mit dem vorgegebenen Winkel zu strahlen.

3. Modul nach Anspruch 1, wobei die Kippeinrichtung (211; 411) ein festes Wasserepoxid oder eine Polymerverbindung umfasst.

4. Modul nach Anspruch 1, wobei die Kippeinrichtung (211; 411) ein Prisma ist und der Einstrahlungswinkel in einem Bereich von 2 Grad bis 45 Grad liegt.

5. Modul nach Anspruch 1, wobei:

die zumindest eine Lichtquelle (112; 210; 410, 420, 430) zumindest zwei Lichtquellen (410, 420, 430) umfasst, wobei jede einen anderen Abstand vom optischen Detektor (440) hat; und sich die Kippeinrichtung an einer (410) der zumindest zwei Lichtquellen (410, 420, 430) befindet, die am weitesten vom optischen Detektor (440) entfernt liegt.

6. Modul nach Anspruch 1, wobei der optische Detektor weiterhin eine Wandlereinheit umfasst, um das gestreute optische Signal in das elektrische Signal umzuwandeln.

7. Modul nach Anspruch 1, das weiterhin eine Einheit zur Steuerung bzw. Regelung optischer Leistung umfasst, um einen Betriebsstrom zu steuern bzw. zu regeln, der an die zumindest eine Lichtquelle (112; 210; 410, 420, 430) gelegt wird.

8. Körperfettmessgerät, das das optische Sensormodul (110) nach einem der Ansprüche 1 - 7 und eine Recheneinheit (120) für das elektrische Signal umfasst, um das elektrische Signal zu verarbeiten und die Dicke der Fettschicht zu berechnen.

9. Gerät nach Anspruch 8, wobei die Dicke der Fettschicht basierend auf einer Grundlage berechnet wird, dass die Streuung von Licht in Körperfett größer ist und die Absorption von Licht in Muskel größer ist.

10. Gerät nach Anspruch 8 oder 9, wobei die Recheneinheit (120) für das elektrische Signal umfasst:

eine Signalverstärkungseinheit (121), um das

- durch den optischen Detektor umgewandelte elektrische Signal zu verstärken;
eine Körperfettinformationen-Berechnungseinheit (122), um die Dicke der Fettschicht umfassende Körperfettinformationen aus dem verstärkten elektrischen Signal zu berechnen; und eine Ausgabesteuerungseinheit (123), um die Körperfettinformationen, die an eine vorgegebene Anzeigeeinheit (131) oder Tonausgabeeinheit (132) auszugeben sind, zu steuern.
- 5
11. Gerät nach Anspruch 8, wobei das Körperfettmessgerät eines ist von einem Mobilkommunikationsendgerät, einem persönlichen digitalen Assistenten (PDA), einem tragbaren Spielgerät, einem MP3-Player, einem persönlichen multimedialen Abspielgerät (PMP: Personal Multimedia Player), einem Endgerät für digitale multimediale Übertragung (DMB: Digital Multimedia Broadcasting), einem tragbaren Blutzuckermessgerät und einem Greifkrafttrainingsgerät.
- 10
12. Verfahren zur Messung einer Dicke einer subkutanen Fettschicht zwischen Haut und Muskel in einem biologischen Gewebe eines Organismus, wobei das Verfahren umfasst:
- 15
- Bereitstellen einer Lichtquelle (112; 210; 410, 420, 430);
Bereitstellen eines optischen Detektors (113; 220; 440), um ein gestreutes optisches Signal zu erfassen und das gestreute optische Signal in ein elektrisches Signal umzuwandeln, wobei das gestreute optische Signal aus dem ins biologische Gewebe gestrahlten Licht gestreut wird;
Einstrahlen von Licht in ein biologisches Gewebe mittels der Lichtquelle (112; 210; 410, 420, 430);
Erfassen gestreuten Lichts aus dem Einstrahlen des Lichts in das biologische Gewebe mittels des optischen Detektors (113; 220; 440); und
Umwandeln des erfassten gestreuten Lichts in ein elektrisches Signal mittels des optischen Detektors (113; 220; 440);
- 20
- gekennzeichnet durch:**
- Bereitstellen einer Kippeinrichtung (211; 411) zur Steuerung eines Einstrahlungswinkels der zumindest einen Lichtquelle (112; 210; 410, 420, 430), um Licht aus der zumindest einen Lichtquelle (112; 210; 410, 420, 430) in das biologische Gewebe mit einem vorgegebenen Winkel, ausgenommen einem zum biologischen Gewebe perpendicularen Winkel, zu strahlen;
Einrichten der Kippeinrichtung (211; 411) zwischen einer Fläche der Lichtquelle und
- 25
- dem biologischen Gewebe zwecks Wegkippen der zumindest einen Lichtquelle (112; 210; 410, 420, 430) von dem optischen Detektor (113; 220; 440).
13. Verfahren nach Anspruch 12, das weiterhin das Steuern bzw. Regeln eines Betriebsstroms, der an zumindest eine Lichtquelle (410, 420, 430) gelegt wird, umfasst, so dass aus jeder der einen oder mehreren Lichtquellen (410, 420, 430) ausgegebene optische Leistungen im Verhältnis zu jeweiligen Abständen zwischen jeder der einen oder mehreren Lichtquellen (410, 420, 430) und einem optischen Detektor (440) größer werden.
14. Verfahren nach Anspruch 12, das weiterhin das Berechnen der Dicke der Fettschicht aus dem elektrischen Signal umfasst.
15. Verfahren nach Anspruch 14, wobei das Berechnen auf einer Grundlage basiert, dass die Streuung von Licht in Körperfett größer ist und die Absorption von Licht in Muskel größer ist.
16. Verfahren nach Anspruch 12, das weiterhin umfasst:
- Verstärken des elektrischen Signals;
Berechnen der Dicke der Fettschicht aus dem verstärkten elektrischen Signal; und
Steuern von die Dicke der Fettschicht umfassenden Körperfettinformationen, die an eine vorgegebene Anzeigeeinheit (131) oder Tonausgabeeinheit (132) auszugeben sind.
17. Verfahren nach Anspruch 12, wobei die Kippeinrichtung (211; 411) ein Prisma ist und der Einstrahlungswinkel in einem Bereich von 2 Grad bis 45 Grad liegt.
- 30
- Revendications**
1. Module à capteur optique (110) pour un appareil de mesure de graisse corporelle, ledit appareil étant agencé pour mesurer une épaisseur d'une couche de graisse sous-cutanée entre la peau et un muscle dans un tissu biologique d'un organisme, le module comprenant :
- 35
- au moins une source lumineuse (112 ; 210 ; 410, 420, 430) ; et
un détecteur optique (113 ; 220 ; 440) pour détecter un signal optique dispersé et pour transformer le signal optique dispersé en un signal électrique, le signal optique dispersé étant dispersé à partir de la lumière rayonnée vers le tissu biologique ;
caractérisé en ce que le module comprend en outre :
- 40
- 45
- 50
- 55

- un basculeur (211 ; 411) pour contrôler un angle de rayonnement de l'au moins une source lumineuse (112 ; 210 ; 410, 420, 430) afin de faire rayonner la lumière issue de l'au moins une source lumineuse (112 ; 210 ; 410, 420, 430) vers le tissu biologique à un angle prédéterminé autre qu'un angle perpendiculaire au tissu biologique ; dans lequel le basculeur (211 ; 411) est adapté pour être placé entre une surface de l'au moins une source lumineuse (112 ; 210 ; 410, 420, 430) et le tissu biologique pour faire basculer l'au moins une source lumineuse (112 ; 210 ; 410, 420, 430) en l'écartant dudit détecteur optique (113 ; 220 ; 440).
2. Module selon la revendication 1, dans lequel le basculeur (211 ; 411) se compose d'un matériau présentant un indice de réfraction prédéterminé afin de faire rayonner la lumière issue de l'au moins une source lumineuse (112 ; 210 ; 410, 420, 430) vers le tissu biologique à l'angle prédéterminé.
 3. Module selon la revendication 1, dans lequel le basculeur (211 ; 411) comprend un époxy à l'eau solide ou un composé polymère.
 4. Module selon la revendication 1, dans lequel le basculeur (211 ; 411) est un prisme et l'angle de rayonnement va de 2 degrés à 45 degrés.
 5. Module selon la revendication 1, dans lequel :
 - l'au moins une source lumineuse (112 ; 210 ; 410, 420, 430) comprend au moins deux sources lumineuses (410, 420, 430), chacune étant à une distance différente par rapport au détecteur optique (440) ; et
 - le basculeur est situé au niveau de l'une (410) des au moins deux sources lumineuses (410, 420, 430) située le plus à l'écart du détecteur optique (440).
 6. Module selon la revendication 1, dans lequel le détecteur optique comprend en outre une unité de transformation pour transformer le signal optique dispersé en ledit signal électrique.
 7. Module selon la revendication 1, comprenant en outre une unité de commande de puissance optique pour commander un courant de pilotage appliqué à l'au moins une source lumineuse (112 ; 210 ; 410, 420, 430).
 8. Appareil de mesure de graisse corporelle comprenant le module à capteur optique (110) selon l'une quelconque des revendications 1 à 7 et une unité de calcul de signal électrique (120) pour traiter le signal électrique et pour calculer l'épaisseur de la couche de graisse.
 9. Appareil selon la revendication 8, dans lequel l'épaisseur de la couche de graisse est calculée en se fondant sur le principe que la dispersion de la lumière est supérieure dans la graisse corporelle et que l'absorption de la lumière est supérieure dans le muscle.
 10. Appareil selon la revendication 8 ou 9, dans lequel l'unité de calcul de signal électrique (120) comprend :
 - une unité d'amplification de signal (121) pour amplifier le signal électrique transformé par le détecteur optique ;
 - une unité de calcul d'une information relative à la graisse corporelle (122) pour calculer l'information relative à la graisse corporelle comprenant l'épaisseur de la couche de graisse à partir du signal électrique amplifié ; et
 - une unité de commande de sortie (123) pour contrôler l'information relative à la graisse corporelle devant être émise auprès d'une unité d'affichage prédéterminée (131) ou d'une unité d'émission de son (132).
 11. Appareil selon la revendication 8, dans lequel l'appareil de mesure de graisse corporelle est un dispositif quelconque parmi un terminal de communication mobile, un assistant numérique personnel (PDA), une console de jeu portative, un lecteur MP3, un lecteur multimédia personnel (PMP), un terminal de diffusion multimédia numérique (DMB), un glucomètre portatif et une poignée de musculation pour les mains.
 12. Procédé de mesure d'une épaisseur de couche de graisse sous-cutanée entre la peau et un muscle dans un tissu biologique d'un organisme, le procédé comprenant :
 - la disposition d'une source lumineuse (112 ; 210 ; 410, 420, 430) ;
 - la disposition d'un détecteur optique (113 ; 220 ; 440) pour détecter un signal optique dispersé et pour transformer le signal optique dispersé en un signal électrique, le signal optique dispersé étant dispersé à partir de la lumière rayonnée vers le tissu biologique ;
 - le rayonnement de la lumière vers un tissu biologique au moyen de ladite source lumineuse (112 ; 210 ; 410, 420, 430) ;
 - la détection de la lumière dispersée à partir du rayonnement de la lumière vers le tissu biologique au moyen du détecteur optique (113 ; 220 ;

- 440) ; et
 la transformation de la lumière dispersée détectée en un signal électrique au moyen du détecteur optique (113 ; 220 ; 440) ;
caractérisé par : 5
- la disposition d'un basculeur (211 ; 411)
 pour contrôler un angle de rayonnement de
 l'au moins une source lumineuse (112 ; 210 ; 410, 420, 430) afin de faire rayonner 10
 la lumière issue de l'au moins une source
 lumineuse (112 ; 210 ; 410, 420, 430) vers
 le tissu biologique à un angle prédéterminé
 autre qu'un angle perpendiculaire au tissu 15
 biologique ;
 l'agencement du basculeur (211 ; 411) entre
 une surface de l'au moins une source
 lumineuse et le tissu biologique pour faire
 basculer l'au moins une source lumineuse 20
 (112 ; 210 ; 410, 420, 430) en l'écartant du
 dit détecteur optique (113 ; 220 ; 440).
- 13.** Procédé selon la revendication 12, comprenant en
 outre le contrôle d'un courant de pilotage appliqué 25
 à au moins une source lumineuse (410, 420, 430)
 de sorte que la sortie des puissances optiques de
 chacune des unes ou plusieurs sources lumineuses
 (410, 420, 430) augmente proportionnellement
 aux distances respectives entre chacune des unes 30
 ou plusieurs sources lumineuses (410, 420, 430) et
 un détecteur optique (440).
- 14.** Procédé selon la revendication 12, comprenant en
 outre le calcul de l'épaisseur de la couche de graisse 35
 à partir du signal électrique.
- 15.** Procédé selon la revendication 14, dans lequel le
 calcul se fonde sur le principe que la dispersion de
 la lumière est supérieure dans la graisse corporelle
 et que l'absorption de la lumière est supérieure dans 40
 le muscle.
- 16.** Procédé selon la revendication 12, comprenant en
 outre : 45
- l'amplification du signal électrique ;
 le calcul de l'épaisseur de la couche de graisse
 à partir du signal électrique amplifié ; et
 le contrôle de l'information relative à la graisse
 corporelle comprenant l'épaisseur de la couche 50
 de graisse devant être émise auprès d'une unité
 d'affichage prédéterminée (131) ou d'une unité
 d'émission de son (132).
- 17.** Procédé selon la revendication 12, dans lequel le 55
 basculeur (211 ; 411) est un prisme et l'angle de
 rayonnement va de 2 degrés à 45 degrés.

FIG. 1

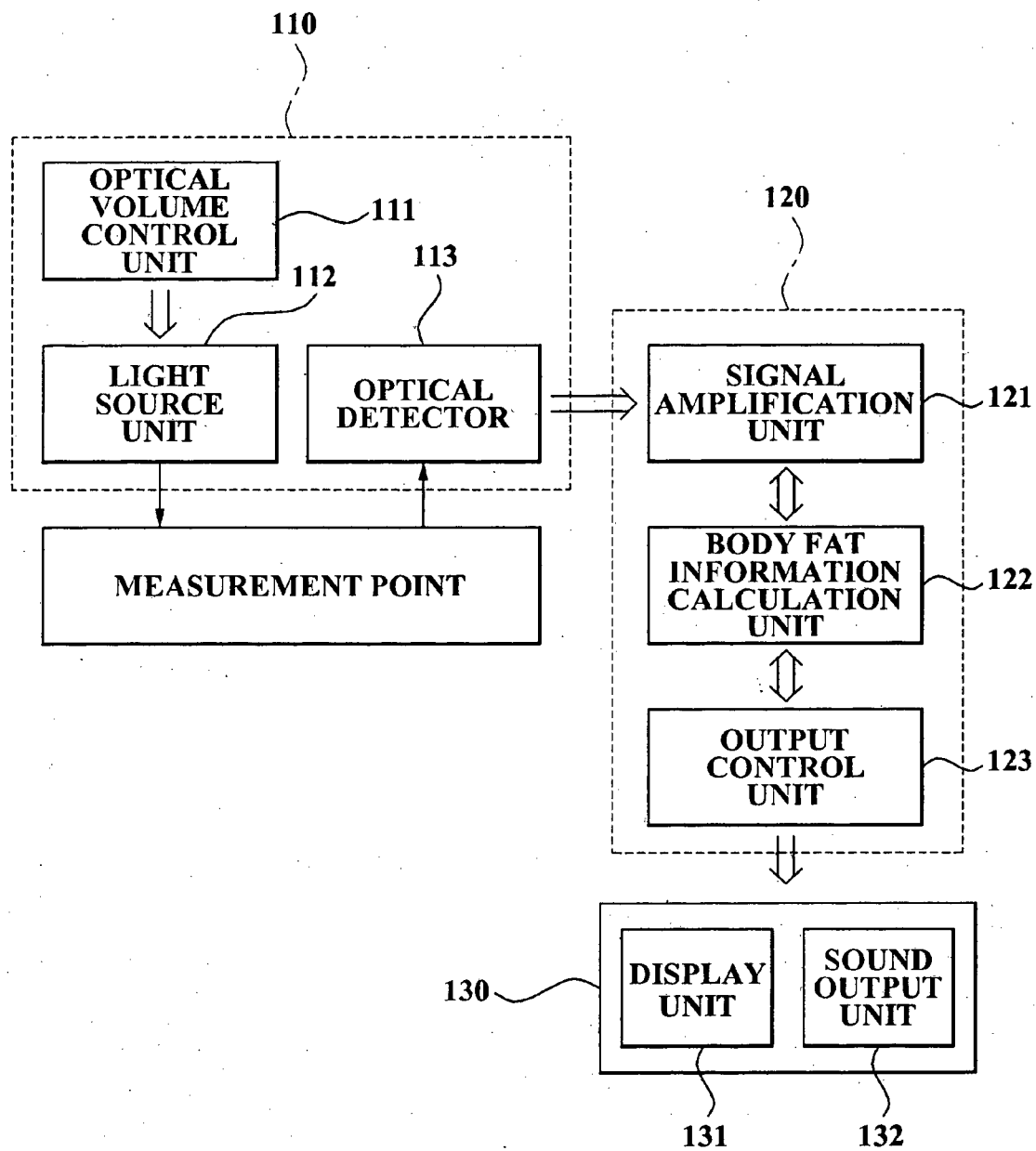


FIG. 2A

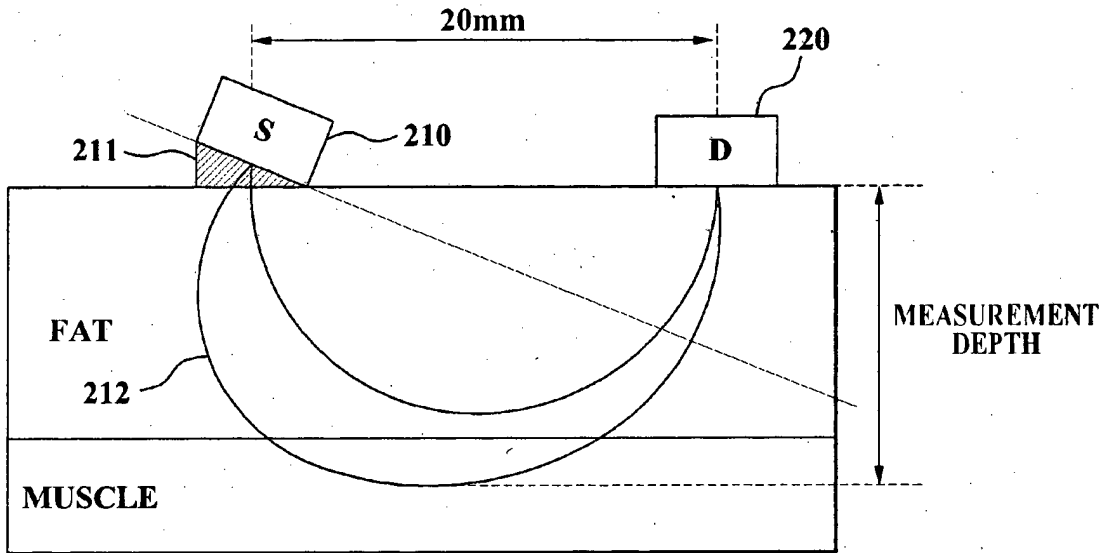


FIG. 2B

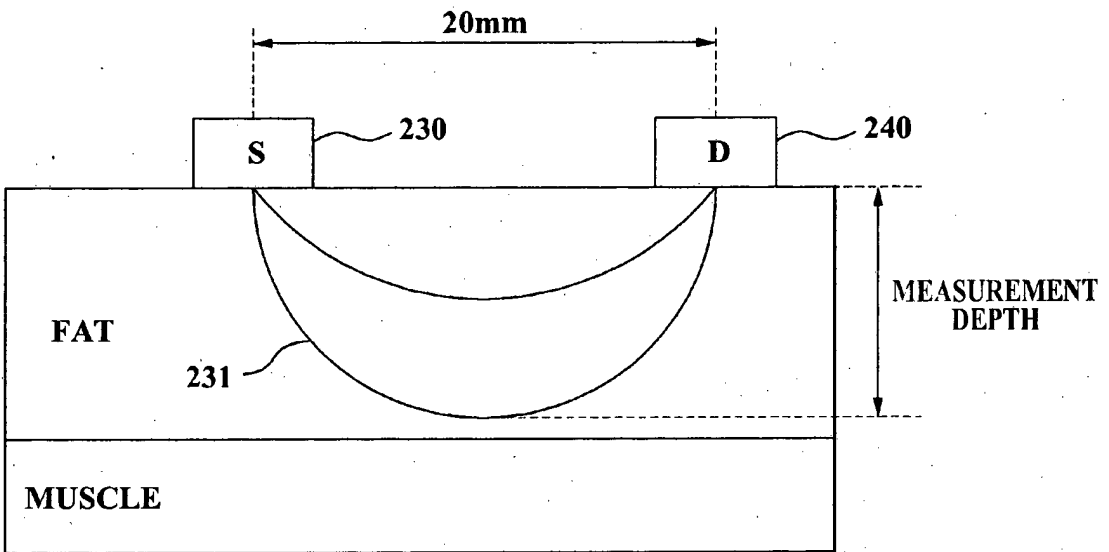


FIG. 3

FAT 2.0cm + MUSCLE 3.0cm

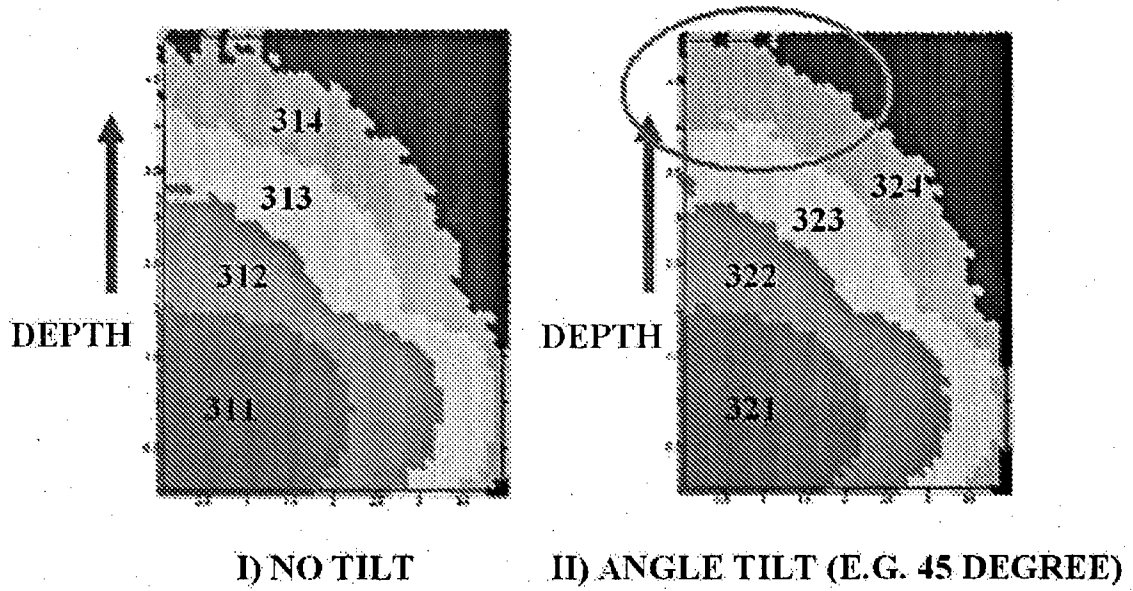
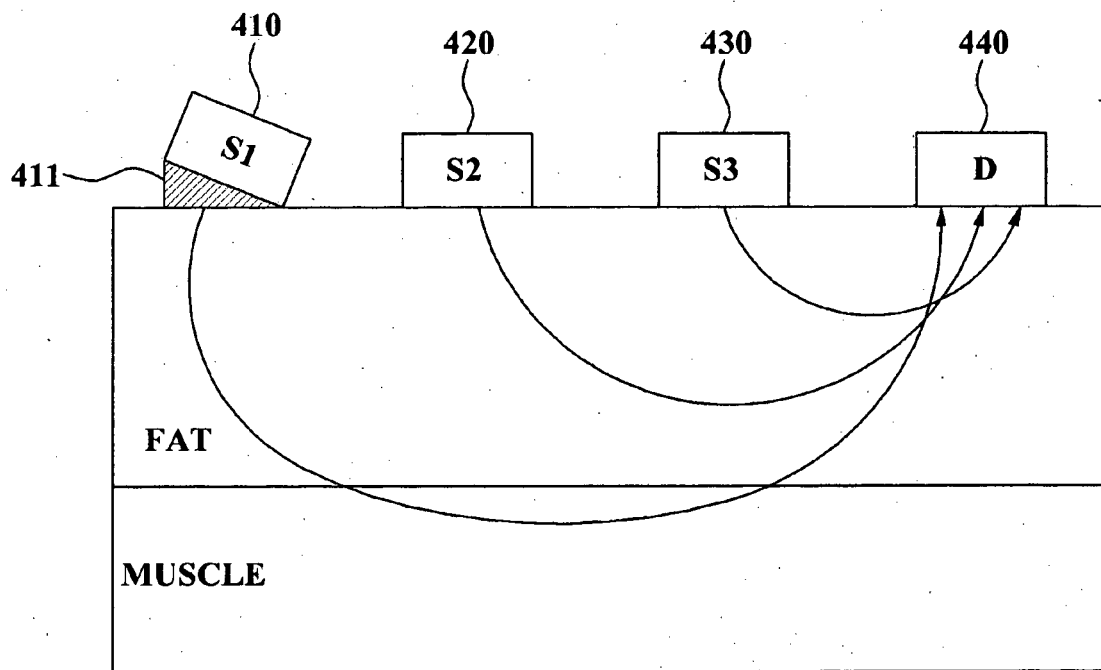


FIG. 4



REFERENCES CITED IN THE DESCRIPTION

This list of references cited by the applicant is for the reader's convenience only. It does not form part of the European patent document. Even though great care has been taken in compiling the references, errors or omissions cannot be excluded and the EPO disclaims all liability in this regard.

Patent documents cited in the description

- EP 1520514 A1 [0006]

专利名称(译)	一种使用倾斜器进行体脂肪测量的装置，方法和光学传感器模块		
公开(公告)号	EP1880665B1	公开(公告)日	2014-05-07
申请号	EP2007112765	申请日	2007-07-19
[标]申请(专利权)人(译)	三星电子株式会社		
申请(专利权)人(译)	SAMSUNG ELECTRONICS CO. , LTD.		
当前申请(专利权)人(译)	SAMSUNG ELECTRONICS CO. , LTD.		
[标]发明人	HWANG IN DUK KIM SANG RYONG SHIN KUN SOO		
发明人	HWANG, IN DUK KIM, SANG RYONG SHIN, KUN SOO		
IPC分类号	A61B5/00		
CPC分类号	A61B5/0059 A61B5/4872 A61B2562/0242 A61B2562/146		
优先权	1020060068482 2006-07-21 KR		
其他公开文献	EP1880665A1		
外部链接	Espacenet		

摘要(译)

一种用于体脂肪测量的装置，方法和光学传感器模块，包括至少一个光源，用于控制光源的照射角度的倾斜器，以将来自光源的光以预定角度辐射到生物组织中，以及光学检测器，检测从生物组织散射的光信号，并将散射的光信号转换成电信号，以获得关于深体脂肪层的更准确的体脂信息。