



(11) **EP 1 177 760 B1**

(12) **EUROPEAN PATENT SPECIFICATION**

(45) Date of publication and mention of the grant of the patent:
27.06.2007 Bulletin 2007/26

(51) Int Cl.:
A61B 5/00^(2006.01) A61B 5/05^(2006.01)

(21) Application number: **01118268.0**

(22) Date of filing: **30.07.2001**

(54) **A body water amount condition judging apparatus by multi-frequency bioelectric impedance measurement**

Vorrichtung zur Schätzung der Wassermenge im Körper durch Messung der bioelektrischen Impedanz bei mehreren Frequenzen

Appareil d'évaluation de la quantité d'eau dans le corps par mesure multi-fréquentielle de l'impédance bioélectrique

(84) Designated Contracting States:
DE FR GB

(30) Priority: **01.08.2000 JP 2000232703**

(43) Date of publication of application:
06.02.2002 Bulletin 2002/06

(73) Proprietor: **TANITA CORPORATION**
Tokyo (JP)

(72) Inventors:
• **Takehara, Katsumi,**
c/o Tanita Corporation
Tokyo (JP)

• **Takehara, Tomoko,**
c/o Tanita Corporation
Tokyo (JP)

(74) Representative: **Müller-Boré & Partner**
Patentanwälte
Grafinger Strasse 2
81671 München (DE)

(56) References cited:
EP-A- 0 865 763 EP-A- 0 998 874
US-A- 5 086 781 US-A- 5 449 000

EP 1 177 760 B1

Note: Within nine months from the publication of the mention of the grant of the European patent, any person may give notice to the European Patent Office of opposition to the European patent granted. Notice of opposition shall be filed in a written reasoned statement. It shall not be deemed to have been filed until the opposition fee has been paid. (Art. 99(1) European Patent Convention).

Description

Background of the Invention:

Field of the Invention:

[0001] The present invention relates to a body water amount condition judging apparatus for judging condition concerning the amount of body water in a living body by measuring bioelectric impedance using a multi-frequency alternating current.

Prior Art:

[0002] Edema is a kind of morbidity, in which interstitial fluid and/or lymph accumulates at intra-cellular or extra-cellular portions and the amount of water in a body increases. Appearing edema everywhere in a whole body may be realized as a symptom of diseases such as heart disease, kidney disease, liver disease, and such like. Therefore, it is desirable that the degree of edema is measured exactly and it is utilized in diagnosing or in monitoring patients' condition.

[0003] On the other hand, dehydration is a kind of morbidity, in which water in a living body is abnormally reduced, and it often occurs in daily life when a person is exercising or when the temperature is high because a lot of water is excreted from the body by sweating and an elevated body temperature. Especially, it is said that elderly persons are apt to experience dehydration symptoms. This is because, when one becomes older, size of muscles which contain water decreases, the amount of urine increases because the function of the kidneys deteriorates, and awareness of thirsty decreases because the senses are dulled. Another reason is that the amount of water which cells require decreases.

[0004] If dehydration symptoms are left untreated, the dehydration symptoms will gradually become worse until a serious dehydration condition is occurring. Usually, it is said that, when one third of the water in a living body is lost, the body temperature regulation is disturbed. This causes the body temperature to increase, and then water in the living body is further reduced. In other words, vicious circle is created, until at last, a heat illness occurs. A heat illness includes conditions such as heat cramp, desert syndrome and heatstroke. Sometimes all the organs in the body are affected by the heat illness. Thus it is desired that dehydration symptoms be detected exactly to avoid the risk of a heat illness.

[0005] Japanese Patent Laid-Open Publication No. Hei 11-318845 discloses an apparatus for measuring the total amount of water in a body, thus allowing edema and dehydration symptoms which a person is not aware of to be detected. This apparatus determines the total amount of body water in a living body of a subject easily by measuring a bioelectrical impedance value, thereby allowing the subject to judge his own body water condition, such as edema or dehydration symptoms, based on this meas-

ured amount of body water.

[0006] It is known that a bioelectrical impedance value changes when the body temperature changes. That is, the bioelectrical impedance value decreases when the body temperature goes up, and the bioelectrical impedance value increases when the body temperature goes down. However, said conventional apparatus, calculating the total amount of body water based on the bioelectrical impedance value, does not take into consideration this fact that the bioelectrical impedance value changes when the body temperature changes. Thus, said apparatus can not determine the total amount of body water precisely, resulting in it being unable to detect the dehydration condition precisely. For example, in a case where the total amount of body water is decreased and the body temperature is raised, and thus a dehydration condition should be detected, the bioelectrical impedance value increases when the total amount of body water is decreased, while on the other hand, the bioelectrical impedance value decreases because body temperature is raised. Thus, when the bioelectrical impedance value is measured, and then the total amount of body water is calculated based on the bioelectrical impedance value to be able to determine whether a dehydration condition has occurred or not based on this calculated total amount of body water, the dehydration condition may not be detected.

[0007] In addition, the said apparatus measures only the total amount of body water, and does not judge the body water amount condition taking each component constituting the body water, such as each amount of intra-cellular or extra-cellular fluid, into account. Therefore, the said apparatus can not judge exact and detailed body water condition.

[0008] As the said apparatus demands personal parameters of a subject, such as height, age, sex, body weight and the like, to calculate the total amount of body water based on the measured bioelectrical impedance value, the subject has to input such personal parameters into the apparatus. Thus, it is very troublesome for the subjects, especially for elderly subjects, to operate the apparatus. It is desirable for the elderly persons to be measured their total body water frequently, because it is said that elderly persons are apt to experience dehydration symptoms as described above. However, there has been a problem that the elderly persons can not obtain their total amount of body water or obtain them based on wrongly input personal parameters.

[0009] US 5 449 000 discloses an apparatus in which extracellular fluid, intracellular fluid and a total amount of body water are judged respectively by measuring bioelectric impedance using a multifrequency alternating current.

[0010] It is the object of the present invention to provide a body water amount condition judging apparatus being easy to use and enabling a detailed and precise judgment of the body water amount condition.

[0011] This object is solved according to the invention

by an apparatus having the features disclosed in claim 1. Preferred embodiments are subject to the dependent claims.

[0012] According to the present invention there is provided a body water amount condition judging apparatus which is capable of judging body water amount condition in detail, such as edema condition and/or dehydration condition exactly and easily.

Summary of the Invention:

[0013] The present invention provides an apparatus for judging body water amount condition, in which at least two values selected from intra-cellular water resistance, extra-cellular water resistance, combined resistance of the intra-cellular and extra-cellular water resistance, and a ratio of intra-cellular and extra-cellular water are judging parameters for body water amount condition, comprises: a multi-frequency bioelectric impedance measuring device; a calculating device; a reference value determining unit; a body water amount condition judging unit; and a display device. Said multi-frequency bioelectric impedance measuring device supplies a plurality of alternating current of different frequencies to a body of a subject and measures a bioelectric impedance value, said calculating device calculates the values of each judging parameter based on the bioelectric impedance value measured, said reference value determining unit determines reference values of the same kind based on judging parameter values calculated prior to each judging parameter of the same kind calculated in the past, said body water amount condition judging unit judges body water amount condition by comparing each calculated judging parameter value with the determined judging parameters of the kind, and said display device displays the judging result of said body water amount condition so judged.

[0014] Furthermore, said reference value determining unit selects the judging parameters which are calculated in the past for the same subject as the one whose body water amount condition is to be judged and are the same kind of judging parameter values as those calculated by said calculating device, and determines them to be the reference values.

[0015] In accordance with the preferred embodiment of the present invention, said calculating device may further calculate at least one of the values of intra-cellular water content, extra-cellular water content and total body water content.

[0016] In accordance with one embodiment of the invention, said reference value determining unit may determine that an average value of each judging parameter of the past is a reference value of a judging parameter of the same kind.

[0017] In accordance with another embodiment of the invention, said reference value determining unit may further determine that the latest value in judging parameters of the past is a reference value of a judging parameter of the same kind.

[0018] In accordance with another embodiment of the invention, said reference value determining unit may determine a reference value of a judging parameter every time the judging parameter is calculated.

5 **[0019]** In accordance with another embodiment of the invention, said reference value determining unit does not use a value of a judging parameter for determining a reference value of the judging parameter, when the value of the judging parameter is abnormal.

10 **[0020]** In accordance with another embodiment of the invention, said reference value determining unit may determine that a value of a judging parameter is abnormal, when the difference between each value of the judging parameter and a reference value of the judging parameter of the same kind which is already determined exceeds the predetermined value.

15 **[0021]** In accordance with another embodiment of the invention, said reference value determining unit determines whether a value of a judging parameter is abnormal or not depending upon the time a bioelectric impedance value is determined for calculating the value of the judging parameter. In accordance with another embodiment of the invention, said apparatus further comprises an abnormal value selecting device, said abnormal value selecting device decides whether a subject uses a value of a judging parameter for determining a reference value or not, and said reference value determining unit determines whether the value of the judging parameter is abnormal or not responding to said abnormal value selecting device.

20 **[0022]** In accordance with yet another embodiment of the invention, said reference value determining unit decides that a value of a judging parameter is abnormal if the time a bioelectric impedance value is determined for calculating the value of the judging parameter is in the hour of rising for the subject.

25 **[0023]** Other objects and advantages of the present invention will be understood from the following description of some preferred embodiments, which are shown in accompanying drawings:

Fig. 1 is a block diagram of a body water amount condition judging apparatus according to the first embodiment of the present invention;

Fig. 2 is a flow chart illustrating an action flow of the body water amount condition judging apparatus shown in Fig. 1;

Fig. 3 illustrates a screen image in inputting personal parameters;

Fig. 4 is an electrically equivalent circuit of cells in a living body;

Fig. 5 is a vector locus of bioelectric impedance of a human body;

Fig. 6 illustrates a relation between bioelectric impedance at zero frequency and at infinite frequency and bioelectric impedance at characteristic frequency.

Fig. 7 illustrates a screen image in displaying results;

Fig. 8 is a flow diagram illustrating the process of a routine for determining a reference value;

Fig. 9 is a block diagram of a body water amount condition judging apparatus according to the second embodiment of the present invention;

Fig. 10 is a perspective view of a body water amount condition judging apparatus shown in Fig. 9;

Fig. 11 is a flow chart illustrating an action flow of the body water amount condition judging apparatus shown in Fig. 9;

Fig. 12 is a perspective view illustrating an arrangement of hands in judging conditions using the body water amount condition judging apparatus shown in Fig. 9.

Description of Preferred Embodiments:

[0024] Preferred embodiments of the present invention will now be described in the following description. Fig. 1 is a block diagram of a body water amount condition judging apparatus according to the first embodiment of the present invention. As shown in Fig. 1, the body water amount condition judging apparatus 1 according to the present embodiment can be divided into two blocks.

[0025] The first block is a block for mainly conducting control and operation concerning measurement, and for inputting and outputting data. The first block comprises a control-and-arithmetic unit 2, a ROM 3, a RAM 4, a nonvolatile auxiliary memory 5, a display 6, an external input-output interface 7, an external interface terminal 8, a key-operated input device 9, a clock 10, a power distributor 11 and a power supply terminal 12. The control-and-arithmetic unit 2 performs the controlling of measurement and the processing of the results of measurement. The ROM 3 stores programs and some parameters for control and arithmetic operations of the apparatus 1. The RAM 4 temporarily stores the results of measurement or acquired data, the results of arithmetic operations, the data derived from external devices, selected programs and such like. The auxiliary memory 5 stores the acquired data, the results of arithmetic operations, some parameters relating to measurements and such like. The display 6 shows some helpful guidance of operation, the progressing of measurement, the results of measurements, the results of arithmetic operations and such like. The external input-output interface 7 permits some parameters relating to measurement and the results of measurements to be transferred to external devices, and inversely it permits some parameters relating to measurement, instructions for controlling measurement, control programs and such like to be supplied from external devices. The external input-output interface 7 can be connected to given external devices via the external interface terminal 8. The key-operated input device 9 inputs data such as instructions for controlling the present apparatus and personal particulars required for measurement. The clock 10 measures on what day and time each measurement is made, recording such day

and time for later use. The power distributor 11 is supplied with electric power from an external power supply via the terminal 12 to distribute the electric power to each component of the apparatus.

[0026] The second block is a block for mainly impedance measuring and for converting the measured analog signal into digital signal, and includes an AC signal generator 20, an AC current output device 21, a reference AC current detecting device 22, paired AC current output terminals 30 and 31, a A/D converter 23, paired voltage measurement terminals 32 and 33, a voltage detecting device 25 and a A/D converter 24. The AC signal generator 20 provides a plurality of alternating current signals of different frequencies which are determined according to the control program stored in the ROM 3 or the RAM 4. Such alternating currents of different frequencies are directed to the AC current output device 21, in which their effective values are modified according to the control program stored in the ROM 3 or the RAM 4, and then the so modified alternating currents are directed to the reference AC current detecting device 22. The device 22 provides the alternating currents of different frequencies sequentially at its output terminals 30 and 31. The analogue value as the output of the device 22 is converted to a corresponding digital value in the A/D converter 23. On the other hand the voltage detecting device 25 receives at its input terminals 32 and 33 a signal representing the voltage appearing between two points selected on the body. Thus, the voltage is detected in the voltage detecting device 25, and the so detected voltage is converted to a corresponding digital value in the A/D converter 24.

[0027] A pair of measurement current applying electrodes 50 and 51 is connected via a pair of measurement cables 40 and 41 to a pair of AC current output terminals 30 and 31, and a voltage measurement electrodes 52 and 53 is connected via a pair of measurement cables 42 and 43 to a pair of voltage measurement terminals 32 and 33. As the apparatus 1 measures bioelectric impedance between two points selected on one hand and one foot of a subject, each electrode 50, 51, 52 and 53 is applied to a predetermined point on the subject. That is, one of the measurement current applying electrodes 50 is applied to a selected inter-finger joint point of the back of the hand and the other electrode 51 is applied to a selected inter-finger joint point of the instep of the foot. And one of the voltage measurement electrodes 52 is applied to a selected point of the wrist and the other electrode 53 is applied to a selected point of the ankle.

[0028] The operation of the judging apparatus now will be described. Fig. 2 shows a flowchart illustrating a series of actions taken in the first embodiment. When the power switch is depressed (step 1), the apparatus 1 is initialized to its initial state (step 2) and the screen image for asking the subject to input his own ID number is displayed on the display. When an ID number is input, the apparatus 1 judges whether or not the ID number is stored in the auxiliary memory 5 as the one for a subject whose per-

sonal parameters are already set. The ID number is a number which is allocated for a new subject, every time when the new subject inputs his or her personal parameters at step 6 described later, and the apparatus 1 stores these personal parameters, measurement results, operational results, judgement results and the like associated with the above ID number into the auxiliary memory 5 and manages such information for each subject, although the detailed operations of which are omitted here. When the input ID number is not the one for a subject whose personal parameters are already set, then the apparatus 1 displays the message on the display 6 saying that the input ID number is not correct and the subject should input his or her correct personal parameters again (step 6). When the input ID number is the one for a subject whose personal parameters are already set, then the apparatus 1 further judges whether or not the reset instruction is input by the subject through the key-operated input device 9 (step 4). In case the reset instruction is input or the input ID number is not the one for a subject whose personal parameters are already set, the apparatus 1 displays an image shown in Fig. 3 for inputting personal parameters and waits for inputting (steps). When a subject inputs his sex, age, height and body weight as his personal parameters, if he or she is a new subject, the apparatus 1 allocates a new ID number for him or her, and displays it on the display 6 (step 6). When the inputting operation of the personal parameters completes or in case the reset instruction is not input at the step 4, the apparatus 1 is changed to its standby condition. After the electrodes 50, 51, 52 and 53 are applied to the predetermined point on the subject's body and the instruction for starting measurement is input through the key-operated input device 9, the apparatus starts measurement for multi-frequency bioelectric impedance.

[0029] Now, the measurement for multi-frequency bioelectric impedance will be explained briefly. In this measurement, n different frequencies F_i ($i = 1, 2, \dots, n$ and n is a predetermined value) are used and the bioelectric impedance is measured n times for each frequency F_i .

[0030] Initially, the " i " is set to 1, and the first measurement of bioelectric impedance for frequency F_1 is started. That is, output signal frequency is set in the AC signal generator 20 based on a measurement control parameter previously stored in the ROM 3 or a measurement control parameter stored in the auxiliary memory 5 or the RAM 4 through the external input-output interface, and the output signal having the set frequency is output to the AC current output device 21 from the AC signal generator 20. The AC current output device 21 is composed of a constant-current outputting circuit which is capable of setting its current value. An output current value is set in the AC current output device 21 based on the measurement control parameter, and an AC current output having the output current value is supplied from the AC current output device 21 to a subject through the reference AC current detecting device 22, the AC current output terminals 30 and 31, the measurement cables 40 and 41, and

the electrodes 50 and 51 which are applied to the subject.

[0031] The reference AC current detecting device 22 detects a current flowing through the subject during the AC current output is supplied to the subject. The detected analog signal is output to the A/D converter 23, converted to digital signal and then stored in the RAM 4.

[0032] Electric potentials at two points on the subject where the electrodes 52 and 53 are applied is detected during the current is supplied to the subject. The detected values are input to the voltage detecting device 25 through the measurement cables 42 and 43, and the measurement terminals 32 and 33. Then a potential difference signal which is a difference between the two input potential values is output from the voltage detecting device 25, and this analog output signal is converted to a digital signal by the A/D converter 24. The digital signal is utilized by the control-and-arithmetic unit 2 to derive a bioelectric impedance, and the derived bioelectric impedance value is stored in the RAM 4.

[0033] Next, i is incremented to $i + 1$ ($i = i + 1$) and it is judged whether or not the i exceeds a predetermined value n . If the i exceeds the n , then the overall measurement of the bioelectric impedance is completed. On the other hand, if the i does not exceed the n , the next measurement of the bioelectric impedance for a new frequency will be conducted (step 7).

[0034] Following the above multi-frequency bioelectric impedance measurement, the judging apparatus 1 calculates a locus of bioelectrical impedance vectors and a parameters thereof based on bioelectric impedance values measured for each of a plurality of different frequencies

[0035] Now the method for calculating the locus of bioelectrical impedance vectors and the parameters will be explained briefly. Ordinarily a bioelectrical impedance can be expressed equivalently by a lumped-constant circuit, which consists of extra-cellular water resistance R_e , intra-cellular water resistance R_i , and cell membrane capacitance C_m as shown in Fig.4. The locus of bioelectrical impedance values actually measured, however, is not in conformity with a semicircular locus drawn theoretically from the impedance values, which are determined from the equivalent circuit whose components are given in the form of lumped constant elements. Because all cells of a living body cannot be expressed by one and same equivalent circuit; specifically each cell has a different shape and characteristic, and should be expressed by a different equivalent circuit allotted only to the same, particular cell for exclusive use. As a matter of fact, the locus of bioelectrical impedance vectors actually measured is given by an arc determined according to Cole-Cole model. One example of arclike locus determined from Cole-Cole model is shown in Fig.5, in which the horizontal axis and the vertical axis represent the resistive component and reactive component of the bioelectrical impedance respectively. As the reactive component of the bioelectrical impedance is capacitive, and is given by a negative value, the locus of bioelectrical impedance

is located below the X-axis as shown in Fig. 5.

[0036] As the calculated locus of bioelectrical impedance is assumed to be in conformity with circular arc shape, the points of bioelectrical impedance Z_1, Z_2, \dots, Z_N measured in terms of frequencies F_i are located as shown in Fig. 6. In the following, let us assume that the horizontal axis as a real axis is a X-axis and the vertical axis as imaginary axis is a Y-axis in a impedance vector plane.

[0037] The following correlation function (1) is derived from the Z_i ($i=1$ to n) plotted on the coordinate system:

$$(X-a)^2 + (Y-b)^2 = r^2 \quad (1)$$

, where "a" and "b" are the abscissa and ordinate of the center of the circle, "r" stands for the radius of the circle, and the equation (1) represents an approximate correlation function based on n points. Equation (1) is rewritten in terms of "X":

$$X = a \pm \sqrt{(r^2 - b^2)}$$

and as $R_0 > R_{inf}$,

$$R_0 = a + \sqrt{(r^2 - b^2)}$$

$$R_{inf} = a - \sqrt{(r^2 - b^2)}$$

is obtained. Therefore, R_e and R_i of an equivalent circuit in Fig.4 can be given as follows:

$$R_e = R_0$$

$$R_i = R_0 \cdot R_{inf} / (R_0 - R_{inf})$$

[0038] From the above calculation, combined resistance of the intra-cellular and extra-cellular water resistance R_{inf} ($=R_i/R_e$), extra-cellular water resistance R_e and intra-cellular water resistance R_i are obtained, and therefore the ratio of intra-cellular and extra-cellular water R_i/R_e is obtained. It should be noted that there is no need for personal parameters, such as height, age, sex, body weight and the like, to obtain these values.

[0039] An intra-cellular water content ICW, an extra-cellular water content ECW, a ratio of the intra-cellular water content to the extra-cellular water content

ICW/ECW, a total body water content TWB ($= ICW + ECW$) and the like can be calculated based on the obtained locus of bioelectrical impedance vectors, parameters R_0 and R_{inf} or R_e and R_i concerning thereof, and the parameters of height, age, sex and body weight which are input at step3, through an already known method. For example, the intra-cellular water content ICW, the extra-cellular water content ECW, and the total body water content TWB are calculated through the following equations using R_i , R_e , height Ht , and body weight W :

$$ICW = K_{11} Ht^2 / R_i + K_{12} W + K_{13}$$

$$ECW = K_{e1} Ht^2 / R_e + K_{e2} W + K_{e3}$$

$$TBW = ICW + ECW$$

Where $K_{11}, K_{12}, K_{13}, K_{e1}, K_{e2}$ and K_{e3} are coefficients.

[0040] Then the judging apparatus 1 judge a body water amount condition at the time when the bioelectric impedance is measured at step 7. Assuming that the intra-cellular water resistance R_i and the ratio of intra-cellular and extra-cellular water resistance R_i/R_e are the judging parameters, this judging operation is conducted by comparing each value of judging parameters obtained at step 7 with the reference values of judging parameters of the same kind which are stored in the auxiliary memory 5. However, if the reference values of judging parameters are not stored in the auxiliary memory 5, then the judging operation is not conducted. The reference values of judging parameters represent the values of judging parameters when the total body water content is in a normal condition, and are determined in step 13 which will be described later.

[0041] There is a relation that the intra-cellular water resistance and the extra-cellular water resistance rise when the intra-cellular water content and the extra-cellular water content decrease, and to the contrary, the intra-cellular water resistance and the extra-cellular water resistance drop when the intra-cellular water content and the extra-cellular water content increase. In addition, we suppose that both in edema condition in which the amount of water in a body increases and in dehydration condition in which the amount of water in a body reduced, the intra-cellular water resistance is little changed at their initial stages, and then the changes begin to appear in their later stages. The judging operation of the apparatus 1 is conducted under the above relation and the assumption. The assumption is derived from the fact that the changes in the amount of body water arise initially in a extra-cellular water, and thus the concentration of electrolytic solution in the extra-cellular water arises causing

the concentration difference between the intra-cellular water and the extra-cellular water, and then the concentration difference is relaxed gradually by the passage of water through cell membrane under the effect of osmotic pressure.

[0042] Under the above described relation and the assumption, the judging apparatus 1 judges that it is in the early stages of dehydration symptoms if the combined resistance of the intra-cellular and extra-cellular water resistance obtained this time is a little higher than the reference value and the ratio of intra-cellular and extra-cellular water resistance obtained this time is lower than the reference value, and the judging apparatus 1 judges that it is in the later stages of dehydration symptoms if the combined resistance of the intra-cellular and extra-cellular water resistance obtained this time increases drastically above the reference value and the ratio of intra-cellular and extra-cellular water resistance obtained this time is higher than the reference value. Further, the judging apparatus 1 judges that it is in the normal condition if the combined resistance of the intra-cellular and extra-cellular water resistance obtained this time is almost the same as the reference value and the ratio of intra-cellular and extra-cellular water resistance obtained this time is also the same as the reference value.

[0043] In this way, the combined resistance of the intra-cellular and extra-cellular water resistance and the ratio of intra-cellular and extra-cellular water resistance are used as judging parameters. This means that the judging operation is conducted based not only on a condition of total amount of water in a body, but also on each constituent component of body water, that is, each condition of the amount of extra-cellular water and intra-cellular water, thereby resulting in a exact and detailed judging results.

[0044] In addition, as the combined resistance of the intra-cellular and extra-cellular water resistance and the ratio of intra-cellular and extra-cellular water resistance are obtained using the bioelectric impedance which is measured under the multi-frequency bioelectric impedance measurement, these values are not affected by body temperature, so the inaccuracy in judging the body water amount condition due to the affection of the body temperature will be effectively avoided (step 9).

[0045] When the judging operation is completed, the apparatus 1 indicates on the display device 6 each resistance value obtained in step 8 and the body water amount condition judged in step 9 and the like. Fig. 7 illustrates an example of such indication (step 10). Further, the apparatus 1 sends the measurement results, the calculation results, the judgement results, the personal parameters and the like to external devices like a monitor device, a printer or the like, under the measurement-controlling parameters through the external input-output interface 7, and also stores them into the auxiliary memory 5 (step 12).

[0046] Next, the judging apparatus 1 carries out a reference value determining process for determining refer-

ence values which are used as a judging parameters in the next judging operation (step 13). Fig. 8 is a flow chart which illustrates processes for determining the reference value. The apparatus 1 first judges whether or not reference values of each parameter are stored in the auxiliary memory 5 (step 21). When the reference values are stored, the apparatus 1 judges whether each judging parameter of this time is normal or not, by comparing each parameter calculated in step 8 with the corresponding stored reference values of the judging parameters of the same kind. The apparatus 1 compares the value of the judging parameter of this time with the reference value of the judging parameter, and if, for example, the difference between the value of the judging parameter and the reference value is 20 % or more, the apparatus 1 judges that the value of the judging parameter of this time is abnormal (step 22). If the abnormal value is detected, the apparatus 1 does not use such a value of the judging parameter of this time to determine the reference value of the same kind, and does not update the reference value. In such a case, the same reference value of the judging parameter will be used again in the next judgement (step 27).

[0047] If the apparatus 1 does not detect an abnormal value in step 27 and if the apparatus 1 decides that there is no reference value in step 21, then the apparatus decides whether or not the time when the bioelectric impedance is measured to obtain the judging parameter of this time in step 7 is suitable for adopting the reference value (step 23). As a example, if the measuring time is decided to be an early time in the morning, the apparatus 1 considers the judging parameter of this time to be an abnormal value, and does not use the value to determine the reference value of the judging parameter, and does not update the reference value which has already been stored (step 27).

[0048] Further, the apparatus 1 indicates an image on the display device 6 which inquires whether or not the subject will use the judging parameter of this time to determine the reference value (step 24). If the answer which is input through the key-operated input device 9 is no, the apparatus 1 considers the judging parameter of this time to be an abnormal value, and does not use the value to determine the reference value of the judging parameter, and does not update the reference value which has already been stored (step 27).

[0049] On the other hand, if the answer which is input through the key-operated input device 9 is yes in step 24, then the apparatus 1 uses the judging parameter values of the same kind as past values, along with each past judging parameter value which was calculated until last time and had been used to determine reference values without being considered as a abnormal value from step 22 to 24 until last time. Then the apparatus 1 obtains the average value from these values and decides the obtained value as a judging parameter reference value of the same kind which will be used in the next judgement.

[0050] In this way, the reference value of judging pa-

rameters are not determined as a common value among subjects, but determined for each subject using the past values of judging parameters obtained before. Therefore, the specific reference values of judging parameters for each subject can be obtained which are not affected by the difference among individuals. In addition, since the reference values of judging parameters are determined again in the way that these values are the average values of the judging parameter values obtained in the past including the last time and abnormal values are excluded during this procedure, according as the number of times increases, the reference values of judging parameters can be obtained which indicate more exactly the body water amount in a normal condition. Therefore, it is possible to judge the body water amount condition appropriately according to each individual subject (step 25).

[0051] And then, the apparatus 1 stores the reference values of the judging parameters obtained in step 25 in the auxiliary memory 5, and closes the process for determining the reference values.

[0052] After closing the process, the apparatus 1 judges whether or not an instruction for re-measurement is input via the key-operated input device 9 (step 14). If such an instruction is input, the measurements and the judgements are conducted again from step 7. If such an instruction is not input in step 14, then a series of measurement and judgement is completed.

[0053] In this embodiment, the intra-cellular water resistance and the ratio of intra-cellular and extra-cellular water resistance, which are obtained using bioelectric impedance measured in the multi-frequency bioelectric impedance measurement in step 10, are used as judging parameters. But, at least two values selected from the intra-cellular water resistance, the extra-cellular water resistance, combined resistance of the intra-cellular and extra-cellular water resistance, and the ratio of intra-cellular and extra-cellular water may be used as judging parameters. Using these parameters, it is possible to judge the body water amount condition considering not only mere total body water amount condition, but also each constituent component of body water, that is, each amount condition of extra-cellular water and intra-cellular water. Each of these parameters is obtained from measured bioelectric impedance in the multi-frequency bioelectric impedance measurement without being affected by body temperature, and thus, inaccuracy in judging the body water amount condition due to body temperature can be effectively avoided.

[0054] Although personal parameters are input in step 6 in this embodiment, these values are necessary only for obtaining the body water amount, intra-cellular water and extra-cellular water, and are not necessary for obtaining the intra-cellular water resistance, the extra-cellular water resistance, combined resistance of the intra-cellular and extra-cellular water resistance, and the ratio of intra-cellular and extra-cellular water, which are the judging parameters in this embodiment. Therefore, it is also possible to simplify the operation of the apparatus

without inputting the personal parameters.

[0055] In addition to , or in place of the process for excluding abnormal values from step 22 through 24, it is possible to obtain an average value from the judging parameter values except for maximum and minimum values which are used to obtain reference values of judging parameters.

[0056] Next, the second embodiment of the present invention will be explained. This embodiment of the body water amount condition judging apparatus is a handheld-type in which bioelectric impedance is measured between both hands of a subject. Since personal parameters are not necessary to be input in this apparatus, easier handling for judging the dehydration condition can be achieved.

[0057] Fig. 9 is a block diagram of a body water amount condition judging apparatus according to the second embodiment of the present invention. As shown in Fig. 9, the dehydration condition judging apparatus 61 comprises a microcomputer 62 having a CPU, ROM, RAM, timer and I/O port. The CPU controls measurements and judgements, and processes the measurement data. The ROM stores programs and some parameters for control and calculation operations. The RAM temporarily stores the results of operations, the programs derived from external devices, selected parameters and the like.

[0058] The dehydration condition judging apparatus 61 further comprises a display 63, a key switch 64, an external input-output interface 65, a nonvolatile auxiliary memory 66. The display 63 shows progress made in the measurements and judgement results and the like. The key switch 64 inputs instructions and the like for controlling the present apparatus 61. The external input-output interface 65 permits the judgement results to be transferred to external devices, and inversely it permits instructions for controlling the device and some parameters and the like to be supplied from external devices. The parameters relating to the measurement are stored in the auxiliary memory 66. The data stored in the memory can be read out and updated.

[0059] The apparatus 61 further comprises a filter circuit 67, an AC current output circuit 68, a reference resistor 69, a measuring current supply electrode 70 and a measuring current supply electrode 71. The filter circuit 67 changes waveforms to signals to be applied to a living body. The AC current output circuit 68 modifies the signals outputted from the filter circuit 67 to a predetermined effective value. The measuring current supply electrode 70 is connected to one output terminal of the AC current output circuit 68 via the reference resistor 69. The measuring current supply electrode 71 is connected to the other output terminal of the AC current output circuit 68. Thus, AC current is applied through the measuring current supply electrodes 70 and 71.

[0060] The apparatus 61 further comprises a differential amplifier 72, voltage measuring electrodes 73 and 74, and a differential amplifier 75. The differential amplifier 72 detects a voltage difference between one terminal

and the other terminal of the reference resistor 69 in order to detect a current flowing into the body of the subject. The voltage measuring electrodes 73 and 74 detect voltage at two points on the subject. The differential amplifier 75 is connected to the voltage measuring electrodes 73 and 74 to detect a voltage difference between these electrodes.

[0061] The apparatus 61 further comprises a switching device 76, an A/D converter 77. The switching device 76 outputs a selected one of the outputs of the amplifiers 72, 75 based on the control of the microcomputer 62. The A/D converter 77 converts analogue signals outputted from the switching device 76 to digital signals and then outputs them to the microcomputer 62.

[0062] Figure 10 is a perspective view of the body water amount condition judging apparatus shown in Figure 9. As shown in Figure 10, the apparatus 61 comprises a housing 78 which has a substantially box shape. The voltage measuring electrodes 73 and 74 and the measuring current supply electrodes 70 and 71 are disposed to be spaced apart from each other on the circumference of the housing 78. That is, the measuring current supply electrodes 70 and 71 are disposed on a left back portion and right back portion of the housing 78, respectively. The voltage measuring electrodes 73 and 74 are disposed on a left front portion and right front portion of the housing 78, respectively. The display 63 and the key switch 64 are disposed on the front side of the housing 78.

[0063] Now the operation of the apparatus will be described. Fig. 11 shows a flowchart illustrating a series of actions of the second embodiment. When the subject activates the power switch (step 31), the apparatus 61 is initialized (step 32). Then, the apparatus 61 is changed to a measuring mode. As shown in Fig. 12, the subject contacts his or her fingers other than the thumbs to the measuring current supply electrodes 70 and 71, and contacts his or her thenars to the voltage measuring electrodes 73 and 74. The subject holds the apparatus 61 in such a way, and then inputs the instruction for starting measurement through the key switch 64. When the instruction for starting measurement is input, the apparatus 61 starts to measure multi-frequency bioelectric impedance of the subject. That is, signals are directed from the microcomputer 62 to the filter circuit 67 according to measurement control parameters which are written in a ROM in the microcomputer 62 beforehand. The filter circuit 67 adjusts the waveform of the AC current to be applied to a living body. The output of the filter circuit 67 is directed to the AC current output circuit 68. The AC current output circuit 68 modifies the alternating current to a predetermined effective value. One output terminal of the AC current output circuit 68 is connected to the measuring current supply electrode 70 via the reference resistor 69. The other output terminal of the AC current output circuit 68 is connected to the measuring current supply electrode 71. Thus, an AC current is applied through the measuring current supply electrodes 70 and 71 to the subject. The potentials of the both terminals of the refer-

ence resistor 69 are detected through a pair of voltage measuring electrodes 73 and 74 during the current is applied to the subject, and the output thereof is fed to the differential amplifier 75. The differential amplifier 72 outputs potential difference values between one terminal and the other terminal of the reference resistor 69 in order to detect a current flowing into the body of the subject. On the other hand, the voltages from two points on the subject are detected by the voltage measuring electrodes 73 and 74, and then supplied to the differential amplifier 75. The differential amplifier 75 outputs potential difference values between the two points of the subject. The potential difference values from the differential amplifiers 72 and 75 are switched by the switching device 76 based on the control signals supplied by the microcomputer 62, and then these values are fed to the A/D converter 77. The A/D converter 77 converts the supplied analogue values into digital values. The output of the A/D converter 77 is then supplied to the microcomputer 62. The microcomputer 62 determines the bioelectric impedance value based on these digital values. The measurement of the bioelectric impedance is conducted for each of a plurality of frequencies in the same way as the first embodiment. And then, the apparatus 61 obtains the vector locus of bioelectric impedance, and values of R_0 , R_{inf} , R_e and R_i , from the bioelectric impedance values measured for each of a plurality of different frequencies in the same way as the first embodiment (step 33).

[0064] Then, apparatus 61 judges a body water amount condition at the time when the bioelectric impedance is measured at step 7. Assuming that the extra-cellular water resistance R_e and the combined intra-cellular and extra-cellular water resistance R_{inf} (R_i/R_e) are the judging parameters, this judging operation is conducted by comparing each value of judging parameters obtained at step 33 with the reference values of judging parameters of the same kind which are stored in the auxiliary memory. The reference values of judging parameters are determined in step 38.

[0065] The apparatus 61 judges in the same way as the first embodiment, based on the relation between the intra-cellular water content and the extra-cellular water content, and the intra-cellular water resistance and the extra-cellular water resistance, and further based on the supposition that the intra-cellular water resistance is little changed at their initial stages, and then the changes begin to appear in their later stages. That is, the apparatus 61 judges that there is a tendency for dehydration in the body water amount condition, if the extra-cellular water resistance measured this time is higher than the reference value by 10 % or more, and the combined resistance of the intra-cellular and extra-cellular water resistance measured this time rises a little. On the other hand, the apparatus 61 judges that there is a tendency for edema, if the extra-cellular water resistance measured this time is lower than the reference value by 10 % or more, and the combined resistance of the intra-cellular and extra-cellular water resistance measured this time falls a little

(step 34).

[0066] When the result judged in step 34 is in a normal state, the apparatus 61 indicates to that effect on the display 63 (step 35), and when the result judged in step 34 is in an abnormal state, the apparatus 61 indicates to that effect on the display 63 (step 36). Further, the apparatus 61 stores the measured result, calculated result, and judgement result judged in step 34 in the auxiliary memory 66 (step 37).

[0067] Next, the apparatus 61 replace the reference value of the judging parameters stored in the auxiliary memory 66 with the reference values of the judging parameters obtained this time (step 38). That concludes a series of the measurement and the judgement.

[0068] In step 38 of this embodiment, reference values of judging parameters may be obtained in the same way as the first embodiment. It is also possible to incorporate the process from step 22 through 24 of the first embodiment into step 38 of this embodiment not to use abnormal judging parameters for obtaining the reference values of judging parameters. On the contrary, in the first embodiment, the reference values may be obtained in the same way as this embodiment.

[0069] The judging parameters are not restricted to the extra-cellular water resistance and the combined resistance of the intra-cellular and extra-cellular water resistance, but at least two values selected from the intra-cellular water resistance, the extra-cellular water resistance, combined resistance of the intra-cellular and extra-cellular water resistance, and the ratio of intra-cellular and extra-cellular water, which are measured in multi-frequency bioelectric impedance measurement, may be used as judging parameters just like the first embodiment.

[0070] Further, the measurement results, calculated results, judging results and the like, may be transferred to external devices like a monitor or a printer via the external input-output interface 65, as the occasion demands.

[0071] As can be understand form the above, according to the body water amount condition judging apparatus of the present invention, at least two values selected from the intra-cellular water resistance, the extra-cellular water resistance, combined resistance of the intra-cellular and extra-cellular water resistance, and the ratio of intra-cellular and extra-cellular water, which are obtained based on the bioelectric impedance measured in multi-frequency bioelectric impedance measurement, are used as the judging parameters. Using these parameters, it is possible to judge the body water amount condition considering not only mere total body water amount condition, but also each constituent component of body water, that is, each amount condition of extra-cellular water and intra-cellular water without being affected by body temperature, and the body water amount condition can then be judged in detail accurately.

[0072] Further, the reference value of judging parameters are not determined as a common value among sub-

jects, but determined for each subject using the past values of judging parameters obtained before. Therefore, the specific reference values of judging parameters for each subject can be obtained which are not affected by the difference among individuals. In addition, since the reference values of judging parameters are determined again in the way that these values are the average values of the judging parameter values obtained in the past including the last time and abnormal values are excluded during this procedure, according as the number of times increases, the reference values of judging parameters can be obtained which indicate more exactly the body water amount in a normal condition. Therefore, it is possible to judge the body water amount condition appropriately according to each individual subject.

[0073] In addition, as the judging parameters mentioned above can be calculated based on the bioelectric impedance, the operation of the apparatus is simplified without inputting the personal parameters such as a height, an age, a sex, a body weight, and the like.

Claims

1. A body water amount condition judging apparatus, comprising

a multi-frequency bioelectric impedance measuring device which supplies a plurality of alternating currents of different frequencies to a body of a subject and measures bioelectric impedance values;

a calculating device which calculates each judging parameter value based an said bioelectric impedance values measured;

a reference value determining unit which determines reference values;

a body water amount condition judging unit which judges a body water amount condition of the subject;

a display device for displaying a judging result of the body water amount condition judged;

wherein said calculating device calculates at least two values selected from intra-cellular water resistance, extra-cellular water resistance, combined resistance of the intra-cellular and extra-cellular water resistance, and a ratio of intra-cellular and extra-cellular water resistance, as the judging parameters for judging a body water amount condition; said reference value determining unit selects the judging parameters which are calculated in the past for the same subject as the one whose body water amount condition is to be judged and are the same kind of judging parameter values as those calculated by said calculating device, and determines them to be the reference values; said body water amount condition judging unit judges

the body water amount condition by comparing said judging parameter values calculated by the calculating device with said reference values determined by said reference value determining unit without inputting personal parameters, such as height, age, sex, body weight and the like.

2. An apparatus according to claim 1 wherein; said calculating device further calculates at least one of the values of intra-cellular water content, extra-cellular water content and total body water content.
3. An apparatus according to claim 1 or 2 wherein; said reference value determining unit determines that an average value of each judging parameter of the past is a reference value of a judging parameter of the same kind.
4. An apparatus according to claim 1 or 2 wherein; said reference value determining unit determines that the latest value in judging parameters of the past is a reference value of a judging parameter of the same kind.
5. An apparatus according to any one of claims 1 to 4 wherein; said reference value determining unit determines a reference value of a judging parameter every time the judging parameter is calculated.
6. An apparatus according to any one of claims 1 to 5 wherein; said reference value determining unit does not use a value of a judging parameter for determining a reference value of the judging parameter, when the value of the judging parameter is abnormal.
7. An apparatus according to claim 6 wherein; said reference value determining unit determines that a value of a judging parameter is abnormal, when the difference between each value of the judging parameter and a reference value of the judging parameter of the same kind which is already determined exceeds the predetermined value.
8. An apparatus according to claim 6 or 7 wherein; said reference value determining unit determines whether a value of a judging parameter is abnormal or not depending upon the time a bioelectric impedance value is determined for calculating the value of the judging parameter.
9. An apparatus according to any one of claims 6 to 8 further comprising:

an abnormal value selecting device; wherein; said abnormal value selecting device decides whether a subject uses a value of a judging pa-

rameter for determining a reference value or not; said reference value determining unit determines whether the value of the judging parameter is abnormal or not responding to said abnormal value selecting device.

10. An apparatus according to claim 8 wherein; said reference value determining unit decides that a value of a judging parameter is abnormal if the time a bioelectric impedance value is determined for calculating the value of the judging parameter is in the hour of rising for the subject.

Patentansprüche

1. Körperwassermengenzustandsschätzvorrichtung bzw. Vorrichtung zur Schätzung der Wassermenge bzw. des Wassermengenzustands im Körper, umfassend

eine Multi-Frequenz-Bioelektrische-Impedanz-Meßeinrichtung bzw. eine Einrichtung zum Messen der bioelektrischen Impedanz bei mehreren Frequenzen, welche eine Mehrzahl von Wechselströmen unterschiedlicher Frequenzen zu einem Körper eines Probanden zuführt und bioelektrische Impedanzwerte misst;
eine Berechnungseinrichtung, welche jeden Schätzungsparameterwert basierend auf den gemessenen bioelektrischen Impedanzwerten berechnet;
eine Referenzwertbestimmungseinheit, welche Referenzwerte bestimmt;
eine Körperwassermengenzustandsschätzereinheit bzw. Einheit zur Schätzung der Wassermenge bzw. des Wassermengenzustands im Körper, welche einen Körperwassermengenzustand des Probanden schätzt;
eine Anzeigeeinrichtung zum Anzeigen eines Schätzungsergebnisses der geschätzten Körperwassermenge;

wobei die Berechnungseinrichtung mindestens zwei Werte ausgewählt aus dem Widerstand des intrazellulären Wassers, dem Widerstand des extrazellulären Wassers, dem kombinierten Widerstand aus dem Widerstand des intrazellulären und des extrazellulären Wassers und einem Verhältnis des Widerstandes von intrazellulärem und extrazellulärem Wasser als die Schätzungsparameter zum Schätzen einer Körperwassermenge berechnet;
die Referenzwertbestimmungseinheit die Schätzungsparameter auswählt, welche in der Vergangenheit für den gleichen Probanden wie dem, dessen Körperwassermengenzustand geschätzt werden soll, berechnet wurden bzw. sind, und welche die gleiche Art von Schätzungsparameterwerten

- sind wie die, die durch die Berechnungseinrichtung berechnet wurden, und sie zu Referenzwerten bestimmt;
- die Körperwassermengenzustandsschätzeinheit den Körperwassermengenzustand durch Vergleichen der Schätzungsparameterwerte, welche durch die Berechnungseinrichtung berechnet wurden, mit den Referenzwerten, welche durch die Referenzwertbestimmungseinheit bestimmt wurden, ohne die Eingabe persönlicher Parameter wie Größe, Alter, Geschlecht, Körpergewicht und ähnlichen schätzt.
2. Vorrichtung nach Anspruch 1, wobei die Berechnungseinrichtung ferner mindestens einen der Werte aus intrazellulärem Wassergehalt, extrazellulärem Wassergehalt und Gesamtkörperwassergehalt berechnet.
 3. Vorrichtung nach Anspruch 1 oder 2, wobei die Referenzwertbestimmungseinheit bestimmt, dass ein Durchschnittswert von jedem Schätzungsparameter aus der Vergangenheit ein Referenzwert eines Schätzungsparameters der gleichen Art ist.
 4. Vorrichtung nach Anspruch 1 oder 2, wobei die Referenzwertbestimmungseinheit bestimmt, dass der letzte Wert der Schätzungsparameter bzw. beim Schätzen von Parametern der Vergangenheit ein Referenzwert eines Schätzungsparameters der gleichen Art ist.
 5. Vorrichtung nach einem der Ansprüche 1 bis 4, wobei die Referenzwertbestimmungseinheit jedes Mal einen Referenzwert eines Schätzungsparameters bestimmt, wenn der Schätzungsparameter berechnet wird.
 6. Verfahren nach einem der Ansprüche 1 bis 5, wobei die Referenzwertbestimmungseinheit nicht einen Wert eines Schätzungsparameters zum Bestimmen eines Referenzwertes des Schätzungsparameters verwendet, wenn der Wert des Schätzungsparameters anomal ist.
 7. Vorrichtung nach Anspruch 6, wobei die Referenzwertbestimmungseinheit bestimmt, dass ein Wert eines Schätzungsparameters anomal ist, wenn die Differenz zwischen jedem Wert des Schätzungsparameters und einem Referenzwert des Schätzungsparameters der gleichen Art, welcher bereits bestimmt wurde bzw. ist, den vorbestimmten Wert übersteigt.
 8. Vorrichtung nach Anspruch 6 oder 7, wobei die Referenzwertbestimmungseinheit bestimmt, ob ein Wert eines Schätzungsparameters anomal ist oder nicht, in Abhängigkeit von der Zeit zu bzw. in
- der ein bioelektrischer Impedanzwert zum Berechnen des Wertes des Schätzungsparameters bestimmt wird.
9. Vorrichtung nach einem der Ansprüche 6 bis 8, ferner umfassend:
 - eine Auswahleinrichtung für anomale Werte, wobei
 - die Auswahleinrichtung für anomale Werte entscheidet, ob ein Proband einen Wert eines Schätzungsparameters zum Bestimmen eines Referenzwertes verwendet oder nicht;
 - die Referenzwertbestimmungseinheit bestimmt, ob der Wert des Schätzungsparameters anomal ist oder nicht, als Reaktion auf die Auswahleinrichtung für anomale Werte.
 10. Vorrichtung nach Anspruch 8, wobei die Referenzwertbestimmungseinheit entscheidet, dass ein Wert eines Schätzungsparameters anomal ist, wenn die Zeit, zu bzw. in der ein bioelektrischer Impedanzwert zum Berechnen des Wertes des Schätzungsparameters bestimmt wird, in der Stunde des Aufstehens für den Probanden liegt.

Revendications

1. Dispositif d'estimation de situation de la quantité d'eau dans le corps, comprenant
 - un dispositif de mesure d'impédance bioélectrique multifréquence, qui fournit une pluralité de courants alternatifs de différentes fréquences au corps d'un sujet et mesure les valeurs d'impédance bioélectrique,
 - un dispositif de calcul qui calcule chaque valeur de paramètre d'estimation sur la base desdites valeurs d'impédance bioélectrique mesurées,
 - une unité de détermination de valeurs de référence qui détermine des valeurs de référence,
 - une unité d'estimation de situation de la quantité d'eau dans le corps qui estime une situation de la quantité d'eau dans le corps du sujet,
 - un dispositif d'affichage destiné à afficher un résultat d'estimation de la situation de la quantité d'eau dans le corps estimée,
- dans lequel ledit dispositif de calcul calcule au moins deux valeurs sélectionnées parmi la résistance à l'eau intra-cellulaire, la résistance à l'eau extra-cellulaire, la résistance combinée de la résistance à l'eau intra-cellulaire et de la résistance à l'eau extra-cellulaire, et un rapport de la résistance à l'eau intra-cellulaire et de la résistance à l'eau extra-cellulaire, en tant que paramètres d'estimation en vue d'estimer une situation de la quantité d'eau dans le corps,

- ladite unité de détermination de valeurs de référence sélectionne les paramètres d'estimation qui sont calculés par le passé pour le même sujet que celui dont la situation de la quantité d'eau dans le corps doit être estimée et sont le même type de valeurs de paramètres d'estimation que celles calculées par ledit dispositif de calcul, et détermine qu'ils sont les valeurs de référence,
- ladite unité d'estimation de situation de la quantité d'eau dans le corps estime la situation de la quantité d'eau dans le corps en comparant lesdites valeurs de paramètres d'estimation calculées par le dispositif de calcul auxdites valeurs de référence déterminées par ladite unité de détermination de valeurs de référence sans entrer de paramètres personnels tels que la taille, l'âge, le sexe, le poids et autres.
2. Dispositif selon la revendication 1, dans lequel :
- ledit dispositif de calcul calcule en outre au moins l'une des valeurs du contenu en eau intracellulaire, du contenu en eau extracellulaire et du contenu en eau dans le corps totale.
3. Dispositif selon la revendication 1 ou 2, dans lequel :
- ladite unité de détermination de valeurs de référence détermine qu'une valeur moyenne de chaque paramètre d'estimation passé est une valeur de référence d'un paramètre d'estimation du même type.
4. Dispositif selon la revendication 1 ou 2, dans lequel :
- ladite unité de détermination de valeurs de référence détermine que la toute dernière valeur des paramètres d'estimation passés est une valeur de référence d'un paramètre d'estimation du même type.
5. Dispositif selon l'une quelconque des revendications 1 à 4, dans lequel :
- ladite unité de détermination de valeurs de référence détermine une valeur de référence d'un paramètre d'estimation à chaque fois que le paramètre d'estimation est calculé.
6. Dispositif selon l'une quelconque des revendications 1 à 5, dans lequel :
- ladite unité de détermination de valeurs de référence n'utilise pas une valeur d'un paramètre d'estimation en vue de déterminer une valeur de référence du paramètre d'estimation, lorsque la valeur du paramètre d'estimation est anormale.
7. Dispositif selon la revendication 6, dans lequel :
- ladite unité de détermination de valeurs de référence détermine qu'une valeur d'un paramètre d'estimation est anormale, lorsque la différence entre chaque valeur du paramètre d'estimation et une valeur de référence du paramètre d'estimation du même type qui est déjà déterminée, dépasse la valeur prédéterminée.
8. Dispositif selon la revendication 6 ou 7, dans lequel :
- ladite unité de détermination de valeurs de référence détermine si une valeur d'un paramètre d'estimation est anormale ou non en fonction du moment où une valeur d'impédance bioélectrique est déterminée pour calculer la valeur du paramètre d'estimation.
9. Dispositif selon l'une quelconque des revendications 6 à 8, comprenant en outre :
- un dispositif de sélection de valeur anormale, où ledit dispositif de sélection de valeur anormale décide si un sujet utilise une valeur d'un paramètre d'estimation pour déterminer une valeur de référence ou non,
- ladite unité de détermination de valeurs de référence détermine si la valeur du paramètre d'estimation est anormale ou non en réponse audit dispositif de sélection de valeur anormale.
10. Dispositif selon la revendication 8, dans lequel :
- ladite unité de détermination de valeurs de référence décide qu'une valeur d'un paramètre d'estimation est anormale si le moment lorsqu'une valeur d'impédance bioélectrique est déterminée pour calculer la valeur du paramètre d'estimation s'inscrit dans l'heure du lever du sujet.

FIG. 1

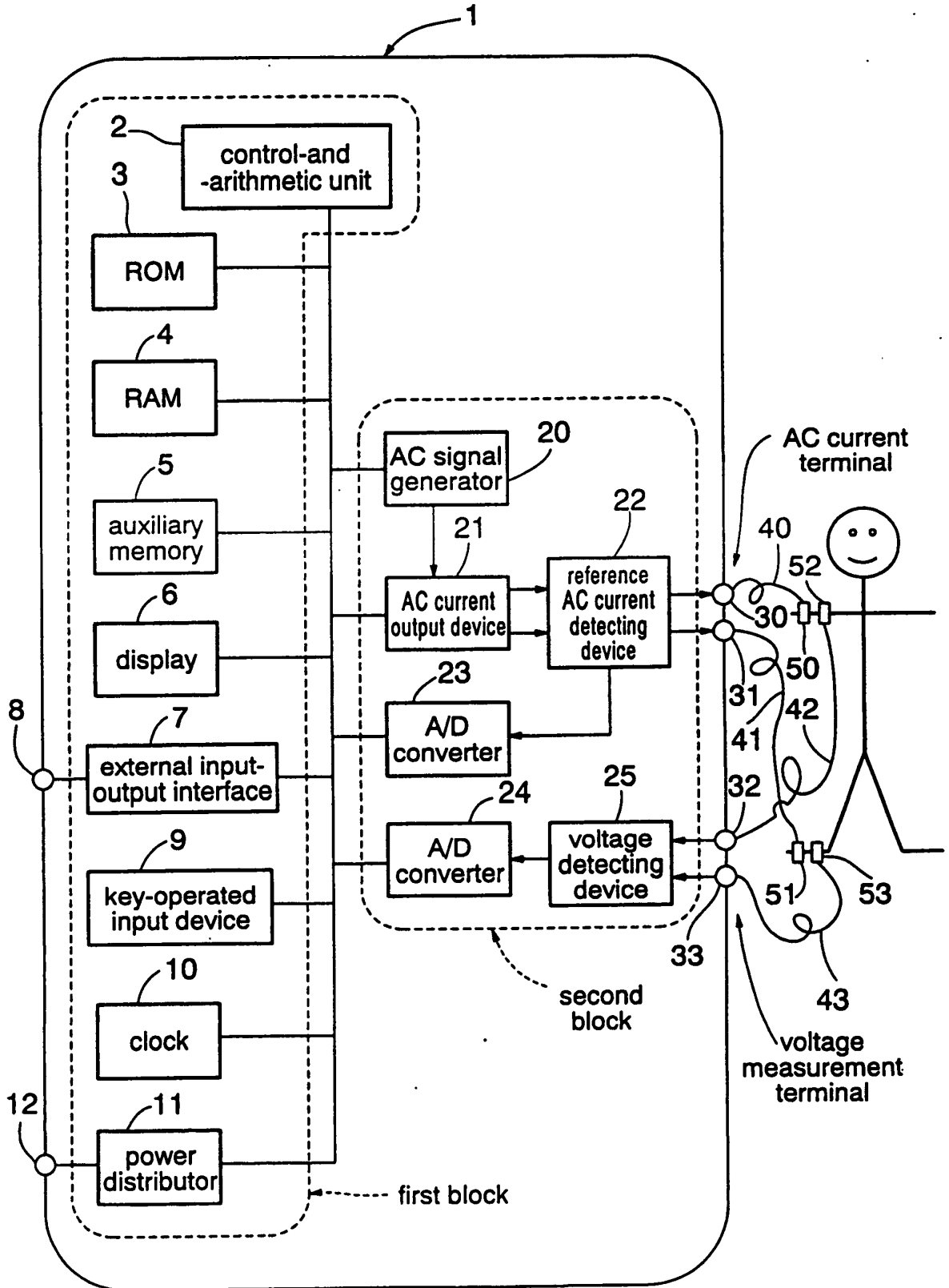


FIG. 2

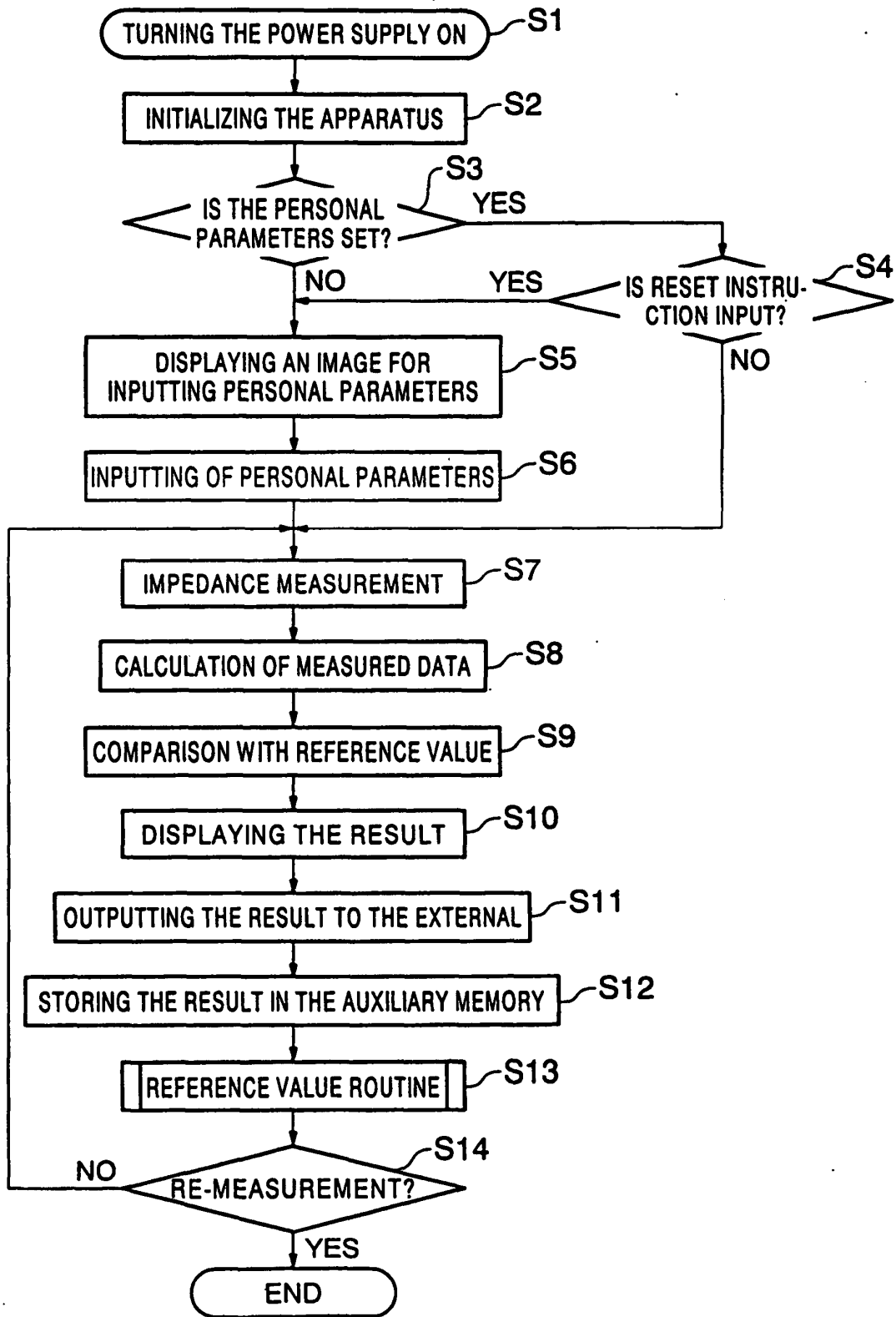


FIG. 3

Parameter input	
ID :	009876
Sex:	male
Age:	
Height:	cm
Body weight	kg

FIG. 4

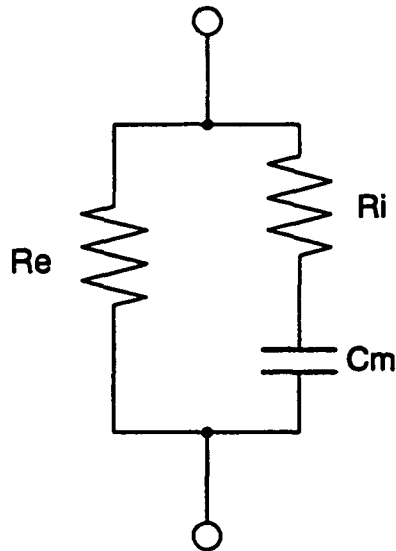


FIG. 5

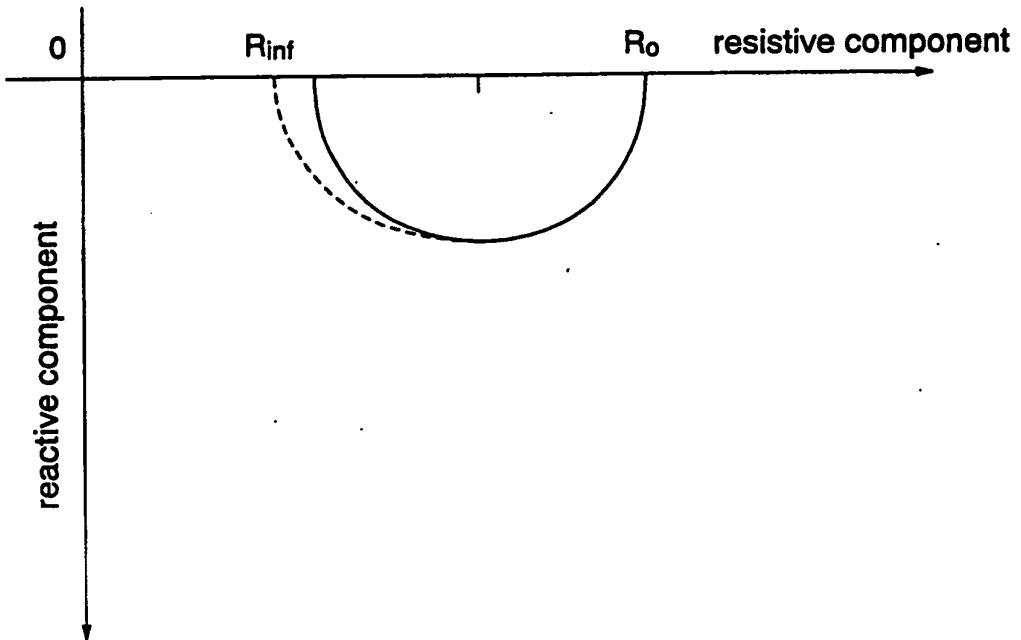


FIG. 6

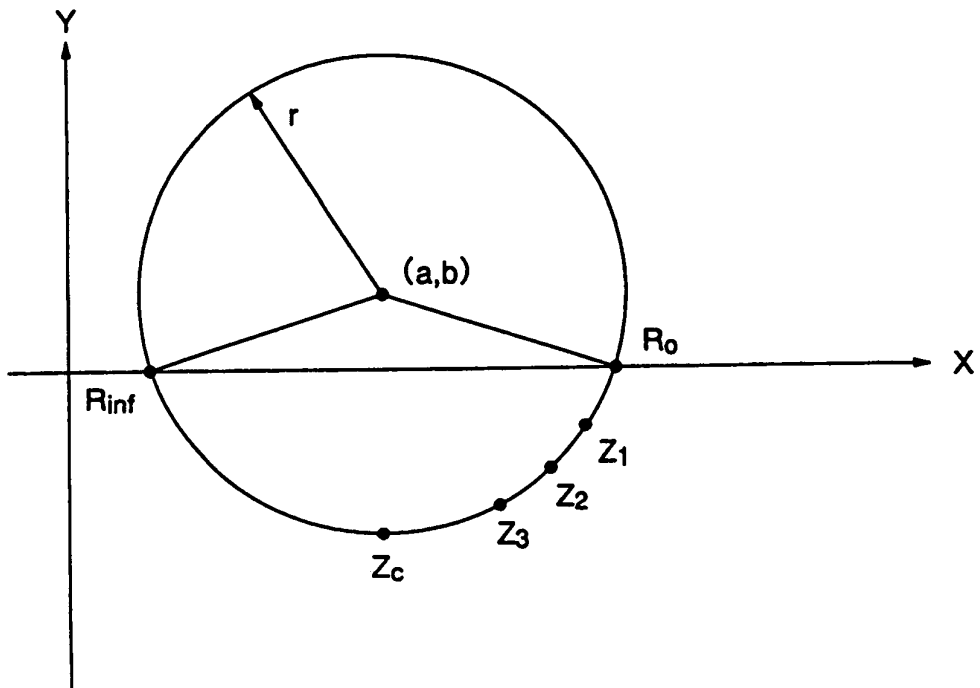


FIG. 7

Measurement Result			
Ro/Re:	Ω	ECW:	Ω
Rinf:	Ω	ICW:	Ω
Ri:	Ω	TBW:	Ω
Body water amount is normal			

FIG. 8

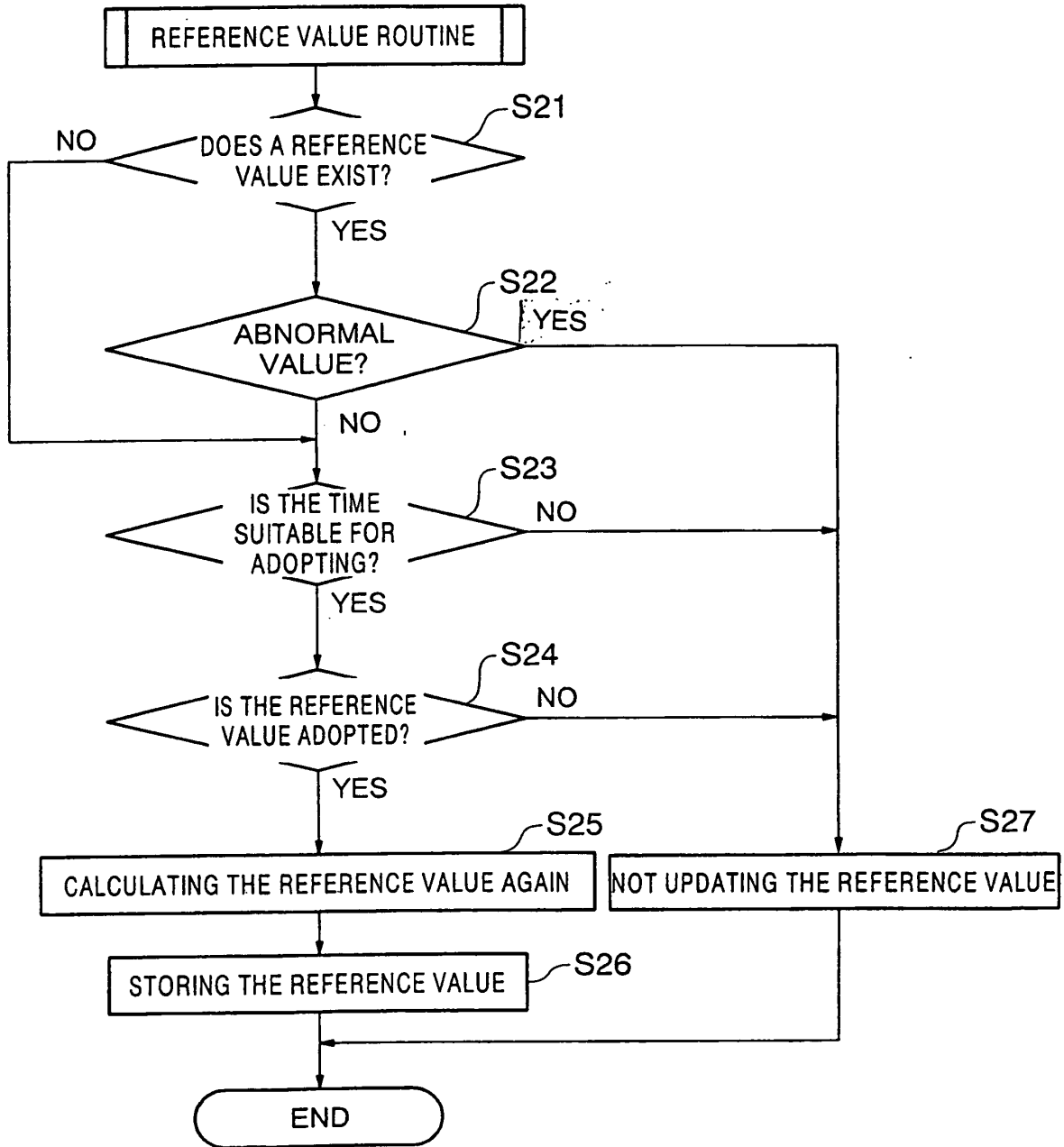


FIG. 9

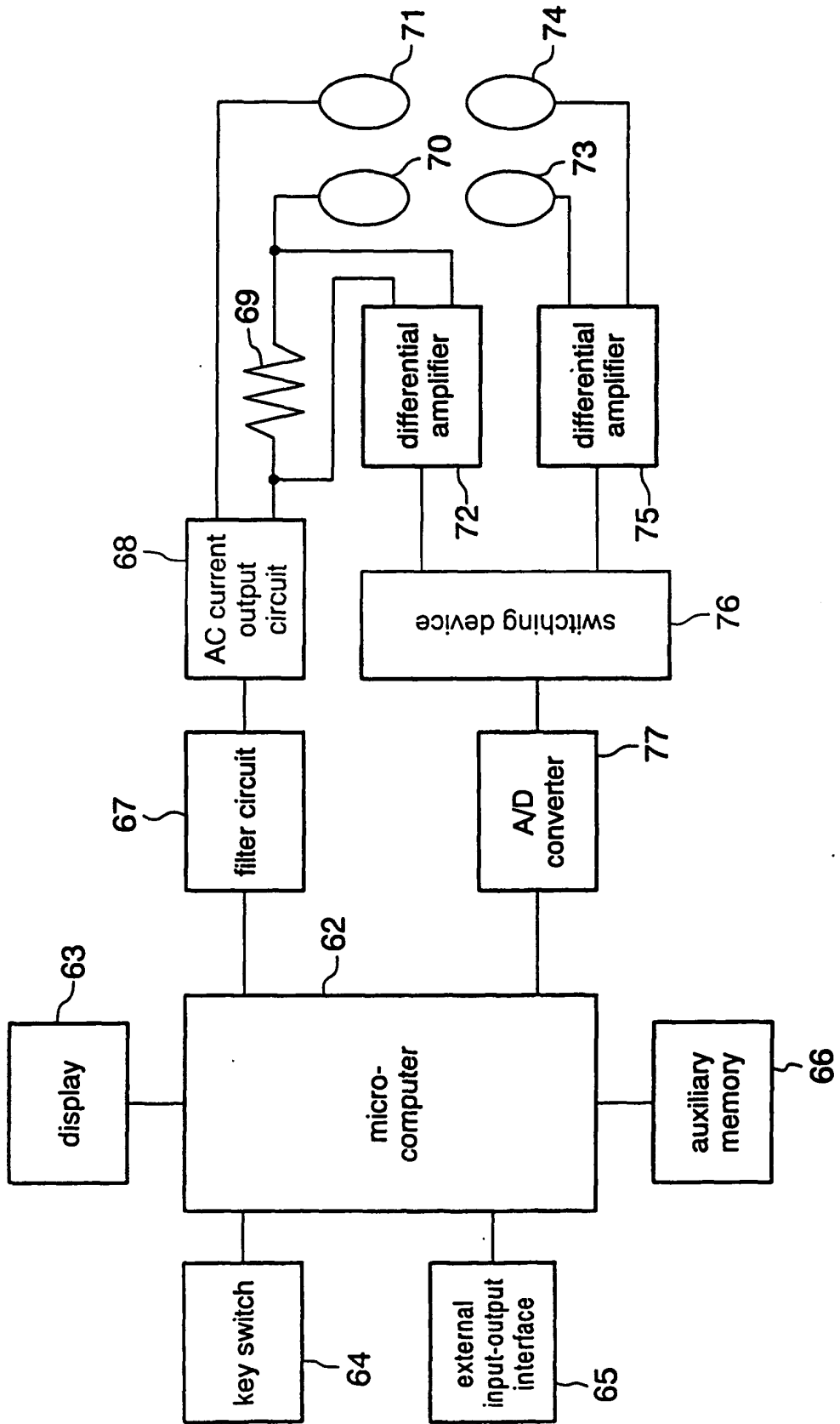


FIG. 10

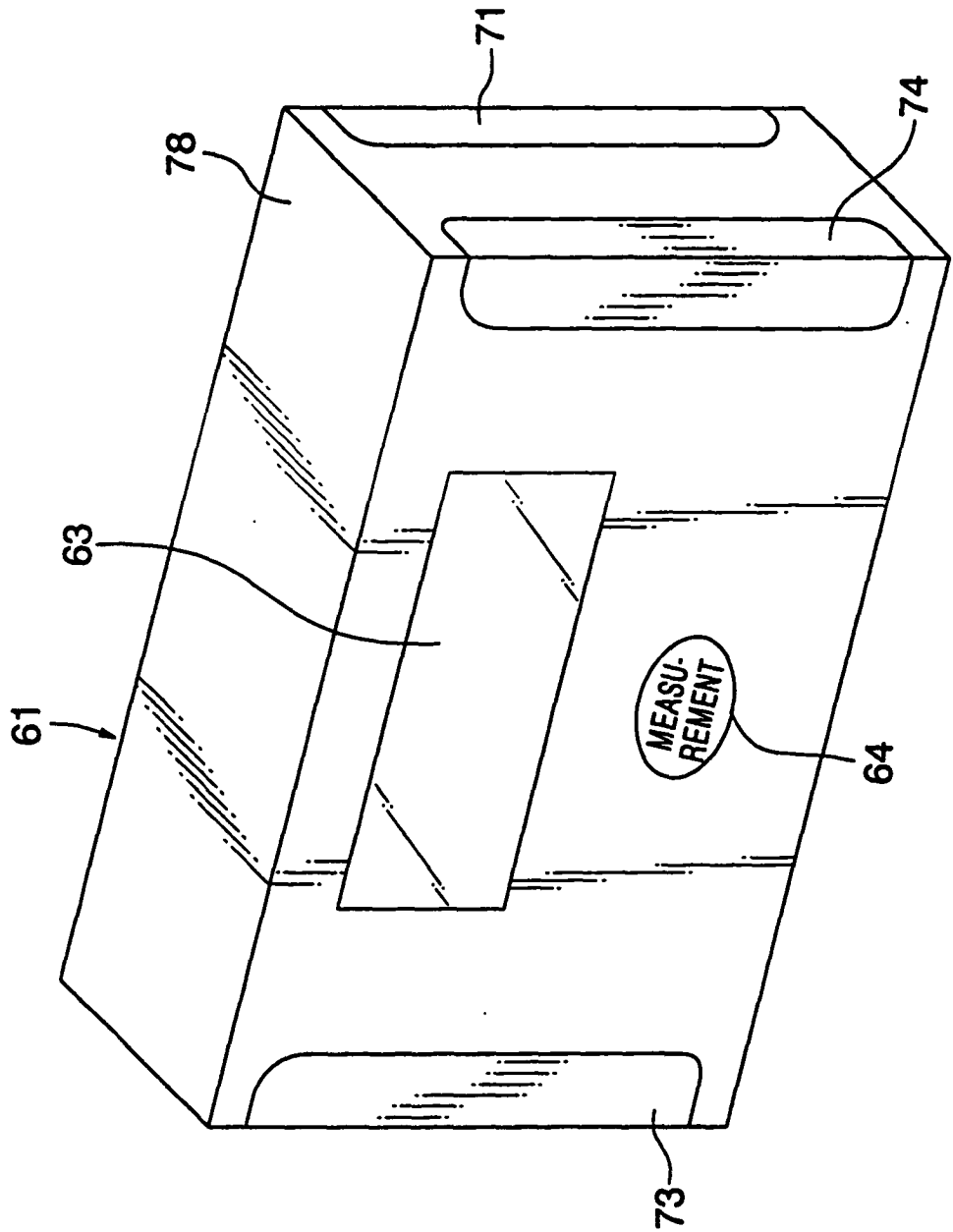


FIG. 11

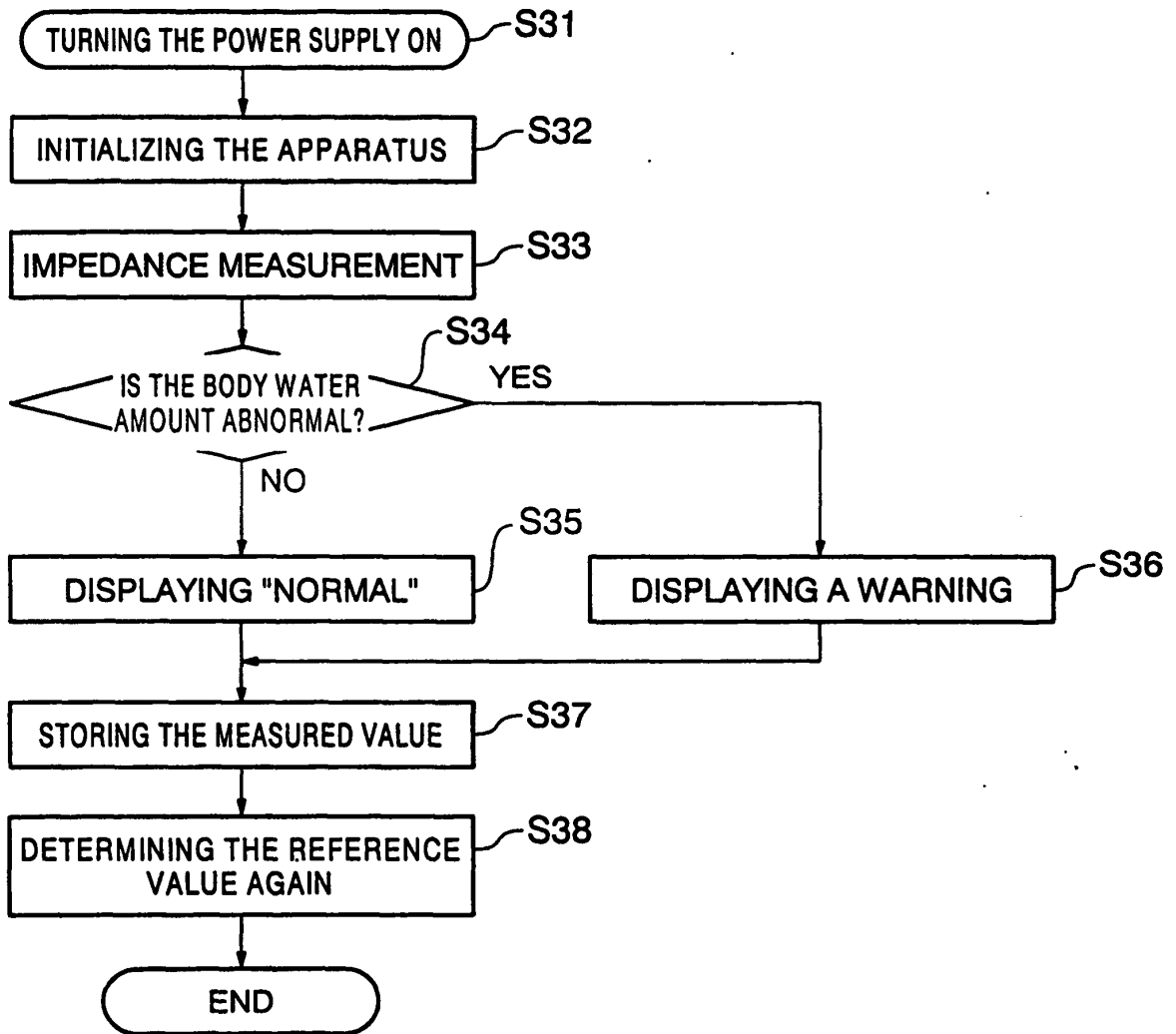
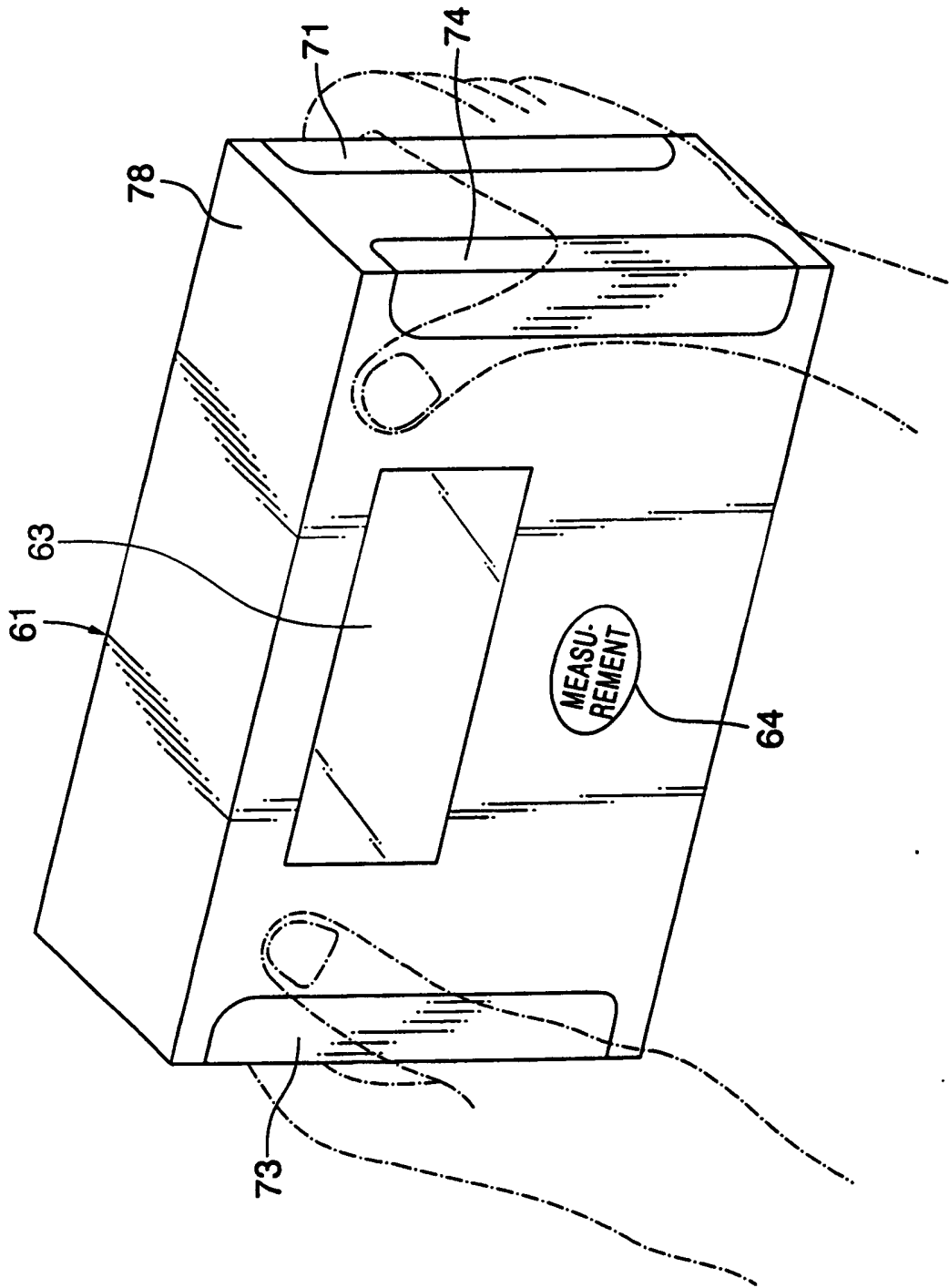


FIG. 12



REFERENCES CITED IN THE DESCRIPTION

This list of references cited by the applicant is for the reader's convenience only. It does not form part of the European patent document. Even though great care has been taken in compiling the references, errors or omissions cannot be excluded and the EPO disclaims all liability in this regard.

Patent documents cited in the description

- JP 11318845 A [0005]
- US 5449000 A [0009]

专利名称(译)	一种通过多频生物电阻抗测量的体水量状态判断装置		
公开(公告)号	EP1177760B1	公开(公告)日	2007-06-27
申请号	EP2001118268	申请日	2001-07-30
[标]申请(专利权)人(译)	株式会社百利达		
申请(专利权)人(译)	TANITA CORPORATION		
当前申请(专利权)人(译)	TANITA CORPORATION		
发明人	TAKEHARA, KATSUMI, C/O TANITA CORPORATION TAKEHARA, TOMOKO, C/O TANITA CORPORATION		
IPC分类号	A61B5/00 A61B5/05 A61B5/053		
CPC分类号	A61B5/4869 A61B5/0537 A61B5/4878 A61B2560/0468		
优先权	2000232703 2000-08-01 JP		
其他公开文献	EP1177760A1		
外部链接	Espacenet		

摘要(译)

本发明公开了一种能够详细判断水体或脱水等体内水量状态的体内水量状态判定装置。在该装置中，至少两个值选自细胞内耐水性，细胞外耐水性，细胞内和细胞外耐水性的组合抗性，以及细胞内和细胞外水的比例。体积水量条件的参数，该装置包括多频生物电阻抗测量装置，用于使用具有不同频率的AC电流测量生物电阻抗，计算装置用于根据测量的生物电阻抗值计算判断参数的每个值，一个体水量条件判断装置，用于根据计算出的判断参数的每个值判断体水量条件，以及显示装置，用于显示如此判断的体水量条件的判断结果。

$$(X-a)^2 + (Y-b)^2 = r^2 \quad (1)$$