

(19)



(11)

**EP 2 567 532 B1**

(12)

**EUROPEAN PATENT SPECIFICATION**

(45) Date of publication and mention of the grant of the patent:

**18.12.2019 Bulletin 2019/51**

(51) Int Cl.:

<b>A61B 5/16</b> <small>(2006.01)</small>	<b>A61B 5/024</b> <small>(2006.01)</small>
<b>A61B 5/053</b> <small>(2006.01)</small>	<b>H04N 1/32</b> <small>(2006.01)</small>
<b>H04N 101/00</b> <small>(2006.01)</small>	<b>H04N 1/00</b> <small>(2006.01)</small>

(21) Application number: **11800289.8**

(86) International application number:

**PCT/IB2011/052885**

(22) Date of filing: **30.06.2011**

(87) International publication number:

**WO 2012/001651 (05.01.2012 Gazette 2012/01)**

**(54) RESPONDING TO CHANGES IN EMOTIONAL CONDITION OF A USER**

REAKTION AUF ÄNDERUNGEN IM EMOTIONALEN ZUSTAND EINES BENUTZERS

RÉPONSE À DES CHANGEMENTS D'UNE SITUATION ÉMOTIONNELLE D'UN UTILISATEUR

(84) Designated Contracting States:

**AL AT BE BG CH CY CZ DE DK EE ES FI FR GB GR HR HU IE IS IT LI LT LU LV MC MK MT NL NO PL PT RO RS SE SI SK SM TR**

(72) Inventor: **SIVADAS, Sunil**

**FIN-33720 Tampere (FI)**

(30) Priority: **01.07.2010 US 829122**

(74) Representative: **Swindell & Pearson Limited**

**48 Friar Gate  
Derby DE1 1GY (GB)**

(43) Date of publication of application:

**13.03.2013 Bulletin 2013/11**

(56) References cited:

<b>EP-A1- 1 509 042</b>	<b>EP-A1- 1 522 256</b>
<b>EP-A1- 1 522 256</b>	<b>GB-A- 2 400 667</b>
<b>US-A1- 2008 027 984</b>	<b>US-A1- 2008 027 984</b>
<b>US-A1- 2008 253 695</b>	<b>US-A1- 2009 110 246</b>
<b>US-A1- 2010 022 279</b>	

(73) Proprietor: **Nokia Technologies Oy  
02610 Espoo (FI)**

**EP 2 567 532 B1**

Note: Within nine months of the publication of the mention of the grant of the European patent in the European Patent Bulletin, any person may give notice to the European Patent Office of opposition to that patent, in accordance with the Implementing Regulations. Notice of opposition shall not be deemed to have been filed until the opposition fee has been paid. (Art. 99(1) European Patent Convention).

## Description

### Field of the Invention

[0001] This invention relates to responding to changes in a tracked emotional condition of a user.

### Background to the Invention

[0002] It is known to represent emotions in text-based messages, such as short message service (SMS) messages, emails, blogs and such like, using emoticons. These are constructed from two or more ASCII characters, and often represent a human face having a certain expression. Emoticons can be inserted into text by a user entering the relevant sequence of ASCII characters. With some mobile devices, emoticons can be selected from a menu and then inserted into text.

[0003] EP 1522256 A1 relates to an information recording device and an information recording method for obtaining bio-information and environment information. The method relies on monitoring inputs from bio-information sensors and environment sensors, and recording images or sound if the bio-information and/or environment information is changed. Therefore the user may be reminded of what was going on when the recording was made.

[0004] US 2008/027984 A1 relates to a method and system in which a user can create a multi-media message such as a text or audio visual message. A sensory action is coupled to the message. The sensory action could be a squeezing or pressing action on a dedicated sensory element. Different sensory elements may express different emotions so that the user can choose which sensory elements to depress in accordance with an emotion when they are creating the message.

[0005] The information indicative of the emotion indicated by the sensory element is transmitted to the recipient of the message where it is communicated to the user of the recipient device. For example the recipient device may vibrate or change the colour of the text in accordance with the indicated emotion.

### Summary of the Invention

[0006] The invention is set out in the appended set of claims. The embodiments and/or examples of the following description which are not covered by the appended claims are considered as not being part of the present invention. The invention is defined in the independent claims. A first aspect of the disclosure provides a method comprising:

monitoring inputs to a content item on a device from a user;  
using the user inputs to track an emotional condition of the user;  
detecting a change in the tracked emotional condi-

tion of the user; and  
in response to detecting the change, using a camera to capture an image of the user and inserting the image into the content item.

[0007] Detecting a change in the tracked emotional condition of the user may comprise determining that there has been a change in the emotional condition of the user.

[0008] The camera may be a front camera of the device.

[0009] The method may comprise communicating the content item from the device to a remote apparatus.

[0010] Using the user inputs to track an emotional condition of the user may comprise tracking a typing speed of the user and detecting a change in the tracked emotional condition of the user may comprise detecting a change in typing speed.

[0011] Using the user inputs to track an emotional condition of the user may comprise detecting a frequency of use of a backspace or delete function and detecting a change in the tracked emotional condition of the user may comprise detecting an increase in the frequency of use of a backspace or delete function.

[0012] Using the user inputs to track an emotional condition of the user may comprise monitoring a typing pressure of the user and detecting a change in the tracked emotional condition of the user may comprise detecting a change in average typing pressure.

[0013] Detecting a change in the tracked emotional condition of the user may comprise determining that there has been a change in typing speed.

[0014] Using the user inputs to track an emotional condition of the user may comprise monitoring a physiological parameter of the user and detecting a change in the tracked emotional condition of the user may comprise detecting a change in the physiological parameter. Detecting a change in the tracked emotional condition of the user may comprise determining that there has been a change in the physiological parameter.

[0015] Using the user inputs to track an emotional condition of the user and to detect a change in the tracked emotional condition of the user may comprise detecting the typing by the user of plural characters that together constitute an emoticon. Detecting a change in the tracked emotional condition of the user may comprise determining that a user has typed plural characters that together constitute an emoticon.

[0016] A second aspect of the disclosure provides apparatus comprising

at least one processor; and  
at least one memory including computer program code the at least one memory and the computer program code configured to, with the at least one processor, cause the apparatus at least to perform a method of::

monitoring inputs to a content item on a device

from a user;  
 using the user inputs to track an emotional condition of the user;  
 detecting a change in the tracked emotional condition of the user; and  
 in response to detecting the change, using a camera to capture an image of the user and inserting the image into the content item.

**[0017]** Detecting a change in the tracked emotional condition of the user may comprise determining that there has been a change in the emotional condition of the user.

**[0018]** A third aspect of the disclosure provides apparatus comprising:

means for monitoring inputs to a content item on a device from a user;  
 means for using the user inputs to track an emotional condition of the user;  
 means for detecting a change in the tracked emotional condition of the user; and  
 means responsive to detecting the change for using a camera to capture an image of the user and inserting the image into the content item.

**[0019]** A fourth aspect of the disclosure provides apparatus comprising a processor, a memory and computer code stored in the memory and controlling operation of the processor, the apparatus comprising:

computer code for monitoring inputs to a content item on a device from a user;  
 computer code for using the user inputs to track an emotional condition of the user;  
 computer code for detecting a change in the tracked emotional condition of the user; and  
 computer code for being responsive to detecting the change to use a camera to capture an image of the user and to insert the image into the content item.

**[0020]** A fifth aspect of the disclosure provides a non-transitory computer readable medium having stored thereon instructions for causing computing apparatus to perform a method comprising:

monitoring inputs to a content item on a device from a user;  
 using the user inputs to track an emotional condition of the user;  
 detecting a change in the tracked emotional condition of the user; and  
 in response to detecting the change, using a camera to capture an image of the user and inserting the image into the content item.

**[0021]** A sixth aspect of the disclosure provides a computer program, optionally stored on a medium, comprising instructions for causing computer apparatus to per-

form a method as recited above

### Brief Description of the Drawings

**[0022]** Embodiments of the present invention will now be described, by way of example only, with reference to the accompanying drawings, in which:

Figure 1 is a schematic diagram illustrating a mobile device according to aspects of the invention; and  
 Figure 2 is a flow chart illustrating operation of the Figure 1 mobile device according to aspects of the invention.

### Detailed Description of Embodiments

**[0023]** Referring firstly to Figure 1, a mobile device 10 includes a number of components. Each component is commonly connected to a system bus 11, with the exception of a battery 12. Connected to the bus 11 are a processor 13, random access memory (RAM) 14, read only memory (ROM) 15, a cellular transmitter and receiver (transceiver) 16 and a keypad or keyboard 17. The cellular transceiver 16 is operable to communicate with a mobile telephone network by way of an antenna 21

**[0024]** The keypad or keyboard 17 may be of the type including hardware keys, or it may be a virtual keypad or keyboard, for instance implemented on a touch screen. The keypad or keyboard provides means by which a user can enter text into the device 10. Also connected to the bus 11 is a microphone 18. The microphone 18 provides another means by which a user can communicate text into the device 10.

**[0025]** The device 10 also includes a front camera 19. This camera is a relatively low resolution camera that is mounted on a front face of the device 10. The front camera 19 might be used for video calls, for instance.

**[0026]** The device 10 also includes a keypad or keyboard pressure sensing arrangement 20. This may take any suitable form. The function of the keypad or keyboard pressure sensing arrangement 20 is to detect a pressure that is applied by a user on the keypad or keyboard 17 when entering text. The form may depend on the type of the keypad or keyboard 17.

**[0027]** The device includes a short range transceiver 22, which is connected to a short range antenna 23. The transceiver may take any suitable form, for instance it may be a Bluetooth transceiver, an IRDA transceiver or any other standard or proprietary protocol transceiver. Using the short range transceiver 22, the mobile device 10 can communicate with an external heart rate monitor 24 and also with an external galvanic skin response (GSR) device 25.

**[0028]** Within the ROM 15 are stored a number of computer programs and software modules. These include an operating system 26, which may for instance be the Mee-Go operating system or a version of the Symbian operating system. Also stored in the ROM 15 are one or more

messaging applications 27. These may include an email application, an instant messaging application and/or any other type of messaging application that is capable of accommodating a mixture of text and image(s). Also stored in the ROM 15 are one or more blogging applications 28. This may include an application for providing microblogs, such as those currently used for instance in the Twitter service. The blogging application or applications 28 may also allow blogging to social networking services, such as Facebook and the like. The blogging applications 28 allow the user to provide status updates and other information in such a way that it is available to be viewed by their friends and family, or by the general public, for instance through the Internet. In the following description, one messaging application 27 and one blogging application are described for simplicity of explanation.

**[0029]** Also stored in the ROM 15 is an emotion expressing software application 29, which is described in more detail below. The emotion expression application 29, briefly, is able to cause a photograph of the user's face, allowing a recipient to see expressions of emotion of the user, into a content item, for instance a text string being handled by one of the messaging applications 27 or by one of the blogging applications 28.

**[0030]** Although not shown in the Figure, the ROM 15 also includes various other software that together allow the device 10 to perform its required functions.

**[0031]** The device 10 may for instance be a mobile telephone or a smart phone. The device 10 may instead take a different form factor. For instance the device 10 may be a personal digital assistant (PDA), or netbook or similar. The device 10 preferably is a battery-powered handheld communications device.

**[0032]** The heart rate monitor 24 is configured to be supported by the user at a location such that it can detect the user's heartbeats. The GSR device 25 is worn by the user at a location where it is in contact with the user's skin, and as such is able to measure parameters such as resistance.

**[0033]** Referring now to Figure 2, operation of the emotion expression application 29 will now be described. The operation starts at step S1. Although not shown in Figure 2, the emotion expression application 29 is active when either or both of the messaging application 27 and the blogging application 28 are in use by a user. The emotion expression application 29 is responsive upon detection that a user is entering text into the messaging application 27 or the blogging application 28 to monitor device inputs at step S2. It will be appreciated that text may be entered by the user either using the keypad or keyboard 17 or by dictating to the device through the microphone 18. In the latter case, voice recognition software (not shown) provides text to the messaging application 27 or the blogging application 28.

**[0034]** Step S2 involves the emotion expression application 29 monitoring signals and data provided by the keypad or keyboard 17, and in particular by monitoring

a typing speed of the user. The emotion expression application 29 is configured to determine an average typing speed of the user, and to compare a current typing speed with the average speed. The current typing speed may be averaged over a period of time, for instance 10 seconds, optionally in a rolling window manner.

**[0035]** Step S2 alternatively or in addition comprises monitoring signals provided by the keypad or keyboard pressure sensing arrangement 20. The emotion expression application 29 is configured to monitor a pressure with which the user provides inputs on the keypad or keyboard 17. The emotion expression application 29 is configured to determine an average pressure, and to compare a current pressure with the average. The average may be determined over a predetermined time period or over a predetermined number of key presses, for instance.

**[0036]** Step S2 may alternatively or in addition involve monitoring information and signals received from the heart rate monitor 24. The emotion expression application 29 may be configured to detect the heart rate of the user by signals emanating from the heart rate monitor 24.

**[0037]** Step S2 may alternatively or in addition involve the emotion expression application 29 monitoring signals received from the GSR device 25. The emotion expression application 29 may determine a typical parameter value for the user, and from the typical parameter value be able to detect whether a current parameter is significantly above or significantly below the typical value.

**[0038]** At step S3, the emotion expression application 29 is configured to track the emotional condition of the user, using the device inputs that are monitored at step S2. Steps S2 and S3 may be performed in parallel, with step S2 in effect being performed continually.

**[0039]** Step S3 involves the emotion expression application 29 making a determination as to an emotional condition of the user, and updating the emotional condition periodically. The emotional condition may be updated frequently, for instance at intervals between half a second and 5 seconds, preferably at between intervals of between 1 second and 2 seconds. The emotional condition may be represented by the emotion expression application 29 in terms of a category. Example categories include normal, excited, happy, stressed, tired, upset etc. Alternatively, the emotional condition may take a numerical value.

**[0040]** At step S4, it is determined whether a change in the emotional condition of the user has occurred. If the emotion condition as tracked at step S3 has not changed significantly within a given time period, then step S4 yields a negative determination, and the operation proceeds again to step S2. If the emotional condition that is tracked in step S3 has changed by a significant degree, then step S4 yields a positive result, and operation progresses to step S5.

**[0041]** The details of step S4 depend on the nature of the device inputs that are being monitored to track the emotional condition at step S3. For instance, a change

in emotional condition may be inferred when the emotion expression application 29 detects that the pressure applied on the keypad or keyboard by the user, as detected by the pressure sensing arrangement 20, differs from usual levels by an amount exceeding a threshold.

**[0042]** Alternatively or in addition, a change in emotional condition may be inferred when the emotion expression application 29 detects that a speed of typing by the user into the keypad or keyboard 17 deviates from the usual typing speed by more than a threshold.

**[0043]** For instance, an increase in typing speed by more than 20% may indicate that the user is in an excited condition.

**[0044]** A change in emotional condition may be inferred also when the emotion expression application 29 detects that a skin resistance parameter of the user, as measured by the GSR device 25, as fallen below a threshold or fallen by more than a predetermined amount. A decrease in skin resistance can indicate that the user is excited or stressed.

**[0045]** Detecting that the user is using a back space or delete key or keys of the keypad or keyboard 17 to an extent that is not usual for the user is used by the emotion expression application 29 to infer a change in emotional condition. For instance, an amount of use of backspace or delete keys that deviates from a typical amount to an extent that exceeds a threshold, the threshold perhaps being specific to the user, may indicate that the user is nervous, stressed or alternatively very excited.

**[0046]** A change in emotional condition may be inferred alternatively or additionally when the user's heart rate, as detected by the heart rate monitor 24, is determined by the emotion expression application 29 to have risen by an amount exceeding a threshold within a given time period. For instance, a change in emotional condition may be inferred when the user's heart rate increases by more than 10% within a period of less than 20 seconds. An increase in heart rate may indicate that the user is excited or frightened.

**[0047]** A change in emotional condition may be inferred alternatively by the user typing an emoticon. This can be inferred because it can be assumed that a user types an emoticon only when they wish to express an emotion, and because it can be assumed that this occurs only when there is a change in emotion. In this alternative, step S4 involves the emotion expression application detecting a sequence of key presses that result in ASCII characters that together constitute an emoticon.

**[0048]** Step S4 may comprise utilising inputs from a number of different sources. For instance, step S4 may involve cross-referencing information from the heart rate monitor 24 with information about the pressure of keypad or keyboard inputs from the keypad pressure sensing apparatus 20. In this way, the device 10 can more accurately determine an emotional condition of the user when utilising information from one source alone could provide an ambiguous result.

**[0049]** At step S5 it is determined whether a device

setting that a photograph of the user's face is to be inserted into a message only at punctuation points is positive or negative. The setting is able to be changed by a user, and has a default setting. If the setting is positive, the operation proceeds to step S6. Here, it is determined whether punctuation has been entered by the user. In the event of a negative determination, the operation returns again to step S6. In the event of a negative determination from step S6 or a negative determination from step S5, the operation proceeds to step S7. Step S6 may exclude detecting punctuation that forms an emoticon.

**[0050]** At step S7, the emotion expression application 29 inserts a photograph of the user into the text string that is being entered by the user into the messaging application 27 or the blogging application 28. The image taken using the front camera is scaled to an appropriate size and may also be transformed to a colour map preferred by the user. Scaling the photograph may involve the emotion expression application 29 adjusting a size of the image provided by the front camera to a size suitable for inclusion into the text string. The size may be small, for instance approximately the size of an icon. The required size may be different depending on whether the image is being inserted into a text string of the blogging application 28 or the messaging application 27. The required size may vary depending on the type of the messaging application 27. The required size may be set by a user through a menu system of the device 10. Scaling may also involve changing other parameters of the image, for instance in order to reduce the amount of data that is needed to represent the image.

**[0051]** Following step S7, the operation proceeds again to step S2. In this way, changes in emotional conditions can result in further images being introduced into the text.

**[0052]** In parallel with steps S2 to S7, the operation determines at step S8 whether the user has selected a send or upload option of the messaging application 27 or the blogging application 28. In the event of a positive determination, the message is sent or the blog uploaded at step S9. Step S9 involves the messaging application 27 or the blogging application 28 and the transceiver 16. Following step S9, the operation ends at step S10.

**[0053]** It will be appreciated that steps and operations described above are performed by the processor 13, using the RAM 14, under control of instructions that form part of the emotion expression application 29 and/or the messaging application 27 or the blogging application 28, running on the operating system 26. During execution, some or all of the computer program that constitutes the operating system 26, the messaging application 27, the blogging application 28 and the emotion expression application 29 may be stored in the RAM 14. In the event that only some of this computer program is stored in the RAM 14, the remainder resides in the ROM 15.

**[0054]** It should be realized that the foregoing embodiments should not be construed as limiting. Other variations and modifications will be apparent to persons skilled

in the art upon reading the present application.

**[0055]** For example, in the above described embodiments of the invention the device 10 is configured to communicate with an external heart rate monitor 24 and also with an external galvanic skin response (GSR) device 25. It is to be appreciated that in other embodiments of the invention the device 10 may be configured to communicate with other different devices. The inputs provided by such devices may be monitored by the emotion expression application 29 to make a determination as to an emotional condition of the user.

**[0056]** The device 10 may be configured to communicate with any type of device which may provide a bio-signal to the device 10. In embodiments of the invention a bio-signal may comprise any type of signal which originates from a biological being such as a human being. A bio-signal may, for example, comprise a bio-electrical signal, a bio-mechanical signal, an aural signal, a chemical signal or an optical signal.

**[0057]** The bio-signal may comprise a consciously controlled signal. For example it may comprise an intentional action by the user such as the user moving a part of their body such as their arm or their eyes. In some embodiments of the invention the device 10 may be configured to determine an emotional state of a user from the detected movement of the facial muscles of the user, for example, if the user is frowning this could be detected by movement of the corrugator supercillii muscle.

**[0058]** In some embodiments of the invention the bio-signal may comprise a sub-consciously controlled signal. For example it may comprise a signal which is an automatic physiological response by the biological being. The automatic physiological response may occur without a direct intentional action by the user and may comprise, for example, an increase in heart rate or a brain signal. In some embodiments of the invention both consciously controlled and sub-consciously controlled signals may be detected.

**[0059]** A Bio-electrical signal may comprise an electrical current produced by one or more electrical potential differences across a part of the body of the user such as tissue, organ or cell system such as the nervous system. Bio-electrical signals may include signals that are detectable, for example, using electroencephalography, magneto encephalography, galvanic skin response techniques, electrocardiography and electromyography or any other suitable technique.

**[0060]** A bio-mechanical signal may comprise the user of the device 10 moving a part of their body. The movement of the part of the body may be a conscious movement or a subconscious movement. Bio-mechanical signals may include signals that are detectable using one or more accelerometers or mechanomyography or any other suitable technique.

**[0061]** An aural signal may comprise a sound wave. The aural signal may be audible to a user. Aural signals may include signals that are detectable using a microphone or any other suitable means for detecting a sound

wave.

**[0062]** A chemical signal may comprise chemicals which are being output by the user of the device 10 or a change in the chemical composition of a part of the body of the user of the device 10. Chemical signals may, for instance, include signals that are detectable using an oxygenation detector or a pH detector or any other suitable means.

**[0063]** An optical signal may comprise any signal which is visible. Optical signals may, for example, include signals detectable using a camera or any other means suitable for detecting optical signals.

**[0064]** In the illustrated embodiments of the invention the sensors and detectors are separate to the device 10 and are configured to provide an indication of a detected bio-signal to the device 10 via a communication link. The communication link could be a wireless communication link. In other embodiments of the invention the communication link could be a wired communication link. In other embodiments of the invention one or more of the sensors or detectors could be part of the device 10.

**[0065]** Moreover, the disclosure of the present application should be understood to include any novel features or any novel combination of features either explicitly or implicitly disclosed herein or any generalization thereof and during the prosecution of the present application or of any application derived therefrom, new claims may be formulated to cover any such features and/or combination of such features.

## Claims

### 1. A method comprising:

monitoring user inputs to a content item (27,28) on a device (10) input by a user;  
 using the user inputs to track an emotional condition of the user;  
 determining whether a change in the tracked emotional condition of the user has occurred; and  
 in response to determining that a change in the tracked emotional condition of the user has occurred, using a camera (19) to capture an image of the user and inserting the image into the content item; and  
 in response to determining that a change in the tracked emotional condition of the user has not occurred continuing to monitor inputs without capturing an image.

### 2. A method as claimed in claim 1, wherein the camera is a front camera of the device.

### 3. A method as claimed in either preceding claim, comprising communicating the content item from the device to a remote apparatus.

4. A method as claimed in any preceding claim, wherein using the user inputs to track an emotional condition of the user comprises tracking a typing speed of the user and wherein detecting a change in the tracked emotional condition of the user comprises detecting a change in typing speed. 5
5. A method as claimed in any preceding claim, wherein using the user inputs to track an emotional condition of the user comprises detecting a frequency of use of a backspace or delete function and wherein detecting a change in the tracked emotional condition of the user comprises detecting an increase in the frequency of use of a backspace or delete function. 10
6. A method as claimed in any preceding claim, wherein using the user inputs to track an emotional condition of the user comprises monitoring a typing pressure of the user and wherein detecting a change in the tracked emotional condition of the user comprises detecting a change in average typing pressure. 15
7. A method as claimed in any preceding claim, wherein using the user inputs to track an emotional condition of the user comprises monitoring a physiological parameter of the user and wherein detecting a change in the tracked emotional condition of the user comprises detecting a change in the physiological parameter. 20
8. Apparatus (10) comprising:  
 means for monitoring user inputs to a content item (27,28) on a device (10) input by a user;  
 means for using the user inputs to track an emotional condition of the user;  
 means for determining whether a change in the tracked emotional condition of the user has occurred;  
 means, responsive to determining that a change in the tracked emotional condition of the user has occurred, for using a camera (19) to capture an image of the user and inserting the image into the content item; and  
 means, responsive to determining that a change in the tracked emotional condition of the user has not occurred, for continuing to monitor inputs without capturing an image. 25  
 30  
 35  
 40
9. Apparatus as claimed in claim 8, wherein the camera is a front camera forming part of the apparatus. 50
10. Apparatus as claimed in claim 8 or claim 9, comprising means for communicating the content item from the device to a remote apparatus. 55
11. Apparatus as claimed in any of claims 8 to 10, wherein the means for using the user inputs to track an emotional condition of the user comprises means for tracking a typing speed of the user and wherein the means for detecting a change in the tracked emotional condition of the user comprises means for detecting a change in typing speed.
12. Apparatus as claimed in any of claims 8 to 11, wherein the means for using the user inputs to track an emotional condition of the user comprises means for monitoring a typing pressure of the user and wherein the means for detecting a change in the tracked emotional condition of the user comprises means for detecting a change in average typing pressure.
13. A device comprising the apparatus of any of claims 8 to 12.
14. A non-transitory computer readable medium having stored thereon instructions for causing computing apparatus (10) to perform a method (29) comprising:  
 monitoring user inputs to a content item (27,28) on a device (10) input by a user;  
 using the user inputs to track an emotional condition of the user;  
 determining whether a change in the tracked emotional condition of the user has occurred;  
 and  
 in response to determining that a change in the tracked emotional condition of the user has occurred, using a camera (19) to capture an image of the user and inserting the image into the content item; and  
 in response to determining that a change in the tracked emotional condition of the user has not occurred continuing to monitor inputs without capturing an image. 30  
 35  
 40
15. A computer program, optionally stored on a medium, comprising instructions for causing computer apparatus to perform a method as claimed in any of claims 1 to 7. 45

#### Patentansprüche

##### 1. Verfahren, das Folgendes umfasst:

- Überwachen von Anwendereingaben an einem Inhaltselement (27, 28) auf einer Einrichtung (10), die durch einen Anwender eingegeben werden;  
 Verwenden der Anwendereingaben, um einen emotionalen Zustand des Anwenders zu verfolgen;  
 Bestimmen, ob eine Änderung des verfolgten emotionalen Zustands des Anwenders aufgetreten ist;

- Verwenden als Antwort auf ein Bestimmen, dass eine Änderung des verfolgten emotionalen Zustands des Anwenders aufgetreten ist, einer Kamera (19), um ein Bild des Anwenders aufzunehmen und das Bild in das Inhaltselement einzusetzen; und  
 Fortsetzen des Überwachens von Eingaben, ohne ein Bild aufzunehmen, als Antwort auf die Bestimmung, dass keine Änderung des verfolgten emotionalen Zustands des Anwenders aufgetreten ist.
- 5
2. Verfahren nach Anspruch 1, wobei die Kamera eine Frontkamera der Einrichtung ist.
- 10
3. Verfahren nach einem vorhergehenden Anspruch, das ein Kommunizieren des Inhaltselements von der Einrichtung zu einer entfernten Vorrichtung umfasst.
- 20
4. Verfahren nach einem vorhergehenden Anspruch, wobei das Verwenden der Anwendereingaben zum Verfolgen eines emotionalen Zustands des Anwenders ein Verfolgen einer Tippgeschwindigkeit des Anwenders umfasst und das Detektieren einer Änderung des verfolgten emotionalen Zustands des Anwenders ein Detektieren einer Änderung der Tippgeschwindigkeit umfasst.
- 25
5. Verfahren nach einem vorhergehenden Anspruch, wobei das Verwenden der Anwendereingaben zum Verfolgen eines emotionalen Zustands des Anwenders ein Detektieren einer Häufigkeit des Verwendens einer Rücktaste oder einer Löschfunktion umfasst und das Detektieren einer Änderung des verfolgten emotionalen Zustands des Anwenders ein Detektieren eines Anstiegs der Häufigkeit einer Verwendung einer Rücktaste oder einer Löschfunktion umfasst.
- 30
6. Verfahren nach einem vorhergehenden Anspruch, wobei das Verwenden der Anwendereingaben zum Verfolgen eines emotionalen Zustands des Anwenders ein Überwachen eines Tippdrucks des Anwenders umfasst und das Detektieren einer Änderung des verfolgten emotionalen Zustands des Anwenders ein Detektieren einer Änderung eines durchschnittlichen Tippdrucks umfasst.
- 35
7. Verfahren nach einem vorhergehenden Anspruch, wobei das Verwenden der Anwendereingaben zum Verfolgen eines emotionalen Zustands des Anwenders ein Überwachen eines physiologischen Parameters des Anwenders umfasst und das Detektieren einer Änderung des verfolgten emotionalen Zustands des Anwenders ein Detektieren des physiologischen Parameters umfasst.
- 40
8. Vorrichtung (10), die Folgendes umfasst:
- 45
- ein Mittel zum Überwachen von Anwendereingaben an einem Inhaltselement (27, 28) auf einer Einrichtung (10), die durch einen Anwender eingegeben werden;
- ein Mittel zum Verwenden der Anwendereingaben, um einen emotionalen Zustand des Anwenders zu verfolgen;
- ein Mittel zum Bestimmen, ob eine Änderung des verfolgten emotionalen Zustands des Anwenders aufgetreten ist;
- ein Mittel zum Verwenden in Reaktion auf ein Bestimmen, dass eine Änderung des verfolgten emotionalen Zustands des Anwenders aufgetreten ist, einer Kamera (19), um ein Bild des Anwenders aufzunehmen und das Bild in das Inhaltselement einzusetzen; und
- ein Mittel zum Fortsetzen des Überwachens von Eingaben, ohne ein Bild aufzunehmen, als Antwort auf die Bestimmung, dass keine Änderung des verfolgten emotionalen Zustands des Anwenders aufgetreten ist.
- 50
9. Vorrichtung nach Anspruch 8, wobei die Kamera eine Frontkamera ist, die einen Teil der Vorrichtung bildet.
- 55
10. Vorrichtung nach Anspruch 8 oder Anspruch 9, die ein Mittel zum Kommunizieren des Inhaltselements von der Einrichtung zu einer entfernten Vorrichtung umfasst.
11. Vorrichtung nach einem der Ansprüche 8 bis 10, wobei das Mittel zum Verwenden der Anwendereingaben zum Verfolgen eines emotionalen Zustands des Anwenders ein Mittel zum Verfolgen einer Tippgeschwindigkeit des Anwenders umfasst und das Mittel zum Detektieren einer Änderung des verfolgten emotionalen Zustands des Anwenders ein Mittel zum Detektieren einer Änderung der Tippgeschwindigkeit umfasst.
12. Vorrichtung nach einem der Ansprüche 8 bis 11, wobei das Mittel zum Verwenden der Anwendereingaben zum Verfolgen eines emotionalen Zustands des Anwenders ein Mittel zum Überwachen eines Tippdrucks des Anwenders umfasst und das Mittel zum Detektieren einer Änderung des verfolgten emotionalen Zustands des Anwenders ein Mittel zum Detektieren einer Änderung eines durchschnittlichen Tippdrucks umfasst.
13. Einrichtung, die die Vorrichtung nach einem der Ansprüche 8 bis 12 umfasst.
14. Nichttransitorisches computerlesbares Medium, in dem Anweisungen gespeichert sind, um zu bewirken, dass eine Rechenvorrichtung (10) ein Verfahren (29) ausführt, das Folgendes umfasst:

Überwachen von Anwendereingaben an einem Inhaltselement (27, 28) auf einer Einrichtung (10), die durch einen Anwender eingegeben werden;

Verwenden der Anwendereingaben, um einen emotionalen Zustand des Anwenders zu verfolgen;

Bestimmen, ob eine Änderung des verfolgten emotionalen Zustands des Anwenders aufgetreten ist;

Verwenden als Antwort auf ein Bestimmen, dass eine Änderung des verfolgten emotionalen Zustands des Anwenders aufgetreten ist, einer Kamera (19), um ein Bild des Anwenders aufzunehmen und das Bild in das Inhaltselement einzusetzen; und

Fortsetzen des Überwachens von Eingaben, ohne ein Bild aufzunehmen, als Antwort auf die Bestimmung, dass keine Änderung des verfolgten emotionalen Zustands des Anwenders aufgetreten ist.

15. Computerprogramm, das wahlweise in einem Medium gespeichert ist und Anweisungen umfasst, um zu bewirken, dass eine Computervorrichtung ein Verfahren nach einem der Ansprüche 1 bis 7 durchführt.

## Revendications

1. Procédé, comprenant :

la surveillance d'entrées utilisateur dans un élément de contenu (27, 28) sur un dispositif (10) entrées par un utilisateur ;

l'utilisation des entrées utilisateur pour suivre un état émotionnel de l'utilisateur ;

la détermination si un changement de l'état émotionnel suivi de l'utilisateur s'est produit ou non ; et

en réponse à la détermination qu'un changement de l'état émotionnel suivi de l'utilisateur s'est produit, l'utilisation d'un appareil de prise de vues (19) pour capturer une image de l'utilisateur et l'insertion de l'image dans l'élément de contenu ; et

en réponse à la détermination qu'un changement de l'état émotionnel suivi de l'utilisateur ne s'est pas produit, la poursuite de la surveillance d'entrées sans capture d'une image.

2. Procédé selon la revendication 1, dans lequel l'appareil de prise de vues consiste en un appareil de prise de vues frontal du dispositif.
3. Procédé selon l'une ou l'autre des revendications précédentes, comprenant la communication de l'élé-

ment de contenu depuis le dispositif à un appareil distant.

4. Procédé selon l'une quelconque des revendications précédentes, dans lequel l'utilisation des entrées utilisateur pour suivre un état émotionnel de l'utilisateur comprend le suivi d'une vitesse de frappe de l'utilisateur, et dans lequel la détection d'un changement de l'état émotionnel suivi de l'utilisateur comprend la détection d'un changement de vitesse de frappe.

5. Procédé selon l'une quelconque des revendications précédentes, dans lequel l'utilisation des entrées utilisateur pour suivre un état émotionnel de l'utilisateur comprend la détection d'une fréquence d'utilisation d'une fonction de retour arrière ou de suppression, et dans lequel la détection d'un changement de l'état émotionnel suivi de l'utilisateur comprend la détection d'une hausse de la fréquence d'utilisation d'une fonction de retour arrière ou de suppression.

6. Procédé selon l'une quelconque des revendications précédentes, dans lequel l'utilisation des entrées utilisateur pour suivre un état émotionnel de l'utilisateur comprend la surveillance d'une pression de frappe de l'utilisateur, et dans lequel la détection d'un changement de l'état émotionnel suivi de l'utilisateur comprend la détection d'un changement de pression de frappe moyenne.

7. Procédé selon l'une quelconque des revendications précédentes, dans lequel l'utilisation des entrées utilisateur pour suivre un état émotionnel de l'utilisateur comprend la surveillance d'un paramètre physiologique de l'utilisateur, et dans lequel la détection d'un changement de l'état émotionnel suivi de l'utilisateur comprend la détection d'un changement du paramètre physiologique.

8. Appareil (10), comprenant :

des moyens de surveillance d'entrées utilisateur dans un élément de contenu (27, 28) sur un dispositif (10) entrées par un utilisateur ;

des moyens d'utilisation des entrées utilisateur pour suivre un état émotionnel de l'utilisateur ; des moyens de détermination si un changement de l'état émotionnel suivi de l'utilisateur s'est produit ou non ;

des moyens, en réponse à la détermination qu'un changement de l'état émotionnel suivi de l'utilisateur s'est produit, d'utilisation d'un appareil de prise de vues (19) pour capturer une image de l'utilisateur et d'insertion de l'image dans l'élément de contenu ; et

des moyens, en réponse à la détermination qu'un changement de l'état émotionnel suivi de l'utilisateur ne s'est pas produit, de poursuite de

- la surveillance d'entrées sans capture d'une image.
9. Appareil selon la revendication 8, dans lequel l'appareil de prise de vues consiste en un appareil de prise de vues frontal faisant partie de l'appareil. 5
10. Appareil selon la revendication 8 ou la revendication 9, comprenant des moyens de communication de l'élément de contenu depuis le dispositif à un appareil distant. 10
11. Appareil selon l'une quelconque des revendications 8 à 10, dans lequel les moyens d'utilisation des entrées utilisateur pour suivre un état émotionnel de l'utilisateur comprennent des moyens de suivi d'une vitesse de frappe de l'utilisateur, et dans lequel les moyens de détection d'un changement de l'état émotionnel suivi de l'utilisateur comprennent des moyens de détection d'un changement de vitesse de frappe. 15  
20
12. Appareil selon l'une quelconque des revendications 8 à 11, dans lequel les moyens d'utilisation des entrées utilisateur pour suivre un état émotionnel de l'utilisateur comprennent des moyens de surveillance d'une pression de frappe de l'utilisateur, et dans lequel les moyens de détection d'un changement de l'état émotionnel suivi de l'utilisateur comprennent des moyens de détection d'un changement de pression de frappe moyenne. 25  
30
13. Dispositif, comprenant l'appareil selon l'une quelconque des revendications 8 à 12. 35
14. Support non transitoire lisible par ordinateur sur lequel sont enregistrées des instructions destinées à amener un appareil informatique (10) à exécuter un procédé (29) comprenant : 40
- la surveillance d'entrées utilisateur dans un élément de contenu (27, 28) sur un dispositif (10) entrées par un utilisateur ;
- l'utilisation des entrées utilisateur pour suivre un état émotionnel de l'utilisateur ; 45
- la détermination si un changement de l'état émotionnel suivi de l'utilisateur s'est produit ou non ;
- et
- en réponse à la détermination qu'un changement de l'état émotionnel suivi de l'utilisateur s'est produit, l'utilisation d'un appareil de prise de vues (19) pour capturer une image de l'utilisateur et l'insertion de l'image dans l'élément de contenu ; et 50
- en réponse à la détermination qu'un changement de l'état émotionnel suivi de l'utilisateur ne s'est pas produit, la poursuite de la surveillance d'entrées sans capture d'une image. 55
15. Programme d'ordinateur, éventuellement enregistré sur un support, comprenant des instructions destinées à amener un appareil ordinateur à exécuter un procédé selon l'une quelconque des revendications 1 à 7.

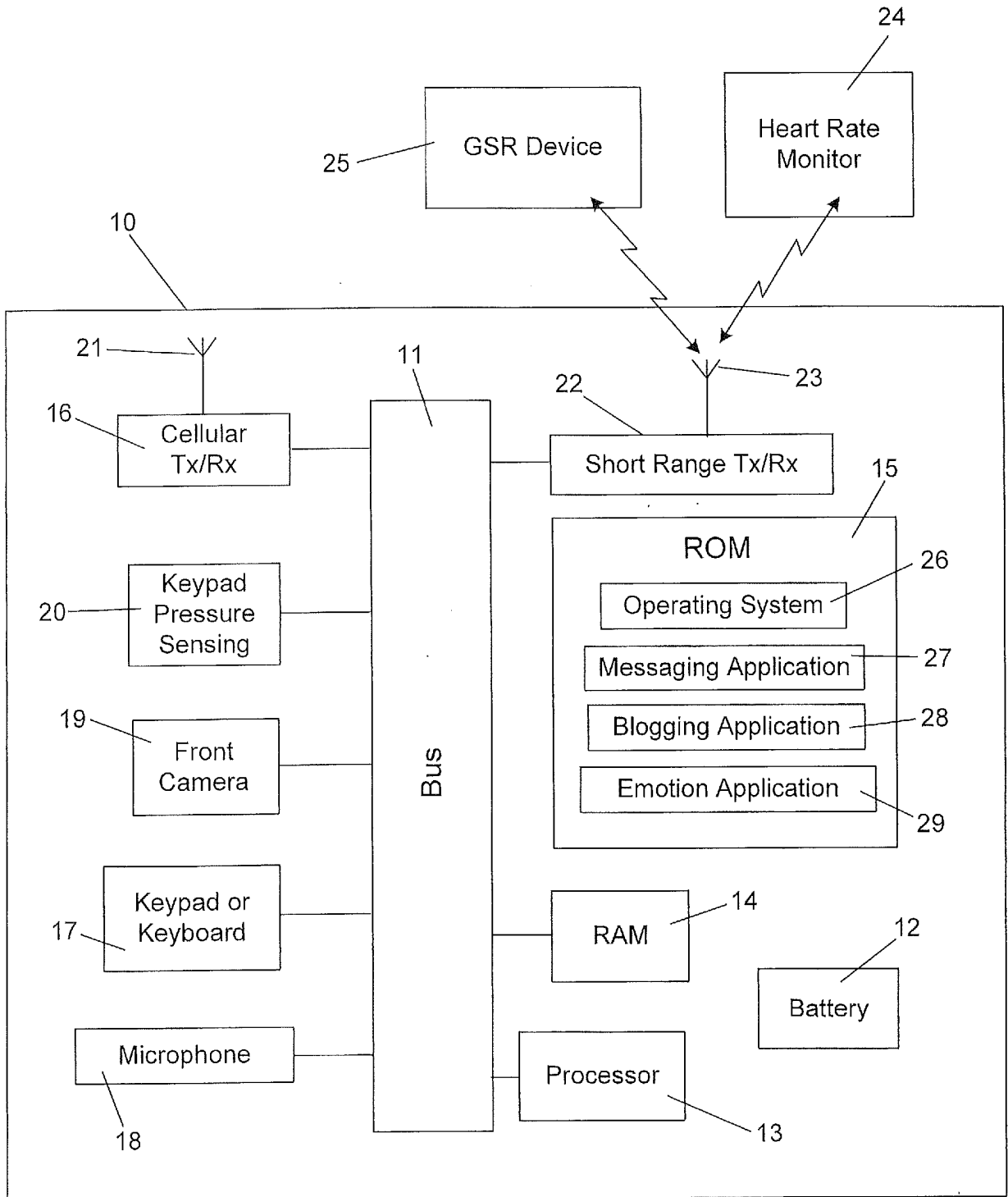


Figure 1

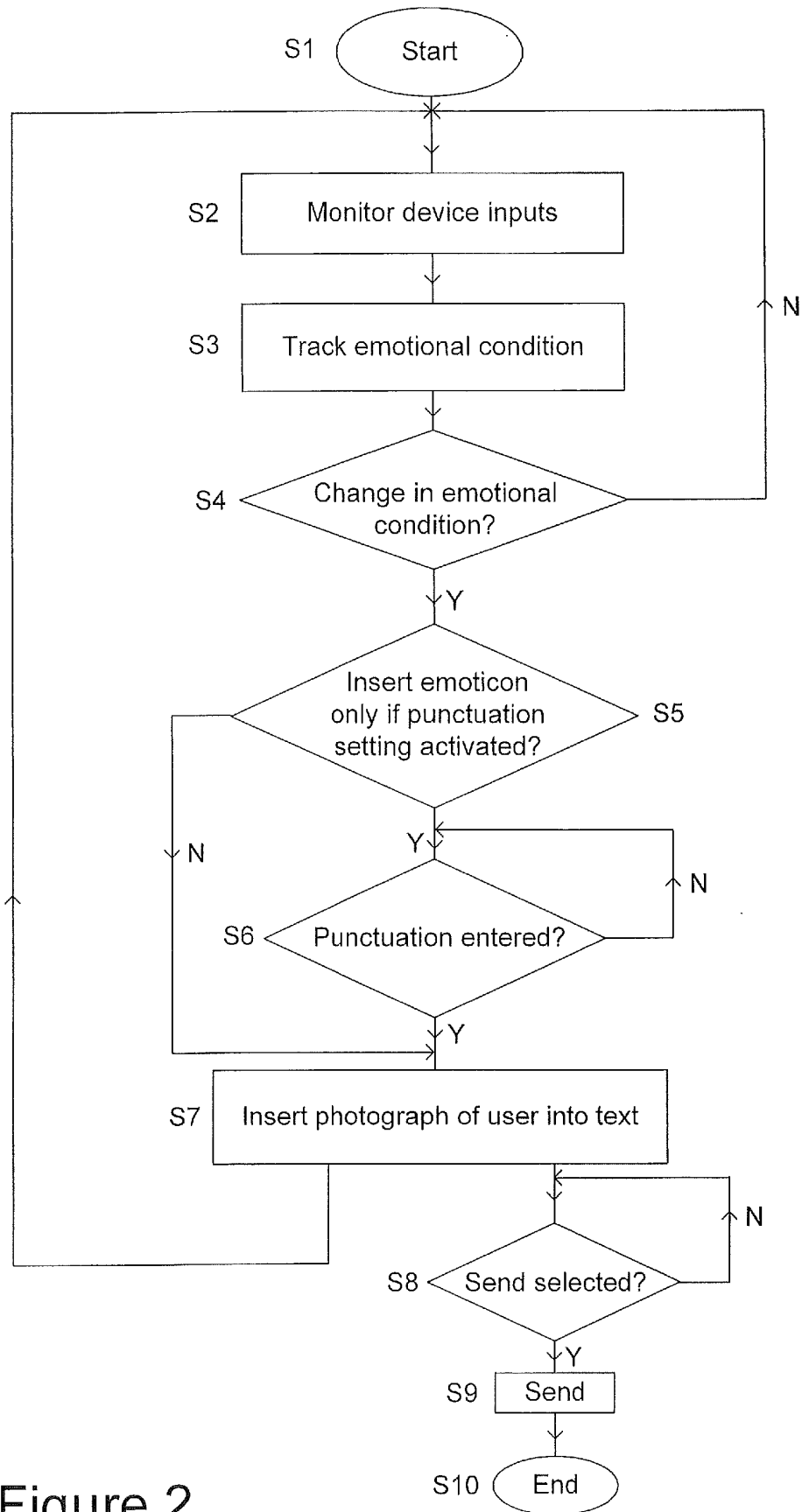


Figure 2

**REFERENCES CITED IN THE DESCRIPTION**

*This list of references cited by the applicant is for the reader's convenience only. It does not form part of the European patent document. Even though great care has been taken in compiling the references, errors or omissions cannot be excluded and the EPO disclaims all liability in this regard.*

**Patent documents cited in the description**

- EP 1522256 A1 [0003]
- US 2008027984 A1 [0004]

专利名称(译)	响应用户情绪状态的变化		
公开(公告)号	<a href="#">EP2567532A1</a>	公开(公告)日	2013-03-13
申请号	EP2011800289	申请日	2011-06-30
[标]申请(专利权)人(译)	诺基亚公司		
申请(专利权)人(译)	诺基亚公司		
当前申请(专利权)人(译)	诺基亚公司		
[标]发明人	SIVADAS SUNIL		
发明人	SIVADAS, SUNIL		
IPC分类号	H04M1/725 A61B5/00 H04L29/08 H04N1/00		
CPC分类号	A61B5/024 A61B5/0533 A61B5/165 H04N1/00307 H04N1/00323 H04N1/32128 H04N2101/00 H04N2201/0084 H04N2201/3266 H04N2201/3278		
优先权	12/829122 2010-07-01 US		
其他公开文献	EP2567532B1 EP2567532A4		
外部链接	<a href="#">Espacenet</a>		

#### 摘要(译)

一种方法包括：监视来自用户的对设备的输入；使用用户输入来跟踪用户的情绪状况；检测所跟踪的用户的情绪状况的变化；以及响应于检测到该变化，使用照相机来捕获 用户的图像并将图像插入到内容项中。