

(19)



(11)

EP 2 437 218 B1

(12)

EUROPEAN PATENT SPECIFICATION

(45) Date of publication and mention of the grant of the patent:
11.11.2015 Bulletin 2015/46

(51) Int Cl.:

A61B 8/10 <small>(2006.01)</small>	G06T 7/00 <small>(2006.01)</small>
G06T 19/20 <small>(2011.01)</small>	G06T 15/08 <small>(2011.01)</small>
A61B 3/10 <small>(2006.01)</small>	A61B 5/00 <small>(2006.01)</small>
G06T 11/00 <small>(2006.01)</small>	

(21) Application number: **11180401.9**

(22) Date of filing: **07.09.2011**

(54) **Medical system**

Medizinisches System

Système médical

(84) Designated Contracting States:
AL AT BE BG CH CY CZ DE DK EE ES FI FR GB GR HR HU IE IS IT LI LT LU LV MC MK MT NL NO PL PT RO RS SE SI SK SM TR

(30) Priority: **29.09.2010 JP 2010219765**

(43) Date of publication of application:
04.04.2012 Bulletin 2012/14

(73) Proprietor: **Canon Kabushiki Kaisha Tokyo 146-8501 (JP)**

(72) Inventor: **Takama, Yasufumi Tokyo 146-8501 (JP)**

(74) Representative: **TBK Bavariaring 4-6 80336 München (DE)**

(56) References cited:
WO-A1-2010/071091 US-A1- 2005 017 972
US-A1- 2007 274 583

- **JANI A B ET AL: "Opacity Transfer Function Optimization for Volume-rendered Computed Tomography Images of the Prostate<1>", ACADEMIC RADIOLOGY, RESTON, VA, US, vol. 12, no. 6, 1 June 2005 (2005-06-01), pages 761-770, XP025311467, ISSN: 1076-6332, DOI: 10.1016/J.ACRA.2005.03.054 [retrieved on 2005-06-01]**
- **ALPER SELVER ET AL: "A software tool for interactive generation, representation, and systematical storage of transfer functions for 3D medical images", COMPUTER METHODS AND PROGRAMS IN BIOMEDICINE, ELSEVIER, AMSTERDAM, NL, vol. 86, no. 3, 3 May 2007 (2007-05-03), pages 270-280, XP022054455, ISSN: 0169-2607, DOI: 10.1016/J.CMPB.2007.03.008**

EP 2 437 218 B1

Note: Within nine months of the publication of the mention of the grant of the European patent in the European Patent Bulletin, any person may give notice to the European Patent Office of opposition to that patent, in accordance with the Implementing Regulations. Notice of opposition shall not be deemed to have been filed until the opposition fee has been paid. (Art. 99(1) European Patent Convention).

Description

BACKGROUND OF THE INVENTION

Field of the Invention

[0001] The present invention relates to a medical system.

Description of the Related Art

[0002] Recently, in ophthalmic sites, an apparatus called an optical coherence tomography (to be referred to as an OCT hereinafter) has been introduced. This apparatus can obtain a volume image constituted by a plurality of two-dimensional tomographic images of the retina.

[0003] In ophthalmic sites, users (technicians and doctors) interpret a layer structure from a volume image and observe the states and distribution of lesions and the three-dimensional running of fundus blood vessels. It is therefore necessary to display the distribution of lesions and blood vessels by using volume images so as to facilitate observation.

[0004] As a technique for implementing such a display, volume rendering is known, which assigns opacities to voxels in accordance with an opacity function, and performs translucent display of target volume data, thereby visualizing an internal structure. In general, the user generates an opacity function by manually setting the shape and the position of a peak, width, and the like of a function by using a user interface. Japanese Patent Laid-Open No. 2008-006274 discloses a technique of automatically generating such an opacity function. This technique fits a Gaussian function to a CT value histogram and can opaquely display the range of CT values calculated from the average value and standard deviation of the resultant data.

[0005] In this case, the following problems arise in the arrangement configured to automatically generate an opacity function to perform volume rendering for easy observation of tissues in a volume image of the retina.

[0006] Consider a case in which blood vessels are displayed. In this case, in a tomographic image obtained by OCT, the luminance value of a blood vessel region is high. Since a region near the lower end of the nerve fiber layer in which blood vessels run has a high luminance value, the contrast of the region in which blood vessels run is low. This makes it difficult to facilitate observation of blood vessels by volume rendering using an automatically generated opacity function.

[0007] Consider a large number of white spots distributed in a layer below the nerve fiber layer and a layer above the retinal pigment epithelium. The luminance values of white spots are high like those of these layers. For this reason, even if the luminance values are converted into opacities, the nerve fiber layer and the retinal pigment epithelium located outside the white spots are displayed,

and the white spots located inside them are difficult to display.

[0008] When displaying tissues (blood vessels and white spots) of the retina based on a tomographic image captured by OCT in this manner, even if an opacity function is automatically generated, the tissues may not be effectively displayed to the user (technician or doctor).

[0009] The US 2007/274583 A1 discloses computer-aided imaging diagnostic processing which can satisfactorily visualize a desired target by properly setting parameters in volume rendering (VR) processing. When an operator specifies a nodule candidate region on a displayed three-dimensional image by manual operation using an operation unit, a control unit receives the specifying instruction. A lung field extraction unit extracts a nodule candidate region from the three-dimensional image data on the basis of the specified nodule candidate region, and segments the extracted nodule candidate region into a foreground region and a background region. A data analyzing unit generates a histogram of H.U. values concerning the extracted VOI which includes the only foreground region. The data analyzing unit 21 sets an opacity curve by determining an opacity window level (OWL) and an opacity window width (OWW) using a statistical analysis result.

[0010] Jani A. B. et al.: "Opacity Transfer Function Optimization for Volume-rendered Computed Tomography Images of the Prostate 1", Academic Radiology, Reston, VA, US, vol. 12, no. 6, 1 June 2005, pages 761-770, XP025311467, ISSN: 1076-6332, DOI: 10.1016/J.ACRA.2005.03.054, describes improved volume visualization of soft tissue interfaces using automated optimal opacity function determination, compared with manual selection.

[0011] The US 2005/0017972 discloses a computer automated method that applies supervised pattern recognition to classify whether voxels in a medical image data set correspond to a tissue type of interest. The method comprises a user identifying examples of voxels which correspond to the tissue type of interest and examples of voxels which do not. Characterizing parameters, such as voxel value, local averages and local standard deviations of voxel value are then computed for the identified example voxels. From these characterizing parameters, one or more distinguishing parameters are identified. The distinguishing parameter are those parameters having values which depend on whether or not the voxel with which they are associated corresponds to the tissue type of interest. The distinguishing parameters are then computed for other voxels in the medical image data set, and these voxels are classified on the basis of the value of their distinguishing parameters. The approach allows tissue types which differ only slightly to be distinguished according to a user's wishes.

SUMMARY OF THE INVENTION

[0012] The present invention provides a technique of

automatically generating an opacity function in accordance with a display target.

[0013] The present invention in its first aspect provides a medical system as specified in claims 1 to 10.

[0014] The present invention in its second aspect provides a non-transitory computer-readable storage medium as specified in claim 11, and in its third aspect an information processing method as specified in claim 12.

[0015] Further features of the present invention will be apparent from the following description of exemplary embodiments (with reference to the attached drawings).

BRIEF DESCRIPTION OF THE DRAWINGS

[0016] The accompanying drawings, which are incorporated in and constitute a part of the specification, illustrate embodiments of the invention, and together with the description, serve to explain the principles of the invention.

Fig. 1 is a block diagram showing an example of the overall arrangement of a diagnosis support system according to an embodiment of the present invention;

Fig. 2 is a block diagram showing an example of the functional arrangement of an image display apparatus 20 shown in Fig. 1;

Fig. 3 is a schematic view showing an example of the layer structure of the retina;

Fig. 4 is a flowchart showing an example of a processing procedure in the image display apparatus 20 shown in Fig. 1;

Fig. 5A is a graph showing an example of the distribution of luminance values in a selected layer;

Fig. 5B is a graph showing an example of an opacity function;

Figs. 6A and 6B are views showing an example of a display form;

Fig. 7A is a graph showing an example of an opacity function according to the third embodiment; and

Fig. 7B is a view showing an example of a display form according to the third embodiment.

DESCRIPTION OF THE EMBODIMENTS

[0017] An exemplary embodiment(s) of the present invention will now be described in detail with reference to the drawings. It should be noted that the relative arrangement of the components, the numerical expressions and numerical values set forth in these embodiments do not limit the scope of the present invention unless it is specifically stated otherwise.

(First Embodiment)

[0018] Fig. 1 is a block diagram showing an example of the overall arrangement of a diagnosis support system (medical system) according to an embodiment of the

present invention.

[0019] A tomography apparatus 10, an image display apparatus 20, and a data server 30 are connected to this diagnosis support system via a network 40 formed by a LAN (Local Area Network) and the like. Note that the respective apparatuses need not always be connected via the network 40 as long as they can communicate with each other. For example, they can be connected to each other via USB (Universal Serial Bus), IEEE1394, or WAN (Wide Area Network).

[0020] In this case, the tomography apparatus (optical coherence tomography apparatus) 10 is implemented by, for example, a time-domain OCT or Fourier domain OCT, and has a function of capturing a tomographic image of the retina. The tomography apparatus 10 (OCT) obtains a plurality of tomographic images by one imaging operation, and sequentially arranges the tomographic images. This makes it possible to obtain a volume image (three-dimensional tomographic image) of the retina.

[0021] The tomography apparatus 10 captures tomographic images of an object (patient) and transmits the obtained volume image to the image display apparatus 20 in accordance with the operation by the user (technician or doctor). In some cases, this apparatus may transmit the volume image data to the data server 30.

[0022] The data server 30 has a function of storing various kinds of data. The data server 30 according to this embodiment stores the volume image of the retina captured by the tomography apparatus 10.

[0023] The image display apparatus 20 presents various kinds of information to the user. More specifically, the image display apparatus 20 displays the volume image captured by the tomography apparatus 10 or the volume image obtained from the data server 30 to the user.

[0024] An example of the functional arrangement of the image display apparatus 20 shown in Fig. 1 will be described next with reference to Fig. 2.

[0025] The image display apparatus 20 includes an input unit 51, a display unit 52, a storage unit 53, a communication unit 54, and a control unit 55, which constitute the functional arrangement of the image display apparatus 20.

[0026] The input unit 51 is implemented by, for example, a keyboard and a mouse, and inputs instructions from the user (doctor or technician) into the apparatus. The display unit 52 is implemented by, for example, a display such as a monitor, and displays various kinds of information to the user. Note that the display unit 52 may be provided outside the image display apparatus 20. That is, it is possible to use an information processing apparatus which performs display processing for an external display, instead of the image display apparatus. In addition, the input unit 51 and the display unit 52 may be implemented as a touch panel.

[0027] The storage unit 53 is implemented by, for example, a hard disk, and stores various kinds of information. The communication unit 54 is implemented by, for

example, a network card, and exchanges various kinds of data with the tomography apparatus 10 and the data server 30. The control unit 55 is implemented by a CPU, ROM (Read Only Memory), and RAM (Random Access Memory), and comprehensively controls processing in the image display apparatus 20.

[0028] In this case, the control unit 55 includes an image obtaining unit 21, an image analysis unit 22, a display mode setting unit 23, a display mode obtaining unit 24, a layer selection unit 25, an opacity function generation unit 26, and a volume rendering unit 27. Note that each component in the control unit 55 is implemented by, for example, a CPU (Central Processing Unit) which reads out and executes programs stored in a ROM and the like.

[0029] The image obtaining unit 21 obtains the images captured by the tomography apparatus 10 and images stored in the data server via the communication unit 54 and the network 40. Note that the image obtaining unit 21 may directly obtain such images from an external storage medium (for example, a USB memory).

[0030] The image analysis unit 22 analyzes the volume image obtained by the image obtaining unit 21. More specifically, the image analysis unit 22 analyzes the layer structure of the retina in the volume image (in the tomographic image of the retina), and extracts the boundary of each layer. In this processing, as shown in Fig. 3, the image analysis unit 22 extracts, for example, the inner limiting membrane (ILM), nerve fiber layer (NFL), inner plexiform layer (IPL), outer plexiform layer (OPL), inner nuclear layer (INL), outer nuclear layer (ONL), photoreceptor inner segment/outer segment (IS/OS) junction, and retinal pigment epithelium (RPE).

[0031] The display mode setting unit 23 sets a display mode based on an instruction from the user via the input unit 51. In this case, the display mode indicates a tissue as a display target in a volume image (in a tomographic image of the retina). A tissue as a display target includes, for example, a blood vessel, white spot, or cyst.

[0032] The display mode obtaining unit 24 obtains the display mode set by the display mode setting unit 23. Display modes include, for example, a blood vessel mode (in which a tissue as a display target is a blood vessel), a white spot mode (in which a tissue as a display target is a white spot), and a cyst mode (in which a tissue as a display target is a cyst). Obviously, it is possible to set other types of display modes.

[0033] The layer selection unit 25 selects a layer to be used to generate an opacity function based on the display mode set by the display mode setting unit 23 and the boundary of each layer extracted by the image analysis unit 22. If, for example, a tissue as a display target is a blood vessel (that is, the blood vessel mode), since the running of blood vessels are often seen in the inner plexiform layer (IPL), the layer selection unit 25 selects the IPL.

[0034] The opacity function generation unit 26 generates (different) opacity functions based on the layer selected by the layer selection unit 25. More specifically,

the opacity function generation unit 26 generates an opacity function that assigns high opacities to voxels corresponding to the tissue as a display target and assigns low opacities to voxels corresponding to other tissues, based on the luminance values of a plurality of voxels in the layer selected by the layer selection unit 25. An opacity function is a function that changes a feature amount (for example, a luminance value) of each voxel into an opacity. For example, transparency is expressed by "0.0", and opacity is expressed by "1.0".

[0035] The volume rendering unit 27 performs volume rendering of a volume image on the display (input/output unit) by using the opacity function generated by the opacity function generation unit 26. This can provide display that allows the user to easily observe the tissue as a display target.

[0036] An example of a processing procedure in the image display apparatus 20 shown in Fig. 1 will be described next with reference to Fig. 4. The following will exemplify operation to be performed when the blood vessel mode (a tissue as a display target is a blood vessel) is set.

[0037] When starting this processing, first of all, the image display apparatus 20 causes the image obtaining unit 21 to obtain the volume image captured by the tomography apparatus 10 or a volume image stored in the data server 30 (S101). The image analysis unit 22 analyzes the layer structure of the retina in the obtained volume image and extracts the boundary of each layer (S102).

[0038] The image display apparatus 20 then causes the layer selection unit 25 to obtain the display mode designated by the user. The layer selection unit 25 selects a layer to be used to generate an opacity function in accordance with the obtained display mode (S103). When, for example, the user wants to display a blood vessel, he/she sets the blood vessel mode as a display mode. In this case, the layer selection unit 25 sets the IPL in the blood vessel mode because the running of blood vessels is often seen in the IPL.

[0039] Upon selection of a layer, the image display apparatus 20 causes the opacity function generation unit 26 to generate an opacity function necessary for volume rendering (S104). When generating an opacity function, first of all, the opacity function generation unit 26 generates a luminance value histogram of a plurality of voxels constituting the layer selected in the processing in step S103 and calculates the average value and standard deviation of the histogram. By using the calculated average value and standard deviation, the opacity function generation unit 26 generates an opacity function that makes voxels with lower luminance values become more transparent, and makes voxels with higher luminance values become more opaque.

[0040] In this case, since the blood vessel mode is set, the opacity function generation unit 26 generates a luminance value histogram of voxels in the IPL (see Fig. 5A), and calculates the average value and standard deviation

of the histogram. Note that voxels in the IPL are those located between the lower end of the NFL and the lower end of the IPL which are obtained as an extraction result by the image analysis unit 22. In OCT, high luminance values appear in a region considered as a region in which a blood vessel runs. For this reason, it is thought that a large number of tissues other than blood vessels are distributed in a range in which luminance values are lower than a first reference value A (in this case, the average value) of the histogram shown in Fig. 5A. It is also thought that a large number of blood vessel tissues are distributed in the range of luminance values between the first reference value A (average value) and a second reference value B (average value + $n \times$ standard deviation).

[0041] To display the information between A and B so as to facilitate observation of the information, the opacity function generation unit 26 generates the opacity function shown in Fig. 5B. More specifically, the opacity function generation unit 26 generates an opacity function that makes regions (voxels) with luminance values equal to or less than the first reference value (average value) transparent and makes regions with luminance values exceeding the second reference value (average value + $n \times$ standard deviation) opaque. In addition, this opacity function is configured to increase the opacity with an increase in luminance value between A and B. That is, voxels having luminance values between A and B are processed into translucent voxels. In this case, the value n has a function of controlling the range of luminance values in which voxels are made translucent.

[0042] According to an example of the opacity function shown in Fig. 5B, the manner of changes in opacity is indicated as linear. Obviously, the apparatus may be configured to generate a nonlinear function such as a quadratic function. Using a quadratic function will assign lower opacities to regions with lower luminance values and assigns higher opacities to regions with higher luminance values. This can display a blood vessel region with higher contrast.

[0043] The image display apparatus 20 then causes the volume rendering unit 27 to perform volume rendering of the volume image (S105). The volume rendering unit 27 performs this processing by using the layer extraction result in step S102, the opacity function generated in step S104, and the layer selected in step S103. As a volume rendering algorithm, a generally known volume ray casting method can be used. Note, however, that target voxels from which opacities are calculated based on luminance values are voxels in a layer selected based on the blood vessel mode. Voxels other than the target voxels are assigned with the opacity "0.0", that is, are made transparent.

[0044] As described above, according to this embodiment, when, for example, the user has selected the blood vessel mode, this apparatus automatically generates an opacity function that assigns high opacities to blood vessel tissues and assigns low opacities to tissues other than the blood vessel tissues. Performing volume ren-

dering by using this opacity function can present the display shown in Fig. 6A to the user. This allows the user to easily observe three-dimensional running of blood vessels running in the retinal layer. Note that Fig. 6A is a schematic view displaying three-dimensional running of blood vessels viewed from above (y direction) the retina shown in Fig. 3.

(Second Embodiment)

[0045] The second embodiment will be described next. The second embodiment will exemplify operation to be performed upon setting of the white spot mode of performing volume rendering of a three-dimensional distribution of white spots. Note that since the arrangements of a diagnosis support system and image display apparatus 20 according to the second embodiment are the same as those shown in Figs. 1 and 2, with reference to which the first embodiment has been described, a description of them will be omitted. Different processes from those in the first embodiment will be mainly described with reference to the flowchart of Fig. 4, with reference to which the first embodiment has been described.

[0046] The image display apparatus 20 obtains a volume image, and then analyzes the volume image as in the first embodiment described above (steps S101 and S102).

[0047] In this case, if the white spot mode is set, the image display apparatus 20 causes a layer selection unit 25 to select the layer located between the lower end of the NFL and the IS/OS because a large number of white spots are distributed in the layer between them (S103).

[0048] The image display apparatus 20 then causes an opacity function generation unit 26 to generate a luminance value histogram of a plurality of voxels constituting the layer selected in the processing in step S103, and calculates the average value and standard deviation of the histogram. By using the calculated average value and standard deviation, the opacity function generation unit 26 generates an opacity function that makes voxels with lower luminance values become more transparent, and makes voxels with higher luminance values become more opaque (S104). Note that the voxels used to generate the luminance value histogram are those located between the lower end of the NFL and IS/OS. In OCT, the luminance value of a white spot is high. For this reason, it is thought that in the luminance value histogram, a large number of white spots are distributed in the range of high luminance values, and a large number of tissues other than the white spots are distributed in the range of low luminance values. The opacity function generation unit 26 generates an opacity function that makes voxels with luminance values equal to or less than a first reference value A (average value) transparent and makes voxels with luminance values exceeding a second reference value B (average value + $n \times$ standard deviation) opaque as in the first embodiment. In addition, the opacity function generation unit 26 generates an opacity function

that changes the opacities of voxels having luminance values between the reference values A and B as in the first embodiment.

[0049] The image display apparatus 20 then causes a volume rendering unit 27 to perform volume rendering of the volume image as in the first embodiment (S105). In this case, assume that voxels for which opacities are to be calculated from luminance values are those in the layer selected based on the white spot mode. Voxels other than the target voxels are assigned with the opacity "0.0", that is, are made transparent.

[0050] As described above, according to the second embodiment, when the user has selected the white spot mode, this apparatus automatically generates an opacity function that assigns high opacities to white spot tissues, and assigns low opacities to tissues other than the white spot tissues. Performing volume rendering by using this opacity function can present the display shown in Fig. 6B to the user. This allows the user to easily observe three-dimensional distributions of white spots and high-luminance tissues in the retinal layer.

(Third Embodiment)

[0051] The third embodiment will be described next. The third embodiment will exemplify operation to be performed when performing volume rendering of a three-dimensional distribution of cysts. Note that since the arrangements of a diagnosis support system and image display apparatus 20 according to the third embodiment are the same as those shown in Figs. 1 and 2, with reference to which the first embodiment has been described, a description of them will be omitted. Different processes from those in the first embodiment will be mainly described with reference to the flowchart of Fig. 4, with reference to which the first embodiment has been described.

[0052] When the white spot mode or the blood vessel mode is set, this apparatus generates an opacity function that assigns high opacities to regions (voxels) with high luminance values, and assigns low opacities to regions with low luminance values. In contrast to this, in the cyst mode, when performing OCT, the apparatus generates an opacity function that assigns high opacities to regions with low luminance values, and assigns low opacities to regions with high luminance values, because cyst regions have low luminance values.

[0053] If the cyst mode is set, the image display apparatus 20 causes a layer selection unit 25 to select at least one of the INL, OPL, and ONL because a large number of cysts are distributed in them (S103).

[0054] The image display apparatus 20 then causes an opacity function generation unit 26 to generate a luminance value histogram of a plurality of voxels constituting the layer selected in the processing in step S103, and calculates the average value and standard deviation of the histogram. By using the calculated average value and standard deviation, the opacity function generation

unit 26 generates an opacity function that makes voxels with lower luminance values become more transparent, and makes voxels with higher luminance values become more opaque (S104). Note that the voxels used to generate a luminance value histogram are those located between the upper boundary of the INL and the lower boundary of the ONL. As described above, since the luminance value of a cyst region is low, it is necessary to display the region with low luminance so as to facilitate observation of the region.

[0055] As shown in Fig. 7A, the opacity function generation unit 26 therefore generates an opacity function that makes voxels with luminance values equal to or less than a first reference value A (in this case, average value - n x standard deviation) opaque, and makes voxels with luminance values exceeding a second reference value B (average value) transparent. This opacity function is also configured to assign lower opacities to voxels with luminance values between A and B (voxels having luminance values which exceed the first reference value and are equal to or less than the second reference value) with an increase in luminance value. That is, voxels having luminance values between A and B are processed into translucent voxels. As in the above case, the value n has a function of controlling the range of luminance values in which voxels are made translucent.

[0056] The image display apparatus 20 then causes the volume rendering unit 27 to perform volume rendering of a volume image as in the first embodiment (S105).

[0057] As described above, according to the third embodiment, when the user has selected the cyst mode, this apparatus automatically generates an opacity function that assigns high opacities to white cyst tissues, and assigns low opacities to tissues other than the cyst tissues. Performing volume rendering by using this opacity function can present the display shown in Fig. 7B to the user. This allows the user to easily observe three-dimensional distributions of cysts and high-luminance tissues in the retinal layer.

[0058] The typical embodiments of the present invention have been described above. However, the present invention is not limited to the embodiments described above and shown in the accompanying drawings, and can be modified and executed as needed within the spirit and scope of the invention.

[0059] For example, tissues as display targets in a tomographic image of the retina may be the entire retina. In this case, the image display apparatus 20 generates an opacity function from the voxels in the entire retinal layer, and performs volume rendering by using the opacity function. This makes it possible to automatically display the entire retina so as to facilitate observation of the retina.

[0060] As has been described above, according to the present invention, an opacity function is automatically generated in accordance with a display target. This makes it possible to perform volume rendering that allows the user to easily observe a tissue as a display target,

thereby improving diagnosis accuracy.

(Other Embodiments)

[0061] Aspects of the present invention can also be realized by a computer of a system or apparatus (or devices such as a CPU or MPU) that reads out and executes a program recorded on a memory device to perform the functions of the above-described embodiment(s), and by a method, the steps of which are performed by a computer of a system or apparatus by, for example, reading out and executing a program recorded on a memory device to perform the functions of the above-described embodiment(s). For this purpose, the program is provided to the computer for example via a network or from a recording medium of various types serving as the memory device (for example, computer-readable storage medium).

[0062] While the present invention has been described with reference to exemplary embodiments, it is to be understood that the invention is not limited to the disclosed exemplary embodiments. The scope of the following claims is to be accorded the broadest interpretation so as to encompass all such modifications and equivalent structures and functions.

A medical system comprising a selection means (25) for selecting at least one of layers in a three-dimensional tomographic image of a retina, and a generation means (26) for generating an opacity function indicating an opacity of each of a plurality of voxels constituting the selected layer, based on a frequency distribution of luminance values of the plurality of voxels.

Claims

1. A medical system comprising:

- an analysis means (22) for analyzing a layer structure of a three-dimensional tomographic image of a retina acquired by an optical coherence tomography apparatus and extracting a boundary of each layer;
- a layer selection means (25) for selecting at least one of layers in the three-dimensional tomographic image of the retina by using boundaries of layers of the retina extracted by said analysis means based on a tissue as a display target in the three-dimensional tomographic image of the retina;
- a generation means (26) for generating an opacity function indicating an opacity of each voxel of a plurality of voxels constituting the at least one layer selected by the layer selection means (25), based on the display target and a frequency distribution of luminance values of the plurality of voxels;
- a volume rendering means (27) for performing

volume rendering of the tomographic image of the retina based on the opacity function; and a display control means (55) for causing a display means (51) to display an image having undergone the volume rendering.

- 2. The system according to claim 1, wherein said generation means (26) is configured to generate, in accordance with the at least one layer, the opacity function that assigns higher or lower opacities to voxels which have luminance values higher than a predetermined value than to other voxels.
- 3. The system according to claim 1 or 2, further comprising:
 - a display mode setting unit (23) for setting a display mode indicating the tissue as the display target in the tomographic image of the retina, wherein said layer selection means (25) is configured to select the at least one layer based on the display target by using the analyzed layer structure.
- 4. The system according to any one of claims 1 to 3, wherein said generation means (26) is configured to generate, based on luminance values of the plurality of voxels, the opacity function that assigns high opacities to voxels corresponding to the tissue as the display target in the tomographic image of the retina and assigns low opacities to voxels corresponding to other tissues.
- 5. The system according to claim 1 or 2, further comprising a display mode setting unit (23) for setting a display mode indicating the tissue as the display target in the tomographic image of the retina, and wherein said layer selection means (25) is configured to select the at least one layer of the retina based on the set display mode by using the analyzed layer structure.
- 6. The system according to any one of claims 1 to 5, wherein said layer selection means (25) is configured to select an inner plexiform layer in a case where the tissue as the display target in the tomographic image of the retina is a blood vessel.
- 7. The system according to any one of claims 1 to 5, wherein said layer selection means (25) is configured to select the at least one layer between a lower end of a nerve fiber layer and a retinal pigment epithelium when the tissue as the display target in the tomographic image of the retina is a white spot.
- 8. The system according to claim 1, wherein said generation means (26) is configured to calculate a first reference value for luminance values

of the plurality of voxels and a second reference value indicating a larger value than the first reference value by using an average value and standard deviation calculated based on the luminance values, and generate an opacity function that makes a voxel having a luminance value not more than the first reference value transparent, makes a voxel having a luminance value exceeding the second reference value opaque, and increases an opacity of a voxel having a luminance value which exceeds the first reference value and is not more than the second reference value, with an increase in luminance value from the first reference value to the second reference value.

9. The system according to any one of claims 1 to 5, wherein in a case where the tissue as the display target in the tomographic image of the retina is a cyst, said layer selection means (25) is configured to select at least one of an inner nuclear layer, an external plexiform layer, and an outer nuclear layer.

10. The system according to claim 1, wherein said generation means (26) is configured to calculate a first reference value for luminance values of a plurality of voxels in the at least one layer selected by the layer selection means and a second reference value indicating a larger value than the first reference value by using an average value and standard deviation calculated based on the luminance values, and generate an opacity function that makes a voxel having a luminance value not more than the first reference value opaque, makes a voxel having a luminance value exceeding the second reference value transparent, and increases a transparency of a voxel having a luminance value which exceeds the first reference value and is not more than the second reference value, with an increase in luminance value from the first reference value to the second reference value.

11. A non-transitory computer-readable storage medium storing a program for causing a computer to execute each function of a medical system defined in any one of claims 1 to 10.

12. An information processing method comprising:

analyzing (S102) a layer structure of a three-dimensional tomographic image of a retina acquired by an optical coherence tomography apparatus and extracting a boundary of each layer; selecting (S103) at least one of layers in the three-dimensional tomographic image of the retina by using boundaries of layers of the retina extracted in said analyzing step based on a tissue as a display target in the three-dimensional

tomographic image of the retina; generating (S104) an opacity function indicating an opacity of each voxel of a plurality of voxels constituting the at least one layer, based on the display target and a frequency distribution of luminance values of the plurality of voxels; performing volume rendering (S105) of the tomographic image of the retina based on the opacity function; and causing a display means (51) to display an image having undergone the volume rendering.

Patentansprüche

1. Medizinsystem mit einer Analyseeinrichtung (22) zum Analysieren eines Schichtaufbaus eines dreidimensionalen Tomographiebildes einer Retina, das durch eine optische Kohärenztomographievorrichtung erhalten wird, und Extrahieren eines Rands jeder Schicht, einer Schichtauswahleinrichtung (25) zum Auswählen zumindest einer Schicht in dem dreidimensionalen Tomographiebild der Retina unter Verwendung von Rändern von Schichten der Retina, die durch die Analyseeinrichtung extrahiert sind, beruhend auf einem Gewebe als Anzeigeziel in dem dreidimensionalen Tomographiebild der Retina, einer Erzeugungseinrichtung (26) zur Erzeugung einer Opazitätsfunktion, die eine Opazität jedes Volumenelements einer Vielzahl von Volumenelementen angibt, die die zumindest eine durch die Schichtauswahleinrichtung (25) ausgewählte Schicht bilden, beruhend auf dem Anzeigeziel und einer Häufigkeitsverteilung von Luminanzwerten der Vielzahl der Volumenelemente, einer Volumenrenderingeinrichtung (27) zur Durchführung von Volumenrendering des Tomographiebildes der Retina beruhend auf der Opazitätsfunktion und einer Anzeigesteuereinrichtung (55) zur Veranlassung einer Anzeigeeinrichtung (51) zur Anzeige eines Bildes, das dem Volumenrendering unterzogen wurde.
2. System nach Anspruch 1, wobei die Erzeugungseinrichtung (26) zur Erzeugung der Opazitätsfunktion entsprechend der zumindest einen Schicht eingerichtet ist, die Volumenelemente, die Luminanzwerte aufweisen, die größer als ein vorbestimmter Wert sind, verglichen mit anderen Volumenelementen höhere oder niedrigere Opazitätswerte zuordnet.
3. System nach Anspruch 1 oder 2, ferner mit einer Anzeigemoduseinstelleinheit (23) zum Einstellen eines Anzeigemodus, der das Gewebe als das Anzeigeziel in dem Tomographiebild der Retina angibt,

wobei die Schichtauswahleinrichtung (25) zur Auswahl der zumindest einen Schicht beruhend auf dem Anzeigeeziel unter Verwendung des analysierten Schichtaufbaus eingerichtet ist.

4. System nach einem der Ansprüche 1 bis 3, wobei die Erzeugungseinrichtung (26) zur Erzeugung der Opazitätsfunktion beruhend auf Luminanzwerten der Vielzahl der Volumenelemente eingerichtet ist, die dem Gewebe als Anzeigeeziel im Tomographiebild der Retina entsprechenden Volumenelementen eine hohe Opazität zuordnet, und anderem Gewebe entsprechenden Volumenelementen eine niedrige Opazität zuordnet.
5. System nach Anspruch 1 oder 2, ferner mit einer Anzeigemoduseinstelleinheit (23) zur Einstellung eines Anzeigemodus, der das Gewebe als Anzeigeeziel im Tomographiebild der Retina angibt, und wobei die Schichtauswahleinrichtung (25) zur Auswahl der zumindest einen Schicht der Retina beruhend auf dem eingestellten Anzeigemodus unter Verwendung des analysierten Schichtaufbaus eingerichtet ist.
6. System nach einem der Ansprüche 1 bis 5, wobei die Schichtauswahleinrichtung (25) zur Auswahl einer inneren plexiformen Schicht in einem Fall eingerichtet ist, in dem das Gewebe als Anzeigeeziel im Tomographiebild der Retina ein Blutgefäß ist.
7. System nach einem der Ansprüche 1 bis 5, wobei die Schichtauswahleinrichtung (25) zur Auswahl der zumindest einen Schicht zwischen einem unteren Ende einer Nervenfaserschicht und einem Retinapigmentepithel eingerichtet ist, wenn das Gewebe als Anzeigeeziel im Tomographiebild der Retina ein weißer Fleck ist.
8. System nach Anspruch 1, wobei die Erzeugungseinrichtung (26) zur Berechnung eines ersten Referenzwerts für Luminanzwerte der Vielzahl der Volumenelemente und eines zweiten Referenzwerts, der einen größeren Wert als der erste Referenzwert angibt, unter Verwendung eines Mittelwerts und einer Standardabweichung eingerichtet ist, die beruhend auf den Luminanzwerten berechnet sind, und zur Erzeugung einer Opazitätsfunktion eingerichtet ist, die ein Volumenelement mit einem Luminanzwert nicht größer als der erste Referenzwert durchsichtig macht, ein Volumenelement mit einem Luminanzwert, der den zweiten Referenzwert überschreitet, undurchsichtig macht, und eine Opazität eines Volumenelements mit einem Luminanzwert, der den ersten Referenzwert überschreitet, und nicht größer als der zweite Referenzwert ist, mit steigendem Luminanzwert von dem ersten Referenzwert zu dem

zweiten Referenzwert erhöht.

9. System nach einem der Ansprüche 1 bis 5, wobei in einem Fall, in dem das Gewebe als Anzeigeeziel im Tomographiebild der Retina eine Zyste ist, die Schichtauswahleinrichtung (25) zur Auswahl einer inneren Körnerschicht und/oder einer externen plexiformen Schicht und/oder einer äußeren Körnerschicht eingerichtet ist.
10. System nach Anspruch 1, wobei die Erzeugungseinrichtung zur Berechnung eines ersten Referenzwerts für Luminanzwerte einer Vielzahl von Volumenelementen in der zumindest einen durch die Schichtauswahleinrichtung ausgewählten Schicht und eines zweiten Referenzwerts, der einen größeren Wert als der erste Referenzwert angibt, unter Verwendung eines Mittelwerts und einer Standardabweichung eingerichtet ist, die beruhend auf den Luminanzwerten berechnet sind, und zur Erzeugung einer Opazitätsfunktion eingerichtet ist, die ein Volumenelement mit einem Luminanzwert nicht größer als der erste Referenzwert undurchsichtig macht, ein Volumenelement mit einem Luminanzwert, der den zweiten Referenzwert überschreitet, durchsichtig macht, und eine Transparenz eines Volumenelements mit einem Luminanzwert, der den ersten Referenzwert überschreitet und nicht größer als der zweite Referenzwert ist, mit einem Anstieg des Luminanzwerts von dem ersten Referenzwert zu dem zweiten Referenzwert erhöht.
11. Nichtflüchtiges computerlesbares Speichermedium, das ein Programm zur Veranlassung eines Computers zur Ausführung jeder Funktion des Medizinsystems nach einem der Ansprüche 1 bis 10 speichert.
12. Informationsverarbeitungsverfahren mit Analysieren (S102) eines Schichtaufbaus eines dreidimensionalen Tomographiebildes einer Retina, das durch eine optische Kohärenztomographievorrichtung erhalten wird, und Extrahieren eines Rands jeder Schicht, Auswählen (S103) zumindest einer Schicht in dem dreidimensionalen Tomographiebild der Retina unter Verwendung von Rändern von Schichten der Retina, die in dem Analyseschritt extrahiert werden, beruhend auf Gewebe als Anzeigeeziel im dreidimensionalen Tomographiebild der Retina, Erzeugen (S104) eine Opazitätsfunktion, die eine Opazität jedes Volumenelements einer Vielzahl von die zumindest eine Schicht bildenden Volumenelementen angibt, beruhend auf dem Anzeigeeziel und einer Häufigkeitsverteilung von Luminanzwerten der Vielzahl der Volumenelemente, Durchführen von Volumenrendering (S105) des Tomographiebildes der Retina beruhend auf der Opazitätsfunktion und

Veranlassen einer Anzeigeeinrichtung (51) zur Anzeige eines Bildes, das dem Volumenrendering unterzogen wurde.

Revendications

1. Système médical comprenant :

un moyen d'analyse (22) destiné à analyser une structure en couches d'une image tomographique tridimensionnelle d'une rétine acquise par l'appareil de tomographie à cohérence optique et à extraire une frontière de chaque couche ;
un moyen de sélection de couches (25) destiné à sélectionner au moins l'une de couches dans l'image tomographique tridimensionnelle de la rétine en utilisant des frontières de couches de la rétine en utilisant des frontières de couches de la rétine extraite par ledit moyen d'analyse sur la base d'un tissu en tant que cible d'affichage dans l'image tomographique tridimensionnelle de la rétine ;

un moyen générateur (26) destiné à générer une fonction d'opacité indiquant une opacité de chaque voxel d'une pluralité de voxels constituant l'au moins une couche sélectionnée par le moyen de sélection de couches (25), sur la base de la cible d'affichage et d'une distribution de fréquence de valeurs de luminance de la pluralité de voxels ;

un moyen de rendu en volume (27) destiné à effectuer un rendu en volume de l'image tomographique de la rétine sur la base de la fonction d'opacité ; et

un moyen de commande d'affichage (55) destiné à amener un moyen d'affichage (51) à afficher une image ayant subi le rendu en volume.

2. Système selon la revendication 1, dans lequel ledit moyen générateur (26) est configuré pour générer, conformément à l'au moins une couche, la fonction d'opacité qui attribue, à des voxels ayant des valeurs de luminance supérieures à une valeur prédéterminée que d'autres voxels, des opacités plus élevées ou plus faibles.

3. Système selon la revendication 1 ou 2, comprenant en outre

un moyen de réglage de mode d'affichage (23) destiné à régler un mode d'affichage indiquant le tissu en tant que cible d'affichage dans l'image tomographique de la rétine,
dans lequel ledit moyen de sélection de couches (25) est configuré pour sélectionner l'au moins une couche sur la base de la cible d'affichage en utilisant la structure en couches analysée.

4. Système selon l'une quelconque des revendications

1 à 3, dans lequel ledit moyen générateur (26) est configuré pour générer, sur la base de valeurs de luminance de la pluralité de voxels, la fonction d'opacité qui attribue des opacités élevées à des voxels correspondant au tissu défini en tant que cible d'affichage dans l'image tomographique de la rétine et attribue de faibles opacités à des voxels correspondant à d'autres tissus.

5

5. Système selon la revendication 1 ou 2, comprenant en outre une unité de réglage du mode d'affichage (23) destinée à régler un mode d'affichage indiquant le tissu défini en tant que cible d'affichage dans l'image tomographique de la rétine, et dans lequel ledit moyen de sélection de couches (25) est configuré pour sélectionner l'au moins une couche de la rétine sur la base du mode d'affichage réglé en utilisant la structure en couches analysée.

15

6. Système selon l'une quelconque des revendications 1 à 5, dans lequel ledit moyen de sélection de couches (25) est configuré pour sélectionner une couche plexiforme interne dans le cas où le tissu défini en tant que cible d'affichage dans l'image tomographique de la rétine est un vaisseau sanguin.

25

7. Système selon l'une quelconque des revendications 1 à 5, dans lequel ledit moyen de sélection de couches (25) est configuré pour sélectionner l'au moins une couche entre une extrémité inférieure d'une couche de fibres nerveuses et un épithélium de pigment rétinien lorsque le tissu défini en tant que cible d'affichage dans l'image tomographique de la rétine est un point blanc.

30

8. Système selon la revendication 1, dans lequel ledit moyen générateur (26) est configuré pour calculer une première valeur de référence pour des valeurs de luminance de la pluralité de voxels et une seconde valeur de référence indiquant une valeur plus élevée que la première valeur de référence en utilisant une valeur moyenne et un écart type calculés sur la base des valeurs de luminance, et

générer une fonction d'opacité qui rend transparent un voxel ayant une valeur de luminance non supérieure à la première valeur de référence, rend opaque un voxel ayant une valeur de luminance dépassant la seconde valeur de référence, et augmente une opacité d'un voxel ayant une valeur de luminance qui dépasse la première valeur de luminance et n'est pas supérieure à la seconde valeur de référence, avec une augmentation de la valeur de luminance de la première valeur de référence à la seconde valeur de référence.

45

50

55

9. Système selon l'une quelconque des revendications 1 à 5, dans lequel, dans le cas où le tissu défini en

tant que cible d'affichage dans l'image tomographique de la rétine est un kyste, ledit moyen de sélection de couches (25) est configuré pour sélectionner au moins l'une d'une couche nucléaire interne, d'une couche plexiforme externe, et d'une couche nucléaire externe.

amener un moyen d'affichage (51) à afficher une image ayant subi le rendu en volume.

- 5
10. Système selon la revendication 1, dans lequel ledit moyen générateur (26) est configuré pour calculer une première valeur de référence pour des valeurs de luminance d'une pluralité de voxels dans l'au moins une couche sélectionnée par le moyen de sélection de couches et une seconde valeur de référence indiquant une valeur supérieure à la première valeur de référence en utilisant une valeur moyenne et un écart type calculés sur la base des valeurs de luminance, et
- 10
- 15
- généraliser une fonction d'opacité qui rend opaque un voxel ayant une valeur de luminance non supérieure à la première valeur de référence, rend transparent un voxel ayant une valeur de luminance dépassant la seconde valeur de référence et augmente une transparence d'un voxel ayant une valeur de luminance qui dépasse la première valeur de référence et n'est pas supérieure à la seconde valeur de référence, avec une augmentation de la valeur de luminance de la première valeur de référence à la seconde valeur de référence.
- 20
- 25
11. Support de stockage non volatil lisible par ordinateur stockant un programme destiné à amener un ordinateur à exécuter chaque fonction d'un système médical selon l'une quelconque des revendications 1 à 10.
- 30
- 35
12. Procédé de traitement d'informations consistant à :
- analyser (S102) une structure en couches d'une image tomographique tridimensionnelle d'une rétine acquise par un appareil de tomographie à cohérence optique et extraire une frontière de chaque couche ;
- 40
- sélectionner (S103) au moins l'une de couches dans l'image tomographique tridimensionnelle de la rétine en utilisant des frontières de couches de la rétine extraites par ledit moyen d'analyse sur la base d'un tissu défini en tant que cible d'affichage dans l'image tomographique tridimensionnelle de la rétine ;
- 45
- généraliser (S104) une fonction d'opacité indiquant une opacité de chaque voxel d'une pluralité de voxels constituant l'au moins une couche, sur la base de la cible d'affichage et d'une distribution de fréquence de valeurs de luminance de la pluralité de voxels ;
- 50
- 55
- effectuer un rendu en volume de l'image tomographique de la rétine sur la base de la fonction d'opacité ; et

FIG. 1

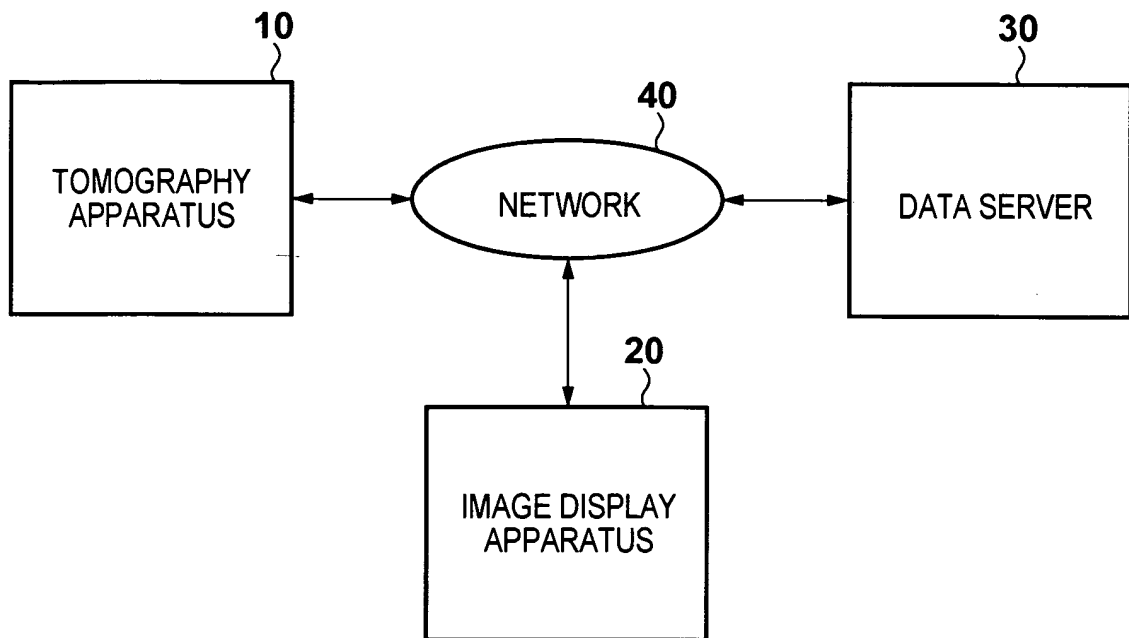


FIG. 2

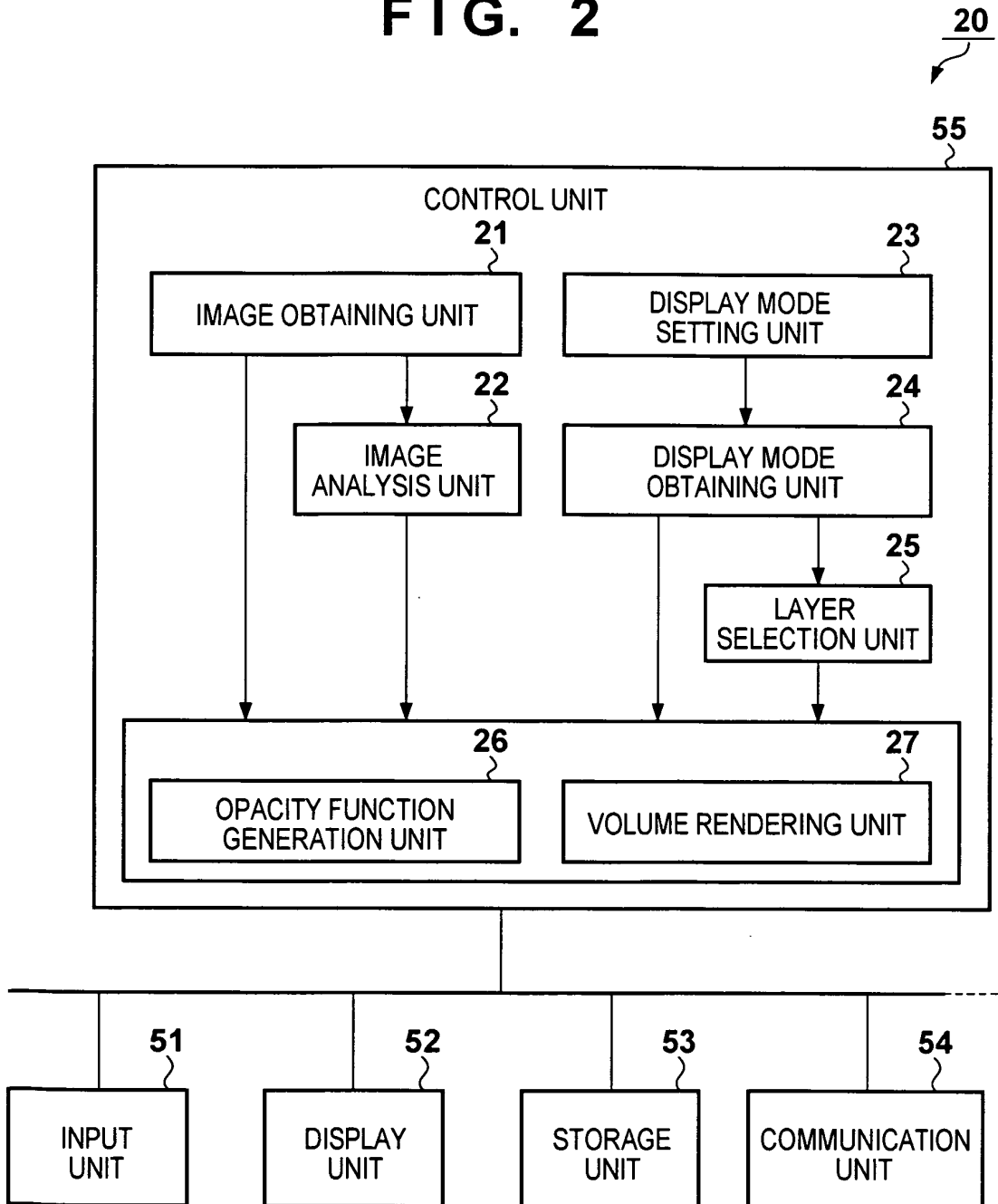


FIG. 3

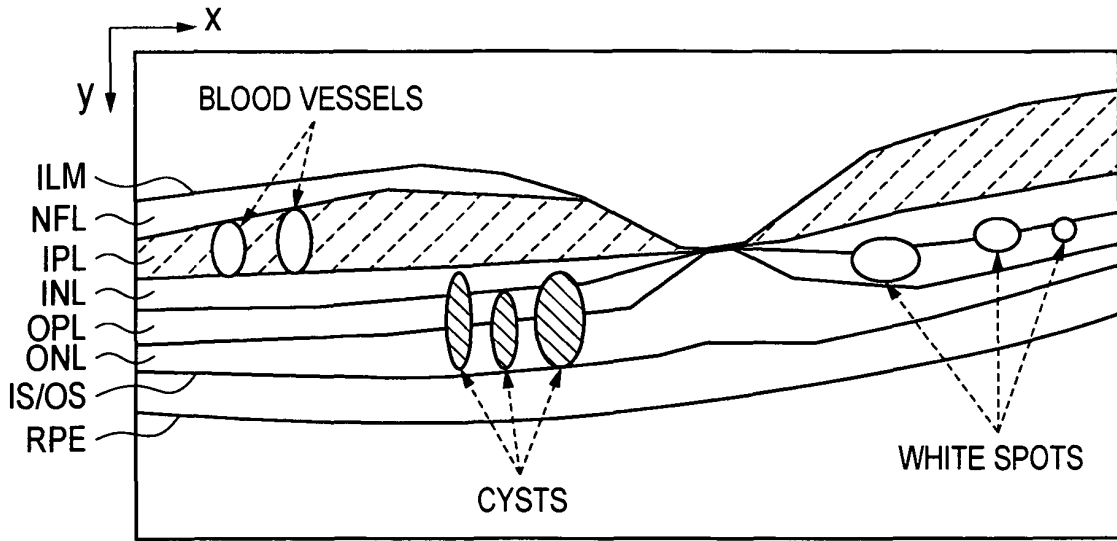


FIG. 4

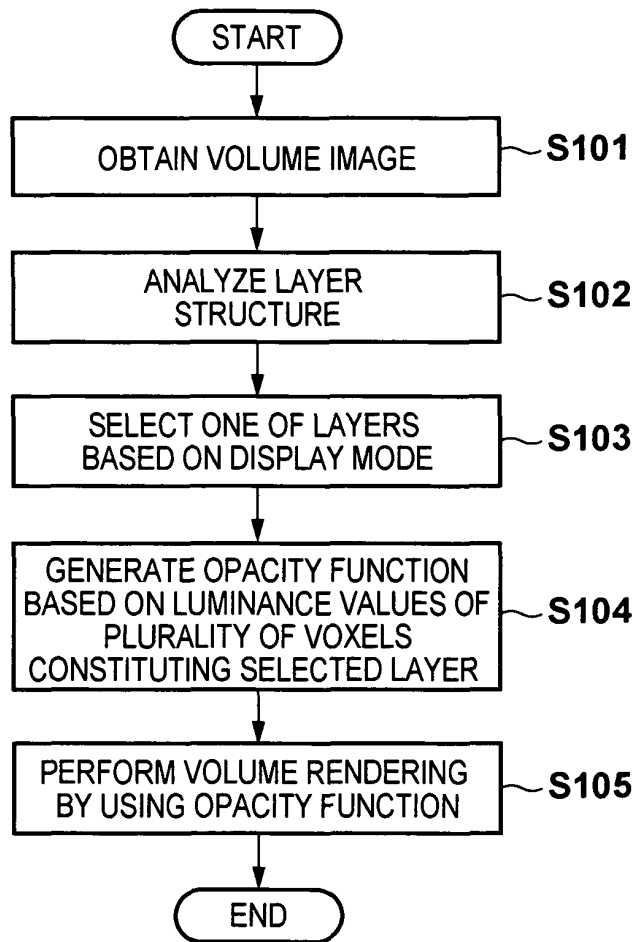


FIG. 5A

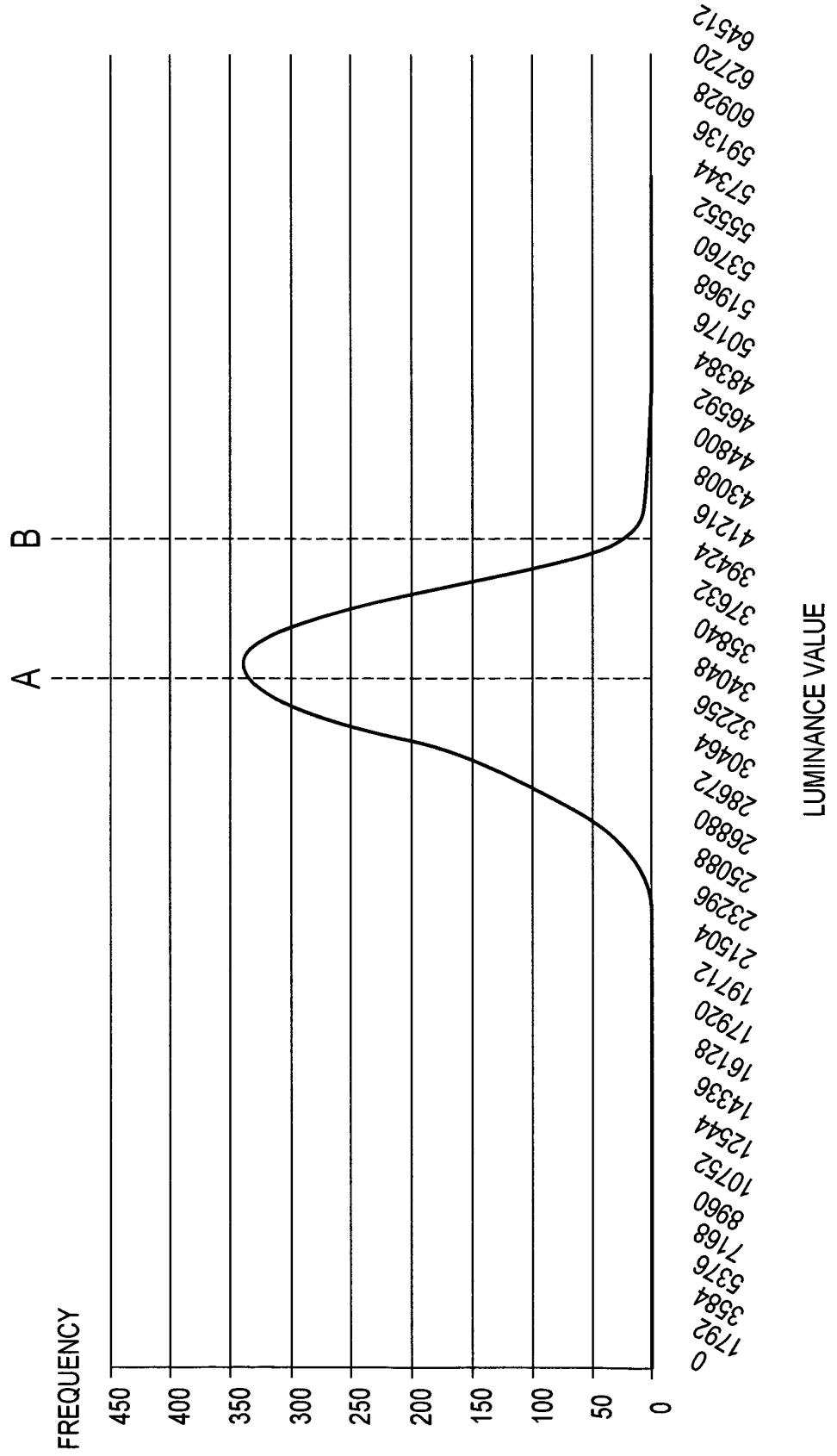


FIG. 5B

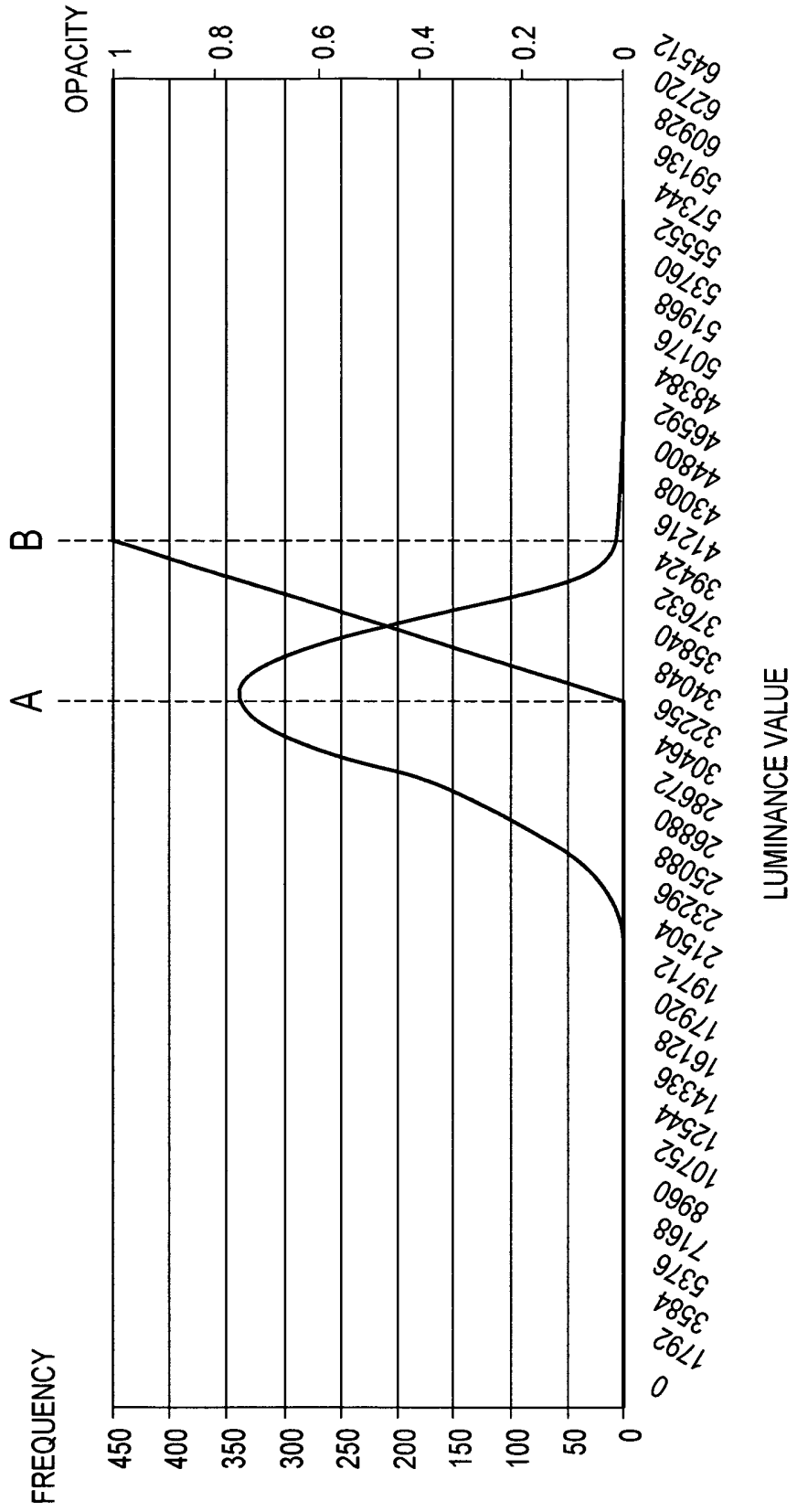


FIG. 6A

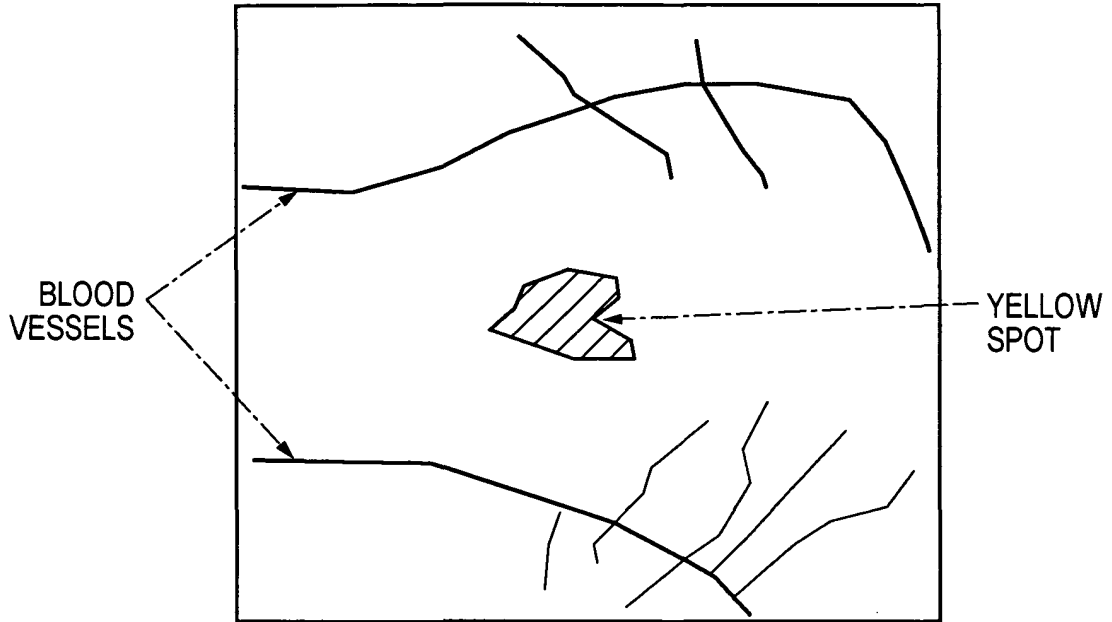


FIG. 6B

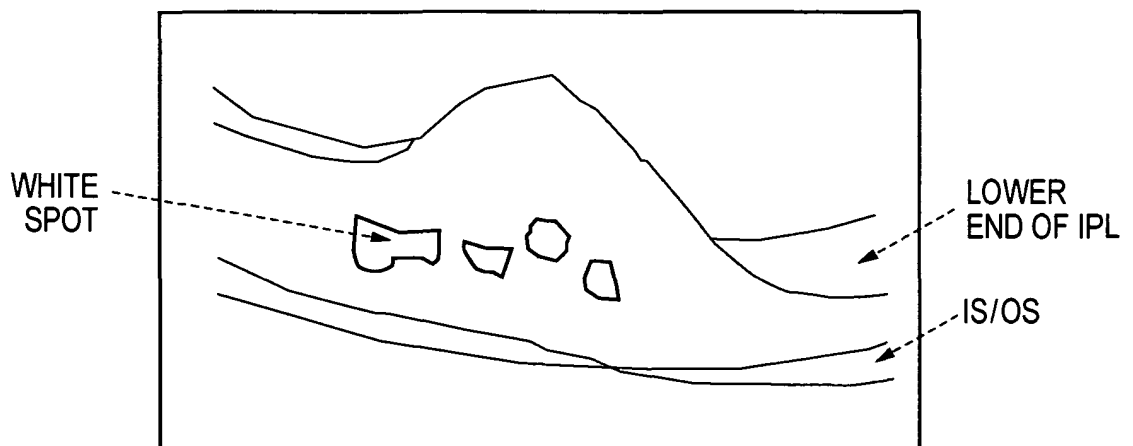


FIG. 7A

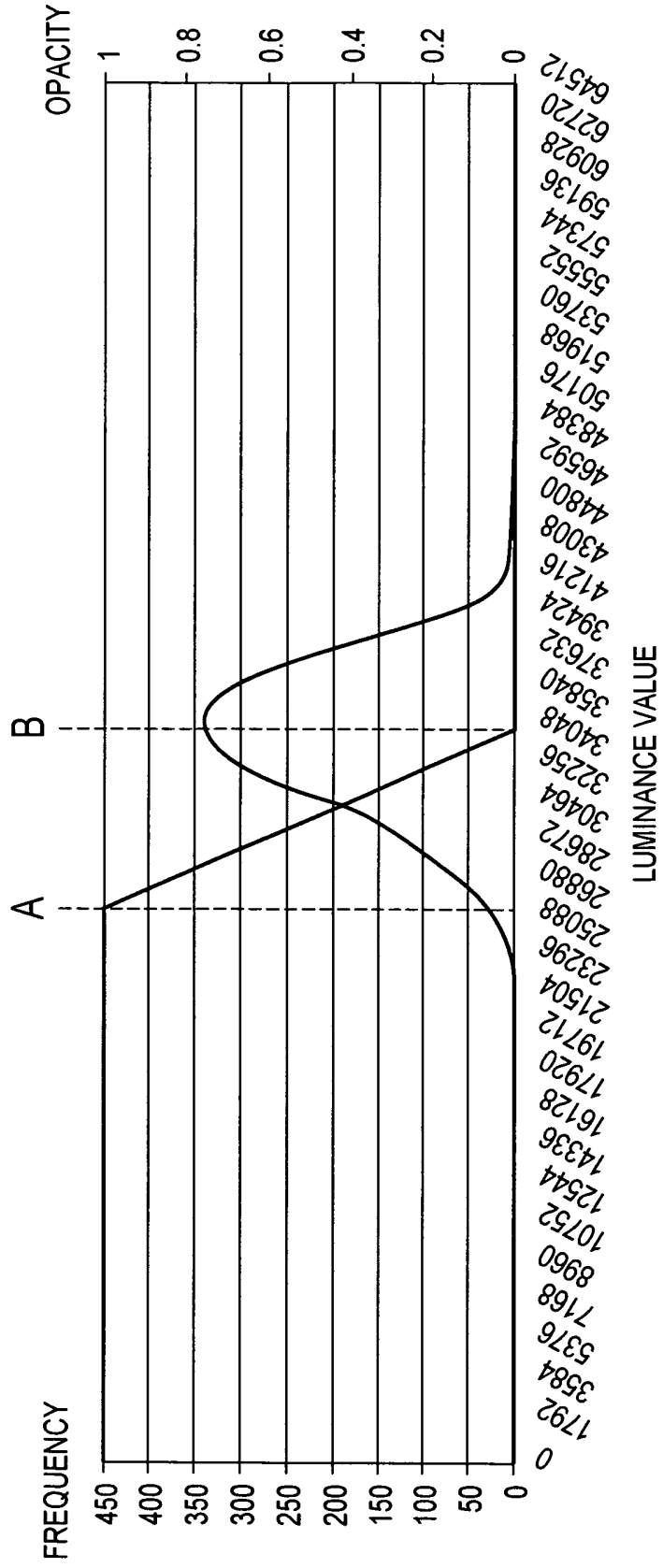
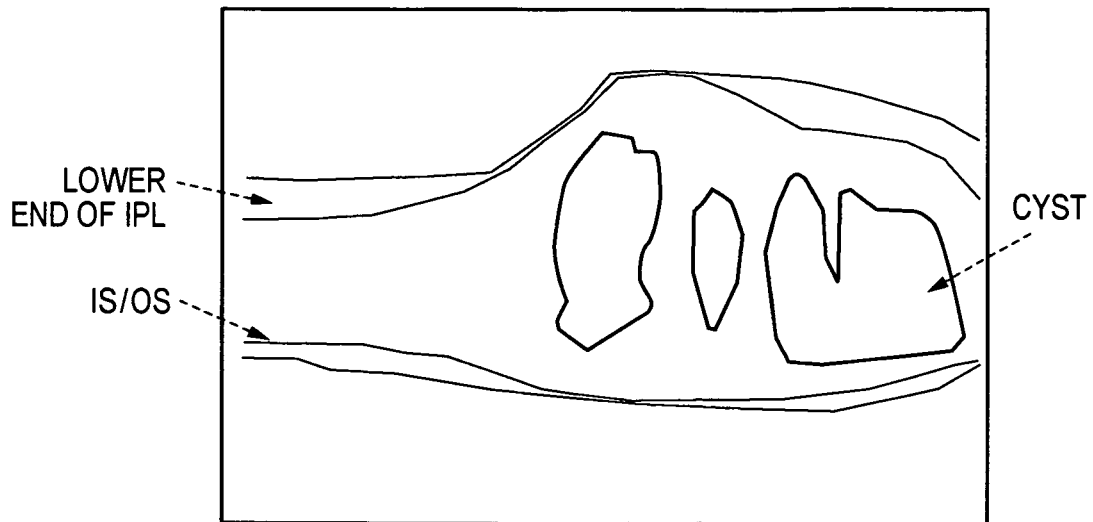


FIG. 7B



REFERENCES CITED IN THE DESCRIPTION

This list of references cited by the applicant is for the reader's convenience only. It does not form part of the European patent document. Even though great care has been taken in compiling the references, errors or omissions cannot be excluded and the EPO disclaims all liability in this regard.

Patent documents cited in the description

- JP 2008006274 A [0004]
- US 2007274583 A1 [0009]
- US 20050017972 A [0011]

Non-patent literature cited in the description

- **JANI A. B. et al.** Opacity Transfer Function Optimization for Volume-rendered Computed Tomography Images of the Prostate 1. *Academic Radiology*, 01 June 2005, vol. 12 (6), ISSN 1076-6332, 761-770 [0010]

专利名称(译)	医疗系统		
公开(公告)号	EP2437218B1	公开(公告)日	2015-11-11
申请号	EP2011180401	申请日	2011-09-07
[标]申请(专利权)人(译)	佳能株式会社		
申请(专利权)人(译)	佳能株式会社		
当前申请(专利权)人(译)	佳能株式会社		
[标]发明人	TAKAMA YASUFUMI		
发明人	TAKAMA, YASUFUMI		
IPC分类号	A61B8/10 G06T7/00 G06T19/20 G06T15/08 A61B3/10 A61B5/00 G06T11/00		
CPC分类号	A61B3/102 A61B5/0066 A61B8/10 G06T7/0012 G06T11/008 G06T15/08 G06T19/20 G06T2219/2012		
代理机构(译)	TBK		
优先权	2010219765 2010-09-29 JP		
其他公开文献	EP2437218A1		
外部链接	Espacenet		

摘要(译)

一种医疗系统，包括：选择装置（25），用于选择视网膜的三维断层图像中的至少一个层；以及生成装置（26），用于生成指示多个体素中的每个体素的不透明度的不透明度函数基于多个体素的亮度值的频率分布，构成所选择的层。

FIG. 1

