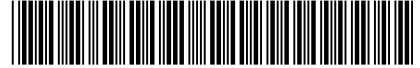


(19)



(11)

EP 2 306 899 B1

(12)

EUROPEAN PATENT SPECIFICATION

(45) Date of publication and mention of the grant of the patent:
13.08.2014 Bulletin 2014/33

(51) Int Cl.:
A61B 5/00 (2006.01) A61B 5/11 (2006.01)

(21) Application number: **09761185.9**

(86) International application number:
PCT/AU2009/000751

(22) Date of filing: **12.06.2009**

(87) International publication number:
WO 2009/149520 (17.12.2009 Gazette 2009/51)

(54) DETECTION OF HYPOKINETIC AND/OR HYPERKINETIC STATES

NACHWEIS VON HYPOKINETISCHEN UND/ODER HYPERKINETISCHEN ZUSTÄNDEN

DÉTECTION D'ÉTATS D'HYPOCINÉSIE ET/OU D'HYPERCINÉSIE

(84) Designated Contracting States:
AT BE BG CH CY CZ DE DK EE ES FI FR GB GR HR HU IE IS IT LI LT LU LV MC MK MT NL NO PL PT RO SE SI SK TR

• **HORNE, Malcolm, Kenneth**
Malvern East
Victoria 3145 (AU)

(30) Priority: **12.06.2008 AU 2008902982**
09.06.2009 AU 2009902616

(74) Representative: **Ilgart, Jean-Christophe**
BREVALEX
95 rue d'Amsterdam
75378 Paris Cedex 8 (FR)

(43) Date of publication of application:
13.04.2011 Bulletin 2011/15

(56) References cited:
EP-B1- 0 535 508 EP-B1- 0 535 508
WO-A1-2006/088415 WO-A2-2008/037260
US-A1- 2005 234 309 US-A1- 2005 240 086
US-A1- 2005 240 086 US-A1- 2009 062 696
US-B1- 6 561 992

(60) Divisional application:
13184435.9 / 2 674 104

(73) Proprietors:
• **Amygdala Pty Ltd**
Malvern East VIC 3145 (AU)
• **Golgi Pty Ltd**
Beaconsfield Upper VIC 3808 (AU)

• **Jorrit Ivar Hoff: "Ambulatory accelerometry in Parkinson's disease", University of Leiden (Doctoral Thesis) , 30 September 2005 (2005-09-30), pages 1-5,7,9-33,35-79,81-111, XP002681088, Retrieved from the Internet: URL: <https://openaccess.leidenuniv.nl/bitstream/handle/1887/3756/Proefschrift2.pdf?sequence=1> [retrieved on 2012-07-31]**

(72) Inventors:
• **GRIFFITHS, Robert, Irwin**
Beaconsfield Upper
Victoria 3808 (AU)

EP 2 306 899 B1

Note: Within nine months of the publication of the mention of the grant of the European patent in the European Patent Bulletin, any person may give notice to the European Patent Office of opposition to that patent, in accordance with the Implementing Regulations. Notice of opposition shall not be deemed to have been filed until the opposition fee has been paid. (Art. 99(1) European Patent Convention).

DescriptionCross-Reference to Related Applications

5 **[0001]** The present application claims priority from Australian Provisional Patent Application No 2008902982 filed on 12 June 2008 and Australian Provisional Patent Application No 2009902616 filed on 9 June 2009.

Technical Field

10 **[0002]** This invention relates to analysis of kinetic state of a person by monitoring motion symptoms to detect bradykinesia.

Background of the Invention

15 **[0003]** A range of diseases, medications, trauma and other factors can lead to a person having motion symptoms such as dyskinesia, in which the person is in a hyperkinetic state, or bradykinesia, in which the person is in a hypokinetic state.

[0004] For example, bradykinesia is a key manifestation of Parkinson's disease. L-Dopa, or Levodopa, is often administered to patients having Parkinson's disease, and can have the effect of causing the patient to become dyskinetic for a period of time after administration. As Parkinson's disease progresses, the half life of L-Dopa shortens and the effective dose range decreases, making dosage control extremely difficult and complex. This is commonly managed by increasing the dose frequency, sometimes by as much as ten doses each day in an attempt to control symptoms and enable the patient to have a reasonable quality of life. Thus, patients with Parkinson's disease may experience periods of bradykinesia, dyskinesia and normal motor function several times a day and throughout the course of a single dose of L-Dopa.

20 **[0005]** Even if a satisfactory dosage regime is reached at one point in time, the progressive nature of Parkinson's disease means that neurologists must regularly review a patient's symptoms in order to effectively control the patient's ongoing treatment dosage. Without objective and ongoing monitoring it is very difficult for physicians to avoid prescribing either an excessive dose which overly increases episodes of dyskinesia, or an inadequate dose which does not prevent episodes of bradykinesia. Furthermore there is no objective measure to say whether a change in dose was effective in improving symptoms.

25 **[0006]** From clinical observation, skilled neurologists can usually detect the existence of bradykinesia and dyskinesia. In one approach, the observing physician gives a score in the range of 0 to 20 to indicate the severity of the observed episode. Figure 1 shows scores given by three neurologists, with each plotted point representing the scores given by two neurologists when observing a single dyskinetic episode. Scores for Neurologist 1 (triangles) and Neurologist 3 (circles) are plotted against scores from Neurologist 2. As is evident, the subjective nature of this scoring approach leads to considerable variation. In one extreme example, Neurologist 2 scored one dyskinetic episode as being of severity 10 (being quite severe when noting that the highest score ever given by Neurologist 2 was a 13), whereas Neurologist 3 scored the same episode as being of severity 0 (no dyskinesia observed). Thus, while physicians can usually detect dyskinesia and other kinetic states during observation, these states are not easily quantified, making dosage control very subjective.

30 **[0007]** Further, clinical observation typically only occurs over a short period of patient attendance, usually of the order of tens of minutes, once every 6 or 8 weeks. Fluctuations in kinetic state throughout the day and from one day to the next significantly complicate attempts at assessing the patient's kinetic state. Clinicians often rely on the patient's recollection and/or written diaries to gain an understanding of the ongoing kinetic state of the patient between clinical appointments. However patients can rarely give objective scores, and the effect of a kinetic episode itself can often make it difficult for a patient to make any record whatsoever of the nature of and timing of motor fluctuations.

35 **[0008]** Another common symptom, of Parkinson's Disease for example, is tremor. Parkinsonian tremor is slower than most forms of tremor with a frequency of 4-6 cycles per second. Compared with other elements of movement, tremor consists of oscillations of relatively few frequency components. On spectral analysis, it appears as a discrete peak in a narrow frequency range (4-6 Hz), usually clearly above the frequency range of normal movement (less than 4 Hz). Tremor has been the subject of numerous studies and is particularly amenable to study with spectral analysis. Tremor is relatively easy to detect because it is a continuous repetitive movement, giving a sinusoidal signature, which is simple to distinguish from normal human motions which are rarely so continuous. Tremor is far less a problem in management of Parkinson's Disease than dyskinesia and bradykinesia. Attempts have been made to infer a person's bradykinetic state from measurements of tremor, in an attempt to regulate medication. However for many patients there is not a close correlation between tremor and bradykinesia, making it likely that medication will be inaccurately administered using this technique.

[0009] Any discussion of documents, acts, materials, devices, articles or the like which has been included in the present specification is solely for the purpose of providing a context for the present invention. It is not to be taken as an admission that any or all of these matters form part of the prior art base or were common general knowledge in the field relevant to the present invention as it existed before the priority date of each claim of this application.

[0010] Throughout this specification the word "comprise", or variations such as "comprises" or "comprising", will be understood to imply the inclusion of a stated element, integer or step, or group of elements, integers or steps, but not the exclusion of any other element, integer or step, or group of elements, integers or steps.

[0011] JORRIT IVAR HOFF - 2005 «Ambulatory accelerometry in Parkinson's disease», University of Leiden (Doctoral Thesis), XP002681088, discloses an automated method of determining a kinetic state of a person, the method comprising:

obtaining accelerometer data from an accelerometer worn on an extremity of the person;
band pass filtering the accelerometer data to extract filtered data for a band of interest, wherein the band of interest has a lower end cut off frequency selected to remove DC and an upper end cut off frequency which is selected to eliminate higher frequency components which in general do not arise from normal human motions; and
processing the filtered data to determine a measure for the kinetic state, the kinetic state being at least one of bradykinesia, dyskinesia, and hyperkinesia.

[0012] EP 0 535 508 B1 discloses a system for monitoring tremors in the limb of a patient, the system having an accelerometer or like means for detecting limb movements and for generating movement signals representative thereof, and process circuitry for programmed processing of the signals with means to filter out signals outside of the frequency range of the tremor signals.

[0013] US 2005/234 309 A1 discloses the use of wearable accelerometers coupled with computer implemented learning and statistical analysis techniques in order to classify the movement states of Parkinson's patients and to provide a timeline of how the patients fluctuate through-out the day.

[0014] US 2005/240 086 A1 discloses an intelligent wearable monitor system, comprising:

one or more intelligent accelerometer units operable for capturing acceleration data while worn by a patient;
a personal server operable for processing acceleration data from the intelligent accelerometer units to generate motor function information;
a remote access unit operable for receiving motor function information from the personal server, and
a data management unit operable for storing motor function information from the remote access unit.

[0015] WO 2006/088 415 A1 discloses a device for monitoring of fluctuating movement disorders, e.g. Parkinson's disease, comprising:

motor test section, arranged for supporting motor tests and for collecting data representing results of said motor tests;
patient diary collection section, arranged for collecting data representing patient subjective experiences; and
scheduler, arranged to restrict operation of said motor test section and said patient diary collection section to a multitude of predetermined limited time intervals.

Summary of the Invention

[0016] The subject-matter of the invention is recited in the appended claims.

[0017] Notably, the present invention thus provides for a determination to be made as to a kinetic state of a person based on measurements obtained from a single accelerometer worn on an extremity of the person. In this specification the term kinetic state is defined to be a movement disorder state. This invention recognises that a single sensor worn on an extremity provides adequate movement-related data to enable a determination of a state of bradykinesia and/or dyskinesia or hyperkinesia to be made.

[0018] Embodiments of the invention may thus be particularly suitable for frail, elderly or disabled persons for whom fitting more than a single sensor becomes impractical. In some embodiments the accelerometer is worn below the elbow, such as on the wrist. In other embodiments the sensor may be worn below the knee, such as on the ankle.

[0019] Further, the present invention provides for an automated determination of a kinetic state which is bradykinesia, thus providing a technique which does not rely on a potentially inaccurate inference of bradykinesia based on a measure of tremor.

[0020] In preferred embodiments, the accelerometer data is processed in order to determine a measure for bradykinesia.

Bradykinesia

[0021] Digital data from the accelerometer is band pass filtered to extract data for a band of interest. The band of interest may have a lower end cut off frequency which is selected to remove DC. The lower end cut off frequency for example may be in the range of 0.05 Hz to 1 Hz, preferably being 0.2 Hz. The band of interest may have an upper end cut off frequency which is selected to eliminate high frequency components which in general do not arise from normal human motions. The upper end cut off frequency for example may be in the range of 3 Hz to 15 Hz, preferably being 4 Hz. An upper cut off of around 4 Hz may be beneficial in avoiding or minimising of the influence of tremor, which is usually over 4Hz.

[0022] A time block or "bin" of digital acceleration data is extracted from the time series of data and considered in isolation, with each bin being of a time duration which is selected to be small enough that relatively regular measures of bradykinesia are determined, while being long enough to provide a reasonable likelihood of a significant movement by the person during that bin. For example, the bin duration may be in the range of two seconds to 60 minutes, more preferably being in the range of 15 seconds to four minutes, and most preferably being in the range of 30 seconds to two minutes.

[0023] The digital data is searched for a maxima, preferably using a moving mean having a window length which is a fraction of the duration of a normal human motion, for example the window length of the moving mean may be in the range of 0.02 seconds to 30 seconds, and may be substantially 0.2 seconds. The window in which the data is found to have the highest mean is taken to represent the movement of peak acceleration by the person. The invention recognises that a person in a normal kinetic state generally has movements of higher peak acceleration than a bradykinetic person, and that the peak acceleration is thus an indicator by which a bradykinetic state may be detected and quantified. When assessing data bins, for bin i the highest mean is referred to as PK_i , being the window of peak acceleration. A threshold may be applied whereby values of PK_i below the threshold are excluded to allow for the possibility that a bradykinetic person and a normally kinetic person may each simply remain still for some bins.

[0024] Additionally or alternatively, in some embodiments in which a measure of bradykinesia is determined, a sub-bin comprising a plurality of data points both before and after a peak acceleration are obtained. The sub-bin preferably comprises a number of data points which is a power of two, and the sub-bin is preferably symmetrically positioned about the peak acceleration. The sub-bin preferably comprises data points obtained over a period of time which is substantially the same as the duration of a normal single human motion, for example the duration of the sub-bin may be in the range of 0.5 seconds to 30 seconds, more preferably in the range of 1 second to 3 seconds, and for example may be substantially 2.56 seconds. The sub-bin is further preferably a small fraction of the length of an associated bin, if any. A spectral analysis of the sub-bin is preferably conducted, for example by performing a Fast Fourier Transform on the data of the sub-bin to obtain sub-band spectral measures. The sub-bands may be of a width which is around one fourth of a band of interest. The sub-bands may be of a width in the range of 0.1 Hz to 2 Hz, more preferably in the range of 0.6 Hz to 1 Hz, and may be substantially 0.8 Hz. The sub-bands may be overlapping in the frequency domain, for example eight partially overlapping sub-bands may be considered.

[0025] Such embodiments thus provide for spectral components of the single movement of peak acceleration to be obtained, recognising that if the person's peak movement has strong low frequency components this is indicative of bradykinesia. Some embodiments may thus identify which single sub-band has greatest power and give a stronger indication of the presence of bradykinesia when a low frequency sub-band has greatest power. Additionally or alternatively a weighting may be applied to some or all of the sub-band spectral measures to produce a weighted mean spectral power MSP_i such that a greater indication of bradykinesia is given when the maximum (MSP_i) is small and exists in lower frequency sub-bands, and a lesser indication of bradykinesia is given when the maximum (MSP_i) is high and exists in higher frequency sub-bands.

[0026] Additionally or alternatively, in some embodiments in which a measure of bradykinesia is determined, a plurality n of consecutive bins may be considered, a PK_i and MSP_i determined for each bin, and from across the n bins selecting the largest value of PK_i ($PK_{i,max}$) and selecting the largest value of MSP_i ($MSP_{i,max}$). A bradykinesia score BK may then be computed as:

$$BK = PK_{i,max} \times MSP_{i,max}$$

[0027] Alternatively, a bradykinesia score may be computed as:

$$BK = A \times \log_c (PK_{i,max} \times MSP_{i,max}) - B$$

where A, c and B are selectable tuning constants. In a non limiting example A=16.667, n=10 and B=116.667. Such embodiments recognise that, if a person is remaining still, individual bins may carry little information to enable differentiation between a normally kinetic person and a bradykinetic person. Consideration of a sequence of bins increases the likelihood that actual movements are being considered.

[0028] Additional or alternative embodiments may provide for the BK score to be influenced by whether the person goes for long periods without movement. Such embodiments recognise a key differentiating factor between normally kinetic persons and bradykinetic persons, which is that normally kinetic persons rarely if ever remain completely motionless for any significant period of time, whereas bradykinetic persons can remain motionless for significant periods. Such embodiments might for example consider a threshold acceleration value of the PK_i of multiple bins, such as the mode of the PK_i values, which will take a small value. Should the PK_i of the person go for a long period (referred to as a quiet time or QT) without exceeding the threshold, this may in such embodiments be taken to indicate a bradykinetic state. For example, the bradykinesia score might be computed as:

$$BK = A \times \log_c (PK_{i,max} \times MSP_{i,max}) / QT^m - B$$

such that a large QT reduces the BK score, thereby more strongly indicating bradykinesia. The value of m is preferably greater than or equal to 1, such that long periods of QT more strongly influence the BK score.

[0029] It is noted that such embodiments produce a BK score which has a larger value for normally kinetic persons and a smaller value closer to zero for bradykinetic persons, consistent with common clinical subjective measures.

[0030] In another embodiment, QT may be used as an additional indicator of BK in its own right. A large QT would be very BK.

[0031] A moving mean of multiple consecutive BK scores may be output to smooth the results. In some embodiments the measure of bradykinesia may be determined repeatedly over time, for example the measure may be determined every few minutes. In such embodiments, a cumulative bradykinesia score comprising a sum of the individual measures may be determined in order to provide a cumulative indication of the kinetic state. For example the cumulative score may be determined over the course of a single dose of L-dopa, or over the course of a day.

[0032] Some embodiments of the invention thus recognise that bradykinetic movements have lower acceleration and velocity, and that the low frequency, amplitude, velocity and acceleration of bradykinetic movements is manifested in a spectral analysis by a relative preponderance of low frequencies and reduced power in all frequencies.

Dyskinesia

[0033] In some embodiments not falling under the scope of the invention in which a measure of dyskinesia is determined, the digital data from the accelerometer is band pass filtered to extract data for a band of interest. The band of interest may have a lower end cut off frequency, which is selected to remove DC components, for example being in the range of 0.05 Hz to 2 Hz, preferably being 1 Hz. The band of interest may have an upper end cut off frequency, which is selected to eliminate higher frequency components which in general do not arise from normal human motions, for example being in the range of 3 Hz to 15 Hz, preferably being 4 Hz. An upper cut off of around 4 Hz may be beneficial in avoiding or minimising the influence of tremor which is usually over 4Hz.

[0034] Additionally or alternatively, in some embodiments not falling under the scope of the invention in which a measure of dyskinesia is determined, a time block or "bin" of digital acceleration data is extracted from the time series of data and considered in isolation, with each bin being of a time duration which is selected to be small enough that relatively regular measures of dyskinesia are determined, while being long enough to provide a reasonable likelihood that a normally kinetic person will have periods of little or no movement during that bin. For example the bin duration may be in the range of ten seconds to 10 minutes, more preferably being in the range of 30 seconds to four minutes, and most preferably being substantially two minutes. Such embodiments recognise that a differentiating factor between a normally kinetic person and a dyskinetic person is that a normally kinetic person will have periods of little or no movement, whereas a dyskinetic person generally can not keep still and thus has few periods of little or no movement.

[0035] Additionally or alternatively, in some embodiments not falling under the scope of the invention in which a measure of dyskinesia is determined, the data may be compared to a threshold value and a period or proportion of time for which the data remains below the threshold may be determined. Such a measure relates to the period or proportion of time for which the person has reduced movement, and is referred to herein as the time of reduced movement (T_{RM}). The threshold value may be the mean value of the data. A moving mean of the data may be what is compared to the threshold, to reduce the effects of noise. For example a window length of the moving mean may be in the range of 0.5 seconds to 4 seconds, preferably substantially one second. A T_{RM} measure produced in such embodiments will be small for dyskinetic persons as they have few periods of no movement, but will be larger for normally kinetic persons, thereby

enabling dyskinesia to be detected and quantified.

[0036] Additionally or alternatively, in some embodiments not falling under the scope of the invention in which a measure of dyskinesia is determined, the data may be compared to a threshold value and a power measure of data which falls below the threshold may be determined. Such embodiments recognise that for a dyskinetic person data below the threshold will have a greater power than for a normally kinetic person, as a dyskinetic person will rarely be truly motionless. The threshold may be the mean value of the data, which will take a higher value for dyskinetic persons and lead to a higher power of data below the threshold, thereby enhancing the ability to detect and quantify dyskinesia. The power measure of the data which falls below the measure may comprise the mean spectral power (SP_{RM}) obtained by performing a Fast Fourier Transform on the data below the threshold. The root-mean-square (RMS) value of the SP_{RM} may be taken to obtain $SP_{RM.RMS}$.

[0037] Additionally or alternatively, in some embodiments not falling under the scope of the invention in which a measure of dyskinesia is determined, a variance (VAR) of the frequency components of the data may be obtained. Such embodiments recognise that dyskinesia often yields movements at a wide range of frequencies leading to a large VAR, whereas a normally kinetic person tends to move at a similar speed for most motions leading to a small VAR. The VAR thus provides a further measure by which dyskinesia may be detected and quantified.

[0038] In some embodiments not falling under the scope of the invention in which a measure of dyskinesia is determined, a dyskinesia score might be computed as:

$$DK = A \times \log_c (SP_{RM} / T_{RM})$$

[0039] Additionally or alternatively, in some embodiments not falling under the scope of the invention in which a measure of dyskinesia is determined, a dyskinesia score might be computed as:

$$DK = A \times \log_c (Acc \times SP_{RM} / T_{RM})$$

[0040] Additionally or alternatively, in some embodiments not falling under the scope of the invention in which a measure of dyskinesia is determined, a dyskinesia score might be computed as:

$$DK = A \times \log_c (RMS_{RM} / T_{RM})$$

where A, and c are selectable tuning constants, T_{RM} is the time of reduced movement and RMS_{RM} is the root mean-square value of the accelerometer data below the threshold value.

[0041] Additionally or alternatively, in some embodiments not falling under the scope of the invention in which a measure of dyskinesia is determined, a dyskinesia score might be computed as:

$$DK = A \times \log_c (VAR / T_{RM})$$

[0042] Additionally or alternatively, in some embodiments not falling under the scope of the invention in which a measure of dyskinesia is determined, a dyskinesia score might be computed as:

$$DK = A \times \log_c (VAR \times SP_{RM} / T_{RM})$$

[0043] As SP_{RM} , $SP_{RM.RMS}$, VAR and Acc are large for dyskinetic persons, and T_{RM} is small for dyskinetic persons, the above scores indicate dyskinesia with a high number, consistent with common clinical subjective measures.

[0044] A moving mean of multiple consecutive DK scores may be output to smooth the results. In some embodiments the measure of dyskinesia may be determined repeatedly over time, for example the measure may be determined every few minutes. In such embodiments, a cumulative dyskinesia score comprising a sum of the individual measures may be determined in order to provide a cumulative indication of the kinetic state. For example the cumulative score may be determined over the course of a single dose of L-dopa, or over the course of a day.

[0045] Some embodiments not falling under the scope of the invention thus recognise that dyskinetic movements have greater power, increased amplitude and are of a continuous relentless quality.

[0046] In some embodiments, the data is processed to produce both a measure of bradykinesia and a measure of

dyskinesia. Such embodiments recognise that a person may suffer both bradykinesia and dyskinesia simultaneously or in close succession and that each state can be independently quantified from the data returned by the accelerometer.

[0047] Thus, some embodiments of the present invention provide for objectively detecting and quantifying bradykinetic states, which is of importance in assessing the effect of therapeutic agents, both in clinical trials and in the normal clinical setting, especially to guide use of disease modifying interventions. These embodiments achieve this, even where kinetic symptoms fluctuate, by taking measurements substantially continuously or frequently throughout the day. Moreover, rather than relying on subjective measures of the patient or neurologist, embodiments of the invention provide for an objective measure so that an automated comparative analysis can be undertaken over a longer period, such as over a 24 hour period. Such embodiments recognise that a longer period of analysis is beneficial in order to better assess the effect of therapeutic agents such as L-Dopa.

[0048] In some embodiments the accelerometer is a 3-axis accelerometer giving, for each axis of sensitivity, an output proportional to acceleration along that axis. Each output is preferably sampled to obtain data representing acceleration over time. For example 100 Hz sampling may be used.

[0049] In some embodiments of the second aspect of the invention, the device may be a central computing device which is remote from the person and configured to receive data from the accelerometer via a communications network. In such embodiments, the central computing device can be further configured to communicate the determined measure of the kinetic state to a physician or clinician or the like associated with the person.

[0050] In other embodiments of the second aspect of the invention, the device may be a body-worn device comprising an accelerometer from which the data is obtained. Such embodiments may further comprise an output means, such as a display, to indicate the determined measure of the kinetic state to the person. In such embodiments the processor of the device may further be configured to use the measure of the kinetic state to update a medication regime of the person and to indicate the updated regime to the person. The medication regime may be updated by altering a dose of medication and/or updating a timing of a dose of medication.

Brief Description of the Drawings

[0051] An example of the invention will now be described with reference to the accompanying drawings, in which:

Figure 1 is a plot of dyskinesia scores given by three neurologists, with each plotted point representing the scores given by two neurologists when observing a single dyskinetic episode;

Figure 2 is a diagrammatic view of a means for detection of various Parkinsonian clinical states in accordance with an embodiment of the invention;

Figure 3 illustrates kinetic state monitoring and reporting in accordance with one embodiment of the invention;

Figure 4 is a plot of dyskinesia scores, with each point showing a score generated by one embodiment not falling under the scope of the invention for a single dyskinetic episode plotted against the average of scores given by three neurologists observing the same episode;

Figure 5 illustrates the Average Peak Acceleration (APA) achieved during task 2 (bradykinesia score) plotted for each subject group (C= Controls, B = bradykinetic and D = dyskinetic subjects);

Figure 6A illustrates the power spectrum obtained from a normal subject while sitting still (dotted line, task 3) and while performing voluntary movements (task 1, heavy line);

Figure 6B illustrates the spectral output when the subject was asked to use the fore finger to track 2 Hz and 4 Hz oscillations moving across the face of an oscilloscope;

Figure 7 illustrates the power spectrum obtained from a normal subject while writing the word "minimum";

Figure 8 is a plot of the MSP for normal (C), bradykinetic (B) and dyskinetic (D) subjects for each spectral band and performing Task 1 or Task 3;

Figure 9A is a plot of APA against the ABS;

Figure 9B illustrates changes in bradykinesia of a single patient plotted against time after a dose of L-dopa, with the heavy line being bradykinesia as determined by the APA and the dotted line being bradykinesia as determined by the ABS;

Figure 10A illustrates the IMS plotted against the ADS;

Figure 10B illustrates changes in dyskinesia of a single patient plotted against time after a dose of L-dopa, with the heavy line being dyskinesia as determined by the APA and the dotted line being dyskinesia as determined by the ADS;

Figure 11 is a resulting scan of the patient and resultant determination using the apparatus and system of the invention;

Figure 12 illustrates a general-purpose computing device that may be used in an exemplary system for implementing the invention;

Figure 13 shows IMS scores for a wrist compared to IMS scores for the whole body;

Figure 14 is a graph illustrating substantially continuous DK and BK scoring for an individual throughout the course of a day;

Figure 15 is a graph illustrating an alternative manner in which the results of the invention may be presented, by plotting a cumulative sum of DK scores for the period following each dose together with the value of BK scores throughout the day; and

Figure 16 is a graph which plots DK and BK scores for a patient who is dyskinetic.

Description of the Preferred Embodiments

[0052] Figure 2 is a diagrammatic view of a device 15 for detection of various Parkinsonian or kinetic states in accordance with an embodiment of the invention. The device 15 is wrist mounted which the present inventors have recognised provides a sufficiently accurate representation of the kinetic state of the whole body. For example, IMS scores for a wrist compared to IMS scores for the whole body are shown in Figure 13, illustrating that the wrist gives adequate kinetic state information. The device 15 comprises three elements for obtaining movement data of a limb of a person. The device 15 comprises a motion monitor 21 in the form of an accelerometer, an assessor 22 for recording and analysis of the received data in a manner that provides an objective determination of bradykinesia and dyskinesia, and an output means 23 for outputting objective determination of bradykinesia or dyskinesia over time periods so as to allow a clinician to prescribe medications or to allow the person to better understand their own kinetic state.

[0053] The device 15 is a light weight device which is intended to be worn on the most affected wrist of the person. The device is mounted on an elastic wrist band so as to be firmly supported enough that it does not wobble on the arm and therefore does not exaggerate accelerations. The device is configured to rise away from the person's wrist by a minimal amount so as to minimise exaggeration of movements. The device may be on a wrist band secured by a buckle, whereby the act of unbuckling and removing the device breaks a circuit and informs the logger that the device is not being worn. The patient preferably wears the device for at least 30 minutes prior to taking their first medication for the day, until bedtime. This allows the device to record early morning bradykinesia, which is usually at its worst at this time. The device then goes on to record kinetic responses to all medications for the day.

[0054] The accelerometer 21 records acceleration in three axes X, Y, Z over the bandwidth 0 - 10Hz, and stores the three channels of data in memory on-board the device. This device has 250MB of storage so as to allow data to be stored on the device for up to 3 days, after which the device can be provided to an administrator for the data to be downloaded and analysed. Additionally, in this embodiment, when the device is removed each night for patient sleep time, the device is configured to be placed in and interface with a dock so as to have the device transfer the data to the dock which then transmits the data via wireless broadband to analysis servers at the main company (see 114 in Figure 3). The interface with the dock also provides for batteries of the device to be recharged.

[0055] As a wrist-worn device intended for potentially frail persons, the device is of minimal size and weight. Further, for this reason the docking interface is designed such that the device simply falls into place to effect connections of the interface, and provides a very clear feedback that the connection has been made. In one alternative information from the data logger may be transmitted wirelessly by Bluetooth or the like to a PDA (Personal Digital Assistant), kept with the patient to avoid the need for docking to effect data transfer.

[0056] Figure 3 illustrates kinetic state monitoring and reporting in accordance with one embodiment of the invention. A patient 112 is wearing the device of Figure 2. The device 15 logs accelerometer data and communicates it to a central computing facility 114. The computing facility 114 analyses the data using an algorithm (discussed further below), to obtain a time series of scores for the bradykinetic state of the person 112 and a time series of scores for the dyskinetic state of the person. These scores are reported to a neurologist 116 in a format which can be rapidly interpreted by the neurologist to ensure efficient use of the neurologist's time. The report shows major movement categories and is emailed directly to the physician or made available on a website. From this report the patient's medication protocol can be optimised. The neurologist 116 then interprets the kinetic state report and updates a medication prescription of the patient accordingly.

[0057] The accelerometer measures acceleration using a uniaxial accelerometer with a measurement range of +/- 4g over a frequency range of 0 to 10 Hz. Alternatively a triaxial accelerometer can be used to provide greater sensitivity.

[0058] The device stores data for up to 16 hours per day, for up to 7 days. The stored data is then transferred to the central computing facility 114 manually or by wireless broadband, or via Bluetooth radio to a PDA, or the like. The recording system is thus fully mobile and can be worn at home by the patient.

[0059] In this embodiment algorithms are applied to the obtained data by a central computing facility 114 in order to generate a dyskinesia score and a bradykinesia score.

Bradykinesia Scoring Algorithm

[0060] The algorithm for producing an automated bradykinesia score (BK) stems from the recognition that bradykinetic subjects have longer intervals between movement and when they do move it is with lower acceleration. Bradykinetic patients thus have a low percentage of time with movement. Normally kinetic persons have a higher percentage of time

EP 2 306 899 B1

in which they are moving and a higher peak acceleration of movements. In keeping with presently used subjective measures based on clinical observation, in this algorithm a low BK score indicates more severe bradykinesia, while a high BK score indicates little or no bradykinesia. The bradykinesia scoring algorithm operates on the recorded data in the following steps.

5 BK1: the data is band-pass filtered to extract components in the range 0.2 to 4 Hz, in order to remove DC, wrist rotation, tremor above 4 Hz, and accidental bumping of the logger and the like.

BK2: Retrieve a short bin of data at a time, being 30 seconds or 3000 data points per bin in this embodiment. The bin length is long enough to provide a good chance that the person will undertake significant movement within that bin period such that parameters PK_i and SP_{maxi} (described further below) are likely to arise from such a movement.

10 Steps BK3 to BK9 are designed to find a maximum acceleration in the bin and the frequency at which this acceleration occurred. This recognises that normal movements have higher accelerations which occur at higher frequencies, while bradykinesia is characterised by lower peak accelerations occurring at lower frequency.

BK3: the i^{th} bin is searched for a maximum acceleration value using a 0.2 second (20 data points) moving mean to eliminate noise. The 0.2 second period with the highest mean is deemed to be the peak acceleration, PK_i . Noise may in other embodiments be eliminated by taking a median, or by selecting high values out, or by low pass filtering.

15 BK4: X points either side of PK_i are collected, to create a sub-bin of 2X data points to be used for a FFT. In this embodiment 128 points are taken either side to produce a sub bin of 256 points (2.56s).

BK5: A FFT is performed on the peak acceleration sub-bin, on the raw accelerometer signal, to find the frequency components present around the PK_i .

20 BK6: Overlapping 0.8 Hz bands are considered, namely:

A	0.2-1.0Hz
B	0.6-1.4Hz
C	1.0-1.8Hz
25 D	1.4-2.2Hz
E	1.8-2.6Hz
F	2.2-3.0Hz
G	2.6-3.4Hz
30 H	3.0-3.8Hz

The band which contains the maximum mean spectral power SP_{maxi} is identified.

BK7: The value in each of the eight frequency bins is weighted as follows:

35

A	x 0.8
B	x 0.9
C	x 1.0
D	x 1.1
E	x 1.2
40 F	x 1.3
G	x 1.4
H	x 1.5

45 A maximum weighted mean spectral power (MSP_{MAX}) is identified from the weighted band values, using a linear look-up function.

BK8: A high MSP_{max} with high frequencies and high amplitudes is taken to be more likely to indicate a non-bradykinetic state, while a small MSP_{max} is more likely to indicate bradykinesia.

BK9: Steps BK3 to BK8 are repeated for each 30 second bin to obtain a series of $MSP_{max.i}$ values.

50 BK10: The biggest movements over a group of the analysis bins are identified and recorded. The group of analysis bins may extend over four bins to yield a BK score every 2 minutes, or may extend over six bins to yield a BK score every 3 minutes, for example. The maximum PK_i of the group of bins and the largest weighted $MSP_{max.i}$ of the group of bins are selected, and it is noted that these two values might not arise from the same bin. A Bradykinesia Score is produced by calculating:

55

$$BK = A \times \log_{10}(MSP_{max} \times PK_i) - B$$

EP 2 306 899 B1

This step thus operates upon the "best" or strongest movements in each 2-3 minute window. The BK score is then plotted against time.

BK11: A moving mean is taken of BK values over a 2 to 10 minute window (window length being a variable) and plotted against time, so as to filter the result for intuitive presentation to a neurologist.

[0061] The BK score produced by this algorithm thus enables a change in BK over time from each medication to be assessed, and the relative change in BK from the time of medication to be measured. This also allows an assessment of the percentage of time for which the patient is at each BK score for each day or each medication period. Noting that normally kinetic people can behave in a bradykinetic manner for short periods of time it is important to assess both the persistency and depth of the person's bradykinesia, which is made possible by this embodiment.

Dyskinesia Scoring Algorithm

[0062] The algorithm for producing an automated dyskinesia score stems from the recognition that dyskinetic subjects have few intervals or pauses between movement, while non-dyskinetic people will have longer periods of no movement. Dyskinetic persons will also move with a greater spectral power. This algorithm thus works to distinguish between normally kinetic people undergoing periods of excess voluntary movement and dyskinetic persons undergoing excess involuntary movement. The dyskinesia scoring algorithm operates on the recorded data in the following steps.

DK1: Band-pass filter the raw data to extract components in the range 1-4Hz, in order to remove DC, wrist rotation, tremor and bumping of the sensor.

DK2: null

Steps DK3 to DK7 aim to remove sections of data that are above the mean acceleration, in an attempt to remove voluntary normal movements from the data set.

DK3: The data is broken down into 120s bins which are each considered in isolation. The bin width is a variable, in this embodiment comprising 12000 data points. Longer bin periods are more likely to exclude movements of high acceleration because the majority of the signal will have smaller amplitude.

DK4: For each 120s bin i the mean acceleration amplitude (Acc_i) is measured, using the absolute amplitude of the data. Acc_i is used as a threshold below which data is deemed to represent "reduced movement".

DK5: A one second (100 data point) moving point mean is calculated across the bin.

DK6: Any one second duration of data for which the mean acceleration is larger than Acc_i is removed from further consideration, in an attempt to exclude voluntary normal movements.

DK7: The remaining data in the bin is assumed to relate to periods of reduced movement and therefore is referred to as the reduced movement (RM) data set. The time period of the reduced movement within the bin is T_{RM} . The remaining RM data in the bin is simply concatenated.

Steps DK8-DK12 aim to measure the properties of the "non-voluntary" movement set remaining in the data, assessing several ways of measuring the power in the non-voluntary movements of the RM data. It is noted that dyskinetic patients have high power in their non-voluntary movements.

DK8A: a FFT is performed on the RM data set in each 120s bin. The mean spectral power for the RM in each 120s bin is the SP_{RM} . This is for the 1-4Hz range due to the filtering at DK1. In dyskinesia this power will be higher than for normally kinetic persons.

DK8B: The RMS value of the Reduced Movement data set absolute values is taken, to give the reduced movement power.

DK8C: The variance (VAR) or standard deviation of the frequencies in either the full 120s bin or in the RM data set is obtained.

DK9: A DK score is calculated as:

$$DK_{sp} = A SP_{RM}/T_{RM}$$

and DK_{sp} is plotted.

DK10: A DK score is calculated as:

$$DK_{acc} = \log_c (Acc_i \times SP_{RM})/T_{RM}$$

and DK_{acc} is plotted.

DK11: A DK score is calculated as

$$DK_{rms} = A \log_c RMS_{RM}/T_{RM}$$

and DK_{rms} is plotted.

DK12: A DK score is calculated as

$$DK_{var} = A \log_c VAR/T_{RM}$$

and DK_{var} is plotted.

[0063] A moving mean is taken of DK values over a 2 to 10 minute window (window length being a variable) and plotted against time, so as to filter the result for intuitive presentation to a neurologist. Further, a percentage of time for which a patient is at different absolute DK scores for each day or each medication period is assessed. This recognises that a normally kinetic person can undergo dyskinetic-like movements for short periods, but that only dyskinetic patients have a relentless nature to their movements, which is what is measured in this approach.

[0064] This embodiment further provides for DK scores from a daily medication period, for example a 9:00 AM to 12:00 PM period, to be averaged over multiple days to obtain a stronger measure.

[0065] Figure 4 is a plot of dyskinesia scores, with each point showing a DK score generated by one embodiment of the invention for a single dyskinetic episode plotted against the average scores of dyskinesia given by three neurologists observing the same event. As can be seen the present invention compares favourably with the average score of three neurologists (referred to as the "Gold standard"), (specificity 93.6%; sensitivity 84.6%), demonstrating that this embodiment is an acceptable replacement for daily clinical monitoring.

[0066] Figure 11 illustrates results obtained using the system of Figure 2 and using the above algorithms, for one patient. The patient woke at 6:15am and put the wrist recording device on. Her movements caused the device and algorithm to give a very low BK score of BK4 at this time, which shows her to be very bradykinetic which is the principle feature of Parkinson's disease. She then took two tablets of L-Dopa at 7:00am but remained bradykinetic until the tablets were absorbed and there was enough concentration in the brain to start to reduce her bradykinesia. From about 8:00am until 9:30am her bradykinesia continued to improve from BK4 up to BK1, BK1 being normal pattern movement. However, the concentration of L-Dopa at this stage also started to introduce peak dose dyskinesia at about 9:00am. She relapsed into BK state near 10:00am. Her second medication was taken at 10:45am which soon returned her to a normal BK score of BK1. Dyskinesia developed again around 12:30pm.

[0067] As will be appreciated such a simultaneous, ongoing and objective measure of both bradykinesia and dyskinesia provides a neurologist with detailed information to assist in formulating a suitable regime of medication. For example, in response to this recording a neurologist may elect to move the first dose of L-Dopa to earlier in the morning to reduce her bradykinesia time, then make the time interval to the second dose somewhat shorter while maintaining the interval to the third dose. The aim for this patient would be to maintain BK for a higher percentage of time in the BK1 state, while also aiming to reduce the DK score so that less time is spent in DK2 and DK3 states. Naturally, further measurements can be taken in accordance with the present invention to monitor the effect of such a change.

[0068] This embodiment thus provides for the bradykinetic and dyskinetic states of the person to be recognised and quantified with high selectivity and sensitivity, even when the person is carrying out normal daily activities across a range of naturalistic movements and not controlled movements in a clinical environment.

[0069] Figure 14 illustrates substantially continuous DK and BK scoring for an individual throughout the course of a day. L-dopa treatments were taken at the times indicated by the vertical lines. This figure produced by the present embodiment of the invention clearly indicates that the patient has very low dyskinesia and very significant bradykinesia, enabling a neurologist to quickly deduce that the patient appears to be undertreated.

[0070] Figure 15 illustrates an alternative manner in which the results of the present technique may be presented, by plotting a cumulative sum of DK scores for the period following each dose. The actual DK scores are shown in faint lines with the cumulative DK score (CUSUM DK) indicated by the solid line. Again, the time of each medication is indicated by a vertical line. A flat CUSUM indicates a normal kinetic state, and so Figure 15 illustrates that this patient experiences significant dyskinesia, particularly during the afternoon. In this case the present invention thus provides the neurologist with valuable information regarding the dyskinesia induced by each particular dose throughout the course of the day. Figure 15 also plots the value of BK scores throughout the day.

[0071] Figure 16 plots DK and BK scores for another patient, who can be seen from these results to be very dyskinetic. This patient's BK scores are largely normal thus providing a neurologist with valuable insight that medication might be lowered as bradykinesia has been fully treated but high dyskinesia is occurring. The aberrant BK scores around 8:15AM might have been caused by the patient removing the logger for example when taking a shower.

[0072] On testing a form of the device and system on test subjects the following occurred: Twelve subjects, patients with Parkinson's Disease, and eight healthy subjects (controls) were studied (Table 1). Subjects were recognised as being bradykinetic [B], dyskinetic [D] and normal [C]. The Parkinson's Disease patients were drawn from one clinic and were receiving medication for Parkinson's Disease. The controls had no known neurological disorders. All procedures complied with the World Medical Association Declaration of Helsinki and were approved and supervised by a Human Research & Ethics Committee. All subjects provided consent following a detailed explanation of the experimental procedure.

Table 1. Subjects

Normal Subjects (C)	8 (4 F) Average age, 48 ± 13
Parkinson Subjects	11 (7 F) Average age, 67 ± 86
Bradykinetic (without tremor, B)	6
Dyskinetic (D)	5
Disease duration	9 ± 4
Age at disease onset	58 ± 10

Treatment of L-dopa

[0073] To ensure that the patients were bradykinetic at time zero, they were requested to withhold their regular therapy 10 hours prior to commencement of the study. Food and fluid intake was not restricted. A single tablet of 250mg of L-dopa and 25mg of carbidopa was given to the patients at the beginning of the study (0 minutes). The patients were then requested to complete a set of simple tasks administered at 0, 10, 20, 30, 45, 60, 90, 120, and 180 minutes after drug administration.

Clinical Assessment.

[0074] Bradykinesia was assessed by measuring maximum acceleration while performing a repetitive, oscillatory movement. Subjects were asked to slide their forefinger between two large dots (diameter 30mm) placed 300mm apart on a piece of cardboard. This was performed for 30 seconds at their own pace, followed by a 30 second rest and then repeated as fast as possible for 30 seconds. The dots were positioned so that the limb movement was across the body rather than to and from the body. This was a variation on the well known and validated key press or peg board tests for assessing bradykinesia. The averaged peak acceleration (APA) was the median of the 20 greatest accelerations and was used as the clinical bradykinesia score.

[0075] A dyskinesia score was obtained from the average of scores provided by trained neurologists familiar with Parkinson's disease and experienced in the use of the modified IMS scoring method. Two of the evaluators had not previously examined any of the patients used in this study; the third evaluator provided their routine neurological care. The evaluators scored independently of their colleagues.

[0076] Subjects were videoed while they performed 5 specified tasks (described later). The video was divided into 30 s epochs and the evaluators provided a score for each epoch. A Modified Involuntary Movement Score (IMS), modified

from previously described methods was used to provide a score of 0-4 for each of the following five body regions: Upper extremities; arms, wrists, hands and fingers, Lower extremities; legs, knees, ankles and toes, Trunk movements; back, shoulders and hips: Head movements; neck and facial: Global Judgments; overall severity of dyskinesias. The scores were as follows: 0=no dyskinesia present: 1 =dyskinesias discernable to a trained physician, except not a layperson: 2=dyskinesias easily detectable: 3= dyskinesias that would affect day-to-day activities but do not restrict them: 4=dyskinesias that would restrict day-to-day activities. Thus the maximum IMS was 20.

Test Procedures

[0077] The accelerometer was oriented so that it was most sensitive to pronation/supination movements and was attached to the most severely affected limb of Parkinsonian subjects and on the dominant limb of control subjects. The lead of the accelerometer was secured separately below the elbow, so as to prevent adventitious movement of the accelerometer. Subjects then performed the following tasks.

Task 1. Unrestricted voluntary movement: Subjects were engaged in conversation about a subject that required descriptions of how to make, build or do something, such as tying a neck tie. Spontaneous movements were recorded to establish whether bradykinesia and dyskinesia could be detected using the spectrogram, during normal activities and not only during specially selected tasks.

Task 2. Voluntary repetitive alternating movements: This was described previously (clinical assessment) and was used to obtain a clinical bradykinesia score.

Task 3. Restricted voluntary movement: Subjects were requested to remain as still as possible in an attempt to identify involuntary movement, such as dyskinesia. The subjects were instructed to sit upright with their hands on their knees and were requested to refrain from voluntary movement for 1 minute. Subjects were scored for dyskinesia during this task.

Task 4. Patients poured water from a 1L jug, filled to 600ml, into three plastic 250ml cups. This task took between half a minute to two minutes to perform. Patients were asked to pour using the wrist with the accelerometer attached.

Task 5. The patients walked a distance of 2.5 metres turned 180° and walked a further 2.5 metres. This was repeated for at least 30s although some subjects took a minute to perform one cycle. One patient was confined to a wheelchair and was unable to perform this task.

[0078] Each task took approximately 2 minutes to perform. In the first part of the study, the subjects completed the first three tasks once. Following the test dose of L-dopa, subjects were requested to perform all five tasks at regular intervals after drug administration. This trial was designed to encompass the effects of a single dose of L-dopa and include the consequent short-term motor fluctuations.

Statistical Analysis

[0079] The 0.5 - 8.0 Hz frequency band was divided into three bins or bands of frequency: 0.5- 2.0 Hz, 2.0-4.0 Hz, and 4.0-8.0 Hz (Figure 7). The frequency bands were selected to represent frequencies that may be relevant to specific movement behaviours. As the FFT is a line drawn through a series of discrete points, all the points in a band could be summed and averaged to produce a mean that will be subsequently referred as the MSP (mean spectral power) for the frequency band. Thus $MSP^{0.5-2.0Hz}$ will refer to the mean spectral power from the frequency band of 0.5 to 2.0Hz.

[0080] In the first stage of the study a comparison was made between the MSP obtained from the bradykinetic and the dyskinetic subjects using the Mann-Whitney test and a P value less than 0.01 was considered significant. Even though tests for statistical significance were performed, the only functionally useful result would be to achieve little or no overlap between various clinical groups for a particular test.

RESULTS

Selection and characterisation of Bradykinesia and Dyskinesia in subjects with Parkinson's Disease.

[0081] Patients in this study were selected because they had either obvious bradykinesia (known as bradykinetic patients) or prominent dyskinesia following a dose of L-dopa (dyskinetic subjects). Bradykinetic subjects were assessed when off medication but most did not develop prominent dyskinesia when on L-dopa. We used the APA (described in

the methods) from the dot slide, as the 'standard' for bradykinesia severity. The APA scores of dyskinetic subjects was intermediate between normal and bradykinetic. A total IMS score was provided by three neurologists who gave a dyskinesia score for each two minute segment of videoed movement. Agreement between the three evaluators was reflected in the strong correlations between their scores

5

Table 2: Spearman Rank order correlations between the different evaluators' scores of dyskinesia. All r values were significant ($p < 0.01$)

10

	Elevator 2	Elevator 3
Elevator 1	$r=0.796$	$r=0.860$
Elevator 2		$R=0.915$

15

[0082] Importantly, the IMS score for the recorded arm correlated highly ($r=0.85$, see also Figure 13) with the total IMS score justifying the measurement of acceleration in a just one arm (Figure 13).

20

[0083] The next set of studies addressed the question of whether the Power spectrum of normal subjects was suitable for identifying different movements. When a normal subject was sitting still (task 3, Figure 6A), the power across the broad range of studied frequencies was lower than when the subject was engaged in voluntary movement (task 1, Fig 6A). To then demonstrate that 2 and 4 Hz limb oscillations could be measured, normal subjects used their fore finger to track 2 and 4Hz oscillations on an oscilloscope screen. Clear peaks at the relevant frequencies were apparent in the power spectrum (Figure 6B). When subjects wrote the word "minimum", a broad peak at approximately 3Hz was apparent (Figure 7).

25

[0084] The Power Spectrum was then divided into three bands (Figure 7) and the MSP of each band was estimated (Figure 8). When moving the wrist during conversation (task 1), power spectrum in all three frequency bands was lower in bradykinetic subjects than in normal subjects (Figure 8). Not surprisingly this difference was less apparent when subjects were asked to remain still: bradykinetic patients could keep as still as normal subjects (e.g. task 3, Figure 8).

30

[0085] The frequency range of dyskinetic movements was similar to normal movements but with a substantially increased power. As might be expected, dyskinetic subjects had difficulty remaining completely still (task 3 Figure 8). Although the MSP of normal and dyskinetic subjects was completely separated in each of the three spectral bands, the separation was greatest in the $MSP^{2.0-4.0Hz}$ (task 3 Figure 8).

Bradykinesia

35

[0086] The $MSP^{2.0-4.0Hz}$ from all patients at all time points were correlated with the APA measured at the same time point

Table 3: Pearson correlations ($n=79$ for all Tasks) between the $MSP^{2.0-4.0Hz}$ and APA. *= significant r values ($p < 0.01$)

40

Task 1	Task 3	Task 4	Task 5
Talking Freely	Sitting Still A	Pouring Water	Walking
0.320*	$r=0.146$	$r=0.400^*$	$r=0.264$

45

[0087] $MSP^{2.0-4.0Hz}$ correlated poorly with bradykinesia (as measured by the APA). This was reflected in a low specificity (76%) and sensitivity (65.1 %) of the $MSP^{2.0-4.0Hz}$ to predict bradykinesia.

50

[0088] The poor correlations most likely arise because bradykinesia measured by MSP was task dependent. For example, when a normal person "chose" to sit still, the MSP would be indistinguishable from a bradykinetic, who does not have the capacity to move faster. Thus, the requirement was to recognise patients who were still for much of the time but capable of making rapid movements from bradykinetic patients who were not capable of fast movements. On consideration, bradykinetic subjects make fewer movements than normal subjects and hence there are longer intervals between movements. Furthermore, when bradykinetics movement occurs, the movements are of lower power, reflecting lower acceleration and amplitude.

55

[0089] An algorithm in accordance with one embodiment of the present invention was thus developed which, in essence, used the maximum acceleration made in each interval and the MSP in the period surrounding this peak to produce an ABS (automated bradykinesia score). The argument was that normal subjects may have periods of low MSP but whatever movements they do make would be done with much higher acceleration than bradykinetic subjects. The algorithm used to derive the ABS was modified serially and optimised against the APA. When optimal, a new set of data was collected and plotted against the APA (Fig 9A). The ABS strongly correlated with the bradykinesia "standard" ($r=0.628$, $p < 0.001$, $n=79$) with a specificity of 87.5% sensitivity of 94.5%. The APA and the ABS were plotted against time after a dose of

L-Dopa and the example of one subject is shown in Figure 9B. In this case the correlation between APA and ABS was $r=0.77$.

Dyskinesia

[0090] An Automated Dyskinesia Score (ADS) was also developed. The Clinical Dyskinesia Score was found to be strongly correlated with both the MSP^{1-4Hz} and the APA

Table 4 Pearson's correlations between the MSO^{2.0-4.0Hz}, the APA and the Clinical Dyskinesia Score. All r values were significant ($p<0.01$).

	APA	Clinical Dyskinesia Score
MSP	$r=0.90$	$r=0.89$
APA		$r=0.85$

[0091] In view of these correlations, either accelerometer measure would provide an objective measure of dyskinesia that would concur with neurological assessment. However, the sensitivity (76.9%) and specificity (63.6%) of the MSP was unacceptably low. The correlation was highly dependent on the task being performed by the patient. In particular, this correlation did not take into account dyskinesia when the subject was sitting still, and the level of dyskinesia was markedly higher when the subject was walking even though it occurred only 30 seconds later. Thus the problems with Spectral power as a measure of dyskinesia were similar to those encountered with bradykinesia: namely, the problem of distinguishing between periods of increased voluntary movement and increased involuntary movement (dyskinesia). Examination of dyskinetic subjects and discussion with neurologists suggested that dyskinetic subjects would have shorter time periods without movement.

[0092] Thus, in accordance with one embodiment not falling under the scope of the invention, a DK algorithm was developed to identify periods where movement was absent or of low amplitude in the accelerometer recording. In brief, the mean acceleration in each 2 minute segment was estimated and movements above average acceleration were regarded as either voluntary or dyskinetic movements. Epochs where acceleration was less than the mean were extracted and the MSP^{1.0-4.0Hz} was divided by the number of low acceleration epochs to provide an Automated Dyskinesia Score (ADS). Non-dyskinetic subjects should have greater periods below the mean acceleration and a lower MSP^{1.0-4.0Hz}, Dyskinetic subjects on the other hand should have less time below the mean acceleration window, and should have a large MSP^{1.0-4.0Hz}. In essence the approach is to quantify the duration of time that the subject remains still. The algorithm of this embodiment used to derive the ADS was modified serially and optimised against the IMS. When optimal, a new set of data was collected and plotted against the IMS and a correlation coefficient (Spearman's) was calculated ($r=0.766$, $p<0.0001$, $n=85$, Figure 10A). While this correlation was less than that between MSP^{1-4Hz} and the IMS, the sensitivity and specificity was much higher (sensitivity = 84.6%, specificity = 93.6%). The method was better suited for long-term recording of patients, because it was less influenced by the type of task performed.

[0093] An assumption underlying these embodiments not falling under the scope of the invention was that patterns of movement recognised by a trained observer can be quantified by recording a trace of the movement and modelling the features that the observer uses to characterise the pattern. In this study we first showed that spectral analyses could distinguish between bradykinesia and dyskinesia. However the sensitivity and selectivity of this method degraded when a variety of activities occurred.

[0094] In particular more complex analysis was required to distinguish between bradykinesia and a normal subject sitting still, and between dyskinesia and some forms of normal activity. This was achieved by modelling what trained observers see: bradykinetic subjects have longer intervals between movement and when they do move it is with lower acceleration. Dyskinetic subjects have fewer intervals between movement and they move with a greater spectral power. Using this approach it was possible to recognise bradykinetic and dyskinetic movements with high selectivity and sensitivity across a range of naturalistic movements.

[0095] To verify this embodiment not falling under the scope of the invention involved reference to a "gold standard". Clinicians know dyskinesia and bradykinesia when they see it and clinical scales have been developed in an attempt to quantify clinical observation. However these scales are subjective, require training and experience and are most precise when repeated by the same clinician. Of necessity these scales can only be used when a trained observer is present, but Parkinson's Disease varies greatly over the day, from day to day and one single snap shot cannot provide a true measure of function or fluctuation in disease. The bradykinesia and dyskinesia rating scales used are the most widely accepted semi-objective methods available to compare with the output of spectral analyses. The most common clinical bedside test for bradykinesia is to request rapid alternating finger movements. Slow small amplitude movements (low acceleration) are considered bradykinetic and there are several quantitative scales that measure peak acceleration

developed during oscillatory movement such as peg board, key press and dot-slide (task 2). These vary according to the number of repetitions or, timing of movement or "amount" of movement achieved. Similarly, low amplitude slow handwriting and key presses per minute are well-validated tests for bradykinesia. Each of these scales depends on the inability to reach normal acceleration as a measure of bradykinesia. The dyskinesia score was a modification of other dyskinesia rating scales. The degree of correlation between the clinical scales and the automated scales of the present embodiment suggest that the automated scales are of value and could be used to continually score the clinical state over a protracted period. The DK and BK scores are capable of recognising the clinical states and may thus provide an effective clinical tool.

[0096] Thus, the described embodiment of the invention recognises that improved management of PD by medication requires monitoring of both bradykinesia and dyskinesia, even when away from clinical observation, throughout the day. The present embodiment thus provides a means to remotely and substantially continuously capture, interpret and report a patient's movement status over a defined period of time. Because this system reports automatically to the neurologist, there is no need for the patient or their carer to worry about remembering, keeping or maintaining records. Further, the simple wrist-worn device of this embodiment is easy to use and can be used at home or elsewhere and does not intrude on day to day activities, being a simple system that does not require an understanding of technology. Further, for people living in rural and remote areas who are unable to easily attend clinics in major centres, changes to dosage can be made by the neurologist remotely, in conjunction with the patient's local GP.

[0097] The presently described embodiment of the invention is further beneficial to the neurologist by automatically providing the neurologist with an objective assessment (in digital report format) of the symptoms experienced by patients with Parkinson's Disease (PD). This provides neurologists with reliable information about a patient's kinetic status over a meaningful period, based on objective and continuous data capture. With this information, physicians can titrate medication more efficiently to reduce the incidence of dyskinesia and bradykinesia, key symptoms for PD sufferers. This results in improved patient management and a better quality of life for people living with PD. This may further result in fewer visits to doctors/clinics, allowing a neurologist to provide effective care to a greater number of patients.

[0098] Wider benefits of this embodiment may include improved patient management that decreases the financial burden on health care systems, fewer day patient visits, reduced incidence of symptom-associated falls and complications requiring hospitalization, and reduced high and specialised aged care.

[0099] This embodiment further provides for the wrist-worn device to be programmable whereby the neurologist can set the time and frequency for recording, based on the needs of the patient, and can further cause the device to give reminders to the patient for taking medication.

[0100] This embodiment thus provides an objective reporting tool that remotely records PD patients' movements on a continuous basis and provides an assessment every 2-3 minutes, for the number of days required by the neurologist. It solves the problem of reliable measurement of PD symptoms and automatically provides reports to the neurologist via email or a suitable website. While helpful for all PD stages, it is particularly valuable during the middle stages of the disease, when dyskinesia begins to emerge. Physicians can diagnose disease progression and change medication dosage based on objective data recorded for 3-4 days before a patient's visit. They can determine dosage effectiveness or make further changes using data recorded after dosage is altered. Records are easy to retain with the patient's history.

[0101] The present embodiment thus provides an objective continuous assessment of the symptoms experienced by patients with Parkinson's disease. This embodiment may thus assist physicians to more inefficiently determine instances of bradykinesia and dyskinesia and therefore improve patient management by providing better medication, giving improved quality of life for people with bradykinesia and/or dyskinesia, such as persons having Parkinson's disease.

[0102] Some portions of this detailed description are presented in terms of algorithms and symbolic representations of operations on data bits within a computer memory. These algorithmic descriptions and representations are the means used by those skilled in the data processing arts to most effectively convey the substance of their work to others skilled in the art. An algorithm is here, and generally, conceived to be a self-consistent sequence of steps leading to a desired result. The steps are those requiring physical manipulations of physical quantities. Usually, though not necessarily, these quantities take the form of electrical or magnetic signals capable of being stored, transferred, combined, compared, and otherwise manipulated. It has proven convenient at times, principally for reasons of common usage, to refer to these signals as bits, values, elements, symbols, characters, terms, numbers, or the like.

[0103] As such, it will be understood that such acts and operations, which are at times referred to as being computer-executed, include the manipulation by the processing unit of the computer of electrical signals representing data in a structured form. This manipulation transforms the data or maintains it at locations in the memory system of the computer, which reconfigures or otherwise alters the operation of the computer in a manner well understood by those skilled in the art. The data structures where data is maintained are physical locations of the memory that have particular properties defined by the format of the data. However, while the invention is described in the foregoing context, it is not meant to be limiting as those of skill in the art will appreciate that various of the acts and operations described may also be implemented in hardware.

[0104] It should be borne in mind, however, that all of these and similar terms are to be associated with the appropriate

physical quantities and are merely convenient labels applied to these quantities. Unless specifically stated otherwise as apparent from the description, it is appreciated that throughout the description, discussions utilizing terms such as "processing" or "computing" or "calculating" or "determining" or "displaying" or the like, refer to the action and processes of a computer system, or similar electronic computing device, that manipulates and transforms data represented as physical (electronic) quantities within the computer system's registers and memories into other data similarly represented as physical quantities within the computer system memories or registers or other such information storage, transmission or display devices.

[0105] The present invention also relates to apparatus for performing the operations herein. This apparatus may be specially constructed for the required purposes, or it may comprise a general purpose computer selectively activated or reconfigured by a computer program stored in the computer. Such a computer program may be stored in a computer readable storage medium, such as, but is not limited to, any type of disk including floppy disks, optical disks, CD-ROMs, and magnetic-optical disks, read-only memories (ROMs), random access memories (RAMs), EPROMs, EEPROMs, magnetic or optical cards, or any type of media suitable for storing electronic instructions, and each coupled to a computer system bus.

[0106] The algorithms and displays presented herein are not inherently related to any particular computer or other apparatus. Various general purpose systems may be used with programs in accordance with the teachings herein, or it may prove convenient to construct more specialized apparatus to perform the required method steps. The required structure for a variety of these systems will appear from the description. In addition, the present invention is not described with reference to any particular programming language. It will be appreciated that a variety of programming languages may be used to implement the teachings of the invention as described herein.

[0107] A machine-readable medium includes any mechanism for storing or transmitting information in a form readable by a machine (e.g., a computer). For example, a machine-readable medium includes read only memory ("ROM"); random access memory ("RAM"); magnetic disk storage media; optical storage media; flash memory devices; electrical, optical, acoustical or other form of propagated signals (e.g., carrier waves, infrared signals, digital signals, etc.); etc.

[0108] Turning to Figure 12, the invention is illustrated as being implemented in a suitable computing environment. Although not required, the invention will be described in the general context of computer-executable instructions, such as program modules, being executed by a personal computer. Generally, program modules include routines, programs, objects, components, data structures, etc. that perform particular tasks or implement particular abstract data types. Moreover, those skilled in the art will appreciate that the invention may be practiced with other computer system configurations, including hand-held devices, multi-processor systems, microprocessor-based or programmable consumer electronics, network PCs, minicomputers, mainframe computers, and the like. The invention may be practiced in distributed computing environments where tasks are performed by remote processing devices that are linked through a communications network. In a distributed computing environment, program modules may be located in both local and remote memory storage devices.

[0109] In Figure 12 a general purpose computing device is shown in the form of a conventional personal computer 20, including a processing unit 21, a system memory 22, and a system bus 23 that couples various system components including the system memory to the processing unit 21. The system bus 23 may be any of several types of bus structures including a memory bus or memory controller, a peripheral bus, and a local bus using any of a variety of bus architectures. The system memory includes read only memory (ROM) 24 and random access memory (RAM) 25. A basic input/output system (BIOS) 26, containing the basic routines that help to transfer information between elements within the personal computer 20, such as during start-up, is stored in ROM 24. The personal computer 20 further includes a hard disk drive 27 for reading from and writing to a hard disk 60, a magnetic disk drive 28 for reading from or writing to a removable magnetic disk 29, and an optical disk drive 30 for reading from or writing to a removable optical disk 31 such as a CD ROM or other optical media.

[0110] The hard disk drive 27, magnetic disk drive 28, and optical disk drive 30 are connected to the system bus 23 by a hard disk drive interface 32, a magnetic disk drive interface 33, and an optical disk drive interface 34, respectively. The drives and their associated computer-readable media provide nonvolatile storage of computer readable instructions, data structures, program modules and other data for the personal computer 20. Although the exemplary environment shown employs a hard disk 60, a removable magnetic disk 29, and a removable optical disk 31, it will be appreciated by those skilled in the art that other types of computer readable media which can store data that is accessible by a computer, such as magnetic cassettes, flash memory cards, digital video disks, Bernoulli cartridges, random access memories, read only memories, storage area networks, and the like may also be used in the exemplary operating environment.

[0111] A number of program modules may be stored on the hard disk 60, magnetic disk 29, optical disk 31, ROM 24 or RAM 25, including an operating system 35, one or more applications programs 36, other program modules 37, and program data 38. A user may enter commands and information into the personal computer 20 through input devices such as a keyboard 40 and a pointing device 42. Other input devices (not shown) may include a microphone, joystick, game pad, satellite dish, scanner, or the like. These and other input devices are often connected to the processing unit

21 through a serial port interface 46 that is coupled to the system bus, but may be connected by other interfaces, such as a parallel port, game port or a universal serial bus (USB) or a network interface card. A monitor 47 or other type of display device is also connected to the system bus 23 via an interface, such as a video adapter 48. In addition to the monitor, personal computers typically include other peripheral output devices, not shown, such as speakers and printers.

5 **[0112]** The personal computer 20 may operate in a networked environment using logical connections to one or more remote computers, such as a remote computer 49. The remote computer 49 may be another personal computer, a server, a router, a network PC, a peer device or other common network node, and typically includes many or all of the elements described above relative to the personal computer 20, although only a memory storage device 50 has been illustrated. The logical connections depicted include a local area network (LAN) 51 and a wide area network (WAN) 52. Such networking environments are commonplace in offices, enterprise-wide computer networks, intranets and, inter alia, the Internet.

10 **[0113]** When used in a LAN networking environment, the personal computer 20 is connected to local network 51 through network interface or adapter 53. When used in a WAN networking environment, the personal computer 20 typically includes modem 54 or other means for establishing communications over WAN 52. The modem 54, which may be internal or external, is connected to system bus 23 via the serial port interface 46. In a networked environment, program modules depicted relative to the personal computer 20, or portions thereof, may be stored in the remote memory storage device. It will be appreciated that the network connections shown are exemplary and other means of establishing a communications link between the computers may be used.

15 **[0114]** It will be appreciated by persons skilled in the art that numerous variations and/or modifications may be made to the invention as shown in the specific embodiments without departing from the scope of the invention as broadly described. For example, while the described embodiments relate to obtaining a dyskinesia score and a bradykinesia score for an idiopathic Parkinson's disease patient treated with L-Dopa, it is to be appreciated that BK score may be obtained alone, and BK score or both scores may be obtained for a person experiencing kinesic symptoms from other causes.

20 **[0115]** With regard to the Bradykinesia Scoring Algorithm, in BK7 the value in each of the sub-bands A to H identified in BK6 were weighted and MSP_{MAX} was identified from the weighted band values. The Bradykinesia Score was then calculated according to the equation $BK=10 \log_{10}(MSP_{max} \times PK_i)$ defined in BK10. In an optional embodiment, a single 0.8Hz sub-band which contains the maximum mean spectral power SP_{max_i} may be identified and may replace MSP_{max} .

25 **[0116]** In DK4 of the Dyskinesia Scoring Algorithm Acc_i is used as a threshold below which data is deemed to represent "reduced movement". In this, or an optional embodiment, a minimum threshold for Acc_i could be set at for example an arbitrary low level or generated in response to a very low BK score.

30 **[0117]** It is to be appreciated that embodiments not falling under the scope of the present invention could for example be applied to individual assessment of hyperkinetic movements such as dystonia, chorea and/or myoclonus. The dyskinesia assessed by alternative embodiments not falling under the scope of the present invention could for example arise from Huntington's disease, cervical dystonia, restless legs syndrome, paroxysmal kinesigenic dyskinesia, sleep disorders of movement, tics (stereotyped movements that are normal but out of context), Tourettes syndrome, tardive dyskinesia, tardive Tourettes, Halaroidan, Acanthocytosis, Hallervorden-Spatz or Pantothen Kinase deficiency, or Sagarawa syndrome.

35 **[0118]** The bradykinesia or hypokinetic movement assessed by alternative embodiments of the present invention could arise from Multi Systems Atrophy, Striatonigral degeneration, progressive Supranuclear palsy, Olivopontocerebellar degeneration, Corticobasal ganglionic degeneration, Huntington's disease, drug induced Parkinsonism, trauma induced Parkinsonism, Pallido Luysian degeneration or Vascular Parkinsonism.

40 **[0119]** Another embodiment of the invention comprises an accelerometer (ADXL330) which is sampled by a Philips ARM-Based Microcontroller LPC2138 and data is stored onboard the device in an SD-Flash Memory card for later manual download to PC for analysis. The device is programmed to record from the patient for 16 hours per day for 4 days without recharge because the patients have difficulty with conventional charging. Data is date and time stamped and includes a header with patient details. The service provider is able to program the patient details, time of start and end for each day, and the number of days to record; all to be stored in datafile header.

45 **[0120]** The device records acceleration in three axes; X, Y, Z using a DC-10Hz bandwidth (sampled @ 100Hz per channel). The signal is calibrated in "gravity - g" and acceleration is measured from between + 4 g and -4 g. A Real Time Clock is able to be programmed by the neurologist or service provider to start recording at some prescribed date and time in the future. Most likely the next day and first thing in the morning. The device records for a default time span of 6:00am to 10:00pm each day, but this time span is programmable by the neurologist or service provider. The number of days of recording defaults to 3 full days, but can be programmed in the range of 1 to 7 days or more. This device further provides for an input to be captured of a date and time that medication was taken. This could be the patient communicating with the wrist device to signal that medication has been taken.

50 **[0121]** At night, when the patient is in bed and the data logger is removed from the wrist, the datalogger will be placed in a cradle for battery charging and downloading of data to the central server or the doctor's own server.

[0122] The present embodiments are, therefore, to be considered in all respects as illustrative and not restrictive.

Claims

5

1. An automated method of determining a bradykinetic state of a person, the method comprising:

obtaining a time series of accelerometer data from an accelerometer (21) worn on an extremity of the person, over an extended period during everyday activities of the person;

10

band pass filtering the accelerometer data to extract filtered data for a band of interest, wherein the band of interest has a lower end cut off frequency selected to remove DC and an upper end cut off frequency which is selected to eliminate higher frequency components which in general do not arise from normal human motions; the method **characterised by**:

15

extracting one or more bins of acceleration data from the time series of the acceleration data, each bin being of a time duration selected to be small enough that relatively regular measures of bradykinesia are determinable, while being long enough to provide a reasonable likelihood of a significant movement by the person during that bin;

20

searching the data in the bin using a moving mean within a window, to identify a window of peak acceleration; and processing data in the window of peak acceleration to determine a measure for bradykinesia.

2. The method according to claim 1, wherein the bin duration is in the range of 2 seconds to 60 minutes.

25

3. The method according to claim 2, wherein the bin duration is in the range of 15seconds to four minutes.

4. The method according to any one of the preceding claims, wherein the searching comprises using a moving mean having a window length which is a fraction of the duration of a normal human motion in order to find a maxima.

30

5. The method of claim 4 wherein the window length is in the range 0.02-30 seconds.

6. The method according to any one of the preceding claims, further comprising obtaining a sub-bin which comprises a plurality of data points both before and after the identified peak acceleration PK_i , and wherein the plurality of data points is a number of data points which is a power of two, and wherein the sub-bin is symmetrically positioned about the peak acceleration, and wherein the data points cover a period of time corresponding to the duration of a normal single human motion.

35

7. The method according to claim 6, further comprising performing a spectral analysis of the sub-bin to obtain sub-band spectral measures, and wherein the sub-band spectral measures are of a width in the range of 0.6 Hz to 1 Hz.

40

8. The method according to claim 7 further comprising applying a weighting to at least a subset of the sub-band spectral measures to produce a weighted mean spectral power (MSP_i), wherein a greater indication of bradykinesia is given when the maximum (MSP_i) is small and exists in lower frequency sub-bands, and a lesser indication of bradykinesia is given when the maximum (MSP_i) is high and exists in higher frequency sub-bands.

45

9. The method according to claim 8 further comprising:

selecting a plurality n of consecutive bins;

determining a peak acceleration (PK_i) and a MSP_i for each selected bin, and from across the n bins selecting the largest value of PK_i ($PK_{i,max}$); and

50

computing a bradykinesia score BK according to at least one of the following formulae:

$$BK = PK_{i,max} \times MSP_{i,max}$$

55

and

$$BK = A \times \log_c (PK_{i,max} \times MSP_{i,max}) - B$$

where A, c and B are selectable tuning constants and $(MSP_{i,max})$ is the largest of the MSP_i .

- 5
10. The method according to claim 9 wherein a moving average of the BK scores within a moving window is calculated, to give a probabilistic determination of the likelihood of bradykinetic behaviour.
11. The method according to claim 9 further comprising calculating a cumulative bradykinesia score comprising a sum of the individual measures determined in order to provide a cumulative indication of bradykinesia.
12. The method of any one of claims 1 to 12 wherein the upper end cut-off frequency is in the range 3-15 Hz;
13. The method of claim 12 wherein the upper end cut-off frequency is 4 Hz.
14. A device (114) for determining a bradykinetic state of a person, the device comprising:

20 a band pass filter configured to band pass filter a time series of accelerometer data obtained over an extended period during everyday activities of the person from an accelerometer (21) worn on an extremity of the person to extract filtered data for a band of interest, wherein the band of interest has a lower end cut off frequency selected to remove DC and an upper end cut off frequency which is selected to eliminate higher frequency components which in general do not arise from normal human motions; and **characterized by**:

25 a processor configured to:

30 extract one or more bins of acceleration data from the time series of the acceleration data, each bin being of a time duration selected to be small enough that relatively regular measures of bradykinesia are determinable, while being long enough to provide a reasonable likelihood of a significant movement by the person during that bin;
 search the data in the bin using a moving mean within a window, to identify a window of peak acceleration;
 and
 process data in the window of peak acceleration to determine a measure for bradykinesia.

- 35 15. A computer program product comprising computer program means to make a computer execute a procedure for determining a bradykinetic state of a person, the computer program product comprising:

40 computer program code means configured to obtain a time series of data from an accelerometer (21) worn on an extremity of the person over an extended period during everyday activities of the person;
 computer program code means configured to band pass filter accelerometer data to extract filtered data for a band of interest, wherein the band of interest has a lower end cut off frequency selected to remove DC and an upper end cut off frequency which is selected to eliminate higher frequency components which in general do not arise from normal human motions; **characterized by**:

45 computer program code means configured to extract one or more bins of acceleration data from the time series of the acceleration data, each bin being of a time duration selected to be small enough that relatively regular measures of bradykinesia are determinable, while being long enough to provide a reasonable likelihood of a significant movement by the person during that bin;
 computer program code means configured to search the data in the bin using a moving mean within a window, to identify a window of peak acceleration; and
 50 computer program code means configured to process data in the window of peak acceleration to determine a measure for bradykinesia.

55 **Patentansprüche**

1. Automatisiertes Verfahren zum Bestimmen eines bradykinetischen Zustands einer Person, wobei das Verfahren umfasst:

Gewinnen einer Zeitfolge von Beschleunigungsmesserdaten von einem Beschleunigungsmesser (21), welcher an einer Extremität der Person getragen wird, über ein Langzeitintervall während Alltagsaktivitäten der Person; Bandpassfiltern der Beschleunigungsmesserdaten, um gefilterte Daten eines Bandes, welches von Interesse ist, zu extrahieren, wobei das Band, welches von Interesse ist, eine untere Trennfrequenz aufweist, die so gewählt ist, dass DC entfernt wird, und eine obere Trennfrequenz aufweist, die so gewählt ist, dass höhere Frequenzkomponenten, welche im Allgemeinen nicht bei normalen menschlichen Bewegungen entstehen, eliminiert werden; wobei das Verfahren **gekennzeichnet ist durch**:

Extrahieren von einem oder mehreren Containern von Beschleunigungsdaten aus der Zeitfolge der Beschleunigungsdaten, wobei jeder Container von einer Zeitdauer ist, die so gewählt ist, dass sie kurz genug dafür ist, dass relativ normale Maße von Bradykinese bestimmbar sind, während sie lang genug dafür ist, dass eine ausreichende Wahrscheinlichkeit für eine signifikante Bewegung **durch** die Person während dieses Containers vorhanden ist;

Durchsuchen der Daten in dem Container mittels eines gleitenden Mittelwerts innerhalb eines Fensters, um ein Fenster von Spitzenbeschleunigung zu identifizieren; und
Verarbeiten von Daten in dem Fenster der Spitzenbeschleunigung, um ein Maß für Bradykinese zu bestimmen.

2. Verfahren nach Anspruch 1, wobei die Containerdauer in der Spanne von 2 Sekunden bis 60 Minuten ist.
3. Verfahren nach Anspruch 2, wobei die Containerdauer in der Spanne von 15 Sekunden bis vier Minuten ist.
4. Verfahren nach einem der vorhergehenden Ansprüche, wobei das Durchsuchen Verwenden eines gleitenden Mittelwerts umfasst, welcher eine Fensterlänge aufweist, die ein Bruchteil der Dauer einer normalen menschlichen Bewegung ist, um ein Maximum zu finden.
5. Verfahren nach Anspruch 4, wobei die Fensterlänge in der Spanne von 0,02 - 30 Sekunden ist.
6. Verfahren nach einem der vorhergehenden Ansprüche, ferner umfassend Gewinnen eines Untercontainers, welcher eine Mehrzahl von Datenpunkten vor und nach der identifizierten Spitzenbeschleunigung PK_i umfasst, und wobei die Mehrzahl von Datenpunkten eine Zahl von Datenpunkten ist, welche eine Potenz von Zwei ist, und wobei der Untercontainer symmetrisch um die Spitzenbeschleunigung angeordnet ist, und wobei die Datenpunkte ein Zeitintervall abdecken, welches der Dauer einer normalen einzelnen menschlichen Bewegung entspricht.
7. Verfahren nach Anspruch 6, ferner umfassend Durchführen einer Spektralanalyse des Untercontainers, um Unterbandspektralmaße zu gewinnen, und wobei die Unterbandspektralmaße von einer Breite in der Spanne von 0,6 Hz bis 1 Hz sind.
8. Verfahren nach Anspruch 7, ferner umfassend Anwenden einer Gewichtung auf wenigstens einen Teil der Unterbandspektralmaße, um eine gewichtete Mittelwertspektralenergie (MSP_i) zu erzeugen, wobei eine höhere Indikation von Bradykinese gegeben ist, wenn das Maximum (MSP_i) klein ist und in Unterbändern niedriger Frequenz existiert, und eine geringere Indikation von Bradykinese gegeben ist, wenn das Maximum (MSP_i) hoch ist und in Unterbändern höherer Frequenz existiert.
9. Verfahren nach Anspruch 8, ferner umfassend:

Auswählen einer Mehrzahl n von aufeinanderfolgenden Containern;
Bestimmen einer Spitzenbeschleunigung (PK_i) und einer MSP_i für jeden ausgewählten Container und Auswählen des größten Wertes von PK_i ($PK_{i,max}$) unter den n Containern; und
Berechnen eines Bradykinesewertes BK in Übereinstimmung mit wenigstens einer der nachfolgenden Formeln:

$$BK = PK_{i,max} \times MSP_{i,max};$$

und

$$BK = A \times \log_c (PK_{i,max} \times MSP_{i,max}) - B$$

wobei A, c und B auswählbare Einstellungskonstanten sind und $(MSP_{i,max})$ der größte von den MSP_i ist.

- 5
10. Verfahren nach Anspruch 9, wobei ein gleitender Durchschnitt der BK-Werte innerhalb eines gleitenden Fensters berechnet wird, um eine statistische Bestimmung der Wahrscheinlichkeit von bradykinetischem Verhalten zu geben.
11. Verfahren nach Anspruch 9, ferner umfassend Berechnen eines kumulierten Bradykinesewertes, der eine Summe der einzelnen, bestimmten Maße umfasst, um eine kumulierte Indikation von Bradykinese vorzusehen.
12. Verfahren nach einem der Ansprüche 1 bis 12, wobei die obere Trennfrequenz in der Spanne von 3 - 15 Hz ist.
13. Verfahren nach Anspruch 12, wobei die obere Trennfrequenz 4 Hz ist.
14. Gerät (114) zum Bestimmen eines bradykinetischen Zustands einer Person, wobei das Gerät umfasst:

20 ein Bandpassfilter, das dazu eingerichtet ist, eine Zeitfolge von Beschleunigungsmesserdaten, die über ein Langzeitintervall während Alltagsaktivitäten der Person von einem Beschleunigungsmesser (21) gewonnen sind, welcher an einer Extremität der Person getragen ist, Bandpass zu filtern, um gefilterte Daten für ein Band, welches von Interesse ist, zu extrahieren, wobei das Band, welches von Interesse ist, eine untere Trennfrequenz aufweist, die so gewählt ist, dass DC entfernt ist, und eine obere Trennfrequenz aufweist, die so gewählt ist, dass höhere Frequenzkomponenten, welche im Allgemeinen nicht bei normalen menschlichen Bewegungen entstehen, eliminiert sind; und **gekennzeichnet durch**:

25 einen Prozessor, der dazu eingerichtet ist:

einen oder mehrere Container von Beschleunigungsdaten aus der Zeitfolge der Beschleunigungsdaten zu extrahieren, wobei jeder Container von einer Zeitdauer ist, die so gewählt ist, dass sie kurz genug dafür ist, dass relativ normale Maße von Bradykinese bestimmbar sind, während sie lang genug dafür ist, dass eine ausreichende Wahrscheinlichkeit für eine signifikante Bewegung **durch** die Person während dieses Containers vorhanden ist;

30 die Daten in dem Container mittels eines gleitenden Mittelwerts innerhalb eines Fensters zu durchsuchen, um ein Fenster von Spitzenbeschleunigung zu identifizieren; und

35 Daten in dem Fenster der Spitzenbeschleunigung zu verarbeiten, um ein Maß für Bradykinese zu bestimmen.

15. Computerprogrammprodukt, umfassend Computerprogrammteil, um einen Computer dazu einzurichten, einen Vorgang zum Bestimmen eines bradykinetischen Zustands einer Person auszuführen, wobei das Computerprogrammprodukt umfasst:

40 Computerprogrammcodemittel, die dazu eingerichtet sind, eine Zeitfolge von Daten von einem Beschleunigungsmesser (21), welcher an einer Extremität der Person getragen wird, über ein Langzeitintervall während Alltagsaktivitäten der Person zu gewinnen;

45 Computerprogrammcodemittel, die dazu eingerichtet sind, Beschleunigungsmesserdaten Bandpass zu filtern, um gefilterte Daten eines Bandes, welches von Interesse ist, zu extrahieren, wobei das Band, welches von Interesse ist, eine untere Trennfrequenz aufweist, die so gewählt ist, dass DC entfernt wird, und eine obere Trennfrequenz aufweist, die so gewählt ist, dass höhere Frequenzkomponenten, welche im Allgemeinen nicht bei normalen menschlichen Bewegungen entstehen, eliminiert werden; **gekennzeichnet durch**:

50 Computerprogrammcodemittel, die dazu eingerichtet sind, einen oder mehrere Container von Beschleunigungsdaten aus der Zeitfolge der Beschleunigungsdaten zu extrahieren, wobei jeder Container von einer Zeitdauer ist, die so gewählt ist, dass sie kurz genug dafür ist, dass relativ normale Maße von Bradykinese bestimmbar sind, während sie lang genug dafür ist, dass eine ausreichende Wahrscheinlichkeit für eine signifikante Bewegung **durch** die Person während dieses Containers vorhanden ist;

55 Computerprogrammcodemittel, die dazu eingerichtet sind, die Daten in dem Container mittels eines gleitenden Mittelwerts innerhalb eines Fensters zu durchsuchen, um ein Fenster von Spitzenbeschleunigung zu identifizieren; und

Computerprogrammcodemittel, die dazu eingerichtet sind, Daten in dem Fenster der Spitzenbeschleunigung zu verarbeiten, um ein Maß für Bradykinese zu bestimmen.

5 Revendications

1. Procédé automatisé de détermination d'un état bradykinétique d'une personne, le procédé comprenant :

l'obtention d'une série temporelle de données d'accéléromètre à partir d'un accéléromètre (21) porté sur une extrémité de la personne, pendant une période prolongée pendant les activités quotidiennes de la personne ; le filtrage passe-bande des données d'accéléromètre pour extraire des données filtrées pour une bande présentant un intérêt, dans lequel la bande présentant un intérêt a une fréquence de coupure d'extrémité inférieure sélectionnée pour retirer la composante continue et une fréquence de coupure d'extrémité supérieure qui est sélectionnée pour éliminer les composantes de fréquences plus élevées qui n'apparaissent généralement pas dans les mouvements d'être humain normaux ; le procédé étant **caractérisé par** :

l'extraction d'un ou de plusieurs récipients de données d'accélération de la série temporelle des données d'accélération, chaque récipient ayant une durée sélectionnée pour être suffisamment faible pour que des mesures relativement régulières de bradykinésie puissent être déterminées, tout en étant suffisamment longue pour fournir une probabilité raisonnable d'un mouvement significatif de la personne pendant ce récipient ;

la recherche des données dans le récipient en utilisant une moyenne mobile dans une fenêtre, pour identifier une fenêtre d'accélération crête ; et

le traitement des données dans la fenêtre d'accélération crête pour déterminer une mesure pour la bradykinésie.

2. Procédé selon la revendication 1, dans lequel la durée du récipient est dans la plage de 2 secondes à 60 minutes.

3. Procédé selon la revendication 2, dans lequel la durée du récipient est dans la plage de 15 secondes à quatre minutes.

4. Procédé selon l'une quelconque des revendications précédentes, dans lequel la recherche comprend l'utilisation d'une moyenne mobile ayant une durée de fenêtre qui est une fraction de la durée d'un mouvement d'être humain normal afin de trouver un maximum.

5. Procédé selon la revendication 4, dans lequel la durée de fenêtre est dans la plage de 0,02 à 30 secondes.

6. Procédé selon l'une quelconque des revendications précédentes, comprenant en outre l'obtention d'un récipient secondaire qui comprend une pluralité de points de données à la fois avant et après l'accélération crête PK_i identifiée, et dans lequel la pluralité de points de données est un nombre de points de données qui est une puissance de deux, et dans lequel le récipient secondaire est positionné symétriquement par rapport à l'accélération crête, et dans lequel les points de données couvrent une période de temps correspondant à la durée d'un mouvement d'être humain unique normal.

7. Procédé selon la revendication 6, comprenant en outre l'exécution d'une analyse spectrale du récipient secondaire pour obtenir des mesures spectrales de sous-bande, et dans lequel les mesures spectrales de sous-bande ont une largeur dans la plage de 0,6 Hz à 1 Hz.

8. Procédé selon la revendication 7, comprenant en outre l'application d'une pondération à au moins un sous-ensemble de mesures spectrales de sous-bande pour produire une puissance spectrale moyenne pondérée (MSP_i), dans lequel une indication plus grande de bradykinésie est donnée lorsque la (MSP_i) maximum est faible et existe dans des sous-bandes de fréquences plus faibles, et une indication plus faible de bradykinésie est donnée lorsque la (MSP_i) maximum est élevée et existe dans des sous-bandes de fréquences plus élevées.

9. Procédé selon la revendication 8, comprenant en outre :

la sélection d'une pluralité n de récipients consécutifs ;

la détermination d'une accélération crête (PK_i) et d'une MSP_i pour chaque récipient sélectionné, et, à partir des n récipients, la sélection de la valeur la plus grande de PK_i ($PK_{i,max}$) ; et

EP 2 306 899 B1

le calcul d'un score de bradykinésie BK selon au moins l'une des formules suivantes :

$$BK = PK_{i, \max} \times MSP_{i, \max}$$

et

$$BK = A \times \log_c (PK_{i, \max} \times MSP_{i, \max}) - B$$

où A, c et B sont des constantes d'accord sélectionnables et ($MSP_{i, \max}$) est la plus grande des MSP_i .

10. Procédé selon la revendication 9, dans lequel une moyenne mobile des scores BK dans une fenêtre mobile est calculée, pour donner une détermination probabiliste de la probabilité d'un comportement bradykinétique.
11. Procédé selon la revendication 9, comprenant en outre le calcul d'un score de bradykinésie cumulatif comprenant une somme des mesures individuelles déterminées afin de fournir une indication cumulative de bradykinésie.
12. Procédé selon l'une quelconque des revendications 1 à 12, dans lequel la fréquence de coupure d'extrémité supérieure est dans la plage 3 à 15 Hz.
13. Procédé selon la revendication 12, dans lequel la fréquence de coupure d'extrémité supérieure est de 4 Hz.
14. Dispositif (114) pour déterminer un état bradykinétique d'une personne, le dispositif comprenant :

un filtre passe-bande configuré pour appliquer un filtrage passe-bande à une série temporelle de données d'accéléromètre obtenues pendant une période prolongée pendant les activités quotidiennes de la personne à partir d'un accéléromètre (21) porté sur une extrémité de la personne pour extraire des données filtrées pour une bande présentant un intérêt, dans lequel la bande présentant un intérêt a une fréquence de coupure d'extrémité inférieure sélectionnée pour retirer la composante continue et une fréquence de coupure d'extrémité supérieure qui est sélectionnée pour éliminer les composantes de fréquences plus élevées qui n'apparaissent généralement pas dans des mouvements d'être humain normaux ; et **caractérisé par** :

un processeur configuré pour :

extraire un ou plusieurs récipients de données d'accélération de la série temporelle des données d'accélération, chaque récipient étant d'une durée sélectionnée pour être suffisamment faible pour que des mesures relativement régulières de bradykinésie puissent être déterminées, tout en étant suffisamment longue pour fournir une probabilité raisonnable d'un mouvement significatif de la personne pendant ce récipient ;
rechercher les données dans le récipient en utilisant une moyenne mobile dans une fenêtre, pour identifier une fenêtre d'accélération crête ; et
traiter les données dans la fenêtre d'accélération crête pour déterminer une mesure pour une bradykinésie.

15. Produit-programme d'ordinateur comprenant des moyens formant programme d'ordinateur pour amener un ordinateur à exécuter une procédure pour déterminer un état bradykinétique d'une personne, le produit-programme d'ordinateur comprenant :

des moyens formant code de programme d'ordinateur configurés pour obtenir une série temporelle de données à partir d'un accéléromètre (21) porté sur une extrémité de la personne pendant une période prolongée pendant les activités quotidiennes de la personne ;
des moyens formant code de programme d'ordinateur configurés pour appliquer un filtrage passe-bande à des données d'accéléromètre pour extraire des données filtrées pour une bande présentant un intérêt, dans lequel la bande présentant un intérêt a une fréquence de coupure d'extrémité inférieure sélectionnée pour retirer la composante continue et une fréquence de coupure d'extrémité supérieure qui est sélectionnée pour éliminer les composantes de fréquences plus élevées qui n'apparaissent généralement pas dans des mouvements

d'être humain normaux ; **caractérisé par** :

5

des moyens formant code de programme d'ordinateur configurés pour extraire un ou plusieurs récipients de données d'accélération de la série temporelle des données d'accélération, chaque récipient ayant une durée sélectionnée pour être suffisamment faible pour que des mesures relativement régulières de bradykinésie puissent être déterminées, tout en étant suffisamment longue pour fournir une probabilité raisonnable d'un mouvement significatif de la personne pendant ce récipient ;

10

des moyens formant code de programme d'ordinateur configurés pour rechercher les données dans le récipient en utilisant une moyenne mobile dans une fenêtre, pour identifier une fenêtre d'accélération crête ;
et

15

des moyens formant code de programme d'ordinateur configurés pour traiter les données dans la fenêtre d'accélération crête pour déterminer une mesure pour une bradykinésie.

20

25

30

35

40

45

50

55

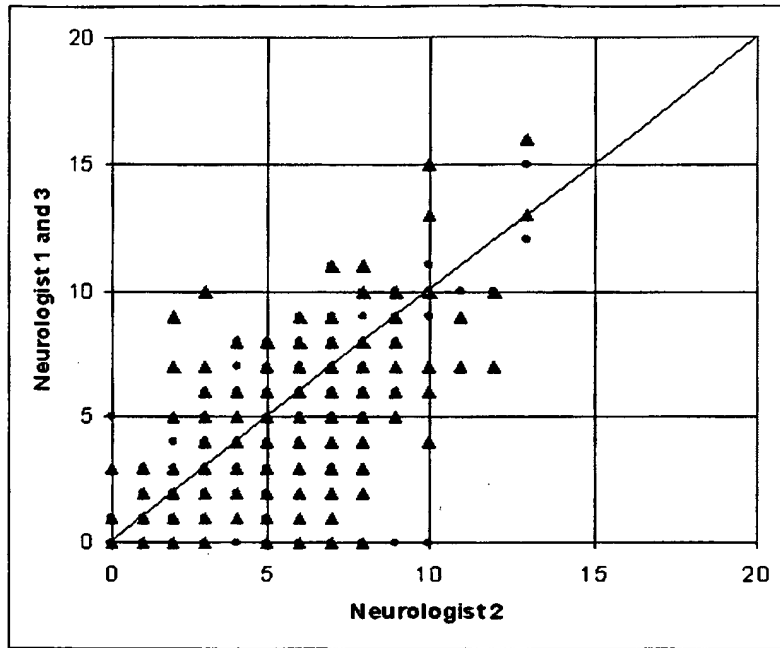


Figure 1

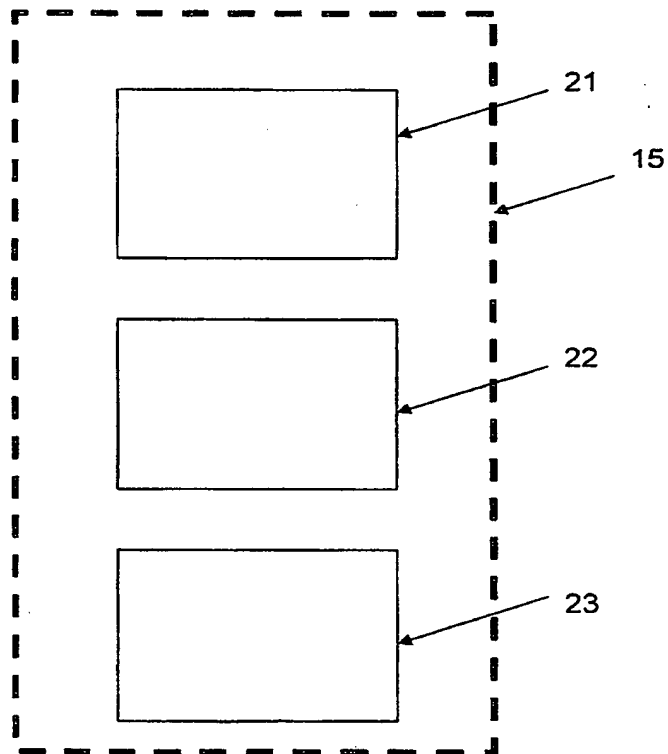


Figure 2

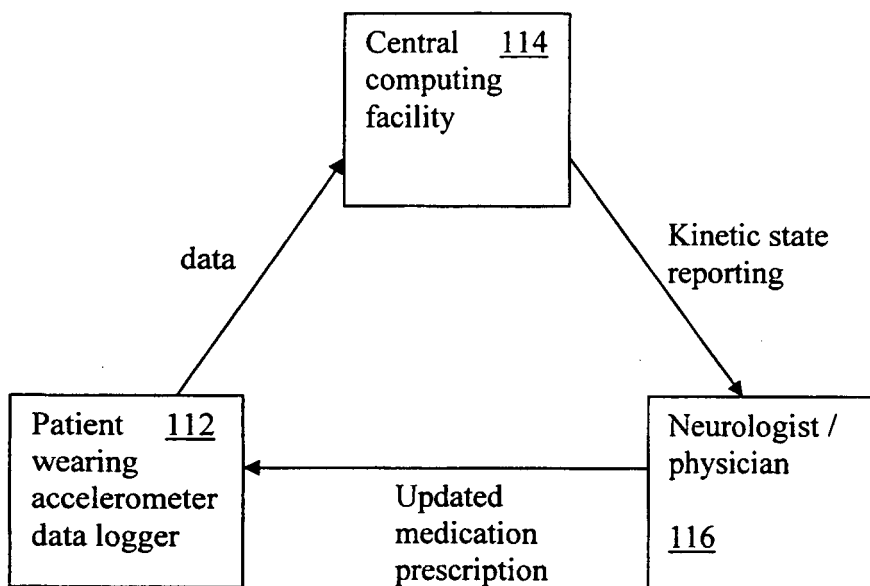


Figure 3

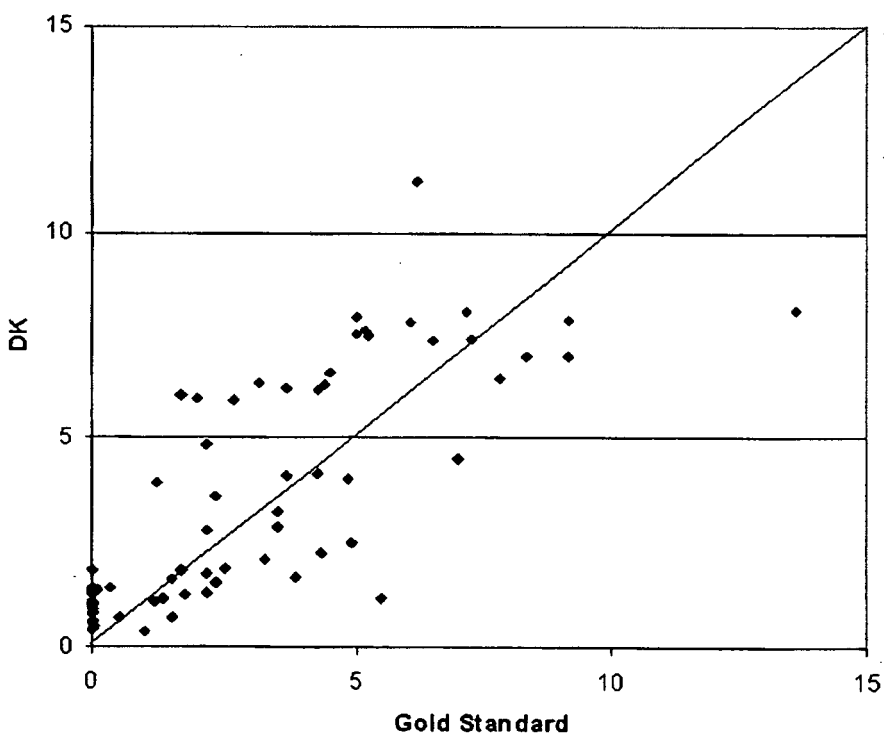


Figure 4

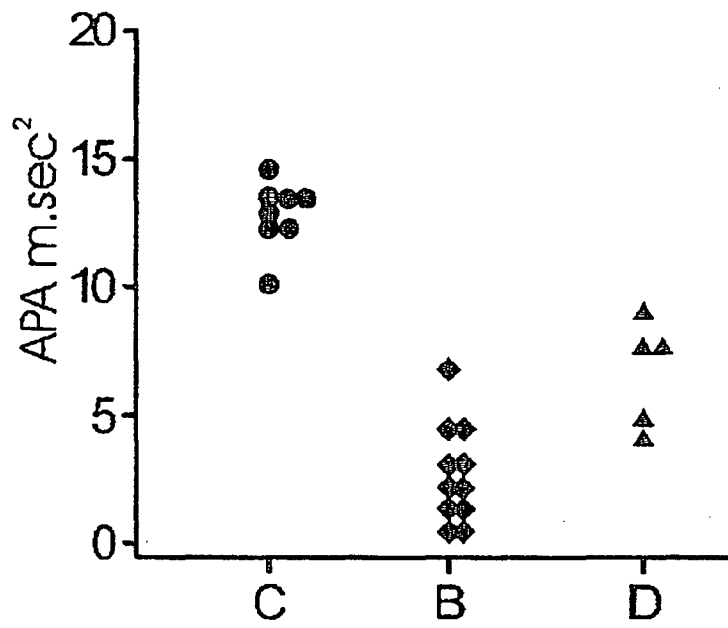


Figure 5

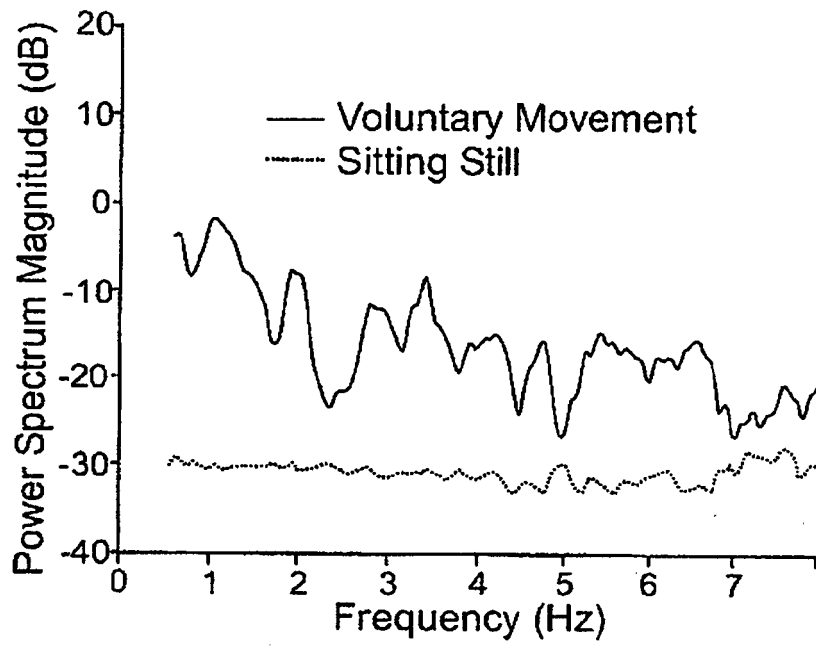


Figure 6a

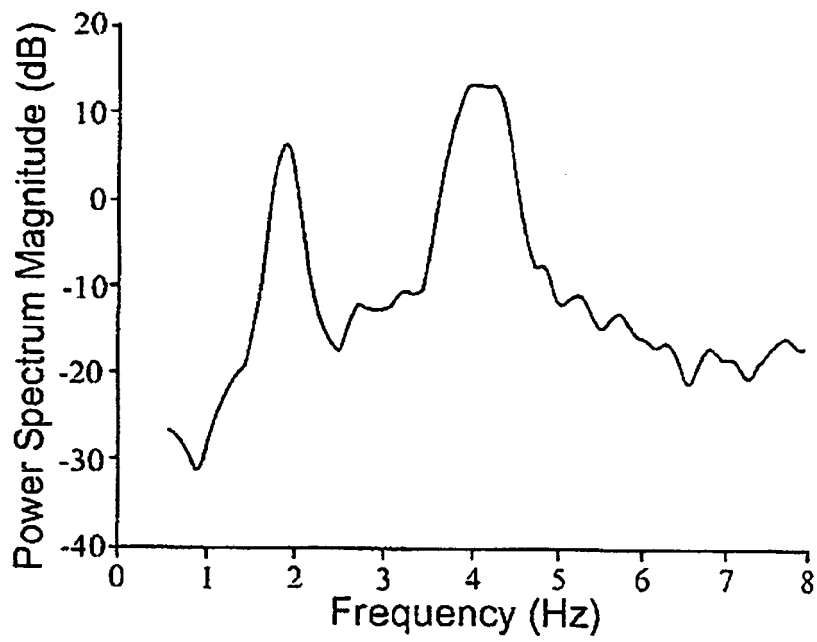


Figure 6b

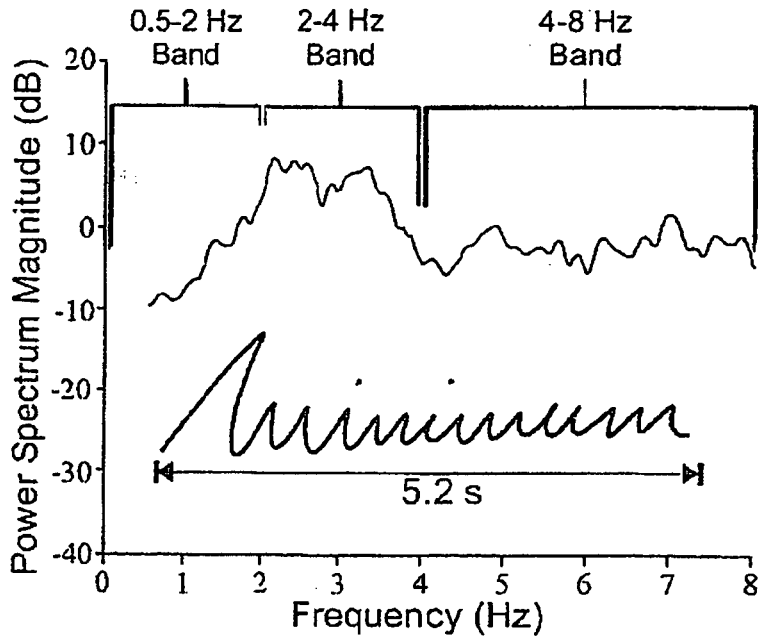


Figure 7

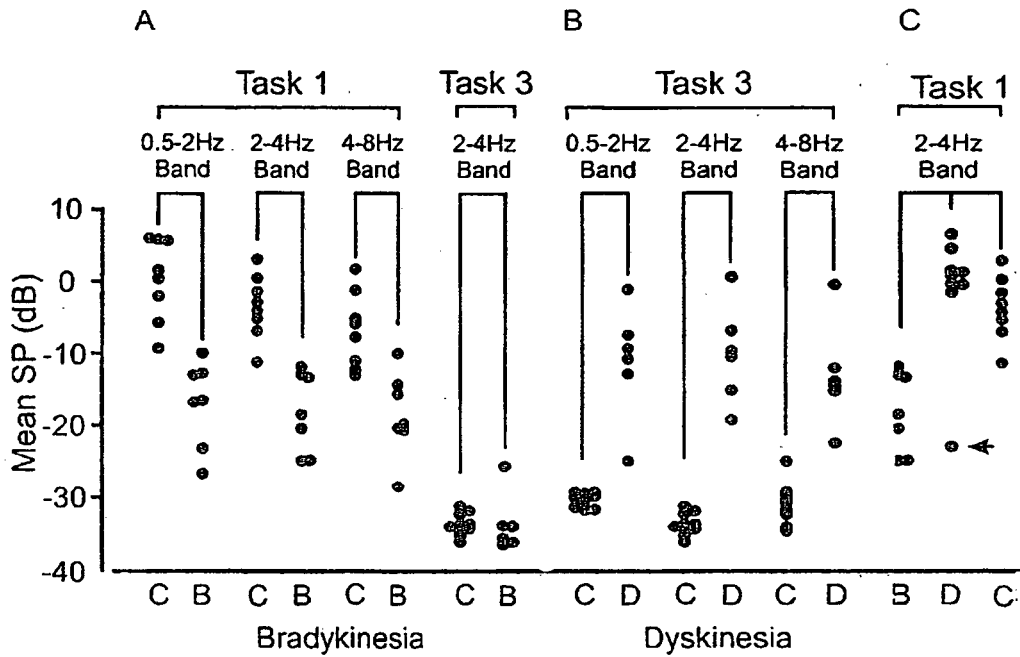


Figure 8

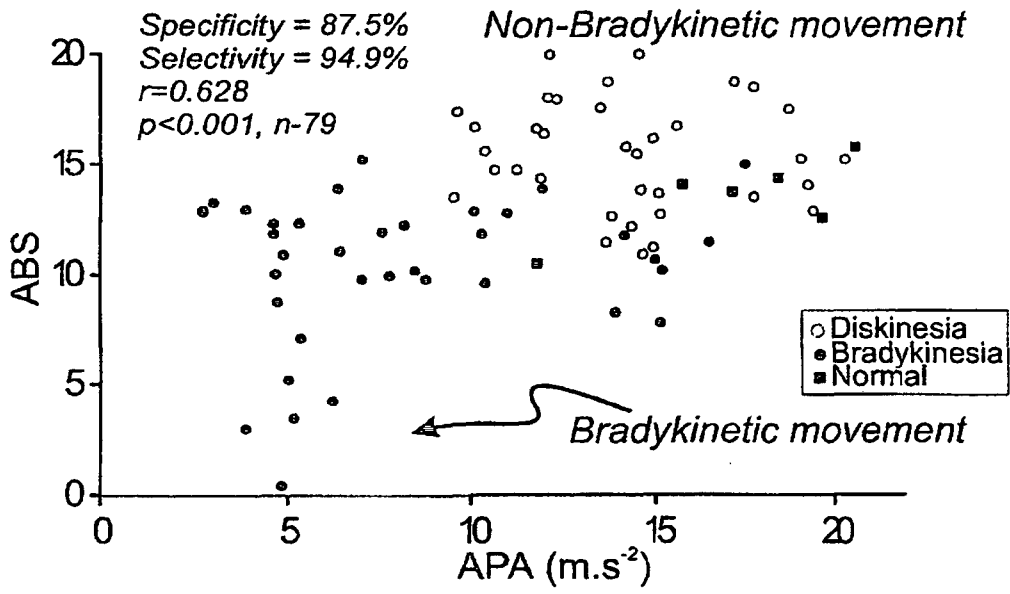


Figure 9a

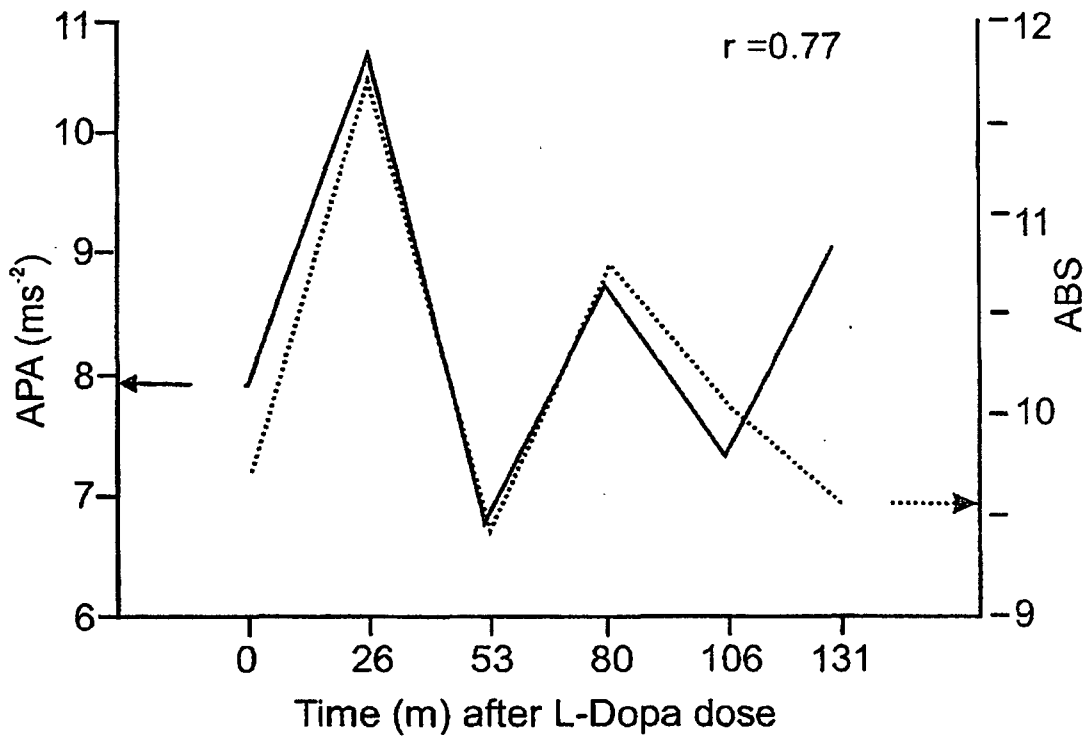


Figure 9b

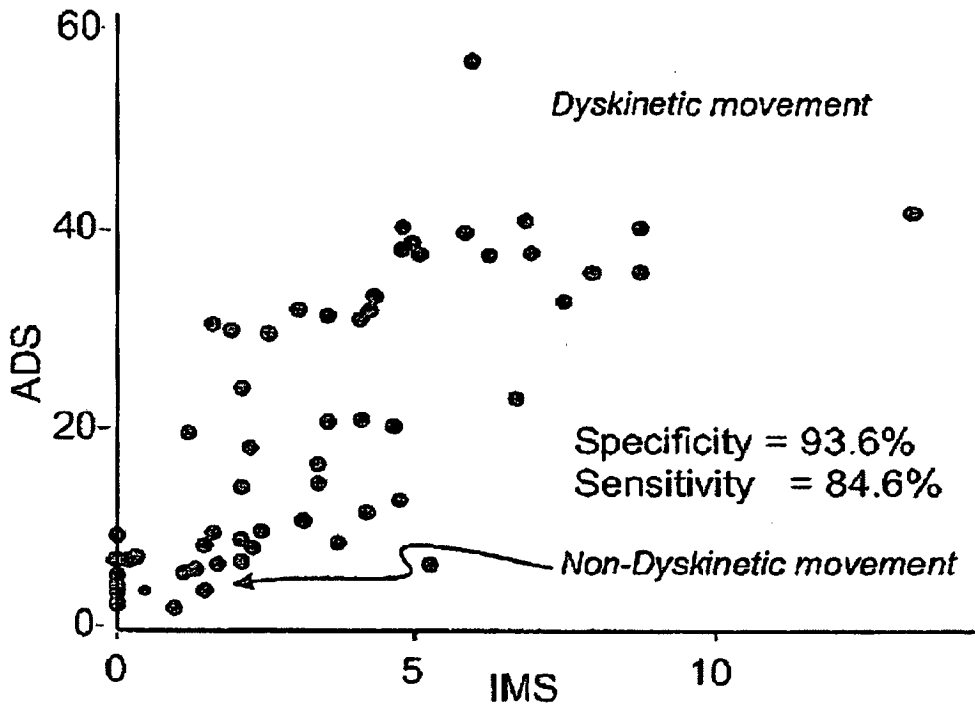


Figure 10a

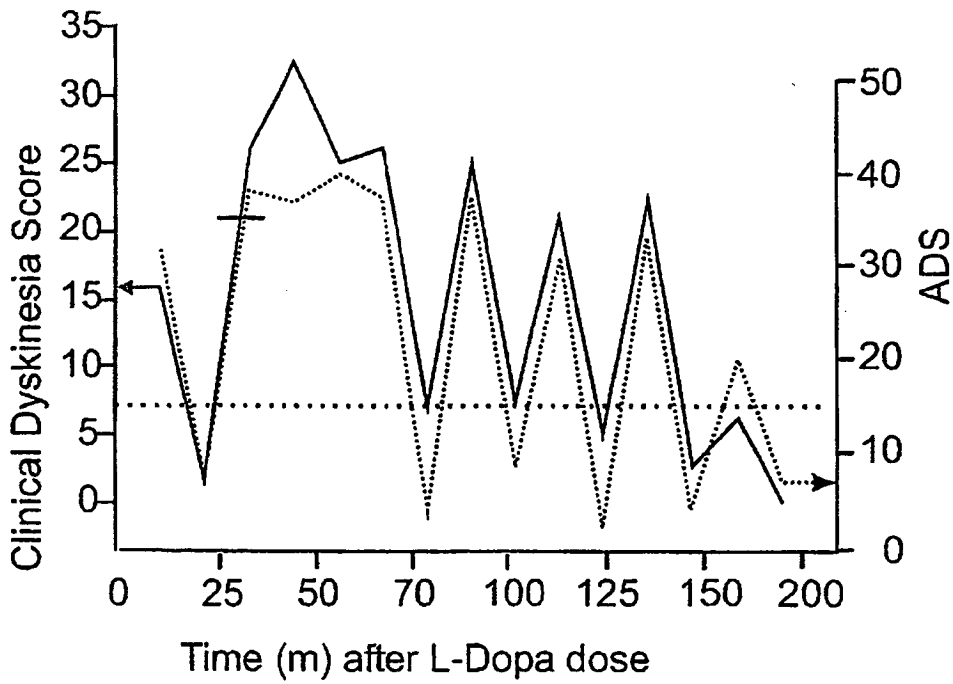


Figure 10b

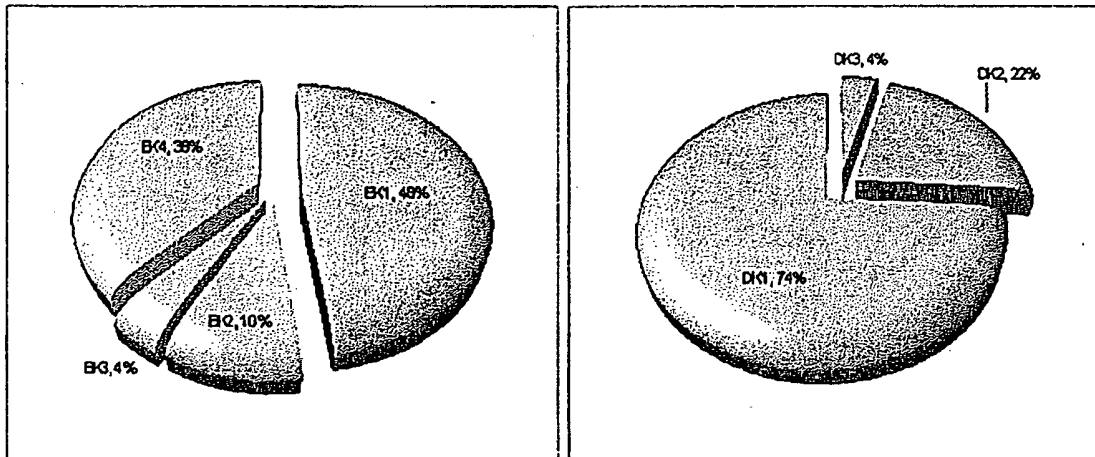
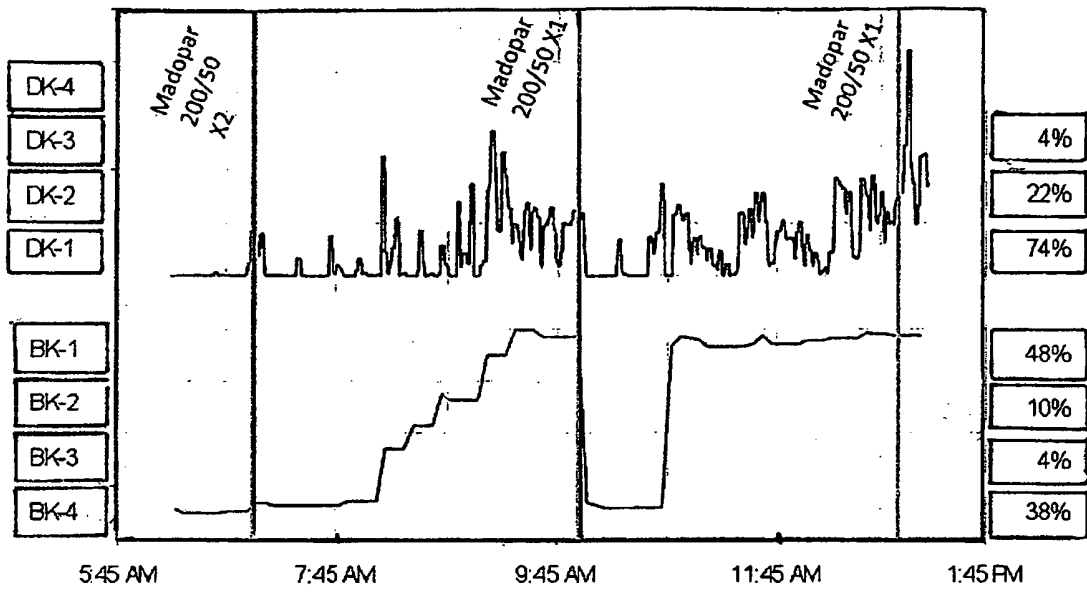


Figure 11

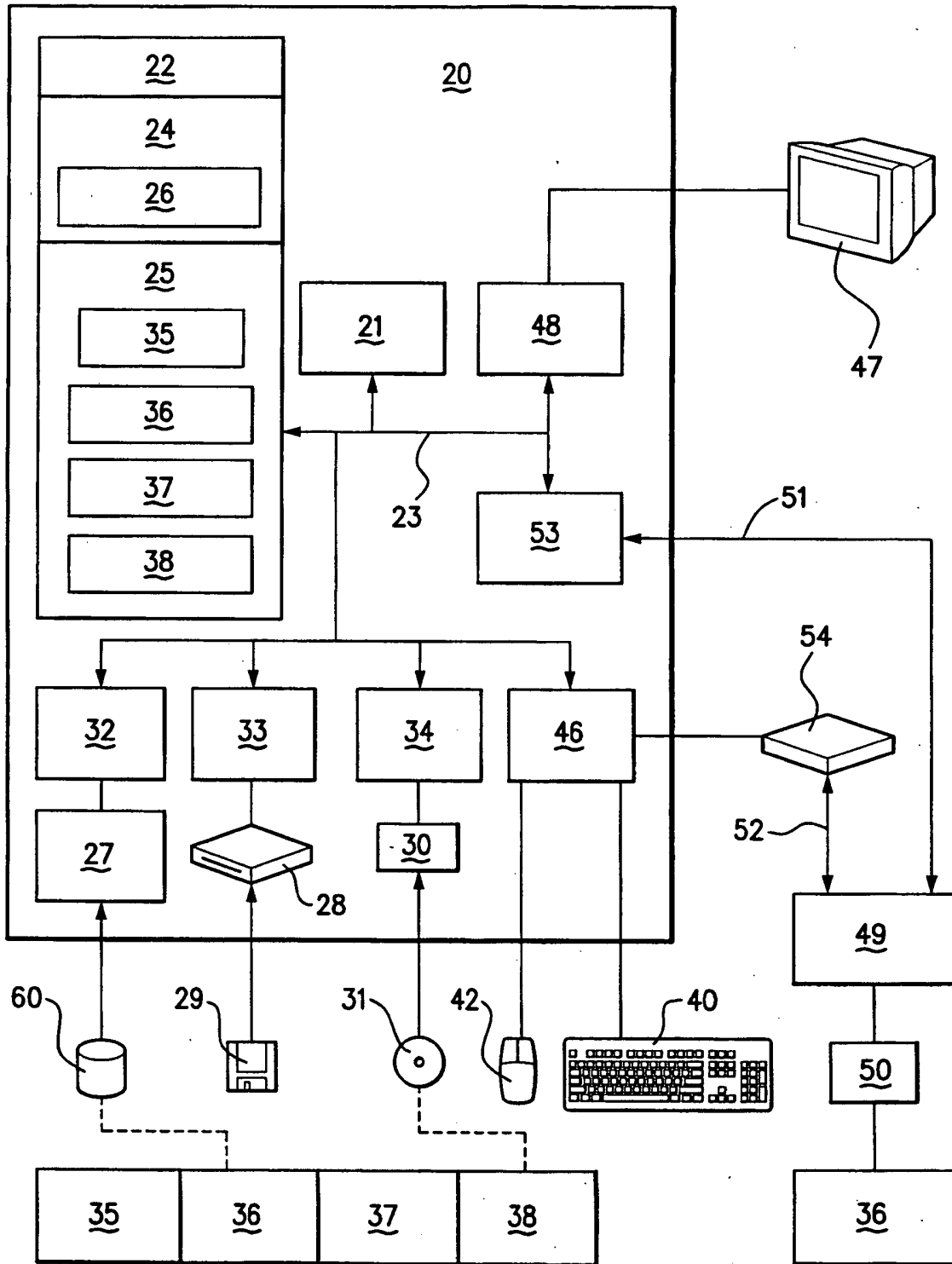


Figure 12

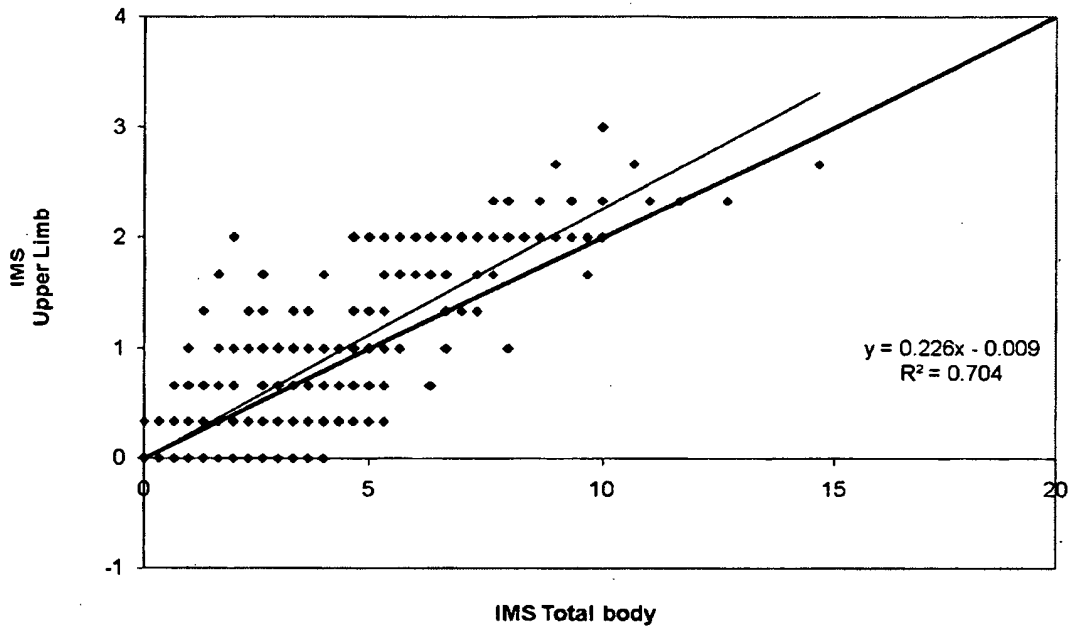


Figure 13

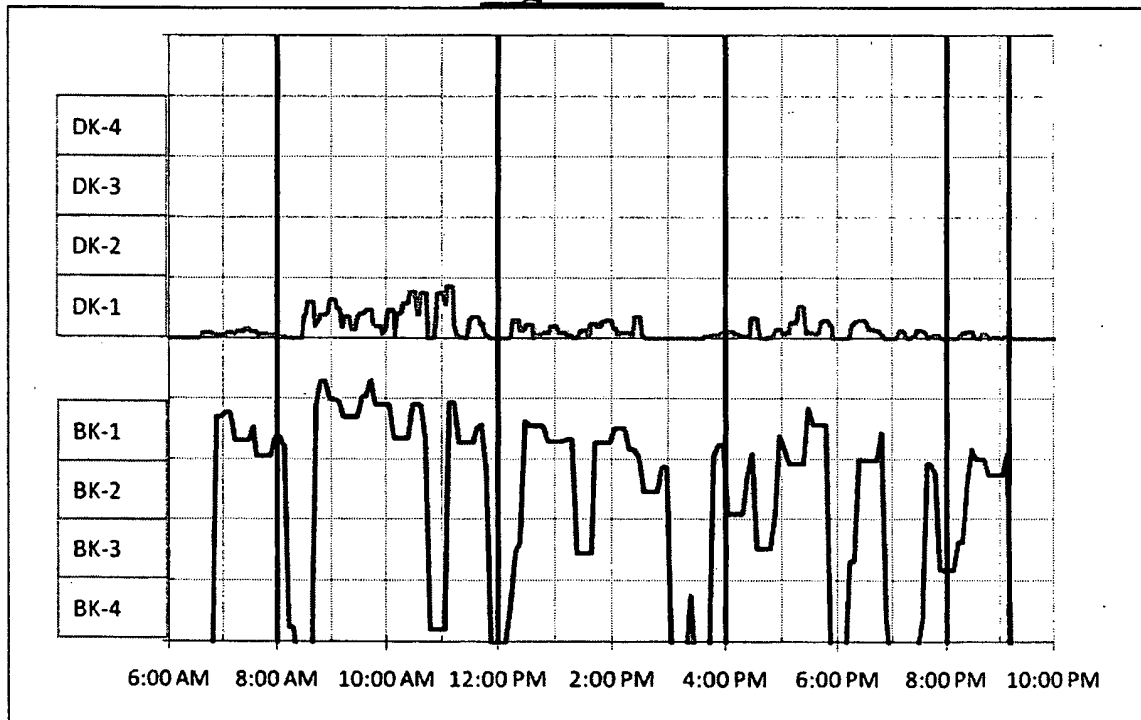


Figure 14

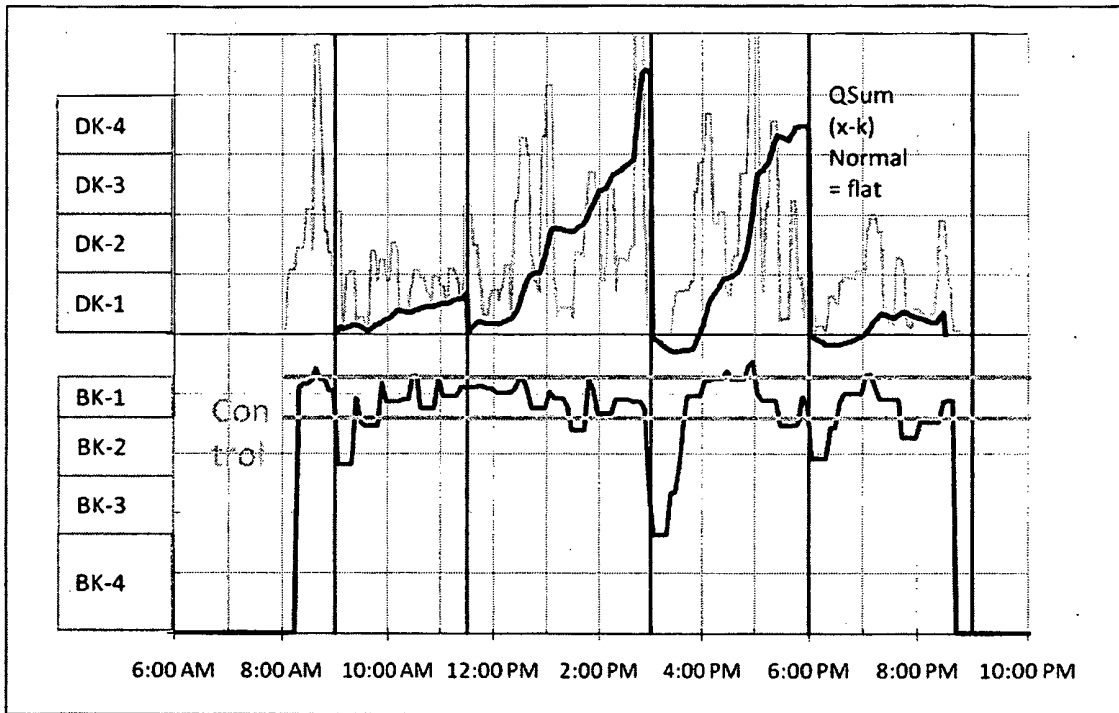


Figure 15

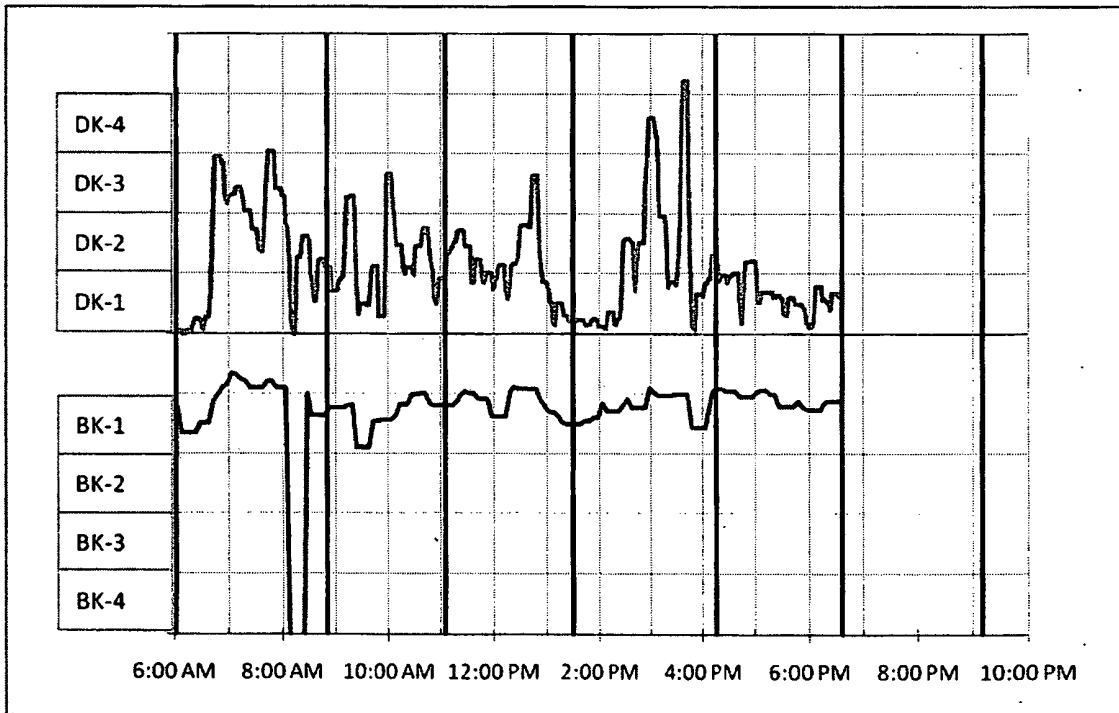


Figure 16

REFERENCES CITED IN THE DESCRIPTION

This list of references cited by the applicant is for the reader's convenience only. It does not form part of the European patent document. Even though great care has been taken in compiling the references, errors or omissions cannot be excluded and the EPO disclaims all liability in this regard.

Patent documents cited in the description

- AU 2008902982 [0001]
- AU 2009902616 [0001]
- EP 0535508 B1 [0012]
- US 2005234309 A1 [0013]
- US 2005240086 A1 [0014]
- WO 2006088415 A1 [0015]

Non-patent literature cited in the description

- **JORRIT IVAR HOFF.** Ambulatory accelerometry in Parkinson's disease. *Doctoral Thesis*, 2005 [0011]

专利名称(译)	检测低动力和/或多动力状态		
公开(公告)号	EP2306899B1	公开(公告)日	2014-08-13
申请号	EP2009761185	申请日	2009-06-12
[标]申请(专利权)人(译)	全球动力股份有限公司		
申请(专利权)人(译)	GLOBAL动力学CORPORATION PTY LTD		
当前申请(专利权)人(译)	高尔基PTY LTD 杏仁核PTY LTD		
[标]发明人	GRIFFITHS ROBERT IRWIN HORNE MALCOLM KENNETH		
发明人	GRIFFITHS, ROBERT, IRWIN HORNE, MALCOLM, KENNETH		
IPC分类号	A61B5/00 A61B5/11		
CPC分类号	A61B5/1114 A61B5/1104 A61B5/1123 A61B5/4082 A61B5/6824 A61B5/7203 A61B5/7214 A61B2562/0219		
优先权	2009902616 2009-06-09 AU 2008902982 2008-06-12 AU		
其他公开文献	EP2306899A1 EP2306899A4		
外部链接	Espacenet		

摘要(译)

本发明涉及确定人的运动状态的自动化方法。该方法从佩戴在人的四肢上的加速度计获得加速度计数据，并且处理该加速度计数据以确定动力学状态的量度。本发明还涉及一种用于确定人的运动状态的装置。该设备包括处理器，该处理器被配置为处理从佩戴在人的四肢上的加速度计获得的数据并从该数据确定动力学状态的量度。在该方法和系统中，动力学状态是运动迟缓，运动障碍和运动亢进中的至少一种。

