



(11) **EP 1 988 823 B1**

(12) **EUROPEAN PATENT SPECIFICATION**

(45) Date of publication and mention of the grant of the patent:
15.08.2018 Bulletin 2018/33

(51) Int Cl.:
A61B 5/00 ^(2006.01) **A61N 1/30** ^(2006.01)
A61M 37/00 ^(2006.01)

(21) Application number: **07750236.7**

(86) International application number:
PCT/US2007/003382

(22) Date of filing: **08.02.2007**

(87) International publication number:
WO 2007/095056 (23.08.2007 Gazette 2007/34)

(54) **SLOW INTRAVENTRICULAR DELIVERY**
LANGSAME INTRAVENTIKULÄRE FREISETZUNG
ADMINISTRATION INTRAVENTRICULAIRE LENTE

(84) Designated Contracting States:
AT BE BG CH CY CZ DE DK EE ES FI FR GB GR HU IE IS IT LI LT LU LV MC NL PL PT RO SE SI SK TR

- **SHIHABUDDIN, Lamya**
Framingham, MA 01701-9322 (US)
- **CHENG, Seng**
Framingham, MA 01701-9322 (US)

(30) Priority: **09.02.2006 US 771451 P**

(74) Representative: **Mathys & Squire LLP**
The Shard
32 London Bridge Street
London SE1 9SG (GB)

(43) Date of publication of application:
12.11.2008 Bulletin 2008/46

(60) Divisional application:
11166289.6

(56) References cited:
WO-A1-2005/095955 WO-A2-2005/002515
WO-A2-2007/084737 US-A- 5 720 720
US-A1- 2002 183 683 US-A1- 2003 022 879
US-A1- 2003 163 181 US-A1- 2004 105 888
US-A1- 2004 105 888 US-A1- 2005 026 823
US-A1- 2005 048 047 US-A1- 2005 102 708
US-B2- 6 689 756

(73) Proprietor: **Genzyme Corporation**
Cambridge, MA 02142 (US)

(72) Inventors:

- **DODGE, James**
Framingham, MA 01701-9322 (US)
- **PASSINI, Marco**
Framingham, MA 01701-9322 (US)

EP 1 988 823 B1

Note: Within nine months of the publication of the mention of the grant of the European patent in the European Patent Bulletin, any person may give notice to the European Patent Office of opposition to that patent, in accordance with the Implementing Regulations. Notice of opposition shall not be deemed to have been filed until the opposition fee has been paid. (Art. 99(1) European Patent Convention).

Description**TECHNICAL FIELD OF THE INVENTION**

5 **[0001]** This invention is related to delivery of agents to the brain. In particular it relates to brain diagnosis, treatment, and imaging.

BACKGROUND OF THE INVENTION

10 **[0002]** A group of metabolic disorders known as lysosomal storage diseases (LSD) includes over forty genetic disorders, many of which involve genetic defects in various lysosomal hydrolases. Representative lysosomal storage diseases and the associated defective enzymes are listed in Table 1.

TABLE 1

15	Lysosomal storage disease	Defective enzyme
	Aspartylglucosaminuria	Aspartylglucosaminidase
	Fabry	.alpha.-Galactosidase A
	Infantile Batten Disease* (CNL1)	Palmitoyl Protein Thioesterase
20	Classic Late Infantile Batten Disease* (CNL2)	Tripeptidyl Peptidase
	Juvenile Batten Disease* (CNL3)	Lysosomal Transmembrane Protein
	Batten, other forms* (CNL4-CNL8)	Multiple gene products
	Cystinosis	Cysteine transporter
	Farber	Acid ceramidase
25	Fucosidosis	Acid .alpha.-L-fucosidase
	Galactosidosis	Protective protein/cathepsin A
	Gaucher types 1, 2*, and 3*	Acid .beta.-glucosidase, or
30	G.sub.M1 gangliosidosis*	Acid .beta.-galactosidase
	Hunter*	Iduronate-2-sulfatase
	Hurler-Scheie*	.alpha.-L-Iduronidase
	Krabbe*	Galactocerebrosidase.
	alpha.-Mannosidosis*	Acid .alpha.-mannosidase .
35	beta.-Mannosidosis*	Acid .beta.-mannosidase
	Maroteaux-Lamy	Arylsulfatase B
	Metachromatic leukodystrophy*	Arylsulfatase A
	Morquio A	N-Acetylgalactosamine-6-sulfate
40	Morquio B	Acid .beta.-galactosidase
	Mucopolipidosis II/III*	N-Acetylglucosamine-1-
	Niemann-Pick A*, B	Acid sphingomyelinase
	Niemann-Pick C*	NPC-1
45	Pompe* Acid	.alpha.-glucosidase
	Sandhoff*	.beta.-Hexosaminidase B
	Sanfilippo A*	Heparan N-sulfatase
	Sanfilippo B*	.alpha.-N-Acetylglucosaminidase
50	Sanfilippo C*	Acetyl-CoA: alpha.-glucosaminide
	Sanfilippo D*	N-Acetylglucosamine-6-sulfate
	Schindler Disease*	.alpha.-N-Acetylgalactosaminidase
	Schindler-Kanzaki .	alpha.-N-Acetylgalactosaminidase
55	Sialidosis	.alpha.-Neuramidase
	Sly*	.beta.-Glucuronidase
	Tay-Sachs*	.beta.-Hexosaminidase A

(continued)

Lysosomal storage disease	Defective enzyme
Wolman*	Acid Lipase
*CNS involvement	

[0003] The hallmark feature of LSD is the abnormal accumulation of metabolites in the lysosomes which leads to the formation of large numbers of distended lysosomes in the perikaryon. A major challenge to treating LSD (as opposed to treating a liver-specific enzymopathy) is the need to reverse lysosomal storage pathology in multiple separate tissues. Some LSDs can be effectively treated by intravenous infusion of the missing enzyme, known as enzyme replacement therapy (ERT). For example, Gaucher type 1 patients have only visceral disease and respond favorably to ERT with recombinant glucocerebrosidase (Cerezyme™, Genzyme Corp.). However, patients with metabolic disease that affects the CNS (e.g., type 2 or 3 Gaucher disease) do not effectively respond to intravenous ERT because the replacement enzyme is prevented from entering the brain by the blood brain barrier (BBB). Furthermore, attempts to introduce a replacement enzyme into the brain by direct injection have been limited in part due to enzyme cytotoxicity at high local concentrations and limited parenchymal diffusion rates in the brain (Partridge, Peptide Drug Delivery to the Brain, Raven Press, 1991).

[0004] According to UniProtKB/Swiss-Prot entry P17405, defects in the SMPD1 gene, located on chromosome 11, (11p15.4-p15.1), are the cause of Niemann-Pick disease type A (NPA), also referred to as the classical infantile form. Niemann-Pick disease is a clinically and genetically heterogeneous recessive disorder. It is caused by the accumulation of sphingomyelin and other metabolically related lipids in the lysosomes, resulting in neurodegeneration starting from early life. Patients may show xanthomas, pigmentation, hepatosplenomegaly, lymphadenopathy and mental retardation. Niemann-Pick disease occurs more frequently among individuals of Ashkenazi Jewish ancestry than in the general population. NPA is characterized by very early onset in infancy and a rapidly progressive course leading to death by three years. The acid sphingomyelinase enzyme (aSM) converts sphingomyelin to ceramide. aSM also has phospholipase C activities toward 1,2-diacylglycerolphosphocholine and 1,2-diacylglycerolphosphoglycerol. The enzyme converts



[0005] There is a continuing need in the art for methods to treat LSDs that have both cerebral and visceral disease pathologies. There is a continuing need in the art for methods to access portions of the brain with diagnostic and therapeutic agents that do not readily cross the blood-brain barrier.

[0006] US 2005/0048047 relates to the intrathecal administration of recombinant enzyme to treat lysosomal storage disorders.

SUMMARY OF THE INVENTION

[0007] According to one instance of the disclosure a method is provided of delivering an agent to a patient's brain. The agent is administered to the patient via a lateral ventricle of the brain at a rate such that the administration of a single dose consumes more than two hours.

[0008] According to another instance of the disclosure a method is provided of delivering an agent to a patient's brain. The agent is administered to the patient via a lateral ventricle of the brain at a rate such that the administration of a single dose consumes at least 50% of the turn-over time of the cerebrospinal fluid in the patient.

[0009] According to still another instance of the disclosure a method is provided of delivering an agent to a patient's brain. Turn-over time of cerebrospinal fluid of the patient is estimated. A rate for delivery and a total delivery time of the agent via a lateral ventricle of the brain is selected based on the turn-over time. A pump is set to deliver the agent at said selected rate for said total delivery time.

[0010] According to yet another instance of the disclosure a method is provided of delivering an agent to a patient's brain. Turn-over time of cerebrospinal fluid of the patient is estimated. A rate and a total delivery time is selected for delivery of the agent via a lateral ventricle of the brain based on the turn-over time. The agent is delivered to the patient at said selected rate for said total delivery time.

[0011] According to another aspect of the disclosure a method is provided of delivering an agent to a patient's brain. The agent is administered to the patient via a lateral ventricle of the brain at a rate such that the administration of a single dose continues at least until the agent is detectable in serum of the patient.

[0012] Based on the present disclosure, a first aspect of the present invention provides for an agent that is suitable for delivery to a patient's brain, for use in a method comprising administering the agent to the patient via a lateral ventricle of the brain at a rate such that the administration of a single dose consumes more than four hours, wherein the admin-

istration is performed until said agent is detectable in the serum of the patient, and wherein the agent is an enzyme that is deficient in a lysosomal storage disease.

[0013] Further aspects and embodiments of the invention are set forth in the appended claims.

5 [0014] According to one instance of the disclosure, including one embodiment of the invention, a patient with Niemann-Pick A, B, or D disease is treated. An acid sphingomyelinase is administered to the patient via intraventricular delivery to the brain in an amount sufficient to reduce sphingomyelin levels in said brain.

[0015] Another aspect of the disclosure is a kit for treating a patient with Niemann-Pick A, B, or D disease. The kit comprises an acid sphingomyelinase, and a catheter for delivery of said acid sphingomyelinase to the patient's brain ventricles.

10 [0016] Yet another aspect of the disclosure is a kit for treating a patient with Niemann-Pick A, B, or D disease. The kit comprises an acid sphingomyelinase and a pump for delivery of said acid sphingomyelinase to the patient's brain ventricles.

[0017] According to the disclosure, including the invention, a patient can be treated who has a lysosomal storage disease which is caused by an enzyme deficiency which leads to accumulation of the enzyme's substrate.

15 [0018] The enzyme is administered to the patient via intraventricular delivery to the brain. The rate of administration is such that the administration of a single dose consumes more than four hours. Substrate levels in said brain are thereby reduced.

[0019] These and other embodiments which will be apparent to those of skill in the art upon reading the specification provide the art with methods for delivering agents to hard-to-reach portions of the brain.

BRIEF DESCRIPTION OF THE DRAWINGS

[0020]

25 FIG. 1 shows diagram of sections of brain that were analyzed for sphingomyelin. S1 is at the front of brain and S5 is at the back of brain.

FIG. 2 shows that intraventricular administration of rhASM reduces SPM levels in the ASMKO mouse brain.

30 FIG. 3 shows intraventricular administration of rhASM reduces SPM levels in the ASMKO liver, spleen, and lung.

FIG. 4 shows hASM staining in the brain following intraventricular infusion.

35 FIG. 5 shows that intraventricular infusion of rhASM over a 6 h period reduces SPM levels in the ASMKO mouse brain.

FIG. 6 shows that intraventricular infusion of rhASM over a 6 h period reduces SPM levels in ASMKO liver, serum, and lung.

40 FIG. 7 shows documented hASM variants and their relationship to disease or enzyme activity.

FIG. 8 shows the ventricular system which bathes the entire brain and spinal cord with cerebrospinal fluid.

DETAILED DESCRIPTION OF THE INVENTION

45 [0021] The inventors have discovered that intraventricular delivery of agents to patients at a slow rate, rather than in a bolus delivery, increases the effective penetration of the agents to distal portions of the brain from the site of introduction. Agents which can be administered in this manner are any, but include diagnostic agents, imaging agents, anesthetic agents, and therapeutic agents. This mode of delivery is particularly useful for agents which cannot cross the blood-brain barrier.

50 [0022] Applicants have observed that bolus intraventricular administration is not very effective, whereas slow infusion is very effective. While applicants do not wish to be bound by any particular theory of operation, it is believed that the slow infusion is effective due to the turn-over of the cerebrospinal fluid (CSF). While estimates and calculations in the literature vary, the adult human cerebrospinal fluid is believed to turn over within about 4, 5, 6, 7, or 8 hours. The turn-over rate may vary depending on the size of the individual and the volume of cerebrospinal fluid in the individual. Thus
55 for example, children have less cerebrospinal fluid than adults and therefore have a shorter turn-over time. The slow infusion of the disclosure can be metered so that the delivery time is about equal to or greater than the turn-over time of the CSF. The metering can be a fixed time, for example, greater than 2, 4, 6, 8, or 10 hours, or it can be set to be a fraction of the estimated turn-over time, for example greater than 50 %, 75 %, 100 %, 150 %, 200 %, 300 %, or 400 %.

The CSF empties into the venous blood system. The delivery can be performed for a time until the delivered agent is detectable in the serum of the patient. One can also detect and/or measure delivered agent in other parts of the CNS such as in the spinal cord and the subarachnoid space. These, too, can be used as endpoints for delivery.

[0023] CSF is secreted at a rate of about 430 to 600 ml/day or about 0.35 to 0.4 per minute in adults and the volume at any given moment is approximately 80 to 150 ml, with the entire volume being replaced every six to eight hours. Infants are estimated to produce 0.15 ml per minute. The choroid plexuses of the lateral ventricles are the largest and produce most of the CSF. The fluid flows through the interventricular foramina in the third ventricle, is augmented by fluid formed in the choroid plexus of that ventricle, and passes through the cerebral aqueduct of Sylvius to the fourth ventricle. CSF flows from the 4th ventricle to the foramen of Magendie to the subarachnoid space that surrounds the spinal cord; CSF flows from 4th ventricle to the foramen of Lushka to the subarachnoid space that surrounds the brain. The arachnoid membrane lines the subarachnoid space; arachnoid villi are part of the membrane. Arachnoid villi are pumps that take in the CSF and return it to the venous circulation. The CSF is reabsorbed into the blood through the arachnoid villi.

[0024] Slower-than-bolus delivery according to the disclosure, including the invention, has the advantage of delivering agents to portions of the brain that are not reached with a bolus. Bolus-delivered agent accumulates in the ependymal layer or in the parenchyma adjacent to the injection site. In contrast, slow-delivered agents are found to access distal regions of the parenchyma from the injection site (widespread delivery across the anterior-to-posterior axis of the brain; in addition widespread delivery dorsally and ventrally to the ependymal layer), the third ventricle, the Aqueduct of Sylvius, the fourth ventricle, the Foramina of Lushka, the Foramina of Magendie, the spinal cord, the subarachnoid space, and the serum. From the serum, peripheral organs can also be reached.

[0025] The CSF empties into the blood via the arachnoid villi and intracranial vascular sinuses, thereby delivering the enzymes to the visceral organs. The visceral organs which are often affected in Niemann-Pick disease are the lungs, spleen, kidney, and liver. The slow intraventricular infusion provides diminished amounts of substrate in at least these visceral organs.

[0026] The reduction in substrate accumulated in the brain, lungs, spleen, kidney, and/or liver is dramatic. Reductions of greater than 10 %, 20 %, 30 %, 40 %, 50 %, 60 %, 70 %, 80 %, 90 % can be achieved. The reduction achieved is not necessarily uniform from patient to patient or even from organ to organ within a single patient.

[0027] Agents for delivery can be any that are known in the art for treatment and imaging of brains. Imaging agents can be radioactive, radio-opaque, fluorescent, etc. Therapeutic agents can be any that are useful for treating neurological or other brain diseases. Anesthetics can be for treating chronic or acute pain, for example lidocaine hydrochloride and morphine. Examples of therapeutic agents include the enzymes that are deficient in lysosomal storage diseases. Other possible agents for use include nucleic acid vectors, such as plasmid and viral vectors, siRNA, anti-sense RNAs, etc. Other therapeutic agents include those which increase or decrease excitation of neurons in the brain. These include agonists or antagonists of glutamate, GABA, and dopamine. Specific examples include cycloserine, carboxyphenylglycine, glutamic acid, dizocilpine, ketamine, dextromethorphan, baclofen, muscimol, gabazine, saclofen, haloperidol, and methanesulfonate. Additional agents which can be used are anti-inflammatory agents, in particular non-steroidal anti-inflammatory agents such as indomethacin and cyclooxygenase inhibitors.

[0028] Nucleic acids can be delivered in any desired vector. These include viral or non-viral vectors, including adenovirus vectors, adeno-associated virus vectors, retrovirus vectors, lentivirus vectors, and plasmid vectors. Exemplary types of viruses include HSV (herpes simplex virus), AAV (adeno associated virus), HIV (human immunodeficiency virus), BIV (bovine immunodeficiency virus), and MLV (murine leukemia virus). Nucleic acids can be administered in any desired format that provides sufficiently efficient delivery levels, including in virus particles, in liposomes, in nanoparticles, and complexed to polymers.

[0029] Adenovirus is a non-enveloped, nuclear DNA virus with a genome of about 36 kb, which has been well-characterized through studies in classical genetics and molecular biology (Hurwitz, M.S., Adenoviruses Virology, 3rd edition, Fields et al., eds., Raven Press, New York, 1996; Hitt, M.M. et al., Adenovirus Vectors, The Development of Human Gene Therapy, Friedman, T. ed., Cold Spring Harbor Laboratory Press, New York 1999). The viral genes are classified into early (designated E1-E4) and late (designated L1-L5) transcriptional units, referring to the generation of two temporal classes of viral proteins. The demarcation of these events is viral DNA replication. The human adenoviruses are divided into numerous serotypes (approximately 47, numbered accordingly and classified into 6 groups: A, B, C, D, E and F), based upon properties including hemagglutination of red blood cells, oncogenicity, DNA and protein amino acid compositions and homologies, and antigenic relationships.

[0030] Recombinant adenoviral vectors have several advantages for use as gene delivery vehicles, including tropism for both dividing and non-dividing cells, minimal pathogenic potential, ability to replicate to high titer for preparation of vector stocks, and the potential to carry large inserts (Berkner, K.L., Curr. Top. Micro. Immunol. 158:39-66, 1992; Jolly, D., Cancer Gene Therapy 1:51-64 1994). Adenoviral vectors with deletions of various adenoviral gene sequences, such as pseudoadenoviral vectors (PAVs) and partially-deleted adenoviral (termed "DeAd"), have been designed to take advantage of the desirable features of adenovirus which render it a suitable vehicle for delivery of nucleic acids to

recipient cells.

[0031] In particular, pseudoadenoviral vectors (PAVs), also known as 'gutless adenovirus' or mini-adenoviral vectors, are adenoviral vectors derived from the genome of an adenovirus that contain minimal cis-acting nucleotide sequences required for the replication and packaging of the vector genome and which can contain one or more transgenes (See, U.S. Patent No. 5,882,877 which covers pseudoadenoviral vectors (PAV) and methods for producing PAV). PAVs have been designed to take advantage of the desirable features of adenovirus which render it a suitable vehicle for gene delivery. While adenoviral vectors can generally carry inserts of up to 8kb in size by the deletion of regions which are dispensable for viral growth, maximal carrying capacity can be achieved with the use of adenoviral vectors containing deletions of most viral coding sequences, including PAVs. See U.S. Patent No. 5,882,877 of Gregory et al.; Kochanek et al., Proc. Natl. Acad. Sci. USA 93:5731-5736, 1996; Parks et al, Proc. Natl. Acad. Sci. USA 93:13565-13570, 1996; Lieber et al., J. Virol. 70:8944-8960, 1996; Fisher et al., Virology 217:11-22, 1996; U.S. Patent No. 5,670,488; PCT Publication No. WO96/33280, published October 24, 1996; PCT Publication No. WO96/40955, published December 19, 1996; PCT Publication No. WO97/25446, published July 19, 1997; PCT Publication No. WO95/29993, published November 9, 1995; PCT Publication No. WO97/00326, published January 3, 1997; Morral et al., Hum. Gene Ther. 10:2709-2716, 1998. Such PAVs, which can accommodate up to about 36 kb of foreign nucleic acid, are advantageous because the carrying capacity of the vector is optimized, while the potential for host immune responses to the vector or the generation of replication-competent viruses is reduced. PAV vectors contain the 5' inverted terminal repeat (ITR) and the 3' ITR nucleotide sequences that contain the origin of replication, and the *cis*-acting nucleotide sequence required for packaging of the PAV genome, and can accommodate one or more transgenes with appropriate regulatory elements, e.g. promoter, enhancers, etc.

[0032] Other, partially deleted adenoviral vectors provide a partially-deleted adenoviral (termed "DeAd") vector in which the majority of adenoviral early genes required for virus replication are deleted from the vector and placed within a producer cell chromosome under the control of a conditional promoter. The deletable adenoviral genes that are placed in the producer cell may include E1A/E1B, E2, E4 (only ORF6 and ORF6/7 need be placed into the cell), pIX and pIVa2. E3 may also be deleted from the vector, but since it is not required for vector production, it can be omitted from the producer cell. The adenoviral late genes, normally under the control of the major late promoter (MLP), are present in the vector, but the MLP may be replaced by a conditional promoter.

[0033] Conditional promoters suitable for use in DeAd vectors and producer cell lines include those with the following characteristics: low basal expression in the uninduced state, such that cytotoxic or cytostatic adenovirus genes are not expressed at levels harmful to the cell; and high level expression in the induced state, such that sufficient amounts of viral proteins are produced to support vector replication and assembly. Preferred conditional promoters suitable for use in DeAd vectors and producer cell lines include the dimerizer gene control system, based on the immunosuppressive agents FK506 and rapamycin, the ecdysone gene control system and the tetracycline gene control system. Also useful in the present invention may be the GeneSwitch™ technology (Valentis, Inc., Woodlands, TX) described in Abruzzese et al., Hum. Gene Ther. 1999 10:1499-507. The partially deleted adenoviral expression system is further described in WO99/57296.

[0034] Adeno-associated virus (AAV) is a single-stranded human DNA parvovirus whose genome has a size of 4.6 kb. The AAV genome contains two major genes: the rep gene, which codes for the rep proteins (Rep 76, Rep 68, Rep 52, and Rep 40) and the cap gene, which codes for AAV replication, rescue, transcription and integration, while the cap proteins form the AAV viral particle. AAV derives its name from its dependence on an adenovirus or other helper virus (e.g., herpesvirus) to supply essential gene products that allow AAV to undergo a productive infection, i.e., reproduce itself in the host cell. In the absence of helper virus, AAV integrates as a provirus into the host cell's chromosome, until it is rescued by superinfection of the host cell with a helper virus, usually adenovirus (Muzyczka, Curr. Top. Micor. Immunol. 158:97-127, 1992).

[0035] Interest in AAV as a gene transfer vector results from several unique features of its biology. At both ends of the AAV genome is a nucleotide sequence known as an inverted terminal repeat (ITR), which contains the cis-acting nucleotide sequences required for virus replication, rescue, packaging and integration. The integration function of the ITR mediated by the rep protein in trans permits the AAV genome to integrate into a cellular chromosome after infection, in the absence of helper virus. This unique property of the virus has relevance to the use of AAV in gene transfer, as it allows for a integration of a recombinant AAV containing a gene of interest into the cellular genome. Therefore, stable genetic transformation, ideal for many of the goals of gene transfer, may be achieved by use of rAAV vectors. Furthermore, the site of integration for AAV is well-established and has been localized to chromosome 19 of humans (Kotin et al., Proc. Natl. Acad. Sci. 87:2211-2215, 1990). This predictability of integration site reduces the danger of random insertional events into the cellular genome that may activate or inactivate host genes or interrupt coding sequences, consequences that can limit the use of vectors whose integration of AAV, removal of this gene in the design of rAAV vectors may result in the altered integration patterns that have been observed with rAAV vectors (Ponnazhagan et al., Hum Gene Ther. 8:275-284, 1997).

[0036] There are other advantages to the use of AAV for gene transfer. The host range of AAV is broad. Moreover,

unlike retroviruses, AAV can infect both quiescent and dividing cells. In addition, AAV has not been associated with human disease, obviating many of the concerns that have been raised with retrovirus-derived gene transfer vectors.

[0037] Standard approaches to the generation of recombinant rAAV vectors have required the coordination of a series of intracellular events: transfection of the host cell with an rAAV vector genome containing a transgene of interest flanked by the AAV ITR sequences, transfection of the host cell by a plasmid encoding the genes for the AAV rep and cap proteins which are required in trans, and infection of the transfected cell with a helper virus to supply the non-AAV helper functions required in trans (Muzyczka, N., *Curr. Top. Micor. Immunol.* 158:97-129, 1992). The adenoviral (or other helper virus) proteins activate transcription of the AAV rep gene, and the rep proteins then activate transcription of the AAV cap genes. The cap proteins then utilize the ITR sequences to package the rAAV genome into an rAAV viral particle. Therefore, the efficiency of packaging is determined, in part, by the availability of adequate amounts of the structural proteins, as well as the accessibility of any cis-acting packaging sequences required in the rAAV vector genome.

[0038] Retrovirus vectors are a common tool for gene delivery (Miller, *Nature* (1992) 357:455-460). The ability of retrovirus vectors to deliver an unarranged, single copy gene into a broad range of rodent, primate and human somatic cells makes retroviral vectors well suited for transferring genes to a cell.

[0039] Retroviruses are RNA viruses wherein the viral genome is RNA. When a host cell is infected with a retrovirus, the genomic RNA is reverse transcribed into a DNA intermediate which is integrated very efficiently into the chromosomal DNA of infected cells. This integrated DNA intermediate is referred to as a provirus. Transcription of the provirus and assembly into infectious virus occurs in the presence of an appropriate helper virus or in a cell line containing appropriate sequences enabling encapsidation without coincident production of a contaminating helper virus. A helper virus is not required for the production of the recombinant retrovirus if the sequences for encapsidation are provided by co-transfection with appropriate vectors.

[0040] The retroviral genome and the proviral DNA have three genes: the gag, the pol, and the env, which are flanked by two long terminal repeat (LTR) sequences. The gag gene encodes the internal structural (matrix, capsid, and nucleocapsid) proteins; the pol gene encodes the RNA-directed DNA polymerase (reverse transcriptase) and the env gene encodes viral envelope glycoproteins. The 5' and 3' LTRs serve to promote transcription and polyadenylation of the virion RNAs. The LTR contains all other cis-acting sequences necessary for viral replication. Lentiviruses have additional genes including vif, vpr, tat, rev, vpu, nef, and vpx (in HIV-1, IDV-2 and/or SIV). Adjacent to the 5' LTR are sequences necessary for reverse transcription of the genome (the tRNA primer binding site) and for efficient encapsidation of viral RNA into particles (the Psi site). If the sequences necessary for encapsidation (or packaging of retroviral RNA into infectious virions) are missing from the viral genome, the result is a cis defect which prevents encapsidation of genomic RNA. However, the resulting mutant is still capable of directing the synthesis of all virion proteins.

[0041] Lentiviruses are complex retroviruses which, in addition to the common retroviral genes gag, pol and env, contain other genes with regulatory or structural function. The higher complexity enables the lentivirus to modulate the life cycle thereof, as in the course of latent infection. A typical lentivirus is the human immunodeficiency virus (HIV), the etiologic agent of AIDS. *In vivo*, HIV can infect terminally differentiated cells that rarely divide, such as lymphocytes and macrophages. *In vitro*, HIV can infect primary cultures of monocyte-derived macrophages (MDM) as well as HeLa-Cd4 or T lymphoid cells arrested in the cell cycle by treatment with aphidicolin or gamma irradiation. Infection of cells is dependent on the active nuclear import of HIV preintegration complexes through the nuclear pores of the target cells. That occurs by the interaction of multiple, partly redundant, molecular determinants in the complex with the nuclear import machinery of the target cell. Identified determinants include a functional nuclear localization signal (NLS) in the gag matrix (MA) protein, the karyophilic virion-associated protein, vpr, and a C-terminal phosphotyrosine residue in the gag MA protein. The use of retroviruses for gene therapy is described, for example, in United States Patent 6,013,516; and U.S. Patent 5,994,136.

[0042] The inventors have discovered that intraventricular delivery of lysosomal hydrolase enzymes to patients who are deficient in the enzymes leads to improved metabolic status of both the brain and the affected visceral (non-CNS) organs. This is particularly true when the delivery rate is slow, relative to a bolus delivery. One particularly useful enzyme for treating Niemann-Pick A, B, or D is acid sphingomyelinase (aSM), such as that shown in SEQ ID NO: 1.¹

¹ Residues 1-46 constitute the signal sequence which is cleaved upon secretion.

[0043] Although a particular amino acid sequence is shown in SEQ ID NO: 1, normal variants in the human population which retain activity can be used as well. Typically these normal variants differ by just one or two residues from the sequence shown in SEQ ID NO: 1. The variants to be used should be at least 95 %, 96 %, 97 %, 98 %, or 99 % identical to SEQ ID NO: 1. Variants which are associated with disease or reduced activity should not be used. Typically the mature form of the enzyme will be delivered. This will begin with residue 47 as shown in SEQ ID NO: 1. Variants which are associated with disease are shown in FIG. 7.

[0044] Kits according to the present disclosure are assemblages of separate components. While they can be packaged in a single container, they can be subpackaged separately. Even a single container can be divided into compartments. Typically a set of instructions will accompany the kit and provide instructions for delivering the diagnostic, therapeutic, or anesthetic agents, such as lysosomal hydrolase enzymes, intraventricularly. The instructions may be in printed form,

in electronic form, as an instructional video or DVD, on a compact disc, on a floppy disc, on the internet with an address provided in the package, or a combination of these means. Other components, such as diluents, buffers, solvents, tape, screws, and maintenance tools can be provided in addition to the agent, one or more cannulae or catheters, and/or a pump. Printed matter or other instructional materials may correlate volume of CSF, turn-over time of CSF, patient weight, patient age, delivery rate, delivery time, and/or other parameters. Pumps may be calibrated to deliver at specified rates based on CSF volume and/or turn-over time and/or patient age and/or patient weight.

[0045] The populations treated by the methods of the disclosure include, but are not limited to, patients having or at risk for developing a neurometabolic disorder, e.g., an LSD, such as diseases listed in Table 1, particularly, if such a disease affects the CNS and visceral organs. In an illustrative embodiment, the disease is type A Niemann-Pick disease. If genetic propensity for the disease has been determined, treatment may begin prenatally. Other diseases or conditions which may be treated include but are not limited to neurosurgical patients, stroke patients, Huntington's disease, epilepsy, Parkinson's disease, Lou Gehrig's disease, Alzheimer's disease.

[0046] An agent, such as a lysosomal hydrolase enzyme, can be incorporated into a pharmaceutical composition. The composition can be useful to diagnose, anesthetize, or treat, e.g., inhibit, attenuate, prevent, or ameliorate, a condition characterized by an insufficient level of a lysosomal hydrolase activity. The pharmaceutical composition can be administered to a subject suffering from a lysosomal hydrolase deficiency or someone who is at risk of developing said deficiency. The compositions should contain an effective diagnostic, anesthetic, therapeutic or prophylactic amount of the agent, in a pharmaceutically-acceptable carrier. The pharmaceutical carrier can be any compatible, non-toxic substance suitable to deliver the polypeptides to the patient. Sterile water, alcohol, fats, and waxes may be used as the carrier. Pharmaceutically-acceptable adjuvants, buffering agents, dispersing agents, and the like, may also be incorporated into the pharmaceutical compositions. The carrier can be combined with the agent in any form suitable for administration by intraventricular injection or infusion (also possibly intravenous or intrathecal) or otherwise. Suitable carriers include, for example, physiological saline, bacteriostatic water, Cremophor EL.TM. (BASF, Parsippany, N.J.) or phosphate buffered saline (PBS), other saline solutions, dextrose solutions, glycerol solutions, water and oils emulsions such as those made with oils of petroleum, animal, vegetable, or synthetic origin (peanut oil, soybean oil, mineral oil, or sesame oil). An artificial CSF can be used as a carrier. The carrier will preferably be sterile and free of pyrogens. The concentration of the agent in the pharmaceutical composition can vary widely, i.e., from at least about 0.01% by weight, to 0.1 % by weight, to about 1% weight, to as much as 20% by weight or more.

[0047] For intraventricular administration, the composition must be sterile and should be fluid. It must be stable under the conditions of manufacture and storage and must be preserved against the contaminating action of microorganisms such as bacteria and fungi. Prevention of the action of microorganisms can be achieved by various antibacterial and antifungal agents, for example, parabens, chlorobutanol, phenol, ascorbic acid, thimerosal, and the like. In many cases, it will be preferable to include isotonic agents, for example, sugars, polyalcohols such as manitol, sorbitol, sodium chloride in the composition.

[0048] Dosage of any agent, whether aSM or other lysosomal hydrolase enzyme, may vary somewhat from individual to individual, depending on the particular agent or enzyme and its specific in vivo activity, the route of administration, the medical condition, age, weight or sex of the patient, the patient's sensitivities to the aSM agent or components of vehicle, and other factors which the attending physician will be capable of readily taking into account. While dosages may vary depending on the disease and the patient, the enzyme is generally administered to the patient in amounts of from about 0.1 to about 1000 milligrams per 50 kg of patient per month, preferably from about 1 to about 500 milligrams per 50 kg of patient per month.

[0049] One way for delivering a slow infusion is to use a pump. Such pumps are commercially available, for example, from Alzet (Cupertino, CA) or Medtronic (Minneapolis, MN). The pump may be implantable or external. Another convenient way to administer the enzymes, is to use a cannula or a catheter. The cannula or catheter may be used for multiple administrations separated in time. Cannulae and catheters can be implanted stereotaxically. It is contemplated that multiple administrations will be used to treat the typical patient with a lysosomal storage disease. Catheters and pumps can be used separately or in combination. Catheters can be inserted surgically, as is known in the art. Kits can comprise an agent and a catheter and/or a pump. The pump may have settings suitable for delivery rates based on the volume of CSF in an individual.

[0050] The above disclosure generally describes the present invention.

[0051] A more complete understanding can be obtained by reference to the following specific examples which are provided herein for purposes of illustration only, and are not intended to limit the scope of the invention.

EXAMPLE 1

Animal model

[0052] ASMKO mice are an accepted model of types A and B Niemann-Pick disease (Horinouchi et al. (1995) Nat.

EP 1 988 823 B1

Genetics, 10:288-293; Jin et al. (2002) J. Clin. Invest., 109:1183-1191; and Otterbach (1995) Cell, 81:1053-1061). Niemann-Pick disease (NPD) is classified as a lysosomal storage disease and is an inherited neurometabolic disorder characterized by a genetic deficiency in acid sphingomyelinase (ASM; sphingomyelin cholinephosphohydrolase, EC 3.1.3.12). The lack of functional ASM protein results in the accumulation of sphingomyelin substrate within the lysosomes of neurons and glia throughout the brain. This leads to the formation of large numbers of distended lysosomes in the perikaryon, which are a hallmark feature and the primary cellular phenotype of type A NPD. The presence of distended lysosomes correlates with the loss of normal cellular function and a progressive neurodegenerative course that leads to death of the affected individual in early childhood (The Metabolic and Molecular Bases of Inherited Diseases, eds. Scriver et al., McGraw-Hill, New York, 2001, pp. 3589-3610). Secondary cellular phenotypes (e.g., additional metabolic abnormalities) are also associated with this disease, notably the high level accumulation of cholesterol in the lysosomal compartment. Sphingomyelin has strong affinity for cholesterol, which results in the sequestering of large amounts of cholesterol in the lysosomes of ASMKO mice and human patients (Leventhal et al. (2001) J. Biol. Chem., 276:44976-44983; Slotte (1997) Subcell. Biochem., 28:277-293; and Viana et al. (1990) J. Med. Genet., 27:499-504.)

EXAMPLE 2

"Intraventricular infusion of rhASM in the ASMKO mouse II"

[0053] Goal: To determine what effect intraventricular infusion of rhASM has on storage pathology (i.e., sphingomyelin and cholesterol storage) in the ASMKO mouse brain

[0054] Methods: ASMKO mice were stereotaxically implanted with an indwelling guide cannula between 12 and 13 weeks of age. At 14 weeks of age, mice were infused with .250 mg of hASM (n=5) over a 24 h period (~01 mg/h) for four straight days (1 mg total was administered) using an infusion probe (fits inside the guide cannula) which is connected to a pump. Lyophilized hASM was dissolved in artificial cerebral spinal fluid (aCSF) prior to infusion. Mice were sacrificed 3 days post infusion. At sacrifice, mice were overdosed with euthasol (>150 mg/kg) and then perfused with PBS or 4% paraformaldehyde. Brain, liver, lung and spleen were removed and analyzed for sphingomyelin (SPM) levels. Brain tissue was divided into 5 sections before SPM analysis (S1 = front of brain, S5 = back of the brain; see Fig. 1)

Table 2.

Group	Treatment	n
ASMKO	.250 mg/24 h (1 mg total)	5
ASMKO	None	4
WT	None	4

[0055] Results summary: Intraventricular infusion of hASM at .250mg/24 h for 4 continuous days (1 mg total) resulted in hASM staining and filipin (i.e., cholesterol storage) clearance throughout the ASMKO brain. Biochemical analysis showed that intraventricular infusion of hASM also led to a global reduction in SPM levels throughout the brain. SPM levels were reduced to that of wild type (WT) levels. A significant reduction in SPM was also observed in the liver and spleen (a downward trend was seen in the lung).

EXAMPLE 3

"Intraventricular delivery of hASM in ASMKO Mice III"

[0056] Goal: to determine lowest efficacious dose over a 6 h infusion period.

[0057] Methods: ASMKO mice were stereotaxically implanted with an indwelling guide cannula between 12 and 13 weeks of age. At 14 weeks of age mice were infused over a 6 h period at one of the following doses of hASM: 10 mg/kg (.250 mg; n=12), 3 mg/kg (.075 mg; n=7), 1 mg/kg (.025 mg; n=7), .3 mg/kg (.0075 mg; n=7), or aCSF (artificial cerebral spinal fluid; n=7). Two mice from each dose level were perfused with 4% paraformaldehyde immediately following the 6 h infusion to assess enzyme distribution in the brain (blood was also collected from these to determine serum hASM levels). The remaining mice from each group were sacrificed 1 week post infusion. Brain, liver, and lung tissue from these mice was analyzed for SPM levels as in study 05-0208.

EP 1 988 823 B1

Table 3.

Group	Treatment	n
ASMKO	0.250 mg (10 mg/kg)	12
ASMKO	0.075 mg (3 mg/kg)	7
ASMKO	0.025 mg (1 mg/kg)	7
ASMKO	0.0075 mg(.3 mg/kg)	7
ASMKO	aCSF	7
WT	None	7

[0058] Results summary: Intraventricular hASM over a 6h period led to a significant reduction in SPM levels throughout the brain regardless of dose. Brains SPM levels in mice treated with doses > .025 mg were reduced to WT levels. Visceral organ SPM levels were also significantly reduced (but not to WT levels) in a dose dependent manner. In support of this finding hASM protein was also detected in the serum of ASMKO mice infused with hASM protein. Histological analysis showed that hASM protein was widely distributed throughout the brain (from S1 to S5) after intraventricular administration of hASM.

EXAMPLE 4

"Intraventricular infusion of rhASM in ASMKO mice IV"

[0059] Goal: To determine (1) the time it takes for SPM to reaccumulate within the brain (and spinal cord) after a 6 h infusion of hASM (dose = .025 mg); (2) if there are sex differences in response to intraventricular hASM administration (previous experiments demonstrate that there are sex differences in substrate accumulation in the liver, whether or not this occurs in the brain is unknown).

[0060] Methods: ASMKO mice were stereotaxically implanted with an indwelling guide cannula between 12 and 13 weeks of age. At 14 weeks of age mice were infused over a 6 h period with .025 mg of hASM. After intraventricular delivery of hASM mice were sacrificed either at 1 week post infusion (n = 7 males, 7 females), or at 2 weeks post infusion (n = 7 males, 7 females) or at 3 weeks post infusion (n = 7 males, 7 females). At sacrifice the brain, spinal cord, liver and lung were removed for SPM analysis.

Group	Treatment	n	Sacrifice
male ASMKO	.025 mg	7	1 week post infusion
female ASMKO	.025 mg	7	1 week post infusion
male ASMKO	.025 mg	7	2 weeks post infusion
female ASMKO	.025 mg	7	2 weeks post infusion
male ASMKO	.025 mg	7	: 3 weeks post infusion
female ASMKO	.025 mg	7	3 weeks post infusion
male ASMKO	aCSF	7	1 week post infusion
female ASMKO	aCSF	7	1 week post infusion
male WT	None	7	1 week post infusion
female WT	None	7	1 week post infusion

[0061] Tissue samples are prepared for SPM analysis.

EXAMPLE 5

"Effect of intraventricular infusion of rhASM on cognitive function in ASMKO mice"

[0062] Goal: to determine if intraventricular infusion of rhASM alleviates disease induced cognitive deficits in ASMKO

mice

[0063] Methods: ASMKO mice will be stereotaxically implanted with an indwelling guide cannula between 9 and 10 weeks of age. At 13 weeks of age mice will be infused over a 6 h period with .025 mg of hASM. At 14 and 16 weeks of age mice will undergo cognitive testing using the Barnes maze.

5

EXAMPLE 6

"hASM protein distribution within the ASMKO CNS after intraventricular infusion"

10 [0064] Goal: to determine the distribution of hASM protein (as function of time) within the brain and spinal cord of ASMKO mice after intraventricular infusion

[0065] Methods: ASMKO mice will be stereotaxically implanted with an indwelling guide cannula between 12 and 13 weeks of age. At 14 weeks of age mice will be infused over a 6 h period with .025 mg of hASM. Following infusion procedure mice will either be sacrificed immediately or 1 week or 2 weeks or 3 weeks later.

15

References

[0066]

20 1) Belichenko PV, Dickson PI, Passage M, Jungles S, Mobley WC, Kakkis ED. Penetration, diffusion, and uptake of recombinant human alpha-1-iduronidase after intraventricular injection into the rat brain. *Mol Genet Metab.* 2005;86(1-2):141-9.

25 2) Kakkis E, McEntee M, Vogler C, Le S, Levy B, Belichenko P, Mobley W, Dickson P, Hanson S, Passage M. Intrathecal enzyme replacement therapy reduces lysosomal storage in the brain and meninges of the canine model of MPS I. *Mol Genet Metab.* 2004;83(1 -2): 163-74.

30 3) Bembi B, Ciana G, Zanatta M, et al. Cerebrospinal-fluid infusion of alglucerase in the treatment for acute neuronopathic Gaucher's disease. *Pediatr Res* 1995;38:A425.

4) Lonser RR, Walbridge S, Murray GJ, Aizenberg MR, Vortmeyer AO, Aerts JM, Brady RO, Oldfield EH. Convection perfusion of glucocerebrosidase for neuronopathic Gaucher's disease. *Ann Neurol.* 2005 Apr;57(4):542-8.

35 Claims

40 1. An agent that is suitable for delivery to a patient's brain, for use in a method comprising administering the agent to the patient via a lateral ventricle of the brain at a rate such that the administration of a single dose consumes more than four hours, wherein the administration is performed until said agent is detectable in the serum of the patient, and wherein the agent is an enzyme that is deficient in a lysosomal storage disease.

2. The agent of claim 1, wherein the agent accesses the third ventricle, the Aqueduct of Sylvius, the fourth ventricle, the Foramina of Luschka, the Foramen of Magendie, the spinal cord, the subarachnoid space, or the serum.

45 3. The agent of claim 1 or claim 2, wherein the agent is selected from the group consisting of sphingomyelinase, alpha-L-iduronidase, glucocerebrosidase, alpha-galactosidase A, acid maltase, hexosaminidase, and alpha-glucosidase.

50 4. The agent of any one of claims 1 to 3, wherein the patient has a disease selected from the group consisting of Niemann-Pick B disease, Hurler syndrome, Gaucher's disease, Fabry disease, Pompe disease, Tay-Sachs disease, or Glycogen storage disease type II.

5. The agent of claim 1, wherein the rate is such that the administration of a single dose consumes more than six hours, more than eight hours, or more than ten hours.

55 6. The agent of claim 1, wherein the rate is such that the administration of a single dose consumes up to ten hours.

7. The agent of claim 1, wherein the rate is such that the administration of a single dose consumes six to ten hours.

8. The agent of claim 1, wherein the agent is delivered using a catheter, a pump, or an implantable pump.

Patentansprüche

- 5
1. Für die Verabreichung an das Hirn eines Patienten geeignetes Mittel zur Verwendung in einem Verfahren, welches die Verabreichung des Mittels an den Patienten über ein laterales Ventrikel des Hirns mit einer solchen Rate umfasst, dass für die Verabreichung einer einzelnen Dosis mehr als vier Stunden benötigt werden, wobei die Verabreichung so lange erfolgt, bis das Mittel im Serum des Patienten nachweisbar ist, und wobei es sich bei dem Mittel um ein Enzym handelt, an dem es bei einer lysosomalen Speicherkrankheit mangelt.
- 10
2. Mittel nach Anspruch 1, wobei das Mittel an den dritten Ventrikel, den Aquaeductus mesencephali, den vierten Ventrikel, das Luschka-Foramen, das Magendie-Foramen, das Rückenmark, den Subarachnoidalraum oder das Serum verabreicht wird.
- 15
3. Mittel nach Anspruch 1 oder Anspruch 2, wobei das Mittel aus der aus Sphingomyelinase, alpha-L-Iduronidase, Glucocerebrosidase, alpha-Galactosidase A, saurer Maltase, Hexosaminidase und alpha-Glucosidase bestehenden Gruppe ausgewählt ist.
- 20
4. Mittel nach einem der Ansprüche 1 bis 3, wobei der Patient an einer aus der aus Niemann-Pick-B-Krankheit, Hurler-Syndrom, Morbus Gaucher, Morbus Fabry, Morbus Pompe, Tay-Sachs-Krankheit und Glykogenspeicherkrankheit vom Typ II bestehenden Gruppe ausgewählten Krankheit leidet.
- 25
5. Mittel nach Anspruch 1, wobei die Rate derart ist, dass für die Verabreichung einer einzelnen Dosis mehr als sechs Stunden, mehr als acht Stunden oder mehr als zehn Stunden benötigt werden.
- 30
6. Mittel nach Anspruch 1, wobei die Rate derart ist, dass für die Verabreichung einer einzelnen Dosis bis zu zehn Stunden benötigt werden.
- 35
7. Mittel nach Anspruch 1, wobei die Rate derart ist, dass für die Verabreichung einer einzelnen Dosis sechs bis zehn Stunden benötigt werden.
8. Mittel nach Anspruch 1, wobei das Mittel mit einem Katheter, einer Pumpe oder einer implantierbaren Pumpe verabreicht wird.

Revendications

- 40
1. Agent qui est adapté pour administration au cerveau d'un patient, pour utilisation dans un procédé comprenant l'administration de l'agent au patient en passant par un ventricule latéral du cerveau à un taux tel que l'administration d'une dose unique prend plus de quatre heures, l'administration étant effectuée jusqu'à ce que ledit agent soit détectable dans le sérum du patient, et l'agent étant une enzyme qui est déficiente dans une maladie du stockage lysosomal.
- 45
2. Agent selon la revendication 1, l'agent accédant au troisième ventricule, à l'aqueduc de Sylvius, au quatrième ventricule, aux trous de Luschka, au trou de Magendie, à la moelle épinière, à l'espace sous-arachnoïdien ou au sérum.
- 50
3. Agent selon la revendication 1 ou la revendication 2, l'agent étant choisi dans le groupe constitué de la sphingomyélinase, l'alpha-L-iduronidase, la glucocérébrosidase, l'alpha-galactosidase A, la maltase acide, l'hexosaminidase, et l'alpha-glucosidase.
- 55
4. Agent selon l'une quelconque des revendications 1 à 3, le patient ayant une maladie choisie dans le groupe constitué de la maladie de Niemann-Pick B, le syndrome de Hurler, la maladie de Gaucher, la maladie de Fabry, la maladie de Pompe, la maladie de Tay-Sachs, ou une maladie de stockage du glycoène de type II.
5. Agent selon la revendication 1, le taux étant tel que l'administration d'une dose unique prend plus de six heures, plus de huit heures, ou plus de dix heures.

EP 1 988 823 B1

- 6. Agent selon la revendication 1, le taux étant tel que l'administration d'une dose unique prend jusqu'à dix heures.
- 7. Agent selon la revendication 1, le taux étant tel que l'administration d'une dose unique prend six à dix heures.

5 8. Agent selon la revendication 1, l'agent étant administré au moyen d'un cathéter, d'une pompe ou d'une pompe implantable.

10

15

20

25

30

35

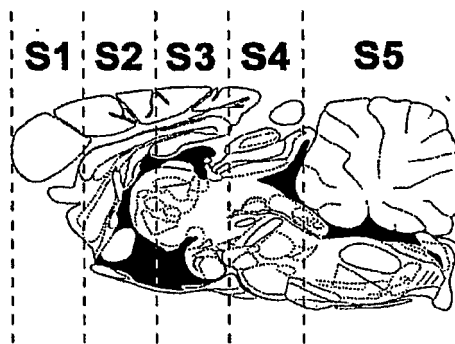
40

45

50

55

Fig. 1



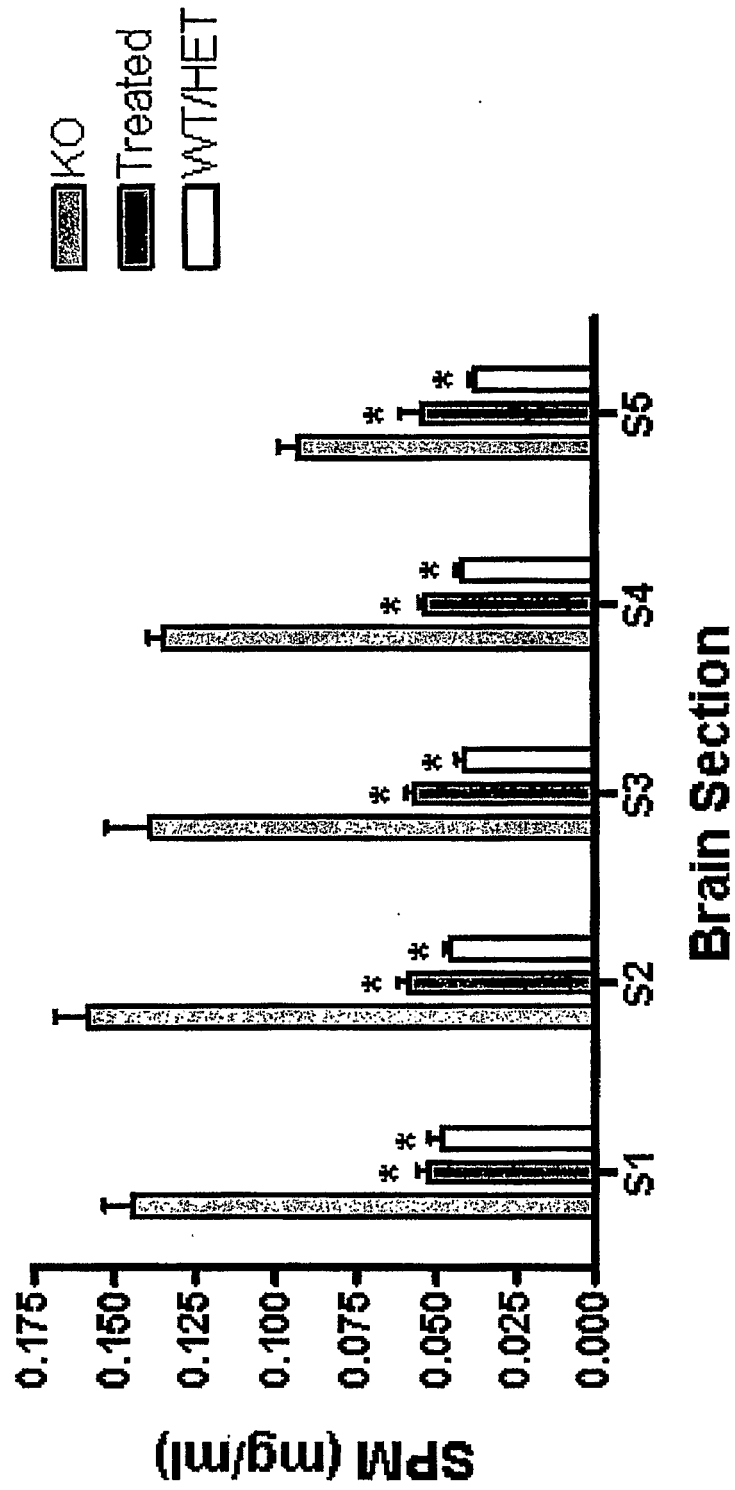
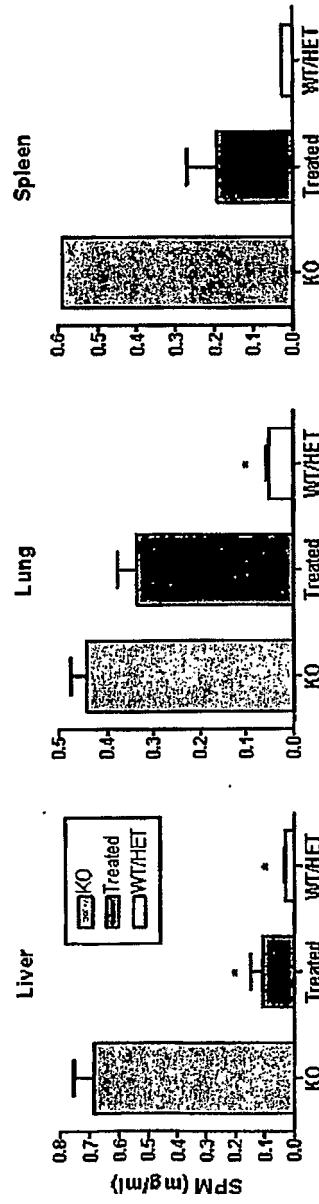


FIG. 2.

FIG. 3.



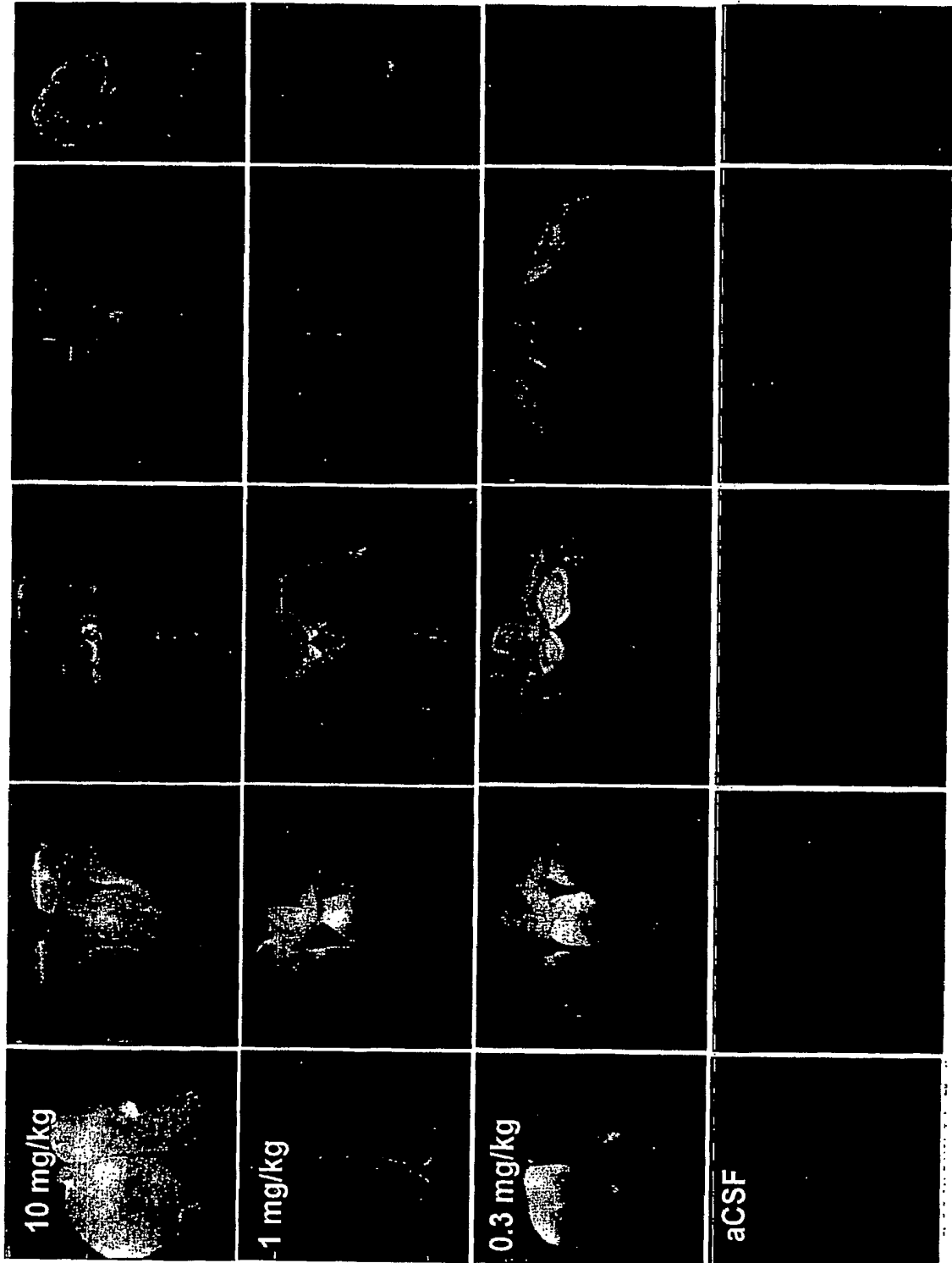
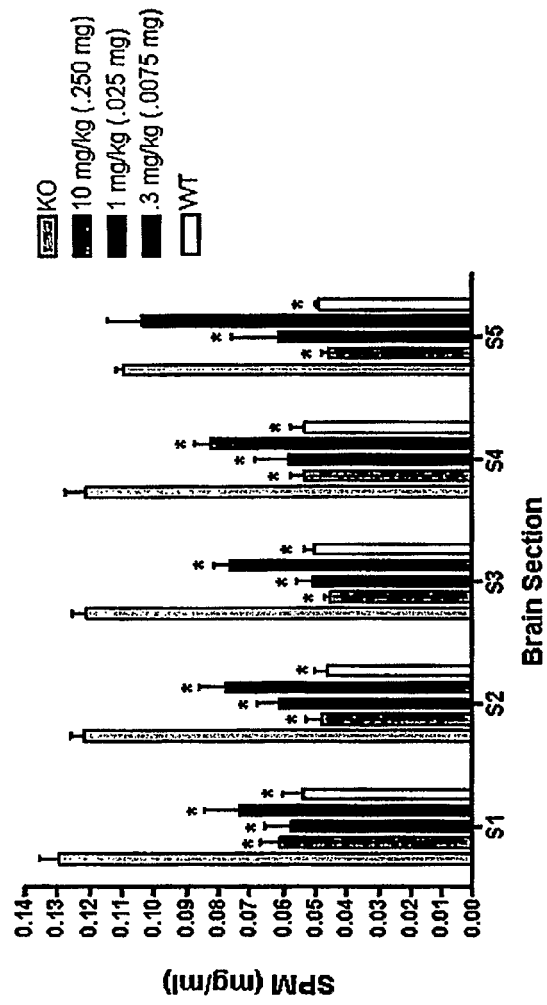


FIG. 4.

FIG. 5



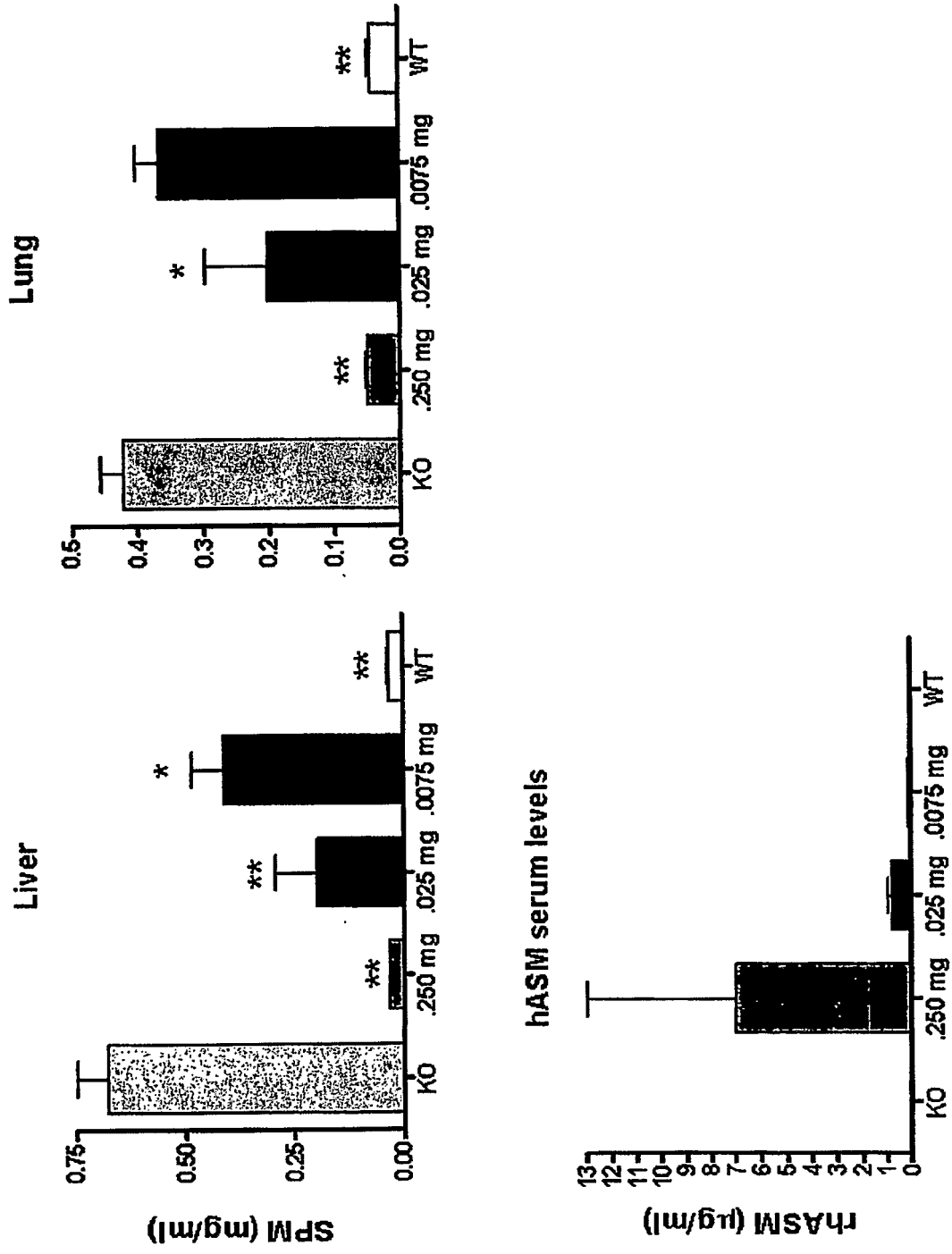
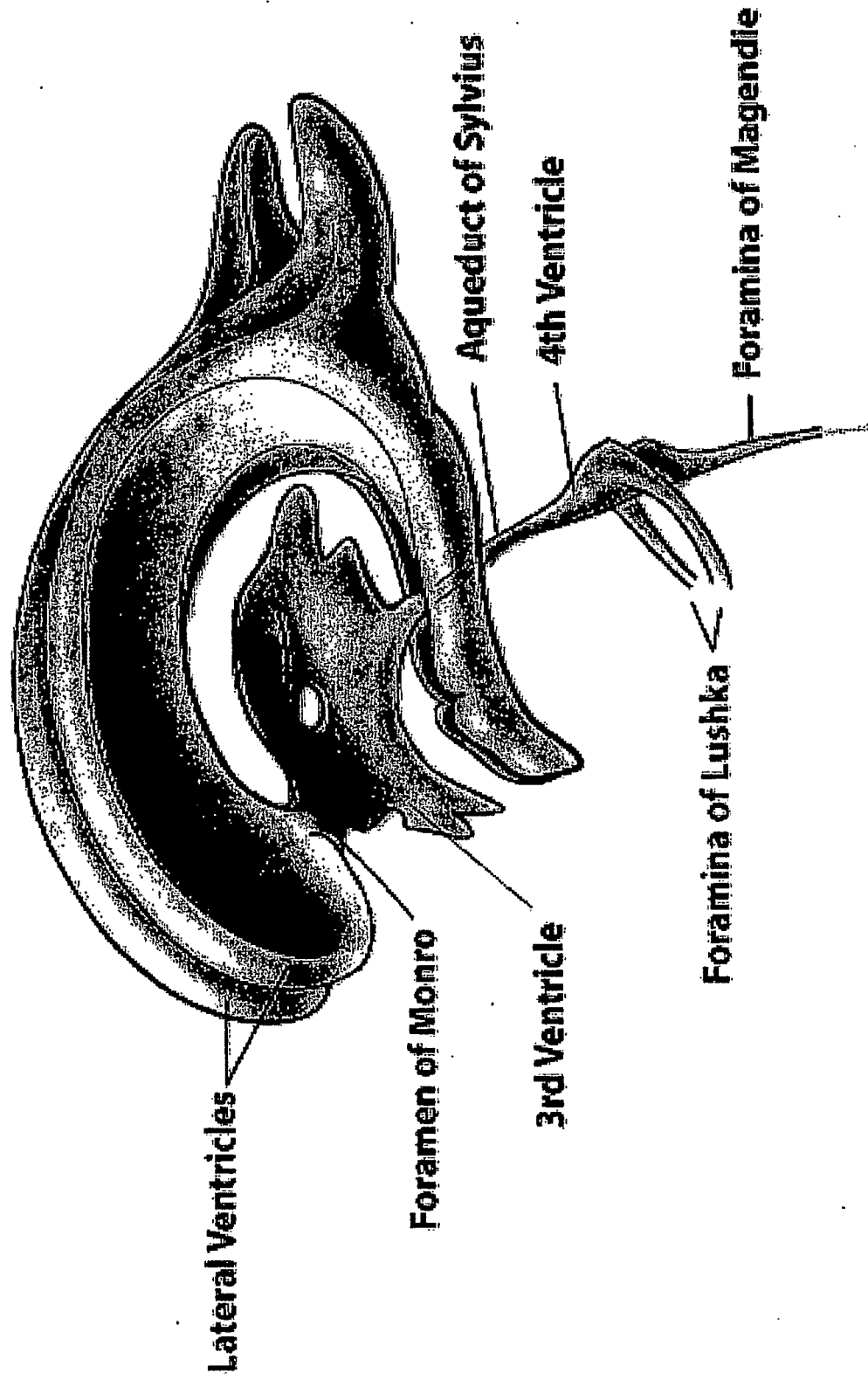


Fig. 6.

FIG. 7. Known variants

VARIANT	157	1	C -> R (seems to be less active).
VARIANT	242	1	G -> R (in NPB).
VARIANT	246	1	E -> Q (in NPA; 30% residual activity).
VARIANT	248	1	S -> R (in NPA).
VARIANT	302	1	L -> P (in NPA; in 23% of NPA Ashkenazi Jewish patients).
VARIANT	319	1	H -> Y (in NPA).
VARIANT	371	1	P -> S (in NPB).
VARIANT	382	1	M -> I (in NPA).
VARIANT	383	1	N -> S (in NPB).
VARIANT	389	1	N -> T (in NPA).
VARIANT	391	1	W -> G (in NPB; low sphingomyelin degradation rates).
VARIANT	421	1	H -> Y (in NPB).
VARIANT	436	1	S -> R (in NPB).
VARIANT	446	1	Y -> C (in NPA).
VARIANT	463	1	F -> S (in NPA).
VARIANT	475	1	P -> L (in NPA).
VARIANT	496	1	R -> L (in NPA; in 32% of NPA Ashkenazi Jewish patients).
VARIANT	537	1	Y -> H (in NPA).
VARIANT	577	1	G -> S (in NPA).
VARIANT	608	1	Missing (in NPB; prevalent among NPB patients from the North-African Maghreb region).

FIG. 8



REFERENCES CITED IN THE DESCRIPTION

This list of references cited by the applicant is for the reader's convenience only. It does not form part of the European patent document. Even though great care has been taken in compiling the references, errors or omissions cannot be excluded and the EPO disclaims all liability in this regard.

Patent documents cited in the description

- US 20050048047 A [0006]
- US 5882877 A [0031]
- US 5670488 A [0031]
- WO 9633280 A [0031]
- WO 9640955 A [0031]
- WO 9725446 A [0031]
- WO 9529993 A [0031]
- WO 9700326 A [0031]
- WO 9957296 A [0033]
- US 6013516 A [0041]
- US 5994136 A [0041]

Non-patent literature cited in the description

- **PARTRIDGE**. Peptide Drug Delivery to the Brain. Raven Press, 1991 [0003]
- Adenoviruses. **HURWITZ, M.S. et al.** Virology. Raven Press, 1996 [0029]
- Adenovirus Vectors. **HITT, M.M. et al.** The Development of Human Gene Therapy. Cold Spring Harbor Laboratory Press, 1999 [0029]
- **BERKNER, K.L.** *Curr. Top. Micro. Immunol.*, 1992, vol. 158, 39-66 [0030]
- **JOLLY, D.** *Cancer Gene Therapy*, 1994, vol. 1, 51-64 [0030]
- **KOCHANEK et al.** *Proc. Natl. Acad. Sci. USA*, 1996, vol. 93, 5731-5736 [0031]
- **PARKS et al.** *Proc. Natl. Acad. Sci. USA*, 1996, vol. 93, 13565-13570 [0031]
- **LIEBER et al.** *J. Virol.*, 1996, vol. 70, 8944-8960 [0031]
- **FISHER et al.** *Virology*, 1996, vol. 217, 11-22 [0031]
- **MORRAL et al.** *Hum. Gene Ther.*, 1998, vol. 10, 2709-2716 [0031]
- **ABRUZZESE et al.** *Hum. Gene Ther.*, 1999, vol. 10, 1499-507 [0033]
- **MUZYCZKA.** *Curr. Top. Micor. Immunol.*, 1992, vol. 158, 97-127 [0034]
- **KOTIN et al.** *Proc. Natl. Acad. Sci.*, 1990, vol. 87, 2211-2215 [0035]
- **PONNAZHAGAN et al.** *Hum Gene Ther.*, 1997, vol. 8, 275-284 [0035]
- **MUZYCZKA, N.** *Curr. Top. Micor. Immunol.*, 1992, vol. 158, 97-129 [0037]
- **MILLER.** *Nature*, 1992, vol. 357, 455-460 [0038]
- **HORINOUCI et al.** *Nat. Genetics*, 1995, vol. 10, 288-293 [0052]
- **JIN et al.** *J. Clin. Invest.*, 2002, vol. 109, 1183-1191 [0052]
- **OTTERBACH.** *Cell*, 1995, vol. 81, 1053-1061 [0052]
- The Metabolic and Molecular Bases of Inherited Diseases. McGraw-Hill, 2001, 3589-3610 [0052]
- **LEVENTHAL et al.** *J. Biol. Chem.*, 2001, vol. 276, 44976-44983 [0052]
- **SLOTTE.** *Subcell. Biochem.*, 1997, vol. 28, 277-293 [0052]
- **VIANA et al.** *J. Med. Genet.*, 1990, vol. 27, 499-504 [0052]
- **BELICHENKO PV ; DICKSON PI ; PASSAGE M ; JUNGLES S ; MOBLEY WC ; KAKKIS ED.** Penetration, diffusion, and uptake of recombinant human alpha-1-iduronidase after intraventricular injection into the rat brain. *Mol Genet Metab.*, 2005, vol. 86 (1-2), 141-9 [0066]
- **KAKKIS E ; MCENTEE M ; VOGLER C ; LE S ; LEVY B ; BELICHENKO P ; MOBLEY W ; DICKSON P ; HANSON S ; PASSAGE M.** Intrathecal enzyme replacement therapy reduces lysosomal storage in the brain and meninges of the canine model of MPS I. *Mol Genet Metab.*, 2004, vol. 83 (1 -2), 163-74 [0066]
- **BEMBI B ; CIANA G ; ZANATTA M et al.** Cerebrospinal-fluid infusion of alglucerase in the treatment for acute neuronopathic Gaucher's disease. *Pediatr Res*, 1995, vol. 38, A425 [0066]
- **LONSER RR ; WALBRIDGE S ; MURRAY GJ ; AIZENBERG MR ; VORTMEYER AO ; AERTS JM ; BRADY RO ; OLDFIELD EH.** Convection perfusion of glucocerebrosidase for neuronopathic Gaucher's disease. *Ann Neurol.*, April 2005, vol. 57 (4), 542-8 [0066]

专利名称(译)	缓慢的心室内分娩		
公开(公告)号	EP1988823B1	公开(公告)日	2018-08-15
申请号	EP2007750236	申请日	2007-02-08
[标]申请(专利权)人(译)	建新公司		
申请(专利权)人(译)	Genzyme公司		
当前申请(专利权)人(译)	Genzyme公司		
[标]发明人	DODGE JAMES PASSINI MARCO SHIHABUDDIN LAMYA CHENG SENG		
发明人	DODGE, JAMES PASSINI, MARCO SHIHABUDDIN, LAMYA CHENG, SENG		
IPC分类号	A61B5/00 A61N1/30 A61M37/00		
CPC分类号	A61K9/0024 A61K31/00 A61P1/16 A61P3/00 A61P11/00 A61P13/12 A61P23/00 A61P25/00 A61P25/08 A61P25/14 A61P25/16 A61P25/28		
优先权	60/771451 2006-02-09 US		
其他公开文献	EP1988823A4 EP1988823A2		
外部链接	Espacenet		

摘要(译)

包括溶酶体贮积病在内的神经疾病可以使用心室内递送治疗剂来绕过血脑屏障而成功治疗。类似地，可以以这种方式将诊断剂和麻醉剂递送到大脑。可以缓慢进行给药以达到最大效果。这种给药允许大脑远端部分的更大穿透。

Fig. 1

