



(11) **EP 1 615 543 B1**

(12) **EUROPEAN PATENT SPECIFICATION**

(45) Date of publication and mention of the grant of the patent:
30.03.2016 Bulletin 2016/13

(51) Int Cl.:
H04L 29/08 ^(2006.01) **A61B 5/00** ^(2006.01)
H04W 12/06 ^(2009.01)

(21) Application number: **04724329.0**

(86) International application number:
PCT/IB2004/001037

(22) Date of filing: **30.03.2004**

(87) International publication number:
WO 2004/089201 (21.10.2004 Gazette 2004/43)

(54) **METHOD AND UNIT FOR THE RELIABLE ALLOCATION OF NETWORK ELEMENTS TO A WIRELESS SENSOR NETWORK**

VERFAHREN UND EINRICHTUNG ZUR ZUVERLÄSSIGEN ZUORDNUNG VON NETZELEMENTEN ZU EINEM DRAHTLOSEN SENSORNETZWERK

PROCEDE ET UNITE POUR L'ATTRIBUTION FIABLE D'ELEMENTS DE RESEAU A UN RESEAU DE CAPTEURS SANS FIL

(84) Designated Contracting States:
AT BE BG CH CY CZ DE DK EE ES FI FR GB GR HU IE IT LI LU MC NL PL PT RO SE SI SK TR

(30) Priority: **10.04.2003 EP 03100965**

(43) Date of publication of application:
18.01.2006 Bulletin 2006/03

(73) Proprietors:
• **Philips Intellectual Property & Standards GmbH 20099 Hamburg (DE)**
Designated Contracting States:
DE
• **Koninklijke Philips N.V. 5656 AE Eindhoven (NL)**
Designated Contracting States:
AT BE BG CH CY CZ DK EE ES FI FR GB GR HU IE IT LI LU MC NL PL PT RO SE SI SK TR

(72) Inventors:
• **MUESCH, Guido, Philips IP & Standards GmbH 52066 Aachen (DE)**
• **KLABUNDE, Karin, Philips IP & Standards 52066 Aachen (DE)**
• **BALDUS, Heribert, Philips IP & Standards 52066 Aachen (DE)**

(74) Representative: **de Haan, Poul Erik et al Philips International B.V. Philips Intellectual Property & Standards High Tech Campus 5 5656 AE Eindhoven (NL)**

(56) References cited:
US-A1- 2002 109 621

EP 1 615 543 B1

Note: Within nine months of the publication of the mention of the grant of the European patent in the European Patent Bulletin, any person may give notice to the European Patent Office of opposition to that patent, in accordance with the Implementing Regulations. Notice of opposition shall not be deemed to have been filed until the opposition fee has been paid. (Art. 99(1) European Patent Convention).

Description

[0001] The present invention relates to a method and a unit for the reliable allocation of new network elements to a wireless network.

[0002] A preferred field of application is the field of monitoring patients by means of medical sensors which are connected to a wireless network. In this case, a new network element (e.g. a medical sensor which monitors the blood pressure of a patient) must be allocated to an existing network (e.g. the patient's other sensors, which monitor the temperature of the patient for example) in a reliable and unambiguous manner in order to prevent incorrect configurations. In the medical sector, this is often made more difficult by the fact that the staff have to operate under a high time pressure and high mental and physical stress. Moreover, in a sector such as this allocation errors must not occur. It is obvious that a reliable and unambiguous allocation of network elements to a network is absolutely necessary in this case.

[0003] Within the context of the present invention, medical sensors are sensors which record data from a patient and forward it to a processing unit. Within the context of the present invention, the term "patient data" includes both physiological data, such as real time ECG signals, blood pressure, CO₂ saturation in the blood, blood sugar level, temperature, etc., and also non-physiological data, such as battery power, patient location, etc.

[0004] US patent application US2001/0023315 A1 discloses a medical system in which sensors transmit patient data to radio frequency transceivers which are mounted on the ceiling. These transceivers transmit the data to a LAN, with each sensor transmitting to at least two transceivers and the better connection being used. However, the configuration of the sensors and their incorporation into the LAN also in this case has to be carried out manually, and thus in a time-consuming and complicated manner. US patent application US 2002/0109621 A1 shows a wireless, programmable system for medical monitoring including a base unit and a plurality of individual wireless, remotely programmable biosensor transceivers. The base unit manages the transceivers by issuing registration, configuration, data acquisition, and transmission commands using wireless techniques. Physiologic data from the wireless transceivers is demultiplexed and supplied via a standard interface to a conventional monitor for display. Initialization, configuration, registration, and management routines for the wireless transceivers and the base unit are also described. But in this case, too, the initial allocation of sensors to the system has to be carried out manually.

[0005] It is an object of the present invention to provide a method and a unit which allow the reliable and controlled allocation of network elements (particularly medical sensors) to a network with prior configuration of the wireless sensors or of the network administration system.

[0006] The object of the invention is achieved by the

features of the independent claims.

[0007] It has now been found that the use of an allocation unit which transmits codes and hence brings about the transmission of encoded IDs meets the necessary profile of requirements.

[0008] One object of the present invention is a method of allocating network elements to a wireless network, wherein an allocation unit (ZG) transmits a code to a first network element (NE-1), which code causes the first network element (NE-1) to transmit its ID together with the code (encoded ID) so that the latter can be received by a second network element (NE-2) which allocates the first network element (NE-1) to its network.

[0009] In the method according to the invention, either the ID of the device (network element) that is to be incorporated is passed to the existing network or the existing network and the new device that is to be incorporated are brought into connection by a common code.

[0010] The method according to the invention is shown schematically in Fig. 1: a network 4 is built up around a network element with network administration function 3. An allocation unit 1 incorporates, into the network 4 around the network element with network administration function 3, a network element 2 that is to be allocated.

[0011] The components used for the method according to the invention are shown in Fig. 2. A network element 2 and a network element with network administration function 3 comprise a receiver 5 and a radio interface 6. An allocation unit 1 has a transmitter 8 which can be activated for example by a push button 7.

[0012] The advantages of the method according to the invention are in particular that no manual presetting of the network elements or network is required. The method according to the invention allows intuitive operation by non-technical staff and provides the possibility of direct feedback about successful performance of the operation by means of LEDs on the network elements. It allows reliable allocation of wireless sensors/network elements even in environments in which a number of wireless networks of the same type are used next to one another.

[0013] The transmission of the code by the allocation unit may take place in various ways; one possibility for carrying out the method according to the invention consists in the allocation unit transmitting an encoded light pulse.

[0014] In this variant of the method, the allocation unit transmits a light pulse which is used to send out a code that is unique for each allocation unit. The sending of the encoded light pulse preferably takes place in a user-activated manner, for example by pressing once or holding down a button on the allocation unit.

[0015] By receiving the code from the allocation unit, a network element that has a receiver for optical pulses is caused to transmit, for a given time period, its identification (ID) together with the received code. This operating state of the network element may be displayed optically for example with the aid of an LED. An LED can also display the reception of the light pulse from the al-

location unit.

[0016] The ID transmitted by NE-1 together with the code received from the allocation unit (hereinafter referred to as the "encoded ID") may then be received by a network element NE-2, which is authorized to allocate new network elements to the network. The network element NE-2 is advantageously activated only temporarily to receive encoded IDs, see below.

[0017] By using differently encoded allocation units, it can be ensured that in two adjacent networks located within range, devices can be unambiguously allocated to a network.

[0018] One preferred procedure of an allocation according to the invention by means of an encoded light pulse is shown in Fig. 3. In Fig. 3, two network elements - a first network element NE-1 which is to be newly allocated to a network (new network element) and a second network element NE-2 which includes a network administration function (network element with network administration) - are in the "Receive (light)" state for receiving encoded light pulses from an allocation unit (ZG). If a code from ZG is received at NE-1, then NE-1 switches into the "Transmit (radio)" state. In this case, messages having their own identification and the received code (so-called encoded IDs) are transmitted by NE-1 regularly over a defined time interval.

[0019] The time interval within which NE-1 transmits encoded IDs preferably lies in the range from one second to one minute, particularly preferably in the range from two seconds to half a minute and in particular in the range from five to ten seconds. The repetition rate within this time interval, that is to say the time after which the signal (the encoded ID) is again transmitted, preferably lies in the range from 0.05 to 5 seconds, particularly preferably in the range from 0.1 to 3 seconds and in particular in the range from 0.2 to 1 second. Accordingly, the frequency with which an NE-1 activated by ZG transmits its encoded ID may preferably be from a few times to a few hundred times, for example one, two, three, four, five, six, seven, eight, nine or ten times to fifty or a hundred times or more. The choice of time window within which two network elements come into contact forms a compromise between a reaction that is as short as possible, in order to be able to give the user rapid feedback, and a power consumption that is as low as possible, said power consumption increasing with the number of transmission operations. Values which have proven useful in practice are, for example, a time window of from 5 to 10 seconds at a transmission rate of 2 to 4 packets per second, resulting in a frequency of 10 to 40 times per second. In the case of smaller time windows, the intervals should be chosen to be shorter; in the case of long time windows they should be chosen to be longer.

[0020] As shown in Fig. 3, the network element NE-2 with network administration function can switch into the "Set up connection" state when it receives an encoded ID. By contrast, if the network element with network administration function receives a message with an unsuit-

able, that is to say incorrect, code, it remains in the "Receive (radio)" state. After the time interval has elapsed, it then switches back into the "Receive (light)" state. One disadvantage of this variant is that NE-2 must already know the code, that is to say each individual network to which new elements are to be allocated must have its own network element with network administration function.

[0021] According to the invention, this is advantageously effected in that the allocation unit is likewise used to activate the network element with network administration function. Following appropriate activation, the network element with network administration function is ready to receive encoded IDs from network elements activated beforehand by ZG. Other messages relating to the connection setup are ignored during this time, so that unambiguous allocation is ensured.

[0022] In particularly preferred methods according to the invention, the activation of NE-2 to receive the encoded ID from NE-1 takes place by receiving the code from the allocation unit.

[0023] In this preferred variant of the method according to the invention, a network element NE-2 has network administration properties, it being possible for the network around NE-2 to have further network elements NE-x. In a network element NE-1 that is to be allocated to the network around NE-2, an event E1 is brought about by means of the allocation unit (NE-1 is caused to transmit its encoded ID). At the same time as this event E1, an event E2 is brought about in the network element NE-2 (NE-2 is caused to receive encoded IDs). Only when NE-2 receives at around the same time a request to set up a connection is this request answered with a positive response. In this context "at around the same time" means that the reception must lie within a time window following the event E2. For this purpose, NE-1 preferably sends its request periodically within a time period following the event E1 (see below). The two time periods of NE-1 and NE-2 must overlap for there to be a successful connection setup.

[0024] In this variant, only the temporal proximity of the events (activation by allocation unit) is used in order that only the respectively activated network elements NE-1 and NE-2 set up a connection with one another. In the hospital environment, it may be possible that two adjacent networks that are within range are activated at the same time. In order still to ensure an unambiguous allocation in this case, the events E1 and E2 may receive a unique ID. NE-1 then transmits its request together with the received ID and NE-2 only accepts requests with the received ID. The allocation unit may make use of various technologies which allow short-range data transmission, in particular wireless technologies such as, for example, Near Field Communication, for instance RF-ID, or preferably infrared communication (see above).

[0025] In this preferred variant of the method according to the invention, the authority of the network which performs the allocation of new network elements to the net-

work (network administration) is likewise activated by the signal of the allocation unit (encoded light pulse or radio signal) in order to react, for a defined time period, to transmitted identifications from new network elements so as then to allocate them to the network. Only identifications from new network elements which have received the same code via the allocation unit are accepted.

[0026] The preferred procedure described above is hence supplemented by the following steps: if the network element with network administration NE-2 receives an encoded light pulse from the allocation unit, then it switches from the "Receive (light)" state to the "Receive (radio)" state. It now accepts only messages having the same code as was given by ZG to NE-2. If no valid message is received within a defined time period, NE-2 switches back to the "Receive (light)" state. If a valid message, that is to say an ID encoded with the same code, is received, there is a transition to the "Set up connection" state. Following this state, there is a switch back to the "Receive (light)" state in order to be able to integrate further network elements into the network.

[0027] In this case, too, the time interval within which NE-2 can receive encoded IDs preferably lies in the range from one second to one minute, particularly preferably in the range from two seconds to half a minute and in particular in the range from five to ten seconds.

[0028] In wireless networks without central network administration, the two functions "Receive (light) → Transmit (radio)" and "Receive (light) → Receive (radio)" may be implemented in each individual network element; in this way an allocation between any desired network elements can be produced.

[0029] In order to make the method more user-friendly, the respective operating states of the individual network elements may be made to be optically or acoustically perceptible. Thus, for example, a flashing LED on the unit may indicate the state "Transmit (radio)", and an LED that stays lit for longer (for example 2 seconds) could indicate that allocation has been successful.

[0030] In addition, the network elements may be given a network checking function. The activation of the network element, that is to say the reception of an encoded light pulse, leads to an optical report of all network elements located in the wireless network. Thus the affiliation of individual network elements in the network can be rapidly checked.

[0031] The method according to the invention has the advantage that the sequence in which the network element with network function and a network element that is to be newly allocated are activated is of no significance. Moreover, an unambiguous allocation is ensured by a unique code for each allocation unit. If in the procedure according to the invention the network elements are provided with LEDs, for example, then optical reports brought about by ZG allow a rapid diagnosis of the allocation of network elements to the network.

[0032] As an alternative to activation by means of an encoded light pulse, it is also possible to use for the meth-

od according to the invention allocation units which activate the network elements by means of a radio signal. In one preferred variant of the method according to the invention, the allocation unit transmits an encoded radio signal.

[0033] This variant is entirely analogous to the variant described above, apart from the fact that in this case the allocation unit does not transmit an encoded light pulse but rather an encoded radio signal. The allocation unit therefore requires a radio interface (transmitter). In this variant, the optical transmission of the unique code is thus replaced by the use of the radio interface already present on the network element.

[0034] In this variant, the allocation unit should have a short transmission range in order that only the desired device is selected. In this variant the allocation unit preferably has a range of from 0.5 to 150 cm, particularly preferably 1 to 100 cm and in particular 2 to 20 cm.

[0035] One preferred procedure for an allocation by means of an encoded radio signal according to the invention is described below. Two network elements, a first network element NE-1 which is to be newly allocated to a network and a second network element NE-2 which includes a network administration function, are in the "Receive (radio, code)" state for receiving encoded radio signals from an allocation unit (ZG). If a code from ZG is received at NE-1, then NE-1 switches into the "Transmit (radio, encoded ID)" state. In this case, messages having their own identification and the received code (so-called encoded IDs) are transmitted by NE-1 regularly over a defined time interval.

[0036] The time interval within which NE-1 transmits encoded IDs preferably lies in the range from one second to one minute, particularly preferably in the range from two seconds to half a minute and in particular in the range from five to ten seconds. The repetition rate within this time interval, that is to say the time after which the signal (the encoded ID) is again transmitted, preferably lies in the range from 0.05 to 5 seconds, particularly preferably in the range from 0.1 to 3 seconds and in particular in the range from 0.2 to 1 second. Accordingly, the frequency with which an NE-1 activated by ZG transmits its encoded ID may be from a few times to a few hundred times.

[0037] When the network element NE-2 with network administration function receives an encoded ID, it can thus switch into the "Set up connection" state. As an alternative and preferably, it is also possible - as described above - for the allocation unit to likewise be used to activate the network element with network administration function. Following appropriate activation by the radio signal from ZG, the network element with network administration function is ready to receive encoded IDs from network elements activated beforehand by ZG. Other messages are ignored during this time, so that unambiguous allocation is ensured.

[0038] The procedure shown in Fig. 3 and described above is hence supplemented by the following steps: if the network element with network administration NE-2

receives an encoded radio signal from the allocation unit, then it switches from the "Receive (radio, code)" state to the "Receive (radio, encoded ID)" state. It now accepts only messages having the same code as was given by ZG to NE-2. If no valid message is received within a defined time period, NE-2 switches back to the "Receive (radio, code)" state. If a valid message, that is to say an ID encoded with the same code, is received, there is a transition to the "Set up connection" state. Following this state, there is a switch back to the "Receive (radio, code)" state in order to be able to integrate further network elements into the network.

[0039] In this variant, too, in wireless networks without central network administration the two functions "Receive (radio, code) → Transmit (radio, encoded ID)" and "Receive (radio, code) → Receive (radio, encoded ID)" may be implemented in each individual network element; in this way an allocation between any desired network elements can be produced.

[0040] In the method variants described above, the network element that is to be allocated transmits its encoded ID to the network element with network administration function. However, the method according to the invention may also be configured such that the network element that is to be allocated is activated by the reception of the code, transmits its encoded ID and this encoded ID is transmitted not to NE-2 but rather to the allocation unit. The allocation unit can then forward the received encoded ID to the network element with network administration function and at the same time acts as a conveyor of the encoded ID without NE-1 and NE-2 having to communicate directly with one another.

[0041] In a preferred variant of the method according to the invention, the allocation unit may receive the encoded ID from NE-1 and transmit it to NE-2.

[0042] Such a preferred procedure is shown in Fig. 4. The allocation unit is in this case configured such that it has the same network interface as that used in the wireless network. If the allocation unit (for example a ZG with radio interface, see above) comes close enough to the new network element NE-1, then a protocol is brought about by means of which the allocation unit picks up the unique identification of the new network element. The allocation unit then has network authority, in which the identification (encoded ID) is output again and the network element NE-1 is made known to the network. The concept of coming closer to a defined distance is achieved either by a threshold value in the received signal strength or by a very low transmission power of the ZG or by a combination of these two measures.

[0043] The incorporation of new network elements by means of the allocation unit according to the method variant described above may be further refined by incorporating a "pick-up" function for example. In this case, the pick-up of the new network element is not brought about by bringing the allocation unit closer but rather by pressing a button for example. If the user holds the button down, as may be indicated for example by an LED, then

the ZG receives the identifier. In order to output the encoded ID to a further network element (with network administration function), the button must simply be released, and this may again be shown by an LED or by an LED going out.

[0044] As already described above, the direction of allocation may be chosen at will, that is to say it is possible either to transmit the identification of the new network element to a network administration element or to transmit the network identification of the network element with network administration function to the network element that is to be newly incorporated. Of course, bidirectional transmission is also possible if a flexible use of the two allocation paths is desired.

[0045] The method according to the invention can also be expanded to the extent that network elements can be removed from the network by means of the allocation unit. A preferred variant of the method according to the invention provides that the allocation unit can transmit a second code which causes a first network element (NE-1) to leave the network of the second network element (NE-2).

[0046] In cases in which the entire network is to be broken up, it may be complicated to cause each network element to leave the network. As an alternative to this, it is possible to cause the network element with network administration function to break up the network. In this case, only one command is required to remove all network elements from the network. In further preferred methods, the allocation unit can transmit a second code which causes the second network element (NE-2) with network administration function to break up the network.

[0047] For the second code, the allocation unit may be provided with a further push button which is actuated for the transmission of the "Leave" or "Break-up" code. However, it is also possible to carry out the abovementioned variants of the method with the code that is already present in the allocation unit. This has the advantage of a simpler design of the allocation unit and lower susceptibility to operating errors.

[0048] In such variants of the method, the difference between the "Leave" or "Break-up" code and the first code may be that the code is transmitted over a longer time period or a number of times in succession. In the first case, time periods of around 2 seconds have proved useful; in the second case it has proved useful for the first code to be sent twice by means of a double click. In summary, methods according to the invention are also preferred in which the second code for removing network elements or for breaking up the network consists in the first code being transmitted over a longer time period or a number of times.

[0049] Another object of the invention is an allocation unit for allocating network elements to a wireless network, comprising a transmitter which transmits, in a user-controlled manner, a code to a first network element (NE-1), which code causes the first network element (NE-1) to transmit its ID together with the code (encoded ID) so

that the latter can be received by a second network element (NE-2) which allocates the first network element (NE-1) to its network.

[0050] The allocation unit according to the invention may be configured such that it transmits the code as an encoded light signal (light pulse), as an encoded radio signal or in some other way to the network elements. Preferred allocation units according to the invention comprise as transmitter a device for transmitting an encoded light pulse and/or an encoded radio signal.

[0051] As described in detail above, it is advantageous if the allocation unit does not only activate the network element that is to be newly incorporated in order to transmit, but also the network administration element in order to receive specific messages. In this case, allocation units according to the invention are preferred in which the code which causes the first network element (NE-1) to transmit its ID together with the code (encoded ID) causes the second network element (NE-2) to be ready to receive the encoded ID from NE-1.

[0052] Allocation units which can transmit an encoded ID are particularly advantageous. Such allocation units additionally comprise a receiver for receiving encoded IDs.

[0053] The respective operating states of the network elements and of the allocation unit are preferably displayed in a user-friendly manner, it being possible for both optical and acoustic signals to be used. Allocation units according to the invention which additionally comprise one or more devices for displaying the respective operating state are particularly preferred.

[0054] The display devices are preferably optical devices since acoustic signals from the surroundings may be regarded as disruptive. Thus it is possible for example for colored light-emitting diodes (LEDs) or liquid crystal displays (LCDs) to be used to display operating states of the allocation unit.

[0055] In order to carry out the preferred variants of the method with a "Leave" or "Break-up" function, the allocation unit according to the invention may additionally be provided with a transmitter which transmits, in a user-controlled manner, a second code which causes the first network element (NE-1) to leave the network of the second network element (NE-2) or causes the second network element (NE-2) with network administration function to break up the network.

LIST OF REFERENCES:

[0056]

- 1 allocation unit
- 2 network element that is to be allocated NE-1
- 3 network element with network administration function NE-2
- 4 network
- 5 receiver
- 6 radio interface

- 7 push button
- 8 transmitter

5 Claims

1. A method of allocating network elements to a wireless network (4), wherein a transmitter (8) of an allocation unit (1) transmits, in a user-controlled manner, a code to a first network element (2), which code causes the first network element (2) to transmit an encoded ID comprising its ID and the received code, so that the encoded ID is received by a second network element (3) having network administration function, which allocates the first network element (2) to its wireless network (4), wherein a temporary activation of the second network element (3) to receive the encoded ID from the first network element (2) takes place by receiving the code from the allocation unit (1), and wherein the second network element (3) accepts only identifications from network elements (2) having the same code, wherein the allocation unit (1) is one of a plurality of differently encoded allocation units, said allocation unit (1) has a short transmission range and sends out a code that is unique for each allocation unit.
2. A method as claimed in claim 1, wherein the allocation unit (1) transmits an encoded light pulse.
3. A method as claimed in claim 1, wherein the allocation unit (1) transmits an encoded radio signal.
4. A method as claimed in claim 2, wherein when receiving the code from the allocation unit (1), the first network element (2) is switched from a light receiving state for receiving encoded light pulses from the allocation unit (1) into a radio transmission state for transmitting the encoded ID and the second network element (3) is switched from a light receiving state for receiving encoded light pulses from the allocation unit (1) into a radio receiving state for receiving the encoded ID.
5. A method as claimed in any of claims 1 to 4, wherein the allocation unit (1) can receive the encoded ID from the first network element (2) and transmit it to the second network element (3).
6. A method as claimed in any of claims 1 to 5, wherein the allocation unit (1) can transmit a second code which causes a first network element (2) to leave the wireless network (4) of the second network element (3).

7. A method as claimed in any of claims 1 to 5, wherein the allocation unit (1) can transmit a second code which causes the second network element (3), which has a network administration function, to break up the wireless network.
8. A method as claimed in either of claims 6 and 7, wherein the second code for removing network elements or for breaking up the wireless network (4) consists in the first code being transmitted over a longer time period or a number of times.
9. A system for allocating network elements to a wireless network (4), comprising an allocation unit (1) having a transmitter (8) configured to transmit, in a user-controlled manner, a code to a first network element (2), the first network element (2) configured to transmit in response to receiving the code an encoded ID comprising its ID and the received code, a second network element (3) having network administration function, which is configured to allocate the first network element (2) to its wireless network (4) in response to receiving the encoded ID from the first network element (2), wherein the second network element (3) is configured to be activated temporarily to receive the encoded ID from the first network element (2) by receiving the code from the allocation unit (1), and wherein the second network element (3) is configured to accept only identifications from network elements (2) having the same code, wherein the allocation unit (1) is one of a plurality of differently encoded allocation units (1), said allocation unit (1) having a short transmission range and being configured to send out a code that is unique for each allocation unit (1).
10. A system as claimed in claim 9, wherein the transmitter (8) comprises a device for transmitting an encoded light pulse and/or an encoded radio signal.
11. A system as claimed in any of claims 9 and 10, wherein there is additionally a receiver for receiving encoded IDs.
12. A system as claimed in any of claims 9 to 11, wherein there is additionally one or more devices for displaying the respective operating state.
13. A system as claimed in any of claims 9 to 11, wherein the transmitter (8) is configured to transmit, in a user-controlled manner, a second code which causes the first network element (2) to leave the wireless network (4) of the second network element (3) or which causes the second network element (3) to break up the wireless network (4).

Patentansprüche

1. Verfahren zur Zuordnung von Netzwerkelementen zu einem drahtlosen Netzwerk (4), wonach:
- ein Sender (8) einer Zuordnungseinheit (1) einen Code zu einem ersten Netzwerkelement (2) in einer benutzergesteuerten Art und Weise überträgt, wobei der Code bewirkt, dass das erste Netzwerkelement (2) eine codierte ID mit seiner ID und dem empfangenen Code überträgt, so dass die codierte ID von einem zweiten Netzwerkelement (3) mit einer Netzwerkadministrationsfunktion empfangen wird, die das erste Netzwerkelement (2) seinem drahtlosen Netzwerk (4) zuordnet, wobei eine temporäre Aktivierung des zweiten Netzwerkelements (3) zum Empfang der codierten ID von dem ersten Netzwerkelement (2) durch Empfangen des Codes von der Zuordnungseinheit (1) stattfindet, und wobei das zweite Netzwerkelement (3) nur Identifikationen von Netzwerkelementen (2) mit dem gleichen Code akzeptiert, wobei es sich bei der Zuordnungseinheit (1) um eine von mehreren unterschiedlich codierten Zuordnungseinheiten handelt, wobei die Zuordnungseinheit (1) einen kurzen Übertragungsbereich aufweist und einen Code aussendet, der für jede Zuordnungseinheit eindeutig ist.
2. Verfahren nach Anspruch 1, wobei die Zuordnungseinheit (1) einen codierten Lichtimpuls überträgt.
3. Verfahren nach Anspruch 1, wobei die Zuordnungseinheit (1) ein codiertes Funksignal überträgt.
4. Verfahren nach Anspruch 2, wobei bei Empfang des Codes von der Zuordnungseinheit (1) das erste Netzwerkelement (2) von einem Lichtempfangszustand zum Empfang von codierten Lichtimpulsen von der Zuordnungseinheit (1) in einen Funkübertragungszustand zur Übertragung der codierten ID geschaltet wird, und das zweite Netzwerkelement (3) von einem Lichtempfangszustand zum Empfang codierter Lichtimpulse von der Zuordnungseinheit (1) in einen Funkempfangszustand zum Empfang der codierten ID geschaltet wird.
5. Verfahren nach einem der Ansprüche 1 bis 4, wobei die Zuordnungseinheit (1) die codierte ID von dem ersten Netzwerkelement (2) empfangen und diese zu dem zweiten Netzwerkelement (3) übertragen kann.
6. Verfahren nach einem der Ansprüche 1 bis 5, wobei die Zuordnungseinheit (1) einen zweiten Code über-

tragen kann, der bewirkt, dass ein erstes Netzwerkelement (2) das drahtlose Netzwerk (4) des zweiten Netzwerkelements (3) verlässt.

7. Verfahren nach einem der Ansprüche 1 bis 5, wobei die Zuordnungseinheit (1) einen zweiten Code übertragen kann, der bewirkt, dass das zweite Netzwerkelement (3), das eine Netzwerkadministrationsfunktion aufweist, das drahtlose Netzwerk schließt.
8. Verfahren nach einem der Ansprüche 6 und 7, wobei der zweite Code zum Entfernen von Netzwerkelementen oder zum Schließen des drahtlosen Netzwerks (4) darin besteht, dass der erste Code über einen längeren Zeitraum oder mehrfach übertragen wird.
9. System zur Zuordnung von Netzwerkelementen zu einem drahtlosen Netzwerk (4), umfassend:

eine Zuordnungseinheit (1) mit einem Sender (8), der so eingerichtet ist, dass er einen Code zu einem ersten Netzwerkelement (2) in einer benutzergesteuerten Art und Weise überträgt, wobei das erste Netzwerkelement (2) so eingerichtet ist, dass es in Reaktion auf den Empfang des Codes eine codierte ID mit seiner ID und dem empfangenen Code überträgt;

ein zweites Netzwerkelement (3) mit einer Netzwerkadministrationsfunktion, das so eingerichtet ist, dass es in Reaktion auf den Empfang der codierten ID von dem ersten Netzwerkelement (2) das erste Netzwerkelement (2) seinem drahtlosen Netzwerk (4) zuordnet, wobei das zweite Netzwerkelement (3) so eingerichtet ist, dass eine temporäre Aktivierung desselben zum Empfang der codierten ID von dem ersten Netzwerkelement (2) durch Empfangen des Codes von der Zuordnungseinheit (1) stattfindet, und

wobei das zweite Netzwerkelement (3) so eingerichtet ist, dass es nur Identifikationen von Netzwerkelementen (2) mit dem gleichen Code akzeptiert,

wobei es sich bei der Zuordnungseinheit (1) um eine von mehreren unterschiedlich codierten Zuordnungseinheiten (1) handelt, wobei die Zuordnungseinheit (1) einen kurzen Übertragungsbereich aufweist und einen Code aussendet, der für jede Zuordnungseinheit (1) eindeutig ist.

10. System nach Anspruch 9, wobei der Sender (8) eine Einrichtung zur Übertragung eines codierten Lichtimpulses und/oder eines codierten Funksignals umfasst.
11. System nach einem der Ansprüche 9 und 10, wobei

zusätzlich ein Empfänger zum Empfang codierter IDs vorgesehen ist.

12. System nach einem der Ansprüche 9 bis 11, wobei zusätzlich eine oder mehrere Einrichtungen zur Anzeige des jeweiligen Betriebszustands vorgesehen ist/sind.
13. System nach einem der Ansprüche 9 bis 11, wobei der Sender (8) so eingerichtet ist, dass er einen zweiten Code in einer benutzergesteuerten Art und Weise überträgt, der bewirkt, dass das erste Netzwerkelement (2) das drahtlose Netzwerk (4) des zweiten Netzwerkelements (3) verlässt, oder der bewirkt, dass das zweite Netzwerkelement (3) das drahtlose Netzwerk (4) schließt.

Revendications

1. Procédé d'allocation d'éléments de réseau à un réseau sans fil (4), dans lequel un émetteur (8) d'une unité d'allocation (1) transmet, sous la commande d'un utilisateur, un code à un premier élément de réseau (2), lequel code amène le premier élément de réseau (2) à transmettre un ID codé comprenant son ID et le code reçu, de sorte que l'ID codé est reçu par un second élément de réseau (3) ayant une fonction d'administration de réseau, qui alloue le premier élément de réseau (2) à son réseau sans fil (4), dans lequel une activation temporaire du second élément de réseau (3) pour recevoir l'ID codé en provenance du premier élément de réseau (2) a lieu en recevant le code en provenance de l'unité d'allocation (1), et dans lequel le second élément de réseau (3) accepte uniquement des identifications en provenance d'éléments de réseau (2) ayant le même code, dans lequel l'unité d'allocation (1) est l'une d'une pluralité d'unités d'allocation codées différemment, ladite unité d'allocation (1) a une portée de transmission courte et envoie un code qui est unique pour chaque unité d'allocation.
2. Procédé selon la revendication 1, dans lequel l'unité d'allocation (1) transmet une impulsion de lumière codée.
3. Procédé selon la revendication 1, dans lequel l'unité d'allocation (1) transmet un signal radio codé.
4. Procédé selon la revendication 2, dans lequel lors de la réception du code en provenance de l'unité d'allocation (1), le premier élément de réseau (2) est commuté d'un état de réception de lumière destiné à recevoir des impulsions de lumière codées en pro-

- venance de l'unité d'allocation (1) à un état de transmission radio destiné à transmettre l'ID codé, et le second élément de réseau (3) est commuté d'un état de réception de lumière destiné à recevoir des impulsions de lumière codées en provenance de l'unité d'allocation (1) en un état de réception radio destiné à recevoir l'ID codé.
5. Procédé selon l'une quelconque des revendications 1 à 4, dans lequel l'unité d'allocation (1) peut recevoir l'ID codé en provenance de l'élément de réseau (2) et le transmettre au second élément de réseau (3).
6. Procédé selon l'une quelconque des revendications 1 à 5, dans lequel l'unité d'allocation (1) peut transmettre un second code qui amène un premier élément de réseau (2) à quitter le réseau sans fil (4) du second élément de réseau (3).
7. Procédé selon l'une quelconque des revendications 1 à 5, dans lequel l'unité d'allocation (1) peut transmettre un second code qui amène le second élément de réseau (3), qui a une fonction d'administration de réseau, à décomposer le réseau sans fil.
8. Procédé selon l'une quelconque des revendications 6 et 7, dans lequel le second code destiné à supprimer des éléments de réseau ou à décomposer le réseau dans fil (4) consiste en le premier code transmis sur une période plus longue ou un certain nombre de fois.
9. Système d'allocation d'éléments de réseau à un réseau sans fil (4), comprenant
 une unité d'allocation (1) ayant un émetteur (8) configuré pour transmettre, sous la commande d'un utilisateur, un code à un premier élément de réseau (2), le premier élément de réseau (2) configuré pour transmettre, en réponse à la réception du code, un ID codé comprenant son ID et le code reçu,
 un second élément de réseau (3) ayant une fonction d'administration de réseau, qui est configuré pour allouer le premier élément de réseau (2) à son réseau sans fil (4) en réponse à la réception de l'ID codé en provenance du premier élément de réseau (2),
 dans lequel le second élément de réseau (3) est configuré pour être activé temporairement pour recevoir l'ID codé en provenance du premier élément de réseau (2) en recevant le code en provenance de l'unité d'allocation (1), et
 dans lequel le second élément de réseau (3) est configuré pour accepter uniquement des identifications en provenance d'éléments de réseau (2) ayant le même code,
 dans lequel l'unité d'allocation (1) est l'une d'une pluralité d'unités d'allocation (1) codées différemment, ladite unité d'allocation (1) ayant une portée de transmission courte et étant configurée pour envoyer un code qui est unique pour chaque unité d'allocation (1).
10. Système selon la revendication 9, dans lequel l'émetteur (8) comprend un dispositif destiné à transmettre une impulsion de lumière codée et/ou un signal radio codé.
11. Système selon l'une quelconque des revendications 9 et 10, dans lequel il y a en outre un récepteur destiné à recevoir les ID codés.
12. Système selon l'une quelconque des revendications 9 à 11, dans lequel il y a en outre un ou plusieurs dispositifs destinés à afficher l'état de fonctionnement respectif.
13. Système selon l'une quelconque des revendications 9 à 11, dans lequel l'émetteur (8) est configuré pour transmettre, sous la commande d'un utilisateur, un second code qui amène le premier élément de réseau (2) à quitter le réseau sans fil (4) du second élément de réseau (3) ou qui amène le second élément de réseau (3) à décomposer le réseau sans fil (4).

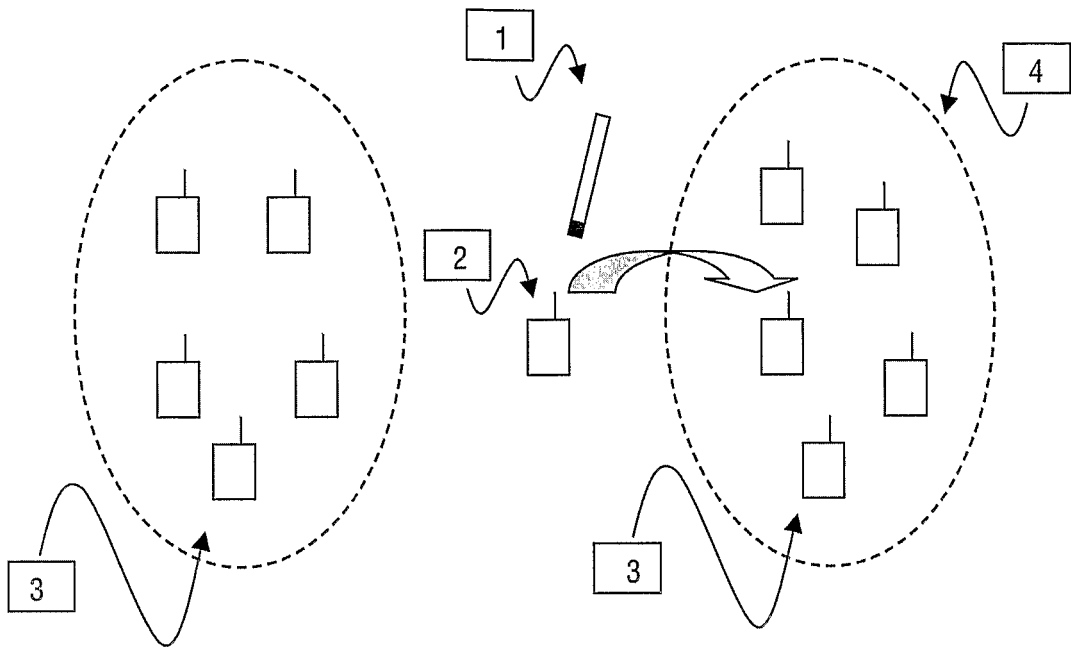


FIG.1

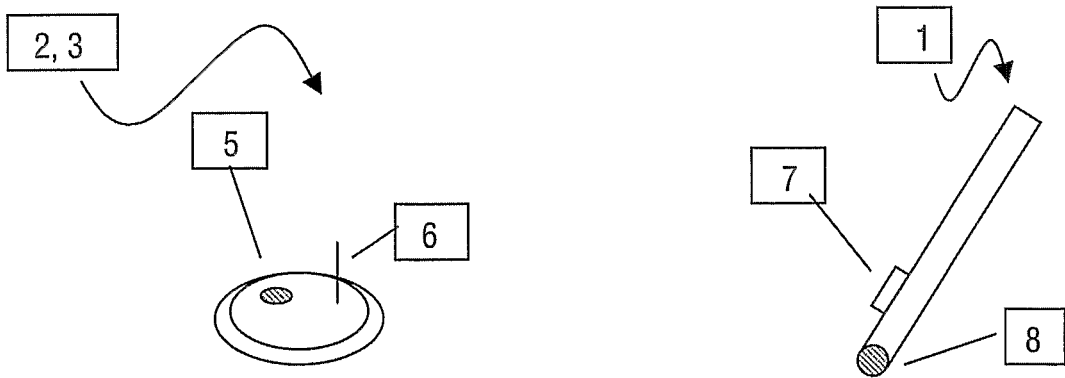


FIG.2

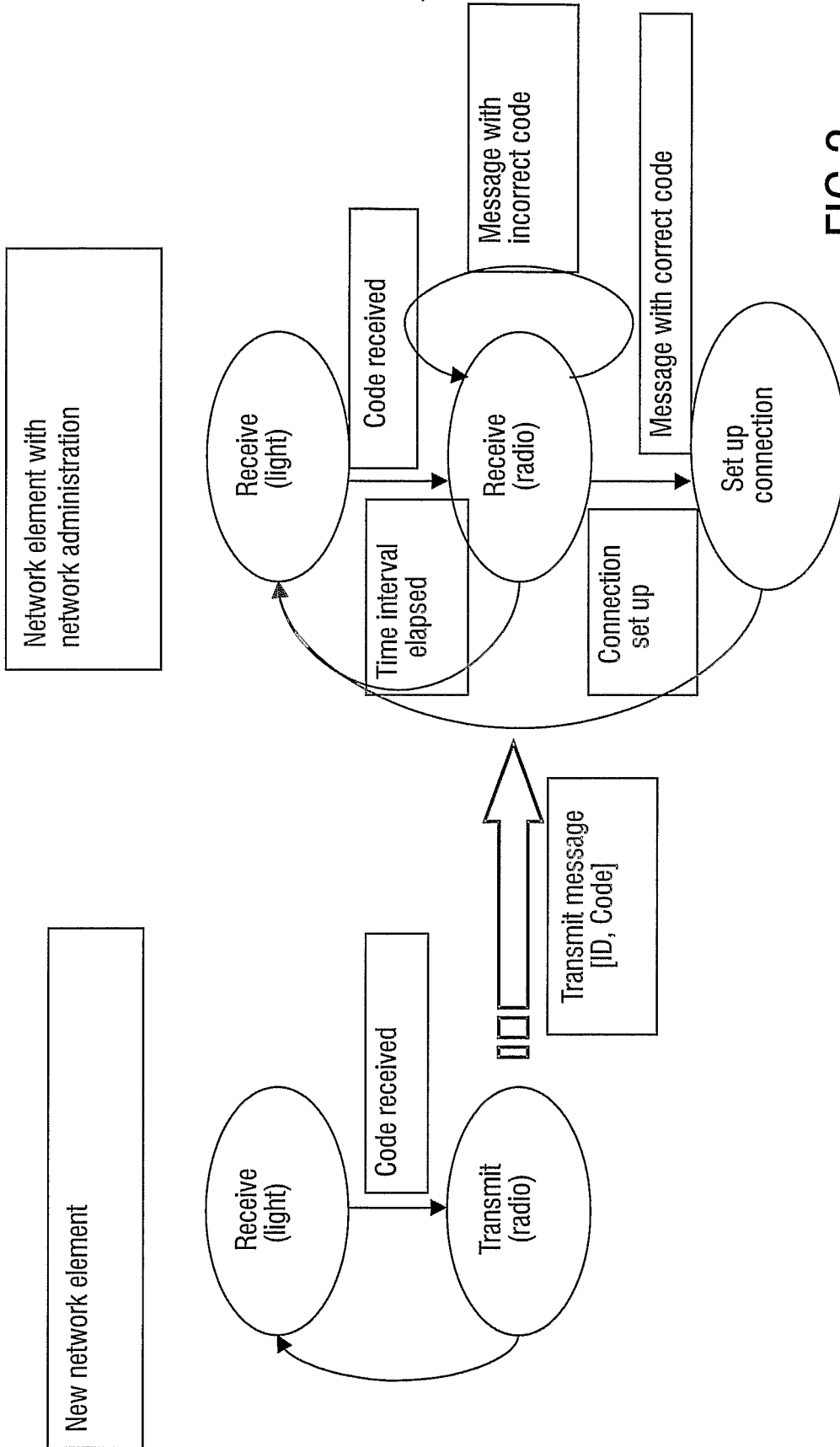


FIG.3

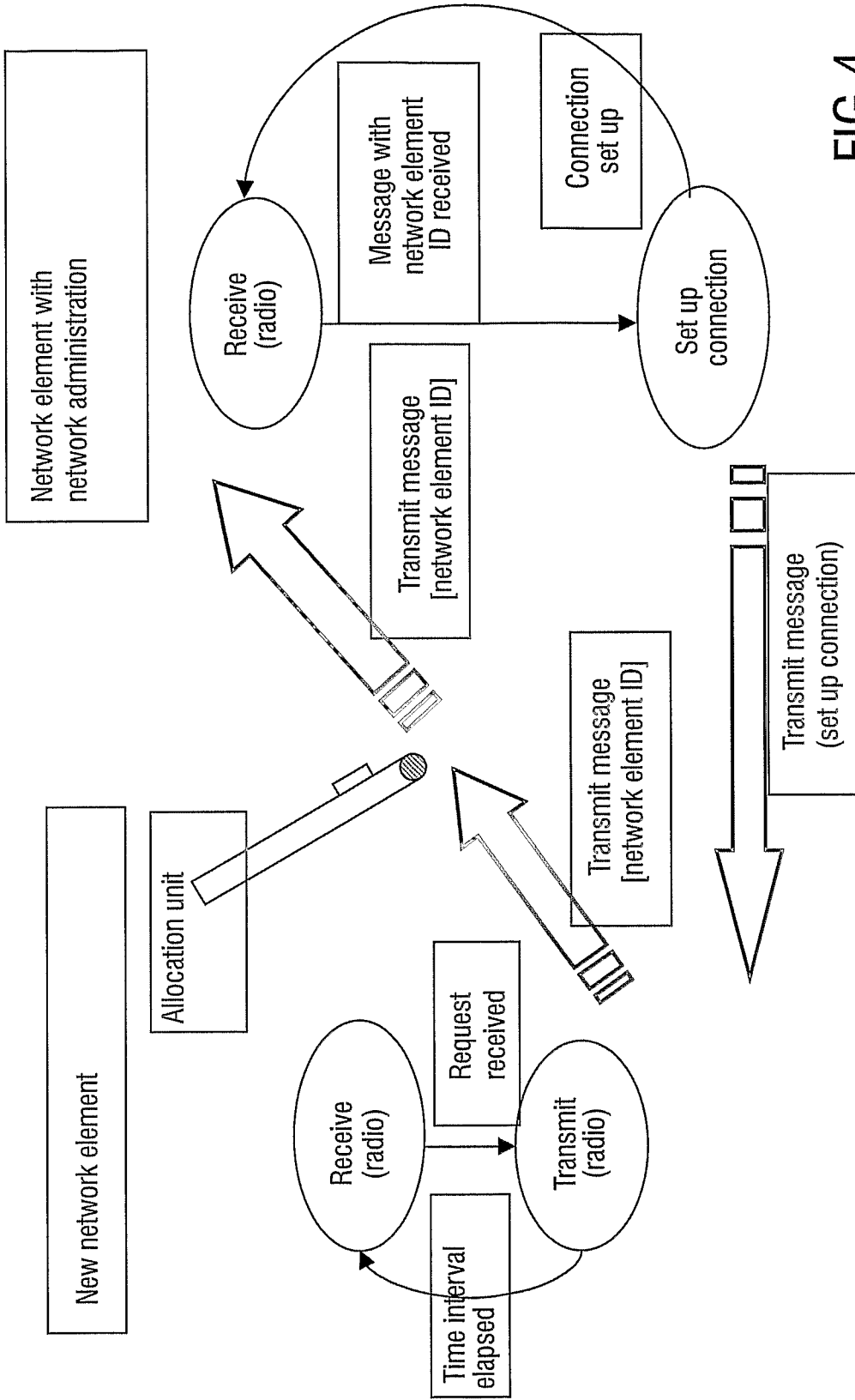


FIG.4

REFERENCES CITED IN THE DESCRIPTION

This list of references cited by the applicant is for the reader's convenience only. It does not form part of the European patent document. Even though great care has been taken in compiling the references, errors or omissions cannot be excluded and the EPO disclaims all liability in this regard.

Patent documents cited in the description

- US 20010023315 A1 [0004]
- US 20020109621 A1 [0004]

专利名称(译)	用于将网络元件可靠地分配给无线传感器网络的方法和单元		
公开(公告)号	EP1615543B1	公开(公告)日	2016-03-30
申请号	EP2004724329	申请日	2004-03-30
[标]申请(专利权)人(译)	皇家飞利浦电子股份有限公司		
申请(专利权)人(译)	飞利浦知识产权及标准部GMBH 皇家飞利浦电子N.V.		
当前申请(专利权)人(译)	飞利浦知识产权及标准部GMBH 皇家飞利浦N.V.		
[标]发明人	MUESCH GUIDO PHILIPS IP & STANDARDS GMBH KLABUNDE KARIN PHILIPS IP & STANDARDS BALDUS HERIBERT PHILIPS IP & STANDARDS		
发明人	MUESCH, GUIDO, PHILIPS IP & STANDARDS GMBH KLABUNDE, KARIN, PHILIPS IP & STANDARDS BALDUS, HERIBERT, PHILIPS IP & STANDARDS		
IPC分类号	H04L29/08 A61B5/00 H04W12/06 G06F19/00 H04B10/118 H04W84/18		
CPC分类号	A61B5/002 A61B2562/08 G06F19/3418 H04L63/18 H04L67/12 H04L67/16 H04W8/26 H04W12/00504 H04W12/06 H04W84/18		
代理机构(译)	德哈恩波尔ERIK		
优先权	2003100965 2003-04-10 EP		
其他公开文献	EP1615543A1		
外部链接	Espacenet		

摘要(译)

在没有无线传感器或网络管理系统的预先配置的情况下，网络元件，特别是医疗传感器（2）到网络（4）的可靠和受控分配可以使用用于分配网络元件的分配单元（1）来执行（2）到无线网络（4），该分配单元（1）包括发送器，该发送器以用户控制的方式将代码发送到第一网络元件（2），该代码使得第一网络元件（2）将其ID与代码（编码ID）一起发送，使得后者可以由第二网络元件（3）接收，第二网络元件（3）将第一网络元件（2）分配给其网络（4）。

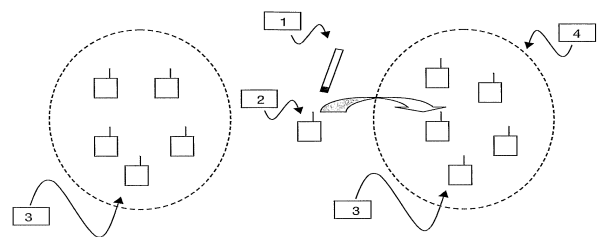


FIG. 1



FIG. 2