

(19)



(11)

**EP 2 632 330 B1**

(12)

**EUROPEAN PATENT SPECIFICATION**

(45) Date of publication and mention of the grant of the patent:

**20.05.2020 Bulletin 2020/21**

(51) Int Cl.:

**A61B 5/053** <sup>(2006.01)</sup>      **A61B 5/0402** <sup>(2006.01)</sup>  
**G06K 9/00** <sup>(2006.01)</sup>      **A61B 5/00** <sup>(2006.01)</sup>  
**A61B 5/0408** <sup>(2006.01)</sup>      **G06T 17/00** <sup>(2006.01)</sup>

(21) Application number: **11852629.2**

(86) International application number:

**PCT/US2011/051503**

(22) Date of filing: **14.09.2011**

(87) International publication number:

**WO 2012/091766 (05.07.2012 Gazette 2012/27)**

**(54) ELECTROPHYSIOLOGICAL MAPPING SYSTEM USING EXTERNAL ELECTRODES**

ELEKTROPHYSIOLOGISCHES MAPPINGSYSTEM MIT EXTERNEN ELEKTRODEN

SYSTÈME DE CARTOGRAPHIE ÉLECTROPHYSIOLOGIQUE FAISANT APPEL À DES ÉLECTRODES EXTERNES

(84) Designated Contracting States:

**AL AT BE BG CH CY CZ DE DK EE ES FI FR GB GR HR HU IE IS IT LI LT LU LV MC MK MT NL NO PL PT RO RS SE SI SK SM TR**

- **VOTH, Eric, J.**  
**Maplewood, MN 55109-5504 (US)**

(30) Priority: **30.12.2010 US 201061428596 P**

(74) Representative: **Kramer Barske Schmidtchen Patentanwälte PartG mbB**  
**European Patent Attorneys**  
**Landsberger Strasse 300**  
**80687 München (DE)**

(43) Date of publication of application: **04.09.2013 Bulletin 2013/36**

(73) Proprietor: **St. Jude Medical, Atrial Fibrillation Division, Inc. St. Paul, Minnesota 55117-9913 (US)**

(56) References cited:

<b>EP-A2- 1 897 490</b>	<b>WO-A1-99/05962</b>
<b>US-A- 4 961 428</b>	<b>US-A- 6 055 452</b>
<b>US-A1- 2006 085 049</b>	<b>US-A1- 2006 085 049</b>
<b>US-A1- 2008 177 192</b>	<b>US-A1- 2010 191 131</b>
<b>US-A2- 2009 053 102</b>	<b>US-B2- 7 774 051</b>

(72) Inventors:

- **EVERLING, Bruce, Richard**  
**Eagan, MN 55122 (US)**

**EP 2 632 330 B1**

Note: Within nine months of the publication of the mention of the grant of the European patent in the European Patent Bulletin, any person may give notice to the European Patent Office of opposition to that patent, in accordance with the Implementing Regulations. Notice of opposition shall not be deemed to have been filed until the opposition fee has been paid. (Art. 99(1) European Patent Convention).

**Description**

## BACKGROUND OF THE INVENTION

## 5 a. Field of the Invention

10 [0001] This invention relates to a system and method for generating an electrophysiological map of an object of interest within the body such as the heart. In particular, the invention relates to a system and method that enable derivation of the map without inserting an EP mapping catheter into the body by using electrodes that are placed on an external surface of the body.

## b. Background Art

15 [0002] The use of electrophysiological (EP) mapping data in the diagnosis and treatment of tissues within a body is well known. For example, EP maps of heart tissue can be used to guide ablation catheters which are used to convey an electrical stimulus to a region of interest within the heart and create tissue necrosis. Ablation catheters may be used to create necrosis in heart tissue to correct conditions such as atrial arrhythmia (including, but not limited to, ectopic atrial tachycardia, atrial fibrillation, and atrial flutter). Arrhythmias can create a variety of dangerous conditions including irregular heart rates, loss of synchronous atrioventricular contractions and stasis of blood flow which can lead to a variety of ailments and even death. It is believed that the primary cause of arrhythmia is stray electrical signals within the left or right atrium of the heart. The ablation catheter imparts ablative energy (e.g., radiofrequency energy) to the heart tissue to create a lesion in the heart tissue. This lesion disrupts electrical pathways and thereby limits or prevents stray electrical signals that lead to arrhythmia. In addition to guiding ablation catheters, EP maps can also be used to evaluate the effectiveness of ablation therapy.

20 [0003] In a conventional EP mapping system, a catheter is inserted within a vessel located near the surface of a body (e.g., in an artery or vein in the leg, neck, or arm) and maneuvered to a region of interest within the body. Electrodes disposed at one end of the catheter detect changes in electrical potential resulting from the transmission of electrical signals between points on the body. In the EP mapping system sold under the registered trademark "ENSITE" by the assignee of the present invention, St. Jude Medical, Atrial Fibrillation Division, Inc., surface electrode patches are applied in several locations on a body. Electrical signals are transmitted between the patches along orthogonal pathways and one or more electrodes supported on a catheter disposed within the body detect changes in voltage and generate signals that are used to generate an image of a tissue surface

25 [0004] Although existing EP mapping systems function well for their intended purpose, it is desirable to reduce or eliminate the need to insert an EP mapping catheter within the body to obtain EP data. Inserting an EP mapping catheter into the body creates a variety of risks including, for example, potential damage to internal tissues and adverse patient reactions to anesthesia used during the EP mapping procedure. In addition, as with any surgical procedure, insertion of an EP mapping catheter requires significant time and resources on the part of the patient and/or clinician in preparing for the procedure, carrying out the procedure, and in recovery. Furthermore, inserting an EP mapping catheter may cause patient discomfort during and/or following the procedure.

30 [0005] In order to address the issues set forth above, approaches have been developed to obtain EP data for internal body structures such as the heart using electrodes placed on an external body surface. In U.S. Patent No. 7,016,719, for example, an electrode vest is placed over the patient. An image of the heart such as a fluoroscopic, ultrasound, computed tomography (CT), or magnetic resonance (MR) image is used to define a geometric relationship between the electrodes on the external body surface and the heart. Using this relationship, electrical potentials on the heart surface are then determined in response to potentials measured by the external electrodes. Although the system described in U.S. Patent No. 7,016,719 eliminates the need for an EP mapping catheter, the accuracy of the system is limited. In particular, the geometric relationship established by the system fails to account for the wide variety of tissues types disposed between the external surface of the body and the heart surface. Different types of tissues within the body have significantly varying impedances. Further, the amount of these tissues will vary along any given pathway from the external body surface to the heart. The geometric relationships advanced in the system described in U.S. Patent No. 7,016,719 cannot account for this variation in tissue types and amounts.

35 [0006] US 4,961,428 A relates to electrophysiological methods and apparatus for determining the interior electrical activity on the surface of an internal organ without considering different tissue types.

40 [0007] WO 99/05962 A1 relates to a system and method for non-invasive electrocardiographic imaging using recorded body surface potentials that are non-invasively obtained without considering different tissue types.

45 [0008] US 2010/191131 A1 relates to reconstructing the dynamics of the heart electric field at internal points of the chest for obtaining electrograms.

50 [0009] The inventors herein have recognized a need for a system and method for generating an electrophysiological

map that will minimize and/or eliminate one or more of the above-identified deficiencies.

#### BRIEF SUMMARY OF THE INVENTION

5 **[0010]** It is desirable to provide a system and method for generating an electrophysiological map. In particular, it is desirable to provide a system and method that will enable generation of the map without the need to insert an EP mapping catheter into the body.

**[0011]** A system for generating an electrophysiological map in accordance with one embodiment of the invention is defined by the subject-matter of claim 1. A method for generating an electrophysiological map in accordance with one  
10 embodiment of the present invention is defined by the subject-matter of claim 8. Further embodiments of the invention are given in the dependent claims.

**[0012]** A system and method in accordance with the above-described embodiments of the present invention are advantageous because they generate much more accurate electrophysiological maps of the heart and other internal body structures. In particular, the system and method identify different objects disposed between the heart and body surface and account for the varying impedances created by these objects. As a result, the electric potentials measured  
15 by the electrodes at the external body surface can be adjusted to account for the different objects and amounts of these objects along individual pathways and a more accurate reading of the electrical activity in the heart can be obtained.

**[0013]** The foregoing and other aspects, features, details, utilities and advantages of the present invention will be apparent from reading the following description and claims, and from reviewing the accompanying drawings.  
20

#### BRIEF DESCRIPTION OF THE DRAWINGS

##### **[0014]**

25 Fig. 1 is a diagrammatic view of a system in accordance with one embodiment of the present teachings.  
Fig. 2 is a flow chart diagram illustrating a method in accordance with one embodiment of the present teachings.  
Figs. 3 and 4 are representative drawings of an image showing intervening objects having varying tissue densities  
between a surface electrode and an object of interest in a body.

#### 30 DETAILED DESCRIPTION OF EMBODIMENTS OF THE INVENTION

**[0015]** Referring now to the drawings wherein like reference numerals are used to identify identical components in the various views, Fig. 1 illustrates one embodiment of a system 10 for generating an electrophysiological (EP) map of an  
35 object of interest in a body 12 such as a heart 14. Although the object of interest is a heart 12 in the illustrated embodiment, it should be understood that the system and method disclosed herein could be applied to other objects within body 12 including, for example, a brain. Further, although body 12 is illustrated as a human body, it should be understood that the system and method disclosed herein could be applied to animal bodies as well. System 10 may include an electrode  
assembly 16, an imaging system 18 and an electronic control unit (ECU) 20 and a display 22.

**[0016]** Electrode assembly 16 is provided to detect electrical impedances at positions on the external surface 24 of  
40 body 12. Assembly 16 may include a housing 26 and a plurality of electrodes 28.

**[0017]** Housing 26 is provided to position electrodes 28 at predetermined positions relative to each other and relative to body 12. Housing 26 is preferably made from a relatively flexible material such that housing 26 can be properly  
45 arranged on, or worn by, the patient. In particular, housing 26 may include a fixed number of electrodes 28 mounted within a semi-elastic material that may be stretched across body 12 to allow the electrodes 28 to be evenly distributed across body 12. When worn, housing 26 may wrap around body 12 to substantially or completely surround the torso to enable electric potential and electrogram readings from substantially all sides of the torso. Housing 26 may include insulated conductors extending therethrough between electrodes 28 and one or more connectors through which elec-  
50 trodes 28 may be coupled to directly to ECU 20 or indirectly to ECU 20 through signal processing circuitry including conventional amplifiers, filters, and analog to digital converters. It should be understood, however, that housing 26 may alternatively include such signal processing circuitry within housing 26.

**[0018]** Electrodes 28 are provided to detect electric potentials on surface 24 of body 12. Electrodes 28 are conventional  
55 in the art and may be similar in construction to surface ECG electrodes. Electrodes 28 are preferably arranged in a predetermined position on surface 24 by positioning of housing 26. In particular, electrodes 28 are preferably arranged to align with estimates of the electrode positions in the software model implemented on ECU 20. Alternatively, the actual electrode positions may be input by an operator or calibrated prior to operation. Surface 24 may be marked with ink in a conventional manner to insure registration of the position of electrodes 28 relative to surface 24 during a procedure and/or across multiple procedures.

**[0019]** Imaging system 18 is provided to capture images (including models) of the object of interest in body 12 such

as heart 14. System 18 may also be provided to capture images (including models) of intervening objects between the object of interest and surface 24 of body 12. Intervening objects may include, for example, connective tissues such as that found in bone, fat, blood and lymph nodes, epithelial tissues, muscle tissues and nerve tissues or fluids such as blood, pericardial fluid or saline. Imaging system 18 may comprise a computed tomography (CT) imaging system, a magnetic resonance (MR) imaging system, a three-dimensional rotational angiography (3DRA) system or an electrical impedance tomography system (EIT). In the case of a CT system, imaging system 18 scans body 12 in a conventional manner from various angles and derives a number indicative of the density of the intervening object in a given location (and, therefore, the type of object). In the resulting image, the color and/or intensity in a given pixel correlates to the object's density at that location. Because the intensity of each pixel is indicative of the object's density and type and because impedance values for various tissue types can be derived, the information contained in the images can be used to determine the impedance at the location shown in the image. As discussed below, the images captured by imaging system 18 may be registered in the coordinate system of the electrodes 28. In one example, registration is accomplished by placing fiducial markers on surface 24 of body 12 corresponding to the location of one or more electrodes 28. The markers may, for example, be disposed within a housing similar to housing 26 and correspond to certain electrodes 28. The housing and markers are placed on surface 24 of body 12 prior to image capture by imaging system 18.

**[0020]** ECU 20 provides a means for controlling the operation of various components of system 10 including display 22. ECU 20 also provides a means for generating an electrophysiological map of the object of interest such as heart 14. ECU 20 may comprise a programmable microprocessor or microcontroller or may comprise an application specific integrated circuit (ASIC). ECU 20 may include a central processing unit (CPU) and an input/output (I/O) interface through which ECU 20 may receive a plurality of input signals including signals generated by electrodes 28 and imaging system 18 and generate a plurality of output signals including those used to control and/or provide data to display 22.

**[0021]** In accordance with one example, ECU 20 is configured with appropriate programming instructions or code (i.e., software) to perform several steps in a method for generating an electrophysiological map. Referring now to Figure 2, the method may include the step 30 of capturing an image of an object of interest such as heart 12 and an image along a pathway between the object of interest and surface 24 of body 12. The images can include the positions on surface 24 at which electrodes 28 are located. While each of the images may be captured using a single imaging system 18, multiple imaging or modeling modalities or methods may be used for all or some of the images. The method may further include the step 32 of registering the images with the positions of electrodes 28. As noted hereinabove, to aid in registration fiducial markers may be placed on surface 24 of body 12 that correspond to the positions of electrodes 28 when housing 26 and/or electrodes 28 are placed on surface 24. For example, a housing or other structure having substantially similar dimensions to housing 26 and fiducial markers corresponding to one or more electrodes 28 may be placed on surface 24 of body 22 prior to imaging. Registration of the positions of the fiducial markers and electrodes 28 may be further assured by placing an ink marking on the body to permit consistent positioning of the markers and the electrodes 28. ECU 20 may use conventional algorithms to identify the fiducial markers and thereby register the images within the same coordinate system as electrodes 28.

**[0022]** The method may continue with the step 34 of receiving signals generated by one or more electrodes 28 disposed at positions on surface 24 of body 12. One or more electrodes 28 generate signals indicative of electric potentials measured at their respective positions on surface 24. These signals may be transmitted through conventional conductors and connectors to ECU 20 and may undergo signal processing (e.g., amplification, filtering, conversion) prior to receipt by ECU 20. The method may further include the step 36 of comparing the electric potential measured at each position by electrodes 28 to a previously acquired electric potential measured at the same position. In particular, initial electric potential measurements may be taken at each electrode 28 at the beginning of a procedure or at another time prior to or during the procedure to use as a baseline to correct later acquired measurements to account for changes in electric potential resulting from, for example, a change in salinity in body 22.

**[0023]** The method may continue with the step 38 of identifying a surface boundary of an object of interest such as heart 14 in body 12 using an image of the object of interest. ECU 20 may use conventional image processing algorithms including edge detection algorithms to identify the surface of the object of interest for which a measured impedance is desired.

**[0024]** The method may further include the step 40 of identifying any intervening objects along pathways between the positions on surface 24 of body 12 at which electrodes 28 are located and the previously identified surface boundary of the object of interest from one or more images of the pathway. ECU 20 may identify appropriate images stored in a local or remote memory that, with reference to Figures 3-4, include portions of pathways 42 between the surface boundary 44 and the position of a given electrode 28 on surface 24 using, for example, the prior registration of the images. It should be understood that Figures 3-4 are intended to illustrate a small slice of a representative image. Using these images, ECU 20 is able to identify tissue densities at locations along the pathways 42 and tissue types. Referring to Figure 3, different tissue densities have been illustrated by changes in width between the lines (to represent changes in grayscale as seen on a typical CT or MR image) as well as the inclusion of different CT or MR (Hounsfield) numbers. It should be understood, however, that the various densities and numbers are intended only to illustrate the invention

and that an actual image would be much more complex and varied.

**[0025]** Different tissue types contribute different levels of impedance to the overall impedance between the body surface 24 and the surface boundary 44 of the object of interest and therefore have varying levels of impact on the electric potential measured at electrodes 28. Exemplary or average impedance values can be determined through testing including for example by direct measurement of tissues in animal studies and, subsequently, by comparing the measured values against measured values from actual studies and applying appropriate corrections. Referring again to Figure 2, the method may therefore continue with the step 46 of obtaining impedance values for one or more of the intervening objects along the pathways 42 between the surface boundary 44 of the object of interest and the positions at which electrodes 28 are located. Referring to Figure 4, the CT or MR numbers may be replaced with impedance values. Again, it should be understood that the values are exemplary only and intended solely to illustrate the invention. The values may be stored in a memory within a data structure, such as a conventional look up table, that correlates the intervening objects with impedance values. Step 46 may include the substep of accessing this data structure. Alternatively, ECU 20 may obtain impedance values for the intervening objects that are generated by an electrical impedance tomography system through its input/output interface. ECU 20 may obtain a total impedance value for the entire pathway between the body surface 24 and the surface boundary 44 of the object of interest or a sum of all of the intervening objects along the pathway 42 ("total impedance value"). However obtained, this value could then be stored in memory and used to correct electrogram signals received at each electrode 28.

**[0026]** The method may continue with the step 48 of determining an electric potential at the surface boundary of the object of interest responsive to the signal from the electrodes and the impedance values of the intervening objects along the pathways 42. Using the impedance values for the intervening objects, ECU 20 is able to filter out the contributions of these objects to the electric potential measured at electrode 28 to thereby obtain an electric potential at the surface boundary 44 of the object of interest. According to the invention, total impedances measured along each of the pathways 42 between electrode 28 and boundary 44 are summed to compute a total impedance value which are used in the system to correct the signals read by the surface electrodes 28, e.g., by subtraction, addition, or by inclusion in an algorithm to correct the value read by the surface electrode 28 prior to the calculation of the electrograms on the surface of the object of interest, e.g., the heart or prior to the calculation of a map of the electrically activity on the surface of the object. In one non-claimed example where the object of interest is the heart 14, electric potentials at the epicardial surface may be obtained using the following formula from Modeling and Imaging of Bioelectrical Activity (Bin He, Ed.) (2004) p. 57:

$$\Phi_E(r) = -\frac{1}{4\pi} \int_{S_E} \frac{1}{r'_{EE}} \nabla' \Phi_E * ndS' + \frac{1}{4\pi} \int_{S_E} \Phi_E \nabla' \left( \frac{1}{r'_{EE}} \right) * ndS' - \frac{1}{4\pi} \int_{S_B} \Phi_B \nabla' \left( \frac{1}{r'_{EB}} \right) * ndS' \quad (\text{Eq. 1})$$

where  $\Phi_E$  and  $\Phi_B$  are column matrices of epicardial and body surface potentials,  $S_E$  and  $S_B$  are the epicardial and body surfaces,  $r'_{EE}$  is the scalar distance between the (observation) point of interest on the epicardial surface and another point on the epicardial surface,  $r'_{EB}$  is the scalar distance between the (observation) point of interest on the epicardial surface and another point on the body surface 24, and  $n$  is a normal to the epicardial surface. The column matrices  $\Phi_E$  and  $\Phi_B$  may be determined using computational methods such as a boundary element method or a finite element method. In particular, ECU 20 may generate a mesh model or a volumetric model (made of cubes or tetrahedra) for each surface or volume, respectively, along a given pathway 42. The generated model would be based, at least in part, on the identification of the intervening objects (tissue types) along a given pathway 42 from images of the pathway 42 in step 40. Because the orientation of muscle fibers impacts impedance in muscle tissue, ECU 20 may further evaluate the orientation of the fibers from the images as part of the process in forming the models and obtaining the relevant impedance values. Once the model is generated, ECU 20 may then develop equations relating the impedance (or another variable) at each corner of the mesh or cube or tetrahedron to the impedance (or another variable) at other corners of the mesh or cube or tetrahedron. These equations are not limited to the boundary element method described in (Eq. 1), and may represent finite element method, finite volume method or other systems of equations known in the art. The column matrices  $\Phi_E$  and  $\Phi_B$  may be then be generated based on these equations. It should be understood that it is also possible to develop equations and matrices for each individual surface or volume in a similar manner and use the output of equations employing those matrices as an input to development of matrices for another surface or volume in a sequential manner. Once the matrices are generated, a generalized minimum residual (GMR) method may be employed as described in U.S. Patent No. 7,016,719 to minimize errors when solving the above-identified equation (i.e. Eq. 1). It should be understood, however, that other methods known in the art may also be used to solve the above-identified equations.

**[0027]** The method may conclude with the step 50 of generating an electrophysiological map of the object of interest. ECU 20 may output a plurality of image or display signals to display 22 to generate the map.

**[0028]** Display 22 is provided to convey information to a clinician to assist in diagnosis and treatment. Display 22 may

comprise a conventional computer monitor or other display device. Display 22 presents a graphical user interface (GUI) to the clinician. The GUI may include a variety of information including, for example, an image of the geometry of the object of interest, EP data associated with the object of interest, graphs illustrating voltage levels over time for various electrodes 28, and images of medical devices and related information indicative of the position of devices relative to the object of interest.

**[0029]** A system and method in accordance with the above-identified embodiments of the invention represents an improvement relative to conventional systems for generating electrophysiological maps because the inventive system and method results in more accurate electrophysiological maps of the heart and other internal body structures. By identifying different objects disposed between the object of interest and the surface of the body and accounting for the varying impedances created by these objects, the inventive system and method are able to more accurately measure electric potentials in the object of interest as opposed to conventional systems that rely on generalized mathematical models. The inventive system and method allow for adjustment of the electric potentials measured by the electrodes at the external body surface to account for the different objects and amounts of these objects along individual pathways and thereby generate a more accurate reading of the electrical activity in objects of interest such as the heart.

**[0030]** Although several embodiments of this invention have been described above with a certain degree of particularity, those skilled in the art could make numerous alterations to the disclosed embodiments without departing from the scope of this invention as solely defined by the appended claims. All directional references (e.g., upper, lower, upward, downward, left, right, leftward, rightward, top, bottom, above, below, vertical, horizontal, clockwise and counterclockwise) are only used for identification purposes to aid the reader's understanding of the present invention, and do not create limitations, particularly as to the position, orientation, or use of the invention. Joinder references (e.g., attached, coupled, connected, and the like) are to be construed broadly and may include intermediate members between a connection of elements and relative movement between elements. As such, joinder references do not necessarily infer that two elements are directly connected and in fixed relation to each other. It is intended that all matter contained in the above description or shown in the accompanying drawings shall be interpreted as illustrative only and not as limiting. Changes in detail or structure may be made without departing from the invention as defined in the appended claims.

## Claims

1. A system for generating an electrophysiological map of a surface boundary (44) of an object of interest (14) of a body (12), comprising:

an electrode (28) of a plurality of electrodes disposed at a position on an external surface (24) of the body (12) for determining an electric potential on said external surface (24) at said position;

an electronic control unit (20) electrically connected to said electrode (28), the electronic control unit (20) configured to:

receive an image from an imaging system (18) of the object of interest (14) and a tissue density and tissue type at a plurality of locations between the object of interest (14) and the external surface (24) of the body (12); receive a signal generated by said electrode (28), said signal indicative of the electric potential measured at said position;

identify the surface boundary (44) of an object of interest (14) within said body (12) using the image of said object of interest (14), and the electronic control unit being **characterized by** being configured to:

obtain an impedance value from the tissue density and tissue type at each of the plurality of locations along pathways between said position on said external surface (24) of said body (12) and said surface boundary (44) of said object of interest; and

determine an electric potential at said surface boundary (44) of said object of interest from said electrode (28) by correcting the signal generated by the electrode (28) by using a total impedance value which is the summed total impedances measured along each of the pathways (42) between the electrode (28) and the surface boundary (44).

2. The system of claim 1 wherein said electronic control unit (20) is further configured to identify a first intervening object along said first pathway (42) from one or more images of said first pathway (42).

3. The system of claim 1 or 2 wherein said images of said first pathway (42) comprise magnetic resonance images or computed tomography images.

4. The system of any one of claims 1 to 3, further comprising a display (22) configured to generate an electrophysiological map of said object of interest responsive to signals generated by said electronic control unit (20).

5 5. The system of any one of claims 1 to 4 wherein said electronic control unit (20) is further configured to compare said electric potential measured at said first position to a previously acquired electric potential measured at said first position.

10 6. The system of any one of claims 1 to 5 wherein said electronic control unit (20) is further configured, in obtaining said first impedance value for said first intervening object along said first pathway (42), to access a data structure in a memory, said data structure correlating said first intervening object with said first impedance value.

15 7. The system of any one of claims 1 to 6 wherein said electronic control unit (20) is further configured, in determining said electric potential at said surface boundary (44) of said object of interest, to generate a model for a portion of said first pathway (42) containing said first intervening object.

8. A method using the system according to claim 1 for generating an electrophysiological map of a surface boundary of an object of interest (14) of a body (12), comprising the steps of:

20 receiving (34) a signal generated by an electrode (28) of a plurality of electrodes disposed at a position on an external surface (24) of the body (12), said signal indicative of an electric potential measured at said position; determining an electric potential at said surface boundary (24) at said position; receiving an image from an imaging system (18) of the object of interest (14) and a tissue density and tissue type at a plurality of locations between the object of interest (14) and the external surface (24) of the body (12); identifying (38) the surface boundary (44) of an object of interest in said body (12) using the image of said object of interest (14), and the method being **characterized by** comprising the steps of:

25 obtaining (46) an impedance value from the tissue density and tissue type at each of the plurality of locations along pathways (42) between said position on said external surface of said body (12) and said surface boundary (44) of said object of interest; and  
30 determining (48) an electric potential at said surface boundary (44) of said object of interest from said electrode (28) by correcting the signal generated by the electrode (28) by using a total impedance value which is the summed total impedances measured along each of said pathways (42), between the electrode (28) and the surface boundary (44).

35 9. The method of claim 8, further comprising the step of identifying a first intervening object along said first pathway (42) from one or more images of said first pathway (42).

40 10. The method of claim 9 wherein said one or more images of said first pathway (42) comprise computed tomography images or magnetic resonance images.

45 11. The method of any one of claims 8 to 10 wherein said impedance value is received from an electrical impedance tomography system.

50 12. The method of any one of claims 8 to 11, further comprising the step of generating (50) an electrophysiological map of said object of interest.

55 13. The method of any one of claims 9 to 12 wherein said step of obtaining (46) said impedance values of each of the plurality of locations along said first pathway (42) along said first pathway (42) includes the substep of accessing a data structure in a memory, said data structure correlating a first intervening object with said impedance value.

14. The method of claim 13 wherein said step of determining (48) said first electric potential at said surface boundary (44) of said object of interest includes the substep of generating a model for a portion of said first pathway (42) containing said first intervening object.

**Patentansprüche**

1. System zum Erzeugen einer elektrophysiologischen Karte einer Oberflächengrenze (44) eines Objekts (14) von

Interesse eines Körpers (12) mit:

einer Elektrode (28) von einer Mehrzahl von Elektroden, die an einer Position auf einer äußeren Oberfläche (24) des Körpers (12) vorgesehen ist, zum Bestimmen eines elektrischen Potentials auf der äußeren Oberfläche (24) an dieser Position;

einer elektrischen Steuerungseinheit (20), die mit der Elektrode (28) elektrisch verbunden ist, wobei die elektronische Steuerungseinheit (20) konfiguriert ist zum:

Empfangen eines Bilds von einem Bildgebungssystem (18) des Objekts (14) von Interesse und einer Gewebedichte und eines Gewebetyps an einer Mehrzahl von Orten zwischen dem Objekt (14) von Interesse und der äußeren Oberfläche (24) des Körpers (12);

Empfangen eines Signals, das von der Elektrode (28) erzeugt wird, wobei das Signal kennzeichnend ist für das an dem Ort gemessene elektrische Potential;

Identifizieren einer Oberflächengrenze (44) eines Objekts (14) von Interesse innerhalb des Körpers (12) unter Verwendung des Bilds von dem Objekt (14) von Interesse, wobei die elektronische Steuerungseinheit **dadurch gekennzeichnet ist, dass** sie konfiguriert ist zum:

Erlangen eines Impedanzwerts aus der Gewebedichte und dem Gewebetyp an jedem von der Mehrzahl von Orten entlang Pfaden zwischen der Position auf der äußeren Oberfläche (24) des Körpers (12) und der Oberflächengrenze (44) des Objekts von Interesse; und

Bestimmen eines elektrischen Potentials an der Oberflächengrenze (44) des Objekts von Interesse von der Elektrode (28), indem das Signal, das von der Elektrode (28) erzeugt wird, korrigiert wird unter Verwendung eines Gesamtimpedanzwerts, der die summierten Gesamtimpedanzen ist, die gemessen werden entlang jedem der Pfade (42) zwischen der Elektrode (28) und der Oberflächengrenze (44).

2. System nach Anspruch 1, bei dem die elektronische Steuerungseinheit (20) ferner konfiguriert ist zum Identifizieren eines ersten dazwischenliegenden Objekts entlang dem ersten Pfad (42) von einem oder mehreren Bildern des ersten Pfads (42).

3. System nach Anspruch 1 oder 2, bei dem die Bilder des ersten Pfads (42) Magnetresonanzbilder oder Computertomographiebilder aufweisen.

4. System nach einem der Ansprüche 1 bis 3 ferner mit einer Anzeige (22), die konfiguriert ist zum Erzeugen einer elektrophysiologischen Karte des Objekts von Interesse in Antwort auf Signale, die von der elektronischen Steuerungseinheit (20) erzeugt werden.

5. System nach einem der Ansprüche 1 bis 4, bei dem die elektronische Steuerungseinheit (20) ferner konfiguriert ist zum Vergleichen des elektrischen Potentials, das an der ersten Position gemessen wird, mit einem vorher erfassten elektrischen Potential, das an der ersten Position gemessen wurde.

6. System nach einem der Ansprüche 1 bis 5, bei dem die elektronische Steuerungseinheit (20) ferner konfiguriert ist, um beim Erlangen des ersten Impedanzwerts für das erste dazwischenliegende Objekt entlang dem ersten Pfad (42) auf eine Datenstruktur in einem Speicher zuzugreifen, wobei die Datenstruktur das erste dazwischenliegende Objekt mit dem ersten Impedanzwert korreliert.

7. System nach einem der Ansprüche 1 bis 6, bei dem die elektronische Steuerungseinheit (20) ferner konfiguriert ist, um beim Bestimmen des elektrischen Potentials an der Oberflächengrenze (44) des Objekts von Interesse ein Model für einen Bereich des ersten Pfads (42), der das erste dazwischenliegende Objekt enthält, zu erzeugen.

8. Verfahren, das das System nach Anspruch 1 verwendet, zum Erzeugen einer elektrophysiologischen Karte einer Oberflächengrenze eines Objekts (14) von Interesse eines Körpers (12), mit den Schritten:

Empfangen (34) eines Signals, das von einer Elektrode (28) von einer Mehrzahl von Elektroden erzeugt wird, die sich an einer Position auf einer äußeren Fläche (24) des Körpers (12) befindet, wobei das Signal für ein an dieser Position gemessenes elektrisches Potential kennzeichnend ist;

Bestimmen eines elektrischen Potentials an der Oberflächengrenze (24) an der Position;

Empfangen eines Bilds von einem Bildgebungssystem (18) des Objekts (14) von Interesse und einer Gewebedichte und eines Gewebetyps an einer Mehrzahl von Orten zwischen dem Objekt (14) von Interesse und der

äußeren Oberfläche (24) des Körpers (12);

Identifizieren (38) der Oberflächengrenze (44) eines Objekts (14) von Interesse in dem Körper (12) unter Verwendung des Bilds des Objekts (14) von Interesse, wobei das Verfahren **dadurch gekennzeichnet ist, dass** es die Schritte aufweist:

5

Erlangen (46) eines Impedanzwerts aus der Gewebedichte und dem Gewebetyp an jedem von der Mehrzahl von Orten entlang Pfaden (42) zwischen der Position auf der äußeren Oberfläche des Körpers (12) und der Oberflächengrenze (44) des Objekts von Interesse; und

10

Bestimmen (48) eines elektrischen Potentials an der Oberflächengrenze (44) des Objekts von Interesse von der Elektrode (28), indem das Signal, das von der Elektrode (28) erzeugt wird, korrigiert wird unter Verwendung eines Gesamtimpedanzwerts, der die summierten Gesamtimpedanzen darstellt, die entlang jedem der Pfade (42) zwischen der Elektrode (28) und der Oberflächengrenze (44) gemessen werden.

15

9. Verfahren nach Anspruch 8, ferner mit dem Schritt des Identifizierens eines ersten dazwischenliegenden Objekts entlang dem ersten Pfad (42) von einem oder von mehreren Bildern des ersten Pfads (42).

10. Verfahren nach Anspruch 9, bei dem das eine oder die mehreren Bilder des ersten Pfads (42) Computertomographiebilder oder Magnetresonanzbilder aufweisen.

20

11. Verfahren nach einem der Ansprüche 8 bis 10, bei dem der Impedanzwert von einem elektrischen Impedanztomographiesystem erhalten wird.

25

12. Verfahren nach einem der Ansprüche 8 bis 11, ferner mit dem Schritt des Erzeugens (50) einer elektrophysiologischen Karte des Objekts von Interesse.

30

13. Verfahren nach einem der Ansprüche 9 bis 12, bei dem der Schritt des Erlangens (46) der Impedanzwerten von jedem von der Mehrzahl von Orten entlang dem ersten Pfad (42) den Nebenschritt des Zugreifens auf eine Datenstruktur in einem Speicher aufweist, wobei die Datenstruktur ein erstes dazwischenliegendes Objekt mit dem Impedanzwert korreliert.

35

14. Verfahren nach Anspruch 13, bei dem der Schritte des Bestimmens (48) des ersten elektrischen Potentials an der Oberflächengrenze (44) des Objekts von Interesse den Nebenschritt des Erzeugens eines Modells für einen Bereich des ersten Pfads (42), der das erste dazwischenliegende Objekt enthält, aufweist.

## Revendications

40

1. Système de génération d'une carte électrophysiologique d'une limite superficielle (44) d'un objet d'intérêt (14) d'un corps (12), comprenant :

une électrode (28) d'une pluralité d'électrodes disposées à une position sur une surface extérieure (24) du corps (12) pour déterminer un potentiel électrique sur ladite surface extérieure (24) à ladite position ;  
une unité de commande électronique (20) connectée électriquement à ladite électrode (28), l'unité de commande électronique (20) étant configurée pour :

45

recevoir une image d'un système d'imagerie (18) de l'objet d'intérêt (14) et une densité et un type de tissu à une pluralité d'emplacements entre l'objet d'intérêt (14) et la surface extérieure (24) du corps (12) ;  
recevoir un signal généré par ladite électrode (28), ledit signal indiquant le potentiel électrique mesuré à ladite position ;

50

identifier la limite superficielle (44) d'un objet d'intérêt (14) à l'intérieur dudit corps (12) en utilisant l'image dudit objet d'intérêt (14), et l'unité de commande électronique étant **caractérisé par** le fait d'être configuré pour :

55

obtenir une valeur d'impédance à partir de la densité de tissu et du type de tissu à chacun de la pluralité d'emplacements le long de trajets entre ladite position sur ladite surface extérieure (24) dudit corps (12) et ladite limite superficielle (44) dudit objet d'intérêt ; et  
déterminer un potentiel électrique à ladite limite superficielle (44) dudit objet d'intérêt à partir de ladite électrode (28) en corrigeant le signal généré par l'électrode (28) en utilisant une valeur d'impédance

## EP 2 632 330 B1

totale qui est la somme des impédances totales mesurées le long de chacun des trajets (42) entre l'électrode (28) et la limite superficielle (44).

- 5 2. Système selon la revendication 1, dans lequel ladite unité de commande électronique (20) est en outre configurée pour identifier un premier objet intervenant le long dudit premier trajet (42) à partir d'une ou plusieurs images dudit premier trajet (42).
- 10 3. Système selon la revendication 1 ou 2, dans lequel lesdites images dudit premier trajet (42) comprennent des images de résonance magnétique ou des images de tomographie informatisée.
- 15 4. Système selon l'une quelconque des revendications 1 à 3, comprenant en outre un écran (22) configuré pour générer une carte électrophysiologique dudit objet d'intérêt en réponse à des signaux générés par ladite unité de commande électronique (20).
- 20 5. Système selon l'une quelconque des revendications 1 à 4, dans lequel ladite unité de commande électronique (20) est en outre configurée pour comparer ledit potentiel électrique mesuré à ladite première position à un potentiel électrique acquis précédemment mesuré à ladite première position.
- 25 6. Système selon l'une quelconque des revendications 1 à 5 dans lequel ladite unité de commande électronique (20) est en outre configurée, en obtenant ladite première valeur d'impédance pour ledit premier objet intervenant le long dudit premier trajet (42), pour accéder à une structure de données dans une mémoire, ladite structure de données corrélant ledit premier objet intervenant avec ladite première valeur d'impédance.
- 30 7. Système selon l'une quelconque des revendications 1 à 6 dans lequel ladite unité de commande électronique (20) est en outre configurée, en déterminant ledit potentiel électrique à ladite limite superficielle (44) dudit objet d'intérêt, pour générer un modèle pour une partie dudit premier trajet (42) contenant ledit premier objet intervenant.
- 35 8. Procédé utilisant le système selon la revendication 1 pour générer une carte électrophysiologique d'une limite superficielle d'un objet d'intérêt (14) d'un corps (12), comprenant les étapes consistant à :  
recevoir (34) un signal généré par une électrode (28) d'une pluralité d'électrodes disposées à une position sur une surface extérieure (24) du corps (12), ledit signal étant indicatif d'un potentiel électrique mesuré à ladite position ;  
déterminer un potentiel électrique au niveau de ladite limite superficielle (44) à ladite position ;  
recevoir une image d'un système d'imagerie (18) de l'objet d'intérêt (14) et une densité de tissu et un type de tissu à une pluralité d'emplacements entre l'objet d'intérêt (14) et la surface extérieure (24) du corps (12) ;  
identifier (38) la limite superficielle (44) d'un objet d'intérêt dans ledit corps (12) en utilisant l'image dudit objet d'intérêt (14), et le procédé étant **caractérisé en ce qu'il** comprend les étapes consistant à :  
obtenir (46) une valeur d'impédance à partir de la densité de tissu et du type de tissu à chacun de la pluralité d'emplacements le long des trajets (42) entre ladite position sur ladite surface extérieure dudit corps (12) et ladite limite superficielle (44) dudit objet d'intérêt ; et  
déterminer (48) un potentiel électrique à ladite limite superficielle (44) dudit objet d'intérêt à partir de ladite électrode (28) en corrigeant le signal généré par l'électrode (28) en utilisant une valeur d'impédance totale qui est la somme des impédances totales mesurées le long de chacun desdits trajets (42), entre l'électrode (28) et la limite superficielle (44).
- 40 9. Procédé selon la revendication 8, comprenant en outre l'étape consistant à identifier un premier objet intervenant le long dudit premier trajet (42) à partir d'une ou plusieurs images dudit premier trajet (42).
- 45 10. Procédé selon la revendication 9, dans lequel lesdites une ou plusieurs images dudit premier trajet (42) comprennent des images de tomographie informatisée ou des images de résonance magnétique.
- 50 11. Procédé selon l'une quelconque des revendications 8 à 10, dans lequel ladite valeur d'impédance est reçue d'un système de tomographie d'impédance électrique.
- 55 12. Procédé selon l'une quelconque des revendications 8 à 11, comprenant en outre l'étape consistant à générer (50) une carte électrophysiologique dudit objet d'intérêt.

## EP 2 632 330 B1

13. Procédé selon l'une quelconque des revendications 9 à 12, dans lequel ladite étape d'obtention (46) desdites valeurs d'impédance de chacun de la pluralité d'emplacements le long dudit premier trajet (42) comprend la sous-étape d'accès à une structure de données dans une mémoire, ladite structure de données corrélant un premier objet intermédiaire avec ladite valeur d'impédance.

5  
14. Procédé selon la revendication 13, dans lequel ladite étape de détermination (48) dudit premier potentiel électrique à ladite limite superficielle (44) dudit objet d'intérêt comprend la sous-étape de génération d'un modèle pour une partie dudit premier trajet (42) contenant ledit premier objet intermédiaire.

10

15

20

25

30

35

40

45

50

55

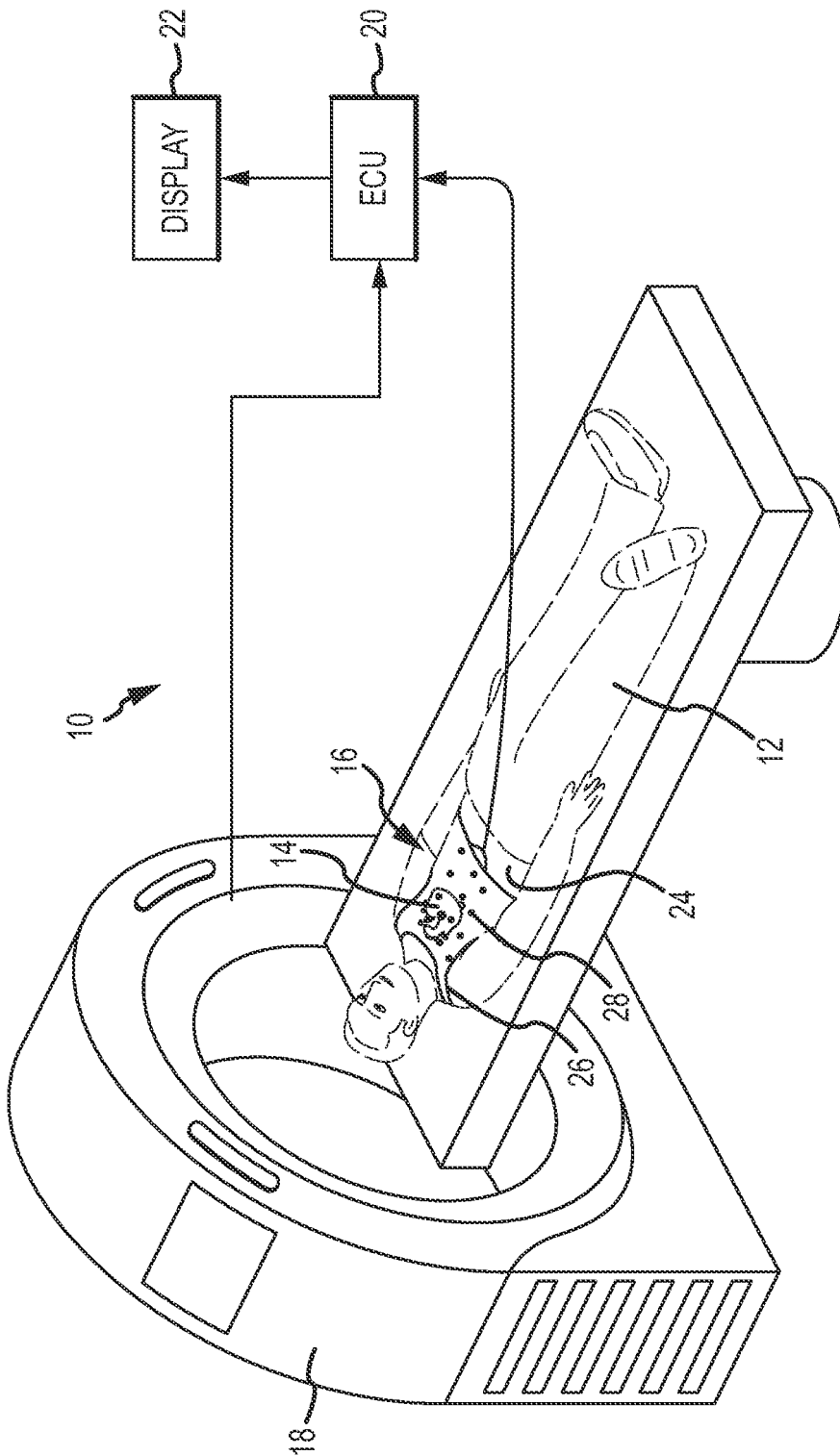


FIG.1

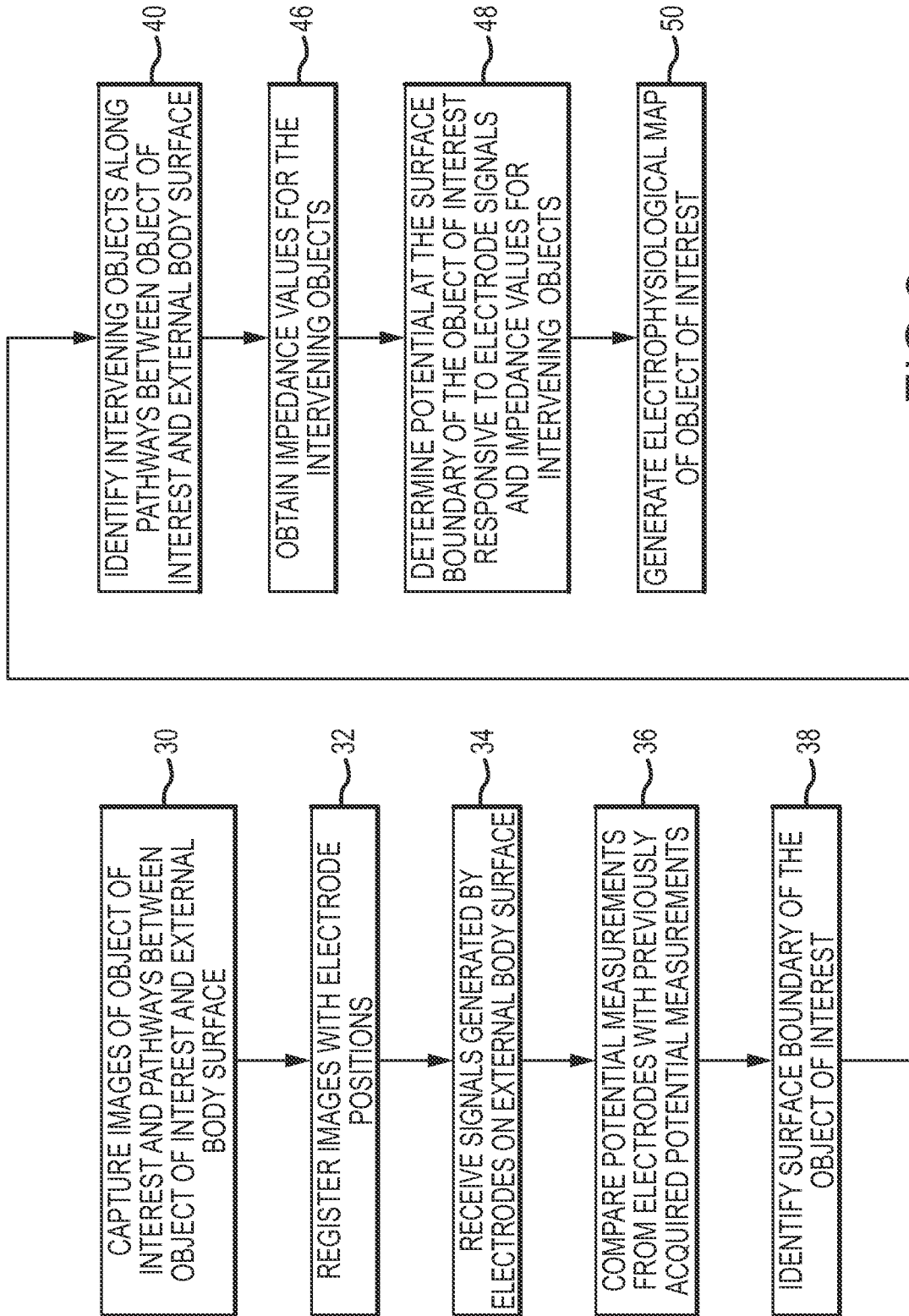


FIG.2

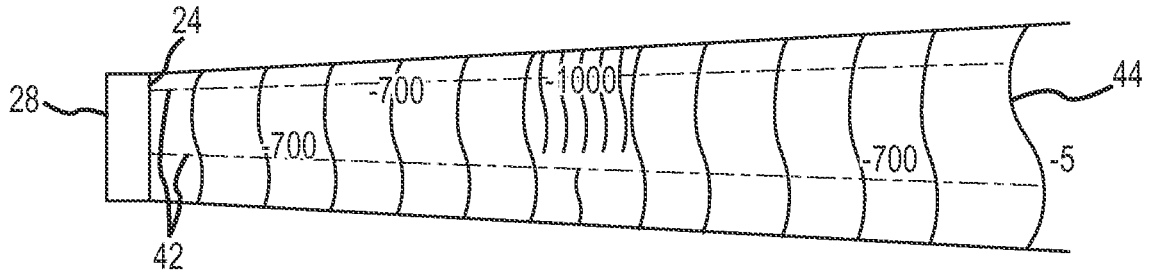


FIG. 3

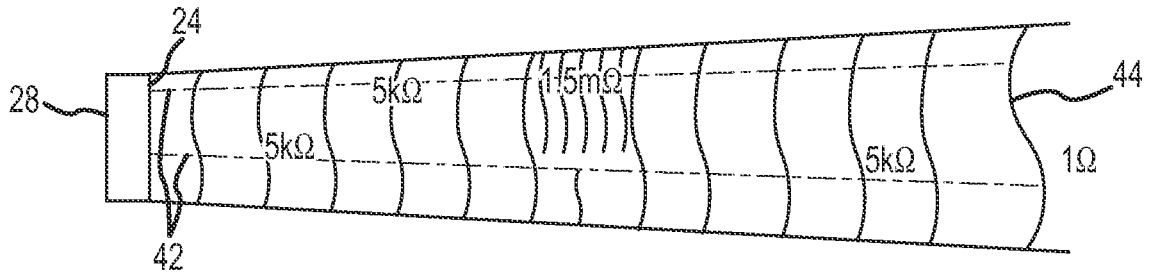


FIG. 4

**REFERENCES CITED IN THE DESCRIPTION**

*This list of references cited by the applicant is for the reader's convenience only. It does not form part of the European patent document. Even though great care has been taken in compiling the references, errors or omissions cannot be excluded and the EPO disclaims all liability in this regard.*

**Patent documents cited in the description**

- US 7016719 B [0005] [0026]
- US 4961428 A [0006]
- WO 9905962 A1 [0007]
- US 2010191131 A1 [0008]

**Non-patent literature cited in the description**

- Modeling and Imaging of Bioelectrical Activity. 2004, 57 [0026]

专利名称(译)	带有外部电极的电生理映射系统		
公开(公告)号	<a href="#">EP2632330B1</a>	公开(公告)日	2020-05-20
申请号	EP2011852629	申请日	2011-09-14
[标]申请(专利权)人(译)	圣犹达医疗用品电生理部门有限公司		
申请(专利权)人(译)	ST.犹达医疗用品, 房颤DIVISION, INC.		
当前申请(专利权)人(译)	ST.犹达医疗用品, 房颤DIVISION, INC.		
[标]发明人	EVERLING BRUCE RICHARD VOTH ERIC J		
发明人	EVERLING, BRUCE, RICHARD VOTH, ERIC, J.		
IPC分类号	A61B5/053 A61B5/0402 G06K9/00 A61B5/00 A61B5/0408 G06T17/00		
CPC分类号	A61B5/0035 A61B5/0402 A61B5/04085 A61B5/0536 A61B5/6805 G06K9/0057 G06K2209/051 A61B5/0044 A61B5/055 A61B5/7225 A61B5/742 A61B5/7475 A61B6/032 A61B6/461 A61B6/467 A61B6/504		
优先权	61/428596 2010-12-30 US		
其他公开文献	EP2632330A1 EP2632330A4		
外部链接	<a href="#">Espacenet</a>		

#### 摘要(译)

提供了一种用于生成电生理图的系统和方法。该系统包括电子控制单元 (ECU), 该电子控制单元被配置为接收由设置为主体的外表面上的位置处的电极产生的信号并指示电位。ECU还被配置为使用物体的图像来识别物体在体内的表面边界。ECU还被配置为从路径上的一个或多个图像识别沿着外表面上的位置与感兴趣对象的表面边界之间的路径的介入对象。ECU还被配置为获得每个介入对象的阻抗值, 并响应于来自电极的信号和介入对象的阻抗值来确定感兴趣对象的表面边界处的电势。

