

(19)



(11)

**EP 2 382 917 B1**

(12)

**EUROPEAN PATENT SPECIFICATION**

(45) Date of publication and mention of the grant of the patent:  
**07.11.2018 Bulletin 2018/45**

(51) Int Cl.:  
**A61B 5/00 (2006.01) A61B 8/00 (2006.01)**

(21) Application number: **11161455.8**

(22) Date of filing: **07.04.2011**

(54) **DISPLAY DATA OBTAINING APPARATUS AND DISPLAY DATA OBTAINING METHOD**  
**ANZEIGEDATENEMPFANGSVORRICHTUNG UND ANZEIGEDATENEMPFANGSVERFAHREN**  
**APPAREIL D'OBTENTION DE DONNÉES D'AFFICHAGE ET PROCÉDÉ D'OBTENTION DE DONNÉES D'AFFICHAGE**

(84) Designated Contracting States:  
**AL AT BE BG CH CY CZ DE DK EE ES FI FR GB GR HR HU IE IS IT LI LT LU LV MC MK MT NL NO PL PT RO RS SE SI SK SM TR**

(74) Representative: **TBK**  
**Bavariaring 4-6**  
**80336 München (DE)**

(30) Priority: **27.04.2010 JP 2010101886**  
**08.03.2011 JP 2011050008**

(56) References cited:  
**WO-A1-2009/073979 WO-A1-2011/070775**  
**WO-A1-2011/070985 US-B1- 6 567 688**

(43) Date of publication of application:  
**02.11.2011 Bulletin 2011/44**

- **DATABASE MEDLINE [Online] US NATIONAL LIBRARY OF MEDICINE (NLM), BETHESDA, MD, US September 2008 EPHRAT PINHAS ET AL: 'Three-dimensional photoacoustic imaging by sparse-array detection and iterative image reconstruction.' Database accession no. NLM19021432 & EPHRAT PINHAS ET AL: "Three-dimensional photoacoustic imaging by sparse-array detection and iterative image reconstruction.", JOURNAL OF BIOMEDICAL OPTICS, vol. 13, no. 5, September 2008 (2008-09), page 54052, ISSN: 1083-3668**

(60) Divisional application:  
**18186987.6**

(73) Proprietor: **Canon Kabushiki Kaisha**  
**Tokyo 146-8501 (JP)**

(72) Inventor: **FUKUTANI, Kazuhiko**  
**Tokyo Tokyo 146-8501 (JP)**

**EP 2 382 917 B1**

Note: Within nine months of the publication of the mention of the grant of the European patent in the European Patent Bulletin, any person may give notice to the European Patent Office of opposition to that patent, in accordance with the Implementing Regulations. Notice of opposition shall not be deemed to have been filed until the opposition fee has been paid. (Art. 99(1) European Patent Convention).

**Description**

## BACKGROUND OF THE INVENTION

5 Field of the Invention

[0001] The present invention relates to a display data obtaining apparatus and a display data obtaining method with which a signal of an acoustic wave from an inner portion of a subject to be examined (hereinafter, referred to as "subject") irradiated with light is detected, and the detected signal is processed to obtain information of the inner portion of the subject.

10

Description of the Related Art

[0002] In medical fields, there has been actively developed an optical imaging apparatus for irradiating a living body with light emitted from a light source such as a laser, and for displaying on a display information of an inner portion of the living body which is obtained based on light entering the living body. An example of the optical imaging technology is photoacoustic tomography (PAT). In the photoacoustic tomography, a living body is irradiated with pulsed light from the light source so as to detect an acoustic wave (typically ultrasound) generated from a living tissue having absorbed the energy of the pulsed light being propagated and diffused in the inner portion of the living body. That is, an elastic wave, which is generated when the examined region having absorbed the energy of the irradiated light is momentarily expanded, is received as a detected signal by an acoustic wave detector (also called a probe or transducer) using a difference in an optical energy absorption factor between an examined region (for example, tumor) and the other tissue. When the detected signal is analyzed and processed, an optical characteristic distribution, in particular, an initial sound pressure distribution or absorption coefficient distribution of the inner portion of the living body may be obtained. When the measurement described above is performed with light beams having various wavelengths, the obtained information may also be used to quantitatively measure specific substances in the inner portion of the living subject, for example, a concentration of hemoglobin contained in blood and an oxygen saturation of blood.

20

25

[0003] There has been known a problem in that, the photoacoustic tomography apparatus causes a spatial sensitivity distribution specific to the apparatus, when an acoustic wave measurement region is insufficient compared to an information acquisition region, for example, when the acoustic wave may be received from not in all directions of a subject but in only a specific direction ("128-channel laser optoacoustic imaging system (LOIS-128) for breast cancer diagnostics", Sergey A. Ermilov, Andre Conjusteau, Ketan Mehta, Ron Lacewell, P. Mark Henrichs, and Alexander A. Oraevsky, Proceedings of SPIE, Vol. 6086, 608609, 2006). A spatial sensitivity distribution is a distribution that exhibits fluctuations in measurement sensitivities for respective locations (sound source positions) in a measurement object. The fluctuation in sensitivities, which depend on locations, occurs because an information amount which may be used for each voxel is changed depending on a relative voxel position difference between the acoustic wave detector and a sound source even in a case where completely the same target parameter (for example, initial sound pressure) is measured. Therefore, results obtained by the detection are displayed using contrasts, which are changed depending on the locations in the measurement object. As a result, the quantity of obtained information is deteriorated. The relative position between the acoustic wave detector and the sound source is changed for every apparatus, and hence a spatial sensitivity distribution contrast difference is also changed, respectively. In order to solve the problem described above, it is known that it is important to detect an acoustic wave in all directions of 360° around the subject to obtain a sufficient information amount ("Photoacoustic Imaging in biomedicine", M. Xu and L. V. Wang, Review of Scientific Instruments, 77, 041101, 2006).

30

35

40

[0004] However, when a large object, for example, breasts of a human are subjected to examination, it is difficult to measure an acoustic wave in various positions around the entire subject, and hence inner information of a living body cannot be obtained by using a sufficient amount of information. In other words, when such objects are subjected to examination, the method of Xu et al. is not necessarily practical to eliminate the deterioration of the quantity of the obtained information.

45

[0005] The WO 2009/073979A1 discloses a photoacoustic imaging apparatus for medical or other imaging applications and also a method for calibrating this apparatus. The apparatus employs a sparse array of transducer elements and a reconstruction algorithm. Spatial calibration maps of the sparse array are used to optimize the reconstruction algorithm. The apparatus includes a laser producing a pulsed laser beam to illuminate a subject for imaging and generate photoacoustic waves. The transducers are fixedly mounted on a holder so as to form the sparse array. The photoacoustic waves are received by each transducer. The resultant analog signals from each transducer are amplified, filtered, and converted to digital signals in parallel by a data acquisition system which is operatively connected to a computer. The computer receives the digital signals and processes the digital signals by the algorithm based on iterative forward projection and back-projection in order to provide the image.

50

55

## SUMMARY OF THE INVENTION

**[0006]** The present invention has been made based on the problem as described above. An object of the present invention is to provide a display data obtaining and diagnosis apparatus capable of reducing a fluctuation in sensitivity (spatial sensitivity distribution) for each location in a measurement object even in a limited measurement condition in which a photoacoustic wave generated in the entire subject cannot be obtained in a sufficient range.

**[0007]** In view of the above-mentioned problem, a display data obtaining apparatus is provided as defined in the appended claims.

**[0008]** According to the display data obtaining apparatus of the present invention, the fluctuation in sensitivity (spatial sensitivity distribution) which depends on location in the measurement object may be reduced even in the limited measurement condition in which the photoacoustic wave generated in the entire subject cannot be obtained in the sufficient range.

**[0009]** Further features of the present invention will become apparent from the following description of exemplary embodiments with reference to the attached drawings.

## BRIEF DESCRIPTION OF THE DRAWINGS

**[0010]**

FIG. 1A is a schematic diagram illustrating a configuration of a display data obtaining apparatus according to an embodiment of the present invention.

FIG. 1B is a schematic diagram illustrating a structural example of a signal processing unit of the display data obtaining apparatus according to the embodiment of the present invention.

FIG. 2 is a flow chart illustrating an example of detected signal (obtained signal) processing in the embodiment of the present invention.

FIG. 3A is a schematic view illustrating an example of a method of calculating data on a spatial sensitivity distribution in the present invention.

FIG. 3B is a schematic view illustrating the example of the method of calculating the data on the spatial sensitivity distribution in the present invention.

FIG. 3C illustrates an example of the spatial sensitivity distribution obtained by the calculating method in the present invention.

FIG. 4A is a schematic view illustrating a measurement object that was used in Example 1.

FIG. 4B illustrates first data before correction, which was obtained in Example 1.

FIG. 4C illustrates second data after correction, which was obtained in Example 1.

FIG. 5 is a schematic view qualitatively illustrating the spatial sensitivity distribution.

## DESCRIPTION OF THE EMBODIMENTS

**[0011]** Hereinafter, the present invention is described in more detail with reference to the attached drawings. The same constituent elements are basically denoted by the same reference symbols and the descriptions thereof are omitted.

**[0012]** Hereinafter, an object information obtaining apparatus according to an embodiment of the present invention is described. However, the present invention is not limited to a single apparatus having a configuration described below. The present invention is realized using a method of realizing functions described below, and is also realized by processing of supplying software (computer program) realizing those functions to a system or an apparatus via network or various storage media and allowing the system or a computer (or CPU, MPU, etc.) of the apparatus to read and execute the program.

(Display Data Obtaining Apparatus)

**[0013]** A configuration of the display data obtaining apparatus according to this embodiment is described with reference to FIGS. 1A and 1B. The display data obtaining apparatus according to this embodiment is an apparatus for obtaining subject information (optical characteristic distribution information) of an inner portion of a subject with which apparatus the subject information is obtained and displayed on a display.

**[0014]** With respect to a fundamental hardware configuration, the display data obtaining apparatus according to this embodiment includes a light source 11, an acoustic wave probe 17 serving as an acoustic wave detector (acoustic wave detecting unit), and a display data obtaining unit 19. Pulsed light 12 emitted from the light source 11 is formed into a desired optical distribution shape by an optical system 13 including, for example, a lens, a mirror, an optical fiber, and a diffusion plate, and guided and applied to a subject 15, for example, a living body. When a part of energy of light

propagating through an inner portion of the subject 15 is absorbed in an optical absorber 14, for example, a blood vessel (which results in sound source), an acoustic wave 16 (typically ultrasound) is generated by the thermal expansion of the optical absorber 14. The acoustic wave 16 is detected (obtained) by the acoustic wave probe 17 and transferred as information to a signal processing unit 20 including a signal converter 18 and the display data obtaining unit 19. The information of the acoustic wave 16 which is transferred to the signal processing unit 20 is amplified and digitally converted by the signal converter 18, and then converted by the display data obtaining unit 19 into display data with respect to optical characteristic distribution information of the inner portion of the subject. Thus, the display data obtaining apparatus obtains a display data concerning optical characteristic distribution. Then, an image based on the display data is displayed on a display 21. Note that, the term "display data" is optical characteristic distribution information data converted in a display form of the display 21. The display form of the display 21 is not particularly limited. For example, whether a two-dimensional form or a three-dimensional form is employed may be arbitrarily determined based on a measurement purpose and a configuration of the apparatus. Information which is not required depending on the measurement purpose, for example, brightness information is not necessarily included in the display data.

(Light Source 11)

**[0015]** When the subject is a living body, light with a specific wavelength, which is absorbed in a specific component of constituent components of the living body, is emitted from the light source 11. The light source may be integrally provided in the display data obtaining apparatus according to this embodiment. Alternatively, the light source may be separated and provided as an additional member. The light source is desirably a pulsed light source which may generate pulsed light having a pulse width in a range of the order of several nanoseconds to the order of several hundred nanoseconds. To be specific, in order to efficiently generate the acoustic wave, a pulse width of approximately ten nanoseconds is employed. The light source is desirably a laser because a large output is obtained. A light emitting diode may be used instead of the laser. Examples of the laser which may be used include a solid laser, a gas laser, a dye laser, and a semiconductor laser. An emitting timing, a waveform, and an intensity are controlled by a light source controlling unit (not shown). Note that, the light source controlling unit may be provided with the light source. In the present invention, the wavelength of the used light source is desirably a wavelength at which light propagates to the inner portion of the subject. To be specific, when the subject is a living body, the wavelength is equal to or larger than 500 nm and equal to or smaller than 1,200 nm.

(Optical System 13)

**[0016]** The light 12 emitted from the light source 11 is typically formed into a desired optical distribution shape by optical parts such as a lens and a mirror and guided to the subject. In this case, the light may be propagated through an optical waveguide, for example, an optical fiber, which is used as the entire optical path or a part thereof. The optical system 13 includes, for example, a mirror for reflecting light, a lens for condensing, expanding, and shaping light, a diffusion plate for diffusing light, and an optical fiber. As long as the subject 15 is irradiated with the light 12 emitted from the light source at the desired shape, any optical parts may be used. Note that, in view of the safety of a living body and the effect of expansion of a diagnostic region, the light is desirably expanded to a certain amount of area, rather than condensed by the lens.

(Subject 15 and Optical Absorber 14)

**[0017]** The subject 15 and the optical absorber 14 are not a part of the display data obtaining apparatus according to this embodiment, but are described below. A principal purpose of the display data obtaining apparatus according to this embodiment is the imaging of the inner portion of the living body, particularly, the diagnosis of a malignant tumor or vessel disease of a human or animal and the chemical treatment follow-up thereof. Therefore, the subject 15 which is a diagnostic target region is expected to be a breast, finger, or limb of a living body (specifically, human or animal). In a case of the animal, particularly, in a case of a small animal, for example, a mouse or a rat, not only a specific region but also the entire small animal may be targeted. The optical absorber 14 in the inner portion of the subject has a relatively high absorption coefficient in the subject. Although depending on a wavelength of used light, for example, when a human is a measurement object, the optical absorber 14 corresponds to an oxy-/deoxy-hemoglobin, a blood vessel containing a large amount of oxy-/deoxy-hemoglobin, or a malignant tumor including a large number of neovascular vessels. In the present invention, the term "optical characteristic distribution information" refers to an initial sound pressure distribution in the inner portion of the living body, which is a generation source distribution of an acoustic wave generated by light irradiation, a light energy absorption density distribution and an absorption coefficient distribution which are derived from the initial sound pressure distribution, and a concentration distribution of a constituent component (particularly, oxy-/deoxy-hemoglobin) of a living tissue, which is obtained from the information. For example, an oxygen saturation obtained

from a concentration distribution of an oxy-/deoxy-hemoglobin is also included in the "optical characteristic distribution information".

(Acoustic Wave Detecting Unit (Acoustic Wave Probe 17))

5  
[0018] The acoustic wave probe 17 serves as the detector for detecting the acoustic wave generated in the surface and inner portion of the subject by the pulsed light, detects (obtains) the acoustic wave, and converts the detected acoustic wave into an electrical signal (obtained signal) which is an analog signal. Hereinafter, the acoustic wave probe 17 may be referred to simply as a probe or a transducer. Any acoustic wave detector capable of detecting an acoustic wave signal, for example, a transducer using a piezoelectric phenomenon, a transducer using light resonance, or a transducer using a change in capacitance may be used. In this embodiment, the acoustic wave probe 17 includes typically multiple receiving elements which are one-dimensionally or two-dimensionally arranged. When such multi-dimensionally arranged elements are used, the acoustic wave may be simultaneously detected at multiple positions, and a measurement time may be shortened. As a result, the influence of vibration of the subject may be reduced.

10  
15 [0019] In the present invention, the acoustic wave probe 17 is provided to be able to receive an acoustic wave from the subject 15 only in a specific direction.

(Signal Converter 18)

20 [0020] The display data obtaining apparatus according to this embodiment desirably includes the signal converter 18 serving as a part of the signal processing unit 20, to amplify the electrical signal obtained from the acoustic wave probe 17 and convert the electrical signal from an analog signal into a digital signal. The signal converter 18 typically includes an amplifier, an A/D converter, and a field programmable gate array (FPGA) chip. When multiple detected signals (obtained signals) are obtained from the acoustic wave probe, the multiple signals may be desirably processed at the same time. In this manner, a time required to display information may be shortened. In this specification, the term "obtained signal" conceptually includes both the analog signal obtained from the acoustic wave probe 17 and the digital signal obtained by the subsequent A/D conversion.

(Display data obtaining unit 19)

30 [0021] The display data obtaining unit 19 principally serves to perform processing described below and convert the digital signal received from the signal converter 18 into display data (first data) associated with optical characteristic distribution of the inner portion of the subject. The display data obtaining unit 19 in the present invention performs correction processing on the first data obtained from the digital signal received from the signal converter 18. The correction processing is a distinguishing feature of the present invention and performed according to a spatial sensitivity distribution specific to the apparatus. As a result, even in a case where a measurement region is limited, the quantitativity of display information may be inhibited from degrading. Note that, the case where the measurement region is limited refers to a state in which an acoustic wave may be received in not all directions around the subject but only in a specific direction as illustrated in FIG. 1A.

35 [0022] The display data obtaining unit 19 includes a computer, for example, a workstation and may perform the formation of the display data and the correction of the formed display data by software in advance programmed. In the present invention, the software used in the workstation includes two modules, that is, a display data forming module 19a for forming the display data (first data deriving unit) and a data correction module 19b for correcting the obtained display data (second data deriving unit). In this invention, the display data forming module 19a and the data correction module 19b are combined to a memory 19c in which the spatial sensitivity distribution data specific to the apparatus is stored, to serve as a single program, and to thereby provide the single display data obtaining unit 19 as illustrated in each of FIGS. 1A and 1B. In a case of photoacoustic tomography, for example, processing for reducing noises of signals received at respective positions is normally performed as preprocessing before the formation of data to be displayed on the display. The processing may be performed by the display data forming module 19a in the present invention. The noise reduction processing and the correction of a sensitivity distribution resulting from a structural or physical property distribution of the subject may be performed independently from the correction of the spatial sensitivity distribution in the present invention.

40 [0023] The display data forming module 19a basically functions to derive the first data by, for example, back projection in time domain or Fourier domain which is normally used in a tomography technology. Note that, when a long time is permitted to be spent in this stage, for example, an iterative reconstruction method of performing repetition processing may be used. As described by Xu et al., examples of typical methods used in the PAT include a Fourier transform method, a universal back projection method, a filtered back projection method, and an iterative reconstruction method. In the present invention, any of the methods may be used.

**[0024]** The data correction module 19b performs various corrections on the first data generated by the display data forming module 19a. In the present invention, particularly, each voxel data of the first data is divided or multiplied by a coefficient based on the spatial sensitivity distribution data specific to the apparatus, which is stored in the memory 19c, to derive second data. In other words, the spatial sensitivity distribution specific to the apparatus is reduced. Note that, the spatial sensitivity distribution data specific to the apparatus may be calculated in advance or calculated depending on apparatus specifications when the first data is derived. When a calculation module 19d for calculating the spatial sensitivity distribution data (calculation unit) is provided in the display data obtaining unit 19 as illustrated in FIG. 1B, the spatial sensitivity distribution data may be calculated at any time. Note that the calculation module 19d may not be provided in the display data obtaining unit 19 and the spatial sensitivity distribution data may be calculated without depending on the display data obtaining apparatus according to the present invention.

**[0025]** In some cases, the signal converter 18 and the display data obtaining unit 19 may be integrally provided. In such cases, the display data of the subject may also be generated not by software processing executed by the workstation but may be by hardware processing.

(Display 21)

**[0026]** The display 21 is a device for displaying the display data output from the display data obtaining unit 19 and typically includes a liquid crystal display. Note that, the display may be provided separate from the display data obtaining apparatus according to the present invention.

**[0027]** Next, an example of spatial sensitivity distribution correction processing which is a distinguishing feature of the present invention is described with reference to FIGS. 2, 3A, 3B, and 3C. The following numbers correspond to processing numbers of FIG. 2.

(Detection of Acoustic Wave)

**[0028]** Processing-0 (S101, 102): Step of detecting acoustic wave, generated inside subject when the subject is irradiated with pulsed light, with acoustic wave probe 17

**[0029]** When a subject 15 is irradiated with light 12 from light source 11 (S101), acoustic wave 16 is generated due to photoacoustic effect at an optical absorber 14 inside the subject 15. The acoustic wave 16 is detected with acoustic probe 17 (S102), and converted into electric signal by the acoustic probe 17.

(Processing of Obtained Signal)

Processing-1 (S201): step of calculating spatial sensitivity distribution data corresponding to specifications of photoacoustic tomography apparatus

**[0030]** The spatial sensitivity distribution data specific to the apparatus, which corresponds to the hardware configuration of the photoacoustic tomography apparatus and the display data forming method, is calculated. The hardware configuration of the photoacoustic tomography apparatus refers to the number of elements of the acoustic wave probe 17, a scanning region, a detection element size, and a band, and so on, which particularly affect the display data. In the present invention, it is necessary to calculate the spatial sensitivity distribution data suitable for the respective apparatus specifications. Various calculation methods may be used and an example of one of the calculation methods is described hereinafter. FIGS. 3A, 3B, and 3C schematically illustrate an example of the method of calculating the spatial sensitivity distribution data. First, as illustrated in FIG. 3A, a measurement object 31 is divided into multiple voxels 32. Note that, while the example of three-dimensional voxel division is described, the same method may be used for one-dimensional or two-dimensional division. Next, the propagation of an acoustic wave is estimated with the assumption that an arbitrarily determined voxel of the multiple voxels is a primary sound source. An acoustic wave signal from the determined voxel, which is to be received (obtained) by the acoustic wave probe 17 used in the photoacoustic tomography apparatus, is calculated. For example, when the respective voxels are assumed to be spherical sound sources in which light is uniformly absorbed and an analytical solution is used, received (obtained) signals may be easily calculated. Note that, in this case, characteristics of the probe for receiving the signals, for example, a detection element size 33 and a receiving band are desirably taken into account.

**[0031]** Next, as illustrated in FIG. 3B, a measurement sensitivity of a voxel corresponding to a position of the sound source generating the sound wave is calculated based on the calculated received signal (obtained signal) of the acoustic wave. For example, even in a case of an apparatus for forming display data by a universal back projection method (see Xu et al.) which is one of time domain methods, the same method is desirably used to calculate the measurement sensitivity value of the voxel corresponding to the position of the sound source. When such processing is performed on all the spatial voxels, the spatial sensitivity distribution data specific to the apparatus is obtained.

[0032] FIG. 3C illustrates a two-dimensional tomographic image (shaded part of FIG. 3B) clipped from the calculated spatial sensitivity distribution data. As is apparent from FIG. 3C, the sensitivity varies depending on positions.

[0033] FIG. 5 is an explanatory view illustrating that the sensitivity varies depending on positions, and illustrates divided voxels corresponding to FIG. 3C (shaded part of FIG. 3B). A shaded part in FIG. 5 corresponds to an acoustic wave probe array. Arbitrary selected voxels are expressed by "A", "B", and "C". Directions from the voxel "A" are expressed by a1, a2, and a3. Directions from the voxel "B" are expressed by b1, b2, and b3, and are the same as the directions a1, a2, and a3, respectively.

[0034] As illustrated in FIG. 3C, the sensitivity is not the same between the voxel "A" and the voxel "B". The reason is as follows. Of acoustic waves generated from the voxel "A" illustrated in FIG. 5, acoustic waves propagating in the respective directions a1, a2, and a3 all travel toward the acoustic wave probe 17 and are to be detected by an element of the acoustic wave probe 17. On the other hand, of acoustic waves generated from the voxel "B", while acoustic waves propagating in the directions b1 and b2 travel toward the acoustic wave probe 17, an acoustic wave propagating in the direction b3 travels toward a region in which the acoustic wave probe 17 is not provided, and is not obtained by the acoustic wave probe 17. Therefore, the detecting range of acoustic waves used for image reconstruction in the display data obtaining unit 19 is changed between the voxel "A" and the voxel "B". In other words, the number of elements of the acoustic wave probe 17 used for image reconstruction in the display data obtaining unit 19 is changed between the voxel "A" and the voxel "B". Thus, the spatial sensitivity of voxel in an X-direction is changed. Note that, even when the acoustic wave probe array is used for scanning in the X-direction, the spatial sensitivity is changed between an end part of a scanning region and a central part of the scanning region.

[0035] As illustrated in FIG. 3C, the sensitivity is also changed between the voxel "A" and the voxel "C". The reason is that the number of elements of the acoustic wave probe 17 used for image reconstruction in the display data obtaining unit 19 is changed between the voxel "A" and the voxel "C". To be specific, the acoustic wave probe 17 is finite in size, and has the directivity of detection sensitivity in which acoustic waves may be highly detected in directions within an angle range between broken lines of FIG. 5. Therefore, an acoustic wave probe element 17a has high detection sensitivity for acoustic waves generated from the voxel "A" but low detection sensitivity for acoustic waves generated from the voxel "C". Thus, the acoustic wave probe element 17a may be used for image reconstruction of the voxel "A" but cannot be used for image reconstruction of the voxel "C", and hence the number of elements of the acoustic wave probe 17 used for image reconstruction is changed between the voxel "A" and the voxel "C". Therefore, even in a Z-direction, the spatial sensitivity of voxel is changed.

[0036] Note that, the calculation processing as described above may be performed at any time if the configuration of the apparatus and the method used to derive the first data are determined. Therefore, in order to reduce a total processing time, the calculation may be performed in advance before measurement. In this case, as is apparent from the signal processing unit 20 illustrated in FIG. 1A, it is unnecessary to incorporate the calculation module for calculating the spatial sensitivity distribution data into the apparatus. Note that, when the configuration of the apparatus and the method used to derive the first data are changed as appropriate, the calculation may be performed after signals are received by the signal converter 18. In this case, as illustrated in FIG. 1B, the calculation module 19d for calculating the spatial sensitivity distribution data is required.

[0037] The example in which the spatial sensitivity distribution data is obtained by calculation is described herein. However, the method of calculating the spatial sensitivity distribution data is not limited to this. For example, a small-size sound source may be actually provided in the position corresponding to each of the voxels, acoustic waves generated from the corresponding voxel are received, and the sensitivity data in the position of the sound source may be calculated based on the received signals. Such processing may be repeated in various positions to experimentally calculate the spatial sensitivity distribution data.

Processing-2 (S202): step of storing spatial sensitivity distribution data calculated in Processing-1 into memory

[0038] When the signal processing unit 20 is a computer such as a workstation, the spatial sensitivity distribution data calculated by the processing described above is saved in a file of a hard disk (not shown), and stored in the memory 19c of the workstation when the data is used. Alternatively, the result is stored in the memory 19c simultaneously with the calculation. In this step, any method may be used as long as the spatial sensitivity distribution data can be stored in the memory 19c.

Processing-3 (S203): step of deriving first data associated with optical characteristic distribution of subject based on received signals obtained by signal converter 18

[0039] In this step, first data associated with optical characteristic distribution information including an initial sound pressure distribution of acoustic waves generated from the subject 15 irradiated with light is derived from, for example, the digital signal obtained from the signal converter 18. In order to form the optical characteristic distribution, any process-

ing method used for photoacoustic tomography may be used. For example, in order to form the initial sound pressure distribution, back projection in time domain or Fourier domain may be employed. Note that, this processing method is desirably the same as the method used to calculate the spatial sensitivity distribution data. When the same method is used, the sensitivity distribution may be accurately corrected in Processing-4 described later. For example, when a universal back projection method which is one of time domain methods is employed to calculate the spatial sensitivity distribution data as described in the calculation example, the initial sound pressure distribution is formed by the following expressions.

Ex. 1

$$p_0(r) = \int_{\Omega_0} b(r_0, t = |r - r_0|) \frac{d\Omega_0}{\Omega_0} \quad (1)$$

where  $P_0(r)$  indicates the initial sound pressure distribution,  $b(r_0, t)$  indicates projection data, and  $d\Omega_0$  indicates a solid angle of a detector  $dS_0$  relative to an arbitrary observation point P. When the projection data is back-projected by the integration of Expression (1), the initial sound pressure distribution  $P_0(r)$  may be obtained.

**[0040]** Note that,  $b(r_0, t)$  and  $d\Omega_0$  are expressed as follows.

Ex. 2

$$b(r_0, t) = 2p(r_0, t) - 2t \frac{\partial p(r_0, t)}{\partial t} \quad (2)$$

Ex. 3

$$d\Omega_0 = \frac{dS_0}{|r - r_0|^2} \cos \theta \quad (3)$$

where  $\theta$  indicates an angle formed between the detector and the arbitrary observation point P.

**[0041]** After that, the absorption coefficient distribution or the oxygen saturation may be calculated based on the obtained initial sound pressure distribution.

**[0042]** The optical characteristic distribution information obtained by the step described above is assumed as the first data.

Processing-4 (S204): step of deriving second data using first data obtained in Processing-3 and spatial sensitivity distribution data stored in memory in Processing-2

**[0043]** For example, each voxel data of the first data obtained in Processing-3 is multiplied or divided by the spatial sensitivity distribution data to correct each voxel value, to thereby derive the second data exhibiting the optical characteristic distribution. In this manner, an effect of the spatial sensitivity distribution dependent on the apparatus may be reduced to improve the quantitativity. Note that, when the number of voxels of the first data obtained in Processing-3 is different from the number of voxels of the spatial sensitivity distribution data, the number of voxels and the positions thereof are adjusted by data interpolation. All the voxels are not necessarily corrected. For example, when a position of a sound source is identified in advance, only a voxel located in the position of the sound source needs to be corrected. In this manner, a calculation time may be shortened.

**[0044]** In the case where the steps described above are executed, even when the acoustic wave receiving range is limited as the example illustrated in FIG. 1A, the spatial sensitivity distribution may be reduced to provide display data with less degradation in quantitativity.

Processing-5 (S301): Step of displaying second data obtained in Processing-4

signal processing unit 20 displays an image based on the second data on display 21

5 Examples

(Example 1)

10 **[0045]** An example of the display data obtaining apparatus using a photoacoustic tomography, to which the embodiment of the present invention is applied, is described. The display data obtaining apparatus is described with reference to the schematic diagrams of FIGS. 1A and 1B. In this example, a Q-switch YAG laser for generating pulsed light of approximately 10 nanoseconds at a wavelength of 1,064 nm was used as the light source 11. The energy of the pulsed light generated from the laser is 0.6 J. The optical system 13 including a mirror and a beam expander was set so that the pulsed light was expanded to a radius of approximately 2 cm by the optical system 13 to irradiate the subject opposed to the acoustic wave probe 17 with the pulsed light. A rectangular phantom simulating a living body as illustrated in FIG. 4A was used as the subject 15. The used phantom was obtained by solidifying water with agar. The phantom was 5 cm in width, 5 cm in height, and 4 cm in depth. As illustrated in FIG. 4A, three substances which are solidified into a spherical shape with a diameter of 1 mm and colored with ink is each buried as the optical absorber 14 in the phantom. Note that, absorption coefficient values of each of the optical absorbers 14 were adjusted to be equal to one another. Plots illustrated in FIG. 4A exhibit the absorption coefficient values at respective positions.

20 **[0046]** For acoustic matching, the phantom and the acoustic wave probe were set in a water bath filled with degassed water. As illustrated in FIG. 1A, the phantom set as described above was irradiated with the pulsed light 12 from a phantom surface side opposed to the acoustic wave probe 17. Note that, the used acoustic wave probe 17 was an ultrasonic transducer made of lead zirconate titanate (PZT). The ultrasonic transducer is of a two-dimensional array type. The number of elements is 345 (15×23). An element pitch is 2 mm. An element width is approximately 2 mm.

25 **[0047]** As illustrated in FIG. 1A, when the pulsed light 12 is applied to the surface of the phantom located under the acoustic wave probe 17, the light is absorbed in the spherical optical absorbers 14 to generate photoacoustic waves. The photoacoustic waves were simultaneously received (detected) in 345 channels by the ultrasonic transducer 17 (acoustic wave probe). Detected signals (obtained signals) were converted into digital data of the photoacoustic waves in all the channels by the signal converter 18 including the amplifier, the A/D converter, and the FPGA. Note that, in order to improve an S/N ratio of the signals, the pulsed light was emitted 30 times from the laser and all detected signals (obtained signals) were averaged. After that, the obtained digital data was transferred to the workstation (WS) as the signal processing unit 20 and stored in the WS. The digital data was used to derive the first data exhibiting the absorption coefficient distribution by the display data forming module 19a. In this case, a universal back projection method as a time domain method was employed to derive three-dimensional volume data. A used voxel interval was set to 0.05 cm. A region for forming the display data was 3.0 cm × 4.6 cm × 4.0 cm. An example of the first data which was derived as described above is illustrated in FIG. 4B. Note that, FIG. 4B illustrates a two-dimensional tomographic image including all optical absorbers, which is clipped from the three-dimensional first data. Plots illustrated in FIG. 4B schematically exhibit contrasts of the optical absorbers at respective positions.

30 **[0048]** Next, the universal back projection method adopted as above was used to calculate spatial sensitivity distribution data of 3.0 cm × 4.6 cm × 4.0 cm as the same region as described above by the calculation module 19d incorporated in the signal processing unit 20 as illustrated in FIG. 1B. As a result, the spatial sensitivity distribution data illustrated in FIG. 3C was obtained. In this case, in order to avoid the spatial sensitivity distribution data from being divided by zero during the correction, data values of the spatial sensitivity distribution data were normalized with a maximum data value. Further, when a data value was equal to or smaller than 0.5, the data value was set to 1. After that, the spatial sensitivity distribution data was stored in the memory 19c of the workstation as the signal processing unit 20. The first data illustrated in FIG. 4B was divided by spatial sensitivity distribution data in a position corresponding to each voxel of the first data by the data correction module 19b to correct the spatial sensitivity distribution. An example of the second data exhibiting the absorption coefficient distribution which was derived as described above is illustrated in FIG. 4C. FIG. 4C also illustrates a two-dimensional tomographic image including all optical absorbers, which is clipped from the three-dimensional second data. Plots illustrated in FIG. 4C schematically exhibit contrasts of the optical absorbers at respective positions.

35 **[0049]** FIG. 4B is compared with FIG. 4C. In FIG. 4B, acoustic waves may be received from only a surface of the phantom as in the case of FIG. 1A. Therefore, the absorption coefficients of the respective optical absorbers are equal to one another but the optical absorbers are displayed with different contrasts. In contrast to this, as is apparent from FIG. 4C, the optical absorbers are displayed with substantially the same contrast because of the correction using the spatial sensitivity distribution data. In other words, the quantitativity is significantly improved. As described above, when the first data is corrected using the spatial sensitivity distribution data in the case where the acoustic wave measurement

region is limited, the information of the optical absorbers in the inner portion of the subject may be quantitatively displayed.

(Example 2)

5 **[0050]** An example of the display data obtaining apparatus using the photoacoustic tomography, to which the embodiment of the present invention is applied, is described. In this example, the same phantom and measurement system as in Example 1 were used. Note that, the first data deriving method and the configuration of the apparatus are known. Therefore, the spatial sensitivity distribution data was calculated in advance by a workstation as a calculation unit prepared separately from the display data obtaining apparatus. After that, the spatial sensitivity distribution data was stored in a hard disk of another workstation as the display data obtaining unit 19 of the display data obtaining apparatus. Note that, the spatial sensitivity distribution data was calculated by substantially the same method as in Example 1.

10 **[0051]** Next, the phantom is irradiated with light as in Example 1. Obtained digital data was transferred to the workstation (WS) as the signal processing unit 20 and stored in the WS. The digital data was used to derive the first data exhibiting the absorption coefficient distribution as illustrated in FIG. 4B as in Example 1. Then, the spatial sensitivity distribution data stored in the workstation was stored in the memory 19c and the first data was subjected to the spatial sensitivity distribution correction. Unlike Example 1, each voxel of the first data was multiplied by the spatial sensitivity distribution data in the same position to correct the spatial sensitivity distribution. As a result, second data exhibiting an absorption coefficient distribution with less degradation was able to be derived as in the case of FIG. 4C.

15 **[0052]** As described above, according to the present invention, even in the case where the spatial sensitivity distribution data is calculated in advance, when the configuration of the apparatus and the first data deriving method are determined, the first data may be corrected to quantitatively display the information of the optical absorbers in the inner portion of the subject.

(Example 3)

25 **[0053]** An example of the display data obtaining apparatus using the photoacoustic tomography, to which the embodiment of the present invention is applied, is described. In this example, the same phantom and measurement system as in Example 1 were used. First, before the measurement of the phantom, a very-small optical absorber in which ink entered a tip end of a transparent glass tube was irradiated with light and acoustic waves were received. Received signals were used to calculate a voxel value in the same position as the very-small sound source. Such an operation was repeated in various positions to experimentally obtain spatial sensitivity distribution data. The spatial sensitivity distribution data was stored in the memory 19c of the signal processing unit 20. Next, the phantom is irradiated with light as in Example 1. Obtained digital data was transferred to the workstation (WS) as the signal processing unit 20 and stored in the WS. Then, the first data exhibiting the absorption coefficient distribution was derived as in Example 1 and corrected using the experimentally obtained spatial sensitivity distribution data. As a result, second data exhibiting substantially the same absorption coefficient distribution as in the case of FIG. 4C was able to be derived.

30 **[0054]** As described above, according to the present invention, even in the case where the spatial sensitivity distribution data which is derived experimentally is used, the image of the optical absorbers in the inner portion of the subject may be quantitatively displayed.

35 **[0055]** While the present invention has been described with reference to exemplary embodiments, it is to be understood that the invention is not limited to the disclosed exemplary embodiments.

40 **[0056]** Provided is a display data obtaining apparatus capable of, in photoacoustic tomography, reducing a fluctuation in sensitivity which depends on location for image reconstruction even in a limited measurement condition in which a photoacoustic wave generated in the entire subject cannot be obtained in a sufficient range. The display data obtaining apparatus includes: an acoustic wave detecting unit for detecting an acoustic wave generated from a subject irradiated with pulsed light to obtain a signal; a first data deriving unit for deriving first data exhibiting an optical characteristic distribution of the subject based on the obtained signal obtained by the acoustic wave detecting unit; a memory for storing spatial sensitivity distribution data specific to the display data obtaining apparatus; and a second data deriving unit for deriving second data exhibiting the optical characteristic distribution of the subject using the first data and the spatial sensitivity distribution data.

## Claims

55 1. A display data obtaining apparatus comprising a display data obtaining unit for obtaining display data showing an optical characteristic distribution based on a signal obtained by detecting an acoustic wave generated from a subject irradiated with pulsed light, the display data obtaining unit comprising:

a first data deriving unit (19a) for deriving first data regarding the optical characteristic distribution of the subject based on the signal,

**characterized in that** the display data obtaining unit further comprises:

a memory (19c) for storing spatial sensitivity distribution data specific to the display data obtaining apparatus; and a second data deriving unit (19b) for deriving second data regarding the optical characteristic distribution of the subject by dividing the first data by the spatial sensitivity distribution data or by multiplying the first data by the spatial sensitivity distribution data.

2. The display data obtaining apparatus according to claim 1, further comprising a calculation unit (19d) for calculating the spatial sensitivity distribution data.

3. The display data obtaining apparatus according to claim 2, wherein the calculation unit (19d) is configured to:

calculate a signal to be detected by an acoustic wave detecting unit when each of multiple divided voxels of a measurement object of the subject is set as a sound source; and calculate a spatial sensitivity in a position corresponding to each of the multiple divided voxels based on the calculated signal to calculate the spatial sensitivity distribution.

4. The display data obtaining apparatus according to any one of claims 1 to 3, wherein the second data deriving unit (19b) is configured to interpolate the spatial sensitivity distribution data, to thereby obtain interpolated spatial sensitivity distribution data, and derive the second data by dividing the first data by the interpolated spatial sensitivity distribution data or by multiplying the first data by the interpolated spatial sensitivity distribution data.

5. The display data obtaining apparatus according to any one of claims 1 to 3, wherein the second data deriving unit (19b) is configured to correct the spatial sensitivity distribution data, to thereby obtain corrected spatial sensitivity distribution data, and derive the second data by dividing the first data by the corrected spatial sensitivity distribution data or by multiplying the first data by the corrected spatial sensitivity distribution data.

6. The display data obtaining apparatus according to any one of claims 1 to 5, further comprising a display controlling unit configured to cause a display unit to display an image based on the second data.

7. The display data obtaining apparatus according to any one of claims 1 to 6, further comprising an acoustic wave detecting unit (17) for detecting the acoustic wave generated from the subject irradiated with pulsed light.

8. A display data obtaining method comprising:

deriving first data regarding an optical characteristic distribution of a subject based on a signal obtained by detecting an acoustic wave generated from the subject irradiated with pulsed light,

**characterized by:**

obtaining spatial sensitivity distribution data specific to a display data obtaining apparatus from a memory; and deriving second data regarding the optical characteristic distribution of the subject by dividing the first data by the spatial sensitivity distribution data or by multiplying the first data by the spatial sensitivity distribution data.

9. The display data obtaining method according to claim 8, wherein in the step of deriving the second data, the spatial sensitivity distribution data is interpolated, to thereby obtain interpolated spatial sensitivity distribution data, and the second data is derived by dividing the first data by the interpolated spatial sensitivity distribution data or by multiplying the first data by the interpolated spatial sensitivity distribution data.

10. The display data obtaining method according to claim 8, wherein in the step of deriving the second data, the spatial sensitivity distribution data is corrected, to thereby obtain corrected spatial sensitivity distribution data, and the second data is derived by dividing the first data by the corrected spatial sensitivity distribution data or by multiplying the first data by the corrected spatial sensitivity distribution data.

11. The display data obtaining method according to any one of claims 8 to 10, further comprising displaying an image

based on the second data.

## Patentansprüche

5

1. Anzeigedatenerhaltungsvorrichtung mit einer Anzeigedatenerhaltungseinheit zum Erhalten von Anzeigedaten, die eine optische Eigenschaftsverteilung zeigen, basierend auf einem Signal, das durch Erfassung einer akustischen Welle erhalten wird, die von einem mit gepulsten Licht bestrahlten Subjekt erzeugt wird, wobei die Anzeigedatenerhaltungseinheit  
10 eine erste Datenherleitungseinheit (19a) umfasst, die, basierend auf dem Signal, erste Daten bezüglich der optischen Eigenschaftsverteilung des Subjekts herleitet,  
**dadurch gekennzeichnet, dass** die Anzeigedatenerhaltungseinheit des Weiteren eine Speichereinrichtung (19c) zur Speicherung von für die Anzeigedatenerhaltungsvorrichtung spezifischen räumlichen Empfindlichkeitsverteilungsdaten und  
15 eine zweite Datenherleitungseinheit (19b) zum Herleiten zweiter Daten bezüglich der optischen Eigenschaftsverteilung des Subjekts durch Division der ersten Daten durch die räumlichen Empfindlichkeitsverteilungsdaten oder durch Multiplikation der ersten Daten mit den räumlichen Empfindlichkeitsverteilungsdaten umfasst.

15

20

2. Anzeigedatenerhaltungsvorrichtung nach Anspruch 1, mit einer Recheneinheit (19d) zur Berechnung der räumlichen Empfindlichkeitsverteilungsdaten.

3. Anzeigedatenerhaltungsvorrichtung nach Anspruch 2, wobei die Recheneinheit (19d) gestaltet ist

25

zum Berechnen eines durch eine akustische Wellenerfassungseinheit zu erfassendes Signal, falls jedes von mehrfach unterteilten Voxeln eines Messobjekts des Subjekts als Geräuschquelle festgelegt wird und zum Berechnen einer räumlichen Empfindlichkeit, basierend auf dem berechneten Signal, an einer Position, die jeder der mehrfach unterteilten Voxeln entspricht, um die räumliche Empfindlichkeitsverteilung zu berechnen.

30

4. Anzeigedatenerhaltungsvorrichtung nach einem der Ansprüche 1 bis 3, wobei die zweite Datenherleitungseinheit (19b) gestaltet ist zum Interpolieren der räumlichen Empfindlichkeitsverteilungsdaten, um dadurch interpolierte räumliche Empfindlichkeitsverteilungsdaten zu erhalten, und die zweiten Daten durch Division der ersten Daten durch die interpolierten räumlichen Empfindlichkeitsverteilungsdaten oder durch Multiplikation der ersten Daten mit den interpolierten räumlichen Empfindlichkeitsverteilungsdaten herzuleiten.

35

5. Anzeigedatenerhaltungsvorrichtung nach einem der Ansprüche 1 bis 3, wobei die zweite Datenherleitungseinheit (19b) gestaltet ist zum Korrigieren der räumlichen Empfindlichkeitsverteilungsdaten, um dadurch korrigierte räumliche Empfindlichkeitsverteilungsdaten zu erhalten, und die zweiten Daten durch Division der ersten Daten durch die korrigierten räumlichen Empfindlichkeitsverteilungsdaten oder durch Multiplikation der ersten Daten mit den korrigierten räumlichen Empfindlichkeitsverteilungsdaten herzuleiten.

40

6. Anzeigedatenerhaltungsvorrichtung nach einem der Ansprüche 1 bis 5 mit einer Anzeigesteuereinheit, wobei diese gestaltet ist, die Anzeige eines Bildes basierend auf den zweiten Daten auf einer Anzeigeeinheit zu bewirken.

45

7. Anzeigedatenerhaltungsvorrichtung nach einem der Ansprüche 1 bis 6, mit einer akustischen Wellenerfassungseinheit (17) zur Erfassung der akustischen Welle, die von dem mit gepulsten Licht bestrahlten Subjekt erzeugt wird.

50

8. Anzeigedatenerhaltungsverfahren, das das Herleiten erster Daten bezüglich einer optischen Eigenschaftsverteilung eines Subjekts, basierend auf einem Signal, das durch Erfassung einer akustischen Welle erhalten wird, die von einem mit gepulsten Licht bestrahlten Subjekt erzeugt wird,  
**dadurch gekennzeichnet, dass** die räumlichen Empfindlichkeitsverteilungsdaten spezifisch für die Anzeigedatenerhaltungsvorrichtung aus der Speichereinrichtung erhalten werden und die zweiten Daten bezüglich der optischen Eigenschaftsverteilung des Subjekts, durch Division der ersten Daten durch die räumlichen Empfindlichkeitsverteilungsdaten oder durch Multiplikation der ersten Daten mit den räumlichen Empfindlichkeitsverteilungsdaten hergeleitet werden.  
55

9. Anzeigedatenerhaltungsverfahren nach Anspruch 8, wobei beim Schritt des Herleitens der zweiten Daten,

die räumlichen Empfindlichkeitsverteilungsdaten interpoliert werden, um dadurch interpolierte räumliche Empfindlichkeitsverteilungsdaten zu erhalten, und die zweiten Daten durch Division der ersten Daten durch die interpolierten räumlichen Empfindlichkeitsverteilungsdaten oder durch Multiplikation der ersten Daten mit den interpolierten räumlichen Empfindlichkeitsverteilungsdaten herzuleiten.

10. Anzeigedatenerhaltungsverfahren nach Anspruch 8, wobei beim Schritt des Herleitens der zweiten Daten, die räumlichen Empfindlichkeitsverteilungsdaten korrigiert werden, um dadurch korrigierte räumliche Empfindlichkeitsverteilungsdaten zu erhalten, und die zweiten Daten durch Division der ersten Daten durch die korrigierten räumlichen Empfindlichkeitsverteilungsdaten oder durch Multiplikation der ersten Daten mit den korrigierten räumlichen Empfindlichkeitsverteilungsdaten herzuleiten.

11. Anzeigedatenerhaltungsverfahren nach einem der Ansprüche 8 bis 11, umfasst des Weiteren die Anzeige eines Bildes basierend auf den zweiten Daten.

### Revendications

1. Appareil d'obtention de données d'affichage comprenant une unité d'obtention de données d'affichage destinée à obtenir des données d'affichage montrant une distribution de caractéristiques optiques sur la base d'un signal obtenu par une détection d'une onde acoustique générée à partir d'un sujet exposé à un rayonnement de lumière pulsée, l'unité d'obtention de données d'affichage comprenant :

une première unité de dérivation de données (19a) destinée à dériver des premières données concernant la distribution de caractéristiques optiques du sujet sur la base du signal,

**caractérisé en ce que** l'unité d'obtention de données d'affichage comprend en outre :

une mémoire (19c) destinée à mémoriser des données de distribution de sensibilité spatiale spécifiques à l'appareil d'obtention de données d'affichage ; et

une seconde unité de dérivation de données (19b) destinée à dériver des secondes données concernant la distribution de caractéristiques optiques du sujet par une division des premières données par les données de distribution de sensibilité spatiale ou par une multiplication des premières données par les données de distribution de sensibilité spatiale.

2. Appareil d'obtention de données d'affichage selon la revendication 1, comprenant en outre une unité de calcul (19d) destinée à calculer les données de distribution de sensibilité spatiale.

3. Appareil d'obtention de données d'affichage selon la revendication 2, dans lequel l'unité de calcul (19d) est configurée pour :

calculer un signal à détecter par une unité de détection d'onde acoustique lorsque chaque voxel de multiples voxels divisés d'un objet de mesure du sujet est défini en tant que source sonore ; et

calculer une sensibilité spatiale d'une position correspondant à chaque voxel des multiples voxels divisés sur la base du signal calculé pour calculer la distribution de sensibilité spatiale.

4. Appareil d'obtention de données d'affichage selon l'une quelconque des revendications 1 à 3, dans lequel la seconde unité de dérivation de données (19b) est configurée pour interpoler les données de distribution de sensibilité spatiale, pour ainsi obtenir des données de distribution de sensibilité spatiale interpolées, et pour dériver les secondes données par une division des premières données par les données de distribution de sensibilité spatiale interpolées ou par une multiplication des premières données par les données de distribution de sensibilité spatiale interpolées.

5. Appareil d'obtention de données d'affichage selon l'une quelconque des revendications 1 à 3, dans lequel la seconde unité de dérivation de données (19b) est configurée pour corriger les données de distribution de sensibilité spatiale, pour ainsi obtenir des données de distribution de sensibilité spatiale corrigées, et pour dériver les secondes données par une division des premières données par les données de distribution de sensibilité spatiale corrigées ou par une multiplication des premières données par les données de distribution de sensibilité spatiale corrigées.

## EP 2 382 917 B1

6. Appareil d'obtention de données d'affichage selon l'une quelconque des revendications 1 à 5, comprenant en outre une unité de commande d'affichage configurée pour amener une unité d'affichage à afficher une image sur la base des secondes données.

5 7. Appareil d'obtention de données d'affichage selon l'une quelconque des revendications 1 à 6, comprenant en outre une unité de détection d'onde acoustique (17) destinée à détecter l'onde acoustique générée à partir du sujet exposé à un rayonnement de lumière pulsée.

10 8. Procédé d'obtention de données d'affichage, consistant à :

dériver des premières données concernant une distribution de caractéristiques optiques d'un sujet sur la base d'un signal obtenu par une détection d'une onde acoustique générée à partir du sujet exposé à un rayonnement de lumière pulsée,

15 **caractérisé par :**

l'obtention de données de distribution de sensibilité spatiale spécifiques à un appareil d'obtention de données d'affichage à partir d'une mémoire ; et

20 la dérivation de secondes données concernant la distribution de caractéristiques optiques du sujet par une division des premières données par les données de distribution de sensibilité spatiale ou par une multiplication des premières données par les données de distribution de sensibilité spatiale.

25 9. Procédé d'obtention de données d'affichage selon la revendication 8, dans lequel, à l'étape de dérivation des secondes données,

les données de distribution de sensibilité spatiale sont interpolées, pour ainsi obtenir des données de distribution de sensibilité spatiale interpolées, et

30 les secondes données sont dérivées par une division des premières données par les données de distribution de sensibilité spatiale interpolées ou par une multiplication des premières données par les données de distribution de sensibilité spatiale interpolées.

35 10. Procédé d'obtention de données d'affichage selon la revendication 8, dans lequel, à l'étape de dérivation des secondes données,

les données de distribution de sensibilité spatiale sont corrigées, pour ainsi obtenir des données de distribution de sensibilité spatiale corrigées, et

les secondes données sont dérivées par une division des premières données par les données de distribution de sensibilité spatiale corrigées ou par une multiplication des premières données par les données de distribution de sensibilité spatiale corrigées.

40 11. Procédé d'obtention de données d'affichage selon l'une quelconque des revendications 8 à 10, consistant en outre à afficher une image sur la base des secondes données.

45

50

55

FIG. 1A

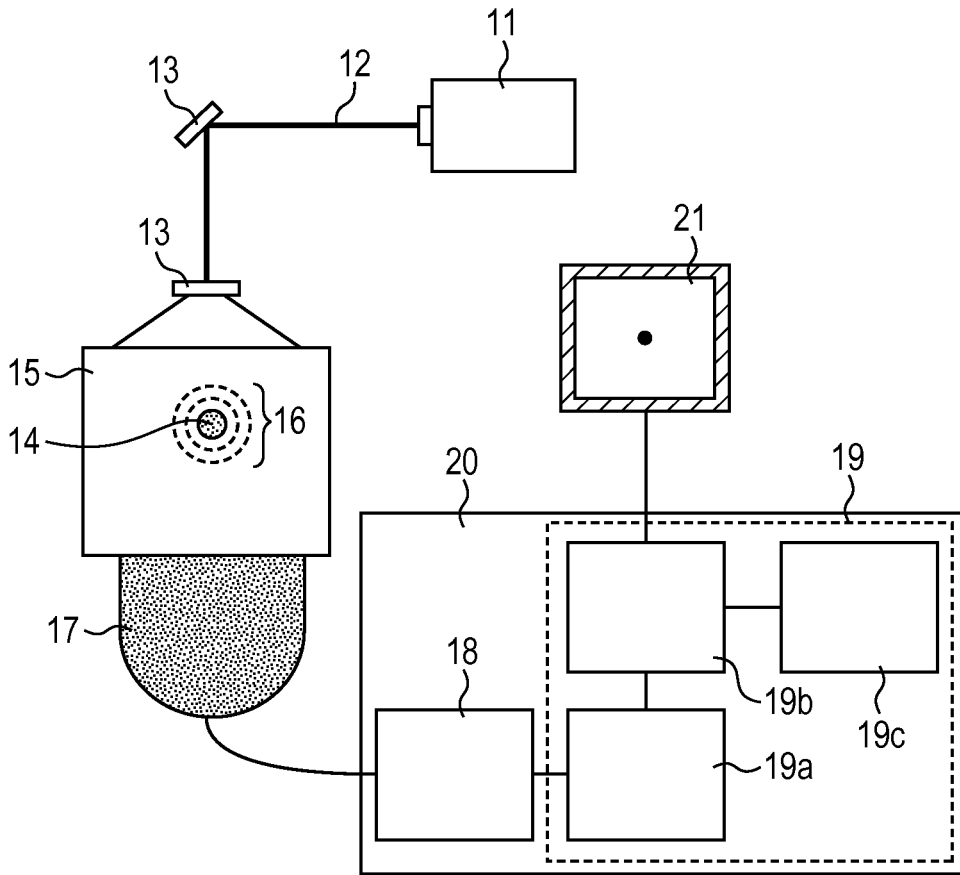
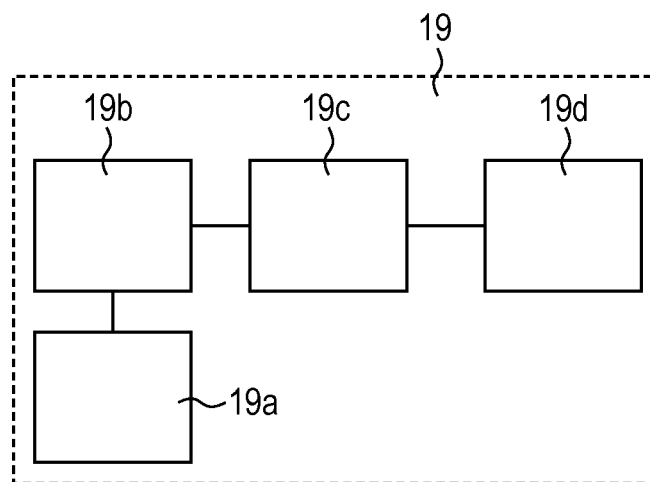


FIG. 1B



**FIG. 2**

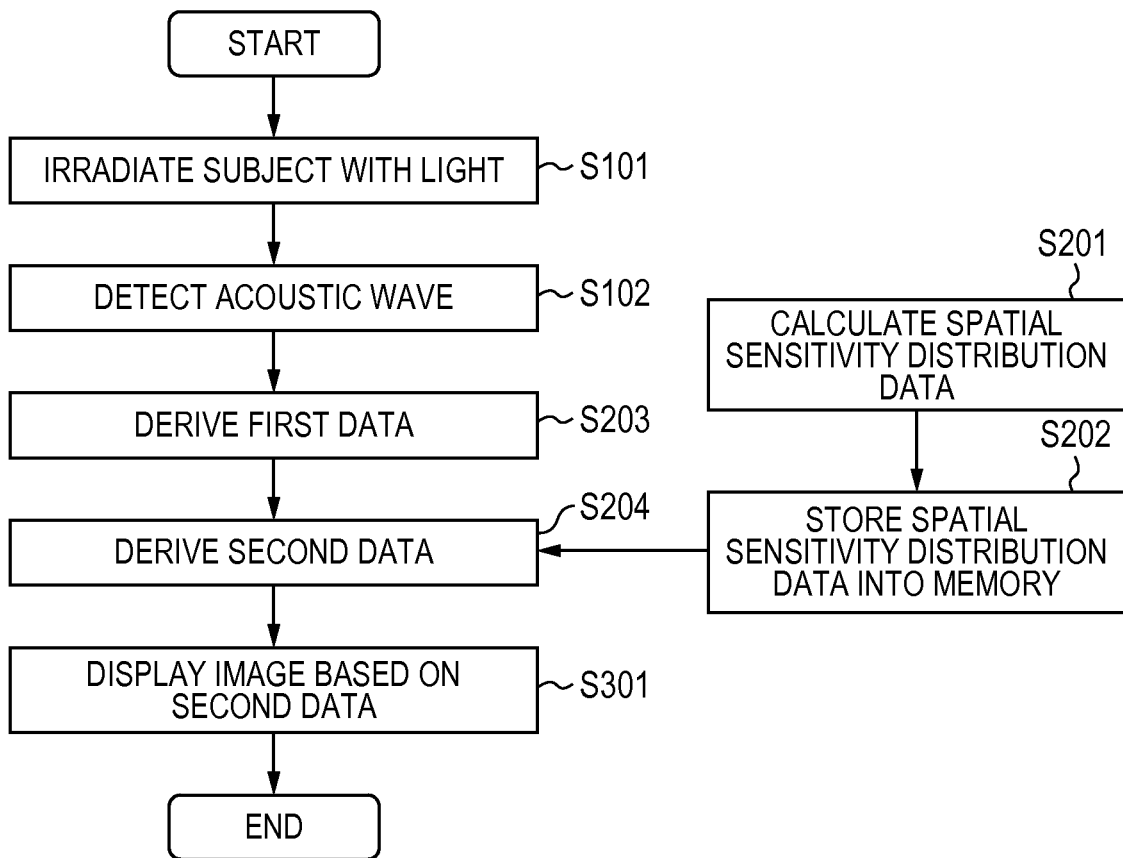


FIG. 3A

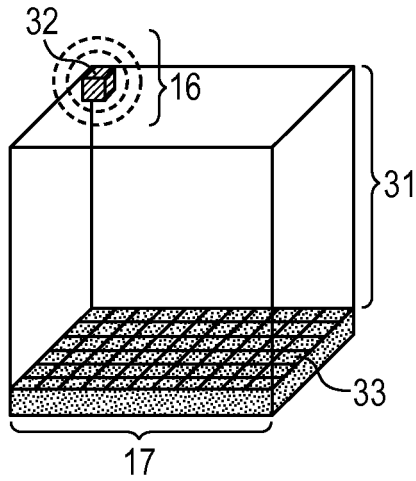


FIG. 3B

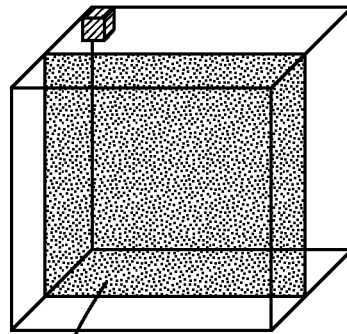


FIG. 3C

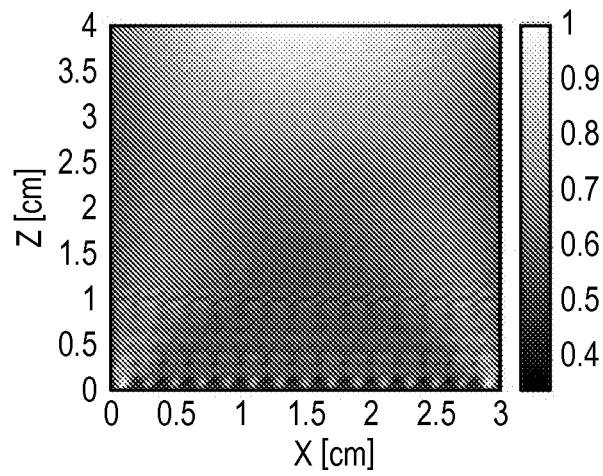


FIG. 4A

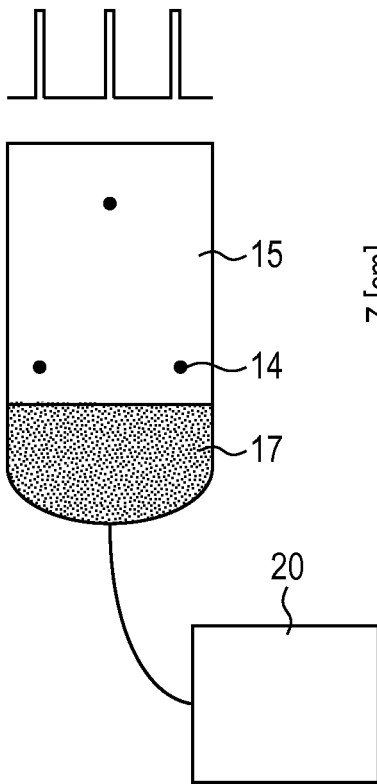


FIG. 4B

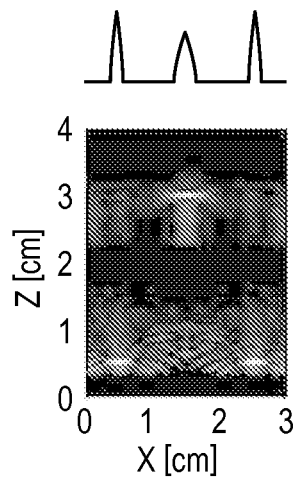


FIG. 4C

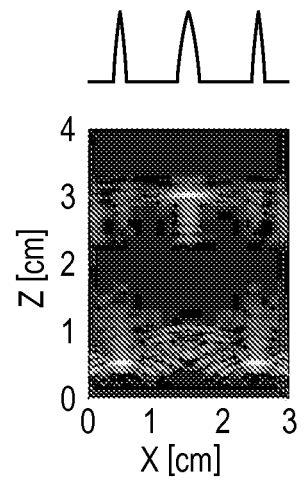
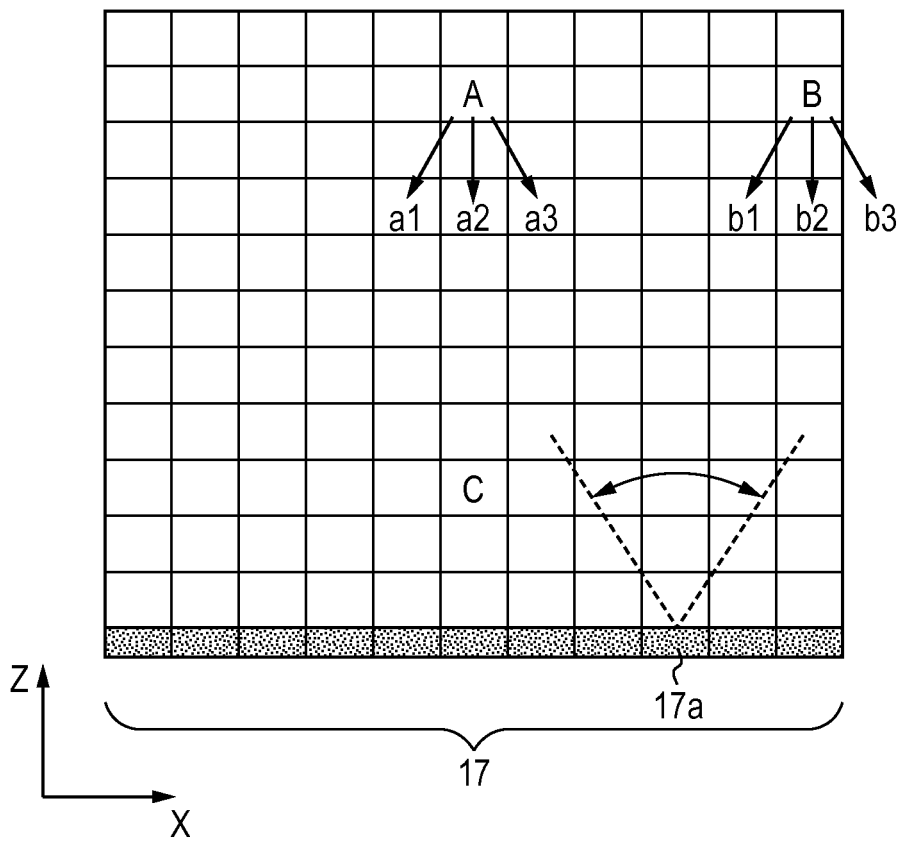


FIG. 5



**REFERENCES CITED IN THE DESCRIPTION**

*This list of references cited by the applicant is for the reader's convenience only. It does not form part of the European patent document. Even though great care has been taken in compiling the references, errors or omissions cannot be excluded and the EPO disclaims all liability in this regard.*

**Patent documents cited in the description**

- WO 2009073979 A1 [0005]

**Non-patent literature cited in the description**

- **SERGEY A. ERMILOV ; ANDRE CONJUSTEAU ; KETAN MEHTA ; RON LACEWELL ; P. MARK HENRICHS ; ALEXANDER A. ORAEVSKY.** 128-channel laser optoacoustic imaging system (LOIS-128) for breast cancer diagnostics. *Proceedings of SPIE*, 2006, vol. 6086, 608609 [0003]
- **M. XU ; L. V. WANG.** Photoacoustic Imaging in biomedicine. *Review of Scientific Instruments*, 2006, vol. 77, 041101 [0003]

专利名称(译)	显示数据获得装置和显示数据获得方法		
公开(公告)号	<a href="#">EP2382917B1</a>	公开(公告)日	2018-11-07
申请号	EP2011161455	申请日	2011-04-07
[标]申请(专利权)人(译)	佳能株式会社		
申请(专利权)人(译)	佳能株式会社		
当前申请(专利权)人(译)	佳能株式会社		
[标]发明人	FUKUTANI KAZUHIKO		
发明人	FUKUTANI, KAZUHIKO		
IPC分类号	A61B5/00 A61B8/00		
CPC分类号	A61B5/0073 A61B5/0095 A61B8/00 A61B8/0825		
代理机构(译)	TBK		
优先权	2010101886 2010-04-27 JP 2011050008 2011-03-08 JP		
其他公开文献	EP2382917A2 EP2382917A3		
外部链接	<a href="#">Espacenet</a>		

摘要(译)

提供一种显示数据获得装置，其能够在光声层析成像中减小依赖于图像重建的位置的灵敏度波动，即使在无法在足够的范围内获得在整个对象中产生的光声波的有限测量条件下也是如此。显示数据获得装置包括：声波检测单元，用于检测从被脉冲光照射的对象产生的声波，以获得信号；第一数据导出单元，用于基于由声波检测单元获得的所获得的信号，导出表现出对象的光学特性分布的第一数据；存储器，用于存储特定于显示数据获得装置的空间灵敏度分布数据；第二数据导出单元，用于使用第一数据和空间灵敏度分布数据导出表现出对象的光学特性分布的第二数据。

$$p_0(r) = \int_{\Omega_0} b(r_0, t = |r - r_0|) \frac{d\Omega_0}{\Omega_0} \quad (1)$$