



(11)

EP 1 398 052 B1

(12)

EUROPEAN PATENT SPECIFICATION

(45) Date of publication and mention
of the grant of the patent:
25.02.2009 Bulletin 2009/09

(51) Int Cl.:
A61B 5/07 (2006.01) **A61B 5/00** (2006.01)
A61F 2/02 (2006.01) **A61M 31/00** (2006.01)
A61M 25/01 (2006.01)

(21) Application number: **03078778.2**

(22) Date of filing: **14.12.2000**

(54) **INGESTIBLE DEVICE FOR THE RELEASE OF SUBSTANCES AT DISTINCT LOCATIONS IN THE ALIMENTARY CANAL**

EINNEHMBARE VORRICHTUNG ZUR FREISETZUNG VON SUBSTANZEN AN DEFINIERTEN ORTEN DES VERDAUUNGSTRAKTES

DISPOSITIF INGERABLE POUVANT DELIVRER DES SUBSTANCES EN UN SITE PARTICULIER DU CANAL ALIMENTAIRE

(84) Designated Contracting States:
**AT BE CH CY DE DK ES FI FR GB GR IE IT LI LU
MC NL PT SE TR**

(30) Priority: **21.12.1999 GB 9930000**

(43) Date of publication of application:
17.03.2004 Bulletin 2004/12

(60) Divisional application:
08075824.6 / 2 016 898

(62) Document number(s) of the earlier application(s) in
accordance with Art. 76 EPC:
00985571.9 / 1 239 769

(73) Proprietor: **Phaeton Research Ltd**
Ruddington,
Nottingham NG11 6JS (GB)

(72) Inventors:
• **Houzego, Peter John**
Cambridge CB4 5AD (GB)
• **Westland, Duncan James**
Cambridge CB1 6EG (GB)
• **Morgan, Peter Neil**
Cambridge CB2 2NQ (GB)
• **Wilding, Ian Robert**
Nottingham NG9 1BZ (GB)
• **Hirst, Peter Hanson**
Springhead Road, Oakworth, Keighley BD22 7SU
(GB)

(74) Representative: **Powell, Timothy John et al**
Potter Clarkson LLP
Park View House
58 The Ropewalk
Nottingham
NG1 5DD (GB)

(56) References cited:
DE-A- 3 339 323 **DE-A- 4 037 043**
DE-B- 1 076 322 **JP-A- 58 121 938**
US-A- 3 659 600 **US-A- 4 239 040**
US-A- 4 425 117 **US-A- 5 167 626**
US-A- 5 217 449 **US-A- 5 279 607**

- **LAMBERT A ET AL: "AUTONOMOUS
TELEMETRIC CAPSULE TO EXPLORE THE
SMALL BOWEL" MEDICAL AND BIOLOGICAL
ENGINEERING AND COMPUTING,GB,PETER
PEREGRINUS LTD. STEVENAGE, vol. 29, no. 2, 1
March 1991 (1991-03-01), pages 191-196,
XP000230962 ISSN: 0140-0118**
- **MUELLER J SETAL: "TWO NOVEL TECHNIQUES
FOR ENHANCING POWERING AND CONTROL
OF MULTIPLE INDUCTIVELY-POWERED
BIOMEDICAL IMPLANTS" IEEE INTERNATIONAL
SYMPOSIUM ON CIRCUITS AND SYSTEMS,US,
NEW-YORK, NY: IEEE, 9 June 1997 (1997-06-09),
pages 289-292, XP000805394 ISBN:
0-7803-3584-8**

Note: Within nine months of the publication of the mention of the grant of the European patent in the European Patent Bulletin, any person may give notice to the European Patent Office of opposition to that patent, in accordance with the Implementing Regulations. Notice of opposition shall not be deemed to have been filed until the opposition fee has been paid. (Art. 99(1) European Patent Convention).

EP 1 398 052 B1

- TOFY MUSSIVAND ET AL: "A
TRANSCUTANEOUS ENERGY AND
INFORMATION TRANSFER SYSTEM FOR
IMPLANTED MEDICAL DEVICES" ASAIO
JOURNAL,US,J.B.LIPPINCOTT CO.,
HAGERSTOWN,MD, vol. 41, no. 3, 1 July 1995
(1995-07-01), pages 253-258, XP000542902 ISSN:
1058-2916

Description

[0001] This invention relates to an ingestible device. In particular the invention relates to such a device in the form of a capsule that is intended to release a controlled quantity of a substance, such as a pharmaceutically active compound, foodstuff, dye, radiolabelled marker, vaccine, physiological marker or diagnostic agent at a chosen location in the gastrointestinal (GI) tract of a mammal. Such a capsule is sometimes referred to as a "Site-Specific Delivery Capsule", or SSDC.

[0002] SSDC's have numerous uses. One use of particular interest to the pharmaceutical industry involves assessing the absorption rate and/or efficacy of a compound under investigation, at various locations in the GI tract. Pharmaceutical companies can use data obtained from such investigations, eg. to improve commercially produced products.

[0003] Several designs of SSDC are known. One design of capsule intended for use in the GI tract of a mammal is disclosed in "Autonomous Telemetric Capsule to Explore the Small Bowel", Lambert et al, Medical & Biological Engineering and Computing, March 1991. The capsule shown therein exhibits several features usually found in such devices, namely:

- a reservoir for a substance to be discharged into the GI tract;
- an on-board energy source;
- a mechanism, operable under power from the energy source, for initiating discharge of the substance from the reservoir;
- a switch, operable remotely from outside the body of the mammal, for initiating the discharge; and
- a telemetry device for transmitting data indicative of the status, location and/or orientation of the capsule.

[0004] Also, of course, the dimensions of the capsule are such as to permit its ingestion via the oesophagus; and the external components of the capsule are such as to be biocompatible for the residence time of the capsule within the body.

[0005] The capsule disclosed by Lambert *et al* suffers several disadvantages. Principal amongst these is the complexity of the device. This means that the capsule is expensive to manufacture. Also the complexity means that the capsule is prone to malfunction.

[0006] For example, the capsule disclosed by Lambert *et al* includes a telemetry device that is initially retracted within a smooth outer housing, to permit swallowing of the capsule via the oesophagus. Once the capsule reaches the stomach, gastric juice destroys a gelatin seal retaining the telemetry device within the housing. The telemetry device then extends from the housing and presents a rotatable star wheel that engages the wall of the GI tract. Rotations of the star wheel generate signals that are transmitted externally of the capsule by means of an on-board RF transmitter powered by a battery within the capsule housing.

[0007] This arrangement may become unreliable when used in mammals whose GI motility is poor or whose gastric juice composition is abnormal.

[0008] There is a risk of malfunction of the rotating part of the telemetry device, and the method of operation of the capsule is generally complex.

[0009] The space needed to house the telemetry device within the capsule during swallowing/ingestion is unusable for any other purpose when the telemetry device is extended. Therefore the Lambert *et al* capsule is not space-efficient. This is a serious drawback when considering the requirement for the capsule to be as small as possible to aid ingestion.

[0010] Also the Lambert *et al* disclosure details the use of a high frequency (>100 MHz) radio transmitter for remotely triggering the release of the substance from the capsule into the GI tract. The use of such high frequencies is associated with disadvantages, as follows:

When power is transmitted to the capsule whilst it is inside the GI tract the energy must pass through the tissue of the mammal that has swallowed the capsule. The transmission of this power through the body of the mammal may result in possible interactions with the tissue which at some power levels may lead to potential damage to that tissue.

The higher the frequency of energy transmission the higher the coupled power for a given field strength. However, as the frequency is increased the absorption of the energy by the body tissue also increases. The guidelines for the exposure of humans to static and time varying electromagnetic fields and radiation for the UK are given in the National Radiological Protection Board (NRPB) publication "Occupational Exposure to Electromagnetic fields: Practical Application of NRPB Guidance" NRPB-R301. This describes two mechanisms of interaction: induced currents and direct heating measured in terms of the SAR (specific energy absorption rate). In general terms the induced

current dominates up to 2MHz above which the SAR effects take over.

[0011] "Equipment and Methodology for Relating Gastrointestinal Absorption to Site of Drug Release", Eriksen et al, Journal of Pharmaceutical Sciences 50 [1961] pp 151-156, discloses another ingestible device used in laboratory experiments.

[0012] There are various possible approaches to providing an on-board energy source for the device.

[0013] In general terms to accomplish sufficient force and movement to expel the drug within a few seconds requires forces in the range 2 to 20N over distances of 2mm to 20mm. This typically amounts to a mechanical power level in the order of 0.1 W or an energy of 0.1J. If the energy were stored in electrical form and used to drive an electromechanical actuator of simple form then typically the conversion efficiency would be less than 10%. An electrical energy storage system would then require to store 1J of energy and deliver it at 1W power. Micro-batteries as used in watches are of the necessary size and store easily sufficient energy; however they can only deliver that power at milliwatt rates. Capacitors however can deliver their energy at the required power levels but within the size constraint can only store millijoules of energy.

[0014] Several other forms of energy storage are theoretically possible including

- Chemical gas generation
- Compressed nitrogen or air
- Liquified propellant fluids (eg. N₂O, butane/propane, HFA's)
- Springs
- Chemical heat generation

[0015] Chemical storage has potentially the highest energy density, but introduces issues associated with chemical compatibility, stability, triggering and toxicological safety.

[0016] Within the available space constraints there is sufficient volume to store the required energy either in springs or as a compressed gas, eg. air both of which forms are possible as the energy can be released directly in the desired form of a force acting to cause mechanical motion. However the complexity of a device including a compressed air source may militate against its use.

[0017] According to a first aspect of the invention there is provided a device as claimed in Claim 1.

[0018] Another device according to a second aspect of the invention is defined in Claim 4, and a device according to a third aspect of the invention is disclosed in Claim 11.

[0019] Preferred features of the first, second and third aspects of the invention are defined in the claims depending from Claims 1, 4 and 11.

[0020] One preferred embodiment of the device includes a coil spring which operates to move a piston to expel the drug from inside the capsule through an opening at the other end of the capsule. An example of the dimensions and components that could be used would be for a volume of 1 ml available to contain the drug in the form of a cylinder 9mm in diameter and 16mm long. A coil spring of 8mm outer diameter compressed to a length of 4.6mm could exert an initial force of over 1kg and have a residual force of 0.2kg after it has travelled the 16mm.

[0021] There now follows a description of preferred embodiments of the invention, by way of non-limiting example, with reference being made to the accompanying drawings in which:

Figure 1 is a perspective, partly sectioned view of an ingestible device;

Figures 2a and 2b are, respectively, block diagram and schematic views of a receiver-transmitter circuit forming part of the Figure 1 device;

Figure 3 shows one embodiment of antenna for use in the Figure 1 device, including an antenna wire coiled about the capsule wall;

Figure 4 shows an alternative antenna, including an antenna wire coiled about a ferrite core within the device;

Figures 5a and 5b are, respectively, side elevational and plan views of an apparatus for generating an oscillating, axial magnetic field;

Figure 6 shows, schematically, a preferred embodiment of oscillating field generator;

Figure 7 shows a further embodiment of oscillating field generator;

Figures 8a and 8b are, respectively plan and cross-sectional views of a restraint and switch combination before actuation of the switch;

Figures 9a and 9b are views, corresponding to the Figure 8 views, after actuation of the switch;

Figures 10 to 12 show three kinds of energy source, according to the invention, in the form of compression springs; Figure 13 shows a restraining ring for retaining moveable components of the device within its housing, after dispensing of a substance;

Figures 14a and 14b show further springs suitable for use as the energy source;

Figure 15 is a plot comparing the force applied by springs, such as those shown in Figures 14a and 14b, against a force resisting opening of the reservoir;

Figure 16 is a cross sectional view of one form of piston suitable for use in the capsule of the invention;

Figure 17 is a similar view of another form of piston;

Figures 18 and 19 show stages in the assembly of part of a device according to the invention, including a piston such as that shown in Figures 16 or 17; and a lost motion arrangement for breaking the breakable link on the pcb forming part of the device;

Figures 18 and 19 show steps in the assembly of the device; and

Figures 20 and 21 show two faces of a printed circuit board, forming part of the device, in plan view.

[0022] Referring to the drawings there is shown an ingestible device 10.

[0023] The overall envelope of the device 10 has been designed to be compatible with swallowing and smooth passage through the GI tract. To support this requirement the outer housing 11 of device 10 is smooth with no sharp edges and preferably has at least one end rounded as shown at 11a to facilitate swallowing. The diameter of the capsule preferably does not exceed 12mm and the length preferably does not exceed 35mm. The precise dimensions represent an optimisation between overall capsule size and the volume of a non-therapeutic, non-diagnostic substance containing reservoir 12. In a preferred embodiment for a drug volume of 1.1 ml the reservoir 12 has a diameter of 11mm and length 32mm. The rounded end 11a can range between a hemispherical profile and a flat end with a 2mm radius corner.

[0024] Reservoir 12 has a cylindrical interior and is open at one end 13 located at the opposite end of device 10 to rounded end 11a. Before use of the device 10 open end 13 of reservoir 12 is sealed against leakage of the contents of the hollow interior of reservoir by a closure member in the form of bung 14. Bung 14 is removable from open end 13, in a manner described below, to permit expulsion of the contents from the interior of reservoir 12. Thus if reservoir 12 is charged, before insertion of bung 14 with a substance which may be eg. in liquid or powder form, the substance may be released into the GI tract on operation of the device as described below.

[0025] The removal of bung 14, in use of the apparatus in the GI tract of a mammal, from open end 13 is by virtue of selectively controlled pressurising of the interior of reservoir 12.

[0026] This is achieved through the action of an actuator mechanism in the form of a cylindrical piston 16 that is sealingly slideable along the interior of reservoir 12 under power from an energy source (eg. a stored energy device that is, for clarity, omitted from Figure 1).

[0027] The interior of device 10 on the side of piston 16 remote from reservoir 12 is generally hollow. Thus the energy source may in preferred embodiments take the form of a compressed spring whose spring force acts between eg. the rear face of piston 16 and a shoulder defined by an annular or part-annular rib 17 that is integral with and hence fixed relative to the housing 11.

[0028] The hollow interior of device 10 includes a shaped space or recess 22 for receiving a radioisotope tag (not visible in the drawings) that may be used for tracking progress of the device 10 along the GI tract, eg. using *per se* known Gamma scintigraphy techniques.

[0029] The device 10 includes a releasable latch that operates to latch the energy source in a potential energy state until a chosen time.

[0030] In the Figure 1 embodiment the latch is in the form of an anchor 18, secured relative to piston 16, for a thread 19 made of or at least including a sharp melting point material; and a heater 20 whose function is to heat the thread and melt it or at least cause a dramatic increase in its ductility at a chosen time.

[0031] More specifically, in the preferred embodiment anchor 18 includes a tubular sleeve 21 one end face of which is rigidly secured to the rear face 16a of piston 16, such that the elongate axis of sleeve 21 is generally perpendicular to rear face 16a.

[0032] The hollow interior of sleeve 21 opens at the end of sleeve 21 remote from piston 16.

[0033] Sleeve 21 includes an elongate perforation 23, whose elongate axis is generally parallel to the elongate axis of sleeve 21, passing through the wall of sleeve 21 as shown. A similar perforation passes through the wall of sleeve 21 on the opposite side thereof.

[0034] An elongate cylindrical anchor member 24 is slideably received at either end in the respective perforations, whereby the elongate axis of the anchor member is generally perpendicular to the elongate axis of the sleeve 21.

[0035] The diameter of anchor member 24 is less than the width of each perforation, whereby anchor member may be slid into place as shown, during assembly of device 10.

[0036] Anchor member 24 has firmly secured thereto one end of thread 19. Thread 19 passes through the hollow interior of sleeve 21 and emerges at the free end thereof, from where it passes through an aperture 25b in a printed

circuit board (pcb) 25. Pcb 25 is in the form of a disc secured against the side of annular rib 17 remote from reservoir 12. Thread 19 is firmly secured to the surface 25a of pcb that is remote from reservoir 12. Surface 25a also mounts heater 20 in the form of a resistor. Thread 19 passes over heater 20 between the aperture and the attachment point of thread 19 to the pcb 25a.

[0037] If as disclosed hereinabove a compression spring (not shown in Figure 1) acts between the rib 17 and piston 16, on assembly of device 10 sleeve 21 will be forced, by virtue of its attachment to piston 16, towards reservoir 12 until anchor member 18 engages the end of each perforation 23 remote from piston 16, causing thread 19 to become taut and thereby preventing the further travel of piston 16 towards bung 14 while thread 19 is intact. The tension in thread 19 draws pcb 25 hard against rib 17, thereby optionally obviating the need for further restraint of pcb 25.

[0038] Pcb 25 includes a tuned receiver of externally applied radiation whereby on the device passing through an electromagnetic field of the frequency to which the receiver is tuned, a current is induced that is fed to resistor heater 20. The heat from the heater 20 melts or renders highly ductile the thread 19, whereby piston 16 becomes free to move towards bung 14 powered by the energy stored in the spring.

[0039] Regardless of whether the substance in reservoir 12 is a liquid, a suspension, a solution a powder or even, in some embodiments of the invention, a solid, the action of piston 16 pressurises the interior of reservoir 12 until bung 14 is forced partly or completely out of open end 13 of reservoir 13. The substance when in solid form may include, but is not limited to, mini-tablets, pellets and cyclodextrin complexes, especially cyclodextrin complexes supporting further substances.

[0040] Since the interior of reservoir 12 is by then pressurised its contents are then expelled rapidly from within the device 10.

[0041] Thus if the electromagnetic field is applied when the device 10 is, following ingestion via the oesophagus, at a preferred location in the GI tract, site-specific drug delivery may be readily and rapidly achieved using a simple, reliable mechanism.

[0042] Figures 2a and 2b show the receiver and transmitter circuits 27, 28 of device 10 in more detail.

[0043] The receiver includes a coupling coil 29, described in more detail below, designed to couple as much energy as possible from a magnetic field incident on the device 10 while it is in the GI tract.

[0044] Coil 29 is connected to a tuner 30, that tunes the resonant frequency of the receiver and includes one or more tuning capacitors C₁, C₂ connected in parallel in a *per se* known manner.

[0045] Tuner 30 is connected in series with resistor R₁ defining heater 20 that is mounted on the surface 25a of pcb 25, in contact with thread 19.

[0046] In the initial condition of the device 10 resistor R₁ is connected in series with the remainder of receiver circuit 27 by means of a short circuit line 32 including a breakable link 31.

[0047] Pcb 25 also includes a transmitter 28.

[0048] Transmitter 28 includes a rectifier 33 that rectifies the oscillating currents in receiver 27 when the transmitter becomes operational. Transmitter 28 includes a *per se* known Hartly oscillator including oscillator feedback capacitor C₃; transmitter frequency determining capacitors C₄ and C₆; d.c. supply capacitor C₅; biasing resistors R₂, R₃ and R₄; and switching transistor Q₁. The outputs of the frequency determining parts C₄, C₆ of the oscillator are transmitted externally of the mammal by series antennae 34, 35. Transmitter 28 may optionally include a transmitter coil similar to or constituted by coil 29.

[0049] Line 32 initially isolates transmitter 28 from any current induced in receiver 27, until breakable line 31 is broken in a manner described below. At that point direct current, rectified by rectifier 33, flows in transmitter 28 and produces an oscillating output by virtue of the presence of the Hartly oscillator circuit.

[0050] The values of receiver tuning capacitors C₁ and C₂ and the oscillator frequency determining capacitors C₄ and C₆ are chosen so that the resonant frequency of receiver circuit 30 is distinct from the output frequency of the transmitter 28, thereby avoiding confusion between the fields input to and output by the device 10.

[0051] Referring now to Figure 3 one arrangement of the receiver coupling coil 29 is shown, in which the coiled antenna wire 29 is embedded in the cylindrical outer wall of the housing 11 of the device 10. This arrangement is advantageously space-efficient and provides an air core for the wire 29.

[0052] In the preferred embodiment the diameter of the coil defined by wire 29 is 8-12mm; and the length 1 from one end to the other of the coil is 10-20mm. The preferred wire diameter is 0.1mm-0.3mm and the antenna coil preferably has 60-100 turns.

[0053] Figure 4 shows an alternative embodiment of the device 10 in which the receiver coil 29a includes a ferrite core 36.

[0054] The ferrite core and coil form a central axial rod rigidly connecting the two discs 16a, 16b to define a bobbin-like member. The discs 16a, 16b have sliding seals 16c that slide along the hollow interior of the capsule body. The space between the discs 16a, 16b forms the reservoir 12 for the substance 12a to be dispensed. The disc 16a adjacent to the pcb 25 acts as the piston and the disc 16b at the other end acts as a cap. A compression spring 50 acts between pcb 25 and disc 16a and tends to drive the bobbin-like structure out of the openable end 11a of the housing 11. A latch

and actuator mechanism similar to those of Figure 1 temporarily prevent expulsion of the bobbin-like structure and hence the substance 12a, in a manner similar to that described hereinabove in relation to Figure 1.

[0055] The tuning components and the latch mechanism are mounted on the bobbin separated from the substance to be released by the lower disc and seal or may be on the capsule body 11 and connected to the bobbin by fine wires. After the latch is activated and the spring 50 is released the whole of the bobbin is slid out of the open capsule end. This avoids the need to pressurise the capsule to push off the cap.

[0056] Since the ferrite core 36 couples the magnetic flux more efficiently than the air core shown in Figure 3, the coil 29a in Figure 4 can be made of smaller diameter than the Figure 3 coil. Consequently the ferrite-cored coil 29a may be located as a discrete component within housing 11, as shown.

[0057] Regardless of the precise design of the coil 29, the loops thereof preferably are spaced from any fluid within or surrounding the device by a distance of 0.1mm to 1mm. This minimises the capacitance effects of neighbouring fluids while maintaining compactness of the device 10. The ferrite core (when present) may be similarly isolated from fluids. The isolation may arise because of a coating on the outer surface of the coil/core combination 29a, 36 of Figure 4.

[0058] In the Figure 4 embodiment the ferrite core 36 includes an axial bore. The thread 19 extends along the bore and is anchored as shown to disc 16b.

[0059] Figures 5a and 5b show a simplified form of an external field generator 40 for transmitting power to a device such as, but not limited to, device 10 of Figure 1.

[0060] The field generator 40 includes a support in the form of a box-like housing 41 for each of a pair of field coils 42.

[0061] The pair of coils 42 are in juxtaposition to one another and preferably but not essentially are dimensioned to define a Helmholtz pair. The location of and the spacing between the coils are such that, on positioning of a mammal between the coils, the coils lie on opposite sides of the abdomen of the mammal.

[0062] The coils 42 are each connected to a source of oscillating electrical energy in the form of oscillator 43.

[0063] Thus a device 10 in the GI tract can be activated by the field generator 40 when the abdomen of the mammal is between the juxtaposed coils 42 and the oscillator switched on.

[0064] The radius r of each coil 42 is the same in the preferred embodiment shown. The spacing s between the coils is between one and four times, and especially twice, the radius r . In the Figure 5 embodiment $s \approx 500\text{mm}$, but other embodiments in which $400 < s < 800\text{mm}$ are believed to offer good field generation while providing sufficient space between the coils 42 to accommodate the mammal. Obviously when the spacing s does not equal the radius r , the coils do not function as a Helmholtz pair.

[0065] The foregoing features confer advantages as disclosed hereinabove.

[0066] As noted hereinabove, the field generator 43 preferably generates a field that oscillates in the frequency range 1MHz-14MHz, and more preferably in the range 1MHz-3MHz.

[0067] The field coils generate, *inter alia*, a near field magnetic field. This has a large energy content which is continually being exchanged between the field and the current in the coils. However, apart from resistive losses, no power is used to maintain this field until the receiver coil interacts with the field to extract energy. In this way the system is more like an air cored transformer rather than a radio transmitter.

[0068] The housings 41 for the coils 42 optionally include shielding. The function of the shielding is to provide a primary safety earth screen around the field coils to protect persons touching any exposed conductors resulting from mechanical damage to the insulation. The shielding is such as to avoid forming closed loops through which the field passes since these will induce current flow and reduce the field levels generated by the coils.

[0069] The shielding may also be used to reduce the magnitude of the electric field outside the shielding generated by the coils and also the radio wave that is generated along with the magnetic field. This is advantageous in reducing any effect on other electronic equipment in the vicinity of the device. Should additional shielding be required then the coils, the oscillator and the user of the capsule could all be contained within an earthed mesh containment room or cubicle.

[0070] In addition the driver circuit for the coils 42 may include a capacitor oscillator that is separately connectable to each of the coils when the current supply to it is switched off. The inclusion of such an oscillator changes the resonant frequency of the said coil, thereby reducing or preventing resonance coupling from a further said coil when the generator is active to energise the further coil.

[0071] Referring now to Figure 6 there is shown a further, and presently more preferred, embodiment of field generator 40 in which there are three pairs of the field coils 42. In Figure 6 the pairs are arranged to generate three mutually skewed, and, more particularly, mutually orthogonal, oscillating magnetic fields, by virtue of arrangement of the coils as faces of a cube.

[0072] The pairs of coils are in Figure 6 labelled according to the following key:

Coil	Cube Face
$C_{z1}, + C_{z2}$	top and bottom faces

(continued)

Coil	Cube Face
$C_{x1} + C_{x2}$	side faces
$C_{y1} + C_{y2}$	front and back faces

[0073] To enable a person to stand within the coils a spacing s between juxtaposed coils 42 of between 400mm and 800mm is appropriate.

[0074] In the Figure 6 embodiment the respective coils 42 may if desired be secured in a framework, that may also if desired support the shielding visible in Figure 5, whereby a mammal may stand, sit or lie in the region between the coils.

[0075] The framework may support at least one of the coils in a moveable fashion (eg. in a removable or hinged door or panel). This facilitates access to the inter-coil space, and in some embodiments permits adjustment of the spacing between the coils 42.

[0076] The framework is omitted from Figure 6 for clarity.

[0077] In Figure 7 there is shown another arrangement of the coils 42. In Figure 7 the components are functionally similar to their counterparts in Figure 6, but the coils of pair C_{z1} , C_{z2} are formed as flat circular coils, whereas the coils C_{x1} , C_{x2} , C_{y1} and C_{y2} define arcuate planes that confer on the coil array as a whole a hollow cylindrical shape. This arrangement of coils may be supported on a frame as in the Figure 6 embodiment; or may if desired be supported on a wearable garment 41 a schematically illustrated by dotted lines in Figure 7.

[0078] Regardless of the precise arrangement of the coils the embodiments of Figures 6 and 7 generate three mutually orthogonal, oscillating magnetic fields the flux lines at least one of which will intersect the antenna 29 of the device 10, regardless of the orientation of the device 10 in the GI tract. Thus the energy in the magnetic field is efficiently transmitted to the device 10 to power its operation.

[0079] The field generators of Figures 6 and 7 may of course include one or more of the aforesaid capacitor oscillators each connectable to a respective said coil 42 to prevent resonance coupling when the field generator is switched off.

[0080] The coils 42 in the preferred embodiments each include eg. 1-4 turns of a large diameter (6mm diameter) hollow copper conductor with a wall thickness of 1mm.

[0081] Figures 8 and 9 show a mechanism for initiating transmission of a signal, by transmitter 28, indicative of discharge of the substance from reservoir 12 into the GI tract.

[0082] Figures 8 and 9 show some of the components of device 10 (with others removed for clarity) in the vicinity of piston 16 and pcb 25.

[0083] Figures 8 and 9 schematically show the spring 50 (not visible in Figures 1 and 2), that acts between rib 17 and the rear face 16a of piston 16 to provide an on-board energy source for powering movement of piston 16, in respectively its compressed (Figure 8) and uncompressed (Figure 9) conditions.

[0084] Sharp phase change thread 19 and heater resistor 20, forming part of the thermally actuated latch arrangement visible in Figure 1, are omitted from Figures 8 and 9. However, the effect of delatching of the latch is evident in these figures in the release of the spring 50 to drive the piston 16.

[0085] A restraint, in the form of a further, essentially non-fusible thread 51, interconnects rear face 16a of piston 16 and rear face 25a of pcb 25, by passing through central aperture 25b of pcb 25.

[0086] Non-fusible thread 51, on exiting aperture 25b on rear face 25, is looped through the wire defining breakable link 31 shown schematically in Figure 2. Non-fusible thread 51 is firmly anchored to rear face 25a at a location 52 spaced laterally from breakable link 31.

[0087] When thread 19, which may also pass through aperture 25b as shown in Figure 1, is taut as shown in Figure 1, non-fusible thread 51 is loose as a result of being significantly longer than thread 19.

[0088] When thread 19 fuses and releases the energy in spring 50, thread 51 rapidly tightens. As it does so it moves laterally in the vicinity of breakable link 31 so that it instantaneously ruptures link 31 to form unconnected link parts 31a and 31b (Figure 9a). This connects the transmitter and receiver circuits together as previously described, so that the device 10 emits a signal indicative of expulsion of the substance from reservoir 12.

[0089] The amount of slack in thread 51 in the pre-expulsion condition (Figure 8) is adjustable by choosing the length of thread 51. Thus the precise moment of rupturing of link 31, corresponding to a chosen point in the travel of piston 16, is adjustable.

[0090] The thread 51 may also serve as a limit or restraint to movement of the piston 16, in the sense that when thread 51 tightens as shown in Figure 9 it prevents further movement of piston 16. This ensures that piston 16 and spring 50 are retained within device 10 even after expulsion of the substance.

[0091] Where thread 51 is used both to rupture the link and restrain the piston a means is required to set the amount of movement of the piston which causes the link to rupture. This may be achieved by positioning the link so that as the

thread tightens the force is applied at the appropriate time; or by attaching the thread to the link with adhesive at the appropriate location. It may also be preferable to use a restraining thread which has a higher temperature tolerance than the latch thread to ensure that even if the device is kept in a high field environment for a long time after operating there is no possibility that the restraining thread could be broken by the temperatures reached. A suitable thread could be

made from materials such as kevlar, tungsten or carbon fibre.

[0092] An alternative restraint for the moveable parts, of device 10, is shown in Figure 13.

[0093] Figure 13 shows a portion of the housing 11 of the Figure 3 device 10 (having an air cored coil). The piston 16 is visible at the end of its travel, following expulsion of the substance 12a from within the reservoir 12.

[0094] A restraining ring 75 is secured on an inwardly directed shoulder 76 formed in the inner wall of housing 11 a short distance from the open end 13 of device 10. Ring 75 effectively reduces the diameter of the interior of housing 11, near to open end 13, to the extent that piston 16 is retained within reservoir 12 after use of the device 10.

[0095] The edge 75a of ring 75 facing piston 16 is chamfered to reduce the impact force arising from contact of the piston 16 and ring 75. The chamfer shown at 75a also applies both axial and radial forces to the piston 16.

[0096] The ring 75 may be manufactured from the same material as housing 11, in which case ring 75 may be welded, eg. using a solvent welding technique, to the housing 11.

[0097] When the material of ring 75 differs from that of housing 11, glue bonding may be used instead to secure the ring in place.

[0098] As noted hereinabove, when the energy source is configured as a spring, it is desirable that the spring force is linear for as much of its travel as possible.

[0099] The requirement is also to achieve a specific force profile using a compression spring which cannot exceed given dimensions, as follows:

Force Profile

Force at full compression sufficient to unstick piston	> 10N to 30N
Force after 10mm travel sufficient to remove the bung 14	> 5N to 15N

Space Constraints

Outer diameter	< 9mm
Inner diameter	> 4mm
Length (as small as possible)	< 6mm

[0100] A number of approaches have been identified:

1) Single Compression Spring as shown in Figure 10

[0101] A *per se* single coil spring as shown in Figure 10a may not utilise the available space efficiently, as only the outer annulus can be used.

[0102] Since the spring only has to work once in the device 10 it can be designed with its stress load close to its yield point. The preferred spring therefore has a higher than usual helical angle and thicker wire size than available in standard springs. The Figure 10b spring 50, according to the invention, has a helical angle α_2 , of 15° and a wire thickness t of 0.8mm. As illustrated the angle α_2 , in the Figure 10b spring is greater than the helical angle α_1 of the Figure 10a spring.

2. Two Concentric Compression Springs as shown in Figures 11a (elevational view) an 11b (plan view)

[0103] Two compression springs 50a, 50b with one inside the other make better use of the available space. The spring diameters need to be chosen to ensure free movement relative to each other and the neighbouring parts of device 10. If the clearance is small then winding one coil clockwise and the other anti-clockwise will reduce the risk of adverse interaction between them. Spring 50a is in Figure 11 wound clockwise and spring 50b is wound anticlockwise for this reason. Where sufficient clearance is available springs wound in the same direction could be used. This permits the use of standard springs rather than custom ones.

[0104] Figures 14a and 14b show respectively the outer spring 50a and the inner spring 50b used in a preferred form of the Figure 11 spring arrangement.

[0105] As is conventional in compression springs, each spring 50a, 50b defines a hollow, cylinder-like shape. The inner diameter of spring 50a is greater than the outer diameter of spring 50b, whereby spring 50b is insertable with clearance into spring 50a to define a composite spring similar to that shown in Figure 1.

[0106] The springs 50a and 50b are each wound in the same direction, and are made from so-called "piano wire" or "music wire". This material has a high energy storage characteristic suitable for use in the capsule 10.

[0107] Each spring 50a, 50b is coated with an insulator over at least part of and preferably all its length, to insulate the springs from one another in use and thereby reduce the chance of the springs creating an electrical or magnetic closed ring ("shorted turn") capable of coupling some of the energy of the electromagnetic field intended for coupling by the receiver 59.

[0108] Food grade PTFE ("Teflon" RTM) is the preferred coating since it is biocompatible and absorbs little of the spring energy.

[0109] The terminus 50c at each end of each wire defining a said spring 50a, 50b is truncated to ensure that the terminal coils of the springs also do not form any closed rings that would undesirably couple energy from the energised field. In addition each terminal portion 50c is ground or otherwise formed flat (ie. flush with the next adjacent coil) so that in use of the springs 50a, 50b within capsule 10 they push the piston 16 evenly and without buckling.

[0110] The springs 50a, 50b are compressible such that the compressed length of each spring is about $\frac{1}{3}$ the length of its uncompressed state, that in the preferred embodiment is about 32mm. These dimensions allow for a sufficiently high spring force to act over the entire length of movement of piston 16.

[0111] Figure 15 is a plot of the spring force applied by a composite spring such as shown in Figure 11 or Figures 14a and b, against its extension. Figure 15 also plots the resistive force offered by a bung such as bung 14 including a rolling O-ring seal. As is evident from Figure 15, although the spring force declines during extension of the spring, during travel of the piston the spring force always exceeds the prevailing resistive force, even when the latter rises to a maximum on opening of the reservoir 12 as noted in Figure 15.

3. Wavy Springs as shown in Figures 12a and 12b

[0112] Thin washers 55 plastically deformed in circumferential waves act as compression springs. Multiple washers 55 welded peak to peak as shown can give the required extension.

[0113] Performance can be superior to a coil spring in this application as more of the available space can be utilised. Thus, for example, a 0.25mm thick annular washer with o.d. 8.5mm and i.d. 4.5mm could be formed to have 3 circumferential waves with a peak to peak height of 2mm. Welding 16 of these together at their peaks in the manner shown forms a wavy spring with a compressed length of 4mm, an extended length of 32mm and a force profile superior to a coil spring in the available space.

[0114] Figure 12a shows such a spring in the uncompressed state; and Figure 12b shows the spring when it is compressed, prior to expulsion of the substance 12a from the reservoir 12.

[0115] Figures 16 and 17 show embodiments of the piston 16 used to expel the contents of reservoir 12 of capsule 10.

[0116] The piston 16 of Figure 16 is intended for use when the reservoir 12 is charged with a substance in liquid form.

[0117] At its end 161 facing the interior of reservoir 12 piston 16 of Figure 16 includes an annular lip 160 that is upstanding from the periphery of end 161.

[0118] Lip 160 tapers in the direction leading away from piston 16. At least lip 160, and in practice other parts of piston 16, are formed from a flexible material whereby in use of the piston 16 the outer periphery of lip 160 slidably seals against the inner, cylindrical surface of the reservoir 12.

[0119] The tapered shape of lip 160 has been found to be particularly suited to the expulsion of liquid substances, since the lip is comparatively rigid. This confers good sealing properties, that prevent leakage of the liquid substance behind the piston.

[0120] Figure 17 shows a similar piston 16 including a lip 162 that is parallel sided. Such a lip is particularly suited to the expulsion of powdered or granular substances, that require higher expulsion forces. The use of the parallel sided lip 162, that is more flexible than the tapered lip 160, reduces friction between the piston 16 and the reservoir 12 and hence assists expulsion of the powdered substance. Clearly when expelling a powdered substance there is a reduced need for liquid-tight sealing between the piston 16 and reservoir 12.

[0121] In both embodiments the recessed nature of face 161 relative to the lip increases the quantity of the substance containable within reservoir 12.

[0122] Figures 18 and 19 show a device, such as device 10 of Figure 1, in a state of partial assembly in order to illustrate a lost motion arrangement for breaking the breakable link 31 of pcb 25.

[0123] As shown, device 10 has inserted in reservoir 12 a piston 16 that typically is as shown in Figure 16 or Figure 17.

[0124] Extending transversely through the aperture in piston 16, anchor member 24 has secured thereto the thread 19 that passes through an aperture in pcb 25 to contact heater resistor 20 on the opposite side of pcb 25 to that of piston 16.

[0125] In the partly assembled condition shown in Figure 18 the springs 50a and 50b, that typically are as shown in Figures 14a and 14b, are installed reacting between the rib 17 and piston 16, thereby drawing thread 19 taut and holding pcb 25 hard against the opposite side of rib 17.

[0126] A non-fusible thread 51, that in the preferred embodiment is made of silk, is looped around the anchor pin 24 and protrudes through the aperture in the rear face of piston 16 remote from face 161.

[0127] Both the free ends 51a, 51b of the flexible thread 51 pass through the aperture in pcb 25; and one, 51a of the

ends passes under link 31 that forms a bridge interconnecting two parts of the surface of pcb 25.

[0128] Subsequently during manufacture of the device 10, the ends 51a, 51b are tied together, as shown in Figure 19, in a firm knot 51c so that thread 51 forms a loop that is interlooped with link 31. Knot 51c is sealed with eg. cyanoacrylate or another biocompatible adhesive.

[0129] The length of thread 51 in its looped form is such that, before expulsion of the substance, the looped thread lies slack. Consequently it allows eg. 5mm of movement of piston 16 away from pcb on melting of thread 19. Thus thread 51 and link 31 constitute a switch for switching the transmitter 28. The thread 51 is a switch member that interconnects the actuator mechanism and the switch, such that operation of the actuator mechanism causes the switch member to operate the switch.

[0130] The approximately 5mm of free travel of the piston, before the thread 51 ruptures the link 31, constitutes a lost motion arrangement in which the slackness of looped, tied thread 51 confers the lost motion characteristic.

[0131] Referring now to Figures 20 and 21 there are shown respectively the upper and lower faces 25a and 25b of pcb 25 shown in Figures 18 and 19.

[0132] As is evident from Figures 20 and 21 the through-going aperture 25c in pcb through which flexible threads 19 and 51 pass is essentially U-shaped, defining an elongate projection 180 of pcb material.

[0133] As is evident from Figure 20 heater resistor 20 is secured on projection 180. This arrangement facilitates assembly of the device 10 since it is an easy matter, on compression of springs 50a and 50b, to pass thread 19 over projection 180 to engage resistor 20.

[0134] As is evident from the labelling of the components in Figures 20 and 21 the resistors of the receiver and transmitter lie respectively on opposite surfaces 25a and 25b of pcb 25. This assists in dissipation of heat from the pcb. Of further assistance in dissipating heat is the perforating of the pcb 25 in the vicinity of each resistor.

[0135] In use of the device 10 the reservoir 12 is charged with a non-therapeutic, non-diagnostic substance to be released and the latch set. These steps can take place during or after manufacture of the device 10, depending on the precise design of the device and its intended use.

[0136] Following such preparation the device 10 is ingested by a mammal under investigation. Its progress along the GI tract is monitored, eg. using a tracking technique as disclosed herein. When the device 10 reaches a chosen location in the GI tract an apparatus such as that shown in Figures 5, 6 or 7 is operated to activate the device 10. The device 10 expels the substance 12a from reservoir 12 and the transmitter sends a signal that may be detected and processed as desired by external circuitry.

[0137] The substance 12a typically may be a non-therapeutic, non-diagnostic substance whose efficacy at the chosen GI tract site is under investigation. Alternatively, in uses of the apparatus not forming part of the invention as claimed, the substance 12a may be a therapeutic or diagnostic agent.

Claims

1. An ingestible device (10) for delivering a substance to a chosen or identifiable location in the alimentary canal of a human or animal, comprising
 - an openable reservoir (12), for the substance, that is sealable against leakage of the substance;
 - an actuator mechanism (16) for opening the reservoir (12);
 - an energy source (50), operatively connected for powering the actuator mechanism;
 - a releasable latch (18, 19, 20) for controllably switching the application of power to the actuator (16) from the energy source (50); and
 - a receiver (27) of electromagnetic radiation, for operating the latch (18, 19, 20) when the receiver detects radiation within a predetermined characteristic range;
 - the energy source including a compressed spring (50) that is capable of acting on the actuator mechanism (16) the expansion of the spring (50) being initiatable by the latch (18, 19, 20) and the work of the expansion of the spring (50) causing operation of the actuator mechanism, **characterised in that** the spring (50), in its uncompressed state, is of a hollow, cylinder-like shape and **in that** the helical angle subtended between adjacent coils of the spring is a minimum of 15°.
2. A device according to Claim 1 wherein the spring (50) includes a wire whose diameter is approximately 0.8mm.
3. A device according to Claim 1 or Claim 2 wherein the spring defines a hollow cylinder.
4. An ingestible device (10) for delivering a substance to a chosen or identifiable location in the alimentary canal of a human or animal, comprising
 - an openable reservoir (12), for the substance, that is sealable against leakage of the substance;

an actuator mechanism (16) for opening the reservoir (12),
 an energy source, operatively connected for powering the actuator mechanism;
 a releasable latch (18, 19, 20) for controllably switching the application of power to the actuator (16) from the energy
 source; and

a receiver (27) of electromagnetic radiation, for operating the latch (16) when the receiver detects radiation within
 a predetermined characteristic range;

the energy source including a compressed spring (50a, 50b) that is capable of acting on the actuator mechanism
 (16) the expansion of the spring being initiatable by the latch (18, 19, 20) and the work of the expansion of which
 causes operation of the actuator mechanism (16), the spring (50a, 50b) including a pair of wires each coiled in loops
 to define a pair of hollow cylinder-like shapes, a first said cylinder-like shape being of a greater internal diameter
 than the outer diameter of the second said cylinder-like shape and the first cylinder-like shape encircling the second
 cylinder-like shape, **characterised in that** each spring of the said pair is coated with an insulator over at least part
 of its length, to insulate the springs from one another in use.

5. A device according to Claim 4 wherein the wire of the first cylinder-like shape is looped in a clockwise direction and
 the wire of the second cylinder-like shape is looped in an anticlockwise direction; or *vice versa*.

6. A device according to Claim 4 wherein the wires of the first and second cylinder-like shapes are wound in the same
 direction.

7. A device according to any of Claim 4 to 6 wherein the first and second cylinder-like shapes are spaced from one
 another in the radial direction of the spring cross section.

8. device according to any of Claims 4 to 7 wherein the ends of the wires defining each said wire are flush with the
 adjacent loops thereof.

9. A device according to any of Claims 4 to 8 wherein the compressed length of the spring (50a, 50b) is approximately
 $\frac{1}{3}$ of its length in the uncompressed condition.

10. A device according to any of Claims 4 to 9 wherein the force applied by the spring (50a, 50b) to the actuator
 mechanism (16) exceeds the maximum resistive force resisting operation of the actuator (16), at the time when the
 maximum resistive force applies.

11. An ingestible device (10) for delivering a substance to a chosen or identifiable location in the alimentary canal of a
 human or animal, comprising

an openable reservoir (12), for the substance, that is sealable against leakage of the substance;

an actuator mechanism (16) for opening the reservoir;

an energy source, operatively connected for powering the actuator mechanism (16);

a releasable latch (18, 19, 20) for controllably switching the application of power to the actuator (16) from the energy
 source (55); and

a receiver (27) of electromagnetic radiation, for operating the latch (18, 19, 20) when the receiver (21) detects
 radiation within a predetermined characteristic range;

the energy source including a compressed spring the expansion of which is initiatable by the latch and the work of
 the expansion of which causes operation of the actuator mechanism, **characterised in that** the spring comprises
 a stack of resiliently deformable discs (55), the periphery of each disc (55) having formed therein a series of waves,
 the waves of respective said discs connecting such that the peak of each wave contacts the trough of a wave of an
 adjacent said disc (55).

12. A device according to Claim 11 wherein the waves of each disc (55) radiate generally from its centre.

13. A device according to Claim 11 or Claim 12 wherein each disc (55) is an annulus.

14. A device according to Claim 13 wherein each annulus is about 0.25mm thick and has three said waves, the peak
 to trough distance of the waves being about 2mm.

15. A device according to Claim 14 wherein the spring includes 16 said annuli secured together at the respective peaks
 and troughs of the waves.

16. A device according to Claim 13 or any claim dependent therefrom, wherein the outer diameter of each annulus is about 8.5mm and the inner diameter is about 4.5mm.
17. A device according to any of Claims 1 to 16 wherein the actuator mechanism (16) includes a piston that is moveable under power from the spring (50; 50a; 50b; 55) for compressing the substance in the reservoir (12) to promote its expulsion therefrom, the spring being engaged at one end directly or indirectly with the piston and secured at its other end to a member (17) that is fixed relative to the remainder of the device (10).
18. A device according to Claim 17 when dependent from Claim 4 wherein the spring (50a, 50b) encircles one or more further components of the device (10).
19. A device according to any of Claims 1 to 18 including a retainer for retaining moveable components within the device (10).
20. A device according to Claim 19 wherein the retainer includes a rib that reduces the cross sectional area of the hollow interior of the device in the vicinity of an opening therein.
21. A device according to Claim 17 or any claim dependent from Claim 18 wherein the piston (16) includes a flexible annular lip for slidingly sealingly engaging the interior of the reservoir.
22. A device according to Claim 21 wherein the cross section of the lip tapers towards its free edge.
23. A device according to Claim 21 wherein the cross section of the lip is generally parallel sided.

Patentansprüche

1. Einnehmbare Vorrichtung (10) zum Verabreichen einer Substanz an einen gewählten oder identifizierbaren Ort in dem Verdauungstrakt eines Menschen oder Tiers, mit einem offenbaren Behälter (12) für die Substanz, der gegen ein Austreten der Substanz abdichtbar ist; einem Aktuatormechanismus (16) zum Öffnen des Behälters (12), einer Energiequelle (50), die derart wirkend angeschlossen ist, dass sie den Aktuatormechanismus mit Energie versorgt; einer lösbaren Klinke (18, 19, 20) zum kontrollierbaren Schalten der Anwendung von Leistung von der Energiequelle (50) auf den Aktuator (16); und einem Empfänger (21) für elektromagnetische Strahlung zum Betätigen der Klinke (18, 19, 20), wenn der Empfänger Strahlung innerhalb eines vorgegebenen charakteristischen Bereichs detektiert; wobei die Energiequelle eine zusammengedrückte Feder (50) umfasst, die in der Lage ist, auf den Aktuatormechanismus (16) einzuwirken, wobei die Expansion der Feder (50) durch die Klinke (18, 19, 20) auslösbar ist, und wobei die Expansionsarbeit der Feder (50) den Betrieb des Aktuatormechanismus verursacht, **dadurch gekennzeichnet, dass** die Feder (50) in ihrem nicht zusammengedrückten Zustand eine hohle zylinderartige Form hat und dass der Schraubenwinkel, der von benachbarten Windungen der Feder begrenzt wird, mindestens 15° beträgt.
2. Vorrichtung nach Anspruch 1, wobei die Feder (50) einen Draht umfasst, dessen Durchmesser ungefähr 0,8 mm beträgt.
3. Vorrichtung nach Anspruch 1 oder 2, wobei die Feder einen Hohlzylinder definiert.
4. Einnehmbare Vorrichtung (10) zum Verabreichen einer Substanz an einen gewählten oder identifizierbaren Ort in dem Verdauungstrakt eines Menschen oder Tiers, mit einem offenbaren Behälter (12) für die Substanz, der gegen ein Austreten der Substanz abdichtbar ist; einem Aktuatormechanismus (16) zum Öffnen des Behälters (12), einer Energiequelle (50), die derart wirkend angeschlossen ist, dass sie den Aktuatormechanismus mit Energie versorgt; einer lösbaren Klinke (18, 19, 20) zum kontrollierbaren Schalten der Anwendung von Leistung von der Energiequelle (50) auf den Aktuator (16); und einem Empfänger (21) für elektromagnetische Strahlung zum Betätigen der Klinke (18, 19, 20), wenn der Empfänger Strahlung innerhalb eines vorgegebenen charakteristischen Bereichs detektiert;

wobei die Energiequelle eine zusammengedrückte Feder (50a, 50b) umfasst, die in der Lage ist, auf den Aktuatormechanismus (16) einzuwirken, wobei die Expansion der Feder durch die Klinke (18, 19, 20) auslösbar ist und wobei die Expansionsarbeit der Feder den Betrieb des Aktuatormechanismus (16) verursacht, wobei die Feder (50a, 50b) ein Paar von Drähten umfasst, die jeweils in Schleifen gewickelt sind, um ein Paar von hohlzylinderartigen Formen zu definieren, wobei eine erste der zylinderförmigen Formen von größerem inneren Durchmesser als der äußere Durchmesser der zweiten der zylinderförmigen Formen ist und wobei die erste zylinderförmige Form die zweite zylinderförmige Form umschließt, **dadurch gekennzeichnet, dass** jede Feder des Paares mit einem Isolator über mindestens einen Teil ihrer Länge beschichtet ist, um die Federn in der Verwendung gegeneinander zu isolieren.

5. Vorrichtung nach Anspruch 4, wobei der Draht der ersten zylinderartigen Form im Uhrzeigersinn gewickelt ist und der Draht der zweiten zylinderartigen Form gegen den Uhrzeigersinn gewickelt ist oder umgekehrt.
6. Vorrichtung nach Anspruch 4, wobei die Drähte der ersten und der zweiten zylinderartigen Form in derselben Richtung gewunden sind.
7. Vorrichtung nach einem der Ansprüche 4 bis 6, wobei die erste und die zweite zylinderartige Form in der radialen Richtung des Federquerschnitts voneinander beabstandet sind.
8. Vorrichtung nach einem der Ansprüche 4 bis 7, wobei die Enden der Drähte, die jeden der Drähte definieren, mit den Ihnen benachbarten Wicklungen bündig abschließen.
9. Vorrichtung nach einem der Ansprüche 4 bis 8, wobei die zusammengedrückte Länge der Feder (50a, 50b) ungefähr $\frac{1}{3}$ ihrer Länge in dem nicht zusammengedrückten Zustand beträgt.
10. Vorrichtung nach einem der Ansprüche 4 bis 9, wobei die Kraft, die von der Feder (50a, 50b) auf den Aktuatormechanismus (16) ausgeübt wird, die maximale Widerstandskraft überschreitet, die dem Betrieb des Aktuators (16) zu dem Zeitpunkt entgegenwirkt, wenn die maximale Widerstandskraft auftritt.
11. Einnehmbare Vorrichtung (10) zum Verabreichen einer Substanz an einen gewählten oder identifizierbaren Ort in dem Verdauungstrakt eines Menschen oder Tiers, mit einem offenbaren Behälter (12) für die Substanz, der gegen ein Austreten der Substanz abdichtbar ist; einem Aktuatormechanismus (16) zum Öffnen des Behälters (12), einer Energiequelle (50), die derart wirkend angeschlossen ist, dass sie den Aktuatormechanismus mit Energie versorgt; einer lösbaren Klinke (18, 19, 20) zum kontrollierbaren Schalten der Anwendung von Leistung von der Energiequelle (50) auf den Aktuator (16); und einem Empfänger (21) für elektromagnetische Strahlung zum Betätigen der Klinke (18, 19, 20), wenn der Empfänger Strahlung innerhalb eines vorgegebenen charakteristischen Bereichs detektiert; wobei die Energiequelle eine zusammengedrückte Feder umfasst, deren Ausdehnung durch die Klinke auslösbar ist und deren Expansionsarbeit den Betrieb des Aktuatormechanismus verursacht, **dadurch gekennzeichnet, dass** die Feder einen Stapel von nachgiebig verformbaren Scheiben (55) aufweist, wobei in den Außenbereich jeder Scheibe (55) eine Reihe von Wellen eingeformt ist, wobei die Wellen der jeweiligen Scheiben derart aneinander anschließen, dass der Berg jeder Welle das Tal einer Welle einer benachbarten der Scheiben (55) kontaktiert.
12. Vorrichtung nach Anspruch 11, wobei die Wellen jeder Scheibe (55) grundsätzlich von ihrem Mittelpunkt strahlenförmig wegführen.
13. Vorrichtung nach Anspruch 11 oder 12, wobei jede Scheibe (55) ein Ring ist.
14. Vorrichtung nach Anspruch 13, wobei jeder Ring ungefähr 0,25 mm dick ist und drei der Wellen aufweist, wobei der Abstand von Berg zu Tal der Wellen ungefähr 2 mm beträgt.
15. Vorrichtung nach Anspruch 14, wobei die Feder 16 der Ringe umfasst, die an den jeweiligen Bergen und Tälern der Wellen aneinander gesichert sind.
16. Vorrichtung nach Anspruch 13 oder einem davon abhängigen Anspruch, wobei der äußere Durchmesser jedes Rings ungefähr 8,5 mm beträgt und der innere Durchmesser ungefähr 4,5 mm beträgt.

17. Vorrichtung nach einem der Ansprüche 1 bis 16, wobei der Aktuatormechanismus (16) einen Kolben aufweist, der unter der Kraft der Feder (50; 50a, 50b; 55) beweglich ist, um die Substanz in dem Reservoir (12) zusammenzudrücken, um ihren Ausstoß daraus anzutreiben, wobei die Feder an einem Ende direkt oder indirekt an dem Kolben angreift und an ihrem anderen Ende an einem Element (17) gesichert ist, das relativ zu dem Rest der Vorrichtung (10) fest ist.
18. Vorrichtung nach Anspruch 17, wenn abhängig von Anspruch 4, wobei die Feder (50a, 50b) eine oder mehrere Komponenten der Vorrichtung (10) umschließt.
19. Vorrichtung nach einem der Ansprüche 1 bis 18, die eine Aufnahme zum Aufnehmen der beweglichen Komponenten innerhalb der Vorrichtung (10) umfasst.
20. Vorrichtung nach Anspruch 19, wobei die Aufnahme eine Rippe umfasst, die den Querschnittsbereich des hohlen Innenraums der Vorrichtung in der Nähe einer darin vorgesehenen Öffnung reduziert.
21. Vorrichtung nach Anspruch 17 oder einem von Anspruch 18 abhängigen Anspruch, wobei der Kolben (16) eine flexible ringförmige Lippe zum gleitenden und abdichtenden Anliegen an dem Innenraum des Reservoirs umfasst.
22. Vorrichtung nach Anspruch 21, wobei der Querschnitt der Lippe zu ihrer freien Kante hin zuläuft.
23. Vorrichtung nach Anspruch 21, wobei der Querschnitt der Lippe hauptsächlich parallel begrenzt ist.

Revendications

1. Dispositif pouvant être ingéré (10) pour administrer une substance à un emplacement choisi ou identifiable dans le tube digestif d'une personne ou d'un animal, comprenant
un réservoir pouvant s'ouvrir (12), pour la substance, qui est scellé pour empêcher des fuites de la substance ;
un organe de commande (16) pour ouvrir le réservoir (12) ;
une source d'énergie (50), connectée opérationnellement, pour alimenter l'organe de commande ;
un verrou détachable (18, 19, 20) pour commuter de façon contrôlable l'application, à l'organe de commande (16), de l'alimentation de la source d'énergie (50), et
un récepteur (27) de rayonnements électromagnétiques, permettant d'actionner le verrou (18, 19, 20) lorsque le récepteur détecte des rayonnements dans une plage caractéristique prédéterminée ;
la source d'énergie comprenant un ressort en compression (50) pouvant agir sur l'organe de commande (16), l'extension du ressort (50) pouvant être amorcée par le verrou (18, 19, 20) et le développement en extension du ressort (50) provoquant l'actionnement de l'organe de commande, **caractérisé en ce que** le ressort (50), dans son état non comprimé, a une forme cylindrique creuse et **en ce que** l'angle de spire sous-tendu entre des spires adjacentes du ressort est au minimum de 15°.
2. Dispositif selon la revendication 1, dans lequel le ressort (50) comprend un fil dont le diamètre est d'approximativement 0,8 mm.
3. Dispositif selon la revendication 1 ou 2, dans lequel le ressort définit un cylindre creux.
4. Dispositif pouvant être ingéré (10) pour administrer une substance à un emplacement choisi ou identifiable dans le tube digestif d'une personne ou d'un animal, comprenant
un réservoir pouvant s'ouvrir (12), pour la substance, qui est scellé pour empêcher des fuites de la substance ;
un organe de commande (16) pour ouvrir le réservoir (12) ;
une source d'énergie, connectée opérationnellement, pour alimenter l'organe de commande ;
un verrou détachable (18, 19, 20) pour commuter de façon contrôlable l'application, à l'organe de commande (16), de l'alimentation de la source d'énergie, et
un récepteur (27) de rayonnements électromagnétiques, permettant d'actionner le verrou (16) lorsque le récepteur détecte des rayonnements dans une plage caractéristique prédéterminée ;
la source d'énergie comprenant un ressort en compression (50a, 50b) pouvant agir sur l'organe de commande (16), l'extension du ressort pouvant être amorcée par le verrou (18, 19, 20) et le développement en extension du ressort provoquant l'actionnement de l'organe de commande (16), le ressort (50a, 50b) comprenant une paire de fils, chacun enroulé en boucles pour définir une paire de formes cylindriques creuses, une première forme desdites formes

cylindriques ayant un diamètre interne supérieur au diamètre extérieur de la seconde forme desdites formes cylindriques et la première forme cylindrique encerclant la seconde forme cylindrique, **caractérisé en ce que** chaque ressort de ladite paire est revêtu d'un isolant sur au moins une partie de sa longueur, afin d'isoler les ressorts les uns des autres, en utilisation.

- 5 5. Dispositif selon la revendication 4, dans lequel le fil de la première forme cylindrique est enroulé en boucles dans le sens des aiguilles d'une montre et le fil de la seconde forme cylindrique est enroulé en boucles dans le sens contraire aux aiguilles d'une montre ; ou vice versa.
- 10 6. Dispositif selon la revendication 4, dans lequel les fils des première et seconde formes cylindriques sont enroulés dans le même sens.
7. Dispositif selon l'une quelconque des revendications 4 à 6, dans lequel les première et seconde formes cylindriques sont espacées l'une de l'autre dans le sens radial de la section transversale du ressort.
- 15 8. Dispositif selon l'une quelconque des revendications 4 à 7, dans lequel les extrémités des fils définissant chacun desdits fils affluent au niveau de leurs boucles adjacentes.
- 20 9. Dispositif selon l'une quelconque des revendications 4 à 8, dans lequel la longueur comprimée du ressort (50a, 50b) est approximativement égale à 1/3 de sa longueur dans son état non comprimé.
- 25 10. Dispositif selon l'une quelconque des revendications 4 à 9, dans lequel la force exercée par le ressort (50a, 50b) sur l'organe de commande (16) est supérieure à la force de résistance maximale en résistance à l'action de l'organe de commande (16), au moment où la force de résistance maximale s'applique.
- 30 11. Dispositif pouvant être ingéré (10) pour administrer une substance à un emplacement choisi ou identifiable dans le tube digestif d'une personne ou d'un animal, comprenant
un réservoir pouvant s'ouvrir (12), pour la substance, qui est scellé pour empêcher des fuites de la substance ;
un organe de commande (16) pour ouvrir le réservoir ;
une source d'énergie, connectée opérationnellement, pour alimenter l'organe de commande (16) ;
un verrou détachable (18, 19, 20) pour commuter de façon contrôlable l'application, à l'organe de commande (16),
de l'alimentation de la source d'énergie (55), et
un récepteur (27) de rayonnements électromagnétiques, permettant d'actionner le verrou (18, 19, 20) lorsque le
récepteur (27) détecte des rayonnements dans une plage caractéristique prédéterminée ;
la source d'énergie comprenant un ressort en compression, dont l'extension peut être amorcée par le verrou et dont
le développement en extension provoque l'actionnement de l'organe de commande, **caractérisé en ce que** le
ressort comprend une pile de disques déformables élastiquement (55), la périphérie de chaque disque (55) pré-
sentant une série d'ondulations, les ondulations desdits disques respectifs étant reliées de telle sorte que le pic de
chaque ondulation contacte le creux d'une ondulation d'un dit disque (55) adjacent.
- 40 12. Dispositif selon la revendication 11, dans lequel les ondulations de chaque disque (55) rayonnent généralement depuis son centre.
- 45 13. Dispositif selon la revendication 11 ou 12, dans lequel chaque disque (55) est un anneau.
14. Dispositif selon la revendication 13, dans lequel chaque anneau a une épaisseur d'environ 0,25 mm et comporte trois dites ondulations, la distance entre le pic et le creux des ondulations avoisinant 2 mm.
- 50 15. Dispositif selon la revendication 14, dans lequel le ressort comprend 16 dits anneaux attachés les uns aux autres au niveau des pics et des creux respectifs des ondulations.
- 55 16. Dispositif selon la revendication 13 ou n'importe quelle revendication qui en dépend, dans lequel le diamètre extérieur de chaque anneau est d'environ 8,5 mm et le diamètre intérieur est d'environ 4,5 mm.
17. Dispositif selon l'une quelconque des revendications 1 à 16, dans lequel l'organe de commande (16) comprend un piston déplaçable sous l'effet de force du ressort (50 ; 50a, 50b ; 55) pour comprimer la substance dans le réservoir (12) afin de favoriser son expulsion du réservoir, le ressort étant engagé par une extrémité de façon directe ou indirecte avec le piston et attaché par son autre extrémité à un élément (17) qui est fixé par rapport au reste du

dispositif (10).

18. Dispositif selon la revendication 17 lorsqu'elle dépend de la revendication 4, dans lequel le ressort (50a, 50b) encercle un ou plusieurs autres composants du dispositif (10).

5 **19.** Dispositif selon l'une quelconque des revendications 1 à 18, comprenant un moyen de retenue pour maintenir des composants déplaçables à l'intérieur du dispositif (10).

10 **20.** Dispositif selon la revendication 19, dans lequel le moyen de retenue comprend une nervure qui réduit la zone de section transversale de l'intérieur creux du dispositif dans le voisinage d'une ouverture ménagée dedans.

21. Dispositif selon la revendication 17 ou n'importe quelle revendication qui dépend de la revendication 18, dans lequel le piston (16) comprend une lèvre annulaire flexible pour engager de façon coulissante en fermeture hermétique l'intérieur du réservoir.

15 **22.** Dispositif selon la revendication 21, dans lequel la section transversale de la lèvre s'étend en biseau vers son bord libre.

20 **23.** Dispositif selon la revendication 21, dans lequel la section transversale de la lèvre est généralement formée avec des bords parallèles.

25

30

35

40

45

50

55

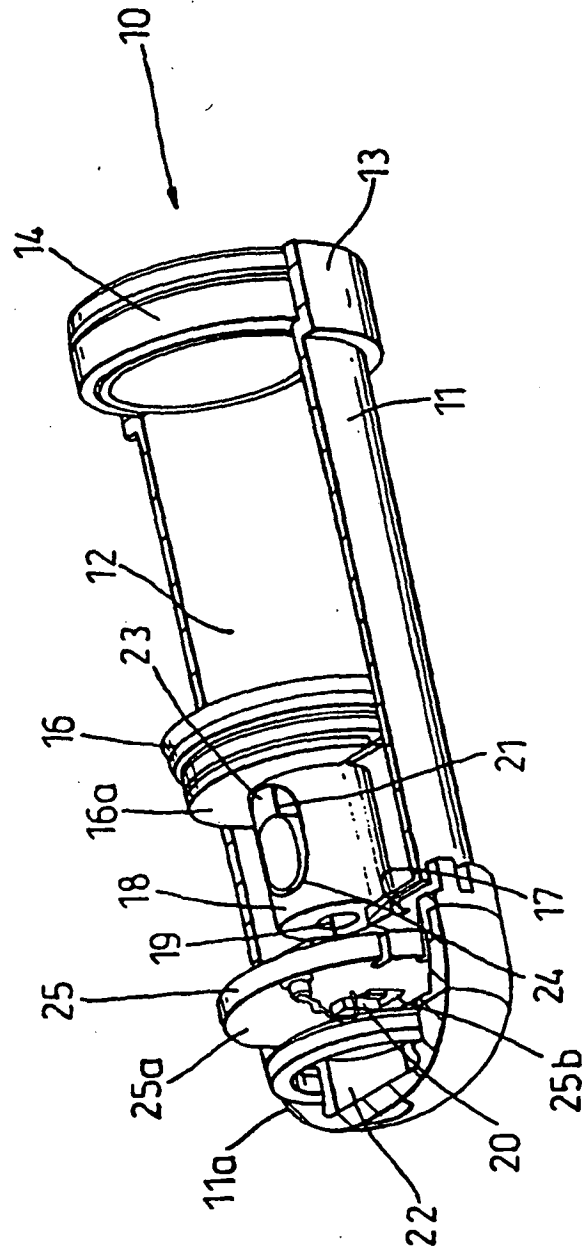


Fig. 1

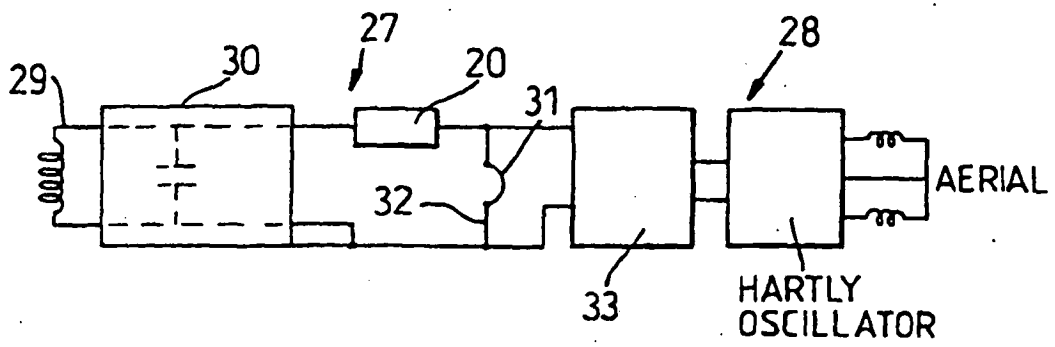


Fig. 2a

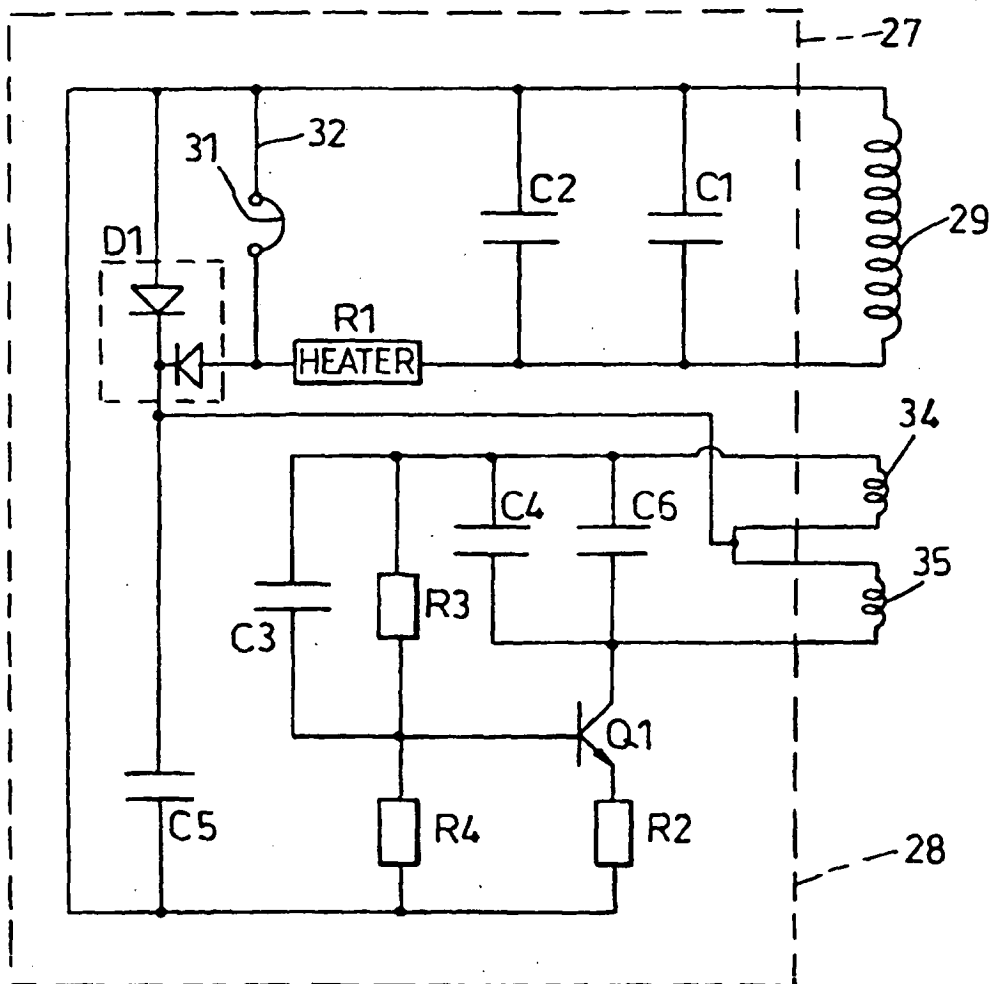


Fig. 2b

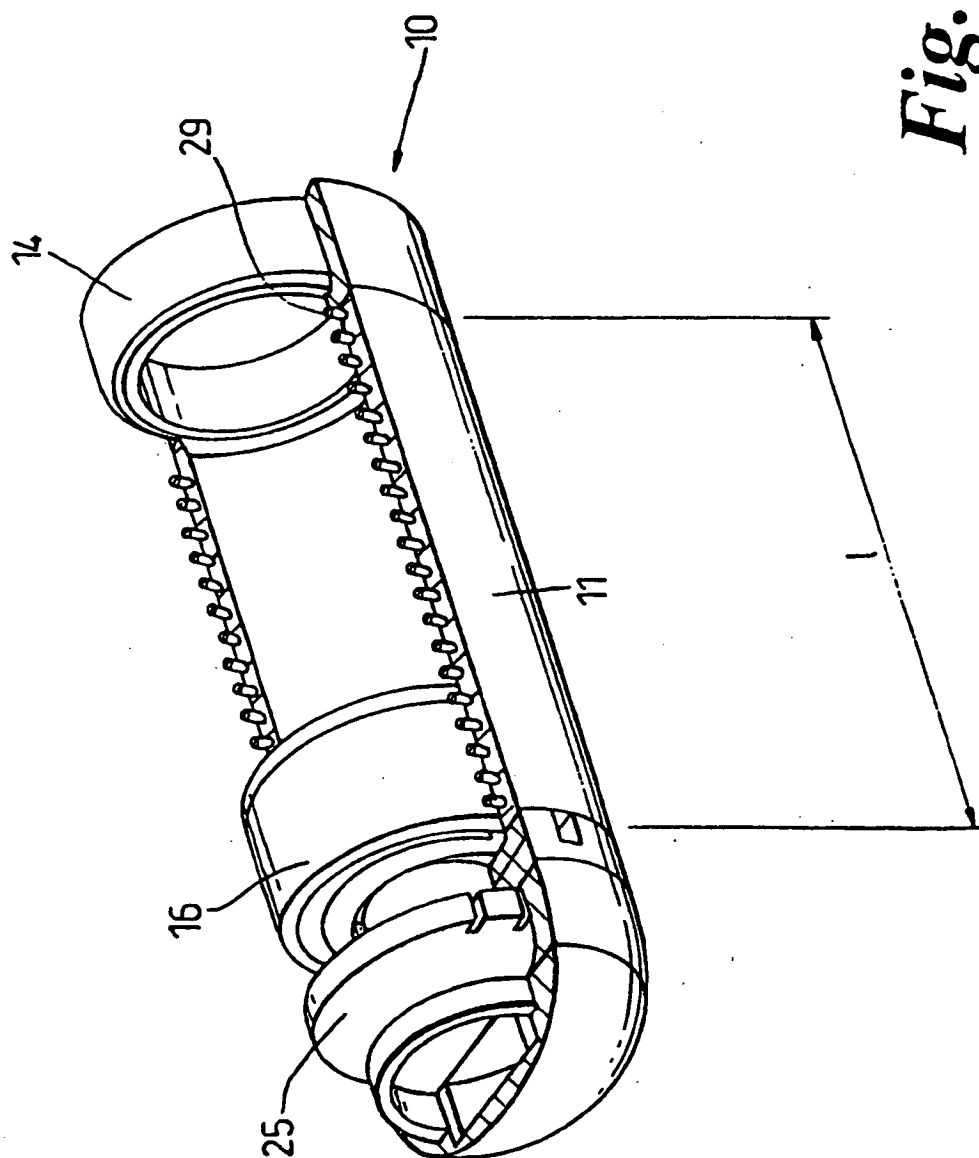


Fig. 3

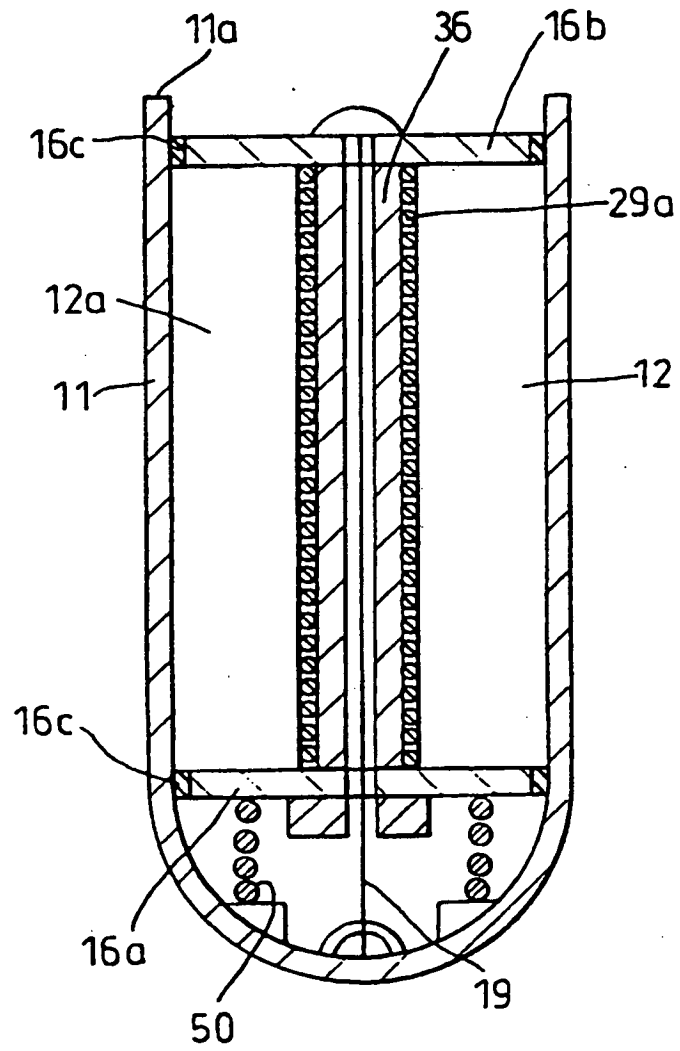


Fig. 4

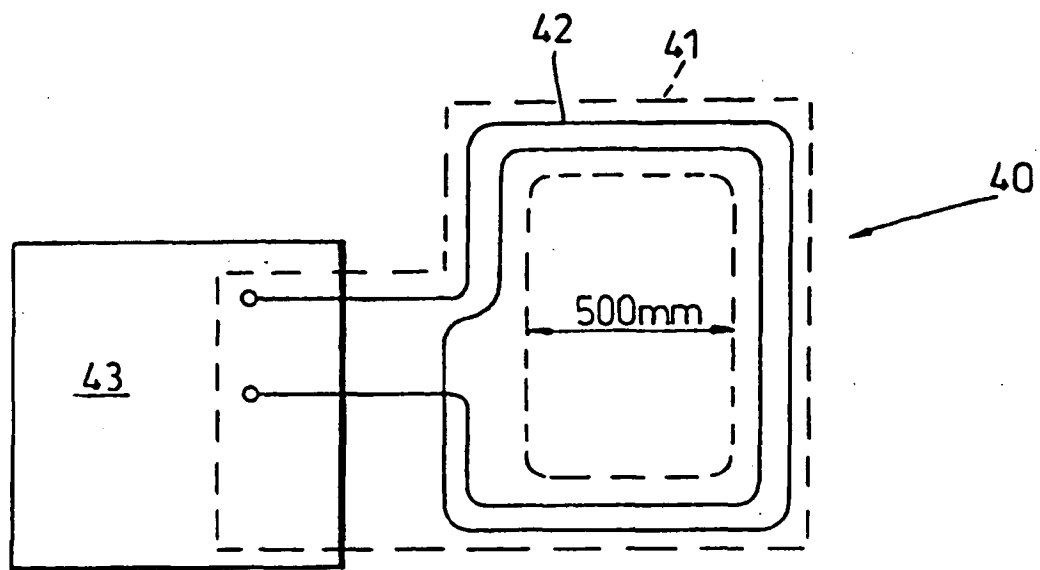


Fig. 5a

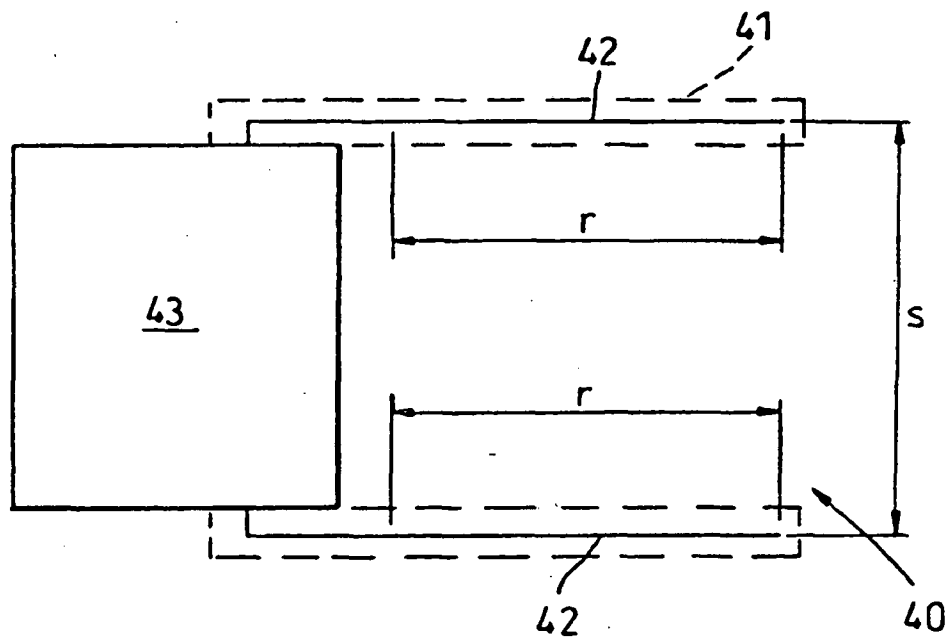


Fig. 5b

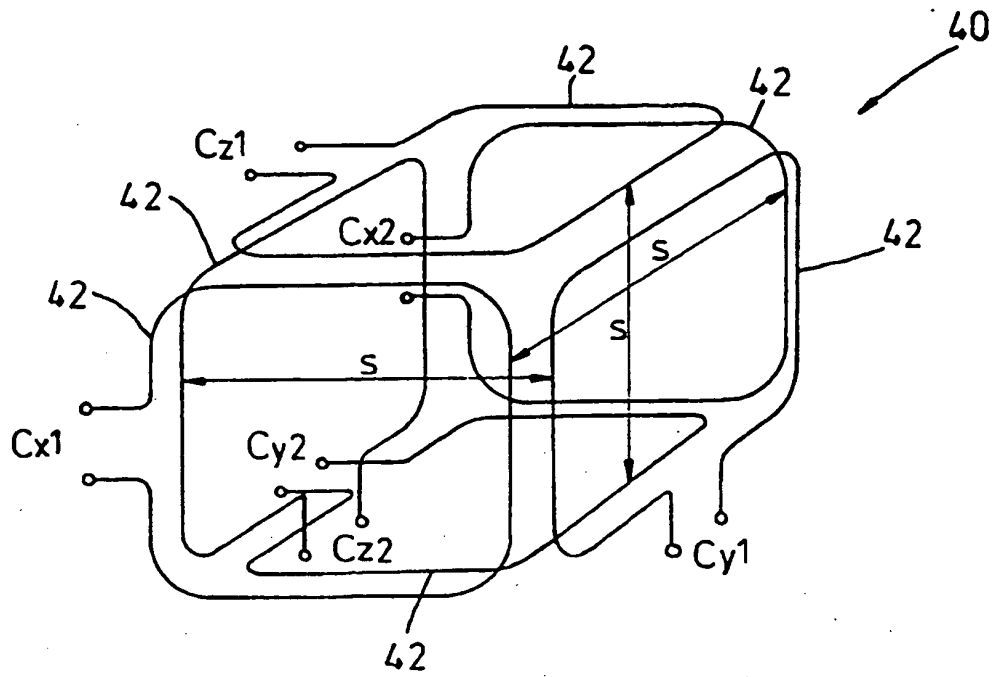


Fig. 6

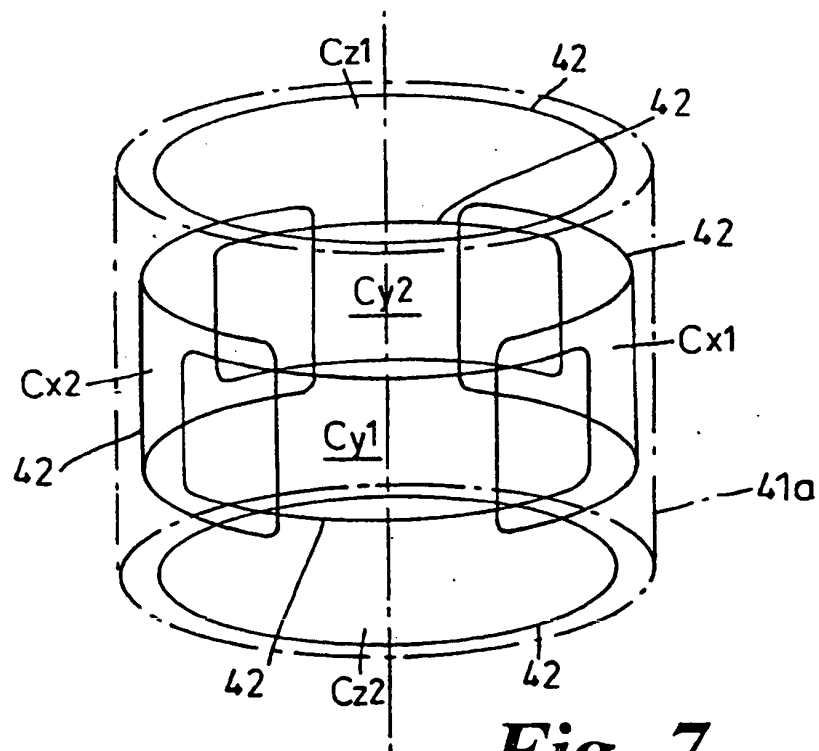


Fig. 7

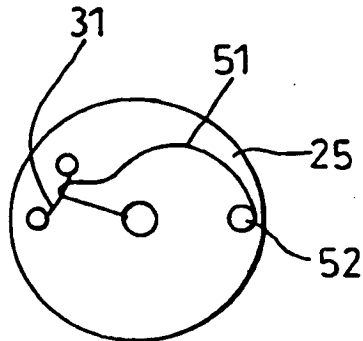


Fig. 8a

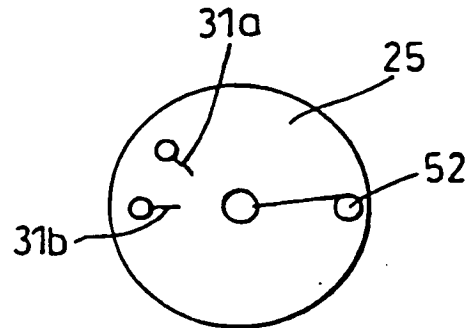
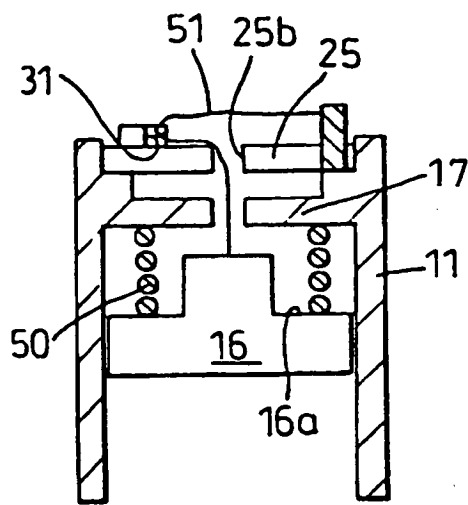
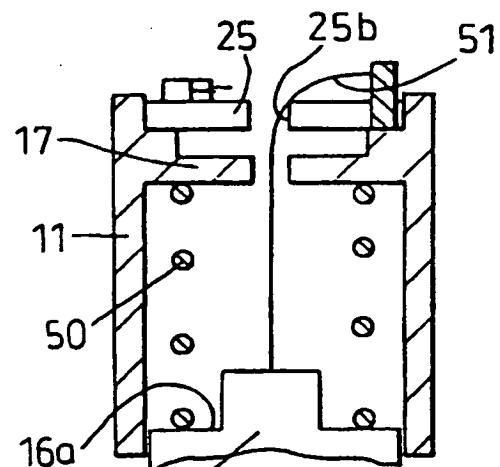


Fig. 9a



BEFORE OPENING

Fig. 8b



AFTER OPENING

Fig. 9b

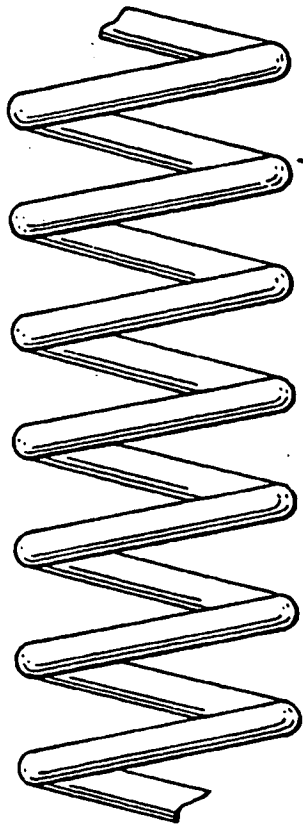


Fig. 10a
(PRIOR ART)

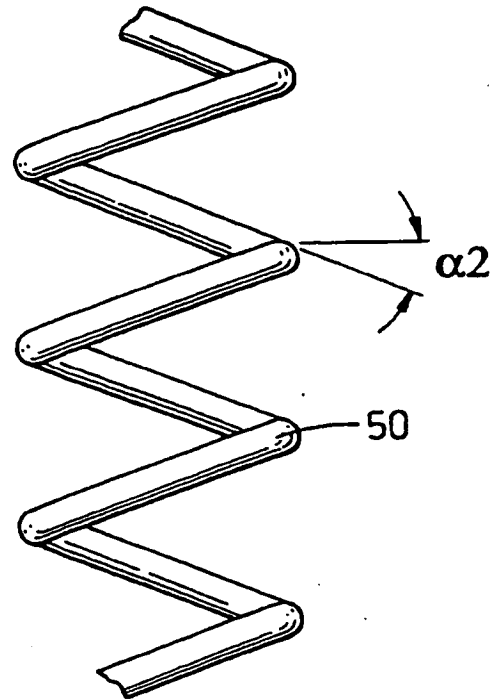


Fig. 10b

$$\alpha_2 > \alpha_1$$

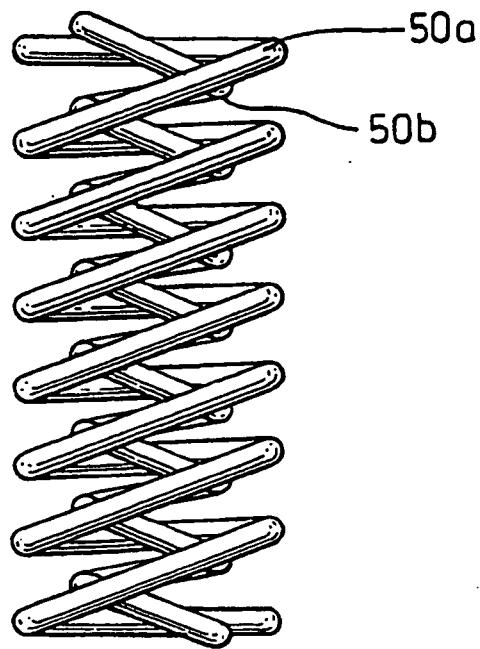


Fig. 11a

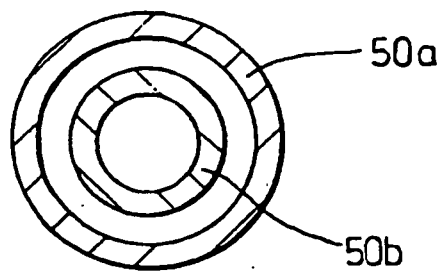


Fig. 11b

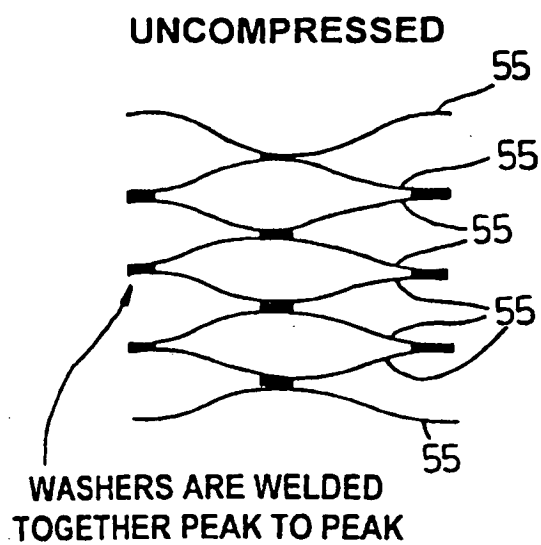


Fig. 12a

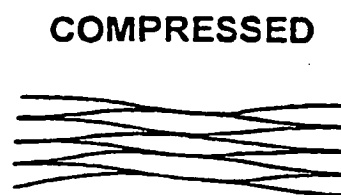


Fig. 12b

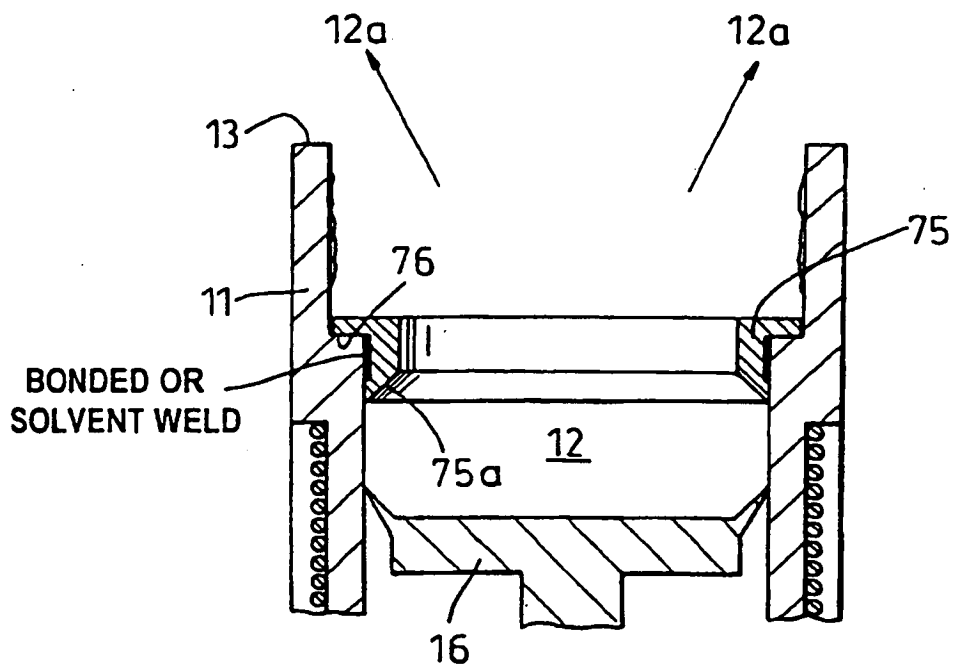


Fig. 13

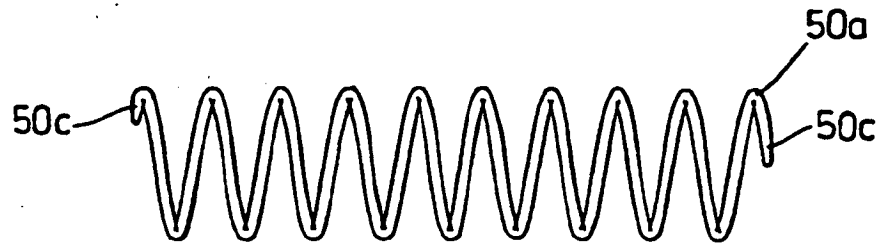


Fig. 14a

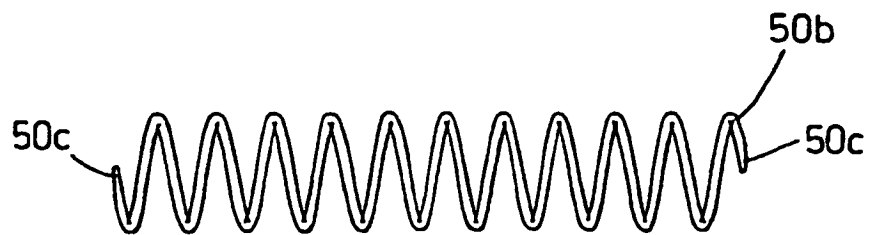


Fig. 14b

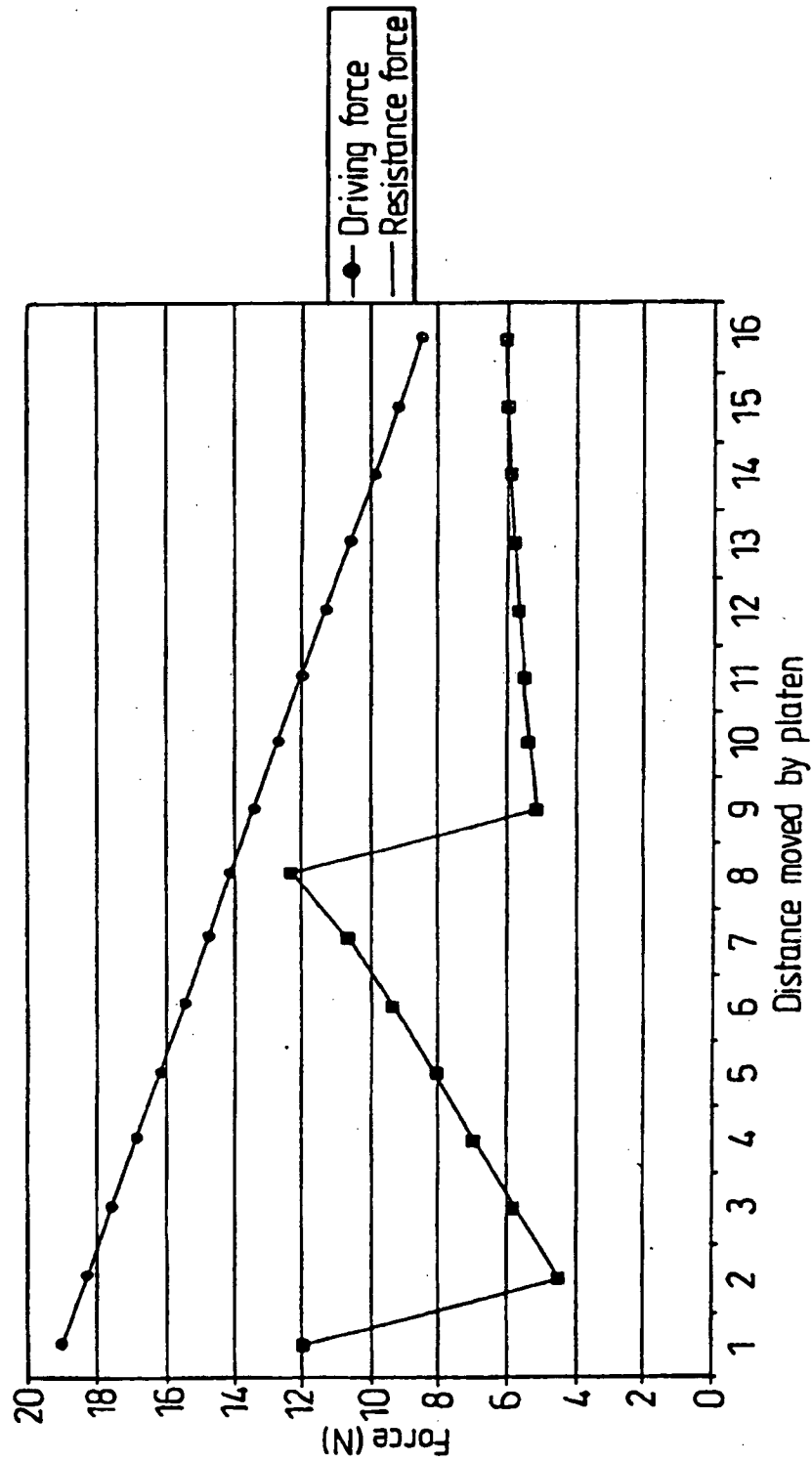


Fig. 15

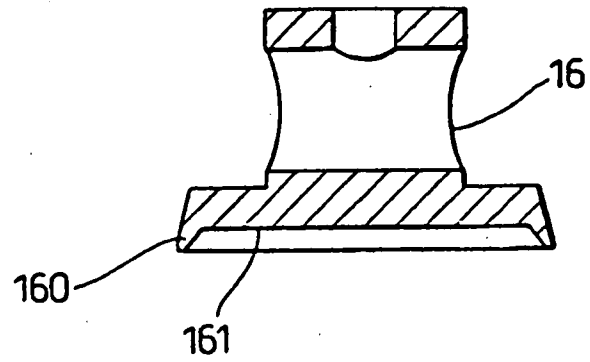


Fig. 16

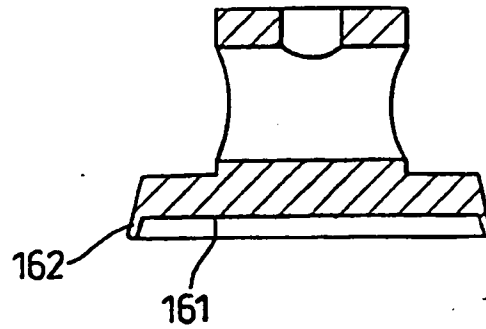


Fig. 17

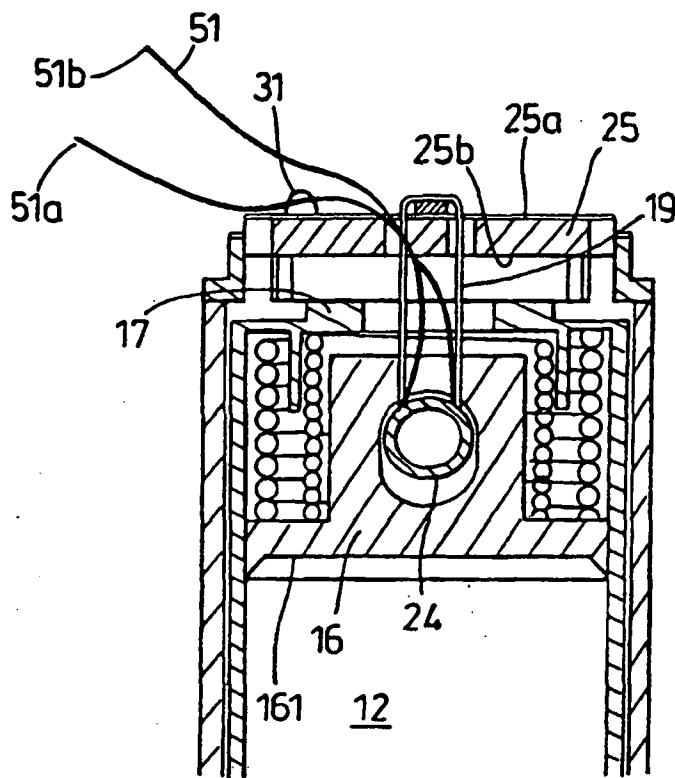


Fig. 18

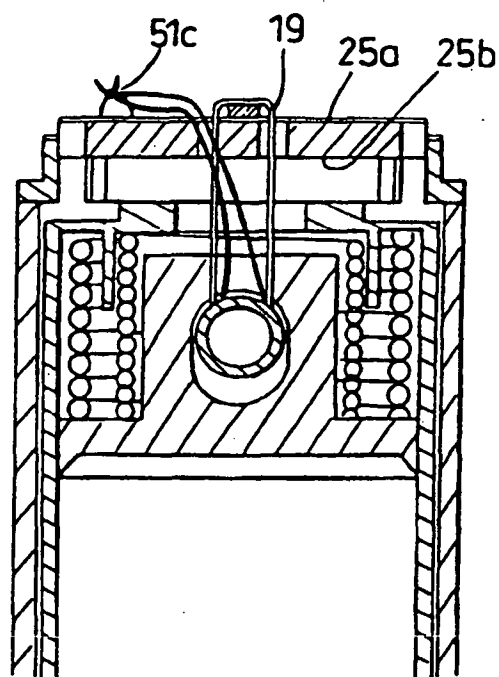


Fig. 19

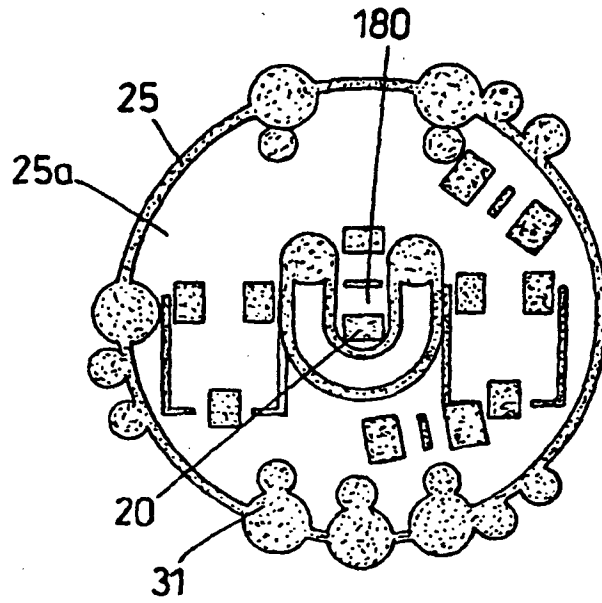


Fig. 20

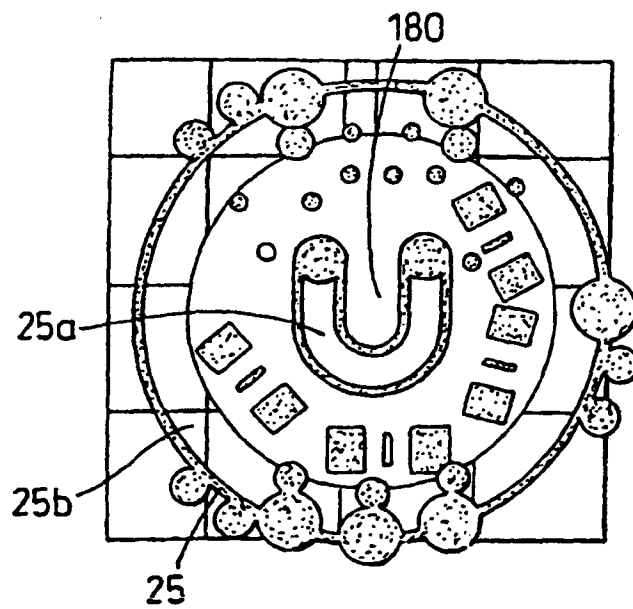


Fig. 21

REFERENCES CITED IN THE DESCRIPTION

This list of references cited by the applicant is for the reader's convenience only. It does not form part of the European patent document. Even though great care has been taken in compiling the references, errors or omissions cannot be excluded and the EPO disclaims all liability in this regard.

Non-patent literature cited in the description

- **LAMBERT et al.** Autonomous Telemetric Capsule to Explore the Small Bowel. *Medical & Biological Engineering and Computing*, March 1991 [**0003**]
- **ERIKSEN et al.** Equipment and Methodology for Relating Gastrointestinal Absorption to Site of Drug Release. *Journal of Pharmaceutical Sciences*, 1961, vol. 50, 151-156 [**0011**]

专利名称(译)	用于在消化道中的不同位置释放物质的可摄取装置		
公开(公告)号	EP1398052B1	公开(公告)日	2009-02-25
申请号	EP2003078778	申请日	2000-12-14
[标]申请(专利权)人(译)	辉腾RES		
申请(专利权)人(译)	辉腾研究有限公司		
当前申请(专利权)人(译)	辉腾研究有限公司		
[标]发明人	HOUZEGO PETER JOHN WESTLAND DUNCAN JAMES MORGAN PETER NEIL WILDING IAN ROBERT HIRST PETER HANSON		
发明人	HOUZEGO, PETER JOHN WESTLAND, DUNCAN JAMES MORGAN, PETER NEIL WILDING, IAN ROBERT HIRST, PETER HANSON		
IPC分类号	A61B5/07 A61B5/00 A61F2/02 A61M31/00 A61M25/01 A61K9/22 A61M36/04		
CPC分类号	A61M31/002 A61F2250/0002 A61J3/07 A61M25/01 A61M31/00 A61M2205/3523 A61M2210/1042		
优先权	1999030000 1999-12-21 GB		
其他公开文献	EP1398052A2 EP1398052A3		
外部链接	Espacenet		

摘要(译)

用于将物质（12a）输送到哺乳动物的胃肠道中的选定位置的可摄取装置（10）包括电磁辐射接收器，用于将装置（10）的可打开部分供电到打开位置以分配物质。（12A）。接收器包括耦合能量场的线圈29，线29具有空气或铁氧体（36）芯。在另一实施例中，本发明包括一种用于产生电磁辐射的装置，该装置包括一对或多对支撑在壳体中的场线圈（42）。装置（10）可选地包括由加热电阻器（20）和可熔断的限制器（19）限定的门锁。装置（10）还可以包括柔性构件（51），其可以起到激活发射器电路（28）以指示物质的分配的功能；并且意味着限制用于排出物质的活塞（16）。

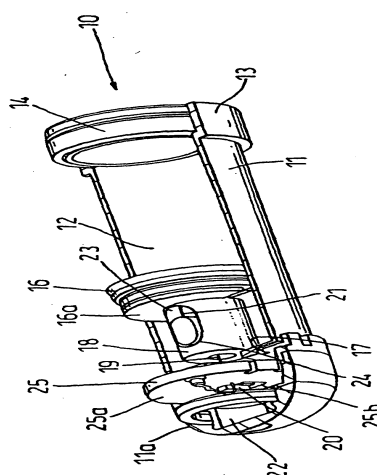


Fig. 1