

(19)



(11)

**EP 2 549 925 B1**

(12)

**EUROPEAN PATENT SPECIFICATION**

(45) Date of publication and mention of the grant of the patent:  
**21.10.2015 Bulletin 2015/43**

(51) Int Cl.:  
**G01N 33/543** <sup>(2006.01)</sup> **G01N 33/58** <sup>(2006.01)</sup>  
**A61K 49/00** <sup>(2006.01)</sup> **A61B 5/00** <sup>(2006.01)</sup>

(21) Application number: **11760209.4**

(86) International application number:  
**PCT/US2011/029777**

(22) Date of filing: **24.03.2011**

(87) International publication number:  
**WO 2011/119822 (29.09.2011 Gazette 2011/39)**

(54) **Multimodal diagnostic technology for early stage cancer lesions**

Multimodale Diagnostetechnologie für Krebsläsionen im Frühstadium

Technologie diagnostique multimodale pour les lésions cancéreuses à un stade précoce

(84) Designated Contracting States:  
**AL AT BE BG CH CY CZ DE DK EE ES FI FR GB GR HR HU IE IS IT LI LT LU LV MC MK MT NL NO PL PT RO RS SE SI SK SM TR**

**US-A1- 2010 068 286**

(30) Priority: **24.03.2010 US 317123 P**

(43) Date of publication of application:  
**30.01.2013 Bulletin 2013/05**

- **YOUNG-PIL KIM ET AL:** "Activity-Based Assay of Matrix Metalloproteinase on Nonbiofouling Surfaces Using Time-of-Flight Secondary Ion Mass Spectrometry", **ANALYTICAL CHEMISTRY, AMERICAN CHEMICAL SOCIETY, US, vol. 80, no. 13, 1 July 2008 (2008-07-01), pages 5094-5102, XP002626931, ISSN: 0003-2700, DOI: 10.1021/AC800299D [retrieved on 2008-05-28]**
- **KAUSHIK A ET AL:** "Chitosan-iron oxide nanobiocomposite based immunosensor for ochratoxin-A", **ELECTROCHEMISTRY COMMUNICATIONS, ELSEVIER, AMSTERDAM, NL, vol. 10, no. 9, 1 September 2008 (2008-09-01), pages 1364-1368, XP024098993, ISSN: 1388-2481, DOI: 10.1016/J.ELECOM.2008.07.007 [retrieved on 2008-07-08]**
- **PANYAM ET AL:** "Fluorescence and electron microscopy probes for cellular and tissue uptake of poly(d,l-lactide-co-glycolide) nanoparticles", **INTERNATIONAL JOURNAL OF PHARMACEUTICS, vol. 262, 2003, pages 1-11, XP002703706,**
- **HORTON ET AL:** "Arg-Gly-Asp (RGD) Peptides and the Anti-Vitronectin Receptor Antibody 23C6 Inhibit Dentine Resorption and Cell Spreading by Osteoclasts", **EXPERIMENTAL CELL RESEARCH, vol. 195, 1991, pages 368-375, XP002703707,**

(73) Proprietor: **Northeastern University Boston, MA 02115-5000 (US)**

- (72) Inventors:
- **AMIJI, Mansoor, M. Attleboro MA 02703 (US)**
  - **GANTA, Srinivas Boston MA 02115 (US)**
  - **TSAI, Pei-Chin Boston MA 02115 (US)**

(74) Representative: **Atkinson, Jonathan David Mark et al HGF Limited Belgrave Hall Belgrave Street Leeds LS2 8DD (GB)**

(56) References cited:  
**WO-A2-2005/102396 US-A1- 2008 032 920**  
**US-A1- 2008 076 676 US-A1- 2008 248 038**  
**US-A1- 2008 248 038 US-A1- 2010 028 453**

Note: Within nine months of the publication of the mention of the grant of the European patent in the European Patent Bulletin, any person may give notice to the European Patent Office of opposition to that patent, in accordance with the Implementing Regulations. Notice of opposition shall not be deemed to have been filed until the opposition fee has been paid. (Art. 99(1) European Patent Convention).

**EP 2 549 925 B1**

- LUE NIYOM ET AL: "Preliminary evaluation of a nanotechnology-based approach for the more effective diagnosis of colon cancers.", NANOMEDICINE (LONDON, ENGLAND) NOV 2010, vol. 5, no. 9, November 2010 (2010-11), pages 1467-1479, XP008163692, ISSN: 1748-6963
- HORTON ET AL.: 'Arg-Gly-Asp (RGD) Peptides and the Anti-Vitronectin Receptor Antibody 23C6 Inhibit Dentine Resorption and Cell Spreading by Osteoclasts' EXPERIMENTAL CELL RESEARCH vol. 195, 1991, pages 368 - 375, XP002703707
- PANYAM ET AL.: 'Fluorescence and electron microscopy probes for cellular and tissue uptake of poly(d,l-lactide-co-glycolide) nanoparticles' INTERNATIONAL JOURNAL OF PHARMACEUTICS vol. 262, 2003, pages 1 - 11, XP002703706

**Description**

**[0001]** This invention is in the field of medicine. More specifically, this invention relates to cancer therapies utilizing microparticles and fluorescence guided scattering technology.

**BACKGROUND**

**[0002]** More than 1.5 million new cases of cancer are diagnosed per year and the mortality rates for some types of cancer remain very high. The diagnosis of tumor lesions at its inception and early intervention with surgery, radiation, and chemotherapy usually has a positive impact in the outcome of the disease.

**[0003]** Current oral cancer diagnosis is based on tissue transformation in advanced stage of the disease, which is confirmed by biopsy and pathological analysis. Early diagnosis technology specifically for pre-cancerous lesions that can be used in routine dental examination would provide favorably affect clinical outcome. Similarly, current colon cancer screening tests, such as colonoscopy, CT, etc., can only detect cancers that are already in advanced stages. At this stage patients already develop symptoms, such as changing in bowel habits, bloody stools, and abdominal pain. Since early stage diagnosis and intervention often leads to a total cure of the disease, there is a real need for a better diagnosis method.

**[0004]** Young-Pil Kim et al, Anal. Chem. 2008, 80, 5094-5102 discloses a label-free, activity based assay of matrix metalloproteinase (MMP) and its inhibition on peptide-conjugated gold nanoparticles (AuNPs) with non-biofouling poly(oligo(ethylene glycol) methacrylate) (pOEG-MA) films using time-of-flight secondary ion mass spectrometry (TOF-SIMS).

**[0005]** Kaushik A et al, Electrochemistry Communications 10 (2008) 1364-1368 discloses rabbit immunoglobulin antibodies (IgGs) immobilized onto nanobiocomposite film of chitosan (CH)-iron oxide ( $\text{Fe}_3\text{O}_4$ ) nanoparticles prepared onto indium-tin oxide (ITO) electrode for detection of ochratoxin-A (OTA). Excellent film forming ability and availability of  $-\text{NH}_2$  group in CH and affinity of surface charged  $\text{Fe}_3\text{O}_4$  nanoparticles for oxygen supported the immobilization of IgGs. Differential pulse voltammetry (DPV) studies indicated that  $\text{Fe}_3\text{O}_4$  nanoparticles provided increased electroactive surface area for loading of IgGs and improved electron transport between IgGs and electrode. IgGs/CH- $\text{Fe}_3\text{O}_4$  nanobiocomposite/ITO immunoelectrode exhibited improved characteristics such as low detection limit ( $0.5 \text{ ng dL}^{-1}$ ), fast response time (18 s) and high sensitivity ( $36 \mu\text{A/ng dL}^{-1} \text{ cm}^{-2}$ ) with respect to IgGs/CH/ITO immunoelectrode.

**[0006]** US2008/076676 discloses a gold nanoparticle (AuNP)-based peptide chip prepared by forming a monolayer of AuNPs onto a self-assembled monolayer constructed on a solid support, and then immobilizing a peptide on the AuNPs. The AuNPs can effectively amplify the mass signal of the peptide, thus making it possible to measure the mass change of the peptide in a simple and accurate manner. Also, when secondary ion mass spectrometric analysis (spectrum or imaging) is performed on the AuNP-based peptide chip, the activities of enzymes and related inhibitors can be effectively quantified.

**[0007]** WO2005/102396 discloses multimodality nanostructures, methods of forming the multimodality nanostructures, and methods of using the multimodality nanostructures.

**[0008]** Panyam et al, International Journal of Pharmaceuticals 262 (2003) 1-11 discloses the formulation of PLGA nanoparticles containing 6-coumarin as a fluorescent marker and osmium tetroxide as an electron microscopic marker with bovine serum albumin (BSA) as a model protein. Nanoparticles loaded with 6-coumarin were found to be useful for studying intracellular nanoparticle uptake and distribution using confocal microscopy while osmium tetroxide-loaded nanoparticles were found to be useful for studying nanoparticle uptake and distribution in cells and tissue using TEM. It was concluded that 6-coumarin and osmium tetroxide could serve as useful fluorescence and electron microscopy probes, respectively, for incorporation into nanoparticles to study their cellular and tissue distribution.

**[0009]** US2008/248038 discloses a combination (i) of a fusion protein, comprising an  $\epsilon_3$ -CH4 domain part and an antibody part, specifically recognising the extra domain B of fibronectin (ED-B-fibronectin), and (ii) and an anti-EGFR-antibody and its use for treatment of cancer, in particular head and neck cancer, non-small cell lung cancer, prostate cancer, colorectal cancer, ovarian cancer, pancreatic cancer, gastric cancer, and/or breast cancer.

**[0010]** Horton et al, Experimental Cell Research, 195, 368-375 (1991) provides data that demonstrate that osteoclast function can be disrupted by low concentrations of the anti-vitronectin receptor antibody, 23C6. The inhibitory effects of the peptides used in the study produced effects on dentine resorption which were generally weaker and variable, although osteoclast cell adhesion was consistently inhibited in an Arg-Gly-Asp (RGD)-dependent manner. The authors concluded that the vitronectin receptor may play an important role in effecting resorption of mineralized tissues by osteoclasts.

**[0011]** Lue et al, Nanomedicine, 5, 1467-79 (2010) discloses a technology and instrumentation that could help to increase the diagnostic yield of current colon cancer screening procedures. The technology is based on a combined fluorescence-optical coherence tomography (OCT) imaging and topical delivery of a cancer targeting agent. Preferential binding of the contrast agent to cancer tissue allowed the cancer-suspicious locations to be highlighted and, thus, guided OCT imaging to visualize tissue morphology and determine tissue type.

SUMMARY

**[0012]** This disclosure relates to multimodal technology for detection of cancerous lesions. The compositions disclosed herein include multimodal detection agents comprising a plurality of metallic nanoparticles attached to a surface of a polymeric carrier. The detection agents further comprise one or more target-specific binding agents attached to the metallic nanoparticles or the polymeric carrier. In this technology, the target-specific binding agent (*i.e.*, targeting ligand) helps in binding of microparticles specifically to cells or tissues of interest. Imaging technologies, such as OCT, are used to detect tissue morphology.

**[0013]** The present invention is defined in its broadest sense by the appended claims.

**[0014]** Aspects of the compositions disclosed herein include a multimodal detection agent. The detection agent comprises a plurality of metallic nanoparticles attached to a surface of a polymeric carrier. The polymeric carrier is constructed of a core particle comprising one or more of silica, poly(epsilon-caprolactone), poly(d,l-lactide-co-glycolide) and/or modifications thereof, or wherein the core particle is produced from a polymer selected from the group consisting of: polythiolates, cysteine containing peptides, polyacrylates, polyacrylic acid, polyvinyl pyrrolidone (pvp), polyethylene glycol (peg), polynucleotides, poly(hydroxyethylloxazoline), polynucleic acid, poly(hydroxyethylmethacrylate), polyallylamine, polyaminoacids, polysaccharides, chitosan, carbophil, carbomer, carbopol, poly(dimethylaminalkyl methacrylates) and poly(dimethylaminalkyl acrylates), or wherein the core particle is produced from a copolymer selected from the group consisting of: poly(dimethylaminalkyl methacrylates-co-trimethylaminoalkyl methacrylate) and poly(dimethylaminalkyl acrylates-co-trimethylaminoalkyl acrylate). The detection agent further comprises one or more target-specific binding agents attached to the metallic nanoparticles or the polymeric carrier.

**[0015]** In certain embodiments, the metallic nanoparticle comprises one or more of the metals and metal oxides selected from the group consisting of gold, silver, cobalt, manganese, and iron. In particular embodiments, the metallic nanoparticle comprises gold.

**[0016]** In some embodiments, the polymeric carrier comprises poly(epsilon-caprolactone) and in other embodiments, the polymeric carrier comprises poly(d,l-lactide-co-glycolide). In some embodiments, the one or more target-specific binding agents is an antibody, Fab fragment, or binding fragment thereof. In particular embodiments, the one or more target-specific binding agents is an EGFR-specific antibody. In more particular embodiments, the one or more target-specific binding agents is a peptide sequence that specifically targets cell surface receptors. In even more particular embodiments, the one or more target-specific binding agents is a peptide sequence that specifically targets EGFR. In other embodiments, the one or more target-specific binding agents is an arginine-glycine-aspartate tripeptide. In still other embodiments, the one or more target-specific binding agents binds to alpha-V-beta III integrin receptor.

**[0017]** In certain embodiments, the polymeric carrier comprises modified poly(epsilon-caprolactone). In some embodiments, the polymeric carrier comprises at least one layer of gelatin having exposed thiol groups. In other embodiments, the metallic nanoparticles comprise gold.

**[0018]** In particular aspects, the metallic nanoparticles are about 2 nanometers to about 30 nanometers. In certain embodiments, the polymeric carrier is about 500 nanometers to about 10 microns.

**[0019]** In other embodiments, the target-specific binding agent is selected from the group consisting of antibody and peptide sequences. In more embodiments, the polymeric carrier encapsulates an imaging agent. In still more embodiments, the imaging agent is selected from the group consisting of fluorophores, radiolabels, X-ray contrast, and positron emission tomography agents. In further embodiments, the imaging agent is a near-infrared fluorescence dye. In still further embodiments, the metallic nanoparticles are about 10 to about 20 nm. In very particular embodiments, the polymeric carrier is about 1.5 microns.

**[0020]** In certain embodiments, the target-specific binding agent is attached to the metallic nanoparticle. In specific embodiments, the target-specific binding agent is attached to the metallic nanoparticle and the polymeric carrier.

**[0021]** Aspects disclosed herein include methods of manufacturing a multimodal imaging agent. The method comprises fabricating a polymeric core particle and adding at least one coating to the polymeric core particle to form a polymeric carrier. In additional aspects, the methods include attaching one or more metallic nanoparticles to the coating and functionalizing the at least one coating or one or more metallic nanoparticles with a target-specific binding agent.

**[0022]** In certain embodiments, the polymeric core particle comprises poly(epsilon-caprolactone). In other embodiments, the one or more metallic nanoparticles comprises one or more of the metals and metal oxides selected from the group consisting of gold, silver, and iron. In particular embodiments, the metallic nanoparticles comprise gold.

**[0023]** In some embodiments, the metallic nanoparticles are about 2 nanometers to about 30 nanometers. In particular embodiments, the polymeric carrier is about 500 nanometers to about 10 microns.

**[0024]** In certain embodiments, the target-specific binding agent is an EGFR-specific antibody. In more certain embodiments, the target-specific binding agent is an arginine-glycine-aspartate tripeptide. In still more certain embodiments, the target-specific binding agent binds to alpha-V-beta III integrin receptor.

**[0025]** In particular embodiments, the polymeric carrier is about 1.5 microns.

**[0026]** In other embodiments, fabricating a polymeric core particle further comprises encapsulating an imaging agent

within the polymeric core particle. In further embodiments, the imaging agent is selected from the group consisting of fluorophores, radiolabels, and positron emission tomography agents.

[0027] In particular embodiments, the at least one coating is a thiol-modified gelatin. In further embodiments, the metallic nanoparticles are about 10 to about 20 nm. In other embodiments, the target-specific binding agent is an antibody, Fab fragment, or binding fragment thereof.

#### BRIEF DESCRIPTION OF THE FIGURES

[0028] The following figures are presented for the purpose of illustration only, and are not intended to be limiting:

Figure 1 is a graphical representation showing a flow diagram depicting fabrication of multimodal technology consisting of target-specific ligand adsorbed on to colloidal gold nanoparticles (Au NPs) that covalently attached to poly(epsilon-caprolactone) (PCL) microparticles incorporated with near infrared fluorescent dye. The targeting ligands used are arginine-glycine-aspartate (RGD) tripeptide to effectively target the alpha-V-beta-III ( $\alpha_v\beta_3$ ) integrin receptor which is over-expressed on pre-cancerous colon epithelial cells, or epidermal growth factor (EGFR) antibody to target pre-cancerous lesions in the oral cavity, respectively. Near infrared dye core consisting of lipophilic DID dye analogues with absorption spectrum at 750 nm are used for fluorescent guided OCT imaging of precancerous lesions. Figure 2 is a pictorial representation showing a scanning electron micrographs of Au nanoparticle coated PCL microparticles with near infrared dye core. The microparticles approximate size is 1.6  $\mu\text{m}$  in diameter. Coverage of the PCL microparticle surface with Au NPs is shown in the magnified image (centre) and back scattered image (right). Figure 3 is a pictorial representation showing an *in vitro* study of binding efficiency of RGD-functionalized Au-PCL-DiR microparticles in HT29 (A, A') and SW480 (B, B') colon cancer cells which over express  $\alpha_v\beta_3$  integrin receptors. Bright field (left) and fluorescence (right) images were taken with 100 x oil immersed Olympus objective. Figure 4 is a pictorial representation showing an *ex vivo* study showing binding efficiency of RGD-functionalized Au-PCL-DiR microparticles in normal and HT 29 tumor tissues obtained from the subcutaneous xenograft model in nu/nu mice. A, B -bright field images of the normal fibrous and adipose tissue; A', B' - corresponding fluorescence images; C, D- bright field images of the tumor tissue; C', D' - corresponding fluorescence images. Images were taken with a 100x oil immersed Olympus objective.

#### DETAILED DESCRIPTION

##### 1. Compositions

[0029] Disclosed herein are multimodal detection agents and methods of making same. Such agents facilitate more effective early diagnosis of superficial tumor lesions such as in the oral cavity, esophageal, stomach, and colon cancer. Aspects of the detection agents disclosed herein are multimodal detection agents, each comprising a plurality of metallic nanoparticles attached to the surface of a polymeric carrier. Each detection agent further comprises one or more target-specific binding agents attached to the metallic nanoparticles or the polymeric carrier.

[0030] The multimodal technology is based, in part, on topical administration of target-specific binding agents to the multimodal detection agents. As used herein, the term "target-specific binding agent" means a molecule or compound that has an affinity for a target molecule or structure and interacts or associates with the target molecule or compound through van der Waals forces, London forces, covalent bonds, ionic bonds, hydrogen bonds or a combination of these interactions.

[0031] The compositions disclosed herein can also encapsulate one or more imaging agents. As used herein, the term "encapsulate" means to enclose within or associate with the polymeric carrier. The encapsulation can include association of a molecule or compound at the surface of the polymeric carrier or within the polymeric carrier. Such imaging agents include fluorophores, radio labels, X-ray contrast, RAMAN spectroscopy agents, and positron emission tomography agents. Examples of fluorophores include rhodamine, fluorescein, isothiocyanate, phycoerythrin, phycocyanin, fluorescamine, and metal chelates. Examples of radiolabels include  $^3\text{H}$ ,  $^{123}\text{I}$ ,  $^{125}\text{I}$ ,  $^{131}\text{I}$ ,  $^{32}\text{P}$ ,  $^{35}\text{S}$ ,  $^{14}\text{C}$ ,  $^{51}\text{Cr}$ ,  $^{36}\text{Cl}$ ,  $^{57}\text{Co}$ ,  $^{55}\text{Fe}$ ,  $^{59}\text{Fe}$ ,  $^{90}\text{Y}$ ,  $^{99\text{m}}\text{Tc}$  (metastable isomer of Technetium 99), and  $^{75}\text{Se}$ . Furthermore, X-ray contrast agents include Diatrizoate (Hypaque 50), Metrizoate (Isopaque 370), Ioxaglate (Hexabrix), Iopamidol (Isovue 370), Iohexol (Omnipaque 350), Ioxilan (Oxilan 350), Iopromide (Ultravist 370), and Iodixanol (Visipaque 320). Other agents include 2,2,6,6-tetramethylpiperidine-1-oxyl (TEMPO) group, DID fluorescent dye analogs, and perdeuterated alkyl or aryl phosphonium groups. Methods of encapsulating imaging agents within a particle are known in the art. For instance, the solvent displacement method has been used to encapsulating nucleic acids, small molecules, and peptides (see, e.g., Oster et al. Journal of Controlled Release (2006) 111(3): 371-381; Ribeiro et al. Food Hydrocolloids 22(1): 12-17;).

[0032] Methods of producing the carrier are known in the art and include the single emulsion method and solvent displacement method (see, e.g., Furtado Mosqueira et al. Journal of Pharmaceutical Sciences Special Issue: Papers

from the 1999 Macromolecular Drug Delivery Conference (2000) 89(5): 614-626; Rosca et al. Journal of Controlled Release (2004) 99(2): 271-280.

**[0033]** Certain aspects of the multimodal detection agents include one or more gelatin layers attached or associated with the core particle of the polymeric carrier. As used herein, the term "gelatin" means any hydrophilic substance or material capable of absorbing an aqueous solution and forming a gel. Exemplary gelling materials include gelatin, polysaccharides, cellulose, collagen, keratin, polyketal, and beta-lactoglobulin. In certain embodiments, the gelling materials are biodegradable or biocompatible. Methods of preparing polymeric materials are well known in the art (see, e.g., Papisov M.I. et al. Biomacromolecules (2005) 6: 2659-2670; Mathiowitz et al. Nature, (1997) 386: 410-414; Tsung et al. AAPS PharmSci. (2001) 3(1): Article 11).

**[0034]** The gelatin layer or core particle can be derivatized with a variety of groups, including target-specific binding agents. Derivatization of organic polymers can be performed to expose selected reactive groups at their surface (see, e.g., Townsend, S. A., et al. Biomaterials (2007) 28(34): 5176-5184; Weiss, B., et al. Bioconjugate Chemistry (2007) 18(4): 1087-1094; and Gindy, M. E., et al. PMSE Preprints (2006) 95:989-990). Furthermore, attaching target-specific binding agents, such as proteins, peptides, antibodies, and small molecules, to a polymer is known in the art (see, e.g., United States Patent 7,022,336; Bumgarner et al. J Control Release (2009) 137(2):90-7; Sy et al. Biomaterials (2010) 31(18):4987-94; Balmayor et al. J. R. Soc. Interface (2011) 10.1098/rsif.2010.0531). A target-specific binding agent can be a small molecule that binds a target, ligand, peptide (e.g., arginine-glycine-aspartate ("RGD") tripeptide), protein, antibody, Fab fragment, F(ab')<sub>2</sub> fragments, and peptidomimetic compounds. Exemplary targets include receptors (e.g., alpha-V-beta III integrin receptor and EGFR receptor), phospholipids, glycoproteins, and proteins.

**[0035]** In certain aspects, the multimodal detection agents comprise metallic nanoparticles attached to the surface of the polymeric carrier. The surface of the polymeric carrier can be either a core particle as described herein or a gelatin layer attached to the surface of the core particle. A variety of metallic nanoparticles are suitable for use in the compositions. In certain embodiments, suitable nanoparticles are essentially spherical in form. In other embodiments, other forms are used. The nanoparticles are composed of a metal. In specific embodiments, metallic nanoparticles comprise metals and metal oxides of gold, silver, and iron. The metallic nanoparticles can be homogeneous or blended from two or more metals. The surface of the nanoparticles has one or more chemically reactive groups suitable for functionalization with a target-specific binding agent. In some embodiments, the surface of the nanoparticles contains multiple, evenly distributed reactive groups of a single type. Some non-limiting examples of nanoparticles suitable for use are gold, thiol residues, cross-linked iron, aminopropylsilyl acyl oxide (CLIO) protecting group, silver, amine organic polymer, COOH or NH<sub>2</sub> or COOH quantum dots.

**[0036]** The size of the metallic nanoparticles, e.g., the average (mean) diameter, is in the range from about 2 nm to about 100 nm; from about 5 nm to about 50 nm; from about 2 nm to about 30 nm; and from about 10 nm to about 20 nm. The size distribution within a set of nanoparticles is a normal distribution; however, for certain applications a set can have other size distributions, such as bimodal or other types of distribution. Size distribution and average diameter of the nanoparticles can be measured by any method known in the art, including but not limited to light scattering, electron microscopy, and size exclusion chromatography.

**[0037]** In specific embodiments, the multimodal detection agent comprises colloidal gold adsorbed to poly(epsilon-caprolactone) (Au-PCL) or silica microparticles and fluorescence-guided scattering technology. While enhanced-contrast fluorescence imaging helps to better localize suspicious lesions, OCT is used under fluorescence guidance to visualize tissue morphology, and thus to serve as a confirmatory tool for neoplastic disease.

**[0038]** The multimodal detection agents disclosed herein are useful in known imaging techniques. For instance, the multimodal detection agents can be used in optical coherence tomography ("OCT") imaging. Other detection methods include fluorescence microscopy, electron paramagnetic resonance, Raman spectroscopy, and positron emission tomography.

**[0039]** In certain embodiments, the multimodal technology is constructed using PCL or silica microspheres as a core material. The core material further incorporates a near infrared fluorescent dye as shown in Figure 1. The single emulsion method can be employed to form the core particle encapsulating a dye. In the embodiment shown in Figure 1, the incorporation is performed in the presence of cetyltriethylammonium bromide. In Figure 1, the amine-modified PCL particle (*i.e.*, polymeric carrier) with near infrared core particle **10** is constructed according to the single emulsion method. The PCL polymeric carrier **10** is thiolated according to known techniques to form a thiol functionalized polymeric carrier **20**. In the embodiment shown in Figure 1, the cationic PCL microparticle surface are modified with thiolated gelatin to allow covalent attachment of colloidal gold nanoparticles **30** (10 nm - 20 nm). The surface of Au-PCL microparticles **40** can be modified with target-specific binding agents such as EGFR specific antibodies **50**. In certain embodiments, the target-specific binding agents are arginine-glycine-aspartate (RGD) tripeptides for targeting the alpha-V-beta-III ( $\alpha_v\beta_3$ ) integrin receptor. In the embodiment shown in Figure 1, DID fluorescent dye analogs with absorption spectrum at 750 nm are used as near infrared dyes for fluorescent guided OCT imaging of pre-cancerous lesions.

**[0040]** The multimodal detection agent, upon topical administration, can bind specifically to particular cells. In certain embodiments, the cells are pre-cancerous and bound through the interaction of RGD and EGFR with the over-expressed

receptors on such cancerous cells. When such binding occurs, the fluorescence contrast originating from the PCL core helps to better localize suspicious lesions. Then OCT is used under fluorescence guidance to visualize tissue morphology and thus to serve as an early diagnosis tool for cancer presence.

[0041] The compositions disclosed herein can be administered orally, topically, or parenterally (e.g., intranasally, subcutaneously, intramuscularly, intravenously, or intra-arterially) by routine methods in pharmaceutically acceptable inert carrier substances. The compositions can be administered in a dosage of 0.25  $\mu\text{g}$  /kg/day to 5 mg/kg/day and in dosages of 1  $\mu\text{g}$ /kg/day to 500  $\mu\text{g}$  /kg/day. Optimal dosage and modes of administration can readily be determined by conventional protocols.

## 2. Methods of Fabrication

[0042] Aspects disclosed herein include methods of manufacturing a multimodal imaging agent. In particular, the methods comprise fabricating a polymeric core particle. For instance, the core particle can be produced by dissolving a polymer, such as PCL, in a solvent (e.g., dichloromethane) in the presence of an imaging agent. Such mixtures can be subjected to the single emulsion method where the mixture of polymer and imaging agent in the solvent are emulsified with an aqueous phase to produce an oil-in-water (O/W) emulsion. The core particle of the detection agent is allowed to form with the imaging agent encapsulated within the core particle. The imaging agent makes the detection agent visible in detection instruments such as a PET instrument.

[0043] The methods disclosed further comprise adding at least one coating to the polymeric core particle to form a polymeric carrier. Such coatings include gelatin, for example. The surface of the core particle can be modified with thiolated gelatin. For thiolation, a solution of gelatin can be prepared in a thiolation agent (e.g., 2-iminothiolane). The thiol functional groups (SH-) of thiolated gelatin can easily attach to the surface of the amino group of the polymer used to make the core particle of the detection agent.

[0044] The methods further comprise attaching one or more metallic nanoparticles to the multimodal detection agent. This can be accomplished using, for instance, metals that are unreactive in a biological system (e.g., gold, silver, iron oxide) and are milled to produce nanometer-sized particles. Such particles can be obtained from various procedures known in the art (see, e.g., McFarland et al. J. Chem. Educ. (2004) 81 (4): 544A; Luna Martinez et al. Mater. Sci. Forum: Adv. Elec. Microscop. Nanomat. (2010) 644: 51-55; Gardea-Torresdey et al. Journal of Nanoparticle Research (1999) 1(3): 397-404; Zhou et al. Chem. Mater. (1999) 11 (9): 2310-2312). Nanoparticles can also be obtained commercially from Sigma-Aldrich (St. Louis, MO) and Nanostructured & Amorphous Materials, Inc. (Houston, TX). The multimodal detection agent can be covered with metallic nanoparticles using known procedures, such as coating gold nanoparticles by reduction of tetrachloroauric acid with sodium citrate, which leads to the formation of 20-30-nm gold particles attached to the surface of the multimodal detection agent. For gold nanoparticles of 2 nm to 10 nm, sodium borohydride is used. In certain embodiments, metallic nanoparticles can be used to facilitate target-specific binding agent attachment, which will enhance imaging contrast by intensively reflecting the light. The nanoparticles' surface is functionalized with the target-specific binding agent, such as with a linear peptide sequence (e.g., ACD/CRG/DCF/CGG/GGG/COOH), which can be synthesized using known methodologies.

## 3. Kits

[0045] One or more of the components needed for preparing the multimodal detection agents can be conveniently provided in the form of a kit. A kit can include instructions for use of the components to prepare functionalized multimodal detection agents according to the disclosed methods, as well as one or more reagents useful in carrying out any of the coupling, blocking, or unblocking reactions. A kit can also include packaging materials.

[0046] The disclosure is further illustrated by the following examples. The examples are provided for illustrative purposes only. They are not to be construed as limiting the scope or content of the disclosure in any way.

## EXAMPLES

### **EXAMPLE 1**

#### **A Nanotechnology-Based Multimodal Approach for More Effective Diagnosis of Early Stage Colon Cancers**

[0047] Near-infrared fluorescent dye labeled PCL microparticles with an average size of 1.5  $\mu\text{m}$  were fabricated by the single emulsion process and surface coated with 20 nm colloidal gold by adsorption on to thiol-modified gelatin coating. These particles were then functionalized with an arginine-glycine-aspartate (RGD) tripeptide having a cysteine group to attach to the gold surface using thiol-gold covalent bond to effectively target the alpha-V-beta-III ( $\alpha_v\beta_3$ ) integrin receptor, which is over-expressed on pre-cancerous epithelial cells. Preliminary testing of functionalization efficacy was

performed on HT29 and SW480 colon cancer cell lines from American Type Culture Collection (ATCC, Richmond, VA) (Sainsbury, et al. (2007) J. Phys. Chem. C, 111: 12992-12999). The following is a brief description of the methodologies used.

5 **[0048]** Highly engineered Au-PCL microspheres were fabricated to be used as a contrast agent. Gold nanoparticles, 20 nm in size, were used to facilitate RGD attachment and enhance OCT imaging contrast by intensively reflecting the light. The nanoparticles' surface was functionalized with RGD with a linear sequence - ACD/CRG/DCF/CGG/GGG/COOH - which was synthesized at the research core facility at Tufts University (MA, USA). This peptide specifically recognizes the  $\alpha_3\beta_1$ -integrin receptor, which is overexpressed by the precancerous epithelial cells. Although other sequences were tested as well, this sequence showed the highest affinity to four cancer cell lines used in recent studies: human colon adenocarcinoma grade II-HT 29, human colon adenocarcinoma SW480, human cervical cancer HeLa, and human esophageal cancer HET1A. A NIR fluorescent dye (D-12731 [Invitrogen, USA], also known as DiR), was used to label these microparticles and make them visible in the fluorescence channel of the instrument.

10 **[0049]** Briefly, 1 g of PCL was dissolved in 16.7 ml of dichloromethane ( $\text{CH}_2\text{Cl}_2$ ), and then the DiR dye (10- $\mu\text{M}$  concentration) was added. The resulting oil-phase mixture was emulsified with the aqueous phase of 1 g cetyltrimethylammonium bromide (CTAB) in 333 ml of deionized water (resistivity: 18.2 M $\Omega$ ·cm; Millipore Corp., USA) using Silverson homogenizer (Silverstone Machines Ltd, CA, USA) at 8000 rpm and at room temperature for 5 min to produce an oil-in-water (O/W) emulsion. The emulsion was then stirred at room temperature for 24 h to allow the evaporation of dichloromethane and the formation (solidification) of the PCL microparticles. The resulting microparticles suspension was centrifuged at 4000 rpm for 10 min, the pellet was washed two to three times with water to remove excess CTAB, and then freeze dried. The microparticles were then covered with gold nanoparticles, which were fabricated using a standard procedure by the reduction of tetrachloroauric acid with sodium citrate, which leads to the formation of 20-30-nm gold particles.

15 **[0050]** To attach citrate gold nanoparticles, the surface of PCL particles was first modified with thiolated gelatin. For thiolation, a solution of gelatin was prepared and incubated with 2-iminothiolane, a cyclic thioimide compound that is stable at both acidic and neutral pH. In total, 1 g of gelatin was dissolved in 100 ml of distilled water, and then incubated with varying masses of 2-iminothiolane (10-100 mg/g of gelatin) at room temperature for 15 h. Any unreacted iminothiolane was removed by repeated dialysis against 5 mM hydrochloric acid, followed by 1 mM hydrochloric acid solution for 24 h each, with repeated water changes in a 2-l beaker. The purified thiolated gelatin was freeze-dried for further use, and stored at 4°C. The thiol functional groups (SH-) of thiolated gelatin can easily attach to the surface of the amino group of CTAB over PCL microparticles. To accomplish this, 1 g of PCL-CTAB microparticles were dispersed in 350 ml of purified water, and 100 mg of thiolated gelatin in 20 ml of 10 mM ethylenediaminetetraacetic acid (EDTA) solution was added. Then, the reaction mixture was stirred vigorously for 1 day at 4°C. Excess thiolated gelatin was removed from the thio-functionalized PCL particles by centrifugation at 4000 rpm for 10 min.

20 **[0051]** After washing twice with water, the pellet was redispersed in 150 ml of water. The 5% wet weight of gold nanoparticles was added slowly (2-3 h) dropwise into the rapidly stirring thio-functionalized PCL particles, which were then transferred to 4°C for overnight mild stirring. After this, the sample was centrifuged, and the pellet was redispersed in water and freeze-dried.

25 **[0052]** The RGD peptide was then attached to microparticles. The RGD (0.1 nM) was diluted with 2 ml of distilled water. A total of 200 mg of well-characterized Au-PCL nanoparticles were dispersed in 50 ml of deionized water. This dispersion was split into two conical flasks containing 100 ml of the dispersed Au-PCL nanoparticle particles. Both conical flasks were wrapped with aluminum foils to prevent light exposure. In one of the conical flasks, 1.5 ml of RGD was added and stirred for 48 h at 4°C (in the dark). In the other flask, under the same conditions, 1.5 ml of RGD was added, and then 20 mg of Trout's reagent was added and stirred for 48 h at 4°C. Subsequently, the reaction mixture was centrifuged to collect the RGD-bound nanoparticles, and washed twice with distilled water and centrifuged. Then, 5 ml of water was added to the microparticles and lyophilized to obtain the purified particles. After fabrication, the gold nanoparticle-coated

30 **[0053]** PCL microparticles were characterized for size and size distribution using a Multisizer™ 3 (Beckman Coulter, CA, USA). This instrument measures the change in the electrical resistance produced by nonconductive particle in the electrolyte solution. The microparticles were diluted with water, and the diluted suspension was added to the glass beaker containing the standard electrolyte solution until a suitable concentration was obtained for particle-size measurement. All measurements were carried out at room temperature. An average size of 1.6  $\mu\text{m}$  with a standard deviation of 0.5  $\mu\text{m}$  was observed. A scanning electron microscopy image of the microparticles is shown in Figure 2 Hitachi S-4800 (Hitachi High-Technologies, UK) field emission scanning microscope at an acceleration voltage of 20 kV was used. The gold-coated surface morphology of the freeze-dried microparticles was observed in the reflectance mode. A custom-built inverted microscope with a fluorescence channel was used for the preliminary testing of the imaging contrast agent on cell cultures and, at a later duration in the study, on thin samples of tissue (50  $\mu\text{m}$  in thickness). The inverted microscope platform was constructed by modifying a Leitz Laborlux upright microscope (Leitz, Germany). A Xenon arc lamp provided a continuous wide band of light, which was used as an illumination source for

35 **[0054]** the fluorescence excitation, and a halogen lamp was used as an illumination source for brightfield imaging. A

light-guide fiber bundle and relay optics were used to deliver the excitation beam from the Xenon lamp to a Nikon objective lens (100× oil immersion; 1.25 numerical aperture [NA]). The fluorescence signal from the sample was collected by the same objective lens and relayed to a charge-coupled device (CCD) camera (Rolera XR; Q-Imaging, BC, Canada). In the fluorescence mode, a NIR filter (Model 41037; Chroma, VT, USA) was placed in front of the CCD camera to reject the back reflection signal from the sample, and to allow only the emission from the fluorescence dye to reach the CCD sensor. In bright-field imaging, a condenser lens was used to send the illumination beam from a halogen source to the sample. The image was magnified by the same objective lens, and relayed to the CCD sensor.

[0055] An existing OCT imaging system based on the spectral domain (SD) approach, previously built at Physical Sciences (MA, USA) was used for OCT imaging. A fluorescence channel was added to the instrument's probe.

[0056] The data acquisition software was upgraded to allow for simultaneous OCT-fluorescence imaging. The SD-OCT/fluorescence imaging system consists of five subsystems: light sources (835 and 1310 nm), fiberoptic interferometer (2 × 2 fiber splitter, circulator, and reference and sample arm optics), spectral detection unit (diffraction grating, spectrometer lens system and digital InGaAs camera), imaging probe, and data acquisition and processing unit (computer, camera board and display). The imaging probe has two channels, allowing for both OCT and fluorescence imaging. This probe has an excitation port that uses a 745-nm laser diode (Model QFLD 745; QPhotonics, MI, USA) to excite the NIR dye, and an OCT imaging port. The OCT channel consists of a beam collimator, two scanning mirrors that generate an OCT raster and a 5 × scanning lens (Model LSM03; Thorlabs, NJ, USA).

[0057] A custom dichroic filter (Andover Corporation, MA, USA) is used to combine the OCT and fluorescence excitation beams on the sample, and simultaneously collect both OCT and fluorescence images. A NIR-enhanced response camera (Rolera XR) is used for fluorescence imaging. The excitation light is blocked by a NIR filter (Model 41037, Chroma Technology Corp., VT, USA). The bench-top imaging probe can collect raster OCT images (maximum 7 × 7 mm) with an axial resolution of approximately 10 μm in tissue, and relatively large-field fluorescence images (25 × 25 mm) at relatively high frame rates (20 frames/s or higher, depending of the image resolution).

[0058] Testing of the multimodal detection agents produced above was performed on a HT29 colon cancer xenograft model in *nulnu* nude mice. Mice were inoculated with the cells under the left flank and the tumor mass was allowed to grow for about 10 days. Following sacrifice, the tumor was harvested and treated with control (unmodified) and RGD-modified Au-PCL microparticles. Tumor and normal tissue sections were cut to 20 μm thickness on 10 slides for tumor sample and 10 slides for normal tissue sample. The tissue samples were kept in Tissue Embedding Media (TEM), and washed with PBS to get rid of the embedding media, 50 mg of DIR-PCL Au particles (freeze dried) were used as control particles (un-modified). They were dispersed in PBS to 2 mg/ml. If there was aggregation, stirring at 4 °C for 30 min was performed. 50 mg of RGD modified DIR-PCL-Au particle suspension was made by adding 2 mg of pure RGD to 50 mg of DIR-PCL-Au particles in 25 ml of water. This sample was centrifuged at 4000 g for 10 min and the pellet dispersed in PBS to 2 mg/ml. Tissue slices were then obtained and imaged using OCT and fluorescence microscopy.

[0059] Strong binding of the RGD-functionalized microparticles and weak binding of the unfunctionalized microparticles was observed in HT29 and SW480 colon cell lines. Both the OCT and fluorescence images taken before and after incubation on both normal and tumor tissue samples showed increased contrast (enhanced scattering and fluorescence contrast, respectively) on the tumor tissue samples.

[0060] These results show that topical administration of RGD-functionalized microparticles in combination with fluorescence-guided OCT imaging helps to more effectively localize early stage colon cancers.

## EXAMPLE 2

### **Development of EGFR-Targeted Gold Nanoparticle-Coated Poly (Epsilon-Caprolactone) Microparticles for Detection of Oral Pre-Cancer Lesions**

[0061] Current oral cancer diagnosis is based on tissue transformation, which is confirmed by biopsy and pathological analysis. Early detection technology specifically for pre-cancerous lesions that can be used in routine dental exam provides a favorable clinical outcome.

[0062] The main objective of this example was to develop epidermal growth factor receptor (EGFR)-targeted gold nanoparticle-coated poly(epsilon-caprolactone) (Au-PCL) microspheres as a dual-detection technology pre-cancerous lesions in the oral cavity.

[0063] Fluorescent dye-encapsulated PCL microparticles (2 mm -3 mm in diameter) were formed using the single emulsion method where the polymer in organic solvent is mixed with an aqueous solution of cetyltriethylammonium bromide and emulsified under controlled stirring. The resulting microparticle size and surface morphology is dictated by the polymer concentration, ratio of organic to aqueous phases, rate of addition, and the stirring speed. These parameters were optimized to generate PCL microspheres of 1 μm -5 μm in diameter and having a positively-charged surface. The positively-charged (cationic) microsphere surfaces were modified with thiolated gelatin to allow for covalent attachment of gold nanoparticles (20 nm-40 nm) through the thiol-gold linkage. The surfaces of Au-PCL microspheres were then

modified with EGFR antibody by adsorption from an aqueous solution. The formulations were characterized for size, surface charge, and morphology. Cell binding studies were performed to confirm EGFR-specific interactions using differential interference contrast (DIC), confocal reflectance, and 2-photon fluorescence microscopy.

**[0064]** The results show that cationic PCL microparticles could successfully encapsulate hydrophobic fluorescent dye and could be functionalized with gold nanoparticles and EGFR-specific antibody. The EGFR-targeted microparticles also showed very efficient binding to EGFR over-expressing cancer cell lines, including HCPC-1 relative to unmodified microparticles. EGFR-specific binding could be displaced by an excess of the soluble antibody.

**[0065]** EGFR-targeted Au-PCL microspheres offer a useful platform for reflectance and fluorescence imaging in detection of EGFR over-expressing oral pre-cancerous lesions.

**[0066]** *In vitro* and *ex vivo* data (Figures 3 and 4) shows that this multimodal technology could efficiently bind to pre-cancerous cells that over-express the ligand specific receptors, produce enhanced fluorescence contrast to localize the affected area and subsequent OCT imaging to confirm the cancer presence.

**[0067]** Unless otherwise defined, all technical and scientific terms used herein have the same meaning as commonly understood by one of ordinary skill in the art to which this invention belongs.

SEQUENCE LISTING

**[0068]**

<110> Northeastern University

<120> MULTIMODAL DIAGNOSTIC TECHNOLOGY FOR EARLY STAGE CANCER LESIONS

<130> P205172EP

<140> EP11760209.4

<141> 2011-03-24

<150> US20100317123

<151> 2010-03-24

<160> 1

<170> PatentIn version 3.5

<210> 1

<211> 15

<212> PRT

<213> Artificial Sequence

<220>

<223> Synthetic peptide

<400> 1

Ala	Cys	Asp	Cys	Arg	Gly	Asp	Cys	Phe	Cys	Gly	Gly	Gly	Gly	Gly
1				5				10						15

**Claims**

1. A multimodal detection agent comprising a plurality of metallic nanoparticles attached to a surface of a polymeric carrier; wherein the polymeric carrier is constructed of a core particle comprising one or more of silica, poly(epsilon-caprolactone), poly(d,l-lactide-co-glycolide) and/or modifications thereof, or wherein the core particle is produced from a polymer selected from the group consisting of: polythiolates, cysteine containing peptides, polyacrylates, polyacrylic acid, polyvinyl pyrrolidone (pvp), polyethylene glycol (peg), polynucleotides, poly(hydroxyethylloxazoline), polynucleic acid, poly(hydroxyethylmethacrylate), polyallylamine, polyaminoacids, polysaccharides, chitosan, carbophil, carbomer, carbopol, poly(dimethylaminalkyl methacrylates) and poly(dimethylaminalkyl acrylates), or where-

in the core particle is produced from a copolymer selected from the group consisting of: poly(dimethylaminalkyl methacrylates-co-trimethylaminoalkyl methacrylate) and poly(dimethylaminalkyl acrylates-co-trimethylaminoalkyl acrylate); the detection agent further comprising one or more target-specific binding agents attached to the metallic nanoparticles or the polymeric carrier.

5

2. The multimodal detection agent of claim 1, wherein the metallic nanoparticle comprises one or more of the metals and metal oxides selected from the group consisting of gold, silver, cobalt, manganese, and iron; optionally wherein the metallic nanoparticle comprises one or more of the metals and metal oxides selected from the group consisting of gold, silver and iron; and further optionally wherein the metallic nanoparticle comprises gold.

10

3. The multimodal detection agent of claim 1 or claim 2, wherein the polymeric carrier comprises poly(epsilon-caprolactone); poly(D,L-lactide-co-glycolide) or modified poly(epsilon-caprolactone); optionally wherein the polymeric carrier comprises at least one layer of gelatin having exposed thiol groups.

15

4. The multimodal detection agent of any preceding claim, wherein the one or more target-specific binding agents is an antibody, Fab fragment, or binding fragment thereof; optionally wherein the one or more target-specific binding agents is an EGFR-specific antibody.

20

5. The multimodal detection agent of any of claims 1 to 3, wherein the one or more target-specific binding agents is a peptide sequence that specifically targets cell surface receptors; optionally wherein the one or more target-specific binding agents is a peptide sequence that specifically targets EGFR.

25

6. The multimodal detection agent of any of claims 1 to 3, wherein the one or more target-specific binding agents is an arginine-glycine-aspartate tripeptide.

7. The multimodal detection agent of any of claims 1 to 3, wherein the one or more target-specific binding agents binds to alpha-V-beta III integrin receptor.

30

8. The multimodal detection agent of any of claims 1 to 3, wherein the target-specific binding agent is selected from the group consisting of antibody and peptide sequences.

9. The multimodal detection agent of any preceding claim, wherein the metallic nanoparticles are 2 nanometers to 30 nanometers; optionally 10 to 20 nm; and/or wherein the polymeric carrier is 500 nanometers to 10 microns; optionally 1.5 microns.

35

10. The multimodal detection agent of any preceding claim, wherein the polymeric carrier encapsulates an imaging agent; optionally wherein the imaging agent is selected from the group consisting of fluorophores, radiolabels, x-ray contrast, and positron emission tomography agents; and further optionally wherein the imaging agent is a near-infrared fluorescence dye.

40

11. The multimodal detection agent of any preceding claim, wherein the target-specific binding agent is attached to the metallic nanoparticle; or wherein the target-specific binding agent is attached to the metallic nanoparticle and the polymeric carrier.

45

12. A method of manufacturing a multimodal imaging agent, the method comprising:

(a) fabricating a polymeric core particle;

(b) adding at least one coating to the polymeric core particle to form a polymeric carrier;

(c) attaching one or more metallic nanoparticles to the coating; and

50

(d) functionalizing the at least one coating or one or more metallic nanoparticles with a target-specific binding agent.

13. The method of claim 12, wherein fabricating a polymeric core particle further comprises encapsulating an imaging agent within the polymeric core particle; optionally wherein the imaging agent is selected from the group consisting of fluorophores, radiolabels, and positron emission tomography agents.

55

14. The method of claim 12 or claim 13, wherein the at least one coating is a thiol-modified gelatin.

- 5
15. The method of any of claims 12 to 14, wherein the metallic nanoparticle comprises one or more of the metals and metal oxides selected from the group consisting of gold, silver, cobalt, manganese, and iron; optionally wherein the metallic nanoparticle comprises one or more of the metals and metal oxides selected from the group consisting of gold, silver and iron; and further optionally wherein the metallic nanoparticle comprises gold.
- 10
16. The method of any of claims 12 to 15, wherein the polymeric carrier comprises poly(epsilon-caprolactone); poly(D,L-lactide-co-glycolide) or modified poly(epsilon-caprolactone); optionally wherein the polymeric carrier comprises at least one layer of gelatin having exposed thiol groups.
- 15
17. The method of any of claims 12 to 16, wherein the one or more target-specific binding agents is an antibody, Fab fragment, or binding fragment thereof; optionally wherein the one or more target-specific binding agents is an EGFR-specific antibody; or wherein the one or more target-specific binding agents is a peptide sequence that specifically targets cell surface receptors; optionally wherein the one or more target-specific binding agents is a peptide sequence that specifically targets EGFR; or wherein the one or more target-specific binding agents is an arginine-glycine-aspartate tripeptide; or wherein the one or more target-specific binding agents binds to alpha-V-beta III integrin receptor; or wherein the target-specific binding agent is selected from the group consisting of antibody and peptide sequences.
- 20
18. The method of any of claims 12 to 17, wherein the metallic nanoparticles are 2 nanometers to 30 nanometers; optionally 10 to 20 nm; and/or wherein the polymeric carrier is 500 nanometers to 10 microns; optionally 1.5 microns.

### Patentansprüche

- 25
1. Multimodales Nachweismittel, umfassend eine Vielzahl metallischer Nanopartikel, die an eine Oberfläche eines polymeren Trägerstoffes gebunden sind; wobei der polymere Trägerstoff aus einem Kernpartikel besteht, umfassend eines oder mehrere von Siliziumdioxid, Poly(epsilon-caprolacton), Poly(D,L-lactid-co-glycolid) und/oder Modifikationen davon oder wobei der Kernpartikel aus einem Polymer hergestellt wird, das aus der Gruppe ausgesucht wird, die sich aus Folgendem zusammensetzt: Polythiolate, Cystein enthaltende Peptide, Polyacrylate, Polyacrylsäure, Polyvinylpyrrolidon (PVP), Polyethylenglycol (PEG), Polynukleotide, Poly(hydroxyethyloxazolin), Polynukleinsäure, Poly(hydroxyethylmethacrylat), Polyallylamin, Polyaminosäuren, Polysaccharide, Chitosan, Carbophil, Carbomer, Carbopol, Poly(dimethylaminoalkylmethacrylate) und Poly(dimethylaminoalkylacrylate) oder wobei der Kernpartikel aus einem Copolymer hergestellt wird, das aus der Gruppe ausgewählt wird, die sich aus Folgendem zusammensetzt: Poly(dimethylaminoalkylmethacrylat-co-trimethylaminoalkylmethacrylat) und Poly(dimethylaminoalkylacrylate-co-trimethylaminoalkylacrylate); wobei das Nachweismittel ferner ein oder mehrere zielspezifische Bindemittel umfasst, die an die metallischen Nanopartikel oder den polymeren Trägerstoff gebunden sind.
- 30
2. Multimodales Nachweismittel nach Anspruch 1, wobei der metallische Nanopartikel eines oder mehrere der Metalle und Metalloxide umfasst, die aus der Gruppe ausgewählt werden, die sich aus Gold, Silber, Cobalt, Mangan und Eisen zusammensetzt; optional wobei der metallische Nanopartikel eines oder mehrere der Metalle und Metalloxide umfasst, die aus der Gruppe ausgewählt werden, die sich aus Gold, Silber und Eisen zusammensetzt; und ferner optional wobei der metallische Nanopartikel Gold umfasst.
- 40
3. Multimodales Nachweismittel nach Anspruch 1 oder Anspruch 2, wobei der polymere Trägerstoff Poly(epsilon-caprolacton); Poly(D,L-lactid-co-glycolid) oder modifiziertes Poly(epsilon-caprolacton) umfasst; optional wobei der polymere Trägerstoff mindestens eine Schicht von Gelatine mit exponierten Thiolgruppen umfasst.
- 45
4. Multimodales Nachweismittel nach einem vorhergehenden Anspruch, wobei die einen oder mehreren zielspezifischen Bindemittel ein Antikörper, ein Fab-Fragment oder ein bindendes Fragment davon sind; optional wobei die einen oder mehreren zielspezifischen Bindemittel ein EGFR-spezifischer Antikörper sind.
- 50
5. Multimodales Nachweismittel nach einem der Ansprüche 1 bis 3, wobei die einen oder mehreren zielspezifischen Bindemittel eine Peptidsequenz sind, die spezifisch auf Zelloberflächenrezeptoren zielt; optional wobei die einen oder mehreren zielspezifischen Bindemittel eine Peptidsequenz sind, die spezifisch auf EGFR zielt.
- 55
6. Multimodales Nachweismittel nach einem der Ansprüche 1 bis 3, wobei die einen oder mehreren zielspezifischen Bindemittel ein Arginin-Glycin-Aspartat-Tripeptid sind.

## EP 2 549 925 B1

7. Multimodales Nachweismittel nach einem der Ansprüche 1 bis 3, wobei sich die einen oder mehreren zielspezifischen Bindemittel an einen alpha-V-beta-III-Integrinrezeptor binden.
- 5 8. Multimodales Nachweismittel nach einem der Ansprüche 1 bis 3, wobei das zielspezifische Bindemittel aus der Gruppe ausgewählt wird, die sich aus Antikörper- und Peptidsequenzen zusammensetzt.
9. Multimodales Nachweismittel nach einem vorhergehenden Anspruch, wobei die metallischen Nanopartikel 2 Nanometer bis 30 Nanometer groß sind; optional 10 bis 20 nm; und/oder wobei der polymere Trägerstoff 500 Nanometer bis 10 Mikrometer groß ist; optional 1,5 Mikrometer.
- 10 10. Multimodales Nachweismittel nach einem vorhergehenden Anspruch, wobei der polymere Trägerstoff ein Kontrastmittel einkapselt; optional wobei das Kontrastmittel aus der Gruppe ausgewählt wird, die sich aus Fluorophoren, radioaktiven Markern, Röntgenkontrastmitteln und Mitteln für die Positronen-Emissions-Tomographie zusammensetzt; und ferner optional wobei das Kontrastmittel ein Nahinfrarot-Fluoreszenzfarbstoff ist.
- 15 11. Multimodales Nachweismittel nach einem vorhergehenden Anspruch, wobei das zielspezifische Bindemittel an den metallischen Nanopartikel gebunden ist; oder wobei das zielspezifische Bindemittel an den metallischen Nanopartikel und den polymeren Trägerstoff gebunden ist.
- 20 12. Verfahren zur Herstellung eines multimodalen Kontrastmittels, wobei das Verfahren Folgendes umfasst:
- (a) Herstellen eines polymeren Kernpartikels;
  - (b) Hinzufügen mindestens einer Beschichtung zu dem polymeren Kernpartikel, um einen polymeren Trägerstoff zu formen;
  - 25 (c) Binden eines oder mehrerer metallischer Nanopartikel an die Beschichtung; und
  - (d) Funktionalisieren der mindestens einer Beschichtung oder der einen oder mehreren metallischen Nanopartikel mit einem zielspezifischen Bindemittel.
- 30 13. Verfahren nach Anspruch 12, wobei das Herstellen eines polymeren Kernpartikels ferner das Einkapseln eines Kontrastmittels in dem polymeren Kernpartikel umfasst; optional wobei das Kontrastmittel aus der Gruppe ausgewählt wird, die sich aus Fluorophoren, radioaktiven Markern und Mitteln für die Positronen-Emissions-Tomographie zusammensetzt.
- 35 14. Verfahren nach Anspruch 12 oder Anspruch 13, wobei die mindestens eine Beschichtung eine thiolmodifizierte Gelatine ist.
- 40 15. Verfahren nach einem der Ansprüche 12 bis 14, wobei der metallische Nanopartikel eines oder mehrere der Metalle und Metalloxide umfasst, die aus der Gruppe ausgewählt werden, die sich aus Gold, Silber, Cobalt, Mangan und Eisen zusammensetzt; optional wobei der metallische Nanopartikel eines oder mehrere der Metalle und Metalloxide umfasst, die aus der Gruppe ausgewählt werden, die sich aus Gold, Silber und Eisen zusammensetzt; und ferner optional wobei der metallische Nanopartikel Gold umfasst.
- 45 16. Verfahren nach einem der Ansprüche 12 bis 15, wobei der polymere Trägerstoff Poly(epsilon-caprolacton); Poly(D,L-lactid-co-glycolid) oder modifiziertes Poly(epsilon-caprolacton) umfasst; optional wobei der polymere Trägerstoff mindestens eine Schicht von Gelatine mit exponierten Thiolgruppen umfasst.
- 50 17. Verfahren nach einem der Ansprüche 12 bis 16, wobei die einen oder mehreren zielspezifischen Bindemittel ein Antikörper, ein Fab-Fragment oder ein bindendes Fragment davon sind; optional wobei die einen oder mehreren zielspezifischen Bindemittel ein EGFR-spezifischer Antikörper sind; oder wobei die einen oder mehreren zielspezifischen Bindemittel eine Peptidsequenz sind, die spezifisch auf Zelloberflächenrezeptoren zielt; optional wobei die einen oder mehreren zielspezifischen Bindemittel eine Peptidsequenz sind, die spezifisch auf EGFR zielt; oder wobei die einen oder mehreren zielspezifischen Bindemittel ein Arginin-Glycin-Aspartat-Tripeptid sind; oder wobei sich die einen oder mehreren zielspezifischen Bindemittel an einen alpha-V-beta-III-Integrinrezeptor binden; oder wobei das zielspezifische Bindemittel aus der Gruppe ausgewählt wird, die sich aus Antikörper- und Peptidsequenzen zusammensetzt.
- 55 18. Verfahren nach einem der Ansprüche 12 bis 17, wobei die metallischen Nanopartikel 2 Nanometer bis 30 Nanometer groß sind; optional 10 bis 20 nm; und/oder wobei der polymere Trägerstoff 500 Nanometer bis 10 Mikrometer groß

ist; optional 1,5 Mikrometer.

## Revendications

- 5
1. Agent de détection multimodal comprenant une pluralité de nanoparticules métalliques fixées sur une surface d'un support polymère ; ledit support polymère étant constitué d'une particule noyau comportant un ou plusieurs composés parmi la silice, la poly(epsilon-caprolactone), le poly(d,l-lactide-co-glycolide) et/ou des modifications de ceux-ci, ou ladite particule noyau étant produite à partir d'un polymère choisi dans le groupe constitué par : les polythiولات, les peptides contenant de la cystéine, les polyacrylates, l'acide polyacrylique, la polyvinylpyrrolidone (pvp), le polyéthylène glycol (peg), les polynucléotides, la poly(hydroxyéthylloxazoline), l'acide polynucléique, le poly(hydroxyméthacrylate d'éthyle), la polyallylamine, les polyaminoacides, les polysaccharides, le chitosane, le carbophile, le carbomère, la carbopol, les poly(méthacrylates de diméthylaminoalkyle) et les poly(acrylates de diméthylaminoalkyle), ou ladite particule noyau étant produite à partir d'un copolymère choisi dans le groupe constitué par : les poly(méthacrylates de diméthylaminoalkyle-co-méthacrylate de triméthylaminoalkyle) et les poly(acrylates de diméthylaminoalkyle-co-acrylate de triméthylaminoalkyle) ; l'agent de détection comprenant en outre un ou plusieurs agents de liaison spécifiques d'une cible fixés aux nanoparticules métalliques ou au support polymère.
- 10
2. Agent de détection multimodal selon la revendication 1, ladite nanoparticule métallique comprenant un ou plusieurs des métaux et des oxydes métalliques choisis dans le groupe constitué par l'or, l'argent, le cobalt, le manganèse et le fer ; éventuellement ladite nanoparticule métallique comprenant un ou plusieurs des métaux et des oxydes métalliques choisis dans le groupe constitué par l'or, l'argent et le fer ; et en outre éventuellement ladite nanoparticule métallique comprenant de l'or.
- 20
3. Agent de détection multimodal selon la revendication 1 ou la revendication 2, ledit support polymère comprenant de la poly(epsilon-caprolactone) ; du poly(d,l-lactide-co-glycolide) ou de la poly(epsilon-caprolactone) modifiée ; éventuellement ledit support polymère comprenant au moins une couche de gélatine comportant des groupes thiol exposés.
- 25
4. Agent de détection multimodal selon l'une quelconque des revendications précédentes, lesdits un ou plusieurs agents de liaison spécifiques d'une cible étant un anticorps, un fragment Fab ou un fragment de liaison de ceux-ci ; éventuellement lesdits un ou plusieurs agents de liaison spécifiques d'une cible étant un anticorps spécifique de l'EGFR.
- 30
5. Agent de détection multimodal selon l'une quelconque des revendications 1 à 3, lesdits un ou plusieurs agents de liaison spécifiques d'une cible étant une séquence peptidique qui cible spécifiquement des récepteurs de surface cellulaire ; éventuellement lesdits un ou plusieurs agents de liaison spécifiques d'une cible étant une séquence peptidique qui cible spécifiquement l'EGFR.
- 35
6. Agent de détection multimodal selon l'une quelconque des revendications 1 à 3, lesdits un ou plusieurs agents de liaison spécifiques d'une cible étant un tripeptide arginine-glycine-aspartate.
- 40
7. Agent de détection multimodal selon l'une quelconque des revendications 1 à 3, lesdits un ou plusieurs agents de liaison spécifiques d'une cible se liant au récepteur de l'intégrine III alpha-V-bêta.
- 45
8. Agent de détection multimodal selon l'une quelconque des revendications 1 à 3, ledit agent de liaison spécifique d'une cible étant choisi dans le groupe constitué par un anticorps et des séquences peptidiques.
- 50
9. Agent de détection multimodal selon l'une quelconque des revendications précédentes, lesdites nanoparticules métalliques faisant 2 nanomètres à 30 nanomètres ; éventuellement 10 à 20 nm ; et/ou ledit support polymère faisant 500 nanomètres à 10 microns ; éventuellement 1,5 microns.
- 55
10. Agent de détection multimodal selon l'une quelconque des revendications précédentes, ledit support polymère encapsulant un agent d'imagerie ; éventuellement ledit agent d'imagerie étant choisi dans le groupe constitué par les fluorophores, les radiomarqueurs, les agents de contraste radiographiques et les agents de tomographie par émission de positons ; et en outre éventuellement ledit agent d'imagerie étant un colorant fluorescent dans l'infrarouge proche.

11. Agent de détection multimodal selon l'une quelconque des revendications précédentes, ledit agent de liaison spécifique d'une cible étant fixé à la nanoparticule métallique ; ou ledit agent de liaison spécifique d'une cible étant fixé à la nanoparticule métallique et au support polymère.

5 12. Procédé de fabrication d'un agent d'imagerie multimodal, ledit procédé comprenant :

(a) la fabrication d'une particule noyau polymère ;

(b) l'ajout d'au moins un revêtement à la particule noyau polymère pour former un support polymère ;

10 (c) la fixation d'une ou plusieurs nanoparticules métalliques sur le revêtement ; et

(d) la fonctionnalisation dudit au moins un revêtement ou d'une ou plusieurs nanoparticules métalliques avec un agent de liaison spécifique d'une cible.

13. Procédé selon la revendication 12, ladite fabrication d'une particule noyau polymère comprenant en outre l'encapsulation d'un agent d'imagerie à l'intérieur de la particule noyau polymère ; éventuellement ledit agent d'imagerie étant choisi dans le groupe constitué par la groupe se composant des fluorophores, des radiomarqueurs et des agents de tomographie par émission de positons.

14. Procédé selon la revendication 12 ou la revendication 13, ledit au moins un revêtement étant une gélatine à groupes thiol modifiés.

20 15. Procédé selon l'une quelconque des revendications 12 à 14, ladite nanoparticule métallique comprenant un ou plusieurs métaux et oxydes métalliques choisis dans le groupe constitué par l'or, l'argent, le cobalt, le manganèse et le fer ; éventuellement ladite nanoparticule métallique comprenant un ou plusieurs des métaux et des oxydes métalliques choisis dans le groupe constitué par l'or, l'argent et le fer ; et éventuellement en outre ladite nanoparticule métallique comprenant de l'or.

25 16. Procédé selon l'une quelconque des revendications 12 à 15, ledit support polymère comprenant de la poly(epsilon-caprolactone) ; du poly(d,l-lactide-co-glycolide) ou de la poly(epsilon-caprolactone) modifiée ; éventuellement ledit support polymère comprenant au moins une couche de gélatine comportant des groupes thiol exposés.

30 17. Procédé selon l'une quelconque des revendications 12 à 16, lesdits un ou plusieurs agents de liaison spécifiques à une cible étant un anticorps, un fragment Fab ou un fragment de liaison de ceux-ci ; éventuellement lesdits un ou plusieurs agents de liaison spécifiques à une cible étant un anticorps spécifique de l'EGFR ; ou lesdits un ou plusieurs agents de liaison spécifiques à une cible étant une séquence peptidique qui cible spécifiquement des récepteurs de surface cellulaire ; éventuellement lesdits un ou plusieurs agents de liaison spécifiques à une cible étant une séquence peptidique qui cible spécifiquement l'EGFR ; ou lesdits un ou plusieurs agents de liaison spécifiques à une cible étant un tripeptide arginine-glycine-aspartate ; ou lesdits un ou plusieurs agents de liaison se liant au récepteur de l'intégrine III alpha-V-bêta ; ou ledit agent de liaison spécifique à une cible étant choisi dans le groupe constitué par un anticorps et des séquences peptidiques.

35 40 18. Procédé selon l'une quelconque des revendications 12 à 17, lesdites nanoparticules métalliques faisant 2 nanomètres à 30 nanomètres ; éventuellement 10 à 20 nm ; et/ou ledit support polymère faisant 500 nanomètres à 10 microns ; éventuellement 1,5 microns.

45

50

55

Figure 1

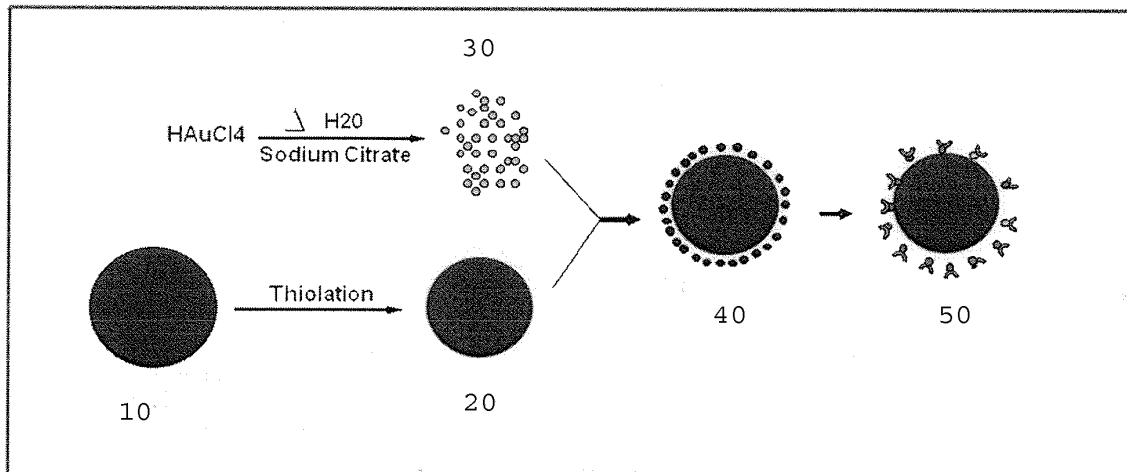


Figure 2

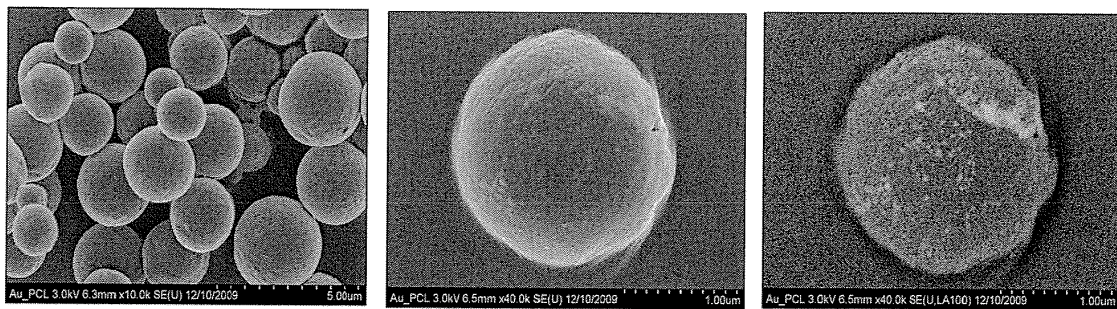


Figure 3

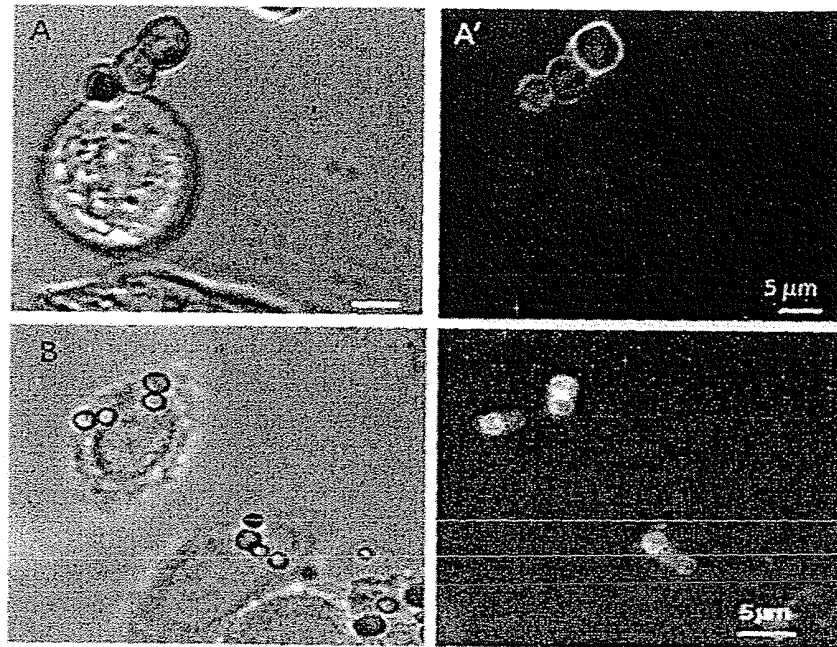
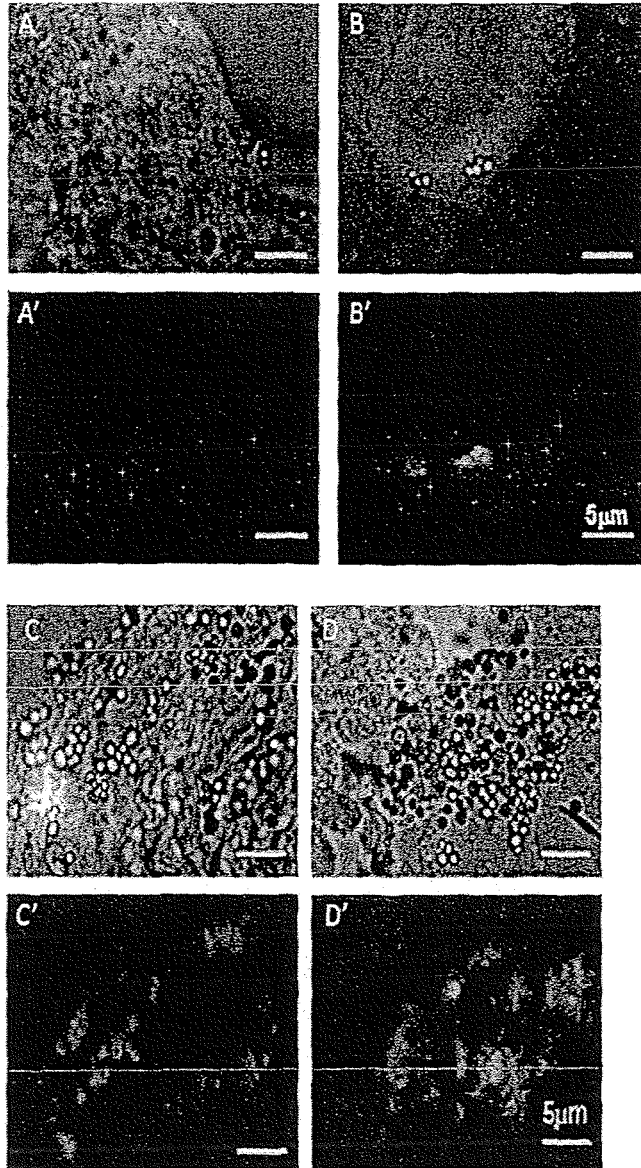


Figure 4



## REFERENCES CITED IN THE DESCRIPTION

This list of references cited by the applicant is for the reader's convenience only. It does not form part of the European patent document. Even though great care has been taken in compiling the references, errors or omissions cannot be excluded and the EPO disclaims all liability in this regard.

## Patent documents cited in the description

- US 2008076676 A [0006]
- WO 2005102396 A [0007]
- US 2008248038 A [0009]
- US 7022336 B [0034]
- EP 11760209 A [0068]
- US 20100317123 A [0068]

## Non-patent literature cited in the description

- **YOUNG-PIL KIM et al.** *Anal. Chem.*, 2008, vol. 80, 5094-5102 [0004]
- **KAUSHIK A et al.** *Electrochemistry Communications*, 2008, vol. 10, 1364-1368 [0005]
- **PANYAM et al.** *International Journal of Pharmaceuticals*, 2003, vol. 262, 1-11 [0008]
- **HORTON et al.** *Experimental Cell Research*, 1991, vol. 195, 368-375 [0010]
- **LUE et al.** *Nanomedicine*, 2010, vol. 5, 1467-79 [0011]
- **OSTER et al.** *Journal of Controlled Release*, 2006, vol. 111 (3), 371-381 [0031]
- **RIBEIRO et al.** *Food Hydrocolloids*, vol. 22 (1), 12-17 [0031]
- **FURTADO MOSQUEIRA et al.** *Journal of Pharmaceutical Sciences Special Issue: Papers from the 1999 Macromolecular Drug Delivery Conference*, 2000, vol. 89 (5), 614-626 [0032]
- **ROSCA et al.** *Journal of Controlled Release*, 2004, vol. 99 (2), 271-280 [0032]
- **PAPISOV M.I. et al.** *Biomacromolecules*, 2005, vol. 6, 2659-2670 [0033]
- **MATHIOWITZ et al.** *Nature*, 1997, vol. 386, 410-414 [0033]
- **TSUNG et al.** *APS PharmSci.*, 2001, vol. 3 (1), 11 [0033]
- **TOWNSEND, S. A et al.** *Biomaterials*, 2007, vol. 28 (34), 5176-5184 [0034]
- **WEISS, B. et al.** *Bioconjugate Chemistry*, 2007, vol. 18 (4), 1087-1094 [0034]
- **GINDY, M. E. et al.** *PMSE Preprints*, 2006, vol. 95, 989-990 [0034]
- **BUMGARNER et al.** *J Control Release*, 2009, vol. 137 (2), 90-7 [0034]
- **SY et al.** *Biomaterials*, 2010, vol. 31 (18), 4987-94 [0034]
- **BALMAYOR et al.** *J. R. Soc. Interface*, 2011 [0034]
- **MCFARLAND et al.** *J. Chem. Educ.*, 2004, vol. 81 (4), 544A [0044]
- **LUNA MARTINEZ et al.** *Mater. Sci. Forum: Adv. Elec. Microscop. Nanomat.*, 2010, vol. 644, 51-55 [0044]
- **GARDEA-TORRESDEY et al.** *Journal of Nanoparticle Research*, 1999, vol. 1 (3), 397-404 [0044]
- **ZHOU et al.** *Chem. Mater.*, 1999, vol. 11 (9), 2310-2312 [0044]
- **SAINSBURY et al.** *J. Phys. Chem. C*, 2007, vol. 111, 12992-12999 [0047]

专利名称(译)	用于早期癌症病变的多模式诊断技术		
公开(公告)号	<a href="#">EP2549925B1</a>	公开(公告)日	2015-10-21
申请号	EP2011760209	申请日	2011-03-24
[标]申请(专利权)人(译)	东北大学		
申请(专利权)人(译)	东北大学		
当前申请(专利权)人(译)	东北大学		
[标]发明人	AMIJI MANSOOR M GANTA SRINIVAS TSAI PEI CHIN		
发明人	AMIJI, MANSOOR, M. GANTA, SRINIVAS TSAI, PEI-CHIN		
IPC分类号	G01N33/543 G01N33/58 A61K49/00 A61B5/00		
CPC分类号	A61K49/0091 A61B5/0066 A61K49/0032 A61K49/0056 A61K49/0058 A61K49/0065 G01N33/54346 G01N33/587		
代理机构(译)	ATKINSON , JONATHAN DAVID MARK		
优先权	61/317123 2010-03-24 US		
其他公开文献	EP2549925A4 EP2549925A1		
外部链接	<a href="#">Espacenet</a>		

摘要(译)

本文公开了多模式检测剂的组合物及其制备方法。多峰检测剂包含附着于聚合物载体表面的多个金属纳米颗粒。检测剂还包含一种或多种与金属纳米颗粒或聚合物载体连接的靶特异性结合剂。

